

1 **Severity of Omicron (B.1.1.529) and Delta (B.1.617.2) SARS-CoV-2 infection among**  
2 **hospitalised adults: a prospective cohort study in Bristol, United Kingdom**

3 Dr Catherine Hyams PhD<sup>†1,6</sup>, Dr Robert Challen PhD<sup>†2,6</sup>, Dr Robin Marlow PhD<sup>1</sup>, Dr Jennifer  
4 Nguyen ScD MPH<sup>3</sup>, Dr Elizabeth Begier MD MPH<sup>3</sup>, Dr Jo Southern PhD<sup>3</sup>, Ms Jade King MSc<sup>4</sup>,  
5 Ms Anna Morley MSc<sup>5</sup>, Ms Jane Kinney BSc<sup>6</sup>, Ms Madeleine Clout BSc<sup>6</sup>, Dr Jennifer Oliver  
6 PhD<sup>6</sup>, Dr Sharon Gray MS<sup>3</sup>, Dr Gillian Ellsbury MD<sup>3</sup>, Prof Nick Maskell MD<sup>5</sup>, Dr Luis Jodar  
7 PhD<sup>3</sup>, Dr Bradford Gessner PhD<sup>3</sup>, Dr John McLaughlin PhD<sup>3</sup>, Dr Leon Danon PhD<sup>2,6</sup>, Professor  
8 Adam Finn PhD FRCP<sup>1,6</sup> (Corresponding Author), On behalf of The Avon CAP Research Group

9 † These authors contributed equally, and should be considered co-first authors

10 1 Population Health Sciences, University of Bristol, Bristol, UK

11 2 Engineering Mathematics, University of Bristol, UK

12 3 Vaccines Medical Development, Scientific and Clinical Affairs, Pfizer Inc, Collegeville, PA,  
13 USA

14 4 Vaccine and Testing Team, Clinical Research Facility, UHBW NHS Trust, Bristol, UK

15 5 Academic Respiratory Unit, University of Bristol, Southmead Hospital, Bristol, UK

16 6 Bristol Vaccine Centre, Population Health Sciences, University of Bristol, Bristol, UK

17 **Corresponding Author:** Professor Adam Finn, PhD  
18 Bristol Vaccine Centre, University of Bristol  
19 Level 6, UHB Education and Research Centre  
20 Upper Maudlin Street  
21 Bristol BS2 8AE  
22 United Kingdom  
23 +44(0)117 342 0160  
24 adam.finn@bristol.ac.uk

25 **Keywords:** COVID-19, SARS-CoV-2, respiratory infection, vaccination

26

27 **Word Count** 3500

28 **ABSTRACT (250/250)**

29 **Background**

30 There is an urgent public health need to evaluate disease severity in adults hospitalised with  
31 Delta and Omicron SARS-CoV-2 variant infections. However, limited data exist assessing  
32 severity of disease in adults hospitalised with Omicron SARS-CoV-2 infections, and to what  
33 extent patient-factors, including vaccination, age, frailty and pre-existing disease, affect variant-  
34 dependent disease severity.

35 **Methods**

36 A prospective cohort study of adults ( $\geq 18$  years of age) hospitalised with acute lower respiratory  
37 tract disease at acute care hospitals in Bristol, UK conducted over 10-months. Delta or Omicron  
38 SARS-CoV-2 infection was defined by positive SARS-CoV-2 PCR and variant identification or  
39 inferred by dominant circulating variant. We constructed adjusted regression analyses to assess  
40 disease severity using three different measures:  $\text{FiO}_2 > 28\%$  (fraction inspired oxygen), World  
41 Health Organization (WHO) outcome score  $> 5$  (assessing need for ventilatory support), and  
42 hospital length of stay (LOS)  $> 3$  days following admission for Omicron or Delta infection.

43 **Findings**

44 Independent of other variables, including vaccination, Omicron variant infection in hospitalised  
45 adults was associated with lower severity than Delta. Risk reductions were 58%, 67%, and 16%  
46 for supplementary oxygen with  $> 28\%$   $\text{FiO}_2$  [Relative Risk (RR)=0.42 (95%CI: 0.34-0.52),  
47  $P < 0.001$ ], WHO outcome score  $> 5$  [RR=0.33 (95%CI: 0.21-0.50),  $P < 0.001$ ], and to have had a  
48 LOS  $> 3$  days [RR=0.84 (95%CI: 0.76-0.92),  $P < 0.001$ ]. Younger age and vaccination with two or  
49 three doses were also independently associated with lower COVID-19 severity.

50 **Interpretation**

51 We provide reassuring evidence that Omicron infection results in less serious adverse outcomes  
52 than Delta in hospitalised patients. Despite lower severity relative to Delta, Omicron infection  
53 still resulted in substantial patient and public health burden and an increased admission rate of  
54 older patients with Omicron which counteracts some of the benefit arising from less severe  
55 disease.

## 56 **Funding**

57 AvonCAP is an investigator-led project funded under a collaborative agreement by Pfizer.

58

## 59 **RESEARCH IN CONTEXT**

### 60 **Evidence before this study**

61 The burden of COVID-19 on hospital services is determined by the prevalence and severity of  
62 SARS-CoV-2 variants, and modified by individual factors such as age, frailty and vaccination  
63 status. Real world data suggest that vaccine effectiveness is lower and may wane faster over time  
64 against symptomatic disease with Omicron (B.1.1.529) than with Delta (B.1.617.2) SARS-CoV-  
65 2 variant. However, numbers of hospitalisations as a case proportion during the Omicron wave  
66 have been considerably lower than previous waves. Several reports have compared the risk of  
67 hospitalisation or severe disease based on SARS-CoV-2 variant, some suggesting that Omicron  
68 is probably less severe than Delta in vaccinated and unvaccinated individuals.

### 69 **Added value of this study**

70 This study provides robust data assessing the relative severity of Delta and Omicron SARS-CoV-  
71 2 variants in patients admitted to hospital, including the first analysis assessing risk for any  
72 positive pressure ventilatory support, as well as risk of supplementary oxygen requirement and  
73 extended hospital admission, that may guide resource planning in hospitals. We found evidence  
74 that infection with Omicron was associated with a milder clinical course following hospital  
75 admission than that caused by Delta and that vaccination was independently associated with  
76 lower in-hospital disease severity using these three separate severity measures. Specifically,  
77 compared to Delta, Omicron-related hospitalizations were 58%, 67%, and 16% less likely to  
78 require high flow oxygen  $>28\%$  FiO<sub>2</sub>, positive pressure ventilatory support or more critical care,  
79 and to have a hospital stay lasting more than three days, respectively.

80 This study reports the considerable morbidity resulting from Omicron infection, with 18% of  
81 Omicron admissions requiring oxygen supplementation  $FiO_2 >28\%$ , 6% requiring positive  
82 pressure ventilation, 62% needing hospitalization  $\geq$ four days, and 4% in-hospital mortality. In  
83 determining the reduced requirement of increased oxygen requirement and total positive pressure  
84 requirement, including non-invasive ventilation, this analysis should contribute to future hospital  
85 care and service planning assessments.

### 86 **Implications of all the available evidence**

87 The risk of severe outcomes following SARS-CoV-2 infection is substantially lower for Omicron  
88 than for Delta, with greater reductions for more severe disease outcomes. Significant variation in  
89 risk occurs with age and vaccination status, with older and unvaccinated individuals remaining at  
90 particular risk of adverse outcome. These results highlight the importance of maintaining high  
91 levels of vaccine coverage in patient groups at risk of severe disease.

92 The impact of lower severity Omicron-related hospitalization must be balanced against increased  
93 transmissibility and overall higher numbers of infections with this variant and there remains a  
94 substantial patient and public health burden. The increased admission rate of older patients with  
95 Omicron counteracts some of the benefit arising from less severe disease. Despite the risk  
96 reduction in high level oxygen supplementation requirement and high dependency care with  
97 Omicron compared to earlier variants at the individual level, healthcare systems could still be  
98 overwhelmed.

99 **INTRODUCTION**

100 The emergence of SARS-CoV-2 has resulted in a global pandemic, with multiple variants  
101 detected since the wild-type virus emerged. The Delta variant (B.1.617.2) was first detected in  
102 India in March 2021, spread rapidly [1] and resulted in a sharp rise in SARS-CoV-2 cases in the  
103 United Kingdom [2]. The Omicron (B.1.1.529) variant, first detected in South Africa in  
104 November 2021, rapidly replaced Delta as the main circulating variant globally and resulted in a  
105 fourth wave of SARS-CoV-2 infection in the UK. By 26<sup>th</sup> December 2021, 95% of UK SARS-  
106 CoV-2 cases were estimated to be caused by Omicron [3].

107  
108 SARS-CoV-2 variants may differ in their capacity to infect and transmit, susceptibility either to  
109 vaccine- or infection-derived immunity and clinical phenotype including disease severity.  
110 Laboratory data suggest that vaccine-induced neutralizing antibody activity is lower against  
111 Delta [4,5] and Omicron variants [6,7] than against the Alpha variant and wild/prototype viral  
112 strains. Real world data subsequently confirmed vaccine effectiveness is lower against  
113 symptomatic disease with Omicron than with Delta and other prior variants [8,9], with protection  
114 that may also wane faster over time [10-13]. However, numbers of hospitalisations as a case  
115 proportion during the Omicron wave have been considerably lower than previous waves [2,14].  
116 Observational data suggest that vaccines remain effective against Omicron-related  
117 hospitalization [15,16].

118 Several reports [11,17-19] have compared the risk of hospitalization or severe disease based on  
119 SARS-CoV-2 variant, some suggesting that Omicron is probably less severe than Delta in  
120 vaccinated and unvaccinated individuals [11,17,18]. However, a recent preliminary report found  
121 no difference in severity between Omicron and Delta [19]. While some studies have stratified

122 results by vaccination status [11,17,18] and age [17], none have comprehensively evaluated the  
123 simultaneous impact of these and other important factors (e.g., chronic medical conditions,  
124 frailty) on more detailed measures of relative clinical severity in UK hospitalized patients.

125  
126 In this study, we assessed the relative impact of SARS-CoV-2 variant on three separate COVID-  
127 19-related severity measures in adults hospitalised with SARS-CoV-2 infection, after adjusting  
128 for important potential confounders, including age, frailty, and vaccination status.

## 129 **METHODS**

### 130 **Study design and study population**

131 We are conducting a prospective cohort study of adults hospitalised with acute respiratory illness  
132 to North Bristol and University Hospitals Bristol and Weston NHS Trusts and now report those  
133 presenting 1<sup>st</sup> June 2021 - 28<sup>th</sup> March 2022 inclusive. All adults aged  $\geq 18$  years admitted to these  
134 hospitals were screened for respiratory disease signs/symptoms [20]. Of these, patients who  
135 tested positive for COVID-19 (detailed below) were included. Details of the UK COVID-19  
136 Vaccination Programme are provided in Supplementary Data 1.

137

### 138 **Data Collection**

139 Clinical data were collected from electronic and paper patient records and recorded on an  
140 electronic case report form using REDCap software [21]. Variables collected included: gender;  
141 age in years; ethnicity; patient pre-existing diseases; vaccination status; age (categorical);  
142 markers of frailty (Charlson Comorbidity Index [CCI] [22], QCovid2 hazard, [23] Rockwood  
143 score [24]); immunosuppressive therapy; residence in a care home; index of multiple deprivation  
144 (IMD); symptom duration prior to admission; hospital site and study week number. We also  
145 collected data about treatment requirement, including: hospital length of stay (LOS); need for  
146 supplementary oxygen and level of oxygen provided; requirement for positive pressure  
147 ventilatory support.

148

149 Data collection was undertaken by individuals not involved in data analysis and collection of  
150 data methods were identical for patients with Omicron and Delta variant infections. Vaccination  
151 records for each study participant were obtained by team members unaware of subjects' SARS-



152 CoV-2 test results from linked hospital and GP records, including details of vaccination brand  
153 and administration date. The QCovid2 hazard score was calculated for each admission [23],  
154 estimating risk of hospitalisation or death due to COVID-19 infection. We also determined the  
155 CCI score [22,25], with higher scores indicating not only a greater mortality risk but also more  
156 severe comorbid conditions, and the Rockwood frailty score[24], a 9-point scale with score  $\geq 5$   
157 indicating frailty.

158

### 159 **Case definitions and exclusions**

160 SARS-CoV-2 infection was defined as respiratory disease and a positive test result for SARS-  
161 CoV-2 on/during hospitalisation or within 7 days prior to hospital admission, using the  
162 established UK Health Security Agency (UKHSA) diagnostic assay deployed at the time.  
163 Infection with a particular SARS-CoV-2 variant was likewise determined using the standard  
164 UKHSA variant identification methods deployed at the time. Initially, Delta was identified by S-  
165 gene positive PCR (SGTP), which was replaced on 11<sup>th</sup> May 2021 by the P681R target following  
166 validation. Omicron was identified as S-gene negative (SGNP) and then by K417N mutation  
167 [26]. Cases without variant identification results admitted between the 1<sup>st</sup> June 2021 and 7<sup>th</sup>  
168 November 2021 were inferred to be Delta, and those after 7<sup>th</sup> Feb 2022 were inferred to be  
169 Omicron. These two dates represent the first date of a proven Omicron admission and the last  
170 date of a proven Delta admission in the Bristol area, respectively.

171

172 Patients developing symptoms  $>10$  days prior to hospitalisation were excluded to avoid  
173 including individuals who may have falsely tested negative for SARS-CoV-2 upon admission  
174 because they presented to hospital late in their clinical course as were individuals who had been

175 inpatients for >28 days prior to their first positive SARS-CoV-2 PCR test. Patients who were  
176 partially vaccinated, i.e. had received only one dose or a second dose <7 days before the time of  
177 symptom onset, and those who had previously recovered from COVID-19 and had not been  
178 vaccinated, were also excluded from the analysis, as their immunological status was uncertain  
179 and would prevent meaningful comparison between vaccinated and unvaccinated individuals.  
180 Individuals were defined as unvaccinated if they had never received any COVID-19 vaccine.  
181 Immunisation with only two vaccine doses was defined as receipt of two doses with  $\geq 7$  days  
182 elapsing between symptom onset and the second dose (and no third dose). Immunisation with  
183 three doses was defined as receipt of a third vaccine dose after receiving two doses, with  $\geq 7$  days  
184 elapsing between the third dose and symptom onset. Only patients being admitted with COVID-  
185 19 for the first time were included, as repeat admissions may be expected to follow different  
186 clinical courses.

187

## 188 **Outcome and covariates**

189 The primary comparison is between cases infected with SARS-CoV-2 Delta variant and SARS-  
190 CoV-2 Omicron variant in hospitalised adults. To investigate disease severity and consider the  
191 hypothesis that Omicron is associated with less severe outcomes in patients hospitalised with  
192 COVID-19, we considered three binary outcomes measured on the seventh day following  
193 admission: (1) maximum oxygen requirement  $FiO_2 > 28\%$ , (2) a WHO outcome score greater  
194 than 5 (i.e. ventilation or intubation required or death) within the first seven days of  
195 hospitalisation (which also implies a maximum oxygen requirement  $FiO_2 > 28\%$ ) [27], and (3)  
196 length of stay longer than three days. The WHO outcome score, or clinical progression scale is  
197 based on the level of invasive ventilation required and, in admitted patients, scores range from 4

198 to 10 (4 = room air, 5 = oxygen supplementation required, 6 = non-invasive positive pressure  
199 ventilation [NIPPV] usage, and 7-9 needing endotracheal intubation). A score of 10 represents  
200 death. Outcome measures were chosen to reflect different operational concerns for hospitals, in  
201 particular the adequacy of oxygen supply, availability of high dependency care, and a measure of  
202 overall hospital bed utilisation. We measured the scores at day seven to include relevant data  
203 from the hospital admission and to prevent complications with right censoring. Thresholds for  
204 the outcomes used here were determined empirically following an initial investigation, and a  
205 sensitivity analysis conducted on the level of each threshold. Charlson Comorbidity Index and  
206 age were divided into categories. For CCI the scores were categorised into none (CCI of 0), mild  
207 (1-2), moderate (3-4) or severe (5 or more) and have an approximately even split across the data.  
208 For age, bands of 18-34years (y), 35-49y, 50-64y, 65-74y, 75-84y and 85y and over, were  
209 chosen as approximately even categories with more resolution in older age groups.

210

## 211 **Statistical Analysis**

212 The demographics of patients with Delta and Omicron infection were described using mean  $\pm$   
213 standard deviation (SD) or median (interquartile range [IQR]) and compared using Fisher exact  
214 tests for categorical variables, two sided Kolmogorov–Smirnov tests for continuous variables and  
215 two-sided Wilcoxon-Mann-Whitney tests for score variables. Where categorical data were  
216 missing, this comparison was performed with both missing data removed and with missing data  
217 included as a separate category (Table 1). There were no missing data items for continuous  
218 variables. We examined trends in patients hospitalised over the study period, determining the  
219 proportion of hospitalisations with each variant, by vaccination status (unvaccinated, two or three  
220 dose of any COVID-19 vaccine) and age group.

221

222 The complex interaction between the dynamics of UK variant distribution and the progressing  
223 age-stratified booster campaign rollout was hypothesised to influence both the risk profile of  
224 patients hospitalised and severity of outcome once hospitalised. The outcomes are relatively  
225 frequent in both groups which can make interpretation of odds ratios resulting from logistic  
226 regression complex [28]. Thus, we used Poisson regression with a robust error variance [28] to  
227 estimate the relative risk of each of the three outcomes.

228

229 The primary comparison was the impact of the variant on hospital outcomes. Other covariates  
230 were identified that might also influence, with variable distribution by variant provided  
231 (Supplementary Table 3). Covariates were screened for systematic biases due to missing data,  
232 resulting in removal of IMD (Supplementary Tables 4, 5). Remaining missing data were imputed  
233 using the fully conditional specification approach implemented using the `mice` package in R  
234 [29]. Multiple imputations were performed, with full analysis repeated for each imputation. The  
235 resulting coefficients for each imputation were combined using a mixture distribution, assuming  
236 normally distributed beta coefficients. For each factor and outcome, the univariate relative risk  
237 was estimated, followed by a multivariable model of a linear combination of genomic variant,  
238 vaccination, age and CCI [22]. As a sensitivity analysis these were fully adjusted using the  
239 remaining covariates, gender, ethnicity, immunosuppressive therapy, residence in a care home,  
240 duration of symptoms prior to admission, hospital site, and study week number. Additional  
241 sensitivity analyses were conducted using different combinations of age and frailty markers,  
242 including CCI as a continuous variable, Rockwood score [24] and QCovid2 hazard rate (which

243 includes age) [23]. Further sensitivity analyses were conducted looking at different threshold  
244 values of each of the three binary outcomes.

245  
246 Statistical analyses were performed in R, version 4.0.2 [30]. Robust Poisson regression was  
247 performed using maximum likelihood estimation of a generalised linear model (positive outcome  
248 coded as 1, negative outcome as 0). We employed a logarithmic link function, and  
249 heteroscedasticity consistent covariance matrix estimators. [28,31] Statistical significance was  
250 defined using a 2-sided significance level of  $\alpha = 0.05$ . We also conducted sensitivity analysis on  
251 the statistical model using quasi-Poisson and log-binomial regression giving relative risks and  
252 logistic regression giving odds ratios.

253

#### 254 **Ethics and permissions**

255 Approved by the Health Research Authority Research Ethics Committee (East of England,  
256 Essex), REC 20/EE/0157, including use of Section 251 of the 2006 NHS Act authorised by the  
257 Confidentiality Advisory Group.

258

#### 259 **Role of the funding source**

260 This study was conducted as a collaboration between the University of Bristol and Pfizer. The  
261 University of Bristol is the study Sponsor. The funders of the study did not play any part in data  
262 collection; they collaborated in study design, data analysis and manuscript preparation.

## 263 RESULTS

264 During the study period reported here, 3297 hospital-admissions with SARS-CoV-2 were  
265 identified, resulting in 1938 SARS-CoV-2 positive qualifying hospitalisations: 1190 (27  
266 inferred) with Delta variant and 748 (119 inferred) with Omicron variant. Overall, 142(76 Delta  
267 and 66 Omicron) cases were excluded from analysis due to being partially vaccinated, or with an  
268 infection acquired in hospital, or both (Figure 1).

269  
270 Patients hospitalised with Omicron variant were statistically significantly older than those with  
271 Delta infection (median [IQR]: 70.6 y [44.8y–83.5y] versus 57.7y [42.6y–74.1y] respectively,  
272  $P<0.001$ ) and had a higher CCI (4 [1–5] versus 2 [0–4] respectively,  $P<0.001$ ). These individuals  
273 were also more likely to have received a third vaccination dose (60.2% (N=679) versus 5.0%  
274 (N=1114) respectively,  $P<0.001$ ) (Table 1). Additional analysis investigated the nature of the  
275 additional comorbidities (Supplementary Table 1) and vaccination (Supplementary Table 2),  
276 showing that patients admitted with Omicron infection were more likely to have pre-existing  
277 heart disease, hypertension, atrial fibrillation, dementia, mild chronic kidney disease (CKD), and  
278 peripheral vascular disease than patients admitted with Delta infection (all  $P<0.001$ ).

279  
280 The proportion of hospitalisations with the Omicron variant increased over time, with Omicron  
281 becoming the dominant variant in the last week of December 2021 (Figure 2A). As the  
282 vaccination campaign progressed over the study period, we saw an increasing proportion of  
283 hospitalised individuals who had received two vaccine doses or booster (Figure 2B). Hospital  
284 admissions occurring early in the study tended to be younger: the admission age profile shifted  
285 towards older groups with time, with a change point in late December 2021, coincident with

286 increasing Omicron cases (Figure 2C). Overall, the patterns suggest that patients hospitalised  
287 between December and February were generally older and frailer, but more commonly  
288 vaccinated.

289  
290 However, patients hospitalised with Omicron infections experienced less severe outcomes  
291 compared to patients infected with Delta. Omicron hospitalisations required ventilation less  
292 frequently (Figure 3A), and when they did, a lower oxygen supplement was needed (Figure 3B).  
293 The WHO outcome score was also lower within the first seven admission days (Figure 3C).  
294 There was no discernible difference in these outcomes between Delta and Omicron in patients  
295  $\geq 85$  years (Figure 3D, 3E). Length of hospital stay was shorter for Omicron compared to Delta  
296 among patients  $< 70$  years of age but similar for  $\geq 70$  years (Figure 3F).

297  
298 Direct associations such as unadjusted estimates account for neither the changes in patient frailty  
299 nor vaccination status observed over the study period (Figure 3). Figure 4 presents results of  
300 adjusted regression models that account for these time-varying factors observed over the study  
301 duration (methods in Supplementary Tables 3-11, results in Supplementary Tables 12, 13).  
302 Relative to Delta, patients infected with Omicron were less likely to require oxygen  
303 supplementation of  $\text{FiO}_2 > 28\%$  [Relative risk (RR)=0.42 (95%CI: 0.34-0.52)], to have a WHO  
304 outcome score  $> 5$  (which implies that a patient required positive pressure ventilatory support or  
305 died in the hospital) [RR=0.33 (95%CI: 0.21-0.50)], and to have a hospital stay lasting over three  
306 days [RR=0.84 (95%CI: 0.76-0.92)]. In stratified analyses by vaccination status, infection with  
307 Omicron relative to Delta was associated with lower severity across all three measures in both  
308 vaccinated and unvaccinated patients.

309  
310 Compared to unvaccinated patients, individuals vaccinated with two doses were less likely to  
311 require oxygen  $>28\%$   $\text{FiO}_2$  [RR=0.78 (95% CI: 0.68-0.89)], positive pressure ventilatory support  
312 or increased critical care [RR=0.56 (95% CI: 0.43-0.73)], and to have a hospital admission  $>3$   
313 days [RR=0.90 (95% CI: 0.84-0.98)]. Results for vaccination with three doses were similar but  
314 had wider confidence intervals than for two doses. In analyses stratified by infecting variant,  
315 vaccination was associated with lower severity of disease using all three measures for both  
316 Omicron and Delta infections. In analyses assessing potential effect modification by adding an  
317 interaction term between variant and vaccination status to adjusted models, the interaction term  
318 was not significant for any severity outcome (Supplementary Table 14).

319  
320 In sensitivity analyses using threshold levels of increased severity to dichotomize outcomes, the  
321 relative lower severity of Omicron declined further when using higher thresholds for oxygen  
322 requirement [ $\text{FiO}_2 >35\%$ : RR=0.27 (95% CI: 0.19-0.39);  $\text{FiO}_2 >50\%$ : RR=0.23 (95% CI: 0.15-  
323 0.37); Supplementary Table 15]. Sensitivity analysis using a WHO outcome score threshold  $>6$   
324 (hence necessitating intubation) had insufficient statistical power (Supplementary Table 16).  
325 When longer thresholds for LOS were used, the lower relative severity of Omicron attenuated as  
326 the threshold increased [LOS  $>5$  days: RR=0.81 (95% CI: 0.71-0.92); LOS  $>7$  days: RR=0.85  
327 (95% CI: 0.73-0.99); Supplementary Table 17], suggesting certain patient characteristics may be  
328 associated with shorter admissions. For vaccination, the protective effect of vaccines increased as  
329 the severity level threshold increased for each outcome measure. Associations were similar in  
330 sensitivity analyses that replaced age group and CCI with the QCovid2 score.

331



## 332 **DISCUSSION**

333 We found evidence that in adults hospitalised with COVID-19, Omicron infection was  
334 associated with less severe illness than that caused by Delta and that vaccination was  
335 independently associated with lower in-hospital disease severity using three separate measures of  
336 severity. Compared to Delta, Omicron-related hospitalizations were 58%, 67%, and 16% less  
337 likely to require high flow oxygen  $>28\%$   $\text{FiO}_2$ , positive pressure ventilatory support or more  
338 critical care, and to have a hospital stay lasting more than three days, respectively. These  
339 findings persisted even after controlling for multiple potential confounders including age,  
340 chronic medical conditions, frailty, and increasing vaccination coverage over time. Our findings  
341 are in keeping with previously published assessment of the relative severity of Omicron variant  
342 infection compared to other variants, which examined markers of severity such as  
343 hospitalization, ICU admission, mechanical ventilation, severe disease and death [32,33]  
344 [11,17,18]. Luring *et al.* reported lower in-hospital severity for Omicron than for Delta among  
345 unvaccinated patients and that vaccinated patients experienced less severe disease regardless of  
346 infecting variant[11]. Although studies have reported lower severity for Omicron relative to  
347 Delta, measured as the risk of hospitalization [17,18] or death [17] after taking into account  
348 vaccination status, the scientific evidence continues to evolve.

349  
350 However, in determining the reduced requirement of increased oxygen requirement and total  
351 positive pressure requirement, including non-invasive ventilation, this analysis should contribute  
352 to future hospital care and service planning assessments. The impact of lower severity Omicron-  
353 related hospitalization must be balanced with increased transmissibility and overall higher  
354 numbers of infections with this variant. Considerable morbidity resulted from Omicron infection,

355 with 18% of Omicron admissions requiring oxygen supplementation  $FiO_2 > 28\%$ , 6% requiring  
356 positive pressure ventilation, 62% needing hospitalization  $\geq$  four days, and 4% in-hospital  
357 mortality. Despite individual-level risk reduction of needing increasing oxygen supplementation  
358 or high dependency care with Omicron compared to earlier variants, healthcare systems could  
359 still be overwhelmed by the sheer case numbers and resulting high hospitalization burden,  
360 especially if the less severe variant is offset by increasingly frail and elderly patients requiring  
361 hospitalization. Omicron's increased transmissibility also increases the infection risk for clinical  
362 and other hospital staff, which can take a significant toll on staffing levels.

363  
364 The length of hospitalization in individuals who have already developed disease severe enough  
365 to merit hospital admission is affected by multiple factors which may confound the effect of any  
366 pathogen or strain, including patient frailty and need for continued care following discharge.  
367 Other events unrelated to the patient's primary pathology, such as secondary hospital-acquired  
368 infection, may also impact discharge. Therefore, discerning the effect of variant on hospital  
369 length of admission is difficult. In contrast, the reductions in oxygen requirements and lower  
370 WHO outcome scores we observe for Omicron infections are reassuring. This suggests that  
371 exhaustion of oxygen supplies or high dependency care beds are less likely in large waves of  
372 community Omicron infection than with Delta and other previous variants. Vaccination reduces  
373 these risks further and our results suggest it is an important modifier of the impact of these  
374 aspects on health services.

375

376

377

378 Our study has several strengths. All patients were admitted to hospital with acute respiratory  
379 illness caused by SARS-CoV-2, so these results are unlikely to be subject to bias caused by  
380 admission for other causes (i.e., incidental COVID-19 disease). In the UK, all national  
381 programme vaccines are provided at no cost at the point of delivery; hence our cohort is not  
382 biased by issues surrounding the cost of vaccination that are seen in fee-based systems [34].  
383 While week of symptom onset was identified as a significant univariate predictor for adverse  
384 outcome, we observe it becomes non-significant on a multivariable analysis which includes time  
385 varying factors, such as vaccination, or variant status (Supplementary Tables 6, 8, 10). This  
386 reassures us that there are no other time varying factors for which we have not accounted. With a  
387 comparatively rich data set of prospectively collected information, we can determine timing of  
388 disease onset accurately and capture information on a range of factors more precisely, such as  
389 vaccination status and patient comorbidities, than could be done using a retrospective design.  
390  
391 However, we are limited in this study to observation of patient outcomes in patients only after  
392 hospital admission. Thus, we cannot draw conclusions about the severity of Omicron infections  
393 occurring entirely in the community. We observed a change in the demographics of patients  
394 being admitted towards more elderly and frail populations, which could be explained if  
395 community Omicron disease were especially milder in young and healthy individuals. The  
396 effects we observed for Omicron and vaccination on clinical outcomes in hospitalised patients  
397 occurred over and above any community-level effects. In this study, lineage association was  
398 only done using lineage-specific PCRs, and it was not possible to attribute a particular case to an  
399 exact sub-lineage. During the period of this analysis the Omicron sub-lineages circulating in the  
400 UK were BA.1 and to a small extent BA.2. The Delta sub-lineages were principally

401 undifferentiated B.1.617.2 and AY.4, as shown in Supplementary Figure 1. Estimates presented  
402 here are for the combined effect of the sub-lineages. We did not have sufficient data to determine  
403 the effectiveness of any individual vaccine against the outcomes studied and our results cannot  
404 be interpreted as a vaccine effectiveness estimate. Furthermore, we did not have sufficient  
405 statistical power to determine with confidence whether booster doses of COVID-19 vaccine  
406 offered additional protection against adverse outcomes. We are unable to control for pressures in  
407 the social care system following discharge, and large waves of community Omicron infection  
408 may put pressure on community elderly care facilities resulting in a backward pressure on  
409 hospital discharges. This could partially explain our observation that length of stay longer than  
410 three days is less associated with variant status and vaccination than other outcomes. Although  
411 dexamethasone was used as treatment in both Delta and Omicron waves, novel antivirals were  
412 introduced throughout the study and this may affect results. Whilst the population of the Bristol  
413 area is representative of the UK population, it is principally Caucasian, and our findings must be  
414 interpreted in this context. Routine testing for anti-nucleocapsid antibodies was not conducted,  
415 and we therefore do not have these data available for determining previous infection status of  
416 hospitalised individuals within the Bristol area nor how our findings were impacted by  
417 population-level changes in infection-derived or hybrid immunity over time. The study design  
418 does not involve any clustering of observations, but we cannot exclude spontaneous formation of  
419 clusters in the data set due to outbreaks in the catchment area, which we can only partly mitigate  
420 by including covariates of age, CCI and vaccination status.

421  
422 In this prospective study, patients hospitalised with Omicron infections had lower clinical  
423 severity than those with Delta infections, as assessed by maximal oxygen requirements, a

424 validated WHO outcome score, and hospital length of stay. Omicron infection, however, still  
425 resulted in substantial patient and public health burden following admission. Older and frail  
426 patients remain particularly susceptible to severe SARS-CoV-2 infection, underscoring the  
427 importance of maintaining high levels of vaccine coverage in this population. Understanding  
428 differences in the risk of clinical disease caused by SARS-CoV-2 variants following infection  
429 and following hospitalisation, and the role of vaccination and other factors in modifying risk, is  
430 critical for planning of public health measures.

431

432 **FIGURE LEGENDS**

433 **Figure 1: Flow diagram of adults hospitalised with SARS-CoV-2 infection**

434 Inclusion and exclusion criteria in the cohort stratified by the primary comparison or SARS-  
435 CoV-2 variant. Any patient may be excluded for multiple reasons at each stage, hence the counts  
436 of reasons for exclusion may not add up to the number of patients excluded.

437 FiO<sub>2</sub>, fraction of inspired oxygen; LOS, length of stay; VOC, variant of concern; WHO, World  
438 Health Organisation

439

440 **Figure 2: Hospitalisations with SARS-CoV-2 infection throughout the study**

441 (A) Daily rates of hospitalisations with Delta and Omicron SARS-CoV-2 infection, (B) 14-day  
442 rolling proportions of hospitalisations by vaccination status (excluding people partially  
443 vaccinated on admission) and (C) 14-day rolling proportions of hospitalisations by age groups  
444 (in years) throughout the study. Vertical lines represent the earliest time an Omicron case was  
445 admitted and the latest time a Delta case was admitted. Before the earliest Omicron detection,  
446 cases are assumed to be Delta when sequencing results are not available, and after the last Delta  
447 detection, cases are assumed to be Omicron, when sequencing results are not available.

448

449 **Figure 3: The detailed breakdown of the three selected indicators of severity of hospital**  
450 **admission stratified by SARS-CoV-2 variant, and the comparison of three binary**  
451 **indicators of hospital burden and their relationship to SARS-CoV-2 variant and patient**  
452 **age, for patients admitted to hospital.**

453 The distribution of patients (A) requiring different peak levels of oxygen supplementation, (B)  
454 with different ventilation requirements as defined by the WHO outcome or clinical progression  
455 score, and (C) with different lengths of stay. The proportion of patients who (D) require high  
456 flow oxygen  $>28\%$   $\text{FiO}_2$ , (E) have a WHO outcome score  $>5$  (requiring NIPPV), and (F) have a  
457 hospital length of stay greater than three days, as assessed on the seventh day following  
458 admission. Error bars show 95% binomial confidence intervals for each outcome, compared to  
459 other outcomes.

460  $\text{FiO}_2$ , Fraction of inspired oxygen; LOS, length of stay; NIPPV, non-invasive positive pressure  
461 ventilation

462

463 **Figure 4: Robust Poisson regression model relative risks for the three indicators of hospital**  
464 **burden.**

465 Relative risks describing the effect of different predictors on whether patients require oxygen  
466 supplementation with  $\text{FiO}_2 >28\%$  (first column), have a WHO outcome score greater than 5  
467 (second column) or who remain in hospital for more than 3 days (third column) measured on the  
468 seventh day after admission. Numerical details of these regression models, including other  
469 explanatory variables that are not our primary interest, are given in Supplementary Table 15. A  
470 comparison of relative risks computed by different methods and odds ratios by logistic  
471 regression is shown in Supplementary Table 18.

472  $\text{FiO}_2$  – fraction inspired oxygen, LOS – length of stay, CCI – Charlson Comorbidity Index

473

474 **CONTRIBUTORS**

475 CH, RC, RM, LD, JO, JN, JM and AF generated the research questions and analysis plan. CH,  
476 AM, JK, MC and The Avon CAP team were involved in data collection. CH, RC, RM, LD, and  
477 AF undertook data analysis. All authors (CH, RC, RM, JN, EB, JS, JK, AM, JK, MC, JO, GE,  
478 NM, LJ, SG, BG, JMM, LD and AF) were involved in the final manuscript preparation and its  
479 revisions before publication. AF provided oversight of the research.

480

481 **DATA SHARING STATEMENT**

482 The data used in this study are sensitive and cannot be made publicly available without  
483 breaching patient confidentiality rules. All analysis code is available on GitHub:

484 <https://doi.org/10.5281/zenodo.7220569>

485

486 **DECLARATIONS OF INTEREST**

487 CH is Principal Investigator of the Avon CAP study which is an investigator-led University of  
488 Bristol study funded by Pfizer and has previously received support from the NIHR in an  
489 Academic Clinical Fellowship. JO is a Co-Investigator on the Avon CAP Study. AF is a member  
490 of the Joint Committee on Vaccination and Immunization (JCVI) and chair of the World Health  
491 Organization European Technical Advisory Group of Experts on Immunization (ETAGE)  
492 committee. In addition to receiving funding from Pfizer as Chief Investigator of this study, he  
493 leads another project investigating transmission of respiratory bacteria in families jointly funded  
494 by Pfizer and the Gates Foundation. LD, RC are members of SPI-M-O subgroups of SAGE and  
495 are also partly funded through AvonCAP. LD is a Co-Investigator of the AvonCAP study and  
496 has also received funding from Pfizer, UKRI and UKHSA for unrelated projects. EB, JS, JN,



497 SG, GE, LJ, BG, and JMM are employees of Pfizer, Inc and may hold stock or stock options.

498 The other authors have no relevant conflicts of interest to declare.

499

## 500 **FUNDING**

501 This study is a University of Bristol sponsored study which is funded under an investigator-led  
502 collaborative agreement by Pfizer Inc. The study funder had no role in data collection, but  
503 collaborated in study design, data interpretation and analysis and writing this manuscript. The  
504 corresponding author had full access to all data in the study and had final responsibility for the  
505 decision to submit for publication.

506

## 507 **ACKNOWLEDGEMENTS**

508 The authors would like to thank the UK Health Security Agency (UKHSA) Vaccine  
509 Effectiveness Working group and the University of Bristol UNCOVER group for guidance in  
510 data analysis and study design. We thank colleagues at the University of Bristol for their support  
511 with this study, including Rachel Davies, Paul Savage, Emma Foose, Susan Christie, Mark  
512 Mummé, and Adam Taylor. We want to recognise the help from Kevin Sweetland and Aman  
513 Kaur-Singh in the AvonCAP study. We would also like to acknowledge the research teams at  
514 North Bristol and University Hospitals of Bristol and Weston NHS Trusts for making this study  
515 possible, including Helen Lewis-White, Rebecca Smith, Rajeka Lazarus, Mark Lyttle, Kelly  
516 Turner, Jane Blazeby, Diana Benton, and David Wynick. We would also like to acknowledge all  
517 participants of the many studies undertaken to find effective vaccines against SARS-CoV-2.

518

519

520 **The AvonCAP Research Group:**

521 Anna Morley, Amelia Langdon, Anabella Turner, Anya Mattocks, Bethany Osborne, Charli  
522 Grimes, Claire Mitchell, David Adegbite, Emma Bridgeman, Emma Scott, Fiona Perkins,  
523 Francesca Bayley, Gabriella Ruffino, Gabriella Valentine, Grace Tilzey, James Campling,  
524 Johanna Kellett Wright, Julia Brzezinska, Julie Cloake, Katarina Milutinovic, Kate Helliker,  
525 Katie Maughan, Kazminder Fox, Konstantina Minou, Lana Ward, Leah Fleming, Leigh  
526 Morrison, Lily Smart, Louise Wright, Lucy Grimwood, Maddalena Bellavia, Madeleine Clout,  
527 Marianne Vasquez, Maria Garcia Gonzalez, Milo Jeenes-Flanagan, Natalie Chang, Niall Grace,  
528 Nicola Manning, Oliver Griffiths, Pip Croxford, Peter Sequenza, Rajeka Lazarus, Rhian Walters,  
529 Robin Marlow, Robyn Heath, Rupert Antico, Sandi Nammuni Arachchge, Seevakumar Suppiah,  
530 Taslima Mona, Tawassal Riaz, Vicki Mackay, Zandile Maseko, Zoe Taylor, Zsolt Friedrich,  
531 Zsuzsa Szasz-Benczur.

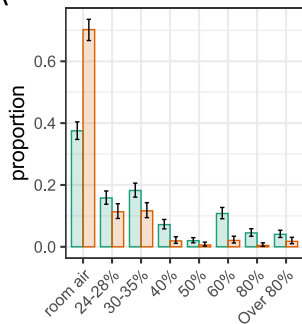
## 532 REFERENCES

- 533 1. Challen R, Dyson L, Overton CE, et al. Early epidemiological signatures of novel SARS-CoV-2  
534 variants: establishment of B.1.617.2 in England. *medRxiv* 2021: 2021.06.05.21258365.
- 535 2. Government U. Coronavirus (COVID-19) in the UK. 2022.  
536 [https://coronavirus.data.gov.uk/details/vaccinations?areaType=overview&areaName=United%20Kingdo](https://coronavirus.data.gov.uk/details/vaccinations?areaType=overview&areaName=United%20Kingdom)  
537 [m](https://coronavirus.data.gov.uk/details/vaccinations?areaType=overview&areaName=United%20Kingdom) (accessed 14 February 2022).
- 538 3. UKHSA. SARS-CoV-2 variants of concern and variants under investigation in England,  
539 Technical briefing 36. 2022.
- 540 4. Wang P, Nair MS, Liu L, et al. Antibody resistance of SARS-CoV-2 variants B. 1.351 and B. 1.1.  
541 7. *Nature* 2021; **593**(7857): 130-5.
- 542 5. Liu Y, Liu J, Xia H, et al. Neutralizing activity of BNT162b2-elicited serum. *New England*  
543 *Journal of Medicine* 2021; **384**(15): 1466-8.
- 544 6. Nemet I, Kliker L, Lustig Y, et al. Third BNT162b2 Vaccination Neutralization of SARS-CoV-2  
545 Omicron Infection. *New England Journal of Medicine* 2021; **386**(5): 492-4.
- 546 7. Schmidt F, Muecksch F, Weisblum Y, et al. Plasma Neutralization of the SARS-CoV-2 Omicron  
547 Variant. *New England Journal of Medicine* 2021; **386**(6): 599-601.
- 548 8. Ferguson N, Ghani A, Hinsley W, Volz E. Report 50: Hospitalisation risk for Omicron cases in  
549 England. *Imperial College London* 2022.
- 550 9. Sheikh A, Kerr S, Woolhouse M, McMenamin J, Robertson C. Severity of Omicron variant of  
551 concern and vaccine effectiveness against symptomatic disease: national cohort with nested test negative  
552 design study in Scotland. *University of Edinburgh* 2021.
- 553 10. UKHSA. COVID-19 vaccine surveillance report: Week 11: UK Government, 2022.
- 554 11. Lauring AS, Tenforde MW, Chappell JD, et al. Clinical severity of, and effectiveness of mRNA  
555 vaccines against, covid-19 from omicron, delta, and alpha SARS-CoV-2 variants in the United States:  
556 prospective observational study. *BMJ* 2022; **376**: e069761.
- 557 12. Ferdinands J, Rao S, Dixon B, al e. Waning 2-Dose and 3-Dose Effectiveness of mRNA Vaccines  
558 Against COVID-19–Associated Emergency Department and Urgent Care Encounters and  
559 Hospitalizations Among Adults During Periods of Delta and Omicron Variant Predominance — VISION  
560 Network, 10 States, August 2021–January 2022. *MMWR Morb Mortal Wkly Rep* 2022; **71**: 255-63.
- 561 13. Thompson M, Natarajan K, SA I, al e. Effectiveness of a Third Dose of mRNA Vaccines Against  
562 COVID-19–Associated Emergency Department and Urgent Care Encounters and Hospitalizations Among  
563 Adults During Periods of Delta and Omicron Variant Predominance — VISION Network, 10 States,  
564 August 2021–January 2022. *MMWR Morb Mortal Wkly Rep* 2022; **71**: 139-45.
- 565 14. Jassat W, Abdool Karim SS, Mudara C, et al. Clinical severity of COVID-19 in patients admitted  
566 to hospital during the omicron wave in South Africa: a retrospective observational study. *The Lancet*  
567 *Global Health*.
- 568 15. Kirsebom FCM, Andrews N, Stowe J, et al. COVID-19 vaccine effectiveness against the omicron  
569 (BA.2) variant in England. *Lancet Infect Dis* 2022.
- 570 16. UKHSA UHSA. COVID-19 vaccine surveillance report: week 19. 2022.  
571 [https://assets.publishing.service.gov.uk/government/uploads/system/uploads/attachment\\_data/file/107511](https://assets.publishing.service.gov.uk/government/uploads/system/uploads/attachment_data/file/107511/5/COVID-19_vaccine_surveillance_report_12_May_2022_week_19.pdf)  
572 [5/COVID-19\\_vaccine\\_surveillance\\_report\\_12\\_May\\_2022\\_week\\_19.pdf](https://assets.publishing.service.gov.uk/government/uploads/system/uploads/attachment_data/file/107511/5/COVID-19_vaccine_surveillance_report_12_May_2022_week_19.pdf) (accessed 8th June 2022 2022).
- 573 17. Nyberg T, Ferguson NM, Nash SG, et al. Comparative analysis of the risks of hospitalisation and  
574 death associated with SARS-CoV-2 omicron (B.1.1.529) and delta (B.1.617.2) variants in England: a  
575 cohort study. *The Lancet*.
- 576 18. Bager P, Wohlfahrt J, Fonager J, et al. Risk of hospitalisation associated with infection with  
577 SARS-CoV-2 lineage B.1.1.7 in Denmark: an observational cohort study. *Lancet Infect Dis* 2021; **21**(11):  
578 1507-17.
- 579 19. Strasser Z, Hadavand A, Murphy S, Estiri H. SARS-CoV-2 Omicron Variant is as Deadly as  
580 Previous Waves After Adjusting for Vaccinations, Demographics, and Comorbidities. *Research Square*  
581 2022.

- 582 20. Hyams C, Marlow R, Maseko Z, et al. Effectiveness of BNT162b2 and ChAdOx1 nCoV-19  
583 COVID-19 vaccination at preventing hospitalisations in people aged at least 80 years: a test-negative,  
584 case-control study. *The Lancet Infectious Diseases* 2021; **21**(11): 1539-48.
- 585 21. Harris PA, Taylor R, Thielke R, Payne J, Gonzalez N, Conde JG. Research electronic data  
586 capture (REDCap)—A metadata-driven methodology and workflow process for providing translational  
587 research informatics support. *Journal of Biomedical Informatics* 2009; **42**(2): 377-81.
- 588 22. Charlson ME, Pompei P, Ales KL, MacKenzie CR. A new method of classifying prognostic  
589 comorbidity in longitudinal studies: Development and validation. *Journal of Chronic Diseases* 1987;  
590 **40**(5): 373-83.
- 591 23. Hippisley-Cox J, Coupland CAC, Mehta N, et al. Risk prediction of covid-19 related death and  
592 hospital admission in adults after covid-19 vaccination: national prospective cohort study. *BMJ* 2021;  
593 **374**: n2244.
- 594 24. Rockwood K, Song X, MacKnight C, et al. A global clinical measure of fitness and frailty in  
595 elderly people. *CMAJ : Canadian Medical Association journal = journal de l'Association medicale  
596 canadienne* 2005; **173**(5): 489-95.
- 597 25. Physicians RCo. National Early Warning Score (NEWS) 2: Standardising the assessment of  
598 acute-illness severity in the NHS. Updated report of a working party. *RCP, London* 2017.
- 599 26. UKHSA. SARS-CoV-2 variants of concern and variants under investigation in England,  
600 Technical Briefing 33, 2021.
- 601 27. Characterisation WHOWGotC, Management of C-i. A minimal common outcome measure set for  
602 COVID-19 clinical research. *Lancet Infect Dis* 2020; **20**(8): e192-e7.
- 603 28. Zou G. A modified poisson regression approach to prospective studies with binary data. *Am J  
604 Epidemiol* 2004; **159**(7): 702-6.
- 605 29. van Buuren S, Groothuis-Oudshoorn K. mice: Multivariate Imputation by Chained Equations in  
606 R. *Journal of Statistical Software* 2011; **45**(3): 1 - 67.
- 607 30. Team RC. R: A language and environment for statistical computing. . In: Computing RFFS,  
608 editor. Vienna, Austria; 2014.
- 609 31. Zeileis A, Köll S, Graham N. Various Versatile Variances: An Object-Oriented Implementation  
610 of Clustered Covariances in R. *Journal of Statistical Software* 2020; **95**(1): 1 - 36.
- 611 32. Lewnard JA, Hong VX, Patel MM, Kahn R, Lipsitch M, Tartof SY. Clinical outcomes associated  
612 with SARS-CoV-2 Omicron (B.1.1.529) variant and BA.1/BA.1.1 or BA.2 subvariant infection in  
613 southern California. *Nature Medicine* 2022.
- 614 33. Van Goethem N, Chung PY, Meurisse M, et al. Clinical Severity of SARS-CoV-2 Omicron  
615 Variant Compared with Delta among Hospitalized COVID-19 Patients in Belgium during Autumn and  
616 Winter Season 2021&ndash;2022. *Viruses* 2022; **14**(6).
- 617 34. Wheelock A, Miraldo M, Thomson A, Vincent C, Sevdalis N. Evaluating the importance of  
618 policy amenable factors in explaining influenza vaccination: a cross-sectional multinational study. *BMJ  
619 Open* 2017; **7**(7): e014668.

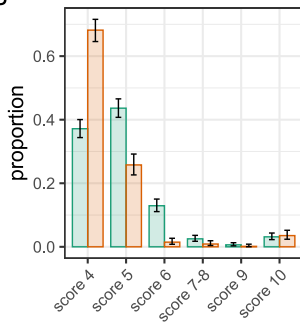
620

A



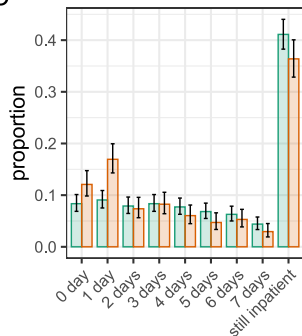
Max FiO2

B



WHO Outcome score

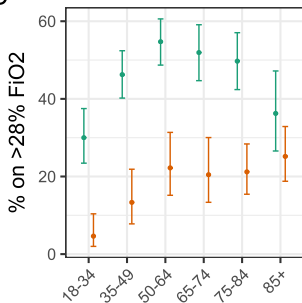
C



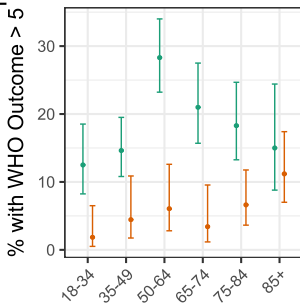
Length of Stay

Delta  
Omicron

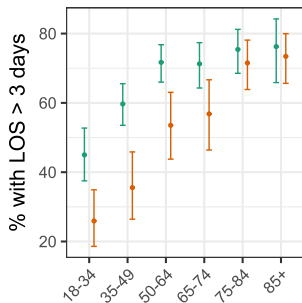
D

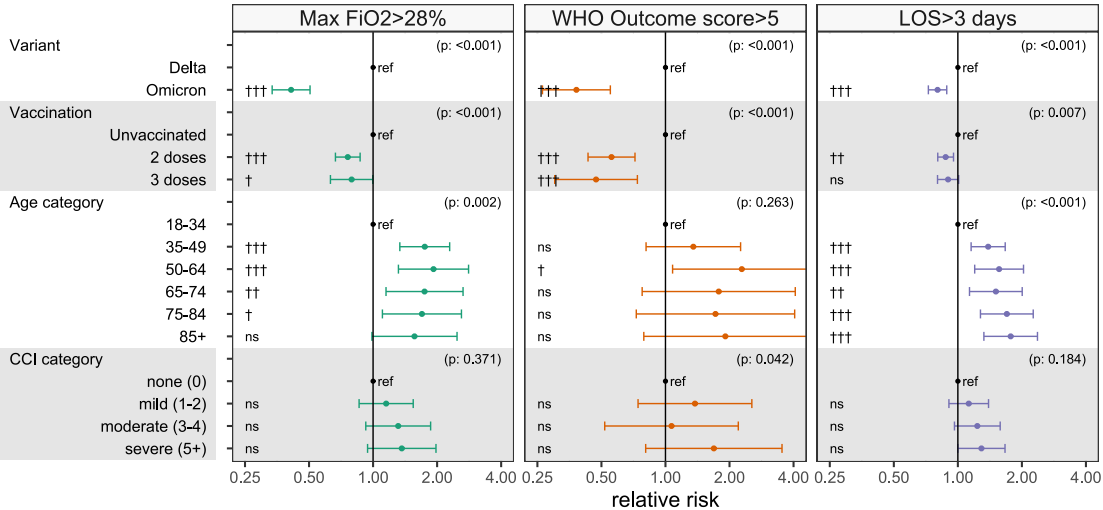


E

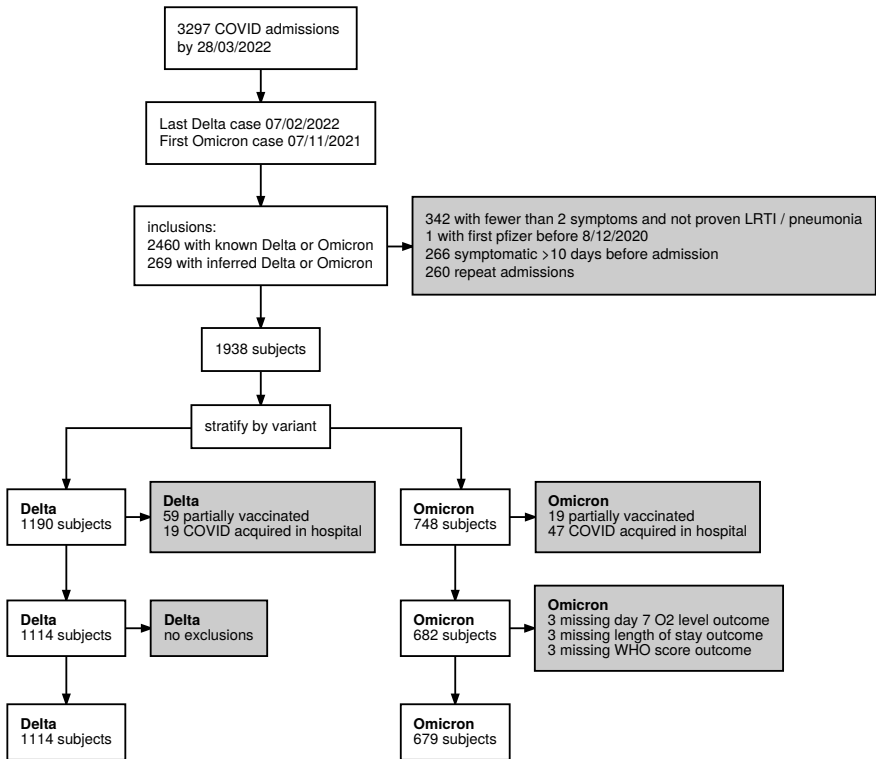


F

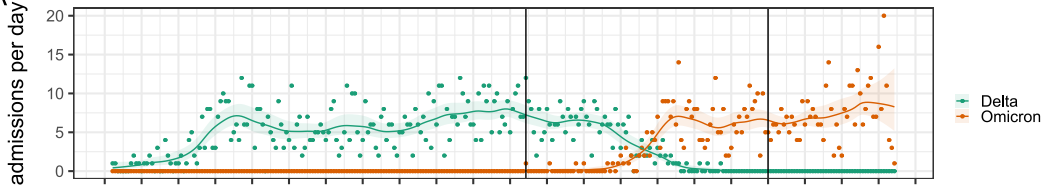




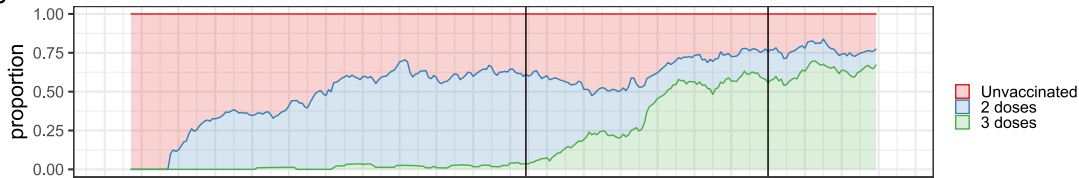
††† indicates p-value < 0.001, †† p-value < 0.01 and † p-value < 0.05. 'ns' have p-value ≥ 0.05



A



B



C

