

1 **Repeat controlled human malaria infection of**
2 **healthy UK adults with blood-stage *Plasmodium falciparum*:**
3 **safety and parasite growth dynamics**
4

5 Jo Salkeld^{1,2*}, Yrene Themistocleous^{2*}, Jordan R. Barrett^{1,2}, Celia H. Mitton², Thomas A. Rawlinson²,
6 Ruth O. Payne², Mimi M. Hou^{1,2}, Baktash Khozoe², Nick J. Edwards², Carolyn M. Nielsen^{1,2}, Diana
7 Muñoz Sandoval³, Florian A. Bach³, Wiebke Nahrendorf³, Raquel Lopez Ramon², Megan Baker²,
8 Fernando Ramos-Lopez², Pedro M. Folegatti², Doris Quinkert^{1,2}, Katherine J. Ellis², Ian D. Poulton²,
9 Alison M. Lawrie², Jee-Sun Cho^{1,2}, Fay L. Nugent², Philip J. Spence^{3,4}, Sarah E. Silk^{1,2}, Simon J.
10 Draper^{1,2}, and Angela M. Minassian^{1,2,#}.

11
12 ¹ Department of Biochemistry, University of Oxford, Oxford, OX1 3QU, UK.

13 ² The Jenner Institute, University of Oxford, Oxford, OX3 7DQ, UK.

14 ³ Institute of Immunology and Infection Research, University of Edinburgh, Edinburgh, UK.

15 ⁴ Centre for Immunity, Infection and Evolution, University of Edinburgh, Edinburgh, UK.

16

17 * These authors contributed equally.

18 # *Corresponding author:* Dr Angela M. Minassian (angela.minassian@bioch.ox.ac.uk)

19

20 **Running title: Safety of repeat blood-stage CHMI**

21

22 **Abstract**

23 In endemic settings it is known that natural malaria immunity is gradually acquired following repeated
24 exposures. Here we sought to assess whether similar acquisition of blood-stage malaria immunity would
25 occur following repeated parasite exposure by controlled human malaria infection (CHMI). We report the
26 findings of a repeat homologous blood-stage *Plasmodium falciparum* (3D7 clone) CHMI study
27 (VAC063C; ClinicalTrials.gov NCT03906474). In total, 24 healthy, unvaccinated, malaria-naïve UK
28 adult participants underwent primary CHMI followed by drug treatment. Ten of these then underwent
29 secondary CHMI in the same manner, and then six of these underwent a final tertiary CHMI. As with
30 primary CHMI, malaria symptoms were common following secondary and tertiary infection, however,
31 most resolved within a few days of treatment and there were no long term sequelae or serious adverse
32 events related to CHMI. Despite detectable induction and boosting of anti-merozoite serum IgG antibody
33 responses following each round of CHMI, there was no clear evidence of anti-parasitic immunity
34 (manifest as reduced parasite growth *in vivo*) conferred by repeated challenge with the homologous
35 parasite in the majority of volunteers. However, three volunteers showed some variation in parasite
36 growth dynamics *in vivo* following repeat CHMI that were either modest or short-lived. We also observed
37 no major differences in clinical symptoms or laboratory markers of infection across the primary,
38 secondary and tertiary challenges. However, there was a trend to more severe pyrexia after primary
39 CHMI and the absence of a detectable transaminitis post-treatment following secondary and tertiary
40 infection. We hypothesize that this could represent the initial induction of disease tolerance or clinical
41 malaria immunity. Repeat homologous blood-stage CHMI is thus safe and provides a model with the
42 potential to further the understanding of the acquisition of blood-stage immunity in a highly controlled
43 setting.

44

45 **Introduction**

46 Controlled human malaria infection (CHMI) is the most developed experimental human microbial
47 infection model. It has been critical to advancing new therapeutic drugs and vaccines, including the most
48 advanced anti-sporozoite vaccine for *Plasmodium falciparum*, RTS,S/AS01, and has provided key
49 insights into parasite immuno-biology and pathogenesis of disease (1). CHMI was pioneered in the
50 fascinating era of malariotherapy, in which deliberate malaria infection, delivered either via mosquito bite
51 or by blood transfusion, was administered as treatment for neurosyphilis prior to the availability of
52 penicillin in the mid-1940s (2). Since it was the induction of fever that led to improvement of
53 neurosyphilitic symptoms, patients were routinely re-challenged with both homologous and heterologous
54 strains (with *P. vivax* and to a lesser extent with *P. falciparum*) and this became the standard treatment of
55 neurosyphilis. Retrospective examinations of reinfection data in patients using homologous *P. vivax* or
56 homologous and/or heterologous *P. falciparum* demonstrated a reduction in fever episodes (“clinical
57 immunity”) during the secondary infection as well as reductions in parasitaemia (“anti-parasitic
58 immunity”), suggesting some partial immunity can be conferred from one previous parasite exposure (3,
59 4). However, this phenomenon has not been re-explored by CHMI in the “modern era”.

60

61 In the natural exposure setting (i.e. in malaria-endemic countries) the manifestations of severe malaria
62 disease vary with age and transmission setting (5). Nonetheless, immunity to severe malaria is gradually
63 acquired by young children following repeated infections with *P. falciparum*, and ultimately older
64 children and adults typically develop asymptomatic infections whereby they are able to tolerate much
65 higher levels of parasitaemia without symptoms or clinical signs of malaria (6). This naturally-acquired
66 immunity, observed in older children and adults, is widely understood to involve a complex interplay of
67 cellular and humoral immune mechanisms, and to develop over time, following repeated exposures, to
68 multiple parasite strains.

69

Salkeld J, Themistocleous Y *et al.*

70 Repeat homologous blood-stage CHMI (with malaria of any species) has the potential to further the
71 understanding of the impact of prior malaria exposure on a subsequent infection in a highly controlled and
72 experimental setting. However, prior to recent studies in Oxford, only one previous study had
73 administered a second intravenous *P. falciparum* blood-stage challenge in humans (7). Five malaria-naïve
74 volunteers were repeatedly inoculated with infected erythrocytes at low doses, followed by administration
75 of anti-malarial drugs before development of clinical infection. Three of the four volunteers who
76 completed the study were protected from infection after three rounds of low dose blood-stage challenge
77 and cure, with no parasite DNA detected by quantitative PCR (qPCR) after the fourth inoculation.
78 However, with very small numbers, lack of a control group and detection of residual atovaquone, which
79 may have confounded the observed outcome, clear interpretation of these results is difficult (7, 8). In
80 contrast, many healthy adult volunteers, in other malaria vaccine clinical trials worldwide, have been re-
81 challenged with *P. falciparum* malaria delivered by mosquito bite (9-12) or as injected cryopreserved
82 sporozoites (13-15). However, in most cases these were vaccinees who had shown evidence of vaccine-
83 induced sterilizing or partial immunity following their primary CHMI. These studies also aimed to assess
84 the durability of vaccine-induced pre-erythrocytic immunity as opposed to any impact on the subsequent
85 blood-stage of infection.
86
87 More recently, as part of the VAC063 RH5.1/AS01_B blood-stage vaccine efficacy trial (16), we
88 administered a secondary homologous *P. falciparum* (3D7 clone) blood-stage challenge to a subset of
89 unvaccinated infectivity control volunteers with unexpected results. Upon primary CHMI in the part of
90 the study called “VAC063A”, all fifteen infectivity controls were diagnosed at ~10,000 parasites per mL
91 of blood within 8-12 days as routinely seen in this CHMI model in malaria-naïve adults. Subsequently,
92 following secondary homologous CHMI approximately 4 months later (called “VAC063B”), six out of
93 eight volunteers showed identical blood-stage parasitaemia to the primary infection, however, two out of
94 eight participants demonstrated a reduction in their parasite multiplication rate (PMR) as compared to

Salkeld J, Themistocleous Y *et al.*

95 primary infection and the remainder of the secondary CHMI cohort. Indeed, one of these two volunteers
96 showed undetectable blood-stage infection out to 19 days.
97
98 Given natural immunity to the blood-stage parasite is slow to acquire, these findings after a single acute
99 primary exposure were not anticipated. However, they did suggest that repeat homologous blood-stage
100 CHMI could provide a model to further interrogate the immunological mechanisms that underlie the
101 acquisition of clinical and anti-parasitic immunity, which could then guide development of new
102 vaccination strategies. Here, we therefore sought to further develop this model by inviting these previous
103 participants back to take part in a final follow-on challenge study (called “VAC063C”), to enable the
104 assessment of safety and parasite growth dynamics following tertiary, secondary and primary homologous
105 blood-stage CHMI.

106 **Results**

107 **Participant flow and demographics**

108 Twenty-five volunteers were screened for the VAC063C study. Sixteen of these were malaria-naïve
109 healthy adult volunteers, and the other nine volunteers were screened following invitation to participate,
110 after their previous enrolment and receipt of blood-stage *P. falciparum* CHMI as unvaccinated infectivity
111 controls in the VAC063 study (A and B CHMIs, ClinicalTrials.gov NCT02927145) (16) (**Figure 1A**).
112 Eleven volunteers were subsequently enrolled, comprising six volunteers who had previously undergone
113 two CHMIs in the VAC063 study (Group 1), two volunteers who had received a single prior CHMI
114 (Group 2) and a further three malaria-naïve volunteers to act as primary infectivity controls (Group 3).
115 Over the entire study period, only a single participant withdrew prior to completion (after 45 days of
116 follow-up post-CHMI) due to personal reasons. **Table S1** compares the demographics of those
117 undergoing primary, secondary or tertiary CHMI in the VAC063C study as well as the pooled
118 demographic data across all three CHMI studies (VAC063A, B and C). Age, gender, ethnicity and body
119 mass index (BMI) were comparable across all participants undergoing primary, secondary and tertiary
120 CHMI.

121

122 **Period of controlled human malaria infection**

123 Blood-stage CHMI, with the *P. falciparum* 3D7 clone, was initiated for the VAC063C study on 6th
124 November 2018; this was approximately 8 months after completion of the preceding VAC063B CHMI
125 (**Figure 1B**). Exactly as for VAC063A and VAC063B, the CHMI was initiated by administration of the
126 inoculum to each participant via an intravenous injection. This contained approximately 777 parasitised
127 erythrocytes in 5 mL of normal saline, as estimated by a limiting dilution assay of the inoculum (executed
128 as soon as the final participant had received it). This was highly comparable to the dose of approximately
129 452 and 857 parasitised erythrocytes administered to participants during the VAC063A and B CHMIs,
130 respectively (16). All eleven participants subsequently developed patent blood-stage parasitaemia and

131 were diagnosed and treated at pre-defined parasitaemia/clinical thresholds. All participants completed the
132 course of antimalarials as prescribed and all follow-up visits were completed by 14th February 2019.

133

134 **Safety of repeat homologous *P. falciparum* CHMI**

135 There were no serious adverse events (SAEs) or unexpected reactions deemed possibly, probably or
136 definitely related to CHMI, blood draws or study drugs during the course of the VAC063C study and no
137 participants withdrew due to study-related adverse events (AEs). Otherwise, only a single SAE deemed
138 unrelated to study interventions occurred during VAC063C; abdominal pain secondary to suspected renal
139 calculus requiring overnight hospital admission. We next proceeded to analyse the safety data from the
140 VAC063C study alone, as well as data from all participants combined across the three VAC063 blood-
141 stage CHMI trials. In total 24 participants underwent one CHMI only, 10 volunteers received two
142 homologous CHMIs and 6 received three homologous CHMIs. The intervals between the CHMI periods
143 were approximately 4 months (VAC063A to B) and 8 months (VAC063B to C) (**Figure 1B**).

144

145 The maximum severity reported and relative frequencies of CHMI-related solicited AEs for all
146 participants receiving primary, secondary and tertiary CHMI across the three CHMI studies are shown in
147 **Figure 2A,C**, with unsolicited AEs shown in **Table S2**. Data on solicited AEs from the VAC063C study
148 only are shown in **Figure 2B**. There were no major differences in the number or type of AE reported
149 across the primary, secondary and tertiary CHMI groups, although severe AEs were limited to those
150 undergoing primary or secondary CHMI (with the caveat that a smaller number of participants underwent
151 tertiary CHMI). The most commonly reported AEs were headache, fatigue, malaise, followed by
152 feverishness, chills, sweats, myalgia, nausea and arthralgia. A minority of volunteers reported diarrhoea
153 or vomiting. Maximum severity of AEs peaked between 24 and 48 hours post-diagnosis (after starting
154 antimalarial drug treatment) and most AEs had resolved within a few days of CHMI or completing
155 treatment with no long-term sequelae (**Figure 3**). A minority of participants also reported AEs possibly

156 related to taking antimalarial treatment (artemether/lumefantrine or atavoquone/proguanil). These
157 occurred in the 24-48 hour period after initiating treatment and resolved quickly (**Figure S1**).

158
159 We next analysed the frequency and severity of objective clinical observations and laboratory AEs
160 (**Figure 4, Table S3**). We observed no differences in haemoglobin or platelet counts across the three
161 cohorts undergoing repeat *P. falciparum* infection. However, lymphocytopaenia was more frequent
162 following secondary and tertiary CHMI (affecting >60% participants) compared to <30% following
163 primary CHMI. There was also a trend toward less severe pyrexia with each successive CHMI (**Figure**
164 **4A,C**). In nearly all cases, these clinical changes were transient, coinciding with malaria diagnosis, with
165 pyrexia resolving within the next 48 hours and lymphocytes normalizing by 6 days post-treatment (T+6)
166 in VAC063C or by 28 days post-CHMI (C+28) in VAC063A and B (noting T+6 was not assessed in
167 these earlier studies).

168
169 During VAC063C we also noted a transaminitis occurring in Group 3 participants (those undergoing
170 primary CHMI), as measured by significantly raised alanine aminotransferase (ALT), one severe, at 6
171 days post-diagnosis and treatment (T+6) (**Figure 4B**); $P = 0.03$ by Kruskal-Wallis test. This was not
172 apparent in any participant undergoing secondary or tertiary CHMI. We potentially failed to observe this
173 degree of transaminitis in the VAC063A and VAC063B cohorts because these studies did not include the
174 T+6 assessment (**Figure S2**), although four milder elevations of ALT were observed. Further examination
175 of the two volunteers with transaminitis in VAC063C revealed similar increases in aspartate
176 aminotransferase (AST) and gamma-glutamyl transferase (GGT), and that the participants had neither
177 signs nor symptoms of hepatitis. One participant reported mild loss of appetite and, upon examination,
178 mild epigastric and suprapubic tenderness were present but without right upper quadrant pain or
179 hepatosplenomegaly. Their AST normalised after 3 days and ALT after 12 days, although GGT did not
180 fully normalise until the last study visit (day C+90). The second participant remained completely

181 asymptomatic and all transaminases (ALT, AST and GGT) normalised after 28 days. In both participants
182 bilirubin and markers of synthetic liver function (albumin, alkaline phosphatase (ALP) and coagulation
183 screen) remained normal. Both participants had been EBV and hepatitis A virus IgG positive prior to
184 CHMI, however, in order to rule out new blood-borne infections as the cause of liver derangement, both
185 participants were screened for CMV, hepatitis B, hepatitis C, human immunodeficiency virus (HIV) and
186 hepatitis E infection; all serology was negative.

187

188 **Parasite growth dynamics following repeat homologous *P. falciparum* CHMI**

189 Across the three VAC063 blood-stage CHMI studies, all participants developed detectable blood-stage
190 parasitaemia and were diagnosed according to clinical/parasitological criteria defined in the trial
191 protocols. Individual parasitaemias were measured over time by qPCR, and are shown for all volunteers
192 undergoing primary (n=24), secondary (n=10) and tertiary (n=6) CHMI (**Figure 5A, Table S4**). Analysis
193 of the median qPCR result showed highly comparable acute blood-stage parasite growth across each
194 repeat infection cohort (**Figure 5B**). We confirmed that volunteers were clinically diagnosed at similar
195 levels of parasitaemia across each cohort (approximately 10,000 parasites per mL [p/mL] blood) with no
196 significant differences observed; $P = 0.79$, Kruskal-Wallis test (**Figure 5C**).

197

198 At the group level there was no evidence that prior blood-stage *P. falciparum* infection affected
199 subsequent homologous parasite growth, as evidenced by comparable time-to-diagnosis (**Figure 5D**)
200 across the three cohorts; $P = 0.16$, log-rank test. The median time-to-diagnosis was 9 days post-primary
201 CHMI (n =24), 9 days post-secondary CHMI (n=10), and 10 days post-tertiary CHMI (n=6). Similar
202 results were observed for the VAC063C protocol pre-specified primary analysis of parasite growth
203 dynamics by comparison of the parasite multiplication rate (PMR). Overall, there was no significant
204 difference in the PMRs between the three groups. The median PMR per 48 h for primary CHMI was 9.8,
205 9.9 for secondary and 8.7 for tertiary, $P = 0.3$, Kruskal-Wallis test (**Figure 5E**).

206
207 Nevertheless, in contrast to the majority (7/10) of volunteers undergoing repeat CHMI who showed near
208 identical blood-stage parasitaemia across all three infections (**Figure 6A**), we noted a small subset of
209 three volunteers where some change in the phenotype of parasite growth occurred (**Figure 6B-D**). Two
210 participants demonstrated slower blood-stage parasite growth following successive CHMIs. The first
211 participant had a relatively low PMR following primary CHMI and then a consistent but modest reduction
212 in PMR during subsequent parasite exposures (4-month then 8-month interval) with PMR per 48 h falling
213 from 6.1 to 4.5 and then to 3.9 after the secondary and tertiary CHMIs, respectively (**Figure 6B**). The
214 second volunteer had a 1.7-fold drop in their PMR per 48 h (9.4 to 5.5) between primary and secondary
215 CHMI (administered 8 months apart), but did not go on to receive a tertiary challenge (**Figure 6C**).
216 Finally, one participant completely suppressed parasitaemia post-secondary CHMI (which occurred 4
217 months post-primary CHMI) until day C+19 (**Figure 6D**). At this point, blood parasitaemia was detected
218 by qPCR for the first time but remained below the lower limit of quantification at 20 p/mL. A similar
219 result was obtained on day C+20, however at this point the participant requested antimalarial treatment so
220 was drug-treated at low-level parasitaemia and never met criteria for diagnosis. A pre-treatment blood
221 sample was also cultured in the laboratory and outgrowth of *P. falciparum* parasites was subsequently
222 confirmed *in vitro* (data not shown). However, upon tertiary CHMI during the VAC063C study (8 months
223 later), this same volunteer developed blood-stage parasitaemia with essentially identical growth to that
224 observed following their primary CHMI. Further clinical investigation yielded no obvious reason for
225 suppressed parasite growth in the blood following this volunteer's secondary CHMI, and a subsequent
226 screen for the presence of antimalarial drugs in plasma proved negative. Indeed, all antimalarial
227 compounds tested were below the limit of detection in all plasma samples tested, with the exception of
228 lumefantrine. This gave a low-level signal across all samples tested, with almost identical within-
229 individual results pre- and post-CHMI (samples taken 2-3 weeks apart). The significance of these very

230 low levels of detectable lumefantrine in all samples remain unexplained but cannot explain the observed
231 parasite growth rates given their presence in all samples.

232

233 **Antibody responses following repeat homologous CHMI**

234 Finally, we assessed serum IgG antibody responses by ELISA to three commonly-studied merozoite
235 antigens – the 19 kDa C-terminus of merozoite surface protein 1 (MSP1₁₉), apical membrane antigen 1
236 (AMA1) and reticulocyte-binding protein homologue 5 (RH5). MSP1₁₉-specific serum IgG responses
237 were detectable at day C+28 in >90% volunteers following initial CHMI. These were subsequently
238 boosted by each successive CHMI and were relatively well-maintained between parasite exposures
239 (**Figure 7A**). In contrast, serum IgG responses to AMA1 were less dominant after the primary CHMI
240 (with responses only detected in a minority of volunteers). These then boosted following repeat CHMI in
241 a similar manner to MSP1₁₉, however, these responses dropped back to baseline between each successive
242 *P. falciparum* exposure (**Figure 7B**). Responses to RH5 were undetectable in all volunteers at all time-
243 points tested (data not shown).

244

245 We also screened serum samples from all participants undergoing more than one CHMI for the presence
246 of red cell alloantibodies, which could have been raised by the repeated exposure to the blood-stage
247 inoculum. Samples were tested both at baseline (before primary CHMI) and at final follow-up (day C+90)
248 after the final (whether secondary or tertiary) CHMI. All tested samples were negative for alloantibodies
249 (data not shown).

250

251 **Discussion**

252 This is the first assessment of repeat homologous *P. falciparum* blood-stage CHMI in the modern era,
253 where volunteers have reached diagnostic criteria before initiation of anti-malarial therapy. Overall we
254 have demonstrated that repeated exposure to homologous blood-stage parasites by CHMI is safe in
255 healthy adults, but does not lead to the development of any significant anti-parasitic blood-stage
256 immunity in the vast majority of re-challengees.

257
258 The frequencies of CHMI-associated solicited AEs were within expected ranges in all participants
259 undergoing a primary CHMI, consistent with previously reported studies of primary CHMI using both
260 blood-stage and sporozoite infection models (16-19). Inference about relative frequency of solicited AEs
261 in re-challenged participants is limited by relatively small sample size, selection bias of returning
262 participants and inter-subject variability in reporting of AEs, however, our findings suggest that there are
263 no major differences in the frequencies of AEs following homologous re-challenge, or any increased risk,
264 as compared to primary CHMI. The majority of AEs also resolve within a few days of treatment.

265
266 There were also no statistically significant differences in the frequencies of objective clinical or
267 laboratory markers of malaria infection across the repeat CHMIs, although we noted the highest levels of
268 pyrexia occurred in a subset of volunteers undergoing primary CHMI. This is not inconsistent with the
269 retrospective analyses of the old neurosyphilis treatment data (4), although the key difference here is that
270 modern CHMIs only allow acute blood-stage infection prior to treatment in contrast to uncontrolled
271 parasitaemia which almost certainly led to more effective acquisition of anti-malarial clinical immunity.

272 We also noted the lowest lymphocyte counts occurred following secondary and tertiary infections.
273 Lymphocytopenia following primary CHMI is well-documented, (20) although further migration of cells
274 from the periphery in repeat CHMI may reflect an immunological recall response upon secondary and

Salkeld J, Themistocleous Y *et al.*

275 tertiary infection, similar to our previous observations on antigen-specific B cells induced by subunit
276 blood-stage vaccination prior to CHMI (21).
277
278 We also detected a derangement in liver transaminases following primary CHMI in approximately 25% of
279 the participants (two in VAC063C and four in VAC063A and B), with the two in VAC063C of greatest
280 severity and noticeably occurring at six days post-treatment initiation. This has not been previously
281 observed in our centre, potentially due to lack of routine testing at the T+6 time point. Given that the
282 abnormalities rapidly improved, these AEs would not have been detected at later follow-up visits, raising
283 the possibility that frequency of liver function test (LFT) abnormalities post-primary CHMI may have
284 been previously underestimated. LFT abnormalities are known to occur in both naturally acquired and
285 experimental infection, and in blood-stage primary CHMI studies performed at QIMR, Australia,
286 moderate and severe elevations of transaminase elevations enzymes have been reported, peaking at 4-12
287 days after antimalarial treatment, with ALT/AST ratio >1 and normal bilirubin in both *P. falciparum* and
288 *P. vivax* infection models (22) . Our findings are consistent with this pattern and given timing of onset
289 and resolution, together with the observation that abnormal ALT levels normalise after treatment in
290 severe malaria, suggest the transaminitis is likely to relate directly to CHMI, with inflammation/infection
291 driving the ALT rather than the antimalarial drugs. However, since the transaminitis affected only a small
292 subset of the primary CHMI cohort, individual host factors may also have contributed. Importantly, all
293 ALT abnormalities were transient in nature, resolved spontaneously and were not associated with clinical
294 symptoms or any derangement of synthetic liver function, so these findings do not raise clinical concern
295 or preclude further testing using this repeat CHMI model, however, monitoring over similar time-points
296 in future studies is warranted. Moreover, we also saw no derangement in LFTs after secondary or tertiary
297 CHMI. We hypothesise that this could represent a degree of clinical immunity or immune “tolerance”,
298 given transaminitis is a collateral marker of tissue damage. This is consistent with a modified CD4⁺ T cell

Salkeld J, Themistocleous Y *et al.*

299 response after a single drug-treated infection that has since been demonstrated in further work using these
300 trial samples (23).

301
302 The blood-type of the donor of the red blood cells infected with 3D7 clone *P. falciparum* was Group O
303 Rhesus negative, and the volume administered for CHMI is extremely small, equivalent to only a few
304 microlitres of blood. As such, the risk of development of red cell alloantibodies following blood-stage
305 CHMI was deemed to be very low. Nevertheless, as an exploratory measure, participants who were re-
306 challenged in the VAC063A, B and C studies, and therefore re-exposed to the same inoculum, were
307 retrospectively screened for IgG alloantibodies to red cells pre-CHMI and post their final follow-up. All
308 samples tested were negative for red cell alloantibodies, consistent with single CHMI data from other
309 groups using the same challenge inoculum (James McCarthy, personal communication). These data also
310 suggest that an antibody response against the challenge inoculum itself was not a confounding factor in
311 these re-challenge studies, which is also consistent with the very similar parasite growth kinetics observed
312 in the majority of re-challengees.

313
314 Across the repeat CHMIs, all participants developed patent parasitaemia and reached diagnostic criteria,
315 with the exception of the one participant who failed to reach diagnosis after secondary CHMI. By and
316 large, our data suggest minimal to no acquisition of effective anti-parasitic blood-stage immunity occurs
317 following one or two drug-treated and acute exposures to *P. falciparum*, even when using the homologous
318 parasite clone. This is not inconsistent with observations from natural infection in the field, albeit here
319 exposure to heterologous parasite strains will occur and blood-stage parasitaemias are likely to reach
320 higher levels prior to treatment. This is also in stark contrast to the highly effective pre-erythrocytic
321 immunity afforded by repeat exposure to sporozoite CHMI under drug cover (24, 25). We nonetheless
322 were able to observe the priming and boosting of antibody responses to the well-studied merozoite
323 antigens MSP1₁₉ and AMA1, but not RH5. This hierarchy of immuno-dominance of *de novo* antibody

Salkeld J, Themistocleous Y *et al.*

324 induction is consistent with our previous observations in other primary CHMI trials (26, 27) , and
325 relatively short-lived responses boosted by each successive malaria exposure is consistent with
326 observations from field studies spanning the malaria season (28) . Notably our repeat CHMI data would
327 strongly suggest these responses, as measured, remain well below a threshold that could contribute to
328 reduced blood-stage parasite growth *in vivo*.

329

330 Nonetheless, we did note three participants of interest whose PMR varied across the repeat CHMIs. In
331 one volunteer parasites grew consistently slowly, in another a modest reduction in PMR was seen upon
332 secondary CHMI, and finally one volunteer showed a dramatic suppression of growth following
333 secondary CHMI that was not repeated following tertiary CHMI. We could identify no demographic or
334 obvious host factors to explain these observations, and these three volunteers had no history of prior
335 malaria exposure. The latter participant's only abnormality on blood tests was the development of a
336 moderate anaemia by 28 days post-secondary CHMI, and their haemoglobin immediately preceding
337 CHMI had been borderline low (111 g/dL). The relationship between iron status and malaria is complex
338 (29) but it is unlikely that a short-term moderate anaemia would have caused such significant suppression
339 of parasite growth. This is also supported by the fact that when a tertiary infection was administered the
340 participant's haemoglobin dropped again to similar levels but parasite growth conversely thrived. Also no
341 systemic supplemental iron was known to be taken at the time of CHMI that could explain the increased
342 growth rate. Instead, the highly anomalous PMR seen after secondary infection might be explained by one
343 or more of the following: i) the induction and then waning of an effective immune response, or the
344 induction of a highly specific immune response against a variant surface antigen on the infected red blood
345 cell that was only expressed by the parasite during the secondary CHMI; ii) surreptitious or accidental
346 self-treatment with a drug with an antimalarial effect; or iii) an operator error in the administration of the
347 secondary challenge inoculum. The latter would seem unlikely, because even if inoculated with a single
348 parasite, with 10-fold blood-stage growth every 48 hours, this would not lead to such prolonged qPCR

Salkeld J, Themistocleous Y *et al.*

349 negativity in a non-immune subject. Regarding drugs, we could identify no such intervention, and
350 performed an anti-malarial drug screen that was negative. Further studies would thus be needed to
351 investigate if this was indeed a highly effective, but variant antigen-specific, immune response.

352

353 Overall, our data support the safety of repeat CHMI with blood-stage *P. falciparum* but suggest this
354 approach will unlikely provide a model to study effective anti-parasitic immunity. On-going work,
355 including with the recently established *P. vivax* blood-stage CHMI model in Oxford (30), will now focus
356 on using the unique opportunities afforded by the CHMI system to interrogate mechanisms of immune
357 tolerance and the acquisition of clinical immunity with the goal of informing next-generation approaches
358 to protect against malaria disease.

359 **Methods**

360 **Study Design and Participants**

361 VAC063C was a non-blinded blood-stage *P. falciparum* controlled human malaria infection (CHMI)
362 study to evaluate the safety and parasite growth dynamics of primary, secondary and tertiary blood-stage
363 *P. falciparum* CHMI of healthy malaria-naïve UK adults. Healthy, malaria-naïve and non-pregnant adults
364 aged 18-50 were invited to participate in the study. Volunteers were recruited and challenged at the
365 Centre for Clinical Vaccinology and Tropical Medicine (CCVTM), part of the Oxford Vaccine Centre
366 (OVC) at the University of Oxford. Eleven volunteers were enrolled in total. A full list of inclusion and
367 exclusion criteria is reported in **Supplementary Methods**. Allocation to study group (Groups 1 and 2)
368 was based on previous involvement and CHMI exposure in the VAC063 trial (ClinicalTrials.gov
369 NCT02927145) (16), with new malaria-naïve volunteers comprising Group 3. The primary endpoint of
370 the study was safety of repeat homologous CHMI (as measured by active and passive collection of
371 clinical and laboratory AEs after each CHMI) and qPCR-derived parasite multiplication rate (PMR) was
372 the primary endpoint for the assessment of parasite growth dynamics.

373
374 Data were pooled for analysis from participants who were enrolled in both VAC063C (November 2018)
375 and in two previous CHMI studies under the preceding VAC063 protocol – VAC063A (November 2017)
376 and VAC063B (March 2018). Briefly, the VAC063 protocol encompassed VAC063A and VAC063B,
377 and was an open label, non-randomised Phase I/IIa clinical trial evaluating vaccine efficacy of the
378 recombinant blood stage malaria protein RH5.1 in AS01_B adjuvant (16). The VAC063C trial was
379 conducted to investigate the durability of any protective anti-parasite immunity measured in control (non-
380 vaccinated) participants upon homologous re-challenge for the second or third time.

381

382 **Study Oversight**

383 The VAC063C study was designed and conducted in the UK at the CCVTM, University of Oxford. The
384 study was registered on ClinicalTrials.gov (NCT03906474) and received ethical approval from the UK
385 National Health Service Research Ethics Services (South Central – Oxford A reference 18/SC/0521). All
386 participants provided written informed consent and consent was verified before each CHMI. The study
387 was conducted according to the principles of the current revision of the Declaration of Helsinki 2008 and
388 in full conformity with the ICH guidelines for Good Clinical Practice (GCP). GCP compliance was
389 independently and externally monitored by the Clinical Trials and Research Governance (CTRG) Team at
390 the University of Oxford. Details of the previous VAC063 study approvals and oversight (from which
391 primary and secondary CHMI data were used for a pooled analysis) are as previously described (16).
392

393 **Controlled Human Malaria Infection**

394 The blood samples used as infectious inocula in this study were produced by Drs Gregor Lawrence, Allan
395 Saul and colleagues at QIMR in Brisbane, Australia in 1994 and consist of aliquots of *P. falciparum*
396 (clone 3D7) infected erythrocytes taken from a single donor (31). Blood was collected at the Australian
397 Red Cross Blood Bank in an aseptic manner using standard blood bank equipment. The leukocytes were
398 removed with a leukocytic filter. The thawing and washing of the cells reduced the amount of serum
399 transferred with the red cells by a factor of 1000, compared to injecting the same volume of blood. The
400 red cells were cryopreserved using a protocol from the American Association of Blood Banks Technical
401 Manual that is normally employed for freezing blood from patients and donors with rare blood groups.
402 The blood group of the donor was group O and Rhesus negative, Kell antigen negative. To date, CHMI of
403 malaria-naïve individuals using this inoculum has always resulted in parasitaemia as detected by qPCR
404 and/or microscopy (17, 19, 31, 32).

Salkeld J, Themistocleous Y *et al.*

405 Between 1994 and 2003 the cryopreserved samples to be used in this trial were stored in dedicated liquid
406 nitrogen cylinders in a secure facility at QIMR. In 2003 the samples were transferred to Biotec
407 Distribution Ltd., Bridgend, UK and then to Thermo Fisher Bishop's Stortford, Hertfordshire, UK, in
408 2007 where they have been stored on behalf of the University of Oxford in temperature-monitored liquid
409 nitrogen. Participants in VAC063C were each infected by direct intravenous inoculation of *P. falciparum*
410 (clone 3D7) blood-stage parasites in the same way as for the VAC063A and B CHMI studies. The target
411 inoculum dose was 1000 parasitised erythrocytes per participant. The inoculum was thawed and prepared
412 under strict aseptic conditions as previously described (16) and volunteers received infected red cells in a
413 total volume of 5 mL normal saline, followed by a saline flush. Subjects were observed for 1 h post-
414 CHMI before discharge. The order in which volunteers from different groups were inoculated was
415 interspersed in case of time effects on viability of the parasites. Following CHMI, blood samples were
416 taken once on day one post-challenge (day C+1) and twice daily from day two (day C+2) for qPCR
417 (target gene = 18S ribosomal RNA), to measure parasite density in real time.

418
419 Diagnosis of malaria was made on the basis of presence of symptoms in-keeping with malaria infection
420 together with qPCR $\geq 5,000$ parasites/mL (p/mL) or any available qPCR $\geq 10,000$ p/mL, even if
421 asymptomatic. Note in the VAC063A study, thick blood films were also evaluated at each time-point by
422 experienced microscopists and diagnosis required volunteers to fulfil two out of three criteria: a positive
423 thick blood film (one viable parasite in 200 fields) and/or qPCR $\geq 5,000$ parasites/mL and/or symptoms
424 consistent with malaria. In VAC063B and C microscopy was removed as a diagnostic tool to reduce the
425 risk of participants being diagnosed prematurely, without any impact on participant safety. Participants
426 were treated with a course of artemether/lumefantrine (Riamet) at diagnosis (n=9), or where
427 contraindicated, with a course of atovaquone/proguanil (Malarone) (n=2). Half of the Riamet doses and
428 all Malarone doses were directly observed by study investigators. After completion of treatment, follow-
429 up visits were conducted at 6 days post-diagnosis/treatment (T+6), as well as at 28, 45 and 90 days post-

430 CHMI (C+28, C+45 and C+90). This was similar though not identical to the follow-up schedule for
431 VAC063A and B CHMIs where a T+6 visit was not included.

432
433 **Safety Analysis**

434 Participants were reviewed once on day 1 post-challenge and twice-daily from day 2. At each visit they
435 were asked a list of symptoms commonly associated with malaria infection ('solicited' symptoms
436 including feverishness, malaise, fatigue, arthralgia, back pain, headache, myalgia, chills, rigors, sweats,
437 headache, nausea, vomiting and diarrhoea). The severity of any reported symptom was then graded by the
438 participant from 1 (mild) to 3 (severe), using the severity grading criteria shown in **Supplementary**
439 **Material**. These were all recorded by the investigator as solicited AEs if they occurred during the 28 day
440 period post-CHMI (or until completion of antimalarial treatment). Pyrexia was scored as follows: absent
441 ($\leq 37.5^{\circ}\text{C}$), mild ($37.6 - 38.2^{\circ}\text{C}$), moderate ($38.3 - 38.9^{\circ}\text{C}$) and severe ($\geq 39^{\circ}\text{C}$) and participants were also
442 asked to measure and record their temperature in a diary card if they experienced feverishness outside of
443 their clinic visit. Blood samples for full blood count and biochemistry were obtained prior to CHMI (C-1)
444 and then at C+6, diagnosis, T+6, C+45 and C+90. These were evaluated at Oxford University Hospitals
445 NHS Trust providing 5-part differential white cell counts and quantification of electrolytes, urea,
446 creatinine, bilirubin, alanine aminotransferase (ALT), alkaline phosphatase (ALP) and albumin. Blood
447 was also tested serologically for evidence of Hepatitis B, Hepatitis C, HIV, EBV and CMV infection prior
448 to CHMI. Blood tests were carried out at other time-points if clinically indicated.

449
450 All other (unsolicited) AEs were collected until day 90 post-CHMI and their likely causality in relation to
451 CHMI or antimalarial drugs assessed and assigned a MedDRA code as described in the protocol. All AEs
452 considered possibly, probably or definitely related to CHMI/antimalarial drugs were reported (**Table S2**),
453 and all laboratory AEs at least possibly related to study interventions are also reported (**Table S3**).

454

455 **qPCR and PMR Modelling**

456 Quantitative PCR was performed as previously reported for the VAC063A and B studies (16), and these
457 data were used to model the PMR. The arithmetic mean of the three replicate qPCR results obtained for
458 each individual at each timepoint was used for model-fitting. Negative individual replicates and data
459 points which, based upon the mean of the three replicates, were negative or below the lower limit of
460 quantification (20 parasites/mL), were handled as specified in the laboratory qPCR standard operating
461 procedure. PMR was calculated using a linear model fitted to log₁₀-transformed qPCR data (33).
462 As previously, fitted lines were constrained to pass through the known starting parasitaemia,
463 calculated from the results of a limiting-dilution-based assay of the number of viable parasites in the
464 inoculum (34) and a weight-based estimate of each volunteer's blood volume (70mL/kg) (35).

465

466 **Total IgG ELISAs**

467 ELISAs to MSP1₁₉, AMA1 and RH5 (all 3D7 sequence) were performed on serum samples using
468 standardised methodology, all as previously described (16, 18).

469

470 **Red Cell Alloantibody Measurement**

471 Serum samples were retrospectively screened for IgG alloantibodies to red cells (performed by Oxford
472 University Hospitals NHS Foundation Trust using Capture-R® Ready-Screen® solid phase system) at C-
473 1 (pre-CHMI) and C+90 (final post-CHMI follow-up).

474

475 **Antimalarial Drug Screen**

476 Plasma taken both pre-CHMI and at day of diagnosis was sent for antimalarial compound testing at the
477 Walter Reed Army Institute of Research (WRAIR) in the USA, using previously described mass
478 spectrometry methodology. Samples were sent from two participants who demonstrated reduced parasite
479 growth after repeat CHMI and from one participant who had the same growth rate across all three CHMIs

Salkeld J, Themistocleous Y *et al.*

480 for comparison. The antimalarial compounds tested included amodiaquine, artemisinin, atovaquone,
481 chloroquine, clindamycin, doxycycline, lumefantrine, mefloquine, proguanil, pyrimethamine, quinine,
482 and sulfadoxine.

483

484 **Statistical Analysis**

485 Data were analysed using GraphPad Prism version 9.3.1 for Windows (GraphPad Software Inc.,
486 California, USA). Statistical tests used are reported in the Results text, and included two-tailed Kruskal-
487 Wallis test with Dunn's multiple comparison post-test, and log-rank analysis (Mantel Cox) of the Kaplan
488 Meier curves. A value of $P < 0.05$ was considered significant.

489 **Author Contributions**

490 Conceived and performed the experiments: YT, JRB, CHM, TAR, ROP, MMH, BK, NJE, CMN, DMS,

491 FAB, WN, RLR, MB, FR-L, PMF, DQ, KJE, IDP, PJS, SES, SJD, AMM

492 Analyzed the data: JS, YT, SES, JRB, NJE, SJD, AMM.

493 Project Management: JSC, FLN.

494 Wrote the paper: JS, YT, SES, SJD, AMM.

495

496

497 **Acknowledgments**

498 The authors are grateful for the assistance of Natalie Lella and Michelle Kuskova for recruitment

499 activities, Daniel Marshall Searson for database management, Julie Furze for laboratory assistance, and

500 Richard Morter, Amy Flaxman and Duncan Bellamy for qPCR support (Jenner Institute, University of

501 Oxford); Amy Duckett and Carly Banner for arranging contracts (University of Oxford); James McCarthy

502 for providing the 3D7 inoculum (QIMR, Australia); Amy Noe (Leidos Life Sciences) and Lorraine

503 Soisson (U.S. Agency for International Development, USAID) for useful discussions; William Dennis

504 and Chau Vuong (WRAIR, USA) for assisting with the antimalarial drug testing; and all the study

505 volunteers. The VAC063 clinical trial was funded by the Office of Infectious Diseases, Bureau for Global

506 Health, USAID, under the terms of Malaria Vaccine Development Program (MVDP) contract AID-OAA-

507 C-15-00071, for which Leidos, Inc. was the prime contractor. The opinions expressed here are those of

508 the authors and do not necessarily reflect the views of the USAID. This work was also supported in part

509 by the National Institute for Health Research (NIHR) Oxford Biomedical Research Centre (BRC). The

510 views expressed are those of the authors and not necessarily those of the NIHR or the Department of

511 Health and Social Care. TAR held a Wellcome Trust Research Training Fellowship [108734/Z/15/Z] and

Salkeld J, Themistocleous Y *et al.*

512 CMN held a Wellcome Trust Sir Henry Wellcome Postdoctoral Fellowship [209200/Z/17/Z]. SJD is a

513 Jenner Investigator and held a Wellcome Trust Senior Fellowship [106917/Z/15/Z].

514

515 **Conflict of Interest Statement**

516 All other authors have declared that no conflict of interest exists.

517 **Data and Materials Availability**

518 Requests for materials should be addressed to the corresponding author.

519 **References**

- 520 1. Roestenberg M, Hoogerwerf MA, Ferreira DM, Mordmuller B, Yazdanbakhsh M. Experimental
521 infection of human volunteers. *Lancet Infect Dis.* 2018;18(10):e312-e22.
- 522 2. Snounou G, Perignon JL. Malariotherapy--insanity at the service of malariology. *Advances in*
523 *parasitology.* 2013;81:223-55.
- 524 3. Collins WE, Jeffery GM, Roberts JM. A retrospective examination of reinfection of humans with
525 *Plasmodium vivax.* *Am J Trop Med Hyg.* 2004;70(6):642-4.
- 526 4. Collins WE, Jeffery GM. A retrospective examination of secondary sporozoite- and trophozoite-
527 induced infections with *Plasmodium falciparum*: development of parasitologic and clinical immunity
528 following secondary infection. *Am J Trop Med Hyg.* 1999;61(1 Suppl):20-35.
- 529 5. Griffin JT, Hollingsworth TD, Reyburn H, Drakeley CJ, Riley EM, Ghani AC. Gradual
530 acquisition of immunity to severe malaria with increasing exposure. *Proc Biol Sci.*
531 2015;282(1801):20142657.
- 532 6. Langhorne J, Ndungu FM, Sponaas AM, Marsh K. Immunity to malaria: more questions than
533 answers. *Nat Immunol.* 2008;9(7):725-32.
- 534 7. Pombo DJ, Lawrence G, Hirunpetcharat C, Rzepczyk C, Bryden M, Cloonan N, et al. Immunity
535 to malaria after administration of ultra-low doses of red cells infected with *Plasmodium falciparum*. *The*
536 *Lancet.* 2002;360(9333):610-7.
- 537 8. Edstein MD, Kotecka BM, Anderson KL, Pombo DJ, Kyle DE, Rieckmann KH, et al. Lengthy
538 antimalarial activity of atovaquone in human plasma following atovaquone-proguanil administration.
539 *Antimicrob Agents Chemother.* 2005;49(10):4421-2.
- 540 9. Ewer KJ, O'Hara GA, Duncan CJ, Collins KA, Sheehy SH, Reyes-Sandoval A, et al. Protective
541 CD8(+) T-cell immunity to human malaria induced by chimpanzee adenovirus-MVA immunisation. *Nat*
542 *Commun.* 2013;4:2836.
- 543 10. Dunachie SJ, Walther M, Vuola JM, Webster DP, Keating SM, Berthoud T, et al. A clinical trial
544 of prime-boost immunisation with the candidate malaria vaccines RTS,S/AS02A and MVA-CS. *Vaccine.*
545 2006;24(15):2850-9.
- 546 11. Rampling T, Ewer KJ, Bowyer G, Bliss CM, Edwards NJ, Wright D, et al. Safety and High Level
547 Efficacy of the Combination Malaria Vaccine Regimen of RTS,S/AS01B With Chimpanzee Adenovirus
548 63 and Modified Vaccinia Ankara Vectors Expressing ME-TRAP. *J Infect Dis.*
549 2016;214(5):772-81.

- 550 12. Roestenberg M, Teirlinck AC, McCall MB, Teelen K, Makamdop KN, Wiersma J, et al. Long-
551 term protection against malaria after experimental sporozoite inoculation: an open-label follow-up study.
552 *Lancet*. 2011;377(9779):1770-6.
- 553 13. Lyke KE, Ishizuka AS, Berry AA, Chakravarty S, DeZure A, Enama ME, et al. Attenuated PfSPZ
554 Vaccine induces strain-transcending T cells and durable protection against heterologous controlled human
555 malaria infection. *Proc Natl Acad Sci U S A*. 2017;114(10):2711-6.
- 556 14. Ishizuka AS, Lyke KE, DeZure A, Berry AA, Richie TL, Mendoza FH, et al. Protection against
557 malaria at 1 year and immune correlates following PfSPZ vaccination. *Nat Med*. 2016;22(6):614-23.
- 558 15. Jongo SA, Church LWP, Mtoro AT, Schindler T, Chakravarty S, Ruben AJ, et al. Increase of
559 Dose Associated With Decrease in Protection Against Controlled Human Malaria Infection by PfSPZ
560 Vaccine in Tanzanian Adults. *Clin Infect Dis*. 2020;71(11):2849-57.
- 561 16. Minassian AM, Silk SE, Barrett JR, Nielsen CM, Miura K, Diouf A, et al. Reduced blood-stage
562 malaria growth and immune correlates in humans following RH5 vaccination. *Med*. 2021;2(6):701-19.
- 563 17. Payne RO, Milne KH, Elias SC, Edwards NJ, Douglas AD, Brown RE, et al. Demonstration of
564 the Blood-Stage *Plasmodium falciparum* Controlled Human Malaria Infection Model to Assess Efficacy
565 of the *P. falciparum* Apical Membrane Antigen 1 Vaccine, FMP2.1/AS01. *The Journal of infectious*
566 *diseases*. 2016;213(11):1743-51.
- 567 18. Sheehy SH, Duncan CJ, Elias SC, Choudhary P, Biswas S, Halstead FD, et al. ChAd63-MVA-
568 vectored Blood-stage Malaria Vaccines Targeting MSP1 and AMA1: Assessment of Efficacy Against
569 Mosquito Bite Challenge in Humans. *Mol Ther*. 2012;20(12):2355-68.
- 570 19. McCarthy JS, Sekuloski S, Griffin PM, Elliott S, Douglas N, Peatey C, et al. A pilot randomised
571 trial of induced blood-stage *Plasmodium falciparum* infections in healthy volunteers for testing efficacy
572 of new antimalarial drugs. *PLoS One*. 2011;6(8):e21914.
- 573 20. Rzepczyk CM, Stamatiou S, Anderson K, Stowers A, Cheng Q, Saul A, et al. Experimental
574 human *Plasmodium falciparum* infections: longitudinal analysis of lymphocyte responses with particular
575 reference to gamma delta T cells. *Scand J Immunol*. 1996;43(2):219-27.
- 576 21. Elias SC, Choudhary P, de Cassan SC, Biswas S, Collins KA, Halstead FD, et al. Analysis of
577 human B-cell responses following ChAd63-MVA MSP1 and AMA1 immunization and controlled
578 malaria infection. *Immunology*. 2014;141(4):628-44.
- 579 22. Woodford J, Shanks GD, Griffin P, Chalons S, McCarthy JS. The Dynamics of Liver Function
580 Test Abnormalities after Malaria Infection: A Retrospective Observational Study. *Am J Trop Med Hyg*.
581 2018;98(4):1113-9.

Salkeld J, Themistocleous Y *et al.*

- 582 23. Diana Muñoz Sandoval FB, Wiebke Nahrendorf, Alasdair Ivens, Michalina Mazurczyk, Yrene
583 Themistocleous, Sarah E. Silk, Jordan R. Barrett, Nick J. Edwards, Giorgio Napolitani, Angela M.
584 Minassian, Simon J. Draper, Philip J. Spence. Adaptive T cells regulate disease tolerance in human
585 malaria. 2021. MedRXiv. doi.org/10.1101/2021.08.19.21262298
- 586 24. Bijker EM, Bastiaens GJ, Teirlinck AC, van Gemert GJ, Graumans W, van de Vegte-Bolmer M,
587 et al. Protection against malaria after immunization by chloroquine prophylaxis and sporozoites is
588 mediated by preerythrocytic immunity. Proc Natl Acad Sci U S A. 2013;110(19):7862-7.
- 589 25. Roestenberg M, McCall M, Hopman J, Wiersma J, Luty AJ, van Gemert GJ, et al. Protection
590 against a malaria challenge by sporozoite inoculation. N Engl J Med. 2009;361(5):468-77.
- 591 26. Hodgson SH, Llewellyn D, Silk SE, Milne KH, Elias SC, Miura K, et al. Changes in Serological
592 Immunology Measures in UK and Kenyan Adults Post-controlled Human Malaria Infection. Front
593 Microbiol. 2016;7:1604.
- 594 27. Biswas S, Choudhary P, Elias SC, Miura K, Milne KH, de Cassan SC, et al. Assessment of
595 Humoral Immune Responses to Blood-Stage Malaria Antigens following ChAd63-MVA Immunization,
596 Controlled Human Malaria Infection and Natural Exposure. PLoS One. 2014;9(9):e107903.
- 597 28. Crompton PD, Kayala MA, Traore B, Kayentao K, Ongoiba A, Weiss GE, et al. A prospective
598 analysis of the Ab response to Plasmodium falciparum before and after a malaria season by protein
599 microarray. Proc Natl Acad Sci U S A. 2010;107(15):6958-63.
- 600 29. Spottiswoode N, Duffy PE, Drakesmith H. Iron, anemia and hepcidin in malaria. Front
601 Pharmacol. 2014;5:125.
- 602 30. Minassian AM, Themistocleous Y, Silk SE, Barrett JR, Kemp A, Quinkert D, et al. Controlled
603 human malaria infection with a clone of Plasmodium vivax with high-quality genome assembly. JCI
604 Insight. 2021;6(23).
- 605 31. Cheng Q, Lawrence G, Reed C, Stowers A, Ranford-Cartwright L, Creasey A, et al.
606 Measurement of *Plasmodium falciparum* growth rates in vivo: a test of malaria vaccines. The American
607 journal of tropical medicine and hygiene. 1997;57(9347970):495-500.
- 608 32. Stanistic DI, Liu XQ, De SL, Batzloff MR, Forbes T, Davis CB, et al. Development of cultured
609 Plasmodium falciparum blood-stage malaria cell banks for early phase in vivo clinical trial assessment of
610 anti-malaria drugs and vaccines. Malar J. 2015;14(1):143.
- 611 33. Douglas AD, Edwards NJ, Duncan CJ, Thompson FM, Sheehy SH, O'Hara GA, et al.
612 Comparison of Modeling Methods to Determine Liver-to-blood Inocula and Parasite Multiplication Rates
613 During Controlled Human Malaria Infection. J Infect Dis. 2013;208(2):340-5.

Salkeld J, Themistocleous Y *et al.*

- 614 34. Duncan CJ, Sheehy SH, Ewer KJ, Douglas AD, Collins KA, Halstead FD, et al. Impact on
615 Malaria Parasite Multiplication Rates in Infected Volunteers of the Protein-in-Adjuvant Vaccine AMA1-
616 C1/Alhydrogel+CPG 7909. PLoS One. 2011;6(7):e22271.
- 617 35. Sheehy SH, Spencer AJ, Douglas AD, Sim BK, Longley RJ, Edwards NJ, et al. Optimising
618 Controlled Human Malaria Infection Studies Using Cryopreserved Parasites Administered by Needle and
619 Syringe. PLoS One. 2013;8(6):e65960.
- 620
- 621
- 622
- 623
- 624
- 625

626 **Figure Legends**

627 **Figure 1. VAC063C flow chart of study design and volunteer recruitment.**

628 (A) Enrolment into the VAC063C study began in October 2018. Twenty five volunteers were screened
629 for eligibility. Eleven eligible volunteers were identified, six of whom were VAC063 participants
630 returning for a tertiary controlled human malaria infection (CHMI) (Group 1), two of whom were
631 VAC063 participants returning for a secondary CHMI (Group 2) and three of whom were newly enrolled
632 participants for primary CHMI (Group 3). Clinical follow-up continued until 90 days after challenge
633 (C+90) and was completed by 14th January 2019. Volunteer demographics are summarized in **Table**
634 **S1. (B)** In total (across three CHMI studies, VAC063A, B and C) 24 participants underwent primary
635 CHMI, 10 of whom subsequently underwent secondary CHMI and six of those participants returned for a
636 tertiary CHMI. The first CHMI (VAC063A) was on 14th November 2017, the second (VAC063B) was on
637 6th March 2018 and the third (VAC063C) was on 6th November 2018.

638

639 **Figure 2. Safety of repeated *P. falciparum* blood-stage CHMI.**

640 Participants were asked about the presence of 13 solicited systemic adverse events (AE) at study each
641 visit following CHMI. (A) The maximum severity of any solicited AE reported by each participant in the
642 48 hours before and after diagnosis during primary (n=24), secondary (n=10) and tertiary (n=6) CHMI is
643 shown as a proportion of the total number of participants. (B) VAC063C: The solicited AEs recorded
644 during the CHMI period are shown as the maximum severity reported by each participant and as a
645 proportion of the participants reporting each individual AE for primary (n=3), secondary (n=2) and
646 tertiary (n=6) CHMI. AE data was collected until 90 days after challenge. Colour coding as per panel
647 A. (C) The solicited AEs recorded during the CHMI period are shown as the maximum severity reported
648 by each participant and as a proportion of the participants reporting each individual AE for primary
649 (n=24), secondary (n=10) and tertiary (n=6) CHMI for all participants across the three CHMI studies.
650 Groups refer to specific study group numbers in VAC063A, B and C. Colour coding as per panel A.

651

652 **Figure 3. Symptom evolution during repeated *P. falciparum* blood-stage CHMI.**

653 The maximum severity of any solicited systemic adverse events (AE) recorded at the indicated time
654 points during the CHMI period for each participant for primary (n=24), secondary (n=10) and tertiary
655 (n=6) CHMI.

656

657 **Figure 4. Objective measurements and laboratory AEs during repeated *P.***
658 ***falciparum* blood-stage CHMI.**

659 (A) Frequency and severity of pyrexia, anaemia, thrombocytopenia and lymphopenia during primary
660 (n=24), secondary (n=10) and tertiary (n=6) CHMI from screening until 90 days post-CHMI. (B) Alanine
661 aminotransferase (ALT) for each participant in VAC063C at each timepoint for primary (n=3), secondary
662 (n=2) and tertiary (n=6) CHMI showing significant transaminitis after treatment of the primary infection
663 ($P = 0.03$ as calculated by Kruskal-Wallis test of peak ALT values). Dashed lines show the local cut off
664 for Grade 1, 2 and 3 abnormalities. Time is number of days post-CHMI, except for day of diagnosis
665 (DoD) and day 6 post-treatment (T+6) which vary by participant. The same information for VAC063 A
666 and B (which did not include a T+6 assessment) is presented in **Figure S2**. (C) Maximum recorded
667 temperature during primary (n=24), secondary (n=10) and tertiary (n=6) CHMI. Individual data points
668 and the median are shown. Dashed lines show the local cut off for Grade 1, 2 and 3 abnormalities.
669 Kruskal-Wallis test showed no significant difference between primary, secondary and tertiary CHMI ($P =$
670 0.31). (D) Median haemoglobin concentration and lymphocyte count for all participants across
671 VAC063A, B and C over time for primary (n=24), secondary (n=10) and tertiary (n=6) CHMI (of which
672 n=18 were female and n=22 male). Time points are the same as in panel B. Kruskal-Wallis test showed
673 no significant difference between primary, secondary and tertiary CHMI (minimum haemoglobin
674 concentration $P = 0.93$; minimum lymphocyte count $P = 0.19$).

675

Salkeld J, Themistocleous Y *et al.*

676 **Figure 5. Parasite growth dynamics following repeated *P. falciparum* blood-stage CHMI.**

677 (A) qPCR data for primary (n=24), secondary (n=10) and tertiary (n=6) CHMI across the VAC063A, B
678 and C studies. Parasitaemia measured by qPCR over time in parasites/mL (p/mL) blood is shown for each
679 volunteer. CHMI was initiated by intravenous inoculation of *P. falciparum* infected erythrocytes on day
680 0. The lower limit of quantification is indicated by the dotted line at 20 p/mL; values below this level are
681 plotted for information only. (B) Median qPCR data are shown for primary, secondary and tertiary CHMI.
682 Colours as in panel A. (C) Parasitaemia at the time of diagnosis. Individual data points and the median \pm
683 inter-quartile range for primary (n=24), secondary (n=9) and tertiary (n=6) CHMI are shown. Note one
684 participant requested antimalarial treatment at day C+20 during secondary CHMI without reaching the
685 diagnostic criteria so no data point is shown for this participant. *P* value as calculated by Kruskal-
686 Wallis test showed no significant difference between groups. (D) Kaplan-Meier plot of time to diagnosis
687 in days. Note one secondary CHMI participant requested treatment and was censored at day C+20. Log-
688 rank (Mantel-Cox) test showed no significant difference in time to diagnosis between primary, secondary
689 and tertiary CHMI. (E) The parasite multiplication rate (PMR) per 48 hours was modelled from the qPCR
690 data up until the time point of diagnosis. Individual data points and median \pm inter-quartile range for
691 primary, secondary and tertiary CHMI PMR are shown. *P* value as calculated by Kruskal-Wallis test
692 showed no significant difference.

693

694 **Figure 6. Individual variation in parasite growth dynamics of repeated *P.***
695 ***falciparum* blood-stage CHMI.**

696 qPCR data for primary (blue), secondary (pink) and tertiary (purple) CHMI. Parasitaemia is shown over
697 time for each volunteer who underwent more than one CHMI (total n=10). The PMR per 48 hours was
698 modelled from the qPCR data up until the time point of diagnosis for each participant for each CHMI and
699 is shown below the relevant parasite growth graph. (A) Data from participants who showed minimal
700 variation in parasite growth dynamics between each CHMI (n=7 for primary and secondary CHMI, of

701 whom n=4 also underwent tertiary CHMI). **(B)** One participant showed consistently slower parasite
702 growth with each subsequent CHMI. **(C)** One participant showed slower parasite growth
703 during secondary CHMI compared to primary but did not undergo a tertiary CHMI. **(D)** One participant
704 showed completely suppressed parasite growth on secondary CHMI until day C+19 but no change
705 compared to primary upon tertiary CHMI.

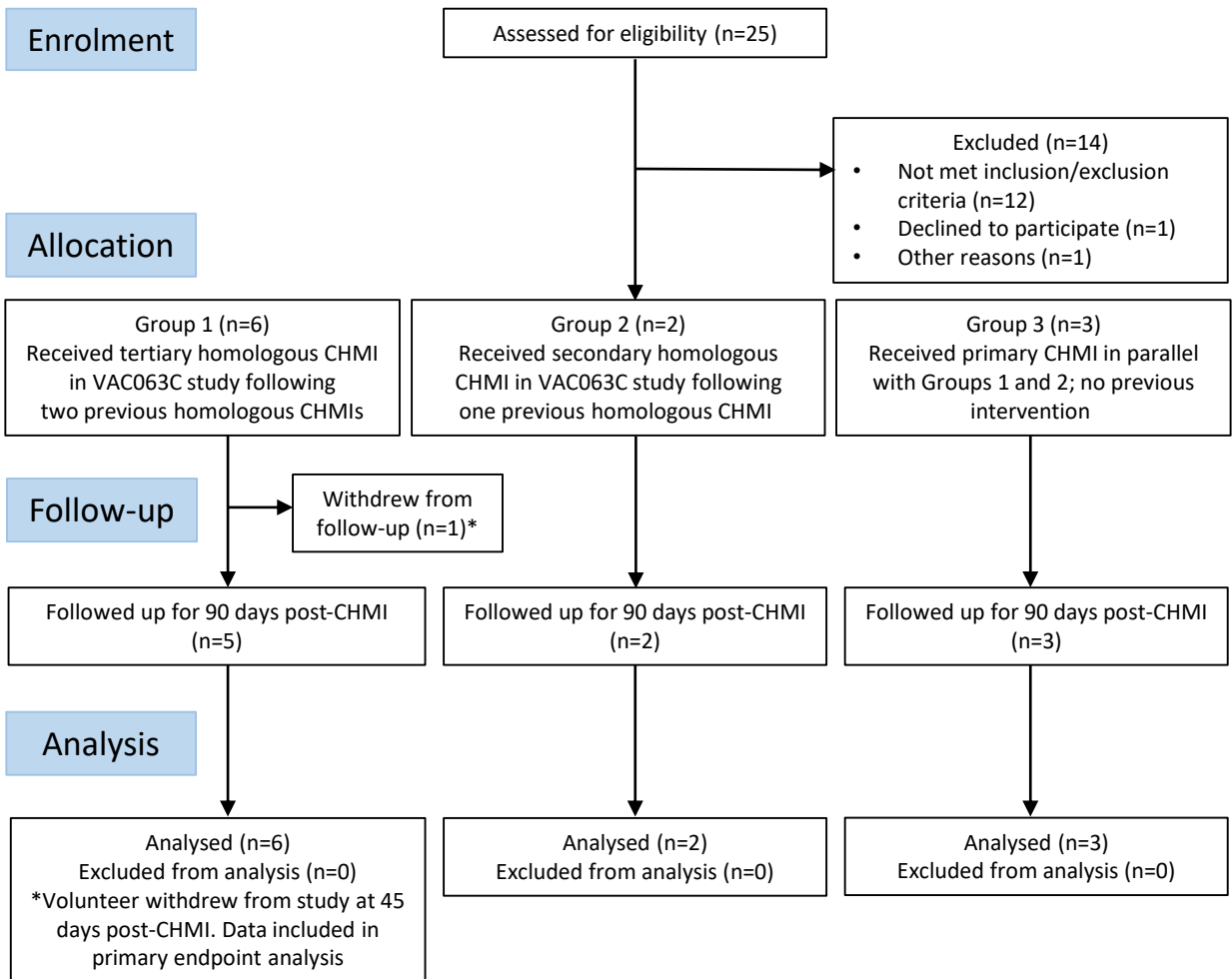
706

707 **Figure 7. Induction of serum antibody responses to merozoite antigens during CHMI.**

708 **(A)** Serum anti-MSP1₁₉ total IgG ELISA was conducted on samples from participants for primary (n=19
709 at dC-1; n=21 at dC+28), secondary (n=8) and tertiary (n=6) CHMI. Sera from the pre-CHMI (dC-1) and
710 28 days post-CHMI (C+28) time points were tested. **(B)** Serum anti-AMA1 total IgG as measured by
711 standardized ELISA on samples from participants for primary (n=6 at dC-1; n=24 at dC+28), secondary
712 (n=9 at dC-1; n=10 at dC+28) and tertiary (n=6) CHMI. Samples colour coded as per previous figures.
713 Individual data points and median are shown.

Figure 1

A



B

	Primary CHMI	Secondary CHMI	Tertiary CHMI	VAC063C study only
Total number of participants undergoing CHMI	24 15 VAC063A (Group 6) 6 VAC063B (Group 9) 3 VAC063C (Group 3)	10 8 VAC063B (Group 8) 2 VAC063C (Group 2)	6 VAC063C (Group 1)	6 primary 2 secondary 3 tertiary
Interval between CHMIs		Post primary 4 months(A->B) 8 months(B->C)	Post secondary 8 months (B->C)	

Figure 3

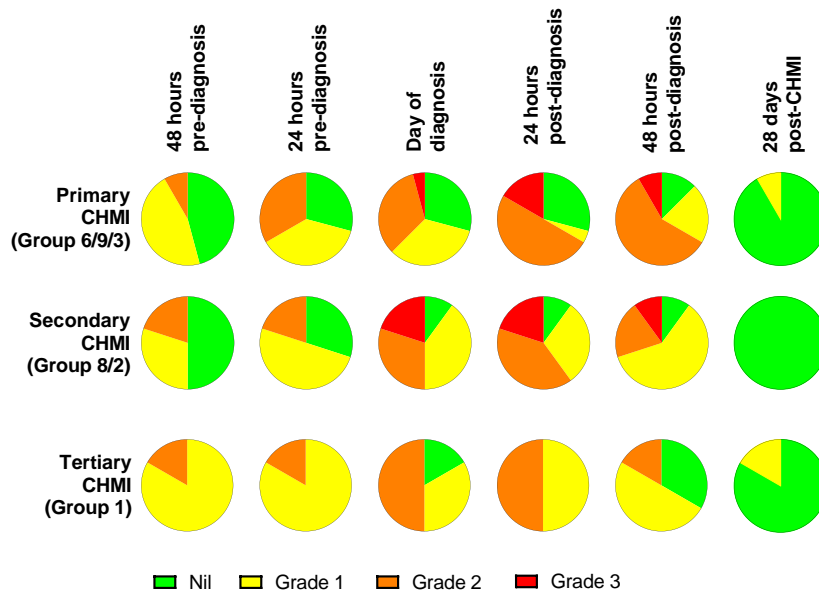
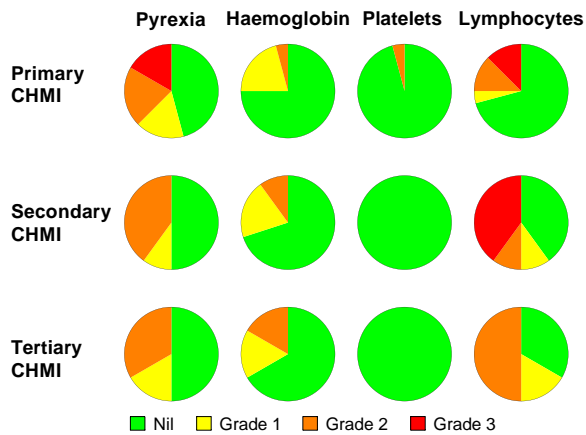
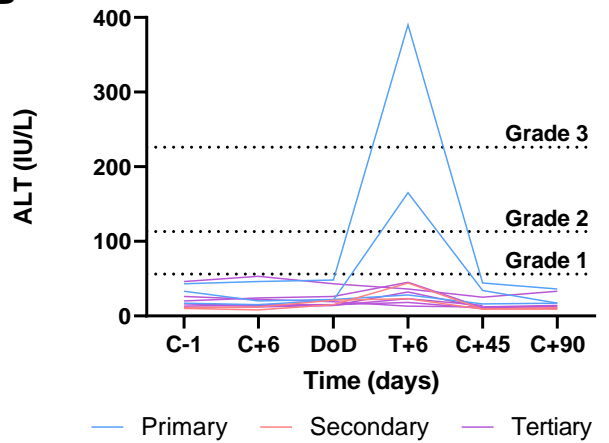


Figure 4

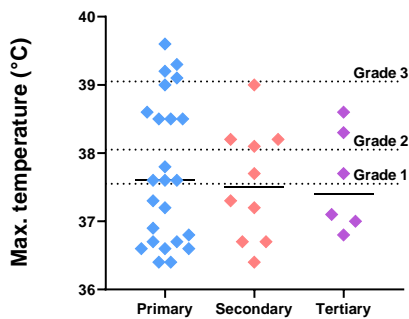
A



B



C



D

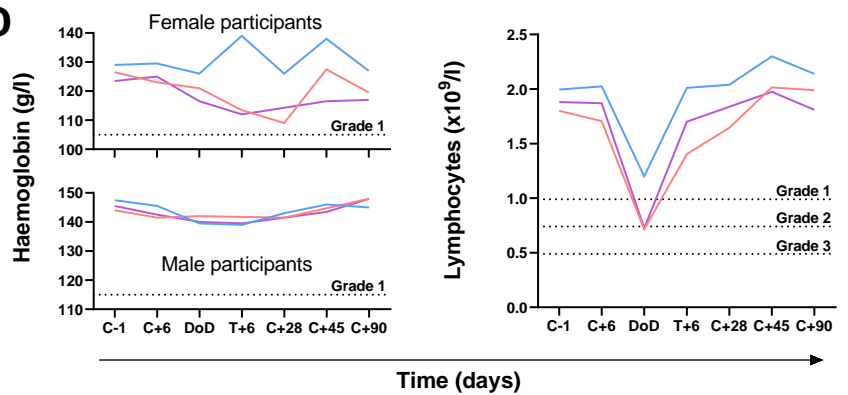


Figure 5

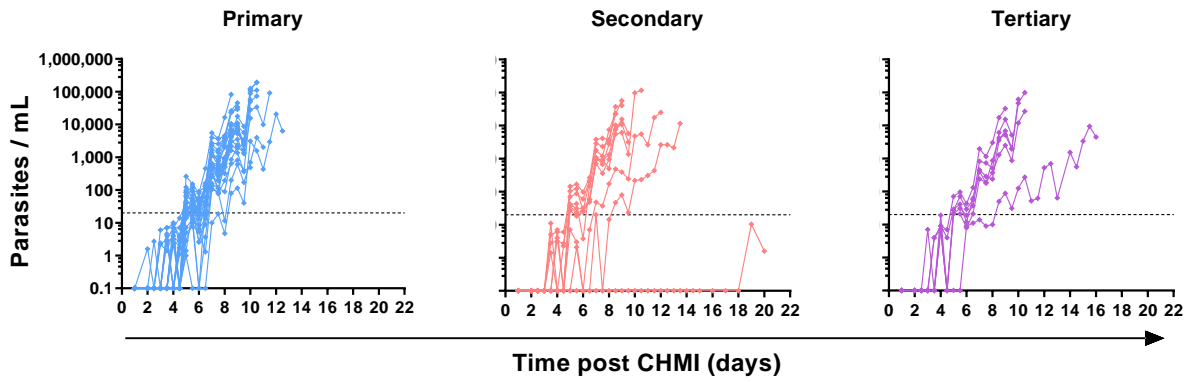
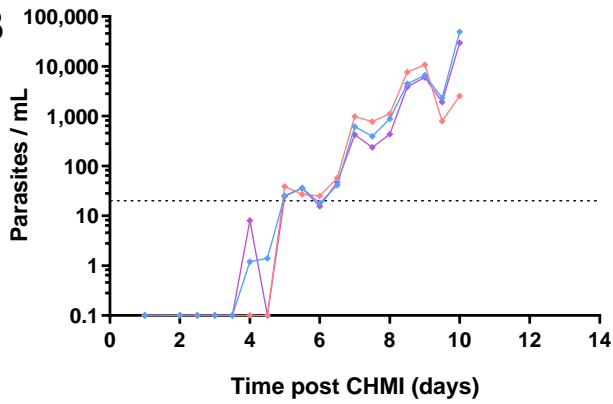
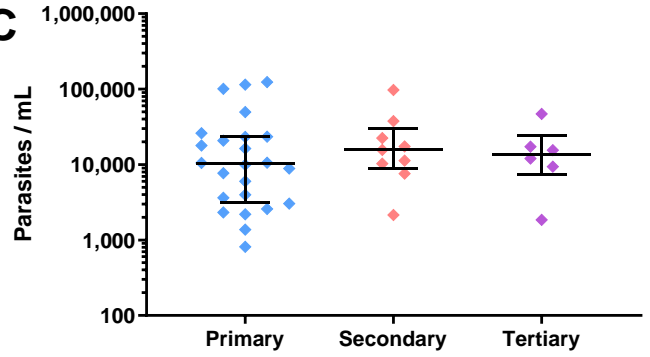
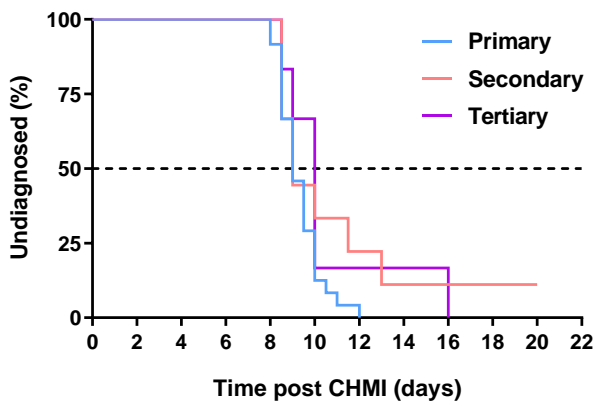
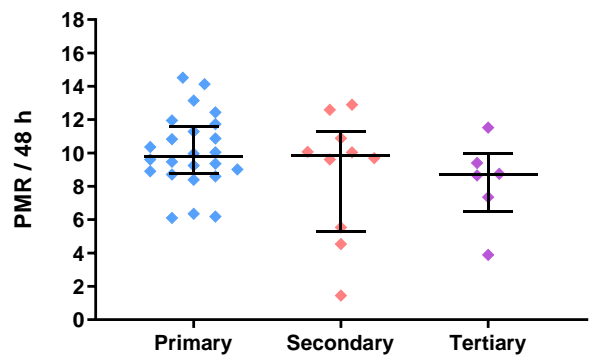
A**B****C****D****E**

Figure 6

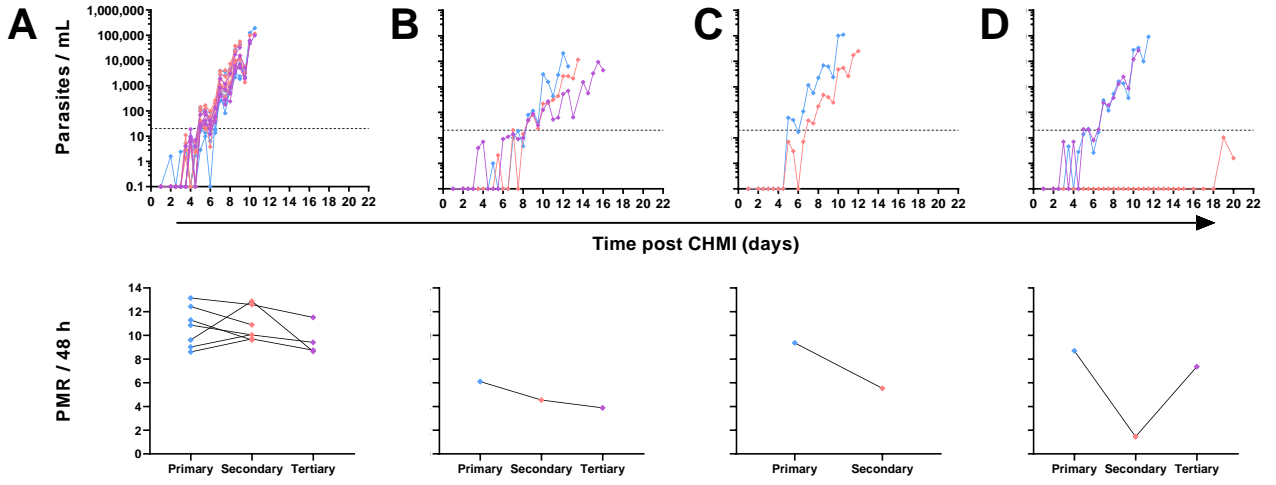


Figure 7

