

1 The 2020 U.S. cancer screening 2 deficit and the timing of adults' most 3 recent screen: A population-based 4 quasi-experiment

5 Jason Semprini^{1,2} and Radhika Ranganthan³

***For correspondence:**

jason-semprini@uiowa.edu

[†]The authors have no conflict of interests to disclose

[‡]This work received no funding

[§]Preliminary work for this study was presented at 10th Annual Symposium on Global Cancer Research (National Cancer Institute)

Present address: [§]145 N.

Riverside Dr. N265, Iowa City, IA United States

6 ¹University of Iowa, College of Public Health; ²University of Iowa, Department of Health
7 Management Policy; ³University of South Carolina, School of Public Health

8

9 **Abstract** In 2020, cancer screenings declined, then rebounded, resulting in a cancer screening
10 deficit. The significance of this deficit, however, has yet to be quantified from a population health
11 perspective. Our study addresses this evidence gap by examining how the pandemic changed the
12 timing of American adults' most recent cancer screen. We obtained population-based, cancer
13 screening data from the Behavioral Risk Factor Surveillance System. Mammograms, pap smears,
14 and colonoscopies were each specified as a variable of mutually exclusive categories to indicate
15 the timing since the most recent screening (never, 0-1 years, 1-2 years, 3+ years). Our
16 quasi-experimental design restricts the sample to adults surveyed in January, February, or March.
17 We then leverage a quirk in the BRFSS implementation and consider adults surveyed in the
18 second year of each survey wave as the quasi-treatment cohort. Next, we constructed Linear and
19 Logistic regression models which control for exogenous sociodemographic characteristics, state
20 fixed effects, and temporal trends. Our results suggest that the deficit in 2020 was largely due to
21 a one year delay among adults who receive annual screening, as the proportion of adults
22 reporting a cancer screen in the past year declined by a nearly identical proportion of adults
23 reporting their most recent cancer screen 1-2 years ago (3% to 4% points). However, the relative
24 change was higher for mammograms and pap smears (17%) than colonoscopies (4%). We also
25 found some evidence that the proportion of women reporting never having completed a
26 mammogram declined in 2020, but the mechanisms for this finding should be further explored
27 with the release of future data. Our estimates for the pandemic's effect on cancer screening rates
28 are smaller than prior studies, but because we account for temporal trends we believe prior
29 studies overestimated the effect of the pandemic and underestimated the overall downward
30 trend in cancer screenings across the country leading up to 2020.

31

32 **Background**

33 Despite the critical importance of early cancer detection, cancer screening rates in America are well
34 below public policy targets, rife with racial and socioeconomic disparities, and despite considerable
35 resources, stagnating (Suran 2022; Sabatino et al. 2022; Benavidez et al. 2021). Then came 2020,
36 the first year of the COVID-19 Pandemic.

37 Even before the first wave of the COVID-19 Pandemic, predictions for cancer prevention and
38 control systems were dire. Given the elevated risk to cancer patients, either from adverse COVID-
39 19 outcomes or consequences of delayed cancer treatment, health systems needed to adapt to
40 ensure the safety of cancer patients during these initial months of the pandemic (Al-Quteimat and
41 Amer 2020; Anderson et al. 2020; Matos et al. 2021). These risk mitigation and continuity of care
42 policies may have prevented dramatic declines in the proportion of cancer patients receiving care
43 (Davidson et al. 2022; Semprini 2022). Unfortunately, cancer screening was less of a priority during
44 the early months of the public health emergency (DeJong, Katz, and Covinsky 2021).

45 Cancer screening could have been impacted by a number of federal, state, or local public health
46 emergency policies, as well as by the changing priorities and capacities of health systems, and by
47 individual social distancing behaviors (Cancino et al. 2020; Richards et al. 2020; DeJong, Katz, and
48 Covinsky 2021). More recent research illuminated the role of financial stress and time costs as
49 individual-level barriers to cancer screening, both of which may have compounded the strain on
50 health systems attempting to resume cancer screening programs (Hanna et al. 2022; Peoples et al.
51 2022; Findling, Blendon, and Benson 2020).

52 There has been no shortage of evidence highlighting the stark decline in cancer screening
53 services during the initial stages of the pandemic. Evidence from hospital records or insurance
54 claims have suggested that, compared to pre-pandemic levels, mammograms, pap smears and
55 colonoscopies declined 60% to 90% in March/April 2020 (Duszak et al. 2020; Bakouny et al. 2021;
56 Staib, Catlett, and DaCosta Byfield 2021). However, subsequent research has found that in the later
57 months of 2020, claims and records of cancer screenings returned to pre-pandemic levels (Chen
58 et al. 2021); DeGross et al. 2021; Labaki et al. 2021; McBain et al. 2021; Bello, Chang, and Massar-
59 weh 2022; Drescher et al. 2022). Still, the pandemic created a major cancer screening deficit which
60 may be difficult to address despite recent investment in "return to screening" initiatives (Chen et al.
61 2021; Hanna et al. 2022; Kelkar et al. 2022). Even as America returns to screening, some are being
62 left behind (Mafi et al. 2022). In fact, among the adults reporting having delayed cancer screenings
63 during the 2020 pandemic year only 25% have plans to return to screening (Suran 2022).

64 **New Contributions**

65 Clearly, the COVID-19 pandemic created a cancer screening deficit in 2020. However, our under-
66 standing of this deficit is limited to hospital and claims based data, which is not necessarily a valid
67 representation of the population's screening behavior. Moreover, the limited population-based

68 research has attempted to quantify changing patterns in cancer screening by comparing rates in
69 2020 with 2019, or an average of prior years, essentially assuming that any change observed in
70 2020 was due to the pandemic (Fedewa et al. 2022; Dennis, Hsu, and Arrington 2021; Richard-
71 son 2022). This assumption, however, may not be valid as several factors could impact temporal
72 screening patterns (Semprini 2022). Finally, few studies have attempted to infer the significance of
73 this decline or deficit in cancer screenings in terms of how the time since the most recent cancer
74 screen may have changed (Fedewa et al. 2022). This is critical for "return to screening" initiatives,
75 as targeting or prioritizing health system capacity should consider the pandemic's effect on the tim-
76 ing of a cancer screen; not just for adults who delayed care for a year, but for adults who delayed
77 for longer or even delayed initiating their first cancer screen.

78 Our study addresses these evidence gaps by designing a population-based quasi-experimental
79 Event History Analysis, where we compare the year-by-year change in the timing of the most recent
80 cancer screen among adults not exposed to the 2020 pandemic with the change in adults exposed
81 to a full year of the pandemic. This approach allows us to control for temporal trends in screening
82 patterns and rigorously assess the internal validity of our design.

83 **Results**

84 **Event-History Estimates (Linear Model)**

85 In short, we find evidence that in 2020, exposure to the COVID-19 pandemic was associated with
86 changing patterns of self-reported cancer screenings. Our estimates reveal that for the quasi-
87 treatment cohort (late survey wave) in 2020, reports of a cancer screen in the past year declined
88 as reports of a most recent cancer in the past 1-2 years increased. In 2020 for the quasi-treatment
89 cohort, we also estimate a significant decline in self-reports of never having had a mammogram,
90 which corresponds to a 33% relative decline from baseline rates of women reporting never having
91 completed a mammogram. The absolute change for reporting a most recent mammogram in the
92 past 1-2 years increased 4.2% points, which corresponds to a 17.5% increase from pre-pandemic
93 rates of having reported a recent mammogram in 1-2 years. Similarly, the absolute change for re-
94 porting a most recent pap smear in the past 1-2 years increased 4.2% points, representing a 17.3%
95 relative increase from pre-pandemic rates. Finally, reports of a colonoscopy in the past year were
96 estimated to have declined by 3.5% points, a 4.3% relative change from baseline.

Table 1. Year-by-Year Differences in Screening Rates for Late Survey Cohort

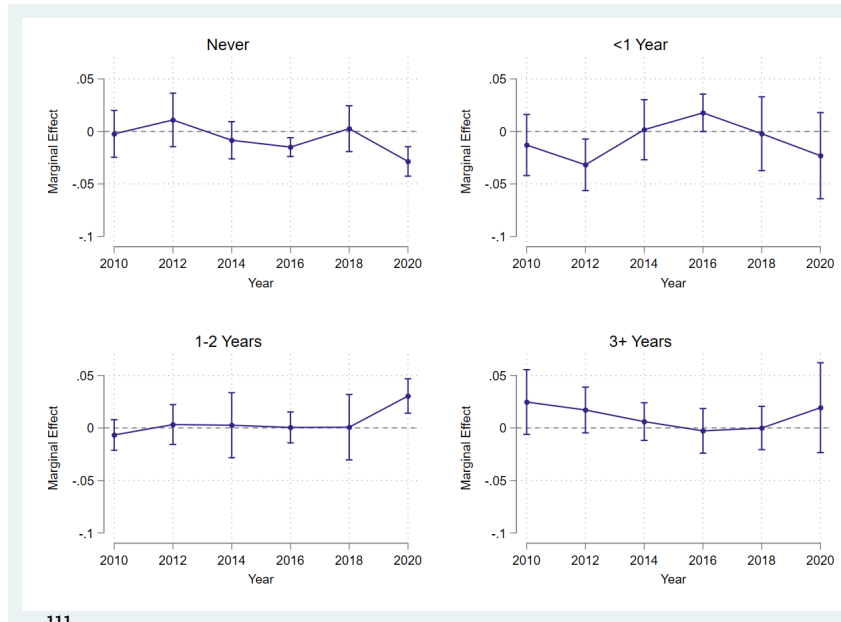
		2010*Late		2012*Late		2014*Late		2016*Late		2020*Late		2020 Relative Change
Mammogram	Never	-0.006	(0.018)	0.009	(0.016)	-0.013	(0.014)	-0.017	(0.012)	-0.029*	(0.013)	-33.0%
	<1 Year	-0.011	(0.023)	-0.030	(0.024)	0.004	(0.023)	0.020	(0.021)	-0.021	(0.034)	-3.5%
	1-2 Years	-0.008	(0.020)	0.003	(0.018)	0.002	(0.020)	-0.000	(0.016)	0.031*	(0.015)	17.5%
	3+ Years	0.025	(0.021)	0.018	(0.018)	0.007	(0.012)	-0.002	(0.015)	0.020	(0.024)	11.5%
Pap Smear	Never	0.017	(0.010)	-0.011	(0.014)	-0.024*	(0.009)	-0.009	(0.010)	-0.011	(0.012)	-22.2%
	<1 Year	0.019	(0.023)	0.015	(0.025)	0.046*	(0.020)	-0.007	(0.015)	-0.043	(0.031)	-13.5%
	1-2 Years	-0.008	(0.015)	-0.014	(0.017)	0.003	(0.017)	0.024	(0.014)	0.042*	(0.019)	17.3%
	3+ Years	-0.028	(0.015)	0.010	(0.019)	-0.026	(0.017)	-0.008	(0.017)	0.012	(0.018)	10.2%
Colonoscopy	Never	0.025	(0.017)	0.045*	(0.021)	0.042	(0.029)	-0.011	(0.022)	-0.010	(0.020)	-1.06
	<1 Year	-0.032	(0.022)	-0.012	(0.017)	-0.031	(0.030)	0.013	(0.018)	-0.035*	(0.016)	-4.3%
	1-2 Years	0.016	(0.031)	-0.035	(0.020)	0.011	(0.025)	-0.009	(0.019)	0.030	(0.016)	3.8%
	3+ Years	-0.009	(0.020)	0.002	(0.012)	-0.023	(0.019)	0.008	(0.018)	0.015	(0.019)	2.1%

⁹⁷ Table 1 reports the year-by-year differences in cancer screening rates between the early and late
⁹⁸ survey cohorts. All analyses control for exogenous sociodemographic characteristics, state-level fixed
⁹⁹ effects, and temporal trends (year fixed effects). Robust standard errors were clustered at the state
¹⁰⁰ level and reported in parentheses. The relative change was estimated by computing the semi-elasticity
¹⁰¹ (relative marginal effect) of belonging to the late survey cohort in 2020. * $p < 0.05$.

¹⁰² Marginal Effect Estimates (Logistic Model)

¹⁰³ Figures 1-3 visually report the non-linear, average marginal effect estimates (derived from the re-
¹⁰⁴ sults of the multinomial logistic model). Here, for each screening type and category, the average
¹⁰⁵ marginal effect of belonging to the quasi-treatment cohort for each year of the analysis. For our
¹⁰⁶ 2020 year of interest, we estimate average marginal effects significantly different than zero for
¹⁰⁷ mammograms in the past 1-2 years, pap smears in the past 1-2 years, and colonoscopies in the
¹⁰⁸ past year. However, we also see years when the average marginal effect of belonging to the quasi-
¹⁰⁹ treatment cohort was significantly different than zero in pre-pandemic years.

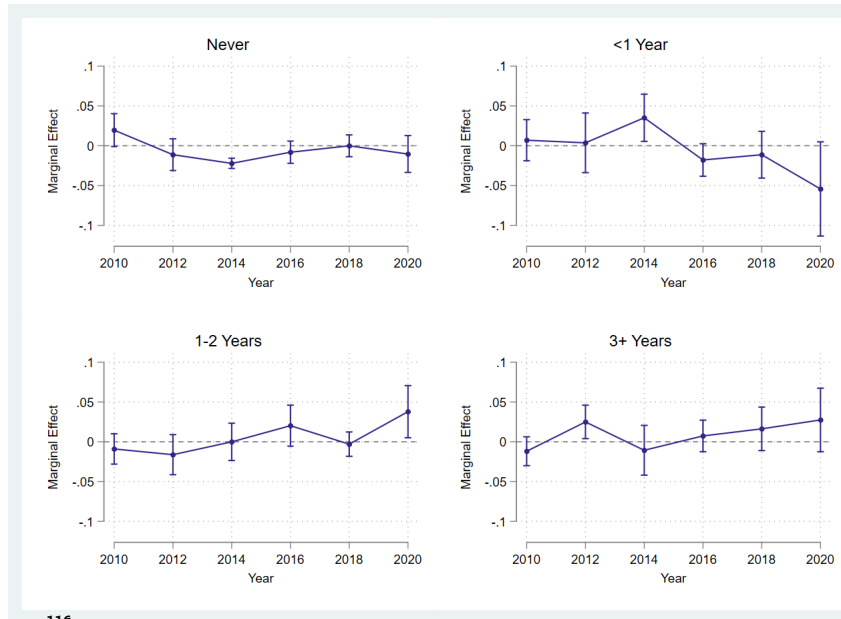
110 Figure 1: Marginal Effect of Late Survey Group on Rates of Most Recent Mammogram



111

112 *Figure 1 shows the marginal effect estimates for each category of the most recent self-reported mam-*
113 *mograms for the late-survey wave cohort. These estimates were based on the results of the multinomial*
114 *logistic model and were averaged across all observations.*

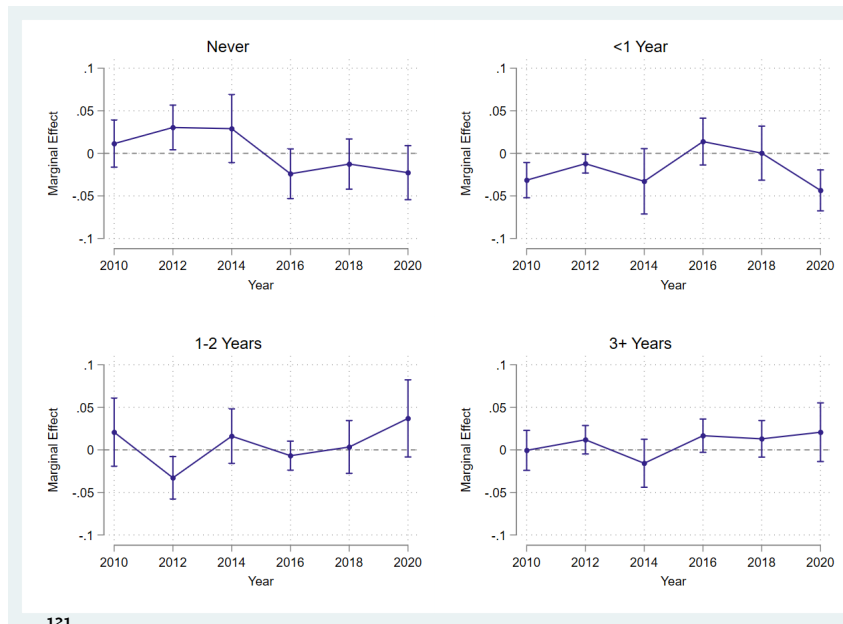
115 Figure 2: Marginal Effect of Late Survey Group on Rates of Most Recent Pap Smear



116

117 *Figure 2 shows the marginal effect estimates for each category of the most recent self-reported pap*
118 *smears for the late-survey wave cohort. These estimates were based on the results of the multinomial*
119 *logistic model and were averaged across all observations.*

120 Figure 3: Marginal Effect of Late Survey Group on Rates of Most Recent Colon/Sigmoidoscopy



121
122 *Figure 3 shows the marginal effect estimates for each category of the most recent self-reported colono-*
123 *scopies for the late-survey wave cohort. These estimates were based on the results of the multinomial*
124 *logistic model and were averaged across all observations.*

125 Sensitivity Checks

126 Our effect estimates and inference do not appear sensitive to linear or non-linear model spec-
127 ification. Supplemental table 2 shows the 2020*Late effect estimates for the linear probability
128 model specification and the multinomial logistic model specification. For each type of screening
129 and screening category, none of the estimates are significantly different from each other. Further,
130 our inference (whether to reject the null hypothesis that screening rates were similar in 2020 for
131 the late survey cohort) changed. The major takeaway from Table 2 in the supplemental file is that
132 the effect estimates in the non-linear model were more precise (smaller standard errors) for sig-
133 nificant estimates for mammograms and colonoscopies.

134 Now while the estimates do not change with regard to including state-fixed effects, clustering
135 robust standard errors, and weighting our analyses, our inference would change depending on the
136 preferred specification. In the supplemental file, table 3 shows the alternative designs (Alt 1 - no
137 state fixed effects, Alt 2 - no state fixed effects, no clustering robust standard errors, Alt 3 - no state
138 fixed effects, no clustering robust standard errors, and no probability sampling weights). For each
139 of the three alternative specifications, the effect estimates for having never reported a mammo-
140 gram in 2020 lose their significance. Moreover, for effect estimates of mammograms in the past
141 year and past 1-2 years, inference appears to change across alternative specifications. Inference
142 for the effect estimates on pap smears and colonoscopies also, slightly, varies across alternative
143 specifications. However, more interest were the increased number of significant pre-trend test

144 statistics when excluding state fixed effects for both types of screenings. We suggest that this
145 finding warrants inclusion of the state-fixed effects to account for differential, time-invariant
146 screening rates between quasi-treatment cohorts. Moreover, failing to account for clustering and
147 weighting within each state may also add noise to our inference. Compared to our primary specifi-
148 cation, our sensitivity analyses result in more differential pre-trend tests where we reject the null
149 hypothesis (of no differential trends). Thus, we conclude that our primary specification is the most
150 internally valid design.

151 **Assessing internal validity**

152 Comparability of quasi-treatment cohorts

153 Upon observing the unadjusted reports of a most recent cancer screen prior to 2020, we find
154 little convincing evidence to believe that screening rates in the two groups differed before the first
155 pandemic year. Supplemental Figures 2-4 visually depict the unadjusted cancer screening rates for
156 our quasi-treatment (late survey wave) and quasi-control (early survey wave), for each year in our
157 analyses. For each category of mammograms and pap smears, we see nearly identical trends and
158 levels in the most recent screening from 2010-2018. For adults reporting never having completed
159 a colonoscopy and adults reporting a colonoscopy in the past year, we do see some possible non-
160 common levels from 2010-14, but the trends and levels appear similar from 2016-2018.

161 The results of our two-sample proportion tests further validate our assumption, that these two
162 quasi-treatment cohorts had similar baseline screening rates. Note that Table 4 in the supplemen-
163 tal files does report a few screening outcomes with p-values under 0.05, but these test statistics are
164 not significantly different than zero after accounting for multiple hypothesis testing (significance
165 threshold $p < 0.0125$). Further, we fail to reject the null hypothesis that the sample composition
166 of these two quasi-treatment groups are significantly different from each other (Table 5 in supple-
167 mental files).

168 Differential Trend Tests

169 We found evidence that screening rates in 2020 were significantly different between the two quasi-
170 treatment cohorts. To infer a causal effect, however, we rely on the assumption that, in the absence
171 of the pandemic, the change in screening rates would not have been observed for the late-survey
172 wave cohort. To test the validity of this assumption, we empirically tested for differential trends
173 prior to 2020. In the supplemental file, table 6 reports the year-by-year effect estimates (absolute
174 differences) between quasi-treatment cohorts after excluding year 2020 from the analysis. We
175 find no statistically significant differences in these effect estimates for mammograms. Moreover,
176 the joint test of significance for each mammogram category exceeds the threshold to reject the
177 null hypothesis that 2010, 2012, 2014, and 2016 coefficients equal zero (note, multiple hypothesis
178 testing threshold set at $p < 0.0125$).

179 We do however, detect the potential for differential trends in pap smears, specifically for adults
180 reporting never having completed a pap smear and having completed a pap smear in the past year.
181 The source of the potential pre-trend differences are observed in 2014. For both categories, we
182 reject the null hypothesis that pap smear screening trends were similar prior to 2020 ($p < 0.0125$).

183 Additionally, we detect the presence of differential trends for adults reporting their most recent
184 colon/sigmoidoscopy three or more years prior. Again, the source of the differential pre-trend is ob-
185 served in 2014. We reject the null hypothesis that, prior to 2020, reports of a colon/sigmoidoscopy
186 three or more years ago were similar between the two quasi-treatment groups ($p < 0.0125$).

187 **Discussion/Conclusion**

188 The dire predictions and early evidence that cancer screening dramatically declined prompted in-
189 vestment and capacity for "return to screening" initiatives and patient prioritization policies (Joung
190 et al. 2022; Sprague et al. 2021). However, most early predictions focused on the initial decline,
191 as opposed to the subsequent rebound, and so did most of the early research. Even the research
192 which accounted for the rebound, failed to account for other, non-pandemic factors which could be
193 biasing the cancer screening deficit estimate. Our study does not claim that the pandemic had no
194 impact on cancer screening rates over the course of 2020. We found higher proportions of women
195 completing their most recent mammogram and pap smear 1-2 years ago. We also found lower
196 proportion of adults completing their colonoscopy in the past year. However, our point estimates
197 are smaller than the most recent population-based research (Fedewa et al. 2022). We attribute
198 this difference to the fact that our study includes adults exposed, not just to the entire pandemic
199 year, but to the "rebound period". Additionally, our Event-History design attempts to control for
200 temporal changes which could be affecting cancer screening rates in ways unrelated to the pan-
201 demic, which other studies may fail to identify with simple pre/post designs. The implications of
202 our findings suggest that "return to screening" initiatives and prioritization policies based on the
203 overestimated effects of the pandemic on screening, may fail to achieve greater screening adher-
204 ence. This is especially true for adults who have been delaying recommended cancer screenings
205 for three or more years, delays which started before the pandemic year. To advance cancer eq-
206 uity, future research must continue monitoring the post-2020 cancer screening rebound to assess
207 who is still delaying cancer screenings and how effective programs are mitigating these long-term
208 delays. Finally, our results not only signal delayed cancer screening in 2020, but increased initia-
209 tion. The proportion of women reporting to have never completed a mammogram declined for
210 our late cohort in 2020 (relative to the change in the early cohort). Did the "return to screening"
211 policies navigate new patients to their first mammogram? Or, was this decline merely a result of a
212 "lower population denominator" after a year of elevated excess mortality? Future data can help us
213 understand the mechanisms influencing the post-COVID screening rebound, which will be critical
214 for advancing efforts to improve early cancer detection in America well beyond this pandemic.

215 **Methods and Materials**

216 **Data**

217 We analyzed data from the Behavioral Risk Factor Surveillance System (BRFSS), a cross-sectional
218 random-digit-dialed, telephonic survey (both landline and cellphone) of nationally representative
219 sample involving non-institutionalized civilian population, aged 18 years or older, who reside in
220 the United States (CDC 2021). This population based self-reported, ongoing survey is conducted
221 across all 50 states, DC and three US territories, which collects information on behavioral health
222 risks, chronic conditions and the usage of preventive services covering more than 400,000 adult
223 interviews each wave year.

224 **Sample**

225 Our study population included non-institutionalized adults 18 years or older, residing in the US (in-
226 cluding DC), interviewed between January 1st to March 31st, for the even years (2010 – 2020). Based
227 on BRFSS cancer module eligibility, we included adults who were asked whether or not they have
228 received a mammogram, pap smear and/or sigmoidoscopy/colonoscopy screening services (CDC
229 2021). We then restricted our analysis to adults eligible for each respective cancer screen based on
230 the United States Preventative Task Force: Mammograms (females age 40-74; Pap Smears (females
231 age 25-64); and Colon/sigmoidoscopies (males and females age 45-79) (Moyer et al. 2012; Siu et
232 al. 2016; Davidson et al. 2021). Participants from unknown US territories/jurisdictions, those who
233 were interviewed between April 1st to December 31st for the years 2010 to 2020, those interviewed
234 in the years which did not utilize cancer modules (odd years), were all excluded (Supplemental Fig-
235 ure 1).

236 **Analytical Design**

237 From the perspective of the analyst, the ideal experiment to evaluate how the COVID-19 pandemic
238 impacted cancer screening would be to randomly assign adults into two groups: those exposed
239 and those not exposed to the pandemic. After tracking individual screening behavior over time,
240 any difference observed during the pandemic year (2020) would be attributed to the COVID-19
241 pandemic. This design is comically unrealistic. Unfortunately, quasi-experimental designs using
242 "as-if" randomization into treatment and controls are also infeasible. Because the COVID-19 pan-
243 demic was a global event, everyone was exposed and everyone was impacted. Simple pre/post
244 analyses have attempted to measure the change in cancer screening rates, but these approaches
245 fail to account for other temporal factors which could be influencing screening rates in ways unre-
246 lated to the pandemic.

247 Rather than attempt to create different groups based on exposure to the pandemic during
248 the pandemic year, we take a different approach by leveraging how BRFSS implements its cross-
249 sectional survey over the course of 15 months. Selection into the BRFSS sample is random. When

250 adults are surveyed, is also random. Therefore there is no reason to expect any observable dif-
251 ferences in cancer screening behavior between adults queried early in a single year BRFSS survey
252 wave and adults queried later in that same BRFSS survey wave; except however, during the COVID-
253 19 pandemic year.

254 Our design begins by creating two distinct quasi-cohorts of adult BRFSS respondents. The first
255 cohort only includes adults surveyed between January 1 and March 31 of the first year in each
256 survey wave. We consider this “early” cohort the control group. Our second cohort only includes
257 adults surveyed between January 1 and March 31 of the second year in each survey wave. We
258 consider this “late” cohort the treatment group. Tables 2 (in the supplemental file) reports the can-
259 cer screening rates for both quasi-treatment and control cohorts for years 2010-2018. We test for
260 significant differences in proportions between both groups and report the t-statistic and respec-
261 tive p-value to assess the comparability of these groups prior to 2020. We also conduct similar
262 proportion tests for the sample composition of our control variables.

263 Prior to 2020, we hypothesize that screening behavior is not significantly different between our
264 control and treatment groups. We also hypothesize that, prior to 2020, the trends in screening
265 behavior do not differentially vary by group (see statistical analysis section below for details on
266 these identification tests). Evidence that levels and trends did not vary between groups prior to
267 2020 supports our identification assumption: that any difference in screening rates observed in
268 2020 should be attributed to the COVID-19 pandemic.

269 Statistical Analysis For each of the three cancer screenings (mammograms, pap smears, and
270 colonoscopies), we model the probability of self-reported cancer screening behavior as mutually
271 exclusive categories related to the timing of the most recent screen. This approach not only allows
272 us to model the change in probabilities over time, but also model how the distribution of cancer
273 screening behavior changes between each timing category. Our initial specification models the
274 probability of a recent cancer screen as a series of linear probability models.

$$275 \quad 1) Y_{its}^m = P(Y^m = y | X_i, t = YEAR, s = STATE)$$

276 Where Y_{its}^m is a binary variable indicating if the respondent reported a cancer screening in time in-
277 terval m . X_i is a vector of control variables potentially impacting cancer screening rates, but exoge-
278 nous to the COVID-19 pandemic. This set of exogenous dummy variables includes age (five-year
279 age groups), race/ethnicity (non-Hispanic White, non-Hispanic Black, Hispanic, and non-Hispanic
280 other), education status (no highschool, high school degree only or GED, some college but no four-
281 year degree, four-year college degree only or at least some graduate-level education and/or de-
282 gree), whether the respondent is married, and whether the respondent is male. To account for
283 secular trends in cancer screening, each model includes YEAR, a vector of binary fixed-effects vari-
284 ables indicating the survey wave year. These survey wave fixed effects account for temporal trends

285 in cancer screening. Finally, to account for time-invariant, regional behaviors, policies, and health
286 systems impacting cancer screening, each model includes s , a vector of binary fixed-effects vari-
287 ables indicating the state of residence for each respondent.

288 We then estimate the incremental effect of the COVID-19 pandemic on screening behavior Y_{its}^m
289 as:

$$290 \quad 2) \Delta SCREENING^m = \frac{\Delta Y_{its}^m}{\Delta PANDEMIC} = \frac{\Delta Y_{its}^m}{\Delta(2020|treatment)}$$

291 Where the estimated effect equals a change in Y_{its}^m given an incremental change in pandemic
292 status (modeled as the incremental change of a dummy variable indicating if the year is 2020, for
293 adults in the treatment group). Rather than implement a simple pre/post design, we explicitly allow
294 the screening behavior in the treatment group to vary from the screening behavior in the control
295 group for each year of the analysis (Clarke and Tapia-Schythe 2021). The event history study model
296 is defined as:

$$297 \quad 3) Y_{its}^m = \beta * YEAR'_i * TREATED_i + YEAR'_i + X'_i + STATE'_S + e_{its}$$

298 B identifies the average association between cancer screening behavior Y^m for adults surveyed
299 in the later part of each BRFSS survey wave. Using 2019 as the arbitrary baseline category, our
300 event history analysis yields five B parameters (2010*Late, 2012*Late, 2014*Late, 2016*Late, and
301 2020*Late) This approach also allows us to test if $\Delta Y_{its}^m = \Delta PANDEMIC = (2020|control) = 0$
302 (Borusyak, Jaravel, and Spiess 2022). More importantly, we can now visually assess and empiri-
303 cally test our identification assumptions (Marcus and SantAnna 2021). Following best practice, we
304 formally conduct pre-treatment differential trend tests by excluding responses in the 2020 survey
305 wave and then recompute equation 3 (Freyaldenhoven, Hansen, and Shapiro 2019). In addition to
306 reporting for each YEAR*TREATED coefficient, we calculate robust Wald statistics (with Bonferonni
307 correction) to test if the trends in cancer screening rates between quasi-treatment and control
308 cohorts jointly equalled zero (Armstrong 2014). Any significant results from these pre-treatment
309 tests would suggest that cancer screening behaviors were differentially changing for treatment,
310 compared to control cohorts, in ways unrelated to the COVID-19 pandemic. Conversely, null re-
311 sults provide confidence in the strength of our identifying assumption and supports the validity of
312 our study design.

313 All analyses incorporate BRFSS supplied sampling weights, estimate standard errors robust to
314 heteroskedasticity, and cluster the robust standard errors at the state level (Abadie et al. 2017;
315 Cameron and Miller 2015). The Bonferonni correction method was used to adjust for multiple
316 hypothesis testing for group differences and pre-treatment joint Wald tests (Armstrong 2014).

317 **Alternative Specifications**

318 Because of its ability to consistently model time-trends and group (i.e., state) fixed effects, the lin-
319 ear probability model is typically the preferred specification in the quasi-experimental literature.
320 However, analytical issues may arise if the linear predictions are estimating potential outcomes
321 outside the bounds of zero and one. In the presence of these nonsensical predictions, the lin-
322 ear probability model may be yielding biased estimates. To confront this threat, we construct an
323 alternative set of specifications and model the probability of a recent cancer diagnosis with a multi-
324 nomial logistic regression model. After comparing the predicted probabilities of these nonlinear
325 models with the predictions of our linear model, we use the coefficients in the nonlinear models to
326 estimate the average incremental effect of the treatment group (compared to the control group) in
327 each year on the probability of each cancer outcome (Williams 2012). We also extend this marginal
328 analysis to estimate the semi-elasticity, or relative change from baseline screening rates, for the
329 treatment group in 2020 (Williams 2012). To support our inference, we test if the point estimates
330 and standard errors in our linear models are significantly different from the estimates in the non-
331 linear specifications. A final set of sensitivity analyses relax the model assumptions by 1) removing
332 the state-specific fixed effects, 2) remove state-specific fixed effects and estimate (unclustered) ro-
333 bust standard errors, 3) remove state-fixed effects, estimate (unclustered) robust standard errors,
334 and ignore probability sampling weights.

References

- 335
336 Abadie, Alberto, Susan Athey, Guido W. Imbens, and Jeffrey Wooldridge. *When Should You Adjust Standard Errors*
337 *for Clustering?* Working Paper 24003. Series: Working Paper Series. National Bureau of Economic Research,
338 November 2017. Accessed June 2, 2022. <https://doi.org/10.3386/w24003>. <https://www.nber.org/papers/w24003>.
- 339 Anderson, Roy M., Hans Heesterbeek, Don Klinkenberg, and T. Déirdre Hollingsworth. "How will country-based
340 mitigation measures influence the course of the COVID-19 epidemic?" Publisher: Elsevier, *The Lancet* 395,
341 no. 10228 (March 21, 2020): 931–934. ISSN: 0140-6736, 1474-547X, accessed April 3, 2020. [https://doi.org/10.](https://doi.org/10.1016/S0140-6736(20)30567-5)
342 [1016/S0140-6736\(20\)30567-5](https://doi.org/10.1016/S0140-6736(20)30567-5). [https://www.thelancet.com/journals/lancet/article/PIIS0140-6736\(20\)30567-5/abstract](https://www.thelancet.com/journals/lancet/article/PIIS0140-6736(20)30567-5/abstract).
- 343 Armstrong, RA. "When to use the Bonferroni correction." *Ophthalmic Physiol Opt*, April 2014. Accessed June 2,
344 2022. <https://doi.org/10.1111/opo.12131>. <https://pubmed.ncbi.nlm.nih.gov/24697967/>.
- 345 Bakouny, Ziad, Marco Paciotti, Andrew L. Schmidt, Stuart R. Lipsitz, Toni K. Choueiri, and Quoc-Dien Trinh.
346 "Cancer Screening Tests and Cancer Diagnoses During the COVID-19 Pandemic." *JAMA Oncology* 7, no. 3
347 (March 1, 2021): 458–460. ISSN: 2374-2437, accessed November 18, 2021. [https://doi.org/10.1001/jamaoncol.](https://doi.org/10.1001/jamaoncol.2020.7600)
348 [2020.7600](https://doi.org/10.1001/jamaoncol.2020.7600). <https://doi.org/10.1001/jamaoncol.2020.7600>.
- 349 Bello, Ricardo J., George J. Chang, and Nader N. Massarweh. "Colorectal Cancer Screening in the US Still Putting
350 the Cart Before the Horse?" *JAMA Oncology*, May 5, 2022. ISSN: 2374-2437, accessed June 2, 2022. <https://doi.org/10.1001/jamaoncol.2022.0500>. <https://doi.org/10.1001/jamaoncol.2022.0500>.
- 352 Benavidez, Gabriel A., Anja Zgodic, Whitney E. Zahnd, and Jan M. Eberth. "Disparities in Meeting USPSTF Breast,
353 Cervical, and Colorectal Cancer Screening Guidelines Among Women in the United States." *Preventing*
354 *Chronic Disease* 18 (April 15, 2021): E37. ISSN: 1545-1151, accessed March 2, 2022. [https://doi.org/10.5888/](https://doi.org/10.5888/pcd18.200315)
355 [pcd18.200315](https://doi.org/10.5888/pcd18.200315). <https://www.ncbi.nlm.nih.gov/pmc/articles/PMC8051853/>.
- 356 Bitler, Marianne P., Christopher S. Carpenter, and Dana Horn. "Effects of the Colorectal Cancer Control Pro-
357 gram." Eprint: <https://onlinelibrary.wiley.com/doi/pdf/10.1002/hec.4397>, *Health Economics* 30, no. 11 (2021):
358 2667–2685. ISSN: 1099-1050, accessed June 2, 2022. <https://doi.org/10.1002/hec.4397>. [https://onlinelibrary.wiley.](https://onlinelibrary.wiley.com/doi/abs/10.1002/hec.4397)
359 [com/doi/abs/10.1002/hec.4397](https://onlinelibrary.wiley.com/doi/abs/10.1002/hec.4397).
- 360 Borusyak, Kirill, Xavier Jaravel, and Jann Spiess. *Revisiting Event Study Designs: Robust and Efficient Estimation*.
361 SSRN Scholarly Paper 2826228. Rochester, NY: Social Science Research Network, April 19, 2022. Accessed
362 June 2, 2022. <https://doi.org/10.2139/ssrn.2826228>. <https://papers.ssrn.com/abstract=2826228>.
- 363 Cameron, A. Colin, and Douglas L. Miller. "A Practitioners Guide to Cluster-Robust Inference." Publisher: Univer-
364 sity of Wisconsin Press, *Journal of Human Resources* 50, no. 2 (March 31, 2015): 317–372. ISSN: 0022-166X,
365 1548-8004, accessed June 2, 2022. <https://doi.org/10.3368/jhr.50.2.317>. <http://jhr.uwpress.org/content/50/2/317>.
- 366 Cancino, Ramon S., Zhaohui Su, Ruben Mesa, Gail E. Tomlinson, and Jing Wang. "The Impact of COVID-19 on
367 Cancer Screening: Challenges and Opportunities." Company: JMIR Cancer Distributor: JMIR Cancer Institu-
368 tion: JMIR Cancer Label: JMIR Cancer Publisher: JMIR Publications Inc., Toronto, Canada, *JMIR Cancer* 6, no.
369 2 (October 29, 2020): e21697. Accessed June 2, 2022. <https://doi.org/10.2196/21697>. [https://cancer.jmir.org/2020/](https://cancer.jmir.org/2020/2/e21697)
370 [2/e21697](https://cancer.jmir.org/2020/2/e21697).
- 371 CDC. "Behavioral Risk Factor Surveillance System [2010-2020]," 2021. Accessed January 2, 2022. [https://www.cdc.](https://www.cdc.gov/brfss/annual_data/annual_2020.html)
372 [gov/brfss/annual_data/annual_2020.html](https://www.cdc.gov/brfss/annual_data/annual_2020.html).

- 373 Chen, Ronald C., Kevin Haynes, Simo Du, John Barron, and Aaron J. Katz. "Association of Cancer Screening Deficit
374 in the United States With the COVID-19 Pandemic." *JAMA Oncology* 7, no. 6 (June 1, 2021): 878–884. ISSN:
375 2374-2437, accessed March 11, 2022. <https://doi.org/10.1001/jamaoncol.2021.0884>. [https://doi.org/10.1001/](https://doi.org/10.1001/jamaoncol.2021.0884)
376 [jamaoncol.2021.0884](https://doi.org/10.1001/jamaoncol.2021.0884).
- 377 Clarke, Damian, and Kathya Tapia-Schythe. "Implementing the panel event study." Publisher: SAGE Publications,
378 *The Stata Journal* 21, no. 4 (December 1, 2021): 853–884. ISSN: 1536-867X, accessed June 2, 2022. <https://doi.org/10.1177/1536867X211063144>. <https://doi.org/10.1177/1536867X211063144>.
- 380 Davidson, Karina W., Michael J. Barry, Carol M. Mangione, Michael Cabana, Aaron B. Caughey, Esa M. Davis,
381 Katrina E. Donahue, et al. "Screening for Colorectal Cancer: US Preventive Services Task Force Recommen-
382 dation Statement." *JAMA* 325, no. 19 (May 18, 2021): 1965–1977. ISSN: 1538-3598. [https://doi.org/10.1001/](https://doi.org/10.1001/jama.2021.6238)
383 [jama.2021.6238](https://doi.org/10.1001/jama.2021.6238).
- 384 Davidson, Nancy E., Karen E. Knudsen, Shelley Fuld Nasso, Randall Oyer, Steve Pergam, Lara Strawbridge, and
385 Lawrence Shulman. "Cancer Care at the Beginning of the COVID-19 Pandemic: Effects on Patients and
386 Early Interventions to Mitigate Stresses on Care." *The Cancer Journal* 28, no. 2 (April 2022): 107–110. ISSN:
387 1528-9117, accessed June 2, 2022. <https://doi.org/10.1097/PPO.0000000000000586>. [https://journals.lww.com/](https://journals.lww.com/journalppo/Fulltext/2022/03000/Cancer_Care_at_the_Beginning_of_the_COVID_19.5.aspx)
388 [journalppo/Fulltext/2022/03000/Cancer_Care_at_the_Beginning_of_the_COVID_19.5.aspx](https://journals.lww.com/journalppo/Fulltext/2022/03000/Cancer_Care_at_the_Beginning_of_the_COVID_19.5.aspx).
- 389 DeGroff, A., J. Miller, K. Sharma, J. Sun, W. Helsel, W. Kammerer, T. Rockwell, et al. "COVID-19 impact on screening
390 test volume through the National Breast and Cervical Cancer early detection program, January-June 2020, in
391 the United States." *Preventive Medicine*, From disruption to recovery: The Impact of the COVID-19 Pandemic
392 on Cancer Screening, 151 (October 1, 2021): 106559. ISSN: 0091-7435, accessed June 2, 2022. <https://doi.org/10.1016/j.ypmed.2021.106559>. <https://www.sciencedirect.com/science/article/pii/S0091743521001432>.
- 394 DeJong, Colette, Mitchell H. Katz, and Kenneth Covinsky. "Deferral of Care for Serious NonCOVID-19 Conditions:
395 A Hidden Harm of COVID-19." *JAMA Internal Medicine* 181, no. 2 (February 1, 2021): 274. ISSN: 2168-6106,
396 accessed April 5, 2022. <https://doi.org/10.1001/jamainternmed.2020.4016>. [https://doi.org/10.1001/jamainternmed.2020.](https://doi.org/10.1001/jamainternmed.2020.4016)
397 [4016](https://doi.org/10.1001/jamainternmed.2020.4016).
- 398 Dennis, Leslie K., Chiu-Hsieh Hsu, and Amanda K. Arrington. "Reduction in Standard Cancer Screening in 2020
399 throughout the U.S." Number: 23 Publisher: Multidisciplinary Digital Publishing Institute, *Cancers* 13, no.
400 23 (January 2021): 5918. ISSN: 2072-6694, accessed June 2, 2022. <https://doi.org/10.3390/cancers13235918>.
401 <https://www.mdpi.com/2072-6694/13/23/5918>.
- 402 Drescher, Charles W., Adam J. Bograd, Shu-Ching Chang, Roshanthi K. Weerasinghe, Ann Vita, and R. Bryan Bell.
403 "Cancer case trends following the onset of the COVID-19 pandemic: A community-based observational
404 study with extended follow-up." _Eprint: <https://onlinelibrary.wiley.com/doi/pdf/10.1002/cncr.34067>, *Cancer*
405 128, no. 7 (2022): 1475–1482. ISSN: 1097-0142, accessed June 2, 2022. <https://doi.org/10.1002/cncr.34067>.
406 <https://onlinelibrary.wiley.com/doi/abs/10.1002/cncr.34067>.
- 407 Duszak, Richard, Jeff Maze, Candice Sessa, Howard B. Fleishon, Lauren P. Golding, Gregory N. Nicola, and Danny
408 R. Hughes. "Characteristics of COVID-19 Community Practice Declines in Noninvasive Diagnostic Imaging
409 Professional Work." Publisher: Elsevier, *Journal of the American College of Radiology* 17, no. 11 (November 1,
410 2020): 1453–1459. ISSN: 1546-1440, 1558-349X, accessed June 2, 2022. [https://doi.org/10.1016/j.jacr.2020.06.](https://doi.org/10.1016/j.jacr.2020.06.031)
411 [031](https://doi.org/10.1016/j.jacr.2020.06.031). [https://www.jacr.org/article/S1546-1440\(20\)30742-0/fulltext](https://www.jacr.org/article/S1546-1440(20)30742-0/fulltext).

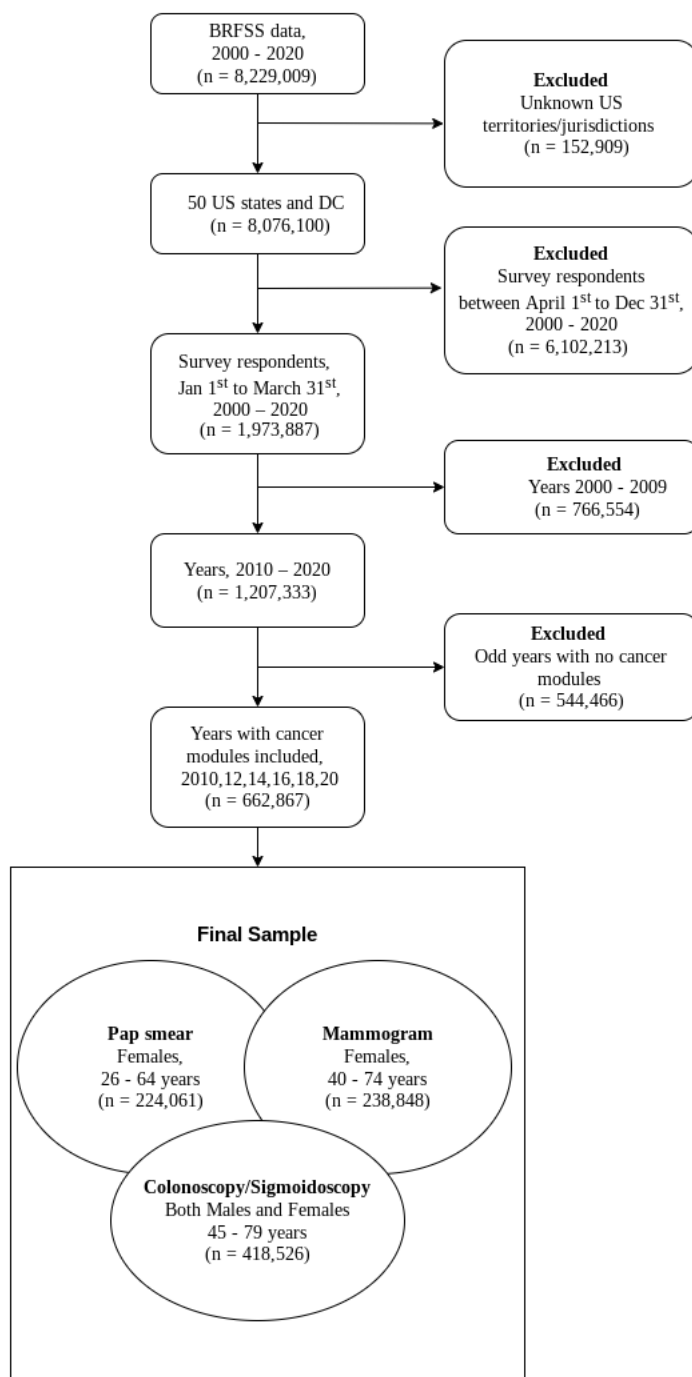
- 412 Fedewa, Stacey A., Jessica Star, Priti Bandi, Adair Minihan, Xuesong Han, K. Robin Yabroff, and Ahmedin Jemal.
413 "Changes in Cancer Screening in the US During the COVID-19 Pandemic." *JAMA Network Open* 5, no. 6 (June
414 2022): e2215490–e2215490. ISSN: 2574-3805. <https://doi.org/10.1001/jamanetworkopen.2022.15490>. eprint: https://jamanetwork.com/journals/jamanetworkopen/articlepdf/2792956/fedewa_2022\oi\220453\1653581780.1564.pdf.
415 <https://doi.org/10.1001/jamanetworkopen.2022.15490>.
416
- 417 Fedewa, Stacey A., K. Robin Yabroff, Priti Bandi, Robert A. Smith, Nigar Nargis, Zhiyuan Zheng, Jeffrey Drope, and
418 Ahmedin Jemal. "Unemployment and cancer screening: Baseline estimates to inform health care delivery
419 in the context of COVID-19 economic distress." *Cancer* 128, no. 4 (February 15, 2022): 737–745. ISSN: 1097-
420 0142. <https://doi.org/10.1002/cncr.33966>.
- 421 Findling, Mary G., Robert J. Blendon, and John M. Benson. "Delayed Care with Harmful Health Consequences-
422 Reported Experiences from National Surveys During Coronavirus Disease 2019." *JAMA Health Forum* 1, no.
423 12 (December 14, 2020): e201463. ISSN: 2689-0186, accessed March 11, 2022. <https://doi.org/10.1001/jamahealthforum.2020.1463>.
424
- 425 Freyaldenhoven, Simon, Christian Hansen, and Jesse M. Shapiro. "Pre-event Trends in the Panel Event-Study
426 Design." *American Economic Review* 109, no. 9 (September 2019): 3307–3338. ISSN: 0002-8282, accessed
427 June 2, 2022. <https://doi.org/10.1257/aer.20180609>. <https://www.aeaweb.org/articles?id=10.1257/aer.20180609>.
- 428 Hanna, Karim, Brandy L. Arredondo, Melody N. Chavez, Carley Geiss, Emma Hume, Laura Szalacha, Shannon M.
429 Christy, et al. "Cancer Screening Among Rural and Urban Clinics During COVID-19: A Multistate Qualitative
430 Study." Publisher: Wolters Kluwer, *JCO Oncology Practice*, March 7, 2022, OP.21.00658. ISSN: 2688-1527,
431 accessed March 29, 2022. <https://doi.org/10.1200/OP.21.00658>. <https://ascopubs.org/doi/full/10.1200/OP.21.00658>.
- 432 Joung, Rachel H., Heidi Nelson, Timothy W. Mullett, Scott H. Kurtzman, Sarah Shafir, James B. Harris, Katharine A.
433 Yao, Brian C. Brajcich, Karl Y. Bilimoria, and William G. Cance. "A national quality improvement study identi-
434 fying and addressing cancer screening deficits due to the COVID-19 pandemic." _Eprint: <https://onlinelibrary.wiley.com>
435 *Cancer* 128, no. 11 (2022): 2119–2125. ISSN: 1097-0142, accessed June 2, 2022. [https://doi.org/10.1002/cncr.](https://doi.org/10.1002/cncr.34157)
436 [34157](https://onlinelibrary.wiley.com/doi/abs/10.1002/cncr.34157). <https://onlinelibrary.wiley.com/doi/abs/10.1002/cncr.34157>.
- 437 Kelkar, Amar H., Jing Zhao, Shu Wang, and Christopher R. Cogle. "Impact of the COVID-19 Pandemic on Colorectal
438 and Prostate Cancer Screening in a Large U.S. Health System." Number: 2 Publisher: Multidisciplinary
439 Digital Publishing Institute, *Healthcare* 10, no. 2 (February 2022): 264. ISSN: 2227-9032, accessed June 2,
440 2022. <https://doi.org/10.3390/healthcare10020264>. <https://www.mdpi.com/2227-9032/10/2/264>.
- 441 Labaki, Chris, Ziad Bakouny, Andrew Schmidt, Stuart R. Lipsitz, Timothy R. Rebbeck, Quoc-Dien Trinh, and Toni K.
442 Choueiri. "Recovery of cancer screening tests and possible associated disparities after the first peak of the
443 COVID-19 pandemic." *Cancer Cell* 39, no. 8 (August 9, 2021): 1042–1044. ISSN: 1535-6108, accessed June 2,
444 2022. <https://doi.org/10.1016/j.ccell.2021.06.019>. <https://www.sciencedirect.com/science/article/pii/S153561082100341X>.
- 445 Mafi, John N., Melody Craff, Sitaram Vangala, Thomas Pu, Dale Skinner, Cyrus Tabatabai-Yazdi, Anikia Nelson,
446 et al. "Trends in US Ambulatory Care Patterns During the COVID-19 Pandemic, 2019-2021." *JAMA* 327, no. 3
447 (January 18, 2022): 237–247. ISSN: 0098-7484, accessed June 2, 2022. <https://doi.org/10.1001/jama.2021.24294>.
448 <https://doi.org/10.1001/jama.2021.24294>.
- 449 Marcus, Michelle, and Pedro H. C. SantAnna. "The Role of Parallel Trends in Event Study Settings: An Applica-
450 tion to Environmental Economics." Publisher: The University of Chicago Press, *Journal of the Association of*
451 *Environmental and Resource Economists* 8, no. 2 (March 2021): 235–275. ISSN: 2333-5955, accessed June 2,
452 2022. <https://doi.org/10.1086/711509>. <https://www.journals.uchicago.edu/doi/full/10.1086/711509>.

- 453 Matos, Leandro L., Carlos Henrique Q. Forster, Gustavo N. Marta, Gilberto Castro Junior, John A. Ridge, Daisy
454 Hirata, Adalberto Miranda-Filho, et al. "The hidden curve behind COVID-19 outbreak: the impact of delay
455 in treatment initiation in cancer patients and how to mitigate the additional risk of dying-the head and
456 neck cancer model." *Cancer causes & control: CCC* 32, no. 5 (May 2021): 459–471. ISSN: 1573-7225. <https://doi.org/10.1007/s10552-021-01411-7>.
457
- 458 McBain, Ryan K., Jonathan H. Cantor, Anupam B. Jena, Megan F. Pera, Dena M. Bravata, and Christopher M.
459 Whaley. "Decline and Rebound in Routine Cancer Screening Rates During the COVID-19 Pandemic." *Journal*
460 *of General Internal Medicine* 36, no. 6 (June 1, 2021): 1829–1831. ISSN: 1525-1497, accessed June 2, 2022.
461 <https://doi.org/10.1007/s11606-021-06660-5>. <https://doi.org/10.1007/s11606-021-06660-5>.
- 462 Moyer, Virginia A., and U.S. Preventive Services Task Force. "Screening for cervical cancer: U.S. Preventive Ser-
463 vices Task Force recommendation statement." *Annals of Internal Medicine* 156, no. 12 (June 19, 2012): 880–
464 891, W312. ISSN: 1539-3704. <https://doi.org/10.7326/0003-4819-156-12-201206190-00424>.
- 465 Peoples, Anita R., Laura B. Oswald, Jennifer Ose, Bailee Daniels, Caroline Himbert, Cassandra A. Hathaway, Bil-
466 jana Gigic, et al. "Impact of the COVID-19 pandemic on rural and urban cancer patients' experiences, health
467 behaviors, and perceptions." _Eprint: <https://onlinelibrary.wiley.com/doi/pdf/10.1111/jrh.12648>, *The Jour-*
468 *nal of Rural Health* n/a (n/a 2022). ISSN: 1748-0361, accessed March 29, 2022. <https://doi.org/10.1111/jrh.12648>.
469 <https://onlinelibrary.wiley.com/doi/abs/10.1111/jrh.12648>.
- 470 Al-Quteimat, Osama M., and Amer Mustafa Amer. "The Impact of the COVID-19 Pandemic on Cancer Patients."
471 *American Journal of Clinical Oncology* 43, no. 6 (June 2020): 452–455. ISSN: 0277-3732, accessed Novem-
472 ber 18, 2021. <https://doi.org/10.1097/COC.0000000000000712>. [https://journals.lww.com/amjclinicaloncology/fulltext/](https://journals.lww.com/amjclinicaloncology/fulltext/2020/06000/the_impact_of_the_covid_19_pandemic_on_cancer.12.aspx)
473 [2020/06000/the_impact_of_the_covid_19_pandemic_on_cancer.12.aspx](https://journals.lww.com/amjclinicaloncology/fulltext/2020/06000/the_impact_of_the_covid_19_pandemic_on_cancer.12.aspx).
- 474 Richards, Mike, Michael Anderson, Paul Carter, Benjamin L. Ebert, and Elias Mossialos. "The impact of the COVID-
475 19 pandemic on cancer care." Number: 6 Publisher: Nature Publishing Group, *Nature Cancer* 1, no. 6 (June
476 2020): 565–567. ISSN: 2662-1347, accessed April 6, 2022. <https://doi.org/10.1038/s43018-020-0074-y>. <https://www.nature.com/articles/s43018-020-0074-y>.
477 <https://www.nature.com/articles/s43018-020-0074-y>.
- 478 Richardson, Lisa C. "Adults Who Have Never Been Screened for Colorectal Cancer, Behavioral Risk Factor Surveil-
479 lance System, 2012 and 2020." *Preventing Chronic Disease* 19 (2022). ISSN: 1545-1151, accessed June 2, 2022.
480 <https://doi.org/10.5888/pcd19.220001>. https://www.cdc.gov/pcd/issues/2022/22_0001.htm.
- 481 Sabatino, Susan A., Trevor D. Thompson, Mary C. White, Jean A. Shapiro, Tainya C. Clarke, Jennifer M. Croswell,
482 and Lisa C. Richardson. "Cancer Screening Test Use 2013; U.S., 2019." *American Journal of Preventive Medicine*,
483 April 22, 2022. ISSN: 0749-3797, accessed June 2, 2022. <https://doi.org/10.1016/j.amepre.2022.02.018>. <https://www.sciencedirect.com/science/article/pii/S0749379722001520>.
484 <https://www.sciencedirect.com/science/article/pii/S0749379722001520>.
- 485 Schoenborn, Nancy L., Cynthia M. Boyd, and Craig E. Pollack. "Impact of the COVID-19 pandemic on cancer
486 screening attitudes, intentions, and behaviors in older adults." _Eprint: <https://onlinelibrary.wiley.com/doi/pdf/10.1111/jgs.17449>,
487 *Journal of the American Geriatrics Society* 70, no. 1 (2022): 67–69. ISSN: 1532-5415, accessed June 2, 2022.
488 <https://doi.org/10.1111/jgs.17449>. <https://onlinelibrary.wiley.com/doi/abs/10.1111/jgs.17449>.
- 489 Semprini, Jason. "How Did the Covid-19 Pandemic Impact Cancer Prevention and Treatment? Examining Nation-
490 ally Representative Survey Data." Publisher: Wolters Kluwer, *JCO Global Oncology* 8 (Supplement_1 2022):
491 18–18. Accessed June 2, 2022. <https://doi.org/10.1200/GO.22.24000>. [https://ascopubs.org/doi/abs/10.1200/GO.22.](https://ascopubs.org/doi/abs/10.1200/GO.22.24000)
492 [24000](https://ascopubs.org/doi/abs/10.1200/GO.22.24000).

- 493 Semprini, Jason. *How did the COVID-19 Pandemic impact self-reported cancer screening rates in 12 Midwestern*
494 *states?* Type: article. medRxiv, April 18, 2022. Accessed June 2, 2022. [https://doi.org/10.1101/2022.04.13.](https://doi.org/10.1101/2022.04.13.22273837)
495 [22273837](https://doi.org/10.1101/2022.04.13.22273837). <https://www.medrxiv.org/content/10.1101/2022.04.13.22273837v1>.
- 496 Siu, Albert L., and U.S. Preventive Services Task Force. "Screening for Breast Cancer: U.S. Preventive Services
497 Task Force Recommendation Statement." *Annals of Internal Medicine* 164, no. 4 (February 16, 2016): 279–
498 296. ISSN: 1539-3704. <https://doi.org/10.7326/M15-2886>.
- 499 Sprague, Brian L., Ellen S. O'Meara, Christoph I. Lee, Janie M. Lee, Louise M. Henderson, Diana S. M. Buist,
500 Nila Alsheik, et al. "Prioritizing breast imaging services during the COVID pandemic: A survey of breast
501 imaging facilities within the Breast Cancer Surveillance Consortium." *Preventive Medicine, From disruption*
502 *to recovery: The Impact of the COVID-19 Pandemic on Cancer Screening*, 151 (October 1, 2021): 106540.
503 ISSN: 0091-7435, accessed June 2, 2022. <https://doi.org/10.1016/j.ypmed.2021.106540>. [https://www.sciencedirect.](https://www.sciencedirect.com/science/article/pii/S0091743521001249)
504 [com/science/article/pii/S0091743521001249](https://www.sciencedirect.com/science/article/pii/S0091743521001249).
- 505 Staib, James, Kierstin Catlett, and Stacey DaCosta Byfield. "Disruptions in cancer screening and diagnoses during
506 the COVID-19 pandemic in 2020." Publisher: Wolters Kluwer, *Journal of Clinical Oncology* 39, no. 28 (October
507 2021): 315–315. ISSN: 0732-183X, accessed June 2, 2022. https://doi.org/10.1200/JCO.2020.39.28_suppl.315.
508 https://ascopubs.org/doi/abs/10.1200/JCO.2020.39.28_suppl.315.
- 509 Suran, Melissa. "Stagnant US Mammography Rates and the Influence of COVID-19." *JAMA* 327, no. 18 (May 10,
510 2022): 1742–1744. ISSN: 0098-7484, accessed June 2, 2022. <https://doi.org/10.1001/jama.2022.4295>. [https:](https://doi.org/10.1001/jama.2022.4295)
511 [//doi.org/10.1001/jama.2022.4295](https://doi.org/10.1001/jama.2022.4295).
- 512 Velazquez, Ana I., Jessica H. Hayward, Blake Gregory, and Niharika Dixit. "Trends in Breast Cancer Screening
513 in a Safety-Net Hospital During the COVID-19 Pandemic." *JAMA Network Open* 4, no. 8 (August 6, 2021):
514 e2119929. ISSN: 2574-3805, accessed June 2, 2022. <https://doi.org/10.1001/jamanetworkopen.2021.19929>.
515 <https://doi.org/10.1001/jamanetworkopen.2021.19929>.
- 516 Williams, Richard. "Using the Margins Command to Estimate and Interpret Adjusted Predictions and Marginal
517 Effects." *The Stata Journal: Promoting communications on statistics and Stata* 12, no. 2 (June 2012): 308–331.
518 ISSN: 1536-867X, 1536-8734, accessed June 2, 2022. <https://doi.org/10.1177/1536867X1201200209>. [http:](http://journals.sagepub.com/doi/10.1177/1536867X1201200209)
519 [//journals.sagepub.com/doi/10.1177/1536867X1201200209](http://journals.sagepub.com/doi/10.1177/1536867X1201200209).

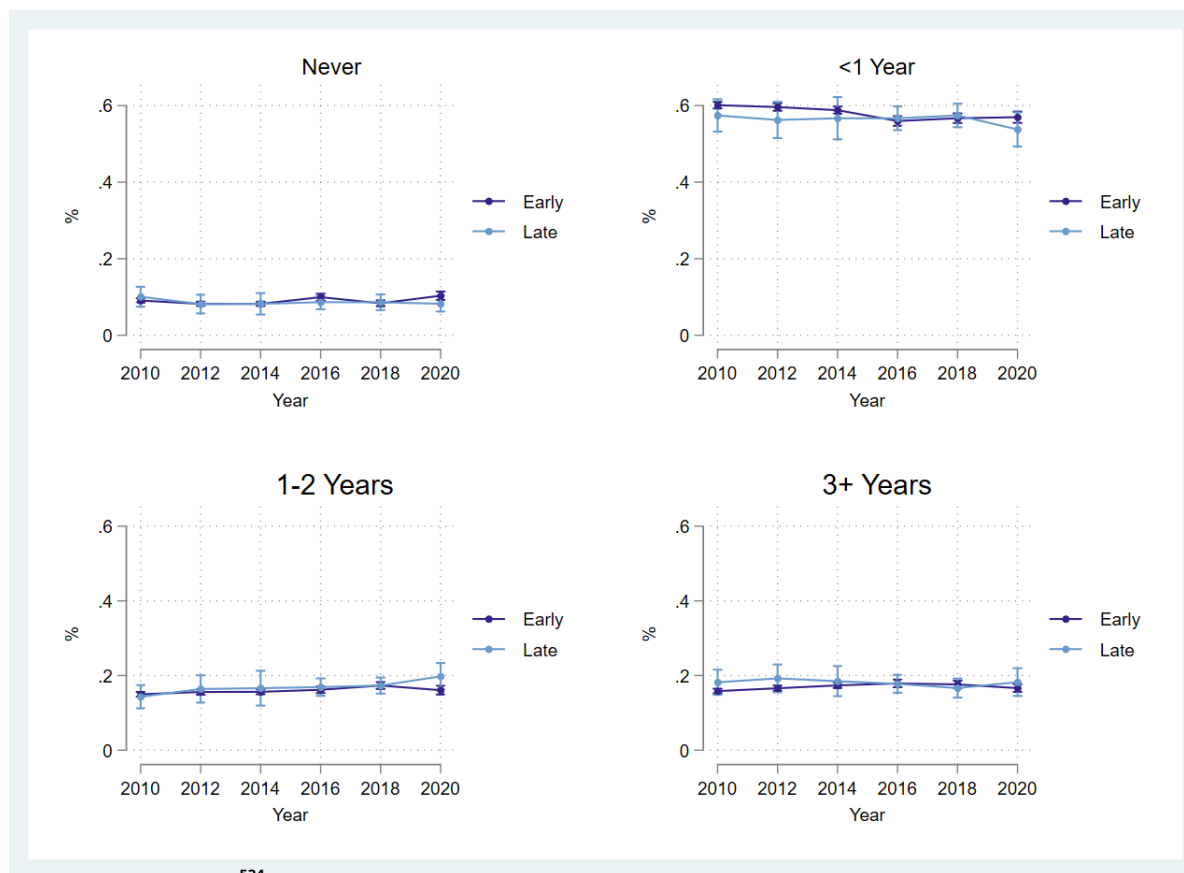
520 **Supplemental Files**

521 **Supplemental Figure 1: Sample Selection Flow Chart**



522

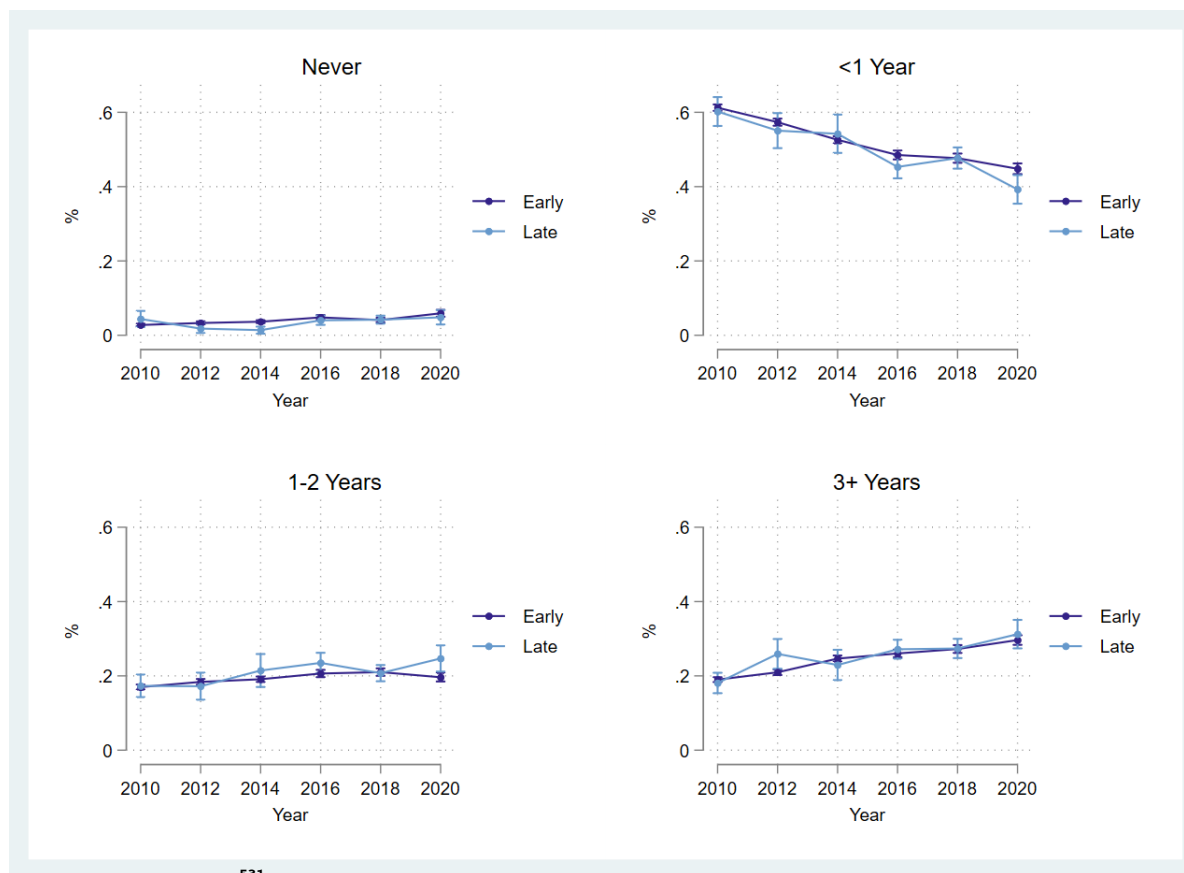
523 Supplemental Figure 2: Mammograms



524

525 Supplemental Figure 1 shows the year-by-year proportion of adults reporting having never received
526 a mammogram, having received a mammogram in the past year, having received a mammogram 1-
527 2 years ago, and having received a mammogram 3 or more years ago. The "early" cohort are adults
528 surveyed by BRFSS in the first three months of the survey wave and the "late" cohort are adults surveyed
529 in the final three months (Jan-Mar) or second year of the survey wave.

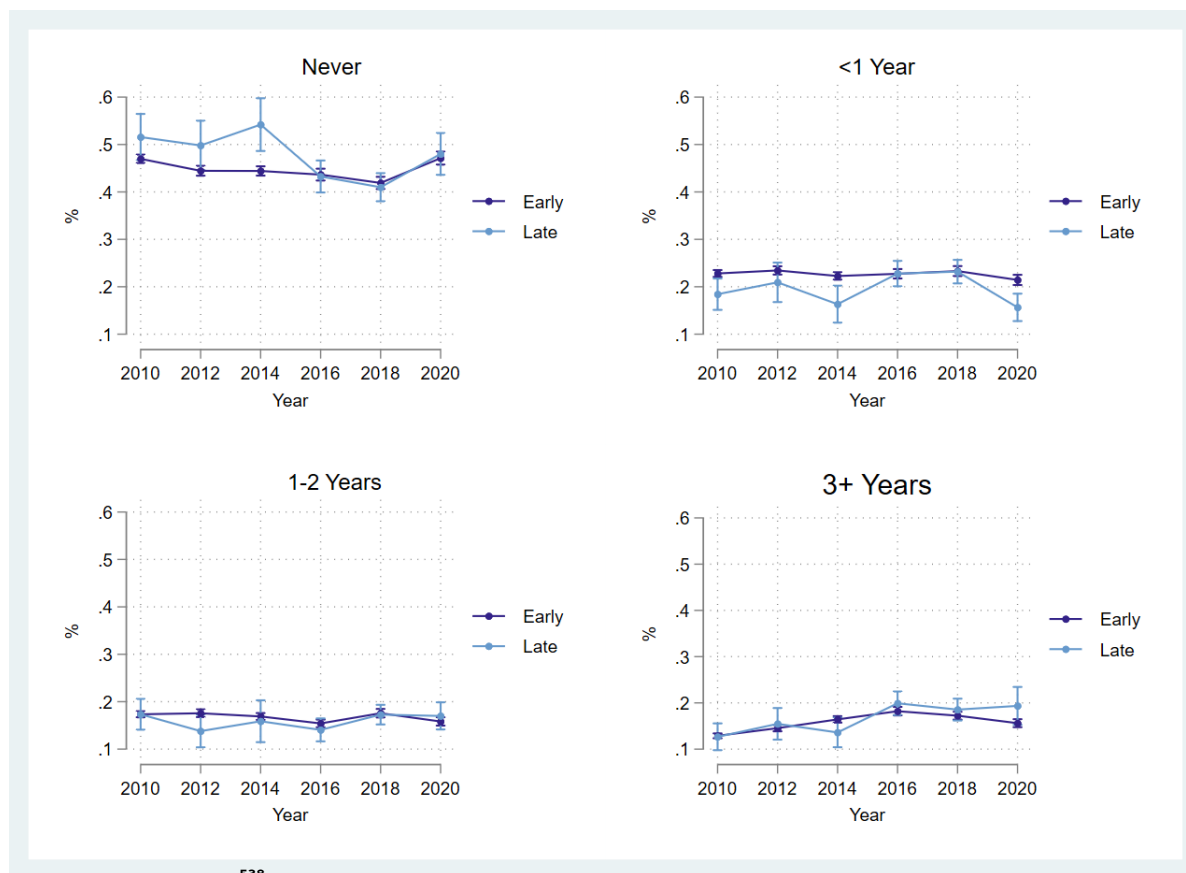
530 Supplemental Figure 3: Pap Smears



531

532 Supplemental Figure 3 shows the year-by-year proportion of adults reporting having never received
533 a pap smear, having received a pap smear in the past year, having received a pap smear 1-2 years ago,
534 and having received a pap smear 3 or more years ago. The "early" cohort are adults surveyed by BRFSS
535 in the first three months of the survey wave and the "late" cohort are adults surveyed in the final three
536 months (Jan-Mar) or second year of the survey wave.

537 Supplemental Figure 4: Colonoscopies or Sigmoidoscopies



538

539 Supplemental Figure 3 shows the year-by-year proportion of adults reporting having never received a
 540 colonoscopy or sigmoidoscopy, having received a colonoscopy or sigmoidoscopy in the past year, having
 541 received a colonoscopy or sigmoidoscopy 1-2 years ago, and having received a colonoscopy or sigmoido-
 542 doscopy 3 or more years ago. The "early" cohort are adults surveyed by BRFSS in the first three months of
 543 the survey wave and the "late" cohort are adults surveyed in the final three months (Jan-Mar) or second
 544 year of the survey wave.

Table 2. Marginal Effect Estimates for 2020*Late Group (Linear & Multinomial Logistic Regression Models)

		Model	
		Linear	Logistic
Mammogram	Never	-0.029* (0.013)	-0.028*** (0.000)
	<1 Year	-0.021 (0.034)	-0.022 (0.030)
	1-2 Years	0.031* (0.015)	0.031*** (0.000)
	3+ Years	0.020 (0.024)	0.020 (0.037)
	Pap Smear	Never	-0.011 (0.012)
	<1 Year	-0.043 (0.031)	-0.055 (0.069)
	1-2 Years	0.042* (0.019)	0.038* (0.027)
	3+ Years	0.012 (0.018)	0.028 (0.019)
Colonoscopy / Sigmoidoscopy	Never	-0.010 (0.020)	-0.016 (0.019)
	<1 Year	-0.035* (0.016)	-0.043*** (0.001)
	1-2 Years	0.030 (0.016)	0.038 (0.084)
	3+ Years	0.015 (0.019)	0.021 (0.024)

545 *Supplemental - Table 2 reports the 2020*Late effect estimates from our primary linear regression*
 546 *model (left column) and the alternative non-linear multinomial logistic regression model (right column).*
 547 ** p < 0.05, ** p < 0.01 *** p < 0.001.*

Table 3. Sensitivity

		Mammogram			Pap Smear			Colonoscopy / Sigmoidoscopy		
		2020*Late	se	Pre-Trend Test (p)	2020*Late	se	Pre-Trend Test (p)	2020*Late	se	Pre-Trend Test (p)
Alt. 1	Never	-0.028	(0.014)	0.290	-0.013	(0.012)	0.000 [^]	-0.002	(0.020)	0.009 [^]
Alt. 2		-0.028	(0.015)	0.540	-0.013	(0.012)	0.005 [^]	-0.002	(0.027)	0.081
Alt. 3		0.005	(0.006)	0.581	-0.013	(0.012)	0.108	0.010	(0.011)	0.010 [^]
Alt. 1	<1 Year	-0.030	(0.032)	0.047	-0.055	(0.031)	0.110	-0.042 [*]	(0.016)	0.356
Alt. 2		-0.030	(0.028)	0.368	-0.055 [*]	(0.025)	0.612	-0.042 [*]	(0.020)	0.294
Alt. 3		-0.047 ^{***}	(0.012)	0.083	-0.055 [*]	(0.025)	0.008 [^]	-0.043 ^{***}	(0.009)	0.014
Alt. 1	1-2 Years	0.036 [*]	(0.016)	0.854	0.050 [*]	(0.021)	0.157	0.026	(0.016)	0.207
Alt. 2		0.036	(0.023)	0.935	0.050 [*]	(0.022)	0.338	0.026	(0.019)	0.331
Alt. 3		0.031 ^{***}	(0.009)	0.398	0.050 [*]	(0.022)	0.933	0.035 ^{***}	(0.009)	0.416
Alt. 1	3+ Year	0.022	(0.022)	0.366	0.017	(0.017)	0.011 [^]	0.019	(0.020)	0.001 [^]
Alt. 2		0.022	(0.024)	0.539	0.017	(0.025)	0.275	0.019	(0.023)	0.260
Alt. 3		0.011	(0.009)	0.618	0.017	(0.025)	0.056	-0.002	(0.009)	0.085

548 Supplemental - Table 3 reports the 2020*Late effect estimates for three alternative linear probability
549 regression models. Alt 1 removes the state-level fixed effects. Alt 2 removes the state-level fixed effects
550 and does not cluster robust standard errors at the state-level, opting only to estimate unclustered robust
551 standard errors. Alt 3 removes fixed effects, does not cluster robust standard errors, and does not weight
552 the analyses by BRFSS supplied sampling weights. * $p < 0.05$, ** $p < 0.01$ *** $p < 0.001$.

Table 4. Self-reported rates (2010-2018) of most recent cancer screening for early and late survey groups

	Survey Wave Group				T	p	
	Early		Late				
Mammogram	Never	0.342	(0.007)	0.355	(0.009)	1.860	0.200
	<1 Year	0.400	(0.007)	0.379	(0.008)	-3.000	0.100
	1-2 Years	0.116	(0.001)	0.121	(0.003)	5.000	0.040
	3+ Years	0.143	(0.004)	0.145	(0.004)	0.500	0.670
Pap Smear	Never	0.088	(0.003)	0.102	(0.006)	4.670	0.040
	<1 Year	0.467	(0.008)	0.420	(0.009)	-5.880	0.030
	1-2 Years	0.172	(0.003)	0.186	(0.009)	4.670	0.040
	3+ Years	0.274	(0.008)	0.292	(0.008)	2.250	0.150
Colon/Sigmoidoscopy	Never	0.417	(0.006)	0.417	(0.012)	0.000	1.000
	<1 Year	0.211	(0.005)	0.195	(0.008)	-3.200	0.090
	1-2 Years	0.159	(0.004)	0.146	(0.008)	-3.250	0.080
	3+ Years	0.213	(0.006)	0.242	(0.010)	4.830	0.040

553 *Supplemental - Table 4 reports the rates for each mutually exclusive cancer screening category (as a*
554 *proportion) of the total sample of adults surveyed by BRFSS in years 2010, 2012, 2014, 2016, and 2018.*
555 *The rates are stratified by adults surveyed early in the survey wave and adults surveyed later in the survey*
556 *wave. The t-statistic is the result of the two-sample proportion test.*

Table 5. Demographic rates (2010-2018) for early and late survey groups

Demographic Group	Survey Wave Group					
	Early		Late	T	p	
Age 18-24	0.126	(0.002)	0.134	(0.003)	4.000	0.060
Age 25-29	0.081	(0.002)	0.091	(0.006)	5.000	0.040
Age 30-34	0.094	(0.002)	0.103	(0.003)	4.500	0.050
Age 35-39	0.081	(0.001)	0.088	(0.003)	7.000	0.020
Age 40-44	0.089	(0.001)	0.088	(0.002)	-1.000	0.420
Age 45-49	0.080	(0.001)	0.077	(0.001)	-3.000	0.100
Age 50-54	0.097	(0.001)	0.094	(0.002)	-3.000	0.100
Age 55-59	0.081	(0.001)	0.081	(0.003)	0.000	1.000
Age 60-64	0.080	(0.001)	0.077	(0.002)	-3.000	0.100
Age 65-69	0.061	(0.001)	0.059	(0.003)	-2.000	0.180
Age 70-74	0.048	(0.001)	0.043	(0.004)	-5.000	0.040
Age 75-79	0.038	(0.001)	0.030	(0.001)	-8.000	0.020
Age 80-84	0.043	(0.002)	0.034	(0.002)	-4.500	0.050
non-Hispanic White	0.659	(0.031)	0.581	(0.065)	-2.520	0.130
non-Hispanic Black	0.114	(0.011)	0.106	(0.019)	-0.730	0.540
non-Hispanic other race/ethnicity	0.074	(0.010)	0.100	(0.026)	2.600	0.120
Hispanic	0.136	(0.027)	0.197	(0.055)	2.260	0.150
No primary education	0.002	(0.001)	0.003	(0.001)	1.000	0.420
Primary education only	0.041	(0.005)	0.053	(0.011)	2.400	0.140
Some High School education, no degree	0.092	(0.002)	0.093	(0.004)	0.500	0.670
High School degree only	0.285	(0.008)	0.270	(0.015)	-1.870	0.200
Some college education, no bachelor's degree	0.305	(0.005)	0.308	(0.007)	0.600	0.610
Bachelor's degree or more	0.274	(0.007)	0.273	(0.007)	-0.140	0.900
Married	0.524	(0.005)	0.515	(0.009)	-1.800	0.210
Divorced	0.105	(0.002)	0.101	(0.004)	-2.000	0.180
Widowed	0.066	(0.002)	0.059	(0.004)	-3.500	0.070
Seperated	0.024	(0.001)	0.024	(0.001)	0.000	1.000
Never Married	0.237	(0.005)	0.251	(0.010)	2.800	0.110
Unmarried Partner	0.044	(0.002)	0.050	(0.005)	3.000	0.100

557 *Supplemental - Table 5 reports the rates each demographic group (used as independent variables in*
558 *the primary analysis) of the total sample of adults surveyed by BRFSS in years 2010, 2012, 2014, 2016,*
559 *and 2018. The rates are stratified by adults surveyed early in the survey wave and adults surveyed later*
560 *in the survey wave. The t-statistic is the result of the two-sample proportion test.*

Table 6. Pre-Trend Tests

		Pre-Treatment Coefficient Estimates									
		2010*Late		2012*Late		2014*Late		2016*Late		Joint Test (p)	
Mammogram	Never	-0.007	(0.018)	0.006	(0.016)	-0.013	(0.014)	-0.018	(0.012)	0.307	
	<1 Year	-0.012	(0.023)	-0.022	(0.024)	0.002	(0.025)	0.021	(0.021)	0.027	
	1-2 Years	-0.008	(0.021)	0.000	(0.019)	0.001	(0.020)	-0.001	(0.016)	0.965	
	3+ Years	0.027	(0.021)	0.016	(0.018)	0.010	(0.013)	-0.003	(0.015)	0.499	
Pap Smear	Never	0.017	(0.011)	-0.009	(0.012)	-0.025**	(0.008)	-0.010	(0.010)	0.000 [^]	
	<1 Year	0.019	(0.022)	0.018	(0.026)	0.045*	(0.021)	-0.006	(0.015)	0.007 [^]	
	1-2 Years	-0.012	(0.014)	-0.018	(0.017)	0.001	(0.017)	0.022	(0.014)	0.319	
	3+ Years	-0.024	(0.016)	0.009	(0.019)	-0.021	(0.018)	-0.006	(0.017)	0.249	
Colonoscopy/ Sigmoidoscopy	Never	0.019	(0.017)	0.015	(0.019)	0.019	(0.019)	-0.024	(0.018)	0.257	
	<1 Year	-0.030	(0.019)	-0.023	(0.013)	-0.037	(0.023)	-0.009	(0.013)	0.445	
	1-2 Years	0.012	(0.020)	-0.021	(0.015)	0.006	(0.015)	-0.009	(0.013)	0.096	
	3+ Years	-0.011	(0.010)	0.014	(0.011)	-0.018*	(0.008)	-0.016	(0.009)	0.002 [^]	

561 *Supplemental - Table 6 reports the year-by-year coefficients of the event-history analyses (excluding*
562 *2020) with year 2018 as the baseline. Significant coefficients indicate differences in screening rate levels*
563 *between quasi-treatment cohorts. The Joint Test (p) column reports the p-value from the Wald test, testing*
564 *if each of the reported coefficient jointly equals zero. The Bonferonni correction was used to account*
565 *for multiple hypotheses. * p < 0.05, ** p < 0.01, *** p < 0.001. Note: [^] p < multiple-test corrected*
566 *significance level for Joint Test.*