

Evidence from telepsychiatry during COVID-19

28 Abstract

29 **Background:** During the COVID-19 pandemic telemedicine became essential in maintaining
30 diagnostic procedures and treatment in psychiatry. However, it is still an open question if telemedicine
31 is a feasible treatment option for all groups of psychiatric patients alike. This prospective monocentric
32 observational trial was conducted to assess the general applicability of telemedical treatment in a
33 naturalistic psychiatric outpatient cohort and to identify groups of disorders and clusters of
34 psychopathology that respond particularly well to telemedical treatment considering sociodemographic
35 characteristics and patients' perspectives.

36 **Methods:** Patients were recruited April 2020 - April 2021 and asked to fill out the WHO-5 and the
37 SCL-90R at baseline, after 4-6 and 8-12 weeks and a feedback-survey. Additionally, medical records,
38 psychopathology, psychosocial functioning and sociodemographic data were analyzed. Primary
39 outcomes were well-being, psychopathology and functioning during treatment. Secondly, diagnostic
40 groups and psychopathology linked to a superior treatment-response were determined with respect to
41 patients' subjective experiences.

42 **Results:** Out of 1.385 patients, 254 - mostly with hyperkinetic (35.3%) and depressive disorders
43 (24.6%) - took part. Well-being and SCL-90R total scores improved substantially (both $p < 0.001$). CGI
44 and GAF scores were worse in depressed subjects (both $p < 0.05$). Improvement was mainly seen in
45 depressed patients; chronic disorders experienced a decline in well-being. Sociodemographic
46 characteristics could not explain this difference. Particularly female ($r = 0.413$) patients found
47 telepsychiatry equivalent to conventional treatment. The more virtual sessions participants attended
48 the more likely they were to find telepsychiatry equal to conventional treatment ($r = 0.231$).

49 **Conclusions:** Telemedicine is an effective treatment for patients with depression under naturalistic
50 conditions. Telemedical consultations are a simple and reliable way of monitoring symptom severity
51 and directing treatment choices during the treatment of depressive disorders. Patients with depression
52 benefited more from telemedical treatment compared to participants with chronic non episodic
53 psychiatric disorders. Future research needs to concentrate on improving telemedical treatment options
54 suited for the latter conditions. Psychiatric telemedicine yielded overall high degrees of satisfaction
55 among users.

56

57

58

59

60

61

62

63

64

65

66

67

Evidence from telepsychiatry during COVID-19

68 Introduction

69 Already at early stages of the coronavirus disease 19 (COVID-19) pandemic it became evident that an
70 accelerated transition from face-to-face services to virtual interventions would automatically impose a
71 plethora of critical questions concerning the adequacy and quality of such treatment options on
72 healthcare providers, caregivers and patients alike(1). Telemedicine - in contrast to conventional
73 psychiatric care - solely relies on the exclusive administration of mental health services via various
74 technological devices and platforms without face-to-face contact(2). Pre-pandemic investigations had
75 substantially focused on the applicability and potential benefits of telemedical mental health services
76 in the context of equalizing access to these services under conditions of shortage, mainly targeting
77 symptoms of depressive or anxiety disorders(3,4). The rapid expansion of telemedical interventions
78 related to the COVID-19 pandemic raised the question of their comparability with conventional
79 treatment options, hitherto mainly relying on personal relationships in the field of psychiatry and
80 psychotherapy. Until 2020, the available data showed a steadily growing dissemination of telemedical
81 practice, albeit only accounting for a relatively small proportion of the entirety of medical services in
82 the U.S.(5). With the pandemic surge of COVID-19 infections in 2020, sudden changes in legislation
83 and reimbursement practices allowed for an unprecedented expansion of telemedical treatment services
84 in the field of psychiatry(6,7).

85 Besides of general advantages of telemedical treatment such as greater geographical and temporal
86 flexibility, the reduction of age-, gender- and ethnicity-specific treatment barriers(8) and cost
87 effectiveness(9), telemedical interventions were an essential tool in maintaining the continuity of
88 community-based treatment paths for patients with severe mental health conditions like schizophrenia-
89 spectrum disorders during the COVID-19 pandemic(10). Telemedical interventions also promoted the
90 involvement of peers and relatives at multiple stages of diagnostic and treatment procedures(11).

91 Despite these advantages, there are some valid concerns about possible tool-related limitations of the
92 reliability and reproducibility of telemedical assessments and categorical diagnostics under the
93 conditions of telemedical consultations compared to traditional face-to-face evaluations(12). In
94 particular, there is only limited evidence on the question which mental health conditions might respond
95 optimally to exclusive telemedical treatment and which mental disorders require face-to-face
96 appointments, respecting patients' personal preferences. On a larger scale, telemedical interventions
97 alone might not be suited to mitigate or overcome gross disparities in health status and access to mental
98 health services, rather calling for thorough systematic implementation of telemedical services without
99 marginalizing patient groups with less developed digital literacy(13).

100 In this longitudinal observational study, the authors aimed to elucidate the applicability, reliability and
101 safety of telemedical assessment and treatment in a naturalistic sample of psychiatric outpatients during
102 the COVID-19 pandemic. In this line, the purpose of this study was to identify a cluster of mental
103 disorders and patient related features (e.g. sociodemographic characteristics) that potentially indicate
104 a favorable response to telemedical treatment under these conditions and to determine the
105 comparability of telemedical interventions to conventional treatments from a patient-perspective.

106

107 Methods

108 *Study design*

109 The study was designed during the first enforced Germany-wide lockdown (starting from March 22
110 2020) due to the COVID-19 pandemic. Most services of the outpatient clinic at the Central Institute of

Evidence from telepsychiatry during COVID-19

111 Mental Health, Mannheim (CIMH) at the University of Heidelberg had to be transformed into
112 telemedical treatment options in order to maintain provision of psychiatric consultations for patients
113 with mental health issues despite severe contact restrictions. The goal of the study was (1) to observe
114 how psychiatric symptoms of patients with mental health problems develop during the course of
115 telepsychiatry; (2) if patient cohorts could be identified which benefit more or less from telemedical
116 psychiatric treatment, (3) if sex-, age or sociodemographic factors with an impact on the effectiveness
117 of telepsychiatric treatment could be revealed and (4), how patients experienced telepsychiatric
118 consultations compared to conventional treatment face to face with professional mental health experts.

119 Participants were recruited between April 2020 and April 2021. Patients received information about
120 the study during the scheduling of their first telemedical psychiatric counseling. The aims and purpose
121 of the study were explained either by members of the study team who contacted interested patients or
122 by the psychiatrist or psychologist who provided the first telemedical session. Patients who gave
123 informed consent to participate were asked to complete three surveys during the course of the study:
124 Before the start of the first telemedical consultation participants agreed that their medical record which
125 would be created during telemedical treatment could be used for further analysis (see below) as part of
126 the study. Subjects were also asked to fill out the WHO-5 well-being index (WHO-5(14)) and the
127 symptom check-list-90-R (SCL-90R(15)), which were provided paper-based. 4-6 and 8-12 weeks after
128 the first telemedical counseling session, participants could choose for the second and third survey, if
129 they preferred an interview via phone call or online surveys using REDCap ([https://www.project-
130 redcap.org/](https://www.project-redcap.org/)), a secure web application for building and managing online surveys for research studies
131 and operations supported by the National Institutes of Health (NIH/NCATS UL1 TR000445). N=254
132 participants returned the first paper-based survey (including 9 anonymous study subjects). N=94
133 participated in the second survey via RedCap and N=50 via telephone. N=68 study subjects also
134 completed the third survey via RedCap, while N=48 were interviewed via telephone. During the second
135 and third survey patients were asked to fill out the WHO-5 questionnaire again while participants were
136 only requested twice to complete the SCL90-R (1st and 2nd survey). Either during the second or the third
137 survey patients could evaluate the telemedical psychiatric counseling (see details below).

138 *Acquisition psychiatric history and sociodemographic data*

139 N=182 subjects (71.7%) gave informed consent to acquire sex, age and sociodemographic data as well
140 as psychiatric history and psychopathological symptoms from the medical record. All professional
141 experts providing telepsychiatric services in our outpatient clinic were instructed to use a structured
142 form in the computerized documentation system of our clinic (ORBIS, SAP, Walldorf Germany) for
143 the first interview. Patients were asked for current psychiatric symptoms, psychiatric diagnoses
144 according to the ICD-classification of the WHO (version 10), past psychiatric history and
145 sociodemographic data such as current life and living situation, education, professional training and
146 labor situation, debts and history of criminal assaults. All psychiatrists and psychologists of our
147 outpatient clinic were also requested to score patients on initial appearance according to the global
148 assessment of functioning scale (GAF(16)) and the clinical global impression scale (CGI(17)). For later
149 data analysis electronic medical records were systematically queried for the number of telemedical
150 treatment sessions participants received and possible hospitalizations during the course of the study.
151 Medical records were additionally scrutinized for the number of in- and outpatient treatments and days
152 of hospitalization during the year before March 2020, when outpatient psychiatric care was still
153 provided personally.

154

Evidence from telepsychiatry during COVID-19

155 *Evaluation and follow-up of psychopathological symptoms*

156 **WHO-5 Well-Being Index (WHO-5)**

157 For assessment of overall well-being over the course of telepsychiatric counseling the WHO-5, a short
158 self-administered measure of well-being over the last two weeks(18), was used. The WHO-5 consists
159 of five positively worded items that are rated on a 6-point Likert scale, ranging from 0 (at no the time)
160 to 5 (all of the time). We transformed the raw scores to a score from 0 to 100 (raw data*4), where lower
161 scores indicated worse well-being. A score of ≤ 50 was considered as poor wellbeing and a score of 28
162 or below indicative of depression.

163 **SCL-90-R**

164 The SCL-90-R by Derogatis(19) measures the subjective perception of physical and mental symptoms
165 a person has experienced during the past seven days. All 90 symptoms are scored on a Likert scale
166 consisting of 5 steps, ranging from 0 (the symptom is not there at all) to 4 (indicating very strong
167 impairment due to the symptom). We analyzed the data gained in two surveys of the SCL-90-R
168 according to the instructions provided by Derogatis/Franke, German Version, 2nd Edition, Beltz Test,
169 2000. T-Values equal to and above 60 were considered as a relevant mental detraction from the
170 respective symptom or global score.

171 **Clinical Global Impression Scale (CGI) and the global assessment of functioning scale (GAF)**

172 While the WHO-5 and the SCL-90-R are self-report questionnaires on the subjective perception of
173 overall well-being and different symptom domains, the GAF and CGI were used as clinician-rated
174 scales to document the global impairment due to patients' (mental) health conditions. The CGI scores
175 the severity of the symptoms, ranging from 1 to 7 (1= normal/not at affected; 7=very severely ill(17)).
176 The GAF indicates the global functioning of a patient taking into account the psychiatric, social and
177 professional level. The scale is ranging from 0 (very sick) to 100 (healthy)(16).

178 **Evaluation of telemedicine by participants**

179 N=112 (44.1% of all participants) completed an evaluation questionnaire asking for feedback
180 concerning technical details (e.g. if patients decided for phone call or video conference or both and if
181 interruptions occurred due to technical problems) and the overall experience with the telepsychiatric
182 consultations. Participants were asked how helpful they found the telemedical intervention and if it
183 was comparable to a conventional face-to face contact. Patients were also requested to state their
184 preference about using telepsychiatry in the future again. Participants could also document pros and
185 cons of the telemedicine and their wishes for future improvements.

186 **Data analysis**

187 All data acquired during surveys and from the medical records were entered into an Excel master file
188 and then translated to SPSS Version 27 and R Version 4.1.1. for further analysis. The descriptive
189 statistics of the sample were computed for the sociodemographic characteristics, consisting of
190 frequencies and percentages for categorical values and mean and standard deviations (SD) for scale
191 variables. Differences between two groups of patients (depressive and suffering from other psychiatric
192 diseases) were assessed using the Mann-Witney test for the different non-parametric clinical scale
193 variables. The differences in these scales over time for the single patients were assessed with an
194 ANOVA test and a post-hoc Bonferroni test.

Evidence from telepsychiatry during COVID-19

195 A paired Wilcoxon signed-rank test was used to assess differences in the levels of mental health
196 variables such as e.g.: WHO-5 or SCL 90 comparing the results of the three inquiries. Bivariate
197 associations between WHO-5 and SCL90-R, CGI and GAF were analyzed using linear regression
198 models and between mental x and y (continuous variable) were assessed via Spearman's correlation
199 coefficient r . For all tests, a p-value of less than 0.05 was considered statistically significant.

200 *Ethics Approval and Consent to Participate*

201 Written informed consent was obtained from all subjects who participated in our study, except for 9
202 cases where patients sent the paper-based WHO-5 and SCL90-R questionnaires of the first survey back
203 to us anonymously. These data could not be further evaluated. The study design and data acquisition
204 were presented to the ethics committee II at the medical faculty Mannheim, University of Heidelberg
205 and approved (No. 2020-562N).

206 **Results**

207 During the first year of the Covid-19 pandemic (April 2020 - April 2021) 8.235 telemedical treatment
208 sessions were provided to 1.385 patients via phone or video call by the psychiatrists and psychologists
209 of the outpatient clinic at the Central Institute of Mental Health (CIMH) in Mannheim, Germany. 254
210 (18.3%) of these patients gave their informed consent to participate in our study and to use their medical
211 record generated during telemedical treatment for further systematic analysis. Out of 239 patients who
212 engaged in the first survey at baseline, 140 patients responded to the second, and 103 patients to the
213 third survey 4-6 and 8-12 weeks after the first telemedicine session, respectively.

214 *Demographics and psychiatric history*

215 In total, electronic medical records of 174 patients could be evaluated revealing sociodemographic
216 characteristics as presented in Table 1: Our study population consisted of younger adults, 38.6 ± 13.1
217 years old with more women (56.7%, 39.9 ± 13.3 years old) than men (37.8%, 37.0 ± 12.6 years old)
218 participating. Most patients had a partner (55.3%), but no children (82.8%) and were living alone
219 (53.6%). Almost half of the study population (48.8%) was well educated with at least 12 years of school
220 education while more than half (53.8%) had also successfully completed apprenticeship. 53.3% were
221 employed during the time of the telemedical counseling and most patients (63.9%) lived in a stable
222 financial situation without significant debts.

223 All patients included in the study were diagnosed with at least one psychiatric disorder (Table 2): The
224 largest group (35.3%) consisted of patients with hyperkinetic and tic disorders, while almost a quarter
225 of the study population (24.6%) was primarily diagnosed with a depressive episode or recurrent
226 depressive disorder according to ICD-10. In addition, for 32 patients (12,6%) a depressive or recurrent
227 depressive disorder was noted as secondary diagnosis. Schizophrenia was only diagnosed in 3 cases
228 (1.3%) as a main psychiatric disorder justifying current psychiatric treatment. Matching with this
229 preponderance of affective and neurodevelopmental disorders, most patients presented with
230 psychopathological symptoms (Supplementary Table 1) typical of affective and hyperkinetic disorders
231 such as attention (51.9%) and concentration deficits (67.6%), abnormal thought processes (71.7%),
232 changes in mood (84.0%), reduced ability to experience joy (52.9%), lack of drive (56.9%), anxiety
233 (64.4%) and sleep disturbances (69.4%). Orientation, mnemonic functioning as well as illness insight
234 were undisturbed in almost all patients (see Supplementary Table 1), while symptoms typical of an
235 episode of psychosis such as abnormal thought content, hallucinations or intrusions were almost absent
236 (Supplementary Table 1). Among the patients who gave full particulars of their psychiatric medical

Evidence from telepsychiatry during COVID-19

237 record (28.3%), 29.2% reported a history of attempted suicides. Three quarters of participants (74.3%)
238 had been already treated for psychiatric issues in the past, while only a minority (25.8%) received
239 psychiatric treatment for the first time.

240 Most patients (93.7%, Table 3) had not been in contact with our outpatient clinic within 12 months
241 before the pandemic. During the course of the study patients had on average 4 (4.26 ± 5.45) psychiatric
242 appointments. At least 3 (3.05 ± 3.58) appointments were provided via phone or video call. For
243 comparison, the 16 patients that had already been in psychiatric outpatient treatment before the
244 pandemic had also had 4 (4.56 ± 5.89) face to face appointments during the course of 12 months before
245 the pandemic. Only a small number of participants ($n=13$, 5.12%) required hospitalization during the
246 study period. These 13 patients spent on average 74.54 ± 46.67 days on a psychiatric ward (Table 3),
247 while four participants had stayed in hospital more than 4 months (128 ± 62.20) in the year prior to the
248 pandemic.

249 *Changes of psychopathology according to WHO-5 and SCL90 self-assessment under telemedicine* 250 *psychiatry*

251 Subjects were requested to report current mental well-being by completing the WHO-5 Well-Being
252 Index (WHO-5,(18)) before, as well as 4-6 and 8-12 weeks after the beginning of telepsychiatric
253 treatment. 237 patients (93.3%) participated in the first self-report, scoring 31.65 ± 20.11 (range 0-100,
254 Fig. 1A). The prevalence of poor well-being (WHO-5 score ≤ 50 , (20)) was 81.9% ($n=194$) and that of
255 depression (WHO-5 score ≤ 28) was 55.3% ($n=131$) before the start of the telemedical treatment. 131
256 (51.6%) and 98 (38.5%) of the initial 254 participants also responded to the second and third survey,
257 respectively. Patients reported a significant improvement of well-being 4-6 and in particular 8-12
258 weeks after the start of the telemedical appointments (WHO-5 4-6 weeks 39.60 ± 21.61 ; WHO-5 8-12
259 weeks 41.47 ± 21.26 ; $p < 0.001$, the Wilcoxon test was used for comparison with the initial WHO-5
260 self-report). 8-12 weeks after initiation of the telemedical treatment only 32% ($n = 33$) revealed very
261 poor well-being, indicative of severe depressive symptoms (WHO-5 score ≤ 28).

262 Patients were also asked to fill out the Symptom Checklist-90 Revised (SCL90-R) at baseline, and 4-
263 6 weeks after the start of the telemedical treatment. The mean SCL90 total score for $n = 83$ (32.68%)
264 participants was 107.9 ± 60.86 at baseline (1st inquiry, Fig. 1B) with a decline to a mean score of 85.08
265 ± 61.22 in the second survey (2nd inquiry, Fig. 1B), indicating a significant improvement of
266 psychopathological symptoms after 4-6 weeks ($p < 0.001$ with a paired Wilcoxon test to compare the
267 SCL90 total scores of patients who participated in both inquiries). For patients who participated in both
268 inquiries ($n = 86$), the means of all three global indices of distress in the first inquiry were above the
269 critical threshold (T-value ≥ 60 , Supplementary Figure 2). The Global Severity Index (GSI) was 66.61
270 ± 10.31 . 77% ($n = 83$) of the study population who participated in both inquiries scored with a T-value
271 ≥ 60 suggesting “psychologically measurable distressed cases” (21). In addition, the Positive Symptom
272 Distress Index (PSDI) and the Positive Symptom Total (PST) were evaluated as global measures of
273 symptom intensity and number of psychiatric symptoms with significant burden. Means of both indices
274 revealed T-values ≥ 60 (PSDI 65.12 ± 8.23 ; PST 62.02 ± 8.45) substantiating significant mental
275 distress. Furthermore, all mean values of the nine primary symptom dimensions (Supplementary Figure
276 2) exceeded T-values of 60. In particular the subscales for obsessive-compulsive symptoms and
277 depression scored even above a T-value ≥ 65 (Mean obsessive-compulsive 67.55 ± 10.77 ; Mean
278 depression 67.08 ± 10.61 , Supplementary Figure 1), revealing significant burden in the study
279 population (T $\geq 1\frac{1}{2}$ SD of mean T-values in a healthy norm group, Franke 2001). All global scales and
280 nine primary dimension scores were markedly decreased in the second inquiry ($p < 0.001$); a Wilcoxon
281 test was used for the comparison of the results of patients with both inquiries completed

Evidence from telepsychiatry during COVID-19

282 (Supplementary Figure 2). In particular T-Values were below 60 for the PSDI (59.45 ± 10.67) and for
283 5 out of nine primary dimension scores (anxiety, hostility, phobic anxiety, paranoid ideation and
284 psychoticism, Supplementary Fig. 2), indicating a reduction of psychopathological burden for these
285 dimensions to the range of a healthy norm group.

286 The correlations of the WHO-5 self-assessments with the SCL90-R global scores are displayed in Fig.
287 1C. With regard to well-established clinical scales, relationships between the response and explanatory
288 variables were obtained; for the Clinical Global Impressions Scale (CGI), WHO-5 decreased by 8.51
289 per CGI increase to measure the severity of psychopathology and for the Global Assessment of
290 Functioning scale (GAF), the WHO-5 increased by 0.70 points per GAF point increase.

291 *Patients diagnosed with depression profit more from telemedicine psychiatry than those with other* 292 *psychiatric entities*

293 We next investigated how patients diagnosed with a depressive episode developed under
294 telepsychiatric treatment, as these patients were significantly more severely affected based on clinical
295 judgment than patients with other psychiatric entities: The CGI was significantly higher for patients
296 with depression (4.98 ± 0.89) than for those without (4.70 ± 0.92 , $p < 0.05$, Mann-Whitney test, Fig.
297 2A). In addition, the GAF was significantly lower for depressive subjects (57.46 ± 10.77) than for those
298 participants with other psychiatric issues (62.18 ± 10.77 , $p < 0.05$, Mann-Whitney test, Fig. 2B).
299 Depressive patients also scored significantly lower in the WHO-5 in the first inquiry before the start of
300 the telemedical treatment (Fig. 2C, depressive patients 18.80 ± 14.57 versus others 30.92 ± 22.00 ,
301 $p < 0.001$, two-way repeated measures analysis of variance (ANOVA) with post hoc Bonferroni).
302 However, during the course of telepsychiatric treatment the WHO-5 improved for depressed patients
303 to a level comparable to patients with other psychiatric disorders, who were clinically less severely ill
304 at the beginning of treatment (Fig. 2C, $p = 0.22$ for inquiry 2 comparing patients with and without
305 depression and $p > 0.99$ for inquiry 3, ANOVA with post hoc Bonferroni). In particular, patients with
306 depression reported an improvement of $>20\%$ on the WHO-5, while subjects with chronic disorders
307 like personality disorders or hyperkinetic disorders who completed the 2nd and 3rd survey of the
308 WHO-5 indicated a decline in mental well-being (Fig. 2D). We also investigated potentially protective
309 or supportive sociodemographic characteristics of depressed patients that were lacking in other
310 patients. However, when examining life and labor situation, education and professional training,
311 children and living situation, as well as debts and the history of criminal assaults, we did not find
312 significant differences (Fig. 2E).

313 *Satisfaction with telemedicine psychiatry*

314 At the end of our observational study, patients were asked to evaluate the telepsychiatric treatment
315 provided during the study period. Most consultations were arranged via phone (89.29%, Table 4) and
316 technical problems were rarely an issue (87.50%). More than 80% of participants (81.48%, Table 4)
317 were satisfied with telemedical treatment. 49.07% (Table 4) of subjects experienced telepsychiatric
318 counseling as effective as face-to-face treatment. Almost half of patients (49.54%, Table 4) considered
319 using telemedicine in the future again. In particular female patients rated telemedical treatment as
320 equivalent to counseling in person ($r = 0.413$, Spearman's correlation) and expressed their wish to use
321 telemedicine in the future again ($r = 0.342$, Spearman's correlation). The more telepsychiatric sessions
322 subjects attended the more likely they were to experience telepsychiatry as equal to conventional
323 outpatient therapy ($r = 0.231$, Spearman's correlation). When participants were asked to describe pros
324 and cons of telepsychiatry, half of the participants providing feedback (N=102 statements) missed the
325 personal atmosphere when talking face to face, while a quarter even reported to have missed substantial

Evidence from telepsychiatry during COVID-19

326 information of the conversations due to missing gestures and body language. 16.7% could not describe
327 any disadvantage at all. 46.1% found telepsychiatry much more comfortable than conventional therapy,
328 as it was secure to prevent any kind of infection (10.8%) and required less time. Patients also reported
329 (27.4%) to feel less stressed during telepsychiatric treatment when providing intimate details of their
330 biography while sitting in a familiar environment at home.

331 4 Discussion

332 The current study aimed at longitudinally investigating the applicability and effectiveness of
333 telemedical treatment in a naturalistic monocentric sample of psychiatric outpatients during the first
334 waves of the COVID-19 pandemic in Germany. A secondary aim was to identify clusters of
335 psychopathology and determine sociodemographic features that were indicative of a favorable
336 response to telemedical psychiatric outpatient treatment. Lastly, the study addressed patients'
337 perceptions of telemedical treatment.

338 More than one third of participants was diagnosed with a hyperkinetic disorder, mostly attention deficit
339 hyperactivity disorder (ADHD) or attention deficit disorder (ADD), probably due to the professional
340 specialization of general psychiatric outpatient services at the CIMH. Almost a quarter of participants
341 was diagnosed with a depressive episode as the main diagnosis during the treatment interval of concern.
342 However, psychopathology in the entire sample, as rated by clinicians, was dominated by symptoms
343 of depression and anxiety in a majority of participants at the onset of telemedical treatment. This is
344 consistent with earlier findings concerning psychological distress linked to the outbreak of the COVID-
345 19 pandemic(22).

346 Most participants reported poor well-being and high rates of depression before the onset of telemedical
347 psychiatric outpatient treatment on the WHO-5 and showed significant improvement 8-12 weeks after
348 the initiation of telemedical treatment. Furthermore, the study population showed a significant degree
349 of psychological distress as measured by the SCL 90-R, both on a global scale (GSI) as well as
350 concerning symptom intensity (PSDI) and quantitative symptom load (PST). In this line, participants'
351 self-assessments via the SCL 90-R revealed a significant burden in all nine primary symptom
352 dimensions of the SCL 90-R, centering around the subscales for depressive and obsessive-compulsive
353 symptoms at baseline. After 4-6 weeks a significant reduction of psychopathology as measured by the
354 SCL 90-R was observed, partly equivalent to the range of a healthy norm group. Generally, patients'
355 self-assessment via the WHO-5 and the SCL 90-R correlated well with observer-rated impressions on
356 more generic measures of clinical functioning and disorder-severity (CGI, GAF). Thus, the specific
357 conditions of telepsychiatric assessment and treatment did not impede the validity and reproducibility
358 of diagnostic procedures in the study sample. This corroborates earlier findings that the implementation
359 of patient reported outcome measures via telemedicine is a viable way of assessing psychiatric
360 symptoms and psychosocial functioning as well as monitoring clinical changes in order to improve
361 treatment outcomes(23).

362 Overall, participants diagnosed with depressive disorders during telemedical treatment were
363 significantly more affected by a deterioration of well-being and functioning than participants suffering
364 from other mental disorders. Yet, during the treatment process, patients with depressive disorders
365 showed a pronounced improvement, whereas individuals with chronic or non-episodic disorders like
366 ADHD and personality disorders did not benefit likewise and - somewhat counterintuitively - showed
367 a decline in mental well-being on the WHO-5 during the study period. Specific sociodemographic traits
368 derived from patients' electronic medical records were not associated with this remarkable difference
369 in treatment outcome, although it could be speculated that chronically impaired individuals might be
370 exposed to more challenging social and environmental conditions (e.g. societal isolation, job
371 insecurity, downward social mobility). Patients with ADHD and other neurodevelopmental disorders

Evidence from telepsychiatry during COVID-19

372 may generally be more vulnerable to a variety of negative health outcomes and increased mortality(24).
373 ADHD symptom severity predicted adherence to preventive measures during the pandemic and higher
374 psychological distress(25). Yet, it is unknown if the ADHD patients in our sample experienced higher
375 or equal levels of distress and higher levels of well-being before the pandemic. Thus, variance and
376 oscillations of psychopathology in neurodevelopmental disorders that are predominantly chronic by
377 nature could not be effectively influenced during the study period by telemedical treatment in our
378 sample. In contrast, available data concerning the telemedical treatment of chronic somatic diseases
379 points at an overall positive effect of telemedicine on the management of these conditions(25).

380 Overall, a vast majority of participants reported high satisfaction with and robust acceptance of the
381 telemedical treatment administered during the study period. Roughly 50% of participants,
382 predominantly female, rated telemedical treatment equivalent to treatment provided face to face. This
383 finding seems to be of particular interest as almost 75% of all participants had undergone psychiatric
384 treatment at some point before their participation in this study. Remarkably, patients' satisfaction with
385 telemedical treatment seemed to increase with the number of telemedical consultations. This is in line
386 with findings from a current nationwide multicentric study from Germany where overall good
387 experiences with the telemedical treatment of affective, stress related and somatoform disorders were
388 reported(26).

389 *Limitations*

390 There are some limitations concerning the above mentioned results that warrant further discussion.
391 Firstly, the study sample might not be fully representative of the entirety of patients that underwent
392 telemedical treatment during the COVID-19 pandemic at the CIMH. The study sample could be
393 enriched for individuals with an above average willingness to partake in an observational study with
394 repeated surveys. Consequently, severely and extremely mentally ill patients who experience
395 difficulties filling out questionnaires and checklists repeatedly might have been excluded. An earlier
396 study found that older patients and patients with more severe disorders (e.g. schizophrenia) were less
397 likely to use telemedicine, whereas female patients with anxiety and depressive disorders as well as
398 post-traumatic stress disorder (PTSD) more frequently used telemedicine(27). Furthermore,
399 participants were not screened for their cultural or ethnic background. Therefore it cannot be excluded
400 that language or cultural barriers prevented potential participants from being included into the study
401 cohort as described before in a sample of African American patients from North America(7). There is
402 no information regarding the degree of digital literacy in the study sample although it is characterized
403 by a relatively high degree of education. Previous studies demonstrated that healthcare providers'
404 degree of experience with digital technologies is associated with the willingness to use these
405 technologies and the way they are judged by their users(28). Likewise, the acceptance of telemedicine
406 by its users is shaped by the perceived usefulness of the technologies applied, social influence and
407 personal attitude(29).

408 It cannot be ruled out that the significant improvement in psychopathology and functioning observed
409 in individuals with depressive disorders during telemedical treatment merely corresponds to the
410 naturalistic course of a group of disorders that is generally characterized by an episodic course.
411 Furthermore, a decrease in distress among the study population during the observation period might be
412 partially linked to the gradual suspension of lockdown measures during spring/summer 2020 and spring
413 2021 as a confounding factor. It has been shown that an escalation of lockdown measures during the
414 COVID-19 pandemic and the rapid spreading of the novel coronavirus reliably lead to a deterioration
415 of mental health in the general population within different cultural backgrounds around the world(30–
416 33). However, more recent studies hint at a persistence of distress and burden of psychopathology
417 independent from periodic intensifications of lockdown measures⁶. In our study cohort, there was a
418 marked difference in the decrease of symptom load between participants with episodic, mostly

Evidence from telepsychiatry during COVID-19

419 depressive disorders and chronic disorders like ADHD, strengthening the hypothesis that a significant
420 part of the psychopathological improvement experienced by a distinct group of participants in our study
421 truly represents a treatment effect.

422 Lastly, due to the naturalistic design of our study, there were neither a healthy control group nor placebo
423 or sham treatments included. The latter might in any case have raised serious ethical concerns during
424 a global pandemic. Nevertheless, we speculate that the participants in our study were generally more
425 affected by psychological distress compared to the general population since the severity of their
426 symptomatology crossed the threshold for diagnosing one of the above mentioned disorders and was
427 eligible for psychiatric treatment within the German insurance system. However, we do not know the
428 precise pre-pandemic level of psychopathology at baseline. Since a majority of patients that enrolled
429 in our study had received psychiatric treatment at some time, however not immediately before the
430 beginning of the study, they might have been at a greater risk for developing clinically relevant
431 psychopathology during the COVID-19 pandemic, a finding that is also supported by results from a
432 French cohort focusing on individuals with a history of depressive episodes(34).

433

434 **5 Conclusions**

435 Psychiatric telemedical treatment is an effective treatment option for patients with depressive disorders
436 that yielded overall favorable outcomes in the observed group of patients. Although individuals
437 diagnosed with depression in our sample had a higher load of psychopathology in the beginning, they
438 profited most from telemedical treatment compared to participants with chronic neurodevelopmental
439 disorders like ADHD who experienced an additional decline of well-being. The latter finding indicates
440 that future research needs to concentrate on improving telemedical treatment options suited for chronic
441 psychiatric conditions. Our study demonstrated a good match between patient-reported standardized
442 measures of psychopathology and clinicians' assessments during telemedical treatment, indicating that
443 telemedical consultations could be a simple, economic and cost-effective but nevertheless reliable way
444 of monitoring symptom severity and directing treatment choices during the treatment of depressive
445 disorders. This is complemented by the overall high satisfaction of participants with the telemedical
446 treatment they received. Therefore, current research on ecological momentary assessment (EMA)
447 seems to open a promising new avenue towards personalized psychiatric telemedical treatment in the
448 near future.

449

450 **6 Conflict of interest**

451 The authors have no patents pending or financial conflicts to disclose. Anna-Sophia Wahl is a recipient
452 of the Margarete Wrangell habilitation fellowship and the Branco Weiss Society in Science Fellowship.

453 **7 Author Contributions**

454 ASW and PP designed the study. TR, PP and ASW acquired data. AB developed the online survey
455 tool. TR, TP and ASW analyzed data. OH, HT and AML advised and discussed data. PP, TP and ASW
456 wrote the manuscript with the help of all authors. All authors have read and approved the manuscript.

457 **8 Funding**

458 ASW is a recipient of the Branco Weiss Society in Science Fellowship and of the Wrangell Habilitation
459 Scholarship. Otherwise, this research did not receive a specific grant from any funding agency in the
460 public, commercial, or non-profit sectors.

Evidence from telepsychiatry during COVID-19

461 9 Acknowledgments

462 The authors thank the service and telephone team of the outpatient clinic at the Central Institute of
463 Mental Health Mannheim, Germany, under the lead of Volker Nitschke for their help with the
464 recruitment of study subjects as well as Gerhard Kühne for the help with the analysis of data from the
465 electronic medical records.

466 10 Data availability statement

467 All data are presented in the paper and the supplementary material. For details of the analysis with
468 SPSS data can be made available on reasonable request.

469

470 References

- 471 1. Sood S, Mbarika V, Jugoo S, Dookhy R, Doarn CR, Prakash N, et al. What is telemedicine? A
472 collection of 104 peer-reviewed perspectives and theoretical underpinnings. *Telemedicine and e-
473 Health*. 2007;13(5).
- 474 2. Siegel A, Zuo Y, Moghaddamcharkari N, McIntyre RS, Rosenblat JD. Barriers, benefits and
475 interventions for improving the delivery of telemental health services during the coronavirus disease
476 2019 pandemic: A systematic review. Vol. 34, *Current Opinion in Psychiatry*. 2021.
- 477 3. Bashshur RL, Shannon GW, Bashshur N, Yellowlees PM. The Empirical Evidence for Telemedicine
478 Interventions in Mental Disorders. *Telemedicine and e-Health*. 2016;22(2).
- 479 4. Fu Z, Burger H, Arjadi R, Bockting CLH. Effectiveness of digital psychological interventions for
480 mental health problems in low-income and middle-income countries: a systematic review and meta-
481 analysis. *The Lancet Psychiatry*. 2020;7(10).
- 482 5. Barnett ML, Ray KN, Souza J, Mehrotra A. Trends in Telemedicine Use in a Large Commercially
483 Insured Population, 2005-2017. Vol. 320, *JAMA - Journal of the American Medical Association*. 2018.
- 484 6. Patel SY, Mehrotra A, Huskamp HA, Uscher-Pines L, Ganguli I, Barnett ML. Trends in Outpatient
485 Care Delivery and Telemedicine during the COVID-19 Pandemic in the US. Vol. 181, *JAMA Internal
486 Medicine*. 2021.
- 487 7. Xue Y, Saeed SA, Liang H, Jones K, Muppavarapu KS. Investigating the Impact of Covid-19 on
488 Telepsychiatry Use Across Sex and Race: A Study of North Carolina Emergency Departments.
489 *Telemedicine and e-Health*. 2022;
- 490 8. Basit SA, Mathews N, Kunik ME. Telemedicine interventions for medication adherence in mental
491 illness: A systematic review. Vol. 62, *General Hospital Psychiatry*. 2020.
- 492 9. Guaiana G, Mastrangelo J, Hendrikx S, Barbui C. A Systematic Review of the Use of Telepsychiatry in
493 Depression. *Community Mental Health Journal*. 2021;57(1).
- 494 10. Bessonova L KEAE et al. Clinical Management of Patients with Schizophrenia Treated with Long-
495 Acting Injectable Antipsychotics and Telepsychiatry Use During COVID-19 Pandemic. *CNS Spectr* .
496 2022;27(230).

Evidence from telepsychiatry during COVID-19

- 497 11. Fortier CB, Currao A, Kenna A, Kim S, Beck BM, Katz D, et al. Online Telehealth Delivery of Group
498 Mental Health Treatment Is Safe, Feasible, and Increases Enrollment and Attendance in Post-9/11 U.S.
499 Veterans. *Behavior Therapy*. 2022;
- 500 12. Barnett P, Goulding L, Casetta C, Jordan H, Sheridan-Rains L, Steare T, et al. Implementation of
501 telemental health services before COVID-19: Rapid umbrella review of systematic reviews. Vol. 23,
502 *Journal of Medical Internet Research*. 2021.
- 503 13. Lyles CR, Wachter RM, Sarkar U. Focusing on Digital Health Equity. Vol. 326, *JAMA - Journal of the*
504 *American Medical Association*. 2021.
- 505 14. Primack BA. The WHO-5 Wellbeing index performed the best in screening for depression in primary
506 care. *Evidence-Based Medicine*. 2003;8(5).
- 507 15. Peveler RC, Fairburn CG. Measurement of neurotic symptoms by self-report questionnaire: Validity of
508 the SCL-90R. *Psychological Medicine*. 1990;20(4).
- 509 16. Grootenboer EMV, Giltay EJ, van der Lem R, van Veen T, van der Wee NJA, Zitman FG. Reliability
510 and validity of the Global Assessment of Functioning Scale in clinical outpatients with depressive
511 disorders. *Journal of Evaluation in Clinical Practice*. 2012;18(2).
- 512 17. Busner J, Targum SD. The clinical global impressions scale: applying a research tool in clinical
513 practice. *Psychiatry (Edgmont)*. 2007;4(7).
- 514 18. WHO Regional Office for Europe. Wellbeing measures in primary health care. Report on a WHO
515 Meeting, Stockholm, Sweden. 1998.
- 516 19. Derogatis L, Spitzer RL. The SCL-90-R, Brief Symptom Inventory, and Matching Clinical Rating Scales.
517 The use of psychological testing for treatment planning and outcomes assessment (2nd ed.). Lawrence
518 Erlbaum Associates Publishers. 1999;
- 519 20. Topp CW, Østergaard SD, Søndergaard S, Bech P. The WHO-5 well-being index: A systematic review
520 of the literature. *Psychotherapy and Psychosomatics*. 2015;84(3).
- 521 21. Franke GH. Möglichkeiten und Grenzen im Einsatz der Symptom-Checkliste SCL-90-R .
522 *Verhaltenstherapie und psychosoziale Praxis*. 2001;33(3):475–85.
- 523 22. Shi L, Lu ZA, Que JY, Huang XL, Liu L, Ran MS, et al. Prevalence of and Risk Factors Associated
524 with Mental Health Symptoms among the General Population in China during the Coronavirus Disease
525 2019 Pandemic. *JAMA Network Open*. 2020;3(7).
- 526 23. Kablinger AS, Gatto AJ, O'Brien VC, Ko H, Jones S, McNamara RS, et al. Effects of COVID-19 on
527 Patients in Adult Ambulatory Psychiatry: Using Patient-Rated Outcome Measures and Telemedicine.
528 *Telemedicine and e-Health*. 2022;
- 529 24. Catalá-López F, Hutton B, Page MJ, Driver JA, Ridao M, Alonso-Arroyo A, et al. Mortality in Persons
530 with Autism Spectrum Disorder or Attention-Deficit/Hyperactivity Disorder: A Systematic Review and
531 Meta-analysis. Vol. 176, *JAMA Pediatrics*. 2022.
- 532 25. Pollak Y, Shoham R, Dayan H, Gabrieli-Seri O, Berger I. Symptoms of ADHD Predict Lower
533 Adaptation to the COVID-19 Outbreak: Financial Decline, Low Adherence to Preventive Measures,
534 Psychological Distress, and Illness-Related Negative Perceptions. *Journal of Attention Disorders*.
535 2022;26(5).

Evidence from telepsychiatry during COVID-19

- 536 26. Wiegand HF BAFM et al. Changes and Challenges in Inpatient Mental Health Care During the First
537 Two High Incidence Phases of the COVID-19 Pandemic in Germany - Results From the COVID Psi
538 Psychiatry Survey. *Front Psychiatry*. 2022;(13:855040).
- 539 27. Ainslie M, Brunette MF, Capozzoli M. Treatment Interruptions and Telemedicine Utilization in
540 Serious Mental Illness: Retrospective Longitudinal Claims Analysis. *JMIR Mental Health*. 2022;9(3).
- 541 28. Wilczewski H PSOT et al. Perceptions of Telemental Health Care Delivery During COVID-19: A
542 Cross-Sectional Study With Providers, February-March 2021. . . *Front Psychiatry* . 2022;(13:855138).
- 543 29. Harst L, Lantzsch H, Scheibe M. Theories predicting end-user acceptance of telemedicine use:
544 Systematic review. Vol. 21, *Journal of Medical Internet Research*. 2019.
- 545 30. Ettman CK, Abdalla SM, Cohen GH, Sampson L, Vivier PM, Galea S. Prevalence of depression
546 symptoms in US adults before and during the COVID-19 pandemic. *JAMA Network Open*. 2020;3(9).
- 547 31. Niedzwiedz CL, Green MJ, Benzeval M, Campbell D, Craig P, Demou E, et al. Mental health and
548 health behaviours before and during the initial phase of the COVID-19 lockdown: Longitudinal
549 analyses of the UK Household Longitudinal Study. *Journal of Epidemiology and Community Health*.
550 2021;75(3).
- 551 32. Pandey D, Bansal S, Goyal S, Garg A, Sethi N, Pothiyill DI, et al. Psychological impact of mass
552 quarantine on population during pandemics-The COVID-19 Lock-Down (COLD) study. *PLoS ONE*.
553 2020;15(10 October).
- 554 33. Wang C, Song W, Hu X, Yan S, Zhang X, Wang X, et al. Depressive, anxiety, and insomnia symptoms
555 between population in quarantine and general population during the COVID-19 pandemic: a case-
556 controlled study. *BMC Psychiatry*. 2021;21(1).
- 557 34. Olié E, Dubois J, Benramdane M, Guillaume S, Courtet P. Psychological state of a sample of patients
558 with mood disorders during the first French COVID-19 lockdown. *Scientific Reports*. 2021;11(1).

559

560

561

562

563

564

565

566

567

568

569

Evidence from telepsychiatry during COVID-19

570 Tables and figure legends:

571 **Table 1.** Sociodemographic characteristics of the study population assessing sex, age, marital status,
572 children, living situation, education, professional training, labor and financial situation. N= number of
573 subjects where information was found in the medical record. The percentage was calculated as (N/N
574 responded)*100. M=mean, SD= standard deviation.

575 **Table 2.** Table depicting the psychiatric history of subjects including the leading psychiatric diagnosis
576 documented in the medical record, as well as attempts of suicides and previous psychiatric treatments.
577 N= number of subjects where information was found in the medical record. The percentage was
578 calculated as (N/N responded)*100.

579 **Table 3.** Table revealing the amount of psychiatric counseling, hospitalization requirements and days
580 of hospitalization in a specialized psychiatric unit 12 months before the pandemic and during the course
581 of the study in the Covid-19 pandemic. N= number of subjects where information was found in the
582 medical record. The percentage was calculated as (N/N responded)*100. M=mean, SD= standard
583 deviation.

584 **Table 4.** Results of the evaluation of the telemedical psychiatric counseling by the study participants
585 requesting feedback considering the mode of telemedical treatment, problems that emerged during
586 telemedical treatment, overall satisfaction and if subjects are willing to use telemedical offers in the
587 future. N= number of subjects that provided feedback at the end of the telemedical treatment . The
588 percentage was calculated as (N/N responded)*100.

589 **Figure 1. Results of self-report assessment using WHO-5 and SCL90-R.** (A) Results of the WHO-
590 5 Wellbeing Index: Boxplots with scoring details of all individuals participating in the different surveys
591 (inquiry 1= survey before the beginning of the telemedical treatment; inquiry 2 and 3= surveys 4-6 and
592 8-12 weeks after start of the telemedical counseling respectively) are shown in the upper panel. In the
593 lower panel we compared the results of subjects who participated at least in the first and one
594 consecutive survey. We found a significant improvement of WHO5 scores during the course of
595 telemedical treatment (inquiry 1 versus 2, $p<0.001$, Wilcoxon-test). (B) Results of the SCL90-R. Those
596 participants that completed the survey twice (before and 4-6 weeks after start of the telemedical
597 psychiatry) reported a significant improvement of psychopathological symptoms (significant decrease
598 of total scores for inquiry 2 versus 1, $p<0.001$, Wilcoxon-test). (C) Results of the WHO-5 correlated
599 to clinical scores such as the CGI and the GAF as well as to all three global indices of distress of the
600 SCL90-R such as the GSI, PSDI and PST (A linear regression analysis was performed, β =regression
601 coefficient). *** $p<0.001$. n.s.= non-significant.

602 **Figure 2.** Based on clinical judgment using the clinical scores, CGI (A) and GAF (B) patients
603 diagnosed with depression were significantly sicker than subjects with other psychiatric entities (for
604 both CGI and GAF Mann-Whitney test was used to compare participants with and without a
605 diagnosis of depression). (C) Although depressive patients scored lower in the WHO-5 than patients
606 with other psychiatric entities (results inquiry 1 of depressive patients versus others, $p<0.001$,
607 ANOVA with post hoc Bonferroni), overall well-being of this patient cohort improved in such a way,
608 that during the 2nd and 3rd inquiry, WHO-5 total scores significantly raised (inquiry 1 versus 2,
609 $p<0.05$; inquiry 1 versus 3, $p<0.001$, ANOVA with post hoc Bonferroni) to the same levels as found
610 in patients without a diagnosis of depression. (D) Table depicting the number of participants
611 diagnosed with different psychiatric entities and how many of these subjects reported a decline or
612 improvement in well-being according to the WHO-5 during the course of the telemedical counseling.

Evidence from telepsychiatry during COVID-19

613 (E) Violin plots showing sociodemographic characteristics for the two cohorts (subjects diagnosed
614 with depression and those without). Using the same different subcategories as described in table 1 we
615 did not find a significant difference between the distribution of sociodemographic characteristics.
616 Results are presented in mean \pm SEM; *P<0.05, **P<0.01, ***P<0.001.

617

618

619

620

621

622

623

624

625

626

627

628

629

630

631

632

633

634

635

636

637

638

639

640

641

Evidence from telepsychiatry during COVID-19

642 **Table 1**

	N or M (SD)	(%)
Total Number (N) of recruited patients	254	
Female	144	56,7
Male	101	39,8
Anonymous	9	3,5
Age in years (SD)		
Female (N=144)	39,9 (13,3)	
Male (N=100)	37,0 (12,6)	
Marital status (N= 150)		
Single	67	44,7
In relationship with a partner	83	55,3
Children (N=93)		
No children	77	82,8
Children	16	17,2
Living situation (N= 110)		
Living alone	59	53,6
Living with partner	14	12,7
Living with family or friends	31	28,2
Living in supervised accommodation	6	5,5
Education (N=125)		
No school graduation	2	1,6
9 years of school education completed	22	17,6

Evidence from telepsychiatry during COVID-19

10 years of school education completed	40	32,0
>12 years of school education completed	61	48,8
Professional Training (N=130)		
No completed professional training	13	10,0
Completed apprenticeship	70	53,8
Completed academic studies	20	15,4
Apprenticeship on-going	13	10,0
Academic studies on-going	14	10,8
Labor situation (N=107)		
Unemployed	25	23,4
Employed	57	53,3
Retired	8	7,5
Disabled	17	15,9
Financial situation (N=83)		
No debts	53	63,9
Debts	30	36,1

643

644

645

646

647

648

649

650

Evidence from telepsychiatry during COVID-19

651 **Table 2**

	N	(%)
Psychiatric diagnosis (N= 224)		
Organic mental disorders	3	1,3
Mental disorders due to psychoactive substance use	8	3,6
Schizophrenia, schizotypal and delusional disorders	3	1,3
Bipolar affective disorders	6	2,7
Depressive and recurrent depressive disorders	55	24,6
Anxiety disorders	16	7,1
Reaction to severe stress, and adjustment disorders	15	6,7
Somatoform disorders	2	0,9
Eating disorders	3	1,3
Nonorganic sleep disorders	14	6,3
Disorders of adult personality and behavior	11	4,9
Intellectual disability	1	0,4
Autism spectrum disorders	1	0,4
Hyperkinetic disorders and tics	79	35,3
Neurological diseases causing psychiatric symptoms	7	3,1
Attempted suicides (N=72)		
No history of attempted suicides	51	70,8
History of attempted suicides	21	29,2
Previously treated of a psychiatric disorder (N=163)		
Yes	121	74,2
No	42	25,8

Evidence from telepsychiatry during COVID-19

653 **Table 3**

Out-patient treatment (Mean # of doctoral appointments)	M (SD)
Within 12 months before the pandemic (N=16)	4,56 (5,89)
During the pandemic (N=254)	4,26 (5,45)
via telemedicine	3,05 (3,58)
with personal contact	1,25 (2,98)
Patients requiring in-patient treatment (N=254)	N (%)
Within 12 months before the pandemic	4 (1,57)
During the pandemic	13 (5,12)
Mean - days of hospitalization (N=254)	M (SD)
Within 12 months before the pandemic (N=4)	128 (62,20)
During the pandemic (N=13)	74,54 (46,67)

654

655

656

657

658

659

660

661

662

663

664

665

Evidence from telepsychiatry during COVID-19

666 **Table 4**

Telemedical treatment (N=112)	N	%
via phone	100	89,29
via video chat	2	1,79
via phone and video chat	10	8,93
Technical problems during the telemedical treatment (N=112)		
Yes	14	12,50
No	98	87,50
Satisfaction with telemedic treatment (N=108)		
Strongly disagree	0	0,00
Disagree	3	2,78
Undecided	17	15,74
Agree	30	27,78
Strongly agree	58	53,70
Telemedical treatment was experienced as effective as therapy in person (N=108)		
Strongly disagree	10	9,26
Disagree	23	21,30
Undecided	22	20,37
Agree	19	17,59
Strongly agree	34	31,48
Patients will consider telemedical treatment in the future again (N=109)		

Evidence from telepsychiatry during COVID-19

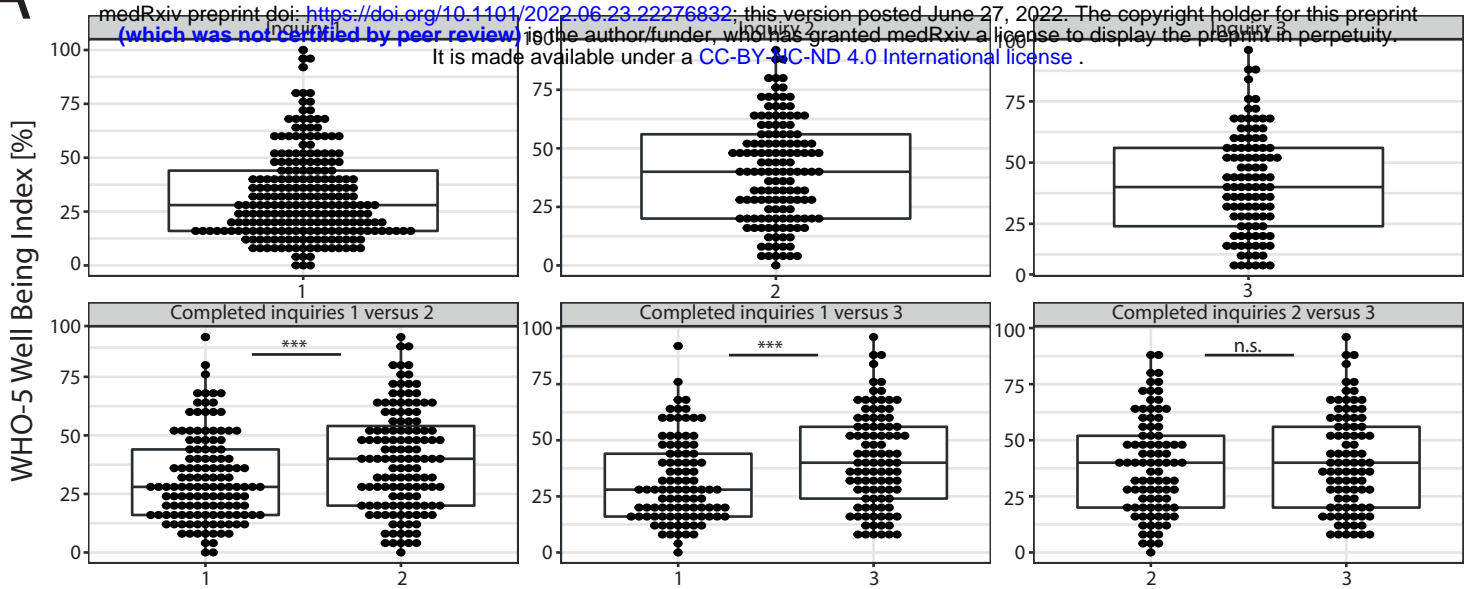
Strongly disagree	19	17,43
Disagree	18	16,51
Undecided	18	16,51
Agree	18	16,51
Strongly agree	36	33,03

667

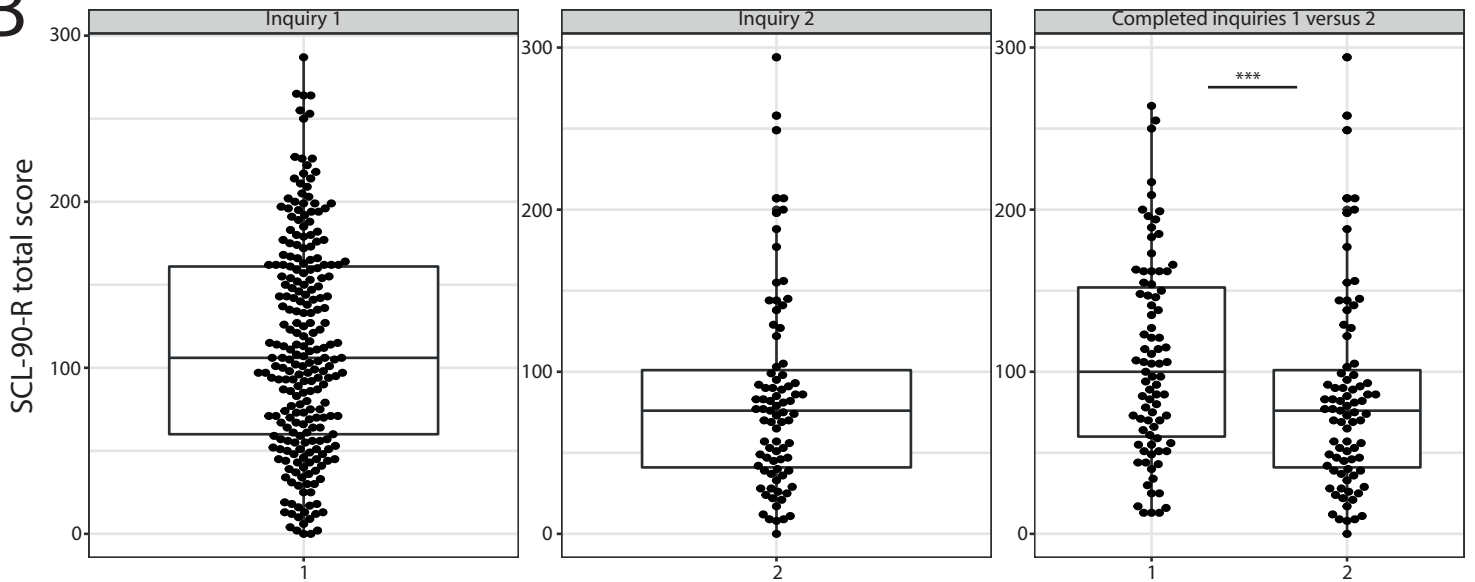
668

Figure 1

A



B



C

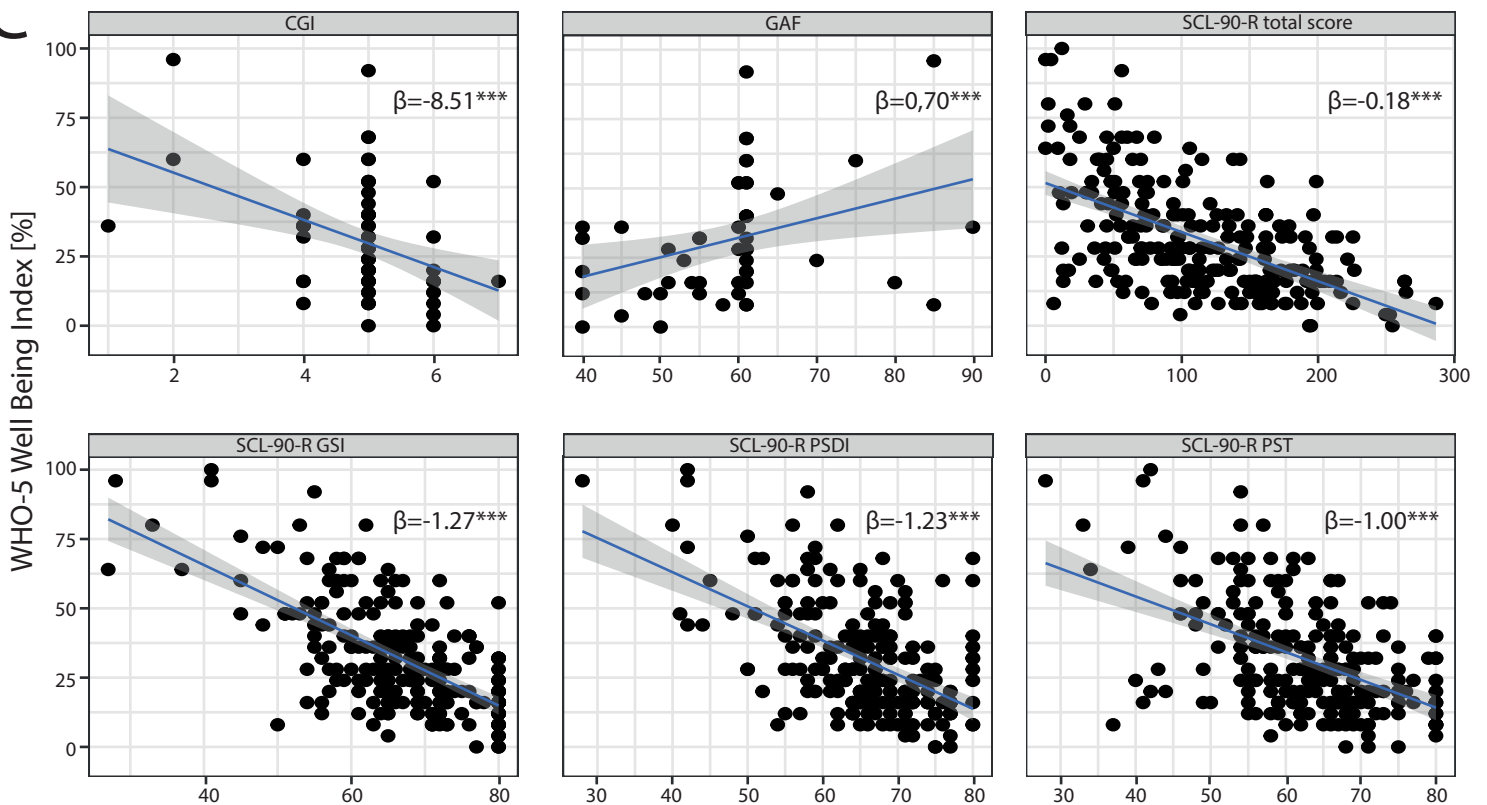


Figure 2

