

1 **Acceleration of regional, racial and gender disparities in drug overdoses across the United**  
2 **States driven by COVID-19 and fentanyl use**

3

4 Maria R. D'Orsogna<sup>1,3</sup>, Ph.D, Lucas Böttcher<sup>2</sup>, Ph.D, Tom Chou<sup>1</sup>, Ph.D

5 Corresponding author: Maria R. D'Orsogna, [dorsogna@csun.edu](mailto:dorsogna@csun.edu)

6

---

7 <sup>1</sup>Department of Computational Medicine, University of California, Los Angeles, 90095-1766  
8 Los Angeles, CA, USA

9 <sup>2</sup>Computational Social Science, Frankfurt School of Finance and Management, 60322 Frankfurt  
10 am Main, Germany

11 <sup>3</sup>Department of Mathematics, California State University at Northridge, Los Angeles, 91330-  
12 8313 CA, USA

13 **Objectives.** To examine trends in drug overdose deaths by gender, race and geography in the  
14 United States during the period 2013-2020.

15 **Methods.** We used the final National Vital Statistics System multiple cause-of-death mortality  
16 files to extract crude rates by gender and race and to calculate the male-to-female ratios of crude  
17 rates between 2013 and 2020. We established 2013-2019 temporal trends for four major drug  
18 types: psychostimulants with addiction potential (T43.6, such as methamphetamines); heroin  
19 (T40.1); natural and semi-synthetic opioids (T40.2, such as those contained in prescription pain-  
20 killers); synthetic opioids (T40.4, such as fentanyl and its derivatives) through a quadratic  
21 regression and determined whether changes in the pandemic year 2020 were statistically  
22 significant. We also identified states, race and gender categories most impacted by drug overdoses.

23 **Results:** Nationwide, the year 2020 saw statistically significant increases in overdoses for all drug  
24 categories except heroin, surpassing predictions based on 2013-2019 trends. Crude rates for Blacks

25 of both genders surpassed those for Whites for fentanyl and psychostimulants in 2018 creating a  
26 gap that widened through 2020. In some regions mortality among Whites decreased while  
27 overdose rates for Blacks kept rising. The largest 2020 mortality statistic is for Black males in the  
28 District of Columbia, with a record 134 overdoses per 100,000 due to fentanyl, 9.4 times more  
29 than the fatality rate among White males. Male overdose crude rates in 2020 remain larger than  
30 those of females for all drug categories except in Idaho, Utah and Arkansas where crude rates of  
31 overdoses by natural and semisynthetic opioids for females exceeded those of males.

32 **Public Health Implications:** Drug prevention, mitigation and no-harm strategies should include  
33 racial, geographical and gender-specific efforts, to better identify and serve at risk groups.

34

35 According to the Centers for Disease Control and Prevention (CDC) and the National Vital  
36 Statistics System (NVSS) 91,798 people died from injury or poisoning from drugs of abuse  
37 (opioids and psychostimulants) in 2020, corresponding to a 32% rise over 2019. Provisional  
38 mortality rates for 2021 point to further rises in fatal overdoses [1]. The media has greatly  
39 discussed these increases, which are bolstered by other reports of rising non-fatal drug overdoses,  
40 or requests for drug-related emergency medical services starting in 2020 [2].

41 The recent overdose surge has been attributed to the many mental health stressors and uncertainties  
42 associated with COVID-19, and to pandemic-related disruptions to the drug supply that resulted  
43 in higher availability of lethal, illicit synthetic opioids such as fentanyl [3]. However, drug abuse  
44 and age-adjusted overdose mortality rates have been steadily increasing over the past 20 years. In  
45 particular, the year 2013 is considered the beginning of a “third wave” of overdose fatalities [4,5]  
46 marked by a shift from deaths due to prescription opioids towards deaths from synthetic opioids,  
47 primarily illicit fentanyl. Recent years have also seen more efforts to better understand differences  
48 among socio-economic, racial and gender groups in how, when and why drugs are first sought,  
49 how they are consumed, and what no-harm options might be the most effective [6--8]. However,  
50 few studies have provided a combined, in-depth analysis of gender, geographical and racial differ-  
51 ences in drug-induced deaths, even prior to the pandemic [9]. For example, recent reports show

52 that in 2020 the nationwide drug-induced crude rate for Blacks surpassed that of Whites for the  
53 first time since 1999 [10]. While interesting for its many societal implications, this analysis does  
54 not differentiate by drug type, gender or geography, hindering localized and/or specific interven-  
55 tion efforts. We aim to fill this gap by investigating mortality patterns during the third wave of  
56 drug overdoses in the United States, from 2013 to 2020. We focus on four major classes of drugs  
57 and verify whether the values recorded for the pandemic year 2020 are statistically significant  
58 compared to years prior.

59

## 60 **METHODS**

61

62 Overdose death rates for all years between 2013 and 2020 were obtained from the CDC WONDER  
63 database which tallies mortality, cause of death, and other relevant demographic data in the United  
64 States [11]. Overdoses were identified as drug poisoning as listed by the International Classifica-  
65 tion of Diseases, 10th Revision (ICD-10) using codes X40-X44 (unintentional), X60-X64 (sui-  
66 cide), X85 (homicide), or Y10-Y14 (undetermined intent). We do not distinguish among these  
67 categories and include all above manners of death in our evaluations. The type of drugs involved  
68 in these overdoses are listed via additional cause of death codes. We focus on the T40 class (poi-  
69 soning by narcotics and psychodysleptics) which includes the relevant subclasses T40.1 (heroin),  
70 T40.2 (natural and semisynthetic opioids such as morphine and oxycodone, typically found in  
71 prescription pain-killers) and T40.4 (synthetic opioids other than methadone, such as fentanyl).  
72 Another relevant subclass is overdoses by psychostimulants with abuse potential (T43.6), a cate-  
73 gory which is listed under class T43 (poisoning by psychotropic drugs). Included in T43.6 are  
74 methamphetamines, amphetamines and 3,4-methylenedioxymethamphetamine (MDMA, ecstasy).  
75 For simplicity we will refer to the four categories as heroin (T40.1), prescription opioids (T40.2),  
76 fentanyl (T40.4) and methamphetamines (T43.6). Since all overdoses in WONDER are fatal, we  
77 refer to overdose deaths as simply overdoses. We do not consider overdoses from any other sub-  
78 stance such as antidepressants, nor poisoning by alcohol. Crude rates for a specific demographic  
79 category are defined as the number of fatalities of that category divided by the mid-year population  
80 of the same category, multiplied by the typical factor of 100,000. Since WONDER lists male and  
81 female genders only, we use a binary gender classification. We further stratify our data by the

82 four Census Regions listed in WONDER: the Northeast (Region 1), the Midwest (Region 2), the  
83 South (Region 3) and the West (Region 4). Since data are also catalogued by state plus the District  
84 of Columbia, we examine all 51 jurisdictions and refer to them collectively as “states”. The WON-  
85 DER database also lists four racial categories (White, Black or African American, Asian or Pacific  
86 Islander, American Indian or Alaska Native) but only two (White and Black or African American)  
87 experienced enough fatalities to achieve statistical significance, so we focus mostly on them. For  
88 each geographical or racial category we consider the crude rates for females and males and derive  
89 the male-to-female crude ratio by dividing the two. We identify 2013-2019 trends and determine  
90 whether 2020 data are statistical outliers. To do this, we first fit the 2013-2019 data to a quadratic  
91 form, which allows for possible non-monotonic behaviors. We then calculate the standard devia-  
92 tion of the residuals between the fitted trends and the data for 2013-2019. If the residual corre-  
93 sponding to 2020 is three times beyond the value of the standard deviation, the 2020 value is  
94 considered an outlier.

95

## 96 **RESULTS**

97

98 Nationwide, fentanyl (T40.4) and methamphetamines (T43.6) overdose crude rates increase mon-  
99 tonically for both genders over the 2013-2019 timeframe as shown in Figure 1. For both drug  
100 classes and genders, the 2020 values are statistical outliers, as they are in excess of three standard  
101 deviations of the residuals above the quadratic regression fit. In particular, for T40.4 male overdose  
102 rates in 2020 exceed projections by 30%; female rates by 28%. For T43.6 male rates exceed pro-  
103 jections by 19%; female rates by 18%. The T40.4 male-to-female overdose ratio increases in an  
104 approximate linear manner from 2013 to 2016, settling around 2.6 and slightly increasing thereaf-  
105 ter. At 2.8, the 2020 value is consistent with this trend. For T43.6 the male-to-female ratio is rela-  
106 tively uniform over the 2013-2020 period and fluctuates between 2.3 and 2.6. This suggests that  
107 while 2020 saw a dramatic nationwide increase in the number of deaths due to fentanyl and meth-  
108 amphetamines, the impact was similar across genders.

109

110 Further stratifying the data reveals racial disparities for T40.4 that can be seen in Figure 1. Male  
111 crude rates for Blacks and Whites were comparable until 2018 (even slightly higher for Whites);

112 the Black male overdose rate exceeded that of White males for the first time in 2019 and in 2020  
113 rose much higher, by about 38%. Similar trends are observed for females: the crude rate for Whites  
114 exceeded the rate for Blacks until 2019, but in 2020 the crude rate for Black females surpassed  
115 that of White females by 19%. Racial disparities are also observed among the male-to-female ratio  
116 of crude rates. All ratios grow until 2015 and later stabilize, however, the Black male-to-female  
117 ratio increased more than that of Whites reaching 3.2 in 2020, higher than the 2.6 ratio of Whites.  
118 Additional geographical stratifications (not shown) reveal that the Northeast and the Midwest are  
119 the most affected by fentanyl mortality for all genders and races, primarily Black males.

120

121 The T43.6 overdose rate is higher among Whites than Blacks throughout 2013-2020. However the  
122 2020 male-to-female ratio among Blacks is 3.8, much higher than the male-to-female ratio for  
123 Whites, roughly 2.4. A geographic analysis reveals that the highest T43.6 crude rates for all races  
124 and genders are in the West.

125

126 Nationwide trends for prescription opioids (T40.2) and heroin (T40.1) overdoses display non-mon-  
127 otonic trends: mortality increased between 2013 and 2016 for both genders, and began decreasing  
128 in 2017. However, while the 2020 rates for T40.1 remain consistent with downward predictions,  
129 those for T40.2 show a statistically significant upward shift, with males surpassing them by 32%  
130 and females by 37%. The male-to-female overdose ratio is relatively stable at around 3.1 for T40.1,  
131 and is slowly increasing for T40.2 reaching 1.6 in 2020, the lowest of all drug categories.

132

133 Stratification by race shows that nationwide Black mortality rates did not decline for either T40.2  
134 or T40.1 over the 2013-2019 interval but instead increased for both genders. In particular, for  
135 heroin the nationwide Black male overdose rate was less than that of White males until 2017. After  
136 the two reached similar levels in 2018, the crude rate among Blacks kept increasing at a higher  
137 rate than among Whites, until in 2020 the crude rate for Blacks exceeded that of Whites by 24%.  
138 The Northeast and the Midwest exhibited the highest heroin overdose rates; in both regions male  
139 Black mortality has increased or remained stable since 2013, similarly for Black females in the  
140 Northeast. Conversely, heroin overdose rates for Whites in these regions declined, especially in  
141 the Midwest (not shown). For T40.2 although nationwide overdose rates are larger for Whites

142 than Blacks, in the Northeast White male and female mortalities for both races are decreasing, but  
143 are increasing dramatically for Black males (not shown). The male-to-female ratio for each race is  
144 slightly larger for Blacks than Whites for both T40.1 and T40.2.

145

146 Taken together, these results suggest that the most significant 2020 nationwide changes are the  
147 statistically significant increases in mortality due to fentanyl and methamphetamines and a statis-  
148 tically significant 2020 resurgence in prescription opioid deaths for both genders. Despite a non-  
149 statistically significant increase in 2020, heroin overdose rates have been declining nationwide  
150 since 2017, but not among Blacks. Nationwide overdose rates for Blacks have surpassed that of  
151 Whites for fentanyl for both genders, and for heroin for males.

152

153 Stratification by gender, race and state does not allow for a consistent analysis over the 2013-2019  
154 range due to insufficient data for many jurisdictions and drug classes so we focus on comparing  
155 2019 data to 2020 data.

156 In Figure 2 we show geographical variations in the male and female crude rates in 2019 and 2020  
157 within the United States. Large increases for T40.4 and T43.6 crude rates are observed in almost  
158 all states, consistent with national trends. The picture is more varied for T40.1 and T40.2 for which  
159 a decrease in overdoses is observed across several states. Some display large gender disparities,  
160 such as Georgia, where heroin crude rates for females increased by more than 100% but only  
161 slightly for males between 2019 and 2020. Similar gender patterns are observed for T40.2 in  
162 Minnesota. T40.2 crude rates are instead much larger for males than females in West Virginia and  
163 Louisiana.

164 Gender-stratified crude rates are shown for all states in Figure 3. For all drug classes examined  
165 except heroin, the largest crude rates are in West Virginia and Delaware. For heroin, the largest  
166 female crude rates are found in Delaware, New Jersey, and West Virginia; the largest male ones  
167 in the District of Columbia, Delaware, and New Jersey.

168

169 As observed above, if only gendered overdoses are considered, the largest 2020 fentanyl crude  
170 rates are in West Virginia (84 male and 33 female). Upon differentiating by race, dramatic dispar-  
171 ities emerge, primarily in the District of Columbia, as can be seen in Figure 4. Here, until 2015  
172 there was an insufficient number of T40.4 overdoses for either gender or race, however in 2016 a  
173 large spike of Black male deaths emerged (57 cases per 100,000) leading to a record crude rate of  
174 134 in 2020 (+35% with respect to 2019) for males and 43 (+56% with respect to 2019) for fe-  
175 males. Both are the highest in the nation in 2020 and 2019. The only significant T40.4 datapoint  
176 in the District of Columbia for Whites over the entire 2013-2020 period is a male crude rate of 14  
177 in 2020. This implies that the vast majority of fentanyl victims in the District of Columbia are  
178 Black males, and that in 2020 there were 9.4 times more fatalities among Blacks than among  
179 Whites. Ever since fentanyl deaths were first tallied in the District of Columbia in 2016, Black  
180 male crude rates have been larger than those of Whites (and Blacks) in West Virginia, the state  
181 with the largest overall male fentanyl mortality.

182

183 Large racial disparities are observed in the District of Columbia for male heroin deaths as well.  
184 Although Black male mortality in the District of Columbia peaked at 55 cases per 100,000 in 2016,  
185 the 2020 male crude rate is still among the highest in the nation at 36. There is insufficient data for  
186 Whites. This pattern of elevated Black mortality and not statistically significant White overdoses  
187 is consistent over the entire 2013-2020 period. The state with the largest Black male crude rate in  
188 2020 is Illinois, at 40, whereas the corresponding rate for Whites is 9, representing a 4.4 Black to  
189 White male ratio. Throughout 2013-2020 heroin crude rates in Illinois have been higher for Blacks  
190 than for Whites; while rates kept increasing or stabilized for Blacks, they began declining for  
191 Whites in 2017.

192

193 Other states with large racial gaps for fentanyl overdoses during 2020 are in the Midwest, and  
194 include Illinois, Minnesota, and Missouri, for both genders, consistent with 2019 data. The male  
195 racial gap increased in 2020 compared to 2019 in all states for which data is available except for  
196 West Virginia, Missouri and Kentucky, where it decreased slightly; for women the racial gap in-  
197 creased in most states, but decreased in ten mostly southern states including South Carolina, Lou-  
198 isiana and Florida. Much larger crude rates for Whites than Blacks are observed in 2020 for T43.6



199 and T40.2 in several southern states, including Georgia, South Carolina and Florida, consistent  
200 with 2019 data.

201

202 Finally, to study overall gender dynamics in each state, we combined all four drug categories and  
203 constructed the 2013-2020 time series. Overdose rates increased everywhere in 2020 compared to  
204 2019, except for New Hampshire and South Dakota for both genders. For males, drug overdoses  
205 also decreased in Delaware, for females in Montana and New Jersey. The combined male-to-  
206 female overdose ratio increased in 36 states in 2020 compared to 2019. Significant upward shifts  
207 occurred in Kentucky, West Virginia and Colorado where the 2020 ratio was three times more the  
208 standard deviation derived from the 2013-2019 deaths. In all three states, male overdoses rose  
209 more than female overdoses. There were also 13 states where the male-to-female ratio decreased  
210 or remained comparable to 2019. The most significant downward shifts in the male-to-female ra-  
211 tios were recorded in Alaska (+16% males, +82% females) and Delaware (-3% males, +20% fe-  
212 males), indicating relatively higher drug overdoses among females in these states.

213

## 214 **DISCUSSION**

215

216 The year 2020 saw increases in drug-induced mortality across the United States compared to pre-  
217 vious years. Mortalities for fentanyl and methamphetamines exceed projections from 2013-2019  
218 (which already anticipated large increases) for both genders. Overall, 2013-2020 saw an explosion  
219 in overdose rates nationwide with male overdose by synthetic opioids increasing by 2,209%; and  
220 female rates by 991%. Methamphetamine rates follow similar patterns (+550% males, +486% fe-  
221 males). Beginning in 2017, natural and semi-synthetic opioid overdose rates began decreasing for  
222 both genders, followed by a large, statistically significant resurgence in 2020; a similar pattern is  
223 observed for heroin for which the limited 2020 increase was not statistically significant. Male  
224 mortality exceeds female mortality in all states; the 2020 male-to-female overdose ratio nationwide  
225 was highest for heroin (3.1), followed by synthetic opioids (2.8), methamphetamines (2.6) and  
226 natural and semi-synthetic opioids (1.6). This is consistent with data from previous years and with  
227 the hypothesis that females consume (and die) more from natural and semi-synthetic opioids con-  
228 tained in prescription pain-killers which are easier and safer to acquire than street drugs [7].



229

230 A more nuanced picture emerges after racial stratifications are included. For example, crude rates  
231 for fentanyl overdoses among Black males and females have increased more than among Whites  
232 over the past few years; in 2018, and for the first time, Black male crude rates reached and later  
233 surpassed those of White males. Between 2013 and 2020 fentanyl crude rates for Black males rose  
234 nationwide by 6,980%; those for Black females rose by 2,140%. These increases are much larger  
235 than those recorded for the population at large (+2,209% male; +991% female) and for Whites (+  
236 2,033% male; +840% female). Similarly, the crude rate of heroin overdoses for the male and fe-  
237 male population at large is decreasing within the United States and among Whites, however it is  
238 still increasing among Black males.

239

240 Combined gender, race and geographical stratifications are important as they may shift our per-  
241 ception of the most at risk groups [12, 13]. For example, in 2020 the highest crude rate for fentanyl  
242 deaths is in West Virginia at 84 cases per 100,000 persons. In the District of Columbia it is 68.  
243 However, as discussed above, a deeper analysis reveals that the fentanyl epidemic is much more  
244 severe for Black males in the District of Columbia with 134 cases per 100,000 Black males; the  
245 White male crude rate is 14, indicating significant disparity between the two races. The crude rate  
246 for Black females in the District of Columbia is 23; there is insufficient data for White females.  
247 This imbalance is also evident in West Virginia where the fentanyl male crude rate is 125 for  
248 Blacks and 83 for Whites. The overall crude rate in West Virginia, at 84, is comparable to that of  
249 White males because of the smaller percentage of Blacks residing in the state, which heavily  
250 weighs the crude rate towards that of Whites. Our results reinforce the importance of including  
251 racial stratifications as they provide a better gauge of the severity of the drug epidemic.

252

253 Fentanyl crude rates for Black males exceeded those of White males in many other states where  
254 there is sufficient 2020 data to allow for racial stratification. Large disparities are seen in Illinois,  
255 Minnesota and Missouri. The trend is reversed in most Southern states where male crude rates  
256 remain higher for Whites than Blacks. The highest 2020 crude rate for Black females is in the  
257 District of Columbia, at 43. Deaths among White females are too low to yield a significant statistic.  
258 Large racial disparities also emerge for male heroin overdoses in Illinois, Missouri and Michigan.

259 Another important finding is that the year 2020 saw male overdose crude rates for all drug types  
260 and genders increasing more than female crude rates almost everywhere except for Alaska, where  
261 crude rates rose by 16% for males but by a very large 82% for females. In Delaware male crude  
262 rates decreased by 3% but female mortality rose by 20%.

263 Why do some jurisdictions display such wide racial and gender disparities, while in others over-  
264 dose rates are more uniform? One step further in our analysis, and an attempt to resolve this ques-  
265 tion, would be to quantify other factors such as poverty, inequality indices, income, unemploy-  
266 ment, drug availability, access to prevention and treatment (such as naloxone) in various regions,  
267 and determine which of these correlate the most with the observed crude rates. Such an analysis  
268 could help provide a clearer, more nuanced picture of the drug epidemic and help prioritize inter-  
269 ventions.

270

## 271 **LIMITATIONS**

272

273 Our analysis is based on four drug categories selected from the CDC WONDER database (T40.4,  
274 T40.2, T40.1, T43.6). They are the ones with the largest crude rates, allowing us to follow temporal  
275 trends and stratify deaths as much as possible by race and gender. Other categories such as T40.3  
276 (methadone) or T40.5 (cocaine) were not included in this study due to lower mortality rates and  
277 may display different dynamics. We did not consider Hispanic origin, nor did we consider other  
278 races such as Asian or Pacific Islander (except in Figure 1), or American Indian or Alaska natives.  
279 While still much lower than the mortality rates of Blacks and Whites, both Asian and American  
280 Indian mortality rates have been increasing in recent years. We did not include any stratification  
281 by age. Since WONDER suppresses entries where the number of deaths is less than 10, data has  
282 not been available for some combinations of states, genders and races with extremely low fatalities  
283 (typically females). Finally, if multiple drugs are found in a person who overdosed, the death is  
284 tallied in all respective categories, resulting in multiple counts.

285

## 286 **PUBLIC HEALTH IMPLICATIONS**

287

288 There are several public health implications stemming from our work. First, although identifying  
289 the underlying causes of increasing overdoses in 2020 is beyond the scope of this work, it is rea-  
290 sonable to assume that pandemic-related anxieties have been major factors in rising mortality [14-  
291 -16], together with the greater availability of cheaper (and potentially contaminated) drugs, and  
292 the ease of ordering drugs online [17]. Isolation may have also made it easier to abuse drugs solo,  
293 with less access to emergency resources and partners in case of overdose. Since decreasing prices,  
294 drug contamination, and easier off-the-street procurement methods may persist in a post-pandemic  
295 world, overdose rates may remain high in the coming years and efforts should be devoted to mon-  
296 itoring online and mail-order drug transactions. Second, we find that stratifying by race and gender  
297 may lead to surprising differences between demographic groups. We find this to be true for over-  
298 doses occurring even prior to the pandemic. Thus, in order to more efficiently implement ef pre-  
299 vention and harm reduction initiatives one must first understand the internal dynamics and barriers  
300 facing diverse groups vis-à-vis drug addiction [18-20]. Given that Black males are often the most-  
301 at-risk category, and that their overdose rates are increasing dramatically, dedicated programs  
302 should be tailored to this specific demographic along the lines recommended in [21]. These include  
303 educational preventive initiatives, awareness of overdose risks associated to fentanyl, naloxone  
304 distribution, access to treatment programs and post-detox support.

305

306 Data and codes for plotting are available at this link: XXX

307

## 308 **ACKNOWLEDGMENTS**

309

310 This work was supported by the Army Research Office through Grant No. W911NF-18-1-0345,  
311 the NIH through Grant No. R01HL146552 (T.C.), and the NSF through Grant No. DMS-1814090  
312 (M.R.D.).

313

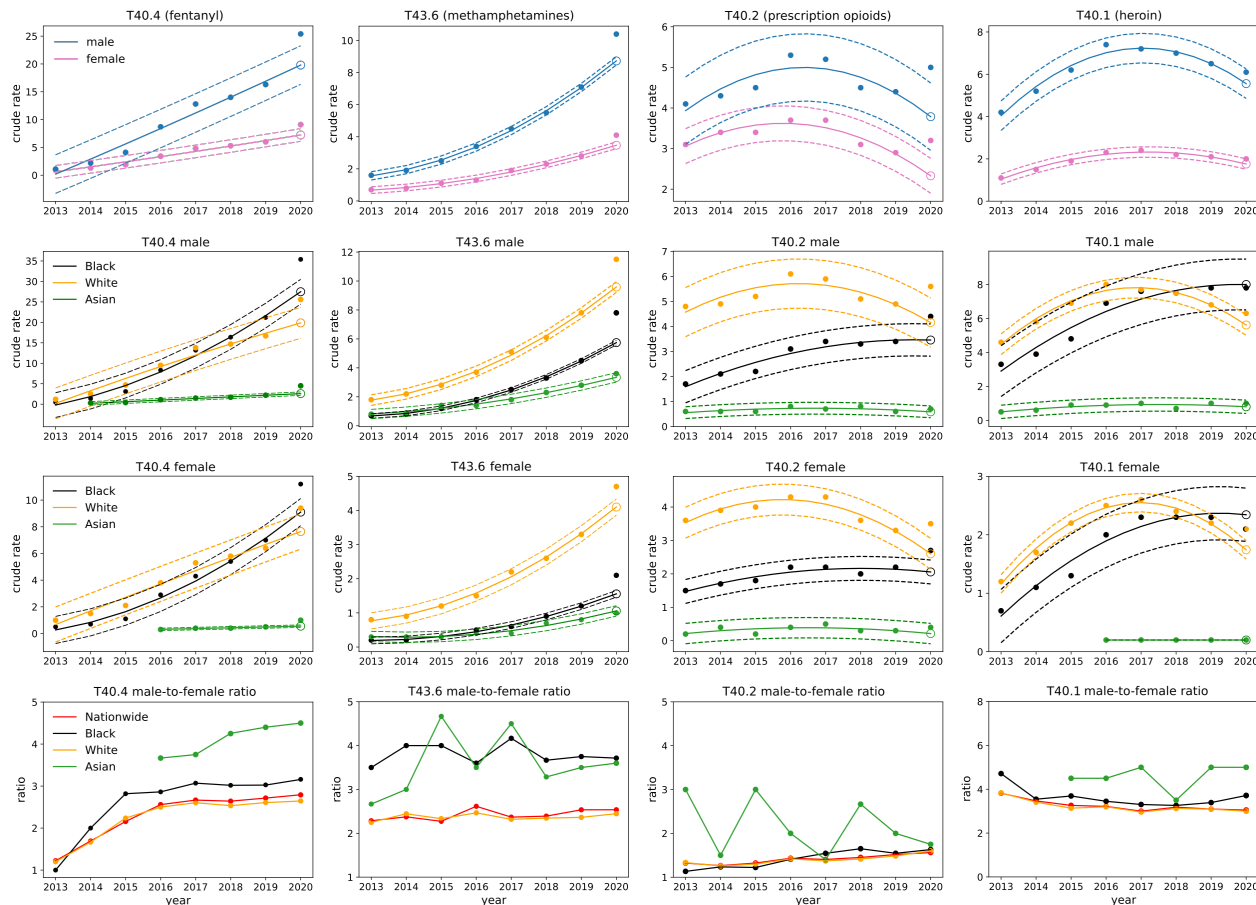
314 Note. The funder had no role in the design and conduct of the study; the collection, management,  
315 analysis, and interpretation of the data; the preparation or review of the article; or the decision to  
316 submit the article for publication.

317

318 **CONFLICTS OF INTEREST**

319

320 The authors have no conflicts of interest to disclose.



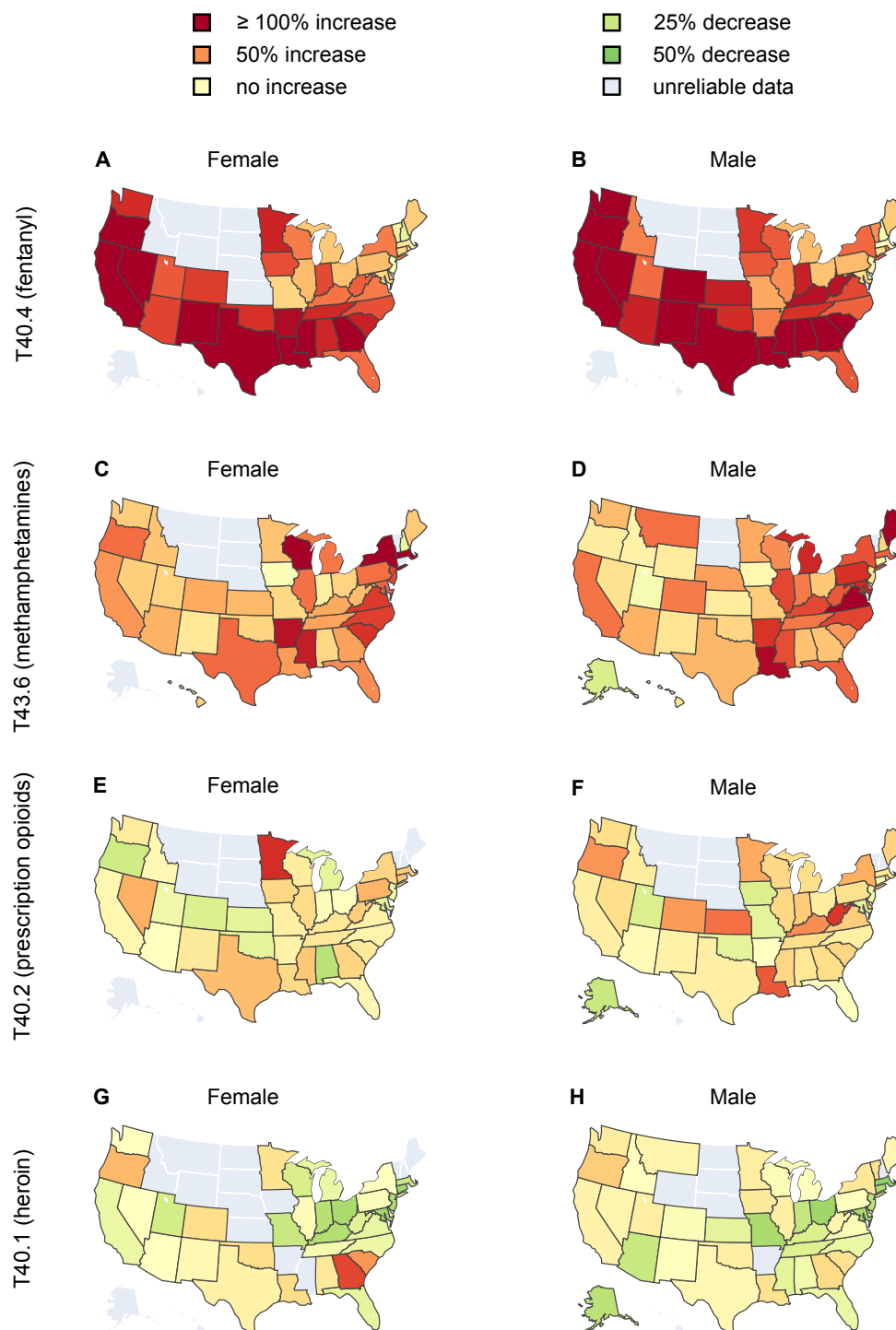
321

322 **Figure 1:** Nationwide gender and race stratified crude rates for synthetic opioids (T40.4, fentanyl),  
323 psychostimulants with abuse potential (T43.6, methamphetamines), semi-synthetic opioids  
324 (T40.2, prescription opioids) and heroin (T40.1), for the year 2020. Solid lines in the upper three  
325 rows represent the 2013-2019 quadratic regression; dotted lines correspond to values three times  
326 above and below the regression; the open circle is the 2020 projection. Top row: results are strati-  
327 fied by gender. Note the increasing 2013-2019 trend and the 2020 value exceeding projections for  
328 T40.4 and T43.6 for both genders; crude rates for T40.2 and T40.1 have been decreasing but rose  
329 again in 2020, with significant rises especially in T40.2 for both genders. Second (third) row from  
330 top: results are stratified by race for males (females). For fentanyl and heroin the Black male crude

331 rate surpassed that of Whites in 2018. Last row: Male-to-female ratio for all races. The ratio for  
332 Blacks is higher than the ratio for Whites in all categories except for T40.2. We include results for  
333 Asians in years when data is available; although crude rates are the lowest in the nation, this is the  
334 race with the largest male-to-female ratio in all drug categories.

335

### 2019-2020 % change in crude death rate

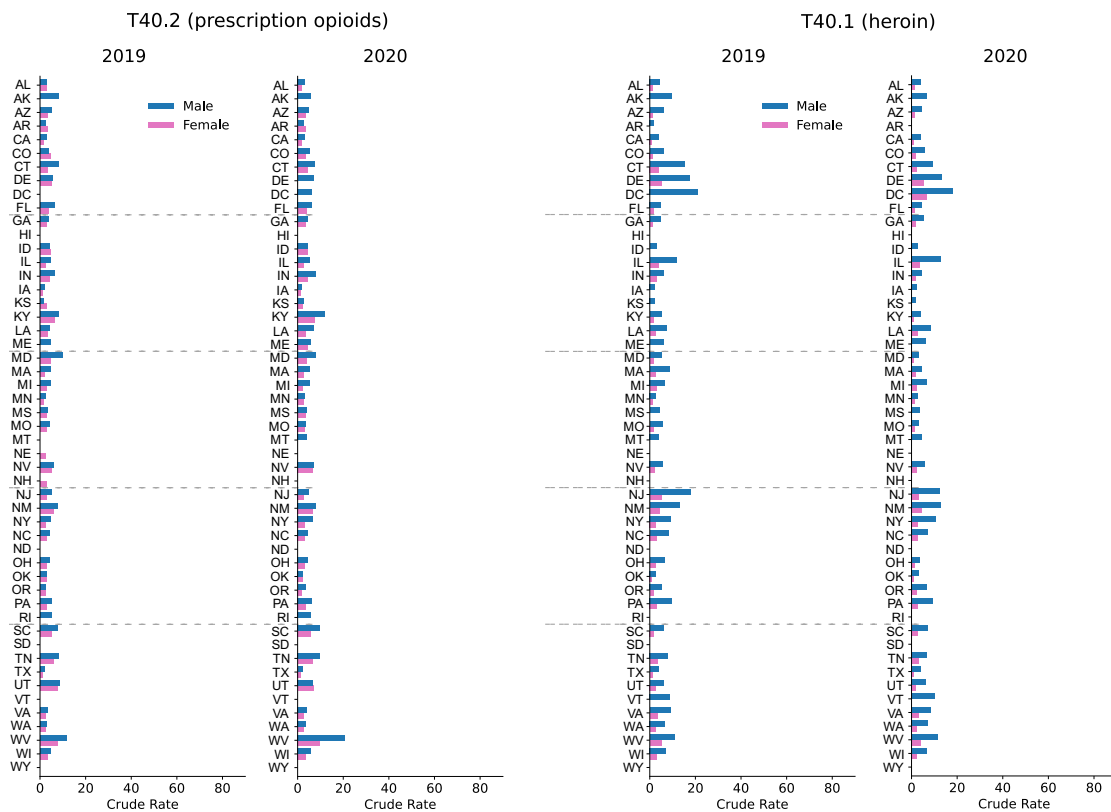
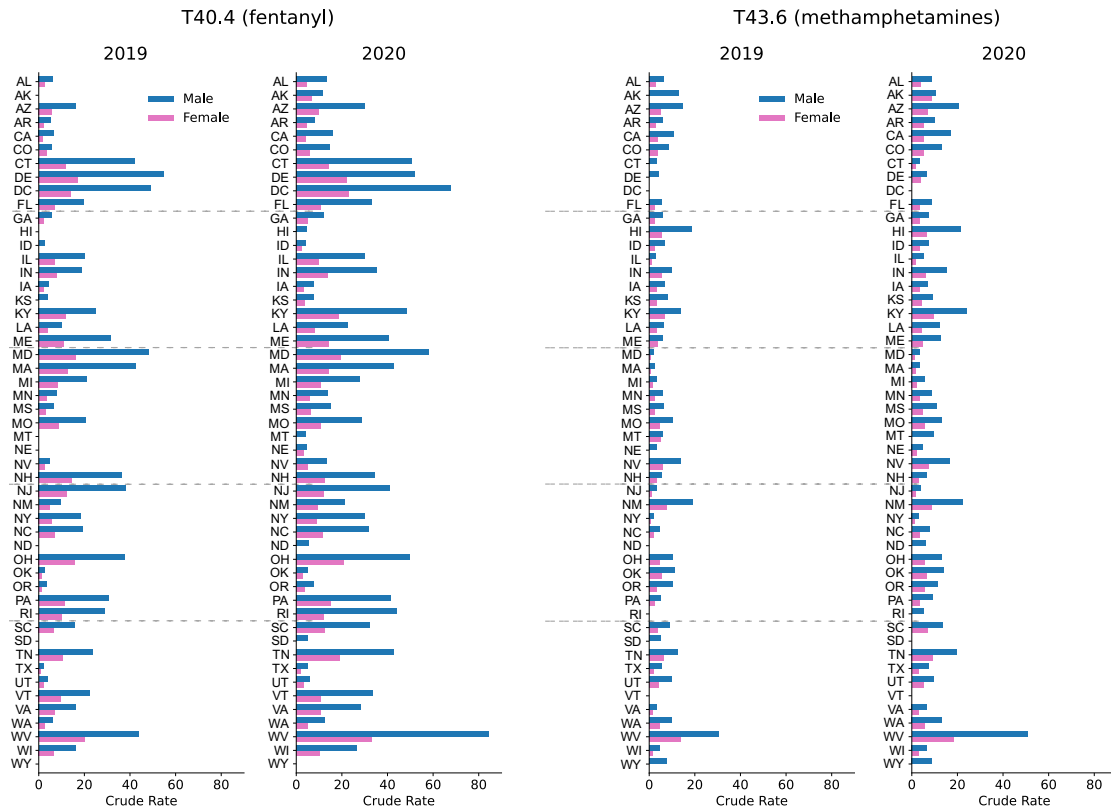


336

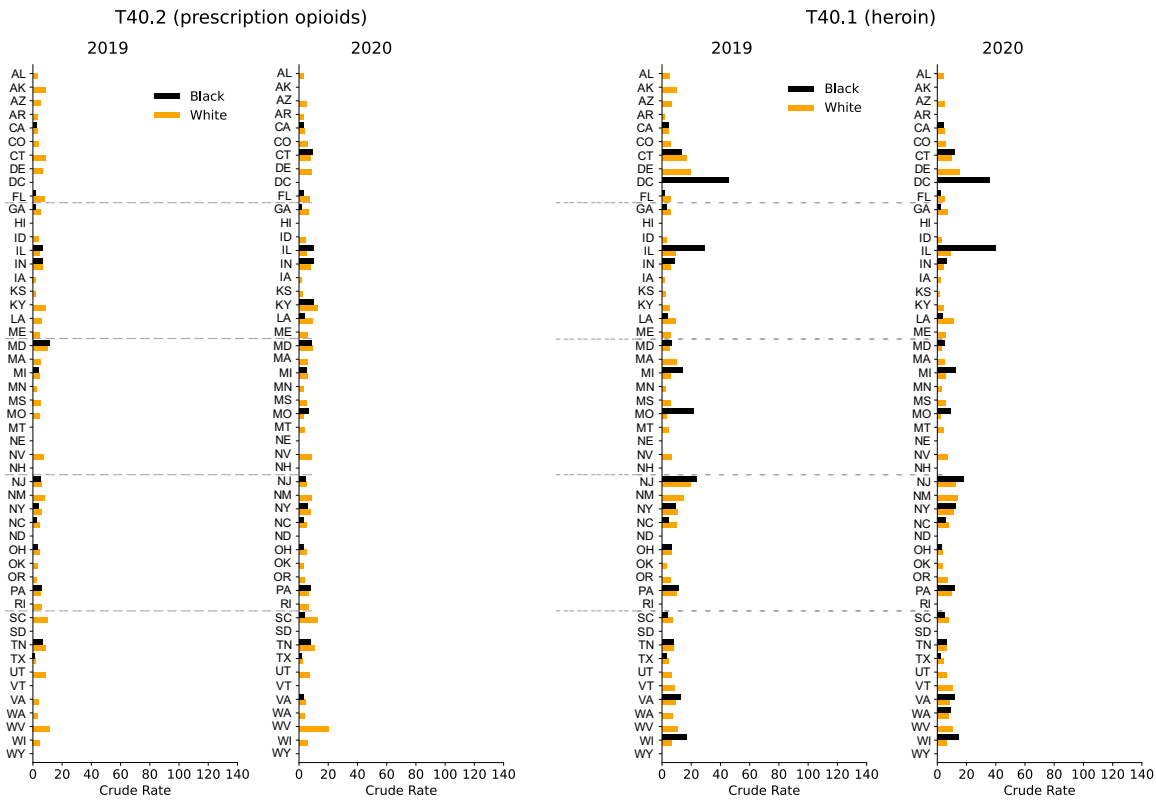
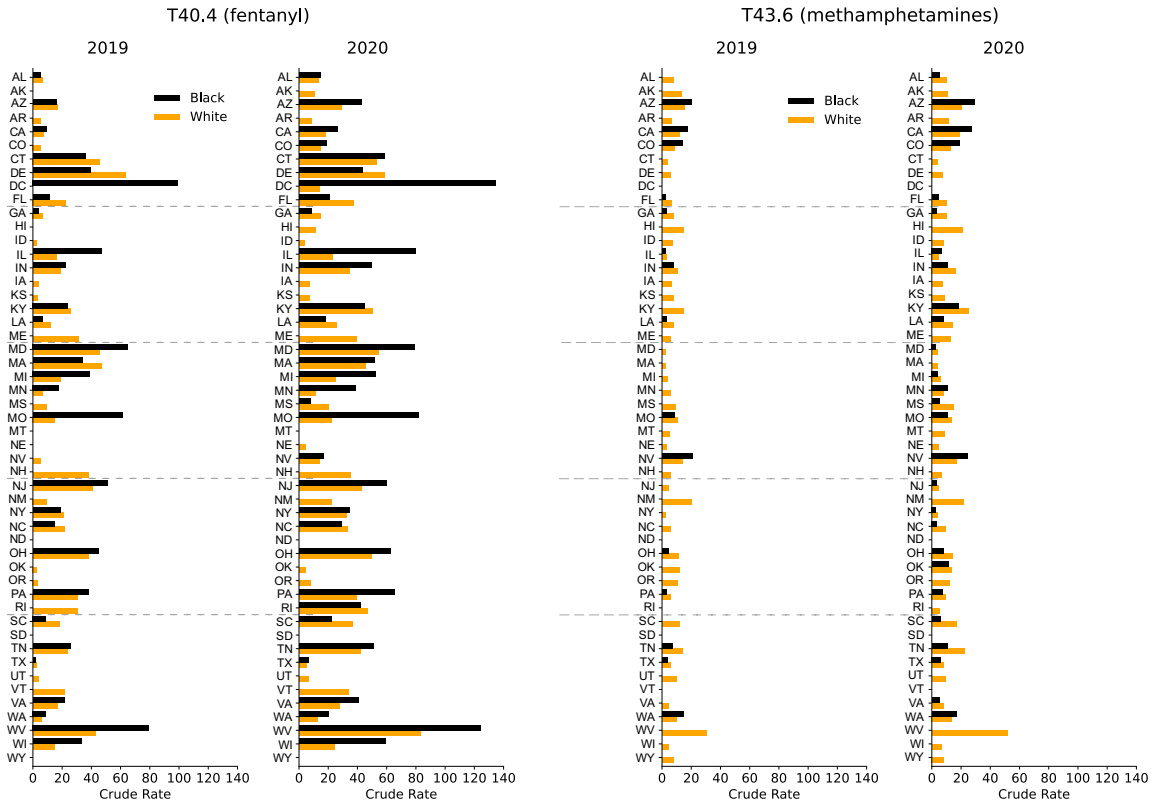
337 **Figure 2:** Percentages of change to the crude rate between 2019 and 2020 stratified by gender for  
338 fentanyl (T40.4, panels A,B), methamphetamines (T43.6, panels C,D), prescription opioids

339 (T40.2, panels E,F), and heroin (T40.1, panels G,H), in the United States. In states shown in dark  
340 red, crude rates more than doubled while green indicates that crude rates decreased between 2019  
341 and 2020.





343 **Figure 3:** Gender-stratified, crude rates across the United States associated with fentanyl (T40.4),  
344 methamphetamines (T43.6), prescription opioids (T40.2), heroin (T40.1) for the years 2019 and  
345 2020. Note the gender imbalances and increase in mortality for West Virginia from 2019 to 2020  
346 for all drug categories except heroin.



348 **Figure 4:** Crude rates for Black and White males across the United States associated with fentanyl  
349 (T40.4), methamphetamines (T43.6), prescription opioids (T40.2), heroin (T40.1) for the years  
350 2019 and 2020. Note the racial imbalances and the increase in mortality in the District of Columbia  
351 for fentanyl and heroin.

352

## 353 REFERENCES

354 [1] Ahmad F. B., Rossen L. M., Sutton P. Provisional drug overdose death counts. National Cen-  
355 ter for Health Statistics (2021).

356 [2] Friedman J., Beletsky L., Schriger D. L. Overdose-related cardiac arrests observed by emer-  
357 gency medical services during the US COVID-19 epidemic. *JAMA Psychiatry* 78 (2021) 562-  
358 564.

359 [3] United Nation Office on Drugs and Crime (UNODC) COVID-19 and the drug supply chain:  
360 from production and trafficking to use, Vienna (2020).

361 [4] Hedegaard H., Miniño, A. M., Spencer, M.R., Warner, M. Drug overdose deaths in the  
362 United States, 1999–2020 NCHS Data Brief No. 428, December 2021.

363 [5] Mattson C. L., Tanz L. J., Quinn K., Kariisa M., Patel P., Davis N.L. Trends and geographic  
364 patterns in drug and synthetic opioid overdose deaths -- United States, 2013–2019. *MMWR*  
365 *Morbidity and Mortality Weekly Reports* 70 (2021) 202–207.

366 [6] Ho J. Y. Cycles of gender convergence and divergence in drug overdose mortality, *Popula-*  
367 *tion and Development Review* 46 (2020) 443–470.

368 [7] Becker J. B., Mc Clellan M. L., Reed, B. G. Sex differences, gender and addiction, *Journal of*  
369 *Neuroscience Research* 95 (2017) 136–147.

- 370 [8] Larochelle M. R., Slavova S., Root E. D., Feaster D. J., Ward P. J., Selk S. C., Knott C., Vil-  
371 lani J., Samet J. H. Disparities in opioid overdose death trends by race/ethnicity, 2018–2019,  
372 from the HEALing Communities Study. *American Journal of Public Health* 111 (2021) 1851-  
373 1854.
- 374 [9] O’Donnell J., Tanz L. J., Gladden M., Davis N.L., Bitting J. Trends in and characteristics of  
375 drug overdose deaths involving illicitly manufactured fentanyls -- United States, 2019–2020.  
376 *MMWR Morbidity and Mortality Weekly Reports* 70 (2021) 1740-1746.
- 377 [10] Friedman J., Hansen H., Evaluation of increases in drug overdose mortality rates in the US  
378 by race and ethnicity before and during the COVID-19 pandemic. *JAMA Psychiatry* 79 (2022)  
379 379-381.
- 380 [11] Wide-ranging online data for epidemiologic research (WONDER). Atlanta, GA: CDC, Na-  
381 tional Center for Health Statistics (2020). Available at <http://wonder.cdc.gov>.
- 382 [12] Friedman J., Hansen, H. Far From a “White Problem”: Responding to the overdose crisis as  
383 a racial justice issue. *American Journal of Public Health* 112 (2022), S30-S32.
- 384 [13] Hulse J. N. Toward improved addiction treatment quality and access for Black patients.  
385 *American Journal of Public Health* 112 (2022) S21-S23.
- 386 [14] Cartus A. R., Li Y., Macmadu A., Goedel W. C., Allen B., Cerda M., Marshall B. D. L.  
387 Forecasted and observed drug overdose deaths in the US during the COVID-19 pandemic in  
388 2020, *JAMA Network Open* 5 (2022) e223418.
- 389 [15] Sher L. The impact of the COVID-19 pandemic on suicide rates. *QJM: An International*  
390 *Journal of Medicine* 113 (2020) 707-712.
- 391 [16] Woolf S. H., Chapman D. A., Sabo R. T., Weinberger D. M., Hill L. Excess deaths from  
392 COVID-19 and other causes, *JAMA* 324 (2020) 510-513.
- 393 [17] Shelley L., Fentanyl, COVID-19, and Public Health, *World Medical and Health Policy* 12

394 (2020) 390-397.

395 [18] Brady K. T., Randall C. L., Gender differences in substance use disorders, Addictive Disor-  
396 ders 22 (1999) 241-252.

397 [19] Hansen H., Jordan A., Plough A., Alegria M., Cunningham C., Ostrovsky A. Lessons for the  
398 opioid crisis - Integrating social determinants of health into clinical care. American Journal of  
399 Public Health, 112(S2) (2022) S109-S111.

400 [20] Lopez A. M., Thomann M., Dhatt Z., Ferrera, J., Al-Nassir M., Ambrose M., Sullivan S.  
401 Understanding racial inequities in the implementation of harm reduction initiatives. American  
402 Journal of Public Health, 112 (2022) S173-S181.

403 [21] Blackwood C. A., Cadet J. L. COVID-19 Pandemic and fentanyl use disorder in African  
404 Americans. Frontiers in Neuroscience, 15 (2021).