

1 **Title:** *An international observational study to assess the impact of the Omicron variant*  
2 *emergence on the clinical epidemiology of COVID-19 in hospitalised patients*

3  
4 **Authors**

5  
6 Bronner P. Gonçalves<sup>1</sup>, Matthew Hall<sup>2</sup>, Waasila Jassat<sup>3</sup>, Valeria Balan<sup>1</sup>, Srinivas Murthy<sup>4</sup>,  
7 Christiana Kartsonaki<sup>5</sup>, Malcolm G. Semple<sup>6,7</sup>, Amanda Rojek<sup>1,8,9</sup>, Joaquín Baruch<sup>1</sup>, Luis  
8 Felipe Reyes<sup>1,10,11</sup>, Abhishek Dasgupta<sup>12,13</sup>, Jake Dunning<sup>1</sup>, Barbara Wanjiru Citarella<sup>1</sup>, Mark  
9 Pritchard<sup>1</sup>, Alejandro Martín-Quiros<sup>14</sup>, Uluhan Sili<sup>15</sup>, J. Kenneth Baillie<sup>16,17</sup>, Diptesh Aryal<sup>18</sup>,  
10 Yaseen Arabi<sup>19</sup>, Aasiyah Rashan<sup>20</sup>, Andrea Angheben<sup>21</sup>, Janice Caoili<sup>22</sup>, François Martin  
11 Carrier<sup>23-26</sup>, Ewen M. Harrison<sup>27</sup>, Joan Gómez-Junyent<sup>28</sup>, Claudia Figueiredo-Mello<sup>29</sup>, James  
12 Joshua Douglas<sup>30</sup>, Mohd Basri Mat Nor<sup>31</sup>, Yock Ping Chow<sup>32</sup>, Xin Ci Wong<sup>33</sup>, Silvia  
13 Bertagnolio<sup>34</sup>, Soe Soe Thwin<sup>34</sup>, Anca Streinu-Cercel<sup>35,36</sup>, Leonardo Salazar<sup>37</sup>, Asgar Rishu<sup>38</sup>,  
14 Rajavardhan Rangappa<sup>39</sup>, David S.Y. Ong<sup>40</sup>, Madiha Hashmi<sup>41</sup>, Gail Carson<sup>1</sup>, Janet Diaz<sup>34</sup>,  
15 Rob Fowler<sup>42</sup>, Moritz U.G. Kraemer<sup>13,43</sup>, Evert-Jan Wils<sup>44</sup>, Peter Horby<sup>1</sup>, Laura Merson<sup>1,45</sup>,  
16 Piero L. Olliaro<sup>1</sup>, **ISARIC Clinical Characterisation Group**

17  
18  
19 **Affiliations**

20  
21 <sup>1</sup> ISARIC, Pandemic Sciences Institute, University of Oxford, UK

22 <sup>2</sup> Big Data Institute, Nuffield Department of Medicine, University of Oxford, Oxford, UK

23 <sup>3</sup> National Institute for Communicable Diseases, South Africa; Right to Care, South Africa

24 <sup>4</sup> Faculty of Medicine, University of British Columbia, Vancouver, Canada

**NOTE: This preprint reports new research that has not been certified by peer review and should not be used to guide clinical practice.**

- 25 <sup>5</sup> MRC Population Health Research Unit, Clinical Trials Service Unit and Epidemiological  
26 Studies Unit, Nuffield Department of Population Health, University of Oxford, Oxford, UK
- 27 <sup>6</sup> Institute of Infection, Veterinary and Ecological Sciences, Faculty of Health and Life  
28 Sciences, University of Liverpool, Liverpool, UK
- 29 <sup>7</sup> Respiratory Medicine, Alder Hey Children's Hospital, University of Liverpool, Liverpool,  
30 UK
- 31 <sup>8</sup> Royal Melbourne Hospital, Melbourne, Australia
- 32 <sup>9</sup> Centre for Integrated Critical Care, University of Melbourne, Melbourne, VIC
- 33 <sup>10</sup> Universidad de La Sabana, Chia, Colombia
- 34 <sup>11</sup> Clinica Universidad de La Sabana, Chia, Colombia
- 35 <sup>12</sup> Department of Computer Science, University of Oxford, UK
- 36 <sup>13</sup> Department of Biology, University of Oxford, UK
- 37 <sup>14</sup> Emergency Department. Hospital Universitario La Paz – IdiPAZ
- 38 <sup>15</sup> Department of Infectious Disease and Clinical Microbiology, Marmara University Pendik  
39 Training and Research Hospital, Istanbul, Turkey
- 40 <sup>16</sup> Roslin Institute, University of Edinburgh, Edinburgh, UK
- 41 <sup>17</sup> Intensive Care Unit, Royal Infirmary of Edinburgh, Edinburgh, UK
- 42 <sup>18</sup> Critical Care and Anesthesia, Nepal Mediciti Hospital, Lalitpur, Nepal
- 43 <sup>19</sup> King Abdullah International Medical Research Center and King Saud Bin Abdulaziz  
44 University for Health Sciences, Riyadh, Saudi Arabia
- 45 <sup>20</sup> Critical Care Asia
- 46 <sup>21</sup> Department of Infectious, Tropical Diseases and Microbiology (DITM), IRCCS Sacro Cuore  
47 Don Calabria Hospital, Negrar di Valpolicella, Verona, Italy
- 48 <sup>22</sup> Makati Medical Center, Makati City, Philippines

49 <sup>23</sup> Department of Anesthesiology, Centre hospitalier de l'Université de Montréal, Montréal,  
50 QC, Canada

51 <sup>24</sup> Department of Medicine, Critical Care Division, Centre hospitalier de l'Université de  
52 Montréal, Montréal, QC, Canada

53 <sup>25</sup> Carrefour de l'innovation et santé des populations, Centre de recherche du Centre hospitalier  
54 de l'Université de Montréal (CRCHUM), 900, rue St-Denis, porte S03-434, Montréal, QC,  
55 Canada

56 <sup>26</sup> Department of Anesthesiology and Pain Medicine, Université de Montréal, Montréal, QC,  
57 Canada

58 <sup>27</sup> Centre for Medical Informatics, The University of Edinburgh, Usher Institute of Population  
59 Health Sciences and Informatics, Edinburgh

60 <sup>28</sup> Department of Infectious Diseases, Hospital del Mar, Infectious Pathology and  
61 Antimicrobial Research Group (IPAR), Institut Hospital del Mar d'Investigacions Mèdiques  
62 (IMIM), Universitat Autònoma de Barcelona (UAB), CEXS-Universitat Pompeu Fabra,  
63 Barcelona, Spain

64 <sup>29</sup> Instituto de Infectologia Emílio Ribas, Brazil

65 <sup>30</sup> Lions Gate Hospital, North Vancouver, Canada

66 <sup>31</sup> International Islamic University Malaysia

67 <sup>32</sup> Clinical Research Centre, Sunway Medical Centre, Selangor Darul Ehsan, Malaysia

68 <sup>33</sup> Digital Health Research and Innovation Unit, Institute for Clinical Research, National  
69 Institutes of Health (NIH), Ministry of Health Malaysia

70 <sup>34</sup> World Health Organization, Geneva

71 <sup>35</sup> Carol Davila University of Medicine and Pharmacy, Bucharest, Romania

72 <sup>36</sup> National Institute for Infectious Diseases "Prof. Dr. Matei Bals", Bucharest, Romania

73 <sup>37</sup> Fundación Cardiovascular de Colombia, Colombia

74 <sup>38</sup> Critical Care Research Unit, Sunnybrook Health Sciences Centre, Toronto, ON, Canada

75 <sup>39</sup> Department of Critical Care Medicine, Manipal Hospital Whitefield, Bengaluru, Karnataka,

76 India

77 <sup>40</sup> Department of Medical Microbiology and Infection Control, Franciscus Gasthuis &

78 Vlietland, the Netherlands

79 <sup>41</sup> Critical Care Asia and Ziauddin University, Karachi Pakistan

80 <sup>42</sup> Department of Critical Care Medicine, Sunnybrook Health Sciences Centre, Toronto, ON,

81 Canada

82 <sup>43</sup> Pandemic Sciences Institute, University of Oxford, UK

83 <sup>44</sup> Department of Intensive Care, Franciscus Gasthuis & Vlietland, the Netherlands

84 <sup>45</sup> Infectious Diseases Data Observatory, Centre for Tropical Medicine and Global Health,

85 University of Oxford, Oxford, UK

86

87 ***Correspondence***

88 Bronner P. Gonçalves, [bronner.goncalves@ndm.ox.ac.uk](mailto:bronner.goncalves@ndm.ox.ac.uk)

89 *Abstract*

90 **Background:** Whilst timely clinical characterisation of infections caused by novel SARS-  
91 CoV-2 variants is necessary for evidence-based policy response, individual-level data on  
92 infecting variants are typically only available for a minority of patients and settings. **Methods:**  
93 Here, we propose an innovative approach to study changes in COVID-19 hospital presentation  
94 and outcomes after the Omicron variant emergence using publicly available population-level  
95 data on variant relative frequency to infer SARS-CoV-2 variants likely responsible for clinical  
96 cases. We apply this method to data collected by a large international clinical consortium before  
97 and after the emergence of the Omicron variant in different countries. **Results:** Our analysis,  
98 that includes more than 100,000 patients from 28 countries, suggests that in many settings  
99 patients hospitalised with Omicron variant infection less often presented with commonly  
100 reported symptoms compared to patients infected with pre-Omicron variants. Patients with  
101 COVID-19 admitted to hospital after Omicron variant emergence had lower mortality  
102 compared to patients admitted during the period when Omicron variant was responsible for  
103 only a minority of infections (odds ratio in a mixed-effects logistic regression adjusted for  
104 likely confounders, 0.67 [95% confidence interval 0.61 – 0.75]). Qualitatively similar findings  
105 were observed in sensitivity analyses with different assumptions on population-level Omicron  
106 variant relative frequencies, and in analyses using available individual-level data on infecting  
107 variant for a subset of the study population. **Conclusions:** Although clinical studies with  
108 matching viral genomic information should remain a priority, our approach combining publicly  
109 available data on variant frequency and a multi-country clinical characterisation dataset with  
110 more than 100,000 records allowed analysis of data from a wide range of settings and novel  
111 insights on real-world heterogeneity of COVID-19 presentation and clinical outcome.

112

113 **Funding:** This work was made possible with the support of UK Foreign, Commonwealth and  
114 Development Office and Wellcome [215091/Z/18/Z and 225288/Z/22/Z] and the Bill &  
115 Melinda Gates Foundation [OPP1209135]; CIHR Coronavirus Rapid Research Funding  
116 Opportunity OV2170359 and was coordinated out of Sunnybrook Research Institute;  
117 Wellcome Trust fellowship [205228/Z/16/Z] and the National Institute for Health Research  
118 Health Protection Research Unit (HPRU) in Emerging and Zoonotic Infections (NIHR200907)  
119 at the University of Liverpool in partnership with Public Health England (PHE), in  
120 collaboration with Liverpool School of Tropical Medicine and the University of Oxford;  
121 Institute for Clinical Research (ICR), National Institutes of Health (NIH) supported by the  
122 Ministry of Health Malaysia; a grant from foundation Bevordering Onderzoek Franciscus;  
123 MUGK acknowledges funding from the Branco Weiss Fellowship, Google.org, the Oxford  
124 Martin School, the Rockefeller Foundation, and the European Union Horizon 2020 project  
125 MOOD (#874850). The contents of this publication are the sole responsibility of the authors  
126 and do not necessarily reflect the views of the European Commission.

127 The COVID-19 Clinical Information Network (CO-CIN) data was collated by ISARIC4C  
128 Investigators. Data provision was supported by grants from: the National Institute for Health  
129 Research (NIHR; award CO-CIN-01), the Medical Research Council (MRC; grant  
130 MC\_PC\_19059), and by the NIHR Health Protection Research Unit (HPRU) in Emerging and  
131 Zoonotic Infections at University of Liverpool in partnership with Public Health England  
132 (PHE), (award 200907), NIHR HPRU in Respiratory Infections at Imperial College London  
133 with PHE (award 200927), Liverpool Experimental Cancer Medicine Centre (grant  
134 C18616/A25153), NIHR Biomedical Research Centre at Imperial College London (award IS-  
135 BRC-1215-20013), and NIHR Clinical Research Network providing infrastructure support.

136 *Introduction*

137

138 The emergence of novel SARS-CoV-2 variants represents a threat to the long-term control of  
139 COVID-19<sup>1</sup>. Whilst efforts to develop vaccines that protect against severe disease have been  
140 successful<sup>2-4</sup>, mutations in the viral genome that lead to ability to escape immunity, and  
141 increased transmissibility and/or clinical severity, either via intrinsic virulence or reduced  
142 vaccine effectiveness<sup>5</sup>, have the potential to cause substantial disease burden despite high  
143 vaccine coverage in many countries<sup>6</sup>.

144

145 These concerns motivated the prompt reporting, initially from South Africa<sup>7,8</sup>, of clinical  
146 characteristics of infection with the Omicron variant only weeks after its emergence<sup>9-11</sup>, which  
147 provided key information for risk assessment and health policies worldwide. Early data from  
148 South Africa showed reduced severity of Omicron lineage BA.1 and similar results were  
149 reported in the United Kingdom and the United States<sup>9,12,13</sup>. However, the impact, in terms of  
150 clinical consequences (i.e., disease severity), of new variants has been shown to be context-  
151 specific, due to regional differences in disease epidemiology, including local circulation of  
152 previous variants and their cumulative incidences, variable vaccination coverages, and  
153 heterogeneity in population-level frequencies of risk factors (e.g. frequency of comorbidities)  
154 for severe disease and mortality. For this reason, international studies with standardised  
155 protocols are necessary to allow comparative assessments across different countries and  
156 epidemiological contexts.

157

158 To understand the impact of the emergence of the Omicron variant of SARS-CoV-2 on the  
159 clinical epidemiology of COVID-19 at the global level, in this study, we report multi-country  
160 data, from all six World Health Organization regions, on clinical characteristics and outcomes

161 of Omicron variant infections in hospitalised patients and compare with infections in patients  
162 admitted with other SARS-CoV-2 variants. For that, we use publicly available population-level  
163 data on relative frequencies of the Omicron variant to determine periods when infections were  
164 likely to be caused by Omicron versus other variants/lineages and compare infections  
165 descriptively and using multivariable statistical models. In addition, we present an analysis that  
166 only includes patients with individual-level data on the infecting variant and paired clinical  
167 information.

168

## 169 **Methods**

170

171 *ISARIC Clinical Characterisation protocol*

172

173 Analyses presented in this manuscript use the ISARIC (International Severe Acute Respiratory  
174 and Emerging Infections Consortium) COVID-19 database, which includes prospectively  
175 collected data from countries where ISARIC partner institutions are located (see a global map  
176 of all ISARIC partner institutions here <https://isaric.org/about-us/membership/>). A full  
177 description of the data collection protocol and database can be found here  
178 <https://isaric.org/research/covid-19-clinical-research-resources/>. In short, data collection for  
179 this initiative was standardised, using the ISARIC case report forms, and pivoted into pandemic  
180 mode in January 2020 to enable rapid characterisation of the clinical presentation and severity  
181 of COVID-19. After the emergence of the Omicron variant, first reported in November 2021<sup>14</sup>,  
182 a call was launched to encourage international investigators partnering with ISARIC to rapidly  
183 share data on patients with confirmed or suspected COVID-19 to describe the clinical  
184 characteristics of Omicron variant infection in different settings; recommendations on possible  
185 hospitalised population sampling approaches were shared. Patients admitted to hospital from



186 1<sup>st</sup> October 2021 to 28<sup>th</sup> February 2022 were included in this analysis. More information on  
187 ISARIC can be found in <sup>15-17</sup>.

188

### 189 *Population-level SARS-CoV-2 variant data*

190

191 Two statistical analysis plans (SAPs) were developed in December 2021 with approaches to be  
192 used in the characterisation of Omicron variant infection. Analyses described in the first SAP  
193 required individual-level data on the clinical presentation and paired data on the variant causing  
194 the infection. In the second SAP we used population-level frequencies of SARS-CoV-2  
195 lineages to infer individual infecting variant during different time periods as Omicron or non-  
196 Omicron variants (**Figure 1**). Since individual-level data on the infecting variant were limited  
197 to a few countries, these data are presented for comparison with the analysis performed using  
198 population-level variant data.

199

200 For the analysis that required information on population-level variant frequency, for countries  
201 contributing clinical data to this analysis, data from the Global Initiative on Sharing All  
202 Influenza Data (GISAID) on each of the main SARS-CoV-2 variants were collated. These data  
203 were aggregated by sample collection date and variant using a computational pipeline available  
204 here: <https://github.com/globaldothealth/covid19-variants-summary>. The GISAID data were  
205 downloaded on 11 April 2022; Pango lineage designation v1.2.133 was used<sup>18</sup>. We used these  
206 data to define calendar time periods when the Omicron variant represented the majority of  
207 infections in each country, and also periods during which the Omicron variant represented only  
208 a small (<10%) fraction of infections. For each country, the period during which infections  
209 were assumed to be caused by other variants ended in the epidemiological week before the  
210 Omicron variant relative frequency crossed a low threshold percentage (*e.g.*, 10%) (see **Figure**

211 1). The first epidemiological week when Omicron variant frequency, as a proportion of all  
212 circulating variants, was higher than a given threshold percentage (90% in analyses presented  
213 in the *Results* section and 80% in sensitivity analyses) was used as the start date of the period  
214 during which all admissions were considered to be caused by the Omicron variant. Note (i) that  
215 amongst different countries these two study periods started in different calendar weeks,  
216 depending on when the Omicron variant was introduced to the location and on the rate of its  
217 local spread, and (ii) that in this analysis all Omicron sub-lineages are included (*e.g.*, BA.1.1,  
218 BA.2).

219

#### 220 *Statistical analysis*

221

222 We report the frequencies of symptoms, comorbidities and vaccination status stratified by  
223 country and time periods (before and after Omicron emergence). We also assessed the case  
224 fatality risk and the frequency of a composite outcome that combined death and invasive  
225 mechanical ventilation use during the two study periods; in this analysis, patients who were  
226 discharged from hospital before the end of the follow-up period used in the definition of the  
227 outcome (14 or 28 days) were assumed to have been alive at the end of that period. When  
228 estimating risk of death by day 14 after admission or onset of symptoms, whichever happened  
229 later, numerators were numbers of patients who died before or on day 14 after admission;  
230 denominators in this calculation included those who died by day 14, those discharged at any  
231 time during follow-up, and those who were followed at least for 2 weeks, regardless of final  
232 outcome, including those who died after 14 days. The same approach was used to analyse the  
233 28-day fatality risk. Note that for 35.5% of patients admitted to hospital during the two study  
234 periods defined by Omicron variant frequency, date of onset of symptoms was missing; for  
235 these patients we assumed onset of clinical disease happened before admission – *i.e.* that these

236 were not hospital acquired infections. Furthermore, for 7.2% of patients, outcome date (date of  
237 death or discharge or latest date with follow-up information) was missing and 0.4% had an  
238 outcome date that was earlier than date of admission or of symptoms onset; except for those  
239 who were discharged and had missing outcome date, these two groups of patients were not  
240 included in analyses on the frequencies of clinical outcomes but were included in analyses  
241 describing distributions of symptoms and comorbidities. As described in the *Results* section,  
242 some patients included in this study were admitted for treatment of a medical condition other  
243 than COVID-19 but tested positive incidentally during hospitalisation.

244

245 We used mixed-effects logistic regression models to assess the association between study  
246 period, *i.e.* periods defined by the Omicron variant frequency at the population level, and 14-  
247 day death risk, adjusting for age, sex, and vaccination status. Age was included with the  
248 following categories: patients younger than 18 years, aged between 18 and 60 years, and older  
249 than 60 years. Random intercepts were used to account for potential variation in the risk of  
250 death between study sites in different countries. We also present models that adjust for the most  
251 commonly reported comorbidities; for each comorbidity included in the analysis, a binary  
252 variable was used to indicate presence or absence of the condition. Cox proportional hazards  
253 models on time to death, adjusted for age and sex and stratified by country and previous  
254 vaccination, were also fit; results of survival analyses are shown in the *Supplementary*  
255 *Appendix*. Note that vaccination status was used as a binary variable in these models, without  
256 dose counts or timing of vaccination, and due to limited information on dates of doses we did  
257 not adjust for time since the most recent vaccination.

258

259 R and Python were used for data processing and descriptive analyses<sup>19,20</sup>. Code used for  
260 analyses and aggregated data used to generate figures are available<sup>21</sup> (see also *Data availability*  
261 *statement*). Stata 17 was used to fit mixed-effects logistic models and perform survival analysis.

262

## 263 **Results**

264

### 265 *Description of study population and study periods*

266

267 Overall, 129,196 records from patients admitted to hospital between 1<sup>st</sup> October 2021 and 28<sup>th</sup>  
268 February 2022 were included in this analysis. Clinical centres in 30 countries contributed data  
269 (median 53 observations per country, interquartile range [IQR] 18 – 162); 11 countries  
270 contributed data on more than 100 hospitalised clinical cases (**Table S1**). 54.0% and 42.6% of  
271 records were from South Africa and the United Kingdom, respectively. **Tables S2** and **S3** show  
272 information on missing data for both symptoms and comorbidities.

273

274 In addition to the clinical data contributed by the collaborating centres, population-level variant  
275 frequency data were used to define time periods when most infections in a country were  
276 assumed to be caused by Omicron versus other lineages. As presented in **Figure 1**, different  
277 countries reached the threshold relative frequencies of 10 and 90% of infections being caused  
278 by the Omicron variant at different times. Similar plots are presented in **Figures S1A** and **S1B**  
279 for other threshold frequencies. In **Table S4**, we list limitations in the use of these data to define  
280 time periods when infections were more likely caused by Omicron versus previous variants.

281

282 Using information presented in **Figure 1**, 103,061 patients, from 28/30 countries, were  
283 admitted either in the two months before the Omicron variant represented 10% of infections at

284 the country-level (N = 22,921; henceforth, the *pre-Omicron period*) or in the two months after  
285 (N = 80,140) the Omicron variant was responsible for at least 90% of the infections; for ease  
286 of reference, the latter period will be referred to as the *Omicron period*. Note that 12,085  
287 patients were admitted during weeks between the end of the *pre-Omicron period* and the start  
288 of the *Omicron period* and are not included in analyses presented in the following subsections  
289 (**Figure 2**); and 12,560 records of patients admitted two months after Omicron variant  
290 represented 90% of infections were not analysed. All patients from South Africa, the United  
291 Kingdom and Malaysia were assumed to be SARS-CoV-2 positive, as this is one criterion for  
292 inclusion in their databases. Of the 2,296 records from other countries, information on SARS-  
293 CoV-2 diagnostic testing was available for 1,999 observations; whilst patients with negative  
294 PCR test result (N=10) were excluded from the rest of the analysis, those with missing PCR  
295 data (N=297) were assumed positive (see **Table S5** for distribution by country). Of note,  
296 clinical data from Laos were not included in comparative analyses as there was only limited  
297 evidence of increase in local Omicron variant relative frequency during the study period  
298 (additional information is provided in the *Supplementary Appendix*). For Pakistan, population-  
299 level data available at the time of the analysis indicate increasing Omicron variant frequency  
300 during the study period, but the proportion of local infections caused by this variant fluctuated;  
301 analyses of clinical data from that country are described in the *Supplementary Appendix*.

302

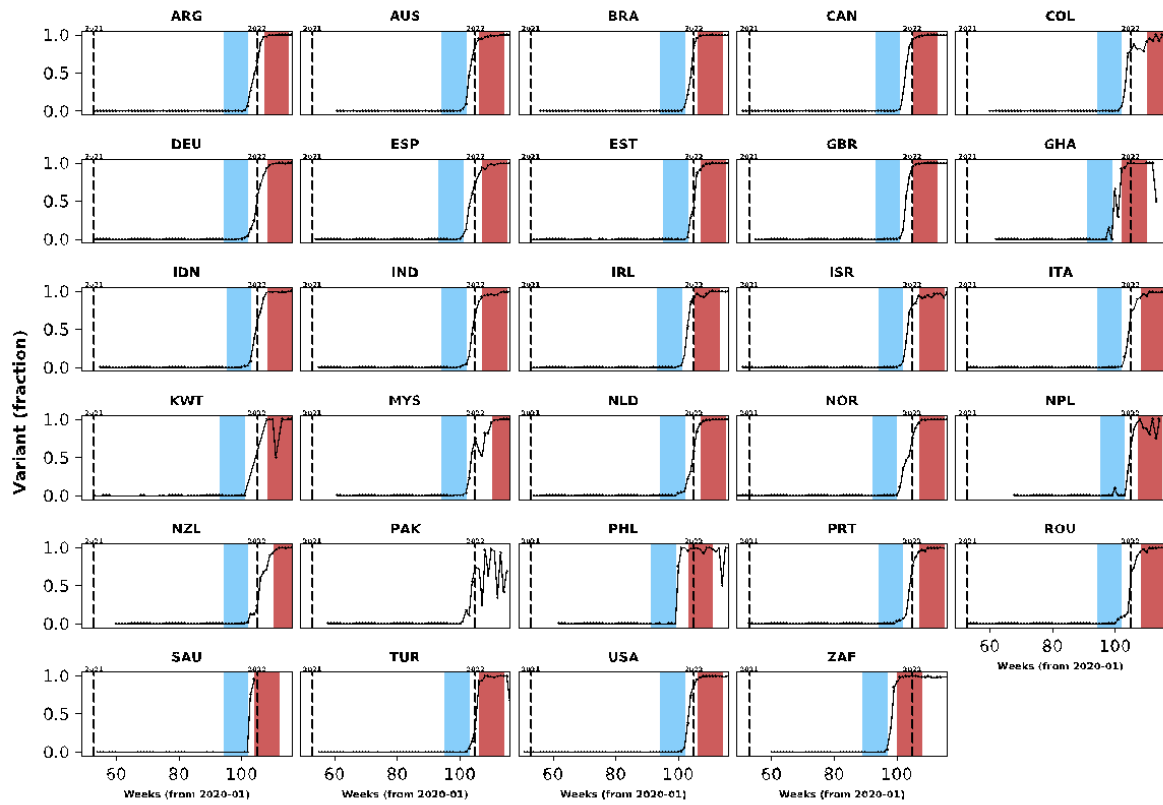
303 The median (IQR) ages of patients during the *pre-Omicron* and *Omicron periods* were 62 (43  
304 – 76) and 50 (30 – 72) years, respectively; however, country-specific medians suggest that the  
305 younger age of patients after Omicron variant emergence in the combined dataset is at least  
306 partially explained by an increase in the proportion of data contributed by South Africa, relative  
307 to the proportion of data contributed by other countries (**Table S6**). 48.3% and 54.8% of  
308 patients admitted during these periods, respectively, were female. 5.2% and 9.1% of patients

309 in the *pre-Omicron* and *Omicron periods*, respectively, had the date of disease onset after  
310 admission date. In some countries, information on whether COVID-19 was the main reason  
311 for hospitalisation was also collected: 70.1% (N = 2,248) and 69.0% (N = 27,804) of patients  
312 during the *pre-Omicron* and *Omicron periods* respectively were admitted to hospital due to  
313 COVID-19; patients for whom this information was available were primarily from South  
314 Africa (94.9%). There was no consistent pattern of within-country changes related to this  
315 variable (**Table S7**). Of note, 465/36,761 (1.3%) individuals reported a history of previous  
316 SARS-CoV-2 infection before the acute episode leading to hospitalisation included in this  
317 analysis (128/15,563 [0.8%] and 337/21,198 [1.6%] in the *pre-Omicron* and *Omicron periods*,  
318 respectively).

319

320

321 **Figure 1. Population-level relative frequency of Omicron variant infections by country**  
322 **and time.** Here, data aggregated by epidemiological week and country were used to calculate  
323 the proportions of infections caused by the Omicron variant. For analyses reported in the  
324 *Results* section, two epidemiological periods were defined: the first corresponds to the two  
325 months before the Omicron variant reaches a threshold frequency of 10% (blue area in each  
326 panel; the *pre-Omicron period*); the second period corresponds to the two months after  
327 Omicron variant frequency reaches 90% (red area in each panel; the *Omicron period*).  
328 Sensitivity analyses, using other relative frequencies for defining periods, are presented in the  
329 *Supplementary Appendix*. Each panel presents data for a country (ISO3 code as title)  
330 contributing clinical data for this analysis; y-axes represent proportions in each epidemiological  
331 week (x-axes). Data for Laos are not shown as, at the time of the analysis, samples were not  
332 included in the database that informed population-level frequency of Omicron variant during  
333 the study period. In Pakistan, due to fluctuations in Omicron variant frequency in the dataset,  
334 study periods were not defined. More information on the spread of the Omicron variant in Laos  
335 and analysis of the clinical data from Pakistan are presented in the *Supplementary Appendix*.  
336



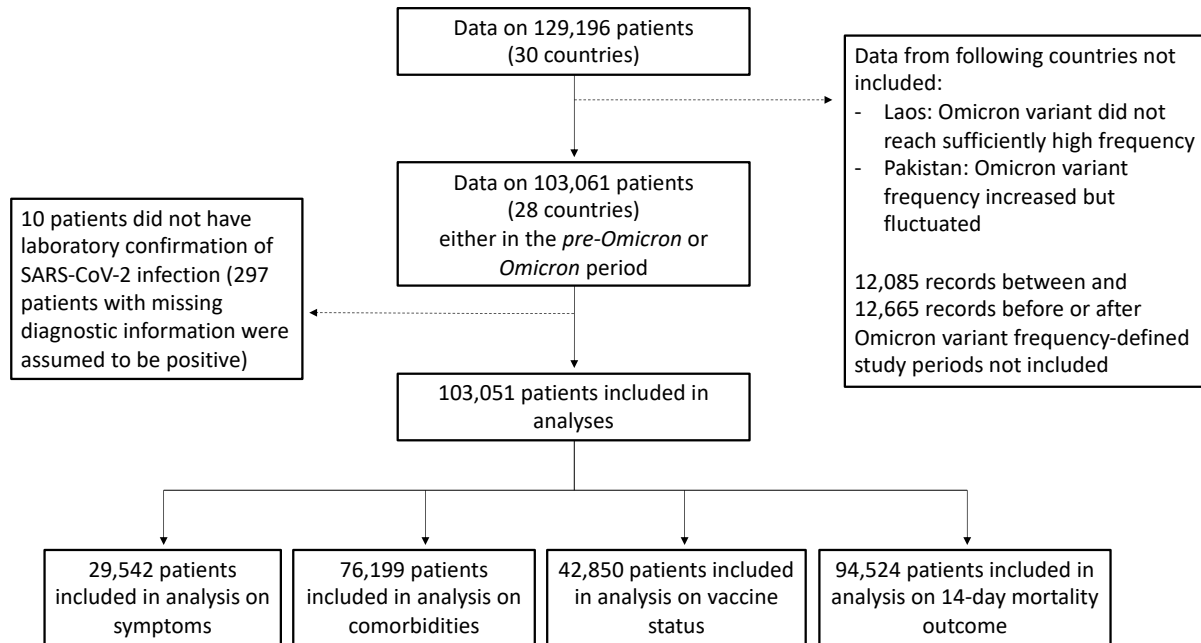
337

338



339 **Figure 2. Study flowchart.** In this figure, we present the numbers of observations included in  
340 analyses in the different subsections of the *Results* section.

341



342

343

344 *Temporal changes in frequencies of symptoms and comorbidities*

345

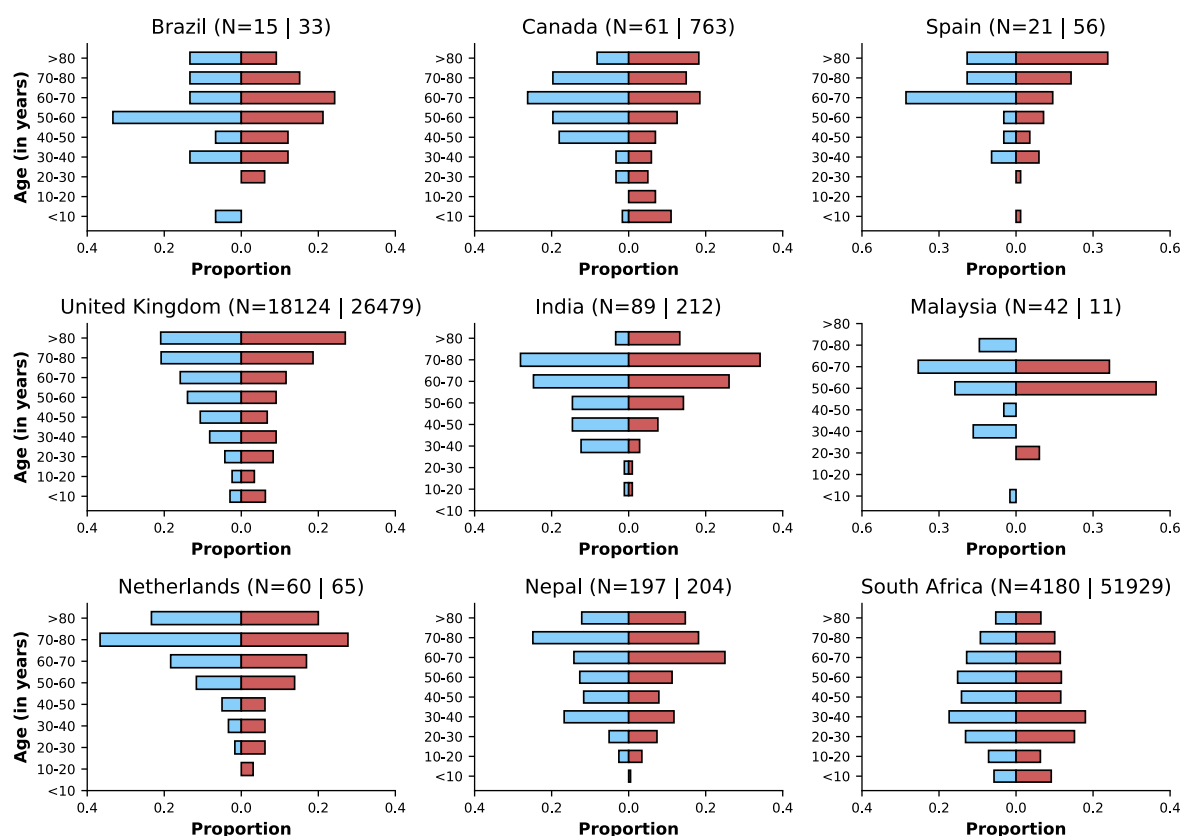
346 **Figure 3** shows age distributions of hospitalised patients before versus after Omicron variant  
347 emergence; only countries with at least 10 observations in each period are included. Despite  
348 similar medians of age in the two periods within countries, in some, but not all, country-specific  
349 datasets, an increase in the proportion of the study population from younger ages was observed,  
350 although the number of patients in some age categories is small. Furthermore, there were  
351 differences between countries with regard to age distribution of cases, which could reflect  
352 either epidemiological differences between settings or else differences in recruitment of  
353 patients for this analysis.

354

355 The frequencies of the five most commonly reported symptoms and comorbidities in the  
356 combined (all countries) dataset during the two study periods are presented in **Figure 4A** and  
357 **4B**, by country and study period. When analysing the combined dataset, there was a decrease  
358 in the percentage of patients with at least one of the comorbidities listed in **Table S3** before  
359 versus during Omicron variant dominance (78.9% [N = 15,574] and 59.6% [N = 60,625],  
360 respectively); however country-specific data show variable patterns (**Table S8**). With a total  
361 of 14 comorbidities being considered, median (IQR) numbers of comorbidity variables with  
362 non-missing information in the *pre-Omicron* and *Omicron periods* were 11 (0 – 12) and 9 (1 –  
363 11), respectively. Whilst the directions of changes (increase or decrease) in frequencies of  
364 comorbidities were not consistent across countries, for many symptoms frequencies were lower  
365 during the *Omicron period* versus the *pre-Omicron period*. As can be seen in **Figure S2**, this  
366 pattern was consistent after stratifying frequencies of symptoms by age groups. The percentage  
367 of patients during the *pre-Omicron period* with at least one of the symptoms in **Table S2** was  
368 96.6% (N = 11,683); this percentage was 88.6% (N = 17,859) during the *Omicron period* (see

369 **Table S9** for country-specific numbers). These numbers refer to records from countries other  
370 than South Africa, where data on symptoms were not systematically available. The median  
371 (IQR) numbers of variables with non-missing data on symptoms were 14 (0 – 19) and 17 (0 –  
372 19) for the *pre-Omicron* and *Omicron periods*, respectively.  
373

374 **Figure 3. Age distributions by study period and country.** Age distributions (x-axes show  
375 proportions; y-axes, age groups) when Omicron variant relative frequency was below 10 %  
376 (blue bars) and when the frequency was 90% or higher (red bars). Data from different countries  
377 are shown in different panels; only countries with 10 or more records in each period are  
378 presented. Numbers of observations with age information are shown for each study period next  
379 to country names. For all countries except Spain and Malaysia, x-axes range from 0 to 0.3 for  
380 the two study time periods.  
381



382

383

384

385

386

387

388 **Figure 4. Frequencies of symptoms and comorbidities by study period and country.**

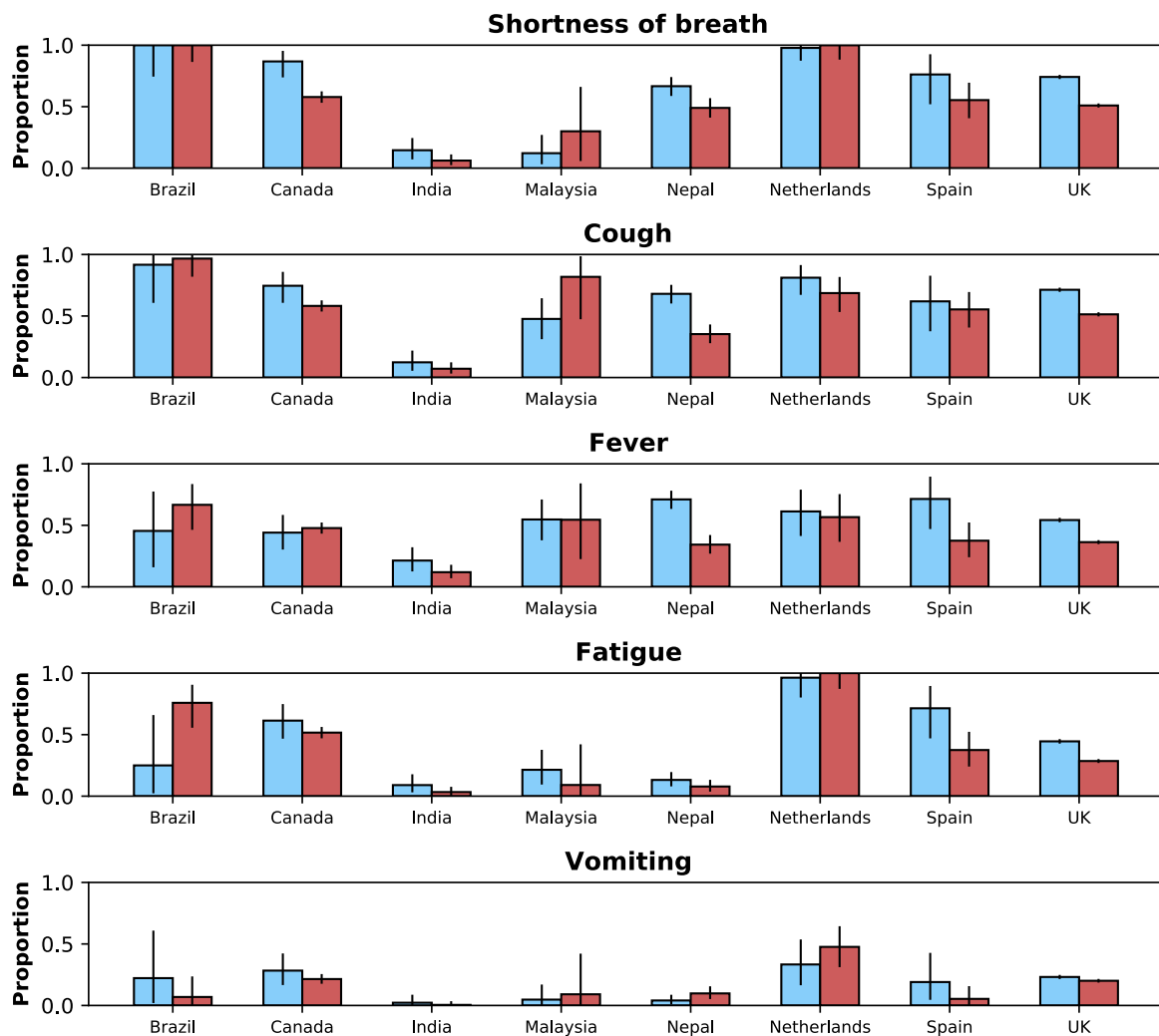
389 Frequencies of the five most common symptoms (**A**) and comorbidities (**B**) during the *pre-*  
390 *Omicron* (blue bars) and *Omicron* (red bars) *periods*. 95% confidence intervals are shown.  
391 Note that South Africa is included in panel B but not panel A. For panel **A**, only data from the  
392 *pre-Omicron period* were used to identify the most frequent symptoms; for panel **B**, as data on  
393 comorbidities were available in the two countries contributing most records, the United  
394 Kingdom and South Africa, and since their relative contributions to the study population  
395 changed in the two study periods, the dataset including both the *pre-Omicron* and *Omicron*  
396 *periods* was used to identify most common comorbidities. Only countries with at least 10  
397 observations during each study period are included. For each symptom or comorbidity,  
398 whenever fewer than 5 observations without missing data were available, bars were not shown  
399 and the text “NS” (not shown) was included.

400

401

402

403 A



404

405

406

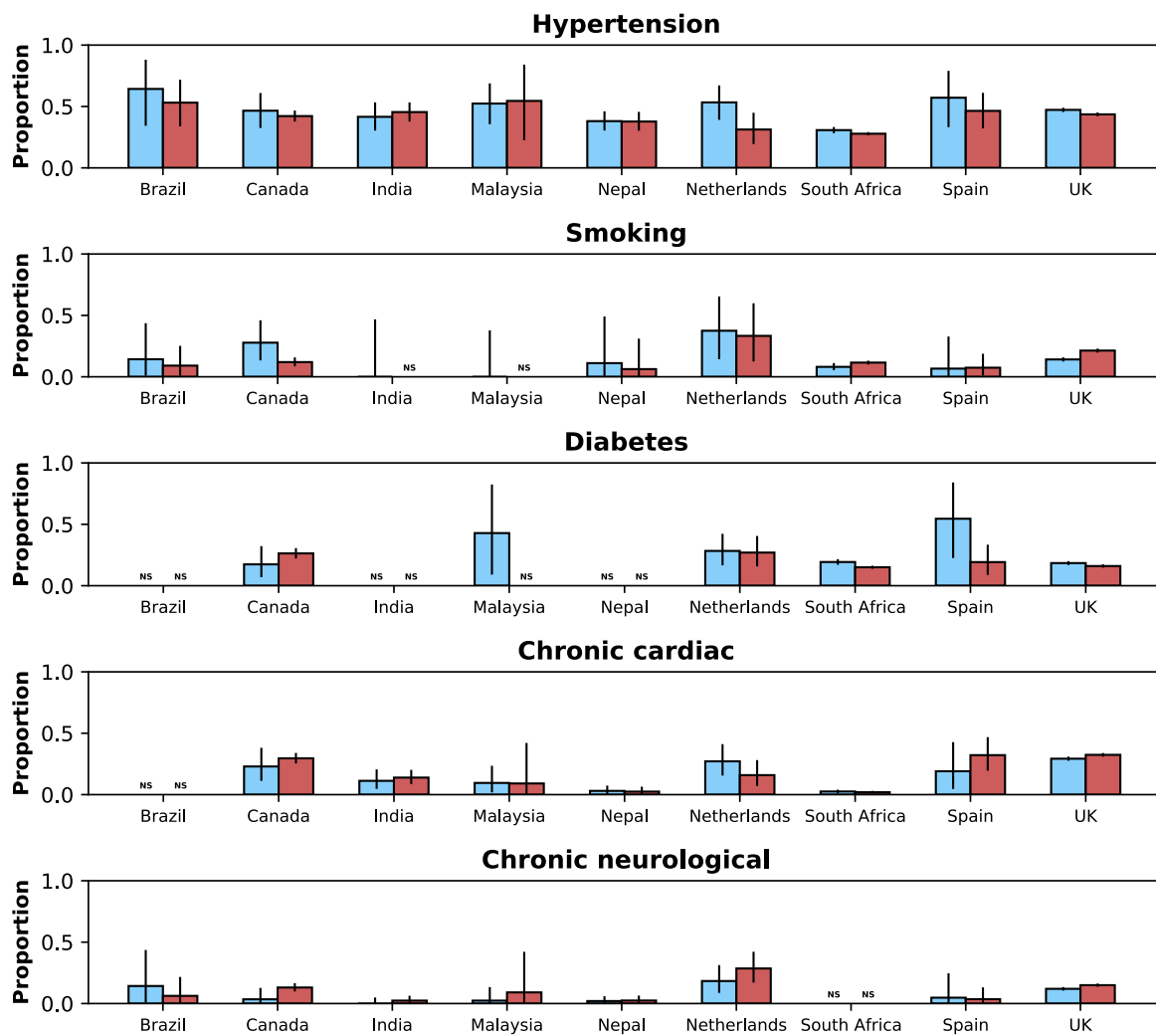
407

408

409

410

411 **B**



412

413

414

415 *Vaccination history in hospitalised patients*

416

417 Data on vaccination status were available for 42,850/103,051 hospitalised patients (8,952  
418 during the *pre-Omicron period* and 33,898 during the *Omicron period*). In **Table 1**, we present  
419 vaccination status for study participants in each of the two periods by country. As expected,  
420 there is considerable inter-country variation in the frequency of vaccination. Age-stratified  
421 vaccination frequencies are shown in **Figure S3** and suggest increases in frequency of previous  
422 vaccination during the period after Omicron variant emergence. However, as shown in **Figure**  
423 **S4**, with population-level vaccination coverage from before Omicron variant emergence up to  
424 the end of February 2022, in many countries contributing data to this study there was an  
425 increase in vaccination coverage over time, including in the periods during and after the  
426 emergence of the Omicron variant. Note that 55.8% of vaccinated patients received two or  
427 more doses before hospital admission.

428

429



430 **Table 1. Vaccination status by country and study period.** Data for period-country  
 431 combinations with less than 10 observations are not presented. Data on vaccination status were  
 432 not available for patients from Saudi Arabia.

433

Country	<i>pre-Omicron period</i>		<i>Omicron period</i>	
	% Vaccinated	Total N	% Vaccinated	Total N
<i>Brazil</i>	84.6	13	87.9	33
<i>Canada</i>	32.2	59	57.3	686
<i>Colombia</i>	42.1	19	-	<10
<i>Estonia</i>	-	<10		
<i>Germany</i>	-	<10	-	<10
<i>India</i>	34.8	23	84.8	33
<i>Malaysia</i>	79.3	29	80.0	10
<i>Nepal</i>	25.3	190	39.3	183
<i>Netherlands</i>	60.0	60	51.0	51
<i>New Zealand</i>	5.9	34	-	<10
<i>Norway</i>	-	<10	82.2	45
<i>Philippines</i>	78.6	14	-	<10
<i>Portugal</i>	-	<10	-	<10
<i>Romania</i>	-	<10	78.6	98
<i>South Africa</i>	15.1	1605	27.9	24752
<i>Spain</i>	45.0	20	70.9	55
<i>United Kingdom</i>	65.4	6865	70.3	7846
<i>United States of America</i>	-	<10	-	<10
<i>Argentina</i>			-	<10
<i>Australia</i>			-	<10
<i>Indonesia</i>			-	<10
<i>Israel</i>			54.5	11
<i>Kuwait</i>			66.7	18
<i>Turkey</i>			74.1	27

434

435

436

437

438

439 *Clinical outcomes*

440

441 Overall, 11,314 patients admitted during the two study periods died during hospitalisation:  
442 8,517/94,524 by day 14 after hospital admission or disease onset, whichever occurred latest,  
443 and 10,530/94,461 by day 28; 738 patients died after day 28 and 46 patients who died did not  
444 have an outcome date recorded. As explained in the *Methods* section, denominators for fatality  
445 risks included patients who were discharged or still in hospital by day 14 or 28. Median (IQR)  
446 times to death were 10 (5 – 17) and 6 (3 – 12) days for the periods before and after Omicron  
447 emergence, respectively; similar information, on time from admission or symptoms onset to  
448 death, stratified by country is shown in **Table S10**. In some countries (see **Figure 5** for  
449 comparisons on 14-day fatality risk, and **Figure S5** for comparisons using the 28-day period),  
450 during the *Omicron period*, a lower proportion of patients died during hospitalisation,  
451 compared to the period before Omicron emergence; in India, the opposite pattern was observed  
452 although numbers for that country were limited.

453

454 In a mixed-effects logistic model on 14-day fatality risk that adjusted for sex, age categories,  
455 and vaccination status, hospitalisations during the *Omicron period* were associated with lower  
456 risk of death (see **Table 2**). The inclusion of common comorbidities in the model did not change  
457 the estimated association. Similar results were obtained when using 28-day fatality risk as the  
458 outcome. We repeated the 14-day fatality risk analysis excluding patients who reported being  
459 admitted to hospital due to a medical condition other than COVID-19; the estimated odds ratio  
460 for the association between study period and the outcome was similar to those reported in **Table**  
461 **2**. Cox proportional hazards models were also fit, and similar results were obtained (**Table**  
462 **S11**).

463

464 In addition to using fatality risk in our analyses, we also considered the composite outcome of  
465 death or invasive mechanical ventilation (IMV). Data on IMV were available in 74,563 records.  
466 3,111/74,563 patients required IMV during hospitalisation; the date when IMV was initiated  
467 was reported for 1,070/3,111 patients. Of those patients with data on IMV, 10,049/67,383  
468 patients either died or required IMV. **Figure S6** shows proportions of patients with this  
469 outcome by country and study period. Since date of IMV initiation was only available for  
470 1,070/3,111 records, we do not present graphs by time since admission date.  
471

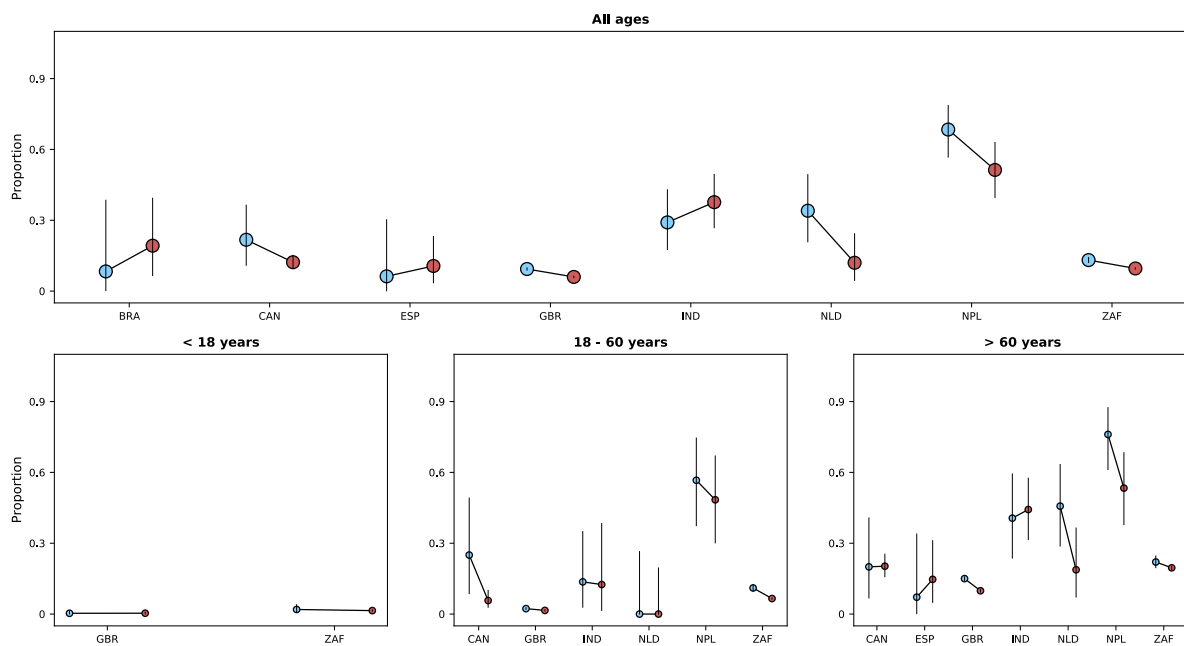
472 **Table 2. Odds ratio for the association between study period and mortality outcome.**

473 Results of multivariate logistic models, with random intercepts for countries, on 14-day fatality  
 474 risk are presented. Different models were fit that included different variables. Model III adjusts  
 475 for all variables in the table, however due to missing data in the vaccination and comorbidity  
 476 variables, less than a third of the study population was included in the estimation of that model;  
 477 models I and II were thus fit that did not adjust for these variables and included more  
 478 individuals. In model IV, a category for missing data was created for the variable on previous  
 479 vaccination; individuals in that category had an odds ratio of 0.74 (0.69 – 0.80; reference group  
 480 in this comparison is the non-vaccinated group). Note that similar results were obtained when  
 481 finer categorisation of the age variable, 10-year intervals, was used. As previous SARS-CoV-  
 482 2 infection has been shown to reduce severity of COVID-19<sup>22</sup>, a multivariable model that also  
 483 adjusted for this variable was fit; in that model, the odds ratio for the association between study  
 484 period and fatality risk was 0.70 (0.61 – 0.80). As in other epidemiological studies, estimates  
 485 for covariates other than the primary exposure (study period) should be carefully interpreted<sup>23</sup>.

<b>Model</b>	<b>I</b>	<b>II</b>	<b>III</b>	<b>IV</b>
<b>Number of observations</b>	94,077	39,950	26,728	56,329
	<b>Odds ratio (95% CI)</b>	<b>Odds ratio (95% CI)</b>	<b>Odds ratio (95% CI)</b>	<b>Odds ratio (95% CI)</b>
<b>Variables</b>				
<i>Omicron period*</i>	0.65 (0.62 - 0.69)	0.67 (0.61 - 0.75)	0.68 (0.60 - 0.77)	0.64 (0.59 - 0.69)
<i>Sex (male)</i>	1.32 (1.26 - 1.38)	1.33 (1.23 - 1.43)	1.36 (1.24 - 1.49)	1.33 (1.25 - 1.42)
<b>Age</b>				
<i>Older than 60 years</i>	Reference	Reference	Reference	Reference
<i>Aged between 18 and 60 years</i>	0.26 (0.25 - 0.27)	0.24 (0.22 - 0.26)	0.27 (0.25 - 0.30)	0.30 (0.27 - 0.32)
<i>Younger than 18 years</i>	0.06 (0.05 - 0.07)	0.06 (0.05 - 0.07)	0.07 (0.05 - 0.09)	0.06 (0.05 - 0.08)
<i>Previous vaccination</i>	-	0.60 (0.55 - 0.65)	0.53 (0.48 - 0.59)	0.59 (0.54 - 0.65)
<b>Comorbidities</b>				
<i>Hypertension</i>	-	-	1.29 (1.16 - 1.42)	1.26 (1.17 - 1.35)
<i>Diabetes</i>	-	-	1.22 (1.09 - 1.38)	1.22 (1.12 - 1.32)
<i>Chronic cardiac disease</i>	-	-	1.50 (1.31 - 1.71)	1.51 (1.39 - 1.65)

486 \*Odds ratio in univariate analysis 0.65 (0.61 – 0.69) (N = 94,524)

487 **Figure 5.** Risk of death (y-axes) in the first 14 days after hospital admission or disease onset,  
488 whichever occurred latest, during the *pre-Omicron* and *Omicron periods*. In each panel, the x-  
489 axis shows countries (ISO3 codes are presented), with different periods represented by circles  
490 with different colours (blue circles for the *pre-Omicron period*; red circles, for the *Omicron*  
491 *period*). 95% confidence intervals are also presented. The top panel shows data for individuals  
492 of all ages; the bottom panels, data for patients aged less than 18 years, between 18 and 60  
493 years, and older than 60 years. Only countries with at least 10 observations in the corresponding  
494 age group in both study periods are included.  
495



496

497

498

499

500 *Comparison with individual-level variant data*

501

502 Whilst our approach of using population-level variant composition information allowed  
503 inclusion in this analysis of data from settings where it was not feasible to systematically  
504 identify the infecting SARS-CoV-2 variant, the use of aggregated data to infer the infecting  
505 variant has limitations, including the possibility of misclassification (see **Table S4** for a list of  
506 limitations of this approach). To assess whether patterns described in previous subsections are  
507 generally consistent with analyses using individual-level variant information, we repeated  
508 comparisons for countries where information on the infecting variant was collected; data on  
509 variant were available for 1,275 records. Of these, 852 patients were admitted either during the  
510 *pre-Omicron period* or the *Omicron period*: whilst only 1.9% (16/827) of those admitted during  
511 the *Omicron period* were infected by a variant other than Omicron, 4.0% (1/25) of patients  
512 during the *pre-Omicron period* had Omicron as the causative virus variant; for the calculation  
513 of these percentages data from a participating institution that prioritised contributing Omicron  
514 variant cases were not included. Except for six clinical cases in South Africa and Saudi Arabia,  
515 all infections were caused either by Delta or Omicron variants, and for this reason only data on  
516 these two variants are presented (**Table S12**). Figures similar to **Figures 3-5** but stratified by  
517 infecting variant, rather than study period, are shown in the *Supplementary Appendix (Figure*  
518 **S7)**. The numbers of participants included in the latter comparisons are lower than the numbers  
519 included in the comparisons using population-level variant data; for countries with ten or more  
520 observations of both Omicron and Delta variants, the patterns observed are broadly consistent  
521 with results obtained using the population-level approach.

522

523 We also performed sensitivity analyses using different population-level threshold frequencies  
524 for the Omicron variant (10% and 80%, rather than 10% and 90%); these are shown in **Figure**  
525 **S8** and are consistent with findings described in the *Results* section.

526

527

528 *Discussion*

529

530 When new variants of SARS-CoV-2 emerge during the COVID-19 pandemic, several critical  
531 questions are asked by public health authorities as to differences in disease severity and risk  
532 factors, and vaccine protection. Here, we leveraged data from multiple sources, from  
533 population-level variant frequency information to individual-level data on the clinical journey  
534 of hospitalised patients with COVID-19, and from multiple countries, to compare  
535 characteristics of patients with infection during periods before Omicron emergence versus  
536 when this variant became locally dominant. We observed that when the relative frequency of  
537 the Omicron variant was high, the proportions of patients with some of the most common  
538 COVID-19 symptoms were lower compared to the *pre-Omicron period*. In most but not all  
539 countries, patients presenting to hospital during the *Omicron period* had better outcomes (lower  
540 fatality risk), compared to those hospitalised before Omicron emergence, which could be  
541 related to lower variant virulence, prior immunity or residual confounding. In summary, our  
542 approach, which was consistent with analyses that used individual-level variant data from a  
543 subset of the study population, suggest clinical differences in patients hospitalised with the  
544 Omicron variant versus those admitted before this variant spread, and these differences vary  
545 by country.

546

547 Our finding that mortality was generally lower during the period when the Omicron variant  
548 was dominant is consistent with data from South Africa reported earlier this year<sup>9</sup>. In that study,  
549 which included more than 30,000 patients with individual-level information on the infecting  
550 variant, individuals infected with the Omicron variant had a lower risk of disease progression  
551 that required hospital admission than individuals infected with other variants; amongst  
552 hospitalised patients, the odds ratio for the association between Omicron variant infection and



553 severe disease was 0.7 (95% confidence interval [CI] 0.3 – 1.4), which is similar to that  
554 observed in this study using death as the outcome. A lower risk of death in Omicron variant-  
555 infected versus Delta variant-infected patients was also observed in a recent study in the United  
556 Kingdom, although that analysis did not assess risk of death conditional on hospitalisation but  
557 rather on infection<sup>13</sup>. In our analyses, statistical models were adjusted for vaccination history,  
558 which is a potential confounder of the association between dominant variant period and risk of  
559 death. However, the simplistic approach of using vaccination as a binary variable may be  
560 subject to residual confounding by time since vaccination, number of doses, or vaccine type.  
561 Moreover, as part of the effort to characterise Omicron variant infection, information on  
562 whether COVID-19 was the main reason for hospitalisation was collected during the study  
563 period and suggests that for a non-negligible proportion of patients other clinical conditions  
564 might have prompted hospital admission. All these factors might have contributed to the  
565 observed association, possibly to different degrees in different countries, reason for which this  
566 result should not be assumed to necessarily relate to differences in variant virulence.

567

568 During the period of Omicron variant dominance, fewer patients presented with the symptoms  
569 most commonly reported earlier. For example, we observed in the United Kingdom that  
570 shortness of breath was present in about three-quarters of patients before Omicron variant  
571 emergence and in about half of patients during the *Omicron period*. Notably, a similar pattern  
572 was observed in Nepal, where patients were more often recruited from critical care settings.  
573 One possible explanation for this finding would be if incidental SARS-CoV-2 infections, *i.e.*  
574 infections that were not the primary reason for hospitalisation, were more frequent during the  
575 *Omicron period*; the high transmissibility of this variant, and the consequent peaks in numbers  
576 of infections, together with its reported association with lower severity, provides support for  
577 this hypothesis. However, in the subset of patients with data on the reason for hospitalisation

578 there was no decrease in the proportion of admissions thought to be directly caused by COVID-  
579 19. An alternative and less plausible explanation would be that some of these patients  
580 developed symptoms other than those presented here, and which are severe enough to prompt  
581 hospital admission. Finally, it is also possible that the question on the primary reason for  
582 hospitalisation might have been interpreted differently in different countries and even in  
583 different hospitals in the same country, which would complicate its use in identifying incidental  
584 infections.

585

586 We also observed that history of COVID-19 vaccination was more frequent during the *Omicron*  
587 *period*. Whilst this would be expected if current vaccines were less effective against the  
588 Omicron variant compared to previously circulating variants, as suggested by a recent study in  
589 England analysing symptomatic disease<sup>24</sup>, there were changes in vaccination coverage in many  
590 settings during the second half of 2021 and early 2022, including in response to the reports of  
591 Omicron variant cases. Since non-COVID-19 patients (*e.g.*, patients with respiratory infections  
592 caused by other pathogens) were not systematically recruited for this multi-country study, it is  
593 not possible to estimate vaccine effectiveness during the two study periods and assess its  
594 change<sup>25</sup>.

595

596 The major strength of our study relates to inclusion of data from all WHO geographic regions,  
597 collected with standardised forms, with over 100,000 records. However we note that 96.6% of  
598 patients were from two countries - South Africa and the United Kingdom - and that the relative  
599 contributions of these countries to the study data were different in the two study periods (**Table**  
600 **S5**); to avoid misinterpretations linked to changes in country-specific contributions to data in  
601 the *pre-Omicron* and *Omicron periods* we present descriptive analyses by country and use  
602 statistical models that adjust for country-level variation. Other limitations of our study relate,

603 as mentioned in **Table S4**, to the use of population-level variant data to define periods when  
604 infections were likely caused by Omicron variant. For example, if infection by Omicron variant  
605 is associated with lower severity and if samples used to inform population-level frequency were  
606 often from community cases, then these aggregated data might not represent variant frequency  
607 in the hospitalised population. However, despite potential weaknesses in this approach, our  
608 results are consistent with reports from South Africa and elsewhere<sup>9</sup>, and individual-level  
609 variant data available for this study population often matched the two study periods defined by  
610 Omicron variant frequency.

611  
612 In conclusion, we believe our approach of comparing changes in clinical characteristics of  
613 COVID-19 using multi-country standardised data, especially when combined with smaller  
614 scale studies that collect individual-level data on infecting variants for validation, will be useful  
615 in understanding the impact of new variants in the future. Another application will be in using  
616 routinely collected health data for cross-country comparisons of variant characteristics.

617

618

## 619 **Acknowledgements**

620

621 The investigators acknowledge the philanthropic support of the donors to the University of  
622 Oxford's COVID-19 Research Response Fund; COVID clinical management team, AIIMS,  
623 Rishikesh, India; COVID-19 Clinical Management team, Manipal Hospital Whitefield,  
624 Bengaluru, India; Italian Ministry of Health "Fondi Ricerca corrente-L1P6" to IRCCS  
625 Ospedale Sacro Cuore-Don Calabria; and Preparedness work conducted by the Short Period  
626 Incidence Study of Severe Acute Respiratory Infection.

627

628 This work uses data provided by patients and collected by the NHS as part of their care and  
629 support #DataSavesLives. The data used for this research were obtained from ISARIC4C. We  
630 are extremely grateful to the 2648 frontline NHS clinical and research staff and volunteer  
631 medical students who collected these data in challenging circumstances; and the generosity of  
632 the patients and their families for their individual contributions in these difficult times. We also  
633 acknowledge the support of Jeremy J Farrar and Nahoko Shindo.

634

635

## 636 References

637

- 638 1 Fontanet, A. *et al.* SARS-CoV-2 variants and ending the COVID-19 pandemic. *Lancet*  
639 **397**, 952-954, doi:10.1016/S0140-6736(21)00370-6 (2021).
- 640 2 Polack, F. P. *et al.* Safety and Efficacy of the BNT162b2 mRNA Covid-19 Vaccine. *N*  
641 *Engl J Med* **383**, 2603-2615, doi:10.1056/NEJMoa2034577 (2020).
- 642 3 Voysey, M. *et al.* Safety and efficacy of the ChAdOx1 nCoV-19 vaccine (AZD1222)  
643 against SARS-CoV-2: an interim analysis of four randomised controlled trials in Brazil,  
644 South Africa, and the UK. *Lancet* **397**, 99-111, doi:10.1016/S0140-6736(20)32661-1  
645 (2021).
- 646 4 Baden, L. R. *et al.* Efficacy and Safety of the mRNA-1273 SARS-CoV-2 Vaccine. *N*  
647 *Engl J Med* **384**, 403-416, doi:10.1056/NEJMoa2035389 (2021).
- 648 5 Lopez Bernal, J. *et al.* Effectiveness of Covid-19 Vaccines against the B.1.617.2 (Delta)  
649 Variant. *N Engl J Med* **385**, 585-594, doi:10.1056/NEJMoa2108891 (2021).
- 650 6 *Our World in Data*, <<https://ourworldindata.org/covid-vaccinations> > (  
651 7 Wolter, N. *et al.* Early assessment of the clinical severity of the SARS-CoV-2 Omicron  
652 variant in South Africa. *medRxiv*, 2021.2012.2021.21268116,  
653 doi:10.1101/2021.12.21.21268116 (2021).
- 654 8 *Classification of Omicron (B.1.1.529): SARS-CoV-2 Variant of Concern*,  
655 <[https://www.who.int/news/item/26-11-2021-classification-of-omicron-\(b.1.1.529\)-](https://www.who.int/news/item/26-11-2021-classification-of-omicron-(b.1.1.529)-sars-cov-2-variant-of-concern)  
656 [sars-cov-2-variant-of-concern](https://www.who.int/news/item/26-11-2021-classification-of-omicron-(b.1.1.529)-sars-cov-2-variant-of-concern)> (  
657 9 Wolter, N. *et al.* Early assessment of the clinical severity of the SARS-CoV-2 omicron  
658 variant in South Africa: a data linkage study. *Lancet* **399**, 437-446, doi:10.1016/S0140-  
659 6736(22)00017-4 (2022).
- 660 10 Ulloa, A. C., Buchan, S. A., Daneman, N. & Brown, K. A. Estimates of SARS-CoV-2  
661 Omicron Variant Severity in Ontario, Canada. *JAMA* **327**, 1286-1288,  
662 doi:10.1001/jama.2022.2274 (2022).
- 663 11 Veneti, L. *et al.* Reduced risk of hospitalisation among reported COVID-19 cases  
664 infected with the SARS-CoV-2 Omicron BA.1 variant compared with the Delta variant,  
665 Norway, December 2021 to January 2022. *Euro Surveill* **27**, doi:10.2807/1560-  
666 7917.ES.2022.27.4.2200077 (2022).
- 667 12 Lewnard, J. A. *et al.* Clinical outcomes associated with Omicron (B.1.1.529) variant  
668 and BA.1/BA.1.1 or BA.2 subvariant infection in southern California. *medRxiv*,  
669 2022.2001.2011.22269045, doi:10.1101/2022.01.11.22269045 (2022).
- 670 13 Nyberg, T. *et al.* Comparative analysis of the risks of hospitalisation and death  
671 associated with SARS-CoV-2 omicron (B.1.1.529) and delta (B.1.617.2) variants in  
672 England: a cohort study. *Lancet* **399**, 1303-1312, doi:10.1016/S0140-6736(22)00462-  
673 7 (2022).
- 674 14 Viana, R. *et al.* Rapid epidemic expansion of the SARS-CoV-2 Omicron variant in  
675 southern Africa. *Nature* **603**, 679-686, doi:10.1038/s41586-022-04411-y (2022).
- 676 15 Group, I. C. C. The value of open-source clinical science in pandemic response: lessons  
677 from ISARIC. *Lancet Infect Dis* **21**, 1623-1624, doi:10.1016/S1473-3099(21)00565-X  
678 (2021).
- 679 16 Group, I. C. C. *et al.* Ten months of temporal variation in the clinical journey of  
680 hospitalised patients with COVID-19: An observational cohort. *Elife* **10**,  
681 doi:10.7554/eLife.70970 (2021).
- 682 17 Reyes, L. F. *et al.* Clinical characteristics, risk factors and outcomes in patients with  
683 severe COVID-19 registered in the International Severe Acute Respiratory and

684 Emerging Infection Consortium WHO clinical characterisation protocol: a prospective,  
685 multinational, multicentre, observational study. *ERJ Open Res* **8**,  
686 doi:10.1183/23120541.00552-2021 (2022).  
687 18 <<https://github.com/cov-lineages/pango-designation/releases/tag/v1.2.133>> (  
688 19 R: a language and environment for statistical computing (R Foundation for Statistical  
689 Computing, Vienna, Austria).  
690 20 *pandas*, <<https://pandas.pydata.org/>> (  
691 21 <https://github.com/ISARICDataPlatform/Omicron>.  
692 22 Altarawneh, H. N. *et al.* Protection against the Omicron Variant from Previous SARS-  
693 CoV-2 Infection. *N Engl J Med* **386**, 1288-1290, doi:10.1056/NEJMc2200133 (2022).  
694 23 Westreich, D. & Greenland, S. The table 2 fallacy: presenting and interpreting  
695 confounder and modifier coefficients. *Am J Epidemiol* **177**, 292-298,  
696 doi:10.1093/aje/kws412 (2013).  
697 24 Andrews, N. *et al.* Covid-19 Vaccine Effectiveness against the Omicron (B.1.1.529)  
698 Variant. *N Engl J Med* **386**, 1532-1546, doi:10.1056/NEJMoa2119451 (2022).  
699 25 Andrews, N. *et al.* Duration of Protection against Mild and Severe Disease by Covid-  
700 19 Vaccines. *N Engl J Med* **386**, 340-350, doi:10.1056/NEJMoa2115481 (2022).

701

702

703

704

## **Supplementary Appendix**

### **Manuscript**

An international observational study to assess the impact of the Omicron variant emergence on the clinical epidemiology of COVID-19 in hospitalised patients

### ***Contents***

Acknowledgements (Partner institutions)

Supplementary Results

Supplementary Tables

Supplementary Figures

ISARIC Clinical Characterisation Group

Conflict of Interest Declarations

## **Acknowledgements (Partner institutions)**

This work was supported by endorsement of the Irish Critical Care- Clinical Trials Group, co-ordinated in Ireland by the Irish Critical Care- Clinical Trials Network at University College Dublin and funded by the Health Research Board of Ireland [CTN-2014-12]; grants from Rapid European COVID-19 Emergency Response research (RECOVER) [H2020 project 101003589] and European Clinical Research Alliance on Infectious Diseases (ECRAID) [965313]; Cambridge NIHR Biomedical Research Centre; The dedication and hard work of the Groote Schuur Hospital Covid ICU Team, supported by the Groote Schuur nursing and University of Cape Town registrar bodies coordinated by the Division of Critical Care at the University of Cape Town; The dedication and hard work of the Norwegian SARS-CoV-2 study team. Research Council of Norway grant no 312780, and a philanthropic donation from Vivaldi Invest A/S owned by Jon Stephenson von Tetzchner; PJMO is supported by the UK's National Institute for Health Research (NIHR) via Imperial's Biomedical Research Centre (NIHR Imperial BRC), Imperial's Health Protection Research Unit in Respiratory Infections (NIHR HPRU RI), the Comprehensive Local Research Networks (CLRNs) and is an NIHR Senior Investigator (NIHR201385); Gender Equity Strategic Fund at University of Queensland, Artificial Intelligence for Pandemics (A14PAN) at University of Queensland, The Australian Research Council Centre of Excellence for Engineered Quantum Systems (EQUUS, CE170100009), The Prince Charles Hospital Foundation, Australia; the South Eastern Norway Health Authority and the Research Council of Norway; and a grant from the Oxford University COVID-19 Research Response fund (grant 0009109).



## ***Supplementary results***

### *Epidemiology of Omicron variant in Laos*

Population-level variant data from Laos were not available in the Global Initiative on Sharing All Influenza Data (GISAID) platform that covered the period between October 2021 and February 2022, and for this reason clinical data from this country were not included in analyses presented in the *Results* section of the manuscript. Local data suggest that Omicron variant spread in the country only after this period. Indeed, unpublished data from the Lao-Oxford-Mahosot Hospital-Wellcome Trust Research Unit indicate that Omicron variant was responsible for a large proportion of infections in March but not February 2022, although the numbers of infections genotyped were limited (Elizabeth Ashley, personal communication).

### *Clinical data from Pakistan*

In Pakistan, there was an increase in the relative frequency of Omicron variant during the period from October 2021 to February 2022. However, despite causing 96.1% of infections in the GISAID data from the country in mid-January 2022, throughout February this percentage fluctuated. Data from Pakistan were thus not included in the *Results* section. Here, we discuss clinical data from this country; for that, we used as the start of the *Omicron period* the first week when this variant was responsible for more than 90% of infections, regardless of whether this percentage was lower in the following weeks.

Data from 929 patients from Pakistan were contributed to the study; 249 records were from the *pre-Omicron period*, and 478, from the *Omicron period*. The percentage of patients in the country with at least one symptom was 83.9% in the *pre-Omicron period*, and 57.9%, in the *Omicron period*. 52.2% and 59.2% had at least one comorbidity during these two periods, respectively. Vaccination data were available for 474 patients admitted during the study periods: 37.7% and 62.9% had history of COVID-19 vaccination during the *pre-Omicron* and *Omicron periods*. The 14-day fatality risk for hospitalised patients during the *pre-Omicron period* was 52.5%, and during the *Omicron period*, 45.4%.

### *Sensitivity analysis that excludes patients with other primary reason for hospitalisation*

For 30,052 patients admitted during the two study periods, information was available on whether COVID-19 was the primary medical reason for hospitalisation; most of these patients were from South Africa. As a sensitivity analysis, we fit a mixed-effects logistic regression model on the 14-day fatality risk excluding patients who had reported that COVID-19 was not the reason for hospitalisation; patients for whom this information was missing were included. The odds ratio for the association between study period and 14-day fatality risk was 0.68 (95% confidence interval 0.61 – 0.75).

## *Supplementary Tables*

**Table S1.** Numbers of records contributed by partner institutions in different countries between 01/10/2021 and 28/02/2022.

<b>Country</b>	<b>Number of records</b>
<i>South Africa</i>	69766
<i>United Kingdom</i>	55049
<i>Pakistan</i>	929
<i>Canada</i>	919
<i>Nepal</i>	504
<i>Laos</i>	456
<i>India</i>	409
<i>Romania</i>	166
<i>Saudi Arabia</i>	151
<i>Spain</i>	151
<i>Netherlands</i>	134
<i>Malaysia</i>	90
<i>Norway</i>	67
<i>Turkey</i>	57
<i>Brazil</i>	54
<i>Colombia</i>	52
<i>New Zealand</i>	46
<i>Kuwait</i>	35
<i>United States</i>	32
<i>Philippines</i>	26
<i>Ghana</i>	21
<i>Ireland</i>	20
<i>Israel</i>	17
<i>Italy</i>	12
<i>Estonia</i>	7
<i>Australia</i>	7
<i>Indonesia</i>	6
<i>Portugal</i>	5
<i>Germany</i>	4
<i>Argentina</i>	4

**Table S2.** Missing data on symptoms. Note that this information was not systematically recorded in South Africa, and for this reason data from that country are not included in this table.

<b>Symptoms</b>	<b>Yes</b>	<b>No</b>	<b>Missing data</b>
<i>Any cough</i>	20431	13726	25273
<i>Fever</i>	16045	19465	23920
<i>Headache</i>	3896	28398	27136
<i>Confusion</i>	5960	28548	24922
<i>Seizures</i>	570	33424	25436
<i>Sore throat</i>	2394	29353	27683
<i>Runny nose</i>	1639	30279	27512
<i>Vomiting</i>	6956	27734	24740
<i>Wheezing</i>	2042	31191	26197
<i>Diarrhoea</i>	4418	29989	25023
<i>Chest pain</i>	5488	28732	25210
<i>Conjunctivitis</i>	106	32606	26718
<i>Myalgia</i>	3686	28195	27549
<i>Rash</i>	476	32877	26077
<i>Fatigue</i>	11339	22150	25941
<i>Ageusia</i>	1682	28341	29407
<i>Inability to walk</i>	252	3797	55381
<i>Anosmia</i>	1393	29040	28997
<i>Shortness of breath</i>	20490	14030	24910
<i>Lymphadenopathy</i>	145	32795	26490

**Table S3.** Missing data on comorbidities. In this table, data from all countries are included.

<b>Comorbidities</b>	<b>Yes</b>	<b>No</b>	<b>Missing data</b>
<i>Liver disease</i>	1786	40992	86418
<i>Diabetes</i>	12956	68743	47497
<i>Chronic cardiac disease</i>	13546	73423	42227
<i>Hypertension</i>	32052	57401	39743
<i>Current smoking</i>	5090	26674	97432
<i>COPD</i>	9304	77794	42098
<i>Active TB</i>	1579	45731	81886
<i>Asthma</i>	8720	79175	41301
<i>Chronic kidney disease</i>	8441	78453	42302
<i>Malignant neoplasm</i>	5062	81465	42669
<i>Dementia</i>	4646	38530	86020
<i>HIV</i>	5925	79121	44150
<i>Chronic neurological disorder</i>	5615	37740	85841
<i>Obesity</i>	5723	45367	78106

**Table S4.** Potential limitations of population-level variant data used to determine time periods when Omicron variant was dominant.

Potential limitation	Likely impact on analyses
Population-level data come from a range of sources in each country, and for most samples it is not possible to determine whether patient was hospitalised or was a community (mild) case	If different variants are associated with different severities upon infection and if a large fraction of samples used in the estimation of population-level frequency of variants are from community cases, then it is possible that this frequency does not fully represent the frequency in the hospitalised population. In particular, if Omicron variant infection is linked to lower risk of hospitalisation, as previous studies suggest, it is possible that even during periods when community-level frequency of Omicron variant was high, the frequency of Omicron variant in the hospitalised population might have been relatively low.
Use of country-level data, rather than data on variant frequency in the catchment areas of clinical centres contributing data	If Omicron variant spreads asynchronously in a country, with some regions reaching high relative frequency faster than others, it is possible that country-level data, rather than data at a finer geographical level, might not reflect Omicron variant frequency in the population from which patients were recruited.
Delay between infection, onset of symptoms and hospitalisation	Depending on the data source used to define population-level frequency of variants, if clinical samples were obtained early during the infection, hospitalised cases might only have the same variant composition after a time lag, corresponding to average time from infection, or onset of symptoms, to hospital admission.

**Table S5.** Numbers of records in the *pre-Omicron* and *Omicron periods* by country.

<b>Country</b>	<i>Omicron emergence</i>		
	<b>Before 10%</b>	<b>After 90%</b>	<b>Total</b>
<i>South Africa</i>	4180	51929	56109
<i>United Kingdom</i>	18124	26479	44603
<i>Canada</i>	61	763	824
<i>Nepal</i>	197	204	401
<i>India</i>	89	212	301
<i>Netherlands</i>	60	65	125
<i>Saudi Arabia</i>	2	121	123
<i>Romania</i>	1	100	101
<i>Spain</i>	21	56	77
<i>Malaysia</i>	42	11	53
<i>Norway</i>	5	45	50
<i>Brazil</i>	15	33	48
<i>New Zealand</i>	34	6	40
<i>Colombia</i>	26	5	31
<i>Turkey</i>	0	27	27
<i>Philippines</i>	16	5	21
<i>United States of America</i>	14	7	21
<i>Kuwait</i>	0	19	19
<i>Ghana</i>	4	15	19
<i>Ireland</i>	14	3	17
<i>Israel</i>	0	14	14
<i>Australia</i>	0	6	6
<i>Portugal</i>	3	2	5
<i>Indonesia</i>	1	4	5
<i>Germany</i>	2	2	4
<i>Italy</i>	3	0	3
<i>Argentina</i>	0	3	3
<i>Estonia</i>	1	0	1

**Table S6.** Medians (interquartile ranges [Q1 - Q3]) of age by study period and country. Only countries with 10 or more observations in both study periods are shown.

<b>Country</b>	<i>Before 10%</i>			<i>After 90%</i>		
	<b>Median</b>	<b>Q1</b>	<b>Q3</b>	<b>Median</b>	<b>Q1</b>	<b>Q3</b>
<i>Brazil</i>	59	50	70	55	48	70
<i>Canada</i>	63	50	71	62	35	76
<i>Spain</i>	68	63	75	76	59	84
<i>United Kingdom</i>	66	48	78	67	38	81
<i>India</i>	63	47	72	70	60	76
<i>Malaysia</i>	63	52	68	59	55	63
<i>Netherlands</i>	74	64	80	70	55	77
<i>Nepal</i>	63	42	77	64	42	75
<i>South Africa</i>	45	30	62	41	27	63



**Table S7.** Numbers of hospitalised patients admitted due to COVID-19. For country-time period combinations with less than 10 observations, numbers are not presented.

Country	<i>Before 10%</i>		<i>After 90%</i>	
	COVID-19 as reason	Total	COVID-19 as reason	Total
<i>Australia</i>			-	<10
<i>Argentina</i>			-	<10
<i>Brazil</i>	14	14	32	33
<i>Canada</i>	12	23	514	761
<i>Colombia</i>	2	26	-	<10
<i>Germany</i>	-	<10	-	<10
<i>Ghana</i>	-	<10		
<i>India</i>	0	12	2	24
<i>Indonesia</i>			-	<10
<i>Israel</i>			8	12
<i>Kuwait</i>			0	18
<i>Malaysia</i>	-	<10	-	<10
<i>Nepal</i>	-	<10	0	15
<i>Netherlands</i>	49	60	39	63
<i>New Zealand</i>	30	33	-	<10
<i>Norway</i>	-	<10	34	45
<i>Philippines</i>	16	16	-	<10
<i>Romania</i>	-	<10	100	100
<i>Saudi Arabia</i>	-	<10	68	99
<i>South Africa</i>	1433	2015	18306	26512
<i>Spain</i>	11	17	37	56
<i>Turkey</i>			27	27
<i>USA</i>	0	11	-	<10

**Table S8.** Percentages of patients with at least one comorbidity by country and study period. Only countries with at least 10 patients in each study period are included.

<b>Country</b>	<i>Before 10%</i>		<i>After 90%</i>	
	<b>% with one or more comorbidities</b>	<b>Total</b>	<b>% with one or more comorbidities</b>	<b>Total</b>
<i>Brazil</i>	78.6	14	81.8	33
<i>Canada</i>	76.7	60	74.2	760
<i>India</i>	44.9	89	56.9	209
<i>Malaysia</i>	64.3	42	72.7	11
<i>Nepal</i>	46.2	197	55.4	204
<i>Netherlands</i>	86.7	60	78.5	65
<i>South Africa</i>	53.9	3170	44.7	37412
<i>Spain</i>	76.2	21	76.8	56
<i>United Kingdom</i>	86.5	11820	84.6	21501

**Table S9.** Percentages of patients with at least one symptom by country and study period. Only countries with at least 10 patients in each study period are included.

<b>Country</b>	<i>Before 10%</i>		<i>After 90%</i>	
	<b>% with one or more symptoms</b>	<b>Total</b>	<b>% with one or more symptoms</b>	<b>Total</b>
<i>Brazil</i>	100.0	14	100.0	32
<i>Canada</i>	91.7	60	91.6	754
<i>India</i>	28.1	89	18.6	210
<i>Malaysia</i>	64.3	42	90.9	11
<i>Nepal</i>	97.0	197	86.3	204
<i>Netherlands</i>	96.7	60	96.9	65
<i>Spain</i>	100.0	21	87.5	56
<i>United Kingdom</i>	97.4	11104	89.3	16157

**Table S10.** Medians (interquartile ranges [Q1 - Q3]) of time from admission or disease onset to death by study period and country. Only countries with 10 or more observations in both study periods are presented.

Country	<i>pre-Omicron period</i>			<i>Omicron period</i>		
	Median	Q1	Q3	Median	Q1	Q3
<i>Canada</i>	10	6	21	10	5	18
<i>United Kingdom</i>	11	6	19	11	6	19
<i>India</i>	6	3	8	7	3	12
<i>Nepal</i>	6	5	12	4	2	8
<i>South Africa</i>	6	2	12	5	2	10

**Table S11.** Cox proportional hazards model, stratified by country, on time to death in the first 28 days since hospital admission or onset of symptoms, which happened latest. For this analysis, if follow-up duration was longer than 28 days, it was set to 28 days, and patients who were discharged were censored on the day of discharge. The assumption of proportional hazards was violated for the variable on previous vaccination; for this reason, the model was also stratified by this variable. An alternative analysis assumed that patients discharged from hospital were censored on day 28; in this analysis, the hazard ratio for the variable corresponding to study period was 0.68 (0.63 – 0.74); for this model, the proportional hazards assumption did not hold for the study period variable.

<b>Variables</b>	<b>Hazard ratio</b>
<i>Omicron period</i>	0.77 (0.71 - 0.84)
<i>Sex (male)</i>	1.24 (1.17 - 1.32)
<i>Age</i>	
<i>Older than 60 years</i>	Reference
<i>Aged between 18 and 60 years</i>	0.41 (0.38 - 0.44)
<i>Younger than 18 years</i>	0.13 (0.11 - 0.17)

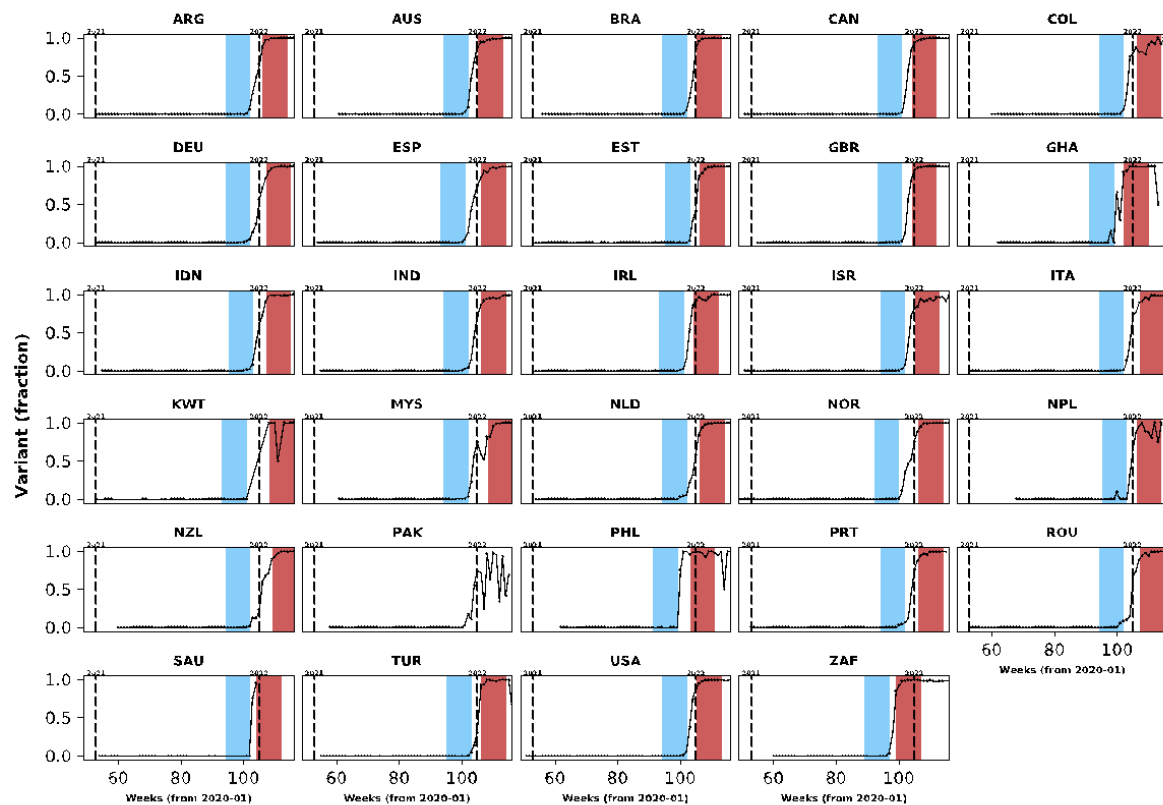
**Table S12.** Distribution of infections with individual-level variant information by country and variant. Only countries with at least 10 observations for Delta and Omicron variants are listed. Note that other countries had limited numbers for both or one of the two variants.

<b>Country</b>	<b>Delta</b>	<b>Omicron</b>
<i>Canada</i>	26	303
<i>Netherlands</i>	12	52
<i>Norway</i>	15	22
<i>South Africa</i>	17	720
<i>Spain</i>	10	16

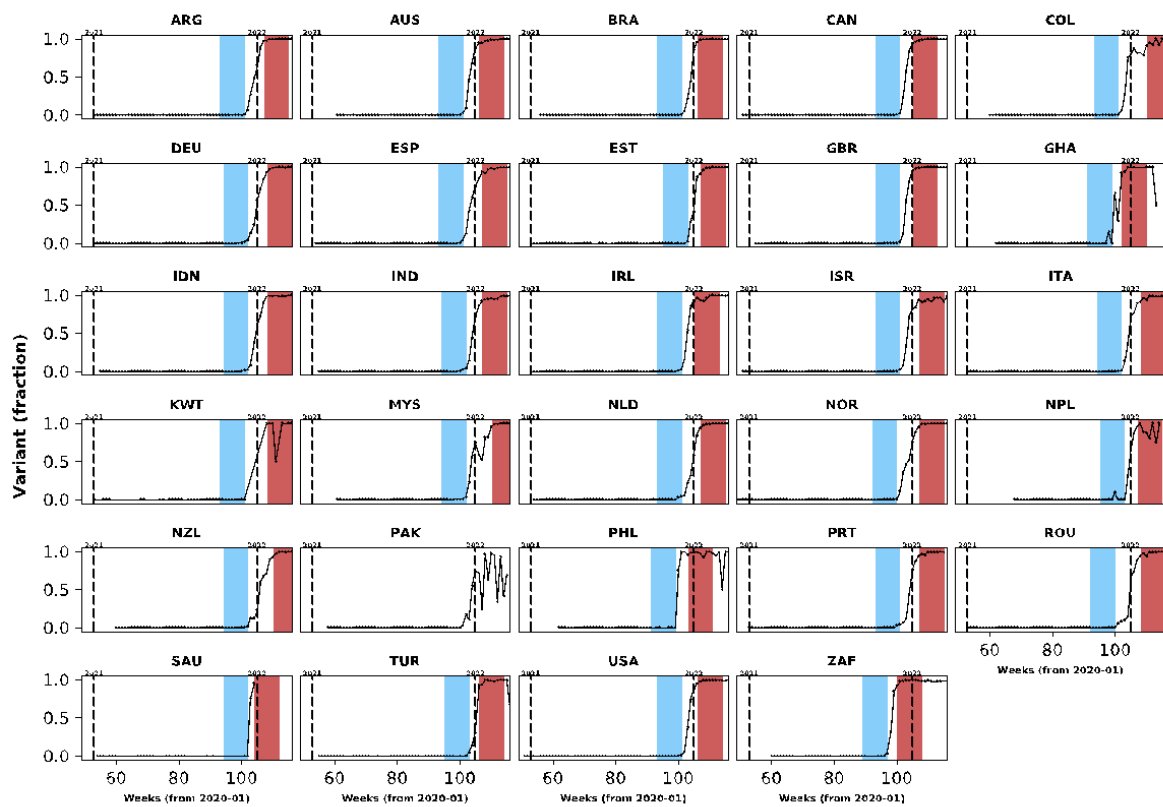
## Supplementary Figures

**Figure S1.** In this figure, population-level variant data are presented for countries with clinical data included in our analysis. The same structure of **Figure 1** was used but different cut-off frequencies for Omicron variant were applied: in **A**, the lower and upper threshold frequencies were 10% and 80%; in **B**, these frequencies were 5% and 90%.

**A**



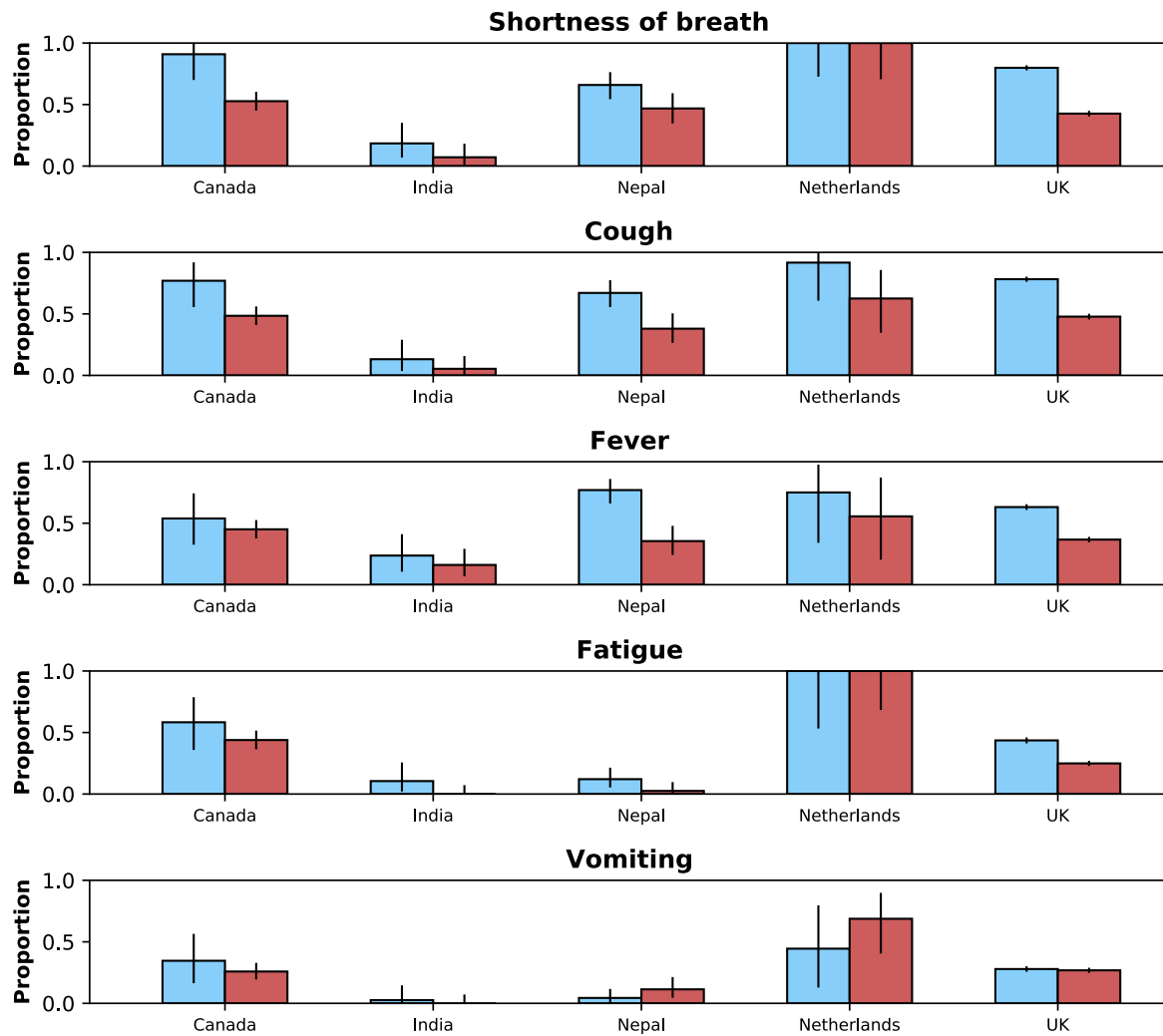
**B**



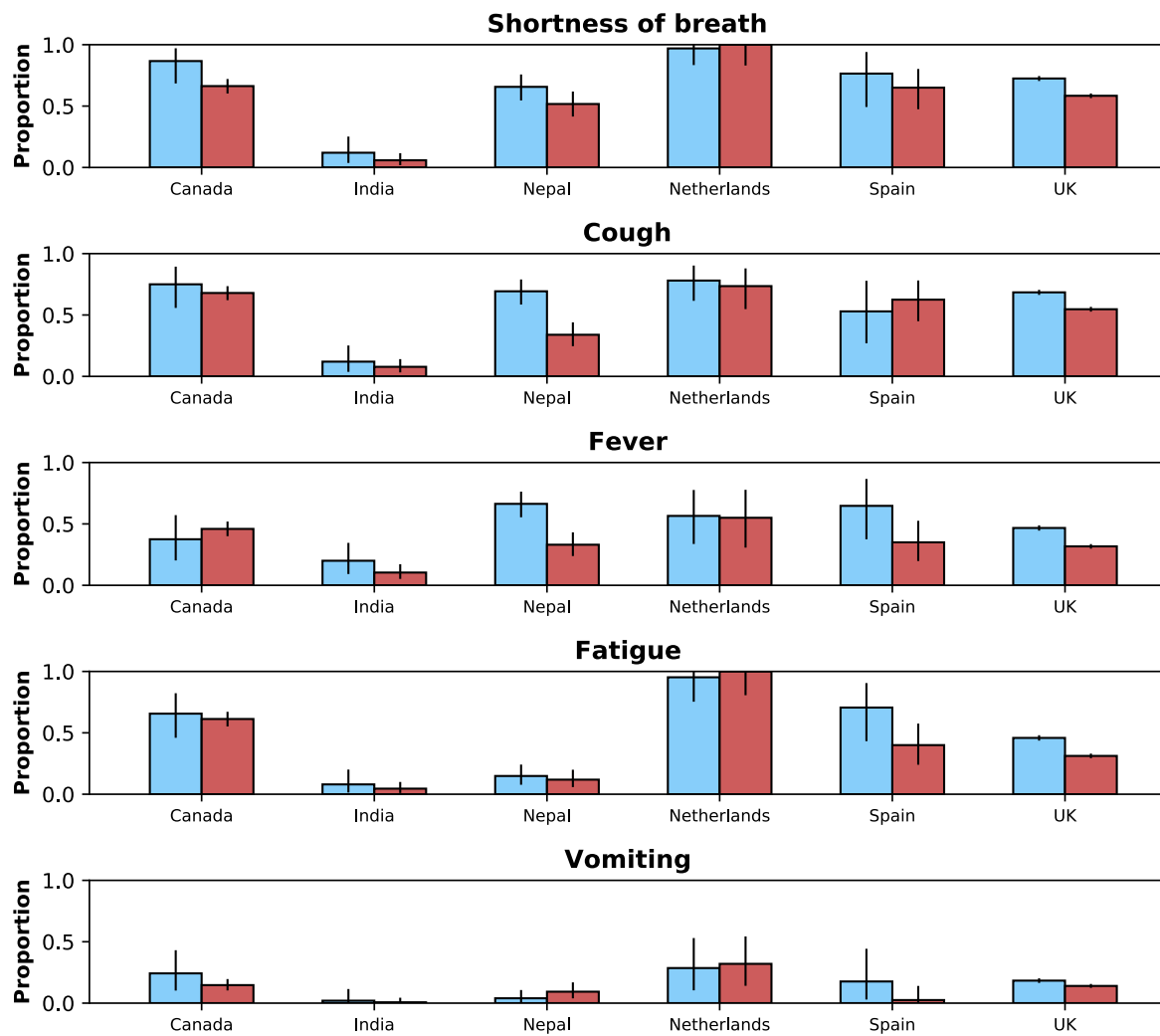


**Figure S2.** Distributions of the five most common symptoms during the period before (blue bars) and after (red bars) Omicron variant frequency reached 10% and 90%, respectively. 95% confidence intervals are also shown. In **A**, data from individuals aged between 18 and 60 years; and **B** shows the same information for individuals older than 60 years. Data from children are not presented.

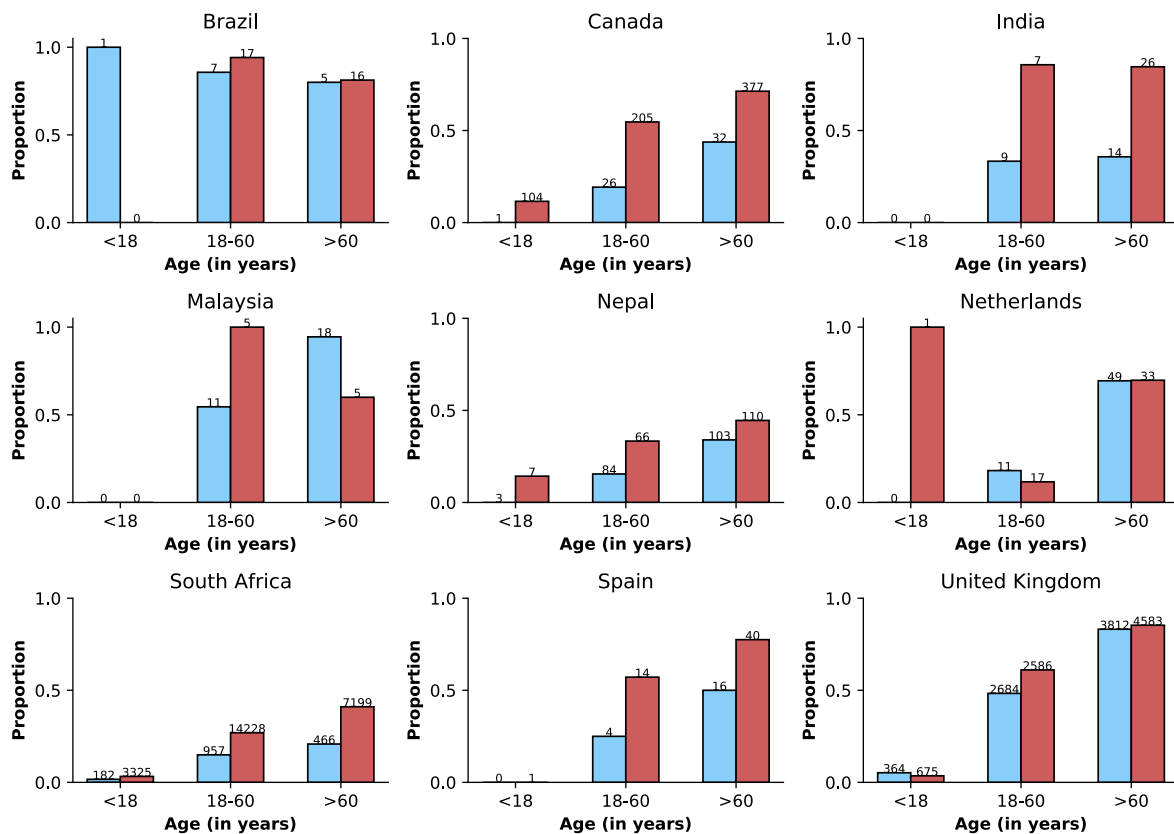
**A**



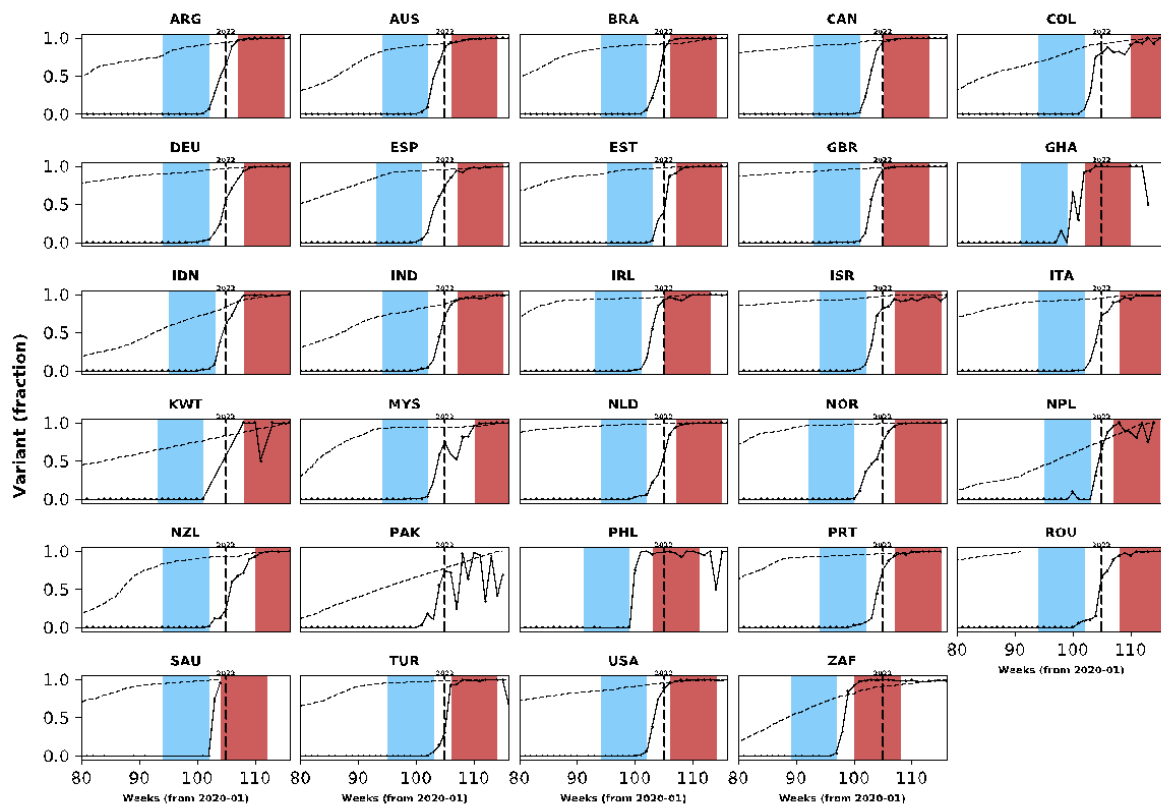
**B**



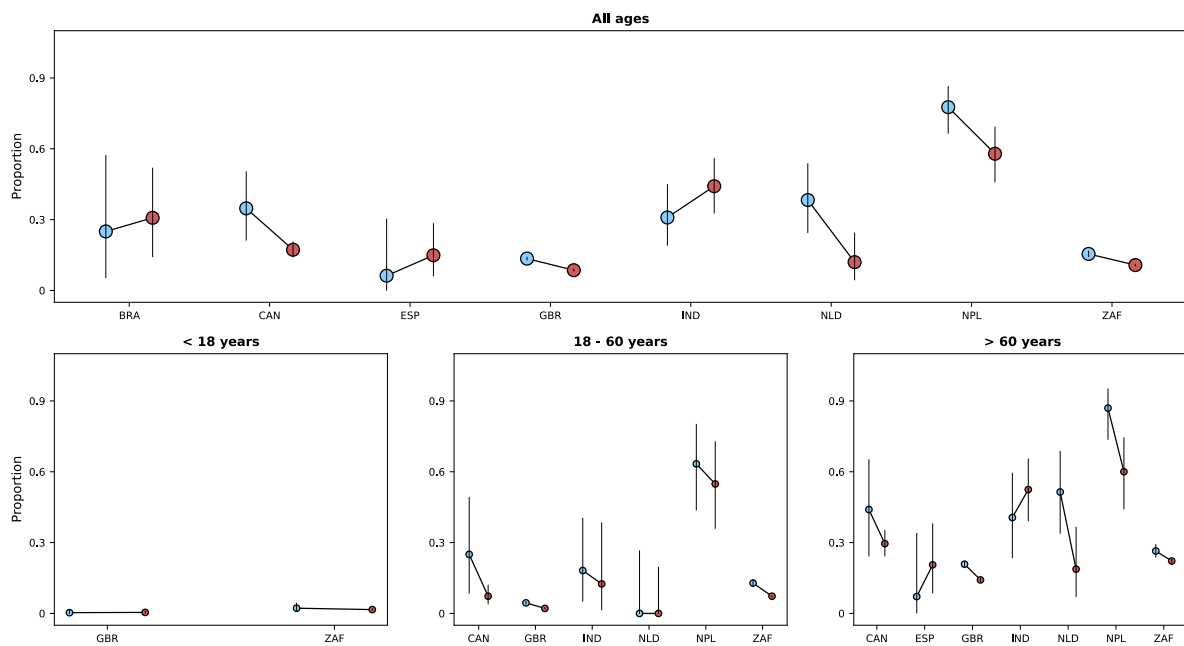
**Figure S3.** Frequency of previous vaccination by study period, age category and country. Only data from countries with at least 10 observations during both study periods defined by Omicron variant frequency are shown. In each panel, the x-axis shows different age categories, with blue bars corresponding to the *pre-Omicron period* and red bars, to the period after Omicron variant frequency, relative to other variants, reaches 90%. Above each bar, the total number of records included in the calculation of the proportions (y-axes) are presented.



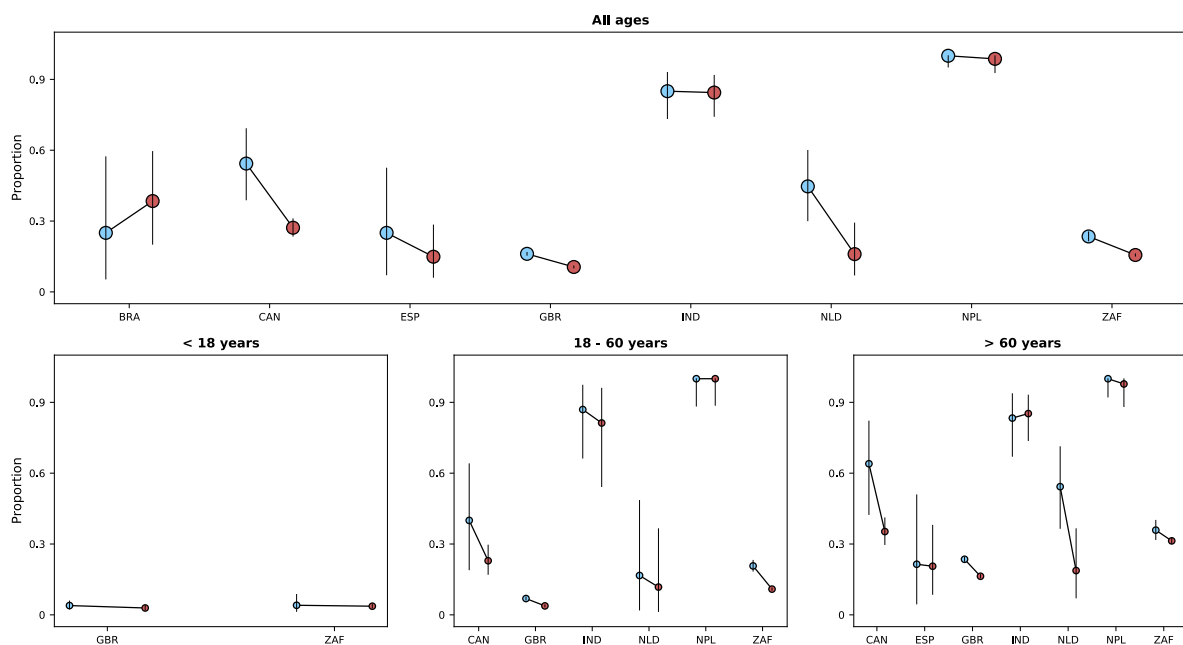
**Figure S4.** Population-level vaccination coverage. Data from different countries are presented in different panels; x-axes show epidemiological weeks since the first epidemiological week of 2020. As in **Figure 1**, continuous black lines represent frequency of Omicron variant relative to the other variants. In addition to information on Omicron variant frequency, each panel also shows data on vaccination: the dashed line shows proportion of population vaccinated relative to the maximum number vaccinated in each country at the time of the analysis (March 2022). Data used to generate this figure were downloaded from <https://ourworldindata.org/>.



**Figure S5.** Risk of death in the first 28 days after hospital admission or disease onset, whichever occurred latest, during *pre-Omicron* and *Omicron periods*. In each panel, the x-axis shows countries, with different periods represented by circles with different colours (blue circles for the *pre-Omicron period*; red circles, for period after Omicron variant frequency reaches 90%). 95% confidence intervals are presented. The top panel shows data for individuals of all ages; the bottom panels, data for patients aged less than 18 years, between 18 and 60 years, and older than 60 years. Only countries with at least 10 observations in each study period and corresponding age group are included.

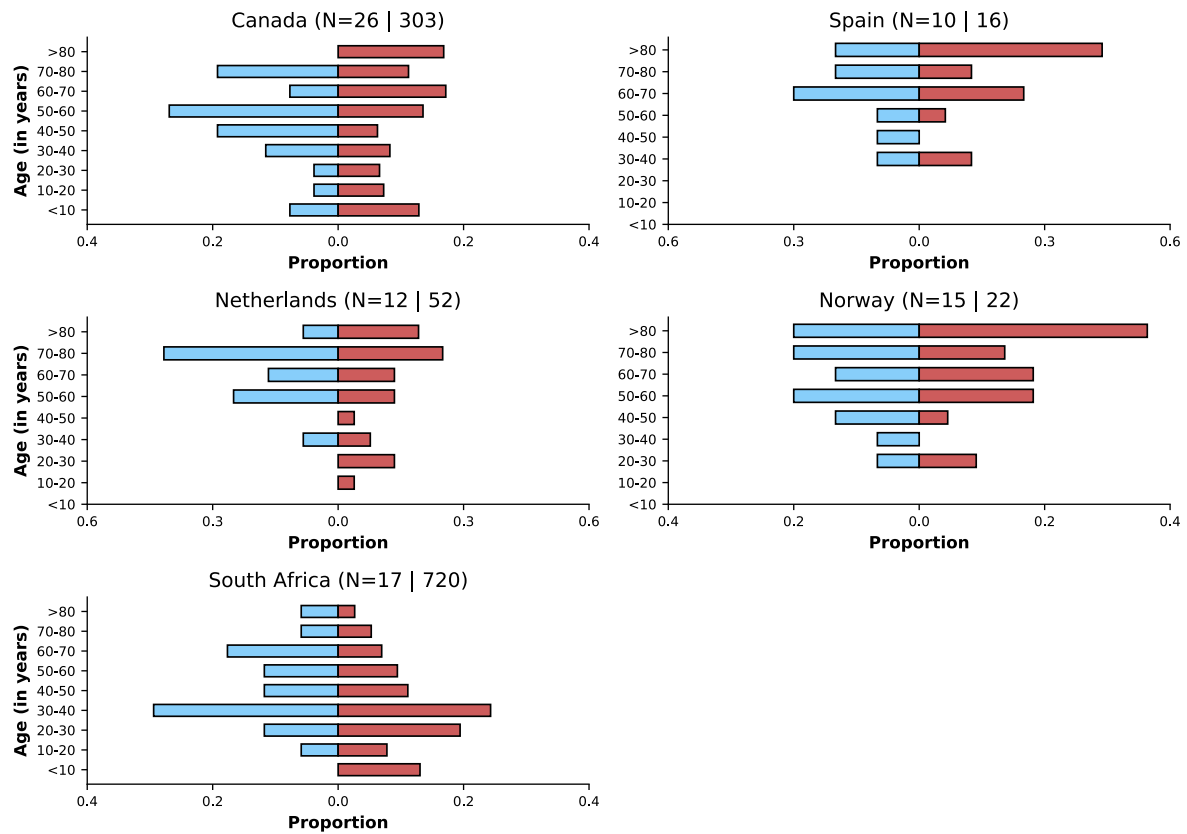


**Figure S6.** Risk of death or invasive mechanical ventilation by study period. In each panel, the x-axis shows countries, with different periods represented by circles with different colours (blue circles for *pre-Omicron period*; red circles, for the *Omicron period*). 95% confidence intervals are presented. The top panel shows data for individuals of all ages; the bottom panels, data for patients aged less than 18 years, between 18 and 60 years, and older than 60 years. Only countries with at least 10 observations in each study period are included. Different from **Figures 5** and **S5**, time since hospital admission or onset of symptoms was not used since for most patients who required invasive mechanical ventilation the start date of the therapeutic approach was not available. Only patients with information on invasive mechanical ventilation use and who were either discharged or died were included.

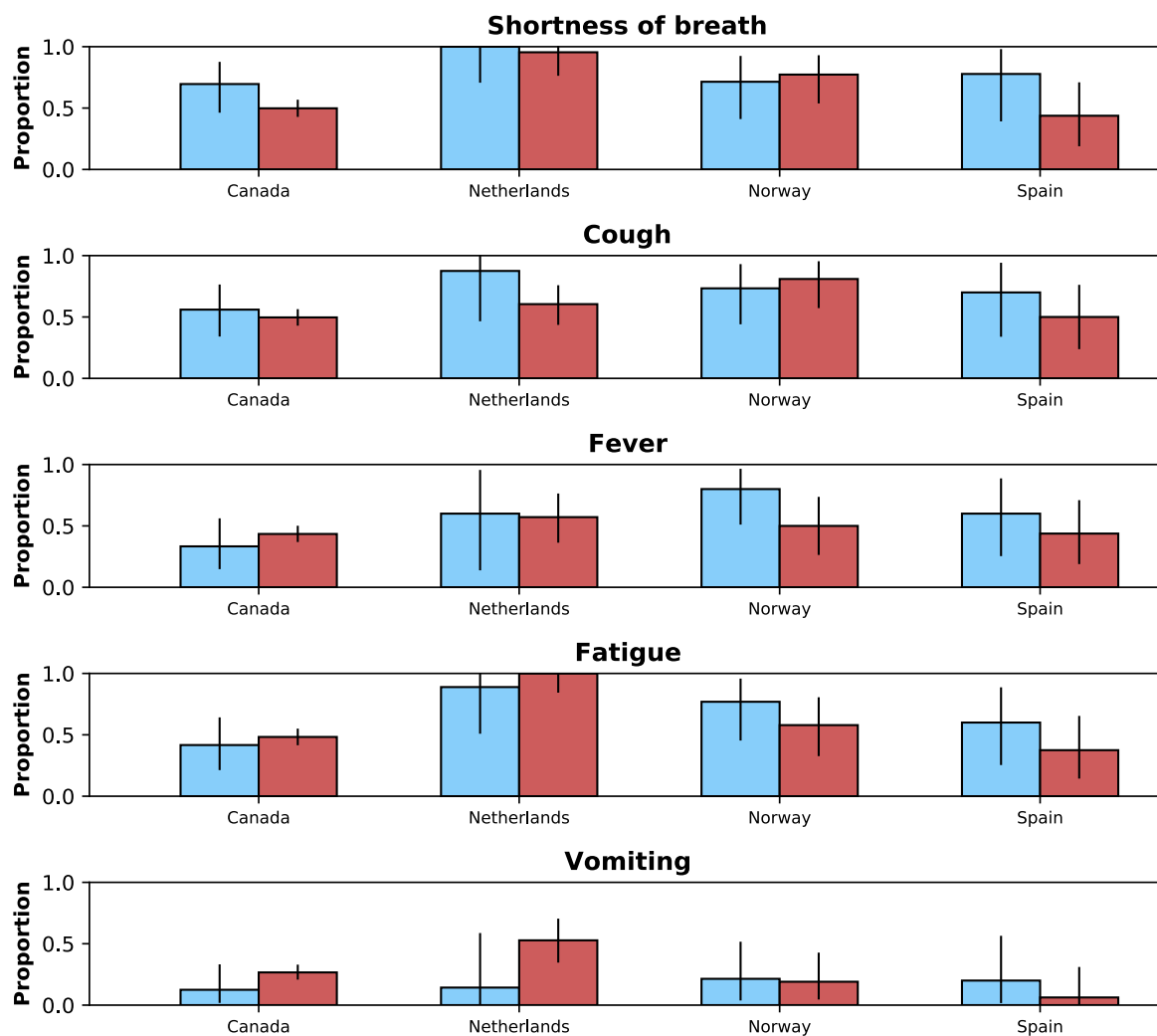


**Figure S7.** This figure shows in different panels similar information to that presented in the following Figures: **Figure 3** corresponds here to panel **A**; **Figure 4A**, to panel **B**; **Figure 4B**, panel **C**; **Figure S3**, panel **D**, **Figure 5**, panel **E**. The legends of those figures apply to the corresponding panels in this figure, except that instead of referring to time periods, the panels below show data for Delta and Omicron variants.

**A**

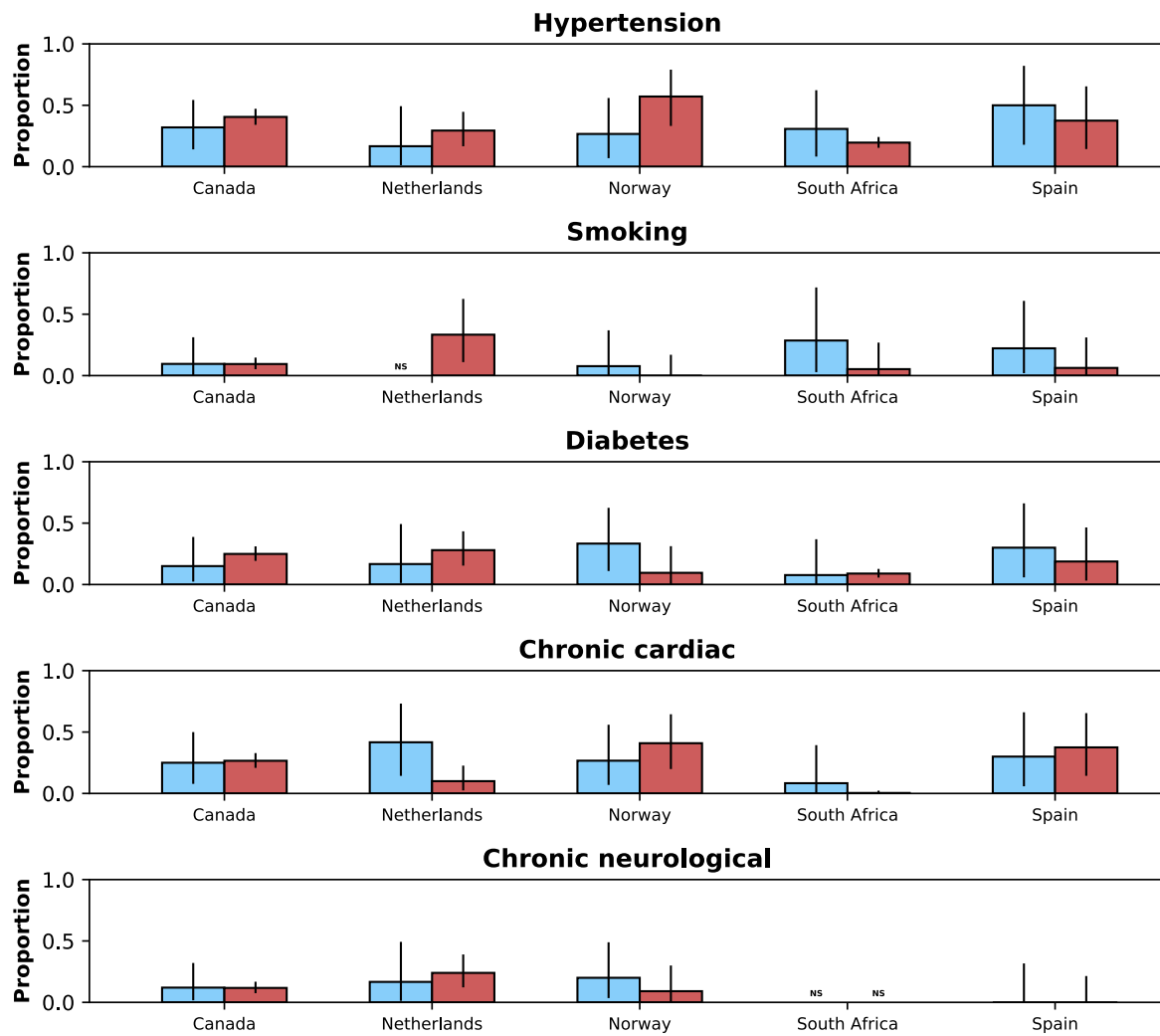


**B**

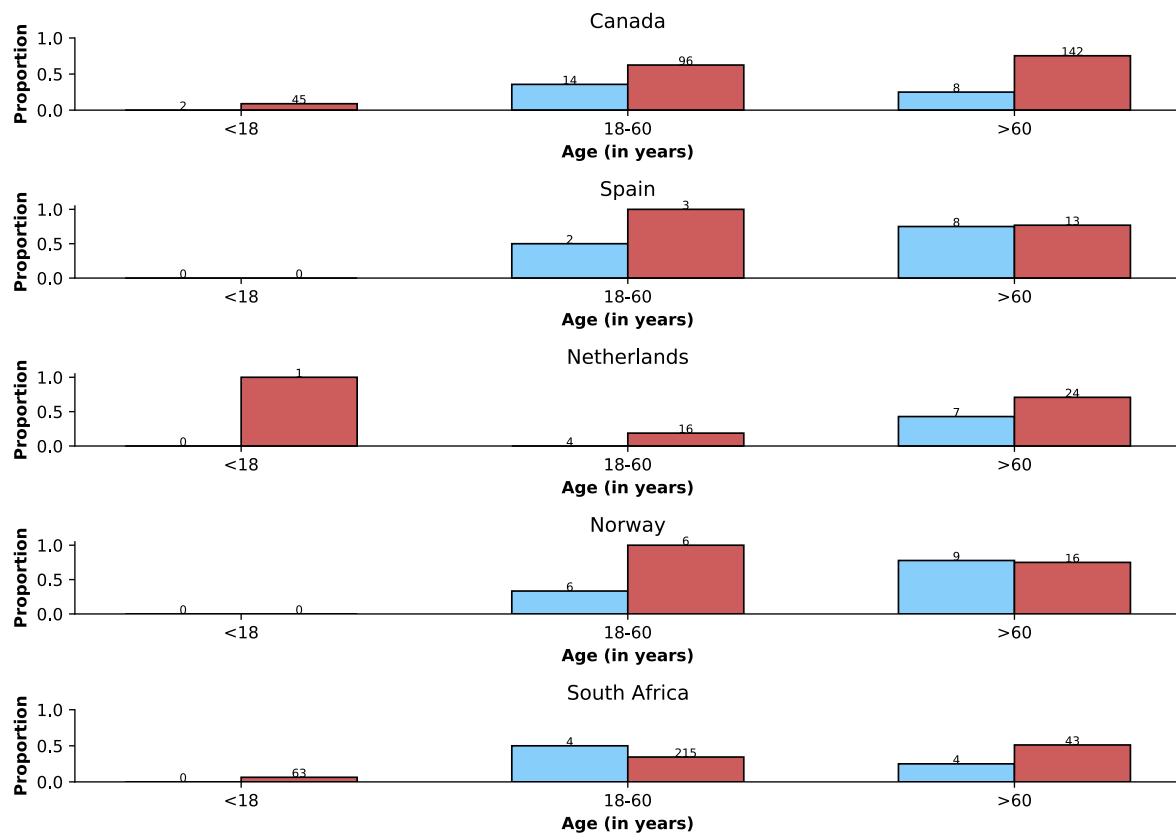




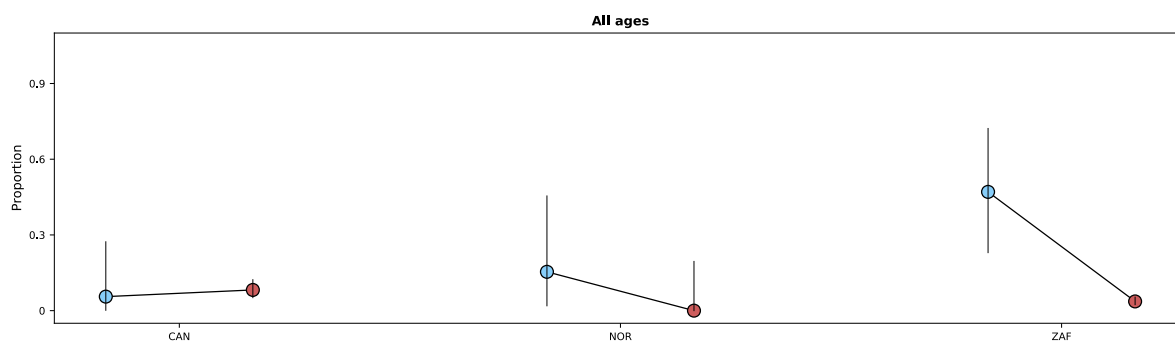
C



**D**

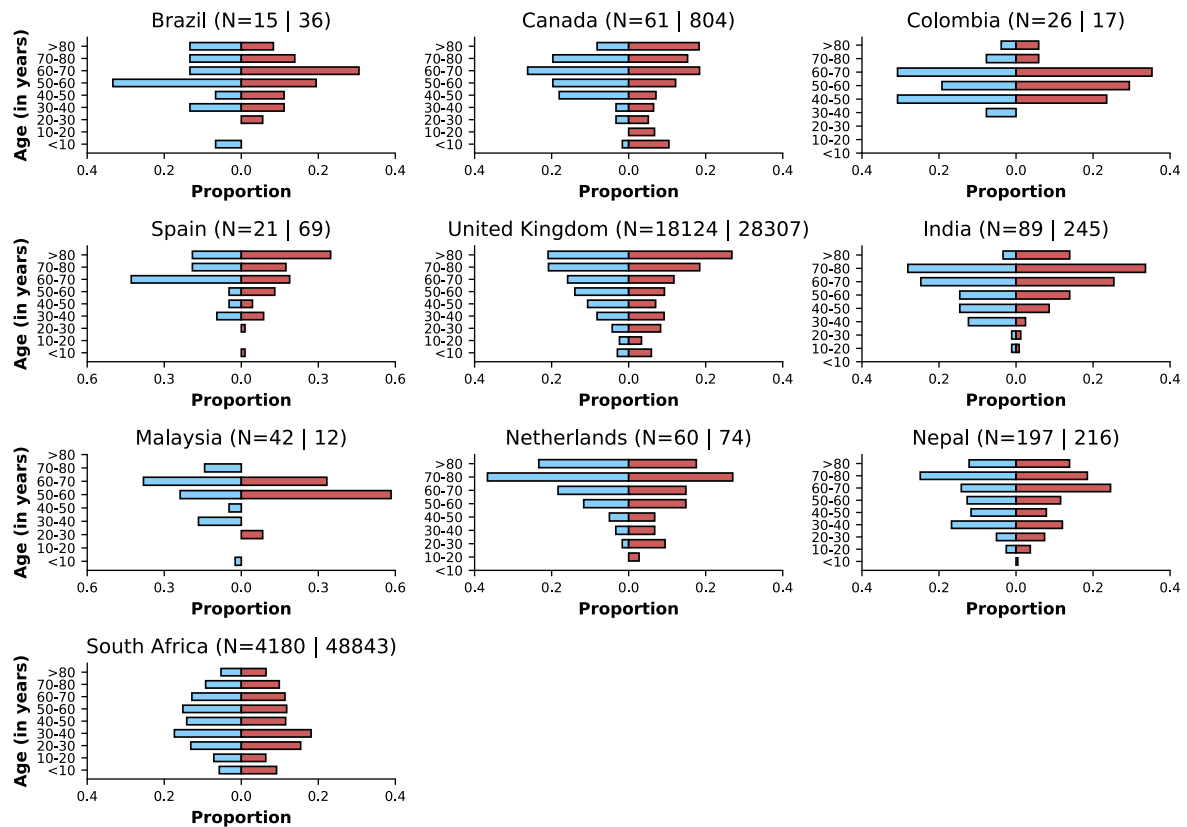


**E**

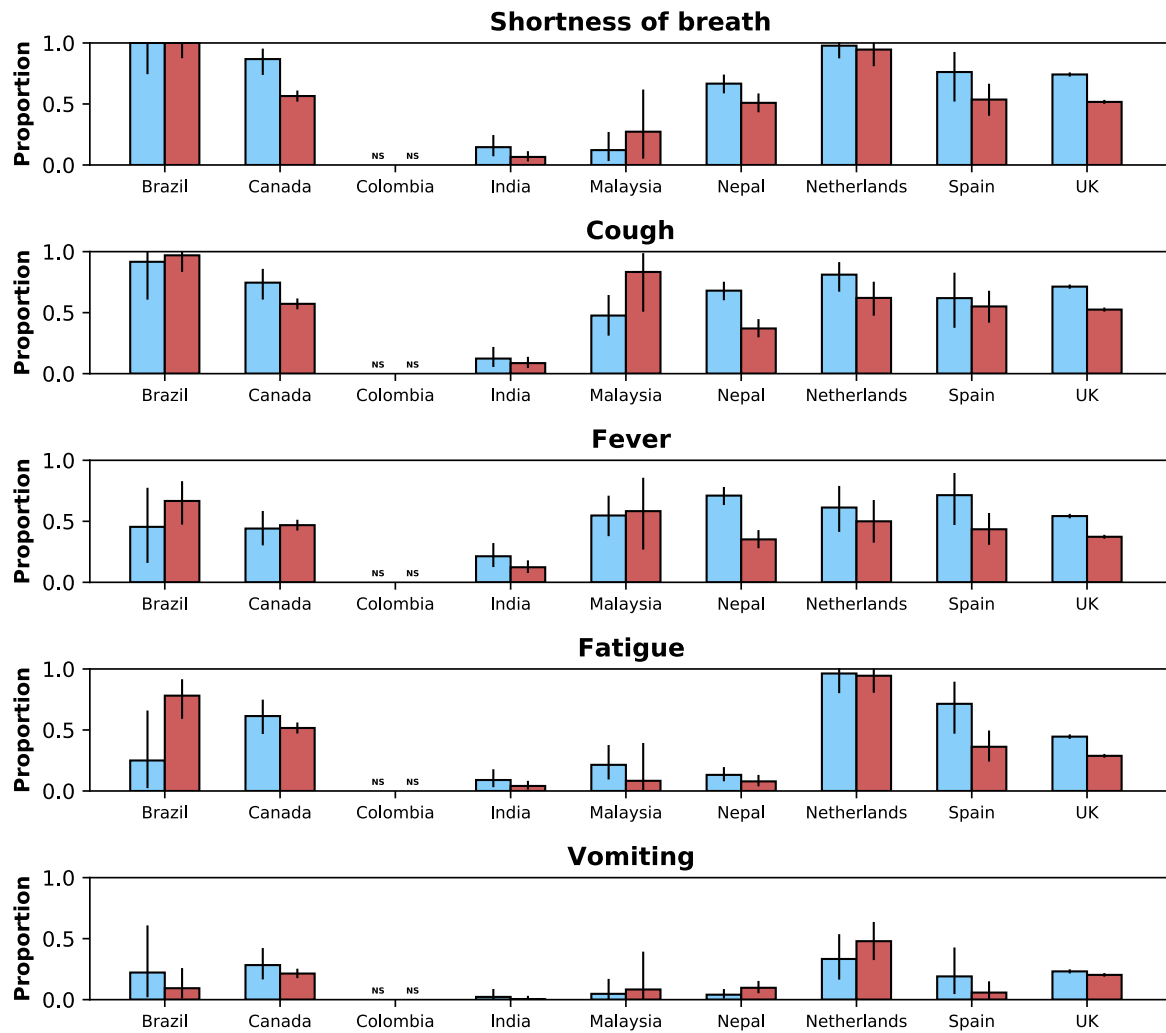


**Figure S8.** This figure shows in different panels similar information to that presented in the following Figures: **Figure 3** corresponds to panel **A**; **Figure 4A**, to panel **B**; **Figure 4B**, panel **C**; **Figure S3**, panel **D**; **Figure 5**, panel **E**. The legends of those figures apply to the corresponding panels in this figure. Here the upper threshold frequency used to define Omicron variant dominance was 80% rather than 90%.

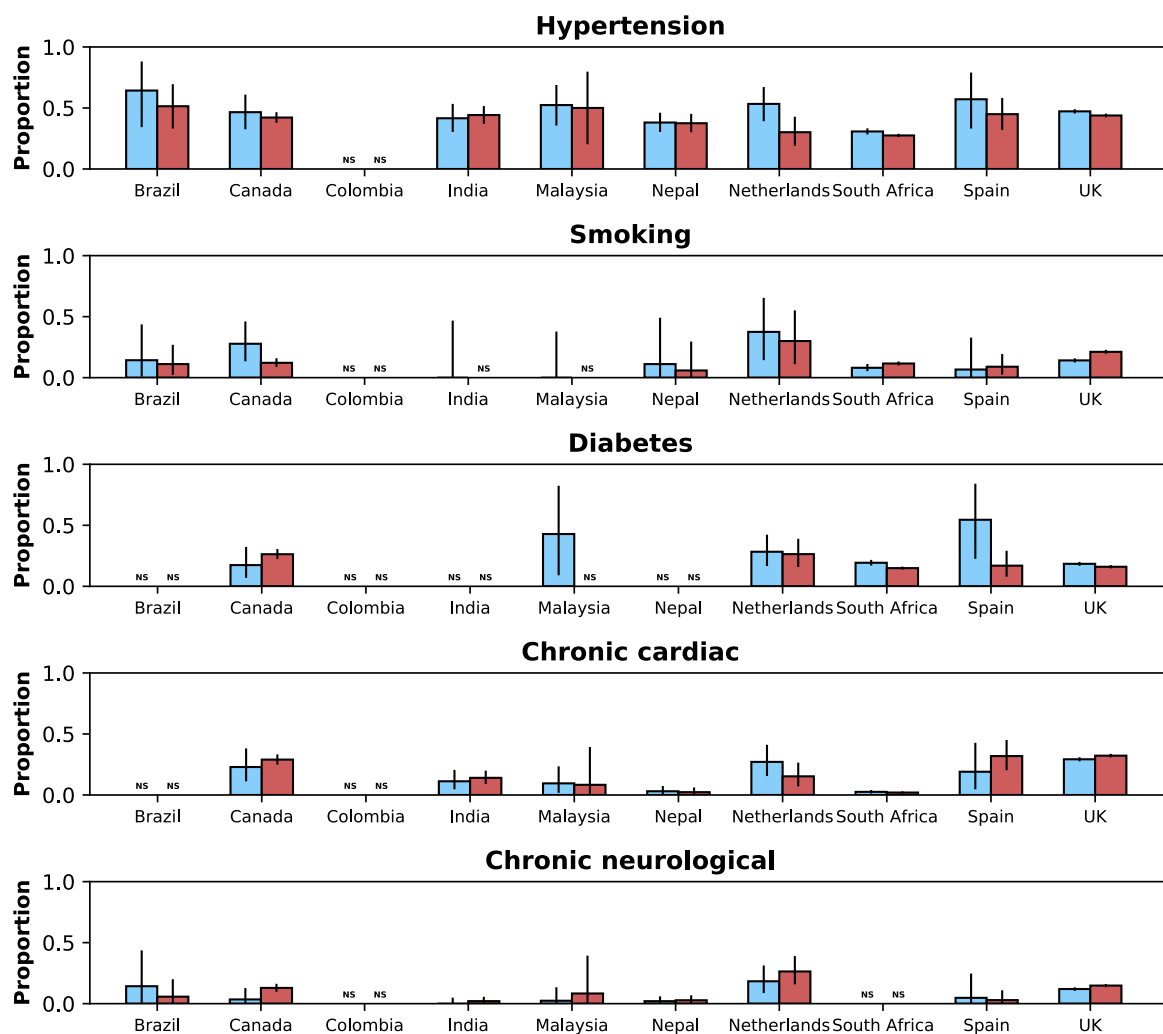
**A**



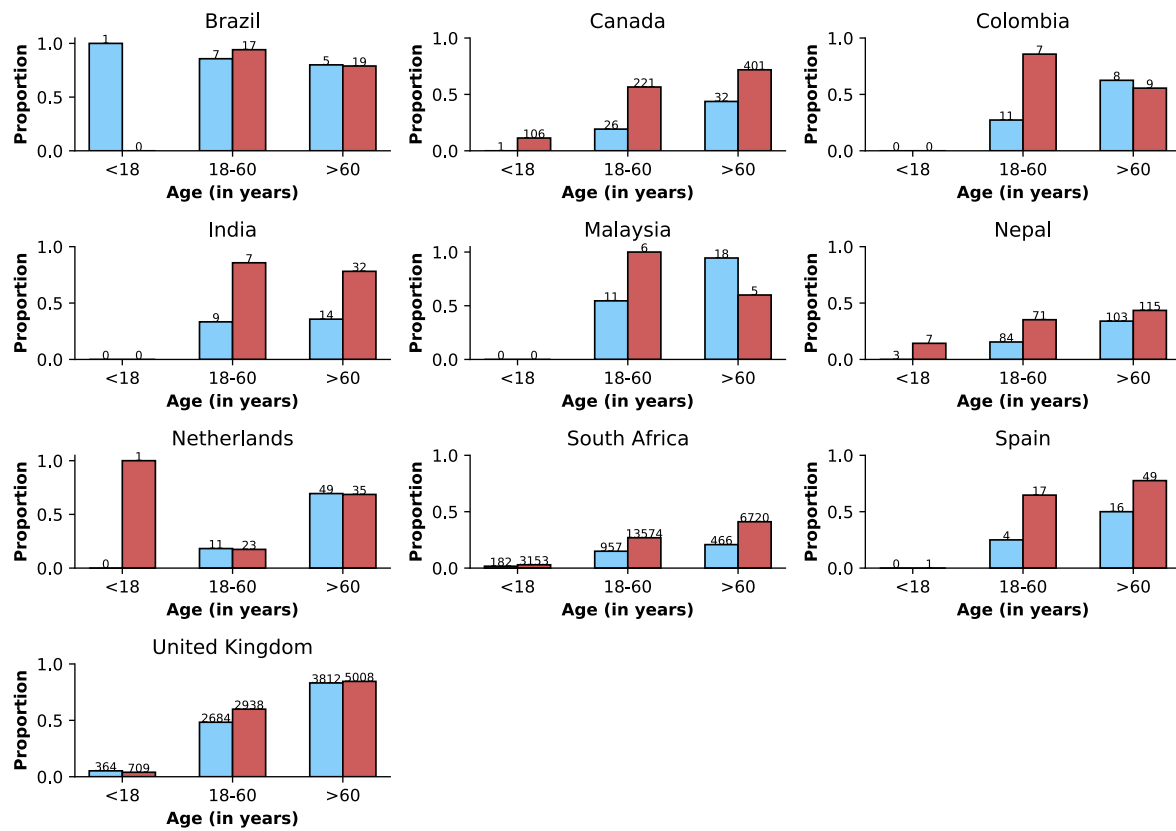
**B**



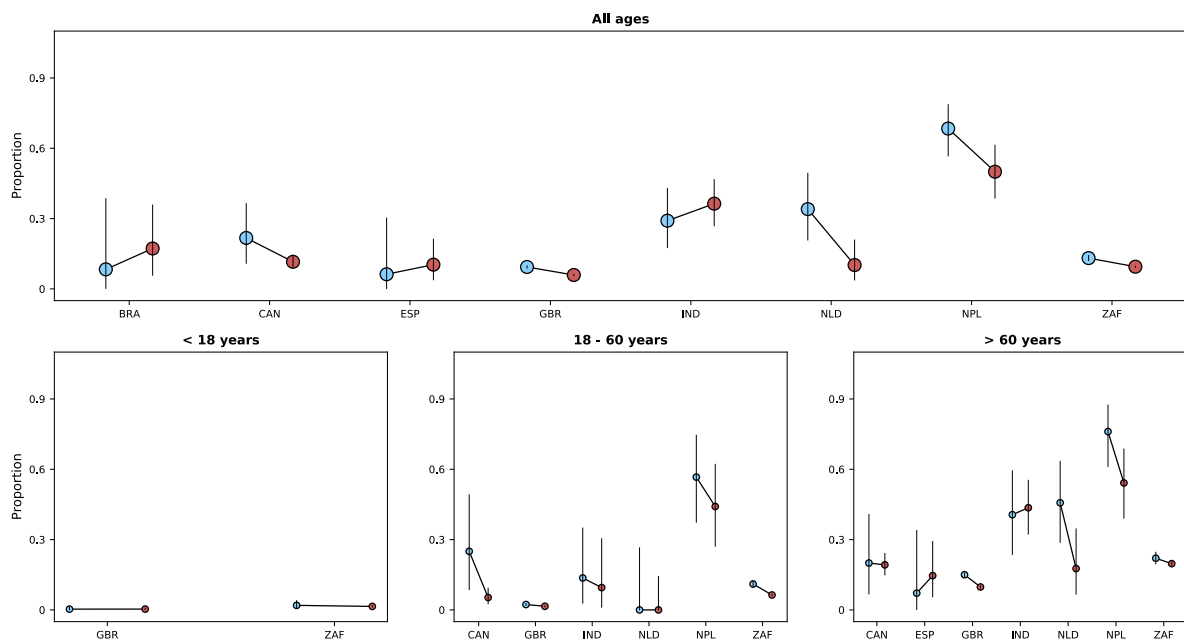
C



**D**



**E**





## **ISARIC Clinical Characterisation Group**

Sheryl Ann Abdukahil, Audrey Dubot-Pérès, José Antonio Lepe, Ali Abbas, Kamal Abu Jabal, Nashat Abu Salah, Francisca Adewhajah, Enrico Adriano, Marina Aiello, Kate Ainscough, Eman Al Qasim, Angela Alberti, Beatrice Alex, Abdulrahman Al-Fares, Phoebe Ampaw, Sophia Ankrah, Ardiyan Apriyana, Yaseen Arabi, Antonio Arcadipane, Patrick Archambault, Lukas Arenz, Christel Arnold-Day, Ana Aroca, Rakesh Arora, Diptesh Aryal, Elizabeth A Ashley, AM Udara Lakshan Attanyake, Benjamin Bach, J. Kenneth Baillie, Valeria Balan, Irene Bando, Renata Barbalho, Wendy S. Barclay, Michaela Barnikel, Joaquín Baruch, Diego Fernando Bautista Rincon, Abigail Beane, John Beca, Netta Beer, Husna Begum, David Bellemare, Anna Berenguera, Hazel Bergin, Amar Bhatt, Claudia Bianco, Moirangthem Bikram Singh, Felwa Bin Humaid, Jonathan Bitton, Catherine Blier, Lucille Blumberg, Debby Bogaert, Patrizia Bonelli, Dounia Bouhmani, Thipsavanh Bounphiengsy, Latsaniphone Bounthasavong, Bianca Boxma, Kathy Brickell, Aidan Burrell, Ingrid G. Bustos, Eder Caceres, Caterina Caminiti, João Camões, Cecilia Canepa, Janice Caoili, Francesca Carlacci, Gayle Carney, Inês Carqueja, François Martin Carrier, Gail Carson, Silvia Castañeda, Nidyanara Castanheira, Roberta Cavalin, Muge Cevik, Bounthavy Chaleunphon, Adrienne Chan, Meera Chand, Alfredo Antonio Chetta, Julian Chica, Danoy Chommanam, Yock Ping Chow, Nathaniel Christy, Barbara Wanjiru Citarella, Sara Clohisey, Perren J. Cobb, Cassidy Codan, Marie Connor, Graham S. Cooke, Mary Copland, Amanda Corley, Gloria Crawl, Paula Custodio, Ana da Silva Filipe, Andrew Dagens, Peter Daley, Heidi Dalton, Jo Dalton, Nick Daneman, Emmanuelle A Dankwa, Frédérick D'Aragnon, Thushan de Silva, Jillian Deacon, William Dechert, Emmanuelle Denis, Santi Dewayanti, Pathik Dhanger, Yael Dishon, Annemarie B. Docherty, Arjen M Dondorp, Maria Donnelly, Christl A. Donnelly, Chloe Donohue, Peter Doran, Phouvieng Douangdala, James Joshua Douglas, Joanne Downey, Tom Drake, Murray Dryden, Susanne Dudman, Jake Dunning, Lucian Durham III, Anne Margarita Dyrhol-Riise, Marco Echeverria-Villalobos, Giorgio Economopoulos, Michael Edelstein, Martina Escher, Mariano Esperatti, Lorinda Essuman, Amna Faheem, Arabella Fahy, Cameron J. Fairfield, Laura Feeney, Carlo Ferrari, Sílvia Ferreira, Claudia Figueiredo-Mello, Juan Fiorda, Tom Fletcher, Brigid Flynn, Federica Fogliazza, Patricia Fontela, Simon Forsyth, Robert A. Fowler, Marianne Fraher, Diego Franch-Llasat, John F Fraser, Christophe Fraser, Ana Freitas Ribeiro, Nora Fuentes, Argin G, Sérgio Gaião, Linda Gail Skeie, Phil Gallagher, Carrol Gamble, Julia Garcia-Diaz, Esteban Garcia-Gallo, Federica Garofalo, Jess Gibson, Michelle Girvan, Geraldine Goco, Joan Gómez-Junyent, Bronner P. Gonçalves, Alicia

Gonzalez, Patricia Gordon, Margarite Grable, Christopher A. Green, William Greenhalf, Fiona Griffiths, Anja Grosse Lordemann, Anne-Marie Guerguerian, Daniel Haber, Hannah Habraken, Matthew Hall, Sophie Halpin, Summer Hamza, Rashan Haniffa, Hayley Hardwick, Ewen M. Harrison, Janet Harrison, Alan Hartman, Madiha Hashmi, Leanne Hays, Lars Hegelund, Lars Heggelund, Ross Hendry, Liv Hesstvedt, Astarini Hidayah, Rupert Higgins, Samuel Hinton, Antonia Ho, Jan Cato Holter, Peter Horby, Juan Pablo Horcajada, Abby Hurd, Samreen Ijaz, Clare Jackson, Nina Jamieson, Waasila Jassat, Synne Jenum, Philippe Jouvét, Dafsa Juzar, Chris Kandel, Christiana Kartsonaki, Anant Kataria, Kevin Katz, Hannah Keane, Seán Keating, Yvelynne Kelly, Sadie Kelly, Kalynn Kennon, Sharma Keshav, Imrana Khalid, Michelle E Kho, Saye Khoo, Peter Kiiza, Beathe Kiland Granerud, Anders Benjamin Kildal, Anders Kildal, Paul Klenerman, Gry Kloumann Bekken, Stephen R Knight, Robin Kobbe, Paa Kobina Forson, Chamira Kodippily, Franklina Korkor Abebrese, Volkan Korten, Karolina Krawczyk, Deepali Kumar, Demetrios Kutsogiannis, Ama Kwakyewaa Bedu-Addo, François Lamontagne, Marina Lanza, Nicola Latronico, Andy Law, Teresa Lawrence, James Lee, Jennifer Lee, Gary Leeming, Amy Lester-Grant, Andrew Letizia, Gianluigi Li Bassi, Janet Liang, Wei Shen Lim, Andreas Lind, Ruth Lyons, Giuseppe Maglietta, Maria Majori, Paddy Mallon, Patrizia Mammi, Frank Manetta, Ceila Maria Sant'Ana Malaque, Daniel Marino, Carlos Cañada Illana, Catherine Marquis, Hannah Marrinan, Laura Marsh, John Marshall, Dori-Ann Martin, Ignacio Martin-Loeches, Alejandro Martin-Quiros, Alejandro Martín-Quiros, Caroline Martins Rego, Gennaro Martucci, Eva Miranda Marwali, David Maslove, Sabina Mason, Henrique Mateus Fernandes, Romans Matulevics, Mayfong Mayxay, Colin McArthur, Anne McCarthy, Rachael McConnochie, Sarah E. McDonald, Allison McGeer, Johnny McKeown, Kenneth A. McLean, Elaine McPartlan, Edel Meaney, Kusum Menon, Alexander J. Mentzer, Laura Merson, Tiziana Meschi, Dan Meyer, Alison M. Meynert, Efstathia Mihelis, Elena Molinos, Brenda Molloy, Claudia Montes, Shona C. Moore, Sarah Moore, Lina Morales Cely, Caroline Mudara, Fredrik Müller, Karl Erik Müller, Laveena Munshi, Lorna Murphy, Srinivas Murthy, Himed Musaab, Carlotta Mutti, Himasha Muvindi, Mangala Narasimhan, Matthew Nelder, Emily Neumann, Alistair Nichol, Lisa Norman, Mahdad Noursadeghi, Giovanna Occhipinti, Derbrenn O'Connor, Katie O'Hearn, Piero L. Olliaro, David S.Y. Ong, Wilna Oosthuyzen, Peter Openshaw, Linda O'Shea, Massimo Palmarini, Giovanna Panarello, Prasan Kumar Panda, Hem Paneru, Paolo Parducci, Rachael Parke, Melissa Parker, Laura Patrizi, Lisa Patterson, Mical Paul, William A. Paxton, Mare Pejkovska, Luis Periel, Michele Petrovic, Frank Olav Pettersen, Scott Pharand, Ooyanong Phonemixay, Soulichanya Phouthavong, Roberta Pisi, Riinu Pius, Simone Piva, Georgios

Pollakis, Andra-Maris Post, Jeff Powis, Viladeth Praphasiri, Mark G. Pritchard, Gamage Dona Dilanthi Priyadarshani, Matteo Puntoni, Vilmaris Quinones-Cardona, Else Quist-Paulsen, Anais Rampello, Rajavardhan Rangappa, Elena Ranza, Aasiyah Rshan, Thalha Rshan, Indrek Rätsep, Cornelius Rau, Francesco Rausa, Brenda Reeve, Liadain Reid, Dag Henrik Reikvam, Jordi Rello, Oleksa Rewa, Luis Felipe Reyes, Asgar Rishu, Maria Angelica Rivera Nuñez, Stephanie Roberts, David L. Robertson, Ferran Roche-Campo, Amanda Rojek, Roberto Roncon-Albuquerque Jr, Matteo Rossetti, Sandra Rossi, Clark D. Russell, Aleksander Rygh Holten, Luca Sacchelli, Musharaf Sadat, Valla Sahraei, Leonardo Salazar, Kizy Sanchez de Oliveira, Vanessa Sancho-Shimizu, Gyan Sandhu, Zulfiqar Sandhu, Oana Sandulescu, Marlene Santos, Shirley Sarfo-Mensah, Iam Claire E. Sarmiento, Sree Satyapriya, Rumaisah Satyawati, Egle Saviciute, Gary Schwartz, Janet T. Scott, James Scott-Brown, Malcolm G. Semple, Ellen Shadowitz, Shaikh Sharjeel, Catherine A. Shaw, Victoria Shaw, Dr. Rajesh Mohan Shetty, Haixia Shi, Mohiuddin Shiekh, Sally Shrapnel, Moses Siaw-Frimpong, Bountoy Sibounheuang, Louise Sigfrid, Piret Sillaots, Budha Charan Singh, Pompini Agustina Sitompul, Vegard Skogen, Sue Smith, Michelle Smyth, Tom Solomon, Rima Song, B. P. Sanka Ruwan Sri Darshana, Shiranee Sriskandan, Stephanie-Susanne Stecher, Trude Steinsvik, Birgitte Stiksrud, Adrian Streinu-Cercel, Anca Streinu-Cercel, David Stuart, Jacky Y. Suen, Charlotte Summers, Jaques Sztajnbok, Maria Lawrensia Tampubolon, Richard S. Tedder, Hubert Tessier-Grenier, Shaun Thompson, David Thomson, Emma C. Thomson, Ryan S. Thwaites, Andrea Ticinesi, Paul Tierney, Bharath Kumar Tirupakuzhi Vijayaraghavan, Kristian Tonby, Rosario Maria Torres Santos-Olmo, Lance C.W. Turtle, Anders Tveita, PG Ishara Udayanga, Alberto Uribe, Timothy M. Uyeki, Ilaria Valzano, Pooja Varghese, Michael Varrone, Sebastian Vencken, James Vickers, José Ernesto Vidal, Judit Villar, Andrea Villoldo, Chiara Vitiello, Manivanh Vongsouvath, Steve Webb, Jia Wei, Sanne Wesselius, Murray Wham, Nicole White, Surya Otto Wijaya, Evert-Jan Wils, Xin Ci Wong, Stephanie Yerkovich, Touxiong Yiaye, Obada Yousif, Saptadi Yulianto, Maram Zahran, Maria Zambon.

## Conflict of Interest Declarations

Angheben, A. declares support from Italian Ministry of Health - “Fondi Ricerca Corrente” Line1 Project 5 to IRCCS Sacro Cuore – Don Calabria Hospital.

Carrier, F.M. declares a grant from the Canadian Institute of Health Research.

Dalton, H. declares personal fees for medical director of Innovative ECMO Concepts and honorarium from Abiomed/BREETHE Oxi-1 and Instrumentation Labs. Consultant fee, Entegriion Inc., Medtronic and Hemocue.

Dyrhol-Riise, AM, declares grants from Gilead outside this work.

Donnelly, C.A. declares research funding from the UK Medical Research Council and the UK National Institute for Health Research.

Douglas, J.J. declares personal fees from lectures from Sunovion and Merck; consulting fees from Pfizer.

Fowler, R. declares a peer reviewed research grant from the Canadian Institutes of Health Research.

Gómez-Junyent, J. declares support by Pfizer, Angelini and MSD to attend meetings (registration to meetings only).

Guerguerian AM. Participated as site investigator for the Hospital For Sick Children, Toronto, Canada as a site through SPRINT-SARI Study via the Canadian Critical Care Trials Group sponsored in part by the Canadian Institutes of Health Research.

Ho, A. declares grant funding from Medical Research Council UK, Scottish Funding Council - Grand Challenges Research Fund, and the Wellcome Trust, outside this submitted work.

Holter, J.C. reports grants from Research Council of Norway grant no 312780, and from Vivaldi Invest A/S owned by Jon Stephenson von Tetzchner, during the conduct of the study.

Kumar, D. declares grants and personal fees from Roche, GSK and Merck; and personal fees from Pfizer and Sanofi.

Kutsogiannis, D.J. declares personal fees for a lecture from Tabuk Pharmaceuticals and the Saudi Critical Care Society

Lee, J. reports grants from European Commission PREPARE grant agreement No 602525, European Commission RECOVER Grant Agreement No 101003589 and European Commission ECRAID Grant Agreement 965313 supporting the conduct, coordination and management of the work.

Lim, W.S. declares his institution has received unrestricted investigator-initiated research funding from Pfizer for an unrelated multicentre cohort study in which he is the Chief

Investigator, and research funding from the National Institute for Health Research, UK for various clinical trials outside the submitted work.

Martin-Loeches I. declared lectures for Gilead, Thermofisher, MSD; advisory board participation for Fresenius Kabi, Advanz Pharma, Gilead, Accelerate, Merck; and consulting fees for Gilead outside of the submitted work.

Martín-Quiros, A. declares consulting fees for Gilead and MSD, presentation fees for GILEAD, Pfizer and MSD, support for attending ECCMID from Gilead, and advisory board fees for MSD and Gilead.

Murthy, S declares receiving salary support from the Health Research Foundation and Innovative Medicines Canada Chair in Pandemic Preparedness Research.

Nichol, A. declares a grant from the Health Research Board of Ireland to support data collection in Ireland (CTN-2014-012), an unrestricted grant from BAXTER for the TAME trial kidney substudy and consultancy fees paid to his institution from AM-PHARMA.

Openshaw, P. has served on scientific advisory boards for Janssen/J&J, Oxford Immunotech Ltd, GSK, Nestle and Pfizer (fees to Imperial College). He is Imperial College lead investigator on EMINENT, a consortium funded by the MRC and GSK. He is a member of the RSV Consortium in Europe (RESCEU) and Inno4Vac, Innovative Medicines Initiatives (IMI) from the European Union.

Parke, R. declares that the Cardiothoracic and Vascular Intensive Care Unit, Auckland City Hospital, receives support by way of an unrestricted grant from Fisher and Paykel Healthcare New Zealand Ltd.

Rewa, O. declares honoraria from Baxter Healthcare Inc and Leading Biosciences Inc.

Săndulescu, O. has been an investigator in COVID-19 clinical trials by Algernon Pharmaceuticals, Atea Pharmaceuticals, Regeneron Pharmaceuticals, Diffusion Pharmaceuticals, Celltrion, Inc. and Atriva Therapeutics, outside the scope of the submitted work.

Simple, M.G. reports grants from DHSC National Institute of Health Research UK, from the Medical Research Council UK, and from the Health Protection Research Unit in Emerging & Zoonotic Infections, University of Liverpool, supporting the conduct of the study; other interest in Integrum Scientific LLC, Greensboro, NC, USA, outside the submitted work.

Shrapnel, S. participated as an investigator for an observational study analysing ICU patients with COVID-19 (for the Critical Care Consortium including ECMOCARD) funded by The Prince Charles Hospital Foundation during the conduct of this study.

Streinu-Cercel, Adrian has been an investigator in COVID-19 clinical trials by Algernon Pharmaceuticals, Atea Pharmaceuticals, Regeneron Pharmaceuticals, Diffusion Pharmaceuticals, and Celltrion, Inc., outside the scope of the submitted work.

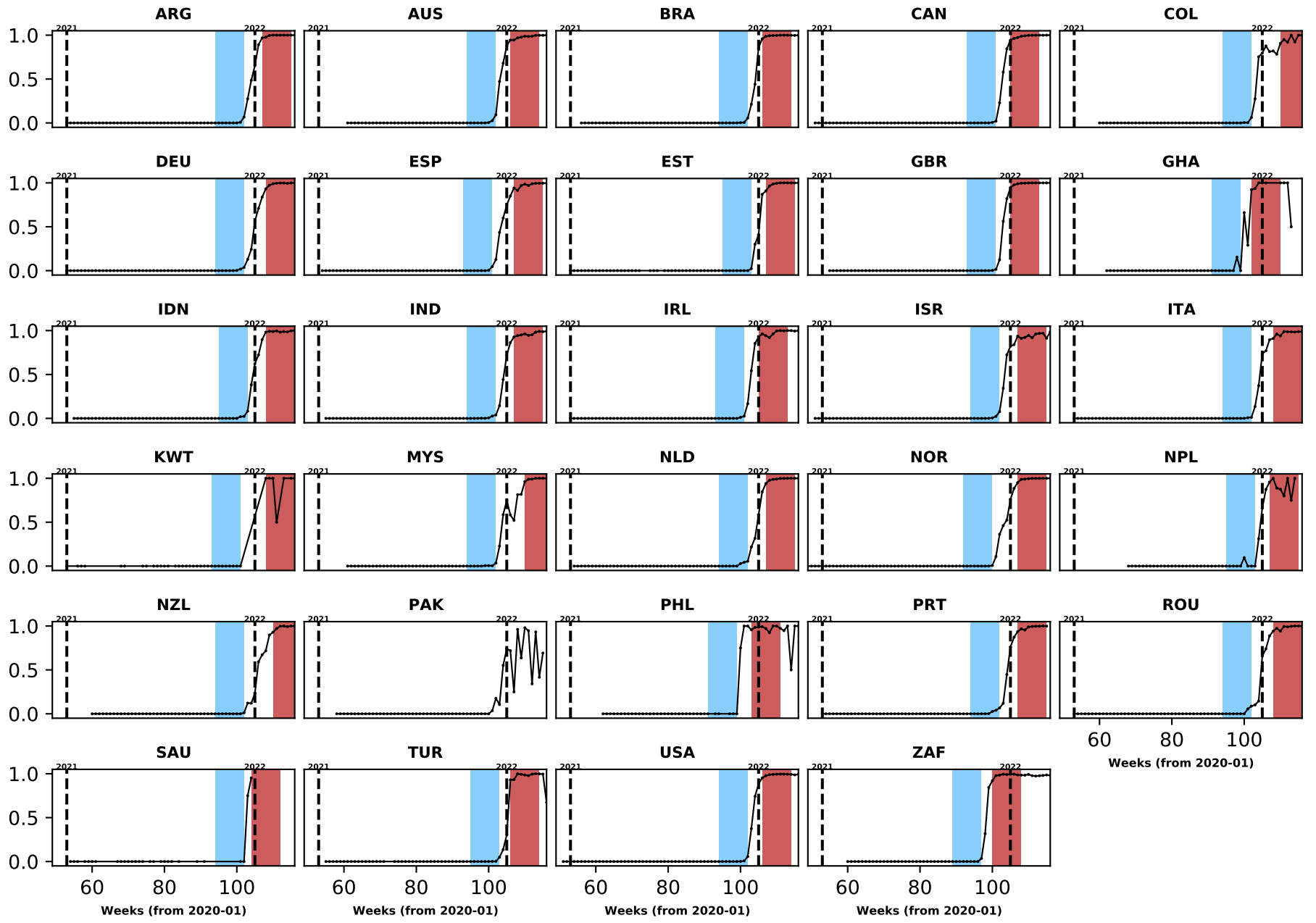
Streinu-Cercel, Anca has been an investigator in COVID-19 clinical trials by Algernon Pharmaceuticals, Atea Pharmaceuticals, Regeneron Pharmaceuticals, Diffusion Pharmaceuticals, Celltrion, Inc. and Atriva Therapeutics, outside the scope of the submitted work.

Summers, C. reports that she has received fees for consultancy for Abbvie and Roche relating to COVID-19 therapeutics. She was also the UK Chief Investigator of a GlaxoSmithKline plc sponsored study of a therapy for COVID, and is a member of the UK COVID Therapeutic Advisory Panel (UK-CTAP). Outside the scope of this work, Dr Summers' institution receives research grants from the Wellcome Trust, UKRI/MRC, National Institute for Health Research (NIHR), GlaxoSmithKline and AstraZeneca to support research in her laboratory.

Susanne Dudman reports grants from Research Council of Norway grant no 312780.

Tedder, R. reports grants from MRC/UKRI during the conduct of the study. In addition, R. Tedder has a patent United Kingdom Patent Application No. 2014047.1 "SARS-CoV-2 antibody detection assay" issued.

Turtle, L. reports grants from MRC/UKRI during the conduct of the study and fees from Eisai for delivering a lecture related to COVID-19 and cancer, paid to the University of Liverpool.



Data on 129,196 patients  
(30 countries)

Data on 103,061 patients  
(28 countries)  
either in the *pre-Omicron* or  
*Omicron* period

103,051 patients included in  
analyses

Data from following countries  
not included:

- Laos: Omicron variant did  
not reach sufficiently high  
frequency
- Pakistan: Omicron variant  
frequency increased but  
fluctuated

12,085 observations between  
and 12,665 observations before  
or after Omicron variant-  
defined study periods

10 patients did not have  
laboratory confirmation of  
SARS-CoV-2 infection (297  
patients with missing  
diagnostic information were  
assumed to be positive)

58,119 patients  
included in analysis on  
symptoms

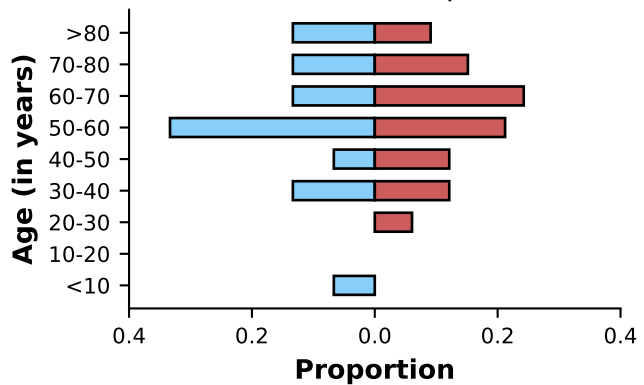
76,199 patients  
included in analysis on  
comorbidities

42,850 patients included  
in analysis on vaccine  
status

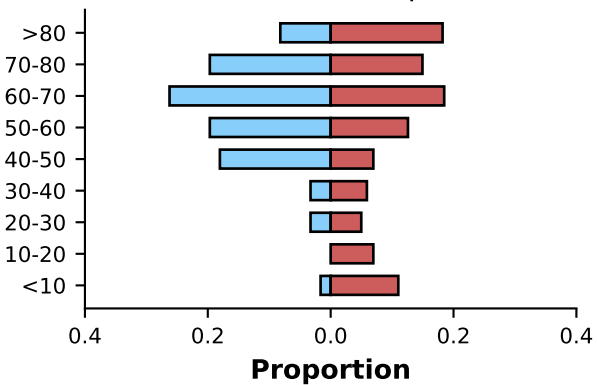
94,524 patients included in  
analysis on 14-day mortality  
outcome



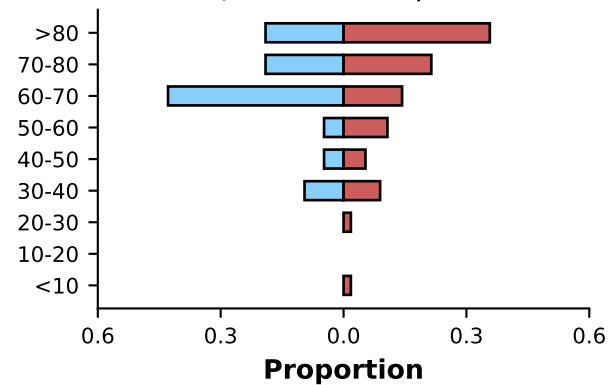
Brazil (N=15 | 33)



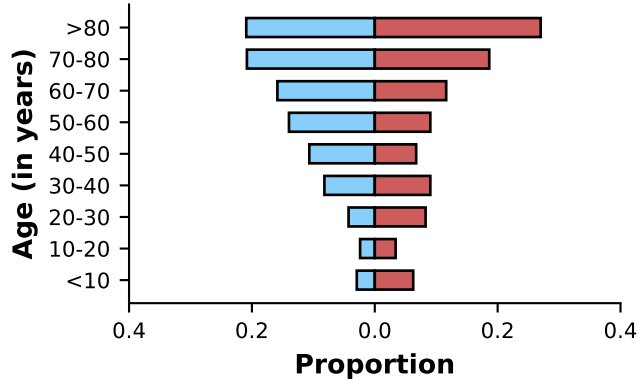
Canada (N=61 | 763)



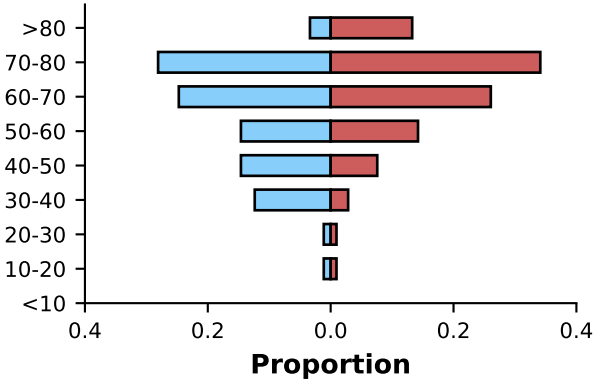
Spain (N=21 | 56)



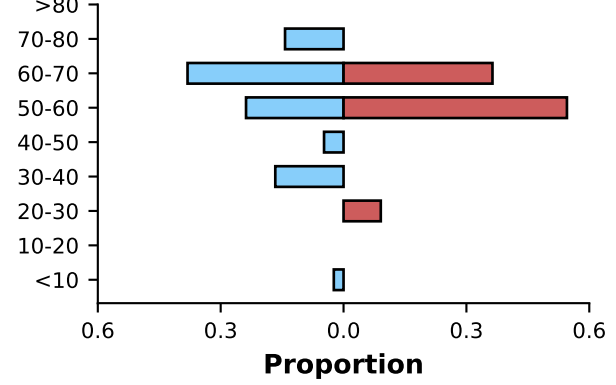
United Kingdom (N=18124 | 26479)



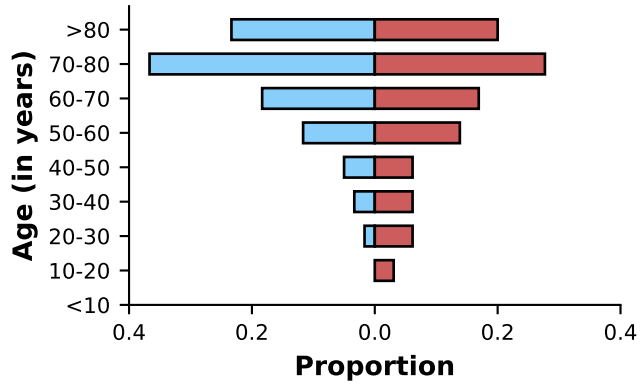
India (N=89 | 212)



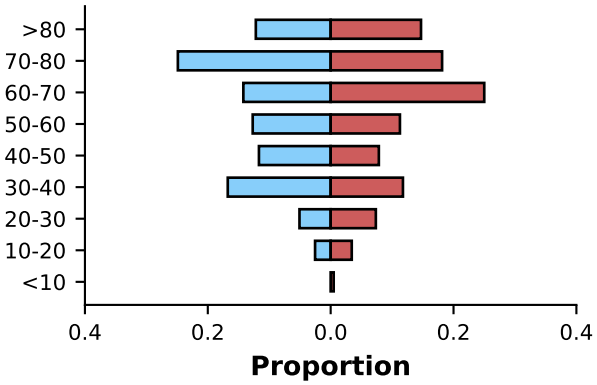
Malaysia (N=42 | 11)



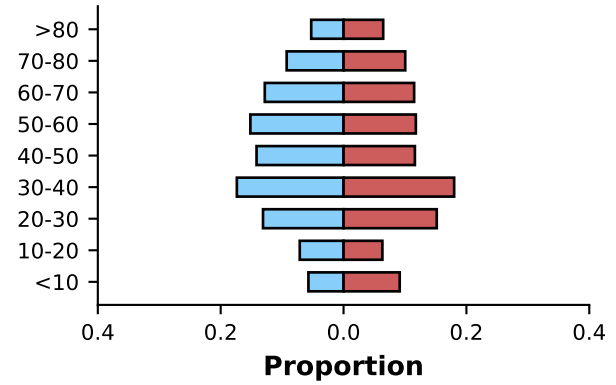
Netherlands (N=60 | 65)



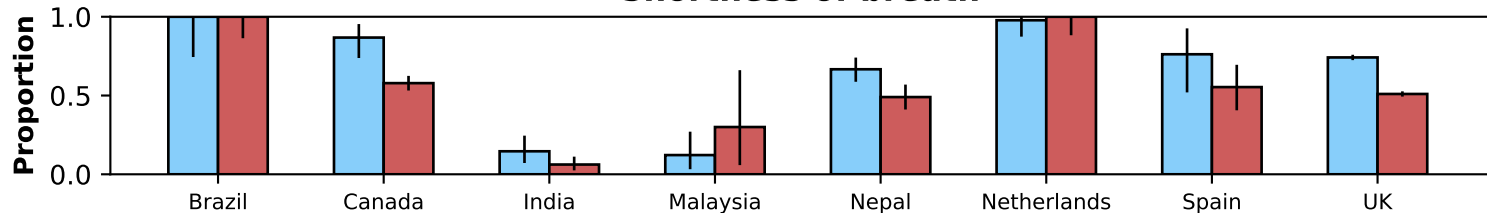
Nepal (N=197 | 204)



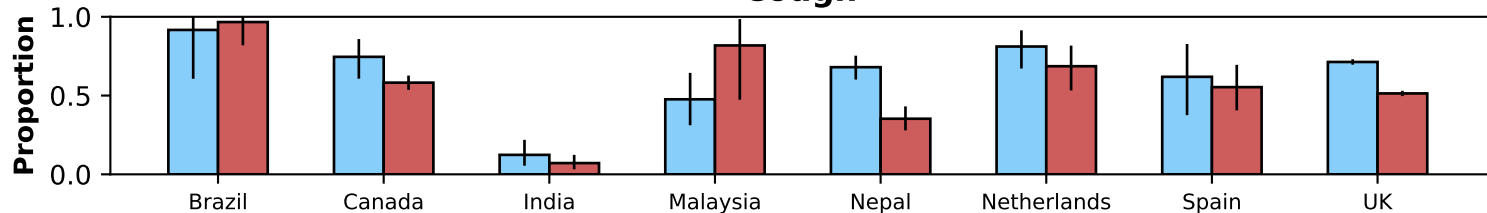
South Africa (N=4180 | 51929)



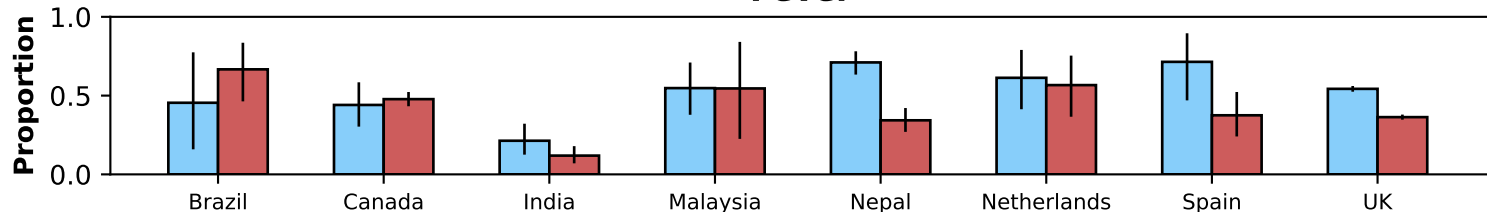
## Shortness of breath



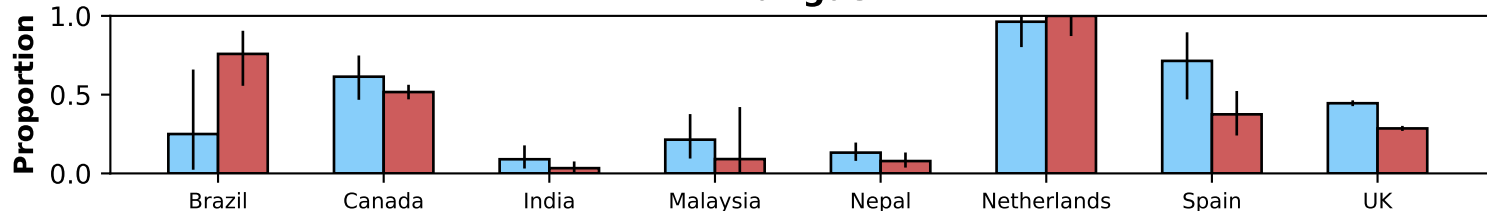
## Cough



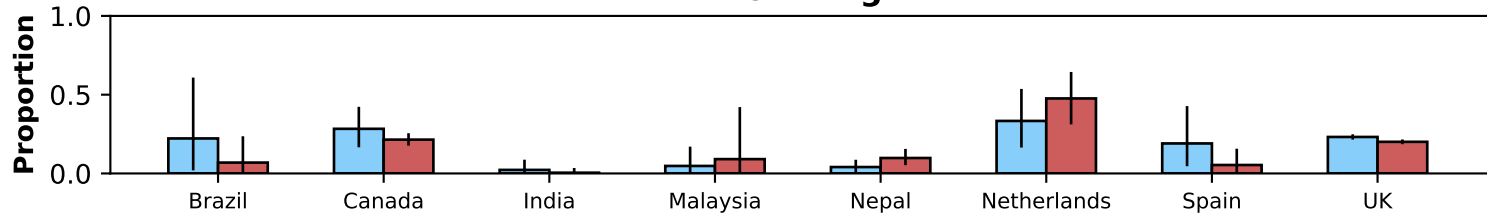
## Fever



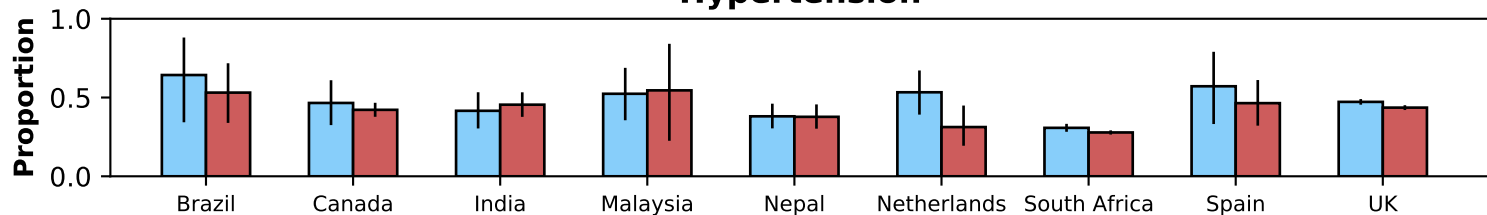
## Fatigue



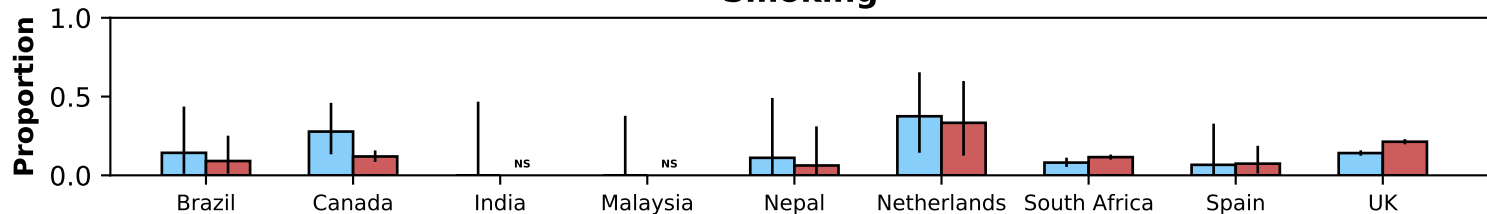
## Vomiting



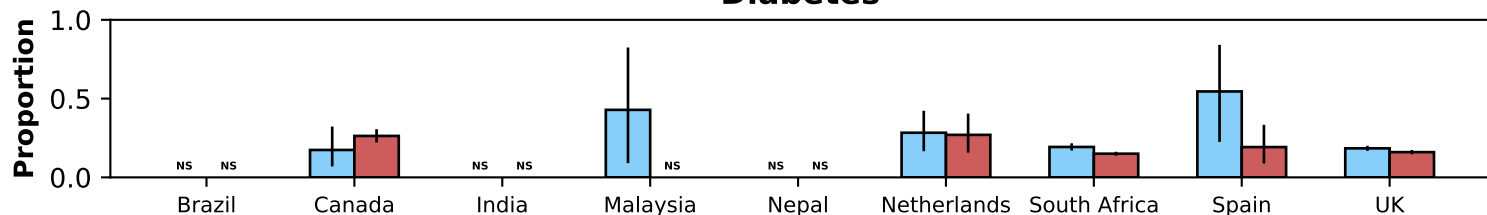
## Hypertension



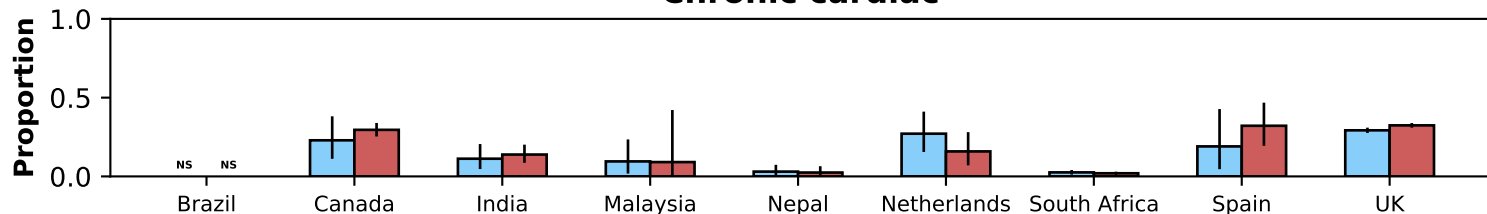
## Smoking



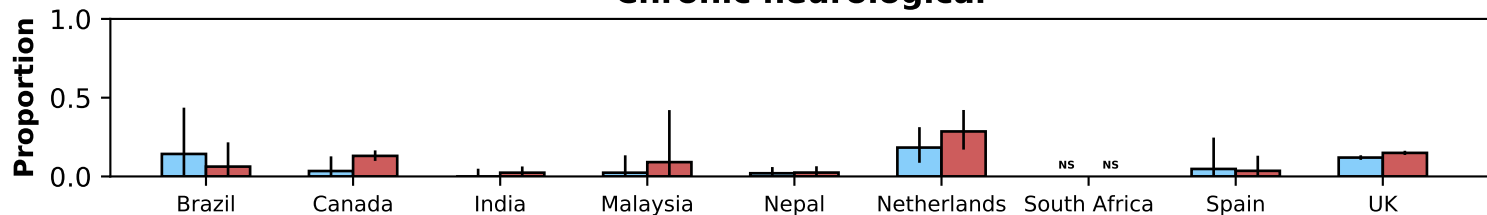
## Diabetes



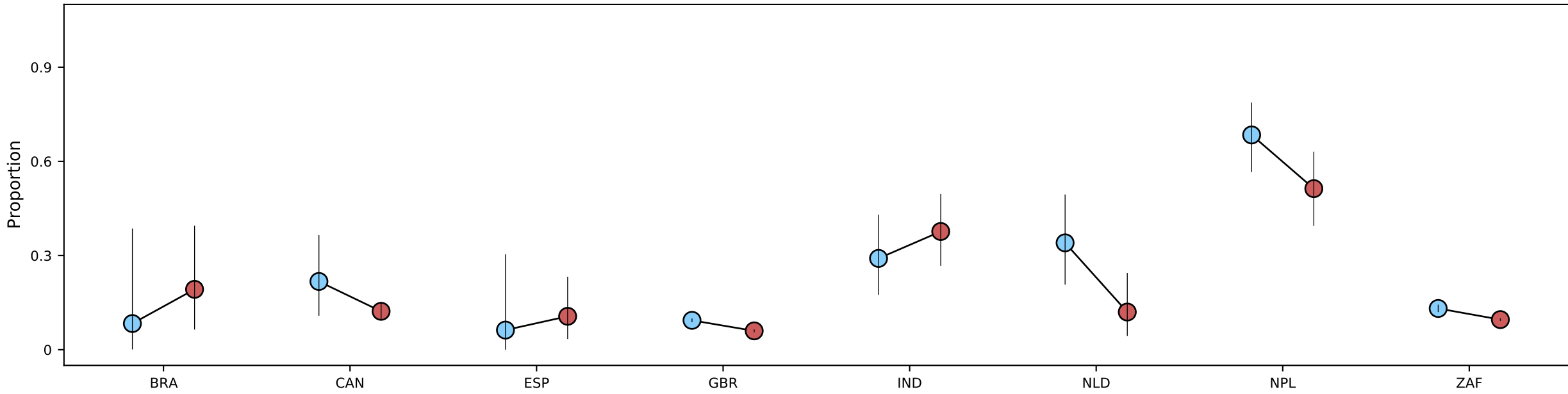
## Chronic cardiac



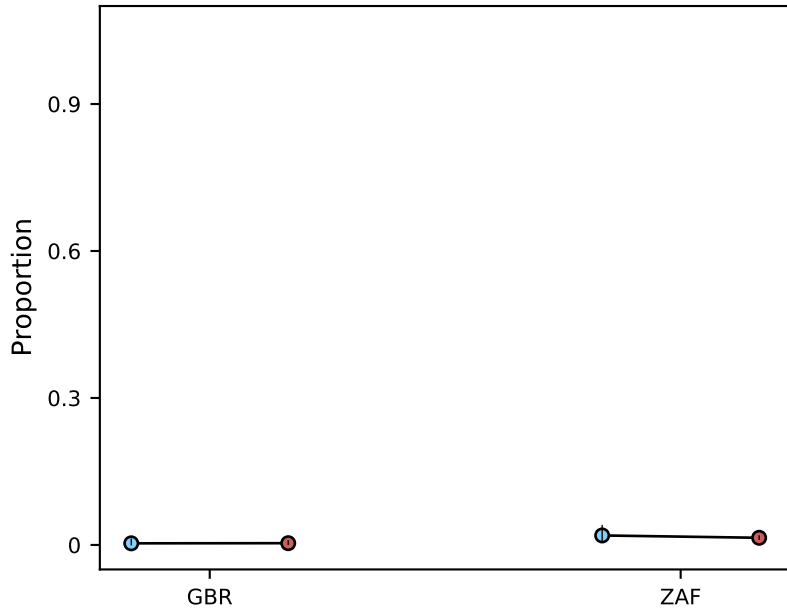
## Chronic neurological



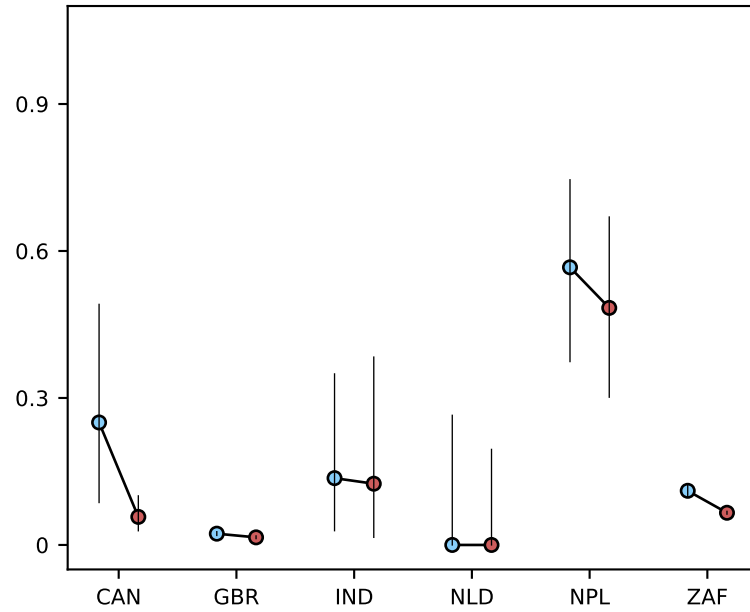
**All ages**



**< 18 years**



**18 - 60 years**



**> 60 years**

