

1 **Natural course of post COVID-19 condition and implications for**
2 **trial design and outcome selection: A population-based**
3 **longitudinal cohort study**

4

5 Tala Ballouz¹, Dominik Menges¹, Alexia Anagnostopoulos¹, Anja Domenghino^{1,2}, H el ene E Aschmann^{1,3},
6 Anja Frei¹, Jan S Fehr¹, Milo A Puhan^{1*}

7

8 ¹*Epidemiology, Biostatistics and Prevention Institute (EBPI), University of Zurich (UZH), Zurich, Switzerland*

9 ²*Department of Visceral and Transplantation Surgery, University Hospital Zurich (USZ), University of Zurich*
10 *(UZH), Zurich, Switzerland*

11 ³*Department of Epidemiology and Biostatistics, University of California San Francisco, San Francisco, USA*

12

13 * Corresponding author. Email: miloalan.puhan@uzh.ch.

14

15

16

17

18 **Abstract**

19 **Background:** Evidence from population-based studies on the longer-term natural course of post COVID-
20 19 condition is limited, but crucial for informing patients and healthcare providers and for effectively
21 designing clinical trials.

22 **Objectives:** To evaluate longer-term symptoms and health outcomes within a cohort of SARS-CoV-2
23 infected individuals.

24 **Design:** Population-based, longitudinal cohort.

25 **Setting:** General population, Canton of Zurich, Switzerland.

26 **Patients:** 1543 adults with confirmed SARS-CoV-2 infection and 628 adults without infection.

27 **Measurements:** Changes in self-reported health status over time, factors associated with persistence of
28 non-recovery, and prevalence and excess risk of symptoms at 6 and 12 months post-infection compared
29 to non-infected individuals.

30 **Results:** 25% of SARS-CoV-2 infected individuals did not recover by 6 months. Of those, 67% and 58% also
31 did not recover at 12 and 18 months after infection, respectively. Hospitalization for acute COVID-19, pre-
32 existing fatigue and pain or discomfort, and presence of specific systemic, cardiovascular, or
33 musculoskeletal symptoms at 6 months were associated with persistent non-recovery. Symptom
34 prevalence was higher among infected individuals compared to non-infected individuals at 6 months
35 (adjusted risk difference (aRD)=17%) and 12 months (aRD=20%). aRDs for individual symptoms ranged
36 from 2% to 12%, with the highest excess risks observed for altered taste or smell, post-exertional malaise,
37 fatigue, and reduced concentration and memory.

38 **Limitations:** We relied on self-reported assessments and did not assess the effects of vaccination or
39 infection with emerging variants of concern.

40 **Conclusion:** These findings emphasize the need for effective interventions to reduce the burden of post
41 COVID-19 condition. They further demonstrate the importance of using multiple outcome measures and
42 of considering the expected rates of natural recovery and heterogenous patient trajectories in the design
43 and interpretation of clinical trials.

44

45 **Registration:** ISRCTN14990068.

46 **Funding source:** Swiss Federal Office of Public Health, Department of Health of the Canton of Zurich,

47 University of Zurich Foundation.

48

49

50

51 **Introduction**

52 Post COVID-19 condition affects approximately 20-30% of unvaccinated individuals at three to six months
53 after SARS-CoV-2 infection (1–10). To adequately inform patients, healthcare providers and policy makers,
54 it is important to not only determine its prevalence but also its natural course over time (11). As evidence
55 on the substantial public health burden of post COVID-19 condition accumulates, clinical trials will be
56 necessary to establish interventions which accelerate recovery or provide relief for associated symptoms.
57 A solid understanding of post COVID-19 condition trajectories and relevant outcome measures is required
58 to effectively design and adequately interpret such trials.

59

60 To date, few studies have reported outcomes related to post COVID-19 condition beyond six months after
61 infection (3,12–16). Common study limitations include specific participant populations (e.g., hospitalized)
62 or the lack of a prospective follow-up. Thus, these studies may not adequately reflect the variability of
63 symptoms and recovery across the severity spectrum of acute COVID-19. Additionally, most studies lacked
64 a comparison with a comparator group, and their findings were often scrutinized as many reported
65 symptoms were non-specific and common in the general population without infection. Furthermore,
66 limited knowledge and the lack of consensus on core outcomes regarding post COVID-19 condition has
67 led to the use of various outcome measures and inconsistent symptom definitions across observational
68 studies affecting their comparability (17). This also impairs the interpretation of future trials of
69 interventions aiming to improve post COVID-19 condition and their translation into healthcare policy and
70 clinical practice.

71

72 In this study, we aimed to characterize the natural course of post COVID-19 condition within a population-
73 based, longitudinal cohort of SARS-CoV-2 infected individuals. Specifically, our objectives were to 1)
74 describe patterns of recovery and symptom persistence over 12-18 months, 2) determine the attributable
75 risk of related symptoms by comparing their prevalence in infected individuals and a general population
76 cohort with no evidence of a past infection, and 3) evaluate factors potentially associated with non-

77 recovery. Thereby, we aim to provide comprehensive evidence on different trajectories and relevant
78 outcomes of post COVID-19 condition to support the design and interpretation of future clinical trials.

79

80 **Methods**

81 A detailed description of the methods is provided in the Supplementary Material.

82

83 **Study design and populations**

84 This analysis is based on the Zurich SARS-CoV-2 Cohort, an ongoing, population-based, prospective study
85 of individuals with laboratory-confirmed SARS-CoV-2 infection, recruited through the Department of
86 Health of the Canton of Zurich. All participants provided written consent. The study was prospectively
87 registered (ISRCTN14990068) and approved by the ethics committee of the Canton of Zurich (BASEC 2020-
88 01739).

89

90 We enrolled two populations of SARS-CoV-2 infected individuals: 1) "*retrospectively recruited*" which
91 included individuals infected with SARS-CoV-2 prior to study initiation (27 February to 05 August 2020)
92 and enrolled at a median of 7.2 months after infection, and 2) "*prospectively recruited*" which included
93 an age-stratified random sample of individuals diagnosed between 06 August 2020 and 19 January 2021,
94 enrolled upon diagnosis. All participants were enrolled before the roll-out of COVID-19 vaccines and
95 emergence of variants of concern in Switzerland.

96

97 To compare health outcomes among SARS-CoV-2 infected individuals with those in a similar uninfected
98 control population, we leveraged data from phase IV of the Corona Immunitas Zurich seroprevalence
99 study ((18,19); ISRCTN18181860, BASEC 2020-01247) which consists of an age-stratified random sample
100 of individuals from the general population of the Canton of Zurich. We excluded participants who were
101 infected in the past or at the time of enrolment.

102

103 **Data sources**

104 We used data collected in the Zurich SARS-CoV-2 Cohort upon enrolment and at regularly conducted
105 follow-ups up to 12 months after infection. Initially, participants consented to participation for one year
106 and were asked to consent for further biannual assessments upon completion of the 12-month
107 assessment. At the time of writing, complete 18-month data was available only for retrospectively
108 recruited participants (77% agreed to prolongation and completed 18-month questionnaire). To provide
109 a longer perspective of the course of post COVID-19 condition, we also included 18-month outcomes from
110 these participants.

111 Furthermore, we included data from the baseline questionnaire of the Corona Immunitas study, which
112 was closely aligned with the Zurich SARS-CoV-2 Cohort questionnaires to ensure comparability. The
113 timeframe of data collection in Corona Immunitas (May-August 2021) corresponded to the timeframe of
114 the 6-month and 12-month assessments of the prospectively and retrospectively recruited populations in
115 the Zurich SARS-CoV-2 Cohort, respectively.

116

117 **Main outcomes**

118 In the absence of an established core outcome set for post COVID-19 condition, we determined outcomes
119 based on commonly reported patient-relevant health measures and symptoms (17,20).

120 Our primary outcome was the overall relative health status of participants at 6 and 12 months after
121 infection, defined using a combination of two self-reported measurements: 1) *(non-)recovery status*
122 compared to usual health status before infection, and 2) *overall health* using the EuroQol visual analogue
123 scale (EQ-VAS), with cut-off values for different levels of health impairment determined based on
124 population normative values and studies on chronic-obstructive pulmonary disease (21–23).

125

126 Secondary outcomes included change in relative health status between the 6- and 12-month follow-up
127 and the presence and severity of 23 predefined symptoms at both follow-up timepoints. We also asked
128 participants to indicate whether they perceived symptoms to be related to COVID-19 to differentiate post-
129 COVID-19 symptoms from those due to other reasons. Additional scale-based assessments included
130 fatigue (Fatigue Assessment Scale [FAS]), dyspnea (modified Medical Research Council [mMRC] dyspnea
131 scale), depression, anxiety, and stress (21-item Depression, Anxiety, and Stress Scale [DASS-21]), and

132 health-related quality of life (HRQoL; EuroQol 5-dimension 5-level [EQ-5D-5L]). Calculation of scores for
133 these assessments followed official guidance, as described previously (5,24).

134

135 **Statistical analysis**

136 In line with our objectives, we conducted three main analyses. First, we descriptively analyzed the overall
137 relative health status among infected individuals (all Zurich SARS-CoV-2 Cohort participants) at the 6-
138 month follow-up and determined the proportion with complete recovery or mild, moderate, and severe
139 health impairment. We performed multivariable regression analyses to assess the influence of potential
140 predictors on non-recovery by 6 months. Furthermore, we calculated the prevalence with 95% confidence
141 interval (CI) for each of the symptoms at 6 and 12 months, grouped based on the affected organ system.
142 Second, we estimated the excess risk of symptoms and adverse health outcomes (adjusted risk difference
143 [aRD]) in infected individuals (Zurich SARS-CoV-2 Cohort) 6 and 12 months after infection compared to
144 the general population (Corona Immunitas Zurich) using logistic regression models. Since the data
145 collection timeframe of Corona Immunitas corresponded to different follow-up timepoints of the
146 prospectively (6-month) and retrospectively recruited (12-month) participants, we performed these
147 comparative analyses separately for the two groups to minimize the influence of the timing of
148 assessments on measured outcomes.

149

150 Third, we focused on longer-term outcome trajectories among SARS-CoV-2 infected participants within
151 the Zurich SARS-CoV-2 Cohort who reported non-recovery at 6 months after infection. We evaluated the
152 change in relative health status at 12 months and assessed associations of potential predictors for
153 persistent non-recovery using logistic regression models. We descriptively analyzed the proportions of
154 participants reporting symptoms at the 6- and 12-month follow-ups and evaluated their co-occurrence.
155 Further, we compared the proportion of participants with adverse health outcomes prior to COVID-19
156 and up to 12 months in non-recovered participants to those recovering by 6 months. Finally, we
157 descriptively analyzed the longitudinal trajectories of the aforementioned outcomes at 18 months among
158 retrospectively recruited participants reporting non-recovery at 6 months.

159

160 **Role of the funding source**

161 This study is part of Corona Immunitas research network, coordinated by the Swiss School of Public Health
162 (SSPH+), and funded by fundraising of SSPH+ including funds of the Swiss Federal Office of Public Health
163 and private funders (ethical guidelines for funding stated by SSPH+ were respected), by funds of the
164 Cantons of Switzerland (Vaud, Zurich, and Basel) and by institutional funds of the Universities. Additional
165 funding specific to this study was received from the Department of Health of the Canton of Zurich, the
166 University of Zurich Foundation, and the Swiss Federal Office of Public Health. The funding bodies had no
167 influence on the design, conduct, analysis, or interpretation of the study, as well as on the decision to
168 publish, preparation or revisions of the manuscript. TB received funding from the European Union's
169 Horizon 2020 research and innovation programme under the Marie Skłodowska-Curie grant agreement
170 No 801076, through the SSPH+ Global PhD Fellowship Programme in Public Health Sciences (GlobalP3HS)
171 of the SSPH+. HA received a Swiss National Science Foundation (SNSF) Early Postdoc. Mobility Fellowship.

172

173 **Results**

174 We included data from 1543 SARS-CoV-2 infected individuals (Zurich SARS-CoV-2 Cohort) and 628 non-
175 infected individuals (Corona Immunitas) (Table 1; Supplementary Table 1 & Figure 1). Participants enrolled
176 in the Zurich SARS-CoV-2 Cohort were on average younger than those in Corona Immunitas (49 versus 65
177 years). 51% of all participants were female.

178

179 In total, 87% (1336/1543) of infected individuals were symptomatic and 8% (130/1543) were hospitalized
180 during acute infection. Compared to prospectively recruited participants (4%), a higher proportion of
181 retrospectively recruited (19%) were hospitalized, likely due to restriction of SARS-CoV-2 testing at the
182 beginning of the pandemic to high-risk and symptomatic individuals.

183 **Non-recovery and symptoms among SARS-CoV-2 infected**

184 Overall, 49% (699/1416, 127 with missing data) reported that they returned to their normal health status
185 in less than a month after infection, while 18% (250/1416) reported recovery within 1 to 3 months. By 6

186 months, 25% (348/1418, 125 with missing data) of participants reported that they had not yet recovered
187 with 17%, 4% and 3% with mild, moderate, and severe health impairment, respectively (1% missing EQ-
188 VAS data). In multivariable regression models, older age, female sex, presence of comorbidities, and
189 increased symptom count during acute infection were associated with non-recovery at 6 months
190 (Supplementary Table 4 & Figure 2).

191

192 At the 6- and 12-month follow-ups, 47% (95% CI: 45% to 50%) and 50% (47% to 52%) of participants,
193 respectively, reported experiencing any of the symptoms (Figure 1, Supplementary Figure 3). Meanwhile,
194 the prevalence of any symptom considered to be related to COVID-19 was 27% (25% to 30%) at 6 months
195 and 25% (23% to 28%) at 12 months. At both follow-ups, systemic (specifically fatigue, post-exertional
196 malaise), respiratory (dyspnea), neurologic (headache, altered taste or smell, sleep disturbances,
197 concentration difficulties), and musculoskeletal (myalgia) symptoms were most frequently reported with
198 a decreased prevalence at 12 months. Self-reported symptom severity for most symptoms decreased or
199 remained unchanged over time.

200 **Symptoms attributable to infection**

201 When comparing symptom prevalence among SARS-CoV-2 infected individuals with non-infected
202 individuals from the general population, we found evidence of higher symptom prevalence among those
203 infected at 6 months (aRD=17%, 11% to 21%) and 12 months (aRD=20%, 14% to 26%) after infection. The
204 highest excess risks among infected individuals were for altered taste or smell, post-exertional malaise,
205 fatigue, reduced concentration or memory, dyspnea, palpitations, chest pain, hair loss, sleep
206 disturbances, and swallowing difficulties, with aRDs ranging between 2% and 12% (Figure 2,
207 Supplementary Table 5).

208

209 When evaluating adverse health outcomes (Supplementary Figure 4 & Table 5), we found strong evidence
210 for a higher proportion of participants experiencing symptoms of anxiety among infected individuals at 6
211 months (aRD=5%, 2% to 8%) and 12 months (aRD=12%, 8% to 16%) based on DASS-21. We also found
212 evidence that a higher proportion of infected individuals experienced anxiety or depression (aRD=7%, 2%

213 to 13%) and problems during usual activities (aRD=8%, 4% to 12%) at 12 months based on EQ-5D-5L.
214 Meanwhile, a higher proportion of non-infected individuals experienced pain or discomfort at both
215 timepoints (6-month aRD=11%, 6% to 15%; 12-month aRD=9%, 3% to 15%).

216 **Symptoms and health trajectories among non-recovered**

217 After 12 months, 63% (57% to 68%) of those reporting non-recovery at 6 months (i.e., 16% overall)
218 reported not having fully recovered. However, there was a decrease in the proportion of those with mild,
219 moderate, and severe health impairment to 11%, 3%, and 1%, respectively (1% missing EQ-VAS data).
220 When assessing changes in the overall relative health status, most participants (53%) improved,
221 particularly among those experiencing a moderate or severe health impairment at 6 months
222 (Supplementary Figure 5). Yet, the health status of some individuals did not change (36%) and even
223 worsened for a smaller proportion (11%).

224

225 Among non-recovered, fatigue (38% at 6-month and 25% at 12-month follow-up), post-exertional malaise
226 (33% and 23%), altered taste or smell (23% and 16%), dyspnea (22% and 14%), reduced concentration
227 (19% and 15%) or memory (13% and 14%), and myalgia (13% and 7%) were the most commonly reported
228 COVID-19 related symptoms. Symptoms mostly decreased in severity over time (Supplementary Figure
229 6). Although most participants reporting COVID-19 related symptoms also reported non-recovery at 12
230 months, 11% nevertheless stated that they had fully recovered. Among those with at least two body organ
231 systems involved (Supplementary Figure 7), systemic and neurologic symptoms co-occurred most
232 frequently, followed by combinations of systemic, neurologic, and respiratory symptoms.

233

234 Longitudinal assessment of adverse health outcomes compared to pre-COVID-19 levels was available for
235 prospectively recruited participants (Figure 3). Compared to those recovering by 6 months, higher
236 proportions of non-recovered participants reported adverse health outcomes at all timepoints, including
237 prior to infection. In both groups, there was an increase in the proportion of participants reporting
238 adverse health outcomes shortly after infection. While this proportion decreased and returned to pre-
239 COVID-19 levels among those who recovered, there was a slower decrease among those who did not

240 recover. At 12 months, all outcomes were still reported by a considerable proportion of participants (57%
241 with fatigue on FAS, 43% with dyspnea grade ≥ 1 on mMRC, 24% with depression, 27% with anxiety and
242 20% with stress on DASS-21, and 66% with problems on EQ-5D-5L).

243

244 Based on exploratory multivariable regression analyses, we found evidence that fatigue (FAS) and pain or
245 discomfort (EQ-5D-5L) prior to COVID-19, hospitalization due to COVID-19, and experiencing post-
246 exertional malaise, chest pain, palpitations, arthralgia, cough, reduced concentration or memory, or visual
247 disturbances at 6 months were associated with persistent non-recovery at 12 months (Figure 4,
248 Supplementary Figure 8).

249

250 Among retrospectively recruited participants who reported non-recovery at 6 months and completed the
251 18-month questionnaire, 42% (37/88) had recovered by 18 months with an improvement in the overall
252 health status in most participants (62%). However, COVID-19 related symptoms (52%) and other adverse
253 health outcomes persisted in a large proportion of participants (Supplementary Figure 9).

254

255 **Discussion**

256 To address the current knowledge gap regarding the natural course of post COVID-19 condition among
257 affected individuals (11), we evaluated the longer-term recovery and health trajectories in a prospective,
258 population-based cohort.

259

260 Consistent with previous studies, we found that 25% of previously unvaccinated individuals did not return
261 to their normal health status by 6 months (1–3,25,4–7,10). Thereof, 37% fully recovered by 12 months
262 and 42% by 18 months after infection. While we observed an initial worsening in participants' HRQoL and
263 health outcomes after infection, the proportion of participants reporting adverse health outcomes
264 decreased over time. Individuals who did not require hospitalization during acute COVID-19 and
265 individuals without pre-existing fatigue or pain or discomfort were more likely to experience full recovery
266 within 12 months. Furthermore, specific systemic, cardiovascular, musculoskeletal symptoms at 6 months

267 were also associated with non-recovery over this timeframe. Our findings imply that an important number
268 of people may be affected by post COVID-19 condition and experience protracted health issues beyond
269 one year. Meanwhile, the rates of recovery and the overall improvement in the severity of participants'
270 health impairment over time may also provide some hope for affected individuals. Identifying patient
271 subgroups with the greatest risks of experiencing long-term health impairments and gaining a deeper
272 understanding of the underlying mechanisms will be necessary for developing interventions targeting
273 post COVID-19 condition.

274

275 Overall, approximately half of participants reported experiencing at least one symptom associated with
276 post COVID-19 condition at 6 and 12 months after infection. However, symptom prevalence was
277 relevantly lower with 27% and 25%, respectively, when restricting to symptoms that participants reported
278 to be related to COVID-19. The comparative analysis leveraging data from a representative population-
279 based seroprevalence study provided further evidence that overall symptom prevalence attributable to
280 SARS-CoV-2 infection was up to 20%. The estimated excess risk of individual symptoms were relatively
281 consistent with the proportion of symptoms self-reported by participants to be related to COVID-19. Yet,
282 for several symptoms, we found insufficient evidence that their prevalence among infected individuals
283 was elevated compared to non-infected individuals from the general population. Furthermore, some
284 participants with symptoms after 12 months nevertheless reported full recovery, implying that the
285 experienced symptoms may have only minimal impact on their daily lives. Considering that many
286 published studies did not consider the relation of symptoms to COVID-19 or did not have a control group
287 to estimate the proportion of adverse outcomes attributable to infection, findings from this study suggest
288 that the reported estimates for post COVID-19 condition based on symptoms alone may be overestimated
289 in the literature.

290

291 In this cohort, we used standardized assessment scales in addition to health status and self-reported
292 symptoms, allowing to further contextualize our findings. The use of such measures increases
293 comparability across studies and ensures that mental health aspects are also appropriately included.
294 Based on DASS-21 and EQ-5D-5L, we found that the excess risk of experiencing symptoms of anxiety or

295 depression among infected individuals was approximately 5-12%. This adds to the existing evidence of a
296 relevant mental health burden of post COVID-19 condition (26,27), even in light of the generally increased
297 prevalence of mental health-related issues in the general population during the pandemic (28). Given the
298 size of the infected population globally, there is a need for healthcare services and policies to assess and
299 address physical and mental health among those affected.

300

301 Altogether, our findings underscore the complexity in estimating the prevalence and trajectories of post
302 COVID-19 condition and emphasize the importance of assessing multiple outcomes, using standardized
303 scales, and including self-reported measures of recovery and health status for a comprehensive and
304 person-centered perspective in clinical trials.

305

306 **Implications for trial design and outcome selection**

307 Several clinical trials assessing potential interventions for post COVID-19 condition are currently underway
308 (29). Evidence from this and other observational studies on its natural course can help to effectively design
309 such trials. First, findings of this study provide important information on expected patient profiles and
310 subgroups at greater risk of non-recovery. This may help in defining study populations in trials to ensure
311 that individuals most likely to benefit from the intervention are included. Second, estimated rates of
312 spontaneous recovery could be used to calculate necessary sample sizes to detect an improvement in
313 participants' outcomes. Third, findings from prospective cohorts may help to determine the most relevant
314 outcome measures to assess post COVID-19 condition in clinical trials. Due to limited knowledge and
315 emerging evidence, defining outcomes in this context has been challenging, leading to substantial
316 heterogeneity across studies. Recently, a core outcome set for assessing post COVID-19 condition was
317 suggested, informed by frequently reported symptoms in the literature and a multi-stakeholder modified
318 Delphi process (17). The outcome measures used in our study are consistent with these
319 recommendations. Meanwhile, our findings also emphasize the importance of using a patient-reported
320 standardized measure of health status as a complementary outcome to capture the multidimensional
321 impact of post COVID-19 condition on HRQoL and daily life functioning among affected individuals. Using
322 such measures may also help to determine the overall benefit-harm balance of a potential intervention,

323 especially in the presence of small effect sizes. Finally, evidence on the different symptoms experienced
324 by individuals affected by post COVID-19 condition may help researchers to ensure that these are
325 accurately and consistently captured in both arms of clinical trials at baseline and prospectively. This
326 ensures that potential adverse effects of the intervention are appropriately investigated in the context of
327 the underlying risk due to post COVID-19 condition.

328

329 **Limitations**

330 Several limitations need to be considered when interpreting this study. First, we relied on the relative
331 health status of participants to evaluate persistent health impairments after infection. We cannot exclude
332 that the health status at the time of reporting may have reflected other infections or conditions. Second,
333 our study relied solely on self-reported assessments. While we believe that standardized patient-reported
334 outcome measures adequately reflect affected individuals' experiences, future work should consider
335 incorporating objective assessments and examining their correlation with self-reported measures. Third,
336 we used pre-defined symptom lists to assess symptoms related to post COVID-19 condition. Although
337 they were informed by what was most commonly reported by study participants and in the literature,
338 these lists may represent only part of the symptoms experienced by those affected (30,31). We further
339 did not assess their patterns, in particular whether they are relapsing, which has been shown to be a
340 feature of post COVID-19 condition (32,33). Fourth, Zurich SARS-CoV-2 Cohort participants were enrolled
341 when wildtype SARS-CoV-2 was the predominant circulating strain and prior to vaccination. Further
342 research is needed to assess the effect of vaccination (34,35) or infection with emerging strains (e.g., Delta
343 and Omicron) (36) on the development and persistence of post COVID-19 condition. Fifth, selection bias
344 may have occurred if individuals who were more concerned with their health were more likely to
345 participate, or if individuals with post COVID-19 condition were more likely to be retained in the study.
346 This may have led to an overestimation of the prevalence of post COVID-19 condition. However, the high
347 retention with minimal losses to follow-up strengthens our evaluations. Finally, we did not have
348 information on whether participants were undergoing therapy for post COVID-19 condition during the
349 study period. Thus, the natural course may not have been adequately reflected. However, given the

350 current lack of effective evidence-based interventions, we deem it unlikely that our findings were affected
351 by any such treatment.

352

353 **Conclusion**

354 This population-based study demonstrated that despite a decrease in the severity of symptoms and health
355 impairment over time, only two-fifths of those with post COVID-19 condition 6 months after infection
356 fully recover within 18 months. Persisting health issues create significant challenges for affected
357 individuals and their families and pose an important burden on population health and healthcare services.
358 This underscores the value of effective infection prevention strategies and emphasizes the need for
359 clinical trials aiming to establish effective interventions for post COVID-19 condition. Together with
360 evidence from other observational studies, our findings demonstrate the importance of using multiple
361 outcome measures and of considering the expected rates of natural recovery and heterogenous patients
362 trajectories in the design and interpretation of future clinical trials.

363

364 References

- 365 1. Ayoubkhani D, Khunti K, Nafilyan V, Maddox T, Humberstone B, Diamond I, et al. Post-covid
366 syndrome in individuals admitted to hospital with covid-19: retrospective cohort study. *BMJ*. 2021
367 Mar 31;372:n693.
- 368 2. Bellan M, Soddu D, Balbo PE, Baricich A, Zeppegno P, Avanzi GC, et al. Respiratory and
369 Psychophysical Sequelae Among Patients With COVID-19 Four Months After Hospital Discharge.
370 *JAMA Netw Open*. 2021 Jan 27;4(1).
- 371 3. Bull-Otterson L. Post-COVID Conditions Among Adult COVID-19 Survivors Aged 18–64 and ≥65
372 Years — United States, March 2020–November 2021. *MMWR Morb Mortal Wkly Rep*. 2022;71.
- 373 4. Logue JK, Franko NM, McCulloch DJ, McDonald D, Magedson A, Wolf CR, et al. Sequelae in Adults
374 at 6 Months After COVID-19 Infection. *JAMA Netw Open*. 2021 Feb 19;4(2):e210830.
- 375 5. Menges D, Ballouz T, Anagnostopoulos A, Aschmann HE, Domenghino A, Fehr JS, et al. Burden of
376 post-COVID-19 syndrome and implications for healthcare service planning: A population-based
377 cohort study. *PLOS ONE*. 2021 Jul 12;16(7):e0254523.
- 378 6. Nehme M, Braillard O, Alcoba G, Aebischer Perone S, Courvoisier D, Chappuis F, et al. COVID-19
379 Symptoms: Longitudinal Evolution and Persistence in Outpatient Settings. *Ann Intern Med*. 2020
380 Dec 8;
- 381 7. Nittas V, Gao M, West EA, Ballouz T, Menges D, Wulf Hanson S, et al. Long COVID Through a Public
382 Health Lens: An Umbrella Review. *Public Health Rev*. 2022;0.
- 383 8. The Writing Committee for the COMEBAC Study Group. Four-Month Clinical Status of a Cohort of
384 Patients After Hospitalization for COVID-19. *JAMA*. 2021 Apr 20;325(15):1525–34.
- 385 9. World Health Organization. A clinical case definition of post COVID-19 condition by a Delphi
386 consensus [Internet]. 2021 [cited 2021 Dec 16]. Available from: [https://www.who.int/publications-
387 detail-redirect/WHO-2019-nCoV-Post_COVID-19_condition-Clinical_case_definition-2021.1](https://www.who.int/publications-detail-redirect/WHO-2019-nCoV-Post_COVID-19_condition-Clinical_case_definition-2021.1)
- 388 10. Living with Covid19 – Second review [Internet]. NIHR Evidence. 2021 [cited 2022 Jun 16]. Available
389 from: <https://evidence.nihr.ac.uk/themedreview/living-with-covid19-second-review/>
- 390 11. Lerner AM, Robinson DA, Yang L, Williams CF, Newman LM, Breen JJ, et al. Toward Understanding
391 COVID-19 Recovery: National Institutes of Health Workshop on Postacute COVID-19. *Ann Intern
392 Med*. 2021 Jul 20;174(7):999–1003.
- 393 12. Heesakkers H, van der Hoeven JG, Corsten S, Janssen I, Ewalds E, Simons KS, et al. Clinical Outcomes
394 Among Patients With 1-Year Survival Following Intensive Care Unit Treatment for COVID-19. *JAMA*.
395 2022 Feb 8;327(6):559–65.
- 396 13. Huang L, Yao Q, Gu X, Wang Q, Ren L, Wang Y, et al. 1-year outcomes in hospital survivors with
397 COVID-19: a longitudinal cohort study. *The Lancet*. 2021 Aug 28;398(10302):747–58.
- 398 14. Huang L, Li X, Gu X, Zhang H, Ren L, Guo L, et al. Health outcomes in people 2 years after surviving
399 hospitalisation with COVID-19: a longitudinal cohort study. *The Lancet Respiratory Medicine*. 2022
400 May 11;0(0).

- 401 15. Nehme M, Braillard O, Chappuis F, Courvoisier DS, Kaiser L, Soccia PM, et al. One-year persistent
402 symptoms and functional impairment in SARS-CoV-2 positive and negative individuals. *Journal of*
403 *Internal Medicine*. 2022;292(1):103–15.
- 404 16. Sigfrid L, Drake TM, Pauley E, Jesudason EC, Olliaro P, Lim WS, et al. Long Covid in adults discharged
405 from UK hospitals after Covid-19: A prospective, multicentre cohort study using the ISARIC WHO
406 Clinical Characterisation Protocol. *The Lancet Regional Health - Europe*. 2021 Sep 1;8:100186.
- 407 17. Munblit D, Nicholson T, Akrami A, Apfelbacher C, Chen J, Groote WD, et al. A core outcome set for
408 post-COVID-19 condition in adults for use in clinical practice and research: an international Delphi
409 consensus study. *The Lancet Respiratory Medicine*. 2022 Jun 14;0(0).
- 410 18. West EA, Anker D, Amati R, Richard A, Wisniak A, Butty A, et al. Corona Immunitas: study protocol
411 of a nationwide program of SARS-CoV-2 seroprevalence and seroepidemiologic studies in
412 Switzerland. *Int J Public Health*. 2020 Oct 24;65(9):1529–48.
- 413 19. Corona Immunitas [Internet]. [cited 2021 Dec 21]. Available from: [https://www.corona-](https://www.corona-immunitas.ch/)
414 [immunitas.ch/](https://www.corona-immunitas.ch/)
- 415 20. Tong A, Baumgart A, Evangelidis N, Viecelli AK, Carter SA, Azevedo LC, et al. Core Outcome Measures
416 for Trials in People With Coronavirus Disease 2019: Respiratory Failure, Multiorgan Failure,
417 Shortness of Breath, and Recovery. *Crit Care Med*. 2021 Mar;49(3):503–16.
- 418 21. Perneger TV, Combesure C, Courvoisier DS. General Population Reference Values for the French
419 Version of the EuroQol EQ-5D Health Utility Instrument. *Value in Health*. 2010 Jul;13(5):631–5.
- 420 22. Wacker ME, Jörres RA, Karch A, Wilke S, Heinrich J, Karrasch S, et al. Assessing health-related quality
421 of life in COPD: comparing generic and disease-specific instruments with focus on comorbidities.
422 *BMC Pulmonary Medicine*. 2016 May 10;16(1):70.
- 423 23. Zanini A, Aiello M, Adamo D, Casale S, Cherubino F, Patrona SD, et al. Estimation of Minimal
424 Clinically Important Difference in EQ-5D Visual Analog Scale Score After Pulmonary Rehabilitation
425 in Subjects With COPD. *Respiratory Care*. 2015 Jan 1;60(1):88–95.
- 426 24. Domenghino A, Aschmann HE, Ballouz T, Menges D, Strebel D, Derfler S, et al. Mental health of
427 individuals infected with SARS-CoV-2 during mandated isolation and compliance with
428 recommendations—A population-based cohort study. *PLOS ONE*. 2022 Mar 16;17(3):e0264655.
- 429 25. Chen C, Hauptert SR, Zimmermann L, Shi X, Fritsche LG, Mukherjee B. Global Prevalence of Post-
430 Coronavirus Disease 2019 (COVID-19) Condition or Long COVID: A Meta-Analysis and Systematic
431 Review. *The Journal of Infectious Diseases*. 2022 Apr 16;jiac136.
- 432 26. Taquet M, Geddes JR, Husain M, Luciano S, Harrison PJ. 6-month neurological and psychiatric
433 outcomes in 236 379 survivors of COVID-19: a retrospective cohort study using electronic health
434 records. *The Lancet Psychiatry*. 2021 May 1;8(5):416–27.
- 435 27. Xie Y, Xu E, Al-Aly Z. Risks of mental health outcomes in people with covid-19: cohort study. *BMJ*.
436 2022 Feb 16;e068993.
- 437 28. Santomauro DF, Herrera AMM, Shadid J, Zheng P, Ashbaugh C, Pigott DM, et al. Global prevalence
438 and burden of depressive and anxiety disorders in 204 countries and territories in 2020 due to the
439 COVID-19 pandemic. *The Lancet*. 2021 Nov 6;398(10312):1700–12.

- 440 29. Ceban F, Leber A, Jawad MY, Yu M, Lui LMW, Subramaniapillai M, et al. Registered clinical trials
441 investigating treatment of long COVID: a scoping review and recommendations for research. *Infect*
442 *Dis (Lond)*. :1–11.
- 443 30. Hayes LD, Ingram J, Sculthorpe NF. More Than 100 Persistent Symptoms of SARS-CoV-2 (Long
444 COVID): A Scoping Review. *Frontiers in Medicine*. 2021;8.
- 445 31. Lopez-Leon S, Wegman-Ostrosky T, Perelman C, Sepulveda R, Rebolledo PA, Cuapio A, et al. More
446 than 50 long-term effects of COVID-19: a systematic review and meta-analysis. *Sci Rep*. 2021 Aug
447 9;11(1):16144.
- 448 32. Tran VT, Porcher R, Pane I, Ravaud P. Course of post COVID-19 disease symptoms over time in the
449 ComPaRe long COVID prospective e-cohort. *Nat Commun*. 2022 Apr 5;13(1):1812.
- 450 33. Davis HE, Assaf GS, McCorkell L, Wei H, Low RJ, Re'em Y, et al. Characterizing long COVID in an
451 international cohort: 7 months of symptoms and their impact. *eClinicalMedicine*. 2021 Aug 1;38.
- 452 34. Ayoubkhani D, Bermingham C, Pouwels KB, Glickman M, Nafilyan V, Zaccardi F, et al. Trajectory of
453 long covid symptoms after covid-19 vaccination: community based cohort study. *BMJ*. 2022 May
454 18;377:e069676.
- 455 35. Tran VT, Perrodeau E, Saldanha J, Pane I, Ravaud P. Efficacy of COVID-19 Vaccination on the
456 Symptoms of Patients With Long COVID: A Target Trial Emulation Using Data From the ComPaRe e-
457 Cohort in France [Internet]. Rochester, NY; 2021 [cited 2022 Jun 16]. Available from:
458 <https://papers.ssrn.com/abstract=3932953>
- 459 36. Antonelli M, Pujol JC, Spector TD, Ourselin S, Steves CJ. Risk of long COVID associated with delta
460 versus omicron variants of SARS-CoV-2. *The Lancet*. 2022 Jun 18;399(10343):2263–4.

461

462 **Author Contributions:**

463 Conception and design: T. Ballouz, D. Menges, J.S. Fehr, M.A. Puhan

464 Analysis and interpretation of the data: T. Ballouz, D. Menges, J.S. Fehr, M.A. Puhan

465 Drafting of the article: T. Ballouz

466 Critical revision for important intellectual content: T. Ballouz, D. Menges, A. Anagnostopoulos, A.

467 Domenghino, H.E. Aschmann, A. Frei, J.S. Fehr, M.A. Puhan

468 Final approval of the article: T. Ballouz, D. Menges, A. Anagnostopoulos, A. Domenghino, H.E. Aschmann,

469 A. Frei, J.S. Fehr, M.A. Puhan

470 Statistical expertise: T. Ballouz, D. Menges

471 Administrative, technical, or logistic support: T. Ballouz, D. Menges, A. Anagnostopoulos, A. Domenghino,

472 H.E. Aschmann, A. Frei, J.S. Fehr, M.A. Puhan

473 Collection and assembly of data: T. Ballouz, D. Menges

474 **Tables and Figures**

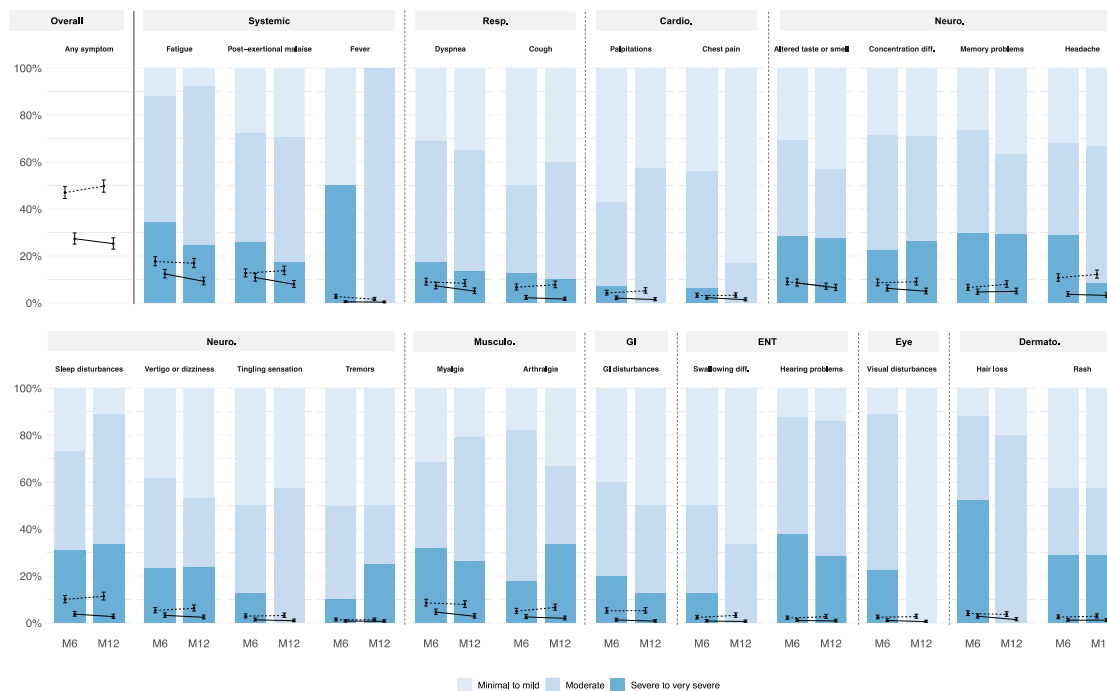
475 **Table 1.** Characteristics of participants enrolled in the Zurich SARS-CoV-2 Cohort study (infected
476 individuals) and phase IV of the Corona Immunitas Zurich seroprevalence study (control population).

	SARS-CoV-2 infected individuals (Zurich SARS-CoV-2 Cohort) (N=1543)	Non-infected individuals in control population (Corona Immunitas Zurich) (N=628)
Age (years), Median (IQR)	49.0 (34.0 to 63.0)	65.0 (45.0 to 72.0)
Age group		
18-39 years	510 (33.1%)	128 (20.4%)
40-64 years	656 (42.5%)	174 (27.7%)
65+ years	377 (24.4%)	326 (51.9%)
Female sex	781 (50.6%)	322 (51.3%)
Initial symptom severity		
Asymptomatic	195 (12.8%)	-
Mild to moderate	942 (61.8%)	-
Severe to very severe	388 (25.4%)	-
Missing	18	-
Initial symptom count, Median (IQR)	5.0 (3.0 to 8.0)	-
Hospitalization and ICU stay		
Non-hospitalized	1401 (91.5%)	-
Hospitalized without ICU stay	115 (7.5%)	-
Hospitalized with ICU stay	15 (1.0%)	-
<i>Intubation during ICU stay</i>	8 (53.3%)	-
Missing	12	-
At least one medical comorbidity	471 (30.8%)	225 (35.8%)
Missing	16	0
Monthly household income		
<6000 CHF	489 (33.8%)	219 (38.1%)
6000 - 12000 CHF	614 (42.4%)	234 (40.8%)
>12000 CHF	344 (23.8%)	121 (21.1%)
Missing	96	55
Current employment status		
Employed	1027 (67.7%)	255 (40.7%)
Student	67 (4.4%)	25 (4.1%)
Retired	327 (21.5%)	322 (51.4%)
Unemployed or other	97 (6.4%)	24 (3.8%)
Missing	25	2
Highest education level reached		
None or mandatory school	65 (4.3%)	32 (5.1%)
Vocational training or specialized baccalaureate	645 (42.5%)	281 (45.0%)
Higher technical school or college	395 (26.0%)	159 (25.5%)
University	412 (27.2%)	152 (24.4%)
Missing	26	4
Swiss nationality	1309 (84.8%)	530 (84.4%)
Smoking status		
Non-smoker	901 (59.3%)	336 (53.6%)
Ex-smoker	410 (27.0%)	208 (33.2%)
Smoker	209 (13.8%)	83 (13.2%)
Missing	23	1
Body mass index, Median (IQR)	24.4 (22.0 to 26.8)	24.2 (21.9 to 26.9)

477 IQR: interquartile range; ICU: intensive care unit; CHF: Swiss francs

478

479



480

481 **Figure 1.** Prevalence and severity of 23 prespecified symptoms at 6 and 12 months after SARS-CoV-2

482 infection, grouped by body organ system affected. Error bars show the prevalence and 95% confidence

483 interval for each of the symptoms among all participants in the Zurich SARS-CoV-2 Cohort (N=1543). Solid

484 line refers to symptoms reported by the participants to be related to COVID-19. Dotted line refers to

485 symptoms regardless of their relation to COVID-19. Stacked bar plot shows self-reported severity of

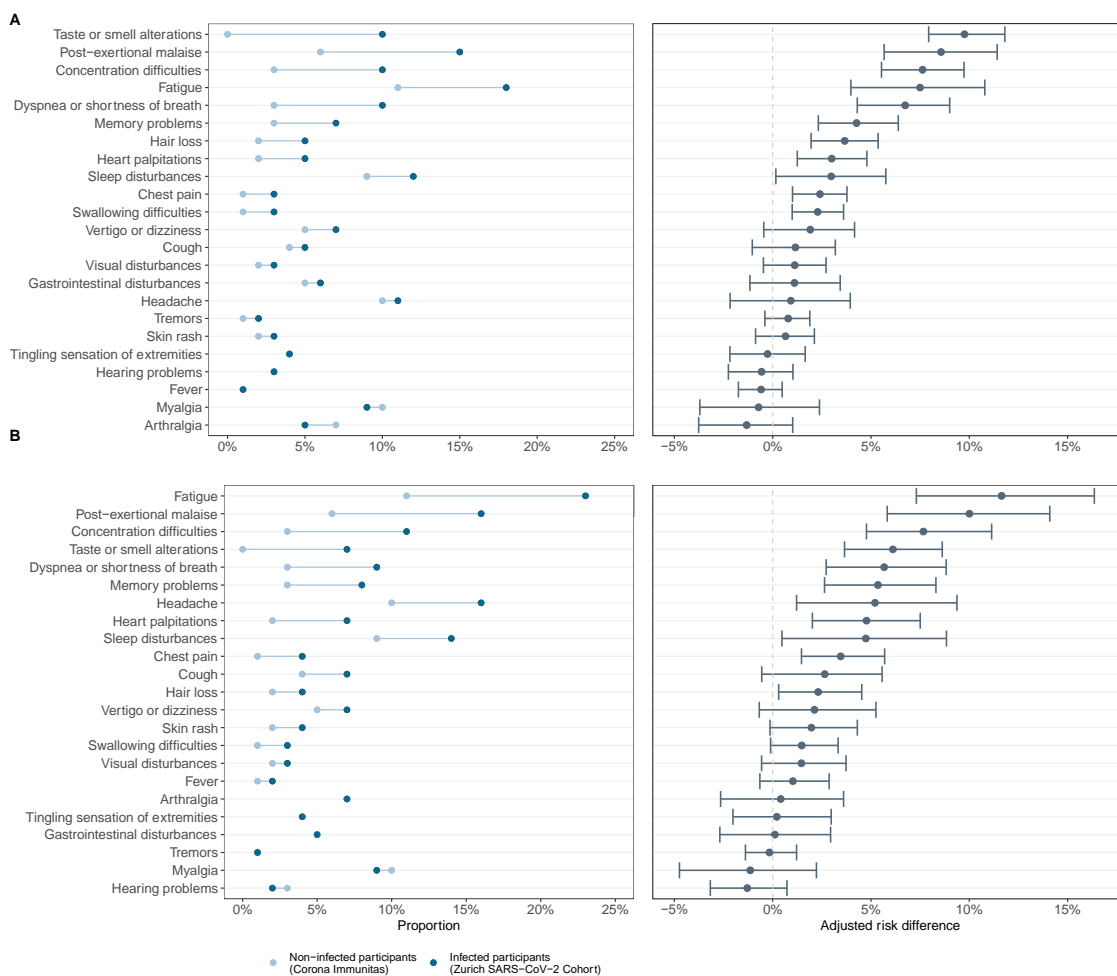
486 symptoms in the prospectively recruited cohort (N=1106). M6: 6 months after infection, M12: 12 months,

487 Resp.: respiratory, Cardio.: cardiovascular, Neuro.: neurologic, Musculo.: musculoskeletal, GI:

488 gastrointestinal, ENT: ear, nose and throat, Dermato: dermatologic, diff.: difficulties.

489

490



491

492 **Figure 2.** (A) Observed proportions and excess risk (adjusted risk differences) of each of the symptoms at
 493 6 months after infection in the prospectively recruited infected group (N=1106; Zurich SARS-CoV-2
 494 Cohort) compared to non-infected individuals from the general population (N=628; Corona Immunitas
 495 Zurich), as estimated based on logistic regression models adjusted for age groups, sex, comorbidity and
 496 body mass index. (B) Observed proportions and excess risk of each of the symptoms at 12 months after
 497 infection in the retrospectively recruited infected group (N=437; Zurich SARS-CoV-2 Cohort) compared to
 498 non-infected individuals (N=628; Corona Immunitas Zurich).

499

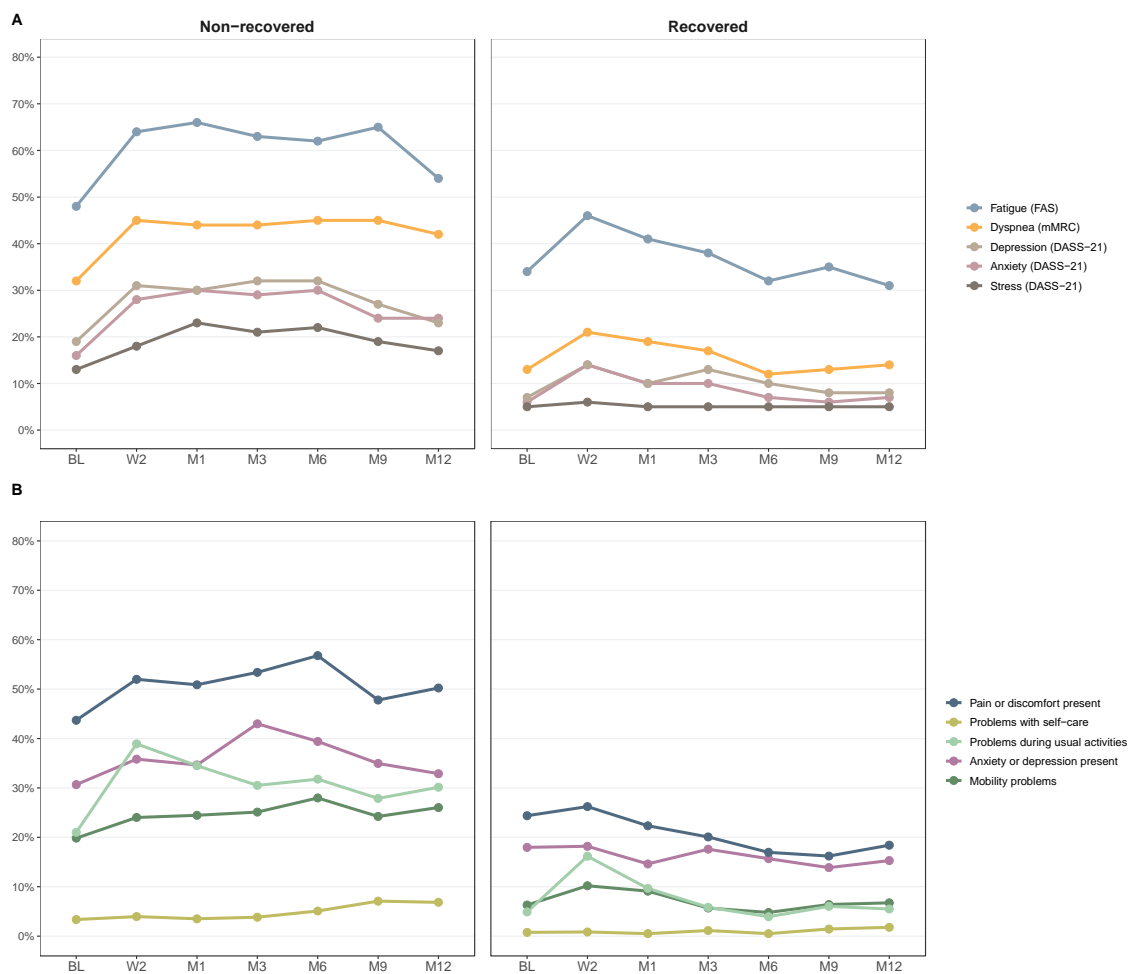
500

501

502

503

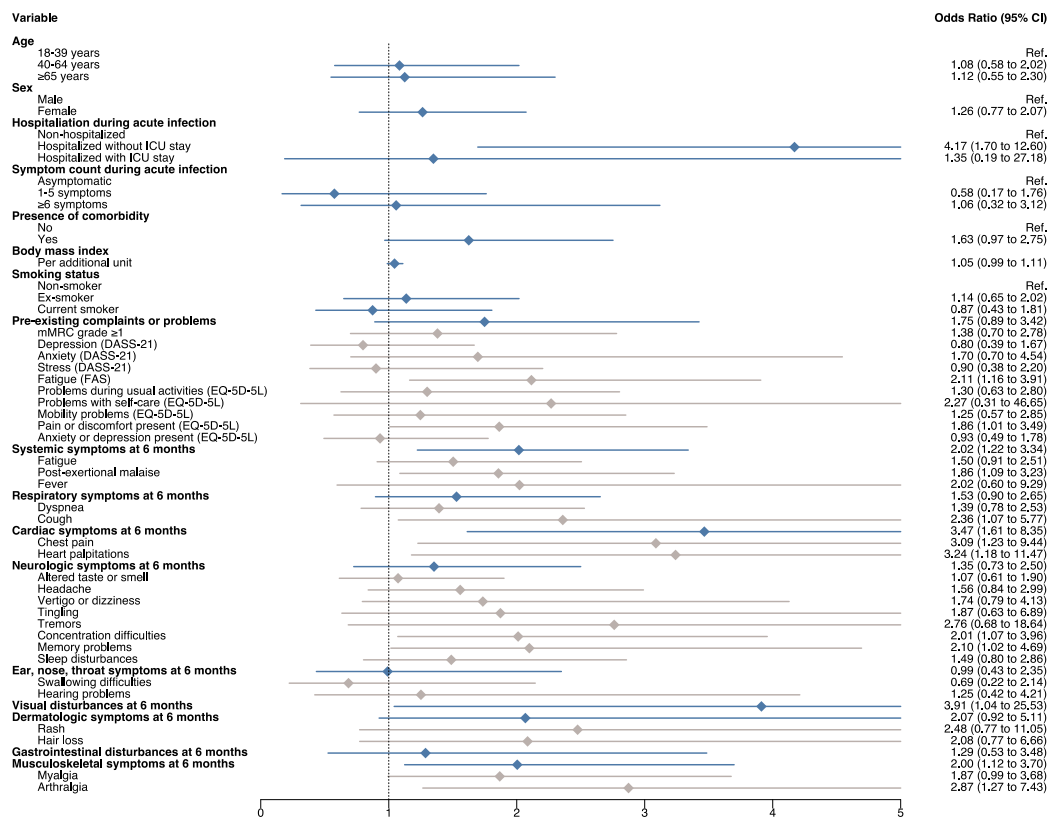
504



505

506 **Figure 3.** Adverse health outcomes stratified by recovery status at 6 months after SARS-CoV-2 infection
 507 among prospectively recruited participants (N=1106). (A) Proportion of participants with fatigue
 508 (measured on FAS), dyspnea grade ≥ 1 (on mMRC), depression, anxiety, and stress (on DASS-21) over time,
 509 stratified by recovery status. BL: baseline (pre-COVID-19), W2: 2 weeks after infection, M1: 1 month, M3:
 510 3 months, M6: 6 months, M9: 9 months, M12: 12 months. (B) Proportion of participants with problems in
 511 the five EQ-5D-5L domains over time, stratified by recovery status.

512



513

514 **Figure 4.** Associations for persistent non-recovery at 12 months after SARS-CoV-2 infection based on
 515 multivariable logistic regression models. Separate models were ran for each predictor variable with
 516 adjustment for age group, sex, hospitalization during acute COVID-19, symptom count and presence of
 517 comorbidities. Data from both retrospectively and prospectively recruited participants of the Zurich SARS-
 518 CoV-2 Cohort (N=1543) were used in all association analyses, with the exception of those relating to pre-
 519 existing complaints or health problems (data only available for prospectively recruited participants;
 520 N=1106). Blue lines represent estimates for grouped symptoms or complaints, while grey lines represent
 521 estimates for individual symptoms or complaints. OR: odds ratio; 95% CI: 95% confidence interval.

522