

1 Prevalence of untreated HIV and HIV incidence 2 among occupational groups in Rakai, Uganda: a 3 population-based longitudinal study, 1999-2016 4

5 Victor O. Popoola¹, Joseph Kagaayi^{2,3}, Joseph Ssekasanvu^{1,2}, Robert Ssekubugu², Grace Kigozi²,
6 Anthony Ndyababo², Fred Nalugoda², Larry W. Chang^{1,2,4}, Tom Lutalo², Aaron A.R. Tobian^{1,5}, Donna
7 Kabatesi⁶, Stella Alamo⁶, Lisa A. Mills⁶, Godfrey Kigozi², Maria J. Wawer^{1,2}, John Santelli⁷, Ronald H.
8 Gray^{1,2}, Steven J Reynolds^{4,8}, David Serwadda^{2,3}, Justin Lessler^{9,10}, M. K. Grabowski^{1,2,5}

- 9
- 10 1. Department of Epidemiology, Johns Hopkins Bloomberg School of Public Health, Baltimore,
11 Maryland
 - 12 2. -Rakai Health Sciences Program, Entebbe, Uganda
 - 13 3. Makerere University School of Public Health, Kampala, Uganda
 - 14 4. Division of Infectious Diseases, Department of Medicine, Johns Hopkins School of Medicine,
15 Baltimore, Maryland, USA
 - 16 5. Department of Pathology, Johns Hopkins School of Medicine, Baltimore, MD, USA
 - 17 6. Division of Global HIV and TB, Centers for Disease Control and Prevention Uganda, Kampala
18 Uganda
 - 19 7. Department of Population and Family Health and Pediatrics, Columbia University, New York,
20 NY, USA
 - 21 8. Laboratory of Immunoregulation, Division of Intramural Research, National Institute for Allergy
22 and Infectious Diseases, National Institutes of Health, Bethesda, Maryland, USA
 - 23 9. Department of Epidemiology, UNC Gillings School of Global Public Health, Chapel Hill, NC,
24 USA
 - 25 10. Carolina Population Center, Chapel Hill, NC, USA
- 26

27

28 Correspondence to: M. Kate Grabowski; 446 Carnegie Building, Department of Pathology, Johns
29 Hopkins University, Baltimore, MD, 21205; Tel: +1 4432875736; email: mgrabow2@jhu.edu
30

31

32

33

34

35

36

37 **Abstract**

38 **Introduction:** Certain occupations have been associated with heightened risk of HIV acquisition and
39 spread in sub-Saharan Africa, including bar work and transportation. However, data on changes in
40 prevalence of untreated HIV infection and HIV incidence within occupations following rollout of
41 antiretroviral therapy and voluntary medical male circumcision programs in 2004 are limited.

42 **Methods:** We evaluated 12 rounds of survey data collected between 1999-2016, from the Rakai
43 Community Cohort Study, a population-based study of adolescents and adults 15-49 years in Uganda, to
44 assess changes in the prevalence of untreated HIV infection and incidence by self-reported primary
45 occupation. Adjusted prevalence risk ratios (adjPRR) for untreated HIV and incidence rate ratios for HIV
46 incidence with 95% confidence intervals (CIs) were estimated using Poisson regression. Primary
47 outcomes were stratified by gender and HIV incidence compared over three time periods (1999-2004;
48 2005-2011; 2011-2016) representing, respectively, the period prior to scale up of combined HIV
49 prevention and treatment, the scale up period, and full implementation.

50 **Results:** 33,866 individuals, including 19,113 (56%) women participated. Of these participants, 17,840
51 women and 14,244 men who were HIV-negative at their first study visit contributed 57,912 and 49,403
52 person-years of follow-up, respectively. Agriculture was the most common occupation at all study visits,
53 though its prevalence declined from 39 to 29% among men and from 61 to 40% among women between
54 1999 and 2016. Untreated HIV infection substantially declined between 1999 and 2016 across most
55 occupational subgroups, including by 70% among men (12 to 4.2%; adjPRR=0.30; 95% CI:0.23-0.41) and
56 by 78% among women working in agriculture (14.7 to 4.0%; adjPRR=0.22; 95% CI:0.18-0.27), along
57 with increasing antiretroviral therapy coverage. Exceptions included men working in transportation and
58 women working in tailoring/laundry services. HIV incidence declined in most occupations, but there were
59 no reductions in incidence among female bar and restaurant workers or men working in transportation.

60 **Conclusion:** Untreated HIV infection and HIV incidence have declined in most occupational sub-groups
61 in Rakai, Uganda. However, women working in bars and restaurants and men working in transportation

62 continue to have relatively high burden of untreated HIV and HIV incidence, and as such should be
63 considered key priority populations for targeted HIV programming.

64

65 **ABSTRACT WORD COUNT=350 (word limit=350)**

66

67 1. INTRODUCTION

68 Mass scale-up of combination HIV treatment and prevention interventions (CHI) in sub-Saharan
69 Africa has led to significant declines in HIV incidence [1-4]. However, rates of new HIV infection remain
70 significantly above elimination thresholds in most countries [5, 6]. Demographic heterogeneities in
71 population-level risk of HIV acquisition and onward transmission likely drive continued virus spread, but
72 they remain poorly characterized. A detailed understanding of such heterogeneities may facilitate
73 targeted control efforts leading to further declines in HIV incidence and, ultimately, disease elimination.

74 Decades-old data has established a person's occupation as a salient risk factor for HIV acquisition
75 in Africa. Occupations historically associated with increased HIV risk have included mining, bar work,
76 truck driving, sex work, fishing, trading, and construction [3, 4, 7-10]. For example, a study of HIV risk
77 in Uganda, conducted in 1992, prior to availability of antiretroviral therapy (ART), found that bar and
78 restaurant work, trading, and truck and taxi driving were associated with three times higher odds of HIV
79 acquisition compared to agricultural work [4]. In southern Africa, truck driving, factory work, and mining
80 have been strongly linked to higher HIV burden [10-12]. While historical studies have provided useful
81 insights into HIV risk by occupation, there are very limited data assessing key HIV outcomes within
82 occupational subgroups since the widespread roll-out of CHI interventions in sub-Saharan Africa. Given
83 that an individual's occupation can be readily assessed in programmatic settings, understanding whether
84 HIV burden currently varies across occupations may facilitate efficient targeting of interventions.

85 Here, we assess the extent to which occupation-specific prevalence of untreated HIV and HIV
86 incidence have changed since the implementation of CHI programs, including ART and voluntary
87 medical male circumcision (VMMC), using data from the Rakai Community Cohort Study (RCCS), a
88 population-based study of HIV in south-central Uganda. We have previously measured trends in HIV
89 prevalence and incidence in the RCCS and shown a 42% reduction in HIV incidence with ART rollout
90 beginning in 2004 and VMMC scale-up beginning in 2007 [13]. However, it remains unclear whether or
91 not untreated HIV prevalence and incidence declines have occurred uniformly across occupational

92 subgroups in this population. We hypothesized that while the burdens of untreated HIV and HIV
93 incidence have declined within all occupations, heterogeneities in HIV outcomes by occupation persist.
94

95 2. METHODS

96 2.1 Study population and procedures

97 The Rakai Community Cohort Study (RCCS) has been described in detail elsewhere [14]. In
98 brief, the RCCS is conducted by the Rakai Health Sciences Program (RHSP) and is an open, population-
99 based census and cohort study including consenting individuals aged 15-49 years across 40 communities.
100 Individuals are followed at ~18-month intervals. The RCCS conducts a household census to enumerate all
101 individuals who are resident in the household, collecting data on gender, age, socioeconomic status, and
102 global positioning system (GPS) location. The census is followed by a survey of all present consenting
103 residents aged 15-49 years. Participant interviews provide data regarding sociodemographic
104 characteristics, sexual behaviors, ART use, and whether they have had VMMC. Two attempts are made to
105 contact individuals who are censused and eligible but who do not participate in the surveys.

106 To determine HIV status, venous blood samples are obtained for HIV testing. Prior to October
107 2011, HIV testing used enzyme immunoassays (EIAs) with confirmation via Western Blot. Subsequently,
108 a field-validated parallel three-test rapid HIV testing algorithm was introduced with demonstrated high
109 sensitivity (>99.5%) and specificity (>99.5%). All rapid test positives are confirmed by two EIAs, with
110 Western Blot or PCR for discordant EIA results [15, 16].

111 In this study, we include data from 12 consecutive surveys conducted between April 6, 1999 and
112 September 2, 2016 collected from 30 continuously surveyed RCCS communities. Participation rates
113 among census eligible persons present in community at time of survey ranged from 74 to 98% (59-66%
114 including those absent from community at time of survey) during this period [13]. The Rakai fishing
115 communities were not included because data collection did not commence in that population until 2011.
116 The 12 surveys are herein denoted as surveys 1 through 12: start and complete dates for each survey are
117 included in Supplemental Table 1. This study was approved by the Research and Ethics Committee of the
118 Uganda Virus Research Institute, the Ugandan Council of Science and Technology, and the Johns
119 Hopkins School of Medicine Institutional Review Board.

120 **2.2 Measurement and classification of participant occupation**

121 Data were collected as self-reported primary and secondary occupations. Participants were asked
122 “What kind of work do you do, or what kind of activities keep you busy during an average day, whether
123 you get money for them or not?” In this study, we only analyzed primary occupation. There were 23
124 occupational subgroups that participants could select from on the questionnaire, including “other.”
125 Individuals who listed “other” were asked to provide occupational details as a free-text response. Free-
126 text responses were reviewed and re-assigned into pre-existing categories or new categories were created
127 as needed. There were 41 self-reported primary occupations (Supplemental Tables 1a and 1b) which were
128 aggregated into 15 occupational subgroups (Supplemental Table 2). Of these larger subgroups, 8 among
129 men (agriculture, trading, student, construction, civil service, casual labor, mechanic, transportation) and
130 9 among women (agriculture, trading, student, bar/restaurant work, civil service, hairdressing, local crafts,
131 tailoring/laundry, housekeeping) contained a median number of ≥ 50 observations per survey across all
132 surveys (Supplemental Tables 3a and 3b).

133

134 **2.3 Primary and secondary outcomes**

135 Our primary study outcomes were (1) untreated HIV infection and (2) incident HIV infection. We
136 defined prevalent untreated HIV infection as HIV infection in an individual who did not self-report ART
137 use. We have previously shown that self-reported ART use has high specificity (99%) and moderate
138 sensitivity (77%) in this population [17]. Incident HIV infection was defined as a first HIV seropositive
139 test result in a person with a prior seronegative test result. The unit of analysis for HIV incidence was
140 person-years of follow-up between surveys, among persons who were initially HIV-negative and who
141 contributed two consecutive survey visits or two visits with no more than one missing intervening survey.
142 Incident infections were assumed to have occurred at the mid-point of the visit interval. Secondary
143 outcomes included HIV prevalence overall, irrespective of self-reported ART use, and prevalence of self-
144 reported ART use among HIV-positive persons.

145

146 **2.4 Scale-up and measurement of Combination HIV Intervention coverage in Rakai**

147 During the analysis period, antiretroviral therapy (ART) roll-out in Uganda, including Rakai, was
148 phased as follows: in 2004, ART was offered to persons with a CD4-T-cell count of <250 cells/mm³; in
149 2011, the CD4 T-cell criterion was raised to <350 ; and in 2013, it was further increased to <500 and ART
150 was also offered to all HIV-positive individuals, regardless of CD4 T-cell count, if they were pregnant, in
151 a serodiscordant relationship, or self-identified as a sex worker or fisherfolk. Prevalence of self-reported
152 ART use had risen to 69% of HIV positive individuals by 2016. In addition to ART, the RHSP has
153 provided free VMMC since 2007 to adolescents and men age 13 years or older [13]. Prevalence of
154 VMMC increased from 15% in 1999 to 59% by 2016 [13]. Impacts of universal HIV test and treat and
155 pre-exposure prophylaxis impact were not assessed in this study as implementation of these programs
156 occurred after the analysis period in 2017 and 2018, respectively.

157 To assess changes in HIV incidence by occupation over calendar time, we divided the study
158 period into pre-CHI (1999-2004), early-CHI scale up (2005-2011), and mature-CHI (2012-2016) periods.
159 Period-specific baselines were established as the first survey during each period, while the study baseline
160 for individual participants was defined as their first survey during the study period.

161

162 **2.5 Statistical analysis**

163 Demographic characteristics of participants at period-specific baselines were summarized using
164 descriptive statistics, including median and interquartile range for continuous variables and frequencies
165 and percentages for categorical variables. The prevalence of each occupation was estimated as the number
166 of participants in that occupation, expressed as a proportion of all participants surveyed and stratified by
167 sex. Self-reported ART use among HIV positive participants was assessed during the early and mature-
168 CHI periods and at the final study visit. Overall and untreated HIV prevalence were assessed at each of
169 the 12 study visits and HIV incidence was estimated during the 11 inter-survey intervals over the 17-year
170 analysis period. Primary and secondary outcomes were only assessed among the fifteen occupational
171 subgroups (men, n=8; women, n=9). To evaluate changes in prevalence of untreated HIV infection and

172 HIV incidence within occupational subgroups, we constructed log-binomial regression models to estimate
173 prevalence risk ratios (PRR) and Poisson regression models to estimate incidence rate ratios (IRR). These
174 IRRs and PRRs were adjusted for age and marital status. We calculated IRRs for HIV infection,
175 comparing incidence rates during the pre-, early-, and late-CHI periods. All statistical analyses were
176 performed in Stata version 15 and the R statistical software (Version 3.6).
177

178 3. RESULTS

179 3.1 Characteristics of study participants

180 Overall, 33,866 individuals, including 19,113 (56%) women participated, contributing a total of
181 102,759 person-visits. Of these participants, 17,840 women and 14,244 men who were HIV-negative at
182 their first study visit contributed 57,912 and 49,403 person-years to the incidence cohort, respectively.
183 Table 1 shows characteristics of the study population by sex at the first (baseline) study visit within the
184 CHI periods. Among women, during the pre-CHI baseline visit, median age was 25.0 years (IQR: 20.0-
185 34.0), 59% (2056/3474) were married, and the prevalence of untreated HIV was 16%. Median age at the
186 late-CHI baseline visit for women was 28 years (IQR: 22.0-34.0), 60% (2265/3758) were married, and
187 prevalence of untreated HIV infection was 9.1%. Among men, during the first pre-CHI baseline visit,
188 median age was 26.0 years (IQR: 20.0-33.0), 56% (1418/2518) were married, 15% (374/2518) were
189 circumcised, and the prevalence of untreated HIV infection was 8.1%. Median age at the late-CHI
190 baseline visit for men was 27 years (IQR: 20.0-36.0), 52% (1524/2944) were married, 46% (1359/2944)
191 were circumcised, and the prevalence of untreated HIV infection was 6.4%.

192

193 3.2 Population prevalence of occupations over calendar time

194 Figure 1 shows the proportion of participants in each occupational subgroup over calendar time
195 stratified by sex. At the initial visit (1999-2000), the majority of women (61%) reported agriculture as
196 their primary occupation. While agriculture remained the most commonly reported female occupation at
197 the final visit (2015-16), its prevalence significantly declined to 40% (PRR 0.66, 95% CI: 0.62-0.69)
198 (Figure 1, Supplemental Table 3a). Declines in agricultural work among women were accompanied by an
199 increase in the average age within the occupation (Supplemental Figure 1) and were predominately offset
200 by the proportion of women who reported working in trading (9.4% in 1999 vs. 16% in 2016, PRR 1.7,
201 95% CI: 1.49-1.91) and being a student (7.3% vs. 14%, PRR 1.97, 95% CI: 1.72-2.27). Notably, no women

202 or men reported sex work as a primary occupation, and very few people reported being unemployed ($n < 5$
203 at all study visits; Supplemental Tables 1a-b).

204 Men similarly reported agriculture and trading as their most common primary occupations
205 (Figure 1, Supplemental Table 3b). Between the first (1999-2000) and last (2015-2016) study visit, there
206 was a decrease in the proportion of male participants reporting agriculture (39% vs. 29%, PRR 0.74,
207 95%CI: 0.68-0.80), while a greater proportion reported being a student (13% vs. 22.0%, PRR 1.74,
208 95%CI: 1.53-1.96), mechanic (2.5% vs. 5.6%, PRR 2.29, 95%CI: 1.74-3.01), or working in transportation
209 (1.9% vs. 4.7%, PRR 2.42, 95%CI: 1.78-3.28).

210

211 **3.3 Trends in the prevalence of ART use and untreated HIV within occupations**

212 The proportion of male and female HIV-positive participants self-reporting ART use increased
213 over time among all occupational subgroups (Tables 2a-b). During the late-CHI period and at the final
214 study visit, levels of ART use was highest among women working in agriculture and lowest among
215 female students. ART use was statistically significantly lower among female traders (adjPRR=0.91; 0.83-
216 0.98) and bar/restaurant workers (adjPRR=0.87; 95%CI: 0.78-0.97) compared to women working in
217 agriculture during the late CHI-period. Among men, ART use was highest among those working in civil
218 service over the entire analysis period. During the late CHI period, ART use was statistically significantly
219 lower among men working in trading (adjPRR=0.91; 95%CI: 0.83-0.98) and male students (adjPRR:
220 0.59; 95%CI: 0.41-0.84).

221 Figures 2 and 3 show the prevalence of untreated HIV within occupational subgroups by gender
222 at each of the 12 survey visits. Significant declines in the prevalence of untreated HIV were observed in
223 nearly all occupational subgroups, irrespective of gender, with scale-up of ART use. Relative changes in
224 untreated HIV between the initial and final visits are shown in Table 3 for each occupational subgroup by
225 gender. The prevalence of untreated HIV significantly decreased within most occupations. For example,
226 among women working in agriculture, prevalence of untreated HIV decreased from 15% to 4.0% (adjPRR

227 0.27; 95%CI:0.22-0.34) and among men, prevalence of untreated HIV decreased from 12% to 4%
228 (adjPRR 0.27, 95%CI: 0.22-0.34).

229 Women working in bars and restaurants had among the highest HIV burdens across all
230 occupational subgroups. The prevalence of untreated HIV significantly declined among female bar and
231 restaurant workers from a high of 35% in 1999-2000 to 12% by 2015-2016 (adjPRR 0.38; 95%CI: 0.25-
232 0.58). However, these women still maintained a three-fold higher burden of untreated HIV, compared to
233 women working in agriculture, at the final visit (12% vs. 4.0%). Women working in local crafts and in
234 trading also continued to have a high prevalence of untreated HIV compared to women in agriculture at
235 the final visit.

236 Men working in transportation did not have significantly higher HIV prevalence than other male
237 occupations at the initial visit (Table 3). However, we observed no declines in untreated HIV in this
238 population over the analysis period, and by the final visit, they had the highest prevalence of untreated
239 HIV among all male occupations at 7.1%.

240

241 **3.4 Changes in HIV incidence within occupations before and during scale-up of CHI programs**

242 Table 4 shows HIV incidence by occupation, gender, and calendar time. In the early CHI period,
243 HIV incidence rates ranged among the major occupations from 0.4 to 2.3 per 100 person-years among
244 women, and from 0.1 to 1.8 per 100 person-years among men. Between the early and late CHI periods,
245 HIV incidence declined among most occupational subgroups. For example, among those working in
246 agriculture, HIV incidence declined by 67% among men (adjIRR 0.33, 95%CI: 0.21- 0.54) and 38%
247 among women (adjIRR 0.62; 95%CI: 0.45-0.86). HIV incidence trends in most other occupations showed
248 a decline but were not statistically significant. While HIV incidence did not decline among students,
249 incidence overall in this population was low. HIV incidence rates also did not decline among men
250 working in transportation, and women working in bars and restaurants and local crafts.

251 Table 5 shows the adjusted relative risk of HIV acquisition by occupation during the late CHI
252 period. Compared to women working in agriculture, female bar and restaurant workers had a three-fold

253 higher HIV incidence (adjIRR 2.88, 95% CI 1.51-5.49, $p = 0.001$). Men working in transportation also
254 had increased HIV incidence compared to agricultural workers (adjIRR 2.75, 95% CI 1.37-5.50).
255 Regardless of sex, students had a significantly lower risk of HIV acquisition compared to persons
256 working in agriculture (men: adjIRR 0.19, 95% CI 0.05-0.73; women: adjIRR 0.36, 95% CI 0.18-0.72).
257

258 4. DISCUSSION

259 In this population-based study, we observed declining prevalence of untreated HIV and HIV
260 incidence among most occupational subgroups with the scale up of CHI programs in Uganda. Among
261 men and women working in agriculture, the most common primary occupation, prevalence of untreated
262 HIV and HIV incidence declined by more than two-thirds. However, this was not always the case for
263 other occupations. While women working in bars and restaurants made up a small proportion of the
264 overall population, they had among the highest burdens of untreated HIV prior to CHI scale-up, with no
265 declines in HIV incidence over the analysis period. We also found no significant reduction in HIV
266 incidence among male transportation workers. Moreover, both female bar and restaurant workers and
267 male transportation workers had the highest prevalence of untreated HIV at the final study visit. HIV
268 incidence rates among women reporting student and crafting as primary occupations also showed no
269 decrease following CHI scale-up, although students had a very low HIV burden overall. Taken together,
270 these results suggest that members of traditionally high-risk occupations continue to experience elevated
271 rates of HIV incidence and remain challenging to engage in HIV programs.

272 Other studies have reported high HIV prevalence among female bar workers in sub-Saharan
273 Africa [18, 19]. In this study, HIV prevalence among female bar and restaurant workers exceeded 40%
274 with rising prevalence in recent years. While the prevalence of untreated HIV significantly declined in
275 this population, it was three times higher than among women working in agriculture at the final study
276 visit. Female bar work also has been associated with a heightened risk of HIV incidence in prior studies
277 [20, 21]. The high burden of HIV among these women has been linked to elevated rates of transactional
278 sex, alcohol use, and mobility [21-23]. In a systematic review of socio-demographic characteristics and
279 risk factors for HIV among female bar workers, high rural-to-urban mobility, transactional sex, and
280 inconsistent condom use were common and associated with financial needs and social marginalization
281 [21]. Our results underscore that female bar and restaurant workers continue to be a priority population
282 for African HIV treatment and prevention programs. While key population-based programs in Africa

283 include female sex workers, and many female bar workers are engaged in sex work, not all women
284 working in bars and restaurants at high risk of HIV classify themselves as sex workers [21]. Multi-level,
285 social influence, and structural HIV prevention interventions targeting alcohol-serving establishments,
286 including enhanced sexually transmitted infection clinic services, portable health services, and peer
287 education, have been shown to be effective in settings outside Africa, for reducing HIV risk and
288 increasing treatment uptake [24, 25].

289 Prior research has shown that men working in transportation are highly mobile and often engage
290 in transactional sex [26-28]. We found that the prevalence of untreated HIV did not significantly decline
291 in this occupational sub-group with the availability of CHI. Prior research has linked male transportation
292 workers, including truck drivers, to higher risk of HIV transmission [26], and has shown that men
293 working in this occupation frequently engage with sex workers and women working in bars and
294 restaurants [27, 29]. Supplies of free condoms, roadside clinics, and free HIV testing services at truck
295 stops are some HIV prevention interventions that have targeted male transportation workers [10, 29];
296 however, levels of awareness and uptake of such services in this population has been low [10, 30].

297 Adolescent girls and young women aged 15 to 24 years have a disproportionately high risk of
298 HIV acquisition in Africa [31-33], but HIV risk was significantly lower among young people who list
299 their occupation as “student” and who have higher education attainment, regardless of sex [34-37].
300 During the study period, HIV prevalence declined in female students by nearly 90%. Incidence of HIV
301 remained stable for both male and female students, but compared to those in agriculture, students of both
302 sexes had lower HIV incidence during the late-CHI period. Research from South Africa has shown that
303 students tend to have smaller sexual networks and are less likely to report high-risk sexual behaviors
304 compared to those not in school [35]. Lower HIV incidence and prevalence among female students has
305 also been attributed to avoiding the consequences of unprotected sex and increased self-efficacy for
306 negotiating safer sex with their partners [38]. Interventions that increase school enrollment of adolescent
307 girls and young women, such as PEPFAR’s Determined, Resilient, Empowered, AIDS-free, Mentored,

308 and Safe (DREAMS) program, may decrease sexual initiation, high-risk sexual behavior, and HIV risk
309 [31]. Since the onset of the COVID-19 pandemic in Uganda during the spring of 2020, schools have
310 remained fully or partially closed. Given the strong protective effects of schooling on HIV acquisition,
311 understanding the extent to which school closures impact HIV and other reproductive health outcomes,
312 such as unplanned pregnancy, is an urgent public health priority.

313 Earlier studies have established migration and mobility as a key risk factor for HIV acquisition
314 and transmission [22, 39, 40]. Overall, we found that the occupations which tend to have high mobility
315 also had higher prevalence of untreated HIV and HIV incidence despite CHI scale-up. Both female bar
316 and restaurant work and male transportation work are associated with increased mobility as well as high-
317 risk sexual behaviors, including concurrent sexual partnerships and inconsistent condom use [27, 28, 41].
318 Specialized service-delivery tailored to mobile populations include the implementation of client-managed
319 groups, adherence clubs, community drug distribution points, and multi-month prescriptions to reduce
320 HIV burden in these populations [42-44].

321 The shifting distribution of the occupational makeup in our study population away from
322 agriculture likely reflects the increasing urbanization happening across the African continent [45]. Little
323 data exists on the impact of urbanization on HIV transmission; however, in sub-Saharan Africa, HIV
324 prevalence and incidence have been reported to be higher in urban than in rural centers [46, 47]. This has
325 been attributed to factors such as relative affluence in urban centers, increased social interaction, and
326 higher-risk behaviors such as transactional sex and concurrent sexual partnerships [48-50]. More research
327 is needed to elucidate the impact of increasing urbanization on HIV transmission within African
328 populations.

329 Our study has important limitations. Occupation and ART use were self-reported and may be
330 subject to bias. However, we have previously shown that self-reported ART has high specificity and
331 moderate sensitivity in this same study population [17]. Sex work in Uganda is criminalized and was
332 likely underreported in our survey [4]. Key population-focused HIV prevention programs began in this

333 region in 2017, after the time of the analysis, and so their impact cannot be assessed. However, our
334 findings do support their focus on female sex workers. Our data suggest that other population sub-groups
335 (beyond the currently defined key and priority population groups in Uganda) may merit additional HIV
336 prevention focus, including bar and restaurant workers and short/medium distance transportation workers.
337 While the longitudinal nature of this study is a strength, analysis of incident HIV infections was limited
338 by a small number of events in some occupational subgroups, which may have obscured trends. Lastly,
339 our results may not be generalizable to other populations, particularly in urban African settings where the
340 nature of the association between occupation and HIV risk may differ.

341

342 **5. CONCLUSIONS**

343 In summary, prevalence of untreated HIV infection and HIV incidence declined in most
344 occupational subgroups following the mass scale-up of HIV prevention and treatment interventions in
345 rural southern Uganda. However, HIV burden remained relatively high in the traditionally high-risk
346 occupations of male transportation and female bar and restaurant work. HIV programs that meet the
347 unique needs of these high-risk populations, which tend to be more mobile with higher levels of HIV-
348 associated risk behaviors, may help achieve HIV epidemic control.

349

350

351 **ACKNOWLEDGEMENTS**

352 We thank the RCCS participants and many staff and investigators who have made this study possible over
353 the years. Additionally, we thank the personnel at the Office of Cyberinfrastructure and Computational
354 Biology at the National Institute of Allergy and Infectious Diseases for data management support.

355

356 **FUNDING**

357 This study was supported by the National Institute of Allergy and Infectious Diseases (grants
358 R01AI110324, U01AI100031, U01AI075115, R01AI102939, R01AI14333, R01AI155080, and
359 K01AI125086-01), the National Institute of Mental Health (grants R01MH107275 and R01MH105313),
360 the Eunice Kennedy Shriver National Institute of Child Health and Human Development (grants
361 R01HD070769 and R01HD050180), the Division of Intramural Research of the National Institute for
362 Allergy and Infectious Diseases, the Johns Hopkins University Center for AIDS Research (grant
363 P30AI094189), and the President's Emergency Plan for AIDS Relief through the Centers for Disease
364 Control and Prevention (grant NU2GGH000817). The findings and conclusions in this article are those of
365 the authors and do not necessarily represent the official position of the funding agencies.

366

367 **CONFLICTS OF INTEREST**

368 Drs. Wawer and Gray are paid consultants to the Rakai Health Sciences Program and serves on its Board
369 of Directors. These arrangements have been reviewed and approved by the Johns Hopkins University in
370 accordance with its conflict of interest policies.

371

372
373
374
375
376
377
378
379
380
381
382
383
384
385
386
387
388
389
390
391
392
393
394
395
396
397
398
399
400
401
402
403
404
405
406
407
408
409
410
411
412
413
414
415
416
417
418
419
420

REFERENCES

1. Joshi K, Lessler J, Olawore O, Loevinsohn G, Bushey S, Tobian AAR, et al. Declining HIV incidence in sub-Saharan Africa: a systematic review and meta-analysis of empiric data. medRxiv. 2020:2020.12.08.20246066.
2. UNAIDS. Report – AIDS 2020. UNAIDS; 2020 2020.
3. Diallo BL, Alary M, Rashed S, Barry A. [HIV prevalence, associated risk factors and evolution among truck drivers from 2001 to 2007 in Guinea]. *Med Trop (Mars)*. 2011;71(2):142-6.
4. Kagaayi J, Gray RH, Whalen C, Fu P, Neuhauser D, McGrath JW, et al. Indices to measure risk of HIV acquisition in Rakai, Uganda. *PloS one*. 2014;9(4):e92015.
5. Granich RM, Gilks CF, Dye C, De Cock KM, Williams BG. Universal voluntary HIV testing with immediate antiretroviral therapy as a strategy for elimination of HIV transmission: a mathematical model. *Lancet*. 2009;373(9657):48-57.
6. Hontelez JA, Lurie MN, Barnighausen T, Bakker R, Baltussen R, Tanser F, et al. Elimination of HIV in South Africa through expanded access to antiretroviral therapy: a model comparison study. *PLoS Med*. 2013;10(10):e1001534.
7. Bowen P, Govender R, Edwards P, Lake A. HIV infection in the South African construction industry. *Psychol Health Med*. 2018;23(5):612-8.
8. Mbugua GG, Muthami LN, Mutura CW, Oogo SA, Waiyaki PG, Lindan CP, et al. Epidemiology of HIV infection among long distance truck drivers in Kenya. *East Afr Med J*. 1995;72(8):515-8.
9. Mafigiri R, Matovu JK, Makumbi FE, Ndyababo A, Nabukalu D, Sakor M, et al. HIV prevalence and uptake of HIV/AIDS services among youths (15-24 Years) in fishing and neighboring communities of Kasensero, Rakai District, South Western Uganda. *BMC public health*. 2017;17(1):251.
10. Delany-Moretlwe S, Bello B, Kinross P, Oliff M, Chersich M, Kleinschmidt I, et al. HIV prevalence and risk in long-distance truck drivers in South Africa: a national cross-sectional survey. *International journal of STD & AIDS*. 2014;25(6):428-38.
11. Mabathoana RS, Wyk CV, Adefuye AO. Factors influencing HIV risk-taking behaviours amongst textile factory workers living with HIV in Lesotho. *Pan Afr Med J*. 2019;33:166.
12. Baltazar CS, Horth R, Inguane C, Sathane I, Cesar F, Ricardo H, et al. HIV prevalence and risk behaviors among Mozambicans working in South African mines. *AIDS and behavior*. 2015;19 Suppl 1:S59-67.
13. Grabowski MK, Serwadda DM, Gray RH, Nakigozi G, Kigozi G, Kagaayi J, et al. HIV Prevention Efforts and Incidence of HIV in Uganda. *N Engl J Med*. 2017;377(22):2154-66.
14. Wawer MJ, Sewankambo NK, Serwadda D, Quinn TC, Paxton LA, Kiwanuka N, et al. Control of sexually transmitted diseases for AIDS prevention in Uganda: a randomised community trial. Rakai Project Study Group. *Lancet*. 1999;353(9152):525-35.
15. Kagulire SC, Opendi P, Stamper PD, Nakavuma JL, Mills LA, Makumbi F, et al. Field evaluation of five rapid diagnostic tests for screening of HIV-1 infections in rural Rakai, Uganda. *International journal of STD & AIDS*. 2011;22(6):308-9.
16. Gray RH, Makumbi F, Serwadda D, Lutalo T, Nalugoda F, Opendi P, et al. Limitations of rapid HIV-1 tests during screening for trials in Uganda: diagnostic test accuracy study. *BMJ*. 2007;335:188.
17. Grabowski MK, Reynolds SJ, Kagaayi J, Gray RH, Clarke W, Chang LW, et al. The validity of self-reported antiretroviral use in persons living with HIV: a population-based study. *AIDS*. 2018;32(3):363-9.
18. Nagot N, Ouangre A, Ouedraogo A, Cartoux M, Huygens P, Defer MC, et al. Spectrum of commercial sex activity in Burkina Faso: classification model and risk of exposure to HIV. *J Acquir Immune Defic Syndr*. 2002;29(5):517-21.
19. Riedner G, Rusizoka M, Hoffmann O, Nichombe F, Lyamuya E, Mmbando D, et al. Baseline survey of sexually transmitted infections in a cohort of female bar workers in Mbeya Region, Tanzania. *Sex Transm Infect*. 2003;79(5):382-7.

- 421 20. Akoku DA, Tihnje MA, Vukugah TA, Tarkang EE, Mbu RE. Socio-economic vulnerabilities and
422 HIV: Drivers of transactional sex among female bar workers in Yaounde, Cameroon. *PLoS one*.
423 2018;13(6):e0198853.
- 424 21. Dambach P, Mahenge B, Mashasi I, Muya A, Barnhart DA, Barnighausen TW, et al. Socio-
425 demographic characteristics and risk factors for HIV transmission in female bar workers in sub-Saharan
426 Africa: a systematic literature review. *BMC public health*. 2020;20(1):697.
- 427 22. Olawore O, Tobian AAR, Kagaayi J, Bazaale JM, Nantume B, Kigozi G, et al. Migration and risk of
428 HIV acquisition in Rakai, Uganda: a population-based cohort study. *Lancet HIV*. 2018;5(4):e181-e9.
- 429 23. Barnhart DA, Harling G, Muya A, Ortblad KF, Mashasi I, Dambach P, et al. Structural, interpersonal,
430 psychosocial, and behavioral risk factors for HIV acquisition among female bar workers in Dar es
431 Salaam, Tanzania. *AIDS Care*. 2019;31(9):1096-105.
- 432 24. Kalichman SC. Social and structural HIV prevention in alcohol-serving establishments: review of
433 international interventions across populations. *Alcohol Res Health*. 2010;33(3):184-94.
- 434 25. Pitpitan EV, Kalichman SC. Reducing HIV Risks in the Places Where People Drink: Prevention
435 Interventions in Alcohol Venues. *AIDS and behavior*. 2016;20 Suppl 1:S119-33.
- 436 26. Botao C, Horth RZ, Frank H, Cummings B, Inguane C, Sathane I, et al. Prevalence of HIV and
437 Associated Risk Factors Among Long Distance Truck Drivers in Inchope, Mozambique, 2012. *AIDS and*
438 *behavior*. 2016;20(4):811-20.
- 439 27. Costenbader EC, Lancaster K, Bufumbo L, Akol A, Guest G. On the road again: concurrency and
440 condom use among Uganda truck drivers. *African journal of AIDS research : AJAR*. 2015;14(2):117-25.
- 441 28. Morris CN, Ferguson AG. Estimation of the sexual transmission of HIV in Kenya and Uganda on the
442 trans-Africa highway: the continuing role for prevention in high risk groups. *Sex Transm Infect*.
443 2006;82(5):368-71.
- 444 29. Makhakhe NF, Lane T, McIntyre J, Struthers H. Sexual transactions between long distance truck
445 drivers and female sex workers in South Africa. *Glob Health Action*. 2017;10(1):1346164.
- 446 30. Kelvin EA, George G, Mwai E, Nyaga E, Mantell JE, Romo ML, et al. Offering self-administered
447 oral HIV testing to truck drivers in Kenya to increase testing: a randomized controlled trial. *AIDS Care*.
448 2018;30(1):47-55.
- 449 31. Birdthistle I, Tanton C, Tomita A, de Graaf K, Schaffnit SB, Tanser F, et al. Recent levels and trends
450 in HIV incidence rates among adolescent girls and young women in ten high-prevalence African
451 countries: a systematic review and meta-analysis. *Lancet Glob Health*. 2019;7(11):e1521-e40.
- 452 32. Blaizot S, Kim AA, Zeh C, Riche B, Maman D, De Cock KM, et al. Estimating HIV Incidence Using
453 a Cross-Sectional Survey: Comparison of Three Approaches in a Hyperendemic Setting, Ndihiwa
454 Subcounty, Kenya, 2012. *AIDS Res Hum Retroviruses*. 2017;33(5):472-81.
- 455 33. Kharsany AB, Buthelezi TJ, Frohlich JA, Yende-Zuma N, Samsunder N, Mahlase G, et al. HIV
456 infection in high school students in rural South Africa: role of transmissions among students. *AIDS Res*
457 *Hum Retroviruses*. 2014;30(10):956-65.
- 458 34. Barnighausen T, Hosegood V, Timaeus IM, Newell ML. The socioeconomic determinants of HIV
459 incidence: evidence from a longitudinal, population-based study in rural South Africa. *AIDS*. 2007;21
460 Suppl 7:S29-38.
- 461 35. Hargreaves JR, Morison LA, Kim JC, Bonell CP, Porter JD, Watts C, et al. The association between
462 school attendance, HIV infection and sexual behaviour among young people in rural South Africa. *J*
463 *Epidemiol Community Health*. 2008;62(2):113-9.
- 464 36. Pettifor AE, Levandowski BA, MacPhail C, Padian NS, Cohen MS, Rees HV. Keep them in school:
465 the importance of education as a protective factor against HIV infection among young South African
466 women. *Int J Epidemiol*. 2008;37(6):1266-73.
- 467 37. Santelli JS, Edelstein ZR, Mathur S, Wei Y, Zhang W, Orr MG, et al. Behavioral, biological, and
468 demographic risk and protective factors for new HIV infections among youth in Rakai, Uganda. *J Acquir*
469 *Immune Defic Syndr*. 2013;63(3):393-400.
- 470 38. Jukes M, Simmons S, Bundy D. Education and vulnerability: the role of schools in protecting young
471 women and girls from HIV in southern Africa. *AIDS*. 2008;22 Suppl 4:S41-56.

- 472 39. McGrath N, Eaton JW, Newell ML, Hosegood V. Migration, sexual behaviour, and HIV risk: a
473 general population cohort in rural South Africa. *Lancet HIV*. 2015;2(6):e252-9.
- 474 40. Phillips TK, Clouse K, Zerbe A, Orrell C, Abrams EJ, Myer L. Linkage to care, mobility and
475 retention of HIV-positive postpartum women in antiretroviral therapy services in South Africa. *Journal of*
476 *the International AIDS Society*. 2018;21 Suppl 4:e25114.
- 477 41. Harling G, Muya A, Ortblad KF, Mashasi I, Dambach P, Ulenga N, et al. HIV risk and pre-exposure
478 prophylaxis interest among female bar workers in Dar es Salaam: cross-sectional survey. *BMJ open*.
479 2019;9(3):e023272.
- 480 42. Grimsrud A, Barnabas RV, Ehrenkranz P, Ford N. Evidence for scale up: the differentiated care
481 research agenda. *Journal of the International AIDS Society*. 2017;20(Suppl 4):22024.
- 482 43. Okoboi S, Ding E, Persuad S, Wangisi J, Birungi J, Shurgold S, et al. Community-based ART
483 distribution system can effectively facilitate long-term program retention and low-rates of death and
484 virologic failure in rural Uganda. *AIDS Res Ther*. 2015;12:37.
- 485 44. Alamo ST, Wagner GJ, Ouma J, Sunday P, Marie L, Colebunders R, et al. Strategies for optimizing
486 clinic efficiency in a community-based antiretroviral treatment programme in Uganda. *AIDS and*
487 *behavior*. 2013;17(1):274-83.
- 488 45. Angel S, Parent J, Civco DL, Blei A, Potere D. The dimensions of global urban expansion: Estimates
489 and projections for all countries, 2000–2050. *Progress in Planning*. 2011;75(2):53-107.
- 490 46. Dyson T. HIV/AIDS and Urbanization. *Population and Development Review*. 2004;29(3):427-42.
- 491 47. Maulide Cane R, Melesse DY, Kayeyi N, Manu A, Wado YD, Barros A, et al. HIV trends and
492 disparities by gender and urban-rural residence among adolescents in sub-Saharan Africa. *Reprod Health*.
493 2021;18(Suppl 1):120.
- 494 48. Shelton JD, Cassell MM, Adetunji J. Is poverty or wealth at the root of HIV? *Lancet*.
495 2005;366(9491):1057-8.
- 496 49. Hargreaves JR. Socioeconomic status and risk of HIV infection in an urban population in Kenya. *Trop*
497 *Med Int Health*. 2002;7(9):793-802.
- 498 50. Awusabo-Asare K, Annim SK. Wealth status and risky sexual behaviour in Ghana and Kenya. *Appl*
499 *Health Econ Health Policy*. 2008;6(1):27-39.

500

501

Table 1. Characteristics of the study population at the baseline visit within each CHI calendar period by gender.

Characteristics	Women			Men		
	Visit 1 (1999-2000), Pre-CHI baseline N = 3,474	Visit 6 (2005-2006), Early-CHI baseline N = 4,683	Visit 10 (2011-2013), Late-CHI baseline N = 3,758	Visit 1 (1999-2000), pre-CHP baseline N = 2,518	Visit 6 (1999-2000), early CHP baseline N = 3,298	Visit 10 (2011-2013), late CHP baseline N = 2,944
Age, Median (IQR)	25 (20-34)	27 (22-34)	28 (22, 35)	26 (20, 33)	28 (21, 35)	27 (20, 36)
Level of education						
None	261 (7.5%)	248 (5.3%)	159 (4.2%)	115 (4.6%)	127 (3.9%)	95 (3.2%)
Primary Education	2312 (67%)	2883 (62%)	2082 (55%)	1653 (66%)	2050 (62%)	1765 (60%)
Secondary Education	779 (22%)	1245 (27%)	1206 (32%)	545 (22%)	837 (25%)	814 (28%)
Tertiary Education	119 (3.4%)	297 (6.3%)	279 (7.4%)	203 (8.1%)	259 (7.9%)	214 (7.3%)
Missing	3 (0.1%)	10 (0.2%)	32 (0.9%)	2 (0.1%)	25 (0.8%)	56 (1.9%)
Marital status						
Married	2056 (59%)	2811 (60%)	2265 (60%)	1418 (56%)	1901 (58%)	1524 (52%)
Never married	781 (23%)	1045 (22%)	830 (22%)	925 (37%)	1153 (35%)	1182 (40%)
Previously Married	637 (18%)	827 (18%)	663 (18%)	175 (6.9%)	244 (7.4%)	238 (8.1%)
Religion						
None	20 (0.6%)	17 (0.4%)	11 (0.3%)	15 (0.6%)	15 (0.5%)	11 (0.4%)
Catholic	2388 (69%)	3061 (65%)	2364 (63%)	1713 (68%)	2168 (66%)	1867 (63%)
Protestant	596 (17%)	843 (18%)	631 (17%)	449 (18%)	563 (17%)	488 (17%)
Pentecostal	43 (1.2%)	123 (2.6%)	162 (4.3%)	32 (1.3%)	93 (2.8%)	131 (4.4%)
Muslim	411 (12%)	607 (13%)	540 (14%)	301 (12.0%)	426 (13%)	380 (13%)
Other	13 (0.4%)	20 (0.4%)	18 (0.5%)	6 (0.2%)	8 (0.2%)	11 (0.4%)
Missing	3 (0.1%)	12 (0.2%)	32 (0.9%)	2 (0.1%)	25 (0.8%)	56 (2%)
Male circumcision						
Yes	-	-	-	374 (15%)	697 (21%)	1359 (46%)
No	-	-	-	2112 (84%)	2516 (76%)	1585 (54%)
Untreated HIV prevalence	15.6%	11.1%	9.1%	10.5%	8.1%	6.4%

CHI=combination HIV intervention; Untreated HIV prevalence: prevalence of HIV-infected individuals who have not received antiretroviral therapy; IQR=interquartile range; Pre-CHI: 1999-2004; Early-CHI: 2005-2011; Late-CHI: 2012-2016

Table 2a: Prevalence of self-reported ART use among HIV-positive women during the early and late-CHI periods and at the final study visit (Visit 12).

	Early – CHI (2004-2011) N=3,352			Late – CHI (2011-2016) N=2,695			Visit 12 N=1,059		
	% self-reporting ART (n/T)	PRR (95% CI)	adjPRR (95% CI)	% self-reporting ART (n/T)	PRR (95% CI)	adjPRR (95% CI)	% self-reporting ART (n/T)	PRR (95% CI)	adjPRR (95% CI)
Agriculture	24.9 (432/1734)	Ref	Ref	64.6 (811/1256)	Ref	Ref	78.0 (375/481)	Ref	Ref
Trading	25.5 (149/584)	1.02 (0.87 - 1.20)	1.04 (0.89 - 1.22)	56.9 (302/531)	0.88*** (0.81 - 0.96)	0.91** (0.83 - 0.98)	68.2 (137/201)	0.87** (0.79 - 0.97)	0.90** (0.81 - 0.99)
Casual labor	-	-	-	-	-	-	-	-	-
Civil service	19.5 (42/215)	0.78* (0.59 - 1.04)	0.89 (0.68 - 1.17)	58.2 (85/146)	0.90 (0.78 - 1.04)	0.93 (0.81 - 1.07)	70.2 (40/57)	0.90 (0.76 - 1.07)	0.93 (0.78 - 1.11)
Student	11.8 (2/17)	0.47 (0.13 - 1.74)	1.31 (0.35 - 4.92)	38.0 (19/50)	0.59*** (0.41 - 0.84)	0.83 (0.58 - 1.20)	53.3 (16/30)	0.68** (0.49 - 0.96)	0.86 (0.60 - 1.22)
Bar/restaurant worker	22.7 (65/287)	0.91 (0.72 - 1.14)	0.95 (0.76 - 1.20)	55.9 (160/286)	0.87** (0.78 - 0.97)	0.89** (0.80 - 0.99)	71.2 (79/111)	0.91 (0.80 - 1.04)	0.93 (0.82 - 1.06)
Local crafts	12.8 (12/94)	0.51** (0.30 - 0.88)	0.57** (0.34 - 0.95)	50.0 (32/64)	0.77** (0.60 - 0.99)	0.82 (0.65 - 1.05)	58.8 (20/34)	0.76* (0.57 - 1.00)	0.79 (0.60 - 1.05)
Hairdressing	21.0 (22/105)	0.84 (0.58 - 1.23)	1.13 (0.76 - 1.66)	54.3 (51/94)	0.84* (0.70 - 1.02)	0.95 (0.79 - 1.15)	65.9 (27/41)	0.85 (0.67 - 1.06)	0.92 (0.74 - 1.15)
Tailoring/laundry	23.7 (9/38)	0.95 (0.53 - 1.69)	1.07 (0.66 - 1.75)	60.0 (18/30)	0.93 (0.69 - 1.25)	0.99 (0.75 - 1.31)	75.0 (12/16)	0.96 (0.72 - 1.28)	1.01 (0.75 - 1.35)
Housekeeping	12.4 (28/226)	0.50*** (0.35 - 0.71)	0.73* (0.52 - 1.04)	52.5 (94/179)	0.81*** (0.70 - 0.94)	0.96 (0.83 - 1.11)	63.8 (44/69)	0.82** (0.68 - 0.98)	0.90 (0.75 - 1.08)
Other occupations	23.1 (12/52)	0.93 (0.56 - 1.53)	0.82 (0.50 - 1.33)	66.1 (39/59)	1.02 (0.85 - 1.24)	1.04 (0.85 - 1.27)	79.0 (15/19)	1.01 (0.80 - 1.28)	1.05 (0.82 - 1.36)

Table 2b: Prevalence of self-reported ART use among HIV-positive women during the early and late-CHI periods and at the final study visit (Visit 12).

	Early – CHI (2004-2011) N=1,702			Late – CHI (2011-2016) N=1,260			Visit 12 N=464		
	% self-reporting ART (n/T)	PRR (95% CI)	adjPRR (95% CI)	% self-reporting ART (n/T)	PRR (95% CI)	adjPRR (95% CI)	% self-reporting ART (n/T)	PRR (95% CI)	adjPRR (95% CI)
Agriculture	21.2 (140/661)	Ref	Ref	54.4 (262/482)	Ref	Ref	64.5 (118/183)	Ref	Ref
Construction	7.8 (14/180)	0.37*** (0.22 - 0.62)	0.48*** (0.29 - 0.80)	41.0 (64/156)	0.76*** (0.62 - 0.93)	0.86 (0.70 - 1.06)	55.6 (30/54)	0.86 (0.66 - 1.12)	0.91 (0.69 - 1.19)
Trading	14.9 (47/316)	0.70** (0.52 - 0.95)	0.76* (0.57 - 1.01)	42.0 (94/224)	0.77*** (0.65 - 0.92)	0.80*** (0.67 - 0.94)	57.8 (48/83)	0.90 (0.73 - 1.11)	0.91 (0.74 - 1.12)
Casual labor	21.7 (15/69)	1.03 (0.64 - 1.64)	1.26 (0.79 - 2.02)	36.9 (24/65)	0.68** (0.49 - 0.94)	0.70** (0.51 - 0.96)	59.1 (13/22)	0.92 (0.64 - 1.32)	0.91 (0.64 - 1.29)
Civil service	24.5 (34/139)	1.16 (0.83 - 1.60)	0.96 (0.69 - 1.34)	60.6 (43/71)	1.11 (0.91 - 1.37)	1.03 (0.84 - 1.25)	84.6 (22/26)	1.31*** (1.08 - 1.60)	1.21* (1.00 - 1.48)
Student	33.3 (4/12)	1.57 (0.70 - 3.55)	11.83*** (4.72 - 29.68)	35.7 (5/14)	0.66 (0.32 - 1.33)	1.20 (0.56 - 2.55)	50.0 (3/6)	0.78 (0.35 - 1.74)	1.21 (0.49 - 2.96)
Mechanic	18.6 (11/59)	0.88 (0.51 - 1.53)	0.87 (0.54 - 1.40)	43.3 (13/30)	0.80 (0.53 - 1.21)	0.80 (0.52 - 1.23)	50.0 (7/14)	0.78 (0.45 - 1.32)	0.82 (0.50 - 1.34)
Transportation	15.4 (18/117)	0.73 (0.46 - 1.14)	1.01 (0.67 - 1.52)	42.9 (48/112)	0.79** (0.63 - 0.99)	0.94 (0.76 - 1.17)	52.6 (20/38)	0.82 (0.59 - 1.13)	0.94 (0.70 - 1.28)
Other occupations	16.1 (24/149)	0.76 (0.51 - 1.13)	0.83 (0.57 - 1.21)	50.9 (54/106)	0.94 (0.76 - 1.15)	1.01 (0.83 - 1.24)	60.5 (23/38)	0.94 (0.71 - 1.24)	0.99 (0.76 - 1.29)

Table 3. Change in prevalence of untreated HIV infection between visit 1 (1999-2000) and visit 12 (2015-2016)

Occupational subgroup	Women N = 10,121					Men N = 7,876				
	Visit 1 (1999-2000), untreated HIV prevalence, % (n/T) n = 3474	Visit 12 (2015-2016), untreated HIV prevalence, % (n/T) n = 6647	Unadjusted PRR (95% CI)	adjPRR* (95% CI)	adjPRR p-value	Visit 1 (1999-2000), untreated HIV prevalence, % (n/T) n = 2,518	Visit 12 (2015-2016), untreated HIV prevalence, % (n/T) n = 5,358	Unadjusted PRR (95% CI)	adjPRR** (95% CI)	adjPRR p-value
Agriculture	14.7 (313/2128)	4.0 (106/2669)	0.27 (0.22-0.23)	0.22 (0.18-0.27)	<0.001	12.3 (120/975)	4.2 (65/1538)	0.34 (0.26-0.46)	0.30 (0.23-0.41)	<0.001
Construction	-	-	-	-	-	12.6 (36/285)	4.8 (24/500)	0.38 (0.23-0.62)	0.27 (0.17-0.43)	<0.001
Trading	21.5 (70/325)	6.1 (64/1048)	0.28 (0.21-0.39)	0.09 (0.06-0.12)	<0.001	13.5 (51/401)	4.6 (35/756)	0.36 (0.24-0.55)	0.27 (0.17-0.43)	<0.001
Casual labor	-	-	-	-	-	10.6 (7/66)	6.8 (9/132)	0.64 (0.25-1.65)	0.54 (0.22-1.35)	0.185
Civil service	11.2 (19/170)	3.2 (17/529)	0.29 (0.15-0.54)	0.07 (0.04-0.15)	<0.001	10.4 (23/221)	0.9 (4/429)	0.09 (0.03-0.26)	0.09 (0.03-0.25)	<0.001
Student	2.4 (6/254)	1.5 (14/959)	0.62 (0.24-1.59)	0.11 (0.04-0.30)	<0.001	0.6 (2/319)	0.3 (3/1178)	0.41 (0.07-2.42)	0.23 (0.04-1.19)	0.079
Mechanic	-	-	-	-	-	9.7 (6/62)	2.3 (7/302)	0.24 (0.08-0.69)	0.22 (0.07-0.67)	0.007
Transportation	-	-	-	-	-	8.2 (4/49)	7.1 (18/252)	0.88 (0.31-2.47)	0.90 (0.30-2.73)	0.858
Bar/Restaurant worker	34.7 (50/144)	12.0 (32/267)	0.35 (0.23-0.51)	0.21 (0.14-0.31)	<0.001	-	-	-	-	-
Local crafts	19.8 (20/101)	10.2 (14/137)	0.52 (0.27-0.97)	0.29 (0.14-0.58)	<0.001	-	-	-	-	-
Hairdressing	46.3 (19/41)	4.7 (14/300)	0.10 (0.05-0.19)	0.01 (0.01-0.02)	<0.001	-	-	-	-	-
Tailoring/laundry	4.0 (2/50)	3.3 (4/122)	0.82 (0.16-4.33)	0.25 (0.05-1.35)	0.107	-	-	-	-	-
Housekeeping	16.7 (38/227)	4.6 (25/545)	0.27 (0.17-0.44)	0.11 (0.07-0.17)	<0.001	-	-	-	-	-
Other occupations	17.6 (6/34)	5.6 (4/71)	0.32 (0.10-1.06)	0.28 (0.08-1.02)	0.053	11.4 (16/140)	5.5 (15/271)	0.48 (0.25-0.95)	0.48 (0.25-0.96)	0.037
All occupations	15.6 (543/3474)	4.4 (294/6647)	0.28 (0.25-0.32)	0.27 (0.24-0.31)	<0.001	10.5 (265/2518)	3.4 (180/5358)	0.32 (0.27-0.38)	0.29 (0.24-0.35)	<0.001

PRR=prevalence risk ratios; adjPRR=adjusted prevalence risk; *Models adjusted for age and marital status of study participants.

Table 4. Incidence of HIV infection by occupational subgroup, sex, and CHI (combination HIV intervention) calendar period.

Occupation	Women (N=17,840)						
	Incidence rate per 100 py (n/py)			IRR (95% CI)		adjIRR (95%CI)	
	Pre – CHI (1999-2004)	Early – CHI (2004-2011)	Late – CHI (2011-2016)	Early – CHI vs. Pre-CHI (ref)	Late – CHI vs. Pre- CHI (ref)	Early – CHI vs. Pre-CHI (ref)	Late – CHI vs. Pre-CHI (ref)
Agriculture	1.1 (97/8490)	0.9 (129/13785)	0.7 (62/9515)	0.82 (0.63 – 1.07)	0.57* (0.41 - 0.79)	0.87 (0.67 – 1.13)	0.62* (0.45 - 0.86)
Bar/restaurant worker	1.1 (4/365)	2.1 (17/813)	2.0 (12/605)	1.91 (0.64 – 5.69)	1.81 (0.58 – 5.66)	2.13 (0.72 – 6.36)	2.79 (0.85 - 9.19)
Trading	1.4 (17/1222)	1.4 (49/3474)	0.7 (23/3117)	1.01 (0.58 - 1.77)	0.53* (0.28 – 1.00)	1.19 (0.69 – 2.06)	0.72 (0.38 - 1.37)
Hairdressing	2.3 (3/133)	1.6 (10/624)	0.8 (6/774)	0.71 (0.19 – 2.62)	0.34 (0.08 – 1.39)	0.73 (0.20 - 2.68)	0.36 (0.09 – 1.43)
Civil service	1.1 (9/851)	0.6 (14/2399)	0.3 (5/1849)	0.55 (0.24 - 1.28)	0.26* (0.09 – 0.77)	0.76 (0.31 - 1.86)	0.49 (0.13 - 1.78)
Student	0.3 (2/623)	0.4 (6/1433)	0.7 (14/2059)	1.30 (0.26 – 6.48)	2.12 (0.48 - 9.35)	1.23 (0.25 – 6.11)	1.93 (0.44 – 8.36)
Housekeeping	1.2 (6/496)	1.1 (15/1388)	0.9 (12/1278)	0.89 (0.35-2.32)	0.78 (0.29-2.08)	1.0 (0.37-2.67)	0.89 (0.30-2.59)
Local crafts	1.3 (5/387)	2.3 (12/518)	1.6 (5/308)	1.79 (0.63 – 5.13)	1.25 (0.36 – 4.38)	1.88 (0.65 – 5.44)	1.36 (0.38 – 4.91)
Tailoring/laundry	1.7 (2/121)	1.4 (5/355)	1.1 (3/261)	0.86 (0.16-4.47)	0.70 (0.12-4.23)	0.94 (0.17-5.10)	0.85 (0.15-4.84)
Other occupations	1.1 (1/93)	0.0 (0/169)	1.2 (5/406)	-	1.14 (0.13 - 9.96)	-	1.41 (0.16-12.48)
All occupations	1.1 (146/12781)	1.0 (257/24958)	0.7 (147/20173)	0.90 (0.74 - 1.11)	0.64* (0.51 - 0.80)	0.93 (0.76-1.14)	0.66* (0.53-0.83)
Men (N=14,244)							
Occupation	Incidence rate per 100 py (n/py)			IRR (95% CI)		adjIRR (95%CI)	
	Pre – CHI (1999-2004)	Early – CHI (2004-2011)	Late – CHI (2011-2016)	Early – CHI vs. Pre-CHI (ref)	Late – CHI vs Pre- CHI (ref)	Early – CHI vs. Pre-CHI (ref)	Late – CHI vs Pre-CHI (ref)
Agriculture	1.4 (53/3894)	0.8 (62/8046)	0.4 (25/5834)	0.57* (0.39 - 0.82)	0.32* (0.20 - 0.51)	0.58* (0.40 - 0.84)	0.33* (0.21 - 0.54)
Construction	1.6 (18/1128)	1.2 (28/2322)	0.5 (9/1690)	0.76 (0.42 - 1.37)	0.33* (0.15 - 0.75)	0.79 (0.42 - 1.47)	0.35* (0.15 - 0.83)
Trading	0.8 (13/1541)	0.7 (26/3613)	0.5 (15/2746)	0.85 (0.44 - 1.67)	0.65 (0.31 - 1.37)	0.89 (0.46 - 1.70)	0.69 (0.33 - 1.45)
Casual labor	1.2 (3/259)	1.6 (7/431)	0.6 (2/322)	1.40 (0.36 - 5.49)	0.54 (0.09 - 3.25)	1.67 (0.42 - 6.66)	0.68 (0.11 - 4.30)
Civil service	0.7 (7/981)	0.6 (12/2121)	0.4 (6/1673)	0.79 (0.31 - 2.02)	0.50 (0.17 - 1.50)	0.78 (0.31 - 2.00)	0.49 (0.16 - 1.51)
Student	0.1 (1/955)	0.05 (1/1905)	0.1 (3/2840)	0.50 (0.03 - 8.03)	1.01 (0.11 - 9.71)	0.51 (0.03 - 8.23)	0.44 (0.04 - 4.86)
Mechanic	0.0 (0/228)	1.0 (8/780)	0.4 (4/901)	-	-	-	-
Transportation	1.4 (4/287)	1.8 (21/1181)	1.2 (12/964)	1.28 (0.43 - 3.75)	0.89 (0.29 - 2.80)	1.33 (0.45 - 3.91)	1.10 (0.35 - 3.50)
Other occupations	1.8 (10/546)	1.9 (21/1099)	0.9 (10/1115)	1.04 (0.49 - 2.23)	0.49 (0.20 - 1.19)	1.06 (0.50 - 2.26)	0.50 (0.21 - 1.23)
All occupations	1.1 (109/9821)	0.9 (186/21498)	0.5 (86/18085)	0.78* (0.62 - 0.99)	0.43* (0.32 - 0.57)	0.79* (0.62 - 1.0)	0.44* (0.33 - 0.59)

py=person years; IRR=incidence rate ratio; adjIRR=adjusted incidence rate ratio for age and marital status; IRR not presented for other occupations (women, Early-CHI) and mechanic (men) because there were no cases in the numerator and denominator respectively; CHI=combination HIV intervention *p<0.05

Table 5. Adjusted incidence rate ratios of HIV infection comparing all occupations vs. agriculture during the late-CHI period

Occupation	Women		Men	
	adjIRR (95% CI)	p-value	adjIRR (95% CI)	p-value
Agriculture	Ref.	Reference	Reference	Reference
Construction	-	-	1.16 (0.54-2.48)	0.707
Trading	1.1 (0.66-1.73)	0.800	1.25 (0.66-2.37)	0.501
Casual labor	-	-	1.45 (0.33-6.39)	0.623
Civil service	0.40 (0.16-1.00)	0.051	0.87 (0.36-2.13)	0.767
Student	0.36 (0.18-0.72)	0.004	0.19 (0.05-0.73)	0.015
Mechanic	-	-	0.91 (0.30-2.83)	0.875
Transportation	-	-	2.75 (1.37-5.50)	0.004
Bar/restaurant worker	2.88 (1.51-5.49)	0.001	-	-
Local crafts	1.96 (0.76-5.06)	0.164	-	-
Hairdressing	0.76 (0.32-1.79)	0.523	-	-
Tailoring/laundry	1.33 (0.40-4.42)	0.640	-	-
Housekeeping	1.08 (0.57-2.04)	0.819	-	-

adjIRR=adjusted incidence rate ratio for age and marital status

Occupations where the median number of observations per visit was <50 were excluded from the analysis.

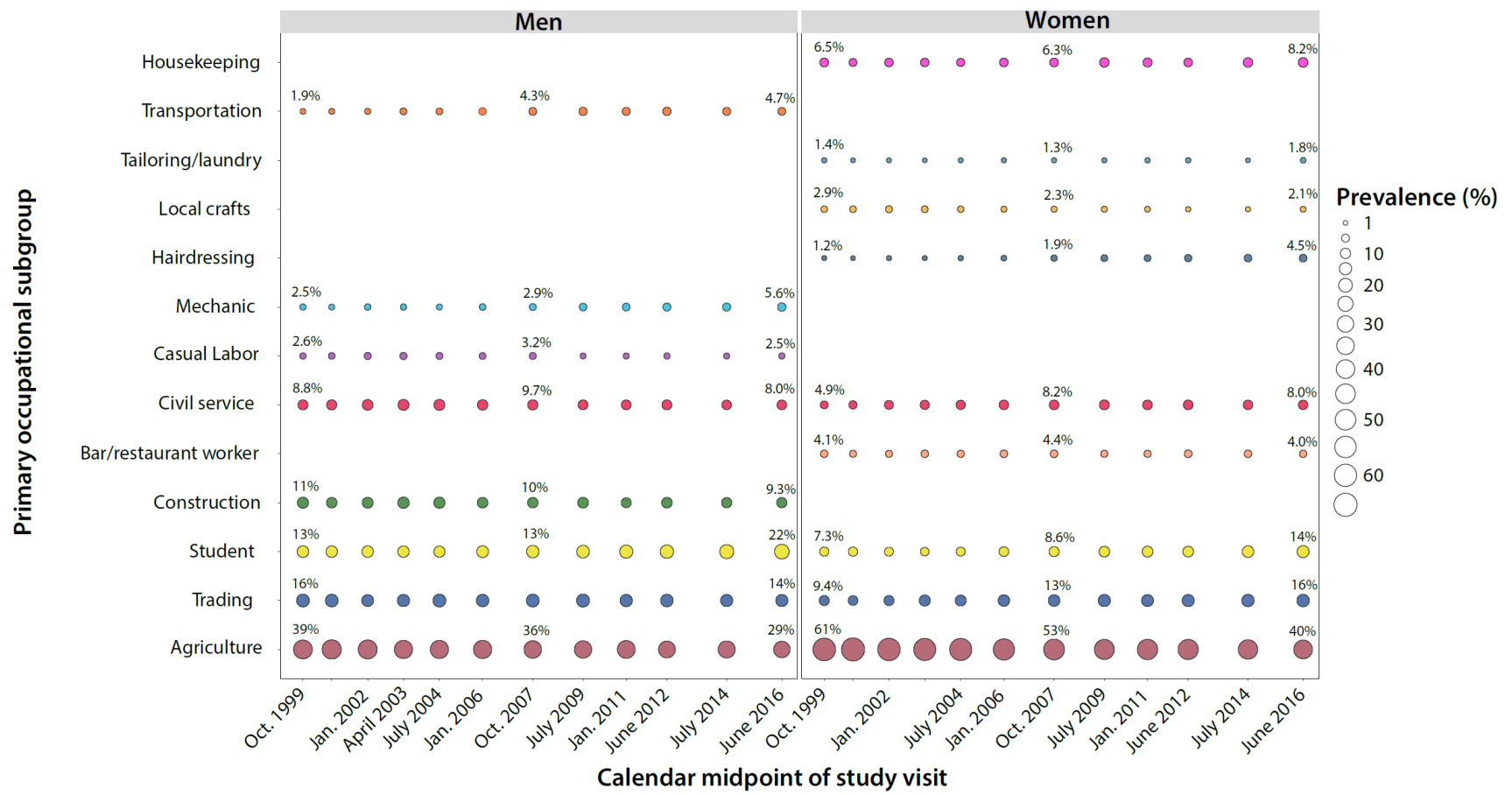


Figure 1. Prevalence of common primary occupational subgroups by sex in the Rakai Community Cohort Study, 1999-2016.

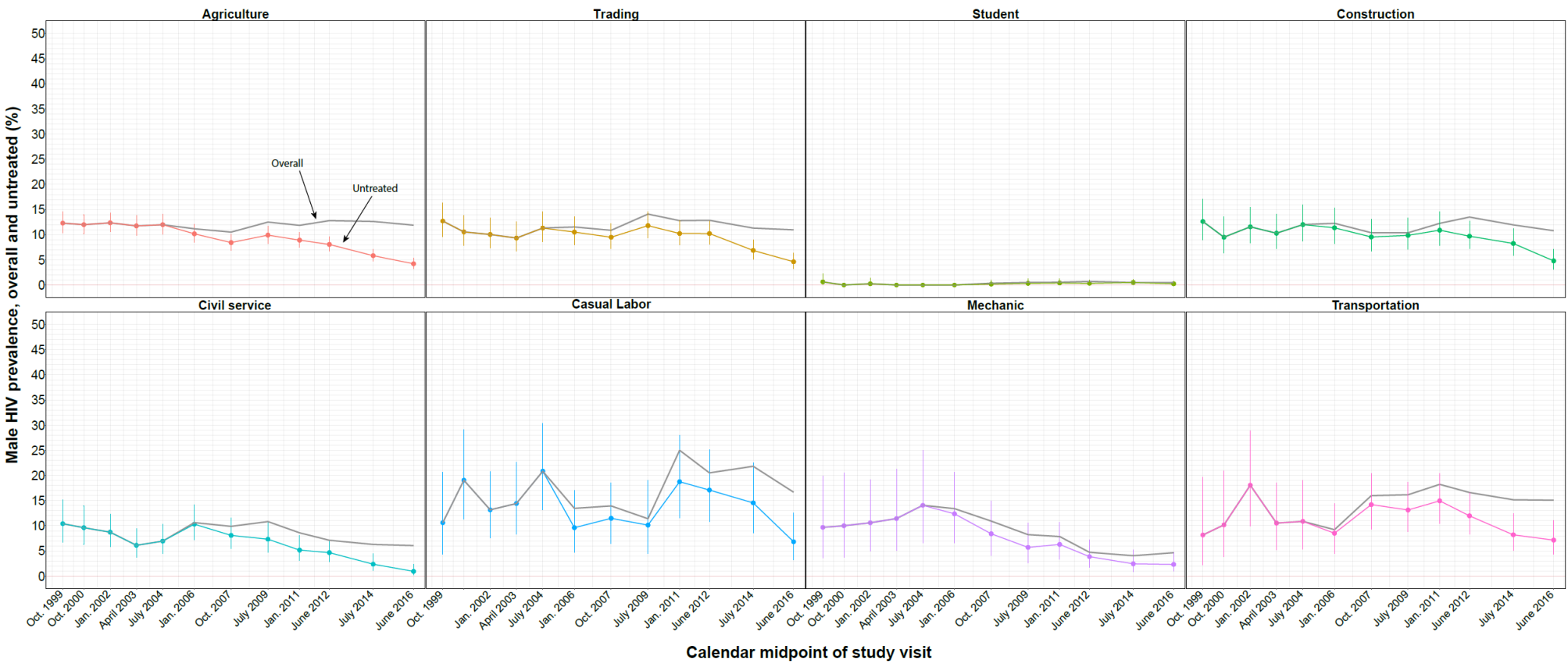


Figure 2a. Trends in HIV prevalence overall (treated and untreated) among men by primary occupational subgroup in the Rakai Community Cohort Study, 1999-2016; Untreated prevalence with 95% confidence intervals are shown in color; overall HIV prevalence is shown in gray. Data are plotted at the calendar midpoint of the study visit.

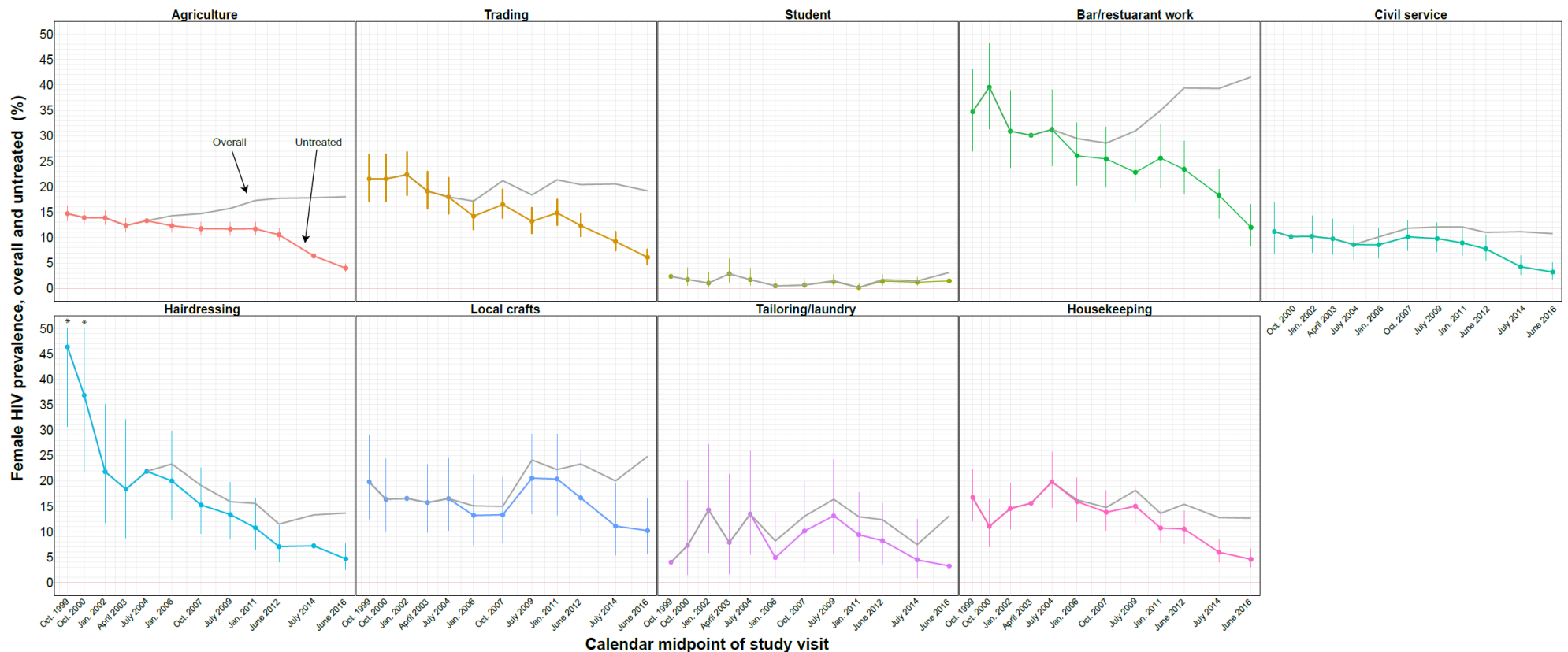


Figure 2b. Trends in HIV prevalence overall (treated and untreated) among women by primary occupational subgroup in the Rakai Community Cohort Study, 1999-2016; Untreated prevalence with 95% confidence intervals are shown in color; overall HIV prevalence is shown in gray. Data are plotted at the calendar midpoint of the study visit. *Upper limit of 95%CI not shown.

Supplemental Table 1a. Self-reported primary occupations by male RCCS study participants at each study visit

Occupations (n)	Study visit (N reporting)											
	1	2	3	4	5	6	7	8	9	10	11	12
Agriculture Home Use/Barter	817	906	1028	740	758	880	791	768	922	861	761	760
Agriculture Selling	157	252	207	278	275	307	406	430	536	576	782	777
Housework in Own Home	5	4	6	6	9	2	11	12	7	11	17	23
Housekeeper (for employer)	1	3	3	3	4	4	0	0	2	1	4	0
Home Brewing	8	12	6	4	6	5	6	10	6	8	6	6
Government/Clerical/Teaching	185	214	271	268	285	284	295	287	308	352	351	381
Fishing	12	12	19	16	16	21	7	12	17	6	11	19
Student	319	351	388	343	333	432	543	582	726	851	988	1178
Military/Police	29	41	37	38	26	34	35	21	30	44	23	37
Shopkeeper	74	85	93	86	114	73	94	96	106	113	118	130
Trading/Vending	319	348	319	317	348	416	478	504	513	602	574	620
Bar Worker or Owner	8	10	7	14	13	11	12	12	10	15	13	9
Trucker	28	37	52	60	48	70	67	79	89	91	94	98
Unemployed	1	2	0	1	6	0	0	0	0	0	1	1
Other	34	34	31	25	32	22	24	10	17	22	162	26
Healthcare Worker	4	1	8	2	4	2	2	2	7	9	7	8
Casual Labor	65	82	114	103	90	104	122	79	96	117	109	131
Restaurant Worker or Cook	3	1	3	10	10	10	11	14	11	19	16	23
Hairdresser	7	12	23	24	29	33	34	41	43	52	57	68
Construction	184	180	238	241	238	239	252	311	307	378	393	383
Mechanic	62	60	85	70	64	97	119	158	191	233	247	302
Boda Boda driver	14	16	14	31	41	65	98	112	124	166	149	152
Architect	1	1	0	1	0	1	1	1	0	0	0	0
Baker	11	8	5	1	4	4	2	3	5	10	2	6
Blacksmith or Welder	6	5	7	4	4	6	8	10	11	29	26	37
Butcher	8	15	23	26	23	21	36	33	23	32	28	33
Carpenter	82	86	83	80	69	66	66	52	40	57	31	59

Clergy	2	4	2	3	2	7	3	3	4	3	0	2
Coffee Worker	1	1	2	3	1	2	0	1	0	1	0	1
Conductor	2	2	4	0	0	0	0	1	0	0	0	1
Driver	5	4	2	4	3	6	4	6	1	2	1	1
Electrician	8	10	7	12	17	16	20	3	3	2	2	7
Entertainer	1	1	1	2	2	4	4	4	6	2	4	3
Local Crafts	20	13	21	24	18	16	22	26	22	25	10	23
Lumberer	4	1	2	2	4	4	8	4	4	6	7	10
Photographer	6	6	7	6	5	8	6	6	4	5	3	6
Plumber	0	1	0	0	1	1	1	4	2	2	1	4
Cobbler	1	3	3	0	0	1	2	1	6	7	2	2
Social Worker	3	4	5	3	2	0	2	4	4	3	1	3
Tailoring or Laundry	18	16	19	10	16	18	17	18	17	31	19	25
Traditional Healer	3	7	5	1	3	3	4	4	4	2	2	3

Supplemental Table 1b. Self-reported primary occupations by female RCCS study participants at each study visit

Occupations (n)	Study visit (N reporting)											
	1	2	3	4	5	6	7	8	9	10	11	12
Agriculture Home Use/Barter	1964	2307	2316	2128	2222	2166	2202	1950	2196	2361	2215	2171
Agriculture Selling	164	172	204	182	168	326	327	347	417	396	468	495
Housework in Own Home	200	161	232	214	204	270	290	363	346	341	454	518
Housekeeper (for employer)	27	29	22	23	18	24	28	23	36	29	31	27
Home Brewing	15	13	16	12	10	16	8	6	12	6	8	8
Government/Clerical/Teaching	141	183	247	251	266	336	358	377	383	420	423	458
Fishing	1	0	1	0	0	0	0	0	1	1	1	1
Student	254	287	284	243	291	404	472	531	601	639	823	959
Military/Police	5	8	6	10	8	8	9	8	13	10	10	12
Shopkeeper	134	146	182	230	227	328	326	365	376	417	426	470
Trading/Vending	176	166	191	229	236	262	327	364	380	435	521	570
Bar Worker or Owner	108	108	89	92	85	118	93	71	94	101	110	110
Unemployed	1	3	2	1	0	1	0	1	0	0	0	1
Other	18	23	20	16	5	7	12	8	9	7	129	10
Healthcare Worker	23	23	40	36	39	40	43	53	49	58	59	58
Casual Labor	10	20	20	27	23	25	39	36	28	25	30	46
Restaurant Worker or Cook	36	31	63	84	75	89	131	113	109	168	152	157
Hairdresser	41	38	55	49	64	90	131	157	167	226	263	300
Construction	0	0	0	0	0	0	0	2	1	0	0	1
Mechanic	0	0	0	0	0	0	0	0	1	1	1	1
Baker	1	0	1	0	0	1	0	1	0	1	1	3
Blacksmith or Welder	0	0	0	0	0	0	0	0	0	1	0	0
Carpenter	0	0	0	0	0	0	1	0	0	1	0	0
Clergy	1	1	1	0	1	1	1	0	1	1	1	0
Coffee Worker	0	0	0	0	0	0	0	4	1	4	1	3
Entertainer	0	0	0	0	0	0	0	0	0	0	1	0
Local Crafts	101	116	145	127	115	106	120	112	108	90	90	137

Cobbler	0	1	0	0	0	0	0	0	0	0	1	1
Social Worker	1	2	0	0	1	1	4	1	2	2	1	1
Tailoring or Laundry	50	41	49	38	52	61	69	61	85	97	67	122
Traditional Healer	2	1	1	1	1	1	1	5	2	4	2	7

Supplemental Table 2. Recategorization of 41 self-reported primary occupations into occupational sub-groups

Final Subgroup	Original Category
Agriculture	Agriculture home use/barter
	Agriculture selling
	Coffee worker
Bar/restaurant work	Bar worker or owner
	Restaurant worker or cook
	Baker
Butcher	Butcher
Casual labor/unemployed	Home Brewing
	Unemployed
	Casual Labor
	Blacksmith or welder
	Carpenter
Construction	Construction
Civil service	Government/clerical/teaching
	Military/police
	Healthcare worker
	Social worker
Hairdressing	Hairdresser
Housekeeping	Housework in own home
	Housekeeper (for employer)
Local crafts	Local crafts
Mechanic	Mechanic
Other	Clergy
	Fishing
	Entertainer
	Cobbler
	Traditional healer
Student	Other

Tailoring/laundry	Student
Trading	Tailoring or laundry
	Shopkeeper
Transportation	Trader
	Trucker
	Boda Boda
	Bus conductor
	Driver

Supplemental Table 3a. Number of male observations at each study visit by primary occupational subgroup

Occupational subgroup	Study Visit N = 44,286 ^a												Median number of observations across all visits
	1	2	3	4	5	6	7	8	9	10	11	12	
Agriculture	975	1159	1237	1021	1034	1189	1197	1199	1458	1438	1543	1538	1198.5
Bar/restaurant worker ^b	11	11	10	24	23	21	23	26	21	34	29	32	23
Butcher ^b	8	15	23	26	23	21	36	33	23	32	28	33	24.5
Casual labor	66	84	114	104	96	104	122	79	96	117	110	132	104
Civil service	221	260	321	311	317	320	334	314	349	408	382	429	320.5
Construction	285	284	337	340	333	333	356	385	367	474	460	500	348
Hairdressing ^b	7	12	23	24	29	33	34	41	43	52	57	68	33.5
Housekeeping ^b	6	7	9	9	13	6	11	12	9	12	21	23	10
Local crafts ^b	20	13	21	24	18	16	22	26	22	25	10	23	21.5
Mechanic	62	60	85	70	64	97	119	158	191	233	247	302	108
Student	319	351	388	343	333	432	543	582	726	851	988	1178	488
Tailoring/laundry ^b	18	16	19	10	16	18	17	18	17	31	19	25	18
Trading	401	445	418	407	468	494	578	610	625	723	698	756	536.5
Transportation	49	59	72	95	92	141	169	198	214	259	244	252	155
Other ^c	70	75	73	54	64	70	52	43	63	57	186	67	65.5
Total	2518	2851	3150	2862	2923	3295	3613	3724	4224	4746	5022	5358	3454

^a14,753 unique individuals

^bOccupations were dropped from final analysis if median number of observations across all study visits < 50

^cCategory is a composite of multiple small categories that do not fit in any of the main categories and was dropped from main analysis

n – Number of observations by visit in each occupational category

N – Total number of observations during study period

Supplemental Table 3b. Number of female observations in each primary occupational subgroup at each study visit

Occupational subgroup	Study Visit N = 58,473 ^a												Median number of observations across all visits
	1	2	3	4	5	6	7	8	9	10	11	12	
Agriculture	2128	2479	2520	2310	2390	2492	2529	2301	2614	2761	2684	2669	2506
Bar/restaurant worker	144	139	152	176	160	207	224	184	203	269	262	267	193.5
Butcher ^b	0	0	0	0	0	0	0	0	0	0	0	0	0
Casual Labor ^b	11	23	22	28	23	26	39	37	28	25	30	47	27
Civil service	170	216	293	297	314	385	414	439	447	490	493	529	399.5
Construction ^b	0	0	0	0	0	0	1	2	1	2	0	1	1
Hairdressing	41	38	55	49	64	90	131	157	167	226	263	300	110.5
Housekeeping	227	190	254	237	222	294	318	386	382	370	485	545	306.5
Local Crafts	101	116	145	127	115	106	120	112	108	90	90	137	113.5
Mechanic ^b	0	0	0	0	0	0	0	0	1	1	1	1	1
Student	254	287	284	243	291	404	472	531	601	639	823	959	438.5
Tailoring/Laundry	50	41	49	38	52	61	69	61	85	97	67	122	61
Trading	325	325	389	471	473	606	661	735	768	858	955	1048	633.5
Transportation	0	0	0	0	0	0	0	0	0	0	0	0	0
Other ^b	23	26	24	17	7	10	14	14	13	14	136	22	15.5
Total	3474	3880	4187	3993	4111	4681	4992	4959	5418	5842	6289	6647	4820

^a19,113 unique individuals

^bOccupations were dropped from final analysis if median number of observations across all study visits < 50

n – Number of observations by visit in each occupational category

N – Total number of observations during study period

Supplemental Figure 1. Boxplots of age in years at each study visit, among RCCS agricultural workers. The bottom and top of the boxes represent the 25th and 75th percentiles of the data (interquartile range), respectively. The solid black line in the middle of the box represents the median (50th percentile) and the lines represent values beyond the middle 50% of the data.

