

1 **TITLE: Can we mitigate the psychological impacts of social isolation using**  
2 **behavioural activation? Long-term results of the UK BASIL Urgent Public**  
3 **Health COVID-19 pilot randomised controlled trial and living systematic**  
4 **review**

5  
6 **Authors from the BASIL trials and living meta-analysis collective**

7 Elizabeth Littlewood<sup>1</sup>, Dean McMillan<sup>1,2</sup>, Carolyn A. Chew-Graham<sup>3</sup>, Della Bailey,<sup>1</sup> Samantha  
8 Gascoyne,<sup>1</sup> Claire Sloan,<sup>1</sup> Lauren Burke<sup>1</sup>, Peter Coventry,<sup>1,10</sup> Suzanne Crosland<sup>1</sup>, Caroline Fairhurst<sup>1</sup>,  
9 Andrew Henry<sup>1,4</sup>, Catherine Hewitt<sup>1</sup>, Kalpita Baird<sup>1</sup>, Eloise Ryde<sup>1,4</sup>, Leanne Shearsmith<sup>5</sup>, Gemma  
10 Traviss-Turner<sup>5</sup>, Rebecca Woodhouse<sup>1</sup>, Judith Webster<sup>8</sup>, Nick Meader<sup>9</sup>, Rachel Churchill,<sup>9</sup> Elizabeth  
11 Eddy<sup>1</sup>, Paul Heron,<sup>1</sup> Nisha Hickin,<sup>12</sup> Roz Shafran<sup>13</sup>, Osvaldo P. Almeida<sup>11</sup>, Andrew Clegg<sup>5</sup>, Tom Gentry<sup>6</sup>,  
12 Andrew Hill<sup>5</sup>, Karina Lovell<sup>7</sup>, Sarah Dexter Smith<sup>4</sup>, David Ekers,<sup>1,4</sup> Simon Gilbody<sup>1,2\*</sup>

13

14 *\*Corresponding author, e-mail: [simon.gilbody@york.ac.uk](mailto:simon.gilbody@york.ac.uk) Telephone number: 01904 321370*

15 *Declared competing interests of authors: none*

16

17

- 18 1. Department of Health Sciences, University of York, York, YO10 5DD, UK  
19 2. Hull York Medical School, University of York, York, YO10 5DD, UK  
20 3. School of Medicine, Keele University, Staffordshire, ST5 5BG, UK  
21 4. Tees, Esk and Wear Valleys NHS FT, Research & Development, Flatts Lane Centre, Middlesbrough,  
22 TS6 0SZ, UK  
23 5. Leeds Institute of Health Sciences, University of Leeds, Leeds, LS2 9NL, UK  
24 6. Age UK, 7th Floor, One America Square, 17 Crosswall, London, EC3N 2LB  
25 7. Division of Nursing, Midwifery & Social Work, University of Manchester, Oxford Road,  
26 Manchester, M13 9PL  
27 8. Patient and Public Representative, UK  
28 9. Centre for Reviews and Dissemination, University of York, UK.  
29 10. York Environmental Sustainability Institute, University of York, YO10 5NG  
30 11. Medical School, University of Western Australia, Perth, Australia.  
31 12. Department of Psychology, Royal Holloway, University of London, Egham, UK  
32 13. UCL Great Ormond Street Institute of Child Health, 30 Guilford Street, London, UK

33

34

35

36 Liz Littlewood: [liz.littlewood@york.ac.uk](mailto:liz.littlewood@york.ac.uk)  
37 Dean McMillan: [dean.mcmillan@york.ac.uk](mailto:dean.mcmillan@york.ac.uk)  
38 Carolyn Chew-Graham: [c.a.chew-graham@keele.ac.uk](mailto:c.a.chew-graham@keele.ac.uk)  
39 Della Bailey: [della.bailey@york.ac.uk](mailto:della.bailey@york.ac.uk)  
40 Samantha Gascoyne: [samantha.gascoyne@york.ac.uk](mailto:samantha.gascoyne@york.ac.uk)  
41 Nick Meader: [nick.meader@newcastle.ac.uk](mailto:nick.meader@newcastle.ac.uk)  
42 Elizabeth Eddy: [elizabethseddy2006@gmail.com](mailto:elizabethseddy2006@gmail.com)  
43 Nisha Hicklin: [nisha.hickin@gmail.com](mailto:nisha.hickin@gmail.com)  
44 Paul Heron: [paul.heron@york.ac.uk](mailto:paul.heron@york.ac.uk)  
45 Claire Sloan: [clairesloan21@gmail.com](mailto:clairesloan21@gmail.com)  
46 Lauren Burke: [lauren.burke@york.ac.uk](mailto:lauren.burke@york.ac.uk)  
47 Peter Coventry: [peter.coventry@york.ac.uk](mailto:peter.coventry@york.ac.uk)  
48 Suzanne Crosland: [Suzanne.crosland@york.ac.uk](mailto:Suzanne.crosland@york.ac.uk)  
49 Caroline Fairhurst: [caroline.fairhurst@york.ac.uk](mailto:caroline.fairhurst@york.ac.uk)  
50 Andrew Henry: [andrew.henry2@nhs.net](mailto:andrew.henry2@nhs.net)  
51 Catherine Hewitt: [Catherine.hewitt@york.ac.uk](mailto:Catherine.hewitt@york.ac.uk)  
52 Kalpita Baird: [kalpita.baird@york.ac.uk](mailto:kalpita.baird@york.ac.uk)  
53 Eloise Ryde: [eloise.ryde@nhs.net](mailto:eloise.ryde@nhs.net)  
54 Leanne Shearsmith: [L.Shearsmith@leeds.ac.uk](mailto:L.Shearsmith@leeds.ac.uk)  
55 Osvaldo P. Almeida: [osvaldo.almeida@uwa.edu.au](mailto:osvaldo.almeida@uwa.edu.au)  
56 Gemma Traviss-Turner: [g.traviss@leeds.ac.uk](mailto:g.traviss@leeds.ac.uk)  
57 Rebecca Woodhouse: [rebecca.woodhouse@york.ac.uk](mailto:rebecca.woodhouse@york.ac.uk)  
58 [Elizabeth Eddy](#)  
59 [Roz Shafran r.shafran@ucl.ac.uk](mailto:Roz.Shafran@ucl.ac.uk)  
60 Andrew Clegg: [A.P.Clegg@leeds.ac.uk](mailto:A.P.Clegg@leeds.ac.uk)  
61 Tom Gentry: [Tom.Gentry@ageuk.org.uk](mailto:Tom.Gentry@ageuk.org.uk)  
62 Andrew Hill: [A.J.Hill@leeds.ac.uk](mailto:A.J.Hill@leeds.ac.uk)  
63 Karina Lovell: [karina.lovell@manchester.ac.uk](mailto:karina.lovell@manchester.ac.uk)  
64 Sarah Dexter Smith: [sarah.dexter-smith@nhs.net](mailto:sarah.dexter-smith@nhs.net)  
65 Judith Webster: [ja.webster@hotmail.co.uk](mailto:ja.webster@hotmail.co.uk)  
66 David Ekers: [david.ekers@nhs.net](mailto:david.ekers@nhs.net)  
67 Simon Gilbody: [simon.gilbody@york.ac.uk](mailto:simon.gilbody@york.ac.uk)  
68  
69

70 **Abstract [currently 248 words]**

71 ***Background***

72 Behavioural and cognitive interventions remain a credible approach in preventing loneliness and  
73 depression. There was a need to rapidly generate and assimilate trial-based data during COVID-19.

74 ***Objectives***

75 We undertook a COVID-19 parallel pilot RCT of behavioural activation for depression and loneliness  
76 [the BASIL-C19 trial ISRCTN94091479]. We also assimilate these data in a COVID-19 living systematic  
77 review [PROSPERO CRD42021298788].

78 ***Methods***

79 Primary care participants ( $\geq 65$  years) with long-term conditions were computer randomised to  
80 Behavioural Activation (n=47) versus care-as-usual (n=49). The single blinded primary outcome was  
81 the PHQ-9. Secondary outcomes included loneliness (De Jong Gierveld Scale). Data from the BASIL-  
82 C19 trial were included in a random effects meta-analysis of depression and loneliness.

83 ***Findings***

84 The 12 months adjusted mean difference for PHQ-9 was -0.70 (95% CI -2.61 to 1.20) and for  
85 loneliness was -0.39 (95% CI -1.43 to 0.65). Secondary 12-month trial outcomes suggested evidence  
86 of benefit for behavioural activation.

87 The BASIL-C19 meta-analysis (13 trials) found short-term reductions in depression (standardised  
88 mean difference [SMD]=-0.31, 95%CI -0.51 to -0.11) and loneliness (SMD=-0.48, 95%CI -0.70 to -  
89 0.27). There were few long-term trials, but there was evidence of some benefit (loneliness SMD=-  
90 0.20, 95%CI -0.40 to -0.01; depression SMD=-0.20, 95%CI -0.47 to 0.07).

91 ***Discussion***

92 We found a signal of effect in reducing loneliness and depression in the BASIL trial. Living meta-  
93 analysis provides strong evidence of short-term benefit for loneliness and depression.

94 ***Clinical implications***

95 Scalable behavioural and cognitive approaches should be considered as population-level strategies  
96 for depression and loneliness on the basis of the living systematic review.

97 ***Funding***

98 This study was funded by National Institute for Health and Care Research (NIHR) Programme Grants  
99 for Applied Research (PGfAR) RP-PG-0217-20006.

100

101

102 **Author summary**

103 **Why was this study done?**

104 ☐ Older people with long-term conditions have been impacted by COVID-19 pandemic  
105 restrictions and have experienced social isolation. In turn, this puts them at risk for  
106 depression and loneliness, and these are bad for health and wellbeing. Psychosocial  
107 approaches, such as behavioural activation, could be helpful.

108 ☐ Trial-based evidence is needed to demonstrate if it is possible to prevent the onset, or  
109 mitigate the impact, of loneliness and depression.

110 ☐ There are few studies of brief psychosocial interventions to mitigate depression and  
111 loneliness, and it is important to know how emerging trial-based data adds to existing  
112 evidence.

113 **What did the researchers do and find?**

114 ☐ There was preliminary evidence that levels of loneliness were reduced at 3 months when  
115 behavioural activation was offered.

116 ☐ At longer term (12-month) follow-up there were signals of ongoing positive impact.

117 ☐ When BASIL-C19 data were assimilated into a living systematic review there is clear  
118 evidence of impact of brief psychological interventions on depression and loneliness in the  
119 short-term. More research into the longer-term impact is needed.

120 **What does all this mean?**

121 ☐ Behavioural activation now shows evidence of benefit which will be useful for policy makers  
122 in offering support to people who are socially isolated.

123 ☐ This research knowledge will be useful once the COVID-19 pandemic has passed, since  
124 loneliness is common in older populations and effective scalable solutions will be needed to  
125 tackle this problem.

126 ☐ As new trial-based data emerges, our living systematic review and meta-analysis will be  
127 updated since this is an area of active research.

128

129

130 **Introduction**

131 The mental health of the population deteriorated during the COVID-19 pandemic<sup>1</sup>. Many people  
132 reported social isolation, and the incidence of depression and anxiety particularly increased for  
133 older people and those with medical vulnerabilities<sup>2</sup>. A plausible mechanism for this deterioration  
134 was that COVID-19 restrictions led to disruption of daily routines, loss of social contact and  
135 heightened isolation and increased loneliness, which are each powerful precipitants of mental ill  
136 health<sup>3</sup>.

137 Social isolation, social disconnectedness, perceived isolation and loneliness are known to be linked  
138 to common mental health problems, such as depression in older people<sup>3,4</sup>. Loneliness is a risk  
139 factor for depression and seems detrimental to physical health and life expectancy<sup>5</sup>. It is  
140 recognised that strategies that, for instance, maintain social connectedness could be important in  
141 ensuring the mental health of older people<sup>6</sup>, particularly during the pandemic<sup>3</sup> and in the planning  
142 for post-pandemic recovery<sup>7</sup> (including the management of people with Long Covid).

143 The need for research to mitigate the psychological impacts of COVID-19, particularly loneliness,  
144 was highlighted as a priority<sup>8</sup>, and we responded by designing and delivering one of a small number  
145 of psychotherapy trials programmes<sup>9</sup>.

146 Behavioural activation (BA) is an evidence-based psychological treatment that explores how physical  
147 inactivity and low mood are linked and result in a reduction of valued activity<sup>10</sup>. Small scale trials of  
148 BA delivered to socially-isolated older people have produced encouraging preliminary results<sup>11</sup>, but  
149 there is not yet sufficient research evidence to support whole-scale adoption, or to inform the  
150 population response to COVID-19 or in planning for post-pandemic recovery. We therefore adapted  
151 an ongoing work programme into the role of BA in multiple long term conditions in early-2020 to  
152 answer the following overarching question: **‘Can we prevent or ameliorate depression and  
153 loneliness in older people with long-term conditions during isolation?’**.

154 In this paper we present the long-term (12-month) results of the BASIL-C19 trial (**B**ehavioural  
155 **A**ctivation in **S**ocial **I**solation): a pilot randomised controlled trial (RCT) of manualised BA, adapted  
156 specifically to be delivered at scale and remotely (via the telephone or video call) for older adults  
157 who became socially isolated as a consequence of COVID-19. The long-term (12-month outcomes)  
158 complement the already-published short-term (up to 3 months) outcomes of the BASIL-C19 trial<sup>12</sup>.  
159 This is a rapidly evolving area, and we therefore present the results of the BASIL-C19 trial alongside  
160 all randomised data in a prospective evidence synthesis and cumulative meta-analysis (a ‘living  
161 systematic review’)<sup>13</sup>.

162

163

164 **Trial methods**

165 ***Study design and participants***

166 The BASIL-C19 pilot RCT was the first and only mental health trial adopted by the National Institute  
167 for Health and Care Research (NIHR) Urgent Public Health programme (adopted on 28<sup>th</sup> May 2020)  
168 <sup>14</sup>. The BASIL-C19 pilot was designed to provide key information on methods of recruitment and  
169 training for intervention practitioners (hereafter BASIL Support Workers [BSWs]). The trial was  
170 registered on 9<sup>th</sup> June 2020 (ISRCTN94091479) and participants were recruited between 23<sup>rd</sup> June  
171 and 15<sup>th</sup> October 2020. Older adults with long-term conditions were identified as being a ‘high risk  
172 group’ for loneliness and depression as a consequence of social isolation under COVID-19  
173 restrictions. They were recruited from primary care registers in the North East of England. Eligible  
174 and consenting participants were randomised to receive either usual primary care (with signposting  
175 to resources to support mental health during COVID) from their general practice or Behavioural  
176 Activation intervention in addition to usual care. Methods, recruitment, intervention uptake,  
177 retention, experience of the BA intervention for our target population, and acceptability of the  
178 intervention are described in full in the short-term results paper <sup>12</sup>.

179 *Inclusion criteria:* Based on the Academy of Medical Sciences definition of multimorbidity <sup>15</sup> we  
180 recruited older adults (65 years or over) with two or more physical long-term conditions (LTCs) on  
181 primary care registers in two general practices in the North East of England. Participants included  
182 those subject to English Government guidelines regarding COVID-19 self-isolation, social distancing  
183 and shielding as relevant to their health conditions and age (though this was not a requirement and  
184 these requirements changed during the study period).

185 *Exclusion criteria:* Older adults who had cognitive impairment, bipolar disorder /psychosis/ psychotic  
186 symptoms, alcohol or drug dependence, in the palliative phase of illness, had active suicidal  
187 ideation, were currently receiving psychological therapy, or are unable to speak or understand  
188 English.

189 Potentially eligible participants were telephoned and those who expressed an interest in the study  
190 were contacted by a member of the research team to determine eligibility, obtain consent and  
191 collect baseline data. Interested patients could also complete an online consent form or contact the  
192 study team directly.

193 ***Randomisation, concealment of allocation and masking***

194 Eligible and consenting participants were randomised 1:1 to BA intervention or usual care using  
195 simple randomisation via an automated computer data entry system, administered remotely by the  
196 York Trials Unit, University of York. Participants, general practices, study clinicians, or BSWs were

197 not blinded to treatment allocation. Outcome assessment was by self-report, and study researchers  
198 facilitating the telephone-based outcome assessment were blind to treatment allocation.

199 **Intervention (Behavioural Activation):**

200 The intervention (BA within a collaborative care framework) has been described elsewhere<sup>16</sup> and  
201 was adapted for the purposes of the BASIL-C19 trial. The main adaptation was the use of telephone  
202 delivery, and the use of functional equivalence to maintain social interactions. Intervention  
203 participants were offered up to eight sessions over a 4 to 6 week period delivered by trained BSWs,  
204 accompanied by a BASIL Behavioural Activation booklet.

205 Sessions were delivered by BSWs remotely via telephone or video call, according to participant  
206 preference. The first session was scheduled to last approximately one hour, with subsequent  
207 sessions lasting approximately 30 minutes.

208 **Comparator (usual GP care with signposting):** Participants in the control group received usual care  
209 as provided by their current NHS and/or third sector providers. In addition, control participants  
210 were 'signposted' to reputable sources of self-help and information, including advice on how to  
211 keep mentally and physically well (e.g., Public Health England (PHE) 'Guidance for the public on the  
212 mental health and wellbeing aspects of coronavirus (COVID-19)<sup>17</sup> and Age UK<sup>18</sup>).

213 **Outcome measures**

214 Demographic information obtained at baseline included: age, sex, long-term condition type, socio-  
215 economic status, ethnicity, education, marital status, and number of children.

216 The overarching aim of the BASIL-C19 pilot trial was to test the feasibility of the intervention and the  
217 methods of recruitment, randomisation and follow-up<sup>19</sup>. The primary clinical outcome was self-  
218 reported symptoms of depression, assessed by the PHQ-9<sup>20</sup>, where higher scores initiate greater  
219 levels of depressive symptomatology. The PHQ-9 was administered at baseline, one, three and 12  
220 months post-randomisation. Other secondary clinical outcomes measured at baseline, one, three  
221 and 12 months were health related quality of life (SF-12v2 mental component scale (MCS) and  
222 physical component scale (PCS))<sup>21</sup>, anxiety (GAD-7)<sup>22</sup>, perceived social and emotional loneliness (De  
223 Jong Gierveld Scale - 11 items loneliness scale) and questions relating to COVID-19 circumstances  
224 and adherence to government guidelines<sup>23</sup>. Findings from one and three month outcomes have  
225 been presented elsewhere<sup>12</sup>, along with information on intervention compliance.

226 **Sample size & statistical analysis**

227 **Sample size:** Sample size calculations were based on estimating attrition and standard deviation  
228 (SD) of the primary outcome. We aimed to recruit 100 participants. The intervention was delivered

229 by BSWs and allowed for potential clustering by BSWs assuming an inter-cluster correlation (ICC) of  
230 0.01 and mean cluster size of 15 based upon previous studies<sup>16</sup>. The effective sample size was  
231 therefore 88. Anticipating 15-20% of participants would be lost to follow-up (17% in the CASPER  
232 trial of older adults<sup>16</sup>), this would result in an effective sample size of at least 70 participants, which  
233 is sufficient to allow reasonably robust estimates of the SD of the primary outcome measure to  
234 inform the sample size calculation for a definitive trial<sup>24</sup>.

235 **Statistical analysis:** This study is reported as per the Consolidated Standards of Reporting Trials  
236 (CONSORT) guideline. The flow of participants through the pilot trial is shown in a CONSORT flow  
237 diagram [Figure 1]. Differences in the clinical outcomes between the two groups were compared at  
238 12 months. This was done using a covariance pattern, mixed-effect linear regression model  
239 incorporating all post-randomisation time points. Treatment group, time point, a treatment-by-time  
240 interaction and the baseline score of the outcome of interest were included as fixed effects, and  
241 participant as a random effect (to account for the repeated observations per participant).

242 Different covariance structures were applied to the model. An unstructured covariance pattern for  
243 the correlation between the observations for a participant over time was specified in the final model  
244 based on Akaike's Information Criterion (AIC) (smaller value preferred).

245 An estimate of the difference between treatment groups in all outcome measures was extracted  
246 from the models for the 12-month time point, and overall, with a 95% confidence interval (CI) as  
247 preliminary estimates of effect, but this pilot trial was not powered to show efficacy. Model  
248 assumptions were checked as follows: the normality of the standardised residuals was visually  
249 assessed using a QQ plot, and homoscedasticity by means of a scatter plot of the standardised  
250 residuals against fitted values. No concerning deviations were noted.

### 251 ***Prospective meta-analysis of trial-based data***

252 Using all trial data to February 2022 we then updated an earlier Cochrane<sup>25</sup> and non-Cochrane<sup>26</sup>  
253 meta-analysis of cognitive or behavioural interventions to prevent or mitigate loneliness and  
254 depression in adult populations in light of the BASIL-C19 results. The planned living systematic  
255 review and meta-analysis protocol was registered on the PROSPERO database (review protocol  
256 CRD42021298788).

257 We updated Cochrane searches of PubMed, EMBASE and PsycINFO from inception to February  
258 2022. Eligible interventions included first, second, or third wave cognitive behavioural therapies  
259 (CBT) seeking to improve or prevent loneliness, as well as other CBT interventions where the focus is  
260 on improving common mental health problems but in which loneliness or a related construct is  
261 measured as an outcome. We studied depression and loneliness as the main outcomes of interest,  
262 under the advice of the BASIL Lived Experience Advisory Panel. We calculated a standardised mean



263 difference (SMD) with 95% CI. SMD represents the size of the intervention effect of each study  
264 compared with the between-participant variability in outcome measurements recorded in each  
265 individual study. We categorised the post-intervention outcomes into short-term outcomes (< 6  
266 months, including end of treatment time points), medium-term ( $\geq 6$  to <12 months), and long-term  
267 outcomes ( $\geq 12$  months). If a study reported follow-up outcomes at more than one time point within  
268 one of these time frames, we selected the outcome at the latest point within the time frame. We  
269 conducted a random effects meta-analysis, and included the BASIL-C19 study evidence. We tested  
270 for small study bias using Egger's approach and test<sup>27</sup>.

#### 271 ***Role of Funding Source***

272 BASIL C-19 was funded by the NIHR Programme Grants for Applied Research (PGfAR) programme  
273 (RP-PG-0217-20006). The scope of our pre-existing research into multi-morbidity in older people  
274 was extended at the outset of the COVID-19 pandemic with the agreement of the funder to consider  
275 loneliness and depression in this vulnerable group. The NIHR PGfAR programme had no role in the  
276 writing of this manuscript or the decision to submit it for publication.

#### 277 ***Ethical approval***

278 Ethical approval for the BASIL-C19 study was granted by Yorkshire & The Humber - Leeds West  
279 Research Ethics Committee on 23/04/2020 (The Old Chapel, Royal Standard Place, Nottingham, NG1  
280 6FS, UK; +44 (0)207 104 8018; leedswest.rec@hra.nhs.uk), ref: 18/YH/0380 (approved as substantial  
281 amendment 02 under existing NIHR IRAS249030 research programme).

282

283 **Results**

284 ***Participant recruitment, characteristics and follow-up***

285 Ninety-six participants were randomised using computer random number generation with  
286 concealment of allocation at the York Trials Unit (47 to the BA intervention group; and 49 to usual  
287 care with signposting group), of which 80 (83.3%) completed the 12-month follow-up and valid  
288 scores were available for 79 (82.3%). See Figure 1 [CONSORT flow diagram].

289 **<Figure 1> consort diagram**

290 The mean age of randomised participants was 74 years (SD 5.5) and most were White (n=92, 95.8%).  
291 Nearly two-thirds of the sample were female (n=59, 61.5%) (Table 1), and the most common long-  
292 term health problems were cardiovascular conditions. Mean depression scores were indicative of  
293 mild depression (BA mean = 7.5, SD 6.2; usual care mean = 6.0, SD 5.6). There was reasonable  
294 balance in baseline characteristics at randomisation between the two groups.

295 ***Outcome data and between-group comparisons at 12 months***

296 Eighty randomised participants (83.3%) completed the 12-month follow-up and valid primary and  
297 secondary outcome data were available for 79 (82.3%) participants (one participant commenced the  
298 questionnaire but then felt too unwell to continue and did not complete any of the outcome  
299 measures). At 12 months, unadjusted between-group mean differences favoured the intervention  
300 for the PHQ-9, GAD-7, De Jong Social Loneliness and the SF-12 MCS, and usual care for De Jong total  
301 and the Emotional Loneliness subscale, and the SF-12 PCS. The adjusted mean difference between  
302 groups in the PHQ-9 indicated lower severity in the intervention group at 12 months (-0.70, 95% CI -  
303 2.61 to 1.20), with an overall difference of -0.41 (95% CI -1.65 to 0.83) across all time points. The  
304 adjusted mean difference for the total De Jong Gierveld score indicated lower severity in the  
305 intervention group at 12 months (-0.39, 95% CI -1.43 to 0.65), with an overall difference of -0.32  
306 (95% CI -0.97 to 0.34) across all time points. The direction of effect in long-term follow up was  
307 consistent, with all outcomes favouring behavioural activation, though the majority were non-  
308 significant (Table 1). For mental health-related quality of life (the SF12 mental component score)  
309 there was an overall benefit across all time points (3.22, 95% CI 0.22 to 6.21).

310 **Table 1. Unadjusted and adjusted mean differences between the BA and usual care groups by**  
 311 **time point**

Mean difference (95% CI)	1-month		3-month		12-month		Over 12 months
	Unadjusted	Adjusted <sup>a</sup>	Unadjusted	Adjusted <sup>a</sup>	Unadjusted	Adjusted <sup>a</sup>	Adjusted <sup>a</sup>
<b>PHQ-9</b>	-1.44 (-3.66, 0.77)	-0.50 (-2.01, 1.01)	-0.39 (-2.70, 1.91)	0.19 (-1.36, 1.75)	-0.59 (-2.92, 1.74)	-0.70 (-2.61, 1.20)	-0.41 (-1.65, 0.83)
<b>GAD-7</b>	-0.54 (-2.52, 1.44)	0.20 (-1.33, 1.73)	-0.16 (-2.09, 1.78)	0.31 (-1.08, 1.70)	-0.97 (-2.93, 0.99)	-0.67 (-2.31, 0.97)	-0.18 (-1.35, 0.98)
<b>De Jong Gierveld scale (total)</b>	0.13 (-1.14, 1.41)	0.28 (-0.51, 1.06)	-0.86 (-2.14, 0.43)	-0.87 (-1.56, -0.18)	0.07 (-1.31, 1.45)	-0.39 (-1.43, 0.65)	-0.32 (-0.97, 0.34)
<b>De Jong Gierveld Emotional Loneliness Subscale</b>	0.07 (-0.68, 0.81)	0.14 (-0.39, 0.67)	-0.36 (-1.09, 0.36)	-0.37 (-0.85, 0.11)	0.19 (-0.70, 1.08)	-0.05 (-0.74, 0.65)	-0.16 (-0.57, 0.26)
<b>De Jong Gierveld Social Loneliness Subscale</b>	0.07 (-0.68, 0.81)	0.14 (-0.42, 0.69)	-0.50 (-1.22, -0.23)	-0.50 (-1.00, -0.01)	-0.12 (-0.84, 0.60)	-0.33 (-0.88, 0.22)	-0.14 (-0.55, 0.26)
<b>SF-12v2 (Physical Component Score)<sup>b</sup></b>	1.40 (-3.42, 6.22)	0.34 (-4.17, 4.85)	0.81 (-4.16, 5.77)	0.11 (-4.46, 4.67)	-0.04 (-5.39, 5.30)	-0.53 (-4.15, 3.09)	-0.27 (-2.73, 2.18)
<b>SF-12v2 (Mental Component Score)<sup>b</sup></b>	3.60 (-1.17, 8.37)	1.91 (-2.64, 5.15)	2.09 (-2.48, 6.65)	1.26 (-2.64, 5.15)	2.17 (-2.54, 6.89)	3.61 (-0.22, 7.44)	3.22 (0.22, 6.21)
<sup>a</sup> adjusted for the baseline score of the outcome; <sup>b</sup> positive difference indicates better health in intervention group							

312

313

314

315 **Living systematic review, incorporating BASIL-C19 data with all available trials data**

316 We identified 13 studies (including BASIL-C19) that evaluated cognitive or behavioural interventions  
317 and reported either loneliness or depression outcomes (or both) (Gilbody-BASIL 2021<sup>12</sup>, Choi<sup>11,28</sup>,  
318 Pepin 2021<sup>28</sup>, Kall 2020<sup>29,30</sup>, Kall 2021<sup>31</sup>, Soucy 2019<sup>32</sup>, Williams 2004<sup>33</sup>, Zhang 2018<sup>34</sup>, Cohen-  
319 Mansfield 2018<sup>35</sup>, Cresswell 2012<sup>36</sup>, Jarvis 2019<sup>37</sup>, Theeke 2016<sup>38</sup> and Almeida 2022<sup>39</sup>. When we  
320 pooled data, twelve studies assessed loneliness in the short-term ( $\geq 6$  months) and there was  
321 strong evidence of benefit for cognitive or behavioural interventions (986 participants, SMD=-0.48,  
322 95%CI -0.70 to -0.27,  $I^2=64.3\%$ ). Four studies assessed loneliness in the long-term ( $\geq 12$  months)  
323 and there was some evidence of benefit (321 participants, SMD=-0.20, 95%CI -0.40 to -0.01,  $I^2 = 0\%$ ).  
324 Nine studies assessed depression in the short-term, and there was strong evidence of benefit (775  
325 participants, SMD=-0.31, 95%CI -0.51 to -0.11,  $I^2 = 38.0\%$ ). Four studies assessed depression in the  
326 long-term, at 12+ months, and although favouring cognitive or behavioural interventions the 95% CI  
327 was wider due to fewer studies reporting at this time point (324 participants, SMD=-0.20, 95%CI -  
328 0.47 to 0.07,  $I^2 = 35.7\%$ ). No studies reported medium term ( $\geq 6$  to  $< 12$  month) data. In all  
329 analyses the level of between-study heterogeneity was low to moderate. Where it was possible to  
330 test for small study and publication bias, there was evidence of funnel plot asymmetry for short  
331 term loneliness (Egger test  $p < 0.05$ ), but not for short term depression (Egger test  $p = 0.76$ ).

332

<Figures 2 & 3: meta-analysis here>

333

334 **Discussion**

335 The BASIL-C19 trial is an external pilot trial, designed to test an adapted intervention and to refine  
336 trial procedures before undertaking a full-scale trial. To our knowledge, this is one of only a small  
337 number of trials undertaken during the COVID-19 pandemic to mitigate the psychological impact of  
338 the pandemic and its restrictions<sup>9</sup>. We demonstrate that it was possible to trial a scalable  
339 intervention, and achieve good follow-up rates under pandemic conditions. We have previously  
340 reported the short-term outcomes<sup>12</sup>, and here we present the 12-month outcomes alongside a  
341 'living systematic review and meta-analysis', undertaken during the pandemic to evaluate  
342 accumulating evidence of cognitive and behavioural approaches in the prevention of depression and  
343 loneliness. Our main finding is that the BASIL-C19 pilot trial results add to a growing body of trial-  
344 based research that demonstrates that brief psychological interventions can potentially offer clinical  
345 benefit for preventing both depression and loneliness. We also demonstrate the relative absence of

346 long-term follow up data, but note a signal of effect at 12 months and the BASIL-C19 trial is one of  
347 only three trials to assess longer term outcomes.

348 Research to date has shown behavioural approaches to be highly effective in the treatment of  
349 depression among older people<sup>10,16,40,41</sup> and the preliminary results of the BASIL-C19 trial support  
350 this approach under COVID-19 restrictions and in mitigating loneliness<sup>42</sup> in an at risk population.

351 Our pilot trial was also undertaken rapidly and during the COVID-19 pandemic in early 2020; the  
352 time elapsed between the onset of the pandemic and the recruitment of the first participant was  
353 less than 3 months. We chose to study the impact of a plausible psychosocial intervention to  
354 mitigate depression and loneliness in an at-risk population of older people with multiple long term  
355 conditions. It is important that interventions to tackle the higher rates of depression and loneliness  
356 in all age groups are also developed and evaluated.

357 The BASIL-C19 trial was not designed or powered to detect effectiveness, and a fully-powered  
358 pragmatic trial (BASIL+, ISRCTN63034289), is now underway to test for robust effects and replicate  
359 signals of effectiveness in important secondary outcomes such as loneliness<sup>43</sup>.

360 The COVID-19 pandemic prompted a number of studies to understand the impacts of COVID-19,<sup>44</sup>  
361 but there have been very few studies to evaluate psychosocial interventions to mitigate  
362 psychological impact<sup>9</sup>. A clinical priority and policy imperative is to identify a brief and scalable  
363 intervention to prevent and mitigate loneliness, particularly in older people<sup>45</sup>. The BASIL trials  
364 programme (including a living systematic review) will be informative in improving the mental health  
365 of populations in socially isolated at-risk populations after the pandemic has passed<sup>7</sup>. We also  
366 emphasise that we have used, for the first time, the technique of 'living systematic review' to  
367 describe the impact of cognitive and/or behavioural interventions in preventing depression and  
368 loneliness in the face of social isolation and this will be updated in line with future and emerging  
369 trial based evidence. The living systematic review demonstrates that there are now multiple small-  
370 scale trials of interventions for loneliness. The strong meta-analytic signal of effect in reducing  
371 loneliness in the short term should be interpreted with some caution, since there is a potential small  
372 study bias and larger studies are needed. We note that there was a rapid rise in application of living  
373 systematic review<sup>13</sup> during the COVID pandemic, and this is one of a number of reviews that have  
374 been undertaken by the mental health research community to rapidly assimilate knowledge to  
375 inform practice and policy<sup>46</sup>. An enduring legacy of the COVID pandemic might be the coupling of  
376 trials programmes with living systematic reviews, as presented in this report.

377

378 ***Contributions of the authors***

379 SG, DE, CCG, EL, DMcM, CH, DB and SGa planned the trial, contributed to the trial design and drafted  
380 the trial protocol. EL, SG, DMcM, PC and DE led manuscript writing. EL, SG and DE oversaw the trial  
381 as chief investigators (SG, DE) and trial manager (EL), and critically revised the manuscript. SG, EL,  
382 DMcM, CCG, CH, PC, GTT, AC, TG, AHi, KL, SDS, TO and JW contributed to trial design and trial  
383 management meetings.

384 SG, CCG, DE, DMcM and DB designed the intervention and BSW training materials, and DB, DMcM,  
385 CCG and DE delivered the BSW training. EL led the day-to-day management of the trial, and SGa and  
386 RW were the trial coordinators. DB, SC and DMcM provided BSW clinical supervision. SGa, LB, AH,  
387 ER, LS and RW facilitated participant recruitment and follow-up data collection, and participated in  
388 trial management meetings. ER and LS delivered the BA intervention. CF, KB and CH developed the  
389 statistical analysis plan and analysed the quantitative data.

390 SG, DMcM, EE, PH, RS, RC & NH designed the living systematic review and are guarantors for the  
391 PROSPERO-registered review. OA provided unpublished data for the meta-analysis and is an  
392 international collaborator to the BASIL programme and the evaluation of behavioural interventions  
393 for older people.

394

395 All authors contributed to the drafts of manuscripts and read the final manuscript. The York Trials  
396 Unit act as data custodians for the BASIL-C19 trial and SG and DMcM act as data custodians for the  
397 living meta-analysis.

398

399

400 ***Competing interests***

401 We have read the journal's policy and the authors of this manuscript have the following competing  
402 interests.

403 DE and CCG were committee members for the NICE Depression Guideline (update) Development  
404 Group between 2015 and 2022, and SG was a member between 2015-18. SG, PC and DMcM are  
405 supported by the NIHR Yorkshire and Humberside Applied Research Collaboration (ARC) and DE is  
406 supported by the North East and North Cumbria ARCs. CCG is part funded by West Midland ARC.

407

408 ***Acknowledgements***

409 We would like to thank: the participants for taking part in the trial, general practices and North East  
410 and North Cumbria Local Clinical Research Network staff for identifying and facilitating recruitment  
411 of participants, the independent Programme Steering Committee members for overseeing the  
412 study, and our BASIL Lived Experience Advisory Panel members for their insightful contributions and  
413 collaboration.

414

415 ***Data sharing***

416 The BASIL research collective is especially keen that the BASIL data contributes to prospective meta-  
417 analyses and individual patient data meta-analyses. Requests for data sharing will be considered by  
418 the independent trial steering and data monitoring committee. Full underlying (non-aggregated)  
419 data cannot be made publicly available since the ethics approval of this study does not cover openly  
420 publishing non-aggregated data.

421

422 A request to access these data must be made to the legal representative of the University of York  
423 (michael.barber@york.ac.uk). Data requestors will have to provide: i) written description and legally  
424 binding confirmation that their data use is within the scope of the study; ii) detailed written  
425 description and legally binding confirmation of their actions to be taken to protect the data (e.g.  
426 with regard to transfer, storage, back-up, destruction, misuse, and use by other parties), as legally  
427 required and to current national and international standards (data protection concept); and iii)  
428 legally binding and written confirmation and description that their use of this data is in line with all  
429 applicable national and international laws (e.g. the General Data Protection Regulation of the EU).  
430

## 431 References

- 432 1. Patel K, Robertson E, Kwong ASF, et al. Psychological distress before and during the COVID-  
433 19 pandemic among adults in the United Kingdom based on coordinated analyses of 11 longitudinal  
434 studies. *JAMA Network open* 2022; **5**(4): e227629-e.
- 435 2. Steptoe A, Di Gessa G. Mental health and social interactions of older people with physical  
436 disabilities in England during the COVID-19 pandemic: a longitudinal cohort study. *The Lancet Public*  
437 *Health* 2021; **6**(6): e365-e73.
- 438 3. Santini ZI, Jose PE, Cornwell EY, et al. Social disconnectedness, perceived isolation, and  
439 symptoms of depression and anxiety among older Americans (NSHAP): a longitudinal mediation  
440 analysis. *The Lancet Public Health* 2020; **5**(1): e62-e70.
- 441 4. Lee SL, Pearce E, Ajnakina O, et al. The association between loneliness and depressive  
442 symptoms among adults aged 50 years and older: a 12-year population-based cohort study. *The*  
443 *Lancet Psychiatry* 2021; **8**(1): 48-57.
- 444 5. Valtorta NK, Kanaan M, Gilbody S, Hanratty B. Loneliness, social isolation and risk of  
445 cardiovascular disease in the English Longitudinal Study of Ageing. *Eur J Prev Cardiol* 2018; **25**(13):  
446 1387-96.
- 447 6. Newman MG, Zainal NH. The value of maintaining social connections for mental health in  
448 older people. *Lancet Public Health* 2020; **5**(1): e12-e3.
- 449 7. Department of Health and Social Care. COVID-19 mental health and wellbeing recovery  
450 action plan, 2021.
- 451 8. Holmes EA, O'Connor RC, Perry VH, et al. Multidisciplinary research priorities for the COVID-  
452 19 pandemic: a call for action for mental health science. *Lancet Psychiatry* 2020; **7**(6): 547-60.
- 453 9. Gilbody S, Littlewood E, Gascoyne S, et al. Mitigating the impacts of COVID-19: where are  
454 the mental health trials? *Lancet Psychiatry* 2021; **8**(8): 647-50.
- 455 10. Samad Z, Brealey S, Gilbody S. The effectiveness of behavioural therapy for the treatment of  
456 depression in older adults: a meta-analysis. *Int J Geriatr Psychiatry* 2011; **26**(12): 1211-20.
- 457 11. Choi NG, Pepin R, Marti CN, Stevens CJ, Bruce ML. Improving Social Connectedness for  
458 Homebound Older Adults: Randomized Controlled Trial of Tele-Delivered Behavioral Activation  
459 Versus Tele-Delivered Friendly Visits. *Am J Geriatr Psychiatry* 2020; **28**(7): 698-708.
- 460 12. Gilbody S, Littlewood E, McMillan D, et al. Behavioural activation to prevent depression and  
461 loneliness among socially isolated older people with long-term conditions: The BASIL COVID-19 pilot  
462 randomised controlled trial. *PLoS Med* 2021; **18**(10): e1003779.
- 463 13. Elliott JH, Synnot A, Turner T, et al. Living systematic review: 1. Introduction—the why,  
464 what, when, and how. *J Clin Epidemiol* 2017; **91**: 23-30.
- 465 14. NIHR. Behavioural Activation in Social Isolation (BASIL-C19). 2020.  
466 <https://www.nihr.ac.uk/covid-studies/study-detail.htm?entryId=249030> (accessed 14th July 2021  
467 2021).
- 468 15. Academy of Medical Sciences. Multimorbidity: a priority for global health research:  
469 Academy of medical sciences; 2018.
- 470 16. Gilbody S, Lewis H, Adamson J, et al. Effect of Collaborative Care vs Usual Care on  
471 Depressive Symptoms in Older Adults With Subthreshold Depression: The CASPER Randomized  
472 Clinical Trial. *JAMA* 2017; **317**(7): 728-37.
- 473 17. Public Health England. COVID-19: guidance for the public on mental health and wellbeing.  
474 Advice and information on how to look after your mental health and wellbeing during the  
475 coronavirus (COVID-19) outbreak. 2020. [https://www.gov.uk/government/publications/covid-19-](https://www.gov.uk/government/publications/covid-19-guidance-for-the-public-on-mental-health-and-wellbeing)  
476 [guidance-for-the-public-on-mental-health-and-wellbeing](https://www.gov.uk/government/publications/covid-19-guidance-for-the-public-on-mental-health-and-wellbeing) (accessed 29th March 2021).
- 477 18. Age UK. Staying safe and well. 2020. [https://www.ageuk.org.uk/information-](https://www.ageuk.org.uk/information-advice/coronavirus/staying-safe-and-well-at-home/)  
478 [advice/coronavirus/staying-safe-and-well-at-home/](https://www.ageuk.org.uk/information-advice/coronavirus/staying-safe-and-well-at-home/) (accessed 29th March 2021).
- 479 19. Eldridge SM, Chan CL, Campbell MJ, et al. CONSORT 2010 statement: extension to  
480 randomised pilot and feasibility trials. *BMJ* 2016; **355**: i5239.

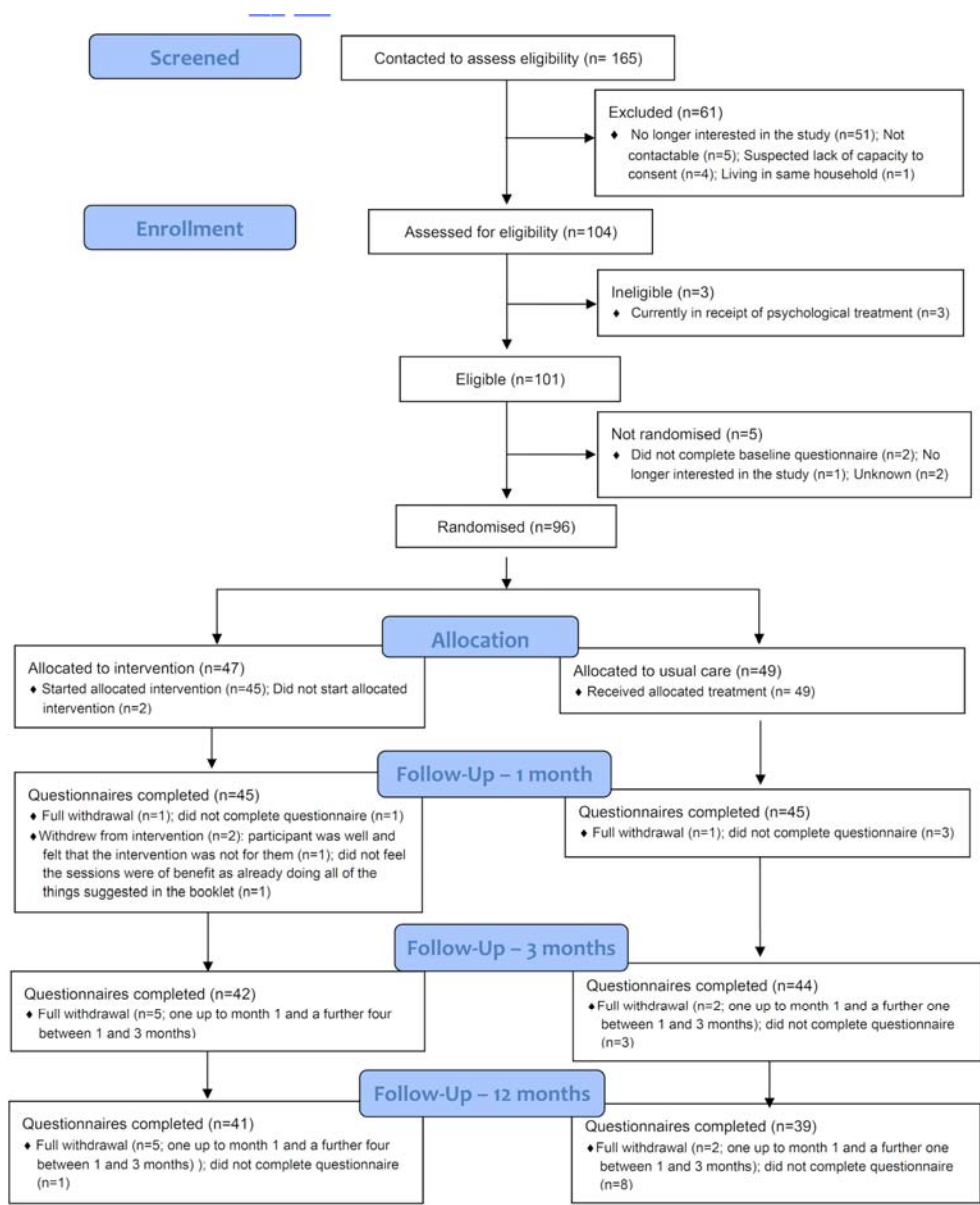


- 481 20. Kroenke K, Spitzer RL. The PHQ-9: A new depression and diagnostic severity measure.  
482 *Psychiatr Ann* 2002; **32**: 509-21.
- 483 21. Ware JE, Kosinski M, Keller SD. SF 12: How to score the SF12 physical and mental health  
484 summary scales. Boston Mass: New England Medical Centre; 1995.
- 485 22. Spitzer RL, Kroenke K, Williams JB, Lowe B. A brief measure for assessing generalized anxiety  
486 disorder: the GAD-7. *Arch Intern Med* 2006; **166**(10): 1092-7.
- 487 23. De Jong-Gierveld J, Kamphuls F. The development of a Rasch-type loneliness scale. *Applied*  
488 *Psychological Measurement* 1985; **9**(3): 289-99.
- 489 24. Teare D, Dimairo M, Hayman A, Shephard N, Whitehead A, Walters S. Sample size  
490 requirements for pilot randomised controlled trials with binary outcomes: a simulation study. *Trials*  
491 2013; **14**(1): O21.
- 492 25. Eddy E, Heron PN, McMillan D, et al. Cognitive or behavioural interventions (or both) to  
493 prevent or mitigate loneliness in adolescents, adults, and older adults. *Cochrane Database of*  
494 *Systematic Reviews (Online)* 2020; [In Press].
- 495 26. Hickin N, Kall A, Shafran R, Sutcliffe S, Manzotti G, Langan D. The effectiveness of  
496 psychological interventions for loneliness: A systematic review and meta-analysis. *Clin Psychol Rev*  
497 2021; **88**: 102066.
- 498 27. Egger M, Davey Smith G, Schneider M, Minder C. Bias in meta-analysis detected by a simple,  
499 graphical test. *BMJ* 1997; **315**(7109): 629-34.
- 500 28. Bruce ML, Pepin R, Marti CN, Stevens CJ, Choi NG. One Year Impact on Social Connectedness  
501 for Homebound Older Adults: Randomized Controlled Trial of Tele-delivered Behavioral Activation  
502 Versus Tele-delivered Friendly Visits. *Am J Geriatr Psychiatry* 2021; **29**(8): 771-6.
- 503 29. Kall A, Jagholm S, Hesser H, et al. Internet-Based Cognitive Behavior Therapy for Loneliness:  
504 A Pilot Randomized Controlled Trial. *Behav Ther* 2020; **51**(1): 54-68.
- 505 30. Käll A, Backlund U, Shafran R, Andersson G. Lonesome no more? A two-year follow-up of  
506 internet-administered cognitive behavioral therapy for loneliness. *Internet interventions* 2020; **19**:  
507 100301.
- 508 31. Käll A, Bäck M, Welin C, et al. Therapist-guided internet-based treatments for loneliness: a  
509 randomized controlled three-arm trial comparing cognitive behavioral therapy and interpersonal  
510 psychotherapy. *Psychotherapy and Psychosomatics* 2021; **90**(5): 351-8.
- 511 32. Soucy I, Provencher MD, Fortier M, McFadden T. Secondary outcomes of the guided self-  
512 help behavioral activation and physical activity for depression trial. *J Ment Health* 2019; **28**(4): 410-  
513 8.
- 514 33. Williams A, Hagerty BM, Yousha SM, Horrocks J, Hoyle KS, Liu D. Psychosocial effects of the  
515 BOOT STRAP intervention in Navy recruits. *Mil Med* 2004; **169**(10): 814-20.
- 516 34. Zhang N, Fan Fm, Huang Sy, Rodriguez MA. Mindfulness training for loneliness among  
517 Chinese college students: A pilot randomized controlled trial. *International Journal of Psychology*  
518 2018; **53**(5): 373-8.
- 519 35. Cohen-Mansfield J, Hazan H, Lerman Y, Shalom V, Birkenfeld S, Cohen R. Efficacy of the I-  
520 SOCIAL intervention for loneliness in old age: Lessons from a randomized controlled trial. *J Psychiatr*  
521 *Res* 2018; **99**: 69-75.
- 522 36. Creswell JD, Irwin MR, Burklund LJ, et al. Mindfulness-Based Stress Reduction training  
523 reduces loneliness and pro-inflammatory gene expression in older adults: a small randomized  
524 controlled trial. *Brain Behav Immun* 2012; **26**(7): 1095-101.
- 525 37. Jarvis MA, Padmanabhanunni A, Chipps J. An Evaluation of a Low-Intensity Cognitive  
526 Behavioral Therapy mHealth-Supported Intervention to Reduce Loneliness in Older People. *Int J*  
527 *Environ Res Public Health* 2019; **16**(7): 1305.
- 528 38. Theeke LA, Mallow JA, Moore J, McBurney A, Rellick S, VanGilder R. Effectiveness of LISTEN  
529 on loneliness, neuroimmunological stress response, psychosocial functioning, quality of life, and  
530 physical health measures of chronic illness. *Int J Nurs Sci* 2016; **3**(3): 242-51.

- 531 39. Almeida OP, Patel H, Velasquez D, et al. Behavioural activation in nursing homes to treat  
532 depression (BAN-Dep): Results from a clustered, randomised, single-blinded, controlled clinical trial.  
533 *The American Journal of Geriatric Psychiatry* 2022.
- 534 40. Orgeta V, Brede J, Livingston G. Behavioural activation for depression in older people:  
535 systematic review and meta-analysis. *Br J Psychiatry* 2017; **211**(5): 274-9.
- 536 41. Gilbody S, Brabyn S, Mitchell A, et al. Can We Prevent Depression in At-Risk Older Adults  
537 Using Self-Help? The UK SHARD Trial of Behavioral Activation. *Am J Geriatr Psychiatry* 2022; **30**(2):  
538 197-207.
- 539 42. Westlund E, Stuart EA. The nonuse, misuse, and proper use of pilot studies in experimental  
540 evaluation research. *American Journal of Evaluation* 2017; **38**(2): 246-61.
- 541 43. Burke L, Littlewood E, Gascoyne S, et al. Behavioural Activation for Social IsoLation (BASIL+)  
542 trial (Behavioural activation to mitigate depression and loneliness among older people with long-  
543 term conditions): Protocol for a fully-powered pragmatic randomised controlled trial. *PLoS One*  
544 2022; **17**(3): e0263856.
- 545 44. Pierce M, McManus S, Jessop C, et al. Says who? The significance of sampling in mental  
546 health surveys during COVID-19. *Lancet Psychiatry* 2020; **7**(7): 567-8.
- 547 45. O'Sullivan R, Lawlor B, Burns A, Leavey G. Will the pandemic reframe loneliness and social  
548 isolation? *The Lancet Healthy Longevity* 2021; **2**(2): e54-e5.
- 549 46. Tasleem A, Wang Y, Li K, et al. Effects of mental health interventions among people  
550 hospitalized with COVID-19 infection: A systematic review of randomized controlled trials. *General*  
551 *Hospital Psychiatry* 2022.
- 552

553 **Figure 1: BASIL CONSORT flow diagram**

554



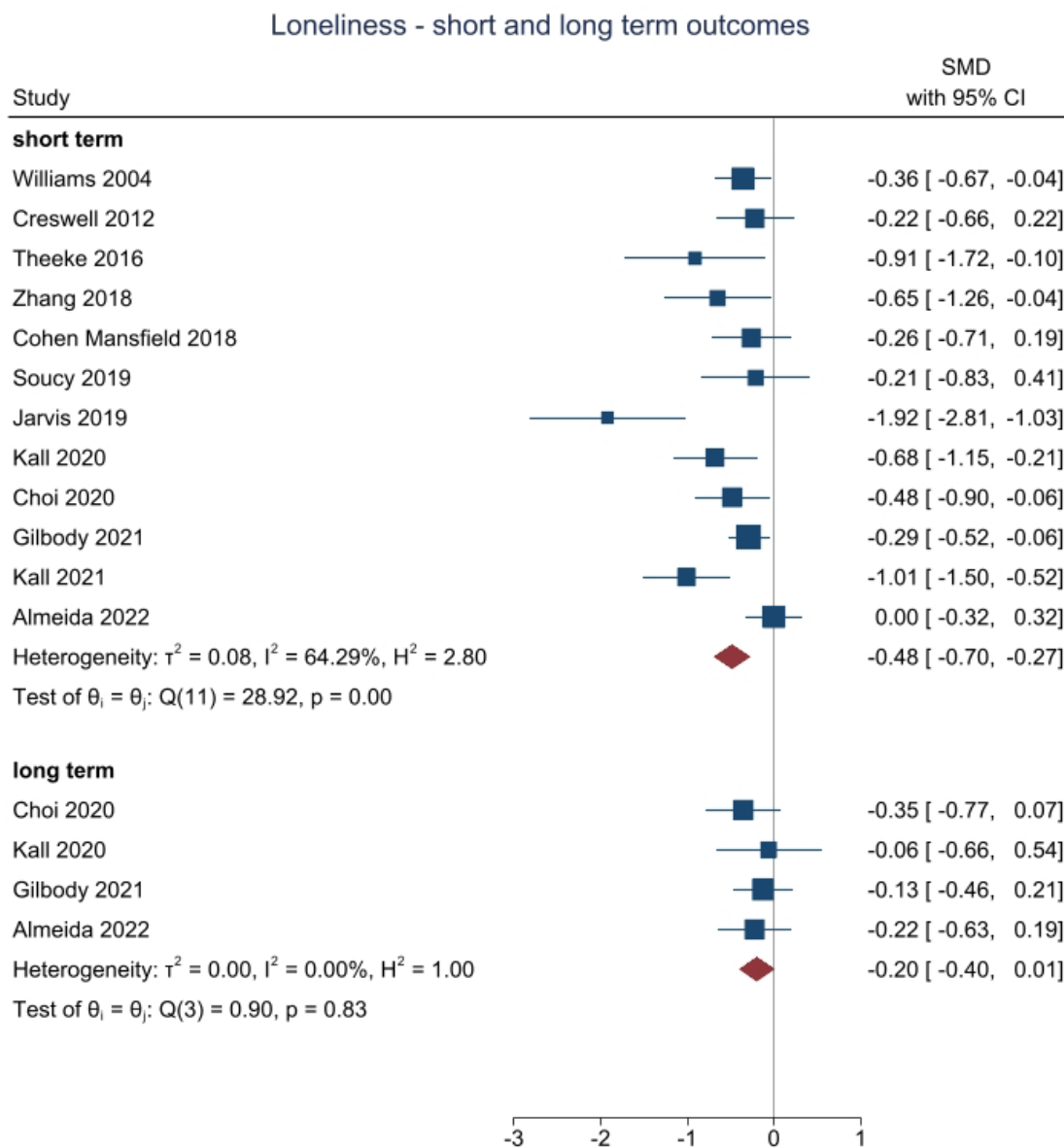
Note: Withdrawals are cumulative at each time point. Patients who did not complete the questionnaire at month 1 but did not formally withdraw were still sent the questionnaire at the next time point and may have returned it.

555

556

557 **Figures 2 & 3: Living meta-analysis of behavioural and cognitive trials targeting loneliness and**  
 558 **depression in socially isolated populations**

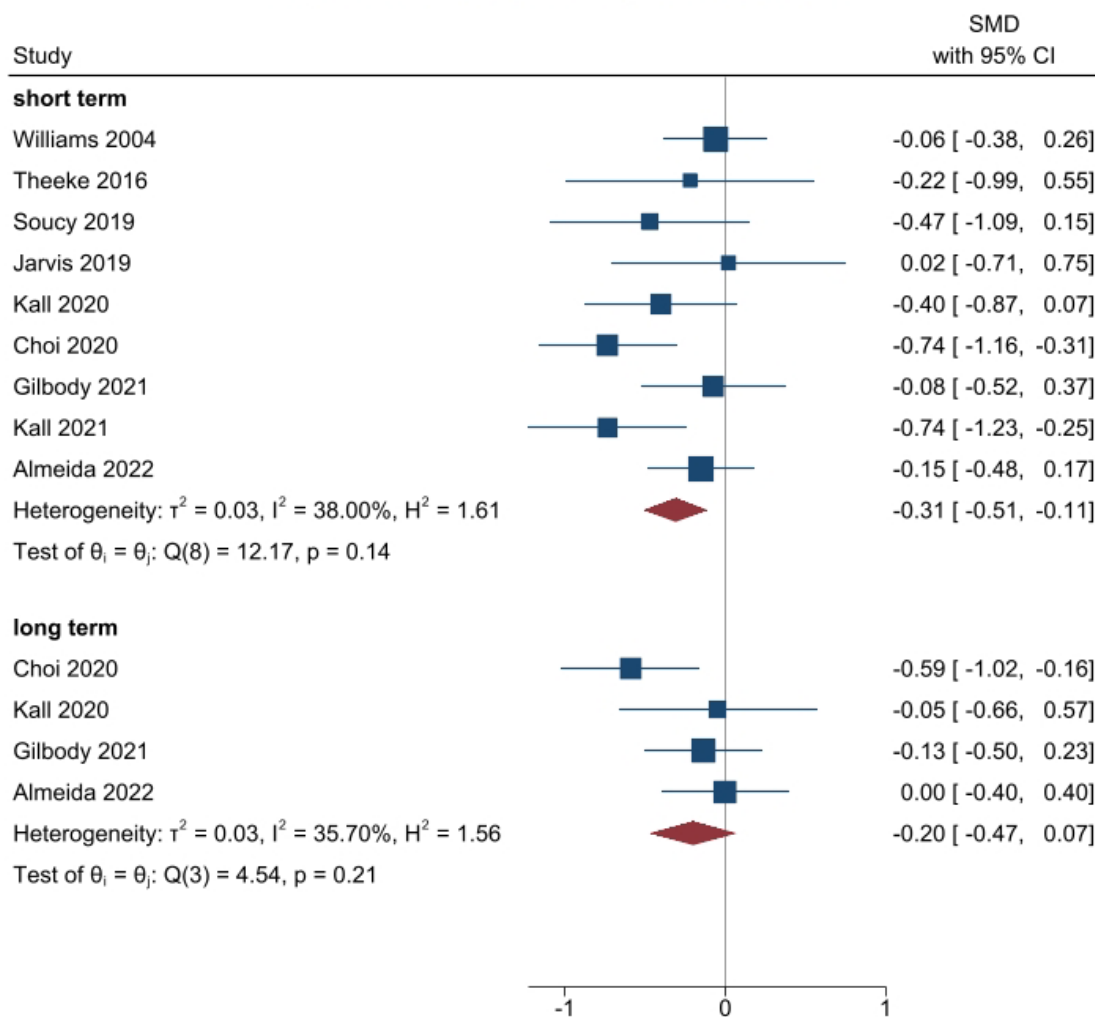
559



560

561

### Depression - short and long term outcomes



562

563