

1 **Title:** Trends in severe acute malnutrition admissions, characteristics, and treatment outcomes in  
2 Malawi from 2011 through 2019

3

4 **Authors:**

5 Allison I. Daniel<sup>1-3\*</sup>

6 Sylvester Kathumba<sup>4</sup>, [kathumbasylvester@gmail.com](mailto:kathumbasylvester@gmail.com)

7 Collins Mitambo<sup>4</sup>, [collins.mitambo@mail.gov.mw](mailto:collins.mitambo@mail.gov.mw)

8 Dennis Chasweka<sup>5</sup>, [dennischasweka@gmail.com](mailto:dennischasweka@gmail.com)

9 Wieger Voskuijl<sup>5,6</sup>, [w.p.voskuijl@amsterdamumc.nl](mailto:w.p.voskuijl@amsterdamumc.nl)

10 Esther Kamanga<sup>5</sup>, [kamangaesther20@gmail.com](mailto:kamangaesther20@gmail.com)

11 Emmie Mbale<sup>5,7</sup>, [emmiembale@gmail.com](mailto:emmiembale@gmail.com)

12 Robert H.J. Bandsma<sup>1-3,8,9\*</sup>, [robert.bandsma@sickkids.ca](mailto:robert.bandsma@sickkids.ca)

13 Isabel Potani<sup>1-3</sup>, [isabel.potani@mail.utoronto.ca](mailto:isabel.potani@mail.utoronto.ca)

14 \*RHJB and IP are co-senior authors

15

16 **Affiliations:**

17 1. Centre for Global Child Health, Hospital for Sick Children, Toronto, Ontario, Canada

18 2. Translational Medicine Program, Hospital for Sick Children, Toronto, Ontario, Canada

19 3. Department of Nutritional Sciences, Faculty of Medicine, University of Toronto,

20 Toronto, Ontario, Canada

21 4. Malawi Ministry of Health, Lilongwe, Malawi

22 5. Queen Elizabeth Central Hospital, Blantyre, Malawi

- 23 6. Amsterdam Centre for Global Child Health, Emma Children’s Hospital, Amsterdam  
24 University Medical Centre, University of Amsterdam, Amsterdam, The Netherlands  
25 7. Department of Paediatrics, Kamuzu University of Health Sciences, Blantyre, Malawi  
26 8. Department of Paediatrics, Faculty of Medicine, University of Toronto, Toronto, Ontario  
27 Canada  
28 9. Department of Biomedical Sciences, Kamuzu University of Health Sciences, Blantyre,  
29 Malawi

30

31 **Corresponding author:** Dr. Allison Daniel, Peter Gilgan Centre for Research and Learning, 686  
32 Bay Street, Toronto, ON M5G 0A4, [allison.daniel@mail.utoronto.ca](mailto:allison.daniel@mail.utoronto.ca), +17789978764 or  
33 0991514203

34

35 **Short running head:** Trends in SAM admissions, characteristics, and treatment outcomes in  
36 Malawi

37

38 **Word count:** 2604

39 **Abstract**

40 **Background:** Community-based Management of Acute Malnutrition (CMAM) has been  
41 successfully implemented across Malawi, yet trends in admissions, characteristics, and treatment  
42 outcomes in children with severe acute malnutrition (SAM) have not been examined. The  
43 objective was therefore to investigate trends in admissions, characteristics including percentage  
44 of children with SAM with HIV and oedema, and treatment outcomes across the decade  
45 following implementation of CMAM.

46 **Methods:** This research involved a retrospective analysis of existing data routinely collected  
47 across Malawi by the Ministry of Health between 2011 and 2019.

48 **Results:** These data showed an increase in outpatient therapeutic feeding (OTP) admissions from  
49 30323 children in 2011 to 37655 in 2019 ( $p=0.045$ ). However, a significant decrease in  
50 nutritional rehabilitation unit (NRU) admissions was observed, from 11389 annual admissions in  
51 2011 to 6271 in 2019 ( $p=0.006$ ). In children identified with SAM, the percentage with oedema  
52 decreased in OTPs with an average annual rate of reduction (AARR) of 5.6% ( $p=0.001$ ) and by  
53 26.2% in NRUs in this timeframe with an AARR of 8.5% ( $p<0.001$ ). There was a decrease in the  
54 percentage of children with SAM who had HIV over time in OTPs with an AARR of 16.1%  
55 ( $p=0.001$ ). HIV rates also decreased in NRUs with an AARR of 7.2% ( $p=0.4$ ), but this difference  
56 was not significant. Death rates decreased in OTPs with an AARR of 6.0% ( $p=0.01$ ). Mortality  
57 rates did not change in NRUs over time with an AARR of 0.9% ( $p=0.5$ ) with the NRU mortality  
58 rate in 2019 being 11.0%.

59 **Conclusions:** These trends indicate that there has been an increase in OTP admissions and a  
60 corresponding decrease in NRU admissions. There have been decreases in the percentage of

61 children with oedematous SAM in OTPs and in NRUs and with HIV in OTPs. Children remain  
62 at high risk of mortality in NRUs.

63

64 **Key words:** severe acute malnutrition (SAM); wasting; oedema; kwashiorkor; nutritional  
65 rehabilitation unit (NRU); Community-based Management of Acute Malnutrition (CMAM)

66

67 **Competing interests:** none to declare

## 68 **Introduction**

69 The Community-based Management of Acute Malnutrition (CMAM) approach, which was  
70 endorsed by the World Health Organization, UNICEF, and World Food Programme in 2007,  
71 drastically changed the way that acute malnutrition is managed (World Health Organization,  
72 2007). Severe acute malnutrition (SAM) is defined as severe wasting (weight-for-height z-scores  
73 (WHZ) below -3 SD or mid-upper arm circumference (MUAC) below 115 mm) and/or  
74 oedematous malnutrition (bilateral pitting oedema). Children with SAM and acute illnesses, loss  
75 of appetite, or other medical complications require admission to nutritional rehabilitation units  
76 (NRUs) for clinical care and nutritional support. Children with SAM in the absence of  
77 complications are treated in outpatient therapeutic feeding programs (OTP), including those  
78 discharged from NRUs. Children with moderate wasting, otherwise known as moderate acute  
79 malnutrition (MAM) (WHZ between -3 SD and -2 SD or MUAC between 115mm and 125mm),  
80 are commonly managed within supplementary feeding programs (SFP) (World Health  
81 Organization, 2009).

82 Malawi has seen a downward trend in the prevalence of wasting from 7% in 2000 to 3%  
83 in 2015 (National Statistical Office/Malawi ICF, 2017). CMAM was first established in 2002 in  
84 Malawi as a pilot program which was then implemented nationally in 2006 to manage children  
85 with acute malnutrition as part of the national nutrition policy and strategy in Malawi (Concern  
86 Worldwide, 2013; Kathumba, 2012; Malawi Ministry of Health, 2016). Scale-up continued until  
87 all 28 districts in the country implemented CMAM programs by 2009 (Kathumba, 2012). There  
88 are 104 operational NRUs in Malawi for inpatient treatment of SAM and over 620 OTP centers  
89 (Kouam, 2016). In 2019, coverage for SAM treatment was 67.3% (38610 children reached out of  
90 a target 75% of 76509 caseloads).

91           While CMAM has been successfully implemented in Malawi, there has been little  
92 examination of trends in admissions, characteristics, and treatment outcomes since its inception  
93 in the country which would aid in resource-allocation within the CMAM approach and to  
94 characterize the population of children with SAM in different treatment settings. The main  
95 objective of this analysis was therefore to examine trends in SAM admissions within the last  
96 decade prior to the COVID-19 pandemic, from 2011 to 2019, at CMAM sites across the country  
97 based on pre-existing data collected by the Malawi Ministry of Health. Another important aim  
98 was to understand trends in characteristics of children with SAM and trends in treatment  
99 outcomes including mortality in children with SAM.

100

## 101 **Methods**

102 This research involved a retrospective analysis of existing CMAM data that were routinely  
103 collected across Malawi by the Ministry of Health between 2011 and 2019 at up to 104 NRUs  
104 and 623 OTPs. Within each site, health workers or other personnel record the number of children  
105 admitted and discharged and a supervisor compiles a report at the end of each month which is  
106 sent to the District Health Office. The mean and median number of NRUs and OTPs reporting  
107 each month across the different years is summarized in Table 1. The number of units reporting  
108 was not documented prior to 2016, apart from 2011 in which the mean number of NRUs was  
109 98.7 and median was 100. Note that data during the COVID-19 pandemic were not included in  
110 this analysis because they were not collected consistently throughout this time and there were  
111 disruptions in accessing routine health and nutrition services.

112           Aggregate data for each district were obtained from the Malawi Ministry of Health. All  
113 variables with sufficient data across multiple years were considered for the purpose of this

114 analysis. Data extracted included the number of SFP, NRU, and OTP admissions, characteristics,  
115 and treatment outcomes including mortality. The characteristics included the percentage of  
116 children identified with SAM who had oedema out of total admissions (data available from 2011  
117 to 2018), percentage of children with SAM with HIV versus children with SAM without HIV  
118 (data available from 2012 to 2017), and gender (data available to 2011 and 2018). In 2011,  
119 severe wasting was identified by weight-for-height below 70% and/or MUAC below 110mm;  
120 from 2012 onwards, WHZ <-3 SD and/or MUAC below 115mm were used. The NRU and OTP  
121 data up to 2018 include children up to five years of age, while children above five years are also  
122 included in the 2019 data. The 2019 data also only capture new admissions, while data from all  
123 other years reflect total admissions. Monthly admissions between the different years were  
124 examined based on data that were available from 2011 to 2018.

125 All data were analyzed using statistical software Stata 16 (StataCorp LP, College Station,  
126 Texas, USA) (StataCorp, 2019). Annual trends in admissions and sources of admissions to NRUs  
127 and OTP, the percentage of children with SAM who had oedema out of total admissions, the  
128 percentage of children with HIV versus children without HIV disaggregated by CMAM setting,  
129 the percentage of children with SAM who were female versus male disaggregated by CMAM  
130 setting, and treatment outcomes disaggregated by CMAM setting were evaluated using a linear-  
131 by-linear trend test with percentage point changes presented. These annual trends, as well as  
132 SAM admissions by month, are also shown visually. The average annual rate of reduction  
133 (AARR) was also calculated for the above trends in percentages where applicable.

134

135 **Ethics Statement**

136 Ethical approval for this analysis was obtained from the Malawi National Health Sciences  
137 Research Committee (Protocol #20/01/2459) in Lilongwe, Malawi. The information used in the  
138 analysis was routinely collected programmatic data; no individual patient information nor  
139 identifying information were collected and therefore informed consent was not required.

140

141 **Results**

142 **Admissions for acute malnutrition**

143 SFP admissions for management of moderate wasting rose from 53446 to 147696 children  
144 representing a percentage point increase of 176.3% between 2011 and 2019 (p=0.01). Total SAM  
145 admissions to both OTPs and NRUs, which include new admissions and readmissions, went  
146 from 41712 to 49167, which was a 17.9% percentage point increase, but this trend was not  
147 significant (p=0.06) (Figure 1). New SAM admissions to OTPs and NRUs specifically increased  
148 by 24.0% percentage points, from 35416 to 43926 (p=0.04).

149 There was a significant positive trend in OTP admissions specifically (p=0.045) from  
150 30323 to 37655 children with SAM which was a 24.2% percentage point increase (Figure 2).  
151 NRU admissions decreased significantly (p=0.006) from 11389 to 6271 between 2011 and 2019,  
152 by 44.9% percentage points (Figure 3). With regards to monthly SAM admissions between 2011  
153 and 2018 at NRUs and OTP, the highest numbers were generally seen in the first three months of  
154 the year (Figure 4).

155 There was no significant decrease in the percentage of children with SAM admitted to  
156 NRUs who were transferred from hospital (p=0.4) and there was an AARR of 7.6% (95% CI: -  
157 12.6%, 24.2%) (Table 2). There was no significant decrease in the percentage of children with



158 SAM transferred from other OTPs to NRUs ( $p=0.3$ ) with an AARR of 2.0% (95% CI: -3.4%,  
159 7.2%). There was a reduction in the rates of returned defaulters in OTP ( $p=0.03$ ) with an AARR  
160 of 11.4% (95% CI: 2.9%, 19.2%). There was also a significant decline in transfer from NRUs to  
161 OTP ( $p=0.01$ ) with an AARR of 18.1% (95% CI: 13.6%, 22.3%) or from other OTPs ( $p=0.01$ )  
162 with an AARR of 11.5% (95% CI: 9.2%, 13.7%). There was an AARR of -20.5% (95% CI: -  
163 46.6%, 0.9%) in transfers from SFP to OTP.

164

### 165 **Characteristics of children with severe acute malnutrition**

166 In children identified with SAM, the percentage of those with oedema went down over time,  
167 from 46.3% to 33.7% ( $p=0.02$ ) in OTP with an AARR of 5.6% (95% CI: 3.3%, 7.9%) between  
168 2011 and 2018 (Figure 5, Figure 6A) and from 62.8% to 36.6% ( $p=0.01$ ) in NRUs with an  
169 AARR of 8.5% (95% CI: 6.3%, 10.5%) between 2011 and 2018 (Figure 5, Figure 6B).

170 The percentage of children with SAM with HIV in OTP also declined between 2012 and  
171 2017, from 16.5% to 7.1% ( $p=0.03$ ) with an AARR of 16.1% (95% CI: 11.7%, 20.2%) (Figure 7,  
172 Figure 8A). There was no significant trend in HIV percentage in children with SAM admitted to  
173 NRUs ( $p=0.06$ ), although there was a significant AARR of 7.2% (95% CI: 1.4%, 12.7%) (Figure  
174 7, Figure 8B).

175 There were no trends in the percentage of males and females from 2011 to 2018 in OTPs  
176 ( $p=0.08$ ) with an AARR of -0.5% (95% CI: -1.0%, 0.1%) (Figure 9, Figure 10A) or NRUs  
177 ( $p=0.3$ ) with an AARR of 0.4% (95% CI: -0.6%, 1.3%) (Figure 9, Figure 10B).

178

179 **Treatment outcomes in children with severe acute malnutrition**

180 There was no trend in the absolute number of SAM deaths in OTPs ( $p=0.5$ ) (Figure 11).

181 However, there was a downward trend in death rates in OTP from 1.9% in 2011 to 1.2% in 2019  
182 ( $p=0.02$ ) with an AARR of 6.0% (95% CI: 1.9%, 10.1%) (Table 3, Figure 12, Figure 13A).

183 Absolute deaths in NRUs decreased from 1167 in 2011 to 594 in 2019 ( $p=0.01$ ) (Figure 12), yet  
184 there was no change in rates of mortality in NRUs ( $p=0.4$ ) with an AARR of 0.9% (95% CI: -  
185 2.0%, 3.7%) (Table 4, Figure 12, Figure 13B).

186 There was an increase in recovery percentage from 82.9% in 2011 to 92.9% in 2019 in  
187 OTPs ( $p=0.008$ ) with an AARR of -0.6% (95% CI: -1.0%, -0.2%). There was a decrease in  
188 percentage of children who defaulted from OTPs from 5.6% in 2011 to 3.1% in 2019 ( $p=0.02$ )  
189 AARR of 10.9% (95% CI: 4.6%, 16.9%). There was no change in non-response ( $p=0.3$ ) in  
190 children with SAM at OTPs with an AARR of -1.8% (95% CI: -7.0%, 3.1%). There was a  
191 decline in the percentage of children who were referred from OTP to NRUs from 3.9% in 2011  
192 to 1.6% in 2018 ( $p=0.009$ ) with an AARR of 12.0% (95% CI: 9.7%, 14.1%) but no difference in  
193 transfer to OTP ( $p=0.1$ ) with an AARR of 3.9% (95% CI: -1.1%, 8.7%) (Table 4).

194 There were no differences in other treatment outcomes in children with SAM who were  
195 admitted to NRUs between 2011 and 2019, including stabilized to OTP ( $p=0.09$ ) with an AARR  
196 of -1.5% (95% CI: -3.2%, 0.3%), recovered ( $p=0.2$ ) with an AARR of 3.0% (95% CI: -3.1%,  
197 8.8%), defaulted ( $p=0.7$ ) with an AARR of 0.6% (95% CI: -2.6%, 3.7%), and medical transfer in  
198 NRUs ( $p=0.2$ ) with an AARR of 2.3% (95% CI: -2.0%, 6.4%) (Table 4).

199

## 200 **Discussion**

201 This is the first analysis of national trends in SAM admissions, characteristics, and treatment  
202 outcomes over the course of a decade in any country that has implemented CMAM. These data  
203 from Malawi show that there was an increase in SFP and OTP admissions and a major reduction  
204 in NRU admissions between 2011 and 2019, with mortality in NRUs being high at between 7.9%  
205 and 11.0%. Admissions for SAM in both OTPs and NRUs were generally higher in the first few  
206 months of each year.

207 The percentage of children with SAM who had oedema compared to severe wasting  
208 declined in OTPs and NRUs across Malawi within the time examined. The primary reason for  
209 this is likely to be that Malawi introduced highly effective active case finding in the community,  
210 which could identify more children with wasting who may have previously been missed. On the  
211 other hand, the drop in the percentage of children with oedema compared to severe wasting does  
212 not necessarily represent a change in the phenotype.

213 HIV rates in children with SAM were seen to be lower in both CMAM settings over time,  
214 albeit non-significant in OTPs. This may represent a shift in the characteristics of children with  
215 SAM in Malawi particularly in NRUs. HIV is known to be associated with elevated risk of  
216 mortality in children admitted for inpatient treatment of SAM (Bandsma et al., 2019; Heikens et  
217 al., 2008; Rytter et al., 2017; Trehan et al., 2012), but the data indicated that SAM mortality in  
218 NRUs has not declined. However, the CMAM data available did not link HIV and mortality,  
219 which makes it impossible to determine whether this is the case from this analysis.

220 Though a fraction of total admissions for SAM is to NRUs, the absolute number of deaths  
221 remains higher in NRUs than in OTPs, with 445 deaths recorded in OTPs and 594 in NRUs in  
222 2019. The Sphere Handbook, which Malawi's CMAM reporting system follows, states that

223 mortality rates should be below 10% for combined OTP and NRU outcomes (Sphere  
224 Association, 2018). Malawi has been near this threshold in NRUs, with mortality rates of 9.8%  
225 in 2019 with four months of that year in which NRUs exceeded mortality rates of 10%.  
226 Evidently, children admitted for inpatient treatment of SAM remain exceptionally vulnerable  
227 even though there are fewer children being treated in NRUs.

228         Results from this analysis of CMAM trends in Malawi point towards key actions to be  
229 taken. The first set of actions is to further support and strengthen active case finding and early  
230 identification of wasting, augmenting treatment in community settings where most children with  
231 wasting can be managed, and improving the referral system from OTP to NRUs for children with  
232 clinical complications. Additionally, the quality of care of children admitted to NRUs should be  
233 enhanced considering the stagnant mortality rates. A recent implementation evaluation showed  
234 that a 17-month quality improvement initiative beginning in April 2016 at seven hospitals in  
235 Malawi with SAM mortality rates above 10% improved the assessment of clinical complications  
236 and nutritional status, prevention and treatment of dehydration, and immediate cautious feeding  
237 of children with SAM (Kauchali et al., 2022). However, the mortality rates remained over 10%,  
238 with death audits showing that deaths were often attributed to delayed presentation, clinical  
239 complications, and inability to access antibiotics. The authors suggested post-training support for  
240 healthcare workers at NRUs, integration with emergency care in alignment with Emergency  
241 Triage Assessment and Treatment (ETAT), and pre-service training of healthcare workers which  
242 started in Malawi in 2016 (Kauchali et al., 2022). With fewer children admitted to NRUs  
243 meaning that many are not at capacity (Daniel et al., 2019; Kouam, 2016) – and many sitting  
244 empty – there is strong potential for this to be done without greatly increasing resource  
245 requirements.

246           Importantly, there are several key limitations of this evaluation. One is that patterns  
247 observed across NRUs and OTP may not be representative of all districts in Malawi. Findings  
248 were not examined by district due to unavailability of these disaggregated data. Furthermore,  
249 annual data are presented but there is potential for issues with regards to data quality and  
250 reporting that may impact the findings. There are also no data on treatment coverage which  
251 makes it challenging to draw conclusions on admissions in particular. Future programmatic data  
252 should include details on coverage and be presented by district and specific NRU and OTP sites  
253 if possible. Additional limitations are that the data do not allow for exploration of direct  
254 relationships between admissions, characteristics, and treatment outcomes in children with  
255 wasting. The data are also not disaggregated by age, including infants under six months  
256 compared to infants and children over six months. In summary, there are many ways to improve  
257 the usability of programmatic data moving forward, which should be coupled with improving  
258 quality and completeness of these data to get a deeper understanding of these trends over time.

259

## 260 **Conclusions**

261 There has been an increase in OTP admissions of children with SAM since the implementation  
262 of CMAM and a corresponding significant decline in NRU admissions in Malawi. These trends  
263 in NRU admissions as well as decreasing percentage of children with SAM who have oedema  
264 demonstrate the positive impact of active case finding, particularly to identify wasting. However,  
265 the mortality rate for children admitted to NRUs has not changed. These findings signal the  
266 importance of reinforcing case finding to identify wasting, effective treatment of children who  
267 have wasting in community settings, timely referral to NRUs for children with SAM and clinical  
268 complications, and improving quality of care at NRUs for those at highest risk.

269 **Acknowledgements**

270 We would like to sincerely thank the Malawi Ministry of Health for sharing these data to  
271 complete this analysis, including staff members involved in collecting these data at sites across  
272 Malawi over the years.

273

274 **Author contributions:** AID, SK, CM, WV, RB, and IP contributed to the conception and design  
275 of this analysis. AID performed the statistical analysis and drafted the manuscript. All authors  
276 contributed to the interpretation of the data. All authors were involved in critical review of the  
277 manuscript and approved the final manuscript.

278

279 **Sources of funding:** Trainee support for this project was awarded from the Canadian Institutes  
280 of Health Research. The sources of support had no role in designing this study, carrying out  
281 study activities or analysis, or writing the manuscript.

282

283 **References**

- 284 Bandsma, R. H. J., Voskuijl, W., Chimwezi, E., Fegan, G., Briend, A., Thitiri, J., Ngari, M.,  
285 Mwalekwa, L., Bandika, V., Ali, R., Hamid, F., Owor, B., Mturi, N., Potani, I., Allubha, B.,  
286 Kobold, A. C. M., Bartels, R. H., Versloot, C. J., Feenstra, M., ... Berkley, J. A. (2019). A  
287 reduced-carbohydrate and lactose-free formulation for stabilization among hospitalized  
288 children with severe acute malnutrition: A double-blind, randomized controlled trial. *PLoS*  
289 *Medicine*, *16*(2), 1–19. <https://doi.org/10.1371/journal.pmed.1002747>
- 290 Concern Worldwide. (2013). *Scaling Up Community-Based Management of Acute Malnutrition:*  
291 *Implementing the CAS Program in Malawi.*
- 292 Daniel, A. I., Chidzalo, K., Potani, I., Voskuijl, W. P., Gladstone, M., van den Heuvel, M.,  
293 Bwanali, M., Mbale, E., & Bandsma, R. (2019). A quantitative cross-sectional survey of  
294 psychosocial stimulation and counselling interventions at nutritional rehabilitation units in  
295 Southern Malawi. *Malawi Medical Journal*, *4*(31), 238–243.  
296 <https://doi.org/10.4314/mmj.v31i4.4>
- 297 Heikens, G. T., Bunn, J., Amadi, B., Manary, M., Chhagan, M., Berkley, J. A., Rollins, N.,  
298 Kelly, P., Adamczick, C., Maitland, K., & Tomkins, A. (2008). Case management of HIV-  
299 infected severely malnourished children: challenges in the area of highest prevalence. *The*  
300 *Lancet*, *371*(9620), 1305–1307. [https://doi.org/10.1016/S0140-6736\(08\)60565-6](https://doi.org/10.1016/S0140-6736(08)60565-6)
- 301 Kathumba, S. (2012). *Creating an enabling policy environment for effective CMAM*  
302 *implementation in Malawi.* Field Exchange 43: Government Experiences of CMAM Scale  
303 Up. <http://www.ennonline.net/fex/43/creating>
- 304 Kauchali, S., Puoane, T., Aguilar, A. M., Kathumba, S., Nkoroi, A., Annan, R., Choi, S.,  
305 Jackson, A., & Ashworth, A. (2022). Scaling Up Improved Inpatient Treatment of Severe

306 Malnutrition: Key Factors and Experiences From South Africa, Bolivia, Malawi, and  
307 Ghana. *Global Health: Science and Practice*, 10(2), 1–16. [https://doi.org/10.9745/GHSP-D-](https://doi.org/10.9745/GHSP-D-21-00411)  
308 21-00411

309 Kouam, E. (2016). Evaluation of community management of acute malnutrition (CMAM) in  
310 Malawi. In *UNICEF Malawi Country Office*.

311 Malawi Ministry of Health. (2016). *Malawi National Community-Based Management of Acute*  
312 *Malnutrition (CMAM) Operational Plan 2017–2021*.

313 National Statistical Office/Malawi ICF. (2017). *Malawi Demographic and Health Survey 2015-*  
314 *16*. National Statistical Office and ICF.

315 Rytter, M. J., Babirekere-Iriso, E., Namusoke, H., Christensen, V. B., Michaelsen, K. F., Ritz,  
316 C., Mortensen, C. G., Mupere, E., & Friis, H. (2017). Risk factors for death in children  
317 during inpatient treatment of severe acute malnutrition: A prospective cohort study.  
318 *American Journal of Clinical Nutrition*, 105(2), 494–502.  
319 <https://doi.org/10.3945/ajcn.116.140822>

320 Sphere Association. (2018). *The Sphere Handbook: Humanitarian Charter and Minimum*  
321 *Standards in Humanitarian Response, fourth edition*.

322 StataCorp. (2019). *Stata Statistical Software: Release 16*. StataCorp LLC.

323 Trehan, I., O’Hare, B. A., Phiri, A., & Heikens, G. T. (2012). Challenges in the Management of  
324 HIV-Infected Malnourished Children in Sub-Saharan Africa. In *AIDS Research and*  
325 *Treatment* (Vol. 2012). Hindawi Limited. <https://doi.org/10.1155/2012/790786>

326 World Health Organization. (2007). *Community-based management of severe acute*  
327 *malnutrition: A Joint Statement by the World Health Organization, the World Food*  
328 *Programme, the United Nations System Standing Committee on Nutrition and the United*



329 *Nations Children's Fund.*

330 World Health Organization. (2009). WHO Child Growth Standards and the Identification of

331 Severe Acute Malnutrition in Infants and Children. In *WHO Library*.

332

334 **Tables**

335

336 **Table 1. Outpatient therapeutic feeding programs and nutritional rehabilitation units**  
337 **reporting each month between 2016 and 2019.**

<b>Year</b>	<b>OTP</b>		<b>NRU</b>	
	<b>Mean</b>	<b>Median</b>	<b>Mean</b>	<b>Median</b>
2016 <sup>1</sup>	595.3 <sup>a</sup>	600 <sup>1</sup>	103	103
2017	613.4	613	103.9	104
2018	619.4	619	103.9	104
2019	623	623	104	104

338

339 NRU: nutritional rehabilitation unit; OTP: outpatient therapeutic feeding program.

340 <sup>a</sup>Based on the number of centres reported for nine of 12 months in 2016.

341 **Table 2. Sources of admissions to outpatient therapeutic feeding programs and nutritional**  
 342 **rehabilitation units between 2011 and 2018.**

Year	NRU		OTP			
	Transfer from hospital	Transfer from other OTP	Returned defaulter	Transfer from NRU	Transfer from other OTP	Transfer from SFP
2011	0.8%	3.8%	1.8%	17.4%	2.9%	0.4%
2012	0.7%	2.5%	1.5%	14.4%	2.4%	1.8%
2013	2.6%	3.6%	1.3%	13.0%	2.3%	1.9%
2014	1.3%	3.1%	1.6%	9.0%	1.7%	2.6%
2015	1.2%	3.4%	1.6%	9.6%	1.6%	3.0%
2016	1.0%	2.8%	1.4%	5.1%	1.5%	3.0%
2017	0.5%	3.1%	0.7%	5.3%	1.4%	2.5%
2018	0.6%	2.8%	0.7%	4.8%	1.2%	2.4%
<b>Linear-by-linear test</b>	p=0.4	p=0.3	p=0.03	p=0.01	p=0.01	p=0.054
<b>AARR</b>	7.6% (95% CI: -12.6%, 24.2%; p=0.04)	2.0% (95% CI: -3.4%, 7.2%; p=0.4)	11.3% (95% CI: 2.9%, 19.2%; p=0.02)	18.1% (95% CI: 13.6%, 22.3%; p<0.001)	11.5% (95% CI: 9.2%, 13.7%; p<0.001)	-20.5% (95% CI: -46.6%, 0.9%; p=0.06)

343  
 344 AARR: average annual rate of reduction; NRU: nutritional rehabilitation unit; OTP: outpatient  
 345 therapeutic feeding program; SFP: supplementary feeding program.

346 **Table 3. Treatment outcomes at outpatient therapeutic feeding programs between 2011 and**  
 347 **2019.**

Year	Died	Recovered	Defaulted	Non-response	Referral to NRU	Transfer to other OTP
2011	1.8%	82.9%	5.6%	1.3%	3.9%	4.5%
2012	1.6%	83.0%	6.0%	1.1%	3.6%	4.7%
2013	1.2%	83.8%	5.7%	1.5%	3.2%	5.2%
2014	1.3%	83.4%	5.9%	1.3%	3.0%	5.1%
2015	1.3%	83.9%	5.3%	1.3%	2.7%	5.5%
2016	0.9%	86.8%	4.9%	1.5%	2.0%	3.9%
2017	0.9%	89.4%	2.5%	1.1%	2.0%	4.0%
2018	1.1%	90.3%	2.4%	1.2%	1.6%	3.5%
2019	1.2%	92.9%	3.1%	1.8%		
<b>Linear-by-linear test</b>	p=0.02	p=0.008	p=0.02	p=0.3	p=0.009	p=0.1
<b>AARR</b>	6.0% (95% CI: 1.9%, 10.1%; p=0.01)	-0.6% (95% CI: -1.0%, -0.2%; p=0.006)	10.9% (95% CI: 4.6%, 16.9%; p=0.005)	-1.8% (95% CI: -7.0%, 3.1%; p=0.4)	12.0% (95% CI: 9.7%, 14.1%; p<0.001)	3.9% (95% CI: -1.1%, 8.7%; p=0.1)

348

349 AARR: average annual rate of reduction; NRU: nutritional rehabilitation unit; OTP: outpatient  
 350 therapeutic feeding program.

351 Recovered is defined as the child meeting criteria for discharge including mid-upper arm  
 352 circumference at least 125mm, weight-for-height z-scores at least -2 SD, no bilateral pitting  
 353 oedema for two consecutive weeks, and being clinically well and alert. Defaulted is defined as  
 354 being absent for two consecutive visits. Non-response is defined as the child not meeting criteria  
 355 for discharge after four months in treatment. Referral to NRU means that the child's condition  
 356 has deteriorated, and they require inpatient care. Transfer to other OTP means that the child has  
 357 been transferred to continue treatment in another OTP.

358 **Table 4. Treatment outcomes at nutritional rehabilitation units between 2011 and 2019.**

Year	Died	Stabilized to OTP	Recovered	Defaulted	Medical transfer
2011	10.8%	63.1%	18.7%	2.7%	4.7%
2012	9.2%	72.3%	12.3%	2.7%	3.5%
2013	8.7%	74.3%	10.5%	2.4%	4.6%
2014	9.2%	72.3%	12.2%	2.7%	4.4%
2015	9.7%	71.5%	12.4%	2.2%	4.3%
2016	7.9%	74.9%	11.0%	2.6%	3.7%
2017	9.7%	74.9%	8.8%	2.4%	4.1%
2018	8.5%	69.1%	11.5%	2.2%	3.5%
2019	11.0%	80.1%	13.9%	2.9%	
<b>Linear-by-linear test</b>	p=0.4	p=0.09	p=0.2	p=0.7	p=0.2
<b>AARR</b>	0.9% (95% CI: -2.0%, 3.7%; p=0.5)	-1.5% (95% CI: -3.2%, 0.3%; p=0.08)	3.0% (95% CI: -3.1%, 8.8%; p=0.3)	0.6% (95% CI: -2.6%, 3.7%, p=0.7)	2.3% (95% CI: -2.0%, 6.4%; p=0.2)

359

360 AARR: average annual rate of reduction; OTP: outpatient therapeutic feeding program.

361 Stabilized to OTP means that the child’s health has stabilized, and they are referred to OTP to  
 362 continue treatment. Recovered is defined as recovering in the NRU and the child meeting criteria  
 363 for discharge including mid-upper arm circumference at least 125mm, weight-for-height z-scores  
 364 at least -2 SD, no bilateral pitting oedema for two consecutive weeks, and being clinically well  
 365 and alert. Defaulted is defined as being absent for two consecutive days. Non-response is defined  
 366 as not meeting criteria for discharge after four months in treatment. Medical transfer means the  
 367 child is transferred to another inpatient facility for further medical investigation and treatment.

368 **Figure legends**

369

370 **Figure 1. Severe acute malnutrition admissions between 2011 and 2019.** Total and new  
371 severe acute malnutrition admissions by year at all nutritional rehabilitation units and outpatient  
372 therapeutic feeding programs across Malawi.

373

374 **Figure 2. Outpatient therapeutic feeding program admissions between 2011 and 2019.**  
375 Severe acute malnutrition admissions by year at all outpatient therapeutic feeding programs  
376 across Malawi. The 2019 data only include new admissions while data from all other years  
377 reflect total admissions.

378

379 **Figure 3. Nutritional rehabilitation unit admissions between 2011 and 2019.** Severe acute  
380 malnutrition admissions by year at all nutritional rehabilitation units across Malawi. The 2019  
381 data only include new admissions while data from all other years reflect total admissions.

382

383 **Figure 4. Severe acute malnutrition admissions by month between 2011 and 2018.** Total  
384 severe acute malnutrition admissions by month at all outpatient therapeutic feeding programs and  
385 nutritional rehabilitation units across Malawi.

386

387 **Figure 5. Trends in the percentage of children with severe acute malnutrition who had**  
388 **oedema in outpatient therapeutic feeding programs (A) and nutritional rehabilitation units**  
389 **(B) between 2011 and 2018.**

390

391 **Figure 6A. Average annual rate of reduction in the percentage of children with severe**  
392 **acute malnutrition who had oedema in outpatient therapeutic feeding programs between**  
393 **2011 and 2018.**

394  
395 **Figure 6B. Average annual rate of reduction in the percentage of children with severe acute**  
396 **malnutrition who had oedema in nutritional rehabilitation units between 2011 and 2018.**

397  
398 **Figure 7. Trends in the percentage of children with severe acute malnutrition who were**  
399 **HIV reactive in outpatient therapeutic feeding programs (A) and nutritional rehabilitation**  
400 **units (B) between 2012 and 2017. HIV: human immunodeficiency virus**

401  
402 **Figure 8A. Average annual rate of reduction in the percentage of children with severe**  
403 **acute malnutrition who had HIV in outpatient therapeutic feeding programs between 2012**  
404 **and 2017. HIV: human immunodeficiency virus**

405  
406 **Figure 8B. Average annual rate of reduction in the percentage of children with severe acute**  
407 **malnutrition who had HIV in nutritional rehabilitation units between 2012 and 2017. HIV:**  
408 **human immunodeficiency virus**

409  
410 **Figure 9. Trends in the percentage of female children with severe acute malnutrition in**  
411 **outpatient therapeutic feeding programs (A) and nutritional rehabilitation units (B)**  
412 **between 2012 and 2018.**

413

414 **Figure 10A. Average annual rate of reduction in the percentage of female children with**  
415 **severe acute malnutrition in outpatient therapeutic feeding programs between 2012 and**  
416 **2018.**

417

418 **Figure 10B. Average annual rate of reduction in the percentage of female children with**  
419 **severe acute malnutrition in nutritional rehabilitation units between 2012 and 2018.**

420

421 **Figure 11. Deaths disaggregated by outpatient therapeutic feeding programs and**  
422 **nutritional rehabilitation units between 2011 and 2019.** NRU: nutritional rehabilitation unit;  
423 OTP: outpatient therapeutic feeding program.

424

425 **Figure 12. Trends in the mortality rates in children with severe acute malnutrition in**  
426 **outpatient therapeutic feeding programs (A) and nutritional rehabilitation units (B)**  
427 **between 2011 and 2019.**

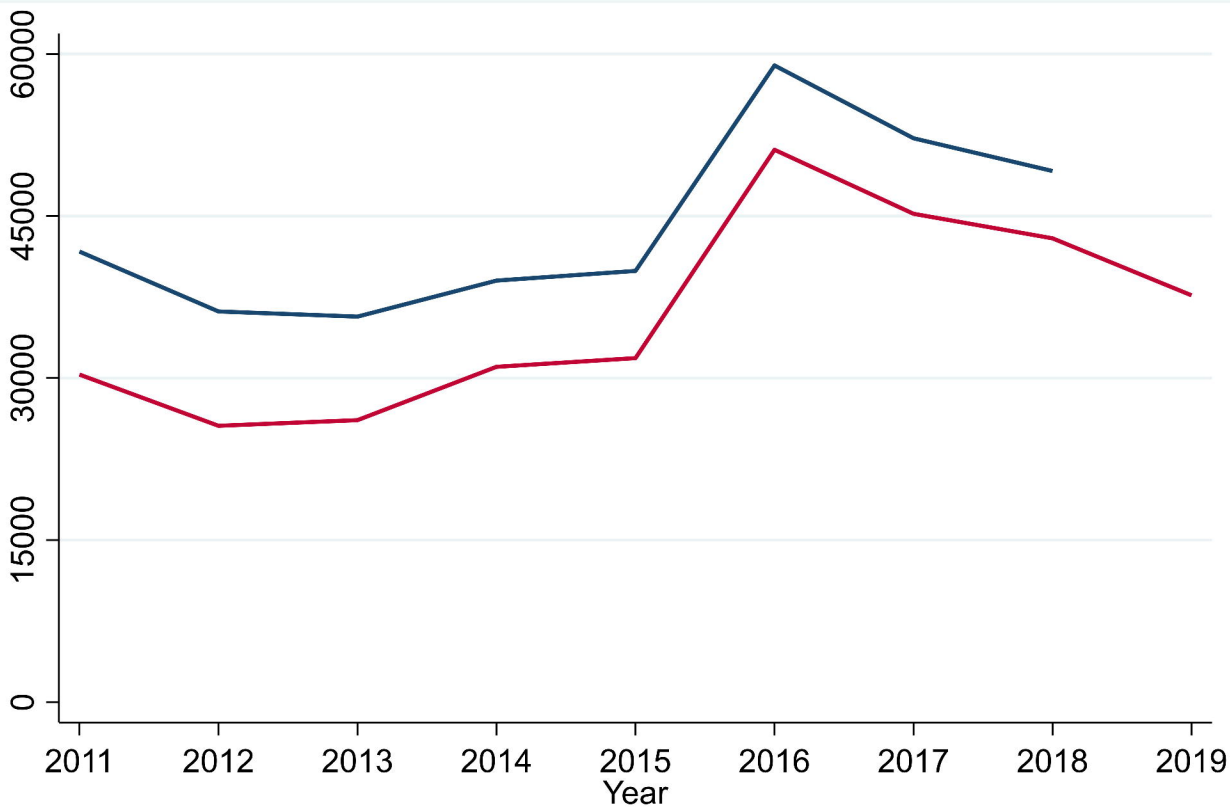
428

429 **Figure 13A. Average annual rate of reduction in the percentage of children with severe**  
430 **acute malnutrition who died in outpatient therapeutic feeding programs between 2011 and**  
431 **2019.**

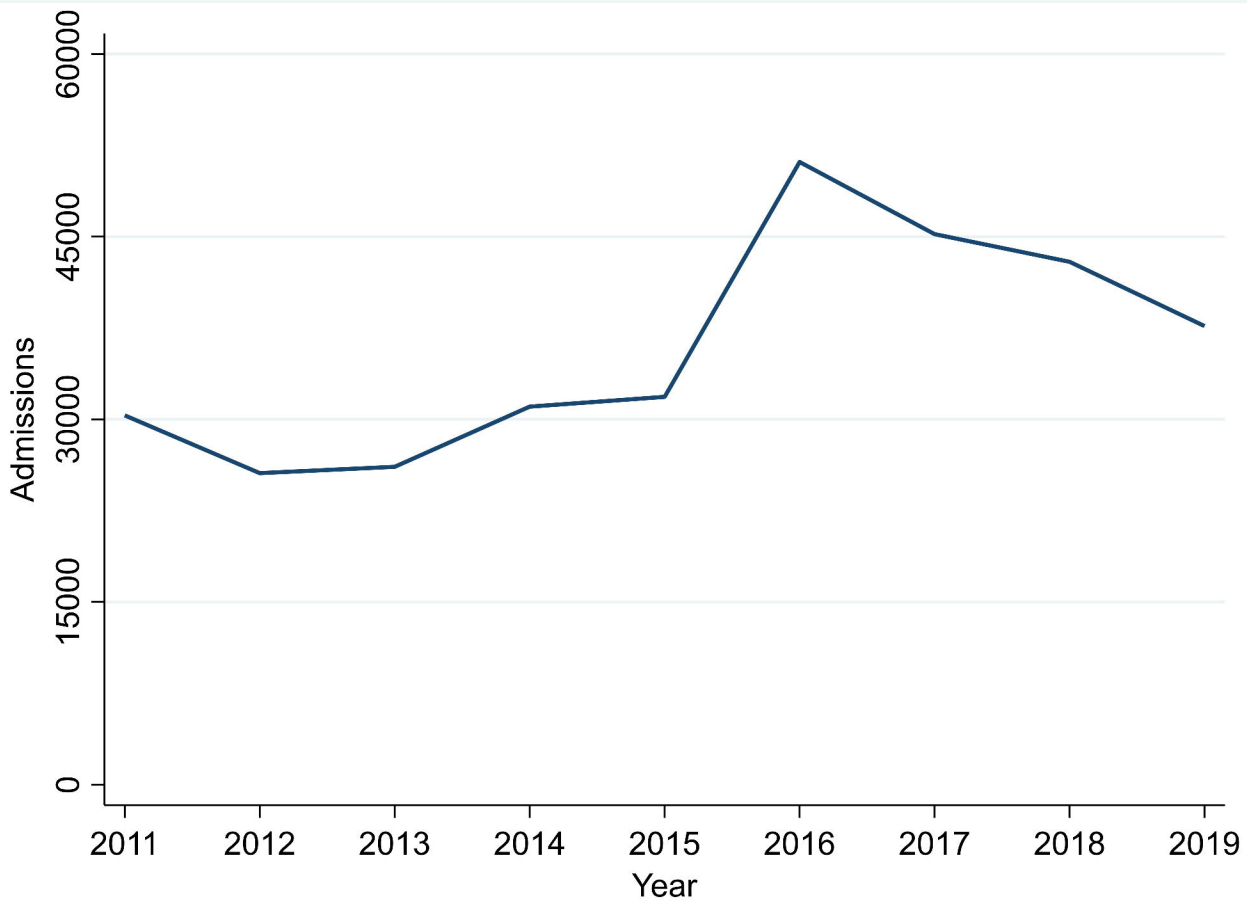
432

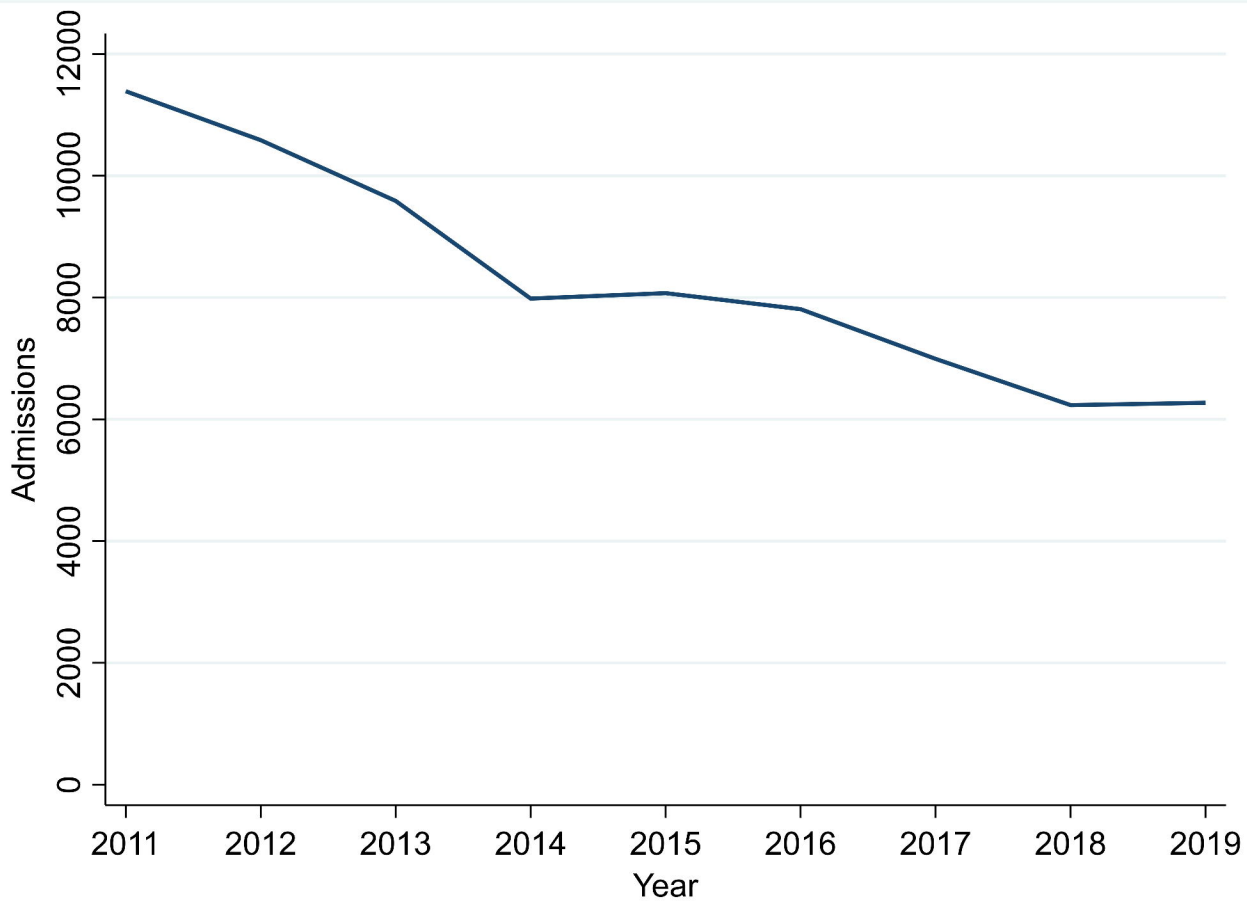
433 **Figure 13B. Average annual rate of reduction in the percentage of children with severe**  
434 **acute malnutrition who died in nutritional rehabilitation units between 2011 and 2019.**

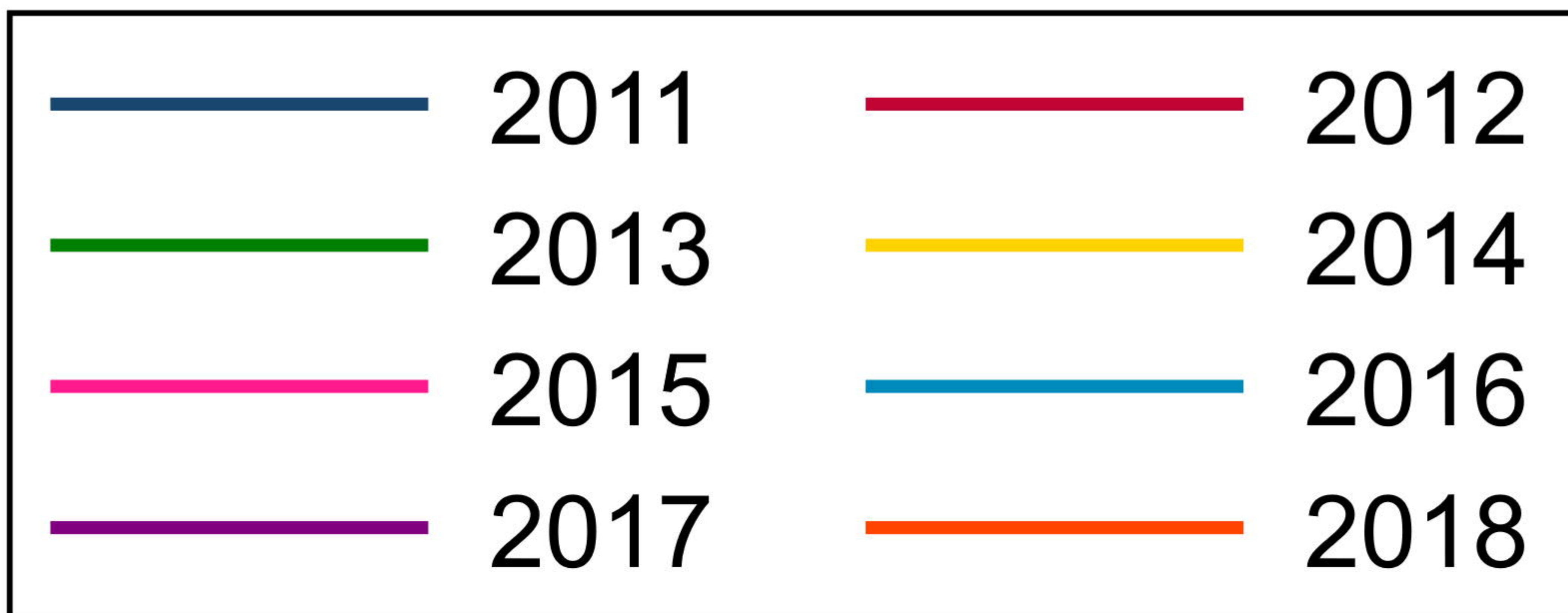
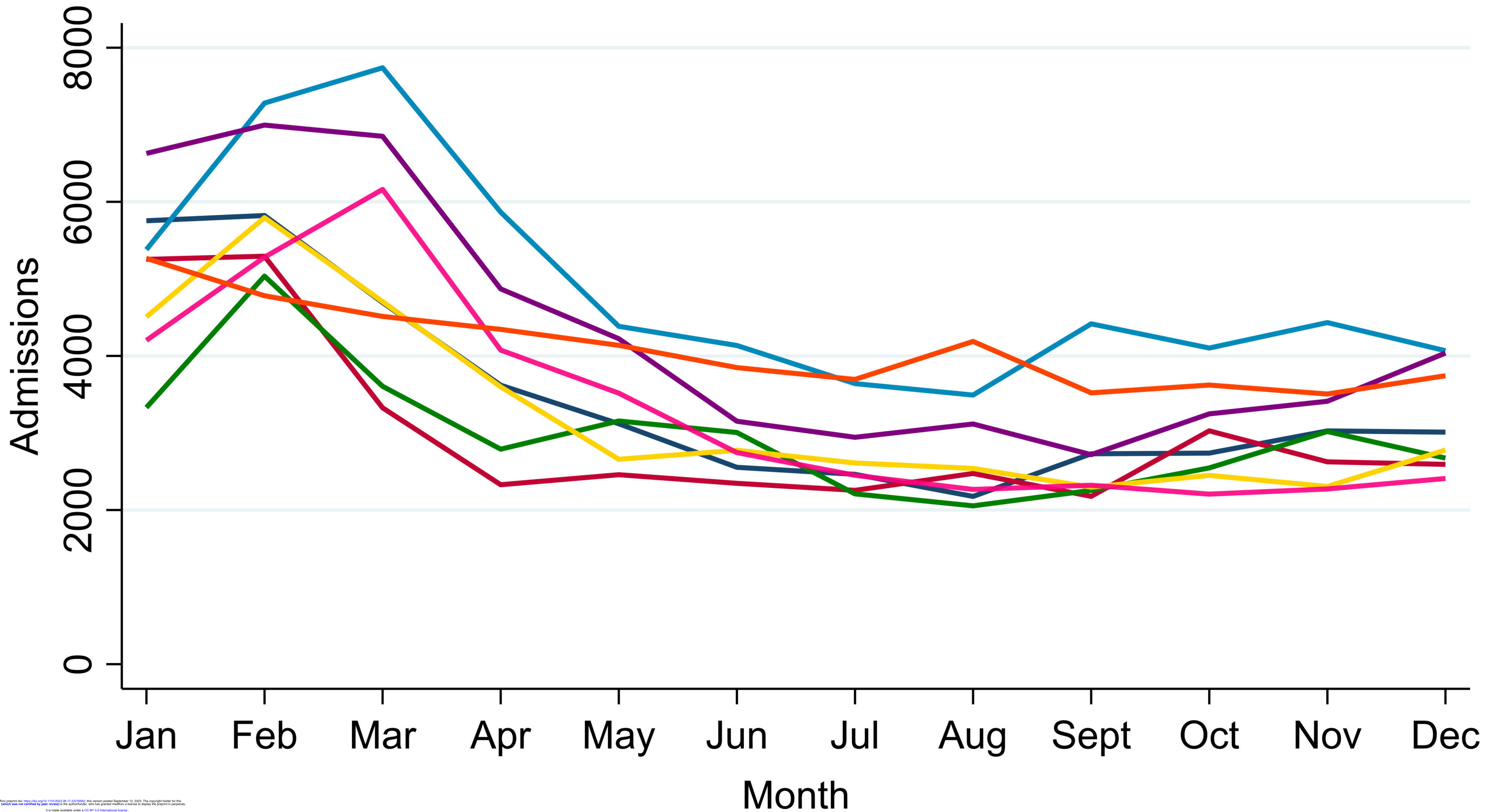




— Total admissions — New admissions







medRxiv preprint doi: <https://doi.org/10.1101/2020.06.19.20270502>; this version posted September 12, 2020. The copyright holder for this preprint (which was not certified by peer review) is the author/funder, who has granted medRxiv a license to display the preprint in perpetuity. It is made available under a CC-BY 4.0 International license.

