

Title: Addiction Potential of Combustible Menthol Cigarette Alternatives: A Randomized Crossover Trial

Authors: Theodore L. Wagener, PhD,^{1,2} Toral Mehta, PhD,¹ Alice Hinton, PhD,^{1,3} Jonathan Schulz, PhD, MPH,⁴ Tyler Erath, PhD,⁴ Jennifer W. Tidey, PhD,⁵ Andrea C. Villanti, PhD, MPH^{4,6}

¹ Center for Tobacco Research, The Ohio State University James Comprehensive Cancer Center, Columbus, OH

² Department of Internal Medicine, College of Medicine, The Ohio State University, Columbus, OH

³ Division of Biostatistics, College of Public Health, The Ohio State University, Columbus, OH

⁴ Vermont Center on Behavior and Health, Department of Psychiatry, University of Vermont, Burlington, VT

⁵ Department of Behavioral and Social Sciences, Brown University School of Public Health, Providence, RI

⁶ Rutgers Center for Tobacco Studies; Department of Health Behavior and Society, Rutgers School of Public Health, Piscataway, NJ

Corresponding Author:

Theodore L. Wagener, PhD

Leonard J. Immke, Jr. and Charlotte L. Immke Chair in Cancer Research

Department of Internal Medicine, OSU Wexner Medical Center

Director, Center for Tobacco Research

Co-Leader, Cancer Control Program, The Ohio State University Comprehensive Cancer Center

3650 Olentangy River Rd, Columbus, OH 43214

Phone: 614-366-4265

theodore.wagener@osumc.edu

ABSTRACT

Introduction: The FDA announced its intention to issue proposed product standards banning menthol as a characterizing flavor in cigarettes and cigars. The public health benefits of these product standards may be attenuated by the role of plausible substitutes in the marketplace.

Therefore, the present study examined the addiction potential of plausible combustible menthol alternatives compared to usual brand menthol cigarettes (UBMC).

Methods: Eighty adult menthol cigarette smokers completed four visits, smoking their UBMC at the first session and 3 menthol cigarette alternatives in random order at the subsequent visits: 1) a pre-assembled menthol roll-your-own cigarette using menthol pipe tobacco and mentholated cigarette tube (mRYO), 2) a menthol filtered little cigar (mFLC), and 3) a non-menthol cigarette (NMC). Measures of smoking topography, exhaled carbon monoxide (CO), craving and withdrawal, subjective effects, and behavioral economic demand indices were assessed.

Results: Compared to UBMC, menthol cigarette alternatives resulted in similar topography and CO exposure but significantly lower levels of positive subjective experience and behavioral economic demand indices. Among the alternative products, participants reported the highest level of positive subjective experience and higher demand for mRYO, compared with mFLC and NMC. Similarly, participants were significantly more likely to want to try again, purchase, and use the mRYO product regularly compared with mFLC and NMC.

Conclusions and Relevance: mRYO cigarettes were the most highly rated cigarette alternative among study products, suggesting their potential appeal as a menthol cigarette substitute and needed inclusion of menthol pipe tobacco and cigarette tubes in FDA's proposed ban.

What is already known on this topic: Menthol cigarettes are associated with increased smoking initiation, higher nicotine dependence, and decreased adult cessation, particularly among vulnerable populations. To address this public health issue, the FDA announced in April 2021 its intention to issue product standards banning menthol as a characterizing flavor in both cigarettes and cigars within a year. However, the public health benefits of these product standards may be attenuated by the role of plausible substitutes available in the marketplace

What this study adds: In this randomized cross-over design study that included 80 adult menthol cigarette smokers, each of the alternative products demonstrated the ability to significantly reduce nicotine craving and withdrawal symptoms, but the combination of mentholated pipe tobacco and tubes in a menthol roll-your-own cigarette, resulted in the highest behavioral economic demand and positive subjective experience.

How this study may affect policy: To maximize the benefits of a menthol cigarette ban, restrictions should extend to plausible substitutes, particularly menthol pipe tobacco and cigarette tubes.

INTRODUCTION

The decreasing prevalence of cigarette smoking in the U.S.¹ has been driven by decreases in non-menthol cigarette use.^{2,3} In contrast, menthol cigarette consumption has remained largely stable since 2000, resulting in a more than 10% increase in menthol cigarette market share over the past two decades² and reaching 37% market share in 2020.⁴ Menthol cigarettes are associated with increased smoking initiation and progression to regular use,^{5,6} higher nicotine dependence, and decreased adult cessation,⁷ particularly among Black people who smoke cigarettes.^{8,9} People who smoke menthol cigarettes are also more likely to be of low socioeconomic status, female, Black or Hispanic, and identify as LGBT compared to non-menthol smokers.^{10,11} Menthol cigarette smoking is estimated to have caused 10.1 million extra smokers, 3 million life years lost, and 378,000 premature deaths between 1980 and 2018,¹² with disproportionate harms experienced by Black Americans.¹³

The 2009 Family Smoking Prevention and Tobacco Control Act granted the US FDA broad authority to regulate tobacco products, leading to bans of flavored cigarettes, excluding menthol, and some flavored e-cigarette devices. In April 2021, the FDA announced its intention to issue product standards banning menthol as a characterizing flavor in both cigarettes and cigars within a year.¹⁴ While evidence from systematic reviews,^{7,15-17} evaluations of Ontario's menthol cigarette ban,¹⁸⁻²⁰ and simulation studies strongly support the likely positive public health impact of a menthol ban on cigarette and cigars,²¹⁻²³ experimental evidence is also needed to bolster these findings to withstand tobacco industry lawsuits.

Even with regulation, tobacco companies frequently exploit regulatory loopholes to maintain sales of their products.^{24,25} Djarum, for example, launched clove filtered cigars in the U.S. in anticipation of the 2009 ban on flavored cigarettes and sales of clove filtered cigars increased by

more than 1400% between 2009 and 2012.²⁶ Similarly, following the 2009 Children’s Health Insurance Program Reauthorization Act (CHIPRA), which levied large increases in federal excise tax rates on cigarettes, cigars, and roll-your-own (RYO) tobacco, tobacco companies repackaged and labeled RYO tobacco as pipe tobacco to avoid these policies.²⁷ As a result, while the market share of pipe tobacco declined from 30.4% in 2002 to 13.6% in 2008, it increased significantly to 89.6% in 2012.²⁷ This reflects an increase of approximately 25.49 million pounds of loose tobacco (i.e., RYO and pipe tobacco) sold per year from 2002 to 2012.²⁷ These examples highlight how the potential public health benefits of regulation, such as a product standard, can be attenuated and suggest that estimating the impact of a potential ban on menthol in cigarettes requires accounting for likely substitutes in the marketplace that may also need to be restricted to effectively protect public health. Current tobacco products, including menthol filtered little cigars, menthol pipe tobacco and cigarette tubes, and non-menthol cigarettes, are relevant targets.²⁸

The purpose of the present study was to assess the addiction potential of other plausible combustible menthol cigarette alternatives in adults who smoke menthol cigarettes by examining the impact of these alternatives on subjective effects, behavioral economic demand indices, smoking topography, and resultant toxicant exposure compared to the participants’ usual brand menthol cigarette (UBMC). We hypothesized that compared to UBMC, alternatives would result in similar smoking topography and carbon monoxide (CO) exposure, but fewer positive subjective effects and lower demand.

METHODS

Setting and Participants

Menthol cigarette smokers from the Columbus, Ohio metropolitan area were recruited via internet advertisements, flyers, and word-of-mouth advertising from January 2020 to August 2021. Potential participants were screened for eligibility via an online questionnaire and then over the telephone. Eligibility criteria included (1) current menthol cigarette smoker (>90% menthol cigarette use; ≥ 5 cigarettes per day) for at least the past 6 months; (2) between 21 and 50 years old; (3) willing to abstain from tobacco, nicotine and marijuana use for at least 12 hours prior to each of the study visits; (4) access to a smartphone or email and (5) read and speak English. Exclusionary criteria included (1) self-reported diagnosis of lung disease; (2) cardiac event or distress within the past 3 months; (3) pregnancy, breastfeeding, or planning to become pregnant; (4) use of other tobacco products (e.g., e-cigarette, cigar, etc.) >5 days in the past month; (5) currently using one of the study products; (6) any reported use of illicit drugs (other than marijuana) during the last 30 days; and (7) currently engaging in smoking cessation treatment. All participants provided written informed consent.

Procedure

Using an in-laboratory and outpatient mixed design, participants completed a three-phase study lasting approximately three weeks. In phase 1, participants completed 4 smoking session visits, smoking their UBMC or one of the 3 menthol cigarette alternatives at each visit. Each visit was separated by a 48-hour washout period. This phase used multiple methods of assessing addiction potential in a lab-based setting, including measurements of drug self-administration; suppression of craving and withdrawal; measures of drug liking; and behavioral economic measures.²⁹ In phase 2, participants were instructed to completely substitute their preferred product from phase 1 for their UBMC for one week and complete daily assessments of their use behavior. In phase 3, participants completed a final in-lab visit to assess the substitutability of

their preferred product, under simulated ban conditions using a progressive ratio task. We report the results of phase 1 below.

All participants completed sociodemographic measures and provided their tobacco use history including their years of smoking, usual cigarette brand, smoking frequency and quantity, number and recency of previous quit attempts, and their level of cigarette dependence (Fagerstrom Test for Nicotine Dependence³⁰). Then, over four visits, participants completed standardized smoking sessions, smoking a different product each session. During each session, a research assistant with a stopwatch instructed participants to take a puff every 30 s, resulting in 10 puffs during the first 5 min. Participants sampled their UBMC during the first session; the order of subsequent products was randomized at the time of enrollment from a prespecified block randomization table with blocks of size 6. Products included a pre-assembled (by study staff), machine-injected roll-your-own cigarette using a mentholated cigarette tube and mentholated pipe tobacco (mRYO; OHM menthol pipe tobacco, hot rod tubes - menthol king size), a mentholated filtered little cigar (mFLC; Cheyenne 100's menthol) and a non-menthol cigarette (NMC; Newport Non-Menthol Red). All products were provided in plain boxes without brand or identifying information. Brand name was present, however, on the NMC filter wrapper. Participants abstained from smoking (biochemically confirmed exhaled carbon monoxide \leq 10ppm), nicotine, and marijuana for 12 hours before the sessions.

During the smoking session, participant puffing topography was collected including average flow rate, inter-puff interval, puff volume, puff duration, maximum puff volume, total puff time, total smoking time, and total inhaled volume. Measures of cigarette craving (Tiffany-Drobes Questionnaire of Smoking Urges [QSU]: Brief Form³¹) and withdrawal (Minnesota Nicotine Withdrawal Scale [MNWS]³²) were also administered immediately before (0) and after the

smoking session (5 min), and at 15, 30, 60, and 90 min. The QSU is a 10-item self-report measure with items rated from 1 (strongly disagree) to 7 (strongly agree). Items have been shown to load on two factors— ‘desire to smoke’ and ‘anticipated relief from withdrawal’. For the MNWS, completed the 15-item version but for analysis we used the 9-item version assessing the Diagnostic and Statistical Manual of Mental Disorders (DSM-5) symptoms for Tobacco Withdrawal and the “craving to smoke” item. We did not include sleep problems in our analysis since this item was not expected to change during the smoking sessions. Exhaled breath carbon monoxide level (eCO), a biomarker of smoke exposure, was assessed using a handheld monitor (Smokerlyzer Micro, Bedfont Scientific) at time 0 and 5 min to determine eCO boost (eCO at time 5 min minus eCO at time 0).

After each smoking session, measures of subjective effects were completed. The 11-item modified Cigarette Evaluation Questionnaire (mCEQ)^{33,34} includes five subscales: Smoking Satisfaction, Psychological Reward, Aversion, Enjoyment of Respiratory Tract Sensations, and Craving Reduction, with items rated from 1 (not at all) to 7 (extremely likely). Five visual analog scale items ranging from 0 (‘not at all’) to 100 (‘extremely’) assessed wanting to smoke the product again, liking the product, enjoying the product, finding the product pleasurable and satisfying.^{35,36} Behavioral intentions to use the menthol cigarette alternatives were also collected. Participants reported how likely they were to: ‘try this product again,’ ‘purchase this product for personal use,’ and ‘use this product regularly’ if menthol cigarettes were no longer available to be purchased. Participants also completed the Cigarette Purchase Task,^{37,38} a behavioral economic task that assesses hypothetical tobacco product consumption across varying prices. Demand indices include demand intensity (Q_0 ; the number of products consumed per day when free), essential value (EV; a measure of reinforcing efficacy that measures the rate of change in

demand elasticity across the range of prices), P_{max} (the price associated with the maximal expenditure, i.e., the highest price before the curve changes from inelastic to elastic), and breakpoint (the last price in which consumption is greater than 0), with higher scores indicating greater abuse liability. Finally, following the completion all of smoking sessions, participants selected their most preferred menthol alternative product to completely substitute for their UBMC for one week.

Data Analytic Plan

The study was powered based on a laboratory study examining the abuse liability of cigarettes containing different doses of nicotine,³⁹ such that with 80 participants there was over 80% power to detect decreases in product satisfaction of up to 50% as compared to UBMC and decreases of 68%-72% in the cigarette purchase task indices of maximum expenditure, maximum price and price sensitivity.

Topography measures were winsorized at the 1st and 99th percentiles and analyzed using repeated measures analysis of variance (ANOVA) with Tukey's adjustment for all pairwise comparisons between products. For QSU, linear mixed effects models with Holms procedure to adjust for post-hoc comparisons were used to assess differences between products. Subjective smoking experiences were analyzed using repeated measures ANOVA models with Tukey's adjustment while behavioral intentions were modeled with mixed effects multinomial logistic regression. For all models, log transformations were employed as necessary to satisfy assumptions. All analyses were conducted in SAS 9.4 (SAS Institute, Cary NC).

Demand data were fit to the normalized Zero-Bound Model of Demand (ZBEn) using the freely available GraphPad Prism® template provided by the Institute for Behavior Resources (<https://ibrinc.org/behavioral-economics-tools/>). To assess normality for all demand indices, we

conducted the D’Agostino-Pearson omnibus normality test using GraphPad Prism® version 9. Results indicated the distributions for all demand indices deviated from a Gaussian distribution; therefore, we used the non-parametric Friedman test with Dunn’s correction for multiple comparisons for all analyses (see Supplemental Appendix for detailed methods).

RESULTS

Participant Demographics and Smoking History

98 participants enrolled in the study, with 80 completing all phase 1 visits and included in the analyzed sample. Participants had a mean age of 37.1 years (SD=7.5), were predominantly female (75.0%), white (72.5%) and non-Hispanic or Latino (93.8%; Table 1). Participants reported smoking an average of 11.3 cigarettes per day (standard deviation [SD]=5.1) and smoking at this frequency for the last 15.4 years (SD=10.2), with a median FTND score of 3 (interquartile range [IQR] 2-5), indicating a moderate level of dependence. Participants reported minimal past 30-day use of other tobacco products (Table 1).

Table 1. Demographics and Tobacco Use History (n=80)

	Analyzed Sample (n=80)	
Demographics		
Age (<i>mean, SD</i>)	37.13	7.54
What term below best describes your ethnicity? (<i>n, %</i>)		
Hispanic or Latino	5	6.3
Not Hispanic or Latino	75	93.8
What term(s) below best describe your race? (<i>n, %</i>)		
Black or African American	16	20.0
White or Caucasian	58	72.5
Bi or Multi-racial	6	7.5
Below is a list of terms that people often use to describe their sexuality or sexual orientation. Please check the term that best applies to you. (<i>n, %</i>)		
Gay	3	3.8
Bisexual	14	17.5
Straight/Heterosexual	62	77.5
Queer	1	1.3

	Analyzed Sample (n=80)	
What sex were you assigned at birth (what the doctor put on your birth certificate)? (<i>n, %</i>)		
Male	20	25.0
Female	60	75.0
What is the highest level of school you have completed? (<i>n, %</i>)		
12th grade, no diploma	1	1.3
High school graduate / GED	13	16.3
Some college, no degree / Associates degree	45	56.3
Bachelor's degree / Master's degree	21	26.3
Which of the following categories best describes your total household income in the past 12 months? (<i>n, %</i>)		
Less than \$35k	36	45.0
\$35k to \$149,999	44	55.0
On average, about how many cigarettes do you currently smoke EACH DAY? (One pack usually equals 20 cigarettes). (<i>mean, SD</i>)	11.28	5.05
Years smoked at this frequency (<i>mean, SD</i>)	15.39	10.15
Usual brand of store-bought cigarettes (<i>n, %</i>)		
Marlboro	21	26.3
Newport	21	26.3
Camel	20	25.0
Maverick	6	7.5
American Spirit	3	3.8
Other	9	11.3
Years smoked this brand of cigarettes (<i>mean, SD</i>)	10.16	8.23
Fagerstrom Test for Nicotine Dependence Score (<i>median, IQR</i>)	3	2 – 5
Other Tobacco Product Use in Past 30 Days (<i>n, %</i>)		
Any	14	17.5
Pipe (with tobacco, not including hookah)	1	1.3
Cigars (like Cohiba or Romeo y Julieta)	1	1.3
Cigarillos	1	1.3
Little cigars or filtered cigars	0	0.0
E-cigarette or vaping device (like JUUL, blu, Vuse, MarkTen, Suorin)	13	16.3
Smokeless tobacco (like chewing tobacco, snuff, or dip)	1	1.3
Snus (like Camel Snus)	0	0.0
Hookah/shisha/waterpipe/hookah tobacco	1	1.3

Smoking Topography and eCO Boost

Table 2 compares all four products on topography and exposure measures. Compared to smoking UBMC, participants demonstrated a greater flow rate when smoking mRYO; and greater puff duration, total puffing time, and eCO boost when smoking mFLC, as well as a lower flow rate and max puff volume. When smoking NMC, participants had shorter puffing times and smaller average and total puff volumes than any of three mentholated products.

Table 2. Smoking Topography for Usual Brand Menthol Cigarettes and Menthol Cigarette Alternatives (n = 80)

	Usual brand menthol cigarette (UBMC)	Menthol roll-your-own cigarette (mRYO)	Menthol filtered little cigar (mFLC)	Non-menthol cigarette (NMC)
	M (SD)	M (SD)	M (SD)	M (SD)
Total Smoking Time (min)	5.11 (0.35)	5.06 (0.19)	5.12 (0.51)	5.09 (0.47)
Total Puffing Time (min)	0.36 (0.10) ^{cd}	0.36 (0.11) ^{cd}	0.47 (0.16) ^{abd}	0.33 (0.10) ^{abc}
Average Puff Duration (s)	2.04 (0.57) ^c	2.07 (0.65) ^{cd}	2.65 (0.91) ^{abd}	1.88 (0.61) ^{bc}
Average Flow Rate (ml/s)	23.10 (6.78) ^{bc}	24.70 (7.56) ^{acd}	16.96 (5.48) ^{abd}	22.16 (7.27) ^{bc}
Average Inter-puff Interval (s)	27.43 (1.83) ^c	27.51 (1.24) ^c	26.40 (2.61) ^{abd}	27.76 (1.55) ^c
Inhaled Volume (mL)	461.68 (140.54) ^d	484.54 (127.13) ^{cd}	433.07 (128.73) ^{bd}	389.42 (120.21) ^{abc}
Average Puff Volume (mL)	45.58 (13.61) ^d	48.15 (12.68) ^{cd}	42.46 (12.91) ^{bd}	39.03 (11.93) ^{abc}
Max Puff Volume (mL)	63.14 (19.35) ^{cd}	64.18 (15.53) ^{cd}	56.57 (18.92) ^{ab}	56.34 (16.04) ^{ab}
CO Boost (ppm)	8.15 (4.09) ^c	7.40 (3.03) ^c	9.31 (4.40) ^{abd}	7.75 (2.91) ^c

Mean (M) and standard deviations (SD) for topography measures. p-values estimated from repeated measures ANOVA with Tukey adjustment for all pairwise comparisons. All measures were winsorized at the 1st and 99th percentiles. Superscripts denote differences in pairwise comparisons between study products at the p<0.05 level. ^a Differs from UBMC; ^b Differs from mRYO; ^c Differs from mFLC; ^d Differs from NMC

Cigarette Craving and Withdrawal

Mean values for QSU-brief desire and relief factors for all four products over time are depicted in Figure 1A and 1B, respectively. Significant within-participant reduction was observed in both subscales for all products following the initial directed puffing segment, supporting the ability of each of the four products to reduce craving. Significant between-group differences comparing UBMC to the study products were not observed for desire or anticipated

relief. Similarly, significant within-participant reduction was observed in withdrawal symptoms for all products following the initial directed puffing segment, but no between-group differences were observed (Figure 1C and 1D).

Product Demand Indices

Demand curves for four participants (5%) were determined to be non-systematic and removed from analyses. Post-hoc analyses for multiple comparisons indicated significantly greater addiction potential of UBMC when compared to all three alternative products for measures of demand intensity, EV, and breakpoint ($p < 0.05$; Figure 2). Among alternative products, mRYO indicated the greatest addiction potential, with significantly higher intensity and EV than both mFLC and NMC, significantly higher P_{max} than NMC, and significantly higher breakpoint than mFLC ($p < 0.05$). There were no significant differences between NMC and mFLC.

Subjective Smoking Experience, Behavioral Intentions and Product Selection

Figure 3 depicts mean ratings for all subjective smoking experience items. Compared to UBMC, participants reported significantly lower levels of wanting to smoke the product again, liking, enjoyment, pleasure, and satisfaction for each of the alternative products ($p < 0.001$; Figure 3A). Among the alternative products, participants reported the most favorable subjective experience when smoking mRYO ($p < 0.001$) compared with mFLC and NMC, with no significant differences between mFLC and NMC (Figure 3A). Similarly, on the mCEQ, UBMCs were rated as more satisfying, rewarding, had more enjoyable sensations in the throat and chest, and better craving reduction than the alternative products ($p < 0.05$; Figure 3B). However, UBMC had similar levels of aversion to NMC and higher levels compared to mRYO and mFLC ($p < 0.05$; Figure 3B). Participants were also significantly more likely to want to try again

($p < 0.001$), purchase ($p < 0.001$), and use the mRYO product regularly ($p < 0.001$) compared with mFLC and NMC, with no significant differences between mFLC and NMC (Figure 3C).

Consistent with these findings, 65.0% ($n = 52$) of participants chose mRYO as their preferred menthol alternative to use during phase 2, 22.5% ($n = 18$) chose NMC, and 12.5% chose mFLC ($n = 10$).

DISCUSSION

Using a large within-subjects study of adults who smoke menthol cigarettes and multiple methods of assessing addiction potential, our study expands prior cross-over studies of menthol and non-menthol cigarettes⁴⁰⁻⁴² to include other potential menthol cigarette substitutes, specifically menthol-flavored filtered little cigars and the combination of mentholated pipe tobacco and tubes in a menthol roll-your-own cigarette. Study findings were generally consistent with hypotheses that menthol cigarette alternatives would result in similar smoking topography and carbon monoxide (CO) exposure, but fewer positive subjective effects and lower demand. All products suppressed craving and withdrawal, with few differences over time across the four study products. Findings on subjective effects of each product were also similar to other studies,^{41 42} with participants reporting the most favorable subjective effects for their UBMC, with mRYO cigarettes rated next highest and outperforming the other two menthol cigarette alternatives. In line with behavioral intention data on likelihood of trying, purchasing, and using the product regularly, pre-filled mRYO cigarettes were the products chosen by most participants to be used in a subsequent one-week trial at home and the most highly rated cigarette alternative, suggesting their potential appeal as a menthol cigarette substitute. These findings are of particular importance, given the components of this product: pipe tobacco, which now comprises most of the loose tobacco market,²⁷ and cigarette tubes, which have been authorized by the FDA

in prior substantial equivalence (SE) applications. While the FDA used its enforcement authority in 2013 to call out misbranding of roll-your-own cigarette tobacco as pipe tobacco,⁴³ retailer education in 2021 embraced slippage between the product categories and encouraged convenience store owners and operators to promote both to their clients.⁴⁴ Given the 2020 court order vacating the FDA's health warning requirement for pipe tobacco,⁴⁵ continued ambiguity in differentiating pipe from roll-your-own tobacco, and anticipated FDA action on menthol cigarettes and cigars, our findings suggest that components of menthol roll-your-own products, including menthol rolling papers, cigarette tubes, and pipe tobacco, be considered for inclusion under a menthol cigarette ban.

Beyond measures of the subjective experiences of smoking, topography data can estimate both addiction potential and toxicity of menthol cigarette alternatives. Findings showed that UBMC and mRYO cigarettes were used similarly, with flow rate being the only measure that differed between the two products; this may be related to a lower density of tobacco in the roll-your-own product than the commercial menthol cigarette. There were several topography measures that differed, however, between UBMCs and the other two study products, which may be related to the more negative subjective ratings of these products. Consistent with other studies,^{40 41} participants had shorter puff duration, lower average puff volume, and lower total inhaled smoke volume when using NMC compared with any of the mentholated products. The higher smoke volume seen for our three menthol products may result in higher exposure to nicotine, tobacco-specific nitrosamines, and ultrafine particulates.⁴⁰ Novel findings supported that compared with all other products, mFLC had a higher puffing time, higher puff duration, lower average flow rate and higher CO boost. While speculative, this finding may reflect both

the nature and greater density of tobacco in the filtered cigar product.⁴⁶ These data suggest that menthol filtered cigars, used as cigarettes,⁴⁷ may induce greater smoke exposure in their users.

Strengths of our study include use of a within-subjects design, multiple methods of estimating the addiction potential of menthol cigarette alternatives, and a large clinical laboratory sample of adults who currently smoke menthol cigarettes. The fact that our sample had a high proportion of people who identified as white, female, and of lower socioeconomic status is both a strength and a limitation of our study. Even though the prevalence of menthol cigarette use is highest among Black adults who smoke,^{3 11} there remains a larger absolute number of White adults who smoke menthol cigarettes in the U.S. Our sample reflects the midwestern city in which it was recruited, but is likely generalizable to a broader population of menthol cigarette smokers in the U.S., including women and people of lower socioeconomic status who have a higher prevalence of menthol cigarette use.^{3 11} Our study's use of a limited number of products to evaluate menthol cigarette alternatives does not reflect the range of alternative products that could be substituted for menthol cigarettes under a potential ban, but recent research using an online experimental tobacco marketplace to simulate product choice following a menthol cigarette ban supports menthol little cigars, non-menthol cigarettes, menthol cigarillos, and menthol vapes as potential substitutes.⁴⁸ Expanding our multi-method design to a broader range of products may identify the most likely menthol cigarette alternative; our current findings suggest that menthol pipe tobacco and tubes should be a target for research and regulation.

Contributors: TW and AV conceived of and designed the study. TM managed the study and was overseen by TW and AV. AH, JS, and TE conducted and are responsible for the data analysis. TW and AV wrote the manuscript and TM, AH, JS, TE, and JT reviewed, edited and approved the final version. TW, AV, and AH had full access to all the data in the study and take responsibility for the integrity of the data and the accuracy of the data analysis.

Funding: Research reported in this publication was supported by the National Institute on Drug Abuse of the National Institutes of Health under Award Number R21DA046333 (MPI: TW and AV). JS, JT and TE were supported by the National Institute on Drug Abuse of the National Institutes of Health under Award Number U54DA036114. The content is solely the responsibility of the authors and does not necessarily represent the official views of the National Institutes of Health or the US Food and Drug Administration. The funder had no role in the design and conduct of the study; collection, management, analysis, and interpretation of the data; preparation, review, or approval of the manuscript; and decision to submit the manuscript for publication.

Conflicts of Interest: The authors have no conflicts to disclose.

Ethics Approval: Ethics approval was obtained from the Ohio State University Institutional Review Board (IRB Protocol Number: 2019C0107). The trial was registered in clinicaltrials.gov (NCT04844762).

REFERENCES

1. Cornelius ME, Wang TW, Jamal A, et al. Tobacco Product Use Among Adults - United States, 2019. *MMWR Morb Mortal Wkly Rep* 2020;69(46):1736-42. doi: 10.15585/mmwr.mm6946a4 [published Online First: 2020/11/20]
2. Delnevo CD, Giovenco DP, Villanti AC. Assessment of Menthol and Nonmenthol Cigarette Consumption in the US, 2000 to 2018. *JAMA Netw Open* 2020;3(8):e2013601. doi: 10.1001/jamanetworkopen.2020.13601 [published Online First: 2020/08/09]
3. Villanti AC, Mowery PD, Delnevo CD, et al. Changes in the prevalence and correlates of menthol cigarette use in the USA, 2004-2014. *Tob Control* 2016;25(Suppl 2):ii14-ii20. doi: 10.1136/tobaccocontrol-2016-053329 [published Online First: 11 Oct]
4. Federal Trade Commission. Federal Trade Commission Cigarette Report for 2020 2021 [updated October 26. Available from: <https://www.ftc.gov/reports/federal-trade-commission-cigarette-report-2020-smokeless-tobacco-report-2020> accessed November 3 2021.
5. Villanti AC, Johnson AL, Glasser AM, et al. Association of Flavored Tobacco Use With Tobacco Initiation and Subsequent Use Among US Youth and Adults, 2013-2015. *JAMA Netw Open* 2019;2(10):e1913804. doi: 10.1001/jamanetworkopen.2019.13804 [published Online First: 2019/10/24]
6. Villanti AC, Johnson AL, Halenar MJ, et al. Menthol and Mint Cigarettes and Cigars: Initiation and Progression in Youth, Young Adults and Adults in Waves 1-4 of the PATH Study, 2013-2017. *Nicotine Tob Res* 2021;23(8):1318-26. doi: 10.1093/ntr/ntaa224 [published Online First: 2020/11/08]
7. Villanti AC, Collins LK, Niaura RS, et al. Menthol cigarettes and the public health standard: a systematic review. *BMC Public Health* 2017;17(1):983. doi: 10.1186/s12889-017-4987-z [published Online First: 2017/12/30]
8. Delnevo CD, Gundersen DA, Hrywna M, et al. Smoking-cessation prevalence among U.S. smokers of menthol versus non-menthol cigarettes. *Am J Prev Med* 2011;41(4):357-65. doi: S0749-3797(11)00462-4 [pii] 10.1016/j.amepre.2011.06.039 [published Online First: 2011/10/04]
9. Smith PH, Assefa B, Kainth S, et al. Use of Mentholated Cigarettes and Likelihood of Smoking Cessation in the United States: A Meta-Analysis. *Nicotine Tob Res* 2020;22(3):307-16. doi: 10.1093/ntr/ntz067 [published Online First: 2019/06/18]
10. Rath JM, Villanti AC, Williams VF, et al. Correlates of current menthol cigarette and flavored other tobacco product use among U.S. young adults. *Addict Behav* 2016;62:35-41. doi: 10.1016/j.addbeh.2016.05.021

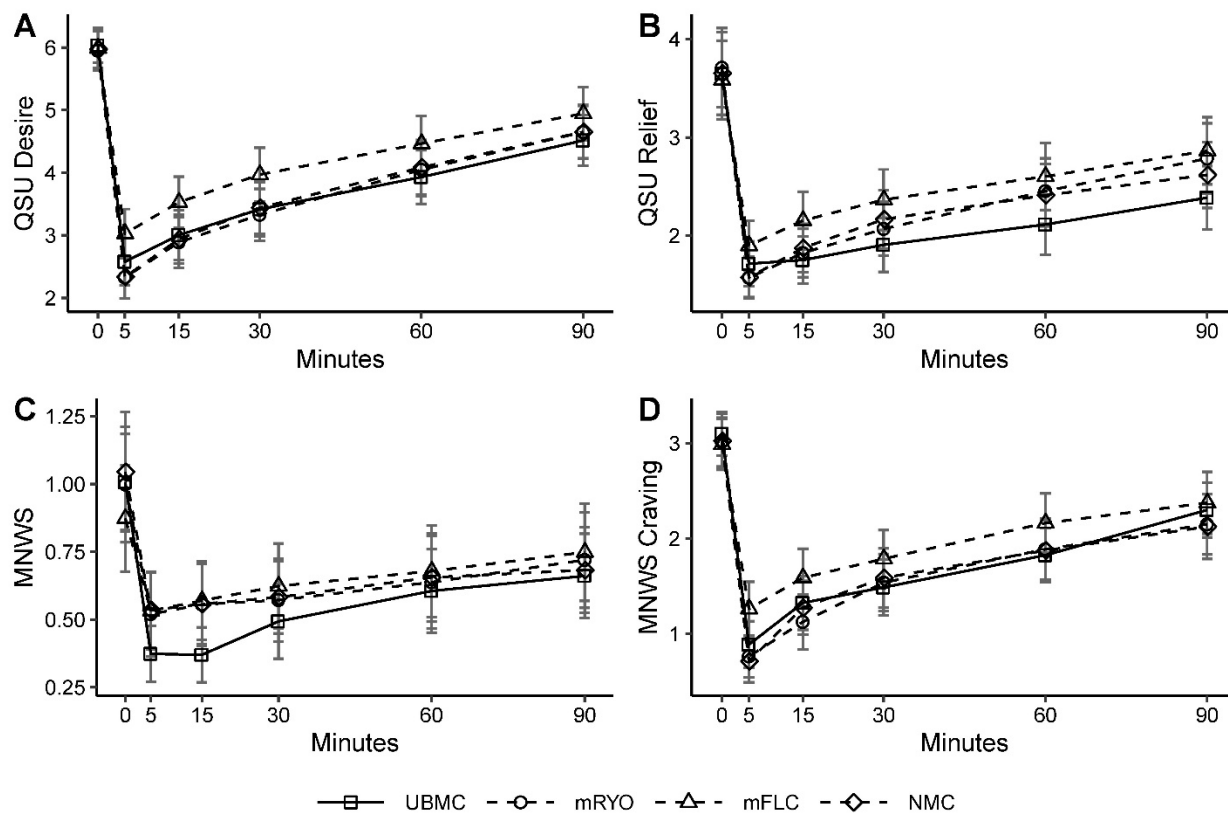
11. Delnevo CD, Ganz O, Goodwin RD. Banning Menthol Cigarettes: A Social Justice Issue Long Overdue. *Nicotine Tob Res* 2020;22(10):1673-75. doi: 10.1093/ntr/ntaa152 [published Online First: 2020/10/09]
12. Le TT, Mendez D. An estimation of the harm of menthol cigarettes in the United States from 1980 to 2018. *Tob Control* 2021 doi: 10.1136/tobaccocontrol-2020-056256 [published Online First: 20210225]
13. Mendez D, Le TTT. Consequences of a match made in hell: the harm caused by menthol smoking to the African American population over 1980-2018. *Tob Control* 2021 doi: 10.1136/tobaccocontrol-2021-056748 [published Online First: 20210916]
14. U.S. Food and Drug Administration. FDA Commits to Evidence-Based Actions Aimed at Saving Lives and Preventing Future Generations of Smokers 2021 [updated April 29. Available from: <https://www.fda.gov/news-events/press-announcements/fda-commits-evidence-based-actions-aimed-saving-lives-and-preventing-future-generations-smokers> accessed January 30 2022.
15. Tobacco Products Scientific Advisory Committee. Menthol Cigarettes and Public Health: Review of the Scientific Evidence and Recommendations. Rockville, MD: Center for Tobacco Products, Food and Drug Administration, 2011.
16. U.S. Food and Drug Administration. Preliminary Scientific Evaluation of the Possible Public Health Effects of Menthol versus Nonmenthol Cigarettes. Silver Spring, MD: Center for Tobacco Products, Food and Drug Administration, 2013.
17. U.S. Food and Drug Administration. Reference Addendum: Preliminary Scientific Evaluation of the Possible Public Health Effects of Menthol versus Nonmenthol Cigarettes. Silver Spring, MD: Center for Tobacco Products, Food and Drug Administration, 2013.
18. Chaiton M, Schwartz R, Cohen JE, et al. Association of Ontario's Ban on Menthol Cigarettes With Smoking Behavior 1 Month After Implementation. *JAMA internal medicine* 2018;178(5):710-11. doi: 10.1001/jamainternmed.2017.8650 [published Online First: 2018/03/07]
19. Chaiton M, Schwartz R, Shuldiner J, et al. Evaluating a Real World Ban on Menthol Cigarettes: An Interrupted Time-Series Analysis of Sales. *Nicotine Tob Res* 2020;22(4):576-79. doi: 10.1093/ntr/ntz041 [published Online First: 2019/03/20]
20. Chaiton MO, Nicolau I, Schwartz R, et al. Ban on menthol-flavoured tobacco products predicts cigarette cessation at 1 year: a population cohort study. *Tob Control* 2020;29(3):341-47. doi: 10.1136/tobaccocontrol-2018-054841 [published Online First: 2019/05/31]
21. Levy DT, Meza R, Yuan Z, et al. Public health impact of a US ban on menthol in cigarettes and cigars: a simulation study. *Tob Control* 2021 doi: 10.1136/tobaccocontrol-2021-056604 [published Online First: 20210902]

22. Li Y, Sisti J, Flórez KR, et al. Assessing the Health and Economic Impact of a Potential Menthol Cigarette Ban in New York City: a Modeling Study. *J Urban Health* 2021;98(6):742-51. doi: 10.1007/s11524-021-00581-8 [published Online First: 20211109]
23. Levy DT, Pearson JL, Villanti AC, et al. Modeling the future effects of a menthol ban on smoking prevalence and smoking-attributable deaths in the United States. *Am J Public Health* 2011;101(7):1236-40. doi: 10.2105/AJPH.2011.300179 [published Online First: 2011/05/14]
24. Delnevo CD, Giovenco DP, Miller Lo EJ. Changes in the Mass-merchandise Cigar Market since the Tobacco Control Act. *Tobacco regulatory science* 2017;3(2 Suppl 1):S8-S16. [published Online First: 2017/03/21]
25. Delnevo CD, Hrywna M, Giovenco DP, et al. Close, but no cigar: certain cigars are pseudo-cigarettes designed to evade regulation. *Tob Control* 2017;26(3):349-54. doi: 10.1136/tobaccocontrol-2016-052935 [published Online First: 2016/05/26]
26. Delnevo CD, Hrywna M. Clove cigar sales following the US flavoured cigarette ban. *Tob Control* 2015;24(e4):e246-50. doi: 10.1136/tobaccocontrol-2013-051415
27. Agaku IT, Alpert HR. Trends in annual sales and current use of cigarettes, cigars, roll-your-own tobacco, pipes, and smokeless tobacco among US adults, 2002-2012. *Tob Control* 2016;25(4):451-7. doi: 10.1136/tobaccocontrol-2014-052125 [published Online First: 20150421]
28. MENTHOL - What works and what don't? : Roll Your Own Resource; [updated August 3, 2015. Available from: <http://www.rollyourownresource.com/forums/viewtopic.php?t=707> accessed September 12 2017.
29. Carter LP, Stitzer ML, Henningfield JE, et al. Abuse liability assessment of tobacco products including potential reduced exposure products. *Cancer Epidemiol Biomarkers Prev* 2009;18(12):3241-62. doi: 10.1158/1055-9965.EPI-09-0948 [published Online First: 2009/12/05]
30. Heatherton TF, Kozlowski LT, Frecker RC, et al. The Fagerstrom Test for Nicotine Dependence: a revision of the Fagerstrom Tolerance Questionnaire. *Br J Addict* 1991;86(9):1119-27. doi: 10.1111/j.1360-0443.1991.tb01879.x [published Online First: 1991/09/01]
31. Cox LS, Tiffany ST, Christen AG. Evaluation of the brief questionnaire of smoking urges (QSU-brief) in laboratory and clinical settings. *Nicotine Tob Res* 2001;3(1):7-16. doi: 10.1080/14622200020032051
32. Hughes JR, Hatsukami D. Signs and symptoms of tobacco withdrawal. *Archives of general psychiatry* 1986;43(3):289-94.

33. Cappelleri JC, Bushmakin AG, Baker CL, et al. Confirmatory factor analyses and reliability of the modified cigarette evaluation questionnaire. *Addict Behav* 2007;32(5):912-23. doi: 10.1016/j.addbeh.2006.06.028 [published Online First: 2006/08/01]
34. Westman E, Levin E, Rose J. Smoking while wearing the nicotine patch-is smoking satisfying or harmful. *Clinical Research* 1992;40(4):A871-A71.
35. Leavens EL, Driskill LM, Molina N, et al. Comparison of a preferred versus non-preferred waterpipe tobacco flavour: subjective experience, smoking behaviour and toxicant exposure. *Tob Control* 2018;27(3):319-24. doi: 10.1136/tobaccocontrol-2016-053344 [published Online First: 2017/04/07]
36. Wagener TL, Leavens ELS, Mehta T, et al. Impact of flavors and humectants on waterpipe tobacco smoking topography, subjective effects, toxicant exposure and intentions for continued use. *Tob Control* 2020 doi: 10.1136/tobaccocontrol-2019-055509 [published Online First: 2020/05/15]
37. Jacobs EA, Bickel WK. Modeling drug consumption in the clinic using simulation procedures: demand for heroin and cigarettes in opioid-dependent outpatients. *Exp Clin Psychopharmacol* 1999;7(4):412-26.
38. MacKillop J, Murphy JG, Ray LA, et al. Further validation of a cigarette purchase task for assessing the relative reinforcing efficacy of nicotine in college smokers. *Exp Clin Psychopharmacol* 2008;16(1):57-65. doi: 10.1037/1064-1297.16.1.57
39. Higgins ST, Heil SH, Sigmon SC, et al. Addiction Potential of Cigarettes With Reduced Nicotine Content in Populations With Psychiatric Disorders and Other Vulnerabilities to Tobacco Addiction. *JAMA Psychiatry* 2017;74(10):1056-64. doi: 10.1001/jamapsychiatry.2017.2355 [published Online First: 2017/08/24]
40. Brinkman MC, Chuang JC, Gordon SM, et al. Exposure to and deposition of fine and ultrafine particles in smokers of menthol and nonmenthol cigarettes. *Inhal Toxicol* 2012;24(5):255-69. doi: 10.3109/08958378.2012.667218
41. Watson CV, Richter P, de Castro BR, et al. Smoking Behavior and Exposure: Results of a Menthol Cigarette Cross-over Study. *Am J Health Behav* 2017;41(3):309-19. doi: 10.5993/ajhb.41.3.10
42. Strasser AA, Ashare RL, Kaufman M, et al. The effect of menthol on cigarette smoking behaviors, biomarkers and subjective responses. *Cancer Epidemiol Biomarkers Prev* 2013;22(3):382-9. doi: 10.1158/1055-9965.EPI-12-1097 [published Online First: 2013/01/22]
43. Campaign for Tobacco-Free Kids. FDA Acts to Stop Misbranding of Roll-Your-Own Cigarette Tobacco as Pipe Tobacco 2013 [updated August 12. Available from: https://www.tobaccofreekids.org/press-releases/2013_08_12_fda_ryo accessed January 31 2021.

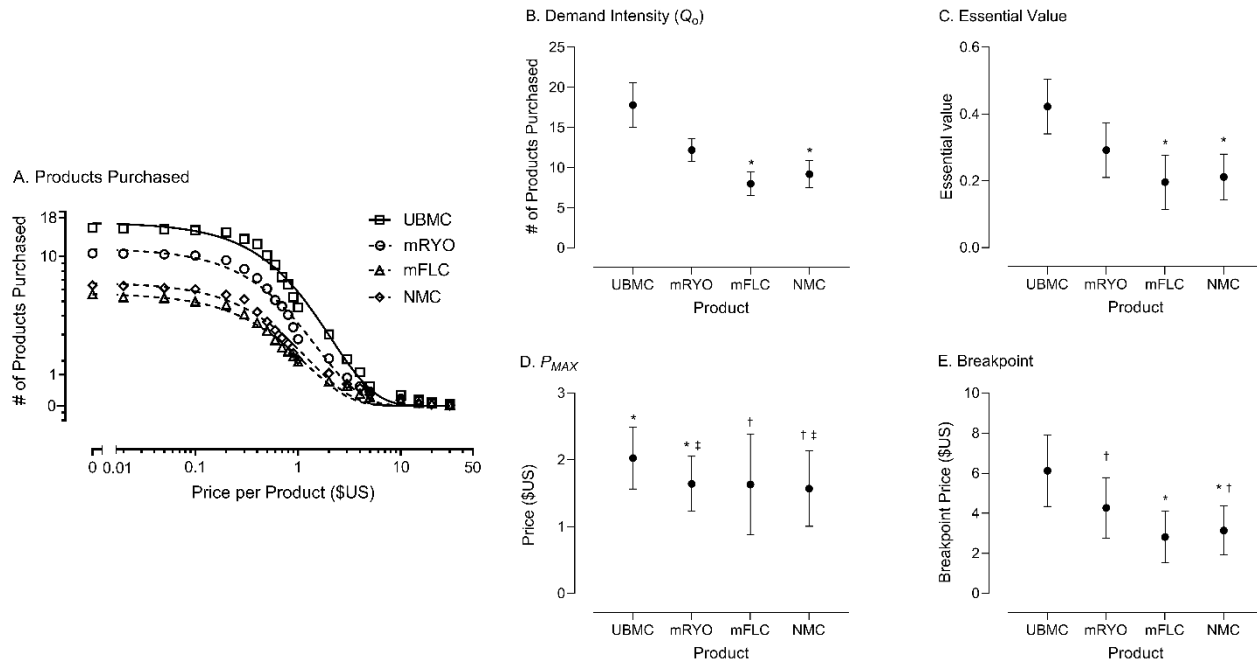
44. Ericksen AB. What Is the Difference Between RYO and Pipe Tobacco? : CStore Decisions; 2021 [updated April 19. Available from: <https://cstoredecisions.com/2021/04/19/what-is-the-difference-between-ryo-and-pipe-tobacco/> accessed January 31 2022.
45. U.S. Food and Drug Administration. Compliance Policy for Certain Labeling and Warning Statement Requirements for Cigars and Pipe Tobacco 2020 [updated October 6. Available from: <https://www.fda.gov/regulatory-information/search-fda-guidance-documents/compliance-policy-certain-labeling-and-warning-statement-requirements-cigars-and-pipe-tobacco> accessed January 31 2022.
46. Reilly SM, Goel R, Bitzer Z, et al. Little Cigars, Filtered Cigars, and their Carbonyl Delivery Relative to Cigarettes. *Nicotine Tob Res* 2018;20(suppl_1):S99-s106. doi: 10.1093/ntr/ntx274 [published Online First: 2018/08/21]
47. Delnevo CD, Hrywna M. "A whole 'nother smoke" or a cigarette in disguise: how RJ Reynolds reframed the image of little cigars. *Am J Public Health* 2007;97(8):1368-75. doi: 10.2105/AJPH.2006.101063
48. Denlinger-Apte RL, Cassidy RN, Carey KB, et al. The impact of menthol flavoring in combusted tobacco on alternative product purchasing: A pilot study using the Experimental Tobacco Marketplace. *Drug Alcohol Depend* 2021;218:108390. doi: 10.1016/j.drugalcdep.2020.108390 [published Online First: 2020/11/21]

Figure 1. Measures of cigarette craving (Tiffany-Drobes Questionnaire of Smoking Urges; QSU) and withdrawal (Minnesota Nicotine Withdrawal Scale; MNWS) for each product (n = 80)



(A) QSU – Desire; (B) QSU – Relief; (C) MNWS withdrawal symptoms; (D) MNWS Craving. Mean and 95% CI estimated immediately before (0) and after the smoking session (5 minutes), and at 15, 30, 60, and 90 minutes.

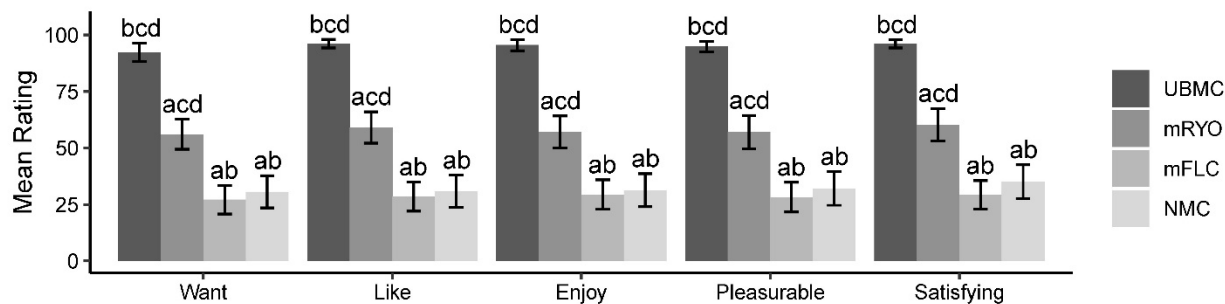
Figure 2. Behavioral economic measures of addiction potential by study product (n=76).



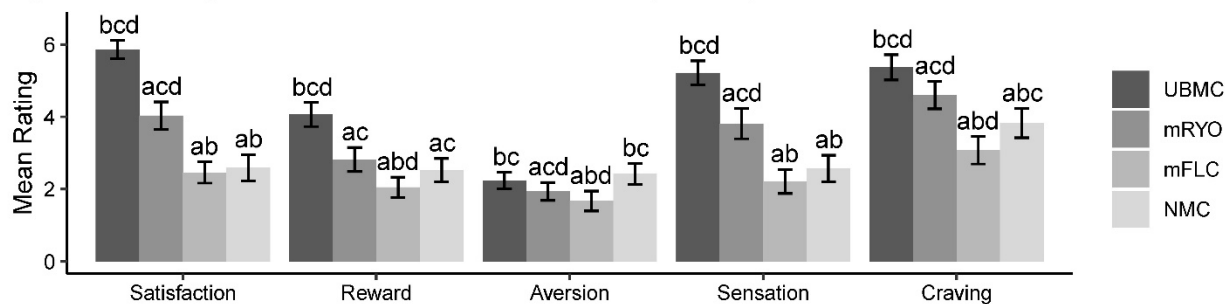
(A) Overall demand across all four products. Data points indicate estimated daily consumption (y-axis) across varying price points per cigarette ranging from \$0 (free) to \$30 (x-axis) for all participants. (B-E) Demand indices across all four products. Data points represent mean scores across participants with 95% CIs. Along the x-axis is product type and along the y-axis are the respective scores or price in \$US. For all indices, a higher score or price indicates greater abuse liability. Data points that do not share a symbol differ significantly ($p < .05$). Note: four participants were removed from analyses due to non-systematic data.

Figure 3. Subjective effects, modified Cigarette Evaluation Questionnaire, and behavioral intentions by study product (n = 80)

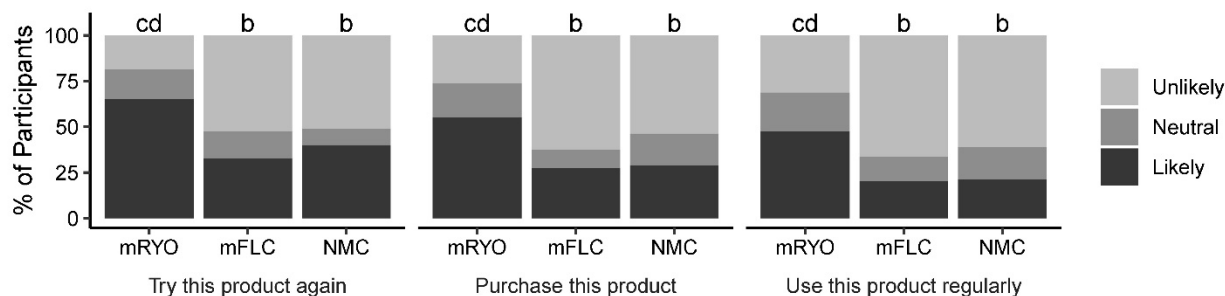
A) Subjective Effects



B) Modified Cigarette Evaluation Questionnaire (mCEQ)



C) Behavioral Intentions



P-values estimated from mixed effects models accounting for repeated measures; Superscripts denote differences in pairwise comparisons between study products at the $p < 0.05$. ^a Differs from UBMC; ^b Differs from mRYO; ^c Differs from mFLC; ^d Differs from NMC.