

Effectiveness of mRNA COVID-19 vaccine boosters against infection, hospitalization and death: a target trial emulation in the omicron (B.1.1.529) variant era.

George N. Ioannou BMBCh, MS^{1,2}

Amy SB Bohnert PhD^{7,14}

Ann M. O'Hare MD⁶

Edward J. Boyko MD MPH⁸

Matthew L. Maciejewski, PhD^{9,10,11,12}

Valerie A. Smith, DrPH^{9,10,12}

C. Barrett Bowling, MD, MSPH¹³

Elizabeth Viglianti, MD^{14,15}

Theodore J. Iwashyna, MD PhD^{14,15}

Denise M. Hynes, MPH, PhD, RN^{5,16}

Kristin Berry, PhD²

for the COVID-19 Observational Research Collaboratory (CORC)*

* CORC collaborators are:

Pamela Green, PhD²

Alexandra Fox, MSIS³

Anna Korpak, PhD³

Troy Shahoumian, PhD⁴

Alex Hickok, MS⁵

Mazhgan Rowneki, MPH, MBS⁵

Xiao Qing Wang, MPH^{14, 15}

Emily R. Locke, MPH²

¹Divisions of Gastroenterology, Veterans Affairs Puget Sound Healthcare System and University of Washington, Seattle, WA, USA

²Research and Development, Veterans Affairs Puget Sound Health Care System, Seattle, WA, USA

³Seattle Epidemiologic Research and Information Center, Veterans Affairs Puget Sound Health Care System, Seattle, WA, USA

⁴Department of Veterans Affairs, Population Health, Palo Alto Healthcare System, Palo Alto, CA, USA

⁵Center of Innovation to Improve Veteran Involvement in Care, VA Portland Healthcare System, Portland, OR

⁶Nephrology, Veterans Affairs Puget Sound Healthcare System and University of Washington, Seattle, WA, USA

⁷Department of Anesthesiology, University of Michigan Medical School, Ann Arbor, MI

⁸General Internal Medicine, Veterans Affairs Puget Sound Healthcare System and University of Washington, Seattle, WA, USA

⁹Center of Innovation to Accelerate Discovery and Practice Transformation (ADAPT), Durham Veterans Affairs Health Care System, Durham, North Carolina, USA.

¹⁰Department of Population Health Sciences, Duke University School of Medicine, Durham, NC USA

¹¹Duke-Margolis Center for Health Policy, Duke University School of Medicine, Durham, North Carolina, USA.

¹²Division of General Internal Medicine, Duke University School of Medicine, Durham, North Carolina, USA

¹³Durham Veterans Affairs Geriatric Research Education and Clinical Center, Durham Veterans Affairs Medical Center (VAMC), Durham, NC and Department of Medicine, Duke University, Durham, NC

¹⁴Center for Clinical Management Research, VA Ann Arbor Health System, Ann Arbor, MI, USA

¹⁵ Division of Pulmonary and Critical Care Medicine, Department of Internal Medicine, University of Michigan, Ann Arbor, MI, USA

¹⁶ Health Management and Policy, School of Social and Behavioral Health Sciences, College of Public Health and Human Sciences; Health Data and Informatics Program, Center for Quantitative Life Sciences, Oregon State University, Corvallis, OR

Disclaimer: The contents do not represent the views of the U.S. Department of Veterans Affairs or the US Government.

Word count abstract: 272

Word count manuscript: 3612

Number of Tables =4

Number of Figures =2

Please direct correspondence to:

George N. Ioannou, BMBCh, MS

Veterans Affairs Puget Sound Healthcare System

1660 S. Columbian Way

Seattle, WA, 98108

Phone: (206) 277-3136

Email: georgei@medicine.washington.edu

Twitter: @gnioannou

Abstract

Background: The effectiveness of a 3rd mRNA COVID-19 vaccine (“booster”) dose against the omicron (B.1.1.529) variant is uncertain especially in older, high-risk populations.

Objective: To determine mRNA booster vaccine effectiveness (VE) against SARS-CoV-2 infection, hospitalization and death in the omicron era by type of booster, type of primary vaccine, time since primary vaccine, age and comorbidity burden.

Design: Target trial emulation study comparing booster vaccination versus no booster.

Setting: U.S. Department of Veterans Affairs (VA) healthcare system

Participants and Intervention: Among persons who had received two mRNA COVID-19 vaccine doses at least 5 months earlier, we designed this retrospective matched cohort study to emulate a target trial of booster mRNA vaccination (BNT162b2 or mRNA-1273) versus no booster, conducted from 12/01/2021 to 03/31/2022.

Measurements: Booster VE.

Results: Each group included 490,838 well-matched persons, predominantly male (88%), mean age 63.0±14.0 years, followed for up to 121 days (mean 79.8 days). Booster VE >10 days after booster was 42.3% (95% CI 40.6-43.9) against SARS-CoV-2 infection, 53.3% (48.1-58.0) against SARS-CoV-2-related hospitalization and 79.1% (71.2-84.9) against SARS-CoV-2-related death. Booster VE was similar for different booster types (BNT162b2 or mRNA-1273), age groups or primary vaccination regimens, but was significantly higher with longer time since primary vaccination and with higher comorbidity burden.

Limitations: Predominantly male population.

Conclusions: Booster mRNA vaccination was highly effective in preventing death and moderately effective in preventing infection and hospitalization for up to 4 months after administration in the omicron era. Increased uptake of booster vaccination, which is currently suboptimal, should be pursued to limit the morbidity and mortality of SARS-CoV-2 infection, especially in persons with high comorbidity burden.

Primary Funding Source: Department of Veterans Affairs

Introduction

The Centers for Disease Control and Prevention (CDC) recommends that all persons 5 years and older receive a 3rd dose (“booster”) of an mRNA COVID-19 vaccine (Pfizer-BioNTech’s BNT162b2 or Moderna’s mRNA-1273) at least 5 months after receipt of the second mRNA vaccine dose¹. Despite these recommendations, uptake of booster vaccination in the United States remains low at ~35.8% as of 6/12/2022².

A booster BNT162b2 dose increases neutralizing antibody levels³. A phase 3 randomized controlled trial conducted in the delta (B.1.617.2) variant era reported fewer SARS-CoV-2 infections in persons randomized to a booster dose of BNT162b2 (6 out of 5081) than in persons randomized to placebo (123 out of 5044)⁴. Real-world studies conducted in the delta variant era estimated that booster vaccine effectiveness (VE) against infection, hospitalization and death was very high ranging from 86 to 95.3%⁵⁻¹⁰.

In December 2021, the omicron (B.1.1.529) variant became dominant worldwide, including in the United States¹¹. The omicron variant is thought to be more likely to evade immunity or cause breakthrough infection after vaccination than the delta variant¹². Indeed, emerging evidence suggests that booster VE against infection and hospitalization caused by the omicron variant is much lower^{9,13-15}. Booster VE against the omicron variant requires further investigation especially in older, racially/ethnically diverse populations with high prevalence of comorbid conditions, who have the highest risk of morbidity and mortality from COVID-19. Furthermore, studies are needed to determine whether booster VE varies by type of booster, type of primary vaccine, time since primary vaccine, age group and comorbidity burden in the omicron era.

The Veterans Affairs (VA) healthcare system, the largest national, integrated healthcare system in the United States, includes a large proportion of older adults with multimorbidity and has provided an adequate framework for multiple target trial emulation studies of the comparative effectiveness of COVID-19 vaccination¹⁶⁻¹⁸. We used target trial emulation principles¹⁹ to specify and emulate a trial comparing booster mRNA COVID-19 vaccination versus no booster during the omicron era with respect to risk of infection, hospitalization and death.

Methods

Specification and emulation of target trials: Overall study design

We designed this retrospective matched cohort study to emulate a target randomized controlled trial of booster (i.e. 3rd dose) mRNA COVID-19 vaccination (BNT162b2 or mRNA-1273) versus no booster among persons who had already received two mRNA COVID-19 vaccinations at least 5 months earlier in the national VA healthcare system in a period of omicron variant predominance. The enrollment and follow-up period was between 12/1/2021 and 03/31/2022. During this period all persons who had completed more than 5 months since their primary COVID-19 immunization were eligible for booster vaccination in the VA irrespective of age or risk factors. We used a matched cohort design to emulate the balance achieved through randomization, with eligible persons matched on the date of their booster dose to their comparator(s) who had not received a booster dose as of that date. Each matched set was followed from the date of booster vaccination (“time zero”). This design ensured that the same time zero served as the date at which eligibility was determined and treatment was initiated and anchored the follow-up for both study arms (**Supplementary Figure 1**), thus minimizing immortal time and selection biases²⁰. For each participant follow-up continued until the earliest of the following events: occurrence of an outcome event, death unrelated to COVID-19, booster vaccination of the comparator (with matched set censoring), or the end of the follow-up period (March 31, 2022). **Supplementary Table 1** compares the critical study design features of the specified and emulated target trials.

We used data from the VA’s Corporate Data Warehouse (CDW), a relational database of VA enrollees’ comprehensive electronic health records (EHR) and the VA COVID-19 Shared Data Resource (CSDR), which includes analytic variables provisioned by the VA Informatics and Computing Infrastructure (VINCI)²¹. We supplemented with additional claims data from the VA Community Care program (non-VA care paid by a VA facility) and from the Centers for Medicare and Medicaid Services (CMS) obtained through the VA Information Resource Center (VIREC)²².

Eligibility criteria and study population.

We identified all VA enrollees aged 18 years or older who were alive as of 12/01/2021 and had received exactly two doses of mRNA vaccination documented in the VA system with the second dose administered at least 5 months earlier (n=2,097,357) – see **Figure 1**. We excluded persons who: had evidence of SARS-CoV-2 infection prior to 12/01/2021, using a combination of VA and CMS data; had incongruent first and second doses of primary vaccination; had missing residential address zip code; did not have an inpatient or outpatient or primary care encounter in the VA healthcare system in the preceding 24 months; or were not assigned to a unique VA Integrated Service Network (VISN), the 19 administrative regions of VA²³. Among the remaining 1,687,421 persons, 505,585 received a booster mRNA vaccine dose between 12/01/2021 and 03/31/2022 documented in the VA healthcare system and could potentially be included in the booster arm of the emulated trial if they could be matched to appropriate unboosted comparators. We captured booster doses administered by VA pharmacy, through VA-funded community care, outside the VA and documented in VA records or documented in CMS data.

Cohort matching

We matched eligible persons who did or did not receive a booster anchored around the same calendar date of booster vaccination^{17,24}. In each 1-week period of the study, we identified among the eligible study participants those who were alive, uninfected and had not yet received booster vaccination as of the first day of the week. Among them, we identified all potential participants in the treatment arm, defined as those who received a booster mRNA vaccine during the given week and all potential comparators, who had not received a booster vaccine at the start of the week. We used the baseline characteristics of all persons to identify the best-matched comparator(s) for each person who received a booster dose using exact matching based on VISN, age (6-year buckets), Charlson Comorbidity Index²⁵ (CCI) (3-point buckets), primary COVID-19 vaccination type (BNT162b2 or mRNA-1273) and date of completion of primary vaccination (6-week buckets). The exact matching factors were selected because they were known to be strongly associated with the probability of receiving a booster (the exposure) as well as with the risk of development of SARS-CoV-2 infection, hospitalization or death (the outcomes) in VA patients²⁶⁻³⁰.

To further reduce confounding as numerous covariates not used in the match remained imbalanced after exact matching, we then executed propensity score matching (calipers within 0.2 standard deviations from the mean) with replacement to identify the best match for each booster dose recipient in a 1:K variable ratio, where K varied based on the number of propensity score ties. We used the following covariates in the propensity score logistic regression model selected *a priori* based on being associated with both the exposure and the outcome: age, sex, self-reported race and ethnicity, urban/rural residence (based on zip codes, using data from the VA Office of Rural Health³¹, which uses the Secondary Rural-Urban Commuting Area [RUCA] for defining rurality), CCI, body mass index (BMI, calculated using measured weight and height), diabetes, congestive heart failure (CHF), chronic obstructive pulmonary disease (COPD), chronic kidney disease (CKD), receipt of immunosuppressant medications in the 2 years prior (see **Supplementary Table 2**) and the Care Assessment Need (CAN) score. The CAN score is a validated measure of 1-year mortality in VA enrollees calculated using socio-demographics, clinical diagnoses, vital signs, medications, laboratory values, and health care utilization data from VA's national EHR^{26,32}. Diabetes, CHF, COPD and CKD were defined by international classification of disease, tenth revision (ICD-10) codes documented in VA EHR in the 2-year period prior to the study (see **Supplementary Table 3** for these ICD10 codes)³³. The two-step matching process was repeated 16 times for each 1-week period between 12/01/21 and 03/31/22, with a separate propensity score model developed for each week to account for dynamic changes in booster uptake and infection incidence that were occurring during the study period. Persons who received booster vaccination were eligible for inclusion in the treatment arm, even if they had previously been selected as a matched comparator. Persons who did not receive a booster dose could serve as matched comparators to more than one person in the treatment arm. The matching strategy was implemented using STATA's `kmatch` command³⁴ (StataCorp, College Station, TX, USA).

Primary endpoints

The trial had three primary endpoints: SARS-CoV-2 infection, SARS-CoV-2-related hospitalization and SARS CoV-2-related death.

SARS-CoV-2 infection was defined as a positive test for SARS-CoV-2 nucleic acid amplification test or antigen in a respiratory specimen within the VA system as well as such tests performed outside the VA but documented in VA records. Such positive tests are identified by the VA National Surveillance Tool and have been used by our group and others to support target trial emulation studies¹⁶⁻¹⁸. The earliest date of a documented positive test was taken as each participant's date of infection.

SARS-CoV-2-related hospitalization was defined as hospitalization documented in the VA healthcare system or in CMS on or within 30 days after a positive test and SARS-CoV-2-related death as death from any cause within 30 days of a positive test; these definitions have been used in multiple prior VA studies^{16-18,26,27,29,30}. Deaths occurring both within and outside the VA are comprehensively captured in the VA Corporate Data Warehouse (CDW) from a variety of VA and non-VA sources including VA inpatient files, VA Beneficiary Identification and Records Locator System (BIRLS), Social Security Administration (SSA) death files, and the Department of Defense³⁵. To ensure that deaths and hospitalizations that occurred on or before 03/31/22 were adequately captured we last accessed relevant data sources on 05/21/22.

Statistical analysis: estimates of booster vaccine effectiveness

Baseline characteristics between the booster and no booster groups were compared using standardized differences. Unadjusted differences in incident outcome rates were estimated via Kaplan-Meier estimator for a period of 121 days, the study's maximum follow-up.

We used Cox proportional hazards regression to compare booster vaccine recipients and their matched comparators with respect to the risk of developing the three study outcomes, with follow-up extending to 03/31/2022. Follow-up began from time zero in both groups and was limited to matched sets in which all individuals were still at risk 10 days after time zero since there is no expectation of protective effect within the first 10 days after vaccination. We calculated the incidence of each outcome and the hazard ratio adjusted for type of primary COVID-19 mRNA vaccine, time since 2nd COVID-19 mRNA vaccine, sex, age, race, ethnicity, urban/rural residence, BMI, CCI, diabetes, CKD, CHF, COPD, CAN score, and immunosuppressant medications and stratified by VA VISN, to account for any residual confounding that

might have been present after matching. Booster vaccine effectiveness (VE) was estimated as (1-adjusted hazard ratio) and served as the study's primary outcome. Booster VE was estimated for the entire population and also for subgroups determined *a priori* based on type of booster (BNT162b2 or mRNA-1273), type of primary vaccination (BNT162b2 or mRNA-1273), time since primary vaccination (5-9 or >9 months), age groups, CCI categories. A χ^2 -test of no difference between the predicted adjusted hazard ratios in models with and without an interaction term was used to evaluate differences in VE between subgroups.

Missing values in sex, BMI, CAN score, race and ethnicity were uncommon and were imputed using deterministic imputation.

We compared as a negative outcome control³⁶ the incidence of SARS-CoV-2 infection within ten days after time zero in the two groups, which should not be affected by vaccination, to verify there was no uncontrolled residual confounding after matching or any ascertainment bias.

All analyses were weighted to account for variable-ratio matching and matching with replacement. A robust sandwich-type variance estimator was used to account for clustering within matched group (because of ties in the propensity score), clustering within subjects (because of matching with replacement), and clustering in the cross-classification of the matched and within subject clusters³⁷. We verified that the proportional hazards assumption was met using log-log plots and Schoenfeld residuals.

Role of the funding source

The funding source did not have any involvement in study design, data collection, data analysis, data interpretation or in writing of the article.

Results

Baseline characteristics of emulated trial participants

Baseline characteristics were well balanced between the booster arm (n=490,838) and their matched comparators (n=490,838 representing 404,196 unique persons) (**Table 1**). Matching with replacement allowed the matching of >97% of persons who received a booster dose. Baseline characteristics of all eligible boosted and unboosted individuals before matching are shown in **Supplementary Table 4** and **Supplementary Figure 2**.

Both matched groups were predominantly male (87.4% vs. 87.7%), had advanced mean age (63.0 ±14 yrs in both groups), diverse racial/ethnic distribution (e.g. Black 21.8% vs. 22.2%, Hispanic 8.6% vs. 8.2%) and a substantial comorbidity burden (mean CCI 1.3±1.7 in both groups). Major comorbid conditions such as diabetes, CHF, COPD and CKD and exposure to immunosuppressant medications were common and nearly equally distributed in the two groups. The mean number of days (273±36) since completion of primary vaccination was almost identical in the two groups with ~48% in each group having received the second dose of the vaccine >9 months prior to time zero.

Booster vaccine effectiveness against infection

486,616 out of 490,838 (99.1%) matched sets remained under follow-up and at risk at day 10 after time zero and were included in VE estimations (**Tables 2-4**). During a mean follow-up of 79.8 days identical in the two groups, (maximum 121 days), 17,384 SARS-CoV-2 infections were documented >10 days after time zero, including 6,438 in the booster cohort and 10,946 in the matched no booster cohort (**Table 2**). 85% (14,823/17,384) of these infections occurred after 01/01/22, when omicron accounted for almost 100% of infections¹¹ in the USA and an additional 14% (2467/17,384) from 12/16-12/31/22 when omicron accounted for the majority of infections, while only 0.5% (94/17,384) occurred before 12/16/22.

Cumulative incidence of infection at 121 days was significantly lower in the booster (16.0 per 1000 persons) than in the no booster (27.0 per 1000) cohort (risk difference -11 per 1000, 95% CI -11.6 to -10.3) (**Figure 2 and Table 2**). Booster VE against infection was 42.3% (95% CI 40.6-43.9) overall, 39.0% (36.4-41.6) for BNT162b2 and 44.6% (42.5-46.6) for mRNA-1273 booster (interaction p-value 0.12) – see **Supplementary Figure 3** for cumulative incidence curves by booster type. Booster VE was higher in those with >9 months since primary vaccination (46.5% [44.1-48.5]) than in persons with 5-9 months since primary vaccination (36.4% [33.3-39.4]) (interaction p-value<0.01). Booster VE appeared to be higher in persons with more comorbidities (interaction p-value<0.01) but lower in older age groups(interaction p-value<0.01) (**Table 2**).

Booster vaccine effectiveness against SARS-CoV-2-related hospitalization

A total of 1575 SARS-CoV-2-related hospitalizations were documented during follow-up, including 515 in the booster cohort and 1060 in the matched no booster cohort (**Table 3**). Cumulative incidence of SARS-CoV-2-related hospitalization at 121 days was significantly lower in the booster (1.3 per 1000 persons) than in the no booster (2.7 per 1000) group (risk difference -1.4 per 1000, 95% CI -1.6 to -1.2) (**Figure 2 and Table 3**).

Booster VE against hospitalization was 53.3% (48.1-58.0) overall, 54.0% (46.1-60.8) for BNT162b2 and 52.9% (45.6-59.2) for mRNA-1273 booster (p-value for interaction by booster type 0.59) – see **Supplementary Figure 3** for cumulative incidence curves by booster type. Booster VE was higher among persons with >9 months since primary vaccination (interaction p-value<0.01) and in persons with more comorbidities (interaction p-value<0.01) with no appreciable differences across age groups or primary vaccination types.

Booster vaccine effectiveness against SARS-CoV-2-related death

A total of 262 SARS-CoV-2-related deaths were documented during follow-up, including 47 in the booster cohort and 215 in the matched no booster cohort (**Table 4**). Cumulative incidence of SARS-CoV-2-related death at 121 days was significantly lower in the booster (0.1 per 1000 persons) than in the no booster (0.6 per 1000) group (risk difference -0.5 per 1000, 95% CI -0.6 to -0.4) (**Figure 2 and Table 4**). Booster VE against death was 79.1% (71.2-84.9) overall, 85.5% (73.9-92.0) for BNT162b2 and 75.2% (62.9-83.4) for mRNA-1273 booster (p-value for interaction by booster type 0.48) –

see **Supplementary Figure 3** for cumulative incidence curves by booster type. Booster VE was not significantly different across age and CCI groups and according to time since primary vaccination or primary vaccination type.

Negative outcome control

Cumulative incidence of SARS-CoV-2 infection during the first 10 days after time zero was nearly identical in the booster and matched no booster cohorts (**Figure 1d** and **Table 2**), suggesting adequate matching and lack of substantial unmeasured confounding.

Discussion

Our target trial emulation study performed in the national VA healthcare system demonstrated that mRNA booster vaccination administered at least 5 months after primary vaccination had an estimated VE of 42.3% (40.6-43.9) against infection, 53.3% (48.1-58.0) against hospitalization and 79.1% (71.2-84.9) against death during follow-up extending up to 121 days in an omicron variant predominant era. Booster VE was similar for different booster types (BNT162b2 or mRNA-1273), age groups and primary vaccination regimens, and increased with longer time since primary vaccination and with greater comorbidity burden. These findings provide strong support for current CDC recommendations that all persons should receive a booster vaccination >5 months after completion of primary immunization.

Booster VE against SARS-CoV-2 infection with the delta variant was found to be very high in a phase 3 randomized controlled trial⁴ and observational cohort studies from Israel^{5,6}, ranging from 86% to 95.3%. However, a population-based matched cohort study from Qatar reported that mRNA booster VE in the omicron era was much lower at 49.4% (47.1-51.6) against symptomatic infection and 76.5% (55.9-87.5) against hospitalization or death¹³, with follow-up extending up to 35 days. Unlike the population we studied, only 9% of the population of Qatar are over age 50, few were reported to have serious coexisting conditions and no individual-level comorbid conditions were available for matching, adjustment or subgroup analysis. A target trial emulation using matched cohorts derived from nationwide population registries in Spain estimated that mRNA booster VE against infection in the omicron era was 51.3% (50.2-52.4) with follow-up extending only up to 34 days¹⁴ – comorbid conditions were unavailable for matching, adjustment or sub-group analyses. A test-negative, case-control study from England reported that booster VE against infection was 67.2% (66.5-67.8) at 2-4 weeks after receipt of a BNT162b2 booster before declining to 45.7% (44.7-46.7) at 10 or more weeks¹⁵. We found even lower booster VE in the omicron era against infection (42.3% [40.6-43.9]) and hospitalization (53.3% [48.1-58.0]), which may be related to the greater comorbidity burden of our study population and the longer follow-up extending up to 121 days. Taken together these studies suggest that booster VE against infection and hospitalization is lower in the omicron era than it was in the delta era and likely declines over time.

Our study demonstrated a much higher booster VE against SARS-CoV-2-related death (79.1% [71.2-84.9]), which was not assessed in prior studies in the omicron era. An Israeli population-based study conducted in the delta era reported that BNT162b2 booster recipients had 90% lower mortality due to Covid-19 than participants who did not receive a booster⁷, which is higher than what we found in the omicron era.

Some studies reported that mRNA-1273 booster VE against infection was slightly higher than BNT162b2 booster VE¹⁴ but others did not¹³. We found that booster VE against infection, hospitalization and death was not significantly different between mRNA-1273 and BNT162b2. Future target trials specifically designed to compare mRNA-1273 versus BNT162b2 boosters are needed to address this question directly.

As in prior studies^{13,14}, we found that booster VE against infection and hospitalization was significantly higher as more time accrued since primary vaccination (>9 vs. 5-9 months). This is most likely related to the waning protection of primary vaccination over time in the comparator, no-booster group. Booster VE was also substantially higher in groups with greater comorbidity burden. Since these groups also have the highest absolute risk of adverse COVID-19 outcomes, this resulted in much greater risk differences in infection, hospitalization and death between the booster and no booster groups in persons with high comorbidity burden. These results reinforce the need to ensure booster vaccination especially in persons with high comorbidity burden.

Receipt of booster dose vaccination has been documented in only 35.8% of the United States population as of 06/12/2022, a far lower proportion than countries such as Uruguay (76.1.3%), Iceland (67.9%), Italy (67.5%), Germany (58.7%), the United Kingdom (58.3%) and Israel (57.2%)². Our data suggest that achieving higher rates of booster vaccination represents an important opportunity to reduce SARS-CoV-2 related morbidity and mortality. At the same time the lower booster VE against omicron than was previously observed against delta variants suggests that

development of new generation of broadly effective vaccines, including potentially “universal coronavirus vaccines”, may be a better strategy than repeated booster vaccination with existing vaccines³⁸.

Our study has the following limitations. Despite adherence to principles of target trial emulation, a matching method that resulted in balanced distribution of baseline characteristics in the two arms and adjustment for potential confounders, residual confounding cannot be completely excluded in a non-randomized study. However, our analysis of a negative outcome control (infection rate in the first 10 days after time zero) suggested little confounding. While some additional infections (diagnosed or undiagnosed) and hospitalizations undoubtedly occurred and were not captured in our analysis, we would expect this outcome misclassification to be nondifferential. Non-differential misclassification would have minimal impact on relative measures of effect (i.e. VE), although absolute risks and risk differences may have been slightly underestimated. If any booster doses were missed (i.e. not administered within VA or VA community care or documented in VA records or Medicare data) among matched comparators, such misclassification would tend to attenuate the reported VE. Our study population is predominantly male, which may limit the generalizability of our findings to women.

In conclusion, in a target trial emulation study of older Veterans with high burden of comorbidity conducted in the omicron era, mRNA booster VE against SARS-CoV-2 infection (42.3%) and SARS-CoV-2-related hospitalization (53.3%) were slightly lower than previously reported but VE against SARS-CoV-2-related death was high (79.1%). Improved booster vaccination should be pursued to reduce COVID-19 morbidity and mortality especially in persons with multiple comorbid conditions.

Authors' Contributions and Authorship Statement

Drs. Kristin Berry and George Ioannou had full access to all the data in the study and take responsibility for the integrity of the data and the accuracy of the data analysis.

Dr. George Ioannou is the guarantor of this paper. All authors approved the final version of the manuscript.

Ioannou, G: Study concept and design, interpretation of results, drafting of manuscript, critical revision of manuscript, obtaining funding.

Bohnert: Study design, Interpretation of results, critical revision of manuscript, obtaining funding

O'Hare: critical revision of manuscript, obtaining funding.

Boyko: Study design, critical revision of manuscript, obtaining funding.

Maciejewski: Study design, critical revision of manuscript, obtaining funding.

Smith: Study design, critical revision of manuscript, obtaining funding.

Bowling: critical revision of manuscript, obtaining funding.

Viglianti: critical revision of manuscript, obtaining funding.

Iwashyna: critical revision of manuscript, obtaining funding.

Hynes: critical revision of manuscript, obtaining funding.

Berry: Study concept and design, statistical analysis, interpretation of results, drafting of manuscript, critical revision of manuscript.

Green: Obtaining access to data, creation of analytic variables and datasets

Fox: Obtaining access to data, creation of analytic variables and datasets

Korpak: Obtaining access to data, creation of analytic variables and datasets

Shahoumian: Obtaining access to data, creation of analytic variables and datasets

Hickock: Obtaining access to data, creation of analytic variables and datasets

Rowneki: Obtaining access to data, creation of analytic variables and datasets

Wang: Obtaining access to data, creation of analytic variables and datasets

Locke: Obtaining access to data, creation of analytic variables and datasets

Funding:

The study was supported by the Department of Veterans Affairs, Office of Research and Development HSR&D grants C19 21-278 to GNI, ASB, EJB and MLM; C19 21-279 to AMO, CBB, TI, DMH and EV; RCS 10-391 to MLM; RCS 21-136 to DMH; and COVID19-8900-11 to GNI.

Support for VA/CMS data is provided by the Department of Veterans Affairs, VA Health Services Research and Development Service, VA Information Resource Center (Project Numbers SDR 02-237 and 98-004)

The funding sources had no role in the design and conduct of the study; collection, management, analysis, and interpretation of the data; preparation, review, or approval of the manuscript; and decision to submit the manuscript for publication.

Declaration of Personal Interests:

None of the authors has any conflicts of interest to disclose.

References

1. Centers for disease control and prevention. Stay up to date with your COVID-19 vaccines. Available at: https://www.cdc.gov/coronavirus/2019-ncov/vaccines/stay-up-to-date.html?s_cid=11747:cdc%20up%20to%20date%20vaccine:sem.ga:p:RG:GM:gen:PTN:FY22 Last accessed April 2, 2022.
2. Our world in data. COVID-19 vaccine boosters administered per 100 people. Available at: https://ourworldindata.org/grapher/covid-vaccine-booster-doses-per-capita?country=BGD~BRA~CHL~IND~ITA~PAK~RUS~SGP~USA~OWID_WRL Last accessed on June 12, 2022.
3. Falsey AR, Frenck RW, Jr., Walsh EE, et al. SARS-CoV-2 Neutralization with BNT162b2 Vaccine Dose 3. *N Engl J Med* 2021;385:1627-9.
4. Moreira ED, Jr., Kitchin N, Xu X, et al. Safety and Efficacy of a Third Dose of BNT162b2 Covid-19 Vaccine. *N Engl J Med* 2022.
5. Barda N, Dagan N, Cohen C, et al. Effectiveness of a third dose of the BNT162b2 mRNA COVID-19 vaccine for preventing severe outcomes in Israel: an observational study. *Lancet* 2021;398:2093-100.
6. Bar-On YM, Goldberg Y, Mandel M, et al. Protection of BNT162b2 Vaccine Booster against Covid-19 in Israel. *N Engl J Med* 2021;385:1393-400.
7. Arbel R, Hammerman A, Sergienko R, et al. BNT162b2 Vaccine Booster and Mortality Due to Covid-19. *N Engl J Med* 2021;385:2413-20.
8. Andrews N, Stowe J, Kirsebom F, et al. Effectiveness of COVID-19 booster vaccines against COVID-19-related symptoms, hospitalization and death in England. *Nat Med* 2022;28:831-7.
9. Thompson MG, Natarajan K, Irving SA, et al. Effectiveness of a Third Dose of mRNA Vaccines Against COVID-19-Associated Emergency Department and Urgent Care Encounters and Hospitalizations Among Adults During Periods of Delta and Omicron Variant Predominance - VISION Network, 10 States, August 2021-January 2022. *MMWR Morb Mortal Wkly Rep* 2022;71:139-45.
10. Accorsi EK, Britton A, Fleming-Dutra KE, et al. Association Between 3 Doses of mRNA COVID-19 Vaccine and Symptomatic Infection Caused by the SARS-CoV-2 Omicron and Delta Variants. *JAMA* 2022;327:639-51.
11. Centers for Disease Control and Prevention (CDC). COVID Data Tracker. Variant Proportions. Available at: <https://covid.cdc.gov/covid-data-tracker/#variant-proportions> Last accessed on 06/10/2022.
12. Planas D, Saunders N, Maes P, et al. Considerable escape of SARS-CoV-2 Omicron to antibody neutralization. *Nature* 2022;602:671-5.
13. Abu-Raddad LJ, Chemaitelly H, Ayoub HH, et al. Effect of mRNA Vaccine Boosters against SARS-CoV-2 Omicron Infection in Qatar. *N Engl J Med* 2022;386:1804-16.
14. Monge S, Rojas-Benedicto A, Olmedo C, et al. Effectiveness of mRNA vaccine boosters against infection with the SARS-CoV-2 omicron (B.1.1.529) variant in Spain: a nationwide cohort study. *Lancet Infect Dis* 2022.
15. Andrews N, Stowe J, Kirsebom F, et al. Covid-19 Vaccine Effectiveness against the Omicron (B.1.1.529) Variant. *N Engl J Med* 2022.
16. Dickerman BA, Gerlovin H, Madenci AL, et al. Comparative Effectiveness of BNT162b2 and mRNA-1273 Vaccines in U.S. Veterans. *N Engl J Med* 2022;386:105-15.
17. Ioannou GN, Locke ER, O'Hare AM, et al. COVID-19 Vaccination Effectiveness Against Infection or Death in a National U.S. Health Care System : A Target Trial Emulation Study. *Ann Intern Med* 2022;175:352-61.
18. Ioannou GN, Locke ER, Green PK, Berry K. Comparison of Moderna versus Pfizer-BioNTech COVID-19 vaccine outcomes: A target trial emulation study in the U.S. Veterans Affairs healthcare system. *EClinicalMedicine* 2022;45:101326.
19. Hernan MA, Robins JM. Using Big Data to Emulate a Target Trial When a Randomized Trial Is Not Available. *Am J Epidemiol* 2016;183:758-64.
20. Hernan MA, Sauer BC, Hernandez-Diaz S, Platt R, Shrier I. Specifying a target trial prevents immortal time bias and other self-inflicted injuries in observational analyses. *Journal of clinical epidemiology* 2016;79:70-5.

21. Veterans Affairs Corporate Data Warehouse. Available at: http://www.hsrd.research.va.gov/for_researchers/vinci/cdw.cfm Last accessed on 03/22/21.
22. VA Information Resource Center (VIREC) Medicare Data. Available at: <https://vaww.virec.research.va.gov/VACMS/Medicare/Data.htm> Last accessed 05/30/2021.
23. List of Veterans Affairs medical facilities. https://en.wikipedia.org/wiki/List_of_Veterans_Affairs_medical_facilities Last accessed: May 7, 2021.
24. Li LP, Propert KJ, Rosenbaum PR. Balanced risk set matching. *J Am Stat Assoc* 2001;96:870-82.
25. Deyo RA, Cherkin DC, Ciol MA. Adapting a clinical comorbidity index for use with ICD-9-CM administrative databases. *Journal of clinical epidemiology* 1992;45:613-9.
26. Ioannou GN, Green P, Fan VS, et al. Development of COVIDVax Model to Estimate the Risk of SARS-CoV-2-Related Death Among 7.6 Million US Veterans for Use in Vaccination Prioritization. *JAMA Netw Open* 2021;4:e214347.
27. Ioannou GN, Locke E, Green P, et al. Risk Factors for Hospitalization, Mechanical Ventilation, or Death Among 10131 US Veterans With SARS-CoV-2 Infection. *JAMA Netw Open* 2020;3:e2022310.
28. Fan VS, Dominitz JA, Eastment MC, et al. Risk Factors for testing positive for SARS-CoV-2 in a national US healthcare system. *Clin Infect Dis* 2020.
29. King JT, Jr., Yoon JS, Rentsch CT, et al. Development and validation of a 30-day mortality index based on pre-existing medical administrative data from 13,323 COVID-19 patients: The Veterans Health Administration COVID-19 (VACO) Index. *PLoS One* 2020;15:e0241825.
30. Ioannou GN, O'Hare AM, Berry K, et al. Trends over time in the risk of adverse outcomes among patients with SARS-CoV-2 infection. *Clin Infect Dis* 2021.
31. Veterans Health Administration, Office of Rural Health. Available at: <https://vaww.vashare.vha.va.gov/sites/ruralhealth/GSOD/default.aspx> Last accessed 03/28/2021.
32. Osborne TF, Veigulis ZP, Arreola DM, Roosli E, Curtin CM. Automated EHR score to predict COVID-19 outcomes at US Department of Veterans Affairs. *PLoS One* 2020;15:e0236554.
33. Veterans Affairs Centralized Interactive Phenomics Resource (CIPHER) Program. Available at https://vhacdwdwhweb100.vha.med.va.gov/phenotype/index.php/CIPHER_Program Last accessed on 3/30/2022.
34. Jann B. KMATCH: Stata module module for multivariate-distance and propensity-score matching, including entropy balancing, inverse probability weighting, (coarsened) exact matching, and regression adjustment. Statistical Software Components S458346, Boston College Department of Economics, revised 19 Sep 2020.
35. Sohn MW, Arnold N, Maynard C, Hynes DM. Accuracy and completeness of mortality data in the Department of Veterans Affairs. *Popul Health Metr* 2006;4:2.
36. Lipsitch M, Tchetgen Tchetgen E, Cohen T. Negative controls: a tool for detecting confounding and bias in observational studies. *Epidemiology* 2010;21:383-8.
37. Austin PC, Cafri G. Variance estimation when using propensity-score matching with replacement with survival or time-to-event outcomes. *Stat Med* 2020;39:1623-40.
38. Morens DM, Taubenberger JK, Fauci AS. Universal Coronavirus Vaccines - An Urgent Need. *N Engl J Med* 2022;386:297-9.

Figure 1. Eligibility criteria and matching process resulting in the selection of study populations for the emulation of a target trial comparing the effectiveness of booster mRNA COVID-19 vaccination versus no booster in the national Veterans Affairs healthcare system from December 1, 2021 to March 31, 2022

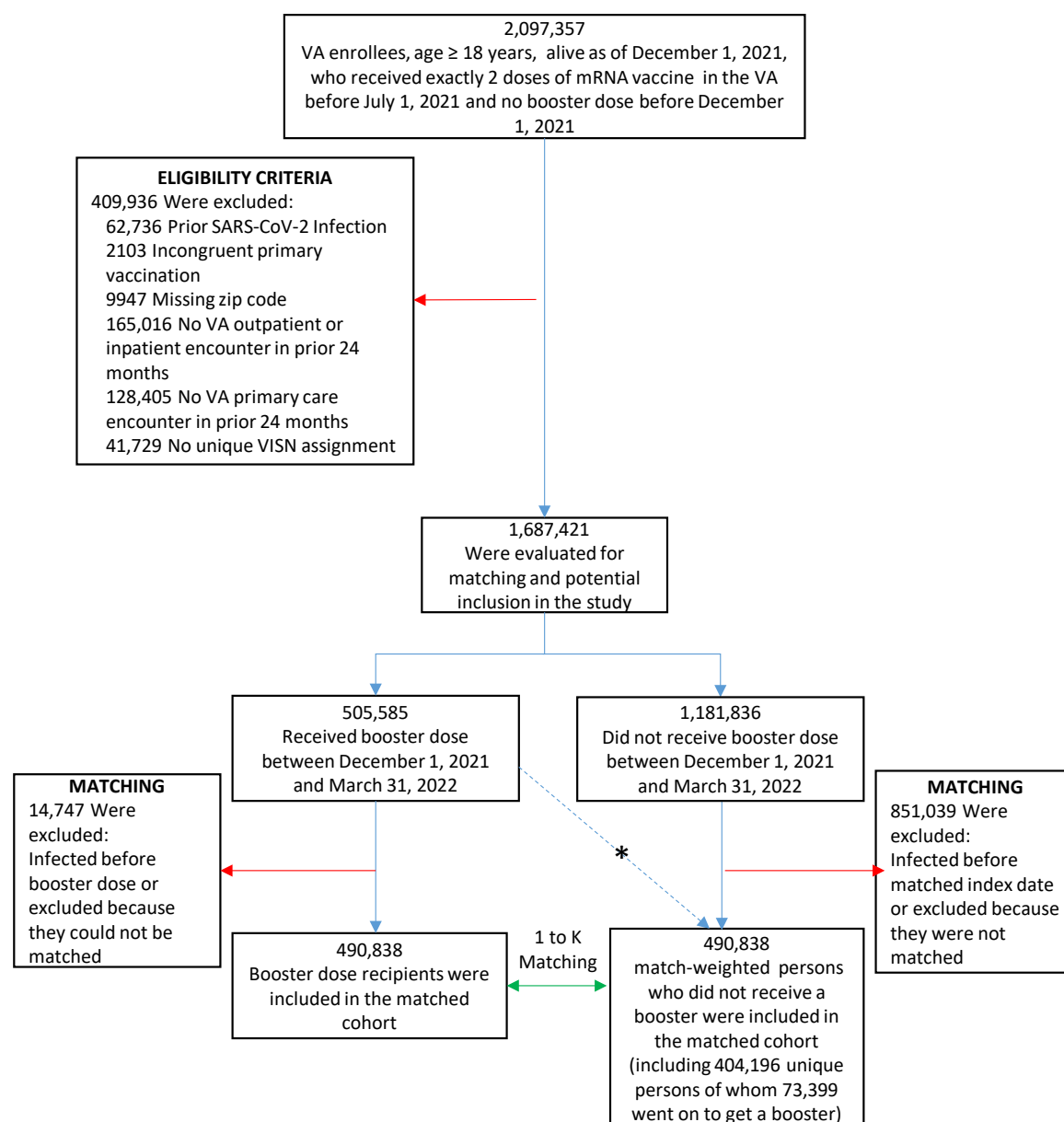


Figure 2. Kaplan-Meier curves comparing persons who received a booster mRNA COVID-19 vaccine versus their matched counterparts who did not with respect to the cumulative incidence (%) and 95% confidence intervals of SARS-CoV-2 infection (a), SARS-CoV-2-related hospitalization (b), SARS-CoV-2-related death (c) and SARS-CoV-2 infection during the first 10 days after time zero (d) (negative outcome control).

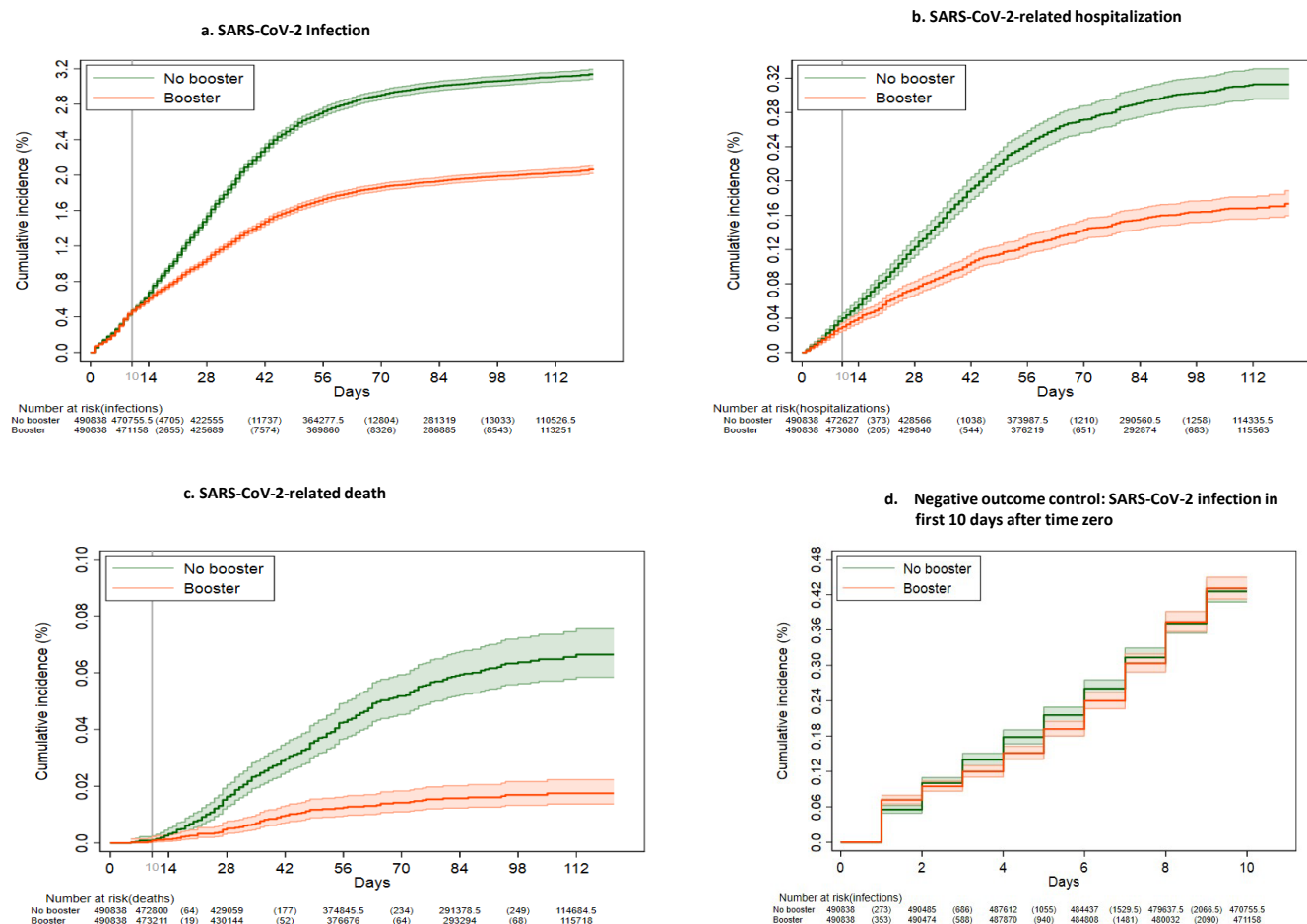


Table 1. Baseline sociodemographic and clinical characteristics of persons who received a booster dose of mRNA COVID-19 vaccination in the VA healthcare system and their matched counterparts who did not receive a booster dose from December 1, 2021 to March 31, 2022.

	Booster mRNA vaccination N=490,838	No booster vaccination N=490,838	Standardized Mean Difference
Type of booster vaccine			
BNT162b2	37.6	N/A	N/A
mRNA-1273	62.4	N/A	N/A
Time since 2nd dose COVID-19 mRNA vaccine (days), mean \pmSD	273.5 \pm 36.1	273.6 \pm 37.0	-0.0027
Time since 2nd dose COVID-19 mRNA vaccine (%)			
5-9 months (154-270 days)	51.5	51.8	-0.0060
>9 months (> 270 days)	48.5	48.2	0.0060
Type of primary COVID-19 mRNA vaccine			
BNT162b2	38.2	38.2	0.0000
mRNA-1273	61.8	61.8	0.0000
Sex (%)			
Female	10.2	9.9	0.0100
Male	87.4	87.7	-0.0091
Declined/Unknown/Missing	2.3	2.3	0.0000
Age (years), mean \pmSD	63.0 \pm 14.0	63.0 \pm 14.0	0.0000
Age Group (%)			
18 to 49	16.9	16.9	0.0000
50 to 59	19	19	0.0000
60 to 64	14.1	13.8	0.0087
65 to 69	12.2	12.1	0.0031
70 to 74	19.1	19.7	-0.0152
75 to 79	9.7	9.6	0.0034
80 to 84	4.3	4.4	-0.0049
85 to 89	3.1	3.1	0.0000
\geq 90	1.5	1.5	0.0000
Race (%)			
White	66.3	67	-0.0148
Black	23	22.4	0.0143
Asian	1.7	1.7	0.0000
American Indian/Alaska Native	1	1	0.0000
Pacific Islander/ Native Hawaiian	1.1	1.1	0.0000
Declined/Unknown/Missing	6.9	6.8	0.0040

Ethnicity (%)			
Non-Hispanic	86.9	87.3	-0.0119
Hispanic	8.6	8.2	0.0144
Declined/Unknown/Missing	4.5	4.5	0.0000
Urban/Rural (%)			
Rural/Highly rural	47.7	48.1	-0.0080
Urban	52.3	51.9	0.0080
VA Integrated Service Network (VISN) (%)			
1	4.6	4.6	0.0000
2	5.3	5.3	0.0000
4	5	5	0.0000
5	2.8	2.8	0.0000
6	6.5	6.5	0.0000
7	6.4	6.4	0.0000
8	10.4	10.4	0.0000
9	3.4	3.4	0.0000
10	7.7	7.7	0.0000
12	5	5	0.0000
15	3.2	3.2	0.0000
16	6.2	6.2	0.0000
17	5.3	5.3	0.0000
19	3.9	3.9	0.0000
20	4.1	4.1	0.0000
21	5.8	5.8	0.0000
22	9.3	9.3	0.0000
23	5	5	
Body Mass Index (kg/m²), mean \pmSD	30.4 \pm 6.1	30.5 \pm 6.1	-0.0164
Body Mass Index (kg/m²), group (%)			
<18.5	0.7	0.7	0.0000
18.5 to <25	16.4	15.8	0.0163
25 to <30 (Overweight)	34.2	33.9	0.0063
30 to <35 (Obese I)	27	27	0.0000
35 to <40 (Obese II)	12.5	12.6	-0.0030
\geq 40 (Obese III)	6.7	6.7	0.0000
Missing	2.5	3.2	-0.0421
Charlson Comorbidity Index, mean \pm SD	1.3 \pm 1.7	1.3 \pm 1.7	0.0000
Charlson Comorbidity Index group (%)			
0	44.5	44.5	0.0000
1	21.6	22	-0.0097
2	15.1	14.9	0.0056
3	7.8	7.6	0.0075
4	4.9	5	-0.0046

5-6	4.5	4.5	0.0000
7-8	1.3	1.3	0.0000
≥9	0.3	0.3	0.0000
Diabetes (%)	30.8	31.4	-0.0130
Chronic Kidney Disease (%)	10.3	10.1	0.0066
Congestive heart failure (%)	4.5	4.3	0.0098
Chronic Obstructive Pulmonary Disease (%)	13.3	13.6	-0.0088
CAN Score† for mortality w/in 1 year, mean ± SD	46.6±27.6	46.6±27.5	0.0000
CAN Score† for mortality w/in 1 year group (%)			
0-30	33.1	32.9	0.0043
31-55	28.6	28.5	0.0022
56-75	20.2	20.2	0.0000
76-90	13.1	12.9	0.0059
95-96	1.6	1.5	0.0081
97-98	1.5	1.4	0.0084
99	0.6	0.6	0.0000
Missing	1.4	2	-0.0464
Immunosuppressant medications* (%)	5.4	5.3	0.0044

† **CAN score** is the Care Assessment Needs score a validated measure of 1-year mortality in VA enrollees, presented as a percentile of all VA enrollees

* Immunosuppressant medications prescribed in the previous year (see list of immunosuppressant medications in **Supplementary Table 2**)

Table 2. Comparison of persons who received a booster dose of mRNA COVID-19 vaccination in the VA healthcare system and their matched counterparts who did not receive a booster dose from December 1, 2021 to March 31, 2022 with respect to the risk of developing SARS-CoV-2 infection and estimation of vaccine effectiveness

	N	Person-days	SARS-CoV-2 infections N	121-day risk of SARS-CoV-2 infections per 1000 persons (95% CI)	121-day risk difference of SARS-CoV-2 infections per 1000 persons (95% CI)	Incidence rate of SARS-CoV-2 infections per 100,000 person-days	Vaccine effectiveness % (95% CI)	P-value for interaction
All Participants*								
No Booster	468,616	38,655,086	10,946	27.0 (26.3-27.6)	-	28.3	-	
Booster	468,616	39,076,462	6,438	16.0 (15.6-16.4)	-11.0 (-11.6--10.3)	16.5	42.3 (40.6-43.9)	
BNT162b2 Booster								0.12
No Booster	176,558	14,424,397	4,522	29.3 (28.2-30.5)	-	31.3	-	
Booster	176,558	14,580,097	2,798	18.4 (17.6-19.1)	-11.0 (-12.1--9.9)	19.2	39.0 (36.4-41.6)	
mRNA-1273 Booster								
No Booster	292,058	24,230,690	6,424	25.5 (24.8-26.3)	-	26.5	-	
Booster	292,058	24,496,365	3,640	14.6 (14.1-15.1)	-10.9 (-11.7--10.2)	14.9	44.6 (42.5-46.6)	
Primary Vaccination with BNT162b2								0.87
No Booster	179,302	14,644,005	4,636	29.6 (28.5-30.8)	-	31.7	-	
Booster	179,302	14,805,330	2,842	18.3 (17.6-19.1)	-11.3 (-12.3--10.2)	19.2	39.6 (36.9-42.1)	
Primary Vaccination with mRNA-1273								
No Booster	289,314	24,011,081	6,310	25.3 (24.5-26.1)	-	26.3	-	

Booster	289,314	24,271,132	3,596	14.6 (14.1-15.1)	-10.8 (-11.5--10.0)	14.8	44.3 (42.2-46.3)	<0.01
Time since primary vaccination 5-9 months								
No Booster	242,857	18,856,281	4,509	21.9 (21.2-22.6)	-	23.9	-	
Booster	241,365	18,810,623	2,914	14.4 (13.9-15.0)	-7.5 (-8.3--6.7)	15.5	36.4 (33.3-39.4)	
Time since primary vaccination >9 months								
No Booster	225,760	19,798,806	6,437	32.4 (31.6-33.3)	-	32.5	-	
Booster	227,251	20,265,839	3,524	17.7 (17.1-18.3)	-14.6 (-15.6--13.6)	17.4	46.5 (44.1-48.7)	
Age 18 to <65								<0.01
No Booster	232,488	18,703,613	6,325	31.3 (30.4-32.1)	-	33.8	-	
Booster	233,878	19,038,428	3,649	18.3 (17.7-18.9)	-12.9 (-14.0--11.8)	19.2	43.3 (41.1-45.4)	
Age 65 to <75								
No Booster	148,842	12,419,969	3,007	23.6 (22.7-24.6)	-	24.2	-	
Booster	146,785	12,349,355	1,745	14.0 (13.3-14.7)	-9.7 (-10.8--8.6)	14.1	42.8 (39.1-46.2)	
Age ≥ 75								
No Booster	87,286	7,531,504	1,614	21.3 (20.2-22.5)	-	21.4	-	<0.01
Booster	87,953	7,688,679	1,044	13.5 (12.7-14.4)	-7.8 (-9.0--6.5)	13.6	38.1 (33.0-42.8)	
CCI 0-1								
No Booster	312,552	26,070,380	6,589	24.0 (23.4-24.7)	-	25.3	-	
Booster	310,497	26,085,015	3,968	14.7 (14.3-15.2)	-9.3 (-10.1--8.5)	15.2	40.5 (38.3-42.6)	<0.01
CCI 2-4								

No Booster	128,034	10,393,959	3,231	29.8 (28.7-31.0)	-	31.1	-	
Booster	129,993	10,732,928	1,869	17.0 (16.3-17.8)	-12.6 (-13.9--11.3)	17.4	44.1 (40.6-47.3)	
CCI ≥ 5								
No Booster	28,030	2,190,748	1,126	48.5 (45.5-51.7)	-	51.4	-	
Booster	28,126	2,258,519	601	26.1 (24.0-28.3)	-22.3 (-25.9--18.7)	26.6	48.4 (42.9-53.4)	
Negative outcome control SARS-CoV-2 infection in 10 days following time 0								
All Participants								
No Booster	490,838	4,836,495	2,067	4.3 (4.0-4.5)	-	42.7	-	
Booster	490,838	4,839,162	2,090	4.3 (4.1-4.5)	0.1 (-0.2-0.3)	43.2	-0.4 (-5.5-4.5)	

* Only matched sets still at risk 10 days after time zero. Characteristics of these participants are shown in **Supplementary Table 5**

Table 3. Comparison of persons who received a booster dose of mRNA COVID-19 vaccination in the VA healthcare system and their matched counterparts who did not receive a booster dose from December 1, 2021 to March 31, 2022 with respect to the risk of developing SARS-CoV-2-related hospitalization and estimation of vaccine effectiveness

	N	Person-days	SARS-CoV-2 Hospitalizations N	121-day risk of SARS-CoV-2 hospitalizations per 1000 persons (95% CI)	121-day risk difference of SARS-CoV-2 hospitalizations per 1000 persons (95% CI)	Incidence rate of SARS-CoV-2 hospitalizations per 100,000 person-days	Vaccine effectiveness % (95% CI)	P-value for interaction
All Participants*								
No Booster	468,616	39,305,524	1,060	2.7 (2.6-2.9)	-	2.7	-	
Booster	468,616	39,457,502	515	1.3 (1.2-1.5)	-1.4 (-1.6--1.2)	1.3	53.3 (48.1-58.0)	
BNT162b2 Booster								0.59
No Booster	176,558	14,695,971	485	3.3 (3.0-3.7)	-	3.3	-	
Booster	176,558	14,748,878	232	1.6 (1.4-1.8)	-1.7 (-2.1--1.4)	1.6	54.0 (46.1-60.8)	
mRNA-1273 Booster								
No Booster	292,058	24,609,553	575	2.4 (2.2-2.6)	-	2.3	-	
Booster	292,058	24,708,624	283	1.2 (1.1-1.3)	-1.2 (-1.5--1.0)	1.2	52.9 (45.6-59.2)	
Primary Vaccination with BNT162b2								0.91
No Booster	179,302	14,921,741	501	3.4 (3.0-3.7)	-	3.4	-	
Booster	179,302	14,976,081	241	1.6 (1.4-1.8)	-1.8 (-2.1--1.4)	1.6	53.7 (45.8-60.4)	
Primary Vaccination with mRNA-1273								
No Booster	289,314	24,383,783	559	2.3 (2.1-2.6)	-	2.3	-	
Booster	289,314	24,481,421	274	1.2 (1.0-1.3)	-1.2 (-1.4--0.9)	1.1	53.1 (45.7-59.5)	

Time since primary vaccination 5-9 months								<0.01
No Booster	242,857	19,107,546	535	2.7 (2.5-3.0)	-	2.8	-	
Booster	241,365	18,974,082	317	1.7 (1.5-1.8)	-1.1 (-1.4--0.8)	1.7	43.8 (35.2-51.3)	
Time since primary vaccination >9 months								
No Booster	225,760	20,197,978	525	2.7 (2.5-3.0)	-	2.6	-	
Booster	227,251	20,483,420	198	1.0 (0.9-1.2)	-1.7 (-2.0--1.4)	1.0	63.2 (56.4-69.0)	
Age 18 to <65								0.29
No Booster	232,488	19,108,938	311	1.6 (1.4-1.8)	-	1.6	-	
Booster	233,878	19,265,332	149	0.8 (0.7-0.9)	-0.8 (-1.1--0.6)	0.8	53.3 (43.2-61.6)	
Age 65 to <75								
No Booster	148,842	12,585,729	422	3.5 (3.1-3.8)	-	3.4	-	
Booster	146,785	12,447,755	198	1.6 (1.4-1.9)	-1.8 (-2.2--1.4)	1.6	54.2 (45.4-61.6)	
Age ≥ 75								
No Booster	87,286	7,610,857	327	4.4 (3.9-4.9)	-	4.3	-	
Booster	87,953	7,744,415	168	2.2 (1.9-2.6)	-2.2 (-2.8--1.6)	2.2	52.3 (42.1-60.7)	
CCI 0-1								<0.01
No Booster	312,552	26,492,891	322	1.3 (1.1-1.4)	-	1.2	-	
Booster	310,497	26,334,294	163	0.6 (0.5-0.7)	-0.6 (-0.8--0.5)	0.6	49.9 (39.2-58.7)	
CCI 2-4								
No Booster	128,034	10,570,379	436	4.2 (3.8-4.6)	-	4.1	-	

Booster	129,993	10,836,389	213	2.0 (1.7-2.3)	-2.1 (-2.6--1.7)	2.0	54.2 (45.7-61.4)	
CCI ≥ 5								
No Booster	28,030	2,242,254	302	13.2 (11.7-14.9)	-	13.5	-	
Booster	28,126	2,286,819	139	6.2 (5.2-7.3)	-7.0 (-8.8--5.2)	6.1	56.3 (46.4-64.3)	

* Only matched sets still at risk 10 days after time zero. Characteristics of these participants are shown in **Supplementary Table 5**

Table 4. Comparison of persons who received a booster dose of mRNA COVID-19 vaccination in the VA healthcare system and their matched counterparts who did not receive a booster dose from December 1, 2021 to March 31, 2022 with respect to the risk of developing SARS-CoV-2-related death and estimation of vaccine effectiveness

	N	Person-days	SARS-CoV-2 Deaths N	121-day risk of SARS-CoV-2 deaths per 1000 persons (95% CI)	121-day risk difference of SARS-CoV-2 deaths per 1000 persons (95% CI)	Incidence rate of SARS-CoV-2 deaths per 100,000 person-days	Vaccine effectiveness % (95% CI)	P-value for interaction
All Participants*								
No Booster	468,616	39,362,522	215	0.6 (0.5-0.7)	-	0.5	-	
Booster	468,616	39,483,627	47	0.1 (0.1-0.2)	-0.5 (-0.6--0.4)	0.1	79.1 (71.2-84.9)	
BNT162b2 Booster								0.48
No Booster	176,558	14,722,300	85	0.6 (0.5-0.8)	-	0.6	-	
Booster	176,558	14,761,175	13	0.1 (0.1-0.2)	-0.5 (-0.6--0.3)	0.1	85.5 (73.9-92.0)	
mRNA-1273 Booster								
No Booster	292,058	24,640,222	130	0.6 (0.5-0.7)	-	0.5	-	
Booster	292,058	24,722,452	34	0.1 (0.1-0.2)	-0.4 (-0.6--0.3)	0.1	75.2 (62.9-83.4)	
Primary Vaccination with BNT162b2								0.16
No Booster	179,302	14,948,702	94	0.6 (0.5-0.8)	-	0.6	-	
Booster	179,302	14,988,717	15	0.1 (0.1-0.2)	-0.5 (-0.7--0.4)	0.1	84.8 (73.7-91.2)	
Primary Vaccination with mRNA-1273								
No Booster	289,314	24,413,820	121	0.6 (0.5-0.7)	-	0.5	-	
Booster	289,314	24,494,910	32	0.1 (0.1-0.2)	-0.4 (-0.5--0.3)	0.1	75.0 (62.3-83.4)	

Time since primary vaccination 5-9 months								0.33
No Booster	242,857	19,134,947	135	0.8 (0.6-0.9)	-	0.7	-	
Booster	241,365	18,989,128	32	0.2 (0.1-0.3)	-0.6 (-0.7--0.4)	0.2	78.1 (67.5-85.3)	
Time since primary vaccination >9 months								
No Booster	225,760	20,227,575	80	0.4 (0.3-0.5)	-	0.4	-	
Booster	227,251	20,494,499	15	0.1 (0.0-0.1)	-0.3 (-0.5--0.2)	0.1	81.6 (67.8-89.4)	
Age 18 to <65								0.36
No Booster	**							
Booster	**							
Age 65 to <75								
No Booster	148,842	12,607,888	86	0.7 (0.6-0.9)	-	0.7	-	
Booster	146,785	12,458,102	13	0.1 (0.1-0.2)	-0.6 (-0.8--0.4)	0.1	85.5 (73.7-92.0)	
Age ≥ 75								
No Booster	87,286	7,627,925	117	1.7 (1.4-2.0)	-	1.5	-	
Booster	87,953	7,752,903	31	0.4 (0.3-0.6)	-1.2 (-1.6--0.9)	0.4	74.8 (61.8-83.3)	
CCI 0-1								0.36
No Booster	**							
Booster	**							
CCI 2-4								
No Booster	128,034	10,594,310	93	0.9 (0.7-1.1)	-	0.9	-	
Booster	129,993	10,847,400	24	0.2 (0.2-0.4)	-0.7 (-0.9--0.5)	0.2	76.2 (62.5-84.9)	
CCI ≥ 5								

No Booster	28,030	2,258,123	79	3.9 (3.0-4.9)	-	3.5	-	
Booster	28,126	2,293,908	13	0.7 (0.4-1.2)	-3.2 (-4.1--2.3)	0.6	84.2 (70.6-91.5)	

* Only matched sets still at risk 10 days after time zero. Characteristics of these participants are shown in Supplementary Table 5

** Indicates one or both of the groups has cell counts less than 10.

Supplementary Appendix

Contents

Supplementary Table 1. Specification and emulation of a target trial evaluating the effectiveness of booster (i.e. third dose) mRNA COVID-19 vaccination conducted from December 1, 2021 to March 31, 2022	30
Supplementary Table 2. Immunosuppressive and cancer medications.	32
Supplementary Table 3: ICD10 Codes used to define diabetes, congestive heart failure (CHF), chronic obstructive pulmonary disease (COPD) and chronic kidney disease (CKD).	35
Supplementary Table 4. Baseline sociodemographic and clinical characteristics of persons who received a booster dose of mRNA COVID-19 vaccination in the VA healthcare system and their unmatched counterparts who did not receive a booster dose from December 1, 2021 to March 31, 2022.	52
Supplementary Table 5. Baseline sociodemographic and clinical characteristics of persons who received a booster dose of mRNA COVID-19 vaccination in the VA healthcare system and their matched counterparts who did not receive a booster dose from December 1, 2021 to March 31, 2022, and for whom all members of matched sets were still at risk 10 days after time zero.	55
Supplementary Figure 1. Schematic representation of the method used to match person(s) who did not receive a booster mRNA vaccine to each person who received a booster mRNA vaccine, within each 1-week period during the target trial period.	58
Supplementary Figure 2. Comparison of baseline characteristics of persons who received a booster dose mRNA COVID-19 vaccine and their comparators who did not, before and after matching, demonstrate excellent balance after matching	59
Supplementary Figure 3. Kaplan-Meier curves comparing persons who received a booster mRNA COVID-19 vaccine versus their matched counterparts who did not with respect to the cumulative incidence (%) and 95% confidence intervals of SARS-CoV-2 infection (a) (b), SARS-CoV-2-related hospitalization (c)(d) and SARS-CoV-2-related death (e)(f). Results are shown separately for booster vaccination with BNT162b2 (a,c,e) and mRNA-1273(b,d,f)	61

Supplementary Table 1. Specification and emulation of a target trial evaluating the effectiveness of booster (i.e. third dose) mRNA COVID-19 vaccination conducted from December 1, 2021 to March 31, 2022

TARGET TRIAL SPECIFICATION	TARGET TRIAL EMULATION
ELIGIBILITY CRITERIA	
VA enrollees age ≥ 18 years	Same
Received two doses of mRNA COVID-19 vaccination at least 5 months before enrollment	Same
No prior known infection with SARS-CoV-2 documented in VA (or Medicare) records	
Known residential address	Same
User of VA healthcare system, defined as having any outpatient or inpatient encounter in the VA healthcare system in the preceding 24 months	Same
Having a documented primary care physician (PCP) visit in the preceding 24 months	Same
TREATMENT STRATEGIES	
Received booster dose mRNA vaccination between December 1, 2021 and April 4, 2022 versus no booster dose	Same.
TREATMENT ASSIGNMENT	
Randomization: Eligible persons are randomly assigned to booster mRNA COVID-19 vaccination versus no booster	Sequential matching: A two-step matching process was used to emulate the balance in baseline characteristics achieved by randomization. Eligible persons were matched on the date of their booster dose to their comparator(s) who did not receive a booster dose as of that date by: <ol style="list-style-type: none"> Exact-matching on the following characteristics <ul style="list-style-type: none"> VA region or "VISN" (19 regions throughout USA) Age (6-year buckets) Charlson comorbidity index (3-point buckets) Primary COVID-19 vaccination type (BNT162b2 or mRNA-1273) Time since completion of primary vaccination (6-week buckets) Propensity score matching After exact-matching, we executed propensity score matching to identify the best match for each booster dose recipient. We used matching with replacement in a 1:k variable ratio, where k varied based on the number of propensity score ties. We included all ties to avoid imbalance due to random pruning. Characteristics included in the propensity score logistic regression model were: Age

	Sex Race Ethnicity Urban/rural residence Charlson Comorbidity Index (CCI) Body mass index Diabetes Congestive heart failure (CHF) Chronic obstructive pulmonary disease (COPD) Chronic kidney disease (CKD) Receipt of immunosuppressant medications in the 2 years prior Care Assessment Need (CAN) score
OUTCOMES	
Laboratory-confirmed SARS CoV-2 Infection, documented by a nucleic acid amplification test (NAAT) or antigen test. SARS-CoV-2-related hospitalization: any hospitalization on or within 30 days following SARS-CoV-2 infection documented in VA or CMC records SARS-CoV-2-related death: death due to any cause on or within 30 days following SARS-CoV-2 infection	Same as for target trial
FOLLOW-UP	
Follow-up starts on the date of booster dose vaccination or the equivalent index date for the matched comparator who did not receive a booster.	Same as for target trial
CAUSAL CONTRASTS	
Intention-to-treat effect	Observational analogue of the per-protocol effect
Per-protocol effect, i.e. the effect if all individuals had received their assigned treatment	
STATISTICAL ANALYSIS	
Hazard ratios and risk differences for each of the outcomes. Vaccine effectiveness was estimated as (1- hazard ratio)	Same as for target trial

Supplementary Table 2. Immunosuppressive and cancer medications.

We identified prescription of these medications within the 2-year period prior to the study period as evidence of being on potentially immune suppressive medications

Drug class	Drugs
Alkylating agents	bendamustine, busulfan, chlorambucil, cisplatin, cyclophosphamide, ifosfamide, lurbinectedin, melphalan, nitrogen mustard procarbazine, temozolomide
Anti-CD19/CD3	blinatumomab
Anti-HER2	trastuzumab
Antimetabolites	azathioprine, capecitabine, cladribine, cytarabine, fludarabine, floxuridine, fluorouracil, gemcitabine, mercaptopurine, methotrexate, pemetrexed, pentostatin, pralatrexate, thioguanine
Antitumor antibiotics	bleomycin, dacarbazine, dactinomycin, daunorubicin, doxorubicin, epirubidin, idarubicin, mitomycin, mitoxantrone
B-cell depletion and inhibition	belimumab, ibriumomab, tiuxetan, obinutuzumab, ocrelizumab, ^b ofatumumab, ^b rituximab ^b
BCL2 inhibitors	venetoxlax
Interferon	interferon alpha-2a, interferon alpha-2b, interferon beta-1a, interferon beta-1b, interferon gamma, interferon gamma-1b
BCR-ABL tyrosine kinase inhibitors	bosutinib, dasatinib, imatinib, nilotinib, ponatinib
Bruton tyrosine kinase (BTK) inhibitors	acalabrutinib, ibrutinib, zanubrutinib
Calcineurin inhibitors	cyclosporine, pimecrolimus, tacrolimus, voclosporin
Complement inhibitor	eculizumab
EGFR inhibitors	afatinib, cetuximab, dacomitinib, erlotinib, gefitinib, lapatinib, mobocertinib, necitumumab, osimertinib, panitumumab
Glucocorticoids (systemic)	cortisone acetate, betamethasone, budesonide, dexamethasone, hydrocortisone, methylprednisolone, prednisolone, prednisone
Histone deacetylase inhibitors	belinostat, vorinostat

IL-1 inhibitors	anakinra, canakinumab, rilonacept
IL-12/23 inhibitors	guselkumab, ustekinumab
IL-17 inhibitors	brodalumab, ixekizumab, secukinumab
IL-4/13 inhibitors	dupilumab
IL-5 inhibitors	benralizumab, mepolizumab, reslizumab
IL-6 inhibitors	sarilumab, siltuximab, tocilizumab
Immune checkpoint inhibitors (anti-CTLA-4)	ipilimumab
Immune checkpoint inhibitors (anti-PD-1)	cemiplimab, dostarlimab, nivolumab, pembrolizumab
Immune checkpoint inhibitors (anti-PD-L1)	atezolizumab, avelumab, durvalumab
Immune globulin	anti-thymocyte globulin ^b
Immunosuppressant agent	mycophenolate mofetil (MMF), mycophenolate sodium
Janus kinase (JAK) inhibitors	baricitinib, ruxolitinib, tofacitinib, upadacitinib
Miscellaneous antineoplastics	arsenic trioxide, blinhydroxyurea, idelalisib, olaparib, omacetaxine, palbociclib, pegaspargase, thalidomide, trabectedin
Miscellaneous biological	glatiramer acetate
Miscellaneous other	leflunomide, sulfasalazine
mTOR kinase inhibitors	everolimus, sirolimus, temsirolimus
Nitrosoureas	carmustine, lomustine, streptozocin
Platinum derivatives	carboplatin, oxaliplatin
Proteasome inhibitors	bortezomib, carfilzomib
Selective adhesion-molecule inhibitors	natalizumab, vedolizumab
T-cell costimulation inhibitors	abatacept, belatacept, alemtuzumab, ² basiliximab
Thalidomide analogs	lenalidomide, pomalidomide
TNF inhibitors	adalimumab, certolizumab, etanercept, golimumab, infliximab
Topoisomerase inhibitors	irinotecan, mitoxantrone, topotecan
Tubulin-acting agents	eribulin, etoposide, ixabepilone
Tubulin-acting agents (taxanes)	cabazitaxel, docetaxel, nabpaclitaxel, paclitaxel
Tubulin-acting agents (vinca alkaloids)	vinblastine, vincristine, vinorelbine

VEGF tyrosine kinase inhibitors	aflibercept, axitinib, bevacizumab, lenvatinib, pazopanib, ramucirumab, regorafenib, sorafenib, sunitinib, vandetanib
---------------------------------	---

Supplementary Table 3: ICD10 Codes used to define diabetes, congestive heart failure (CHF), chronic obstructive pulmonary disease (COPD) and chronic kidney disease (CKD).

The presence of these conditions was defined by documentation of one or more of these ICD10 codes recorded in VA electronic health records (both outpatient or inpatient records) during the 2-year period prior to the date of vaccination. We used lists of ICD10 codes developed by the VA's Centralized Interactive Phenomics Resource or CIPHER to define each condition. CIPHER develops and validates EHR-based phenotype algorithms and definitions.

CIPHER is available through VA intranet at:

[https://vhacdwdwhweb100.vha.med.va.gov/phenotype/index.php/VA_Phenomics_Library -
Centralized Interactive Phenomics Resource \(CIPHER\)](https://vhacdwdwhweb100.vha.med.va.gov/phenotype/index.php/VA_Phenomics_Library_-_Centralized_Interactive_Phenomics_Resource_(CIPHER))

Phenotype	Code	CodeDescription
CONGESTIVE HEART FAILURE (CHF)		
CHF	I50.20	Unspecified systolic (congestive) heart failure
CHF	I50.21	Acute systolic (congestive) heart failure
CHF	I50.22	Chronic systolic (congestive) heart failure
CHF	I50.23	Acute on chronic systolic (congestive) heart failure
CHF	I50.30	Unspecified diastolic (congestive) heart failure
CHF	I50.31	Acute diastolic (congestive) heart failure
CHF	I50.32	Chronic diastolic (congestive) heart failure
CHF	I50.33	Acute on chronic diastolic (congestive) heart failure
CHF	I50.40	Unspecified combined systolic (congestive) and diastolic (congestive) heart failure
CHF	I50.41	Acute combined systolic (congestive) and diastolic (congestive) heart failure
CHRONIC KIDNEY DISEASE (CKD) AND KIDNEY FAILURE (CKF)		
CKD	585.9	CHRONIC KIDNEY DISEASE, UNSPECIFIED
CKD	D63.1	Anemia in chronic kidney disease
CKD	E08.22	Diabetes mellitus due to underlying condition with diabetic chronic kidney disease
CKD	E09.22	Drug or chemical induced diabetes mellitus with diabetic chronic kidney disease
CKD	E10.22	Type 1 diabetes mellitus with diabetic chronic kidney disease
CKD	E11.22	Type 2 diabetes mellitus with diabetic chronic kidney disease
CKD	E13.22	Other specified diabetes mellitus with diabetic chronic kidney disease
CKD	I12.0	Hypertensive chronic kidney disease with stage 5 chronic kidney disease or end stage renal disease
CKD	I12.9	Hypertensive chronic kidney disease with stage 1 through stage 4 chronic kidney disease, or unspecified chronic kidney disease
CKD	I13.0	Hypertensive heart and chronic kidney disease with heart failure and stage 1 through stage 4 chronic kidney disease, or unspecified chronic kidney disease
CKD	I13.10	Hypertensive heart and chronic kidney disease without heart failure, with stage 1 through stage 4 chronic kidney disease, or unspecified chronic kidney disease
CKD	I13.11	Hypertensive heart and chronic kidney disease without heart failure, with stage 5 chronic kidney disease, or end stage renal disease
CKD	I13.2	Hypertensive heart and chronic kidney disease with heart failure and with stage 5 chronic kidney disease, or end stage renal disease
CKD	N18.1	Chronic kidney disease, stage 1
CKD	N18.2	Chronic kidney disease, stage 2 (mild)
CKD	N18.3	Chronic kidney disease, stage 3 (moderate)
CKD	N18.30	Chronic kidney disease, stage 3 unspecified

CKD	N18.31	Chronic kidney disease, stage 3a
CKD	N18.32	Chronic kidney disease, stage 3b
CKD	N18.4	Chronic kidney disease, stage 4 (severe)
CKD	N18.5	Chronic kidney disease, stage 5
CKD	N18.6	End stage renal disease
CKD	N18.9	Chronic kidney disease, unspecified
CKD	R88.0	Cloudy (hemodialysis) (peritoneal) dialysis effluent
CKD	Z49.01	Encounter for fitting and adjustment of extracorporeal dialysis catheter
CKD	Z49.02	Encounter for fitting and adjustment of peritoneal dialysis catheter
CKD	Z49.31	Encounter for adequacy testing for hemodialysis
CKD	Z49.32	Encounter for adequacy testing for peritoneal dialysis
CKF	I12.0	Hypertensive chronic kidney disease with stage 5 chronic kidney disease or end stage renal disease
CKF	I13.11	Hypertensive heart and chronic kidney disease without heart failure, with stage 5 chronic kidney disease, or end stage renal disease
CKF	I13.2	Hypertensive heart and chronic kidney disease with heart failure and with stage 5 chronic kidney disease, or end stage renal disease
CKF	N18.6	End stage renal disease
CKF	N99.0	Postprocedural (acute) (chronic) kidney failure
CHRONIC OBSTRUCTIVE PULMONARY DISEASE (COPD)		
COPD	J40.	Bronchitis, not specified as acute or chronic
COPD	J41.0	Simple chronic bronchitis
COPD	J41.1	Mucopurulent chronic bronchitis
COPD	J41.8	Mixed simple and mucopurulent chronic bronchitis
COPD	J42.	Unspecified chronic bronchitis
COPD	J43.0	Unilateral pulmonary emphysema [MacLeod's syndrome]
COPD	J43.1	Panlobular emphysema
COPD	J43.2	Centrilobular emphysema
COPD	J43.8	Other emphysema
COPD	J43.9	Emphysema, unspecified
COPD	J44.0	Chronic obstructive pulmonary disease with (acute) lower respiratory infection
COPD	J44.1	Chronic obstructive pulmonary disease with (acute) exacerbation
COPD	J44.9	Chronic obstructive pulmonary disease, unspecified
COPD	J47.0	Bronchiectasis with acute lower respiratory infection
COPD	J47.1	Bronchiectasis with (acute) exacerbation
COPD	J47.9	Bronchiectasis, uncomplicated
DIABETES		
DiabetesAny	250.00	DIABETES MELLITUS WITHOUT MENTION OF COMPLICATION, TYPE II OR UNSPECIFIED TYPE, NOT STATED AS UNCONTROLLED
DiabetesAny	250.60	DIABETES WITH NEUROLOGICAL MANIFESTATIONS, TYPE II OR UNSPECIFIED TYPE, NOT STATED AS UNCONTROLLED
DiabetesAny	E08.00	Diabetes mellitus due to underlying condition with hyperosmolarity without nonketotic hyperglycemic-hyperosmolar coma (NKHHC)
DiabetesAny	E08.01	Diabetes mellitus due to underlying condition with hyperosmolarity with coma
DiabetesAny	E08.10	Diabetes mellitus due to underlying condition with ketoacidosis without coma
DiabetesAny	E08.11	Diabetes mellitus due to underlying condition with ketoacidosis with coma
DiabetesAny	E08.21	Diabetes mellitus due to underlying condition with diabetic nephropathy

DiabetesAny	E08.22	Diabetes mellitus due to underlying condition with diabetic chronic kidney disease
DiabetesAny	E08.29	Diabetes mellitus due to underlying condition with other diabetic kidney complication
DiabetesAny	E08.311	Diabetes mellitus due to underlying condition with unspecified diabetic retinopathy with macular edema
DiabetesAny	E08.319	Diabetes mellitus due to underlying condition with unspecified diabetic retinopathy without macular edema
DiabetesAny	E08.3211	Diabetes mellitus due to underlying condition with mild nonproliferative diabetic retinopathy with macular edema, right eye
DiabetesAny	E08.3212	Diabetes mellitus due to underlying condition with mild nonproliferative diabetic retinopathy with macular edema, left eye
DiabetesAny	E08.3213	Diabetes mellitus due to underlying condition with mild nonproliferative diabetic retinopathy with macular edema, bilateral
DiabetesAny	E08.3219	Diabetes mellitus due to underlying condition with mild nonproliferative diabetic retinopathy with macular edema, unspecified eye
DiabetesAny	E08.3291	Diabetes mellitus due to underlying condition with mild nonproliferative diabetic retinopathy without macular edema, right eye
DiabetesAny	E08.3292	Diabetes mellitus due to underlying condition with mild nonproliferative diabetic retinopathy without macular edema, left eye
DiabetesAny	E08.3293	Diabetes mellitus due to underlying condition with mild nonproliferative diabetic retinopathy without macular edema, bilateral
DiabetesAny	E08.3299	Diabetes mellitus due to underlying condition with mild nonproliferative diabetic retinopathy without macular edema, unspecified eye
DiabetesAny	E08.3311	Diabetes mellitus due to underlying condition with moderate nonproliferative diabetic retinopathy with macular edema, right eye
DiabetesAny	E08.3312	Diabetes mellitus due to underlying condition with moderate nonproliferative diabetic retinopathy with macular edema, left eye
DiabetesAny	E08.3313	Diabetes mellitus due to underlying condition with moderate nonproliferative diabetic retinopathy with macular edema, bilateral
DiabetesAny	E08.3319	Diabetes mellitus due to underlying condition with moderate nonproliferative diabetic retinopathy with macular edema, unspecified eye
DiabetesAny	E08.3391	Diabetes mellitus due to underlying condition with moderate nonproliferative diabetic retinopathy without macular edema, right eye
DiabetesAny	E08.3392	Diabetes mellitus due to underlying condition with moderate nonproliferative diabetic retinopathy without macular edema, left eye
DiabetesAny	E08.3393	Diabetes mellitus due to underlying condition with moderate nonproliferative diabetic retinopathy without macular edema, bilateral
DiabetesAny	E08.3399	Diabetes mellitus due to underlying condition with moderate nonproliferative diabetic retinopathy without macular edema, unspecified eye
DiabetesAny	E08.3411	Diabetes mellitus due to underlying condition with severe nonproliferative diabetic retinopathy with macular edema, right eye
DiabetesAny	E08.3412	Diabetes mellitus due to underlying condition with severe nonproliferative diabetic retinopathy with macular edema, left eye
DiabetesAny	E08.3413	Diabetes mellitus due to underlying condition with severe nonproliferative diabetic retinopathy with macular edema, bilateral
DiabetesAny	E08.3419	Diabetes mellitus due to underlying condition with severe nonproliferative diabetic retinopathy with macular edema, unspecified eye
DiabetesAny	E08.3491	Diabetes mellitus due to underlying condition with severe nonproliferative diabetic retinopathy without macular edema, right eye
DiabetesAny	E08.3492	Diabetes mellitus due to underlying condition with severe nonproliferative diabetic retinopathy without macular edema, left eye
DiabetesAny	E08.3493	Diabetes mellitus due to underlying condition with severe nonproliferative diabetic retinopathy without macular edema, bilateral
DiabetesAny	E08.3499	Diabetes mellitus due to underlying condition with severe nonproliferative diabetic retinopathy without macular edema, unspecified eye

DiabetesAny	E08.3511	Diabetes mellitus due to underlying condition with proliferative diabetic retinopathy with macular edema, right eye
DiabetesAny	E08.3512	Diabetes mellitus due to underlying condition with proliferative diabetic retinopathy with macular edema, left eye
DiabetesAny	E08.3513	Diabetes mellitus due to underlying condition with proliferative diabetic retinopathy with macular edema, bilateral
DiabetesAny	E08.3519	Diabetes mellitus due to underlying condition with proliferative diabetic retinopathy with macular edema, unspecified eye
DiabetesAny	E08.3521	Diabetes mellitus due to underlying condition with proliferative diabetic retinopathy with traction retinal detachment involving the macula, right eye
DiabetesAny	E08.3522	Diabetes mellitus due to underlying condition with proliferative diabetic retinopathy with traction retinal detachment involving the macula, left eye
DiabetesAny	E08.3523	Diabetes mellitus due to underlying condition with proliferative diabetic retinopathy with traction retinal detachment involving the macula, bilateral
DiabetesAny	E08.3529	Diabetes mellitus due to underlying condition with proliferative diabetic retinopathy with traction retinal detachment involving the macula, unspecified eye
DiabetesAny	E08.3531	Diabetes mellitus due to underlying condition with proliferative diabetic retinopathy with traction retinal detachment not involving the macula, right eye
DiabetesAny	E08.3532	Diabetes mellitus due to underlying condition with proliferative diabetic retinopathy with traction retinal detachment not involving the macula, left eye
DiabetesAny	E08.3533	Diabetes mellitus due to underlying condition with proliferative diabetic retinopathy with traction retinal detachment not involving the macula, bilateral
DiabetesAny	E08.3539	Diabetes mellitus due to underlying condition with proliferative diabetic retinopathy with traction retinal detachment not involving the macula, unspecified eye
DiabetesAny	E08.3541	Diabetes mellitus due to underlying condition with proliferative diabetic retinopathy with combined traction retinal detachment and rhegmatogenous retinal detachment, right eye
DiabetesAny	E08.3542	Diabetes mellitus due to underlying condition with proliferative diabetic retinopathy with combined traction retinal detachment and rhegmatogenous retinal detachment, left eye
DiabetesAny	E08.3543	Diabetes mellitus due to underlying condition with proliferative diabetic retinopathy with combined traction retinal detachment and rhegmatogenous retinal detachment, bilateral
DiabetesAny	E08.3549	Diabetes mellitus due to underlying condition with proliferative diabetic retinopathy with combined traction retinal detachment and rhegmatogenous retinal detachment, unspecified
DiabetesAny	E08.3551	Diabetes mellitus due to underlying condition with stable proliferative diabetic retinopathy, right eye
DiabetesAny	E08.3552	Diabetes mellitus due to underlying condition with stable proliferative diabetic retinopathy, left eye
DiabetesAny	E08.3553	Diabetes mellitus due to underlying condition with stable proliferative diabetic retinopathy, bilateral
DiabetesAny	E08.3559	Diabetes mellitus due to underlying condition with stable proliferative diabetic retinopathy, unspecified eye
DiabetesAny	E08.3591	Diabetes mellitus due to underlying condition with proliferative diabetic retinopathy without macular edema, right eye
DiabetesAny	E08.3592	Diabetes mellitus due to underlying condition with proliferative diabetic retinopathy without macular edema, left eye
DiabetesAny	E08.3593	Diabetes mellitus due to underlying condition with proliferative diabetic retinopathy without macular edema, bilateral
DiabetesAny	E08.3599	Diabetes mellitus due to underlying condition with proliferative diabetic retinopathy without macular edema, unspecified eye
DiabetesAny	E08.36	Diabetes mellitus due to underlying condition with diabetic cataract
DiabetesAny	E08.37X1	Diabetes mellitus due to underlying condition with diabetic macular edema, resolved following treatment, right eye
DiabetesAny	E08.37X2	Diabetes mellitus due to underlying condition with diabetic macular edema, resolved following treatment, left eye
DiabetesAny	E08.37X3	Diabetes mellitus due to underlying condition with diabetic macular edema, resolved following treatment, bilateral

DiabetesAny	E08.37X9	Diabetes mellitus due to underlying condition with diabetic macular edema, resolved following treatment, unspecified eye
DiabetesAny	E08.39	Diabetes mellitus due to underlying condition with other diabetic ophthalmic complication
DiabetesAny	E08.40	Diabetes mellitus due to underlying condition with diabetic neuropathy, unspecified
DiabetesAny	E08.41	Diabetes mellitus due to underlying condition with diabetic mononeuropathy
DiabetesAny	E08.42	Diabetes mellitus due to underlying condition with diabetic polyneuropathy
DiabetesAny	E08.43	Diabetes mellitus due to underlying condition with diabetic autonomic (poly)neuropathy
DiabetesAny	E08.44	Diabetes mellitus due to underlying condition with diabetic amyotrophy
DiabetesAny	E08.49	Diabetes mellitus due to underlying condition with other diabetic neurological complication
DiabetesAny	E08.51	Diabetes mellitus due to underlying condition with diabetic peripheral angiopathy without gangrene
DiabetesAny	E08.52	Diabetes mellitus due to underlying condition with diabetic peripheral angiopathy with gangrene
DiabetesAny	E08.59	Diabetes mellitus due to underlying condition with other circulatory complications
DiabetesAny	E08.610	Diabetes mellitus due to underlying condition with diabetic neuropathic arthropathy
DiabetesAny	E08.618	Diabetes mellitus due to underlying condition with other diabetic arthropathy
DiabetesAny	E08.620	Diabetes mellitus due to underlying condition with diabetic dermatitis
DiabetesAny	E08.621	Diabetes mellitus due to underlying condition with foot ulcer
DiabetesAny	E08.622	Diabetes mellitus due to underlying condition with other skin ulcer
DiabetesAny	E08.628	Diabetes mellitus due to underlying condition with other skin complications
DiabetesAny	E08.630	Diabetes mellitus due to underlying condition with periodontal disease
DiabetesAny	E08.638	Diabetes mellitus due to underlying condition with other oral complications
DiabetesAny	E08.641	Diabetes mellitus due to underlying condition with hypoglycemia with coma
DiabetesAny	E08.649	Diabetes mellitus due to underlying condition with hypoglycemia without coma
DiabetesAny	E08.65	Diabetes mellitus due to underlying condition with hyperglycemia
DiabetesAny	E08.69	Diabetes mellitus due to underlying condition with other specified complication
DiabetesAny	E08.8	Diabetes mellitus due to underlying condition with unspecified complications
DiabetesAny	E08.9	Diabetes mellitus due to underlying condition without complications
DiabetesAny	E09.00	Drug or chemical induced diabetes mellitus with hyperosmolarity without nonketotic hyperglycemic-hyperosmolar coma (NKHHC)
DiabetesAny	E09.01	Drug or chemical induced diabetes mellitus with hyperosmolarity with coma
DiabetesAny	E09.10	Drug or chemical induced diabetes mellitus with ketoacidosis without coma
DiabetesAny	E09.11	Drug or chemical induced diabetes mellitus with ketoacidosis with coma
DiabetesAny	E09.21	Drug or chemical induced diabetes mellitus with diabetic nephropathy
DiabetesAny	E09.22	Drug or chemical induced diabetes mellitus with diabetic chronic kidney disease
DiabetesAny	E09.29	Drug or chemical induced diabetes mellitus with other diabetic kidney complication
DiabetesAny	E09.311	Drug or chemical induced diabetes mellitus with unspecified diabetic retinopathy with macular edema
DiabetesAny	E09.319	Drug or chemical induced diabetes mellitus with unspecified diabetic retinopathy without macular edema
DiabetesAny	E09.3211	Drug or chemical induced diabetes mellitus with mild nonproliferative diabetic retinopathy with macular edema, right eye
DiabetesAny	E09.3212	Drug or chemical induced diabetes mellitus with mild nonproliferative diabetic retinopathy with macular edema, left eye
DiabetesAny	E09.3213	Drug or chemical induced diabetes mellitus with mild nonproliferative diabetic retinopathy with macular edema, bilateral
DiabetesAny	E09.3219	Drug or chemical induced diabetes mellitus with mild nonproliferative diabetic retinopathy with macular edema, unspecified eye

DiabetesAny	E09.3291	Drug or chemical induced diabetes mellitus with mild nonproliferative diabetic retinopathy without macular edema, right eye
DiabetesAny	E09.3292	Drug or chemical induced diabetes mellitus with mild nonproliferative diabetic retinopathy without macular edema, left eye
DiabetesAny	E09.3293	Drug or chemical induced diabetes mellitus with mild nonproliferative diabetic retinopathy without macular edema, bilateral
DiabetesAny	E09.3299	Drug or chemical induced diabetes mellitus with mild nonproliferative diabetic retinopathy without macular edema, unspecified eye
DiabetesAny	E09.3311	Drug or chemical induced diabetes mellitus with moderate nonproliferative diabetic retinopathy with macular edema, right eye
DiabetesAny	E09.3312	Drug or chemical induced diabetes mellitus with moderate nonproliferative diabetic retinopathy with macular edema, left eye
DiabetesAny	E09.3313	Drug or chemical induced diabetes mellitus with moderate nonproliferative diabetic retinopathy with macular edema, bilateral
DiabetesAny	E09.3319	Drug or chemical induced diabetes mellitus with moderate nonproliferative diabetic retinopathy with macular edema, unspecified eye
DiabetesAny	E09.3391	Drug or chemical induced diabetes mellitus with moderate nonproliferative diabetic retinopathy without macular edema, right eye
DiabetesAny	E09.3392	Drug or chemical induced diabetes mellitus with moderate nonproliferative diabetic retinopathy without macular edema, left eye
DiabetesAny	E09.3393	Drug or chemical induced diabetes mellitus with moderate nonproliferative diabetic retinopathy without macular edema, bilateral
DiabetesAny	E09.3399	Drug or chemical induced diabetes mellitus with moderate nonproliferative diabetic retinopathy without macular edema, unspecified eye
DiabetesAny	E09.3411	Drug or chemical induced diabetes mellitus with severe nonproliferative diabetic retinopathy with macular edema, right eye
DiabetesAny	E09.3412	Drug or chemical induced diabetes mellitus with severe nonproliferative diabetic retinopathy with macular edema, left eye
DiabetesAny	E09.3413	Drug or chemical induced diabetes mellitus with severe nonproliferative diabetic retinopathy with macular edema, bilateral
DiabetesAny	E09.3419	Drug or chemical induced diabetes mellitus with severe nonproliferative diabetic retinopathy with macular edema, unspecified eye
DiabetesAny	E09.3493	Drug or chemical induced diabetes mellitus with severe nonproliferative diabetic retinopathy without macular edema, bilateral
DiabetesAny	E09.3499	Drug or chemical induced diabetes mellitus with severe nonproliferative diabetic retinopathy without macular edema, unspecified eye
DiabetesAny	E09.3511	Drug or chemical induced diabetes mellitus with proliferative diabetic retinopathy with macular edema, right eye
DiabetesAny	E09.3512	Drug or chemical induced diabetes mellitus with proliferative diabetic retinopathy with macular edema, left eye
DiabetesAny	E09.3513	Drug or chemical induced diabetes mellitus with proliferative diabetic retinopathy with macular edema, bilateral
DiabetesAny	E09.3519	Drug or chemical induced diabetes mellitus with proliferative diabetic retinopathy with macular edema, unspecified eye
DiabetesAny	E09.3522	Drug or chemical induced diabetes mellitus with proliferative diabetic retinopathy with traction retinal detachment involving the macula, left eye
DiabetesAny	E09.3533	Drug or chemical induced diabetes mellitus with proliferative diabetic retinopathy with traction retinal detachment not involving the macula, bilateral
DiabetesAny	E09.3541	Drug or chemical induced diabetes mellitus with proliferative diabetic retinopathy with combined traction retinal detachment and rhegmatogenous retinal detachment, right eye
DiabetesAny	E09.3542	Drug or chemical induced diabetes mellitus with proliferative diabetic retinopathy with combined traction retinal detachment and rhegmatogenous retinal detachment, left eye
DiabetesAny	E09.3551	Drug or chemical induced diabetes mellitus with stable proliferative diabetic retinopathy, right eye

DiabetesAny	E09.3552	Drug or chemical induced diabetes mellitus with stable proliferative diabetic retinopathy, left eye
DiabetesAny	E09.3553	Drug or chemical induced diabetes mellitus with stable proliferative diabetic retinopathy, bilateral
DiabetesAny	E09.3559	Drug or chemical induced diabetes mellitus with stable proliferative diabetic retinopathy, unspecified eye
DiabetesAny	E09.3591	Drug or chemical induced diabetes mellitus with proliferative diabetic retinopathy without macular edema, right eye
DiabetesAny	E09.3592	Drug or chemical induced diabetes mellitus with proliferative diabetic retinopathy without macular edema, left eye
DiabetesAny	E09.3593	Drug or chemical induced diabetes mellitus with proliferative diabetic retinopathy without macular edema, bilateral
DiabetesAny	E09.3599	Drug or chemical induced diabetes mellitus with proliferative diabetic retinopathy without macular edema, unspecified eye
DiabetesAny	E09.36	Drug or chemical induced diabetes mellitus with diabetic cataract
DiabetesAny	E09.37X1	Drug or chemical induced diabetes mellitus with diabetic macular edema, resolved following treatment, right eye
DiabetesAny	E09.37X2	Drug or chemical induced diabetes mellitus with diabetic macular edema, resolved following treatment, left eye
DiabetesAny	E09.37X3	Drug or chemical induced diabetes mellitus with diabetic macular edema, resolved following treatment, bilateral
DiabetesAny	E09.39	Drug or chemical induced diabetes mellitus with other diabetic ophthalmic complication
DiabetesAny	E09.40	Drug or chemical induced diabetes mellitus with neurological complications with diabetic neuropathy, unspecified
DiabetesAny	E09.41	Drug or chemical induced diabetes mellitus with neurological complications with diabetic mononeuropathy
DiabetesAny	E09.42	Drug or chemical induced diabetes mellitus with neurological complications with diabetic polyneuropathy
DiabetesAny	E09.43	Drug or chemical induced diabetes mellitus with neurological complications with diabetic autonomic (poly)neuropathy
DiabetesAny	E09.44	Drug or chemical induced diabetes mellitus with neurological complications with diabetic amyotrophy
DiabetesAny	E09.49	Drug or chemical induced diabetes mellitus with neurological complications with other diabetic neurological complication
DiabetesAny	E09.51	Drug or chemical induced diabetes mellitus with diabetic peripheral angiopathy without gangrene
DiabetesAny	E09.52	Drug or chemical induced diabetes mellitus with diabetic peripheral angiopathy with gangrene
DiabetesAny	E09.59	Drug or chemical induced diabetes mellitus with other circulatory complications
DiabetesAny	E09.610	Drug or chemical induced diabetes mellitus with diabetic neuropathic arthropathy
DiabetesAny	E09.618	Drug or chemical induced diabetes mellitus with other diabetic arthropathy
DiabetesAny	E09.620	Drug or chemical induced diabetes mellitus with diabetic dermatitis
DiabetesAny	E09.621	Drug or chemical induced diabetes mellitus with foot ulcer
DiabetesAny	E09.622	Drug or chemical induced diabetes mellitus with other skin ulcer
DiabetesAny	E09.628	Drug or chemical induced diabetes mellitus with other skin complications
DiabetesAny	E09.630	Drug or chemical induced diabetes mellitus with periodontal disease
DiabetesAny	E09.638	Drug or chemical induced diabetes mellitus with other oral complications
DiabetesAny	E09.641	Drug or chemical induced diabetes mellitus with hypoglycemia with coma
DiabetesAny	E09.649	Drug or chemical induced diabetes mellitus with hypoglycemia without coma
DiabetesAny	E09.65	Drug or chemical induced diabetes mellitus with hyperglycemia
DiabetesAny	E09.69	Drug or chemical induced diabetes mellitus with other specified complication

DiabetesAny	E09.8	Drug or chemical induced diabetes mellitus with unspecified complications
DiabetesAny	E09.9	Drug or chemical induced diabetes mellitus without complications
DiabetesAny	E10.10	Type 1 diabetes mellitus with ketoacidosis without coma
DiabetesAny	E10.11	Type 1 diabetes mellitus with ketoacidosis with coma
DiabetesAny	E10.21	Type 1 diabetes mellitus with diabetic nephropathy
DiabetesAny	E10.22	Type 1 diabetes mellitus with diabetic chronic kidney disease
DiabetesAny	E10.29	Type 1 diabetes mellitus with other diabetic kidney complication
DiabetesAny	E10.311	Type 1 diabetes mellitus with unspecified diabetic retinopathy with macular edema
DiabetesAny	E10.319	Type 1 diabetes mellitus with unspecified diabetic retinopathy without macular edema
DiabetesAny	E10.3211	Type 1 diabetes mellitus with mild nonproliferative diabetic retinopathy with macular edema, right eye
DiabetesAny	E10.3212	Type 1 diabetes mellitus with mild nonproliferative diabetic retinopathy with macular edema, left eye
DiabetesAny	E10.3213	Type 1 diabetes mellitus with mild nonproliferative diabetic retinopathy with macular edema, bilateral
DiabetesAny	E10.3219	Type 1 diabetes mellitus with mild nonproliferative diabetic retinopathy with macular edema, unspecified eye
DiabetesAny	E10.3291	Type 1 diabetes mellitus with mild nonproliferative diabetic retinopathy without macular edema, right eye
DiabetesAny	E10.3292	Type 1 diabetes mellitus with mild nonproliferative diabetic retinopathy without macular edema, left eye
DiabetesAny	E10.3293	Type 1 diabetes mellitus with mild nonproliferative diabetic retinopathy without macular edema, bilateral
DiabetesAny	E10.3299	Type 1 diabetes mellitus with mild nonproliferative diabetic retinopathy without macular edema, unspecified eye
DiabetesAny	E10.3311	Type 1 diabetes mellitus with moderate nonproliferative diabetic retinopathy with macular edema, right eye
DiabetesAny	E10.3312	Type 1 diabetes mellitus with moderate nonproliferative diabetic retinopathy with macular edema, left eye
DiabetesAny	E10.3313	Type 1 diabetes mellitus with moderate nonproliferative diabetic retinopathy with macular edema, bilateral
DiabetesAny	E10.3319	Type 1 diabetes mellitus with moderate nonproliferative diabetic retinopathy with macular edema, unspecified eye
DiabetesAny	E10.3391	Type 1 diabetes mellitus with moderate nonproliferative diabetic retinopathy without macular edema, right eye
DiabetesAny	E10.3392	Type 1 diabetes mellitus with moderate nonproliferative diabetic retinopathy without macular edema, left eye
DiabetesAny	E10.3393	Type 1 diabetes mellitus with moderate nonproliferative diabetic retinopathy without macular edema, bilateral
DiabetesAny	E10.3399	Type 1 diabetes mellitus with moderate nonproliferative diabetic retinopathy without macular edema, unspecified eye
DiabetesAny	E10.3411	Type 1 diabetes mellitus with severe nonproliferative diabetic retinopathy with macular edema, right eye
DiabetesAny	E10.3412	Type 1 diabetes mellitus with severe nonproliferative diabetic retinopathy with macular edema, left eye
DiabetesAny	E10.3413	Type 1 diabetes mellitus with severe nonproliferative diabetic retinopathy with macular edema, bilateral
DiabetesAny	E10.3419	Type 1 diabetes mellitus with severe nonproliferative diabetic retinopathy with macular edema, unspecified eye
DiabetesAny	E10.3491	Type 1 diabetes mellitus with severe nonproliferative diabetic retinopathy without macular edema, right eye
DiabetesAny	E10.3492	Type 1 diabetes mellitus with severe nonproliferative diabetic retinopathy without macular edema, left eye

DiabetesAny	E10.3493	Type 1 diabetes mellitus with severe nonproliferative diabetic retinopathy without macular edema, bilateral
DiabetesAny	E10.3499	Type 1 diabetes mellitus with severe nonproliferative diabetic retinopathy without macular edema, unspecified eye
DiabetesAny	E10.3511	Type 1 diabetes mellitus with proliferative diabetic retinopathy with macular edema, right eye
DiabetesAny	E10.3512	Type 1 diabetes mellitus with proliferative diabetic retinopathy with macular edema, left eye
DiabetesAny	E10.3513	Type 1 diabetes mellitus with proliferative diabetic retinopathy with macular edema, bilateral
DiabetesAny	E10.3519	Type 1 diabetes mellitus with proliferative diabetic retinopathy with macular edema, unspecified eye
DiabetesAny	E10.3521	Type 1 diabetes mellitus with proliferative diabetic retinopathy with traction retinal detachment involving the macula, right eye
DiabetesAny	E10.3522	Type 1 diabetes mellitus with proliferative diabetic retinopathy with traction retinal detachment involving the macula, left eye
DiabetesAny	E10.3523	Type 1 diabetes mellitus with proliferative diabetic retinopathy with traction retinal detachment involving the macula, bilateral
DiabetesAny	E10.3529	Type 1 diabetes mellitus with proliferative diabetic retinopathy with traction retinal detachment involving the macula, unspecified eye
DiabetesAny	E10.3531	Type 1 diabetes mellitus with proliferative diabetic retinopathy with traction retinal detachment not involving the macula, right eye
DiabetesAny	E10.3532	Type 1 diabetes mellitus with proliferative diabetic retinopathy with traction retinal detachment not involving the macula, left eye
DiabetesAny	E10.3533	Type 1 diabetes mellitus with proliferative diabetic retinopathy with traction retinal detachment not involving the macula, bilateral
DiabetesAny	E10.3539	Type 1 diabetes mellitus with proliferative diabetic retinopathy with traction retinal detachment not involving the macula, unspecified eye
DiabetesAny	E10.3541	Type 1 diabetes mellitus with proliferative diabetic retinopathy with combined traction retinal detachment and rhegmatogenous retinal detachment, right eye
DiabetesAny	E10.3542	Type 1 diabetes mellitus with proliferative diabetic retinopathy with combined traction retinal detachment and rhegmatogenous retinal detachment, left eye
DiabetesAny	E10.3543	Type 1 diabetes mellitus with proliferative diabetic retinopathy with combined traction retinal detachment and rhegmatogenous retinal detachment, bilateral
DiabetesAny	E10.3549	Type 1 diabetes mellitus with proliferative diabetic retinopathy with combined traction retinal detachment and rhegmatogenous retinal detachment, unspecified eye
DiabetesAny	E10.3551	Type 1 diabetes mellitus with stable proliferative diabetic retinopathy, right eye
DiabetesAny	E10.3552	Type 1 diabetes mellitus with stable proliferative diabetic retinopathy, left eye
DiabetesAny	E10.3553	Type 1 diabetes mellitus with stable proliferative diabetic retinopathy, bilateral
DiabetesAny	E10.3559	Type 1 diabetes mellitus with stable proliferative diabetic retinopathy, unspecified eye
DiabetesAny	E10.3591	Type 1 diabetes mellitus with proliferative diabetic retinopathy without macular edema, right eye
DiabetesAny	E10.3592	Type 1 diabetes mellitus with proliferative diabetic retinopathy without macular edema, left eye
DiabetesAny	E10.3593	Type 1 diabetes mellitus with proliferative diabetic retinopathy without macular edema, bilateral
DiabetesAny	E10.3599	Type 1 diabetes mellitus with proliferative diabetic retinopathy without macular edema, unspecified eye
DiabetesAny	E10.36	Type 1 diabetes mellitus with diabetic cataract
DiabetesAny	E10.37X1	Type 1 diabetes mellitus with diabetic macular edema, resolved following treatment, right eye
DiabetesAny	E10.37X2	Type 1 diabetes mellitus with diabetic macular edema, resolved following treatment, left eye
DiabetesAny	E10.37X3	Type 1 diabetes mellitus with diabetic macular edema, resolved following treatment, bilateral
DiabetesAny	E10.37X9	Type 1 diabetes mellitus with diabetic macular edema, resolved following treatment, unspecified eye

DiabetesAny	E10.39	Type 1 diabetes mellitus with other diabetic ophthalmic complication
DiabetesAny	E10.40	Type 1 diabetes mellitus with diabetic neuropathy, unspecified
DiabetesAny	E10.41	Type 1 diabetes mellitus with diabetic mononeuropathy
DiabetesAny	E10.42	Type 1 diabetes mellitus with diabetic polyneuropathy
DiabetesAny	E10.43	Type 1 diabetes mellitus with diabetic autonomic (poly)neuropathy
DiabetesAny	E10.44	Type 1 diabetes mellitus with diabetic amyotrophy
DiabetesAny	E10.49	Type 1 diabetes mellitus with other diabetic neurological complication
DiabetesAny	E10.51	Type 1 diabetes mellitus with diabetic peripheral angiopathy without gangrene
DiabetesAny	E10.52	Type 1 diabetes mellitus with diabetic peripheral angiopathy with gangrene
DiabetesAny	E10.59	Type 1 diabetes mellitus with other circulatory complications
DiabetesAny	E10.610	Type 1 diabetes mellitus with diabetic neuropathic arthropathy
DiabetesAny	E10.618	Type 1 diabetes mellitus with other diabetic arthropathy
DiabetesAny	E10.620	Type 1 diabetes mellitus with diabetic dermatitis
DiabetesAny	E10.621	Type 1 diabetes mellitus with foot ulcer
DiabetesAny	E10.622	Type 1 diabetes mellitus with other skin ulcer
DiabetesAny	E10.628	Type 1 diabetes mellitus with other skin complications
DiabetesAny	E10.630	Type 1 diabetes mellitus with periodontal disease
DiabetesAny	E10.638	Type 1 diabetes mellitus with other oral complications
DiabetesAny	E10.641	Type 1 diabetes mellitus with hypoglycemia with coma
DiabetesAny	E10.649	Type 1 diabetes mellitus with hypoglycemia without coma
DiabetesAny	E10.65	Type 1 diabetes mellitus with hyperglycemia
DiabetesAny	E10.69	Type 1 diabetes mellitus with other specified complication
DiabetesAny	E10.8	Type 1 diabetes mellitus with unspecified complications
DiabetesAny	E10.9	Type 1 diabetes mellitus without complications
DiabetesAny	E11.00	Type 2 diabetes mellitus with hyperosmolarity without nonketotic hyperglycemic-hyperosmolar coma (NKHHC)
DiabetesAny	E11.01	Type 2 diabetes mellitus with hyperosmolarity with coma
DiabetesAny	E11.10	Type 2 diabetes mellitus with ketoacidosis without coma
DiabetesAny	E11.11	Type 2 diabetes mellitus with ketoacidosis with coma
DiabetesAny	E11.21	Type 2 diabetes mellitus with diabetic nephropathy
DiabetesAny	E11.22	Type 2 diabetes mellitus with diabetic chronic kidney disease
DiabetesAny	E11.29	Type 2 diabetes mellitus with other diabetic kidney complication
DiabetesAny	E11.311	Type 2 diabetes mellitus with unspecified diabetic retinopathy with macular edema
DiabetesAny	E11.319	Type 2 diabetes mellitus with unspecified diabetic retinopathy without macular edema
DiabetesAny	E11.321	Type 2 Diabetes Mellitus with Mild Nonproliferative Diabetic Retinopathy with Macular Edema
DiabetesAny	E11.3211	Type 2 diabetes mellitus with mild nonproliferative diabetic retinopathy with macular edema, right eye
DiabetesAny	E11.3212	Type 2 diabetes mellitus with mild nonproliferative diabetic retinopathy with macular edema, left eye
DiabetesAny	E11.3213	Type 2 diabetes mellitus with mild nonproliferative diabetic retinopathy with macular edema, bilateral
DiabetesAny	E11.3219	Type 2 diabetes mellitus with mild nonproliferative diabetic retinopathy with macular edema, unspecified eye
DiabetesAny	E11.329	Type 2 Diabetes Mellitus with Mild Nonproliferative Diabetic Retinopathy without Macular Edema

DiabetesAny	E11.3291	Type 2 diabetes mellitus with mild nonproliferative diabetic retinopathy without macular edema, right eye
DiabetesAny	E11.3292	Type 2 diabetes mellitus with mild nonproliferative diabetic retinopathy without macular edema, left eye
DiabetesAny	E11.3293	Type 2 diabetes mellitus with mild nonproliferative diabetic retinopathy without macular edema, bilateral
DiabetesAny	E11.3299	Type 2 diabetes mellitus with mild nonproliferative diabetic retinopathy without macular edema, unspecified eye
DiabetesAny	E11.3311	Type 2 diabetes mellitus with moderate nonproliferative diabetic retinopathy with macular edema, right eye
DiabetesAny	E11.3312	Type 2 diabetes mellitus with moderate nonproliferative diabetic retinopathy with macular edema, left eye
DiabetesAny	E11.3313	Type 2 diabetes mellitus with moderate nonproliferative diabetic retinopathy with macular edema, bilateral
DiabetesAny	E11.3319	Type 2 diabetes mellitus with moderate nonproliferative diabetic retinopathy with macular edema, unspecified eye
DiabetesAny	E11.339	Type 2 Diabetes Mellitus with Moderate Nonproliferative Diabetic Retinopathy without Macular Edema
DiabetesAny	E11.3391	Type 2 diabetes mellitus with moderate nonproliferative diabetic retinopathy without macular edema, right eye
DiabetesAny	E11.3392	Type 2 diabetes mellitus with moderate nonproliferative diabetic retinopathy without macular edema, left eye
DiabetesAny	E11.3393	Type 2 diabetes mellitus with moderate nonproliferative diabetic retinopathy without macular edema, bilateral
DiabetesAny	E11.3399	Type 2 diabetes mellitus with moderate nonproliferative diabetic retinopathy without macular edema, unspecified eye
DiabetesAny	E11.341	Type 2 Diabetes Mellitus with Severe Nonproliferative Diabetic Retinopathy with Macular Edema
DiabetesAny	E11.3411	Type 2 diabetes mellitus with severe nonproliferative diabetic retinopathy with macular edema, right eye
DiabetesAny	E11.3412	Type 2 diabetes mellitus with severe nonproliferative diabetic retinopathy with macular edema, left eye
DiabetesAny	E11.3413	Type 2 diabetes mellitus with severe nonproliferative diabetic retinopathy with macular edema, bilateral
DiabetesAny	E11.3419	Type 2 diabetes mellitus with severe nonproliferative diabetic retinopathy with macular edema, unspecified eye
DiabetesAny	E11.3491	Type 2 diabetes mellitus with severe nonproliferative diabetic retinopathy without macular edema, right eye
DiabetesAny	E11.3492	Type 2 diabetes mellitus with severe nonproliferative diabetic retinopathy without macular edema, left eye
DiabetesAny	E11.3493	Type 2 diabetes mellitus with severe nonproliferative diabetic retinopathy without macular edema, bilateral
DiabetesAny	E11.3499	Type 2 diabetes mellitus with severe nonproliferative diabetic retinopathy without macular edema, unspecified eye
DiabetesAny	E11.351	Type 2 Diabetes Mellitus with Proliferative Diabetic Retinopathy with Macular Edema
DiabetesAny	E11.3511	Type 2 diabetes mellitus with proliferative diabetic retinopathy with macular edema, right eye
DiabetesAny	E11.3512	Type 2 diabetes mellitus with proliferative diabetic retinopathy with macular edema, left eye
DiabetesAny	E11.3513	Type 2 diabetes mellitus with proliferative diabetic retinopathy with macular edema, bilateral
DiabetesAny	E11.3519	Type 2 diabetes mellitus with proliferative diabetic retinopathy with macular edema, unspecified eye
DiabetesAny	E11.3521	Type 2 diabetes mellitus with proliferative diabetic retinopathy with traction retinal detachment involving the macula, right eye

DiabetesAny	E11.3522	Type 2 diabetes mellitus with proliferative diabetic retinopathy with traction retinal detachment involving the macula, left eye
DiabetesAny	E11.3523	Type 2 diabetes mellitus with proliferative diabetic retinopathy with traction retinal detachment involving the macula, bilateral
DiabetesAny	E11.3529	Type 2 diabetes mellitus with proliferative diabetic retinopathy with traction retinal detachment involving the macula, unspecified eye
DiabetesAny	E11.3531	Type 2 diabetes mellitus with proliferative diabetic retinopathy with traction retinal detachment not involving the macula, right eye
DiabetesAny	E11.3532	Type 2 diabetes mellitus with proliferative diabetic retinopathy with traction retinal detachment not involving the macula, left eye
DiabetesAny	E11.3533	Type 2 diabetes mellitus with proliferative diabetic retinopathy with traction retinal detachment not involving the macula, bilateral
DiabetesAny	E11.3539	Type 2 diabetes mellitus with proliferative diabetic retinopathy with traction retinal detachment not involving the macula, unspecified eye
DiabetesAny	E11.3541	Type 2 diabetes mellitus with proliferative diabetic retinopathy with combined traction retinal detachment and rhegmatogenous retinal detachment, right eye
DiabetesAny	E11.3542	Type 2 diabetes mellitus with proliferative diabetic retinopathy with combined traction retinal detachment and rhegmatogenous retinal detachment, left eye
DiabetesAny	E11.3543	Type 2 diabetes mellitus with proliferative diabetic retinopathy with combined traction retinal detachment and rhegmatogenous retinal detachment, bilateral
DiabetesAny	E11.3549	Type 2 diabetes mellitus with proliferative diabetic retinopathy with combined traction retinal detachment and rhegmatogenous retinal detachment, unspecified eye
DiabetesAny	E11.3551	Type 2 diabetes mellitus with stable proliferative diabetic retinopathy, right eye
DiabetesAny	E11.3552	Type 2 diabetes mellitus with stable proliferative diabetic retinopathy, left eye
DiabetesAny	E11.3553	Type 2 diabetes mellitus with stable proliferative diabetic retinopathy, bilateral
DiabetesAny	E11.3559	Type 2 diabetes mellitus with stable proliferative diabetic retinopathy, unspecified eye
DiabetesAny	E11.359	Type 2 Diabetes Mellitus with Proliferative Diabetic Retinopathy without Macular Edema
DiabetesAny	E11.3591	Type 2 diabetes mellitus with proliferative diabetic retinopathy without macular edema, right eye
DiabetesAny	E11.3592	Type 2 diabetes mellitus with proliferative diabetic retinopathy without macular edema, left eye
DiabetesAny	E11.3593	Type 2 diabetes mellitus with proliferative diabetic retinopathy without macular edema, bilateral
DiabetesAny	E11.3599	Type 2 diabetes mellitus with proliferative diabetic retinopathy without macular edema, unspecified eye
DiabetesAny	E11.36	Type 2 diabetes mellitus with diabetic cataract
DiabetesAny	E11.37X1	Type 2 diabetes mellitus with diabetic macular edema, resolved following treatment, right eye
DiabetesAny	E11.37X2	Type 2 diabetes mellitus with diabetic macular edema, resolved following treatment, left eye
DiabetesAny	E11.37X3	Type 2 diabetes mellitus with diabetic macular edema, resolved following treatment, bilateral
DiabetesAny	E11.37X9	Type 2 diabetes mellitus with diabetic macular edema, resolved following treatment, unspecified eye
DiabetesAny	E11.39	Type 2 diabetes mellitus with other diabetic ophthalmic complication
DiabetesAny	E11.40	Type 2 diabetes mellitus with diabetic neuropathy, unspecified
DiabetesAny	E11.41	Type 2 diabetes mellitus with diabetic mononeuropathy
DiabetesAny	E11.42	Type 2 diabetes mellitus with diabetic polyneuropathy
DiabetesAny	E11.43	Type 2 diabetes mellitus with diabetic autonomic (poly)neuropathy
DiabetesAny	E11.44	Type 2 diabetes mellitus with diabetic amyotrophy
DiabetesAny	E11.49	Type 2 diabetes mellitus with other diabetic neurological complication
DiabetesAny	E11.51	Type 2 diabetes mellitus with diabetic peripheral angiopathy without gangrene
DiabetesAny	E11.52	Type 2 diabetes mellitus with diabetic peripheral angiopathy with gangrene

DiabetesAny	E11.59	Type 2 diabetes mellitus with other circulatory complications
DiabetesAny	E11.610	Type 2 diabetes mellitus with diabetic neuropathic arthropathy
DiabetesAny	E11.618	Type 2 diabetes mellitus with other diabetic arthropathy
DiabetesAny	E11.620	Type 2 diabetes mellitus with diabetic dermatitis
DiabetesAny	E11.621	Type 2 diabetes mellitus with foot ulcer
DiabetesAny	E11.622	Type 2 diabetes mellitus with other skin ulcer
DiabetesAny	E11.628	Type 2 diabetes mellitus with other skin complications
DiabetesAny	E11.630	Type 2 diabetes mellitus with periodontal disease
DiabetesAny	E11.638	Type 2 diabetes mellitus with other oral complications
DiabetesAny	E11.641	Type 2 diabetes mellitus with hypoglycemia with coma
DiabetesAny	E11.649	Type 2 diabetes mellitus with hypoglycemia without coma
DiabetesAny	E11.65	Type 2 diabetes mellitus with hyperglycemia
DiabetesAny	E11.69	Type 2 diabetes mellitus with other specified complication
DiabetesAny	E11.8	Type 2 diabetes mellitus with unspecified complications
DiabetesAny	E11.9	Type 2 diabetes mellitus without complications
DiabetesAny	E13.00	Other specified diabetes mellitus with hyperosmolarity without nonketotic hyperglycemic-hyperosmolar coma (NKHHC)
DiabetesAny	E13.01	Other specified diabetes mellitus with hyperosmolarity with coma
DiabetesAny	E13.10	Other specified diabetes mellitus with ketoacidosis without coma
DiabetesAny	E13.11	Other specified diabetes mellitus with ketoacidosis with coma
DiabetesAny	E13.21	Other specified diabetes mellitus with diabetic nephropathy
DiabetesAny	E13.22	Other specified diabetes mellitus with diabetic chronic kidney disease
DiabetesAny	E13.29	Other specified diabetes mellitus with other diabetic kidney complication
DiabetesAny	E13.311	Other specified diabetes mellitus with unspecified diabetic retinopathy with macular edema
DiabetesAny	E13.319	Other specified diabetes mellitus with unspecified diabetic retinopathy without macular edema
DiabetesAny	E13.3211	Other specified diabetes mellitus with mild nonproliferative diabetic retinopathy with macular edema, right eye
DiabetesAny	E13.3212	Other specified diabetes mellitus with mild nonproliferative diabetic retinopathy with macular edema, left eye
DiabetesAny	E13.3213	Other specified diabetes mellitus with mild nonproliferative diabetic retinopathy with macular edema, bilateral
DiabetesAny	E13.3219	Other specified diabetes mellitus with mild nonproliferative diabetic retinopathy with macular edema, unspecified eye
DiabetesAny	E13.3291	Other specified diabetes mellitus with mild nonproliferative diabetic retinopathy without macular edema, right eye
DiabetesAny	E13.3292	Other specified diabetes mellitus with mild nonproliferative diabetic retinopathy without macular edema, left eye
DiabetesAny	E13.3293	Other specified diabetes mellitus with mild nonproliferative diabetic retinopathy without macular edema, bilateral
DiabetesAny	E13.3299	Other specified diabetes mellitus with mild nonproliferative diabetic retinopathy without macular edema, unspecified eye
DiabetesAny	E13.3311	Other specified diabetes mellitus with moderate nonproliferative diabetic retinopathy with macular edema, right eye
DiabetesAny	E13.3312	Other specified diabetes mellitus with moderate nonproliferative diabetic retinopathy with macular edema, left eye
DiabetesAny	E13.3313	Other specified diabetes mellitus with moderate nonproliferative diabetic retinopathy with macular edema, bilateral
DiabetesAny	E13.3319	Other specified diabetes mellitus with moderate nonproliferative diabetic retinopathy with macular edema, unspecified eye

DiabetesAny	E13.3391	Other specified diabetes mellitus with moderate nonproliferative diabetic retinopathy without macular edema, right eye
DiabetesAny	E13.3392	Other specified diabetes mellitus with moderate nonproliferative diabetic retinopathy without macular edema, left eye
DiabetesAny	E13.3393	Other specified diabetes mellitus with moderate nonproliferative diabetic retinopathy without macular edema, bilateral
DiabetesAny	E13.3399	Other specified diabetes mellitus with moderate nonproliferative diabetic retinopathy without macular edema, unspecified eye
DiabetesAny	E13.3411	Other specified diabetes mellitus with severe nonproliferative diabetic retinopathy with macular edema, right eye
DiabetesAny	E13.3412	Other specified diabetes mellitus with severe nonproliferative diabetic retinopathy with macular edema, left eye
DiabetesAny	E13.3413	Other specified diabetes mellitus with severe nonproliferative diabetic retinopathy with macular edema, bilateral
DiabetesAny	E13.3419	Other specified diabetes mellitus with severe nonproliferative diabetic retinopathy with macular edema, unspecified eye
DiabetesAny	E13.3491	Other specified diabetes mellitus with severe nonproliferative diabetic retinopathy without macular edema, right eye
DiabetesAny	E13.3492	Other specified diabetes mellitus with severe nonproliferative diabetic retinopathy without macular edema, left eye
DiabetesAny	E13.3493	Other specified diabetes mellitus with severe nonproliferative diabetic retinopathy without macular edema, bilateral
DiabetesAny	E13.3499	Other specified diabetes mellitus with severe nonproliferative diabetic retinopathy without macular edema, unspecified eye
DiabetesAny	E13.3511	Other specified diabetes mellitus with proliferative diabetic retinopathy with macular edema, right eye
DiabetesAny	E13.3512	Other specified diabetes mellitus with proliferative diabetic retinopathy with macular edema, left eye
DiabetesAny	E13.3513	Other specified diabetes mellitus with proliferative diabetic retinopathy with macular edema, bilateral
DiabetesAny	E13.3519	Other specified diabetes mellitus with proliferative diabetic retinopathy with macular edema, unspecified eye
DiabetesAny	E13.3521	Other specified diabetes mellitus with proliferative diabetic retinopathy with traction retinal detachment involving the macula, right eye
DiabetesAny	E13.3522	Other specified diabetes mellitus with proliferative diabetic retinopathy with traction retinal detachment involving the macula, left eye
DiabetesAny	E13.3523	Other specified diabetes mellitus with proliferative diabetic retinopathy with traction retinal detachment involving the macula, bilateral
DiabetesAny	E13.3529	Other specified diabetes mellitus with proliferative diabetic retinopathy with traction retinal detachment involving the macula, unspecified eye
DiabetesAny	E13.3531	Other specified diabetes mellitus with proliferative diabetic retinopathy with traction retinal detachment not involving the macula, right eye
DiabetesAny	E13.3532	Other specified diabetes mellitus with proliferative diabetic retinopathy with traction retinal detachment not involving the macula, left eye
DiabetesAny	E13.3533	Other specified diabetes mellitus with proliferative diabetic retinopathy with traction retinal detachment not involving the macula, bilateral
DiabetesAny	E13.3539	Other specified diabetes mellitus with proliferative diabetic retinopathy with traction retinal detachment not involving the macula, unspecified eye
DiabetesAny	E13.3541	Other specified diabetes mellitus with proliferative diabetic retinopathy with combined traction retinal detachment and rhegmatogenous retinal detachment, right eye
DiabetesAny	E13.3542	Other specified diabetes mellitus with proliferative diabetic retinopathy with combined traction retinal detachment and rhegmatogenous retinal detachment, left eye
DiabetesAny	E13.3543	Other specified diabetes mellitus with proliferative diabetic retinopathy with combined traction retinal detachment and rhegmatogenous retinal detachment, bilateral

DiabetesAny	E13.3549	Other specified diabetes mellitus with proliferative diabetic retinopathy with combined traction retinal detachment and rhegmatogenous retinal detachment, unspecified eye
DiabetesAny	E13.3551	Other specified diabetes mellitus with stable proliferative diabetic retinopathy, right eye
DiabetesAny	E13.3552	Other specified diabetes mellitus with stable proliferative diabetic retinopathy, left eye
DiabetesAny	E13.3553	Other specified diabetes mellitus with stable proliferative diabetic retinopathy, bilateral
DiabetesAny	E13.3559	Other specified diabetes mellitus with stable proliferative diabetic retinopathy, unspecified eye
DiabetesAny	E13.3591	Other specified diabetes mellitus with proliferative diabetic retinopathy without macular edema, right eye
DiabetesAny	E13.3592	Other specified diabetes mellitus with proliferative diabetic retinopathy without macular edema, left eye
DiabetesAny	E13.3593	Other specified diabetes mellitus with proliferative diabetic retinopathy without macular edema, bilateral
DiabetesAny	E13.3599	Other specified diabetes mellitus with proliferative diabetic retinopathy without macular edema, unspecified eye
DiabetesAny	E13.36	Other specified diabetes mellitus with diabetic cataract
DiabetesAny	E13.37X1	Other specified diabetes mellitus with diabetic macular edema, resolved following treatment, right eye
DiabetesAny	E13.37X2	Other specified diabetes mellitus with diabetic macular edema, resolved following treatment, left eye
DiabetesAny	E13.37X3	Other specified diabetes mellitus with diabetic macular edema, resolved following treatment, bilateral
DiabetesAny	E13.37X9	Other specified diabetes mellitus with diabetic macular edema, resolved following treatment, unspecified eye
DiabetesAny	E13.39	Other specified diabetes mellitus with other diabetic ophthalmic complication
DiabetesAny	E13.40	Other specified diabetes mellitus with diabetic neuropathy, unspecified
DiabetesAny	E13.41	Other specified diabetes mellitus with diabetic mononeuropathy
DiabetesAny	E13.42	Other specified diabetes mellitus with diabetic polyneuropathy
DiabetesAny	E13.43	Other specified diabetes mellitus with diabetic autonomic (poly)neuropathy
DiabetesAny	E13.44	Other specified diabetes mellitus with diabetic amyotrophy
DiabetesAny	E13.49	Other specified diabetes mellitus with other diabetic neurological complication
DiabetesAny	E13.51	Other specified diabetes mellitus with diabetic peripheral angiopathy without gangrene
DiabetesAny	E13.52	Other specified diabetes mellitus with diabetic peripheral angiopathy with gangrene
DiabetesAny	E13.59	Other specified diabetes mellitus with other circulatory complications
DiabetesAny	E13.610	Other specified diabetes mellitus with diabetic neuropathic arthropathy
DiabetesAny	E13.618	Other specified diabetes mellitus with other diabetic arthropathy
DiabetesAny	E13.620	Other specified diabetes mellitus with diabetic dermatitis
DiabetesAny	E13.621	Other specified diabetes mellitus with foot ulcer
DiabetesAny	E13.622	Other specified diabetes mellitus with other skin ulcer
DiabetesAny	E13.628	Other specified diabetes mellitus with other skin complications
DiabetesAny	E13.630	Other specified diabetes mellitus with periodontal disease
DiabetesAny	E13.638	Other specified diabetes mellitus with other oral complications
DiabetesAny	E13.641	Other specified diabetes mellitus with hypoglycemia with coma
DiabetesAny	E13.649	Other specified diabetes mellitus with hypoglycemia without coma
DiabetesAny	E13.65	Other specified diabetes mellitus with hyperglycemia
DiabetesAny	E13.69	Other specified diabetes mellitus with other specified complication
DiabetesAny	E13.8	Other specified diabetes mellitus with unspecified complications
DiabetesAny	E13.9	Other specified diabetes mellitus without complications

DiabetesAny	E89.1	Postprocedural hypoinsulinemia
DiabetesAny	O24.011	Pre-existing type 1 diabetes mellitus, in pregnancy, first trimester
DiabetesAny	O24.012	Pre-existing type 1 diabetes mellitus, in pregnancy, second trimester
DiabetesAny	O24.013	Pre-existing type 1 diabetes mellitus, in pregnancy, third trimester
DiabetesAny	O24.019	Pre-existing type 1 diabetes mellitus, in pregnancy, unspecified trimester
DiabetesAny	O24.02	Pre-existing type 1 diabetes mellitus, in childbirth
DiabetesAny	O24.03	Pre-existing type 1 diabetes mellitus, in the puerperium
DiabetesAny	O24.111	Pre-existing type 2 diabetes mellitus, in pregnancy, first trimester
DiabetesAny	O24.112	Pre-existing type 2 diabetes mellitus, in pregnancy, second trimester
DiabetesAny	O24.113	Pre-existing type 2 diabetes mellitus, in pregnancy, third trimester
DiabetesAny	O24.119	Pre-existing type 2 diabetes mellitus, in pregnancy, unspecified trimester
DiabetesAny	O24.12	Pre-existing type 2 diabetes mellitus, in childbirth
DiabetesAny	O24.13	Pre-existing type 2 diabetes mellitus, in the puerperium
DiabetesAny	O24.311	Unspecified pre-existing diabetes mellitus in pregnancy, first trimester
DiabetesAny	O24.312	Unspecified pre-existing diabetes mellitus in pregnancy, second trimester
DiabetesAny	O24.313	Unspecified pre-existing diabetes mellitus in pregnancy, third trimester
DiabetesAny	O24.319	Unspecified pre-existing diabetes mellitus in pregnancy, unspecified trimester
DiabetesAny	O24.32	Unspecified pre-existing diabetes mellitus in childbirth
DiabetesAny	O24.33	Unspecified pre-existing diabetes mellitus in the puerperium
DiabetesAny	O24.410	Gestational diabetes mellitus in pregnancy, diet controlled
DiabetesAny	O24.414	Gestational diabetes mellitus in pregnancy, insulin controlled
DiabetesAny	O24.415	Gestational diabetes mellitus in pregnancy, controlled by oral hypoglycemic drugs
DiabetesAny	O24.419	Gestational diabetes mellitus in pregnancy, unspecified control
DiabetesAny	O24.420	Gestational diabetes mellitus in childbirth, diet controlled
DiabetesAny	O24.424	Gestational diabetes mellitus in childbirth, insulin controlled
DiabetesAny	O24.425	Gestational diabetes mellitus in childbirth, controlled by oral hypoglycemic drugs
DiabetesAny	O24.429	Gestational diabetes mellitus in childbirth, unspecified control
DiabetesAny	O24.430	Gestational diabetes mellitus in the puerperium, diet controlled
DiabetesAny	O24.434	Gestational diabetes mellitus in the puerperium, insulin controlled
DiabetesAny	O24.435	Gestational diabetes mellitus in puerperium, controlled by oral hypoglycemic drugs
DiabetesAny	O24.439	Gestational diabetes mellitus in the puerperium, unspecified control
DiabetesAny	O24.811	Other pre-existing diabetes mellitus in pregnancy, first trimester
DiabetesAny	O24.812	Other pre-existing diabetes mellitus in pregnancy, second trimester
DiabetesAny	O24.813	Other pre-existing diabetes mellitus in pregnancy, third trimester
DiabetesAny	O24.819	Other pre-existing diabetes mellitus in pregnancy, unspecified trimester
DiabetesAny	O24.82	Other pre-existing diabetes mellitus in childbirth
DiabetesAny	O24.83	Other pre-existing diabetes mellitus in the puerperium
DiabetesAny	O24.911	Unspecified diabetes mellitus in pregnancy, first trimester
DiabetesAny	O24.912	Unspecified diabetes mellitus in pregnancy, second trimester
DiabetesAny	O24.913	Unspecified diabetes mellitus in pregnancy, third trimester
DiabetesAny	O24.919	Unspecified diabetes mellitus in pregnancy, unspecified trimester
DiabetesAny	O24.92	Unspecified diabetes mellitus in childbirth
DiabetesAny	O24.93	Unspecified diabetes mellitus in the puerperium
DiabetesAny	O99.810	Abnormal glucose complicating pregnancy

DiabetesAny	O99.814	Abnormal glucose complicating childbirth
DiabetesAny	O99.815	Abnormal glucose complicating the puerperium

Supplementary Table 4. Baseline sociodemographic and clinical characteristics of persons who received a booster dose of mRNA COVID-19 vaccination in the VA healthcare system and their unmatched counterparts who did not receive a booster dose from December 1, 2021 to March 31, 2022.

	Booster mRNA vaccination N=505,585	No booster vaccination N=1,181,836
Type of booster vaccine		
BNT162b2	37.9	N/A
mRNA-1273	62.1	N/A
Time since 2nd dose COVID-19 mRNA vaccine (days), mean \pmSD	274.0 \pm 36.7	N/A
Time since 2nd dose COVID-19 mRNA vaccine (%)		
5-9 months (154-270 days)	48.0	N/A
>9 months (> 270 days)	52.0	N/A
Type of primary COVID-19 mRNA vaccine**		
BNT162b2	38.5	43.5
mRNA-1273	61.5	56.5
Sex (%)		
Female	10.3	9.5
Male	87.3	87
Missing	2.3	3.5
Age (years), mean \pmSD	63.0 \pm 14.0	62.5 \pm 16.3
Age Group (%)		
18 to 49	17	22.9
50 to 59	19	15.4
60 to 64	14.1	9.7
65 to 69	12.1	10
70 to 74	19	18.6
75 to 79	9.7	10.7
80 to 84	4.4	5.5
85 to 89	3.2	4.5
\geq 90	1.6	2.5
Race (%)		
White	65.7	70.8
Black	23.6	17.3
Asian	1.7	1.7
American Indian/Alaska Native	1	1
Pacific Islander/ Native Hawaiian	1.1	1
Declined/Unknown/Missing	6.9	8.1
Ethnicity (%)		
Non-Hispanic	86.8	86.8
Hispanic	8.7	7.5
Declined/Unknown/Missing	4.4	5.6

Urban/Rural (%)		
Rural/Highly rural	47.3	51.7
Urban	52.7	48.3
VA Integrated Service Network (VISN) (%)		
1	4.6	4
2	5.4	4
4	5	4.4
5	2.9	3.4
6	6.5	6.2
7	6.4	7.9
8	10.3	9.8
9	3.4	3.8
10	7.7	6.5
12	5.1	3.5
15	3.3	3.5
16	6.2	6.1
17	5.3	7.9
19	3.9	4.9
20	4.1	6
21	5.8	4.9
22	9.3	8.6
23	4.9	4.7
Body Mass Index (kg/m²), mean ±SD	30.4±6.1	30.1±5.9
Body Mass Index (kg/m²), group (%)		
<18.5	0.7	0.7
18.5 to <25	16.4	16.8
25 to <30 (Overweight)	34.1	34.9
30 to <35 (Obese I)	27	26.1
35 to <40 (Obese II)	12.5	11.5
≥40 (Obese III)	6.7	5.8
Missing	2.4	4.3
Charlson Comorbidity Index, mean ± SD	1.4±1.8	1.1±1.6
Charlson Comorbidity Index group (%)		
0	43.9	51.4
1	21.3	20.6
2	14.9	13.2
3	7.8	6.3
4	5.1	3.8
5-6	4.7	3.3
7-8	1.6	1.1
≥9	0.6	0.3
Diabetes (%)		
No	68.8	74.2
Yes	31.2	25.8

Chronic Kidney Disease (%)		
No	89.2	91.1
Yes	10.8	8.9
Congestive heart failure (%)		
No	95.1	96.6
Yes	4.9	3.4
Chronic Obstructive Pulmonary Disease (%)		
No	86.3	89.1
Yes	13.7	10.9
CAN Score† for mortality w/in 1 year, mean ± SD	46.8±27.8	46.8±28.6
CAN Score† for mortality w/in 1 year group (%)		
0-30	33	34.4
31-55	28.4	24.8
56-75	20	20
76-90	13.2	14.3
95-96	1.7	1.7
97-98	1.6	1.6
99	0.7	0.6
Missing	1.4	2.6
Immunosuppressant medications* (%)		
No	94.1	95.9
Yes	5.9	4.1

† **CAN score** is the Care Assessment Needs score a validated measure of 1-year mortality in VA enrollees, presented as a percentile of all VA enrollees

* Immunosuppressant medications prescribed in the previous year (see list of immunosuppressant medications in **Supplementary Appendix-Supplementary Methods 2**)

Supplementary Table 5. Baseline sociodemographic and clinical characteristics of persons who received a booster dose of mRNA COVID-19 vaccination in the VA healthcare system and their matched counterparts who did not receive a booster dose from December 1, 2021 to March 31, 2022, and for whom all members of matched sets were still at risk 10 days after time zero.

	Booster mRNA vaccination N=468,616	No booster vaccination N=468,616	Standardized Mean Difference
Type of 3rd dose COVID-19 mRNA vaccine			
BNT162b2	37.7	N/A	0.0000
mRNA-1273	62.3	N/A	0.0000
Time since 2nd dose COVID-19 mRNA vaccine (days), mean \pmSD	273.3 \pm 35.8	273.4 \pm 36.8	-0.0028
Time since 2nd dose COVID-19 mRNA vaccine (%)			
5-9 months (154-270 days)	51.5	51.8	-0.0060
>9 months (> 270 days)	48.5	48.2	0.0060
Type of primary COVID-19 mRNA vaccine**			
BNT162b2	38.3	38.3	0.0000
mRNA-1273	61.7	61.7	0.0000
Sex (%)			
Female	10.2	9.9	0.0100
Male	87.4	87.7	-0.0091
Declined/Unknown/Missing	2.4	2.4	0.0000
Age (years), mean \pmSD	63.0 \pm 14.0	63.0 \pm 14.0	0.0000
Age Group (%)			
18 to 49	17	17	0.0000
50 to 59	18.9	18.9	0.0000
60 to 64	14	13.7	0.0087
65 to 69	12.2	12	0.0061
70 to 74	19.1	19.7	-0.0152
75 to 79	9.8	9.6	0.0068
80 to 84	4.4	4.4	0.0000
85 to 89	3.2	3.1	0.0057
\geq 90	1.5	1.5	0.0000
Race (%)			
White	66.4	67.1	-0.0149
Black	22.8	22.2	0.0144
Asian	1.7	1.7	0.0000
American Indian/Alaska Native	1	1	0.0000
Pacific Islander/ Native Hawaiian	1.1	1.1	0.0000
Declined/Unknown/Missing	6.9	6.8	0.0040

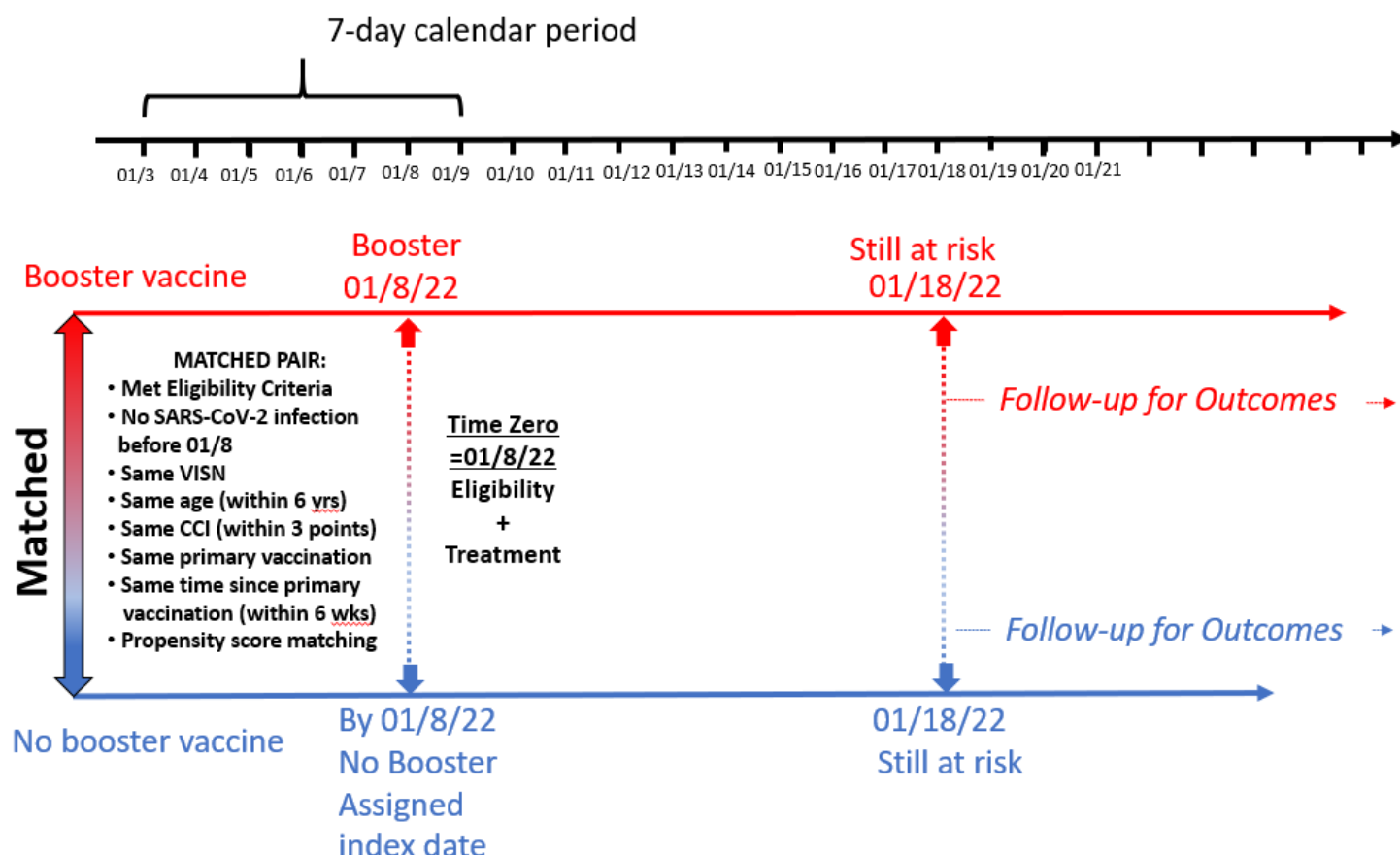
Ethnicity (%)			
Non-Hispanic	86.9	87.3	-0.0119
Hispanic	8.6	8.2	0.0144
Declined/Unknown/Missing	4.5	4.5	0.0000
Urban/Rural (%)			
Rural/Highly rural	47.9	48.2	-0.0060
Urban	52.1	51.8	0.0060
VA Integrated Service Network (VISN) (%)			
1	4.5	4.5	0.0000
2	5.3	5.3	0.0000
4	5	5	0.0000
5	2.8	2.8	0.0000
6	6.5	6.5	0.0000
7	6.5	6.5	0.0000
8	10.4	10.4	0.0000
9	3.4	3.4	0.0000
10	7.7	7.7	0.0000
12	5	5	0.0000
15	3.2	3.2	0.0000
16	6.2	6.2	0.0000
17	5.4	5.4	0.0000
19	3.9	3.9	0.0000
20	4.1	4.1	0.0000
21	5.8	5.8	0.0000
22	9.3	9.3	0.0000
23	5	5	
Body Mass Index (kg/m²), mean ±SD	30.4±6.1	30.4±6.1	0.0000
Body Mass Index (kg/m²), group (%)			
<18.5	0.7	0.7	0.0000
18.5 to <25	16.5	15.8	0.0190
25 to <30 (Overweight)	34.2	33.9	0.0063
30 to <35 (Obese I)	27	27	0.0000
35 to <40 (Obese II)	12.5	12.6	-0.0030
≥40 (Obese III)	6.6	6.7	-0.0040
Missing	2.5	3.3	-0.0477
Charlson Comorbidity Index, mean ± SD	1.3±1.7	1.3±1.7	0.0000
Charlson Comorbidity Index group (%)			
0	44.7	44.7	0.0000
1	21.5	22	-0.0121
2	15.1	14.8	0.0084
3	7.8	7.6	0.0075
4	4.9	4.9	0.0000
5-6	4.4	4.4	0.0000
7-8	1.3	1.3	0.0000

≥9	0.3	0.3	0.0000
Diabetes (%)	30.6	31.2	-0.0130
Chronic Kidney Disease (%)	10.2	10	0.0066
Congestive heart failure (%)	4.5	4.3	0.0098
Chronic Obstructive Pulmonary Disease (%)	13.2	13.5	-0.0088
CAN Score† for mortality w/in 1 year, mean ± SD	46.7±27.6	46.6±27.4	0.0036
CAN Score† for mortality w/in 1 year group (%)			
0-30	33	32.9	0.0021
31-55	28.6	28.4	0.0044
56-75	20.2	20.2	0.0000
76-90	13.1	12.9	0.0059
95-96	1.6	1.5	0.0081
97-98	1.5	1.4	0.0084
99	0.6	0.5	0.0135
Missing	1.4	2.1	-0.0534
Immunosuppressant medications* (%)	5.3	5.2	0.0045

Supplementary Figure 1. Schematic representation of the method used to match person(s) who did not receive a booster mRNA vaccine to each person who received a booster mRNA vaccine, within each 1-week period during the target trial period.

Supplementary Figure 1 Caption.

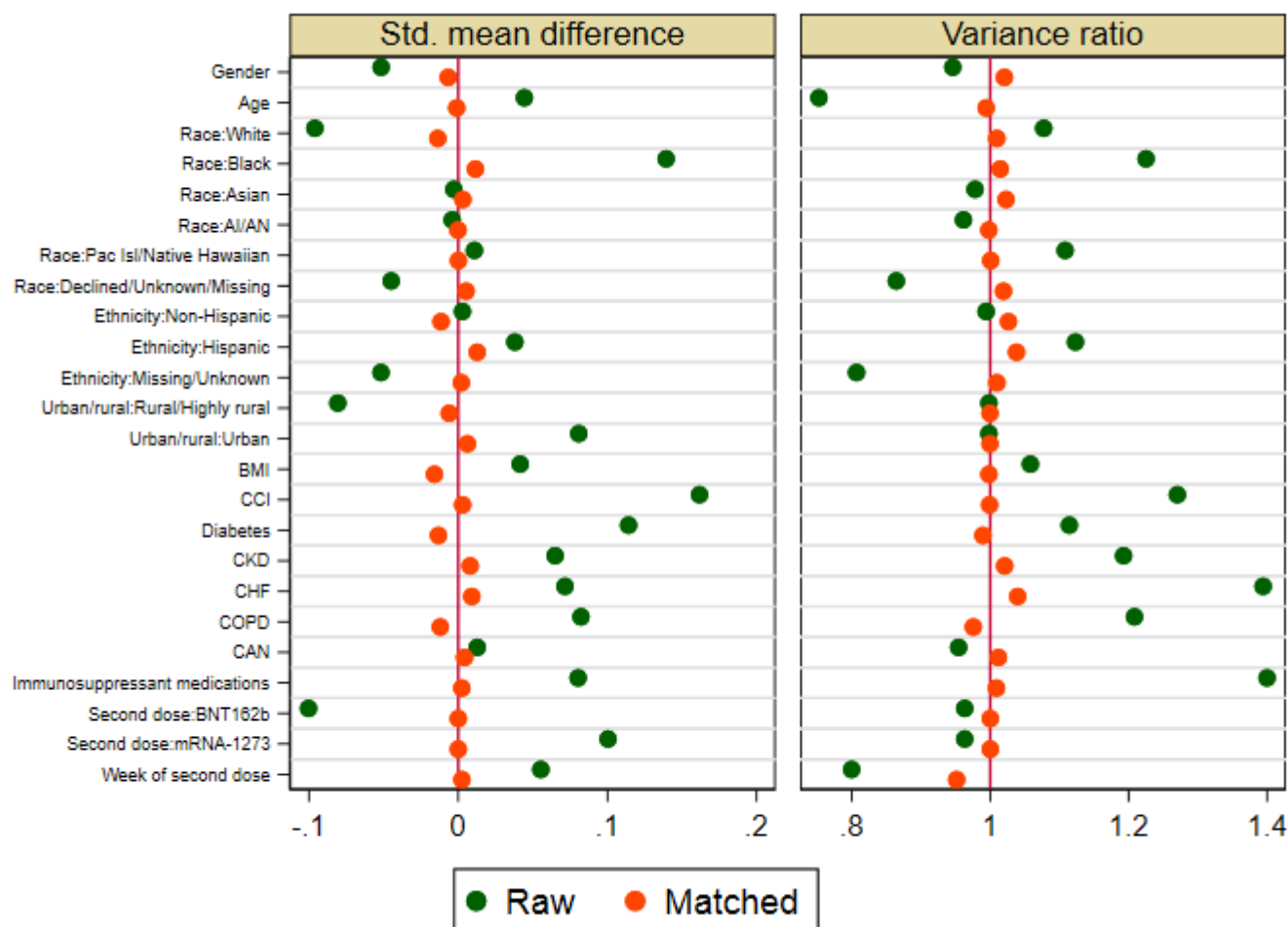
The schematic shows a specific person during the 1-week period from 01/3/2022 to 01/9/2022 who received a booster mRNA vaccine dose on 01/8/2022 and met all of the target trial's eligibility criteria and did not have SARS-CoV-2 infection as of 01/8/2022. This person is matched to a person who did not receive a booster vaccine dose as of 01/8/2022 (i.e. had only received two mRNA doses), who also fulfilled all the eligibility criteria and was alive as of 01/8/2022, and had the same VISN, type of primary vaccination, week of primary vaccination completion (within 6 weeks), age (within 6 years) and Charlson Comorbidity Index (CCI, within 3 points) as the booster dose recipient, and has a propensity score within 0.2 standard deviation of the mean (sdm) of that of the booster dose recipient. In practice, the propensity score difference between matched sets ranged from 0.0002-0.0033 sdm. Both persons in the matched pair have to remain at risk (i.e. alive, uninfected) as of the date 10 days later, after which outcomes are ascertained for the calculation of vaccine effectiveness



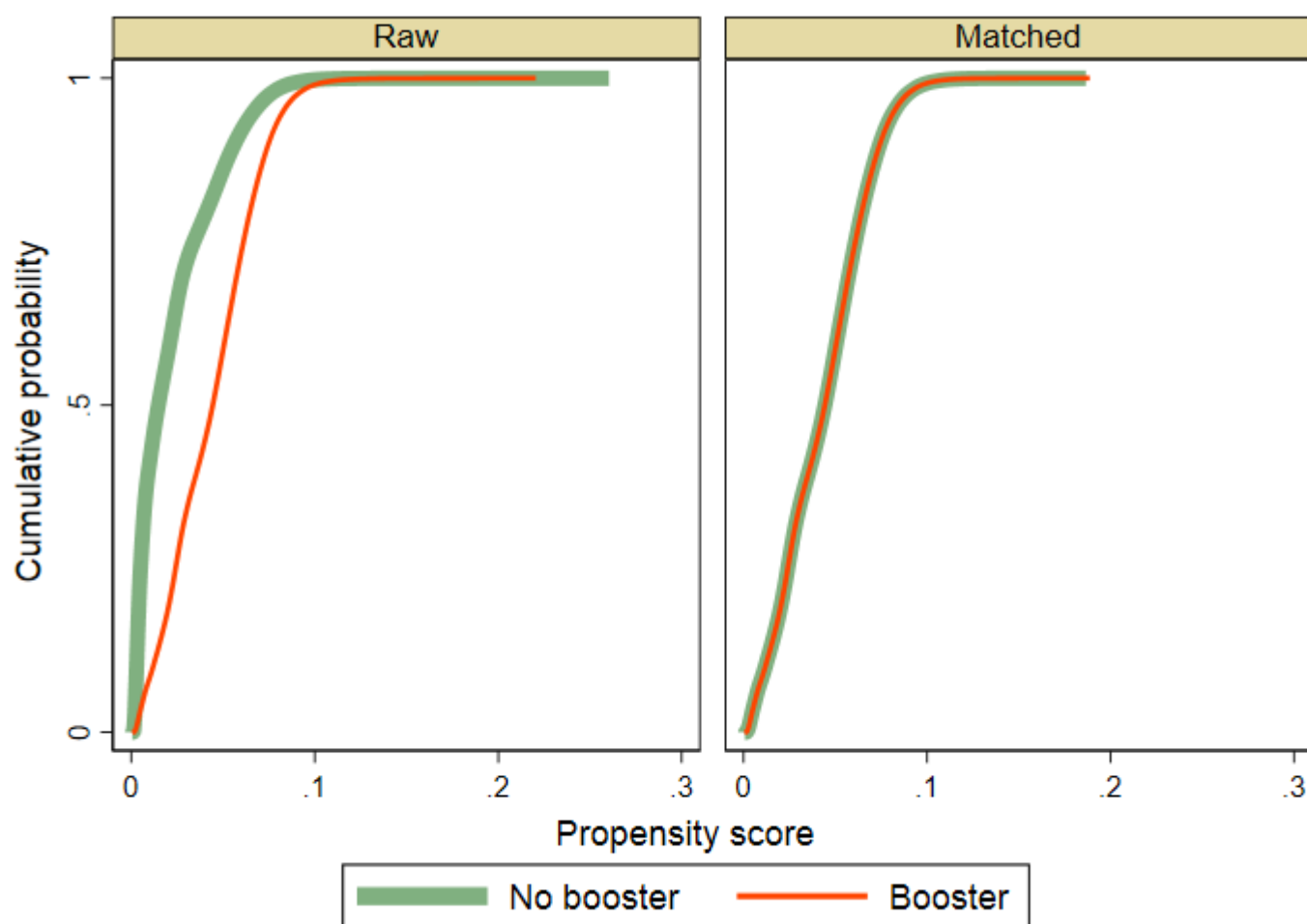
Supplementary Figure 2. Comparison of baseline characteristics of persons who received a booster dose mRNA COVID-19 vaccine and their comparators who did not, before and after matching, demonstrate excellent balance after matching

- a. Absolute standardized mean difference and variance ratio of baseline characteristics between booster dose mRNA vaccination recipients versus no booster dose shown for the raw (green dots) and matched (orange dots) data demonstrate balance after matching.

Prior to matching, the absolute standardized difference in baseline characteristics between the 3rd dose and no 3rd dose groups ranged from 0.003-0.162 with a median of 0.060 (IQR: 0.040-0.089). After matching, the absolute standardized differences ranged from 0.000-0.016 with a median of 0.001 (IQR: 0.002-0.011).



- b. Cumulative distribution of propensity score between booster dose mRNA vaccination recipients versus no booster dose shown for the raw and matched data demonstrate balance after matching.

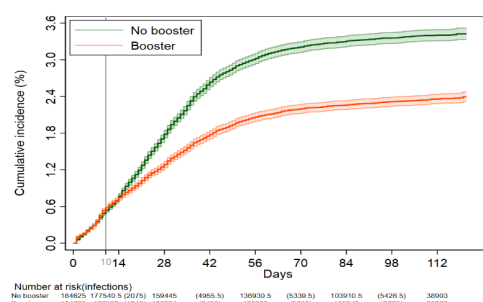


Supplementary Figure 3. Kaplan-Meier curves comparing persons who received a booster mRNA COVID-19 vaccine versus their matched counterparts who did not with respect to the cumulative incidence (%) and 95% confidence intervals of SARS-CoV-2 infection (a) (b), SARS-CoV-2-related hospitalization (c)(d) and SARS-CoV-2-related death (e)(f). Results are shown separately for booster vaccination with BNT162b2 (a,c,e) and mRNA-1273(b,d,f)

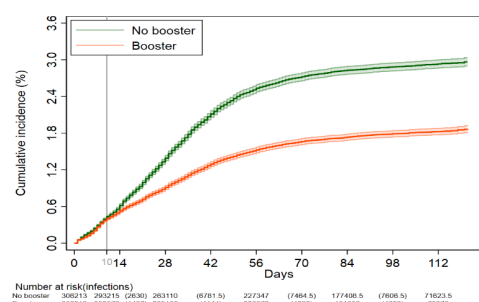
BNT162b2 Booster Vaccination

mRNA-1273 Booster Vaccination

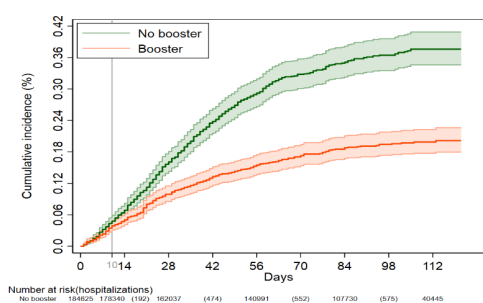
a. SARS-CoV-2 Infection



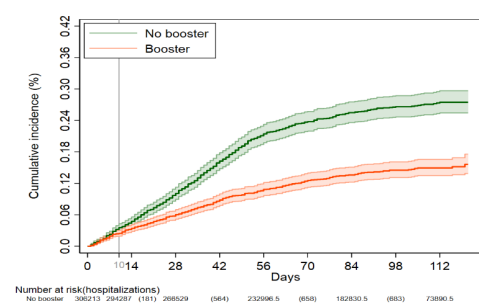
b. SARS-CoV-2 Infection



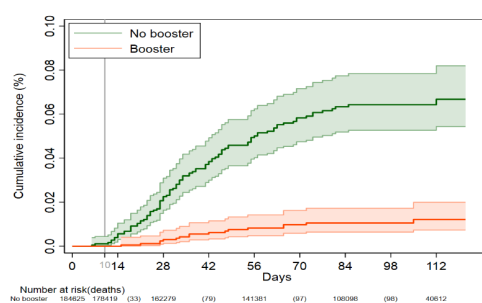
c. SARS-CoV-2-related hospitalization



d. SARS-CoV-2-related hospitalization



e. SARS-CoV-2-related death



f. SARS-CoV-2-related death

