

1 **Real-world treatment patterns and clinical outcomes in Korean**
2 **patients with AML ineligible for first-line intensive**
3 **chemotherapy: A subanalysis of the CURRENT study, a non-**
4 **interventional, retrospective chart review**

5
6 **Short title:** Real-world treatment for Korean patients with AML not candidates for intensive
7 chemotherapy

8
9 Soo-Mee Bang¹, Ka-Won Kang², Ik-Chan Song³, Alexander Delgado⁴, Cynthia Llamas⁵,
10 Yinghui Duan⁵, Ji-Young Jeong⁶, Je-Hwan Lee^{7*}

11
12 ¹Division of Hematology and Medical Oncology, Department of Internal Medicine, Seoul
13 National University, College of Medicine, Seoul National University Bundang Hospital,
14 Seongnam, Korea

15 ²Division of Hematology and Oncology, Department of Internal Medicine, Korea University
16 College of Medicine, Seoul, Korea

17 ³Division of Hematology and Oncology, Department of Internal Medicine, Chungnam
18 National University School of Medicine, Daejeon, Korea

19 ⁴ Medical Affairs, Oncology JAPAC, AbbVie Singapore Pte Ltd, Singapore

20 ⁵ Evidence Solutions, AbbVie Inc., North Chicago, IL, USA

21 ⁶ Medical Affairs, AbbVie Korea Ltd, Seoul, Korea

22 ⁷Department of Hematology, Asan Medical Center, University of Ulsan College of Medicine,

23 ^{NOTE:} This preprint reports new research that has not been certified by peer review and should not be used to guide clinical practice.
Seoul, Korea

24

25 *Corresponding author

26 Email: jhlee3@amc.seoul.kr (JHL)

27 **Abstract**

28 **Background**

29 Although most elderly patients with acute myeloid leukemia are ineligible for intensive
30 chemotherapy, treatment options remain limited. CURRENT (UMIN000037786), a real-
31 world, non-interventional, retrospective chart review, evaluated clinical outcomes,
32 clinicopathologic characteristics, and treatment patterns in these patients. We present results
33 from a subanalysis of Korean patients in this study.

34 **Methods**

35 Patients were aged ≥ 18 years with primary or secondary acute myeloid leukemia ineligible
36 for intensive chemotherapy who initiated first-line systemic therapy or best supportive care
37 between 2015 and 2018 across four centers in Korea. Primary endpoint was overall survival
38 from diagnosis. Secondary endpoints included progression-free survival, time to treatment
39 failure, and response rates. Data analyses were primarily descriptive, with time-to-event
40 outcomes estimated using the Kaplan-Meier method, and Cox regression used to determine
41 prognostic factors for survival.

42 **Results**

43 Among 194 patients enrolled, 84.0% received systemic therapy and 16.0% received best
44 supportive care. Median age at diagnosis was 74 and 78 years, and Eastern Cooperative
45 Oncology Group performance status 0 or 1 was reported in 73.0% and 48.4% of patients,
46 respectively; poor cytogenetic risk was reported in 30.1% and 16.1% of patients. Median
47 overall survival was 7.83 versus 4.50 months, and median progression-free survival was 6.73
48 versus 4.50 months in the systemic therapy versus best supportive care groups. Prognostic
49 factors (all $P < 0.05$) affecting overall survival included secondary acute myeloid leukemia
50 (hazard ratio, 1.67 [95% CI: 1.13–2.45]), Eastern Cooperative Oncology Group performance

51 status ≥ 2 (2.41 [1.51–3.83]), poor cytogenetic risk (2.10 [1.36–3.24]), and Charlson
52 comorbidity index ≥ 1 (2.26 [1.43–3.58]).

53 **Conclusion**

54 Clinical outcomes are poor in Korean patients with acute myeloid leukemia ineligible for
55 intensive chemotherapy who are prescribed current systemic therapies or best supportive
56 care. There is a substantial unmet need for novel agents (monotherapy or in combination) to
57 improve clinical outcomes in this patient population.

58

59

60 **Introduction**

61 Acute myeloid leukemia (AML) is a hematologic malignancy characterized by the rapid
62 proliferation of abnormally differentiated myeloid blast cells [1]. AML, the most common
63 type of leukemia in adults worldwide [2], predominantly affects elderly individuals, with
64 about 60% of patients diagnosed at ≥ 65 years of age [3]. From 1990 to 2017, the global
65 incidence of AML rose by 87%, with 119,570 cases recorded in 2017 [4]. In Korea, AML is
66 the most frequently diagnosed myeloid malignancy and is most prevalent in patients aged 60
67 to 79 years [5]. Despite the greater prevalence of AML in older versus younger adults,
68 survival outcomes for this population remain extremely poor [6].

69
70 The current standard of care for AML is intensive chemotherapy (ICT), but approximately
71 50% of patients are ineligible for this treatment [7] owing to factors such as advanced age,
72 poor performance status, and prevalence of comorbidities [8, 9]. AML-related genetic
73 abnormalities can also increase the likelihood of resistance to ICT [9]. Treatment options for
74 these patients remain limited and include low-intensity treatment with hypomethylating
75 agents (HMAs), low-dose cytarabine (LDAC), and best supportive care (BSC) [2, 10]. The
76 availability of targeted therapies, such as inhibitors of B-cell lymphoma-2 (BCL-2), isocitrate
77 dehydrogenase isoforms 1/2 (IDH1/2), FMS-like tyrosine kinase-3 (FLT3), and Hedgehog
78 (Hh), is also increasing for patients who are ineligible for ICT [11].

79
80 Prognostic models have been developed to determine the suitability of older patients for ICT,
81 yet there is no consensus regarding their optimal treatment [12-14]. Treatment decision-
82 making for elderly patients with AML is an escalating global clinical challenge in light of
83 emerging new agents and is compounded by an increasing incidence of AML due to the

84 aging population [4, 15]. Thus, there is a growing need to understand current treatment
85 strategies and their associated clinical outcomes in patients who are ineligible for ICT.

86

87 The CURRENT study was an international, real-world, non-interventional, retrospective
88 chart review that aimed to evaluate clinical outcomes, clinicopathologic characteristics, and
89 treatment patterns of patients with AML deemed ineligible for ICT [16]. Here, we report that
90 clinical outcomes were poor among the subgroup of Korean patients included in the
91 CURRENT study.

92

93 **Methods**

94 **Study design**

95 The CURRENT study [16] enrolled 1792 patients across 112 community or hospital medical
96 centers from 22 countries between January 1, 2015, and December 31, 2018; four of the
97 medical centers were in Korea. Notification was made to the responsible ethics committees,
98 health institutions, and/or competent authorities as required by local laws and regulations.
99 Ethics committee approval was obtained for this study, with the following institutional
100 review board approval numbers (Seoul National University Bundang Hospital: B-1908/559-
101 102; Korea University College of Medicine: K2019-1535-001; Chungnan National
102 University School of Medicine: 2019-09-027; Asan Medical Center: S2019-1692-0001). Data
103 collection was carried out anonymously, and final data cut-off was March 31, 2020.

104

105 **Study population**

106 Eligible patients were aged ≥ 18 years, diagnosed with primary or secondary AML, and
107 ineligible for ICT based on physician assessment of age, Eastern Cooperative Oncology

108 Group (ECOG) performance status, comorbidities, regional guidelines, and institutional
109 practice. Patients were also required to have commenced first-line systemic therapy with low-
110 intensity chemotherapy (e.g. HMAs, including azacytidine and decitabine, or LDAC),
111 targeted therapy, or BSC and to have attended at least two practice visits to the physician
112 during the treatment period in addition to the initial treatment visit. Exclusion criteria
113 included undiagnosed AML, acute promyelocytic leukemia, and having received first-line
114 therapy for AML in a clinical trial. Patients were followed up until the last recorded contact
115 or death (whichever came first), and all visits were completed before data extraction.

116

117 **Endpoints**

118 The primary endpoint was overall survival (OS; measured from diagnosis of AML).
119 Secondary endpoints included progression-free survival (PFS), time to treatment failure
120 (TTF), response rate (including complete remission [CR] and CR with incomplete
121 hematologic recovery [CRi]), and duration of response (DoR).

122

123 **Data collection**

124 Anonymized patient data including age, sex, disease characteristics, prior treatment, ECOG
125 performance status, cytogenetic risk, and Charlson comorbidity index (CCI) were extracted
126 from patient charts and/or site documentation, and recorded via electronic case report forms
127 (CRFs) completed by each center.

128

129 **Sample size**

130 Target sample size for the overall CURRENT study was 1600 patients, and the target sample
131 size in Korea was 170 patients. Because of the descriptive nature of the study, formal

132 statistical power considerations are not provided. However, the sample size was considered
133 sufficient to provide reasonably precise estimates.

134

135 **Statistical analyses**

136 Data analyses were primarily descriptive. Continuous variables were described using mean,
137 standard deviation (SD), median, and ranges. Categorical variables were reported as counts
138 and proportions. Time-to-event data were estimated using the Kaplan-Meier method, with
139 median time and 95% confidence intervals (CIs) reported. Log-rank test or Wilcoxon test
140 were used to compare Kaplan-Meier estimates of survival between patient subgroups. Cox
141 regression analyses were performed to evaluate the association between patient variables and
142 estimates of median OS and PFS. Missing data were captured via an “unknown” option in the
143 electronic CRFs wherever appropriate. No imputation was performed, and all analyses were
144 conducted on available data only.

145

146 **Results**

147 **Patient demographics and clinical characteristics**

148 At final data cut-off, 194 Korean patients were enrolled. Patient baseline characteristics by
149 treatment group are provided in Table 1. In the first-line systemic therapy and BSC groups,
150 respectively, median age was 74.0 and 78.0 years, 64.4% and 48.4% of patients were male,
151 and secondary AML was diagnosed in 25.2% and 29.0% of patients. The majority (73.0%) of
152 patients in the first-line systemic therapy group had an ECOG performance status of 0 or 1; in
153 the BSC group, approximately half (51.6%) had an ECOG performance status ≥ 2 .
154 Cardiovascular, pulmonary, liver, renal, and other comorbidities were reported in 130

155 (89.7%), 18 (100.0%), and 28 (90.3%) patients who received HMA, LDAC and other
 156 systemic therapies, and BSC, respectively (S1 Table).

157

158 **Table 1. Baseline demographics and patient characteristics.**

	First-line systemic therapy			BSC (n = 31)	P value
	All (n = 163)	HMA (n = 145)	LDAC & other (n = 18)		
Male	105 (64.42)	89 (61.38)	16 (88.89)	15 (48.39)	0.0186*
Age at diagnosis, median (range), years	74 (53–87)	74 (53–87)	72 (61–82)	78 (46–87)	0.0500†
>75	61 (37.42)	56 (38.62)	5 (27.78)	20 (64.52)	0.0133*
Secondary AML	41 (25.15)	35 (24.14)	6 (33.33)	9 (29.03)	0.2654‡
MDS	22 (53.66)	17 (48.57)	5 (83.33)	7 (77.78)	0.6057‡
CMML	7 (17.07)	6 (17.14)	1 (16.67)	1 (11.11)	–
MPN	7 (17.07)	7 (20.00)	0	0	–
t-AML	5 (12.20)	5 (14.29)	0	1 (11.11)	–
Prior HMA Tx for antecedent disorder	8 (19.51)	3 (8.57)	5 (83.33)	6 (66.67)	<0.0001‡
ECOG performance status					
0–1	119 (73.01)	109 (75.17)	10 (55.56)	15 (48.39)	0.0059*
≥2	44 (26.99)	36 (24.83)	8 (44.44)	16 (51.61)	–

159 Data are n (%) unless otherwise stated.

160 P value indicates statistical difference in a three-way comparison between BSC, HMA, and

161 LDAC and other systemic therapies.

162 AML, acute myeloid leukemia; BSC, best supportive care; CMML, chronic myelomonocytic

163 leukemia; ECOG, Eastern Cooperative Oncology Group; HMA, hypomethylating agent;

164 LDAC, low-dose cytarabine; MDS, myelodysplastic syndrome; MPN, myeloproliferative

165 neoplasm; t-AML, therapy-related AML; Tx, treatment.

166 *Chi-squared test; †Kruskal-Wallis test; ‡Fisher's exact test.

167

168 Patient molecular profiling and cytogenetic risk data by treatment groups are provided in S2
169 Table. Of the patients who received first-line systemic therapy with available cytogenetic risk
170 data (n = 145), 66 (45.5%), 30 (20.7%), and 49 (33.8%) had favorable, intermediate, and poor
171 risk, respectively, according to the cytogenetic risk classification in the CRF (S3 Table). Of
172 16 patients who received BSC with available cytogenetic risk data, the respective risk
173 proportions were seven (43.8%), four (25.0%), and five (31.2%) patients. Of the patients who
174 received first-line systemic therapy with available molecular data (obtained using next-
175 generation sequencing or targeted mutation testing; n = 144), 49 (34.0%) had a mutation.
176 None of the patients who received BSC with available molecular data (n = 22) had mutations.
177
178 Patients who received first-line systemic therapy were more likely to be <75 years of age
179 compared with the BSC group (62.6% vs 35.5%), more likely to be male (64.4% vs 48.4%),
180 and more likely to have an ECOG performance status <2 (73.0% vs 48.4%) and poor
181 cytogenetic risk (30.1% vs 16.1%). Among patients who received first-line systemic therapy
182 who had AML-related mutation(s), *NPM1* (n = 11; 22.4%), *MLL^{PTD}* (n = 11; 22.4%), *CEBPA*
183 (n = 8; 16.3%), *TET2* (n = 8; 16.3%), and *FLT3^{ITD}* (n = 7; 14.3%) were most frequently
184 identified.
185
186 Among the 194 patients in this Korean subanalysis, 163 (84.0%) received first-line systemic
187 therapy and 31 (16.0%) received BSC. In the first-line systemic therapy group, 10 had
188 ongoing treatment, 152 discontinued treatment, and the status of one patient was unknown
189 (S1 Fig). There were 145 (89.0%) patients who received HMA monotherapy (azacytidine, n =
190 5 [3.1%]; decitabine, n = 140 [85.9%]), five (3.1%) who received LDAC monotherapy, and
191 13 (8.0%) who received HMA and/or LDAC in combination with other systemic therapies
192 (S2 Fig).

193

194 **Primary endpoint**

195 Median (95% CI) OS was 7.83 (6.30–9.27) months in patients who received systemic therapy
 196 (HMAs, 8.07 [6.27–9.50] months; LDAC and other systemic therapies, 7.57 [3.90–9.80]
 197 months), and 4.50 (2.93–11.83) months in those who received BSC (Table 2 and Fig 1).
 198 Thirty-seven patients had missing OS data.

199

200 **Table 2. Median OS, PFS, TTF, response rate, and duration of response for**
 201 **patients who received first-line systemic therapy or BSC.**

	First-line systemic therapy			BSC (n = 31)
	All (n = 163)	HMA (n = 145)	LDAC & other (n = 18)	
OS, median (95% CI), mo*	7.83 (6.30–9.27)	8.07 (6.27–9.50)	7.57 (3.90–9.80)	4.50 (2.93–11.83)
PFS, median (95% CI), mo[†]	6.73 (5.90–8.20)	6.87 (5.90–8.20)	6.27 (2.37–10.03)	4.50 (2.93–11.83)
Best overall response, n (%)				
CR	27 (16.56)	22 (15.17)	5 (27.78)	0
CRi	10 (6.13)	7 (4.83)	3 (16.67)	0
PR	5 (3.07)	5 (3.45)	0	0
SD	57 (34.97)	53 (36.55)	4 (22.22)	2 (6.45)
PD	14 (8.59)	13 (8.97)	1 (5.56)	1 (3.23)
Unknown	50 (30.67)	45 (31.03)	5 (27.78)	28 (90.32)
Duration of CR+CRi, median (range), d	275.00 (47.00–919.00)	296.00 (47.00–919.00)	252.50 (69.00–763.00)	–
TTF, median (95% CI), mo[‡]	4.13 (2.73–5.00)	4.13 (2.70–5.03)	4.13 (0.93–9.97)	–

202 BSC, best supportive care; CI, confidence interval; CR, complete remission; CRi, CR with

203 incomplete hematologic recovery; d, days; HMA, hypomethylating agent; LDAC, low-dose

204 cytarabine; mo, months; OS, overall survival; PFS, progression-free survival; PR, partial
205 response; PD, progressive disease; SD, stable disease; TTF, time to treatment failure.
206 *37 patients with missing data; †42 patients with missing data; ‡52 patients with missing data.

207

208 **Fig 1. Kaplan-Meier analysis of OS in patients who received HMA, LDAC and other**
209 **systemic therapies, or BSC.** BSC, best supportive care; CI, confidence interval; HMA,
210 hypomethylating agent; LDAC, low-dose cytarabine; mo, months; OS, overall survival.

211 *Log-rank test by comparing between three groups; †Log-rank test by comparing between
212 every two groups; ‡HMA vs BSC; §LDAC and other systemic therapies vs BSC; ¶HMA vs
213 LDAC and other systemic therapies. Patients with missing data across all groups, n = 37.

214

215 Subgroup analyses showed that median OS was significantly different (all $P < 0.005$) between
216 patients without (8.20 months) versus with (4.73 months) secondary AML, patients with an
217 ECOG performance status of 0 or 1 (8.30 months) versus ≥ 2 (4.43 months), patients with
218 favorable (10.67 months) versus intermediate (6.13 months) and poor (6.32 months)
219 cytogenetic risk, and patients with CCI of 0 (8.30 months) versus ≥ 1 (5.73 months; S4 Table).

220

221 Using Cox regression analyses, we identified several prognostic factors for OS, including
222 presence of secondary AML (hazard ratio [95% CI], 1.67 [1.13–2.45]; $P = 0.0094$), ECOG
223 performance status ≥ 2 (2.41 [1.51–3.83]; $P = 0.0002$), intermediate (1.77 [1.10–2.84]; $P =$
224 0.0182) or poor (2.10 [1.36–3.24]; $P = 0.0008$) cytogenetic risk, and CCI ≥ 1 (2.26 [1.43–
225 3.58]; $P = 0.0005$; Table 3).

226

227 **Table 3. Prognostic factors that affect OS.**

Category	HR (95% CI)	P value
Sex		
Male vs female	0.98 (0.68–1.41)	0.9192
Age		
>75 vs ≤75 years	0.98 (0.67–1.45)	0.9279
Secondary AML		
Yes vs no	1.67 (1.13–2.45)	0.0094*
Unknown vs no	2.04 (0.26–16.12)	0.5006
ECOG performance status		
≥2 vs <2	2.41 (1.51–3.83)	0.0002*
Cytogenetic risk[†]		
Intermediate vs favorable	1.77 (1.10–2.84)	0.0182*
Poor vs favorable	2.10 (1.36–3.24)	0.0008*
Unknown vs favorable	2.91 (1.21–6.96)	0.0167*
Charlson comorbidity index		
≥1 vs 0	2.26 (1.43–3.58)	0.0005*

228 AML, acute myeloid leukemia; CI, confidence interval; ECOG, Eastern Cooperative

229 Oncology Group; HR, hazard ratio; OS, overall survival.

230 *Statistically significant; [†]Risk stratification according to the cytogenetic risk classification

231 described in S3 Table.

232

233 **Secondary endpoints**

234 Median (95% CI) PFS was 6.73 (5.90–8.20) months for patients who received systemic

235 therapy (HMAs, 6.87 [5.90–8.20] months; LDAC and other systemic therapies, 6.27 [2.37–

236 10.03] months), and 4.50 (2.93–11.83) months for patients who received BSC (Table 2 and

237 S3 Fig). Median (95% CI) TTF was 4.13 (2.73–5.00) months for patients who received

238 systemic therapy (HMAs: 4.13 [2.70–5.03] months; LDAC and other systemic therapies: 4.13

239 [0.93–9.97] months; Table 2). The number of patients with missing data for PFS and TTF

240 was 42 and 52, respectively. Among the 163 patients who received systemic therapy, 37

241 (22.7%) achieved CR or CRi, with a median (95% CI) DoR of 275.00 (47.00–919.00) days

242 (Table 2). CR or CRi was achieved in 20.0% of patients who received HMAs and 44.4% of
243 patients who received LDAC and other systemic therapies, with a corresponding median
244 (95% CI) DoR of 296.00 (47.00–919.00) and 252.50 (69.00–763.00) days, respectively
245 (Table 2).

246

247 Subgroup analysis showed that median PFS was significantly different (all $P < 0.05$) between
248 patients without (7.37 months) versus with (4.68 months) secondary AML, patients with
249 ECOG performance status 0 or 1 (7.23 months) versus ≥ 2 (4.20 months), patients with
250 favorable (8.37 months) versus intermediate (5.77 months) and poor (6.23 months) cytogenic
251 risk, and patients with CCI of 0 (7.27 months) versus ≥ 1 (5.73 months; S5 Table).

252

253 Using Cox regression analyses, we identified several factors associated with PFS, including
254 presence of secondary AML (hazard ratio [95% CI], 1.58 [1.08–2.33]; $P = 0.0190$), ECOG
255 performance status ≥ 2 (2.25 [1.40–3.62]; $P = 0.0008$), poor cytogenetic risk (1.96 [1.27–
256 3.04]; $P = 0.0026$), and CCI ≥ 1 (2.01 [1.28–3.16]; $P = 0.0025$; S6 Table).

257

258 **Discussion**

259 In the overall CURRENT study population, HMAs were associated with longer median OS,
260 PFS, and TTF, compared with other systemic therapies or BSC [7]. This subanalysis revealed
261 similar survival outcomes among the study's Korean subpopulation. We also found that
262 several patient demographic and genetic factors were associated with OS and PFS.

263

264 Survival outcomes among all patients in this Korean subanalysis were poor. Median OS was
265 higher in patients who received systemic therapy (7.83 months) compared with those who
266 received BSC (4.50 months), although this was not statistically significant. Notably, median

267 OS was highest in patients who received HMAs (8.07 months). Survival outcomes in patients
268 receiving HMAs were largely consistent with previous reports in clinical trials [17-19] and
269 real-world studies [20] (median OS, 6.6–10.4 months). In line with previous studies and the
270 overall CURRENT study [16], this subanalysis highlights the preference for HMAs in
271 patients who are ineligible to receive ICT, which was not surprising given the favorable
272 survival outcomes associated with HMAs compared with other available therapies. Median
273 OS for the HMA cohort in this subanalysis closely mirrored that of a systematic review and
274 meta-analysis of the efficacy and safety of decitabine in the treatment of elderly patients with
275 AML (n = 718; median [95% CI] OS, 8.09 [5.77–10.41] months) [21]. Notably, 85.9% of
276 patients in the present subanalysis received decitabine as first-line systemic therapy. In
277 contrast to our results, a US study reported a median (95% CI) OS of 4.30 (3.20–5.80)
278 months in patients treated with HMAs [22]. Furthermore, median OS in the LDAC and BSC
279 cohorts were slightly longer than reported previously [18]. These differences may be
280 explained by the present population being more representative of real-world clinical practice
281 and comprising only Korean patients. When evaluating OS in patient subgroups, we found
282 that those diagnosed with versus without secondary AML, with an ECOG performance status
283 ≥ 2 versus 0 or 1, with poor or intermediate versus favorable cytogenetic risk, or with CCI ≥ 1
284 versus 0 had a shorter median OS. Similar observations have been reported in previous
285 studies [14, 23-25].

286

287 Median PFS in this subanalysis was higher in patients who received systemic therapy (6.73
288 months) compared with patients who received BSC (4.50 months), although this was not
289 statistically significant. Notably, median PFS was highest in patients who received HMAs
290 (6.87 months), which is consistent with the global CURRENT study [16]. Evaluation of PFS
291 according to patient subgroups revealed that patients diagnosed with versus without

292 secondary AML, with an ECOG performance status ≥ 2 versus 0 or 1, with poor or
293 intermediate versus favorable cytogenetic risk, or with CCI ≥ 1 versus 0 had shorter median
294 PFS. These results are consistent with previous studies in which poor ECOG performance
295 status and comorbidity index scores were associated with shorter median PFS [23].
296
297 Median TTF was comparable between all patients receiving first-line systemic therapies,
298 which is in contrast to the overall CURRENT study in which longer median TTF was
299 reported in patients who received HMAs [16]. CR and CRi rates were lower in patients who
300 received HMAs compared with LDAC and other systemic therapies, which is consistent with
301 results from the CURRENT study [16]. On the other hand, median duration of CR and CRi
302 were higher in patients who received HMAs compared with other systemic therapies, which
303 was not observed in the main study [16].
304
305 Baseline characteristics of Korean patients in this subanalysis were generally consistent with
306 the global CURRENT study [16]. The vast majority of patients reported comorbidities, and
307 patients who received HMAs were more likely to report ECOG performance status < 2 with
308 favorable or intermediate cytogenetic risk, compared with patients who received LDAC and
309 other systemic therapies, or BSC. The mutation rate in this subanalysis among patients who
310 received systemic therapies was 34.0%; the most frequently occurring mutations reported
311 here and in the CURRENT study [16] were *NPM1* and *FLT3*^{ITD}, confirming findings from a
312 previous report [26]. In addition, we found that there was a significant difference between
313 median age, proportion of male patients, and the proportion of patients aged > 75 years for the
314 HMA, LDAC and other systemic therapies, and BSC groups. Fewer patients in the systemic
315 therapies groups versus the BSC group were > 75 years of age, indicating that patients in this
316 subanalysis who received systemic therapies may have had a better prognosis [27], although

317 age was not found to be a significant prognostic factor for survival in this Korean
318 subanalysis.
319
320 Factors associated with poorer OS and PFS included secondary AML, ECOG performance
321 status ≥ 2 , intermediate or poor cytogenetic risk, and CCI ≥ 1 . This is consistent with a
322 multicenter trial in which better performance status, non-adverse cytogenetics, and lower CCI
323 scores were associated with better survival outcomes in patients with AML who were
324 ineligible for ICT and received decitabine as first-line treatment [28]. Better performance
325 status was similarly found to be prognostic for survival in elderly Korean patients with AML
326 [29]. This may have influenced the outcomes of patients in our study, in which 75% of
327 patients in the HMA group had ECOG performance status < 2 compared with just 55.6% and
328 48.4% in the LDAC and other systemic therapies and BSC groups, respectively. In contrast to
329 our results, a study of 248 elderly patients on low-intensity therapy did not find an association
330 between survival and ECOG performance status or cytogenetic risk, but identified response
331 to the first induction cycle and lactate dehydrogenase levels as prognostic parameters [27],
332 neither of which were examined in our study. With regard to treatment with HMAs, patients
333 with DNA methylation-related mutations have improved OS, and *TET2* mutation has been
334 recognized as an independent prognostic factor for PFS [30]. In this subanalysis, *TET2*
335 mutation was identified in 18.2% of patients in the HMA cohort, whereas none of the patients
336 in the other treatment groups had this mutation. Overall, the prognostic parameters associated
337 with median OS and PFS in our study were consistent with those reported in patients who
338 received ICT [19, 31-34].
339
340 Finally, we have shown that more patients who were ineligible for ICT received HMAs
341 compared with LDAC and BSC, which is consistent with the CURRENT study [16].

342 Regardless, survival was poor among all patients. Studies investigating outcomes in patients
343 who received HMA compared with ICT have found that HMA was more frequently used in
344 older patients, despite better outcomes with ICT, even in those with comorbidities [20, 22].
345 Conversely, two recent analyses of elderly patients (≥ 65 years) with AML in Korea noted
346 that despite lower response rates in patients who received HMAs compared with those who
347 received ICT, survival outcomes were comparable [35, 36]. Other studies involving elderly
348 patients with AML have also reported comparable or better survival outcomes for those who
349 received HMAs compared with those who received ICT or palliative care [37]. Notably, there
350 were patients in this subanalysis who received only palliative BSC despite the availability of
351 first-line systemic therapies. Given that baseline characteristics, except for age, were largely
352 consistent between the first-line systemic therapy and BSC groups, it may be that BSC is
353 considered for elderly patients because age is regarded as a critical factor when making
354 treatment decisions. There remains a significant unmet need for higher efficacy treatments for
355 patients who are ineligible for ICT owing to advanced age. Although targeted treatments have
356 been associated with a moderate improvement in outcomes for patients unfit for ICT [38-43],
357 prognosis remains poor and there is a lack of consensus regarding optimal treatment for these
358 patients.

359

360 Several limitations should be considered when interpreting the results of this study. As with
361 all real-world retrospective studies, the CURRENT study was uncontrolled and
362 nonrandomized. Missing data may limit interpretation; missing molecular and cytogenetic
363 data may limit assessment of their effect on outcomes, and missing response rate data
364 for $>30\%$ of patients who received systemic therapies may limit the generalizability of these
365 findings. There are many systemic therapies included in the “other systemic therapy” group
366 of this study, which may limit interpretation of the clinical outcomes of patients who received

367 each of these therapies. Intra- and inter-site variability may exist, but to reduce variations and
368 the need for corrections in the data collected, we optimized and ensured the clarity of the
369 electronic CRF, and provided all study sites with adequate training.

370

371 **Conclusion**

372 Overall, this subanalysis of the real-world CURRENT study provided several insights into
373 the clinical management of Korean patients with AML who are ineligible for ICT. The
374 clinical outcomes for this Korean subgroup are poor, with a median OS <10 months in
375 patients who received systemic therapy and <5 months in patients who received BSC. The
376 majority of Korean patients with AML who are unfit for ICT receive HMAs, which are
377 associated with numerically longer median OS and PFS relative to other systemic therapies
378 and BSC. Factors such as secondary AML, ECOG performance status, cytogenetic risk, and
379 CCI may be prognostic for survival. Given the rising incidence of AML due to the aging
380 population, there is a substantial unmet need for novel therapies and combination regimens to
381 improve clinical outcomes in this patient population.

382

383 **Acknowledgments**

384 Editorial assistance was provided by Liting Hang BSc (Hons), PhD, and Alice Carruthers
385 BSc (Hons), PhD, (Nucleus Global Shanghai, Shanghai, China) and statistical analysis was
386 provided by Medi Help Line, both funded by AbbVie Korea. We would like to acknowledge
387 the contributions of our colleague, Maria Belen Guijarro Garbayo in memoriam, formerly of
388 AbbVie, for her contributions to the study concept and design, and contributions to drafts of
389 this publication.

390

391 **References**

- 392 1. Saultz JN, Garzon R. Acute myeloid leukemia: A concise review. *J Clin Med.*
393 2016;5(3):33.
- 394 2. Pollyea DA, Bixby D, Perl A, Bhatt VR, Altman JK, Appelbaum FR, et al. NCCN
395 guidelines insights: Acute myeloid leukemia, Version 2. 2021. *J Natl Compr Canc*
396 *Netw.* 2021;19(1):16-27.
- 397 3. Cancer stat facts: Leukemia - acute myeloid leukemia. National Cancer Institute
398 Surveillance, Epidemiology and End Results Program. 2021. Available from:
399 <https://seer.cancer.gov/statfacts/html/amy1.html>.
- 400 4. Yi M, Li A, Zhou L, Chu Q, Song Y, Wu K. The global burden and attributable risk
401 factor analysis of acute myeloid leukemia in 195 countries and territories from 1990
402 to 2017: Estimates based on the global burden of disease study 2017. *J Hematol*
403 *Oncol.* 2020;13(1):72.
- 404 5. Park E-H, Lee H, Won Y-J, Ju HY, Oh C-M, Ingabire C, et al. Nationwide statistical
405 analysis of myeloid malignancies in Korea: Incidence and survival rate from 1999 to
406 2012. *Blood Res.* 2015;50(4):204-17.
- 407 6. Thein MS, Erschler WB, Jemal A, Yates JW, Baer MR. Outcome of older patients with
408 acute myeloid leukemia: an analysis of SEER data over 3 decades. *Cancer.*
409 2013;119(15):2720-7.
- 410 7. Deschler B, de Witte T, Mertelsmann R, Lübbert M. Treatment decision-making for
411 older patients with high-risk myelodysplastic syndrome or acute myeloid leukemia:
412 problems and approaches. *Haematologica.* 2006;91(11):1513-22.
- 413 8. Ferrara F, Barosi G, Venditti A, Angelucci E, Gobbi M, Pane F, et al. Consensus-
414 based definition of unfit to intensive and non-intensive chemotherapy in acute
415 myeloid leukemia: a project of SIE, SIES and GITMO group on a new tool for
416 therapy decision making. *Leukemia.* 2013;27(5):997-9.
- 417 9. Döhner H, Estey E, Grimwade D, Amadori S, Appelbaum FR, Büchner T, et al.
418 Diagnosis and management of AML in adults: 2017 ELN recommendations from an
419 international expert panel. *Blood.* 2017;129(4):424-47.
- 420 10. Heuser M, Ofran Y, Boissel N, Brunet Mauri S, Craddock C, Janssen J, et al. Acute
421 myeloid leukaemia in adult patients: ESMO clinical practice guidelines for diagnosis,
422 treatment and follow-up. *Ann Oncol.* 2020;31(6):697-712.
- 423 11. Palmieri R, Paterno G, De Bellis E, Mercante L, Buzzatti E, Esposito F, et al.
424 Therapeutic choice in older patients with acute myeloid leukemia: A matter of fitness.
425 *Cancers (Basel).* 2020;12(1):120.
- 426 12. Büchner T, Berdel WE, Haferlach C, Haferlach T, Schnittger S, Müller-Tidow C, et
427 al. Age-related risk profile and chemotherapy dose response in acute myeloid
428 leukemia: a study by the German Acute Myeloid Leukemia Cooperative Group. *J Clin*
429 *Oncol.* 2009;27(1):61-9.

- 430 13. Wahlin A, Markev rn B, Golovleva I, Nilsson M. Prognostic significance of risk
431 group stratification in elderly patients with acute myeloid leukaemia. *Br J Haematol.*
432 2001;115(1):25-33.
- 433 14. Wheatley K, Brookes CL, Howman AJ, Goldstone AH, Milligan DW, Prentice AG, et
434 al. Prognostic factor analysis of the survival of elderly patients with AML in the MRC
435 AML11 and LRF AML14 trials. *Br J Haematol.* 2009;145(5):598-605.
- 436 15. Krok-Schoen JL, Fisher JL, Stephens JA, Mims A, Ayyappan S, Woyach JA, et al.
437 Incidence and survival of hematological cancers among adults ages ≥ 75 years. *Cancer*
438 *Med.* 2018;7(7):3425-33.
- 439 16. Miyamoto T, Sanford D, Tomuleasa C, Hsiao HH, Olivera LJE, Enjeti AK, et al.
440 Real-world treatment patterns and clinical outcomes in patients with AML unfit for
441 first-line intensive chemotherapy. *Leuk Lymphoma.* 2022;63(4):928-38.
- 442 17. Dombret H, Seymour JF, Butrym A, Wierzbowska A, Selleslag D, Jang JH, et al.
443 International phase 3 study of azacitidine vs conventional care regimens in older
444 patients with newly diagnosed AML with $>30\%$ blasts. *Blood.* 2015;126(3):291-9.
- 445 18. Seymour JF, D hner H, Butrym A, Wierzbowska A, Selleslag D, Jang JH, et al.
446 Azacitidine improves clinical outcomes in older patients with acute myeloid
447 leukaemia with myelodysplasia-related changes compared with conventional care
448 regimens. *BMC Cancer.* 2017;17(1):852.
- 449 19. Kantarjian HM, Thomas XG, Dmoszynska A, Wierzbowska A, Mazur G, Mayer J, et
450 al. Multicenter, randomized, open-label, phase III trial of decitabine versus patient
451 choice, with physician advice, of either supportive care or low-dose cytarabine for the
452 treatment of older patients with newly diagnosed acute myeloid leukemia. *J Clin*
453 *Oncol.* 2012;30(21):2670-7.
- 454 20. Medeiros BC, Satram-Hoang S, Hurst D, Hoang KQ, Momin F, Reyes C. Big data
455 analysis of treatment patterns and outcomes among elderly acute myeloid leukemia
456 patients in the United States. *Ann Hematol.* 2015;94(7):1127-38.
- 457 21. He P-F, Zhou J-D, Yao D-M, Ma J-C, Wen X-M, Zhang Z-H, et al. Efficacy and
458 safety of decitabine in treatment of elderly patients with acute myeloid leukemia: A
459 systematic review and meta-analysis. *Oncotarget.* 2017;8(25):41498-507.
- 460 22. Bell JA, Galaznik A, Farrelly E, Blazer M, Murty S, Ogbonnaya A, et al. A
461 retrospective study evaluating treatment patterns and survival outcomes in elderly
462 patients with acute myeloid leukemia treated in the United States with either 7+3 or a
463 hypomethylating agent. *Leuk Res.* 2019;78:45-51.
- 464 23. Papageorgiou SG, Kotsianidis I, Bouchla A, Symeonidis A, Galanopoulos A, Viniou
465 N-A, et al. Serum ferritin and ECOG performance status predict the response and
466 improve the prognostic value of IPSS or IPSS-R in patients with high-risk
467 myelodysplastic syndromes and oligoblastic acute myeloid leukemia treated with 5-
468 azacytidine: a retrospective analysis of the Hellenic national registry of
469 myelodysplastic and hypoplastic syndromes. *Ther Adv Hematol.*
470 2020;11:2040620720966121.

- 471 24. Dhakal P, Shostrom V, Al-Kadhimi ZS, Maness LJ, Gundabolu K, Bhatt VR.
472 Usefulness of Charlson comorbidity index to predict early mortality and overall
473 survival in older patients with acute myeloid leukemia. *Clin Lymphoma Myeloma*
474 *Leuk.* 2020;20(12):804-12.e8.
- 475 25. Gbadamosi B, Ezekwudo D, Bastola S, Jaiyesimi I. Predictive and prognostic markers
476 in adults with acute myeloid leukemia: A single-institution experience. *Clin*
477 *Lymphoma Myeloma Leuk.* 2018;18(7):e287-e94.
- 478 26. Papaemmanuil E, Gerstung M, Bullinger L, Gaidzik VI, Paschka P, Roberts ND, et al.
479 Genomic classification and prognosis in acute myeloid leukemia. *The New England*
480 *journal of medicine.* 2016;374(23):2209-21.
- 481 27. Chen Y, Yang T, Zheng X, Yang X, Zheng Z, Zheng J, et al. The outcome and
482 prognostic factors of 248 elderly patients with acute myeloid leukemia treated with
483 standard-dose or low-intensity induction therapy. *Medicine (Baltimore).*
484 2016;95(30):e4182.
- 485 28. Lübbert M, Rüter BH, Claus R, Schmoor C, Schmid M, Germing U, et al. A
486 multicenter phase II trial of decitabine as first-line treatment for older patients with
487 acute myeloid leukemia judged unfit for induction chemotherapy. *Haematologica.*
488 2012;97(3):393-401.
- 489 29. Yi HG, Lee MH, Kim CS, Hong J, Park J, Lee JH, et al. Clinical characteristics and
490 treatment outcome of acute myeloid leukemia in elderly patients in Korea: A
491 retrospective analysis. *Blood Res.* 2014;49(2):95-9.
- 492 30. Wang RQ, Chen CJ, Jing Y, Qin JY, Li Y, Chen GF, et al. Characteristics and
493 prognostic significance of genetic mutations in acute myeloid leukemia based on a
494 targeted next-generation sequencing technique. *Cancer Med.* 2020;9(22):8457-67.
- 495 31. Roboz GJ, Wei AH, Ravandi F, Pocock C, Montesinos P, Dombret H, et al.
496 Prognostic factors of overall (OS) and relapse-free survival (RFS) for patients with
497 acute myeloid leukemia (AML) in remission after intensive chemotherapy (IC):
498 Multivariate analyses from the QUAZAR AML-001 trial of oral azacitidine (Oral-
499 AZA). *J Clin Oncol.* 2021;39(15_Suppl):7014.
- 500 32. Kim DS, Kang KW, Yu ES, Kim HJ, Kim JS, Lee SR, et al. Selection of elderly acute
501 myeloid leukemia patients for intensive chemotherapy: effectiveness of intensive
502 chemotherapy and subgroup analysis. *Acta Haematol.* 2015;133(3):300-9.
- 503 33. Ma TT, Lin XJ, Cheng WY, Xue Q, Wang SY, Liu FJ, et al. Development and
504 validation of a prognostic model for adult patients with acute myeloid leukaemia.
505 *EBioMedicine.* 2020;62:103126.
- 506 34. Suvajdžić N, Cvetković Z, Dorđević V, Kraguljac-Kurtović N, Stanisavljević D,
507 Bogdanović A, et al. Prognostic factors for therapy-related acute myeloid leukaemia
508 (t-AML)--a single centre experience. *Biomed Pharmacother.* 2012;66(4):285-92.
- 509 35. Oh SB, Park SW, Chung JS, Lee WS, Lee HS, Cho SH, et al. Therapeutic decision-
510 making in elderly patients with acute myeloid leukemia: conventional intensive

- 511 chemotherapy versus hypomethylating agent therapy. *Ann Hematol.*
512 2017;96(11):1801-9.
- 513 36. Choi EJ, Lee JH, Park HS, Lee JH, Seol M, Lee YS, et al. Decitabine versus intensive
514 chemotherapy for elderly patients with newly diagnosed acute myeloid leukemia. *Clin*
515 *Lymphoma Myeloma Leuk.* 2019;19(5):290-9.e3.
- 516 37. Österroos A, Eriksson A, Antunovic P, Cammenga J, Deneberg S, Lazarevic V, et al.
517 Real-world data on treatment patterns and outcomes of hypomethylating therapy in
518 patients with newly diagnosed acute myeloid leukaemia aged ≥ 60 years. *Br J*
519 *Haematol.* 2020;189(1):e13-e6.
- 520 38. Amadori S, Suci S, Selleslag D, Aversa F, Gaidano G, Musso M, et al. Gemtuzumab
521 ozogamicin versus best supportive care in older patients with newly diagnosed acute
522 myeloid leukemia unsuitable for intensive chemotherapy: Results of the randomized
523 phase III EORTC-GIMEMA AML-19 trial. *J Clin Oncol.* 2016;34(9):972-9.
- 524 39. Cortes JE, Heidel FH, Hellmann A, Fiedler W, Smith BD, Robak T, et al.
525 Randomized comparison of low dose cytarabine with or without glasdegib in patients
526 with newly diagnosed acute myeloid leukemia or high-risk myelodysplastic
527 syndrome. *Leukemia.* 2019;33(2):379-89.
- 528 40. DiNardo CD, Pratz K, Pullarkat V, Jonas BA, Arellano M, Becker PS, et al.
529 Venetoclax combined with decitabine or azacitidine in treatment-naive, elderly
530 patients with acute myeloid leukemia. *Blood.* 2019;133(1):7-17.
- 531 41. Lambert J, Pautas C, Terré C, Raffoux E, Turlure P, Caillot D, et al. Gemtuzumab
532 ozogamicin for de novo acute myeloid leukemia: final efficacy and safety updates
533 from the open-label, phase III ALFA-0701 trial. *Haematologica.* 2019;104(1):113-9.
- 534 42. Ohanian M, Garcia-Manero G, Levis M, Jabbour E, Daver N, Borthakur G, et al.
535 Sorafenib combined with 5-azacytidine in older patients with untreated FLT3-ITD
536 mutated acute myeloid leukemia. *Am J Hematol.* 2018;93(9):1136-41.
- 537 43. Pollyea DA, Tallman MS, de Botton S, Kantarjian HM, Collins R, Stein AS, et al.
538 Enasidenib, an inhibitor of mutant IDH2 proteins, induces durable remissions in older
539 patients with newly diagnosed acute myeloid leukemia. *Leukemia.* 2019;33(11):2575-
540 84.

541 **Supporting information**

542 **S1 Table. Baseline comorbidities.** Each patient can have multiple comorbidities. BSC, best
543 supportive care; HMA, hypomethylating agent; LDAC, low-dose cytarabine. *Fisher exact
544 test; †Marked as ‘Other’ in case report form (disease not specified). *P* value indicates
545 statistical difference in a three-way comparison between BSC, HMA, and LDAC and other
546 systemic therapies.

547

548 **S2 Table. Baseline molecular profiling and cytogenetic risk.** Percentages may total more
549 than 100% because multiselection was allowed. BSC, best supportive care; HMA,
550 hypomethylating agent; LDAC, low-dose cytarabine; NGS, next-generation sequencing.
551 *Chi-squared test; **Kruskal-Wallis test; †Percentages were calculated for each respective
552 treatment group using the number of patients with known mutation status from NGS or
553 targeted mutation testing; ‡Risk stratification according to the cytogenetic risk classification
554 described in S3 Table. *P* value indicates statistical difference in a three-way comparison
555 between BSC, HMA, and LDAC and other systemic therapies.

556

557 **S3 Table. Cytogenetic risk classification.**

558

559 **S4 Table. Kaplan-Meier estimate for median OS by baseline clinical characteristics.**

560 AML, acute myeloid leukemia; AML-MRC, AML with myelodysplasia-related changes;
561 BSC, best supportive care; CI, confidence interval; ECOG, Eastern Cooperative Oncology
562 Group; mo, months; NA, not applicable; NR, not reached; OS, overall survival. *Statistically
563 significant; †Risk stratification according to the cytogenetic risk classification described in S3
564 Table. The lower limit of the 95% CI is a closed interval (indicated by a square bracket)
565 whereas the upper limit of the 95% CI is an open interval (indicated by a round bracket).

566

567 **S5 Table. Kaplan-Meier estimate for median PFS by baseline clinical characteristics.**

568 AML, acute myeloid leukemia; AML-MRC, AML with myelodysplasia-related changes;
569 BSC, best supportive care; CI, confidence interval; ECOG, Eastern Cooperative Oncology
570 Group; mo, months; NA, not applicable; NR, not reached; PFS, progression-free survival.
571 *Statistically significant; †Risk stratification according to the cytogenetic risk classification
572 described in S3 Table. The lower limit of the 95% CI is a closed interval (indicated by a

573 square bracket) whereas the upper limit of the 95% CI is an open interval (indicated by a
574 round bracket).

575

576 **S6 Table. Prognostic factors that affect PFS.** AML, acute myeloid leukemia; CI,
577 confidence interval; ECOG, Eastern Cooperative Oncology Group; HR, hazard ratio, PFS,
578 progression-free survival. *Statistically significant.

579

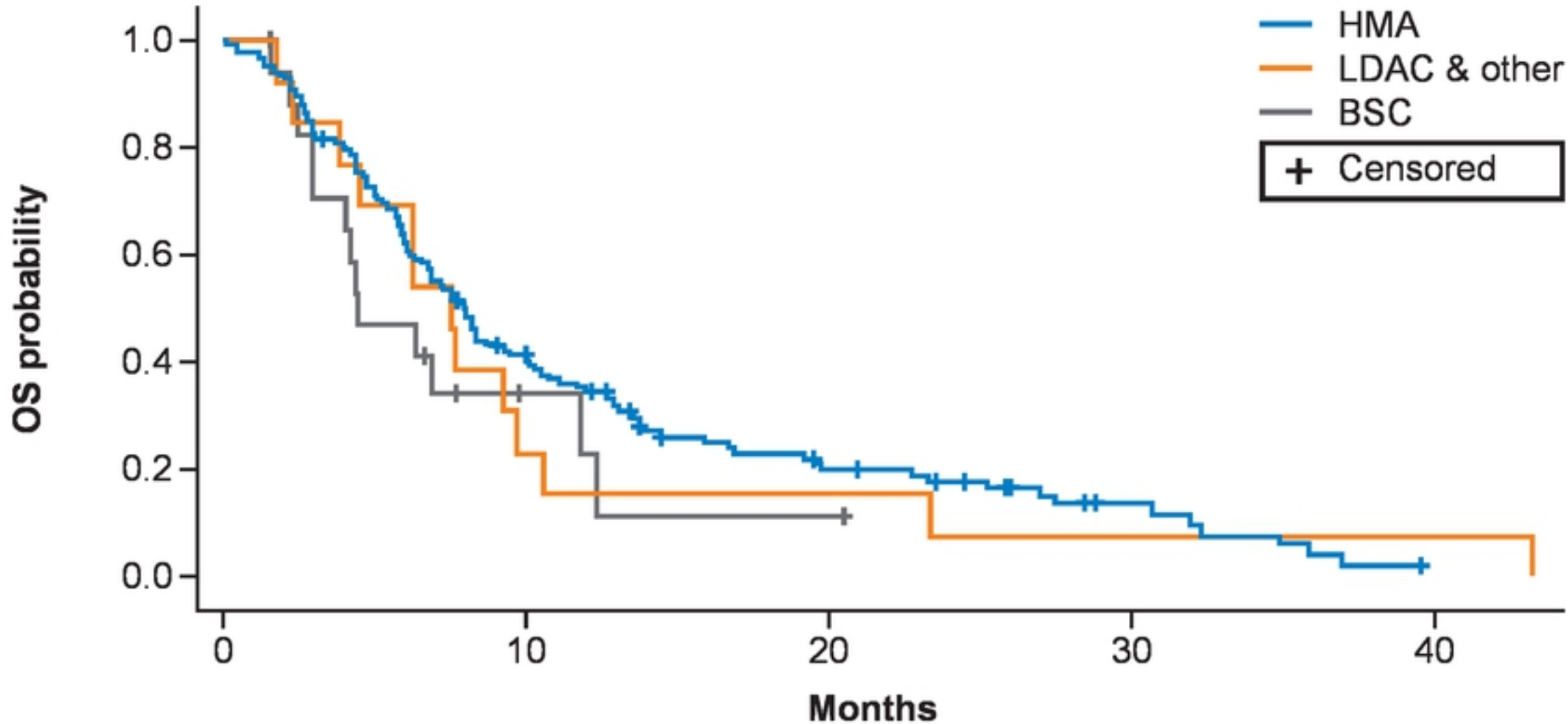
580 **S1 Fig. Patient disposition.** *Overlapping count.

581

582 **S2 Fig. Overview of patients receiving first-line systemic therapies and BSC.** BSC, best
583 supportive care; CA ± G, cytarabine and aclarubicin ± granulocyte colony-stimulating factor
584 combination regimen; LDAC, low-dose cytarabine.

585

586 **S3 Fig. Kaplan–Meier analysis of PFS in patients who received HMA, LDAC and other**
587 **systemic therapies, and BSC.** BSC, best supportive care; CI, confidence interval; HMA,
588 hypomethylating agent; LDAC, low-dose cytarabine; mo, months; PFS, progression-free
589 survival. *Log-rank test by comparing between three groups; †Log-rank test by comparing
590 between every two groups; ‡HMA vs BSC; §LDAC & other vs BSC; ¶HMA vs LDAC &
591 other. Patients with missing data across all groups, n = 42.



Number at risk

HMA	126	49	19	7	0
LDAC & other	13	3	2	1	1
BSC	18	3	1	0	-

Treatment	OS, median (95% CI), mo	<i>P</i> value*	<i>P</i> value†
HMA (n = 126)	8.07 (6.27–9.50)	0.40	0.17‡ 0.77§ 0.94¶
LDAC & other (n = 13)	7.57 (3.90–9.80)		
BSC (n = 18)	4.50 (2.93–11.83)		

Figure