

1 **Use of systemic hormonal contraception and risk of attempted suicide**

2

3 Elena Toffol¹ (0000-0001-6757-7355), Oskari Heikinheimo² (0000-0002-8671-130X), Timo
4 Partonen³ (0000-0003-1951-2455), Anna But¹ (0000-0002-0259-8224), Antti Latvala⁴ (0000-0001-
5 5695-117X), Jari Haukka¹ (0000-0003-1450-6208)

6

7 ¹ Department of Public Health, Clinicum, Faculty of Medicine, University of Helsinki, Helsinki,
8 Finland

9 ² Department of Obstetrics and Gynaecology, University of Helsinki and Helsinki University
10 Hospital, Helsinki, Finland

11 ³ Mental Health Team, Equality Unit, Department of Public Health and Welfare, Finnish Institute
12 for Health and Welfare, Helsinki, Finland

13 ⁴ Institute of Criminology and Legal Policy, University of Helsinki, Helsinki, Finland

14

15 **Correspondence to:**

16 Dr. Elena Toffol, Department of Public Health, Clinicum, University of Helsinki, Helsinki, Finland,
17 elena.toffol@helsinki.fi

18

19

20 **Funding Statement.** The study was supported by the Jane and Aatos Erkko Foundation (JH; grant
21 number 170062), the Avohoidon tutkimussäätiö (JH; Foundation for Primary Care Research), the
22 Yrjö Jahnsson Foundation (ET; grant number 20207328) and the Finnish Cultural Foundation (ET;
23 grant number 00211101).

24

25

26 **Word count:** 3686

27 **Abstract**

28 **Background.** Evidence regarding the role of hormonal contraception (HC) as a risk factor for
29 attempted suicide (AS) is inconclusive. The aim was to assess the associations of use of different
30 types of systemic hormonal contraceptives with the risk of AS in women aged 15–49 years.

31 **Methods.** Data were retrieved from national registers in Finland. The AS incidence in 2018-2019
32 was assessed in a population-based cohort of women (n=587,823) according to their HC use in
33 2017. To examine the risk of AS related to HC use in the six months preceding the suicide attempt
34 (i.e. current use), we used a nested case-control design with 1:4 ratio (n=4090), and applied
35 multivariable conditional logistic regression models.

36 **Results.** During the follow-up 1.174,346 million person-years were cumulated and 818 AS cases
37 observed (incidence rate=0.70, 95% CI=0.63–0.83 per 1000 person-years). The incidence rate ratio
38 of HC (n=344 cases) vs. no-HC (n=474 cases) was 0.73 (95% CI=0.63–0.83). Use of HC, and
39 specifically of combined hormonal contraceptives was associated with a lower AS risk compared to
40 non-use when controlling for marital status, socioeconomic status, education, chronic diseases and
41 recent delivery (OR=0.55, 95% CI=0.42–0.73), but not when further adjusting for recent psychiatric
42 hospitalizations and current use of psychotropic medications (OR=0.68, 95% CI=0.45–1.02).
43 Current use of progestogen-only preparations was not associated with AS.

44 **Conclusions.** HC use appeared not associated with an increased AS risk in fertile-aged women. The
45 choice of the best and safest contraceptive option should take individual mental health status,
46 including assessment of suicidal risk, into account.

47

48 **Keywords:** attempted suicide; hormonal contraception; women; register

49

50

51 **Introduction**

52

53 The global age-standardized suicide rate in 2019 was 9.0 per 100,000 persons (WHO 2021), which
54 corresponds to more than 700,000 suicidal deaths every year. It is estimated that for every adult
55 who dies by suicide, there are more than 20 people who attempt suicide (WHO 2014). Given that a
56 prior suicidal attempt is the major risk factor for a death from suicide (WHO 2014), it is evident that
57 suicidal behavior represents a major public health problem.

58 Attempted suicides (AS) are two to three times more common in women than in men, especially in
59 the young age group (Baca-Garcia, Perez-Rodriguez, Mann & Oquendo, 2008; Bachmann, 2018).
60 In addition to current or previous psychiatric disorders, many other biological, social or
61 psychological factors contribute to the risk of AS. The possible role of hormonal contraception
62 (HC) as a risk factor for AS has gained particular attention in recent years, especially with respect
63 to young, fertile-aged women (Charlton et al., 2014; Skovlund, Mørch, Kessing, Lange, &
64 Lidegaard, 2018; Edwards et al., 2020). However, results appear inconsistent (Amarasekera,
65 Catalao, Molyneaux, & Fuhr, 2020), and some studies have shown a reduced risk or no associations
66 between the use of contraception and suicidal risk (Vessey, McPherson, Lawless, & Yeates, 1985;
67 Vessey, Villard-Mackintosh, McPherson, & Yeates, 1989; Hannaford et al., 2010; Keyes et al.,
68 2013). For example, one of the first studies to examine the association of oral contraceptive (OC)
69 use with mortality found no difference in mortality by several causes, including suicide, between
70 the ever, current or past users *vs.* never-users in a 12-year follow-up study of over 100,000 US
71 women aged 30–55 years (Colditz, 1994). However, the 36-year follow-up of the same study found
72 higher risk of suicide (hazard ratio, HR 1.41, 95% CI 1.05–1.87) in ever users *vs.* never-users of
73 OCs, with no duration-of-use-related trend, but with increased risk in relation to longer time since
74 last use (Charlton et al., 2014). On the other hand, in a 14-year longitudinal US study of women
75 aged 25–34 years Keyes et al. (2013) found a reduced (by 62%) risk of past-year AS among HC
76 users compared to users of non-hormonal methods.

77 Different types of HC are known to have different profiles of side effects and adverse events,
78 including mood effects, mostly depending on the types and doses of estrogens and progestogens
79 (Bitzer & Simon, 2011). However, to the best of our knowledge, only few recent studies have
80 examined the associations of different types and doses of HC with the risk of suicidal behavior
81 (Skovlund et al., 2018; Edwards et al., 2020), with partly inconclusive results.

82 Thus, the aim of this study was to assess the associations of the current use of HC with the risk of
83 AS. Specifically, we examined the risk of AS in relation to different types of systemic hormonal

84 contraceptives in a large cohort of fertile-aged women using recent (2017–2019) high quality
85 registry data from Finland.

86

87 **Methods**

88

89 Study population and design

90

91 This study was part of a larger register-based study of HC use in Finland (Toffol et al., 2020).
92 Briefly, the population was selected, based on the unique personal identification number that is
93 given at birth or at immigration to each person permanently residing in Finland, as inclusive of all
94 fertile-aged women (15–49 years) with at least one redeemed prescription for HC (Anatomical
95 Therapeutic Chemical -ATC- codes: G02B, “contraceptives for topical use”; G03A, “hormonal
96 contraceptives for systemic use”; G03HB, “antiandrogens and estrogens”) in 2017 (n = 294,445)
97 according to the Prescription Centre in the Kanta Services ([https://www.kanta.fi/en/what-are-kanta-](https://www.kanta.fi/en/what-are-kanta-services)
98 [services](https://www.kanta.fi/en/what-are-kanta-services)). A 1:1 matched (by age and municipality of residence) reference group of women with no
99 redeemed HC prescriptions in 2017 (HC non-users) was also selected. After exclusion of 89 women
100 with a prescription for emergency contraception (ATC code “G03AD”, usually available without
101 prescription in Finland), and of their matched control individuals, a final population of 294,356 HC
102 users and a same-sized reference group were retained for the analyses. Through the Prescription
103 Centre the HC use of all these women was followed-up until the end of 2019. The study was
104 reviewed by the Ethics Committee of the Faculty of Medicine, University of Helsinki (3/2018).
105 Because this is a register-based study, no individual consent is needed.

106

107 The follow-up started on 1 January 2018 and ended on 31 December 2019, with a maximum length
108 of follow-up of two years. A first hospitalization or visit to specialized outpatient care (as recorded
109 in the Care Register for Health Care, CRHC) due to attempted suicide (International Classification
110 of Diseases, Tenth Revision, ICD-10 diagnosis “X[6-7]|X8[0-4]”) or a primary health-care contact
111 due to attempted suicide (as recorded in the Register of Primary Health Care visits, RPHC; ICD-10
112 diagnosis “X[6-7]|X8[0-4]” or International Classification of Primary Care, ICPC, “P77”) were
113 considered as primary endpoint events. Death, emigration from Finland or end of follow-up were
114 defined as censoring events. Individuals with an endpoint event before the start of follow-up (years
115 2016 and 2017) were excluded from the study (n=889).

116

117 The incidence of AS was examined in the cohorts of HC users and non-users (after exclusion of 889
118 prevalent AS cases, $n = 587,823$), which altogether included more than half of all fertile-aged
119 women living in Finland in 2017. This cohort was further used as a sampling frame for a nested
120 case-control study, which explored the risk of AS related to current (i.e., in the six months before
121 the event) HC use. For each incident AS case we selected four controls, matched by year of birth.

122

123 The register data and variables

124

125 Information on sociodemographic characteristics of all the study members on 31 December 2017
126 (age, municipality of residence, civil status, socioeconomic status, highest level of education) was
127 retrieved from Statistics Finland. Information about recent deliveries (within the previous two
128 years) was gathered from the Medical Birth Register. Data on special reimbursement rights for
129 chronic diseases (diabetes, multiple sclerosis, epilepsy, severe psychiatric disorders, connective
130 tissue diseases, ulcerative colitis or Crohn's disease) were obtained from the Social Insurance
131 Institution of Finland. Data on recent (in the past two years) hospitalizations or visits to specialized
132 outpatient care due to psychiatric disorders (ICD-10 codes F00-F99) were gathered from the
133 CRHC. In addition to selection of the initial study population based on redeemed HC prescriptions
134 in 2017, the Prescription Centre was used to gather information on their HC use in the period 2018–
135 2019. Only ATC codes with at least five individuals in all categories were used in statistical
136 analyses. Moreover, from the Prescription Centre we gathered information on use of psychotropic
137 medications in the 360 days before the event (ATC codes: N05A, antipsychotics; N05B,
138 anxiolytics; N05C, hypnotics and sedatives; N06A, antidepressants; N06B, psychostimulants,
139 N06C psycholeptics and psychoanaleptics in combination). Use of each substance (hormonal
140 contraceptives and psychotropic drugs) was defined as two or more redeemed prescriptions in a
141 180-day period.

142

143 In the incidence study only an indicator of baseline (during year 2017) HC usage (HC use vs. no-
144 HC use) was considered. In the nested case-control design, for each HC substance we defined a
145 categorical variable as follows: non-user (no use in the 180 days before the AS event) and current
146 user (use in 1–180 days before the event). The HC methods of interest and available in Finland in
147 2018 are summarized in Table S1. Contraceptive implants and the levonorgestrel-releasing
148 intrauterine system were excluded, because they can be used for up to three or five years, and are
149 often provided free-of-charge by single communities, thus not necessitating individual prescription
150 (and as such they are not completely covered in the Prescription Centre database). Additionally,

151 levonorgestrel-only containing oral contraceptives were excluded from further analyses because of
152 the small numbers of users and of associated AS cases.

153

154 Statistical analyses

155

156 We used Kaplan-Meier curve to describe the incidence rates of AS in relation to HC use in 2017;
157 incidence rate comparison was performed via Poisson regression analysis.

158 To take into account matching, in the nested case-control design we utilized conditional logistic
159 regression, with group of utilized HC (current use *vs.* non-use) as the main predictor. In addition to
160 a univariate model, we performed Model 1, controlled for marital status, socioeconomic status and
161 education; Model 2, further controlled for chronic diseases (indicator of chronic diseases before
162 start of follow-up) and recent (in the previous six months or in the previous two years) delivery; and
163 Model 3, which is Model 2 further adjusted for recent (in the previous six months or in the previous
164 two years) psychiatric hospitalizations and use of psychotropic medications in the 360 days before
165 the event. Because the case and control groups were matched by year of birth, age was not included
166 as covariate in the models; rather, age-stratified analyses were performed. Sensitivity analyses were
167 conducted by only considering AS cases recorded in the CRHC (i.e., serious AS requiring
168 hospitalization or specialized outpatient care). Additionally, in order to take into account previous
169 severe psychiatric disorders, the analyses were repeated after exclusion of women with special
170 reimbursement rights for severe psychiatric disorders. Moreover, analyses were also conducted in
171 groups stratified by psychiatric history (those with and without a recent hospitalization due to
172 psychiatric disorders, use of psychotropic drugs or reimbursement rights for severe psychiatric
173 disorders at baseline).

174

175 All the analyses were performed with R software version 4.0.5 (R Core Team, 2021).

176

177

178 **Results**

179

180 During the follow-up 1,174,346 person-years were cumulated and 818 AS cases observed, with an
181 overall incidence rate (IR) of 0.70 (95% CI 0.63–0.83) per 1000 person-years. In the group of HC
182 non-users in 2017, we observed 474 cases of AS (IR 0.81 per 1000 person-years, 95% CI 0.74–
183 0.88), while among HC users there were 344 AS cases (IR 0.59, 95% CI 0.53–0.65). The incidence
184 rate ratio (IRR) of HC *vs.* no-HC users was 0.73 (0.63–0.83) (Figure 1). The incidence of AS

185 decreased with age, with the highest IR in the age group 15–19 years (1.62, 95% CI 1.42–1.83)
186 (Table S2).

187

188 The nested case-control study for AS built on this cohort consisted of altogether 4090 women
189 (Table 1). Compared to the controls, women who attempted suicide were less likely to be married,
190 employed, with post-secondary or higher education, and to have given birth in the previous two
191 years, but more likely to have had a recent psychiatric hospitalization. Additionally, they were less
192 likely to be current users of HC (15.6% vs. 22.2%), in particular of combined hormonal
193 contraceptives (CHCs) (9.8% vs. 17.8%: ethinyl estradiol (EE)-containing preparations, 7.5% vs.
194 13.9%; estradiol-containing preparations, 2.3% vs. 4.0%; $p < 0.001$). Specifically, current use of
195 desogestrel and EE (0.9% vs. 2.0%, $p = 0.045$) and of drospirenone and EE (3.7% vs. 6.3%, $p =$
196 0.005) was less common among women who attempted suicide than in their controls (Table 2).

197 Consistently, in the univariable logistic regression model, use of HC (OR 0.64, 95% CI 0.52–0.79),
198 and specifically of CHCs (either EE-containing or estradiol-containing preparations) was associated
199 with lower risk of AS compared to the risk in HC non-users (OR 0.50, 95% CI 0.39–0.64). No
200 significant associations emerged with current use of progestin-only contraceptives (Table 3). The
201 lower risk associated with CHCs (specifically, EE-containing contraceptives) remained significant
202 after controlling for covariates (Models 1–2), except when further adjusting for recent psychiatric
203 hospitalizations and current use of psychotropic medications (Model 3, see Table 3). The results did
204 not change in age-stratified analyses (Table S3). In analyses stratified by psychiatric history, current
205 use of HC, and in detail of EE-containing preparations, was associated with lower risk of AS only
206 in women without psychiatric disorders (Table S4). Among women with psychiatric disorders HC
207 use was not associated with AS risk.

208

209 In detail, in unadjusted models current use of combined OCs (COC) containing desogestrel and EE,
210 and drospirenone and EE was associated with lower AS risk than non-use of the same preparations
211 (OR 0.43, 95% CI 0.20–0.94; and OR 0.56, 95% CI 0.38–0.84, respectively). The association with
212 drospirenone and EE remained significant after controlling for background characteristics
213 (socioeconomic status, marital status, education, chronic diseases, recent delivery) and after
214 exclusion of women with previous severe psychiatric disorders, but was lost when further adjusting
215 for recent psychiatric hospitalizations and use of psychotropic medications (Figure 2).

216

217 In sensitivity analyses including only AS cases recorded in the CRHC, among the 1,174,475
218 person-years cumulated 760 AS cases were observed (IR 0.65 per 1000 person-years, 95% CI 0.60–

219 0.70). Of them, 440 occurred among HC non-users in 2017, and 320 in HC users, with an IRR of
220 HC vs. no-HC users of 0.73 (95% CI 0.63–0.84; see Table S5). Basic characteristics of the
221 population of the nested-case control study based on CRHC cases only are reported in Table S6 and
222 Table S7. Associations with AS risk were similar to those in the original population (Table 3,
223 Figure S1). In addition, current use of norethisterone-only OC was associated with higher AS risk
224 when controlling for background characteristics (OR 4.78, 95% CI 1.34–21.72) and after exclusion
225 of women with previous severe psychiatric disorders (OR 5.63, 95% CI 1.46–21.73), but not when
226 adjusting for recent psychiatric hospitalizations and use of psychotropic medications (OR 1.40, 95%
227 CI 0.20–9.63) (Figure S1).

228

229

230 **Discussion**

231

232 The main finding of our study is that HC use was not associated with an increased risk of attempted
233 suicide in women of fertile age. In addition, the current use of CHCs, and in particular of EE-
234 containing preparations was associated with a lower risk of attempted suicide compared to non-use
235 of HC even after controlling for covariates and in women without psychiatric disorders. However,
236 the significance of this finding was lost after taking psychiatric disorders into account.

237

238 Differently from suicide, epidemiological data on AS are difficult to retrieve and often inconsistent,
239 due to the lack of official registration systems and different definitions of suicidal attempts.
240 Subsequently, the overall incidence of AS in our population (0.70 per 1000 women-years)
241 corresponds only in part to previously reported figures (Bossuyt & Van Casteren, 2007). For
242 example, a previous register-based study from Finland reported an incidence of first serious AS in
243 men and women aged 12 or older of 0.4 per 1000 person-years between 1996 and 2003 (Haukka,
244 Suominen, Partonen, & Lönnqvist, 2008). On the other hand, a prospective study conducted
245 between 1981 and 1993 in a community sample in Baltimore found an incidence of 1.6 per 1000
246 women-years in women of all ages (specifically, 3.7 per 1000 women-years in the age group 18–29
247 years, and 1.2 per 1000 women-years in the age group 30–44 years) (Kuo, Gallo, & Tien, 2001).
248 Similarly, in a recent Danish study (Skovlund et al., 2018) the incidence of AS was 1.8 per 1000
249 women-years in women aged 15–33 years (compared to an IR of 0.8 per 1000 women-years in the
250 same age group, i.e. 15–34 years, in our study). Differences between the above reported figures are
251 attributable, among others, to different times of assessment, with consequent different levels of
252 awareness and preventive measures implemented to contrast suicidal behavior, and to different

253 social and cultural milieu affecting contraceptive choices. Additionally, the use of interview-
254 reported cases, thus including AS which did not receive medical attention, likely explains the higher
255 AS rates reported in some studies (Kuo et al., 2001).

256

257 Our finding that the current use of HC is not associated with an increased risk of AS in fertile-aged
258 women contrasts with results reported by recent studies in the Nordic countries. A Danish study
259 found a higher risk of the first AS in women aged 15–33 years using HC both currently (relative
260 risk, RR 1.97, 95% CI 1.85–2.10) and previously (RR 3.40, 95% CI 3.11–3.71) compared with
261 never-users (Skovlund et al., 2018). Similarly, a large Swedish register-based study of women aged
262 15–22 years found an increased risk of suicidal behavior (attempted or completed suicide) in users
263 of COCs (HR 1.36, 95%CI 1.18–1.56) and progestin-only pills (HR 1.75, 95% CI 1.44–2.12)
264 (Edwards et al., 2020). A Korean study also reported positive associations between OC use and
265 suicidality (ideation and attempt) in women over 20 years of age; however, the latter compared,
266 with a retrospective design, lifetime prevalence of OC use and period prevalence of suicidality, and
267 did not provide any information on the type of OC or on other types of HC (Jung, Cho, & Kim,
268 2019). One of the possible reasons underlying these different findings is the inclusion in our sample
269 of older women, where the prevalence of AS in general is lower, and who usually have a distinct
270 profile of HC use. On this regard, it must be acknowledged that older women are more likely to use
271 long-active reversible contraceptive (LARC) methods, such as the levonorgestrel-releasing
272 intrauterine system, which were not included in our study, given that most of these methods are
273 provided free-of-charge from some municipalities in Finland, and can be used for up to five years.
274 However, our results did not change in age-stratified analyses. Another possible explanation to our
275 findings is that women with severe psychiatric disorders may be less likely to use HC (Toffol et al.,
276 2020), but more likely to attempt suicide. However, no associations between HC use and higher risk
277 of AS emerged in analyses stratified by psychiatric history.

278

279 The observation of a negative association between current use of EE-containing preparations and
280 AS risk is a novel one, although the association lost its significance after controlling for psychiatric
281 disorders, which are known to be the main risk factor for suicidal behavior. Skovlund et al. (2018)
282 found an increased risk associated with the use of all EE-containing COCs, but the highest risk was
283 seen in users of patch, vaginal ring and progestin-only products. While the Danish study took the
284 use of antidepressants or psychiatric diagnoses after starting the HC into account as a possible
285 mediator factor in the relationship between HC use and suicidal behavior, we controlled our results
286 for the current use of any psychotropic medications, including antipsychotics and anxiolytics. This

287 may be relevant, as we have previously shown positive associations between HC use and the use of
288 psychotropic drugs of any class in the same population as in the current cohort used to assess
289 incidence (Toffol et al., 2022). We also found a tendency for a higher AS risk with the use of
290 progestin-only products, such as norethisterone and desogestrel containing oral contraceptives, but
291 no associations with the use of vaginal ring and patch. Even though the negative impact of
292 norethisterone on mood has been previously observed (Lawrie, Hofmeyr, De Jager, Berk, Paiker, &
293 Viljoen, 1998; Dennis, Ross, & Herxheimer, 2008), our results have to be taken with caution, given
294 that the use of norethisterone-only pills in Finland is rather limited (Table S1), especially to the
295 postpartum period. However, the tendency did not change after controlling for a recent delivery.

296
297 Another key finding of our study is a tendency for a lower AS risk in women using drospirenone
298 and EE. Drospirenone has progestogenic, antimineralcorticoid and antiandrogenic activities. These
299 characteristics are related to its favorable influence on mood also in women suffering from
300 premenstrual dysphoric disorder (Paoletti et al., 2004; Pearlstein, Bachmann, Zacur, & Yonkers,
301 2005; Sangthawan, & Taneepanichskul, 2005; Yonkers et al., 2005). This finding is of relevance, as
302 OC containing drospirenone (and third generation progestins such as desogestrel, etonogestrel and
303 gestodene) are used more commonly in Finland than in the other Nordic countries, and OC
304 containing drospirenone is the most used COC in Finland (Table S1).

305
306 This study has a number of limitations. By using registry data, we were not able to detect less
307 severe cases of AS which remained unknown to the health-care system, which likely account for
308 almost half of the self-reported AS (Kjøller, & Helweg-Larsen, 2000). Additionally, as HC use was
309 defined based on redeemed prescriptions rather than on its actual use, misclassification cannot be
310 ruled out. However, because the Social Insurance Institution in Finland does not reimburse HC, it is
311 likely that the majority of those who purchased the drug did in fact use it. Likewise, it cannot be
312 excluded that women currently not using HC at the time of the AS (in the 6 months before) were in
313 fact former users, who discontinued their contraceptive due to side effects, including mood changes.
314 For example, Skovlud et al. (2018) found a higher risk of AS in former users than in current users
315 of HC. However, in our nested case-control study, most of women who attempted suicide in the
316 period 2018–2019 were in fact HC non-users in 2017 (57.9% vs. 49.0% in the control group).
317 Another limitation arises from the lack of information on the precise contents of the contraceptive
318 preparations used, which precluded any analyses on the effect of different doses of EE.
319 Additionally, we lacked information on the use of non-hormonal methods (e.g., copper intrauterine
320 device and barrier methods) as well as contraceptives obtained free-of-charge as part of municipal

321 programs, especially LARC methods. Furthermore, we cannot exclude that the detected
322 associations are confounded by external unaccounted factors.

323
324 Among the strengths of our study is the use of Finnish register data of proven high quality (Heino,
325 Niinimäki, Mentula, & Gissler, 2018; Sund, 2012), and the identification of AS cases based on
326 diagnostic codes from specialist health-care between 2018 and 2019. The nested case-control design
327 is shown to produce unbiased estimates and to be free from weaknesses of ordinary case-control
328 design. It uses correct sampling of controls that takes the follow-up time into account (Langholz, &
329 Richardson, 2009; Sedgwick, 2014). In addition, the control women were matched by age. Thus,
330 our study design provides results that are relatively free from confounding bias, although some
331 residual confounding is always possible in observational studies. Importantly, our results appeared
332 consistent across the two different study designs (incidence study, nested case-control design) and
333 definitions of HC use (baseline and current use).

334
335 Taken together, our results convey the reassuring message to fertile-aged women seeking
336 contraception that HC use is not associated with an increased risk of attempted suicide. At the same
337 time, they once more stress the importance of a personalized choice of the best and safest
338 contraceptive option, which should take individual mental health status including assessment of
339 possible suicidal risk into account.

340
341
342 **Conflicts of Interest.** OH serves occasionally on advisory boards for Bayer AG and Gedeon
343 Richter, and has designed and lectured at educational events of these companies. The other authors
344 report no financial relationships with commercial interests.

345
346

347 **References**

348

349 Amarasekera, S., Catalao, R., Molyneaux, E., & Fuhr, D.C. Hormonal contraceptive use and risk
350 of attempted and completed suicide: a systematic review and narrative synthesis. *The Psychiatric*
351 *Quarterly*, 91(4), 1075-1087. doi:10.1007/s11126-020-09815-5.

352 Baca-Garcia, E., Perez-Rodriguez, M.M., Mann, J.J., & Oquendo, M.A. (2008). Suicidal behavior
353 in young women. *The Psychiatric Clinics of North America*, 31(2), 317-331. doi:
354 10.1016/j.psc.2008.01.002.

355 Bachmann, S. (2018). Epidemiology of suicide and the psychiatric perspective. *International*
356 *Journal of Environmental Research and Public Health*, 15(7), 1425. doi:10.3390/ijerph15071425

357 Bitzer, J., & Simon, J.A. (2011). Current issues and available options in combined hormonal
358 contraception. *Contraception*, 84(4), 342-356. doi:10.1016/j.contraception.2011.02.013.

359 Bossuyt, N., & Van Casteren, V. (2007). Epidemiology of suicide and suicide attempts in
360 Belgium: results from the sentinel network of general practitioners. *International Journal of Public*
361 *Health*, 52(3), 153/157. doi:10.1007/s00038-007-5060-y.

362 Charlton, B.M., Rich-Edwards, J.W., Colditz, G.A., Missmer, S.A., Rosner, B.A., Hankinson,
363 S.E., ... Michels, K.B. (2014). Oral contraceptive use and mortality after 36 years of follow-up in
364 the Nurses' Health Study: prospective cohort study. *British Medical Journal*, 349, g6356.
365 doi:10.1136/bmj.g6356

366 Colditz, G.A. (1994). Oral contraceptive use and mortality during 12 years of follow-up: the
367 Nurses' Health Study. *Annals of Internal Medicine*, 120(10), 821-826. doi:10.7326/0003-4819-120-
368 10-199405150-00002.

369 Dennis, C.L., Ross, L.E., & Herxheimer, A. (2008). Oestrogens and progestins for preventing and
370 treating postpartum depression. *Cochrane Database of Systematic Reviews*, 2008(4), CD001690.
371 doi:10.1002/14651858.CD001690.pub2.

372 Edwards, A.C., Lönn, S.L., Crump, C., Mościcki, E.K., Sundquist, J., Kendler, K.S., & Sundquist,
373 K. (2020). Oral contraceptive use and risk of suicidal behavior among young women. *Psychological*
374 *Medicine*, 1-8. doi:10.1017/S0033291720003475

375 Hannaford, P.C., Iversen, L., Macfarlane, T.V., Elliott, A.M., Angus, V., & Lee, A.J. (2010).
376 Mortality among contraceptive pill users: cohort evidence from Royal College of General
377 Practitioners' Oral Contraception Study. *British Medical Journal*, 340, c927. doi:10.1136/bmj.c927.

378 Haukka, J., Suominen, K., Partonen, T., & Lönnqvist, J. (2008). Determinants and outcomes of
379 serious attempted suicide: a nationwide study in Finland, 1996–2003. *American Journal of*
380 *Epidemiology*, 167(10), 1155-1163. doi:10.1093/aje/kwn017

- 381 Heino, A., Niinimäki, M., Mentula, M., Gissler, M. (2018). How reliable are health registers?
382 Registration of induced abortions and sterilizations in Finland. *Informatics for Health & Social*
383 *Care*, 43(3), 310-319. doi:10.1080/17538157.2017.1297306.
- 384 Jung, S.J., Cho, S.M.J., & Kim, H.C. (2019). Association of oral contraceptive use with suicidal
385 behavior among representative Korean population: Results from Korea National Health and
386 Nutrition Examination Survey (2007-2016). *Journal of Affective Disorders*, 243, 8-15.
387 doi:10.1016/j.jad.2018.09.004.
- 388 Kanta Services. What are the Kanta services? Retrieved from [https://www.kanta.fi/en/what-are-](https://www.kanta.fi/en/what-are-kanta-services)
389 [kanta-services](https://www.kanta.fi/en/what-are-kanta-services) [Accessed 8 Sep 2021]
- 390 Keyes, K.M., Cheslack-Postava, K., Westhoff, C., Heim, C.M., Haloosim, M., Walsh, K., &
391 Koenen, K. (2013). Association of hormonal contraceptive use with reduced levels of depressive
392 symptoms: a national study of sexually active women in the United States. *American Journal of*
393 *Epidemiology*, 178(9), 1378-1388. doi:10.1093/aje/kwt188.
- 394 Kuo, W-H., Gallo, J.J., & Tien, A.Y. (2001). Incidence of suicide ideation and attempts in adults:
395 the 13-year follow-up of a community sample in Baltimore, Maryland. *Psychological Medicine*,
396 31(7), 1181-1119. doi:10.1017/s0033291701004482
- 397 Kjølner, M., & Helweg-Larsen, M. (2000). Suicidal ideation and suicide attempts among adult
398 Danes. *Scandinavian Journal of Public Health*, 28(1), 54-61. doi:10.1177/140349480002800110.
- 399 Langholz, B., & Richardson, D. (2009). Are nested case-control studies biased? *Epidemiology*,
400 20(3), 321-329. doi:10.1097/EDE.0b013e31819e370b
- 401 Lawrie, T.A., Hofmeyr, G.J., De Jager, M., Berk, M., Paiker, J., & Viljoen, E. (1998). A double-
402 blind randomised placebo controlled trial of postnatal norethisterone enanthate: the effect on
403 postnatal depression and serum hormones. *British Journal of Obstetrics and Gynecology*, 105(10),
404 1082-1090. doi:10.1111/j.1471-0528.1998.tb09940.x.
- 405 Paoletti, A.M., Lello, S., Fratta, S., Orrù, M., Ranuzzi, F., Sogliano, C.,... Melis, G.B. (2004).
406 Psychological effect of the oral contraceptive formulation containing 3 mg of drospirenone plus 30
407 microg of ethinyl estradiol. *Fertility and Sterility*, 81(3), 645-651.
408 doi:10.1016/j.fertnstert.2003.08.030.
- 409 Pearlstein, T.B., Bachmann, G.A., Zacur, H.A., & Yonkers, K.A. (2005). Treatment of
410 premenstrual dysphoric disorder with a new drospirenone-containing oral contraceptive
411 formulation. *Contraception*, 72(6), 414-421. doi:10.1016/j.contraception.2005.08.021.
- 412 R Core Team. R: A Language and Environment for Statistical Computing [Internet]. Vienna,
413 Austria: R Foundation for Statistical Computing, 2021. Retrieved from: <https://www.R-project.org/>

- 414 Sangthawan, M., & Taneepanichskul, S. (2005). A comparative study of monophasic oral
415 contraceptives containing either drospirenone 3 mg or levonorgestrel 150 microg on premenstrual
416 symptoms. *Contraception*, *71*(1), 1-7. doi: 10.1016/j.contraception.2004.07.010.
- 417 Sedgwick, P. (2014). Nested case-control studies: advantages and disadvantages. *British Medical*
418 *Journal*, *348*, g1532. doi:10.1136/bmj.g1532.
- 419 Skovlund, C.W., Mørch, L.S., Kessing, L.V., Lange, T., & Lidegaard, Ø. (2018). Association of
420 hormonal contraception with suicide attempts and suicides. *American Journal of Psychiatry*,
421 *175*(4), 336-342. doi:10.1176/appi.ajp.2017.17060616.
- 422 Sund, R. (2012). Quality of the Finnish Hospital Discharge Register: a systematic review.
423 *Scandinavian Journal of Public Health*, *40*(6), 505-515. doi:10.1177/1403494812456637.
- 424 Toffol, E., But, A., Heikinheimo, O., Latvala, A., Partonen, T., & Haukka, J. (2020). Associations
425 between hormonal contraception use, sociodemographic factors and mental health: a nationwide,
426 register-based, matched case-control study. *BMJ Open*, *10*(10), e040072. doi:10.1136/bmjopen-
427 2020-040072.
- 428 Toffol, E., Partonen, T., Heikinheimo, O., But, A., Latvala, A., & Haukka, J. (2022).
429 Associations between use of psychotropic medications and use of hormonal contraception among
430 girls and women aged 15–49 years in Finland: a nationwide, register-based, matched case-control
431 study. *BMJ Open*, *12*(2), e053837. doi:10.1136/bmjopen-2021-053837
- 432 Vessey, M.P., McPherson, K., Lawless, M., Yeates, D. (1985). Oral contraception and serious
433 psychiatric illness: absence of an association. *British Journal of Psychiatry*, *146*, 45-49.
434 doi:10.1192/bjp.146.1.45.
- 435 Vessey, M.P., Villard-Mackintosh, L., McPherson, K., Yeates, D. (1989). Mortality among oral
436 contraceptive users: 20 year follow up of women in a cohort study. *British Medical Journal*,
437 *299*(6714), 1487-1491. doi:10.1136/bmj.299.6714.1487.
- 438 World Health Organization 2014. Preventing suicide: a global imperative. World Health
439 Organization. ISBN 978 92 4 156477 9 (NLM classification: HV 6545)
- 440 World Health Organization 2021. Suicide worldwide in 2019: global health estimates ISBN 978-
441 92-4-002664-3 (electronic version) ISBN 978-92-4-002665-0 (print version).
- 442 Yonkers, K.A., Brown, C., Pearlstein, T.B., Foegh, M., Sampson-Landers, C., & Rapkin, A.
443 (2005). Efficacy of a new low-dose oral contraceptive with drospirenone in premenstrual dysphoric
444 disorder. *Obstetrics and Gynecology*, *106*(3), 492-501. doi:10.1097/01.AOG.0000175834.77215.2e.
445

446 **Table 1. Basic characteristics of the nested case-control study of attempted suicides.**

	Cases (N=818)		Controls (N=3272)		p-value
	N	%	N	%	
Marital status					<0.001
Unmarried	667	81.5	2643	80.8	
Married	84	10.3	545	16.7	
Divorced	65	7.9	79	2.4	
Widowed	<5	NA	<5	NA	
Other	<5	NA	<5	NA	
Socioeconomic group					<0.001
Self-employed	19	2.3	96	3.0	
Upper-level employees	22	2.7	308	9.5	
Lower-level employees	118	14.5	850	26.2	
Manual workers	112	13.8	482	14.9	
Students	281	34.6	1067	32.9	
Pensioners	70	8.6	41	1.3	
Others	122	15.0	216	6.7	
Unknown	69	8.5	185	5.7	
Education					<0.001
Upper secondary	325	39.7	1488	45.5	
Post-secondary non-tertiary	<5	NA	15	0.5	
Short-cycle tertiary	6	0.7	39	1.2	
Bachelor	29	3.5	471	14.4	
Master	17	2.1	190	5.8	
Doctoral	<5	NA	12	0.4	
Missing (including, e.g., missing information on education other than of primary school level, school dropouts)	439	53.7	1057	32.3	
Age group[*]					1.000
15-19 years	249	30.4	996	30.4	
20-24 years	239	29.2	956	29.2	
25-29 years	143	17.5	572	17.5	

30-34 years	79	9.7	316	9.7	
35-39 years	56	6.8	224	6.8	
40-44 years	35	4.3	140	4.3	
45-49 years	17	2.1	68	2.1	
Severe psychiatric disorder at baseline	104	12.7	24	0.7	<0.001
Chronic somatic disease at baseline**	60	7.3	146	4.5	0.001
HC use in 2017	344	42.1	1668	51.0	<0.001
Use of psychotropic medication					
antipsychotics	281	34.4	59	1.8	<0.001
anxiolytics	186	22.7	31	0.9	<0.001
hypnotics and sedatives	112	13.7	41	1.3	<0.001
antidepressants	399	48.8	240	7.3	<0.001
psychostimulants	13	1.6	13	0.4	<0.001
psycholeptics and psychoanaleptics in combination	5	0.6	<5	NA	0.001
Recent delivery					<0.001
No	799	97.7	3077	94.0	
In the previous 6 months	< 5	NA	29	0.9	
6 to 24 months before	17	2.1	166	5.1	
Recent hospitalization due to psychiatric disorders					<0.001
No	189	23.1	2978	91.0	
In the previous 6 months	524	64.1	175	5.3	
6 to 24 months before	105	12.8	119	3.6	

447 * matched by age

448 ** Diabetes, multiple sclerosis, epilepsy, connective tissue diseases, ulcerative colitis or Chron's disease.

449 NA,

not

available

Table 2. Hormonal contraception use in the nested case-control study of attempted suicides.

	Cases (N=818)		Controls (N=3272)		p-value
	N	%	N	%	
HC group					<0.001
No HC	690	84.4	2545	77.8	
Current HC	128	15.6	727	22.2	
Combined hormonal contraception	80	9.8	584	17.8	
Ethinyl-estradiol containing	61	7.5	454	13.9	
Estradiol containing	19	2.3	130	4.0	
Progestin-only	48	5.9	143	4.4	
Combined hormonal contraceptives (ATC code)					
Levonorgestrel and ethinylestradiol (G03AA07)	<5	NA	14	0.4	0.124
Desogestrel and ethinylestradiol (G03AA09)	7	0.9	64	2.0	0.045
Gestodene and ethinylestradiol (G03AA10)	14	1.7	85	2.6	0.178
Drospirenone and ethinylestradiol (G03AA12)	30	3.7	206	6.3	0.005
Norelgestromin and ethinylestradiol patch (G03AA13)	<5	NA	10	0.3	0.597
Nomegestrol and estradiol (G03AA14)	<5	NA	39	1.2	0.116
Dienogest and ethinylestradiol (G03AA16)	<5	NA	18	0.6	0.186
Dienogest and estradiol-valerate (G03AB08)	<5	NA	27	0.8	0.052
Etonogestrel and ethinylestradiol vaginal ring (G02BB01)	8	1.0	58	1.8	0.145
Progestin-only oral contraceptives					
Norethisterone (G03AC01)	5	0.6	8	0.2	0.187
Desogestrel (G03AC09)	42	5.1	135	4.1	0.241
Antiandrogen and estrogen					
Cyproterone and estrogen (G03HB01)	14	1.7	65	2.0	0.712

ATC, Anatomical Therapeutic Chemical; NA, Not Available.

Table 3. Nested case-control study of AS. Odds ratios and 95% confidence intervals based on conditional logistic regression models.

Usage of drugs in respect to the event day: no=no use in the past 180 days; current= use in the past 180 days. Multivariate Model 1 is adjusted with the following covariates: marital status, socioeconomic status, education; Model 2 is Model 1 further adjusted for chronic diseases (reimbursement codes*) and recent delivery; Model 3 is Model 2 further adjusted for recent psychiatric hospitalization and current use of psychotropic medications.

		Univariable		Model 1		Model 2		Model 3	
		Odds Ratio	95% CI	Odds Ratio	95% CI	Odds Ratio	95% CI	Odds Ratio	95% CI
CRHC and RPHC data									
HC groups	No HC	reference		reference		reference		reference	
	Current HC	0.64	0.52–0.79	0.74	0.59–0.93	0.71	0.56–0.90	0.79	0.56–1.11
	CHC	0.50	0.39–0.64	0.59	0.45–0.77	0.55	0.42–0.73	0.68	0.45–1.02
	EE containing CHCs	0.49	0.37–0.64	0.56	0.41–0.75	0.54	0.40–0.73	0.74	0.47–1.17
	estradiol containing CHCs	0.53	0.33–0.87	0.71	0.43–1.20	0.60	0.34–1.05	0.50	0.21–1.19
	Progestin-only	1.24	0.88–1.74	1.40	0.96–2.06	1.39	0.94–2.05	1.08	0.62–1.88
Only CRHC data									
HC groups	No HC	reference		reference		reference		reference	
	Current HC	0.59	0.48–0.73	0.65	0.51–0.82	0.65	0.51–0.82	0.86	0.61–1.21
	CHC	0.46	0.35–0.60	0.49	0.37–0.65	0.49	0.37–0.65	0.72	0.48–1.08
	EE containing CHCs	0.46	0.34–0.62	0.49	0.36–0.68	0.50	0.36–0.69	0.78	0.50–1.24
	estradiol containing CHCs	0.46	0.28–0.75	0.50	0.30–0.85	0.46	0.27–0.81	0.56	0.26–1.24
	Progestin-only	1.08	0.77–1.54	1.29	0.88–1.90	1.36	0.91–2.02	1.35	0.74–2.46

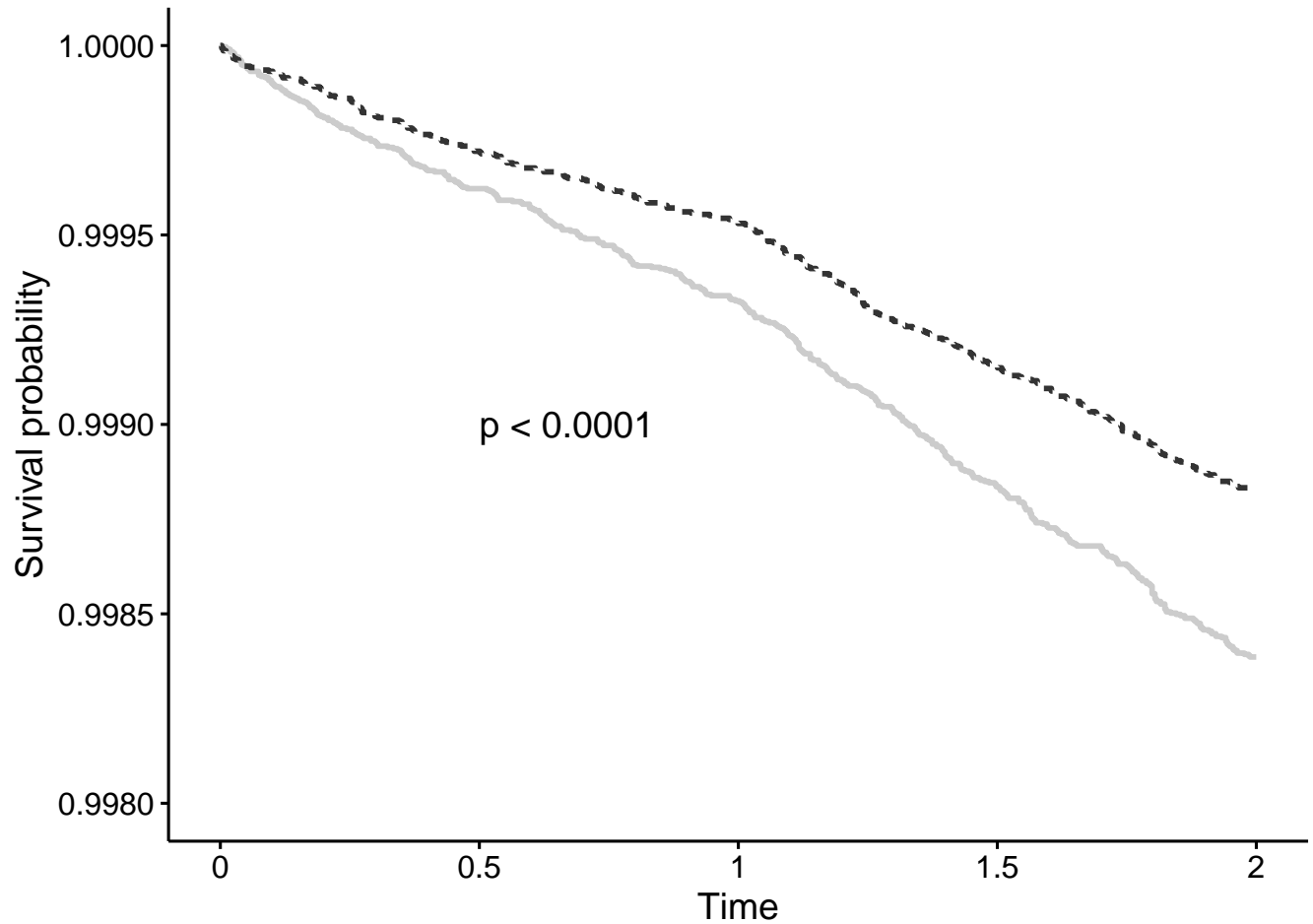
*diabetes, multiple sclerosis, epilepsy, severe psychiatric disorders, connective tissue diseases, ulcerative colitis or Crohn's disease

CHC, combined hormonal contraception; CRHC, Care Register for Health Care; EE, ethinyl estradiol; HC, hormonal contraception; RPHC, Register of Primary Health Care visit.

Figure 1. Kaplan-Meier curve for incidence of attempted suicide. *p*-value of log-rank test shown.

Figure 2. Associations between attempted suicide and current use (in the previous 180 days) of hormonal contraceptives. Results are expressed as Odds Ratios with 95% Confidence Intervals. For each substance the reference category is no use of the same substance in the 180 days before the attempted suicide. Adjusted model is controlled for marital status, socioeconomic status, education, chronic diseases and recent delivery. One substance in model a time. Care Register of Health Care and Register of Primary Health Care visits data together.

Group — no HC - - - HC



Number at risk

no HC	293854	293690	293526	293310	0
HC	293965	293836	293736	293574	0

Model

- Unadjusted
- Adjusted
- ◆ Adjusted after exclusion of psychiatric disorders
- Adjusted for recent psychiatric hospitalizations or medications

Contraceptive

levonorgestrel and ethinylestradiol

desogestrel and ethinylestradiol

gestodene and ethinylestradiol

drospirenone and ethinylestradiol

norelgestromin and ethinylestradiol patch

nomegestrol and estradiol

dienogest and ethinylestradiol

dienogest and estradiol-valerate

etonogestrel and ethinylestradiol vaginal ring

norethisterone

desogestrel

cyproterone and estrogen

OR

95% CI

