

Quantifying Inequities in COVID-19 Vaccine Distribution Over Time by social vulnerability, race and ethnicity, and location: A Population-Level Analysis in St. Louis and Kansas City, Missouri

Authors:

Aaloke Mody, M.D.¹; Cory Bradley, Ph.D.¹; Salil Redkar, M.S.¹; Branson Fox, B.A.¹; Ingrid Eshun-Wilson, MB.ChB., M.Sc.¹; Matifadza G. Hlatshwayo, M.D., M.P.H.²; Anne Trolard, M.P.H.^{1,3}; Khai Hoan Tram, M.D.⁴; Lindsey M. Filiatreau, Ph.D.¹; Franda Thomas, M.Ed.²; Matt Haslam, M.Sc.²; George Turabelidze, M.D., Ph.D.⁵; Vetta Sanders-Thompson, Ph.D.⁶; William G. Powderly, M.D.^{1,3}; Elvin H. Geng, M.D., M.P.H.^{1,3}

1 Washington University School of Medicine, St. Louis, Missouri, USA

2 St. Louis City Department of Health, St. Louis, Missouri, USA

3 Institute for Public Health, Washington University in St. Louis, St. Louis, Missouri, USA

4 University of Washington School of Medicine, Seattle, WA, USA

5 Missouri Department of Health and Senior Services, Jefferson City and St Louis, Missouri, USA

6 Brown School of Social Work, Washington University in St. Louis, St. Louis, Missouri, USA

Keywords: COVID-19 vaccinations; Racial Disparities; Lorenz Curve; Inequity; structural racism; vaccine locations; social vulnerability index

Corresponding Author:

Aaloke Mody, M.D.

Division of Infectious Diseases

Department of Medicine

Washington University School of Medicine

Campus Box 8051, 4523 Clayton Avenue

St. Louis, MO 63110

Phone: 314-454-8293

Fax: 314-454-5392

Email: aaloke.mody@wustl.edu

38 **ABSTRACT**

39

40 **BACKGROUND:** Equity in vaccination coverage is a cornerstone to a successful public health
41 response to COVID-19. To deepen understand of the extent to which vaccination coverage compared
42 to initial strategies for equitable vaccination, we explore primary vaccine series and booster rollout
43 over time and by race/ethnicity, social vulnerability, and geography.

44 **METHODS AND FINDINGS:** We analyzed data from the Missouri State Department of Health and
45 Senior Services on all COVID-19 vaccinations administered across 7 counties in the St. Louis region
46 and 4 counties in the Kansas City Region. We compared rates of receiving the primary COVID-19
47 vaccine series and boosters relative to time, race/ethnicity, zip code-level social vulnerability index
48 (SVI), vaccine location type, and COVID-19 disease burden. We adapted a well-established tool for
49 measuring inequity—the Lorenz curve—to quantify inequities in COVID-19 vaccination relative to
50 these key metrics. Between 12/15/2020 and 2/15/2022, 1,762,508 individuals completed the primary
51 series and 871,896 had received a booster. During early phases of the primary series rollout, Black
52 and Hispanic individuals from high SVI zip codes were vaccinated at less than half the rate of White
53 individuals, but rates increased over time until they were higher than rates in White individuals after
54 June 2021; Asian individuals maintained high levels of vaccination throughout. Increasing vaccination
55 rates in Black and Hispanic communities corresponded with periods when more vaccinations were
56 offered at small community-based sites such as pharmacies rather than larger health systems and
57 mass vaccination sites. Using Lorenz curves, zip codes in the quartile with the lowest rates of primary
58 series completion accounted for 19.3%, 18.1%, 10.8%, and 8.8% of vaccinations but represented
59 25% of either the total population, cases, deaths, or population-level SVI, respectively. When tracking
60 Gini coefficients, these disparities were greatest earlier during rollout, but improvements were slow
61 and modest and vaccine disparities remained across all metrics even after one year. Patterns of
62 disparities for boosters were similar but often of much greater magnitude during rollout in Fall 2021.
63 Study limitations include inherent limitations in vaccine registry dataset such as missing and
64 misclassified race/ethnicity and zip code variables and potential changes in zip code population sizes
65 since census enumeration.

66 **CONCLUSIONS:** Racial inequity in the initial COVID-19 vaccination and booster rollout in two large
67 U.S. metropolitan areas were apparent across racial/ethnic communities, across levels of social
68 vulnerability, over time, and across types of vaccination administration sites. Disparities in receipt of
69 the primary vaccine series attenuated over time during a period in which sites of vaccination
70 administration diversified, but were recapitulated during booster rollout. These findings highlight how
71 public health strategies from the outset must directly target these deeply embedded structural and
72 systemic determinants of disparities and track equity metrics over time to avoid perpetuating
73 inequities in health care access.

74 AUTHOR SUMMARY

75 Why Was This Study Done?

- 76 • Equitable vaccine strategies are critical for the public health response to COVID-19, but there is limited
77 understanding of how vaccination campaigns compared to different metrics for equity.
- 78 • Many initial approaches to vaccine allocation sought to acknowledge the known disparities in exposure
79 risk, disease burden, needs, and access by formally considering social vulnerability or race/ethnicity in
80 plans to prioritize vaccinations, but there is limited empirical evaluation of how actual primary vaccine
81 series and subsequent booster efforts aligned with the initial goals set out for equity.
- 82 • We quantify COVID-19 vaccine-related inequities in receipt of the primary vaccine series and booster
83 across key equity metrics including race/ethnicity, social vulnerability, location, and time using a novel
84 application of Lorenz curves and Gini coefficients—tools from economics to measure inequalities—in the
85 St. Louis and Kansas City regions of Missouri.

86 What Did the Researchers Do and Find?

- 87 • We analyzed data from the Missouri State Department of Health and Senior Services on all COVID-19
88 vaccinations administered in the St. Louis region and Kansas City Regions. We compared rates of
89 receiving the primary COVID-19 vaccine series and boosters relative to time, race/ethnicity, zip code-level
90 social vulnerability index (SVI), vaccine location type, and COVID-19 disease burden. We adapted Lorenz
91 curves and Gini coefficients to quantify the inequities in COVID-19 vaccination relative to these key metrics
92 and examined how they changed over time.
- 93 • Black and Hispanic individuals from high SVI zip codes completed the primary series at less than half the
94 rate of White individuals during early phases of the primary series rollout, but surpassed rates in White
95 individuals after June 2021. These relative increases in primary series completion rates in Black and
96 Hispanic communities corresponded to periods when vaccinations became more available at small
97 community-based sites.
- 98 • Lorenz curves demonstrated that zip codes in the quartile with the lowest rates of primary series
99 completion accounted for 19.3%, 18.1%, 10.8%, and 8.8% of vaccinations but represented 25% of either
100 the total population, cases, deaths, or population-level SVI, respectively. Tracking Gini coefficients over
101 time demonstrated that these disparities were greatest earlier during rollout, but only improved slowly and
102 modestly over time.
- 103 • Patterns of disparities for boosters were similar but often of much greater magnitude than those seen with
104 completion of the primary vaccine series. patterns of disparities were similar but often of greater magnitude
105 during booster rollout in Fall 2021.

106 What Do These Findings Mean?

- 107 • Vaccination coverage for both the primary series and boosters demonstrated substantial disparities across
108 race/ethnicity, levels of social vulnerability, types of vaccine administration sites, and over time.
- 109 • Despite well-documented inequities for COVID-19 and need for equitable vaccine approaches, the
110 strategies employed did not overcome deeply entrenched systemic inequities in health care and society.
- 111 • Public health strategies must proactively target these deeply embedded structural determinants of
112 disparities from the outset and should systematically track equity metrics over time to avoid perpetuating
113 inequities in health care access.

127 INTRODUCTION

128 The initial wave of coronavirus disease 2019 (COVID-19) redemonstrated and highlighted
129 historical inequities in health by race, ethnicity, and other social indicators of vulnerability [1-3],
130 prompting a range of efforts to design public health services that redress inequity in the COVID-19
131 response. Across a wide range of indicators, disease burden as measured by COVID-19 cases,
132 hospitalizations, and mortality has disproportionately affected minoritized communities [1-3]. Initial
133 responses to COVID-19 through established channels were thus accompanied by additional efforts to
134 address the evolving disparities. Nevertheless, minoritized and vulnerable communities still had
135 reduced access to testing and treatments and have endured disproportionate impacts of social
136 distancing and lockdown policies on employment, education, and housing [4-8]. Against this
137 backdrop, achieving equitable vaccinations has and continues to be one of the most critical public
138 health challenges for mitigating the impact of the COVID-19 pandemic and achieving long-term
139 control.

140 Closer examination of equity in the vaccine response evaluating the extent to which health
141 systems performed in this domain is still necessary, and something that has not clearly documented
142 in the literature to date. Whereas equality simply refers to provision of equal resources to every
143 individual regardless of need, equitable approaches acknowledge that individuals will have different
144 risks, needs, or opportunities and that access to or distribution of resources needs to take these
145 differences into account. Strategies and frameworks to guide the equitable allocation and distributions
146 of vaccine were developed for when vaccines for SARS CoV-2 became available in December 2020
147 [9,10], but empirical examination of how actual primary vaccine series and subsequent booster efforts
148 aligned with the initial goals set out for equity are still needed. For example, several strategies
149 proposed formally considering geography, social vulnerability, or race/ethnicity in plans to prioritize
150 and distribute vaccinations in response to the known inequities in exposure risk and disease burden
151 across these metrics [11-13]. Examinations of equity must thus document patterns of vaccinations

152 across race/ethnicity, social vulnerability, geography, over time, and how they are delivered to
153 understand the mechanisms that give rise to disparities and yield key insights to the success, failures,
154 and steps for redress to achieve equitable vaccination strategies.

155 In this manuscript, we deepen our understanding of COVID-19 vaccine-related disparities by
156 examining inequities in vaccination in the St. Louis and Kansas City regions in Missouri—regions with
157 a history of health disparities—across several key metrics. We characterize rates of receiving the
158 primary vaccine series and boosters over time, race/ethnicity, social vulnerability, disease burden,
159 geography, and across vaccination location types. We use Lorenz curves and Gini coefficients—tools
160 from economics commonly used to measure inequity in a population—to quantify and track inequities
161 in COVID-19 vaccination over time relative to different metrics for conceptualizing equity [14]. The
162 novel application of this methodology—which we previously used to characterize COVID-19 testing
163 disparities [4]—has potential to yield deeper insights into the progress made towards vaccine equity
164 in these regions that may then better inform health policy solutions to address remaining gaps.

166 **METHODS**

167 *Ethics statement*

168 The study was approved by the institutional review board at Washington University in St. Louis
169 (IRB ID# 202009021). The research in this paper was not pre-specified and consists of secondary
170 analysis of preexisting de-identified data. This manuscript was prepared according to STROBE
171 guidelines (S1 STROBE Checklist).

173 *Study Setting and Data*

174 We sought to assess disparities in COVID-19 vaccination across the 7 counties in the St. Louis
175 region (St. Louis City, St. Louis County, St. Charles, Jefferson, Franklin, Lincoln, and Warren; total
176 population 2,095,978: 19.2% Black, 73.1% White, 3.0% Hispanic, 3.2% Asian) and the 4 counties in
177 the Kansas City region (Jackson, Clay, Cass, and Platte; total population 1,121,224: 16.8% Black,
178 73.2% White, 8.2% Hispanic, 2.0% Asian). These counties make up the broader metropolitan area
179 located within Missouri for these two cities. Vaccines first became available on December 15, 2020
180 and all individuals became eligible on March 29, 2021. We used data from the Missouri State
181 Department of Health and Senior Services on SARS-CoV-2 vaccines administered in Missouri to
182 individuals 12 years old and up between December 15, 2020 and February 15, 2022. Reporting for
183 vaccinations was mandated so this database is expected to contain near complete data on all
184 vaccinations administered in Missouri. This individual-level dataset contains vaccination date, type,
185 and dose number; administration site; and patient age, sex, race/ethnicity, and zip code, and was de-
186 duplicated and cleaned by the Missouri State Department of Health and Senior Services. We used
187 2020 census data to obtain age-, sex-, and race-stratified zip code population estimates and 2018
188 American Community Surveys (ACS) data to obtain sociodemographic and socioeconomic
189 characteristics of individual zip codes as well as the CDC's social vulnerability index (SVI). The SVI is
190 a composite metric that captures a community's vulnerability to external stresses on human health
191 and is calculated from 15 ACS variables measuring demographics, socioeconomic status, household
192 composition, and infrastructure [15].

193 *Analyses*

194 Our analyses seek to characterize patterns of disparities in receiving the primary vaccine
195 series and boosters over time by examining rates of vaccination with respect to race/ethnicity and
196 social vulnerability, changes in the type of locations vaccines were being administered, and the extent
197 to which vaccine administration was equitable between zip codes. We adapted methods that we had

198 previously used to assess disparities related to COVID-19 testing and extend them to COVID-19
199 vaccination [4].

200 First, we estimated the rates and cumulative incidence of COVID-19 vaccinations over time
201 stratifying individuals by race/ethnicity (i.e., Black, White, Hispanic, or Asian) and whether they lived
202 in zip codes with a low, medium, or high SVI (i.e., less than 0.333, 0.333 to 0.666, or greater than
203 0.666, respectively). We examined completion rates for the primary vaccine series (defined as 2
204 doses of either BNT162b2 mRNA [Pfizer] or mRNA-1273 [Moderna] or a single dose of Ad26.COV2.S
205 [Johnson and Johnson]) and boosters (defined as a single dose of any vaccine after completing the
206 primary series). Second, we examined the distribution by the type of sites at which individuals were
207 receiving their primary vaccine series and boosters over time and by race/ethnicity and zip code-level
208 SVI. We categorized vaccine administration sites into health facilities (e.g., clinics, hospitals, health
209 system-affiliated sites) that administered either a small, medium, or large volume of vaccinations (i.e.,
210 less than 1000, 1000 to 10,000, or greater than 10,000 unique individuals vaccinated, respectively),
211 public health departments (including mass vaccination sites), pharmacies, employer/school-based
212 sites, and other (e.g., dialysis centers, home health, nursing homes, mental health/psychiatric
213 facilities, and correctional facilities).

214 Third, we generated modified versions of Lorenz curves to assess the relative equity in the
215 distribution of COVID-19 vaccinations across zip codes. Lorenz curves—originally developed by
216 economists to graphically represent income equality—have more recently been leveraged as a tool
217 for public health [14,16,17]. Lorenz curves are generated by plotting the cumulative proportion of the
218 total population against the cumulative proportion of a resource after sorting values in ascending
219 order. The curve follows a straight line at a 45-degree angle when a resource is equitably distributed
220 across the population and becomes more convex with increasing inequity. In general, equitable
221 vaccination strategies would seek to balance the number of vaccines with the overall risk of disease
222 in a community, but the most appropriate metric of equity for so doing will depend on whether one

223 considers the goal to be creating balance between vaccination rates relative to the total population,
224 overall disease burden (i.e., number of COVID-19 cases or deaths), or risk factors (i.e., social
225 vulnerability) in a community. To examine vaccine equity from these different perspectives, we
226 adapted the Lorenz curve method to examine disparities in receiving the primary vaccine series and
227 boosters relative to several relevant metrics: 1) the total population, 2) number of diagnosed COVID-
228 19 cases, 3) number of COVID-19 deaths, and 4) population-level social vulnerability, which we
229 defined as the zip code-level social vulnerability index multiplied by its population. For each curve, we
230 calculated Gini coefficients—a measure of equality/inequality between 0 and 1, with 0 indicating
231 perfect equality and 1 indicating perfect inequality—and assessed how these changed over time [18].
232 We also grouped zip codes into quartiles based on their position on Lorenz curves and assessed
233 differences in zip code-level sociodemographic and socioeconomic characteristics using Kruskal-
234 Wallis tests.

235 Fourth, we generated bubble plots to compare primary vaccine series and booster completion
236 rates for Black, Hispanic, and Asian residents relative to White residents living in the same zip code.
237 For these analyses, we only considered zip codes whose populations had at least 25 individuals for
238 each of the race/ethnic groups being compared to avoid extreme outliers from small denominators.

239 Lastly, we performed univariate and multivariable mixed-effects Poisson regression to identify
240 individual (e.g., sex, race/ethnicity, age) and zip-code level (e.g., SVI, racial makeup, health
241 insurance coverage) factors independently associated with receiving the primary vaccine series and
242 boosters; in multivariable models, we excluded zip code-level variables that would be expected to
243 relate directly to SVI (e.g., poverty, median income). We applied an established method for using
244 Poisson regression with robust variances to estimate risk ratios from binary outcomes [19,20]. We
245 leveraged vaccination and 2020 census data to estimate the number of unvaccinated individuals
246 across strata of age, sex, and race/ethnicity in each zip code. We visually assessed for linearity in the
247 relationship between continuous variables and outcomes and presented variables with nonlinear

relationships as categorical variables (i.e., age, zip code SVI). The effect of race/ethnicity and racism on health outcomes is mediated by (as opposed to confounded by) ecological structural factors such as socioeconomic status; thus, unadjusted analyses assess the overall association with race/ethnicity and racism while adjusted analyses can be thought to assess the contribution of systemic racism that still remains even when adjusting away the mediating effects of measured ecological factors [21-23].

To account for missingness in race/ethnicity and patient zip code variables, we performed multiple imputation using multivariate normal imputation methods (n=50 imputations) [24-26]. For zip codes, we first transformed them to the latitude and longitude of their centroid, ran the multiple imputation model, and then transformed multiply imputed latitude and longitude values back into zip codes. Missingness was highly dependent on vaccination date and administration site, and thus the missing at random assumption required for unbiased imputation (i.e., that missingness was random conditional on all the variables included in the imputation model [administration site, vaccination date, sex, age, race/ethnicity, zip code latitude and longitude, type of vaccine]) was very plausible in our setting [24-26].

All analyses were conducted using Stata MP 17.0 and R 3.2.4.

RESULTS

Between December 15, 2020 to February 15, 2022, 4,741,806 total COVID-19 vaccines were administered to 2,019,715 unique individuals across 7 counties in the St. Louis region and 4 counties in the Kansas City region. Among those receiving at least one dose in St. Louis and Kansas City, 1,762,508 (87.3%) completed the primary series and 871,896 (43.2%) had received a booster. Of those who completed the primary series, approximately 75% of individuals did so prior to June 15 and approximately 25% afterwards (Tables 1a and 1b, Table S1a and S1b).

Rates of COVID-19 Primary and Booster Vaccinations by Race/Ethnicity and SVI over Time

The rate of primary COVID-19 vaccinations steadily increased until peaking in mid-April. This was followed by rapid decline with smaller upticks at the end of May and then during the Delta wave beginning in July; there was no corresponding uptick in vaccination rates during the Omicron wave beginning in mid-December (Figure 1, Table/Figures S2-S5). Up through April, White individuals from zip codes with low SVIs were vaccinated at a rate greater than 2 times that of Black and Hispanic individuals from high SVI zip codes, but the rate ratio declined over time. Asian individuals from all zip codes were vaccinated at the highest rates. During the same early period, Black and Hispanic individuals from low-SVI zip codes were vaccinated at rates somewhat similar to or higher than White individuals from medium and high SVI zip codes. After June, Black and Hispanic individuals from high, medium, and low SVI zip codes were vaccinated at higher rates than White individuals, although this was also during periods with lower absolute numbers of vaccinations (Figure 1, Table/Figures S2-S5). Patterns were largely similar across St. Louis and Kansas City (Figures S4a-S4b).

Booster rates increased starting in October 2021 and peaked in early December at the beginning of the Omicron wave, albeit at much lower levels than for the primary vaccine series, and started to decline in January 2022. Patterns of disparities across race/ethnicity were similar for boosters compared to completion of the primary series (Figure 1, Table/Figures S2-S5).

Locations of COVID-19 Vaccinations Over Time

Early during the vaccination campaign, the vast majority of vaccines were delivered through medium and large volume health facilities (Figure 2). From February through April, a substantial proportion were also delivered through public health departments (including mass vaccination sites). After April, the proportion of vaccines being administered through pharmacies steadily increased accounting for about 70% of vaccines administered after July. Black individuals received

296 comparatively more vaccines through employer/school sponsored sites, small volume health facilities,
297 or other facilities such as dialysis centers, home health, and nursing homes and fewer from
298 pharmacies and health departments. Hispanic and Asian individuals received comparatively more
299 vaccines through pharmacies and health departments; Hispanic individuals also received relatively
300 few vaccines from large volume health facilities. Again, patterns were qualitatively similar for boosters
301 (Figure 2).

303 *COVID-19 Vaccine Disparities across Zip Codes using Lorenz Curves*

304 Modified Lorenz curves depict the distribution of COVID-19 vaccinations with respect to the
305 total population, diagnosed COVID-19 cases, deaths, and population-level SVI across zip codes
306 (Figure 3). For the primary vaccine series, zip codes in the quartile with the lowest rates of
307 vaccinations accounted for 19.3%, 18.1%, 10.8%, and 8.8% of vaccines but represented 25% of
308 either the total population, cases, deaths, or population-level SVI, respectively. These zip codes, in
309 general, had higher proportions of Black residents, lower median incomes, higher rates of poverty,
310 lower rates of health insurance coverage, a higher proportion of residents employed in the service
311 sector, and higher COVID-19 deaths (Figure 3, Tables S6-S9). In contrast, zip codes with the highest
312 rates of vaccinations accounted for 30.7%, 35.0%, 44.2%, and 56.1% of vaccinations, but
313 represented 25% of either the total population, cases, deaths, or population-SVI, respectively. These
314 zip codes tended to have a lower percentage of Black residents and be more socioeconomically
315 advantaged (Figure 3, Tables S6-S9). These patterns were similar, but demonstrated a greater
316 magnitude of disparities for boosters (Figure 3, Tables S6-S9).

317 When examining changes in Gini coefficients and vaccine inequities between zip codes over
318 time, inequities were extremely high during the initial periods of the primary series rollout, but began
319 to slowly improve after February 2021 relative to population, deaths, and total social vulnerability, but

improvements relative to diagnosed cases plateaued around May 2021. Nevertheless, these improvements were slow and modest and vaccine inequities between zip codes remained substantial all metrics through to January 2022 (Figures 4 and S10). With respect to boosters, Gini coefficients once again were very high in the beginning of rollout, followed by slow improvement with relative to population, cases, and deaths; Ginis did not improve (and even worsened initially) relative to total social vulnerability (Figures 4 and S11). There were limited improvements after December 2022 during the Omicron wave.

COVID-19 Vaccine Disparities within Zip Codes

Black, Hispanic, and Asian individuals generally had lower rates of primary series completion compared to White individuals residing in the same zip codes in zip codes with lower vaccination coverage (which also tended to have higher SVIs) (Figures 5 and S12). However, in zip codes with high vaccine coverage (which also tended to have low SVIs), Black, Hispanic, and Asian communities often had higher primary series completion compare to White communities in the same zip code. For boosters, Black and Hispanic communities had lower vaccination rates compared to White communities across most zip codes, although Asian communities trended slightly towards have higher booster rates (Figures 5 and S12).

Factors Associated with Receiving the Primary Vaccine Series and Boosters

In multivariable mixed-effects Poisson regression, Black and Hispanic individuals had slightly lower rates of completing the primary vaccine series compared to White individuals (aRRs 0.94 [95% CI 0.93-0.94] and 0.96 [95% CI 0.95-0.97], respectively), while Asian individuals had slightly higher rates (aRRs 1.03 [95% CI 1.02-1.03]). Living in medium and high SVI zip codes was also associated with lower vaccination rates compared to low SVI zip codes (aRRs 0.92 [95% CI 0.91-0.92] and 0.88

[95% CI 0.88-0.89]) (Table 2). Additional factors associated with increased vaccination were being female, being over 55, or between 12 to 19 years old (as compared to 45 to 55 years old); 20 to 34 years olds had decreased vaccination rates. Differences in receipt of a booster vaccine were substantially higher across race, age, sex, and zip code SVI compared to the differences in completion of the primary vaccine series, except that 12- to 19-year-olds were less likely to receive a booster (Table 2).

DISCUSSION

Our analyses characterized disparities in the COVID-19 vaccination campaign in the St. Louis and Kansas City regions across racial/ethnic communities, across levels of social vulnerability, over time, and across types of vaccine administrations sites. We describe changes in the rates of receiving the primary COVID-19 vaccination series and boosters across race/ethnicity and social vulnerability and highlight how these changes corresponded with shifts in the types of locations where vaccines individuals were being vaccinated. We also use Lorenz curves and Gini coefficients to quantify disparities in vaccinations with respect to population, COVID-19 related disease burden, and social vulnerability. Overall, these results provide a deeper characterization the systemic inequities in distribution of one of the most critical (and initially scarce) resources for controlling the COVID-19 pandemic but one that is immediately actionable: COVID-19 vaccinations.

These analyses provide a deeper understanding of the patterns of vaccine inequities over time, and note that disparities were greatest earlier on but have also largely persisted over time with minimal improvement since April 2020. Furthermore, they emerged anew with the booster rollout in Fall 2021. Early during vaccination, rates of completing the primary vaccine series were highest among White and Asian individuals in zip codes with low SVIs. During this early period a vast majority of vaccines were administered through health systems and also mass vaccination sites coordinated

368 by public health departments. The relationship between race/ethnicity and zip code SVI is salient
369 during this period: Black and Hispanic individuals living in high SVI zip codes had strikingly lower
370 rates of vaccination compared to other groups, whereas Black and Hispanic individuals in low SVI zip
371 codes had similar to somewhat higher rates compared to White individuals in medium and high SVI
372 zip codes. Over time, and particularly after all adults became eligible for vaccination, rates of
373 vaccinations among Black and Hispanic individuals across all SVI zip codes started to exceed those
374 among White individuals. During these periods, sites of vaccine administration also diversified and
375 shifted more towards pharmacies and other small community-based sites (and were much less likely
376 to occur at very large facilities). When quantifying these disparities using Lorenz curves, we note that
377 disparities in vaccinations were highest relative to population-level social vulnerability and deaths, but
378 still evident—albeit reduced—even when considering vaccinations relative to the overall population
379 and diagnosed COVID-19 cases. Lastly, when examining disparities within zip codes, we see
380 consistently higher rates of vaccination among White individuals compared to Black individuals, with
381 the starkest difference in high SVI zip codes. Unfortunately, despite the slow progress from the early
382 periods in improving equity in completion of the primary vaccine series, the same patterns of
383 disparities were repeated again during the booster rollout, and were often of greater magnitude.

384 It is critical to understand these trends in the context of the underlying structural driving forces
385 and decisions leading to these vaccination patterns, both of which are relevant nationally and not
386 specific to Missouri. First, the high levels of disparities seen in the earlier stages of the primary
387 vaccine series and booster rollout likely reflects the fact that health care workers and older individuals
388 were eligible for vaccination first, factors that are also associated with higher socioeconomic status
389 and lower SVI [9,10]. Second, the early phases for the primary vaccine series occurred primarily at
390 sites associated with large health systems. However, these are also the sites from which Black and
391 Hispanic individuals—and particularly those from high SVI zip codes—were comparatively less likely
392 to ultimately receive vaccinations, highlighting a critical issue related to vaccine access among

393 racially and ethnically marginalized and socially vulnerable communities [27-32]. Although large
394 health systems may have been more readily able to overcome logistic issues and provide the robust
395 cold chain needed for mRNA vaccines, they have limited mandates and expertise for implementing
396 large-scale public health initiatives. Even prior to the pandemic, the significant disparities in who
397 accesses care at these health systems and who is outside of them were well-known [30,33]. Physical
398 access, challenges with scheduling (particularly online), disparities in insurance, lack of community
399 partnerships, and mistrust of large institutions that have largely neglected underserved communities
400 often serve as salient barriers to care-seeking in large health systems for individuals from high SVI
401 communities [27,30,34,35]. Vaccination campaigns are a public health strategy that requires broad
402 reach into communities that large health systems did not have and were not designed for; thus, the
403 strategies relying on these systems did not reach the most vulnerable populations essentially by
404 design even though the vaccines themselves were freely available. These patterns seen in both the
405 primary vaccine series and booster rollout were also mirrored in prior research from our group
406 examining disparities in COVID-19 testing, and their origins can be traced back to many of the same
407 root causes [4]. Ultimately, the repeated reliance on systems with a history of providing lower access
408 to certain segments of the population is representative of how structural inequities also became
409 embedded in vaccine rollout from its onset and serves as a precautionary tale, albeit one that has
410 been told too many times before.

411 Overall vaccination rates and patterns over time in Black and Hispanic populations and high
412 SVI zip codes further underscores the deeply embedded systemic nature of racialized disparities and
413 the highly intersectional nature of systemic racism and social vulnerability [1,27-30,33-35]. Even
414 though several vaccination strategies sought to prioritize Black and Hispanic individuals living in high
415 SVI zip codes given their high burden of disease earlier on [11,12,36-38], they still had dramatically
416 lower vaccination rates compared to White and Asian individuals in the same high SVI zip codes and
417 those from zip codes with low SVIs. As the initial vaccine rollout progressed, though, rates in Black

418 and Hispanic populations did eventually exceed those in White (though not Asian) populations. This
419 coincided with wider vaccine availability and the shift toward vaccine administration at smaller centers
420 such as pharmacies. Again, these changes in vaccination rates over time may be indicative of the
421 increased access to vaccinations in Black, Hispanic, and other socially vulnerable communities
422 through community-based settings as opposed to large health systems [30,34,37,39]. These patterns
423 must also be contextualized within the growing literature on vaccine confidence and hesitancy.
424 Vaccine hesitancy is not monolithic and ranges from beliefs in conspiracy theories and skepticism
425 about COVID-19 to more nuanced concerns regarding safety, side effects, inability to take time off
426 work, observing others safely vaccinated (i.e., social proof), and lack of trusted messaging [29,33-
427 35,40-42]; its patterns and trends across communities also varies [43,44]. Qualitative studies have
428 shown that lack of vaccine confidence in Black communities in particular stems largely from histories
429 of systematic mistreatment and racism—which includes failed contemporary responses to COVID-
430 19—leading to mistrust of larger institutions and concerns over bearing the burden of unfavorable
431 safety and side effect profiles (particularly given the rapid timeline of development and shifting
432 messaging over the need for additional doses) [29,35]. However, rates of primary series completion in
433 the Black population also likely increased as confidence in vaccinations improved over time, more of
434 the population was safely vaccinated (i.e., social proof), purposeful and targeted messaging was
435 delivered from trusted sources, and there were more opportunities to discuss specific questions and
436 concerns with trusted health care providers [43,44]. Although a common pattern with the diffusion of
437 many innovations, it is critical to contextualize the structural disparities leading to this late adoption.

438 Although multiple strategies were put forth early in order to prioritize equitable vaccination, our
439 analysis shows that we were far from achieving such goals when examined from several metrics.
440 Early vaccine allocation strategies designed to maximize benefits when supply was limited included
441 considerations for prioritizing groups with higher risk for COVID-19 exposure or who had experienced
442 higher burden of COVID-19 disease using metrics such as geography, social vulnerability index, or

443 race/ethnicity (in addition to using age, comorbidities, high risk occupations) [11-13,36-38]. Still, these
444 strategies mostly focused on determining vaccine eligibility, but eligibility or availability of vaccines
445 doesn't equate to adequate access. Indeed, achieving equity would have also required early
446 concomitant prioritization and efforts to target structural barriers to vaccine uptake and reasons for
447 later adoption [45]. Several programs demonstrated success using early, low barrier, and widely
448 available access to vaccines at community-based sites (as opposed to mass vaccination sites and
449 large health systems, often requiring online registration) in areas with high social vulnerability coupled
450 with abundant opportunities to connect with and discuss concerns with trusted sources of information
451 [30,34,41,46-50]. A program in San Francisco leveraged a community-based vaccination site near a
452 transportation hub to target both access and trust-related barriers, and leveraged both high-touch
453 (e.g., going door-to-door to provide information and register individuals) and low-touch methods (e.g.,
454 flyers and advertisements [50]. Approaches like these are even more important during the later
455 stages of vaccination roll-out, when large or mass vaccination sites—which allowed for high volume
456 for those already eager to be vaccinated—are likely at the limits of their reach.

457 There are several limitations to our analysis. First, reporting of all vaccinations was mandated
458 by the state, but race/ethnicity and zip code were not reported consistently, particularly at smaller
459 sites. Still, as this missingness was highly dependent on the vaccination date and site date, multiple
460 imputation would still yield unbiased results even with higher levels of missingness [24-26]. Second,
461 there may also have been misclassification of zip codes of individuals if permanent addresses did not
462 match where people were actually living at the time of vaccination or in our categorization of vaccine
463 location types. However, any misclassification was likely small and there is no reason to believe that
464 there was systemic error that would substantially bias our results. Third, we used zip code population
465 estimates from the 2020 census data, but true population sizes—and thus the appropriate
466 denominators for some analyses—may have changed since then, particularly due to the well-
467 documented migrations that occurred during the early phases of the pandemic. Fourth, we lacked

468 complementary data that could help contextualize our findings (e.g., association between
469 race/ethnicity and time or vaccine location type) and help characterize the relationship with potential
470 drivers of these disparities, such as occupation, health insurance status, linkage to primary care, and
471 vaccination awareness, knowledge, beliefs, and intentions. Fourth, in this analysis we were unable to
472 provide more granular details on other racial/ethnic minorities such as indigenous or multi-racial
473 individuals, either due to small populations in the regions or inability to link these population across
474 data sources. Still, although we do include Black, White, Hispanic, and Asian communities, it remains
475 critical to also assess disparities across other minoritized communities, acknowledging that the
476 multidimensional nature of health disparities and unique drivers across these different communities
477 warrants dedicated attention and public health action.

478 In conclusion, we provide nuanced characterizations of the disparities in COVID-19 vaccination
479 across racial/ethnic communities, across levels of social vulnerability, over time, and across types of
480 vaccine administration sites after one year of vaccination. Equitable COVID-19 vaccination is one of
481 the most critical targets for successfully ending the pandemic, but, despite substantial discussion on
482 how to effectively do so, it is clear that our strategies—both nationally and in Missouri—have yet to
483 overcome the deeply entrenched systemic inequities in health care and society. Future planning for
484 proactive and considered public health strategies in the face of pandemic emergencies—as opposed
485 to reactive approaches—are needed to ensure that our responses are equitable from the outset and
486 do not disproportionately affect minority communities both in the United States and globally.

490

REFERENCES

- 491 1. Bibbins-Domingo K. This Time Must Be Different: Disparities During the COVID-19 Pandemic. *Ann*
492 *Intern Med*. 2020;173(3):233-4.
- 493 2. Mackey K, Ayers CK, Kondo KK, Saha S, Advani SM, Young S, et al. Racial and Ethnic Disparities in
494 COVID-19–Related Infections, Hospitalizations, and Deaths. *Annals of Internal Medicine*. 2020;174(3):362-73.
- 495 3. Miller S, Wherry LR, Mazumder B. Estimated Mortality Increases During The COVID-19 Pandemic By
496 Socioeconomic Status, Race, And Ethnicity. *Health Affairs*. 2021;40(8):1252-60.
- 497 4. Mody A, Pfeifauf K, Bradley C, Fox B, Hlatshwayo MG, Ross W, et al. Understanding Drivers of
498 Coronavirus Disease 2019 (COVID-19) Racial Disparities: A Population-Level Analysis of COVID-19 Testing
499 Among Black and White Populations. *Clin Infect Dis*. 2021;73(9):e2921-e31.
- 500 5. Bajos N, Jusot F, Pailhé A, Spire A, Martin C, Meyer L, et al. When lockdown policies amplify social
501 inequalities in COVID-19 infections: evidence from a cross-sectional population-based survey in France. *BMC*
502 *Public Health*. 2021;21(1):705.
- 503 6. Zhou M, Kan M-Y. The varying impacts of COVID-19 and its related measures in the UK: A year in
504 review. *PLoS ONE*. 2021;16(9):e0257286.
- 505 7. Galea S, Abdalla SM. COVID-19 Pandemic, Unemployment, and Civil Unrest: Underlying Deep Racial
506 and Socioeconomic Divides. *JAMA*. 2020;324(3):227-8.
- 507 8. Benfer EA, Vlahov D, Long MY, Walker-Wells E, Pottenger JL, Jr., Gonsalves G, et al. Eviction, Health
508 Inequity, and the Spread of COVID-19: Housing Policy as a Primary Pandemic Mitigation Strategy. *J Urban*
509 *Health*. 2021;98(1):1-12.
- 510 9. National Academies of Sciences E, and Medicine. Framework for Equitable Allocation of COVID-19
511 Vaccine. Washington, DC: The National Academies Press; 2020.
- 512 10. Bell BP, Romero JR, Lee GM. Scientific and Ethical Principles Underlying Recommendations From the
513 Advisory Committee on Immunization Practices for COVID-19 Vaccination Implementation. *JAMA*.
514 2020;324(20):2025-6.
- 515 11. Schmidt H, Weintraub R, Williams MA, Miller K, Buttenheim A, Sadecki E, et al. Equitable allocation of
516 COVID-19 vaccines in the United States. *Nature Medicine*. 2021;27(7):1298-307.
- 517 12. Wrigley-Field E, Kiang MV, Riley AR, Barbieri M, Chen Y-H, Duchowny KA, et al. Geographically
518 targeted COVID-19 vaccination is more equitable and averts more deaths than age-based thresholds alone.
519 *Science Advances*. 2021;7(40):eabj2099.
- 520 13. Srivastava T, Schmidt H, Sadecki E, Kornides ML. Disadvantage Indices Deployed to Promote
521 Equitable Allocation of COVID-19 Vaccines in the US: A Scoping Review of Differences and Similarities in
522 Design. *JAMA Health Forum*. 2022;3(1):e214501-e.
- 523 14. Lorenz MO. Methods of Measuring the Concentration of Wealth. *Publications of the American*
524 *Statistical Association*. 1905;9(70):209-19.
- 525 15. Centers for Disease Control and Prevention/ Agency for Toxic Substances and Disease Registry/
526 Geospatial Research A, and Services Program. CDC/ATSDR Social Vulnerability Index 2018 Database
527 [Available from: https://www.atsdr.cdc.gov/placeandhealth/svi/data_documentation_download.html].
- 528 16. Christopoulos KA, Hartogensis W, Glidden DV, Pilcher CD, Gandhi M, Geng EH. The Lorenz curve: a
529 novel method for understanding viral load distribution at the population level. *AIDS*. 2017;31(2):309-10.
- 530 17. Mauguen A, Begg CB. Using the Lorenz Curve to Characterize Risk Predictiveness and Etiologic
531 Heterogeneity. *Epidemiology*. 2016;27(4):531-7.
- 532 18. Rita Neves Costa SbPr-D. Statistics Paper Series: Not all inequality measures were created equal.
533 *ECB Statistics Paper Series*. December 2019;31.
- 534 19. Zou G. A modified poisson regression approach to prospective studies with binary data. *Am J*
535 *Epidemiol*. 2004;159(7):702-6.
- 536 20. Zou GY, Donner A. Extension of the modified Poisson regression model to prospective studies with
537 correlated binary data. *Stat Methods Med Res*. 2013;22(6):661-70.
- 538 21. Jones CP. Invited commentary: "race," racism, and the practice of epidemiology. *Am J Epidemiol*.
539 2001;154(4):299-304; discussion 5-6.
- 540 22. Chowkwanyun M, Reed AL, Jr. Racial Health Disparities and Covid-19 - Caution and Context. *N Engl J*
541 *Med*. 2020;383(3):201-3.

- 542 23. Boyd RW, Lindo EG, Weeks LD, McLemore MR. On Racism: A New Standard For Publishing On
543 Racial Health Inequities [Internet]: Health Affairs Blog. 2020.
- 544 24. Lee KJ, Carlin JB. Multiple imputation for missing data: fully conditional specification versus multivariate
545 normal imputation. *Am J Epidemiol*. 2010;171(5):624-32.
- 546 25. Madley-Dowd P, Hughes R, Tilling K, Heron J. The proportion of missing data should not be used to
547 guide decisions on multiple imputation. *J Clin Epidemiol*. 2019;110:63-73.
- 548 26. Bernaards CA, Belin TR, Schafer JL. Robustness of a multivariate normal approximation for imputation
549 of incomplete binary data. *Stat Med*. 2007;26(6):1368-82.
- 550 27. Jean-Jacques M, Bauchner H. Vaccine Distribution—Equity Left Behind? *JAMA*. 2021;325(9):829-30.
- 551 28. Thakore N, Khazanchi R, Orav EJ, Ganguli I. Association of Social Vulnerability, COVID-19 vaccine site
552 density, and vaccination rates in the United States. *Healthcare*. 2021;9(4):100583.
- 553 29. Balasuriya L, Santilli A, Morone J, Ainooson J, Roy B, Njoku A, et al. COVID-19 Vaccine Acceptance
554 and Access Among Black and Latinx Communities. *JAMA Network Open*. 2021;4(10):e2128575-e.
- 555 30. Njoku A, Joseph M, Felix R. Changing the Narrative: Structural Barriers and Racial and Ethnic
556 Inequities in COVID-19 Vaccination. *International journal of environmental research and public health*.
557 2021;18(18):9904.
- 558 31. Blackstock U, Blackstock O. White Americans are being vaccinated at higher rates than Black
559 Americans. Such inequity cannot stand.: *Washington Post*; February 1, 2021 [Available from:
560 <https://www.washingtonpost.com/opinions/2021/02/01/racial-inequality-covid-vaccine/>.
- 561 32. Boyd R. Black People Need Better Vaccine Access, Not Better Vaccine Attitudes: *New York Times*;
562 March 5, 2021 [Available from: <https://www.nytimes.com/2021/03/05/opinion/us-covid-black-people.html>.
- 563 33. Levesque JF, Harris MF, Russell G. Patient-centred access to health care: conceptualising access at
564 the interface of health systems and populations. *Int J Equity Health*. 2013;12:18.
- 565 34. Marcelin JR, Swartz TH, Bernice F, Berthaud V, Christian R, da Costa C, et al. Addressing and
566 Inspiring Vaccine Confidence in Black, Indigenous, and People of Color During the Coronavirus Disease 2019
567 Pandemic. *Open forum infectious diseases*. 2021;8(9):ofab417-ofab.
- 568 35. Momplaisir F, Haynes N, Nkwihoreze H, Nelson M, Werner RM, Jemmott J. Understanding Drivers of
569 COVID-19 Vaccine Hesitancy Among Blacks. *Clin Infect Dis*. 2021.
- 570 36. Ndugga N, Artiga S, Pham O. How are States Addressing Racial Equity in COVID-19 Vaccine Efforts? :
571 Kaiser Family Foundation; March 10, 2021 [Available from: [https://www.kff.org/racial-equity-and-health-
572 policy/issue-brief/how-are-states-addressing-racial-equity-in-covid-19-vaccine-efforts/](https://www.kff.org/racial-equity-and-health-policy/issue-brief/how-are-states-addressing-racial-equity-in-covid-19-vaccine-efforts/).
- 573 37. Bibbins-Domingo K, Petersen M, Havlir D. Taking Vaccine to Where the Virus Is—Equity and
574 Effectiveness in Coronavirus Vaccinations. *JAMA Health Forum*. 2021;2(2):e210213-e.
- 575 38. Schmidt H, Gostin LO, Williams MA. Is It Lawful and Ethical to Prioritize Racial Minorities for COVID-19
576 Vaccines? *JAMA*. 2020;324(20):2023-4.
- 577 39. Corallo B, Artiga S, Tolbert J. Are Health Centers Facilitating Equitable Access to COVID-19
578 Vaccinations? : Kaiser Family Foundation; June 02, 2021 [Available from: [https://www.kff.org/coronavirus-
580 update/](https://www.kff.org/coronavirus-covid-19/issue-brief/are-health-centers-facilitating-equitable-access-to-covid-19-vaccinations-a-june-2021-
579 update/).
- 581 40. Tram KH, Saeed S, Bradley C, Fox B, Eshun-Wilson I, Mody A, et al. Deliberation, Dissent, and
582 Distrust: Understanding distinct drivers of COVID-19 vaccine hesitancy in the United States. *Clin Infect Dis*.
583 2021.
- 584 41. Corbie-Smith G. Vaccine Hesitancy Is a Scapegoat for Structural Racism. *JAMA Health Forum*.
585 2021;2(3):e210434-e.
- 586 42. Eshun-Wilson I, Mody A, Tram KH, Bradley C, Sheve A, Fox B, et al. Preferences for COVID-19
587 vaccine distribution strategies in the US: A discrete choice survey. *PLoS ONE*. 2021;16(8):e0256394-e.
- 588 43. Padamsee TJ, Bond RM, Dixon GN, Hovick SR, Na K, Nisbet EC, et al. Changes in COVID-19 Vaccine
589 Hesitancy Among Black and White Individuals in the US. *JAMA Netw Open*. 2022;5(1):e2144470.
- 590 44. Daly M, Jones A, Robinson E. Public Trust and Willingness to Vaccinate Against COVID-19 in the US
591 From October 14, 2020, to March 29, 2021. *JAMA*. 2021;325(23):2397-9.
- 592 45. Hardeman A, Wong T, Denson JL, Postelnicu R, Rojas JC. Evaluation of Health Equity in COVID-19
593 Vaccine Distribution Plans in the United States. *JAMA Network Open*. 2021;4(7):e2115653-e.

- 594 46. Abdul-Mutakabbir JC, Casey S, Jews V, King A, Simmons K, Hogue MD, et al. A three-tiered approach
595 to address barriers to COVID-19 vaccine delivery in the Black community. *The Lancet Global health*.
596 2021;9(6):e749-e50.
- 597 47. Galaviz KI, Breland JY, Sanders M, Breathett K, Cerezo A, Gil O, et al. Implementation Science to
598 Address Health Disparities During the Coronavirus Pandemic. *Health Equity*. 2020;4(1):463-7.
- 599 48. Faherty LJ, Ringel JS, Williams MV, Kranz AM, Perez L, Schulson L, et al. Early Insights from the
600 Equity-First Vaccination Initiative. Santa Monica, CA: RAND Corporation; 2021.
- 601 49. Beste Lauren A, Chen A, Geyer J, Wilson M, Schuttner L, Wheat C, et al. Best Practices for an
602 Equitable Covid-19 Vaccination Program. *NEJM Catalyst*.2(10).
- 603 50. Marquez C, Kerkhoff AD, Naso J, Contreras MG, Castellanos Diaz E, Rojas S, et al. A multi-
604 component, community-based strategy to facilitate COVID-19 vaccine uptake among Latinx populations: From
605 theory to practice. *PLoS ONE*. 2021;16(9):e0257111-e.

Table 1a. Characteristics of individuals completing primary series

	Overall (n =1,762,508)	Black (n=226,459)	White (n=1,088,834)	Hispanic (n =60,066)	Asian (n=47,819)	SVI (High) (n=202,627)	SVI (Medium) (n=527,664)	SVI (Low) (n=1,032,217)
Sex*, n (%)								
Male	797,650 (45.3%)	92,535 (40.9%)	503,284 (46.2%)	29,859 (49.7%)	22,403 (46.9%)	86,560 (42.8%)	237,040 (45.0%)	474,050 (46.0%)
Female	962,994 (54.7%)	133,866 (59.1%)	585,354 (53.8%)	30,174 (50.3%)	25,392 (53.1%)	115,832 (57.2%)	289,827 (55.0%)	557,335 (54.0%)
Age Category*, n (%)								
12-19 years	160,187 (9.1%)	23,038 (10.2%)	93,945 (8.6%)	8,363 (13.9%)	5,227 (10.9%)	18,718 (9.2%)	42,966 (8.1%)	98,503 (9.5%)
20-34 years	331,810 (18.8%)	41,749 (18.4%)	199,457 (18.3%)	16,725 (27.8%)	14,888 (31.1%)	39,559 (19.5%)	105,291 (20.0%)	186,960 (18.1%)
35-44 years	257,328 (14.6%)	32,389 (14.3%)	156,796 (14.4%)	11,322 (18.8%)	9,127 (19.1%)	29,369 (14.5%)	74,321 (14.1%)	153,638 (14.9%)
45-54 years	250,925 (14.2%)	36,557 (16.1%)	151,304 (13.9%)	9,400 (15.6%)	7,798 (16.3%)	29,641 (14.6%)	73,123 (13.9%)	148,161 (14.4%)
55-64 years	303,951 (17.2%)	43,314 (19.1%)	192,070 (17.6%)	7,428 (12.4%)	5,184 (10.8%)	37,069 (18.3%)	93,515 (17.7%)	173,367 (16.8%)
65-74 years	263,282 (14.9%)	31,411 (13.9%)	170,422 (15.7%)	4,342 (7.2%)	3,501 (7.3%)	29,318 (14.5%)	80,562 (15.3%)	153,402 (14.9%)
75+ years	195,025 (11.1%)	18,001 (7.9%)	124,840 (11.5%)	2,486 (4.1%)	2,094 (4.4%)	18,953 (9.4%)	57,886 (11.0%)	118,186 (11.4%)
Race*, n (%)								
Black	226,459 (13.3%)	-	-	-	-	99,427 (50.7%)	84,172 (16.6%)	42,860 (4.3%)
White	1,088,834 (64.1%)	-	-	-	-	48,610 (24.8%)	310,289 (61.4%)	729,935 (73.2%)

Hispanic	60,066 (3.5%)	-	-	-	-	13,040 (6.7%)	19,738 (3.9%)	27,288 (2.7%)
Asian	47,819 (2.8%)	-	-	-	-	3,312 (1.7%)	13,333 (2.6%)	31,174 (3.1%)
Other	274,977 (16.2%)	-	-	-	-	31,669 (16.2%)	78,007 (15.4%)	165,301 (16.6%)
Median Zip Code SVI, (IQR)	0.29 (0.31)	0.57 (0.39)	0.25 (0.26)	0.37 (0.43)	0.24 (0.28)	0.79 (0.12)	0.47 (0.12)	0.18 (0.12)
Vaccine Location Type, n (%)								
Small Volume Health Facility	53,786 (3.1%)	9,473 (4.2%)	31,823 (2.9%)	1,631 (2.7%)	982 (2.1%)	7,617 (3.8%)	16,854 (3.2%)	29,315 (2.8%)
Medium Volume Health Facility	246,879 (14.0%)	28,435 (12.6%)	156,814 (14.4%)	8,630 (14.4%)	5,743 (12.0%)	25,426 (12.5%)	72,552 (13.7%)	148,901 (14.4%)
Large Volume Health Facility	423,935 (24.1%)	51,541 (22.8%)	276,743 (25.4%)	7,798 (13.0%)	10,018 (20.9%)	39,685 (19.6%)	115,636 (21.9%)	268,614 (26.0%)
Pharmacy	655,107 (37.2%)	80,424 (35.5%)	389,969 (35.8%)	28,618 (47.6%)	18,312 (38.3%)	81,772 (40.4%)	205,822 (39.0%)	367,513 (35.6%)
Health Department	304,869 (17.3%)	40,779 (18.0%)	192,470 (17.7%)	11,164 (18.6%)	10,594 (22.2%)	36,292 (17.9%)	93,509 (17.7%)	175,068 (17.0%)
Employer/School	39,272 (2.2%)	7,957 (3.5%)	21,030 (1.9%)	981 (1.6%)	1,613 (3.4%)	5,700 (2.8%)	12,397 (2.3%)	21,175 (2.1%)
Other	38,660 (2.2%)	7,850 (3.5%)	19,985 (1.8%)	1,244 (2.1%)	557 (1.2%)	6,135 (3.0%)	10,894 (2.1%)	21,631 (2.1%)
Primary Series Vaccine Type, n (%)								
J&J	115,350 (6.5%)	18,352 (8.1%)	71,569 (6.6%)	4,656 (7.8%)	2,269 (4.7%)	16,174 (8.0%)	37,860 (7.2%)	61,316 (5.9%)

Moderna	485,101 (27.5%)		59,385 (26.2%)	286,032 (26.3%)	16,353 (27.2%)	10,976 (23.0%)		59,390 (29.3%)	156,016 (29.6%)	269,695 (26.1%)
Pfizer	116,2057 (65.9%)		148,722 (65.7%)	731,233 (67.2%)	39,057 (65.0%)	34,574 (72.3%)		127,063 (62.7%)	333,788 (63.3%)	701,206 (67.9%)
Booster Received, (n%)	928,776 (52.7%)		95,760 (42.3%)	601,731 (55.3%)	22,275 (37.1%)	25,512 (53.4%)		83,363 (41.1%)	262,900 (49.8%)	582,513 (56.4%)
Time Period, n (%)										
Dec 15, 20 – Jun 15, 21	1430,852 (81.2%)		153,684 (67.9%)	916,414 (84.2%)	42,993 (71.6%)	41,462 (86.7%)		138,701 (68.5%)	415,754 (78.8%)	876,397 (84.9%)
Jun 16, 21 – Dec 15, 21	311,635 (17.7%)		67,322 (29.7%)	162,767 (14.9%)	15,696 (26.1%)	5,814 (12.2%)		59,428 (29.3%)	105,018 (19.9%)	147,189 (14.3%)
Dec 16, 21 – Feb 15, 22	20,021 (1.1%)		5,453 (2.4%)	9,653 (0.9%)	1,377 (2.3%)	543 (1.1%)		4,498 (2.2%)	6,892 (1.3%)	8,631 (0.8%)

Footnote: *Overall Missing values: Sex: 1,866; Race: 64,353; Zip code: 128. Abbreviations: SVI – Social Vulnerability Index; J&J – Johnson and Johnson

607
608
609
610

Table 1b. Characteristics of individuals receiving a booster vaccination

	<u>Overall</u> (n =871,896)	<u>Black</u> (n=84,525)	<u>White</u> (n=569,128)	<u>Hispanic</u> (n=20,072)	<u>Asian</u> (n=23,399)	<u>SVI (High)</u> (n=74,193)	<u>SVI (Medium)</u> (n=245,056)	<u>SVI (Low)</u> (n=552,647)
Sex*, n (%)								
Male	375,579 (43.1%)	32,938 (39.0%)	250,101 (43.9%)	9,309 (46.4%)	10,752 (46.0%)	29,862 (40.3%)	104,250 (42.6%)	241,467 (43.7%)
Female	4961,78 (56.9%)	51,583 (61.0%)	319,001 (56.1%)	10,762 (53.6%)	12,641 (54.0%)	44,319 (59.7%)	140,742 (57.4%)	311,117 (56.3%)
Age Category*, n (%)								
12-19 years	41,111 (4.7%)	3,288 (3.9%)	26,431 (4.6%)	1,586 (7.9%)	1,826 (7.8%)	2,370 (3.2%)	8,896 (3.6%)	29,845 (5.4%)
20-34 years	110,347 (12.7%)	7,699 (9.1%)	71,940 (12.6%)	3,982 (19.8%)	6,178 (26.4%)	7,913 (10.7%)	32,652 (13.3%)	69,782 (12.6%)
35-44 years	111,641 (12.8%)	8,625 (10.2%)	73,835 (13.0%)	3,441 (17.1%)	4,614 (19.7%)	7,847 (10.6%)	28,746 (11.7%)	75,048 (13.6%)
45-54 years	118,526 (13.6%)	13,498 (16.0%)	75,512 (13.3%)	3,537 (17.6%)	4,298 (18.4%)	10,052 (13.5%)	31,469 (12.8%)	77,005 (13.9%)
55-64 years	169,775 (19.5%)	20,779 (24.6%)	110,725 (19.5%)	3,496 (17.4%)	2,926 (12.5%)	16,791 (22.6%)	49,642 (20.3%)	103,342 (18.7%)
65-74 years	181,916 (20.9%)	19,322 (22.9%)	120,021 (21.1%)	2,533 (12.6%)	2,198 (9.4%)	17,515 (23.6%)	53,771 (21.9%)	110,630 (20.0%)
75+ years	138,580 (15.9%)	11,314 (13.4%)	90,664 (15.9%)	1,497 (7.5%)	1,359 (5.8%)	11,705 (15.8%)	39,880 (16.3%)	86,995 (15.7%)
Race*, n (%)								
Black	84,525 (9.9%)	-	-	-	-	33,701 (46.2%)	32,522 (13.6%)	18,302 (3.4%)
White	569,128 (66.5%)	-	-	-	-	21,723 (29.8%)	152,836 (63.8%)	394,569 (72.6%)

Hispanic	20,072 (2.3%)	-	-	-	-	2,735 (3.8%)	6,183 (2.6%)	11,154 (2.1%)
Asian	23,399 (2.7%)	-	-	-	-	1,251 (1.7%)	6,166 (2.6%)	15,982 (2.9%)
Other	159,057 (18.6%)	-	-	-	-	13,494 (18.5%)	41,817 (17.5%)	103,746 (19.1%)
Median Zip Code SVI, (IQR)	0.25 (0.31)	0.57 (0.43)	0.23 (0.22)	0.31 (0.32)	0.22 (0.27)	0.79 (0.14)	0.47 (0.12)	0.17 (0.11)
Booster Location Type, n (%)								
Small Volume Health Facility	41,162 (4.7%)	7,056 (8.3%)	25,891 (4.5%)	801 (4.0%)	949 (4.1%)	5,177 (7.0%)	11,591 (4.7%)	24,394 (4.4%)
Medium Volume Health Facility	86,685 (9.9%)	12,226 (14.5%)	51,772 (9.1%)	1,812 (9.0%)	2,289 (9.8%)	9,602 (12.9%)	21,985 (9.0%)	55,098 (10.0%)
Large Volume Health Facility	71,377 (8.2%)	9,288 (11.0%)	47,160 (8.3%)	956 (4.8%)	1,856 (7.9%)	6,611 (8.9%)	19,927 (8.1%)	44,839 (8.1%)
Pharmacy	610,162 (70.0%)	46,377 (54.9%)	409,512 (72.0%)	14,516 (72.3%)	17,044 (72.8%)	44,051 (59.4%)	169,978 (69.4%)	396,133 (71.7%)
Health Department	37,420 (4.3%)	6,512 (7.7%)	21,872 (3.8%)	1,367 (6.8%)	606 (2.6%)	5,987 (8.1%)	14,179 (5.8%)	17,254 (3.1%)
Employer/School	6,467 (0.7%)	589 (0.7%)	3,767 (0.7%)	177 (0.9%)	473 (2.0%)	385 (0.5%)	2,106 (0.9%)	3,976 (0.7%)
Other	18,623 (2.1%)	2,477 (2.9%)	9,154 (1.6%)	443 (2.2%)	182 (0.8%)	2,380 (3.2%)	5,290 (2.2%)	10,953 (2.0%)
Booster Vaccine Type, n (%)								
J&J	8,795 (1.0%)	1,747 (2.1%)	5,183 (0.9%)	306 (1.5%)	118 (0.5%)	1,363 (1.8%)	2,972 (1.2%)	4,460 (0.8%)

Moderna	293,710 (33.7%)	26,927 (31.9%)	189,204 (33.2%)	7,173 (35.7%)	7,123 (30.4%)	26,353 (35.5%)	86,411 (35.3%)	180,946 (32.7%)
Pfizer	569,391 (65.3%)	55,851 (66.1%)	374,741 (65.8%)	12,593 (62.7%)	16,158 (69.1%)	46,477 (62.6%)	155,673 (63.5%)	367,241 (66.5%)
Time Period, n (%)								
Dec 15, 20 – Jun 15, 21	9,617 (1.1%)	1,068 (1.3%)	6,031 (1.1%)	253 (1.3%)	203 (0.9%)	943 (1.3%)	2,724 (1.1%)	5,950 (1.1%)
Jun 16, 21 – Dec 15, 21	592,550 (68.0%)	50,080 (59.2%)	390,151 (68.6%)	11,309 (56.3%)	13,504 (57.7%)	45,748 (61.7%)	164,184 (67.0%)	382,618 (69.2%)
Dec 16, 21 – Feb 15, 22	269,729 (30.9%)	33,377 (39.5%)	172,946 (30.4%)	8,510 (42.4%)	9,692 (41.4%)	27,502 (37.1%)	78,148 (31.9%)	164,079 (29.7%)

611
612

Footnote: *Overall Missing values: Sex: 139; Race/Ethnicity: 15,741; Zip code: 40. Abbreviations: SVI – Social Vulnerability Index; J&J – Johnson and Johnson

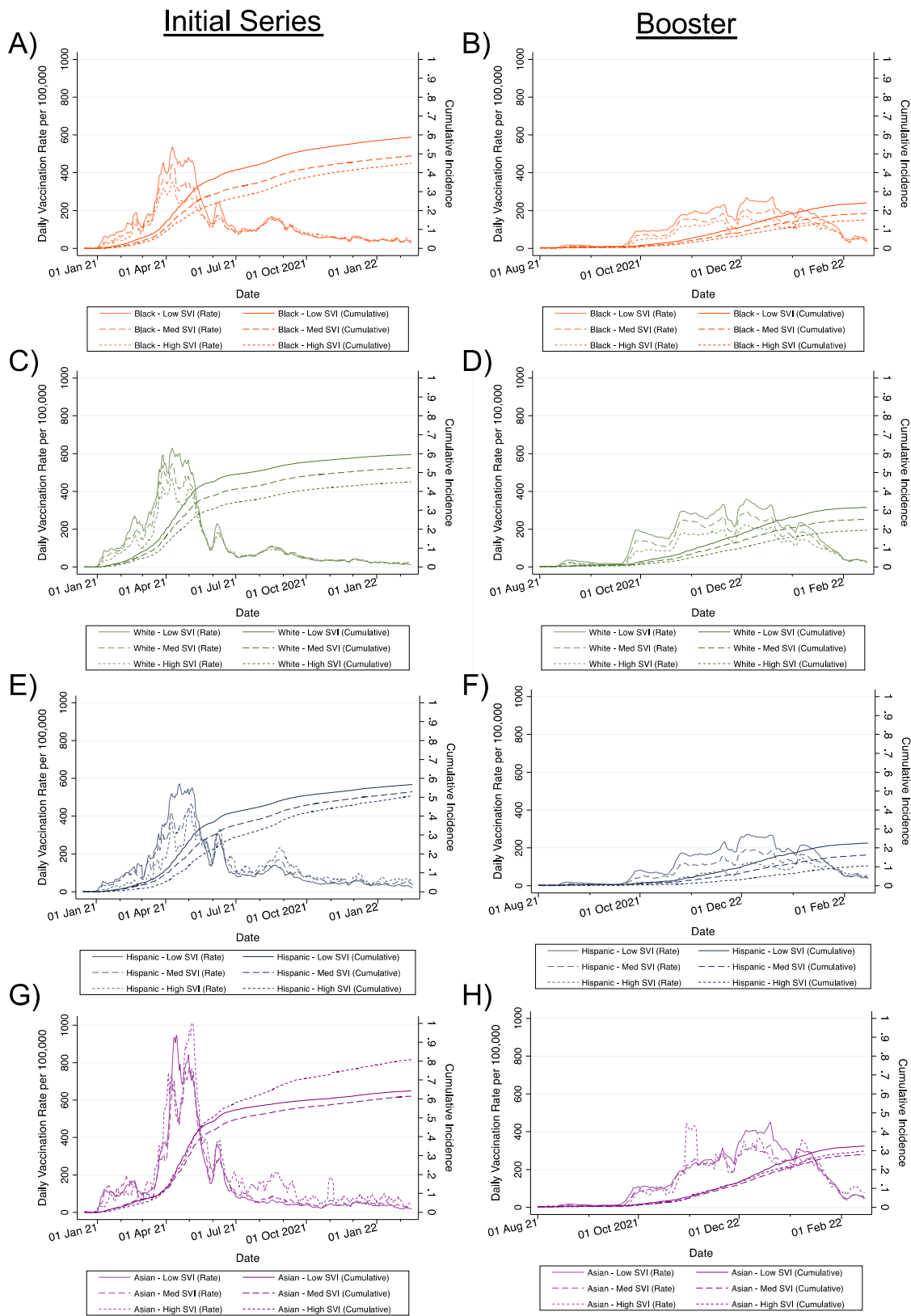
Table 2. Poisson Model of Individual- and Zip Code-Level Factors Associated with Receipt of Primary COVID-19 Vaccination Series and Booster

	Primary Series				Booster			
	Unadjusted Risk Ratio (95% CI)	p-value	Adjusted Risk Ratio (95% CI)	p-value	Unadjusted Risk Ratio (95% CI)	p-value	Adjusted Risk Ratio (95% CI)	p-value
Race/Ethnicity								
Black	0.86 (0.86-0.86)	<0.001	0.94 (0.93-0.94)	<0.001	0.65 (0.66-0.66)	<0.001	0.83 (0.82-0.83)	<0.001
White	1 (REF)		1 (REF)		1 (REF)		1 (REF)	
Hispanic	0.89 (0.88-0.89)		0.96 (0.95-0.97)		0.60 (0.59-0.60)		0.76 (0.75-0.77)	
Asian	1.00 (0.99-1.00)		1.03 (1.02-1.03)		0.96 (0.95-0.97)		1.08 (1.07-1.09)	
Other	1.72 (1.71-1.72)		1.65 (1.65-1.66)		1.88 (1.88-1.89)		1.76 (1.76-1.77)	
Age Category								
12-19 years	1.28 (1.28-1.29)	<0.001	1.27 (1.26-1.27)	<0.001	0.77 (0.77-0.78)	<0.001	0.76 (0.75-0.76)	<0.001
20-34 years	0.83 (0.83-0.83)		0.84 (0.84-0.84)		0.59 (0.59-0.60)		0.61 (0.60-0.61)	
35-44 years	1.01 (1.01-1.02)		1.01 (1.01-1.01)		0.92 (0.92-0.93)		0.92 (0.92-0.93)	
45-54 years	1 (REF)		1 (REF)		1 (REF)		1 (REF)	
55-64 years	1.11 (1.11-1.12)		1.11 (1.10-1.11)		1.31 (1.30-1.32)		1.29 (1.28-1.30)	
65-74 years	1.34 (1.33-1.34)		1.30 (1.30-1.30)		1.93 (1.92-1.94)		1.83 (1.82-1.84)	
>75 years	1.31 (1.31-1.31)		1.24 (1.24-1.25)		1.93 (1.92-1.94)		1.77 (1.76-1.78)	
Sex								
Male	1 (REF)	<0.001	1 (REF)	<0.001	1 (REF)	<0.001	1 (REF)	<0.001
Female	1.09 (1.08 -1.09)		1.07 (1.07-1.07)		1.19 (1.18 -1.19)		1.13 (1.13-1.14)	

<u>Zip Code-Level Characteristics</u>								
Social Vulnerability Index								
Low	1 (REF)		1 (REF)		1 (REF)		1 (REF)	
Medium	0.87 (0.87-0.87)	<0.001	0.92 (0.91-0.92)	<0.001	0.77 (0.77-0.77)	<0.001	0.83 (0.82-0.83)	<0.001
High	0.80 (0.80-0.81)		0.88 (0.88-0.89)		0.59 (0.58-0.59)		0.69 (0.68-0.69)	
Total Population, per 10,000 increase	1.04 (1.04-1.04)	<0.001	1.02 (1.02-1.02)	<0.001	1.06 (1.05-1.06)	<0.001	1.02 (1.02-1.02)	<0.001
Percent Black, per 10% increase	0.98 (0.98-0.98)	<0.001	*	*	0.95 (0.95-0.95)	<0.001	*	*
Median Income, per \$15,000 increase	1.05 (1.05-1.05)	<0.001	*	*	1.11 (1.11-1.11)	<0.001	*	*
Percent Below Poverty Line, per 2.5% increase	0.97 (0.97-0.97)	<0.001	*	*	0.93 (0.93-0.93)	<0.001	*	*
Percent without health insurance, per 2.5% increase	0.96 (0.96-0.96)	<0.001	*	*	0.90 (0.90-0.90)	<0.001	*	*
Percent in Healthcare Industry, per 2.5% increase	1.02 (1.01 -1.02)	<0.001	*	*	1.04 (1.04-1.04)	<0.001	*	*
Percent in Service Industry, per 2.5% increase	0.97 (0.97-0.97)	<0.001	*	*	0.92 (0.92-0.92)	<0.001	*	*
Vaccine sites per 10,000, per 1 site increase	1.01 (1.01-1.01)	<0.001	1.01 (1.01-1.01)	<0.001	1.01 (1.01-1.01)	<0.001	1.01 (1.01-1.01)	<0.001
Cases per 100,000, per 1500 increase	1.01 (1.01-1.01)	<0.001	1.00 (1.00-1.00)	<0.001	1.01 (1.01-1.01)		0.99 (0.99-0.99)	<0.001
Deaths per 100,000, per 50 increase	1.00 (1.00-1.00)	<0.001	1.00 (1.00-1.00)	<0.001	1.00 (1.00-1.01)		1.00 (1.00-1.00)	0.14
<u>Region</u>								
St. Louis	1 (REF)		1 (REF)		1 (REF)		1 (REF)	
Kansas City	0.92 (0.92-0.93)	<0.001	0.95 (0.95-0.96)	<0.001	0.87 (0.87-0.87)	<0.001	0.93 (0.93-0.94)	<0.001

613 Notes: Continuous variables are scaled so that a one-unit increase represents approximately half of the interquartile range for that variable.

614 *Excluded from multivariable model due to collinearity with social vulnerability index. Abbreviations: CI=confidence interval; REF=reference value



615
616
617
618
619

Figure 1: Rates and Cumulative Incidence of Receiving the Primary COVID-19 Vaccination Series and Boosters by Race/Ethnicity and SVI over Time. Estimates represent 7-day moving averages derived from multiply imputed datasets. Denominators represent the total population greater than or equal to 12 years old. Low SVI indicates zip codes with SVIs less than 0.333, medium SVI indicates SVIs between 0.333 and 0.666, and high SVI indicates SVIs greater than or equal to 0.666. SVI=Social Vulnerability Index.

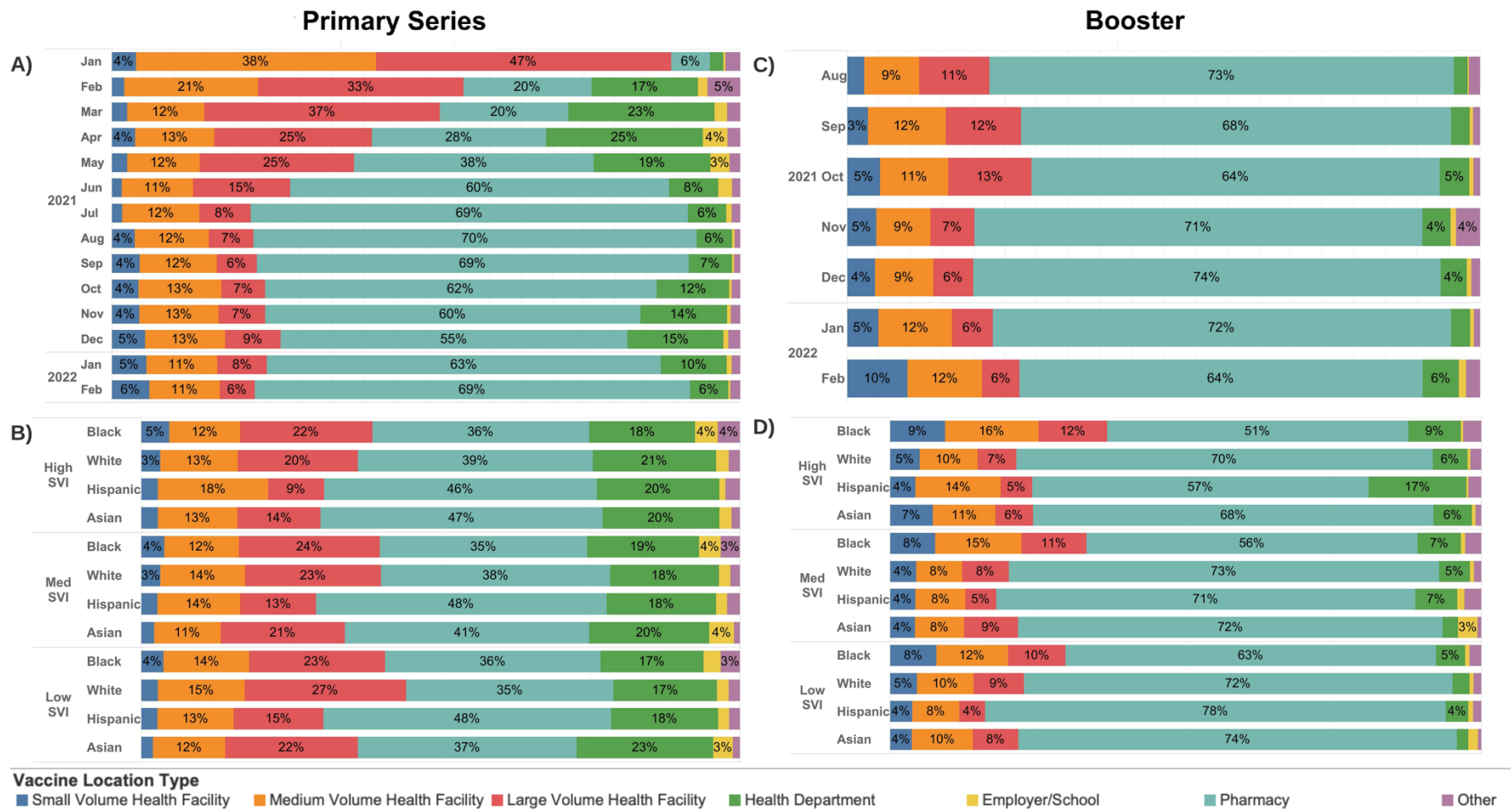


Figure 2: Distribution of Primary COVID-19 Vaccine Series and Boosters by Location Type over time, SVI, and race/ethnicity. Low SVI indicates zip codes with SVIs less than 0.333, medium SVI is between 0.333 and 0.666, and high SVI is greater than or equal to 0.666. Health facilities were categorized as small-, medium-, and large-volume based on whether they vaccinated less than 1000, 1000 to 10,000, or greater than 10,000 unique individuals. Other facilities included dialysis centers, home health, nursing homes, mental health/psychiatric facilities, and correctional facilities. Primary series vaccines were allocated to the location where the series was completed. SVI=Social Vulnerability Index.

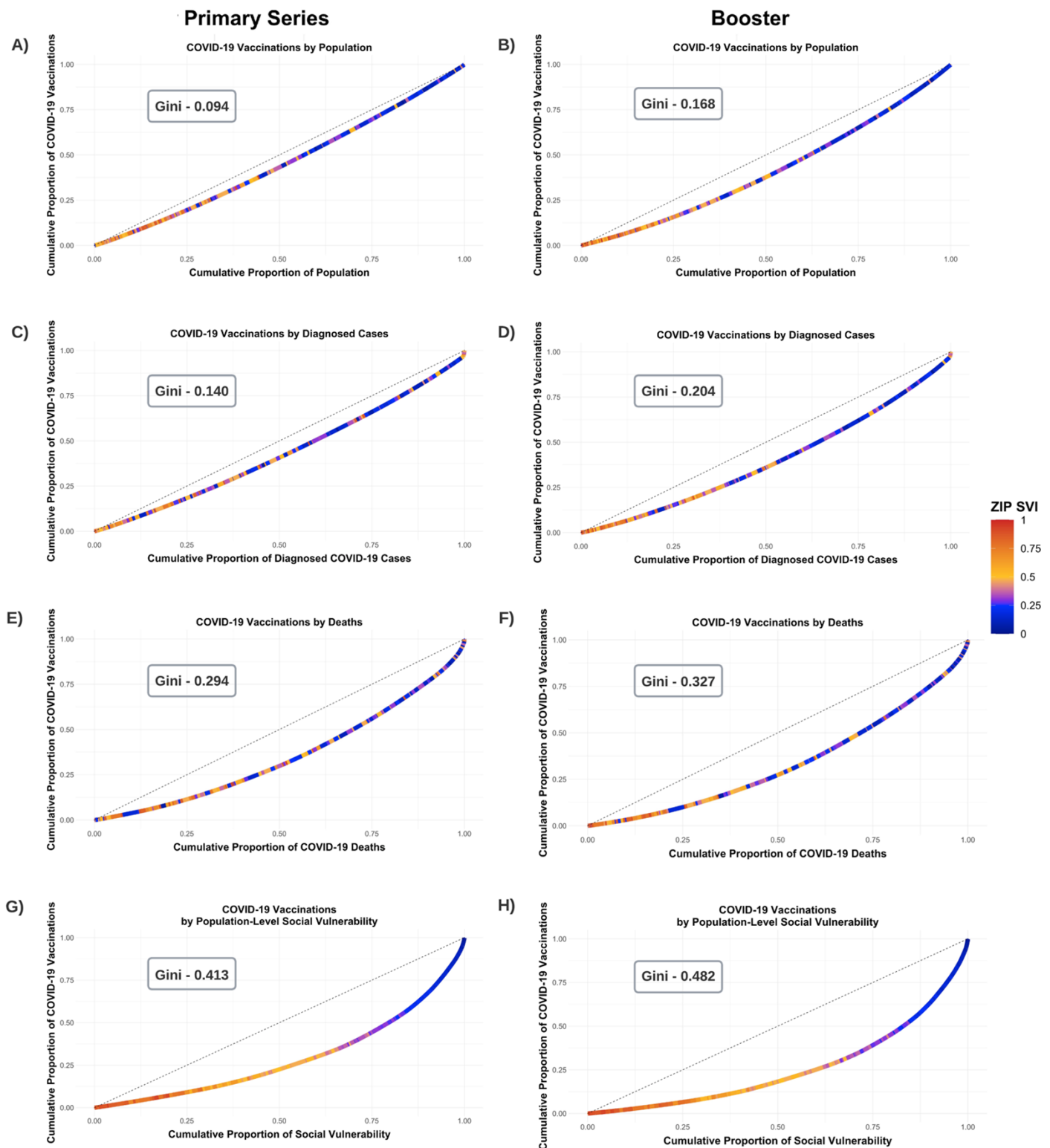
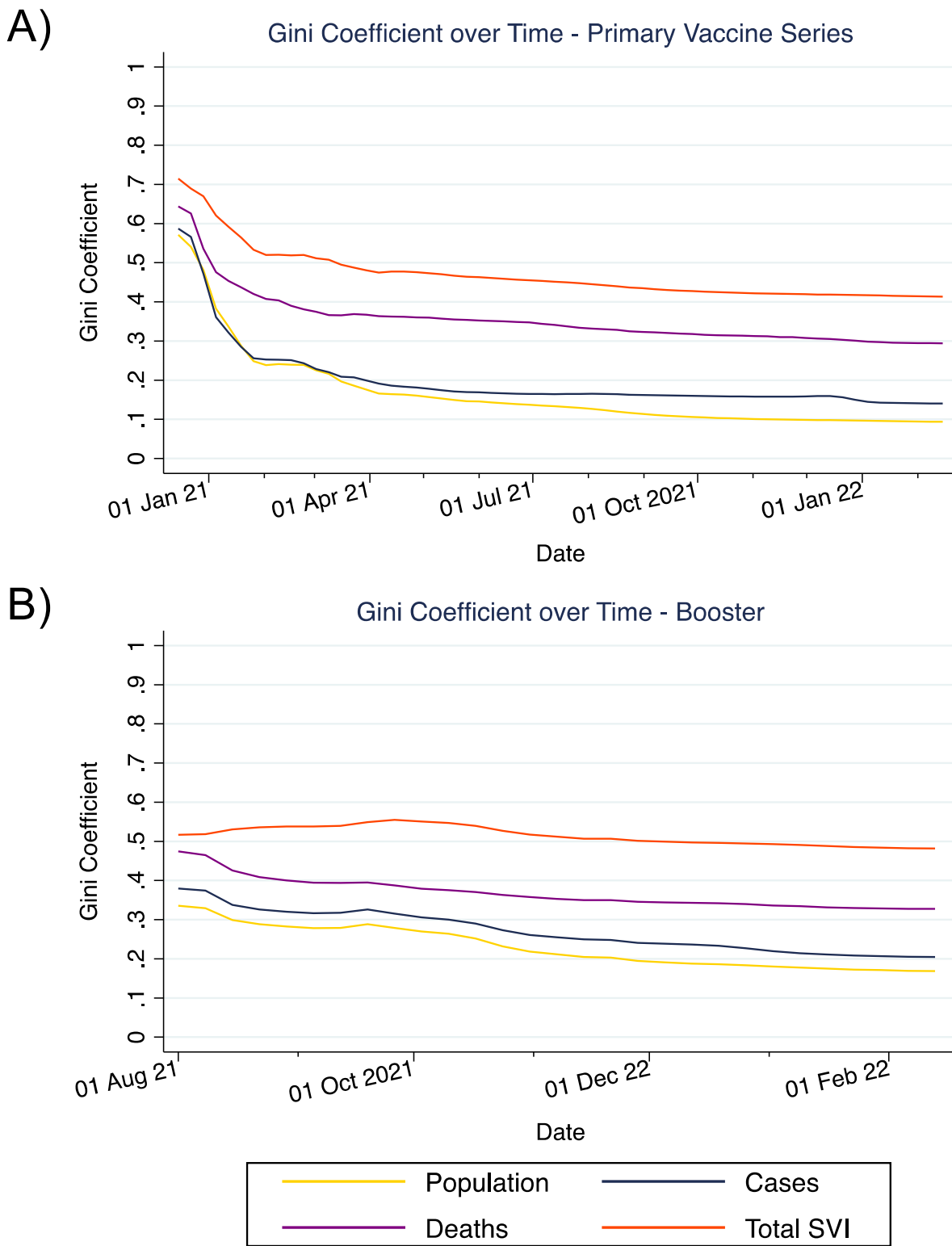
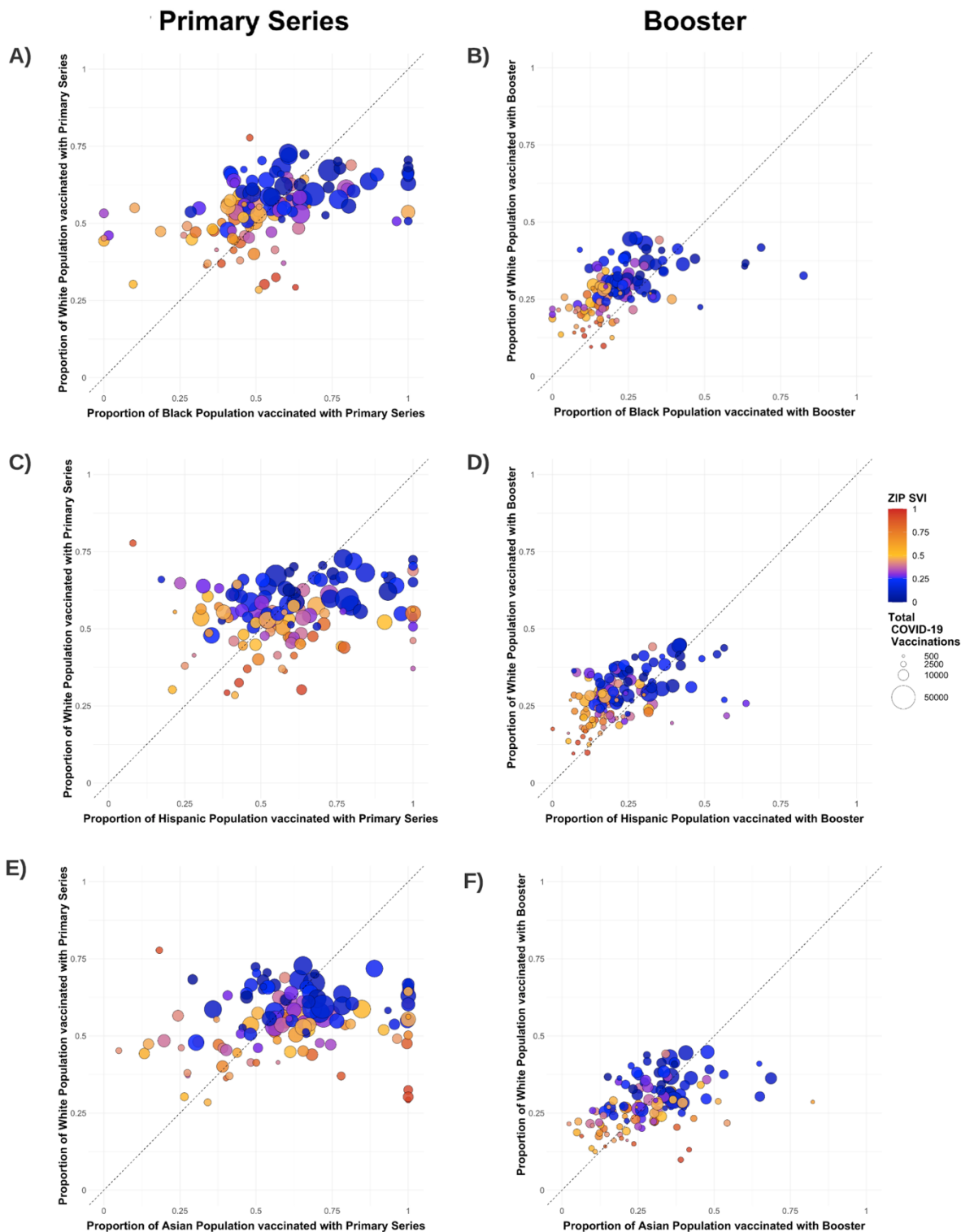


Figure 3: Lorenz Curves of Disparities in COVID-19 Vaccinations. This figure depicts modified Lorenz curve examining disparities in COVID-19 vaccinations as of February 15, 2022. The units of analysis are zip codes and they are color-coded by their SVI. The dashed line represents equitable distribution where 50% of vaccinations would be conducting in zip codes accounting for either 50% of the population, cases, deaths, or total social vulnerability. Lorenz curves measure disparities in the distribution of receiving 1) the primary vaccine series and 2) a booster relative to the total population above 12 years old (Panels A, B), diagnosed COVID-19 cases (Panels C, D), deaths, (Panels E, F), and total social vulnerability (Panels G, H).



635
636
637
638
639
640

Figure 4: Temporal Trends in COVID-19 Vaccine Inequities. This figure depicts trends in the Gini coefficients over time for inequities in receiving 1) the primary vaccine series (Panel A) and 2) a booster (Panel B) relative to population, diagnosed COVID-19 cases, COVID-19 deaths, and population-level social vulnerability. Gini coefficients were calculated on a weekly basis from Lorenz curves generated up through that time interval.



641 **Figure 5: Disparities in COVID-19 Primary Vaccine Series and Boosters Among Black, Hispanic, and**
642 **Asian versus White residents of the same zip code.**

643 This figure depicts vaccination rates for the primary series and boosters for Black (Panel A,B), Hispanic (C, D),
644 and Asian (E,F) residents compared to the White residents of the same zip code. Each marker represents a
645 single zip code. Markers are color-coded by the zip code SVI and sized by the total number of vaccines
646 administered in the zip code. The dashed line represents equitable vaccine distribution between
647 racial/communities being compared. Zip codes falling above the dashed line indicates that there was
648 decreased vaccination in Black, Hispanic, or Asian residents as opposed to White residents (and vice versa).
649

Initial Series

Booster

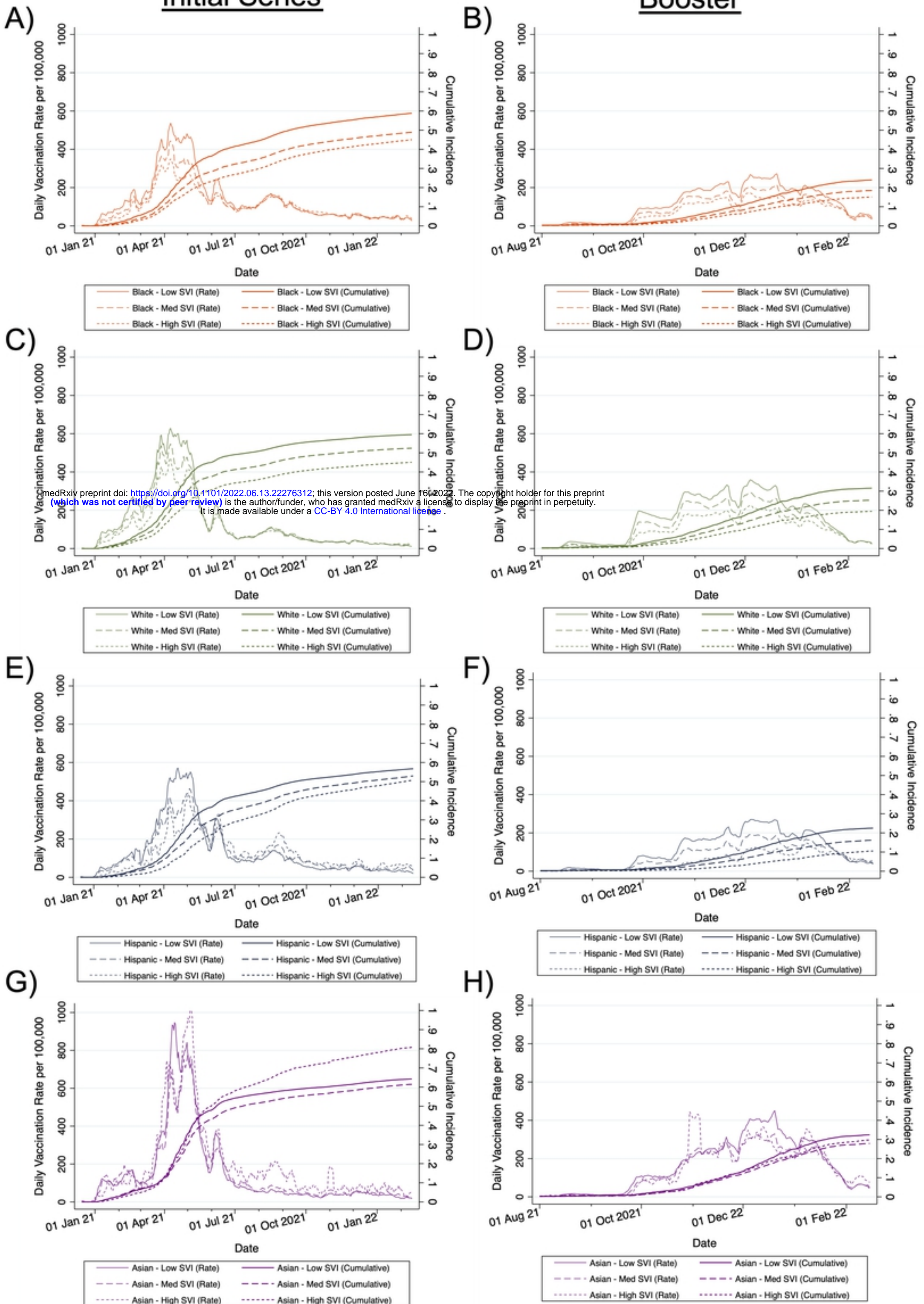
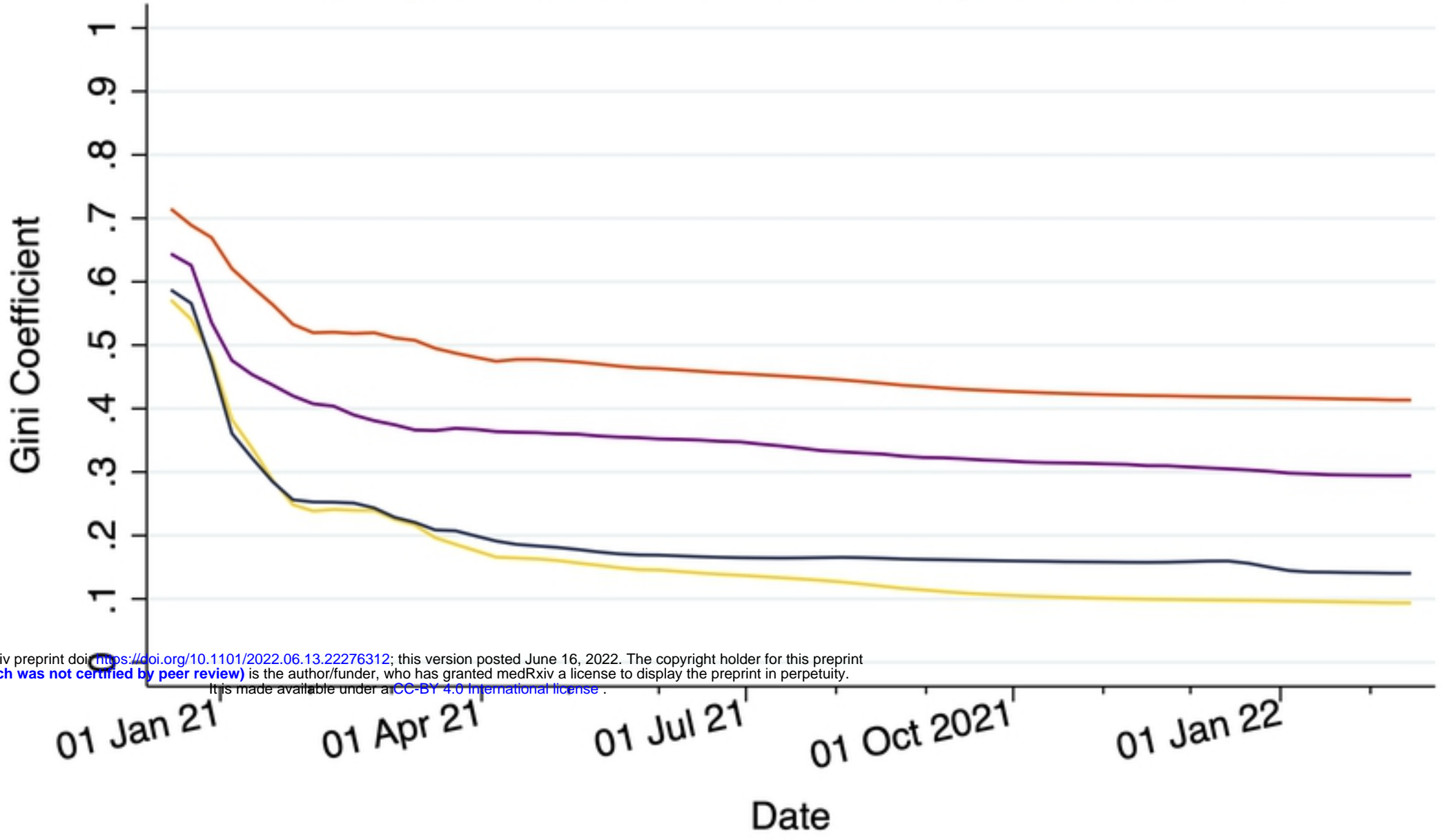


Fig 1

A)

Gini Coefficient over Time - Primary Vaccine Series



B)

Gini Coefficient over Time - Booster

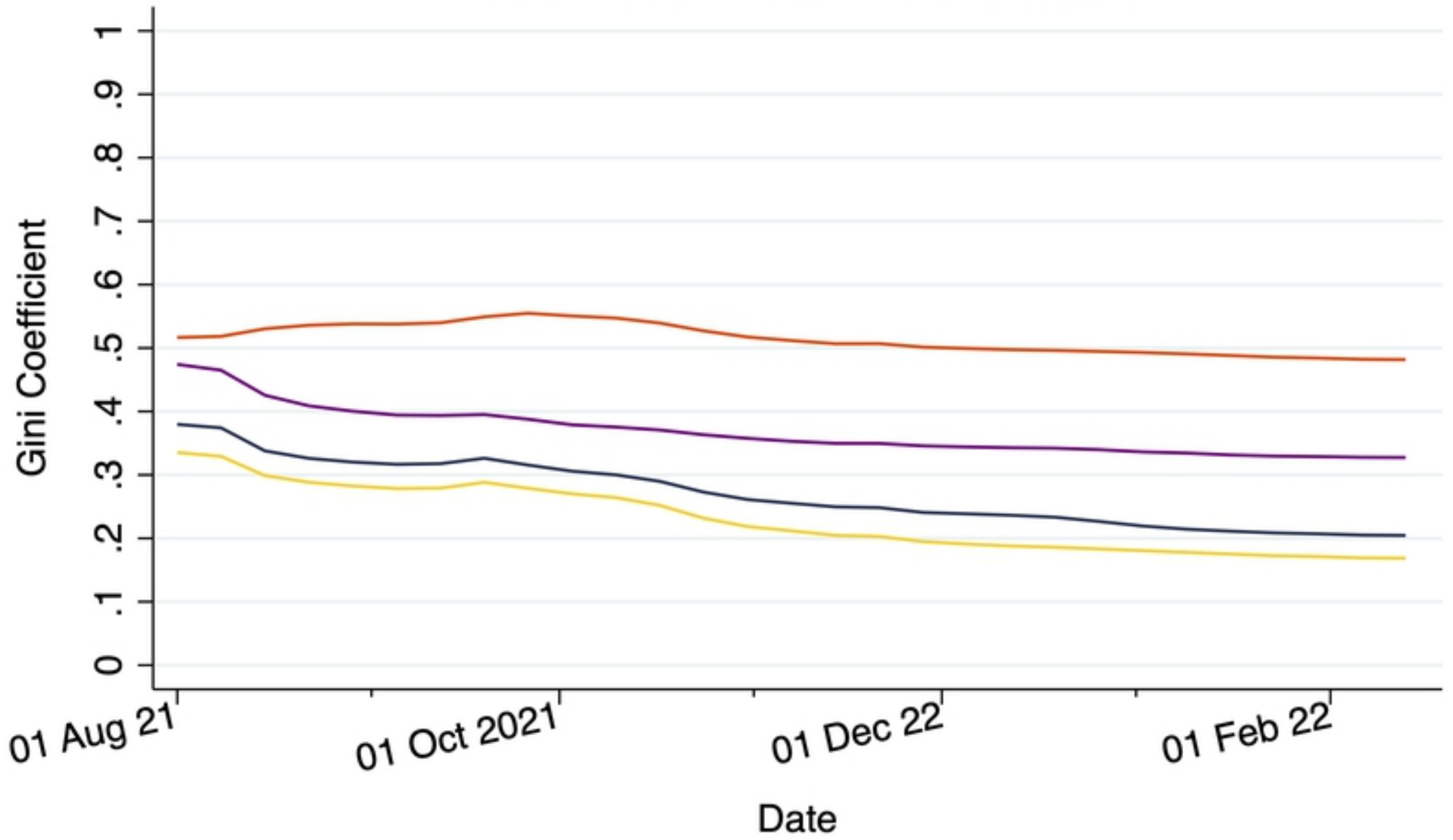
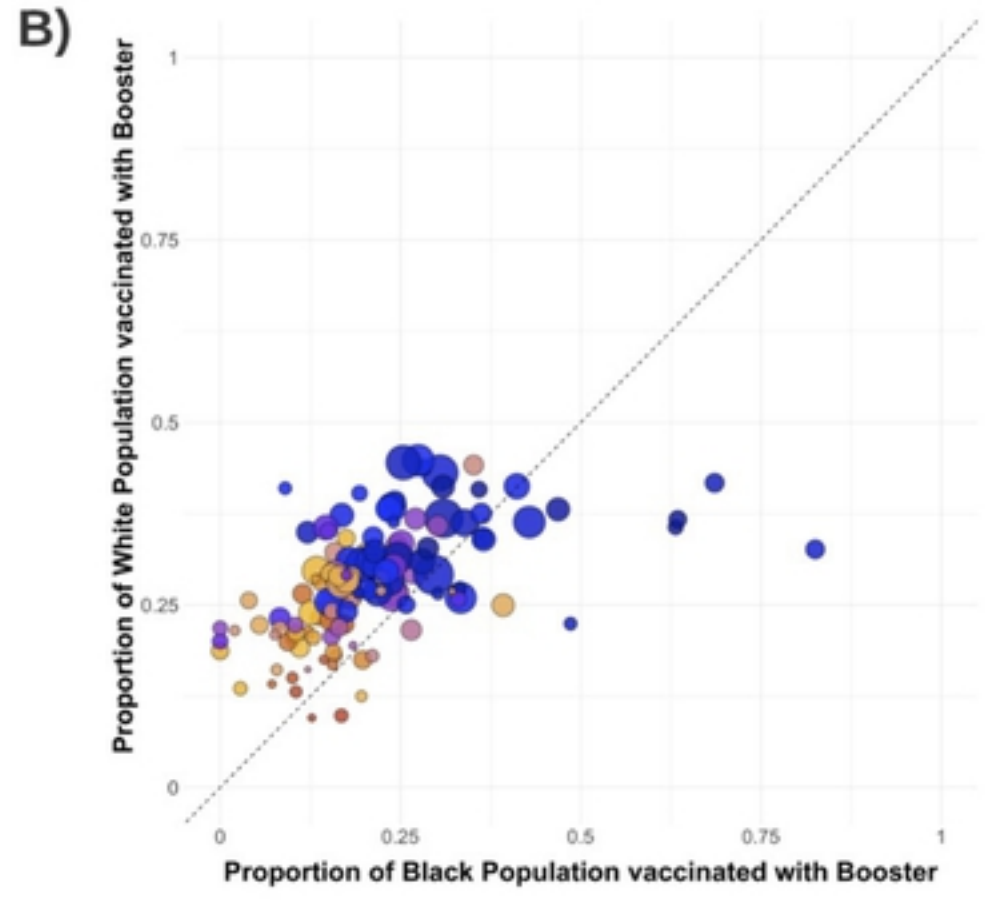
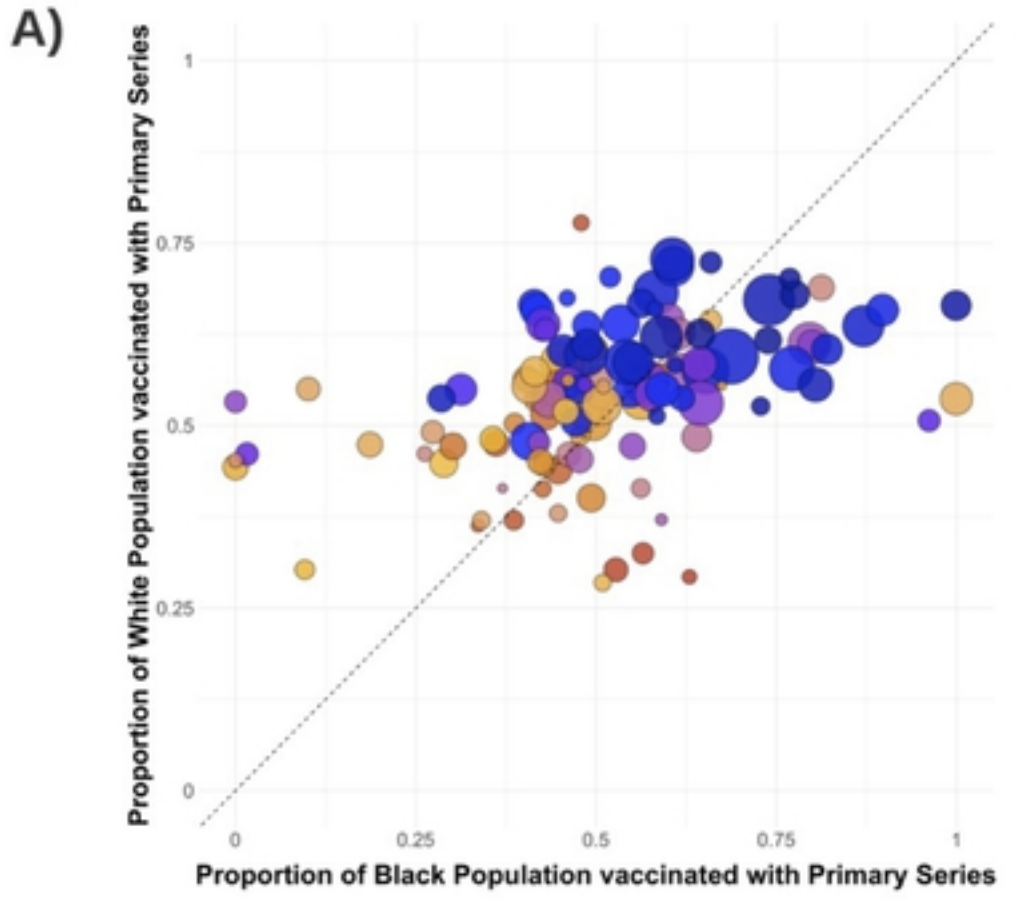


Fig 4

Primary Series

Booster



medRxiv preprint doi: <https://doi.org/10.1101/2022.06.13.22276312>; this version posted June 16, 2022. The copyright holder for this preprint (which was not certified by peer review) is the author/funder, who has granted medRxiv a license to display the preprint in perpetuity. It is made available under a [CC-BY 4.0 International license](https://creativecommons.org/licenses/by/4.0/).

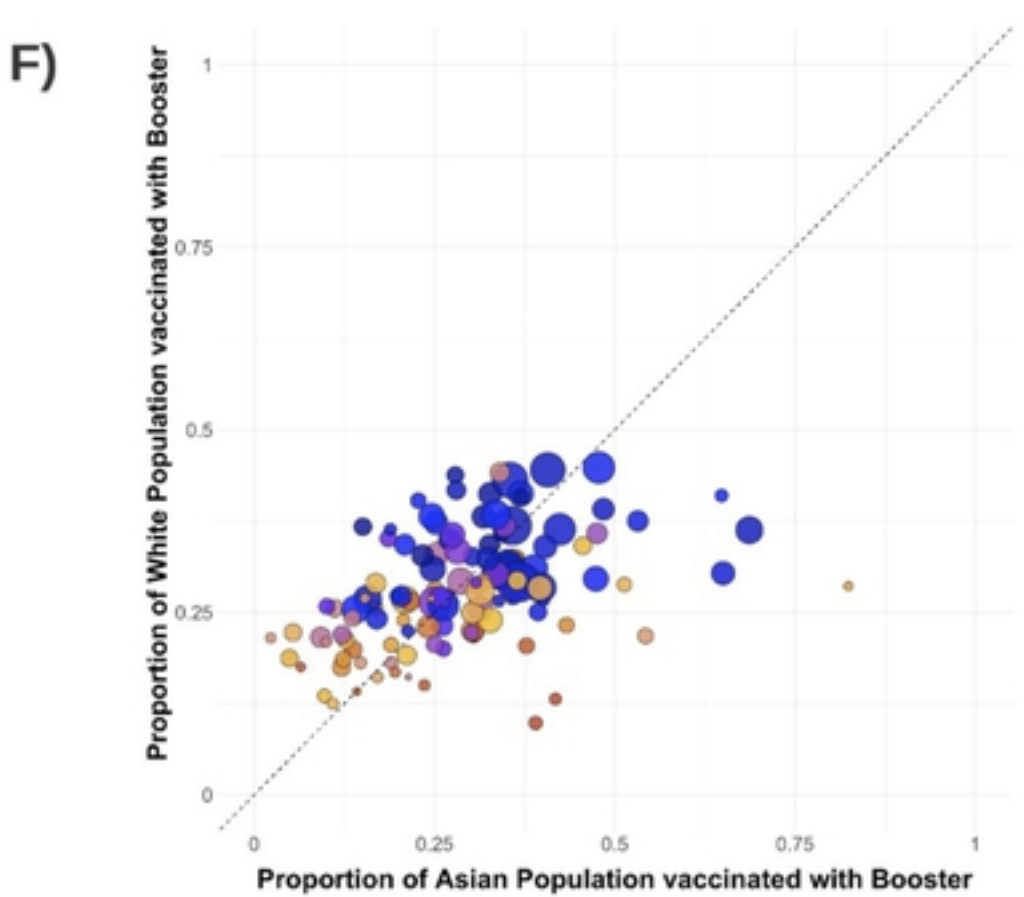
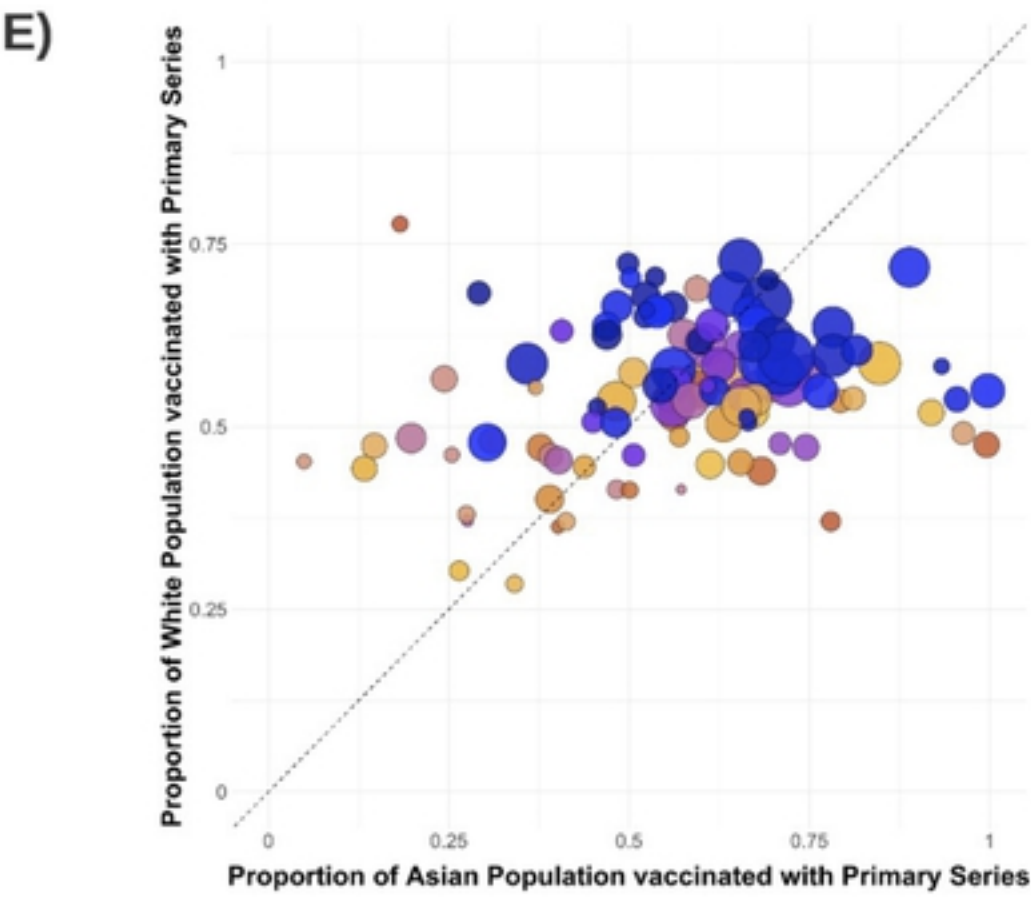
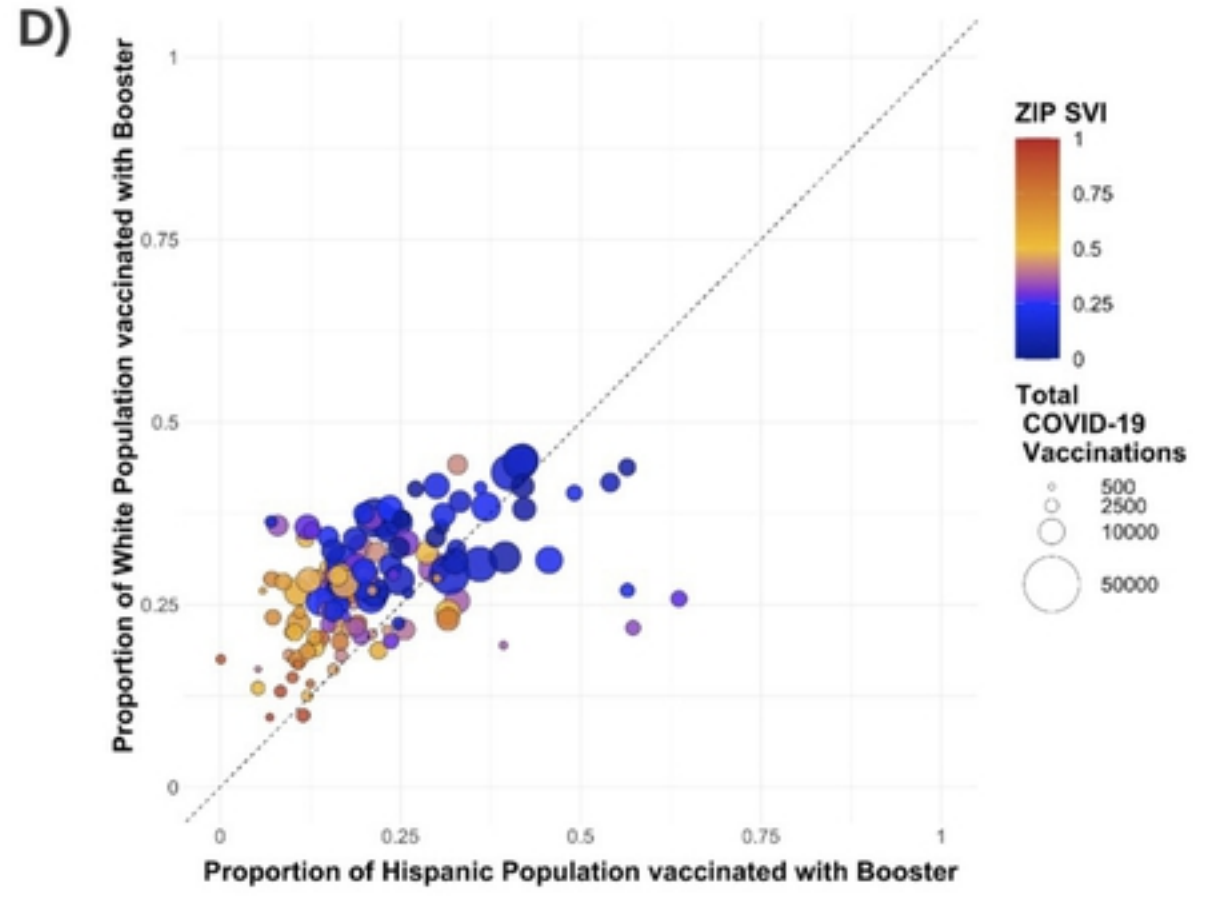
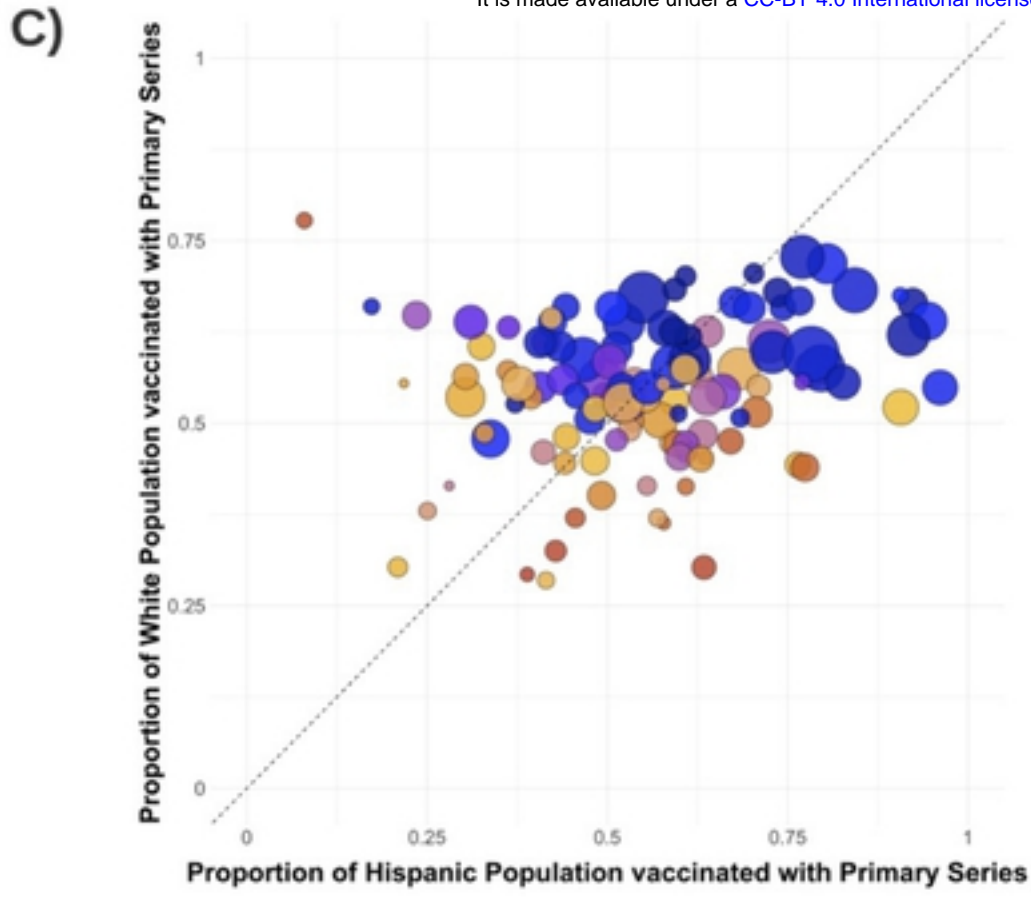
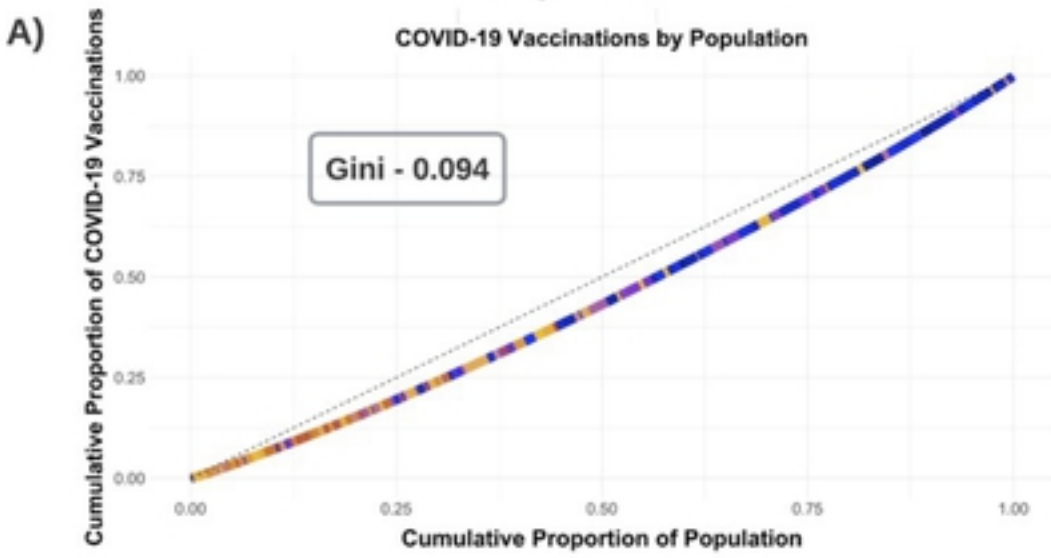
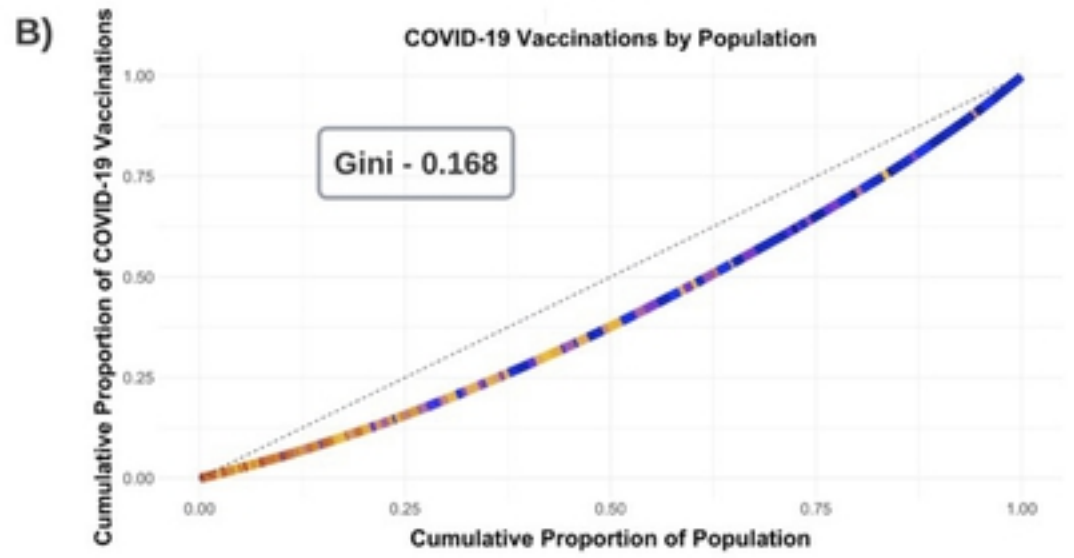


Fig 5

Primary Series



Booster



medRxiv preprint doi: <https://doi.org/10.1101/2022.06.13.22276312>; this version posted June 16, 2022. The copyright holder for this preprint (which was not certified by peer review) is the author/funder, who has granted medRxiv a license to display the preprint in perpetuity. It is made available under a [CC-BY 4.0 International license](https://creativecommons.org/licenses/by/4.0/).

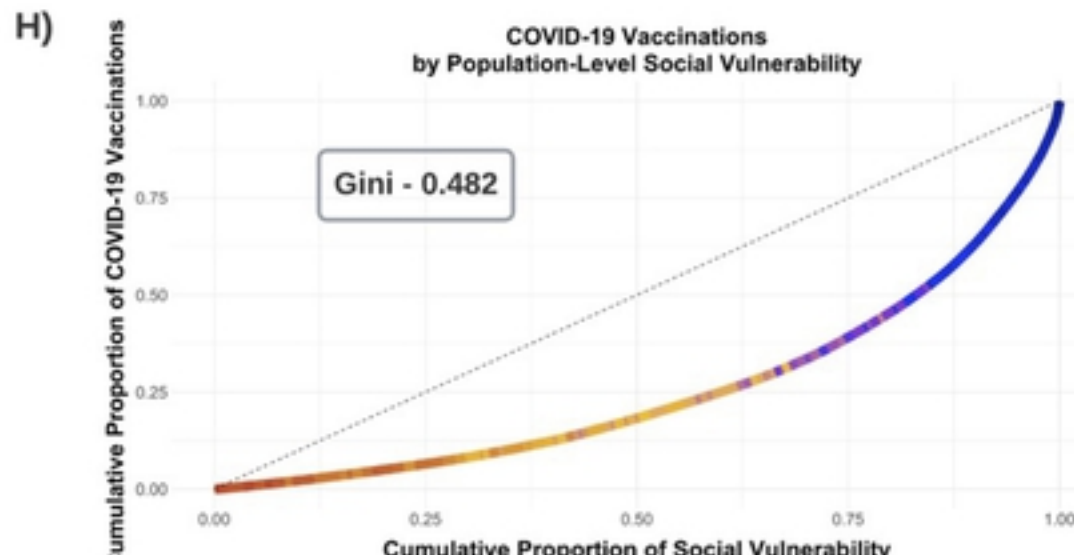
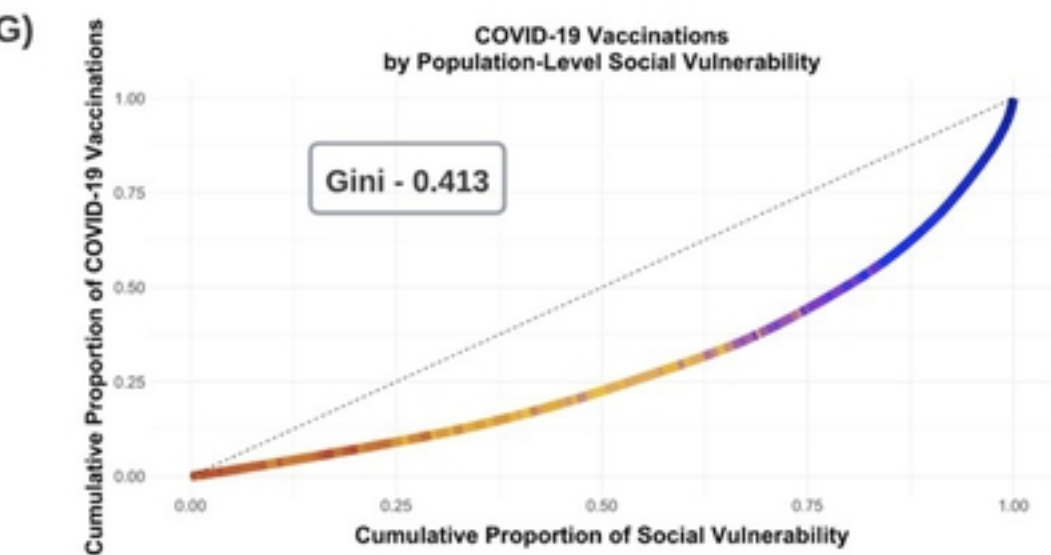
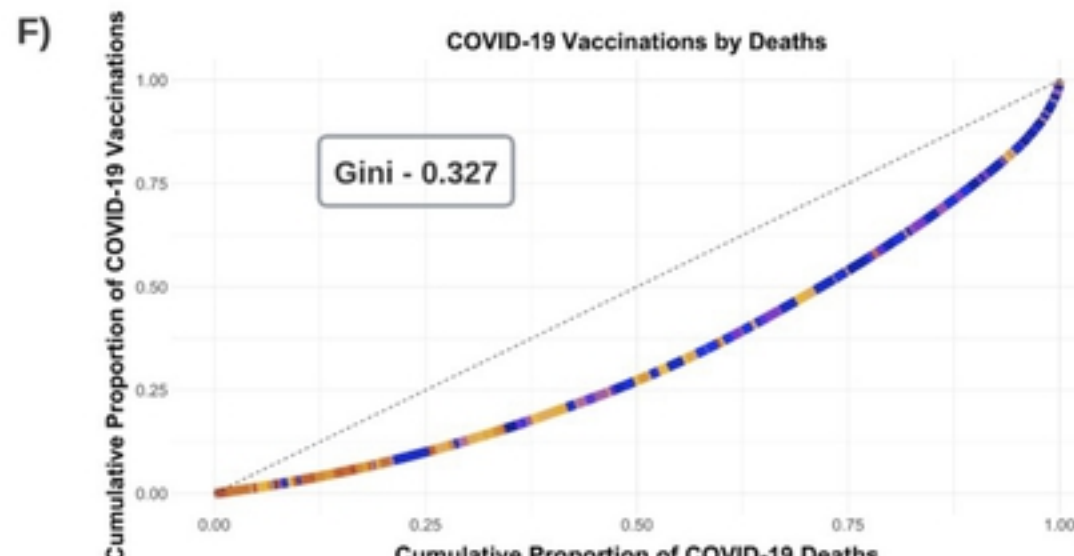
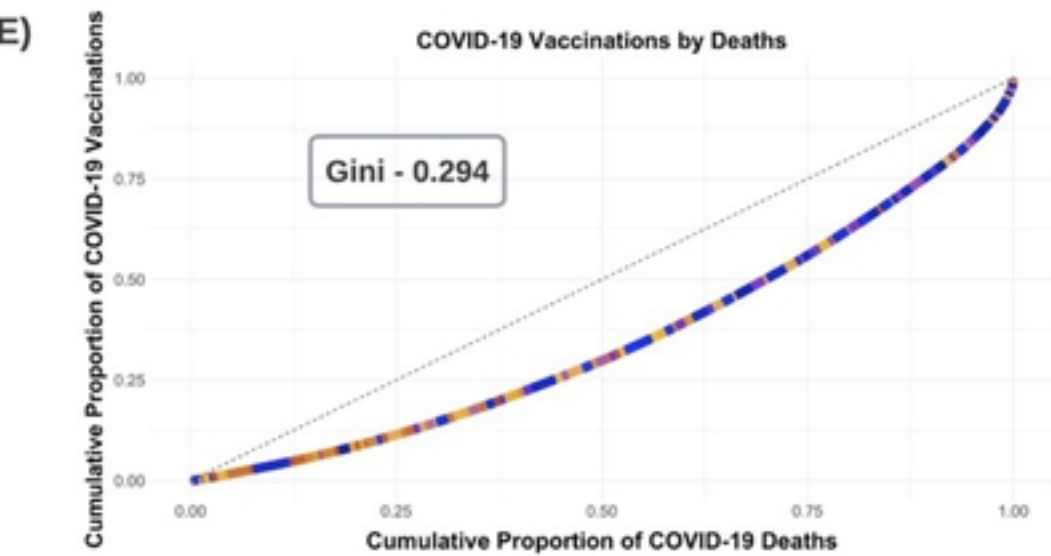
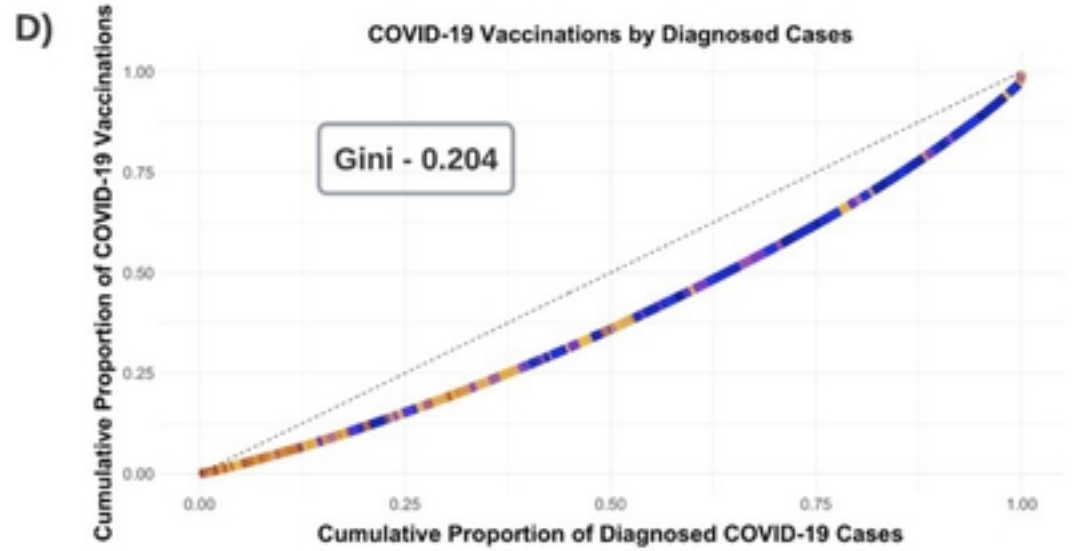
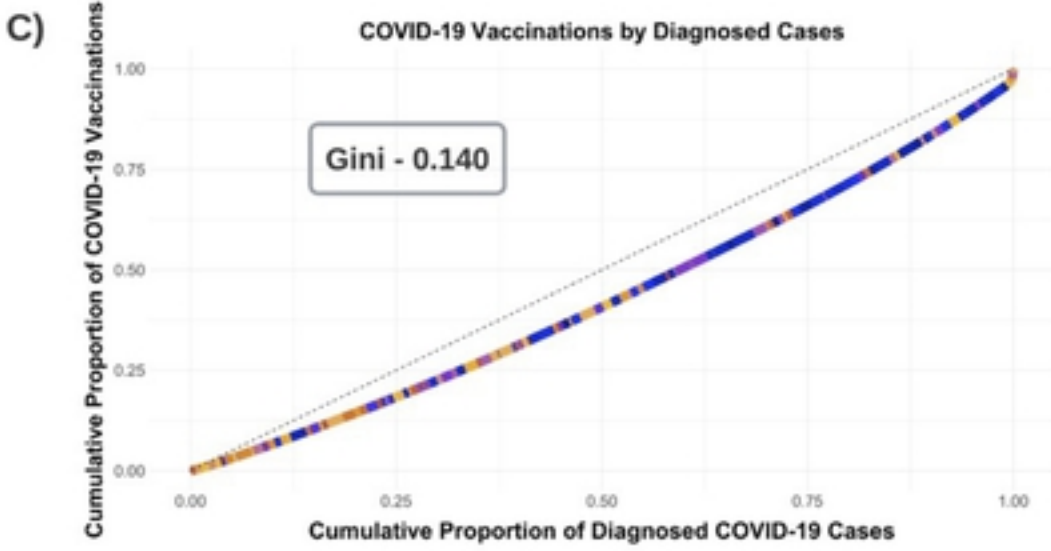
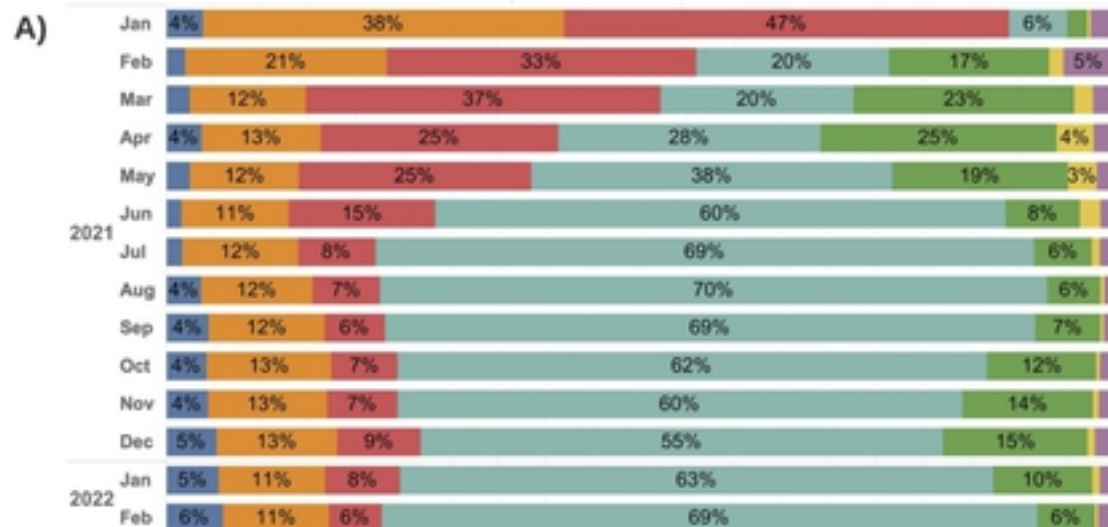
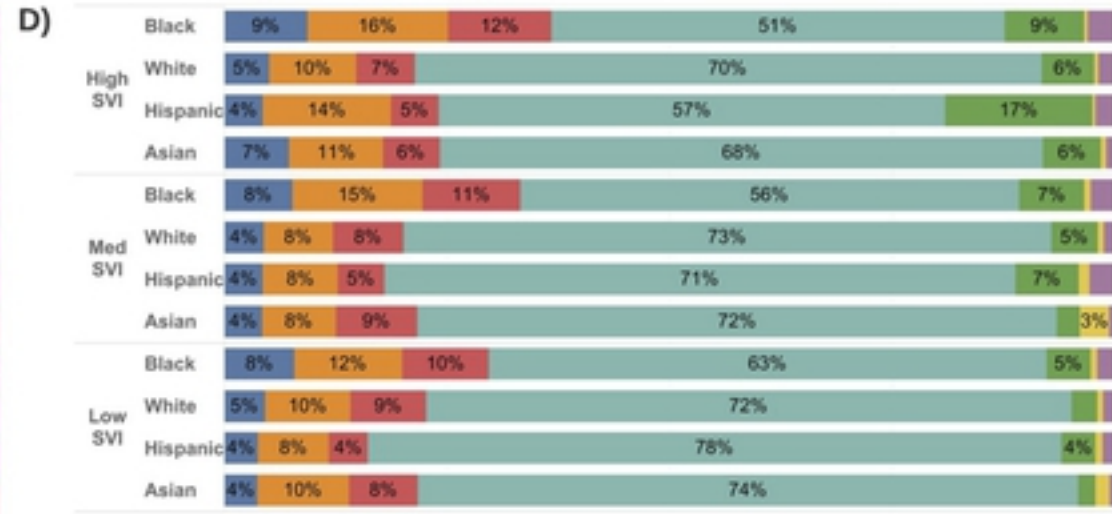
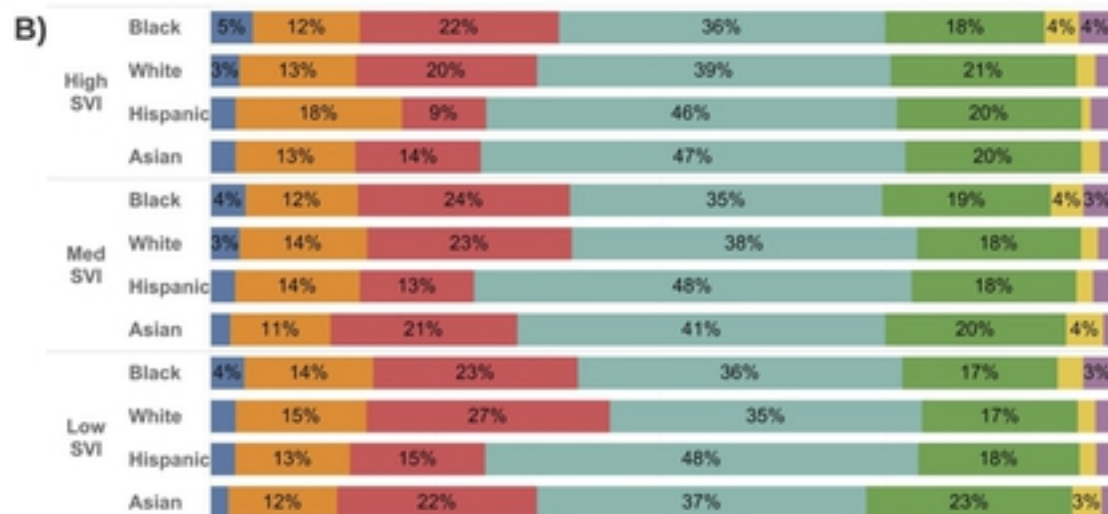
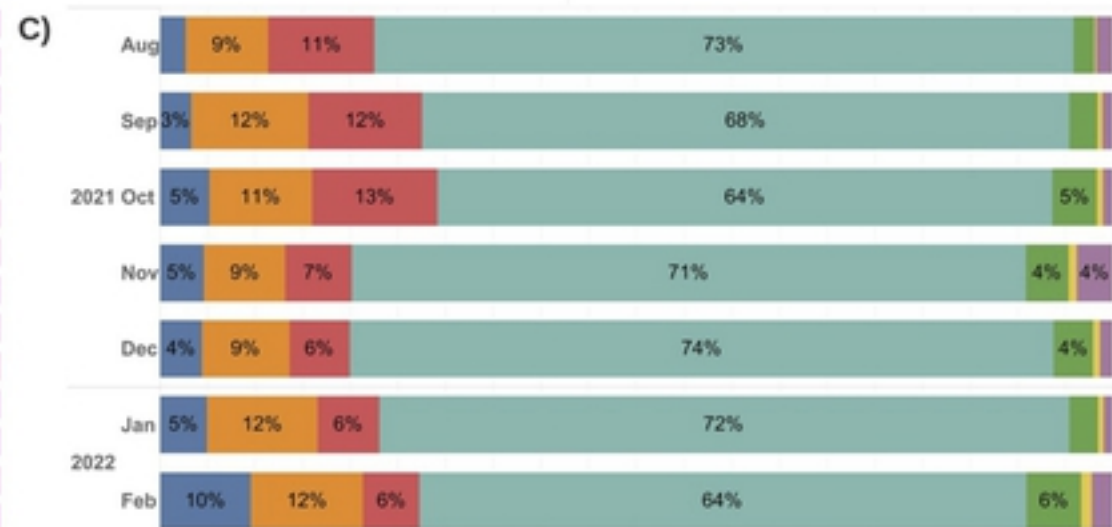


Fig 3

Primary Series



Booster



Vaccine Location Type



Fig 2