

1 **A nomogram to predict failure rate in immediate implant-based breast**  
2 **reconstruction**

3 **Meizhen Zhu<sup>1</sup>, Fanrong Zhang<sup>1</sup>, Jiefei Mao<sup>1</sup>, Jun Fang<sup>2</sup>, Daobao Chen<sup>1\*</sup>**

4 <sup>1</sup> Department of Breast Surgery, The Cancer Hospital of the University of  
5 Chinese Academy of Sciences (Zhejiang Cancer Hospital), Institute of Basic  
6 Medicine and Cancer (IBMC), Chinese Academy of Sciences, Hangzhou,  
7 China

8 <sup>2</sup> Department of Radiation Therapy, The Cancer Hospital of the University of  
9 Chinese Academy of Sciences (Zhejiang Cancer Hospital), Institute of Basic  
10 Medicine and Cancer (IBMC), Chinese Academy of Sciences, Hangzhou,  
11 China

12 \* Corresponding author

13 E-mail: [chendb@zjcc.org.cn](mailto:chendb@zjcc.org.cn) (DBC)

14 **A shortened title:** Breast Reconstruction Failure Rate

15

16

17 **Abstract**

18 Controversies on risk factors affecting immediate implant-based breast  
19 reconstruction (IBBR) still exist. We aimed to evaluate risk factors of  
20 reconstruction failure (RF) in immediate IBBR. We retrospectively reviewed  
21 239 patients (241 breasts) who underwent immediate IBBR from 2011 to  
22 2019. A nomogram was established to predict RF rate in stage I operation  
23 and logistic regression model was created for stage II operation. 14 (5.81%)  
24 and 7 (5.51%) reconstructive breasts experienced RF in stage I and II  
25 operation, respectively. Body mass index (BMI) [odds ratio (OR)=1.569, 95%  
26 confidence interval (CI): 1.087-2.263,  $p=0.016$ ], implant/tissue expander (TE)  
27 volume>86.30% (OR=5.711, 95% CI: 1.067-30.583,  $p=0.042$ ), adjuvant  
28 chemotherapy (ACT) (OR=30.094, 95% CI: 2.030-446.084,  $p=0.013$ ) were  
29 independent risk factors for RF in stage I operation. The nomogram to predict  
30 RF rate in stage I operation revealed area under the curve (AUC) was 0.920  
31 (95% CI: 0.844-0.995). Logistic regression demonstrated that mesh use was  
32 the independent predictor of RF in stage II operation (OR=47.326, 95% CI:  
33 3.11-720.081,  $p=0.005$ ). The nomogram exhibited satisfied predictive ability.  
34 Present findings enhanced our understanding of the risk factors contributing  
35 to RF and might lead us clinical decision to improve the outcome of immediate  
36 IBBR.

## 37 **Introduction**

38 Breast cancer is the most common carcinoma among female in China and  
39 70% of patients are younger than 60 years old [1]. Along with significant  
40 improvements in comprehensive treatment and multidisciplinary team  
41 approach, the mortality rate of breast cancer is decreasing [2]. Moreover,  
42 as the development of economy and the improvement of living conditions in  
43 China, patients' demand for better body image and quality of life have also  
44 been increasing, in especial of younger patients. Breast reconstruction  
45 following mastectomy can help patients modify local deformity, improve  
46 cosmetic outcome, and thus increase self-confidence and satisfaction in  
47 social and psychological aspects [3].

48 Immediate breast reconstruction has been shown satisfactory aesthetic  
49 results and overall psychological well-being compared with delayed breast  
50 reconstruction [4]. Moreover, recent studies supported oncologic safety in  
51 patients who received immediate breast reconstruction following total  
52 mastectomy [5,6]. Similar with the United States, implant-based breast  
53 reconstruction (IBBR) represents the most prevalent form of breast  
54 reconstruction in China, partly due to low damage without donor site sacrifice  
55 and thus postoperative recovery is fast, furthermore, the operation takes a  
56 relative shorter learning curve, which is favored by more doctors and patients

57 [7]. However, IBBR is often associated with higher incidence of complications,  
58 including infection, implant exposure, capsular contracture, and malposition.  
59 Adjuvant therapy, such as chemotherapy and post-mastectomy radiation  
60 therapy (PMRT), at further increase the risk of complications [8].

61 Many tailored strategies, such as two-stage procedure, appropriate  
62 incision design, coverage of prosthesis surface, and optimal time of adjuvant  
63 therapy were explored for each individual patient to achieve a successful and  
64 satisfied reconstruction. However, reconstruction failure (RF), defined as  
65 tissue expander (TE) or implant removal due to complications, still has a high  
66 rate of 17.6% [9]. Once RF occurs, it is not only a financial loss, but also a  
67 frustrate both for surgeons and patients. Surgeons may experience a feeling  
68 of guilty and their self-confidence may be undermined, while patients may  
69 experience several physical and psychosocial impacts [10]. However, many  
70 controversies still exist focusing on risk factors affecting reconstruction, such  
71 as one- or two-stage prosthesis breast reconstruction, the impact of adjuvant  
72 therapy on reconstructed breast [11]. Thus, the purpose of present study is to  
73 evaluate risk factors of RF in immediate IBBR procedure from patient  
74 characteristics, surgical techniques, and adjuvant therapies aspects, and  
75 establish a nomogram model to predict individual RF risk for immediate IBBR  
76 to lead clinical decision making.

## 77 **Methods**

### 78 **Study design and patients enrollment**

79 Breast cancer patients underwent breast reconstruction in our single center  
80 from January 2011 to December 2019 were retrospectively reviewed following  
81 the approval of Zhejiang Cancer Hospital Clinical Research Ethics Committee  
82 (IRB-2020-327). Eligible criteria were as follows: (I) Female patients and  
83 histologically confirmed with in situ or invasive breast cancer in primary or  
84 post neoadjuvant chemotherapy (NACT); (II) Patients underwent immediate  
85 IBBR including one- or two-stage procedure: inserting a permanent implant or  
86 TE (classified as stage I operation), exchanging of TE for a permanent implant  
87 or followed by flap reconstruction (classified as stage II operation). For data  
88 analysis in stage I operation, patients were excluded with any of the following:  
89 (I) Delayed breast reconstruction; (II) Immediate autologous breast  
90 reconstruction (ABR); (III) Contralateral prophylactic mastectomy (CPM)  
91 followed by reconstruction; (IV) Ipsilateral breast radiotherapy history; (V)  
92 Patients progressed local recurrence or/and distant metastasis. For data  
93 analysis in stage II operation, patient cohort was further excluded with any of  
94 the following: (I) Exchange of TE for ABR; (II) TE with no subsequent  
95 exchange; (III) TE removed with patients' requirements (Fig 1).

96 **Fig 1.** Flow chart for study design and patients enrollment. TE, tissue  
97 expander; RF, reconstruction failure; ABR, autologous breast reconstruction;  
98 CPM, contralateral prophylactic mastectomy.

### 99 **Data collection**

100 Patient characteristics including age, body mass index (BMI; calculated as  
101 weight in kilograms divided by height in meters squared), smoking status,  
102 comorbidities (diabetes, hypertension), pathological TNM stage according to  
103 8<sup>th</sup> edition of the AJCC TNM staging system [12] were recorded. Surgical  
104 techniques in stage I operation such as skin-sparing mastectomy (SSM) or  
105 nipple-sparing mastectomy (NSM), incision types, sentinel lymph node biopsy  
106 (SLNB) or axillary lymph node dissection (ALND), volume of implant or TE  
107 inflation at surgery, mesh use, device coverage were collected. Adjuvant  
108 therapies details such as NACT, adjuvant chemotherapy (ACT), PMRT,  
109 perioperative antibiotics were recorded. Incisions for stage II operation were  
110 recorded. The duration days from stage I operation to ACT or PMRT, and  
111 months from PMRT to stage II operation were collected.

### 112 **Surgical techniques**

113 Patients following NACT were respected to receive surgery at least 2 weeks  
114 from last chemotherapy. For patients clinically suspected or/and pathologically

115 confirmed of nipple involved, transverse ellipse incision to remove the nipple-  
116 areola complex was chosen for performing SSM, while lateral transverse with  
117 or without semicircle periareolar, or inframammary fold were common  
118 incisions for NSM. In the subpectoral group, implant/TE would be inserted into  
119 a pocket combined of pectoralis major and either a mesh or the serratus  
120 anterior muscle, whereas in the prepectoral group, partial of latissimus dorsi  
121 or skin envelop covered implant/TE. In immediate two-stage IBBR, TE was  
122 filled with a variable volume of saline in stage I operation. Multidisciplinary  
123 treatment was made for ACT or/and PMRT according to final pathology. For  
124 immediate two-stage IBBR, TE was inflated by saline injection 4 weeks later  
125 after stage I operation, usually 50-80ml every 2 weeks. TE was required fully  
126 expansion, usually extra 20% volume lager than intended implant, before  
127 PMRT. Stage II operation was performed at least 3 months from stage I  
128 operation, and at least 6 months from radiotherapy. In stage II, some  
129 surgeons explored another incision to lower the RF rate. Perioperative  
130 antibiotic prophylaxis would be given for 48 hours in immediate IBBR while  
131 second-generation cephalosporins were preferred and lincosamides may be  
132 another choice for allergic patients.

### 133 **Statistical analysis**

134 For analyzing predictors of RF in stage I operation, the volume of implant/TE  
135 which inserting to the prepared pocket was calculated as volume percentage  
136 according to mastectomy specimen weight and then was divided into two  
137 groups according to maximizing the Youden index by receiver operating  
138 characteristic (ROC) curve analysis (13). Then enrolled patients were  
139 randomly divided into training set and validation set (7:3) by using  
140 createDataPartition function in caret package. Continuous variables were  
141 analyzed using Student's t test or Mann-Whitney U test and were reported as  
142 mean  $\pm$  standard deviation (SD). Categorical variables were analyzed using  
143 Chi-square test or Fisher's exact test. Logistic regression analysis was  
144 performed and potential prognostic factors ( $p < 0.1$ ) by univariate analysis  
145 further entered multivariate analysis to identify independent predictors of RF.  
146 Then a nomogram for predicting RF in stage I was established based on the  
147 logistic model using rms package. The nomogram was quantified by  
148 discrimination and calibration both in training set and validation set. For  
149 analyzing predictors of RF in stage II operation, logistic regression  
150 (Method=Enter) was used for multivariate analysis to identify independent  
151 predictors. Statistical analysis was performed using SPSS software (version  
152 25.0; IBM Corporation, Armonk, NY, USA) and R software (version 4.0.3;  
153 <https://www.r-project.org/>). All reported  $p$  values were two-sided, and  $p < 0.05$   
154 was considered statistically significant.



## 155 **Results**

156 A total of 298 consecutive breast cancer patients (309 breasts) receiving  
157 breast reconstruction surgery from January 2011 to December 2019 in our  
158 single center were retrospectively reviewed and finally 239 patients (241  
159 breasts) who met the inclusion criteria were enrolled for the study cohort. The  
160 median follow-up time since breast reconstruction surgery was 48 months  
161 (21-123) months. During nine years in our single center, both the use of two-  
162 stage operation and NSM increased (Fig 2A-2B), and rates of RF per year  
163 remain stable lower than 10% (Fig 2C). Overall, 14 (5.81%) and 7 (5.51%)  
164 reconstructive breasts experienced failure in stage I and II operation,  
165 respectively.

166 **Fig 2.** (A) Trends of one- or two-stage operation in immediate IBBR. (B)  
167 Trends of SSM and NSM in immediate IBBR. (C) RF rate of immediate IBBR  
168 per year in our single center. IBBR, implant-based breast reconstruction;  
169 NSM, nipple-sparing mastectomy; SSM, skin-sparing mastectomy; RF,  
170 reconstruction failure.

## 171 **Characteristics of study cohort and treatment**

172 To establish a nomogram for predicting RF, the study cohort was randomly  
173 (7:3) divided into training cohort (169 breasts) and validation cohort (72

174 breasts). The characteristics of patients, surgical techniques, and adjuvant  
 175 therapies of the training and validation cohorts were summarized in Table 1.  
 176 All patients had no history of smoking (present or former) and no patient had  
 177 comorbidity of diabetes or hypertension. The optimal cut-off value for  
 178 implant/TE volume by ROC curve analysis was 86.30%. 34 (14.11%)  
 179 implant/TEs suffered immediate PMRT (all of them underwent surgery after  
 180 NACT and the time between surgery to PMRT ranged from 1-3 months) and  
 181 one implant lost. 33 implant/TEs experienced radiotherapy after ACT, usually  
 182 4-7 months later from surgery and no RF occurred.

183 **Table 1.** Characteristics for the training and validation cohorts of 241 breasts  
 184 underwent stage I operation of immediate implant-based breast reconstruction

Characteristics	Overall cohort (n=241), n (%)	Training cohort (n =169), n (%)	Validation cohort (n = 72), n (%)	p value
Age (mean ± SD), years	39.81 ± 7.77	39.30 ± 7.69	41.03 ± 7.86	0.932
BMI (mean ± SD), kg/m <sup>2</sup>	21.99 ± 2.48	21.94 ± 2.35	22.11 ± 2.75	0.212
yp/pTNM stage				
0	30 (12.45)	22 (13.02)	8 (11.11)	0.967
I	102 (42.32)	72 (42.60)	30 (41.67)	
II	81 (33.61)	56 (33.14)	25 (34.72)	
III	28 (11.62)	19 (11.24)	9 (12.50)	
Mastectomy type				
SSM	147 (61.00)	102 (60.36)	45 (62.50)	0.775
NSM	94 (39.00)	67 (39.64)	27 (37.50)	
Incision				
Without periareolar	233 (96.68)	162 (69.53)	71 (30.47)	0.442
Periareolar	8 (3.32)	7 (87.50)	1 (12.50)	
Lymph node management				
SLNB	149 (61.83)	106 (71.14)	43 (28.86)	
ALND	92 (38.17)	63 (68.48)	29 (31.52)	0.667
Implant/TE volume				

≤86.30%	168 (69.71)	121 (71.60)	47 (65.28)	0.360
> 86.30%	73 (30.29)	48 (28.40)	25 (34.72)	
Mesh use				
No	178 (73.86)	124 (73.37)	54 (75.00)	0.873
Yes	63 (26.14)	45 (26.63)	18 (25.00)	
Covering of pocket				
Latissimus dorsi	48 (19.92)	28 (16.57)	20 (27.78)	0.131
Pectoralis major muscle	182 (75.51)	133 (78.70)	49 (68.06)	
Skin	11 (4.57)	8 (4.73)	3 (4.17)	
NACT				
No	204 (84.65)	142 (84.02)	62 (86.11)	0.845
Yes	37 (15.35)	27 (15.98)	10 (13.89)	
ACT				
No	103 (42.74)	71 (42.01)	32 (44.44)	0.777
Yes	138 (57.26)	98 (57.99)	40 (55.56)	
Immediate PMRT				
No	207 (85.89)	143 (84.62)	64 (88.89)	0.426
Yes	34 (14.11)	26 (15.38)	8 (11.11)	
Perioperative antibiotics				
Lincosamides	26 (10.79)	17 (10.06)	9 (12.50)	0.651
Cephalosporins	215 (89.21)	152 (89.94)	63 (87.50)	
RF				
No	227 (94.19)	159 (94.08)	68 (94.44)	1.000
Yes	14 (5.81)	10 (5.92)	4 (5.56)	

185 SD, standard deviation; BMI, body mass index; SSM, skin-sparing mastectomy; NSM, nipple-sparing mastectomy; SLNB,  
 186 sentinel lymph node biopsy; ALND, axillary lymph node dissection; TE, tissue expander; NACT, neoadjuvant chemotherapy;  
 187 ACT adjuvant chemotherapy; PMRT, post-mastectomy radiation therapy; RF, reconstruction failure.

## 188 Predictors of reconstruction failure in stage I operation

189 Analysis of 169 breasts in the training cohort revealed that 10 breasts  
 190 experienced RF, then characteristics between RF and no RF groups were  
 191 compared (Table 2). Logistic regression analysis was performed and  
 192 variables in case of zero count were excluded (variables of incision, skin  
 193 covering pocket and NACT) in the training cohort. Univariate analysis showed  
 194 that BMI, lymph node management, implant/TE volume, mesh use and ACT

195 were possible factors associated with RF ( $p < 0.1$ ). Further multivariate  
 196 analysis revealed that BMI [odds ratio (OR)=1.569, 95% confidence interval  
 197 (CI): 1.087-2.263,  $P=0.016$ ], implant/TE volume  $>86.30\%$  (OR=5.711, 95% CI:  
 198 1.067-30.583,  $P=0.042$ ), ACT (OR=30.094, 95% CI: 2.030-446.084,  $P=0.013$ )  
 199 were independent risk factors for RF (Table 3).

200 **Table 2.** Comparisons of characteristics in RF and no RF groups of the  
 201 training cohort in stage I operation

Variables	RF	no RF	<i>p</i> value
	(n=10), n (%)	(n=159), n (%)	
Age (mean $\pm$ SD), years	42.00 $\pm$ 7.41	39.13 $\pm$ 7.70	0.253
BMI (mean $\pm$ SD), kg/m <sup>2</sup>	23.66 $\pm$ 2.84	21.83 $\pm$ 2.29	0.017*
Mastectomy type			
SSM	4 (3.92)	98 (96.08)	0.197
NSM	6 (8.96)	61 (91.04)	
Incision			
Without periareolar	0 (0.00)	7 (100.00)	1.000
Periareolar	10 (6.17)	152 (93.83)	
Lymph node management			
SLNB	3 (2.78)	105 (97.22)	0.037*
ALND	7 (11.48)	54 (88.52)	
Implant/TE volume			
$\leq 86.30\%$	3 (2.48)	118 (97.52)	0.006**
$> 86.30\%$	7 (14.58)	41 (85.42)	
Mesh use			
No	4 (3.23)	120 (96.77)	0.023*
Yes	6 (13.33)	39 (86.67)	
Covering of pocket			
Latissimus dorsi	3 (10.71)	25 (89.29)	0.514
Pectoralis major muscle	7 (5.26)	126 (94.74)	
Skin	0 (0.00)	8 (100.00)	
NACT			
No	10 (7.04)	132 (92.96)	0.367
Yes	0 (0.00)	27 (100.00)	
ACT			
No	1 (1.41)	70 (98.59)	0.046*
Yes	9 (9.18)	89 (90.82)	

202	Immediate PMRT				
	No	9 (6.29)	134 (93.71)	1.000	
	Yes	1 (3.85)	25 (96.15)		
203	Perioperative antibiotics			0.265	* $p < 0.05$ , ** $p < 0.01$ . RF,
204	Lincosamides	2 (11.76)	15 (88.24)		reconstruction failure; SD,
205	Cephalosporins	8 (5.26)	144 (94.74)		standard deviation; BMI, body
206	mass index; SSM, skin-sparing mastectomy; NSM, nipple-sparing mastectomy; SLNB, sentinel lymph node biopsy; ALND,				
207	axillary lymph node dissection; TE, tissue expander; NACT, neoadjuvant chemotherapy; ACT, adjuvant chemotherapy;				
208	PMRT, post-mastectomy radiation therapy.				

209 **Table 3. Logistic regression analysis of reconstruction failure in the training**  
 210 **cohort (169 breasts)**

Variables	Univariate Analysis		Multivariate Analysis	
	OR (95% CI)	<i>p</i> value	OR (95% CI)	<i>p</i> value
Age, years	1.052 (0.964-1.149)	0.254		
BMI, kg/m <sup>2</sup>	1.388 (1.051-1.834)	0.021*	1.569 (1.087-2.263)	0.016*
Mastectomy type				
SSM	1.000			
NSM	2.410 (0.654-8.886)	0.186		
Lymph node management				
SLNB	1.000			
ALND	4.537 (1.128-18.248)	0.033*	4.876 (0.966-24.617)	0.055
Implant/TE volume				
≤86.30	1.000			
>86.30	6.715 (1.659-27.189)	0.008**	5.711 (1.067-30.583)	0.042*
Mesh use				
No	1.000			
Yes	4.615 (1.238-17.204)	0.023*	3.510 (0.682-18.073)	0.133
Position				
Latissimus dorsi	1.000			
Pectoralis major muscle	0.463 (0.112-1.913)	0.287		
ACT				
No	1.000			
Yes	7.079 (0.876-57.206)	0.066	30.094 (2.030-446.084)	0.013*
Immediate PMRT				
No	1.000			
Yes	0.596 (0.072-4.911)	0.630		
Perioperative antibiotics				
Lincosamides	1.000			
Cephalosporins	0.417 (0.081-2.144)	0.295		

211 \* $p < 0.05$ , \*\* $p < 0.01$ . OR, odds ratio; BMI, body mass index; SSM, skin-sparing mastectomy; NSM, nipple-sparing mastectomy;  
212 SLNB, sentinel lymph node biopsy; ALND, axillary lymph node dissection; TE, tissue expander; ACT, adjuvant  
213 chemotherapy; PMRT, post-mastectomy radiation therapy.

## 214 **Nomogram establishment and validation**

215 A nomogram was established based on five variables, including BMI, lymph  
216 node management, implant/TE volume, mesh use and ACT to predict the RF  
217 rate in stage I operation. The points for the five factors were summed up to  
218 calculate the probability of RF (Fig 3). ROC curves and calibration curves  
219 were created based on the training and validation cohorts for internal and  
220 external validation, respectively (Fig 4). The ROC curve of the nomogram  
221 revealed area under the curve (AUC) was 0.920 (95% CI: 0.844-0.995) (Fig  
222 4A) and external validation revealed AUC of 0.930 (Fig 4B), showing a  
223 satisfactory discriminative ability of the nomogram. The calibration curve  
224 based on training cohort with a bootstrap resampling frequency of 1000 and a  
225 Hosmer-Lemeshow Chi square value of 8.946 ( $p = 0.347$ ), showed a goodness  
226 of fit. Additionally, brier score was 0.040, showing a good calibration ability of  
227 the nomogram. Calibration curves of training (Fig 4C) and validation (Fig 4D)  
228 cohorts showed an acceptable consistency between the actual observation  
229 and logistic model prediction.

230 **Fig 3.** A nomogram to predict the RF rate in stage I operation. BMI, body  
231 mass index; TE, tissue expander; SLNB, sentinel lymph node biopsy; ALND,

232 axillary lymph node dissection; ACT, adjuvant chemotherapy; RF,

233 reconstruction failure.

234 **Fig 4.** ROC curves with an AUC of 0.920 derived from the training cohort (A)

235 and 0.930 derived from the validation cohort (B) demonstrated the

236 discriminatory ability of the nomogram. The calibration curves for the

237 nomogram as the internal validation group derived from the training cohort (C)

238 and external calibration group derived from the validation cohort (D). AUC;

239 area under the curves; ROC, receiver operating characteristic.

#### 240 **Predictors of reconstruction failure in stage II operation**

241 A total of 127 breasts met the inclusion criteria for analysis in stage II

242 operation. There were 7 (5.51%) reconstructive breasts experienced failure in

243 stage II operation. While comparing characteristics with and without RF, there

244 was no significant difference in age, BMI, incision, pocket coverage,

245 radiotherapy history or perioperative antibiotics. RF rate was significantly

246 higher in the mesh use group (17.65% vs 1.07%;  $p=0.001$ ). Multivariate

247 analysis demonstrated that mesh use was the independent predictor of RF

248 stage II operation (OR=47.326, 95% CI: 3.11-720.081,  $p=0.005$ ) (Table 4).

249

250 **Table 4.** Comparison of variables between RF with no RF groups and  
 251 multivariate logistic regression model for predicting RF in stage II operation

Variables	RF (n=7), n (%)	no RF (n=120), n (%)	<i>p</i> value	Multivariate Analysis OR (95% CI)	<i>p</i> value
Age (mean ± SD), years	38.97 ± 7.39	38.00 ± 7.51	0.737	0.986 (0.863-1.125)	0.831
BMI (mean ± SD), kg/m <sup>2</sup>	22.03 ± 2.39	21.53 ± 2.45	0.591	0.804 (0.527-1.227)	0.312
Mastectomy type					
SSM	4 (4.76)	80 (95.24)		1.000	
NSM	3 (6.98)	40 (93.02)	0.688	0.372 (0.021-6.527)	0.499
Incision for stage II operation					
Previous	6 (6.45)	87 (93.55)		1.000	
Another	1 (2.94)	33 (97.06)	0.674	0.241 (0.026-2.239)	0.211
Mesh use					
No	1 (1.07)	92 (98.92)		1.000	
Yes	6 (17.65)	28 (82.35)	0.001**	47.326 (3.11-720.081)	0.005**
Covering of pocket					
Latissimus dorsi	0 (0.00)	2 (100.00)			
Pectoralis major muscle	6 (5.00)	114 (95.00)		1.000	
Skin	1 (20.00)	4 (80.00)	0.334	3.105 (0.177-54.549)	0.439
Radiotherapy history					
No	3 (3.70)	78 (96.30)		1.000	
Yes	4 (8.70)	42 (91.30)	0.254	4.271 (0.519-35.172)	0.177
Perioperative antibiotics					
Lincosamides	1 (11.11)	8 (88.89)		1.000	
Cephalosporins	6 (5.08)	112 (94.92)	0.410	2.104 (0.072-61.082)	0.665

252 \**p*<0.05, \*\**p*<0.01. OR, odds ratio; BMI, body mass index; SSM, skin-sparing mastectomy; NSM, nipple-sparing mastectomy;  
 253 SLNB, sentinel lymph node biopsy; ALND, axillary lymph node dissection; TE, tissue expander; ACT, adjuvant  
 254 chemotherapy; PMRT, post-mastectomy radiation therapy.

## 255 Discussion

256 With the rising trend of immediate IBBR surgery over past nine years in our  
 257 single center, the overall reconstruction failure rates were 5.81% and 5.51% in  
 258 stage I and II operation, respectively, which were still acceptable and  
 259 relatively lower compared with previous literatures (5.6%-22.9%) [14,15]. Each



260 stage of immediate IBBR was separated with its own risks, so risks of RF  
261 were compared for each stage separately in present study. A nomogram was  
262 established to predict RF rate in stage I operation and a logistic regression  
263 model was established to predict RF rate in stage II operation, separately.  
264 The nomogram was established based on five variables, including BMI, lymph  
265 node management, implant/TE volume, mesh use and ACT. Among these  
266 variables, higher BMI, implant/TE volume>86.30% and ACT were  
267 independent risk factors for RF in stage I operation. During stage II operation,  
268 a logistic regression model was established, and mesh use was demonstrated  
269 as the independent predictor of RF. To our knowledge, this is the first clinical  
270 study to use nomogram to develop a prediction model of RF rate for  
271 immediate IBBR. Additionally, with an AUC of 0.920 (95% CI: 0.844-0.995)  
272 and an AUC of 0.930 via external validation, the model exhibited satisfied  
273 predict performance.

274 Old age and higher BMI were well-established risk factors for RF in  
275 immediate IBBR from patient aspect [16]. Furthermore, many studies  
276 indicated obesity was associated with RF in both implant-based and  
277 autologous breast reconstruction [17,18]. The mean age and BMI in present  
278 study were 39.81 years and 21.99 kg/m<sup>2</sup>, respectively, indicating patients  
279 underwent immediate IBBR in this study were mostly young and normal in

280 weight. Age was not a risk factor in our study both in stage I and II operations.  
281 In contrast, higher BMI was be found significantly associated with RF in stage  
282 I operation, with an OR of 1.569 compared with relative lower BMI individuals.  
283 However, BMI was not a risk factor in stage II operation. Some studies have  
284 proposed a theory to explain this result, because higher BMI women might  
285 have larger breasts, which led to longer operative time, longer mastectomy  
286 flaps and more ischemia flaps. While these high-risk patients might not  
287 progress to stage II operation due to removal of TE in stage I operation [8,19].

288 Skin-sparing mastectomy was a widespread technique in breast  
289 reconstruction surgery, which preserves native skin envelope and  
290 inframammary fold [20]. By contrast, nipple-sparing mastectomy was an  
291 improved satisfaction surgical technique with proven oncological safety in  
292 appropriately selected patients [21,22]. However, different incision locations  
293 for NSM procedure were associated with different rates of NAC necrosis.  
294 Previous literatures demonstrated that periareolar incisions had a higher NAC  
295 necrosis rate which might result in RF [23]. 39.00% of breasts in present study  
296 retained NAC, and 8 [3.32%] breasts received periareolar incisions.  
297 Nevertheless, mastectomy type and incision were not risk factors in our study  
298 in stage I operation.

299        There were significant differences in axillary lymph node management  
300        between RF and no RF groups during stage I operation. ALND was  
301        associated with higher risk of RF in univariate analysis, however, it was not an  
302        independent risk factor by multivariate analysis. Removal of axillary lymph  
303        nodes affects lymph drainage and wound healing, which results in  
304        postoperative complication such as flap lymphedema, wound infection, and  
305        delayed healing [24]. Some studies demonstrated that seroma formation was  
306        the most likely reason for wound infection after ALND and minimizing dead  
307        space through fixation axillary flaps with underlying muscles can lower the  
308        incidence of seroma [25,26]. We might try this method for improvement in  
309        future surgery procedure.

310        Perfusion of the flap was closely associated with complication of delayed  
311        wound healing in IBBR. Yang et al. quantified tension-perfusion relationship  
312        and proved that the flap perfusion deteriorated as skin tension increased from  
313        larger implant [27]. Permanent implant in one-stage breast reconstruction,  
314        whose volume cannot be manipulated, causes greater tension on the skin  
315        envelope. In case of SSM techniques, whose skin envelope was reduced due  
316        to NAC dissection, will inherently create further stress to skin envelop [11]. On  
317        the contrary, the volume of TE can be manipulated by inflation or deflation.  
318        Our study indicated that 86.30% of the mastectomy specimen weight was the

319 cutoff of implant/TE volume when inserting to prepared pocket in one-stage  
320 immediate IBBR or in stage I operation of two-stage immediate IBBR.  
321 Moreover, implant/TE volume>86.30% was independent risk factor for RF in  
322 stage I operation. Recently, some studies recommended indocyanine green  
323 fluorescence to assess the perfusion of flap during surgery, and volume of TE  
324 can be modulated to ensure the skin perfusion and the skin with ischemic  
325 condition can be removed to reduce complications [28]. We tried indocyanine  
326 green fluorescence assessment in several cases and indeed found relatively  
327 accurate evaluation of flap perfusion, but unfortunately, sample size was too  
328 small for us to gather and analyze data.

329 The coverage of implant/TE would be skin, total muscular, or muscular  
330 combined with a mesh in our study. The covering of pocket was not  
331 associated with RF rate both in stage I and II operation. Total muscular  
332 coverage provides a protective pocket for implant/TE when flap necrosis or  
333 wound disruption [29]. Mesh was generally placed and sutured with pectoralis  
334 major muscle edges to support and cover prosthesis. The mesh has many  
335 advantages such as reducing muscle sacrifice, reducing prosthesis migration,  
336 improving better pole, and resulting in natural inframammary fold, specifically  
337 in cases of larger size of breast or insufficient muscle coverage [11].  
338 Nevertheless, mesh use significantly increased the risk of complications

339 compared with total muscular coverage in IBBR [30]. Titanium-coated  
340 polypropylene mesh, which was approved for use in 2008 and the implant  
341 loss rate were 8.7% in previous report [31], was popularly used in our center.  
342 Our study showed mesh use was associated with higher risk of RF in  
343 univariate analysis although it was not an independent risk factor by  
344 multivariate analysis in stage I operation. Furthermore, mesh use was the  
345 independent risk factor for RF in stage II operation.

346 Chemotherapeutic agents and irradiation have been proven to reduce  
347 local recurrence and improve patient survival outcome in advanced breast  
348 cancer [32]. However, many studies demonstrated that adjuvant  
349 chemotherapy was associated with cytotoxicity effect and immunosuppression  
350 which caused wound infection, delayed healing [33]. Similarly, PMRT on  
351 prosthesis might increase complication and compromise aesthetic outcome  
352 [34]. One systematic review showed that RF rate was significantly lower when  
353 radiotherapy was given after stage II (5.6%, radiotherapy to implant)  
354 compared to radiotherapy given after stage I (22.9%, radiotherapy to TE).  
355 However, it was unclear how many implants were lost during chemotherapy  
356 period of treatment following stage I without experiencing radiotherapy [14]. In  
357 stage I operation of our study, RF rate was 0.97% (1/103), 8.70% (12/138),  
358 2.94% (1/34) for reconstructive breasts with no ACT, with ACT, with

359 immediate PMRT, respectively. Meanwhile, radiotherapy history, which  
360 contained immediate PMRT and radiotherapy after ACT, was not associated  
361 with RF in stage II operation. Obviously, radiotherapy was not the only culprit  
362 in IBBR. Nevertheless, ACT was considered as an independent risk factor for  
363 RF in stage I operation.

364 Two-stage technique of breast reconstruction is the most commonly form  
365 of immediate IBBR today [35]. Advocates for two-stage operation proposed  
366 the ability of revision on radiation effect and symmetries in stage II operation  
367 to obtain more satisfactory appearance, and because complications rate was  
368 relatively lower when compared with single-stage reconstruction [11]. Some  
369 surgeons in our center explored to choose another incision to lower RF rate in  
370 stage II operation, especially for patients who had radiotherapy history, for the  
371 theory that poor flap perfusion and delayed healing after radiotherapy.  
372 However, the incision was not the predict factor of RF in stage II operation.  
373 Many literatures demonstrated that 24 hours of antibiotic prophylaxis was  
374 warranted [36] and infectious disease guidelines recommended  
375 cephalosporins against Gram-positive organisms are appropriate for  
376 nonallergic [37]. All patients in our study received antibiotic prophylaxis for 48  
377 hours during the perioperative period, second-generation cephalosporins for

378 nonallergic patients and lincosamides for others. Moreover, the perioperative  
379 antibiotic was not the predictor for RF.

380 Although the nomogram model created in our study demonstrated  
381 satisfactory performance, we still acknowledged some limitations. Firstly, as  
382 the data was retrospectively reviewed, some important details were  
383 unavailable such as patients' satisfaction score of reconstructed breasts,  
384 Baker grading following radiotherapy. Secondly, multiple breast and plastic  
385 surgeons might have variative learning curve of reconstructive surgery  
386 technique, which also affected the outcome and complication rate. Thirdly, the  
387 number of patients is relatively smaller due to the low incidence rate of  
388 events. Additionally, only logistic regression model is suitable due to the  
389 limited sample and variables in analysis of stage II operation, which resulted  
390 in insufficient data for validation. Therefore, a multicenter perspective study  
391 with more data available is necessary to overcome these limitations.

## 392 **CONCLUSION**

393 This is the first application of nomogram to develop a prediction model of RF  
394 rate for immediate IBBR, which demonstrated higher BMI, implant/TE  
395 volume>86.30% and ACT were independent risk factors for RF in stage I  
396 operation and the model exhibited satisfied predictive ability. Then a logistic

397 regression model was established, and mesh use was independent predictor  
398 of RF in stage II operation. The nomogram created in this study is an easy-to-  
399 use tool for clinicians to predict RF rate in immediate one-stage IBBR or stage  
400 I operation of immediate two-stage IBBR. Furthermore, these findings  
401 enhanced our understanding of the risk factors contributing to RF and might  
402 lead us clinical decision to improve the outcome of immediate IBBR.

### 403 **Acknowledgments**

404 This work is funded by grants from the Medical Health Science and  
405 Technology Project of Zhejiang Provincial Health Commission (2021RC045).

### 406 **References**

- 407 1. Siegel RL, Miller KD, Jemal A. Cancer statistics, 2020. *CA Cancer J Clin.*  
408 2020 Jan;70(1):7-30. doi: 10.3322/caac.21590. Epub 2020 Jan 8. PMID:  
409 31912902.
- 410 2. Maajani K, Jalali A, Alipour S, Khodadost M, Tohidinik HR, Yazdani K.  
411 The Global and Regional Survival Rate of Women With Breast Cancer: A  
412 Systematic Review and Meta-analysis. *Clin Breast Cancer.* 2019  
413 Jun;19(3):165-177. doi: 10.1016/j.clbc.2019.01.006. Epub 2019 Jan 29.  
414 PMID: 30952546.



- 415 3. Reefy S, Patani N, Anderson A, Burgoyne G, Osman H, Mokbel K.  
416 Oncological outcome and patient satisfaction with skin-sparing  
417 mastectomy and immediate breast reconstruction: a prospective  
418 observational study. *BMC Cancer*. 2010 Apr 29;10:171. doi:  
419 10.1186/1471-2407-10-171. PMID: 20429922.
- 420 4. Fuertes V, Francés M, Casarrubios JM, Fernández-Palacios J, González  
421 JM, Loro-Ferrer JF. Implant-based immediate breast reconstruction:  
422 failure rate when radiating the tissue expander or the permanent implant-a  
423 meta-analysis. *Gland Surg*. 2020 Apr;9(2):209-218. doi:  
424 10.21037/gs.2020.01.20. PMID: 32420244.
- 425 5. Ryu JM, Paik HJ, Park S, Yi HW, Nam SJ, Kim SW, et al. Oncologic  
426 Outcomes after Immediate Breast Reconstruction Following Total  
427 Mastectomy in Patients with Breast Cancer: A Matched Case-Control  
428 Study. *J Breast Cancer*. 2017 Mar;20(1):74-81. doi:  
429 10.4048/jbc.2017.20.1.74. Epub 2017 Mar 24. PMID: 28382097.
- 430 6. Taqi K, Pao JS, Chen L, Ma C, Zhang M, McKeivitt E, et al. Immediate  
431 breast reconstruction in locally advanced breast cancer: is it safe? *Breast*  
432 *Cancer Res Treat*. 2021 Nov;190(2):175-182. doi: 10.1007/s10549-021-  
433 06366-6. Epub 2021 Aug 31. PMID: 34467443.

- 434 7. Xu F, Lei C, Cao H, Liu J, Li J, Jiang H, Chinese Society Of Breast  
435 Surgery. Multi-center investigation of breast reconstruction after  
436 mastectomy from Chinese Society of Breast Surgery: A survey based on  
437 31 tertiary hospitals (CSBrS-004). Chin J Cancer Res. 2021 Feb  
438 28;33(1):33-41. doi: 10.21147/j.issn.1000-9604.2021.01.04. PMID:  
439 33707926.
- 440 8. Ozturk CN, Ozturk C, Soucise A, Platek M, Ahsan N, Lohman R, et al.  
441 Expander/Implant Removal After Breast Reconstruction: Analysis of Risk  
442 Factors and Timeline. Aesthetic Plast Surg. 2018 Feb;42(1):64-72. doi:  
443 10.1007/s00266-017-1031-8. Epub 2017 Dec 21. PMID: 29270693.
- 444 9. Ricci JA, Epstein S, Momoh AO, Lin SJ, Singhal D, Lee BT. A meta-  
445 analysis of implant-based breast reconstruction and timing of adjuvant  
446 radiation therapy. J Surg Res. 2017 Oct;218:108-116. doi:  
447 10.1016/j.jss.2017.05.072. Epub 2017 Jun 15. PMID: 28985836.
- 448 10. Kouwenberg CAE, van Hoogdalem LE, Mureau MAM, Ismail S, Gopie JP,  
449 Tibben A, et al. Patients' and surgeons' experiences after failed breast  
450 reconstruction: A qualitative study. J Plast Reconstr Aesthet Surg. 2021  
451 Jul;74(7):1480-1485. doi: 10.1016/j.bjps.2020.10.080. Epub 2020 Nov 8.  
452 PMID: 33272843.

- 453 11. Frey JD, Salibian AA, Karp NS, Choi M. Implant-Based Breast  
454 Reconstruction: Hot Topics, Controversies, and New Directions. *Plast*  
455 *Reconstr Surg*. 2019 Feb;143(2):404e-416e. doi:  
456 10.1097/PRS.0000000000005290. PMID: 30688910.
- 457 12. Amin MB, Edge S, Greene F, Byrd DR, Brookland RK, Washington MK, et  
458 al. *AJCC Cancer Staging Manual*. 8th Ed. New York: Springer; (2017).
- 459 13. YODEN WJ. Index for rating diagnostic tests. *Cancer*. 1950 Jan;3(1):32-  
460 5. doi: 10.1002/1097-0142(1950)3:1<32::aid-cnrcr2820030106>3.0.co;2-3.  
461 PMID: 15405679.
- 462 14. Lam TC, Hsieh F, Boyages J. The effects of postmastectomy adjuvant  
463 radiotherapy on immediate two-stage prosthetic breast reconstruction: a  
464 systematic review. *Plast Reconstr Surg*. 2013 Sep;132(3):511-518. doi:  
465 10.1097/PRS.0b013e31829acc41. PMID: 23676964.
- 466 15. Lam TC, Borotkanics R, Hsieh F, Salinas J, Boyages J. Immediate Two-  
467 Stage Prosthetic Breast Reconstruction Failure: Radiation Is Not the Only  
468 Culprit. *Plast Reconstr Surg*. 2018 Jun;141(6):1315-1324. doi:  
469 10.1097/PRS.0000000000004358. PMID: 29750759.

- 470 16. Ilonzo N, Tsang A, Tsantes S, Estabrook A, Thu Ma AM. Breast  
471 reconstruction after mastectomy: A ten-year analysis of trends and  
472 immediate postoperative outcomes. *Breast*. 2017 Apr;32:7-12. doi:  
473 10.1016/j.breast.2016.11.023. Epub 2016 Dec 16. PMID: 27988412.
- 474 17. Srinivasa DR, Clemens MW, Qi J, Hamill JB, Kim HM, Pusic AL, et al.  
475 Obesity and Breast Reconstruction: Complications and Patient-Reported  
476 Outcomes in a Multicenter, Prospective Study. *Plast Reconstr Surg*. 2020  
477 Mar;145(3):481e-490e. doi: 10.1097/PRS.0000000000006543. PMID:  
478 32097295.
- 479 18. Banuelos J, Abu-Ghname A, Vyas K, Sharaf B, Nguyen MT, Harless C, et  
480 al. Should Obesity Be Considered a Contraindication for Prepectoral  
481 Breast Reconstruction? *Plast Reconstr Surg*. 2020 Mar;145(3):619-627.  
482 doi: 10.1097/PRS.0000000000006540. PMID: 32097293.
- 483 19. Hirsch EM, Seth AK, Kim JYS, Dumanian GA, Mustoe TA, Galiano RD, et  
484 al. Analysis of risk factors for complications in expander/implant breast  
485 reconstruction by stage of reconstruction. *Plast Reconstr Surg*. 2014  
486 Nov;134(5):692e-699e. doi: 10.1097/PRS.0000000000000607. PMID:  
487 25347643.

- 488 20. Ozturk CN, Ozturk C, Soucise A, Platek M, Ahsan N, Lohman R, et al.  
489 Expander/Implant Removal After Breast Reconstruction: Analysis of Risk  
490 Factors and Timeline. *Aesthetic Plast Surg*. 2018 Feb;42(1):64-72. doi:  
491 10.1007/s00266-017-1031-8. Epub 2017 Dec 21. PMID: 29270693.
- 492 21. Wu ZY, Kim HJ, Lee JW, Chung IY, Kim JS, Lee SB, et al. Breast Cancer  
493 Recurrence in the Nipple-Areola Complex After Nipple-Sparing  
494 Mastectomy With Immediate Breast Reconstruction for Invasive Breast  
495 Cancer. *JAMA Surg*. 2019 Nov 1;154(11):1030-1037. doi:  
496 10.1001/jamasurg.2019.2959. PMID: 31461141.
- 497 22. De La Cruz L, Moody AM, Tappy EE, Blankenship SA, Hecht EM. Overall  
498 Survival, Disease-Free Survival, Local Recurrence, and Nipple-Areolar  
499 Recurrence in the Setting of Nipple-Sparing Mastectomy: A Meta-Analysis  
500 and Systematic Review. *Ann Surg Oncol*. 2015 Oct;22(10):3241-9. doi:  
501 10.1245/s10434-015-4739-1. Epub 2015 Aug 5. PMID: 26242363.
- 502 23. Daar DA, Abdou SA, Rosario L, Rifkin WJ, Santos PJ, Wirth GA, et al. Is  
503 There a Preferred Incision Location for Nipple-Sparing Mastectomy? A  
504 Systematic Review and Meta-Analysis. *Plast Reconstr Surg*. 2019  
505 May;143(5):906e-919e. doi: 10.1097/PRS.0000000000005502. PMID:  
506 30789474.

- 507 24. Killelea BK, Long JB, Dang W, Mougalian SS, Evans SB, Gross CP, et al.  
508 Associations Between Sentinel Lymph Node Biopsy and Complications for  
509 Patients with Ductal Carcinoma In Situ. *Ann Surg Oncol*. 2018  
510 Jun;25(6):1521-1529. doi: 10.1245/s10434-018-6410-0. Epub 2018 Mar 7.  
511 PMID: 29516364.
- 512 25. ten Wolde B, van den Wildenberg FJ, Keemers-Gels ME, Polat F, Strobbe  
513 LJ. Quilting prevents seroma formation following breast cancer surgery:  
514 closing the dead space by quilting prevents seroma following axillary  
515 lymph node dissection and mastectomy. *Ann Surg Oncol*. 2014  
516 Mar;21(3):802-7. doi: 10.1245/s10434-013-3359-x. Epub 2013 Nov 12.  
517 PMID: 24217790.
- 518 26. Jung SM, Jeon BJ, Woo J, Ryu JM, Lee SK, Chae BJ, et al. Does  
519 chemotherapy or radiotherapy affect the postoperative complication in  
520 breast cancer patients who underwent immediate breast reconstruction  
521 with tissue expander? *BMC Cancer*. 2021 Jan 22;21(1):88. doi:  
522 10.1186/s12885-020-07729-w. PMID: 33482758.
- 523 27. Yang CE, Chung SW, Lee DW, Lew DH, Song SY. Evaluation of the  
524 Relationship Between Flap Tension and Tissue Perfusion in Implant-  
525 Based Breast Reconstruction Using Laser-Assisted Indocyanine Green

- 526       Angiography. *Ann Surg Oncol*. 2018 Aug;25(8):2235-2240. doi:  
527       10.1245/s10434-018-6527-1. Epub 2018 May 21. PMID: 29786124.
- 528   28. Jones G, Yoo A, King V, Jao B, Wang H, Rammos C, et al. Prepectoral  
529       Immediate Direct-to-Implant Breast Reconstruction with Anterior AlloDerm  
530       Coverage. *Plast Reconstr Surg*. 2017 Dec;140(6S Prepectoral Breast  
531       Reconstruction):31S-38S. doi: 10.1097/PRS.0000000000004048. PMID:  
532       29166345.
- 533   29. Cordeiro PG, Jazayeri L. Two-Stage Implant-Based Breast  
534       Reconstruction: An Evolution of the Conceptual and Technical Approach  
535       over a Two-Decade Period. *Plast Reconstr Surg*. 2016 Jul;138(1):1-11.  
536       doi: 10.1097/PRS.0000000000002243. PMID: 27348635.
- 537   30. Kim JYS, Davila AA, Persing S, Connor CM, Jovanovic B, Khan SA, et al.  
538       A meta-analysis of human acellular dermis and submuscular tissue  
539       expander breast reconstruction. *Plast Reconstr Surg*. 2012 Jan;129(1):28-  
540       41. doi: 10.1097/PRS.0b013e3182361fd6. PMID: 22186498.
- 541   31. Dieterich M, Paepke S, Zwiefel K, Dieterich H, Blohmer J, Faridi A, et al.  
542       Implant-based breast reconstruction using a titanium-coated  
543       polypropylene mesh (TiLOOP Bra): a multicenter study of 231 cases.

- 544 Plast Reconstr Surg. 2013 Jul;132(1):8e-19e. doi:  
545 10.1097/PRS.0b013e318290f8a0. PMID: 23806958.
- 546 32. El-Sabawi B, Sosin M, Carey JN, Nahabedian MY, Patel KM. Breast  
547 reconstruction and adjuvant therapy: A systematic review of surgical  
548 outcomes. J Surg Oncol. 2015 Oct;112(5):458-64. doi: 10.1002/jso.24028.  
549 Epub 2015 Sep 8. PMID: 26345465.
- 550 33. Lee KT, Bae J, Jeon BJ, Pyon JK, Mun GH, Bang SI. Adjuvant  
551 Chemotherapy in Two-Stage Tissue Expander/Implant Breast  
552 Reconstruction: Does it Affect Final Outcomes? Ann Surg Oncol. 2021  
553 Apr;28(4):2191-2198. doi: 10.1245/s10434-020-09177-z. Epub 2020 Sep  
554 24. PMID: 32974692.
- 555 34. Yun JH, Diaz R, Orman AG. Breast Reconstruction and Radiation  
556 Therapy. Cancer Control. 2018 Jan-Dec;25(1):1073274818795489. doi:  
557 10.1177/1073274818795489. PMID: 30132338.
- 558 35. Bellini E, Pesce M, Santi P, Raposio E. Two-Stage Tissue-Expander  
559 Breast Reconstruction: A Focus on the Surgical Technique. Biomed Res  
560 Int. 2017;2017:1791546. doi: 10.1155/2017/1791546. Epub 2017 Dec 10.  
561 PMID: 29376067.



- 562 36. Phillips BT, Halvorson EG. Antibiotic Prophylaxis following Implant-Based  
563 Breast Reconstruction: What Is the Evidence? *Plast Reconstr Surg*. 2016  
564 Oct;138(4):751-757. doi: 10.1097/PRS.0000000000002530. PMID:  
565 27307337.
- 566 37. Cataife G, Weinberg DA, Wong HH, Kahn KL. The effect of Surgical Care  
567 Improvement Project (SCIP) compliance on surgical site infections (SSI).  
568 *Med Care*. 2014 Feb;52(2 Suppl 1):S66-73. doi:  
569 10.1097/MLR.0000000000000028. PMID: 24430269.

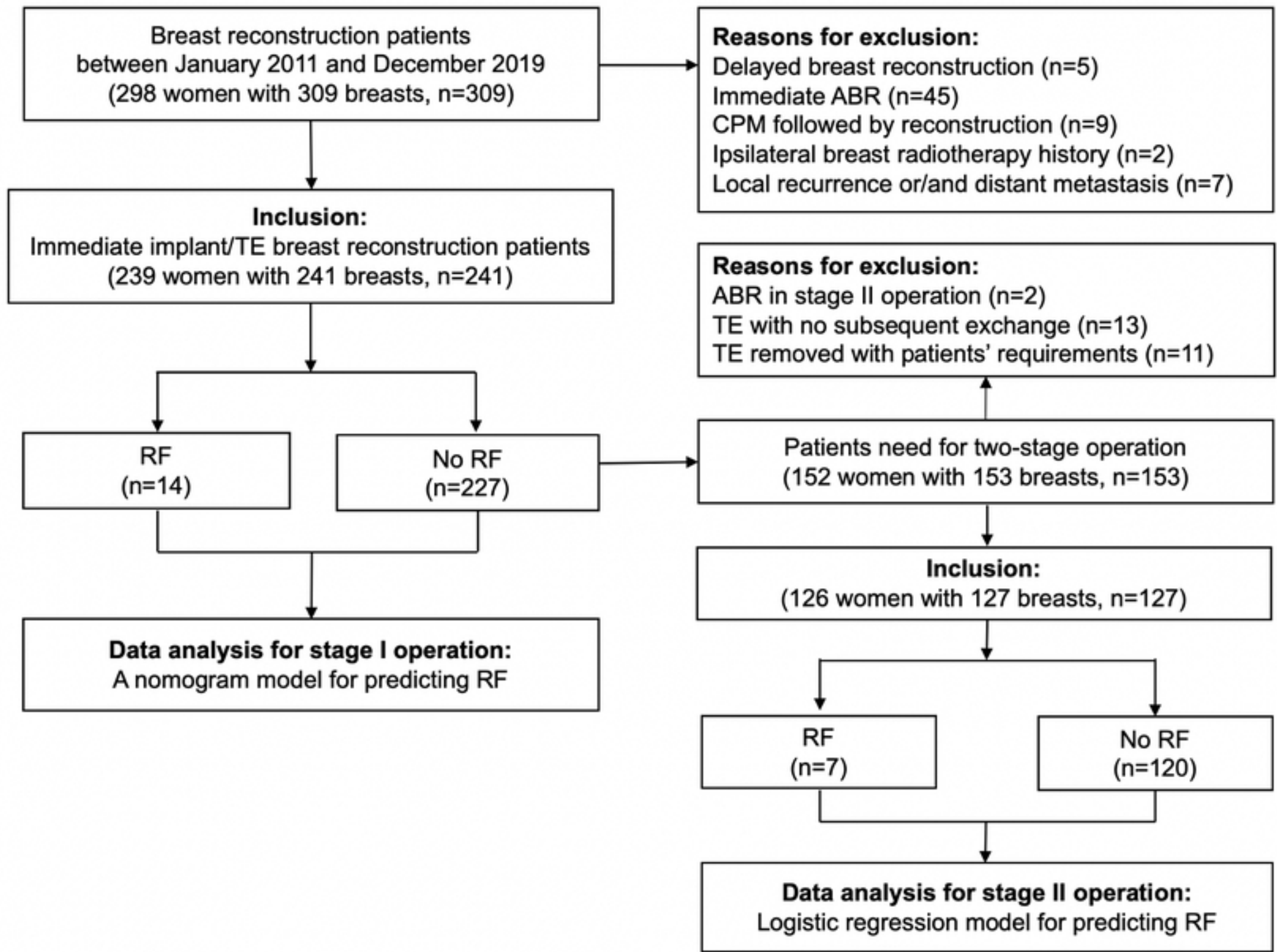


Fig 1

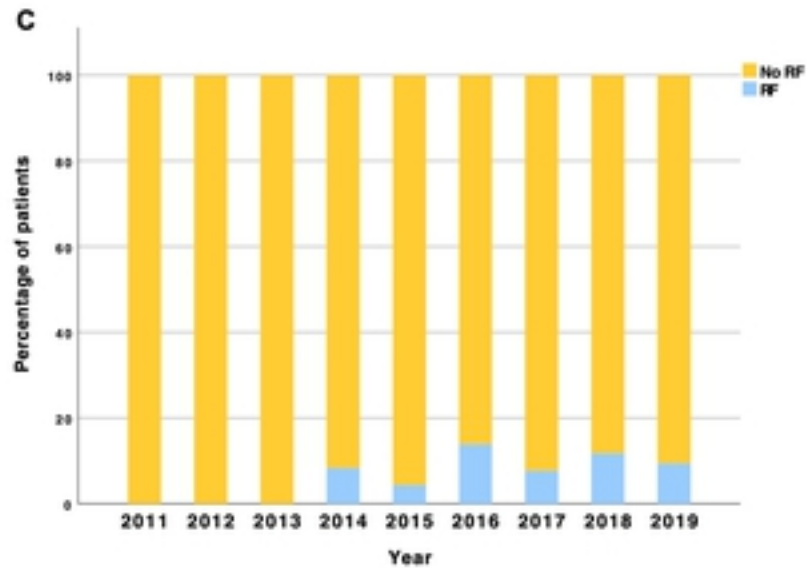
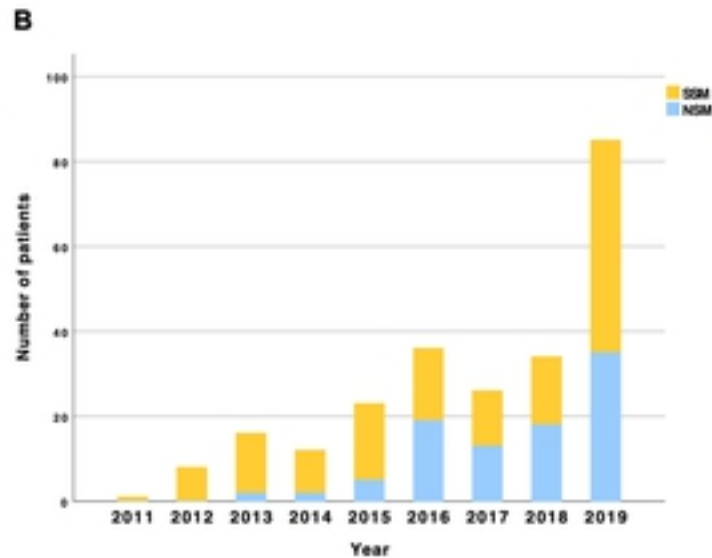
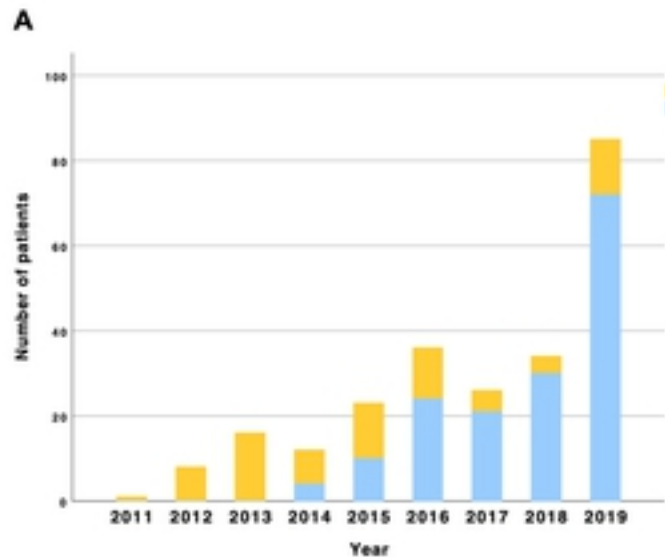


Fig 2

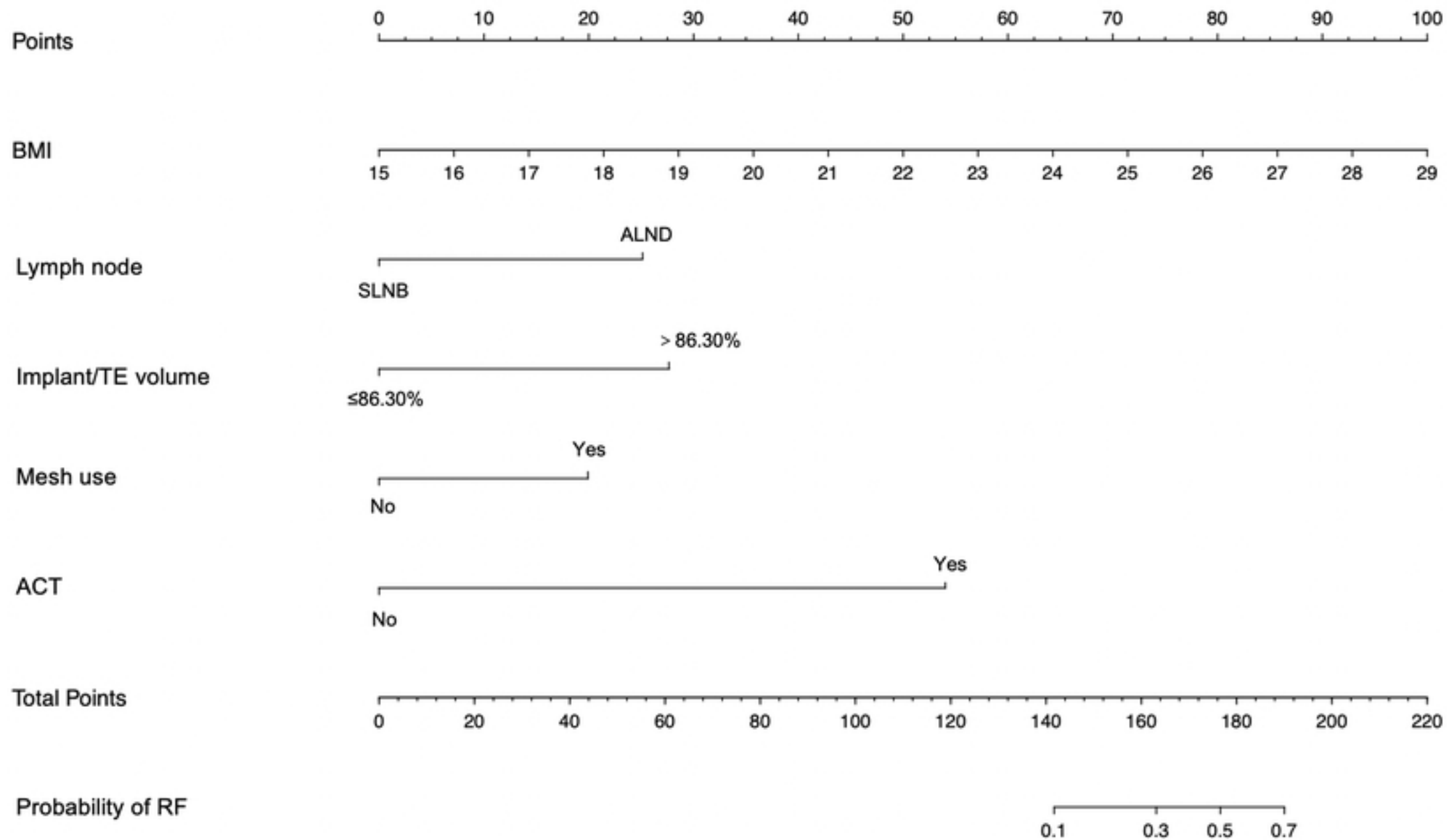


Fig 3

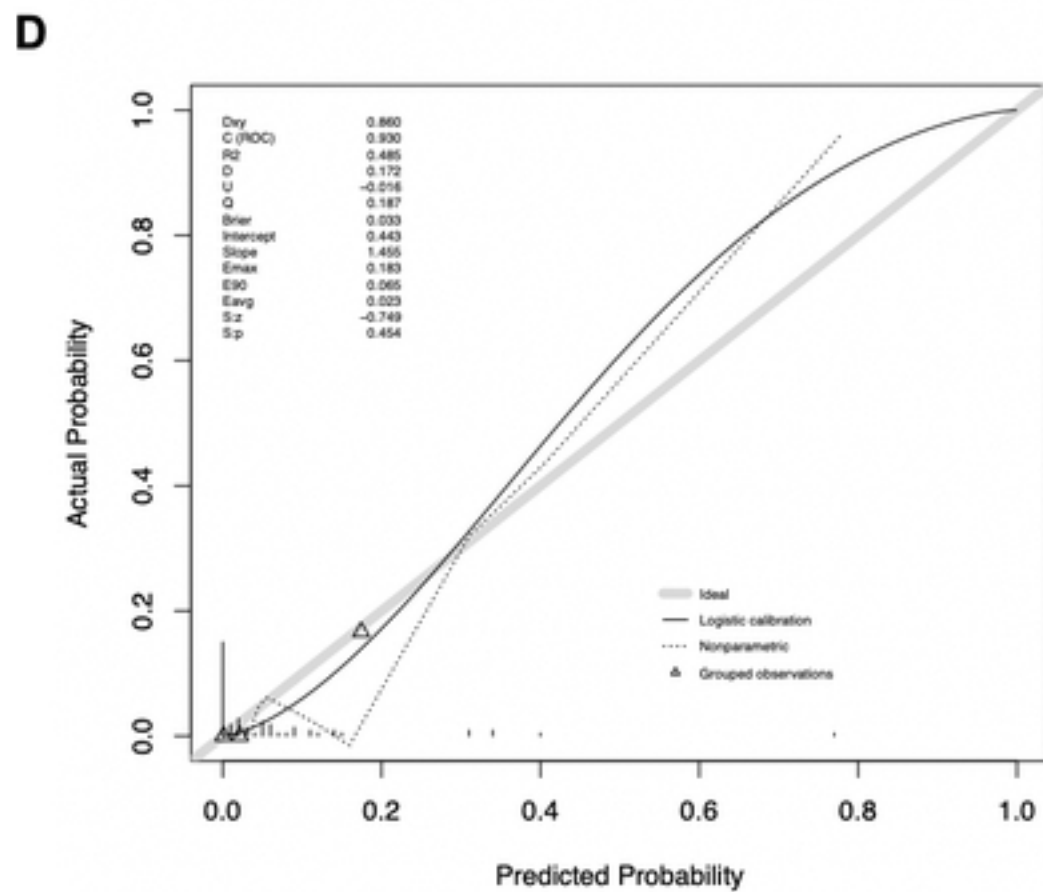
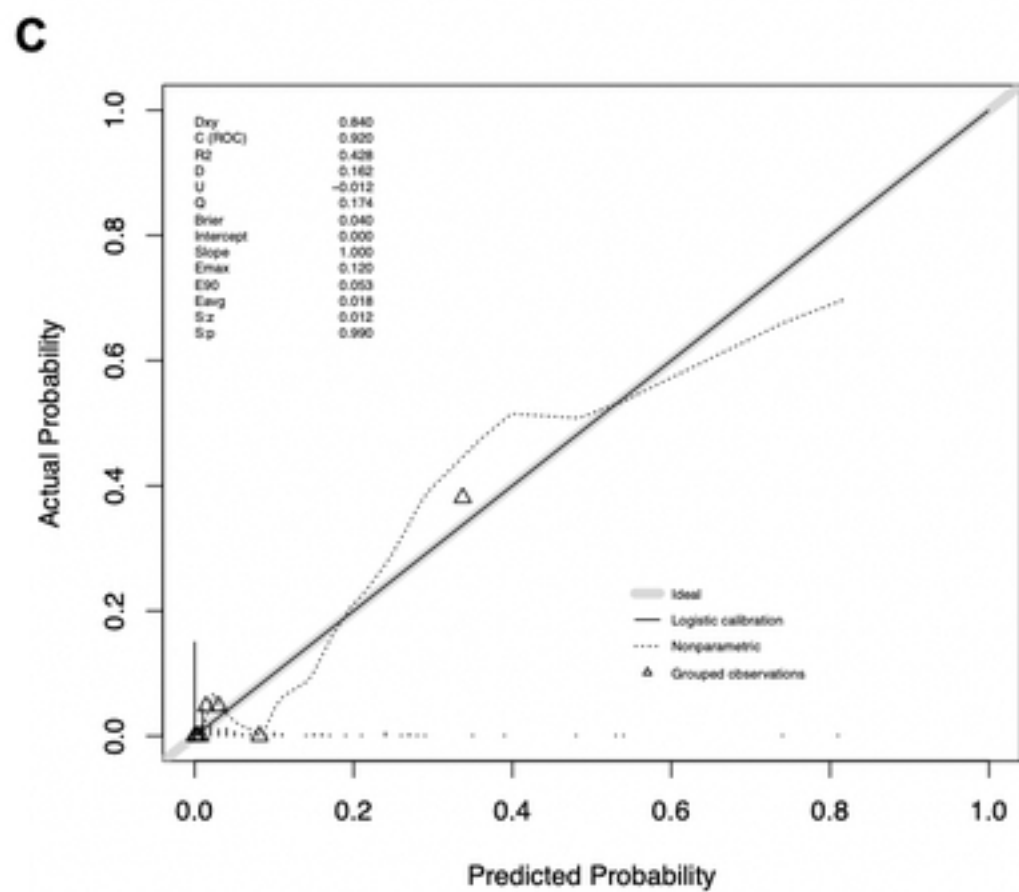
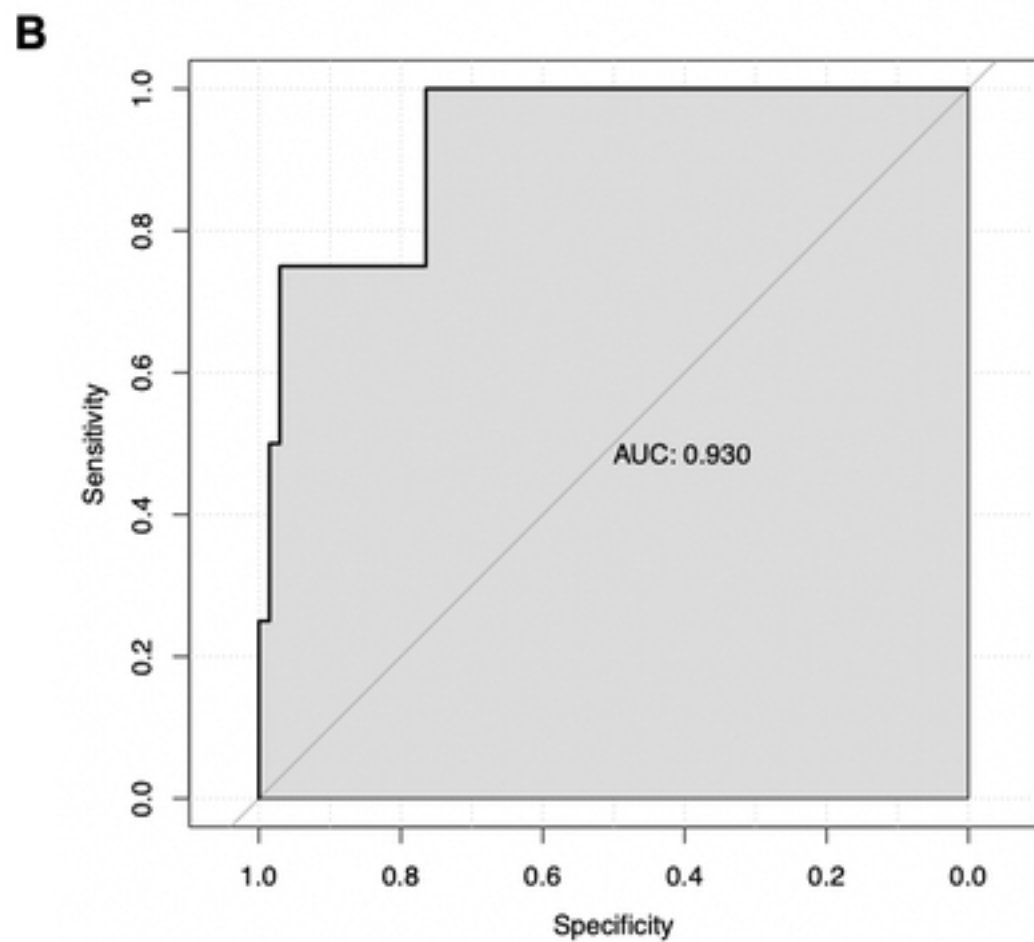
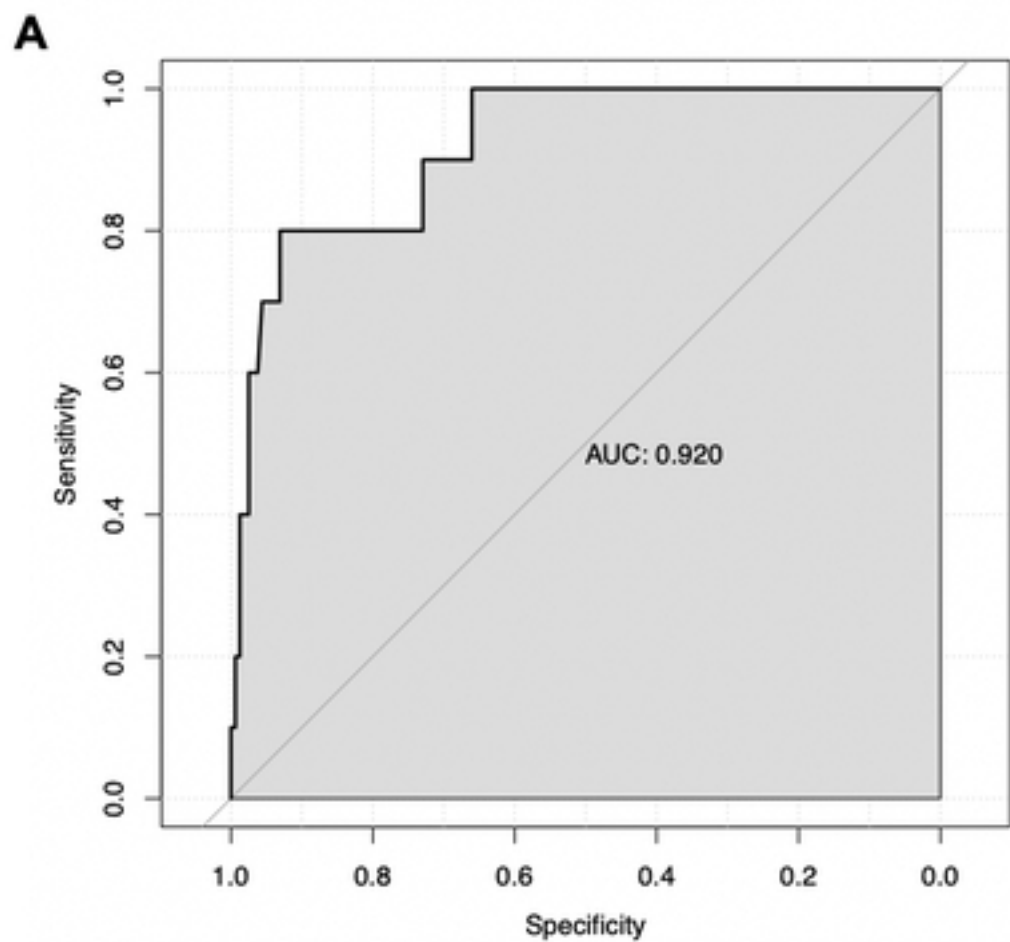


Fig 4