

## Title of the Study

HEALTH ECONOMIC BURDEN ON HEPATITIS B IMMUNOGLOBULIN VACCINATION

## Authors

1. **Corresponding Author: Arbeen A. Laurito, MD, FPSMSG, MSHHM** Medical Specialist III, JR Borja General Hospital, Cagayan De Oro City, Philippines, CP: +63-09369104457 (Globe)
2. **Lourdes L. Bett (MA (Accountancy) Candidate)** Xavier University- Ateneo De Cagayan, Senior High School-Faculty

## Abstract of the Study

**Background.** Chronic Hepatitis B infection comprises the mortality among viral hepatitis despite primary hepatitis B vaccination was implemented in different states health programs. Different modalities of combining active and passive hepatitis B vaccination were conducted. Pregnant women hepatitis screening was not yet streamlined in the clinical management due to social and economic challenges. Fetal to maternal vertical transmission of hepatitis B virus is still a burden to our health system. It is the objective of the study to present the cost of incorporating hepatitis B immunoglobulin vaccine in the current vaccination program, as strengthen the preventive measures of hepatitis infection locally and nationally.

**Methods** Survey questionnaires were utilized to gather demographic data among randomly selected pregnant women during their prenatal visits at the hospital. Hospital and city-based census were used for projecting cost and revenues of having hepatitis B immunoglobulin vaccination.

**Results.** A total of 74 respondents were identified. A financial 5-year was forecast would show a revenue of Php 1,494,500.00 (\$28,869.5) on the 5<sup>th</sup> year and would spare the mothers from OOP expenses with a total amount of Php 945,500 (\$18,264.40). Moreover, the monthly revenue of Hep B Ig vaccination (based on 2016 census) on a city-wide was forecasted. The difference of the total amount of PHIC reimbursement from the amount of vaccine purchasing would give the facility a projected revenue of Php 3,381,123.00 (\$65,313.62) or a monthly average of Php (281,760.25). A total of 1,380 newborns would be at risk to hepatitis B-reactive mothers and would be protected by securing hepatitis B immunoglobulin and be made available in the hospital pharmacy. Furthermore, pregnant women are protected against financial risk of unnecessary out-of-pocket expenses.

**Conclusion.** This study found that the pregnant women was aware of the economic burden of hepatitis B immunoglobulin vaccine and it would benefit the healthcare facility by strategically addressing the external factors for a sustained vaccination program.

## Introduction

Hep B Ig is not covered in the government's Expanded Program of Immunization (EPI) program of vaccination. But once the newborn is exposed to a Hepatitis B-confirmed mother, Hep B Ig is time-bound and highly recommended to be given in less than 12 hours for better efficacy and protection against adult hepatitis B infection. Infection in infancy and early childhood leads to chronic hepatitis in about 95% of cases<sup>1</sup>. This is the basis for strengthening and prioritizing infant and childhood vaccination including Hepatitis B vaccine among all newborns in the Philippines.

World Health Organization (WHO) estimates that 296 million people were living with chronic hepatitis B infection in 2019, with 1.5 million new infections each year. The burden of hepatitis B infection is highest in the WHO Western Pacific Region and the WHO African Region, where 116 million and 81 million people, respectively, are chronically infected. In 2019, hepatitis B resulted in an estimated 820 000 deaths, mostly from cirrhosis and hepatocellular carcinoma (primary liver cancer)<sup>1</sup>. In highly endemic areas, hepatitis B is most commonly spread from mother to child at birth (perinatal transmission) or through horizontal transmission (exposure to infected blood), especially from an infected child to an uninfected child during the first 5 years of life.

The health facility where the study was conducted had an average of 3,931 OB cases with newborns of 2,185 (based on 2017 unpublished hospital data). Moreover, the serology logbook of the hospital's laboratory documented an average of 40 HBsAG reactive mothers, among the other indications for a high-risk newborn for hepatitis B infection. The hospital is a government-owned health facility and the apex facility which caters to the increasing city population with a predicted growth rate of 2.23%<sup>2</sup>.

Currently, the healthcare facility does not purchase the vaccine due to its cost and unstable target population. In this situation, the mother or relatives have to spend their own money for the Hep B Ig vaccine in the nearest private hospital, pharmacy or clinics. They can also avail lower cost of the vaccines in pharmacies outside a tertiary hospital but the distance is a challenge. Fortunately, stocks are available most of the time.

Thus, it is the objective of the study to determine vaccine access in the community, the preference of the mothers for the Hep B Ig vaccine, and its projected cost when the health facility planned to purchase the vaccine. This study will also give us a good and logical data on the burden of Hep B Ig cost from the perspectives of an insured mother from the national health insurance (Philippine Health Insurance Corporation or PHIC for brevity), and the health facility procurement program. Furthermore, it will help in reducing the out-of-pocket expenses among the target population and increases health equities.

## Logical Framework of the Study

The logic model was used in this study. The model clarifies who will be the target population to receive the input of the program, expected activity to achieve accomplishments, and the impact of this program prospectively. This particular study will be the baseline and the input to this program to contribute in reducing chronic hepatitis B infection and the protection against out-of-pocket expenses. Expected output, outcome and impact of the program are presented in Figure 1. But these are beyond the scope of the study.

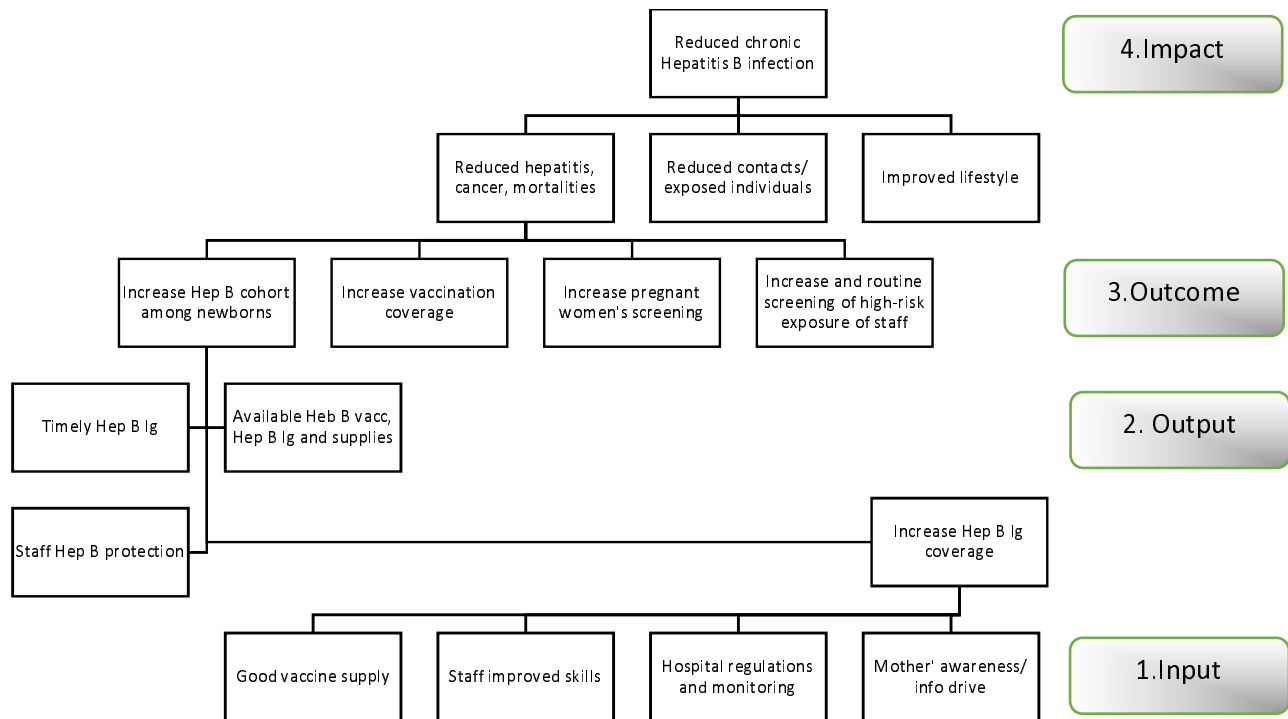


Figure 1. Schematic diagram of Hep B Ig vaccination based on Logic Model.

## METHODS

### Health economic analysis plan

This study planned to present the projected 5-year revenue based on admitted obstetrics cases in the hospital, projected 5-year revenue based on the city-wide population and use of questionnaire surveys among the respondents.

### Study population

Pregnant women who had their prenatal care (PNC) attended the family planning clinic at the Out-patient department of the hospital. Informed consent was discussed and secured from each respondent before the introduction of the questionnaire survey forms.

### Setting and location

Out-patient department of the level-1 public hospital J.R. Borja General Hospital (JRBGH) is located at Cagayan De Oro City, Misamis Oriental, Philippines. The city has 80 barangays clustered into 4 groups.

### Comparators

The current clinical management of a newborn born to a Hepatitis B reactive mother is to give a Hep B Immunoglobulin (Hep B Ig) within 12hours after birth<sup>3,4</sup> for the optimal protection of the newborn. Since Hep B Ig is recommended but not readily available in the local setting, situational analysis was performed. Survey was done for the vaccine acceptance of the end-user and SWOT analysis for a comprehensive viewpoint for the needs of accessing Hep B Ig in each healthcare facility

### Perspective

Hep B Ig is critically important to be available anytime since there is a 12-hour golden period for its optimal effectiveness and should be accessible and affordable 24 hours and 7 days a week. Delayed giving of Hep B Ig to newborns via intramuscular route increases the probability of hepatitis infection in the adult age.

### Time horizon

The awareness of pregnant women is expectedly higher for her pregnancy and her baby's health. Appropriate and good planning before delivery of an expectant of pregnant women is best during the prenatal period visits. Therefore, this study planned to determine the level of awareness and the capability of the pregnant women to proactively plan forward for her baby's hep B Ig vaccination, if applicable.

### Selection of outcomes

Demographic profiles of the respondents were gathered through the questionnaire surveys, determined their knowledge and preference relative to hep B Ig

vaccination, SWOT analysis for the needs of sustaining the program, forecast revenues of the health facility based on assumptions in a 5-year time frame.

### Measurement of outcomes

The survey answers were the bases for the values to be utilized in the 5-year forecast of Hep Ig vaccination costs, collection of admission census from the health facility, and the prevailing cost in dollars.

### Analytics and assumptions

Descriptive analyses were presented in terms of frequency, mean, mode and percentage on the demographic profile of the respondents and their knowledge on Hep B Ig vaccination. The following assumptions considered were as follows; Assumptions A -The forecast assumptions are based on the JRBGH Obstetric cases who were confirmed as Hep B- reactive mothers with their babies, and Assumptions B- The forecast assumptions were based on the city-wide obstetrics monthly cases<sup>2</sup>.

## RESULTS

### A. Demographic Profile of Pregnant Women

Pregnant women who had their prenatal care (PNC) visits at JRBGH and attended the family planning clinic were the respondents of this survey questionnaire (n=74). The majority of respondents belong to the mature group of pregnant women with age ranges 25-35 years of age (40.7%), followed by age 19-24 years old (30.5%). There were 9 (15.2%) women aged more than 36 years of age while 8 teenage pregnant women (13.6%). The youngest among the respondents was 16 years old (Table 1).

Most of these respondents were Roman Catholics, 56 (76.7%), living with their partners, 34 (47.2%), and with a monthly income bracket below Php 5,000 (59.1%). Though we have 8 teenage pregnant respondents, they attributed to the majority with living children, 41 (87.2%), which means most of them are multigravida (1 or more pregnancy). The mode of distribution of the respondents based on their educational level belongs to the High School level or graduate.

The addresses of the respondents' residents were well distributed all throughout the city and the neighboring municipalities. Table 2 showed the distribution of the respondents representing the top ten most populated barangays. The other 34 (48.6%)

respondents came from other barangays of the city with 1-3 respondents each. Two (2) of the respondents did not indicate their address.

JRBGH is the referring health facility for these barangay health centers. Therefore, the majority of these respondents were referred from medical staff from these health centers their areas (42, 57.5%); some by their relatives, 10 (13.7%); and some visited based on their personal preference, 16 (21.9%) as seen in Table 3.

Furthermore, 43 (58.9%) of the respondents had their initial PNC at the barangay health centers, and some were referred due to indications of high-risk pregnancies. About 38.4% (28) had their first PNC at the hospital and 2 (2.4%) pregnant women had their initial PNC from a private hospital.

To assess the knowledge of these respondents, Table 4 showed that majority of them had previous history of vaccination (86.3%); mothers were willing to have vaccine injection (92.9%); mothers were willing to have their baby vaccinated (98.6%); Hep B Ig vaccination was explained to them (56.9%); and they were willing to have Hep B Ig vaccination for their babies if they were screened to be HBsAg reactive (90.4%). This will have a positive impact on the hep B Ig compliance due to high vaccine acceptance.

Most of the respondents (48, 65.7%), preferred to have their immunizations at the barangay health centers, 50 (64.9%) indicated that vaccination should done by doctors, and followed, both by the nurses and midwives (17.1% each).

Regarding vaccination schedules, most of them preferred vaccination after their pregnancy period, 32 (44.4%). This data is presumed to be dependent on their knowledge after they were explained on hep B infection and hep B vaccine importance during their mothers' classes. Other respondents would prefer vaccination before pregnancy (41.7%), and during breastfeeding (6.9%).

The least amount of vaccine at Php 1,550 was the choice by most of the respondents, 69 (97.2%). They will be paying on a 25% payment mode on every visit (19%) versus the full payment mode committed by only 9 mothers (11.4%) (Table 5). Moreover, the majority of them preferred those vaccines be funded from PHIC (44.3%) and be given for free.

Figure 2 shows the percentage of respondents who will recommend vaccination to other pregnant women. About 77.8% (56) recommended vaccination to other pregnant women. Only 2 (2.8%) will not recommend vaccination for any other reasons. Validation on these issues is beyond the scope of the study. There were 14 mothers who were not able to decide on whether to recommend vaccination or not (19.4%).

The primary target market of the study were those babies born to hepatitis B reactive mothers (positive) during screening and who had their deliveries at the health facility. The majority of the respondents were PHIC members. Table 6 showed the total number of newborns born to pregnant women relative to the monthly total hospital admissions. Based on WHO (2017)<sup>5</sup>, hepatitis B infection estimated prevalence of 10% in the general population, there will be 2,404 newborns at high-risk for hepatitis B virus.

## B. SWOT Analysis

The SWOT analysis of the program is presented on Table 7. The internal strengths and weaknesses were shown as well as the external opportunities and possible threats which may affect in the sustainability of the program.

## C. Financial Projections

The hospital average newborn deliveries were 2,185 babies with an average of 3,931 pregnant women gave birth per month (based on 2017 census, unpublished). If the WHO estimated Hepatitis B infection prevalence at 10%, then about 2,404 babies would be exposed to Hepatitis B virus from their mothers during deliveries or an average of 218 newborn per month. Moreover, the 2017 serology logbook from the hospital laboratory showed that the average HBsAG reactive mothers was 40 per month or 480 per year.

The financial 5-year projection was assumed based on the following: 3% increase in obstetrics admission, 480 hep B-reactive mothers per year (2017), national health insurance reimbursement (PHIC) at Php 4,000, and the amount of Php 1,550.00 as the preferred amount for Hep B Ig vaccine (single dose only) (Table 8). Prevailing dollar exchange average at Php 51.7675= 1 dollar at the time of study period. The projected revenue would total to Php 1,494,500.00 (\$28,869.5) on the 5<sup>th</sup> year and would spare the mothers from OOP expenses with a total amount of Php 945,500 (\$18,264.40).

Moreover, Table 8 showed the monthly revenue of Hep B Ig vaccination (2016 census) on a city-wide scale based on the following assumptions: 40 hep B-reactive mothers per month; 480 hep B-reactive mothers or 7% of the 6,915 obstetric cases (2017); Php 4,000 as the reimbursable amount by PHIC for hep B Ig vaccination; and Php 1,550 as the prevailing and preferred cost of hep B Ig vaccine. Based on the above assumptions, there were a total of 1.380 newborns that would be at risk to hepatitis B-reactive mothers. The difference of the total amount of PHIC reimbursement from the amount of vaccine purchasing would give the facility a projected revenue of Php 3,381,123.00 (\$65,313.62) or a monthly average of Php (281,760.25).

## DISCUSSION

Clinically, hep B immunoglobulin is highly recommended to protect the newborn population against mother to child via vertical transmission of hepatitis B virus. It is also highly recommended to give the vaccine within 12 hours of life. This target population, as they become an adult, would carry these protective measures against future cohort of hepatitis B infected individuals. The local government and the healthcare institutions shall be in position to make these vaccines accessible since it is not part of the government's EPI program. Locally, there is no published and available study assessing the health cost and burden of hepatitis B Ig in a government-owned hospital. For decision-making, empirical evidence are very relevant and logical. Financial managers should deal in-depth economic studies for future and current use, and a baseline study for scaling up the program to a national level.

Other studies pointed out cost-effective measures to incorporate hepatitis B immunoglobulin with hepatitis B primary vaccination and screening pregnant women<sup>6</sup>, and or hepatitis B vaccination combined with immunoglobulin<sup>7</sup>. This current study contributes to evidence-based understanding of the financial burden of delivering the Hep B Ig. Meanwhile, the healthcare facility will proactively procure the vaccine with the available resources.

This documented the acceptance of hep B Ig on the demand side of a vaccine program. If prospectively conducted for the 2,404 newborns, this target population may contribute to the rising number of complicated or non-complicated chronic hepatitis B infection. We must help these mothers to make informed decisions for the hep B Ig immunization (and for the other vaccines) through daily prenatal/ mothers' class, family planning counselling, the postpartum classes for better acceptance of the vaccine as a program, compliance and wider coverage. Implementation of universal hepatitis B vaccination in the country should still be pushed forward for no newborn should be left behind. Optimal national universal hepatitis vaccination requires extensive efforts to overcome current social and economic challenges. Hepatitis B immunoglobulin vaccine should be included in these programs.

The burden of its cost is way behind the cost of chronic hepatitis treatment. Furthermore, mortality due to viral hepatitis is estimated at 29% due to cirrhosis secondary to viral hepatitis, 3% due to acute hepatitis, and 67% due to liver cancer<sup>8</sup>. All are preventable and successfully reduced with the maximum implementation of hepatitis vaccination programs.

On the supply side of the vaccination program, hep B Ig vaccine should be made available 24 hours and 7 days a week. Currently these are available in private clinics, hospitals and pharmacies around the city. This study presented a financial 5-year forecast with a good revenue amounting to Php 1,494,500.00 (\$28,869.5) on its 5<sup>th</sup> year



and would spare the mothers from unnecessary out-of-pocket expenditures amounting to Php 945,500 (\$18,264.40) or almost a million pesos.

The study presented the cost of Hep B Ig for the beneficiaries and for the facilities handling the Hepatitis B exposed newborns. As a preventable disease, maternal awareness and knowledge of the vaccine at the first facility visits will greatly expand the cohort of newborn with the Hep B Ig coverage (output), expected outcome will reduce hepatitis and liver cancer, and sustainably impact towards a reduced health burden of Hepatitis B infection (impact).

The prevailing cost is dependent on the prevailing world market and may change overtime or within the timeframe of the cost forecast. Moreover, projected city-wide population may fluctuate as well as the availability of the service per se especially during pandemic.

Initial engagement with the facility were more on discussions based on the situational analysis and the clinical needs of the newborn. Hep B Ig was purchased in bulk at the health facility's pharmacy, accessible by the mothers anytime for in-patients, and newborns were given Hep B Ig within the critical period of 24 hours without out-of-pocket expenditures.

This study had several strengths and limitations. Four limitations were identified: 1. Published census data for the city were outdated almost 4 years back, and not current as to the time of study period, 2. Health costing mainly utilized hepatitis B immunoglobulin vaccine and did not include the supplies and other materials during vaccination (eg. Cotton balls), 3. Small number of respondents was used in the study and recommended for a much larger group, 4. Newborn hepatitis b exposure were determined sole using the HBsAg titer among the screened pregnant women.

However, this study presented a baseline data for hepatitis B Ig cost analysis, had random respondents representing each top ten barangays, and hospitals and laboratory data were collated and updated.

The protective measures from vaccination still high and the demand is increasing. It is still considered as the primary preventive measures against viral hepatitis in a larger scale. Furthermore, considered also as a very cost-effective preventive health measure to date. The local government's advocacy for Health for All is well supported and hopefully

Hepatitis B immunoglobulin vaccine will be part of it nationally. As the healthcare industry continues to have costs spiraling upwards, the majority of the city residents cannot afford the vaccination outside of the Expanded Program of Immunization

program.

These newborns will be best supported by the wider and extensive coverage under the Universal Health Care of the national government to reduce the economic risk of out-of-pocket expenses among pregnant women and more protection among the younger generations.

## OTHER RELEVANT INFORMATION

Source of funding

This study did not receive any funding

Conflicts of interest

The authors have declared no conflicts of interest.

Reporting Guidelines

This study utilizes the Enhancing the QUALity and Transparency Of Health Research<sup>9</sup> upon submission.

## REFERENCES

1. World Health Organization. 2022. Hepatitis B Key Facts. <https://www.who.int/news-room/fact-sheets/detail/hepatitis-b>
2. Census of Population and Housing (POPCEN 2015). 2015. <https://psa.gov.ph/content/philippine-population-surpassed-100-million-mark-results-2015-census-population>. Accessed December 19, 2017.
3. Barnett, E. 2017. Give first dose of HepB vaccine within 24 hours of birth: American Academy of Pediatrics. <https://publications.aap.org/aapnews/news/10295?autologincheck=redirecte>
4. Centers for Disease Control and Prevention. Hepatitis B Vaccination of Infants, Children, and Adolescents. <https://www.cdc.gov/hepatitis/hbv/vaccchildren.htm>
5. World Health Organization. 2019. Hepatitis data and statistics in the Western Pacific. <https://www.who.int/westernpacific/health-topics/hepatitis/regional-hepatitis-data>
6. Fan L, Owusu-Edusei K Jr, Schillie SF, Murphy TV. Cost-effectiveness of testing hepatitis B-positive pregnant women for hepatitis B e antigen or viral load. *Obstet Gynecol*. 2014 May;123(5):929-937. doi: 10.1097/AOG.000000000000124. PMID: 24785842; PMCID: PMC4682356.
7. Zeng Y, Luo M, Lin J, He H, Deng X, Xie S, Fang Y. Cost-effectiveness of augmenting universal hepatitis B vaccination with immunoglobulin treatment: a case study in Zhejiang Province, East China. *Hum Vaccin Immunother*. 2020 Apr 2;16(4):955-964. doi: 10.1080/21645515.2019.1688031. Epub 2019 Nov 26. PMID: 31769718; PMCID: PMC7227702.

8. Hepatitis in the Western Pacific Region. [https://cdn.who.int/media/docs/default-source/documents/health-topics/hepatitis/click-here---hepatitis-in-the-western-pacific-region.pdf?sfvrsn=2899b67b\\_0](https://cdn.who.int/media/docs/default-source/documents/health-topics/hepatitis/click-here---hepatitis-in-the-western-pacific-region.pdf?sfvrsn=2899b67b_0)
9. Husereau D, Drummond M, Augustovski F, et al. Consolidated Health Economic Evaluation Reporting Standards 2022 (CHEERS 2022) Explanation and Elaboration: A Report of the ISPOR CHEERS II Good Practices Task Force. *Value Health* 2022;25. doi:10.1016/j.jval.2021.10.008

**Table 1. Demographic profile of pregnant women surveyed (n=74).**

Profile	No.	%	Profile	No.	%
<b>Age</b>	<b>59</b>		<b>Religion</b>	<b>73</b>	
<19yo	8	13.6	Catholic	56	76.7
19-24 yo	18	30.5	Protestants	1	1.4
25-35 yo	24	40.7	Mormons	1	1.4
>36 yo	9	15.2	Others	15	20.5
<b>Marital Status</b>	<b>72</b>		<b>Income</b>	<b>71</b>	
Married	24	33.3	<5,000	42	59.1
Live-in	34	47.2	5,000-10,000	26	36.6
Single	14	19.4	10,000-20,000	2	2.8
			>20,000	1	1.4
<b>Children</b>	<b>47</b>		<b>Educational level</b>	<b>72</b>	
Living	41	87.2	Elementary level	3	4.2
Fullterm	3	6.4	Elementary Grad	2	2.8
Preterm>5	0	0	High School level	17	23.6
Abort	3	6.4	High School Grad	25	34.7
			Senior HS	2	2.8
			College	23	31.9

**Table 2. Distribution of the respondent based on the top 10 barangays of the city.**

Barangay	Population	Respondent
Carmen	70,492	<b>10</b>
Lapasan	43,611	<b>3</b>
Kauswagan	35,069	<b>5</b>
Balulang	34,793	<b>3</b>
Bulua	32,348	<b>5</b>

Camaman-an	30,927	1
Bugo	30,893	3
Canito-an	27,815	2
Gusa	26,815	5
Iponan	26,340	1
Total	359,103	38

Note: N=38 + 36 (other barangays) = 74

**Table 3. Prenatal care status of pregnant women surveyed (n=74).**

Reasons for JRBGH referral	No.	%	PNC Done at	No.	%
Referral from relatives	10	13.7	BHC	43	58.9
Referral from the medical staff	42	57.5	JRBGH	28	38.4
Personal preference	16	21.9	Private hospital	2	2.4
Others	5	6.8	Private MD	0	0
			Others	0	0
			None	0	0
Total	73	100		73	100

**Table 4. Knowledge of mothers on Hep B Ig vaccination(n=74).**

Issues	Yes		No		Total
	No.	%	No.	%	
1. History of previous vaccination?	63	86.3	10	13.7	73
2. Mother is willing to have vaccine injection?	65	92.9	5	7.1	70
3. Mother is willing to have her baby vaccinated?	70	98.6	1	1.4	71

4. Was Hep B Ig vaccination explained to you?	<b>41</b>	56.9	<b>31</b>	43.1	72
5. If Hep B (+), are you willing have Hep B Immunoglobulin vaccination to your baby?	<b>66</b>	90.4	<b>7</b>	9.6	73

**Table 5. Preference of mothers on Hep B Ig vaccination(n=74).**

<b>Concerns</b>	<b>No.</b>	<b>%</b>	<b>Concerns</b>	<b>No.</b>	<b>%</b>
Facility preferred for vaccination	<b>73</b>		Preferred staff to do the injection	74	
Brgy Health Center	48	65.7	Doctor	50	64.9
JRBGH	25	34.2	Nurse	13	17.1
Private Hospital	0	0	Midwife	13	17.1
Private Doctor	0	0			
Price of Vaccine	<b>71</b>		Preferred timing of vaccination	<b>72</b>	
Php 1,550	69	97.2	Before pregnancy	30	41.7
Php 1,600	2	2.8	After pregnancy	32	44.4
Php 1,650	0	0	During breastfeeding	5	6.9
Php 1,700	0	0	None	5	6.9
Php 1,750	0	0			
<b>Mode of Payment for the vaccine. Multiple answers. (n=79)</b>					
Full payment	9	11.4	via PHIC	35	44.3
50%-50%	6	7.6	via DOH	9	11.4
25% per visit	15	19.0	Others	3	3.8
per Relatives	2	2.5			

**Table 6. JRBGH Population of patients seen, Obstetric Ward patients and Newborns for 2017.**

Months	Total Patients Seen	OB	%	Newborn	%	10% Exposed
Jan	11621	4734	50.84	<b>2310</b>	19.88	231
Feb	9469	2999	38.86	<b>1752</b>	18.50	175.2
Mar	9006	3528	50.44	<b>2011</b>	22.33	201.1
Apr	11327	4141	45.58	<b>2242</b>	19.79	224.2
May	11199	3979	44.14	<b>2184</b>	19.50	218.4
Jun	10846	3751	42.91	<b>2105</b>	19.41	210.5
Jul	11231	3730	40.85	<b>2101</b>	18.71	210.1
Aug	12198	4098	41.42	<b>2304</b>	18.89	230.4
Sep	11420	4421	49.47	<b>2484</b>	21.75	248.4
Oct	10881	3892	44.72	<b>2178</b>	20.02	217.8
Nov	11160	3978	45.26	<b>2371</b>	21.25	237.1
Dec	No data					
<b>Total</b>	120358	43251		<b>24042</b>		2404.2
<b>Average</b>	10,942	3,931	45%	2,185	20%	218

**Table 7. SWOT Grid on the proposed Hep B immunoglobulin vaccination program.**

<b>Parameters</b>	<b>Strengths</b>	<b>Weaknesses</b>
	<ol style="list-style-type: none"> <li>1. Reliable company</li> <li>2. PHIC reimbursement</li> <li>3. Facility-based program</li> <li>4. Vaccine supply available</li> </ol>	<ol style="list-style-type: none"> <li>1. Source of initial funds</li> <li>2. Cold chain and storage area</li> <li>3. Mothers' acceptance</li> <li>4. Sole company available locally</li> </ol>
<p><b>Opportunities</b></p> <ol style="list-style-type: none"> <li>1. No competitor</li> <li>2. Increasing city population, admission</li> <li>3. PHIC membership</li> <li>4. Waste disposals</li> </ol>	<p><b>Opportunity-Strength (OS) Strategies</b></p> <p>Use of strengths to take advantage of opportunities</p> <ol style="list-style-type: none"> <li>1. Increase coverage from other facilities among PHIC members</li> <li>2. Allot PHIC funds for waste disposal infrastructure</li> </ol>	<p><b>Opportunity-Weakness (OW) Strategies</b></p> <p>Overcome weaknesses by taking advantage of opportunities</p> <ol style="list-style-type: none"> <li>1. PHIC source made available</li> <li>2. Functional cold chain support from the company (eg. sponsorship)</li> <li>3. Acquire vaccine from accredited pharma company</li> <li>4. Include acceptance awareness during PHIC membership</li> </ol>
<p><b>Threats</b></p> <ol style="list-style-type: none"> <li>1. No alternative supplier</li> <li>2. No space available for was disposal</li> <li>3. Private clinics</li> </ol>	<p><b>Threat-Strength (TS) Strategies</b></p> <p>Use strengths to avoid threats</p> <ol style="list-style-type: none"> <li>1. Acquire directly and in bulk from the accredited</li> </ol>	<p><b>Threat-Weakness (TW) Strategies</b></p> <p>Minimize weaknesses and avoid threats</p> <ol style="list-style-type: none"> <li>1. Constant awareness drive to mothers and expand to target</li> </ol>

	pharma company 2.Boost the program through info drive and scale up to other health facilities and far-flung barangays	population 2.Create appropriate garbage disposal infrastructure
--	--------------------------------------------------------------------------------------------------------------------------	--------------------------------------------------------------------

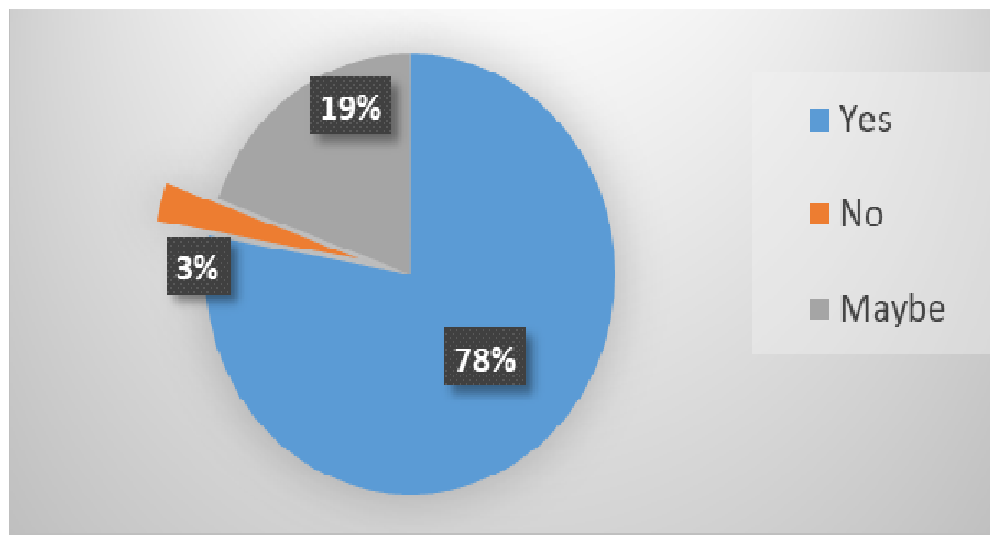


Figure 2. Percentage of mothers who will recommend vaccination to others.



**Table 8. Five-year forecast for the revenue of Hep B Ig vaccination among newborns born to Hepatitis-B reactive mothers at JRBGH.**

Assumptions A

The forecast assumptions are based on the JRBGH OB cases that noted to be Hep B reactive mothers with their babies.

- 3% • Minimum increased of OB admissions for the last 6 years (max 50%, 2011-2017); average is 21%.
- 40 cases/month • 480 Hep B reactive mothers per year (2017)
- 7% • 480 Hep B reactive mom is 7% of the total 6,915 OB cases (2017)
- Php 4,000.00 • Amount reimbursed by PHIC for a Hep B Ig vaccination
- Php 1,550.00 • Amount of Hep B Ig vaccine (single dose only)

	Parameters	2016	2017	2018	2019	2020	2021
A	OB cases (3%)	6,715	6,915	7,122	7,336	7,556	7,782
B	Projected HepB(+)/yr (eg. 480 x 7%)	-	480	498	533	570	610
C	Difference (yearly) (eg. 2018-2017)	-	-	18	35	37	40
D	Amt of vaccine (B x 1550)	-	744,000	771,900	826,150	883,500	945,500
E	PHIC per Hep B Ig (B x 4,000)	-	1,920,000	1,992,000	2,132,000	2,280,000	2,440,000
F	Revenue (E-D)	-	<b>1,176,000</b>	<b>1,220,100</b>	<b>1,305,850</b>	<b>1,396,500</b>	<b>1,494,500</b>
G	Increment (yearly) (eg.2018-2017)	-		44,100	85,750	90,650	98,000

**Table 9. Projected monthly forecast for the revenue of Hep B Ig vaccination among newborns born to Hepatitis B reactive mothers in Cagayan De Oro City (based on 2016 census).**

Assumptions B

The forecast assumptions are based on the Cagayan De Oro City OB monthly case.

- 40 cases/month      480 Hep B reactive mothers per year (2017)
- 7%                      480 Hep B reactive mom, 7% of the total 6,915 OB cases (2017)
- Php 4,000.00        Amount reimbursed by PHIC for a Hep B Ig vaccination
  
- Php 1,550.00        Amount of Hep B Ig vaccine (single dose only)

Months	Newborn Deliveries	Hep B (+)	Amt of Hep B vaccine*	PHIC reimbursement*	Revenue*	Difference*
Jan	<b>1354</b>	95	146,909	379,120	<b>232,211</b>	-
Feb	<b>1184</b>	83	128,464	331,520	<b>203,056</b>	-29,155
March	<b>1420</b>	99	154,070	397,600	<b>243,530</b>	40,474
April	<b>1553</b>	109	168,501	434,840	<b>266,340</b>	22,810
May	<b>1710</b>	120	185,535	478,800	<b>293,265</b>	26,925
June	<b>1537</b>	108	166,765	430,360	<b>263,596</b>	-29,670
July	<b>1442</b>	101	156,457	403,760	<b>247,303</b>	-16,293
Aug	<b>1621</b>	113	175,879	453,880	<b>278,002</b>	30,699
Sept	<b>1874</b>	131	203,329	524,720	<b>321,391</b>	43,390
Oct	<b>1619</b>	113	175,662	453,320	<b>277,659</b>	-43,733
Nov	<b>2010</b>	141	218,085	562,800	<b>344,715</b>	67,057
Dec	<b>2391</b>	167	259,424	669,480	<b>410,057</b>	65,341
<b>Total</b>	<b>19,715</b>	<b>1,380</b>	<b>2,139,078</b>	<b>5,520,200</b>	<b>3,381,123</b> (Ave.=281.760.25)	

Note: \* = in pesos

