

The landscape of secondary malignancies in cancer survivors and the susceptibility to hereditary multiple cancer syndrome: a Korean nationwide population-based study

Running head: Secondary malignancies in cancer survivors

Yoon Young Choi, M.D., Ph.D.^{1,2*}, Myeongjee Lee, Ph.D.^{3*}, Eun Hwa Kim, M.S³., Jae Eun Lee, Ph.D.⁴, Inkyung Jung, Ph.D.^{3§}, Jae-Ho Cheong, M.D., Ph.D.^{5§}

¹Department of Surgery, Soonchunhyang Bucheon Hospital, Soonchunhyang University College of Medicine, Bucheon, Korea

²Department of Surgery, CHA Ilsan Medical Center, CHA University School of Medicine, Ilsan, Korea,

³Department of Biomedical Systems Informatics, Yonsei University College of Medicine, Korea

⁴Graduate School of Integrated Medicine, CHA University School of Medicine, Pocheon, Korea

⁵Department of Surgery, Yonsei University Health System, Yonsei University College of Medicine, Seoul, Korea

*YY Choi and M Lee contributed equally to this study and are joint first co-authors.

Correspondence to,

Inkyung Jung, Ph.D.

Department of Biomedical Systems Informatics, Yonsei University College of Medicine, Korea

NOTE: This preprint reports new research that has not been certified by peer review and should not be used to guide clinical practice.

E-mail: IJUNG@yuhs.ac

Jae-Ho Cheong, M.D., Ph.D.

Department of Surgery, Yonsei University College of Medicine,

50 Yonsei-ro, Seodaemun-gu, 120-752, Seoul, Korea

Tel.: +82-2-2228-2094; Fax.: +82-2-313-8289

ORCID: 0000-0002-1703-1781

E-mail: JHCHEONG@yuhs.ac

Keywords: Cancer, survivors, secondary cancer, hereditary cancer syndrome

ABSTRACT

Background: Cancer survivors and secondary malignancy risk have increased following early diagnosis and advanced cancer treatments; however, secondary malignancy risk in cancer survivors and possibility of genetic susceptibility among young individuals with multiple cancers have scarcely been evaluated. We evaluated the risk of secondary malignancies in cancer survivors by primary cancer type, and the combination of cancer types frequently observed in young patients with multiple cancers.

Methods and Findings: Patients diagnosed with cancer, from Korea Health Insurance Review and Assessment database, between January 2009 and December 2010, were followed-up until December 2019. Cancer survivors and those with secondary cancers were defined as having lived >5 years without developing other cancers; and being newly diagnosed with cancer at another site, respectively. To identify possible hereditary multiple cancer syndrome (HMCS), combinations of multiple cancers frequently observed in young individuals compared to older adults were evaluated. Of the 371,181 patients in 3,008,274 person-years of follow-up, 266,241 were cancer survivors; of these 7,348 had secondary cancers (2.76%; 2,759.9 persons/100,000 population), higher than primary cancer risk in general population. The common primary cancer types were those mainly observed as secondary cancer in cancer survivors. Contrarily, higher-risk cancers among those with secondary cancers compared to those in the general population varied by sex and primary cancer type, suggesting the need for tailored cancer screening for cancer survivors. Combinations of well-known hereditary cancer syndrome-related cancer types were mainly observed in younger compared to older patients with multiple cancers, which could be HMCS, including cancer combinations those may be caused by a novel cancer predisposition gene.

Conclusions: Cancer survivors harbor high and distinctive secondary cancer risk than the

general population, necessitating tailored cancer screening in survivors. Genetic screening should be considered for young patients with multiple cancers to validate genetic predisposition.

INTRODUCTION

Cancer, a global health burden, is the main cause of death globally.[1] Early diagnosis and advanced treatment strategy have improved the survival of cancer patients; therefore, managing the health of cancer survivors, including those with secondary cancers, has become an important medical issue.[2, 3] Because cancer survivors live in similar environments as where their first cancer developed and the genetic risk is sustained, the risk of secondary cancer could be associated with the first one. Consequently, the landscape of secondary cancers may differ compared to the primary cancer in the general population. Therefore, tailored cancer screening and prevention by the type of first cancer is necessary. Although epidemiologic evidence has been reported on some single cancer types,[4-7] there has been no study focused on the overall association between the primary and secondary cancers, targeting cancer survivors so far.

Family history of cancer is the classic surrogate for hereditary cancer syndrome caused by genetic susceptibility. However, as life expectancy has increased, the possibility of experiencing cancer during one's lifetime has increased. Consequently, only family history could be a sensitive but not specific surrogate to guide hereditary cancer syndrome. Along with younger-age onset cancer, multiple cancers are regarded as being related to hereditary cancer syndrome.[8, 9] A recent study reported that younger patients with multiple Lynch syndrome-related cancers showed a strong association with genetic susceptibility.[10] Therefore, the combination of multiple cancers frequently observed in younger individuals could be a gateway to guide hereditary multiple cancer syndrome (HMCS) (i.e., multiple cancers caused by genetic susceptibility). However, this has not been assessed in epidemiologic studies.

In this study, we evaluated the high-risk secondary malignancies in cancer survivors (SMCS) by primary cancer type and identified the candidates for HMCS, using data from the South Korea Health Insurance Review and Assessment (HIRA) database.

METHODS

Data source

This nationwide, population-based, cohort study was conducted using data collected in the HIRA database between January 2008 and December 2019, which includes over 50 million Koreans. This study was approved by the research ethics committee of South Korea National Health Insurance Sharing Service (M20200902739) and the institutional review board of Severance Hospital (4-2020-0155). The need for informed consent was waived owing to the use of de-identified data.

Patient and Public Involvement

Patients or the public were not involved in the design, or conduct, or reporting, or dissemination plans of our research

Study population

We retrieved the data of patients diagnosed with cancer between January 2009 and December 2010. To identify newly diagnosed cancer cases during this period, those diagnosed in 2008 were excluded. We used the 10th revision of the International Classification of Diseases (ICD) code and the Korean Individual Co-payment Beneficiaries Program (ICBP) data to define each cancer site. The ICBP was established for rare and intractable diseases, including cancers, in 2008, and patients in this program pay only 5-10% of their medical costs. Therefore, the most affected individuals are registered in ICBP. We followed those cancer patients until the end of December 2019. Cancer survivors were defined as cancer patients who have lived longer than 5 years without developing other cancers besides the first diagnosed cancers. SMCS was defined as a newly diagnosed distinct cancer type after 5-years of the primary cancer diagnosis (cancer at the same site as the initial one was not considered). We hypothesized that the

combination of cancer types frequently observed in younger compared to older individuals is related to hereditary cancer. To validate this hypothesis, cancer patients with HMCS were defined based on a diagnosis with specific combinations of cancer types and more often diagnosed at a younger age for the first cancer. Therefore, we collected all information on diagnosed cancer types in cancer patients during the study period and included patients with two or more cancers. We then defined the combinations of multiple cancer types and categorized younger and older age groups depending on their age at the first cancer diagnosis.

Statistical analysis

To investigate a potentially increased risk of secondary cancer in cancer survivors compared to the general Korean population, we calculated the age-standardized incidence ratio (SIR) by primary cancer type and sex, using the Korean National Cancer Statistics 2015,[11] the median time point of the present cohort as the reference values. The 95% confidence interval (CI) of the SIR was calculated using the Poisson distribution. For each primary cancer, the high-risk SMCS was defined when the SIR was statistically significantly greater than 1.

To identify the HMCS candidates, the relative risk (RR) of each combination of cancers in younger compared to older individuals was calculated. For patients with two distinct cancer types, younger and older individuals were defined as being younger and older than 10-years from the median age at diagnosis for each first cancer,[12-15] respectively, by sex (S1 Table 1). Considering the complexity of combinations and small sample sizes of patients with three or more distinct cancers, the younger and older individuals were defined as being $<$ and ≥ 50 years based on the age at first cancer diagnosis.[16, 17] The ratio was compared to that of patients with multiple cancers (n=60,648) by sex, and the order of cancer diagnosis was not considered. Combinations of cancers with over 5 cases were statistically analyzed. A two-sided p-value <0.05 was considered statistically significant. SAS Enterprise Guide version 9.4 (SAS

Institute Inc., Cary, NC, USA) was used for all statistical analyses.

RESULTS

Population

A total of 371,181 patients were diagnosed with primary cancers between 2009 and 2010 and followed up in 3,008,274 person-years. Table 1 shows the detailed number of enrolled patients by primary cancer types, and the proportions by cancer type were similar to those in Korean cancer statistics.[18] After excluding 76,103 deaths and 28,837 cases with additional cancers within 5 years, there were 266,241 cancer survivors and 7,348 of these (2.76%, 2,759.9 person/100,000 population) were diagnosed with secondary cancer. This rate is substantially higher than the most recent Korean cancer statistics in 2019; 475.3 person/100,000 population of incidence rate for primary cancer in the overall Korean population.[18]

There were 60,648 cancer patients diagnosed with two or more distinct cancer types during follow-up; 50,561 patients had two distinct cancers and 10,087 patients had three or more distinct cancers (Figure 1).

SMCS

The risk of secondary cancer was highest in laryngeal cancer survivors (9.03%, Table 2) and lowest in multiple myeloma survivors (0.63%). There was no significant correlation between the percentage of survivors according to cancer type and the risk of SMCS with cancer (pearson's correlation $p=0.512$). In breast cancer survivors, the risk of secondary cancer was higher in male patients compared to female patients ($p=0.002$).

The most frequent SMCS were lung, prostate, stomach, colo-rectum, and liver cancers in male patients; and breast, lung, stomach, colo-rectum, and thyroid cancers in female patients (S1 Tables 2 and 3). These cancers were the most frequent primary cancers by sex in Korea.[18]

Contrarily, the landscape of high-risk SMCS differed from that in the general population: the risk of prostate cancer was 7.931 times higher in male breast cancer survivors, while the risk of lung cancer was 10.093 times higher in female laryngeal cancer survivors compared to the general population (Figure 2A and B, S1 table 4 and 5). The frequently observed high-risk secondary cancers in male and female cancer survivors were prostate, bladder, and lung cancers; and pancreas and lung cancers, respectively. The risk of prostate cancer as a secondary cancer compared to that in the general population was increased in male survivors of stomach, colorectum, breast, kidney, and thyroid cancers, while the risk of pancreas cancer as a secondary cancer was increased in survivors of colo-rectum, breast, kidney, thyroid cancer, and non-Hodgkin lymphoma in female. In addition, some cancer types were highly associated with each other regardless of the order of diagnosis; in male patients, the risk of cancer of the head & neck/esophagus, and larynx/bladder were high (SIRs; 5.556/6.357 and 2.657/2.698, respectively, Figure 2A), suggesting that smoking could affect even secondary cancers because these are all smoking-related cancers.[19] The risk of cancer of the breast/uterus (possibly due to hormonal effect) and non-Hodgkin lymphoma/leukemia (possibly due to chemotherapy effect),[20] was high in female patients (SIRs; 2.82/1.757 and 7.05/8.553, respectively, Figure 2B).

Susceptibility to HMCS

Table 3 shows the risk of the combination of double cancers in younger individuals, defined as being 10-years younger than the median age at the first cancer diagnosis, by sex. Expectedly, the risk of well-known Lynch syndrome-related double cancers in male patients (stomach and colo-rectum, RR: 1.48, 95% CI: 1.197-1.839, $p < 0.001$) and in female patients (hereditary breast and ovarian cancer syndrome [HBOC]-related cancers [breast-ovary and ovary-breast, RR: 1.70 and 2.38, $p = 0.03$; $p = 0.01$, by order of cancers, respectively]) was higher among

younger compared to older patients. This suggests that this epidemiologic approach to identify hereditary cancer syndrome, which targeted younger patients with multiple cancers, is reasonable. Some cancer combinations were significantly frequent in younger patients with double primary cancers regardless of the order of diagnosis. The risks of liver-brain, brain-liver cancers, and brain-thyroid, thyroid-brain cancers were higher in male patients (Table 3), while the risk of combinations of breast and cervix, breast and thyroid, cervix and thyroid, and uterus and thyroid were higher in female patients. These combinations could be possible candidates of HMCS; however, the age of onset for secondary cancers might affect this analysis (Table 3 and S1 Table1).

Table 4 shows the risk of cancer combinations in patients with three or more cancers in the younger (<50-years) compared to older (\geq 50-years) age groups. In male patients, colo-rectum, pancreatic, and stomach cancer, which are Lynch syndrome-related cancers, were mainly observed. There was a higher risk of triple cancers including Hodgkin/non-Hodgkin lymphoma and leukemia in younger patients; however, age could be a confounder in this result because of the younger age at onset of those cancers (S1 Table 1). Triple cancers involving the liver, lung, and brain were frequently observed before the age of 50 years and the combination could be a candidate for novel HMCS because liver-brain and lung-brain cancers also showed high risk in younger patients with double cancers (Table 3). Lynch (colo-rectum, uterus, and pancreas) and HBOC syndrome (breast, ovary, and pancreas)-related cancers were mainly observed in female patients. In addition, thyroid cancer with cancers of the female organs (breast, ovary, and cervix) and colo-rectum were frequently observed, and these could be related to Cowden syndrome caused by *PTEN* germline mutation. Triple cancers involving the lung, breast, and brain were 2.792 times more frequent before the age of 50 years. As combinations of these cancers also showed high risk in younger patients with double cancers, they could be candidates for novel HMCS (Tables 3 and 4). Considering the above results,

multiple cancers of the stomach, colo-rectum, pancreas, prostate, liver, lung, and brain in male patients; and colo-rectum, uterus, cervix, ovary, breast, lung, brain, and thyroid in female patients, could be candidates for HMCS.

DISCUSSION

The present results showed that the risk of secondary cancer was higher among cancer survivors than in those with primary cancers in the general population; thus, careful cancer screening and preventative strategy is necessary for cancer survivors. In addition, common cancers were mainly observed even in cancer survivors, implying that the focus of cancer screening should also be on common cancer types among cancer survivors. However, high-risk secondary cancer types varied by sex and primary cancer type, suggesting that further consideration to tailor cancer screening for cancer survivors is required. For example, lung and bladder cancers were frequently observed as high-risk secondary cancers in cancer survivors of both sexes; and prostate and pancreatic cancer risks were mainly high in male and female survivors, respectively. Therefore, ultrasonography, tumor markers such as prostate-specific antigen (PSA) and cancer antigen (CA)19-9 for prostate/pancreatic/bladder cancer screening, and chest X-ray or low-dose computed tomography for lung cancer screening[21] need to be considered for cancer survivors with specific primary cancers. Based on the present results, a cancer type- and sex-specific national cancer screening program for cancer survivors could be developed and the benefit of new tailored screening programs for cancer survivors needs to be evaluated by further studies.

Strong associations between head and neck/esophagus and larynx/bladder cancers were observed – these are well-known smoking-related cancers.[19, 22] Smoking is one of the strongest carcinogens causing various cancers, and smoking cessation reduces the risk of cancer and improves the survival of cancer patients even after the cancer diagnosis.[23, 24]

Therefore, quitting smoking is especially crucial for cancer survivors not only to improve survival but also to prevent high-risk secondary cancers. However, it seems that smoking cessation interventions for cancer survivors have not been successful.[25, 26] Clinicians need to communicate with and educate cancer survivors regarding the high risk of secondary cancer and guide smoking cessation. Considering that smoking cessation services are mainly provided by primary physicians, collaboration between oncologists and primary physicians is essential to provide high-quality comprehensive smoking cessation intervention.[27]

Hereditary cancer syndrome, caused by inherited DNA pathogenic variant in cancer predisposition gene, is related to high-risk and early-onset cancer occurrence, and a half of first-degree family members have a similar risk of cancer. In addition, hereditary cancer syndrome sometimes presents as multiple cancers in individuals. Therefore, the identification of hereditary cancer syndrome is clinically important for both cancer prevention and treatment.[28] The HBOC and Lynch syndrome, harboring germline mutation in *BRCA1/2* and mismatch repair-related genes, are well-known hereditary cancer syndrome related to breast-ovary and various cancers including colon cancer, respectively. The present study showed that multiple cancers in HBOC and Lynch-related sites, breast/ovary/pancreas, and stomach/colon/uterus/prostate/pancreas are frequently observed in younger compared to older groups among patients with multiple cancers. A previous study showed that genetic predisposition is mainly observed in younger rather than older patients with Lynch-related multiple cancers,[10] and HMCS may be mainly observed in younger patients. Therefore, our epidemiologic approach could be a guide to discovering novel hereditary cancer syndrome expressed as multiple cancers, HMCS. We found combinations such as lung, brain, and liver cancers, which are not well-known HBOC and Lynch-related cancers, in young patients with multiple cancers. Because the spectrum of Lynch syndrome is wide,[29] these multiple cancers also could be related to Lynch syndrome; conversely, they could be a novel HMCS caused by

other cancer predisposition genes. A whole-genome-wide study targeting patients with these combinations of multiple cancers focusing on younger-age onset is worth investigating.

There is evidence that cancer could be prevented even in hereditary cancer syndrome. Hormonal therapy such as tamoxifen could reduce the risk of breast cancer in patients with *BRCA1/2* mutation carriers.[30, 31] The preventive effect of aspirin to reduce the risk of colorectal cancer in Lynch syndrome has been reported,[32] however, its benefit is unclear for other cancer types. Considering that a recent large genomic cohort study showed that the spectrum of Lynch syndrome is wider than expected,[29] further studies to evaluate the benefit of aspirin for other cancer types should be conducted. Recently, it was reported that a frameshift peptide neoantigen-based vaccine to prevent cancer in Lynch syndrome is tolerated in humans.[33] Therefore, it could be used as a preventive treatment for Lynch syndrome along with aspirin in the future. If hereditary cancer is preventable, early diagnosis of hereditary cancer syndrome may become increasingly important. Developing DNA sequencing technology can make early detection possible at the clinic and popularize the concept of genetic disease.[34] Furthermore, despite the possible disadvantage of genetic screening including false-positives or findings of unknown significance that could increase anxiety and unnecessary clinical examinations, active genetic screening for high-risk patients is still worthwhile.[29] Based on the present study results, patients with multiple cancers, especially younger patients, are good candidates for genetic evaluation, especially candidates with combinations of HMCS.

An interesting association was observed in male breast cancer survivors; they had high-risk prostate cancer as the secondary cancer. The positive association of the two cancers, which has been reported in male patients,[35, 36] could be explained by two hypotheses.[37] 1) It was reported that 4%-40% of male breast cancer patients harbor *BRCA2* germline mutation.[38, 39] *BRCA1/2* mutation causes both breast and prostate cancers; therefore, high-risk prostate cancer

in male breast cancer survivors could be related to the germline susceptibility.[40, 41] 2) Most male breast cancers are estrogen receptor-positive, implying that they are good candidates for hormonal treatment; therefore, they can be treated with aromatase inhibitors at the clinic.[36, 42] The suppressed estrogen could cause an imbalance of estrogen and testosterone and hypothetically increase the risk of prostate cancer.[43] This association suggests the necessity of germline testing and careful prostate cancer screening in male breast cancer survivors.

This is the first comprehensive epidemiologic study that covered various cancer types focusing on secondary cancer in cancer survivors. Despite the novel findings, some limitations need to be addressed. The risk of secondary cancer could be under-estimated in cancer survivors who develop cancers with high risk of mortality, such as pancreatic and lung cancers. We could not consider the effect of chemotherapy or radiation therapy that could be related to the incidence of some specific cancers.[44] This is largely attributed to the limitation of accessible data, due to the HIRA policy. We also could not consider family cancer history because the HIRA do not cover the information. Detailed histologic or molecular types of each cancer could not be considered. Some minor malignancies that could have related genetic susceptibility, such as pheochromocytoma and paraganglioma syndrome,[45] could not be evaluated, because they were classified as other cancers (other C00-96) and excluded from the analysis.

Conclusion

Cancer survivors harbor more high-risk secondary cancers than the general population. Because the high-risk secondary cancers varied by primary cancer type, tailored cancer screening is necessary for cancer survivors. Genetic screening needs to be considered for younger patients with multiple cancers to validate the genetic predisposition.

Acknowledgements

None

REFERENCES

1. Siegel RL, Miller KD, Fuchs HE, Jemal A. Cancer statistics, 2022. *CA Cancer J Clin*. 2022;72(1):7-33. Epub 2022/01/13. doi: 10.3322/caac.21708. PubMed PMID: 35020204.
2. Miller KD, Nogueira L, Mariotto AB, Rowland JH, Yabroff KR, Alfano CM, et al. Cancer treatment and survivorship statistics, 2019. *CA Cancer J Clin*. 2019;69(5):363-85. Epub 2019/06/12. doi: 10.3322/caac.21565. PubMed PMID: 31184787.
3. Morton LM, Onel K, Curtis RE, Hungate EA, Armstrong GT. The rising incidence of second cancers: patterns of occurrence and identification of risk factors for children and adults. *Am Soc Clin Oncol Educ Book*. 2014:e57-67. Epub 2014/05/27. doi: 10.14694/EdBook_AM.2014.34.e57. PubMed PMID: 24857148.
4. Ho J, Kim E, Han M, Jung I, Lee J, Jo YS. Impact of Dyslipidemia on the Risk of Second Cancer in Thyroid Cancer Patients: A Korean National Cohort Study. *Ann Surg Oncol*. 2021;28(8):4373-84. Epub 2021/01/24. doi: 10.1245/s10434-020-09570-8. PubMed PMID: 33483844.
5. Yun SJ, Bae JM, Kim H, Park BC, Kim JS, Seo SH, et al. Non-melanoma skin cancer as a clinical marker for internal malignancies: a nationwide population-based cohort study. *J Eur Acad Dermatol Venereol*. 2020;34(4):746-53. Epub 2019/09/09. doi: 10.1111/jdv.15936. PubMed PMID: 31494979.
6. Nam K, Shin JE. Risk factors of advanced metachronous neoplasms in surveillance after colon cancer resection. *Korean J Intern Med*. 2021;36(2):305-12. Epub 2020/04/21. doi: 10.3904/kjim.2019.053. PubMed PMID: 32306711; PubMed Central PMCID: PMC7969076.
7. Vogt A, Schmid S, Heinimann K, Frick H, Herrmann C, Cerny T, et al. Multiple primary tumours: challenges and approaches, a review. *ESMO Open*. 2017;2(2):e000172. Epub 2017/08/02. doi: 10.1136/esmooopen-2017-000172. PubMed PMID: 28761745; PubMed

Central PMCID: PMCPMC5519797.

8. Whitworth J, Hoffman J, Chapman C, Ong KR, Lalloo F, Evans DG, et al. A clinical and genetic analysis of multiple primary cancer referrals to genetics services. *Eur J Hum Genet*. 2015;23(5):581-7. Epub 2014/09/25. doi: 10.1038/ejhg.2014.157. PubMed PMID: 25248401; PubMed Central PMCID: PMCPMC4402633.
9. Cybulski C, Nazarali S, Narod SA. Multiple primary cancers as a guide to heritability. *Int J Cancer*. 2014;135(8):1756-63. Epub 2014/06/20. doi: 10.1002/ijc.28988. PubMed PMID: 24945890.
10. Choi YY, Shin SJ, Lee JE, Madlensky L, Lee ST, Park JS, et al. Prevalence of cancer susceptibility variants in patients with multiple Lynch syndrome related cancers. *Sci Rep*. 2021;11(1):14807. Epub 2021/07/22. doi: 10.1038/s41598-021-94292-4. PubMed PMID: 34285288; PubMed Central PMCID: PMCPMC8292343.
11. Jung KW, Won YJ, Kong HJ, Lee ES, Community of Population-Based Regional Cancer R. Cancer Statistics in Korea: Incidence, Mortality, Survival, and Prevalence in 2015. *Cancer Res Treat*. 2018;50(2):303-16. Epub 2018/03/24. doi: 10.4143/crt.2018.143. PubMed PMID: 29566481; PubMed Central PMCID: PMCPMC5912151.
12. Chubb D, Broderick P, Frampton M, Kinnersley B, Sherborne A, Penegar S, et al. Genetic diagnosis of high-penetrance susceptibility for colorectal cancer (CRC) is achievable for a high proportion of familial CRC by exome sequencing. *J Clin Oncol*. 2015;33(5):426-32. Epub 2015/01/07. doi: 10.1200/JCO.2014.56.5689. PubMed PMID: 25559809.
13. Brandt A, Bermejo JL, Sundquist J, Hemminki K. Age of onset in familial breast cancer as background data for medical surveillance. *Br J Cancer*. 2010;102(1):42-7. Epub 2009/11/12. doi: 10.1038/sj.bjc.6605421. PubMed PMID: 19904271; PubMed Central PMCID: PMCPMC2813740.
14. Garber JE, Offit K. Hereditary cancer predisposition syndromes. *J Clin Oncol*.

2005;23(2):276-92. Epub 2005/01/08. doi: 10.1200/JCO.2005.10.042. PubMed PMID: 15637391.

15. Brandt A, Bermejo JL, Sundquist J, Hemminki K. Age of onset in familial cancer. *Ann Oncol*. 2008;19(12):2084-8. Epub 2008/07/26. doi: 10.1093/annonc/mdn527. PubMed PMID: 18653701; PubMed Central PMCID: PMCPMC2733121.

16. Moller P, Seppala T, Bernstein I, Holinski-Feder E, Sala P, Evans DG, et al. Cancer incidence and survival in Lynch syndrome patients receiving colonoscopic and gynaecological surveillance: first report from the prospective Lynch syndrome database. *Gut*. 2017;66(3):464-72. Epub 2015/12/15. doi: 10.1136/gutjnl-2015-309675. PubMed PMID: 26657901; PubMed Central PMCID: PMCPMC5534760.

17. Okano M, Nomizu T, Tachibana K, Nagatsuka M, Matsuzaki M, Katagata N, et al. The relationship between BRCA-associated breast cancer and age factors: an analysis of the Japanese HBOC consortium database. *J Hum Genet*. 2021;66(3):307-14. Epub 2020/10/14. doi: 10.1038/s10038-020-00849-y. PubMed PMID: 33046835; PubMed Central PMCID: PMCPMC7843417.

18. Kang MJ, Won YJ, Lee JJ, Jung KW, Kim HJ, Kong HJ, et al. Cancer Statistics in Korea: Incidence, Mortality, Survival, and Prevalence in 2019. *Cancer Res Treat*. 2022;54(2):330-44. Epub 2022/03/22. doi: 10.4143/crt.2022.128. PubMed PMID: 35313102; PubMed Central PMCID: PMCPMC9016309.

19. Warren GW, Cummings KM. Tobacco and lung cancer: risks, trends, and outcomes in patients with cancer. *Am Soc Clin Oncol Educ Book*. 2013:359-64. Epub 2013/05/30. doi: 10.1200/EdBook_AM.2013.33.359
10.14694/EdBook_AM.2013.33.359. PubMed PMID: 23714547.

20. Mudie NY, Swerdlow AJ, Higgins CD, Smith P, Qiao Z, Hancock BW, et al. Risk of second malignancy after non-Hodgkin's lymphoma: a British Cohort Study. *J Clin Oncol*.

2006;24(10):1568-74. Epub 2006/03/08. doi: 10.1200/JCO.2005.04.2200. PubMed PMID: 16520465.

21. Park J, Lee J, Kim Y. Public opinion on implementing the National Lung Cancer Screening Program in Korea. *Transl Lung Cancer Res.* 2021;10(3):1355-67. Epub 2021/04/24. doi: 10.21037/tlcr-20-865. PubMed PMID: 33889515; PubMed Central PMCID: PMC8044494.

22. Ray G, Henson DE, Schwartz AM. Cigarette smoking as a cause of cancers other than lung cancer: an exploratory study using the Surveillance, Epidemiology, and End Results Program. *Chest.* 2010;138(3):491-9. Epub 2010/02/16. doi: 10.1378/chest.09-1909. PubMed PMID: 20154072.

23. Ordonez-Mena JM, Schottker B, Mons U, Jenab M, Freisling H, Bueno-de-Mesquita B, et al. Quantification of the smoking-associated cancer risk with rate advancement periods: meta-analysis of individual participant data from cohorts of the CHANCES consortium. *BMC Med.* 2016;14:62. Epub 2016/04/06. doi: 10.1186/s12916-016-0607-5. PubMed PMID: 27044418; PubMed Central PMCID: PMC4820956.

24. Caini S, Del Riccio M, Vettori V, Scotti V, Martinoli C, Raimondi S, et al. Quitting Smoking At or Around Diagnosis Improves the Overall Survival of Lung Cancer Patients: A Systematic Review and Meta-Analysis. *J Thorac Oncol.* 2022;17(5):623-36. Epub 2022/01/08. doi: 10.1016/j.jtho.2021.12.005. PubMed PMID: 34995798.

25. McCarter K, Martinez U, Britton B, Baker A, Bonevski B, Carter G, et al. Smoking cessation care among patients with head and neck cancer: a systematic review. *BMJ Open.* 2016;6(9):e012296. Epub 2016/09/22. doi: 10.1136/bmjopen-2016-012296. PubMed PMID: 27650767; PubMed Central PMCID: PMC5051538.

26. Sheeran P, Jones K, Avishai A, Symes YR, Abraham C, Miles E, et al. What works in smoking cessation interventions for cancer survivors? A meta-analysis. *Health Psychol.*

2019;38(10):855-65. Epub 2019/07/02. doi: 10.1037/hea0000757. PubMed PMID: 31259596.

27. Cho YG. Smoking Cessation in Cancer Survivors. *Korean J Fam Med*. 2021;42(4):258-9. Epub 2021/07/30. doi: 10.4082/kjfm.42.4E. PubMed PMID: 34320793; PubMed Central PMCID: PMCPCMC8321901.

28. Rahman N. Realizing the promise of cancer predisposition genes. *Nature*. 2014;505(7483):302-8. Epub 2014/01/17. doi: 10.1038/nature12981. PubMed PMID: 24429628; PubMed Central PMCID: PMCPCMC4975511.

29. Latham A, Srinivasan P, Kemel Y, Shia J, Bandlamudi C, Mandelker D, et al. Microsatellite Instability Is Associated With the Presence of Lynch Syndrome Pan-Cancer. *J Clin Oncol*. 2019;37(4):286-95. Epub 2018/10/31. doi: 10.1200/JCO.18.00283. PubMed PMID: 30376427; PubMed Central PMCID: PMCPCMC6553803.

30. Gronwald J, Tung N, Foulkes WD, Offit K, Gershoni R, Daly M, et al. Tamoxifen and contralateral breast cancer in BRCA1 and BRCA2 carriers: an update. *Int J Cancer*. 2006;118(9):2281-4. Epub 2005/12/07. doi: 10.1002/ijc.21536. PubMed PMID: 16331614.

31. Phillips KA, Milne RL, Rookus MA, Daly MB, Antoniou AC, Peock S, et al. Tamoxifen and risk of contralateral breast cancer for BRCA1 and BRCA2 mutation carriers. *J Clin Oncol*. 2013;31(25):3091-9. Epub 2013/08/07. doi: 10.1200/JCO.2012.47.8313. PubMed PMID: 23918944; PubMed Central PMCID: PMCPCMC3753701.

32. Burn J, Sheth H, Elliott F, Reed L, Macrae F, Mecklin JP, et al. Cancer prevention with aspirin in hereditary colorectal cancer (Lynch syndrome), 10-year follow-up and registry-based 20-year data in the CAPP2 study: a double-blind, randomised, placebo-controlled trial. *Lancet*. 2020;395(10240):1855-63. Epub 2020/06/15. doi: 10.1016/S0140-6736(20)30366-4. PubMed PMID: 32534647; PubMed Central PMCID: PMCPCMC7294238.

33. Kloor M, Reuschenbach M, Pauligk C, Karbach J, Rafiyan MR, Al-Batran SE, et al. A Frameshift Peptide Neoantigen-Based Vaccine for Mismatch Repair-Deficient Cancers: A

Phase I/IIa Clinical Trial. *Clin Cancer Res.* 2020;26(17):4503-10. Epub 2020/06/17. doi: 10.1158/1078-0432.CCR-19-3517. PubMed PMID: 32540851.

34. Mersch J, Brown N, Pirzadeh-Miller S, Mundt E, Cox HC, Brown K, et al. Prevalence of Variant Reclassification Following Hereditary Cancer Genetic Testing. *JAMA.* 2018;320(12):1266-74. Epub 2018/09/29. doi: 10.1001/jama.2018.13152. PubMed PMID: 30264118; PubMed Central PMCID: PMC6233618.

35. Thellenberg C, Malmer B, Tavelin B, Gronberg H. Second primary cancers in men with prostate cancer: an increased risk of male breast cancer. *J Urol.* 2003;169(4):1345-8. Epub 2003/03/12. doi: 10.1097/01.ju.0000056706.88960.7c. PubMed PMID: 12629357.

36. Lee UJ, Jones JS. Incidence of prostate cancer in male breast cancer patients: a risk factor for prostate cancer screening. *Prostate Cancer Prostatic Dis.* 2009;12(1):52-6. Epub 2008/05/28. doi: 10.1038/pcan.2008.26. PubMed PMID: 18504455.

37. Karlsson CT, Malmer B, Wiklund F, Gronberg H. Breast cancer as a second primary in patients with prostate cancer--estrogen treatment or association with family history of cancer? *J Urol.* 2006;176(2):538-43. Epub 2006/07/04. doi: 10.1016/j.juro.2006.03.036. PubMed PMID: 16813884.

38. Diez O, Cortes J, Domenech M, Pericay C, Brunet J, Alonso C, et al. BRCA2 germline mutations in Spanish male breast cancer patients. *Ann Oncol.* 2000;11(1):81-4. Epub 2000/02/26. doi: 10.1023/a:1008339009528. PubMed PMID: 10690392.

39. Thorlacius S, Tryggvadottir L, Olafsdottir GH, Jonasson JG, Ogmundsdottir HM, Tulinius H, et al. Linkage to BRCA2 region in hereditary male breast cancer. *Lancet.* 1995;346(8974):544-5. Epub 1995/08/26. doi: 10.1016/s0140-6736(95)91383-1. PubMed PMID: 7658781.

40. Edwards SM, Kote-Jarai Z, Meitz J, Hamoudi R, Hope Q, Osin P, et al. Two percent of men with early-onset prostate cancer harbor germline mutations in the BRCA2 gene. *Am J*

Hum Genet. 2003;72(1):1-12. Epub 2002/12/11. doi: 10.1086/345310. PubMed PMID: 12474142; PubMed Central PMCID: PMCPMC420008.

41. Friedman LS, Gayther SA, Kurosaki T, Gordon D, Noble B, Casey G, et al. Mutation analysis of BRCA1 and BRCA2 in a male breast cancer population. Am J Hum Genet. 1997;60(2):313-9. Epub 1997/02/01. PubMed PMID: 9012404; PubMed Central PMCID: PMCPMC1712407.

42. Gough DB, Donohue JH, Evans MM, Pernicone PJ, Wold LE, Naessens JM, et al. A 50-year experience of male breast cancer: is outcome changing? Surg Oncol. 1993;2(6):325-33. Epub 1993/12/01. doi: 10.1016/0960-7404(93)90063-5. PubMed PMID: 8130939.

43. Terris MK, McCallum SW. Re: Aromatase inhibitors for male infertility. J Urol. 2002;168(4 Pt 1):1509. Epub 2002/09/28. doi: 10.1097/01.ju.0000027875.94736.be. PubMed PMID: 12352445.

44. Travis LB. The epidemiology of second primary cancers. Cancer Epidemiol Biomarkers Prev. 2006;15(11):2020-6. Epub 2006/10/24. doi: 10.1158/1055-9965.EPI-06-0414. PubMed PMID: 17057028.

45. Lefebvre M, Foulkes WD. Pheochromocytoma and paraganglioma syndromes: genetics and management update. Curr Oncol. 2014;21(1):e8-e17. Epub 2014/02/14. doi: 10.3747/co.21.1579. PubMed PMID: 24523625; PubMed Central PMCID: PMCPMC3921052.

Table 1. Number and proportion of patients by primary cancer types in the study cohort

ICD	Primary cancer	No. of patients	Proportion (%)
C00-14	Head & Neck	5,534	1.49
C15	Esophagus	3,702	1.0
C16	Stomach	61,775	16.64
C18-20	Colo-rectum	49,614	13.37
C22	Liver	28,858	7.77
C23-24	GB-biliary	7,332	1.98
C25	Pancreas	7,392	1.99
C32	Larynx	2,468	0.66
C33-34	Lung	32,182	8.67
C50	Breast	34,706	9.35
C53	Cervix	11,144	3.0
C54	Uterus	3,642	0.98
C56	Ovary	4,680	1.26
C61	Prostate	13,539	3.65
C62	Testis	493	0.13
C64	Kidney	7,065	1.9
C67	Bladder	8,592	2.31
C70-72	Brain	5,254	1.42
C73	Thyroid	69,211	18.65
C81	Hodgkin lymphoma	455	0.12
C82-86, C96	Non-Hodgkin lymphoma	7,001	1.89
C90	Multiple myeloma	1,942	0.52
C91-95	Leukemia	4,600	1.24
Total		371,181	100

ICD; International Classification of Diseases, GB; gallbladder

Table 2. Number and proportion of patients with secondary cancers at other anatomical sites among cancer survivors

Primary cancer	Overall			Male			Female		
	No. of patients	No. of Survivors	Proportion (%)	No. of patients	No. of Survivors	Proportion (%)	No. of patients	No. of Survivors	Proportion (%)
Head and neck	120	3,491	3.44	95	2,315	4.10	25	1,176	2.13
Esophagus	67	1,596	4.20	63	1,458	4.32	4	138	2.90
Stomach	1,652	45,347	3.64	1,286	30,165	4.26	366	15,182	2.41
Colo-rectum	1,465	36,618	4.00	1,071	22,008	4.87	394	14,610	2.70
Liver	170	13,178	1.29	129	10,116	1.28	41	3,062	1.34
GB-biliary	74	2,683	2.76	44	1,334	3.30	30	1,349	2.22
pancreas	38	2,628	1.45	26	1,420	1.83	12	1,208	0.99
Larynx	139	1,540	9.03	132	1,438	9.18	7	102	6.86
Lung	207	14,559	1.42	158	10,349	1.53	49	4,210	1.16
Breast	607	29,977	2.02	8	111	7.21	599	29,866	2.01
Cervix	222	8,901	2.49	NA	NA	NA	222	8,901	2.49
Uterus	80	2,529	3.16	NA	NA	NA	80	2,529	3.16
Ovary	80	3,089	2.59	NA	NA	NA	80	3,089	2.59
Prostate	362	10,628	3.41	362	10,628	3.41	NA	NA	NA
Testis	6	408	1.47	6	408	1.47	NA	NA	NA
Kidney	210	5,221	4.02	156	3,482	4.48	54	1,739	3.11
Bladder	289	6,179	4.68	252	5,033	5.01	37	1,146	3.23
Brain	63	3,500	1.80	23	1,687	1.36	40	1,813	2.21
Thyroid	1,322	66,087	2.00	300	10,515	2.85	1022	55,572	1.84
Hodgkin lymphoma	5	246	2.03	3	164	1.83	2	82	2.44
Non-Hodgkin lymphoma	133	4,349	3.06	76	2,358	3.22	57	1,991	2.86
Multiple myeloma	6	948	0.63	3	491	0.61	3	457	0.66
Leukemia	31	2,539	1.22	14	1,409	0.99	17	1,130	1.50
Total	7,348	266,241	2.76	4,207	116,889	3.60	3,141	149,352	2.10

P; proportion, GB; gallbladder

Table 3. Relative risk of combination of double primary cancers in younger compared to older patients

Male					Female				
First cancer type	Second cancer type	RR	95% CI	p-value	First cancer type	Second cancer type	RR	95% CI	p-value
Head and neck	Thyroid	2.92	(1.178-7.22)	0.02	Head & Neck	Brain	6.71	(1.502-30.01)	0.01
Esophagus	Head and neck	3.64	(1.095-12.111)	0.04	Head & Neck	Thyroid	2.17	(1.082-4.351)	0.03
Stomach	Colo-rectum	1.48	(1.197-1.839)	<0.001	Stomach	Breast	4.17	(2.411-7.223)	<0.001
Stomach	Brain	3.51	(1.376-8.928)	0.01	Stomach	Ovary	10.63	(4.35-25.997)	<0.001
Stomach	Thyroid	12.04	(3.805-38.083)	<0.001	Stomach	Thyroid	5.11	(3.228-8.099)	<0.001
Stomach	Non-Hodgkin lymphoma	2.60	(1.329-5.097)	0.01	Colo-rectum	Breast	4.82	(2.655-8.75)	<0.001
Colo-rectum	Liver	1.93	(1.519-2.447)	<0.001	Colo-rectum	Uterus	3.85	(1.822-8.134)	<0.001
Colo-rectum	Thyroid	11.96	(4.378-32.649)	<0.001	Colo-rectum	Ovary	3.76	(2.226-6.337)	<0.001
Liver	Brain	4.30	(1.645-11.224)	<0.001	Colo-rectum	Thyroid	2.74	(1.833-4.084)	<0.001
Liver	Thyroid	4.36	(1.26-15.087)	0.02	Liver	Lung	2.04	(1.109-3.74)	0.02
Lung	Brain	2.45	(1.584-3.78)	<0.001	Liver	Breast	4.78	(1.091-20.952)	0.04
Kidney	Thyroid	3.65	(1.512-8.803)	<0.001	Lung	Breast	4.27	(1.7-10.741)	<0.001
Bladder	Kidney	2.64	(1.061-6.577)	0.04	Lung	Brain	2.11	(1.431-3.112)	<0.001
Brain	Liver	4.94	(1.122-21.704)	0.04	Breast	Cervix	1.91	(1.043-3.509)	0.04
Brain	Thyroid	10.77	(1.426-81.266)	0.02	Breast	Uterus	2.07	(1.025-4.194)	0.04
Brain	Non-Hodgkin lymphoma	5.16	(1.85-14.384)	<0.001	Breast	Ovary	1.70	(1.052-2.737)	0.03
Thyroid	Kidney	5.78	(1.958-17.072)	<0.001	Breast	Brain	2.35	(1.504-3.658)	<0.001
Thyroid	Brain	6.94	(1.521-31.649)	0.01	Breast	Thyroid	1.96	(1.647-2.336)	<0.001
Thyroid	Non-Hodgkin lymphoma	2.83	(1.069-7.473)	0.04	Cervix	Breast	2.01	(1.2-3.369)	0.01
Thyroid	Leukemia	6.17	(1.771-21.473)	<0.001	Cervix	Ovary	1.58	(1.069-2.344)	0.02
Non-Hodgkin lymphoma	Hodgkin lymphoma	2.77	(1.563-4.899)	<0.001	Cervix	Thyroid	4.99	(3.097-8.03)	<0.001
Non-Hodgkin lymphoma	Leukemia	1.73	(1.029-2.904)	0.04	Uterus	Ovary	1.95	(1.204-3.155)	0.01
					Uterus	Thyroid	2.44	(1.215-4.884)	0.01

	Ovary	Breast	2.38	(1.294-4.37)	0.01
	Ovary	Thyroid	9.15	(2.756-30.355)	<0.001
	kidney	Breast	4.20	(1.502-11.722)	0.01
	kidney	Thyroid	13.43	(3.33-54.131)	<0.001
	Brain	Thyroid	5.84	(1.793-18.992)	<0.001
	Thyroid	Breast	3.19	(2.696-3.771)	<0.001
	Thyroid	Cervix	2.05	(1.237-3.387)	0.01
	Thyroid	Uterus	5.31	(2.004-14.078)	<0.001
	Non-Hodgkin lymphoma	Hodgkin lymphoma	1.95	(1.039-3.669)	0.04

Younger and older age was defined as 10-years younger and older than the median age of first cancer, respectively. Bold text indicates that the combination of cancer types was significantly frequent in younger double primary cancer patients, regardless of order.

RR; relative risk, CI; confidence interval

Table 4. High-risk combination of multiple cancers in younger (<50 years old) compared to older (≥50 years) patients with three or more primary cancers

	Cancer types[†]	No. of distinct cancer types	No. of patients < 50years (%)[‡]	No. of patients ≥50 years (%)	RR (95% CI) *	p-value
Male	Colo-rectum/Liver/GB-biliary/Pancreas	4	8 (20.5)	31 (79.5)	2.473 (1.138-5.376)	0.027
	Stomach/Colo-rectum/Pancreas	3	36 (16.9)	177 (83.1)	1.949 (1.365-2.784)	0.001
	Hodgkin/Non-Hodgkin lymphoma/Leukemia	3	7 (63.6)	4 (36.4)	16.771 (4.912-57.261)	<0.001
	Pancreas/Prostate/Brain	3	7 (41.2)	10 (58.8)	6.709 (2.555-17.612)	0.001
	Liver/Lung/Brain	3	6 (25.0)	18 (75.0)	3.195 (1.269-8.042)	0.021
Female	Colo-rectum/Cervix/Uterus/Ovary	4	7 (70.0)	3 (30.0)	6.162 (1.594-23.822)	0.006
	Colo-rectum/Pancreas/Uterus/Ovary	4	6 (60.0)	4 (40.0)	3.961 (1.118-14.033)	0.031
	Colo-rectum/Pancreas/Ovary	3	25 (44.6)	31 (55.4)	2.130 (1.258-3.604)	0.006
	Lung/Breast/Brain	3	19 (51.4)	18 (48.6)	0.612 (0.372-1.007)	0.057
	Breast/Ovary/Thyroid	3	11 (57.9)	8 (42.1)	2.788 (1.464-5.308)	0.003
	Colo-rectum/Breast/Ovary	3	11 (52.4)	10 (47.6)	3.631 (1.461-9.024)	0.007
	Breast/Uterus/Ovary	3	10 (50.0)	10 (50.0)	2.905 (1.234-6.837)	0.024
	Head and Neck/Breast/Thyroid	3	10 (66.7)	5 (33.3)	2.641 (1.100-6.342)	0.041
	Colo-rectum/Ovary/Thyroid	3	10 (50.0)	10 (50.0)	5.282 (1.806-15.447)	0.002
	Breast/Cervix/Thyroid	3	8 (66.7)	4 (33.3)	2.641 (1.100-6.342)	0.041
	Pancreas/Cervix/Ovary	3	8 (57.1)	6 (42.9)	5.282 (1.591-17.534)	0.005
	Cervix/Ovary/Thyroid	3	6 (66.7)	3 (33.3)	3.521 (1.222-10.144)	0.03

RR; relative risk, CI; confidence interval

[†] The cancer types regardless of the occurred order

[‡] The age at first cancer diagnosis

*Relative risk was calculated by comparison of the proportion for those aged <50 years (n=60,648 patients) with two or more cancers, by sex.

There were 3,355 (9.4%) out of 35,508 and 6,905 (27.5%) out of 25,140 male and female patients, respectively, who were diagnosed with cancer

before the age of 50 years. Only statistically significant combinations are reported.

Figure legends

Figure 1. Flow diagram for patient selection.

Figure 2. The heatmap for risk of secondary cancers in cancer survivors of A) male and B) female. The number represents age-standardized incidence ratio (SIR) compared to the primary cancer in general Korean population. The intensity of the color represents the SIR and bold square represents the cancer types that were significantly associated with each other regardless of the order of diagnosis. Only statistically significant combinations are presented.

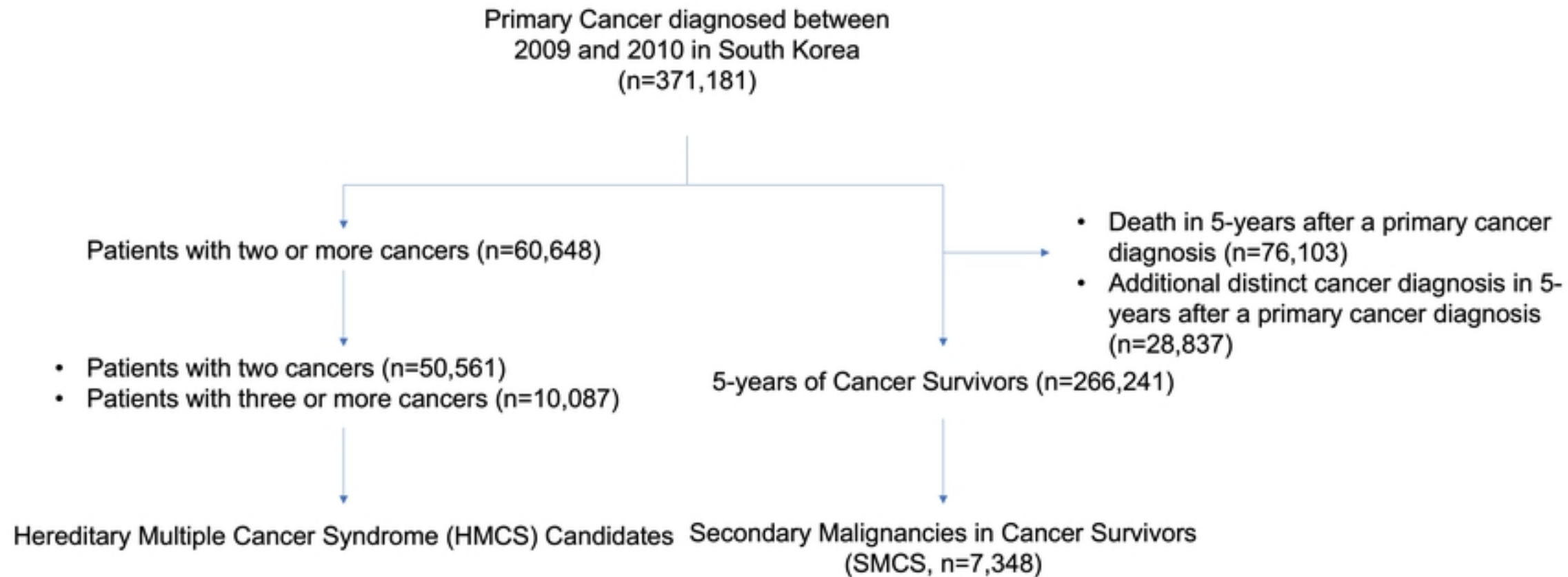


Figure 1

		Secondary Cancer																				
		Head and neck	Esophagus	Stomach	Colo-rectum	Liver	GB/biliary	Pancreas	Larynx	Lung	Breast	Prostate	Testis	Kidney	Bladder	Brain	Thyroid	Hodgkin	Non-hodgkin	Multiple myeloma	Leukemia	
Primary Cancer	Head_neck		5.556																			
	Esophagus	6.357																				
	Stomach	1.512					1.412				1.182			1.467							1.614	
	Colo-rectum						1.345			2.514	1.367			1.588	3.503							
	Liver																					
	GB_biliary																					
	Pancreas																					
	Larynx	6.01	4.287	1.65						2.513					2.657							
	Lung																					
	Breast											7.931										
	Prostate																					2.352
	Testis																					
	Kidney							2.841	1.544	1.693		1.68				5.564						
	Bladder								2.698	1.416												
	Brain																					
	Thyroid							2.927		1.596		3.927			3.749							2.951
	Hodgkin																					
	Non-hodgkin																					
	Multiple myeloma																					
	Leukemia																					

Figure 2A

		Secondary Cancer																					
		Head and neck	Esophagus	Stomach	Colo-rectum	Liver	GB/biliary	Pancreas	Larynx	Lung	Breast	Cervix	Uterus	Ovary	Kidney	Bladder	Brain	Thyroid	Hodgkin	Non-hodgkin	Multiple myeloma	Leukemia	
Primary Cancer	Head_neck					3.72																	
	Esophagus						1.544																
	Stomach							1.494					3.841	1.325									
	Colo-rectum																						
	Liver																						
	GB_biliary																			3.749			
	Pancreas																						
	Larynx									10.093													
	Lung																						
	Breast		4.26	1.675		1.648		2.084		1.938			2.82	2.776		3.11	2.242					2.46	
	Cervix									1.851						4.69							
	Uterus										1.757												
	Ovary																						
	Kidney								3.493														
	Bladder																						
	Brain																						
	Thyroid	3.163						1.724		1.828	1.264				2.201	2.575	2.219				2.039	2.658	
	Hodgkin																						
	Non-hodgkin					3.26		3.764															7.05
	Multiple_myeloma																						
Leukemia																				8.553			

Figure 2B