

Pediatric ARDS phenotypes in critical COVID-19: implications for therapies and outcomes.

Jesús Domínguez-Rojas^{1,2,3} (ORCID 0000-0001-6141-6622), Yesica Luna-Delgado⁴, Patrick Caqui-Vilca⁵, Carlos Martel-Ramírez⁵, Miguel Quispe-Chipana⁵, Mario Cruz-Arpi⁵, Noé Atamari-Anahui⁶, Cleotilde Mireya Muñoz Ramírez⁷, Gaudi Quispe Flores¹, Mariela Tello-Pezo⁸, Pablo Cruces^{3,9,10} (ORCID 0000-0001-9337-1254), Pablo Vásquez-Hoyos^{3,11,12} (ORCID 0000-0002-4892-5032), Franco Díaz^{3,9,13} (ORCID 0000-0003-4763-074X)

1. Hospital Nacional Edgardo Rebagliati Martins, Departamento de Pediatría, Lima, Perú.
2. Hospital Nacional de Emergencias de Villa El Salvador. División de Cuidados Críticos Pediátricos, Lima, Perú.
3. LARed Network, Red Colaborativa Pediátrica de Latinoamérica.
4. Hospital Nacional Regional de Cusco, División de Cuidados Críticos Pediátricos, Perú.
5. Hospital Nacional Hipólito Unanue, Lima, División de Cuidados Críticos Pediátricos, Lima, Perú.
6. Universidad San Ignacio de Loyola, Vicerrectorado de Investigación, Unidad de Investigación para la Generación y Síntesis de Evidencias en Salud, Lima, Perú.
7. Instituto Nacional de Pediatría, División de Cuidados Críticos Pediátricos, Ciudad de México.
8. Instituto Nacional de Salud del Niño San Borja. Departamento de Pediatría, Lima, Perú.
9. Hospital El Carmen de Maipú, Unidad de Cuidados Intensivos Pediátricos, Maipú, Chile.
10. Facultad de Ciencias de la Vida, Universidad Andres Bello, Santiago Chile.
11. Departamento de Pediatría, Fundación Universitaria de Ciencias de la Salud, Bogotá, Colombia.
12. Departamento de Pediatría, Universidad Nacional de Colombia, Bogotá, Colombia.
13. Escuela de Medicina, Universidad Finis Terrae, Santiago, Chile.

Correspondence: Jesús Angel Domínguez Rojas. Departamento de Pediatría y Paciente Crítico Pediátrico, Hospital Edgardo Rebagliati Martins, jesusdominguez24@gmail.com

Pediatric Acute Respiratory Disease Syndrome phenotypes in critical COVID-19: implications for therapies and outcomes.

Purpose: to describe lung mechanics in Pediatric Acute Respiratory Disease Syndrome (PARDS) associated with COVID-19. We hypothesize two phenotypes according to respiratory system mechanics and clinical diagnosis.

Methods: a concurrent multicenter observational study was performed, analyzing clinical variables and pulmonary mechanics of PARDS associated with COVID-19 in 4 Pediatric intensive care units (PICUs) of Perú. Subgroup analysis included PARDS associated with multisystem inflammatory syndrome in children (MIS-C), MIS-PARDS, and PARDS with COVID-19 primary respiratory infection, C-PARDS. In addition, receiver operator curve analysis (ROC) for mortality was performed.

Results: 30 patients were included. Age was 7.5(4-11) years, 60% male, and mortality 23%. 47% corresponded to MIS-PARDS and 53% to C-PARDS phenotypes. C-PARDS had positive RT-PCR in 67% and MIS-PARDS none ($p<0.001$). C-PARDS group had more profound hypoxemia ($P/F_{ratio}<100$, 86%vs38%, $p<0.01$) and higher driving-pressure (DP) [14(10-22)vs10(10-12)cmH₂O], and lower compliance of the respiratory system (C_{RS})[0.5(0.3-0.6)vs 0.7(0.6-0.8)ml/kg/cmH₂O] compared to MIS-PARDS (all $p<0.05$). ROC-analysis for mortality showed that DP had the best performance [AUC 0.91(95%CI0.81-1.00), with the best cut-point of 15 cmH₂O (100% sensitivity and 87% of specificity). Mortality in C-PARDS was 38% and 7% in MIS-PARDS($p=0.09$). MV free-days were 12(0-23) in C-PARDS and 23(21-25) in MIS-PARDS($p=0.02$)

Conclusion: critical pediatric COVID-19 is heterogeneous in children. COVID-19 PARDS had two phenotypes with distinctive pulmonary mechanics features. Characteristics of C-PARDS are like a classic primary PARDS, while a decoupling between compliance and hypoxemia was more frequent in MIS-PARDS. In addition, C-PARDS had fewer MV free-days. $DP \geq 15$ cmH₂O had the best performance of the quasi-static calculations to discriminate for mortality. Standardized pulmonary mechanics measurements in PARDS might reveal essential information to tailor the ventilatory strategy in pediatric critical COVID-19.

Keywords: PARDS, COVID-19, MIS-C, Pulmonary mechanics, Driving pressure.

Pediatric ARDS phenotypes in critical COVID-19: implications for therapies and outcomes.

"Take-home message"

- PARDS associated with COVID-19 have two different phenotypes based on clinical diagnosis and pulmonary mechanics.
- C-PARDS group was characterized as a classic moderate to severe primary ARDS. A decoupling between compliance and hypoxemia was more frequent in MIS-PARDS. Regarding outcomes, C-PARDS had less VFD and a trend toward higher mortality.
- Data from the quasi-static calculations were associated with mortality; $DP \geq 15$ cmH₂O was the best discriminator.
- Standardized pulmonary mechanics measurements in PARDS might reveal essential information to tailor the ventilatory strategy, characterizing different phenotypes and parameters associated with outcomes.

Tweet

Lung mechanics help to differentiate two different phenotypes in PARDS associated with COVID-19. C-PARDS associated with respiratory infection, and MIS-PARDS, associated with MIS-C. Also, lung mechanics variables were associated with mortality, being $DP \geq 15$ cmH₂O the best discriminator.

Pediatric ARDS phenotypes in critical COVID-19: implications for therapies and outcomes.

BACKGROUND

Respiratory failure has been the leading cause of hospital admission and death during the COVID-19 pandemic. Severe hypoxemia due to pneumonia and acute respiratory distress syndrome (ARDS) is a frequent cause of admission to intensive care for advanced respiratory support¹. Since the first cohorts' description in China and Europe, many authors reported discrepancies between the severity of the oxygenation and the relatively spared pulmonary mechanics in a subgroup of patients^{2,3}

In addition, atypical lung imaging in chest computed tomography and histopathology with lung microvascular involvement raises questions about whether the underlying pathophysiology in COVID-19 is like that of ARDS in other etiologies^{2,4,5,6}. Thus, a new entity called C-ARDS (COVID-19 associated ARDS) is proposed by some researchers⁷⁻⁹.

Pediatric COVID-19 critical illness is heterogeneous and infrequent¹⁰⁻¹². The most common causes of admission to the pediatric intensive care unit (PICU) are respiratory failure and multisystem inflammatory syndrome in children (MIS-C),¹⁰⁻¹⁵. Nonetheless, cases of non-cardiopulmonary involvement are frequent¹⁴⁻¹⁶. While the low morbidity and mortality in the general pediatric population is reassuring, there is a significant gap in knowledge in identifying high-risk subgroups, such as those who develop pediatric ARDS (PARDS) or multiorgan failure.^{11,12,16}

Invasive mechanical ventilation (MV) for pediatric COVID-19 at PICU has been reported between 30 to 70% in different cohorts^{11,13,15,17-19}. Surprisingly, specific information on PARDS related to COVID-19 is scarce. The heterogeneous nature of lung involvement was initially described as distinctive phenotypes in adult C-ARDS based on pulmonary mechanics, type L and type H². Although still controversial, different phenotypes might have implications for therapy and outcomes^{20,21}. This principle also applies to respiratory failure and PARDS in the general PICU population. A better description of PARDS characteristics is urgently needed to improve guidelines and recommendations and ultimately improve outcomes for critically ill children.

We hypothesize that two different phenotypes can be observed in critically ill children with PARDS associated with COVID-19: 1) PARDS in patients diagnosed with MIS-C (MIS-PARDS), with almost normal compliance, low driving pressure, and extrapulmonary organ failure; 2) PARDS with severe COVID-19 pneumonia (C-PARDS), with low compliance, profound hypoxemia, and less frequent multiorgan failure.

This study aimed to describe lung mechanics in critically ill children with PARDS due to COVID-19, analyzing sub-groups of MIS-C and C-PARDS and outcomes.

PATIENTS AND METHODS

A concurrent observational study was conducted in four PICU's of pediatric referral hospitals in Perú: Hospital Nacional Hipolito Unanue, Hospital de Emergencias de Villa El Salvador, Hospital Regional del Cusco, Hospital Edgardo Rebagliati Martins. Institutional review boards' approval for data collection was obtained at each site, waiving informed consent

The study included patients between 1 month and 17 years of age from the PICU Registry cohort of COVID-19 admitted between April 1 and August 31, 2021. Briefly, this observational registry records the treatment and the management of critical COVID-19 patients admitted to participating centers. Deidentified data were gathered from administrative and clinical databases for benchmarking, including demographics, clinical and physiological parameters, therapeutic interventions, and outcomes. Critical COVID-19 definition included patients with SARS-CoV-2 rt-PCR in respiratory airways or antibody profile compatible with acute COVID-19 infection (IgG (+)) and CT scan with characteristics of acute COVID-19 infection. **In addition, patients who met the case definition for MIS-C were also included, even lacking a confirmed microbiological diagnosis of SARS-CoV-2 infection, to include all the causes of pediatric critical COVID-19, requiring PICU admission, as previously defined.** ^{11,12,22,23}

Patients with a clinical and microbiological profile of SARS-CoV-2 infection at PICU admission, receiving invasive MV, and meeting PALICC criteria for PARDS²⁴, were included in the analysis. Pneumonia severity was based on PAHO definitions²⁵. Patients were excluded if they had uncorrected congenital heart, pre-existing lung or airway disease, chronic respiratory failure requiring long-term MV and tracheostomy, severe **left ventricular dysfunction failure with ejection fraction less than 30%**²⁶ and COVID-19 with primary neurological involvement. In addition, patients with spontaneous breathing effort and endotracheal tube air leak were excluded due to possible interference with data acquisition and unreliable quasi-static lung mechanics measurements and calculations.

During the first 72 hrs after initiation of MV, all patients were screened at 8 AM and 8 PM. PARDS severity was determined following PALICC criteria, according to the oxygenation index, classified as mild (4 to <8), moderate (8 to <16), and severe (≥ 16).²⁴ When hypoxemia was the lowest, all the parameters were recorded. Organ dysfunction was assessed by the treating physician based on definitions by the international pediatric sepsis consensus conference²⁷, and multiorgan dysfunction was defined as ≥ 3 organ dysfunctions. Vasoactive support was quantified through Vasoactive-Inotropic Score (VIS)²⁸. **Cardiac function was evaluated in all patients with transthoracic echocardiography performed by an experienced clinician, defining cardiac**

dysfunction as any alteration in systolic and diastolic function, and severe dysfunction was defined as ejection fraction less than 40%^{26, 29}. In assessing organ dysfunction, we consider the worst value in the first 72 h after admission. Analyzed outcomes were duration of MV, Ventilator-free days at day 30 (VFD), Length of PICU stay, length of hospital stay, and PICU mortality.

Patients were classified into the MIS-C (MIS-PARDS) and COVID-19 pneumonia (C-PARDS) phenotypes. All patients fulfilling MIS-C diagnostic criteria (World Health Organization (WHO), Royal College of Paediatrics and Child Health, or Centers for Disease Control and Prevention) were classified as MIS-PARDS³⁰⁻³². C-PARDS group consisted of PARDS patients fulfilling COVID-19 pneumonia according to the modified case definitions of the World Health Organization (WHO).³³ **Supplementary table 1 shows detailed patient classifications according to diagnostic tests.**

Lung mechanics were measured in a volume control mode as previously described.^{34,35} Ventilator parameters [peak inspiratory pressure (PIP), plateau pressure (Pplat), PEEP, expiratory VT (VTE), and inspiratory time (IT), and arterial blood gases were registered, and PaO₂/FiO₂ ratio and Oxygenation Index (OI) were calculated. The components of working pressure, resistive (PIP – Pplat) and elastic (driving pressure, $\Delta P = Pplat - PEEP$), were calculated for each subject. Respiratory system compliance (C_{RS} , mL·cmH₂O⁻¹·kg⁻¹) was calculated according to the standard equation.

Statistical analysis

The data obtained were entered in a database on Microsoft® Excel (version for Windows 2016), reviewed, cleaned, and analyzed in STATA v.16 (StataCorp LP, Texas, USA). Frequencies and percentages were used to describe the categorical variables, while median and interquartile range (IQR) were used for quantitative data since the assumption of normality was not met. In addition, a bivariate analysis was performed between MIS-PARDS and C-PARDS and for survivors and non-survivors, using Fisher's exact test for categorical variables and the Mann-Whitney U test for quantitative variables. A p-value less than 0.05 was considered statistically significant. Finally, receiver operator characteristic (ROC) curves were built for DP, C_{RS} , and Pplat, to evaluate their accuracy as discriminators for mortality as an outcome.

RESULTS

During the study period, 123 critically ill COVID-19 children were admitted to the participating units, 30 with PARDS diagnosis, and all of them met the selection criteria for the analysis (Figure 1). The median age was 7.5 years (4-11), 63% were intubated before PICU admission, 50% of the patients suffered moderate PARDS, 30%

severe, and 30% developed multiorgan failure. PICU median length of stay was seven days (5-9), and mortality was 23% (Table 1). The primary cause of death was refractory shock and multiorgan failure.

The most frequent clinical signs and symptoms were dyspnea (77%), fever (67%), and abdominal pain (43%). Regarding the COVID-19 diagnosis, RT-PCR was positive in 38% of PARDS patients, and serology tests showed that 12/26 patients were IgM/IgG positive and 12/26 were IgM negative/IgG positive. Only one case was positive for IgG and RT-PCR. Viral co-infection and bacterial superinfection were ruled out with PCR for viral respiratory pathogens and blood and tracheal secretion cultures.

In 5 cases, left ventricular dysfunction was observed in echocardiograms, but none were severe (Supplementary Table 2). Coronary aneurysms were reported in two patients. The most frequent vasopressors were epinephrine (67%) and norepinephrine (57%), and VIS was 22 (12 to 50) (Table 2).

Fourteen patients (47%) were classified in MIS-PARDS phenotype and 16 (53%) children in C-PARDS phenotype. MIS-PARDS had more frequent abdominal pain and rash, while the C-PARDS group had more respiratory symptoms, like cough and lower oxygen saturation (Table 1). All patients with MIS-PARDS phenotype had a negative RT-PCR, and it was positive in 62.5% of the C-PARDS subgroup ($p < 0.001$). On the contrary, IgM(-)/IgG(+) profile was observed in 64.3% of MIS-PARDS and only in 16.7% of C-PARDS ($p=0.02$). (Table 1)

MIS-PARDS patients had significantly more cardiac dysfunction than the C-PARDS group (71 vs. 25%, $p=0.03$), and no other differences were found in organ failures and vasoactive support (Table 2). **Mild left ventricular dysfunction was observed in 42% of MIS-PARDS and 6% of C-PARDS (supplementary table 2), but no severe dysfunction was found.** C-PARDS group had more profound hypoxemia, higher Pplat and DP, and lower C_{RS} , all $p < 0.05$, while MIS-PARDS had a higher PIP-Pplat gradient ($p=0.04$) (Table 3 and Figure 2). There was a trend toward higher mortality in the C-PARDS group compared to MIS-PARDS (38 vs. 7%, $p=0.09$). MV free days were significantly lower in C-PARDS than MIS-PARDS ($p=0.02$), without differences in other outcomes.

When comparing survivors and non-survivors, there were no significant differences in demographics, organ dysfunctions, vasoactive support, and gas exchange. In addition, there were no significant differences in V_T and PEEP between both groups, but C_{RS} was significantly lower in non-survivors; thus, PIP, Pplat, and DP were higher (all $p < 0.05$).

ROC of DP and mortality showed an AUC of 0.91 (95% CI 0.81-1.00), and the best cut point was 15 cmH_2O (100% sensitivity and 87% specificity). AUC for Elastance ($1/\text{CRS}$) was 0.89 (95% CI 0.77-1.00), with a best

cut point of 2.7 (C_{RS} 0.37) (85.7% sensibility and 91.3% specificity). AUC for Pplat was 0.89 (95% CI 0.76-1.00), with a best-cut point of 28 (C_{RS} 0.37) (100% sensibility and specificity 87%). (Supplementary figure)

DISCUSSION

The main result of this multicentric study of PARDS associated with pediatric critical COVID-19 was the description of two different phenotypes, C-PARDS and MIS-PARDS. C-PARDS is similar to other severe viral pneumonia, and we observed more frequent respiratory symptoms, hypoxia, and a positive COVID-19 rt-PCR in upper respiratory airways. On the other hand, MIS-PARDS had abdominal pain, mucocutaneous signs, and the characteristic MIS-C profile of IgG (+), IgM (-), and negative SARS-CoV-2 RT-PCR. In agreement with these observations, the lung mechanics parameters were different between subgroups: C-PARDS had higher Pplat and DP and lower C_{RS} and PIP-Pplat than MIS-PARDS. Regarding mortality, similar differences were observed between survivors and non-survivors. DP, Elastance ($1/C_{RS}$), and Pplat were good discriminators for mortality, but DP had the best performance.

Remarkably, the C_{RS} of C-PARDS was close to the C_{RS} reported in other pediatric cohorts of viral PARDS³¹ and other restrictive lung diseases³⁸. Regarding outcomes, mortality was not statistically different between C-PARDS and MIS-PARDS. VFD were significantly lower in this group, probably due to the primary pulmonary dysfunction observed in C-PARDS. Only one patient out of 14 died in the MIS-PARDS group, in accordance with the usual overall good prognosis of MIS-C.^{11,12,15}

The mortality of our cohort may seem high, but when analyzing survival, many studies report between 10 and 70% of mortality in PARDS.³⁷ Also, there are reports regarding differences in mortality between high and low-middle-income countries.^{39,40} It is very interesting that in the current study, previous known variables associated with mortality in PARDS and in pediatric critical COVID-19, like organ failures and hypoxemia severity, were not different between survivors and non-survivors.^{37,38, 41-45}

A surprising result was the difference in the respiratory mechanics between the clinical phenotypes. The cohort fulfilled PARDS and critical COVID-19 criteria but with different characteristics. C-PARDS group's features were like a classic moderate to severe primary ARDS.⁴⁶ On the contrary, the main characteristic of the MIS-PARDS group was an uncoupling between the respiratory mechanics and gas exchange. An attractive hypothesis is that the underlying pathophysiology leading to PARDS might be different in both phenotypes. In C-PARDS, airway epithelium and pneumocytes injury might be the initial alteration resulting in alveolar collapse with inflammatory exudate, neutrophils, and macrophages. On the other hand, in the context of

systemic dysregulated inflammation, MIS-PARDS, the initial injury might depend on capillary endothelium, leading to interstitial edema and then flooding of alveolar space. **It is important to recall severe left ventricular dysfunction was not observed in the cohort, but mild dysfunction was frequently reported, a common finding in critically ill children^{26,47-49}. In addition, no signs of cardiogenic acute pulmonary edema were present.**

A possible explanation for the trend toward higher mortality is the low C_{RS} of the C-PARDS group, resulting in higher DP, a previous parameter associated with mortality in ARDS patients. In an exploratory analysis, we found that DP was close to the ideal clinical discriminator for mortality. Interestingly, the best cut-off was 15 cmH₂O. In 2 retrospective studies of children under MV due to acute hypoxemic respiratory failure, high DP (≥ 15 cmH₂O) was associated with less VFD but not mortality. This threshold also was described in adults. In a meta-analysis that included nine prospective trials and more than 3,500 patients, Amato et al. showed that DP was the best variable correlated with survival, even in patients within the usual thresholds of a lung-protective MV strategy⁵⁰. Even more, interventions that resulted in a decrease in DP were associated with a greater survival rate. Other authors have confirmed the association between DP and ARDS outcomes, and a threshold of 15 cmH₂O has been incorporated into most lung-protective protocols.^{51,52}

Our study has some limitations. We report respiratory mechanics in quasi-static conditions in VCV mode; thus, they cannot be extrapolated to other modes of MV with a decelerating flow, frequently used in pediatrics⁴⁴. Presented data is the worst during the first 72h of admission, so time-dependent variables are not analyzed⁴³. We did not investigate other parameters associated with PARDS severity or outcomes, i.e., dead space or mechanical power, because it was not part of our objective⁵³⁻⁵⁵. **As in many multicenter studies, there might be differences in ventilatory strategy between sites, and comparisons were not possible given the heterogeneity of cases per center. The lack of consistency, especially PEEP titration, might influence some calculations of pulmonary mechanics.** The small number of patients in each group might lead to type II statistical errors in some analyzed variables. There is also a risk of type I statistical errors, given the absence of statistical correction for multiple comparisons. Finally, the small number of cases probably influenced the lack of a statistical difference in mortality between C-PARDS and MIS-PARDS groups, although the difference was clinically relevant (38 vs. 7%). Nonetheless, we consider our results important to define high-risk groups of children with critical COVID-19 and as hypothesis-generating data for PARDS in the general PICU population.

CONCLUSIONS

Our data show two different clinical phenotypes of pediatric critical COVID-19 PARDS with distinctive pulmonary mechanics features. C-PARDS group characteristics were like a classic moderate to severe primary

ARDS. A decoupling between compliance and hypoxemia was more frequent in MIS-PARDS. Regarding outcomes, C-PARDS had less VFD and a trend toward higher mortality than MIS-PARDS. Data from the quasi-static calculations were associated with mortality; specifically, a $DP \geq 15$ cmH₂O was the best discriminator. Standardized pulmonary mechanics measurements in PARDS might reveal essential information to tailor the ventilatory strategy. Future studies may include these data for subgroup classifications and outcomes and ultimately improve the care of critically ill children.

Acknowledgments

None

Authors' contributions

Conceptualization and design: JDR, CMM, NAA. Data collection: JDR, YLD, PCV, CMR, MQC, MCA, GQF, MTP. Data curation: JDR, PVH, FD. Formal analysis and investigation: JDR, FD, PVH. Draft preparation: JDR, PVH, FD; Manuscript review and editing: JDR, PVH, FD, PC. JDR supervised the study at all stages. All authors read and approved the final version of the manuscript.

Funding

No funding was involved in this research

Availability of supporting data

The data supporting this study's findings are available from the corresponding author, FD, upon reasonable request.

Compliance with ethical standards.

Conflicts of interests.

The authors declare no conflicts of interest.

Ethical approval

Local IRB of each participating center approved the study (Approval letters 088-2021-CIEI-HNHU, 011-2021-CIEI-HEVES, 001-2021-COVID-HR, 42-IETSI-ESSALUD-2020).

Informed consent

Informed consent was waived due to gathering anonymized data previously collected for administrative and benchmarking purposes.

REFERENCES

1. Chen N, Zhou M, Dong X, et al (2020) Epidemiological and clinical characteristics of 99 cases of 2019 novel coronavirus pneumonia in Wuhan, China: a descriptive study. *Lancet* 395:507-13.
DOI: 10.1016/S0140-6736(20)30211-7
2. Luciano Gattinoni, Davide Chiumello, Pietro Caironi (2020) COVID-19 pneumonia: different respiratory treatments for different phenotypes? *Intensive Care Med* 46(6):1099-1102
DOI: 10.1007/s00134-020-06033-2
3. Tsolaki V, Zakyntinos GE, Makris D (2020) The ARDSnet protocol may be detrimental in COVID-19. *Crit Care* 24:351.
DOI: 10.1186/s13054-020-03081-4
4. Hendrickson KW, Peltan ID, Brown SM (2021) The Epidemiology of Acute Respiratory Distress Syndrome Before and After Coronavirus Disease 2019. *Crit Care Clin* 37:703–716.
DOI: 10.1016/j.ccc.2021.05.001
5. Ackermann M, Verleden SE, Kuehnel M, et al (2020) Pulmonary Vascular Endothelialitis, Thrombosis, and Angiogenesis in Covid-19. *New Engl J Med* 383:120–128.
DOI: 10.1056/NEJMoa2015432
6. Haberecker M, Schwarz EI, Steiger P, et al (2021) Autopsy-Based Pulmonary and Vascular Pathology: Pulmonary Endotheliitis and Multi-Organ Involvement in COVID-19 Associated Deaths. *Respiration* 1–11. DOI: 10.1159/000518914
7. Marini JJ, Gattinoni L (2020) Management of COVID-19 Respiratory Distress. *JAMA* 323:2329–2330.
DOI: 10.1001/jama.2020.6825

8. Pfortmueller CA, Spinetti T, Urman RD, et al (2021) COVID-19-associated acute respiratory distress syndrome (CARDS): Current knowledge on pathophysiology and ICU treatment – A narrative review. *Best Pract Res Clin Anaesthesiol* 35:351–368.
DOI: 10.1016/j.bpa.2020.12.011
9. Acosta MAT, Singer BD (2020) Pathogenesis of COVID-19-induced ARDS: implications for an ageing population. *Eur Respir J* 56:2002049.
DOI: 10.1183/13993003.02049-2020
10. Parcha V, Booker KS, Kalra R, et al (2021) A retrospective cohort study of 12,306 pediatric COVID-19 patients in the United States. *Sci Rep-uk* 11:10231.
DOI: 10.1038/s41598-021-89553-1
11. Gonzalez-Dambrasuskas S, Vasquez-Hoyos P, Camporesi A, Cantillano EM, Dallefeld S, Dominguez-Rojas J, et al. Pediatric critical COVID-19 and mortality in a multinational cohort. *Medrxiv*. 2021;2021.08.20.21262122.
DOI: 10.1101/2021.08.20.21262122
12. Feldstein LR, Tenforde MW, Friedman KG, Newhams M, Rose EB, Dapul H, et al. Characteristics and Outcomes of US Children and Adolescents With Multisystem Inflammatory Syndrome in Children (MIS-C) Compared With Severe Acute COVID-19. *JAMA*. 2021;325:1074–87.
DOI: 10.1001/jama.2021.2091
13. Fisler G, Izard SM, Shah S, et al (2020) Characteristics and risk factors associated with critical illness in pediatric COVID-19. *Ann Intensive Care* 10:171.
DOI: 10.1186/s13613-020-00790-5
14. González-Dambrasuskas S, Vásquez-Hoyos P, Camporesi A, et al (2020) Pediatric Critical Care and COVID19. *Pediatrics* 146:e20201766.
DOI: 10.1542/peds.2020-1766
15. Bustos B R, Jaramillo-Bustamante JC, Vasquez-Hoyos P, et al.: Pediatric Inflammatory Multisystem Syndrome Associated With SARS-CoV-2: A Case Series Quantitative Systematic Review. *Pediatr Emerg Care* 2020; 37:44–47
DOI: 10.1097/PEC.0000000000002306

16. Bourgeois FT, Gutiérrez-Sacristán A, Keller MS, et al (2021) International Analysis of Electronic Health Records of Children and Youth Hospitalized With COVID-19 Infection in 6 Countries. *Jama Netw Open* 4:e2112596.
DOI: 10.1001/jamanetworkopen.2021.12596
17. Kanthimathinathan HK, Buckley H, Lamming C, et al (2021) Characteristics of Severe Acute Respiratory Syndrome Coronavirus-2 Infection and Comparison With Influenza in Children Admitted to U.K. PICUs. *Critical Care Explor* 3:e0362.
DOI: 10.1097/cce.0000000000000362
18. Chao JY, Derespina KR, Herold BC, et al (2020) Clinical Characteristics and Outcomes of Hospitalized and Critically Ill Children and Adolescents with Coronavirus Disease 2019 (COVID-19) at a Tertiary Care Medical Center in New York City. *J Pediatrics* 223:14-19.e2
DOI: 10.1016/j.jpeds.2020.05.006
19. Lorenzo VB, Nascimento-Carvalho CM (2021) Differences between children with severe acute lower respiratory infection with or without SARS-Cov-2 infection. *J Infection* 83:e1–e3.
DOI: 10.1016/j.jinf.2021.05.038
20. Gattinoni L, Marini JJ (2021) Isn't it time to abandon ARDS? The COVID-19 lesson. *Crit Care* 25:326. DOI: 10.1186/s13054-021-03748-6
21. Attaway AH, Scheraga RG, Bhimraj A, et al (2021) Severe covid-19 pneumonia: pathogenesis and clinical management. *BMJ* 372:n436.
DOI: 10.1136/bmj.n436
22. Reiff DD, Mannion ML, Samuy N, Scalici P, Cron RQ. Distinguishing active pediatric COVID-19 pneumonia from MIS-C. *Pediatr Rheumatol* (2021) 19:21.
DOI: 10.1186/s12969-021-00508-2.
23. Rimensberger PC, Kneyber MCJ, Deep A, Bansal M, Hoskote A, Javouhey E, Jourdain G, Latten L, MacLaren G, Morin L, et al. Caring for Critically Ill Children With Suspected or Proven Coronavirus Disease 2019 Infection: Recommendations by the Scientific Sections' Collaborative of the European Society of Pediatric and Neonatal Intensive Care. *Pediatr Crit Care Me* (2020) 22:56–67.
DOI: 10.1097/pcc.0000000000002599

24. Pediatric Acute Lung Injury Consensus Conference Group (2015) Pediatric acute respiratory distress syndrome: consensus recommendations from the Pediatric Acute Lung Injury Consensus Conference. *Pediatr Crit Care Med* ;16(5):428-39.
DOI: 10.1097/PCC.0000000000000350
25. <https://www.paho.org/en/case-definitions-covid-19-surveillance-16-december-2020>
26. Alexander PMA, Checchia PA, Ryerson LM, Bohn D, Eckerle M, Gaies M, Laussen P, Jeffries H, Thiagarajan RR, Shekerdemian L, et al. Cardiovascular Dysfunction Criteria in Critically Ill Children: The PODIUM Consensus Conference. *Pediatrics* (2022) 149:S39–S47.
DOI:10.1542/peds.2021-052888f
27. Goldstein B, Giroir B, Randolph A (2005) International pediatric sepsis consensus conference: definitions for sepsis and organ dysfunction in pediatrics. *Pediatr Crit Care Med* 6(1):2-8.
DOI: 10.1097/01.PCC.0000149131.72248.E6.
28. McIntosh AM, Tong S, Deakynne SJ, Davidson JA, Scott HF (2017) Validation of the Vasoactive-Inotropic Score in Pediatric Sepsis. *Pediatr Crit Care Med*. 18(8):750-757.
DOI: 10.1097/PCC.0000000000001191.
29. Nagueh SF, Smiseth OA, Appleton CP (2016) Recommendations for the Evaluation of Left Ventricular Diastolic Function by Echocardiography: An Update from the American Society of Echocardiography and the European Association of Cardiovascular Imaging. *J Am Soc Echocardiogr* 29(4):277-314.
DOI: doi: 10.1016/j.echo.2016.01.011.
30. WHO. Multisystem inflammatory syndrome in children and adolescents with COVID-19. May 15, 2020.
<https://www.who.int/news-room/commentaries/detail/multisystem-inflammatory-syndrome-in-children-and-adolescents-with-covid-19> . Accessed December, 15th, 2021.
31. Centers for Disease Control and Prevention. Multisystem Inflammatory Syndrome in Children (MIS-C) Associated with Coronavirus Disease 2019 (COVID-19). Distributed via the CDC Health Alert Network. May 14, 2020
32. Royal College of Paediatrics and Child Health. Guidance: Paediatric multisystem inflammatory syndrome temporally associated with COVID-19. May 1, 2020.

33. World Health Organization. (2020). Clinical management of severe acute respiratory infection (SARI) when COVID-19 disease is suspected: interim guidance, 13 March 2020. World Health Organization. <https://apps.who.int/iris/handle/10665/331446>
34. Cruces P, González-Dambrauskas S, Quilodrán J, et al (2017) Respiratory mechanics in infants with severe bronchiolitis on controlled mechanical ventilation. *BMC Pulm Med* 17:129
DOI: 10.1186/s12890-017-0475-6
35. Khemani RG, Bart RD, Newth CJL (2007) Respiratory monitoring during mechanical ventilation. *Paediatrics and Child Health* 5(17):193-201
DOI:10.1016/j.paed.2007.02.006
36. van Schelven P, Koopman AA, Burgerhof J, Markhorst DG, Blokpoel R, Kneyber M (2021) Driving Pressure Is Associated with Outcome in Pediatric Acute Respiratory Failure. *Pediatr Crit Care Med* Publish Ahead of Print
DOI: 10.1097/PCC.0000000000002848
37. Schouten LR, Veltkamp F, Bos AP, van Woensel JB, Serpa Neto A, Schultz MJ, et al. (2016) Incidence and mortality of acute respiratory distress syndrome in children: a systematic review and meta-analysis. *Crit Care Med* 44(4):819–29.
DOI: 10.1097/CCM.0000000000001388
38. Kim SY, Kim B, Choi SH, Kim JD, Sol IS, Kim MJ et al (2018) Oxygenation Index in the First 24 Hours after the Diagnosis of Acute Respiratory Distress Syndrome as a Surrogate Metric for Risk Stratification in Children. *Acute Critical Care* 33:222–229.
DOI: 10.4266/acc.2018.00136
39. Munoz AC, Tasayco J, Morales W, Moreno L, Zorrilla D, Stapleton A, Pajuelo P, Reyes G, Estupiñan M, Seminario R, et al. (2021) High incidence of stroke and mortality in pediatric critical care patients with COVID-19 in Peru. *Pediatr Res* 1–5.
doi: 10.1038/s41390-021-01547-x
40. Kitano T, Kitano M, Krueger C, Jamal H, Rawahi HA, Lee-Krueger R, Sun RD, Isabel S, García-Ascaso MT, Hibino H, et al. (2021) The differential impact of pediatric COVID-19 between high-income countries and low- and middle-income countries: A systematic review of fatality and ICU admission in children worldwide. *Plos One* 16:e0246326.
doi: 10.1371/journal.pone.0246326

41. Panico FF, Troster EJ, Oliveira CS, et al (2015) Risk Factors for Mortality and Outcomes in Pediatric Acute Lung Injury/Acute Respiratory Distress Syndrome. *Pediatr Crit Care Me* 16:e194–e200.
DOI: 10.1097/PCC.0000000000000490
42. Wong JJM, Lee SW, Tan HL, et al (2020) Lung-Protective Mechanical Ventilation Strategies in Pediatric Acute Respiratory Distress Syndrome. *Pediatr Crit Care Med* 16(7):e194-200.
DOI: doi: 10.1097/PCC.0000000000000490
43. López-Fernández Y, Azagra AM, Oliva P de la, et al (2012) Pediatric Acute Lung Injury Epidemiology and Natural History Study. *Crit Care Med* 40:3238–3245.
DOI: 10.1097/CCM.0b013e318260caa3
44. Khemani RG, Smith L, Lopez-Fernandez YM, Kwok J, Morzov R, Klein MJ, et al (2019) Paediatric acute respiratory distress syndrome incidence and epidemiology (PARDIE): an international, observational study. *Lancet Respir Med* 7(2):115–28.
DOI: 10.1016/S2213-2600(18)30344-8
45. Weiss SL, Asaro LA, Flori HR, Allen GL, Wypij D, Curley MAQ, et al (2017) Multiple Organ Dysfunction in Children Mechanically Ventilated for Acute Respiratory Failure *Pediatr Crit Care Med* 18:319–29.
DOI: 10.1097/PCC.0000000000001091
46. Pelosi P, D'Onofrio D, Chiumello D, Paolo S, Chiara G, Capelozzi VI, et al. (2003). *European Respiratory Journal* 22:48s-56.
DOI: 10.1183/09031936.03.00420803
47. Ginsburg S, Conlon T, Himebauch A, Glau C, Weiss S, Weber MD, O'Connor MJ, Nishisaki A. (2021) Left Ventricular Diastolic Dysfunction in Pediatric Sepsis: Outcomes in a Single-Center Retrospective Cohort Study. *Pediatr Crit Care Med* 22:275–285.
doi:10.1097/pcc.0000000000002668
48. Williams FZ, Sachdeva R, Travers CD, Walson KH, Hebbar KB. (2016) Characterization of Myocardial Dysfunction in Fluid- and Catecholamine-Refractory Pediatric Septic Shock and Its Clinical Significance. *J Intensive Care Med* 34:17–25.
doi:10.1177/0885066616685247

49. Ranjit S, Aram G, Kissoon N, Ali MK, Natraj R, Shresti S, Jayakumar I, Gandhi D. (2014) Multimodal Monitoring for Hemodynamic Categorization and Management of Pediatric Septic Shock. *Pediatr Crit Care Med* 15:e17–e26.
doi: [10.1097/pcc.0b013e3182a5589c](https://doi.org/10.1097/pcc.0b013e3182a5589c)
50. Amato MB, Meade MO, Slutsky AS, Brochard L, Costa EL, Schoenfeld DA, et al (2015) Driving pressure and survival in the acute respiratory distress syndrome. *N Engl J Med* 372(8):747-755.
DOI: [10.1056/NEJMsa1410639](https://doi.org/10.1056/NEJMsa1410639).
51. Griffiths MJD, McAuley DF, Perkins GD, et al (2019) Guidelines on the management of acute respiratory distress syndrome *BMJ Open Respiratory Research* 6:e000420.
DOI: [10.1136/bmjresp-2019-000420](https://doi.org/10.1136/bmjresp-2019-000420)
52. Romano MLP, Maia IS, Laranjeira LN, et al (2020) Driving Pressure–limited Strategy for Patients with Acute Respiratory Distress Syndrome. A Pilot Randomized Clinical Trial. *Ann Am Thorac Soc* 17:596–604.
DOI: [10.1513/annalsats.201907-506oc](https://doi.org/10.1513/annalsats.201907-506oc)
53. Díaz F, González-Dambruskas S, Cristiani F, et al (2021) Driving Pressure and Normalized Energy Transmission Calculations in Mechanically Ventilated Children Without Lung Disease and Pediatric Acute Respiratory Distress Syndrome. *Pediatr Crit Care Med* Publish Ahead of Print.
DOI: [10.1097/pcc.0000000000002780](https://doi.org/10.1097/pcc.0000000000002780)
54. Bhalla AK, Belani S, Leung D, Newth CJL, Khemani RG (2015) Higher Dead Space Is Associated with Increased Mortality in Critically Ill Children. *Crit Care Med* 43:2439–45.
DOI: [10.1097/CCM.0000000000001199](https://doi.org/10.1097/CCM.0000000000001199)
55. Yehya N, Bhalla AK, Thomas NJ, Khemani RG (2016) Alveolar Dead Space Fraction Discriminates Mortality in Pediatric Acute Respiratory Distress Syndrome. *Pediatr Crit Care Med* 17:101–9.
DOI: [10.1097/PCC.0000000000000613](https://doi.org/10.1097/PCC.0000000000000613)

Table 1. Demographic and clinical characteristics of pediatric respiratory distress syndrome associated with COVID-19 according to the clinical phenotypes and outcome.

	All n. 30	MIS-PARDS n. 14	C-PARDS n. 16	Survivors n. 23	Non-survivors n. 7
Age, years	7.5 (4-11)	7 (6-9)	10 (2-13)	8 (5-12)	7 (3-11)
Male sex	18 (60)	12 (67)*	6 (33)	15 (65)	3 (43)
Weight, kg	30 (21-45)	32 (21-45)	28 (13-57)	30 (21-54)	25 (15-34)
SpO ₂ , %	87 (82-90)	89 (86-95)*	85 (78-88)	88 (82-94)	85 (79-88)
Intubation prior to PICU	19 (63)	9 (64)	10 (63)	14 (61)	5 (71)
<u>Signs and Symptoms</u>					
Fever	20 (67)	12 (86)	8 (50)	14 (61)	6 (86)
Respiratory					
Respiratory distress	24 (80)	12 (86)	12 (75)	19 (83)	5 (71)
Chest Retractions	7 (23)	4 (29)	3 (19)	7 (30)	0 (0)
Oxygen desaturation	21 (70)	7 (50)*	14 (88)	15 (65)	6 (86)
Rhinorrhea	3 (10)	0 (0)	3 (19)	1 (4)	2 (29)
Cough	7 (23)	0 (0)*	7 (44)	5 (22)	2 (29)
Mucocutaneous					
Rash	5 (17)	5 (36)*	0 (0)	5 (22)	0 (0)
Red eye	3 (10)	3 (21)	0 (0)	2 (9)	1 (14)
Abdominal pain	13 (43)	12 (86)*	1 (6)	12 (52)	1 (14)
Diarrhea/vomiting	4 (13)	2 (14)	2 (13)	4 (17)	0 (0)
<u>SARS-CoV-2 testing</u>					
Viral test, positive	10/26	0/14*	10/16	6/20	4/6
(<i>Not tested</i>)	4 (13)	3 (21)	1 (6)	3 (13)	1 (14)
Antibody test					
IgM [+] / IgG [+]	12/26	4/14	8/12	9/21	3/5
IgM [-] / IgG [+]	12/26	10/14*	2/12	12/21*	0/5
(<i>Not tested</i>)	4 (13)	0 (0)	4 (25)	2 (9)	2 (29)
<u>Outcomes</u>					
MV duration, hours	120 (72-168)	108 (72-144)	120 (84-216)	120 (72-232)	120 (72-168)
MV free days	22 (7-24)	23 (21-25)*	12 (0-23)	-	-
PICU length of stay, days	7 (5-9)	6 (5-9)	7 (5-10)	7 (6-15)*	5 (3-7)
Hospital length of stay, days	11 (7-16)	13 (8-14)	9 (7-18)	13 (8-18)*	6 (4-7)

ICU death	7 (23)	1 (7)	6 (38)	-	-
-----------	--------	-------	--------	---	---

Data are n (%) or median (IQR).

*p<0.05 using Fisher's exact test or Mann-Whitney U test.

Abbreviations: SpO₂, pulse oximetry saturation; MV, mechanical ventilation; PARDS, Pediatric Acute Respiratory Distress Syndrome; C-PARDS, PARDS associated with COVID-19 pneumonia; MIS-PARDS, PARDS associated with multisystem inflammatory syndrome in children

Table 2. Organ failure and vasoactive support in pediatric respiratory distress syndrome associated with COVID-19 according to the clinical phenotypes and outcomes.

	All n. 30	MISC-PARDS n. 14	C-PARDS n. 16	Survivors n. 23	Non-survivors n. 7
<u>Organ dysfunction</u>					
Pulmonary	30 (100)	14 (100)	16 (100)	23 (100)	7 (100)
Hemodynamic	29 (96)	14 (100)	15 (94)	22 (96)	7 (100)
Another organ (any)	17 (57)	6 (43)	11 (69)	12 (52)	5(71)
Hematological	10 (33)	3 (21)	7 (44)	8 (35)	2 (29)
Renal	3 (10)	1 (7)	2 (13)	2 (9)	1 (14)
Neurological	6 (20)	3 (21)	3 (19)	4 (17)	2 (29)
GI/Hepatic	3 (10)	2 (14)	1 (6)	3 (13)	0 (0)
Number of organ dysfunctions					
1	5 (17)	2 (14)	3 (19)	5 (22)	0 (0)
2	16 (53)	7 (50)	9 (56)	12 (52)	4 (57)
≥ 3	9 (30)	5 (36)	4 (25)	6 (26)	3 (43)
Vasoactive support					
Any vasoactive	29	14 (100)	15 (94)	22 (97)	7 (100)
Vasopressors	19 (63)	10 (71)	9 (56)	13 (57)	6 (86)
Inotropes	24 (80)	13 (93)	11 (69)	18 (78)	6 (86)
Median VIS	22 (12-50)	31 (19-50)	18 (10-45)	20 (12-50)	30 (10-60)

Data are n (%) or median (IQR).

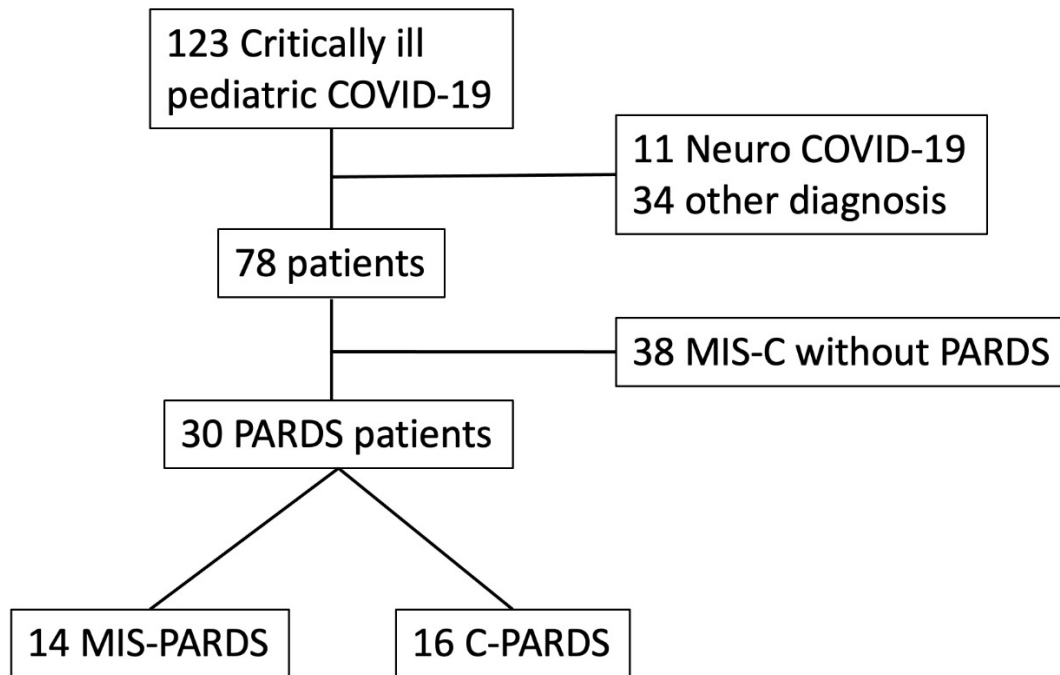
Abbreviations: GI, gastrointestinal; VIS, vasoactive inotropic scale; PARDS: Pediatric Acute Respiratory Distress Syndrome; C-PARDS, PARDS associated with COVID-19 pneumonia; MIS-PARDS, PARDS associated with multisystem inflammatory syndrome in children.

Table 3. Gas exchange, mechanical ventilation settings, and lung mechanics in pediatric respiratory distress syndrome associated with COVID-19 according to the clinical phenotypes and outcome.

	All n. 30	MISC-PARDS n. 14	C-PARDS n. 16	Survivors n. 23	Non-survivors n. 7
<u>Oxygenation</u>					
FiO ₂	60 (45-100)	53 (40-60)	60 (48-100)	55 (45-60)	100 (45-100)
PaO ₂ , mmHg	80 (60-100)	92 (70-129)	77 (55-83)	85 (60-100)	77 (56-80)
PaO ₂ /FIO ₂	130 (85-228)	163 (129-252)*	96 (74-150)	130 (98-230)	80 (70-171)
PaO ₂ /FIO ₂ < 100	12 (40)	6 (38)*	12 (86)	15 (65)	3 (43)
P(A-a) O ₂ , mmHg	246 (165-399)	235 (141-305)	336 (175-564)	240 (141-330)	547 (182-580)
Oxygenation index	9.7 (6.1-19.9)	7.5 (4.2-13.6)*	11.9 (7.8-23.0)	8.4 (4.3-15)	22.5 (8.6-24)
PARDS severity					
Mild (4 to <8)	6 (20)	4 (29)	2 (13)	6 (26)	0 (0)
Moderate (8 to <16)	15 (50)	7 (50)	8 (50)	12 (52)	3 (43)
Severe (≥ 16)	9 (30)	3 (21)	6 (37)	5 (22)	4 (57)
<u>Arterial Blood Gas</u>					
pH	7.33 (7.19-7.39)	7.30 (7.22-7.39)	7.37 (7.2-7.44)	7.35 (7.22-7.42)	7.18 (6.9-7.39)
PaCO ₂ , mmHg	44 (33-51)	38 (33-51)	47 (34-56)	38 (33-51)	51 (45-59)
Bicarbonate, mmol/L	21 (17-24)	20 (17-23)	22 (17-26)	21 (18-24)	17 (11-27)
Hemoglobin, g/dL	10.3 (9.6-11.0)	10.0 (10.0-11.0)	10.6 (9.0-11.5)	10.0 (9.6-12.0)	10.6 (9.0-11.0)
Lactate, mmol/L	1.6 (1.0-3.0)	1.7 (1.2-3.4)	1.4 (0.9-2.6)	1.6 (0.9-3.0)	2 (1.0-7.9)
<u>Lung mechanics</u>					
PIP, cmH ₂ O	28 (24-32)	27 (22-30)	29 (25-33)	25 (23-28)*	33 (32-35)
Pplat	20 (16-30)	18 (15-20)*	26 (19-30)	18 (15-22)*	30 (28-30)
PEEP, cmH ₂ O	7 (6-11)	7 (5-10)	8 (7-12)	7 (6-11)	10 (7-12)
Paw	12.7 (11.0-16.4)	11.5 (10.0-16.0)	14.1 (11.6-17.5)	12.2 (10.0-16.3)	16 (12.1-18.3)
V _T , ml/kg	7 (6-8)	7.0 (6.5-8.0)	6.5 (6.0-7.5)	7 (6-8)	7 (6-9)
Prone Position	9 (30)	3 (21)	6 (38)	6 (26)	3 (43)
Prone duration, hours	48 (48-48)	96 (48-96)	48 (48-48)	48 (48-48)	48 (48-96)
Neuromuscular blocker	13 (43)	4 (29)	9 (56)	8 (35)	5 (71)

Data are n (%) or median (IQR); *p<0.05 using Fisher's exact test or Mann-Whitney U test. Abbreviations: FiO₂: Fraction of inspired oxygen; PaO₂: Arterial oxygen partial pressure; PaO₂/FIO₂: PaO₂ to FiO₂ ratio; P(A-a) O₂: Alveolar-arterial oxygen gradient; PEEP: Positive end-expiratory pressure; PaCO₂: Partial pressure of carbon dioxide; PIP: Peak inspiratory pressure; Vt/Kg: Tidal volume per kilogram; Pplat: plateau pressure; Paw: mean airway pressure; C-ARDS, Coronavirus associated acute respiratory distress syndrome; PARDS: Pediatric Acute Respiratory Distress Syndrome; C-PARDS, PARDS associated with COVID-19 pneumonia; MIS-PARDS, PARDS associated with multisystem inflammatory syndrome in children

Figure 1. Study patient flow diagram.

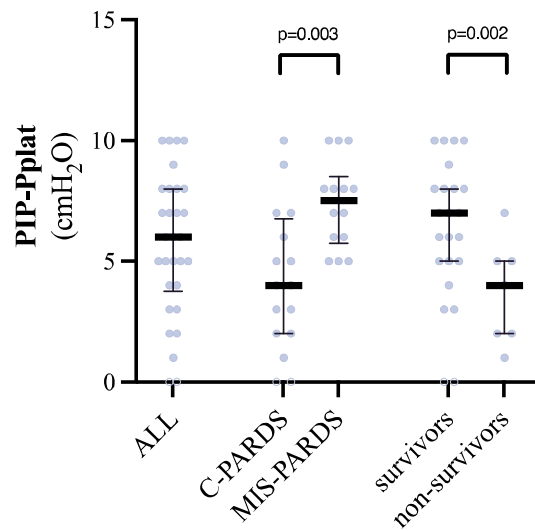


(PARDS: Pediatric Acute Respiratory Distress Syndrome; C-PARDS, PARDS associated with COVID-19 pneumonia; MIS-PARDS, PARDS associated with multisystem inflammatory syndrome in children)

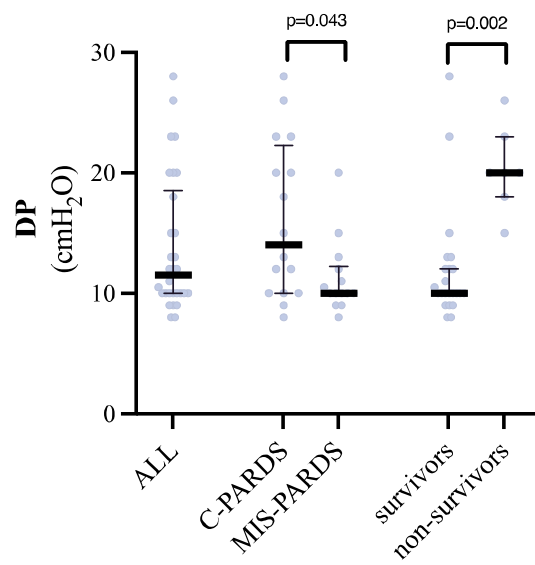
Figure 2. Boxplot graph of calculated parameters of lung mechanics of Children with PARDS associated with COVID-19, according to the clinical phenotypes and outcome. (A) The resistive component of work of breathing (Peak Inspiratory Pressure minus Plateau Pressure subtraction, [PIP-Pplat]); (B) the viscoelastic component of the work of breathing (Driving Pressure, DP); (C) compliance of the respiratory system (C_{RS}).

(PARDS: Pediatric Acute Respiratory Distress Syndrome; C-PARDS, PARDS associated with COVID-19 pneumonia; MIS-PARDS, PARDS associated with multisystem inflammatory syndrome in children)

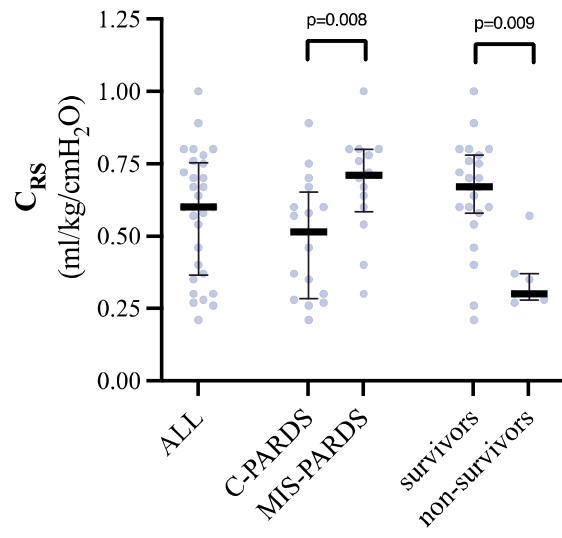
A



B



C



Supplementary files

Table S1. Case definitions for phenotypes according to diagnostics tests available.

C-PARDS, pediatric acute respiratory syndrome associated to COVID-19 infection; MIS-PARDS, pediatric acute respiratory syndrome associated to multisystem inflammatory syndrome; rt-PCR, reverse transcription-polymerase chain reaction; MIS-C, multisystem inflammatory syndrome in children. * epidemiologic contact.

	COVID-19 rt-PCR	MIS-C criteria	COVID-19 IgM	COVID-19 IgG
C-PARDS	(+)	(-)	N/A	N/A
	(-)	(-)	(+)	(-)
	(-)	(+)	(-)	(-)*
MIS-PARDS	(+)	(+)	(-)	(+)
	(-)	(+)	(+)	(+)

Table S2. Echocardiogram findings in C-PARDS and MIS-PARDS phenotypes.

C-PARDS, pediatric acute respiratory syndrome associated to COVID-19 infection; MIS-PARDS, pediatric acute respiratory syndrome associated to multisystem inflammatory syndrome; LV, left ventricular.

	All n = 30	MIS-PARDS n = 14	C-PARDS n = 16
Abnormal Coronaries	2	2	0
LV Dysfunction	4	4	1
EF < 40%	0	0	0
No Echocardiogram	10	1	9

Figure S1. Receiver operator curve analysis for driving pressure and mortality.

Area under the ROC curve was 0.91 (95% CI 0.81-1.00), and the best cut point was 15 cmH₂O (100% sensitivity and 87% specificity).

