

# 1 Patient Clusters and Cost Trajectories in Atrial Fibrillation: 2 Evidence from the Swiss Atrial Fibrillation Cohort

## 3 Authors

4 Aebersold Helena<sup>a</sup>, Serra-Burriel Miquel<sup>a</sup>, Foster-Witassek Fabienne<sup>a</sup>, Moschovitis  
5 Giorgio<sup>b</sup>, Aeschbacher Stefanie<sup>c,d</sup>, Auricchio Angelo<sup>e</sup>, Beer Jürg H.<sup>f,g</sup>, Blozik Eva<sup>h</sup>, Bonati  
6 Leo H.<sup>i,j</sup>, Conen David<sup>k</sup>, Felder Stefan<sup>l</sup>, Huber Carola A.<sup>m</sup>, Kühne Michael<sup>c,d</sup>, Müller  
7 Andreas<sup>n</sup>, Oberle Jolanda<sup>o,p</sup>, Paladini Rebecca E.<sup>c,d</sup>, Reichlin Tobias<sup>q</sup>, Rodondi  
8 Nicolas<sup>o,p</sup>, Springer Anne<sup>c,d</sup>, Stauber Annina<sup>n</sup>, Sticherling Christian<sup>c,d</sup>, Szucs Thomas<sup>r</sup>,  
9 Osswald Stefan<sup>c,d</sup>, Schwenkglenks Matthias<sup>a,r</sup>, on behalf of the Swiss-AF Investigators

10

11 <sup>a</sup> Epidemiology, Biostatistics and Prevention Institute, University of Zurich, Zurich,  
12 Switzerland

13 <sup>b</sup> Division of Cardiology, Ente Ospedaliero Cantonale (EOC), Ospedale Regionale di  
14 Lugano, Lugano, Switzerland

15 <sup>c</sup> Cardiology Division, Department of Medicine, University Hospital Basel, Switzerland

16 <sup>d</sup> Cardiovascular Research Institute Basel, University Hospital Basel, Switzerland

17 <sup>e</sup> Department of Cardiology, Instituto Cardiocentro Ticino, Ente Ospedaliero Cantonale  
18 (EOC), Lugano, Switzerland

19 <sup>f</sup> Department of Medicine, Cantonal Hospital of Baden, Switzerland

20 <sup>g</sup> Center for Molecular Cardiology, University of Zürich, Switzerland

21 <sup>h</sup> Institute of Primary Care, University of Zurich, Zurich, Switzerland

22 <sup>i</sup> Department of Neurology, University Hospital Basel, Basel Switzerland

23 <sup>j</sup> Research Department, Reha Rheinfelden, Rheinfelden, Switzerland

24 <sup>k</sup> Population Health Research Institute, McMaster University, Hamilton, Canada

25 <sup>l</sup> University of Basel, Faculty of Business and Economics, Switzerland

26 <sup>m</sup> Department of Health Sciences, Helsana Group, Zurich, Switzerland

27 <sup>n</sup> Department of Cardiology, Triemli Hospital Zurich, Switzerland

28 <sup>o</sup> Institute of Primary Health Care (BIHAM), University of Bern, Switzerland

29 <sup>p</sup> Department of General Internal Medicine, Inselspital, Bern University Hospital,  
30 University of Bern, Switzerland

31 <sup>q</sup> Department of Cardiology, Inselspital, Bern University Hospital, University of Bern,  
32 Switzerland

33 <sup>r</sup> Institute of Pharmaceutical Medicine (ECPM), University of Basel, Basel, Switzerland

34

## 35 Correspondence:

36 Helena Aebersold

NOTE: This preprint reports new research that has not been certified by peer review and should not be used to guide clinical practice.

- 1 University of Zurich
- 2 Epidemiology, Biostatistics & Prevention Institute (EBPI)
- 3 Hirschengraben 84, 8001 Zurich
- 4 [helena.aebersold@uzh.ch](mailto:helena.aebersold@uzh.ch)
- 5
- 6 **Word count:**
- 7 2993

1 **Abstract**

2 *Aims*

3 Evidence on long-term costs of atrial fibrillation (AF) and associated factors is  
4 scarce. As part of the Swiss-AF prospective cohort study we aimed to characterise AF  
5 costs and their development over time, and to assess specific patient clusters and their  
6 cost trajectories.

7

8 *Methods*

9 Swiss-AF enrolled 2,415 patients with variable duration of AF between 2014 and  
10 2017. Patient clusters were identified using hierarchical cluster analysis of baseline  
11 characteristics. Ongoing yearly follow-ups include health insurance clinical and claims  
12 data. An algorithm was developed to adjudicate costs to AF and related complications.

13

14 *Results*

15 Hierarchical analysis identified three patient clusters. “Cardiovascular-  
16 dominated” (CV-dominated) patients had the highest proportions of prior myocardial  
17 infarction and presence of diabetes. “Heart failure-dominated” (HF-dominated) patients  
18 had the highest occurrence of heart failure and permanent AF. “Isolated symptomatic”  
19 (IS) patients were younger and had the highest occurrence of paroxysmal AF. A  
20 subpopulation of 1,024 Swiss-AF patients with available claims data was followed up for  
21 a median [interquartile range] of 3.24 [1.09] years. Average yearly AF-adjudicated costs  
22 amounted to CHF 5,679, remaining stable across the observation period. CV-dominated  
23 (N = 253 with claims data) and HF-dominated patients (N = 185) depicted similarly high  
24 costs across all cost outcomes, the IS (N = 586) patients accrued the lowest costs.

25

26 *Conclusion*

27 Our results highlight three well-differentiated patient clusters with specific costs  
28 that could be used for stratification in both clinical and economic studies. Patient  
29 characteristics associated with adjudicated costs as well as cost trajectories may enable  
30 an early understanding of the magnitude of upcoming AF-related healthcare costs.

31

32 **Keywords**

33 atrial fibrillation, cost of illness, cost trajectories, hierarchical clustering, patient cluster

34

1 **What is already known on this topic**

2 Atrial fibrillation (AF) is a complex disease and constitutes a major economic and  
3 societal challenge due to its high prevalence worldwide.

4

5 **What this study adds**

6 This study, based on a large prospective cohort study, provides evidence on real-world  
7 AF costs and their development over time. Data-derived patient clusters are linked to  
8 costs and their respective cost trajectories are assessed.

9

10 **How this study might affect research, practice or policy**

11 The identified patient clusters and their characteristics may help clinicians and payers to  
12 gain an early insight and understanding of the magnitude of the expected AF-related  
13 healthcare costs.

14

## 1 **Introduction**

2 Atrial fibrillation (AF) is the most prevalent arrhythmia worldwide,<sup>1</sup> and its  
3 prevalence is expected to double by 2050.<sup>2,3</sup> AF patients face increased risk of stroke,  
4 cognitive dysfunction, and impaired quality of life.<sup>4,5</sup>

5 AF also constitutes a major economic and societal challenge. However, only a  
6 limited number of AF cost-of-illness studies<sup>6</sup> is available, indicating that costs are  
7 predominantly driven by AF-related hospitalisations.<sup>7</sup> Hospitalisation costs were reported  
8 to amount to 50-70% of total costs,<sup>8</sup> while medication costs were comparatively low.<sup>9</sup>  
9 Drivers of hospitalisations in AF patients were identified to be multifaceted and  
10 diverse.<sup>10,11</sup> They include age, cardiovascular diseases like previous history of heart  
11 failure and myocardial infarction, non-cardiovascular conditions, i.e. sleep apnoea and  
12 chronic kidney disease, as well as lifestyle factors.

13 Despite these insights, evidence on real-world AF-related costs and their  
14 components remains scarce. Most results stem from retrospective studies. Even less  
15 evidence is available on cost trajectories over time, especially in prevalent AF patients.  
16 Patient characterisation based on AF subtypes is known to not encompass the full  
17 heterogeneity of AF,<sup>12,13</sup> and data-driven characterisation of patients has not yet been  
18 used for costing.

19 The Swiss-AF Economics project is part of the prospective Swiss Atrial Fibrillation  
20 cohort study<sup>14,15</sup> (Swiss-AF) and aims to assess AF-related economic burden. Clinical  
21 data are combined with health insurance claims data to characterise the Swiss-AF study  
22 population from an economic perspective. Focusing on the direct medical cost per patient  
23 from the perspective of the Swiss statutory health insurance system, the present work  
24 aims to: i) describe AF costs and their trajectories, and ii) to build data-driven patient  
25 clusters and assess their respective cost trajectories.

## 1 **Methods**

### 2 *Study Design and Data Sources*

3 Swiss-AF is an ongoing prospective multicentre observational cohort study  
4 across 13 clinical centres in Switzerland. The detailed study setup and methodology  
5 have been described earlier.<sup>14</sup> In short, 2,415 patients were enrolled between April 2014  
6 and August 2017; this analysis used a 2014-2020 data cut. Eligibility criteria for Swiss-  
7 AF were based on a history of documented AF (paroxysmal, persistent, or permanent)  
8 and being older than 65 years; 228 patients were enrolled at age 45-64 years to enhance  
9 the study of socio-economic aspects of AF.

10 Health economic data include medical resource use at the enrolling centres and  
11 health insurance claims data from four cooperating insurance companies, covering 1,024  
12 patients (42.4% of the study population). The claims data cover all services submitted  
13 for reimbursement by the Swiss statutory health insurance. The statutory health  
14 insurance is obligatory for all residents and has a comprehensive benefit package  
15 covering inpatient and outpatient services. An insured person can choose from a variety  
16 of deductibles (CHF 300–2,500), where a higher deductible leads to a lower premium.

17 Claims relating to inpatient services were based on the Swiss flat-fee  
18 reimbursement scheme for acute care hospitalisations (SwissDRG<sup>16</sup>). Data related to  
19 inpatient services in rehabilitation clinics were based on tariffs per day negotiated  
20 between each service provider and insurer, and claims related to nursing home care  
21 services were based on daily contributions fixed by the Swiss Federal Council.  
22 Outpatient services were covered with detailed information for each cost component.  
23 Relevant comorbidities not collected by the Swiss-AF study were derived from the drug  
24 utilisation present in the claims data, using the pharmaceutical cost groups (PCGs)  
25 method.<sup>17</sup>

26

### 27 *Outcome Measures*

28 Our main outcome of interest was total AF-adjudicated costs from the Swiss  
29 statutory health insurance perspective. Costs in AF patients are typically partially related  
30 to AF and its potential complications, partially related to other comorbidities. To  
31 distinguish these components, an adjudication algorithm was developed through an  
32 iterative process involving several clinical experts of the Swiss-AF study centres. The  
33 adjudication algorithm ([https://gitlab.uzh.ch/helena.aebersold/patient-clusters-and-cost-  
34 trajectories.git](https://gitlab.uzh.ch/helena.aebersold/patient-clusters-and-cost-trajectories.git)) combined clinical events, e.g. date of a bleeding event, with information  
35 from the health insurance claims, e.g. SwissDRG based. Inpatient costs were either non-  
36 related or adjudicated to one of five groups: (1) AF, (2) stroke or transient ischemic attack  
37 (TIA), (3) bleeding, (4) fall, (5) heart failure. Similarly, outpatient costs were either non-

1 related or classified into one of six groups: (1) AF without medication, (2) AF medication,  
2 (3) stroke or TIA without medication, (4) stroke or TIA medication, (5) bleeding, (6) fall.  
3 As it was not possible to distinguish between complications (e.g. strokes) caused by AF  
4 or other reasons, complication costs were considered in full.

5 We thus considered the sum of all costs adjudicated to groups (1) to (6) as total  
6 AF-adjudicated costs. Secondary outcomes included AF-adjudicated inpatient costs, AF-  
7 adjudicated outpatient costs excluding drug costs, and AF-adjudicated outpatient drug  
8 costs. We also considered total costs, i.e., the sum of total AF-adjudicated costs and  
9 total non-adjudicated costs, and equivalent sub-categories. All outcome variables and  
10 their relation can be found in **Figure S1** in the supplement.

### 11 *Covariates*

12 Baseline covariates, measured at enrolment, included the following types:

13 (1) patient characteristics: age, sex, body mass index (BMI), AF type, AF symptoms, time  
14 since AF diagnosis, risk of stroke for non-valvular atrial fibrillation (CHA<sub>2</sub>DS<sub>2</sub>-VASc  
15 score).

16 (2) medical history: previous major bleeding, stroke or TIA, systemic embolism, heart  
17 failure, myocardial infarction, diabetes, hypertension, renal insufficiency, sleep  
18 apnoea.

19 (3) treatments and implanted devices: percutaneous transluminal coronary angioplasty  
20 (PTCA), coronary artery bypass grafting (CABG), electro-conversion, pulmonary vein  
21 isolation (PVI), loop recorder, pacemaker (PM), cardiac resynchronisation therapy  
22 (CRT) with or without ICD, implantable cardioverter defibrillator (ICD).

23 (4) anticoagulation medication: vitamin K antagonist (VKA), direct-acting oral  
24 anticoagulant (DOAC).

25 (5) other medication: antiplatelets, aspirin, statins, diuretics, beta-blockers, digoxin.

26 (6) socioeconomic factors: education, greater area of residence, smoking, alcohol  
27 consumption.

28

### 29 *Statistical analysis*

30 First, the characteristics of the included Swiss-AF patients were described.  
31 Baseline characteristics were presented with mean and standard deviation for normally  
32 distributed variables, median and interquartile range for continuous non-normally  
33 distributed variables, and N (%) for categorical ones. Kaplan-Meier curves of overall  
34 survival were used to depict mortality and cohort attrition.

35 Second, the costs and their trajectories since enrolment were described. Cost  
36 components are shown as bar charts and boxplot distributions of mean annual costs.  
37 Cost trajectories are depicted as line plots with mean estimates and 95% confidence

1 intervals. All costs considered individual follow-up times and were aggregated to a yearly  
2 level. Given the relative stability of prices over the observation period, costs were taken  
3 as reported. Costs as a function of time since diagnosis were also explored graphically.

4 Third, to gain an understanding of different patterns in the Swiss-AF population,  
5 clusters of patients and their respective cost composition and cost trajectories were  
6 determined. A hierarchical cluster analysis was run. The unsupervised learning model<sup>18</sup>  
7 considered the full Swiss-AF population and all baseline covariates except greater area  
8 of residence. Gower distances were used with a complete linkage method, choosing  
9 optimal clusters according to elbow and silhouette methods.<sup>18</sup> Differences in baseline  
10 characteristics between patient clusters were compared with standardised mean  
11 difference, t-test for continuous and roughly normally distributed variables, Mann-  
12 Whitney U test for continuous non-normally distributed variables, and fisher's exact test  
13 for categorical variables. Cluster-specific overall survival was compared using Kaplan-  
14 Meier curves and age-adjusted cox regression. A complementary multivariable  
15 regression-based cost analysis is reported in the supplement (**Figures S7-S8, Tables**  
16 **S5-S8**).

17 A 5% significance level was pre-specified, and no multiple hypothesis testing  
18 adjustments were performed due to the exploratory nature of the study. Given the usage  
19 of baseline data and observed claims there were no missing data. The cost analyses  
20 conditioned on patients being alive. Data management, variable derivations and all  
21 statistical analyses were conducted using R version 3.6.3.



## 1 Results

### 2 *Patient population*

3 Out of 2,415 Swiss-AF patients, 1,024 (42.4%) had available claims data and  
4 were included in the cost analyses. Baseline characteristics are shown in Fehler!  
5 Verweisquelle konnte nicht gefunden werden.. The mean age at baseline was  $73 \pm$   
6 standard deviation (SD) 8 years and 28% of the participants were female. On average,  
7 patients were diagnosed with AF 6.3 years prior to enrolment, and the majority had AF  
8 symptoms (62%). Patients without available claims data, additionally used in the  
9 hierarchical cluster analysis, had comparable characteristics (Fehler! Verweisquelle  
10 konnte nicht gefunden werden. in the supplement). **Figure S2** in the supplement depicts  
11 the average monthly cost evolution alongside the Kaplan-Meier curve of overall survival,  
12 across the full observation period of 2014 to 2020. For subsequent analyses, individual  
13 patient follow-up was censored at five years after enrolment (median follow-up: 3.24  
14 years), given sparse data thereafter.

### 15 *Cost structures and cost trajectories*

16 Mean annual costs and cost trajectories for different cost outcomes are shown in  
17 **Figure 1**. More details on all cost outcomes and costs by time since AF diagnosis can  
18 be found in the supplement (**Tables S2, Figures S3-S4**). The average total per-patient  
19 costs amounted to CHF 19,037 yearly, of which roughly half corresponded to outpatient  
20 services. Inpatient costs appeared to be higher than outpatient costs only during the first  
21 year, remaining stable and at a similar level thereafter.

22 Total AF-adjudicated costs amounted to CHF 5,679 annually, roughly 30% of the  
23 total costs. AF-adjudicated costs consisted mainly of AF treatment costs (CHF 4,078),  
24 followed by costs of bleeding (CHF 696) and heart failure (CHF 494). As the total costs,  
25 the AF-adjudicated costs remained stable across the whole analysed period of five years.  
26 AF-adjudicated inpatient costs were higher than AF-adjudicated outpatient costs in the  
27 first year.

28

### 29 *Patient clusters and their cost trajectories*

30 A total of three hierarchical analysis-based clusters were identified to be optimal  
31 according to the elbow and silhouette methods. Baseline characteristics by cluster are  
32 shown in **Table 1**. Cluster-specific Kaplan-Meier curves of overall survival and results of  
33 age-adjusted cox regression are depicted in **Figure S5** and **Table S3**.

34 The first cluster included 253 patients and may be characterised as  
35 “cardiovascular dominated” (CV-dominated). Most patients in this cluster had previous  
36 PTCA or CABG (87%), and we observed the highest proportions of prior myocardial  
37 infarction (55%), heart failure (50%), and stroke or TIA (27%). There was also a high

1 presence of diabetes (38%), hyperlipidaemia (67%), and past smoking (63%). Until the  
2 five-year follow-up 55 (21.7%) were deceased and 11 (4.3%) lost.

3 The second cluster included 586 patients we characterise as being “isolated  
4 symptomatic” (IS). Patients in this cluster were the youngest among the three clusters  
5 (mean age: 71). They had the highest occurrence of paroxysmal AF (54%) and presence  
6 of AF symptoms (73%). However, they had fewer medical history items present, fewer  
7 comorbidities, low medication use, and had been diagnosed with AF more recently  
8 (mean years: 5.3). Until the 5-year follow-up 36 (6.1%) were deceased and 14 (2.4%)  
9 lost.

10 The third cluster included 185 “heart failure dominated” (HF-dominated) patients.  
11 These patients were characterised by the highest occurrence of permanent AF (45%), a  
12 high presence of heart failure (43%), and the highest proportion with a pacemaker (22%).  
13 Moreover, they featured the lowest presence of AF symptoms (42%), had practically no  
14 previous myocardial infarctions (2.2%), low prevalence of diabetes (21%), and low  
15 aspirin usage (9.7%). Many used diuretics (90%). Until the 5-year follow-up 35 (18.9%)  
16 were deceased and 12 (6.5%) lost.

17 Cost trajectories for each cluster are shown in **Figure 2**. More details on the cost  
18 outcomes by cluster can be found in **Table S4** and **Figure S6**. Throughout all cost  
19 trajectories, the IS patients accrued the lowest costs. Moreover, the pattern in the IS  
20 group resembled the overall cost trajectory (see **Figure 1**): after an initial high, all costs  
21 remained stable across the observation period. Compared to the HF-dominated cluster,  
22 the CV-dominated patients depicted slightly higher AF-adjudicated costs. The results are  
23 consistent with the results of the complementary multivariable regression-based cost  
24 analysis, which provided estimates of average covariate effects across all patients  
25 (**Figures S7-S8, Tables S5-S8**).

## 1 Discussion

2 This study presents recent evidence on real-world AF costs. To the best of our  
3 knowledge, it is the first to link data-derived patient clusters with cost trajectories. We  
4 observed mean annual and AF-adjudicated healthcare costs to remain stable over  
5 several years. Furthermore, among three clinically well-differentiated patient clusters  
6 cost levels differed but were also stable throughout the observation period.

7 Mean annual total costs amounted to CHF 19,037 per AF patient (~23% of the  
8 Swiss Gross Domestic Product per capita), whereof CHF 5,679 were attributable to AF  
9 and its complications. Across the entire observation period, these costs remained  
10 relatively stable. Inpatient and outpatient costs were of similar magnitude; this applied to  
11 both, AF-adjudicated and non-adjudicated costs. This finding is in line with existing  
12 literature, where inpatient costs incurred at least half of the total costs.<sup>19–22</sup> The  
13 observation of a stable proportion across five years, also apparent in AF-adjudicated  
14 costs, has not been previously described.

15 Of the AF-adjudicated costs, 71.8% were directly related to AF, followed by  
16 bleeding, heart failure, fall, and stroke / TIA costs. In the literature so far, AF-related costs  
17 were mostly assessed through various excess cost calculations<sup>23</sup> and a clinically-based  
18 bottom-up approach was missing. Even though our adjudication algorithm was unable to  
19 distinguish between the costs of care episodes triggered by AF versus by other causes,  
20 we believe that this bottom-up approach contributes to a more realistic understanding of  
21 AF and related costs. Also, in contrast to most studies,<sup>19,21,24,25</sup> our observed contribution  
22 of AF-adjudicated costs to overall healthcare costs was smaller. One reason may be that  
23 we analysed prevalent AF patients while the literature focussed mainly on incident  
24 patients.

25 Three well-differentiated patient clusters resulted from our analysis, with distinct  
26 cost trajectories: CV-dominated with rather high costs, HF-dominated with similarly high  
27 costs, and IS with substantially lower costs. Some attempts to cluster the heterogeneity  
28 of AF patients were reported previously, but not linked with cost trajectories.<sup>12,26–28</sup> To  
29 facilitate an understanding of expected patient trajectories, we based our analysis on  
30 baseline characteristics.

31 Our first cluster, the CV-dominated patients, featured many strong risk factors for  
32 cardiovascular diseases (e.g., high rates of past smokers, low rate of never smokers,  
33 high prevalence of diabetes) and high cardiovascular drug use (i.e. aspirin, statin, and  
34 beta-blocker). The high rates of cardiovascular revascularisation procedures, myocardial  
35 infarction and stroke/TIA suggested underlying cardiovascular disease. These  
36 characteristics are roughly comparable with those of the Atherosclerotic Comorbid AF  
37 cluster found in two other cluster studies.<sup>12,26</sup> The CV-dominated patients accrued

1 substantial costs, especially AF-adjudicated costs, which remained stable at a high level  
2 across time. This result is strongly consistent with the complementary multivariate  
3 approach.

4 The second cluster, representing IS, showed the lowest costs among the three  
5 clusters. Patients were noticeably younger, had fewer comorbidities, but high rates of  
6 previous cardioversion, AF symptoms, and paroxysmal AF. This cluster has partially  
7 similar characteristics as the Younger Paroxysmal AF cluster identified in a Japanese  
8 cohort<sup>29</sup> and the Low Comorbidity cluster identified in a US cohort<sup>12</sup>. Differences in  
9 cultural and clinical settings, and in available descriptors of patient characteristics may  
10 have limited the degree of similarity. Considering the results of the multivariable  
11 regression-based analysis, this cluster seems to possess very few covariates that drive  
12 the costs significantly above a base level, explaining the low cost level.

13 The third cluster, HF-dominated, featured similarly high costs as the CV-  
14 dominated, as well as similarly high rates of heart failure. However, patients had almost  
15 no prior myocardial infarction, little diabetes, low aspirin intake, yet high diuretics intake.  
16 This may be consistent with heart failure caused by underlying causes other than  
17 cardiovascular disease. The patients also featured a relatively low prevalence of  
18 covariates associated with higher AF-adjudicated costs but were at the same cost level  
19 as the CV-dominated cluster. A possible explanation for this result may be unplanned  
20 hospitalisations and complications due to the ongoing challenge to treat patients with  
21 heart failure. This specific cluster has not yet been reported by other AF cluster  
22 studies.<sup>12,26</sup>

23 The prospective cohort study patients we report on differ from the patient  
24 populations underlying recent AF costs studies in four ways, which has implication for  
25 the interpretation of the results. Firstly, most studies to-date relied on administrative  
26 databases<sup>21,25,30</sup>; secondly, they were often retrospective<sup>19,21,25,27</sup>; and thirdly, had short  
27 follow-up times between 0.5 to 3 years<sup>19,24,29</sup>. In combining clinical and health insurance  
28 claims data prospectively, the present analysis adds detailed insight into the longer-term  
29 healthcare costs of AF patients. Fourthly, the present study examined prevalent patients  
30 with varying disease duration (including 13% enrolled within six months after first AF  
31 diagnosis). Even though the Swiss-AF study population cannot be regarded as a  
32 representative sample of AF patients, it provides insights on the longer-term cost impact  
33 of AF in a substantially wider spectrum of AF patients than previous studies.

34 There are several limitations inherent to our study that require discussion. First,  
35 the data structure is highly complex and patients in Swiss-AF are very heterogeneous.  
36 We tried to account for the heterogeneity with the clustering method, and covariate  
37 selection was based on the current literature as well as discussions with clinicians from

1 the Swiss-AF study centres. Second, as the study population is not truly representative  
2 of all Swiss AF patients, a typical ‘average’ AF cost could not be reliably deducted.  
3 Further work will approach this topic with a general population-based, matched control  
4 population. Third, given deductible levels in the Swiss statutory health insurance system,  
5 the possibility that not all claims were handed in for reimbursement exists, which may  
6 have led to an underestimation of true costs. However, as AF patients have substantial  
7 costs, it is rather unlikely that claims were not submitted. A fourth limitation lies in the  
8 adjudication algorithm, which was developed carefully and considered clinical  
9 information together with claims data. Still, it may not fully reflect the true causation of  
10 costs by AF and its complications, and could not distinguish which specific complications,  
11 e.g. strokes, were truly due to AF or not.

12 In conclusion, this study analysed real-world AF costs, patient clusters and their  
13 cost trajectories. We observed mean annual AF-adjudicated costs of roughly CHF 6,000  
14 per patient and stable relative contributions of different cost categories during five years.  
15 Three well-differentiated patient clusters were identified using a hierarchical clustering  
16 method: CV-dominated, HF-dominated and IS patients. The cost levels for AF-  
17 adjudicated and overall healthcare costs depended on patient cluster but remained again  
18 stable over time. CV-dominated patients accrued the highest costs and HF-dominated  
19 patients only slightly lower ones, while IS patients had substantially lower costs. These  
20 insights may help clinicians and payers to develop an early understanding of the  
21 magnitude of to be expected AF-related healthcare costs.

## 1 **Funding**

2 This work is supported by grants of the Swiss National Science Foundation (grant  
3 numbers 105318\_189195 / 1, 33CS30\_148474, 33CS30\_177520, 32473B\_176178, and  
4 32003B\_197524), the Swiss Heart Foundation, the Foundation for Cardiovascular  
5 Research Basel (FCVR), and the University of Basel.

6

## 7 **Acknowledgements**

8 We thank Lukas Kauer from the health insurance CSS, Pascal Godet from the health  
9 insurance Sanitas, Beat Brüngger and Andri Signorell from the health insurance  
10 Helsana, and the health insurance KPT for providing the claims data for this study. The  
11 full list of Swiss-AF investigators is provided in the supplementary material.

12

## 13 **Disclosures**

14 Dr. Auricchio is a consultant with Abbott, Boston Scientific, Backbeat, Cairdac, Corvia,  
15 EP Solutions, Medtronic, Microport CRM, Philips, XSpline; he participates in clinical trials  
16 sponsored by Boston Scientific, Medtronic, Microport CRM, Philips and XSpline; and has  
17 intellectual properties assigned to Boston Scientific, Biosense Webster, and Microport  
18 CRM. Dr. Beer reports grant support from the Swiss National Foundation of Science,  
19 The Swiss Heart Foundation and the Stiftung Kardio; grant support, speakers- and  
20 consultation fees to the institution from Bayer, Sanofi and Daiichi Sankyo. Dr. Bonati  
21 reports personal fees and nonfinancial support from Amgen, grants from AstraZeneca,  
22 personal fees and nonfinancial support from Bayer, personal fees from Bristol-Myers  
23 Squibb, personal fees from Claret Medical, grants from Swiss National Science  
24 Foundation, grants from University of Basel, grants from Swiss Heart Foundation,  
25 outside the submitted work. Dr. Conen received consulting fees from Roche Diagnostics,  
26 and speaker fees from Servier and BMS/Pfizer, all outside of the current work. Dr. Kühne  
27 reports personal fees from Bayer, personal fees from Böhringer Ingelheim, personal fees  
28 from Pfizer BMS, personal fees from Daiichi Sankyo, personal fees from Medtronic,  
29 personal fees from Biotronik, personal fees from Boston Scientific, personal fees from  
30 Johnson&Johnson, personal fees from Roche, grants from Bayer, grants from Pfizer,  
31 grants from Boston Scientific, grants from BMS, grants from Biotronik, grants from Daiichi  
32 Sankyo. Dr. Moschovitis has received consultant fees for taking part to advisory boards  
33 from Novartis, Boehringer Ingelheim, Bayer, Astra Zeneca and Daiichi Sankyo, all  
34 outside of the presented work. Dr. Müller reports fellowship and training support from  
35 Biotronik, Boston Scientific, Medtronic, Abbott/St. Jude Medical, and Biosense Webster;  
36 speaker honoraria from Biosense Webster, Medtronic, Abbott/St. Jude Medical,  
37 AstraZeneca, Daiichi Sankyo, Biotronik, MicroPort, Novartis, and consultant honoraria

1 for Biosense Webster, Medtronic, Abbott/St. Jude Medcal, and Biotronik. Dr. Osswald  
2 received research grants from the Swiss National Science Foundation and from the  
3 Swiss Heart Foundation, research grants from Foundation for CardioVascular Research  
4 Basel, research grants from Roche, educational and speaker office grants from Roche,  
5 Bayer, Novartis, Sanofi AstraZeneca, Daiichi-Sankyo and Pfizer. Dr. Reichlin has  
6 received research grants from the Swiss National Science Foundation, the Swiss Heart  
7 Foundation, and the sitem insel support fund, all for work outside the submitted study.  
8 Speaker/consulting honoraria or travel support from Abbott/SJM, Astra Zeneca, Brahms,  
9 Bayer, Biosense-Webster, Biotronik, Boston-Scientific, Daiichi Sankyo, Medtronic,  
10 Pfizer-BMS and Roche, all for work outside the submitted study. Support for his  
11 institution's fellowship program from Abbott/SJM, Biosense-Webster, Biotronik, Boston-  
12 Scientific and Medtronic for work outside the submitted study. Dr. Schwenkglens reports  
13 grants from Swiss National Science Foundation, for the conduct of the study; grants and  
14 personal fees from Amgen, grants from MSD, grants from Novartis, grants from Pfizer,  
15 grants from The Medicines Company, all outside the submitted work. Dr. Serra-Burriel  
16 reports grants from the European Commission outside of the present work. Dr.  
17 Sticherling has received speaker honoraria from Biosense Webster and Medtronic and  
18 research grants from Biosense Webster, Daiichi-Sankyo, and Medtronic. The remaining  
19 authors have nothing to disclose.

20

## 21 **Ethics and Data availability statement**

22 The Swiss-AF study protocol was approved by the local ethics committee  
23 (Ethikkommission Nordwest- und Zentralschweiz), and written informed consent was  
24 obtained from each participant. The patient informed consent forms state that the data,  
25 containing personal and medical information, are exclusively available for research  
26 institutions in an anonymized form and are not allowed to be made publicly available.  
27 Researchers interested in obtaining the data for research purposes can contact the  
28 Swiss-AF scientific lead. Contact information is provided on the Swiss-AF website  
29 (<http://www.swissaf.ch/contact.htm>). Authorization of the responsible ethics committee is  
30 mandatory before the requested data can be transferred to external research institutions.

## 1   **References**

- 2   1.   Patel, N. J., Atti, V., Mitrani, R. D., Viles-Gonzalez, J. F. & Goldberger, J. J. Global  
3       rising trends of atrial fibrillation: a major public health concern. *Heart* **104**, 1989–  
4       1990 (2018).
- 5   2.   Krijthe, B. P. *et al.* Projections on the number of individuals with atrial fibrillation in  
6       the European Union, from 2000 to 2060. *European Heart Journal* **34**, 2746–2751  
7       (2013).
- 8   3.   Miyasaka, Y. *et al.* Secular Trends in Incidence of Atrial Fibrillation in Olmsted  
9       County, Minnesota, 1980 to 2000, and Implications on the Projections for Future  
10      Prevalence. *Circulation* **114**, 119–125 (2006).
- 11  4.   Conen, D. *et al.* Risk of Death and Cardiovascular Events in Initially Healthy  
12      Women With New-Onset Atrial Fibrillation. *JAMA* **305**, 2080–2087 (2011).
- 13  5.   Stewart, S., Murphy, N. F., Walker, A., McGuire, A. & McMurray, JJ. Cost of an  
14      emerging epidemic: an economic analysis of atrial fibrillation in the UK. *Heart* **90**,  
15      286–292 (2004).
- 16  6.   Wodchis, W. P., Bhatia, R. S., Leblanc, K., Meshkat, N. & Morra, D. A Review of  
17      the Cost of Atrial Fibrillation. *Value in Health* **15**, 240–248 (2012).
- 18  7.   Ball, J., Carrington, M. J., McMurray, J. J. V. & Stewart, S. Atrial fibrillation: Profile  
19      and burden of an evolving epidemic in the 21st century. *International Journal of*  
20      *Cardiology* **167**, 1807–1824 (2013).
- 21  8.   Wolowacz, S. E., Samuel, M., Brennan, V. K., Jasso-Mosqueda, J. G. & van  
22      Gelder, I. C. The cost of illness of atrial fibrillation: a systematic review of the  
23      recent literature. *Europace* **13**, 1375–1385 (2011).
- 24  9.   Wong, C. X., Brooks, A. G., Leong, D. P., Roberts-Thomson, K. C. & Sanders, P.  
25      The Increasing Burden of Atrial Fibrillation Compared With Heart Failure and  
26      Myocardial Infarction: A 15-Year Study of All Hospitalizations in Australia. *Arch*  
27      *Internal Medicine* **172**, 739–741 (2012).
- 28  10.  Bhat, A. *et al.* Drivers of hospitalization in atrial fibrillation: A contemporary review.  
29      *Heart Rhythm* **17**, 1991–1999 (2020).
- 30  11.  Steinberg, B. A. *et al.* Drivers of hospitalization for patients with atrial fibrillation:  
31      Results from the Outcomes Registry for Better Informed Treatment of Atrial  
32      Fibrillation (ORBIT-AF). *American Heart Journal* **167**, 735-742.e2 (2014).
- 33  12.  Inohara, T. *et al.* Association of of Atrial Fibrillation Clinical Phenotypes With  
34      Treatment Patterns and Outcomes: A Multicenter Registry Study. *JAMA*  
35      *Cardiology* **3**, 54–63 (2018).
- 36  13.  Lip, G., Nieuwlaat, R., Pisters, R., Lane, D. & Crijns, H. Refining clinical risk  
37      stratification for predicting stroke and thromboembolism in atrial fibrillation using  
38      a novel risk factor-based approach: the euro heart survey on atrial fibrillation.  
39      *Chest* **137**, 263–272 (2010).
- 40  14.  Conen, D. *et al.* Design of the Swiss Atrial Fibrillation Cohort Study (Swiss-AF):  
41      structural brain damage and cognitive decline among patients with atrial  
42      fibrillation. *Swiss Medical Weekly* **147**, (2017).



- 1 15. Conen, D. *et al.* Relationships of Overt and Silent Brain Lesions With Cognitive  
2 Function in Patients With Atrial Fibrillation. *J Am Coll Cardiol* **73**, 989–999 (2019).
- 3 16. SwissDRG. <https://www.swissdrg.org/de/akutsomatik/swissdrg-system-1002021>  
4 (2021).
- 5 17. Huber, C. A., Szucs, T. D., Rapold, R. & Reich, O. Identifying patients with chronic  
6 conditions using pharmacy data in Switzerland: an updated mapping approach to  
7 the classification of medications. *BMC Public Health* **13**, 1–10 (2013).
- 8 18. Hastie, T., Tibshirani, R. & Friedman, J. *Springer Series in Statistics The Elements*  
9 *of Statistical Learning Data Mining, Inference, and Prediction*.
- 10 19. Reinhold, T., Lindig, C., Willich, S. N. & Brüggjenjürgen, B. The costs of atrial  
11 fibrillation in patients with cardiovascular comorbidities--a longitudinal analysis of  
12 German health insurance data. *Europace* **13**, 1275–1280 (2011).
- 13 20. Zoni-Berisso, M. *et al.* The cost of atrial fibrillation in Italy: a five-year analysis of  
14 healthcare expenditure in the general population. From the Italian Survey of Atrial  
15 Fibrillation Management (ISAF) study. *European Review for Medical and*  
16 *Pharmacological Sciences* **21**, 175–183 (2017).
- 17 21. Kim, M., Lin, J., Hussein, M., Kreilick, C. & Battleman, D. Cost of atrial fibrillation  
18 in United States managed care organizations. *Advances in Therapy* **26**, 847–857  
19 (2009).
- 20 22. Ringborg, A. *et al.* Costs of atrial fibrillation in five European countries: Results  
21 from the Euro Heart Survey on atrial fibrillation. *Europace* **10**, 403–411 (2008).
- 22 23. Becker, C. Cost-of-illness studies of atrial fibrillation: methodological  
23 considerations. *Expert Review of Pharmacoeconomics & Outcomes Research* **14**,  
24 661–684 (2014).
- 25 24. Johnsen, S. P., Dalby, L. W., Täckström, T., Olsen, J. & Fraschke, A. Cost of  
26 illness of atrial fibrillation: a nationwide study of societal impact. *BMC Health*  
27 *Services Research* **17**, 1–8 (2017).
- 28 25. Kim, M., Johnston, S., Chu, B., Dalal, M. R. & Schulman, K. Estimation of total  
29 incremental health care costs in patients with atrial fibrillation in the United States.  
30 *Circulation. Cardiovascular Quality and Outcomes* **4**, 313–320 (2011).
- 31 26. Inohara, T. *et al.* A Cluster Analysis of the Japanese Multicenter Outpatient  
32 Registry of Patients With Atrial Fibrillation. *The American Journal of Cardiology*  
33 **124**, 871–878 (2019).
- 34 27. Suzuki, S. *et al.* Identifying risk patterns in older adults with atrial fibrillation by  
35 hierarchical cluster analysis: A retrospective approach based on the risk  
36 probability for clinical events. *IJC Heart & Vasculature* **37**, 100883 (2021).
- 37 28. Karwath, A. *et al.* Redefining  $\beta$ -blocker response in heart failure patients with sinus  
38 rhythm and atrial fibrillation: a machine learning cluster analysis. *The Lancet* **398**,  
39 1427–1435 (2021).
- 40 29. Boccuzzi, S. *et al.* Retrospective study of total healthcare costs associated with  
41 chronic nonvalvular atrial fibrillation and the occurrence of a first transient  
42 ischemic attack, stroke or major bleed. *Curr Med Res Opin* **25**, 2853–2864 (2009).

- 1 30. Bennell, M. C. *et al.* Identifying predictors of cumulative healthcare costs in  
2 incident atrial fibrillation: A population-based study. *J Am Heart Assoc* **4**, (2015).

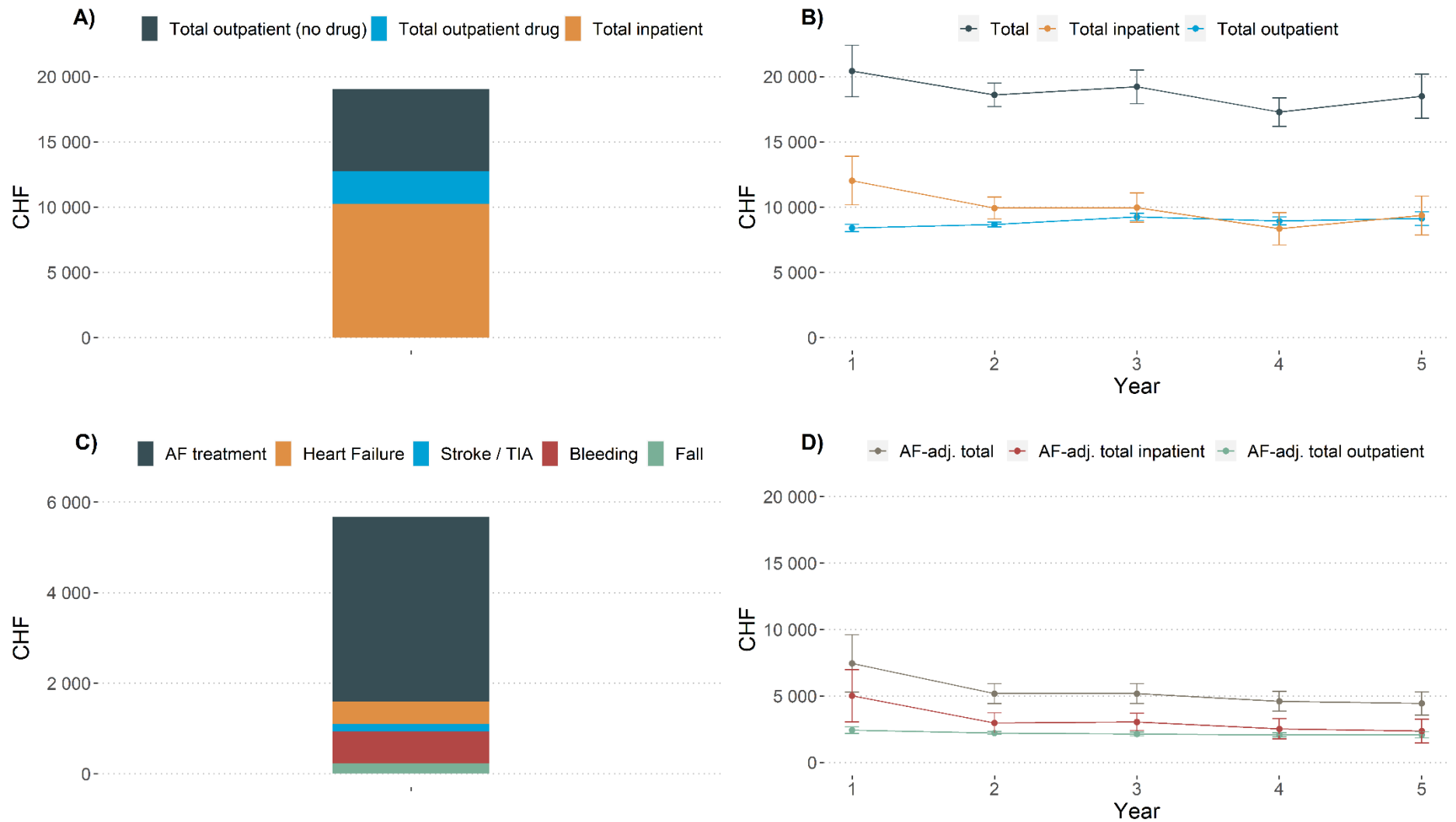
**Table 1. Baseline characteristics of all included AF patients and each cluster.**

	Overall	Cardiovascular Dominated	Isolated Symptomatic	Heart Failure Dominated	p	SMD	
	N	1 024	253	586	185		
<b>Characteristics</b>							
Age <i>mean (SD)</i>		73.00 (8.17)	75.39 (6.81)	70.92 (8.30)	76.32 (7.48)	<0.001	0.467
Sex Female <i>N (%)</i>		283 (27.6)	29 (11.5)	177 (30.2)	77 (41.6)	<0.001	0.48
BMI <i>median [IQR]</i>		26.98 [24.43, 30.52]	28.65 [25.61, 31.94]	26.21 [24.06, 29.72]	27.13 [24.69, 30.81]	<0.001	0.276
Type of AF <i>N (%)</i>						<0.001	0.508
Paroxysmal		471 (46.0)	97 (38.3)	314 (53.6)	60 (32.4)		
Permanent		243 (23.7)	87 (34.4)	73 (12.5)	83 (44.9)		
Persistent		310 (30.3)	69 (27.3)	199 (34.0)	42 (22.7)		
AF symptoms <i>N (%)</i>		632 (61.8)	125 (49.4)	429 (73.2)	78 (42.2)	<0.001	0.437
Years since AF Dx <i>mean (SD)</i>		6.33 (7.91)	7.72 (9.21)	5.32 (6.99)	7.66 (8.32)	<0.001	0.202
CHA <sub>2</sub> DS <sub>2</sub> -VASc <i>mean (SD)</i>		3.44 (1.73)	4.90 (1.42)	2.67 (1.48)	3.92 (1.39)	<0.001	1.036
Prev. Major Bleeding <i>N (%)</i>		61 ( 6.0)	22 ( 8.7)	21 ( 3.6)	18 ( 9.7)	0.001	0.166
Prev. Stroke or TIA <i>N (%)</i>		212 (20.7)	68 (26.9)	109 (18.6)	35 (18.9)	0.02	0.132
Prev. Sys. Embolism <i>N (%)</i>		60 ( 5.9)	27 (10.7)	16 ( 2.7)	17 ( 9.2)	<0.001	0.216
Prev. Heart Failure <i>N (%)</i>		254 (24.8)	126 (49.8)	49 ( 8.4)	79 (42.7)	<0.001	0.675
Prev. Myocardial Inf. <i>N (%)</i>		161 (15.7)	140 (55.3)	17 ( 2.9)	4 ( 2.2)	<0.001	0.971
Diabetes <i>N (%)</i>		176 (17.2)	96 (37.9)	41 ( 7.0)	39 (21.1)	<0.001	0.53
Hypertension <i>N (%)</i>		692 (67.6)	222 (87.7)	319 (54.4)	151 (81.6)	<0.001	0.523
Renal Insufficiency <i>N (%)</i>		213 (20.8)	101 (39.9)	39 ( 6.7)	73 (39.5)	<0.001	0.57
Sleep Apnea <i>N (%)</i>		154 (15.0)	63 (24.9)	65 (11.1)	26 (14.1)	<0.001	0.244
Prev. PTCA or CABG <i>N (%)</i>		288 (28.1)	219 (86.6)	63 (10.8)	6 ( 3.2)	<0.001	1.897
Prev. Electroconversion <i>N (%)</i>		355 (34.7)	80 (31.6)	223 (38.1)	52 (28.1)	0.023	0.142
Prev. PVI <i>N (%)</i>		210 (20.5)	23 ( 9.1)	176 (30.0)	11 ( 5.9)	<0.001	0.442
<b>Implanted Device <i>N (%)</i></b>						<0.001	0.42
No device or Loop recorder		841 (82.1)	183 (72.3)	529 (90.3)	129 (69.7)		

PM	121 (11.8)	37 (14.6)	44 ( 7.5)	40 (21.6)		
ICD	31 (3.0)	16 ( 6.3)	8 ( 1.4)	7 ( 3.8)		
CRT (ICD)	31 (3.0)	17 ( 6.7)	5 ( 0.9)	9 ( 4.9)		
<b>Medication N (%)</b>						
Antiplateletes	53 ( 5.2)	37 (14.6)	13 ( 2.2)	3 ( 1.6)	<0.001	0.331
Aspirin	171 (16.7)	103 (40.7)	50 ( 8.5)	18 ( 9.7)	<0.001	0.537
Statins	529 (51.7)	228 (90.1)	228 (38.9)	73 (39.5)	<0.001	0.843
Diuretics	459 (44.8)	177 (70.0)	116 (19.8)	166 (89.7)	<0.001	1.217
Beta-blockers	726 (70.9)	210 (83.0)	379 (64.7)	137 (74.1)	<0.001	0.283
Digoxin	39 (3.8)	13 ( 5.1)	9 ( 1.5)	17 ( 9.2)	<0.001	0.235
Anticoagulation					<0.001	0.586
None	93 (9.1)	28 (11.1)	55 ( 9.4)	10 ( 5.4)		
VKA	414 (40.4)	148 (58.5)	151 (25.8)	115 (62.2)		
DOAC	517 (50.5)	77 (30.4)	380 (64.8)	60 (32.4)		
<b>Comorbidities (PCG; %)</b>						
Acid	397 (38.8)	115 (45.6)	207 (35.4)	75 (40.5)	0.018	0.14
Bone	44 ( 4.3)	7 ( 2.8)	22 ( 3.8)	15 ( 8.1)	0.015	0.159
Cancer	35 ( 3.4)	9 ( 3.6)	17 ( 2.9)	9 ( 4.9)	0.438	0.068
Cardiovascular	754 (73.8)	191 (75.8)	417 (71.3)	146 (78.9)	0.085	0.118
Dementia	27 ( 2.6)	3 ( 1.2)	16 ( 2.7)	8 ( 4.3)	0.127	0.13
Diabetes	122 (11.9)	63 (25.0)	27 ( 4.6)	32 (17.3)	<0.001	0.401
Epilepsy	66 ( 6.5)	22 ( 8.7)	35 ( 6.0)	9 ( 4.9)	0.207	0.103
Glaucoma	103 (10.1)	29 (11.5)	54 ( 9.2)	20 (10.8)	0.565	0.05
Gout	96 ( 9.4)	43 (17.1)	27 ( 4.6)	26 (14.1)	<0.001	0.274
Hyperlipidemia	425 (41.6)	169 (67.1)	190 (32.5)	66 (35.7)	<0.001	0.489
Iron deficiency	66 ( 6.5)	22 ( 8.7)	27 ( 4.6)	17 ( 9.2)	0.021	0.121
Pain	386 (37.8)	105 (41.7)	199 (34.0)	82 (44.3)	0.014	0.141
Psychiatric	266 (26.0)	72 (28.6)	143 (24.4)	51 (27.6)	0.399	0.062
Antipsychotic	16 ( 1.6)	3 ( 1.2)	10 ( 1.7)	3 ( 1.6)	0.855	0.029
Respiratory	144 (14.1)	44 (17.5)	69 (11.8)	31 (16.8)	0.05	0.107

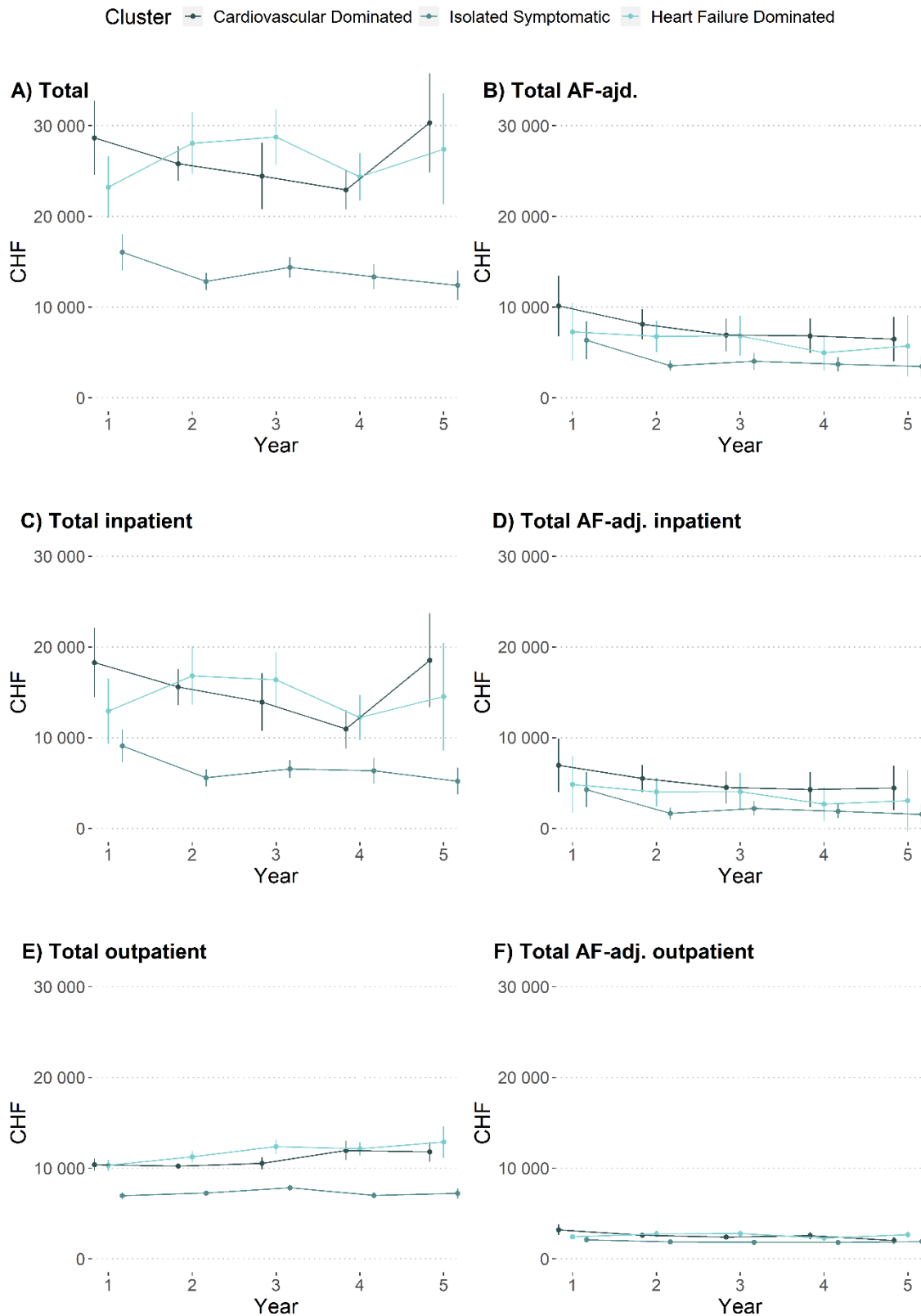
Rheumatic	406 (39.7)	111 (44.0)	223 (38.1)	72 (38.9)	0.266	0.08
Thyroid	87 ( 8.5)	20 ( 7.9)	49 ( 8.4)	18 ( 9.7)	0.789	0.042
Sparse	27 ( 2.6)	8 ( 3.2)	12 ( 2.1)	7 ( 3.8)	0.366	0.069
<b>Socioeconomic</b>						
Education <i>N (%)</i>					<0.001	0.337
Basic	139 (13.6)	25 ( 9.9)	75 (12.8)	39 (21.1)		
Middle	505 (49.4)	147 (58.1)	258 (44.1)	100 (54.1)		
Advanced	379 (37.0)	81 (32.0)	252 (43.1)	46 (24.9)		
Mother tongue <i>N (%)</i>					0.005	0.213
German	755 (73.7)	203 (80.2)	415 (70.8)	137 (74.1)		
French	141 (13.8)	29 (11.5)	80 (13.7)	32 (17.3)		
Italian	128 (12.5)	21 ( 8.3)	91 (15.5)	16 ( 8.6)		
Smoking <i>N (%)</i>					<0.001	0.295
Never	453 (44.2)	73 (28.9)	290 (49.5)	90 (48.6)		
In the past	495 (48.3)	160 (63.2)	253 (43.2)	82 (44.3)		
Active	76 ( 7.4)	20 ( 7.9)	43 ( 7.3)	13 ( 7.0)		
Alcohol <i>mean (SD)</i>	1.12 (1.53)	1.08 (1.40)	1.14 (1.52)	1.14 (1.72)	0.845	0.028
<b>Greater Region <i>N (%)</i></b>						
Zurich	125 (12.2)	46 (18.2)	63 (10.8)	16 (8.6)		
Lake Geneva Region	56 ( 5.5)	12 (4.7)	28 (4.8)	16 (8.6)		
Espace Mitelland	289 (28.2)	68 (26.9)	166 (28.3)	55 (29.7)		
Northwestern Switzerland	310 (30.3)	84 (33.2)	159 (27.1)	67 (36.2)		
Eastern Switzerland	67 ( 6.5)	9 (3.6)	48 (8.2)	10 (5.4)		
Southern Switzerland	125 (12.2)	21 (8.3)	89 (15.2)	15 (8.1)		
Central Switzerland	52 ( 5.1)	13 (5.1)	33 (5.6)	6 (3.2)		

Notes: Alcohol in drinks per day. Abbreviations: AF: atrial fibrillation, CABG: coronary artery bypass grafting, CHA<sub>2</sub>DS<sub>2</sub>-VASc: risk of stroke (for non-valvular atrial fibrillation), CRT: Cardiac resynchronization therapy, DOAC: direct-acting oral anticoagulant, Dx: diagnosis, ICD: Implantable cardioverter defibrillator, IQR: interquartile range, PCG: pharmaceutical cost groups, PM: Pacemaker, Prev.: previous history of, PTCA: Percutaneous transluminal coronary angioplasty, PVI: Pulmonary vein isolation, SD: standard deviation, SMD: standardized mean difference, TIA: transient ischemic attack, VKA: vitamin K antagonist.



**Figure 1. Cost compositions and cost trajectory of different outcome variables.** A) Composition of mean annual total costs. B) Cost trajectory of total, total inpatient and total outpatient costs during five years of follow-up. C) Composition of mean annual AF-adjudicated total costs. AF treatment costs include AF medication, and stroke / TIA costs include stroke / TIA medication. All cost components include inpatient and outpatient services, except for heart failure. Heart failure costs were calculated only from inpatient services. D) Cost trajectory of AF-adjudicated total, AF-adjudicated total inpatient and AF-adjudicated total outpatient costs during five years of follow-up.

Notes: Abbreviations: adj.: adjudicated, AF: atrial fibrillation.



**Figure 2. Cost trajectories by patient clusters.** Three patient clusters were identified: Cardiovascular Dominated, Isolated Symptomatic AF, and Heart Failure Dominated. The cost trajectory for different cost outcomes are shown for a follow-up period of five years: A) total costs, B) total AF-adjudicated costs, C) total inpatient costs, D) total AF-adjudicated inpatient costs, E) total outpatient costs, and F) total AF-adjudicated outpatient costs.

*Notes:* Abbreviations: adj.: adjudicated, AF: atrial fibrillation.