

Hospitalization, death, and probable reinfection in Peruvian healthcare workers infected with SARS-CoV-2: a national retrospective cohort study

Willy Ramos^{1,2}, Nadia Guerrero¹, Omar Napanga Saldaña¹, José Medina¹, Manuel Loayza², Jhony A. De La Cruz-Vargas², María Vargas¹, Luis Ordóñez¹, Yovana Seclén³, Carlos Álvarez-Antonio⁴, Juan Arrasco¹.

1. Centro Nacional de Epidemiología, Prevención y Control de Enfermedades. Lima, Perú.
2. Instituto de Investigaciones en Ciencias Biomédicas (INICIB). Facultad de Medicina, Universidad Ricardo Palma. Lima, Perú.
3. Unidad de Post Grado. Facultad de Medicina, Universidad Nacional Mayor de San Marcos. Lima, Perú.
4. Centro de Prevención y Control de Enfermedades, Dirección Regional de Salud de Loreto. Iquitos, Perú.

ABSTRACT

OBJECTIVE: To determine if occupation is a risk factor for probable reinfection, hospitalization, and death from COVID-19 in Peruvian healthcare workers infected with SARS-CoV-2.

MATERIAL AND METHODS: Retrospective cohort study. Healthcare workers who presented SARS-CoV-2 infection between March 1, 2020 and August 9, 2021 were included. Occupational cohorts were reconstructed from the following sources of information: the National Epidemiological Surveillance System, molecular tests (NETLAB), results of serology and antigen tests (SICOVID-19), National Registry of Health Personnel (INFORHUS) and National Information System of Deaths (SINADEF). The incidence of probable reinfection, hospitalization, and death from COVID-19 was obtained in the cohorts of health auxiliaries and technicians, nursing staff, obstetricians, physicians, and other healthcare workers. We evaluated whether occupation was a risk factor for probable reinfection, hospitalization, and death from COVID-19 using a log-binomial generalized linear model, obtaining the adjusted relative risk (RR_{Adj}).

RESULTS: 90,672 healthcare workers were included. 8.1% required hospitalization, 1.7% died from COVID-19, and 2.0% had probable reinfection. A similar incidence of probable reinfection was found in the 5 cohorts (1.9%-2.2%). Physicians had a higher incidence of hospitalization (13.2%) and death (2.6%); however, they were also those who presented greater susceptibility linked to non-occupational variables such as age and comorbidities. The multivariate analysis found that physicians (RR=1.691; CI 95: 1.556–1.837) had a higher risk of hospitalization and that the occupation of health technician and assistant was the only one that constituted a risk factor for mortality from COVID-19 (RR =1.240; 95% CI: 1.052–1.463).

CONCLUSIONS: Peruvian health technicians and auxiliaries have a higher risk of death from COVID-19 linked to their occupation, while doctors have higher mortality due to non-occupational factors. Physicians had a higher risk of hospitalization independent of the presence of comorbidities and age; likewise, all occupations had a similar risk of probable reinfection.

KEY WORDS: Healthcare workers, COVID-19, death, reinfection.

INTRODUCTION

Since the beginning of the COVID-19 pandemic, healthcare workers have been identified as one of the groups at greatest risk due to their direct exposure to SARS CoV-2 as part of health care ¹⁻⁶. Thus, the first reports made in China and later in European countries ⁽⁷⁻¹¹⁾ evidenced the rapid and exponential transmission in healthcare personnel. As of May 7, 2020, health personnel accounted for 22% of COVID-19 cases in Spain ⁹. In the Region of the Americas, according to the Pan American Health Organization, as of August 20, 2021, 1,792,212 cases and 10,302 deaths from COVID-19 were reported in healthcare workers ⁶.

The increased risk of SARS-CoV-2 infection in healthcare workers is explained by their greater exposure to patients with COVID-19, to the procedures that generate aerosol, to the prolonged use of personal protective equipment or to the lack of any of them (masks, gloves, gown, eye protection) ¹²⁻¹³. For this reason, the World Health Organization, as part of their public health strategies to safeguard their health and guarantee the continuity of health care, prioritized the vaccination of healthcare workers ¹⁴.

Although it is true that healthcare workers have a significantly higher risk than the general population for SARS-CoV-2 infection as well as for adverse outcomes, this may vary according to occupational groups and according to the outcome that is evaluated (reinfection, hospitalization, and death). Likewise, the risk granted by health care is added to that derived from individual risk factors such as age, sex, and diagnosis of comorbidities, among others. ^{2,4,5,7}

Peru is one of the countries with the most adverse results in the control of the SARS-CoV-2 pandemic, having reached the highest cumulative global mortality rate per hundred thousand inhabitants since the first wave, a phenomenon that continues to this day ¹⁵. It is to be assumed that this has also been transferred to healthcare workers, during the time of the greatest pandemic activity in which the demand for cases far exceeded the supply of health services, in which there was a significant deficit of human resources, personal protective equipment and equipment which would lead to the collapse of health services ¹⁶⁻¹⁸. To reduce the transmission of SARS-CoV-2, the Peruvian government established various measures such as remote work for tasks that could be carried out from home and for people belonging to risk groups, which included healthcare workers ¹⁹.

For this reason, it is necessary to assess the risk of adverse outcomes of SARS-CoV-2 infection in Peruvian healthcare workers, discriminating between the risk conferred by occupation and the risk attributable to non-occupational risk factors. The objective of the present investigation was to determine whether occupation and other non-occupational variables constituted risk factors for probable reinfection, hospitalization, and death from COVID-19 in cohorts of Peruvian healthcare workers infected with SARS-CoV-2.

MATERIAL AND METHODS

National retrospective cohort study. The studied population consisted of healthcare workers who presented SARS-CoV-2 infection between March 1, 2020 and August 6, 2021. All healthcare workers who presented SARS-CoV-2 infection were included in the study, whether they be symptomatic or asymptomatic, as long as they were positive or reactive to RT-PCR, antigen, or serology testing. Healthcare workers older than 70 years and those with inconsistent records were excluded from the study. Sampling was not carried out, we worked with all healthcare workers who met the inclusion and exclusion criteria because they were accessible through secondary sources.

The cohort of healthcare workers infected with SARS-CoV-2 was reconstructed from the following sources of information: National Epidemiological Surveillance System (NOTI COVID-19), molecular test results (NETLAB), serology results, and antigen (SICOVID-19), National Registry of Health Personnel (INFORHUS) and National Deaths Information System (SINADEF), uniting them to form a database.

From the resulting database, the incidence of probable reinfection by SARS-CoV-2 as well as hospitalization and death by COVID-19 was obtained in five occupational cohorts: health assistants and technicians, nursing staff, obstetricians, doctors, and others healthcare workers. This last category grouped together biologists, health career interns, veterinarians, nutritionists, dentists, chemical-pharmacists, medical technologists, and psychologists. It was evaluated if this occupation constituted a risk factor for probable reinfection by SARS-CoV-2, hospitalization, and death by COVID-19. The following occupational and non-occupational variables were also evaluated:

- Probable SARS-CoV-2 reinfection: Work institution, region where hospital is located, direct contact with COVID-19 cases in the work environment, age, sex, and diagnosis of comorbidities.
- Hospitalization for COVID-19: Work institution, age, diagnosis of comorbidities, within the work institution, the hospitals of the Ministry of Health and regional governments (MINSA/GORE), Social Security of Peru (EsSalud), National Police and Armed Forces (PNP/FF. AA) and private establishments were considered.
- Death by COVID-19: Area of work, years working there, age, sex, and diagnosis of comorbidities.

A health worker was considered to have probable reinfection if he or she presented more than one positive or reactive laboratory result separated by at least 3 months²⁰. Death due to COVID-19 was defined as death occurring as a consequence of the natural history or clinical course of the disease (without recovery period) and must meet at least one of the following criteria²⁰:

- Virological: Death in a health worker with clinical disease who dies within 60 days after a molecular (RT-PCR) or reactive antigen test for SARS-CoV-2.
- Serologic: Death in an infected health worker with clinical disease who dies within 60 days of a positive IgM or IgM/IgG serologic test for SARS-CoV-2.

- Radiological: Death in a health worker infected health worker with clinical disease who presents a radiological, tomographic, or nuclear magnetic resonance image compatible with COVID-19 pneumonia.
- Epidemiological link: Death in a health worker with pneumonia that has an epidemiological link with a case of COVID-19.
- Epidemiological investigation: Death in a health worker suspected of COVID-19 that is verified by epidemiological investigation.
- Clinical criteria: Death in a suspected case of COVID-19 with a clinical picture compatible with the disease.
- Death certificate: Death in a health worker who has a death certificate in which the diagnosis of COVID-19 is presented as the cause of death.

Descriptive statistics were performed based on the obtained frequencies, percentages, measures of central tendency and dispersion. Bivariate statistics were performed with Pearson's Chi square test, which was used to compare proportions. To assess the risk of developing adverse outcomes of SARS-CoV-2 infection (probable reinfection, hospitalization, and death), multivariate statistics were performed with a log-binomial generalized linear model, obtaining the adjusted relative risk (RR_{AJ}) for other covariates or potentially confounding variables as well as their confidence intervals. In this model, probable reinfection, hospitalization, and death were considered dependent variables, and occupational and non-occupational variables (older adults, male gender, and presence of comorbidities) were considered independent. The calculations were made with a confidence level of 95%.

In regard to the ethical aspects, the study did not require informed consent because it was based on secondary sources. The confidentiality of the information obtained from the healthcare workers was guaranteed and was used only for the purposes of this study. The research was approved by the Research Ethics Committee of the Ricardo Palma University, School of Medicine (Expedited Review: PI-003-2022).

RESULTS

CHARACTERISTICS OF THE HEALTHCARE WORKERS

The study included 90,672 healthcare workers who presented SARS-CoV-2 infection during the study period, with health technicians and auxiliaries as well as nursing staff being the most frequent occupational groups.

Regarding personal characteristics, the highest gender frequency was female and 8.9% had some comorbidity. In the case of occupational characteristics, the highest frequency of healthcare workers labor status was contracted workers, they labored in MINSA/GORE establishments, in the department of Lima and 17.2% reported having direct contact with cases of COVID-19 in their work environment. Likewise, 85.9% presented symptomatic disease, the most used tests for confirmation being serology and RT-PCR. This is shown in table 1.

TABLE 1: Non-occupational, occupational, clinical and laboratory characteristics of healthcare workers infected with SARS-CoV-2 in Peru.

FEATURES	FREQUENCY	%
NON-OCCUPATIONAL		
Sex		
Male	26878	29.6
Female	63794	70.4
Age group		
18-29	17604	19.4
30-65	71147	78.5
65 and over	1921	2.1
Comorbidity		
Heart disease	2456	2.7
Obesity	2156	2.4
Bronchial asthma	1920	2.1
Diabetes	1540	1.7
Lung disease	384	0.4
Cancer	231	0.3
Renal disease	192	0.2
Liver disease	181	0.2
Neurological disease	141	0.2
Immunodeficiency	83	0.1
Any comorbidity	8112	8.9
OCCUPATIONAL		
Occupation		
Technician and health assistant	34928	38.5
Nursing staff	23262	25.7
Midwife	6276	6.9
Physician	16181	17.8
Other health professionals	10025	11.1

Labor Status		
Contracted worker	44599	49.2
Temporary worker	34065	37.6
Resident doctor	1553	1.7
Rural Service Doctor	1993	2.2
Intern	863	1.0
Not specified	7599	8.4
Work Institution		
MINSA/GORE	64284	70.9
ESSALUD	16061	17.7
PNP / Armed Forces	3470	3.8
Others	4764	5.3
Private Establishments	2093	
Work region		
Lima	33712	37.2
Rest of the Coast	19896	21.9
Mountain range	25806	28.5
Jungle	11258	12.4
Direct contact with COVID-19 cases in the workplace		
Yes	15612	17.2
No	75060	82.0
CLINICS AND LABORATORIES		
Clinical Presentation		
Symptomatic	77868	85.9
Asymptomatic	12804	14.1
Positive or reactive diagnostic test		
RT-PCR	43354	47.8
Antigen test	13475	14.9
Serology	48351	53.3

ADVERSE OUTCOMES OF SARS-CoV-2 INFECTION

When evaluating the adverse results of SARS-CoV-2 infection in healthcare workers, it was observed that 8.1% required hospitalization and 1.7% died from COVID-19; while 2.0% presented probable reinfection. A similar incidence of probable reinfection was observed in the different occupational groups (between 1.9% and 2.2%); while it was the doctors who presented the highest incidence of hospitalization (13.2%) and death (2.6%) (table 2). Physicians were also the ones who presented greater susceptibility not linked to occupational variables. In this sense, 3.5% of doctors were older adults compared to 2.1% of health technicians and assistants, 1.6% of nursing staff, 1.0% of obstetricians and 1.5% of the rest of healthcare workers (Pearson's Chi-square test; $p < 0.001$). Likewise, 13.1% of doctors had comorbidities compared to 7.8% of health technicians and auxiliaries, 8.6% of nursing staff, 8.1% of obstetricians, and 7.7% of the rest of healthcare workers (Pearson's Chi-square test; $p < 0.001$).

TABLE 2: Adverse outcomes of SARS-CoV-2 infection in healthcare workers in Peru.

ADVERSE OUTCOME	FREQUENCY	INCIDENCE (%)
Probable reinfection		
Technician and health assist.	700	2.0
Nursing staff	485	2.1
Midwife	135	2.2
Physician	322	2.0
Other health professionals	189	1.9
Total	1831	2.0
Hospitalization		
Technician and health assist.	2595	7.4
Nursing staff	1602	6.9
Midwife	328	5.2
Physician	2130	13.2
Other health professionals	662	6.6
Total	7317	8.1
Death		
Technician and health assist.	664	1.9
Nursing staff	224	1.0
Midwife	55	0.9
Physician	418	2.6
Other health professionals	161	1.6
Total	1522	1.7

The risk of probable reinfection was similar in the different occupational cohorts of healthcare workers. Regardless of occupation, a higher risk of probable reinfection was observed in those who worked in MINSA/GORE establishments, in those who worked outside of Lima, in those who had direct contact with COVID-19 cases in their work environment, and in those who had some comorbidity (Table 3).

TABLE 3: Multivariate analysis of occupation and other possible risk factors for probable SARS-CoV-2 reinfection in healthcare workers.

RISK FACTORS	RR _{AI}	CI 95%
OCCUPATIONAL		
Occupational cohorts		
Technician and health assistant	0.974	0.830 – 1.143
Nursing staff	1,023	0.864 – 1.212
Midwife	0.980	0.785 – 1.222
Physician	1,032	0.862 – 1.235
Other health professionals*	1	
Work institution		
MINSA/GORE	2,428	2,127 – 2,770
ESSALUD	1,025	0.704 – 1.494
PNP / Armed Forces	1,174	0.757 – 1.820

Others	0.714	0.454 – 1.123
Private establishments*	1	
Work region		
Jungle	2,428	2,127 – 2,770
Mountain range	1,345	1,187 – 1,523
Rest of the Coast	1,262	1,105 – 1,442
Lima*	1	
Direct contact with COVID-19 cases in the workplace		
Yes	2,196	1993 – 2421
No*	1	
NON-OCCUPATIONAL		
Gender		
Male	0.938	0.842 – 1.046
Female*	one	
Senior citizen		
Yes	0.871	0.608 – 1.247
No*	1	
Comorbidities		
Yes	1,346	1,169 – 1,550
No*	1	

* Reference category

The multivariate analysis shows that doctors and, to a lesser extent, health technicians and auxiliaries presented a higher risk of hospitalization. Regardless of the occupation, a higher risk was observed in those who worked in Lima and other parts of the coast, in those who had some comorbidities and in the older adults, the latter being the ones with the highest risk ($RR_{AJ}=2.947$). This is shown in table 4.

TABLE 4: Multivariate analysis of occupation and other possible risk factors for hospitalization for COVID-19 in healthcare workers.

RISK FACTORS	RR _{AJ}	CI 95%
OCCUPATIONAL		
Occupational cohorts		
Technician and health assistant	1,091	1,005 – 1,184
Nursing staff	1,015	0.931 – 1.107
Midwife	0.817	0.719 – 0.928
Medical	1,691	1556 – 1837
Other health professionals*	1	
Work region		
Lima	1,272	1,180 – 1,370
Rest of the Coast	1,126	1,039 – 1,221
Mountain range	1,001	0.923 – 1.085
Jungle*	1	
PERSONAL		
Older adult		
Yes	2,947	2,760 – 3,148
No*	1	
Comorbidities		

Yes	2,338	2,221 – 2,461
No*	1	
Likely reinfection		
Yes	0.969	0.830 – 1.130
No*	1	

* Reference category

The trend of deaths from COVID-19 in healthcare workers compared to the trend in the general Peruvian population is shown in Figure 1. After controlling for other non-occupational and occupational variables, it was found that the occupation of technician and assistant in health was the only one that constituted a risk factor for mortality from COVID-19 ($RR_{AJ} = 1.240$; 95% CI: 1.052 – 1.463). Likewise, there was a higher risk of death for those who worked in Lima and the rest of the coast, in those who had some comorbidity and in older adults, the latter being the ones with the highest risk (Table 5).

FIGURE 1: Trend of COVID-19 deaths in healthcare workers compared to the general Peruvian population.

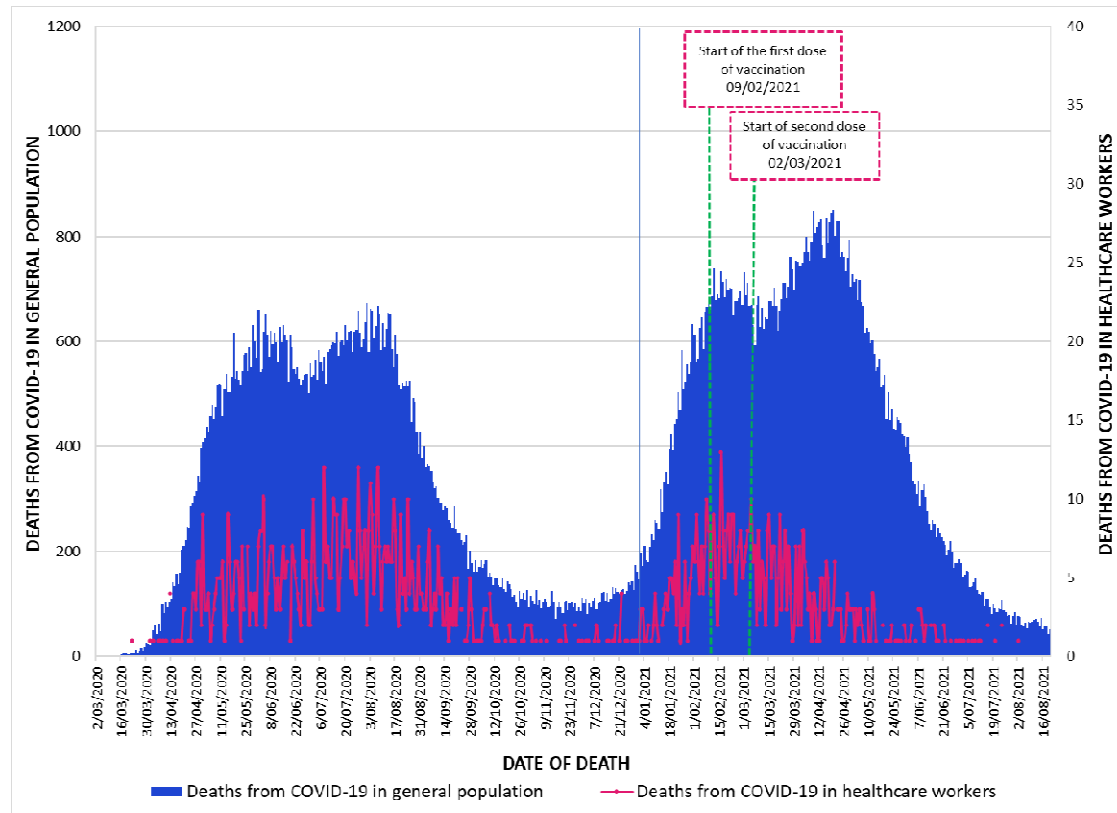


TABLE 5: Multivariate analysis of occupation and other possible risk factors for death from COVID-19 in healthcare workers.

RISK FACTORS	RR_{AJ}	CI 95%
OCCUPATIONAL		
Occupational cohorts		

Technician and health assistant	1,240	1,052 – 1,463
Nursing staff	0.840	0.687 – 1.028
Midwife	0.857	0.632 – 0.161
Physician	0.925	0.776 – 1.102
Other health professionals*	1	
Work region		
Jungle	1,442	1,229 – 1,693
Mountain range	0.982	0.822 – 1.174
Rest of the Coast	1,173	0.982 – 1.401
Lima*	1	
Year of employment		
2021	1,272	1,156 – 1,400
2020*	1	
INDIVIDUALS		
Gender		
Male	2,722	2,442 – 3,035
Female*	1	
Senior Citizen		
Yes	8,959	7,996 – 10,037
No*	1	
Comorbidity		
Yes	2,523	2,271 – 2,824
No*	1	

* Reference category

DISCUSSION

The present investigation shows that cohorts of Peruvian healthcare workers have differences amongst the risk of hospitalization and death from COVID-19 based on their occupation. The strong influence of non-occupational factors that increase the risk of adverse outcomes of SARS-CoV-2 infection is also observed.

Death from COVID-19 represents the main adverse outcome of SARS-CoV-2 infection. The mortality in healthcare workers in Peru infected by SARS-CoV-2 found in our study was 1.7%, which is higher than that reported by Gholami ²¹ who found a mortality of 1.5% in a meta-analysis of 28 studies. A second meta-analysis by Gómez-Ochoa ²² that included 97 studies found that mortality from COVID-19 in infected workers was 0.5%, which is notably lower than that reported in this study for Peruvian healthcare workers. It should be noted that the meta-analysis carried out by Gholami included 119,883 healthcare workers infected with SARS-CoV-2 and that carried out by Gómez-Ochoa included 96,813; whereas the Peruvian health worker cohort alone included 90,672 infected healthcare workers. This shows in absolute terms the great affectation of Peruvian healthcare workers by the pandemic, not only due to the high workload, continuous exposure, and lack of personal protective equipment (mainly at the beginning of the pandemic); but also due to the informal nature of work and the worsening labor conditions observed in various countries since before the pandemic, particularly those with low and medium income ²³⁻²⁶.

The results of our research show that the cohort with the highest risk of death from COVID-19 derived from their occupation was that of health technicians and auxiliaries, who had a 24%

higher risk of dying than other healthcare workers. This is explained because the cohort of health technicians and auxiliaries includes technicians and auxiliaries in nursing, laboratory, dental, pharmacy, nutrition, radiology, rehabilitation, and physical therapy. This occupational cohort, particularly nursing technicians, who collaborate with patient care in consulting rooms, emergencies, hospitalization (including feeding, cleaning, mobility, patient oxygen administration, among others) as well as radiology and laboratory technicians, have close contact with patients or with biological samples²⁷. This leads to a higher viral load exposure and would explain their greater overall risk²⁸⁻³⁰. The bibliographic review does not find studies with the category of health technicians and auxiliaries like that defined in Peru, but an approximation is found in the cohort of Mexican healthcare workers that finds a higher risk of death in medical assistants, laboratory technicians, pharmacy, and radiology staff³¹.

The case of doctors is particular because they present an occupational risk of dying similar to other healthcare workers; however, they are the ones with the highest mortality (2.6%). This is consistent with the results of a systematic review³² that found that the group with the highest mortality among infected healthcare workers were doctors (6.0%). One possible explanation for this phenomenon is that in Peru, the physician cohort is the one with the highest proportion of older adults and comorbidities compared to the other cohorts of healthcare workers, which could explain their higher mortality from COVID-19, regardless of their occupational risk. Another possible explanation is that physicians have performed diagnostic tests less frequently in the presence of mild disease and more frequently in the presence of moderate and severe disease, which could have biased the results towards greater lethality³³.

It is observed that non-occupational risk factors lead to a higher risk of death from COVID-19 than occupational factors, the main one is being an older adult; thus, older adults have about 9 times the risk of dying than those under 65 years of age. Male gender, as well as the presence of comorbidities, are risk factors for death from COVID-19, as it occurs in the general population. This agrees with other studies carried out on healthcare workers such as the one carried out by Ferland in 9 European countries³⁴ and the one by Robles-Pérez in Mexico³¹. The main comorbidities identified were cardiovascular disease, obesity, bronchial asthma, and diabetes mellitus, representing 8.9% of the total infected. These values are similar to those found in the meta-analysis by Gómez-Ochoa, who found that the prevalence of comorbidities was 7% (95% CI: 4% - 10%).²²

The trend of deaths from COVID-19 in healthcare workers follows a trend similar to that of the general Peruvian population; however, this correlation breaks down after the start of vaccination. Thus, the trend in deaths decreased after vaccination; while, in the general population, the trend was to increase until reaching the highest value of the pandemic during the second wave. This confirms the results of Escobar-Agreda³⁵ who found a higher survival rate in Peruvian healthcare workers in 2021 after the start of vaccination. This would show the effectiveness of vaccination since without it, the number of deaths from COVID-19 would have increased notably in a similar way to what happened with the general Peruvian population.

In the case of hospitalizations for COVID-19, it was the doctors who showed 69.1% more risk than the cohort of other healthcare workers; while technicians and health assistants had a 9.1% higher risk of being hospitalized. The fact that technicians and health assistants are the ones with the highest risk of death but a modest additional risk for hospitalization could show inequity in access to hospitalization, which could also explain the higher risk of deaths from COVID-19 in this cohort. It is possible that the efforts of the professional associations, in obtaining air transport for their members and the coordination for their referrals, as is the case

of the Peruvian Medical Association, has contributed to a timely hospitalization of its members, reducing their mortality³⁶. Unfortunately, there is no school, society or association of health technicians and auxiliary support in Peru that would ensure the timely hospitalization of its members, which may have put them at a disadvantage with other occupations that do have professional associations. Although it is true that our bibliographic review has not found studies that show inequities in access to hospitalization services in occupational groups of healthcare workers, this is possible since there is evidence of inequities for hospitalization in more disadvantaged or invisible groups during the SARS-CoV-2 pandemic^{37,38}.

Probable reinfection was documented in 1.7% of healthcare workers. It was observed that the risk of probable reinfection was similar in the cohorts of healthcare workers studied; however, other occupational factors were relevant. The greatest risk of probable reinfection was found in those who worked in public establishments of the MINSA/GORE, PNP/FFAA, as well as in those who worked outside the capital, particularly in establishments in the Amazon and the Andean region; a higher risk was also documented in those who had direct contact with COVID-19 cases in their workplace. It is possible that the greater limitations existing in the establishments of the MINSA/GORE, PNP/FAA and outside the capital of Peru, have contributed to the reinfection of healthcare workers during the pandemic's greatest activity, moments in which there have been documented deficit of personal protective equipment, as well as a greater exposure to COVID-19 due to the overwhelming patient demand^{17,35,39-41}.

Within the limitations, it should be stated that our study was carried out using secondary sources, so it is possible that there are some degree of quality problems and underreporting; however, the fact that we considered various sources of information as well as the verification and investigation of deaths would partially compensate for these limitations. Likewise, it was not possible to document which healthcare workers were providing face-to-face care and which were performing remote work. Finally, it was not possible to confirm the reinfection of healthcare workers because in Peru the identification of SARS-CoV-2 lineages is not routinely performed in all cases of infection, so probable reinfection was evaluated. Despite these limitations, we consider that the results obtained are consistent and are close to those observed in Peruvian healthcare workers during the pandemic.

In conclusion, Peruvian health technicians and auxiliaries have a higher risk of death from COVID-19 linked to their occupation; while physicians have a higher risk of death linked to the high frequency of non-occupational risk factors such as age and the diagnosis of comorbidities. Physicians had a higher risk of hospitalization independent of the presence of comorbidities and age; likewise, all occupations had a similar risk of probable reinfection.

BIBLIOGRAPHIC REFERENCES

1. International Labor Organization, World Health Organization. COVID-19: Occupational health and safety for healthcare workers. Geneva; QUIEN; 2021. https://www.who.int/publications/i/item/WHO-2019-nCoV-HCW_advice-2021.1.
2. Urrea Vega EA, Antonioli L, Teixeira Macedo AB, Gediél Pinheiro JM, Martins Dornelles T, Cócaro de Souza SB. Risks of occupational illnesses among healthcare workers providing care to patients with COVID-19: an integrative review. *Rev Lat Am Enfermagem*. 2021;29:e3455.
3. Fisher D, Heymann D. Q&A: The novel coronavirus outbreak causing COVID-19. *BMC Med* 2020;18(1):57.
4. Firew T, Sano ED, Lee JW, Flores S, Lang K, Salman K, et al. Protecting the front line: a cross-sectional survey analysis of the occupational factors contributing to healthcare workers' infection and psychological distress during the COVID-19 pandemic in the USA. *BMJ Open*. 2020 Oct 21;10(10):e 042752.
5. Amit S, Beni SA, Biber A, Grinberg A, Leshem E, Regev-Yochay G. Postvaccination COVID-19 among Healthcare Workers, Israel. *Emerg Infect Dis*. 2021;27(4):1220-2.
6. Pan American Health Organization. Epidemiological Update: Coronavirus Disease (COVID-19). Washington DC; PAHO/WHO; 2021.
7. Chang D, Xu H, Rebaza A, Sharma L, Dela Cruz CS. Protecting health-care workers from subclinical coronavirus infection. *Lancet Respir Med*. 2020;8(3):e13.
8. Wu Z, McGoogan JM. Characteristics of and Important Lessons From the Coronavirus Disease 2019 (COVID-19) Outbreak in China: Summary of a Report of 72,314 Cases From the Chinese Center for Disease Control and Prevention. *JAMA*. 2020 Apr 7;323(13):1239-1242.
9. National Liaison Center, Carlos III Health Institute. Report on the situation of COVID-19 in health personnel in Spain. Madrid: RENAVE. CNE. CNM (ISCIII); 2020.
10. Martí-Amengual Gabriel, Sanz-Gallen p, Arimany-Manso j. Medicolegal Assessment of COVID-19 Infection in the Workplace. *Rev Esp Med Legal* 2020;46(3):146-52.
11. Al Bujayr AA, Aljohar BA, Bin Saleh GM, Alanazi KH, Assiri AM. Incidence and epidemiological characteristics of COVID-19 among health care workers in Saudi Arabia: A retrospective cohort study. *J Infect Public Health*. 2021;14(9):1174-8.
12. World Health Organization. COVID-19: Occupational health and safety for healthcare workers. Geneva: WHO; 2021. https://www.who.int/publications/i/item/WHO-2019-nCoV-HCW_advice-2021.1.
13. Silva JS, Batista de Carvalho AR, Leite HC, Oliveira EN. Reflections on occupational risks in healthcare workers in times of the COVID-19 pandemic. *Cuba Rev. sick* 2020; 36(2). Available at: <http://www.revenfermeria.sld.cu/index.php/enf/article/view/3738>.
14. World Health Organization. Coronavirus disease (COVID-19): Accessibility and allocation of vaccines. Genoa: WHO; 2021.
15. Johns Hopkins University & Medicine. Mortality Analyzes: Mortality in the most affected countries . Baltimore: Johns Hopkins University; August 2020 (Accessed February 02, 2021). Available at : <https://coronavirus.jhu.edu/data/mortality>.
16. Raraz-Vidal JG, Allpas-Gomez HL, Torres-Salome FK, Cabrera-Patiño WM, Alcántara-Leyva LM, Ramos-Gómez RP, et al. Work conditions and personal protective

- equipment against COVID-19 in health personnel, Lima-Peru. *Rev. Fac. Med. Hum.* 2021; 21(2):335-45.
17. Neyra-Leon J, Huancahuari-Nuñez J, Díaz-Monge JC, Pinto JA. The impact of COVID-19 on the healthcare workforce in Peru. *J Public Health Policy.* 2020;7:1-3.
18. Padilla Machaca PM, Cárdenas Ramírez BE, Cabrera Cabrejos MC. Impact of COVID-19 on liver diseases and public health in Peru. *Rev Gastroenterol Peru.* 2020;40(2):162-72.
19. Government of Peru. Emergency Decree No. 026-2020 that establishes various exceptional and temporary measures to prevent the spread of the coronavirus (COVID-19) in the national territory [Extraordinary Edition March 15]. Lima: Official newspaper El Peruano; 2020, pp 1. Available at: <https://busquedas.elperuano.pe/normaslegales/decreto-de-urgencia-que-establece-diversas-medidas-excepcion-decreto-de-urgencia-n-026-2020-1864948-1/>.
20. National Center for Epidemiology, Disease Prevention and Control, Ministry of Health of Peru. Sanitary Directive for Epidemiological Surveillance of coronavirus disease (COVID-19) in Peru [DS No. 135-MINSA/CDC-2021]. Lima: CDC/MINSA; 2001. Available at: <https://www.gob.pe/institucion/minsa/normas-legales/2027213-881-2021-minsa>.
21. Gholami M, Fawad I, Shadan S, Rowaiee R, Ghanem H, Hassan Khamis A, et al. COVID-19 and healthcare workers: A systematic review and meta-analysis. *Int J Infect Dis.* 2021 Mar;104: 335-346.
22. Gómez-Ochoa SA, Franco OH, Rojas LZ, Raguindin PF, Roa-Díaz ZM, Wyssmann BM, et al. COVID-19 in Health-Care Workers: A Living Systematic Review and Meta-Analysis of Prevalence, Risk Factors, Clinical Characteristics, and Outcomes. *Am J Epidemiol.* 2021 Jan 4;190(1):161-75.
23. Raraz-Vidal JG, Allpas-Gomez HL, Torres-Salome FK, Cabrera-Patiño WM, Alcántara-Leyva LM, Ramos-Gómez RP, et al. Work conditions and personal protective equipment against COVID-19 in health personnel, Lima-Peru. *Rev. Fac. Med. Hum.* 2021; 21(2):335-45.
24. McNamara CL, McKee M, Stuckler D. Precarious employment and health in the context of COVID-19: a rapid scoping umbrella review. *Eur J Public Health.* 2021;31(Supplement 4):iv40-iv49.
25. Llop-Gironés A, Vračar A, Llop-Gironés G, Benach J, Angeli-Silva L, Jaimez L, et al. Employment and working conditions of nurses: where and how health inequalities have increased during the COVID-19 pandemic?. *Hum Resource Health.* 2021;19(1):112.
26. Pérez-Raya F, Cobos-Serrano JL, Ayuso-Murillo D, Fernández-Fernández P, Rodríguez-Gómez JA, Almeida Souza A. COVID-19 impact on nurses in Spain: a considered opinion survey. *Int Nurs Rev.* 2021;68(2):248-55.
27. Government of Peru. Supreme Decree No. 004-2012-SA that approves the Regulation of Law No. 28561, Law that regulates the work of health care technicians and assistants. Official Gazette El Peruano 2012; page 463365. Available at: <https://busquedas.elperuano.pe/normaslegales/aproban-reglamento-de-la-ley-n-28561-ley-que-regula-el-tr-decreto-supremo-n-004-2012-sa-771039-2/>.
28. Faíco -Filho KS, Passarelli VC, Bellei N. Is Higher Viral Load in SARS-CoV-2 Associated with Death?. *Am J Trop Med Hyg.* 2020;103(5):2019-21.
29. McEllistrem MC, Clancy CJ, Buehrle DJ, Singh N, Lucas A, Sirianni V, et al. SARS-CoV-2 is associated with high viral loads in asymptomatic and recently symptomatic healthcare workers. *PLoS One.* 2021;16(3):e0248347.

30. Knudtzen FC, Jensen TG, Lindvig SO, Rasmussen LD, Madsen LW, Hoegh SV, et al. SARS-CoV-2 viral load as a predictor for disease severity in outpatients and hospitalized patients with COVID-19: A prospective cohort study. *PLoS One*. 2021;16(10):e0258421.)
31. Robles-Pérez E, González-Díaz B, Miranda-García M, Borja-Aburto VH. Infection and death by COVID-19 in a cohort of healthcare workers in Mexico. *Scand J Work Environ Health*. 2021;47(5):349-55.
32. Bandyopadhyay S, Baticulon RE, Kadhun M, Alser M, Ojuka DK, Badereddin Y, et al. Infection and mortality of healthcare workers worldwide from COVID-19: a systematic review. *BMJ Global Health* 2020; 5:e 003097.
33. Nienhaus A, Hod R. COVID-19 among Healthcare workers in Germany and Malaysia. *International Journal of Environmental Research and Public Health*. 2020; 17(13):4881.
34. Ferland L, Carvalho C, Gomes Dias J, Lamb F, Adlhoch C, Suetens C, et al. Risk of hospitalization and death for healthcare workers with COVID-19 in nine European countries, January 2020-January 2021. *J Hosp Infect*. 2022;119:170-4 .
35. Escobar-Agreda S, Silva-Valencia J, Rojas-Mezarina L, Vargas-Herrera J. Survival of healthcare workers infected with SARS-CoV-2 in the context of vaccination against COVID-19 in Peru. *An Fac med*. 2021;82(2):106-12.
36. Galán-Rodas E, Tarazona-Fernández A, Palacios-Celi M. Risk and death of doctors 100 days after the state of emergency due to COVID-19 in Peru. *Acta Med Peru*. 2020;37(2):119-21.
37. Khanijahani A, Iezadi S, Gholipour K, Azami- Aghdash S, Naghibi D. A systematic review of racial/ethnic and socioeconomic disparities in COVID-19. *Int J Equity Health*. 2021;20(1):248.
38. Baksh RA, Pape SE, Smith J, Strydom A. Understanding inequalities in COVID-19 outcomes following hospital admission for people with intellectual disability compared to the general population: a matched cohort study in the UK. *BMJ Open*. 2021;11(10):e052482.
39. Valenzuela-Rodriguez G, Zambrano LI, Muñoz-Lara F, Pecho-Silva S, Arteaga-Livias K, Rodriguez-Morales AJ. Intrnational differences in the case fatality rates for COVID-19 among Peruvian physicians. *Int J Infect Dis*. 2020;101:226-7.
40. Ramos W, Arrasco J, De La Cruz-Vargas JA, Ordóñez L, Vargas M, Seclén M, et al. Epidemiological characteristics of deaths from COVID-19: an analysis at almost three months of the first confirmed case in Peru. medRxiv 2020.11.05.20226639. Available at: <https://www.medrxiv.org/content/10.1101/2020.11.05.20226639v1> .
41. Pampa-Espinoza L, García M, Gavilán RG, Donaires L, Cabezas C, Rojas N, et al. First case of reinfection confirmed by SARS-CoV-2 in Peru. *Rev Peru Med Exp Public Health*. 2021;38(2):358-9.