

1 **Travel-related Twenty-eight Days Cyclical Thrombosis and Subgroups of COVID-19 Cardiac**
2 **Biomarker Data: Novel Review Strategy and Meta-analysis Method**

3

4 **Authors' names**

5 Keiichiro Kimoto, M.Sc. * (0000-0002-5123-6123), Munekazu Yamakuchi, M.D., Ph.D. (0000-0003-
6 2181-7194), Kazunori Takenouchi, M.D., Ph.D. (0000-0003-1946-457X), Teruto Hashiguchi, M.D.,
7 Ph.D. (0000-0003-4820-8268)

8

9 **Address for each author and positions**

10 Department of Laboratory and Vascular Medicine, Kagoshima University Graduate School of
11 Medical and Dental Sciences, 8-35-1 Sakuragaoka, Kagoshima 890-8520, Japan, Keiichiro Kimoto,
12 research student of laboratory and vascular medicine (present affiliation: External Advisor for Data
13 Strategy Research Institute, Yokohama, Japan), Department of Laboratory and Vascular Medicine,
14 Kagoshima University Graduate School of Medical and Dental Sciences, 8-35-1 Sakuragaoka,
15 Kagoshima 890-8520, Japan, Munekazu Yamakuchi, associate professor of laboratory and vascular
16 medicine, Department of Laboratory and Vascular Medicine, Kagoshima University Graduate School
17 of Medical and Dental Sciences, 8-35-1 Sakuragaoka, Kagoshima 890-8520, Japan, Kazunori
18 Takenouchi, assistant professor of laboratory and vascular medicine, Department of Laboratory and
19 Vascular Medicine, Kagoshima University Graduate School of Medical and Dental Sciences, 8-35-1
20 Sakuragaoka, Kagoshima 890-8520, Japan, Teruto Hashiguchi, professor of laboratory and vascular
21 medicine.

22

23 **Corresponding author information**

24 *Corresponding author: Keiichiro Kimoto (0000-0002-5123-6123)

25 E-mail: k1974142@kadai.jp

26 Department of Laboratory and Vascular Medicine, Kagoshima University Graduate School of

27 Medical and Dental Sciences, 8-35-1 Sakuragaoka, Kagoshima 890-8520, Japan

28 Phone: /Fax: +81-99-275-5437/+81-99-275-2629

29

30 **Author contributions**

31 Keiichiro Kimoto takes responsibility for this research, making study concepts, data analysis,
32 interpretation of analysis results, and manuscript drafting. Dr. Yamakuchi contributed to interpreting
33 analysis results, manuscript drafting, supervision, and administrative role. Dr. Takenouchi contributed
34 to the supervision. Dr. Hashiguchi contributed to the study concept, interpretation of analysis results,
35 manuscript drafting, supervision, and administrative role.

36

37 **Competing interest statement**

38 Munekazu Yamakuchi, Kazunori Takenouchi, and Teruto Hashiguchi have completed the
39 Unified Competing Interest form and declare: no support from any organization for the submitted
40 work; no financial relationships with any organizations that might have an interest in the submitted
41 work in the previous three years, no other relationships or activities that could appear to have
42 influenced the submitted work. Keiichiro Kimoto has been in charge of external advisor for the Data
43 Strategy Research Institute but received no financial support for this study.

44

45 **Classification:** Research article

46

47 **Keywords**

48 Traveler's thrombosis, cardiovascular biomarker, COVID-19, Oral Contraceptives (OC),
49 and Hormone Replacement Therapy (HRT)

50

51 This file includes Abstract, Main Text, Figures 1 to 6. Also, this article has supporting
52 information that contains supporting figures, tables, method details, and supporting discussions.

53

54

55

56 **Abstract**

57 **Backgrounds**

58 Strange controversies have remained in thrombosis-related fields (traveler’s and COVID-19-related
59 thrombosis), although traveler’s thrombosis is well-known even among non-professionals as
60 “economy class syndrome.” We hypothesized there might be something overlooked behind those
61 strange situations.

62

63 **Methods**

64 Since ordinary review methods (e.g., systematic review or meta-analysis) had already been conducted,
65 we focused on reviewing a “previously published” “chart.” Also, we developed a novel “review
66 method” for the meta-regression analysis result. We applied those to some previously published and
67 well-known data.

68

69 **Results**

70 We newly found an approximately 28 days cycle of thrombosis onset over several weeks after travel
71 in a figure. Also, we found an eighteen-day cycle of thrombosis onset in another chart. In COVID-19
72 cardiovascular biomarker studies, we newly extracted subgroup patterns in a scatterplot (Troponin T
73 and NT-proBNP) that applied simple linear regression analysis. Also, these subgroups had already
74 appeared in the cardiomyopathy study.

75

76 **Conclusions**

77 Traveler’s thrombosis sometimes occurs over two months after leaving the risky in-flight
78 environment. This phenomenon has been explained that the thrombus is formed in a cabin but
79 dislodged after. However, from the cyclic patterns, explaining that the “high-risk period of thrombosis
80 with Oral Contraceptive (OC) use initiation” coincided with “travel” is more reasonable (e.g.,
81 honeymoon and OC initiation). Regarding risk-benefit balance, it is conceivable that “spreading the
82 risk” by starting the dosing away from the travel period is essential to ensure safer use because the in-

83 flight environment may have a non-zero effect, and optimal care by a primary care physician
84 (prescriber) is not available during the travel. In COVID-19, there seems to be a complex scatterplot
85 structure that is unsuitable for usually used simple linear fitting. In a literature review, a pattern on a
86 chart should be given more paying attention.
87

88

89 **Main text**

90 **Introduction**

91 Traveler’s thrombosis is well-known even among non-professionals as “economy class
92 syndrome.” However, controversial discussions have remained (**Supporting discussion 1: history of
93 traveler’s thrombosis**)¹⁻¹⁷. Also, the status of recent COVID-19-related thrombosis research seemed
94 like that of the traveler’s thrombosis (**Supporting discussion 2: research situations of COVID-19-
95 related thrombosis**)¹⁸⁻²³. We hypothesized there might be something overlooked behind those strange
96 situations.

97 However, trying ordinary review methods (e.g., systematic review or meta-analysis) again
98 seemed impractical because those types of the study had already been conducted^{2,6-10}. So, a novel
99 strategy seemed to be needed.

100 Recently, there has been software that detects research fraud in the figures submitted for
101 journals²⁴, but it does not discover “overlooked findings.” Also, although raw data images, such as CT
102 or MRI images, were analyzed, there is no awareness of new information extraction from the
103 “previously published” “chart.” On the other hand, numerical data in tables within each piece of
104 literature are usually evaluated in a meta-analysis. However, figures created by each researcher are
105 generally not. Also, seeing the chart is more complex than we thought²⁵. So, we focused on reviewing
106 “figures.”

107 In addition, we focused on geometry. Although statistics usually have applied to medicine
108 (e.g., p-value), approaching from a different direction seemed helpful when ordinary methods do not
109 work.

110 We finally made our original strategy, which was extracting overlooked knowledge from the
111 “previously published” “chart” by “geometrical viewpoint” (**Fig. S1, a-c**).

112 Considering the above strategy, we focused on a figure that showed a result of meta-
113 regression analysis (**Fig. 3, b**)(Chandra et al, *Ann Intern Med.* 2009;151(3):180-90., Figure 3)¹⁰. In
114 this figure, we saw a geometrical shape (layered hyperbolic shapes) that seemed to be formed by two
115 subgroups (**Fig. 3, Fig. S1, b**). Also, we conceived a methodology, which was a manually executable

116 kind of pattern recognition, searching layered hyperbolic patterns in a figure that shows a result of
117 meta-regression analysis to detect latent sub-groups. Our basic idea is that a confidence interval length
118 for an odds ratio is inversely proportional to the “potential patient population size” (see Fig. S2, d-f).

119 In this paper, we report the results of our literature reviews based on our original strategy,
120 including evaluating our methodological idea by fitting the curves derived from mathematical
121 considerations (the overall study framework is demonstrated in Fig. 2).

122

123 **Methods**

124 Geometrically, the edges of this hyperbolic shape are formed by a combination of an S-
125 shaped curve and a U-shaped curve. We first focused only on the U-shaped curve.

126 The confidence interval length for the odds ratio is inverse proportional to the size of the
127 potential patient population. However, to be precise, the ability of patient recruitment, in other words,
128 the “sample size in each study,” also affects the confidence interval length. However, we speculated
129 that the effect of the differences in sample size could not be a practical problem for two reasons.

130 The first reason is that stratified analysis, often performed in clinical studies, can be a force
131 in reducing the differences. The second reason is that two types of boundary conditions in the
132 hyperbolic shape fitting, which are the “S-curve” and the “error bar length,” reduce the degree of
133 freedom in searching and increase the possibility of finding the desired shape.

134 Considering the numerical experiment (Fig. 1, c), we decided on the equations for the S-
135 shaped curve, the upper end of the confidence limit, and the lower end of the confidence limit (Fig. 1,
136 d).

137 The whole process, including driving the formulas, data review, regression analysis, and
138 tools for the analysis, is described in the supplementary information (Supporting information:
139 Method details).

140

141 **Results**

142 **1) Analysis 1A (dataset: Chandra et al)¹⁰**

143 Before redrawing the figures of the meta-regression analysis, we reviewed the cited four
144 studies (Martinelli et al, 2003; Parkin et al, 2006; Cannegieter et al, 2006; Kuipers et al, 2007)^{1,3,5,26}.
145 The main objective of Chandra et al's research¹⁰ was estimating a risk, but the main of our analysis is
146 detecting the subgroups. So, we are considering the possibility of some problems with inclusion in our
147 study, even if there were no problems in Chandra et al's research.

148 In this assessment, two study data (Martinelli et al, 2003; Cannegieter et al, 2006)^{1,3} were
149 judged inappropriate and excluded from our analysis. Cannegieter et al and Martinelli et al used a
150 unique research design, which uses the patient's partner as a control (Martinelli et al: friend and
151 partner). In the introduction, we described that although the properties of each study (the ability of
152 patient recruitment, sample size) disrupt the effect of the size of the potential patient population, the
153 stratified analysis could reduce the disruption. However, the impact of adding a unique study design
154 was unclear.

155 Additionally, the odds ratio reported by Parkin et al²⁶ was suspected to be affected by the
156 misplacement of the cells in the cross table for calculating the odds ratio. Still, qualitatively, it could
157 be used (**see Fig. 3, Table S1, Table S2, and Supporting information: Method details**).

158 In the residual dataset (Parkin et al, 2006 & Kuipers et al, 2007)^{5,26}, layered hyperbolic
159 patterns appeared, and applied regression analysis with the above three formulas. The inflection points
160 of the S-curves (center of distributions) were 7.1 hours and 11.8 hours, respectively (**Fig. 3, b**).

161 Additionally, it seemed that S-curve could be fitted to the group of points reported by
162 Cannegieter et al and Martinelli et al, respectively. Also, those of inflection points would position at
163 positions of less than 10 hours and more than 10 hours. This result seems consistent with the two
164 hyperbolic shapes fitting (**Fig. 3, b, orange, and green dots**).

165 Notably, we observed an overlooked cyclic pattern of thrombosis onset in the figure
166 reported by Cannegieter et al during the above data review process. The cycle period was 27.4 days
167 (**Fig. 4, a-e**). The wave of about 28 days consisted of a gradually decaying wave and a monotonically
168 decreasing function (**Fig. 4, e**). The wave disappeared after about three months (90 days). The

169 monotonically decreasing part estimated that it continued for over 90 days after the travel (**Fig. 4, f**).

170 Cannegieter et al did not mention this wave pattern.

171

172 **2) Analysis 1B (dataset: Philbrick et al)⁷**

173 Considering that only a few pieces of data were available for the first analysis, we performed
174 a similar analysis using another dataset gathered by Philbrick et al⁷ for a systematic review. As a
175 preparation, we conducted a data review to confirm eligibility for our regression analysis (**see Fig. 2**).
176 The dataset did not contain risk ratio data. In this case, hyperbolic shapes could not be fitted (for the
177 details, see **Supporting information: Method details**). So, only S-curves were applied. This analysis
178 found two S-curves in the stratified datasets by pulmonary embolism (PE) and deep vein thrombosis
179 (DVT). The inflection point of PE was about 9.2 hours, and the point of DVT was about 12.1 hours,
180 respectively (**Fig. S3, b**), which were similar to the first analysis.

181 Additionally, we found that unrecognized periodic pattern in the data reported by Clérel and
182 Caillard²⁷ during the data review, which was suspected to be the effect of circadian rhythm (**Fig. S4,**
183 **c**).

184 We also found a cyclic pattern after travel in the data reported by Kelman et al²⁸. However,
185 the period of the wave was 17.9 days, and the wave was less clear than the wave observed in the data
186 reported by Cannegieter et al. In the waveform, there was a raw-risk period just before 90 days. Also,
187 in this data, there was an uptrend (**Fig. 5**).

188 Furthermore, we found a correlation between the stepped stages of increasing PE patients
189 and the issuance of the guidelines²⁹⁻³² for preventive hormone replacement therapy (HRT) to a
190 menopause woman in a figure reported by Clérel and Caillard²⁷ (**Fig. S5**). Especially the thrombosis
191 onset in Paris airports has increased since the late 1990s (**Fig. S5**).

192

193 **3) Analysis 1B-related additional analysis**

194 We performed the trend analysis of the literature to assess the generalization on the
195 increasing number of patients at Paris airports reported by Clérel & Caillard²⁷ (**Fig. S5**). We searched

196 the literature in PubMed (keywords: “Economy Class Syndrome,” “Traveler’s Thrombosis,” and
197 “Travel-related thrombosis”). The number of references increases rapidly after the 2000s (**Fig. S6**).

198 The difference between the above result of trend analysis and the result in the data reported
199 by Clérel and Caillard²⁷ can be explained by the difference between publication day and onset day.
200 So, there is no practical difference between the two results.

201 The literature search found that two articles (Symington & Stack, 1977, Cruickshank,
202 Gorlin, & Jennett, 1988)^{33,34} contained each patient’s details. We already obtained each patient’s data
203 from the other two articles in analyses 1A and 1B (Clérel & Caillard, 1999, Parkin et al, 2006)^{26,27}. So,
204 we confirm changing the sex ratio using those data to assess the effect of HRT. We found that the rate
205 of women in the PE data gathered from the above four studies^{26,27,33,34} gradually increased but was
206 most pronounced during the late 1990s (**Table S3**).

207 We also conducted a literature review targeting early literature because we strongly
208 questioned the “economy class syndrome” concept from our findings in Analysis 1A and 1B. We
209 found that the word appeared in Symington & Stack, 1977³³. However, judging from the citation
210 history checked on the Europe PMC website (<https://europepmc.org/>), the article by Cruickshank,
211 Gorlin, & Jennett, 1988³⁴ might influence the word as evangelists. The paper was a “personal paper,”
212 a type of article category of the Lancet, and the authors prepared case reports of their own
213 experiences.

214 Dr. Cruickshank was middle-aged³⁴. Usually, the mid-life crisis is concerned around this
215 range of age. Dr. Jennett was a dean of medicine at Glasgow³⁵. Generally, heavy psychological stress
216 based on heavy social responsibility is concerned. So, we hypothesized that men’s life event-related
217 psychological stress could be one of the risk factors (**see Fig. S7, b**).

218 To assess our hypothesis, we merged data from the above four studies^{26,27,33,34} and made a
219 bar chart for 1-year. The onset of PE was concentrated in certain age stages, such as around 30, the
220 40s, late 50s, and early 70s (**Fig. S7, e**).

221 We performed the same analysis in the women’s data except for data reported by Clérel &
222 Caillard²⁷. Although the peak range was 65 to 70 in the data of Clérel & Caillard²⁷, PE was
223 concentrated in the 40s to 50s (menopausal stage) in this analysis (**Fig. S8, d**).

224 Additionally, we found an inverted-U-shaped (mountainous) relationship in the scatter plot:
225 age on the horizontal axis and air travel time on the vertical axis (**Fig. S9**). However, it was possible
226 to fit a straight line as an up-right linear relationship or a down-right linear relationship (**Fig. S9, a,**
227 **and Fig. S10, a, c**).

228 These analyses were also performed on the female data reported by Clérel & Caillard²⁷, and
229 we found a U-shaped relationship (**Fig. S9, c**).

230

231 **4) Analysis 2 (dataset: COVID-19)³⁶**

232 We decided to apply our ideas to the current complex COVID-19 pandemic problem to find
233 some overlooked things because there was some controversy¹⁸⁻²³ about COVID-19-related
234 thrombosis.

235 As a note, we described that stratified is necessary for the introduction section, but clinical
236 studies of COVID-19 did not perform it. However, Stratification seemed unnecessary because the size
237 of the studies was not huge and roughly the same due to no mega trial during the pandemic.

238 One of us (KK) searched for the layered hyperbolic pattern using the search engine Google
239 and extracted a figure reported by Matsushita et al³⁶ (**Fig. S11, a-c**). After evaluating eligibility (**see**
240 **Fig. 2**), patterns that allowed to be fitted hyperbolic shapes appeared (**Fig. S11, d-f, & g-i**).

241 Considering the cause of these patterns, we found the matching between grouping the data
242 by hyperbolic patterns and grouping by data cut-off days (**Fig. S12**). We calculated weighted averages
243 of age by grouping. In the earlier days group, non-severe was 46.5, and severe was 57.7, which were
244 middle age (age 45-64). In the late date group, non-severe was 40.9, and severe was 68.6, which were
245 mature age (age 25-44) and elderly (age > 65), respectively.

246 Surprisingly, we found unrecognized patterns during the data review process in a figure
247 reported by Guo et al.³⁷, which showed a relationship between N-terminal pro-brain natriuretic
248 peptide (NT-proBNP) and Troponin T (TnT). There were three clusters of subgroup patterns, and
249 each cluster could be fitted parabola (**Fig. 6, a, b, Fig. S13, a, b & Fig. S14, a, d, e-h**).

250 The third subgroup pattern was similar to ST-elevating myocardial infarction in the figure
251 report by Budnik et al³⁸. That study was a comparative study between Takotsubo cardiomyopathy

252 (also known as stress cardiomyopathy or broken heart syndrome) and ST-elevating myocardial
253 infarction. This tilted parabola appeared in another study on COVID-19 patients (**Fig. S13, c**)³⁹, and
254 the pattern had already appeared in other studies^{40,41} before the pandemic (**Fig. S14, b & c**). However,
255 patterns in COVID-19 patients were not recognized by each author.

256 Additionally, In the case of dropping points to the horizontal axis (troponin axis), the
257 histogram on the troponin axis results in bimodality. The above results matched the patterns reported
258 by other studies (**Fig. S13, b, d & e**)^{39,42,43}.

259 Furthermore, by mounting the data of high-sensitivity C-Reactive protein (hsCRP) onto the
260 third subgroup in the data reported by Guo et al³⁷ and constructing a parabolic cylinder, we found a
261 pattern that might further be subdivided into two subgroups on the side surface of this parabolic
262 cylinder (**Fig. 6, c, d, & Fig. S15**).

263

264 **Discussion**

265 **1) Traveler's thrombosis**

266 *a. Hyperbolic patterns*

267 In traveler's thrombosis, we obtained consistent results from two analyses (Analysis 1A: 7.1
268 hours and 11.8 hours, Analysis 1B: 9.2 hours and 12.1 hours) (**Fig. 3, b, Fig. S3, b**). The discrepancy
269 between the value of 7.1 hours and 9.2 hours seems to be explained by the miscalculation found in the
270 data review process (**see Table S1, Table S2, and Supporting information: Method details**).

271 Our results implied two S-curves. Also, we hypothesized two high-risk periods and two
272 types of high-risk groups. In those groups, "factor V Leiden paradox"⁴⁴ may have to be considered
273 (**Supporting discussion 3: two high-risk periods and two types of high-risk groups?**).

274

275 *b. Cyclic patterns*

276 Another noteworthy point is the cyclic patterns in the data reported by Cannegieter et al³
277 (**Fig. 4**). In Cannegieter et al³, the cyclic pattern disappeared around three months (90 days),
278 consistent with the high-risk period in oral contraceptive (OC) use was the first three months⁴⁵. Also,

279 there is multi-phase OC in the category of OC. Therefore, it is conceivable that the 28 days cycle OC
280 is attributable to the cyclic pattern.

281 Additionally, the raw-risk period just before 90 days in the data reported by Kelman et al²⁸
282 (**Fig. 5**). This raw-risk period could be explained that extended-use type OC, which has a planned
283 drug withdrawal, such as 84 active days and seven placebo days⁴⁶. Also, the uptrend in the data by
284 Kelman et al might be due to depot agent type OC administrated in 90 days cycle, which injects drugs
285 periodically after decreasing the drugs in the body.

286 Based on the above results, those types of OC use (multi-phase type, extended-use type, and
287 depot agent type) might be triggered by travel.

288

289 *c. Difference of the periods and patterns*

290 Interestingly, there was a difference between the period of cyclic patterns (Cannegieter et al:
291 about 28 days, Kelman et al: about 18 days). Also, the wave in the data reported by Cannegieter et al
292 was clear, but the wave in the data reported by Kelman et al was not clear.

293 Regarding the halfway cycle (about 18 days) in Kelman et al, it is notable that a combination
294 of daily estrogen dosing and 10–14 days of progestogen⁴⁷ is used for HRT. Also, in 1999, Clérel and
295 Caillard mentioned that OC and HRT might affect thrombosis after travel²⁷.

296 It is also notable that thrombosis onset in the data reported by Cannegieter et al was “March
297 1999-March 2000” (only most late 1990s to early 2000)³. Thrombosis onset in the data reported by
298 Kelman et al was “1981-1999” (including the whole of the 1990s)²⁸.

299 Therefore, the difference in waves can be explained as follows: the halfway cycle (17.9
300 days) in Kelman et al was a mixture of the 28 days OC cycle and a type of HRT cycle. However, only
301 OC users might remain in the data reported by Cannegieter et al after the issue of the HERS study in
302 1998³¹.

303

304 *d. Specific age in man?*

305 Analysis 1B-related additional analysis suggested that the development of travel-related
306 thrombosis occurs at specific ages (**Fig. S7**). On the other hand, Kelman et al reported the incidence

307 of VTE per 100,000 passengers²⁸. In this data, the incidence of VTE sharply increased after age 40,
308 and it was a temporary decrease in the early 60s. Although it should be noted that these results are not
309 limited to men, they are consistent with our results.

310 We also found that the relationship between male age and travel duration seems to be
311 inverted-U-shaped (mountainous) (**Fig. S9 & Fig. S10**). Regarding this result, men's life event-related
312 psychological stress may be one of the risk factors.

313

314 *e. In-flight environment?*

315 There has been a widespread belief that in-flight environments cause thrombosis. Also, the
316 phenomenon of the onset of thrombosis after over a few weeks to two months since the travel has
317 been explained, such as the development of blood clots occurring on a cabin, but the dislodge of a
318 thrombus occurs after³⁴. Also, although OC-related thrombosis had already been known, OC was
319 recognized as not a substantial cause but one of the risk (aggravating) factors¹.

320 Other researchers might realize other possibilities changed the name of thrombosis after
321 travel from “traveler’s thrombosis” to “travel-related thrombosis,” but they could not show evidence.

322 However, the above cyclic patterns of thrombosis onset may suggest that the disease concept
323 of traveler’s thrombosis (travel-related thrombosis) should be changed. From the cyclic patterns, it is
324 more reasonable to explain that the “travel” and “high-risk period of thrombosis with OC use (within
325 three months from starting OC)” coincided with the travel (e.g., honeymoon and starting birth control
326 OC).

327

328 *f. Life-event-related thrombosis*

329 Recently, Er et al reported a few cases of venous thromboembolism (VTE) incidence during
330 the COVID-19 lockdown⁴⁸. However, all patients had intermediate-high risk pulmonary embolisms.
331 Therefore, the influence of the in-flight environment may be less than we had previously thought.
332 From a comprehensive view, “traveler’s thrombosis” or “travel-related thrombosis” may require to be
333 regarded as “life-event-related thrombosis.”

334 Even if a substantial risk factor is not the in-flight environment, it is not neglectable at the
335 present research stage. Our thought that starting OC or HRT was triggered by travel suggests that
336 usage based on risk diversification is important to avoid overlapping risks of drug and in-flight
337 environment. Also, well-planned may allow more safe use of OC and HRT. Additionally, for men,
338 perhaps we should focus more on “stress reduction.” (**Supporting discussion 4: for more discussion**
339 **on Traveler’s thrombosis in Women and Men**).

340

341 **2) COVID-19**

342 In applying our ideas for COVID-19, the dataset grouping by Matsushita et al³⁶ matched the
343 grouping by data cut-off dates (**Fig. S12**). Age structure diverged from middle age to mature and
344 elderly. Middle-aged people (age 45-64) might enter the workforce for manual labor treating fish
345 containers, mature people (age 25-44) might want to select IT jobs, and elderly people (age > 65)
346 might stay in the house. So, our results were consistent with the hypothesis that COVID-19 spread
347 from the seafood market.

348 In our data review process (**Supporting discussion 5: linear regression analysis**), our
349 analysis of the data reported by Guo et al³⁷ showed three clusters of subgroups and formed the tilted
350 parabola. Also, the patterns matched the other studies (**Fig. 6, a, b, Fig. S13 & Fig. S14**)³⁸⁻⁴³.
351 Considering the study by Budnik et al³⁸, those subgroups may have different biological mechanisms.
352 Also, we found patterns on the side surface of this parabolic cylinder (**Fig. 6, c, d, & Fig. S15**).

353 Meisel et al⁴⁹ mentioned that the CRP to troponin ratio (CRP/troponin) could serve to
354 differentiate between myopericarditis and acute myocardial ischemia (AMI), although not the study
355 on COVID-19 patients. In COVID-19, Caro-Codón et al reported interesting behavior of CRP⁴². A
356 meta-analysis by Lagunas-Rangel reported that the lymphocyte-to-C-reactive protein ratio (LCR)
357 level, which was not a simple measurement value but a ratio, might be related to an inflammatory
358 process⁵⁰.

359 The above studies might imply complex data structures in 2-dimensional and 3-dimensional
360 scatter plots consisting of biomarker values, and our findings may serve the cardiac biomarkers’
361 research field.

362

363 **3) Conclusions**

364 From the consistent results of Analysis 1A and 1B and the explainable result of analysis 2, it
365 is conceivable that our strategy and method were effective.

366 We could not judge whether our findings are the root cause of the remaining controversies in
367 thrombosis research. However, judging from many findings, when conducting a literature review,
368 although paying attention to the reproducibility of a pattern in charts is needed to avoid arbitrary
369 discussions, more serious consideration should be given to a pattern on a chart that has been ignored
370 as a noisy variation.

371

372

373 **Acknowledgments**

374 One of the authors, Keiichiro Kimoto, appreciates the kindful encouragement of Hideo
375 Yoshioka, MEcon., who is in charge of the Data Strategy Research Institute representative.

376

377 **Statement of our intention for data analysis results on previous published articles.**

378 In addition to general acknowledgments, to clarify our stance, we mention this statement of
379 intention for results. In this article, we pointed out many overlooked information and errors. However,
380 we have no intention to attack previous works because our analysis results owing to their original
381 works, including original research articles, reported valuable data, and writings of meta-analysis
382 synthesized valuable datasets. Since just a scientist had better reconfirm the previous studies with no
383 preconceptions and being grateful to those studies' researchers, we carefully reviewed the data
384 reported by previous studies. We highly respect previous works intending to solve medical issues.

385

386 **Transparency declaration**

387 This study was not required ethical approval because the study used ONLY two types of
388 openly available human data. Firstly, this study performed meta-analyses as secondary analyses. The
389 source of the data was described in the method section. Second, this study analyzed measured values
390 from figures in previous published scientific papers.

391 All the figures were appropriately treated with careful attention to the copyright issues to
392 protect the integrity of the science. The sources of the original articles were described in the figure
393 legend following the copyright holder's instructions. Also, we submit copyright details in another file
394 to a journal that we submit this manuscript file to explain additional information.

395 This study suggests a new review strategy and meta-analysis method for exploratory data
396 analysis and reports some epidemiological findings. So, there were no applicable guidelines (e.g.,
397 Preferred Reporting Items for Systematic reviews and Meta-Analyses, PRISMA). However, this study
398 carefully follows the usage of the statistical analysis method, and the whole process is precisely
399 described in the method details section and **Fig. 2**.

400 This study was not received financial support from any funding.

401

402 **Data availability statement**

403 We analyzed clinical data published by other studies (third parties). Used data is identified
404 by indicated information of citation (reference numbers and list of references). The corresponding
405 author responds to inquiries in the case of measured values from published figures requested by
406 reviewers or readers.

407

408 **Code availability statement**

409 Correspondence author (KK) can respond to inquiries for the corresponding author's email
410 address on offering the Python source code and spreadsheet software files for statistical analysis.
411 Also, we have already uploaded our Python programs for the following GitHub repository to keep
412 traceability perfectly.

413 [https://github.com/Keiichiro-KIMOTO-Kagoshima-University/Travel-related_Twenty-](https://github.com/Keiichiro-KIMOTO-Kagoshima-University/Travel-related_Twenty-eight_Days_Cyclical_Thrombosis_and_Subgroups_of_COVID-19_Cardiac_Biomarker_Dat)
414 [eight_Days_Cyclical_Thrombosis_and_Subgroups_of_COVID-19_Cardiac_Biomarker_Dat](https://github.com/Keiichiro-KIMOTO-Kagoshima-University/Travel-related_Twenty-eight_Days_Cyclical_Thrombosis_and_Subgroups_of_COVID-19_Cardiac_Biomarker_Dat)

415

416

417

418 **References**

- 419 1. Martinelli I, Taioli E, Battaglioli T, et al. Risk of venous thromboembolism after air travel:
420 interaction with thrombophilia and oral contraceptives. *Arch Intern Med.* 2003 Dec 8-22
421 2003;163(22):2771-4. doi:10.1001/archinte.163.22.2771
- 422 2. Adi Y, Bayliss S, Rouse A, Taylor RS. The association between air travel and deep vein
423 thrombosis: systematic review & meta-analysis. *BMC Cardiovasc Disord.* May 2004;4:7.
424 doi:10.1186/1471-2261-4-7
- 425 3. Cannegieter SC, Doggen CJ, van Houwelingen HC, Rosendaal FR. Travel-related venous
426 thrombosis: results from a large population-based case control study (MEGA study). *PLoS*
427 *Med.* Aug 2006;3(8):e307. doi:10.1371/journal.pmed.0030307
- 428 4. Rothman KJ. Thrombosis after travel. *PLoS Med.* Aug 2006;3(8):e300.
429 doi:10.1371/journal.pmed.0030300
- 430 5. Kuipers S, Cannegieter SC, Middeldorp S, Robyn L, Büller HR, Rosendaal FR. The
431 absolute risk of venous thrombosis after air travel: a cohort study of 8,755 employees of
432 international organisations. *PLoS Med.* Sep 2007;4(9):e290.
433 doi:10.1371/journal.pmed.0040290
- 434 6. Kuipers S, Schreijer AJ, Cannegieter SC, Büller HR, Rosendaal FR, Middeldorp S. Travel
435 and venous thrombosis: a systematic review. *J Intern Med.* Dec 2007;262(6):615-34.
436 doi:10.1111/j.1365-2796.2007.01867.x
- 437 7. Philbrick JT, Shumate R, Siadaty MS, Becker DM. Air travel and venous
438 thromboembolism: a systematic review. *J Gen Intern Med.* Jan 2007;22(1):107-14.
439 doi:10.1007/s11606-006-0016-0
- 440 8. Spencer FA. Review: Flight times >8 hours and presence of risk factors for VTE increases
441 travel related VTE. *Evid Based Med.* Aug 2007;12(4):105. doi:10.1136/ebm.12.4.105
- 442 9. Trujillo-Santos AJ, Jiménez-Puente A, Perea-Milla E. Association between long travel and
443 venous thromboembolic disease: a systematic review and meta-analysis of case-control
444 studies. *Ann Hematol.* Feb 2008;87(2):79-86. doi:10.1007/s00277-007-0373-8

- 445 10. Chandra D, Parisini E, Mozaffarian D. Meta-analysis: travel and risk for venous
446 thromboembolism. *Ann Intern Med.* Aug 2009;151(3):180-90. doi:10.7326/0003-4819-151-
447 3-200908040-00129
- 448 11. Vandenbroucke JP, Cannegieter SC, Rosendaal FR. Travel and venous thrombosis: an
449 exercise in thinking about bias. *Ann Intern Med.* Aug 2009;151(3):212-3. doi:10.7326/0003-
450 4819-151-3-200908040-00130
- 451 12. New DVT Guidelines: No Evidence to Support Economy Class Syndrome. 2012.
- 452 13. Crowther M. A Inserted Comment "Traveling in economy class does not increase your risk
453 for developing a blood clot, even during long-distance travel; however, remaining immobile
454 for long periods of time will" Retrieved from the Press Release of the American College of
455 Chest Physicians "New DVT Guidelines: No Evidence to Support Economy Class
456 Syndrome". In: American College of Chest Physicians, editor. 2012.
- 457 14. Kahn SR, Lim W, Dunn AS, et al. Prevention of VTE in nonsurgical patients:
458 Antithrombotic Therapy and Prevention of Thrombosis, 9th ed: American College of Chest
459 Physicians Evidence-Based Clinical Practice Guidelines. *Chest.* Feb 2012;141(2
460 Suppl):e195S-e226S. doi:10.1378/chest.11-2296
- 461 15. Schünemann HJ, Cushman M, Burnett AE, et al. American Society of Hematology 2018
462 guidelines for management of venous thromboembolism: prophylaxis for hospitalized and
463 nonhospitalized medical patients. *Blood Adv.* 11 2018;2(22):3198-3225.
464 doi:10.1182/bloodadvances.2018022954
- 465 16. Clark SL, Onida S, Davies A. Long-haul travel and venous thrombosis: What is the
466 evidence? *Phlebology.* 06 2018;33(5):295-297. doi:10.1177/0268355517717423
- 467 17. Reyes NL, Beckman MG, Abe K. Travel by Air, Land & Sea. In: Centers for Disease
468 Control and Prevention (CDC), Brunette GW, Nemhauser JB, eds. *CDC Yellow Book*
469 *2020 Health Information for International Travel.* Oxford University Press; 2019:chap 8.
- 470 18. Ahmed S, Zimba O, Gasparian AY. Thrombosis in Coronavirus disease 2019 (COVID-19)
471 through the prism of Virchow's triad. *Clin Rheumatol.* Sep 2020;39(9):2529-2543.
472 doi:10.1007/s10067-020-05275-1

- 473 19. Barrett CD, Moore HB, Yaffe MB, Moore EE. ISTH interim guidance on recognition and
474 management of coagulopathy in COVID-19: A comment. *J Thromb Haemost.* 08
475 2020;18(8):2060-2063. doi:10.1111/jth.14860
- 476 20. Thachil J, Tang N, Gando S, et al. ISTH interim guidance on recognition and management
477 of coagulopathy in COVID-19. *J Thromb Haemost.* 05 2020;18(5):1023-1026.
478 doi:10.1111/jth.14810
- 479 21. Callaway E, Ledford H, Mallapaty S. Six months of coronavirus: the mysteries scientists are
480 still racing to solve. *Nature.* 07 2020;583(7815):178-179. doi:10.1038/d41586-020-01989-z
- 481 22. Tal S, Spectre G, Kornowski R, Perl L. Venous Thromboembolism Complicated with
482 COVID-19: What Do We Know So Far? *Acta Haematol.* 2020;143(5):417-424.
483 doi:10.1159/000508233
- 484 23. Marietta M, Coluccio V, Luppi M. COVID-19, coagulopathy and venous
485 thromboembolism: more questions than answers. *Intern Emerg Med.* Nov 2020;15(8):1375-
486 1387. doi:10.1007/s11739-020-02432-x
- 487 24. Van Noorden R. Publishers launch joint effort to tackle altered images in research papers.
488 *Nature.* May 13 2020;doi:10.1038/d41586-020-01410-9
- 489 25. Cairo A. *How Charts Lie: Getting Smarter about Visual Information (English Edition)*. W.
490 W. Norton & Company; 2019.
- 491 26. Parkin L, Bell ML, Herbison GP, Paul C, Skegg DC. Air travel and fatal pulmonary
492 embolism. *Thromb Haemost.* May 2006;95(5):807-14.
- 493 27. Clérel M, Caillard G. [Thromboembolic syndrome from prolonged sitting and flights of
494 long duration: experience of the Emergency Medical Service of the Paris Airports]. *Bull*
495 *Acad Natl Med.* 1999;183(5):985-97; discussion 997-1001.
- 496 28. Kelman CW, Kortt MA, Becker NG, et al. Deep vein thrombosis and air travel: record
497 linkage study. *BMJ.* Nov 2003;327(7423):1072. doi:10.1136/bmj.327.7423.1072
- 498 29. Guidelines for counseling postmenopausal women about preventive hormone therapy.
499 American College of Physicians. *Ann Intern Med.* Dec 15 1992;117(12):1038-41.
500 doi:10.7326/0003-4819-117-12-1038

- 501 30. Smith SC, Blair SN, Criqui MH, et al. AHA consensus panel statement. Preventing heart
502 attack and death in patients with coronary disease. The Secondary Prevention Panel. *J Am*
503 *Coll Cardiol*. Jul 1995;26(1):292-4. doi:10.1016/0735-1097(95)90846-g
- 504 31. Hulley S, Grady D, Bush T, et al. Randomized trial of estrogen plus progestin for secondary
505 prevention of coronary heart disease in postmenopausal women. Heart and
506 Estrogen/progestin Replacement Study (HERS) Research Group. *JAMA*. Aug 19
507 1998;280(7):605-13. doi:10.1001/jama.280.7.605
- 508 32. Rossouw JE, Anderson GL, Prentice RL, et al. Risks and benefits of estrogen plus progestin
509 in healthy postmenopausal women: principal results From the Women's Health Initiative
510 randomized controlled trial. *JAMA*. Jul 17 2002;288(3):321-33. doi:10.1001/jama.288.3.321
- 511 33. Symington IS, Stack BH. Pulmonary thromboembolism after travel. *Br J Dis Chest*. Apr
512 1977;71(2):138-40. doi:10.1016/0007-0971(77)90097-3
- 513 34. Cruickshank JM, Gorlin R, Jennett B. Air travel and thrombotic episodes: the economy
514 class syndrome. *Lancet*. Aug 27 1988;2(8609):497-8. doi:10.1016/s0140-6736(88)90134-1
- 515 35. Professor Bryan Jennett. *British Journal of Neurosurgery*. 2008/01/01 2008;22(2):305-306.
516 doi:10.1080/02688690802021215
- 517 36. Matsushita K, Ding N, Kou M, et al. The Relationship of COVID-19 Severity with
518 Cardiovascular Disease and Its Traditional Risk Factors: A Systematic Review and Meta-
519 Analysis. *Glob Heart*. Sep 2020;15(1):64. doi:10.5334/gh.814
- 520 37. Guo T, Fan Y, Chen M, et al. Cardiovascular Implications of Fatal Outcomes of Patients
521 With Coronavirus Disease 2019 (COVID-19). *JAMA Cardiol*. 07 2020;5(7):811-818.
522 doi:10.1001/jamacardio.2020.1017
- 523 38. Budnik M, Kochanowski J, Piatkowski R, et al. Simple markers can distinguish Takotsubo
524 cardiomyopathy from ST segment elevation myocardial infarction. *Int J Cardiol*. Sep
525 2016;219:417-20. doi:10.1016/j.ijcard.2016.06.015
- 526 39. Wang Y, Zheng Y, Tong Q, et al. Cardiac Injury and Clinical Course of Patients With
527 Coronavirus Disease 2019. *Front Cardiovasc Med*. 2020;7:147.
528 doi:10.3389/fcvm.2020.00147

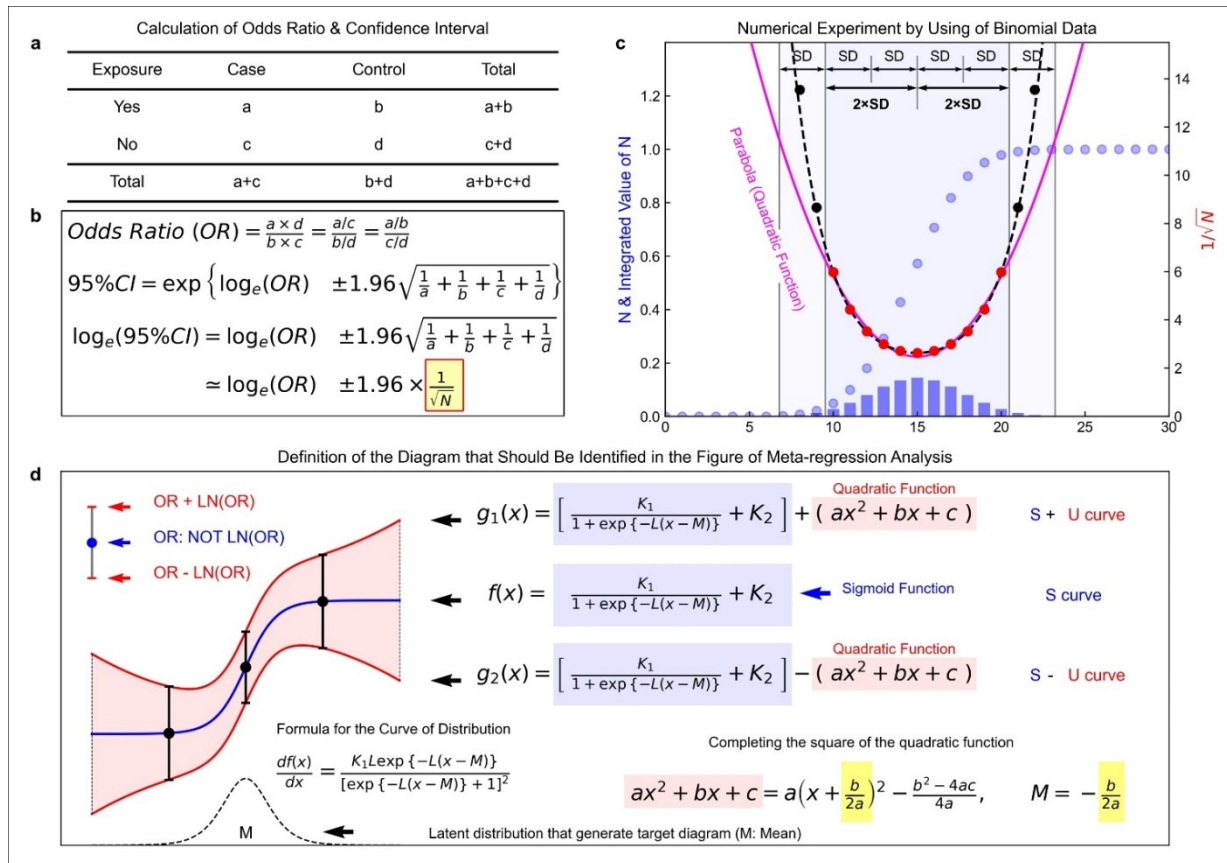
- 529 40. Satyan S, Light RP, Agarwal R. Relationships of N-terminal pro-B-natriuretic peptide and
530 cardiac troponin T to left ventricular mass and function and mortality in asymptomatic
531 hemodialysis patients. *Am J Kidney Dis*. Dec 2007;50(6):1009-19.
532 doi:10.1053/j.ajkd.2007.08.017
- 533 41. Sugawa S, Masuda I, Kato K, Yoshimura M. Increased Levels of Cardiac Troponin I in
534 Subjects with Extremely Low B-type Natriuretic Peptide Levels. *Sci Rep*. 03
535 2018;8(1):5120. doi:10.1038/s41598-018-23441-z
- 536 42. Caro-Codón J, Rey JR, Buño A, et al. Characterization of NT-proBNP in a large cohort of
537 COVID-19 patients. *Eur J Heart Fail*. 03 2021;23(3):456-464. doi:10.1002/ejhf.2095
- 538 43. Demir OM, Ryan M, Cirillo C, et al. Impact and Determinants of High-Sensitivity Cardiac
539 Troponin-T Concentration in Patients With COVID-19 Admitted to Critical Care. *Am J*
540 *Cardiol*. 05 15 2021;147:129-136. doi:10.1016/j.amjcard.2021.01.037
- 541 44. van Langevelde K, Flinterman LE, van Hylckama Vlieg A, Rosendaal FR, Cannegieter SC.
542 Broadening the factor V Leiden paradox: pulmonary embolism and deep-vein thrombosis as
543 2 sides of the spectrum. *Blood*. Aug 02 2012;120(5):933-46. doi:10.1182/blood-2012-02-
544 407551
- 545 45. van Hylckama Vlieg A, Helmerhorst FM, Vandenbroucke JP, Doggen CJ, Rosendaal FR.
546 The venous thrombotic risk of oral contraceptives, effects of oestrogen dose and
547 progestogen type: results of the MEGA case-control study. *BMJ*. Aug 13 2009;339:b2921.
548 doi:10.1136/bmj.b2921
- 549 46. Wiegatz I, Stahlberg S, Manthey T, et al. Effect of extended-cycle regimen with an oral
550 contraceptive containing 30 mcg ethinylestradiol and 2 mg dienogest on bleeding patterns,
551 safety, acceptance and contraceptive efficacy. *Contraception*. Aug 2011;84(2):133-43.
552 doi:10.1016/j.contraception.2011.01.002
- 553 47. Humans IWGotEoCRt. Combined estrogen-progestogen contraceptives and combined
554 estrogen-progestogen menopausal therapy. *IARC Monogr Eval Carcinog Risks Hum*.
555 2007;91:1-528.

- 556 48. Er C, Tan JY, Tan CW, et al. "Lockdown-thrombosis"-an unexpected problem of the
557 COVID-19 pandemic? *J Thromb Thrombolysis*. Jul 2022;54(1):29-32. doi:10.1007/s11239-
558 022-02648-y
- 559 49. Meisel SR, Nashed H, Natour R, et al. Differentiation between myopericarditis and acute
560 myocardial infarction on presentation in the emergency department using the admission C-
561 reactive protein to troponin ratio. *PLoS One*. 2021;16(4):e0248365.
562 doi:10.1371/journal.pone.0248365
- 563 50. Lagunas-Rangel FA. Neutrophil-to-lymphocyte ratio and lymphocyte-to-C-reactive protein
564 ratio in patients with severe coronavirus disease 2019 (COVID-19): A meta-analysis. *J Med*
565 *Virol*. 10 2020;92(10):1733-1734. doi:10.1002/jmv.25819
- 566

567

568 **Figures and Tables**

569 **Fig. 1**



570

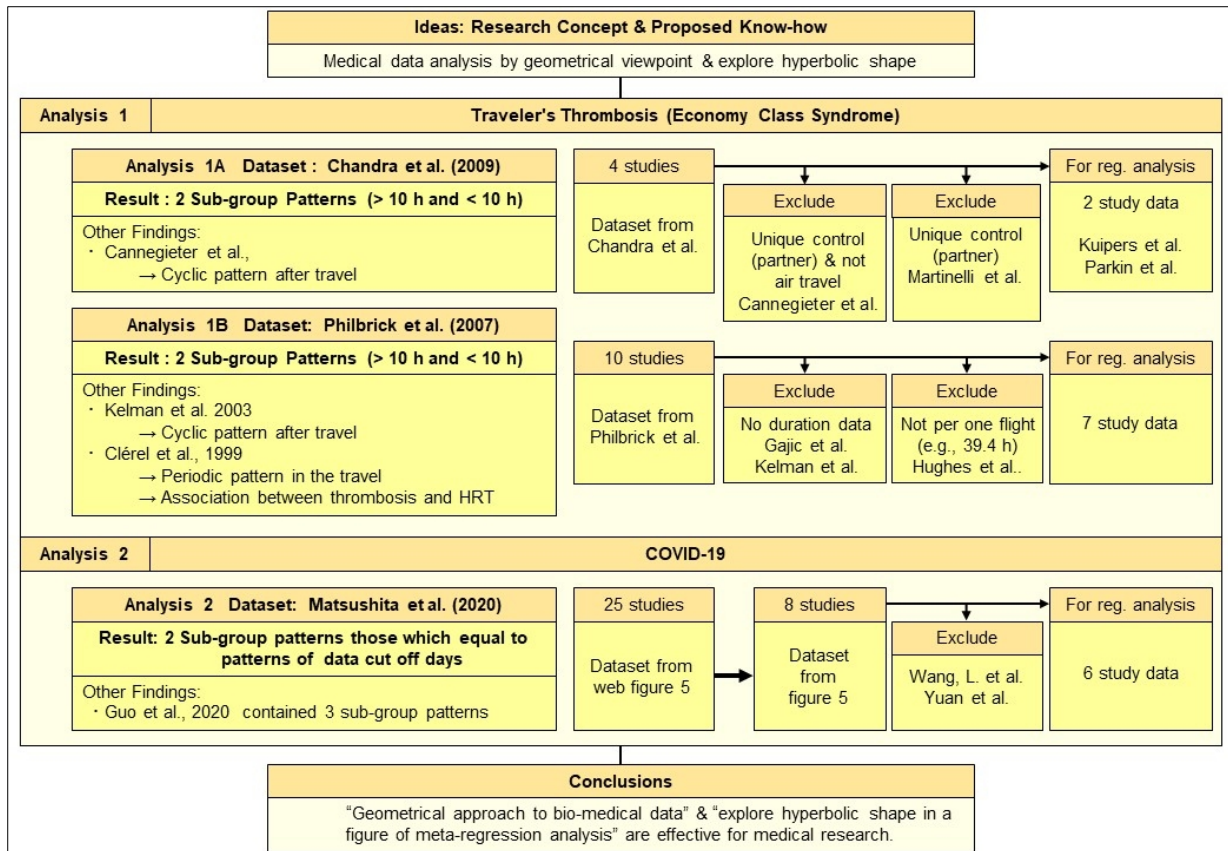
571 **Fig. 1. A hyperbolic shape formed by confidence limits.**

572 **a**, A two-way cross-tabulation (contingency table) for calculating an odds ratio (OR). **b**, Calculation
573 of OR and its 95% confidence interval. **c**, Histogram of the data following a binomial distribution and
574 a plot of the inverse values of the square roots. **d**, The mathematical formulas for the hyperbolic
575 shape. Note that the OR is not logarithmic, and only the length of the error bar is logarithmic (see the
576 upper left position of panel d). We generate binomial distribution data because normal distribution
577 could be approximated by binomial distribution. Around the center of distribution (within $\pm 2SD$ of
578 the mean), the parabola was a good fit for the points calculated from the simulated data. Also, from
579 around the over $\pm 2SD$ to $\pm 3SD$ range, the parabola is positioned below the points. Although a
580 catenary curve (dashed curve) is more likely suitable for fit, the number of patients who fall into the
581 categories at both ends is slightly larger than the expected number. Usually, data placed over the

582 range of ± 3 SD from the distribution center are summarized as “greater than” or “less than.” For
583 example, in the case of 10 hours is the center of the distribution, the time category might be following
584 sets such as “less than” 5 hours, 6-8 hours, 9-11 hours, 12-14 hours, and “more than” 15 hours. The
585 value of 1 over root N ($1/\sqrt{N}$) becomes smaller. So, using a parabola seemed to be based on the
586 reality of the data handling method in the medical and biological fields.
587

588

589 **Fig. 2**



590

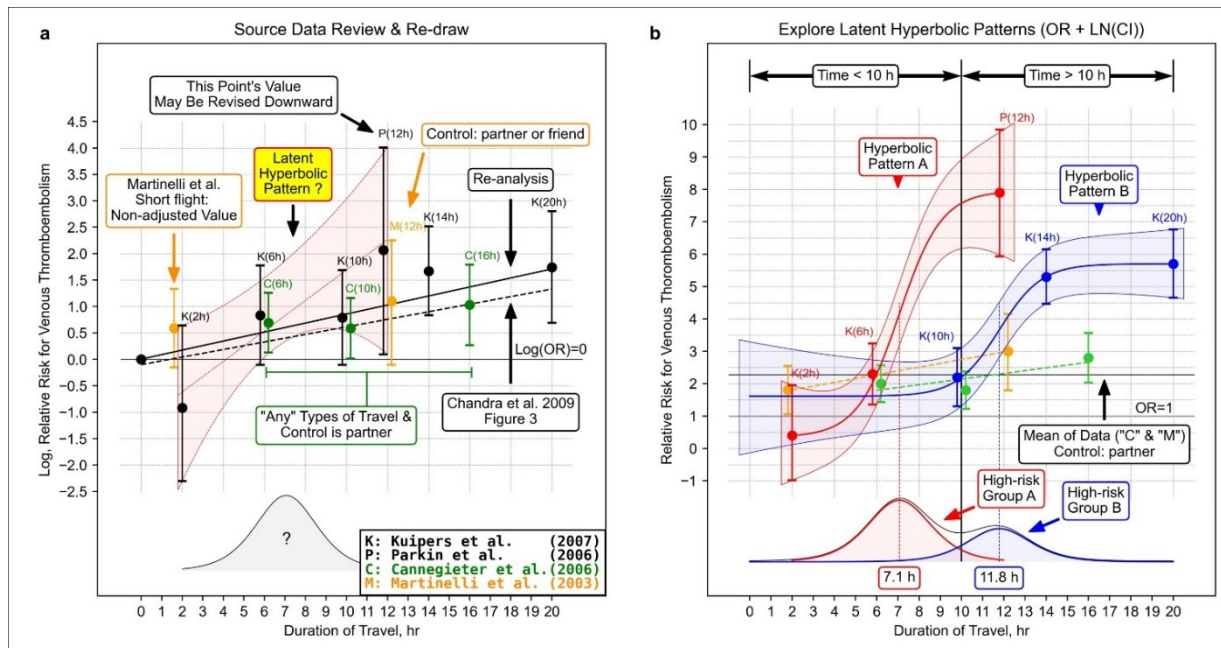
591 **Fig. 2. Overall framework of this study.**

592 We applied our concepts to travelers' thrombosis and COVID-19. These were similar in research
 593 history (see **Supporting discussion 1: history of traveler's thrombosis & Supporting discussion 2:**
 594 **research situations of COVID-19-related thrombosis**). In the case of traveler's thrombosis, we
 595 analyzed a dataset collected by Chandra et al and Philbrick et al^{7,10}. In the case of COVID-19, we
 596 analyzed a dataset collected by Matsushita et al¹⁰. Flow charts show data accept or reject flows. To
 597 avoid duplicating data, Matsushita et al selected only eight studies data (25 studies included in initial
 598 web Figure 5)³⁶.

599

600

601 **Fig. 3**



602

603 **Fig. 3. Re-analysis based on the proposed ideas.**

604 **a**, Data review and meta-regression analysis using the same method as Chandra et al. *Ann Intern Med.*

605 2009; 151(3):180-190. Figure 3¹⁰. We added information from original studies and our hypothesis to

606 the previously published form, such as latent distribution. This figure is regarded as a re-drawn figure

607 from Chandra D, Parisini E, Mozaffarian D. Meta-analysis: travel and risk for venous

608 thromboembolism. *Ann Intern Med.* 2009 Aug 4;151(3):180-90. doi: 10.7326/0003-4819-151-3-

609 200908040-00129. Epub 2009 Jul 6. © 2009 American College of Physicians. Adapted with

610 permission. The original figure has been shown on the American College of Physicians website,

611 which links to PubMed® (<https://pubmed.ncbi.nlm.nih.gov/19581633/>). **b**, grouping the data and

612 hyperbolic shape fitting. The dots represent the odds ratio with error bars of the confidence interval

613 are the adjusted odds ratio described in the four studies cited by Chandra et al. Since Cannegieter et al

614 did not describe values of confidence intervals, we calculated the values from the case-count data. We

615 also calculated the odds ratio at the time point of short travel in the research reported by Martinelli et

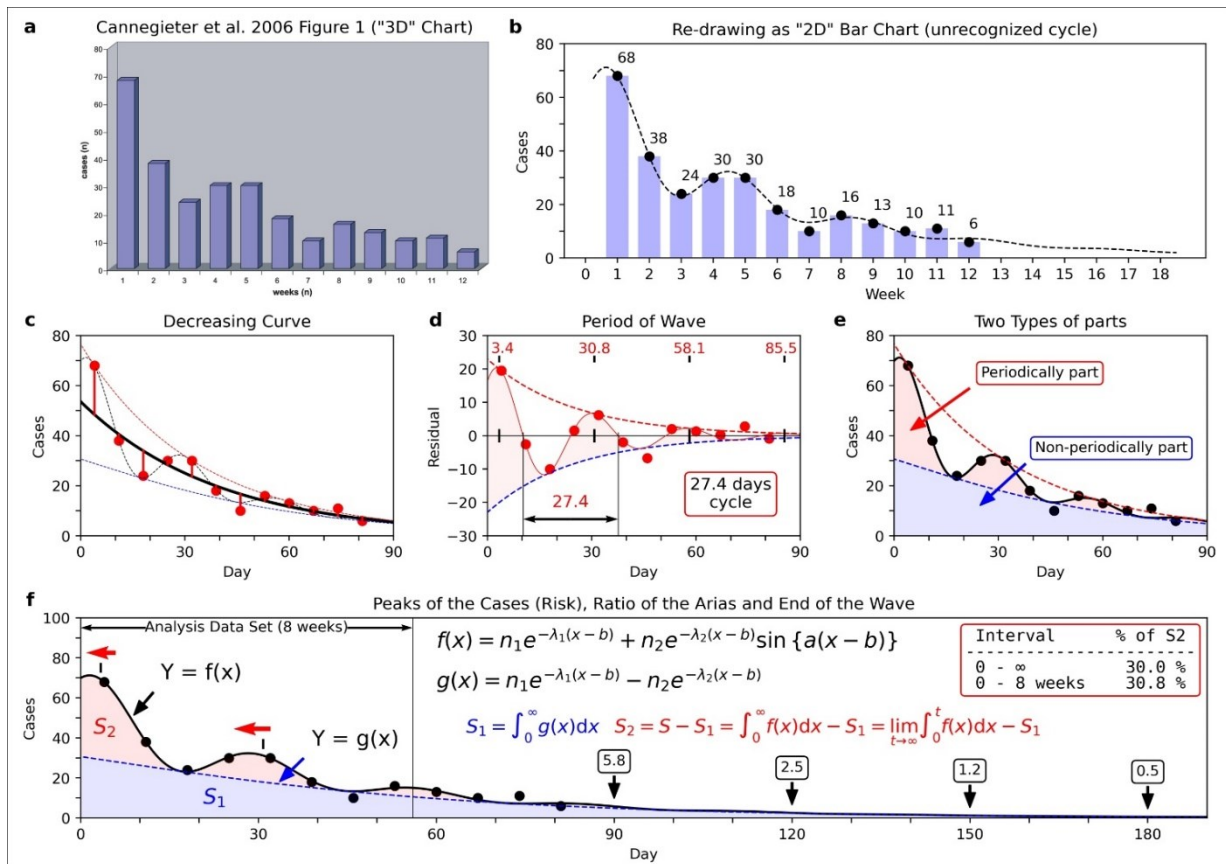
616 al. Chandra et al did not display it might be due to the no adjusted odds ratio initially described. Our

617 result of a meta-regression analysis was slightly different from the straight line drawn by Chandra et

618 al might be due to the software used by Chandra et al (STATA) being different from the one we used
619 (R and R package “metafor”) or they might conduct a meta-regression analysis reversing the front
620 head and the front side of the cross-tabulation. It was impossible to fit S-shaped curves for the points
621 excluded from the search for hyperbolic shapes (Martinelli et al & Cannegieter et al) due to the small
622 number of data or the form of the point sequence. However, if we manually fit S-curves, the two
623 inflection points would appear close to the positions of the hyperbolic shapes’ inflection points.
624

625

626 **Fig. 4**



627

628 **Fig. 4. Unrecognized cyclic pattern of thrombosis onset after travel³.**

629 **a**, A bar graph showing the relationship between weeks after travel and the number of thrombosis

630 onset in a figure reported by Cannegieter et al³. **b**, Re-expressing as a two-dimensional bar graph

631 avoiding the three-dimensional representation. **c**, Applying a damped wave by non-linear regression

632 analysis. **d**, Extraction of damped wave part by subtracting the monotonic decrease function. **e**,

633 Dividing into 2 sub-parts areas by the envelopes of the damped wave that touch the lower parts of the

634 wave. **f**, Enlarged and added explanation of the ratio of the area. Cannegieter et al³ used the data up to

635 week eight. The ratio of sub-parts 2 to the total number of patients (ratio of S2 to the area of S1 + S2)

636 was 30.0%. In the integration for the infinite interval, it was 30.8%. Peak shifts of the wave (peak

637 position of the wave shifted from the original to the other) appeared when comparing panels d and f

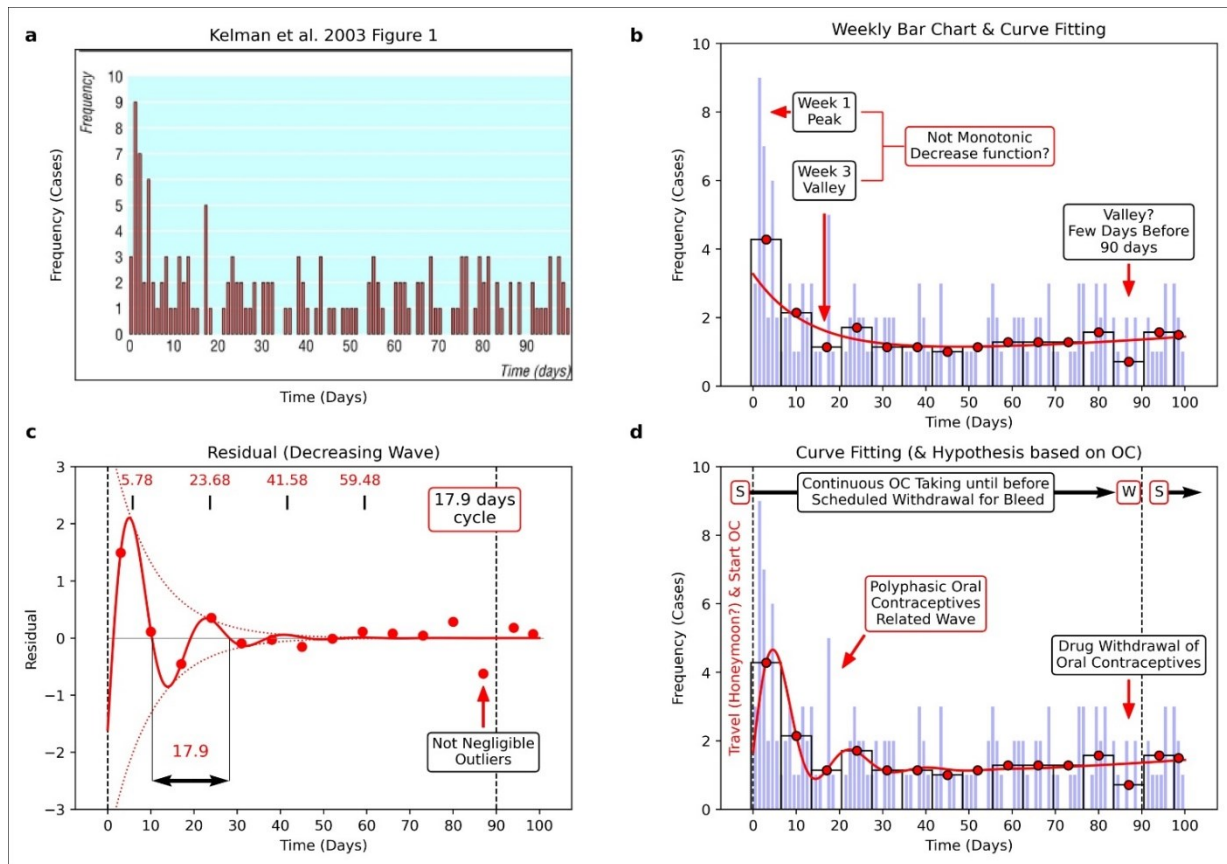
638 due to putting by regression curve located in the center (c + d). Panel a was re-used from Cannegieter

639 et al. *PLoS Med.* 2006; 3(8):e307. Figure 1.

640 <https://www.ncbi.nlm.nih.gov/labs/pmc/articles/PMC1551914/figure/pmed-0030307-g001/> Copyright
641 © 2006 Cannegieter et al. Creative Commons Attribution License. In 2006, the Creative Commons
642 Attribution 2.0 Generic, License (CC BY 2.0) was available.
643 <https://creativecommons.org/licenses/by/2.0/>
644

645

646 **Fig. 5**



647

648 **Fig. 5. Cyclic pattern of thrombosis onset appeared in a figure by Kelman et al²⁸.**

649 **a**, A thrombosis onset distribution reported by Kelman et al²⁸. **b**, The regression curve is located in the
 650 center of all average points (the points express the average of thrombosis onset during seven days). **c**,

651 Curve fitting to the residual data of the regression curve in panel **b**. **d**, Application of damped wave

652 function and adding interpretation of the results assuming some women started taking oral

653 contraceptives (OC) in the timing of travel. The observed cyclic pattern was relatively unclear than

654 Cannegieter et al³ (see Fig. 4). Noteworthy, the thrombosis onset downed in the days before 90 days,

655 and it seems to be the scheduled withdrawal period of OC use. This figure was re-used and re-drawn

656 from Kelman et al. *BMJ*. 2003; 327(7423):1072. Figure 1

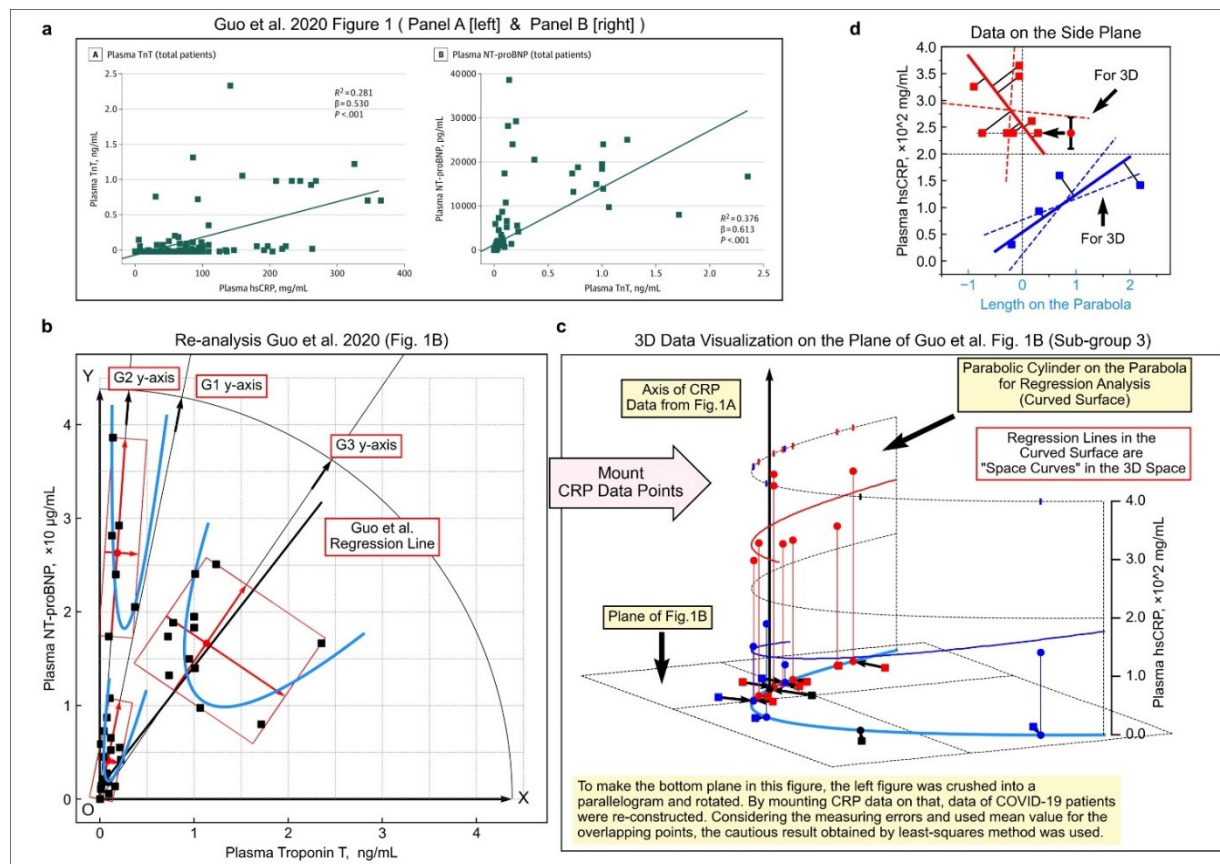
657 <https://www.bmj.com/content/327/7423/1072#F1> Copyright © 2003 BMJ Publishing Group Ltd. All

658 rights reserved. The BMJ permission team thankfully confirms this figure adaptation. Also, we

659 obtained permission to re-use.

660

661 **Fig. 6**



662

663 **Fig. 6. Parabola shape patterns in the figure reported by Guo et al³⁷.**

664 **a**, Relationship between high sensitive C-reactive protein (hsCRP) and cardiac troponin T (TnT) in
 665 COVID-19 patients (left) and the relationship between cardiac troponin T (TnT) and N-terminal pro-
 666 brain natriuretic peptide (NT-proBNP) (right). **b**, Data points from the right side of panel a and fitting
 667 parabola. **c**, Three-dimensional data visualization was constructed by mounting the value of hsCRP
 668 onto panel b. **d**, Linear regression analysis on the side surface of the parabolic cylinder in panel c. The
 669 points were replaced with their average if the values could not be determined due to overlapping (the
 670 points indicated by the left-pointing arrow and the error bar, which are the average and the range of
 671 values, respectively). Panel a was re-used from Guo T et al. *JAMA Cardiol.* 2020; 5(7):811-818.

672 Figure 1 <https://www.ncbi.nlm.nih.gov/labs/pmc/articles/PMC7101506/figure/hoi200026f1/>

673 Copyright © 2020 Guo T et al. *JAMA Cardiology*. Creative Commons Attribution License (CC-BY).

674 <https://creativecommons.org/licenses/by/4.0/>