

1 **Novel Findings in Travel-related Thrombosis and COVID-19 Related Cardiovascular Data: Data Mining**

2 **Method for Previously Published Data**

3

4 **Author list**

5 Keiichiro Kimoto, M.Sc.^{1,2*}, Munekazu Yamakuchi, M.D., Ph.D.¹, Kazunori Takenouchi, M.D., Ph.D.¹, Teruto
6 Hashiguchi, M.D., Ph.D.¹

7

8 **Author affiliations**

9 ¹ Department of Laboratory and Vascular Medicine, Kagoshima University Graduate School of Medical and
10 Dental Sciences, 8-35-1 Sakuragaoka, Kagoshima 890-8520, Japan

11 ² Present Affiliation: External Advisor for Data Strategy Research Institute, Yokohama, Japan

12

13 **Corresponding author information**

14 *Corresponding author: Keiichiro Kimoto

15 E-mail: k1974142@kadai.jp

16 Department of Laboratory and Vascular Medicine, Kagoshima University, Graduate School of Medical and
17 Dental Sciences, 8-35-1 Sakuragaoka, Kagoshima 890-8544, Japan.

18 Phone: /Fax: +81-99-275-5437/+81-99-275-2629

19

20 **Author contributions**

21 Keiichiro Kimoto takes responsibility for this research, making study concepts, data analysis,
22 interpretation of analysis results, and drafting the manuscript. Dr. Yamakuchi contributed to interpreting analysis
23 results, manuscript drafting, supervision, and administrative role. Dr. Takenouchi contributed to the supervision.
24 Dr. Hashiguchi contributed to the study concept, interpretation of analysis results, manuscript drafting,
25 supervision, and administrative role.

26

27 **Competing interest statement**

28 Keiichiro Kimoto has been in charge of external advisor for the Data Strategy Research Institute but
29 received no financial support for this study. Except for this, the authors have no conflicts of interest or financial
30 disclosures that should be disclosed.

31

32 **Classification:** Research article, Medical Sciences

33

34 **Keywords**

35 Traveler's thrombosis, cardiovascular biomarker, COVID-19, Oral Contraceptives (OC), and Hormone
36 Replacement Therapy (HRT)

37

38 This file includes Abstract, Significant statement, Main Text, Figures 1 to 7, and Table 1. Also, this
39 article has supporting information that contains supporting figures, tables, method details, and supporting
40 discussions.

41

42

43 **Abstract**

44 Image analysis software is used in the review process to detect research misconduct (1), but not for positive
45 motives (e.g., for missing findings). Also, scientists analyze “raw images” (e.g., MRI), but there are no methods
46 for published “charts.” So, we conceived an analysis method. We applied our idea to two cardiovascular data
47 related to thrombosis (traveler’s or travel-related thrombosis and COVID-19) because there are still controversial
48 discussions that might be due to some overlooked information. We found overlooked an approximately 28 days
49 cycle of thrombosis onset over several weeks after travel in a figure (Cannegieter et al., *PLoS Med.* 2006, in the
50 top 25% of all research scored by Altmetric) (2). Also, we found an eighteen-day cycle of thrombosis onset in
51 another chart (Kelman et al., *BMJ.* 2003, in the top 5% of research) (3). In COVID-19, we found overlooked
52 subgroup patterns in a scatterplot of Troponin T and NT-proBNP (Guo et al. *JAMA Cardiol.* 2020, top 5%
53 research) (4), which has already appeared in the cardiomyopathy study in 2016 (Budnik et al., *Int J Cardiol.*
54 2016) (5). The above cyclic patterns suggested that travel-related oral contraceptive initiation (e.g., honeymoon
55 and OC initiation) or hormone replacement therapy caused thrombosis. Also, the in-flight environment can likely
56 not explain the cyclic patterns. In conclusion, women’s life-stage-related events, which are also related to travel,
57 may be the underlying cause. In COVID-19, biomarker data should require a re-analysis. Our findings in the
58 well-known figures suggest that our tips can be an essential review technique.

59

60 **Significance statement**

61 Raw images (raw data), such as MRI, are often analyzed, but the chart is not. We developed a method for review
62 charts and found about 28 days of thrombosis onset rhythm after travel in a published figure, which suggests
63 travel-related oral contraceptive (OC) initiation exists (e.g., honeymoon and starting birth control OC). The OC
64 has already been discussed as a risk (aggravating) factor in the context that the thrombosis is caused by increased
65 blood viscosity due to dehydration in a dry cabin or blood stasis due to restricted movement in a narrow seat
66 (e.g., economy class). However, our result may require reversing the root cause because the rhythm suggests that
67 thrombus (blood clot) is not developed in the cabin but is related to drug concentration.

68

69

70

71 **Main text**

72 **Introduction**

73 Recently, some image-checking AI detects research misconduct but not for helpful, latent findings (1).
74 So, we first made questioned whether something new exploratory data analysis (data mining) method assisted
75 us in finding important knowledge from “previously published” figures (**Fig. S1, a**).

76 Besides, scientists analyze “raw images” (e.g., MRI, CT, or X-ray), but there are no methods for
77 “charts” previously published. Also, software improvements have allowed us to make a beautiful chart, but an
78 understanding chart is required (6). So, we took the idea of “reading a chart carefully” one step further, and we
79 made a secondary question that something new data mining method assisted us in finding necessary knowledge
80 from “previously published” “chart” (**Fig. S1, b**).

81 Meanwhile, in the 20th century, statistics based on probability theory have applied to biology and
82 medicine (e.g., biostatistics and p-value), and in the 21st-century differential equation often used in clinical
83 research (e.g., mathematical biology and application of Susceptible-Infected-Recovered (SIR) model for
84 COVID-19 pandemic to estimate the number of an infected person) (7).

85 We turned our attention from statistics and differential equation to geometry regarding its importance
86 in science history. For example, Isaac Newton elicited the theory of gravitation by analyzing an elliptical orbit
87 with the geometrical technique after German astronomer Johannes Kepler found that the planet’s orbit was
88 elliptical in the 17th century. So, we finally decided to develop a data mining method that assisted us in finding
89 essential knowledge from the “previously published” “chart” by “geometrical approach” (**Fig. S1, c**).

90 Considering the above three concepts, we were interested in a research field, traveler’s thrombosis,
91 because many controversies (2, 8-24) in this field seemed to be associated with some overlooked information
92 (**Supporting discussion 1: history of traveler’s thrombosis**). In the literature review, we focused on a figure
93 that showed a result of meta-regression analysis (**Fig. S1, b**)(Chandra et al., *Ann Intern Med.*
94 2009;151(3):180-90., Figure 3) (16). In this figure, we saw a geometrical shape (layered hyperbolic shapes) that
95 seemed to be formed by overlapping two subgroups (**Fig. 1, Fig. 3, a**).

96 Finally, we conceived a methodology, which was a kind of pattern recognition, searching layered
97 hyperbolic patterns in a figure showing a result of meta-regression analysis to detect latent sub-groups. Our basic
98 idea is that the confidence interval length for the odds ratio is inversely proportional to the “potential patient
99 population size” (see **Fig. S2, d-f**).

100 To be precise, the ability of patient recruitment, in other words, the “sample size in each study,” affects
101 the confidence interval length. However, we speculated that the effect of the differences in sample size could not
102 be a practical problem for two reasons. The first reason is that stratified analysis, often performed in clinical
103 studies, can be a force in reducing the differences. The second reason is that two types of boundary conditions in
104 the hyperbolic shape fitting, which are the “S-curve” and the “error bar length,” reduce the degree of freedom in
105 searching and increase the possibility of finding the desired shape (details in **Materials and methods**).

106 We were aware that only published data would not be able to prove that meaningful subgroups formed
107 overlapping hyperbolic patterns. Also, some researchers might argue that the pattern alone is not enough basis
108 for a discussion to be significantly considered. However, we thought we could show the discussion was
109 meaningful by showing that the curves derived from theoretical considerations can be applied to the hyperbolic
110 patterns.

111 To validate our ideas, we worked on consecutive exploratory data analyses (**the overall study**
112 **framework is shown in Fig. 2**).

113

114 **Results**

115 **Numerical Experiment**

116 Usually, a sigmoid function is used for curve fitting to a dose-response relationship and outline of the
117 cumulative distribution. Also, the curve expressing the end of a confidence interval is a sum of the S-shaped and
118 U-shaped curves (see **Fig. 1**).

119 To decide on a formula to express a U-shaped curve, we performed a numerical experiment. The result
120 indicated that a parabola could approximate a U-shaped curve (**Fig. 1, c & d**). We constructed three
121 mathematical formulas for fitting hyperbolic patterns to data (see **Fig. 1 and Materials and methods**).

122

123 **Analysis 1A (dataset: Chandra et al.) (16)**

124 Before redrawing the figures of the meta-regression analysis, we reviewed the cited four studies
125 (Martinelli et al., 2003; Parkin et al., 2006; Cannegieter et al., 2006; Kuipers et al., 2007) (2, 8, 11, 25). The main
126 objective of Chandra et al.’s research (16) was estimating a risk, but the main of our analysis is detecting the
127 subgroups. So, we are considering the possibility of some problems with inclusion in our study, even if there
128 were no problems in Chandra et al.’s research.

129 In this assessment, two study data (Martinelli et al., 2003; Cannegieter et al., 2006) (2, 8) were judged
130 inappropriate and excluded from our analysis. Cannegieter et al. and Martinelli et al. used a unique research
131 design, which uses the patient's partner as a control (Martinelli et al.: friend and partner). In the introduction, we
132 described that although the properties of each study (the ability of patient recruitment, sample size) disrupt the
133 effect of the size of the potential patient population, the stratified analysis could reduce the disruption. However,
134 the impact of adding a unique study design was unclear.

135 Additionally, the odds ratio reported by Parkin et al. (25) was suspected to be affected by the
136 misplacement of the cells in the cross table for calculating the odds ratio. Still, qualitatively, it could be used (see
137 **Fig. 2, Table S1, Table S2, and Supporting information: Method details**).

138 In the residual dataset (Parkin et al., 2006 & Kuipers et al., 2007)(11, 25), layered hyperbolic patterns
139 appeared, and applied regression analysis with the above three formulas. The inflection points of the S-curves
140 (center of distributions) were 7.1 hours and 11.8 hours, respectively (**Fig. 3, b**).

141 Additionally, it seemed that S-curve could be fitted to the group of points reported by Cannegieter et al.
142 and Martinelli et al., respectively. Also, those of inflection points would position at positions of less than 10
143 hours and more than 10 hours. This result seems consistent with the two hyperbolic shapes fitting (**Fig. 3, b**,
144 **orange, and green dots**).

145 Notably, we observed an overlooked cyclic pattern of thrombosis onset in the figure reported by
146 Cannegieter et al. (2) during the above data review process. The cycle period was 27.4 days (**Fig. 4, a-e**). The
147 wave of about 28 days consisted of a gradually decaying wave and a monotonically decreasing function (**Fig. 4,**
148 **e**). The wave disappeared after about three months (90 days). The monotonically decreasing part estimated that it
149 continued for over 90 days after the travel (**Fig. 4, f**). Cannegieter et al. (2) did not mention this wave pattern.

150

151 **Analysis 1B (dataset: Philbrick et al.) (13)**

152 Considering that only a few pieces of data were available for the first analysis, we performed a similar
153 analysis using another dataset gathered by Philbrick et al. for a systematic review. As a preparation, we
154 conducted a data review to confirm eligibility for our regression analysis (see **Fig. 2**). The dataset did not contain
155 risk ratio data. In this case, hyperbolic shapes could not be fitted (for the details, see **Supporting information:**
156 **Method details**). So, only S-curves were applied. This analysis found two S-curves in the stratified datasets by
157 pulmonary embolism (PE) and deep vein thrombosis (DVT). The inflection point of PE was about 9.2 hours, and
158 the point of DVT was about 12.1 hours, respectively (**Fig. S3, b**), which were similar to the first analysis.

159 Additionally, we found that unrecognized periodic pattern in the data reported by Clérel and Caillard
160 (26) during the data review, which was suspected to be the effect of circadian rhythm (**Fig. S4, c**).

161 We also found a cyclic pattern after travel in the data reported by Kelman et al. (3). However, the
162 period of the wave was 17.9 days, and the wave was less clear than the wave observed in the data reported by
163 Cannegieter et al. In the waveform, there was a raw-risk period just before 90 days. Also, in this data, there was
164 an uptrend (**Fig. 5**).

165 Furthermore, we found a correlation between the stepped stages of increasing PE patients and the
166 issuance of the guidelines (27-30) for preventive hormone replacement therapy (HRT) to a menopause woman in
167 a figure reported by Clérel and Caillard (26) (**Fig. S5**). Especially the thrombosis onset in Paris airports has
168 increased since the late 1990s (**Fig. S5**).

169

170 **Analysis 1B-related additional analysis**

171 *Trend analysis and history of sex ratio change*

172 We performed the trend analysis of the literature to assess the generalization on the increasing number
173 of patients at Paris airports reported by Clérel & Caillard (26) (**Fig. S5**). We searched the literature in PubMed
174 (keywords: “Economy Class Syndrome,” “Traveler’s Thrombosis,” and “Travel-related thrombosis”). The
175 number of references increases rapidly after the 2000s (**Fig. S6**).

176 The difference between the above result of trend analysis and the result in the data reported by Clérel
177 and Caillard (26) can be explained by the difference between publication day and onset day. So, there is no
178 practical difference between the two results.

179 The literature search found that two articles (Symington & Stack, 1977, Cruickshank, Gorlin, & Jennett,
180 1988) (31, 32) contained each patient’s details. We already obtained each patient’s data from the other two
181 articles in analyses 1A and 1B (Clérel & Caillard, 1999, Parkin et al., 2006) (25, 26). So, we confirm changing
182 the sex ratio using those data to assess the effect of HRT. We found that the rate of women in the PE data
183 gathered from the above four studies (25, 26, 31, 32) gradually increased but was most pronounced during the
184 late 1990s (**Table 1**).

185

186 *Literature review targeting early literature and analysis focusing on men*

187 We also conducted a literature review targeting early literature because we strongly questioned the
188 “economy class syndrome” concept from our findings in Analysis 1A and 1B. We found that the word appeared

189 in Symington & Stack, 1977 (31). However, judging from the citation history checked on the Europe PMC
190 website (<https://europepmc.org/>), the article by Cruickshank, Gorlin, & Jennett, 1988 (32) might influence the
191 word as evangelists. The paper was a “personal paper,” a type of article category of the Lancet, and the authors
192 prepared case reports of their own experiences.

193 Dr. Cruickshank was middle-aged (32). Usually, the mid-life crisis is concerned around this range of
194 age. Dr. Jennett was a dean of medicine at Glasgow (33). Generally, heavy psychological stress based on heavy
195 social responsibility is concerned. So, we hypothesized that men’s life event-related psychological stress could
196 be one of the risk factors (**see Fig. S7, b**).

197 To assess our hypothesis, we merged data from the above four studies (25, 26, 31, 32) and made a bar
198 chart for 1-year. The onset of PE was concentrated in certain age stages, such as around 30, the 40s, late 50s, and
199 early 70s (**Fig. S7, e**).

200 We performed the same analysis in the women’s data except for data reported by Clérel & Caillard (26).
201 Although the peak range was 65 to 70 in the data of Clérel & Caillard (26) (**Fig. S4, d**), PE was concentrated in
202 the 40s to 50s (menopausal stage) in this analysis (**Fig. S8**).

203 Additionally, we found an inverted-U-shaped (mountainous) relationship in the scatter plot: age on the
204 horizontal axis and air travel time on the vertical axis (**Fig. S10, d**). However, it was possible to fit a straight line
205 as an up-right linear relationship or a down-right linear relationship (**Fig. S9, a, and Fig. S10, a, c**).

206 These analyses were also performed on the female data reported by Clérel & Caillard (26), and we
207 found a U-shaped relationship (**Fig. S9, c**).

208

209 **Analysis 2 (dataset: COVID-19) (34)**

210 We decided to apply our ideas to the current complex COVID-19 pandemic problem to find some
211 overlooked things because there was some controversy (35-41) about COVID-19-related thrombosis. This
212 situation was similar to that of the traveler’s thrombosis. (**Supporting discussion 2: research situations of**
213 **COVID-19-related thrombosis**), and we started this analysis with the inspiration from the famous
214 mathematician Polya who stated that solving a similar problem helped us solve a more complex problem (42).

215 As a note, we described that stratified is necessary for the introduction section, but clinical studies of
216 COVID-19 did not perform it. However, Stratification seemed unnecessary because the size of the studies was
217 not huge and roughly the same due to no mega trial during the pandemic.

218 One of us (KK) searched for the layered hyperbolic pattern using the search engine Google and
219 extracted a figure reported by Matsushita et al. (34) (**Fig. 6, a-c**). After evaluating eligibility (**see Fig. 2**), patterns
220 that allowed to be fitted hyperbolic shapes appeared (**Fig. 6, d-f, & g-i**).

221 Considering the cause of these patterns, we found the matching between grouping the data by
222 hyperbolic patterns and grouping by data cut-off days (**Fig. S11**). We calculated weighted averages of age by
223 grouping. In the earlier days group, non-severe was 46.5, and severe was 57.7, which were middle age (age
224 45-64). In the late date group, non-severe was 40.9, and severe was 68.6, which were mature age (age 25-44) and
225 elderly (age > 65), respectively.

226 Surprisingly, we found unrecognized patterns during the data review process in a figure reported by
227 Guo et al. (4), which showed a relationship between N-terminal pro-brain natriuretic peptide (NT-proBNP) and
228 Troponin T (TnT). There were three clusters of subgroup patterns, and each cluster could be fitted parabola (**Fig.**
229 **7 a, b, Fig. S12, a, b & Fig. S13, a, d, e-h**).

230 The third subgroup pattern was similar to ST-elevating myocardial infarction in the figure report by
231 Budnik et al. (5). That study was a comparative study between Takotsubo cardiomyopathy (also known as stress
232 cardiomyopathy or broken heart syndrome) and ST-elevating myocardial infarction. This tilted parabola
233 appeared in another study on COVID-19 patients (**Fig. S12, c**) (43), and the pattern had already appeared in
234 other studies (44, 45) before the pandemic (**Fig. S13, b & c**). However, patterns in COVID-19 patients were not
235 recognized by each author.

236 Additionally, In the case of dropping points to the horizontal axis (troponin axis), the histogram on the
237 troponin axis results in bimodality. The above results matched the patterns reported by other studies (**Fig. S12, d**
238 **& e**) (43, 46, 47).

239 Furthermore, by mounting the data of high-sensitivity C-Reactive protein (hsCRP) onto the third
240 subgroup in the data reported by Guo et al. (4) and constructing a parabolic cylinder, we found a pattern that
241 might further be subdivided into two subgroups on the side surface of this parabolic cylinder (**Fig. 7, c, d, & Fig.**
242 **S14**).

243

244 **Discussion**

245 *Hyperbolic shape fitting in traveler's thrombosis*

246 In traveler's thrombosis, we obtained consistent results from two analyses (Analysis 1A: 7.1 hours and
247 11.8 hours, Analysis 1B: 9.2 hours and 12.1 hours) (**Fig. 3, b, Fig. S3, b**). The discrepancy between the value of

248 7.1 hours and 9.2 hours seems to be explained by the miscalculation found in the data review process (see **Table**
249 **S1, Table S2, and Supporting information: Method details**). Our results implied two S-curves. Also, we
250 hypothesized two high-risk periods and two types of high-risk groups, which may have to be considered with the
251 “factor V Leiden paradox” (48) (**Supporting discussion 3: two high-risk periods and two types of high-risk**
252 **groups?**).

253

254 *Cyclic patterns newly founded in this research and effect of OC – life event of young women-*

255 Another noteworthy point is the cyclic patterns in the data reported by Cannegieter et al. (2) (**Fig. 4**). In
256 Cannegieter et al. (2), the cyclic pattern disappeared around three months (90 days), consistent with the high-risk
257 period in oral contraceptive (OC) use was the first three months (49). Also, there is multi-phase OC in the
258 category of OC. So, our findings imply that the 28 days cycle OC is attributable to the cyclic pattern.

259 Additionally, the low-risk period just before 90 days in the data reported by Kelman et al. (3) (**Fig. 5**).
260 This low-risk period could be explained that extended-use type OC, which has a planned drug withdrawal, such
261 as 84 active days and seven placebo days (50, 51).

262 The uptrend in the data by Kelman et al.(3) might be due to depot agent type OC administered in 90
263 days cycle, which injects drugs periodically after decreasing the drugs in the body.

264 Based on the above results, types of OC use (multi-phase type, extended-use type, and depot agent
265 type) might be triggered by travel.

266 Importantly, thromboembolism onset is caused by passing two stages. The first stage is developing a
267 “thrombus (blood clot).” The second stage is “embolization.” Suppose the in-flight environment caused
268 thrombus formation, and the onset of thrombosis (thrombus release and embolization) occurs after travel. In that
269 case, some mechanism must promote the release of thrombus periodically after travel. However, such a
270 mechanism is not known. Also, the cyclic pattern found in this study suggested that OC and HRT are involved in
271 the cyclic pattern. Therefore, it is more plausible that thrombus formation occurred related to changes in drug
272 concentrations rather than related to the in-flight environment.

273 The data reported by Cannegieter et al. contained many car trips (air travel, train, bus, and car trip).
274 These cars might be honeymoon cars.

275

276 *Notable descriptions in the previous work – valley of the wave -*

277 Kelman et al. described that the risk increased within 2 to 4 weeks of flight (hazard period) but the risk
278 was low after the period because travelers were healthier than the average of a group (healthy traveler effect) (3).
279 Also, Rothman mentioned the “persistence of travel-related risk” and “spline regression” (10). They perhaps
280 intuitively realized the importance of the pattern at the position around 3-4 weeks, which we have identified as
281 the valley of the wave. If Cannegieter et al. used a more appropriate visualization technique instead of a
282 3-dimensional bar graph (**Fig. 4, a**), someone might point out the above cyclic patterns at a faster stage.

283

284 *Difference of the cyclic patterns and effect of HRT history – life event of matured women-*

285 Interestingly, there was a difference between the period of cyclic patterns (Cannegieter et al.: about 28
286 days, Kelman et al.: about 18 days). Also, the wave in the data reported by Cannegieter et al. was clear, but the
287 wave in the data reported by Kelman et al. was not clear despite the exposures in Cannegieter et al. being more
288 complex (air travel, train, bus, and car trip) (2) than Kelman et al. (only air travel) (3).

289 Regarding the halfway cycle (about 18 days) in Kelman et al. (3), it is notable that sequential type drug
290 for HRT is used as daily estrogen dosing and 10–14 days progestogen (52). Also, in 1999, Clérel and Caillard
291 mentioned the possibility of both the effects of OC and HRT (26).

292 It is also notable that thrombosis onset in the data reported by Cannegieter et al. was “March
293 1999-March 2000” (only most late 1990s to early 2000) (2). Thrombosis onset in the data reported by Kelman
294 et al. was “1981-1999” (including the whole of the 1990s) (3).

295 We found a slowdown of the increase of thrombosis onset at Paris airports in 1998, the year of HERS
296 result was issued (**Fig. S5**). Also, our trend analysis showed that the number of literature on thrombosis
297 decreased since around 2000 (**Fig. S6**). Moreover, our merged data from four studies (25, 26, 31, 32) on PE
298 from the 1970s to the 2000s showed that the rate of women was most pronounced during the late 1990s (**Table**
299 **1**).

300 Therefore, the difference in waves can be explained as follows: the halfway cycle (17.9 days) in
301 Kelman et al. (3) was a mixture of the 28 days OC cycle and a type of HRT cycle. However, only OC users
302 might remain in the data reported by Cannegieter et al. (2) after the issue of the HERS study in 1998 (29).

303 Although the existence of the women patients not “menopausal” stage women (40s to 50s) but among
304 around 70-75 years of age seems to disagree with HRT use (**Fig. S4, d, & Fig. S8, d**), the subjects of the WHI
305 study were “postmenopausal” women (age 50-79) for prophylactic use for cardiovascular problems.

306

307 *Men's life stage and travel related psychological stress – life event in the men's life stage -*

308 Analysis 1B-related additional analysis suggested that the development of travel-related thrombosis
309 occurs at specific ages (**Fig. S7**). On the other hand, Kelman et al. reported the incidence of VTE per 100,000
310 passengers (3). In this data (3), the incidence of VTE sharply increased after age 40, and it was a temporary
311 decrease in the early 60s. Although it should be noted that these results are not limited to men, they are
312 consistent with our results.

313 We also found that the relationship between male age and travel duration seems to be
314 inverted-U-shaped (mountainous) (**Fig. S9 & Fig. S10**). Regarding this result, men's life event-related
315 psychological stress may be one of the risk factors.

316 Moreover, every four studies (25, 26, 31, 32) showed inconsistent results (correlated or inversely
317 correlated). This situation seems to be the same as the parable of “blind men and an elephant.” Considering the
318 correlation between age and the risk of thrombosis, the above phenomena may cause controversial discussions
319 (**Supporting discussion 1: history of traveler's thrombosis**).

320

321 *Not travel-related but life event-related thrombosis? - how to improve QOL in women and men -*

322 Taking OC or HRT can be regarded as a women's life events-related phenomenon. In the case of men,
323 periods of life events that increase psychological stress or flight time linked to psychological stress may be
324 associated with the development of thrombosis. From a comprehensive view, “traveler's thrombosis” or
325 “travel-related thrombosis” may require to be regarded as “life-event-related thrombosis.”

326 For women, even if a substantial risk factor is not the in-flight environment, it is not neglectable. So,
327 our thought that starting OC or HRT was triggered by travel suggests that usage based on risk diversification is
328 important to avoid overlapping risks of drug and in-flight environment. Also, well-planned may allow more safe
329 use of OC and HRT. Additionally, for men, perhaps we should focus more on “stress reduction.”

330

331 *Application of our method for COVID-19 cardiovascular data*

332 In appreciation of our ideas for COVID-19, the dataset grouping by Matsushita et al.(34) matched the
333 grouping by data cut-off dates (**Fig. S11**). Age structure diverged from middle age to mature and elderly.
334 Middle-aged people (age 45-64) might enter the workforce for manual labor treating fish containers, mature

335 people (age 25-44) might want to select IT jobs, and elderly people (age > 65) might stay in the house. So, our
336 results were consistent with the hypothesis that COVID-19 spread from the seafood market.

337 In our data review process (**Supporting discussion 4: linear regression analysis**), our analysis of the
338 data reported by Guo et al. (4) showed three clusters of subgroups and formed the tilted parabola. Also, the
339 patterns matched the other studies (**Fig. 7 a, b, Fig. S12 & Fig. S13**) (5, 43-47). Considering the study by
340 Budnik et al. (5), those subgroups may have different biological mechanisms. Also, we found patterns on the
341 side surface of this parabolic cylinder (**Fig. 7, c, d, & Fig. S14**).

342 On the other hand, a paradoxical result on troponin was obtained just before the pandemic (53). Meisel
343 et al. mentioned that the CRP to troponin ratio (CRP/troponin) could serve to differentiate between
344 myopericarditis and acute myocardial ischemia (AMI), although not the study on COVID-19 patients. In
345 COVID-19, Caro-Codón et al. reported interesting behavior of CRP (46). A meta-analysis by Lagunas-Rangel
346 reported that the lymphocyte to C reactive protein ratio (LCR) level, which was not a simple measurement
347 value but a ratio, might be related to an inflammatory process (54).

348 The above studies might imply complex data structures in 2-dimensional and 3-dimensional scatter
349 plots consisting of biomarker values, and our findings may serve the cardiac biomarkers' research field.

350 Supplementary, our result suggested that the treatment of implicit function, which is unfamiliar in the
351 medical and biological fields, is required. In this research, we used our method to fit the curves. However, a
352 Fortran program created by Dr. Timmes (55), a researcher in astronomy, may also be helpful for future research.

353

354 ***Proposed data mining method based on geometry***

355 From the consistent results of Analysis 1A and 1B, and also the explainable result of analysis 2, it is
356 conceivable that the discussion based on the concept of layered hyperbolic shapes was not nonsense.

357 Surprisingly, we discovered many overlooked patterns in evaluating the process of our ideas unexpectedly. In
358 this process, the geometrical viewpoint allowed us to catch the patterns. Therefore, approaching medical data
359 from geometry and exploring data focusing on layered hyperbolic patterns can be a practical option for
360 researchers. We imagine that the concept of "medical research test" or "inspection of medical data analysis" can
361 be developed analogically as an extension of the medical inspection, including laboratory tests for each patient.

362 Like medical inspection using equipment, detecting overlaid hyperbolic shape patterns may be a tool or marker
363 of inadequate data analysis or some overlooked information that requires re-analysis (**Fig. S1, e**).

364

365 **Materials and methods**

366 Deriving the exact formula directly was difficult. So, firstly we focused only on the U-shaped curve.
367 The length of the confidence interval for the odds ratio is inverse proportional-like to the size of the potential
368 patient population, which onset thrombosis by exposure to risk factors (see **Fig. 1**). Although, there are multiple
369 possibilities (e.g., $1/N$, $1/N^2$, or $1/\sqrt{N}$), regarding the form of equations (1) and (2) below, we intuitively
370 predicted that it would be approximately equal to the inverse of the root (equation (3)).

371

$$372 \quad \text{Log}_e(95\%CI) = \text{Log}_e(OR) \pm 1.96 \sqrt{\frac{1}{a} + \frac{1}{b} + \frac{1}{c} + \frac{1}{d}} \quad (1)$$

373

$$374 \quad \sqrt{\frac{1}{a} + \frac{1}{b} + \frac{1}{c} + \frac{1}{d}} = \frac{\sqrt{bcd+acd+abd+abc}}{\sqrt{abcd}} = \frac{\text{complex combination of numbers}}{\sqrt{abcd}} \quad (2)$$

375

$$376 \quad \text{Log}_e(95\%CI) = \text{Log}_e(OR) \pm 1.96 \sqrt{\frac{1}{a} + \frac{1}{b} + \frac{1}{c} + \frac{1}{d}} \cong \text{Log}_e(OR) \pm 1.96 \times \frac{1}{\sqrt{N}} \quad (3)$$

377

378 To be precise, the “sample size in each study,” which depends on the ability to recruit patients, also
379 affects the confidence interval length. It is similar to Hooke’s law on spring (56), which states that the pull-back
380 force of spring is proportional to the length of the pull. In this case, the power also depends on the spring type
381 (e.g., thick spring or thin spring). Thus, the formula is as follows, with spring constant (k) depending on the kind
382 of spring (equation (4)). Similarly, equation (3) express equation (5) precisely.

383

$$384 \quad \text{Force} = k \times \text{Distance} \quad (4)$$

385

$$386 \quad \text{Log}_e(95\%CI) = \text{Log}_e(OR) \pm 1.96 \sqrt{\frac{1}{a} + \frac{1}{b} + \frac{1}{c} + \frac{1}{d}} \cong \text{Log}_e(OR) \pm 1.96 \times \frac{k}{\sqrt{N}} \quad (5)$$

387

388 However, we speculated that the effect of the sample size and the difference between values of the k in
389 each study could not be practical problems for two reasons, described in the introduction section.

390 Considering the numerical experiment, we decided on the equations for the S-shaped curve, the upper
391 end of the confidence limit, and the lower end of the confidence limit (equation (1), (2), and (3)). Note that in the

392 below equations, the coefficient L is generally set as 1. So, we used this equation under the condition of L=1

393 unless there is some reason.

394

$$395 \quad y = \left\{ \frac{K_1}{1+e^{L(x-M)}} + K_2 \right\} \quad (6)$$

$$396 \quad y = \left\{ \frac{K_1}{1+e^{L(x-M)}} + K_2 \right\} + (ax^2 + bx + c) \quad (7)$$

$$397 \quad y = \left\{ \frac{K_1}{1+e^{L(x-M)}} + K_2 \right\} - (ax^2 + bx + c) \quad (8)$$

398

399 The whole process, including, data review, regression analysis, and tools for the analysis, is described

400 in the supplementary information (**Supporting information: Method details**).

401

402

403 **Acknowledgments and funding sources**

404 One of the authors, Keiichiro Kimoto, appreciates the kindful encouragement of Hideo Yoshioka,
405 MEcon., who is in charge of the Data Strategy Research Institute representative.

406

407 **Statement of our intention for data analysis results on previous published articles.**

408 In addition to general acknowledgments, to clarify our stance, we mention this statement of intention
409 for results. In this article, we pointed out many overlooked information and errors. However, we have no
410 intention to attack previous works because our analysis results owing to their original works, including original
411 research articles, reported valuable data, and writings of meta-analysis synthesized valuable datasets. Since just a
412 scientist had better reconfirm the previous studies with no preconceptions and being grateful to those studies'
413 researchers, we carefully reviewed the data reported by previous studies. We highly respect previous works
414 intending to solve medical issues.

415

416 **Data availability statement**

417 We analyzed clinical data published by other studies (third parties). Used data is identified by indicated
418 information of citation (reference numbers and list of references). The corresponding author responds to
419 inquiries in the case of measured values from published figures requested by reviewers or readers.

420

421 **Code availability statement**

422 Correspondence author (KK) can respond to inquiries for the corresponding author's email address on
423 offering the Python source code and spreadsheet software files for statistical analysis. Also, we have already
424 uploaded our Python programs for the following GitHub repository to keep traceability perfectly.

425 <https://github.com/Keiichiro-KIMOTO-Kagoshima-University/Novel-Findings-in-Travel-related-Thrombosis-and-COVID-19-Related-Cardiovascular-Data>

427

428

429

430 **References**

- 431 1. R. Van Noorden, Publishers launch joint effort to tackle altered images in research papers. *Nature*,
432 (2020).
- 433 2. S. C. Cannegieter, C. J. Doggen, H. C. van Houwelingen, F. R. Rosendaal, Travel-related venous
434 thrombosis: results from a large population-based case control study (MEGA study). *PLoS Med* **3**,
435 e307 (2006).
- 436 3. C. W. Kelman *et al.*, Deep vein thrombosis and air travel: record linkage study. *BMJ* **327**, 1072 (2003).
- 437 4. T. Guo *et al.*, Cardiovascular Implications of Fatal Outcomes of Patients With Coronavirus Disease
438 2019 (COVID-19). *JAMA Cardiol* **5**, 811-818 (2020).
- 439 5. M. Budnik *et al.*, Simple markers can distinguish Takotsubo cardiomyopathy from ST segment
440 elevation myocardial infarction. *Int J Cardiol* **219**, 417-420 (2016).
- 441 6. A. Cairo. (W. W. Norton & Company, New York, 2019).
- 442 7. I. Cooper, A. Mondal, C. G. Antonopoulos, A SIR model assumption for the spread of COVID-19 in
443 different communities. *Chaos Solitons Fractals* **139**, 110057 (2020).
- 444 8. I. Martinelli *et al.*, Risk of venous thromboembolism after air travel: interaction with thrombophilia
445 and oral contraceptives. *Arch Intern Med* **163**, 2771-2774 (2003).
- 446 9. Y. Adi, S. Bayliss, A. Rouse, R. S. Taylor, The association between air travel and deep vein
447 thrombosis: systematic review & meta-analysis. *BMC Cardiovasc Disord* **4**, 7 (2004).
- 448 10. K. J. Rothman, Thrombosis after travel. *PLoS Med* **3**, e300 (2006).
- 449 11. S. Kuipers *et al.*, The absolute risk of venous thrombosis after air travel: a cohort study of 8,755
450 employees of international organisations. *PLoS Med* **4**, e290 (2007).
- 451 12. S. Kuipers *et al.*, Travel and venous thrombosis: a systematic review. *J Intern Med* **262**, 615-634
452 (2007).
- 453 13. J. T. Philbrick, R. Shumate, M. S. Siadaty, D. M. Becker, Air travel and venous thromboembolism: a
454 systematic review. *J Gen Intern Med* **22**, 107-114 (2007).
- 455 14. F. A. Spencer, Review: Flight times >8 hours and presence of risk factors for VTE increases travel
456 related VTE. *Evid Based Med* **12**, 105 (2007).

- 457 15. A. J. Trujillo-Santos, A. Jiménez-Puente, E. Perea-Milla, Association between long travel and venous
458 thromboembolic disease: a systematic review and meta-analysis of case-control studies. *Ann Hematol*
459 **87**, 79-86 (2008).
- 460 16. D. Chandra, E. Parisini, D. Mozaffarian, Meta-analysis: travel and risk for venous thromboembolism.
461 *Ann Intern Med* **151**, 180-190 (2009).
- 462 17. J. M. Gore, in *NEJM Journal Watch*. (2009).
- 463 18. J. P. Vandenbroucke, S. C. Cannegieter, F. R. Rosendaal, Travel and venous thrombosis: an exercise in
464 thinking about bias. *Ann Intern Med* **151**, 212-213 (2009).
- 465 19. American College of Chest Physicians. (2012).
- 466 20. M. Crowther, A. C. o. C. Physicians, Ed. (2012).
- 467 21. S. R. Kahn *et al.*, Prevention of VTE in nonsurgical patients: Antithrombotic Therapy and Prevention
468 of Thrombosis, 9th ed: American College of Chest Physicians Evidence-Based Clinical Practice
469 Guidelines. *Chest* **141**, e195S-e226S (2012).
- 470 22. H. J. Schünemann *et al.*, American Society of Hematology 2018 guidelines for management of venous
471 thromboembolism: prophylaxis for hospitalized and nonhospitalized medical patients. *Blood Adv* **2**,
472 3198-3225 (2018).
- 473 23. S. L. Clark, S. Onida, A. Davies, Long-haul travel and venous thrombosis: What is the evidence?
474 *Phlebology* **33**, 295-297 (2018).
- 475 24. N. L. Reyes, M. G. Beckman, K. Abe, in *CDC Yellow Book 2020 Health Information for*
476 *International Travel*, Centers for Disease Control and Prevention (CDC), G. W. Brunette, J. B.
477 Nemhauser, Eds. (Oxford University Press, New York, United States of America, 2019), chap. 8.
- 478 25. L. Parkin, M. L. Bell, G. P. Herbison, C. Paul, D. C. Skegg, Air travel and fatal pulmonary embolism.
479 *Thromb Haemost* **95**, 807-814 (2006).
- 480 26. M. Clérel, G. Caillard, [Thromboembolic syndrome from prolonged sitting and flights of long
481 duration: experience of the Emergency Medical Service of the Paris Airports]. *Bull Acad Natl Med* **183**,
482 985-997; discussion 997-1001 (1999).
- 483 27. Guidelines for counseling postmenopausal women about preventive hormone therapy. American
484 College of Physicians. *Ann Intern Med* **117**, 1038-1041 (1992).
- 485 28. S. C. Smith *et al.*, AHA consensus panel statement. Preventing heart attack and death in patients with
486 coronary disease. The Secondary Prevention Panel. *J Am Coll Cardiol* **26**, 292-294 (1995).

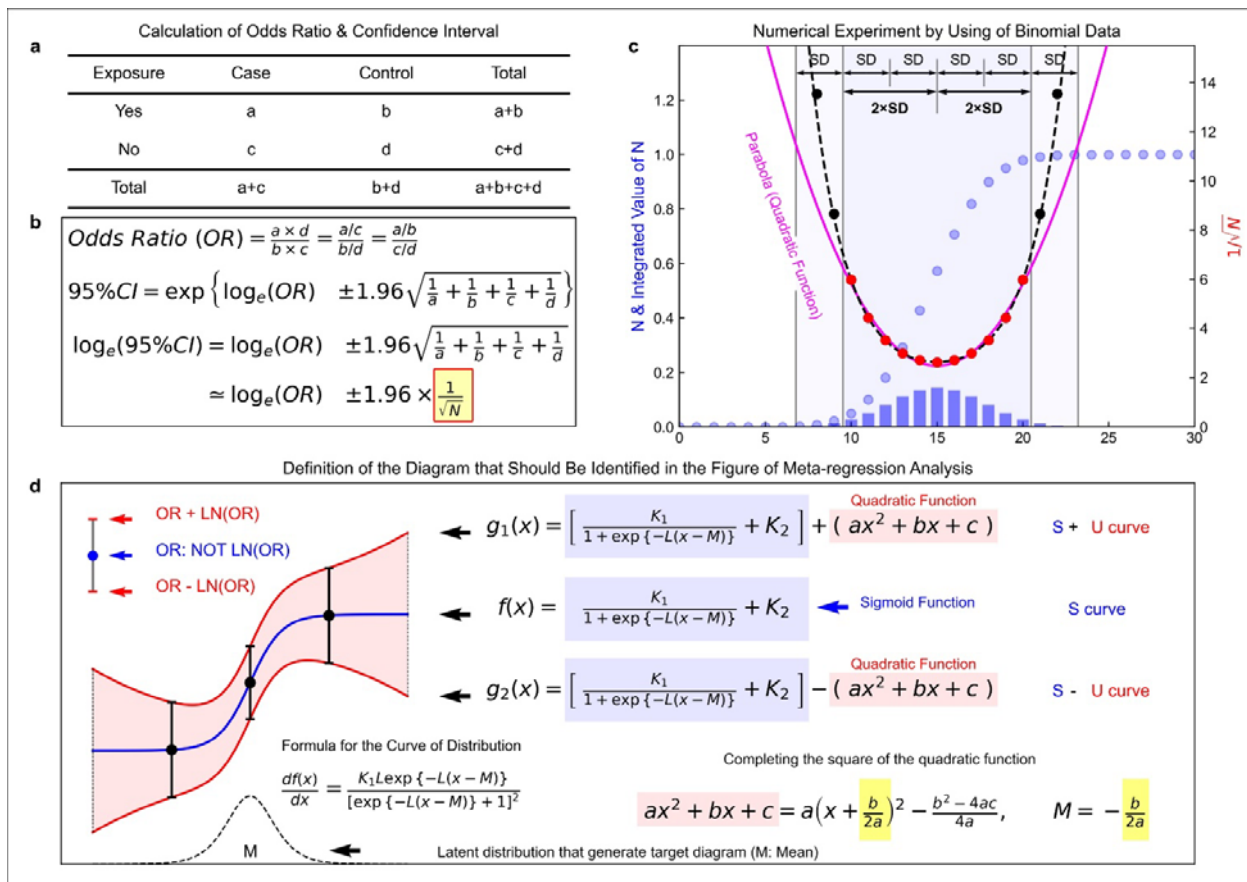
- 487 29. S. Hulley *et al.*, Randomized trial of estrogen plus progestin for secondary prevention of coronary
488 heart disease in postmenopausal women. Heart and Estrogen/progestin Replacement Study (HERS)
489 Research Group. *JAMA* **280**, 605-613 (1998).
- 490 30. J. E. Rossouw *et al.*, Risks and benefits of estrogen plus progestin in healthy postmenopausal women:
491 principal results From the Women's Health Initiative randomized controlled trial. *JAMA* **288**, 321-333
492 (2002).
- 493 31. I. S. Symington, B. H. Stack, Pulmonary thromboembolism after travel. *Br J Dis Chest* **71**, 138-140
494 (1977).
- 495 32. J. M. Cruickshank, R. Gorlin, B. Jennett, Air travel and thrombotic episodes: the economy class
496 syndrome. *Lancet* **2**, 497-498 (1988).
- 497 33. Professor Bryan Jennett. *British Journal of Neurosurgery* **22**, 305-306 (2008).
- 498 34. K. Matsushita *et al.*, The Relationship of COVID-19 Severity with Cardiovascular Disease and Its
499 Traditional Risk Factors: A Systematic Review and Meta-Analysis. *Glob Heart* **15**, 64 (2020).
- 500 35. S. Ahmed, O. Zimba, A. Y. Gasparyan, Thrombosis in Coronavirus disease 2019 (COVID-19) through
501 the prism of Virchow's triad. *Clin Rheumatol* **39**, 2529-2543 (2020).
- 502 36. A. Kushner, W. P. West, L. S. Pillarisetty. (2021).
- 503 37. C. D. Barrett, H. B. Moore, M. B. Yaffe, E. E. Moore, ISTH interim guidance on recognition and
504 management of coagulopathy in COVID-19: A comment. *J Thromb Haemost* **18**, 2060-2063 (2020).
- 505 38. J. Thachil *et al.*, ISTH interim guidance on recognition and management of coagulopathy in
506 COVID-19. *J Thromb Haemost* **18**, 1023-1026 (2020).
- 507 39. E. Callaway, H. Ledford, S. Mallapaty, Six months of coronavirus: the mysteries scientists are still
508 racing to solve. *Nature* **583**, 178-179 (2020).
- 509 40. S. Tal, G. Spectre, R. Kornowski, L. Perl, Venous Thromboembolism Complicated with COVID-19:
510 What Do We Know So Far? *Acta Haematol* **143**, 417-424 (2020).
- 511 41. M. Marietta, V. Coluccio, M. Luppi, COVID-19, coagulopathy and venous thromboembolism: more
512 questions than answers. *Intern Emerg Med* **15**, 1375-1387 (2020).
- 513 42. G. Polya, *How to Solve It: A New Aspect of Mathematical Method (Princeton Science Library)*.
514 (Princeton University Press, Princeton, New Jersey, 1957).
- 515 43. Y. Wang *et al.*, Cardiac Injury and Clinical Course of Patients With Coronavirus Disease 2019. *Front*
516 *Cardiovasc Med* **7**, 147 (2020).

- 517 44. S. Sugawa, I. Masuda, K. Kato, M. Yoshimura, Increased Levels of Cardiac Troponin I in Subjects
518 with Extremely Low B-type Natriuretic Peptide Levels. *Sci Rep* **8**, 5120 (2018).
- 519 45. S. Satyan, R. P. Light, R. Agarwal, Relationships of N-terminal pro-B-natriuretic peptide and cardiac
520 troponin T to left ventricular mass and function and mortality in asymptomatic hemodialysis patients.
521 *Am J Kidney Dis* **50**, 1009-1019 (2007).
- 522 46. J. Caro-Codón *et al.*, Characterization of NT-proBNP in a large cohort of COVID-19 patients. *Eur J*
523 *Heart Fail* **23**, 456-464 (2021).
- 524 47. O. M. Demir *et al.*, Impact and Determinants of High-Sensitivity Cardiac Troponin-T Concentration in
525 Patients With COVID-19 Admitted to Critical Care. *Am J Cardiol* **147**, 129-136 (2021).
- 526 48. K. van Langevelde, L. E. Flinterman, A. van Hylckama Vlieg, F. R. Rosendaal, S. C. Cannegieter,
527 Broadening the factor V Leiden paradox: pulmonary embolism and deep-vein thrombosis as 2 sides of
528 the spectrum. *Blood* **120**, 933-946 (2012).
- 529 49. A. van Hylckama Vlieg, F. M. Helmerhorst, J. P. Vandenbroucke, C. J. Doggen, F. R. Rosendaal, The
530 venous thrombotic risk of oral contraceptives, effects of oestrogen dose and progestogen type: results
531 of the MEGA case-control study. *BMJ* **339**, b2921 (2009).
- 532 50. I. Wiegratz *et al.*, Effect of extended-cycle regimen with an oral contraceptive containing 30 mcg
533 ethinylestradiol and 2 mg dienogest on bleeding patterns, safety, acceptance and contraceptive efficacy.
534 *Contraception* **84**, 133-143 (2011).
- 535 51. R. S. Legro, "A Review of Extended-Cycle Oral Contraception," *CLINICAL / CONTRACEPTIVE*
536 *TECHNOLOGY UPDATE* (Morrisville, North Carolina, USA, 2003).
- 537 52. I. W. G. o. t. E. o. C. R. t. Humans, Combined estrogen-progestogen contraceptives and combined
538 estrogen-progestogen menopausal therapy. *IARC Monogr Eval Carcinog Risks Hum* **91**, 1-528 (2007).
- 539 53. E. Pérez-Rodríguez *et al.*, Incidence of air travel-related pulmonary embolism at the Madrid-Barajas
540 airport. *Arch Intern Med* **163**, 2766-2770 (2003).
- 541 54. F. A. Lagunas-Rangel, Neutrophil-to-lymphocyte ratio and lymphocyte-to-C-reactive protein ratio in
542 patients with severe coronavirus disease 2019 (COVID-19): A meta-analysis. *J Med Virol* **92**,
543 1733-1734 (2020).
- 544 55. F. X. Timmes. (2021).
- 545 56. W. contributors.
- 546

547

548 **Figures and Tables**

549 **Fig. 1**



550

551 **Fig. 1. A hyperbolic shape formed by confidence limits.**

552 **a**, A two-way cross-tabulation (contingency table) for calculating an odds ratio (OR). **b**, Calculation of OR and
 553 its 95% confidence interval. **c**, Histogram of the data following a binomial distribution and a plot of the inverse
 554 values of the square roots. **d**, The mathematical formulas for the hyperbolic shape. Note that the OR is not
 555 logarithmic, and only the length of the error bar is logarithmic (see the upper left position of panel d). We
 556 generate binomial distribution data because normal distribution could be approximated by binominal distribution.
 557 Around the center of distribution (within $\pm 2SD$ of the mean), the parabola was a good fit for the points
 558 calculated from the simulated data. Also, from around the over $\pm 2SD$ to $\pm 3SD$ range, the parabola is positioned
 559 below the points. Although a catenary curve (dashed curve) is more likely suitable for fit, the number of patients
 560 who fall into the categories at both ends is slightly larger than the expected number. Usually, data placed over
 561 the range of $\pm 3 SD$ from the distribution center are summarized as “greater than” or “less than.” For example, in
 562 the case of 10 hours is the center of the distribution, the time category might be following sets such as “less than”

563 5 hours, 6-8 hours, 9-11 hours, 12-14 hours, and “more than” 15 hours. The value of 1 over root N ($1/\sqrt{N}$)

564 becomes smaller. So, using a parabola seemed to be based on the reality of the data handling method in the

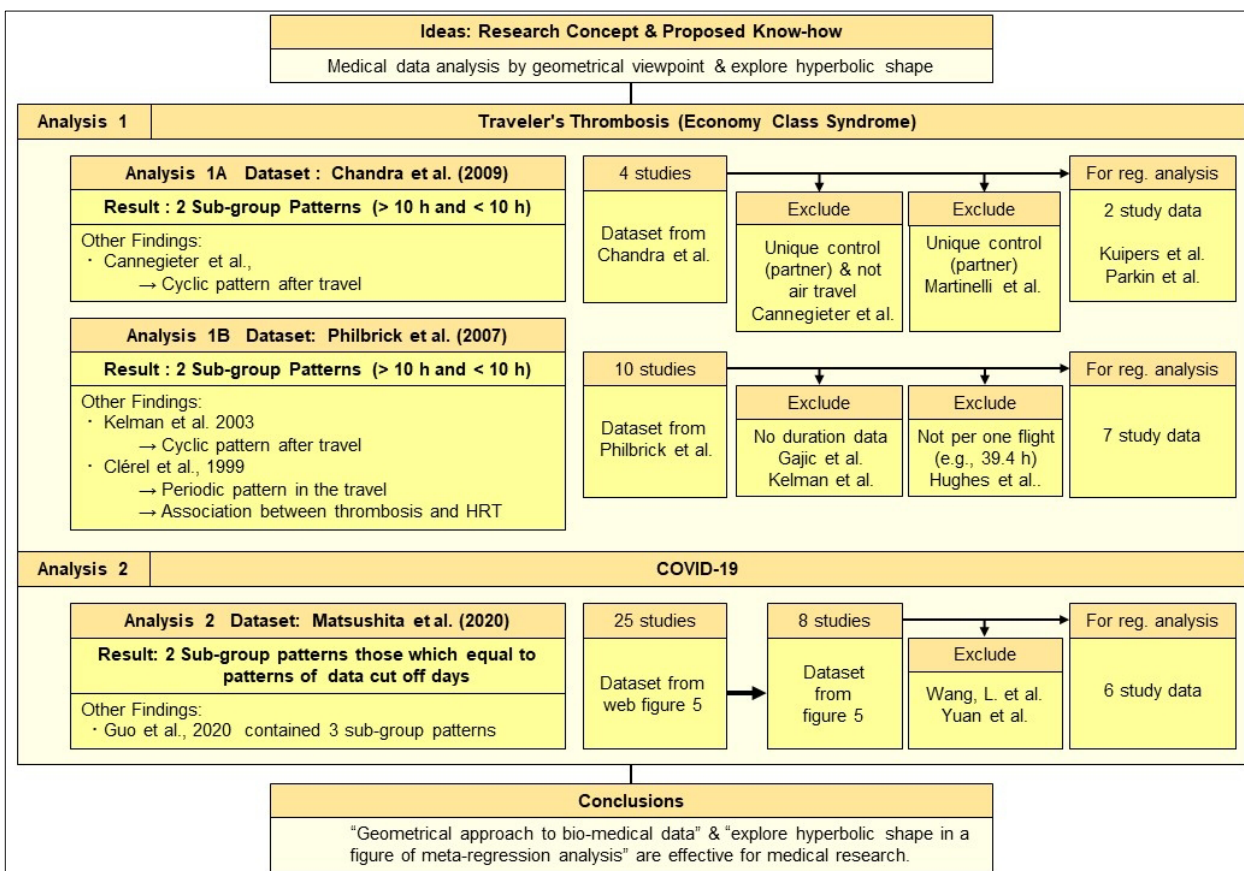
565 medical and biological fields.

566

567

568

569 **Fig. 2**



570

571 **Fig. 2. Overall framework of this study.**

572 We applied our concepts to travelers' thrombosis and COVID-19. These were similar in research history (see

573 **Supporting discussion 1: history of traveler's thrombosis & Supporting discussion 2: research situations**

574 **of COVID-19-related thrombosis**). In the case of traveler's thrombosis, we analyzed a dataset collected by

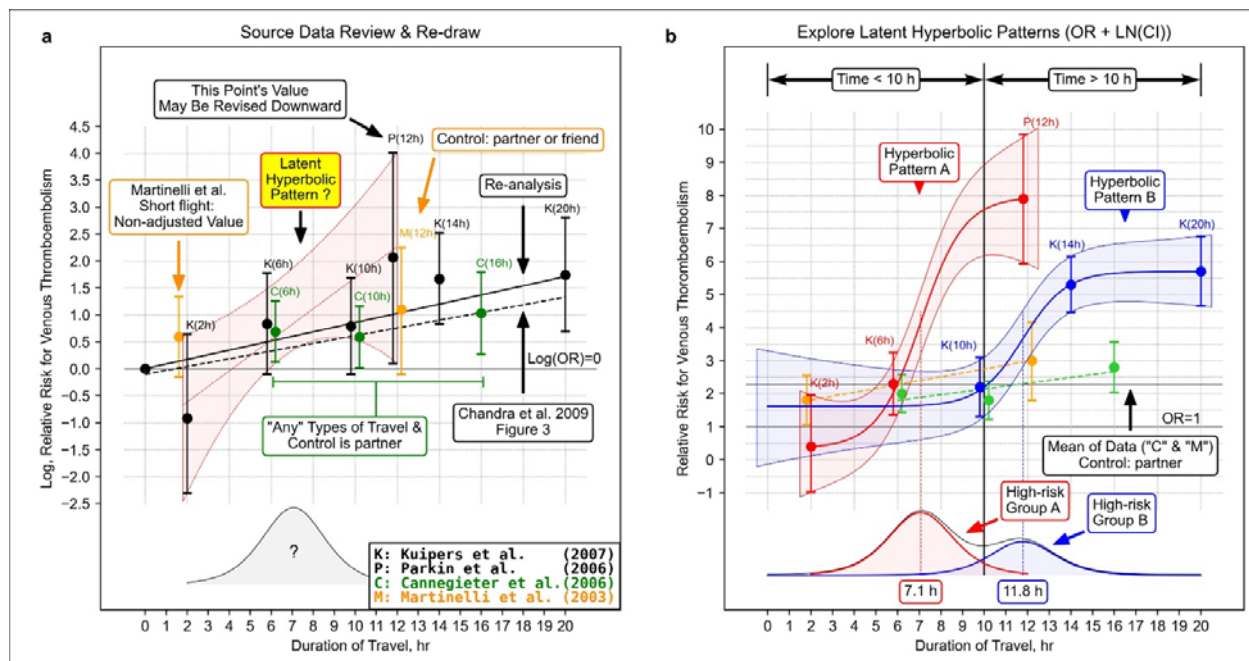
575 Chandra et al. and Philbrick et al. (13, 16). In the case of COVID-19, we analyzed a dataset collected by

576 Matsushita et al. (16). Flow charts show data accept or reject flows. To avoid duplicating data, Matsushita et al.

577 selected only eight studies data (25 studies included in initial web Figure 5) (34).

578

579 **Fig. 3**



580

581 **Fig. 3. Re-analysis based on the proposed ideas.**

582 **a**, Data review and meta-regression analysis using the same method as Chandra et al. Ann Intern Med. 2009;

583 151(3):180-190. Figure 3 (16). We added information from original studies and our hypothesis to the previously

584 published form, such as latent distribution. This figure is regarded as a re-drawn figure from Chandra D, Parisini

585 E, Mozaffarian D. Meta-analysis: travel and risk for venous thromboembolism. Ann Intern Med. 2009 Aug

586 4;151(3):180-90. doi: 10.7326/0003-4819-151-3-200908040-00129. Epub 2009 Jul 6. © 2009 American College

587 of Physicians. Adapted with permission. The original figure has been shown on the American College of

588 Physicians website, which links to PubMedR (<https://pubmed.ncbi.nlm.nih.gov/19581633/>). **b**, grouping the

589 data and hyperbolic shape fitting. The dots represent the odds ratio with error bars of the confidence interval are

590 the adjusted odds ratio described in the four studies cited by Chandra et al. Since Cannegieter et al. did not

591 describe values of confidence intervals, we calculated the values from the case-count data. We also calculated

592 the odds ratio at the time point of short travel in the research reported by Martinelli et al. Chandra et al. did not

593 display it might be due to the no adjusted odds ratio initially described. Our result of a meta-regression analysis

594 was slightly different from the straight line drawn by Chandra et al. might be due to the software used by

595 Chandra et al. (STATA) being different from the one we used (R and R package “metafor”) or they might

596 conduct a meta-regression analysis reversing the front head and the front side of the cross-tabulation. It was

597 impossible to fit S-shaped curves for the points excluded from the search for hyperbolic shapes (Martinelli et al.

598 & Cannegieter et al.) due to the small number of data or the form of the point sequence. However, if we

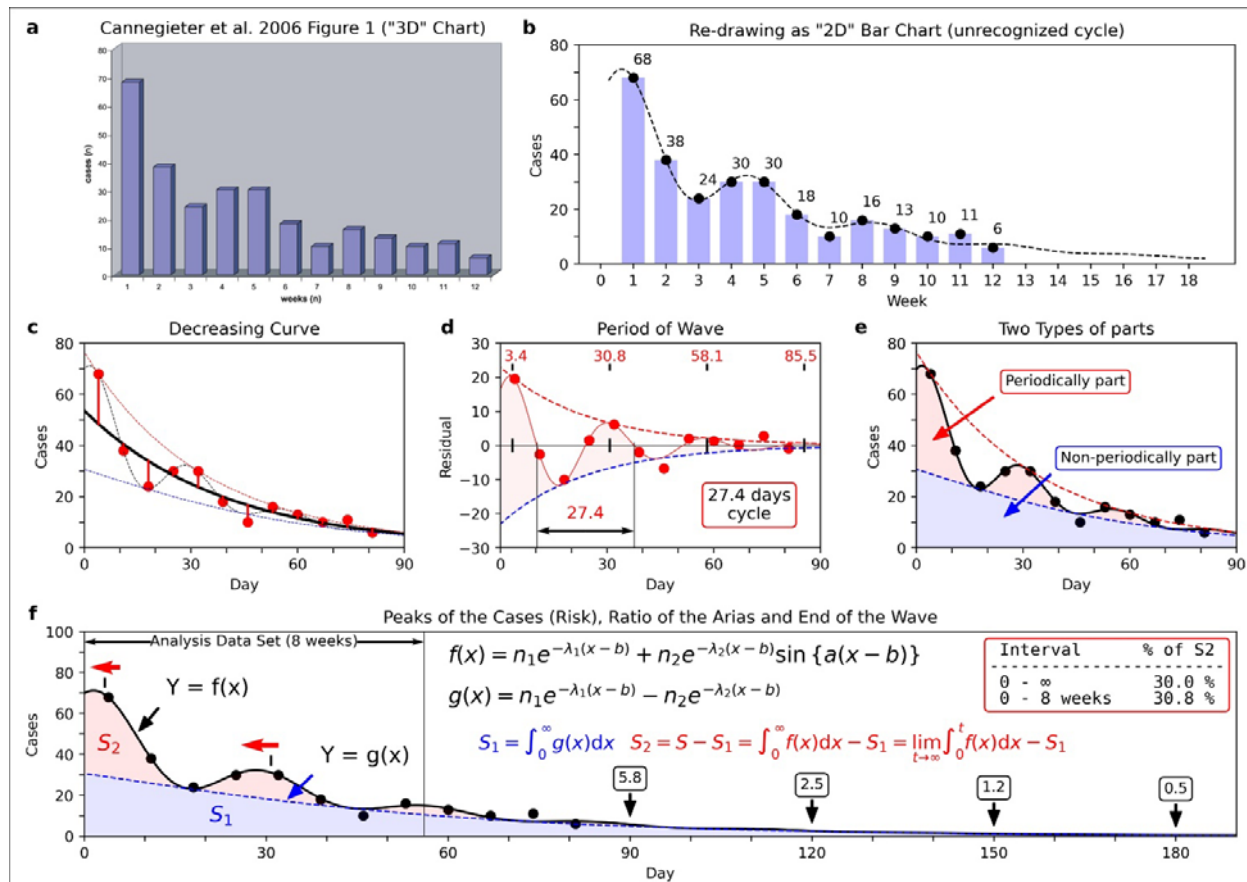
599 manually fit S-curves, the two inflection points would appear close to the positions of the hyperbolic shapes'

600 inflection points.

601

602

603 **Fig. 4**



604

605 **Fig. 4. Unrecognized cyclic pattern of thrombosis onset after travel (2).**

606 **a**, A bar graph showing the relationship between weeks after travel and the number of thrombosis onset in a

607 figure reported by Cannegieter et al. (2). **b**, Re-expressing as a two-dimensional bar graph avoiding the

608 three-dimensional representation. **c**, Applying a damped wave by non-linear regression analysis. **d**, Extraction of

609 damped wave part by subtracting the monotonic decrease function. **e**, Dividing into 2 sub-parts areas by the

610 envelopes of the damped wave that touch the lower parts of the wave. **f**, Enlarged and added explanation of the

611 ratio of the area. Cannegieter et al. (2) used the data up to week eight. The ratio of sub-parts 2 to the total number
612 of patients (ratio of S2 to the area of S1 + S2) was 30.0%. In the integration for the infinite interval, it was 30.8%.

613 Peak shifts of the wave (peak position of the wave shifted from the original to the other) appeared when

614 comparing panels d and f due to putting by regression curve located in the center (c + d). Panel a was re-used

615 from Cannegieter et al. PLoS Med. 2006; 3(8):e307. Figure 1.

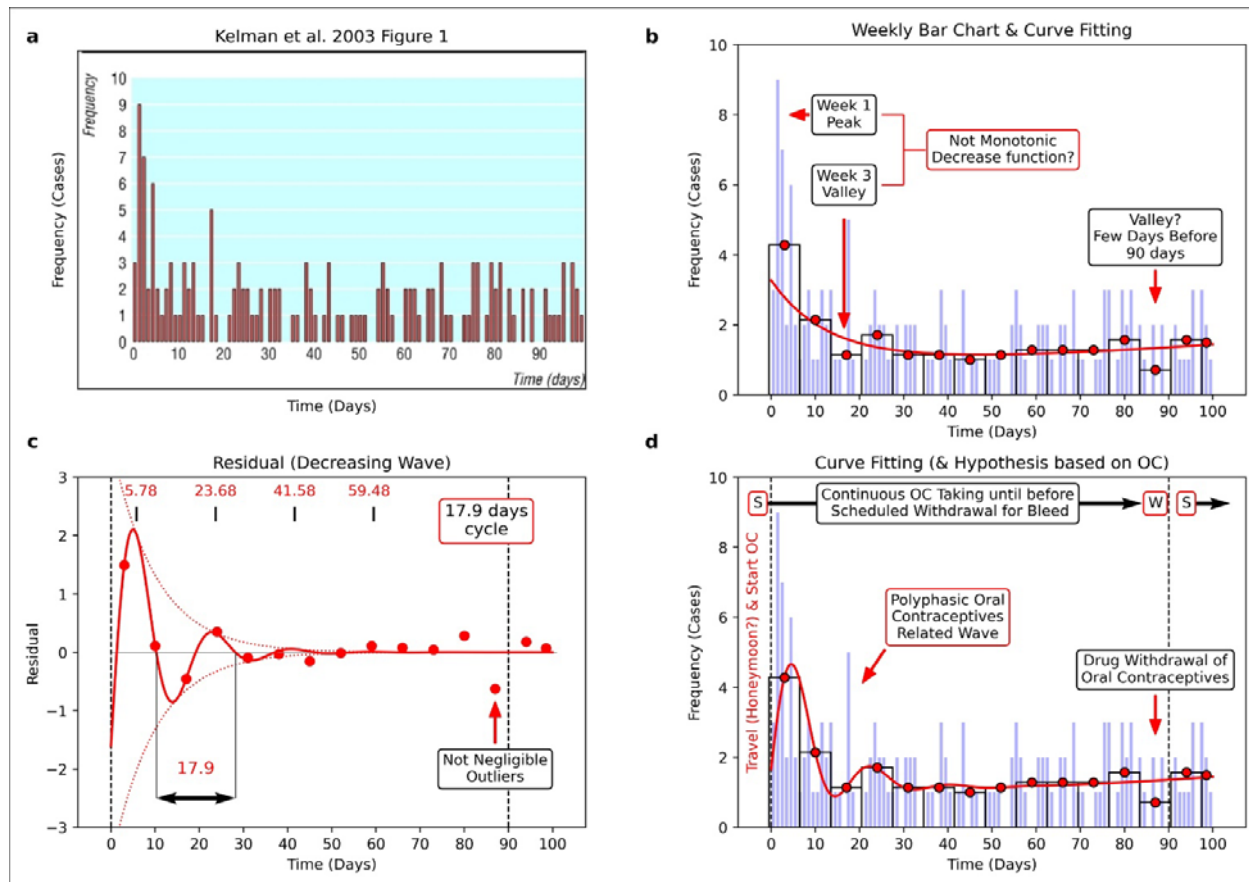
616 <https://www.ncbi.nlm.nih.gov/labs/pmc/articles/PMC1551914/figure/pmed-0030307-g001/> Copyright © 2006

617 Cannegieter et al. Creative Commons Attribution License. In 2006, the Creative Commons Attribution 2.0

618 Generic, License (CC BY 2.0) was available. <https://creativecommons.org/licenses/by/2.0/>

619

620 **Fig. 5**



621

622 **Fig. 5. Cyclic pattern of thrombosis onset appeared in a figure by Kelman et al. (3).**

623 **a**, A thrombosis onset distribution reported by Kelman et al. (3). **b**, The regression curve is located in the center

624 of all average points (the points express the average of thrombosis onset during seven days). **c**, Curve fitting to

625 the residual data of the regression curve in panel b. **d**, Application of damped wave function and adding

626 interpretation of the results assuming some women started taking oral contraceptives (OC) in the timing of travel.

627 The observed cyclic pattern was relatively unclear than Cannegieter et al.(2) (see Fig. 4). Noteworthy, the

628 thrombosis onset downed in the days before 90 days, and it seems to be the scheduled withdrawal period of OC

629 use. This figure was re-used and re-drawn from Kelman et al. *BMJ*. 2003; 327(7423):1072. Figure 1

630 <https://www.bmj.com/content/327/7423/1072#F1> Copyright © 2003 BMJ Publishing Group Ltd. All rights

631 reserved. The BMJ permission team thankfully confirms this figure adaptation. Also, we obtained permission to

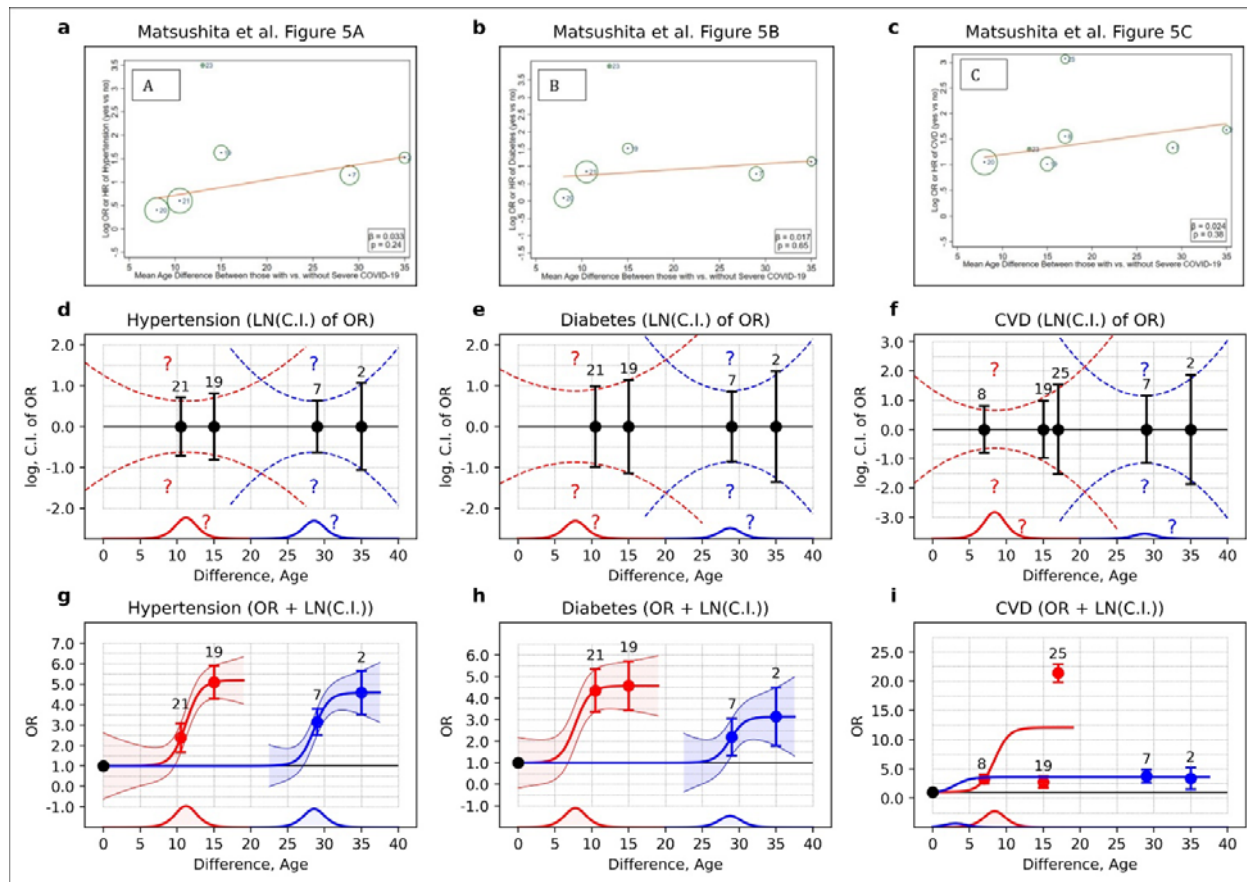
632 re-use.

633

634

635

636 **Fig. 6**



637

638 **Fig. 6. Hyperbolic shapes found in the figure reported by Matsushita et al. (34).**

639 **a**, A figure reported by Matsushita et al. shows the relationship between the severe and non-severe groups (34),
 640 which shows age difference on the horizontal axis and odds ratio (OR) or hazard ratio of hypertension on the
 641 vertical axis. To evaluate potential confounding for relative risk by age, Matsushita et al. conducted
 642 meta-regression analyses based on the assumption that there was the possibility of confounding by age in the
 643 case that the study with a larger age difference has a higher relative risk (34). **b**, Diabetes. **c**, Cardiovascular
 644 disease (CVD). **d-f**, Comparisons of error bars, which show 95% confidence interval (C.I.) s. It corresponds to
 645 the upper figure. **g-i**, Hyperbolic patterns were fitted to the OR and the 95% confidence limit of the OR. In the
 646 panel i, a hyperbolic shape could not be fitted due to the considerable data variation, likely due to the
 647 inconsistency of the term “CVD” (see **Supporting information: Method details**). The numbers marked at each
 648 point are the same as the numbers shown in the original figure. The sources of each data are shown in Methods.
 649 This figure was re-used from Matsushita et al. *Glob Heart*. 2020; 15(1):64. Figure 5.

650 <https://www.ncbi.nlm.nih.gov/labs/pmc/articles/PMC7546112/figure/F5/>

651 Copyright © 2020 The Authors. Creative Commons Attribution 4.0 International License (CC-BY 4.0)

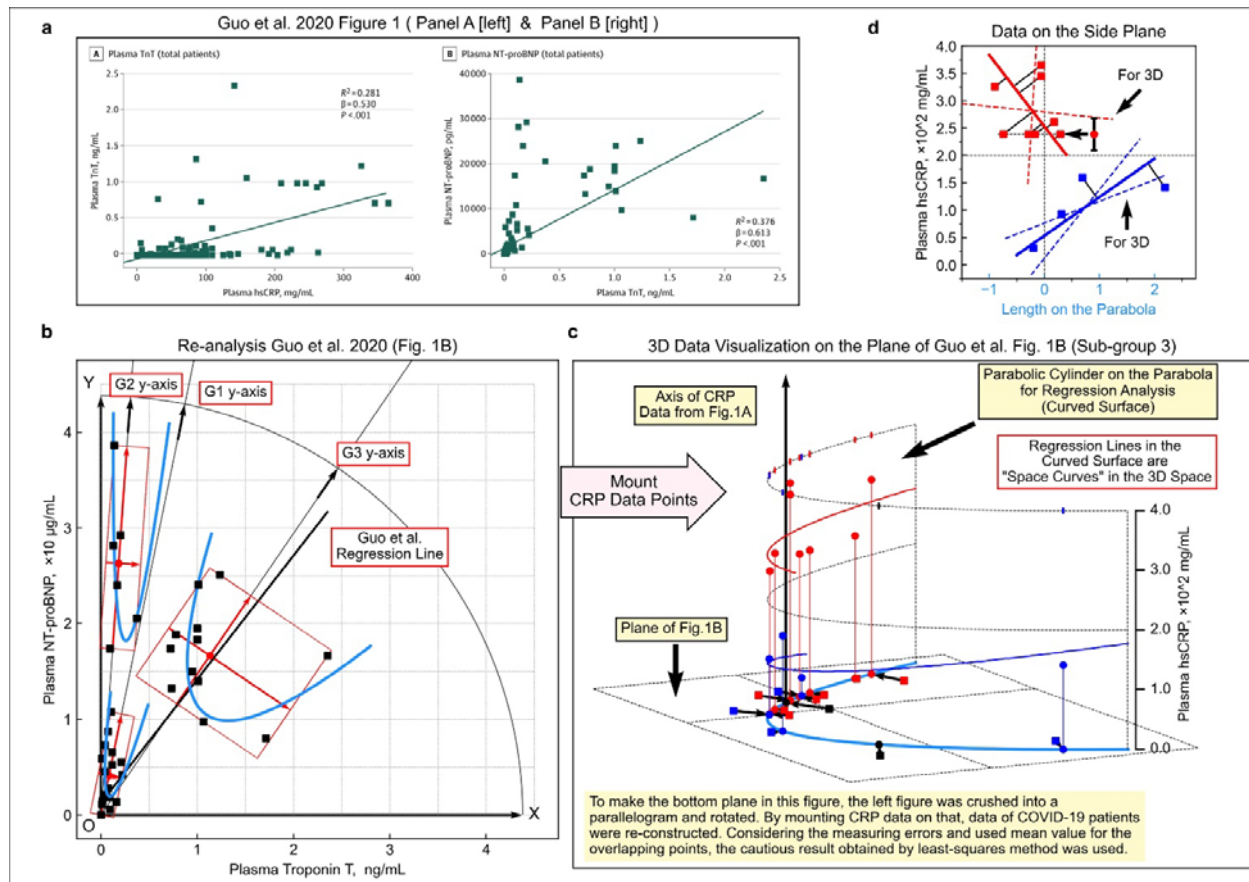
652 <https://creativecommons.org/licenses/by/4.0/>

653

654

655

656 **Fig. 7**



657

658 **Fig. 7. Parabola shape patterns in the figure reported by Guo et al. (4).**

659 **a**, Relationship between high sensitive C-reactive protein (hsCRP) and cardiac troponin T (TnT) in COVID-19
660 patients (left) and the relationship between cardiac troponin T (TnT) and N-terminal pro-brain natriuretic peptide
661 (NT-proBNP) (right). **b**, Data points from the right side of panel a and fitting parabola. **c**, Three-dimensional
662 data visualization was constructed by mounting the value of hsCRP onto panel b. **d**, Linear regression analysis
663 on the side surface of the parabolic cylinder in panel c. The points were replaced with their average if the values
664 could not be determined due to overlapping (the points indicated by the left-pointing arrow and the error bar,
665 which are the average and the range of values, respectively). Panel a was re-used from Guo T et al. JAMA
666 *Cardiol.* 2020; 5(7):811-818. Figure 1

667 <https://www.ncbi.nlm.nih.gov/labs/pmc/articles/PMC7101506/figure/hoi200026f1/>

668 Copyright © 2020 Guo T et al. JAMA Cardiology. Creative Commons Attribution License (CC-BY).

669 <https://creativecommons.org/licenses/by/4.0/>

670

671

672 **Table 1**

673

674 **Table 1. Changing female percentage from four studies reported in the 1970s to 2000s.**

Author	Year	Total N	Male		Female		Larger one
			Male N	%	Female N	%	
Symington & Stack (31)	1977	n=8	n=5	62.5%	n=3	37.5%	Male
Cruickshank et al. (32)	1988	n=6	n=5	83.3%	n=1	16.7%	Male
Clérel & Caillard (26)	1999	n=64	n=15	23.4%	n=49	76.6%	Female
Parkin et al. (25)	2006	n=11	n=4	36.4%	n=7	63.6%	Female

675