

1 **Main Manuscript for**

2 **Personality traits are consistently associated with blood mitochondrial** 3 **DNA copy number estimated from genome sequences in two genetic** 4 **cohort studies**

5

6 Richard F. Opong¹, Antonio Terracciano^{2,3}, Martin Picard⁴, Yong Qian¹, Thomas J. Butler¹,
7 Toshiko Tanaka¹, Ann Zenobia Moore¹, Eleanor M. Simonsick¹, Krista Opsahl-Ong¹, Christopher
8 Coletta⁵, Angelina R. Sutin⁶, Myriam Gorospe⁵, Susan M. Resnick³, Francesco Cucca⁷, Sonja W.
9 Scholz^{8,9}, Bryan J. Traynor^{9,10}, David Schlessinger⁵, Luigi Ferrucci^{1*}, Jun Ding^{1*}

10

11 ¹Translational Gerontology Branch, National Institute on Aging, Baltimore, MD 21224, USA.

12 ²Department of Geriatrics, Florida State University, Tallahassee, FL 32304, USA.

13 ³Laboratory of Behavioral Neuroscience, National Institute on Aging, Baltimore, MD 21224, USA.

14 ⁴Division of Behavioral Medicine, Department of Psychiatry; Merritt Center and Columbia
15 Translational Neuroscience initiative, Department of Neurology, Columbia University Irving Medical
16 Center; New York State Psychiatric Institute, New York, NY 10032, USA.

17 ⁵Laboratory of Genetics and Genomics, National Institute on Aging, Baltimore, MD 21224, USA.

18 ⁶Department of Behavioral Sciences and Social Medicine, College of Medicine, Florida State
19 University, Tallahassee, FL 32304, USA.

20 ⁷Istituto di Ricerca Genetica e Biomedica, Consiglio Nazionale delle Ricerche, 09042, Monserrato,
21 Italy

22 ⁸Neurodegenerative Diseases Research Unit, National Institute of Neurological Disorders and
23 Stroke, Bethesda, MD 20892, USA.

24 ⁹Department of Neurology, Johns Hopkins University Medical Center, Baltimore, MD 21287, USA

25 ¹⁰Laboratory of Neurogenetics, National Institute on Aging, Bethesda, MD 20892, USA.

26

27 * Luigi Ferrucci, Translational Gerontology Branch, National Institute on Aging, 251 Bayview Blvd,
28 BRC, Baltimore, MD 21224, USA. **Email:** ferruccilu@grc.nia.nih.gov

29 *Jun Ding, Translational Gerontology Branch, National Institute on Aging, 251 Bayview Blvd, BRC,
30 Baltimore, MD 21224, USA. **Email:** jun.ding@nih.gov

31 **Author Contributions:** Conceived and designed the experiments: RFO, DS, LF, JD. Provided
32 data: TT, AZM, EMS, CC, ARS, MG, SMR, FC, SWS, BJT, DS, LF. Developed statistical analysis
33 strategy: RFO, AT, MP, LF, JD. Developed mtDNAcn analyses software: YQ, TJB, JD. Analyzed
34 the data: RFO, KO, JD. Wrote the manuscript: RFO, AT, MP, DS, LF, JD.

35 **Competing Interest Statement:** Authors declare no potential conflict of interest.

36 **Keywords:** Mitochondria DNA copy number, personality, depressive symptoms, genome
37 sequence, mortality risk.

38 **This PDF file includes:**

39 Main Text
40 Figures 1 to 4
41 Tables 1 to 3
42 Supplementary Information

43
44
45 **Abstract**

46 **Background:** Mitochondrial DNA copy number (mtDNA_{cn}) in tissues and blood can be altered in
47 conditions like diabetes and major depression and may play a role in aging and longevity. However,
48 little is known about the association between mtDNA_{cn} and personality traits linked to emotional
49 states, metabolic health, and longevity. This study tests the hypothesis that blood mtDNA_{cn} is
50 related to personality traits and mediates the association between personality and mortality.

51 **Methods:** We assessed the big five personality domains and facets using the Revised NEO
52 Personality Inventory (NEO-PI-R), assessed depressive symptoms with the Center for
53 Epidemiologic Studies Depression Scale (CES-D), estimated mtDNA_{cn} levels from whole-genome
54 sequencing, and tracked mortality in participants from the Baltimore Longitudinal Study of Aging.
55 Results were replicated in the SardiNIA Project.

56 **Results:** We found that mtDNA_{cn} was negatively associated with the Neuroticism domain and its
57 facets and positively associated with facets from the other four domains. The direction and size of
58 the effects were replicated in the SardiNIA cohort and were robust to adjustment for potential
59 confounders in both samples. Consistent with the Neuroticism finding, higher depressive symptoms
60 were associated with lower mtDNA_{cn}. Finally, mtDNA_{cn} mediated the association between
61 personality and mortality risk.

62 **Conclusions:** To our knowledge, this is the first study to show a replicable association between
63 mtDNA_{cn} and personality. Furthermore, the results support our hypothesis that mtDNA_{cn} is a
64 biomarker of the biological process that explains part of the association between personality and
65 mortality.

66
67
68 **Main Text**

69
70 **Introduction**

71
72 Mitochondria are cellular organelles essential for the life of eukaryotic cells (1). They produce
73 adenosine 5'-triphosphate (ATP), the main energetic currency for biological function, by oxidative
74 phosphorylation (OXPHOS) of a number of substrates (2). Mitochondria harbor their own circular
75 DNA molecules (mtDNA), which lack histone proteins and bear genes lacking introns (2). The
76 proximity of mtDNA to OXPHOS production and its lack of histone protection makes it more
77 susceptible to ROS damage, threatening healthy cellular function (3). The number of copies of
78 mtDNA (mtDNA_{cn}) in tissues and blood leukocytes is considered an imperfect proxy measure of
79 mitochondrial mass that may reflect energetic resilience or hematopoiesis (4).

80 Consequently, reduced mtDNA_{cn} in peripheral blood has been associated with various health
81 outcomes, including renal cell carcinoma (5), hypertension (6), neurodegenerative disease (7), and
82 diabetes-related conditions, including insulin sensitivity (8, 9), fasting plasma glucose level (12),

83 and diabetic nephropathy (10). High levels of mtDNAcn in tissue and the blood can also occur in
84 conditions of stress and illness such as diabetes (13) and peripheral artery disease (14), suggesting
85 that in some situations of stress, mtDNAcn can be elevated to compensate for low cellular energy
86 (4, 15) and stress adaptation (16). For major depression, however, the findings are mixed, with
87 some studies reporting that mtDNAcn has a positive (17), negative (18), or null association with
88 depression (19–23).

89 Since specific personality traits affect individuals' susceptibility to environmental stress (24) and
90 the development of pathology and premature death, we hypothesized that blood mtDNAcn is a
91 biomarker of stress burden and might mediate the association between personality traits and
92 excess mortality (25). To test this hypothesis, we tested the relationship between personality and
93 levels of whole-blood mtDNAcn estimated by whole-genome sequencing and whether mtDNAcn
94 mediated the relation between personality and mortality. To ensure replicability and robustness, we
95 tested these associations in two cohorts, one from the US and the other from Italy.

96 To assess personality, we used participants' profiles of the *big five* domains, including the six facets
97 of each domain, measured with the Revised NEO Personality Inventory (NEO-PI-R), a personality
98 measure validated extensively in multiple populations and languages (26). Personality traits
99 measured with the NEO-PI-R have been associated with stressors such as anxiety and depression
100 (27, 28), cognitive decline (29, 30), metabolic dysfunction (31, 32), energy levels (33), and physical
101 illness (34). Facets of personality have also been associated with mortality risk (25). Compared
102 with behavioral pathways to mortality risk (35), there has been less attention on the physiological
103 mechanisms that explain the well-known association between personality and mortality risk. As
104 mentioned above, lower mtDNAcn has been associated with both stressful situations and higher
105 mortality (36). We thus address the critical novel question by testing whether mtDNAcn mediates
106 the association between personality traits and mortality risk.

107 The goal of this study was to investigate the association between blood mtDNAcn and personality
108 traits and facets assessed by the NEO-PI-R in two epidemiological studies: the Baltimore
109 Longitudinal Study of Aging (BLSA) (37, 38) and the SardiNIA study (39). Using mediation analysis,
110 we further tested the hypothesis that mtDNAcn is a biomarker in the biological process that
111 connects personality characteristics with mortality.

112

113

114 **Results**

115

116 **Relationship of sex, age, and white blood cell parameters with mtDNAcn**

117 In both cohorts, mtDNAcn was negatively associated with age and male biological sex (Table S1).
118 Furthermore, higher mtDNAcn was associated with lower WBC count and lower neutrophil
119 percentage and was also associated with higher platelet count, lymphocyte percentage, eosinophil
120 percentage, monocyte percentage, and basophil percentage (Table S1), consistent with previous
121 findings (4). After adjusting for the effect of sex, sequence coverage, platelet count, and white blood
122 cell parameters, there remained a significant, albeit modest, inverse association of mtDNAcn with
123 age in both study cohorts (Figure 1 and Table S1). For the BLSA cohort, on average, every one-
124 year increase in age was associated with a 0.014 standard deviation decrease in mtDNAcn (about
125 3.89% decrease in mtDNAcn per decade of life, p -value = 2.5×10^{-5}), while in the SardiNIA cohort,
126 there was a 0.0065 standard deviation decline in mtDNAcn for every year increase in age (about
127 1.36% decrease in mtDNAcn per decade of life, p -value = 0.028). After adjusting for all the other
128 covariates, women still had a significantly higher mtDNAcn than men (Figure 1 and Table S1).

129 **Association of personality traits with mtDNA copy number**

130 To test the association between NEO PI-R traits and mtDNAcn in each study cohort, we regressed
131 mtDNAcn values on each personality trait, adjusting for age, sex, sequence coverage, platelet
132 count, and white blood cell parameters. In both samples, mtDNAcn was associated with lower
133 Neuroticism and higher Extraversion, Openness, Agreeableness, and Conscientiousness (Figure
134 2). We then performed a random-effects meta-analysis and used an FDR-corrected p-value
135 threshold of 0.01. Among the 35 personality traits (five domains, 30 facets) tested, nine (five facets
136 in the Neuroticism domain and four from Extraversion, Agreeableness, and Conscientiousness)
137 were associated significantly with mtDNAcn even after the stringent FDR correction. Table 2 shows
138 the individual study and meta-analysis results for the Neuroticism domain, while Table S2 provides
139 detailed results for all 35 NEO PI-R traits.

140 The Neuroticism domain showed the most significant associations with mtDNAcn. The overall
141 Neuroticism domain and four out of six facets were associated significantly (FDR p-value \leq 0.01)
142 with mtDNAcn (Table 2). The four facets were anxiety, angry hostility, depression, and vulnerability.
143 Of note, facet self-consciousness was associated with mtDNAcn with an FDR-corrected p-value of
144 0.013. Notably, all neuroticism traits were associated negatively with mtDNAcn, with higher trait
145 values corresponding to lower mtDNAcn values. Furthermore, the higher-order neuroticism domain
146 was the personality trait associated with mtDNAcn with the most significant p-value (FDR p-value
147 = 0.0015). The Neuroticism domain also showed highly consistent associations between the two
148 study cohorts, with I^2 (a measure of inconsistency among individual studies) equal to 0 for
149 Neuroticism and its facets. Figure S1 shows the effect sizes for the Neuroticism domain and facets.

150 The overall Extraversion domain, the *positive emotions* facet in the Extraversion domain, the
151 *altruism* facet in the Agreeableness domain, and the *dutifulness* facet in the Conscientiousness
152 domain were associated with mtDNAcn with FDR-corrected p-values less than 0.01 (Table S2).
153 These are all positive associations, with higher trait values corresponding to higher mtDNAcn
154 values. No facets in the Openness domain were significantly associated with mtDNAcn.

155 Figure S2 compares the standardized effect sizes of the NEO PI-R traits between the two study
156 cohorts. The results show remarkable concordance between the two study cohorts, with the data
157 points clustering close to the diagonal line. In a sensitivity analysis evaluating the robustness of
158 these findings to covariate adjustments, we compared the standardized effect sizes of the
159 personality traits using models with and without adjustment for platelet count and white blood cell
160 parameters (Fig S3). As most of the points were closely aligned to the diagonal line, we concluded
161 that adjusting for platelet count and white blood cell parameters did not significantly impact the
162 results.

163 **Association of CES-D with mtDNAcn**

164 In both cohorts, we also regressed mtDNAcn on both continuous and binary CES-D values,
165 adjusting for the effect of other covariates. Higher CES-D scores, measured as a continuous
166 variable, were associated with lower mtDNAcn. Participants with depressive symptoms that
167 exceeded the CES-D cutoff of either 16 or 20, had 6.06% or 11.57% lower mtDNAcn than those
168 with no depressive symptoms, respectively (Table 2). Remarkably, in both cohorts, the effect sizes
169 almost doubled when moving from moderate depressive symptoms (CES-D binary cutoff 16) to
170 significant depressive symptoms (CES-D binary cutoff 20). The random-effects meta-analysis
171 supported both the magnitude and direction of the effects with highly significant association p-
172 values. There was also high consistency across the two cohorts for the continuous and binary CES-
173 D traits, with I^2 equal to 0.

174 **Personality, mtDNAcn, and mortality risk**

175 We further studied the relationship between mtDNAcn and personality facets known to be
176 associated with mortality risk. Figure S4 compares the mtDNAcn amongst four distinct personality
177 types (see Methods for details) based on the *vulnerability* facet of Neuroticism and *self-discipline*

178 facet of Conscientiousness, which were the two individual facets most strongly associated with
179 mortality (25). Comparing the mtDNAcn between the four personality types in the BLSA cohort, we
180 observed that the personality type with the perceived highest mortality risk (HVLD: high vulnerability
181 low self-discipline) had the lowest mtDNAcn amongst the four personality types. The HVLD
182 personality type had a mean mtDNAcn value 0.23 standard deviations lower than the type with a
183 perceived lowest mortality risk (LVHD: low vulnerability high self-discipline) (p -value < 0.0065),
184 indirectly supporting an association between blood mtDNAcn and mortality risk. A more detailed
185 description and interpretation of the results can be found in the Supplementary text.

186 **mtDNAcn mediates the association between personality and mortality risk**

187 The above preliminary observation that mtDNAcn was associated with mortality-related personality
188 traits led us to a more detailed investigation on the relationship among personality, blood mtDNAcn,
189 and mortality. In particular, we further extended our analysis to include four facets (*vulnerability*,
190 *self-discipline*, *activity*, and *competence*) by creating a personality-mortality index (PMI) (see
191 Methods for details) and performed a mediation analysis.

192 First, we observed an increasing mtDNAcn when moving from index zero (worst PMI) to index four
193 (excellent PMI) in both study cohorts (Figure 3). Analyzing the personality-mortality index as a
194 continuous variable showed that higher trait values were associated with higher mtDNAcn in both
195 cohorts (Table 2). We confirmed the association between PMI and mortality by finding that the
196 participants had significantly longer survival time with increasing PMI from zero to four (Figure 4).

197 Given the significant associations of mtDNAcn and specific personality traits with mortality, we then
198 tested the hypothesis that the association between PMI and mortality may be mediated through
199 mtDNAcn. We used structural equation modeling to test the indirect effect of PMI on mortality via
200 mtDNAcn. The results are shown in Table 3 and Figure 4. We observed that for BLSA, PMI was a
201 significant predictor of mortality. The indirect effect estimate showed that the effect of PMI on
202 mortality was fully mediated via mtDNAcn. We tested the significance of the indirect effect using
203 5000 bootstrap samples, which yielded a significant p -value = 0.002 (estimate = -0.097). Similar
204 results were obtained for SardinIA, although they were not statistically significant, likely due to
205 limited power because the Sardinian cohort is younger, and the mortality data are limited compared
206 to the BLSA cohort. Also, the Sardinian analysis had reduced statistical power compared to the
207 BLSA analysis because the personality measures are averaged across multiple visits for BLSA,
208 which decreases the standard deviation (increasing the reliability) of effect estimates.

209

210

211 **Discussion**

212 An extensive literature has reported the association of blood mtDNAcn with various psychological
213 outcomes such as major depression (17, 18), autism (40), bipolar disorder (41), and stress (42–
214 44). Our study adds new information to this literature by reporting an association between mtDNAcn
215 and personality traits. Our results show that higher mtDNAcn is significantly associated with a lower
216 level of Neuroticism and higher levels of Extraversion, Openness, Agreeableness, and
217 Conscientiousness in study participants. We demonstrate the robustness of these associations by
218 showing that the direction and size of the effects are robust to adjustment for potential confounders
219 such as age, sex, platelet count, and white blood cell parameters and are replicated across two
220 cohorts. Consistent with Neuroticism, participants with more depressive symptoms had lower
221 mtDNAcn than those without depressive symptoms. Finally, we report an effect of personality on
222 mortality and demonstrate that this effect is partially mediated via mtDNAcn.

223 mtDNAcn is a biomarker of energetic health and cellular aging (16). The mechanism that controls
224 the levels of mtDNAcn in tissues, blood, and plasma is not fully understood, and it is unclear
225 whether the change of blood mtDNAcn reflects mitochondrial biogenesis, immune health, and/or

226 hematopoiesis in the bone marrow (4). Increased mtDNAcn have been shown to have a different
227 and potentially opposite indication depending on the underlying health condition (13). In population-
228 based cohorts such as those involved in this study, increased mtDNAcn is generally positively
229 correlated with mitochondria mass and thus is generally associated with higher oxidative capacity.
230 Having a large pool of well-functioning mitochondria can positively influence health and generate
231 signals that contribute to stress adaptation (16). Consistent with this interpretation, we found that
232 the mtDNAcn levels were higher in younger participants, and our primary findings indicated that
233 individuals with higher mtDNAcn levels had lower Neuroticism and were at lower risk of depression
234 and lower risk of mortality. In adverse health conditions, however, it should be noted that increased
235 mtDNAcn may not correlate with function (13, 45). Rather, it may indicate a compensatory
236 upregulation of mtDNAcn (4), a phenomenon where mtDNAcn is increased to compensate for low
237 energy cellular environment due to poor mitochondrial energetics (4, 15).

238 Personality traits influence behaviors, emotional states, and how individuals deal with stress. For
239 example, personality traits are associated with how individuals assess stressful life circumstances
240 (24) and what coping responses to the stressors (i.e., neuroendocrine responses, immune
241 functioning and inflammation, cardiovascular responses) are elicited (46). Given these associations
242 with stress and health-related behaviors, it is not surprising that personality traits are also related
243 to better health, function, and longevity (27, 29, 34, 47–50). We observed a positive association
244 between mtDNAcn and personality traits that are also related to health-relevant habits and
245 conditions, such as non-smoking (51), healthy diet and obesity (52, 53), exercise and physical
246 function (54), and preventive medical screenings (55). Thus, indirect pathways may exist to link
247 personality and health-related behaviors to changes in mitochondrial biology. Our finding of an
248 association between mtDNAcn and personality expands this broader literature on personality traits
249 and health.

250 Reduced mtDNAcn may reflect reduced mitochondrial mass or loss of mtDNA due to mitochondrial
251 dysfunction (4). Dysfunctional mitochondria that are not appropriately removed by mitophagy
252 produce excess ROS, which causes oxidative stress. As a result of damage caused by oxidative
253 stress, mitochondria release mitochondrial antigenic molecules called damage-associated
254 molecular patterns (DAMPs) into the cytoplasm (16, 56). These released DAMPs contain mtDNA,
255 which are unmethylated and thus act as antigenic fragments and elicit an innate immune response
256 through toll-like receptors (57). This triggers an inflammatory response through cytokine release
257 (16, 56). Prolonged inflammation, when unresolved, can lead to damage to cells and tissues and
258 has been associated with a number of chronic diseases, including cardiovascular diseases (58),
259 depression (59), and neurodegeneration (60). Our study shows that low mtDNAcn is associated
260 with higher levels of Neuroticism and facets of Neuroticism, including depression. Of note, data
261 from the SardiNIA sample indicates that Neuroticism is associated with higher interleukin-6 (IL-6)
262 and C-reactive protein (CRP) (61). We observed a similar relationship between mtDNAcn and CES-
263 D (depressive symptoms), and the effect becomes even more pronounced (almost doubling in
264 effect size) when considering significant depressive symptoms (setting CES-D binary cutoff at 20
265 instead of at 16). Kim et al. (18) report a similar negative association between mtDNAcn and
266 depression. However, other studies like Cai et al. (17) and Tyrka et al. (44) report a positive
267 association of mtDNAcn with major depression, and several studies have found null associations
268 (19–23). One explanation for these inconsistencies could be the heterogeneity of the depression
269 phenotyping: the depression facet of the Neuroticism domain is a trait measure, and the CES-D
270 measures symptoms, but neither is a diagnostic instrument for major depression. It should also be
271 noted that although some past studies assayed for mtDNAcn from whole blood, they did not adjust
272 for the effect of platelets, white blood cells, and other leukocytes subgroups on mtDNAcn as we do
273 in this study. mtDNAcn estimates differ amongst the various blood cell types (62), and this
274 significantly impacts whole-blood mtDNAcn estimates and should be adjusted for in association
275 models (also see Discussion below).

276 mtDNAcn and personality are both predictors of mortality (25, 36, 63), thus making our finding of
277 an association between the two even more intriguing. Understanding which variable affects the
278 other in driving the effect on mortality is a significant step forward, but alternative models are
279 similarly plausible. To test the hypothesis that mtDNAcn mediates the association between
280 personality and mortality, we performed a causal mediation analysis. In this paper, we provide the
281 first evidence of mtDNAcn significantly mediating the association between personality [including
282 three facets capturing positive psychosocial states (activity, self-discipline, and competence) and
283 an emotional stressor (vulnerability)] and mortality. Advances in mitochondrial research have
284 presented the mitochondrion as a target of stress (64), and more recently, as a potential biological
285 mediator of the stress-disease cascade (16). Picard and McEwen (16) provide a conceptual model
286 for mitochondrial stress pathophysiology, outlining how mitochondria interact with psychosocial
287 factors and stressors to influence health and lifespan outcomes. The underlying mechanism for this
288 mediation is still an area of active research and is not fully understood, but the significance of our
289 results remains clear: mtDNAcn is one mechanism in the pathway that connects personality and
290 mortality.

291 This study also shows that mtDNAcn was negatively associated with age and male biological sex,
292 which is consistent with previous reports (65). Also, higher mtDNAcn was significantly associated
293 with higher levels of platelet count and percentages of lymphocytes, eosinophils, monocytes, and
294 basophils. However, higher mtDNAcn was associated with lower white blood cell (WBC) count and
295 lower neutrophil percentage. Neutrophils have relatively lower mtDNAcn compared to other
296 leukocytes (62), and they form the largest proportion of WBC, which may explain the negative
297 association of WBC count with mtDNAcn. A similar negative association between mtDNAcn and
298 WBC count was observed by Liu et al. (66). The current study and other recent publications (67–
299 69) have highlighted the importance of adjusting for white blood cell parameters and platelet count
300 when testing the association between traits and mtDNAcn measured in whole blood.

301 The primary strength of the current study is the use of two independent study cohorts, one in the
302 US and the other in Europe: the top associations not only had significant p-values in both studies
303 but also had very similar estimated effect sizes. Furthermore, in both cohorts, the associations of
304 the personality traits and mtDNAcn ranked high when put in a broader context of mtDNAcn
305 associations with other traits. The consistency of the results with the previous literature also clearly
306 demonstrates the reproducibility of this current study. The way mtDNAcn is estimated using whole-
307 genome sequence information from the two study cohorts is also seen as the gold standard going
308 forward in this line of research (70), with major mitochondria consortia such as TopMed (66)
309 employing the same approach. A limitation of the current study was the one-time assessment of
310 mtDNAcn, which precluded a longitudinal analysis of changes in mtDNAcn. Personality was
311 assessed only once in the Sardinia cohort, but personality is relatively stable in adults over long
312 periods (71, 72); therefore, not much information may be lost in a cross-sectional analysis of
313 personality. Another drawback of this study is the difference in the distribution of age and mtDNAcn
314 across the two cohorts. The differences in the average mtDNAcn between the two cohorts can be
315 explained by the gap in the time at which sequencing was done; almost a decade passed between
316 the time the two cohorts were sequenced. Despite these limitations, the associations between
317 mtDNAcn and personality traits are clear and consistent across the two study cohorts.

318 In conclusion, we provide the first evidence of an association between mtDNAcn and personality.
319 These results may provide further evidence of the link between mtDNAcn and psychosocial stress
320 and suggest that blood mtDNAcn may correlate with changes in mitochondrial biology under stress.
321 These initial findings will require further exploration to reveal the potential causal pathways between
322 personality and mtDNAcn. We also provide novel insights into the effect of personality on mortality
323 by showing that this effect is mediated through mtDNAcn.

324
325
326

Materials and Methods

327

328 **Study cohorts' description**

329 **Baltimore Longitudinal Study of Aging**

330 The Baltimore Longitudinal Study of Aging (BLSA) is an ongoing scientific study that aims to
331 understand risk factors and pathways that cause a decline in physical and cognitive function with
332 aging. The study began in 1958 and is run by the National Institute on Aging Intramural Research
333 Program and enrolls healthy volunteers. Blood samples were obtained from 955 individuals, and
334 DNA was extracted from a red-cell-free buffy coat and sequenced on a HiSeq X Ten sequencer
335 using 150 base-pair, paired-end cycles (version 2.5 chemistry, Illumina), as described elsewhere
336 (73). For genetic homogeneity, we retained only participants with white ancestry for further analysis
337 downstream. We further excluded participants who had developed Alzheimer's Disease (AD) from
338 further analysis because their NEO PI-R profiles are likely changed by clinical dementia (74).
339 Therefore, 722 participants (mean age 75, ranging from 48 to 100, 48% were women) remained
340 for downstream analysis. All participants gave written informed consent, with protocols approved
341 by the Institutional Review Board of the Intramural Research Program of the National Institutes of
342 Health.

343 **SardiNIA Longitudinal Study**

344 SardiNIA (39) is a longitudinal study of human aging and genetics of quantitative traits that has
345 followed a genetically isolated population on the Italian island of Sardinia since 2000. The data
346 used for this current study consist of 2,077 participants who had their DNA from whole blood
347 sequenced using Illumina Genome Analyzer Ix and Illumina HiSeq 2000 instruments. We further
348 excluded one of each pair of participants with a genetic relationship above the level of second-
349 degree cousins. A total of 587 participants (mean age 57, ranging from 15 to 96, 62% women)
350 remained for further downstream analysis. All participants gave written informed consent, with
351 protocols approved by the Institutional Review Board of the Intramural Research Program of the
352 National Institutes of Health.

353 **Phenotype measures and definition**

354 Personality was assessed using the **Revised NEO Personality Inventory (NEO-PI-R)** (26). The
355 NEO-PI-R is an inventory of 240 items that examines an individual's thoughts, feelings, and
356 behaviors (26). Each item is answered on a five-point Likert scale ranging from "strongly disagree"
357 to "strongly agree." Responses to these items are scored to assess the *big five* personality traits
358 (the five domains of personality traits): Neuroticism (N), Extraversion (E), Openness (O),
359 Agreeableness (A), and Conscientiousness (C). In addition to the five domains, the NEO-PI-R also
360 assesses six facets within each domain, for a total of 30 facets [for example, for the Neuroticism
361 domain, the following six facets are assessed: Anxiety (N1), Angry Hostility (N2), Depression (N3),
362 Self-Consciousness (N4), Impulsiveness (N5), Vulnerability (N6)]. Scores are standardized using
363 a normative population to generate standardized *T scores* (mean =50, SD =10) (26). These *T*
364 *scores* were used in the analysis.

365 BLSA participants completed the NEO-PI-R at each clinic visit (four assessment points on
366 average), and we used the average across all assessment points for the downstream analysis. We
367 did this because barring onset and progression of clinical dementia, which causes a drastic change
368 in NEO PI-R profiles (49), NEO PI-R scores are quite stable in adults over long periods (71).
369 Averaging the NEO-PI-R scores over multiple visits improves the BLSA analysis by reducing the
370 standard deviation of the effects estimates and therefore increases statistical power. SardiNIA
371 participants completed the NEO-PI-R once, and we used this one-time measure for downstream
372 analysis. An extensive literature supports the validity and reliability of the NEO-PI-R scales in the
373 United States and other countries, including Italy (75, 76). In both the BLSA and SardiNIA, the five
374 traits have high internal consistency ($\alpha > .80$), and in the BLSA, the test-retest stability of the
375 five traits ranges from .78 to .83 over a follow-up of 10 years (72, 77). The correlations between
376 the NEO PI-R traits are shown in Fig S5.

377 We also analyzed in both studies the measure of depressive symptoms using the Center for
378 Epidemiologic Studies Depression Scale (CES-D) (78). The CES-D is a 20-item instrument
379 assessing depressive mood and behavior over the past week. Responses to these statements are
380 graded on a 4-point Likert scale ranging from "rarely or none of the time" to "most or all of the time."
381 The responses are scored from zero to three and summed across the 20 items to assess
382 depressive symptoms (range 0 to 60). In general populations, a CES-D score of 16 is the clinical
383 cutoff used to classify depressive symptoms (79, 80). However, among older populations, a cutoff
384 score of 20 is used to improve the accuracy of the diagnosis of major depression (81, 82). We,
385 therefore, analyzed two binary clinical cutoffs of CES-D (16 and 20 for significant depressive
386 symptoms) and continuous scores in both studies. CES-D in both studies was assessed at a single
387 time point.

388 **mtDNA copy number estimation**

389 The whole blood mitochondria DNA copy number (mtDNAcn) of each study participant was
390 estimated from whole-genome sequence information using *fastMitoCalc* (83). This software
391 implements the formula below, as described by Ding et al. (65).

$$392 \quad \text{mtDNA copy number per cell} = \frac{\text{mtDNA average coverage}}{\text{autosomal DNA average coverage}} \times 2$$

393 The above formula was derived from the fact that average sequencing coverage should be
394 proportional to DNA copy number for autosomal DNA and mtDNA. Since there are two copies of
395 autosomal DNA in each cell, the mtDNAcn is inferred as a ratio of average mtDNA coverage to
396 autosomal DNA coverage multiplied by two. The average coverage of mtDNA and autosomal DNA
397 is obtained using sequence alignment with *SAMtools* (84).

398 **Statistical Analysis**

399 We performed initial simple linear regression of mtDNAcn values on variables such as age, sex,
400 sequence coverage, platelet count, and white blood cell (WBC) parameters, including white blood
401 cell count, percentages of the major leukocytes: lymphocytes, neutrophils, eosinophils, monocytes,
402 and basophils. These initial assessments helped us determine which variables should be included
403 as covariates in subsequent multiple linear regression models of mtDNAcn on NEO-PI-R traits.

404 As expected from previous findings reviewed in (4), age, sex, white blood cell count, platelet count,
405 and percentages of neutrophils, lymphocytes, and basophils were significantly associated with
406 mtDNAcn (p -value < 0.0001). Sequence coverage and percentage of eosinophils were nominally
407 associated with mtDNAcn (p -value < 0.05), while percentage monocytes was marginally
408 associated with mtDNAcn (p -value = 0.0821). Therefore, all regression analyses relating mtDNAcn
409 with personality traits or depression were adjusted for age, sex, white blood cell and platelet count,
410 percent neutrophils, lymphocytes, basophils, and eosinophils, and sequence coverage.

411 Standardized values were used in regression analyses to make effect sizes more comparable
412 across the two study cohorts. Therefore, all reported NEO-PI-R associations are expressed as the
413 number of standard deviations change in mtDNAcn in response to higher NEO-PI-R trait values. A
414 random-effect meta-analysis was used to obtain the combined estimates of effects and 95%
415 confidence interval (CI) of each NEO PI-R/ CESD trait on mtDNAcn using the standardized effect
416 sizes obtained from the two study cohorts.

417 **Personality, mtDNAcn, and mortality risk**

418 In previous studies, the *vulnerability* facet of Neuroticism, the *activity* facet of *Extraversion*, and the
419 *self-discipline* and *competence* facets of Conscientiousness were associated with mortality risk,
420 with *vulnerability* (increased risk) and *self-discipline* (reduced risk) showing the strongest

421 associations (25). To confirm these findings in the literature, we classified BLSA and SardiNIA
422 participants according to *vulnerability* and *self-discipline* scores below and above the median level,
423 and cross-classified participants into four groups by combinations of these two dichotomous
424 variables (see Fig S6 for more details). We tested their association with mortality and mtDNAcn,
425 using the low vulnerability/ high self-discipline group as a reference.

426 In subsequent analyses, we computed a personality-mortality index (PMI) using data from the four
427 NEO PI-R facets (*vulnerability*, *activity*, *self-discipline*, and *competence*) that have been previously
428 shown as significantly associated with mortality (25). For each of the four traits, we assigned a
429 score of 0 or 1 to each individual based on the median value and the direction of the association of
430 the trait with mortality. For example, individuals with *vulnerability* measures lower than the median
431 received a score of 1 for the trait, and individuals with *self-discipline* measures higher than the
432 median received a score of 1. The final PMI is the sum of the four scores for the four traits. The
433 index ranged between 0 and 4, where a score of 0 means an individual has a high *vulnerability*,
434 low *self-discipline*, low *activity*, and low *competence* (i.e., a poor PMI and potentially highest
435 mortality risk). A score of 4 represents low *vulnerability*, high *self-discipline*, high *activity*, and high
436 *competence*, indicating a favorable PMI and potentially lowest mortality risk. Scores of 1, 2, and 3
437 are various levels of improved PMI. We compared the mtDNAcn amongst the five indices (0, 1, 2,
438 3, and 4) of the PMI. We also tested for an association between PMI as a continuous variable and
439 mtDNAcn, and death (a binary variable that classified study participants as dead or alive).

440 Finally, we used R package lavaan (version 0.6-7) to perform a mediation analysis to test whether
441 mtDNAcn mediates the association between personality (i.e., PMI) and mortality risk. In general,
442 there are three steps in a mediation analysis to show a potential mediator variable mediates the
443 relationship between an independent variable and a dependent variable. Briefly, the three steps in
444 our specific analysis are: 1) a total effect model, that regresses mortality (dependent variable) on
445 PMI (independent variable) to confirm that PMI is a significant predictor of mortality; 2) a mediator
446 model, that regresses mtDNAcn (mediator) on PMI to confirm that PMI is a significant predictor of
447 mtDNAcn; 3) an outcome model, that regresses mortality on both mtDNAcn and PMI to confirm
448 that a) mtDNAcn is a significant predictor of mortality, and b) the strength of the previously
449 significant effect of PMI in Step 1) is now greatly reduced (i.e., the effect of PMI on mortality is
450 largely indirect via mtDNAcn). In our analysis, the significance of indirect effect was estimated using
451 5,000 bootstrap samples.

452

453

454

455 **Acknowledgments**

456

457 Support for this work was provided by the Intramural Research Program of the National Institute
458 on Aging (Z01-AG000693 and Z01-AG000949) and the National Institute of Neurological Disorders
459 and Stroke of the National Institutes of Health. AT was also supported by the National Institute on
460 Aging of the National Institutes of Health Grant R01AG068093.

461

462

463 **References**

464

- 465 1. M. R. Duchon, Mitochondria in health and disease: perspectives on a new mitochondrial
466 biology. *Mol. Aspects Med.* **25**, 365–451 (2004).
- 467 2. G. Attardi, G. Schatz, Biogenesis of mitochondria. *Annu. Rev. Cell Biol.* **4**, 289–333 (1988).

- 468 3. L. L. Clay Montier, J. J. Deng, Y. Bai, Number matters: control of mammalian mitochondrial
469 DNA copy number. *J Genet Genomics* **36**, 125–131 (2009).
- 470 4. M. Picard, Blood mitochondrial DNA copy number: What are we counting? *Mitochondrion*
471 **60**, 1–11 (2021).
- 472 5. J. Xing, *et al.*, Mitochondrial DNA content: its genetic heritability and association with renal
473 cell carcinoma. *J. Natl. Cancer Inst.* **100**, 1104–1112 (2008).
- 474 6. S. Hägg, J. Jylhävä, Y. Wang, K. Czene, F. Grassmann, Deciphering the genetic and
475 epidemiological landscape of mitochondrial DNA abundance. *Hum Genet* **140**, 849–861
476 (2021).
- 477 7. S. Y. Yang, *et al.*, Blood-derived mitochondrial DNA copy number is associated with gene
478 expression across multiple tissues and is predictive for incident neurodegenerative
479 disease. *Genome Res* **31**, 349–358 (2021).
- 480 8. T. F. Gianotti, *et al.*, A decreased mitochondrial DNA content is related to insulin resistance
481 in adolescents. *Obesity (Silver Spring)* **16**, 1591–1595 (2008).
- 482 9. J. Song, *et al.*, Peripheral blood mitochondrial DNA content is related to insulin sensitivity
483 in offspring of type 2 diabetic patients. *Diabetes Care* **24**, 865–869 (2001).
- 484 10. G. Al-Kafaji, A. Aljadaan, A. Kamal, M. Bakhiet, Peripheral blood mitochondrial DNA copy
485 number as a novel potential biomarker for diabetic nephropathy in type 2 diabetes
486 patients. *Exp Ther Med* **16**, 1483–1492 (2018).
- 487 11. H. K. Lee, *et al.*, Decreased mitochondrial DNA content in peripheral blood precedes the
488 development of non-insulin-dependent diabetes mellitus. *Diabetes Research and Clinical*
489 *Practice* **42**, 161–167 (1998).
- 490 12. F. X. Xu, X. Zhou, F. Shen, R. Pang, S. M. Liu, Decreased peripheral blood mitochondrial
491 DNA content is related to HbA1c, fasting plasma glucose level and age of onset in type 2
492 diabetes mellitus. *Diabet. Med.* **29**, e47-54 (2012).
- 493 13. A. Z. Moore, *et al.*, Influence of cell distribution and diabetes status on the association
494 between mitochondrial DNA copy number and aging phenotypes in the InCHIANTI study.
495 *Aging Cell* **17** (2018).
- 496 14. M. M. McDermott, *et al.*, Peripheral artery disease, calf skeletal muscle mitochondrial DNA
497 copy number, and functional performance. *Vasc Med* **23**, 340–348 (2018).
- 498 15. C. Giordano, *et al.*, Efficient mitochondrial biogenesis drives incomplete penetrance in
499 Leber’s hereditary optic neuropathy. *Brain* **137**, 335–353 (2014).
- 500 16. M. Picard, B. S. McEwen, Psychological Stress and Mitochondria: A Conceptual Framework.
501 *Psychosom Med* **80**, 126–140 (2018).

- 502 17. N. Cai, *et al.*, Molecular signatures of major depression. *Curr. Biol.* **25**, 1146–1156 (2015).
- 503 18. M.-Y. Kim, J.-W. Lee, H.-C. Kang, E. Kim, D.-C. Lee, Leukocyte mitochondrial DNA (mtDNA)
504 content is associated with depression in old women. *Arch Gerontol Geriatr* **53**, e218-221
505 (2011).
- 506 19. R. T. de Sousa, *et al.*, Leukocyte mitochondrial DNA copy number in bipolar disorder. *Prog*
507 *Neuropsychopharmacol Biol Psychiatry* **48**, 32–35 (2014).
- 508 20. Y. He, *et al.*, Leukocyte Mitochondrial DNA Copy Number in Blood Is Not Associated with
509 Major Depressive Disorder in Young Adults. *PLOS ONE* **9**, e96869 (2014).
- 510 21. D. Lindqvist, *et al.*, Circulating cell-free mitochondrial DNA, but not leukocyte
511 mitochondrial DNA copy number, is elevated in major depressive disorder.
512 *Neuropsychopharmacology* **43**, 1557–1564 (2018).
- 513 22. J. E. Verhoeven, *et al.*, Depression, telomeres and mitochondrial DNA: between- and
514 within-person associations from a 10-year longitudinal study. *Mol. Psychiatry* **23**, 850–857
515 (2018).
- 516 23. C. M. Vyas, *et al.*, Lifestyle and behavioral factors and mitochondrial DNA copy number in a
517 diverse cohort of mid-life and older adults. *PLOS ONE* **15**, e0237235 (2020).
- 518 24. J. F. Ebstrup, L. F. Eplöv, C. Pisinger, T. Jørgensen, Association between the Five Factor
519 personality traits and perceived stress: is the effect mediated by general self-efficacy?
520 *Anxiety, Stress, & Coping* **24**, 407–419 (2011).
- 521 25. B. P. Chapman, *et al.*, Mortality Risk Associated With Personality Facets of the Big Five and
522 Interpersonal Circumplex Across Three Aging Cohorts. *Psychosom Med* **82**, 64–73 (2020).
- 523 26. P. Costa, R. McCrae, The revised NEO personality inventory (NEO-PI-R). *The SAGE*
524 *Handbook of Personality Theory and Assessment* **2**, 179–198 (2008).
- 525 27. R. D. Hayward, W. D. Taylor, M. J. Smoski, D. C. Steffens, M. E. Payne, Association of NEO
526 personality domains and facets with presence, onset, and treatment outcomes of major
527 depression in older adults. *Am J Geriatr Psychiatry* **21**, 88–96 (2013).
- 528 28. R. Kotov, W. Gamez, F. Schmidt, D. Watson, Linking “big” personality traits to anxiety,
529 depressive, and substance use disorders: a meta-analysis. *Psychol Bull* **136**, 768–821
530 (2010).
- 531 29. R. J. Caselli, *et al.*, Impact of Personality on Cognitive Aging: A Prospective Cohort Study.
532 *Journal of the International Neuropsychological Society* **22**, 765–776 (2016).
- 533 30. M. Luchetti, A. Terracciano, Y. Stephan, A. R. Sutin, Personality and Cognitive Decline in
534 Older Adults: Data From a Longitudinal Sample and Meta-Analysis. *J Gerontol B Psychol Sci*
535 *Soc Sci* **71**, 591–601 (2016).

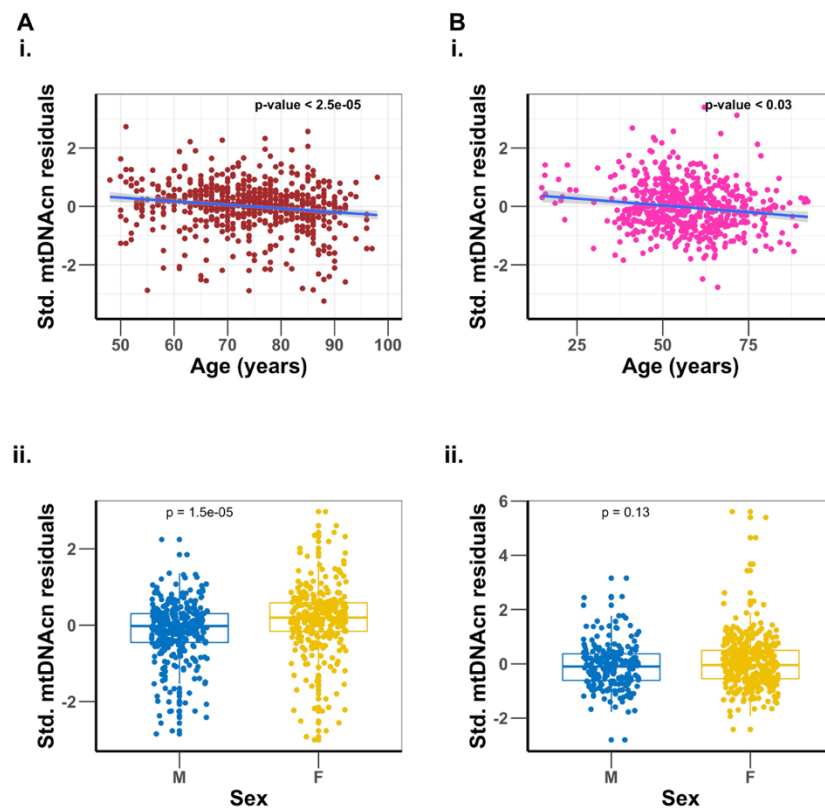
- 536 31. M. Jokela, *et al.*, Personality and risk of diabetes in adults: pooled analysis of 5 cohort
537 studies. *Health Psychol* **33**, 1618–1621 (2014).
- 538 32. Y. Stephan, A. R. Sutin, M. Luchetti, A. Terracciano, Allostatic Load and Personality: A 4-
539 Year Longitudinal Study. *Psychosom Med* **78**, 302–310 (2016).
- 540 33. A. Terracciano, *et al.*, Personality, metabolic rate and aerobic capacity. *PLoS One* **8**, e54746
541 (2013).
- 542 34. T. W. Smith, J. MacKenzie, Personality and Risk of Physical Illness. *Annual Review of Clinical*
543 *Psychology* **2**, 435–467 (2006).
- 544 35. N. A. Turiano, B. P. Chapman, T. L. Gruenewald, D. K. Mroczek, Personality and the leading
545 behavioral contributors of mortality. *Health Psychology* **34**, 51–60 (2015).
- 546 36. J. Mengel-From, *et al.*, Mitochondrial DNA copy number in peripheral blood cells declines
547 with age and is associated with general health among elderly. *Hum. Genet.* **133**, 1149–
548 1159 (2014).
- 549 37. P.-L. Kuo, *et al.*, A roadmap to build a phenotypic metric of ageing: insights from the
550 Baltimore Longitudinal Study of Aging. *Journal of Internal Medicine* **287**, 373–394 (2020).
- 551 38. J. L. Stone, A. H. Norris, Activities and attitudes of participants in the Baltimore longitudinal
552 study. *J Gerontol* **21**, 575–580 (1966).
- 553 39. G. Pilia, *et al.*, Heritability of Cardiovascular and Personality Traits in 6,148 Sardinians. *PLOS*
554 *Genetics* **2**, e132 (2006).
- 555 40. C. Giulivi, *et al.*, Mitochondrial dysfunction in autism. *JAMA* **304**, 2389–2396 (2010).
- 556 41. C.-C. Chang, S.-H. Jou, T.-T. Lin, C.-S. Liu, Mitochondrial DNA variation and increased
557 oxidative damage in euthymic patients with bipolar disorder. *Psychiatry Clin. Neurosci.* **68**,
558 551–557 (2014).
- 559 42. F. S. Bersani, *et al.*, Mitochondrial DNA copy number is reduced in male combat veterans
560 with PTSD. *Prog. Neuropsychopharmacol. Biol. Psychiatry* **64**, 10–17 (2016).
- 561 43. C. Boeck, *et al.*, Inflammation in adult women with a history of child maltreatment: The
562 involvement of mitochondrial alterations and oxidative stress. *Mitochondrion* **30**, 197–207
563 (2016).
- 564 44. A. R. Tyrka, *et al.*, Alterations of Mitochondrial DNA Copy Number and Telomere Length
565 With Early Adversity and Psychopathology. *Biol. Psychiatry* **79**, 78–86 (2016).
- 566 45. Y. H. Wei, *et al.*, Increases of mitochondrial mass and mitochondrial genome in association
567 with enhanced oxidative stress in human cells harboring 4,977 BP-deleted mitochondrial
568 DNA. *Ann N Y Acad Sci* **928**, 97–112 (2001).

- 569 46. N. Schneiderman, G. Ironson, S. D. Siegel, Stress and health: psychological, behavioral, and
570 biological determinants. *Annu Rev Clin Psychol* **1**, 607–628 (2005).
- 571 47. T. Bogg, B. W. Roberts, Conscientiousness and health-related behaviors: a meta-analysis of
572 the leading behavioral contributors to mortality. *Psychol Bull* **130**, 887–919 (2004).
- 573 48. A. R. Sutin, Y. Stephan, A. Terracciano, Personality and metabolic dysfunction in young
574 adulthood: A cross-sectional study. *J Health Psychol* **24**, 495–501 (2019).
- 575 49. A. Terracciano, A. R. Sutin, Personality and Alzheimer’s disease: An integrative review.
576 *Personality Disorders: Theory, Research, and Treatment* **10**, 4–12 (2019).
- 577 50. B. Canada, Y. Stephan, H. Fundenberger, A. R. Sutin, A. Terracciano, Cross-sectional and
578 prospective association between personality traits and IADL/ADL limitations. *Psychology
579 and Aging* **36**, 309–321 (2021).
- 580 51. J. M. Malouff, E. B. Thorsteinsson, N. S. Schutte, The five-factor model of personality and
581 smoking: a meta-analysis. *J Drug Educ* **36**, 47–58 (2006).
- 582 52. M. Jokela, *et al.*, Association of personality with the development and persistence of
583 obesity: a meta-analysis based on individual-participant data. *Obes Rev* **14**, 315–323
584 (2013).
- 585 53. R. Möttus, *et al.*, The associations between personality, diet and body mass index in older
586 people. *Health Psychol* **32**, 353–360 (2013).
- 587 54. T. Kekäläinen, A. Terracciano, S. Sipilä, K. Kokko, Personality traits and physical functioning:
588 a cross-sectional multimethod facet-level analysis. *Eur Rev Aging Phys Act* **17**, 20 (2020).
- 589 55. D. Aschwanden, *et al.*, Personality traits and preventive cancer screenings in the Health
590 Retirement Study. *Preventive Medicine* **126**, 105763 (2019).
- 591 56. M. Zampino, *et al.*, Poor mitochondrial health and systemic inflammation? Test of a classic
592 hypothesis in the Baltimore Longitudinal Study of Aging. *Geroscience* **42**, 1175–1182
593 (2020).
- 594 57. Q. Zhang, *et al.*, Circulating mitochondrial DAMPs cause inflammatory responses to injury.
595 *Nature* **464**, 104–107 (2010).
- 596 58. A. Lopez-Candales, P. M. Hernández Burgos, D. F. Hernandez-Suarez, D. Harris, Linking
597 Chronic Inflammation with Cardiovascular Disease: From Normal Aging to the Metabolic
598 Syndrome. *J Nat Sci* **3**, e341 (2017).
- 599 59. V. Maydych, The Interplay Between Stress, Inflammation, and Emotional Attention:
600 Relevance for Depression. *Front Neurosci* **13** (2019).
- 601 60. S. Missiroli, *et al.*, The Role of Mitochondria in Inflammation: From Cancer to
602 Neurodegenerative Disorders. *J Clin Med* **9** (2020).

- 603 61. A. R. Sutin, *et al.*, High Neuroticism and low Conscientiousness are associated with
604 interleukin-6. *Psychological Medicine* **40**, 1485–1493 (2010).
- 605 62. S. Rausser, *et al.*, Mitochondrial phenotypes in purified human immune cell subtypes and
606 cell mixtures. *bioRxiv*, 2020.10.16.342923 (2021).
- 607 63. F. N. Ashar, *et al.*, Association of mitochondrial DNA levels with frailty and all-cause
608 mortality. *J. Mol. Med.* **93**, 177–186 (2015).
- 609 64. M. Picard, B. S. McEwen, Psychological Stress and Mitochondria: A Systematic Review.
610 *Psychosomatic Medicine* **80**, 141–153 (2018).
- 611 65. J. Ding, *et al.*, Assessing Mitochondrial DNA Variation and Copy Number in Lymphocytes of
612 ~2,000 Sardinians Using Tailored Sequencing Analysis Tools. *PLOS Genetics* **11**, e1005306
613 (2015).
- 614 66. X. Liu, *et al.*, Association of mitochondrial DNA copy number with cardiometabolic diseases
615 in a large cross-sectional study of multiple ancestries. *medRxiv*, 2020.04.20.20016337
616 (2020).
- 617 67. Y. Hurtado-Roca, *et al.*, Adjusting MtDNA Quantification in Whole Blood for Peripheral
618 Blood Platelet and Leukocyte Counts. *PLOS ONE* **11**, e0163770 (2016).
- 619 68. J. Knez, *et al.*, Correlates of Peripheral Blood Mitochondrial DNA Content in a General
620 Population. *American Journal of Epidemiology* **183**, 138–146 (2016).
- 621 69. H. B. Shim, O. Arshad, I. Gadawska, H. C. F. Côté, A. Y. Y. Hsieh, Platelet mtDNA content
622 and leukocyte count influence whole blood mtDNA content. *Mitochondrion* **52**, 108–114
623 (2020).
- 624 70. R. Filograna, M. Mennuni, D. Alsina, N.-G. Larsson, Mitochondrial DNA copy number in
625 human disease: the more the better? *FEBS Letters* **595**, 976–1002 (2021).
- 626 71. P. T. Costa, R. R. McCrae, Personality in adulthood: A six-year longitudinal study of self-
627 reports and spouse ratings on the NEO Personality Inventory. *Journal of Personality and*
628 *Social Psychology* **54**, 853 (1988).
- 629 72. A. Terracciano, P. T. Costa, R. R. McCrae, Personality Plasticity After Age 30. *Pers Soc*
630 *Psychol Bull* **32**, 999–1009 (2006).
- 631 73. R. Chia, *et al.*, Genome sequencing analysis identifies new loci associated with Lewy body
632 dementia and provides insights into its genetic architecture. *Nat Genet* **53**, 294–303
633 (2021).
- 634 74. M. Islam, *et al.*, Personality changes with dementia from the informant perspective: New
635 data and meta-analysis. *J Am Med Dir Assoc* **20**, 131–137 (2019).

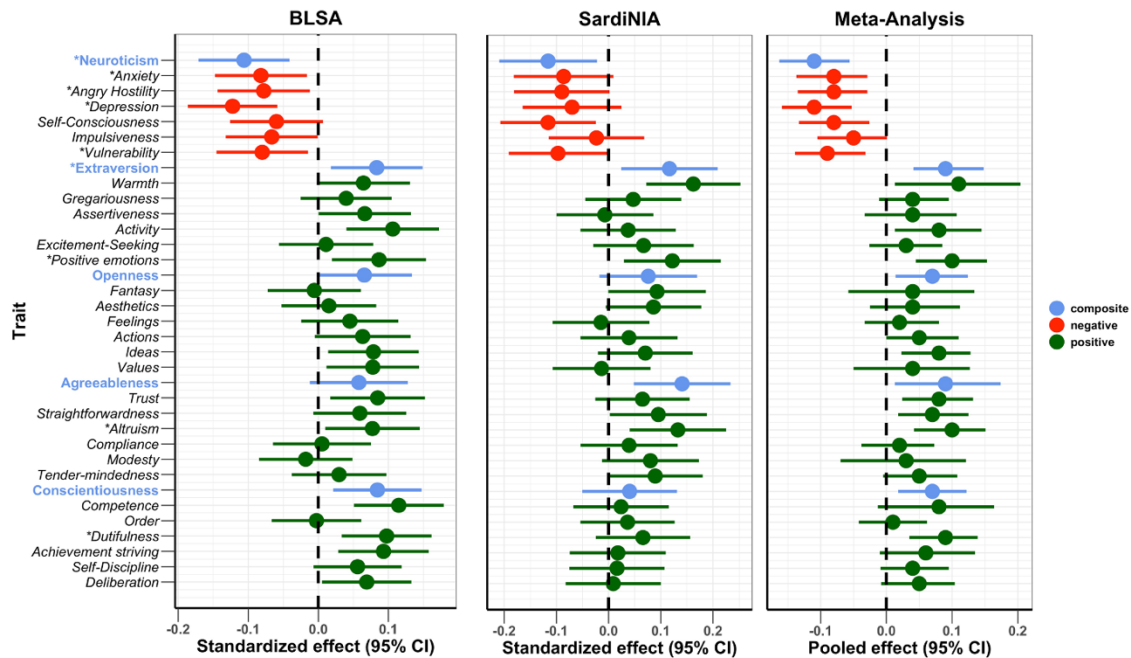
- 636 75. R. R. McCrae, A. Terracciano, Personality Profiles of Cultures Project, Universal features of
637 personality traits from the observer's perspective: data from 50 cultures. *J Pers Soc Psychol*
638 **88**, 547–561 (2005).
- 639 76. A. Terracciano, The Italian version of the NEO PI-R: Conceptual and empirical support for
640 the use of targeted rotation. *Pers Individ Dif* **35**, 1859–1872 (2003).
- 641 77. P. T. Costa, *et al.*, Personality traits in Sardinia: testing founder population effects on trait
642 means and variances. *Behav. Genet.* **37**, 376–387 (2007).
- 643 78. L. S. Radloff, The CES-D Scale: A self-report depression scale for research in the general
644 population (1977) <https://doi.org/10.1177/014662167700100306> (March 9, 2020).
- 645 79. A. T. Beekman, *et al.*, Criterion validity of the Center for Epidemiologic Studies Depression
646 scale (CES-D): results from a community-based sample of older subjects in The
647 Netherlands. *Psychol Med* **27**, 231–235 (1997).
- 648 80. A. P. Delitala, *et al.*, Depressive symptoms, thyroid hormone and autoimmunity in a
649 population-based cohort from Sardinia. *J Affect Disord* **191**, 82–87 (2016).
- 650 81. Y. Milaneschi, *et al.*, Depressive symptoms and inflammation increase in a prospective
651 study of older adults: a protective effect of a healthy (Mediterranean-style) diet. *Mol*
652 *Psychiatry* **16**, 589–590 (2011).
- 653 82. B. W. Penninx, *et al.*, Depressive symptoms and physical decline in community-dwelling
654 older persons. *JAMA* **279**, 1720–1726 (1998).
- 655 83. Y. Qian, *et al.*, fastMitoCalc: an ultra-fast program to estimate mitochondrial DNA copy
656 number from whole-genome sequences. *Bioinformatics* **33**, 1399–1401 (2017).
- 657 84. H. Li, *et al.*, The Sequence Alignment/Map format and SAMtools. *Bioinformatics* **25**, 2078–
658 2079 (2009).
- 659
660
661

662 **Figures**



663
664
665
666
667
668
669
670

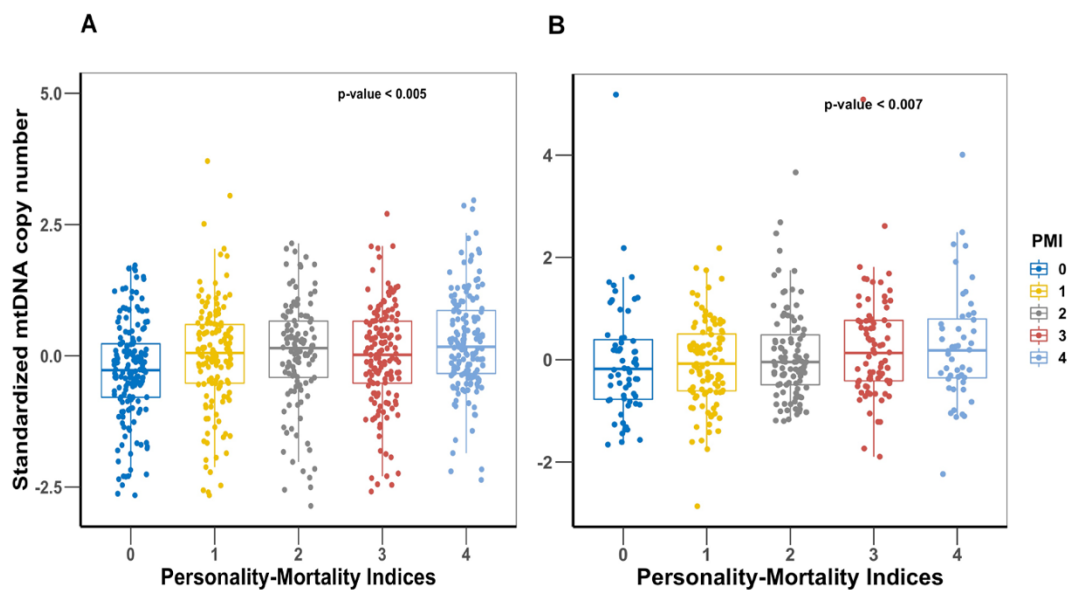
Figure 1. Association of mtDNAcn with age, and sex differences. Panel A is the BLSA cohort and panel B is the SardinIA cohort. Plots i. are regression of mtDNAcn residuals on age after adjusting for sex, sequence coverage, platelets count and white blood cell parameters. Plots ii. are comparisons of mtDNAcn residuals after adjusting for age, sequence coverage, platelets count and white blood cell parameters between males (M) and females (F), with t-test p-values shown.



671
672
673
674
675
676
677
678

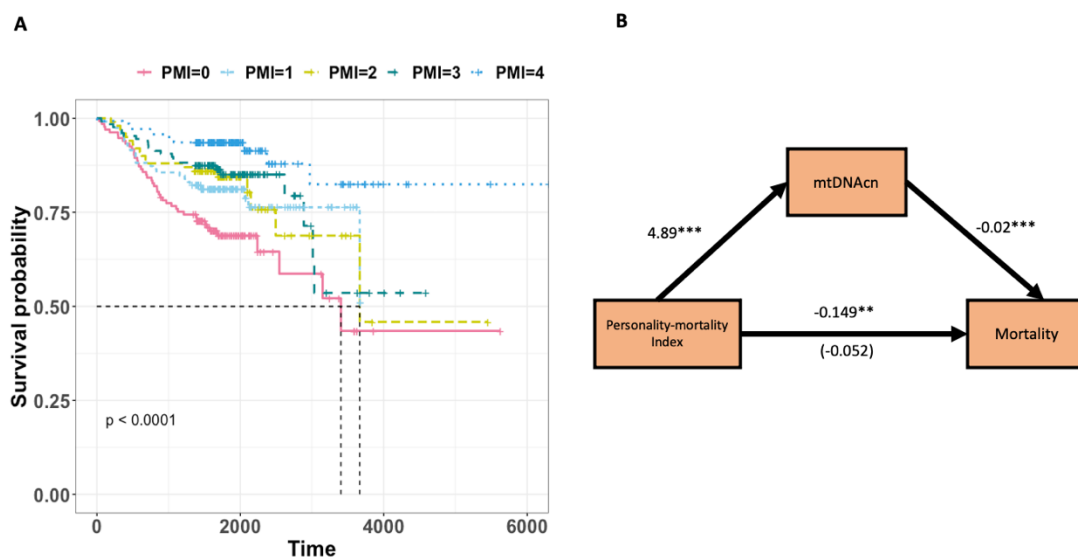
Figure 2. Association of NEO PI-R traits with mtDNAcn. Standardized/ Pooled effects with 95% CI of NEO PI-R traits after adjusting for the effects of age, sex, sequence coverage, platelets count and white blood cell parameters. Color coding is green for positive personality types, red for negative personality types and blue for the composite scores for the Big five NEO PI-R domains.

* Traits with FDR-corrected meta-analysis p-values ≤ 0.01



679
680
681
682
683
684
685
686
687

Figure 3. Comparison of mtDNAcn values amongst the five personality-mortality indices created from the *vulnerability* facet of Neuroticism, *activity* facet of Extraversion, *self-discipline* and *competence* facets of Conscientiousness. Panel A is BLSA cohort and panel B is Sardinia cohort. The personality-mortality index with the lowest mortality risk is 4 and the index with the highest mortality risk is index 0. P-values of linear regression of mtDNAcn and the personality-mortality index are shown on the plots.



688
689

690 **Figure 4.** The effect of Personality-mortality Index (PMI) on mortality is fully mediated via
691 mtDNAcn. Panel A is a Kaplan-Meier plot of time to death of BLSA participants in the five
692 Personality Mortality Indices. Panel B shows the regression coefficients between PMI (predictor),
693 mortality (outcome), and mtDNAcn (mediator) for the BLSA study. The effects of age and sex are
694 adjusted for in the models. The indirect effect is $(4.89) \times (-0.02) = -0.097$. We tested for the
695 significance of the indirect effect using 5000 bootstrap samples and it was statistically significant
696 (p value = 0.002). See Table 3 for more details.

697

698

699

700

701 **Table 1.** Demography of study cohorts.

	BLSA (n = 722)	SardiNIA (n = 587)
	n/%/Mean (Std. Deviation)	n/%/Mean (Std. Deviation)
Female	48.1%	62.2%
Age (years)	74.88 (10.86)	57.28 (13.24)
Education (years)	17.68 (2.50)	7.33 (3.96)
Big Five personality traits		
Neuroticism	45.35 (8.25)	55.46 (8.36)
Extraversion	50.60 (10.10)	46.80 (8.04)
Openness	52.59 (10.55)	44.35 (9.08)
Agreeableness	51.88 (9.51)	47.55 (8.55)
Conscientiousness	51.91 (9.31)	49.20 (8.79)
Measures of depressive symptoms		
CESD continuous	5.47 (5.66)	11.66 (7.79)
CESD binary cutoff 16	6.6%	23.8%
CESD binary cutoff 20	2.6%	13.9%

702

703

704

Table 2. Association of Neuroticism domain with mtDNAcn.

Domain and Facets	BLSA β (p value)	SardiNIA β (p value)	Pooled β (p value) *	I² % [p of Q]
Neuroticism	-0.106 (0.001)	-0.116 (0.01)	-0.11 (0.0015)	0% [0.87]
<i>Anxiety</i>	-0.082 (0.01)	-0.086 (0.08)	-0.08 (0.010)	0% [0.94]
<i>Angry hostility</i>	-0.078 (0.02)	-0.090 (0.054)	-0.08 (0.010)	0% [0.84]
<i>Depression</i>	-0.122 (0.0002)	-0.070 (0.1)	-0.11 (0.0015)	0% [0.37]
<i>Self-consciousness</i>	-0.060 (0.08)	-0.116 (0.01)	-0.08 (0.013)	0% [0.33]
<i>Impulsiveness</i>	-0.067 (0.046)	-0.023 (0.6)	-0.05 (0.099)	0% [0.45]
<i>Vulnerability</i>	-0.080 (0.02)	-0.097 (0.04)	-0.09 (0.0087)	0% [0.77]
Measures of depressive symptoms				
<i>CESD continuous</i>	-0.122 (0.0002)	-0.077 (0.13)	-0.11 (0.00008)	0% [0.46]
<i>CESD binary cutoff 16</i>	-0.260 (0.051)	-0.180 (0.13)	-0.22 (0.015)	0% [0.65]
<i>CESD binary cutoff 20</i>	-0.591 (0.005)	-0.343 (0.02)	-0.42 (0.0004)	0% [0.34]
PMI				
<i>Personality-mortality index</i>	0.092 (0.005)	0.124 (0.007)	0.10 (0.0001)	0% [0.57]

* Pooled effect p-values of Neuroticism domain and facets are FDR-corrected for 35 tests for 35 personality traits. Information for other personality domains and facets are provided in Supplementary Table 2.

Table 3. Testing the direct and indirect effects of Personality-mortality index and mtDNAcn on mortality.

	BLSA (n = 721)	SardiNIA (n = 395)
Total Effect	Estimate (p value)	Estimate (p value)
Personality-mortality index	-0.149 (0.001)	-0.022 (0.808)
Full effects		
Personality-mortality index	-0.052 (0.260)	-0.019 (0.895)
mtDNAcn	-0.020 (0.000)	-0.001 (0.966)
Indirect Effect	Estimate [Nonparametric Bootstrap 95% CI]	Estimate [Nonparametric Bootstrap 95% CI]
mtDNAcn	-0.097 [-0.143; -0.03]	-0.004 [-0.169; 0.189]

Supplementary Information for

Personality traits are consistently associated with blood mitochondrial DNA copy number estimated from genome sequences in two genetic cohort studies

Richard F. Opong¹, Antonio Terracciano^{2,3}, Martin Picard⁴, Yong Qian¹, Thomas J. Butler¹, Toshiko Tanaka¹, Ann Zenobia Moore¹, Eleanor M. Simonsick¹, Krista Opsahl-Ong¹, Christopher Coletta⁵, Angelina R. Sutin⁶, Myriam Gorospe⁵, Susan M. Resnick³, Francesco Cucca⁷, Sonja W. Scholz^{8,9}, Bryan J. Traynor^{9,10}, David Schlessinger⁵, Luigi Ferrucci^{1*}, Jun Ding^{1*}

* Luigi Ferrucci, Translational Gerontology Branch, National Institute on Aging, 251 Bayview Blvd, BRC, Baltimore, MD 21224, USA. **Email:** ferruccilu@grc.nia.nih.gov

* Jun Ding, Translational Gerontology Branch, National Institute on Aging, 251 Bayview Blvd, BRC, Baltimore, MD 21224, USA. **Email:** jun.ding@nih.gov

This Supplementary Information file includes:

Supplementary text
Figures S1 to S6
Tables S1 to S2

Supplementary Information Text

Personality, mtDNAcn, and mortality risk. We studied the relationship between mtDNAcn and personality facets known to be associated with mortality risk. Supplementary Figure 6 compares the mtDNAcn amongst four distinct personality types (see Methods for details) created from the vulnerability facet of Neuroticism and self-discipline facet of Conscientiousness, which were the two individual facets most strongly associated with mortality. When comparing the mtDNAcn between the four personality types in the BLSA cohort, we observed that the personality type with the perceived highest mortality risk (HVLD: high vulnerability low self-discipline) had the lowest mtDNAcn amongst the four personality types. The type with a perceived lowest mortality risk (LVHD: low vulnerability high self-discipline) had a mean mtDNAcn value that is 0.23 standard deviations higher than the highest mortality type (HVLD) (p -value <0.0065). As a comparison of effect size relative to the slope of mtDNAcn and age after adjusting for all covariates, this difference in mtDNAcn between personality types corresponds to the difference in mtDNAcn observed across 0.6 years (about seven months) of life. A similar mtDNAcn difference was observed in the SardiNIA cohort: the mean mtDNAcn difference between the two personality types was 0.21 standard deviations. This difference corresponds to the difference in mtDNAcn observed across 0.3 years (a little over three months) of life.

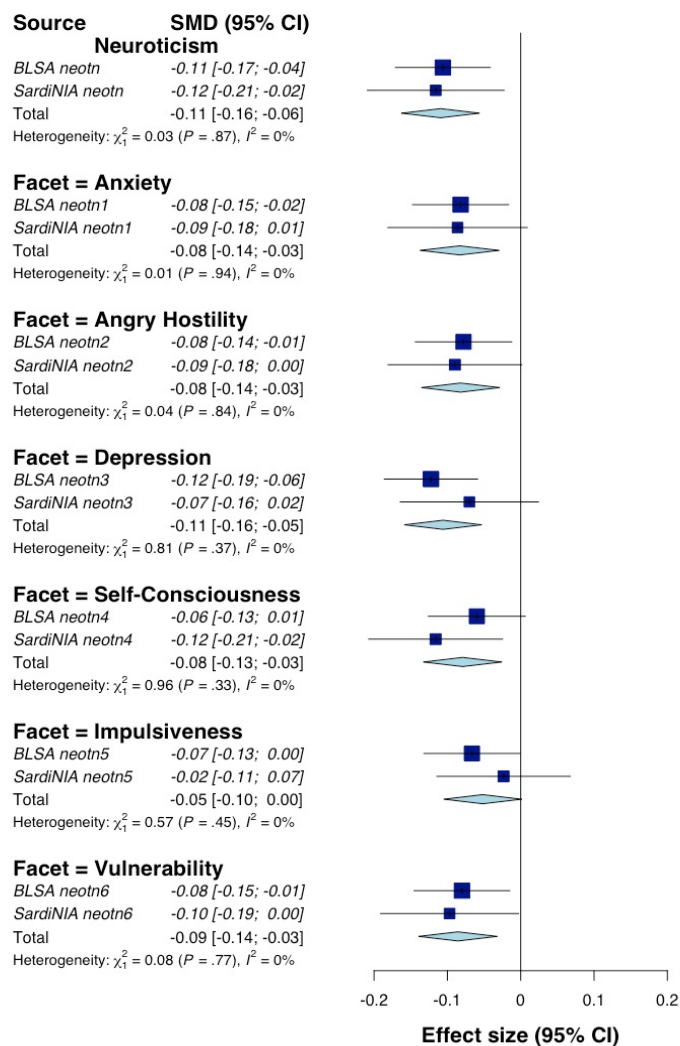


Fig. S1. Random effect meta-analysis of Neuroticism domain of NEO PI-R.

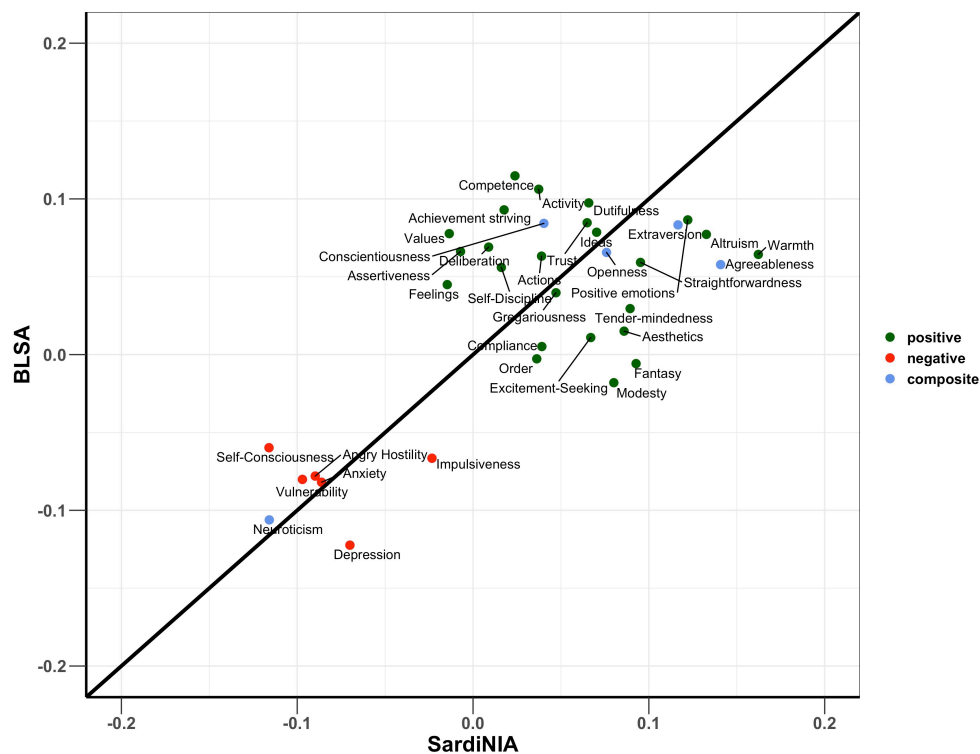


Fig. S2. Comparison of effect sizes of NEO PI-R traits between the two cohorts. Regression model adjusted for the effects of age, sex, sequence coverage and white blood cell parameters. Color coding is green for positive personality types, red for negative personality types and blue for the composite scores for the Big five NEO PI-R domains.

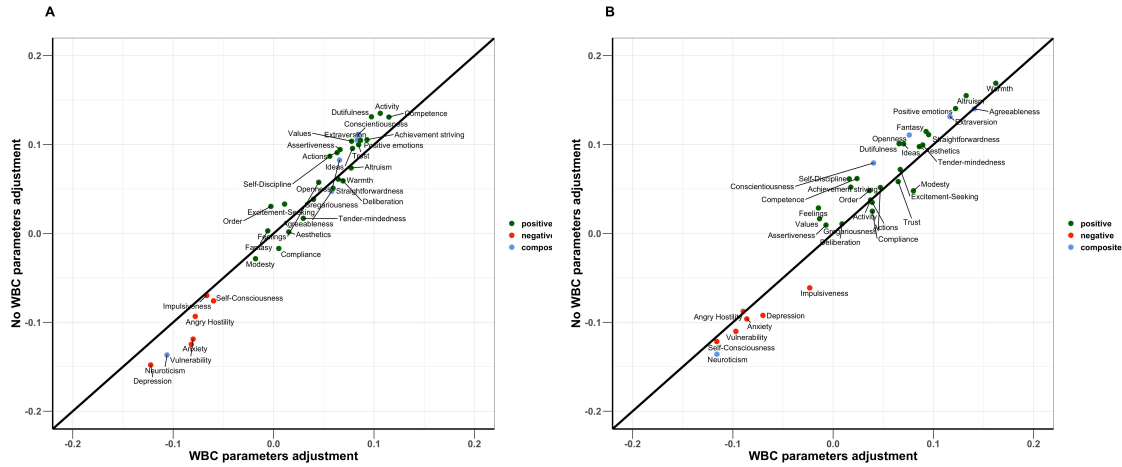


Fig. S3. Comparison of effect sizes of NEO PI-R traits between models with WBC parameters adjustments and with no adjustments. Panel A is BLSA cohort and panel B is SardiNIA cohort. Color coding is green for positive personality types, red for negative personality types and blue for the composite scores for the Big five NEO PI-R domains.

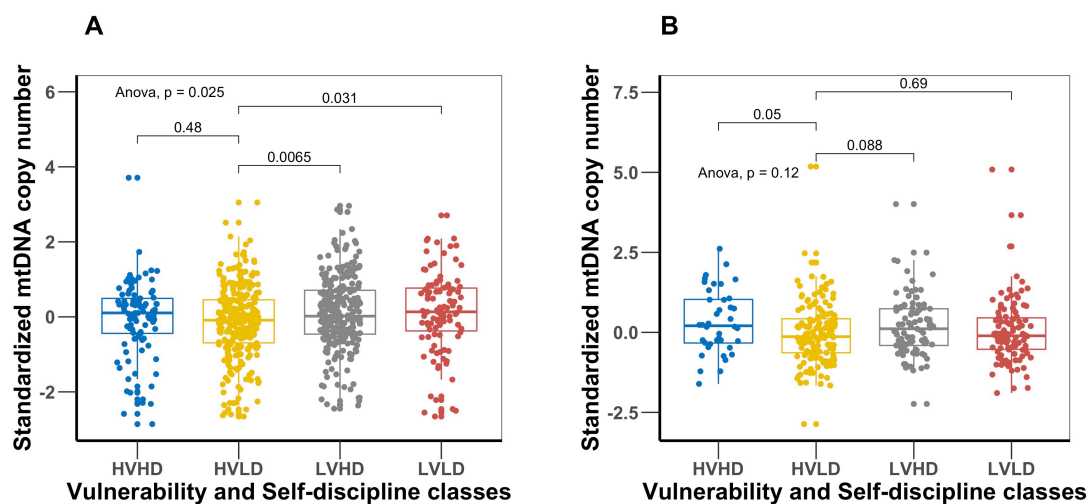


Fig. S4. Comparison of mtDNAcn values amongst the four distinct personality types created from the vulnerability facet of Neuroticism and self-discipline facet of Conscientiousness. Panel A is BLSA cohort and panel B is SardinIA cohort. The personality type with lowest mortality risk (LVHD: low vulnerability high self-discipline) has a significantly higher mean mtDNAcn value than the highest mortality risk type (HVLD: high vulnerability low self-discipline).

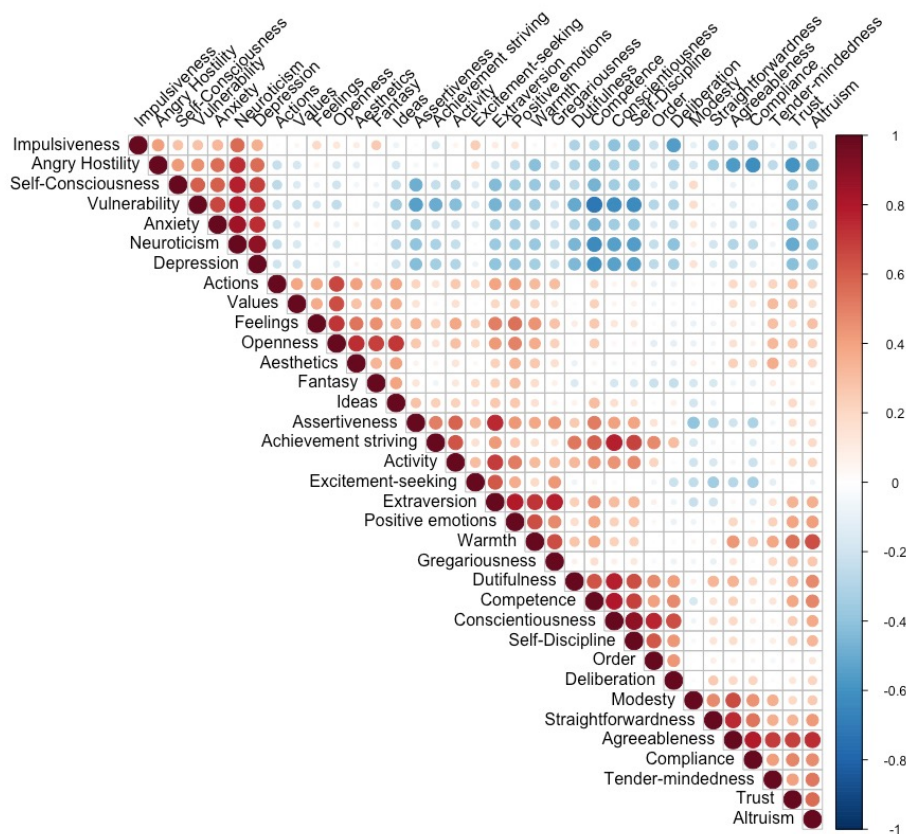


Fig. S5. Correlation between NEO PI-R traits. The color intensity and size of circle are indication of size and significance of correlation.

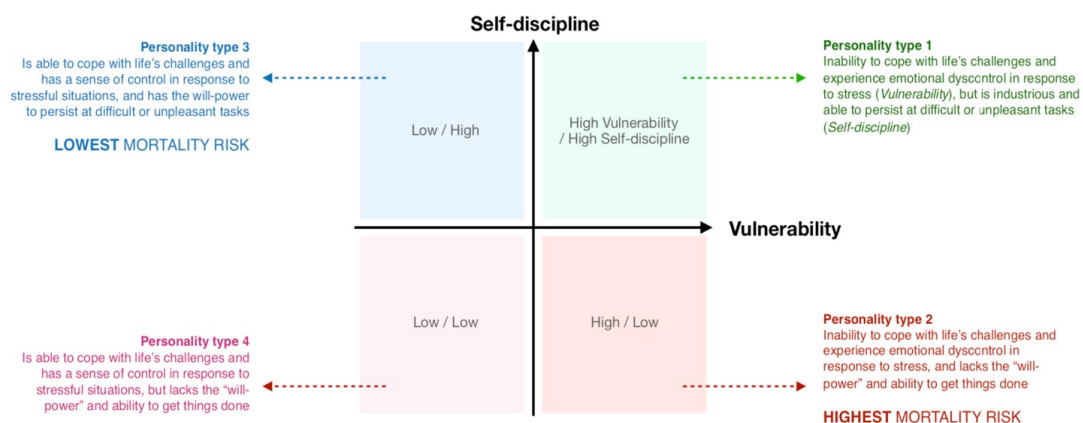


Fig. S6. Four distinct personality types created from the Vulnerability facet of Neuroticism and Self-discipline facet of Conscientiousness.

Table S1. Association of age, sex, and white blood cell parameters with mtDNAcn.

Trait	β (p-value) of Model adjusted			
	No adjustment		Age, sex, coverage, and WBC parameters	
	BLSA	SardiNIA	BLSA	SardiNIA
Age	-0.025 (2.85e-13)	-0.0093 (0.003)	-0.014 (2.52e-5)	-0.0065 (0.028)
Sex	-0.61 (8.14e-17)	-0.25 (0.004)	-0.36 (1.21e-6)	-0.13 (0.11)
Platelet count	0.004 (1.31e-7)	0.0007 (0.30)	0.003 (3.71e-6)	0.001 (0.063)
WBC count	-0.13 (2.35e-10)	-0.14 (1.37e-8)	-0.097 (1.48e-6)	-0.08 (0.002)
Lymphocytes percent	0.04 (5.5e-25)	0.042 (5.19e-16)	-0.033 (0.23)	0.073 (0.55)
Neutrophils percent	-0.041 (1.47e-28)	-0.041 (6.19e-18)	-0.063 (0.021)	0.036 (0.77)
Eosinophils percent	0.037 (0.031)	0.043 (0.06)	-0.045 (0.16)	0.076 (0.55)
Monocytes percent	0.022 (0.082)	0.062 (0.002)	-0.014 (0.57)	0.082 (0.52)
Basophils percent	0.44 (8.54e-5)	0.11 (0.38)	0.044 (0.69)	-0.076 (0.55)

Table S2. Association of NEO PI-R domains with mtDNAcn.

NEO PI-R Domains	BLSA β (p value)	SardiNIA β (p value)	Meta-analysis			
			Pooled β	Raw p value	FDR adj. p*	I ² % [p of Q]
Neuroticism	-0.106 (0.001)	-0.116 (0.01)	-0.11	0.00006	0.0015	0% [0.87]
<i>Anxiety</i>	-0.082 (0.01)	-0.086 (0.08)	-0.08	0.002	0.010	0% [0.94]
<i>Angry hostility</i>	-0.078 (0.02)	-0.090 (0.054)	-0.08	0.003	0.010	0% [0.84]
<i>Depression</i>	-0.122 (0.0002)	-0.070 (0.1)	-0.11	0.00008	0.0015	0% [0.37]
<i>Self-consciousness</i>	-0.060 (0.08)	-0.116 (0.01)	-0.08	0.004	0.013	0% [0.33]
<i>Impulsiveness</i>	-0.067 (0.046)	-0.023 (0.6)	-0.05	0.06	0.099	0% [0.45]
<i>Vulnerability</i>	-0.080 (0.02)	-0.097 (0.04)	-0.09	0.002	0.0087	0% [0.77]
Extraversion	0.083 (0.01)	0.117 (0.01)	0.09	0.0005	0.0036	0% [0.56]
<i>Warmth</i>	0.064 (0.06)	0.162 (0.0004)	0.11	0.03	0.051	66% [0.09]
<i>Gregariousness</i>	0.040 (0.2)	0.047 (0.3)	0.04	0.1	0.16	0% [0.90]
<i>Assertiveness</i>	0.066 (0.048)	-0.007 (0.9)	0.04	0.3	0.36	38% [0.21]
<i>Activity</i>	0.106 (0.002)	0.037 (0.4)	0.08	0.02	0.040	30% [0.23]
<i>Excitement seeking</i>	0.011 (0.7)	0.067 (0.2)	0.03	0.3	0.36	0% [0.35]
<i>Positive emotions</i>	0.087 (0.01)	0.122 (0.01)	0.10	0.0004	0.0036	0% [0.54]
Openness	0.066 (0.06)	0.076 (0.1)	0.07	0.01	0.032	0% [0.86]
<i>Fantasy</i>	-0.006 (0.9)	0.093 (0.051)	0.04	0.4	0.48	65% [0.09]
<i>Aesthetics</i>	0.015 (0.7)	0.086 (0.06)	0.04	0.2	0.27	34% [0.22]
<i>Feelings</i>	0.045 (0.2)	-0.015 (0.8)	0.02	0.4	0.47	2% [0.31]
<i>Actions</i>	0.063 (0.07)	0.039 (0.4)	0.05	0.051	0.094	0% [0.68]
<i>Ideas</i>	0.079 (0.02)	0.070 (0.1)	0.08	0.005	0.014	0% [0.88]
<i>Values</i>	0.078 (0.02)	-0.014 (0.8)	0.04	0.4	0.46	59% [0.12]
Agreeableness	0.058 (0.1)	0.141 (0.003)	0.09	0.02	0.047	49% [0.16]
<i>Trust</i>	0.085 (0.014)	0.065 (0.2)	0.08	0.005	0.014	0% [0.73]
<i>Straightforwardness</i>	0.059 (0.08)	0.095 (0.04)	0.07	0.009	0.024	0% [0.54]
<i>Altruism</i>	0.077 (0.02)	0.133 (0.005)	0.10	0.0005	0.0036	0% [0.34]
<i>Compliance</i>	0.005 (0.9)	0.039 (0.4)	0.02	0.5	0.57	0% [0.57]
<i>Modesty</i>	-0.018 (0.6)	0.080 (0.09)	0.03	0.6	0.62	65% [0.09]
<i>Tendermindedness</i>	0.030 (0.4)	0.089 (0.053)	0.05	0.07	0.12	7% [0.30]
Conscientiousness	0.084 (0.009)	0.040 (0.4)	0.07	0.008	0.022	0% [0.43]
<i>Competence</i>	0.115 (0.0004)	0.024 (0.6)	0.08	0.09	0.14	61% [0.11]
<i>Order</i>	-0.003 (0.9)	0.036 (0.4)	0.01	0.7	0.69	0% [0.49]
<i>Dutifulness</i>	0.097 (0.003)	0.066 (0.2)	0.09	0.001	0.0064	0% [0.57]
<i>Achievement striving</i>	0.093 (0.005)	0.018 (0.7)	0.06	0.09	0.14	42% [0.19]
<i>Self-discipline</i>	0.056 (0.08)	0.016 (0.7)	0.04	0.1	0.14	0% [0.48]
<i>Deliberation</i>	0.069 (0.03)	0.009 (0.8)	0.05	0.09	0.14	11% [0.29]
Personality & Mortality						
Mortality	BLSA Md (p value)	SardiNIA Md (p value)	Pooled Md	Raw p value	FDR adj. p	I² % [p of Q]
HVLD vs LVHD	0.234 (0.006)	0.209 (0.09)	0.226	0.0013	-	0% [0.87]

* Entries with FDR-corrected p-values ≤ 0.01 were labeled as bold.