

Multiomic prioritisation of risk genes for anorexia nervosa

Danielle M. Adams^{1,2}, William R. Reay^{1,2}, Murray J. Cairns^{1,2}

¹Centre for Complex Disease Neurobiology and Precision Medicine, School of Biomedical Sciences and Pharmacy, The University of Newcastle, Callaghan, NSW, Australia

²Precision Medicine Research Program, Hunter Medical Research Institute, Newcastle, NSW, Australia

To whom correspondence should be addressed: Professor Murray Cairns
(Murray.Cairns@newcastle.edu.au)

36 ABSTRACT

37 Anorexia nervosa is the leading cause of mortality among psychiatric disorders worldwide. Currently
38 no medications are approved for anorexia nervosa treatment, and thus, identification of risk factors
39 for this disorder is pivotal to improve patient outcomes. We used models of genetically imputed
40 expression and splicing from 17 tissues (two blood and fifteen brain regions), leveraging mRNA,
41 protein, and mRNA alternative splicing weights to identify genes, proteins, and transcripts,
42 respectively, associated with anorexia nervosa risk. We uncovered 134 genes for which genetically
43 predicted mRNA expression was associated with anorexia nervosa after multiple-testing correction,
44 as well as four proteins and 16 alternatively spliced transcripts. Conditional analysis of these
45 significantly associated genes on other proximal association signals resulted in 97 genes
46 independently associated with anorexia nervosa. Moreover, probabilistic finemapping further refined
47 these associations and prioritised putative causal genes. The gene *WDR6*, for which increased
48 genetically predicted mRNA expression was correlated with anorexia, was strongly supported by both
49 conditional analyses and finemapping. Pathway analysis of genes revealed by finemapping identified
50 regulation of *immune system process* (overlapping genes = *MST1*, *TREX1*, *PRKAR2A*, *PROS1*) as
51 statistically overrepresented. In summary, we leveraged multiomic datasets to genetically prioritise
52 novel risk genes for anorexia nervosa that warrant further exploration.

53

54 INTRODUCTION

55 Anorexia nervosa is a complex psychiatric disorder associated with alterations to satiety, activity, and
56 self-perception that results in severe mental distress and malnourishment (1). Anorexia nervosa
57 usually begins during adolescence with a long course of illness and one of the highest mortality rates
58 of any psychiatric disorder (2). Cognitive behavioural therapy and weight rehabilitation are the first-
59 line treatments for anorexia nervosa, as there are still no approved pharmacotherapies for the disorder
60 (3). Unravelling the biological complexity of anorexia onset and its clinical course will be key to
61 developing more effective interventions and improving clinical management.

62

63 Anorexia is a complex disorder influenced by genetic and environmental factors, with twin studies
64 estimating heritability at 56% (4), and common variants are now shown to account for around 20%
65 of this through genome-wide association studies (GWAS) (5). The most recent anorexia nervosa
66 GWAS uncovered eight independent genome-wide associated loci (6). While this presents an
67 opportunity to identify new drug targets, many of the causal variants in these loci will be confounded
68 by linkage disequilibrium (LD) and other interactions that obscure their effects on specific genes.

69

70 Gene-based aggregation methods can increase power to detect associations beyond genome-wide
71 significant loci and yield more biologically relevant information. For example, transcriptome wide
72 association studies (TWAS) achieve this by integrating mRNA expression data with GWAS
73 association data to detect genes for which genetically predicted expression is associated with the trait
74 (7). This approach can be extended to other quantitative functional data such as protein and
75 alternatively spliced mRNA isoform abundance. TWAS is capable of prioritising genes that may be
76 involved in the disorder and also assign them a direction of expression that is odds increasing. (7).
77 Despite these useful features TWAS alone is not a test of causality as the signal does not exclude the
78 possibility of co-regulation between genes or LD between variants used in expression models (8).
79 Interrogating TWAS results through approaches such as conditional analysis and probabilistic
80 finemapping can be utilised to overcome some of these limitations and identify genes from
81 association signals that could constitute a causal relationship (9, 10).

82

83 Anorexia TWAS data have previously been leveraged to reveal insights into the pathogenesis of the
84 disorder (11-13), however, these studies did not specifically prioritise genes that could be involved
85 in the disorder. In addition, extending TWAS to the use of protein and mRNA isoform weights has
86 not previously been investigated for anorexia nervosa and could further identify novel risk genes. In
87 this study, we utilise models of genetically predicted mRNA expression, protein expression, and
88 alternative mRNA isoform abundance to prioritise genes involved in anorexia nervosa. These
89 associations signals were further refined through conditional analysis and finemapping to reveal
90 several genes including WDR6 with plausible utility as targets for therapeutic intervention. Pathways
91 analysis also implicated regulation of *immune system process* with gene set functional analysis
92 including signal from *MST1*, *TREX1*, *PRKAR2A* and *PROS1*.

93

94 **METHODS**

95 **Overview of study**

96 We aimed to prioritise genes associated with anorexia nervosa and implicate potential mechanisms
97 related to expression and/or splicing. Firstly, we conducted a comprehensive brain and blood-based
98 transcriptome-wide association study (TWAS) (8, 14, 15). TWAS requires expression data which can
99 be imputed from independent SNP-mRNA expression weights from multivariate models of *cis*-acting
100 genetically regulated expression (GR_EX). TWAS then compares imputed expression with SNP-
101 anorexia effect sizes to test the association between predicted expression and the odds of anorexia.
102 Genes uncovered from this approach that survived multiple-testing correction were then further
103 probed to refine candidate causal genes through conditional analysis and probabilistic fine-mapping
104 (10, 14). Whilst mRNA expression is arguably the most well studied cellular readout, genes may

105 operate more specifically in the pathogenesis of anorexia nervosa through dysregulation of other
106 factors like protein expression and alternative splicing. As a result, we leveraged SNP weights, where
107 available, for protein expression and splicing to also perform a proteome-wide association study
108 (PWAS) and an alternative splicing based test (spliceWAS). Genes were prioritised based on
109 evidence from mRNA, protein, and alternative isoform expression and then subjected to further *in*
110 *silico* analyses related to overrepresentation in biological pathways, spatiotemporal expression, and
111 *in vivo* phenotypes. The anorexia nervosa GWAS utilised in this study was a meta-analysis European
112 ancestry cohort that totalled 16,992 cases and 55,525 controls – further details related to collection of
113 samples, phenotype acquisition, and GWAS approach are described in the original publication (6).

114

115 **Weights for genetically predicted mRNA, protein, and splicing**

116 Brain related SNP weights (multivariate GReX) for TWAS were derived from GTEx v7 and
117 PsychENCODE, whilst whole blood weights were also obtained from GTEx v7 (14, 16). The GTEx
118 v7 SNP weights comprise data from twelve different brain regions – with the sample sizes of the
119 cohorts utilised for GReX estimation as follows: amygdala (N=88), anterior cingulate cortex
120 (N=109), caudate (N=144), cerebellar hemisphere (N=125), cerebellum (N=154), cortex (N=136),
121 frontal cortex (N=136), hippocampus (N=111), hypothalamus (N=108), nucleus accumbens (N=130),
122 putamen (N=80) and substantia nigra (N=80). HapMap3 SNPs from the 1000 genomes phase 3
123 European reference panel were used as a linkage disequilibrium (LD) estimate, to correspond with
124 how the weights were calculated with those same HapMap3 SNPs. The TWAS using whole blood
125 weights utilised the same LD reference strategy, with 369 GTEx v7 participants in these models.
126 Frontal or cerebral cortex tissue from the larger PsychENCODE cohort was also utilised in terms of
127 SNP weights, with a sample size of 1695. As described in the original PsychENCODE publication,
128 gene-wise GReX were estimated for all imputed SNPs, not just the HapMap3 panel, and thus, we
129 utilised the full suite of the phase 3 1000 genomes European subset as the LD reference. There were
130 two tissues for which SNP weights related to protein expression were available – the dorsolateral
131 prefrontal cortex (DLPFC, N = 376) and plasma (N = 7213) (17, 18). It should be noted that the
132 plasma weights were derived from the European subset of the study cohort and the authors only used
133 the elastic net method to derive GReX. Analogous to the difference between the GTEx v7 and
134 PsychENCODE studies above, the DLPFC SNP weights were estimated using the HapMap3 panel,
135 and thus, we only used those SNPs as an LD reference. The plasma PWAS utilised the full reference
136 panel. Finally, the splicing related weights were derived from the DLPFC samples from the Common
137 Mind Consortium (N=452) which utilised the HapMap3 restricted 1000 genomes panel (19).

138

139

140 **Implementation of the FUSION pipeline**

141 We conducted TWAS/PWAS/spliceWAS using the FUSION package (14). Specifically, the
142 *FUSION.assoc_test.R* script was utilised, with the best performing GReX model selected from five-
143 fold cross-validation (R^2) and the SNP weight set selected by FUSION for calculating the TWAS Z
144 score. In accordance with usual practice for the FUSION approach, only genes/transcripts with
145 significantly non-zero *cis*-acting heritability ($cis-h^2$) are included. Prior to analysis, summary
146 statistics were also munged whereby SNPs were retained with an imputation INFO > 0.9, as well as
147 removing indels, strand ambiguous SNPs and SNPs with MAF < 0.01. We corrected for the number
148 of non-missing SNP weight sets using the Bonferroni [family-wise error rate (FWER) based] and
149 Benjamini-Hochberg [false discovery rate (FDR) based] approaches for the TWAS, PWAS, and
150 spliceWAS independently.

151

152 **Conditional analyses and probabilistic fine-mapping**

153 We applied conditional analysis via the FUSION framework (*FUSION.post_process.R*) to the regions
154 of significant genes after correction to investigate the proportion of implicated genes in any given
155 locus that are independently associated. Specifically, jointly significant genes retain their significance
156 after jointly estimating association for all models within a 500,000 base pair region of a significant
157 gene. Marginally associated genes, which are not jointly significant, likely arise due to factors such
158 as genes for which predicted expression was correlated.

159

160 Moreover, we applied probabilistic finemapping to prioritise candidate causal genes from any locus
161 in the anorexia GWAS summary statistics with at least a suggestively significant SNP ($P < 1 \times 10^{-5}$)
162 using the FOCUS method (10). The default prior ($p = 1 \times 10^{-3}$) and prior variance ($n\sigma^2 = 40$) were
163 utilised to approximate Bayes' factors such that the posterior inclusion probability (PIP) of each gene
164 being a member of a credible set with 90% probability of containing the causal gene could be derived.
165 Finemapping was performed with default tissue prioritisation in addition to the prioritisation of brain
166 tissue. In the TWAS, there were two reference panels utilised for fine-mapping – for genes uncovered
167 from a GTEx v7 tissue, we utilised the default combined FOCUS SNP weight set which collated
168 GTEx v7 tissues, DLPFC (CommonMind), blood (YFS, NTR), and adipose (METSIM) SNP weight
169 sets (<https://www.dropbox.com/s/ep3dzlqnp7p8e5j/focus.db?dl=0>), with genes discovered using the
170 PsychENCODE weights fine-mapped specifically using that panel given the different LD parameters
171 and its more complete set of genes with *cis*-heritable models in that one tissue. The multi-tissue fine-
172 mapping panel contains several other non-brain tissues, and thus, some GReX models that would not
173 have been available in brain and blood. We sought to balance maximising the number of models
174 available for finemapping, whilst acknowledging that some of the tissues in this panel are less likely

175 to be disease relevant. As FOCUS allows the null mode that the causal feature is not typed to be
176 predicted as a possible member of the credible set, we excluded any genes for which that occurred.
177 The credible set was defined by summing normalised *PIP* such that ρ was exceeded, sorting the genes,
178 and then including those genes until at least ρ of the normalised-posterior mass is explained, as
179 described in more detail elsewhere (10, 20). As an exploratory analysis, we also applied finemapping
180 to the PWAS and spliceWAS results, although the limited number of SNP weights available for
181 protein and alternative splicing means that the probability of a causal gene for any region not being
182 present is higher.

183

184 **Investigation of prioritised anorexia nervosa associated genes**

185 We further investigated two sets of prioritised genes *in silico*: 1) conditionally independent
186 associations (TWAS/PWAS/spliceWAS) from marginally significant signals (FDR < 0.05) that are
187 at least nominally jointly significant ($P < 0.05$), and 2) genes in the fine-mapped 90% credible set
188 with $PIP > 0.4$ and the absence of the null model in the credible set. Firstly, we considered biological
189 pathways and other ontological sets for which these two sets of genes could separately be
190 overrepresented via the g:Profiler framework and the Benjamini-Hochberg method for multiple-
191 testing correction (21). Moreover, the GENE2FUNC module of FUMA (functional mapping and
192 annotation of genetic associations) was utilised to test for tissue specific expression amongst different
193 tissues (GTEx v8: 54 tissue types) and temporal stages of brain development (BrainSpan: 29 different
194 ages of brain samples) (22). Interactions between proteins may indicate shared mechanisms of action,
195 and thus, protein-protein interactions for these gene-sets were estimated using STRING (23). Protein-
196 protein interactions were obtained from experiment and database sources (interaction score > 0.7)
197 using a 5% false discovery rate. STRING estimates the interactions between proteins within a set, in
198 addition to quantifying if the observed number of interactions is greater than expected given the size
199 of the gene-set.

200

201 **RESULTS:**

202 **Novel anorexia risk genes uncovered through genetically predicted expression or splicing**

203 Firstly, a transcriptome-wide association study was performed using models of genetically predicted
204 mRNA expression across twelve brain regions from GTEx, cortical samples from the PsychENCODE
205 consortium, and whole blood GTEx samples. This was the most well-powered approach as there were
206 57,596 mRNA models available to test, with the number of unique genes totalling 11,242, 12,183,
207 and 5,915, for GTEx brain, PsychENCODE brain, and GTEx whole blood samples, respectively
208 (*Supplementary Table 1*). The most significant association signals were found in a gene dense region
209 on chromosome 3 (*Figure 1*), in line with expectation given the significant GWAS signal for anorexia

210 nervosa (chromosome 3: 47,588,253- 51,368,253) overlaps this cluster of significant genes.
211 Upregulation of the gene encoding WD Repeat Domain 6 (*WDR6*) was the top hit in this region
212 associated with increased odds of anorexia nervosa – $Z_{\text{TWAS}} = 7.44$, $P = 9.96 \times 10^{-14}$ (GTEx cortex).
213 This gene also surpassed Bonferroni correction in several other tissues, including the larger sample
214 size PsychENCODE cortical samples, whole blood, nucleus accumbens, and caudate basal ganglia.
215 The WD repeat protein family effects signal transduction (24), whilst *WDR6* is thought to influence
216 cell cycle arrest (25). Several other proximal genes to *WDR6* also survived Bonferroni correction in
217 multiple tissues, such as, *CCDC71*, *NCKIPSD*, and *MST1R*. O-6-Methylguanine-DNA
218 Methyltransferase (*MGMT*) was the most significant gene outside of chromosome 3 ($Z_{\text{TWAS}} = -5.33$,
219 $P = 9.88 \times 10^{-8}$ – caudate basal ganglia), followed by *CDK11B* on chromosome 1 and the long non-
220 coding RNA (lncRNA) *LINC00324* on chromosome 17. Previous analysis, differing in methodology
221 and samples found an association between *SUOX* expression and anorexia which was not replicated
222 in the present study (12, 26).

223

224 We then sought to extend the power for gene discovery, as well as supporting signals uncovered by
225 the TWAS, through integration of models of genetically regulated protein expression (PWAS) and
226 alternative splicing (spliceWAS, *Supplementary Tables 2, 3*). There were 2,300 protein expression
227 SNP weight sets in total available to test across the DLPFC and blood cohorts in which the imputed
228 expression models were trained. Two proteins survived Bonferroni correction in the PWAS, and we
229 uncovered four signals that were significant after applying a less stringent FDR based cut-off (FDR
230 < 0.05). The strongest protein association, MHC class I chain-related gene B (*MICB*) ($Z_{\text{PWAS}} = 4.53$,
231 $P = 5.75 \times 10^{-6}$, plasma) was correlated with increased odds risk of anorexia, however, due to the
232 extensive LD of the MHC region it is difficult to apply approaches such as PWAS, and thus, this
233 signal should be treated cautiously. The densely associated region on chromosome 3 harboured the
234 next most significant protein expression signal, with decreased predicted expression of Glutathione
235 peroxidase 1 (*GPX1*) associated with anorexia in the DLPFC ($Z_{\text{PWAS}} = -4.41$), mirroring its negative
236 TWAS test statistic in the hypothalamus for mRNA expression ($Z_{\text{TWAS}} = -4.51$). Thereafter, the
237 remaining two proteins surviving correction were each on different chromosomes (*FGF23*, chr 12
238 and *CTNND1*, chr 11). The spliceWAS yielded fourteen transcripts that survived Bonferroni
239 correction from the 7,708 transcripts tested relating to 3,291 total genes. The mean number of
240 alternatively spliced transcripts per gene that were significantly *cis*-heritable and available for
241 analyses was 2.3. Once more the anorexia nervosa association dense region on chromosome 3
242 implicated already by GWAS, TWAS, and PWAS, yielded the most significant signal, with seven
243 transcripts of *ARIH2* significantly associated. Interestingly, there were mixed directions of effect
244 amongst the different isoforms as increased predicted abundance of three splice variants were

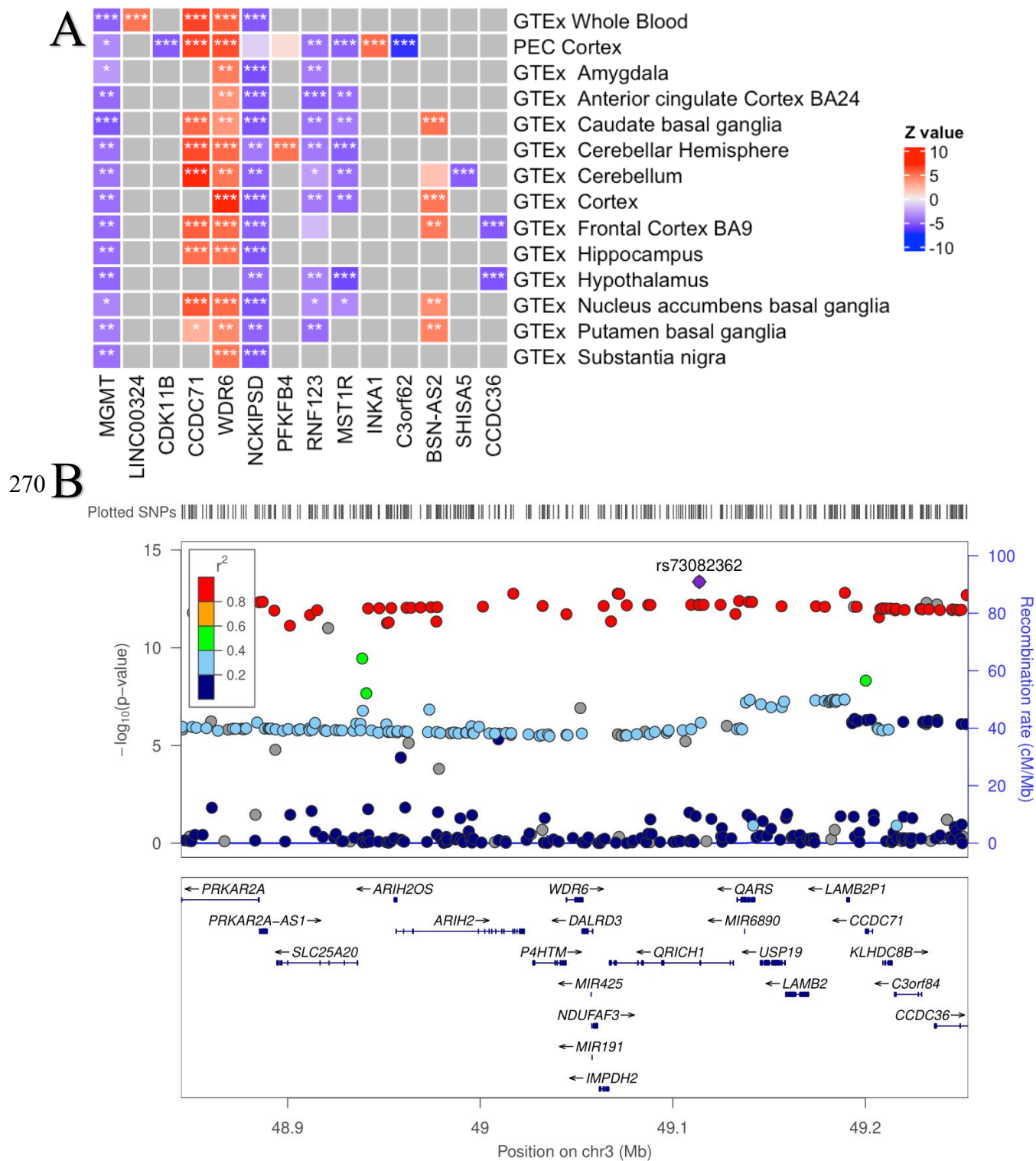
245 associated with anorexia, whilst the converse was true for the remaining four. None of these isoforms
246 correspond to the canonical transcript; chr3:48918821:48967151 (27). In general, the *ARIH2* gene is
247 postulated to regulate ubiquitination (28, 29) and post-transcriptionally modifies *NLRP3* to reduce
248 inflammatory activity (30), however, the functional specificity of particular splicing isoforms is less
249 well characterised. This gene was also not significant in the TWAS, despite having a well-powered
250 model of imputed expression in the PsychENCODE cortical samples. The only remaining transcripts
251 surviving Bonferroni correction not proximally located to the chromosome 3 region were two
252 isoforms of GPR75-ASB3 Readthrough (*GPR75-ASB3*), which are isoforms from which a naturally
253 occurring readthrough occurs between two genes (*GPR75* and *ASB3*), and thus, features exons from
254 both genes. Decreased predicted abundance of these two isoforms was associated with anorexia.

255

256 We then intersected the TWAS, PWAS, and spliceWAS results, finding that of the genes modelled,
257 or a transcript thereof, 631 were available with a significantly *cis*-heritable model for all three
258 modalities (mRNA, protein, alternative splicing), no genes significantly (Benjamini-Hochberg)
259 overlapped all three methods. From the 134 Benjamini-Hochberg significant TWAS genes, four of
260 these were nominally significant ($P < 0.05$) for protein expression, while 13 were nominally
261 significant for isoform expression. Two of the Four Benjamini-Hochberg significant PWAS genes
262 were nominally significant for TWAS without any isoform overlap. Of the 16 Benjamini-Hochberg
263 significantly associated gene isoforms from the spliceWAS, 12 had nominally significant mRNA
264 expression models, while only one had a nominally significant protein expression model. The *Z* scores
265 from models with available data across all three modalities exhibited low correlation (mRNA-protein:
266 $r = 0.07$ [$P=1.3 \times 10^{-11}$], protein-isoform: $r = -0.008$ [$P=0.49$], mRNA-isoform: $r = 0.02$ [$P=0.04$]),
267 however, the correlation between mRNA and protein expression was statistically significant.

268

269



271
 272 **Figure 1: TWAS associations and region plot of the densely associated anorexia signal on chromosome 3.** A: Heatmap of genes with
 273 at least one Bonferroni significant eQTL tissue associated with anorexia nervosa. Red indicates positive z scores, blue indicates
 274 negative z scores (legend). Columns indicates genes, rows indicate tissue models. * Indicates nominally significant genes, ** indicates
 275 Benjamini-Hochberg significant association, *** indicates Bonferroni significant association. Grey squares indicate that a
 276 significantly cis-heritable model of imputed expression data was unavailable in that tissue. B: Relative anorexia nervosa gene and
 277 SNP locations and significance. Points in the top panel indicate SNPs, legend indicates r^2 , left side y-axis indicates the negative log
 278 transformed p-value of SNPs, right side y-axis indicates the recombination rate (cM/Mb). The bottom panel indicates the location of
 279 genes relative to the top panel SNPs. Plot generated using ZoomLocus (31) with 200kb flanking size. The SNP with the most significant
 280 p-value in this region: rs73082362 is highlighted.

281
 282
 283

284 **Conditional analyses and probabilistic fine-mapping further refine anorexia association signals**

285 Co-regulation and LD between genes can confound TWAS signals and lead to spurious associations
286 for non-causal genes. Conditional analysis and finemapping was performed to distinguish genes with
287 increased evidence of exerting an independent causal effect on anorexia nervosa. Conditional analysis
288 (14) estimates the residual independent association of TWAS signals after controlling for the
289 predicted expression of nearby significant genes. Benjamini-Hochberg significant TWAS genes were
290 subjected to conditional analysis to predict which genes accounted for the localised signal. From 313
291 significant TWAS signals, 97 genes had a conditionally independent association ($P_{\text{Joint}} < 0.05$) with
292 anorexia nervosa as indicated by their nominally significant joint P value (*Supplementary table 4*).
293 The gene most significantly associated with anorexia, *WDR6* ($Z_{\text{conditional-TWAS}}=7.4$, $P=1 \times 10^{-13}$, Cortex)
294 maintains an independent association after conditioning on the 77 other TWAS significant gene
295 models (21 genes) from chromosome 3, three of which are also conditionally independent (*CTNNB1*,
296 *GOLIM4*, *STX19*).

297
298 Finemapping (10) is a Bayesian statistical method designed to isolate subsets of genes more likely to
299 contain causal genes. We applied this approach to all suggestively significant regions in the anorexia
300 GWAS ($P_{\text{GWAS}} < 1 \times 10^{-5}$) to derive 90% credible sets. Credible sets were removed if they contained
301 the null model that is included by FOCUS to account for missing causal mechanisms like genes
302 without a suitable GReX model. Across either mRNA, protein or mRNA alternative splicing weights
303 there were 116 genes that were prioritised in a credible set (*Supplementary table 5*). Of these eight
304 genes (*Table 1*) had moderate ($PIP > 0.4$) evidence of a causal effect on anorexia, while five genes
305 demonstrated strong evidence ($PIP > 0.8$). The strongest evidence of a causal relationship was
306 observed for Neurexophilin And PC-Esterase Domain Family Member 1 (*NXPE1*) ($PIP=1$, testis).
307 Surprisingly, *NXPE1* was indicated for the testis (GTEx), whilst it was also highly expressed in the
308 colon (32). The other four genes with strong evidence of a potential causal effect on anorexia were
309 as follows: *WDR6* ($PIP=0.997$, DLPPFC), *PRKAR2A* ($PIP=0.814$, GTEx artery tibial), *PROS1* ($PIP=$
310 0.895 , GTEx cortex) and the non-coding RNA *RP13-238F13.5* ($PIP=0.971$, GTEx spinal cord
311 cervical c-1). *WDR6* and *MST1* were the only genes found to be both conditionally independent with
312 at least moderate finemap evidence of a causal relationship (*Table 1*). Macrophage Stimulating 1
313 (*MST1*) mediates cell division and apoptosis (33, 34) and is predicted to increase risk of anorexia
314 ($Z_{\text{TWAS}} = 4.85$, $P=1.2 \times 10^{-6}$, GTEx Hypothalamus). However, finemapping of the *MST1* PWAS
315 indicates evidence of a protective relationship with anorexia ($Z_{\text{finemap}} = -4.63$, $PIP=0.457$, blood
316 plasma protein). This discordant direction between mRNA and protein requires further investigation
317 to refine its biological salience. The power of finemapping to identify causal genes increases when
318 more GReX expression models are included, and thus, tissues were used for finemapping that were

319 not subjected to the marginal TWAS, since removing these would decrease finemapping power.
 320 There are three genes (*RP13-28F13.5*, *NXPE1* and *PRKAR2A*) without TWAS blood and brain
 321 associations. One of these; *PRKAR2A* exists in a credible set with four other genes (the same set as
 322 the fine-mapped *TREX1*), three of which are associated within brain regions. The DGIdb drug bank
 323 was queried to determine if any FDA approved pharmaceutical interventions exist which target these
 324 anorexia nervosa associated genes. The DGIdb drug bank indicated six drugs which target *PROSI*
 325 (35) a fine-mapped gene for which increased genetically predicted expression was associated with
 326 increased anorexia nervosa risk. One of these drugs, menadione is indicated to activate *PROSI* (36,
 327 37), however, as a risk increasing gene it would need to be inhibited to potentially treat anorexia
 328 nervosa. There are currently no approved drugs for the other fine-mapped genes (*MST1*, *WDR6*,
 329 *RP13-238F13.5*, *NXPE1*, *C3orf62*, *TREX1* and *PRKAR2A*) which could be an avenue for future
 330 research.

331
 332
 333
 334
 335
 336
 337
 338

Table 1: Finemap associations. Finemapped genes with moderate or strong evidence of a causal effect on anorexia ($PIP > 0.4$). Tissue indicates which tissue the expression weights were derived from, Ref name indicates the group/consortium responsible for eQTL generation, $Z_{finemap}$ indicates the estimated Z score association, PIP indicates the posterior inclusion probability and region indicates the GRCh37 genomic region the credible set was derived from. Credible set size indicates the number of genes in the credible set when prioritising brain or any tissue. All genes are in the credible set. $Z_{TWAS}(P)$ -tissue and $Z_{PWAS}(P)$ -tissue indicates the TWAS and PWAS Z score and P value associated with the most significant tissue for each association. No spliceWAS associations are available for these eight genes.

Molecular name	tissue	Ref name	$Z_{finemap}$	PIP	$Z_{TWAS}(P)$ -tissue	$Z_{PWAS}(P)$ -tissue	region	Credible set size (brain/default)
<i>MST1</i>	Blood plasma protein	gtex	-4.63	0.457	4.85 (1.2×10^{-6}) - hypothalamus - Conditionally independent	-3.4787 (5.04×10^{-4}) - plasma	3:49317941-3:51830833	NA/1
<i>WDR6</i>	brain dorsolateral prefrontal cortex	pec	6.46	0.997	7.44 (9.96×10^{-14}) - cortex - Conditionally independent	NA	3:49317338-3:51828635	1/1
<i>RP13-238F13.5</i>	brain spinal cord cervical c-1	gtex	5.01	0.97	NA	NA	10:125919795-10:127999424	1/1
<i>NXPE1</i>	testis	gtex	6.02	1	NA	NA	11:114833710-11:116383064	1/1
<i>C3orf62</i>	brain dorsolateral prefrontal cortex	cmc	-7.19	0.423	-7.13 (9.71×10^{-13}) - cortex	NA	3:47777774-3:49313978	4/384
<i>TREX1</i>	brain cortex	gtex	-6.95	0.449	-3.2575 (1.1×10^{-3}) - Nucleus accumbens basal ganglia	-2.1349 (0.032) - DLPFC	3:49317338-3:51815687	5/476
<i>PROSI</i>	brain cortex	gtex	5.21	0.895	0.07 (0.94) - whole blood	NA	3:94256654-3:95306175	2/3
<i>PRKAR2A</i>	artery tibial	gtex	-6.95	0.814	NA	NA	3:49317338-3:51815687	5/476

339
 340

341 **Functional interrogation of prioritised anorexia nervosa risk genes suggests a role for immune**
342 **function**

343 Pathway analysis was performed on the conditionally independent (N = 97) and fine-mapped credible
344 set (N = 8) genes using g:Profiler (Ensembl 103, Ensembl Genomes 50). We focused on pathways
345 that were enriched for either of these input sets of genes that survived FDR correction (FDR < 0.05)
346 and had at least three intersecting genes with the input list. Firstly, the conditionally independent
347 genes were overrepresented amongst pathways related to the *presynaptic active zone* (overlapping
348 genes = *STX19, CTNND1, CTBP2, CTNNB1*) (Supplementary Table 6). While the genes prioritised
349 by fine-mapping were overrepresented in the *regulation of immune system process* (overlapping
350 genes = *MST1, TREX1, PRKAR2A, PROS1*) (Supplementary Table 7).

351
352 To determine the potential functional mechanisms through which finemapped and conditionally
353 independent genes may affect anorexia nervosa, we investigated tissue specificity, temporal
354 expression and protein interactions. Both the predicted conditionally independent genes and the
355 finemapped credible genes with moderate evidence of a causal effect on anorexia were investigated
356 with STRING and FUMA (Supplementary figure 1-4). STRING (Supplementary figure 5, 6)
357 indicated that fewer protein-protein interactions occur within the set of finemapped genes (STRING-
358 $P=1$) and conditionally independent genes (STRING- $P=0.4$) than expected. This may indicate that
359 there are no biological mechanism linking the finemapped genes, however these results may also be
360 explained by incomplete availability of data. Considering anorexia nervosa onset predominately
361 occurs during adolescence it would be expected that genes that impact anorexia aetiology may be
362 differentially expressed during this period, however FUMA GENE2FUNC did not indicate any
363 consistent increased or decreased differential expression during adolescence. Similarly, there was no
364 systemic patterns of tissue expression across these sets of genes, however it is not a prerequisite for
365 genes to exhibit differential expression in the regions with which they exert an effect. These methods
366 are limited by the accuracy and depth of gene functional data which may prevent the analysis of
367 pathways or genes that are poorly characterised.

368
369 **DISCUSSION**

370 Anorexia nervosa is a complex disorder characterised by weight loss, altered self-perception and other
371 comorbidities such as anxiety. To advance new treatments we need to increase our understanding of
372 the pathogenic mechanisms that underlie the onset and progression of the disorder, as cognitive
373 behavioural therapy is the only approved treatment (3). In the current study we integrated genome
374 wide association signal for anorexia nervosa with genetically regulated gene expression to identify
375 potential drugs targets for the disorder.

376

377 Triangulation of evidence across statistical association methods enhances the confidence in the
378 disorder relevance of a gene. Upregulation of WD Repeat Domain 6 (*WDR6*) was supported in our
379 study as exhibiting a plausible causal relationship with anorexia nervosa across all methods with
380 available data (TWAS, conditional analysis, fine-mapping). The region surrounding *WDR6* is dense
381 with genes also predicted to have an association with anorexia nervosa but due to linkage
382 disequilibrium, refining causal genes is challenging. A conditionally significant TWAS signal along
383 with the finemapping evidence suggests that *WDR6* is a causal gene at this locus, however, further
384 analyses such as SNP based finemapping and *in silico* prediction of variants in this locus are
385 warranted in future to confirm this finding given genetic influence on disease may not directly be
386 mediated by *cis*-acting expression. *WDR6* is a conserved repeat region expression ubiquitously during
387 human development that may function as a restriction factor to inhibit virus replication and a protein
388 complex assembly platform (38-40). In rats *WDR6* physically interacts with insulin receptor substrate
389 4 to modulate insulin signalling in the hypothalamic arcuate nucleus (41). Both *WDR6* (42) and
390 circulating insulin (43) inhibit autophagy. While incidence of apoptosis and autophagy particularly
391 in the liver are increased in anorexia patients (44, 45). Additionally, fasting insulin level has evidence
392 to suggest it exerts a protective effect against anorexia nervosa risk (46) which may relate to the
393 predicted effect of *WDR6* on anorexia nervosa.

394

395 Accumulating observational evidence suggests a relationship may exist between immune function
396 and anorexia nervosa (47, 48). Starvation can lead to inflammation; however, there remains
397 differences between the presentation of immune dysregulation during malnutrition and anorexia
398 nervosa, suggesting an underlying relationship may exist beyond the pathology associated with
399 malnutrition (49). Interestingly, four of the eight fine-mapped genes including *MST1*, *TREX1*,
400 *PRKAR2A*, and *PROS1* were a member in the *immune system processes* gene-set, which was a
401 statistically significant overrepresentation. This is supportive of previous observations suggesting that
402 immune system dysregulation may contribute to anorexia nervosa onset and maintenance (49).
403 Furthermore, the strongest protein PWAS signal MICB, which implicates the MHC region, and the
404 lead mRNA isoform gene *ARIH2* were also present within the immune system processes pathway.
405 However, the overrepresentation in this instance was not significant like the finemapped genes. The
406 identification of an MHC protein (MICB) in the PWAS necessitates further analysis of the MHC
407 region in anorexia nervosa, such as the role of specific human leukocyte antigen (HLA) types.
408 Conditionally independent or finemapped genes from this pathway; *MST1* (50, 51), *PRKAR2A* (52)
409 and *ARIH2* (30) have been linked to inflammatory processes in previous studies. Anorexia nervosa
410 is observationally associated with a pro-inflammatory state which includes increased levels of

411 cytokines such as tumour necrosis factor and interleukins 1 and 6, in addition to T cell proliferation
412 (49, 53, 54). Although these studies are likely confounded by factors like reverse causality that
413 complicates their interpretation. Recent genetic evidence from our group demonstrates evidence of a
414 protective effect of C-reactive protein (CRP) on anorexia nervosa, which may relate to infection
415 susceptibility given that CRP is not simply a marker of inflammation, as is often characterised, and
416 directly participates in processes like phagocytosis (48, 55). Our data suggests that genes with
417 immune related functions are involved in the pathogenesis of anorexia nervosa. Further work is now
418 needed to refine whether the immune system is a plausible target for anorexia nervosa that could lead
419 to new treatments-

420

421 Whilst TWAS, SpliceWAS and PWAS provide a mechanistic framework for the associative evidence
422 between genes and disease, there is also significant confounding by co-regulation derived correlation.
423 TWAS associations can also be confounded by linkage disequilibrium which can bias SNP effect
424 estimates for both expression weights and disease associations (7). The performance of TWAS is also
425 limited to some extent by the sample size of GReX data from different tissues and that some genes
426 are not expressed and are therefore “missing” from a relevant gene set. Incompleteness of gene
427 expression data diminishes the effectiveness of finemapping, null models within the credible set could
428 be better linked to potentially causal genes which would allow for the identification of other causal
429 genes. Analyses performed in exclusively European ancestries will not have the benefit of variant
430 diversity than can support the finemapping and when larger and more diverse non-European samples
431 and trans-ancestry GWAS become available, this is likely to improve TWAS and fine mapping
432 studies. Another limitation in the existing anorexia nervosa GWAS has been the predominately
433 female composition which restricts the identification of sex specific causal risk/protective factors.
434 Increased male case acquisition and diagnosis for future GWAS is therefore likely to improve risk
435 characterisation across demographics.

436

437 In conclusion, our study highlighted novel genes, proteins and mRNA isoforms predicted to effect
438 anorexia risk. In particular, we provide strong evidence suggesting that *WDR6* and several genes
439 related to immune system function contribute to the pathogenesis of the disorder. Further research is
440 warranted to establish these mechanisms and determine their potential as targets for treatment.

441

442 **DATA AVAILABILITY**

443 All data in this study are publicly available. GWAS summary statistics for anorexia nervosa are
444 available to download from the Psychiatric Genomics Consortium
445 (<https://www.med.unc.edu/pgc/download-results/>). The TWAS and spliceWAS SNP weights are

446 available from (<http://gusevlab.org/projects/fusion/>), whilst the PWAS SNP weights can be
447 obtained from (<http://nilanjanchatterjeelab.org/pwas/>) and
448 (<https://www.synapse.org/#!/Synapse:syn23627957>) for plasma and brain, respectively.

449

450 **ACKNOWLEDGEMENTS**

451 This work was supported by a National Health and Medical Research Council (NHMRC) grant
452 (1188493). M.J.C. is supported by an NHMRC Senior Research Fellowship (1121474). The funders
453 had no role in study design, data collection and analysis, decision to publish, or preparation of the
454 paper. The authors wish to acknowledge the Eating Disorders working group of the Psychiatric
455 Genomics Consortium for making their summary statistics publicly available.

456

457 **DISCLOSURES**

458 The authors have no relevant conflicts of interest to disclose related to this study.

459

460 **AUTHOR CONTRIBUTIONS**

461 W.R.R. conceived and designed the study with input from D.M.A and M.J.C. D.M.A performed the
462 analyses. D.M.A, W.R.R. and M.J.C wrote the manuscript. W.R.R. and M.J.C contributed to the
463 interpretation and visualisation of results.

464

465 **REFERENCES:**

- 466 1. Sibeoni J, Orri M, Valentin M, Podlipski M-A, Colin S, Pradere J, et al. Metasynthesis of the
467 Views about Treatment of Anorexia Nervosa in Adolescents: Perspectives of Adolescents, Parents,
468 and Professionals. *PLOS ONE*. 2017;12(1):e0169493.
- 469 2. Edakubo S, Fushimi K. Mortality and risk assessment for anorexia nervosa in acute-care
470 hospitals: a nationwide administrative database analysis. *BMC Psychiatry*. 2020;20(1):19.
- 471 3. Wonderlich SA, Bulik CM, Schmidt U, Steiger H, Hoek HW. Severe and enduring anorexia
472 nervosa: Update and observations about the current clinical reality. *International Journal of Eating
473 Disorders*. 2020;53(8):1303-12.
- 474 4. Bulik CM, Sullivan PF, Tozzi F, Furberg H, Lichtenstein P, Pedersen NL. Prevalence,
475 Heritability, and Prospective Risk Factors for Anorexia Nervosa. *Archives of General Psychiatry*.
476 2006;63(3):305-12.
- 477 5. Hirtz R, Hinney A. Genetic and epigenetic findings in anorexia nervosa. *Medizinische Genetik*.
478 2020;32(1):25-9.
- 479 6. Watson HJ, Yilmaz Z, Thornton LM, Hübel C, Coleman JRI, Gaspar HA, et al. Genome-wide
480 association study identifies eight risk loci and implicates metabo-psychiatric origins for anorexia
481 nervosa. *Nat Genet*. 2019;51(8):1207-14.
- 482 7. Wainberg M, Sinnott-Armstrong N, Mancuso N, Barbeira AN, Knowles DA, Golan D, et al.
483 Opportunities and challenges for transcriptome-wide association studies. *Nat Genet*.
484 2019;51(4):592-9.
- 485 8. Reay WR, Cairns MJ. Advancing the use of genome-wide association studies for drug
486 repurposing. *Nature Reviews Genetics*. 2021;22(10):658-71.

- 487 9. Hall LS, Medway CW, Pain O, Pardiñas AF, Rees EG, Escott-Price V, et al. A transcriptome-
488 wide association study implicates specific pre- and post-synaptic abnormalities in schizophrenia.
489 Hum Mol Genet. 2019;29(1):159-67.
- 490 10. Mancuso N, Freund MK, Johnson R, Shi H, Kichaev G, Gusev A, et al. Probabilistic fine-
491 mapping of transcriptome-wide association studies. Nat Genet. 2019;51(4):675-82.
- 492 11. Cheng B, Qi X, Liang C, Zhang L, Ma M, Li P, et al. Integrative Genomic Enrichment Analysis
493 Identified the Brain Regions and Development Stages Related to Anorexia Nervosa and Obsessive-
494 Compulsive Disorder. Cereb Cortex. 2020;30(12):6481-9.
- 495 12. Chatzinakos C, Georgiadis F, Lee D, Cai N, Vladimirov VI, Docherty A, et al. TWAS pathway
496 method greatly enhances the number of leads for uncovering the molecular underpinnings of
497 psychiatric disorders. Am J Med Genet B Neuropsychiatr Genet. 2020;183(8):454-63.
- 498 13. Johnson JS, Cote AC, Dobbyn A, Sloofman LG, Xu J, Cotter L, et al. Mapping anorexia nervosa
499 genes to clinical phenotypes. Psychol Med. 2022:1-15.
- 500 14. Gusev A, Ko A, Shi H, Bhatia G, Chung W, Penninx BW, et al. Integrative approaches for large-
501 scale transcriptome-wide association studies. Nat Genet. 2016;48(3):245-52.
- 502 15. Gamazon ER, Wheeler HE, Shah KP, Mozaffari SV, Aquino-Michaels K, Carroll RJ, et al. A gene-
503 based association method for mapping traits using reference transcriptome data. Nat Genet.
504 2015;47(9):1091-8.
- 505 16. Gandal MJ, Zhang P, Hadjimichael E, Walker RL, Chen C, Liu S, et al. Transcriptome-wide
506 isoform-level dysregulation in ASD, schizophrenia, and bipolar disorder. Science.
507 2018;362(6420):eaat8127.
- 508 17. Wingo AP, Liu Y, Gerasimov ES, Gockley J, Logsdon BA, Duong DM, et al. Integrating human
509 brain proteomes with genome-wide association data implicates new proteins in Alzheimer's disease
510 pathogenesis. Nat Genet. 2021;53(2):143-6.
- 511 18. Zhang J, Dutta D, Köttgen A, Tin A, Schlosser P, Grams ME, et al. Large Bi-Ethnic Study of
512 Plasma Proteome Leads to Comprehensive Mapping of *cis*-pQTL and Models for
513 Proteome-wide Association Studies. bioRxiv. 2021:2021.03.15.435533.
- 514 19. Gusev A, Mancuso N, Won H, Kousi M, Finucane HK, Reshef Y, et al. Transcriptome-wide
515 association study of schizophrenia and chromatin activity yields mechanistic disease insights. Nat
516 Genet. 2018;50(4):538-48.
- 517 20. Reay WR, El Shair SI, Geaghan MP, Riveros C, Holliday EG, McEvoy MA, et al. Genetic
518 association and causal inference converge on hyperglycaemia as a modifiable factor to improve lung
519 function. Elife. 2021;10.
- 520 21. Reimand J, Kull M, Peterson H, Hansen J, Vilo J. g:Profiler--a web-based toolset for functional
521 profiling of gene lists from large-scale experiments. Nucleic Acids Res. 2007;35(Web Server
522 issue):W193-200.
- 523 22. Watanabe K, Taskesen E, van Bochoven A, Posthuma D. Functional mapping and annotation
524 of genetic associations with FUMA. Nature Communications. 2017;8(1):1826.
- 525 23. Szklarczyk D, Gable AL, Lyon D, Junge A, Wyder S, Huerta-Cepas J, et al. STRING v11: protein-
526 protein association networks with increased coverage, supporting functional discovery in genome-
527 wide experimental datasets. Nucleic Acids Res. 2019;47(D1):D607-D13.
- 528 24. Li D, Roberts R. Human Genome and Diseases: WD-repeat proteins: structure
529 characteristics, biological function, and their involvement in human diseases. Cellular and Molecular
530 Life Sciences CMLS. 2001;58(14):2085-97.
- 531 25. Xie X, Wang Z, Chen Y. Association of LKB1 with a WD-repeat protein WDR6 is implicated in
532 cell growth arrest and p27(Kip1) induction. Mol Cell Biochem. 2007;301(1-2):115-22.
- 533 26. Baird DA, Liu JZ, Zheng J, Sieberts SK, Perumal T, Elsworth B, et al. Identifying drug targets
534 for neurological and psychiatric disease via genetics and the brain transcriptome. PLoS Genet.
535 2021;17(1):e1009224.

- 536 27. Howe KL, Achuthan P, Allen J, Allen J, Alvarez-Jarreta J, Amode MR, et al. Ensembl 2021.
537 Nucleic Acids Research. 2020;49(D1):D884-D91.
- 538 28. Kelsall IR, Duda DM, Olszewski JL, Hofmann K, Knebel A, Langevin F, et al. TRIAD1 and HHARI
539 bind to and are activated by distinct neddylated Cullin-RING ligase complexes. *Embo j.*
540 2013;32(21):2848-60.
- 541 29. Marteiijn JA, van Emst L, Erpelinck-Verschueren CA, Nikoloski G, Menke A, de Witte T, et al.
542 The E3 ubiquitin-protein ligase Triad1 inhibits clonogenic growth of primary myeloid progenitor
543 cells. *Blood*. 2005;106(13):4114-23.
- 544 30. Kawashima A, Karasawa T, Tago K, Kimura H, Kamata R, Usui-Kawanishi F, et al. ARIH2
545 Ubiquitinates NLRP3 and Negatively Regulates NLRP3 Inflammasome Activation in Macrophages. *J*
546 *Immunol*. 2017;199(10):3614-22.
- 547 31. Pruim RJ, Welch RP, Sanna S, Teslovich TM, Chines PS, Gliedt TP, et al. LocusZoom: regional
548 visualization of genome-wide association scan results. *Bioinformatics*. 2010;26(18):2336-7.
- 549 32. Aguet F, Brown AA, Castel SE, Davis JR, He Y, Jo B, et al. Genetic effects on gene expression
550 across human tissues. *Nature*. 2017;550(7675):204-13.
- 551 33. Wang Y, Yang Q, Shen S, Zhang L, Xiang Y, Weng X. Mst1 promotes mitochondrial dysfunction
552 and apoptosis in oxidative stress-induced rheumatoid arthritis synoviocytes. *Aging (Albany NY)*.
553 2020;12(16):16211-23.
- 554 34. Zhang J, Sun L, Li W, Wang Y, Li X, Liu Y. Overexpression of macrophage stimulating 1
555 enhances the anti-tumor effects of IL-24 in esophageal cancer via inhibiting ERK-Mfn2 signaling-
556 dependent mitophagy. *Biomed Pharmacother*. 2019;114:108844.
- 557 35. Freshour SL, Kiwala S, Cotto KC, Coffman AC, McMichael JF, Song JJ, et al. Integration of the
558 Drug-Gene Interaction Database (DGIdb 4.0) with open crowdsourcing efforts. *Nucleic Acids*
559 *Research*. 2020;49(D1):D1144-D51.
- 560 36. Chai YC, Hendrich S, Thomas JA. Protein S-thiolation in hepatocytes stimulated by t-butyl
561 hydroperoxide, menadione, and neutrophils. *Arch Biochem Biophys*. 1994;310(1):264-72.
- 562 37. Mallis RJ, Hamann MJ, Zhao W, Zhang T, Hendrich S, Thomas JA. Irreversible thiol oxidation
563 in carbonic anhydrase III: protection by S-glutathiolation and detection in aging rats. *Biol Chem*.
564 2002;383(3-4):649-62.
- 565 38. Li D, Burch P, Gonzalez O, Kashork CD, Shaffer LG, Bachinski LL, et al. Molecular cloning,
566 expression analysis, and chromosome mapping of WDR6, a novel human WD-repeat gene. *Biochem*
567 *Biophys Res Commun*. 2000;274(1):117-23.
- 568 39. Sivan G, Ormanoglu P, Buehler EC, Martin SE, Moss B. Identification of Restriction Factors by
569 Human Genome-Wide RNA Interference Screening of Viral Host Range Mutants Exemplified by
570 Discovery of SAMD9 and WDR6 as Inhibitors of the Vaccinia Virus K1L-C7L- Mutant. *mBio*.
571 2015;6(4):e01122.
- 572 40. Smith TF. Diversity of WD-Repeat proteins. In: Clemen CS, Eichinger L, Rybakina V, editors.
573 *The Coronin Family of Proteins: Subcellular Biochemistry*. New York, NY: Springer New York; 2008.
574 p. 20-30.
- 575 41. Chiba T, Inoue D, Mizuno A, Komatsu T, Fujita S, Kubota H, et al. Identification and
576 characterization of an insulin receptor substrate 4-interacting protein in rat brain: implications for
577 longevity. *Neurobiol Aging*. 2009;30(3):474-82.
- 578 42. McKnight NC, Jefferies HB, Alemu EA, Saunders RE, Howell M, Johansen T, et al. Genome-
579 wide siRNA screen reveals amino acid starvation-induced autophagy requires SCOC and WAC. *Embo*
580 *j*. 2012;31(8):1931-46.
- 581 43. Frendo-Cumbo S, Tokarz VL, Bilan PJ, Brumell JH, Klip A. Communication Between Autophagy
582 and Insulin Action: At the Crux of Insulin Action-Insulin Resistance? *Front Cell Dev Biol*.
583 2021;9:708431.

- 584 44. Rautou PE, Cazals-Hatem D, Moreau R, Francoz C, Feldmann G, Lebrech D, et al. Acute liver
585 cell damage in patients with anorexia nervosa: a possible role of starvation-induced hepatocyte
586 autophagy. *Gastroenterology*. 2008;135(3):840-8, 8.e1-3.
- 587 45. van Niekerk G, Loos B, Nell T, Engelbrecht AM. Autophagy--A free meal in sickness-associated
588 anorexia. *Autophagy*. 2016;12(4):727-34.
- 589 46. Adams DM, Reay WR, Geaghan MP, Cairns MJ. Investigation of glycaemic traits in psychiatric
590 disorders using Mendelian randomisation revealed a causal relationship with anorexia nervosa.
591 *Neuropsychopharmacology*. 2021;46(6):1093-102.
- 592 47. Reay WR, Kiltchewskij DJ, Geaghan MP, Atkins JR, Carr VJ, Green MJ, et al. Genetic estimates
593 of correlation and causality between blood-based biomarkers and psychiatric disorders. *Sci Adv*.
594 2022;8(14):eabj8969.
- 595 48. Dalton B, Bartholdy S, Robinson L, Solmi M, Ibrahim MAA, Breen G, et al. A meta-analysis of
596 cytokine concentrations in eating disorders. *J Psychiatr Res*. 2018;103:252-64.
- 597 49. Gibson D, Mehler PS. Anorexia Nervosa and the Immune System-A Narrative Review. *J Clin*
598 *Med*. 2019;8(11).
- 599 50. Chanda D, Li J, Oligschlaeger Y, Jeurissen ML, Houben T, Walenbergh SM, et al. MSP is a
600 negative regulator of inflammation and lipogenesis in ex vivo models of non-alcoholic
601 steatohepatitis. *Exp Mol Med*. 2016;48(9):e258.
- 602 51. Lu K, Zhao J, Liu W. Macrophage stimulating 1-induced inflammation response promotes
603 aortic aneurysm formation through triggering endothelial cells death and activating the NF- κ B
604 signaling pathway. *J Recept Signal Transduct Res*. 2020;40(4):374-82.
- 605 52. Kong D, Shen Y, Liu G, Zuo S, Ji Y, Lu A, et al. PKA regulatory II α subunit is essential for PGD₂-
606 mediated resolution of inflammation. *J Exp Med*. 2016;213(10):2209-26.
- 607 53. Dalton B, Campbell IC, Chung R, Breen G, Schmidt U, Himmerich H. Inflammatory Markers in
608 Anorexia Nervosa: An Exploratory Study. *Nutrients*. 2018;10(11).
- 609 54. Caso JR, Graell M, Navalón A, MacDowell KS, Gutiérrez S, Soto M, et al. Dysfunction of
610 inflammatory pathways in adolescent female patients with anorexia nervosa. *Progress in Neuro-*
611 *Psychopharmacology and Biological Psychiatry*. 2020;96:109727.
- 612 55. Del Giudice M, Gangestad SW. Rethinking IL-6 and CRP: Why they are more than
613 inflammatory biomarkers, and why it matters. *Brain Behav Immun*. 2018;70:61-75.
- 614