

1 **Longitudinal profiles of plasma gelsolin, cytokines and antibody expression**
2 **predict COVID-19 severity and hospitalization outcomes**

3
4 Meshach Asare-Werehene^{1,2,4,5}, Michaeline McGuinty^{3,4,7}, Agatha Vranjkovic^{3,4,7}, Yannick
5 Galipeau³, Juthaporn Cowan^{3,4,5,7}, Bill Cameron^{3,4,5,7}, Curtis L. Cooper^{3,4,7}, Marc-André
6 Langlois^{3,5}, Angela M. Crawley^{3,4,5,6,8,9}, Benjamin K. Tsang^{1,2,5,6}

7
8
9 Departments of ¹Obstetrics & Gynecology, ²Cellular & Molecular Medicine, ³Biochemistry,
10 Microbiology & Immunology, ⁴Medicine and ⁵Centre for Infection, Immunity & Inflammation,
11 University of Ottawa, Ottawa, Ontario, Canada, K1H 8L1

12 ⁶Chronic Disease Program and ⁷Clinical Epidemiology Program, Ottawa Hospital Research
13 Institute, Ottawa, Canada, Ottawa, Ontario, Canada K1H 8L6

14 ⁸Department of Biology, Carleton University, Ottawa, Ontario, Canada.

15 ⁹Coronavirus Variants Rapid Response Network–Biobank, Canada.

16
17
18 Correspondence: Dr. Benjamin K Tsang, Chronic Disease Program, Ottawa Hospital Research
19 Institute, The Ottawa Hospital (General Campus), 501 Smyth Road, Ottawa, Canada K1H 8L6;
20 Tel: 1-613-798-5555 ext 72926; Email: btsang@ohri.ca

21
22 **Conflict of Interest statement:**

23 The authors have declared that no conflict of interest exists.

24 **NOTE: This preprint reports new research that has not been certified by peer review and should not be used to guide clinical practice.**

25 **Abstract**

26 **Background:** Prognostic markers for COVID-19 disease outcome are currently lacking. Plasma
27 gelsolin (pGSN) is an actin-binding protein and an innate immune marker involved in disease
28 pathogenesis and viral infections. Here, we demonstrate the utility of pGSN as a prognostic
29 marker for COVID-19 disease outcome; a test performance that is significantly improved when
30 combined with cytokines and antibodies compared to other conventional markers such as CRP
31 and ferritin.

32 **Methods:** Blood samples were longitudinally collected from hospitalized COVID-19 patients as
33 well as COVID-19 negative controls and the levels of pGSN in $\mu\text{g/mL}$, cytokines and anti-
34 SARS-CoV-2 spike protein antibodies assayed. Mean \pm SEM values were correlated with clinical
35 parameters to develop a prognostic platform.

36 **Results:** pGSN levels were significantly reduced in COVID-19 patients compared to healthy
37 individuals. Additionally, pGSN levels combined with plasma IL-6, IP-10 and M-CSF
38 significantly distinguished COVID-19 patients from healthy individuals. While pGSN and anti-
39 spike IgG titers together strongly predict COVID-19 severity and death, the combination of pGSN
40 and IL-6 was a significant predictor of milder disease and favorable outcomes.

41 **Conclusion:** Taken together, these findings suggest that multi-parameter analysis of pGSN,
42 cytokines and antibodies could predict COVID-19 hospitalization outcomes with greater certainty
43 compared with conventional clinical laboratory markers such as CRP and ferritin. This research
44 will inform and improve clinical management and health system interventions in response to
45 SARS-CoV-2 infection.

46 **Trial Registration:** N/A

47

48 **Funding:** The Ottawa Hospital Department of Medicine - Special Pandemic Agile Research
49 Competition

50 **Introduction:**

51 COVID-19 is a respiratory infectious disease caused by SARS-CoV-2 (1-4). Currently,
52 >460 million people are infected worldwide and >6 million SARS-CoV-2-related deaths have
53 been recorded (World Health Organization) thus, requiring urgent health care interventions.
54 SARS-CoV-2 suppresses the adaptive arm (B and T lymphocytes) of the immune system and
55 overly activates the innate arm (macrophages, natural killer cells, dendritic cells), causing an
56 inflammatory cytokine storm (TNF- α , IL-6, IL-8, IL-1 β , MCP-1) (5). These immune reactions
57 can result in lung damage, multiple organ dysfunctions and in severe cases, death (5, 6). To date,
58 direct therapeutic options are limited to a modestly effective antiviral that remains inaccessible to
59 most patients. Patients are managed using best supportive care including steroids, and in severe
60 cases the use of mechanical ventilation and extracorporeal membrane oxygenation (ECMO) (7, 8).
61 Identifying novel biomarkers will enable physicians to predict/assess the progress of COVID-19
62 patients and inform decision-making for available therapeutic intervention.

63 Lower viral titers contribute to false negative testing for SARS-CoV-2 (9, 10). Thus, an
64 additional screening method that could detect possible infections despite lower viral titers will be
65 highly beneficial. Antibodies directed to the nucleoprotein of SARS-COV-2 could be useful in
66 identifying recent infections given most of the population will have detectable anti-spike antibody
67 from prior infection and/or immunization (9, 10). As to whether their detection could be used to
68 determine COVID-19 disease severity and clinical outcomes remain to be examined.

69 Laboratory markers including interleukin 6 (IL-6), C-reactive protein (CRP), ferritin,
70 platelets, lactate dehydrogenase (LDH), erythrocyte sedimentation rate (ESR), D-dimer and
71 lymphopenia are significantly implicated in COVID-19 complications (11, 12). Diseases like
72 influenza, bacterial infection, and chronic inflammatory and neurodegenerative diseases trigger
73 the elevation of these laboratory markers (13-15), hence casting doubts on their specificity and
74 sensitivity as reliable prognostic markers for COVID-19 severity, hospitalization outcomes and

75 ICU admissions.

76 Recently, proteomic screening of plasma samples from individuals with active COVID-19
77 disease has shown that plasma gelsolin (pGSN) expression levels are downregulated compared to
78 healthy controls (16-18). Gelsolin (GSN) is a 80-85kDa calcium-dependent multifunctional actin-
79 binding protein which exists in three isoforms: cytoplasmic gelsolin (cGSN), pGSN, and gelsolin
80 3 (19, 20). pGSN has recently been shown to be a key player in the immune regulation of cancer
81 (21). pGSN depletion significantly reduces its organ-protective function, leading to multi-organ
82 dysfunction syndrome (MODS), increased mortality and long-term morbidity in survivors,
83 complications that are commonly seen in COVID-19 patients (22-25).

84 Thus, it is conceivable that pGSN could be of clinical relevance in the pathogenesis of
85 COVID-19. Its pathological significance and potential as a biomarker for COVID-19 severity and
86 treatment response remains to be determined. In the present study, we have demonstrated a pGSN
87 multi-analyte panel as a potential biomarker of poor COVID-19 outcomes and pGSN with
88 cytokines and antibodies present as a significant predictor of COVID-19 hospitalization outcomes
89 compared with conventional clinical laboratory markers.

90

91 **Results:**

92 **pGSN's combination with IL-6, IP-10 and M-CSF significantly distinguish hospitalized**
93 **COVID-19 patients from healthy controls.** COVID-19 negative and positive patients were
94 recruited at TOH and their blood longitudinally collected. The subjects were stratified into
95 COVID-19 negative and positive subjects and the levels of pGSN, cytokines and antibodies were
96 quantified (**Fig. 1A**). There were no significant differences in the levels of pGSN between males
97 and females as well as age references (**Suppl. Fig S1A and SB**). pGSN levels were significantly
98 lower ($p < 0.0001$) in COVID-19 patients compared with the negative subjects (**Fig. 1B**). On the
99 contrary, IL-6 ($p = 0.034$), M-CSF ($p = 0.001$) and IP-10 ($p = 0.023$) levels were significantly up-

100 regulated in COVID-19 patients compared with the negative subjects whereas HGF and CTAK
101 demonstrated a tendency to be significantly higher (**Fig. 1B**). The ratio of pGSN and cytokines
102 were calculated and used in several ratio analyses. The mean levels of pGSN/IL-6, pGSN/M-CSF,
103 pGSN/HGF, pGSN/IP-10 and pGSN/CTAK were determined and compared between COVID-19
104 patients and COVID-19 negative controls. All ratios tested were significantly decreased in
105 COVID-19 patients compared with COVID-19 negative controls (**Fig. 1C; p < 0.0001**). ROC
106 curves were used to determine the diagnostic significance of these ratios in differentiating
107 COVID-19+ patients from COVID-19- controls (**Fig. 1D**). The combination of pGSN with IL-6,
108 IP-10 and M-CSF but not HGF provided a significant 100% test accuracy with AUC of 1 (**Fig.**
109 **1D**). Meanwhile, pGSN alone or cytokines alone provided a statistically significant AUC <1 (**Fig.**
110 **1D**). To determine if these markers predicted disease progression in COVID-19 patients, pGSN
111 levels measured over time were compared between days of sample collection. No significant
112 differences were observed over time between the groups; however, a significant improvement
113 (**p<0.002**) in the levels of pGSN were observed on day 30, potentially suggesting patients'
114 conditions might be improving (**Fig. 1E` and Suppl. Figs. S1C-G**).

115

116 **The combination of pGSN and IL-6, IP-10, HGF, CTAK and M-CSF is associated with**
117 **favorable COVID-19 outcomes.** Having observed that pGSN significantly distinguishes
118 COVID-19+ patients from COVID-19 negative controls, its prediction of disease severity,
119 progression and hospitalization outcomes were subsequently investigated. Here, we correlated the
120 levels of pGSN at day 1 of hospitalization with the clinical outcomes of the patients prior to being
121 discharged alive or death (**Fig. 2**). We observed that pGSN levels increased with increases in ICU
122 admissions (**Fig. 2A**). COVID-19 patients who were discharged had increased levels of pGSN
123 suggesting their recovery (**Fig. 2A**). Inflammatory cytokines (IL-6, IP-10, HGF, M-CSF and

124 CTAK) as well as pGSN were elevated in severe COVID-19 patients reminiscent of reported
125 cytokine storms (6, 26, 27) that are highly associated with increased organ damage (**Fig. 2B**).

126 Unlike cytokines, none of the antibody isotypes measured associated with disease
127 severity (**Fig. 2B**). In order to develop a stronger prognostic marker, pGSN was combined with
128 selected cytokines in a ratio to be compared between mild and severe cases, ICU admission and
129 hospitalization outcomes. pGSN/IL-6 was significantly higher in mild cases compared with
130 severe cases; pGSN/HGF and pGSN/IP-10 showed a similar trend although not significant (**Fig.**
131 **2C**). Meanwhile, pGSN/IgM was significantly higher in severe cases with pGSN/IgG (but not
132 pGSN/IgA) showing a similar trend (**Fig. 2C**). Although the ratio of pGSN and cytokines and IgA
133 had no significant association with intubation, pGSN/IgM and pGSN/IgG at day 1 were
134 significantly elevated in patients who were intubated during hospitalization (**Fig. 2D**). In terms of
135 ICU admissions, patients with significantly higher levels of pGSN/IL-6 and pGSN/HGF (but not
136 pGSN/IP-10, pGSN/IL-4 and pGSN/M-CSF) were admitted to the ICU (**Fig 2E**) with the
137 antibodies having no significant impact. The levels of pGSN/IP-10, pGSN/CTAK, pGSN/IL-6
138 and pGSN/M-CSF (but not pGSN/HGF) were elevated in patients that were discharged (**Fig. 2F**),
139 suggesting that pGSN levels in combination with inflammatory cytokines especially pGSN/IL-6,
140 may predict mild and favorable outcomes for hospitalized COVID-19 patients.

141
142 **The pGSN/IL-6 ratio is a strong predictor of disease progression and outcomes relative to**
143 **symptoms onset.** To further strengthen the potential of using pGSN and cytokines as a multi-
144 analyte marker for COVID-19 outcomes, we investigated their utility in days from symptoms
145 onset. Mild COVID-19 patients had significantly high pGSN/IL-6 amongst all the multi-analyte
146 markers following day 4 of symptoms onset compared with moderate and severe COVID-19
147 patients, and pGSN/IP-10 and pGSN/HGF showed a trend toward this association (**Fig. 3A**;

148 **Suppl. Fig. S2A**). Patients admitted into the ICU as well as those who died had lower pGSN/IL-6,
149 with pGSN/HGF showing a similar trend (**Fig. 2A; Suppl. Fig S2B-C**). Taken together, the
150 pGSN/IL-6 ratio presents as a strong candidate which could be potentially used to monitor disease
151 progression and hospitalization outcomes 4 days from symptom onset. Although pGSN levels
152 correlated with SARS-COV-2 spike protein antibodies on day 8, their combination as a multi-
153 analyte marker did not provide a significant output for monitoring patient outcomes days from
154 symptom onset (**Fig. 3B; Suppl. Figs. S2-S3**).

155
156 **pGSN levels are elevated in response to cytokine storm.** We have thus far demonstrated that
157 pGSN and inflammatory cytokines are elevated in severe COVID-19 disease although we have
158 yet to determine how they correlate with each other as well as that of the clinically used
159 inflammatory markers. Here, we stratified patients into two groups based on their pGSN levels
160 (low and high) using an optimal cut-off point determined by Fisher's Exact Test. The mean
161 inflammatory cytokine levels (IL-6, IP-10, HGF, M-CSF and CTAK; **Fig. 3C**) and clinically used
162 laboratory markers (**INR, d-dimer, CRP, WBC, platelets, neutrophils; Fig. 3D**) were
163 determined and compared between the groups. The mean levels of the cytokines (except CTAK)
164 were significantly higher in the high pGSN group compared with lower pGSN group (**Fig. 3C**)
165 whereas only INR and CRP were elevated in the high pGSN group. These findings suggest that
166 pGSN could be upregulated as a feedback mechanism to fight the damage caused by the
167 inflammatory state of the patient.

168
169 **pGSN/IgG and pGSN/IgM are strong predictors of worse COVID-19 outcomes.** We further
170 tested how reliable pGSN would be to monitor disease severity and hospitalization outcomes
171 either alone or in combination with SARS-COV-2 spike antibodies at the time of hospitalization

172 (day 0). Using ROC curves, we derived AUC to assess the prognostic performances of these
173 markers (**Fig. 4**). Using pGSN, CRP, IgG, IgM or IgA alone were not significantly predictive,
174 however the AUCs of pGSN/IgG and pGSN/IgM to predict severe COVID-19 were 0.893
175 (p=0.028) and 0.96 (p=0.01) respectively (**Fig. 4A; Suppl. S4A**). Similar outcomes were
176 observed for pGSN/IgG (AUC=0.776; p=0.032) and pGSN/IgM (AUC=0.735; p=0.067) when
177 predicting COVID-19 death (**Fig. 4B; Suppl. S4B**). These findings suggest that pGSN/IgG and
178 pGSN/IgM could be potential markers for predicting disease severity and hospitalization
179 outcomes for COVID-19.

180
181 **pGSN/IL-6 is a strong predictor of mild COVID-19 and favorable outcomes.** Unlike the
182 antibodies, the inflammatory cytokines showed more promise when combined with pGSN for
183 predicting mild and favorable COVID-19 outcomes (i.e. no-ICU admissions, and survival to
184 hospital discharge). pGSN, CRP and individual cytokines alone provided an AUC < 0.6 in
185 predicting mild COVID-19 disease (**Fig. 5A; Suppl. Fig. S1C**). Meanwhile, combining pGSN
186 with IL-6 (AUC=0.904; p=0.003) showed a more significant ability to predict mild COVID-19
187 and IP-10 (AUC=0.754; p=0.065), HGF (AUC=0.746; p=0.075) and TGF- β 1 (AUC=0.765;
188 p=0.078) demonstrated a trend toward significance (**Fig. 5A; Suppl. Fig. S4C**).

189 Unlike the mild cases, there were no significant differences between the pGSN/cytokine panels
190 and pGSN alone when predicting non-ICU admissions (**Fig. 5B; Suppl. Fig. S4D**). Interestingly,
191 pGSN/CTAK (AUC=0.833; p=0.016), pGSN/M-CSF (AUC=0.772; p=0.049) and pGSN/SCGF-b
192 (AUC=0.772; p=0.049) but not the other ratios, significantly predicted survival to hospital
193 discharge of COVID-19 patients (**Fig. 5C**). As expected, a modest AUC (less than 6) was
194 observed with pGSN, cytokines or clinical inflammatory markers alone, suggesting the need for a
195 multi-analyte marker for disease monitoring in COVID-19 (**Fig. 5C; Suppl. Fig. S4E**).

196

197 **Multi-analyte panel of pGSN with cytokines and antibodies predict more than one clinical**
198 **outcome of COVID-19.** Using heat maps, we demonstrated how our multi-analyte panels could
199 enable us to predict two clinical outcomes at the same time; an approach that will be significantly
200 useful in triaging patients. We observed that COVID-19 patients with increased levels of
201 pGSN/IL-6, pGSN/HGF and pGSN/IgM compared with the other markers are more likely not to
202 progress to severe disease and will eventually be discharged alive (**Fig. 6A; Suppl. Fig. S5A**).
203 The situation with pGSN/IgG was different since it is more predictive of severe disease and death
204 in this study (**Fig. 6A**). Additionally, patients with increased levels of pGSN/IL-6, pGSN/IP-10
205 and pGSN/IgM compared with the other markers were more likely not to be admitted to the ICU
206 and to survive to hospital discharge (**Fig. 6B; Suppl. Fig. S5B**). When ICU and disease severity
207 were used in the heat map analysis, we observed that patients with increased pGSN/IL-6,
208 pGSN/IP-10 and pGSN/IgM are likely to present with mild cases and will eventually avoid ICU
209 admission. These findings suggest that by combining pGSN with cytokines more than one clinical
210 outcome could be predicted in COVID-19 cases from the first day of hospital visit.

211

212 **Discussion**

213 Our study reveals for the first time the prognostic significance of pGSN when combined with
214 cytokines and anti-SARS-CoV-2 antibodies in COVID-19 infection. Specifically, we have
215 demonstrated that pGSN is significantly downregulated in COVID-19 patients and in combination
216 with cytokines and anti-SARS-COV-2 antibodies can predict COVID-19 severity and
217 hospitalization outcomes.

218 Although pGSN levels were lower at the time of admission, a return to normal range in the levels

219 were seen at day 30 which is associated with improved outcome (i.e. discharge) in patients with
220 COVID-19 infection. pGSN alone outperformed cytokines (IL-6, IP-10, HGF and M-CSF) in
221 discriminating COVID-19+ patients from non-COVID-19 suggesting that pGSN is a potential
222 biomarker indicative of COVID-19 infection. As shown in previous studies (5, 6, 28, 29),
223 COVID-19 is characterized by the upregulation of pro-inflammatory cytokines which was evident
224 in our study with the upregulation of IL-6, IP-10, M-CSF, HGF, CTAK and TGF- β 1. It is
225 interesting to note that the test accuracy of pGSN was enhanced when combined with IL-6, IP-10,
226 HGF and C-MSF in a multi-analyte panel. During cytokine storm (5), multi-organ damage results
227 in the release of actin filaments in the blood which are cleared, in part, by pGSN (30, 31), a
228 process that may result in the decrease of pGSN in COVID-19 patients also. This might further
229 explain why combining pGSN with the pro-inflammatory cytokines provided much greater
230 accuracy since these markers are both systemically related to disease progression.

231 Prediction of hospitalization outcomes is key to the effective management of COVID-19 cases as
232 well as allocation of hospital resources. However, there are currently no biomarkers which
233 reliably predict COVID-19 severity, ICU admission and death. We have shown that a multi-
234 analyte panel using pGSN and cytokines can predict favorable hospitalization outcomes.
235 pGSN/IL-6 was the strongest predictive marker (amongst other cytokines) for mild COVID-19+
236 cases, ICU admissions and patient discharge. pGSN is a negative regulator of IL-6 and other pro-
237 inflammatory cytokines secreted by monocytes and macrophages (32). Hence, pGSN could be
238 secreted as a response to cytokine storm to prevent multiple organ damage as well as actin
239 filament toxicity. This notion is consistent with the observation that pro-inflammatory cytokine
240 levels were elevated in COVID-19+ patients with high pGSN. It is therefore note-worthy that
241 combining pGSN and IL-6 provided robust test accuracy for favorable outcomes compared to
242 individual markers alone, an indication of disease progression in the participants. Additionally,
243 our findings are consistent with a previous study that has demonstrated the immunomodulatory

244 effectiveness of human recombinant (rhu)-pGSN in the treatment of a single severe COVID-19
245 case (33). There is an ongoing double-blinded proof-of-concept trial (NCT04358406) to further
246 assess the efficacy and safety of rhu-pGSN in severe COVID-19.

247 Another key observation in this study was the relationship between pGSN levels and antibodies
248 (IgA, IgM and IgG) against SARS-CoV-2 spike protein. From day 1 of sample collection through
249 day 30 we observed a pattern where the inverse relationship between pGSN and the antibodies
250 increased. An indication that with improving clinical status, pGSN levels are restored while
251 antibody levels, especially IgG, began to decline. This is consistent with the observation that
252 antibody levels were lower in patients with severe COVID-19. Some patients were treated with
253 corticosteroids; which could impact antibody levels. Unlike the pro-inflammatory cytokines,
254 combining pGSN with the anti-spike IgG and IgM were strong predictive markers for severe
255 COVID-19 and COVID-19-related death. Actin remodeling is a crucial step in B-cell activation
256 and B-cell receptor function (34, 35). Although pGSN is a key protein in actin binding and
257 remodeling (20, 30), we have yet to investigate whether it is directly involved in COVID-19
258 humoral immunity. This could explain the relationship between pGSN and the antibodies as
259 observed in these COVID-19 patients. As to whether pGSN has a direct function on the
260 production of SARS-COV-2 antibodies is yet to be investigated.

261 An additional major finding was the ability to utilize pGSN/IL-6 as well as other markers
262 (cytokines, antibodies and clinical laboratory inflammatory markers) to predict more than one
263 clinical outcome. Of note, we observed that COVID-19 patients with high pGSN/IL-6 and
264 pGSN/IgM presented with mild disease did not require ICU admission and were more likely to be
265 discharged. The opposite was noted with pGSN/IgG. In situations where there are limited
266 resources, this could potentially provide clinicians and hospital administrators' prior knowledge in
267 prioritizing their resources such as ICU beds in terms of delivering care to COVID-19 patients.

268 In summary, a multi-analyte panel of pGSN, cytokines and SARS-COV-2 antibodies, present as
269 potential biomarkers predicting disease severity, ICU admissions and COVID-19-related death.
270 Despite these promising findings, there are limitations that need to be acknowledged. The sample
271 size of this study is relatively small due to the difficulty in sampling patients longitudinally in a
272 hospital setting. Antibody kinetics (levels and isotype) during the early infection could be
273 influenced by time since infection. Also, the control samples consist of out-patient populations
274 that had no recorded history of respiratory infection during sample collection. Having control
275 samples from patients who are SARS-CoV-2 negative but positive for other respiratory diseases
276 will further strengthen the reliability of pGSN multi-analyte panels. In future studies, patient
277 sample size will be increased while we investigate the prognostic significance of pGSN multi-
278 analyte panel in SARS-CoV-2 variant patients, vaccinated patients as well as convalescent plasma.

279

280 **Materials and Methods:**

281 Ethics statement:

282 This study was approved by the Ottawa Health Science Network Research Ethics Board (OH
283 SNREB; Protocol# 20200200-01H) and conducted in accordance with the appropriate guidelines.

284 Written informed consent was obtained from all subjects.

285

286 Patient characteristics and plasma samples:

287 Forty participants (unvaccinated) recruited at The Ottawa Hospital (TOH) from 2020 to 2021
288 were included in this study. Plasma samples were serially collected from 28 PCR-confirmed
289 SARS-CoV-2-infected patients admitted to hospital at days 0, 4, 8, 12 and 30. Plasma samples had
290 pre-determined laboratory markers such as C-reactive protein (CRP), ferritin, white blood cells
291 (WBC), d-dimer, neutrophils, platelets and international normalized ratio (INR). Twelve samples

292 collected from healthy controls were negative for SARS-COV-2. Non-COVID-19 subjects had no
293 reported illnesses at the time of sample collection. COVID-19 severity was defined as mild (no
294 supplemental oxygen), moderate [supplemental oxygen, not high flow or no flow listed, no
295 intubation/mechanical ventilation – ex. No Bi-level Positive Airway Pressure (BiPap) /intubation]
296 and severe (high flow oxygen and non-invasive or invasive mechanical ventilation – ex. Yes
297 BiPap/intubation). The range and median of follow-up period was 87 and 10 days respectively.
298 Other details of patient demographics and baseline characteristics are described in
299 **Supplementary Table 1**. Patients received interventional management including antiviral
300 therapies (lopinavir/ritonavir, ribavirin, hydroxychloroquine and remdesivir) and non-antiviral
301 adjunctive therapies (convalescent plasma, steroids, immune-modulators, anticoagulation, and
302 antibiotics) in addition to appropriate supportive care.

303

304 pGSN ELISA:

305 pGSN concentrations were assayed in the study participants by sandwich ELISA (Aviscera
306 Bioscience, Inc. CA), according to manufacturer's instructions. The detection antibody was raised
307 against human plasma (soluble) gelsolin. Plasma samples were diluted in a sample buffer (1/1500;
308 Aviscera Bioscience, Inc. CA) and all analyses done in triplicate. Optical densities (OD) were
309 determined using a microtiter plate reader at 450 nm. The blank was subtracted from the triplicate
310 readings for each standard and sample and concentrations reported in $\mu\text{g/mL}$.

311

312 Cytokine Assay:

313 The concentrations of pro- and anti-inflammatory cytokines in plasma were quantified using
314 multiplexing immunobead assays analyzed using the BioRad Luminex machine (Bio-Rad
315 Laboratories, Hercules, CA, USA). Transforming growth factor β (TFG- β) -1, -2 and -3 were

316 quantified using the TGF-Beta 1,2,3 Magnetic Bead Kit (Milliplex, Millipore SIGMA) while all
317 remaining cytokines were assayed using the 48-plex Bio-Plex Pro™ Human Cytokine Screening
318 Panel (BioRad, Mississauga, ON, CANADA). Cytokine concentrations were reported in pg/mL.

319

320 Anti-spike protein antibody assay:

321 A manual colorimetric ELISA was used to measure antibodies targeting SARS-CoV-2 spike
322 protein, a complete description of the methods can be found here (36). Briefly, high protein-
323 binding Immulon 4 HBX clear 96-well plates (VWR International, Mississauga, ON, Canada,
324 #62402-959) were coated with 50 µL of 2 µg/mL full length trimeric Spike protein (NRC) diluted
325 in PBS and kept at 4°C on a shaker. After an overnight incubation, the plates were washed three
326 times with 200uL of PBST and blocked with 200 µL of 3% w/v skim milk powder in PBST for 1
327 hour at room temperature on a shaker. During that time, plasma samples were diluted in 1% w/v
328 skim milk powder. The plates were washed again and 100uL of diluted plasma samples was added
329 to the plate. Additionally, positive and negative serum controls alongside an isotype-antigen
330 specific calibration curve (CR3022 Human IgG1 (Absolute Antibody, Ab01680-10.0), anti-SARS-
331 CoV-2 S CR3022 Human IgA (Absolute Antibody, Ab01680-16.0), or anti-SARS-CoV-2 S
332 CR3022 Human IgM (Absolute Antibody, Ab01680-15.0)) was added to the plate and incubated
333 for 2h with shaking. The plates were washed again and 50uL of isotype specific secondary
334 antibodies (anti-human IgG#5-HRP (NRC), anti-human IgA-HRP (Jackson ImmunoResearch
335 Labs, 109-035-011), and anti-human IgM-HRP (Jackson ImmunoResearch Labs, 109-035-129)
336 added and incubated with shaking for 1 hour. The plates were then washed for one last time and
337 developed using 100 µL of SIGMAFAST OPD Tablets (Sigma-Aldrich, P9187) dissolved in 20
338 mL of Water for Injection for Cell Culture (Thermo Fisher Scientific, A1287301). The reaction
339 was stopped with the addition of 50uL of 3M HCl and the absorbance was measured at 490 nm

340 using a PowerWave XS2 Plate Reader (BioTek Instruments). Absorbance reads were blank
341 adjusted and correlated with the linear portion of the calibration curve, hereby taking into account
342 plate-to-plate variability and dilution factor. Concentrations of antibodies were reported in ng/mL.

343
344 **Biostatistical methods:**
345 The GraphPad Prism 8 (San Diego, CA, USA) and SPSS software version 28 (SPSS Inc., Chicago,
346 IL, USA) were used to perform all statistical analyses and two-sided $P \leq 0.05$ considered to
347 indicate statistical significance. Concentrations of pGSN in study groups were dichotomized by
348 their median cut-offs into low or high concentrations and correlated to clinicopathological
349 parameters (37) [age, sex, disease severity, inflammatory cytokines, IgG, IgA and IgM levels],
350 using Pearson's correlation test (two-tailed), Fisher exact test, Students' t test and Kruskal Wallis
351 test, as appropriate. Receiving operating characteristic (ROC) curves were used to assess the
352 performance of pGSN, cytokines and multi-analyte panels over their entire range of values. The
353 area under the curve (AUC) was used as an index of global test performance to predict disease
354 severity. Heat maps were used to demonstrate the relationships between multi-analyte panels and
355 clinical outcomes.

356
357 **Author Contributions:** M.A-W. and B.K.T. conceived and designed the study in partnership with
358 A.M.C. Plasma samples were collected by B.C., C.L.C. and M.M and processed by A.V., and
359 A.M.C. Clinical information was collected and curated by B.C., C.L.C., and M.M. pGSN analyses
360 were performed by M.A-W and B.K.T. Cytokine assays were conducted by A.V. and A.M.C.
361 while antibody measurements were completed by Y.G. and MA.L. M.A.W. analysed the data with
362 scientific input from B.K.T., B.C., C.L.C., MA.L., M.M., J.C. and A.M.C. M.A.W. wrote the

363 paper with feedback from all authors.

364 **Acknowledgements**

365 This work was supported by a grant from The Ottawa Hospital Department of Medicine - Special
366 Pandemic Agile Research Competition (M.M., C.L.C., J.C., A.M.C.).

367

368

369

370

371

372

373

374

375

376

377

378

379

380

381

382 **References**

- 383 1. Li T. Diagnosis and clinical management of severe acute respiratory syndrome Coronavirus 2
384 (SARS-CoV-2) infection: an operational recommendation of Peking Union Medical College Hospital
385 (V2.0). *Emerg Microbes Infect.* 2020;9(1):582-5.
- 386 2. Ng OT, Marimuthu K, Chia PY, Koh V, Chiew CJ, De Wang L, et al. SARS-CoV-2 Infection
387 among Travelers Returning from Wuhan, China. *The New England journal of medicine.*
388 2020;382(15):1476-8.
- 389 3. Ozma MA, Maroufi P, Khodadadi E, Kose S, Esposito I, Ganbarov K, et al. Clinical manifestation,
390 diagnosis, prevention and control of SARS-CoV-2 (COVID-19) during the outbreak period. *Infez Med.*
391 2020;28(2):153-65.
- 392 4. Corman VM, Landt O, Kaiser M, Molenkamp R, Meijer A, Chu DK, et al. Detection of 2019
393 novel coronavirus (2019-nCoV) by real-time RT-PCR. *Euro Surveill.* 2020;25(3).
- 394 5. Shi Y, Wang Y, Shao C, Huang J, Gan J, Huang X, et al. COVID-19 infection: the perspectives on
395 immune responses. *Cell death and differentiation.* 27. England2020. p. 1451-4.
- 396 6. Conti P, Ronconi G, Caraffa A, Gallenga CE, Ross R, Frydas I, et al. Induction of pro-
397 inflammatory cytokines (IL-1 and IL-6) and lung inflammation by Coronavirus-19 (COVI-19 or SARS-
398 CoV-2): anti-inflammatory strategies. *J Biol Regul Homeost Agents.* 2020;34(2).
- 399 7. Esposito S, Noviello S, Pagliano P. Update on treatment of COVID-19: ongoing studies
400 between promising and disappointing results. *Infez Med.* 2020;28(2):198-211.
- 401 8. Tu YF, Chien CS, Yarmishyn AA, Lin YY, Luo YH, Lin YT, et al. A Review of SARS-CoV-2 and the
402 Ongoing Clinical Trials. *International journal of molecular sciences.* 2020;21(7).
- 403 9. Guo L, Ren L, Yang S, Xiao M, Chang D, Yang F, et al. Profiling Early Humoral Response to
404 Diagnose Novel Coronavirus Disease (COVID-19). *Clin Infect Dis.* 2020;71(15):778-85.
- 405 10. Ni L, Ye F, Cheng ML, Feng Y, Deng YQ, Zhao H, et al. Detection of SARS-CoV-2-Specific
406 Humoral and Cellular Immunity in COVID-19 Convalescent Individuals. *Immunity.* 2020;52(6):971-7.e3.
- 407 11. Wang D, Hu B, Hu C, Zhu F, Liu X, Zhang J, et al. Clinical Characteristics of 138 Hospitalized
408 Patients With 2019 Novel Coronavirus-Infected Pneumonia in Wuhan, China. *Jama.* 2020;323(11):1061-9.
- 409 12. Ponti G, Maccaferri M, Ruini C, Tomasi A, Ozben T. Biomarkers associated with COVID-19
410 disease progression. *Critical reviews in clinical laboratory sciences.* 2020;57(6):389-99.
- 411 13. Goldberg I, Shalmon D, Shteinvil R, Berliner S, Paran Y, Zeltser D, et al. A second C-reactive
412 protein (CRP) test to detect inflammatory burst in patients with acute bacterial infections presenting
413 with a first relatively low CRP. *Medicine.* 2020;99(42):e22551.
- 414 14. Luan YY, Yao YM. The Clinical Significance and Potential Role of C-Reactive Protein in Chronic
415 Inflammatory and Neurodegenerative Diseases. *Front Immunol.* 2018;9:1302.
- 416 15. Woo PC, Tung ET, Chan KH, Lau CC, Lau SK, Yuen KY. Cytokine profiles induced by the novel
417 swine-origin influenza A/H1N1 virus: implications for treatment strategies. *J Infect Dis.* 2010;201(3):346-
418 53.
- 419 16. Messner CB, Demichev V, Wendisch D, Michalick L, White M, Freiwald A, et al. Ultra-High-

- 420 Throughput Clinical Proteomics Reveals Classifiers of COVID-19 Infection. *Cell systems*. 2020;11(1):11-
421 24.e4.
- 422 17. D'Alessandro A, Thomas T, Dzieciatkowska M, Hill RC, Francis RO, Hudson KE, et al. Serum
423 Proteomics in COVID-19 Patients: Altered Coagulation and Complement Status as a Function of IL-6
424 Level. *Journal of proteome research*. 2020.
- 425 18. Overmyer KA, Shishkova E, Miller IJ, Balnis J, Bernstein MN, Peters-Clarke TM, et al. Large-scale
426 Multi-omic Analysis of COVID-19 Severity. *medRxiv : the preprint server for health sciences*. 2020.
- 427 19. Kwiatkowski DJ, Stossel TP, Orkin SH, Mole JE, Colten HR, Yin HL. Plasma and cytoplasmic
428 gelsolins are encoded by a single gene and contain a duplicated actin-binding domain. *Nature*.
429 1986;323(6087):455-8.
- 430 20. Sun HQ, Yamamoto M, Mejillano M, Yin HL. Gelsolin, a multifunctional actin regulatory protein.
431 *The Journal of biological chemistry*. 1999;274(47):33179-82.
- 432 21. Asare-Werehene M, Communal L, Carmona E, Han Y, Song YS, Burger D, et al. Plasma Gelsolin
433 Inhibits CD8(+) T-cell Function and Regulates Glutathione Production to Confer Chemoresistance in
434 Ovarian Cancer. *Cancer research*. 2020;80(18):3959-71.
- 435 22. Rothenbach PA, Dahl B, Schwartz JJ, O'Keefe GE, Yamamoto M, Lee WM, et al. Recombinant
436 plasma gelsolin infusion attenuates burn-induced pulmonary microvascular dysfunction. *J Appl Physiol*
437 (1985). 2004;96(1):25-31.
- 438 23. Yang Z, Chiou TT, Stossel TP, Kobzik L. Plasma gelsolin improves lung host defense against
439 pneumonia by enhancing macrophage NOS3 function. *Am J Physiol Lung Cell Mol Physiol*.
440 2015;309(1):L11-6.
- 441 24. Yang Z, Bedugnis A, Levinson S, DiNubile M, Stossel T, Lu Q, et al. Delayed administration of
442 recombinant plasma gelsolin improves survival in a murine model of severe influenza. *F1000Res*.
443 2019;8:1860.
- 444 25. Yang Z, Bedugnis A, Levinson S, Dinubile M, Stossel T, Lu Q, et al. Delayed Administration of
445 Recombinant Plasma Gelsolin Improves Survival in a Murine Model of Penicillin-Susceptible and
446 Penicillin-Resistant Pneumococcal Pneumonia. *J Infect Dis*. 2019;220(9):1498-502.
- 447 26. Yang SS, Lipes J. Corticosteroids for critically ill COVID-19 patients with cytokine release
448 syndrome: a limited case series. *Canadian journal of anaesthesia = Journal canadien d'anesthesie*.
449 2020;67(10):1462-4.
- 450 27. Merad M, Martin JC. Pathological inflammation in patients with COVID-19: a key role for
451 monocytes and macrophages. *Nature reviews Immunology*. 2020.
- 452 28. Thevarajan I, Nguyen THO, Koutsakos M, Druce J, Caly L, van de Sandt CE, et al. Breadth of
453 concomitant immune responses prior to patient recovery: a case report of non-severe COVID-19.
454 *Nature medicine*. 26. United States2020. p. 453-5.
- 455 29. Liu J, Li S, Liu J, Liang B, Wang X, Wang H, et al. Longitudinal characteristics of lymphocyte
456 responses and cytokine profiles in the peripheral blood of SARS-CoV-2 infected patients. *EBioMedicine*.
457 2020;55:102763.
- 458 30. Lind SE, Smith DB, Janmey PA, Stossel TP. Role of plasma gelsolin and the vitamin D-binding

- 459 protein in clearing actin from the circulation. *The Journal of clinical investigation*. 1986;78(3):736-42.
- 460 31. Feldt J, Schicht M, Garreis F, Welss J, Schneider UW, Paulsen F. Structure, regulation and
461 related diseases of the actin-binding protein gelsolin. *Expert reviews in molecular medicine*. 2019;20:e7.
- 462 32. Cheng Y, Hu X, Liu C, Chen M, Wang J, Wang M, et al. Gelsolin Inhibits the Inflammatory
463 Process Induced by LPS. *Cellular physiology and biochemistry : international journal of experimental
464 cellular physiology, biochemistry, and pharmacology*. 2017;41(1):205-12.
- 465 33. Catteeuw JV, DiNubile MJ. Recombinant human plasma gelsolin (rhu-pGSN) in a patient
466 hospitalized with critical COVID-19 pneumonia. *Clinical infection in practice*. 2021;12:100088.
- 467 34. Liu C, Miller H, Orłowski G, Hang H, Upadhyaya A, Song W. Actin reorganization is required
468 for the formation of polarized B cell receptor signalosomes in response to both soluble and
469 membrane-associated antigens. *Journal of immunology (Baltimore, Md : 1950)*. 2012;188(7):3237-46.
- 470 35. Song W, Liu C, Upadhyaya A. The pivotal position of the actin cytoskeleton in the initiation
471 and regulation of B cell receptor activation. *Biochimica et biophysica acta*. 2014;1838(2):569-78.
- 472 36. Colwill K, Galipeau Y, Stuiblé M, Gervais C, Arnold C, Rathod B, et al. A scalable serology
473 solution for profiling humoral immune responses to SARS-CoV-2 infection and vaccination. *Clinical &
474 translational immunology*. 2022;11(3):e1380.
- 475 37. Huang C, Wang Y, Li X, Ren L, Zhao J, Hu Y, et al. Clinical features of patients infected with
476 2019 novel coronavirus in Wuhan, China. *Lancet (London, England)*. 2020;395(10223):497-506.

477

478

479

480

481

482

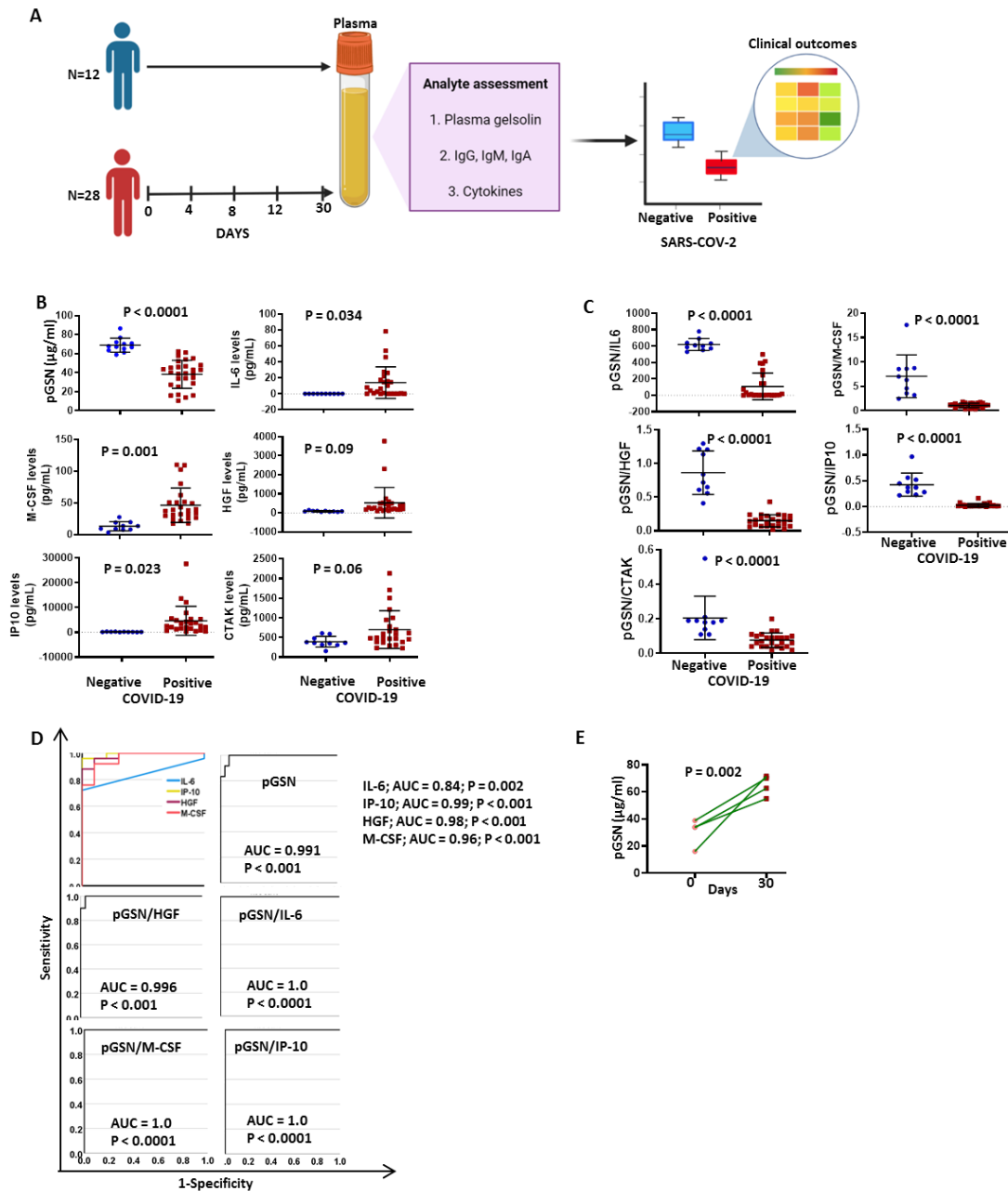
483

484

485

486

487 **Figures:**



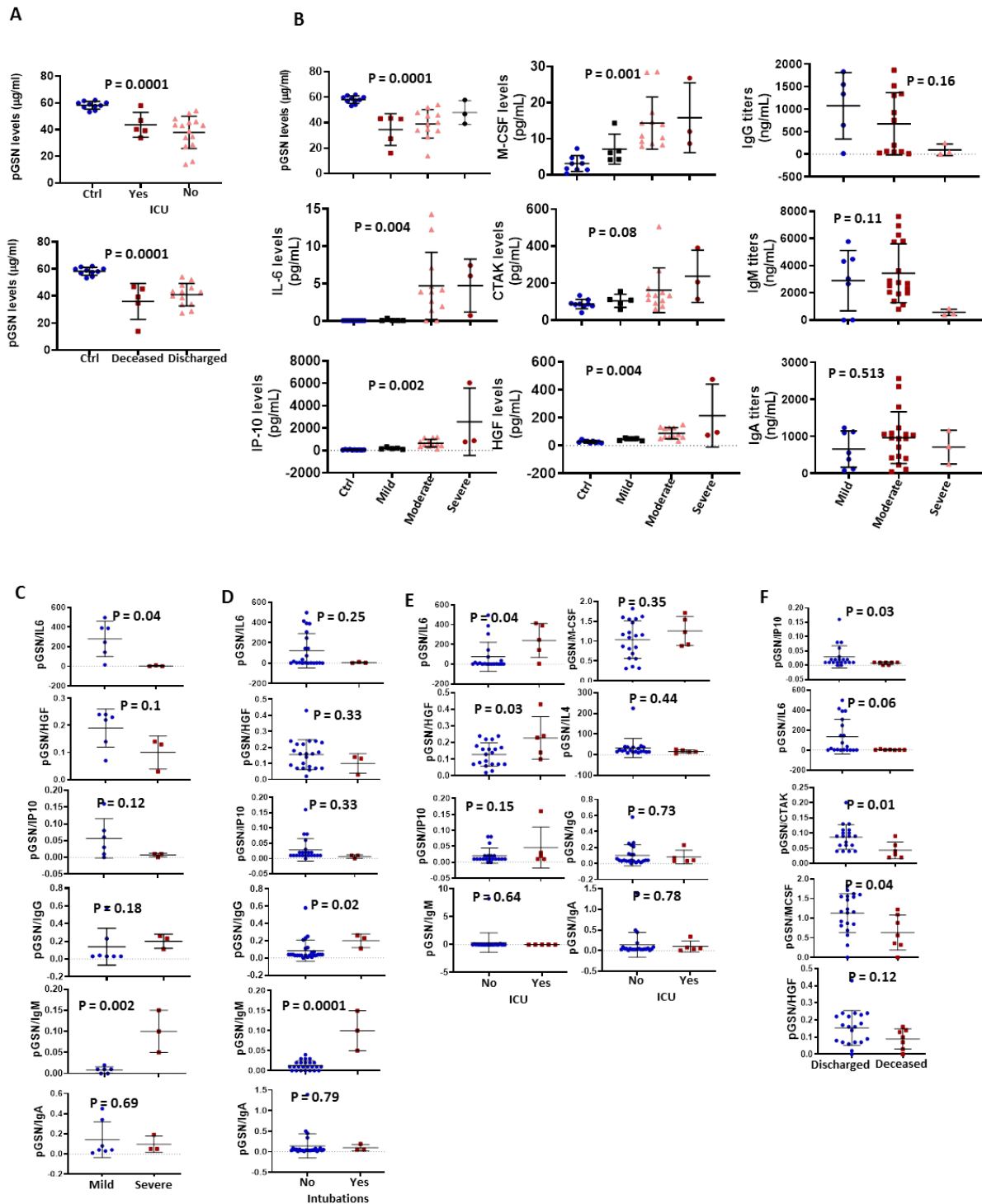
488

489 Figure 1. pGSN's combination with IL-6, IP-10 and M-CSF significantly discriminates COVID-
490 19 positive patients from negative subjects. (A) 28 samples were serially collected from PCR-
491 confirmed SARS-CoV-2-infected patients and 12 samples collected from non-COVID-19 controls.
492 Samples were analyzed for the levels of pGSN, cytokines and anti-SARS-COV-2 antibodies. The
493 mean levels of the analyte were compared between COVID-19 negative and positive subjects.
494 The test performances of the biomarkers against clinical outcomes were analyzed. (B) The
495 mean \pm SEM levels of pGSN, IL-6, IP-10, M-CSF, HGF and CTAK were detected and compared
496 between COVID-19 and non-COVID-19 patients. (C) The ratio of pGSN and cytokines were
497 calculated and used as multi-analyte diagnostic panels. The mean \pm SEM levels of pGSN/IL-6,

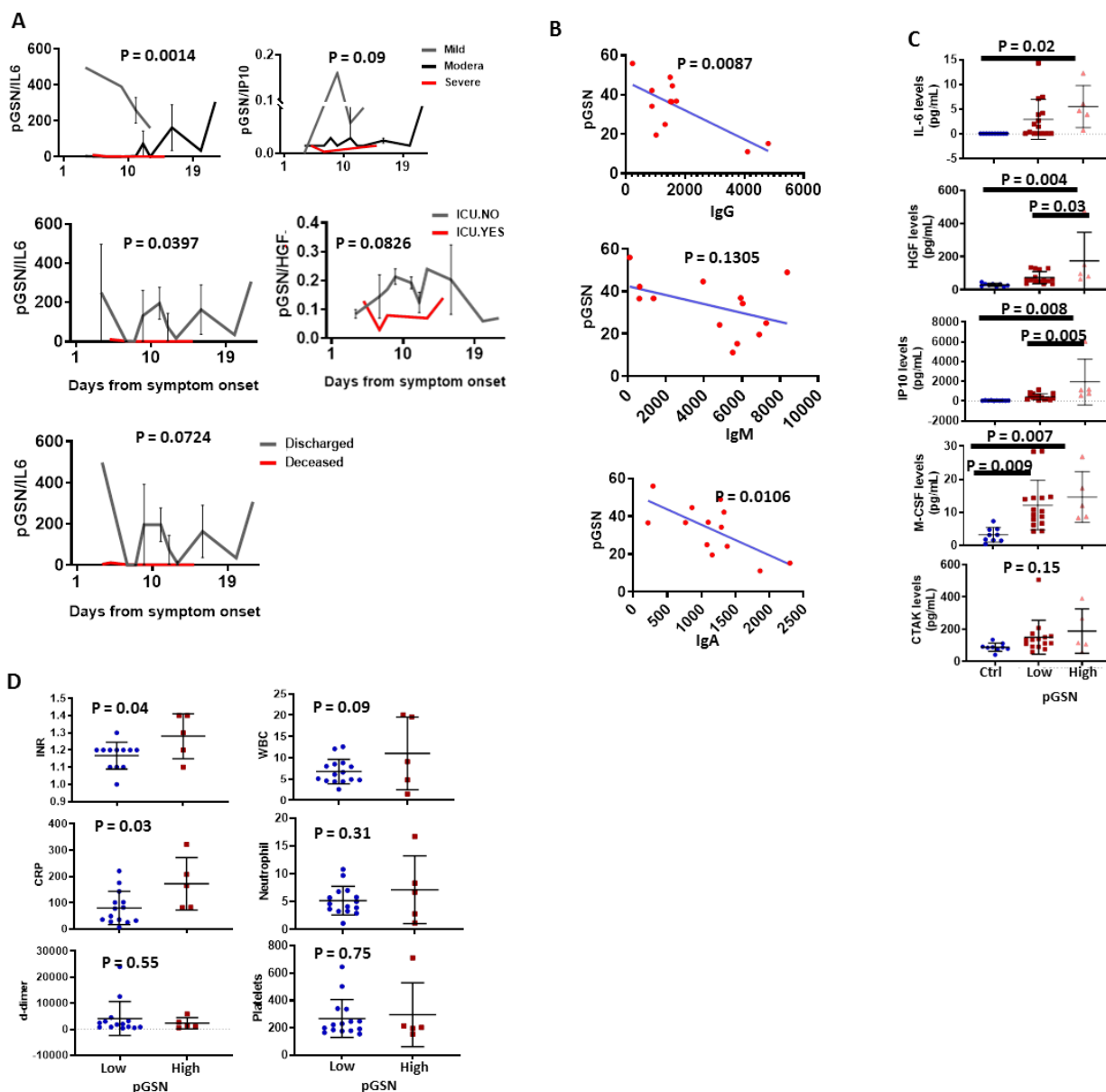
498 pGSN/M-CSF, pGSN/HGF, pGSN/IP-10 and pGSN/CTAK were determined and compared
499 between COVID-19 and non-COVID-19 subjects. (D) The test performances of pGSN, cytokines
500 (IL-6, IP-10, HGF, M-CSF) and multi-analyte panels (pGSN/HGF, pGSN/IL-6, pGSN/M-CSF
501 and pGSN/IP-10) in differentiating COVID-19 patients from non-COVID-19 subjects were
502 determined using receiving operating characteristic (ROC) curves. (E) pGSN levels in blood
503 collected on day 0 and 30 were compared. P-values were calculated by independent sample t-test.

504

505



506 Figure 2. The combination of pGSN and IL-6, IP-10, HGF, CTAK and M-CSF is associated with
 507 favorable COVID-19 outcomes. (A) pGSN levels at day 0 were determined and the mean±SEM
 508 compared between patients based on ICU admittance and hospitalization outcome. (B) The
 509 mean±SEM levels of pGSN, IL-6, IP-10, M-CSF, HGF, CTAK, IgA, IgM and IgG were detected
 510 and compared between patients based on disease severity. The ratio of pGSN and cytokines
 511 were calculated and used as multi-analyte diagnostic panels. (C) The mean±SEM levels of pGSN/IL-6,
 512 pGSN/HGF, pGSN/IP-10, pGSN/IgG, pGSN/IgM and pGSN/IgA were determined and compared
 513 between mild and severe COVID-19 patients as well as (D) intubation status and (E) ICU
 514 admittance with pGSN/IL-4 included. (F) The mean±SEM levels of pGSN/IP-10, pGSN/IL-6,
 515 pGSN/CTAK, pGSN/M-CSF and pGSN/HGF were compared between deceased and discharged
 516 patients. P-values were calculated by one-way ANOVA and independent sample t-test.

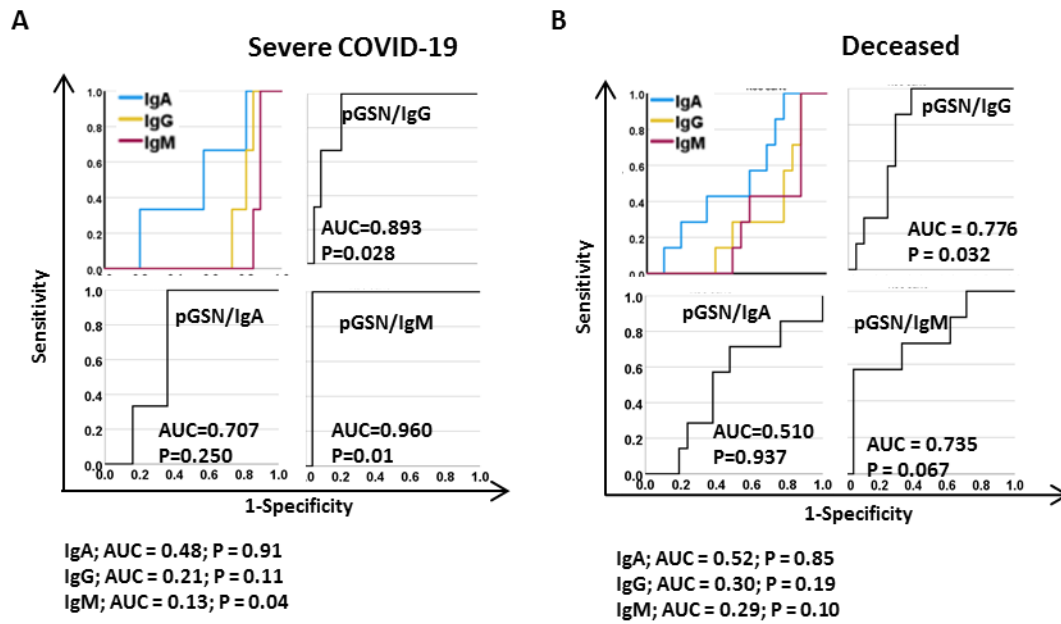


517

518 Figure 3. pGSN/IL-6 multi-analyte is a strong marker for monitoring disease severity and
 519 outcomes days from symptoms onset. (A) pGSN/IL-6, pGSN/IP-10 and pGSN/HGF levels were
 520 utilized to monitor disease severity, ICU admittance and discharge following day 1 from
 521 symptoms onset. (B) pGSN and SARS-COV-2 antibodies (IgG, IgM and IgA) were assessed on
 522 day 8 and correlated using Pearson's test. (C) Patients were stratified into low and high pGSN
 523 groups using an optimal cut-off point. The mean±SEM levels of IL-6, HGF, IP-10, M-CSF and
 524 CTAK were compared between the groups using scatter plot. (D) The mean±SEM levels of INR,
 525 CRP, d-dimer, WBC, neutrophils and platelets were compared between the pGSN groups using
 526 scatter plot. P-values were calculated by one-way ANOVA and independent sample t-test.

527

528



529

530 Figure 4. pGSN/IgG and pGSN/IgM are strong predictors of worst COVID-19 outcomes. ROC
531 curves were used to assess the test performances of IgG, IgA, IgM, pGSN/IgG, pGSN/IgM and
532 pGSN/IgA in predicting (A) disease severity and (B) death.

533

534

535

536

537

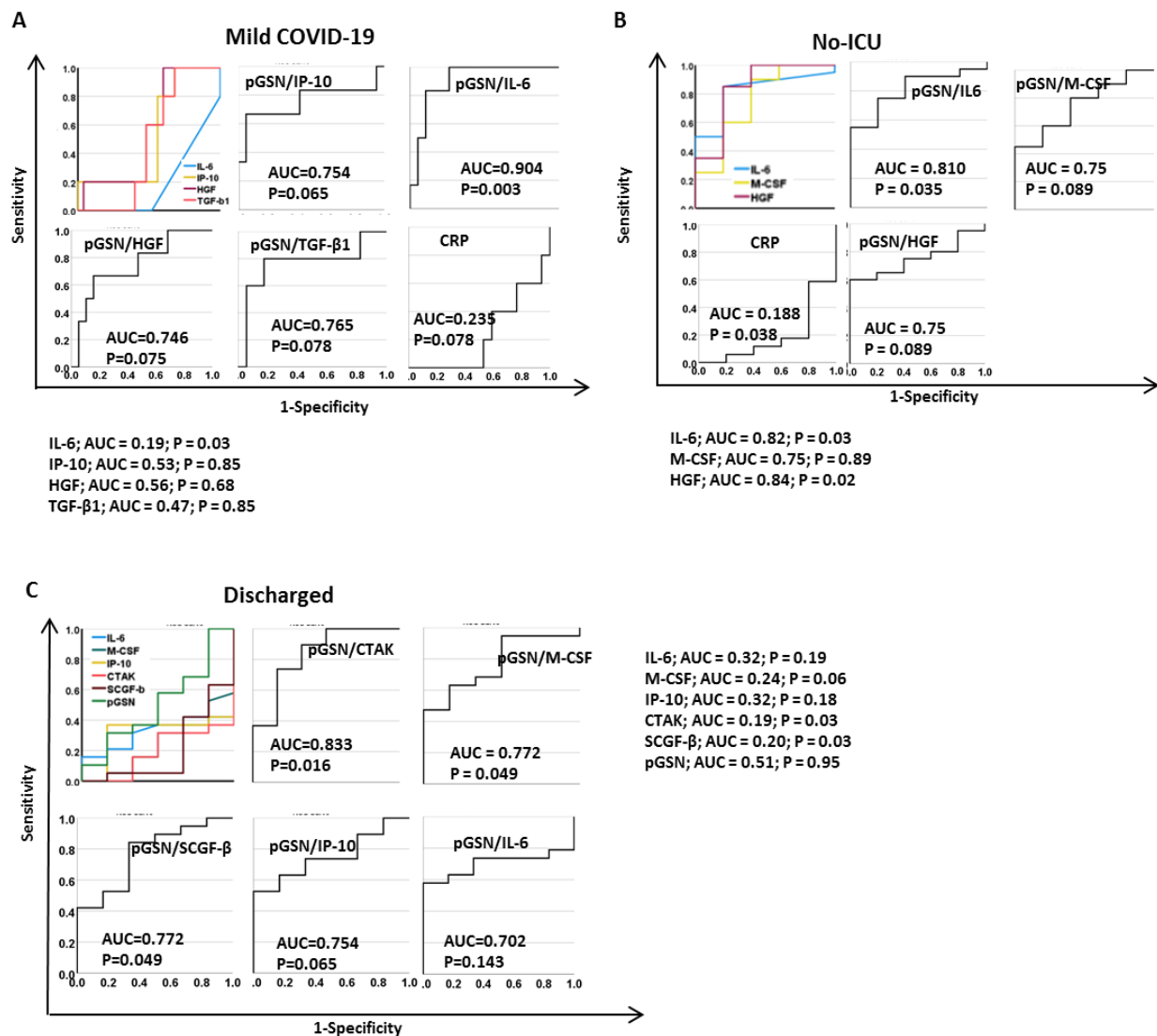
538

539

540

541

542



543

544 Figure 5. pGSN/IL-6 is a strong predictor of mild COVID-19 cases and favorable outcomes. ROC
 545 curves were used to assess the test performances of IL-6, IP-10, HGF, TGF- β 1, M-CSF, CTAK,
 546 SCGF- β , CRP, pGSN, pGSN/IP-10, pGSN/IL-6, pGSN/HGF, pGSN/TGF- β , pGSN/M-CSF and
 547 pGSN/SCGF- β in predicting (A) mild COVID-19 cases, (B) no-ICU admissions and (C)
 548 discharged patients.

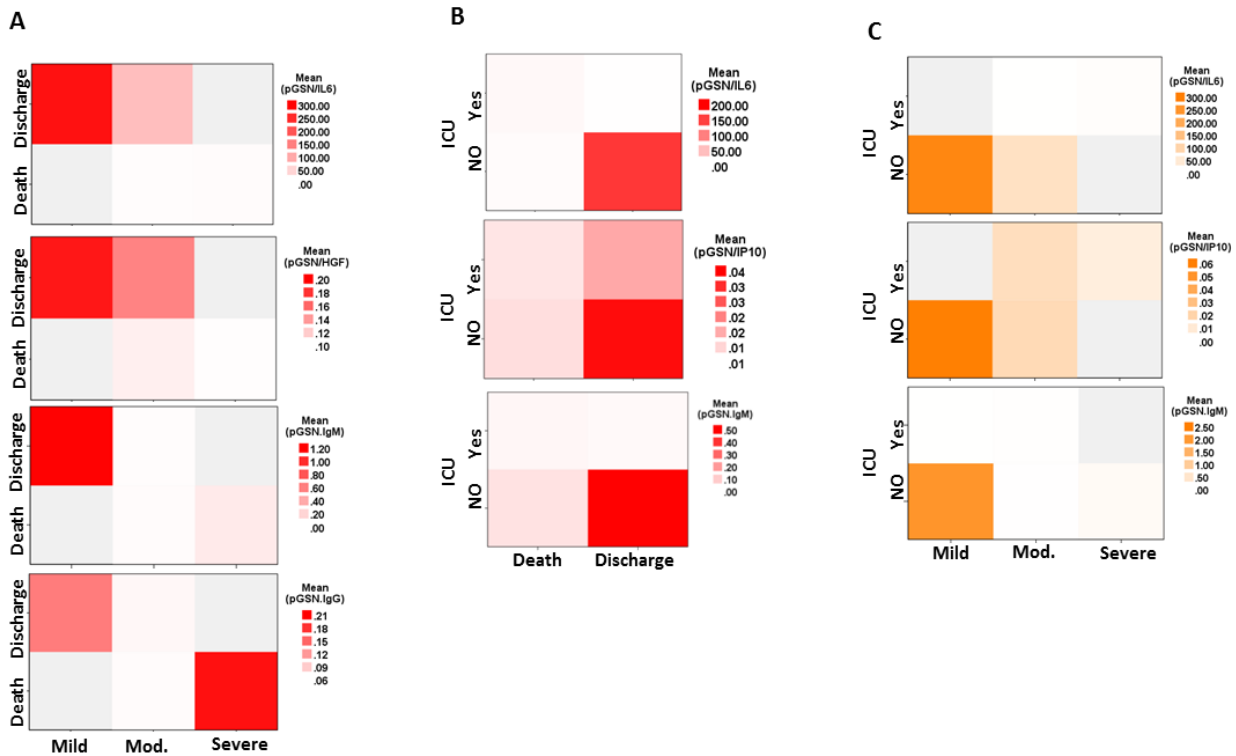
549

550

551

552

553



554

555 Figure 6. Multi-analyte panel of pGSN with cytokines and antibodies predict more than one
 556 clinical outcome of COVID-19. pGSN/IL-6, pGSN/HGF, pGSN/IP-10, pGSN/IgM and
 557 pGSN/IgG were used in a heat map analyses to predict (A) disease severity and hospitalization
 558 outcomes, (B) ICU admissions and hospitalization outcomes and (C) disease severity and ICU
 559 admissions.