

1 **Full title:** Gestational age at birth and body size from infancy through adolescence: find-  
2 ings from analyses of individual data on 253,810 singletons in 16 birth cohort studies

3 **Short title:** Gestational age at birth and body size from infancy to adolescence in 16  
4 birth cohort studies

5  
6 Johan L. Vinther MSc<sup>1\*</sup>; Tim Cadman PhD<sup>2</sup>; Demetris Avraam PhD<sup>3</sup>; Claus T. Ekstrøm PhD<sup>4</sup>; Thorkild I.A. Sørensen  
7 MD.dr.med.sci<sup>1,5</sup>; Ahmed Elhakeem PhD<sup>2</sup>; Ana C. Santos PhD<sup>6,7</sup>; Angela Pinot de Moira PhD<sup>1</sup>; Barbara Heude PhD<sup>8</sup>; Car-  
8 men Iñiguez PhD<sup>9,10,11</sup>; Costanza Pizzi PhD<sup>12</sup>; Elinor Simons MD.PhD<sup>13,14</sup>; Ellis Voerman PhD<sup>15,16</sup>; Eva Corpeleijn PhD<sup>17</sup>;  
9 Faryal Zariouh MSc<sup>18</sup>; Gilian Santorelli MSc<sup>19</sup>; Hazel M. Inskip PhD<sup>20,21</sup>; Henrique Barros PhD<sup>6,7</sup>; Jennie Carson MSc<sup>22,23</sup>;  
10 Jennifer R. Harris PhD<sup>24</sup>; Johanna L. Nader PhD<sup>25</sup>; Justiina Ronkainen PhD<sup>26</sup>; Katrine Strandberg-Larsen<sup>1</sup>, Loreto Santa-  
11 Marina MSc<sup>10,28,28</sup>; Lucinda Calas MSc<sup>8</sup>; Luise Cederkvist PhD<sup>1</sup>; Maja Popovic PhD<sup>12</sup>; Marie-Aline Charles MD.MPH<sup>18</sup>;  
12 Marieke Welten MSc<sup>15,16</sup>; Martine Vrijheid PhD<sup>10,29,30</sup>; Meghan Azad PhD<sup>13,31,32</sup>; Padmaja Subbarao MD.MSc<sup>33,34,35</sup>; Paul  
13 Burton MD<sup>3</sup>; Puishkumar J. Mandhane MD.PhD<sup>36</sup>; Rae-Chi Huang MD.PhD<sup>22,37</sup>; Rebecca C. Wilson PhD<sup>38</sup>; Sido Haakma  
14 MSc<sup>39</sup>; Sílvia Fernández-Barrés PhD<sup>10,29,30</sup>; Stuart Turvey MBBS.DPhil<sup>41</sup>; Susana Santos PhD<sup>15,16</sup>; Suzanne C. Tough PhD<sup>42</sup>;  
15 Sylvain Sebert PhD<sup>26</sup>; Tanis Fenton PhD<sup>42</sup>; Theo J. Moraes MD.PhD<sup>33</sup>; Theodosia Salika MSc<sup>21</sup>; Vincent W.V. Jaddoe  
16 MD.PhD<sup>15,16</sup>; Deborah A. Lawlor PhD<sup>2,43</sup>; Anne-Marie Nybo Andersen MD.PhD<sup>1</sup>

17

18 \*Corresponding author:

19 E-mail: [johan.vinther@sund.ku.dk](mailto:johan.vinther@sund.ku.dk) (JLV)

20

21 **1** Section of Epidemiology, Department of Public Health, University of Copenhagen, Denmark, **2** Population Health Science,  
22 Bristol Medical School, Bristol BS8 2BN, United Kingdom, **3** Population Health Sciences Institute, Newcastle University,  
23 Newcastle, United Kingdom, **4** Section of Biostatistics, Department of Public Health, University of Copenhagen, Denmark,  
24 **5** Novo Nordisk Foundation Center for Basic Metabolic Research, Faculty of Health and Medical Sciences, University of  
25 Copenhagen, Copenhagen, Denmark **6** EPIUnit – Instituto de Saúde Pública, Universidade do Porto, Portugal, **7** Departamento de Ciências da Saúde Pública e Forenses e Educação Médica, Faculdade de Medicina, Universidade do Porto, Portugal,  
26 **8** Université de Paris Cité, Inserm, INRAE, Centre of Research in Epidemiology and StatisticS (CRESS), F-75004 Paris,  
27 **NOTE:** This preprint reports new research that has not been certified by peer review and should not be used to guide clinical practice.

28 France, **9** Department of Statistics and Operational Research. Universitat de València. València. Spain, **10** Spanish Consor-  
29 tium for Research on Epidemiology and Public Health (CIBERESP), Madrid, Spain, **11** FISABIO - Universitat Jaume I -  
30 Universitat de València Epidemiology and Environmental Health Joint Research Unit. Spain, **12** Cancer Epidemiology Unit,  
31 Department of Medical Sciences, University of Turin, Turin, Italy, **13** Section of Allergy and Immunology, Department of  
32 Pediatrics and Child Health, University of Manitoba, Winnipeg, MB, Canada, **14** The Children's Hospital Research Institute  
33 of Manitoba (CHRIM), **15** The Generation R Study Group, Erasmus MC, University Medical Center Rotterdam, Rotterdam,  
34 the Netherlands, **16** Department of Pediatrics, Erasmus MC – Sophia Children’s Hospital, University Medical Center Rot-  
35 terdam, Rotterdam, the Netherlands, **17** Department of Epidemiology, University of Groningen, University Medical Center  
36 Groningen, Groningen, the Netherlands, **18** Ined, Inserm, EFS, joint unit Elfe, France, **19** Born In Bradford, Bradford Insti-  
37 tute for Health Research, United Kingdom, **20** MRC Lifecourse Epidemiology Centre, University of Southampton, South-  
38 ampton General Hospital, Southampton, SO16 6YD, United Kingdom, **21** NIHR Southampton Biomedical Research Centre,  
39 University of Southampton and University Hospital Southampton NHS Foundation Trust, Southampton, United Kingdom,  
40 **22** Telethon Kids Institute, Australia, **23** University of Western Australia, School of Population and Global Health, Perth,  
41 Australia, **24** Center for Fertility and Health, The Norwegian Institute of Public Health, Oslo, Norway, **25** Department of  
42 Genetics and Bioinformatics, Division of Health Data and Digitalisation, Norwegian Institute of Public Health, Oslo, Nor-  
43 way, **26** Center for Life-course Health research, University of Oulu, Finland, **27** Biodonostia Health Research Institute, San  
44 Sebastian, Spain, **28** Health Department of Basque Government, Sub-directorate of Public Health of Gipuzkoa, San Sebas-  
45 tian, Spain, **29** ISGlobal, Barcelona, Spain, **30** Universitat Pompeu Fabra, Barcelona, Spain, **31** Developmental Origins of  
46 Chronic Diseases in Children Network (DEVOTION), Children’s Hospital, **32** Department of Food and Human Nutritional  
47 Sciences, University of Manitoba, Winnipeg, MB, Canada, **33** Translational Medicine Program, Department of Pediatrics,  
48 The Hospital for Sick Children, Toronto, Canada, **34** Department of Medicine, McMaster University, Hamilton, ON, Can-  
49 ada, **35** Dalla Lana School of Public Health, University of Toronto, Toronto, Canada, **36** Department of Pediatrics, University  
50 of Alberta, Edmonton, Canada, **37** Edith Cowan University, School of Medicine and Health Sciences, Australia, **38** Institute  
51 of Population Health, University of Liverpool, Liverpool, United Kingdom, **39** University of Groningen, University Medical  
52 Center Groningen, Genomics Coordination Center, Groningen, The Netherlands, **40** CIBER Epidemiología y Salud Pública  
53 (CIBERESP), Spain, **41** Department of Pediatrics, BC Children’s Hospital, University of British Columbia, Vancouver, BC,  
54 Canada, **42** Department of Community Health Sciences, Cumming School of Medicine, University of Calgary, 3280 Hospi-  
55 tal Drive NW, Calgary, AB T2N4Z6, Canada, **43** MRC Integrative Epidemiology Unit at the University of Bristol, Bristol  
56 BS8 2PS, United Kingdom

## 57 **Abstract**

### 58 **Background**

59 Preterm birth is the leading cause of perinatal morbidity and mortality, and is associated with adverse developmental and  
60 long-term health outcomes, including several cardio-metabolic risk factors. However, evidence about the association of  
61 preterm birth with later body size derives mainly from studies using birth weight as proxy of prematurity rather than actual  
62 length of gestation. We investigated the association of gestational age at birth (GA) with body size from infancy through  
63 adolescence.

64

### 65 **Methods and Findings**

66 We conducted a two-stage Individual Participant Data (IPD) meta-analysis using data from 253,810 mother-children dyads  
67 from 16 general population-based cohort studies in Europe, North America and Australasia to estimate the association of  
68 GA with standardized Body Mass Index (BMI) and overweight (including obesity) adjusted for confounders. Using a feder-  
69 ated analytical tool (DataSHIELD), we fitted linear and logistic regression models in each cohort separately, and combined  
70 the regression estimates and standard errors through random-effects study-level meta-analysis providing an overall effect  
71 estimate at early infancy (>0.0-0.5 years), late infancy (>0.5-2.0 years), early childhood (>2.0-5.0 years), mid-childhood  
72 (>5.0-9.0 years), late childhood (>9.0-14.0 years) and adolescence (>14.0-19.0 years).

73 GA was positively associated with BMI in the first decade of life with mean differences in BMI z-score (0.01-0.02) per week  
74 of increase in GA, however preterm infants reached similar levels of BMI as term infants by adolescence. The association  
75 of GA with risk of overweight revealed a similar pattern of results from late infancy through mid-childhood with an increased  
76 odds of overweight (OR 1.01-1.02) per week increase in GA. By adolescence, however, GA was slightly negatively associ-  
77 ated with risk of overweight (OR 0.98 [95% CI: 0.97:1.00]) per week of increase in GA, and children born very preterm had  
78 increased odds of overweight (OR 1.46 [95% CI: 1.03; 2.08]) compared with term.

79 The findings were consistent across cohorts and sensitivity analyses, despite considerable heterogeneity in cohort character-  
80 istics.

81

### 82 **Conclusion**

83 Higher GA is potentially clinically important for higher BMI in infancy, while the association attenuates consistently with  
84 age. By adolescence, preterm children have on average a similar mean BMI to those born term.

## 85 **Introduction**

86 Today, one in ten infants are born preterm (<37 completed weeks' gestation) with an increased risk of perinatal mortality  
87 and morbidity that may persist and develop over the life-course (1-3). Global estimates show an increase in preterm birth  
88 between 2000 and 2014, but the proportions vary between countries (4).

89 Previous systematic reviews and meta-analyses (5-7) have reported an association of gestational age at birth (GA) with  
90 conventional cardio-metabolic risk factors, including increased blood pressure, impaired glucose regulation, and insulin  
91 resistance in those born preterm (8-11). An infant born preterm adapts to extrauterine conditions entering a phase of growth  
92 that possibly expresses a mismatch with the environment outside utero leading to alterations in body composition (12-17).  
93 It has been hypothesized that these changes increase susceptibility to being overweight for preterm birth through various  
94 pathways and mechanisms, including catch-up weight (16, 18-22). However, later body size in preterm cohorts is not well  
95 characterized and most studies define populations by birth weight rather than actual length of gestation (17, 23). It is recog-  
96 nized that determinants and consequences of gestational duration are quite different from those of foetal growth (23), and  
97 that birth weight reflects both gestational duration and foetal growth (24), hence being at potential intermediate variable on  
98 the causal pathway (25).

99 Studies have shown that infants born extremely (23-27 weeks gestation) and very preterm (28-31 weeks gestation) typically  
100 experience postnatal growth failure followed by catch-up weight and length gain within the first two years of life (20).  
101 Growth in preterm children remains different from that of full term peers through childhood and into school age (26-32).  
102 However, studies on growth in preterm cohorts across key stages of growth development (33) and at more advanced gesta-  
103 tional age are scarce (10, 20, 34). Several methodological considerations and sample characteristics complicate the interpre-  
104 tation and comparability of findings on the relationship between GA with later body size (5, 6, 35-37). This includes differ-  
105 ences in study design; using birth weight as a proxy for GA; sample size; age at outcome; conditions under which variables  
106 are examined; type of statistical analysis; and availability of confounders.

107 In this study, we use the novel approach and unique opportunity of federated analysis of individual participant data in a  
108 secure manner provided by the EU Child Cohort Network (38, 39), an international network of European and Australasian  
109 birth cohort data. We base our study on 16 cohorts and 253,810 mother-child dyads, which enables us to extend previous  
110 research by including information on repeated body size measures during a long follow-up across a wide range of GA, and  
111 overcome the methodological limitations identified above.

112 The overall aim of this study was to determine the association between GA (completed weeks and clinical categories) and,  
113 respectively, body mass index (BMI) and overweight (including obesity) from infancy through adolescence in birth cohort  
114 studies representing diverse contexts.

## 115 **Methods**

### 116 **Inclusion criteria and participating cohorts**

117 In December 2019, we invited pregnancy and birth cohort studies within the EU Child Cohort Network from the LifeCycle  
118 and the EUCAN-Connect consortia (38-40). Cohorts were eligible for inclusion if they had information for live-born single-  
119 tons on GA and at least one offspring measurement of BMI in one of six age-periods: early infancy (>0.0-0.5 years), late  
120 infancy (>0.5-2.0 years), early childhood (>2.0-5.0 years), mid-childhood (>5.0-9.0 years), late childhood (>9.0-14.0 years),  
121 adolescence (>14.0-19.0 years).

122 The following 16 cohorts participated in the study: Avon Longitudinal Study of Parents and Children, UK (*ALSPAC*)  
123 (n=10,452) (41), All Our Families, Canada (*AOF*) (n=2,263) (42), Born in Bradford, UK (*BIB*) (n=13,097) (43), CHILD  
124 Cohort Study (*CHILD*) (n=2,984) (44), Danish National Birth Cohort, Denmark (*DNBC*) (n=81,117) (45), The EDEN  
125 mother-child cohort on the prenatal and postnatal determinants of child health and development, France (*EDEN*) (n=1,765)  
126 (46), French Longitudinal Study of Children, France (*ELFE*) (n=15,506) (47), The Generation 21 Birth Cohort, Portugal  
127 (*G21*) (n=6,439) (48), The GECKO Drenthe Cohort, The Netherlands (*GECKO*) (n=2,768) (49), The Generation R Study,  
128 The Netherlands (*GEN-R*) (n=8,641) (50), The Environment and Childhood Project, Spain (*INMA*) (n=1,936) (51), The  
129 Norwegian Mother, Father and Child Study, Norway (*MoBa*) (n=86,553) (52), The Northern Finland Birth Cohort 1986,  
130 Finland (*NFBC1986*) (n=8,325) (53-55), The NINFEA (Nasita e INFanzia: gli Effetti dell’Ambiente) birth cohort study,  
131 Italy (*NINFEA*) (n=6,515) (56), The Raine Study, Australia (*The Raine Study*) (n=2,443) (57), and The Southampton Women  
132 Survey, UK (*SWS*) (n=3,007) (58).

133

### 134 **Data Access and Federated Analysis on DataSHIELD**

135 In this study, we used pseudonymized data stored on local secure data servers in their original location (59-62), and harmo-  
136 nised according to protocols in the EU Child Cohort Network (39). Cohort-specific description about methods for ascertain-  
137 ing and defining variables are documented in the EU Child Cohort Network catalogue ([https://data-catalogue.molgenis-  
138 cloud.org/catalogue/catalogue/#/](https://data-catalogue.molgenis-cloud.org/catalogue/catalogue/#/)) and the Maelstrom Catalogue (<http://maelstrom-research.org>) for studies in LifeCycle and  
139 EUCAN-Connect, respectively. Data were analysed remotely through the open-source software, DataSHIELD, which allows  
140 both federated study level and Individual Participant Data (IPD) meta-analysis with active disclosure protection (63-65).  
141 Fourteen cohorts gave permission to analyse their data via DataSHIELD, and two cohorts (*AOF*, *CHILD*) via data transfer  
142 agreements.

143

## 144 **Gestational age at birth**

145 Information on GA (in days) was available as harmonised IPD with source of delivery information obtained from medical  
146 records in the majority of cohorts (S1 Table, S1 Text). GA was rounded to completed weeks, and further categorized into  
147 five groups (66): 28-33 weeks (very preterm), 34-36 weeks (late preterm), 37-38 weeks (early term), 39-41 weeks (full term)  
148 and 42-43 weeks (post term).

149

## 150 **Offspring BMI and overweight and obesity**

151 Information on height (cm) and weight (kg) was available as harmonised IPD measured in either a clinical setting, or self-  
152 reported by parents or index child (Table S1). BMI was calculated as weight (kg) / (height (m))<sup>2</sup> (67), and sex-and-age  
153 specific BMI z-scores were calculated per month using external WHO standards (68) and references (69). We defined over-  
154 weight (including obesity) following WHO cut-offs, separately for children <5 years (>2 standard deviations above WHO  
155 Child Growth Standard median) and ≥5 years (>1 standard deviation above WHO Growth Reference median). In several  
156 cohorts (ALSPAC, BIB, DNBC, GEN-R, INMA, NINFEA, NFBC1986, the Raine Study, SWS), multiple measurements of  
157 BMI were available for the same child within one or more of the six age-groups. In such cases, the latest measurement was  
158 chosen.

159

## 160 **Confounders**

161 Confounders were selected a priori as factors that were known or plausible causes of variation in GA and subsequent body  
162 size with a directed acyclic graph used in discussions to select the final set of confounders (S2 Table). The resulting con-  
163 founders were: maternal education (ISCED-2011/97, low/medium/high) (S1 Text) (70), maternal height (continuous, m),  
164 maternal pre-pregnancy BMI (continuous, kg/m<sup>2</sup>), maternal smoking during pregnancy (yes/no), maternal age at child's birth  
165 (continuous, years); gestational diabetes (yes/no); gestational hypertension (yes/no); pre-eclampsia (yes/no), maternal ethnic  
166 background (western/non-western/mixed) (S1 Text), and parity (nulliparous/parous). For the objective of this study, we did  
167 not include birth weight as it may distort interpretation of the results being an intermediate variable on the causal pathway  
168 (25).

169

## 170 **Statistical Analysis**

171 Distributions of GA at birth, body size measures and confounders were obtained for each cohort separately, and for all  
172 cohorts combined.

173 We conducted a two-stage meta-analysis to estimate associations between GA with BMI and overweight, adjusted for con-  
174 founders. We fitted a linear regression model to examine the associations of GA in weeks and in clinical categories with  
175 BMI z-scores. Models were fitted in each cohort separately, and cohort-specific coefficients and standard errors were com-  
176 bined and assigned weights using random-effects model to attain overall effect estimates (71, 72). The analyses were per-  
177 formed separately for the six age-groups (>0.0-0.5 years, >0.5-2.0 years, >2.0-5.0 years, >5.0-9.0 years, >9.0-14.0 years,  
178 >14.0-19.0 years). To examine the associations between GA in weeks and in clinical categories and odds of overweight  
179 (compared with normal weight) we used a binomial logistic regression model.

180 The main results are those from regression analyses adjusted for the maximum set of baseline confounders available within  
181 each cohort. Models were adjusted for maternal age at child's birth, height, education, pre-pregnancy BMI, and parity in all  
182 cohorts. Models were additionally adjusted for maternal ethnic background, gestational hypertension, gestational diabetes,  
183 and preeclampsia in cohorts where these were available (Table 1).

184 Results are presented with 95% confidence intervals, and  $I^2$  statistics (73). We examined between-study heterogeneity by  
185 meta-regression in meta-analyses with considerable heterogeneity reflected by either  $I^2 > 75\%$  or  $I^2 \sim 75\%$  with effect esti-  
186 mates in different directions. The meta-regressions were conducted to determine which study characteristics were inde-  
187 pendently associated with between-study heterogeneity. In addition, we undertook 'Leave-one-out'-analysis for cross-vali-  
188 dation to explore the influence of each study on the overall estimate (74), while sub-group analysis with sex (boys vs. girls),  
189 maternal education (high vs. low/medium), and maternal smoking in pregnancy (no vs. yes) was performed to measure the  
190 robustness of our findings.

191 Statistical analyses were performed using DataSHIELD (dsBaseClient v6.1.0, [https://github.com/datashield/](https://github.com/datashield/dsBaseClient/releases)  
192 [dsBaseClient/releases](https://github.com/datashield/dsBaseClient/releases)) and the Statistical Software R (v4.1) (75). We used the ds.getWGSR and ds.glmSLMA functions  
193 and the dh.makeStrata function from the ds.Helper-package in addition to the rma-package v3.0.2 (76). Forest plots were  
194 created using Excel 2016.

195

## 196 **Ethical approval**

197 Cohort-specific ethical approvals and consent from participants are listed in Supplementary Information (S3-S4 Appendix).

## 198 **Results**

### 199 **Descriptive statistics**

200 A total of 253,810 mother-child dyads in 16 cohort studies from 11 countries had information on GA and at least one meas-  
201 urement of offspring BMI.

202 Descriptive information including characteristics of GA at birth, body size measures and covariates for study participants  
203 are displayed separately for each cohort and for the cohorts combined in Table 1-3.

204 There were distinct differences in the cohort-specific sample sizes ( $n=1,765-86,553$ ), distributions of maternal education  
205 (range: 2.2% to 77.5% for low), maternal ethnicity (range: 42.2% to 99.0% for Western; 0.5% to 55.9% for non-Western;  
206 0.0% to 9.9% for mixed); maternal pre-pregnancy overweight (range: 16.9% to 50.2%), gestational hypertension (range:  
207 1.9% to 19.3%), and parity (range for nulliparous: 34.2% to 72.7%) (Table 1).

208 The mean gestational age was 39.8 weeks and overall 5.5% were born preterm (range: 3.1% to 7.5%), 17.8 % (range: 11.8%  
209 to 31.6%) were born early term, 69.9% were born full term (range 61.1% to 73.6%), and 6.7% (range: 0.2% to 15.4%) were  
210 born post term (Table 2). The majority of the cohorts had study participants included for analysis in all five categories of  
211 GA, except CHILD (34-43 weeks gestation).

212 From infancy to age 19 years, 711,856 measurements of BMI were available for 253,810 children. The number of cohorts  
213 and participants with data on BMI and overweight varied across the six age-bands with most cohorts and participants in  
214 infancy and mid-childhood and fewest in adolescence, where four cohorts (ALSPAC, DNBC, NFBC1986, the Raine Study)  
215 contributed with data on 36,895 individuals. The proportion of children classified as overweight also varied between cohorts,  
216 and across age-bands due to different cut-offs used for children  $<$  five years and in children  $\geq$  five years (Table 3).

217 The percentage of missing values for baseline characteristics is presented in Supplementary Information (S4 Table).

218

### 219 **Gestational age at birth and BMI z-scores**

220 The overall estimates for the associations of GA in completed weeks and clinical categories with BMI z-score are displayed  
221 in Fig. 1 and Fig. 2.

222 There was a positive association of GA with BMI in early infancy ( $>0.0-0.5$  years): 0.02 SD per week increase in GA [95%  
223 CI: 0.00, 0.05] was associated with a BMI z-score of -0.55 [95% CI: -0.82, -0.28] for very preterm and -0.15 [95% CI: -  
224 0.26, -0.05] for late preterm compared to full term. Results attenuated through childhood and continuing to decrease to zero  
225 by adolescence (0.00 [95% CI: -0.02, 0.02]) with no difference in BMI z-score between preterm and full term peers.



226 Between-study heterogeneity was examined through meta-regression in four age-bands (>0.0-0.5 years, >5.0-9.0 years, >9.0-  
227 14.0 years, >14.0-19.0 years) having considerable heterogeneity, with largest  $I^2$ -statistics (96.4%) in early infancy (S4 Ta-  
228 ble). We examined age at measurement, child sex, maternal education and maternal smoking in pregnancy as between-study  
229 characteristics. The meta-regression found age at measurement to be significantly associated with heterogeneity in early  
230 infancy ( $\beta=-0.03$ ,  $se=0.008$ ,  $p<0.01$ ); maternal education in late childhood ( $\beta=0.001$ ,  $se=0.001$ ,  $p=0.05$ ), and both maternal  
231 education ( $\beta=0.001$ ,  $se=0.001$ ,  $p<0.01$ ) and smoking in pregnancy ( $\beta=0.01$ ,  $se=0.003$ ,  $p=0.01$ ) in adolescence.

232 The ‘Leave-one-out’ analyses gave similar overall effect estimates in all age-bands and did not change between-study het-  
233 erogeneity markedly (S2 Fig.), however in adolescence leaving out ALSPAC changed the  $I^2$  from 70.4% to 0.4% (S2 Fig.  
234 F). Sub-group analyses were consistent with the main findings across sex (S3 Fig.), maternal educational level (S4 Fig.),  
235 and pregnancy smoking-status (S5 Fig.).

236

### 237 **Gestational age at birth and overweight**

238 The overall estimates for the associations of GA in completed weeks and clinical categories with odds of overweight are  
239 displayed in Fig. 3 and Fig. 4.

240 There was a positive association of GA with odds of overweight (OR 1.02 per week increase in GA) in late infancy [95%  
241 CI: 1.00, 1.03] and early childhood [95% CI: 0.99, 1.05]. Results attenuated through childhood and continued to decrease to  
242 below one by late childhood. In adolescence (>14.0-19.0 years), there was a negative association of GA with odds of over-  
243 weight with very preterm having a significantly increased risk of overweight (OR 1.46 [95% CI: 1.03, 2.08] compared with  
244 full term peers.

245 None of the five age-bands had considerable between-study heterogeneity ( $I^2 < 55\%$ ); hence, we did not perform meta-  
246 regression for the associations of GA with odds of overweight. The ‘Leave-one-out’ analyses were consistent with the main  
247 findings without changing the overall effect estimate in any of the age-bands or any notable changes in the between-study  
248 heterogeneity (S7 Fig.). The subgroup-analysis showed no difference in the associations of GA with odds of overweight for  
249 sex (S8 Fig.), maternal educational level (S9 Fig.) or pregnancy smoking-status (S10 Fig.).

## 250 **Discussion**

251 In this two-stage meta-analysis using individual participant data on 253,810 live-born singletons from 16 birth cohorts, we  
252 found a potentially important association in early infancy between GA and BMI, and in adolescence for the association of  
253 GA with odds of overweight. Difference in BMI z-score between categories of GA attenuated markedly after infancy  
254 throughout adolescence. A similar trend was observed for the association of GA with odds of overweight; however, by  
255 adolescence increased odds of overweight was observed in very preterm compared with full term peers. Despite heteroge-  
256 neity in cohort characteristics, our main findings were consistent across cohorts and the supplementary analyses showed  
257 associations to be robust.

258

### 259 **Interpretation of main findings**

260 Previous studies (26-28, 77) and a meta-analysis (35) have shown consistent results for the association of GA with BMI in  
261 childhood with lower BMI in preterm children compared with full term peers, although several methodological issues should  
262 be taken into account when interpreting these findings. In contrast, surprisingly few studies have examined the association  
263 of GA with later overweight, particularly in childhood.

264 Existing evidence for the association of GA and BMI rely on small sample sizes from different countries; different GA-  
265 categorization and reference group; and variations in use of BMI indices (z-scores or natural units, external or internal  
266 reference, IOTF or WHO reference). In our study, we observed a positive overall estimate for the association between GA  
267 and BMI in early infancy through mid-childhood with lower BMI z-score in very and late preterm compared to full term  
268 peers. In addition, we found age to be the main driver of between-study heterogeneity in early infancy suggesting that GA  
269 has a potentially important association in infancy. Our findings are in line with descriptive results from Australia (26) and  
270 Sweden (27). In an Australian cohort the authors reported lower BMI z-scores among 225 extremely preterm compared with  
271 253 term controls at both 2 and 5 years, and researchers in Sweden found a lower mean BMI z-scores at 2 and 5 years among  
272 152 Swedish children born between 32-37 weeks compared with a large reference population. Our study showed a weaker  
273 association that most likely is explained by adjustment for confounders, but also methodological differences.

274 Our analyses revealed that the overall associations between GA and BMI attenuated in mid- and late childhood, but very  
275 and late preterm children remained at a lower BMI compared to their full term counterparts. Similar associations were  
276 reported in studies from Brazil and United Kingdom on 203 and 497 children aged 6 and 8-12 years, respectively (28, 77).  
277 Moreover, the study from Brazil compared BMI z-scores in 350 very (<33 weeks) and late preterm (34-36 weeks) aged 18  
278 years with 3,027 early and full term peers using the WHO Growth Reference. In line with our findings, children born preterm

279 in Brazil reached similar BMI levels of term counterparts by adolescence supporting that the overall association attenuates  
280 through childhood (20, 26).

281 A rapid phase of growth has been proposed to evolve into increased susceptibility of later overweight (21, 78-80), but only  
282 few studies have examined the relationship between GA and later overweight in childhood or adulthood (10, 29, 30, 81).  
283 The overall effect estimates from our main analysis showed a weak association between GA and overweight from early  
284 infancy through mid-childhood with only very preterm in mid-childhood being at lower odds of overweight than full term  
285 peers. In contrast, a cohort study from Chile based on 153,635 children aged 6-8 years reported that term children are a lower  
286 risk of overweight (OR 0.84 [95% CI: 0.79, 0.88]) than preterm peers (reference group, ( $\leq 37$  weeks) (29). However, as  
287 highlighted by the authors, a major limitation of their study was the lack of information on obstetric maternal characteristics  
288 and maternal pre-pregnancy BMI.

289 In accordance with a cohort study from the United Kingdom on 11,765 children aged 11 years (30), we found no difference  
290 in odds of overweight between preterm and full term children in late childhood ( $>9.0$ - $14.0$  years).

291 Our study extends previous research by examining the association between GA and overweight in adolescence, and across  
292 key stages of growth development throughout childhood. Moreover, our study design and large sample size enables an  
293 examination of odds of overweight in preterm adolescents, and provides insights about this association across a wide range  
294 of GA. This distinction between degrees of preterm births is important as decreasing length of gestation is associated with  
295 increased risk of mortality, disability, and morbidity across the lifespan (82). Also, considering preterm births as not being  
296 homogeneous in causes and consequences was highlighted by others (83, 84) as an important approach when interpreting  
297 such results, but a major limitation in current evidence (6, 7, 34).

298 Our main analysis suggested that very preterm have an increased odds of overweight in adolescence compared with full term  
299 peers. Despite heterogeneity in characteristics for the cohorts (ALSPAC, DNBC, NFBC1986 and the Raine Study) included  
300 for this age-band, our supplementary analyses addressed robustness in our findings. Our results are further supported by  
301 findings from two comparable studies conducted in Finland and Australia, where an increased odds of overweight was  
302 reported in preterm aged 23 and 35 years, respectively (81, 85).

303 In summary, this study sheds new light on factors influencing BMI and the odds of developing overweight from infancy  
304 through adolescence. Our analysis revealed that although preterm infants are relatively small at birth, they reach similar  
305 levels of BMI and odds of overweight by adolescence as full term counterparts. The underlying mechanisms from the current  
306 observational data are unknown. However, in accordance with previous findings, our pattern of results suggests that preterm  
307 infants may be at an increased odds of overweight later in life, even though mean BMI in preterm and full term are similar.

308 In addition, it should be noted that mediating exposures such as birth weight, congenital anomalies and breast feeding prac-  
309 tices may also affect the relationship between GA and later body size.

310

### 311 **Strengths and limitations**

312 An important strength in the current study is the large sample size with information on more than 250,000 mother-child  
313 dyads, from 16 prospective pregnancy and birth cohorts in Europe, North America, and Australasia. We used comprehensive  
314 obstetric and maternal data as well as multiple BMI measurements following birth through adolescence, which allowed us  
315 to adjust analyses. Additionally, the large sample size enabled us to assess associations successively using clinical categories  
316 of preterm birth to age 19 years. We also examined the robustness of our findings performing several sensitivity analyses.  
317 Furthermore, the federated analysis approach using DataSHIELD proves a key advantage since it enables identical and  
318 reproducible analysis across multiple cohorts (39, 86, 87).

319 The limitations include the considerable variations that exist in the measurement and availability of both exposures, covari-  
320 ates, and outcomes. However, this was explored by meta-regressions on multiple covariates showing that study characteris-  
321 tics were independently associated with between-study heterogeneity only in the associations of GA with BMI. Age at  
322 measurement was the main contributor to heterogeneity in early infancy, but not in childhood and adolescence. This suggests  
323 that GA is important for BMI in early life, but attenuates consistently as children get older. In late childhood and adolescence,  
324 maternal education and maternal smoking in pregnancy were independently associated with the observed heterogeneity.

325 Residual confounding may be another limitation in this study as the confounders are harmonised across studies, which gives  
326 the lowest common denominator. Several large cohorts (DNBC, MOBA, NFBC1986, the Raine study) had no available  
327 information on maternal ethnic background (Table S1), which could bias our results. However, we had reports that the  
328 cohorts were homogeneous (>95% western) (45, 52, 53, 56), hence we do not assume this affected our findings.

329 As survival rates and postnatal treatment for preterm infants have improved in the last 20 years (3), distribution and charac-  
330 teristics of GA in the earliest cohorts are likely to differ from that in populations born more recently, with the former poten-  
331 tially being more selected and healthy later (34, 88). We do, however, not assume this would affect our overall estimates  
332 markedly.

333 **Conclusions**

334 Higher GA is potentially clinically important for higher BMI in infancy, while the association attenuates consistently with  
335 age. By adolescence, preterm children have on average a similar mean BMI to those born full term.

## 336 **Funding**

337 This collaborative project received funding from the European Union's Horizon 2020 research and innovation programme  
338 (Grant Agreement No. 733206 LifeCycle, Grant Agreement No. 824989 EUCAN-Connect). Please see S1 Appendix for list  
339 of cohort-specific funding/support. DAL is supported by the UK Medical Research Council (MC\_UU\_00011/6) and British  
340 Heart Foundation (CH/F/20/90003 and AA/18/7/34219). RW is supported by UKRI Innovation Fellowship with Health Data  
341 Research UK [MR/S003959/1].

342

## 343 **Acknowledgement**

344 The authors would like to acknowledge everyone in LifeCycle and EUCAN-Connect who have supported and contributed  
345 to each cohort included in the study. In addition, acknowledgements are sent to the DataSHIELD team. Please see S2 Ap-  
346 pendix for list of cohort-specific acknowledgements.

347

## 348 **Conflict of interest**

349 I have read the journal's policy and the authors of this manuscript have the following competing interests: DAL has received  
350 support from Roche Diagnostics and Medtronic in relation to biomarker research that is not related to the research presented  
351 in this paper. The other authors have declared that no competing interests exist.

352

## 353 **Author Contribution**

354 **Conceptualization:** Johan L. Vinther, Anne-Marie Nybo Andersen, Claus T. Ekstrøm, Thorkild I.A. Sørensen, Deborah  
355 Lawlor

356 **Data Curation:** Johan L. Vinther, Tim Cadman, Demetris Avraam, Thorkild I.A. Sørensen, Claus T. Ekstrøm, Ahmed  
357 Elhakeem, Ana C. Santos, Angela Pinot de Moira, Barbara Heude, Carmen Iñiguez, Costanza Pizzi, Elinor Simons, Ellis  
358 Voerman, Eva Corpeleijn, Faryal Zariouh, Gilian Santorelli, Hazel M. Inskip, Henrique Barros, Jennie Carson, Jennifer R.  
359 Harris, Johanna L Nader, Justiina Ronkainen, Loreto Santa-Marina, Lucinda Calas, Luise Cederkvist, Maja Popovic, Marie-  
360 Aline Charles, Martine Vrijheid, Meghan Azad, Padmaja Subbarao, Paul Burton, Puishkumar J. Mandhane, Rae-Chi Huang,  
361 Rebecca C. Wilson, Sido Haakma, Silvia Fernandez, Stuart Turvey, Susana Santos, Suzanne C. Tough, Sylvain Sebert, Tanis  
362 Fenton, Theo Moraes, Theodosia Salika, Vincent W.V. Jaddoe, Deborah A. Lawlor, Anne-Marie Nybo Andersen

363 **Formal Analysis:** Johan L. Vinther, Tim Cadman, Demetris Avraam

364 **Funding Acquisition:** Vincent Jaddoe, Martine Vrijheid, Marie-Aline Charles, Jennifer R. Harris, Deborah A. Lawlor,  
365 Anne-Marie Nybo Andersen, Hazel Inskip, Rae-Chi Huang

366 **Methodology:** Johan L. Vinther, Anne-Marie Nybo Andersen, Tim Cadman, Demetris Avraam, Claus T. Ekstrøm, Debo-  
367 rah A. Lawlor, Thorkild I.A. Sørensen

368 **Project Administration:** Johan L. Vinther

369 **Software:** Johan L. Vinther, Tim Cadman, Demetris Avraam, Sido Haakma, Paul Burton

370 **Supervision:** Anne-Marie Nybo Andersen, Deborah A. Lawlor, Claus T. Ekstrøm

371 **Visualization:** Johan L. Vinther

372 **Writing – Original Draft Preparation:** Johan L. Vinther, Anne-Marie Nybo Andersen, Tim Cadman, Demetris Av-  
373 raam, Claus T. Ekstrøm, Thorkild I.A. Sørensen, Deborah A. Lawlor

374 **Writing – Review & Editing:** Johan L. Vinther, Tim Cadman, Demetris Avraam, Thorkild I.A. Sørensen, Claus T.  
375 Ekstrøm, Ahmed Elhakeem, Ana C. Santos, Angela Pinot de Moira, Barbara Heude, Carmen Iñiguez, Costanza Pizzi, Elinor  
376 Simons, Ellis Voerman, Eva Corpeleijn, Faryal Zariouh, Gilian Santorelli, Hazel M. Inskip, Henrique Barros, Jennie Carson,  
377 Jennifer R. Harris, Johanna L Nader, Justiina Ronkainen, Katrine Strandberg-Larsen, Loreto Santa-Marina, Lucinda Calas,  
378 Luise Cederkvist, Maja Popovic, Marie-Aline Charles, Martine Vrijheid, Meghan Azad, Padmaja Subbarao, Paul Burton,  
379 Puishkumar J. Mandhane, Rae-Chi Huang, Rebecca C. Wilson, Sido Haakma, Sílvia Fernández-Barrés, Stuart Turvey, Su-  
380 sana Santos, Suzanne C. Tough, Sylvain Sebert, Tanis Fenton, Theo Moraes, Theodosia Salika, Vincent W.V. Jaddoe, De-  
381 borah A. Lawlor, Anne-Marie Nybo Andersen

## References

1. Goldenberg RL, Culhane JF, Iams JD, Romero R. Epidemiology and causes of preterm birth. *Lancet*. 2008;371(9606):75-84.
2. Saigal S, Doyle LW. An overview of mortality and sequelae of preterm birth from infancy to adulthood. *Lancet*. 2008;371(9608):261-9.
3. Bick D. Born too soon: the global issue of preterm birth. *Midwifery*. 2012;28(4):341-2.
4. Chawanpaiboon S, Vogel JP, Moller AB, Lumbiganon P, Petzold M, Hogan D, et al. Global, regional, and national estimates of levels of preterm birth in 2014: a systematic review and modelling analysis. *Lancet Glob Health*. 2019;7(1):e37-e46.
5. Markopoulou P, Papanikolaou E, Analytis A, Zoumakis E, Siahianidou T. Preterm Birth as a Risk Factor for Metabolic Syndrome and Cardiovascular Disease in Adult Life: A Systematic Review and Meta-Analysis. *J Pediatr*. 2019;210:69-80 e5.
6. Parkinson JR, Hyde MJ, Gale C, Santhakumaran S, Modi N. Preterm birth and the metabolic syndrome in adult life: a systematic review and meta-analysis. *Pediatrics*. 2013;131(4):e1240-63.
7. Kajantie E, Strang-Karlsson S, Evensen KAI, Haaramo P. Adult outcomes of being born late preterm or early term - What do we know? *Semin Fetal Neonatal Med*. 2019;24(1):66-83.
8. Johansson S, Iliadou A, Bergvall N, Tuvemo T, Norman M, Cnattingius S. Risk of high blood pressure among young men increases with the degree of immaturity at birth. *Circulation*. 2005;112(22):3430-6.
9. Lawlor DA, Hubinette A, Tynelius P, Leon DA, Smith GD, Rasmussen F. Associations of gestational age and intrauterine growth with systolic blood pressure in a family-based study of 386,485 men in 331,089 families. *Circulation*. 2007;115(5):562-8.
10. Sipola-Leppanen M, Vaarasmaki M, Tikanmaki M, Matinolli HM, Miettola S, Hovi P, et al. Cardiometabolic risk factors in young adults who were born preterm. *Am J Epidemiol*. 2015;181(11):861-73.
11. Sipola-Leppanen M, Vaarasmaki M, Tikanmaki M, Hovi P, Miettola S, Ruokonen A, et al. Cardiovascular risk factors in adolescents born preterm. *Pediatrics*. 2014;134(4):e1072-81.
12. Baird J, Jacob C, Barker M, Fall CH, Hanson M, Harvey NC, et al. Developmental Origins of Health and Disease: A Lifecourse Approach to the Prevention of Non-Communicable Diseases. *Healthcare (Basel)*. 2017;5(1).
13. Gluckman PD, Hanson MA, Cooper C, Thornburg KL. Effect of in utero and early-life conditions on adult health and disease. *N Engl J Med*. 2008;359(1):61-73.
14. Hanson MA, Gluckman PD. Early developmental conditioning of later health and disease: physiology or pathophysiology? *Physiol Rev*. 2014;94(4):1027-76.



15. Kopec G, Shekhawat PS, Mhanna MJ. Prevalence of diabetes and obesity in association with prematurity and growth restriction. *Diabetes Metab Syndr Obes.* 2017;10:285-95.
16. Remacle C, Bieswal F, Reusens B. Programming of obesity and cardiovascular disease. *Int J Obes Relat Metab Disord.* 2004;28 Suppl 3:S46-53.
17. Rowe DL, Derraik JG, Robinson E, Cutfield WS, Hofman PL. Preterm birth and the endocrine regulation of growth in childhood and adolescence. *Clin Endocrinol (Oxf).* 2011;75(5):661-5.
18. Barker DJ. Obesity and early life. *Obes Rev.* 2007;8 Suppl 1:45-9.
19. Barker DJ. Adult consequences of fetal growth restriction. *Clin Obstet Gynecol.* 2006;49(2):270-83.
20. Euser AM, de Wit CC, Finken MJ, Rijken M, Wit JM. Growth of preterm born children. *Horm Res.* 2008;70(6):319-28.
21. Griffin IJ, Cooke RJ. Development of whole body adiposity in preterm infants. *Early Hum Dev.* 2012;88 Suppl 1:S19-24.
22. WHO European Regional Obesity Report 2022. Copenhagen; 2022 2022.
23. Hollanders JJ, van der Pal SM, van Dommelen P, Rotteveel J, Finken MJJ. Growth pattern and final height of very preterm vs. very low birth weight infants. *Pediatr Res.* 2017;82(2):317-23.
24. Adams M, Andersen AM, Andersen PK, Haig D, Henriksen TB, Hertz-Picciotto I, et al. Sostrup statement on low birthweight. *Int J Epidemiol.* 2003;32(5):884-5.
25. Ananth CV, Schisterman EF. Confounding, causality, and confusion: the role of intermediate variables in interpreting observational studies in obstetrics. *Am J Obstet Gynecol.* 2017;217(2):167-75.
26. Roberts G, Cheong J, Opie G, Carse E, Davis N, Duff J, et al. Growth of extremely preterm survivors from birth to 18 years of age compared with term controls. *Pediatrics.* 2013;131(2):e439-45.
27. Roswall J, Karlsson AK, Allvin K, Tangen GA, Bergman S, Niklasson A, et al. Preschool children born moderately preterm have increased waist circumference at two years of age despite low body mass index. *Acta Paediatr.* 2012;101(11):1175-81.
28. Bortolotto CC, Santos IS, Dos Santos Vaz J, Matijasevich A, Barros AJD, Barros FC, et al. Prematurity and body composition at 6, 18, and 30 years of age: Pelotas (Brazil) 2004, 1993, and 1982 birth cohorts. *BMC Public Health.* 2021;21(1):321.
29. Mardones F, Villarroel L, Karzulovic L, Barja S, Arnaiz P, Taibo M, et al. Association of perinatal factors and obesity in 6- to 8-year-old Chilean children. *Int J Epidemiol.* 2008;37(4):902-10.
30. Massion S, Wickham S, Pearce A, Barr B, Law C, Taylor-Robinson D. Exploring the impact of early life factors on inequalities in risk of overweight in UK children: findings from the UK Millennium Cohort Study. *Arch Dis Child.* 2016;101(8):724-30.

31. Ni Y, Beckmann J, Gandhi R, Hurst JR, Morris JK, Marlow N. Growth to early adulthood following extremely preterm birth: the EPICure study. *Arch Dis Child Fetal Neonatal Ed.* 2020;105(5):496-503.
32. Bocca-Tjeertes IF, Kerstjens JM, Reijneveld SA, de Winter AF, Bos AF. Growth and predictors of growth restraint in moderately preterm children aged 0 to 4 years. *Pediatrics.* 2011;128(5):e1187-94.
33. Dietz WH. Critical periods in childhood for the development of obesity. *Am J Clin Nutr.* 1994;59(5):955-9.
34. Cooper R, Atherton K, Power C. Gestational age and risk factors for cardiovascular disease: evidence from the 1958 British birth cohort followed to mid-life. *Int J Epidemiol.* 2009;38(1):235-44.
35. Andraweera PH, Condon B, Collett G, Gentilcore S, Lassi ZS. Cardiovascular risk factors in those born preterm - systematic review and meta-analysis. *J Dev Orig Health Dis.* 2021;12(4):539-54.
36. Yoshida-Montezuma Y, Stone E, Iftikhar S, De Rubeis V, Andreacchi AT, Keown-Stoneman C, et al. The association between late preterm birth and cardiometabolic conditions across the life course: A systematic review and meta-analysis. *Paediatr Perinat Epidemiol.* 2021.
37. Lurbe E, Ingelfinger J. Developmental and Early Life Origins of Cardiometabolic Risk Factors: Novel Findings and Implications. *Hypertension.* 2021;77(2):308-18.
38. Jaddoe VWV, Felix JF, Andersen AN, Charles MA, Chatzi L, Corpeleijn E, et al. The LifeCycle Project-EU Child Cohort Network: a federated analysis infrastructure and harmonized data of more than 250,000 children and parents. *Eur J Epidemiol.* 2020;35(7):709-24.
39. Pinot de Moira A, Haakma S, Strandberg-Larsen K, van Enkevort E, Kooijman M, Cadman T, et al. The EU Child Cohort Network's core data: establishing a set of findable, accessible, interoperable and re-usable (FAIR) variables. *Eur J Epidemiol.* 2021;36(5):565-80.
40. EUCAN-Connect. A federated FAIR platform enabling large-scale analysis of high-value cohort data connecting Europe and Canada in personalized health [Available from: <https://eucanconnect.com/>].
41. Fraser A, Macdonald-Wallis C, Tilling K, Boyd A, Golding J, Davey Smith G, et al. Cohort Profile: the Avon Longitudinal Study of Parents and Children: ALSPAC mothers cohort. *Int J Epidemiol.* 2013;42(1):97-110.
42. Tough SC, McDonald SW, Collisson BA, Graham SA, Kehler H, Kingston D, et al. Cohort Profile: The All Our Babies pregnancy cohort (AOB). *Int J Epidemiol.* 2017;46(5):1389-90k.
43. Wright J, Small N, Raynor P, Tuffnell D, Bhopal R, Cameron N, et al. Cohort Profile: the Born in Bradford multi-ethnic family cohort study. *Int J Epidemiol.* 2013;42(4):978-91.
44. Subbarao P, Anand SS, Becker AB, Befus AD, Brauer M, Brook JR, et al. The Canadian Healthy Infant Longitudinal Development (CHILD) Study: examining developmental origins of allergy and asthma. *Thorax.* 2015;70(10):998-1000.

45. Olsen J, Melbye M, Olsen SF, Sorensen TI, Aaby P, Andersen AM, et al. The Danish National Birth Cohort--its background, structure and aim. *Scand J Public Health*. 2001;29(4):300-7.
46. Heude B, Forhan A, Slama R, Douhaud L, Bedel S, Saurel-Cubizolles MJ, et al. Cohort Profile: The EDEN mother-child cohort on the prenatal and early postnatal determinants of child health and development. *Int J Epidemiol*. 2016;45(2):353-63.
47. Charles MA, Thierry X, Lanoe JL, Bois C, Dufourg MN, Popa R, et al. Cohort Profile: The French national cohort of children (ELFE): birth to 5 years. *Int J Epidemiol*. 2020;49(2):368-9j.
48. Correia S, Rodrigues T, Barros H. Socioeconomic variations in female fertility impairment: a study in a cohort of Portuguese mothers. *BMJ Open*. 2014;4(1):e003985.
49. L'Abée C, Sauer PJ, Damen M, Rake JP, Cats H, Stolk RP. Cohort Profile: the GECKO Drenthe study, overweight programming during early childhood. *Int J Epidemiol*. 2008;37(3):486-9.
50. Jaddoe VW, Mackenbach JP, Moll HA, Steegers EA, Tiemeier H, Verhulst FC, et al. The Generation R Study: Design and cohort profile. *Eur J Epidemiol*. 2006;21(6):475-84.
51. Guxens M, Ballester F, Espada M, Fernandez MF, Grimalt JO, Ibarluzea J, et al. Cohort Profile: the INMA--Infancia y Medio Ambiente--(Environment and Childhood) Project. *Int J Epidemiol*. 2012;41(4):930-40.
52. Magnus P, Birke C, Vejrup K, Haugan A, Alsaker E, Daltveit AK, et al. Cohort Profile Update: The Norwegian Mother and Child Cohort Study (MoBa). *Int J Epidemiol*. 2016;45(2):382-8.
53. Jarvelin MR, Hartikainen-Sorri AL, Rantakallio P. Labour induction policy in hospitals of different levels of specialisation. *Br J Obstet Gynaecol*. 1993;100(4):310-5.
54. Jarvelin MR, Elliott P, Kleinschmidt I, Martuzzi M, Grundy C, Hartikainen AL, et al. Ecological and individual predictors of birthweight in a northern Finland birth cohort 1986. *Paediatr Perinat Epidemiol*. 1997;11(3):298-312.
55. University of Oulu: Northern Finland Birth Cohort 1986. University of Oulu.
56. Richiardi L, Baussano I, Vizzini L, Douwes J, Pearce N, Merletti F, et al. Feasibility of recruiting a birth cohort through the Internet: the experience of the NINFEA cohort. *Eur J Epidemiol*. 2007;22(12):831-7.
57. McKnight CM, Newnham JP, Stanley FJ, Mountain JA, Landau LI, Beilin LJ, et al. Birth of a cohort--the first 20 years of the Raine study. *Med J Aust*. 2012;197(11):608-10.
58. Inskip HM, Godfrey KM, Robinson SM, Law CM, Barker DJ, Cooper C, et al. Cohort profile: The Southampton Women's Survey. *Int J Epidemiol*. 2006;35(1):42-8.
59. Doiron D, Marcon Y, Fortier I, Burton P, Ferretti V. Software Application Profile: Opal and Mica: open-source software solutions for epidemiological data management, harmonization and dissemination. *Int J Epidemiol*. 2017;46(5):1372-8.

60. Swertz MA, Dijkstra M, Adamusiak T, van der Velde JK, Kanterakis A, Roos ET, et al. The MOLGENIS toolkit: rapid prototyping of biosoftware at the push of a button. *BMC Bioinformatics*. 2010;11 Suppl 12:S12.
61. Swertz MA, Jansen RC. Beyond standardization: dynamic software infrastructures for systems biology. *Nat Rev Genet*. 2007;8(3):235-43.
62. van der Velde KJ, Imhann F, Charbon B, Pang C, van Enkevort D, Slofstra M, et al. MOLGENIS research: advanced bioinformatics data software for non-bioinformaticians. *Bioinformatics*. 2019;35(6):1076-8.
63. Budin-Ljosne I, Burton P, Isaeva J, Gaye A, Turner A, Murtagh MJ, et al. DataSHIELD: an ethically robust solution to multiple-site individual-level data analysis. *Public Health Genomics*. 2015;18(2):87-96.
64. Gaye A, Marcon Y, Isaeva J, LaFlamme P, Turner A, Jones EM, et al. DataSHIELD: taking the analysis to the data, not the data to the analysis. *Int J Epidemiol*. 2014;43(6):1929-44.
65. Wilson R.C. BOW, Avraam D., Baker J., Tedds J., Turner A., Murtagh M. and Burton P. . DataSHIELD – moving in new directions and dimensions. *Data Science Journal*. 2017;16.
66. Gill JV, Boyle EM. Outcomes of infants born near term. *Arch Dis Child*. 2017;102(2):194-8.
67. Woo JG, Daniels SR. Assessment of Body Mass Index in Infancy: It Is Time to Revise Our Guidelines. *J Pediatr*. 2019;204:10-1.
68. de Onis M, Lobstein T. Defining obesity risk status in the general childhood population: which cut-offs should we use? *Int J Pediatr Obes*. 2010;5(6):458-60.
69. de Onis M, Onyango AW, Borghi E, Siyam A, Nishida C, Siekmann J. Development of a WHO growth reference for school-aged children and adolescents. *Bull World Health Organ*. 2007;85(9):660-7.
70. Statistics: Uif. International Standard Classification of Education ISCED 2011. Montréal; 2012.
71. Burke DL, Ensor J, Riley RD. Meta-analysis using individual participant data: one-stage and two-stage approaches, and why they may differ. *Stat Med*. 2017;36(5):855-75.
72. Borenstein M, Hedges LV, Higgins JP, Rothstein HR. A basic introduction to fixed-effect and random-effects models for meta-analysis. *Res Synth Methods*. 2010;1(2):97-111.
73. Higgins JP, Thompson SG, Deeks JJ, Altman DG. Measuring inconsistency in meta-analyses. *BMJ*. 2003;327(7414):557-60.
74. Hastie T, Tibshirani R, Friedman, J. Model Assessment and Selection. *The elements of statistical learning: Data mining, inference, and prediction*. 6 ed: New York Springer; 2001. p. 219-60.
75. RC T. R: A language and environment for statistical computing. 2014.
76. Viechtbauer W. Conducting Meta-Analyses in R with the metafor Package. *Journal of Statistical Software*. 2010;36(3).

77. Fewtrell MS, Lucas A, Cole TJ, Wells JC. Prematurity and reduced body fatness at 8-12 y of age. *Am J Clin Nutr*. 2004;80(2):436-40.
78. Pico C, Palou A. Perinatal programming of obesity: an introduction to the topic. *Front Physiol*. 2013;4:255.
79. Ong KK, Dunger DB. Perinatal growth failure: the road to obesity, insulin resistance and cardiovascular disease in adults. *Best Pract Res Clin Endocrinol Metab*. 2002;16(2):191-207.
80. Ong KK, Loos RJ. Rapid infancy weight gain and subsequent obesity: systematic reviews and hopeful suggestions. *Acta Paediatr*. 2006;95(8):904-8.
81. Mathai S, Derraik JG, Cutfield WS, Dalziel SR, Harding JE, Biggs J, et al. Increased adiposity in adults born preterm and their children. *PLoS One*. 2013;8(11):e81840.
82. Blencowe H, Cousens S, Oestergaard MZ, Chou D, Moller AB, Narwal R, et al. National, regional, and worldwide estimates of preterm birth rates in the year 2010 with time trends since 1990 for selected countries: a systematic analysis and implications. *Lancet*. 2012;379(9832):2162-72.
83. Villar J, Papageorghiou AT, Knight HE, Gravett MG, Iams J, Waller SA, et al. The preterm birth syndrome: a prototype phenotypic classification. *Am J Obstet Gynecol*. 2012;206(2):119-23.
84. McElrath TF, Hecht JL, Dammann O, Boggess K, Onderdonk A, Markenson G, et al. Pregnancy disorders that lead to delivery before the 28th week of gestation: an epidemiologic approach to classification. *Am J Epidemiol*. 2008;168(9):980-9.
85. Sipola-Leppanen M, Kajantie E. Should we assess cardiovascular risk in young adults born preterm? *Curr Opin Lipidol*. 2015;26(4):282-7.
86. Jones EM SN, Gaye A, Laflamme P, Burton PR. Combined analysis of correlated data when data cannot be pooled. *Stat*. 2013;2.
87. Jones EM SN, Masca N, Wallace S, Murtagh MJ, Burton PR. DataSHIELD – shared individual-level analysis without sharing data: a biostatistical perspective. *Norwegian Journal of Epidemiology*. 2012;21:231-9.
88. Reilly JJ, El-Hamdouchi A, Diouf A, Monyeki A, Somda SA. Determining the worldwide prevalence of obesity. *Lancet*. 2018;391(10132):1773-4.

## **FIGURES & TABLES**

**Table 1. Baseline characteristics of study participants in the 16 participating cohorts**

**Table 2. Distribution of gestational age groups in the 16 participating cohorts**

**Table 3. Distribution of BMI z-scores and overweight in the 16 participating cohorts**

**Fig 1. Forest plot of associations between gestational age at birth (completed weeks) and BMI z-score**

**Fig 2. Forest plot of associations between gestational age at birth (clinical categories) and BMI z-score**

**Fig 3. Forest plot of associations between gestational age at birth (completed weeks) and odds of overweight**

**Fig 4. Forest plot of associations between gestational age at birth (clinical categories) and odds of overweight**

**Table 1. Baseline characteristics of study participants in the 16 participating cohorts**

	Study population	Year of birth	Sex (%), female	Gestational age at birth (weeks), mean (SD)	Maternal age at birth (years), mean (SD)	Maternal education (%), low	Maternal education (%), medium	Maternal education (%), high	Maternal ethnic background (%), western	Maternal ethnic background (%), non-western	Maternal ethnic background (%), mixed	Maternal height at birth (cm), mean (SD)	Pre-pregnancy BMI (kg/m <sup>2</sup> ), mean (SD)	Pre-pregnancy overweight (%)	Maternal smoking in pregnancy (%)	Gestational diabetes (%)	Gestational hypertension (%)	Maternal preeclampsia (%)	Parity, nulliparity (%)
<b>All Cohorts (N=16)</b>	<b>253,811</b>	<b>1985-2017</b>	<b>49.1</b>	<b>39.8 (1.8)</b>	<b>30.0 (4.7)</b>	<b>16.9</b>	<b>30.5</b>	<b>52.6</b>	<b>77.6</b>	<b>18.7</b>	<b>3.7</b>	<b>167.1 (6.5)</b>	<b>23.7 (4.3)</b>	<b>28.6</b>	<b>18.0</b>	<b>2.0</b>	<b>7.4</b>	<b>1.6</b>	<b>47.7</b>
ALSPAC, United Kingdom	10,452	1991-1993	49.6	39.9 (1.7)	28.8 (4.6)	14.5	68.9	16.7	98.4	1.6	0.0	164.1 (6.7)	22.6 (4.4)	20.5	25.4	0.5	14.7	1.9	45.4
AOF, Canada	2,263	2008-2011	47.4	38.9 (1.7)	31.3 (4.4)	77.5	20.2	2.3	81.7	16.7	1.6	165.9 (7.0)	24.5 (5.2)	34.8	10.7	5.1	7.4	6.8	50.8
BIB, United Kingdom	13,097	2007-2011	48.4	39.5 (1.8)	27.6 (5.6)	56.8	15.8	27.4	42.2	55.9	1.9	161.6 (6.5)	26.0 (5.6)	50.2	16.3	8.0	7.1	2.6	39.5
CHILD, Canada	2,984	2009-2012	47.5	39.5 (1.4)	31.8 (4.6)	8.3	28.7	63.0	73.3	20.6	6.1	165.0 (6.9)	24.2 (5.0)	32.5	18.7	4.2	7.6	1.3	37.5
DNBC, Denmark	81,117	1996-2003	49.6	39.9 (1.8)	30.1 (4.2)	26.4	21.9	51.7				168.8 (6.1)	23.6 (4.2)	27.4	25.4	0.9	12.6	2.4	47.6
EDEN, France	1,765	2003-2006	48.0	39.7 (1.7)	29.6 (4.8)	6.1	38.8	55.1	99.0	0.5	0.5	163.6 (6.2)	23.2 (4.6)	25.9	25.5	6.5	1.9	2.6	45.3
ELFE, France	15,506	2011	48.8	39.6 (1.5)	30.4 (4.9)	7.2	32.9	59.9	81.1	12.0	6.9	165.0 (6.3)	23.4 (4.8)	26.6	19.3	6.9	2.0	1.5	46.1
G21, Portugal	6,439	2005-2006	48.6	39.2 (1.6)	29.3 (5.4)	46.0	28.8	25.3	95.5	2.6	2.0	160.8 (6.2)	24.0 (4.3)	31.0	37.5	6.5	1.9	2.0	58.0
GECKO, The Netherlands	2,768	2006-2008	49.6	39.8 (1.6)	30.7 (4.4)	35.6	28.6	35.8	95.7	2.7	1.7	171.6 (6.3)	24.7 (4.7)	37.3	15.6	2.5	7.9	2.6	40.5
GEN-R, The Netherlands	8,641	2002-2006	49.6	40.3 (1.8)	30.6 (5.2)	10.3	44.6	45.0	56.8	33.3	9.9	167.5 (7.5)	23.6 (4.3)	27.8	26.0	1.1	3.8	2.2	55.3
INMA, Spain	1,936	2004-2008	48.6	39.9 (1.5)	31.8 (4.2)	24.1	40.9	35.0	95.6	4.4	0.0	162.8 (6.2)	23.5 (4.2)	25.1	31.5	4.4			55.5
MoBa, Norway	86,553	1999-2009	48.7	39.8 (1.8)	30.3 (4.5)	2.2	31.8	66.0				168.2 (5.9)	24.0 (4.2)	31.0	8.7	0.4	4.9	0.1	47.7
NFBC 1986, Finland	8,325	1985-1986	49.1	39.8 (1.6)	27.8 (5.5)	38.9	37.3	23.7				163.2 (5.5)	22.3 (3.5)	16.9	23.8		4.0	2.5	34.2
NINFEA, Italy	6,515	2005-2017	49.3	39.7 (1.7)	33.2 (4.3)	4.6	32.5	62.9				165.0 (6.2)	22.5 (3.8)	19.0	8.0	8.1	3.3	2.2	72.7
The Raine study, Australia	2,443	1989-1992	48.7	39.2 (2.0)	27.8 (5.8)	52.7	27.1	20.2	89.4	10.6	0.0	163.6 (6.6)	22.3 (4.2)	17.7	27.5	1.8	19.3	4.9	47.7
SWS, United Kingdom	3,007	1999-2007	48.0	39.7 (1.8)	30.2 (3.8)	12.0	59.3	28.7	95.7	3.7	0.6	163.3 (6.5)	25.2 (4.8)	41.3	15.6	1.3	3.3	2.8	51.5

**Note:** Percentages include non-missing, and empty cells represent no available data.

**Abbreviations:** SD = Standard Deviation, BMI = Body Mass Index

**Table 2. Distribution of gestational age groups in the 16 participating cohorts**

	<b>Gestational age at birth (completed weeks)</b>				
	<b>Very preterm 28-33 weeks (%)</b>	<b>Late preterm, 34-36 weeks (%)</b>	<b>Early term, 37-38 weeks (%)</b>	<b>Full term, 39-41 weeks (%)</b>	<b>Post term, 42-43 weeks (%)</b>
<b>All Cohorts (N=16)</b>	<b>1.2</b>	<b>4.3</b>	<b>17.8</b>	<b>69.9</b>	<b>6.7</b>
ALSPAC, United Kingdom	1.2	4.2	17.0	69.9	7.7
AOF, Canada	1.3	5.0	26.1	67.4	0.2
BIB, United Kingdom	1.4	4.6	22.5	70.2	1.3
CHILD, Canada		4.2	23.5	71.5	0.8
DNBC, Denmark	1.3	4.3	16.4	69.5	8.6
EDEN, France	1.4	4.0	18.9	73.6	2.0
ELFE, France	0.5	4.9	20.6	73.5	0.5
G21, Portugal	1.4	5.8	31.6	61.1	0.2
GECKO, The Netherlands	0.7	4.3	19.9	70.4	4.7
GEN-R, The Netherlands	1.0	3.5	11.8	68.4	15.4
INMA, Spain	0.4	2.7	19.3	71.8	5.8
MoBa, Norway	1.4	4.4	16.7	70.0	7.6
NFBC1986, Finland	1.3	3.5	17.5	73.9	3.9
NINFEA, Italy	1.1	4.5	21.2	69.2	4.0
The Raine study, Australia	2.1	5.4	20.8	65.9	5.8
SWS United Kingdom	1.5	4.4	17.3	72.4	4.5

**Note:** Empty cells represent no available data



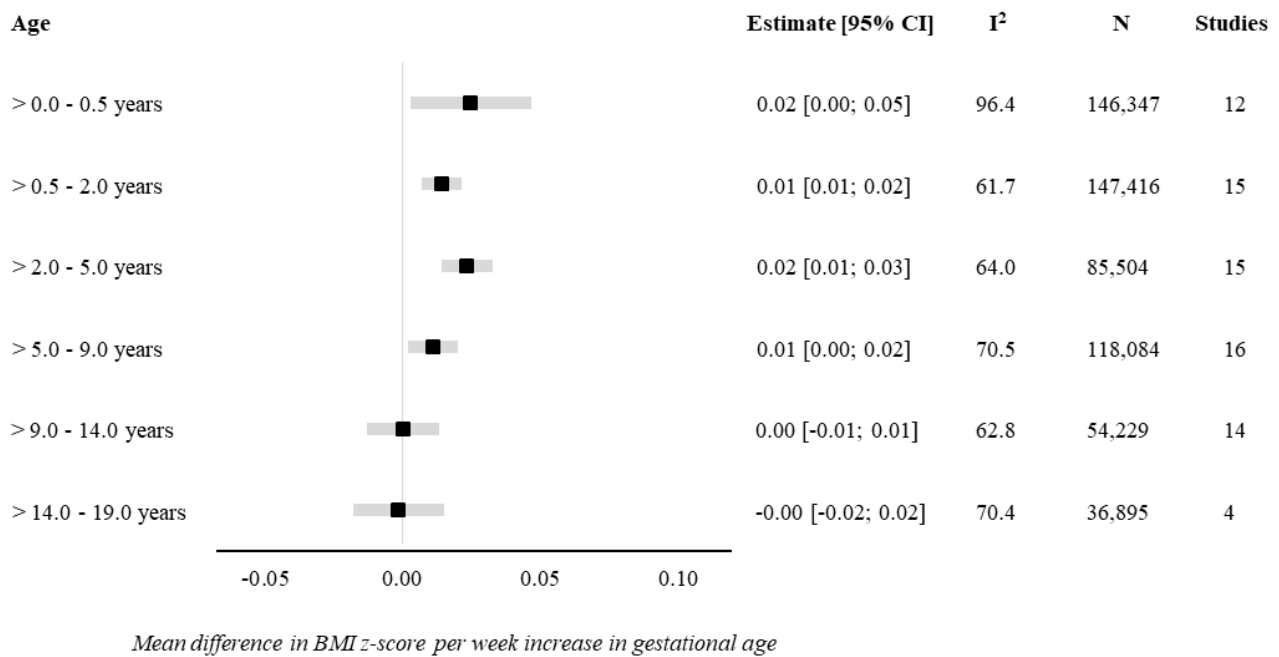
**Table 3. Distribution and age of body size measurements in the 16 participating cohorts**

	Early Infancy >0-0.5 years (1-6 months)				Late Infancy >0.5-2 years (7-24 months)				Early Childhood >2-5 years (25-60 months)				Mid Childhood >5-9 years (61-108 months)				Late Childhood >9-14 years (109-168 months)				Adolescence >14-19 years (169-227 months)			
	N	Age in months (SD)	BMI z-score	Overweight (%)	N	Age in months (SD)	BMI z-score	Overweight (%)	N	Age in months (SD)	BMI z-score	Overweight (%)	N	Age in months (SD)	BMI z-score	Overweight (%)	N	Age in months (SD)	BMI z-score	Overweight (%)	N	Age in months (SD)	BMI z-score	Overweight (%)
All Cohorts (N=16)	185,428	4.5 (1.3)	-0.19	2.1	186,419	14.7 (4.0)	0.36	5.4	106,916	44.7 (10.5)	0.34	6.0	154,863	88.0 (10.8)	0.17	21.1	78,230	136.7 (14.4)	0.08	21.0	54,155	211.8 (10.1)	0.12	18.2
ALSPAC, United Kingdom	1,014	3.8 (0.2)	-0.10	1.4	1,368	17.2 (2.8)	0.78	8.1	1,261	47.1 (5.4)	0.63	7.0	8,298	97.9 (11.4)	0.40	28.0	9,202	156.5 (13.7)	0.29	27.1	7,703	206.5 (11.0)	0.23	22.8
AOF, Canada					1,412	17.2 (2.8)	0.83	18.0	1,878	44.1 (11.8)	0.21	6.6	1,745	92.9 (12.5)	0.00	21.8								
BIB, United Kingdom	11,724	1.9 (1.1)	-0.59	0.6	10,384	19.2 (5.5)	0.19	5.1	9,813	51.8 (9.2)	0.48	8.5	8,241	93.6 (12.7)	0.29	28.8	1,141	119.5 (6.6)	0.37	34.8				
CHILD, Canada					2,847	12.7 (5.9)	0.31	6.8	2,750	46.5 (10.2)	0.48	7.0	1,652	61.9 (2.3)	0.28	18.2								
DNBC, Denmark	51,411	5.2 (0.4)	-0.32	2.1	51,429	12.4 (1.0)	0.29	6.0					42,930	84.1 (3.5)	0.02	15.4	44,070	136.3 (7.4)	-0.14	15.0	38,351	216.3 (3.9)	0.11	17.5
EDEN, France	1,701	5.0 (0.8)	-0.28	1.1	1,721	19.3 (4.8)	0.35	4.4	1,524	47.8 (8.0)	0.12	2.3	1,240	86.8 (13.8)	0.05	16.3	807	133.9 (9.2)	-0.10	19.8				
ELFE, France	13,876	3.8 (0.9)	-0.25	1.5	13,628	14.2 (5.0)	0.19	3.7	12,002	46.4 (9.5)	0.05	3.2	7,812	86.7 (16.6)	-0.05	16.0	492	109.3 (0.3)	-0.08	14.2				
G21, Portugal									5,048	51.2 (3.4)	0.63	10.6	5,604	85.2 (4.2)	0.74	37.6	4,884	121.9 (4.2)	0.72	42.7				
GECKO, The Netherlands	2,714	5.0 (0.7)	-0.18	1.1	2,683	17.3 (3.6)	0.50	4.5	2,247	41.9 (7.6)	0.33	4.1	2,258	70.4 (4.2)	0.43	22.8	2,178	127.5 (5.4)	0.26	24.6				
GEN-R, The Netherlands	6,252	4.4 (1.2)	-0.17	1.7	6,973	17.8 (3.6)	0.68	7.9	6,452	42.1 (6.6)	0.38	5.4	6,609	74.3 (6.7)	0.46	25.5	5,591	117.5 (3.9)	0.35	26.3				
INMA, Spain	1,873	4.9 (0.9)	-0.14	1.6	1,927	17.6 (3.1)	0.47	6.0	1,611	52.7 (2.8)	0.61	9.1	1,417	93.5 (8.2)	0.81	40.4	937	130.8 (7.8)	0.73	43.3				
MOBA, Norway	83,416	4.5 (1.3)	-0.06	2.4	75,091	18.5 (4.2)	0.37	4.3	48,835	41.4 (11.1)	0.35	6.1	52,132	91.7 (9.7)	0.11	20.7								
NFBC1986, Finland	5,671	5.2 (0.7)	0.05	2.6	5,795	18.5 (4.2)	0.64	6.9	5,470	49.8 (7.6)	0.35	3.8	8,081	92.6 (8.8)	0.32	24.4	5,318	157.3 (9.8)	0.22	22.8	6,535	195.0 (8.3)	-0.01	15.2
NINFEA, Italy	5,036	4.7 (1.5)	-0.39	2.6	6,032	17.2 (4.2)	0.41	7.8	4,721	51.2 (5.1)	0.06	5.1	2,724	86.8 (4.2)	0.08	21.7	1,005	131.2 (16.6)	0.04	21.5				
The Raine study, Australia					2,220	13.9 (1.6)	0.45	4.9	584	26.2 (1.6)	0.06	2.6	2,107	93.9 (9.0)	0.39	25.4	1,732	133.8 (15.1)	0.52	32.9	1,566	196.3 (14.5)	0.41	26.3
SWS, United Kingdom	740	5.8 (0.1)	0.21	3.2	2,909	14.8 (5.2)	0.69	8.7	2,720	41.5 (7.5)	0.53	6.3	2,013	84.3 (10.2)	0.29	22.4	873	111.4 (2.6)	0.19	25.7				

**Note:** Percentages include non-missing, and empty cells represent no available data

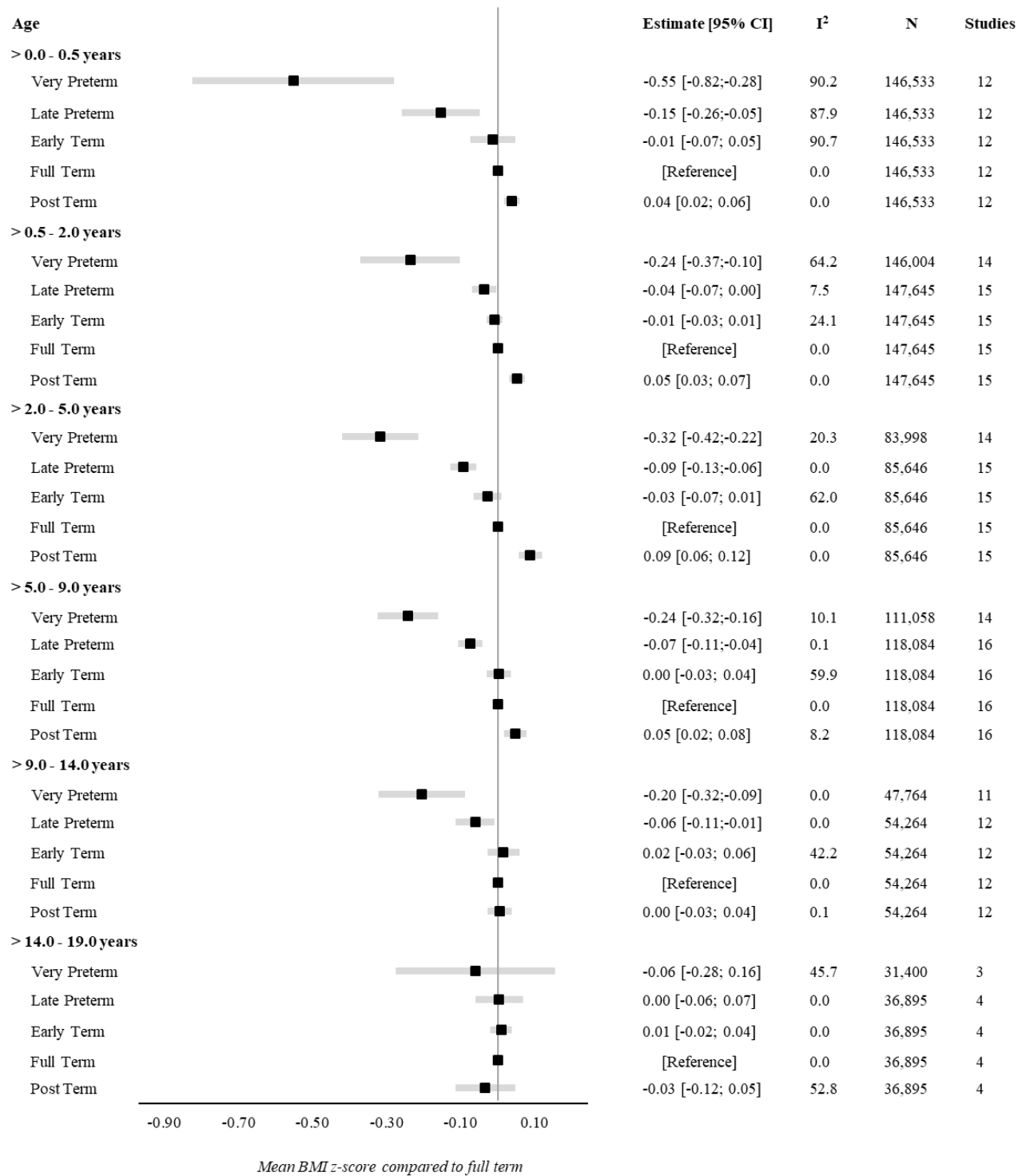
**Abbreviations:** N = Sample Size, SD = Standard Deviation

**Fig 1. Forest plot of associations between gestational age at birth (completed weeks) and BMI z-score**



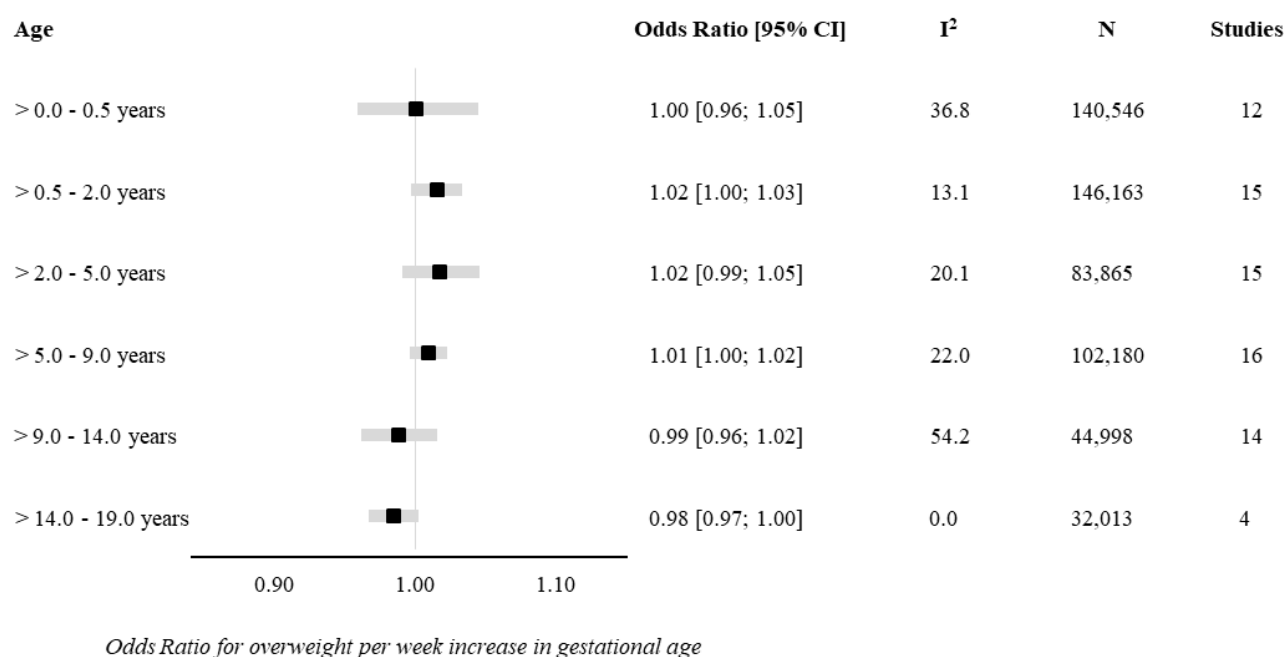
Values are overall estimates from IPD meta-analyses of the study-specific linear regression model estimates, where cohorts were assigned weights under the random-effects model. Overall estimates reflect a mean difference in BMI z-scores per week increase in gestational at birth in early infancy (>0-0.5 years), late infancy (>0.5-2.0 years), early childhood (>2-5 years), mid childhood (>5-9 years), late childhood (>9-14 years), and adolescence (>14-19 years). Models are adjusted for sex of child, maternal age at child's birth, maternal education, maternal height, maternal pre-pregnancy BMI, maternal smoking during pregnancy, parity, maternal ethnic background, gestational diabetes, gestational hypertension, pre-eclampsia. Specific variables were not available in few cohorts (see Table 1), hence not adjusted for.

**Fig 2. Forest plot of associations between gestational age at birth (clinical categories) and BMI z-score**



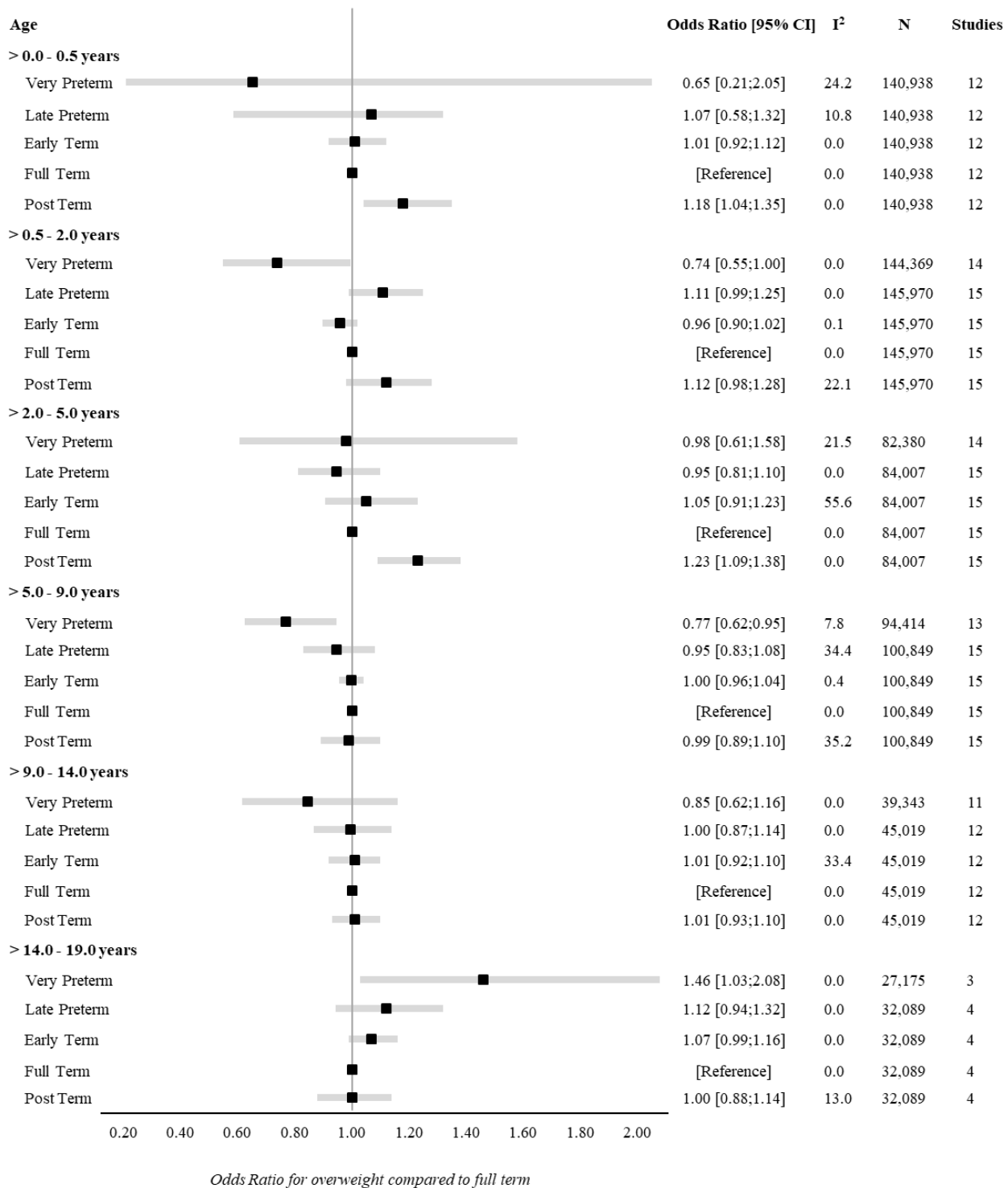
Values are overall estimates from IPD meta-analyses of the study-specific linear regression model estimates, where cohorts were assigned weights under the random-effects model. Overall estimates reflect a mean BMI z-scores compared to full term (reference category) in early infancy (>0-0.5 years), late infancy (>0.5-2.0 years), early childhood (>2-5 years), mid childhood (>5-9 years), late childhood (>9-14 years), and adolescence (>14-19 years). Models are adjusted for sex of child, maternal age at child's birth, maternal education, maternal height, maternal pre-pregnancy BMI, maternal smoking during pregnancy, parity, maternal ethnic background, gestational diabetes, gestational hypertension, pre-eclampsia. Specific variables were not available in few cohorts (see Table 1), hence not adjusted for.

**Fig 3. Forest plot of associations between gestational age at birth (completed weeks) and odds of overweight**



Values are overall estimates from IPD meta-analyses of the study-specific logistic regression model estimates, where cohorts were assigned weights under the random-effects model. Overall estimates reflect odds ratio for overweight per week increase in gestational at birth in early infancy (>0-0.5 years), late infancy (>0.5-2.0 years), early childhood (>2-5 years), mid childhood (>5-9 years), late childhood (>9-14 years), and adolescence (>14-19 years). Models are adjusted for sex of child, maternal age at child's birth, maternal education, maternal height, maternal pre-pregnancy BMI, maternal smoking during pregnancy, parity, maternal ethnic background, gestational diabetes, gestational hypertension, pre-eclampsia. Specific variables were not available in few cohorts (see Table 1), hence not adjusted for.

**Fig 4. Forest plot of associations between gestational age at birth (clinical categories) and odds of overweight**



Values are overall estimates from IPD meta-analyses of the study-specific logistic regression model estimates, where cohorts were assigned weights under the random-effects model. Overall estimates reflect odds ratio for overweight compared to full term (reference category) in early infancy (>0-0.5 years), late infancy (>0.5-2.0 years), early childhood (>2-5 years), mid childhood (>5-9 years), late childhood (>9-14 years), and adolescence (>14-19 years). Models are adjusted for sex of child, maternal age at child's birth, maternal education, maternal height, maternal pre-pregnancy BMI, maternal smoking during pregnancy, parity, maternal ethnic background, gestational diabetes, gestational hypertension, pre-eclampsia. Specific variables were not available in few cohorts (see Table 1), hence not adjusted for.

# SUPPORTING INFORMATION

**S1 Table Cohort-specific study characteristics and information on exposure and outcome measurements**

**S2 Table Directed Acyclic Graph for the association between GA and Body Size**

**S3 Table Percentage of missing values for cohort-specific baseline characteristics**

**S4 Table Results of individual variable meta-regression models showing values of  $\beta$ ,  $se(\beta)$ , and the significance of  $\beta$  for each study characteristic**

**S1 Fig. Forest plot of associations between GA (completed weeks) and BMI z-score**

**S2 Fig. Forest plot of ‘Leave-one-out’ analysis for the association between GA (completed weeks) and BMI z-score**

**S3 Fig. Forest plot of associations between GA (completed weeks) and BMI z-score by sex**

**S4 Fig. Forest plot of associations between GA (completed weeks) and BMI z-score by maternal education**

**S5 Fig. Forest plot of associations between GA (completed weeks) and BMI z-score by maternal smoking in pregnancy**

**S6 Fig. Forest plot of associations between GA (completed weeks) and odds of overweight**

**S7 Fig. Forest plot of ‘Leave-one-out’ analysis for the association between GA (completed weeks) and odds of overweight**

**S8 Fig. Forest plot of associations between GA (completed weeks) and odds of overweight by sex**

**S9 Fig. Forest plot of associations between GA (completed weeks) and odds of overweight by maternal education**

**S10 Fig. Forest plot of associations between GA (completed weeks) and odds of overweight by maternal smoking in pregnancy**

**S1 Text Information about variable classification and coding**

**S1 Appendix Cohort specific sources of funding/support**

**S2 Appendix Cohort specific acknowledgments**

**S3 Appendix Cohort specific ethics approval**

**S4 Appendix Cohort specific consent to participate**

**S1 Table Cohort-specific study characteristics and information on exposure and outcome measurements**

<b>Cohort</b>	<b>Cover Area</b>	<b>Timing of Recruitment (note)</b>	<b>Source of Delivery Information</b>	<b>Source of Anthropometrics</b>
<b>ALSPAC<sup>1,2,3</sup> United Kingdom</b>	City of Bristol and surrounding areas of Southwest England	In pregnancy (median: 14 weeks)	A combination of Last Menstrual Period and Ultra-Sound. Mothers reported the date of their last menstrual period on entry to the study, from which gestational age was calculated. Where there was conflicting information regarding last menstrual period from clinical or pediatric estimates, the clinical records were reviewed, and dating was based on the earliest ultrasound scan.	Weight and height measures were obtained from numerous sources from birth to 18 years, including from midwives, health visitors, linkage to child health records, and ALSPAC research clinics. Birth weight/length data were available from obstetric records. Child health records were used for measures up to 4 years. ALSPAC research clinics were used for measures from 4-18 years
<b>AOF Canada</b>	City of Calgary and Alberta	In pregnancy (< 24 weeks)	A combination of Last Menstrual Period and Ultra-Sound	Data are collected and reported by mothers through self-report questionnaires during pregnancy, post-partum, and post-birth (1-8 years)
<b>BIB United Kingdom</b>	City of Bradford	In pregnancy (~26 weeks)	A combination of Last Menstrual Period and Ultra-Sound	Maternity records; BiB cohort and sub-cohort studies; Healthy Child Programme; GP, National Child Measurement Programme
<b>CHILD Canada</b>	4 urban centers in Canada (Vancouver, Edmonton, Winnipeg, Toronto) and 1 rural site (Morden/Winkler Manitoba)	In pregnancy (~18 weeks)	A combination of Last Menstrual Period and Ultra-Sound	Measured at clinical examinations by trained research personnel (3 months, 1 year, 3 year, 5 year and 8 year) using standardized assessment tools and protocol.
<b>DNBC<sup>4,5,6</sup> Denmark</b>	Denmark	In pregnancy (16 weeks)	A combination of Last Menstrual Period and Ultra-Sound	Reported by parents from routine visits at GP (5 & 12 months, and 7 years) and self-reported (11 years)
<b>EDEN France</b>	Poitiers and Nancy	In pregnancy (<24 weeks)	A combination of Last Menstrual Period and Ultra-Sound	Measured at clinical examinations (birth to 5 years) and collected from GP reports on child's health booklets
<b>ELFE France</b>	France (Metropolitan)	At birth	A combination of Last Menstrual Period and Ultra-Sound	Collected from GP reports on child's health booklets
<b>G21 Portugal</b>	Metropolitan Area of Porto	At birth	A combination of Last Menstrual Period and Ultra-Sound	Measured by Trained Researchers (all ages)
<b>GECKO The Netherlands</b>	Province of Drenthe	In pregnancy (3rd trimester)	A combination of Last Menstrual Period and Ultra-Sound	Measured by Youth Health Services (all ages)

<b>GENR The Netherlands</b>	City of Rotterdam	In pregnancy (<18 weeks, 69%) until birth	Ultra-sound for participants prenatally included; Medical records or self-recorded for participants postnatally included	Measured at routine visits in community child health centres (2-48 months), and at GENR Research Center (6 & 10 years)
<b>INMA<sup>7</sup> Spain</b>	3 areas of Spain (Gipuzkoa, Sabadell, Valencia)	In pregnancy (10-13 weeks)	A combination of Last Menstrual Period and Ultra-Sound	Measured in a clinical setting
<b>MoBa<sup>8</sup> Norway</b>	Norway	In pregnancy (17-18 weeks) <sup>4</sup>	Ultra-Sound	Parent-report based on health cards (6 weeks, 3-18 months), and parent-reported (2-8 years)
<b>NFBC<sup>86</sup> Finland</b>	Provinces of Oulu and Lapland	In pregnancy	A combination of Last Menstrual Period (58%), Ultra-Sound (40%) and hospital records (2%) <sup>5</sup>	Measured from antenatal cards, school nurse records, and questionnaires
<b>NINFEA Italy</b>	Italy	In pregnancy	A combination of Last Menstrual Period and Ultra-Sound	Reported by parents
<b>The Raine Study Australia</b>	Metropolitan Area of Perth	In pregnancy (16-18 weeks)	A combination of Last Menstrual Period and Ultra-Sound	Measured in a clinical setting (all ages)
<b>SWS<sup>9</sup> United Kingdom</b>	City of Southampton and surrounding area	Before pregnancy (median: -130 weeks)	A combination of Last Menstrual Period and Ultra-Sound	Measurements of children by research nurses ( at birth, v6, 12, 24 months, 3-4 years, 6 years, 8 years) Measurements of mothers by research nurses (pre-pregnancy, around 11 and 34 weeks of gestation)

<sup>1</sup>Iles-Caven, Y., Northstone, K., & Golding, J. Gestation at completion of prenatal questionnaires in ALSPAC. Wellcome open research 2020; 5, 100.

<sup>2</sup>Nicola J. Wiles, Tim J. Peters, Jon Heron, David Gunnell, Alan Emond, Glyn Lewis, for the ALSPAC Study Team. Fetal Growth and Childhood Behavioral Problems: Results from the ALSPAC Cohort. Am J Epidemiol. 2006;163(9):829–837

<sup>3</sup>Howe LD, Tilling K, Lawlor DA. Accuracy of height and weight data from child health records. Arch Dis Child. 2009 Dec;94(12):950-954

<sup>4</sup>Olsen J, Melbye M, Olsen SF, Sorensen TI, Aaby P, Andersen AM, et al. The Danish National Birth Cohort - its background, structure and aim. Scand J Public Health. 2001; 29(4):300-307.

<sup>5</sup>Morgen CS, Andersen PK, Mortensen LH, Howe LD, Rasmussen M, Due P, et al. Socioeconomic disparities in birth weight and body mass index during infancy through age 7 years: a study within the Danish National Birth Cohort. BMJ Open. 2017;20: 7(1):e011781.

<sup>6</sup>Morgen CS, Ångquist L, Baker JL, Andersen AMN, Sørensen TIA, Michaelsen KF. Breastfeeding and complementary feeding in relation to body mass index and overweight at ages 7 and 11 y: a path analysis within the Danish National Birth Cohort. The American Journal of Clinical Nutrition. 2018; 107(3):313-322

<sup>7</sup>Guxens M, Ballester F, Espada M, Fernández MF, Grimalt JO, Ibarluzea J, et al. INMA Project. Cohort Profile: the INMA--Infancia y Medio Ambiente--(Environment and Childhood) Project. Int J Epidemiol. 2012 41(4):930-940

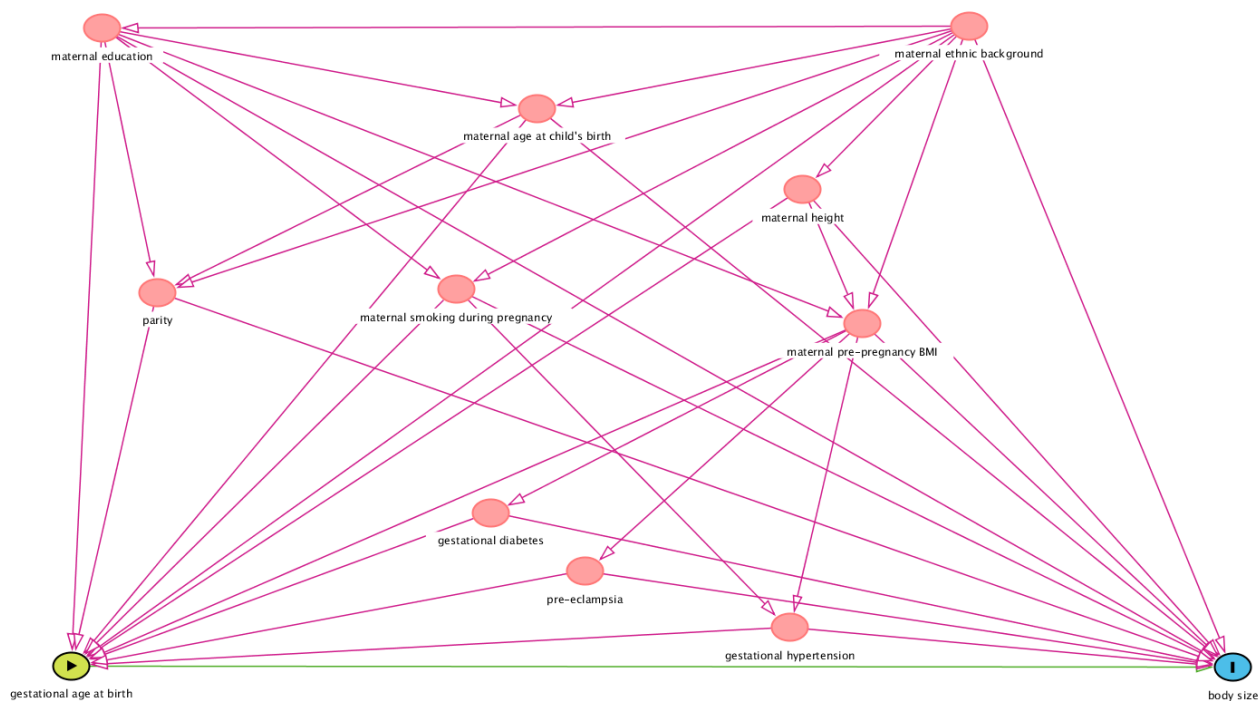
<sup>7</sup>Schreuder P, Alsaker E. The Norwegian Mother and Child Cohort Study (MoBa) – MoBa recruitment and logistics. Norsk Epidemiologi 2014; 24 (1-2): 23-27

<sup>8</sup>Sipola-Leppänen M, Vääräsmäki M, Tikanmäki M, Hovi P, Miettola S, Ruokonen A, et al. Cardiovascular risk factors in adolescents born preterm. Pediatrics 2014; 134(4):e1072

<sup>9</sup>Inskip HM, Godfrey KM, Robinson SM, Law CM, Barker DJ, Cooper C, et al. Cohort profile: The Southampton Women's Survey. Int J Epidemiol. 2006;35(1):42-48



## S2 Table Directed Acyclic Graph for the association between GA and Body Size



**S3 Table. Percentage of missing values for cohort-specific baseline characteristics**

	N	Maternal Age at Child's Birth	Maternal Education	Maternal Ethnicity	Maternal Height	Pre-pregnancy BMI	Smoking in Pregnancy	Gestational Diabetes	Gestational Hypertension	Maternal Preeclampsia	Parity
ALSPAC United Kingdom	10,542	8.8	5.3	6.2	7.0	15.4	11.5	5.7	2.4	0.4	4.3
AOF Canada	2,263	0.0	0.2	0.4	0.5	1.3	0.0	0.0	0.0	0.0	0.8
BIB United Kingdom	13,097	0.0	23.8	17.2	18.9	64.5	17.3	6.6	18.3	18.3	3.7
CHILD Canada	2,984	0.0	3.4	0.9	3.1	31.8	2.3	0.0	16.3	2.3	0.1
DNBC Denmark	81,117	0.0	11.1		5.0	6.4	1.5	0.0	25.3	1.6	0.0
EDEN France	1,765	0.0	0.6	13.8	1.4	2.0	0.3	0.1	0.1	1.1	0.2
ELFE France	15,506	0.3	0.0	6.7	0.3	1.3	0.9	3.9	1.8	1.8	1.2
G21 Portugal	6,439	0.1	0.6	5.2	0.2	2.0	43.8	0.5	0.5	0.0	1.8
GECKO The Netherlands	2,768	0.9	7.0	6.8	5.3	8.5	1.0	13.8	2.6	8.2	1.5
GEN-R The Netherlands	8,641	0.0	10.3	5.4	3.7	23.4	14.0	3.9	12.1	12.1	2.8
INMA Spain	1,936	0.0	2.0	1.8	0.9	0.9	1.2	7.1			4.5
MoBa Norway	86,553	0.2	5.9		2.2	3.5	0.0	1.1	4.1	4.1	1.1
NFBC1986 Finland	8,325	0.0	12.3		0.8	2.2	0.5		19.1	20.3	0.3
NINFEA Italy	6,514	0.0	0.7		2.1	2.2	1.2	8.8	8.4	8.2	4.8
The Raine study Australia	2,443	0.2	0.5	0.0	0.0	2.8	0.0	0.0	2.7	2.7	0.0
SWS United Kingdom	3,007	0.0	0.3	0.3	0.5	0.9	4.6	0.0	0.0	0.0	0.1

**Note:** Empty cells represent no available data

**Abbreviations:** N = Sample Size, BMI = Body Mass Index

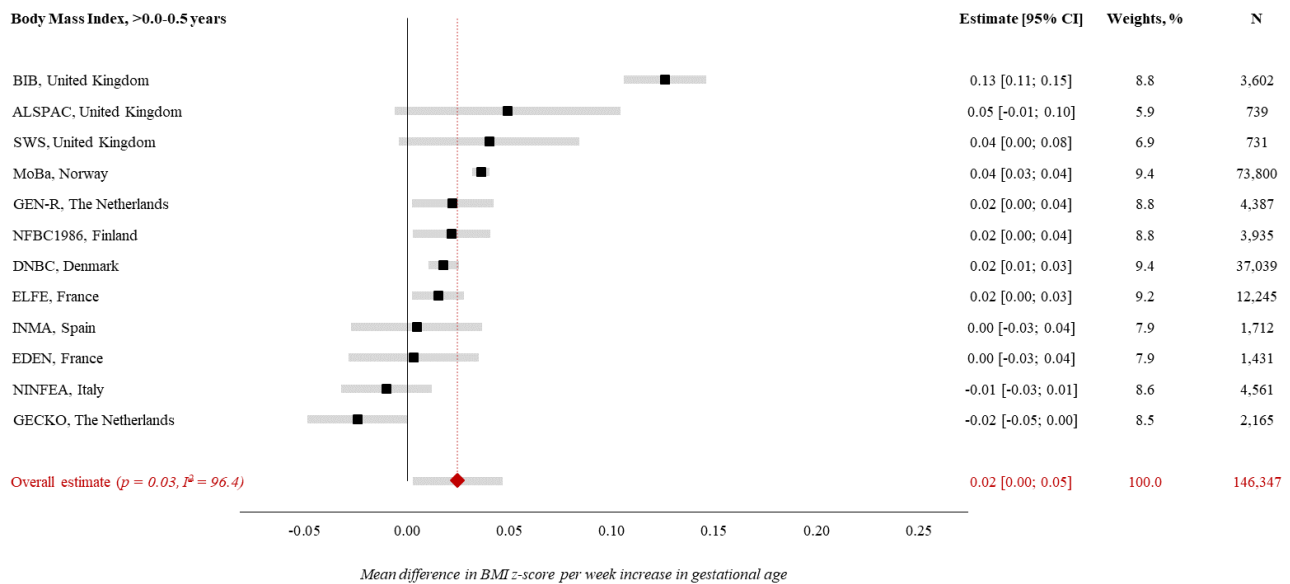
**S4 Table Results of individual variable meta-regression models showing values of  $\beta$ ,  $se(\beta)$ , and the significance of  $\beta$  for each study characteristic**

<b>Age-band</b>	<b>Study Characteristics</b>	<b><math>\beta</math></b>	<b><math>se(\beta)</math></b>	<b>p-value</b>
<b>Early infancy (&gt;0.0-0.5 years)</b>	<i>Age at measurement, months</i>	<b>-0.0296</b>	0.0076	<0.01
	<i>Sex, female (%)</i>	<b>0.0016</b>	0.0096	0.87
	<i>Maternal education, low (%)</i>	<b>0.0011</b>	0.0006	0.10
	<i>Maternal smoking in pregnancy, yes (%)</i>	<b>-0.0005</b>	0.0011	0.68
<b>Mid-childhood (&gt;5.0-9.0 years)</b>	<i>Age at measurement, months</i>	<b>0.0006</b>	0.0005	0.27
	<i>Sex, female (%)</i>	<b>0.0042</b>	0.0047	0.38
	<i>Maternal education, low (%)</i>	<b>0.0002</b>	0.0003	0.59
	<i>Maternal smoking in pregnancy, yes (%)</i>	<b>0.0000</b>	0.0005	0.94
<b>Late childhood (&gt;9.0-14.0 years)</b>	<i>Age at measurement, months</i>	<b>0.0001</b>	0.0005	0.83
	<i>Sex, female (%)</i>	<b>0.0019</b>	0.0071	0.77
	<i>Maternal education, low (%)</i>	<b>0.0009</b>	0.0005	0.05
	<i>Maternal smoking in pregnancy, yes (%)</i>	<b>0.0002</b>	0.0007	0.74
<b>Adolescence (&gt;14.0-19.0 years)</b>	<i>Age at measurement, months</i>	<b>-0.0007</b>	0.0012	0.58
	<i>Sex, female (%)</i>	<b>-0.0020</b>	0.0034	0.55
	<i>Maternal education, low (%)</i>	<b>0.0012</b>	0.0005	<0.01
	<i>Maternal smoking in pregnancy, yes (%)</i>	<b>0.0074</b>	0.0030	0.01

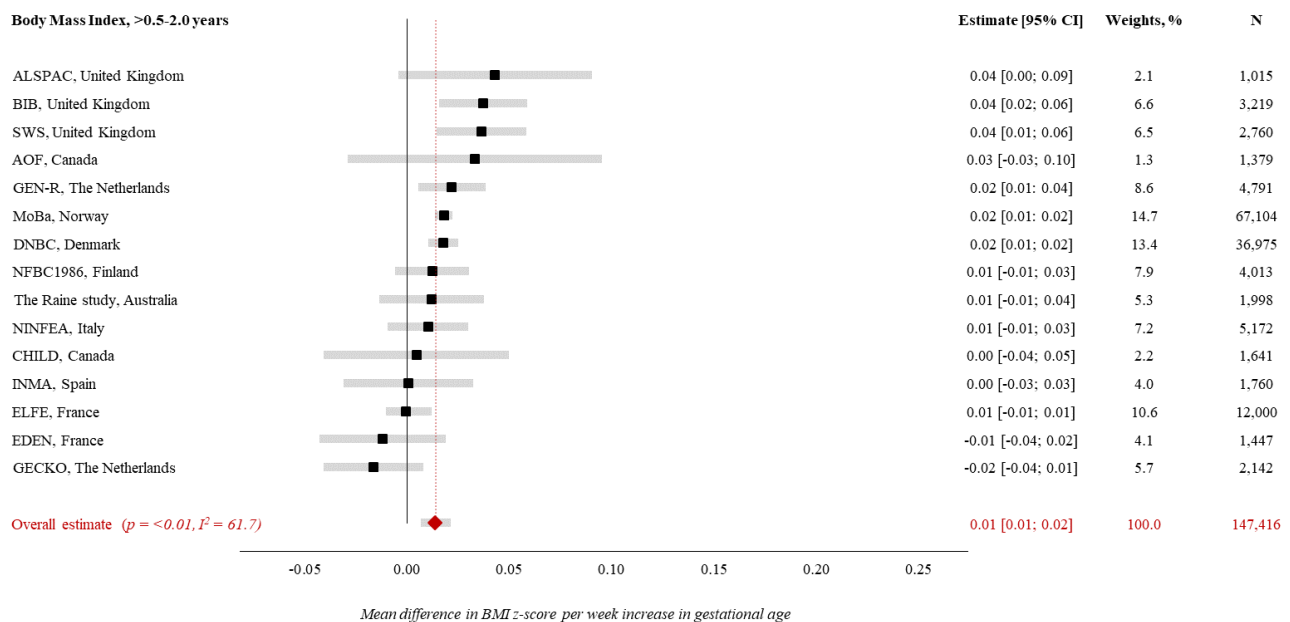
### S1 Fig. Forest plot of associations between GA (completed weeks) and BMI z-score

Estimates from study-specific linear regression models were assigned weights under the random-effects model to attain overall estimates. Results reflect mean differences in BMI z-score per week increase in gestational age at birth in (A) early infancy (>0.0-0.5 years), (B) late infancy (>0.5-2.0 years), (C) early childhood (>2.0-5.0 years), (D) mid-childhood (>5.0-9.0 years), (E) late childhood (>9.0-14.0 years), (F) adolescence (>14.0-19.0 years)

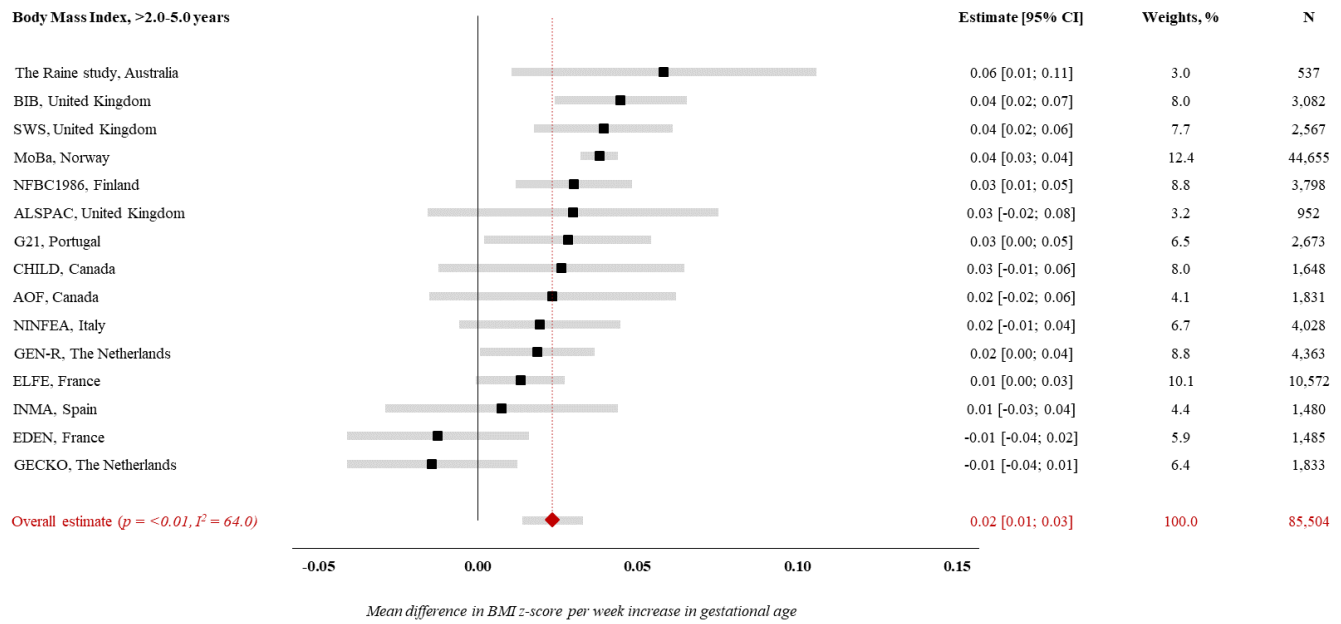
**A**



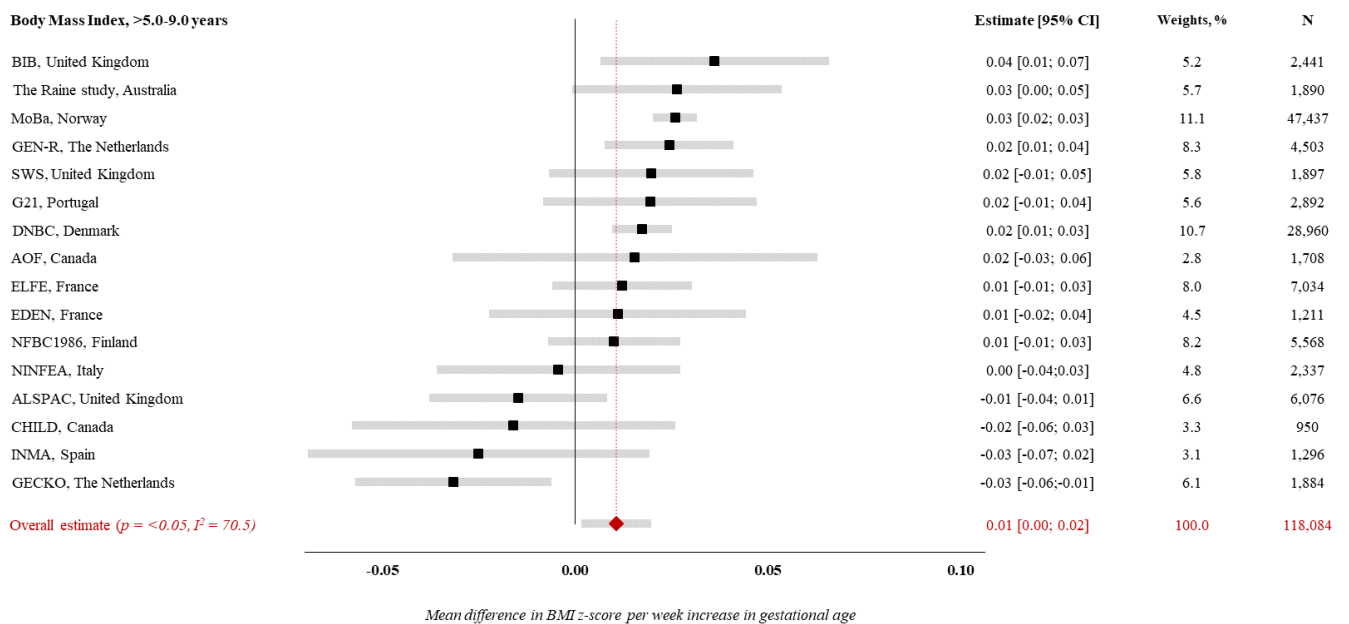
**B**



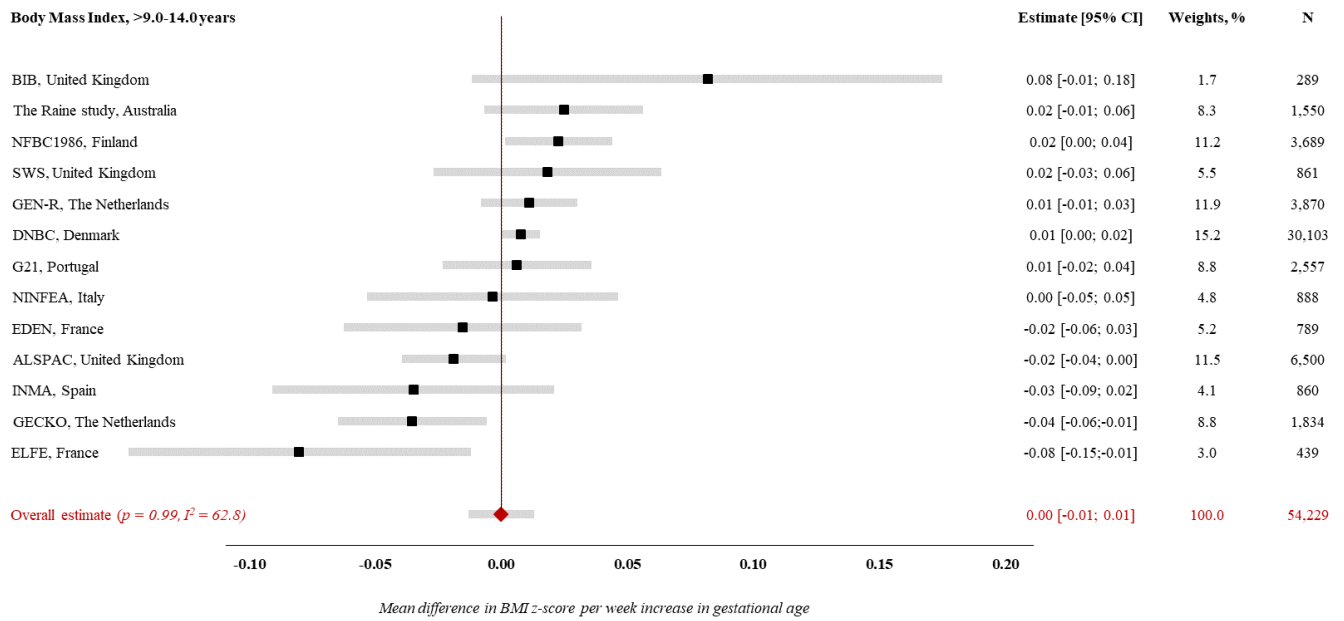
## C



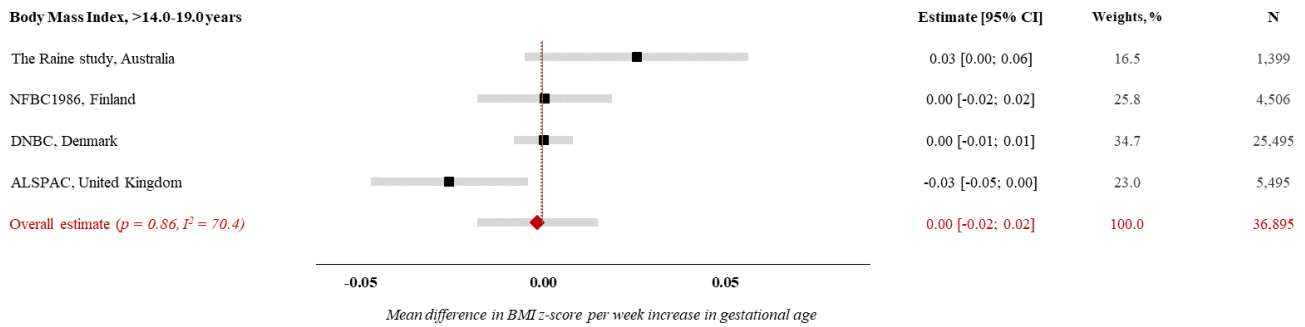
## D



**E**



**F**

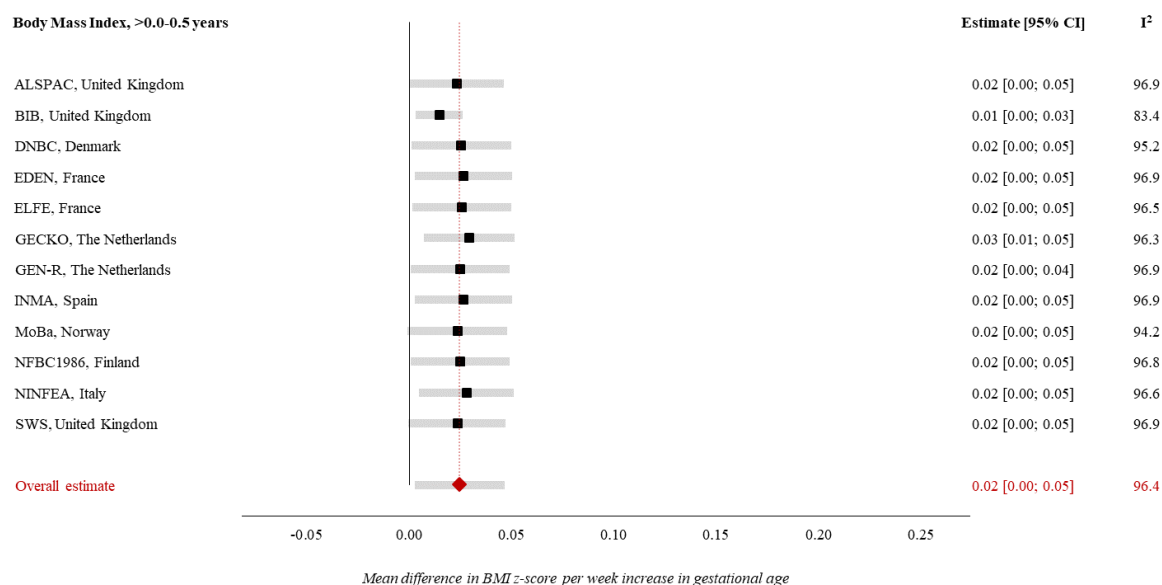


Models are adjusted for sex of child, maternal age at child's birth, maternal education, maternal height, maternal pre-pregnancy BMI, maternal smoking during pregnancy, parity, maternal ethnic background, gestational diabetes, gestational hypertension, pre-eclampsia. Specific variables were not available in few cohorts (see Table 1), hence not adjusted for.

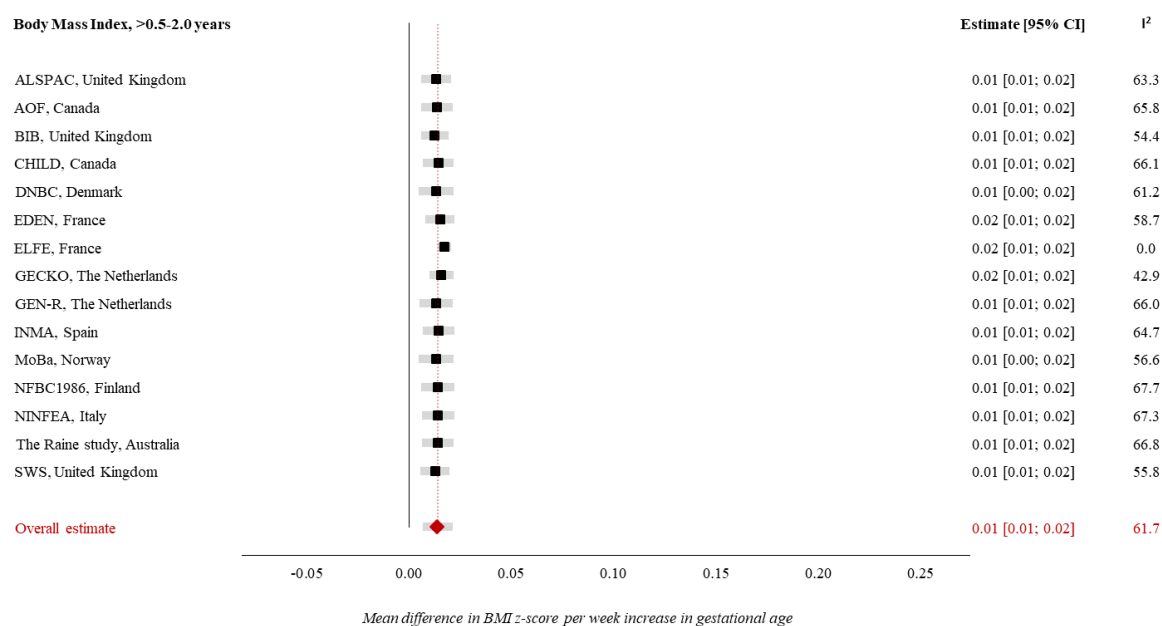
## S2 Fig. Forest plot of ‘Leave-one-out’ analysis for the association between GA (in weeks) and BMI z-score

Estimates from study-specific linear regression models were assigned weights under the random-effects model to attain overall estimates. Results reflect mean differences in BMI z-score per week increase in gestational age at birth in (A) early infancy (>0.0-0.5 years), (B) late infancy (>0.5-2.0 years), (C) early childhood (>2.0-5.0 years), (D) mid-childhood (>5.0-9.0 years), (E) late childhood (>9.0-14.0 years), (F) adolescence (>14.0-19.0 years)

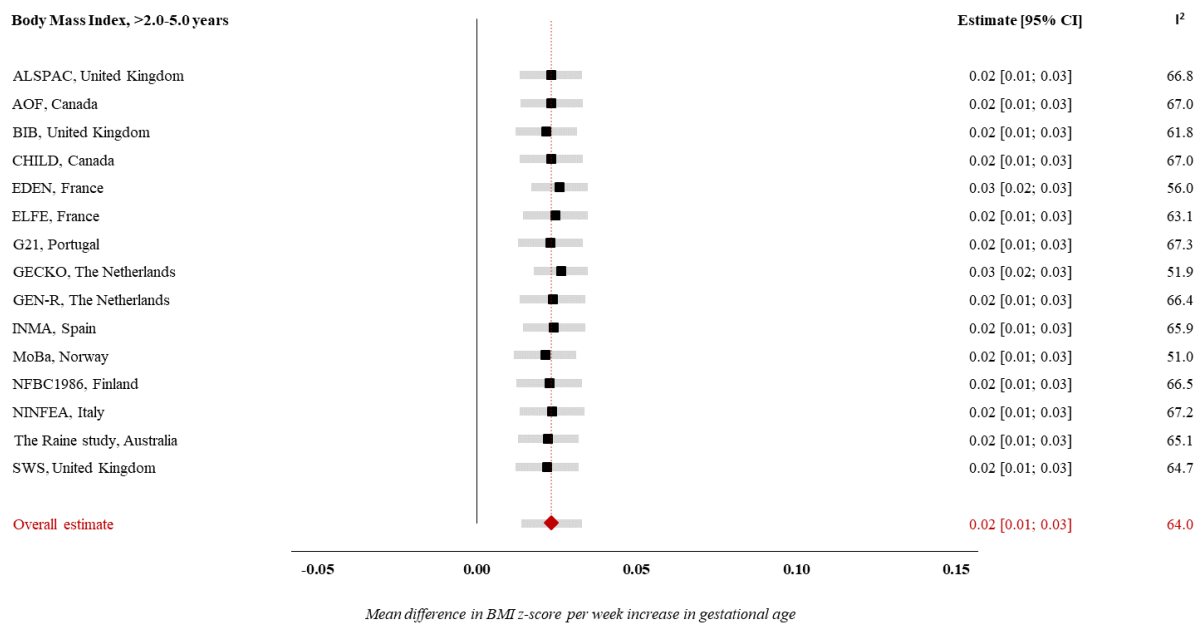
**A**



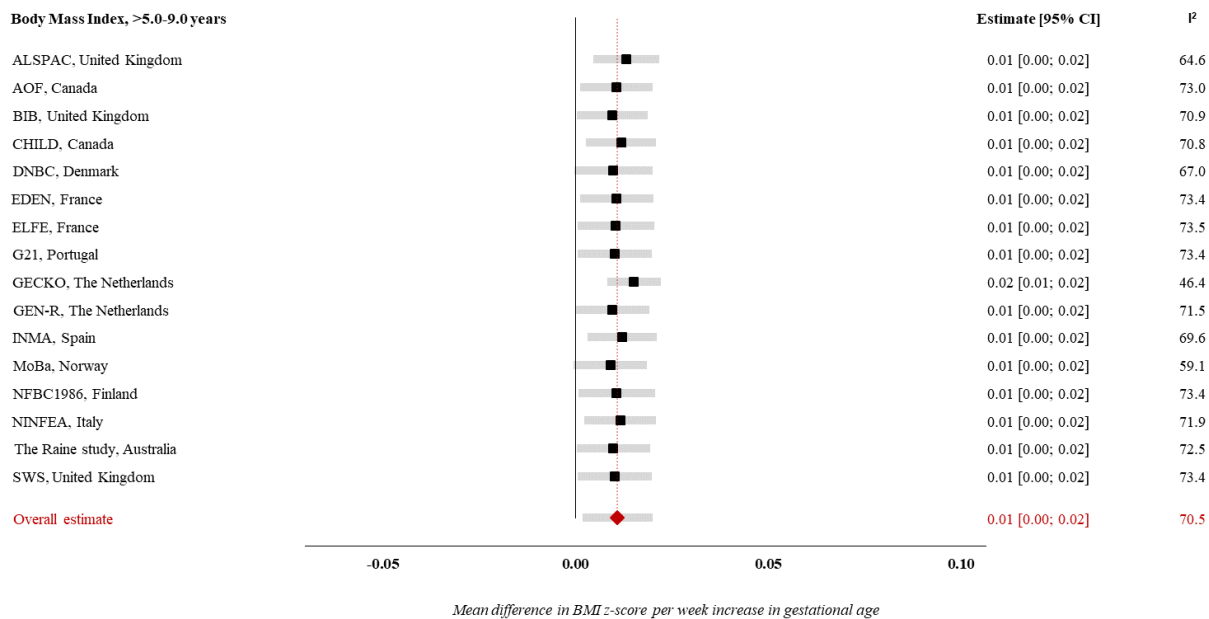
**B**



## C

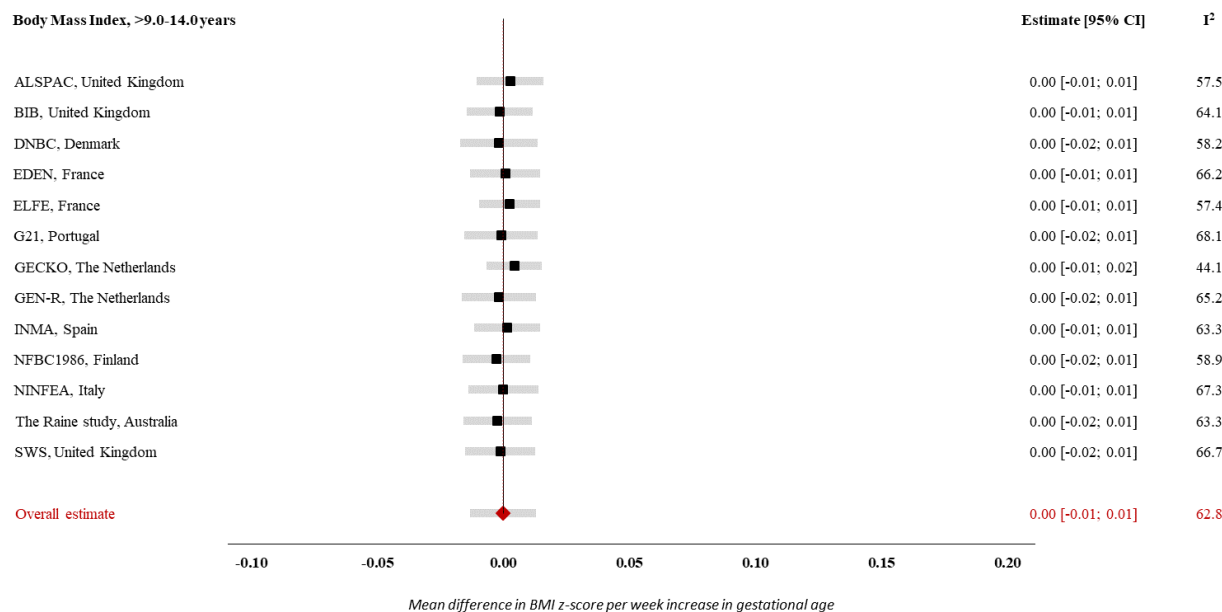


## D

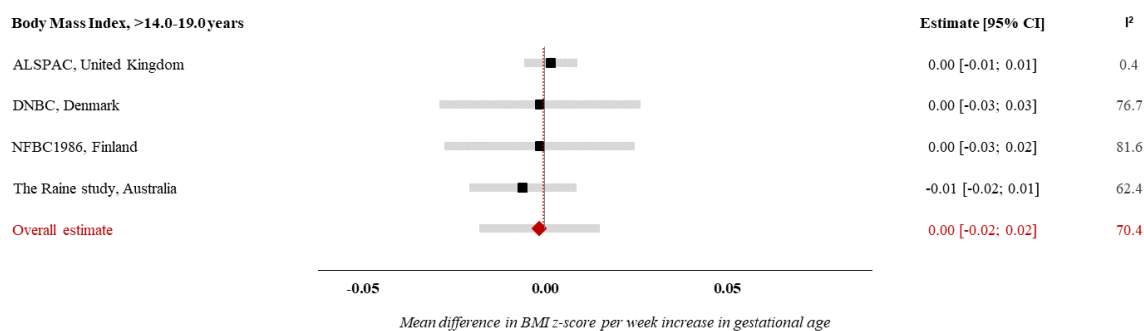




## E



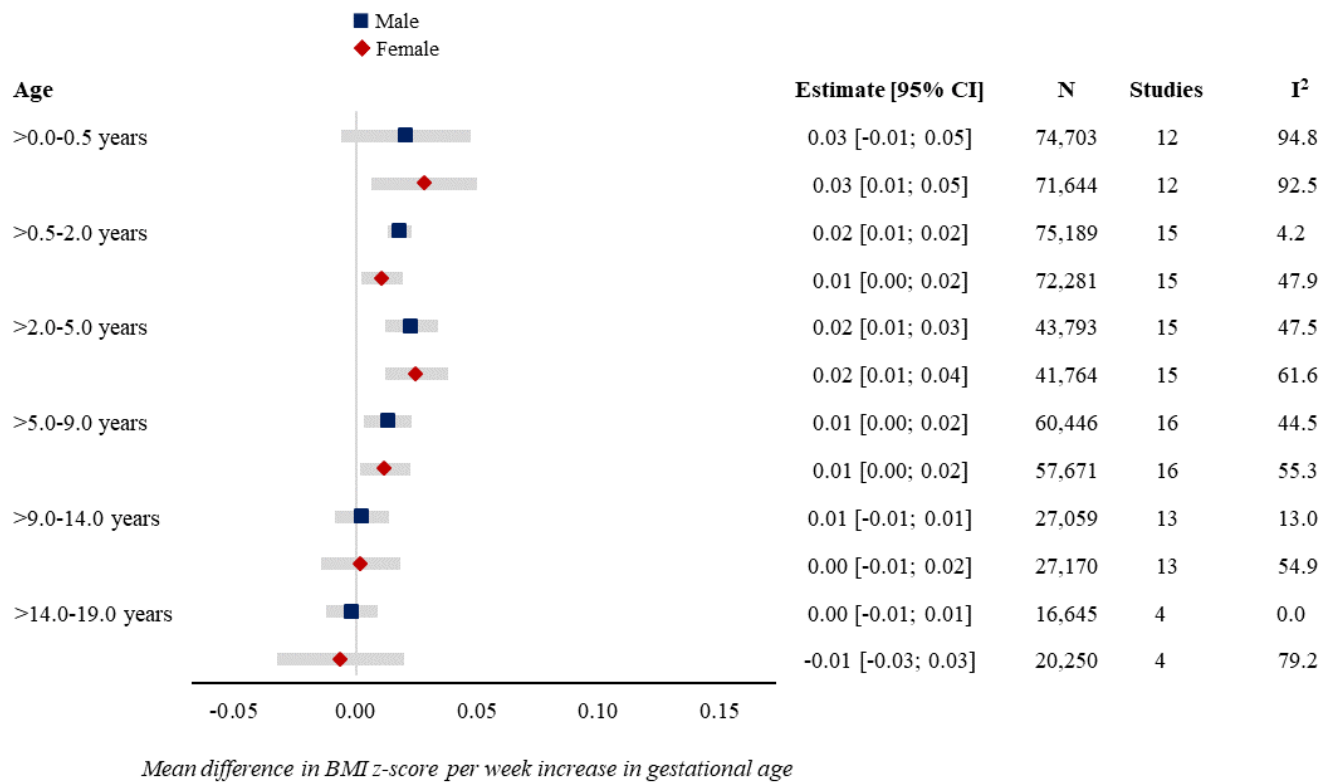
## F



Models are adjusted for sex of child, maternal age at child's birth, maternal education, maternal height, maternal pre-pregnancy BMI, maternal smoking during pregnancy, parity, maternal ethnic background, gestational diabetes, gestational hypertension, pre-eclampsia. Specific variables were not available in few cohorts (see Table 1), hence not adjusted for.

### S3 Fig. Forest plot of associations between GA (completed weeks) and BMI z-score by sex

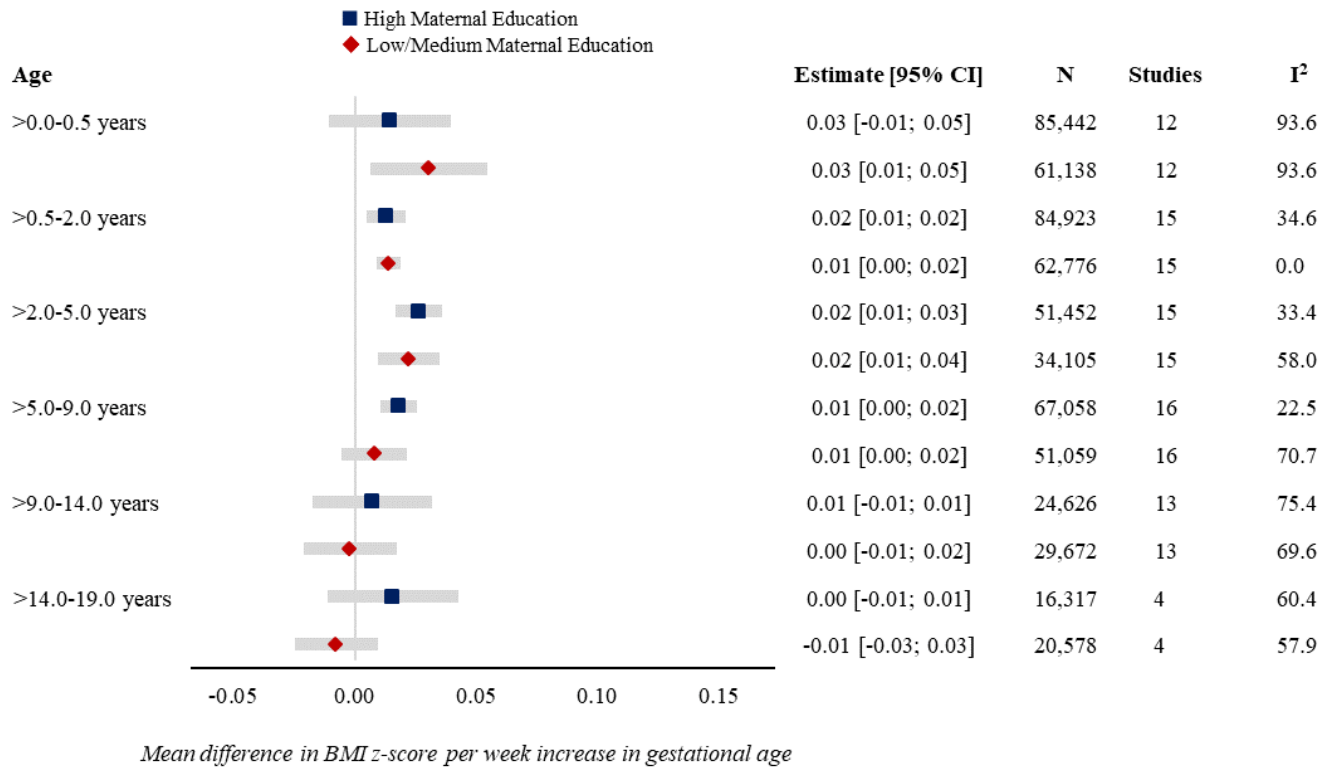
Estimates from study-specific linear regression models were assigned weights under the random-effects model to attain overall estimates. Results reflect mean differences in BMI z-score per week increase in gestational age at birth in early infancy (>0.0-0.5 years), late infancy (>0.5-2.0 years), early childhood (>2.0-5.0 years), mid-childhood (>5.0-9.0 years), late childhood (>9.0-14.0 years), adolescence (>14.0-19.0 years).



Models are adjusted for sex of child, maternal age at child's birth, maternal education, maternal height, maternal pre-pregnancy BMI, maternal smoking during pregnancy, parity, maternal ethnic background, gestational diabetes, gestational hypertension, pre-eclampsia. Specific variables were not available in few cohorts (see Table 1), hence not adjusted for.

#### S4 Fig. Forest plot of associations between GA (completed weeks) and BMI z-score by maternal education

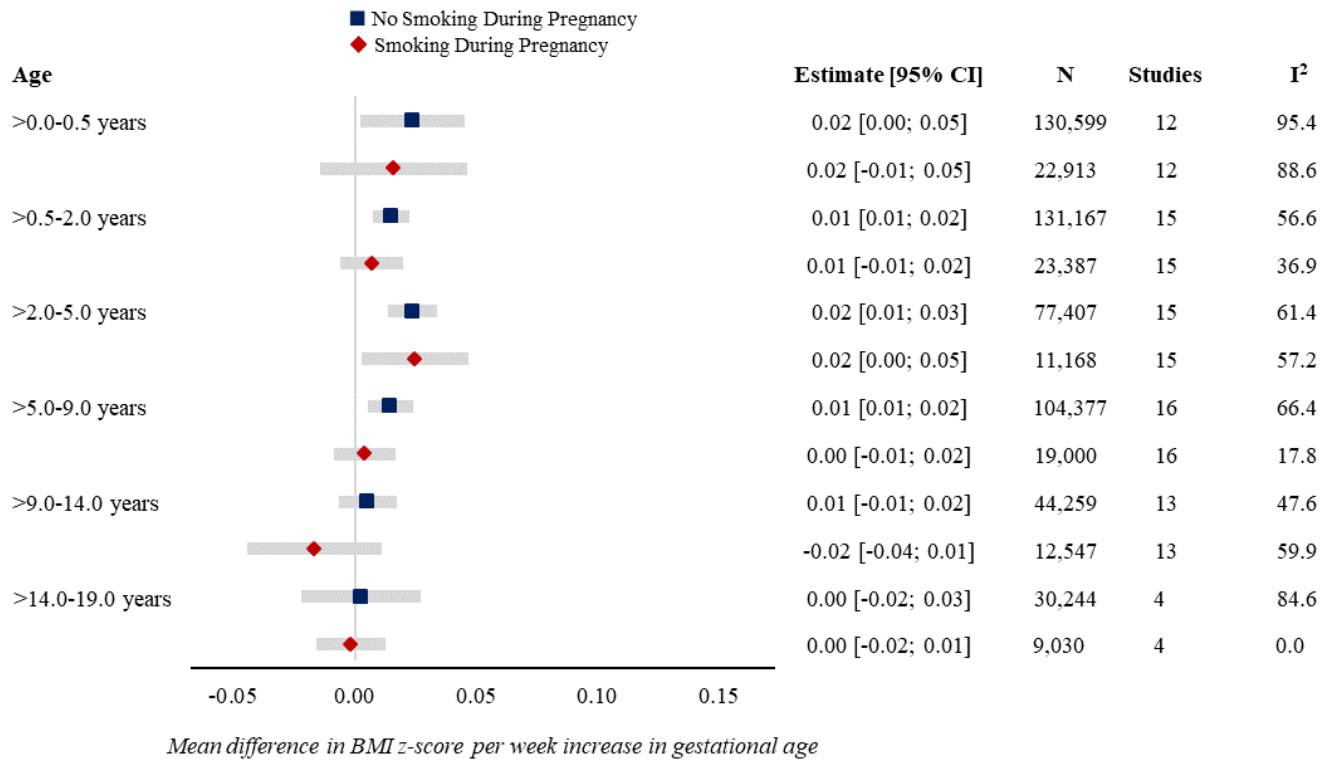
Estimates from study-specific linear regression models were assigned weights under the random-effects model to attain overall estimates. Results reflect mean differences in BMI z-score per week increase in gestational age at birth in early infancy (>0.0-0.5 years), late infancy (>0.5-2.0 years), early childhood (>2.0-5.0 years), mid-childhood (>5.0-9.0 years), late childhood (>9.0-14.0 years), adolescence (>14.0-19.0 years).



Models are adjusted for sex of child, maternal age at child's birth, maternal education, maternal height, maternal pre-pregnancy BMI, maternal smoking during pregnancy, parity, maternal ethnic background, gestational diabetes, gestational hypertension, pre-eclampsia. Specific variables were not available in few cohorts (see Table 1), hence not adjusted for.

**S5 Fig. Forest plot of associations between GA (completed weeks) and BMI z-score by maternal smoking in pregnancy**

Estimates from study-specific linear regression models were assigned weights under the random-effects model to attain overall estimates. Results reflect mean differences in BMI z-score per week increase in gestational age at birth in early infancy (>0.0-0.5 years), late infancy (>0.5-2.0 years), early childhood (>2.0-5.0 years), mid-childhood (>5.0-9.0 years), late childhood (>9.0-14.0 years), adolescence (>14.0-19.0 years).

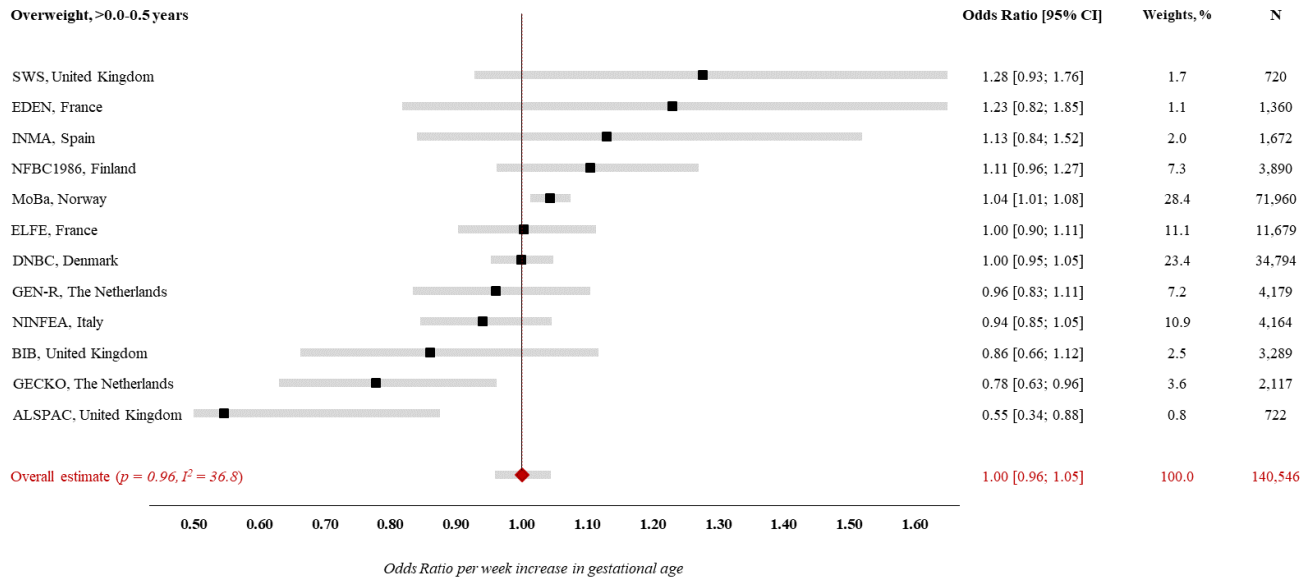


Models are adjusted for sex of child, maternal age at child's birth, maternal education, maternal height, maternal pre-pregnancy BMI, maternal smoking during pregnancy, parity, maternal ethnic background, gestational diabetes, gestational hypertension, pre-eclampsia. Specific variables were not available in few cohorts (see Table 1), hence not adjusted for.

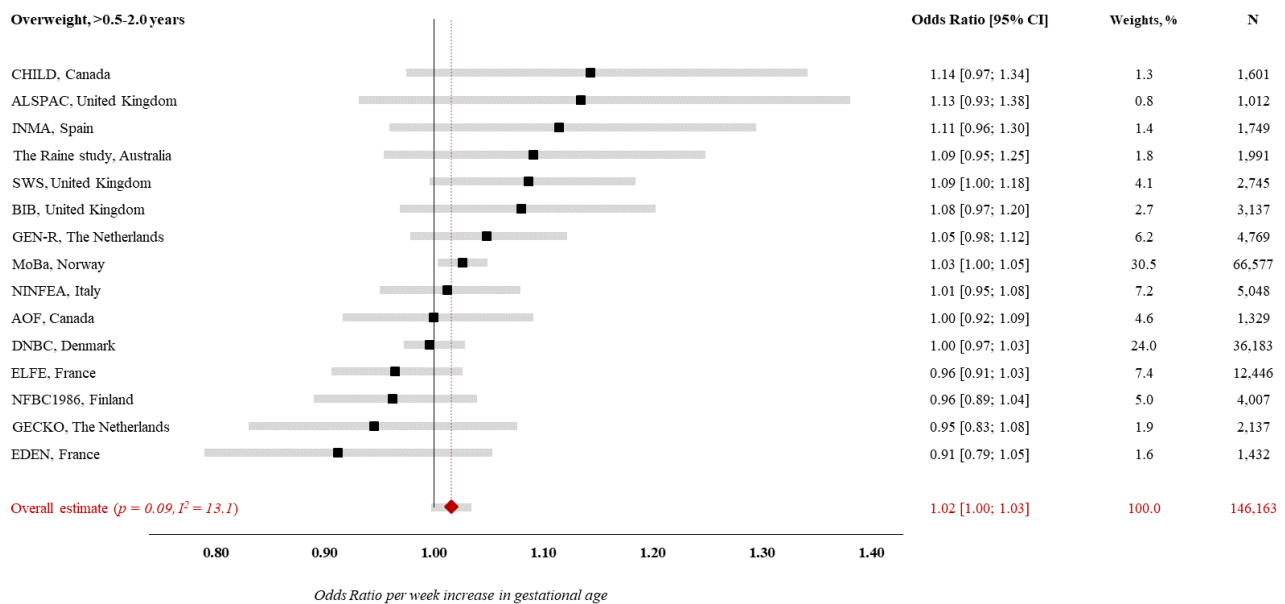
### S6 Fig. Forest plot of associations between GA (completed weeks) and odds of overweight

Estimates from study-specific logistic regression models were assigned weights under the random-effects model to attain overall estimates. Results reflect odds ratio of overweight (vs. normal weight) per week increase in gestational age at birth in (A) early infancy (>0.0-0.5 years), (B) late infancy (>0.5-2.0 years), (C) early childhood (>2.0-5.0 years), (D) mid-childhood (>5.0-9.0 years), (E) late childhood (>9.0-14.0 years), (F) adolescence (>14.0-19.0 years)

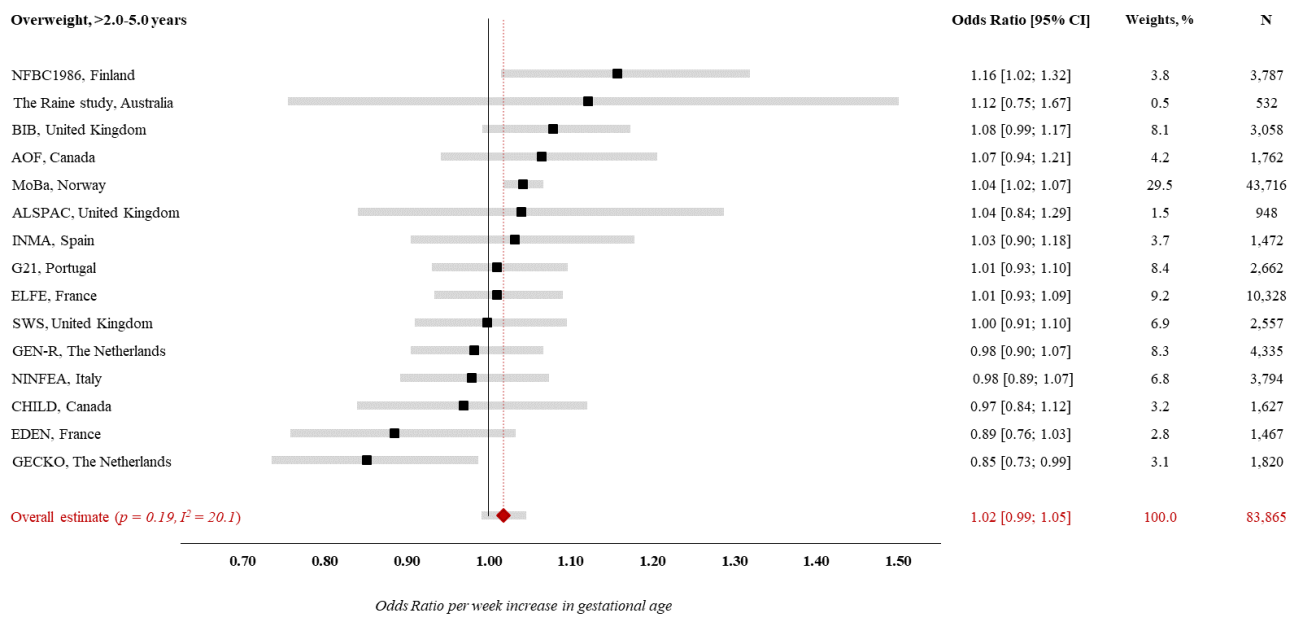
**A**



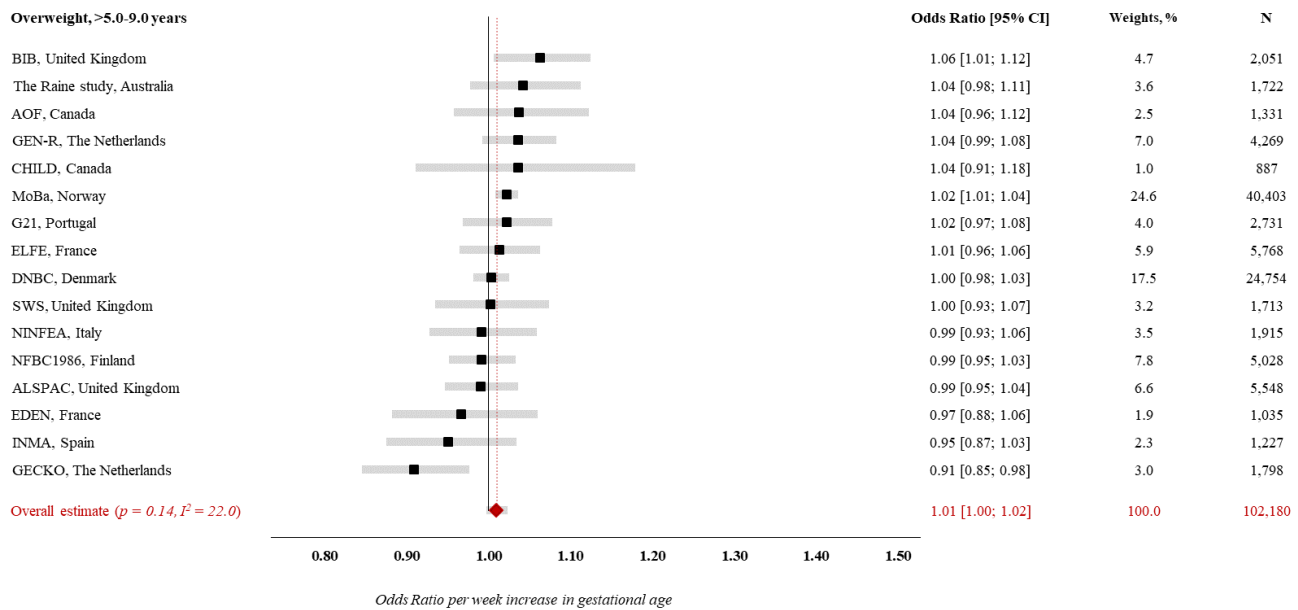
**B**



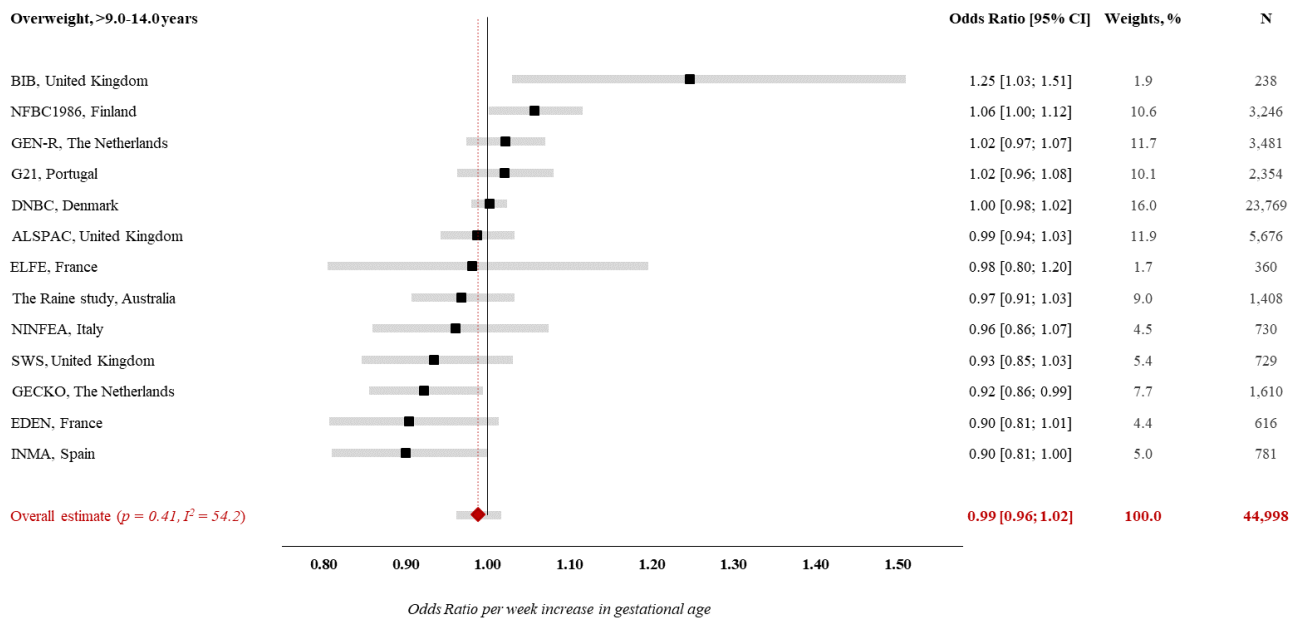
**C**



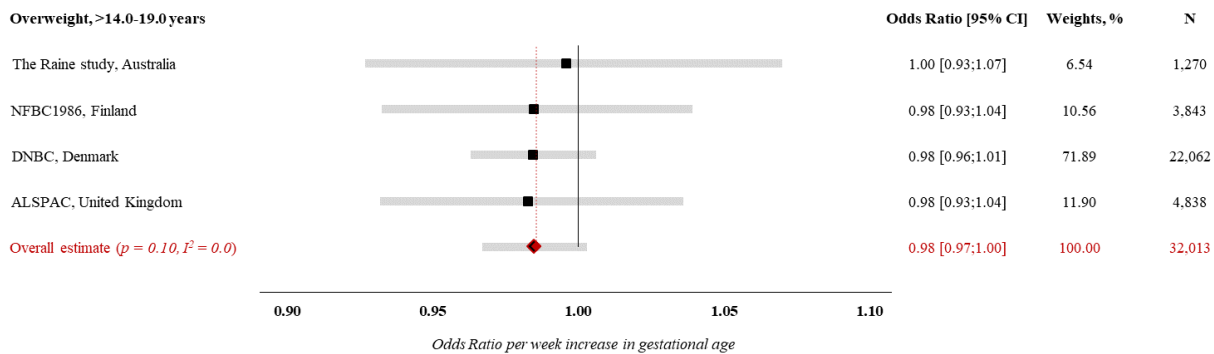
**D**



## E



## F

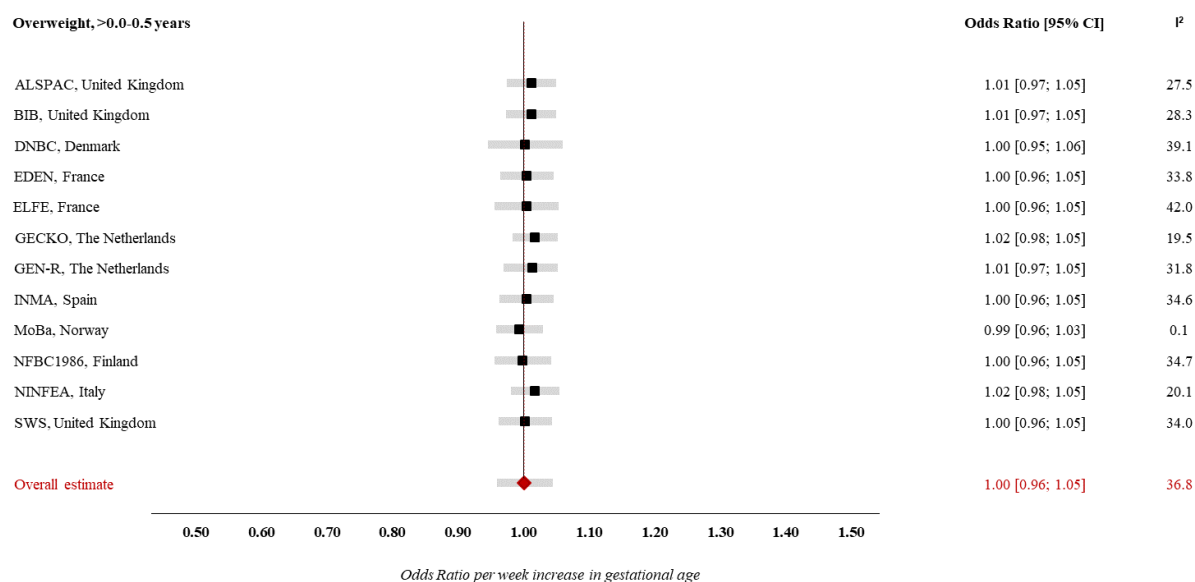


Models are adjusted for sex of child, maternal age at child's birth, maternal education, maternal height, maternal pre-pregnancy BMI, maternal smoking during pregnancy, parity, maternal ethnic background, gestational diabetes, gestational hypertension, pre-eclampsia. Specific variables were not available in few cohorts (see Table 1), hence not adjusted for.

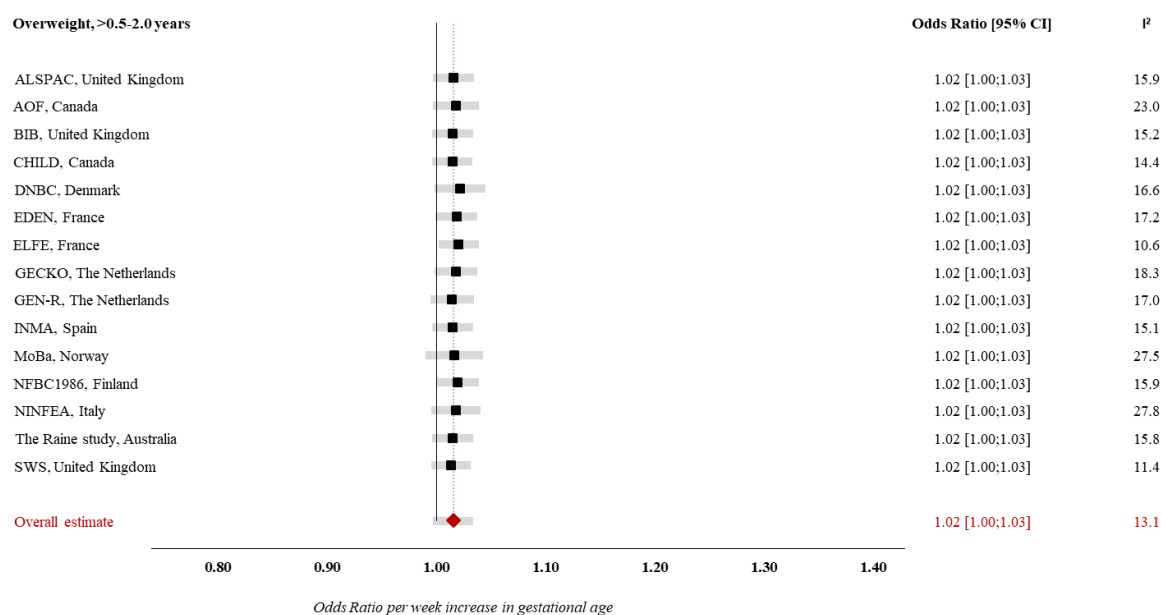
### S7 Fig. Forest plot of ‘Leave-one-out’ analysis for the association between GA (completed weeks) and odds of overweight

Estimates from study-specific logistic regression models were assigned weights under the random-effects model to attain overall estimates. Results reflect odds ratio of overweight (vs. normal weight) per week increase in gestational age at birth in (A) early infancy (>0.0-0.5 years), (B) late infancy (>0.5-2.0 years), (C) early childhood (>2.0-5.0 years), (D) mid-childhood (>5.0-9.0 years), (E) late childhood (>9.0-14.0 years), (F) adolescence (>14.0-19.0 years)

**A**

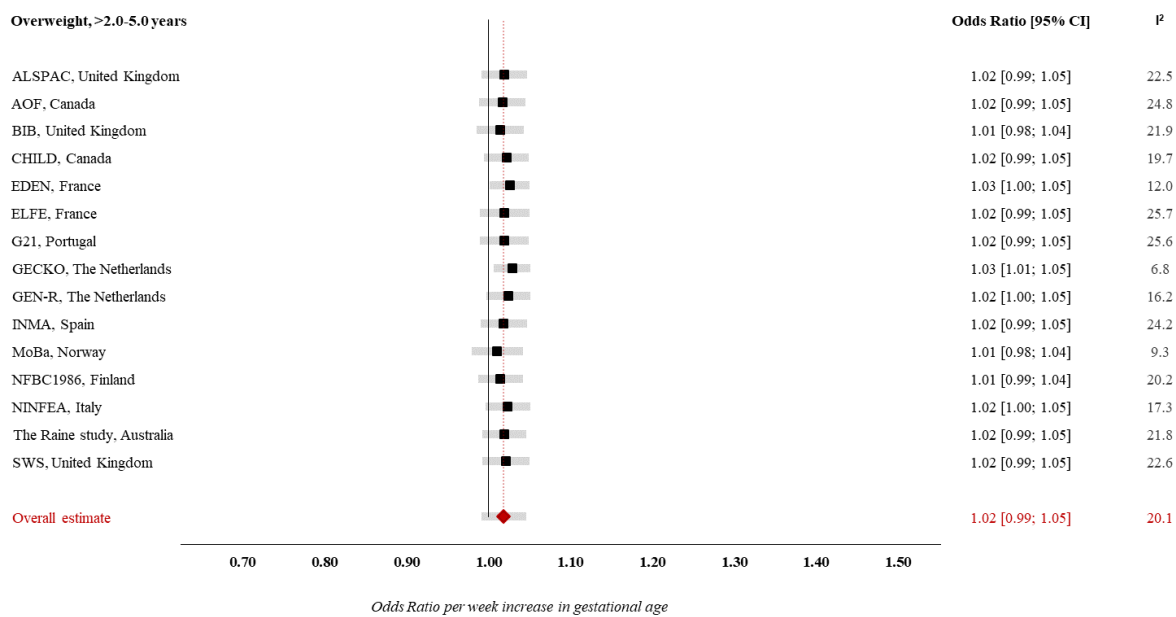


**B**

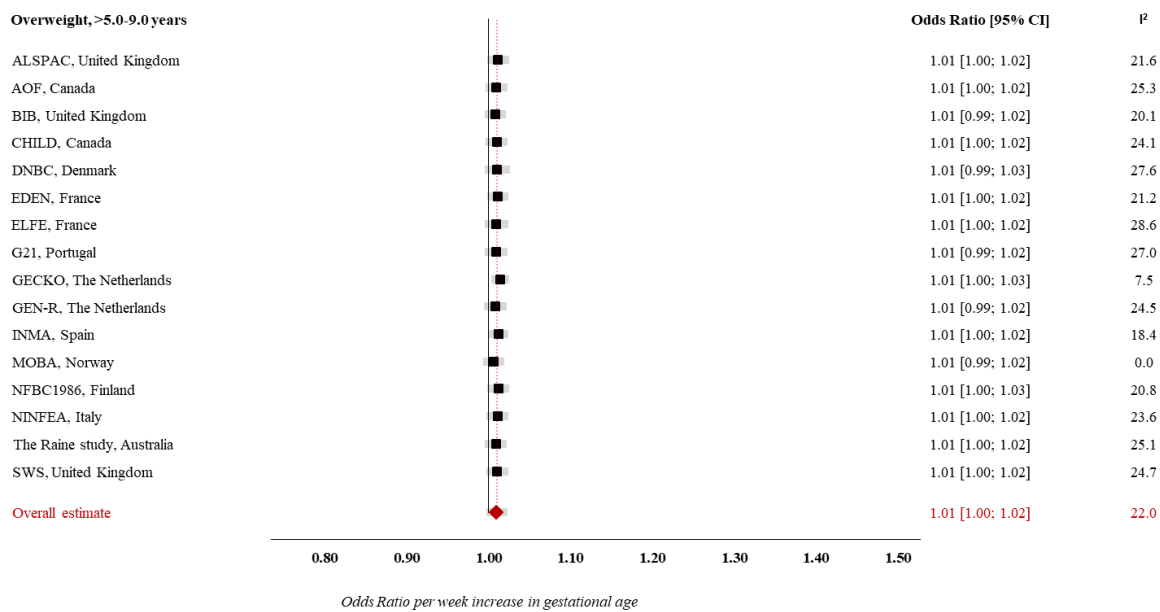




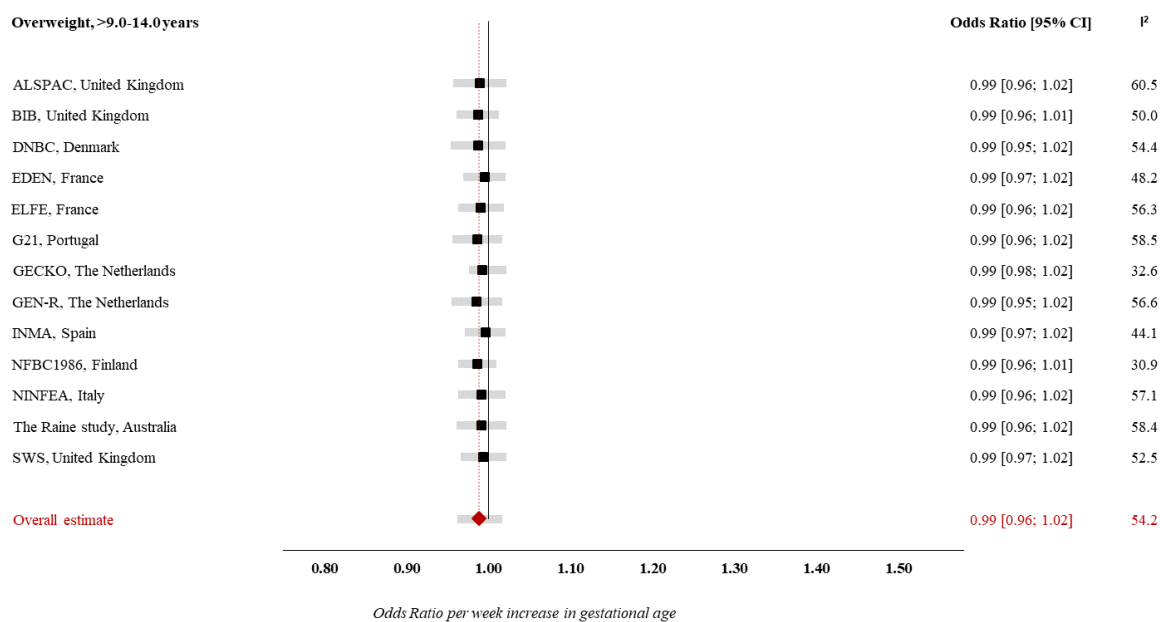
**C**



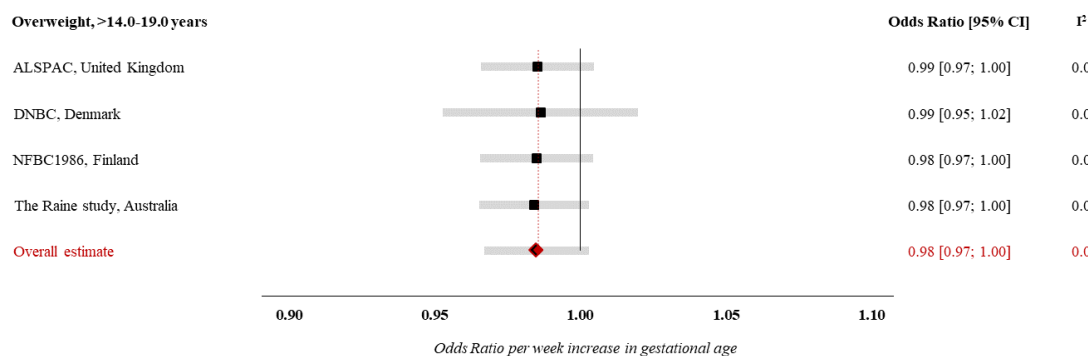
**D**



## E



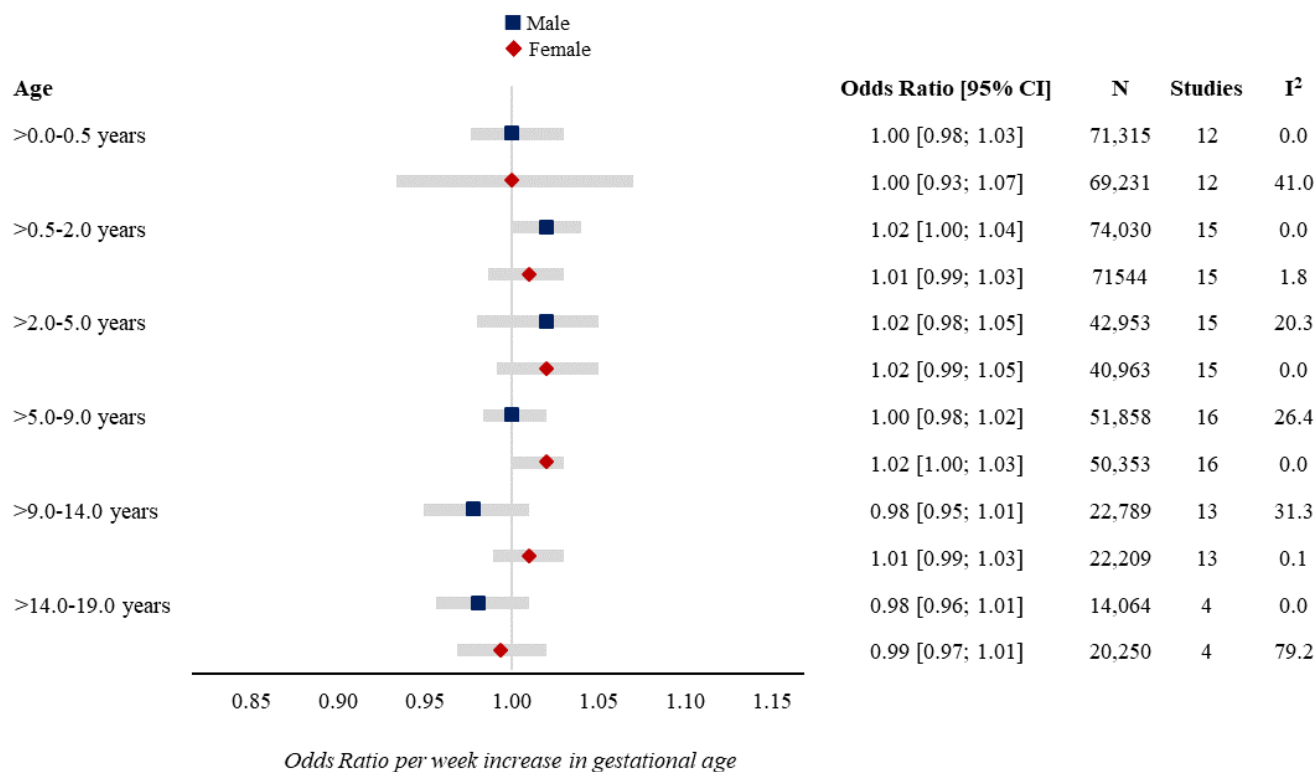
## F



Models are adjusted for sex of child, maternal age at child's birth, maternal education, maternal height, maternal pre-pregnancy BMI, maternal smoking during pregnancy, parity, maternal ethnic background, gestational diabetes, gestational hypertension, pre-eclampsia. Specific variables were not available in few cohorts (see Table 1), hence not adjusted for.

**S8 Fig. Forest plot of associations between GA (completed weeks) and odds of overweight by sex**

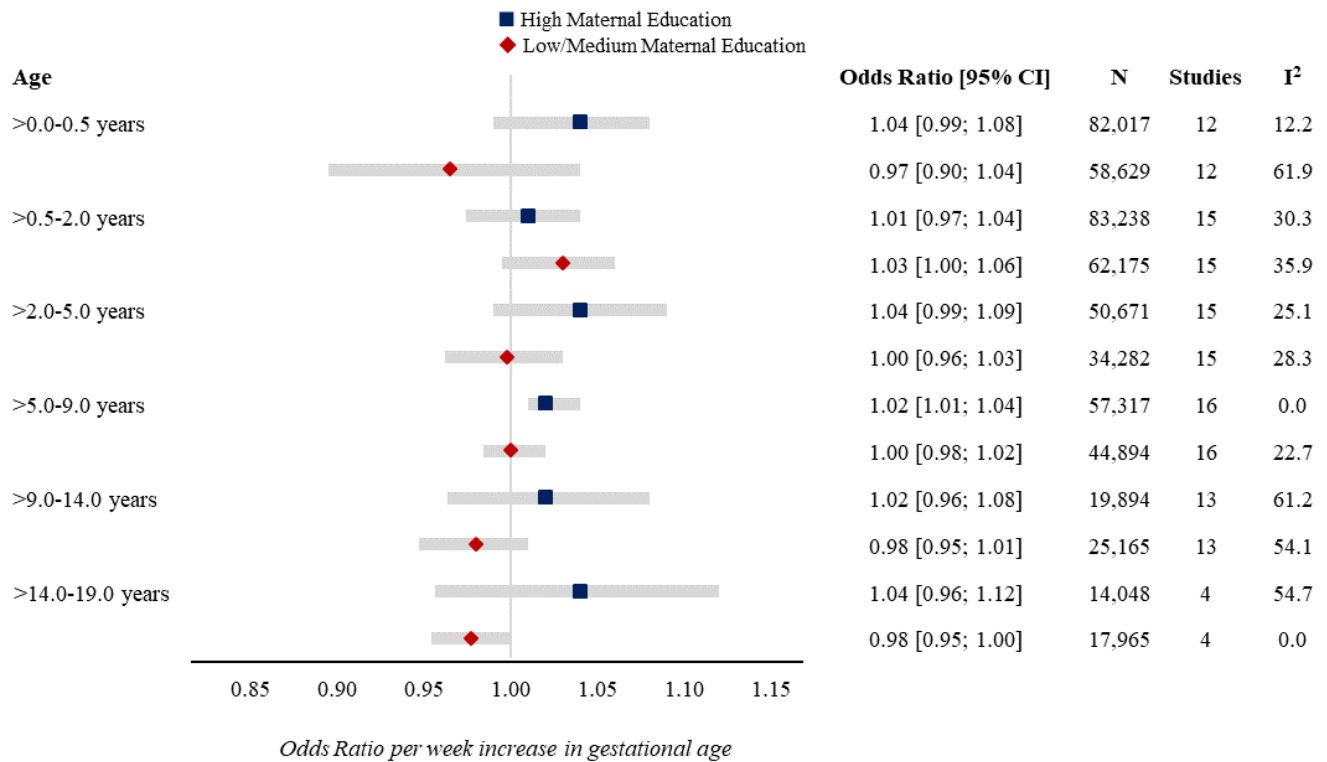
Estimates from study-specific logistic regression models were assigned weights under the random-effects model to attain overall estimates. Results reflect odds ratio of overweight (vs. normal weight) per week increase in gestational age at birth in early infancy (>0.0-0.5 years), late infancy (>0.5-2.0 years), early childhood (>2.0-5.0 years), mid-childhood (>5.0-9.0 years), late childhood (>9.0-14.0 years), adolescence (>14.0-19.0 years).



*Models are adjusted for sex of child, maternal age at child's birth, maternal education, maternal height, maternal pre-pregnancy BMI, maternal smoking during pregnancy, parity, maternal ethnic background, gestational diabetes, gestational hypertension, pre-eclampsia. Specific variables were not available in few cohorts (see Table 1), hence not adjusted for.*

### S9 Fig. Forest plot of associations between GA (completed weeks) and odds of overweight by maternal education

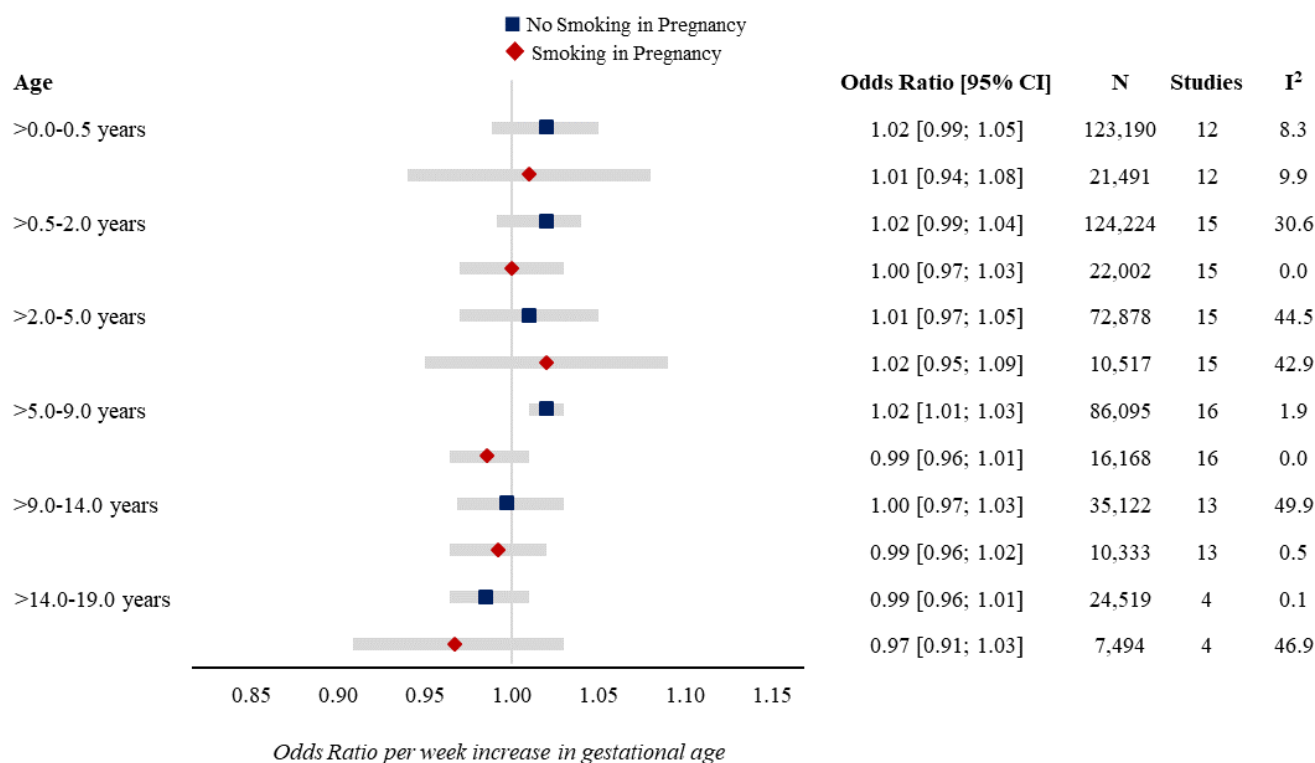
Estimates from study-specific logistic regression models were assigned weights under the random-effects model to attain overall estimates. Results reflect odds ratio of overweight (vs. normal weight) per week increase in gestational age at birth in early infancy (>0.0-0.5 years), late infancy (>0.5-2.0 years), early childhood (>2.0-5.0 years), mid-childhood (>5.0-9.0 years), late childhood (>9.0-14.0 years), adolescence (>14.0-19.0 years).



Models are adjusted for sex of child, maternal age at child's birth, maternal education, maternal height, maternal pre-pregnancy BMI, maternal smoking during pregnancy, parity, maternal ethnic background, gestational diabetes, gestational hypertension, pre-eclampsia. Specific variables were not available in few cohorts (see Table 1), hence not adjusted for.

**S10 Fig. Forest plot of associations between GA (completed weeks) and odds of overweight by maternal smoking in pregnancy**

Estimates from study-specific logistic regression models were assigned weights under the random-effects model to attain overall estimates. Results reflect odds ratio of overweight (vs. normal weight) per week increase in gestational age at birth in early infancy (>0.0-0.5 years), late infancy (>0.5-2.0 years), early childhood (>2.0-5.0 years), mid-childhood (>5.0-9.0 years), late childhood (>9.0-14.0 years), adolescence (>14.0-19.0 years).



*Models are adjusted for sex of child, maternal age at child's birth, maternal education, maternal height, maternal pre-pregnancy BMI, maternal smoking during pregnancy, parity, maternal ethnic background, gestational diabetes, gestational hypertension, pre-eclampsia. Specific variables were not available in few cohorts (see Table 1), hence not adjusted for.*

## **S1 Text. Information about variable classification and coding**

### **Gestational Age at Birth**

Each cohort decided the most accurate available measure of GA, but a priority was given to last menstrual period (LMP), unless it varied from an ultrasound-based (US) estimate by more than 1 week, in which ultrasound was used. If LMP was not available, US was used. If LMP or US was not available, information from a maternal report was used.

### **Maternal Education**

Maternal education was classified according to International Classification of Education 97/2011 (ISCED 97/2011) as either *high, medium* or *low*. High includes short cycle tertiary, Bachelor, Masters, Doctoral or equivalent (ISCED-2011: 5-8, ISCED-97: 5-6); Medium includes Upper Secondary, Post-secondary non-tertiary (ISCED-2011: 3-4, ISCED-97: 3-4); Low includes No education, early childhood, pre-primary, primary, lower secondary or second stage of basic education (ISCED-2011: 0-2, ISCED-97: 0-2).

### **Maternal Ethnic Background**

Maternal ethnic background was based on (a) *colour of mother* (white/Caucasian, non-white/non-Caucasian) or (b) *country of origin of parents* (western, non-western or mixed), where western countries include European Union, Andorra, Australia, Canada, Iceland, Liechtenstein, Monaco, New Zealand, Norway, San Marino, Switzerland, USA and Vatican City. Non-western countries include all other countries, while mixed refers to one parent from a western country and one parent from a non-western country. The distinction between and definition of western and non-western is chosen in accordance with Statistics Denmark (<https://www.dst.dk/Site/Dst/SingleFiles/GetArchiveFile.aspx?fi=91448101625&fo=0&ext=kvaldel>), guidelines, which is a continuation of a former UN-definition

## **S1 Appendix. Cohort-specific sources of funding/support**

### **ALSPAC**

Core funding for the Avon Longitudinal Study of Parents and Children (ALSPAC) is provided by the UK Medical Research Council and Wellcome (217065/Z/19/Z) and the University of Bristol. A comprehensive list of grants funding is available on the ALSPAC website (<http://www.bristol.ac.uk/alspac/external/documents/grant-acknowledgements.pdf>). DAL and AK work in a unit that is supported by the University of Bristol and UK Medical Research Council (MC\_UU\_00011/6) and DAL holds a European Research Council Advanced Grant (ERC grant agreement no 669545) and is a NIHR Senior Investigator (NF-0616-10102). The funders had no role in the design of the study, the collection, analysis, or interpretation of the data; the writing of the manuscript, or the decision to submit the manuscript for publication. The views expressed in this paper are those of the authors and not necessarily those of any funder.

### **AOF**

All Our Families is funded through Alberta Innovates Interdisciplinary Team Grant #200700595, the Alberta Children's Hospital Foundation, the Canadian Institutes of Health Research, and the Social Sciences and Humanities Research Council. Initial funding to investigate maternal and infant outcomes during the perinatal period was provided by Three Cheers for the Early Years, Alberta Health Services. Expansion of the cohort, to include collection of biological specimens to predict determinants of adverse birth outcomes, was funded by Alberta Innovates Health Solutions [Interdisciplinary Team Grant #200700595] and the Global Alliance to Prevent Prematurity and Stillbirth [GAPPS award #12006]. Subsequent collaborations focusing on the developmental trajectories of AOB children have been supported by numerous grants, including the Social Sciences and Humanities Research Council, Alberta Health Services, the Alberta Children's Hospital Foundation, the Alberta Centre for Child, Family and Community Research, Upstart the United Way of Calgary, Women and Children's Health Research Institute, the Canadian Foundation for Fetal Alcohol Research and the Max Bell Foundation.

### **BiB**

BiB receives core infrastructure funding from the Wellcome Trust (WT101597MA) and a joint grant from the UK Medical Research Council (MRC) and Economic and Social Science Research Council (ESRC) (MR/N024397/1). This study has received support from the British Heart Foundation (CS/16/4/32482), US National Institutes of Health (R01 DK10324), European Research Council under the European Union's Seventh Framework Programme (FP7/2007-2013) / ERC grant agreement no 669545, and National Institute for Health Research ARC Yorkshire and Humber (NIHR200166. PMW receives funding

from the National Institute for Health Research Applied Research Collaboration for Greater Manchester. The views expressed are those of the author(s), and not necessarily those of the NHS, the NIHR or the Department of Health and Social Care.

## **CHILD**

The CHILD Cohort Study was launched in 2008 with funding from AllerGen NCE Inc. and the Canadian Institutes of Health Research (CIHR). Additional funding has been provided for the core study by Genome Canada and local provincial funding and philanthropic support. The funders had no role in the design of the study, the collection, analysis, or interpretation of the data; the writing of the manuscript, or the decision to submit the manuscript for publication. The views expressed in this paper are those of the authors and not necessarily those of any funder

## **DNBC**

The Danish National Birth Cohort was established with a significant grant from the Danish National Research Foundation. Additional support was obtained from the Danish Regional Committees, the Pharmacy Foundation, the Egmont Foundation, the March of Dimes Birth Defects Foundation, the Health Foundation and other minor grants. The DNBC Biobank has been supported by the Novo Nordisk Foundation and the Lundbeck Foundation. Follow-up of mothers and children have been supported by the Danish Medical Research Council (SSVF 0646, 271-08-0839/06-066023, O602-01042B, 0602-02738B), the Lundbeck Foundation (195/04, R100-A9193), The Innovation Fund Denmark 0603-00294B (09-067124), the Nordea Foundation (02-2013-2014), Aarhus Ideas (AU R9-A959-13-S804), University of Copenhagen Strategic Grant (IFSV 2012), and the Danish Council for Independent Research (DFF – 4183-00594 and DFF - 4183-00152). AP is funded by a Lundbeck Foundation fellowship (R264-2017-3099)



## **EDEN**

The EDEN study was supported by Foundation for medical research (FRM), National Agency for Research (ANR), National Institute for Research in Public health (IRESP: TGIR cohorte santé 2008 program), French Ministry of Health (DGS), French Ministry of Research, INSERM Bone and Joint

Diseases National Research (PRO-A) and Human Nutrition National Research Programs, Paris-Sud University, Nestlé, French National Institute for Population Health Surveillance (InVS), French National Institute for Health Education (INPES), the European Union FP7 programmes (FP7/2007-2013, HELIX, ESCAPE, ENRIECO, Medall projects), Diabetes National Research Program (through a collaboration with the French Association of Diabetic Patients (AFD)), French Agency for Environmental Health Safety (now ANSES), Mutuelle Générale de l'Éducation Nationale a complementary health insurance (MGEN), French national agency for food security, French speaking association for the study of diabetes and metabolism (ALFEDIAM).

## **ELFE**

The Elfe cohort received funding from the National Research Agency Investment for the Future program [ANR-11-EQPX-0038]; French National Institute for Research in Public Health (IRESP TGIR 2009-2001 program); Ministry of Higher Education and Research; Ministry of Environment; Ministry of Health; French Agency for Public Health; Ministry of Culture; and National Family Allowance Fund.

## **G21**

Generation XXI was supported by the European Regional Development Fund (ERDF) through the Operational Programme Competitiveness and Internationalization and national funding from the Foundation for Science and Technology (FCT), Portuguese Ministry of Science, Technology and Higher Education under the project “HIneC: When do health inequalities start? Understanding the impact of childhood social adversity on health trajectories from birth to early adolescence” (POCI-01-0145-FEDER-029567; Reference PTDC/SAU-PUB/29567/2017). It is also supported by the Unidade de Investigação em Epidemiologia - Instituto de Saúde Pública da Universidade do Porto (EPIUnit) (UIDB/04750/2020), Administração Regional de Saúde Norte (Regional Department of Ministry of Health) and Fundação Calouste Gulbenkian; PhD Grant SFRH/BD/108742/2015 (to SS) co-funded by FCT and the Human Capital Operational Programme (POCH/FSE Program). This project received funding from the European Union's Horizon 2020 research and innovation programme under the project ; EUCAN-Connect grant agreement No 824989. ACS is founded by a FCT Investigator contracts IF/01060/2015.

## **GECKO**

The GECKO Drenthe birth cohort was funded by an unrestricted grant of Hutchison Whampoa Ltd, Hong Kong and supported by the University of Groningen, Well Baby Clinic Foundation Icare, Noordlease, Paediatric Association Of The Netherlands, Youth Preventive Health Care Drenthe and European Union's Horizon 2020 research and innovation programme (LifeCycle, Grant Agreement No. 733206 LifeCycle).

## **Generation R**

The general design of the Generation R Study is made possible by financial support from the Erasmus MC, University Medical Center, Rotterdam, Erasmus University Rotterdam, Netherlands Organization for Health Research and Development (ZonMw), Netherlands Organisation for Scientific Research (NWO), Ministry of Health, Welfare and Sport and Ministry of Youth and Families. This project received funding from the European Union's Horizon 2020 research and innovation programme (LIFECYCLE, grant agreement No 733206, 2016; EUCAN-Connect grant agreement No 824989; ATHLETE, grant agreement No 874583). VJ received funding from a Consolidator Grant from the European Research Council (ERC-2014-CoG-648916). The study sponsors had no role in the study design, data analysis, interpretation of data, or writing of this report.

## **INMA**

INMA-Valencia was funded by Grants from UE (FP7-ENV-2011 cod 282957 and HEALTH.2010.2.4.5-1), Spain: ISCIII (G03/176; FIS-FEDER: PI09/02647, PI11/01007, PI11/02591, PI11/02038, PI13/1944, PI13/2032, PI14/00891, PI14/01687, and PI16/1288; Miguel Servet-FEDER CP11/00178, CP15/00025, and CPII16/00051), and Generalitat Valenciana: FISABIO (UGP 15-230, UGP-15-244, and UGP-15-249). INMA-Gipuzkoa was funded by grants from the Instituto de Salud Carlos III (FISFIS PI06/0867, FISPS09/0009) 0867, Red INMA G03/176) and the Departamento de Salud del Gobierno Vasco (2005111093 and 2009111069) and the Provincial Government of Guipúzcoa (DFG06/004 and FG08/001). INMA-Sabadell was funded by grants from ISCIII (Red INMA G03/176; CB06/02/0041; FIS-FEDER: PI041436; PI081151; PI12/01890; CP13/00054; PI15/00118; CP16/00128; PI16/00118; PI16/00261; PI18/00547), CIBERESP, Generalitat de Catalunya-CIRIT (1999SGR 00241), Generalitat de Catalunya-AGAUR (2009 SGR 501, 2014 SGR 822), Fundació La Marató de TV3 (090430), Spanish Ministry of Economy and Competitiveness (SAF2012-32991 incl. FEDER funds), Agence Nationale de Securite Sanitaire de l'Alimentation de l'Environnement et du Travail (1262C0010; EST-2016 RF-21), and the European Commission (261357, 308333, 603794 and 634453). ISGlobal acknowledges support from the Spanish Ministry of Science, Innovation and Universities through the "Centro de Excelencia Severo Ochoa 2019-2023" Program (CEX2018-000806-S), and support from the Generalitat de Catalunya through the CERCA Program.

## **MoBa**

The Norwegian Mother, Father and Child Cohort Study is supported by the Norwegian Ministry of Health and Care Services and the Ministry of Education and Research. JN received funding, in part, from the European Union's Horizon 2020 research and innovation programme (LIFECYCLE, grant agreement No 733206), The work of JRH was partly supported by the Research Council of Norway through its Centres of Excellence funding scheme, project number 262700.

## **NINFEA**

The NINFEA cohort was initially funded by the Compagnia SanPaolo Foundation and the Piedmont Region. It received funding from European projects: CHICOS (FP7 grant number HEALTH-FP7-2009-241604, LifeCycle (H2020 grant number 733206), ATHLETE (H2020 grant number 874583).

## **NFBC1986**

NFBC1986 received financial support from EU QLG1-CT-2000-01643 (EUROBLCS, grant number E51560), NorFA (grant numbers 731, 20056 and 30167) and USA / NIH 2000 G DF682 (grant number 50945). Financial support for data generation, research and supporting staff was received from the Academy of Finland (grant numbers: 104781, 120315, 129269, 1114194, 24300796, 285547 (EGEA)); University Hospital Oulu, Biocenter, University of Oulu, Finland (grant number: 75617); NIHM (grant number: MH063706, Smalley and Jarvelin for NFBC1986 data collection), Juselius Foundation; NIH/NIMH (grant number: 5R01MH63706:02); the European Commission: EURO-BLCS, Framework 5 award QLG1-CT-2000-01643 (for NFBC1986 data collection), ENGAGE project and grant agreement HEALTH-F4-2007 (grant number: 201413); EU H2020-HCO-2004 iHEALTH Action (grant number: 643774), EU H2020-PHC-2014 DynaHealth Action (grant number: 633595); ALEC Action (grant number: 633212); ERDF European Regional Development Fund (grant number: 539/2010 A31592); the Medical Research Council (MRC), UK (grant numbers: G0500539, G0600705, G1002319, MR/M013138/1), EU H2020-SC1-2016-2017 LifeCycle Action (grant number: 733206). The programme is currently funded by EU H2020-SC1-2016-2017 LifeCycle Action (grant number: 733206), EU-H2020 EUCAN Connect (grant number: 824989) and H2020-SC1-2019 LongI-Tools (grant number 874739).

## **The Raine study**

The Raine study has been funded by program and project grants from the Australian National Health and Medical Research Council (NHMRC), the Commonwealth Scientific and Industrial Research Organisation, Healthway and the Lions Eye Institute in Western Australia. The Raine study Gen2-17 year follow-up was funded by the NHMRC Program Grant (Stanley et al, ID 353514). The Raine study participation in LIFECYCLE was funded by a grant from the National Health and Medical Research Council, Australia (GNT114285). The University of Western Australia (UWA), Curtin University, the Raine Medical Research Foundation, the Telethon Kids Institute, the Women's and Infant's Research Foundation (KEMH), Murdoch University, The University of Notre Dame Australia and Edith Cowan University provide funding for the Core Management of the Raine Study. RCH was supported by NHMRC fellowship (Grant Number 1053384). JC is supported by NHMRC EU (Grant Number 114285).

## **SWS**

The SWS is supported by grants from the Medical Research Council, National Institute for Health Research Southampton Biomedical Research Centre, British Heart Foundation, University of Southampton and University Hospital Southampton National Health Service Foundation Trust, and the European Union's Seventh Framework Programme (FP7/2007-2013), project Early Nutrition (grant 289346) and from the European Union's Horizon 2020 research and innovation programme (LIFECYCLE, grant agreement No 733206). Study participants were drawn from a cohort study funded by the Medical Research Council and the Dunhill Medical Trust.

## **S2 Appendix. Cohort-specific acknowledgments**

### **ALSPAC**

We are extremely grateful to all of the families who took part in ALSPAC, the midwives for their help in recruiting them, and the whole ALSPAC team, which includes interviewers, computer and laboratory technicians, clerical workers, research scientists, volunteers, managers, receptionists and nurses.

### **AOF**

The authors acknowledge the tremendous contribution and support of AOF participants and AOF team members. We are extremely grateful to the investigators, coordinators, research assistants, graduate and undergraduate students, volunteers, clerical staff and managers.

### **BIB**

The authors acknowledge that Born in Bradford is only possible because of the enthusiasm and commitment of the children and parents in Born in Bradford. We are grateful to all participants, health professionals and researchers who have made Born in Bradford happen.

### **CHILD**

We thank the CHILD Cohort Study (CHILD) participant families for their dedication and commitment to advancing health research. Visit CHILD at [childcohort.ca](http://childcohort.ca).

### **DNBC**

The authors would like to thank the participants, the first Principal Investigator of DNBC Prof. Jørn Olsen, the scientific managerial team, and DNBC secretariat for being, establishing, developing and consolidating the Danish National Birth Cohort.

### **EDEN**

The authors thank the cohort participants and the EDEN mother-child study group, whose members are: I. Annesi-Maesano, J.Y. Bernard, J. Botton, M.A. Charles, P. Dargent-Molina, B. de Lauzon-Guillain, P. Ducimetière, M. de Agostini, B. Foliguët, A. Forhan, X. Fritel, A. Germa, V. Goua, R. Hankard, B. Heude, M. Kaminski, B. Larroque†, N. Lelong, J. Lepeule, G. Magnin, L. Marchand, C. Nabet, F. Pierre, R. Slama, M.J. Saurel-Cubizolles, M. Schweitzer, O. Thiebaugeorges.

## **ELFE**

The authors are grateful to 1) the former members of the Elfe unit without whom the project would never have started: Henri Léridon, initiator and former Principal Investigator of the project, Stéphanie Vandentorren, Claudine Pirus, and Ando Rakotonirina; 2) the expertise and assistance of members of the unit for support functions, 3) all the researchers who contribute to the projects as members of the Elfe thematic groups and especially their coordinators; 4) all the field research assistants and interviewers; 5) and above all, all the Elfe families who have placed their confidence in us and given up their time to the study

## **G21**

The authors gratefully acknowledge the families enrolled in Generation XXI for their kindness, all members of the research team for their enthusiasm and perseverance, and the participating hospitals and their staff for their help and support.

## **GECKO**

The authors are grateful to the families who took part in the GECKO Drenthe study, the midwives, gynecologists, nurses, and the general practitioners and all health professionals at the Preventive Child Healthcare Drenthe for their help in the recruitment and the measurements, and the GECKO Drenthe study team.

## **Generation R**

The authors gratefully acknowledge the contribution of participants, research collaborators, general practitioners, hospitals, midwives, and pharmacies in Rotterdam.

## **INMA**

The authors would particularly like to thank all the participants for their generous collaboration. The authors are grateful to Silvia Fochs, Nuria Pey, Mireia Garcia, Maria Victoria Estraña, Maria Victoria Iturriaga, Cristina Capo and Josep LLuch for their assistance in contacting the families and administering the questionnaires.

## **MoBa**

The authors are grateful to all the participating families in Norway who take part in this on-going cohort study.

## **NFBC1986**

The authors thank all cohort members and researchers who have participated in the NFBC studies. We also wish acknowledge the work of the NFBC project center.

## **NINFEA**

The authors thank all families participating in the NINFEA cohort.

## **The Raine study**

The authors would like to acknowledge the Raine study participants and their families for their ongoing participation in the study and the Raine study team for study co-ordination and data collection. We also thank the NHMRC for their long term contribution to funding the study over the last 30 years. The core management of the Raine study is funded by The University of Western Australia, Curtin University, Telethon Kids Institute, Women and Infants Research Foundation, Edith Cowan University, Murdoch University, The University of Notre Dame Australia and the Raine Medical Research Foundation.

## **SWS**

The authors are grateful to the women and their children in Southampton who gave their time to take part in the Southampton Women's Survey and to the research nurses and other staff who collected and processed the data.

### **S3 Appendix. Cohort-specific ethics approval**

#### **ALSPAC**

Ethical approval for the study was obtained from the ALSPAC Ethics and Law Committee and the Local Research Ethics Committees

#### **AOF**

The All Our Families study was approved by the Child Health Research Office and the Conjoint Health Research Ethics Board of the Faculties of Medicine, Nursing, and Kinesiology, University of Calgary, and the Affiliated Teaching Institutions (Ethics ID 20821 and 22821).

#### **BiB**

Ethics approval has been obtained for the main platform study and all of the individual substudies from the Bradford Research Ethics Committee

#### **CHILD**

Ethics approvals for the study were obtained at recruitment and at each data collection phase from all four Canadian sites.

#### **DNBC**

The DNBC complies with the Declaration of Helsinki and was approved by the Danish National Committee on Biomedical Research Ethics

#### **EDEN**

The study received approval from the ethics committee (CCPPRB) of Kremlin Bicêtre on 12 December 2002 and from CNIL (Commission Nationale Informatique et Liberté), the French data privacy institution



## **ELFE**

Ethical approvals for data collection in maternity units and for each data collection wave during follow-up were obtained from the national advisory committee on information processing in health research (CCTIRS: Comité Consultatif sur le Traitement de l'Information en matière de Recherche dans le domaine de la Santé), the national data protection authority (CNIL: Commission Nationale Informatique et Liberté) and, in case of invasive data collection such as biological sampling, the committee for protection of persons engaged in research (CPP: Comité de Protection des Personnes). The ELFE study was also approved by the national committee for statistical information (CNIS: Conseil National de l'Information Statistique).

## **G21**

Generation XXI was approved by the Portuguese Data Protection Authority and by the Ethics Committee of Hospital São João, and data confidentiality and protection were guaranteed in all procedures according to the Declaration of Helsinki. Signed informed consent was obtained for all adults and children participants had it signed by their legal guardian at every study waves.

## **GECKO**

The GECKO Drenthe study complies with the Declaration of Helsinki and was approved by the Medical Ethics Committee of the University Medical Center Groningen (UMCG).

## **Generation R**

The general design, all research aims and the specific measurements in the Generation R Study have been approved by the Medical Ethical Committee of the Erasmus Medical Center, Rotterdam. New measurements will only be embedded in the study after approval of the Medical Ethical Committee.

## **INMA**

The INMA project was approved by the ethics committee in each area.

## **MoBa**

The establishment and data collection in MoBa was previously based on a license from the Norwegian Data protection agency and approval from The Regional Committee for Medical Research Ethics, and it is now based on regulations related to the Norwegian Health Registry Act.

## **NINFEA**

The Ethical Committee of the San Giovanni Battista Hospital and CTO/CRF/Maria Adelaide Hospital of Turin approved the NINFEA study (approval N. 0048362, and subsequent amendments)

## **NFBC1986**

The study was performed according to the Declaration of Helsinki, and approved by the Ethics committee of the Northern Ostrobothnia Hospital District in Finland

## **The Raine study**

The original cohort study received approval from the King Edward Memorial Hospital for women ethics committee in 1989 (DD/JS/459), and all subsequent follow-ups also received institutional human research ethics committee (HREC) approval prior to commencing. All participants were provided with participant information sheets and parents (Gen1) provided informed consent, and the child (Gen2) provided assent. When the Raine study Gen2 participants turned 18 years of age, ethics approval was further received from the University of Western Australia HREC (RA/4/1/2100) to contact and obtain consent from Raine study participants for any data that was collected before they were 18 to be used for future research. A further UWA HREC was provided to all a single 'overarching' approval code that recognises all previous approvals under which previous data and/or bio-samples were collected. This approval was received on 29 April 2020 and provides a single consolidated approval (RA/4/20/5722) for use of research data and/or bio-samples held in the Raine study data collection.

## **SWS**

The study had full approval at each wave from the Southampton and Southwest Hampshire Local Research Ethics Committee.

## **S4 Appendix. Cohort-specific consent to participate**

### **ALSPAC**

Informed consent for the use of data collected via questionnaires and clinics was obtained from participants following the recommendations of the ALSPAC Ethics and Law Committee at the time.

### **AOF**

Participants provided informed consent at the time of recruitment and were provided copies of the consent form for their records.

### **BiB**

All participants gave written informed consent.

### **CHILD**

Informed consent of CHILD Cohort Study participants was obtained upon enrolment and at each subsequent data collection phase.

### **DNBC**

Informed consent was obtained from participants upon enrolment

### **EDEN**

Women gave written informed consent for themselves and their child. Fathers gave written informed consent for themselves.

### **ELFE**

Informed consent was signed by the parents or the mother alone, with the father being informed of his right to deny consent for participation

## **G21**

Written informed consent was signed by any of the parents or legal representative of each participant at the baseline and in all subsequent follow up evaluations. Even with consent of the parents, when the child is not willing to participate, no measurements were performed. From the age of 13 years, children were also asked for their informed consent.

## **GECKO**

Parents of all participants in the study gave written informed consent.

## **Gen R**

Participants are asked for their written informed consent for the four consecutive phases of the study (prenatally, birth to 4 years, 4–12 years, and from 12 years onwards). At the start of each phase, mothers and their partners receive written and oral information about the study. Even with consent of the parents, when the child is not willing to participate actively, no measurements are performed. From the age of 12 years, children are asked for written informed consent

## **INMA**

All participants provided written informed consent before enrolment to the study

## **MoBa**

MoBa is conducted according to the guidelines laid down in the declaration of Helsinki, and written informed consent was obtained from all participants. A detailed protocol of the study including the consent can be found elsewhere (<http://www.fhi.no/morogbarn>).

## **NINFEA**

Informed consent was obtained from all the participants at enrolment and at each follow-up.

## **NFBC1986**

Each participant and a guardian gave signed informed consent

### **The Raine study**

All participants were provided with participant information sheets and parents (Gen1) provided informed consent, and the child (Gen2) provided assent. When the Raine study Gen2 participants turned 18 years of age, ethics approval was further received from the University of Western Australia HREC (RA/4/1/2100) to contact and obtain consent from Raine study participants for any data that was collected before they were 18 to be used for future research.

### **SWS**

All participants gave written informed consent for each data collection wave of the study.