

1 **Impact of Adverse Drug Reactions in the outcomes of Tuberculosis** 2 **Treatment**

3 **Short Title: Drug reactions in anti-TB therapy**

4 **Flávia M. Sant´Anna^{1,2#}, Mariana Araújo-Pereira^{3,4,5#}, Carolina A. S. Schmaltz^{2#}, María B.**
5 **Arriaga^{3,4,5#}, Bruno B. Andrade^{3,4,5,6,7*}, Valeria C. Rolla^{1,2*}**

6

7 ¹Postgraduate Program Clinical Research in Infectious Diseases, National Institute of Infectious
8 Diseases Evandro Chagas, Oswaldo Cruz Foundation, Rio de Janeiro, Brazil

9 ²Clinical Research Laboratory on Mycobacteria, (LAPCLIN-TB), National Institute of Infectious
10 Diseases Evandro Chagas, Oswaldo Cruz Foundation, Rio de Janeiro, Brazil

11 ³School of Medicine, Federal University of Bahia, Salvador, Brazil

12 ⁴Multinational Organization Network Sponsoring Translational and Epidemiological Research
13 (MONSTER) Initiative, Salvador, Brazil

14 ⁵Laboratory of Inflammation and Biomarkers, Gonçalo Moniz Institute, Oswaldo Cruz Foundation,
15 Salvador, Brazil

16 ⁶Curso de Medicina, Escola Bahiana de Medicina e Saúde Pública (EBMSP), Salvador, Brazil

17 ⁷Curso de Medicina, Universidade Salvador (UNIFACS), Laureate Universities, Salvador, Brazil

18

19 [#]Flávia M. Sant´Anna, Mariana Araújo-Pereira, Carolina A. S. Schmaltz and María B. Arriaga
20 equally contributed to the work.

21

22 ^{*}The senior authors Bruno B. Andrade and Valeria C Rolla equally contributed to the work.

23

24 *** Correspondence:** Bruno B. Andrade, MD, PhD. Laboratory of Inflammation and Biomarkers,
25 Gonçalo Moniz Institute, Oswaldo Cruz Foundation, Rua Waldemar Falcao, 121, Candeal, Salvador,
26 Bahia 40296-710, Brazil. E-mail: Bruno.andrade@fiocruz.br.

27 **Keywords: tuberculosis, tuberculosis treatment, adverse drug reaction, treatment outcomes,**
28 **loss to follow up.**

29

30 **ABSTRACT**

31 Adverse drug reactions (ADR) challenge successful anti-tuberculosis treatment (ATT). The aim of this
32 study was to evaluate the impact of ATT-associated ADR and related factors on treatment outcomes.
33 A prospective cohort study of persons with tuberculosis at a referral center in Rio de Janeiro, Brazil,
34 from 2010 to 2016. ADRs, favorable (cure and treatment completion) and unfavorable (death, loss to
35 follow up and failure) outcomes were prospectively captured. The Kaplan-Meier curve was used to
36 estimate probability ADR-free time. A logistic regression model was performed to identify
37 independent associations with unfavorable outcomes. 550 patients were enrolled and 35.1% were
38 people living with HIV (PLHIV). ADR occurred in 78.6% of participants and was associated with
39 favorable outcomes. Smokers (OR:2.32;95%CI:1.34-3.99) and illicit drug users
40 (OR:2.02;95%CI:1.15-3.55) exhibited higher risk of unfavorable outcome. PLHIV more frequently
41 experienced grade 3/4-ADR, specially “liver and biliary system disorders”. Lower CD4 counts were
42 associated with hepatotoxicity (p=0.03). Male sex, low schooling, smoking and illicit-drug use are
43 independent risk factors for unfavorable outcomes, as well alcohol abuse and previous ART in PLHIV.
44 ADR increases the odds of favorable outcomes, although it is more severe in PLHIV and related to a
45 higher risk of hepatotoxicity.

46 **Introduction**

47 Anti-tuberculosis treatment (ATT) has been available worldwide and can reach more than 90% of
48 effectiveness [1]. However, the challenges in achieving this goal persist as ATT can cause adverse drug
49 reactions (ADR) that lead to increased morbidity and compromise adherence eventually contributing
50 to treatment failure, relapse, or emergence of resistant strains [2,3].

51 The ATT recommended by World Health Organization (WHO) and implemented since 2009 in
52 the Brazilian guidelines is as a fixed-dose (FDC), single-tablet combination of four drugs (rifampicin,
53 isoniazid, pyrazinamide, and ethambutol) during the intensive phase of treatment followed by
54 rifampicin and isoniazid in FDC until the end of treatment [4]

55 Retrospective studies conducted in Brazil found an incidence of ADR between 23% to 83% [5–
56 7] and in a meta-analysis including other non-Brazilian studies, the incidence varied from 8.4% to
57 83.5% [8]. ADRs are multifactorial [9,10] and the major determinants are unadjusted prescribed doses
58 of medications, patient's age, nutritional status, alcohol consumption, liver and kidney function and
59 HIV-infection [11,12].

60 In people living with HIV (PLHIV), co-administration of antiretroviral therapy (ART) and ATT
61 increases the risk of drug interactions, immunopathological responses, and ADRs [13]. ADRs have
62 been associated with almost two-fold increased risk of unsuccessful treatment outcomes after 6 months
63 of ATT [14].

64 According to data from the Brazilian Ministry of Health, in the year of 2020, 8.5% of new
65 diagnoses of tuberculosis were in PLHIV [15]. ART during ATT is challenging because of drug-to-
66 drug interactions and increased risk of ADR. In Brazil there are few studies on ADR in PLHIV treating
67 TB, with no definitive conclusion. The aim of this study is to evaluate the impact of ADR due to ATT

68 and factors associated with favorable and unfavorable outcomes. We hypothesize that ADR occurrence
69 could increase unfavorable outcome occurrences.

70 **Methods**

71 **Ethics statement**

72 The study was approved by the Institutional Review Board of the National Institute of Infectious
73 Diseases Evandro Chagas (INI) (CAAE: 86215118.5.0000.5262). Written informed consent was
74 obtained from all participants involved in the study and all clinical investigations were conducted
75 according to the principles expressed in the Declaration of Helsinki.

76 **Study design**

77 We conducted a prospective cohort study with TB patients treated and followed up at the Clinical
78 Research Laboratory on Mycobacteria (LAPCLIN-TB) of the National Institute of Infectious diseases
79 Evandro Chagas (INI), Oswaldo Cruz Foundation (FIOCRUZ), Rio de Janeiro, Brazil, from January
80 2010 to December 2016. In LAPCLIN-TB a cohort study has been active since 2000, with data
81 registered at a standardized visit template. The information is captured at each patient's visit. Raw data
82 is shown in S1 File.

83 **Inclusion and exclusion criteria**

84 The inclusion criteria were 18 years old or more and pulmonary, extrapulmonary or
85 disseminated TB. The exclusion criteria were death or loss to follow up (LTFU) within the first 15
86 days of ATT (early death or early LTFU avoiding data capture), rifampicin and isoniazid resistance
87 (MDR) and lack of information on outcomes. Patients initially diagnosed with TB based on clinical-
88 radiologic evaluation who were later diagnosed with another disease rather than tuberculosis were also
89 excluded.

90 **TB diagnosis and follow up visits**

91 Tuberculosis diagnosis was clinical-radiological (based on symptoms and signs and chest X-ray
92 findings), in some cases confirmed by laboratory tests (acid fast smears and/or culture and/or
93 histopathological findings and/or Xpert-MTB/RIF™). In cases without laboratory confirmation, a
94 positive therapeutic response to ATT was considered for TB diagnosis (clinical-radiological
95 improvement with ATT). Visits were scheduled at baseline (ATT initiation), 15, 30, 60, 90, 120, 150
96 and 180 days after ATT initiation. Sometimes treatment was prolonged, especially for disseminated or
97 extrapulmonary TB cases and due to a physician decision. In these cases, there were monthly visits
98 scheduled after the 180 days of ATT. Data were entered into an electronic medical record and
99 standardized information was collected using a predefined template in all visits.

100 During the baseline visit, information collected included demographic variables such as age, sex, race
101 (self-reported), marital status, schooling (illiterate, elementary school up to 12 years, and high
102 schooling above 12 years), social behavior (alcohol, tobacco, illicit drugs use/addiction), clinical
103 information such as clinical forms of tuberculosis (pulmonary, extrapulmonary or disseminated - 2 or
104 more non-contiguous sites), presence of comorbidities, and concomitant medications use. At baseline
105 visits laboratory tests were collected: hemogram, urea, creatinine, uric acid, alanine (ALT) and
106 aspartate (AST) transferases, albumin, alkaline phosphatase, gamma glutamyl transferase (GGT), chest
107 X-ray, hepatitis B, C and HIV serology. At subsequent visits, ADR were monitored with clinical
108 information and laboratory evaluation (hemogram and biochemistry including liver enzymes) in all
109 visits. For known PLHIV, CD4 count, and HIV viral load (VL) were added at baseline visits and at the
110 end of ATT.

111 **Anti-TB treatment (ATT)**

112 Since 2009, Brazilian guidelines incorporated WHO-recommendation of rifampicin 600 mg, isoniazid
113 300 mg, pyrazinamide 1600 mg and ethambutol 1100 mg in FDC for two months, followed by four
114 months of rifampicin 600 mg and isoniazid 300 mg in FDC, for both new and retreatment TB cases
115 until drug-susceptibility tests were available. Doses were adjusted for patients with less than 50kg [4].

116 **HIV treatment**

117 ART was prescribed for PLHIV, by each assistant physician, according to Brazilian guidelines for
118 Sexual Transmitted Diseases and AIDS [16]. The recommended ATT for PLHIV included a rifamycin
119 (rifampicin or rifabutin), which was chosen according to the ART regimen appropriate for each specific
120 patient. Rifabutin 150 mg/day was chosen when protease inhibitors were prescribed as part of ART
121 [11]. ART was introduced for naïve patients as soon as possible, which happened around the first month
122 of ATT in most cases.

123 **Smoke habit**

124 A current smoker was defined as someone who was smoking at the time of tuberculosis diagnosis
125 and/or at the beginning of ATT or who stopped smoking due to tuberculosis symptoms but went back
126 to smoke during ATT.

127 **Illicit drug users**

128 All patients who reported to be currently using drugs were considered illicit drug users.

129 **Alcohol abusers**

130 All patients answered the CAGE questionnaire [17] and those who answered yes to 2 or more questions
131 were considered as having significant alcohol addiction.

132 **Adverse Drug Reaction (ADR)**

133 ADR were defined according to signs and symptoms (clinical), laboratory tests abnormalities
134 (laboratory) or both (clinical and laboratory). ADRs were categorized according to WHO-ART
135 classification [18]. The scale of intensity was based on the Division of AIDS table for grading the
136 severity of adult and pediatric ADR [19]: Grade 1: mild event, Grade 2: moderate event, Grade 3:
137 severe event, Grade 4: potentially life-threatening event, Grade 5: death. The causality of ADRs were
138 assessed using the Naranjo Scale, as improbable, possible, probable, and definitively related to the
139 medications [20]. Only probable, possible, and definitively related ADR were considered for the
140 analysis.

141 **Outcomes**

142 Outcomes were based on WHO criteria [21]. The success of treatment consisted of cure and
143 treatment conclusion which were considered favorable outcomes. Unfavorable outcomes were grouped
144 (composite outcome) and included treatment failure (remaining smear-positive after the 4th month of
145 ATT), transfer to different treatment facilities (patients who were transferred out to other health unit),
146 LTFU (interruption of treatment for two or more consecutive months) and death associated with
147 tuberculosis (all cases were revised and the causality assessed).

148 **Data analyses**

149 Descriptive statistics was performed using the median values with interquartile ranges (IQR) as
150 measures of central tendency and dispersion for continuous variables. Categorical variables were
151 described using frequency (no.) and proportions (%). The Mann–Whitney U test (for two unmatched
152 groups) was used to compare continuous variables and the Pearson chi-square test was used to compare
153 categorical variables between study groups. The Kaplan-Meier curve was used to estimate ADR-free
154 probabilities.

155 A logistic binary regression was performed with backward stepwise selection using variables with
156 univariate p-value ≤ 0.2 to identify independent associations between characteristics of tuberculosis
157 patients with the composite unfavorable treatment outcome. Results from regression were presented in
158 terms of point estimates and 95% confidence intervals (CI). All analyses were pre-specified.
159 Differences with p-values below 0.05 after adjustment for multiple comparisons (Holm-Bonferroni)
160 were considered statistically significant.

161 The statistical analyses and data visualization were performed using rstatix (version 0.4.0), stats
162 (version 3.6.2), ggplot2 (version 3.3.2), survivor (version 3.2.7) and survminer (version 0.4.8) R
163 packages.

164 **Results**

165 From 2010 to 2016, 606 patients were enrolled in this study. Fifty-six patients with exclusion criteria
166 were ruled out: 31 with MDR tuberculosis, 18 with other diagnoses during ATT (including non-
167 tuberculous mycobacteria), two due to early death, and one because of early LTFU. Two patients were
168 removed from the dataset due to lack of information on the outcomes.

169 A total of 550 patients were included in this study. Only patients with ADR (total 426) were included
170 in these analyses (**Figure 1A**). **Table 1** shows a comparison of favorable and unfavorable outcomes
171 regarding their sociodemographic and clinical characteristics. The median age was 38 years, 329
172 (59.8%) were male and 193 (35.1%) were PLHIV. Among patients with unfavorable outcomes: 84
173 were LTFU, 7 had a treatment failure and 7 died.

174 **Figure 1. Study Design and probability of presenting adverse reactions during the antitubercular**
175 **treatment. (A) Study design. (B) Event free curve (Kaplan-Meier) of Tuberculosis patients**
176 **during antitubercular treatment. Mean time (in state, restricted max time = 365) in days of event**

177 **occurrence: 140.7. Abbreviation: ADR: adverse drug reaction; ATT: anti-TB treatment; CI:**
 178 **confidence interval; TB: tuberculosis.**

179

180 **Table 1. Clinical, social demographics and comorbidities according to outcomes**

	All (n=550)	Favorable (n=452)	Unfavorable (n=98)	p value
Male, n (%):	329 (59.8)	256 (56.6)	73 (74.5)	0.002
Age, median (IQR):	38 (29-49)	39 (29-50)	36 (28.2-46.8)	0.138
Race, n (%):				<0.001
White	281 (51.1)	250 (55.3)	31 (31.6)	
Black/Pardo	269 (48.9)	202 (44.7)	67 (68.4)	
Scholarity, n (%):				<0.001
Illiterate	21 (3.82)	16 (3.54)	5 (5.10)	
Elementary School	449 (81.6)	356 (78.8)	93 (94.9)	
High School	80 (14.5)	80 (17.7)	0 (0.00)	
Married, n (%):	279 (50.7)	239 (52.9)	40 (40.8)	0.040

Tobacco use, n (%):	191 (34.7)	134 (29.6)	57 (58.2)	<0.001
Alcohol abuse, n (%):	212 (38.5)	156 (34.5)	56 (57.1)	<0.001
Illicit drug use, n (%):	121 (22.0)	78 (17.3)	43 (43.9)	<0.001
Initial Weight, median (IQR):	58 (50.6-67.5)	59.7 (50.7-9.6)	56.3 (50.1-64)	0.023
ADR occurrence, n (%):	431 (78.6)	372 (82.5)	59 (60.8)	<0.001
Type of TB, n (%):				0.023
PTB	290 (52.7)	238 (52.7)	52 (53.1)	1
EPTB	170 (30.9)	148 (32.7)	22 (22.4)	0.060
Disseminated	90 (16.4)	66 (14.6)	24 (24.5)	0.025
Changed treatment, n (%):	64 (11.6)	49 (10.8)	15 (15.3)	0.282
Hepatitis B or C, n (%):	28 (5.09)	23 (5.09)	5 (5.10)	1

Diabetes mellitus, n (%):	50 (9.09)	46 (10.2)	4 (4.08)	0.087
Hypertension, n (%):	78 (14.2)	72 (15.9)	6 (6.12)	0.018
COPD, n (%):	10 (1.82)	9 (1.99)	1 (1.02)	1
HIV infection, n (%):	193 (35.1)	141 (31.2)	52 (53.1)	<0.001
ART naive, n (%)	74 (38.7)	62 (44.3)	12 (23.5)	0.015

181 **Table Note:**

182 Data are shown as median and interquartile (IQR) range or number and frequency (percentage). Data
 183 were compared between the clinical groups using the Mann–Whitney U test (continuous variables) or
 184 the Pearson’s χ^2 tests (for data on frequency). Bold in p-value indicates $p < 0.05$.

185 Weight was measured in kilograms. Abbreviations: ADR: adverse drug reaction; HIV: Human
 186 immunodeficiency virus; IQR: Interquartile Range; TB: tuberculosis;

187

188 All participants who died were PLHIV with clinical and/or laboratorial signs of advanced
 189 immunodeficiency. No deaths were related to ADR. We observed significant differences in race,
 190 schooling, smoking habits, and alcohol consumption among cases with unfavorable outcomes when
 191 compared to patients who experienced favorable outcomes. ADR occurred in 78.6% of participants,
 192 35.1% of ADR were in PLHIV. Despite the high incidence, occurrence of ADR was higher in the group
 193 of participants who experienced favorable ATT outcomes.

194 Our analysis of the type, severity, date of onset, relationship with the ATT and WHO-ART
 195 classification according to outcomes are presented in **Table 2**. According to WHO-ART classification,

196 gastro-intestinal system disorders (23.9%) followed by “metabolic and nutritional disorders” (22.4%),
 197 were the most prevalent ADR related to unfavorable outcomes. The probability of ADR was higher
 198 until 140 days of ATT (**Figure 1B**). In the logistic regression model, smoking habit, illicit drugs use,
 199 and HIV-infection were associated with unfavorable outcomes (**Figure 2**).

200 **Table 2. ADR characteristics according to ATT outcome**

	All (n=695)	Favorable (n=628)	Unfavorable (n=67)	p value
Type of event, n (%)				0.95
Clinical + Laboratory	87 (12.5)	78 (12.4)	9 (13.4)	
Laboratory	228 (32.8)	207 (33.0)	21 (31.3)	
Clinical	380 (54.7)	343 (54.6)	37 (55.2)	
Adverse reactions duration (days), median (IQR)	77.0 (39.0-142)	81.5 (43.0-147)	44.0 (25.0-85.0)	<0.001
Severity of ADR, n (%)				0.128
Grade 1	264 (38.0)	246 (39.2)	18 (26.9)	

Grade 2	352 (50.6)	314 (50.0)	38 (56.7)	
Grade 3	67 (9.64)	57 (9.08)	10 (14.9)	
Grade 4	12 (1.73)	11 (1.75)	1 (1.49)	
Onset of ADR, n (%):				0.38
before 2nd month (early)	592 (85.2)	532 (84.7)	60 (89.6)	
after month 2 (late)	103 (14.8)	96 (15.3)	7 (10.4)	
Relation of ADR with ATT, n (%):				0.601
Related	14 (2.01)	14 (2.23)	0 (0.00)	
Probable	171 (24.6)	153 (24.4)	18 (26.9)	
Possible	510 (73.4)	461 (73.4)	49 (73.1)	
WHO ART classification, n (%):				0.207

Central and peripheral nervous system disorders	45 (6.47)	43 (6.85)	2 (2.99)	
Gastro-intestinal system disorder	151 (21.7)	135 (21.5)	16 (23.9)	
Liver and biliary system disorders	54 (7.77)	44 (7.01)	10 (14.9)	
Metabolic and nutritional disorders	171 (24.6)	156 (24.8)	15 (22.4)	
Musculo-skeletal disorders	63 (9.06)	56 (8.92)	7 (10.4)	
Other	46 (6.62)	45 (7.17)	1 (1.49)	
Skin and appendages disorders	125 (18.0)	113 (18.0)	12 (17.9)	

201 **Table Note:**

202 Data are shown as median and interquartile (IQR) range or number and frequency (percentage). Data
 203 were compared between the clinical groups using the Mann–Whitney U test (continuous variables) or
 204 the Pearson’s χ^2 tests (for data on frequency). Bold in p-value indicates $p < 0.05$.

205

206 **Figure 2. Association between clinical characteristics and tuberculosis treatment outcomes**
207 **among tuberculosis patients. The logistic binary regression model (backward stepwise**
208 **regression) was performed to evaluate the independent associations between clinical**
209 **characteristics, including adverse drug reaction occurrence, of tuberculosis patients and**
210 **variables with p-value <0.2 results in the univariate analyses (Table 1) and unfavorable**
211 **treatment outcome. Abbreviation: ADR: adverse drug reaction; CI: confidence interval; TB:**
212 **tuberculosis.**

213 We compared the clinical characteristics and ADR presentation of patients according to HIV status and
214 noted that there were significant differences between the groups (**Table 3**). Self-reported race, marital
215 status, smoking habits, alcohol abuse, illicit drug use in the PLHIV group were associated with
216 unfavorable outcomes. ADR occurred in 78.6% of total participants and 72,8% of them were in the
217 PLHIV. Although diagnosis of viral hepatitis serology was included in our model, it was not associated
218 with unfavorable outcomes, but the number of positive cases was small and we did not test viral load
219 to confirm active hepatitis. The main finding of this investigation was that PLHIV experienced more
220 severe forms of ADR than HIV-unexposed participants, especially liver and biliary system disorders
221 (**Table 4**).

222 **Table 3. Sociodemographics and clinical characteristics of patients according to HIV status**

	All (n=425)	HIV (n=141)	non-HIV (n=284)	p value
Male, n (%):	258 (60.6)	97 (68.8)	161 (56.5)	0.019

Age, median (IQR):	39.0 (29.0-50.0)	37.0 (31.0-47.0)	40.0 (28.0-53.0)	0.244
White (race), n (%):	230 (54.0)	52 (36.9)	178 (62.5)	<0.001
Married, n (%):	229 (53.8)	57 (40.4)	172 (60.4)	<0.001
Tobacco use, n (%):	144 (33.8)	64 (45.4)	80 (28.1)	0.001
Alcohol abuse, n (%):	160 (37.6)	70 (49.6)	90 (31.6)	<0.001
Illicit drug use, n (%):	88 (20.7)	44 (31.2)	44 (15.4)	<0.001
Type of TB, n (%):				<0.001
PTB	222 (52.1)	65 (46.1)	157 (55.1)	
EPTB	135 (31.7)	19 (13.5)	116 (40.7)	
Disseminated	69 (16.2)	57 (40.4)	12 (4.21)	
Initial Weight, median (IQR):	59.0 (51.0-68.0)	59.6 (50.7-68.0)	57.1 (53.8-64.0)	0.836

Hepatitis B or C, n (%):	21 (4.93)	11 (7.80)	10 (3.51)	0.091
Diabetes mellitus, n (%):	41 (9.62)	11 (7.80)	30 (10.5)	0.47
Hypertension, n (%):	70 (16.4)	12 (8.51)	58 (20.4)	0.003
COPD, n (%):	8 (1.88)	1 (0.71)	7 (2.46)	0.28

223 **Table Note:**

224 Data are shown as median and interquartile (IQR) range or number and frequency (percentage). Data
 225 were compared between the clinical groups using the Mann–Whitney *U* test (continuous variables) or
 226 the Pearson’s χ^2 tests (for data on frequency). Bold in p-value indicates $p < 0.05$.

227 Weight was measured in kilograms. Abbreviations: COPD: Chronic obstructive pulmonary disease;
 228 ART: Antiretroviral Therapy; HIV: Human immunodeficiency virus; IQR: Interquartile Range; TB:
 229 tuberculosis.

230

231 **Table 4. ADR characteristics according to intensity of ADR in PLHIV**

	All (n=273)	ADR 1/2 (n=223)	ADR 3/4 (n=50)	p value
Type of event, n (%):				<0.001
Laboratory	96 (35.2)	73 (32.7)	23 (46.0)	
Clinical	122 (44.7)	115 (51.6)	7 (14.0)	
Clinical +				
Laboratory	55 (20.1)	35 (15.7)	20 (40.0)	

Onset of ADR, median (IQR):	21.0 (12.00- 55.0)	21.0 (11.0- 60.0)	20.0 (14.00- 35.0)	<0.001
Adverse reactions				
duration (days), median (IQR):	77.0 (35.0- 136)	75.0 (36.0- 126)	83.0 (31.0- 153)	0.731
Severity of ADR, n				
(%):				0.308
Grade 1	90 (33.0)	90 (40.4)	0 (0.00)	
Grade 2	133 (48.7)	133 (59.6)	0 (0.00)	
Grade 3	43 (15.8)	0 (0.00)	43 (86.0)	
Grade 4	7 (2.56)	0 (0.00)	7 (14.0)	
Relation ADR with				
ATT, n (%):				0.043
Probable	64 (23.4)	46 (20.6)	18 (36.0)	
Possible	201 (73.6)	171 (76.7)	30 (60.0)	
Related	8 (2.93)	6 (2.69)	2 (4.00)	
Onset of ADR, n (%):				
before 2nd month (early)	215 (78.8)	169 (75.8)	46 (92.0)	0.019
after month 2 (late)	58 (21.2)	54 (24.2)	4 (8.00)	

WHO ART

classification, n (%):

Central and

peripheral nervous

system disorders	13 (4.76)	12 (5.38)	1 (2.00)
------------------	-----------	-----------	----------

Gastro-intestinal

system disorder	42 (15.4)	42 (18.8)	0 (0.00)
-----------------	-----------	-----------	----------

Liver and biliary

system disorders	41 (15.0)	22 (9.87)	19 (38.0)
------------------	-----------	-----------	-----------

Metabolic and

nutritional disorders	52 (19.0)	47 (21.1)	5 (10.0)
-----------------------	-----------	-----------	----------

Musculo-skeletal

disorders	35 (12.8)	26 (11.7)	9 (18.0)
-----------	-----------	-----------	----------

Other

	15 (5.49)	13 (5.83)	2 (4.00)
--	-----------	-----------	----------

Skin and

appendages disorders	45 (16.5)	42 (18.8)	3 (6.00)
----------------------	-----------	-----------	----------

White cell and RES

and platelet disorders	30 (11.0)	19 (8.52)	11 (22.0)
------------------------	-----------	-----------	-----------

WHO ART

dichotomized, n (%):

<0.001

Liver and biliary

system disorders	41 (15.0)	22 (9.87)	19 (38.0)
------------------	-----------	-----------	-----------

Others 232 (85.0) 201 (90.1) 31 (62.0)

232 **Table Note:**

233 Data are shown as median and interquartile (IQR) range or number and frequency (percentage). Data
 234 were compared between the clinical groups using the Mann–Whitney U test (continuous variables) or
 235 the Pearson’s χ^2 tests (for data on frequency). Bold in p-value indicates $p < 0.05$. Abbreviations: ADR:
 236 adverse drug reaction; HIV: Human immunodeficiency virus; IQR: Interquartile Range; TB:
 237 tuberculosis;

238

239 According to clinical data, it was observed that among PLHIV, median CD4 count was 166 cell/ μ l and
 240 those with ADR grade 3 and 4 had lower CD4 count compared to those with ADR grade 1 and 2 and
 241 most of those with ADR grade 3/4 displayed CD4 count below 100/uL (**Table 5**). The characteristics
 242 of ADR differed between cases of grade 1/2 compared to those graded 3/4 in terms of type, time of
 243 onset, relationship with treatment, and affected system. The most affected system in patients with grade
 244 3/4 ADR was the liver and biliary system (**Table 5**). Considering all PLHIV, 53.1% experienced
 245 unfavorable outcomes ($p < 0.001$). Among them, 183 (33.3%) were ART-experienced while 38.7%
 246 ART naïve. In the group of ART experienced patients, 48 (49%) experienced unfavorable outcomes
 247 ($p < 0.001$).

248 **Table 5. Clinical and laboratory characteristics according to intensity of ADR in PLHIV**

	All (n=140)	1/2 (n=114)	3/4 (n=26)	p value
Type of TB, n (%):				<0.001
PTB	65 (46.1)	55 (48.2)	10 (38.5)	
EPTB	19 (13.5)	16 (14.0)	3 (11.5)	

Disseminated	57 (40.4)	43 (37.7)	13 (50.0)	
HIV Viral Load, median (IQR):	4.53 (3.26-5.33)	4.44 (3.21-5.40)	4.86 (3.55-5.21)	0.871
CD4 (cells/uL), median (IQR):	166 (43.0-353)	176 (52.8-360)	110 (26.8-180)	0.065
CD4 levels, n (%):				0.033
<100	56 (40.0)	43 (37.8)	13 (50.0)	
100-200	30 (21.4)	21 (18.4)	9 (34.6)	
>200	54 (38.6)	50 (43.9)	4 (15.4)	
Initial Weight, median (IQR):	59.0 (51.0-68.0)	59.6 (50.7-68.0)	57.1 (53.8-64.0)	0.836
Hepatitis B or C, n (%):	11 (7.86)	11 (9.65)	0 (0.0)	0.091
Diabetes mellitus, n (%):	10 (7.14)	7 (6.1)	3 (11.5)	0.47
Hypertension, n (%):	10 (7.14)	8 (7.01)	2 (7.7)	1.000

COPD, n (%):	1 (0.71)	1 (0.88)	0 (0.0)	1.000
--------------	----------	----------	---------	-------

249 **Table Note:**

250 Data are shown as median and interquartile (IQR) range or number and frequency (percentage). Data
251 were compared between the clinical groups using the Mann–Whitney U test (continuous variables) or
252 the Pearson’s χ^2 tests (for data on frequency). Bold in p-value indicates $p < 0.05$.

253 Weight was measured in kilograms. Abbreviations: COPD: Chronic obstructive pulmonary disease;
254 ART: Antiretroviral Therapy; HIV: Human immunodeficiency virus; IQR: Interquartile Range; TB:
255 tuberculosis.

256

257 **Discussion**

258 The impact of unsuccessful ATT can directly impair the strategies for TB control [22,23]. The main
259 findings of our study were: ADR was not associated with unfavorable outcomes and PLHIV had higher
260 ADR intensity than HIV-unexposed study participants, which were mainly liver and biliary system
261 disorders, especially those with lower CD4 counts.

262 As expected, most patients who were lost to follow up had licit or illicit drug addiction. These findings
263 are of great importance for planning strategies to decrease harm but increase early ART, even with the
264 risk of drug to drug interaction. As there was a considerable LTFU, representing the predominant
265 unfavorable outcome, it is urgent to create policies to increase treatment adherence.

266 In our data male sex was found to be significantly associated with unfavorable outcomes. A possible
267 explanation is that men were less likely to regularly follow treatment when compared with women in
268 our setting [15]. In our study, low schooling, smoke habit and illicit drug use were associated with
269 unfavorable outcomes. However, among PLHIV, alcohol abuse was the only independent factor
270 associated with unfavorable outcomes. Other studies in the literature have shown the same correlation
271 between alcohol abuse [2,24,25] and in the general population, smoke habit was associated with
272 unfavorable outcomes as well as in our study [26].

273 ADRs were not associated with unfavorable outcomes, contrary to our primary expectations. Probably,
274 patients who experienced ADR were better managed and/or more closely monitored, which contributed
275 to feeling well cared for and having a good adherence to therapy. In contrast, a previous prospective
276 study in Rwanda with TB patients, with or without HIV-infection, has shown that ADRs were
277 associated with an almost two-fold increased risk of LTFU [2].

278 Another correlation observed in our study was that high schooling participants did not present any
279 unfavorable outcome, which was not a surprise since they probably have a better understanding about

280 the importance of treatment adherence for TB cure. Definitive treatment interruption before cure can
281 lead to recurrence, development of drug resistance, increased costs and a worse epidemiologic situation
282 [27].

283 We also explored the liver and biliary system disorders in advanced HIV patients and a high incidence
284 of hepatotoxicity was associated with low CD4 count, mainly in those with less than 100 cells/uL.
285 This important finding should help the management of TB in patients with HIV, since more attention
286 will be directed to this type of ADR in this population. Most ART naïve patients are diagnosed with
287 HIV due to TB, as HIV serology is done in all patients with TB diagnosis [11]. These are, in general,
288 the most severe cases and hospitalization is sometimes necessary not only for TB diagnosis but also to
289 manage severe and serious ADR after ATT introduction. The early ART start in these cases is of special
290 interest due to the added risk of hepatotoxicity. Sometimes, when ADR occurs, it is necessary to stop
291 all drugs and reintroduce one by one to identify the causality. Many studies also have found that PLHIV
292 using concomitant ART and ATT had a higher frequency of ADR and low adherence to treatment [27–
293 29].

294 In our study we found 26% of PLHIV developing unfavorable outcomes. ART-naïve patients presented
295 a higher incidence of ADR in comparison with ART-experienced PLHIV, although the latter group
296 more frequently developed unfavorable outcomes, especially LTFU. Most of these patients were
297 already cared for at the study referral center or other health clinics and had TB due to low adherence
298 to ART. These patients are different from ART-naïve patients that had a recent TB diagnosis and were
299 tested for HIV for the first time.

300 In our routine care, ART commencement occurs as soon as possible in the first month of TB treatment
301 for those with low CD4 counts, as well as cotrimoxazole prophylaxis, since this approach has already
302 been proved to reduce mortality [30]. Although all those challenges reported here, our TB lethality was

303 relatively low in PLHIV which shows that the strategy of early ART start works and ADR can be
304 successfully managed.

305 In conclusion male sex, low schooling, smoke habit, and illicit drug use were all independently
306 associated with unfavorable outcomes during ATT. In PLHIV, alcohol abuse and previous ART use
307 were factors associated with unfavorable outcomes. ADR was more frequent in the beginning of TB
308 treatment and was not associated with unfavorable outcomes.

309 In our study, clinical center patients were attended by different physicians who in general conduct the
310 whole treatment and have laboratory exams available to help ADRs detection and management. Also,
311 medical care was available at the hospital every day, 24 hours a day, which helps ADR management
312 any time they occur. We had some limitations: directly observed treatment (DOT) was not performed
313 in our site due to our characteristics of being a tertiary hospital and far from most patients' houses.
314 Viral hepatitis were screened with serology and no viral load was performed, the low proportion of
315 viral hepatitis in our study limited the analyses in this group.

316 The identification of factors associated with unfavorable outcomes could allow health care to
317 appropriately risk-stratify patients for closer management and improve outcomes. In addition,
318 investments in programs destined to reduce tobacco, alcohol and drug addiction are also necessary to
319 improve TB treatment adherence and decrease LTFU. On the other hand, an investment in education
320 is necessary by the government to make patients better understand the disease and the importance of
321 treatment completion.

322 **Conflict of interest**

323 The authors declare that the research was conducted in the absence of any commercial or financial
324 relationships that could be construed as a potential conflict of interest.

325 **Author Contributions**

326 FS, CS and VR contributed to conception and design of the study. FS collected the data and organized
327 the initial database. MA-P and MA performed the statistical analysis and data visualization. VR and
328 BA supervised the project execution. All authors contributed to manuscript writing, revision, read, and
329 approved the submitted version.

330 **Funding**

331 This work was supported by Brazilian Program of STD-AIDS and Viral Hepatitis, in partnership with
332 the UNODC and the Clinical Research Laboratory on Mycobacteria of INI, FIOCRUZ, edital
333 modalidade pesquisas nº 01/2013. The study was partially supported by the Intramural Research
334 Program of the Fundação Oswaldo Cruz. B.B.A and V.C.R. are senior scientists from the Conselho
335 Nacional de Desenvolvimento Científico e Tecnológico (CNPq). M.B.A. received a scholarship from
336 Fundação de Amparo à Pesquisa do Estado da Bahia (FAPESB). M.A.P. received a research fellowship
337 from the Coordenação de Aperfeiçoamento de Pessoal de Nível Superior (CAPES, finance code: 001).
338 The funders had no role in study design, data collection and analysis, decision to publish, or preparation
339 of the manuscript.

340 **Acknowledgments**

341 The authors thank the study participants.

342

343 **Supplementary material**

344 **S1 File.** Raw data.

345

346

347 REFERENCES

- 348 1. World Health Organization. Global tuberculosis report 2021. Geneva; 2021. Available:
349 <https://www.who.int/publications-detail-redirect/9789240037021>
- 350 2. Castro ATE, Mendes M, Freitas S, Roxo PC. Incidence and risk factors of major toxicity
351 associated to first-line antituberculosis drugs for latent and active tuberculosis during a period of
352 10 years. *Rev Port Pneumol* (2006). 2015;21: 144–150. doi:10.1016/j.rppnen.2014.08.004
- 353 3. Lorent N, Sebatunzi O, Mukeshimana G, Ende JV den, Clerinx J. Incidence and Risk Factors of
354 Serious Adverse Events during Antituberculous Treatment in Rwanda: A Prospective Cohort
355 Study. *PLOS ONE*. 2011;6: e19566. doi:10.1371/journal.pone.0019566
- 356 4. Brasil. Nota técnica sobre as mudanças no tratamento da tuberculose no Brasil para adultos e
357 adolescentes. Ministério da Saúde; 2010.
- 358 5. Arriaga MB, Torres NMC, Araujo NCN, Caldas SCC, Andrade BB, Netto EM. Impact of the
359 change in the antitubercular regimen from three to four drugs on cure and frequency of adverse
360 reactions in tuberculosis patients from Brazil: A retrospective cohort study. *PLoS One*. 2019;14:
361 e0227101. doi:10.1371/journal.pone.0227101
- 362 6. Ferreira ACG, Silva Júnior JLR da, Conde MB, Rabahi MF. Desfechos clínicos do tratamento
363 de tuberculose utilizando o esquema básico recomendado pelo Ministério da Saúde do Brasil
364 com comprimidos em dose fixa combinada na região metropolitana de Goiânia. *J bras pneumol*.
365 2013;39: 76–83. doi:10.1590/S1806-37132013000100011
- 366 7. Maciel ELN, Guidoni LM, Favero JL, Hadad DJ, Molino LP, Jonhson JL, et al. [Adverse
367 effects of the new tuberculosis treatment regimen recommended by the Brazilian Ministry of
368 Health]. *J Bras Pneumol*. 2010;36: 232–238. doi:10.1590/s1806-37132010000200012
- 369 8. Singh A, Prasad R, Balasubramanian V, Gupta N, Gupta P. Prevalence of adverse drug reaction
370 with first-line drugs among patients treated for pulmonary tuberculosis. *Clinical Epidemiology
371 and Global Health*. 2015;3: S80–S90. doi:10.1016/j.cegh.2015.10.005
- 372 9. Prasad R, Singh A, Gupta N. Adverse drug reactions in tuberculosis and management. *Indian J
373 Tuberc*. 2019;66: 520–532. doi:10.1016/j.ijtb.2019.11.005
- 374 10. Forget EJ, Menzies D. Adverse reactions to first-line antituberculosis drugs. *Expert Opin Drug
375 Saf*. 2006;5: 231–249. doi:10.1517/14740338.5.2.231
- 376 11. BRASIL. Manual de Recomendações para o Controle da Tuberculose no Brasil. 2019; 366.
- 377 12. Treatment of Tuberculosis. *N Engl J Med*. 2015;373: 2149–2160.
378 doi:doi:10.1056/NEJMra1413919
- 379 13. Masuka JT, Chipangura P, Nyambayo PP, Stergachis A, Khoza S. A Comparison of Adverse
380 Drug Reaction Profiles in Patients on Antiretroviral and Antitubercular Treatment in Zimbabwe.
381 *Clin Drug Investig*. 2018;38: 9–17. doi:10.1007/s40261-017-0579-z

- 382 14. Incidence and risk factors of serious adverse events during antituberculous treatment in
383 Rwanda: a prospective cohort study - PubMed. [cited 15 Mar 2022]. Available:
384 <https://pubmed.ncbi.nlm.nih.gov/21611117/>
- 385 15. Boletim Tuberculose 2021 | Departamento de Doenças de Condições Crônicas e Infecções
386 Sexualmente Transmissíveis. [cited 15 Mar 2022]. Available: [http://www.aids.gov.br/pt-](http://www.aids.gov.br/pt-br/pub/2021/boletim-tuberculose-2021)
387 [br/pub/2021/boletim-tuberculose-2021](http://www.aids.gov.br/pt-br/pub/2021/boletim-tuberculose-2021)
- 388 16. BRASIL. Guia de Tratamento: Recomendações para Terapia Anti-retroviral em Adultos e
389 Adolescentes Infectados pelo HIV:2008. Ministério da Saúde; 2008.
- 390 17. Williams N. The CAGE questionnaire. *Occup Med (Lond)*. 2014;64: 473–474.
391 doi:10.1093/occmed/kqu058
- 392 18. Centre UM. Uppsala Monitoring Centre. [cited 15 Mar 2022]. Available: <https://who-umc.org/>
- 393 19. Division of AIDS (DAIDS) Table for Grading the Severity of Adult and Pediatric Adverse
394 Events. : 35.
- 395 20. Naranjo CA, Busto U, Sellers EM, Sandor P, Ruiz I, Roberts EA, et al. A method for estimating
396 the probability of adverse drug reactions. *Clin Pharmacol Ther*. 1981;30: 239–245.
397 doi:10.1038/clpt.1981.154
- 398 21. World Health Organization. Consolidated guidelines on HIV prevention, testing, treatment,
399 service delivery and monitoring: recommendations for a public health approach. 2021.
400 Available: <https://www.who.int/publications-detail-redirect/9789240031593>
- 401 22. Adverse drug reactions associated with first-line anti-tuberculosis drug regimens - PubMed.
402 [cited 15 Mar 2022]. Available: <https://pubmed.ncbi.nlm.nih.gov/17705952/>
- 403 23. Xia YY, Hu DY, Liu FY, Wang XM, Yuan YL, Tu DH, et al. Design of the Anti-tuberculosis
404 Drugs induced Adverse Reactions in China National Tuberculosis Prevention and Control
405 Scheme Study (ADACS). *BMC Public Health*. 2010;10: 267. doi:10.1186/1471-2458-10-267
- 406 24. Przybylski G, Dąbrowska A, Trzcińska H. Alcoholism and other socio-demographic risk factors
407 for adverse TB-drug reactions and unsuccessful tuberculosis treatment - data from ten years'
408 observation at the Regional Centre of Pulmonology, Bydgoszcz, Poland. *Med Sci Monit*.
409 2014;20: 444–453. doi:10.12659/MSM.890012
- 410 25. Zhang T, Du J, Yin X, Xue F, Liu Y, Li R, et al. Adverse Events in Treating Smear-Positive
411 Tuberculosis Patients in China. *Int J Environ Res Public Health*. 2015;13: E86.
412 doi:10.3390/ijerph13010086
- 413 26. Liew SM, Khoo EM, Ho BK, Lee YK, Mimi O, Fazlina MY, et al. Tuberculosis in Malaysia:
414 predictors of treatment outcomes in a national registry. *Int J Tuberc Lung Dis*. 2015;19: 764–
415 771. doi:10.5588/ijtld.14.0767
- 416 27. Lv X, Tang S, Xia Y, Wang X, Yuan Y, Hu D, et al. Adverse reactions due to directly observed
417 treatment strategy therapy in Chinese tuberculosis patients: a prospective study. *PLoS One*.
418 2013;8: e65037. doi:10.1371/journal.pone.0065037

- 419 28. Marks DJB, Dheda K, Dawson R, Ainslie G, Miller RF. Adverse events to antituberculosis
420 therapy: influence of HIV and antiretroviral drugs. *Int J STD AIDS*. 2009;20: 339–345.
421 doi:10.1258/ijsa.2008.008361
- 422 29. Breen RAM, Swaden L, Ballinger J, Lipman MCI. Tuberculosis and HIV co-infection: a
423 practical therapeutic approach. *Drugs*. 2006;66: 2299–2308. doi:10.2165/00003495-200666180-
424 00003
- 425 30. Havlir DV, Kendall MA, Ive P, Kumwenda J, Swindells S, Qasba SS, et al. Timing of
426 Antiretroviral Therapy for HIV-1 Infection and Tuberculosis. *N Engl J Med*. 2011;365: 1482–
427 1491. doi:10.1056/NEJMoa1013607

428

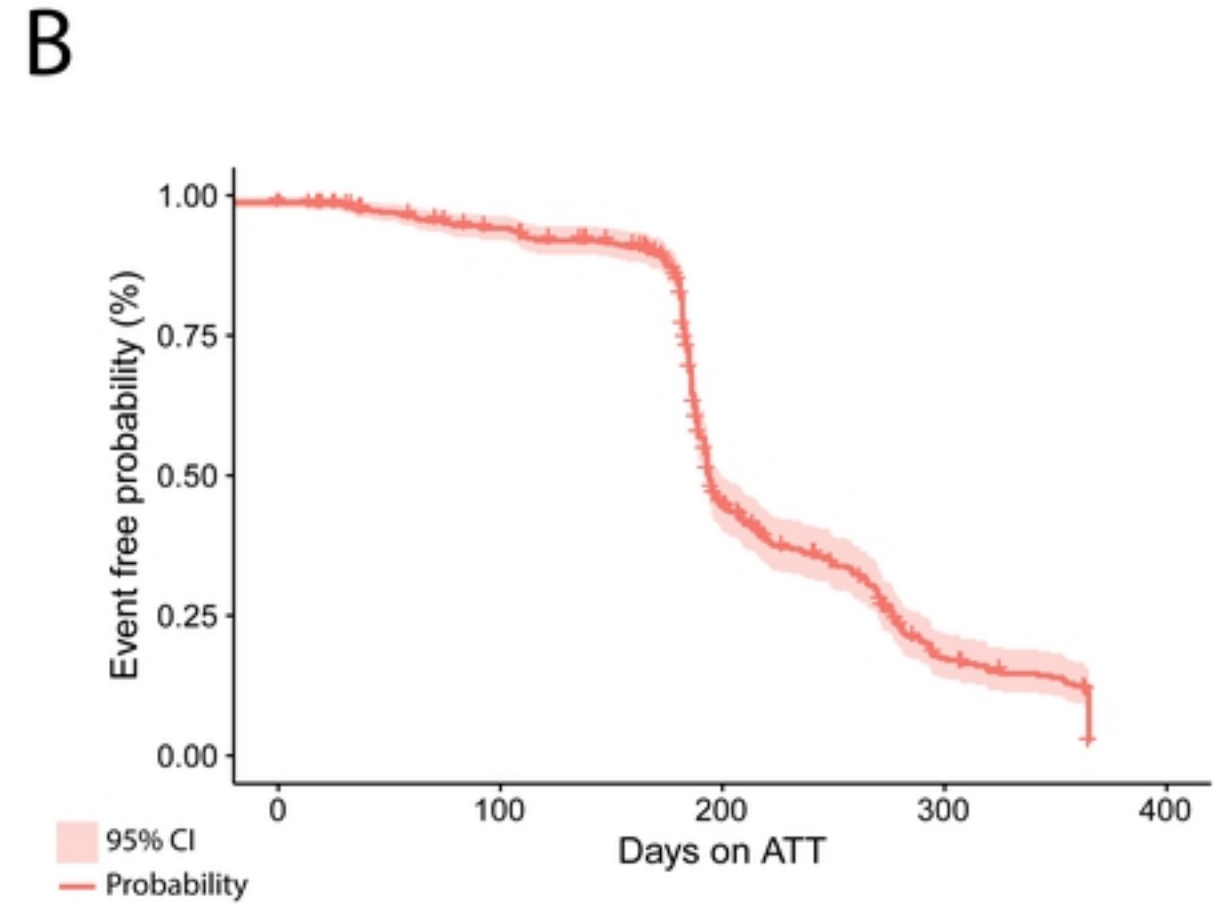
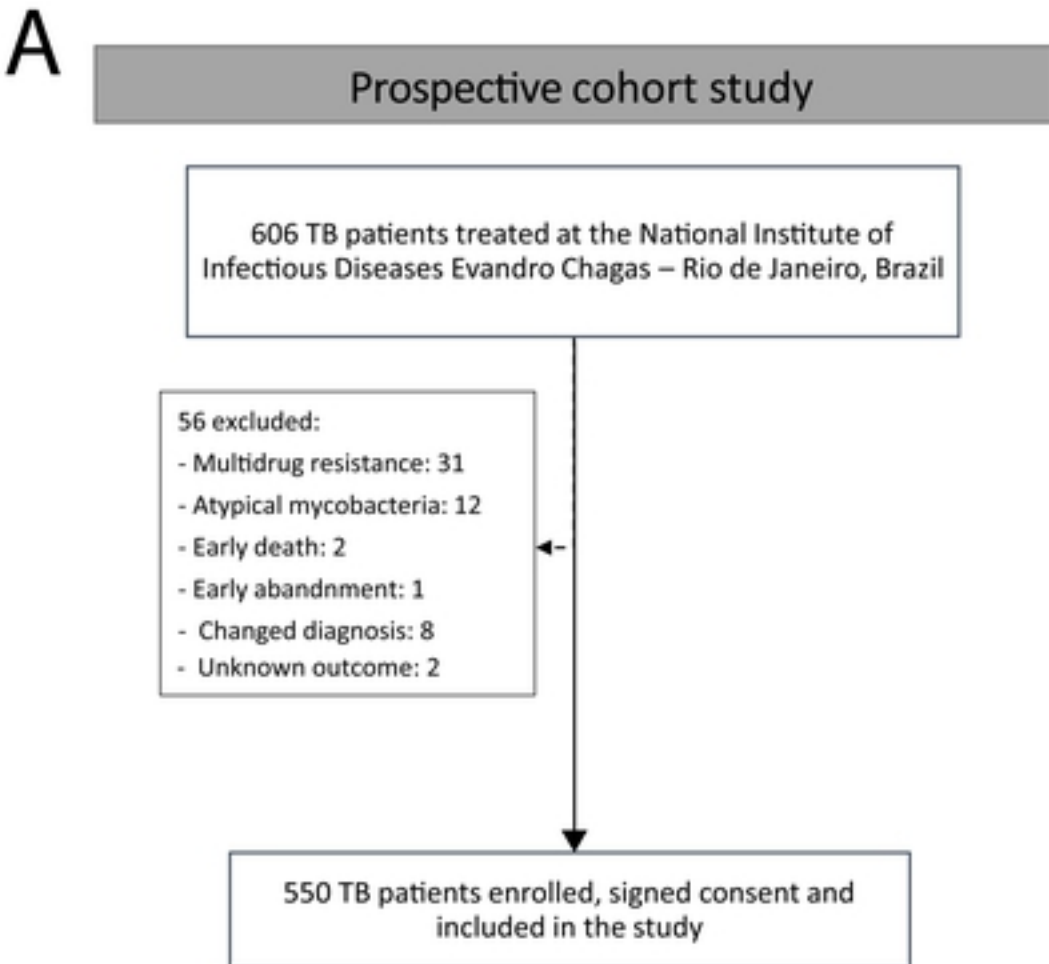


Figure 1

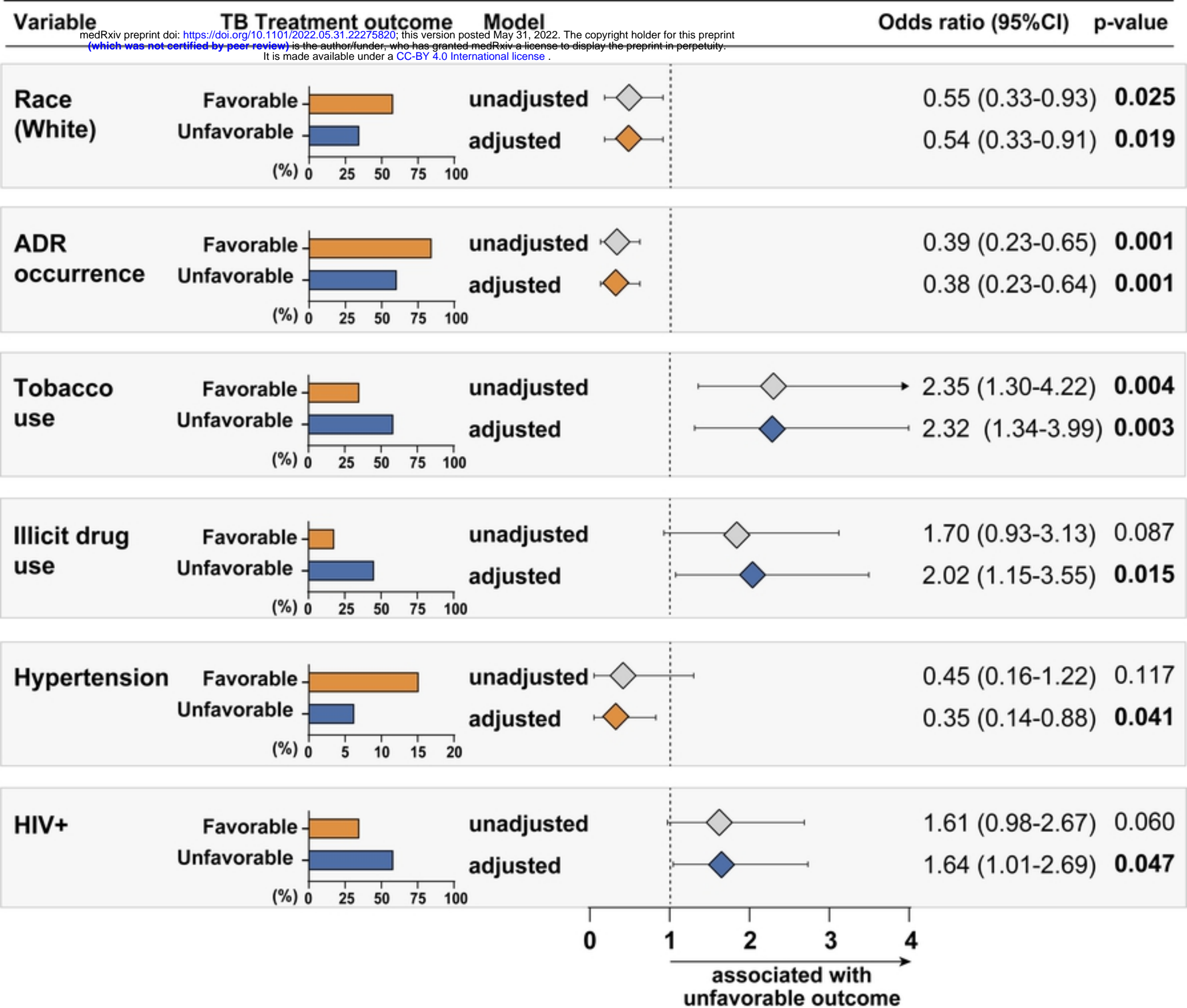


Figure 2