

1 **Targeted reduction of airborne viral transmission risk in residential aged care**

2

3 Amanda Brass^{1,2}, Andrew P Shoubridge^{1,2}, Nicolas Larby³, Levi Elms^{1,2}, Sarah K Sims^{1,2},
4 Erin Flynn^{1,2,4}, Caroline Miller^{1,5}, Maria Crotty^{6,7}, Lito E Papanicolas^{1,2,8}, Steve L
5 Wesselingh¹, Lidia Morawska⁹, Scott C Bell^{10,11}, Steven L Taylor^{1,2,*}, Geraint B Rogers^{1,2,*}

6

7 ¹The South Australian Health and Medical Research Institute, Adelaide, South Australia,
8 Australia

9 ²The Microbiome and Host Health Programme, College of Medicine and Public Health,
10 Flinders University, Bedford Park, South Australia, Australia

11 ³Aged Care Property Services Management, South Australia, Australia

12 ⁴National Centre for Epidemiology & Population Health, The Australian National University,
13 Canberra, Australian Capital Territory, Australia

14 ⁵School of Public Health, University of Adelaide, Adelaide, South Australia, Australia

15 ⁶College of Medicine and Public Health, Flinders University, Adelaide, South Australia,
16 Australia

17 ⁷Southern Adelaide Local Health Network, SA Health, Adelaide, South Australia, Australia

18 ⁸SA Pathology, SA Health, Adelaide, South Australia, Australia

19 ⁹International Laboratory for Air Quality and Health, Queensland University of Technology,
20 Queensland, Australia

21 ¹⁰The Prince Charles Hospital, Brisbane, Queensland, Australia

22 ¹¹Child Health Research Centre, Faculty of Medicine, The University of Queensland,
23 Brisbane, Queensland, Australia

24 * Joint senior

25

26 Correspondence:

27 Name: Dr. Steven L Taylor

28 Email: steven.taylor@sahmri.com

29 Phone: +61 (08) 8204 5711.

30 Address: 5D332, Flinders Medical Centre, Flinders Drive, Bedford Park, South Australia,

31 5042, Australia

32 **Keywords:** Ventilation, airborne transmission, aged care, COVID-19

33 **Abstract**

34 COVID-19 has demonstrated the devastating consequences of the rapid spread of an airborne
35 virus in residential aged care. We report the use of CO₂-based ventilation assessment to
36 empirically identify potential “super-spreader” zones within an aged care facility, and
37 determine the efficacy of rapidly implemented, inexpensive, risk reduction measures.

38 **Main Text**

39 Outbreaks of COVID-19 in residential aged care facilities (RACF) have proven devastating.
40 The combination of high transmission rates and resident vulnerability has led to rates of
41 mortality that are higher than any other setting, including acute care hospital facilities [1]. In
42 response, aged care providers and public health authorities have enacted measures to reduce
43 the risk of SARS-CoV-2 exposure to prevent transmission within facilities. These measures
44 include social distancing, reduced visitation by family members (site lockdowns), the
45 wearing of personal protective equipment (PPE) by staff and visitors, and isolation of those
46 with active infection. The impact of these measures on the well-being and quality-of-life of
47 residents, more than half of whom have reduced cognitive ability or dementia [2], has been
48 considerable [3]. The need to identify less disruptive measures to protect RACF populations
49 from airborne viral transmission (including respiratory viruses other than SARS-CoV-2) is
50 urgent.

51 Current strategies to reduce rates of indoor viral transmission can be placed into two broad
52 categories; 1) those that reduce the susceptible occupant population, including occupancy
53 limits, vaccination programs, and PPE use, and 2) those that prevent the accumulation of
54 viable viral particles within the circulating air of an RACF environment [4]. This latter group
55 of measures is more effective as it doesn’t require any behaviour changes to staff or visitors.
56 It also offers long-term advantages by avoiding the need to place additional burden on facility
57 residents and staff, or the need to limit access to facilities by family members. Several

58 strategies to reduce the build-up of viable viral particles can be employed, including the use
59 of high-efficiency particulate absorbing (HEPA) air-filtration, or ultraviolet C (UVC)
60 disinfection devices [3,4]. However, most effective approach is arguably to remove viral
61 particles through increased ventilation [5].

62 Outdoor venues are associated with a low relative risk for airborne viral transmission due to
63 the rapid clearance of virus-containing airborne particles through natural air movement.
64 Indoor spaces, where air exchange is considerably reduced, are estimated to have a SARS-
65 CoV-2 transmission risk that is more than 18 times higher [6]. Increasing rates of air
66 exchange within the built environment would reduce this transmission risk substantially. The
67 principal reason that this strategy has not been employed widely is the considerable costs
68 associated with heating or cooling external air [7]. Instead, many facilities, including RACFs,
69 typically employ high rates of air recirculation, inadvertently resulting in recirculation of the
70 virus as well [5].

71 Increasing ventilation within facilities that house vulnerable populations has been advocated
72 widely during the COVID-19 pandemic [8]. However, implementation of ventilation
73 measures has been limited. The ability to target increases in air exchange to those zones
74 within facilities that carry the highest transmission risk would greatly increase the financial
75 feasibility of improving ventilation. Here we report the use of a rapid, low-cost, strategy to
76 empirically identify potential “super-spreader” zones within an RACF, and the efficacy of the
77 targeted ventilation-based risk reduction measures that were deployed in response.

78 While atmospheric CO₂ levels remain relatively constant, indoor CO₂ levels increase as a
79 result of human respiration. Elevated CO₂ levels have been used widely as a marker of indoor
80 air quality and, relative to occupancy, a measure of air exchange and ventilation efficiency.
81 Indeed, such measures correlate strongly with infectious disease outcomes, such as
82 absenteeism due to acute respiratory infection [9]. CO₂ levels can be determined accurately

83 using inexpensive monitors, allowing for high transmission risk zones within facilities to be
84 identified rapidly and mitigation strategies to be enacted. We used 62 wall-mounted
85 remotely-monitored CO₂ sensors (Aranet4 Pro Sensors, Radical, Australia) to monitor CO₂
86 levels over a four-week period within a two-storey 110-bed RACF in Australia. During this
87 period, all staff and visitors to the RACF were required to wear N95 face masks (or
88 equivalent), goggles or face shield, and be vaccinated against COVID-19. Deployment of
89 CO₂ monitors covered the majority of accessible sites within the facility, including “back of
90 house” areas used by staff only (n=17) and mixed communal areas used by both staff and
91 residents (n=45). The zones employed a range of heating, ventilation, and air-conditioning
92 (HVAC) systems, including evaporative cooling with 100% fresh ducted air, refrigerated
93 reverse cycle ducted air, refrigerated reverse cycle split system, and exhaust air. Each monitor
94 also captured temperature, humidity, and pressure, enabling data normalisation.

95 Over the course of the survey period, none of the 45 mixed zones showed indications of poor
96 ventilation, with the highest peak CO₂ concentration being 830 ppm, which was in the
97 resident dining room during the lunch period. However, of the 17 assessed back of house
98 zones, which were only accessible to staff, 3 were identified as high transmission risk based
99 on CO₂ levels exceeding 1000 ppm for a period of 15 min or more (levels logged at 60
100 second intervals). These included one of the two staff lunch rooms and two of the three staff
101 meeting rooms (**Figure 1A**). Interventions were identified based on the zone usage, the
102 HVAC modality employed, and the ability to achieve improved ventilation rapidly and at low
103 relative cost.

104 *High risk zone 1:* The staff lunch room had a floor area of 19 m² with a refrigerated reverse
105 cycle split system HVAC. Despite room density restrictions of 1 person per 4 m², high,
106 regular, and prolonged CO₂ peaks were identified in the lunch room corresponding to meal
107 breaks (**Supplementary Figure 1**). Of note, staff were not masked while eating and CO₂

108 levels did not return to baseline levels for several hours after these peak periods. To quantify
109 room ventilation, a subsequent CO₂ decay curve was generated over a 6-hour period, during
110 which the staff lunch room was not occupied. The resulting air changes per hour (ACH) was
111 0.65 (**Figure 1B**), which is 10-fold lower than the Australian Standards for ventilation in a
112 healthcare setting [10]. Discussion with the facility's environmental management team
113 identified that installation of an extraction fan at a cost of \$3400 AUD would effectively
114 ventilate the room. The fan was set to extract air at 100 L/s and connected to a room sensor
115 allowing usage to be limited to times of room occupancy. Retesting ventilation by CO₂ decay
116 curve after extraction fan installation yielded an improved ACH of 5.30 (**Figure 1B**).
117 Ongoing running costs of the extraction fan were calculated by an AC current and voltage
118 data logger to be \$40.20 AUD per year.

119 *High risk zones 2 and 3:* Two staff meeting rooms also had CO₂ peaks indicative of high
120 transmission risk. The first room had a floor area of 50 m² and a refrigerated reverse cycle
121 ducted air system controlled by a remote control. CO₂ peaks in this room were less frequent
122 than the staff lunch room, with a total of two peaks over 1000 ppm during the survey period.
123 It was noted by facility management that the HVAC was rarely switched on during meetings,
124 potentially explaining these CO₂ peaks. Intervention strategies were therefore minimal, with
125 the HVAC system programming adjusted to automatically turn on during times when the
126 room is in use. The second room had a floor area of 20 m² and a refrigerated reverse cycle
127 split system HVAC. Like the first meeting room, a total of two peaks above 1000 ppm were
128 recorded in this room during the survey period. However, unlike the first meeting room,
129 existing HVAC could not be easily modified to improve ventilation. Interim protocols were
130 therefore implemented, continuing a mandated mask use and room density limit for staff
131 using this room.

132 Globally, the COVID-19 pandemic has again underlined the vulnerability of those living in
133 residential aged care to airborne transmission of viral infections. In addition to COVID-19,
134 seasonal respiratory viruses, including seasonal influenza and respiratory syncytial virus
135 (RSV) represent a major cause of morbidity and mortality for residents [11]. Indeed,
136 following a period of reduced exposure, the seasonal influenza peaks in 2022 are predicted to
137 pose a significant health threat, as seen in the 2021-2022 winter in the Northern Hemisphere
138 [12]. Targeting effective risk reduction measures to areas that are likely to contribute
139 disproportionately viral spread could provide considerable protection.

140 In our analysis, passive and simulated CO₂ levels were used to identify high transmission risk
141 zones. Such approaches are simple and readily deployable, however do not account for other
142 factors affecting transmission risk, such as PPE and level of interaction [13]. CO₂ peaks were
143 also based on levels recommended by The American Society of Heating, Refrigerating and
144 Air-Conditioning Engineers (ASHRAE) of less than 600 ppm above outdoor concentrations
145 (approximately, 420 ppm) [14]. The recommendation of these thresholds is based on
146 consideration of a number of factors, including comfort. Alignment of target levels more
147 closely with empirically assessed viral transmission rates would enable further protocol
148 refinements.

149 The approach we describe has the potential to be applied beyond aged care. Rapid, targeted,
150 improvements in air quality management, based on empirical facility surveys, could
151 substantially reduce airborne pathogen transmission in other high-risk contexts, and warrant
152 consideration in settings such as detention facilities, hospitals, or schools.

153 **Competing interests**

154 The authors declare that they have no competing interests.

155 **Funding**

156 This study was funded through the Australian Medical Research Future Fund (GNT2005904).

157 SLT is supported by an NHMRC Emerging Leader Fellowship (GNT1195421). GBR is

158 supported by an NHMRC Senior Research Fellowship (GNT1155179) and a Matthew

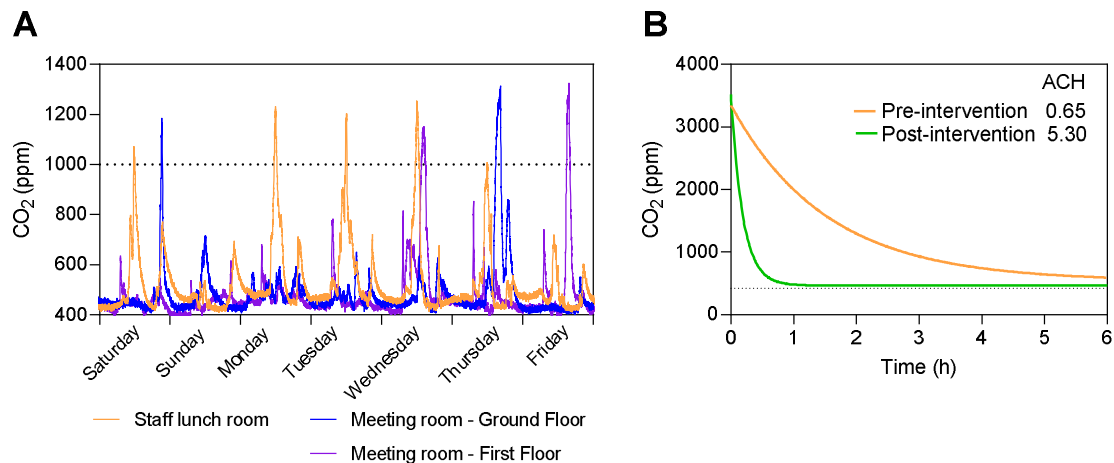
159 Flinders Professorial Fellowship. CM is supported by an NHMRC Emerging Leader

160 Fellowship (GNT1195421).

161 **REFERENCES**

- 162 1. United Nations. Policy Brief: The Impact of COVID-19 on older persons, May 2020, p 3.
163 Available at: [https://unsdg.un.org/sites/default/files/2020-05/Policy-Brief-The-Impact-of-
COVID-19-on-Older-Persons.pdf](https://unsdg.un.org/sites/default/files/2020-05/Policy-Brief-The-Impact-of-
164 COVID-19-on-Older-Persons.pdf), Accessed 11 May 2022.
- 165 2. Australian Institute of Health and Welfare. Dementia in Australia. Available at:
166 [https://www.aihw.gov.au/reports/dementia/dementia-in-aus/contents/population-health-
impacts-of-dementia/prevalence-of-dementia](https://www.aihw.gov.au/reports/dementia/dementia-in-aus/contents/population-health-
167 impacts-of-dementia/prevalence-of-dementia), Accessed 11 May 2022.
- 168 3. Royal Commission. Aged care and COVID-19: a special report. Available at:
169 [https://agedcare.royalcommission.gov.au/publications/aged-care-and-covid-19-special-
report](https://agedcare.royalcommission.gov.au/publications/aged-care-and-covid-19-special-
170 report), , Accessed 11 May 2022.
- 171 4. Brass A, Shoubridge AP, Crotty M, et al. Prevention of SARS-CoV-2 (COVID-19)
172 transmission in residential aged care using ultraviolet light (PETRA): a two-arm
173 crossover randomised controlled trial protocol. *BMC Infect Dis* **2021**; 21(1):1-7.
- 174 5. Morawska L, Cao J. Airborne transmission of SARS-CoV-2: The world should face the
175 reality. *Environ Int* **2020**; 139: 105730.
- 176 6. Bulfone TC, Malekinejad M, Rutherford GW, Razani N. Outdoor Transmission of
177 SARS-CoV-2 and Other Respiratory Viruses: A Systematic Review. *J Infect Dis* **2021**;
178 223(4): 550-61.
- 179 7. Pérez-Lombard L, Ortiz J, Pout C. A review on buildings energy consumption
180 information. *Energy Build* **2008**; 40(3): 394-8.
- 181 8. Morawska L, Milton DK. It Is Time to Address Airborne Transmission of Coronavirus
182 Disease 2019 (COVID-19). *Clin Infect Dis* **2020**; 71(9): 2311-3.
- 183 9. Kolarik B, Andersen ZJ, Ibfelt T, Englund EH, Moller E, Brauner EV. Ventilation in
184 day care centers and sick leave among nursery children. *Indoor Air* **2016**; 26(2): 157-67.
- 185 10. Standards Association of Australia. AS 1668.2-2012: the use of ventilation and air
186 conditioning in buildings. Part 2. Sydney, NSW: Standards Australia, 2012.
- 187 11. Queensland Health. Other respiratory viruses in residential care facilities. Available at:
188 [https://www.health.qld.gov.au/public-health/industry-environment/care-
facilities/prevention/non-influenza-respiratory-viral-illness](https://www.health.qld.gov.au/public-health/industry-environment/care-
189 facilities/prevention/non-influenza-respiratory-viral-illness), Accessed 11 May 2022.
- 190 12. European Centre for Disease Prevention and Control. Influenza virus characterisation,
191 summary Europe, March 2022. Available at: [www.ecdc.europa.eu/en/publications-
data/influenza-virus-characterisation-summary-europe-march-2022](http://www.ecdc.europa.eu/en/publications-
192 data/influenza-virus-characterisation-summary-europe-march-2022), Accessed 11 May
193 2022.

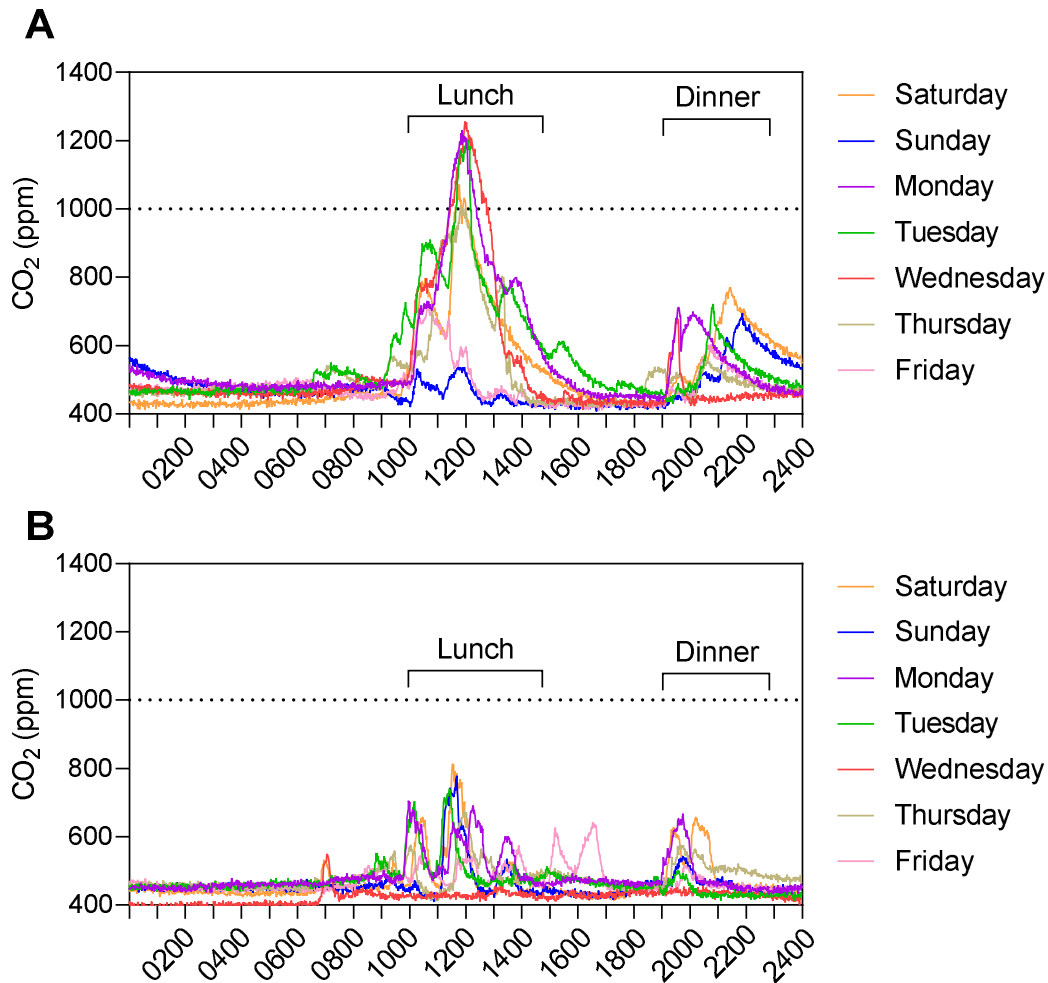
- 194 13. Stabile L, Pacitto A, Mikszewski A, Morawska L, Buonanno G. Ventilation procedures
195 to minimize the airborne transmission of viruses in classrooms. *Build Environ* **2021**; 202:
196 108042.
- 197 14. Prill R. 2000. Why measure CO₂ inside buildings?
198 www.energy.wsu.edu/documents/co2inbuildings.pdf



199

200 **Figure 1:** A) CO₂ peaks over a one-week period for the identified high risk transmission
201 zones. B) CO₂ decay curve for the staff lunch room before (orange) and after (green)
202 extraction fan installation. Air changes per hour (ACH) calculated by fitting non-linear
203 regression.

204



205

206 **Supplementary Figure 1:** CO₂ tracing of a 24 h period in the staff lunch room over the
207 course of a week. A) Prior to the installation of the extraction fan, showing high prolonged
208 peaks between 10am-2pm and 7pm-10pm, corresponding with staff lunch and dinner breaks.

209 B) After the installation of the extraction fan, showing reduced peaks.

210