

Immunity response against mild-to-moderate breakthrough COVID-19

Pichanun Mongkolsucharitkul, M.Sc.¹, Apinya Surawit, M.Sc.¹, Nitat Sookrung, Ph.D.², Anchalee Tungtrongchitr, M.D., Ph.D.², Pochamana Phisalprapa, M.D., Ph.D.³, Naruemit Sayabovorn, M.D.³, Weerachai Srivanichakorn³, M.D.³, Chaiwat Washirasaksiri, M.D.³, Chonticha Auesomwang, M.D.³, Tullaya Sitasuwan, M.D.³, Thanet Chaisathaphol, M.D.³, Rungsima Tinmanee, M.D.³, Methee Chayakulkeeree, M.D., Ph.D.⁴, Pakpoom Phoompoung, M.D.⁴, Watip Tangjittipokin, Ph.D.⁵, Sansanee Senawong, M.D.⁵, Gornmigar Sanpawitayakul, M.D.⁶, Saipin Muangman, M.D.⁷, and Korapat Mayurasakorn, M.D.¹, for the SPHERE Investigators*

¹Siriraj Population Health and Nutrition Research Group, Department of Research Group and Research Network, Faculty of Medicine Siriraj Hospital, Mahidol University, ²Center of Research Excellence on Therapeutic Proteins and Antibody Engineering, Department of Parasitology, Faculty of Medicine Siriraj Hospital, Mahidol University, ³Division of Ambulatory Medicine, Department of Medicine, Faculty of Medicine Siriraj Hospital, Mahidol University, ⁴Division of Infectious Diseases and Tropical Medicine, Department of Medicine, Faculty of Medicine Siriraj Hospital, Mahidol University, ⁵Department of Immunology, Faculty of Medicine Siriraj Hospital, Mahidol University, ⁶Division of Ambulatory Paediatrics, Department of Paediatrics, Faculty of Medicine Siriraj Hospital, Mahidol University, ⁷Department of Anesthesiology, Faculty of Medicine Siriraj Hospital, Mahidol University

Correspondence to: Dr. Mayurasakorn can be contacted at korapat.may@mahidol.edu, or at the Siriraj Population Health and Nutrition Research Group, Department of Research and Development, Siriraj Medical Research Center, Mahidol University, 2 Wanglang Rd, SIMR 903-2, Siriraj, Bangkok Noi, Bangkok, Thailand 10700.

Pichanun Mongkolsucharitkul and Apinya Surawit contributed equally to this work.

*A complete list of the SPHERE investigators is provided in the Supplementary Appendix.

26 **Funding:** This work was supported by Siriraj Hospital, Mahidol University. The funders had no role
27 in study design, data collection and analysis, decision to publish, or preparation of the manuscript.

28 **Competing interests:** The authors have declared that no competing interests exist.

29

30

31

32

33

34

35

36

37

38

39

40

41

42

43

44

45 **ABSTRACT**

46 **BACKGROUND**

47 The Omicron variant prevails the Delta variant after December 2021 in Thailand. Both variants of
48 concern embody diverse epidemiological trends and immunogenicity, raising enormous public health
49 concerns. We determined whether biological and clinical characteristics and immunogenicity of patients
50 differ between Delta and Omicron during post-coronavirus disease 2019 (COVID-19) stage.

51 **METHODS**

52 A retrospective cohort study involved patients with mild-to-moderate COVID-19 who were under a
53 home isolation (HI) strategy. Clinical outcomes and laboratory data of 2704 and 2477 patients during
54 the Delta and Omicron pandemics were analyzed, respectively. We evaluated anti-receptor binding
55 domain immunoglobulin G (anti-RBD IgG) and surrogate viral neutralizing (sVNT) activity in a subset
56 of 495 individuals post-COVID-19 infection during the Delta pandemic.

57 **RESULTS**

58 Eighty-four percent of all patients received antiviral treatment. The peak cycle threshold (Ct) values,
59 which inversely related to viral load, were lower in the Omicron (19 [IQR=17-22]) compared with the
60 Delta (21 [IQR=18-26]; $p<0.001$), regardless of vaccination status. Upper respiratory tract symptoms
61 were common signs during the Omicron compared with the Delta pandemic. At least two-dose
62 vaccination reduced the chance of hospital readmissions by 10–30% and death by less than 1%.
63 Furthermore, anti-RBD IgG and sVNT against the Delta variants tended to be higher among the older
64 individuals after post-COVID 19 infections and expressed in the long interval after two-dose
65 vaccination than in other groups.

66 **CONCLUSIONS**

67 Mild-to-moderate Delta and Omicron breakthrough infection with prior full vaccination is limitedly
68 immunogenic; thereby exerting reduced protection against reinfection and infection from novel
69 variants. However, this may be only sufficient to prevent hospitalization and death, particularly in
70 countries where vaccines are limited. (ClinicalTrials.gov number, NCT05328479.)

71 INTRODUCTION

72 Thailand faced rapidly third and fourth waves of coronavirus disease 2019 (COVID-19) outbreak since
73 2021. Social distancing and vaccines are encouraged as a survival tool for people to circumvent this
74 threat.^{1,2} CoronaVac (Sinovac, Life Science) and ChAdOx1 (AstraZeneca/Oxford) were widely used
75 than other vaccines for most Thais with limited supply since February 2021.³ Both vaccines were
76 efficacious against symptomatic COVID-19 caused by the Wuhan strain but lower extent against other
77 variants of concern including Delta and Omicron variants.^{4,5} Currently, the Omicron variant displaced
78 the Delta variant during the study period.¹ Random selection for severe acute respiratory syndrome
79 coronavirus 2 (SARS-CoV-2) variants surveillance from Department of Medical Science⁴ and
80 worldwide during the week 4-10 of 2022 demonstrated that almost all new infections in Thailand are
81 from the Omicron variant (99.6%).

82 Combination of waning vaccine-derived immunity and an arrival of SARS-CoV-2 variant: the
83 Delta variant (B.1.617.2) and the Omicron variant (B.1.1.529), led to breakthrough infections after
84 COVID-19 vaccination or prior infection.^{5,6} This greatly overloaded the nation's public health system
85 and exacerbated socioeconomic disparities.^{2,7} In response, home isolation (HI) strategy has been
86 implemented for patients with mild to moderate symptoms nationwide to combat an overwhelming
87 demand for hospital beds (Method S1).

88 Serious concerns about the Omicron variant have been drawn due to its increased
89 transmissibility⁸ and a potential for reduced sensitivity to neutralizing antibodies associated with
90 immune escape, and new emerging Omicron lineages (BA.4 and BA.5),⁹⁻¹¹ although Omicron causes
91 less severe disease than other variants.¹² Little are data available on an early presentation in patients
92 with mild-to-moderate severity and post-infection immunogenicity of patients, and very few studies
93 verify the guidance for vaccination after mildly-moderately COVID-19 infection particularly in
94 countries where fully vaccination is challenging tasks.¹³ We demonstrated here completed results of
95 retrospective information of mild-moderate symptomatic individuals who were seropositive for SARS-

96 CoV-2 and were treated in HI system from July 2021 to March 2022 during the Delta and Omicron
97 pandemics.

98

99 **METHODS**

100 **STUDY DESIGN AND POPULATION**

101 A retrospective cohort study was conducted to evaluate treatment outcomes and immunogenicity of
102 mild to moderate COVID-19 among patients who were admitted in HI system of Siriraj Hospital, the
103 largest university hospital in Bangkok, Thailand (details were provided in the Supplementary
104 Appendix). The data collection reported here was performed between July 8, 2021 to March 15, 2022.
105 The study population included 2704 and 2477 patients during the Delta (before November 2021) and
106 Omicron (after January 12, 2022) pandemics who had been positive with SARS-CoV-2 as determined
107 by a reverse transcriptase polymerase chain reaction (RT-PCR) testing. Data were retrieved from
108 electronic medical record of each patient, which included demographic, clinical information, clinical
109 manifestations, and laboratory test findings. A study protocol and guidelines for COVID-19 standard
110 care was based on a standard recommendation of the National and World Health Organization (WHO)
111 (Methods S1).^{7,14}

112 **PATIENT SELECTION AND PROCEDURES**

113 A subset of 495 patients (age \geq 12 years) from the aforementioned patients were recruited for the
114 reactogenicity and immunogenicity follow-up study after COVID-19 recovery at 21-150 days post
115 COVID-19 onset to test for SARS-CoV-2 antibodies and a surrogate virus neutralization test (sVNT)
116 against SARS-CoV-2 Wuhan and Delta variants (Method S1). This follow-up study was approved by
117 the Institutional Review Board, Faculty of Medicine Siriraj Hospital, Mahidol University (COA: Si
118 833/2021, COA: Si 732/2021). At the study visit, all patients were classified into different exposure
119 groups based on vaccination status prior to COVID-19 infection, study antibody, and PCR test (Method S1).

120

121

122 **OUTCOME MEASURES**

123 Rationales for treatment of mild to moderate COVID-19 were shown in Method S1. In brief, the primary
124 treatment strategy included early Favipiravir treatment. The primary composite outcome was to
125 compare baseline clinical and biological characteristics of patients with Delta and Omicron variants of
126 SARS-CoV-2 infections in the HI system. Treatment groups were categorized into 3 groups: (1)
127 symptomatic treatment (S), (2) symptomatic treatment plus Favipiravir treatment (Favi), and (3)
128 symptomatic treatment plus Favipiravir and dexamethasone treatment (Favi/Dexa). The date of disease
129 onset was defined as the day when new-onset self-reported respiratory symptoms were observed. The
130 durations of illness onset to first hospital admission, to first Favipiravir treatment, and to discharge up
131 to 14 days were measured. Analyses considered viral load for comparisons of cycle threshold (Ct)
132 values by vaccine exposure groups and self-reported symptoms. The Ct value of ≥ 30 was shown to
133 correspond to 150 copies per milliliter or less, indicating low viral RNA.¹⁵

134 **SEROLOGIC ASSAYS**

135 Patients were randomly invited to test for anti-SARS-CoV-2 receptor binding domain immunoglobulin
136 G (anti-SARS-CoV-2 RBD IgG). A chemiluminescent microparticle immunoassay for qualitative
137 detection of IgG against RBD of the SARS-CoV-2 spike protein and SARS-CoV-2 nucleocapsid protein
138 (SARS-CoV-2 IgG II Quant for use with ARCHITECT; Abbott Laboratories, USA) were undertaken.⁷
139 Anti-SARS-CoV-2 RBD IgG assay was then converted to the WHO International Standard
140 concentration as binding antibody unit (BAU) per milliliter.¹⁶ sVNT was undertaken against the original
141 (Wuhan) strain and the Delta (B.1617.2) strain (Method S1).

142 **STATISTICAL ANALYSIS**

143 Multivariable analysis was performed by binary logistic regression for vaccination variables. We used
144 negative binomial mixed models to analyze factors associated with numeric variables including
145 symptoms and the Chalder fatigue scale. Let y_i and N_i represented a number of symptoms or fatigue
146 score and a number of persons time at risk i , ($i = 1, \dots, n$), respectively. We assumed that y_i conditional

147 on μ_i had the negative binomial distribution with mean μ_i where $\mu_i = N_i \exp(\psi_i)$ was written as
148 $y_i | \mu_i \sim NB(N_i \exp(\psi_i))$, where $\psi_i = X_i' \beta + v_i$, X_i' represented the vector of space-specific covariates
149 for a number of symptoms or a fatigue score and β as a vector of coefficients that were obtained by
150 regression, v_i as a random effect with apprehending residual in area i , which was the unstructured
151 heterogeneity that compiles effect of covariates in an unknown area. The area i had the relative risk as
152 $r_i = \exp(\psi_i)$. Then specification of the log-link function was $\log(\mu_i) = X_i' \beta + v_i + \log(N_i)$. Cox
153 regression analysis was used to analyze the factors of the negative conversion time (NCT) of SARS-
154 CoV-2 RNA. NCT is closely related to clinical manifestation and disease progression in COVID-19
155 patients. First, univariate analysis was performed and the indicators with statistical significance were
156 analyzed for Kaplan-Meier survival analysis. A Cox proportional hazard model was used for
157 multivariate analysis. Normally distributed continuous variables were summarized as the mean \pm SD;
158 otherwise, median (interquartile range, IQR) was used. Categorical variables were expressed using
159 numbers and percentages. Statistical significance of Ct values, IgG, and sVNT were determined by
160 Kruskal-Wallis and Dunn's multiple comparisons test by using GraphPad Prism 9 (GraphPad Software,
161 CA, USA). Other analyses were conducted using STATA version 17 (Stata Corp, TX, USA).

162

163 RESULTS

164 DEMOGRAPHIC AND CLINICAL INFORMATION

165 2704 and 2477 patients were enrolled between July-October 2021 and January-March 2022 during the
166 Delta and Omicron pandemics, respectively (Table 1). Most patients were women (53.7-58.4%) and
167 their mean age were younger in the Omicron compared with the Delta (31.3 ± 12.3 vs. 33.8 ± 11.6 years,
168 $p < 0.001$), suggesting that middle-aged people were more susceptible to infection with mild symptoms
169 than other age groups. Comorbidities differed significantly between two pandemics, including
170 prevalence of hypertension ($p < 0.001$), obesity ($p = 0.009$), and neurologic disease ($p < 0.001$). Common
171 initial symptoms were cough (60.7%) and low-grade fever (95.2%) in the Delta, whereas were

172 asymptomatic (39.1%) and cough (47.7%) in the Omicron. The median duration from disease onset to
173 HI admission was 5.1 (IQR=2.4) and 2.8 (IQR=1.6) days in the Delta and Omicron, respectively
174 ($p=0.021$). The median peak viral RNA based on Ct values during the Omicron (19.0 [IQR=5.7]) was
175 lower than the Delta (21.0 [IQR=7.8], $p<0.001$). No correlation was observed in Ct values and
176 vaccination status, during Delta vs. Omicron pandemics (*ns*). Retrospective analysis revealed patients
177 receiving dexamethasone treatment significantly had Ct levels below 20 during the Delta ($p<0.001$),
178 which indicated that Ct levels were associated with disease severity in the Delta but not in the Omicron.

179 **REHOSPITALIZED COVID-19 PATIENTS**

180 Eighty-nine (3.3%) and forty-three (1.7%) patients in HI system were eventually referred back to the
181 hospital during the Delta and Omicron, mostly due to worsening conditions, respectively, suggesting
182 aggravated COVID-19 (Table 2). The mean age of patients in the Delta was older than the Omicron
183 (55, IQR=24 vs. 33, IQR =14, $p<0.001$). More than a quarter of patients had underlying diseases,
184 including diabetes (16.3-25.8%) and hypertension (23.3-31.5%). Compared with the Omicron, patients
185 in the Delta had marked lymphocytopenia (0.4-fold) and neutrocytosis (1.8-fold), higher serum C-
186 reactive protein (CRP) (21.2-fold), aspartate aminotransferase (1.6-fold), alanine aminotransferase (2.3-
187 fold), and D-dimer (2-fold) ($p<0.05$). Vaccination with at least 2 doses was associated with reduced
188 readmission rates in the Delta (OR=0.305, 95% CI=0.189-0.504) and the Omicron (OR=0.131, 95%
189 CI, 0.052-0.334), as compared with unvaccinated and partial vaccination groups.

190 **NUMBERS OF SYMPTOMS AND A FATIGUE SCORE DURING HI ADMISSION**

191 The risk factors, including gender, severity of illness, and vaccination status, were significantly related
192 to an increased fatigue symptom as determined by the Chalder fatigue scale¹⁶ (Table 3 and Table S1).
193 Neutralizing antibody titers were independently associated with the number of symptoms (RR= 1.22,
194 95% CI, 1.05-1.42, $p=0.009$). However, the association of neutralizing antibody titers was not
195 statistically significant for the fatigue. The severity of initial illness was associated with the persistent
196 fatigue (aRR=1.43, 95% CI, 1.37-1.72, $p=0.039$) and weakly associated with the number of symptoms
197 (aRR=1.22, 95% CI, 1.02-1.45, $p=0.03$). In the stratified analysis of the patients, increased antibody

198 titers remained associated with the number of symptoms (aRR=1.04, 95% CI, 1.01-1.08, $p=0.025$) and
199 the fatigue scale (aRR=1.09, 95% CI, 1.02-1.16, $p=0.015$). Patients who were vaccinated prior to
200 COVID-19 infection reported a significantly lower number of symptoms ($p<0.001$) and the fatigue
201 score ($p=0.01$) than unvaccinated patients. To analyze factors on NCT of SARS-CoV-2 RNA
202 systematically, the multivariate Cox's proportional hazard model was used to analyze the multivariate
203 analyses. We revealed that fever (Exp(B), 0.75; 95% CI, 0.70-0.80, $p<0.001$), cough (Exp(B), 0.84;
204 95% CI, 0.81-0.87, $p<0.001$) and loss of smell (Exp(B), 0.81; 95% CI, 0.77-0.85, $p<0.001$) were
205 independent risk factors of prolonged NCT of SARS-CoV-2 RNA in patients with COVID-19 (Table
206 S6).

207 **CLINICAL MANIFESTATION AND VIRAL BURDEN**

208 Higher peak Ct values were slightly prevalent with numbers of doses of ChAdOx1 or CoronaVac when
209 compared the Delta with the Omicron-dominant, and strongly decreased in those unvaccinated
210 individuals in the Omicron (19 [IQR=17-22]) as compared with the Delta-dominant (21 [IQR=18-26])
211 age/gender-adjusted trend- $p<0.001$, Figure 1A, 1B). No difference was observed from those vaccinated
212 with either ChAdOx1 or CoronaVac (age/gender-adjusted $p=0.175$) indicating that vaccination was still
213 valuable in reducing viral load. Considering effect of pandemic waves (Delta vs. Omicron), new PCR-
214 positives were likely to be in the low Ct subpopulation in most vaccinations, regardless of doses, types
215 of vaccines and time since the last vaccination, during the Omicron while Ct levels tended to be varied
216 during the Delta (Figure 1C-1I). In the Delta pandemic, BioNTech and Moderna vaccines were not
217 available in Thailand, so we did not have Ct values related to these vaccines (Figure 1C-1D). During
218 the Delta but not the Omicron pandemics, patients who had at least two-dose vaccination prior to
219 COVID-19 infection reported a significantly lower number and probability of any symptoms (OR=0.25,
220 95% CI, 0.12-0.52, $p<0.001$) and common COVID-19 symptoms (cough, fever, anosmia/ageusia,
221 [OR=0.28, 95% CI=0.13 - 0.58, $p<0.001$]) than unvaccinated individuals (Figure 1J, Table S4). No
222 correlation between Ct values and probability of reporting any symptoms was noted in the Omicron
223 pandemic (Figure 1K-1N, Table S5).

224 IMMUNE RESPONSES AGAINST SARS-COV-2 VARIANTS

225 Higher antibody titers were observed in both unvaccinated COVID-19 and breakthrough COVID-19
226 patients vaccinated with both CoronaVac-prime or ChAdOx1-prime, regardless of numbers of doses,
227 which reached their peak around 2-3 months post-COVID-19 (PC) and decreased gradually after 3
228 months. The RBD-IgG geometric mean titers (GMT) at baseline (1-2 months PC) were higher in the
229 ChAdOx1 groups (1,2,3 doses) than in the CoronaVac groups but no different titers were observed
230 between the two groups after 3 months PC (ChAdOx1: 1 dose [822 BAU/mL, 95% CI, 626-1081], 2
231 doses [945 BAU/mL, 95% CI, 567-1575], and 3 doses [886 BAU/mL, 95% CI, 588-1335] vs.
232 (CoronaVac: 1 dose [1174 BAU/mL, 95% CI, 638-2158], and 2 doses [974 BAU/mL, 95% CI, 684-
233 13786]). However, participants with a breakthrough infection had higher antibody titers at all time
234 points compared with previously unvaccinated participants with COVID-19 infection ($p < 0.05$, Figure
235 2A, Table S8). The GMT of anti-RBD IgG was significantly higher in unvaccinated after two months
236 in both males and females (Figure 2G). Older individuals had significantly higher GMT of Anti-RBD
237 IgG than the younger individuals in both unvaccinated and ChAdOx1 groups. Although there was no
238 significant difference in anti-RBD IgG between age groups in the CoronaVac groups, anti-RBD IgG
239 tended to be higher in the older individuals than the younger individuals (Figure 2L).

240 Most patients had highly positive sVNT against Wuhan and Delta. Higher sVNT was observed
241 mostly in breakthrough COVID-19 patients vaccinated with either CoronaVac-prime or ChAdOx1-
242 prime, regardless of numbers of doses, which reached their peak around 2-3 months PC and decreased
243 approximately 10-20% after 3 months as compared with 2-3 months PC (Figure 2B). Additionally, the
244 titers were significantly higher against Wuhan as compared with the Delta variant ($p < 0.001$). Using
245 sVNT, the proportion of individuals with neutralizing test against Delta above sVNT cutoff of 30 was
246 ≈ 66 -88% of unvaccinated participants (pink dots), as compared with ≈ 83 -89% of 1-2 doses of
247 ChAdOx1 (pale blue dots), 100% of 3 doses of ChAdOx1, 67-95% of 1-2 doses of CoronaVac.

248 In fully-vaccinated individuals at 2-3 months PC, mean sVNT to the Delta relative to the Wuhan
249 virus was reduced 0.7-fold ($96.4 \rightarrow 72.3$, ChAdOx1 group). As compared with unvaccinated COVID-

250 19, sVNT for the Delta variant of ChAdOx1-boostered individuals at 2-3 months PC were increased 2.8-
251 fold (34.7→98) and 2.1-fold (34.7→72.3 when compared with 2-dose ChAdOx1 group) (Figure 2B).
252 The anti-SARS-CoV-2 RBD IgG levels and sVNT against Delta variant were markedly correlated
253 ($r=0.486$ to $r=0.599$) particularly in the unvaccinated group and vaccinated group (Figure 2C-2F). The
254 proportion of plasma samples exhibiting such a neutralizing activity against Delta tended to be nearly
255 1-2-fold higher among the older than the younger individuals (Figure 2I-2K).

256

257 **DISCUSSION**

258 At the time of our study, few studies had been published regarding the outcomes of mild-to-moderate
259 COVID-19 in an outpatient setting. We affirmed the following important findings. First, in the majority
260 of patients, illness is mild, and medical intervention is not needed, particularly in fully vaccinated
261 individuals. This confirms that early access to treatment along with prompt responses from telehealth
262 visits and anti-viral medication provides statistically favorable efficacy in sustaining COVID-19 and
263 improving outcomes in an appropriate outpatient setting.¹⁹ Recent studies in a “hospital” (a field
264 hospital) demonstrated that patients receiving Favipiravir exhibited higher viral clearance rates than
265 patients receiving standard symptomatic treatment and prevented hospitalization.¹⁹ A systematic review
266 and meta-analysis of clinical trials summarized that Favipiravir exerted low efficacy in the term of
267 reduced mortality in patients with mild to moderate COVID-19. But they pointed out that that might be
268 due to treatment in many trials was delayed.²⁰

269 Second, understanding the relationship between symptoms, viral load, disease severity and
270 predictive immunity is crucial to planning for the next steps in the booster vaccination program. Our
271 results are in contrast with a recent study¹⁷ reporting lower Ct values, for patients infected during mild
272 Omicron pandemic, compared to patients infected during Delta pandemic. In the mild-to-moderate
273 COVID-19 during the Delta and Omicron pandemics, antibodies including IgG and surrogate
274 neutralizing titers are higher in patients with more severe common COVID-19 symptoms, associated

275 with high viral load (lower Ct levels) and in older individuals who are generally vaccinated and have
276 more severe symptoms than asymptomatic individuals.⁵ IgG and sVNT remained stable for at least 3
277 months. However, receiving booster vaccines will ensure better predictive immunity against COVID-
278 19. In the Omicron pandemic, viral load was not correlated with symptoms. This was likely due to
279 Omicron's milder conditions, an improved vaccination campaign and quick access to medication
280 treatment. Therefore, other variables should be considered for the assessment of symptoms. Our results
281 are consistent with a previous study by Servellita *et al.*⁵ that examined neutralizing responses in Delta
282 and Omicron breakthrough infections and displayed strong increases in antibody titers to Wuhan and
283 Delta especially from boosting and added that in symptomatic or mild Delta and Omicron breakthrough
284 infections, the extent of conferred cross-neutralizing immunity against Omicron and Delta is limited.
285 However, Wratil *et al.*¹⁸ found that sera from patients with Omicron breakthrough infections enhanced
286 Omicron viral neutralization significantly (17.4-fold).

287 It is well documented that COVID-19 is not only primarily manifested as a respiratory tract
288 infection but also, emerging data indicate that it involves multiple systems. Several hematological
289 laboratory investigations into lymphocytes, neutrophils and hemostasis including CRP, elevated D-
290 dimer were altered significantly in COVID-19 patients, suggesting this can be regarded as a potential
291 indicator for both disease progression and effectiveness of therapy.¹⁹ Evidence showed that mild
292 COVID-19 can be associated with a potent initial innate antiviral response induction and viral
293 neutralization and might evade the host innate immune activation and consequently increase
294 proinflammatory response and immune cell infiltration.^{20,21} Even though we did not have a complete
295 set of these parameters for every subject, we fortunately had a subgroup of patients with worsening
296 conditions who were eventually hospitalized and had their blood examined. Our results indicated that
297 during the Delta pandemic these patients had increased neutrophils and lymphocytopenia, activation of
298 the coagulation cascade. Although we did not observe this trend in patients during the Omicron
299 pandemic, there was report that the Omicron COVID-19 patients had abnormal levels of neutrophils,
300 lymphocytes, and monocytes and signs of coagulopathy.²¹⁻²³ Still, more in-depth research on the

301 underlying etiology is necessary. A recent genome-wide association analysis (GWAS)²⁴ showed
302 associations of loci on chromosomes 5q32 and 9q21.13 with COVID-19 susceptibility and two
303 suggestive loci on chromosomes 12q22 and 3p24.3 severity. Interestingly, the association signal on
304 chromosome 5q32 coincided with *IL17B* encoding T cell-derived cytokine known as interleukin-17B
305 (IL-17B). IL-17B was reported to play a role as a proinflammatory inducer in inflammatory disease,
306 stimulating the release of tumor necrosis factor- α (TNF- α) and interleukin-1 β (IL-1 β) from a monocytic
307 cell line resulting in neutrophil infiltration.^{25,26} This supports our finding of hyperneutrophilia seen in
308 our COVID-19 cohort.

309 These data combined with ours could suggest that higher infectivity of Omicron may be related
310 to a decreased viral load, probably lower past protective immunity against Omicron either from
311 vaccines, or natural infection (Delta) and an asymptomatic stage of infected individuals with respiratory
312 symptoms, age.¹¹ But we found no meaningful difference in types of vaccines, numbers of vaccines or
313 duration of disease symptoms of the Omicron variant as compared with the Delta variant. Still,
314 substantial variation in patients' symptoms and immunogenicity underscores the heterogeneity of
315 protective immunity against future infections. However, an individual previously infected with SARS-
316 Cov-2 is advised to receive a full vaccination or at least one additional dose of a vaccine after the
317 infection to protect against reinfection from some circulating variants.²⁷ High vaccination rates also help
318 to reduce the transmission of COVID-19. However, vaccination rates are still low in some provinces,
319 important risk groups, and low-income countries.²⁸

320 There are several limitations to our study. We only have blood test from a small subset of
321 hospitalized patients and assumed that these findings might be similar to all milder infected cases
322 without hospitalization. At the time of analysis, we didn't have serology data from patients during the
323 Omicron pandemic and long term follow up data, so we could not determine the antibody levels against
324 the Omicron variants and vaccine efficacy after the COVID-19 infection and its impact on the long
325 COVID-19. Our future COVID-19 direction is to further gain insight into the long-term monitoring of

326 neutralizing antibodies and to study if the breakthrough Omicron infection will have a protective
327 immunity against reinfection of SARS-CoV-2 Omicron sub-lineages BA.4 and BA.5.

328

329 **CONCLUSION**

330 Our study displayed important knowledge about immunogenicity and dynamics of the immune
331 responses induced by post-COVID-19 together with prior vaccination, which help improve protection
332 against current and new emerging SARS-CoV-2 variants. Our data suggest that in countries where
333 vaccines are limited, full vaccination of most prime or mixed vaccines, and a booster shot for individuals
334 with risks might be enough to induce high levels of short-term immunity and prevent hospitalization
335 and death, regardless of higher viral burden or symptoms, especially during the Omicron pandemic in
336 the absence of novel variants.

337

338 **ACKNOWLEDGEMENTS**

339 We thank the patients and their families at Siriraj Hospital without whom collecting and providing this
340 aggregate data would not have been successful. We are grateful for the support of the COVID-19 teams:
341 Population Health and Nutrition Research Group, Tassanee Narkdontri, Nipaporn Teerawattanapong,
342 Worapanit Lerdsaeng from Siriraj Center of Research Excellence for Diabetes and Obesity Research
343 (SiCORE-DO), Research department and Department of Immunology at Faculty of Medicine Siriraj
344 Hospital, Mahidol University and Utane Runpanich from Department of Immunology, Faculty of
345 Medicine Siriraj Hospital, Mahidol University for performing IgG assays, and Center of Research
346 Excellence on Therapeutic Proteins and Antibody Engineering, Department of Parasitology, Faculty of
347 Medicine Siriraj Hospital, Mahidol University for performing the surrogate virus neutralization test.

348

349 **CONTRIBUTIONS**

350 **Members of Siriraj Population Health and Nutrition Research Group (SPHERE):** Sureeporn
351 Pumeiam,

352 Bonggochpass Pinsawas, Pichanun Mongkolsucharitkul, Apinya Surawit, Tanyaporn Pongkunakorn,
353 Sophida Suta, Thamonwan Manosan, Suphawan Ophakas and Korapat Mayurasakorn

354

355 **AUTHORS CONTRIBUTION**

356 P.M., A.S. and KM conceived and designed the manuscript, analyzed the data and drafted the
357 manuscript. P.P., N.S., W.S., C.W., C.A., T.S., R.T., M.C., G.S., P.P., S.S., S.M., and SPHERE
358 performed patient care and revised and reviewed the manuscript. P.M. and A.S. K.M. performed critical
359 revision of the manuscript. W.T. performed IgG testing and provided data establishing testing. N.S. and
360 A.T. performed sVNT testing. A.S. performed biostatistical analysis and reviewed. The corresponding
361 author (K.M.) attests that all listed authors meet authorship criteria and that no others meeting the criteria
362 have been omitted. All staff for COVID-19 care were listed in the supplement appendix. All authors
363 read the manuscript and agreed to its contents.

364

365 **DATA AVAILABILITY**

366 Raw data used in this study, including de-identified patient metadata and test results, are available upon
367 request.

368

369

370

371

372

373

374

375 **REFERENCE**

- 376 1. Suntronwong N, Yorsaeng R, Puenpa J, et al. COVID-19 Breakthrough Infection after
377 Inactivated Vaccine Induced Robust Antibody Responses and Cross-Neutralization of SARS-
378 CoV-2 Variants, but Less Immunity against Omicron. *Vaccines* 2022;10(3):391.
- 379 2. Escandón K, Rasmussen AL, Bogoch II, et al. COVID-19 false dichotomies and a
380 comprehensive review of the evidence regarding public health, COVID-19 symptomatology,
381 SARS-CoV-2 transmission, mask wearing, and reinfection. *BMC Infect Dis* 2021;21(1):710.
- 382 3. Angkasekwinai N, Sewatanon J, Niyomnaitham S, et al. Comparison of safety and
383 immunogenicity of CoronaVac and ChAdOx1 against the SARS-CoV-2 circulating variants of
384 concern (Alpha, Delta, Beta) in Thai healthcare workers. *Vaccine: X* 2022;10:100153.
- 385 4. World Health Organization Thailand. COVID-19 - WHO Thailand situation reports. World
386 Health Organization. ([https://www.who.int/thailand/emergencies/novel-coronavirus-](https://www.who.int/thailand/emergencies/novel-coronavirus-2019/situation-reports)
387 [2019/situation-reports](https://www.who.int/thailand/emergencies/novel-coronavirus-2019/situation-reports)).
- 388 5. Servellita V, Syed AM, Morris MK, et al. Neutralizing immunity in vaccine breakthrough
389 infections from the SARS-CoV-2 Omicron and Delta variants. *Cell* 2022;185(9):1539-1548.
- 390 6. Angkasekwinai N, Niyomnaitham S, Sewatanon J, et al. The immunogenicity against variants
391 of concern and reactogenicity of four COVID-19 booster vaccinations following CoronaVac or
392 ChAdOx1 nCoV-19 primary series. Jan 19, 2022
393 (<http://medrxiv.org/content/early/2022/01/19/2021.11.29.21266947.abstract>). preprint.
- 394 7. Lu L, Mok BW, Chen LL, et al. Neutralization of SARS-CoV-2 Omicron variant by sera from
395 BNT162b2 or Coronavac vaccine recipients. *Clin Infect Dis* 2021:ciab1041.
- 396 8. Torjesen I. Covid-19: Omicron may be more transmissible than other variants and partly
397 resistant to existing vaccines, scientists fear. *BMJ* 2021;375:n2943.
- 398 9. Sui Y, Bekele Y, Berzofsky JA. Potential SARS-CoV-2 Immune Correlates of Protection in
399 Infection and Vaccine Immunization. *Pathogens (Basel, Switzerland)* 2021;10(2):138.
- 400 10. Madhi SA, Kwatra G, Myers JE, et al. Population Immunity and Covid-19 Severity with
401 Omicron Variant in South Africa. *N Engl J Med* 2022;386(14):1314-1326.
- 402 11. Tegally H, Moir M, Everatt J, et al. Continued Emergence and Evolution of Omicron in South
403 Africa: New BA.4 and BA.5 lineages. *medRxiv*. May 02, 2022
404 (<https://www.medrxiv.org/content/10.1101/2022.05.01.22274406v1>). preprint.
- 405 12. Wolter N, Jassat W, Walaza S, et al. Early assessment of the clinical severity of the SARS-
406 CoV-2 omicron variant in South Africa: a data linkage study. *Lancet* 2022;399(10323):437-
407 446.

- 408 13. Centers for disease control and prevention, U.S. Department of health & human services.
409 Quarantine and isolation. ([https://www.cdc.gov/coronavirus/2019-ncov/your-](https://www.cdc.gov/coronavirus/2019-ncov/your-health/quarantine-isolation.html)
410 [health/quarantine-isolation.html](https://www.cdc.gov/coronavirus/2019-ncov/your-health/quarantine-isolation.html)).
- 411 14. Manabe T, Kambayashi D, Akatsu H, Kudo K. Favipiravir for the treatment of patients with
412 COVID-19: a systematic review and meta-analysis. *BMC Infect Dis* 2021;21(1):489.
- 413 15. Department of Disease Control. Corona virus disease (COVID-19). Ministry of Public Health.
414 (<https://ddc.moph.go.th/covid19-dashboard/>).
- 415 16. Jackson C. The Chalder Fatigue Scale (CFQ 11). *Occup Med* 2015;65(1):86-86.
- 416 17. Sentis C, Billaud G, Bal A, et al. SARS-CoV-2 Omicron Variant, Lineage BA.1, Is Associated
417 with Lower Viral Load in Nasopharyngeal Samples Compared to Delta Variant. *Viruses*
418 2022;14(5):919.
- 419 18. Wratil PR, Stern M, Priller A, et al. Three exposures to the spike protein of SARS-CoV-2 by
420 either infection or vaccination elicit superior neutralizing immunity to all variants of concern.
421 *Nat Med* 2022;28(3):496-503.
- 422 19. Terpos E, Ntanasis-Stathopoulos I, Elalamy I, et al. Hematological findings and complications
423 of COVID-19. *American journal of hematology* 2020;95(7):834-847.
- 424 20. Mehandru S, Merad M. Pathological sequelae of long-haul COVID. *Nat Immunol*
425 2022;23(2):194-202.
- 426 21. Elderderly AY, Elkhalfa AME, Alsrhani A, et al. Complete Blood Count Alterations of
427 COVID-19 Patients in Riyadh, Kingdom of Saudi Arabia. *J Nanomater* 2022;2022:1-6.
- 428 22. Pozdnyakova O, Connell NT, Battinelli EM, Connors JM, Fell G, Kim ASJAjocp. Clinical
429 significance of CBC and WBC morphology in the diagnosis and clinical course of COVID-19
430 infection. *Am J Clin Pathol* 2021;155(3):364-375.
- 431 23. Zhang J, Chen N, Zhao D, Zhang J, Hu Z, Tao Z. Clinical Characteristics of COVID-19 Patients
432 Infected by the Omicron Variant of SARS-CoV-2. *Front Med* 2022;9:1-10.
- 433 24. Chamnanphon M, Pongpanich M, Suttichet TB, et al. Host genetic factors of COVID-19
434 susceptibility and disease severity in a Thai population. *J Hum Genet* 2022:1-7.
- 435 25. Iwakura Y, Ishigame H, Saijo S, Nakae S. Functional specialization of interleukin-17 family
436 members. *Immunity* 2011;34(2):149-62.
- 437 26. Pappu R, Ramirez-Carrozzi V, Sambandam A. The interleukin-17 cytokine family: critical
438 players in host defence and inflammatory diseases. *Immunology* 2011;134(1):8-16.
- 439 27. Cavanaugh AM, Spicer KB, Thoroughman D, Glick C, K. W. Reduced risk of reinfection with
440 SARS-CoV-2 after COVID-19 vaccination — Kentucky, May–June 2021. *MMWR Morb*
441 *Mortal Wkly Rep* 2021(70):1081-1083.

- 442 28. Ritchie H, Mathieu E, Rodés-Guirao L, et al. Coronavirus Pandemic (COVID-19).
443 (<https://ourworldindata.org/coronavirus>).
444

medRxiv preprint doi: <https://doi.org/10.1101/2022.05.30.22275050>; this version posted May 31, 2022. The copyright holder for this preprint (which was not certified by peer review) is the author/funder, who has granted medRxiv a license to display the preprint in perpetuity. It is made available under a CC-BY-NC-ND 4.0 International license. Jan-Mar 2022 (Omicron)

Table 1 Characteristics and laboratory findings of all confirmed COVID-19 patients, and compared between those with symptomatic treatment (S), symptomatic treatment plus 5 - 14 days standard Favipiravir treatment (Favi) and symptomatic treatment plus 5 - 14 days standard Favipiravir treatment plus dexamethasone (Favi/Dexa).

Characteristics	All patients (n=2704)		S (n=352)		Favi (n=2277)		Favi/Dexa (n=75)		p*†	All patients (n=2477)		S (n=520)		Favi (n=1957)		p*‡	p*§
	n	%	n	%	n	%	n	%		n	%	n	%	n	%		
	Female gender	1451	53.7	176	50.0	1235	54.2	40		53.3	0.332	1446	58.4	340	65.4		
Age, yr, mean (SD)	33.8	(11.6)	15.7	(9.4)	36.0	(8.7)	52.5	(6.4)	<0.001	31.3	(12.3)	36.0	(15.4)	30.1	(11.2)	<0.001	<0.001
<25	955	35.3	275	78.1	677	29.7	3	4.0	<0.001	1015	41.0	115	22.1	900	46.0	<0.001	<0.001
25-60	1470	54.4	75	21.3	1350	59.3	45	60.0		1220	49.3	360	69.2	860	43.9		
>60	279	10.3	2	0.6	250	11.0	27	36.0		242	9.8	45	8.7	197	10.1		
Body weight, kg, mean (SD)	57.5	(22.0)	38.3	(21.4)	59.7	(20.9)	69.7	(13.2)	0.043	55.8	(22.4)	61.6	(16.7)	54.2	(23.4)	0.034	0.007
Presence of comorbidities																	
Diabetes mellitus	162	6.0	1	0.3	151	6.6	10	13.3	<0.001	150	6.1	34	6.5	116	5.9	0.604	0.922
Hypertension	313	11.6	7	2.0	283	12.4	23	30.7	<0.001	513	20.7	116	22.3	397	20.3	0.312	<0.001
Dyslipidemia	123	4.5	2	0.6	113	5.0	8	10.7	0.017	108	4.4	16	3.1	92	4.7	0.107	0.742
Obesity	23	0.9	0	0.0	23	1.0	0	0.0	0.114	41	1.7	7	1.3	34	1.7	0.534	0.009
Malignancy	22	0.8	0	0.0	21	0.9	1	1.3	0.176	25	1.0	2	0.4	23	1.2	0.109	0.458
Neurologic disease	7	0.3	0	0.0	7	0.3	0	0.0	0.288	271	10.9	78	15.0	193	9.9	0.001	<0.001
Heart disease	33	1.2	1	0.3	31	1.4	1	1.3	0.230	38	1.5	2	0.4	36	1.8	0.016	0.332
Lung disease	51	1.9	1	0.3	30	1.3	20	26.7	<0.001	na	na	na	na	na	na		
Kidney disease	14	0.5	1	0.3	13	0.6	0	0.0	0.641	10	0.4	1	0.2	9	0.5	0.392	0.546
Others	336	12.4	33	9.4	292	12.8	11	14.7	0.158	753	30.4	162	31.2	591	30.2	0.674	<0.001
Presenting symptoms																	
Asymptomatic infection	390	14.4	103	29.3	286	12.6	1	1.3	<0.001	969	39.1	224	43.1	745	38.1	0.038	<0.001
Fever/history of fever	1250	46.2	133	37.8	1074	47.2	43	57.3	0.001	267	10.8	23	4.4	244	12.5	<0.001	<0.001
BT¶ (°C), median (IQR)¶¶	36.6	(0.7)	36.3	(0.6)	36.6	(0.7)	37.0	(0.6)	0.015	36.8	(0.5)	36.7	(0.4)	36.9	(0.5)	0.149	<0.001
<37.5	2474	95.2	318	97.0	2094	95.3	62	83.8	0.002	2107	88.8	489	95.5	1618	86.9	0.015	<0.001
37.5-38.0	120	4.6	10	3.0	99	4.5	11	14.9		244	10.3	21	4.1	223	12.0		
>38.0	6	0.2	0	0.0	5	0.2	1	1.4		23	1.0	2	0.4	21	1.1		
Cough	1642	60.7	152	43.2	1425	62.6	65	86.7	<0.001	1181	47.7	242	46.5	939	48.0	0.558	<0.001
Sore throat	1038	38.4	81	23.0	918	40.3	39	52.0	0.010	1181	47.7	242	46.5	939	48.0	0.558	<0.001
Rhinorrhea	419	15.5	47	13.4	358	15.7	14	18.7	0.383	626	25.3	143	27.5	483	24.7	0.189	<0.001
Productive sputum	537	19.9	46	13.1	465	20.4	26	34.7	0.029	na	na	na	na	na	na		
Loss of taste	312	11.5	23	6.5	274	12.0	15	20.0	0.010	43	1.7	12	2.3	31	1.6	0.261	<0.001
Loss of smell	821	30.4	66	18.8	725	31.8	30	40.0	0.017	43	1.7	12	2.3	31	1.6	0.261	<0.001
Dyspnea	305	11.3	5	1.4	271	11.9	29	38.7	0.012	24	1.0	2	0.4	22	1.1	0.126	<0.001
Myalgia	282	10.4	11	3.1	249	10.9	22	29.3	0.005	206	8.3	52	10.0	154	7.9	0.118	0.009
Diarrhea	126	4.7	11	3.1	108	4.7	7	9.3	<0.001	63	2.5	10	1.9	53	2.7	0.312	<0.001
Nausea/vomiting	59	2.2	2	0.6	49	2.2	8	10.7	0.038	37	1.5	5	1.0	32	1.6	0.260	0.067
Others	1549	57.3	168	47.7	1328	58.3	53	70.7	<0.001	191	7.7	36	6.9	155	7.9	0.449	<0.001
Clinical features at the time of admission																	
Time from symptom onset to PCR diagnosis, median (IQR), days	1.9	(1.6)	2.1	(1.9)	1.9	(1.6)	1.9	(1.5)	0.394	2.0	(1.1)	2.1	(1.0)	2.0	(1.1)	0.167	0.049
Time from symptom onset to admission, median (IQR), days	5.1	(2.4)	5.6	(2.6)	5.0	(2.3)	5.2	(2.0)	0.337	2.8	(1.6)	3.2	(2.0)	2.6	(1.4)	0.032	0.021
Cycle Threshold**																	
Cycle Threshold, median (IQR)	21.0	(7.8)	24.1	(9.4)	20.7	(7.4)	18.5	(4.3)	0.001	19.0	(5.7)	21.4	(6.9)	19.7	(5.3)	0.001	<0.001
<20	1118	43.1	88	25.9	979	45.0	51	68.9	<0.001	1162	49.4	201	38.7	961	52.4	<0.001	<0.001
20-30	1218	47.0	189	55.6	1008	46.3	21	28.4		974	41.4	240	46.2	734	40.0		
>30	255	9.8	63	18.5	190	8.7	2	2.7		216	9.2	78	15.0	138	7.5		
Envelope (E), median (IQR)	17.5	(8.4)	20.9	(9.9)	17.3	(8.0)	14.3	(4.7)	0.012	18.0	(5.4)	17.8	(5.1)	19.0	(6.7)	0.121	<0.001
RNA-dependent RNA polymerase (RdRp), median (IQR)	22.3	(8.2)	25.9	(9.6)	22.0	(7.7)	19.7	(4.7)	<0.001	19.3	(5.4)	20.3	(6.9)	19.1	(5.0)	0.220	<0.001
Referred back to the hospital, yes	89	3.3	3	0.9	61	2.7	25	33.3	<0.001	43	1.7	5	1.0	38	1.9	0.128	<0.001
Dead, yes	5	0.2	0	0.0	0	0.0	5	6.7	<0.001	2	0.1	0	0.0	2	0.1	0.466	0.308

* Continuous data of Characteristics and laboratory findings of all confirmed COVID-19 patients presented as mean (SD), median (IQR), and range at $p<0.05$ indicates statistical significance

† The statistical significance was assessed by the Fisher's exact test and Kruskal-wallis test, statistical difference within the Delta group at $p<0.05$

‡ The statistical significance was assessed by the Fisher's exact test and Mann Whitney test statistical difference within the Omicron group at $p<0.05$

§ The statistical significance was assessed by the Fisher's exact test and Mann Whitney test, statistical difference between Delta and Omicron groups at $p<0.05$

¶ Body temperature (BT) is a measure of the balance between heat generation and heat loss of the body.

¶¶ Interquartile range (IQR) is a measure of statistical dispersion.

** Cycle Threshold (Ct) value from RT-PCR tests represents the cycle number at which the signal breaches the threshold for positivity, a lower Ct value is indicative of a high viral.

Table 2 Demographic, clinic, and laboratory finding of all of patients referred back for in-patients care and compared between those during the Delta and the Omicron pandemic*
 medRxiv preprint doi: <https://doi.org/10.1101/2022.05.30.22275050>; this version posted May 31, 2022. The copyright holder for this preprint (which was not certified by peer review) is the author/funder, who has granted medRxiv a license to display the preprint in perpetuity. It is made available under a CC-BY-NC-ND 4.0 International license.

Characteristics	All patients (n=89)		Alive (n=84)		Dead (n= 5)		p**†	All patients (n=43)		Alive (n=41)		Dead (n=2)		p*‡	p*§
	n	%	n	%	n	%		n	%	n	%	n	%		
	Male gender	44	49.4	43	51.2	1		20.0	0.175	20	46.5	18	43.9		
Age, yr, median (IQR)	55.0	(24.0)	55.5	(24.5)	54.0	(5.0)	0.617	33.0	(14.0)	30.5	(12.0)	81.0	(8.5)	0.073	<0.001
45-64	68	76.4	63	75.0	5	100.0	0.201	32	74.4	32	78.0	0	0.0	0.014	0.803
>65	21	23.6	21	25.0	0	0.0		11	25.6	9	22.0	2	100.0		
Presence of comorbidities															
Diabetes mellitus	23	25.8	21	25.0	2	40.0	0.457	7	16.3	7	17.1	0	0.0	na	<0.001
Hypertension	28	31.5	26	31.0	2	40.0	0.672	10	23.3	10	24.4	0	0.0	na	<0.001
Dyslipidemia	12	13.5	12	14.3	0	0.0	0.364	6	14.0	6	14.6	0	0.0	na	<0.001
Heart disease	na		na		na			3	7.0	3	7.3	0	0.0	na	<0.002
Others	31	34.8	28	33.3	3	60.0	0.224	2	4.7	2	4.9	0	0.0	na	0.258
Presenting symptoms of entering HI¶															
Asymptomatic infection	9	10.1	9	10.7	0	0.0	0.440	32	74.4	30	73.2	2	100.0	0.396	0.020
Fever/history of fever	49	55.1	46	54.8	3	60.0	0.464	27	62.8	25	61.0	2	100.0	0.530	0.003
BT¶ (°C), median (IQR)**	36.8	(0.5)	36.8	(0.5)	36.8	(0.2)	0.156	36.7	(0.9)	36.7	(0.9)	-	-	na	
>38.0	9	10.1	8	9.5	1	20.0	0.429	2	4.7	2	4.9	0	0.0	na	0.660
Cough	61	68.5	58	69.0	3	60.0	0.672	20	46.5	18	43.9	2	100.0	0.258	0.533
URI††	45	50.6	43	51.2	2	40.0	0.489	21	48.8	21	51.2	0	0.0	0.111	0.174
Loss of taste/ smell	22	24.7	21	25.0	1	20.0	0.201	1	2.3	1	2.4	0	0.0	0.793	0.008
Dyspnea	53	59.6	48	57.1	5	100.0	0.013	2	4.7	2	4.9	0	0.0	0.706	<0.001
Muscle aches	23	25.8	21	25.0	2	40.0	0.101	8	18.6	8	19.5	0	0.0	0.399	0.925
Diarrhea	13	14.6	11	13.1	2	40.0	0.098	2	4.7	2	4.9	0	0.0	0.706	0.219
Nausea/vomiting	10	11.2	10	11.9	1	20.0	0.413	6	14.0	6	14.6	0	0.0	0.483	0.372
Chest radiograph on referral date															
Pneumonia detected in chest radiograph	51	57.3	48	57.1	3	60.0	0.638	12	27.9	12	29.3	0	0.0	na	0.158
Hematological, median (IQR)															
WBC‡‡ (x 10 ³ /µl)	7.7	(7.4)	7.7	(7.4)	7.4	(7.2)	0.785	6.3	(4.0)	6.3	(3.7)	8.8	(9.8)	0.061	0.012
Lymphocytes (x 10 ³ /µl)	0.8	(0.8)	0.9	(0.4)	0.8	(0.8)	0.038	1.8	(2.1)	1.8	(2.0)	2.1	(2.6)	0.914	<0.001
<1 x 10 ³ /ul	35	39.3	32	38.1	3	60.0	0.592	12	27.9	11	26.8	1	50.0	0.492	0.001
Neutrophil (x 10 ³ /µl)	6.1	(7.0)	6.4	(7.4)	6.1	(7.0)	0.584	3.4	(2.5)	3.4	(2.6)	6.1	(7.3)	0.047	<0.001
Creatinine (mg/dL)	0.8	(0.4)	0.8	(0.4)	1.0	(1.6)	0.068	0.8	(0.8)	0.8	(0.9)	0.8	(0.3)	0.047	<0.001
eGFR§§ (mL/min/1.73 m ²)	84.5	(37.5)	84.5	(38.2)	56.4	(87.1)	0.080	67.0	(64.5)	67.0	(64.5)	-	-	na	0.139
AST¶¶ (U/L)	47.5	(27.5)	47.0	(26.0)	59.0	(146.0)	0.043	30.0	(17.0)	30.0	(17.0)	36.0	-	na	<0.001
>40	35	39.3	32	38.1	3	60.0	0.056	10	23.3	10	24.4	0	0.0	0.552	<0.001
ALT¶¶ (U/L)	41.5	(32.5)	42.0	(32.0)	19.0	(39.0)	0.337	18.0	(8.0)	17.5	(8.0)	22.0	-	na	<0.001
>40	29	32.6	28	33.3	1	20.0	0.511	3	7.0	3	7.3	0	0.0	0.771	<0.001
C-reactive protein (mg/L)	72.1	(65.2)	72.5	(64.0)	64.1	(54.7)	0.154	3.4	(9.2)	3.4	(8.7)	67.6	(29.3)	0.035	0.008
<10	6	9.5	4	6.7	2	66.7	0.005	31	73.8	30	75.0	1	50.0	0.114	<0.001
10-100	40	63.5	40	66.7	0	0.0		8	19.0	8	20.0	0	0.0		
>100	17	27.0	16	26.7	1	33.3		3	7.1	2	5.0	1	50.0		
Procalcitonin (ng/mL)	0.1	(0.3)	0.1	(0.2)	0.5	(1.5)	0.085	0.1	(0.3)	0.1	(0.3)	0.1	(0.2)	0.439	<0.001
>0.05	40	83.3	36	81.8	4	100.0	0.097	9	69.2	7	63.6	2	100.0	0.305	0.257
D-dimer, median (ng/mL)	2671.9	(1008.9)	2552.1	(1067.1)	4308.0	(2872.6)	0.059	1347.0	(4588.5)	1297.0	(2723.0)	7633.0	-	na	0.029
<500	13	29.5	13	31.7	0	0.0	0.215	0	0.0	0	0.0	0	0.0	0.117	0.099
501-3000	25	56.8	23	56.1	2	66.7		5	62.5	5	71.4	0	0.0		
>3000	6	13.6	5	12.2	1	33.3		3	37.5	2	28.6	1	100.0		
Cycle Threshold¶¶¶ (viral load at the time of entering HI)															
Nucleocapsid (N), median (IQR)	19.1	(5.4)	19.2	(5.2)	16.1	(3.7)	0.846	18.9	(3.9)	18.9	(3.2)	18.2	(5.6)	0.729	0.023
<20	57	64.0	53	63.1	4	80.0	0.714	31	72.1	30	73.2	1	50.0	0.567	0.414
20-30	28	31.5	27	32.1	1	20.0		9	20.9	8	19.5	1	50.0		
>30	4	4.5	4	4.8	0	0.0		3	7.0	3	7.3	0	0.0		
Vaccine status															
Unvaccinated	58	65.2	54	64.3	4	80.0	0.408	29	67.4	27	65.9	2	100.0	0.603	0.134
1 dose	10	11.2	9	10.7	1	20.0		9	20.9	9	22.0	0	0.0		
≥2 doses	21	23.6	21	25.0	0	0.0		5	11.6	5	12.2	0	0.0		

Table 2 Demographic, clinic, and laboratory finding of all of patients referred back for in-patients care and compared between those during the Delta and the Omicron pandemic*

medRxiv preprint doi: <https://doi.org/10.1101/2022.05.30.22275050>; this version posted May 31, 2022. The copyright holder for this preprint (which was not certified by peer review) is the author/funder, who has granted medRxiv a license to display the preprint in perpetuity. It is made available under a [CC-BY-NC-ND 4.0 International license](https://creativecommons.org/licenses/by-nc-nd/4.0/).

ORcrude (95% CI)***	0.142 (0.016-0.265)	0.151 (0.032-0.334)
ORage and sex adjusted	0.142 (0.016-0.265)	0.109 (0.011-0.318)
ORfully adjusted	0.299 (0.012-7.643)	0.105 (0.005-0.294)

- * Continuous data demographic, clinic, and laboratory finding of all patients referred back presented as mean (SD), median (IQR), and range at $p < 0.05$ indicates statistical significance, OR, odds ratio.
- † The statistical significance was assessed by the Fisher's exact test and Kruskal-wallis test, statistical difference within the Delta group at $p < 0.05$
- ‡ The statistical significance was assessed by the Fisher's exact test and Mann Whitney test statistical difference within the Omicron group at $p < 0.05$
- § The statistical significance was assessed by the Fisher's exact test and Mann Whitney test, statistical difference between Delta and Omicron groups at $p < 0.05$
- ¶ Home isolation (HI) Once a COVID-19 infection has been diagnosed, medical staff will assess home isolation. The patients should generally be in good health, and not suffering from any of the following conditions: chronic obstructive pulmonary disease (COPD), chronic kidney disease (CKD), cardiovascular disease, cerebrovascular disease, uncontrollable diabetes, or other conditions that may be considered by doctors to be a risk. Patients must agree to strictly isolate themselves from others.
- || Body temperature (BT) is a measure of the balance between heat generation and heat loss of the body.
- ** Interquartile range (IQR) is a measure of statistical dispersion.
- †† Upper respiratory infection (URI) affects the upper part of your respiratory system.
- ‡‡ White blood count (WBC) is part of the immune system, helping to defend the body against infections and disease.
- §§ Estimated Glomerular Filtration Rate (eGFR) to determine if you have kidney disease.
- ¶¶ Aspartate aminotransferase (AST) is an enzyme that's present in various tissues of the body while Alanine aminotransferase (ALT) is found mainly in your liver, used to check for liver conditions. While AST is found in more parts of the body than ALT. For this reason, abnormal levels of ALT tend to be a better indicator of liver problems than AST
- ||| Cycle Threshold (Ct) value from RT-PCR tests represents the cycle number at which the signal breaches the threshold for positivity, a lower Ct value is indicative of a high viral.
- *** Effect estimates are reported as ORs (95% CIs), compare groups with unvaccinated and 1 dose (reference) vs. ≥ 2 doses by using multivariable logistic regression, to calculate adjusted ORs (aORs) with 95% CIs.

medRxiv preprint doi: <https://doi.org/10.1101/2022.05.30.22275050>; this version posted May 31, 2022. The copyright holder for this preprint (which was not certified by peer review) is the author/funder, who has granted medRxiv a license to display the preprint in perpetuity. It is made available under aCC-BY-NC-ND 4.0 International license.

Table 3 COVID-19 patient factors associated with increasing number of symptoms and higher fatigue score at 14-days follow-up—negative binomial mixed models (July 2021 to March 2022)*

Characteristics	n %		Number of symptoms (0-14)						Fatigue score† (0-27)					
			RR§	95%CI¶	p*	aRR**	95%CI	p*	RR	95%CI	p*††	aRR	95%CI	p*††
Female gender	2194	58.4	1.02	(0.94, 1.10)	0.650	1.03	(0.96, 1.11)	0.361	1.13	(0.99, 1.30)	0.071	1.15	(1.00, 1.31)	0.049*
Age, yr, median (range)	31	(17-47)	1.00	(1.00, 1.00)	0.966	1.00	(1.00, 1.00)	0.146	1.00	(0.99, 1.00)	0.458	1.00	(0.99, 1.00)	0.292
Comorbidity														
Hypertension	769	20.5	1.05	(0.95, 1.16)	0.322	1.04	(0.93, 1.16)	0.488	0.97	(0.81, 1.15)	0.708	-	--	-
Dyslipidemia	231	6.2	1.01	(0.89, 1.15)	0.890	1.07	(0.93, 1.22)	0.353	0.97	(0.77, 1.22)	0.781	1.11	(0.86, 1.42)	0.427
Diabetes mellitus	311	8.3	0.99	(0.87, 1.13)	0.914	0.95	(0.83, 1.09)	0.491	0.83	(0.65, 1.05)	0.115	0.81	(0.63, 1.04)	0.104
Asthma/COPD‡‡	97	4.8	0.99	(0.85, 1.15)	0.882	0.99	(0.86, 1.14)	0.882	0.84	(0.64, 1.10)	0.211	0.85	(0.65, 1.11)	0.232
Chronic heart disease	65	1.7	1.07	(0.83, 1.39)	0.592	1.07	(0.84, 1.37)	0.568	1.22	(0.77, 1.93)	0.39	1.30	(0.83, 2.04)	0.252
Severity of initial illness	102	2.7	1.34	(1.11, 1.61)	0.002*	1.22	(1.02, 1.45)	0.030*	1.46	(0.95, 1.75)	0.051	1.43	(1.37, 1.72)	0.039*
Immunosuppression§§, median (range)	8.89	(7.94-9.53)	1.05	(1.03, 1.08)	<0.001*	1.04	(1.01, 1.08)	0.025*	1.04	(1.00, 1.10)	0.074	1.09	(1.02, 1.16)	0.015*
Neutralizing antibody titers¶¶, median (range)	4.58	(4.55-4.59)	1.22	(1.08, 1.37)	0.001*	1.22	(1.05, 1.42)	0.009*	1.18	(0.80, 1.20)	0.876	1.14	(0.66, 1.19)	0.324
Vaccinated, yes	2577	68.6	0.81	(0.76, 0.87)	<0.001*	0.78	(0.72, 0.84)	<0.001*	0.85	(0.75, 0.97)	0.014*	0.84	(0.73, 0.96)	0.011*

* Analysis of associated factors was done by negative binomial mixed models. aRR, adjusted rate ratio; RR, rate ratio. Statistical significance at the level of $p < 0.05$ is shown in bold text.

† Patients were assessed for 12 symptoms mentioned in Table S1.

‡ Chalder fatigue score is validated only for patients aged >18 years (n=3756); possible fatigue scores range from 0 (no fatigue) to 27 (worst possible fatigue).

§ The relative risk (RR) is the risk of the event in an experimental group relative to that in a control group.

¶ 95% confidence interval (CI) is used to estimate the precision of the OR

|| Factors with significance level $p < 0.1$ in univariable analysis were included in the multivariable analysis of symptoms at 14-days follow-up.

** Adjusted rate ratio (aRR) is the difference in increased risk of symptoms and fatigue score.

†† Factors with significance level $p < 0.1$ in univariable analysis were included in the multivariable analysis of fatigue score at 14-days follow-up.

‡‡ COPD is chronic obstructive pulmonary disease.

§§ SARS-CoV-2 spike protein antibody titers, \log_{10} transformed.

¶¶ Neutralizing antibody titers, \log_{10} transformed.

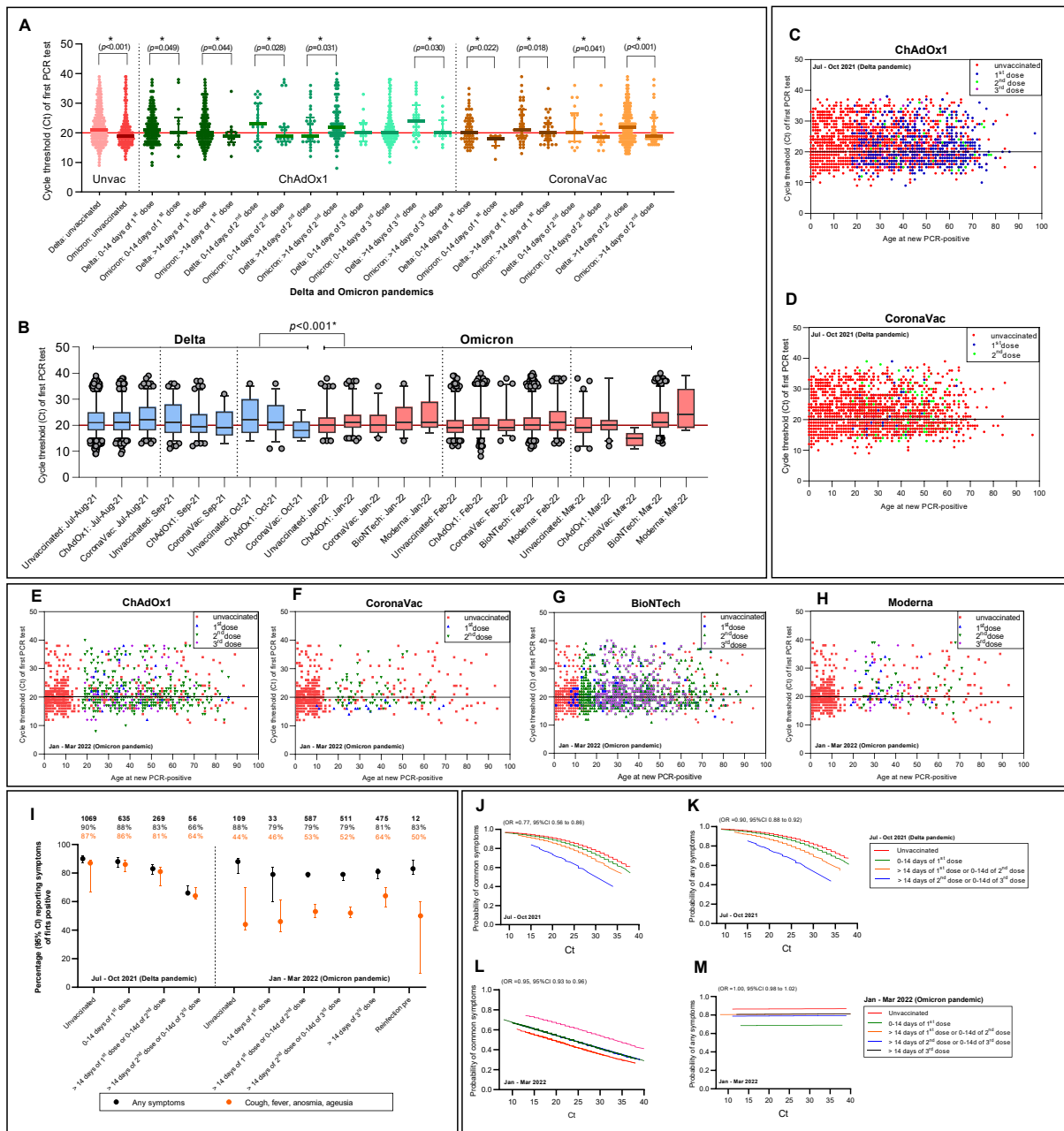


Figure 1: Ct value trajectories of confirmed COVID-19 infection and symptoms during the Delta and Omicron pandemics in vaccinated and unvaccinated individuals

(A) Ct values by vaccination/reinfection status and (B) Ct values by waves and vaccination type. (C-H) Ct values in PCR-positives after receiving ChAdOx1 or CoronaVac or BioNTech or Moderna vaccines or unvaccinated, regardless of vaccine doses by time since July 2021. Red dots are represented in all figures as reference values. (I) Self-report symptoms in PCR-positives by numbers of vaccination/reinfection status. Probability of reporting common (J, L) fever, cough, anosmia, ageusia or (K, M) any symptoms by Ct values and vaccination status in PCR-positives. $*p < 0.05$

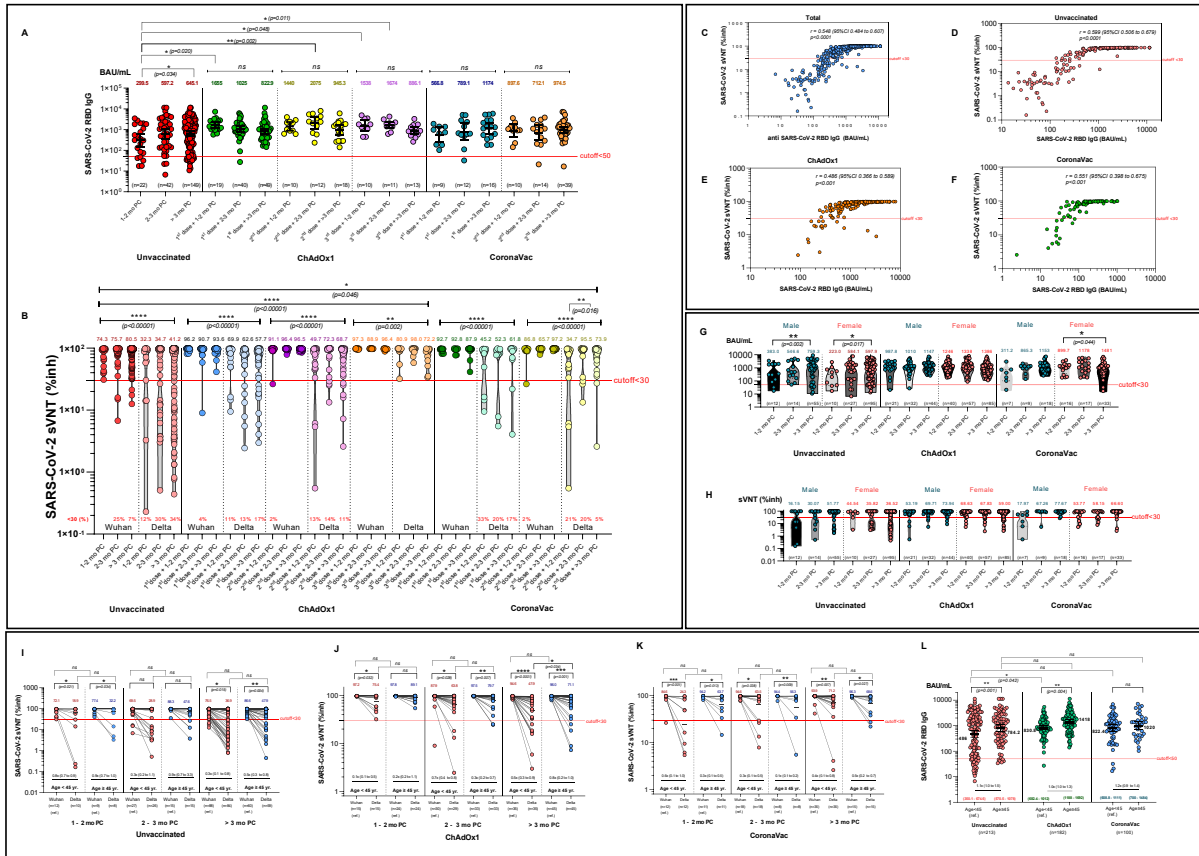


Figure 2: Immune responses after breakthrough COVID-19 infection with prior CoronaVac or ChAdOx1 vaccination during the Delta pandemic.

(A) The scatter plot of geometric mean titers (GMT) of SARS-CoV-2 anti-spike protein receptor-binding domain antibodies (Anti-RBD IgG) concentrations in serum samples obtained from subjects after COVID-19 infection and with prior various vaccination status (CoronaVac vs. ChAdOx1). Sera at different time points from patients recovered from the COVID-19 are shown as reference level (red). (B) Scatter plots demonstrates an inhibition rate of Wuhan and Delta RBD-blocking antibodies measured using a surrogate viral neutralization test (sVNT) by vaccination/reinfection status, the lower dot line represents the cut-off level for seropositivity. All sera were from the patients during the Delta pandemic. (C-F) Dot plots show the correlation between the level of anti-SARS-CoV-2 RBD IgG and surrogate viral neutralization test (sVNT) for the SARS-CoV-2 delta variant in plasma of study participants (total, C) who were unvaccinated (D), or completed two doses of ChAdOxX1 (E), CoronaVac (F) and having breakthrough infection. (G, H) Anti-RBD IgG concentrations, sVNT by gender/vaccination/reinfection status, and sVNT (I-K) by age groups/vaccination/infection status and (L) antibodies (Anti-RBD IgG) by age/vaccination.

* $p < 0.05$; ** $p < 0.01$; *** $p < 0.001$; **** $p < 0.0001$.