

# 1 **Investigation of a SARS-CoV-2 outbreak in a Texas summer camp** 2 **resulting from a single introduction**

3 Daniele M. Swetnam<sup>1</sup>, R. Elias. Alvarado<sup>2</sup>, Stephanea Sotcheff<sup>1</sup>, Brooke M. Mitchell<sup>3,4</sup>, Allan  
4 McConnell<sup>3</sup>, Rafael R.G. Machado<sup>3,4</sup>, Nehad Saada<sup>3</sup>, Florence P. Haseltine<sup>4</sup>, Sara Maknojia<sup>6</sup>,  
5 Anajane Smith<sup>5</sup>, Ping Ren<sup>7</sup>, Philip Keiser<sup>8</sup>, Scott C. Weaver<sup>3,4,9</sup>, Andrew Routh<sup>1,9,10</sup>

## 6 7 **Affiliations**

- 8 1) Department of Biochemistry and Molecular Biology, The University of Texas  
9 Medical Branch, Galveston, TX 77550, USA
- 10 2) Department of Human Pathophysiology, The University of Texas Medical Branch,  
11 Galveston, TX 77550, USA
- 12 3) Department of Microbiology and Immunology, The University of Texas Medical  
13 Branch, Galveston, TX 77550
- 14 4) World Reference Center for Emerging Viruses and Arboviruses, The University of  
15 Texas Medical Branch, Galveston, TX
- 16 5) North Texas Genome Center, University of Texas, Arlington
- 17 6) Galveston County Health District
- 18 7) Department of Pathology, The University of Texas Medical Branch, Galveston, TX  
19 77550
- 20 8) Department of Internal Medicine- Infectious Disease, The University of Texas  
21 Medical Branch
- 22 9) Institute for Human Infections and Immunity, University of Texas Medical Branch,  
23 Galveston, TX, USA

24 10) Sealy Center for Structural Biology and Molecular Biophysics, The University of  
25 Texas Medical Branch, Galveston, TX 77550, USA

26

27 **Address for Correspondence**

28 Daniele Swetnam  
29 [dmswetna@utmb.edu](mailto:dmswetna@utmb.edu)

30  
31 Andrew Routh  
32 [alrouth@utmb.edu](mailto:alrouth@utmb.edu)

33

34 **Abstract**

35 SARS-CoV-2 is the etiological agent responsible for the COVID-19 pandemic. It is estimated  
36 that only 10 aerosol-borne virus particles are sufficient to establish a secondary infection with  
37 SARS-CoV-2. However, the dispersal pattern of SARS-CoV-2 is highly variable and only 10–  
38 20% of cases are responsible for up 80% of secondary infections. The heterogeneous nature of  
39 SARS-CoV-2 transmission suggests that super-spreader events play an important role in viral  
40 transmission. Super-spreader events occur when a single person is responsible for an unusually  
41 high number of secondary infections due to a combination of biological, environmental, and/or  
42 behavioral factors. While super-spreader events have been identified as a significant factor  
43 driving SARS-CoV-2 transmission, epidemiologic studies have consistently shown that  
44 education settings do not play a major role in community transmission. However, an outbreak of  
45 SARS-CoV-2 was recently reported among 186 children (aged 10-17) and adults (aged 18 +)  
46 after attending an overnight summer camp in Texas in June 2021. To understand the  
47 transmission dynamics of the outbreak, RNA was isolated from 36 nasopharyngeal swabs

48 collected from patients that attended the camp and 19 control patients with no known connection  
49 to the outbreak. Genome sequencing on the Oxford Nanopore platform was performed using the  
50 ARTIC approaches for library preparation and bioinformatic analysis. SARS-CoV-2 amplicons  
51 were produced from all RNA samples and >70% of the viral genome was successfully  
52 reconstructed with >10X coverage for 46 samples. Phylogenetic methods were used to estimate  
53 the transmission history and suggested that the outbreak was the result of a single introduction.  
54 We also found evidence for secondary transmission from campers to the community. Together,  
55 these findings demonstrate that super-spreader events may occur during large gatherings of  
56 children.

## 57 **Main Text**

58 The rapid spread of Severe Acute Respiratory Syndrome Coronavirus 2 (SARS-CoV-2), the  
59 virus driving the Coronavirus disease 2019 (COVID-19) pandemic, is partly due to the highly  
60 infectious nature of the virus. Approximately 10 aerosol-borne virus particles are sufficient to  
61 establish a novel infection (1). However, the dispersal pattern (K) of SARS-CoV-2 is highly  
62 variable. Approximately 60–75% of infected patients do not transmit SARS-CoV-2 infection,  
63 and only 15% of cases are responsible for up to 80% of secondary infections (2). The  
64 heterogenous dispersal dynamics of SARS-CoV-2 suggest that super-spreader events play a  
65 major role in transmission dynamics.

66 Super-spreader events result in the transmission of SARS-CoV-2 from an infected  
67 individual to an unusually high number of persons due to some combination of environmental,  
68 biological and/or behavioral factors. Such events have been reported frequently, especially  
69 involving mass gatherings (reviewed (3)). Given the well-documented role of super-spreader  
70 events in the transmission of SARS-CoV-2, there is considerable concern over the risk of super-  
71 spreader events occurring in educational settings among children, their caregivers, and staff.  
72 Studies in Europe (4–11), North America (12–15), and Oman (16) have repeatedly shown that  
73 educational settings are not major drivers of SARS-CoV-2 transmission in the community,  
74 despite the dense populations and prolonged exposure of children and adolescents in classrooms.  
75 Even when infected, children usually develop milder disease (17) and emit fewer virus particles  
76 than adults (18). Outbreaks among schools report low secondary attack rates (4,19) with child-to-  
77 child transmission, which is significantly lower than adult-to-adult and adult-to-child  
78 transmission (19–22). However, several studies have noted an important distinction between  
79 transmission among young children (age 6-12) and adolescents (23,24) with reports of larger and

80 more frequent outbreaks among secondary schools (25). Rather, household transmission appears  
81 to be a more important driver of SARS-CoV-2 spread (14,22,26).

82 While educational settings have not been a major source of SARS-CoV-2 transmission,  
83 large outbreaks among children and adolescents have been reported in several summer camps  
84 throughout the United States of America (27–29), with primary attack rates as high as 46% (28)  
85 in Georgia and even 76% in Wisconsin (29). However, some reports have demonstrated success  
86 preventing and event halting the transmission of SARS-CoV-2 with multi-layered mitigation  
87 approaches, including but not limited to vaccination, pre-arrival quarantine, pre-post arrival  
88 testing, masking, and social distancing (30–32). However, studies investigating SARS-CoV-2  
89 outbreaks in summer camps have relied on diagnostic and epidemiological methods alone and  
90 have lacked phylogenetic approaches that could provide insights into the patterns of viral  
91 transmission.

92 Such an outbreak occurred at an overnight summer camp in Texas during June 2021.  
93 Four hundred and fifty-one individuals attended including 364 youths (ages 10-17) and 87 adults  
94 (age 18 or older). At the conclusion of the camp, attendees began to show symptoms and tested  
95 positive for SARS-CoV-2 by RT-PCR. An investigation of the outbreak led to the identification  
96 of 186 SARS-CoV-2 positive cases (33). The vaccination rate among attendees was low (19%  
97 fully vaccinated and 6% partially vaccinated), pre-arrival testing was not required for camp  
98 attendance, and no post-arrival testing was conducted. The primary attack rate within the camp  
99 was 41% (48% among unvaccinated attendees and 20% among vaccinated), which is consistent  
100 with outbreaks reported in overnight summer camps in Georgia (28).

101 Notably, the Texas outbreak occurred at the beginning of the Delta variant wave in the  
102 US, while cases were still low in the community but rapidly increasing. To better understand the

103 pattern of viral transmission, we obtained 55 SARS-CoV-2 positive nasopharyngeal swabs  
104 collected by the University of Texas Medical Branch, Galveston, TX from patients who attended  
105 the summer camp (36) as well as from unrelated community members who tested positive during  
106 the same time period (17). RNA was extracted from the swabs as previously described (34) and  
107 used for deep sequencing with the well-defined ARTIC nanopore approach and associated  
108 bioinformatic pipeline (34). SARS-CoV-2 reads were detected in all samples, and 70% genome  
109 coverage greater than 10X was achieved for 43 samples (31 camp attendees and 13 Galveston  
110 County residents). The results were aligned with 3 additional genomes that were isolated from an  
111 Arlington, TX family that tested positive following contact with asymptomatic attendees after  
112 the camp concluded. The Arlington genomes were sequenced using similar methods (35). All  
113 genomes are available on GSAID EPI\_ISL\_12486186-213 (Table 1).

114         The evolutionary history of the genomes was inferred using a maximum likelihood  
115 approach implemented with IQ-Tree (36) (Figure 1A). The phylogenetic tree demonstrated that  
116 all the SARS-CoV-2 genomes collected from camp attendees shared a single common ancestor,  
117 including the genomes collected from the family from Arlington, TX that became sick after  
118 contact with camp attendees. This suggests that the outbreak was initiated from a single infected  
119 individual. Genomes from campers that shared suspected risk factors, including bus or cabin  
120 assignment, did not cluster together. Similarly, the genomes collected from siblings did not  
121 appear to cluster together, suggesting that transmission occurred while the youths were at the  
122 camp as opposed to when they returned home. However, these negative results should be  
123 interpreted with caution because there was insufficient diversity to resolve all branches within  
124 the phylogeny. The lack of diversity also prevented generation of a transmission tree, which may  
125 have provided additional epidemiologically relevant insights. This was unsurprising, given the

126 short duration of the outbreak (5 days) relative to the generation time (delta variant mean=4.7  
127 days, 95% CI=4.1-5.6 days)(37). Interestingly, several genomes from patients that did not attend  
128 the camp clustered among the campers, suggesting that transmission occurred from campers to  
129 the community.

130 To further investigate the role of the camp outbreak in community transmission, all  
131 complete genomes published on GISAID collected in Galveston County and Harris County,  
132 Texas (4085 genomes in total) were compared to the genomes collected from the campers.  
133 Phylogenetic analysis using the Nextstrain platform (38) identified 29 genomes that clustered  
134 among the camper's genomes that were collected after the camp concluded between June 28,  
135 2021 and July 30, 2021, suggesting that community transmission originating from the camp  
136 outbreak continued at least until the end of July (Figure 1B-C).

137 It is essential to understand the mechanisms that support super-spreader events, such as  
138 the Texas summer camp outbreak of 2021, and the risk factors associated with them. Taken  
139 together, our study demonstrates that the Texas camp outbreak was likely the result of a single  
140 introduction that spread in the camp environment and eventually into the community, creating a  
141 chain of transmission that persisted until at least July 30, 2021. This study also highlights the  
142 risks associated with overnight summer camps that do not employ adequate prevention  
143 strategies, such vaccination, pre- and post-arrival testing, etc. Furthermore, this study is the first  
144 of our knowledge to combine epidemiological, genomic, and phylogenetic approaches to  
145 investigate an outbreak at an overnight camp. It illustrates the importance of multidisciplinary  
146 collaborations between public health specialists and evolutionary virologist in responding to this  
147 and future pandemics.

148

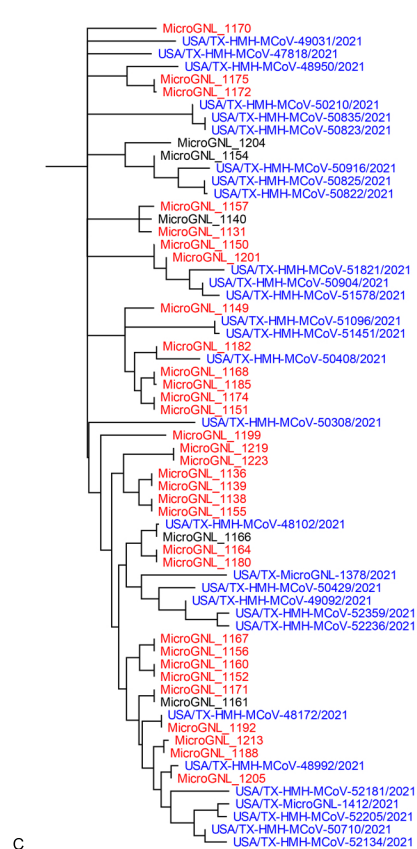
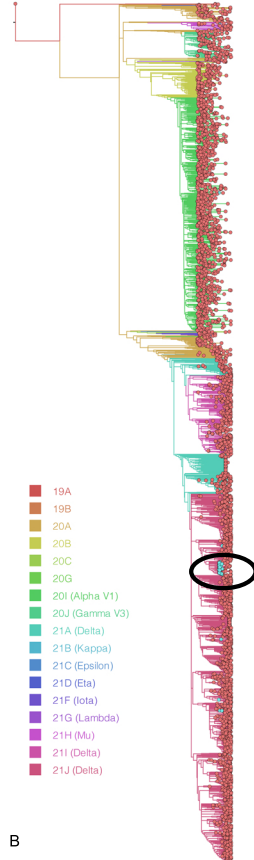
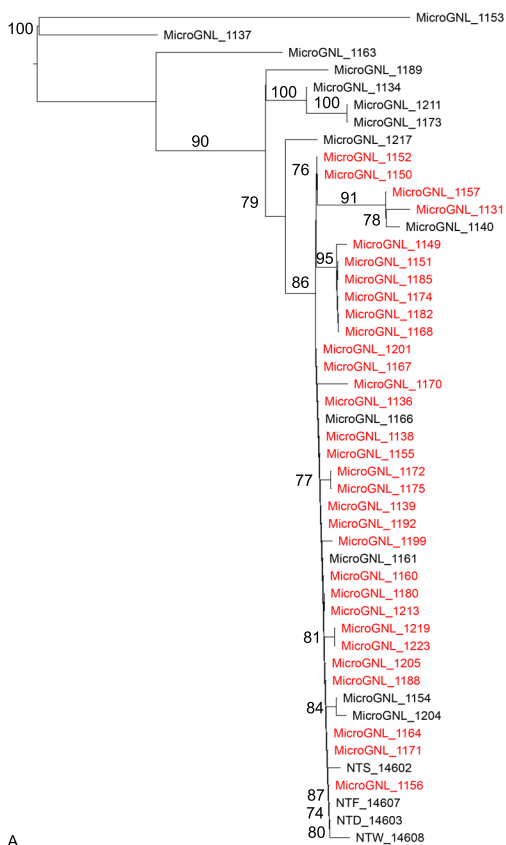
149 **Figure Captions:**

150 Figure 1. Evolutionary history of genomes collected from camp attendees. The genomes  
151 collected from camp attendees with at least 70% genomic coverage were aligned. (A) The  
152 evolutionary history was inferred with IQ-Tree using the Maximum likelihood method based on  
153 the general time reversible model. A discrete gamma distribution was used to model variation  
154 among sites and allow for invariable sites. The consensus tree following 1000 UF bootstraps is  
155 shown. Genomes collected from camp attendees are shown in red and genomes collected from  
156 community members are shown in black. Bootstrap values greater than 70 are provided. (B) All  
157 complete genomes (n=4085) available on GSAID collected in Harris and Galveston Counties  
158 between May and July were combined with the genomes sequenced in this study. The  
159 evolutionary history was inferred using the Nextstrain platform, which using Augur to perform  
160 bioinformatic analysis including aligning and filtering the genomes, generating a phylogeny with  
161 IQ-Tree, and removing polytomies, inferring node dates, and pruning branches with TimeTree.  
162 The phylogeny was visualized with Auspice and Figtree. The branches of the phylogeny were  
163 colored to indicate clade membership. The cluster containing genomes collected from campers is  
164 indicated by the black circle and expanded (C). Genomes isolated from campers and community  
165 members are depicted in red and black, respectively. Genomes obtained from GSAID are  
166 depicted in blue.

167

168





169 Table 1. Sequence Metadata. All relevant metadata are provided including sample names, dates  
 170 the samples were collected, type of patients (camper or community member) and the GSAID  
 171 accession number.

172

| Sample Name   | Collection Date | Patient Type     | Accession Number |
|---------------|-----------------|------------------|------------------|
| MicroGNL-1131 | 6/28/21         | Camper           | EPI_ISL_12486192 |
| MicroGNL-1134 | 6/28/21         | Community Member | EPI_ISL_12486173 |
| MicroGNL-1136 | 6/28/21         | Camper           | EPI_ISL_12486193 |
| MicroGNL-1138 | 6/28/21         | Camper           | EPI_ISL_12486179 |
| MicroGNL-1137 | 6/29/21         | Community Member | EPI_ISL_12740992 |
| MicroGNL-1139 | 6/28/21         | Camper           | EPI_ISL_12486194 |
| MicroGNL-1140 | 6/28/21         | Community Member | EPI_ISL_12486174 |
| MicroGNL-1149 | 6/29/21         | Camper           | EPI_ISL_12486180 |
| MicroGNL-1150 | 6/29/21         | Camper           | EPI_ISL_12486181 |
| MicroGNL-1151 | 6/29/21         | Camper           | EPI_ISL_12486182 |
| MicroGNL-1152 | 6/29/21         | Camper           | EPI_ISL_12486183 |
| MicroGNL-1153 | 6/28/21         | Community Member | EPI_ISL_12486168 |
| MicroGNL-1154 | 6/29/21         | Community Member | EPI_ISL_12486184 |
| MicroGNL-1155 | 6/28/21         | Camper           | EPI_ISL_12486195 |
| MicroGNL-1156 | 6/29/21         | Camper           | EPI_ISL_12486185 |
| MicroGNL-1157 | 6/29/21         | Camper           | EPI_ISL_12486186 |
| MicroGNL-1160 | 6/29/21         | Camper           | EPI_ISL_12486187 |
| MicroGNL-1161 | 6/29/21         | Community Member | EPI_ISL_12486172 |
| MicroGNL-1163 | 6/29/21         | Community Member | EPI_ISL_12486175 |
| MicroGNL-1164 | 6/30/21         | Camper           | EPI_ISL_12486196 |
| MicroGNL-1166 | 6/30/21         | Community Member | EPI_ISL_12486176 |
| MicroGNL-1167 | 6/29/21         | Camper           | EPI_ISL_12486197 |
| MicroGNL-1168 | 6/29/21         | Camper           | EPI_ISL_12486198 |
| MicroGNL-1170 | 6/30/21         | Camper           | EPI_ISL_12486199 |
| MicroGNL-1171 | 6/29/21         | Camper           | EPI_ISL_12486188 |
| MicroGNL-1172 | 6/30/21         | Camper           | EPI_ISL_12486200 |
| MicroGNL-1173 | 6/30/21         | Community Member | EPI_ISL_12486177 |
| MicroGNL-1174 | 6/29/21         | Camper           | EPI_ISL_12486189 |
| MicroGNL-1175 | 6/29/21         | Camper           | EPI_ISL_12486201 |
| MicroGNL-1180 | 6/30/21         | Camper           | EPI_ISL_12486202 |
| MicroGNL-1182 | 6/30/21         | Camper           | EPI_ISL_12486203 |

|               |         |                  |                  |
|---------------|---------|------------------|------------------|
| MicroGNL-1185 | 6/30/21 | Camper           | EPI_ISL_12486204 |
| MicroGNL-1188 | 7/3/21  | Camper           | EPI_ISL_12486190 |
| MicroGNL-1189 | 7/4/21  | Community Member | EPI_ISL_12486178 |
| MicroGNL-1192 | 7/2/21  | Camper           | EPI_ISL_12486205 |
| MicroGNL-1199 | 7/4/21  | Camper           | EPI_ISL_12486206 |
| MicroGNL-1201 | 7/4/21  | Camper           | EPI_ISL_12486207 |
| MicroGNL-1204 | 7/6/21  | Community Member | EPI_ISL_12486169 |
| MicroGNL-1205 | 7/6/21  | Camper           | EPI_ISL_12486191 |
| MicroGNL-1211 | 7/6/21  | Community Member | EPI_ISL_12486170 |
| MicroGNL-1213 | 7/5/21  | Camper           | EPI_ISL_12486208 |
| MicroGNL-1217 | 7/7/21  | Community Member | EPI_ISL_12486171 |
| MicroGNL-1219 | 7/7/21  | Camper           | EPI_ISL_12486209 |
| MicroGNL-1223 | 7/7/21  | Camper           | EPI_ISL_12486210 |
| NTD_14603     | 7/7/21  | Community Member | EPI_ISL_12486211 |
| NTW_14608     | 7/7/21  | Community Member | EPI_ISL_12486212 |
| NTF_14607     | 7/7/21  | Community Member | EPI_ISL_12486213 |
| NTS_14602     | 7/7/21  | Community Member | EPI_ISL_12740993 |

173

174

175 **Acknowledgments**

176 The authors of this manuscript gratefully acknowledge the following funding sources: ‘Data  
177 collection grant’ and ‘COVID-19 funding’ from IHII to ALR; NIH grant R21AI151725 from to  
178 ALR; NIH grant R24 AI120942 to SW; The Sealy and Smith Foundation to SW and UTMB;  
179 CDC Contract 200-2021-11195 to ALR and Kempner Fellowship to DMS; FAPESP Fellowship  
180 2019/27803 to RRG, the West African Center for Emerging Infectious Diseases to SW, BM,  
181 AM, RM, NS.

- 182  
183 1. Bazant MZ, Bush JWM. A guideline to limit indoor airborne transmission of COVID-19.  
184 [cited 2022 Mar 25]; Available from: <https://doi.org/10.1073/pnas.2018995118>
- 185 2. Sun K, Wang W, Gao L, Wang Y, Luo K, Ren L, et al. Transmission heterogeneities,  
186 kinetics, and controllability of SARS-CoV-2. *Science* (80- ) [Internet]. 2021 Jan 15 [cited  
187 2022 Mar 25];371(6526). Available from:  
188 <https://www.science.org/doi/full/10.1126/science.abe2424>
- 189 3. Majra D, Benson J, Pitts J, Stebbing J. SARS-CoV-2 (COVID-19) superspreader events. 2021  
190 Jan 1 [cited 2022 Mar 25];82(1). Available from:  
191 <https://doi.org/10.1016/j.jinf.2020.11.021>
- 192 4. Powell AA, Ireland G, Baawuah F, Beckmann J, Okike IO, Ahmad S, et al. Secondary attack  
193 rates in primary and secondary school bubbles following a confirmed case: Active,  
194 prospective national surveillance, November to December 2020, England. *PLoS One*  
195 [Internet]. 2022 Feb 1 [cited 2022 Mar 4];17(2). Available from:  
196 <https://pubmed.ncbi.nlm.nih.gov/35171942/>
- 197 5. Young BC, Eyre DW, Kendrick S, White C, Smith S, Beveridge G, et al. Daily testing for  
198 contacts of individuals with SARS-CoV-2 infection and attendance and SARS-CoV-2  
199 transmission in English secondary schools and colleges: an open-label, cluster-  
200 randomised trial. *Lancet* (London, England) [Internet]. 2021 Oct 2 [cited 2022 Mar  
201 9];398(10307):1217–29. Available from: <https://pubmed.ncbi.nlm.nih.gov/34534517/>
- 202 6. Mensah AA, Sinnathamby M, Zaidi A, Coughlan L, Simmons R, Ismail SA, et al. SARS-CoV-2  
203 infections in children following the full re-opening of schools and the impact of national  
204 lockdown: Prospective, national observational cohort surveillance, July-December 2020,

- 205 England. *J Infect* [Internet]. 2021 Apr 1 [cited 2022 Mar 4];82(4):67–74. Available from:  
206 <https://pubmed.ncbi.nlm.nih.gov/33639175/>
- 207 7. White P, O’Sullivan MB, Murphy N, Stapleton J, Dillon A, Brennan A, et al. An  
208 investigation into the rates of transmission of SARS-CoV-2 during the first 6 weeks of the  
209 2020-2021 academic year in primary and post-primary schools in Cork and Kerry, Ireland.  
210 *Ir J Med Sci* [Internet]. 2021 [cited 2022 Mar 4]; Available from:  
211 <https://pubmed.ncbi.nlm.nih.gov/33792855/>
- 212 8. Gandini S, Rainisio M, Iannuzzo ML, Bellerba F, Cecconi F, Scorrano L. A cross-sectional  
213 and prospective cohort study of the role of schools in the SARS-CoV-2 second wave in  
214 Italy. *Lancet Reg Heal - Eur* [Internet]. 2021 Jun 1 [cited 2022 Mar 10];5. Available from:  
215 <http://www.thelancet.com/article/S2666776221000697/fulltext>
- 216 9. Ulyte A, Radtke T, Abela IA, Haile SR, Berger C, Huber M, et al. Clustering and longitudinal  
217 change in SARS-CoV-2 seroprevalence in school children in the canton of Zurich,  
218 Switzerland: prospective cohort study of 55 schools. *BMJ* [Internet]. 2021 Mar 17 [cited  
219 2022 Mar 4];372. Available from: <https://pubmed.ncbi.nlm.nih.gov/33731327/>
- 220 10. Macartney K, Quinn HE, Pillsbury AJ, Koirala A, Deng L, Winkler N, et al. Transmission of  
221 SARS-CoV-2 in Australian educational settings: a prospective cohort study. *Lancet Child  
222 Adolesc Heal* [Internet]. 2020 Nov 1 [cited 2022 Mar 9];4(11):807–16. Available from:  
223 <https://pubmed.ncbi.nlm.nih.gov/32758454/>
- 224 11. Brandal LT, Ofitserova TS, Meijerink H, Rykkvin R, Lund HM, Hungnes O, et al. Minimal  
225 transmission of SARS-CoV-2 from paediatric COVID-19 cases in primary schools, Norway,  
226 August to November 2020. *Euro Surveill* [Internet]. 2021 Dec 1 [cited 2022 Mar 9];26(1).

- 227 Available from: <https://pubmed.ncbi.nlm.nih.gov/33413743/>
- 228 12. Doyle T, Kendrick K, Troelstrup T, Gumke M, Edwards J, Chapman S, et al. COVID-19 in  
229 Primary and Secondary School Settings During the First Semester of School Reopening -  
230 Florida, August-December 2020. MMWR Morb Mortal Wkly Rep [Internet]. 2021 [cited  
231 2022 Mar 4];70(12):437–41. Available from:  
232 <https://pubmed.ncbi.nlm.nih.gov/33764962/>
- 233 13. Hershov RB, Wu K, Lewis NM, Milne AT, Currie D, Smith AR, et al. Low SARS-CoV-2  
234 Transmission in Elementary Schools - Salt Lake County, Utah, December 3, 2020-January  
235 31, 2021. MMWR Morb Mortal Wkly Rep [Internet]. 2021 [cited 2022 Mar 4];70(12):442–  
236 8. Available from: <https://pubmed.ncbi.nlm.nih.gov/33764967/>
- 237 14. Peetluk LS, Rebeiro PF, Edwards KM, Banerjee R, Mallal SA, Aronoff DM, et al. Minimal in-  
238 school SARS-CoV-2 transmission with strict mitigation protocols at two independent  
239 schools in Nashville, TN. medRxiv Prepr Serv Heal Sci [Internet]. 2021 Nov 10 [cited 2022  
240 Mar 9]; Available from: <https://pubmed.ncbi.nlm.nih.gov/34790987/>
- 241 15. Bark D, Dhillon N, St-Jean M, Kinniburgh B, McKee G, Choi A. SARS-CoV-2 transmission in  
242 kindergarten to grade 12 schools in the Vancouver Coastal Health region: a descriptive  
243 epidemiologic study. C open [Internet]. 2021 Jul 1 [cited 2022 Mar 9];9(3):E810–7.  
244 Available from: <https://pubmed.ncbi.nlm.nih.gov/34429325/>
- 245 16. Alqayoudhi A, Al Manji A, Al khalili S, Al Maani A, Alkindi H, Alyaquobi F, et al. The role of  
246 children and adolescents in the transmission of SARS-CoV-2 virus within family clusters: A  
247 large population study from Oman. J Infect Public Health [Internet]. 2021 Nov 1 [cited  
248 2022 Mar 9];14(11):1590–4. Available from:

- 249 <https://pubmed.ncbi.nlm.nih.gov/34627056/>
- 250 17. Ludvigsson JF. Systematic review of COVID-19 in children shows milder cases and a better  
251 prognosis than adults. *Acta Paediatr* [Internet]. 2020 Jun 1 [cited 2022 Mar  
252 10];109(6):1088–95. Available from: <https://pubmed.ncbi.nlm.nih.gov/32202343/>
- 253 18. Fleischer M, Schumann L, Hartmann A, Walker RS, Ifrim L, Zadow D von, et al. Pre-  
254 adolescent children exhibit lower aerosol particle volume emissions than adults for  
255 breathing, speaking, singing and shouting. *J R Soc Interface* [Internet]. 2022 Feb 23 [cited  
256 2022 Mar 4];19(187). Available from: [/pmc/articles/PMC8864358/](https://pubmed.ncbi.nlm.nih.gov/35173498/)
- 257 19. Aizawa Y, Shobugawa Y, Tomiyama N, Nakayama H, Takahashi M, Yanagiya J, et al.  
258 Coronavirus Disease 2019 Cluster Originating in a Primary School Teachers' Room in  
259 Japan. *Pediatr Infect Dis J* [Internet]. 2021 [cited 2022 Mar 9];40(11):E418–23. Available  
260 from: <https://pubmed.ncbi.nlm.nih.gov/34561385/>
- 261 20. Gold JAW, Gettings JR, Kimball A, Franklin R, Rivera G, Morris E, et al. Clusters of SARS-  
262 CoV-2 Infection Among Elementary School Educators and Students in One School District  
263 - Georgia, December 2020-January 2021. *MMWR Morb Mortal Wkly Rep* [Internet]. 2021  
264 [cited 2022 Mar 4];70(8):289–92. Available from:  
265 <https://pubmed.ncbi.nlm.nih.gov/33630823/>
- 266 21. Jang J, Hwang MJ, Kim YY, Park SY, Yoo M, Kim SS, et al. Epidemiological Characteristics  
267 and Transmission Patterns of COVID-19 Cases Among Children and Adolescents Aged 0-  
268 18 Years in South Korea. *Risk Manag Healthc Policy* [Internet]. 2022 [cited 2022 Mar  
269 9];15:219–27. Available from: <https://pubmed.ncbi.nlm.nih.gov/35173498/>
- 270 22. Stich M, Elling R, Renk H, Janda A, Garbade SF, Müller B, et al. Transmission of Severe

- 271 Acute Respiratory Syndrome Coronavirus 2 in Households with Children, Southwest  
272 Germany, May-August 2020. *Emerg Infect Dis* [Internet]. 2021 Dec 1 [cited 2022 Mar  
273 9];27(12):3009–19. Available from: <https://pubmed.ncbi.nlm.nih.gov/34695369/>
- 274 23. Boey L, Roelants M, Merckx J, Hens N, Desombere I, Duysburgh E, et al. Age-dependent  
275 seroprevalence of SARS-CoV-2 antibodies in school-aged children from areas with low  
276 and high community transmission. *Eur J Pediatr* [Internet]. 2022 Feb 1 [cited 2022 Mar  
277 10];181(2):571–8. Available from: <https://pubmed.ncbi.nlm.nih.gov/34455523/>
- 278 24. Irfan O, Li J, Tang K, Wang Z, Bhutta ZA. Risk of infection and transmission of SARS-CoV-2  
279 among children and adolescents in households, communities and educational settings: A  
280 systematic review and meta-analysis. *J Glob Health* [Internet]. 2021 [cited 2022 Mar  
281 9];11:1–15. Available from: <https://pubmed.ncbi.nlm.nih.gov/34326997/>
- 282 25. Aiano F, Mensah AA, McOwat K, Obi C, Vusirikala A, Powell AA, et al. COVID-19 outbreaks  
283 following full reopening of primary and secondary schools in England: Cross-sectional  
284 national surveillance, November 2020. *Lancet Reg Heal Eur* [Internet]. 2021 Jul 1 [cited  
285 2022 Mar 9];6. Available from: <https://pubmed.ncbi.nlm.nih.gov/34278370/>
- 286 26. Viner R, Waddington C, Mytton O, Booy R, Cruz J, Ward J, et al. Transmission of SARS-  
287 CoV-2 by children and young people in households and schools: A meta-analysis of  
288 population-based and contact-tracing studies. *J Infect* [Internet]. 2022 Mar 1 [cited 2022  
289 Mar 10];84(3):361. Available from: [/pmc/articles/PMC8694793/](https://pubmed.ncbi.nlm.nih.gov/34278370/)
- 290 27. Tonzel JL, Sokol T. COVID-19 Outbreaks at Youth Summer Camps — Louisiana, June–July  
291 2021. *Morb Mortal Wkly Rep* [Internet]. 2021 [cited 2022 Mar 10];70(40):1425. Available  
292 from: [/pmc/articles/PMC8519274/](https://pubmed.ncbi.nlm.nih.gov/34278370/)



- 293 28. Szablewski CM, Chang KT, Brown MM, Chu VT, Yousaf AR, Anyalechi N, et al. SARS-CoV-2  
294 Transmission and Infection Among Attendees of an Overnight Camp — Georgia, June  
295 2020. *Morb Mortal Wkly Rep* [Internet]. 2020 Aug 7 [cited 2022 Mar 10];69(31):1023.  
296 Available from: [/pmc/articles/PMC7454898/](https://pubmed.ncbi.nlm.nih.gov/33119558/)
- 297 29. Pray IW, Gibbons-Burgener SN, Rosenberg AZ, Cole D, Borenstein S, Bateman A, et al.  
298 COVID-19 Outbreak at an Overnight Summer School Retreat - Wisconsin, July-August  
299 2020. *MMWR Morb Mortal Wkly Rep* [Internet]. 2020 Oct 30 [cited 2022 Mar  
300 10];69(43):1600–4. Available from: <https://pubmed.ncbi.nlm.nih.gov/33119558/>
- 301 30. Kowalsky RH, Fine S, Eisenberg M. Exclusion of SARS-COV-2 From Two Maine Overnight  
302 Camps July-August 2020. *Disaster Med Public Health Prep* [Internet]. 2021 [cited 2022  
303 Mar 10];1–10. Available from: <https://pubmed.ncbi.nlm.nih.gov/33762061/>
- 304 31. Blaisdell LL, Cohn W, Pavell JR, Rubin DS, Vergales JE. Preventing and Mitigating SARS-  
305 CoV-2 Transmission — Four Overnight Camps, Maine, June–August 2020. *MMWR Morb*  
306 *Mortal Wkly Rep*. 2020 Sep 4;69(35):1216–20.
- 307 32. Braun KVN, Drexler M, Rozenfeld RA, Deener-Agus E, Greenstein R, Agus M, et al.  
308 Multicomponent Strategies to Prevent SARS-CoV-2 Transmission - Nine Overnight Youth  
309 Summer Camps, United States, June-August 2021. *MMWR Morb Mortal Wkly Rep*  
310 [Internet]. 2021 [cited 2022 Mar 10];70(40):1420–4. Available from:  
311 <https://pubmed.ncbi.nlm.nih.gov/34618796/>
- 312 33. Baker JM, Shah MM, O’Hegarty M, Pomeroy M, Keiser P, Ren P, et al. Primary and  
313 Secondary Attack Rates by Vaccination Status after a SARS-CoV-2 B.1.617.2 (Delta)  
314 Variant Outbreak at a Youth Summer Camp — Texas, June 2021. submitted.

- 315 34. Jaworski E, Langsjoen RM, Mitchell B, Judy B, Newman P, Plante JA, et al. Tiled-clickseq  
316 for targeted sequencing of complete coronavirus genomes with simultaneous capture of  
317 rna recombination and minority variants. *Elife*. 2021 Sep 1;10.
- 318 35. Zhao LP, Roychoudhury P, Gilbert P, Schiffer J, Lybrand TP, Payne TH, et al. Mutations in  
319 viral nucleocapsid protein and endoRNase are discovered to associate with COVID19  
320 hospitalization risk. *Sci Reports* 2022 121 [Internet]. 2022 Jan 24 [cited 2022 Apr  
321 18];12(1):1–11. Available from: <https://www.nature.com/articles/s41598-021-04376-4>
- 322 36. Nguyen LT, Schmidt HA, Von Haeseler A, Minh BQ. IQ-TREE: A Fast and Effective  
323 Stochastic Algorithm for Estimating Maximum-Likelihood Phylogenies. *Mol Biol Evol*  
324 [Internet]. 2015 Jan 1 [cited 2022 Apr 14];32(1):268. Available from:  
325 [/pmc/articles/PMC4271533/](https://pubmed.ncbi.nlm.nih.gov/25816414/)
- 326 37. Hart WS, Miller E, Andrews NJ, Waight P, Maini PK, Funk S, et al. Generation time of the  
327 alpha and delta SARS-CoV-2 variants: an epidemiological analysis. *Lancet Infect Dis*  
328 [Internet]. 2022 Feb [cited 2022 Mar 25];0(0). Available from:  
329 <http://www.thelancet.com/article/S1473309922000019/fulltext>
- 330 38. Hadfield J, Megill C, Bell SM, Huddleston J, Potter B, Callender C, et al. Nextstrain: real-  
331 time tracking of pathogen evolution. Kelso J, editor. *Bioinformatics* [Internet]. 2018 Dec 1  
332 [cited 2019 Feb 15];34(23):4121–3. Available from:  
333 <https://academic.oup.com/bioinformatics/article/34/23/4121/5001388>  
334  
335