

## **Association of vasopressors with mortality in critically ill patients with COVID-19: A systematic review and meta-analysis**

Maria Mermiri MD<sup>1\*</sup>, Georgios Mavrovounis MD<sup>2\*</sup>, Eleni Laou MD, PhD<sup>1</sup>, Nikolaos Papagiannakis MD, PhD<sup>3</sup>, Ioannis Pantazopoulos MD, PhD<sup>2</sup>, Athanasios Chalkias MD, PhD<sup>1,4</sup>

<sup>1</sup> Department of Anesthesiology, Faculty of Medicine, University of Thessaly, Larisa, Greece

<sup>2</sup> Department of Emergency Medicine, Faculty of Medicine, University of Thessaly, Larisa, Greece

<sup>3</sup> First Department of Neurology, Eginition University Hospital, Medical School, National and Kapodistrian University of Athens, Athens, Greece

<sup>4</sup> Outcomes Research Consortium, Cleveland, OH 44195, United States

\*Authors contributed equally and share first authorship

**Corresponding author:** Prof. Athanasios Chalkias, University Hospital of Larisa, Department of Anesthesiology, 41110, Biopolis, Larisa, Greece. Tel.: +30 2413502953, Fax.: +30 2413501017, Email: thanoschalkias@yahoo.gr

**Declaration of competing interests:** The authors have no competing interest to declare.

**Funding:** This research did not receive any specific grant from funding agencies in

the public, commercial, or not-for-profit sectors.

NOTE: This preprint reports new research that has not been certified by peer review and should not be used to guide clinical practice.

## **ABSTRACT**

**Purpose:** The effect of vasopressors on mortality of critically ill patients with COVID-19 has not been studied extensively.

**Materials and Methods:** A systematic search of PubMed, Scopus, and clinicaltrials.gov was conducted for relevant articles until January 2022. Eligibility criteria were randomized controlled and non-randomized trials. The primary outcome was mortality at latest follow-up. The quality of studies was assessed using the MINORS tool. Paired meta-analysis was used to estimate the pooled risk ratios along with their 95% Confidence Interval.

**Results:** Analyses of 21 studies (n=7900) revealed that vasopressor use is associated with mortality in patients who receive vasopressors compared to those who do not receive vasopressor therapy [RR (95%CI): 4.26 (3.15, 5.76); p<0.001]. In-hospital and 30-day mortality are significantly higher in patients who receive vasopressors [RR (95%CI): 4.60 (2.47, 8.55); p<0.001 and RR (95%CI): 2.97 (1.72, 5.14); p<0.001, respectively]. The highest mortality rate was observed with vasopressin or epinephrine, while the lowest mortality rate was observed with angiotensin-II. Also, analyses of data from 10 studies (n=3519) revealed that vasopressor use is associated with acute kidney injury [RR (95%CI): 3.17 (2.21, 4.54); p<0.001].

**Conclusion:** Vasopressor use was associated with an increase in in-hospital mortality, 30-day mortality, and acute kidney injury in critically ill patients with COVID-19.

**Key words:** covid-19; critically ill; hemodynamics; vasopressor; intensive care; mortality

## **INTRODUCTION**

Mounting evidence suggest that COVID-19 should be perceived as a new entity with its own characteristics and distinct pathophysiology, including complex immuno-inflammatory, thrombotic, and parenchymal derangements [1]. The cytokine storm and the dysregulation of host response are more severe in COVID-19-related acute respiratory distress syndrome (ARDS) than in ARDS of other causes [2-4]. SARS-CoV-2 not only infects the respiratory tract, but also injures the vascular endothelium and epithelium [5,6].

Most critically ill patients with COVID-19 need hemodynamic support that is usually guided by the current, non-covid, surviving sepsis campaign guidelines recommending the use of vasopressors to optimize mean arterial pressure (MAP) and cardiac output and provide adequate organ perfusion [7,8]. Most of these medications improve the hemodynamic function through enhancement of the adrenergic pathway; however, they may have important side-effects due to excessive adrenergic stimulation [9-11]. Of note, exogenous catecholamines can have a pronounced impact on inflammation and immunosuppression, metabolism, endothelial lesion, platelet activation, and coagulation [12]. As critically ill patients with COVID-19 are characterized by a similar pathophysiological substrate, exogenous vasopressors could further dysregulate their physiological cascades and aggravate outcome [13]. We therefore performed a systematic review and meta-analysis to investigate the effect of vasopressors on mortality of critically ill patients with COVID-19.

## **MATERIAL AND METHODS**

The protocol was registered in the PROSPERO international prospective register of systematic reviews on 13 December 2021 (CRD42021297595). This

systematic review and meta-analysis was designed according to the preferred reporting items for systematic reviews and meta-analyses (PRISMA) checklist (Appendix A) [14].

### **Inclusion and exclusion criteria**

The inclusion criteria of the current systematic review and meta-analysis were: (1) randomized controlled trials (RCTs) and observational studies; (2) critically ill patients admitted to the intensive care (ICU) or high dependency unit (HDU), including patients admitted through the Emergency Department (ED); (3) adults ( $\geq 18$  years old) hospitalized primarily for COVID-19; (4) SARS-CoV-2 infection confirmed by reverse transcription polymerase chain reaction test of nasopharyngeal or oropharyngeal samples; and (5) vasopressor vs. no vasopressor administration. We excluded animal studies, case reports, review papers, editorials, abstracts, white papers, and non-English literature. We also excluded studies about pediatric patients and non-ICU/HDU/ED patients.

### **Outcomes of interest**

The primary outcome was mortality at latest follow-up. Secondary outcomes was to investigate (1) the hemodynamic profiles of patients at first measuring point and after six hours [heart rate, MAP, central venous pressure (CVP), urinary output, blood lactate levels, cardiac output or cardiac index, systemic vascular resistance index, central venous oxygen saturation, oxygen delivery index, and oxygen consumption index]; (2) the number of participants who achieved the target MAP ( $\geq 65$  mmHg); (3) time to achieve the target MAP; (4) adverse events including arrhythmia, acute myocardial infarction, cardiac arrest, acute mesenteric ischemia,

digital ischemia, acute kidney injury (AKI); (5) vasopressor-free days; (6) ICU or HDU length of stay; (7) duration of mechanical ventilation; (8) ventilator free days; (9) hospital length of stay; and (10) all-cause mortality at 90-days.

### **Search strategy**

The search strategy was intended to explore all available published and unpublished studies from January 2020 to January 2022. A comprehensive initial search was employed in PubMed (MEDLINE), Scopus, and clinicaltrials.gov databases by two independent investigators (MM, GM) followed by an analysis of the textwords contained in Title/Abstract and indexed terms. A second search was conducted by combining free text words (vasopressor, epinephrine, norepinephrine, phenylephrine, vasopressin, dopamine, angiotensin-II, covid-19, critically ill, intensive care) and indexed terms with Boolean operators. Finally, a third search was conducted with the reference lists of all identified reports and articles for additional studies. Appendix B presents the exact search algorithm used for all databases.

### **Data extraction**

The data from each study were extracted by two independent authors (MM, GM) with a customized format. Any disagreements between the two independent authors were resolved by four other authors (EL, IP, NP, AC). Publication details (authors, year), study information (design, population, department of admission, follow-up, inclusion-exclusion criteria, number of cases/cohort-size, and subgroups), hemodynamic profile (heart rate, MAP, CVP, urinary output, blood lactate levels, cardiac output or cardiac index, systemic vascular resistance index, central venous oxygen saturation, oxygen delivery index, oxygen consumption index) at first

measuring point and six hours after vasopressor use, the number of participants who achieved the target MAP and time to achieve the target MAP, adverse events, vasopressor-free days, ICU length of stay, hospital length of stay, duration of mechanical ventilation, ventilator-free days, all-cause mortality in all groups at 28 or 30 days, and all-cause mortality at 90 days were extracted in a pre-designed excel spreadsheet. The definition used for AKI and the mortality follow-up timepoints for each study are presented in Appendix C1. Authors of studies with missing data were contacted in an attempt to obtain relevant data.

### **Assessment of methodological quality**

Articles identified for retrieval were assessed by two independent authors (MM, GM) for methodological quality before inclusion in the review using standardized critical appraisal tools. The quality of the included observational studies was assessed using the MINORS tool [15], while the Risk of Bias 2.0 (RoB 2.0) tool was used for RCTs [16]. Any disagreements between the authors appraising the articles were resolved through discussion with the other authors.

### **Data analysis and Synthesis**

A paired meta-analysis was used to estimate the pooled risk ratios (RR) along with their 95% Confidence Interval (95% CI). Based on the presence of statistical heterogeneity, the meta-analysis was conducted according to fixed- or random effect models. The statistical heterogeneity was estimated by the use of the Cochran's Q and  $I^2$  indices. When  $I^2 > 50\%$  and/or  $P_Q < 0.10$ , the random effects model was used, otherwise the fixed effects model was implemented [17]. Funnel plots as well as the Begg's test were used to determine the existence of publication bias [18,19]. The

statistical significance was set at  $p < 0.05$ . All statistical analyses were performed in Review Manager (Rev-Man) [Computer program], Version 5.3. Copenhagen: The Nordic Cochrane Centre, The Cochrane Collaboration, 2014.

## **RESULTS**

Altogether, 809 relevant citations were identified and screened, while 87 studies were included in our final assessment for possible data extraction (Fig. 1). In total, data extraction was possible in 33 studies [20-52].

### **Study characteristics**

All the 33 included studies were observational in their design [20-52]. The studies originated from multiple countries [20,21,23,32-35,38,42,43,45,48,51]. Nineteen studies included only patients admitted to the ICU [20,22,24,25,27,30-32,35-39,43-47,52], five studies included patients admitted to a COVID-19-dedicated HDU [28,29,33,34,42], eight studies included patients who were admitted to both HDU and ICU [21,23,26,40,41,48,49,51], and one study included Emergency Department patients who were later admitted either to the HDU or ICU [50]. Thirty studies included data about patients who received *vs.* patients who did not receive vasopressors [20-37,39-48,50,52] and were included in review. Moreover, three studies included patients who received angiotensin-II [38,49,51] and, out of those, two compared the use of angiotensin-II with other vasopressors [49,51] (Appendix C2). Table 1 summarizes the main characteristics of the included studies.

### **Synthesis including all patients**

#### *Primary outcome*

Twenty-one out of the 33 included studies provided data on hospital mortality in patients who received vs. patients who did not receive vasopressors, resulting in a total population of 7900 individuals [25,27,31-37,39-48,50,52]. Due to high heterogeneity ( $I^2$ : 94%,  $P_Q < 0.001$ ), the random-effects model was implemented. Vasopressor use is associated with mortality in patients who receive vasopressors compared to those who do not receive vasopressor therapy [RR (95%CI): 4.26 (3.15, 5.76);  $p < 0.001$ ] (Figure 2). Visual inspection of the funnel plot (Appendix D1) and Begg's test ( $p = 0.86$ ) did not reveal significant publication bias.

We performed subgroup analyses based on the department of admission. The results for all three subgroups, namely ICU [RR (95%CI): 3.45 (2.32, 5.13);  $p < 0.001$ ], HDU [RR (95%CI): 6.25 (4.63, 8.44);  $p < 0.001$ ], and ICU + HDU [RR (95%CI): 5.52 (2.51, 12.15);  $p < 0.001$ ], remained statistically significant for higher mortality rates in patients who received vasopressors.

Subgroup analyses were also performed based on the mortality follow-up timepoints. Only the in-hospital and 30-day mortality subgroups had three or more studies that allowed data extraction and analysis. The in-hospital and 30-day mortality were statistically significantly higher in patients who received vasopressors [RR (95%CI): 4.60 (2.47, 8.55);  $p < 0.001$  and RR (95%CI): 2.97 (1.72, 5.14);  $p < 0.001$ , respectively].

#### Effect of major vasopressors on mortality

Four studies provided data on mortality based on the specific vasopressor(s) administered [38,43,49,51]. The highest mortality rate was observed in patients treated with vasopressin or epinephrine (78% and 76%, respectively) [43]. Three of those studies investigated the role of angiotensin-II as a sole or second-, third-, fourth-



, or fifth-line vasopressor agent [38,49,51]. These studies showed the lowest mortality rate. The relevant data are depicted in Table 2.

### *Secondary outcomes*

#### Acute Kidney Injury

Ten studies provided data on AKI in patients who received *vs.* patients who did not receive vasopressors, resulting in a total population of 3519 individuals [21-23,25-30,44]. Due to high heterogeneity ( $I^2$ : 92%,  $P_Q < 0.001$ ), the random-effects model was implemented. In addition, vasopressor use is associated with AKI in patients who receive vasopressors compared to those who do not receive vasopressor therapy [RR (95% CI): 3.17 (2.21, 4.54);  $p < 0.001$ ] (Figure 3).

Subgroup analyses were performed based on the definition of AKI that was used in the included studies. Only the subgroup with patients at all KDINGO stages included more than three studies, allowing for meta-analysis to be performed. Specifically, vasopressor use is associated with AKI in patients who receive vasopressors compared to those who do not receive vasopressor therapy [RR (95% CI): 2.29 (1.67-3.14);  $p < 0.001$ ] (Figure 4).

#### Other secondary outcomes

No data were identified for the remaining secondary outcomes.

### **Risk of bias, quality of evidence**

The overall quality of the studies, as assessed by the MINORS tool, ranged between moderate and high. The exact score for each study is available in Appendix C3. In addition, visual inspection of the funnel plot (Appendix D2) and the Begg's

test ( $p=0.18$ ) did not reveal significant publication bias for the studies included in the AKI analysis. All included studies were observational non-randomized studies with striking heterogeneity that does not allow to derive an estimate of overall effect. According to GRADE criteria, the quality of evidence provided by the studies was low.

## **DISCUSSION**

Many high-quality RCTs have addressed the effects of vasopressors on the outcomes of non-covid patients, yet their impact on mortality in patients with COVID-19 had not been studied so far. The most important finding of this systematic review and meta-analysis is that vasopressor use is associated with mortality in critically ill patients with COVID-19. Although these results are based on published non-randomized evidence, they raise significant concerns for the routine management of these individuals.

The mortality of critically ill patients with COVID-19 is high [53,54]. A main cause is the characteristics of the SARS-CoV-2 infection, which can rapidly affect other organs including the cardiovascular system [55]. Although administration of vasopressors is a fundamental treatment of hypotension, the traditional (non-covid) hemodynamic management of shock and the adverse effects of vasoactive agents may be associated with complications and poor outcome in patients with COVID-19. Indeed, the present analysis reveals an association between vasopressor use and in-hospital mortality or mortality at 30 days. This association may be coincidental due to the severity of critical illness. However, norepinephrine, the suggested first-line agent (weak recommendation) [56], have numerous biological effects that can affect many systems including the immune and hematological systems, the renin-angiotensin-

aldosterone system, the cardiovascular and respiratory systems, and others [13], suggesting a complex interplay that can have a detrimental effect on survival. Future RCTs should investigate the degree to which the association between vasopressor use and mortality is causal.

Of the 33 included studies in this systematic review and meta-analysis, only four studies included data on specific vasopressors. The highest mortality rate was observed in patients receiving vasopressin or epinephrine. Although one can appraise that these patients had severe shock necessitating second- and third-line vasopressors [7], these observations merit further discussion. Epinephrine is well-known for its adverse effects in non-covid and COVID-19 patients [57], but our observations regarding vasopressin are quite interesting. Although vasopressin infusion reduces total norepinephrine-equivalent dose requirements and may be renal and pulmonary vasculature sparing [58], there is evidence showing a pronounced activation of the vasopressin system in COVID-19 patients and that molecular complexes form between the SARS-CoV-2 spike protein, soluble angiotensin-converting enzyme-2 (ACE2), and vasopressin, facilitating cellular infection and aggravating outcome [59,60]. However, data from a small clinical cohort did not show a clinically relevant effect of vasopressin infusion on viral mRNA level in critically ill patients with COVID-19 (but who were not treated with corticosteroids or interleukin-6 antagonists) [58]. The findings of the present analysis suggest that the addition of arginine vasopressin agonists might not be a good choice for these individuals. Considering that vasopressin is suggested as a second-line vasopressor in the latest international guidelines [7, 56], further research is required to establish the therapeutic efficiency of vasopressin in critically ill patients with COVID-19.

Another intriguing finding is the low mortality rate in patients receiving angiotensin-II as a sole or second-line vasopressor agent. Serpa Neto et al. showed a potentially positive effect of angiotensin-II on blood pressure and fraction of inspired oxygen in COVID-19 patients, but they did not collect data regarding treatment with steroids or other drugs, which may have affected their results [49]. Leisman et al. and Ofose-Barko et al. reported that angiotensin-II treatment was associated with rapid improvement in multiple physiologic indices [38,51]. The rationale for angiotensin-II therapy is based on decreasing the expression of the ACE2 receptors, which can reduce the entry of the COVID-19 virus into cells [61,62]. However, the progressive loss of ACE2 shifts the system to an overall higher angiotensin level due to the impaired ability of ACE2 to degrade it, which may explain the initial hemodynamic stability of patients with COVID-19 [63]. Therefore, exogenous use of angiotensin-II may be harmful in patients with increased endogenous levels. Taking into consideration its potential favorable effects in critically ill patients with COVID-19, randomized controlled trials are needed to further evaluate angiotensin-II for the treatment of COVID-19-related shock.

A meta-analysis of randomized clinical trials with non-covid patients reported that vasopressor therapy is not associated with differences in mortality in the overall population, while prophylactic administration in patients with vasodilatory shock may improve survival [64]. In addition, a Cochrane systematic review found no evidence of substantial differences in total mortality between several vasopressors [65]. Nevertheless, vasopressors are a heterogeneous class of drugs with powerful and immediate haemodynamic effects, and each drug has advantages and disadvantages. These characteristics are particularly important in patients with COVID-19 who are characterized by unique pathophysiological disturbances and different hemodynamic

phenotypes that necessitate a thorough understanding of the underlying complex pathophysiology and careful selection and administration of vasoactive agents.

In COVID-19, the progressive hypoxemia initially increases cardiac output and capillary recruitment, which maintain microcirculatory oxygen-extraction capacity by increasing red blood cell availability (silent hypoxia) [66-68]. However, microcirculatory flow decreases proportionally to the increasing inflammation, hypercoagulation, and thrombosis, resulting in multi-organ failure at later stages [66,69-71]. In the study by Mesquida et al., patients showed alterations in systemic microcirculatory status, and the degree of these alterations correlated with the severity of the respiratory disease [24]. The relationship between MAP and organ blood flow may be different in critically ill patients with COVID-19 and improving only macrocirculation might be inadequate to maintain tissue perfusion. In these patients, vasopressor use can overwhelm endogenous receptor-mediated vessel regulation, further contributing to the loss of hemodynamic coherence [67,72], and therefore, hemodynamic management should focus on optimizing microcirculatory perfusion instead of attaining a predefined MAP target.

## **Limitations**

This meta-analysis was based on observational studies. Due to the lack of randomized controlled trials, the synthesis of all the available knowledge on the specific outcomes was difficult. This is an inherent problem to observational studies, and not least considering the difficulties of collecting data during the periods of surges across the globe. Moreover, we could not obtain individual data to reach a minimal level of evidence that could result on relevant findings and thus, the effects of different vasopressors may reflect differences in severity and/or practices.

International registries are necessary to collect uniform data to evaluate the effect of vasopressors on mortality and other outcomes in critically ill patients with COVID-19.

In addition, the level of heterogeneity was high and the conclusions drawn from this review must be cautious and reserved. This analysis included patients from various settings, i.e., HDU, ICU, and Emergency Department. Consequently, it may have included heterogeneous groups of patients with COVID-19. No data from the included studies was available to adjust the resulting odds ratios according to age, comorbidities, the presence of septic shock, or other known factors that affect ICU mortality. Also, most of the secondary outcomes could not be assessed. Another limitation is the heterogeneity of definitions of AKI that were used across different studies. Finally, non-English publications were not included.

## **CONCLUSIONS**

Vasopressor use was associated with an increase in in-hospital mortality, 30-day mortality, and acute kidney injury in critically ill patients with COVID-19. The lower mortality rate in patients receiving angiotensin-II as a sole or second-line vasopressor agent and the higher mortality rate in patients receiving vasopressin and epinephrine are worth noting. However, the included studies were observational non-randomized studies with striking heterogeneity that does not allow to derive an estimate of overall effect. Randomized controlled trials are required to estimate the correlation of specific vasopressors with adverse effects and mortality in this population.

## **PERSPECTIVES**

The results of the present systematic review and meta-analysis suggest for early administration of low-dose vasopressors, with or without inodilator agents, in an effort to avoid excessive doses that could have detrimental effect on survival, especially at later disease stages. An alternative second-line vasopressor may be angiotensin-II. However, further immediate research is recommended to elucidate the effects of angiotensin-II and other vasopressors acting through pathways other than the adrenergic pathway as sole or second-line vasopressor agents. These agents may be associated with a significant increase in survival.

A possible explanation for the association of vasopressors with mortality may lie in the microcirculation [66-72]. The physiological pulsatile shear stress from normal laminar flow maintains the normal endothelial cell functions and the expression of ACE2s and other anticoagulant/antithrombotic and antioxidant substances [73]. However, dysfunctional endothelium resulting from turbulent flow displays a hypercoagulant/prothrombotic and pro-oxidant state and impairs microcirculatory reactivity and flow [74]. Therapeutic approaches should consider the systemic vascular involvement, allowing an individualized, physiology-guided management. It is almost certain that there are distinct COVID-19 phenotypes/subphenotypes that include the impairment of microvasculature as key feature and their identification will have important therapeutic implications [75]. Of note, an increased CVP in critically ill patients with COVID-19 may impair venous return and retrogradely increase post-capillary venular pressure which, together with excessive vasopressor doses, impair capillary perfusion and increase the diffusion distance of oxygen [76,77]. Thus, minimizing fluid administration is also crucial for improving tissue perfusion in this population.

The present systematic review and meta-analysis analyzed data from retrospective studies only. Further research and well-designed trials are necessary to investigate the effect of the type (catecholamines vs. non-catecholamines), time of administration, and infusion rates of vasopressors in order to develop more specific treatment strategies and integrate a more individualized approach in patients with COVID-19. Although designing and conducting RCTs on vasopressors during a disease outbreak may be difficult, the need for assessing their effect on the outcome of critically ill patients with COVID-19 is imperative. We recommend the exploration of suitable animal models and the integration of translational research to aid in the identification of the most suitable vasopressor in this population and also, to better define homogenous target (sub)populations for trials [78-80]. At the same time, large pragmatic generalizable RCTs with very broad inclusion criteria will help improve generalizability of the findings.



**Acknowledgements:** We would like to thank Dr. George L. Anesi, University of Pennsylvania Perelman School of Medicine, for responding to our request for additional study data.

**Author contributions:** Conceptualization: AC. Data curation: MM, GM. Formal analysis: MM, GM. Methodology: AC, MM, GM, EL, NP, IP. Project administration: AC. Visualization: MM, GM, EL, NP, IP, AC. Writing - original draft: AC. Writing - review & editing: AC, MM, GM, EL, NP, IP.

**Funding:** This research did not receive any specific grant from funding agencies in the public, commercial, or not-for-profit sectors.

**Data Sharing Statement:** Data can be made available upon request after publication through a collaborative process. Researchers should provide a methodically sound proposal with specific objectives in an approval proposal. Please contact the corresponding author for additional information.

**Declaration of competing interests:** The authors have no competing interest to declare.

## REFERENCES

- [1] Osuchowski MF, Winkler MS, Skirecki T, Cajander S, Shankar-Hari M, Lachmann G, Monneret G, Venet F, Bauer M, Brunkhorst FM, Weis S, Garcia-Salido A, Kox M, Cavaillon JM, Uhle F, Weigand MA, Flohé SB, Wiersinga WJ, Almansa R, de la Fuente A, Martin-Loeches I, Meisel C, Spinetti T, Schefold JC, Cilloniz C, Torres A, Giamarellos-Bourboulis EJ, Ferrer R, Girardis M, Cossarizza A, Netea MG, van der Poll T, Bermejo-Martín JF, Rubio I. The COVID-19 puzzle: deciphering pathophysiology and phenotypes of a new disease entity. *Lancet Respir Med* 2021;9:622-42. [https://doi.org/10.1016/S2213-2600\(21\)00218-6](https://doi.org/10.1016/S2213-2600(21)00218-6).
- [2] Sinha P, Calfee CS, Cherian S, Brealey D, Cutler S, King C, Killick C, Richards O, Cheema Y, Bailey C, Reddy K, Delucchi KL, Shankar-Hari M, Gordon AC, Shyamsundar M, O'Kane CM, McAuley DF, Szakmany T. Prevalence of phenotypes of acute respiratory distress syndrome in critically ill patients with COVID-19: a prospective observational study. *Lancet Respir Med* 2020;8:1209-18. [https://doi.org/10.1016/S2213-2600\(20\)30366-0](https://doi.org/10.1016/S2213-2600(20)30366-0).
- [3] Puelles VG, Lütgehetmann M, Lindenmeyer MT, Sperhake JP, Wong MN, Allweiss L, Chilla S, Heinemann A, Wanner N, Liu S, Braun F, Lu S, Pfefferle S, Schröder AS, Edler C, Gross O, Glatzel M, Wichmann D, Wiech T, Kluge S, Pueschel K, Aepfelbacher M, Huber TB. Multiorgan and Renal Tropism of SARS-CoV-2. *N Engl J Med* 2020;383:590-2. <https://doi.org/10.1056/NEJMc2011400>.
- [4] Wichmann D, Sperhake JP, Lütgehetmann M, Steurer S, Edler C, Heinemann A, Heinrich F, Mushumba H, Kniep I, Schröder AS, Burdelski C, de Heer G, Nierhaus A, Frings D, Pfefferle S, Becker H, Bredereke-Wiedling H, de

- Weerth A, Paschen HR, Sheikhzadeh-Eggers S, Stang A, Schmiedel S, Bokemeyer C, Addo MM, Aepfelbacher M, Püschel K, Kluge S. Autopsy Findings and Venous Thromboembolism in Patients With COVID-19: A Prospective Cohort Study. *Ann Intern Med* 2020;173:268-77. <https://doi.org/10.7326/M20-2003>.
- [5] Varga Z, Flammer AJ, Steiger P, Haberecker M, Andermatt R, Zinkernagel AS, Mehra MR, Schuepbach RA, Ruschitzka F, Moch H. Endothelial cell infection and endotheliitis in COVID-19. *Lancet* 2020;395:1417-8. [https://doi.org/10.1016/S0140-6736\(20\)30937-5](https://doi.org/10.1016/S0140-6736(20)30937-5).
- [6] Gupta A, Madhavan MV, Sehgal K, Nair N, Mahajan S, Sehrawat TS, Bikdeli B, Ahluwalia N, Ausiello JC, Wan EY, Freedberg DE, Kirtane AJ, Parikh SA, Maurer MS, Nordvig AS, Accili D, Bathon JM, Mohan S, Bauer KA, Leon MB, Krumholz HM, Uriel N, Mehra MR, Elkind MSV, Stone GW, Schwartz A, Ho DD, Bilezikian JP, Landry DW. Extrapulmonary manifestations of COVID-19. *Nat Med* 2020;26:1017-32. <https://doi.org/10.1038/s41591-020-0968-3>.
- [7] Evans L, Rhodes A, Alhazzani W, Antonelli M, Coopersmith CM, French C, Machado FR, Mcintyre L, Ostermann M, Prescott HC, Schorr C, Simpson S, Wiersinga WJ, Alshamsi F, Angus DC, Arabi Y, Azevedo L, Beale R, Beilman G, Belley-Cote E, Burry L, Cecconi M, Centofanti J, Coz Yataco A, De Waele J, Dellinger RP, Doi K, Du B, Estenssoro E, Ferrer R, Gomersall C, Hodgson C, Møller MH, Iwashyna T, Jacob S, Kleinpell R, Klompas M, Koh Y, Kumar A, Kwizera A, Lobo S, Masur H, McGloughlin S, Mehta S, Mehta Y, Mer M, Nunnally M, Oczkowski S, Osborn T, Papathanassoglou E, Perner A, Puskarich M, Roberts J, Schweickert W, Seckel M, Sevransky J, Sprung

- CL, Welte T, Zimmerman J, Levy M. Surviving sepsis campaign: international guidelines for management of sepsis and septic shock 2021. *Intensive Care Med* 2021;47:1181-247. <https://doi.org/10.1007/s00134-021-06506-y>.
- [8] Botta M, Tsonas AM, Pillay J, Boers LS, Algera AG, Bos LDJ, Dongelmans DA, Hollmann MW, Horn J, Vlaar APJ, Schultz MJ, Neto AS, Paulus F; PRoVENT-COVID Collaborative Group. Ventilation management and clinical outcomes in invasively ventilated patients with COVID-19 (PRoVENT-COVID): a national, multicentre, observational cohort study. *Lancet Respir Med* 2021;9:139-48. [https://doi.org/10.1016/S2213-2600\(20\)30459-8](https://doi.org/10.1016/S2213-2600(20)30459-8).
- [9] Dünser MW, Hasibeder WR. Sympathetic overstimulation during critical illness: adverse effects of adrenergic stress. *J Intensive Care Med* 2009;24:293-316. <https://doi.org/10.1177/0885066609340519>.
- [10] Schmittinger CA, Torgersen C, Luckner G, Schröder DC, Lorenz I, Dünser MW. Adverse cardiac events during catecholamine vasopressor therapy: a prospective observational study. *Intensive Care Med* 2012;38:950-8. <https://doi.org/10.1007/s00134-012-2531-2>.
- [11] Bangash MN, Kong ML, Pearse RM. Use of inotropes and vasopressor agents in critically ill patients. *Br J Pharmacol* 2012;165:2015-33. <https://doi.org/10.1111/j.1476-5381.2011.01588.x>.
- [12] Hartmann C, Radermacher P, Wepler M, Nußbaum B. Non-Hemodynamic Effects of Catecholamines. *Shock* 2017;48:390-400. <https://doi.org/10.1097/SHK.0000000000000879>.
- [13] Gubbi S, Nazari MA, Taieb D, Klubo-Gwiedzinska J, Pacak K. Catecholamine physiology and its implications in patients with COVID-19.

Lancet Diabetes Endocrinol 2020;8:978-86. [https://doi.org/10.1016/S2213-8587\(20\)30342-9](https://doi.org/10.1016/S2213-8587(20)30342-9).

- [14] Page MJ, McKenzie JE, Bossuyt PM, Boutron I, Hoffmann TC, Mulrow CD, Shamseer L, Tetzlaff JM, Akl EA, Brennan SE, Chou R, Glanville J, Grimshaw JM, Hróbjartsson A, Lalu MM, Li T, Loder EW, Mayo-Wilson E, McDonald S, McGuinness LA, Stewart LA, Thomas J, Tricco AC, Welch VA, Whiting P, Moher D. The PRISMA 2020 statement: an updated guideline for reporting systematic reviews. *BMJ* 2021;372:n71. <https://doi.org/10.1136/bmj.n71>.
- [15] Sterne JA, Hernán MA, Reeves BC, Savović J, Berkman ND, Viswanathan M, Henry D, Altman DG, Ansari MT, Boutron I, Carpenter JR, Chan AW, Churchill R, Deeks JJ, Hróbjartsson A, Kirkham J, Jüni P, Loke YK, Pigott TD, Ramsay CR, Regidor D, Rothstein HR, Sandhu L, Santaguida PL, Schünemann HJ, Shea B, Shrier I, Tugwell P, Turner L, Valentine JC, Waddington H, Waters E, Wells GA, Whiting PF, Higgins JP. ROBINS-I: a tool for assessing risk of bias in non-randomised studies of interventions. *BMJ* 2016;355:i4919. <https://doi.org/10.1136/bmj.i4919>.
- [16] Sterne JAC, Savović J, Page MJ, Elbers RG, Blencowe NS, Boutron I, Cates CJ, Cheng HY, Corbett MS, Eldridge SM, Emberson JR, Hernán MA, Hopewell S, Hróbjartsson A, Junqueira DR, Jüni P, Kirkham JJ, Lasserson T, Li T, McAleenan A, Reeves BC, Shepperd S, Shrier I, Stewart LA, Tilling K, White IR, Whiting PF, Higgins JPT. RoB 2: a revised tool for assessing risk of bias in randomised trials. *BMJ* 2019;366:l4898. <https://doi.org/10.1136/bmj.l4898>.

- [17] Higgins JP, Thompson SG. Quantifying heterogeneity in a meta-analysis. *Stat Med* 2002;21:1539-58. <https://doi.org/10.1002/sim.1186>.
- [18] Begg CB, Mazumdar M. Operating characteristics of a rank correlation test for publication bias. *Biometrics* 1994;50:1088-101.
- [19] Mavridis D, Salanti G. How to assess publication bias: funnel plot, trim-and-fill method and selection models. *Evid Based Ment Health* 2014;17:30. <https://doi.org/10.1136/eb-2013-101699>.
- [20] Ionescu F, Zimmer MS, Petrescu I, Castillo E, Bozyk P, Abbas A, Abplanalp L, Dogra S, Nair GB. Extubation Failure in Critically Ill COVID-19 Patients: Risk Factors and Impact on In-Hospital Mortality. *J Intensive Care Med* 2021;36:1018-24. <https://doi.org/10.1177/08850666211020281>.
- [21] Pelayo J, Lo KB, Bhargav R, Gul F, Peterson E, DeJoy Iii R, Salacup GF, Albano J, Gopalakrishnan A, Azmaiparashvili Z, Patarroyo-Aponte G, Rangaswami J. Clinical Characteristics and Outcomes of Community- and Hospital-Acquired Acute Kidney Injury with COVID-19 in a US Inner City Hospital System. *Cardiorenal Med* 2020;10:223-31. <https://doi.org/10.1159/000509182>.
- [22] Lowe R, Ferrari M, Nasim-Mohi M, Jackson A, Beecham R, Veighey K, Cusack R, Richardson D, Grocott M, Levett D, Dushianthan A; University Hospital Southampton Critical Care Team and the REACT COVID investigators. Clinical characteristics and outcome of critically ill COVID-19 patients with acute kidney injury: a single centre cohort study. *BMC Nephrol* 2021;22:92. <https://doi.org/10.1186/s12882-021-02296-z>.
- [23] Hansrivijit P, Gadhiya KP, Gangireddy M, Goldman JD. Risk Factors, Clinical Characteristics, and Prognosis of Acute Kidney Injury in Hospitalized

- COVID-19 Patients: A Retrospective Cohort Study. *Medicines (Basel)* 2021;8:4. <https://doi.org/10.3390/medicines8010004>.
- [24] Mesquida J, Caballer A, Cortese L, Vila C, Karadeniz U, Pagliuzzi M, Zanoletti M, Pacheco AP, Castro P, García-de-Acilu M, Mesquita RC, Busch DR, Durduran T; HEMOCOVID-19 Consortium. Peripheral microcirculatory alterations are associated with the severity of acute respiratory distress syndrome in COVID-19 patients admitted to intermediate respiratory and intensive care units. *Crit Care* 2021;25:381. <https://doi.org/10.1186/s13054-021-03803-2>.
- [25] Ghosn M, Attallah N, Badr M, Abdallah K, De Oliveira B, Nadeem A, Varghese Y, Munde D, Salam S, Abduljawad B, Saleh K, Elkambergy H, Wahla A, Taha A, Dibu J, Bayrlee A, Hamed F, Rahman N, Mallat J. Severe Acute Kidney Injury in Critically Ill Patients with COVID-19 Admitted to ICU: Incidence, Risk Factors, and Outcomes. *J Clin Med* 2021;10:1217. <https://doi.org/10.3390/jcm10061217>.
- [26] Farooqui MA, Almegren A, Binrushud SR, Alnuwaiser FA, Almegren NM, Alhamied NA, Aloraifi EA, Alothman AM, Aldafas MA, Ardah HI, Alhejaili FF. Incidence and Outcome of Acute Kidney Injury in Patients Hospitalized With Coronavirus Disease-19 at a Tertiary Care Medical Center in Saudi Arabia. *Cureus* 2021;13:e18927. <https://doi.org/10.7759/cureus.18927>.
- [27] Neves PDMM, Sato VAH, Mohrbacher S, Ferreira BMC, Oliveira ÉS, Pereira LVB, Bales AM, Nardotto LL, Ferreira JN, Machado DJ, Bassi E, Silva-Júnior A, Chocair PR, Cuvello-Neto AL. Acute Kidney Injury Due to COVID-19 in Intensive Care Unit: An Analysis From a Latin-American

Center. Front Med (Lausanne) 2021;8:620050.

<https://doi.org/10.3389/fmed.2021.620050>.

- [28] Bernardo J, Gonçalves J, Gameiro J, Oliveira J, Marques F, Duarte I, Branco C, Costa C, Carreiro C, Fonseca JN, Braz S, Lopes JA. The impact of transient and persistent acute kidney injury in hospital mortality in COVID-19 patients. *J Bras Nefrol* 2021. In press. <https://doi.org/10.1590/2175-8239-JBN-2021-0123>.
- [29] Hardenberg JB, Stockmann H, Aigner A, Gotthardt I, Enghard P, Hinze C, Balzer F, Schmidt D, Zickler D, Kruse J, Körner R, Stegemann M, Schneider T, Schumann M, Müller-Redetzky H, Angermair S, Budde K, Weber-Carstens S, Witzenrath M, Treskatsch S, Siegmund B, Spies C, Suttorp N, Rauch G, Eckardt KU, Schmidt-Ott KM. Critical Illness and Systemic Inflammation Are Key Risk Factors of Severe Acute Kidney Injury in Patients With COVID-19. *Kidney Int Rep* 2021;6:905-15. <https://doi.org/10.1016/j.ekir.2021.01.011>.
- [30] Geri G, Darmon M, Zafrani L, Fartoukh M, Voiriot G, Le Marec J, Nemlaghi S, Vieillard-Baron A, Azoulay E. Acute kidney injury in SARS-CoV2-related pneumonia ICU patients: a retrospective multicenter study. *Ann Intensive Care* 2021;11:86. <https://doi.org/10.1186/s13613-021-00875-9>.
- [31] Ñamendys-Silva SA, Alvarado-Ávila PE, Domínguez-Cherit G, Rivero-Sigarroa E, Sánchez-Hurtado LA, Gutiérrez-Villaseñor A, Romero-González JP, Rodríguez-Bautista H, García-Briones A, Garnica-Camacho CE, Cruz-Ruiz NG, González-Herrera MO, García-Guillén FJ, Guerrero-Gutiérrez MA, Salmerón-González JD, Romero-Gutiérrez L, Canto-Castro JL, Cervantes VH; Mexico COVID-19 Critical Care Collaborative Group.



- Outcomes of patients with COVID-19 in the intensive care unit in Mexico: A multicenter observational study. *Heart Lung* 2021;50:28-32. <https://doi.org/10.1016/j.hrtlng.2020.10.013>.
- [32] Auld SC, Caridi-Scheible M, Blum JM, Robichaux C, Kraft C, Jacob JT, Jabaley CS, Carpenter D, Kaplow R, Hernandez-Romieu AC, Adelman MW, Martin GS, Coopersmith CM, Murphy DJ; and the Emory COVID-19 Quality and Clinical Research Collaborative. ICU and Ventilator Mortality Among Critically Ill Adults With Coronavirus Disease 2019. *Crit Care Med* 2020;48:e799-e804. <https://doi.org/10.1097/CCM.0000000000004457>.
- [33] Nabors C, Sridhar A, Hooda U, Lobo SA, Levine A, Frishman WH, Dhand A. Characteristics and Outcomes of Patients 80 Years and Older Hospitalized With Coronavirus Disease 2019 (COVID-19). *Cardiol Rev* 2021;29:39-42. <https://doi.org/10.1097/CRD.0000000000000368>.
- [34] Salacup G, Lo KB, Gul F, Peterson E, De Joy R, Bhargav R, Pelayo J, Albano J, Azmaiparashvili Z, Benzaquen S, Patarroyo-Aponte G, Rangaswami J. Characteristics and clinical outcomes of COVID-19 patients in an underserved-inner city population: A single tertiary center cohort. *J Med Virol* 2021;93:416-23. <https://doi.org/10.1002/jmv.26252>.
- [35] Nasrullah A, Jayakrishnan T, Wedgeworth P, Mosley M, Vashistha K, Haag A, Bakalov V, Chaturvedi A, Manzi S, Kapetanos A. Characteristics and Outcomes of COVID-19 Patients Admitted to Intensive Care Units in a Large Health System in Western Pennsylvania. *Cureus* 2021;13:e16552. <https://doi.org/10.7759/cureus.16552>.
- [36] Sjöström B, Månsson E, Viklund Kamienny J, Östberg E. Characteristics and definitive outcomes of COVID-19 patients admitted to a

secondary hospital intensive care unit in Sweden. *Health Sci Rep* 2021;4:e446.

<https://doi.org/10.1002/hsr2.446>.

- [37] Ismail K, Bensasi H, Taha A, Nazir A, Abdelkhalek M, Mohamed W, Lodhe D, Buschbeck S, Bauer M, Sakr Y. Characteristics and outcome of critically ill patients with coronavirus disease-2019 (COVID-19) pneumonia admitted to a tertiary care center in the United Arab Emirates during the first wave of the SARS-CoV-2 pandemic. A retrospective analysis. *PLoS One* 2021;16:e0251687. <https://doi.org/10.1371/journal.pone.0251687>.
- [38] Ofosu-Barko K, Liu Y, Alkhatib Tamimi F, Al Husami W, Ganatra S, Resnic F, Shah SP. Angiotensin II Administration in Patients With COVID-19 Shock. *Crit Pathw Cardiol* 2021;20:100-2. <https://doi.org/10.1097/HPC.0000000000000246>.
- [39] Ramkumar R, Rani D, Bhattacharjee S, Aggarwal R, Soni KD, Aravindan A, Gupta A, Ayub A, Prakash K, Ganesh V, Trikha A. Epidemiology and clinical characteristics of COVID- 19 patients requiring critical care in a Tertiary care teaching hospital. *J Anaesthesiol Clin Pharmacol* 2021;37:366-70. [https://doi.org/10.4103/joacp.JOACP\\_585\\_20](https://doi.org/10.4103/joacp.JOACP_585_20).
- [40] Biccard BM, Miller M, Michell WL, Thomson D, Ademuyiwa A, Aniteye E, et al; ACCCOS Investigators. Patient care and clinical outcomes for patients with COVID-19 infection admitted to African high-care or intensive care units (ACCCOS): a multicentre, prospective, observational cohort study. *Lancet* 2021;397:1885-94. [https://doi.org/10.1016/S0140-6736\(21\)00441-4](https://doi.org/10.1016/S0140-6736(21)00441-4).
- [41] Mammen JJ, Kumar S, Thomas L, Kumar G, Zachariah A, Jeyaseelan L, Peter JV, Agarwal A, Mukherjee A, Chatterjee P, Bhatnagar T, Rasalam JE,

- Chacko B, Mani T, Joy M, Rupali P, Murugesan M, Daniel D, Latha B, Bundas S, Kumar V, Dosi R, Khambholja JR, de Souza R, Chander BT, Bahadur S, Dube S, Suri A, Jindal A, Shrivastav O, Barge V, Bajpayee A, Malhotra P, Singh N, Tambe M, Sharma N, Bhat S, Kaulgud RS, Gurtoo A, Reddy DH, Upadhyay K, Jain A, Patel TC, Nagori I, Jha PR, Babu KVS, Aparna C, Panjwani SJ, Natarajan M, Baldi M, Khadke VK, Dua S, Singh R, Sharma A, Sharma J, Gokhale YA, Yadav PD, Sapkal G, Kaushal H, Kumar VS. Factors associated with mortality among moderate and severe patients with COVID-19 in India: a secondary analysis of a randomised controlled trial. *BMJ Open* 2021;11:e050571. <https://doi.org/10.1136/bmjopen-2021-050571>.
- [42] Andrade JA, Muzykovsky K, Truong J. Risk factors for mortality in COVID-19 patients in a community teaching hospital. *J Med Virol* 2021;93:3184-93. <https://doi.org/10.1002/jmv.26885>.
- [43] Chand S, Kapoor S, Orsi D, Fazzari MJ, Tanner TG, Umeh GC, Islam M, Dicipinigaitis PV. COVID-19-Associated Critical Illness-Report of the First 300 Patients Admitted to Intensive Care Units at a New York City Medical Center. *J Intensive Care Med* 2020;35:963-70. <https://doi.org/10.1177/0885066620946692>.
- [44] Bezerra R, Teles F, Mendonca PB, Damte T, Likaka A, Ferrer-Miranda E, Albuquerque JO, de Lima Filho JL. Outcomes of critically ill patients with acute kidney injury in COVID-19 infection: an observational study. *Ren Fail* 2021;43:911-8. <https://doi.org/10.1080/0886022X.2021.1933530>.

- [45] Dang MKM, Bhatt I, Dulu AO, Zhang H, Kostecky N, Pastores SM. Clinical Characteristics, Management, and Outcomes of Cancer Patients With Coronavirus Disease 2019 Admitted to the ICU. *Crit Care Explor* 2021;3:e0535. <https://doi.org/10.1097/CCE.0000000000000535>.
- [46] Gündoğan K, Akbudak İH, Hancı P, Halaçlı B, Temel Ş, Güllü Z, İnci K, Bilir Y, Bozkurt FT, Yıldırım F, Şimşek M, Yüksel RC, Eren E, Altıntaş ND, Talan L, Elay G, Güven G, Kara İ, Aydın E, Yılmaz S, Mengi T, Sarı S, Akbaş T, Acar Cinleti B, Ateş Ayhan N, Aral Özbek D, Şahin TK, Açıkgöz A, Esbah AÜ, Fırat A, Aydemir F, Gürkök MÇ, Zerman A, Gümüş A, Türkoğlu M, Aydoğdu M, Ulu R, Çelik JB, Balcı C, Kiraklı C, Karakoç E, Özyılmaz E, Ortaç Ersoy E, Öcal S, Akın Şen İ, Tor İH, Cömert B, Ergan B, Saraçoğlu KT, Ergil J, Yüksel ÜG, Tutar N, Sungur M, Topeli A. Clinical Outcomes and Independent Risk Factors for 90-Day Mortality in Critically Ill Patients with Respiratory Failure Infected with SARS-CoV-2: A Multicenter Study in Turkish Intensive Care Units. *Balkan Med J* 2021;38:296-303. <https://doi.org/10.5152/balkanmedj.2021.21188>.
- [47] Estella Á, Garcia Garmendia JL, de la Fuente C, Machado Casas JF, Yuste ME, Amaya Villar R, Estechea MA, Yaguez Mateos L, Cantón Bulnes ML, Loza A, Mora J, Fernández Ruiz L, Díez Del Corral Fernández B, Rojas Amezcua M, Rodriguez Higuera MI, Díaz Torres I, Recuerda Núñez M, Zaheri Beryanaki M, Rivera Espinar F, Matallana Zapata DF, Moreno Cano SG, Gimenez Beltrán B, Muñoz N, Sainz de Baranda Piñero A, Bustelo Bueno P, Moreno Barriga E, Rios Toro JJ, Pérez Ruiz M, Gómez González C, Breval Flores A, de San José Bermejo Gómez A, Ruiz Cabello Jimenez MA, Guerrero Marín M, Ortega Ordiales A, Tejero-Aranguren J, Rodriguez Mejías

- C, Gomez de Oña J, de la Hoz C, Ocaña Fernández D, Ibañez Cuadros S, Garnacho Montero J; Work Group of Infectious Disease (GTEI) de la Sociedad Andaluza de Medicina Intensiva y Unidades coronarias SAMIUC. Predictive factors of six-week mortality in critically ill patients with SARS-CoV-2: A multicenter prospective study. *Med Intensiva (Engl Ed)* 2021;46:179-91. <https://doi.org/10.1016/j.medin.2021.02.013>.
- [48] Gadhiya KP, Hansrivijit P, Gangireddy M, Goldman JD. Clinical characteristics of hospitalised patients with COVID-19 and the impact on mortality: a single-network, retrospective cohort study from Pennsylvania state. *BMJ Open* 2021;11:e042549. <https://doi.org/10.1136/bmjopen-2020-042549>.
- [49] Serpa Neto A, Landoni G, Ostermann M, Lumlertgul N, Forni L, Alvarez-Belon L, Trapani T, Alliegro PV, Zacharowski K, Wiedenbeck C, de Backer D, Bellomo R. Angiotensin II infusion in COVID-19: An international, multicenter, registry-based study. *J Med Virol* 2022;94:2079-88. <https://doi.org/10.1002/jmv.27592>.
- [50] Brandão Neto RA, Marchini JF, Marino LO, Alencar JCG, Lazar Neto F, Ribeiro S, Salvetti FV, Rahhal H, Gomez Gomez LM, Bueno CG, Faria CC, da Cunha VP, Padrão E, Velasco IT, de Souza HP; Emergencia USP Covid group. Mortality and other outcomes of patients with coronavirus disease pneumonia admitted to the emergency department: A prospective observational Brazilian study. *PLoS One* 2021;16:e0244532. <https://doi.org/10.1371/journal.pone.0244532>.
- [51] Leisman DE, Mastroianni F, Fisler G, Shah S, Hasan Z, Narasimhan M, Taylor MD, Deutschman CS. Physiologic Response to Angiotensin II

- Treatment for Coronavirus Disease 2019-Induced Vasodilatory Shock: A Retrospective Matched Cohort Study. *Crit Care Explor* 2020;2:e0230. <https://doi.org/10.1097/CCE.0000000000000230>.
- [52] Burrell AJ, Pellegrini B, Salimi F, Begum H, Broadley T, Campbell LT, Cheng AC, Cheung W, Cooper DJ, Earnest A, Erickson SJ, French CJ, Kaldor JM, Litton E, Murthy S, McAllister RE, Nichol AD, Palermo A, Plummer MP, Ramanan M, Reddi BA, Reynolds C, Trapani T, Webb SA, Udy AA. Outcomes for patients with COVID-19 admitted to Australian intensive care units during the first four months of the pandemic. *Med J Aust* 2021;214:23-30. <https://doi.org/10.5694/mja2.50883>.
- [53] Qian Z, Lu S, Luo X, Chen Y, Liu L. Mortality and Clinical Interventions in Critically ill Patient With Coronavirus Disease 2019: A Systematic Review and Meta-Analysis. *Front Med (Lausanne)* 2021;8:635560. <https://doi.org/10.3389/fmed.2021.635560>.
- [54] Potere N, Valeriani E, Candeloro M, Tana M, Porreca E, Abbate A, Spoto S, Rutjes AWS, Di Nisio M. Acute complications and mortality in hospitalized patients with coronavirus disease 2019: a systematic review and meta-analysis. *Crit Care* 2020;24:389. <https://doi.org/10.1186/s13054-020-03022-1>.
- [55] Jasiński T, Stefaniak J. COVID-19 and haemodynamic failure: a point of view on mechanisms and treatment. *Anaesthesiol Intensive Ther* 2020;52:409-17. <https://doi.org/10.5114/ait.2020.101813>.
- [56] Alhazzani W, Evans L, Alshamsi F, Møller MH, Ostermann M, Prescott HC, Arabi YM, Loeb M, Ng Gong M, Fan E, Oczkowski S, Levy MM, Derde L, Dzierba A, Du B, Machado F, Wunsch H, Crowther M,

- Cecconi M, Koh Y, Burry L, Chertow DS, Szczeklik W, Belley-Cote E, Greco M, Bala M, Zarychanski R, Kesecioglu J, McGeer A, Mermel L, Mammen MJ, Nainan Myatra S, Arrington A, Kleinpell R, Citerio G, Lewis K, Bridges E, Memish ZA, Hammond N, Hayden FG, Alshahrani M, Al Duhailib Z, Martin GS, Kaplan LJ, Coopersmith CM, Antonelli M, Rhodes A. Surviving Sepsis Campaign Guidelines on the Management of Adults With Coronavirus Disease 2019 (COVID-19) in the ICU: First Update. *Crit Care Med* 2021;49:e219-34. doi: 10.1097/CCM.0000000000004899.
- [57] Luo P, Liu D, Li J. Epinephrine use in COVID-19: friend or foe? *Eur J Hosp Pharm* 2021;28:e1. <https://doi.org/10.1136/ejhpharm-2020-002295>.
- [58] Leisman DE, Mehta A, Li Y, Kays KR, Li JZ, Filbin MR, Goldberg MB. Vasopressin infusion in COVID-19 critical illness is not associated with impaired viral clearance: a pilot study. *Br J Anaesth* 2021;127:e146-8. <https://doi.org/10.1016/j.bja.2021.07.005>.
- [59] Yeung ML, Teng JLL, Jia L, Zhang C, Huang C, Cai JP, Zhou R, Chan KH, Zhao H, Zhu L, Siu KL, Fung SY, Yung S, Chan TM, To KK, Chan JF, Cai Z, Lau SKP, Chen Z, Jin DY, Woo PCY, Yuen KY. Soluble ACE2-mediated cell entry of SARS-CoV-2 via interaction with proteins related to the renin-angiotensin system. *Cell* 2021;184:2212-28.e12. <https://doi.org/10.1016/j.cell.2021.02.053>.
- [60] Gregoriano C, Molitor A, Haag E, Kutz A, Koch D, Haubitz S, Conen A, Bernasconi L, Hammerer-Lercher A, Fux CA, Mueller B, Schuetz P. Activation of Vasopressin System During COVID-19 is Associated With Adverse Clinical Outcomes: An Observational Study. *J Endocr Soc* 2021;5:bvab045. <https://doi.org/10.1210/jendso/bvab045>.

- [61] Deshotels MR, Xia H, Sriramula S, Lazartigues E, Filipeanu CM. Angiotensin II mediates angiotensin converting enzyme type 2 internalization and degradation through an angiotensin II type I receptor-dependent mechanism. *Hypertension* 2014;64:1368-75. <https://doi.org/10.1161/HYPERTENSIONAHA.114.03743>.
- [62] Pan M, Vasbinder A, Anderson E, Catalan T, Shadid HR, Berlin H, Padalia K, O'Hayer P, Meloche C, Azam TU, Khaleel I, Michaud E, Blakely P, Bitar A, Huang Y, Zhao L, Pop-Busui R, Loosen SH, Chalkias A, Tacke F, Giamarellos-Bourboulis EJ, Reiser J, Eugen-Olsen J, Hayek SS; ISIC Group. Angiotensin-Converting Enzyme Inhibitors, Angiotensin II Receptor Blockers, and Outcomes in Patients Hospitalized for COVID-19. *J Am Heart Assoc* 2021;10:e023535. <https://doi.org/10.1161/JAHA.121.023535>.
- [63] Bendjelid K. Should we use angiotensin II infusion in COVID-19-associated vasoplegic shock? *Crit Care* 2020;24:407. <https://doi.org/10.1186/s13054-020-03144-6>.
- [64] Belletti A, Castro ML, Silveti S, Greco T, Biondi-Zoccai G, Pasin L, Zangrillo A, Landoni G. The Effect of inotropes and vasopressors on mortality: a meta-analysis of randomized clinical trials. *Br J Anaesth* 2015;115:656-75. <https://doi.org/10.1093/bja/aev284>.
- [65] Gamper G, Havel C, Arrich J, Losert H, Pace NL, Müllner M, Herkner H. Vasopressors for hypotensive shock. *Cochrane Database Syst Rev* 2016;2:CD003709. <https://doi.org/10.1002/14651858.CD003709.pub4>.
- [66] Favaron E, Ince C, Hilty MP, Ergin B, van der Zee P, Uz Z, Wendel Garcia PD, Hofmaenner DA, Acevedo CT, van Boven WJ, Akin S, Gommers D, Endeman H. Capillary Leukocytes, Microaggregates, and the Response to



- Hypoxemia in the Microcirculation of Coronavirus Disease 2019 Patients. *Crit Care Med* 2021;49:661-70. <https://doi.org/10.1097/CCM.0000000000004862>.
- [67] Di Dedda U, Ascari A, Fantinato A, Fina D, Baryshnikova E, Ranucci M. Microcirculatory Alterations in Critically Ill Patients with COVID-19-Associated Acute Respiratory Distress Syndrome. *J Clin Med* 2022;11:1032. <https://doi.org/10.3390/jcm11041032>.
- [68] Kanoore Edul VS, Caminos Eguillor JF, Ferrara G, Estenssoro E, Siles DSP, Cesio CE, Dubin A. Microcirculation alterations in severe COVID-19 pneumonia. *J Crit Care* 2021;61:73-5. <https://doi.org/10.1016/j.jcrc.2020.10.002>.
- [69] Çalışkan M, Baycan ÖF, Çelik FB, Güvenç TS, Atıcı A, Çağ Y, Konal O, İrgi T, Bilgili ÜZ, Ağırbaşı MA. Coronary microvascular dysfunction is common in patients hospitalized with COVID-19 infection. *Microcirculation* 2022;18:e12757. <https://doi.org/10.1111/micc.12757>.
- [70] Rovas A, Osiaevi I, Buscher K, Sackarnd J, Tepasse PR, Fobker M, Kühn J, Braune S, Göbel U, Thölking G, Gröschel A, Pavenstädt H, Vink H, Kümpers P. Microvascular dysfunction in COVID-19: the MYSTIC study. *Angiogenesis* 2021;24:145-57. <https://doi.org/10.1007/s10456-020-09753-7>.
- [71] do Espírito Santo DA, Lemos ACB, Miranda CH. In vivo demonstration of microvascular thrombosis in severe COVID-19. *J Thromb Thrombolysis* 2020;50:790-4. <https://doi.org/10.1007/s11239-020-02245-x>.
- [72] Dubin A, Pozo MO, Casabella CA, Pálizas F Jr, Murias G, Moseinco MC, Kanoore Edul VS, Pálizas F, Estenssoro E, Ince C. Increasing arterial blood pressure with norepinephrine does not improve microcirculatory blood

- flow: a prospective study. *Crit Care* 2009;13:R92.  
<https://doi.org/10.1186/cc7922>.
- [73] Dekker RJ, van Thienen JV, Rohlena J, de Jager SC, Elderkamp YW, Seppen J, de Vries CJ, Biessen EA, van Berkel TJ, Pannekoek H, Horrevoets AJ. Endothelial KLF2 links local arterial shear stress levels to the expression of vascular tone-regulating genes. *Am J Pathol* 2005;167:609-18.  
[https://doi.org/10.1016/S0002-9440\(10\)63002-7](https://doi.org/10.1016/S0002-9440(10)63002-7).
- [74] Lupu F, Kinasewitz G, Dormer K. The role of endothelial shear stress on haemodynamics, inflammation, coagulation and glycocalyx during sepsis. *J Cell Mol Med* 2020;24:12258-71. <https://doi.org/10.1111/jcmm.15895>.
- [75] Mori M, Krumholz HM, Allore HG. Using Latent Class Analysis to Identify Hidden Clinical Phenotypes. *JAMA* 2020;324:700-1.  
<https://doi.org/10.1001/jama.2020.2278>.
- [76] Chalkias A, Xanthos T, Papageorgiou E, Anania A, Beloukas A, Pavlopoulos F. Intraoperative initiation of a modified ARDSNet protocol increases survival of septic patients with severe acute respiratory distress syndrome. *Heart Lung* 2018;47:616-21.  
<https://doi.org/10.1016/j.hrtlng.2018.06.011>.
- [77] Marik PE. Iatrogenic salt water drowning and the hazards of a high central venous pressure. *Ann Intensive Care* 2014;4:21.  
<https://doi.org/10.1186/s13613-014-0021-0>.
- [78] Matthay MA, McAuley DF, Ware LB. Clinical trials in acute respiratory distress syndrome: challenges and opportunities. *Lancet Respir Med* 2017;5:524-34. [https://doi.org/10.1016/S2213-2600\(17\)30188-1](https://doi.org/10.1016/S2213-2600(17)30188-1).

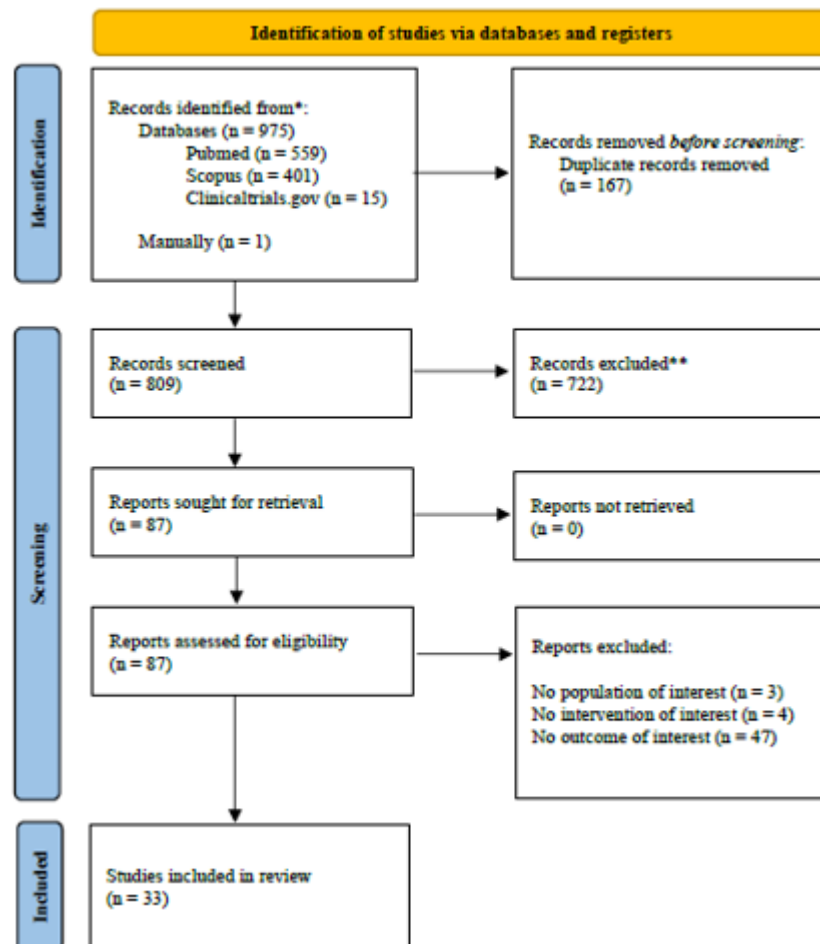
[79] Caldera-Crespo LA, Paidas MJ, Roy S, Schulman CI, Kenyon NS, Daunert S, Jayakumar AR. Experimental Models of COVID-19. *Front Cell Infect Microbiol* 2022;11:792584. doi: <https://doi.org/10.3389/fcimb.2021.792584>.

[80] Ware LB, Matthay MA, Mebazaa A. Designing an ARDS trial for 2020 and beyond: focus on enrichment strategies. *Intensive Care Med* 2020;46:2153-6. <https://doi.org/10.1007/s00134-020-06232-x>.

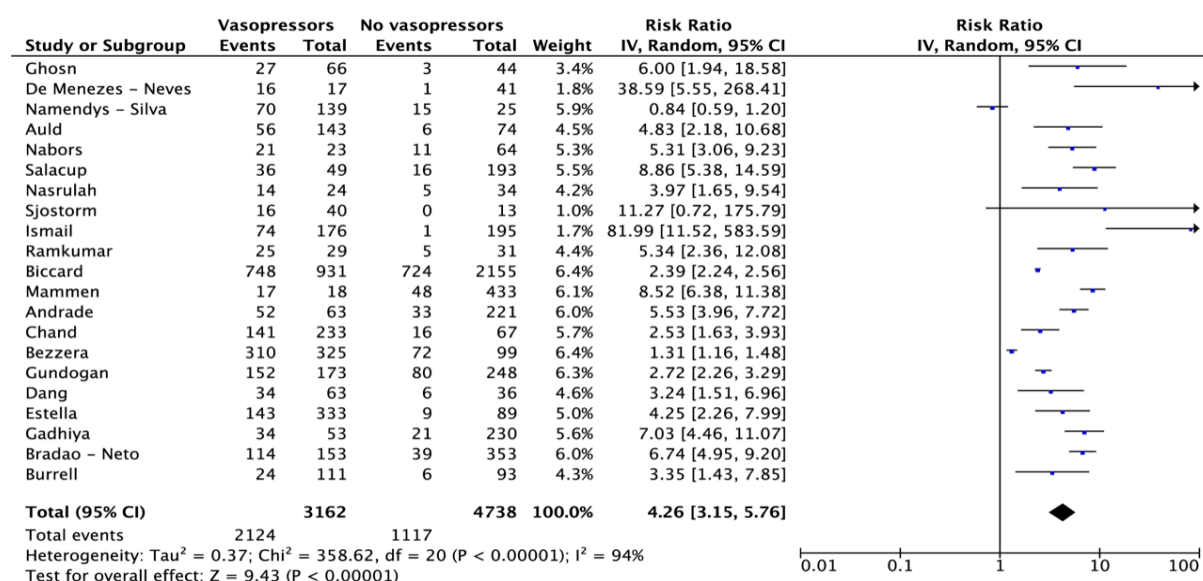
## FIGURE LEGENDS

**Fig. 1** Preferred Reporting Items for Systematic Reviews and Meta-Analyses

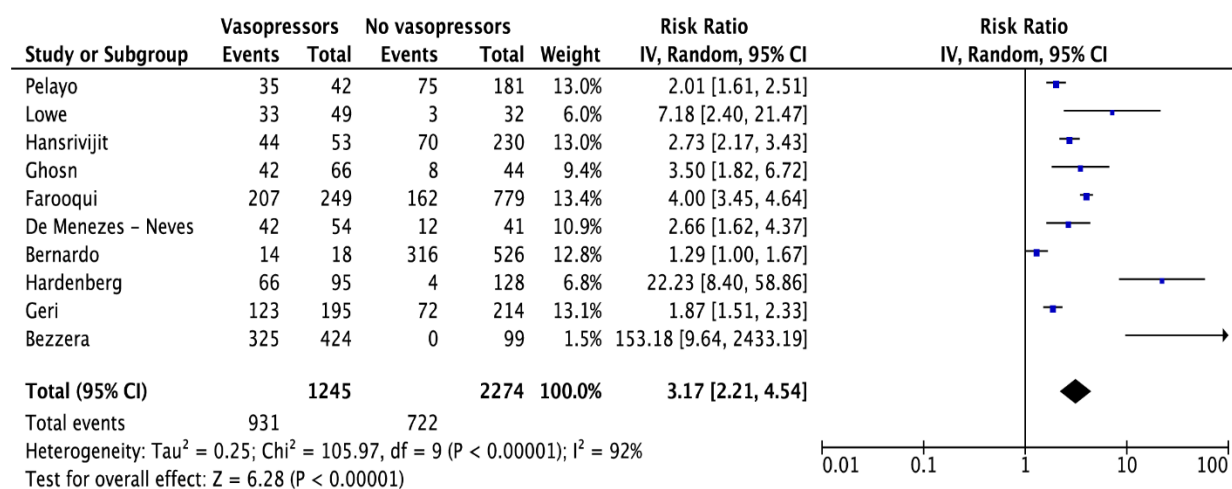
(PRISMA) diagram



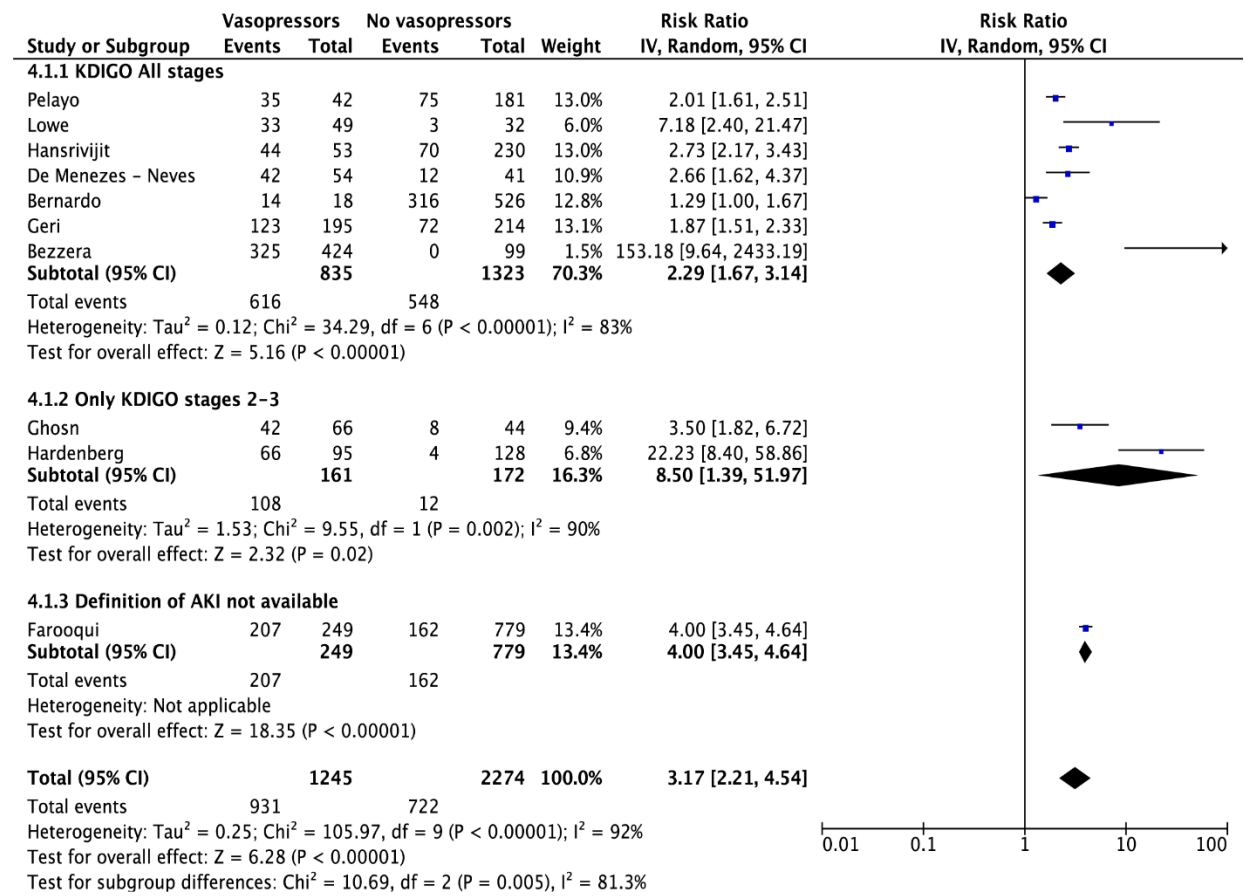
**Fig. 2** Effect of vasopressor use on mortality of critically ill patients with COVID-19



**Fig. 3** Effect of vasopressor use on the incidence of acute kidney injury



**Fig. 4** Subgroup analyses were performed based on the definition of acute kidney injury



## **APPENDIX LEGENDS**

**Appendix A:** PRISMA checklist.

**Appendix B:** Algorithms used for all databases.

**Appendix C1:** Definitions used for AKI and mortality follow-up time points.

**Appendix C2:** Angiotensin-related data.

**Appendix C3:** MINORS results for each study.

**Appendix D1:** Funnel plot for mortality meta-analysis.

**Appendix D2:** Funnel plot for AKI meta-analysis.

**Table 1. Main characteristics of the included studies**

<b>Authors Country, YOP Study Design</b>	<b>Department</b>	<b>Number of patients (Received vasopressors / All [%])</b>	<b>Age Mean <math>\pm</math> SD / Median (IQR)</b>	<b>Male (%) / Female (%)</b>
Ionescu et al. USA, 2021 Retrospective	ICU	191 / 281 (68 %)	61 $\pm$ 13.9	154 (54.8%) / 127 (45.2%)
Pelayo et al. USA, 2020 Retrospective	ICU + HDU	42 / 223 (18.8 %)	65.91 $\pm$ 14.95	116 (52%) / 107 (48%)
Lowe et al. UK, 2021 Retrospective	ICU	49 / 81 (60.5 %)	57 $\pm$ 18	50 (61.7%) / 31 (38.3%)
Hansrivijit et al. USA, 2021 Retrospective	ICU + HDU	53 / 283 (18.7 %)	64.1 $\pm$ 15.9	159 (56.2%) / 124 (43.8%)
Mesquida et al. Spain/Mexico/Brazil, 2021 Prospective	ICU + IRCU	12 / 71 (16.9 %)	59 $\pm$ 13	51 (69.9%) / 22 (30.1%)
Ghosn et al. UAE, 2021 Retrospective	ICU	66 / 110 (60 %)	50 (40-59)	98 (89.1%) / 12 (10.9%)
Farooqui et al. Saudi Arabia, 2021 Retrospective	ICU + HDU	249 / 1025 (24.3 %)	55.8 $\pm$ 18.52	582 (56.8%) / 443 (43.2%)
de Menezes Neves et al. Brazil, 2021	ICU	54 / 95 (56.8 %)	64.9 $\pm$ 15.1	61 (64.2%) / 34 (35.8%)



Retrospective				
Bernardo et al. Portugal, 2021 Retrospective	HDU	18 / 544 (3.3 %)	68.9 ± 17.9	298 (54.8%) / 246 (45.2%)
Hardenberg et al. Germany, 2021 Retrospective	HDU	95 / 223 (42.6 %)	62 (51-75)	147 (65.9%) / 76 (34.1%)
Geri et al. France, 2021 Retrospective	ICU	165 / 379 (43.5 %)	62 (53.69)	291 (76.8%) / 88 (23.2%)
Namendys-Silva et al. Mexico, 2021 Retrospective	ICU	139 / 164 (84.8 %)	57.3 ± 13.7	114 (69.5%) / 50 (30.5%)
Auld et al. USA, 2021 Retrospective	ICU	143 / 217 (65.9 %)	64 (54-73)	119 (54.8%) / 98 (45.2%)
Nabors et al. USA, 2021 Retrospective	HDU	23 / 87 (26.4 %)	86 (80-105)	48 (55.2%) / 39 (44.8%)
Salacup et al. USA, 2021 Retrospective	HDU	49 / 242 (20.2 %)	66 (58-76)	123 (50.8%) / 119 (49.2%)
Nasrulah et al. USA, 2021 Retrospective	ICU	24 / 58 (41.4 %)	62 (54-73)	37 (63.8%) / 21 (36.2%)
Sjostorm et al. Sweden, 2021 Prospective	ICU	40 / 53 (75.5 %)	59 (33-76)	39 (73.6%) / 14 (26.4%)

Ismail et al. UAE, 2021 Retrospective	ICU	176 / 371 (47.4 %)	53 ± 13	314 (84.6%) / 57 (15.4%)
Osofu-Barko et al.* USA, 2021 Retrospective	ICU	10 / Not available	64.5 ± 6.15	9 (90%) / 1 (10%)
Ramkumar et al. India, 2021 Prospective	ICU	29 / 60 (48.3 %)	50 (37.5-63)	42 (70%) / 18 (30%)
Biccard et al. (ACCCOS) Africa**, 2021 Prospective	ICU + HDU	931 / 3086 (30.2 %)	56 ± 16.11	1890 (60.6%) / 1228 (39.4%)
Mammen et al. India, 2021 Secondary analysis of RCT	ICU + HDU	18 / 451 (4 %)	51 ± 12.4	346 (76.7%) / 105 (23.3%)
Andrade et al. USA, 2021 Retrospective	HDU	63 / 284 (22.2 %)	67 ± 14.5	155 (54.6%) / 129 (45.4%)
Chand et al. USA, 2020 Retrospective	ICU	233 / 300 (77.7 %)	58.2 ± 12.6	182 (60.7%) / 118 (39.3%)
Bezzera et al. Brazil, 2021 Retrospective	ICU	325 / 424 (76.7 %)	66.42 ± 13.79	251 (59.2%) / 173 (40.8%)
Gundogan et al. Turkey, 2021 Retrospective	ICU	173 / 421 (41.1 %)	67 (57-76)	251 (59.6%) / 170 (40.4%)
Dang et al.	ICU	63 / 89 (70.8 %)	65 (57-70)	52 (58.4%) / 37 (41.6%)

USA, 2021 Retrospective				
Estella et al. Spain, 2021 Prospective	ICU	419 / 422 (99.3 %)	63 (54-71)	305 (72.3%) / 117 (27.7%)
Gadhiya et al. USA, 2021 Retrospective	ICU + HDU	53 / 283 (18.7 %)	64.1 ± 15.9	159 (56.2%) / 124 (43.8%)
Brandão Neto et al. Brazil, 2021 Prospective	ED and then transferred to ICU + HDU	179 / 506 (35.4 %)	60.1 ± 15.1	290 (57.3%) / 216 (42.7%)
Burrell et al. Australia, 2021 Prospective	ICU	111 / 204 (54.4 %)	63.5 (53-72)	140 (68.6%) / 64 (31.4%)
Leisman et al.* USA, 2020 Retrospective	ICU + HDU	10 / 29 (34.5 %)	56 ± 14	19 (65.5%) / 10 (34.5%)
Serpa Neto et al.* Multicentric study, 2022 Prospective	ICU + HDU	65 / 132 (49.2 %)	61 (53-67)	105 (79.5%) / 27 (20.5%)

Abbreviations. YOP: Year of Publication; SD: Standard Deviation; IQR: Interquartile Range; USA: United States of America; ICU: Intensive Care Unit; HDU: High Dependency Unit; UK: United Kingdom; IRCU: Intensive Respiratory Care Unit; UAE: United Arab Emirates; ED: Emergency Department.

\* These studies only included patients that received angiotensin-II.

\*\*10 African Countries.

**Table 2. Data on mortality based on major vasopressors**

<b>Authors Country, YOP Study Design</b>	<b>Intervention Group: Deaths / All (%)</b>	<b>Comparator Group: Deaths / All (%)</b>
Chand et al. USA, 2020 Retrospective	Any vasopressor support: 141 / 233 (61%) Norepinephrine ± other vasopressors: 138 / 226 (61%) Phenylephrine ± other vasopressors: 53 / 89 (60%) Vasopressin ± other vasopressors: 81 / 104 (78%) Epinephrine ± other vasopressors: 19 / 25 (76%)	No vasopressor support: 16 / 67 (24%)
Leisman et al. USA, 2020 Retrospective	Angiotensin-II ± other vasopressors: 4 / 10 (40%)	Other vasopressors: 10 / 19 (53%)
Serpa Neto et al. Multicentric study, 2022 Prospective	Angiotensin-II ± norepinephrine: 35 / 65 (54%)	Other vasopressors: 27 / 67 (40%)
Oforu-Barko et al. USA, 2021 Retrospective	Angiotensin-II + other vasopressors: 4 / 10 (40%)	-