

1 **Genetic Architecture And Clinical Outcomes Of The Fredrickson-Levy-Lees**  
2 **Dyslipoproteinemias**

3  
4 Thomas Gilliland, MD (1-3), Jaqueline S. Dron, PhD (1-2), Margaret Sunitha Selvaraj, PhD (1-  
5 3), Mark Trinder, BA (4-5), Kaavya Paruchuri, MD (1-3), Sarah M. Urbut, MD PhD (1-3), Sara  
6 Haidermota, BA (1-2), Rachel Bernardo, BS (1-2), Md Mesbah Uddin, PhD (1-2), Michael C.  
7 Honigberg, MD MPP (1-3), Gina Peloso, PhD (6), Pradeep Natarajan, MD, MMSc (1-3)

- 8  
9 (1) Cardiovascular Research Center, Massachusetts General Hospital, Boston, MA  
10 (2) Program in Medical and Population Genetics and the Cardiovascular Disease Initiative,  
11 Broad Institute of Harvard and MIT, Cambridge, MA  
12 (3) Department of Medicine, Harvard Medical School, Boston, MA  
13 (4) Centre for Heart Lung Innovation, University of British Columbia, Vancouver.  
14 (5) Program in Medical and Population Genetics and the Cardiovascular Disease Initiative,  
15 Broad Institute of Harvard, Cambridge, Massachusetts.  
16 (6) Department of Biostatistics, Boston University School of Public Health, Boston, MA

17  
18 Please address correspondence to:  
19 Pradeep Natarajan, MD, MMSc  
20 55 Fruit Street  
21 Boston, Massachusetts 02145  
22 pnatarajan@mgh.harvard.edu  
23 617-726-1843

24 **Abstract**

25 **Background and Aims:** The genetic basis and clinical relevance of the classical Fredrickson-  
26 Levy-Lees (FLL) dyslipoproteinemia classifications has not been studied in general population-  
27 based cohorts. We aimed to evaluate the phenotypic and genetic characteristics of FLL disorders.

28 **Methods:** Among UK Biobank participants free of prevalent coronary artery disease (CAD), we  
29 used blood lipids and apolipoprotein B concentrations to infer FLL classes (Types I, IIa, IIb, III,  
30 IV, and V). For each FLL class, Cox proportional hazards regression estimated risk of incident  
31 CAD. Phenome-wide association testing was performed. GWAS were performed, followed by *in*  
32 *silico* causal gene prioritization and heritability analyses. Prevalence of disruptive Mendelian  
33 lipid variants was assessed from whole exome sequencing.

34 **Results:** Of 450,636 individuals, 259,289 (57.5%) met criteria for a FLL dyslipoproteinemia: 63  
35 (0.01%) type I; 40,005 (8.9%) type IIa; 94,785 (21.0%) type IIb; 13,998 (3.1%) type III; 110,389  
36 (24.5%) type IV; and 49 (0.01%) type V. Over median 11.1 years follow-up, compared to  
37 normolipidemics the type IIb pattern conferred the highest hazard of incident CAD overall (HR  
38 1.92, 95% CI 1.84-2.01,  $P < 0.001$ ) and in meta-analysis across matched non-HDL-C strata (HR  
39 1.45, 95% CI 1.30-1.60). GWAS revealed 250 loci associated with FLL, of which 13 were  
40 shared across all classes; compared to GWAS of isolated lipid traits, 72 additional loci were  
41 detected. Mendelian lipid variants were rare (2%), but polygenic heritability was high, ranging  
42 from 23% (type III) to 54% (type IIb).

43 **Conclusions:** FLL classes have distinct genetic architectures yielding new insights for  
44 cardiometabolic disease beyond single lipid analyses.

45

46 **Keywords**

47 ApoB: apolipoprotein B

48 FLL: Fredrickson-Levy-Lees

49 GWAS: genome-wide association study

50

51 **Introduction:**

52 Over 50 years ago, Fredrickson, Levy, and Lees (FLL) introduced a classification scheme  
53 for lipid disorders based on patterns of circulating lipoproteins(1). In their seminal series of  
54 papers, the authors describe six dyslipoproteinemia types involving excess of one or more  
55 lipoprotein fractions. These were termed types I, IIa, IIb, III, IV, and V, reflecting chylomicron  
56 (CM) excess, low-density lipoprotein (LDL) excess, combined LDL and very low-density  
57 lipoprotein (VLDL) excess, remnant cholesterol-rich lipoprotein excess, VLDL excess, and  
58 combined CM and VLDL excess, respectively (**Table 1**). The authors observed distinguishing  
59 clinical characteristics and patterns of heritability for each disorder and hypothesized  
60 pathophysiologic mechanisms.

61 Owing to the cost and complexity of laboratory techniques used for diagnosis, the FLL  
62 phenotypes have been studied primarily in specialized lipid clinics and research cohorts. These  
63 settings may tend to capture extreme phenotypes, and conclusions drawn may not generalize to  
64 contemporary general populations beset with growing obesity and diabetes epidemics. Thus, the  
65 proposed clinical rationale for FLL classification beyond considering conventional lipid  
66 measures alone remains theoretical. Sniderman and colleagues developed and validated a  
67 diagnostic algorithm for the FLL disorders based on serum total cholesterol (TC), triglycerides  
68 (TG), and apolipoprotein B (apoB)(2), allowing FLL diagnosis with routine lipid measurements.  
69 Application to contemporary Western populations reveals a high prevalence of FLL  
70 dyslipoproteinemia with relationships to subclinical atherosclerosis(3,4). Associations with  
71 clinical outcomes in large contemporary cohorts are presently unknown.

72 Monogenic factors have largely been studied as the basis of FLL classes but comprise a  
73 very small fraction of individuals with dyslipoproteinemias. Inheritance patterns for FLL

74 disorders are believed to be variably monogenic, oligogenic, and polygenic, but characterizations  
75 have largely been restricted to the former. Furthermore, phenotypic expression may depend on  
76 the interactions between genetic and environmental factors(5)(6). Expression of the type III  
77 pattern in patients with *APOE2* homozygosity is modified by mutations in other lipid-related  
78 genes(7,8) and likely requires comorbid disease or exposure – hyperinsulinemia, alcohol excess,  
79 or the postmenopausal state(9). Further, clinical type III can occur independently of *APOE2*(10).  
80 While the type II phenotype with isolated hypercholesterolemia (type IIa) is classically  
81 monogenic (i.e., familial hypercholesterolemia [FH]), FH represents a very small fraction of type  
82 II pattern(11,12). FLL type IIb is believed to be polygenic, but the genetic factors are not well  
83 understood(6)(13).

84 Here we apply the apoB-based classification scheme to a general population-based cohort  
85 to evaluate the clinical characteristics and cardiovascular outcomes of the FLL phenotypes. We  
86 complement our findings with genome-wide association studies of the FLL disorders and  
87 perform unbiased phenotype association testing to glean novel insights into lipid metabolic  
88 disturbances.

89

## 90 **Methods**

### 91 *Study participants.*

92 The UK Biobank (UKBB) is a cohort of ~500,000 volunteer participants living in the  
93 United Kingdom at ages 40-69 years recruited across 22 sites between 2006 and 2010, with  
94 ongoing follow up(14). Extensive genetic and phenotypic data is available as previously  
95 described. Laboratory measurements, anthropometrics, and clinical histories were ascertained at  
96 study enrollment. This research was conducted under UK Biobank application number 7089. All

97 study participants provided written and informed consent. The Mass General Brigham  
98 Institutional Review Board approved secondary use of these data (2013P001840).

99

### 100 ***Biochemical measurement and definition of Fredrickson-Levy-Lees classes.***

101 Among UKBB participants, non-fasting blood lipids and apoB were measured at  
102 baseline. ApoB was quantified by immuno-turbimetric assay, TC and TG by enzymatic assay,  
103 high-density lipoprotein cholesterol (HDL-C) by enzyme immune-inhibition assay, and direct  
104 low-density lipoprotein cholesterol (LDL-C) by enzymatic selective protection assay, all using  
105 the Beckman Coulter AU5800 analytical platform, as previously reported(15). The presence of  
106 lipid-lowering medications was ascertained at baseline. Similar to prior studies, in the presence  
107 of a statin prescription, total cholesterol (TC) was divided by 0.8 and apoB and LDL-C were  
108 divided by 0.7(16,17).

109 Among 450,636 UKBB participants free of CAD at baseline, FLL phenotype was  
110 determined by an algorithm developed by Sniderman and colleagues, which utilizes apoB, TG  
111 and the ratios of TG/apoB and TC/apoB to group individuals into one of six dyslipoproteinemias  
112 (**Table 1**)(2). Individuals not meeting criteria for FLL were categorized as normolipidemic.  
113 Sensitivity analyses were performed among individuals who were not prescribed lipid-lowering  
114 medications (including statins, ezetimibe, fibrates, or niacin) (N = 382,159).

115

### 116 ***Genotyping.***

117 UKBB samples were genotyped using the UK Biobank Lung Exome Variant Evaluation  
118 (UK BiLEVE) or Applied Biosystems UK Biobank Axiom Array. Genetic data was imputed

119 using either the Haplotype Reference Consortium panel or the UK10K + 1000 Genomes  
120 panel(14,18).

121

### 122 *Clinical phenotypes.*

123 UKBB study subjects were free of CAD at the time of enrollment. The CAD definition  
124 was based on the appearance of a qualifying International Classification of Diseases (ICD) code  
125 corresponding to acute myocardial infarction and coronary artery revascularization, physician, or  
126 patient report, as used previously (**Supplementary Table 1**)(19–21). Similarly, the covariates of  
127 hypertension and type 2 diabetes were based on a combination qualifying ICD code or physician  
128 or patient report.

129 We coded 1584 phenome-wide phenotypes in UKBB from both prevalent and incident  
130 hospital episodes using ICD-9 and -10 diagnosis codes grouped into phecodes(22–24). Phecodes  
131 that were sex-specific were coded as not applicable for the opposite sex. Clinical phenotypes  
132 were defined using the Phecode Map 1.2 ICD-9 and ICD-10 phenotype groupings(25). ICD  
133 codes were queried up to March 2020 in UKBB.

134

### 135 *Monogenic dyslipidemia variant annotation*

136 Monogenic dyslipidemia variant identification was performed on the subset of ~200,000  
137 whole exome sequences (WES) available for UKBB participants who were also included in our  
138 study(26).

139 We extracted variants disrupting genes associated with monogenic dyslipidemia  
140 phenotypes, including high LDL-C, low HDL-C, and high TG. Each gene was defined on  
141 whether the resultant phenotype followed an autosomal dominant (AD) or autosomal recessive

142 (AR) inheritance pattern. High LDL-C genes included *LDLR* (AD), *APOB* (AD), *PCSK9* (AD),  
143 *LDLRAP1* (AR), *ABCG5* (AR), and *ABCG8* (AR). Low HDL-C genes included: *APOA1* (AD),  
144 *ABCA1* (AR), and *LCAT* (AR). High TG genes included: *LPL* (AD), *APOA5* (AD), *APOC2*  
145 (AR), *GPIBHP1* (AR), *LMF1* (AR), and *APOE* (AR). Individuals were considered as having a  
146 consistent Mendelian lipid variant if they were either homozygous or heterozygous for the  
147 alternative allele in AD genes, or homozygous for the alternative allele in AR genes.

148 Variants with minor allele frequencies of <1% and <10% were considered in AD and AR  
149 genes, respectively. This list was further restricted based on multiple variant annotations;  
150 variants were included if they were defined as high-confidence loss-of function by the Ensemble  
151 Variant Effect Predictor (VEP) LOFTEE plugin, had a ClinVar interpretation of “pathogenic” or  
152 “pathogenic/likely pathogenic” (last checked November 2021), or were predicted as “damaging”  
153 by metaSVM(27–29). All variants were annotated following canonical gene transcripts.

154 Further, we determined genotypes for *APOE* (E2/E3/E4) based on allelic combinations  
155 from rs429358 and rs7412 (where rs429358 and rs7412 are T and T, respectively, for *APOE* E2;  
156 T and C for *APOE* E3; and C and C for *APOE* E4).

157 We used PLINK (version 2.0)(30) to perform variant extractions.

158

### 159 ***Statistical analysis.***

160 For descriptive analyses, categorical variables are presented as frequencies and  
161 proportions and compared using chi square or Fisher’s exact test, and continuous variables are  
162 presented as mean with standard deviation or median with interquartile range and compared with  
163 Student’s T-test or Wilcoxon rank sum test.



164 In UKBB, incident CAD was compared between FLL phenotypes using Cox proportional  
165 hazards regression ('survival' R software package, version 3.2-13) relative to normolipidemic  
166 individuals. The model accounted for study enrollment to March 31<sup>st</sup>, 2020. Participants were  
167 censored if loss-to-follow-up or death occurred prior to March 31<sup>st</sup>, 2020. Covariates included  
168 age, sex, smoking status, genotyping array, the first five principal components of genetic  
169 ancestry, hypertension, type 2 diabetes, BMI, and statin prescription. In secondary analysis,  
170 individuals were sub-grouped according to non-HDL-C concentration (130-160 mg/dl, 160-190  
171 mg/dl, 190-220 mg/dl, and 220-250 mg/dl); individuals with FLL types IIa, IIb, III, and IV were  
172 compared separately against a reference group of stratum-matched normolipidemic individuals  
173 for incident CAD using Cox proportional hazards regression. Heterogeneity testing was used to  
174 assess significant differences within non-HDL-C groups, and meta-analysis was performed  
175 across non-HDL-C groups to calculate an overall FLL phenotype effect ('meta' R software  
176 package, version 4.19-0)(31). Statistical significance was assigned at  $P < 0.05$ .

177 We tested the phenome-wide associations between FLL disorders and combined  
178 prevalent and incident hospital episode statistic phenotypes using the PheWAS version 0.99.5-4  
179 package for R (version 4.0.2). In a single model with normolipidemics as reference, the  
180 association between FLL class and each phecode was assessed using logistic regression with  
181 adjustments for age, sex, genotyping array, and the first 5 principal components of genetic  
182 ancestry. Accounting for multiple hypothesis-testing, statistical significance was assigned at  
183  $P < 3.2 \times 10^{-5}$  (0.05/1584 phecodes).

184 We performed genome-wide association studies (GWAS) using REGENIE software  
185 (version 1.0.2) across four FLL phenotypes against normolipidemic controls(32). Third-degree  
186 related individuals (N=34828) were excluded by the KING method(33). REGENIE step 1 was

187 performed on UKBB array genotypes. We excluded variants with minor allele frequency (MAF)  
188 <1%, minor allele count <100, genotype missingness >10%, or Hardy-Weinberg equilibrium p-  
189 value >10<sup>-15</sup>. Additionally, 6 samples (of 488377 used in step 1) were excluded due to genotype  
190 missingness >10%. In REGENIE step 2, Logistic regression was performed on genotyped and  
191 imputed variants (N=19475096) meeting MAF and imputation quality filters (MAF >=0.01%  
192 and INFO >=0.3), with Firth correction applied to SNPs where association p-value from standard  
193 logistic regression was <0.01. Covariates included were age, sex, genotyping array, and the first  
194 10 principal components of ancestry. SNPs and indels with association p-values <5x10<sup>-8</sup> were  
195 considered statistically significant. In a secondary analysis examining the effect of fasting status,  
196 we repeated the above GWAS additionally adjusting for fasting time, restricted to the top  
197 independent SNPs for each phenotype. Using LD score regression version 1.01 (restricted to  
198 SNPs present in HapMap3), we assessed the SNP heritability and pair-wise genetic correlation of  
199 FLL types IIa, IIb, III, and IV(34,35). We utilized a newly developed similarity-based method  
200 for gene prioritization, Polygenic Priority Score (PoPS), to investigate protein-coding gene  
201 contributions to each FLL phenotype(36). PoPS was performed on summary level GWAS data  
202 for each phenotype using 1000 Genome Project as a reference(37) to yield a ranked set of  
203 candidate causal genes.

204 Analyses were performed using R version 4.0.2 (R Core Team, 2020) unless otherwise  
205 specified.

206

## 207 **Results**

### 208 *Baseline characteristics of UKBB Participants.*

209 Overall, 450,636 UKBB participants with non-missing apoB and lipids, free of prevalent  
210 CAD, and with active participant consent were included in the analysis. Mean age was 56.3 (8.1)  
211 years, 44.4% were male, and 94.3% were white (**Table 2**). FLL dyslipoproteinemia was  
212 common, with 259,289 (57.5%) participants meeting criteria for one of the FLL types. The most  
213 prevalent FLL type was type IV (110,389, 24.5% of the overall population), followed by type IIb  
214 (94,785, 21.0%), type IIa (40,005, 8.9%), type I (63, 0.01%), and type V (49, 0.01%)  
215 (**Supplementary Figure 1**). Mean BMI was lowest among participants without  
216 dyslipoproteinemia (25.9 kg/m<sup>2</sup>), intermediate in type IIa individuals (26.9 kg/m<sup>2</sup>), and highest in  
217 FLL types I, IIb, IV, and V (28.9, 28.9, 28.8, and 29.3 kg/m<sup>2</sup>, respectively). Type 2 diabetes was  
218 more common in among individuals with FLL disorders I, IIb, IV, and V – 9.5%, 2.5%, 3.3%,  
219 and 10.2%, respectively – compared to normolipidemics or FLL disorders IIa and III – 1.4%,  
220 1.2%, and 1.2%, respectively. Statin treatment was most common in participants with FLL types  
221 IIa and IIb (25.1% and 24.3%, respectively), compared to 8.3% of normolipidemics. The  
222 distribution of lipids adjusted for lipid-lowering treatment (see Methods) reflected the  
223 assignments according to the apoB-based algorithm (**Figure 1**).

224

### 225 ***Risk of incident CAD by FLL dyslipoproteinemia class.***

226 Over median 11.1 years of follow-up, adjusted for age, sex, smoking status, BMI,  
227 hypertension, type 2 diabetes mellitus, statin prescription, genotyping array, and the first five  
228 principal components of ancestry, participants with FLL type IIb had the highest risk of incident  
229 CAD (HR 1.92, 95% CI 1.84-2.01, P<0.001) compared to normolipidemics, followed by type IIa  
230 (1.51, 95% CI 1.42-1.61, P<0.001) and type IV (HR 1.28, 95% CI 1.22-1.34, P<0.001) (**Figure**  
231 **2, Supplementary Table 2**). Type III individuals were not at statistically increased risk relative

232 to normolipidemics (HR 1.05, 95% CI 0.93-1.18, P=0.44). Adjusting the model further for either  
233 apoB or non-HDL-C attenuates the effect of FLL class on incident CAD, with preservation of  
234 increased hazard among individuals with the type IIb phenotype compared to other common FLL  
235 classes (**Supplementary Tables 3 and 4** for models additionally adjusting for apoB and non-  
236 HDL-C, respectively). Type III reaches nominal significance only in the model adjusted for  
237 apoB (HR 1.08, 95% CI 1.02-1.29, P=0.02). When patients prescribed lipid-lowering  
238 medications at baseline were excluded from the primary survival analysis, a similar pattern was  
239 observed of increased hazard for type IIb versus the other FLL disorders against  
240 normolipidemics (**Supplementary Table 5**).

241         Across strata of non-HDL-C (130-160, 160-190, 190-220, and 220-250 mg/dL), the type  
242 IIb pattern was associated with increased risk of incident CAD compared to types IIa, III, and IV  
243 when compared to stratum-matched normolipidemic individuals. In random-effects meta-  
244 analysis across the non-HDL-C strata, type IIb conferred a 1.45-fold independent hazard (95%  
245 CI 1.30-1.60) for incident CAD (Figure 3). Risk was elevated for types IV and IIa (HR 1.18,  
246 95% CI 1.10-1.30 and HR 1.17, 95% CI 1.04-1.30, respectively) but not for type III individuals  
247 (**Supplementary Figure 2**).

248

#### 249 *Phenome-wide association testing in UK Biobank.*

250         Unbiased phenome-wide association testing was performed to screen for associations  
251 between FLL classes and combined prevalent or incident phenotypes among UKBB participants,  
252 adjusted for age, sex, genotyping array, and the first five principal components of ancestry. A  
253 total of 1584 phenotypes were considered in the UKBB. Effect estimates (odds ratio) between  
254 FLL type and phecode for the union of the top 50 associations for each FLL type are shown in

255 **Supplementary Figure 3.** Representative top associations across the four phenotypes are shown  
256 in **Figure 4**. While type IIa was strongly associated with atherosclerotic cardiovascular disease  
257 (ASCVD) phenotypes, effects were greater for type IIb, which was also accompanied by strong  
258 associations with diabetes mellitus, liver disease, and obesity. Type IV was also similarly  
259 associated with diabetes mellitus, liver disease, and obesity, but effects for ASCVD were less.  
260 Type III was most strongly associated with alcohol-related disorders and malnutrition along with  
261 liver disease but without significant associations for diabetes or CAD.

262

### 263 *Genomic architecture of FLL dyslipoproteinemias.*

264 Among 98,587 individuals with any FLL dyslipoproteinemia with WES, only 2,020  
265 (2.05%) carried a disruptive variant in a monogenic dyslipidemia gene. Type IIa had the greatest  
266 prevalence (479 of 15,309 [3.1%]) of a disruptive monogenic dyslipidemia gene, most  
267 commonly in *LDLR* (**Supplementary Table 6, Supplementary Figure 4**). We also assessed  
268 *APOE* genotype status among study participants. Notably, the *APOE*-2/2 genotype, which is  
269 classically associated with remnant hypercholesterolemia, was markedly enriched among FLL  
270 type III individuals (11.4% prevalence) relative to the other FLL phenotypes and was rare among  
271 normolipidemics (0.5% prevalence) (**Supplementary Table 7, Supplementary Figure 5**).

272 Common variants were assessed for relevance separately for FLL types IIa, IIb, III, and  
273 IV (types I and V were excluded due to low case counts) against normolipidemic individuals  
274 through GWAS. Among 418603 unrelated individuals included, there were 57 with type I,  
275 37,211 with type IIa, 88,007 with type IIb, 13,030 with type III, 102,677 with type IV, 45 with  
276 type V, and 177,576 normolipidemics. These independent GWAS identify 77, 210, 31, and 99  
277 variants contributing to FLL types IIa, IIb, III, and IV, respectively (**Supplementary Tables 8-**

278 **11).** Taken together, these represent a total of 250 unique genome-wide significant ( $P < 5 \times 10^{-8}$ )  
279 loci contributing to any FLL class (**Figure 5, Supplementary Table 12**). Of the total associated  
280 loci, 13 were shared across all phenotypes (**Supplementary Table 13**), all of which are  
281 previously described lipid-associated genes. Unique loci for types IIa, IIb, III, and IV, number  
282 12, 97, 5, and 21, respectively (**Supplementary Figure 7, Supplementary Table 14**).

283       When compared to a recent GWAS of similar size in the Million Veterans Program for  
284 individual lipid concentrations (inclusive of HDL-C, LDL-C, TC, and TG), several loci (72 of  
285 250 [28.8%]) are novel(38). When further compared against published studies in the GWAS  
286 Catalog(39), 14 of the total loci are not reported to be associated with any of HDL-C, LDL-C,  
287 TG, total-C, or apoB concentrations (**Supplementary Table 15**). Examples include rs17576576,  
288 which associates with the FLL IIa phenotype and is upstream of peroxisome proliferator-  
289 activated receptor gamma, coactivator 1 alpha (*PPARGC1A*), and rs3856522, which associates  
290 with the FLL IIb phenotype and is an exonic variant of ATPase homolog 2 pseudogene  
291 (*AHSA2P*). Rs141955254 is the sole novel purported association with the Type III phenotype and  
292 is annotated as an intergenic variant in proximity to BMP/retinoic acid inducible neural specific  
293 1 (*BRINP1*).

294       Independent variants reported in the recent CARDIoGRAM-C4D Consortium CAD  
295 GWAS meta-analysis were extracted from FLL GWAS summary statistics for each  
296 phenotype(40). There was substantial overlap between CAD and FLL phenotype variants. Of the  
297 genome-wide significant CAD variants extracted from FLL GWAS summary statistics, 42.8% of  
298 variants were nominally significant at  $P < 0.05$  for type IIb (16.9% genome-wide), 32.2% for type  
299 IIa (12.7%), 27.1% for type IV (11.4%), and 24.2% for type III (6.4%) (**Supplementary Figure**  
300 **8**). Direction of effect was generally shared between CAD variants and FLL variants for

301 phenotypes IIa and IIb but not for phenotypes III and IV (**Supplementary Figure 9**). For  
302 example, *APOB* locus variants increasing the risk of CAD increased the risk of FLL types IIa  
303 and IIb but decreased the risk of phenotypes III and IV. Further, we observe that certain loci  
304 strongly affect risk of one condition while only modestly affecting the comparator phenotype.  
305 *LPA* variants have a strong influence on CAD risk but more modest influence on the FLL  
306 phenotypes.

307 Polygenic priority scoring ranked protein-coding genes from the common variants  
308 GWAS results for FLL types IIa, IIb, III, and IV using external multi-omics data.  
309 **Supplementary Figure 10** shows the union of the top 20 genetic contributors to each phenotype  
310 according to PoPS score. *APOE* was the top-ranked gene across all phenotypes, and common  
311 variants linked to Mendelian lipid-related genes were prioritized for all phenotypes, including  
312 *LDLR*, *APOB*, *SCARB1*, and the *APOA5/A4/C3/A1* locus. *LPL* was prioritized more highly for  
313 the hypertriglyceridemic types (i.e., IIb, III, and IV) than for type IIa. Some prioritized novel  
314 genes are platelet derived growth factor subunit B (*PDGFB*) for type IV, BRCA1 DNA repair  
315 associated (*BRCA1*) and beta-1,4-galactosyltransferase 1 (*B4GALT1*) for type III, and insulin  
316 receptor substrate 1 (*IRS1*) and insulin like growth factor 1 (*IGF1*) for type IV.

317 LD score regression estimated heritabilities and genetic correlations among the FLL  
318 dyslipoproteinemias (**Supplementary Figure 11**). Observed SNP heritabilities (standard errors  
319 [SE]) for FLL types IIa, IIb, III, and IV were 0.37 (0.1), 0.54 (0.09), 0.23 (0.29), and 0.28 (0.04),  
320 respectively. Pairwise genetic correlations were greatest between FLL types IV and III (0.96, SE  
321 0.03), types IIb and III (0.92, SE 0.05), and types IIb and IV (0.82, SE 0.02). The least genetic  
322 correlations were observed between types IIa and III (0.02, SE 0.05) and IIa and IV (0.09, SE  
323 0.01).

324 *Sensitivity analysis: Accounting for fasting time*

325 A minority of individuals (N=18488) fasted for greater than or equal to 8 hours prior to  
326 baseline blood draw. Utilizing the same algorithm for FLL classification, a similar prevalence of  
327 dyslipoproteinemia was observed: 52.3% were dyslipoproteinemic among fasting individuals  
328 compared to 57.5% among all individuals. No significant difference in the prevalences of FLL  
329 types I, IIb, III, and V was noted, whereas types IIa and IV were less common among fasting  
330 individuals (**Supplementary Table 17**).

331 Repeating GWAS with fasting time as a covariate, restricted to top independent SNPs for  
332 each phenotype, yielded no significant difference in effect estimates or association P-value for any  
333 of the FLL disorders (**Supplementary Figure 12**).

334

335 *Discussion*

336 In a large contemporary prospective cohort, we identified individuals with one of six FLL  
337 dyslipoproteinemias using an apoB-based classification algorithm. The prevalence of FLL  
338 disorders was high, affecting more than half of individuals. In both primary analysis and  
339 sensitivity analyses controlling for apoB or non-HDL-C, the type IIb phenotype conferred the  
340 highest risk of incident CAD compared to the remaining FLL dyslipoproteinemias; importantly,  
341 risk was also elevated for types IIa and IV in all analyses. FLL patterns exhibited diverse  
342 phenotypic relationships, including CAD for types IIa, IIb, and IV; diabetes and liver disease for  
343 types IIb and IV; and alcohol-related disorders and liver disease for type III. Common variant  
344 analysis using GWAS for the four prevalent FLL disorders revealed multiple genetic  
345 contributions to each, with novel loci detected not previously associated with individual lipids.  
346 Monogenic dyslipidemia variants were most common among type IIa individuals, usually



347 affecting *LDLR*, but were rare overall (i.e., 2% prevalence), and heritability analyses highlighted  
348 the polygenicity of the FLL phenotypes.

349 Our study adds to the growing evidence that FLL dyslipoproteinemias are  
350 underrecognized in contemporary Western populations(3,4). We show that identification of  
351 combinations of lipid derangement – as initially conceived by Fredrickson and colleagues –  
352 allows for refinement of CAD risk, as seen with the type IIb pattern when traditional lipid  
353 parameters are controlled for. Characterizing combinations of lipids furthermore yields distinct  
354 patterns of cardiometabolic risk not captured by single lipid parameters. While both types IIa and  
355 IIb are associated with CAD risk, only the latter carries significant risk independent of apoB  
356 concentration and also carries risk for diabetes and liver disease. While current guidelines  
357 prioritize FH, a pattern consistent with type IIa, for early preventive therapies, our observations  
358 support extension to type IIb alongside strategies to prevent diabetes onset.

359 The FLL type III phenotype was not associated with CAD in our study, in contrast to  
360 prior descriptions. As previously reported, the apoB-based scheme may be more sensitive and  
361 less specific for severe versions of type III dysbetalipoproteinemia in comparison to  
362 ultracentrifugation(4,41). Further, given that type III is reported to be a labile finding even  
363 among *APOE-2/2* carriers and likely highly influenced by environmental exposures, follow-up  
364 time in our model may not accurately reflect total remnant cholesterol exposure. Finally, the  
365 subclinical atherosclerosis described in contemporary cohorts with FLL type III individuals may  
366 not manifest as clinical ASCVD in the relatively young and healthy UKBB cohort.

367 Our genetic studies and downstream analysis revealed several interesting findings. First,  
368 canonical lipid loci are important contributors to each of the four most common FLL phenotypes,  
369 but non-lipid loci appear to be associated as well. For example, we identify the *IRSI* locus as an

370 important contributor to both type IIb and IV phenotypes. A variant ~500kb upstream of *IRS1*  
371 (rs2943641) is previously reported to be associated with a 35% increased risk of type 2 diabetes,  
372 the pathophysiologic basis of which appears to be impaired insulin sensitivity (and thus  
373 increased serum insulin) rather than altered beta cell homeostasis(42). This variant is strongly  
374 associated with both type IIb and IV phenotypes and is in close proximity and LD with lead  
375 CAD risk variant rs2943634(43). Thus, our strategy of combining multiple lipid derangements  
376 allows us to link insulin resistance, lipid abnormalities, and CAD risk for a variant likely driving  
377 CAD risk via a mechanism distinct from hypercholesterolemia. Second, while there may be  
378 important instances of monogenic inheritance for each of the FLL types, polygenicity is a far  
379 more common pattern of inheritance. This is consistent with prior genetic studies of individuals  
380 with severe hypercholesterolemia (akin to FLL type IIa) and with combined hyperlipidemia (akin  
381 to FLL type IIb)(13). In the case of the type IIb phenotype, our demonstration of high  
382 concordance between CAD risk loci and type IIb risk loci is consistent with the finding of high  
383 atherogenicity. Further, we find that, though concentrated among type III individuals, the *APOE*-  
384 2/2 genotype is not necessary for its expression; rather, polygenic susceptibility appears  
385 sufficient. Third, SNP heritability is high, and genetic correlation analysis reveals clusters of  
386 similarity – the hypertriglyceridemic conditions (types IIb, III, and IV) share greater genetic  
387 overlap than either types IIa and IIb or IIa with the other phenotypes.

388 Phenotype association testing reveals both previously reported and novel disease  
389 associations. As expected, type IIa was associated with traditional ASCVD phenotypes, and  
390 hypertriglyceridemic types IIb and IV were associated with obesity and diabetes mellitus, with  
391 type IV being associated with more biliary disorders and less strongly for ASCVD, suggesting  
392 that these may reflect a spectrum of a similar dyslipoproteinemia associated with metabolic

393 syndrome. Interestingly, FLL type III was associated with alcohol-related disorders and both  
394 malnutrition and hyperalimentation. This finding suggests that the type III pattern may be related  
395 to an exposure not well captured by these descriptors (e.g., liver disease) or simply cannot be  
396 explained by a single genetic by exposure axis.

397 Combining our genetic and phenotypic findings reveals patterns of association for  
398 specific FLL classes and highlights opportunities for precision medicine approaches for  
399 dyslipidemia treatment. For example, we find that variants at *RBM47* are uniquely associated  
400 with the type IIb phenotype. The *RBM47* locus is recently reported as a putative novel CAD risk  
401 locus among individuals of Middle Eastern ancestry(44). Further, in exome sequencing of  
402 diverse ancestry populations there was an association between the burden of deleterious variants  
403 in *RBM47* and TG/HDL-C ratio, and specific variants have been shown to significantly alter  
404 apoC-III concentrations(45). This may indicate that the type IIb phenotype would benefit from  
405 apo-CIII-lowering therapies in addition to LDL-C-lowering therapies. We also found the  
406 *FAMI3A* locus to be uniquely associated with the type IIb phenotype (lead variant rs6824451,  
407 OR 1.04,  $P=7.84 \times 10^{-10}$ ). This variant also increased risk for the type IV phenotype, although it  
408 did not reach genome-wide significance (OR 1.03,  $P=7.48 \times 10^{-7}$ ). *FAMI3A* encodes family with  
409 sequence similarity 13 member A, which has been implicated in body fat distribution in humans  
410 and visceral to subcutaneous adipose tissue ratio in mice via effects on adipocyte  
411 differentiation(46); a functional genomic study in adipocytes prioritized *FAMI3A* as a causal  
412 gene in insulin resistance(47). Overall, these findings point to a common mechanism connecting  
413 abnormal adipocyte homeostasis with lipid phenotype among hypertriglyceridemic FLL types IIb  
414 and IV.

415           This study has several limitations. First, the UKBB is a predominantly European ancestry  
416 cohort, and studies in ancestrally diverse populations are necessary to test whether these findings  
417 generalize to non-European groups. Second, we relied on non-fasting lipids (the UKBB Biobank  
418 standard) to assign Fredrickson class. Reassuringly, we found that when we limited the  
419 population to those with  $\geq 8$  hour fast prior to the baseline lab draw, a similar proportion of  
420 participants met criteria for a FLL disorder, suggesting this is simply a high prevalence  
421 population. Further evidence of high baseline dyslipoproteinemia is that type IIa prevalence is  
422 double that in other contemporary cohorts (8.9% versus 4-5%), despite apoB not being  
423 significantly influenced by the post-prandial state(22,48). Importantly, though isolated  
424 hypertriglyceridemia (FLL type IV) is classically defined in the fasting state, post-prandial  
425 hypertriglyceridemia has equal implications for cardiovascular risk (49). Our approach of  
426 applying the FLL framework to non-fasting samples permits clinical and genetic discovery on a  
427 scale not feasible when restricting to fasting-only samples, and we show that genetic results are  
428 unaffected by fasting time.

429           By accounting for patterns of change in multiple lipoprotein subfractions, the FLL  
430 classification scheme describes an underlying pathophysiologic disturbance with specificity that  
431 individual lipoprotein fractions cannot. Individuals with the type IIb pattern are at elevated risk  
432 of ASCVD relative to other dyslipoproteinemic individuals at equivalent non-HDL-C and thus  
433 merit intensive risk reduction and attention to the associated disease states that may contribute to  
434 the phenotype. Differential genetic risk factors underlying the FLL types highlights opportunities  
435 for precision medicine strategies aimed at lipid patterns beyond LDL-C alone.

436

437 **Funding**

438 Dr. Gilliland is partially supported by the National Heart, Lung, and Blood Institute T32  
439 grant 5T32HL125232. Dr. Dron is supported by the Canadian Institute of Health Research as a  
440 Banting Postdoctoral Research Fellow. Drs. Peloso and Natarajan are supported by grants from  
441 the National Heart, Lung, and Blood Institute (R01HL142711, R01HL127564). In addition, Dr.  
442 Natarajan is supported by grants from the National Heart Lung and Blood Institute  
443 (R01HL148050, R01HL151283, R01HL148565, R01HL135242, R01HL151152), National  
444 Institute of Diabetes and Digestive and Kidney Diseases (R01DK125782), Fondation Leducq  
445 (TNE-18CVD04), and Massachusetts General Hospital (Paul and Phyllis Fireman Endowed  
446 Chair in Vascular Medicine).

447 **Acknowledgements**

448           The authors would like to acknowledge and thank the staff, investigators, and participants

449 of the UK Biobank.

450 **Disclosures**

451 Dr. Natarajan reports grant support from Amgen, Apple, AstraZeneca, Boston Scientific,  
452 and Novartis, spousal employment and equity at Vertex, consulting income from Apple,  
453 AstraZeneca, Novartis, Genentech / Roche, Blackstone Life Sciences, Foresite Labs, and  
454 TenSixteen Bio, and is a scientific advisor board member and shareholder of TenSixteen Bio and  
455 geneXwell, all unrelated to this work. The other authors report no disclosures.

456

457 **Data Availability**

458           The data underlying this article were accessed from the UK Biobank under Application  
459 number 7089. UK Biobank individual-level data are available for request by application  
460 ([www.ukbiobank.ac.uk](http://www.ukbiobank.ac.uk)).



## 461 **References**

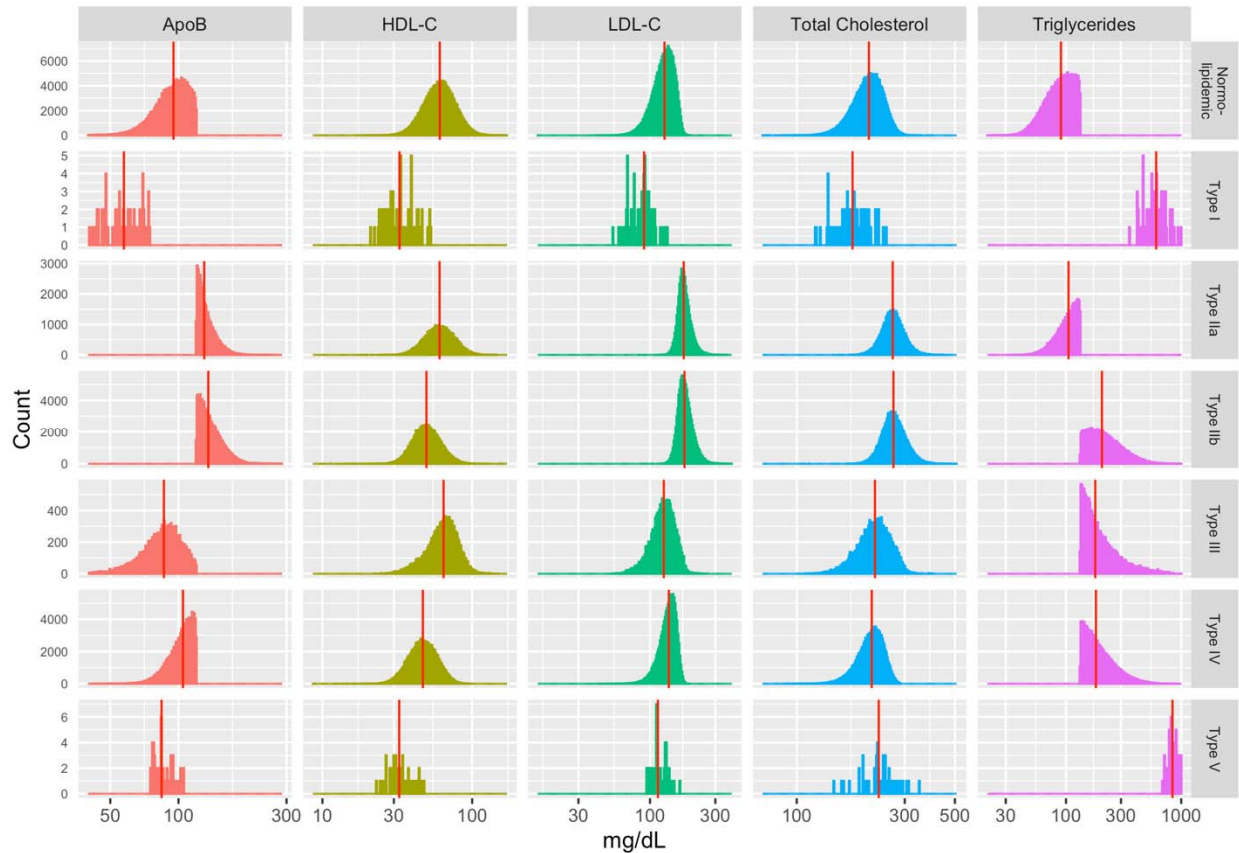
- 462 1. Fredrickson DS, Levy RI, Lees RS. Fat Transport in Lipoproteins — An Integrated  
463 Approach to Mechanisms and Disorders. *New England Journal of Medicine*. 1967 Jan  
464 5;276(1):34–44.
- 465 2. de Graaf J, Couture P, Sniderman A. A diagnostic algorithm for the atherogenic  
466 apolipoprotein B dyslipoproteinemias. *Nat Clin Pract Endocrinol Metab*. 2008  
467 Nov;4(11):608–18.
- 468 3. Holewijn S, Sniderman AD, den Heijer M, Swinkels DW, Stalenhoef AFH, de Graaf J.  
469 Application and validation of a diagnostic algorithm for the atherogenic apoB  
470 dyslipoproteinemias: ApoB dyslipoproteinemias in a Dutch population-based study. *Eur J*  
471 *Clin Invest*. 2011 Apr;41(4):423–33.
- 472 4. Sathiyakumar V, Pallazola VA, Park J, Vakil RM, Toth PP, Lazo-Elizondo M, et al. Modern  
473 prevalence of the Fredrickson-Levy-Lees dyslipidemias: findings from the Very Large  
474 Database of Lipids and National Health and Nutrition Examination Survey. *Arch Med Sci*.  
475 2020;16(6):1279–87.
- 476 5. Keulen ET, Voors-Pette C, de Bruin TW. Familial dyslipidemic hypertension syndrome:  
477 familial combined hyperlipidemia, and the role of abdominal fat mass. *Am J Hypertens*.  
478 2001 Apr;14(4 Pt 1):357–63.
- 479 6. Brouwers MCGJ, van Greevenbroek MMJ, Stehouwer CDA, de Graaf J, Stalenhoef AFH.  
480 The genetics of familial combined hyperlipidaemia. *Nat Rev Endocrinol*. 2012 Feb  
481 14;8(6):352–62.
- 482 7. Evans D, Seedorf U, Beil FU. Polymorphisms in the apolipoprotein A5 (APOA5) gene and  
483 type III hyperlipidemia. *Clin Genet*. 2005 Oct;68(4):369–72.
- 484 8. Schaefer JR, Sattler AM, Hackler B, Kurt B, Hackler R, Maisch B, et al. Hyperlipidemia in  
485 patients with apolipoprotein E 2/2 phenotype: apolipoprotein A5 S19W mutation as a  
486 cofactor. *Clin Chem*. 2004 Nov;50(11):2214.
- 487 9. de Beer F, Stalenhoef AFH, Hoogerbrugge N, Kastelein JJP, Gevers Leuven JA, van Duijn  
488 CM, et al. Expression of type III hyperlipoproteinemia in apolipoprotein E2 (Arg158 -->  
489 Cys) homozygotes is associated with hyperinsulinemia. *Arterioscler Thromb Vasc Biol*.  
490 2002 Feb 1;22(2):294–9.
- 491 10. Breckenridge WC, Little JA, Alaupovic P, Wang CS, Kuksis A, Kakis G, et al. Lipoprotein  
492 abnormalities associated with a familial deficiency of hepatic lipase. *Atherosclerosis*. 1982  
493 Nov;45(2):161–79.
- 494 11. Khera AV, Won HH, Peloso GM, Lawson KS, Bartz TM, Deng X, et al. Diagnostic Yield  
495 and Clinical Utility of Sequencing Familial Hypercholesterolemia Genes in Patients With  
496 Severe Hypercholesterolemia. *J Am Coll Cardiol*. 2016 Jun 7;67(22):2578–89.

- 497 12. Benn M, Watts GF, Tybjaerg-Hansen A, Nordestgaard BG. Mutations causative of familial  
498 hypercholesterolaemia: screening of 98 098 individuals from the Copenhagen General  
499 Population Study estimated a prevalence of 1 in 217. *Eur Heart J*. 2016 May  
500 1;37(17):1384–94.
- 501 13. Gill PK, Dron JS, Berberich AJ, Wang J, McIntyre AD, Cao H, et al. Combined  
502 hyperlipidemia is genetically similar to isolated hypertriglyceridemia. *J Clin Lipidol*. 2021  
503 Feb;15(1):79–87.
- 504 14. Bycroft C, Freeman C, Petkova D, Band G, Elliott LT, Sharp K, et al. The UK Biobank  
505 resource with deep phenotyping and genomic data. *Nature*. 2018 Oct;562(7726):203–9.
- 506 15. serum\_biochemistry.pdf [Internet]. [cited 2021 Dec 2]. Available from:  
507 [https://biobank.ndph.ox.ac.uk/showcase/ukb/docs/serum\\_biochemistry.pdf](https://biobank.ndph.ox.ac.uk/showcase/ukb/docs/serum_biochemistry.pdf)
- 508 16. Natarajan P, Peloso GM, Zekavat SM, Montasser M, Ganna A, Chaffin M, et al. Deep-  
509 coverage whole genome sequences and blood lipids among 16,324 individuals. *Nat*  
510 *Commun*. 2018 Aug 23;9(1):3391.
- 511 17. Cholesterol Treatment Trialists' (CTT) Collaboration, Baigent C, Blackwell L, Emberson J,  
512 Holland LE, Reith C, et al. Efficacy and safety of more intensive lowering of LDL  
513 cholesterol: a meta-analysis of data from 170,000 participants in 26 randomised trials.  
514 *Lancet*. 2010 Nov 13;376(9753):1670–81.
- 515 18. Bycroft C, Freeman C, Petkova D, Band G, Elliott LT, Sharp K, et al. Genome-wide genetic  
516 data on ~500,000 UK Biobank participants [Internet]. *Genetics*; 2017 Jul [cited 2021 Sep 7].  
517 Available from: <http://biorxiv.org/lookup/doi/10.1101/166298>
- 518 19. Honigberg MC, Zekavat SM, Aragam K, Finneran P, Klarin D, Bhatt DL, et al. Association  
519 of Premature Natural and Surgical Menopause With Incident Cardiovascular Disease.  
520 *JAMA*. 2019 Dec 24;322(24):2411–21.
- 521 20. Klarin D, Zhu QM, Emdin CA, Chaffin M, Horner S, McMillan BJ, et al. Genetic analysis in  
522 UK Biobank links insulin resistance and transendothelial migration pathways to coronary  
523 artery disease. *Nat Genet*. 2017 Sep;49(9):1392–7.
- 524 21. Honigberg MC, Zekavat SM, Niroula A, Griffin GK, Bick AG, Pirruccello JP, et al.  
525 Premature Menopause, Clonal Hematopoiesis, and Coronary Artery Disease in  
526 Postmenopausal Women. *Circulation*. 2021 Feb 2;143(5):410–23.
- 527 22. Denny JC, Ritchie MD, Basford MA, Pulley JM, Bastarache L, Brown-Gentry K, et al.  
528 PheWAS: demonstrating the feasibility of a phenome-wide scan to discover gene-disease  
529 associations. *Bioinformatics*. 2010 May 1;26(9):1205–10.
- 530 23. Wei WQ, Bastarache LA, Carroll RJ, Marlo JE, Osterman TJ, Gamazon ER, et al. Evaluating  
531 phecodes, clinical classification software, and ICD-9-CM codes for phenome-wide  
532 association studies in the electronic health record. *PLoS One*. 2017;12(7):e0175508.

- 533 24. Wu P, Gifford A, Meng X, Li X, Campbell H, Varley T, et al. Mapping ICD-10 and ICD-10-  
534 CM Codes to Phecodes: Workflow Development and Initial Evaluation. *JMIR Med Inform.*  
535 2019 Nov 29;7(4):e14325.
- 536 25. Wu P, Gifford A, Meng X, Li X, Campbell H, Varley T, et al. Mapping ICD-10 and ICD-10-  
537 CM Codes to Phecodes: Workflow Development and Initial Evaluation. *JMIR Med Inform.*  
538 2019 Nov 29;7(4):e14325.
- 539 26. Szustakowski JD, Balasubramanian S, Kvikstad E, Khalid S, Bronson PG, Sasson A, et al.  
540 Advancing human genetics research and drug discovery through exome sequencing of the  
541 UK Biobank. *Nat Genet.* 2021 Jul;53(7):942–8.
- 542 27. Liu X, Wu C, Li C, Boerwinkle E. dbNSFP v3.0: A One-Stop Database of Functional  
543 Predictions and Annotations for Human Nonsynonymous and Splice-Site SNVs. *Hum*  
544 *Mutat.* 2016 Mar;37(3):235–41.
- 545 28. Landrum MJ, Lee JM, Riley GR, Jang W, Rubinstein WS, Church DM, et al. ClinVar: public  
546 archive of relationships among sequence variation and human phenotype. *Nucleic Acids*  
547 *Res.* 2014 Jan;42(Database issue):D980-985.
- 548 29. Karczewski KJ, Francioli LC, Tiao G, Cummings BB, Alföldi J, Wang Q, et al. The  
549 mutational constraint spectrum quantified from variation in 141,456 humans. *Nature.* 2020  
550 May;581(7809):434–43.
- 551 30. PLINK 2.0 [Internet]. [cited 2021 Dec 31]. Available from: <https://www.cog->  
552 [genomics.org/plink/2.0/](https://www.cog-genomics.org/plink/2.0/)
- 553 31. Schwarzer G, Carpenter JR, Rücker G. *Meta-Analysis with R* [Internet]. Cham: Springer  
554 International Publishing; 2015 [cited 2021 Sep 7]. (Use R!). Available from:  
555 <http://link.springer.com/10.1007/978-3-319-21416-0>
- 556 32. Mbatchou J, Barnard L, Backman J, Marcketta A, Kosmicki JA, Ziyatdinov A, et al.  
557 Computationally efficient whole-genome regression for quantitative and binary traits. *Nat*  
558 *Genet.* 2021 Jul;53(7):1097–103.
- 559 33. Manichaikul A, Mychaleckyj JC, Rich SS, Daly K, Sale M, Chen WM. Robust relationship  
560 inference in genome-wide association studies. *Bioinformatics.* 2010 Nov 15;26(22):2867–  
561 73.
- 562 34. International HapMap 3 Consortium, Altshuler DM, Gibbs RA, Peltonen L, Altshuler DM,  
563 Gibbs RA, et al. Integrating common and rare genetic variation in diverse human  
564 populations. *Nature.* 2010 Sep 2;467(7311):52–8.
- 565 35. Bulik-Sullivan BK, Loh PR, Finucane HK, Ripke S, Yang J, Schizophrenia Working Group  
566 of the Psychiatric Genomics Consortium, et al. LD Score regression distinguishes  
567 confounding from polygenicity in genome-wide association studies. *Nat Genet.* 2015  
568 Mar;47(3):291–5.

- 569 36. Weeks EM, Ulirsch JC, Cheng NY, Trippe BL, Fine RS, Miao J, et al. Leveraging polygenic  
570 enrichments of gene features to predict genes underlying complex traits and diseases  
571 [Internet]. *Genetic and Genomic Medicine*; 2020 Sep [cited 2021 Sep 7]. Available from:  
572 <http://medrxiv.org/lookup/doi/10.1101/2020.09.08.20190561>
- 573 37. 1000 Genomes Project Consortium, Auton A, Brooks LD, Durbin RM, Garrison EP, Kang  
574 HM, et al. A global reference for human genetic variation. *Nature*. 2015 Oct  
575 1;526(7571):68–74.
- 576 38. Klarin D, Damrauer SM, Cho K, Sun YV, Teslovich TM, Honerlaw J, et al. Genetics of  
577 blood lipids among ~300,000 multi-ethnic participants of the Million Veteran Program. *Nat*  
578 *Genet*. 2018 Nov;50(11):1514–23.
- 579 39. GWAS Catalog [Internet]. [cited 2021 Dec 13]. Available from: <https://www.ebi.ac.uk/gwas/>
- 580 40. Aragam KG, Jiang T, Goel A, Kanoni S, Wolford BN, Weeks EM, et al. Discovery and  
581 systematic characterization of risk variants and genes for coronary artery disease in over a  
582 million participants [Internet]. 2021 Jun [cited 2021 Dec 31] p. 2021.05.24.21257377.  
583 Available from: <https://www.medrxiv.org/content/10.1101/2021.05.24.21257377v1>
- 584 41. Sniderman AD, de Graaf J, Thanassoulis G, Tremblay AJ, Martin SS, Couture P. The  
585 spectrum of type III hyperlipoproteinemia. *J Clin Lipidol*. 2018 Dec;12(6):1383–9.
- 586 42. Rung J, Cauchi S, Albrechtsen A, Shen L, Rocheleau G, Cavalcanti-Proença C, et al. Genetic  
587 variant near *IRS1* is associated with type 2 diabetes, insulin resistance and  
588 hyperinsulinemia. *Nat Genet*. 2009 Oct;41(10):1110–5.
- 589 43. Genomewide Association Analysis of Coronary Artery Disease | *NEJM* [Internet]. [cited  
590 2022 Jan 7]. Available from: <https://www.nejm.org/doi/full/10.1056/NEJMoa072366>
- 591 44. Kunji K, El -Menyar Ayman, Ullah E, Kullo I, Saad M, Al SJ. Whole genome sequencing of  
592 a middle eastern cohort replicates known loci for coronary heart disease and identifies  
593 potential novel ones. *Journal of the American College of Cardiology*. 2021 May  
594 11;77(18\_Supplement\_1):13–13.
- 595 45. Sandholm N, Hotakainen R, Haukka JK, Sigfrids FJ, Dahlström EH, Antikainen A, et al.  
596 Novel protein-altering variants associated with serum apolipoprotein and lipid levels  
597 [Internet]. 2021 Sep [cited 2022 Jan 10] p. 2021.09.19.21263610. Available from:  
598 <https://www.medrxiv.org/content/10.1101/2021.09.19.21263610v1>
- 599 46. Fathzadeh M, Li J, Rao A, Cook N, Chennamsetty I, Seldin M, et al. *FAM13A* affects body  
600 fat distribution and adipocyte function. *Nat Commun*. 2020 Mar 19;11(1):1–13.
- 601 47. Chen Z, Yu H, Shi X, Warren CR, Lotta LA, Friesen M, et al. Functional Screening of  
602 Candidate Causal Genes for Insulin Resistance in Human Preadipocytes and Adipocytes.  
603 *Circulation Research*. 2020 Jan 31;126(3):330–46.

- 604 48. Mora S, Chang CL, Moorthy MV, Sever PS. Association of Nonfasting vs Fasting Lipid  
605 Levels With Risk of Major Coronary Events in the Anglo-Scandinavian Cardiac Outcomes  
606 Trial-Lipid Lowering Arm. *JAMA Intern Med.* 2019 Jul 1;179(7):898–905.
- 607 49. Langsted A, Nordestgaard BG. Nonfasting versus fasting lipid profile for cardiovascular risk  
608 prediction. *Pathology.* 2019 Feb 1;51(2):131–41.
- 609



610

611 **Figure 1. Distribution of lipids among normolipidemics and FLL classes.** Lipids are

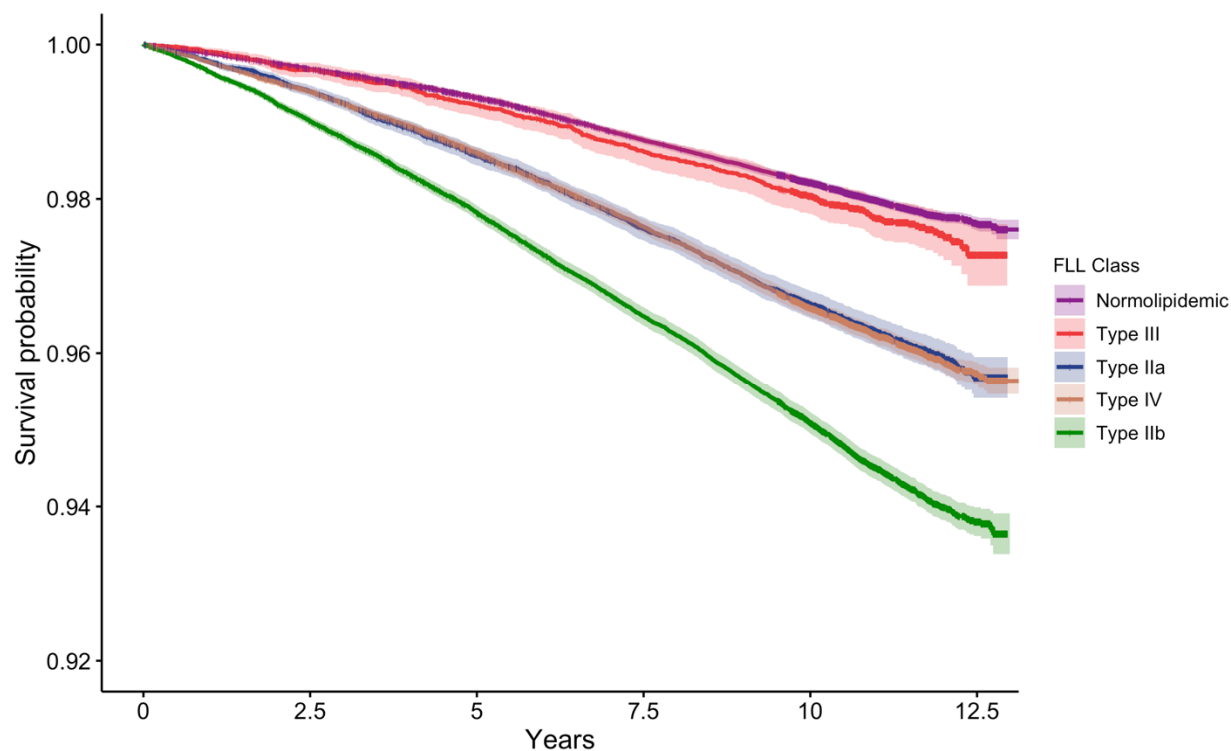
612 presented as mg/dL on the log(10) scale, with vertical dash marking distribution median.

613 Abbreviations: ‘ApoB’ = apolipoprotein B; ‘HDL-C’ = high-density lipoprotein cholesterol;

614 ‘LDL-C’ = directly measured low-density lipoprotein cholesterol. ApoB, LDL-C, and total

615 cholesterol are corrected for baseline statin prescription, as outlined in *Methods*.

616

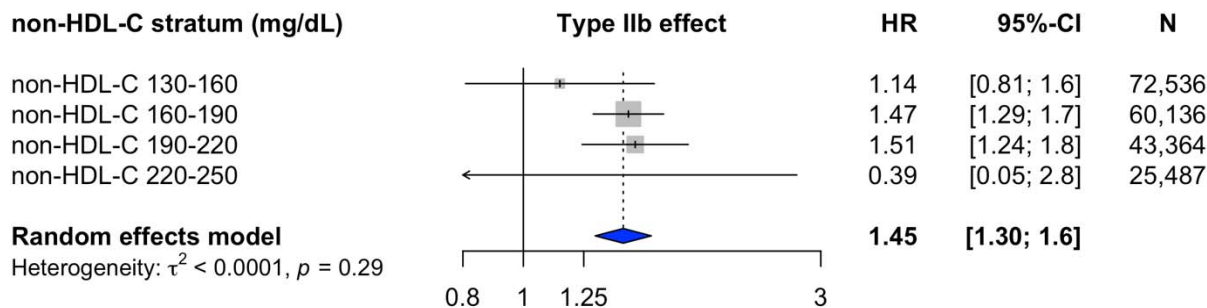


617

618 **Figure 2. Survival free from incident CAD according to FLL class.** Individuals with FLL  
619 dyslipoproteinemias were followed for a median of 11.1 years for incident CAD. Abbreviations:  
620 ‘CAD’ = coronary artery disease; ‘FLL’ = Fredrickson-Levy-Lees; ‘Normolipidemic’ = not  
621 meeting criteria for any FLL disorder.

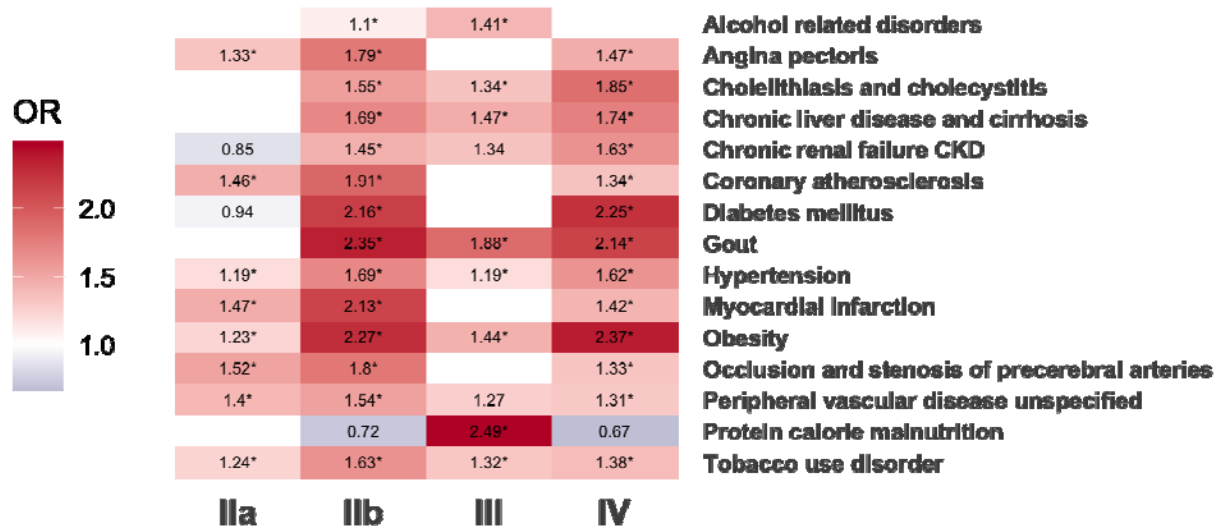
622





623  
 624 **Figure 3. FLL type IIb confers elevated CAD risk across non-HDL-C strata.** Meta-analysis  
 625 of FLL type IIb effect compared to normolipidemic individuals across non-HDL-C strata.  
 626 Individuals meeting criteria for FLL type IIb were compared against stratum-matched  
 627 normolipidemic individuals across four strata of non-HDL-C. Random-effects meta-analysis  
 628 reported overall type IIb effect. Abbreviations: ‘Non-HDL-C’ = non-high-density lipoprotein  
 629 cholesterol; ‘HR’ = hazard ratio; ‘CI’ = confidence interval; ‘N’=total individuals in a given  
 630 stratum;  $\tau^2$  = effect size variance estimated by restricted maximum likelihood method.  
 631





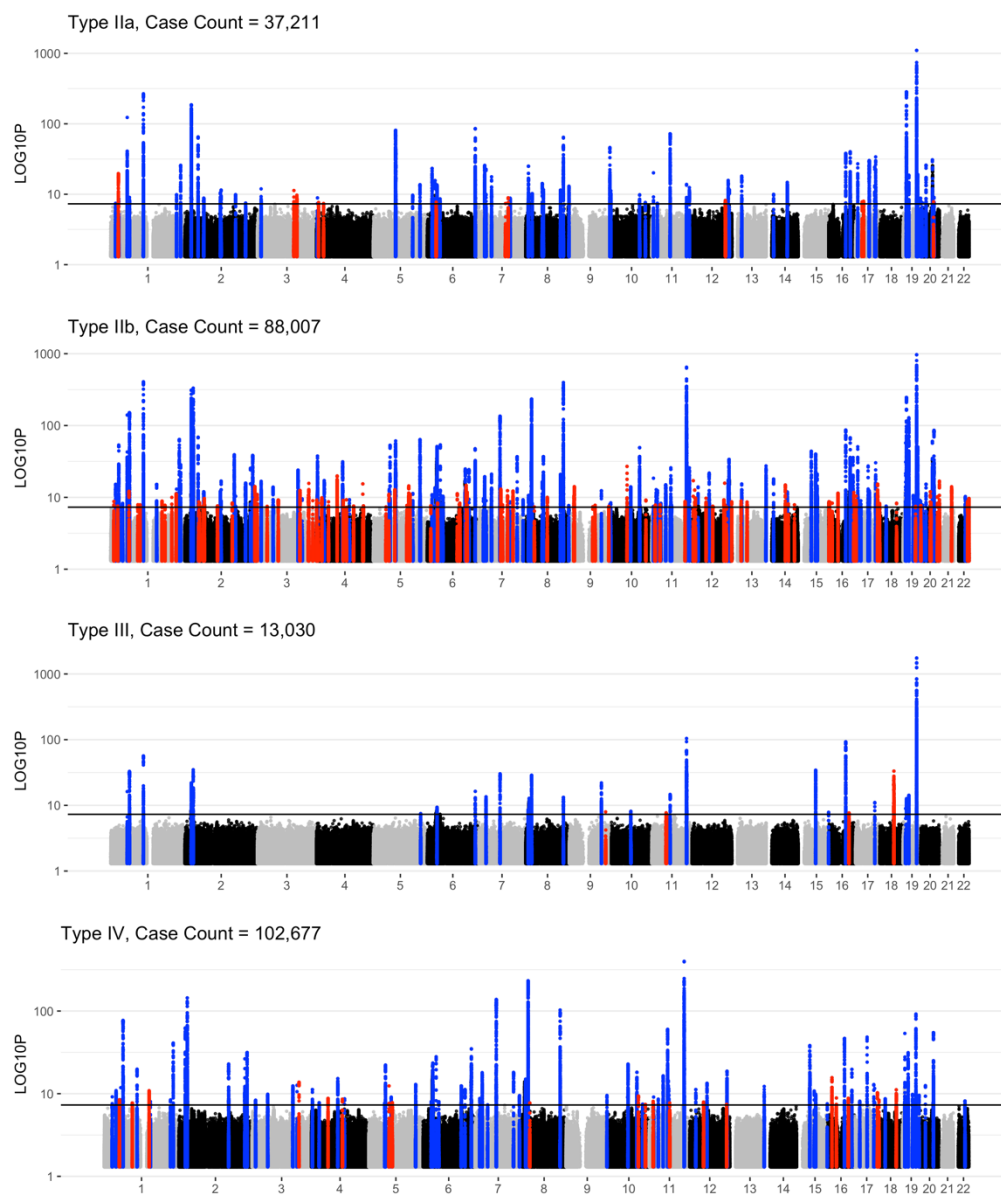
632

633 **Figure 4. Phenome-wide association of lipid patterns yields distinct phenotypic patterns.**

634 PheWAS UKBB of representative phenotypes reaching phenome-wide significance (Bonferroni  
 635 adjusted  $P < 3.2 \times 10^{-5}$ ) relative to normolipidemics. OR is presented only when nominal P value of  
 636  $P < 0.05$  is reached and are marked with “\*” if reaching phenome-wide significance. Blank cells  
 637 reflect exposure-phenotype associations  $P > 0.05$ .

638

639



640

641 **Figure 5. Shared and distinct genetic loci associated with FLL classes.** Independent GWAS

642 were performed using REGENIE software for each of the common FLL phenotypes (IIa, IIb, III,

643 and IV) against normolipidemic individuals. Independent genome-wide significant SNPs define

644 +/- 500kbp loci, which are highlighted in red or blue. Red loci are unique to the phenotype, and

645 blue loci are shared between two or more phenotypes. X-axis reflects genomic location labeled

646 according to chromosome 1-22. Y-axis displays  $-\log_{10}(\text{P-value})$  on the  $\log_{10}$  scale.

Fredrickson-Levy-Lees class definitions					
	ApoB (mg/dL)	TG (mg/dL)	TG/apoB	TC (mg/dL) /apoB	Lipoprotein excess
<b>Type I</b>	<75	≥ 133	≥ 8.8	-	Chylomicrons
<b>Type IIa</b>	≥ 120	< 133	-	-	LDL
<b>Type IIb</b>	≥ 120	≥ 133	-	-	LDL and VLDL
<b>Type III</b>	< 120	≥ 133	< 8.8	≥ 2.4	Remnant particles
<b>Type IV</b>	< 120	≥ 133	< 8.8	< 2.4	VLDL
<b>Type V</b>	≥ 75 and < 120	≥ 133	≥ 8.8	-	Chylomicrons and VLDL

647  
648 **Table 1. Definition and characteristics of FLL dyslipoproteinemias.** FLL disorders were  
649 defined as previously based on apoB and TG and the ratios of TG/apoB and TC/apoB. ApoB and  
650 TG are expressed in mg/dL for both isolated measurements and in defining the thresholds for the  
651 ratios TG/apoB and TC/apoB. Lipoprotein excess refers to the lipoprotein particle(s) found in  
652 excess for each phenotype. Abbreviations: ‘apoB’ = apolipoprotein B; ‘TG’ = triglycerides; ‘TC’  
653 = total cholesterol; ‘LDL’ = low-density lipoprotein; ‘VLDL’ = very low-density lipoprotein.

654

	All	Normolipidemic	Type I	Type IIa	Type IIb	Type III	Type IV	Type V
<b>Number (%)</b>	450636 (100)	191347 (42.5)	63 (0.01)	40005 (8.9)	94785 (21.0)	13998 (3.1)	110389 (24.5)	49 (0.01)
<b>Demographics</b>								
<b>Age at enrollment, mean (SD), y</b>	56.3 (8.1)	55.0 (8.3)	55.8 (8.6)	58.4 (7.3)	57.9 (7.5)	56.8 (7.7)	56.6 (8.1)	52.6 (8.6)
<b>Male sex, n (%)</b>	200353 (44.4)	67992 (35.5)	57 (90.5)	14991 (37.5)	48317 (51.0)	4792 (34.2)	64163 (58.1)	41 (83.7)
<b>White, n (%)</b>	424851 (94.3)	179080 (93.6)	59 (93.7)	37725 (94.3)	90518 (95.5)	13408 (95.8)	104015 (94.2)	46 (93.9)
<b>Black, n (%)</b>	7114 (1.6)	4635 (2.4)	0	847 (2.1)	635 (0.7)	128 (0.9)	869 (0.8)	0
<b>Baseline lipids</b>								
<b>TC, median (IQR), mg/dl</b>	225.8 (199.5-253.9)	208.4 (186.7-229.6)	176.4 (155.8-200.2)	265.5 (247.1-285.7)	267.4 (248.2-289.9)	221.6 (197.1-247.0)	214.5 (195.0-232.5)	230.4 (206.8-256.5)
<b>LDL-C, median (IQR), mg/dl</b>	143.0 (122.7-165.2)	127.6 (111.6-142.9)	90.5 (76.4-98.6)	176.2 (166.0-189.5)	178.5 (166.2-194.7)	126.1 (109.8-143.1)	137.2 (123.5-149.2)	114.2 (107.0-129.6)
<b>HDL-C, median (IQR), mg/dl</b>	54.5 (45.7-65.1)	60.8 (51.5-71.2)	32.7 (27.7-39.0)	60.6 (51.9-70.7)	49.5 (43.0-57.2)	64.4 (54.6-74.1)	46.9 (40.3-54.5)	32.6 (29.5-37.4)
<b>TG, median (IQR), mg/dl</b>	130.6 (92.3-188.9)	90.3 (72.1-109.4)	605.7 (512.2-696.1)	105.1 (88.6-119.5)	205.0 (165.5-267.6)	179.3 (151.2-235.5)	181.9 (153.6-232.7)	839.3 (786.0-903.3)
<b>ApoB, median (IQR), mg/dl</b>	107.3 (91.9-123.7)	95.0 (83.5-106.0)	57.4 (48.4-68.6)	129.9 (124.2-139.7)	135.4 (126.7-148.3)	86.2 (75.0-97.1)	104.7 (94.8-112.5)	84.2 (78.4-94.3)
<b>Lipid-lowering therapy</b>								
<b>Statin, n (%)</b>	62990 (14.0)	15903 (8.3)	5 (7.9)	9984 (25.0)	22888 (24.1)	522 (3.7)	13680 (12.4)	8 (16.3)
<b>Ezetimibe, n (%)</b>	1861 (0.4)	437 (0.2)	1 (1.6)	175 (0.4)	623 (0.6)	33 (0.2)	592 (0.5)	0
<b>Fibrate, n (%)</b>	1024 (0.2)	245 (0.1)	2 (3.2)	57 (0.1)	333 (0.4)	30 (0.2)	357 (0.3)	0
<b>Niacin, n (%)</b>	39	14	0 (0%)	1	11	2	11	0 (0%)
<b>Any therapy, n (%)</b>	78477 (17.4)	22718 (11.8)	9 (14.3)	11393 (28.5)	25869 (27.3)	1054 (7.5)	17426 (15.8)	8 (16.3)
<b>Medical history</b>								
<b>Smoking status, n (%)</b>	199707 (44.3)	77564 (40.5)	36 (57.1)	17689 (44.2)	46826 (49.4)	6353 (45.4)	51207 (46.4)	32 (65.3)
Never	248706 (55.2)	112920 (59.0)	27 (42.9)	22145 (55.4)	47466 (50.1)	7573 (54.1)	58559 (53.0)	16 (32.7)
Previous	152861 (33.9)	60920 (31.8)	27 (42.9)	13759 (34.4)	34631 (36.5)	4920 (35.1)	38581 (35.0)	23 (46.9)
Current	46846 (10.4)	16644 (8.7)	9 (14.3)	3930 (9.8)	12195 (12.9)	1433 (10.2)	12626 (11.4)	9 (18.4)
<b>Hypertension, n (%)</b>	126092 (28.0)	41155 (21.5)	30 (47.6)	11699 (29.2)	33336 (35.2)	3573 (25.5)	36279 (32.9)	20 (40.8)
<b>Diabetes mellitus, type 2, n (%)</b>	9316 (2.1)	2624 (1.4)	6 (9.5)	467 (1.2)	2366 (2.5)	174 (1.2)	3674 (3.3)	5 (10.2)
<b>BMI, mean (SD), kg/m<sup>2</sup></b>	27.4 (4.8)	25.9 (4.4)	28.9 (3.8)	26.9 (4.3)	28.9 (4.5)	26.9 (4.5)	28.8 (4.8)	29.3 (4.1)

655  
656 **Table 2. Baseline characteristics of UKBB study participants.** We report demographic  
657 characteristics, baseline lipids, lipid-lowering medication use, and relevant medical history for all  
658 study participants ('All'), individuals not meeting criteria for an FLL disorder

659 ('Normolipidemic'), and individuals meeting criteria for any of the six FLL dyslipoproteinemias.

660 Abbreviations: 'SD' = standard deviation; 'IQR' = interquartile range; 'TC' = total cholesterol;

661 'LDL-C' = low density lipoprotein cholesterol; 'HDL-C' = high density lipoprotein cholesterol;

662 'TG' = triglyceride; 'ApoB' = apolipoprotein B; 'BMI' = body-mass index.