

1 Development and Validation of a Metabolite Index for Obstructive 2 Sleep Apnea across Race/Ethnicities

3 Ying Zhang¹, Debby Ngo², Bing Yu³, Neomi A. Shah⁴, Han Chen^{3,5}, Alberto R. Ramos⁶, Phyllis C.
4 Zee⁷, Russell Tracy⁸, Peter Durda⁸, Robert Kaplan⁹, Martha L. Daviglus¹⁰, Stephen S.
5 Rich¹¹, Jerome I. Rotter¹², Jianwen Cai¹³, Clary Clish¹⁴, Robert Gerszten¹⁵, Bruce S.
6 Kristal^{16,17}, Sina A. Gharib¹⁸, Susan Redline¹⁷, Tamar Sofer^{16,19,*}

7 ¹Department of Medicine, Division of Sleep Medicine and Circadian Disorders, Brigham and
8 Women's Hospital, Boston, MA, 02115, ²Cardiovascular Institute, Division of Pulmonary, Critical
9 Care and Sleep Medicine, Beth Israel Deaconess Medical Center, Boston, MA, 02215, ³Human
10 Genetics Center, Department of Epidemiology, Human Genetics and Environmental Sciences,
11 School of Public Health, The University of Texas Health Science Center at Houston, Houston, TX,
12 77030, ⁴Department of Medicine, Albert Einstein College of Medicine, New York, NY,
13 10029, ⁵Center for Precision Health, School of Biomedical Informatics, The University of Texas
14 Health Science Center at Houston, Houston, TX, 77030, ⁶Department of Neurology, Sleep
15 Medicine Program, University of Miami Miller School of Medicine, Miami, FL,
16 33136, ⁷Department of Neurology, Division of Sleep Medicine, Northwestern University,
17 Chicago, IL, 60611, ⁸Department of Pathology Laboratory Medicine, Larner College of Medicine,
18 University of Vermont, Burlington, VT, 05405, ⁹Department of Epidemiology & Population
19 Health, Albert Einstein College of Medicine, Bronx, NY, 10461, ¹⁰Department of Preventive
20 Medicine, Northwestern University Feinberg School of Medicine, Chicago, IL, 60612, ¹¹Center
21 for Public Health Genomics, University of Virginia, Charlottesville, VA, 22908, ¹²Department of

22 Pediatrics, The Institute for Translational Genomics and Population Sciences, The Lundquist
23 Institute for Biomedical Innovation at Harbor-UCLA Medical Center, Torrance, CA,
24 90502, ¹³Department of Biostatistics, Collaborative Studies Coordinating Center, University of
25 North Carolina at Chapel Hill, Chapel Hill, NC, 27599, ¹⁴Metabolite Profiling Platform, Broad
26 Institute of MIT and Harvard, Cambridge, MA, 02142, ¹⁵Cardiovascular Research Center,
27 Massachusetts General Hospital, Harvard Medical School, Boston, MA, 02115, ¹⁶Department of
28 Medicine, Sleep and Circadian Disorders, Harvard Medical School, Boston, MA,
29 02115, ¹⁷Department of Medicine, Division of Sleep Medicine and Circadian Disorders, Brigham
30 and Women's Hospital and Harvard Medical School, Boston, MA, 02115, ¹⁸Department of
31 Medicine, Division of Pulmonary, Critical Care, and Sleep Medicine, University of Washington,
32 Seattle, WA, 98195, ¹⁹Department of Biostatistics, Harvard T.H. Chan School of Public Health,
33 Boston, MA, 02115

34

35 *Corresponding Author

36 Email: tsofer@bwh.harvard.edu (TS)

37

38

39 Author's contributions

40 Conception: D.N, T.S., Y.Z.; MESA Metabolomics measurement and study design: D.N., R.G.,
41 C.C., S.S.R., J.I.R.; HCHS/SOL metabolomics measurement and study design: B.Y.; Sleep data

- 42 collection: S.R.; Data analysis: Y.Z., T.S.; MESA data collection: S.S.R., J.I.R.; HCHS/SOL data
- 43 collection: P.C.Z., R.K., M.D., J.C.; Results interpretation and critical review of manuscript:
- 44 Everyone.

45 Abstract

46

47 **Background:** Obstructive sleep apnea (OSA) is a common disorder characterized by recurrent
48 episodes of upper airway obstruction during sleep resulting in oxygen desaturation and sleep
49 fragmentation, and associated with increased risk of adverse health outcomes. Metabolites are
50 being increasingly used for biomarker discovery and evaluation of disease processes and
51 progression. Studying metabolomic associations with OSA in a diverse community-based cohort
52 may provide insights into the pathophysiology of OSA. We aimed to develop and replicate a
53 metabolite index for OSA and identify individual metabolites associated with OSA.

54 **Methods and Findings:** We studied 219 metabolites and their associations with the apnea
55 hypopnea index (AHI) and with moderate-severe OSA ($AHI \geq 15$) in the Hispanic Community
56 Health Study/Study of Latinos (HCHS/SOL) ($n=3507$) using two methods: (1) association analysis
57 of individual metabolites, and (2) least absolute shrinkage and selection operator (LASSO)
58 regression to identify a subset of metabolites jointly associated with OSA, and develop a
59 metabolite index for OSA. Results were validated in the Multi-Ethnic Study of Atherosclerosis
60 (MESA) ($n=475$). When assessing the associations with individual metabolites, we identified
61 seven metabolites significantly positively associated with OSA in HCHS/SOL ($FDR p < 0.05$), of
62 which four associations - glutamate, oleoyl-linoleoyl-glycerol (18:1/18:2), linoleoyl-linoleoyl-
63 glycerol (18:2/18:2) and phenylalanine, replicated in MESA (one sided- $p < 0.05$). The OSA
64 metabolite index, composed of 14 metabolites, was associated with 50% increase of risk for
65 moderate-severe OSA ($OR=1.50$ [95% CI: 1.21-1.85] per 1 SD of OSA metabolite index, $p < .001$)

66 in HCHS/SOL and 44% increased risk (OR=1.55 [95% CI: 1.10-2.20] per 1 SD of OSA metabolite
67 index, $p=0.013$) in MESA, both adjusted for demographics, lifestyle, and comorbidities. Similar
68 albeit less significant associations were observed for AHI.

69 **Conclusions:** We developed a metabolite index that replicated in an independent multi-ethnic
70 dataset, demonstrating the robustness of metabolomic-based OSA index to population
71 heterogeneity. Replicated metabolite associations may provide insights into OSA-related
72 molecular and metabolic mechanisms.

73

74 Introduction

75 Obstructive sleep apnea (OSA) is a common disorder characterized by recurrent
76 episodes of upper airway obstruction during sleep resulting in oxygen desaturation and sleep
77 fragmentation (1). While highly prevalent in the population (2), OSA is severely under-
78 diagnosed (3), especially in women (4). For example, only 1.3% of participants in the Hispanic
79 Community Health Study/Study of Latinos (HCHS/SOL) and 7-15% of participants in the Multi-
80 Ethnic Study of Atherosclerosis (MESA) reported a previous OSA diagnosis; in MESA,
81 underdiagnosis was highest among race/ethnic minorities (5,6). The pathophysiology
82 underlying OSA is multifaceted, which includes obesity, craniofacial structure, upper airway
83 neuronal control, ventilatory control, and inflammation, among others (7). OSA is also
84 associated with increased risk of adverse health outcomes, including hypertension,
85 cardiovascular disease, diabetes, and early mortality (8–11).

86

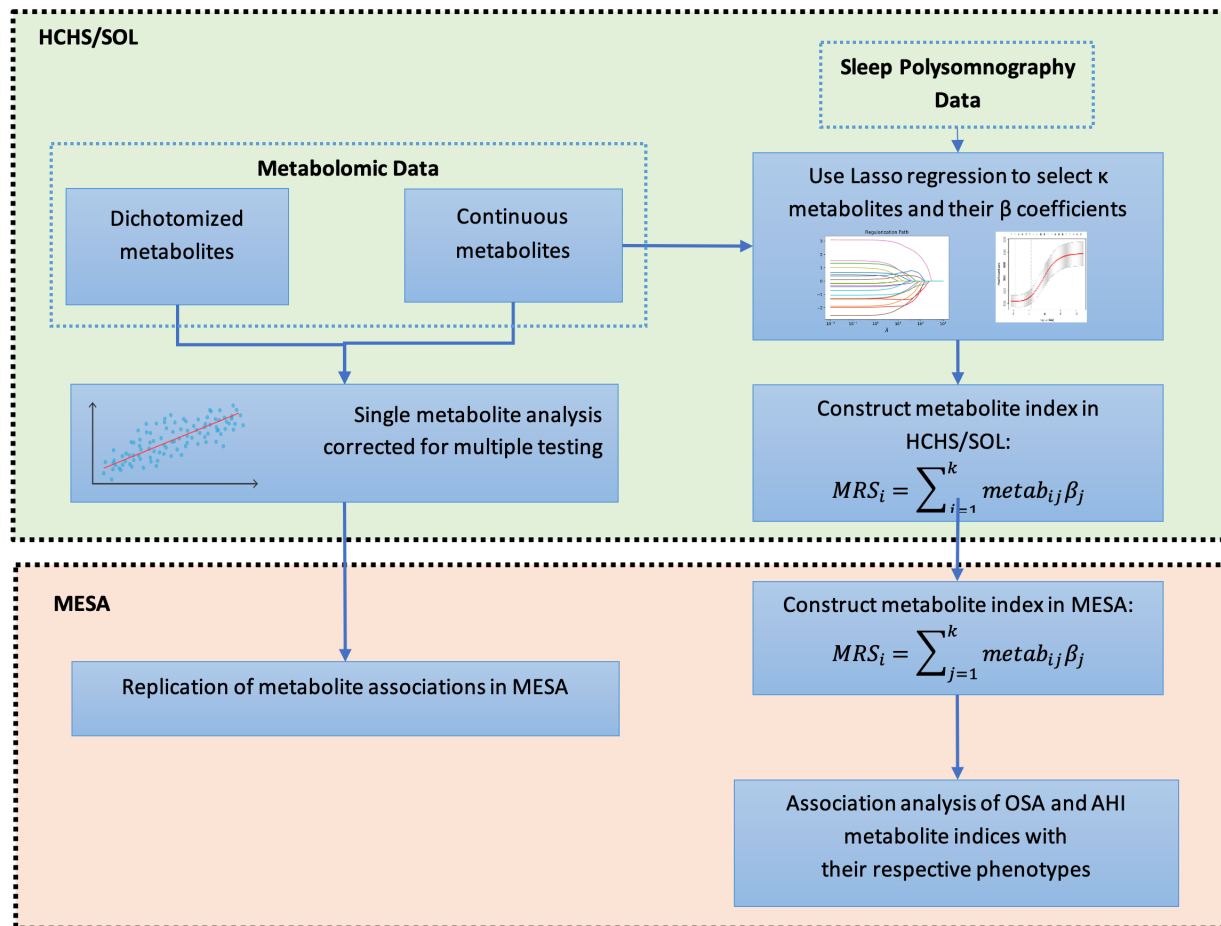
87 Metabolomics is the study of small biochemical compounds at large scales (12). As a growing
88 number of large metabolomics datasets become available, metabolites are being increasingly
89 leveraged for biomarker discovery and evaluation of disease processes and progression (13,14).
90 In particular, studying metabolite associations with OSA may improve our understanding of the
91 pathophysiology of OSA. However, research in this area has been limited by the relatively small
92 number of participants that have undergone both overnight sleep studies and metabolomic
93 profiling, the lack of representativeness of the study subjects selected solely in clinical

94 encounters, and the limited metabolite panels used by many targeted metabolomics platforms
95 (15,16).

96 Here, we study metabolite associations with OSA in the HCHS/SOL, one of the largest multi-
97 center cohorts with diverse participants from a rapidly growing minority group in the US:
98 Hispanics/Latinos. We then test these associations for replication in MESA, a multi-ethnic
99 community-based cohort. Our study follows the design described in **Figure 1**. First, we study
100 associations of individual metabolites with a measure of moderate to severe OSA, defined by
101 the apnea hypopnea index $AHI \geq 15$, as well as by associations with continuously measured
102 AHI. Next, we develop a metabolite index for OSA by aggregating together multiple metabolites
103 as a potential biomarker for OSA. We then validate its association with OSA in MESA. This
104 process is repeated for a continuous measure of OSA severity, the AHI. Because OSA has
105 different characteristics across sexes (17), in secondary analyses we additionally studied sex-
106 specific metabolite indices.

107

Figure 1: Study design flow chart.



Definition of abbreviations: LASSO = least absolute shrinkage and selection operator, HCHS/SOL= the Hispanic Community Health Study/Study of Latinos, MESA= the Multi-Ethnic Study of Atherosclerosis.

108

109 **Methods**

110 **The Hispanic Community Health Study/Study of Latinos**

111 The HCHS/SOL is a community-based cohort study of 16,415 self-identified Hispanic/Latino
 112 persons from diverse Hispanic/Latino backgrounds (Mexicans, Puerto Ricans, Cubans, Central
 113 Americans, Dominicans, and South Americans) (18). Participants 18–74 years of age at their

114 baseline examination were recruited through a stratified multistage area probability sample
115 design from four communities: San Diego, California; Chicago, Illinois; The Bronx, New York; and
116 Miami, Florida. The baseline examinations occurred in June 2008–July 2011 and included
117 assessment of OSA using a validated Type 3 home sleep apnea test (ARES Unicorder 5.2; B-
118 Alert, Carlsbad, CA) that measured nasal air-flow, position, snoring, heart rate and
119 oxyhemoglobin saturation (19) as previously described (5) in 14,440 individuals. The current
120 cross-sectional analysis included 3,507 of these participants who also had blood assessed for
121 metabolomic measures. Our primary analysis focused on a metabolomics-based biomarker for
122 moderate or severe OSA defined as $AHI \geq 15$, with events defined as apneas or hypopneas with
123 at least 50% cannula flow reduction for a minimum duration of 10 seconds, with $\geq 3\%$ oxygen
124 desaturation. The sleep study was conducted within the week following the baseline exam in
125 which blood was collected and used for metabolite quantification. The study was approved by
126 Institutional Review Boards at each field center where all participants provided written consent,
127 and by the study's Reading and Data Coordinating Centers.

128

129 HCHS/SOL Metabolomic Profiling

130 Fasting blood samples were collected at the baseline examination. Of all HCHS/SOL participants
131 from the baseline examination who also had genetic data, 3,968 individuals were selected at
132 random for metabolomics assessment. The samples were processed, and serum was stored at
133 -70°C since collection. The metabolomic profiling was conducted at Metabolon (Durham, NC)
134 with Discovery HD4 platform in 2017. Serum metabolites were quantified with untargeted,
135 liquid chromatography-mass spectrometry (LC-MS)-based quantification protocol (20).-The

136 platform captured a total of 1,136 metabolites, including 782 known and 354 unknown
137 (unidentified) metabolites.

138

139 The Multi-Ethnic Study of Atherosclerosis

140 MESA is a cohort study designed to study risk factors for clinical and subclinical cardiovascular
141 diseases in four racial/ ethnic groups (21). The study began in July 2000 and recruited 6,814
142 adults free of clinical CVD and aged 45–84 years from 6 centers: Baltimore, MD; Chicago, IL; Los
143 Angeles, CA; New York, NY; Saint Paul, MN; and Winston-Salem, NC. Participants were
144 continued to be studied through subsequent follow-up exams. Of the 4,077 participants who
145 attended Exam 5 (2010-2012), 2,261 participated in the MESA Sleep ancillary study (2010-
146 2013). As reported before (6), participants in the Sleep Exam were generally similar to non-
147 participants. OSA was assessed with Type II in-home polysomnography. AHI was defined as the
148 total number of apnea and hypopneas with at least 30% reduction in the nasal flow signal and
149 with $\geq 3\%$ oxygen desaturation per hour of sleep. The median time interval between Exam 5
150 fasting plasma sample collection and MESA Sleep was 301 days (range 0–1,024 days).
151 Metabolomic data was collected on 1,000 randomly selected participants from Exam 5. Of
152 these, 475 participants also had sleep measures and are included in this analysis. Local
153 institutional review boards at all the participating institutions approved study protocols, and all
154 participants gave written informed consent.

155

156 MESA Metabolomic Profiling

157 Metabolite profiling was performed using liquid chromatography tandem mass spectrometry
158 (LC-MS). Positive ion mode profiling of water-soluble metabolites and lipids was performed
159 using LC-MS systems comprised of Nexera X2 U-HPLC (Shimadzu Corp.; Marlborough, MA) units
160 coupled to a Q Exactive mass spectrometer (Thermo Fisher Scientific; Waltham, MA). Polar
161 metabolites were analyzed using hydrophilic interaction liquid chromatography (HILIC) and
162 lipids were analyzed separately using reversed phase C8 chromatography as described in detail
163 previously (22). Raw data were processed using TraceFinder 3.1 (Thermo Fisher Scientific;
164 Waltham, MA) and Progenesis Q1 (Nonlinear Dynamics; Newcastle upon Tyne, UK). To measure
165 organic acids and other intermediary metabolites in negative ionization mode, chromatography
166 was performed using an Agilent 1290 infinity LC system equipped with a Waters XBridge Amide
167 column, coupled to an Agilent 6490 triple quadrupole mass spectrometer. Metabolite
168 transitions were assayed using a dynamic multiple reaction monitoring system. LC-MS data
169 were analyzed with Agilent Masshunter QQQ Quantitative analysis software. Isotope labeled
170 internal standards were monitored in each sample to ensure proper MS sensitivity for quality
171 control. Pooled plasma samples were interspersed at intervals of 10 participant samples for
172 standardization of drift over time and between batches. Additionally, separate pooled plasma
173 was interspersed at every 20 injections to determine coefficient of variation for each
174 metabolite over the run. Peaks were manually reviewed in a blinded fashion to assess quality.
175 For each method, metabolite identities were confirmed using authentic reference standards or
176 reference samples. Metabolites with poor peak quality and coefficients of variation greater
177 than 30% averaged across batches were removed from analysis.

178

179 Quality control of metabolites in HCHS/SOL and MESA

180 Missing metabolite values were addressed as described in **Supplemental Figure 1**. In our
181 discovery sample (HCHS/SOL), we excluded individuals with more than 25% missing metabolite
182 levels, and metabolites with missing values for 75% or more individuals. For metabolites with
183 more than 25% and less than 75% missing values, values were dichotomized as “observed” and
184 “unobserved”. For metabolites with less than 25% missing values, we imputed the missing
185 values using the minimum observed value of the metabolite in the sample, under the
186 assumption that metabolites were not observed due to a technical detection limit.

187

188 Because our study design includes validation analysis, we focused on metabolites available in
189 both HCHS/SOL and MESA. Before any quality control (QC) methods were applied, 231
190 HCHS/SOL metabolites were mapped to 294 metabolites in MESA. The mapping of MESA to
191 HCHS/SOL metabolites as well as to RefMet ID was done at Clish Lab. MESA had multiple
192 metabolites matched to a single HCHS/SOL metabolite in multiple instances because the same
193 metabolite was measured via more than one platform used by MESA. In some cases, a single
194 metabolite appears as two highly correlated ion features in the same MESA platform (e.g.,
195 some neutral lipids were measured as both sodium and ammonium adducts). Therefore, a single
196 feature was mapped to the metabolite in HCHS/SOL while the redundant features were dropped
197 according to the following principles: features with redundant ions were excluded; features with
198 lower missingness and lower skewness were prioritized. After removing 60 such redundant
199 features in MESA and applied QC methods based on the missingness in HCHS/SOL, 219

200 HCHS/SOL metabolites were mapped to 219 metabolites in MESA. **Table S1** provides the list of
201 the 294 initially matched metabolites cross-referenced by RefMet ID and metabolite
202 annotations including HMDB IDs provided by Metabolon, along with details regarding
203 metabolite-specific QC resulting in the final list of one-to-one matched metabolites. The serum
204 concentration values of the matched metabolites that were treated as continuous were rank-
205 normalized.

206

207 Because MESA was a validation study, we only evaluated metabolites that were identified in
208 the association analysis in HCHS/SOL. The missing data for these metabolites were always
209 <25%, so we treated these as continuous variables and imputed missing values with the
210 minimum observed value in the MESA sample.

211

212 Statistical analysis

213 Association analyses were based on three conceptual regression models: Model 1 (i.e., primary
214 model) adjusted for demographic variables – age, sex, study center, Hispanic background
215 (Mexicans, Puerto Ricans, Cubans, Central Americans, Dominicans, and South Americans and
216 other/multi), and body mass index (BMI) in HCHS/SOL; age, sex, study site (two sites with low
217 sample sizes were combined), race (White versus “Non-White”, which consists of Hispanic, Black
218 and Chinese Americans), and BMI in MESA. Model 2 (i.e., lifestyle model) adjusted for
219 demographic and lifestyle variables – alcohol use, cigarette use, total physical activity (MET-
220 min/day), and diet (Alternative Healthy Eating Index 2010) in HCHS/SOL; alcohol use and
221 cigarette use in MESA. Model 3 (i.e., lifestyle and comorbidity model) adjusted for demographic,

222 lifestyle and comorbidity variables - indicators for diabetes, hypertension, fasting insulin, fasting
223 glucose, HOMA-IR, HDL, LDL, total cholesterol, triglycerides, systolic blood pressure and diastolic
224 blood pressure in HCHS/SOL; hypertension, fasting glucose, HDL, LDL, cholesterol, triglycerides,
225 systolic blood pressure and diastolic blood pressure in MESA. All models used the same set of
226 individuals with complete set of sleep and covariate measures.

227

228 Association analysis between individual metabolites and OSA and AHI

229 We tested the association of each of 219 metabolites (both continuous and dichotomized
230 metabolites) with moderate-severe OSA and AHI in the HCHS/SOL. Each metabolite was the
231 exposure in either linear or logistic regression (depending on the outcome) for each model. We
232 accounted for the HCHS/SOL study design (sampling and clustering) and obtained
233 representative effect estimates using survey regression implemented in the R survey package
234 (4.0) (23). We controlled the false discovery rate (FDR) using the Benjamini-Hochberg
235 procedure (24) and determined significant associations as those with FDR p-value<0.05. In the
236 replication analysis, we tested the associations of these metabolites with OSA in logistic
237 regression and with AHI in linear regression in MESA in models 1-3. We computed one-sided p-
238 values guided by the estimated direction of associations in the HCHS/SOL (25), and determined
239 replication if the one-sided p-value was <0.05.

240

241 LASSO regression for constructing metabolite indices

242 We applied a LASSO logistic regression with moderate to severe OSA versus no or mild OSA (for
243 brevity “OSA versus no OSA”), and linear regression with AHI – log transformed as $\log(\text{AHI}+1)$,
244 adjusted for the covariates in Model 1 in HCHS/SOL. We included 209 continuous metabolites
245 (not including the 10 dichotomized metabolites). We selected the LASSO tuning parameter by
246 minimizing the misclassification error for OSA (assuming probability of 0.5 is the cutoff for
247 “predicting” OSA), and the prediction error for AHI, in a 10-fold cross-validation. Metabolite
248 indices were calculated as a weighted sum of the (normalized) metabolite serum
249 concentrations, with weights being the metabolite coefficients from the LASSO regression.

250

251 To validate the metabolite index association with OSA/AHI, we constructed the indices in MESA
252 using the weights from the LASSO regression conducted in HCHS/SOL, then assessed their
253 associations with the corresponding sleep traits (i.e., OSA, AHI) in model 1-3. In the secondary
254 analyses we assessed potential sex differences via: (1) sex-stratified association analysis for sex-
255 specific metabolite indices (constructed based on sex-stratified LASSO), as well as (2) sex-
256 stratified association analysis for metabolite indices constructed based on combined sexes. We
257 also assessed the associations between metabolite indices quartiles and the corresponding
258 sleep traits.

259

260 All analyses were done in R 3.6.3. The glmnet package (3.0)(26) in R was used for the LASSO
261 logistic regression.

262

263 Results

264 Participant characteristics

265 **Table 1** characterizes the HCHS/SOL analytic sample and target population. The HCHS/SOL
 266 cohort included 3,507 participants, with a mean age of 41.72 years (SD =15.4), of whom 50.7%
 267 were female and 10.2% were classified with moderate or severe OSA (AHI \geq 15). Participants
 268 with OSA were more likely to be male, had a higher BMI, and were less likely to be never
 269 smokers compared to those without OSA. Individuals with OSA were also more likely to have
 270 co-morbidities: 60% had hypertension and 34.3% had diabetes, compared to 27.8%
 271 hypertension and 16.9% diabetes in those without OSA. **S2 Table** characterizes the 475 MESA
 272 participants with metabolomics, sleep, and required measured covariates from the validation
 273 dataset. MESA participants were older (mean 68.45 years, SD=9.33), with a higher proportion of
 274 females (56.2%). Reflecting their older age, more MESA participants had moderate or severe
 275 OSA (46.7%) compared to HCHS/SOL.

276

277 **Table 1. Characteristics of Hispanics/Latinos represented by the HCHS/SOL study population**

Mean (SD)	Stratified by sex		Stratified by OSA status		Total
	Female	Male	AHI<15	AHI \geq 15	
n	2011	1496	3122	385	3507
Age	42.22 (15.12)	41.20 (14.94)	40.29 (14.60)	54.20 (12.91)	41.72 (15.04)
Gender = Male (%)	0 (0.0)	1496 (100.0)	1252 (40.1)	244 (63.4)	1496 (49.3)
Latino background (%)					
Dominican	220 (10.9)	121 (8.2)	301 (9.6)	40 (10.4)	341 (10.7)
Central American	205 (10.2)	136 (5.7)	304 (9.7)	37 (9.6)	341 (6.4)

Cuban	279 (13.9)	279 (24.5)	479 (15.3)	79 (20.5)	558 (21.5)
Mexican	795 (39.5)	558 (35.7)	1221 (39.1)	132 (34.3)	1353 (36.7)
Puerto Rican	334 (16.6)	267 (17.8)	535 (17.1)	66 (17.1)	601 (16.4)
South American	121 (6.0)	86 (3.7)	187 (6.0)	20 (5.2)	207 (4.5)
Multi	57 (2.8)	49 (4.3)	95 (3.0)	11 (2.9)	106 (3.8)
Alcohol drinking status (%)					
never	512 (25.5)	116 (8.1)	568 (18.2)	60 (15.6)	628 (16.3)
former	698 (34.7)	447 (27.7)	1000 (32.0)	145 (37.7)	1145 (29.5)
current	800 (39.8)	933 (64.1)	1553 (49.8)	180 (46.8)	1733 (54.2)
Smoking status (%)					
never	1382 (68.8)	710 (47.5)	1906 (61.1)	186 (48.3)	2092 (61.5)
former	320 (15.9)	391 (26.2)	589 (18.9)	122 (31.7)	711 (16.2)
current	308 (15.3)	394 (26.4)	625 (20.0)	77 (20.0)	702 (22.3)
BMI	30.02 (6.90)	28.81 (5.34)	28.99 (6.09)	33.24 (5.97)	29.43 (6.21)
OSA status = OSA, AHI \geq 15 (%)	141 (7.0)	244 (16.3)	0 (0.0)	385 (100.0)	385 (10.2)
AHI (3% desaturation)	3.64 (7.52)	8.01 (14.93)	2.60 (3.43)	33.80 (20.62)	5.79 (11.97)
Overnight Hypoxemia (\geq 5% sleep $<$ 90% saturation)					
	41 (2.0)	86 (5.7)	6 (0.2)	121 (31.4)	127 (3.2)
Diabetes status (ADA) [†] = Yes (%)					
	376 (18.7)	283 (18.9)	527 (16.9)	132 (34.3)	659 (15.3)
Hypertension status [‡] = Yes (%)					
	642 (31.9)	458 (30.6)	869 (27.8)	231 (60.0)	1100 (25.8)
Triglycerides (mg/dL)					
	115.91 (71.29)	144.00 (99.29)	124.97 (83.48)	171.88 (107.33)	129.77 (87.38)
HDL (mg/dL)					
	52.51 (12.73)	45.18 (11.90)	49.44 (13.03)	44.06 (10.11)	48.89 (12.86)
LDL (mg/dL)					
	119.63 (35.66)	122.36 (35.61)	120.43 (35.72)	125.75 (34.77)	120.97 (35.66)
Fasting glucose (mg/dL)					
	99.99 (32.62)	104.72 (34.52)	100.92 (31.83)	114.64 (44.85)	102.33 (33.65)
Fasting insulin (mU/L)					
	197.84 (147.49)	200.34 (142.42)	199.60 (145.42)	194.39 (141.28)	199.07 (145.00)
HOMA-IR					
	3.39 (3.72)	3.48 (5.41)	3.17 (3.26)	5.77 (10.53)	3.43 (4.63)
Total cholesterol (mg/dL)					
	195.40 (41.67)	196.06 (42.86)	194.82 (42.38)	203.65 (40.35)	195.72 (42.26)
Systolic blood pressure (mmhg)					
	116.13 (17.69)	124.17 (15.57)	118.73 (16.51)	132.07 (18.06)	120.09 (17.15)
Diastolic blood pressure (mmhg)					
	71.02 (10.53)	74.32 (10.92)	71.87 (10.60)	79.49 (10.61)	72.65 (10.85)

278 * Means and percentages were weighted using sampling weights to provides estimates of the

279 HCHS/SOL target population characteristics.

280 † Baseline diabetes are based on American Diabetes Association definition (Diabetes Care 2010;33:S62-
281 69), defined as fasting glucose ≥ 100 mg/dL, or post-OGTT glucose ≥ 140 mg/dL or A1C $\geq 5.7\%$, or use
282 of anti-diabetic medication.

283 ‡ Baseline hypertension is defined as systolic or diastolic BP greater than or equal to 140/90
284 respectively, or current use of antihypertensive medications.

285

286 Metabolite associations with OSA and AHI

287 **Table 2** shows the odds ratios corresponding to 7 metabolites associated (FDR $P < 0.05$) with
288 OSA in HCHS/SOL adjusted for age, sex, BMI, study site/center, race/ethnicity). **Figure 2A and**
289 **S3 Tables** show the lifestyle adjusted model and comorbidity adjusted model results. Among
290 the 7 mapped metabolites in MESA, 4 metabolite associations had one sided p-values < 0.05 –
291 glutamate, phenylalanine, linoleoyl-linoleoyl-glycerol (18:2/18:2), and oleoyl-linoleoyl-glycerol
292 (18:1/18:2), all of which were associated with increased risks for OSA (**Figure 2B**). These
293 associations also had FDR p-value < 0.05 in MESA. No metabolite was associated with AHI after
294 multiple testing correction in the HCHS/SOL (**Supplemental Figure 2**). Also, no metabolite
295 associations were detected at the FDR < 0.05 level in minimally adjusted sex-stratified analyses
296 in HCHS/SOL.

297 **Table 2. Single metabolite associations with FDR-adjusted p-value <0.05 in the discovery step**

Biochemical	Super-pathway	Sub-pathway	HMDB ID	HCHS/SOL			MESA					
				OR	Unadj-p [†]	FDR p	Platform	OR	Unadj-p [†]	1-sided p	1-sided FDR p	
glutamate	Amino Acid	Glutamate Metabolism	HMDB00148	1.33								
					1.36E-04	0.014	Amide-neg	1.16	1.11E-02	0.006	0.019	
phenylalanine	Amino Acid	Phenylalanine Metabolism	HMDB00159	1.23								
					1.63E-03	0.049	HIL-pos	1.17	3.55E-03	0.002	0.014	
linoleoyl-linoleoyl-glycerol (18:2/18:2) [1]*	Lipid	Diacylglycerol	HMDB07248	1.25								
					8.27E-04	0.040	HIL-pos	1.11	3.47E-02	0.017	0.030	
oleoyl-linoleoyl-glycerol (18:1/18:2) [1]	Lipid	Diacylglycerol	HMDB07219	1.29								
					8.90E-05	0.014	HIL-pos	1.13	1.51E-02	0.008	0.019	
1-palmitoleoylglycerol (16:1)*	Lipid	Monoacylglycerol	HMDB11565	1.21	1.15E-03	0.040	C8-pos	0.92	9.96E-02	0.950	0.950	
1-stearoyl-2-linoleoyl-GPE (18:0/18:2)*	Lipid	Phosphatidylethanolamine (PE)	HMDB08994	1.25								
					9.89E-04	0.040	HIL-pos	1.03	5.37E-01	0.269	0.314	
1-stearoyl-2-oleoyl-GPE (18:0/18:1)	Lipid	Phosphatidylethanolamine (PE)	HMDB08993	1.28								
					2.77E-04	0.019	C8-pos	1.04	4.49E-01	0.225	0.314	

298 * Metabolite with * indicates they were identified based on accurate mass data, retention time and mass spectrometry but not reference

299 standards. Therefore, the verification is not as robust as metabolites without *.

300 † All results were adjusted for age, gender, BMI, study center, and Hispanic/Latino background in HCHS/SOL, and adjusted for age, sex, BMI,

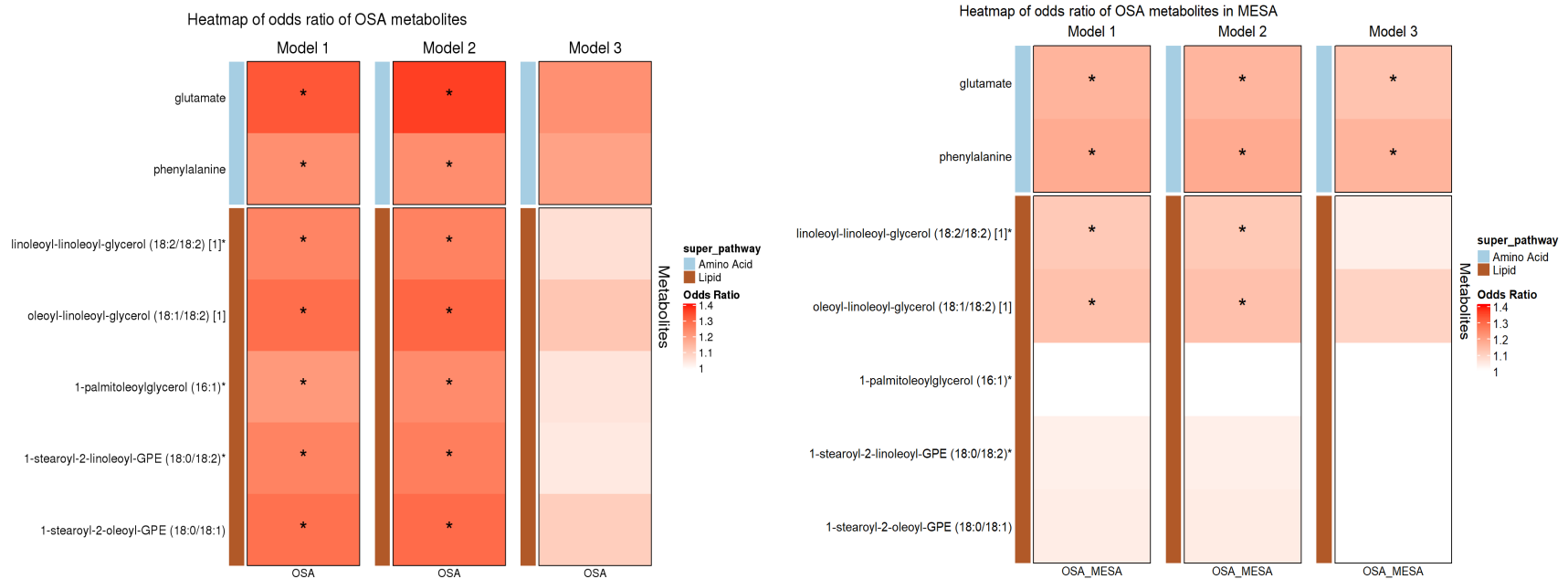
301 study site (site WFU and UCLA are combined due to low cell count), and race in MESA. Unadj-p is the abbreviations of raw p before the FDR

302 correction. 1-sided p-values reflect the required of the same direction of associations in the discovery and validation datasets for concluding

303 replication.

304

Figure 2. Heatmap showing estimated odds ratios of metabolites with significant FDR-adjusted p-value for OSA in HCHS/SOL and in MESA



* indicates FDR $p < 0.05$. In HCHS/SOL: Model 1 adjusted for age, gender, center, background, and bmi. Model 2 adjusted for age, gender, center, background, bmi, alcohol use, smoking status, physical activity and diet (AHEI 2010). Model 3 adjusted for age, gender, center, background, bmi, alcohol use, smoking status, physical activity, diet, T2DM, hypertension, fasting glucose, fasting insulin, HOMA_IR, HDL, LDL, total cholesterol, triglycerides, systolic blood pressure and diastolic blood pressure. In MESA: Model 1 adjusted for age, gender, BMI, study site (site WFU and UCLA are combined due to low cell count), and race. Model 2 adjusted for age, gender, BMI, study site, race, alcohol use and smoking status. Model 3 adjusted for age, gender, BMI, study site, race, alcohol use, smoking status, hypertension indicator, fasting glucose, HDL, LDL, cholesterol, triglycerides, systolic blood pressure and diastolic blood pressure.

306

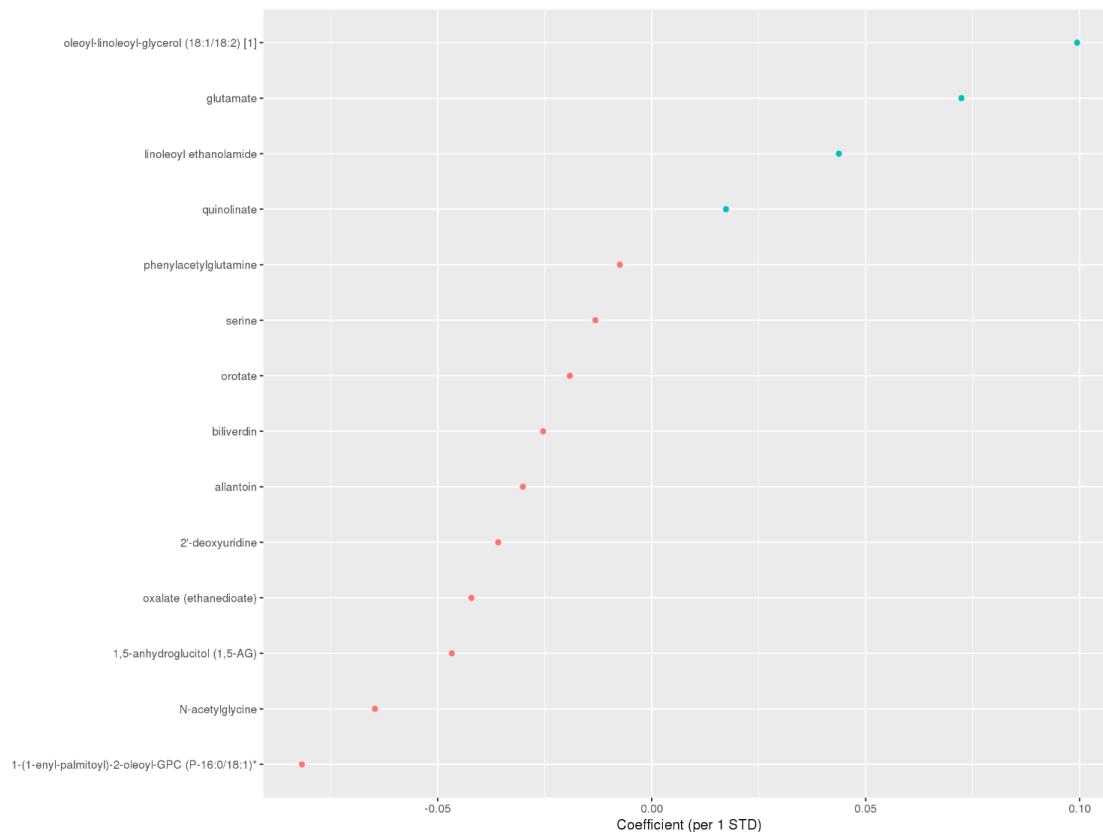
307 LASSO regression for joint selection and estimation of metabolite
308 associations with OSA and AHI in HCHS/SOL

309 We used a LASSO regression to select a set of metabolites that jointly associated with sleep
310 apnea traits in the HCHS/SOL. Among the 14 metabolites identified for OSA by LASSO (**Figure 3**),
311 there were one carbohydrate, one peptide, three amino acids, three lipids, three nucleotides,
312 and three cofactors and vitamins, among which biliverdin and serine were unique to the OSA
313 metabolite index while the rest were shared between the OSA and AHI metabolite indices. 41
314 metabolites were identified for AHI (**Supplemental Figure 3**), among which 29 metabolites were
315 unique to AHI metabolite index. Metabolites identified by sex-specific LASSO are provided in
316 the supplemental materials (**Supplemental Figures 4-7**).

317

318

Figure 3: Coefficients for metabolites selected by LASSO (OSA model) in HCHS/SOL.



Blue: coefficient<0; Red: coefficient>0. Definition of abbreviations: OSA = moderate to severe obstructive sleep apnea (AHI \geq 15), LASSO = least absolute shrinkage and selection operator.

319

320 Metabolite indices associations with OSA and AHI in HCHS/SOL and in 321 independent validation in MESA

322 We constructed OSA and AHI metabolite indices in both HCHS/SOL and MESA based on the
323 weights from the LASSO regressions conducted in HCHS/SOL. **Table 3** provides overall and sex-
324 stratified results. As expected by construction, the metabolite indices were associated with
325 their phenotypes in HCHS/SOL (OSA metabolite index OR: 1.50; 95% CI 1.30-1.74; $P < 0.001$; AHI

326 metabolite index beta =2.12 per 1 SD of the index, 95% CI 1.43-2.81; $P < 0.001$) after
327 adjustment for demographic covariates (i.e., age, sex, BMI, study center, and Hispanic/Latino
328 background); the associations persisted after additional adjustment of lifestyle (i.e., alcohol
329 usage, smoking status, physical activity and diet) and comorbidity (i.e., diabetes, hypertension,
330 fasting glucose, fasting insulin, HOMA-IR, HDL, LDL, total cholesterol, triglycerides, systolic
331 blood pressure, diastolic blood pressure) covariates (OSA metabolite index OR: 1.50; 95% CI
332 1.21-1.85; $P < 0.001$; AHI metabolite index beta =1.73 per 1 SD of the index, 95% CI 0.96-2.50;
333 $P < 0.001$). In the validation dataset, the OSA metabolite index was also associated with an
334 increased odds ratio for OSA (OR: 1.41; 95% CI 1.13-1.77; $P = 0.003$) (**Table 3**) when adjusted for
335 demographic (i.e., age, sex, BMI, study site, and race) covariates and remained similar when
336 adjusted for lifestyle (i.e., alcohol usage and smoking status) and comorbidity (i.e.,
337 hypertension, fasting glucose, HDL, LDL, cholesterol, triglycerides, systolic blood pressure and
338 diastolic blood pressure) covariates (OR: 1.55; 95% CI 1.10-2.20; $P = 0.013$). When compared
339 with the lowest quartile of the OSA metabolite index, the top quartile showed more than two-
340 fold increase in risk for OSA [OR: 2.53; 95% CI (1.37-4.70); $P = 0.003$] in the primary model and
341 remained significant when adjusted for lifestyle and comorbidity covariates [OR: 2.63; 95% CI
342 (1.14-6.14); $P = 0.024$] (see **Figure 3 and Supplemental Figure 3**). AHI metabolite index
343 associations had higher p-values in MESA, compared to OSA metabolite index associations
344 (**Table 3**). AHI metabolite index was only replicated in women, adjusted for demographic,
345 lifestyle, and comorbidity covariates in MESA. Notably, both OSA metabolite index and AHI
346 metabolite index associations with their phenotypes were stronger when evaluated in women
347 compared to the overall sample, in both HCHS/SOL and MESA.

Table 3. Estimated associations between OSA and AHI metabolite indices and their respective phenotypes, in HCHS/SOL and MESA

OSA	HCHS/SOL						MESA					
	Both		Male		Female		Both		Male		Female	
<i>Predictors</i>	<i>OR*</i>	<i>p</i>	<i>OR</i>	<i>p</i>	<i>OR</i>	<i>p</i>	<i>OR</i>	<i>p</i>	<i>OR</i>	<i>p</i>	<i>OR</i>	<i>p</i>
Model 1†												
OSA-Met Index	1.50	<0.001	1.41	<0.001	1.78	<0.001	1.41	0.003	1.17	0.403	1.48	0.009
	[1.30–1.74]		[1.17–1.70]		[1.47–2.14]		[1.13–1.77]		[0.81–1.72]		[1.11–2.00]	
Male-specific OSA-Met Index			1.67	<0.001					1.20	0.369		
			[1.39–2.00]						[0.81–1.79]			
Female-specific OSA-Met Index					2.12	<0.001					1.34	0.082
					[1.70–2.66]						[0.97–1.86]	
Model 2‡												
OSA-Met Index	1.53	<0.001	1.44	<0.001	1.86	<0.001	1.39	0.004	1.15	0.476	1.46	0.013
	[1.33–1.77]		[1.20–1.72]		[1.52–2.27]		[1.11–1.76]		[0.78–1.69]		[1.09–1.98]	
Male-specific OSA-Met Index			1.71	<0.001					1.17	0.433		
			[1.43–2.05]						[0.79–1.75]			
Female-specific OSA-Met Index					2.19	<0.001					1.39	0.053
					[1.71–2.79]						[1.00–1.94]	
Model 3§												
OSA-Met Index	1.50	<0.001	1.43	0.009	1.89	<0.001	1.55	0.013	1.30	0.365	1.71	0.026
	[1.21–1.85]		[1.09–1.88]		[1.35–2.64]		[1.10–2.20]		[0.74–2.30]		[1.07–2.78]	
Male-specific OSA-Met Index			1.71	<0.001					1.13	0.600		
			[1.39–2.09]						[0.71–1.82]			
Female-specific OSA-Met Index					2.17	<0.001					1.41	0.094
					[1.54–3.04]						[0.95–2.11]	
AHI	HCHS/SOL						MESA					
<i>Predictors</i>	Both		Male		Female		Both		Male		Female	
	<i>Estimates</i>	<i>p</i>	<i>Estimates</i>	<i>p</i>	<i>Estimates</i>	<i>p</i>	<i>Estimates</i>	<i>p</i>	<i>Estimates</i>	<i>p</i>	<i>Estimates</i>	<i>p</i>
Model 1†												
AHI-Met Index	2.12	<0.001	2.39	<0.001	1.47	<0.001	1.45	0.083	-1.59	0.254	3.38	0.001
	[1.43–2.81]		[1.21–3.58]		[1.00–1.94]		[-0.19–3.08]		[-4.33–1.15]		[1.42–5.33]	
Male-specific AHI-Met Index			3.54	<0.001					-1.99	0.628		
			[2.04–5.03]						[-10.11–6.12]			

Female-specific AHI-Met Index					1.70 [0.98–2.43]	<0.001					2.75 [0.57–4.93]	0.013
Model 2†												
AHI-Met Index	2.12 [1.41–2.83]	<0.001	2.41 [1.22–3.61]	<0.001	1.49 [1.01–1.96]	<0.001	1.42 [-0.22–3.06]	0.089	-1.55 [-4.32–1.21]	0.269	3.25 [1.30–5.21]	0.001
Male-specific AHI-Met Index			3.62 [2.10–5.14]	<0.001					-2.10 [-10.25–6.05]	0.612		
Female-specific AHI-Met Index					1.69 [0.97–2.42]	<0.001					2.80 [0.63–4.98]	0.012
Model 3§												
AHI-Met Index	1.73 [0.96–2.50]	<0.001	2.14 [0.79–3.48]	0.002	1.11 [0.64–1.58]	<0.001	1.20 [-0.56–2.96]	0.181	-0.96 [-3.96–2.03]	0.527	2.65 [0.54–4.76]	0.014
Male-specific AHI-Met Index			3.34 [1.65–5.02]	<0.001					-2.45 [-11.21–6.31]	0.581		
Female-specific AHI-Met Index					1.05 [0.43–1.67]	0.001					2.09 [-0.34–4.52]	0.092

* per 1 STD increase in metabolite index (Met Index).

† Model 1 adjusted for age, gender, BMI, study center, and Hispanic/Latino background in HCHS/SOL, and adjusted for age, gender, BMI, study site (site WFU and UCLA are combined due to low cell count), and race in MESA.

‡ Model 2 adjusted for all covariates in model 1, in HCHS/SOL model 2 additionally adjusted for alcohol usage, smoking status, physical activity and diet; in MESA, model 2 additionally adjusted for alcohol usage and smoking status.

§ Model 3 adjusted for all covariates in model 2, in HCHS/SOL, model 3 additionally adjusted for diabetes, hypertension, fasting glucose, fasting insulin, HOMA-IR, HDL, LDL, total cholesterol, triglycerides, systolic blood pressure, diastolic blood pressure; in MESA, model 3 additionally adjusted for hypertension indicator, fasting glucose, HDL, LDL, cholesterol, triglycerides, systolic blood pressure and diastolic blood pressure.

1

2 Results from secondary analysis of a sex specific metabolite indices are also provided in **Table 3**.

3 Only the female-specific AHI metabolite index replicated in MESA in model 1 and 2, but its

4 association with AHI in women was weaker than that of the AHI metabolite index trained on

5 the full HCHS/SOL sample, both in terms of p-value and of estimated effect size.

6

7 Discussion

8 In this paper, we leveraged metabolomics data from two large, diverse community-based

9 cohorts to derive the first metabolite index for moderate to severe OSA, as well as to identify

10 individual metabolites associated with this disorder. We studied 219 metabolites and their

11 associations with OSA and AHI in the HCHS/SOL using two methods: (1) analysis of individual

12 metabolites, and (2) LASSO to identify a subset of metabolites that jointly predict OSA or AHI.

13 Then, we studied the associations in an independent validation study, MESA. We used the

14 results from LASSO to derive an OSA and AHI metabolite indices. In MESA, the OSA metabolite

15 index was significantly associated with moderate to severe OSA; e.g., individuals in the highest

16 quartile for OSA metabolite index had a more than 2-fold increased odds of moderate to severe

17 OSA- both in the derivation sample and in an independent sample that varied by ancestry, age,

18 and OSA prevalence, with findings that persisted after adjusting for multiple lifestyle and health

19 covariates. In contrast, when modeling AHI as a continuous measure of sleep apnea, weaker

20 associations were observed, except for the top quartiles among females. In the association

21 analysis of individual metabolites, seven metabolites were associated with OSA in HCHS/SOL
22 (FDR $p < 0.05$), of which four associations replicated in MESA.

23

24 We implemented two approaches to study the metabolomic correlates of sleep apnea
25 phenotypes: LASSO and individual-metabolite regression analysis. These approaches serve
26 different purposes: single metabolite regression highlights individual metabolites associated
27 with sleep apnea phenotypes without adjustment to other metabolites, while LASSO estimates
28 the combined effect of multiple metabolites. A metabolite identified as associated with sleep
29 apnea phenotypes individually may not be selected by the LASSO analysis (e.g., if a different
30 metabolite correlated to it was selected by LASSO). Thus, it is not surprising that two of the
31 replicated metabolites identified in single metabolite analysis were not selected by LASSO.
32 Similarly, a specific metabolite may be selected by LASSO, but not by individual metabolite
33 analysis due to adjustment for multiple testing, which is not done in LASSO analysis. The OSA
34 metabolite index, constructed based on the LASSO results, is a single index using multiple blood
35 biomarkers which together reflect the biochemical differences in the blood of individuals with
36 and without OSA. The OSA metabolite index also showed stronger association with OSA than
37 any single metabolite, in both the discovery and validation study, consistent with the influence
38 of multiple metabolites in OSA pathophysiology (see **Table 3, S3 Table**). While future work is
39 needed to study whether the metabolite index can be used in the clinic for OSA screening or
40 clinical management of OSA patients, it is clearly useful from a statistical and epidemiological
41 standpoints, as analysis based on the metabolite index had evidently higher statistical power
42 than analyses testing single metabolite associations. Therefore, it may also enable additional

43 studies of the pathophysiology of OSA and its relationship with other cardiometabolic
44 conditions.

45

46 Four metabolites were replicated in the single metabolite regression: glutamate, oleoyl-
47 linoleoyl-glycerol (18:1/18:2) (DAG(36:3)), linoleoyl-linoleoyl-glycerol (18:2/18:2) (DAG(36:4))
48 and phenylalanine, among which glutamate and phenylalanine remained positively associated
49 with OSA after adjusting for lifestyle and comorbidities in addition to basic demographics. Both
50 metabolites have some previous evidence linking them to OSA or other sleep disorders, as well
51 as cardiometabolic diseases, and suggest that elevations in glutamate and phenylalanine can be
52 investigated as biomarkers for adverse outcomes in patients with OSA. High plasma glutamate
53 has been associated with total and visceral adiposity, dyslipidemia and insulin resistance (27),
54 as well as increased risks for incident cardiovascular disease (28), type 2 diabetes (29), and
55 subclinical atherosclerosis (30), independent of established cardiovascular risk factors. The
56 positive association between glutamate and OSA observed in our study may suggest a shared
57 metabolomic profile for OSA and other cardiometabolic phenotypes. Previous studies in rats
58 animals and human showed that more frequent sleep apneas led to increased level of
59 glutamate in brain (31–33). Glutamate is the major excitatory neurotransmitter in the brain,
60 and modulates brain energy metabolism and neuronal synaptic plasticity. Although the blood-
61 brain barrier prevents plasma glutamate to freely permeate into the central nervous system
62 (34), when glutamate increases in the brain, the brain-to-blood glutamate efflux also increases,
63 as suggested by the correlation between the peripheral glutamate and the central nerve system

64 glutamate levels (35). These findings support further research addressing the roles of peripheral
65 and central glutamate in the pathophysiology of OSA.

66

67 Phenylalanine is an essential aromatic amino acid that plays a key role in the biosynthesis of
68 other amino acids, including the neurotransmitters, dopamine, and norepinephrine. Studies
69 have shown that plasma phenylalanine level can be elevated due to inflammation (36,37), and
70 inflammation is a common finding in OSA (38). One mechanism for the increased levels of
71 phenylalanine may be through chronic hypoxia, which has been reported to increase both
72 systemic and cerebral delivery of phenylalanine (39). This is in line with our evidence:
73 peripheral phenylalanine was elevated among individuals with moderate to severe OSA
74 patients (**S3 Table**). A prior lab-based study that measured a few metabolites over the course of
75 sleep reported that phenylalanine levels decreased less overnight among patients with OSA
76 compared to controls (40). Phenylalanine levels were also reported to be elevated after sleep
77 restriction (41). The downstream effects of phenylalanine have been studied more widely in
78 other chronic conditions, with reports of associations with elevated pro-inflammatory
79 cytokines, suppressed immunity and increased mortality among heart failure patients (42);
80 more rapid telomere shortening consistent with accelerated aging (43). Recent studies reported
81 elevations of phenylalanine associated with adverse COPD outcomes (44), which was
82 postulated to reflect muscle breakdown and respiratory muscle insufficiency (45). Elevated
83 plasma phenylalanine was shown to be a strong predictor for cardiovascular risk (46) and a
84 biomarker, mediator and potentially therapeutic target for pulmonary hypertension (47).
85 Further research on the association of OSA and phenylalanine may further identify the roles of

86 hypoxia, inflammation, and muscle function in the pathophysiology of OSA and cardiometabolic
87 conditions.

88

89 Our study has also shown that increased plasma levels of two diacylglycerols (DAGs): DAG(36:3)
90 and DAG(36:4) were associated with moderate to severe OSA. Altered lipids metabolism is
91 often observed among OSA patients (48–50); specifically, intermittent hypoxemia can
92 stimulate lipolysis, increasing free fatty acid levels (51). Abnormalities in lipid metabolism may
93 result in liver and skeletal muscle fat deposition, exacerbating OSA through inflammatory or
94 muscle-related pathways (52). Therefore, the associations with these diacylglycerols may
95 reflect mechanisms by which OSA related hypoxemia alters fatty acid metabolism. These
96 associations, however, did not replicate in the validation study once adjusted for comorbidities,
97 suggesting that the associations might be confounded by cardiometabolic conditions that often
98 accompany OSA.

99

100 Estimated OSA associations, in both LASSO and single metabolite analysis, were generally
101 stronger than AHI associations. Potential reasons are the variability of AHI and the potential
102 non-linear metabolomic associations with AHI. Notably, non-linearity (i.e., a threshold effect)
103 was previously shown for AHI association with hypoxemia and sympathetic nervous system
104 activation burden (53).

105

106 Sex differences have been increasingly reported among OSA patients (17). Population-based
107 studies have shown that the overall OSA prevalence is higher among men than women (54),
108 while metabolic syndrome and cardiovascular conditions are more strongly associated with OSA
109 among female patients compared to males (55,56). Indeed, when assessing the metabolite
110 indices developed in both sexes and tested for their associations with OSA and AHI, we
111 observed stronger associations among women than men in the MESA validation dataset (**Table**
112 **3**). However, compared to the metabolite indices developed in combined sex strata, sex-specific
113 metabolite indices had weaker associations with the OSA/AHI in the validation data set (weaker
114 effect size estimates and higher p-value), which may be the result of more misclassification
115 when using a smaller dataset for discovery.

116 In addition to pointing to novel individual metabolites that play a role in OSA, our metabolite
117 indices also showed moderately strong associations with OSA in an external sample, despite the
118 marked differences in race/ethnicity, age, and OSA prevalence compared to the discovery
119 sample. This supports the overall generalizability of the metabolite index across diverse
120 populations. Nonetheless, the utility of a 2-fold increased risk of OSA among individuals in the
121 highest metabolite index quartile in helping to screen or triage patients for more
122 comprehensive testing will need to be formally evaluated, potentially combining metabolite
123 data with other information, such as OSA-related symptoms, to improve screening.

124

125 A strength of our study is that our population-based sample is more than 10-fold larger than
126 prior studies (57), includes a high proportion of ethnic/racial minorities who have been under-

127 represented in research but are at increased for adverse health outcomes, and is more
128 representative of samples in the general population who remain include large numbers of
129 undiagnosed individuals. We used rigorous statistical methods, adjusted for a large number of
130 lifestyle and health covariates, and were able to replicate the main findings despite large
131 differences in our discovery and validation populations, which suggests relatively strong
132 associations and generalizability of the metabolite associations with OSA.

133

134 There are several limitations in this study. The temporal relationship between the blood sample
135 collection and sleep test was concurrent in HCHS/SOL and up to one year apart in MESA,
136 allowing for cross-sectional associations, but limiting our ability to discern causal pathways.
137 Although over 1000 metabolites were quantified in both populations, less than 300 metabolites
138 were matched between the two platforms (after quality control only 219 distinct metabolites
139 were mapped). We limited our study to only the matched metabolites to allow for replication
140 testing, which strengthens the results and conclusions. MESA metabolomic profiling was
141 conducted using three complementary platforms measuring several broad classes of small
142 molecules therefore multiple chemical compounds from MESA were mapped to the same
143 metabolite in the HCHS/SOL. We chose a single feature to map to any HCHS/SOL metabolite
144 based on a set of rules related presence of redundant ions, data missingness and skewness. In
145 the future, other more optimal approaches may be proposed and studied. Some associations
146 failed to replicate in MESA, potentially due to heterogeneity in different populations and low
147 power in MESA, which had a small sample size. Finally, the definitions of AHI differed slightly in
148 the two studies: while the 3% oxyhemoglobin desaturation criterion applied to hypopneas only

149 in MESA, due to differences in the recording montage, a 3% desaturation criterion was applied
150 for all respiratory events in HCHS/SOL.

151

152 In summary, we used two large datasets of population-based multi-ethnic cohort studies to
153 study metabolomics associations with OSA. We developed an metabolite index that replicated
154 across datasets, and had statistically significant association with OSA even after adjustment to
155 cardiometabolic comorbidities. In future work we will study the possibility of developing an
156 OSA screening tool based on this metabolite index. Four metabolites also replicated in an
157 independent data set, of which one was previously implicated in OSA, and two were previously
158 connected to sleep disorders. Collectively, our findings support the utility of metabolomic
159 profiling to generate metabolite indices of sleep apnea in racially diverse populations, and to
160 OSA's pathophysiology.

161

162 Acknowledgement

163 The authors thank the staff and participants of HCHS/SOL and MESA for their important
164 contributions. We gratefully acknowledge the studies and participants who provided biological
165 samples and data for TOPMed.

166

167 Data availability statement

168 MESA and HCHS/SOL data are available through application to dbGaP according to the study
169 specific accessions. MESA phenotypes are available in: phs000209, and HCHS/SOL
170 phenotypes: phs000810. HCHS/SOL metabolomics data are available via data use agreement
171 with the HCHS/SOL Data Coordinating Center at the University of North Carolina at Chapel Hill,
172 see collaborators website: <https://sites.csc.unc.edu/hchs/>.

173

174 Funding

175 The research was partially supported by NIH NHLBI R35 HL135818. Support for metabolomics
176 data was graciously provided by the JLH Foundation (Houston, Texas). The Hispanic
177 Community Health Study/Study of Latinos was carried out as a collaborative study supported by
178 contracts from the National Heart, Lung, and Blood Institute (NHLBI) to the University of North
179 Carolina (N01-HC65233), University of Miami (N01-HC65234), Albert Einstein College of
180 Medicine (N01-HC65235), Northwestern University (N01-HC65236), and San Diego State
181 University (N01-HC65237). The following Institutes/Centers/Offices contribute to the HCHS/SOL
182 through a transfer of funds to the NHLBI: National Center on Minority Health and Health
183 Disparities, the National Institute of Deafness and Other Communications Disorders, the
184 National Institute of Dental and Craniofacial Research, the National Institute of Diabetes and

185 Digestive and Kidney Diseases, the National Institute of Neurological Disorders and Stroke, and
186 the Office of Dietary Supplements. The authors thank the staff and participants of HCHS/SOL
187 for their important contributions. MESA and the MESA SHARe project are conducted and
188 supported by the National Heart, Lung, and Blood Institute (NHLBI) in collaboration with MESA
189 investigators. Support for MESA is provided by contracts HHSN268201500003I, N01-HC-
190 95159, N01-HC-95160, N01-HC-95161, N01-HC-95162, N01-HC-95163, N01-HC-95164, N01-
191 HC-95165, N01-HC-95166, N01-HC-95167, N01-HC-95168, N01-HC-95169, UL1-TR-000040,
192 UL1-TR-001079, UL1-TR-001420. MESA Family is conducted and supported by the National
193 Heart, Lung, and Blood Institute (NHLBI) in collaboration with MESA investigators. Support is
194 provided by grants and contracts R01HL071051, R01HL071205, R01HL071250, R01HL071251,
195 R01HL071258, R01HL071259 and by the National Center for Research Resources, Grant
196 UL1RR033176. The MESA Sleep Ancillary study was funded by NIH-NHLBI R01HL098433.
197 The provision of genotyping data was supported in part by the National Center for Advancing
198 Translational Sciences, CTSI grant UL1TR001881, and the National Institute of Diabetes and
199 Digestive and Kidney Disease Diabetes Research Center (DRC) grant DK063491 to the
200 Southern California Diabetes Endocrinology Research Center. Molecular data for the Trans-
201 Omics in Precision Medicine (TOPMed) program was supported by the National Heart, Lung
202 and Blood Institute (NHLBI).). Metabolomics for “NHLBI TOPMed: Multi-Ethnic Study of
203 Atherosclerosis (MESA)” (phs001416) was performed at Broad Institute and Beth Israel
204 Metabolomics Platform (HHSN268201600038I). Core support including centralized genomic
205 read mapping and genotype calling, along with variant quality metrics and filtering were
206 provided by the TOPMed Informatics Research Center (3R01HL-117626-02S1; contract
207 HHSN268201800002I). Core support including phenotype harmonization, data management,
208 sample-identity QC, and general program coordination were provided by the TOPMed Data
209 Coordinating Center (R01HL-120393; U01HL-120393; contract HHSN268201800001I).

210 Reference

- 211 1. Somers VK, White DP, Amin R, Abraham WT, Costa F, Culebras A, et al. Sleep apnea and
212 cardiovascular disease: an American Heart Association/American College Of Cardiology Foundation
213 Scientific Statement from the American Heart Association Council for High Blood Pressure Research
214 Professional Education Committee, Council on Clinical Cardiology, Stroke Council, and Council On
215 Cardiovascular Nursing. In collaboration with the National Heart, Lung, and Blood Institute National
216 Center on Sleep Disorders Research (National Institutes of Health). *Circulation*. 2008 Sep
217 2;118(10):1080–1111.
- 218 2. Peppard PE, Young T, Barnet JH, Palta M, Hagen EW, Hla KM. Increased prevalence of sleep-
219 disordered breathing in adults. *Am J Epidemiol*. 2013 May 1;177(9):1006–1014.
- 220 3. Kapur V, Strohl KP, Redline S, Iber C, O'Connor G, Nieto J. Underdiagnosis of sleep apnea
221 syndrome in U.S. communities. *Sleep Breath*. 2002 Jun;6(2):49–54.
- 222 4. Lastra AC, Attarian HP. The persistent gender bias in the diagnosis of obstructive sleep apnea.
223 *Gender and the Genome*. 2018 Apr;2(2):43–48.
- 224 5. Redline S, Sotres-Alvarez D, Loredó J, Hall M, Patel SR, Ramos A, et al. Sleep-disordered
225 breathing in Hispanic/Latino individuals of diverse backgrounds. The Hispanic Community Health
226 Study/Study of Latinos. *Am J Respir Crit Care Med*. 2014 Feb 1;189(3):335–344.
- 227 6. Chen X, Wang R, Zee P, Lutsey PL, Javaheri S, Alcántara C, et al. Racial/Ethnic Differences in
228 Sleep Disturbances: The Multi-Ethnic Study of Atherosclerosis (MESA). *Sleep*. 2015 Jun 1;38(6):877–888.
- 229 7. Redline S. Genetics of obstructive sleep apnea. *Principles and practice of sleep medicine*.
230 Elsevier; 2011. p. 1183–1193.
- 231 8. Peppard PE, Young T, Palta M, Skatrud J. Prospective study of the association between sleep-
232 disordered breathing and hypertension. *N Engl J Med*. 2000 May 11;342(19):1378–1384.
- 233 9. Kasai T, Floras JS, Bradley TD. Sleep apnea and cardiovascular disease: a bidirectional
234 relationship. *Circulation*. 2012 Sep 18;126(12):1495–1510.
- 235 10. Vgontzas AN, Papanicolaou DA, Bixler EO, Hopper K, Lotsikas A, Lin HM, et al. Sleep apnea and
236 daytime sleepiness and fatigue: relation to visceral obesity, insulin resistance, and hypercytokinemia. *J*
237 *Clin Endocrinol Metab*. 2000 Mar;85(3):1151–1158.
- 238 11. Heilbrunn ES, Ssentongo P, Chinchilli VM, Oh J, Ssentongo AE. Sudden death in individuals with
239 obstructive sleep apnoea: a systematic review and meta-analysis. *BMJ Open Respir Res*. 2021 Jun;8(1).
- 240 12. Idle JR, Gonzalez FJ. *Metabolomics*. *Cell Metab*. 2007 Nov;6(5):348–351.
- 241 13. Ussher JR, Elmariah S, Gerszten RE, Dyck JRB. The Emerging Role of Metabolomics
242 in the Diagnosis and Prognosis of Cardiovascular Disease. *J Am Coll Cardiol*. 2016 Dec 27;68(25):2850–
243 2870.
- 244 14. Hunter WG, Kelly JP, McGarrah RW, Khouri MG, Craig D, Haynes C, et al. Metabolomic profiling
245 identifies novel circulating biomarkers of mitochondrial dysfunction differentially elevated in heart

- 246 failure with preserved versus reduced ejection fraction: evidence for shared metabolic impairments in
247 clinical heart failure. *J Am Heart Assoc.* 2016 Jul 29;5(8).
- 248 15. Ferrarini A, Rupérez FJ, Erazo M, Martínez MP, Villar-Álvarez F, Peces-Barba G, et al.
249 Fingerprinting-based metabolomic approach with LC-MS to sleep apnea and hypopnea syndrome: a pilot
250 study. *Electrophoresis.* 2013 Oct;34(19):2873–2881.
- 251 16. Engeli S, Blüher M, Jumpertz R, Wiesner T, Wirtz H, Bosse-Henck A, et al. Circulating anandamide
252 and blood pressure in patients with obstructive sleep apnea. *J Hypertens.* 2012 Dec;30(12):2345–2351.
- 253 17. Won CHJ, Reid M, Sofer T, Azarbarzin A, Purcell S, White D, et al. Sex differences in obstructive
254 sleep apnea phenotypes, the multi-ethnic study of atherosclerosis. *Sleep.* 2020 May 12;43(5).
- 255 18. Lavange LM, Kalsbeek WD, Sorlie PD, Avilés-Santa LM, Kaplan RC, Barnhart J, et al. Sample
256 design and cohort selection in the Hispanic Community Health Study/Study of Latinos. *Ann Epidemiol.*
257 2010 Aug;20(8):642–649.
- 258 19. Westbrook PR, Levendowski DJ, Cvetinovic M, Zavora T, Velimirovic V, Henninger D, et al.
259 Description and validation of the apnea risk evaluation system: a novel method to diagnose sleep apnea-
260 hypopnea in the home. *Chest.* 2005 Oct;128(4):2166–2175.
- 261 20. Evans AM, DeHaven CD, Barrett T, Mitchell M, Milgram E. Integrated, nontargeted ultrahigh
262 performance liquid chromatography/electrospray ionization tandem mass spectrometry platform for
263 the identification and relative quantification of the small-molecule complement of biological systems.
264 *Anal Chem.* 2009 Aug 15;81(16):6656–6667.
- 265 21. Bild DE, Bluemke DA, Burke GL, Detrano R, Diez Roux AV, Folsom AR, et al. Multi-Ethnic Study of
266 Atherosclerosis: objectives and design. *Am J Epidemiol.* 2002 Nov 1;156(9):871–881.
- 267 22. Paynter NP, Balasubramanian R, Giulianini F, Wang DD, Tinker LF, Gopal S, et al. Metabolic
268 predictors of incident coronary heart disease in women. *Circulation.* 2018 Feb 20;137(8):841–853.
- 269 23. Lumley T. survey: analysis of complex survey samples [Internet]. 2020 [cited 2021 Nov 18].
270 Available from: <https://cran.r-project.org/web/packages/survey/index.html>
- 271 24. Benjamini Y. Discovering the false discovery rate. *J Royal Statistical Soc B.* 2010 Aug 5;72(4):405–
272 416.
- 273 25. Sofer T, Heller R, Bogomolov M, Avery CL, Graff M, North KE, et al. A powerful statistical
274 framework for generalization testing in GWAS, with application to the HCHS/SOL. *Genet Epidemiol.* 2017
275 Apr;41(3):251–258.
- 276 26. Friedman J, Hastie T, Tibshirani R, Narasimhan B, Tay K, Simon N. Package glmnet. *J Stat Softw.*
277 2010 Feb 21;33(1).
- 278 27. Cheng S, Rhee EP, Larson MG, Lewis GD, McCabe EL, Shen D, et al. Metabolite profiling identifies
279 pathways associated with metabolic risk in humans. *Circulation.* 2012 May 8;125(18):2222–2231.
- 280 28. Zheng Y, Hu FB, Ruiz-Canela M, Clish CB, Dennis C, Salas-Salvado J, et al. Metabolites of
281 glutamate metabolism are associated with incident cardiovascular events in the PREDIMED prevención
282 con dieta mediterránea (PREDIMED) trial. *J Am Heart Assoc.* 2016 Sep 15;5(9).

- 283 29. Liu X, Zheng Y, Guasch-Ferré M, Ruiz-Canela M, Toledo E, Clish C, et al. High plasma glutamate
284 and low glutamine-to-glutamate ratio are associated with type 2 diabetes: Case-cohort study within the
285 PREDIMED trial. *Nutr Metab Cardiovasc Dis*. 2019 Oct;29(10):1040–1049.
- 286 30. Lehn-Stefan A, Peter A, Machann J, Schick F, Randrianarisoa E, Heni M, et al. Elevated Circulating
287 Glutamate Is Associated With Subclinical Atherosclerosis Independently of Established Risk Markers: A
288 Cross-Sectional Study. *J Clin Endocrinol Metab*. 2021 Jan 23;106(2):e982–e989.
- 289 31. Fung SJ, Xi M-C, Zhang J-H, Sampogna S, Yamuy J, Morales FR, et al. Apnea promotes glutamate-
290 induced excitotoxicity in hippocampal neurons. *Brain Res*. 2007 Nov 7;1179:42–50.
- 291 32. Macey PM, Sarma MK, Nagarajan R, Aysola R, Siegel JM, Harper RM, et al. Obstructive sleep
292 apnea is associated with low GABA and high glutamate in the insular cortex. *J Sleep Res*. 2016
293 Aug;25(4):390–394.
- 294 33. Macey PM, Sarma MK, Prasad JP, Ogren JA, Aysola R, Harper RM, et al. Obstructive sleep apnea
295 is associated with altered midbrain chemical concentrations. *Neuroscience*. 2017 Nov 5;363:76–86.
- 296 34. Hawkins RA. The blood-brain barrier and glutamate. *Am J Clin Nutr*. 2009 Sep;90(3):867S–874S.
- 297 35. Alfredsson G, Wiesel FA, Tylec A. Relationships between glutamate and monoamine metabolites
298 in cerebrospinal fluid and serum in healthy volunteers. *Biol Psychiatry*. 1988 Apr 1;23(7):689–697.
- 299 36. Murr C, Grammer TB, Meinitzer A, Kleber ME, März W, Fuchs D. Immune activation and
300 inflammation in patients with cardiovascular disease are associated with higher phenylalanine to
301 tyrosine ratios: the ludwigshafen risk and cardiovascular health study. *J Amino Acids*. 2014 Feb
302 10;2014:783730.
- 303 37. Strasser B, Sperner-Unterweger B, Fuchs D, Gostner JM. Mechanisms of Inflammation-
304 Associated Depression: Immune Influences on Tryptophan and Phenylalanine Metabolisms. *Current*
305 *topics in behavioral neurosciences*. 2017;31:95–115.
- 306 38. Huang T, Goodman M, Li X, Sands SA, Li J, Stampfer MJ, et al. C-reactive Protein and Risk of OSA
307 in Four US Cohorts. *Chest*. 2021 Jun;159(6):2439–2448.
- 308 39. Dahl RH, Berg RMG, Taudorf S, Bailey DM, Lundby C, Christensen M, et al. Transcerebral
309 exchange kinetics of large neutral amino acids during acute inspiratory hypoxia in humans. *Scand J Clin*
310 *Lab Invest*. 2019 Dec;79(8):595–600.
- 311 40. Kiens O, Taalberg E, Ivanova V, Veeväli K, Laurits T, Tamm R, et al. The effect of obstructive sleep
312 apnea on peripheral blood amino acid and biogenic amine metabolome at multiple time points
313 overnight. *Sci Rep*. 2021 May 24;11(1):10811.
- 314 41. Bell LN, Kilkus JM, Booth JN, Bromley LE, Imperial JG, Penev PD. Effects of sleep restriction on
315 the human plasma metabolome. *Physiol Behav*. 2013 Oct 2;122:25–31.
- 316 42. Chen W-S, Wang C-H, Cheng C-W, Liu M-H, Chu C-M, Wu H-P, et al. Elevated plasma
317 phenylalanine predicts mortality in critical patients with heart failure. *ESC Heart Fail*. 2020
318 Oct;7(5):2884–2893.

- 319 43. Eriksson JG, Guzzardi M-A, Iozzo P, Kajantie E, Kautiainen H, Salonen MK. Higher serum
320 phenylalanine concentration is associated with more rapid telomere shortening in men. *Am J Clin Nutr.*
321 2017 Jan;105(1):144–150.
- 322 44. Ubhi BK, Riley JH, Shaw PA, Lomas DA, Tal-Singer R, MacNee W, et al. Metabolic profiling detects
323 biomarkers of protein degradation in COPD patients. *Eur Respir J.* 2012 Aug;40(2):345–355.
- 324 45. Kuo W-K, Liu Y-C, Chu C-M, Hua C-C, Huang C-Y, Liu M-H, et al. Amino Acid-Based Metabolic
325 Indexes Identify Patients With Chronic Obstructive Pulmonary Disease And Further Discriminates
326 Patients In Advanced BODE Stages. *Int J Chron Obstruct Pulmon Dis.* 2019 Sep 30;14:2257–2266.
- 327 46. Würtz P, Havulinna AS, Soininen P, Tynkkynen T, Prieto-Merino D, Tillin T, et al. Metabolite
328 profiling and cardiovascular event risk: a prospective study of 3 population-based cohorts. *Circulation.*
329 2015 Mar 3;131(9):774–785.
- 330 47. Tan R, Li J, Liu F, Liao P, Ruiz M, Dupuis J, et al. Phenylalanine induces pulmonary hypertension
331 through calcium-sensing receptor activation. *Am J Physiol Lung Cell Mol Physiol.* 2020 Dec
332 1;319(6):L1010–L1020.
- 333 48. Lebkuchen A, Carvalho VM, Venturini G, Salgueiro JS, Freitas LS, Dellavance A, et al.
334 Metabolomic and lipidomic profile in men with obstructive sleep apnoea: implications for diagnosis and
335 biomarkers of cardiovascular risk. *Sci Rep.* 2018 Jul 26;8(1):11270.
- 336 49. Geovanini GR, Wang R, Weng J, Jenny NS, Shea S, Allison M, et al. Association between
337 Obstructive Sleep Apnea and Cardiovascular Risk Factors: Variation by Age, Sex, and Race. *The Multi-*
338 *Ethnic Study of Atherosclerosis. Annals of the American Thoracic Society.* 2018;15(8):970–977.
- 339 50. Nadeem R, Singh M, Nida M, Waheed I, Khan A, Ahmed S, et al. Effect of obstructive sleep apnea
340 hypopnea syndrome on lipid profile: a meta-regression analysis. *J Clin Sleep Med.* 2014 May
341 15;10(5):475–489.
- 342 51. Chopra S, Rathore A, Younas H, Pham LV, Gu C, Beselman A, et al. Obstructive sleep apnea
343 dynamically increases nocturnal plasma free fatty acids, glucose, and cortisol during sleep. *J Clin*
344 *Endocrinol Metab.* 2017 Sep 1;102(9):3172–3181.
- 345 52. Bonsignore MR, McNicholas WT, Montserrat JM, Eckel J. Adipose tissue in obesity and
346 obstructive sleep apnoea. *Eur Respir J.* 2012 Mar;39(3):746–767.
- 347 53. Alvarez D, Hornero R, Abásolo D, del Campo F, Zamarrón C. Nonlinear characteristics of blood
348 oxygen saturation from nocturnal oximetry for obstructive sleep apnoea detection. *Physiol Meas.* 2006
349 Apr;27(4):399–412.
- 350 54. Senaratna CV, Perret JL, Lodge CJ, Lowe AJ, Campbell BE, Matheson MC, et al. Prevalence of
351 obstructive sleep apnea in the general population: A systematic review. *Sleep Med Rev.* 2017
352 Aug;34:70–81.
- 353 55. Fietze I, Laharnar N, Obst A, Ewert R, Felix SB, Garcia C, et al. Prevalence and association analysis
354 of obstructive sleep apnea with gender and age differences - Results of SHIP-Trend. *J Sleep Res.* 2019
355 Oct;28(5):e12770.

356 56. Chaudhary P, Goyal A, Goel SK, Kumar A, Chaudhary S, Kirti Keshri S, et al. Women with OSA
357 have higher chances of having metabolic syndrome than men: effect of gender on syndrome Z in cross
358 sectional study. *Sleep Med.* 2021 Mar;79:83–87.

359 57. Zhang X, Wang S, Xu H, Yi H, Guan J, Yin S. Metabolomics and microbiome profiling as
360 biomarkers in obstructive sleep apnoea: a comprehensive review. *Eur Respir Rev.* 2021 Jun 30;30(160).

361

362 Supporting information

363

364 **S1 Table. Mapping between MESA and HCHS/SOL Metabolomics Platform.** The mapping was carried
365 out before any quality control steps (e.g. assessment of missingness, etc.). 294 compounds in MESA
366 were mapped to 231 metabolites in HCHS/SOL. 60 redundant features in MESA were dropped based on
367 the principles described in the methods section. After discarding 12 metabolites with high
368 missingness($\geq 75\%$) in HCHS/SOL, 209 metabolites with low missingness ($< 25\%$) were imputed and 10
369 metabolites with medium missingness (25-75%) were dichotomized in the HCHS/SOL metabolomics
370 platform. We applied the same QC steps to the corresponding metabolites in MESA, i.e., discarded,
371 imputed, and dichotomized, the same metabolites in MESA as in HCHS/SOL.

372 **S2 Table. Characteristics of the analytic sample from the MESA study population.** * Baseline
373 hypertension is defined as systolic blood pressure (SBP) > 130 mmHg, diastolic blood pressure (DBP) > 80
374 mmHg or any history of antihypertensive medication intake.

375 **S3 Table. Single metabolite associations with FDR-adjusted p-value < 0.05 in HCHS/SOL and MESA.**
376 Model 1 adjusted for age, gender, BMI, study center, and Hispanic/Latino background in HCHS/SOL, and
377 adjusted for age, gender, BMI, study site (site WFU and UCLA are combined due to low cell count), and
378 race in MESA. Model 2 adjusted for all covariates in model 1, in HCHS/SOL model 2 additionally adjusted
379 for alcohol usage, smoking status, physical activity and diet; in MESA, model 2 additionally adjusted for
380 alcohol usage and smoking status. Model 3 adjusted for all covariates in model 2, in HCHS/SOL, model 3

381 additionally adjusted for diabetes, hypertension, fasting glucose, fasting insulin, HOMA-IR, HDL, LDL,
382 total cholesterol, triglycerides, systolic blood pressure, diastolic blood pressure; in MESA, model 3
383 additionally adjusted for hypertension indicator, fasting glucose, HDL, LDL, cholesterol, triglycerides,
384 systolic blood pressure and diastolic blood pressure. Metabolite with * indicates they were identified
385 based on accurate mass data, retention time and mass spectrometry but not reference standards.
386 Therefore, the verification is not as robust as metabolites without *.

387 **S4 Table. Estimated associations between OSA and AHI metabolite indices and their respective**
388 **phenotypes in quartiles, in HCHS/SOL and MESA.** * per 1 STD increase in metabolite index. Model 1
389 adjusted for age, gender, BMI, study center, and Hispanic/Latino background in HCHS/SOL, and adjusted
390 for age, gender, BMI, study site (site WFU and UCLA are combined due to low cell count), and race in
391 MESA. Model 2 adjusted for all covariates in model 1, in HCHS/SOL model 2 additionally adjusted for
392 alcohol usage, smoking status, physical activity and diet; in MESA, model 2 additionally adjusted for
393 alcohol usage and smoking status. Model 3 adjusted for all covariates in model 2, in HCHS/SOL, model 3
394 additionally adjusted for diabetes, hypertension, fasting glucose, fasting insulin, HOMA-IR, HDL, LDL,
395 total cholesterol, triglycerides, systolic blood pressure, diastolic blood pressure; in MESA, model 3
396 additionally adjusted for hypertension indicator, fasting glucose, HDL, LDL, cholesterol, triglycerides,
397 systolic blood pressure and diastolic blood pressure.

398