

1 **Clearing the Fog: A Systematic Review on Cognitive Dysfunction in COVID-19**

2 Nicole D. Butardo¹, Mikaela Frances D. Coronel¹, Alanna Marie O. Dino¹, Tiffany Ritz

3 F. Mendoza¹, Oliver Kyle DC. Sto. Domingo¹, Zypher Jude G. Regencia^{2,3},

4 Jacqueline C. Dominguez⁴, Emmanuel S. Baja^{2,3}, and Antonio D. Ligsay^{1,5,6,*}

5

6 1. College of Science, University of Santo Tomas, España Blvd., Manila 1008

7 Philippines

8 2. Department of Clinical Epidemiology, College of Medicine, University of the

9 Philippines-Manila, Pedro Gil Street, Ermita, Manila, 1000 Philippines

10 3. Institute of Clinical Epidemiology, National Institutes of Health, University of

11 the Philippines-Manila, Pedro Gil Street, Ermita, Manila, 1000 Philippines

12 4. Institute for Neurosciences, St. Luke's Medical Center, 279 E. Rodriguez Sr.

13 Ave, Quezon City, 1112 Philippines

14 5. The Graduate School, University of Santo Tomas, España Blvd., Manila 1008

15 Philippines

16 6. St. Luke's Medical Center College of Medicine - William H. Quasha Memorial,

17 279 E Rodriguez Sr. Ave, Quezon City, 1112 Metro Manila

18

19 * Corresponding author: adligsay@ust.edu.ph; College of Science, University of

20 Santo Tomas, España Blvd., Manila 1008 Philippines

21

22

23

24

25

NOTE: This preprint reports new research that has not been certified by peer review and should not be used to guide clinical practice.

26
27
28
29
30
31
32
33
34
35
36
37
38
39
40
41
42
43
44
45
46
47
48
49
50

ABSTRACT

Objective: The systematic review aims to examine the association between COVID-19 and cognitive dysfunction, including the link between the severity of COVID-19 and the occurrence of cognitive impairment and the potential pathophysiological mechanisms related to brain fog among COVID-19 patients.

Methods: PubMed, Oxford University Press, ProQuest Health and Medical Complete, ScienceDirect, Ovid, HERDIN, Google Scholar, and Cochrane Library databases were accessed to retrieve literature using the PRISMA guidelines.

Results: After critical appraisal, thirteen full journal articles were included in the study. The studies showed the most frequent cognitive impairment are attention, memory, and executive function in COVID-19 patients. Compared with healthy controls (HC) in 3 out of 4 studies, cognitive impairment was only evident in COVID-19 patients. Furthermore, two studies showed no correlation between brain fog and depression, and five studies showed a link between the severity of COVID-19 infection and cognitive impairment. Cases ranging from mild to severe illness presented manifestations of brain fog. However, a disparity in the evidence of the pathophysiology of COVID-19 and cognitive dysfunction exists, prompting the need to investigate further. Additionally, recent studies provide insufficient evidence for direct central nervous system invasion, and there are emerging studies that contrast the presumed pathogenesis of neurological complications from neuroinflammation.

Conclusion: There is an association between COVID-19 and cognitive dysfunction. Manifestation of cognitive dysfunction is present regardless of illness severity. Moreover, there are existing pathophysiological mechanisms of the Coronavirus that lead to cognitive dysfunction in COVID-19 patients; however, additional studies are required to substantiate such mechanisms further.

51 **PROSPERO Registration Number:** CRD42022325669

52 **Keywords:** *brain fog, cognitive dysfunction, COVID-19, disease severity,*
53 *neuroinflammatory processes, pathophysiology, SARS-CoV-2 infection*

54

55 INTRODUCTION

56 With millions of Coronavirus (COVID-19) cases worldwide, it is becoming
57 apparent that more people are experiencing neurological symptoms associated with
58 severe acute respiratory syndrome coronavirus-2 (SARS-CoV-2) infection. For this
59 reason, researches into the putative link between SARS-CoV-2 and neurological
60 manifestations continue to grow (Desai et al., 2021; Ghannam et al., 2020;
61 Guadarrama-Ortiz et al., 2020). Cognitive dysfunction, also known as brain fog, is
62 defined as the decrements in the cognitive status during continuous mental activity
63 (García-Sánchez et al., 2022). Brain fog as a general term can present as confusion,
64 difficulty finding the appropriate words, disorientation, memory problems, altered
65 mental status, and trouble concentrating (Altuna et al., 2021; Asadi-Pooya et al., 2022;
66 Hampshire et al., 2021). Such decline can be measured using various neurocognitive
67 assessments that can either reveal a cognitive impairment with a certain severity or
68 discern which specific cognitive domain is significantly affected. According to the
69 Montreal Cognitive Assessment (MoCA) test, the cognitive domains include
70 orientation, attention, language, visuospatial function, memory, and executive function
71 (Julayanont & Nasreddine, 2017).

72 Gustatory and olfactory impairments are the most frequent sudden neurologic
73 manifestations of COVID-19 associated with the peripheral nervous system (PNS),
74 which occur in the early stages of SARS-CoV-2 infection (Cooper et al., 2020; Lechien
75 et al., 2020; Salcan et al., 2021). These sensory impairments entail that SARS-CoV-2

76 is afflicting the nervous system (Iadecola et al., 2020). The SARS-CoV-2 virus could
77 potentially affect the gustatory system in two different ways— either by directly
78 damaging the mucosal membrane of the oral cavity and the peripheral neuronal
79 trajectory of the gustatory tract or by directly damaging the cranial nerves that are
80 responsible for the sense of taste (Finsterer & Stollberger, 2020). With the
81 presentation of anosmia in COVID-19 patients, olfactory neurons were at an incredibly
82 high risk of injury due to the high viral load within the nasal cavity (Zou et al., 2020).

83 The discovery of the brain invasion of mice by the intranasal administration of
84 the novel coronavirus (Kumari et al., 2021) and the existing knowledge about the
85 previous detection of other coronaviruses in human cerebrum (Cheng et al., 2020) led
86 to a hypothesis that COVID-19 infection can be linked with neurocognitive
87 complications. Preliminary studies suggest that cognitive deficits of hospitalized
88 COVID-19 patients were dependent on two factors: the medical assistance they
89 received (Ferrucci et al., 2021; Hampshire et al., 2021) and the degree of inflammation
90 (Zhou et al., 2020); that is, severe infections are assumed to contribute to severe
91 cognitive impairments (Beaud et al., 2021; Tay et al., 2021; Wild et al., 2021).
92 However, there are still gaps in the studies regarding how COVID-19 infection
93 increases cognitive impairment risk, severity, and progression. There is mounting
94 evidence that brain fog is among the observed neurological manifestations of COVID-
95 19 (Whittaker et al., 2020). However, the association of the symptom, including the
96 possible mechanisms and the potential triggers, remains unclear. Consequently, if
97 there is an association between the two, research about the extent of the impact on
98 cognition and the affected cognitive domains of brain fog is limited (Zhou et al., 2020).
99 Therefore, researchers have yet to determine whether cognitive systems are equally
100 affected or some domains are more susceptible to SARS-CoV-2 infection. The primary

101 purpose of this review is to assess cognitive dysfunction, more commonly known as
102 “brain fog,” as a symptom of COVID-19 to understand its etiology better. This
103 encompasses the mechanisms that may cause the impairment and the prevalence of
104 the emergent symptom. The current study also aims to determine the association
105 between SARS-CoV-2 infection and cognitive dysfunction, elucidate the link between
106 the severity of COVID-19 infection and brain fog, and describe the potential
107 pathophysiological mechanisms related to cognitive dysfunction in COVID-positive
108 individuals. This study gathered evidence that could provide clarity on the association
109 between brain fog and COVID-19 infection.

110

111 **METHODS**

112 **Study Setting**

113 The study was carried out for six months (July to December 2021). Database
114 searching was the initial step for identifying reports. Search strategies were employed,
115 and primary identified records were based on the titles, database availability, and
116 abstracts. Reviewers evaluated these based on predetermined inclusion criteria. Once
117 reports have passed the inclusion criteria, a full-text report was obtained to assess its
118 eligibility against the inclusion criteria further. Irretrievable full-text reports were
119 excluded. More specifically, a population, phenomenon of interest, and context (PICO)
120 approach was utilized to generate a sequence of terms (Lockwood et al., 2015; Munn
121 et al., 2018).

122 **Eligibility Criteria/ Criteria for Considering Studies for this Review**

123 *Types of Studies*

124 The studies included in this systematic review were observational studies,
125 including case reports, case series, cross-sectional studies, case-control studies, and

126 cohort studies. In addition, reports focusing on individuals with COVID-19 who suffer
127 from brain fog were included. Only articles in the English language restriction were
128 imposed.

129 *Types of Participants*

130 Participants included in the study were patients who tested positive for COVID-
131 19 through a Reverse Transcription Polymerase Chain Reaction (RT-PCR), antigen
132 test or SARS-CoV-2-specific immunoglobulin G (IgG) in serum and experienced
133 cognitive dysfunction. All COVID-19 positive patients were included regardless of sex,
134 race, ethnicity, and age. In addition, healthy, non-COVID-19 patients were also
135 included for comparison.

136 *Types of Phenomena of Interest and Context*

137 This systematic review's main phenomena of interest included the
138 manifestation of brain fog in COVID-19 patients and non-COVID-19 patients.
139 Therefore, studies focusing on the link between COVID-19 severity and occurrence of
140 brain fog and potential mechanisms that cause cognitive dysfunction as a symptom of
141 COVID-19 were also included.

142 **Search Methods for Identification of Studies**

143 *Information Sources*

144 The following databases were used to identify completed studies until
145 December 2021: PubMed, Oxford University Press, ProQuest Health and Medical
146 Complete, ScienceDirect, Ovid, HERDIN, Google Scholar, and Cochrane Library.
147 Ongoing studies were recognized; however, these studies were not included in the
148 systematic review. In addition, a date restriction was set for identifying studies: studies
149 since the start of the COVID-19 pandemic, January 2020 up to December 2021, were

150 included in this systematic review. Furthermore, English language restriction was
151 imposed.

152 *Search Strategy*

153 The electronic literature search included the following key terms: COVID-19,
154 SARS-CoV-2, neurocognitive impairment, brain fog, confusion, poor concentration,
155 memory problems, brain fog pathophysiology, neurological mechanism, and cognitive
156 dysfunction. Moreover, the Boolean search strategy (“AND,” “NOT,” “AND NOT,”
157 “OR”) was employed to identify studies using the key terms. The search strategy for
158 databases can be found in online Supplemental Appendix A.

159 *Selection Process*

160 Authors independently searched for studies that were included in the
161 systematic review. The initial selection of studies consists of the examination of the
162 titles, abstracts, and full-text, if available. Inclusion criteria implemented were
163 observational studies on individuals with COVID-19 who experience cognitive
164 dysfunction. The authors created the final list of included studies. Any disagreements
165 that arose during the appraisal process were settled by discussing with another author.

166 *Assessment of Risk of Bias in Individual Studies*

167 Three authors (MFDC, TRFM, and OKSD) independently evaluated the risk of
168 bias in each study. A fourth (NDB) and fifth (AMOD) author was assigned to resolve
169 disagreements in assessments. To assess bias in included studies, they were
170 segregated into observational studies such as case reports, case series, cross-
171 sectional studies, case-control studies, and cohort studies. The risk of bias in the
172 included studies was assessed using the Strengthening the Reporting of
173 Observational Studies in Epidemiology (STROBE) statement (Vandenbroucke et al.,
174 2007). The risk of bias was scored as “low,” “moderate,” or “high” risk. The overall

175 quality of each study was given a rating based on the score from the STROBE
176 statement. Furthermore, only studies with a low-risk rating were included in the study.

177 **Data analysis and presentation**

178 Formatted according to the extraction tool used to extract the data, an MS Excel
179 spreadsheet was used to tabulate results for representation of results. The
180 characteristics of the included articles were described, which were previously
181 discussed and agreed upon within the study team.

182 **Evidence Synthesis**

183 A narrative synthesis of overall evidence was undertaken by comparing and
184 contrasting the data to express and synthesize the results of the included studies.
185 Development of a preliminary synthesis, exploration of the relationships within and
186 between studies, and the determination of the robustness of the synthesis were the
187 three stages of the narrative synthesis undertaken by the research team (Popay et al.,
188 2006). Data of the included studies were qualitatively described and presented. The
189 authors frequently met to discuss the results and reach a consensus on the findings.

190 **RESULTS**

191 **Description of the Studies**

192 *Literature Search*

193 Two hundred eighty-nine studies were identified after a comprehensive search
194 through databases (PubMed, ProQuest, Oxford University Press, ScienceDirect,
195 Cochrane Library, Google Scholar, JSTOR, and Herdin). Duplicate records (n=12)
196 were removed based on their titles. After initial screening, 177 studies were excluded
197 due to differences in study design (e.g., review paper, narrative review,
198 hypothesis/theory article and chart review) based on the title and abstract. In addition,
199 15 articles were not retrieved because the study is ongoing. A total of 85 full-text

200 studies were assessed for eligibility. After critical appraisal, 13 studies were included
201 in the final systematic review. An adapted PRISMA (Preferred Reporting Items for
202 Systematic Reviews and Meta-Analyses) flow chart of the study selection is presented
203 in Fig. 1.

204 *Included Studies*

205 Characteristics of the included studies are tabulated in Table 1. The age of the
206 study participants in the included studies was greater than 16 years old. All study
207 participants were diagnosed with COVID-19 through various diagnostic tests such as
208 SARS-CoV-2 RT-PCR of a nasopharyngeal swab, SARS-CoV-2 antibody testing (e.g.,
209 SARS-CoV-2-specific IgG in serum), rapid antigen test, and polymerase chain
210 reaction (PCR) test for SARS-CoV-2 in upper and/or lower airway samples.
211 Participants in 4 included studies were assessed during COVID-19 infection, seven
212 during post-COVID-19 infection, 4 had follow-ups, and one examined patients post-
213 mortem. The duration of the follow-ups in the included studies ranges from 2 to 4
214 months. Out of the 13 included observational studies, 1 is a case series, 1 is a case
215 report, 6 were cross-sectional studies, and 5 were cohort studies.

216 *Excluded Studies*

217 A total of 276 studies were excluded from the list of included studies due to the
218 following reasons: different study design (n=179), irrelevance to the systematic review
219 (n=59), unavailability of the full-text article (n=16), duplications (n=13), and focused on
220 the psychological aspect (n=9).

221 **Risk of Bias in Included Studies**

222 Observational studies were evaluated based on ten domains: Introduction - (1)
223 Objectives; Methods - (2) Participants; Results - (3) Participants, (4) Descriptive Data,
224 (5) Outcome Data, and (6) Main Results; Discussion - (7) Key Results, (8) Limitations,

225 (9) Interpretation, and (10) Generalizability. Of the 13 included observational studies,
226 all were assessed as low risk of bias.

227 **Qualitative Results**

228 Eleven studies focused on the association between COVID-19 and brain fog, five
229 (5) studies identified the link between the severity of COVID-19 and the occurrence of
230 cognitive dysfunction, and seven (7) studies described the possible pathophysiological
231 mechanisms related to brain fog in COVID-19 patients.

232 *Association between SARS-CoV-2 infection and neurocognitive dysfunction*

233 The prospective cohort study conducted two MoCA tests with mean scores of
234 19.1 and 23.4 on the first and second exams, respectively (Blazhenets et al., 2021).
235 The average scores showed significant improvement on the second exam. However,
236 the MoCA performance of the second exam was still within the range of mild cognitive
237 impairment (MCI). In a cross-sectional study, the average MoCA score of the COVID-
238 19 patients was significantly lower than the healthy controls (Ortelli et al., 2021). In
239 addition, the severity of cognitive impairment was mentioned in a study(Hosp et al.,
240 2021) wherein 54% (14/26) of the participants were mild to moderately impaired,
241 whereas 15% (4/26) were severely impaired (see Table 2 for details).

242 Seven of the included studies reported domain-specific cognitive deficits. The
243 prospective cohort assessed all six (6) cognitive domains that showed an insignificant
244 decline in orientation and attention domains with 6.00 and 5.13 scores, respectively
245 (Blazhenets et al., 2021). However, the MoCA domain scores on language (3.88),
246 visuospatial function (3.13), memory (2.25), and executive function (2.50) revealed
247 significant cognitive deficits.

248 Another cohort study also utilized the MoCA test (Hosp et al., 2021). The MoCA
249 domain scores in this study revealed an impairment in executive function, visuospatial

250 function, memory, and attention. The two other domains, language, and orientation,
251 were not impaired. An extended neuropsychological test battery confirmed the deficit
252 in executive function and memory, but not in attention (Hosp et al., 2021).

253 In a cross-sectional study, two cognitive domains such as attention and
254 executive function, were assessed using three subtests of MoCA and Frontal
255 Assessment Battery (FAB), respectively (Ortelli et al., 2021). The reaction time (RT)
256 of the COVID-19 patients in each subtest of MoCA was compared with that of the
257 healthy controls. In two of the subtests, namely Stroop Interference Task (SIT) and
258 Navon Task (NT), the RTs were significantly longer in the patients than in the healthy
259 controls (HC). In contrast, the RTs of the patients and the healthy controls in the
260 Vigilance Task (VT) did not have a significant difference. Furthermore, significantly
261 lower FAB scores were observed in COVID-19 patients than in the healthy controls
262 indicating an executive function deficit (Ortelli et al., 2021).

263 Another study also utilized subtests of MoCA such as the Trail Making Test
264 (TMT), Sign Coding Test (SCT), Continuous Performance Test (CPT), and Digit Span
265 Test (DST) that revealed significant differences in the attention domain and no
266 significant differences in executive function, visuospatial function, and memory
267 between COVID-19 patients and healthy controls (Zhou et al., 2020). Meanwhile, in a
268 cohort study, a neuropsychological assessment battery revealed specific cognitive
269 deficits in non-ICU and post-ICU COVID-19 patients (Vannorsdall et al., 2022). Both
270 groups showed significant cognitive impairment in three cognitive domains, namely
271 executive function, language, and memory but not in attention.

272 A different cognitive function assessment tool was used in another cohort study
273 (Graham et al., 2021). In this study, the National Institutes of Health (NIH) Toolbox
274 v2.1 instrument revealed a mild to moderate cognitive impairment in both COVID-19

275 patients and healthy controls; however, it did not show any significant difference
276 between the Toolbox T-scores of the two groups.

277 A Modified Telephone Interview for Cognitive Status (TICS-M) is another
278 screening tool for MCI used in another study (Woo et al., 2020). Cognitive deficits in
279 orientation, memory, attention, and language in post-COVID-19 patients and healthy
280 controls were reported. It was also revealed that the scores of the patients in three
281 domains, specifically memory, attention, and language, were significantly lower than
282 the healthy controls (Woo et al., 2020).

283 Moreover, a cross-sectional study involving 199 patients from Lima, Peru,
284 described the relationship between mild to moderate COVID-19 infection and
285 neurological symptoms, wherein 7 out of 199 patients (3.5%) presented impaired
286 consciousness (M. H. C. Garcia et al., 2021). Meanwhile, in another study, 23 patients
287 who had severe to critical COVID-19 were analyzed (Puchner et al., 2021). A
288 neuropsychological evaluation was conducted on 14 out of the 23 patients, and four
289 patients (29%) were found to have cognitive dysfunction in memory, executive
290 function, and attention (Puchner et al., 2021). In addition, a case study reported a
291 patient who tested positive for SARS-CoV-2 and did not have any neurologic or
292 psychiatric evaluation history. The patient was evaluated using a neuropsychological
293 battery test, including the Global Deterioration Scale (GDS), California Verbal
294 Learning Test (CVLT), FAB, and TMT. The neurological battery tests suggested
295 cognitive impairment (FAB score of 16; GDS stage 3) in executive function,
296 concentration, and memory. At the patient's follow-up, no cognitive impairment was
297 identified (FAB score of 13; GDS stage 1) (Yesilkaya et al., 2021).

298 Fourteen COVID-19 patients underwent hospital anxiety and depression scale
299 (HADS-D) that revealed no significant increase in their anxiety and depression

300 symptoms despite detecting cognitive deficits in memory and executive
301 functions.(Puchner et al., 2021) A similar study that utilized the Patient Health
302 Questionnaire - 9 (PHQ-9) Depression Scale revealed no significant correlation
303 between depression and cognitive dysfunction.(Woo et al., 2020) Meanwhile, one
304 study used the Beck Depression Inventory (BDI), wherein scores of COVID-19
305 patients and healthy controls had a significant difference (Ortelli et al., 2021).

306 *Elucidating the link between disease severity of COVID-19 infection and the*
307 *manifestation of cognitive dysfunction*

308 The National Institute of Health (NIH) established a classification for the clinical
309 spectrum of SARS-CoV-2 infection. Patients with COVID-19 may be grouped
310 according to illness severity: asymptomatic or presymptomatic, mild, moderate,
311 severe, and critical illness (Health, 2020). Increasing evidence suggests that the
312 severity of SARS-CoV-2 infection is linked with the occurrence of cognitive dysfunction
313 in COVID-19 patients. After evaluation of retrieved and appraised journals, five studies
314 correlate with this hypothesis (see Table 3). In the cross-sectional study examining
315 cerebrospinal fluid (CSF) of 18 COVID-19 subjects with neurological complications,
316 44% (8) were classified as critical, 28% (5) as severe, 22% (4) as moderate, and one
317 patient as mild illness (M. A. Garcia et al., 2021). This review shows that across the
318 case of 18 COVID-19 patients, all exhibited cognitive dysfunction regardless of case
319 severity. Furthermore, a cohort study conducted among patients of the John Hopkins
320 Post-Acute COVID-19 Team (PACT) Pulmonary Clinic reveals that out of 82 patients
321 classified for critical illness, 67% (54) demonstrated abnormally low cognitive scores
322 (≥ 1 deviation from published age-adjustive normative means) and is correlated to
323 mild/moderate or severe range of cognitive impairment (Vannorsdall et al., 2022). In
324 addition, the prospective-single center study involved 19 patients with a distribution of

325 11% (2) having a mild illness, 21% (4) having a moderate illness, another 21% (4)
326 having a severe illness, and 47% (9) having critical illness severity (2021) were
327 reported (Virhammar et al., 2021). Report also showed that 2 out of 9 critically ill
328 patients manifested cognitive dysfunction, 2 out of 4 severely ill patients showed
329 altered mental status, and 2 out of 4 moderately ill patients exhibited confusion and
330 altered mental status (Virhammar et al., 2021). Findings show that there is no specific
331 pattern for COVID-19-related cognitive dysfunction. Lastly, a cross-sectional study
332 conducted at the University Medical Center Hamburg-Eppendorf involved 18 patients
333 in either mild or moderate severity (Woo et al., 2020). Cognitive deficiencies were
334 present among the involved patients: 9 (50%) reported having attention deficiency, 8
335 (44.4%) suffered from concentration deficits, 8 (44.4%) experienced short-term
336 memory deficiency, and 5 (27.8%) had trouble finding words. Results from 18 patients
337 impacted with COVID-19 were compared to 10 healthy non-COVID patients. Findings
338 also show that COVID-19 neurological sequelae are independent of hospitalization
339 and illness severity (Woo et al., 2020).

340 *Possible pathophysiological mechanisms leading to cognitive dysfunction*

341 Seven studies analyzed cognitive dysfunction in COVID-19 patients on a
342 molecular level and their potential pathogenesis. One study examined serum pro-
343 inflammatory markers (interleukin-2 (IL-2), IL-4, IL-6, IL-10, tumor necrosis factor- α
344 (TNF- α), interferon- γ (IFN- γ), and C-reactive protein (CRP)) (Zhou et al., 2020).
345 However, their findings revealed no significant correlation between the inflammatory
346 markers and the cognitive function assessment results from the Trail Making Test,
347 Sign Coding Test, and Digital Span Test. In contrast, all the 29 post-COVID-19
348 patients showed a trend of significant difference for lower reaction time in the first and
349 second parts of CPT and a lower correct number in the second part of CPT than the

350 29 healthy controls. The serum C-reactive protein level and reaction time in the
351 Continuous Performance Test are positively correlated. Moreover, 11 post-COVID-19
352 patients demonstrated hyper-inflammation, evidenced by elevated C-reactive protein
353 (CRP) and interleukin-6 serum levels (Ortelli et al., 2021). The remarkable pro-
354 inflammatory state induced by SARS-CoV-2 in all 4 cases and the cessation of
355 carbidopa-levodopa in one patient case described in another study has been
356 postulated to convey a dysregulated immune response and a potential precipitant of
357 the abrupt mental confusion and emotional disarray (Beach et al., 2020).

358 One study analyzed the CSF of 19 patients with mild to critical COVID-19. Only
359 one (5%) was positive for SARS-CoV-2. The analysis includes biomarkers of central
360 nervous system injury (neurofilament light chain (NfL) protein, glial fibrillary acidic
361 protein (GFAP), and total tau (T-tau), and found increased CSF levels of NfL (63%),
362 total tau (37%), and GFAP (16%). The amount of CSF NfL was higher in patients with
363 central neurological symptoms, and the elevated level was associated with the
364 severity of the disease, time spent in critical care, and level of consciousness
365 (Virhammar et al., 2021).

366 Another study evaluated fluorodeoxyglucose (FDG)-positron emission
367 tomography (PET) images of 8 COVID-19 patients (post-infection) and the MoCA
368 scores to assess neuronal damage or synaptic dysfunction distribution (Blazhenets et
369 al., 2021). They discovered that after the patients are no longer infectious and in the
370 chronic stage (about six months after symptom onset), their impaired neocortical
371 glucose metabolism can return to normal levels, evidence of reversibility, which is
372 critical for the pathophysiology of cognitive deficit. In the FDG PET scans of another
373 study, 10 of the 15 patients had abnormal findings (Hosp et al., 2021). According to
374 the observer, 10 of the subjects had cortical hypometabolism, with 2 cases having

375 striatal hypermetabolism. Likewise, the second observer noted cerebral
376 hypometabolism in 6 out of 9 subjects. Striatal hypermetabolism is present in the other
377 three cases. In addition, their findings demonstrated a highly significant linear
378 association between MoCA and PET, with more robust pattern expression being
379 related to poorer cognitive function. The same study found oligoclonal bands present
380 with identical electrophoretic patterns in the serum in one patient but unremarkable
381 protein and IgG levels in 4 out of 29 who agreed to undergo CSF analysis. Moreover,
382 all CSF samples tested negative for SARS-CoV-2 (Hosp et al., 2021).

383 In a case study, the CSF analysis through lumbar puncture is unremarkable.
384 The N-acetylaspartate (NAA), glutamate, and glutamate/glutamine ratio were
385 measured using MR-spectroscopy and bilateral DLPFC. A week and three months
386 following the initial diagnosis of SARS-CoV-2 infection, substantial increases in
387 glutamate, glutamine, and NAA levels were discovered during follow-up, suggesting
388 that the glutamatergic pathway might be implicated in the pathogenesis of cognitive
389 impairment (Yesilkaya et al., 2021).

390 **DISCUSSION**

391 All studies that utilized the MoCA test showed MCI following COVID-19
392 infection. An included study reported a more severe global cognitive impairment
393 among COVID-19 patients than healthy controls (Ortelli et al., 2021). Among the
394 cognitive domains, attention, executive function, and memory are most likely to be
395 impaired. These were also the domains that frequently showed significant differences
396 between COVID-19 and non-COVID-19 patients in a recent study (Crivelli et al., 2022).
397 This observation is congruent with another study reporting that the exact cognitive
398 domains, except for memory, seem prone to impairments (Daroische et al., 2021). On
399 the other hand, results on language, orientation, and visuospatial function varied in

400 the included studies. This inconsistency may be due to the apparent heterogeneity in
401 the tests used, time of evaluation, eligibility criteria, and the presentation of results.

402 Majority of the included studies utilized the MoCA test (n = 5), followed by NIH
403 Toolbox (n = 1) and TICS-M (n = 1). Different tests with varying total scores, sensitivity,
404 and specificity in comparing study populations can be attributed to the contradictory
405 results. For instance, one study used three tests, SIT, NT, and VT, all assessed the
406 attention domain and discovered that only SIT and NT showed significantly different
407 RTs between COVID-19 and healthy controls (Ortelli et al., 2021). However, the
408 difference in VT was not statistically different. Furthermore, some studies either did
409 not specify or utilized different cut-off scores. Two studies used the same test and total
410 score. Still, different cut-off values in assessing visuospatial function, thereby affecting
411 the consistency of the interpretation (Blazhenets et al., 2021; Hosp et al., 2021). This
412 emphasizes the need for a standardized and accurate test specific to each cognitive
413 domain.

414 A prospective cohort study with 31 participants showed a better MoCA
415 performance of COVID-19 patients at the chronic stage than at the subacute stage
416 (Blazhenets et al., 2021). The authors provided evidence that supports the association
417 between COVID-19 infection and cognitive dysfunction, and these deficits can still be
418 measured six months after symptom onset of COVID-19. However, only eight patients
419 underwent a second MoCA examination at the chronic stage of the disease. Similarly,
420 another study reported that only one-tenth of the patients had cognitive dysfunction at
421 the 6-month follow-up (Nalbandian et al., 2021). With that, the different assessment
422 times of the included studies could be the result of the inconsistency. More research
423 using the same methodology is necessary to evaluate the time frame of cognitive
424 dysfunction after COVID-19 infection.

425 Several studies showed the comparison of results between COVID-19 and non-
426 COVID-19 patients (healthy controls). Three of the four studies used HC and reported
427 a cognitive impairment only in COVID-19 patients (Ortelli et al., 2021; Woo et al., 2020;
428 Zhou et al., 2020). A similar review reported that its included studies had significantly
429 more cases of cognitive impairment in COVID-19 patients than in HC (Daroische et
430 al., 2021).

431 Of all included studies, only three studies measured depression, two of which
432 stated no correlation between depression and cognitive dysfunction. However, one
433 study reported a significant difference in depression between COVID-19 patients and
434 HC (Ortelli et al., 2021). Previous studies hypothesized that cognitive dysfunction and
435 depression was bi-directional (Miskowiak et al., 2021; Vinkers et al., 2020). Severe
436 cognitive dysfunctions may produce more depression because of increased difficulty
437 in daily life functions. In addition, more symptoms of depression can affect the
438 performance in cognitive tests (Miskowiak et al., 2021). Therefore, there should be
439 more significant consideration of mood and cognitive symptoms following COVID-19
440 infection.

441 Emerging reports indicate that a large population suffers from cognitive
442 dysfunction due to COVID-19 infection. Results from the selected studies (Table 3)
443 showed that cognitive dysfunction is present among patients characterized by mild,
444 moderate, severe, and critical illnesses. According to a report, cognitive impairments
445 were most prevalent in hospitalized patients (Hampshire et al., 2021). However, non-
446 hospitalized patients also exhibited cognitive dysfunction relating to COVID-19
447 infection. A recent study stated evidence of cognitive deficits in patients classified with
448 mild to moderate illness (Del Brutto et al., 2021). Cases exhibiting severe illness also
449 provide proof of cognitive deficit (Hampshire et al., 2021; Negrini et al., 2021).

450 Additionally, severe infections are assumed to contribute to severe cognitive
451 impairments (Beaud et al., 2021; Tay et al., 2021; Wild et al., 2021). Moreover, another
452 study reported that critically ill patients presented long-lasting complaints of inability to
453 think and concentrate (brain fog) (Asadi-Pooya et al., 2022). In contrast with the
454 current study results, other studies revealed that cognitive deficits were also observed
455 in asymptomatic/presymptomatic cases (Amalakanti et al., 2021; Huang et al., 2021;
456 Tenforde et al., 2020). Therefore, regardless of the intensity of clinical manifestations
457 of COVID-19, patients may still develop brain fog; however, take into account that the
458 link between the severity of COVID-19 and severity of brain fog was not elucidated.
459 The correlation between the severity of COVID-19 disease & severity of cognitive
460 dysfunction remains inconclusive due to a lack of studies, variation of patient
461 characteristics, and breadth and depth of cognitive assessment. The establishment of
462 standardized tests for obtaining cognitive scores should be developed to represent a
463 normative data set to analyze the correlation of severity scale.

464 Out of 13 studies, only three tested for the presence of SARS-CoV-2 in the
465 CSF. No evidence of viral RNA in the CSF was reported (M. A. Garcia et al., 2021).
466 Likewise, all tested negative among 4 out of 29 patients who underwent lumbar
467 puncture (Hosp et al., 2021). On the other hand, 1 out of 19 patients tested positive
468 for SARS-CoV-2 in CSF findings (Virhammar et al., 2021). The lack of studies
469 reporting the presence of viral RNA in the CSF leads to inadequate evidence of
470 SARS-CoV-2 neuroinvasion, suggesting that it is not the primary pathogenic
471 mechanism in most cases. The NfL protein is an indicator of neuroaxonal damage.
472 Recent research of 544 Mexican Americans found that NfL had a detrimental influence
473 on processing speed, attention, executive skills, and delayed recognition memory in
474 normal and mild cognitive impairment groups, suggesting its significance as a marker

475 of cognitive impairment and early cognitive impairment changes (Hall et al., 2020). In
476 a previous study that used a community-based population of non-cognitive impairment
477 participants, CSF NfL is a better predictor of cognitive deterioration than other CSF
478 markers of neurodegeneration (Mielke et al., 2021). Another study elaborates on the
479 association of biomarkers such as t-tau with cognitive decline (Chen et al., 2021). The
480 findings showed that higher levels of plasma biomarkers (i.e., A β 42, t-tau, and A β 42
481 \times t-tau) were found in participants who showed a cognitive decline (the declined group)
482 compared to those who did not (the stable group) and were associated with lower
483 episodic verbal memory performance at baseline and a more significant annual
484 decrease in MMSE score (Chen et al., 2021).

485 Instead of the classic post-viral syndrome, cognitive impairment may be a
486 distinct post-COVID-19 manifestation caused by altered neuronal signaling in the brain
487 due to the immune response triggered by the virus. However, there is no evidence of
488 a link between inflammatory responses during acute infection (Woo et al., 2020). The
489 presence of oligoclonal bands in one patient might be similar to the association of
490 these bands in cognitive decline in other inflammatory and neurodegenerative
491 diseases of the central nervous system like multiple sclerosis (Giedraitiene et al.,
492 2021).

493 This study is limited by the number of studies available with the appropriate
494 parameters. Most studies available were systematic and meta-analysis studies and
495 observational studies that were inconclusive or unrelated to the topic of interest.
496 Moreover, the majority of the excluded studies focused on neurological manifestations
497 in general and did not necessarily mention cognitive dysfunction. Another limitation is
498 the possibility that some relevant studies were not taken into account because they
499 have been published in languages other than English (e.g., Chinese). We also did not

500 have access to some other databases that may store some articles on COVID-19 and
501 cognitive dysfunctions. And lastly, there could be some other studies on this theme in
502 the literature that skipped our attention and analyses. However, a comprehensive
503 search strategy that covers a broad range of evidence was implemented.

504 This systematic review gathered evidence that could provide clarity on the
505 association between brain fog and COVID-19 infection. The information acquired in
506 this study may help re-evaluate the impact of the virus. Furthermore, the use of the
507 data gleaned from this analysis may assist in earlier treatment, allowing physicians
508 and clinicians to manage the neurological manifestation effectively. Additionally, this
509 will aid in the development of various therapeutic strategies to support COVID-19
510 patients in recovering from impaired cognitive capacity. Finally, the analysis of such
511 data could provide an insight into the challenges that this virus could cause people in
512 their prime years, particularly those in the workforce.

513 **CONCLUSION**

514 Attention, memory, and executive function were the most frequently affected
515 cognitive domains in COVID-19 patients. There was also a significant difference in the
516 neuropsychological assessment scores between COVID-19 patients and HC.
517 Interestingly, results from the included studies showed no correlation between
518 cognitive dysfunction and depression. Increasing evidence suggests that cognitive
519 dysfunction due to COVID-19 is manifested across disease severity ranging from
520 asymptomatic to critical illness. The interplay of physical and cognitive impairments
521 may lead to functional problems inhibiting health-related standards of life. The
522 knowledge gained from this study may be used to improve the implementation of
523 comprehensive treatment modalities and rehabilitation throughout the COVID-19 care
524 continuum to remove such barriers and restore the meaningful lives of patients brought

525 about by brain fog. The findings from this systematic review indicate multiple potential
526 pathophysiological mechanisms related to cognitive dysfunction in COVID-positive
527 individuals. Neuroinflammation is one of the mechanisms that have led to cognitive
528 dysfunction based on the studies obtained. Neuroinflammation in the NFL protein and
529 inflammatory levels indicated by CRP provide further insight into the pathophysiology
530 that could lead to cognitive dysfunction. The evidence appears to be contrasting;
531 however, from what was gathered, the CNS invasion is not the primary pathological
532 mechanism due to the lack of studies that portray the presence of SARS-COV-2
533 concerning said mechanism. It is also suggested that neuroinflammation is not
534 substantial enough even with the rising levels of pro-inflammatory markers due to the
535 lack of value in numbers. Therefore, more studies are needed to substantiate these
536 pathophysiological mechanisms further.

537 **Acknowledgment**

538 The authors acknowledge the University of Santo Tomas College of Science,
539 especially the Department of Biological Sciences, for the support and assistance.

540 **Authors' Contributions**

541 ADL conceptualized the study following discussion with JCD. MFDC, TRFM, OKSD,
542 NDB, and AMOD designed the protocol, with feedback from ADL, ESB, ZGR, and
543 JCD. MFDC, TRFM, OKSD, NDB, and AMOD ran the database search and oversaw
544 the search, screening, full-text review and data extraction process. ZGR, ESB and
545 ADL drafted the manuscript. All authors reviewed the draft, provided critical review
546 and read and approved the final manuscript. The corresponding author, as guarantor,
547 accepts full responsibility for the finished article has access to any data and controlled
548 the decision to publish. The corresponding author attests that all listed authors meet
549 the authorship criteria and that no others meeting the criteria have been omitted.

550 **Competing interests** : None declared.

551 **Funding Statement:** The study did not receive any research grants for its
552 implementation.

553 **Data availability statement**

554 Data are available on reasonable request. Extracted data are available on request to
555 the corresponding author.

556 **Registration:** This study is registered in PROSPERO (International Prospective
557 Register for Systematic Reviews) as CRD42022325669.

558 **Author Note:** If there is a need to amend the study protocol or results, the date of
559 each amendment and the reason for the change will be described.

560 **Ethics statements**

561 *Patient consent for publication*

562 Not applicable.

563 *Ethics approval*

564 Ethical approval was not required for this systematic review, since all data came from
565 information freely available in the public domain (i.e., published articles or conference
566 abstracts). This study does not involve human participants.

567

568 **REFERENCES**

569 ALTUNA, M., SÁNCHEZ-SAUDINÓS, M. B., & LLEÓ, A. (2021). Cognitive
570 symptoms after COVID-19. *Neurology Perspectives*, 1, S16-S24.

571 AMALAKANTI, S., AREPALLI, K. V. R., & JILLELLA, J. P. (2021). Cognitive
572 assessment in asymptomatic COVID-19 subjects. *Virusdisease*, 32(1), 146-
573 149.

- 574 ASADI-POOYA, A. A., AKBARI, A., EMAMI, A., LOTFI, M.,
575 ROSTAMIHOSSEINKHANI, M., NEMATI, H., BARZEGAR, Z., KABIRI, M.,
576 ZERAATPISHEH, Z., & FARJOURD-KOUHANJANI, M. (2022). Long COVID
577 syndrome-associated brain fog. *Journal of Medical Virology*, 94(3), 979-984.
578
- 579 BEACH, S. R., PRASCHAN, N. C., HOGAN, C., DOTSON, S., MERIDETH, F.,
580 KONTOS, N., FRICCHIONE, G. L., & SMITH, F. A. (2020). Delirium in
581 COVID-19: a case series and exploration of potential mechanisms for central
582 nervous system involvement. *General hospital psychiatry*, 65, 47-53.
- 583 BEAUD, V., CROTTAZ-HERBETTE, S., DUNET, V., VAUCHER, J., BERNARD-
584 VALNET, R., DU PASQUIER, R., BART, P.-A., & CLARKE, S. (2021). Pattern
585 of cognitive deficits in severe COVID-19. *Journal of Neurology, Neurosurgery*
586 *& Psychiatry*, 92(5), 567-568.
- 587 BLAZHENETS, G., SCHROETER, N., BORMANN, T., THUROW, J., WAGNER, D.,
588 FRINGS, L., WEILLER, C., MEYER, P. T., DRESSING, A., & HOSP, J. A.
589 (2021). Slow but evident recovery from neocortical dysfunction and cognitive
590 impairment in a series of chronic COVID-19 patients. *Journal of Nuclear*
591 *Medicine*, 62(7), 910-915.
- 592 CHEN, Z., CHANG, F., YAO, L., YUAN, F., HONG, J., WU, D., & WEI, Y. (2021).
593 Clinical significance of the cognition-related pathogenic proteins in plasma
594 neuronal-derived exosomes among normal cognitive adults over 45 years old
595 with olfactory dysfunction. *European Archives of Oto-rhino-laryngology*, 1-10.
596
- 597 CHENG, Q., YANG, Y., & GAO, J. (2020). Infectivity of human coronavirus in the
598 brain. *EBioMedicine*, 56, 102799.

- 599 COOPER, K. W., BRANN, D. H., FARRUGGIA, M. C., BHUTANI, S., PELLEGRINO,
600 R., TSUKAHARA, T., WEINREB, C., JOSEPH, P. V., LARSON, E. D., &
601 PARMA, V. (2020). COVID-19 and the chemical senses: supporting players
602 take center stage. *Neuron*, 107(2), 219-233.
- 603 CRIVELLI, L., PALMER, K., CALANDRI, I., GUEKHT, A., BEGHI, E., CARROLL, W.,
604 FRONTERA, J., GARCÍA-AZORÍN, D., WESTENBERG, E., & WINKLER, A.
605 S. (2022). Changes in cognitive functioning after COVID-19: A systematic
606 review and meta-analysis. *Alzheimer's & Dementia*.
- 607 DAROISCHE, R., HEMMINGHYTH, M. S., EILERTSEN, T. H., BREITVE, M. H., &
608 CHWISZCZUK, L. J. (2021). Cognitive impairment after COVID-19—a review
609 on objective test data. *Frontiers in neurology*, 1238.
- 610 DEL BRUTTO, O. H., WU, S., MERA, R. M., COSTA, A. F., RECALDE, B. Y., &
611 ISSA, N. P. (2021). Cognitive decline among individuals with history of mild
612 symptomatic SARS-CoV-2 infection: A longitudinal prospective study nested
613 to a population cohort. *European journal of neurology*, 28(10), 3245-3253.
- 614 DESAI, I., MANCHANDA, R., KUMAR, N., TIWARI, A., & KUMAR, M. (2021).
615 Neurological manifestations of coronavirus disease 2019: exploring past to
616 understand present. *Neurological Sciences*, 42(3), 773-785.
- 617 FERRUCCI, R., DINI, M., GROPPPO, E., ROSCI, C., REITANO, M. R., BAI, F.,
618 POLETTI, B., BRUGNERA, A., SILANI, V., & D'ARMINIO MONFORTE, A.
619 (2021). Long-lasting cognitive abnormalities after COVID-19. *Brain Sciences*,
620 11(2), 235.
- 621 FINSTERER, J., & STOLLBERGER, C. (2020). Causes of hypogeusia/hyposmia in
622 SARS-CoV2 infected patients. *Journal of Medical Virology*.

- 623 GARCIA, M. A., BARRERAS, P. V., LEWIS, A., PINILLA, G., SOKOLL, L. J.,
624 KICKLER, T., MOSTAFA, H., CATUREGLI, M., MOGHEKAR, A., &
625 FITZGERALD, K. C. (2021). Cerebrospinal fluid in COVID-19 neurological
626 complications: Neuroaxonal damage, anti-SARS-Cov2 antibodies but no
627 evidence of cytokine storm. *Journal of the neurological sciences*, 427,
628 117517.
- 629 GARCIA, M. H. C., CHOZA, D. D. G., LINARES, B. J. S., & DIAZ, M. M. (2021).
630 Neurological manifestations of patients with mild-to-moderate COVID-19
631 attending a public hospital in Lima, Peru. *ENeurologicalSci*, 23, 100338.
- 632 GARCÍA-SÁNCHEZ, C., CALABRIA, M., GRUNDEN, N., PONS, C., ARROYO, J. A.,
633 GÓMEZ-ANSON, B., LLEÓ, A., ALCOLEA, D., BELVÍS, R., & MOROLLÓN,
634 N. (2022). Neuropsychological deficits in patients with cognitive complaints
635 after COVID-19. *Brain and Behavior*, 12(3), e2508.
- 636 GHANNAM, M., ALSHAER, Q., AL-CHALABI, M., ZAKARNA, L., ROBERTSON, J.,
637 & MANOUSAKIS, G. (2020). Neurological involvement of coronavirus disease
638 2019: a systematic review. *Journal of neurology*, 267(11), 3135-3153.
- 639 GIEDRAITIENE, N., DRUKTEINIENE, E., KIZLAITIENE, R., CIMBALAS, A.,
640 ASOKLIS, R., & KAUBRYNS, G. (2021). Cognitive decline in multiple sclerosis
641 is related to the progression of retinal atrophy and presence of oligoclonal
642 bands: a 5-year follow-up study. *Frontiers in neurology*, 12.
- 643 GRAHAM, E. L., CLARK, J. R., ORBAN, Z. S., LIM, P. H., SZYMANSKI, A. L.,
644 TAYLOR, C., DIBIASE, R. M., JIA, D. T., BALABANOV, R., & HO, S. U.
645 (2021). Persistent neurologic symptoms and cognitive dysfunction in non-
646 hospitalized Covid-19 “long haulers”. *Annals of clinical and translational
647 neurology*, 8(5), 1073-1085.

- 648 GUADARRAMA-ORTIZ, P., CHOREÑO-PARRA, J. A., SÁNCHEZ-MARTÍNEZ, C.
649 M., PACHECO-SÁNCHEZ, F. J., RODRÍGUEZ-NAVA, A. I., & GARCÍA-
650 QUINTERO, G. (2020). Neurological aspects of SARS-CoV-2 infection:
651 mechanisms and manifestations. *Frontiers in neurology*, 1039.
- 652 HALL, J. R., JOHNSON, L. A., PETERSON, M., JULOVICH, D., COMO, T., &
653 O'BRYANT, S. E. (2020). Relationship of neurofilament light (NfL) and
654 cognitive performance in a sample of Mexican Americans with normal
655 cognition, mild cognitive impairment and dementia. *Current Alzheimer*
656 *Research*, 17(13), 1214-1220.
- 657 HAMPSHIRE, A., TRENDER, W., CHAMBERLAIN, S. R., JOLLY, A. E., GRANT, J.
658 E., PATRICK, F., MAZIBUKO, N., WILLIAMS, S. C., BARNBY, J. M., &
659 HELLYER, P. (2021). Cognitive deficits in people who have recovered from
660 COVID-19. *EClinicalMedicine*, 39, 101044.
- 661 HEALTH, N. I. O. (2020). Management of persons with COVID-19. *COVID-19*
662 *Treatment Guidelines*.
- 663 HOSP, J. A., DRESSING, A., BLAZHENETS, G., BORMANN, T., RAU, A.,
664 SCHWABENLAND, M., THUROW, J., WAGNER, D., WALLER, C., &
665 NIESEN, W. D. (2021). Cognitive impairment and altered cerebral glucose
666 metabolism in the subacute stage of COVID-19. *Brain*, 144(4), 1263-1276.
667
- 668 HUANG, Y., PINTO, M. D., BORELLI, J. L., MEHRABADI, M. A., ABRIHIM, H.,
669 DUTT, N., LAMBERT, N., NURMI, E. L., CHAKRABORTY, R., & RAHMANI,
670 A. M. (2021). COVID symptoms, symptom clusters, and predictors for
671 becoming a long-hauler: looking for clarity in the haze of the pandemic.

- 672 IADECOLA, C., ANRATHER, J., & KAMEL, H. (2020). Effects of COVID-19 on the
673 nervous system. *Cell*, 183(1), 16-27. e11.
- 674 JULAYANONT, P., & NASREDDINE, Z. S. (2017). Montreal Cognitive Assessment
675 (MoCA): concept and clinical review. In *Cognitive screening instruments* (pp.
676 139-195). Springer.
- 677 KUMARI, P., ROTHAN, H. A., NATEKAR, J. P., STONE, S., PATHAK, H., STRATE,
678 P. G., ARORA, K., BRINTON, M. A., & KUMAR, M. (2021). Neuroinvasion
679 and encephalitis following intranasal inoculation of SARS-CoV-2 in K18-
680 hACE2 mice. *Viruses*, 13(1), 132.
- 681 LECHIEN, J. R., CHIESA-ESTOMBA, C. M., DE SIATI, D. R., HOROI, M., LE BON,
682 S. D., RODRIGUEZ, A., DEQUANTER, D., BLECIC, S., EL AFIA, F., &
683 DISTINGUIN, L. (2020). Olfactory and gustatory dysfunctions as a clinical
684 presentation of mild-to-moderate forms of the coronavirus disease (COVID-
685 19): a multicenter European study. *European Archives of Oto-rhino-
686 laryngology*, 277(8), 2251-2261.
- 687 LOCKWOOD, C., MUNN, Z., & PORRITT, K. (2015). Qualitative research synthesis:
688 methodological guidance for systematic reviewers utilizing meta-aggregation.
689 *JBI Evidence Implementation*, 13(3), 179-187.
- 690 MIELKE, M. M., PRZYBELSKI, S. A., LESNICK, T. G., KERN, S., ZETTERBERG,
691 H., BLENNOW, K., KNOPMAN, D. S., GRAFF-RADFORD, J., PETERSEN, R.
692 C., & JACK JR, C. R. (2021). Comparison of CSF neurofilament light chain,
693 neurogranin, and tau to MRI markers. *Alzheimer's & Dementia*, 17(5), 801-
694 812.
- 695 MISKOWIAK, K., JOHNSEN, S., SATTLER, S., NIELSEN, S., KUNALAN, K.,
696 RUNGBY, J., LAPPERRE, T., & PORSBERG, C. (2021). Cognitive

697 impairments four months after COVID-19 hospital discharge: pattern, severity
698 and association with illness variables. *European Neuropsychopharmacology*,
699 46, 39-48.

700 MUNN, Z., STERN, C., AROMATARIS, E., LOCKWOOD, C., & JORDAN, Z. (2018).
701 What kind of systematic review should I conduct? A proposed typology and
702 guidance for systematic reviewers in the medical and health sciences. *BMC*
703 *medical research methodology*, 18(1), 1-9.

704 NALBANDIAN, A., SEHGAL, K., GUPTA, A., MADHAVAN, M. V., MCGRODER, C.,
705 STEVENS, J. S., COOK, J. R., NORDVIG, A. S., SHALEV, D., &
706 SEHRAWAT, T. S. (2021). Post-acute COVID-19 syndrome. *Nature medicine*,
707 27(4), 601-615.

708 NEGRINI, F., FERRARIO, I., MAZZIOTTI, D., BERCHICCI, M., BONAZZI, M., DE
709 SIRE, A., NEGRINI, S., & ZAPPAROLI, L. (2021). Neuropsychological
710 features of severe hospitalized coronavirus disease 2019 patients at clinical
711 stability and clues for postacute rehabilitation. *Archives of Physical Medicine*
712 *and Rehabilitation*, 102(1), 155-158.

713 ORTELLI, P., FERRAZZOLI, D., SEBASTIANELLI, L., ENGL, M., ROMANELLO, R.,
714 NARDONE, R., BONINI, I., KOCH, G., SALTUARI, L., & QUARTARONE, A.
715 (2021). Neuropsychological and neurophysiological correlates of fatigue in
716 post-acute patients with neurological manifestations of COVID-19: Insights
717 into a challenging symptom. *Journal of the neurological sciences*, 420,
718 117271.

719 POPAY, J., ROBERTS, H., SOWDEN, A., PETTICREW, M., ARAI, L., RODGERS,
720 M., BRITTEN, N., ROEN, K., & DUFFY, S. (2006). Guidance on the conduct

721 of narrative synthesis in systematic reviews. *A product from the ESRC*
722 *methods programme Version, 1*, b92.

723 PUCHNER, B., SAHANIC, S., KIRCHMAIR, R., PIZZINI, A., SONNWEBER, B.,
724 WÖLL, E., MÜHLBACHER, A., GARIMORTH, K., DAREB, B., & EHLING, R.
725 (2021). Beneficial effects of multi-disciplinary rehabilitation in postacute
726 COVID-19: an observational cohort study. *Eur J Phys Rehabil Med*, 189-198.

727 SALCAN, İ., KARAKEÇİLİ, F., SALCAN, S., ÜNVER, E., AKYÜZ, S., SEÇKİN, E., &
728 CINGI, C. (2021). Is taste and smell impairment irreversible in COVID-19
729 patients? *European Archives of Oto-rhino-laryngology*, 278(2), 411-415.

730 TAY, M. R. J., LOW, Y. H., LIM, C. C. T., UMAPATHI, T., THIO, J. M. L., LUI, W. L.,
731 CHAN, W. L. W., & CHUA, K. S. G. (2021). Covert subclinical neurocognitive
732 sequelae during the rehabilitation course of severe Coronavirus Disease
733 2019. *American journal of physical medicine & rehabilitation*, 100(1), 39-43.

734 TENFORDE, M. W., KIM, S. S., LINDSELL, C. J., ROSE, E. B., SHAPIRO, N. I.,
735 FILES, D. C., GIBBS, K. W., ERICKSON, H. L., STEINGRUB, J. S., &
736 SMITHLINE, H. A. (2020). Symptom duration and risk factors for delayed
737 return to usual health among outpatients with COVID-19 in a multistate health
738 care systems network—United States, March–June 2020. *Morbidity and*
739 *Mortality Weekly Report*, 69(30), 993.

740 VANDENBROUCKE, J. P., VON ELM, E., ALTMAN, D. G., GØTZSCHE, P. C.,
741 MULROW, C. D., POCOCK, S. J., POOLE, C., SCHLESSELMAN, J. J.,
742 EGGER, M., & INITIATIVE, S. (2007). Strengthening the Reporting of
743 Observational Studies in Epidemiology (STROBE): explanation and
744 elaboration. *PLoS medicine*, 4(10), e297.

- 745 VANNORSALL, T. D., BRIGHAM, E., FAWZY, A., RAJU, S., GORGONE, A.,
746 PLETNIKOVA, A., LYKETSOS, C. G., PARKER, A. M., & OH, E. S. (2022).
747 Cognitive Dysfunction, Psychiatric Distress, and Functional Decline After
748 COVID-19. *Journal of the Academy of Consultation-liaison Psychiatry*, 63(2),
749 133-143.
- 750 VINKERS, C. H., VAN AMELSVOORT, T., BISSON, J. I., BRANCHI, I., CRYAN, J.
751 F., DOMSCHKE, K., HOWES, O. D., MANCHIA, M., PINTO, L., & DE
752 QUERVAIN, D. (2020). Stress resilience during the coronavirus pandemic.
753 *European Neuropsychopharmacology*, 35, 12-16.
- 754 VIRHAMMAR, J., NÄÄS, A., FÄLLMAR, D., CUNNINGHAM, J. L., KLANG, A.,
755 ASHTON, N. J., JACKMANN, S., WESTMAN, G., FRITHIOF, R., &
756 BLENNOW, K. (2021). Biomarkers for central nervous system injury in
757 cerebrospinal fluid are elevated in COVID-19 and associated with neurological
758 symptoms and disease severity. *European journal of neurology*, 28(10), 3324-
759 3331.
- 760 WHITTAKER, A., ANSON, M., & HARKY, A. (2020). Neurological manifestations of
761 COVID-19: a systematic review and current update. *Acta Neurologica*
762 *Scandinavica*, 142(1), 14-22.
- 763 WILD, C., NORTON, L., MENON, D., RIPSAN, D., SWARTZ, R., & OWEN, A.
764 (2021). Seeing through brain fog: disentangling the cognitive, physical, and
765 mental health sequelae of COVID-19.
- 766 WOO, M. S., MALSY, J., PÖTTGEN, J., SEDDIQ ZAI, S., UFER, F., HADJILAOU,
767 A., SCHMIEDEL, S., ADDO, M. M., GERLOFF, C., & HEESEN, C. (2020).
768 Frequent neurocognitive deficits after recovery from mild COVID-19. *Brain*
769 *communications*, 2(2), fcaa205.

770 YESILKAYA, U. H., SEN, M., & BALCIOGLU, Y. H. (2021). COVID-19-related
771 cognitive dysfunction may be associated with transient disruption in the
772 DLPFC glutamatergic pathway. *Journal of Clinical Neuroscience*, 87, 153-155.

773

774 ZHOU, H., LU, S., CHEN, J., WEI, N., WANG, D., LYU, H., SHI, C., & HU, S. (2020).
775 The landscape of cognitive function in recovered COVID-19 patients. *Journal*
776 *of psychiatric research*, 129, 98-102.

777 ZOU, L., RUAN, F., HUANG, M., LIANG, L., HUANG, H., HONG, Z., YU, J., KANG,
778 M., SONG, Y., & XIA, J. (2020). SARS-CoV-2 viral load in upper respiratory
779 specimens of infected patients. *New England Journal of Medicine*, 382(12),
780 1177-1179.

781

782

783

784

785

786

787

788

789

790

791

792

793

794

795

Tables and Figures

796

797 **Table 1.** Characteristics of included studies (n=13).

Author (Year)	Sample Size	Population Mean Age/ Median Age* (Range)	Study Design	Outcome/s
Beach et al. (2020)	4	75.25 yo (68-87)	Case series	Neuropsychological and neurophysiological features of fatigue were studied in post-COVID-19 patients. In addition, apathy, deficits in executive functions, and reduction in global cognition were found.
Blazhenets et al. (2021)	31	66.00 yo (39-89)	Cohort	MOCA <i>M</i> = 19.13; 23.38 Impaired language, visuospatial function, memory, and executive function
Garcia, M.A. et al. (2021)	18	56 yo*(20-79 yo; 14 healthy, 68 non-COVID-19 neurological disease controls)	Cross-sectional	Neuroinflammatory processes in COVID-19 CSF may be the result of a homeostatic neurological response rather than an adaptive, immune-mediated cytokine storm or inflammation caused by neurovirulence. Mild, moderate, severe, and critical cases exhibited cognitive deficits, regardless of severity.
Garcia, M.H.C. et al. (2021)	199	43 yo (>18 yo)	Cross-sectional	Mild to moderate cases of COVID-19 severity exhibited cognitive deficits
Graham et al. (2021)	100	43.2 yo	Cohort	Patients and controls had mild to moderate cognitive dysfunction but showed no significant difference
Hosp et al. (2021)	29	65.2 yo (>18)	Cohort	MOCA <i>M</i> = 21.77 Impaired attention, visuospatial function, memory, and executive function
Ortelli et al. (2020)	12	67 yo (48-80)	Cross-sectional	MOCA <i>M</i> = 17.80 Impaired attention via SIT and NT but unimpaired attention on VT

Author (Year)	Sample Size	Population Mean Age/ Median Age* (Range)	Study Design	Outcome/s
Puchner et al. (2021)	23	57 yo (≥ 18)	Cohort	In 29% of tested patients, cognitive deficits in concentration, memory, and/or executive functions were found.
Vannorsdall et al. (2022)	82	54.5 yo (>16)	Cohort	Impaired scores for Oral Trail Making Test, Verbal Fluency, and Rey Auditory Verbal Learning Test Critically ill patients exhibited cognitive deficits.
Virhammar et al. (2021)	19	64 yo (34-76)	Cohort	Majority of patients presented with increased CSF levels of neuronal injury markers. Results of the study show that there is no specific pattern in the manifestation of brain fog across illness severity.
Woo et al. (2020)	18	42.11 yo (17-71)	Cross-sectional	TICS-M: COVID-19 patients scored significantly lower than HC, especially in memory, attention, and language. Patients with mild to moderate case severity indicated manifestation of cognitive dysfunction.
Yesilkaya et al. (2021)	1	20 yo	Case report	Cognitive deficits in SARS-CoV-2 infection can result from glutamatergic dysfunction with decreased glutamate and NAA levels in the DLPFC confirmed by MRS.
Zhou et al. (2020)	29	47 yo (30-64)	Cross-sectional	CPT: COVID-19 patients performed significantly worse than HC No significance for TMT, SCT, and DST between the two groups

798

799

800

801

802

803 **Table 2.** Summary of domain-specific and non-domain-specific test results of included
 804 studies (n=7).

Author	Sample Size	MoCA global score (> 26)		Cognitive Domains*					
				O	A	L	VSF	M	EF
Blazhenets et al. (2021)	8	1st exam	2nd exam	x	x	✓	✓	✓	✓
		19.13	23.38						
Graham et al. (2021)	50	n/a		n/a	✓	n/a	n/a	✓	✓
Hosp et al. (2021)	26	21.77		x	✓	x	✓	✓	✓
Ortelli et al. (2020)	12	17.80		n/a	✓	n/a	n/a	n/a	✓
Vannorsdall et al. (2021)	82	n/a		n/a	x	✓	n/a	✓	✓
Woo et al. (2020)	18	n/a		✓	✓	✓	n/a	✓	n/a
Zhou et al. (2020)	29	n/a		n/a	✓	n/a	x	x	x

805 *✓: impaired domain; X: unimpaired domain; n/a: no available data.

806

807 **Legend:** O – Orientation; A – Attention; L – Language, VSF – Visuospatial Function;
 808 M – Memory; EF – Executive Function

809

810

811 **Table 3.** Summary of occurrence of cognitive dysfunction across illness severity from
812 included studies (n=5).

Author (Year)	Clinical Spectrum of SARS-CoV-2 Infection					Cognitive dysfunction
	Asymptomatic or Presymptomatic Infection	Mild Illness	Moderate Illness	Severe Illness	Critical Illness	
Garcia MA et al. (2021)	X	✓	✓	✓	✓	✓
Garcia MHC et al. (2021)	X	✓	✓	X	X	✓
Vannorsdall et al. (2022)	X	X	X	X	✓	✓
Virhammar et al. (2021)	X	✓	✓	✓	✓	✓
Woo et al. (2020)	X	✓	✓	X	X	✓

813

814

815

816

817

818

819

820

821

822

823

824

825

826

827

828

829

830

831

832

833

834

835

836

837

838

839

840

841

842

843

844

845

846

847

848

849

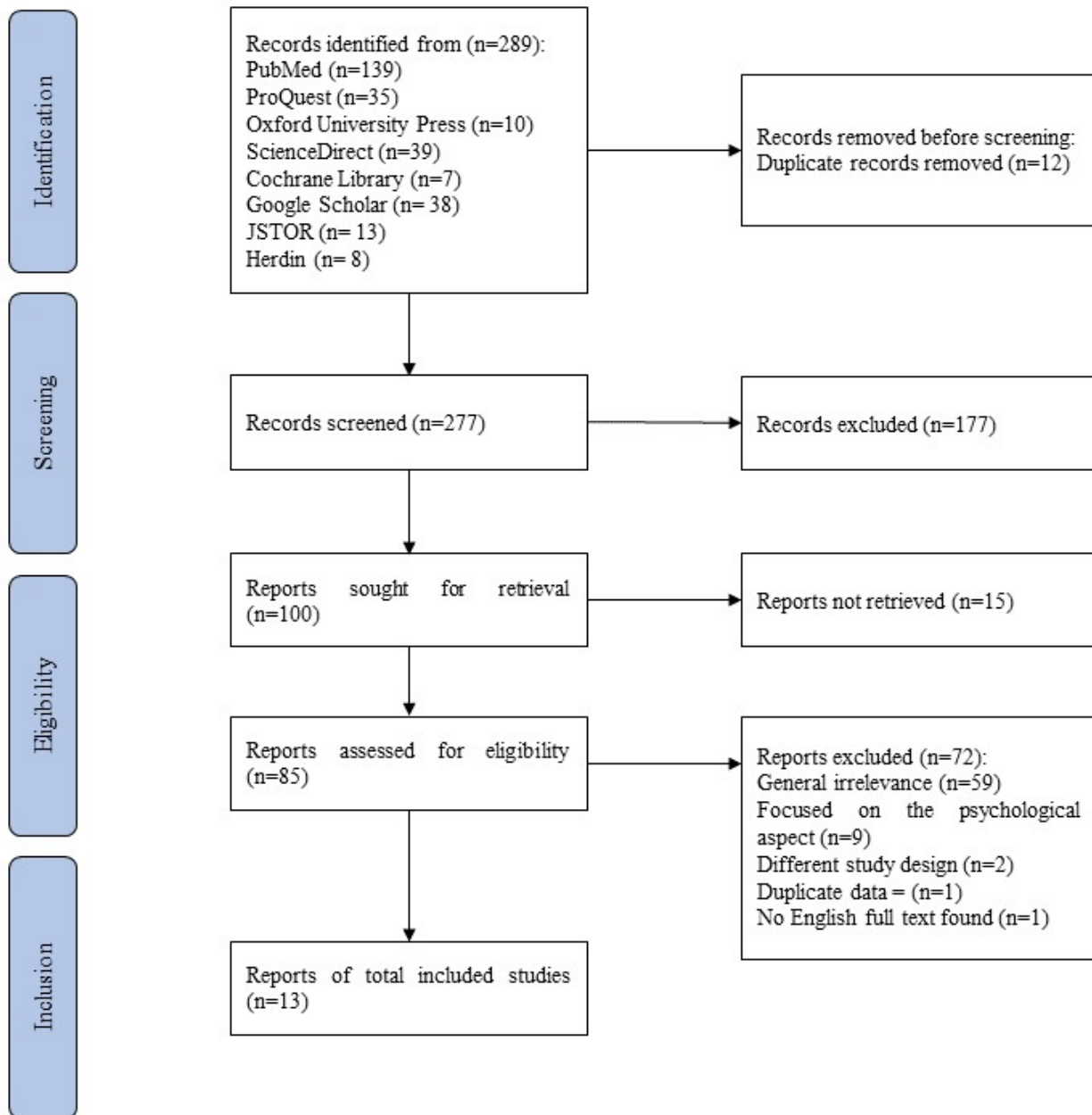


Figure 1. PRISMA flow diagram.

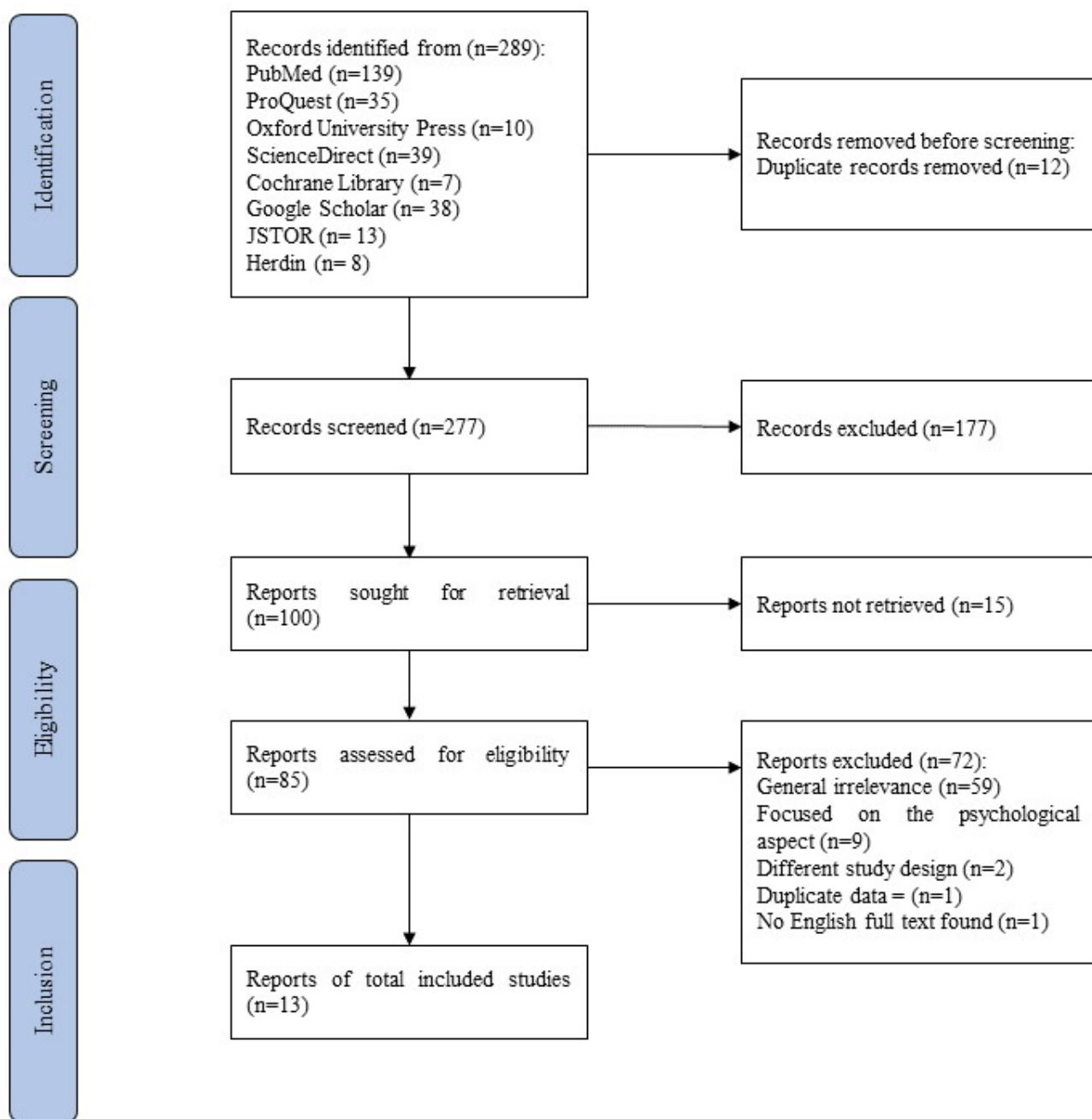


Figure 1. PRISMA flow diagram.