

1 **Clinical features and burden of post-acute sequelae of SARS-CoV-2 infection in children**
2 **and adolescents: an exploratory EHR-based cohort study from the RECOVER program**

3 **Authors:** Suchitra Rao, MBBS, MSCS¹, Grace M. Lee, MD, MPH²; Hanieh Razzaghi,
4 MPH³, Vitaly Lorman, PhD³, Asuncion Mejias, MD, PhD⁴, Nathan M. Pajor, MD⁵, Deepika
5 Thacker, MD⁶, Ryan Webb, MS³, Kimberley Dickinson, BS³, L. Charles Bailey, MD, PhD³,
6 Ravi Jhaveri, MD⁷, Dimitri A. Christakis, MD, MPH⁸, Tellen D. Bennett, MD, MS¹, Yong
7 Chen, PhD⁹, Christopher B. Forrest, MD, PhD³

8 **Affiliations:**

9 ¹Department of Pediatrics, University of Colorado School of Medicine and Children's Hospital
10 Colorado, Aurora, CO,

11 ²Department of Pediatrics (Infectious Diseases), Stanford University School of Medicine,
12 Stanford, CA

13 ³Applied Clinical Research Center, Children's Hospital of Philadelphia, Philadelphia, PA

14 ⁴Division of Infectious Diseases, Department of Pediatrics, Nationwide Children's Hospital and
15 The Ohio State University, Columbus, OH

16 ⁵Division of Pulmonary Medicine, Cincinnati Children's Hospital Medical Center and University
17 of Cincinnati College of Medicine, Cincinnati, OH

18 ⁶Division of Cardiology, Nemours Children's Health, Wilmington, DE

19 ⁷Division of Infectious Diseases, Ann & Robert H. Lurie Children's Hospital of Chicago, Chicago,
20 IL

21 ⁸Center for Child Health, Behavior and Development, Seattle Children's Hospital, Seattle, WA

22 ⁹Department of Biostatistics, Epidemiology and Informatics, the Perelman School of Medicine,
23 University of Pennsylvania, Pennsylvania, PA

24 **Corresponding Author:**

25 Suchitra Rao, MBBS, MSCS

26 Associate Professor of Pediatrics (Infectious Diseases/Hospital Medicine/Epidemiology),

27 University of Colorado School of Medicine and Children's Hospital Colorado, Aurora, CO

28 13123 E 16th Ave Box 090

29 Aurora, CO 80045

30 Email: suchitra.rao@childrenscolorado.org

31 Phone: 720 777 2823

32 **Abbreviated Title:** Post-acute sequelae of SARS-CoV-2 infection in children

33 **Funding Source:** This research was funded by the National Institutes of Health (NIH)

34 Agreement OT2HL161847-01 as part of the Researching COVID to Enhance Recovery

35 (RECOVER) program of research.

36 **Disclaimer:** The views and conclusions contained in this document are those of the authors

37 and should not be interpreted as representing the official policies, either expressed or implied, of

38 the NIH.

39 **Key Words:** PEDSnet, post-acute sequelae COVID, long COVID, Chronic COVID-19

40 Syndrome, Late sequelae of COVID-19, Long haul COVID, Long-term COVID-19, Post COVID

41 syndrome, Post-acute COVID-19, Post-acute sequelae of SARS-CoV-2 infection

42 **Abbreviations:** PASC--post-acute sequelae of SARS-CoV-2 infection; COVID-19--coronavirus

43 disease 2019; SARS-CoV-2--severe acute respiratory syndrome coronavirus 2; PCR--

44 polymerase chain reaction; EHR--electronic health record; aHR—adjusted hazard ratio; MIS-C--

45 multisystem inflammatory syndrome in children; ED--emergency department; UC--urgent care;

46 CI--confidence intervals; ICD-10--International Classification of Diseases, version 10.

47 **Revision Date:** 5/12/22

48 **Word Count:** 3295

49 **Key Points**

50 **Question:** What are the incidence and clinical features of post-acute sequelae of SARS-CoV-2
51 infection (PASC) in children?

52 **Findings:** In this retrospective cohort study of 659,286 children tested for SARS-CoV-2 by
53 polymerase chain reaction (PCR), the symptom, condition and medication with the strongest
54 associations with SARS-CoV-2 infection were loss of taste/smell, myocarditis, and cough and
55 cold preparations. The incidence proportion of non-MIS-C related PASC in the PCR-positive
56 group exceeded the PCR-negative group by 3.7% (95% CI 3.2-4.2), with increased rates
57 associated with acute illness severity, young age, and medical complexity.

58 **Meaning:** PASC in children appears to be uncommon, with features that differ from adults.

59 **Abstract**

60 **Importance:** The post-acute sequelae of SARS-CoV-2 (PASC) has emerged as a long-term
61 complication in adults, but current understanding of the clinical presentation of PASC in children
62 is limited.

63 **Objective:** To identify diagnosed symptoms, diagnosed health conditions and medications
64 associated with PASC in children.

65 **Design, Setting and Participants:** Retrospective cohort study using electronic health records
66 from 9 US children's hospitals for individuals <21 years-old who underwent reverse
67 transcriptase polymerase chain reaction (RT-PCR) testing for SARS-CoV-2 between March
68 1, 2020 – October 31, 2021 and had at least 1 encounter in the 3 years before testing.

69 **Exposure:** SARS-CoV-2 PCR positivity.

70 **Main Outcomes and Measures:** We identified syndromic (symptoms), systemic (conditions),
71 and medication PASC features in the 28-179 days following the initial test date. Adjusted hazard
72 ratios (aHRs) were obtained for 151 clinically predicted PASC features by contrasting PCR-
73 positive with PCR-negative groups using proportional hazards models, adjusting for site,
74 age, sex, testing location, race/ethnicity, and time-period of cohort entrance. We estimated the
75 incidence proportion for any syndromic, systemic or medication PASC feature in the two groups
76 to obtain a burden of PASC estimate.

77 **Results:** Among 659,286 children in the study sample, 59,893 (9.1%) tested positive by PCR
78 for SARS-CoV-2. Most were tested in outpatient testing facility (50.3%) or office (24.6%)
79 settings. The most common syndromic, systemic, and medication features were loss of taste or
80 smell (aHR 1.96 [95% CI 1.16-3.32]), myocarditis (aHR 3.10 [95% CI 1.94-4.96]), and cough and
81 cold preparations (aHR 1.52 [95% CI 1.18-1.96]). The incidence of at least one
82 systemic/syndromic/medication feature of PASC was 41.9% among PCR-positive children

83 versus 38.2% among PCR-negative children, with an incidence proportion difference of 3.7%
84 (95% CI 3.2-4.2%). A higher strength of association for PASC was identified in those cared for
85 in the ICU during the acute illness phase, children less than 5 years-old, and individuals with
86 complex chronic conditions.

87 **Conclusions and Relevance:** In this large-scale, exploratory study, the burden of pediatric
88 PASC that presented to health systems was low. Myocarditis was the most commonly
89 diagnosed PASC-associated condition. Acute illness severity, young age, and comorbid
90 complex chronic disease increased the risk of PASC.

91

92 Introduction

93 Scientific and clinical evidence is evolving on the sequelae following coronavirus disease
94 2019 (COVID-19) caused by Severe Acute Respiratory Syndrome Coronavirus 2 (SARS-CoV-
95 2). Post-acute sequelae of SARS-CoV-2 (PASC) infection has a broad spectrum of clinical
96 manifestations that can affect multiple organ systems. The National Institutes of Health
97 definition of PASC refers to ongoing, relapsing or new symptoms or other health effects
98 occurring after the acute phase of SARS-CoV-2 infection that is present four or more weeks
99 after the acute infection.¹ As defined by the Centers for Disease Control and Prevention, post-
100 COVID-19 conditions include a wide range of new, recurring, or persistent health problems
101 people experience four or more weeks after being infected with SARS-CoV-2.² Alternatively,
102 the World Health Organization defines post-COVID-19 conditions as those occurring ≥ 3 months
103 from the onset of SARS-CoV-2 infection that cannot be explained by an alternative diagnosis,
104 and last for at least 2 months, acknowledging that a separate definition may be applicable for
105 children.³

106 In adults, PASC is characterized by two types of manifestations: persistent, intermittent
107 or relapsing non-specific symptoms such as fatigue, headache and shortness of breath (a
108 syndromic variant) and conditions which may be a direct result of the acute illness
109 presentation (such as pulmonary fibrosis) or that may arise *de novo* after infection, such as
110 autoimmune conditions (a systemic variant).⁴ While more data are accruing in adults,⁵⁻¹² our
111 understanding of PASC is still limited in children, with the exception of MIS-C.¹³ There is an
112 urgent need to elucidate the incidence, clinical features and duration of PASC in children, with
113 standardized definitions and data collection methods.¹⁴

114 There is wide variability in prevalence estimates of PASC in children ranging from 2-
115 66%, due to the marked heterogeneity in case ascertainment and methodology of existing
116 studies, as well as lack of an adequate comparison group.¹⁵⁻²⁰ It remains unclear to what extent

117 children experience SARS-CoV-2 sequelae, and how PASC features may differ from those in
118 adults. In this study our objectives were to 1) identify syndromic (symptoms) and systemic
119 (conditions) features, and medications used to treat PASC in the 1-6 months following SARS-
120 CoV-2 infection in children and adolescents, 2) estimate the incidence of any PASC feature
121 attributable to SARS-CoV-2 infection, and 3) to identify risk factors for PASC.

122 **Methods**

123 *Data Source*

124 This retrospective cohort study is part of the NIH Researching COVID to Enhance
125 Recovery (RECOVER) Initiative, which seeks to understand, treat, and prevent the post-acute
126 sequelae of SARS-CoV-2 infection (PASC). For more information on RECOVER, visit
127 <https://recovercovid.org/>. We used electronic health record (EHR) data from PEDSnet
128 institutions for the study. PEDSnet (pedsnet.org) is a multi-institutional clinical research network
129 that aggregates EHR data from several of the nation's largest children's healthcare
130 organizations.^{21,22} Participating institutions included Children's Hospital of Philadelphia,
131 Cincinnati Children's Hospital Medical Center, Children's Hospital Colorado, Ann & Robert H.
132 Lurie Children's Hospital of Chicago, Nationwide Children's Hospital, Nemours Children's Health
133 System (a Delaware and Florida health system), Seattle Children's Hospital, and Stanford
134 Children's Health. PEDSnet standardizes institutional data to the Observational Medical
135 Outcomes Partnership common data model. PEDSnet has accrued data for >8 million children
136 with at least one visit from 2009-2021 from inpatient and outpatient clinical settings.

137 We retrieved EHR data from all healthcare encounters associated with patients who
138 underwent SARS-CoV-2 polymerase chain reaction (PCR) testing provided in outpatient,
139 inpatient and emergency department settings. Data were extracted from the PEDSnet COVID-
140 19 Database-Version 2022-01-16 on January 25, 2022 and included EHR data with dates of

141 services up to December 31, 2021. The Children’s Hospital of Philadelphia’s Institutional
142 Review Board designated this study as not human subjects’ research and waived informed
143 consent. Reporting of study design and results follows the Strengthening the Reporting of
144 Observational Studies in Epidemiology (STROBE) reporting guideline for observational
145 research.²³

146 *Cohorts*

147 Infected cohorts were individuals < 21 years of age at the time of the health encounter
148 with a positive SARS-CoV-2 PCR test between March 1, 2020 and October 31, 2021. We
149 compared this group to a cohort of children with negative SARS-CoV-2 PCR (and no prior or
150 subsequent positive) tests during the same study period. Children with a positive serology test,
151 or MIS-C/PASC diagnosis codes with negative PCR tests were also excluded from the
152 comparison group. Cohort entry was defined by the date of the first positive (infected)
153 or first negative test. We further restricted the sample to those with at least one encounter
154 (including telephone/telehealth) within health systems from day 7 to day 1095 before cohort
155 entry to ensure prior care at a PEDSnet institution.

156 *Outcomes*

157 We developed International Classification of Diseases-10-CM (ICD-10) syndromic
158 (symptoms), systemic (health conditions), and medication (therapeutic classes) clusters of
159 codes, which served as outcomes. We coded 66,294 ICD-10-CM codes into 439 deduplicated
160 clusters, beginning with the widely used Agency for Healthcare Research and Quality (AHRQ)
161 Clinical Classification Software Refined,²⁴ and extending the categories to include more refined
162 autoimmune, mental health disorders, and COVID-19-related complication categories. ICD
163 codes were obtained from all service settings including telephone encounters, inpatient,
164 outpatient clinics, and emergency departments. Syndromic clusters included symptoms such as

165 fever, cough, fatigue, shortness of breath, chest pain, palpitations, chest tightness, headache,
166 and altered smell and taste. Systemic clusters included such conditions as multi-inflammatory
167 syndrome, myocarditis, diabetes, and other autoimmune diseases. We clustered 2,172 RxNorm
168 medication ingredient codes into 228 Anatomical Therapeutic Chemical (ATC) Classification
169 Level 3 classes for prescribed medications that were listed in the record during the outcome
170 evaluation period.²⁵ Examples include antiarrhythmics, opioids, and systemic corticosteroids.
171 The full list of the code assignments to clusters is publicly available
172 (<https://github.com/PEDSnet/PASC>).

173 To evaluate their clinical content validity, all clusters were reviewed by experts in
174 pediatric psychiatry, infectious diseases, cardiology, pulmonology, and primary care. We
175 narrowed this list to *an a priori* set of 121 syndromic and systemic and 30 medication clusters
176 that were clinically predicted to be PASC-associated based on our review of the literature,
177 clinical experience, and potential medications used to treat PASC-associated symptoms and
178 conditions.

179 The outcome assessment follow-up time period spanned 28 to 179 days after cohort
180 entrance, or up to December 31, 2021, whichever event came first. For chronic conditions (e.g.,
181 asthma, diabetes, etc.), we excluded patients from the denominator if they had evidence of that
182 condition in the 18 months before cohort entrance.

183 *Covariates*

184 Age was assessed at cohort entry. Other covariates were sex, race/ethnicity, institution,
185 obesity, testing location (emergency department, inpatient, outpatient clinic, or outpatient testing
186 facility), intensive care unit care 7 days before through 13 days after cohort entrance, and
187 medical complexity. Obesity was defined as presence of an age-sex standardized BMI z-score
188 $\geq 95^{\text{th}}$ percentile any time before cohort entrance. We used the Pediatric Medical Complexity

189 Algorithm (PMCA) Version 2.0²⁶ to categorize children as having no chronic condition, non-
190 complex chronic condition, or complex chronic conditions. We considered diagnoses up to three
191 years before cohort entrance. Children were assigned to the complex chronic condition category
192 if they had conditions that affected ≥ 2 body systems (e.g., Type 1 diabetes with end-organ
193 complications) or a progressive chronic condition (e.g., muscular dystrophy).²⁷

194 *Statistical Analyses*

195 We used descriptive analyses to report characteristics of tested patients, divided into
196 PCR-positive and PCR-negative patients, and contrasted the groups using standardized
197 differences²⁸ and set a cut-point of >0.20 as a meaningful difference. To explore post-acute
198 sequelae of SARS-CoV-2 infection, we evaluated each clinically predicted symptom, condition,
199 and medication as a separate outcome for a total of 121 syndromic/systemic clusters and 30
200 classes of medications. This was done using Cox proportional hazards models, adjusting for
201 institution, age group (<1 year, 1-4 years, 5-11 years, 12-15 years and 16- < 21 years), sex,
202 race/ethnicity, time period of cohort entrance (March-June 2020, July-October 2020, November
203 2020-February 2021, March-June 2021, July-Oct 2021), location of testing (ED, inpatient,
204 outpatient office, outpatient test only, other/unknown), and medical complexity. Each regression
205 model produced an adjusted hazard ratio (aHR) and 95% confidence interval that contrasted the
206 risk (i.e., incidence) of the feature in the PCR-positive cohort with the PCR-negative cohort.
207 aHRs for which the 95% CI lower limit was >1.00 were considered to be empirically supported.
208 We displayed these aHRs in forest plots and used this subset in further analyses. This approach
209 permitted evaluation of all encounters in the outcome evaluation period, thus minimizing the risk
210 of bias that may result from children returning from care within the health system, versus those
211 who did not. We implemented a false discovery rate adjustment for our p-values and 95%
212 confidence intervals in our forest plots. This multiple-testing adjustment procedure controls for

213 the proportion of false coverage statements expressed by the reported confidence intervals to
214 be less than 0.05.²⁹

215 To estimate the incidence of non-MIS-C PASC, we excluded children with MIS-C
216 diagnoses and calculated the difference in the incidence proportions for any clinically-predicted
217 and empirically-supported syndromic, systemic or medication-related PASC feature between
218 children in the SARS-CoV-2 PCR-positive group and those with at least one PASC feature in
219 the SARS-CoV-2 test negative group.

220 We calculated the standardized morbidity ratio, by applying the age-viral testing date-
221 specific PASC incidence rates (ie, 25 different rates) for the PCR-negative group to the PCR-
222 positive group to obtain expected counts and contrasted those with the number observed.

223 Finally, we evaluated the risk of any syndromic, systemic or medication feature, by age,
224 comorbidity and illness severity to identify features associated with the risk of non-MIS-C PASC.
225 Analyses were conducted using R version 4.1.2 (2021-11-01).

226 **Results**

227 *Cohort identification*

228 From March 1, 2020 to October 31, 2021, there were 1,782,537 patients < 21 years of age, of
229 which 817,505 (45.9%) patients were tested for SARS-CoV-2 by PCR across all sites; of these,
230 659,286 had at least one visit in the 7-1095 days before the PCR-test date. Of this total, 59,893
231 tested positive (9.1%). The follow-up time during the outcome assessment period for both
232 positive and negative groups were similar (mean 4.6 months versus 4.7 months). Most patients
233 were tested in outpatient testing facilities (50.3%) or outpatient clinic (24.6%) settings. PCR-
234 positive compared with PCR-negative patients were more likely to be Non-Hispanic
235 Black/African-American (20.2% vs 15.4%), Hispanic ethnicity (18.8% vs 15.3%), and older
236 (17.4% vs. 12.1% were aged 16 years and older; 19.9% vs. 15.4% were 12-15 years). The time-

237 periods with the highest SARS-CoV-2 percent PCR-positivity were Nov 2020-Feb 2021 and
238 July-October 2021 (**Table 1**). From our cohort of 1,782,537 patients, there were 1,260 children
239 with a diagnosis of MIS-C (7.1 cases per 10,000 population), of whom 155 tested positive for
240 SARS-CoV-2.

241 *Syndromic and Systemic PASC Features*

242 Adjusted analyses of syndromic and systemic features of PASC by cluster category that
243 were clinically-predicted and empirically-supported are summarized in Figures 1 and 2. (Those
244 that were clinically-predicted but not empirically-supported and vice versa are listed in the
245 Supplemental Appendix). During the outcome assessment period (days 28 to 179), PCR-
246 positive children compared with PCR-negative individuals had higher rates of changes in smell
247 and taste (aHR 1.96 [95% CI 1.16-3.32]), loss of smell (aHR 1.85 [95% CI 1.20-2.86]), hair loss
248 (aHR 1.58 [95% CI 1.24-2.01]) chest pain (aHR 1.52 [95% CI 1.38-1.68]), abnormal liver
249 enzymes (aHR 1.50 [95% CI 1.27-1.77]), skin rashes (aHR 1.26 [95% CI 1.15-1.38]), fatigue
250 and malaise (aHR 1.24 [95% CI 1.13-1.35]), fever and chills (aHR 1.22 [95% CI 1.16-1.28]),
251 cardiorespiratory signs and symptoms (aHR 1.20 [95% CI 1.15-1.26]), and diarrhea (aHR 1.18
252 [95% CI 1.09-1.29]) (Figure 1).

253 Regarding systemic features, infected cohorts had higher rates of myocarditis (HR 3.10
254 [95% CI 1.94-4.96]), acute respiratory distress syndrome (aHR 2.96 [95% CI 1.54-5.67]),
255 myositis (aHR 2.59 [95% CI 1.37-4.89]), disorders of teeth/gingiva (aHR 1.48 [95% CI 1.36-
256 1.60]), other/ill-defined heart disease (aHR 1.47 [95% CI 1.17-1.84]), and fluid and electrolyte
257 disturbance (aHR 1.45 [95% CI 1.32-1.58]) (Figure 2). Mental health clusters associated with
258 prior SARS-CoV-2 infection in our analyses were mental health treatment (aHR 1.62 [95% CI
259 1.46-1.80] and anxiety symptoms (aHR 1.29 [95% CI 1.08-1.55]).

260 *Medications*

261 Medication therapeutic classes clinically-predicted and empirically-supported for their
262 association with COVID-19 illness are shown in the Supplemental Appendix. The five most
263 common were cough and cold preparations, nasal decongestants for systemic use,
264 corticosteroids with antiseptics, opioids, and decongestants.

265 *Incidence of PASC*

266 The incidence proportions for non-MIS-C related syndromic, systemic and medication
267 features during the 28-179 days after viral testing and their standardized morbidity ratios,
268 adjusted for age and date, of testing are shown in Table 2. The incidence proportion of at least
269 one syndromic, systemic or medication feature of PASC was 41.9% (95% CI 41.4-42.4) in the
270 PCR-positive group and 38.2% (95% CI 38.1-38.4) in those who tested negative for a difference
271 of 3.7% (95% CI 3.2-4.2). The standardized morbidity ratio, which adjusted for differences in the
272 distributions of age and date of cohort entrance between the two groups, was 1.15 (95% CI
273 1.14-1.17).

274 *Factors associated with non-MIS-C related PASC*

275 Proportional hazards models for non-MIS-C related PASC, defined by any clinically-
276 predicted and empirically-supported syndromic features, systemic conditions and medication
277 features are shown in Table 3. These analyses demonstrated the highest rate of any PASC
278 feature in children <5 years-old, requiring ICU level care during the acute illness episode, or
279 with a complex chronic condition. The risk of non-MIS-C related PASC was highest during the
280 March-June 2020 time period.

281 **Discussion**

282 In this exploratory study we identified possible clinical features of PASC including
283 symptoms, conditions and medications to define these features. Our results showed features
284 that have been well-described in adult populations, including changes in taste or smell, chest

285 pain, fatigue/malaise, cardiorespiratory sign/symptoms, and fever/chills. In this pediatric
286 population, however, we also note other features such as abnormal liver enzymes, hair loss,
287 skin rashes, and diarrhea that occurred more commonly in children in the 1 to 6 months after
288 SARS-CoV-2 infection compared with negative patients. Among systemic features, myocarditis
289 was the condition with the strongest association with SARS-CoV-2 infection and is recognized
290 as an important complication in this age group.^{30,31} Myositis, encounters for mental health
291 treatment, and respiratory infections including tonsillitis, pneumonia and bronchiolitis were also
292 associated with COVID-19.

293 To estimate the burden of PASC unrelated to MIS-C, we computed the incidence
294 proportion difference of clinically-predicted and empirically-supported PASC features between
295 PCR-positive and PCR-negative groups, which was 3.7% (95% CI, 3.2%, 4.2%). This proportion
296 is an estimate of attributable burden of any syndromic, systemic, or medication-related PASC
297 feature in the sample of children we studied. This estimate should be considered preliminary as
298 it is based entirely on diagnosis and medication codes in EHRs, which depend on clinicians'
299 coding practices and may exclude children who do not seek healthcare for PASC symptoms.
300 Nonetheless, the strength of association of PASC increased with acute COVID-19 severity,
301 similar to previous reports,³² and medical complexity.

302 Early reports of PASC in children reporting higher incidence than in this study were
303 prone to systematic selection biases of cases in the absence of appropriate controls. Patients
304 were recruited from long COVID clinics^{17,20} or online support groups,³³ with data limited to self-
305 reported symptoms, some without a laboratory-confirmed diagnosis of SARS-CoV-2, limiting
306 the ability to differentiate symptoms and conditions attributable to SARS-CoV-2 infection versus
307 illnesses that may have been exacerbated by the situational context of the pandemic (e.g.
308 delayed access to healthcare, prolonged social isolation). Other studies focused on hospitalized
309 patients,³⁴ biasing the sample to patients who were at higher risk of more persistent or severe

310 post-acute symptoms. Our study's strengths lie in capturing patients with PCR-confirmed
311 infection and including a control group of PCR-negative children, thereby minimizing bias from
312 differences in health-seeking behaviors between test positive and test negative cohorts. Finally,
313 our population includes children from diverse geographical locations across the US, and
314 encompasses ambulatory clinics, outpatient referrals to testing sites, subspecialty clinics as well
315 as hospitalized patients, which provides a wider spectrum of presentations.

316 Unlike case series that describe the prevalence of PASC features in a cohort of children
317 previously infected, we compared the incidence rate of these symptoms in test positive versus
318 test negative patients to estimate an attributable burden. With this approach, we reported a
319 preliminary estimate of lower incidence of PASC in children compared with adults.⁵⁻⁹ Our
320 findings are similar to recent pediatric studies which use population-based approaches, and/or
321 control groups.^{15,35,36} Notably, the frequency of any PASC-related symptoms is high in both
322 PCR-positive and PCR-negative patients (41.9% vs. 38.2%), similar to observations in adult
323 studies.^{37,38} Nonetheless, the attributable and measurable burden of PASC may still differ in
324 children in comparison to adults. Potential reasons for these differences may be under-
325 recognition of signs and symptoms associated with PASC due to a dynamic developmental
326 trajectory, or age-specific differences in the immune response to infection in PASC related
327 either to ongoing viral replication or an aberrant response.

328 Our findings have limitations that warrant discussion. This EHR-based study identified
329 symptoms, signs, and diagnoses that were significant enough to prompt health service use and
330 be coded by clinicians as a reason for an encounter. Our approach may have missed some
331 findings that may be stored in laboratory, procedural, radiological and other unstructured text
332 data. The true burden of PASC may be underestimated from EHR data, with data from open
333 health systems, with the potential for infrequent follow-up visits to academic centers of
334 excellence for milder symptoms. For this reason, we limited our cohort to at least one visit in the

335 prior three years, to identify active patients within the health system; similar strategies have
336 been employed in other PEDSnet studies of COVID-19;^{39,40} the benefits of such approaches
337 have been reported previously.⁴¹ However, this may underestimate the burden of PASC by
338 excluding previously healthy children who did not have prior health encounters. Next, our test
339 negative cohort may include individuals with SARS-CoV-2 infection who may have had testing
340 conducted outside our health systems. These limitations may have biased results towards the
341 null. Further, we did not identify specific race/ethnic groups as a risk factor for PASC despite the
342 fact that SARS-CoV-2 disproportionately affects minority communities, which may reflect
343 differences in care seeking behavior and access to care. Finally, children who tested positive
344 may be more likely to seek medical care, however we do not anticipate this to be creating
345 significant bias given our low incident proportion difference, which is similar to findings from
346 other controlled studies.

347 While there were significant features associated with SARS-CoV-2 infection in our study
348 that overlapped with findings reported in the literature in adults (such as loss of taste and
349 smell^{42,43}), several distinctions are worth noting. First, neurological manifestations such as
350 headache, vertigo and paresthesias, which are commonly reported in adults, were not
351 significant findings in our study. In addition, memory loss and “brain fog” have been documented
352 up to 3 months post SARS-CoV-2 infection in adults,^{6,7,44} but were not identified in our study,
353 possibly due to these symptoms not being adequately captured through diagnosis codes. Next,
354 respiratory symptoms such as persistent cough and dyspnea also did not feature as prominently
355 in our study as other observational cohort studies in adults^{9,45-47} and children,^{17,18,20,36} however,
356 these symptoms were detected through capture of cough and cold preparations in our
357 exploration of medication utilization. Interestingly, during the 1-6 months following infection, our
358 study detected increased rates of pneumonia, tonsillitis and bronchiolitis, which may represent
359 persistent pulmonary symptoms, as well as the potential for an increased susceptibility to other

360 infections from lung pathology developing after SARS-CoV-2 infection. While the mechanisms
361 for injury in patients with pulmonary manifestations of PASC are providing some insights in
362 adults,^{48,49} further research is required to determine how the lung pathophysiology in children
363 differs from adults both in acute COVID-19 infection (for example, increased susceptibility to
364 infection or asthma) and in the mechanisms driving long-term symptoms.

365 **Conclusion**

366 In the first large-scale study to understand the features of PASC in children, the burden
367 of PASC appeared to be low and systemic features were predominant and varied. Our findings
368 suggest that the burden and risk windows of PASC may differ between children and adults.
369 Future studies, including long term prospective studies, such as NIH RECOVER, are needed to
370 fully elucidate PASC phenotypes.

371 **Acknowledgements**

372 **Author Conflict of Interest Disclosures:** Dr. Mejias reports funding from Janssen, Merck for
373 research support, and Janssen, Merck and Sanofi-Pasteur for Advisory Board participation; Dr.
374 Rao reports prior grant support from GSK and Biofire and is a consultant for Sequiris. Dr. Chen
375 receives consulting support from GSK. Dr. Jhaveri is a consultant for AstraZeneca, Seqirus and
376 Dynavax, and receives an editorial stipend from Elsevier. All other authors have no conflicts of
377 interest to disclose.

378 **Role of funder/sponsor statement:** The funder had no role in the design and conduct of the
379 study; collection, management, analysis, and interpretation of the data; preparation, review, or
380 approval of the manuscript; and decision to submit the manuscript for publication.

381 **Access to data and data analysis:** CF, VL and HR had full access to all the data in the study
382 and take responsibility for the integrity of the data and the accuracy of the data analysis.

383

384 **References**

- 385 1. National Institutes of Health RECOVER: Researching COVID to Enhance Recovery.
386 Accessed April 12, 2022, <https://recovercovid.org/>
- 387 2. Centers for Disease Control and Prevention. Evaluating and Caring for Patients with
388 Post-COVID Conditions: Interim Guidance. Accessed December 22, 2021,
389 <https://www.cdc.gov/coronavirus/2019-ncov/hcp/clinical-care/post-covid-index.html>
- 390 3. Soriano JB, Murthy S, Marshall JC, Relan P, Diaz JV, Condition WHOCCDWGoP-C-. A
391 clinical case definition of post-COVID-19 condition by a Delphi consensus. *Lancet Infect Dis*.
392 Dec 21 2021;doi:10.1016/S1473-3099(21)00703-9
- 393 4. Lopez-Leon S, Wegman-Ostrosky T, Perelman C, et al. More than 50 Long-term effects
394 of COVID-19: a systematic review and meta-analysis. *medRxiv*. Jan 30
395 2021;doi:10.1101/2021.01.27.21250617
- 396 5. Sudre CH, Murray B, Varsavsky T, et al. Attributes and predictors of long COVID. *Nature*
397 *medicine*. Mar 10 2021;doi:10.1038/s41591-021-01292-y
- 398 6. Greenhalgh T, Knight M, A'Court C, Buxton M, Husain L. Management of post-acute
399 covid-19 in primary care. *BMJ*. Aug 11 2020;370:m3026. doi:10.1136/bmj.m3026
- 400 7. Carfi A, Bernabei R, Landi F, Gemelli Against C-P-ACSG. Persistent Symptoms in
401 Patients After Acute COVID-19. *JAMA*. Aug 11 2020;324(6):603-605.
402 doi:10.1001/jama.2020.12603
- 403 8. Huang C, Huang L, Wang Y, et al. 6-month consequences of COVID-19 in patients
404 discharged from hospital: a cohort study. *Lancet*. Jan 16 2021;397(10270):220-232.
405 doi:10.1016/S0140-6736(20)32656-8
- 406 9. Groff D, Sun A, Ssentongo AE, et al. Short-term and Long-term Rates of Postacute
407 Sequelae of SARS-CoV-2 Infection: A Systematic Review. *JAMA Netw Open*. Oct 1
408 2021;4(10):e2128568. doi:10.1001/jamanetworkopen.2021.28568
- 409 10. Lund LC, Hallas J, Nielsen H, et al. Post-acute effects of SARS-CoV-2 infection in
410 individuals not requiring hospital admission: a Danish population-based cohort study. *Lancet*
411 *Infect Dis*. Oct 2021;21(10):1373-1382. doi:10.1016/S1473-3099(21)00211-5
- 412 11. Radin JM, Quer G, Ramos E, et al. Assessment of Prolonged Physiological and
413 Behavioral Changes Associated With COVID-19 Infection. *JAMA Netw Open*. Jul 1
414 2021;4(7):e2115959. doi:10.1001/jamanetworkopen.2021.15959
- 415 12. Matta J, Wiernik E, Robineau O, et al. Association of Self-reported COVID-19 Infection
416 and SARS-CoV-2 Serology Test Results With Persistent Physical Symptoms Among French
417 Adults During the COVID-19 Pandemic. *JAMA Intern Med*. Jan 1 2022;182(1):19-25.
418 doi:10.1001/jamainternmed.2021.6454
- 419 13. Santos MO, Goncalves LC, Silva PAN, et al. Multisystem inflammatory syndrome (MIS-
420 C): a systematic review and meta-analysis of clinical characteristics, treatment, and outcomes. *J*
421 *Pediatr (Rio J)*. Dec 3 2021;doi:10.1016/j.jped.2021.08.006
- 422 14. Munblit D, Sigfrid L, Warner JO. Setting Priorities to Address Research Gaps in Long-
423 term COVID-19 Outcomes in Children. *JAMA Pediatr*. Nov 1 2021;175(11):1095-1096.
424 doi:10.1001/jamapediatrics.2021.2281
- 425 15. Radtke T, Ulyte A, Puhan MA, Kriemler S. Long-term Symptoms After SARS-CoV-2
426 Infection in Children and Adolescents. *JAMA*. Jul 15 2021;doi:10.1001/jama.2021.11880
- 427 16. Buonsenso D, Munblit D, De Rose C, et al. Preliminary evidence on long COVID in
428 children. *Acta Paediatr*. Jul 2021;110(7):2208-2211. doi:10.1111/apa.15870
- 429 17. Say D, Crawford N, McNab S, Wurzel D, Steer A, Tosif S. Post-acute COVID-19
430 outcomes in children with mild and asymptomatic disease. *Lancet Child Adolesc Health*. Jun
431 2021;5(6):e22-e23. doi:10.1016/S2352-4642(21)00124-3

- 432 18. Brackel CLH, Lap CR, Buddingh EP, et al. Pediatric long-COVID: An overlooked
433 phenomenon? *Pediatr Pulmonol*. Aug 2021;56(8):2495-2502. doi:10.1002/ppul.25521
- 434 19. Erol N, Alpınar A, Erol C, Sari E, Alkan K. Intriguing new faces of Covid-19: persisting
435 clinical symptoms and cardiac effects in children. *Cardiol Young*. Aug 19 2021:1-7.
436 doi:10.1017/S1047951121003693
- 437 20. Ashkenazi-Hoffnung L, Shmueli E, Ehrlich S, et al. Long COVID in Children:
438 Observations From a Designated Pediatric Clinic. *Pediatr Infect Dis J*. Dec 1 2021;40(12):e509-
439 e511. doi:10.1097/INF.0000000000003285
- 440 21. Forrest CB, Margolis PA, Bailey LC, et al. PEDSnet: a National Pediatric Learning
441 Health System. *J Am Med Inform Assoc*. Jul-Aug 2014;21(4):602-6. doi:10.1136/amiajnl-2014-
442 002743
- 443 22. Forrest CB, Margolis P, Seid M, Colletti RB. PEDSnet: how a prototype pediatric
444 learning health system is being expanded into a national network. *Health Aff (Millwood)*. Jul
445 2014;33(7):1171-7. doi:10.1377/hlthaff.2014.0127
- 446 23. von Elm E, Altman DG, Egger M, et al. The Strengthening the Reporting of
447 Observational Studies in Epidemiology (STROBE) statement: guidelines for reporting
448 observational studies. *PLoS Med*. Oct 16 2007;4(10):e296. doi:10.1371/journal.pmed.0040296
- 449 24. Grohskopf LA, Alyanak E, Ferdinands JM, et al. Prevention and Control of Seasonal
450 Influenza with Vaccines: Recommendations of the Advisory Committee on Immunization
451 Practices, United States, 2021-22 Influenza Season. *MMWR Recomm Rep*. Aug 27
452 2021;70(5):1-28. doi:10.15585/mmwr.rr7005a1
- 453 25. Dufort EM, Koumans EH, Chow EJ, et al. Multisystem Inflammatory Syndrome in
454 Children in New York State. *N Engl J Med*. Jul 23 2020;383(4):347-358.
455 doi:10.1056/NEJMoa2021756
- 456 26. Simon TD, Cawthon ML, Popalisky J, Mangione-Smith R, Center of Excellence on
457 Quality of Care Measures for Children with Complex N. Development and Validation of the
458 Pediatric Medical Complexity Algorithm (PMCA) Version 2.0. *Hosp Pediatr*. Jul 2017;7(7):373-
459 377. doi:10.1542/hpeds.2016-0173
- 460 27. Simon TD, Cawthon ML, Stanford S, et al. Pediatric medical complexity algorithm: a new
461 method to stratify children by medical complexity. *Pediatrics*. Jun 2014;133(6):e1647-54.
462 doi:10.1542/peds.2013-3875
- 463 28. Flury BK, Riedwyl H. Standard Distance in Univariate and Multivariate Analysis. *The*
464 *American Statistician*. 1986;40(3):249-251.
- 465 29. Benjamini Y, Yekutieli D, Edwards D, . False Discovery Rate: Adjusted Multiple
466 Confidence Intervals for Selected Parameters. *Journal of the American Statistical Association*.
467 2005;100(469):71-93.
- 468 30. Block JP, Boehmer TK, Forrest CB, et al. Cardiac Complications After SARS-CoV-2
469 Infection and mRNA COVID-19 Vaccination - PCORnet, United States, January 2021-January
470 2022. *MMWR Morb Mortal Wkly Rep*. Apr 8 2022;71(14):517-523.
471 doi:10.15585/mmwr.mm7114e1
- 472 31. Boehmer TK, Kompaniyets L, Lavery AM, et al. Association Between COVID-19 and
473 Myocarditis Using Hospital-Based Administrative Data - United States, March 2020-January
474 2021. *MMWR Morb Mortal Wkly Rep*. Sep 3 2021;70(35):1228-1232.
475 doi:10.15585/mmwr.mm7035e5
- 476 32. Blomberg B, Mohn KG, Brokstad KA, et al. Long COVID in a prospective cohort of
477 home-isolated patients. *Nat Med*. Sep 2021;27(9):1607-1613. doi:10.1038/s41591-021-01433-3
- 478 33. Buonsenso D, Pujol, F. E., Munblit, D., Mcfarland, S. & Simpson, F. Clinical
479 Characteristics, Activity Levels and Mental Health Problems in Children with Long COVID: A
480 Survey of 510 Children. *preprint*. 2021;

- 481 34. Osmanov IM, Spiridonova E, Bobkova P, et al. Risk factors for long covid in previously
482 hospitalised children using the ISARIC Global follow-up protocol: A prospective cohort study.
483 *Eur Respir J*. Jul 1 2021;doi:10.1183/13993003.01341-2021
- 484 35. Borch L, Holm M, Knudsen M, Ellermann-Eriksen S, Hagstroem S. Long COVID
485 symptoms and duration in SARS-CoV-2 positive children - a nationwide cohort study. *Eur J*
486 *Pediatr*. Jan 9 2022;doi:10.1007/s00431-021-04345-z
- 487 36. Molteni E, Sudre CH, Canas LS, et al. Illness duration and symptom profile in
488 symptomatic UK school-aged children tested for SARS-CoV-2. *Lancet Child Adolesc Health*.
489 Oct 2021;5(10):708-718. doi:10.1016/S2352-4642(21)00198-X
- 490 37. Taquet M, Dercon Q, Luciano S, Geddes JR, Husain M, Harrison PJ. Incidence, co-
491 occurrence, and evolution of long-COVID features: A 6-month retrospective cohort study of
492 273,618 survivors of COVID-19. *PLoS Med*. Sep 2021;18(9):e1003773.
493 doi:10.1371/journal.pmed.1003773
- 494 38. Wanga V, Chevinsky JR, Dimitrov LV, et al. Long-Term Symptoms Among Adults Tested
495 for SARS-CoV-2 - United States, January 2020-April 2021. *MMWR Morb Mortal Wkly Rep*. Sep
496 10 2021;70(36):1235-1241. doi:10.15585/mmwr.mm7036a1
- 497 39. Bailey LC, Razzaghi H, Burrows EK, et al. Assessment of 135794 Pediatric Patients
498 Tested for Severe Acute Respiratory Syndrome Coronavirus 2 Across the United States. *JAMA*
499 *Pediatr*. Feb 1 2021;175(2):176-184. doi:10.1001/jamapediatrics.2020.5052
- 500 40. Forrest CB BE, Mejias A, Razzaghi H, Christakis DA, Jhaveri R, Lee G, Pajor NM, Rao
501 S, Thacker D, Bailey LC. Severity of Acute COVID-19 in Children <18 years-old, March 2020 to
502 September 2021. *Pediatrics, in press*. 2022;
- 503 41. Yu TC, Zhou H. Benefits of applying a proxy eligibility period when using electronic
504 health records for outcomes research: a simulation study. *BMC Res Notes*. Jun 9 2015;8:229.
505 doi:10.1186/s13104-015-1217-6
- 506 42. Boscolo-Rizzo P, Borsetto D, Fabbris C, et al. Evolution of Altered Sense of Smell or
507 Taste in Patients With Mildly Symptomatic COVID-19. *JAMA Otolaryngol Head Neck Surg*. Aug
508 1 2020;146(8):729-732. doi:10.1001/jamaoto.2020.1379
- 509 43. Whitcroft KL, Hummel T. Olfactory Dysfunction in COVID-19: Diagnosis and
510 Management. *JAMA*. Jun 23 2020;323(24):2512-2514. doi:10.1001/jama.2020.8391
- 511 44. Zubair AS, McAlpine LS, Gardin T, Farhadian S, Kuruvilla DE, Spudich S.
512 Neuropathogenesis and Neurologic Manifestations of the Coronaviruses in the Age of
513 Coronavirus Disease 2019: A Review. *JAMA neurology*. Aug 1 2020;77(8):1018-1027.
514 doi:10.1001/jamaneurol.2020.2065
- 515 45. Al-Aly Z, Xie Y, Bowe B. High-dimensional characterization of post-acute sequelae of
516 COVID-19. *Nature*. Jun 2021;594(7862):259-264. doi:10.1038/s41586-021-03553-9
- 517 46. Michelen M, Manoharan L, Elkheir N, et al. Characterising long COVID: a living
518 systematic review. *BMJ Glob Health*. Sep 2021;6(9)doi:10.1136/bmjgh-2021-005427
- 519 47. Bell ML, Catalfamo CJ, Farland LV, et al. Post-acute sequelae of COVID-19 in a non-
520 hospitalized cohort: Results from the Arizona CoVHORT. *PLoS One*. 2021;16(8):e0254347.
521 doi:10.1371/journal.pone.0254347
- 522 48. Guler SA, Ebner L, Aubry-Beigelman C, et al. Pulmonary function and radiological
523 features 4 months after COVID-19: first results from the national prospective observational
524 Swiss COVID-19 lung study. *Eur Respir J*. Apr 2021;57(4)doi:10.1183/13993003.03690-2020
- 525 49. Halawa S, Pullamsetti SS, Bangham CRM, et al. Potential long-term effects of SARS-
526 CoV-2 infection on the pulmonary vasculature: a global perspective. *Nat Rev Cardiol*. Dec 6
527 2021;doi:10.1038/s41569-021-00640-2

528

529

530 **Figure legends**

531 **Figure 1. Syndromic PASC features associated with SARS-CoV-2 infection**

532 Adjusted hazard ratios (aHR) with associated 95% CI among patients who tested positive for
533 SARS-CoV-2 infection versus those who tested negative for the risk of each syndromic feature
534 using Cox proportional hazards models. Models were adjusted for age at cohort entrance, sex,
535 race/ethnicity, institution, testing place location, presence of a complex medical condition and
536 date of cohort entrance.

537 **Figure 2. Systemic PASC features associated with SARS-CoV-2 infection**

538 Adjusted hazard ratios (aHR) with associated 95% CI among patients who tested positive for
539 SARS-CoV-2 infection versus those who tested negative for the risk of each systemic feature
540 using Cox proportional hazards models. Models were adjusted for age at cohort entrance, sex,
541 race/ethnicity, institution, testing place location, and date of cohort entrance. For each health
542 condition evaluated, patients with evidence of that condition 18 months before cohort entrance
543 were excluded from the denominator in order to identify incident cases. Each ratio compares the
544 risk of the outcome in children who tested positive for SARS-CoV-2 infection versus those who
545 tested negative. Footnote: The diagnostic cluster for COVID-19 indicates children receiving care
546 for the illness in the post-acute period.

547

548 **Table 1. Study sample characteristics.**

Characteristic		SARS-CoV-2 Reverse-Transcription Polymerase Chain Reaction Test Result			Standardized Difference
		Overall (n=659,286)	Negative (n=599,393)	Positive (n=59,893)	
Age at cohort entrance, mean (SD)		8.1 (5.7)	7.9 (5.7)	9.4 (5.9)	0.26
Age at cohort entrance, years, n (%)	<1	58,660 (8.9)	54,133 (9.0)	4,527 (7.6)	0.25
	1-4	195,269 (29.6)	182,252 (30.4)	13,017 (21.7)	
	5-11	217,684 (33.0)	197,669 (33.0)	20,015 (33.4)	
	12-15	104,470 (15.8)	92,552 (15.4)	11,918 (19.9)	
	16-20	83,203 (12.6)	72,787 (12.1)	10,416 (17.4)	
Follow-up during outcome assessment period, months (SD)		4.7 (0.7)	4.7 (0.7)	4.6 (0.7)	0.13
Sex, n (%)	Female	311,164 (47.2)	281,998 (47.0)	29,166 (48.7)	0.03
	Male	348,091 (52.8)	317,369 (53.0)	30,722 (51.3)	
Race/ethnicity, n (%)	Hispanic	103,148 (15.6)	91,896 (15.3)	11,252 (18.8)	0.19
	Non-Hispanic White	342,935 (52.0)	314,782 (52.5)	28,153 (47.0)	
	Non-Hispanic Black/African-American	104,618 (15.9)	92,497 (15.4)	12,121 (20.2)	
	Non-Hispanic Asian/Pacific Islander	28,832 (4.4)	27,108 (4.5)	1,724 (2.9)	
	Other/Unknown	52,921 (8.0)	48,625 (8.1)	4,296 (7.2)	
Institution, n (%)	Multiple	26,832 (4.1)	24,485 (4.1)	2,347 (3.9)	0.29
	Site A	32,922 (5.0)	31,987 (5.3)	935 (1.6)	
	Site B	83,726 (12.7)	76,387 (12.7)	7,339 (12.3)	
	Site C	41,616 (6.3)	39,403 (6.6)	2,213 (3.7)	
	Site D	125,243 (19.0)	110,400 (18.4)	14,843 (24.8)	
	Site E	103,830 (15.9)	94,557 (15.8)	10,273 (17.2)	
	Site F	134,054 (20.3)	121,725 (20.3)	12,329 (20.6)	
	Site G	97,447 (14.8)	88,134	9,313 (15.5)	

Characteristic		SARS-CoV-2 Reverse-Transcription Polymerase Chain Reaction Test Result			Standardized Difference
		Overall (n=659,286)	Negative (n=599,393)	Positive (n=59,893)	
			(14.7)		
	Site H	39,448 (6.0)	36,800 (6.1)	2,648 (4.4)	
Chronic conditions, n (%)	None	462,248 (70.1)	419,152 (69.9)	43,096 (72.0)	0.06
	Non-complex	104,144 (15.8)	94,647 (15.8)	9,497 (15.9)	
	Complex	92,894 (14.1)	85,594 (14.3)	7,300 (12.2)	
Time period of cohort entrance, n (%)	Mar 2020-Jun 2020	55,753 (8.5)	53,590 (8.9)	2,163 (3.6)	0.53
	Jul 2020-Oct 2020	146,054 (22.2)	139,587 (23.3)	6,467 (10.8)	
	Nov 2020-Feb 2021	161,986 (24.6)	138,120 (23.0)	23,866 (39.8)	
	Mar 2021-Jun 2021	129,171 (19.6)	120,262 (20.1)	8,909 (14.9)	
	Jul 2021-Oct 2021	166,322 (25.2)	147,834 (24.7)	18,488 (30.9)	
Obesity, n (%)		164,895 (25.0)	148,499 (24.8)	16,396 (27.4)	0.06
Admitted to Intensive Care Unit		14,521 (2.2)	13,847 (2.3)	674 (1.1)	0.09
Test Location (%)	Emergency Department	125,797 (19.1)	114,227 (19.1)	11,570 (19.3)	0.19
	Inpatient	39,513 (6.0)	37,857 (6.3)	1,656 (2.8)	
	Outpatient Clinic	162,138 (24.6)	148,371 (24.8)	13,767 (23.0)	
	Outpatient Testing Facility	332,813 (50.3)	298,918 (49.9)	32,895 (54.9)	

549

550 Abbreviations: SD--standard deviation

551 Footnote: For continuous variables, the standardized difference was computed as the difference

552 in means divided by the pooled standard deviation. For categorical variables, the standardized

553 difference was calculated from a distance matrix on a vector difference between categories,

554 normalized by a covariate matrix calculated from the rates of categories in each of the two

555 groups.

556 **Table 2. Incidence proportions for syndromic, systemic, and medication features of**
 557 **PASC unrelated to MIS-C observed day 28-179 after viral testing and standardized**
 558 **morbidity ratios adjusted for patient age and date of viral testing.**

PASC Feature	N Incidences		N Persons		Incidence Proportion (95% CI)		Incidence Proportion Difference (95% CI)	Standardized Morbidity Ratio
	PCR Test Positive	PCR Test Negative	PCR Test Positive ^d	PCR Test Negative	PCR Test Positive	PCR Test Negative		
Syndromic ^a	10,657	108,906	54,061	548,304	19.7% (19.4, 20.0)	19.9% (19.8, 20.0)	-0.1% (-0.5, 0.2)	1.07 (1.05, 1.09)
Systemic ^a	7,084	50,786	52,027	529,741	13.6% (13.3, 13.9)	9.6% (9.5, 9.7)	4.0% (3.7, 4.3)	1.49 (1.45, 1.52)
Medication	7,871	73,651	40,742	425,741	19.3% (18.9, 19.7)	17.3% (17.2, 17.4)	2.0% (1.6, 2.4)	1.19 (1.16, 1.22)
Syndromic or systemic ^b	14,418	133,328	50,180	510,045	28.7% (28.3, 29.1)	26.1% (26.0, 26.3)	2.6% (2.2, 3.0)	1.16 (1.14, 1.18)
Syndromic, systemic, or medication ^c	17,498	162,228	41,756	424,215	41.9% (41.4, 42.4)	38.2% (38.1, 38.4)	3.7% (3.2, 4.2)	1.15 (1.14, 1.17)

559

560

561 Abbreviations: PASC- Post-acute sequelae of COVID-19; PCR- polymerase chain reaction; CI-
 562 Confidence Interval

563 Footnote:

564 ^a Any syndromic and any systemic refer to the features in Figures 1 and 2, respectively, that
 565 were clinically predicted or plausible and empirically supported in the proportional hazards
 566 model.

567 ^b Either syndromic or systemic refers to the union of the features from any syndromic or
 568 systemic.

569 ^c Syndromic, systemic or medication refers to the union of the features from any syndromic,
 570 systemic or medication.

571 ^d Number of PCR test positive and negative patients differs across PASC features due to
 572 washout of chronic conditions.

573

574 **Table 3. Proportional hazards models for PASC unrelated to MIS-C defined by syndromic**
 575 **features, systemic conditions, medications features, or all three.¹**

Predictors	Syndromic	Systemic	Medication	Any Syndromic, Systemic, or Medication
	Adjusted Hazard Ratios (95% CI)			
PCR Test Result and ICU Level Care				
PCR-negative, no ICU	<i>Referent</i>	<i>Referent</i>	<i>Referent</i>	<i>Referent</i>
PCR-positive, no ICU	1.10 (1.07,1.12)	1.54 (1.50,1.58)	1.25 (1.22,1.28)	1.22 (1.20,1.24)
PCR-negative, with ICU	1.22 (1.19,1.26)	1.49 (1.43,1.55)	2.00 (1.94,2.07)	1.35 (1.32,1.39)
PCR-positive, with ICU	1.99 (1.78,2.23)	3.40 (2.99,3.86)	2.76 (2.39,3.18)	2.11 (1.91,2.34)
Age, years				
<1	2.35 (2.31,2.39)	2.08 (2.03,2.14)	2.15 (2.10,2.20)	1.86 (1.83,1.89)
1-4	1.48 (1.46,1.50)	1.57 (1.54,1.61)	1.55 (1.52,1.58)	1.49 (1.47,1.50)
5-11	<i>Referent</i>	<i>Referent</i>	<i>Referent</i>	<i>Referent</i>
12-15	1.06 (1.04,1.08)	1.54 (1.50, 1.58)	1.19 (1.16,1.21)	1.24 (1.22,1.26)
16-20	0.99 (0.97,1.01)	1.42 (1.38,1.46)	1.21 (1.18,1.24)	1.16 (1.14,1.18)
Male	0.93 (0.92,0.94)	1.05 (1.03,1.07)	0.98 (0.97,0.99)	0.97 (0.96,0.98)
Race/Ethnicity				
Hispanic	1.00 (0.97, 1.03)	1.15 (1.10,1.20)	1.25 (1.20,1.29)	1.11 (1.08,1.13)
Non-Hispanic	1.04 (1.01,1.08)	1.15 (1.10,1.20)	1.42 (1.36,1.47)	1.20 (1.17,1.23)
Black/African-American				
White	0.85 (0.83,0.88)	0.83 (0.80,0.87)	0.87 (0.84,0.90)	0.84 (0.83,0.86)
Asian/Pacific Islander	<i>Referent</i>	<i>Referent</i>	<i>Referent</i>	<i>Referent</i>
Other/Unknown	0.82 (0.79,0.84)	0.80 (0.76,0.84)	0.73 (0.70,0.77)	0.78 (0.76,0.80)
Multiple	0.96 (0.92,1.00)	1.03 (0.97,1.09)	1.03 (0.98,1.08)	0.98 (0.95,1.02)
PCR Testing Date				
Mar-Jun 2020	1.38 (1.35, 1.41)	1.31 (1.27,1.35)	1.59 (1.55,1.64)	1.42 (1.40,1.45)
Jul-Oct 2020	1.13 (1.11, 1.15)	1.06 (1.04,1.09)	1.12 (1.09,1.14)	1.12 (1.10, 1.13)
Nov 2020-Feb 2021	1.17 (1.15,1.19)	1.13 (1.10,1.16)	1.13 (1.10,1.15)	1.10 (1.09, 1.12)
Mar-Jun 2021	1.28 (1.26,1.30)	1.28 (1.25,1.31)	1.33 (1.31,1.36)	1.20 (1.19,1.22)
Jul-Nov 2021	<i>Referent</i>	<i>Referent</i>	<i>Referent</i>	<i>Referent</i>
Chronic Conditions				
None	<i>Referent</i>	<i>Referent</i>	<i>Referent</i>	<i>Referent</i>
Non-complex	1.58 (1.56,1.61)	1.62 (1.58,1.65)	1.84 (1.80,1.87)	1.92 (1.89,1.94)
Complex	3.33 (3.29,3.38)	3.30 (3.23,3.36)	3.64 (3.57,3.70)	3.68 (3.64,3.72)

576

577 ¹ Regression models are adjusted for institution.

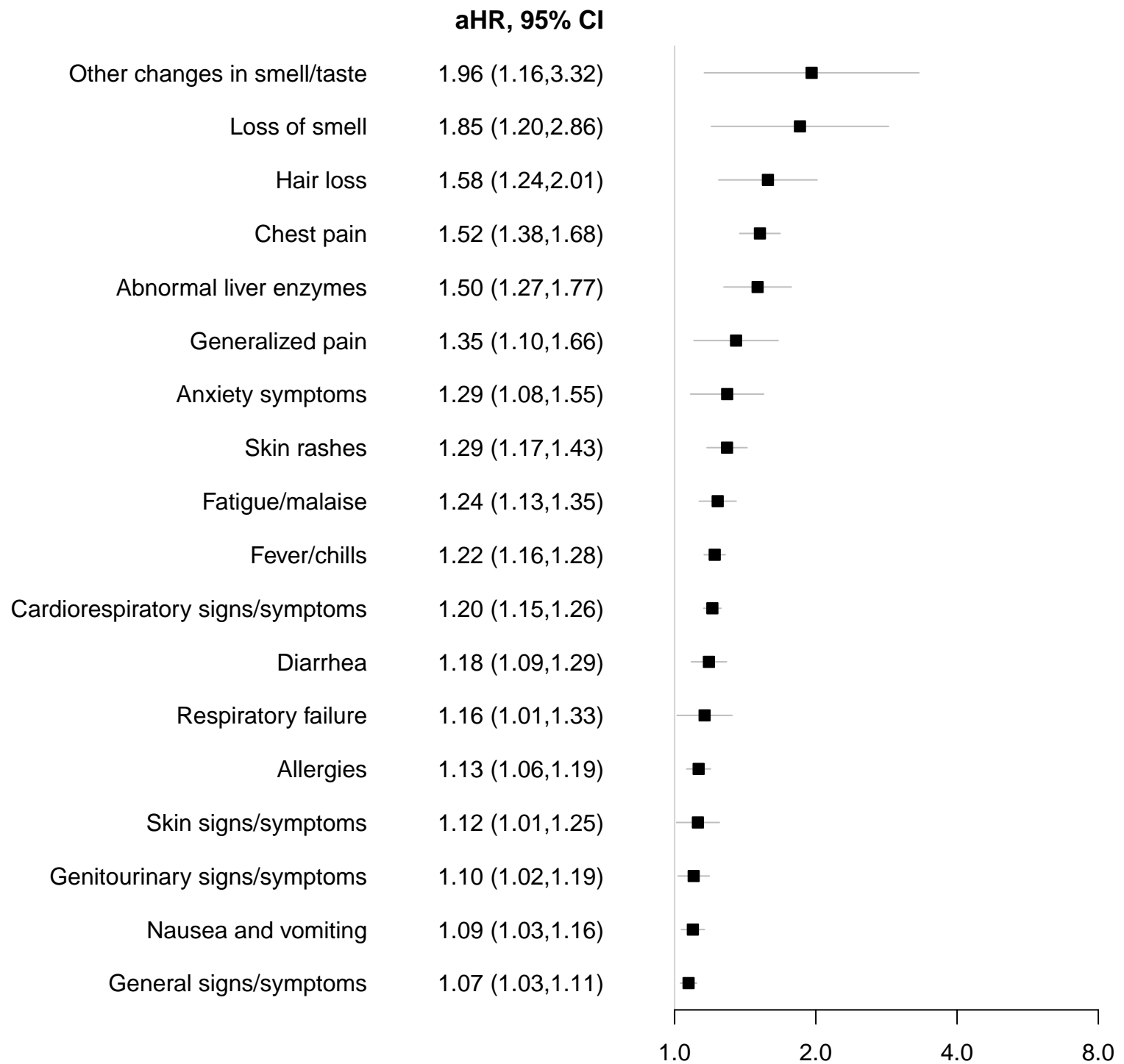
578

579

580

581

582



aHR, 95% CI

COVID-19	7.00 (6.56,7.47)
Myocarditis	3.10 (1.94,4.96)
Acute respiratory distress syndrome	2.96 (1.54,5.67)
Myositis	2.59 (1.37,4.89)
Mental health treatment	1.62 (1.46,1.80)
Disorders of teeth/gingiva	1.48 (1.36,1.60)
Other/ill-defined heart disease	1.47 (1.17,1.84)
Fluid/electrolyte disturbance	1.45 (1.32,1.58)
Thrombophlebitis and thromboembolism	1.31 (1.05,1.63)
Acute kidney injury	1.30 (1.07,1.58)
Tonsillitis	1.26 (1.15,1.38)
Bronchiolitis	1.26 (1.13,1.41)
Pneumonia	1.26 (1.09,1.45)
Other specified inflammatory condition of skin	1.22 (1.12,1.33)
Obesity	1.20 (1.10,1.31)
Communication/motor disorders	1.18 (1.08,1.29)
Gastroenteritis	1.12 (1.03,1.22)

