

1 **Comparison of cardiovascular and renal outcomes between dapagliflozin**
2 **and empagliflozin in patients with type 2 diabetes**

3

4 Jayoung Lim¹, In-Chang Hwang^{1,2*}, Hong-Mi Choi^{1,2}, Yeonyee E. Yoon^{1,2}, Goo-Yeong Cho^{1,2}

5

6 ¹Department of Cardiology, Cardiovascular Center, Seoul National University Bundang
7 Hospital, Seongnam, Gyeonggi, South Korea;

8 ²Department of Internal Medicine, Seoul National University College of Medicine, Seoul,
9 South Korea;

10

11 * Corresponding author

12 E-mail: inchang.hwang@gmail.com

13

14 **Short title:** Dapagliflozin vs. empagliflozin in type 2 diabetes

16 Abstract

17 **Background:** The cardiovascular and renal benefits of sodium glucose co-transporter 2
18 inhibitors (SGLT2i) have been clearly demonstrated. However, studies comparing the effects
19 of dapagliflozin and empagliflozin are scarce. Therefore, we aimed to compare the clinical
20 outcomes between dapagliflozin and empagliflozin in patients with type 2 diabetes without
21 prior atherosclerotic cardiovascular disease, chronic kidney disease, or heart failure.

22 **Methods:** Using a propensity-score matching method, we retrospectively analyzed 921
23 patients treated with dapagliflozin, 921 patients treated with empagliflozin, and 1842 patients
24 treated with dipeptidyl peptidase-4 inhibitors (DPP4i; control group). Study outcomes
25 comprised composite coronary events (acute coronary syndrome and coronary
26 revascularization), composite ischemic events (coronary events and stroke), and composite
27 heart failure and renal events.

28 **Results:** During follow up (median, 43.4 months), the incidence of composite coronary events
29 was significantly lower in the SGLT2i groups than in the control group, and the incidence of
30 composite ischemic events was lower in the dapagliflozin group than in the control group.
31 Dapagliflozin and empagliflozin both demonstrated significant benefits in terms of heart failure
32 and renal outcomes, supported by renoprotective effects, as assessed by the change in
33 glomerular filtration rate. At 24–36 months of treatment, the empagliflozin group had higher
34 low-density lipoprotein cholesterol levels, and lower glycated hemoglobin levels, compared to
35 those in the dapagliflozin and control groups.

36 **Conclusion:** SGLT2i use was associated with a significantly reduced risk of atherosclerotic
37 cardiovascular events, heart failure hospitalization, and renal events, compared to that with
38 DPP4i use. There were no significant differences in clinical outcomes between dapagliflozin
39 and empagliflozin, supporting a SGLT2i class effect.

40 **Introduction**

41 Type 2 diabetes is a major risk factor for macrovascular and microvascular diseases
42 (1). The treatment strategy for type 2 diabetes has evolved from glycemic control to patient-
43 centered approaches, with consideration of the risk of atherosclerotic cardiovascular disease
44 (ASCVD), chronic kidney disease (CKD), and heart failure (HF) (2). This expansion in
45 therapeutic strategy is mainly based on the introduction of new anti-hyperglycemic agents,
46 such as sodium glucose co-transporter 2 inhibitors (SGLT2i), which were the first to
47 demonstrate a prognostic benefit. Large-scale clinical trials of two SGLT2i, empagliflozin and
48 dapagliflozin, have shown direct and indirect evidence for their significant cardiovascular and
49 renal protective effects in patients with type 2 diabetes (3-8). As microvascular dysfunction,
50 inflammation, oxidative stress, and fibrosis contribute to the progression of diabetic kidney
51 disease and HF, SGLT2i-mediated attenuations in these pathways may contribute to
52 cardiovascular and renal protection (9, 10). Several meta-analyses have suggested that there is
53 a class effect for SGLT2i (11-14). However, a few retrospective studies have suggested
54 differences in effects between SGLT2i, favoring the use of dapagliflozin over empagliflozin in
55 terms of HF prevention (15, 16). On the other hand, a few studies have indicated more favorable
56 glycemic control and management of cardiometabolic parameters with empagliflozin than with
57 dapagliflozin (17, 18). Despite potential differences in benefit profiles, no trial has directly
58 compared these SGLT2i in terms of clinical outcomes.

59 Therefore, in the present retrospective study, we aimed to compare the cardiovascular
60 and renal outcomes between dapagliflozin and empagliflozin in patients with type 2 diabetes
61 without prior ASCVD, CKD, or HF, and assess their impact on lipid profiles, glycemic control,
62 and renal function.

63

64 **Materials and methods**

65 **Study population**

66 Patients with type 2 diabetes prescribed empagliflozin, dapagliflozin, or a dipeptidyl
67 peptidase-4 inhibitor (DPP4i) at Seoul National University Bundang Hospital from April 2009
68 to December 2020 were retrospectively identified (19). The date of medication (SGLT2i or
69 DPP4i) initiation was defined as the index date. Exclusion criteria were type 1 diabetes mellitus,
70 prior HF, prior ASCVD (angina, myocardial infarction, coronary revascularization, peripheral
71 artery disease, and stroke), prior CKD (glomerular filtration rate [GFR] <45 mL/min/1.73m²),
72 short duration of medication use (<3 months), low medication possession ratio (<75%), and
73 simultaneous or sequential use of empagliflozin and dapagliflozin.

74 In total, 921 patients treated with empagliflozin, 1,424 patients treated with
75 dapagliflozin, and 10,981 patients treated with DPP4i (control group) were identified (**Fig 1**).
76 After propensity-score matching (1:1:2 ratio) on clinical factors, laboratory findings, and
77 medication use, the empagliflozin and dapagliflozin groups comprised 921 patients each, and
78 the DPP4i (control) group comprised 1,842 patients (**Fig 1**). Seoul National Bundang
79 Hospital's Institutional Review Board approved the study protocol and waived the requirement
80 for informed consent.

81
82 **Fig 1. Study flowchart.** After 1:1:2 propensity score matching, there were 921 patients treated
83 with empagliflozin, 921 patients treated with dapagliflozin, and 1,842 patients treated with
84 DPP4i (control group).

85 ASCVD, atherosclerotic cardiovascular disease; CKD, chronic kidney disease; DPP4i,
86 dipeptidyl peptidase-4 inhibitor; GLP1RA, glucagon-like peptide 1 receptor agonists; HF, heart
87 failure; SGLT2i, sodium-glucose co-transporter 2 inhibitor

88

89 **Measurements**

90 We collected data on age, sex, systolic blood pressure, diastolic blood pressure, history
91 of smoking, preexisting comorbidities, medications, and laboratory findings, including the lipid
92 profile, fasting glucose level, glycated hemoglobin (HbA1c) level, and GFR.

93

94 **Outcomes**

95 Study outcomes comprised composite coronary events (acute coronary syndrome and
96 coronary revascularization), composite ischemic events (acute coronary syndrome, coronary
97 revascularization, and stroke), hospitalization for HF (HHF), renal events (renal death,
98 initiation of renal replacement therapy, and admission due to acute kidney injury or CKD
99 progression), and composite HHF and renal events. Changes in the levels of total cholesterol,
100 low-density lipoprotein cholesterol (LDLc), and HbA1c, and GFR during follow up were also
101 assessed.

102

103 **Statistical analysis**

104 To adjust for imbalances in the baseline characteristics of patients among
105 empagliflozin, dapagliflozin, and control groups, propensity-score matching, with a 1:1:2 ratio,
106 was performed using the nearest neighbor method, with the following covariates: age, sex, 10-
107 year ASCVD risk, systolic blood pressure, presence of microalbuminuria/proteinuria, HbA1c
108 level, GFR, and the use of antiplatelet agents, renin-angiotensin system blockers, and statins.
109 The distributions of propensity scores and standardized mean differences were calculated to
110 assess the strength of matching.

111 Categorical variables are presented as numbers with percentages, and continuous

112 variables as medians with interquartile ranges (IQRs). Group comparisons were performed
113 using the χ^2 test for categorical variables and analysis of variance for continuous variables.
114 Hazard ratios (HRs) with 95% confidence intervals (CIs) were estimated using the Cox
115 proportional-hazards method.

116 Statistical analyses were performed using SPSS version 22.0 (IBM Co., Armonk, NY,
117 USA) and R version 4.0.2 (The R Foundation for Statistical Computing, Vienna, Austria).
118 Two-sided p-values <0.05 were considered statistically significant.

119

120 **Results**

121 **Baseline characteristics**

122 The baseline characteristics, laboratory findings, and use of medications were well
123 balanced among the groups (**Table 1**). The median age was 56, 56, and 57 years in the
124 dapagliflozin, empagliflozin, and control groups, respectively, and two-thirds of the patients
125 were male. The prevalence of current smoking, hypertension, and dyslipidemia was 20%, 60%,
126 and 80%, respectively. The mean 10-year ASCVD risk ranged 10%–11%, without significant
127 inter-group differences. In all three groups, the median HbA1c level was approximately 8.0%
128 and median GFR was approximately 97 mL/min/1.73m², and the prevalence of
129 microalbuminuria or proteinuria was more than 30%. Two-thirds of the patients were on statins,
130 and less than 50% were on RAS blockers. Regarding anti-diabetic medication, more than 97%
131 of the patients were on metformin, more than 40% were on sulfonylurea, and 18% were on
132 insulin therapy.

133 **Table 1. Baseline characteristics**

	Dapagliflozin (n=921)	Empagliflozin (n=921)	Control (n=1,842)	p-value
<i>Clinical characteristics</i>				
Age (years)	56 (48–65)	56 (48–64)	57 (48–66)	0.321
Male sex	610 (66.2%)	611 (66.3%)	1177 (63.9%)	0.314
Systolic blood pressure (mmHg)	134 (123–149)	134 (122–147)	133 (121–145)	0.034
Diastolic blood pressure (mmHg)	79 (70–88)	79 (71–88)	78 (71–87)	0.406
Body-mass index (kg/m ²)	26.0 (24.0–28.7)	26.3 (24.0–28.9)	25.1 (22.7–27.7)	0.061
Current smoker	167 (18.1%)	186 (20.2%)	385 (20.9%)	0.228
Hypertension	541 (58.7%)	538 (58.4%)	1131 (61.4%)	0.215
Dyslipidemia	734 (79.7%)	702 (76.2%)	1462 (79.4%)	0.110
Atrial fibrillation	30 (3.3%)	28 (3.0%)	70 (3.8%)	0.541
10-year ASCVD risk (%)	10.6 (4.2–22.6)	10.4 (4.5–22.6)	11.4 (4.5–24.2)	0.513
<i>Laboratory findings</i>				
Total cholesterol (mg/dL)	159 (138–190)	161 (140–190)	161 (134–197)	0.642
HDL cholesterol (mg/dL)	47 (40–54)	46 (40–54)	46 (39–53)	0.057
LDL cholesterol (mg/dL)	104 (85–126)	106 (86–128)	102 (79–131)	0.125
Fasting glucose (mg/dL)	157 (128–189)	158 (128–199)	159 (127–208)	0.110
Hemoglobin A1c (%)	8.1 (7.3–9.1)	8.3 (7.3–9.5)	8.0 (7.1–9.5)	0.087
Creatinine (mg/dL)	0.8 (0.7–0.9)	0.8 (0.7–0.9)	0.8 (0.6–0.9)	0.745
Glomerular filtration rate (mL/min/1.73 m ²)	96.6 (85.3–106.0)	96.7 (84.9–105.9)	96.5 (83.7–106.4)	0.700
Microalbuminuria or proteinuria	335 (36.4%)	336 (36.5%)	640 (34.7%)	0.565

Medications

Antiplatelet agents	231 (25.1%)	220 (23.9%)	471 (25.6%)	0.629
Statins	615 (66.8%)	600 (65.1%)	1196 (64.9%)	0.615
Calcium channel blockers	258 (28.0%)	246 (26.7%)	558 (30.3%)	0.120
RAS blocker	449 (48.8%)	423 (45.9%)	835 (45.3%)	0.226
Beta blockers	88 (9.6%)	77 (8.4%)	153 (8.3%)	0.515
Diuretics	107 (11.6%)	122 (13.2%)	247 (13.4%)	0.393
Direct oral anticoagulants	22 (2.4%)	20 (2.2%)	55 (3.0%)	0.392
Insulin	168 (18.2%)	166 (18.0%)	341 (18.5%)	0.950
Metformin	897 (97.4%)	896 (97.3%)	1789 (97.1%)	0.913
Sulfonylurea	407 (44.2%)	392 (42.6%)	763 (41.4%)	0.379
Thiazolidinedione	81 (8.8%)	80 (8.7%)	144 (7.8%)	0.594
GLP1 receptor agonists	2 (0.2%)	2 (0.2%)	8 (0.4%)	0.596

134 Values are medians with interquartile ranges (IQR; Q1–Q3).

135 ASCVD, atherosclerotic cardiovascular disease; GLP1, glucagon-like peptide 1; HDL, high-density lipoprotein; HHF, hospitalization for heart

136 failure; LDL, low-density lipoprotein; RAS, renin-angiotensin system

137 **Clinical outcomes**

138 The median follow-up duration was 37.3 months (IQR, 24.5–55.7 months), 37.1
139 months (IQR 27.1–49.2 months), and 55.1 months (27.5–84.9 months) in the dapagliflozin,
140 empagliflozin, and control groups, respectively (**Table 2**). Composite coronary events occurred
141 in 6 patients (0.7%) in the dapagliflozin group, 10 patients (1.1%) in the empagliflozin group,
142 and 55 patients (3.0%) in the control group. On multivariable analysis, advanced age, current
143 smoking, presence of hypertension, and higher 10-year ASCVD risk were associated with a
144 higher risk of composite coronary and ischemic events (**Table 3**). SGLT2i use was significantly
145 associated with a lower incidence of composite coronary events (dapagliflozin vs. control: HR,
146 0.267; 95% CI, 0.114–0.627; $p=0.002$) (empagliflozin vs. control: HR, 0.467; 95% CI, 0.235–
147 0.929; $p=0.030$), without a significant difference between dapagliflozin and empagliflozin
148 groups (HR, 2.196; 95% CI, 0.742–6.502; $p=0.156$) (**Fig 2A**). Likewise, compared to that in
149 the control group, the occurrence of composite ischemic events was significantly less frequent
150 in the dapagliflozin group, and tended to be lower in the empagliflozin group, without a
151 significant difference between dapagliflozin and empagliflozin groups (**Fig 2B**).

152 **Table 2. Clinical outcomes**

	Dapagliflozin (n=921)	Empagliflozin (n=921)	Control (n=1,842)	p-value
Follow-up duration (months)	37.3 (24.5–55.7)	37.1 (27.1–49.2)	55.1 (27.5–84.9)	<0.001
All-cause death	2 (0.2%)	2 (0.2%)	60 (3.3%)	<0.001
Cardiovascular death	1 (0.1%)	2 (0.2%)	5 (0.3%)	0.897
Acute coronary syndrome	2 (0.2%)	2 (0.2%)	31 (1.7%)	<0.001
Coronary revascularization	5 (0.5%)	7 (0.8%)	39 (2.1%)	0.001
Stroke	3 (0.3%)	2 (0.2%)	4 (0.2%)	0.908
HHF	3 (0.3%)	6 (0.7%)	40 (2.2%)	<0.001
Renal events (renal admission, progression to ESRD)	2 (0.2%)	2 (0.2%)	30 (1.6%)	<0.001
Composite coronary events	6 (0.7%)	10 (1.1%)	55 (3.0%)	<0.001
Composite ischemic events	11 (1.2%)	14 (1.5%)	59 (3.2%)	0.001
Composite of HHF and renal events	4 (0.4%)	8 (0.9%)	64 (3.5%)	<0.001

153 ESRD, end-stage renal disease; HHF, hospitalization for heart failure

154 **Table 3. Multivariable predictors of ischemic events**

	Composite coronary events*			Composite ischemic events†		
	Adjusted HR	95% CI	p-value	Adjusted HR	95% CI	p-value
Age (per +1 year)	1.024	1.004 – 1.045	0.021	1.026	1.007 – 1.045	0.006
Current smoker	1.788	1.077 – 2.968	0.025	2.039	1.295 – 3.213	0.002
Hypertension	3.611	1.831 – 7.122	<0.001	3.081	1.690 – 5.615	<0.001
10-year ASCVD risk (per +1%)	1.024	1.012 – 1.035	<0.001	1.014	1.003 – 1.026	0.015
Antidiabetic medication						
- Control (DPP4i)	<i>Reference</i>			<i>Reference</i>		
- Dapagliflozin	0.267	0.114 – 0.627	0.002	0.458	0.238 – 0.881	0.019
- Empagliflozin	0.467	0.235 – 0.929	0.030	0.607	0.334 – 1.103	0.102

155 Univariable factors with p-values <0.200 were entered into the multivariable Cox proportional hazard regression analysis using the stepwise
 156 backward elimination method.

157 * Composite coronary events included acute coronary syndrome and coronary revascularization.

158 † Composite ischemic events included acute coronary syndrome, coronary revascularization, and stroke.

159 ASCVD, atherosclerotic cardiovascular disease; CI, confidence interval; DPP4i, dipeptidyl peptidase-4 inhibitor; HR, hazard ratio

160 **Fig 2. Event-free survival curves for atherosclerotic events.** Kaplan-Meier curves
161 comparing the risk of **(A)** composite coronary events and **(B)** composite ischemic events
162 between the 3 groups.

163 CI, confidence interval; HR, hazard ratio; SGLT2i, sodium-glucose co-transporter 2 inhibitor

164

165 Composite HHF and renal events occurred in 4 patients (0.4%) in the dapagliflozin
166 group and 8 patients (0.9%) in the empagliflozin group (**Table 2**). Significant risk factors for
167 HHF and renal events comprised atrial fibrillation, impaired renal function, and the presence
168 of microalbuminuria or proteinuria (**Table 4**). Both dapagliflozin and empagliflozin
169 demonstrated significant beneficial effects against HHF and renal events compared to that with
170 DPP4i (dapagliflozin vs. control: HR, 0.186; 95% CI, 0.067–0.516; p=0.001) (empagliflozin
171 vs. control: HR, 0.358; 95% CI, 0.169–0.756; p=0.007) (**Fig 3**).

172 **Table 4. Multivariable predictors of HF and renal events**

	HHF			Renal events*			Composite of HHF and renal events		
	Adjusted HR	95% CI	p-value	Adjusted HR	95% CI	p-value	Adjusted HR	95% CI	p-value
Age (per +1 year)	1.022	0.998 – 1.048	0.076	-	-	-	-	-	-
Hypertension	1.961	0.960 – 4.003	0.064	-	-	-	-	-	-
Atrial fibrillation	6.888	3.398 – 13.961	<0.001	-	-	-	4.431	2.355 – 8.337	<0.001
HbA1c (per +1%)	1.145	1.002 – 1.309	0.047	0.786	0.622 – 0.994	0.044	-	-	-
GFR (per +1 mL/min/1.73m ²)	-	-	-	0.971	0.954 – 0.988	0.001	0.983	0.972 – 0.995	0.005
Microalbuminuria or proteinuria	1.668	0.928 – 2.996	0.087	2.993	1.444 – 6.205	0.003	2.225	1.402 – 3.531	0.001
Antidiabetic medication									
- Control (DPP4i)	<i>Reference</i>			<i>Reference</i>			<i>Reference</i>		
- Dapagliflozin	0.182	0.056 – 0.593	0.005	0.235	0.055 – 1.002	0.050	0.186	0.067 – 0.516	0.001
- Empagliflozin	0.349	0.147 – 0.832	0.018	0.219	0.051 – 0.932	0.040	0.358	0.169 – 0.756	0.007

173 Univariable factors with p-values <0.200 were entered into the multivariable Cox proportional hazard regression analysis using the stepwise

174 backward elimination method.

175 * Renal events included renal death, hospitalization for acute kidney injury, and progression to end-stage renal disease.

176 CI, confidence interval; DPP4i, dipeptidyl peptidase-4 inhibitor; GFR, glomerular filtration rate; HbA1c, glycated hemoglobin A1c; HHF,

177 hospitalization for heart failure; HR, hazard ratio

178 **Fig 3. Event-free survival curves for HHF and renal events.** Kaplan-Meier curves
179 comparing the risk of (A) HHF, (B) composite renal events, and (C) composite HHF and renal
180 events between the 3 groups.

181 CI, confidence interval; HHF, hospitalization for heart failure; HR, hazard ratio; SGLT2i,
182 sodium-glucose co-transporter 2 inhibitor

183

184 **Laboratory findings**

185 Changes in the levels of total cholesterol, LDLc, and HbA1c, and GFR during follow
186 up are shown according to group in **Fig 4**. At baseline, there were no significant inter-group
187 differences in the levels of total cholesterol, LDLc, and HbA1c, and GFR. Overall, the total
188 cholesterol level did not show inter-group differences during follow up (**Fig 4A**). However, at
189 24 and 36 months of treatment, the LDLc level was significantly higher in the empagliflozin
190 group than in the control and dapagliflozin groups (**Fig 4B**), and the HbA1c level was
191 significantly lower in the empagliflozin group than in the other groups (**Fig 4C**). Additionally,
192 the GFR level tended to be better preserved at 24 months of treatment, and was significantly
193 higher at 36 months and 48 months of treatment, in the dapagliflozin and empagliflozin groups
194 than in the control group (**Fig 4D**).

195

196 **Fig 4. Changes in laboratory findings.** Serial changes in (A) total cholesterol, (B) LDL
197 cholesterol, (C) HbA1c, and (D) GFR are plotted according to group.

198 GFR, glomerular filtration rate; HbA1c, glycosylated hemoglobin; LDL, low-density
199 lipoprotein; SGLT2i, sodium-glucose co-transporter 2 inhibitor

200 **Discussion**

201 In this retrospective study, we compared cardiovascular and renal outcomes among
202 dapagliflozin, empagliflozin, and DPP4i (control) groups in 3,684 patients with type 2 diabetes
203 and without prior ASCVD, HF, and CKD. Patients treated with SGLT2i demonstrated a
204 significantly lower risk of atherosclerotic events, HHF, and renal events than that in patients
205 treated with DPP4i (control group), with significant benefits in renal protection as assessed by
206 the GFR level. There were no significant differences in clinical outcomes between
207 dapagliflozin and empagliflozin groups. Of note, at 24–36 months of treatment, we observed
208 higher LDLc levels and lower HbA1c levels in the empagliflozin group than in the other groups.
209

210 **Clinical benefits of SGLT2i**

211 A series of landmark trials provided robust evidence on the cardiovascular and renal
212 benefits of SGLT2i, regardless of baseline ASCVD status. In the EMPA-REG outcome trial,
213 empagliflozin was associated with a reduced risk of cardiovascular death (HR, 0.86; 95% CI,
214 0.74 to 0.99; p=0.04 for superiority) in patients with type 2 diabetes and established ASCVD
215 (6). Canagliflozin showed a reduced risk for HHF and cardiovascular death (HR, 0.78; 95%
216 CI, 0.52-0.87; p=0.02) and composite renal outcomes (HR, 0.6; 95% CI, 0.47 to 0.77; p<0.001)
217 in patients with type 2 diabetes, two-thirds of whom had established ASCVD (3, 4). In the
218 DECLARE–TIMI 58 trial, dapagliflozin showed a lower rate of cardiovascular death and HHF
219 compared to that with placebo in patients with type 2 diabetes with established ASCVD (40%)
220 or at high risk for ASCVD (60%) (HR, 0.83; 95% CI, 0.73–0.95; p=0.005) (5). In a meta-
221 analysis, SGLT2i use was associated with a reduced risk of major adverse cardiovascular
222 events, HHF, and adverse kidney outcomes, independent of baseline ASCVD status (20).

223 Furthermore, the benefits of SGLT2i use have been observed in patients without prior

224 cardiovascular disease, HF, or CKD. In the EMPRISE East Asia study, empagliflozin treatment
225 was associated with a 28% reduced risk for HHF in patients with diabetes without CVD (21);
226 SGLT2i use showed a 36% risk reduction for HHF among patients with diabetes without prior
227 HF (22); and SGLT2i use resulted in a 30%–40% reduction in the risk of HHF and 40%–50%
228 reduction in the risk of adverse renal outcomes among patients with diabetes with GFR ≥ 60
229 mL/min/1.73m² (23). These findings support the benefits of SGLT2i for primary prevention in
230 patients with type 2 diabetes but without overt ASCVD, HF, or CKD.

231

232 **Direct comparisons between dapagliflozin and empagliflozin**

233 Given the concordant benefits of various SGLT2i, as well as their similar
234 pharmacologic profiles, a class effect has been suggested for this drug entity. Although there
235 have been some discrepancies in the reported clinical outcomes in clinical trials, this can be
236 explained by differences in the inclusion criteria, baseline characteristics, and outcome
237 definitions. However, several studies have suggested that SGLT2i effects may differ according
238 to drug type. According to a multi-institutional cohort study by Shao et al., dapagliflozin may
239 offer a more favorable benefit in terms of HF prevention, compared to that with empagliflozin
240 (15). In another study by Shao et al., dapagliflozin had a more favorable HHF risk reduction
241 than empagliflozin in patients with type 2 diabetes without ASCVD, while similar HHF risks
242 were observed in patients with type 2 diabetes with ASCVD (16). The more potent effects of
243 dapagliflozin over empagliflozin for HF outcomes can be explained by the SGLT2:SGLT1
244 receptor selectivity ratio, which is lower for dapagliflozin (1200:1) than for empagliflozin
245 (2500:1) (24, 25). More specifically, myocardial ischemia and hypertrophy are associated with
246 SGLT1 upregulation in the myocardium, where SGLT2 receptors are never expressed. This
247 finding suggests that the SGLT2i with a lower specificity for SGLT2 receptors, and thus, a

248 greater effect on SGLT1, has an even greater beneficial effect on HF prevention (26). In
249 addition, compared to that with empagliflozin, dapagliflozin did not increase plasma
250 aldosterone and noradrenaline levels, which could be advantageous for HF prevention (27).

251 In the present study, the benefits for HF and renal outcomes did not differ between
252 dapagliflozin and empagliflozin groups. The changes in GFR also demonstrated similar
253 patterns for these two SGLT2i, which showed significant benefits over DPP4i treatment
254 (control group). Thus, in contrast to the studies by Shao et al.,(15, 16) we did not observe a
255 more favorable benefit with dapagliflozin than with empagliflozin in terms of HF and renal
256 outcomes. However, we acknowledge that the present study had a relatively small sample size
257 and was performed in a retrospective manner. Although our findings support a SGLT2i class
258 effect on HF and renal outcomes, future studies are warranted to compare their effects in a
259 prospective trial or using nationwide real-world data.

260 Regarding the risk of ischemic events, a prospective observational study by Ku et al.
261 found that empagliflozin resulted in better glycemic control and improvements in
262 cardiometabolic components than that with dapagliflozin among patients with type 2 diabetes
263 (17, 18). Similarly, in the present study, we found that HbA1c levels were significantly lower
264 in the empagliflozin group than in the dapagliflozin and control groups. However, the LDLc
265 levels at 24 and 36 months of treatment were higher in the empagliflozin group than in the
266 other groups. It should be noted that better glycemic control, but higher LDLc level, with
267 empagliflozin was not associated with clinical events; the risk of composite coronary and
268 ischemic events was significantly lower in both SGLT2i groups than in the control group,
269 without a significant difference between dapagliflozin and empagliflozin. Therefore, our study
270 supports a SGLT2i class effect and, simultaneously, suggests that the benefits of SGLT2i use
271 for ASCVD prevention are independent of the management of glucose and lipid profile. In
272 particular, it has been suggested that SGLT2i can prevent endothelial dysfunction by reducing

273 oxidative stress and sympathetic activation, reduce inflammatory cytokines, and reduce the
274 plaque size while stabilizing their vulnerability (28).

275

276 **Study limitations**

277 First, due to the relatively small sample size, the number of clinical events might not
278 have been adequate to demonstrate a difference between dapagliflozin and empagliflozin.
279 Second, laboratory tests were not performed with pre-specified schedules due to the
280 retrospective nature of the study. However, more than 16,000 laboratory test results were
281 included in the analysis, suggesting that our findings reflect real-world clinical practice. Third,
282 although we used propensity-score matching to minimize differences in baseline characteristics
283 between groups, some unmeasured confounders might remain unresolved.

284

285 **Conclusions**

286 SGLT2i use was associated with a significantly reduced risk of ASCVD, HHF, and
287 renal events among patients with diabetes and without prior ASCVD, HF, or CKD. There were
288 no significant differences between dapagliflozin and empagliflozin, supporting a SGLT2i class
289 effect.

290

291

292 **Acknowledgements**

293 None.

294 **References**

- 295 1. Sarwar N, Gao P, Seshasai SR, Gobin R, Kaptoge S, Di Angelantonio E, et al. Diabetes
296 mellitus, fasting blood glucose concentration, and risk of vascular disease: a collaborative
297 meta-analysis of 102 prospective studies. *Lancet (London, England)*. 2010;375(9733):2215-
298 22.
- 299 2. 9. Pharmacologic Approaches to Glycemic Treatment: Standards of Medical Care in
300 Diabetes-2019. *Diabetes care*. 2019;42(Suppl 1):S90-s102.
- 301 3. Neal B, Perkovic V, Mahaffey KW, de Zeeuw D, Fulcher G, Erondy N, et al.
302 Canagliflozin and Cardiovascular and Renal Events in Type 2 Diabetes. *The New England*
303 *journal of medicine*. 2017;377(7):644-57.
- 304 4. Perkovic V, Jardine MJ, Neal B, Bompoint S, Heerspink HJL, Charytan DM, et al.
305 Canagliflozin and Renal Outcomes in Type 2 Diabetes and Nephropathy. *The New England*
306 *journal of medicine*. 2019;380(24):2295-306.
- 307 5. Wiviott SD, Raz I, Bonaca MP, Mosenzon O, Kato ET, Cahn A, et al. Dapagliflozin
308 and Cardiovascular Outcomes in Type 2 Diabetes. *The New England journal of medicine*.
309 2019;380(4):347-57.
- 310 6. Zinman B, Wanner C, Lachin JM, Fitchett D, Bluhmki E, Hantel S, et al.
311 Empagliflozin, Cardiovascular Outcomes, and Mortality in Type 2 Diabetes. *The New England*
312 *journal of medicine*. 2015;373(22):2117-28.
- 313 7. McMurray JJV, Solomon SD, Inzucchi SE, Køber L, Kosiborod MN, Martinez FA, et
314 al. Dapagliflozin in Patients with Heart Failure and Reduced Ejection Fraction. *The New*
315 *England journal of medicine*. 2019;381(21):1995-2008.
- 316 8. Hwang IC, Cho GY, Yoon YE, Park JJ, Park JB, Lee SP, et al. Different effects of
317 SGLT2 inhibitors according to the presence and types of heart failure in type 2 diabetic patients.

- 318 Cardiovasc Diabetol. 2020;19(1):69.
- 319 9. Liu H, Sridhar VS, Boulet J, Dharia A, Khan A, Lawler PR, et al. Cardiorenal
320 protection with SGLT2 inhibitors in patients with diabetes mellitus: from biomarkers to clinical
321 outcomes in heart failure and diabetic kidney disease. *Metabolism: clinical and experimental*.
322 2022;126:154918.
- 323 10. Verma S, McMurray JJV. SGLT2 inhibitors and mechanisms of cardiovascular benefit:
324 a state-of-the-art review. *Diabetologia*. 2018;61(10):2108-17.
- 325 11. Toyama T, Neuen BL, Jun M, Ohkuma T, Neal B, Jardine MJ, et al. Effect of SGLT2
326 inhibitors on cardiovascular, renal and safety outcomes in patients with type 2 diabetes mellitus
327 and chronic kidney disease: A systematic review and meta-analysis. *Diabetes, obesity &*
328 *metabolism*. 2019;21(5):1237-50.
- 329 12. Salah HM, Al'Aref SJ, Khan MS, Al-Hawwas M, Vallurupalli S, Mehta JL, et al. Effect
330 of sodium-glucose cotransporter 2 inhibitors on cardiovascular and kidney outcomes-
331 Systematic review and meta-analysis of randomized placebo-controlled trials. *American heart*
332 *journal*. 2021;232:10-22.
- 333 13. Lo KB, Gul F, Ram P, Kluger AY, Tecson KM, McCullough PA, et al. The Effects of
334 SGLT2 Inhibitors on Cardiovascular and Renal Outcomes in Diabetic Patients: A Systematic
335 Review and Meta-Analysis. *Cardiorenal medicine*. 2020;10(1):1-10.
- 336 14. Zelniker TA, Wiviott SD, Raz I, Im K, Goodrich EL, Bonaca MP, et al. SGLT2
337 inhibitors for primary and secondary prevention of cardiovascular and renal outcomes in type
338 2 diabetes: a systematic review and meta-analysis of cardiovascular outcome trials. *Lancet*.
339 2019;393(10166):31-9.
- 340 15. Shao SC, Chang KC, Hung MJ, Yang NI, Chan YY, Chen HY, et al. Comparative risk
341 evaluation for cardiovascular events associated with dapagliflozin vs. empagliflozin in real-
342 world type 2 diabetes patients: a multi-institutional cohort study. *Cardiovascular diabetology*.

343 2019;18(1):120.

344 16. Shao SC, Chang KC, Lin SJ, Chang SH, Hung MJ, Chan YY, et al. Differences in
345 outcomes of hospitalizations for heart failure after SGLT2 inhibitor treatment: effect
346 modification by atherosclerotic cardiovascular disease. *Cardiovascular diabetology*.
347 2021;20(1):213.

348 17. Ku EJ, Lee DH, Jeon HJ, Oh TK. Empagliflozin versus dapagliflozin in patients with
349 type 2 diabetes inadequately controlled with metformin, glimepiride and dipeptidyl peptide 4
350 inhibitors: A 52-week prospective observational study. *Diabetes research and clinical practice*.
351 2019;151:65-73.

352 18. Ku EJ, Lee D-H, Jeon HJ, Oh TK. Long-term effectiveness and safety of quadruple
353 combination therapy with empagliflozin versus dapagliflozin in patients with type 2 diabetes:
354 3-year prospective observational study. *Diabetes research and clinical practice*.
355 2021;182:109123.

356 19. Kim CH, Hwang I-C, Ahn CH, Yoon YE, Cho G-Y. Differential Cardiovascular and
357 Renal Benefits of SGLT2 Inhibitors and GLP1 Receptor Agonists in Patients With Type 2
358 Diabetes Mellitus. Preprint at <https://doi.org/10.21203/rs.3.rs-734897/v1>. 2021.

359 20. McGuire DK, Shih WJ, Cosentino F, Charbonnel B, Cherney DZI, Dagogo-Jack S, et
360 al. Association of SGLT2 Inhibitors With Cardiovascular and Kidney Outcomes in Patients
361 With Type 2 Diabetes: A Meta-analysis. *JAMA cardiology*. 2021;6(2):148-58.

362 21. Seino Y, Kim DJ, Yabe D, Tan EC, Chung WJ, Ha KH, et al. Cardiovascular and renal
363 effectiveness of empagliflozin in routine care in East Asia: Results from the EMPRISE East
364 Asia study. *Endocrinology, diabetes & metabolism*. 2021;4(1):e00183.

365 22. Paterno E, Pawar A, Franklin JM, Najafzadeh M, Déruaz-Luyet A, Brodovicz KG, et
366 al. Empagliflozin and the Risk of Heart Failure Hospitalization in Routine Clinical Care.
367 *Circulation*. 2019;139(25):2822-30.

- 368 23. Cahn A, Raz I, Leiter LA, Mosenzon O, Murphy SA, Goodrich EL, et al.
369 Cardiovascular, Renal, and Metabolic Outcomes of Dapagliflozin Versus Placebo in a Primary
370 Cardiovascular Prevention Cohort: Analyses From DECLARE-TIMI 58. *Diabetes care*.
371 2021;44(5):1159-67.
- 372 24. Anker SD, Butler J. Empagliflozin, calcium, and SGLT1/2 receptor affinity: another
373 piece of the puzzle. *ESC heart failure*. 2018;5(4):549-51.
- 374 25. Täger T, Frankenstein L, Atar D, Agewall S, Frey N, Grundtvig M, et al. Influence of
375 receptor selectivity on benefits from SGLT2 inhibitors in patients with heart failure: a
376 systematic review and head-to-head comparative efficacy network meta-analysis. *Clinical
377 research in cardiology : official journal of the German Cardiac Society*. 2022;111(4):428-39.
- 378 26. Perry RJ, Shulman GI. Sodium-glucose cotransporter-2 inhibitors: Understanding the
379 mechanisms for therapeutic promise and persisting risks. *The Journal of biological chemistry*.
380 2020;295(42):14379-90.
- 381 27. Nakagaito M, Joho S, Ushijima R, Nakamura M, Kinugawa K. Comparison of
382 Canagliflozin, Dapagliflozin and Empagliflozin Added to Heart Failure Treatment in
383 Decompensated Heart Failure Patients With Type 2 Diabetes Mellitus. *Circulation reports*.
384 2019;1(10):405-13.
- 385 28. Pahud de Mortanges A, Salvador D, Jr., Laimer M, Muka T, Wilhelm M, Bano A. The
386 Role of SGLT2 Inhibitors in Atherosclerosis: A Narrative Mini-Review. *Frontiers in
387 pharmacology*. 2021;12:751214.

388

Figure 1

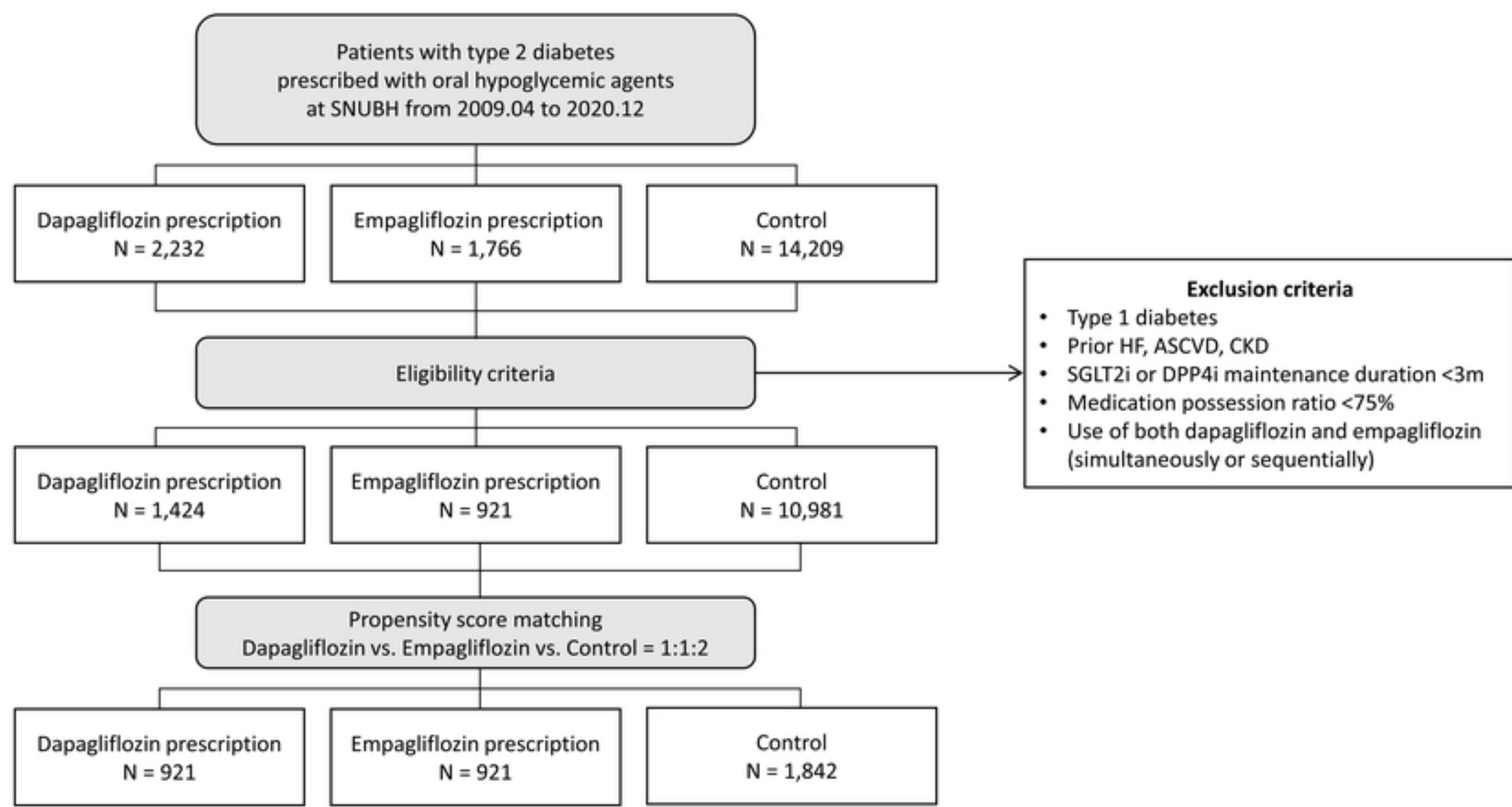
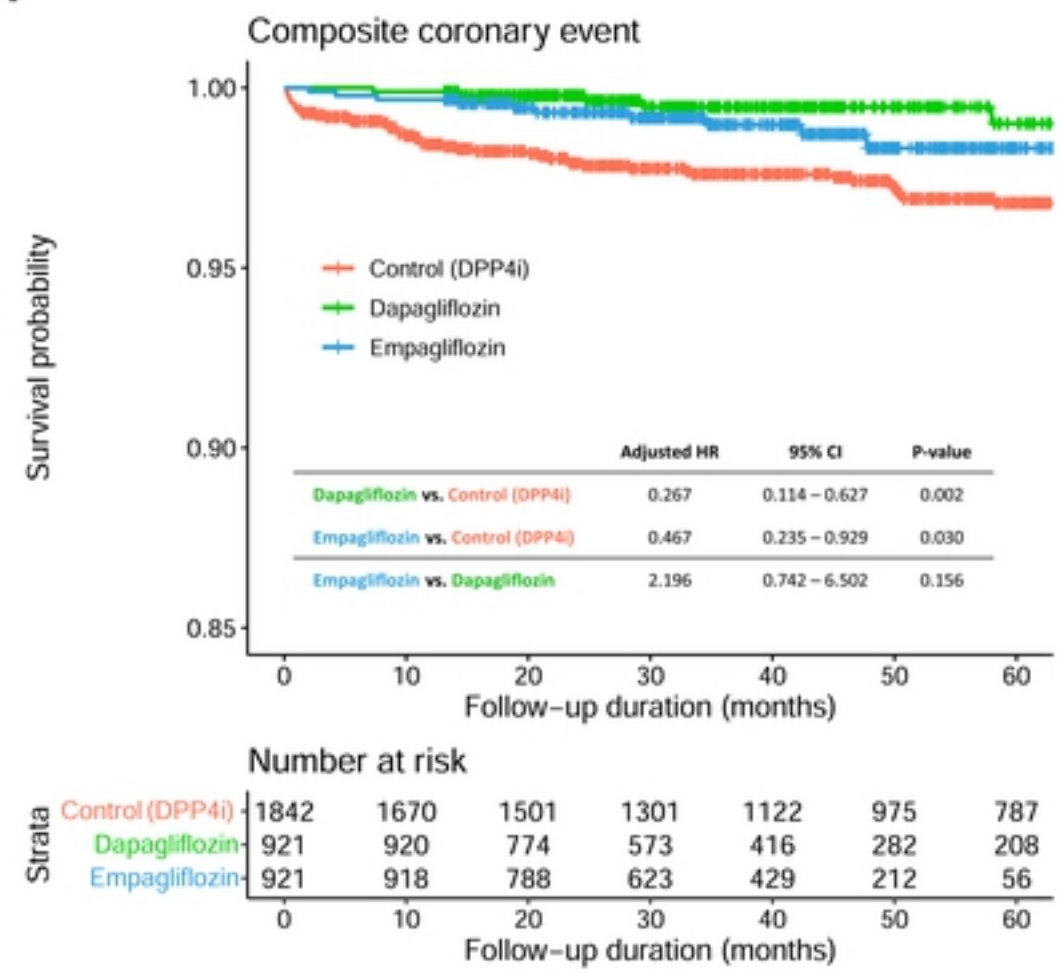


Figure 1

Figure 2

A



B

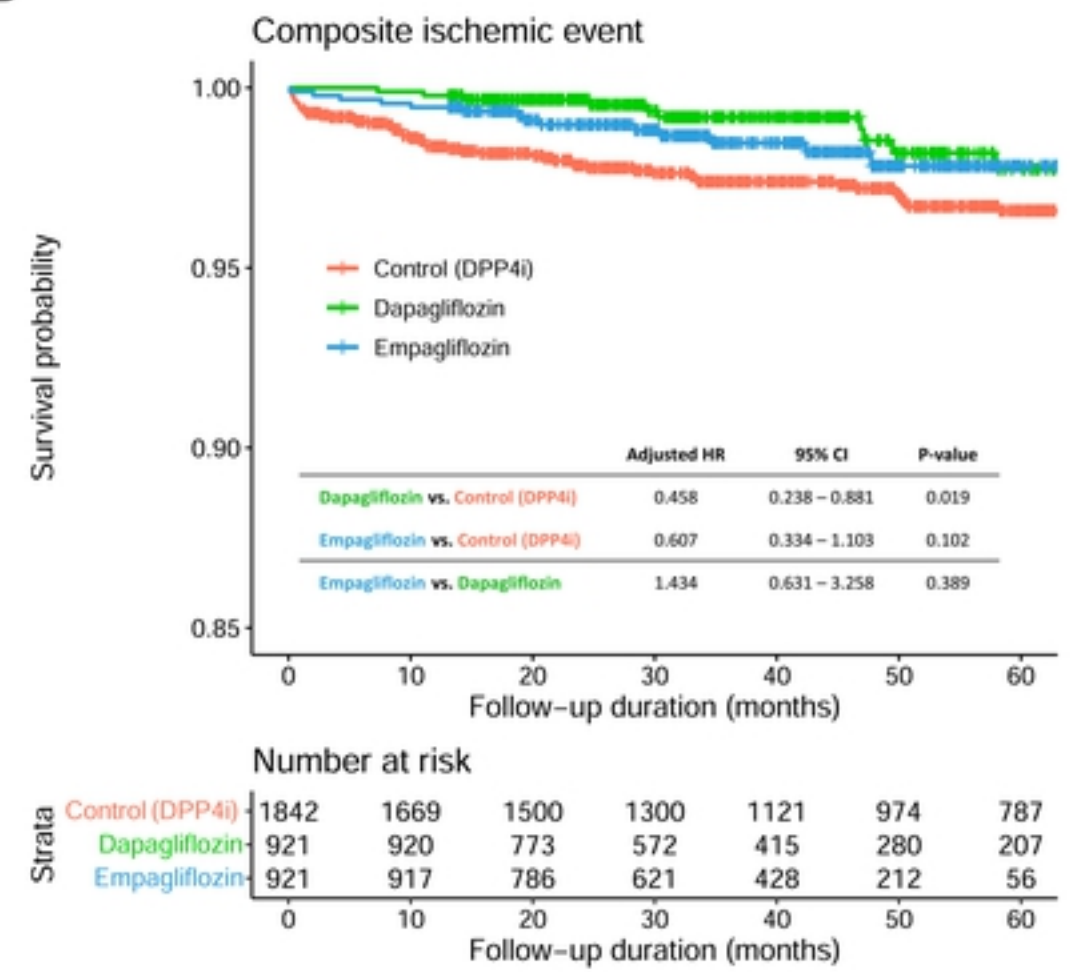
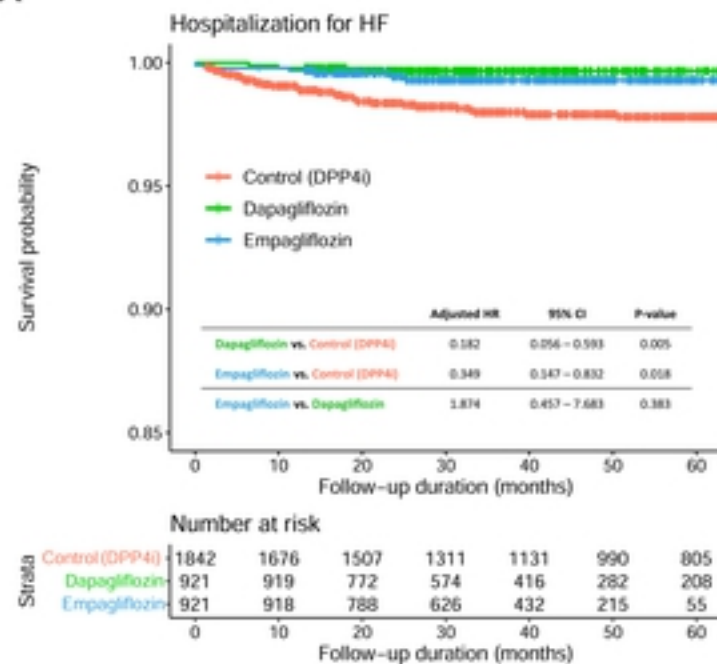


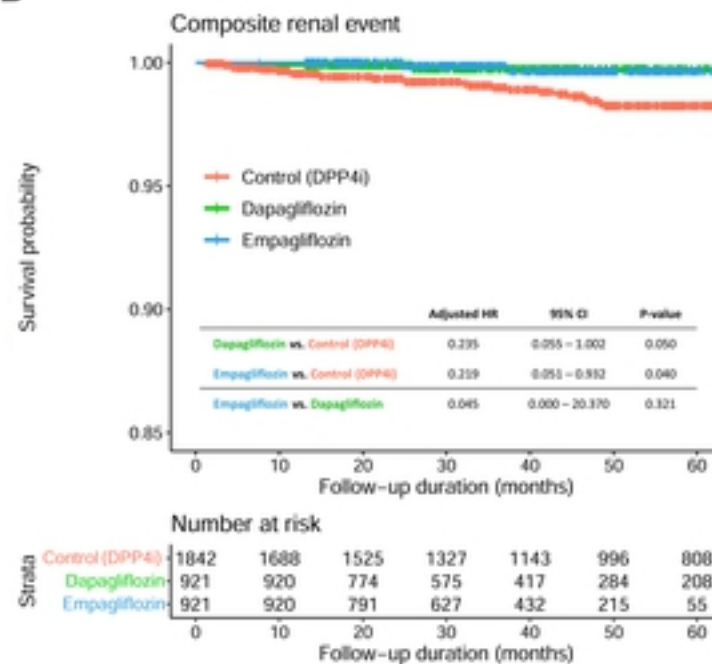
Figure 2

Figure 3

A



B



C

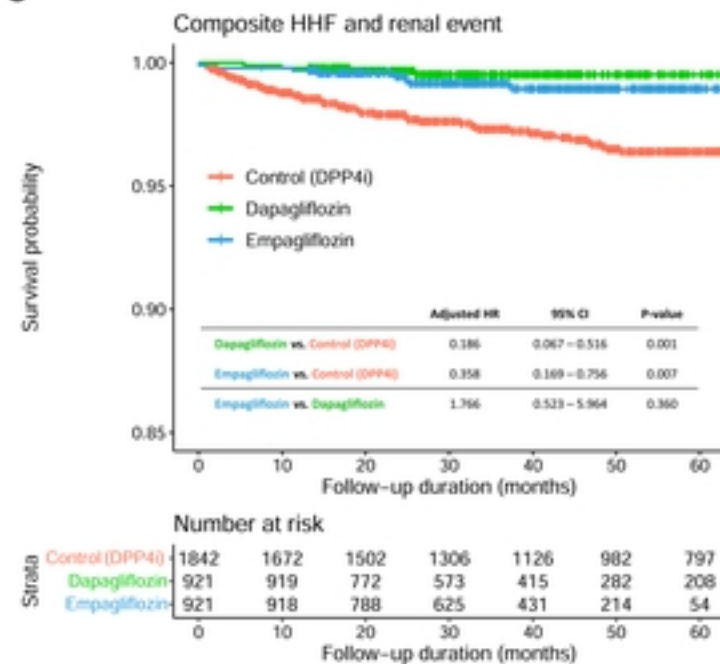
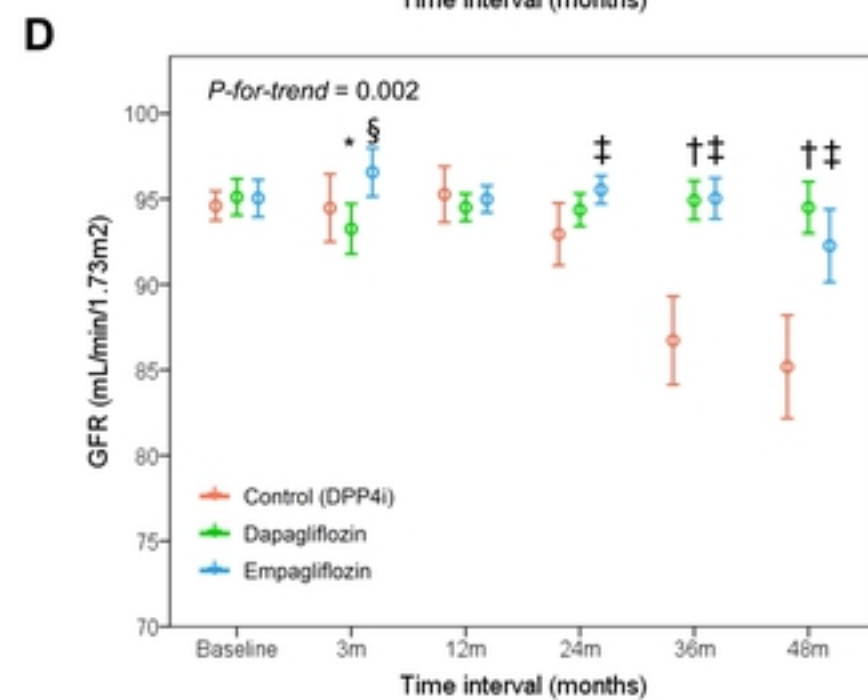
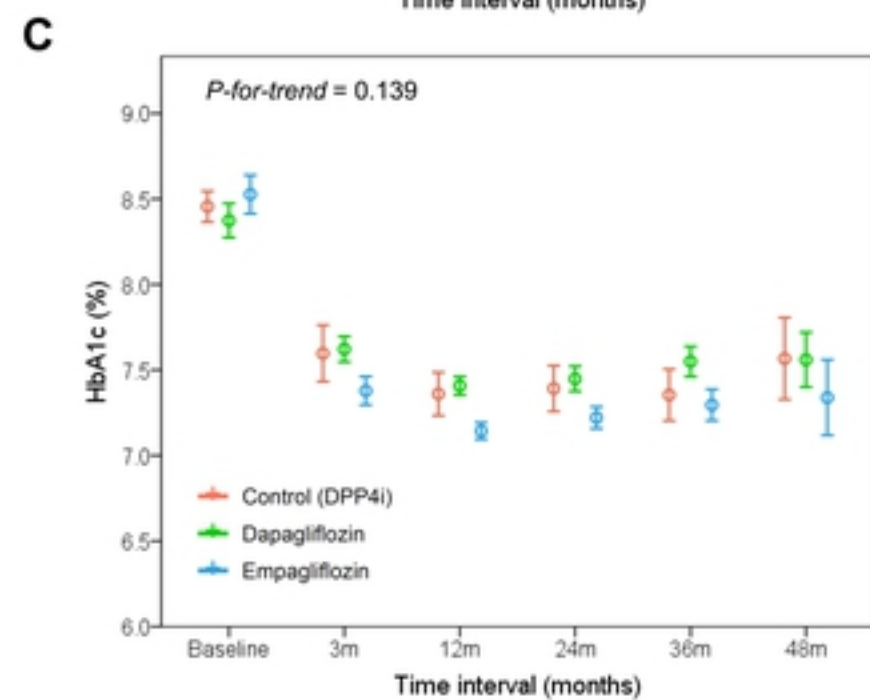
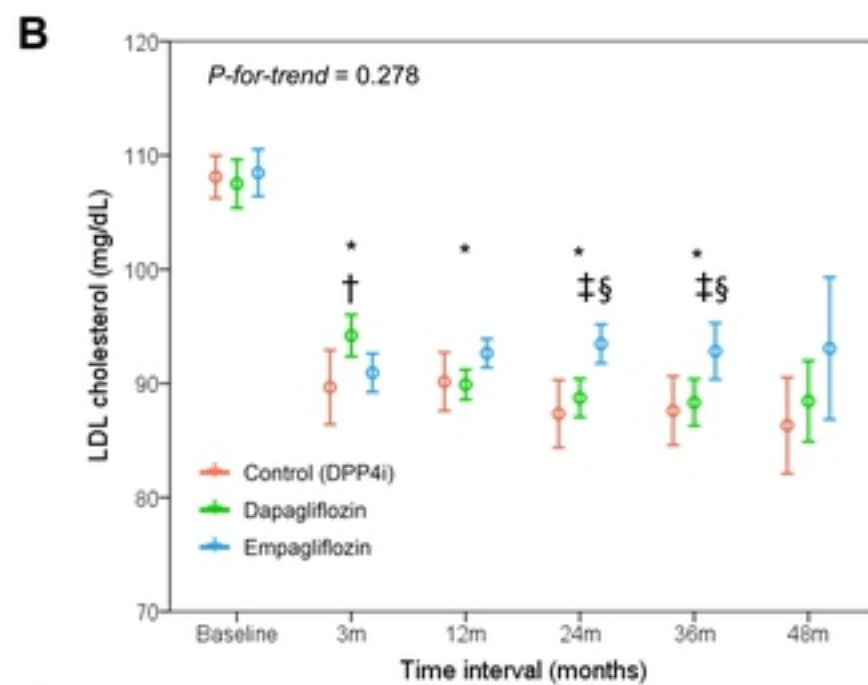
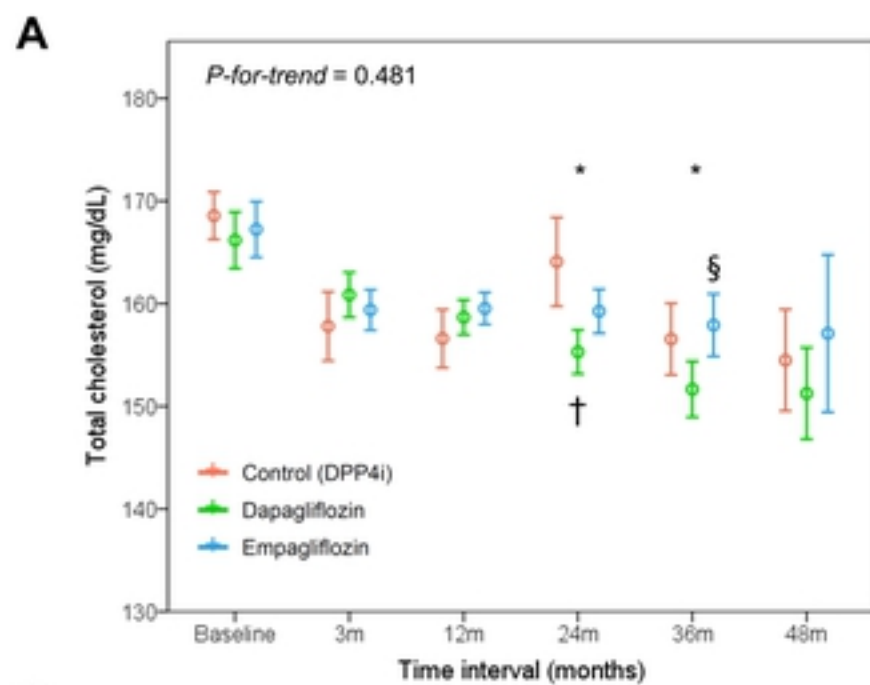


Figure 3

Figure 4

* Overall *P* < 0.05

† *P* < 0.05 (Dapagliflozin vs. Control)

‡ *P* < 0.05 (Empagliflozin vs. Control)

§ *P* < 0.05 (Dapagliflozin vs. Empagliflozin)

Figure 4