

Real-world effectiveness of molnupiravir and nirmatrelvir/ritonavir among COVID-19 inpatients during Hong Kong's Omicron BA.2 wave: an observational study

Carlos K.H. Wong^{1,2,3} PhD, Ivan C.H. Au¹ BSc, Kristy T.K. Lau¹ MSc, Eric H. Y. Lau^{3,4} PhD, Benjamin J. Cowling^{3,4*} PhD, Gabriel M. Leung^{3,4*} M.D

Affiliation

1 Department of Pharmacology and Pharmacy, LKS Faculty of Medicine, The University of Hong Kong, Hong Kong SAR, China

2 Department of Family Medicine and Primary Care, LKS Faculty of Medicine, The University of Hong Kong, Hong Kong SAR, China

3 Laboratory of Data Discovery for Health (D24H), Hong Kong Science and Technology Park, Hong Kong SAR, China

4 WHO Collaborating Centre for Infectious Disease Epidemiology and Control, School of Public Health, LKS Faculty of Medicine, The University of Hong Kong, Hong Kong SAR, China

* Full professors

Corresponding authors:

Carlos King Ho Wong (carlosho@hku.hk)

Department of Pharmacology and Pharmacy, LKS Faculty of Medicine, The University of Hong Kong, 26 Sassoon Road, Pokfulam, Hong Kong SAR, China

Benjamin John Cowling (bcowling@hku.hk)

World Health Organization Collaborating Center for Infectious Disease Epidemiology and Control, School of Public Health, LKS Faculty of Medicine, The University of Hong Kong, 7 Sassoon Road, Pokfulam, Hong Kong Special Administrative Region, China

Running Title: Effectiveness of molnupiravir and nirmatrelvir/ritonavir

Word count (Abstract): 372

Word count (Main text): 3053

Summary

Background

Real-world evidence on the effectiveness of oral antivirals in mild-to-moderate COVID-19 patients is urgently needed. This retrospective cohort study aims to evaluate the clinical and virologic outcomes associated with molnupiravir and nirmatrelvir/ritonavir use in COVID-19 patients during a pandemic wave dominated by the Omicron BA.2 variant.

Methods

We analyzed data from a territory-wide retrospective cohort of hospitalized patients with confirmed diagnosis of SARS-CoV-2 infection from 26th February 2022 to 26th April 2022 in Hong Kong. Oral antiviral users were matched with controls using propensity-score matching in a ratio of 1:4. Study outcomes were a composite outcome of disease progression (all-cause mortality, initiation of invasive mechanical ventilation [IMV], or intensive care unit admission) and their individual outcomes, and lower viral load of cycle threshold (Ct) value ≥ 30 cycles. Hazard ratios (HR) of event outcomes were estimated using Cox regression models.

Results

Among 40,776 hospitalized patients with SARS-CoV-2 infection over a mean follow-up of 41.3 days with 925,713 person-days, 2,359 and 1,000 patients not initially requiring oxygen therapy were initiated with molnupiravir and nirmatrelvir/ritonavir, respectively. The crude incidence rates of all-cause mortality and IMV were 22.24 and 1.06 events per 10,000 person-days among molnupiravir users, 11.04 and 1.75 events per 10,000 person-days among nirmatrelvir/ritonavir users. Oral antiviral use was associated with a significantly lower risk of the composite outcome of disease progression (molnupiravir: HR=0.53, 95%CI=0.46-0.62, $p<0.001$; nirmatrelvir/ritonavir: HR=0.33, 95%CI=0.24-0.46, $p<0.001$) than non-use, which was consistently observed for all-cause mortality (molnupiravir: HR=0.55, 95%CI=0.47-0.63, $p<0.001$; nirmatrelvir/ritonavir: HR=0.32, 95%CI=0.23-0.45, $p<0.001$). Molnupiravir users had lower risks of IMV (HR=0.31, 95%CI=0.16-0.61, $p<0.001$). Time to achieving lower viral load was significantly shorter among oral antiviral users than matched controls (molnupiravir: HR=1.21, 95%CI=1.07-1.37, $p=0.002$; nirmatrelvir/ritonavir: HR=1.25, 95%CI=1.04-1.50, $p=0.015$). Amongst survivors, nirmatrelvir/ritonavir had shorter length of hospital stay (-0.70 days, 95%CI=-1.37 to -0.04, $p=0.039$) than matched controls. Head-to-

head comparison of molnupiravir and nirmatrelvir/ritonavir reported higher risk of mortality (HR=1.53 95%CI=1.01-2.31, p=0.047) and longer length of hospital stay (0.83 days, 95%CI=0.07-1.58, p=0.032) for molnupiravir users.

Conclusions

Against Omicron BA.2, initiation of novel oral antiviral treatment in hospitalized patients not requiring any oxygen therapy was associated with lower risks of disease progression and all-cause mortality, in addition to achieving low viral load faster.

Funding: Health and Medical Research Fund, Food and Health Bureau

Research in context

Evidence before this study

The medical and research community are actively exploring the use of oral antivirals in COVID-19 patients to lower their risks of hospitalization and death, and to reduce the burden on healthcare systems. We searched Scopus and PubMed for studies until 13 May 2022 using the search terms “SARS-CoV-2 OR COVID-19” AND “molnupiravir OR Lagevrio OR EIDD-2801” OR “nirmatrelvir OR Paxlovid OR PF-07321332”. Major studies examining the safety and efficacy of molnupiravir include MOVE-IN and MOVE-OUT trials conducted in hospitalized and non-hospitalized COVID-19 patients, respectively. Clinical evidence for the use of ritonavir-boosted nirmatrelvir came from the EPIC-HR trial conducted among non-hospitalized adults with COVID-19. While no clinical benefits have been observed with molnupiravir use in the inpatient setting among patients with moderate-to-severe COVID-19, early initiation of molnupiravir or nirmatrelvir/ritonavir within 5 days of symptom onset in non-hospitalized patients with mild-to-moderate COVID-19 and risk factors for progression to severe disease has been associated with relative risk reduction of hospitalization or death by 30% and 88%, respectively. Notably, these clinical trials were conducted prior to the prevalence of Omicron variant, and the efficacy of oral antivirals against this current variant of concern can only be inferred from experimental evidence to date. Real-world evidence of oral antiviral use in patients with SARS-CoV-2 infection of Omicron variant is lacking.

Added value of this study

To the best of our knowledge, this is the first real-world study exploring the clinical use of oral antivirals during a pandemic wave dominated by SARS-CoV-2 Omicron variant. We conducted a territory-wide, retrospective cohort study to examine the effectiveness of molnupiravir and nirmatrelvir/ritonavir in COVID-19 patients who did not require supplemental oxygen on admission in Hong Kong. Early initiation of oral antivirals within 2 days of admission was associated with significantly lower risks of disease progression and all-cause mortality, in addition to achieving low viral load faster than their respective matched controls. Molnupiravir use was also associated with a significantly lower risk of requiring invasive mechanical ventilation than non-use. Furthermore, our head-to-head

comparison suggested a relatively larger reduction in mortality risk with nirmatrelvir/ritonavir than molnupiravir use.

Implications of all the available evidence

Current guidelines are now prioritizing the distribution of oral antivirals to those who do not require supplemental oxygen, but who are at the highest risk of disease progression. Our study cohort reflected such prescription pattern in real-world clinical practice. The antiviral effect and mortality benefit observed in this patient cohort support the use of oral antivirals in COVID-19 patients who do not require supplemental oxygen on admission during a pandemic wave of Omicron variant. Our findings also support the prioritization of nirmatrelvir/ritonavir over molnupiravir use in COVID-19 patients whenever accessible and clinically appropriate, in view of the former's substantial mortality benefit. Ongoing research will inform the safety and effectiveness of oral antivirals in specific patient populations (by vaccination status and viral variants), drug combinations, and different healthcare settings.

Manuscript text

Introduction

In the midst of the coronavirus disease 2019 (COVID-19) pandemic, various drugs have been repurposed or developed for treating patients with SARS-CoV-2 infection. In December 2021, molnupiravir (Lagevrio) and ritonavir-boosted nirmatrelvir (Paxlovid) are two oral antivirals that have been granted Emergency Use Authorization (EUA) by the U.S. Food and Drug Administration (FDA) for the treatment of non-hospitalized patients with mild-to-moderate COVID-19, who are at risk of progression to severe disease, so as to reduce the burden on healthcare systems by lowering their risk of hospitalization or death ^{1,2}.

While both molnupiravir and nirmatrelvir/ritonavir are indicated for non-hospitalized patients with mild-to-moderate COVID-19 within 5 days of symptom onset should they be at risk of progression to severe disease, current guidelines give priority to nirmatrelvir/ritonavir and another antiviral remdesivir (relative risk reduction by 87%) that have demonstrated higher efficacy than molnupiravir in reducing hospitalization or death among COVID-19 patients not requiring hospitalization or supplemental oxygen ¹⁻⁴. Notably, several concerns and research gaps remain in the use of the two oral antivirals, for instance, if initiation in asymptomatic COVID-19 patients is appropriate, the lack of clinical data in treating patients infected with specific VOC, and their safety and efficacy in vaccinated individuals with breakthrough infections ⁵⁻⁷. Furthermore, efficacy of molnupiravir as illustrated in the MOVE-OUT trial has been questioned in light of its premature termination, imbalances in risk factors and COVID-19 severity of patients at baseline, results with borderline statistical significance and of uncertain clinical significance, and discrepancies between interim and full analyses that could not be fully explained by differences in patient characteristics ⁸⁻¹⁰.

Real-world evidence on the effectiveness of molnupiravir and nirmatrelvir/ritonavir in COVID-19 patients is urgently needed ¹¹, as well as head-to-head comparison between the two oral antivirals. This retrospective cohort study aims to evaluate the clinical and virologic outcomes associated with molnupiravir and nirmatrelvir/ritonavir use in COVID-19 patients during a community epidemic dominated by the Omicron BA.2 variant.

Methods

Study Design

A territory-wide, retrospective cohort study was used to examine the effectiveness of oral antivirals (molnupiravir or nirmatrelvir/ritonavir) in hospitalized adult patients with COVID-19 without oxygen therapy in the Hong Kong Special Administrative Region, China, during the observation period from 26th February 2022 to 5th May 2022.

Data Source and Study Population

Electronic health records of patients with COVID-19 were retrieved from the Hospital Authority (HA), a statutory provider of public inpatient services and primary public outpatient services in Hong Kong. Electronic health records included demographics, date of registered death, hospital admission, emergency department visits, diagnoses, prescription and drug dispensing records, procedures, and laboratory tests. The HA linked the health records and anonymized population-based vaccination records of individuals provided by the Department of Health using unique identification numbers (Hong Kong Identity Card or foreign passport number). The database has been widely used for high-quality studies to evaluate the safety and effectiveness of drug treatments for COVID-19 at a population level¹². Our cohort comprised patients with positive results of reverse transcription-polymerase chain reaction (RT-PCR) or rapid antigen test who were admitted to local public hospitals from 26th February 2022 to 26th April 2022. Patients were eligible for inclusion if they had been admitted within 3 days of their COVID-19 diagnosis date, or if COVID-19 diagnosis was confirmed within 3 days of their admission date, so as to account for any potential time lag in the confirmation of cases during an upsurge of patients with SARS-CoV-2 infection. The index date was defined as the date of hospital admission (day 0). Patients who were admitted to hospital with COVID-19 before 26th February 2022 (the date of first molnupiravir prescription) or after 26th April 2022 (less than 1 week of follow-up), aged <18 years, or with oxygen support or mechanical ventilation on the index date, were excluded.

This study was approved by the institutional review board of the University of Hong Kong / Hospital Authority Hong Kong West Cluster (reference no. UW 20-493). Given the extraordinary nature of the COVID-19 pandemic, individual patient-informed consent was not required for this retrospective cohort study using anonymized data.

Treatment Exposure and Follow-up Period

Hospitalized patients with COVID-19 without oxygen therapy and receiving early (i) molnupiravir and (ii) nirmatrelvir/ritonavir treatment at public hospitals during the observation period were defined as (i) molnupiravir users and (ii) nirmatrelvir/ritonavir users. We defined treatment exposure period at 2 days within admission to mitigate potential immortal time bias between treatment initiation and admission¹³⁻¹⁵. Controls were selected from the cohort of hospitalized patients with COVID-19 without oxygen therapy who did not receive oral antivirals (molnupiravir and/or Paxlovid) during the observation period, using the propensity-score in a ratio of 1:4. Patients were observed from the index date until registered death, the occurrence of outcome events, crossover of oral antiviral treatment, or the end of the observation period (5th May 2022), whichever came first.

Outcomes

Study outcomes were a composite outcome of disease progression (all-cause mortality, initiation of invasive mechanical ventilation [IMV], or intensive care unit [ICU] admission) and their individual outcomes, and lower viral load of cycle threshold (Ct) value ≥ 30 cycles. Hospital length of stay (LOS) was also determined for discharged survivors. In response to an upsurge of COVID-19 cases during the study period and the limited number of hospital beds, the HA had revised their discharge criteria on 26th February 2022 to allow patients hospitalized with COVID-19 to be discharged as early as they were deemed clinically stable by their attending physicians, and provided that their residential premises were suitable for isolation or they would be accepted by community isolation facilities, where they would continue their isolation until negative test results were obtained (on days 6 and 7 for fully vaccinated individuals [with at least two doses]; and day 14 for those not fully vaccinated [unvaccinated or vaccinated with only one dose])¹⁶.

Over the follow-up period, changes in the proportion of patients in respective clinical status (namely in-hospital death, on supplemental oxygen or mechanical ventilation, without oxygen therapy, and discharged) were compared between molnupiravir and control groups.

Baseline Covariates

Baseline covariates of patients included age, sex, symptomatic presentation, Charlson Comorbidity Index (CCI), concomitant treatments initiated on the index date (antibiotics,

dexamethasone and other systemic steroids, interferon- β -1b, baricitinib, tocilizumab, and paracetamol), COVID-19 vaccination status (fully vaccinated [with at least two doses of Comirnaty or 3 doses of CoronaVac), and laboratory parameters at admission (Ct value, lactate dehydrogenase, C-reactive protein, and lymphocyte count).

Statistical Analyses

Propensity-score models conditional on the aforementioned baseline covariates in a logistic regression model was performed, and the propensity of receiving each oral antiviral was estimated. Missing laboratory parameters (Supplementary Table 1) for oral antiviral users were imputed 20 times using other parameters in the propensity-score model¹⁷. We applied Rubin's rules to pool the treatment effects estimated from the 20 independent imputed datasets¹⁸. We used the standardized mean difference (SMD) to assess the balance of each baseline covariate between the groups before and after propensity-score matching, with SMD greater than 0.1 indicating covariate imbalance¹⁹.

Hazard ratios (HR) with 95% confidence intervals (CI) of each outcome between oral antiviral users and non-users were estimated using Cox regression models. Further analysis on the head-to-head comparison of molnupiravir and nirmatrelvir/ritonavir on each outcome was performed after re-matching baseline covariates of two oral antiviral groups.

All statistical analyses were performed using Stata version 17 (StataCorp LP, College Station, TX). All significance tests were 2-tailed, where P-value <0.05 was considered statistically significant.

Results

In this territory-wide, retrospective cohort study, a total of 40,776 hospitalized patients with confirmed diagnosis of SARS-CoV-2 infection over a mean follow-up of 41.3 days with 925,713 person-days were identified from 26th February 2022 to 26th April 2022, where 2,359 and 1,000 were prescribed molnupiravir and nirmatrelvir/ritonavir during admission on or before 26th April 2022, respectively (Figure 1). Baseline characteristics of oral antiviral and control groups before matching are presented in Supplementary Table 2. After 1:4 propensity-score matching, this analysis included 2,116 molnupiravir users (with 8,396 matched control) and 991 nirmatrelvir/ritonavir (with 3,952 matched control) with COVID-

19 not initially requiring any oxygen therapy at baseline. After matching, propensity score distribution of oral antiviral and matched control groups were highly overlapping (Supplementary Figure 1) while baseline characteristics of patients were balanced between oral antiviral and matched control groups with all SMDs <0.1 (Table 1). The median duration from symptom onset to molnupiravir initiation was 2 (interquartile range[IQR]: 1-3) days, and that from symptom onset to nirmatrelvir/ritonavir initiation was 2 (IQR: 1-3) days. The proportion of molnupiravir who received molnupiravir 800mg twice daily for 5 days was 96.2% while the proportion of nirmatrelvir/ritonavir users who completed the 5-days regimen (nirmatrelvir 300mg with ritonavir 100mg twice daily for 5 days) was 98.5%.

The crude incidence rates of all-cause mortality and IMV were 22.24 and 1.06 events per 10,000 person-days among molnupiravir users, 11.04 and 1.75 events per 10,000 person-days among nirmatrelvir/ritonavir users (Table 2). Oral antiviral use was associated with a significantly lower risk of the composite outcome of disease progression (molnupiravir: HR=0.53, 95%CI=0.46-0.62, $p<0.001$; nirmatrelvir/ritonavir: HR=0.33, 95%CI=0.24-0.46, $p<0.001$) than non-use, which was consistently observed for all-cause mortality (molnupiravir: HR=0.55, 95%CI=0.47-0.63, $p<0.001$; nirmatrelvir/ritonavir: HR=0.32, 95%CI=0.23-0.45, $p<0.001$) (Table 2 and Figure 2). Molnupiravir users had lower risks of IMV (HR=0.31, 95%CI=0.16-0.61, $p<0.001$). Time to achieving lower viral load was significantly shorter among oral antiviral users than matched controls (molnupiravir: HR=1.21, 95%CI=1.07-1.37, $p=0.002$; nirmatrelvir/ritonavir: HR=1.25, 95%CI=1.04-1.50, $p=0.015$) (Table 2 and Figure 2). Amongst survivors, nirmatrelvir/ritonavir had shorter length of hospital stay (-0.70 days, 95%CI=-1.37 to -0.04, $p=0.039$) than matched controls.

Since day-3 from baseline, the proportion of patients with in-hospital death was noticeably higher in the control group than oral antiviral users (Molnupiravir: 1.4% vs 0.6%; nirmatrelvir/ritonavir: 1.1% vs 0.4%), which persisted until day-28 of follow-up (Molnupiravir: 14.8% vs 8.3%; nirmatrelvir/ritonavir: 10.3% vs 3.2%) (Figure 3). The proportion of patients discharged was generally comparable between oral antiviral and matched control groups throughout the observation period.

Table 3 demonstrates a head-to-head comparison of molnupiravir and nirmatrelvir/ritonavir after one-to-one propensity score matching, and reports higher risk of mortality (HR=1.53

95%CI=1.01-2.31, $p=0.047$) and longer length of hospital stay (0.83 days, 95%CI=0.07-1.58, $p=0.032$) for molnupiravir users.

Discussion

In this retrospective cohort of COVID-19 patients not requiring any supplemental oxygen on admission, initiation of molnupiravir or nirmatrelvir/ritonavir was associated with significantly lower risks of disease progression and all-cause mortality, in addition to achieving low viral load faster than their respective matched controls. Molnupiravir use was also associated with a significantly lower risk of IMV initiation; while nirmatrelvir/ritonavir users had a shorter length of hospital stay than their control counterparts. Furthermore, our head-to-head comparison suggested a relatively larger reduction in mortality risk with nirmatrelvir/ritonavir than molnupiravir use. To our knowledge, this is the first real-world study exploring the clinical use of oral antivirals during a pandemic wave dominated by the SARS-CoV-2 Omicron BA.2 variant.

Based on the very limited studies on the safety and efficacy of oral antivirals in COVID-19 patients, current guidelines and the medical community are now prioritizing their distribution to those who do not require supplemental oxygen, but who are at the highest risk of disease progression, i.e. who will likely benefit the most from antivirals^{4,11,20,21}. Our study cohort reflected such prescription pattern in real-world clinical practice; and provided real-world evidence supporting their use in those at risk of progression to severe disease, namely the elderly with multiple pre-existing comorbidities and who had not been fully vaccinated, during a pandemic wave dominated by the Omicron variant. The significant risk reduction in disease progression associated with both molnupiravir and nirmatrelvir/ritonavir was mainly driven by a substantial reduction in mortality risk, which has been illustrated in respective major clinical trials^{22,23}. Despite an inpatient setting of the current study, our patient population who did not require any supplemental oxygen at baseline was likely different from that of the MOVE-IN trial, where the majority presented with moderate-to-severe COVID-19 and approximately half of the patients were on oxygen therapy²⁴. Meanwhile, our molnupiravir users probably resembled those of the MOVE-OUT trial, where the antiviral was initiated early to patients with mild-to-moderate COVID-19 and risk factors for severe disease²³. Molnupiravir users were also more likely than the placebo group to achieve improved clinical outcomes and greater viral load reduction during follow-up²³.

Correspondingly, our results were in line with the latter establishing a significant mortality benefit and reduced disease progression (of increasing oxygen needs) among molnupiravir users, whilst these were not evident in the MOVE-IN trial when it was initiated at a later and more severe stage of COVID-19^{23,24}.

In terms of viral load reduction, our patients managed to achieve low viral load faster with molnupiravir or nirmatrelvir/ritonavir use upon SARS-CoV-2 infection of the Omicron variant, which added clinical support to the efficacy of oral antivirals demonstrated in experimental studies²⁵⁻²⁹. In recent studies based on previous VOC (including Delta), early initiation of molnupiravir has been shown to promote clinical improvement and symptom resolution in patients with mild-to-moderate COVID-19, in addition to accelerating viral load reduction, SARS-CoV-2 RNA clearance, and elimination of infectious virus^{23,30-32}. The EPIC-HR trial was also conducted prior to the prevalence of Omicron variant, where nirmatrelvir/ritonavir use was associated with significant viral load reduction of Delta variant in patients with mild-to-moderate COVID-19 compared to placebo^{20,22}. To the best of our knowledge, this is the first clinical study offering real-world evidence of oral antiviral use among COVID-19 patients during a pandemic wave of Omicron variant.

Our head-to-head comparison between the two oral antivirals offers preliminary evidence confirming the prioritization of nirmatrelvir/ritonavir over molnupiravir in COVID-19 patients who do not require supplemental oxygen, whenever accessible and clinically appropriate^{3,4,21}. A relatively larger reduction in all-cause mortality risk was observed with nirmatrelvir/ritonavir use in this study, in addition to its greater efficacy in preventing COVID-19-related hospitalization than molnupiravir in previous trials, and without the risk of host mutational activity¹¹. Recently, an experimental study hypothesized that the efficacy of different antivirals may be influenced by their drug concentrations in the lungs of COVID-19 patients³³. For instance, both remdesivir and EIDD-1931 (active metabolite of molnupiravir) have been identified as substrates of equilibrative nucleoside transporters (ENT) 1 and 2, while nirmatrelvir is not^{33,34}. During acute lung injury and tissue hypoxia induced by SARS-CoV-2 infection, ENT repression may contribute to lower pulmonary concentrations of remdesivir and EIDD-1931 compared to that of nirmatrelvir, hence the latter may demonstrate higher effectiveness in COVID-19 patients than remdesivir and molnupiravir with controversial findings^{8,33}. Nonetheless, further *in vivo* studies are needed to confirm such postulation, explore other potential mechanisms and their application to specific COVID-19 patient populations. While molnupiravir is recommended only when neither

nirmatrelvir/ritonavir nor remdesivir are accessible or clinically appropriate, molnupiravir still has its own merit considering its ease of administration via the oral route (compared to parenteral administration for remdesivir), no apparent drug-drug interactions (which are significant for nirmatrelvir/ritonavir), and no dosage adjustment needed based on hepatic or renal impairment (which is necessary for nirmatrelvir/ritonavir) ^{1,3,4,20}.

This territory-wide, retrospective cohort study of COVID-19 patients who did not initially require supplemental oxygen suggested that initiating oral antivirals within 2 days of admission was associated with significant risk reduction in disease progression and all-cause mortality, and achieving low viral load faster compared to non-use. Referring to the medical records of hospitalized cases who were closely monitored, clinical outcomes and procedures were systematically documented and analyzed. Medication adherence could also be guaranteed in an inpatient setting compared to oral antiviral users in the community. Nevertheless, several limitations of our study should be acknowledged. Firstly, we cannot exclude the possibility of selection bias or confounding by indication in this observational study, despite our population-based cohort was fully representative of the local COVID-19 patient population who did not require supplemental oxygen on admission. Besides, the clinical profile of our patients who would be deemed at risk of progression to severe COVID-19 might be different from those in the major trials of molnupiravir and nirmatrelvir/ritonavir, for instance, their dominant risk factor was overweight or obesity ^{22,23}, whilst ours was old age. Secondly, since the Ct value was no longer adopted as one of the discharge criteria during our study period, patients might have already been deemed clinically stable for discharge before reaching the specific cutoff. Accordingly, further studies are needed to confirm our findings on viral load reduction and length of hospital stay associated with oral antiviral use. Results from ongoing trials (namely PANORAMIC and RECOVERY) and observational studies are awaiting ³⁵⁻³⁹, and further research is needed to explore the safety and effectiveness of oral antivirals in different patient populations (especially by COVID-19 vaccination status and VOC), drug combinations, and other healthcare settings such as nursing homes or residential care facilities.

As proposed by the medical and research community, logistics and distribution issues should be adequately addressed by governments and the healthcare sector to meet ethical standards and promote optimal and equitable access in the face of limited supplies, such as developing an evidence-based scoring system or risk prediction tools to help physicians prioritizing the

distribution of oral antivirals to COVID-19 patients who would most likely benefit from them, based on predicted efficacy and risk assessments^{11,20,21}. Notably, some unknown long-term risks associated with molnupiravir use include possible carcinogenicity and teratogenicity, as mutations have been observed in mammalian cells *in vitro*; and the risk of emergence of more infectious and vaccine-resistant viral variants attributed to the genetic mutations induced^{7-9,40-42}. Moreover, concerns about the development of drug resistance to molnupiravir and nirmatrelvir/ritonavir have been raised, especially considering the high mutation rates of SARS-CoV-2 and potential selective pressure induced by an extensive use of antiviral monotherapy^{21,43}. Active pharmacovigilance programs and sequencing of viral mutations are essential to monitoring their long-term safety and effectiveness in different patient populations and waves of COVID-19 pandemic²¹.

In conclusion, this retrospective cohort study of COVID-19 patients who did not initially require supplemental oxygen suggested that early initiation of oral antivirals was associated with significant risk reduction in disease progression and all-cause mortality, as well as achieving low viral load faster than non-use. Furthermore, a relatively larger reduction in mortality risk could be observed with nirmatrelvir/ritonavir use compared to molnupiravir during a pandemic wave of the SARS-CoV-2 Omicron BA.2 variant. Ongoing research will inform the safety and effectiveness of oral antivirals in specific patient populations, drug combinations, and healthcare settings.

Contributors

The study was designed by CKHW, GML and BJC. The underlying data was verified by CKHW, ICHA and EHYL, and data analyses were done by CKHW and ICHA. CKHW and KTKL wrote the first draft of the manuscript which was revised by GML and BJC. All authors interpreted data, provided critical review and revision of the text and approved the final version of the manuscript.

Data Sharing

The clinical outcome data were extracted from the Hospital Authority database in Hong Kong and vaccination records were extracted from the eSARS data provided by the Centre for Health Protection. Restrictions apply to the availability of these data, which were used under license for this study.

Declaration of interest

BJC reports honoraria from AstraZeneca, Fosun Pharma, GlaxoSmithKline, Moderna, Pfizer, Roche and Sanofi Pasteur. The authors report no other potential conflicts of interest.

References

1. The U.S. Food and Drug Administration (FDA). Fact Sheet for Healthcare Providers: Emergency Use Authorization for Molnupiravir. 2022/03/23 2022. <https://www.fda.gov/media/155054/download>.
2. The U.S. Food and Drug Administration (FDA). Fact Sheet for Healthcare Providers: Emergency Use Authorization for Paxlovid. 2022/04/14 2022. <https://www.fda.gov/media/155050/download>.
3. Infectious Diseases Society of America. IDSA Guidelines on the Treatment and Management of Patients with COVID-19. 2022/05/10 2022. <https://www.idsociety.org/practice-guideline/covid-19-guideline-treatment-and-management/>.
4. The National Institutes of Health. Therapeutic Management of Nonhospitalized Adults With COVID-19. 2022/04/08 2022. <https://www.covid19treatmentguidelines.nih.gov/management/clinical-management/nonhospitalized-adults--therapeutic-management/>.
5. Schöning V, Kern C, Chaccour C, Hammann F. Effectiveness of Antiviral Therapy in Highly-Transmissible Variants of SARS-CoV-2: A Modeling and Simulation Study. *Frontiers in Pharmacology* 2022; **13**: 816429.
6. Singh AK, Singh A, Singh R, Misra A. An updated practical guideline on use of molnupiravir and comparison with agents having emergency use authorization for treatment of COVID-19. *Diabetes & Metabolic Syndrome: Clinical Research & Reviews* 2022; **16**(2): 102396.
7. Tian L, Pang Z, Li M, et al. Molnupiravir and Its Antiviral Activity Against COVID-19. *Frontiers in Immunology* 2022; **13**: 855496.
8. Brophy JM. Molnupiravir's authorisation was premature. *BMJ* 2022; **376**: o443.
9. Dyer O. Covid-19: FDA expert panel recommends authorising molnupiravir but also voices concerns. *BMJ* 2021; **375**: n2984.
10. Hama R. Imbalance in baseline characteristics in molnupiravir trials. *BMJ* 2022; **377**: o977.
11. Dal-Ré R, Becker SL, Bottieau E, Holm S. Availability of oral antivirals against SARS-CoV-2 infection and the requirement for an ethical prescribing approach. *The Lancet Infectious Diseases* 2022.
12. Wong CKH, Wan EYF, Luo S, et al. Clinical outcomes of different therapeutic options for COVID-19 in two Chinese case cohorts: A propensity-score analysis. *eClinicalMedicine* 2021; **32**: 100743.
13. Gupta S, Wang W, Hayek SS, et al. Association Between Early Treatment With Tocilizumab and Mortality Among Critically Ill Patients With COVID-19. *JAMA Internal Medicine* 2021; **181**(1): 41-51.
14. Monedero P, Gea A, Castro P, et al. Early corticosteroids are associated with lower mortality in critically ill patients with COVID-19: a cohort study. *Critical Care* 2021; **25**(1): 2.
15. Renoux C, Azoulay L, Suissa S. Biases in evaluating the safety and effectiveness of drugs for covid-19: designing real-world evidence studies. *American Journal of Epidemiology* 2021.
16. The Government of the Hong Kong Special Administrative Region. Government announces latest criteria for discharge from isolation and home quarantine. 2022/02/26 2022. <https://www.info.gov.hk/gia/general/202202/26/P2022022600750.htm>.
17. White IR, Royston P, Wood AM. Multiple imputation using chained equations: Issues and guidance for practice. *Stat Med* 2011; **30**(4): 377-99.
18. Leyrat C, Seaman SR, White IR, et al. Propensity score analysis with partially observed covariates: How should multiple imputation be used? *Stat Methods Med Res* 2019; **28**(1): 3-19.
19. Austin PC. Some methods of propensity-score matching had superior performance to others: results of an empirical investigation and Monte Carlo simulations. *Biom J* 2009; **51**(1): 171-84.
20. Saravolatz LD, Depcinski S, Sharma M. Molnupiravir and Nirmatrelvir-Ritonavir: Oral COVID Antiviral Drugs. *Clinical Infectious Diseases* 2022: ciac180.

21. World Health Organization. Therapeutics and COVID-19: living guideline. 2022/04/22 2022. <https://www.who.int/publications/i/item/WHO-2019-nCoV-therapeutics-2022.2>.
22. Hammond J, Leister-Tebbe H, Gardner A, et al. Oral Nirmatrelvir for High-Risk, Nonhospitalized Adults with Covid-19. *New England Journal of Medicine* 2022; **386**(15): 1397-408.
23. Jayk Bernal A, Gomes da Silva MM, Musungaie DB, et al. Molnupiravir for Oral Treatment of Covid-19 in Nonhospitalized Patients. *N Engl J Med* 2022; **386**(6): 509-20.
24. Arribas José R, Bhagani S, Lobo Suzana M, et al. Randomized Trial of Molnupiravir or Placebo in Patients Hospitalized with Covid-19. *NEJM Evidence* 2022; **1**(2): EVIDoA2100044.
25. Bojkova D, Widera M, Ciesek S, Wass MN, Michaelis M, Cinatl J. Reduced interferon antagonism but similar drug sensitivity in Omicron variant compared to Delta variant of SARS-CoV-2 isolates. *Cell Research* 2022; **32**(3): 319-21.
26. Li P, Wang Y, Lavrijsen M, et al. SARS-CoV-2 Omicron variant is highly sensitive to molnupiravir, nirmatrelvir, and the combination. *Cell Research* 2022; **32**(3): 322-4.
27. Takashita E, Kinoshita N, Yamayoshi S, et al. Efficacy of Antibodies and Antiviral Drugs against Covid-19 Omicron Variant. *New England Journal of Medicine* 2022; **386**(10): 995-8.
28. Vangeel L, Chiu W, De Jonghe S, et al. Remdesivir, Molnupiravir and Nirmatrelvir remain active against SARS-CoV-2 Omicron and other variants of concern. *Antiviral Research* 2022; **198**: 105252.
29. Ullrich S, Ekanayake KB, Otting G, Nitsche C. Main protease mutants of SARS-CoV-2 variants remain susceptible to nirmatrelvir. *Bioorganic & Medicinal Chemistry Letters* 2022; **62**: 128629.
30. Hetero. Hetero Announces Interim Clinical Results from Phase III Clinical Trials of Molnupiravir conducted in India. Hyderabad, India: Hetero; 2021.
31. Fischer William A, Eron Joseph J, Holman W, et al. A phase 2a clinical trial of molnupiravir in patients with COVID-19 shows accelerated SARS-CoV-2 RNA clearance and elimination of infectious virus. *Science Translational Medicine* 2022; **14**(628): eab17430.
32. Merck. Merck and Ridgeback to Present Data Demonstrating That Treatment With LAGEVRIO™ (molnupiravir) Was Associated With More Rapid Elimination of Infectious SARS-CoV-2 Than Placebo. 2022/04/01 2022. <https://www.merck.com/news/merck-and-ridgeback-to-present-data-demonstrating-that-treatment-with-lagevrio-molnupiravir-was-associated-with-more-rapid-elimination-of-infectious-sars-cov-2-than-placebo/>.
33. Hau RK, Wright SH, Cherrington NJ. PF-07321332 (Nirmatrelvir) Does Not Interact with Human ENT1 or ENT2: Implications for COVID-19 Patients. *Clinical and Translational Science* 2022.
34. Miller SR, McGrath ME, Zorn KM, Ekins S, Wright SH, Cherrington NJ. Remdesivir and EIDD-1931 Interact with Human Equilibrative Nucleoside Transporters 1 and 2: Implications for Reaching SARS-CoV-2 Viral Sanctuary Sites. *Molecular Pharmacology* 2021; **100**(6): 548-57.
35. ClinicalTrials.gov. AGILE (Early Phase Platform Trial for COVID-19). 2021/08/25 2022. <https://clinicaltrials.gov/ct2/show/NCT04746183>.
36. ClinicalTrials.gov. TURN-COVID Biobank: The Dutch Cohort Study for the Evaluation of the Use of Neutralizing Monoclonal Antibodies and Other Antiviral Agents Against SARS-CoV-2 (TURN-COVID). 2022/01/18 2022. <https://clinicaltrials.gov/ct2/show/NCT05195060>.
37. ClinicalTrials.gov. Evaluation of Protease Inhibition for COVID-19 in Standard-Risk Patients (EPIC-SR). 2022/04/13 2022. <https://clinicaltrials.gov/ct2/show/NCT05011513>.
38. Nuffield Department of Population Health. RECOVERY (Randomised Evaluation of COVID-19 Therapy). 2022. <https://www.recoverytrial.net/> (accessed 2022/05/12).
39. University of Oxford. PANORAMIC (Platform Adaptive trial of NOvel antivirals for eARly treatMent of COVID-19 In the Community). 2022. <https://www.panoramictrial.org/> (accessed 2022/05/12).
40. Singh AK, Singh A, Singh R, Misra A. Molnupiravir in COVID-19: A systematic review of literature. *Diabetes & Metabolic Syndrome: Clinical Research & Reviews* 2021; **15**(6): 102329.

41. Waters MD, Warren S, Hughes C, Lewis P, Zhang F. Human genetic risk of treatment with antiviral nucleoside analog drugs that induce lethal mutagenesis: the special case of molnupiravir. *Environmental and Molecular Mutagenesis* 2022; **63**(1): 37-63.
42. Zhou S, Hill CS, Sarkar S, et al. β -d-N4-hydroxycytidine Inhibits SARS-CoV-2 Through Lethal Mutagenesis But Is Also Mutagenic To Mammalian Cells. *The Journal of Infectious Diseases* 2021; **224**(3): 415-9.
43. Mótyán JA, Mahdi M, Hoffka G, Tózsér J. Potential Resistance of SARS-CoV-2 Main Protease (Mpro) against Protease Inhibitors: Lessons Learned from HIV-1 Protease. *International Journal of Molecular Sciences* 2022; **23**(7): 3507.

Figure 1. Identification of molnupiravir users, nirmatrelvir/ritonavir users, and their matched controls among patients hospitalized with COVID-19 not requiring oxygen therapy from 26 February 2022 to 26 April 2022 in Hong Kong

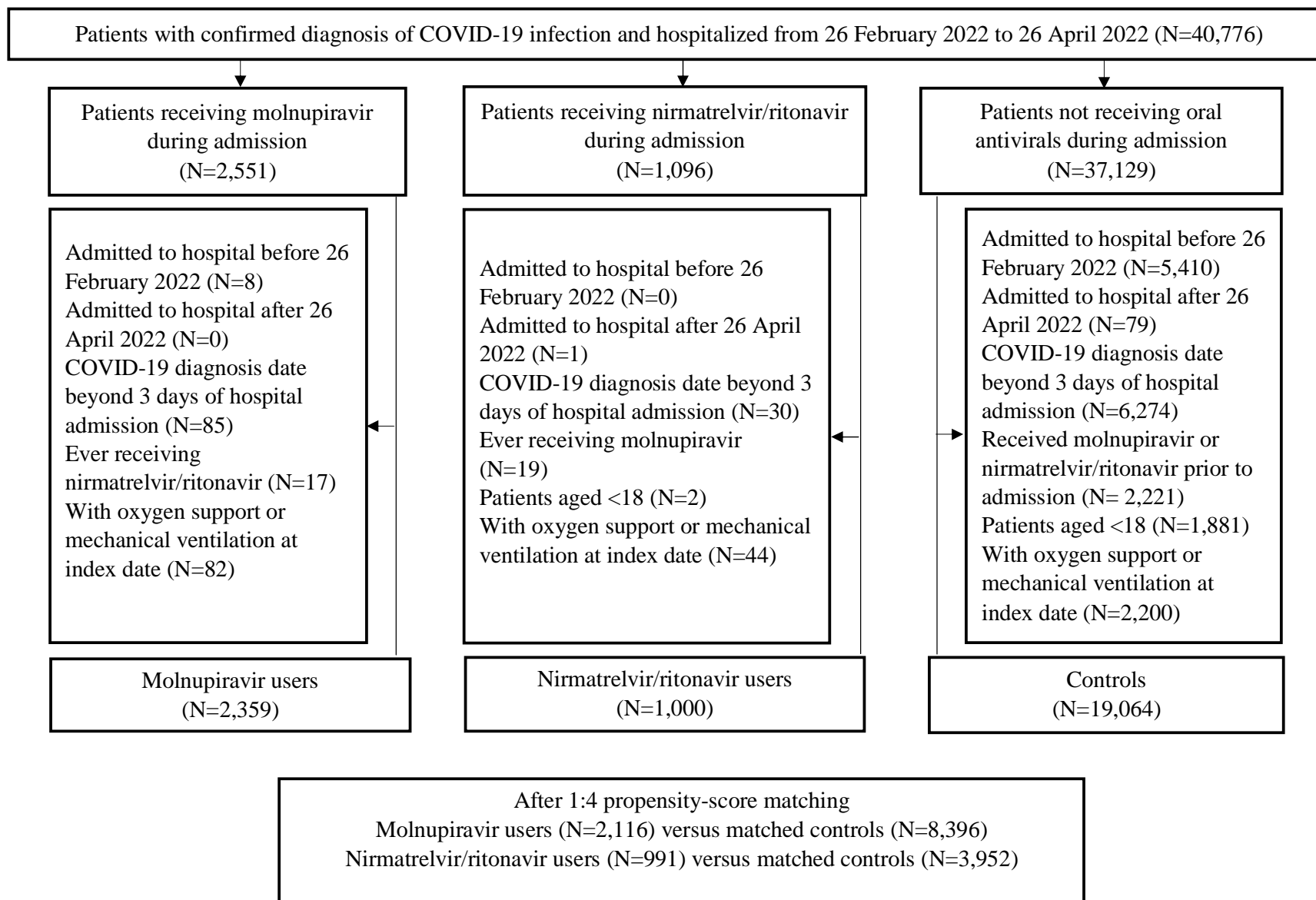


Figure 2. Cumulative incidence plots of (a) composite progression outcome, (b) all-cause mortality, and (c) lower viral load for molnupiravir users versus their matched controls, and (a) composite progression outcome, (b) all-cause mortality, and (c) lower viral load for nirmatrelvir/ritonavir users versus their matched controls

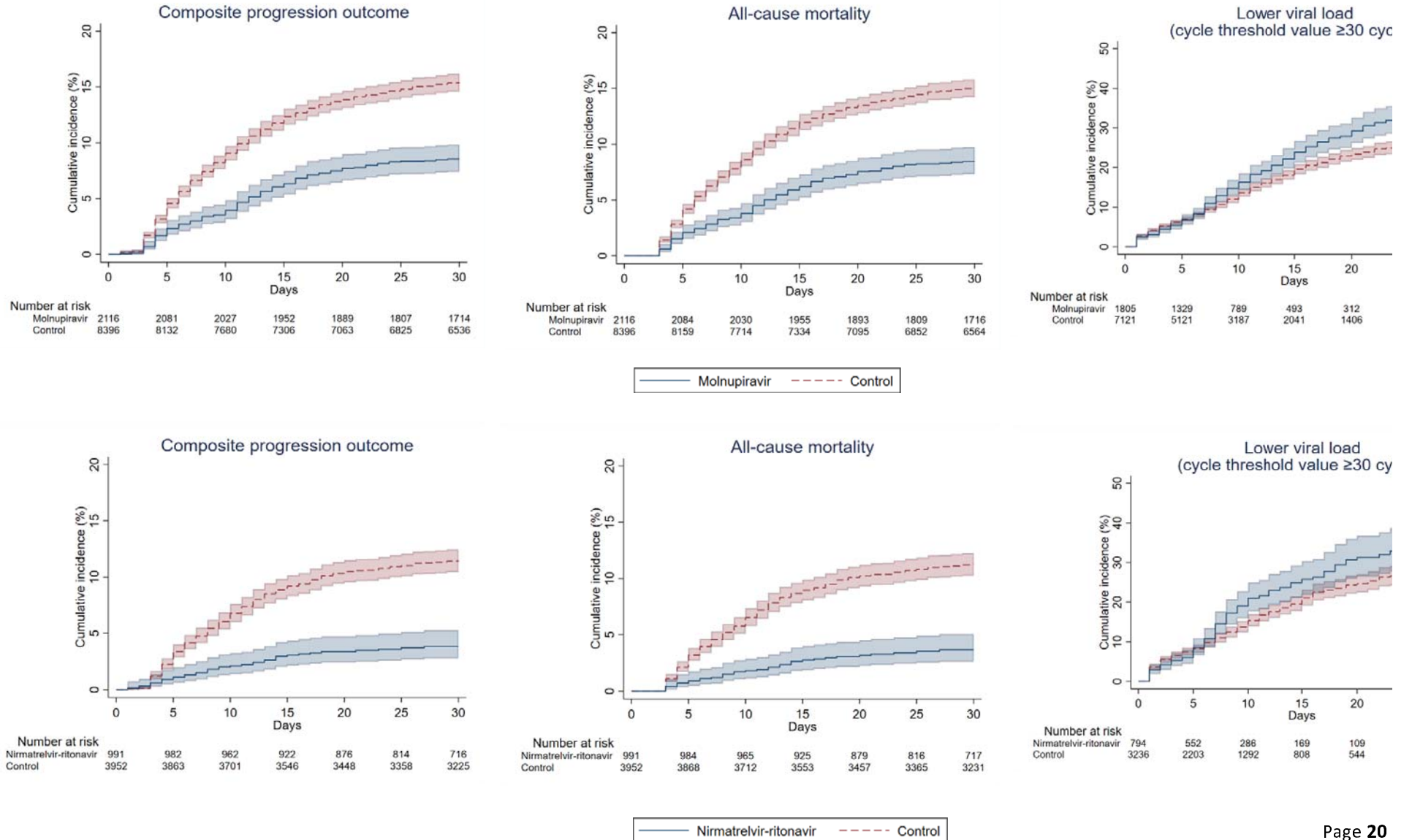
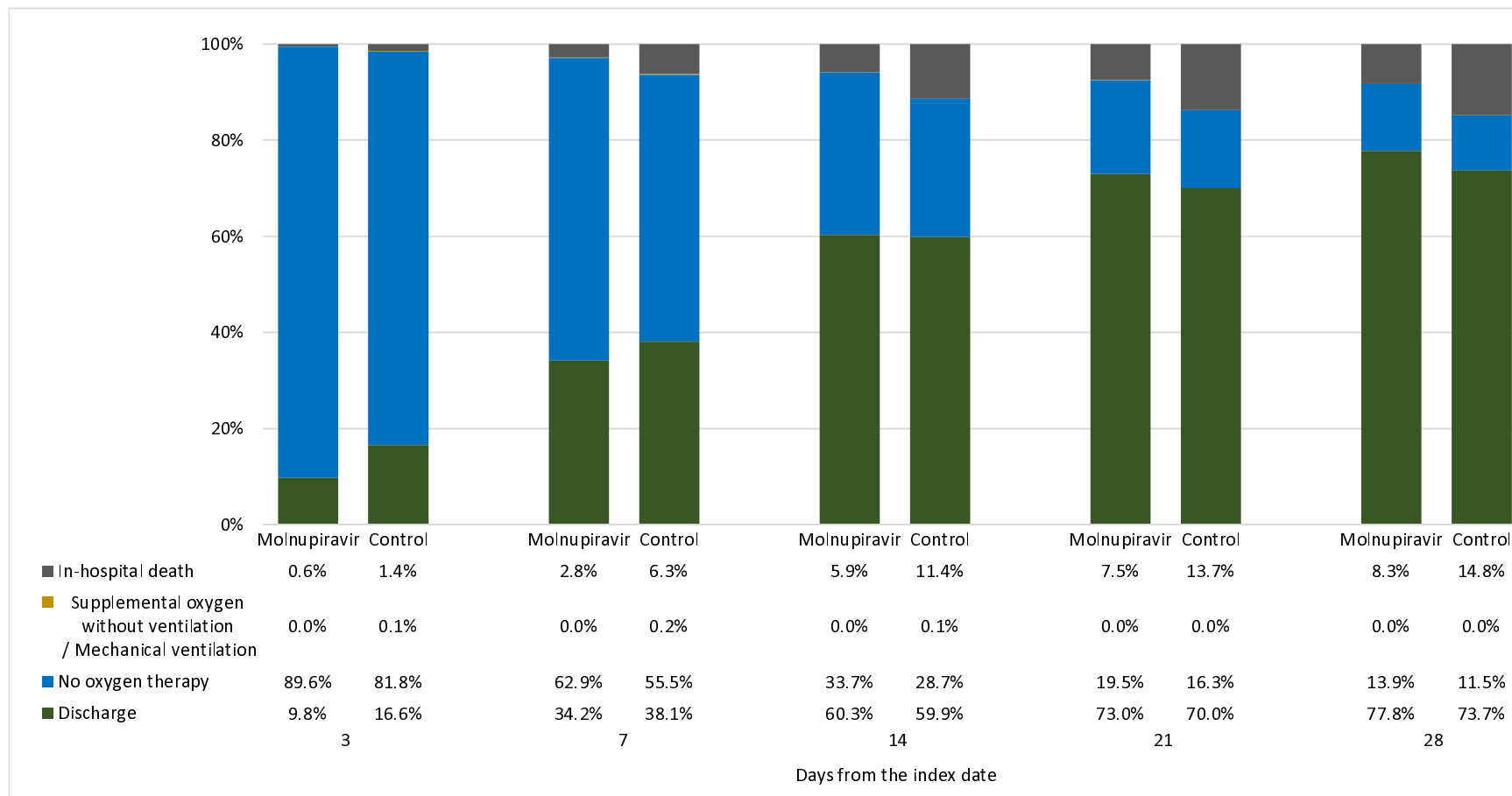


Figure 3. Comparison of disease status at days 3, 7, 14, 21, and 28 after the index date (hospital admission) a) between molnupiravir users and their matched controls, and b) between nirmatrelvir/ritonavir users and their matched controls



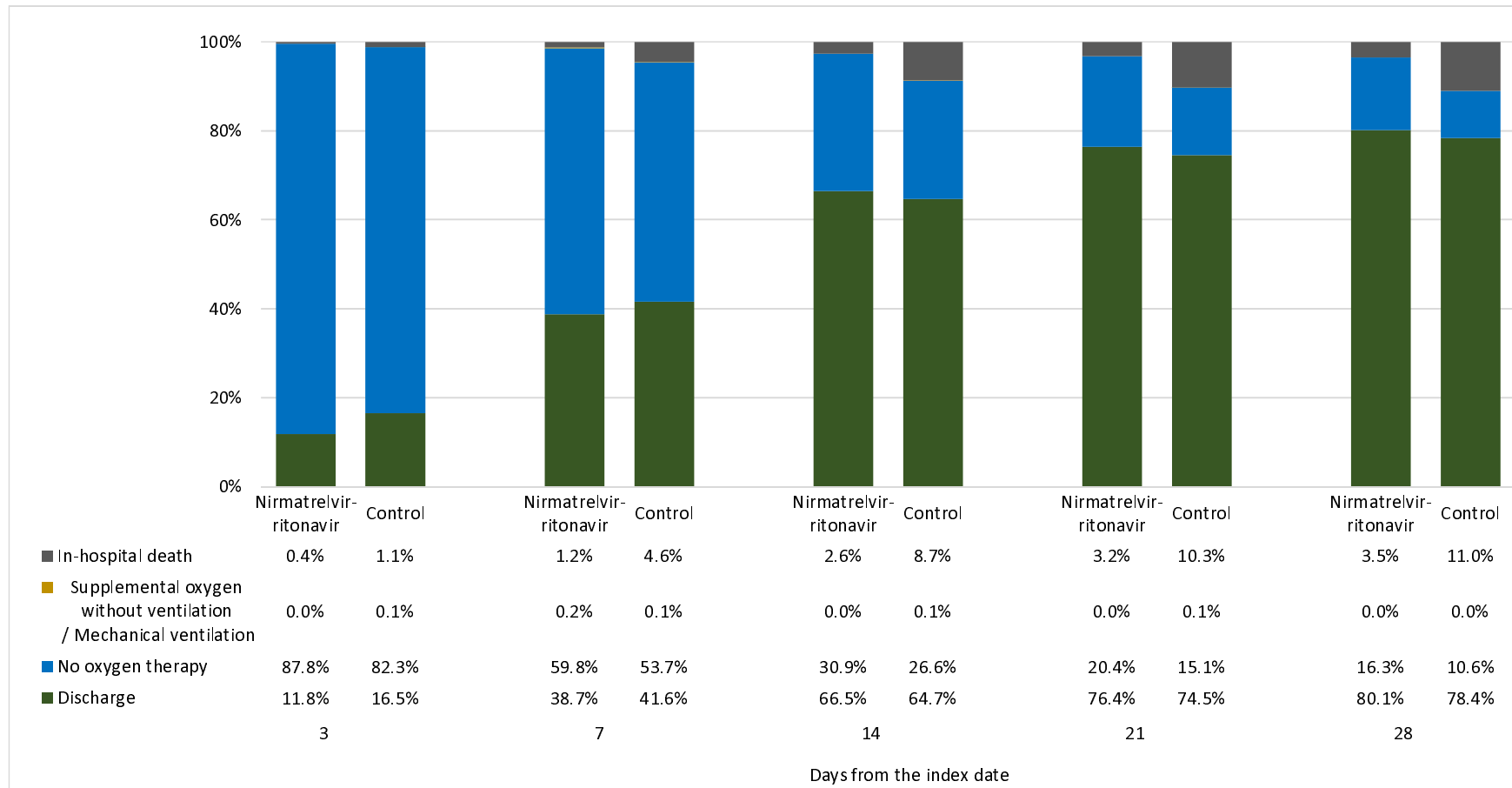


Table 1. Baseline characteristics of inpatients with COVID-19 in (a) molnupiravir and respective matched control groups, and (b) nirmatrelvir-ritonavir and respective matched control groups after 1:4 propensity score matching

Baseline characteristics	After 1:4 propensity score matching									
	Molnupiravir (n=2,116)		Control (n=8,396)		SMD	Nirmatrelvir-ritonavir (n=991)		Control (n=3,952)		SMD
	N / Mean	% / SD	N / Mean	% / SD		N / Mean	% / SD	N / Mean	% / SD	
Age, years †	79.1	13.6	79.2	14.9	0.00	77.2	14.0	77.8	16.2	0.04
18-40	38	(1.8%)	248	(3.0%)		30	(3.0%)	168	(4.3%)	
40-65	288	(13.6%)	1,095	(13.0%)	0.08	147	(14.8%)	584	(14.8%)	0.07
>65	1,790	(84.6%)	7,053	(84.0%)		814	(82.1%)	3,200	(81.0%)	
Sex										
Male	1,083	(51.2%)	4,257	(50.7%)	0.01	503	(50.8%)	1,957	(49.5%)	0.02
Female	1,033	(48.8%)	4,139	(49.3%)		488	(49.2%)	1,995	(50.5%)	
Pre-existing comorbidities										
Charlson's Index †	5.8	2.0	5.8	2.1	0.04	5.1	1.7	5.1	1.9	0.00
1-4	499	(23.6%)	2,046	(24.4%)		333	(33.6%)	1,283	(32.5%)	
5-6	938	(44.3%)	3,693	(44.0%)	0.02	490	(49.5%)	1,978	(50.1%)	0.03
7-14	679	(32.1%)	2,657	(31.7%)		168	(17.0%)	691	(17.5%)	
Previous SARS-CoV-2 infection	0	(0.0%)	0	(0.0%)	NA	0	(0.0%)	0	(0.0%)	NA
Fully vaccinated*	141	(6.7%)	537	(6.4%)	0.01	100	(10.1%)	375	(9.5%)	0.02
Concomitant treatments initiated at admission										
Antibiotics	239	(11.3%)	943	(11.2%)	0.00	165	(16.6%)	667	(16.9%)	0.01
Immunomodulators	322	(15.2%)	1,312	(15.6%)	0.01	121	(12.2%)	496	(12.6%)	0.01
Dexamethasone	292	(13.8%)	1,190	(14.2%)	0.01	101	(10.2%)	399	(10.1%)	0.00
Other systemic steroid	24	(1.1%)	99	(1.2%)	0.00	23	(2.3%)	89	(2.3%)	0.00
Interferon-β-1b	17	(0.8%)	59	(0.7%)	0.01	4	(0.4%)	13	(0.3%)	0.01
Baricitinib	2	(0.1%)	8	(0.1%)	0.00	7	(0.7%)	18	(0.5%)	0.03
Tocilizumab	0	(0.0%)	3	(0.0%)	0.03	0	(0.0%)	2	(0.1%)	0.03

Laboratory parameters at admission†										
Cycle threshold value at admission, cycle	22.9	6.2	22.8	7.4	0.01	23.4	6.9	22.9	7.9	0.06
<20	767	(36.3%)	3,065	(36.5%)		365	(36.8%)	1,502	(38.0%)	
20-<30	1,044	(49.3%)	4,136	(49.3%)	0.01	430	(43.4%)	1,722	(43.6%)	0.04
30-<35	173	(8.2%)	677	(8.1%)		129	(13.0%)	491	(12.4%)	
≥35	132	(6.2%)	518	(6.2%)		67	(6.8%)	237	(6.0%)	
Lactate dehydrogenase, U/L	269.8	186.3	270.5	109.3	0.01	252.2	126.2	251.6	81.6	0.01
C-reactive protein, mg/L	52.8	54.2	54.9	49.2	0.04	43.3	49.6	44.4	44.8	0.03
Lymphocyte, ×10 ⁹ /L	1.1	1.1	1.1	1.4	0.00	1.2	2.0	1.2	2.2	0.01

Notes: ACEI/ARB = angiotensin-converting enzyme inhibitors / angiotensin receptor blockers; NA = not applicable; NSAID = non-steroidal anti-inflammatory drugs; SD = standard deviation; SMD = standardized mean difference

* Fully vaccinated patients were defined as those with at least 2 doses of Comirnaty or 3 doses of CoronaVac.

† Age, Charlson Comorbidity Index, and laboratory parameters at admission are presented in mean ± SD.

Table 2. Hazard ratios of clinical and virologic outcomes for a) molnupiravir users versus their matched controls, and b) nirmatrelvir/ritonavir users versus their match controls, and differences in hospital length of stay between the groups amongst discharged survivors

Outcomes	Molnupiravir (N=2,116)					Control (N=8,396)					Molnupiravir vs Control		
	Cumulative incidence		Crude incidence rate (Events / 10,000 person-days)			Cumulative incidence		Crude incidence rate (Events / 10,000 person-days)			HR†	95% CI	P-value
	New events	Rate	Estimate	95% CI	Person-days	New events	Rate	Estimate	95% CI	Person-days			
Composite progression outcome*	189	8.9%	22.24	(19.18, 25.64)	84,988	1,365	16.3%	37.68	(35.70, 39.73)	362,289	0.53	(0.46, 0.62)	<0.001
All-cause mortality	188	8.9%	22.09	(19.04, 25.48)	85,108	1,334	15.9%	36.69	(34.75, 38.71)	363,601	0.55	(0.47, 0.63)	<0.001
Invasive mechanical ventilation	9	0.4%	1.06	(0.48, 2.01)	85,006	114	1.4%	3.15	(2.59, 3.78)	362,435	0.31	(0.16, 0.61)	<0.001
Intensive care unit admission	1	0.0%	0.12	(0.00, 0.65)	85,090	7	0.1%	0.19	(0.08, 0.40)	363,423	NA	NA	NA
Lower viral load (cycle threshold value ≥30 cycles)	320	17.7%	148.91	(133.04, 166.15)	21,490	1,072	15.1%	109.60	(103.13, 116.36)	97,814	1.21	(1.07, 1.37)	0.001
			Mean	95% CI				Mean	95% CI		Diff	95% CI	P-value
Hospital length of stay, days			10.85	(10.47, 11.23)				10.90	(10.67, 11.12)		-0.04	(-0.52, 0.43)	0.86
Outcomes	Nirmatrelvir-ritonavir (N=991)					Control (N=3,952)					Nirmatrelvir-ritonavir vs Control		
	Cumulative incidence		Crude incidence rate (Events / 10,000 person-days)			Cumulative incidence		Crude incidence rate (Events / 10,000 person-days)			HR†	95% CI	P-value
	New events	Rate	Estimate	95% CI	Person-days	New events	Rate	Estimate	95% CI	Person-days			
Composite progression outcome*	40	4.0%	11.65	(8.33, 15.87)	34,324	481	12.2%	27.34	(24.95, 29.90)	175,936	0.33	(0.24, 0.46)	<0.001
All-cause mortality	38	3.8%	11.04	(7.81, 15.16)	34,412	472	11.9%	26.78	(24.42, 29.31)	176,265	0.32	(0.23, 0.45)	<0.001
Invasive mechanical ventilation	6	0.6%	1.75	(0.64, 3.80)	34,324	35	0.9%	1.99	(1.39, 2.77)	175,936	0.69	(0.29, 1.65)	0.405
Intensive care unit admission	0	0.0%	0.00	NA	34,412	1	0.0%	0.06	(0.00, 0.32)	176,246	NA	NA	NA
Lower viral load (cycle threshold value ≥30 cycles)	147	18.5%	181.84	(153.63, 213.73)	8,084	509	15.7%	129.66	(118.64, 141.43)	39,256	1.25	(1.04, 1.50)	0.015
			Mean	95% CI				Mean	95% CI		Diff	95% CI	P-value
Hospital length of stay, days			9.52	(9.02, 10.02)				10.22	(9.91, 10.52)		-0.70	(-1.37, -0.04)	0.039

Notes: CI = confidence interval; HR = hazard ratio; NA = not applicable

HR were estimated only when the number of events in both groups were more than or equal to 2.

† HR >1 (or <1) indicates oral antiviral users had higher (lower) risk of outcome or quick (slower) time to lower viral load compared to the matched control group.

* Composite progression outcome includes all-cause mortality, invasive mechanical ventilation, and intensive care unit admission.

Table 3. Hazard ratios of clinical and virologic outcomes for molnupiravir users versus nirmatrelvir-ritonavir users, and differences in hospital length of stay between the groups amongst discharged survivors

Outcomes	Molnupiravir (N=967)		Nirmatrelvir- ritonavir (N=967)		Molnupiravir vs Nirmatrelvir- ritonavir		
	Cumulative incidence		Cumulative incidence		HR [†]	95% CI	P-value
	New events	Rate	New events	Rate			
Composite progression outcome*	58	6.0%	38	3.9%	1.44	(0.96, 2.18)	0.078
All-cause mortality	58	6.0%	36	3.7%	1.53	(1.01, 2.31)	0.047
Invasive mechanical ventilation	1	0.1%	5	0.5%	NA	NA	NA
Intensive care unit admission	0	0.0%	0	0.0%	NA	NA	NA
Lower viral load (cycle threshold value ≥ 30 cycles)	132	16.5%	140	17.9%	0.88	(0.69, 1.11)	0.281
Hospital length of stay, days					Diff	95% CI	P-value
					0.83	(0.07, 1.58)	0.032

Notes: CI = confidence interval; HR = hazard ratio

HR were estimated only when the number of events in both groups were more than or equal to 2.

[†] HR >1 (or <1) indicates molnupiravir users had higher (lower) risk of outcome or quick (slower) time to lower viral load compared to the nirmatrelvir-ritonavir users.

* Composite progression outcome includes all-cause mortality, invasive mechanical ventilation, and intensive care unit admission.

