

1 PRIMETIME: an epidemiological model for informing diet and obesity policy

2

3 Linda J Cobiac

4 Senior Research Fellow

5 School of Medicine and Dentistry

6 Griffith University

7

8 Cherry Law

9 Lecturer

10 Department of Agri-Food Economics and Marketing

11 University of Reading

12

13 Peter Scarborough

14 Professor of Population Health

15 Nuffield Department of Population Health

16 University of Oxford

17

18 Funding:

19 This project was supported by the NIHR Biomedical Research Centre at Oxford (IS-BRC-1215-20008)

20 and an NIHR project grant for an evaluation of the UK Soft Drinks Industry Levy (16/130/01).

21

NOTE: This preprint reports new research that has not been certified by peer review and should not be used to guide clinical practice.

22 Abstract

23 **Background:** Mathematical modelling can play a vital role in guiding public health action. In this paper,
24 we provide an overview of the revised and updated PRIMETIME model, a tool for evaluating health
25 and economic impacts of policies impacting on diet and obesity. We provide guidance on populating
26 PRIMETIME with country-specific data; and illustrate its validation and implementation in evaluating a
27 combination of interventions in the UK: a sugar-sweetened beverage (SSB) tax; a ban on television
28 advertising of unhealthy foods; and a weight loss program.

29 **Methods:** PRIMETIME uses routinely available epidemiological data to simulate the effects of changes
30 in diet and obesity on 19 non-communicable diseases, in open- or closed-population cohorts, over
31 time horizons from 1 year to a lifetime. From these simulations, the model can estimate impact of a
32 policy on population health (obesity prevalence, cases of disease averted, quality-adjusted life years),
33 health and social care costs, and economic measures (net monetary benefit, cost-effectiveness ratios).
34 We populated PRIMETIME with UK data and validated epidemiological predictions against two
35 published data collections. We then evaluated three current obesity intervention policies based on
36 estimates of effectiveness from published evaluation studies.

37 **Results:** There was considerable variation in the modelled impact of interventions on prevalence of
38 obesity and subsequent changes in health and the need for health care: restrictions on TV advertising
39 of unhealthy foods to children led to the largest reductions in obesity prevalence; but the SSB tax,
40 which also targeted adults, had the biggest benefits in reducing obesity-related disease; and the
41 weight loss program, while having very small impact on obesity prevalence at the population scale,
42 had large and immediate benefits in improving health and reducing health sector spending. From a
43 health sector perspective, the combination of interventions produced a favourable net monetary
44 benefit of £31,400 (12,200 to 50,700) million. But the combined effect in reducing prevalence of
45 overweight and obesity, was not estimated to reach more than 0.81 percentage points (95%

46 uncertainty interval: 0.21 to 1.4) for males and 0.95 percentage points (0.24 to 1.7) for females by
47 2050.

48 **Conclusions:**

49 Diet and obesity interventions have the potential to improve population health and reduce health
50 sector spending both immediately and in the long-term. Models such as PRIMETIME can be used to
51 evaluate the economic merits of intervention strategies and determine how best to combine
52 interventions to achieve maximum population benefit. But with almost a third of children and two-
53 thirds of adults currently overweight or obese, we need to broaden the application of public health
54 models to evaluating the structural and systemic changes that are needed in our society to address
55 the underlying drivers of the obesity epidemic.

56

57 Introduction

58 Overweight and obesity have been recognised as a cause of poor health for over 2000 years.[1] But in
59 the early times, it is likely the overall prevalence of obesity in the population was low; with
60 malnutrition and underweight a greater cause of ill-health and premature loss of life. It is only in the
61 last two decades that the number of overweight and obese adults worldwide have outnumbered
62 those who are underweight.[2] Globally, 39% of adults and 18% of children and adolescents are now
63 estimated to be overweight or obese.[3] This is associated with an excess 4.7 million deaths and 147.7
64 million disability-adjusted life years, with around 90% of this burden due to cardiovascular diseases,
65 diabetes, related kidney diseases, and cancers.[4]

66 Like many high-income countries, the United Kingdom has been at the leading edge of the transition
67 to obesity. By the time the World Health Organization recognised the growing prevalence of
68 overweight and obesity as a 'global epidemic' in 1998, around 3 in 5 adults in England were already
69 either overweight or obese.[5] While successive governments have attempted to address the problem
70 over the last 30 years, including 14 strategy documents and 689 proposed policies and programs,
71 efforts have so far failed to turn the tide.[6, 7] Although rapid upwards trends in obesity prevalence
72 of the 1990s had flattened by the early 2000s, projection models suggest that prevalence of
73 overweight and obesity will remain high until at least 2035, without more effective action.[8]

74 Mathematical modelling can play a vital role in guiding public health action,[9] as we have witnessed
75 in the COVID-19 pandemic. While an epidemic of obesity may be slower-moving than an epidemic of
76 an infectious disease, the informative value of modelling is no less important. Models can help us
77 understand what the likely consequences of an intervention are, how confident we can be in the
78 predicted outcomes, and what are the risks associated with the decision to act (or not act).[10] In the
79 absence of modelling, decision-making is little more than blind guesswork; but modelling will only be
80 of value if the model's design, its inputs and outputs are clearly communicated, and there is

81 transparency in the assumptions that have been made, whether explicit in model parameters or
82 implicit in the structural design.[9, 10]

83 PRIMETIME is an epidemiological modelling tool that was developed in the UK for simulating diet and
84 obesity interventions and scenarios. The model was initially developed in 2014 for examining impacts
85 of changes in diet and obesity on population health, including non-communicable disease rates and
86 life expectancy,[11] and this was later expanded to include impacts on quality of life and costs of
87 health and social care.[12] The model has been used to examine potential impacts of a range of
88 interventions and scenarios, including a targeted weight loss program, regulation of television
89 advertising of unhealthy foods to children, salt reduction, evaluating changes to dietary guidelines and
90 identifying most environmentally sustainable dietary patterns.[11-16]

91 In recent years, we have made a number of updates to the PRIMETIME model. These include new
92 features to capture background trends in obesity and disease rates, as well as updates of model
93 parameters to incorporate the latest evidence on risks of disease associated with diet and obesity,
94 and to capture the latest data on risk factor and disease rates in the UK. In addition, we have modified
95 the cohort simulation to include options for both open- and closed-cohort simulation. While
96 previously a closed-cohort simulation model, allowing users to examine changing health and cost
97 consequences for an adult population cohort ageing through time, PRIMETIME now additionally
98 incorporates open-cohort simulation of outcomes for children and future birth cohorts out to 2050.
99 This feature enables users to examine impacts of interventions on population prevalence of
100 overweight and obesity and population rates of disease into the future, and potentially facilitates
101 linkage of PRIMETIME with economic and environmental simulation models.

102 In this paper we describe the updated PRIMETIME model and illustrate its use in evaluating a
103 combination of interventions: a sugar-sweetened beverage tax; a ban on television advertising of
104 unhealthy foods; and a weight loss program. These are all interventions that have been implemented
105 or recommended in the government's latest obesity strategy.[17] This work is not intended to be a

106 comprehensive evaluation of all potential obesity intervention strategies, rather the aim is to provide
107 transparency on the model's design and input parameters, to illustrate how the model can be used,
108 and discuss how this and other modelling may be developed and better integrated into policy in the
109 future.

110 Methods

111 The PRIMETIME model

112 Model Design

113 The PRIMETIME modelling approach (Figure 1) consists of three interlinked components: (1) a risk
114 factor exposure module, which quantifies the effect of change in prevalence of one or more risk
115 factors on incidence of related diseases; (2) a series of disease models, which simulate changing
116 incidence, prevalence and mortality of diseases related to the modelled risk factors; (3) a lifetable,
117 which simulates overall impacts on the population, health and social care system, due to the changing
118 disease epidemiology.

119 Risk factor exposure

120 When an intervention is simulated in PRIMETIME, the magnitude of impact on disease associated with
121 a risk factor (e.g. high body mass index) depends on a combination of variables: (1) the baseline
122 population exposure to the risk factor; (2) the measured effect of the intervention on exposure, and
123 the proportion of the population who stand to benefit; and (3) the magnitude of the relative risk of
124 disease associated with the risk factor. This impact is quantified by the population impact fraction
125 (PIF):[18]

$$126 \quad PIF = \frac{\int p RR(x) dx - \int p'(x) RR(x) dx}{\int p(x) RR(x) dx}$$

127 where: x is the units of a risk factor (e.g. body mass index); $p(x)$ is the prevalence of that risk factor;
128 $p'(x)$ is the prevalence of the risk factor after a scenario or intervention; and $RR(x)$ is the relative risk

129 of disease associated with the risk factor. The PIF is age- and sex-dependent. Where there are
130 background trends in the risk factor (e.g. obesity), the PIF is also time-dependent. Where diseases are
131 influenced by multiple independent risk factors, PRIMETIME combines the PIFs multiplicatively:

132
$$PIF_{combined} = 1 - \prod_{i=1}^n (1 - PIF_i)$$

133 for $i = 1 \dots n$ diseases.

134 The relative risks of disease associated with each risk factor in PRIMETIME, have been drawn from
135 systematic reviews and meta-analyses. For modelling purposes, it is necessary to establish dose-
136 response relationships across the entire distribution of risk factor exposure in the population of
137 interest. Large, long-term randomised controlled trials are rare, and where they do exist, they provide
138 only limited variance between control and intervention arms in the risk factor of interest. Therefore,
139 establishing causality in the relationship between a risk factor and condition relies heavily on
140 prospective cohort studies, and evaluation of the entirety of evidence against criteria, such as those
141 of Bradford-Hill – strength and consistency of evidence, specificity, temporality, biological gradient,
142 plausibility, coherence, analogy and supporting experimental evidence.[19] In developing and
143 updating PRIMETIME we have preferentially drawn on systematic reviews and meta-analyses that take
144 these factors into account.

145 Disease models

146 Diet- and obesity-related diseases currently included in PRIMETIME include ischaemic heart disease,
147 ischaemic stroke, intracerebral haemorrhage, hypertensive heart disease, diabetes mellitus type 2,
148 colorectal cancer, breast cancer, uterine cancer, oesophageal cancer, kidney cancer, pancreatic
149 cancer, liver cancer, multiple myeloma, asthma, low back pain, osteoarthritis of the hip and knee,
150 depression, atrial fibrillation/flutter, and gallbladder/biliary diseases.

151 Cardiovascular diseases, diabetes and cancers are modelled in a three-state Markov model, in which
152 the population is either in a healthy state, a diseased state or dead (from the disease or from other
153 un-related causes).[20] The initial distribution of the population between the healthy and diseased
154 states is determined by the prevalence of the disease in the baseline year. Further transition between
155 states over time is based on annual rates of incidence, remission and case fatality. However, for the
156 remaining PRIMETIME diseases that are chiefly characterised by morbidity rather than mortality (low
157 back pain, osteoarthritis, depression, and gallbladder and biliary diseases) we do not model
158 progression to mortality.

159 PRIMETIME is designed to evaluate the effects of interventions, scenarios or system shocks in
160 *preventing* disease and the consequent effects on population health and society. Therefore, we model
161 the effects of a change in risk factor exposure, which is quantified by the PIF, as a change in disease
162 incidence rate (I):

163
$$I'_{lag} = I \times (1 - PIF_{combined})$$

164 The calculation of I'_{lag} allows for a time lag in the reversal of disease risk. While there is an absence
165 of direct evidence examining the time course for changes in disease rates following population
166 changes in dietary intake or obesity, the World Health Organization has estimated it takes three to
167 five years to achieve full reversal of stroke risk and around two-thirds of heart disease risk, from trials
168 of blood pressure treatments.[21] Risk reversibility of cancers is likely to be longer, based on follow-
169 up of patients around ten years after bariatric surgery or intentional weight loss.[22]

170 Population lifetable

171 In the population lifetable component of PRIMETIME, the population is divided into five-year age and
172 sex cohorts that are simulated through time. In a closed cohort simulation, the model is typically run
173 until everyone in the starting population is dead. In an open cohort simulation, which incorporates

174 future birth cohorts, the model can be run until the desired time horizon is reached or until there are
175 no further birth cohorts entering the simulation.

176 Each population age- and sex- cohort is simulated in a proportional multi-state lifetable.[23] This
177 consists of a standard lifetable model, which simulates the survival experience of a cohort based on
178 age- and sex-specific mortality rates, connected with the series of disease-specific models described
179 above. There are three key actions that occur in the proportional multi-state lifetable model.

180 First, when we simulate a change in prevalence of obesity, this influences incidence of obesity-related
181 diseases, which, over time, lead to changes in disease-specific mortality rates. These changes in
182 disease-specific mortality rates modify the total mortality rate in the main lifetable, while holding the
183 proportion of mortality due to all other causes (i.e. causes not related to obesity) constant.

184 Second, everyone in the lifetable cohort who is alive has a utility weight, which reflects average
185 'quality of life' at each age and sex. In the same way that total mortality in the lifetable is modified by
186 changes in disease-specific mortality, the total utility in the lifetable is modified by changes in disease-
187 specific utility, which are derived in the disease-specific models from the change in incidence and/or
188 prevalence of the disease and the disease-specific utility weight(s).

189 Third, everyone in the lifetable cohort who is alive has an average cost associated with their health
190 care. This cost increases or decreases, based on changes in rates of obesity-related diseases, which
191 are derived in the disease-specific models from the change in incidence and/or prevalence of the
192 disease and the disease-specific health care cost.

193 Together, the lifetable, disease-specific and risk factor exposure models simulate each cohort ageing,
194 over time, until everyone is dead, has reached 100 years of age, or the simulation has reached the end
195 of its time horizon. From these simulations, PRIMETIME can determine the effect of a change in
196 prevalence of a risk factor on: (a) population life expectancy; (b) gain or loss of quality-adjusted life
197 years (QALYs); and (c) impact on costs to the health or social care system.

198 Country-specific input data

199 Population and mortality

200 PRIMETIME can be adapted for any country context with a number of country-specific inputs.

201 Population is entered by sex and 5-year age group, with the exception of the 0 to 4 year old group,

202 which is split into 0 year olds and 1 to 4 years olds to facilitate calculation of life expectancy at birth.

203 To run a closed cohort analysis, only the population in the baseline year of analysis is required. If

204 running an open cohort analysis, future cohorts of 0 to 4 years olds can be estimated from population

205 projections. The model currently has capacity to accept new entrants into the modelling until 2050.

206 PRIMETIME also requires mortality rates from all causes by sex and single year of age, from age 0 to

207 100+.

208 Both mortality rates and population numbers can be downloaded in the required format from the

209 Human Mortality Database[24] for 41 countries and, in some cases, also by population sub-groups,

210 e.g. by ethnicity. The Institute of Health Metrics Results Tool[25] also provides links to their collations

211 of population, mortality and life table data for Global Burden of Disease analyses, which is an

212 alternative source of data for countries not included in the Human Mortality Database or if within-

213 country data collections are not accessible. These sources currently provide data up to 2019.

214 Population estimates for later years (e.g. for open cohort analyses incorporating future birth cohorts)

215 are based on population projections. The United Nations provide a database of global population

216 projections if local estimates are not available.

217 Disease epidemiology

218 Population-specific disease rates can be derived from a variety of sources such as death and disease

219 registries and disease-specific studies. Alternatively, PRIMETIME users can draw on Global Burden of

220 Disease (GBD) syntheses of these sources. Cause-specific incidence, prevalence and mortality rates

221 can be downloaded, by age and sex, using the GBD Results Tool.[25] These data can be used in

222 PRIMETIME for non-commercial purposes under the Creative Commons Attribution-Non Commercial
223 4.0 International License.[26]

224 A key challenge in populating the PRIMETIME model is the requirement for cause-specific case fatality
225 rates. In the PRIMETIME model, the case fatality reflects the excess mortality of someone with the
226 disease compared with someone who does not have the disease. These rates are rarely reported,
227 however they can be derived from cause-specific incidence, prevalence and mortality rates, together
228 with population numbers and all-cause mortality rates, using the *disbayes* R package, which can be
229 found on the GitHub repository.[27] This package is recommended as, using a Bayesian approach, it
230 estimates case fatality using the same three-state model and assumptions that underpin disease
231 simulation in the PRIMETIME model, so consistency in approach is maintained.

232 Background trends in cause-specific incidence and case fatality rates can be estimated by fitting
233 models to rates derived over multiple years. The GBD Results Tool[25] contains yearly estimates of
234 rates from 1990.

235 Risk factor exposure

236 Prevalence of risk factors can be derived from population survey data. PRIMETIME is designed to take
237 the mean and standard deviation of the distribution of risk in the population, by age and sex. This
238 allows the population impact fraction to be calculated continuously (e.g. where the relative risk is
239 defined per unit of BMI) or categorically (e.g. where relative risks are defined for overweight and obese
240 categories of prevalence). There is also an option for taking background trends in risk factors into
241 account.

242 Derivation of risk factor prevalence and trends depend on the availability of survey data, which is
243 highly country-specific. Cobiac et al[8] provides an example of deriving trends in body mass index from
244 health survey data in England. However, some global collations of data also exist, such as the World
245 Health Organization Global Health Observatory[3] and the Global Dietary Database.[28]

246 Costs

247 There is currently no global database of age- and sex-specific costs of disease treatment in different
248 countries. For PRIMETIME analyses in the UK, the unit costs of treatment for the explicitly modelled
249 diseases and the average costs associated with health care for all other diseases, have been derived
250 from a range of administrative datasets. Briggs et al.[29] have published a detailed description of these
251 methods.

252 [Model Implementation](#)

253 Simulation options

254 PRIMETIME provides a number of options for evaluation. The user can:

- 255 – define discount rates for health and cost impacts;
- 256 – define time horizons for population simulation and for output of data;
- 257 – set time lags on the effects of a risk factor on diseases;
- 258 – include or exclude background trends in risk factors;
- 259 – include or exclude diseases; and
- 260 – select population cohorts for simulation (a closed cohort analysis only simulates outcomes for
261 the population alive in the baseline year of analysis, whereas an open cohort analysis also
262 simulates outcomes for those born in future years).

263 These choices depend on the purpose of the PRIMETIME simulation. For example, calculating cost-
264 effectiveness or return-on-investment of an intervention, will generally require discounting of cost
265 and health outcomes. Comparing cost-effectiveness of multiple preventive interventions can generally
266 be performed using a closed cohort simulation, since the relative performance of different
267 interventions is unlikely to be greatly impacted by the addition of future birth cohorts who will not
268 experience health benefits until well into the future. However, an open cohort simulation may be

269 preferred if PRIMETIME is being used to simulate impacts of a scenario on rates of obesity-related
270 diseases or costs of treating these diseases, over time into the future.

271 Scenario specification

272 PRIMETIME currently allows for simultaneous simulation of up to five scenarios or population sub-
273 groups. While the model can be run any number of times for different evaluations, simultaneous
274 simulation facilitates analyses where uncertainty in the relative order of or difference between
275 scenarios or sub-groups is important. For example, by simultaneously simulating outcome by quintile
276 of Index of Multiple Deprivation, it is possible to estimate uncertainty in the slope index of inequality,
277 a measure of health inequality.

278 Probabilistic Sensitivity Analysis

279 The PRIMETIME model is designed to be run iteratively. If only one iteration is performed, the model
280 will produce point-estimates of outputs based on the mean values of model input parameters.
281 However, when run many times, the model will randomly select from uncertain distributions around
282 input parameters to produce a range of outputs, from which mean or median values and 95%
283 uncertainty intervals can be determined. The degree of uncertainty in outputs depends on the number
284 of inputs that are uncertain, and the distribution of uncertainty around those inputs. As a rule-of-
285 thumb, we recommend running as many iterations as are required to achieve stability in outputs to
286 the desired number of significant figures. Typically, this is between 2000 and 5000 iterations.

287 [PRIMETIME evaluation of obesity interventions](#)

288 [Intervention specification](#)

289 We demonstrate use of the PRIMETIME model in evaluating three interventions for addressing obesity
290 in the UK population:

291 1. Implementing a Soft Drinks Industry Levy (SSB tax)

292 2. Banning television advertising of foods and drinks high in fat, sugar, and salt (HFSS) between
293 5:30 AM and 9:00 PM (TV ad bans).

294 3. Offering total diet replacement to adults (18+ years) with a BMI greater than 30 kg/m² (Weight
295 loss program).

296 Intervention effects were derived from previously published analyses as described in Table 1. For this
297 study, we evaluated the interventions individually and additionally evaluated a combination of all
298 three interventions, as if rolled out in the UK population from a baseline year of 2015.

299 UK data inputs

300 For the obesity intervention evaluation, we populated the PRIMETIME model with data for the UK.
301 Table 2 described the data sources and assumptions made, and Text S1 provides the data as entered
302 into PRIMETIME.

303 *Table 1 Intervention scenarios*

Target group	Per person effect	Source
SSB tax		
Whole population	-1.8 kcal (-3.1 to -0.50)*	Estimated from the results of interrupted time series analyses of weekly household reductions in purchasing of sugar in drinks before and after the SDIL,[30] assuming an average of 2.4 people per household,[31] and a calorie content of 3.75 kcal per gram of sugar.[32]
TV ad bans		
Children aged 5 to 17 years	-9.1 kcal (-18 to -0.50)*	Estimated by Mytton et al,[14] assuming a complete withdrawal of HFSS advertising between 5:30 AM and 9:00 PM, a mean ad duration of 25.9 seconds (standard

deviation 11.9 seconds) and an association between a child’s daily energy intake and ad viewing for high fat, sugar and salt foods and drinks of 14.2 kcal per minute (0.7 to 27.7).

We assumed that modelled changes in BMI at age 17 years would be sustained through adulthood.

Weight loss program

<p>Adults aged ≥18 years with a BMI>30 kg/m²</p>	<p>-7.2 kg (-9.4 to -4.9) at a cost of 2017GDP796 per person</p>	<p>Estimated by Kent et al.[13] from the results of a randomised controlled trial of a total diet replacement programme for weight management in primary care. We assumed a weight regain of 27.2 grams per month (18.4 to 35.9) based on the results of a systematic review and meta-analysis of trials reporting weight regain following weight loss intervention.[33] We assumed the intervention would be offered to all registered patients with a BMI>30kg/m². Rates of eligibility and willingness to participate, were based on the results of the randomised controlled trial.[34, 35]</p>
--	--	---

Combination

<p>As per individual interventions</p>	<p>As per individual interventions</p>	<p>The calorie effect of the SSB tax (via sugar reduction) and the calorie effect of the TV ad bans are assumed to be additive in childhood. As with the individual analysis of the TV ad bans intervention, the difference in BMI due to the intervention at age 17, is assumed to be maintained into adulthood when the interventions are</p>
--	--	---

combined. The combined analysis takes into account the impact of the SSB tax and TV ad bans on the proportion of adults who are obese and therefore eligible for the weight loss program.

NB. Values are expressed as means and 95% confidence intervals, except where otherwise noted.

* Impact on body weight (kg) estimated using energy balance model predictions from Hall et al.[36, 37]

304

305 *Table 2 PRIMETIME data inputs*

PRIMETIME data input	Source
Population numbers	UK population numbers were determined by 5-year age group and sex from the Human Mortality Database.[24] Future cohorts of 0-4 year olds were derived by sex from the Office for National Statistics (principal projection).[38]
All-cause mortality rates	UK all-cause mortality rates were taken from the Human Mortality Database,[24] by single year of age and sex.
Background trends in overweight and obesity	Predicted trends in overweight and obesity were taken from models fitted to 27 years of Health Survey for England data, by Cobiac et al.[8] We assumed BMI trends in PRIMETIME would follow the non-linear model in base case analyses and the linear model in sensitivity analyses.
Disease rates – incidence, case fatality and starting prevalence	Incidence and case fatality rates were derived from Global Burden of Disease[39] estimates of incidence, prevalence and mortality, using <i>disbayes</i> .[27] Spline models were used to smooth data by age.

Background trends in disease incidence and case fatality	We approximated average annual trends in incidence and case fatality rates, by sex and age group (0-34 years; 35-64 years; 65+ years), from the difference in rates between 1995 and 2005 for model validation, and between 2005 and 2015 for intervention analyses.
Relative risks	We derived relative risks of obesity-related diseases from systematic reviews that had been published up to January 2021.
Utility weights	Parameters for estimating disease-specific and background utility weights were taken from a UK catalogue of EQ-5D scores.[40]
Disease costs	<p>We estimated an average cost per prevalent case of each modelled disease, by determining: (a) the total costs of disease treatment from Department of Health and Social Care budget allocations to primary, hospital, community and specialised care services in England; then (b) dividing the total cost by the average number of prevalent cases.[25]</p> <p>We also estimated an overall average cost of health care from the total budget allocation for all diseases, divided by the number of people in the population.[24] Further details of these methods are provided in Text S2.</p> <p>The health care costs were estimated for the 2018-19 budget year and adjusted to the 2015 modelling baseline year using CPI adjustors.[41]</p>

306

307 [Model validation](#)

308 To validate the epidemiological modelling, we additionally populated PRIMETIME with UK data for a
309 baseline year of 2005, then ran the model forward in time to 2015 and compared simulated
310 prevalence estimates for all cardio-metabolic diseases and cancers with other published data. For

311 comparison we used: (1) GBD estimates of prevalence in the year 2015;⁷ and (2) estimates of
312 prevalence for the period 2010-2015, from an analysis of linked clinical datasets by Kuan et al.[42]

313 Intervention evaluation

314 To simulate impact of the interventions on obesity prevalence, we ran an open cohort analysis from
315 2015 to 2050, adding new entrants to the population based on UK population projections. To simulate
316 overall impact on population health (QALYs) and health care costs, we ran a closed cohort analysis
317 over the lifetime of the population alive in 2015. QALYs and costs were discounted using HM Treasury
318 rates of 3.5% costs and 1.5% health (0 to 30 years), 3% costs and 1.29% health (31-75 years) and 2.5%
319 costs and 1.07% health (76-125 years).[43] We also calculated the net monetary benefit of each
320 intervention and the combination of interventions, which reflects the value of each option in
321 monetary terms, assuming a willingness-to-pay threshold for health.[44] For these calculations we
322 assumed a value of £60,000 per QALY, as recommended by HM Treasury.[45]

323 Results

324 Model validation

325 Figure 2 illustrates the results of the model validation runs, and full results can be found in Table S1
326 (PRIMEtime vs. GBD) and Table S2 (PRIMEtime vs. Kuan et al) in the supplementary appendix (Text
327 S3). Overall, estimates from PRIMEtime were slightly higher than estimates from GBD for 13 out of 14
328 diseases, and slightly lower than estimates from Kuan et al for 12 out of 13 diseases (Kuan et al did
329 not have a comparable disease category for hypertensive heart disease). The absolute difference in
330 the prevalent proportion of the population with disease was less than 1 percentage point for 12 out
331 of 14 diseases in comparison with the GBD estimates, and for 11 out of the 13 diseases in the
332 comparison with the Kuan et al estimates. We found the largest percentage differences for diabetes
333 (Kuan et al 2.7 percentage points lower; GBD 2.5 percentage points higher) and atrial fibrillation and

334 flutter (Kuan et al 2.5 percentage points higher). The mean absolute percentage error across all
335 outcomes was 0.12 percentage points.

336 [Prevalence of overweight and obesity](#)

337 The modelling shows that all of the interventions are likely to reduce population prevalence of
338 overweight and obesity over time, but the pattern of impact varies between interventions (Figure 3).
339 Restricting television advertising of unhealthy foods has the largest impact in reducing overweight and
340 obesity overall, with effects concentrated during childhood. The reduction in prevalence starts at
341 around 0.31 percentage points (95% uncertainty interval: 0.021 to 0.58) for males and 0.34 percentage
342 points (0.023 to 0.65) for females, then increases over time as more children are born and exposed to
343 the intervention. The sugar-sweetened beverage tax also has a slightly smaller impact; benefiting both
344 children and adults, it achieves a reduction in prevalence of overweight and obesity of around 0.19
345 percentage points (0.058 to 0.31) for males and 0.20 percentage points (0.063 to 0.34) for females
346 initially, and remains relatively stable through time (Text S3 – Table S3). The weight loss program,
347 while very effective for the obese adult population who participate in the program, has the smallest
348 overall effect on population prevalence of overweight and obesity, initially reducing prevalence by just
349 0.022 percentage points (0.015 to 0.030) for males and 0.027 percentage points (0.018 to 0.037) for
350 females, with lessening benefit over time due to weight regain among participants. The best outcomes
351 are achieved by combining the interventions, which leads to an initial reduction in population
352 prevalence of overweight and obesity of 0.51 percentage point (0.20 to 0.82) for males and 0.57
353 percentage points (0.22 to 0.90) for females. This reduction increases over time, to around 0.81
354 percentage points (0.21 to 1.4) for males and 0.95 percentage points (0.24 to 1.7) for females by the
355 end of the simulation in 2050.

356 [Cases of disease](#)

357 Due to the modelled improvements in overweight and obesity prevalence, all of the modelled
358 interventions lead to a reduction in incidence of disease (Table 3). The size of the impact of each

359 intervention, in the first ten years of implementation is strongly influenced by the nature of the target
 360 population. The sugar-sweetened beverage tax, which is designed to have an effect across all groups
 361 in the population, has the largest benefits in reducing disease in the first ten years. The biggest impact
 362 is on cases of type 2 diabetes, followed by cardiovascular diseases and cancers. While restricting
 363 television advertising of unhealthy foods to children has larger impacts on overweight and obesity
 364 than the SSB tax, it has relatively little effect on cases of disease in the first ten years, since it is
 365 targeting children, who will not experience the benefits of disease prevention until some years into
 366 the future. The weight loss program, on the other hand, has immediate benefits in reducing cases of
 367 type 2 diabetes, cardiovascular diseases and cancers, since it is targeting obese adults, who are at
 368 highest risk of developing obesity-related diseases. When combined, the interventions are predicted
 369 to prevent 15,000 (95% uncertainty interval: 6,600 to 24,000) cases of type 2 diabetes, 4,900 (2,200
 370 to 7,700) cases of cardiovascular diseases and 460 (220 to 720) cases of cancer in the first ten years of
 371 implementation.

372 *Table 3 Impact of the intervention scenarios on incident cases of disease in the first ten years (rounded to two significant*
 373 *figures).*

Disease group*	Female	Male	Total
SSB tax			
Type 2 diabetes	-5,300 (-9,200 to - 1,600)	-6,400 (-11,000 to - 1,900)	-12,000 (-20,000 to - 3,500)
Cardiovascular diseases	-1,500 (-2,600 to - 480)	-2,300 (-4,000 to - 730)	-3,900 (-6,600 to - 1,200)
Cancers	-240 (-410 to -75)	-110 (-190 to -33)	-350 (-600 to -110)
TV ad bans			
Type 2 diabetes	0.0039 (0.0003 to 0.0078)	0.0047 (0.0003 to 0.0094)	0.0086 (0.0005 to 0.017)
Cardiovascular diseases	-0.16 (-0.32 to -0.011)	-0.23 (-0.46 to -0.015)	-0.38 (-0.79 to -0.026)

Cancers	-6.9 (-14 to -0.48)	-1.3 (-2.6 to -0.08)	-8.2 (-16 to -0.56)
Weight loss program			
Type 2 diabetes	-1,500 (-2,200 to -920)	-1,700 (-2,400 to -1,000)	-3,200 (-4,600 to -1,900)
Cardiovascular diseases	-440 (-640 to -270)	-650 (-930 to -400)	-1,100 (-1,600 to -670)
Cancers	-73 (-100 to -46)	-32 (-46 to -20)	-110 (-150 to -66)
Combination			
Type 2 diabetes	-6,800 (-11,000 to -3,100)	-8,100 (-13,000 to -3,500)	-15,000 (-24,000 to -6,600)
Cardiovascular diseases	-2,000 (-3,100 to -890)	-3,000 (-4,700 to -1,300)	-4,900 (-7,700 to -2,200)
Cancers	-320 (-500 to -150)	-140 (-230 to -67)	-460 (-720 to -220)

* Table S4 in the supplementary appendix (Text S3) shows modelled impact on individual diseases within each group.

374

375 [Population health and health care costs](#)

376 When modelled over the lifetime of the UK population, all of the interventions lead to a health gain
 377 for the population and a reduction in health care spending, and all interventions have a positive net
 378 monetary benefit from a health sector perspective (Table 4). The combination of interventions is
 379 estimated to produce a population health gain of 519,000 (201,000 to 837,000) QALYs and offset £299
 380 (£121 to £515) million in health sector spending, achieving a net monetary benefit of £31,400 (12,200
 381 to 50,700) million.

382 *Table 4 Lifetime impact of the intervention scenarios on population health and health care costs, and the net monetary benefit*
383 *of the scenarios*

Scenario	Health impact (QALYs)	Cost offsets (£million)	Net monetary benefit (£million)
SSB tax	200,000 (61,200 to 345,000)	-128 (-237 to -37.5)	12,100 (3,710 to 20,900)
TV ad bans	302,000 (19,900 to 588,000)	-159 (-331 to -11.2)	18,300 (1,200 to 35,600)
Weight loss program	18,600 (8,580 to 33,300)	-12.2 (-26.2 to -2.82)	1,130 (519 to 2,020)
Combination	519,000 (201,000 to 837,000)	-299 (-515 to -121)	31,400 (12,200 to 50,700)

384

385 [Uncertainty](#)

386 Uncertainty around intervention effects on sugar intake (SSB tax), calorie intake (TV ad bans) or weight
387 change (Weight loss program) have the biggest influence on uncertainty in the model predictions of
388 health gain, health sector cost offsets and net monetary benefit (Figure 4). The uncertainty in relative
389 risks of obesity-related diseases, utility values quantifying quality of life, and disease unit costs are less
390 influential. Results are similar when the interventions are evaluated individually (Text S3 – Figure S1).

391 [Sensitivity](#)

392 The modelled net monetary benefit remained positive in all sensitivity scenarios we evaluated (Text
393 S3 – Figure S2). The magnitude of net monetary benefit is most strongly influenced by the preferred
394 discount rates. The outcome is more favourable with lower or no discounting, since this effectively
395 gives more weight to future health gains and averted health care costs. Whereas the net monetary
396 benefit is less favourable (although still positive) with a higher discount rate overall, or when the rate
397 of discounting of health gains is increased more than costs, (e.g. when changing to NICE rates). Net

398 monetary benefit does not vary substantially with variations in the modelled background trends in
399 BMI distribution, background trends in disease incidence and case fatality rates, and assumed lags in
400 effect of BMI changes on disease incidence. Increasing the number of modelled obesity-related
401 diseases included in the simulation does influence the magnitude of impact on health and health care
402 costs, but the overall impact on net monetary benefit is small.

403 Discussion

404 Main findings and interpretation

405 In this paper we have described the PRIMETIME model, a tool for evaluating health and economic
406 impacts of diet and obesity policies. The model uses routinely available epidemiological data to
407 simulate the effects of changes in diet and obesity on 19 non-communicable diseases, over the lifetime
408 of the population, or out to the year 2050 if including future birth cohorts. From these simulations,
409 the model can estimate impact of a policy on population health (overweight and obesity prevalence,
410 cases of disease averted, quality-adjusted life years gained), health and social care costs, and
411 economic measures (net monetary benefit, cost-effectiveness ratios).

412 The PRIMETIME modelling of a SSB tax, a ban on television advertising of unhealthy foods, and a weight
413 loss program illustrates the potentially wide variation in impact of interventions on prevalence of
414 overweight and obesity, and subsequent changes in health and the need for health care. This variation
415 is due to both the characteristics of the intervention and population that is targeted.

416 While reductions in TV advertising of unhealthy foods to children has the largest impact in reducing
417 prevalence of overweight and obesity, the SSB tax has much larger and more immediate benefits in
418 reducing disease. The weight loss program also has immediate benefits in improving health despite
419 relatively small benefits in reducing overweight and obesity on a population-scale. The variability in
420 impact, both by age and over time, demonstrates the importance of using models to determine how
421 best to combine intervention strategies to achieve maximum population benefit.

422 From a health sector perspective, the modelling shows that all three policies will likely have a positive
423 net monetary benefit. This would suggest that all three of the obesity interventions are a good
424 investment for HM Treasury. However, even when combined these three interventions are predicted
425 to reduce prevalence of overweight and obesity by less than 1 percentage point by 2050. With almost
426 a third of children and two-thirds of adults currently overweight or obese,[5] much more will be
427 needed to address the problem.

428 [Study strengths and limitations](#)

429 While PRIMETIME is not primarily designed for forecasting disease rates, the accuracy of the
430 underlying epidemiological model will nevertheless impact on the absolute magnitude of its outputs,
431 such as QALYs and health care costs. Therefore it is reassuring that in validation PRIMETIME simulated
432 future prevalence of diseases close to estimates from GBD and Kuan et al.[42] (<1 percentage point
433 difference for 85% of estimates). For the majority of diseases, prevalence estimates from PRIMETIME
434 were slightly higher than those from GBD and slightly lower than those from Kuan et al. This may partly
435 relate to differences in the way that the two comparison studies have arrived at their estimates. The
436 GBD collates data from a variety of sources, such as surveys, registries and published studies, and uses
437 statistical models to estimate country-specific disease rates that are regionally and globally consistent.
438 Whereas, Kuan et al have derived prevalence by analysing electronic health records from the primary
439 care Clinical Practice Research Datalink linked with hospital admissions records from Hospital Episode
440 Statistics, using a newly developed system of algorithmic phenotyping to identify cases of disease.[46]
441 The linked databases are considered representative of the English population,[47] which constitutes
442 around 85% of the UK population that we simulated in PRIMETIME.

443 Other reasons for differences between PRIMETIME predictions and later estimates may include
444 changes in incidence or case fatality rates that were not captured by trend estimates (e.g. due to
445 increased or decreased funding of prevention or treatment practices) and assumptions embedded in
446 the epidemiological modelling. PRIMETIME simulates the epidemiology using a *proportional* multi-

447 state lifetable design.[23] In a standard multi-state lifetable model, an individual or population cohort
448 transition from one state to another (e.g. from healthy, to having disease *X*, to dying from disease *X*
449 or other causes). But as additional diseases are added to the simulation, the model quickly becomes
450 intractable due the need for additional disease states (e.g. having disease *X* only, having disease *Y* only
451 and having diseases *X* and *Y*) and data required to quantify rates of transition between these many
452 states. A *proportional* multi-state lifetable model overcomes this problem by allowing the individual
453 or population cohort to proportionally exist in multiple disease states. This approach potentially has
454 an advantage in modelling health impacts of *preventive* interventions, where a change in population
455 exposure to a risk factor, can influence many diseases. However, implicit in allowing a population
456 cohort to proportionally exist across multiple disease states is the assumption that the diseases are
457 independent. In some cases, this assumption is clearly violated. For example, prevalence of diabetes
458 increases risk of both heart disease[48] and stroke,[49] even when adjusted for baseline
459 cardiovascular risks such as obesity. In PRIMETIME, we adjust for the dependence between diabetes
460 and cardiovascular disease outcomes, by treating diabetes as both a risk factor and a disease in the
461 model structure. But data to explicitly incorporate other possible relationships, such as between
462 cancer prevalence and cardiovascular outcomes, are limited.

463 While the proportional multi-state lifetable approach does involve some trade-offs, the methods are
464 widely used in modelling tools designed to evaluate health and economic impacts of diet and obesity
465 interventions (e.g.[50-55]). Models that do not take this approach, typically only simulate one disease
466 (e.g. the Coronary heart disease (CHD) policy model[56, 57]) or estimate changes in incidence and/or
467 mortality of diseases without addressing co-morbidity (e.g. the Foresight model,[58]) thus sacrificing
468 capacity to simulate changing effects on quality of life and health care costs through time.

469 PRIMETIME is primarily designed for scenario evaluation. It is a tool that can be used to compare future
470 impacts of policies, under a common set of assumptions about future unknowns, and to explore
471 uncertainties in potential outcomes, in order to help set priorities for action and better understand

472 risks associated with decisions. Uncertainty bounds reflect best estimates of the likely range of
473 outcomes, but will never capture impacts of future unpredictable events, such as the emergence of
474 new pandemic diseases. Thus, the true strength of simulation is in comparison of alternative policy
475 options under the same set of assumptions. And these assumptions must be updated as knowledge
476 develops. For example, the selection of diet- and obesity-related diseases in PRIMETIME, and
477 quantification of the dose-response relationships, as captured in Table S4 and Table S5
478 (supplementary appendix Text S1) should be regularly revisited and updated as new systematic
479 reviews and meta-analyses are published.

480 [Potential policy and research implications](#)

481 The three interventions we have evaluated in PRIMETIME are all components of the UK government's
482 latest obesity strategy.[17] The SSB tax was implemented as a Soft Drinks Industry Levy in 2018;[59]
483 and a 9pm watershed on advertising of high fat, salt and sugar foods, is scheduled to come into effect
484 at the end of 2022.[60] While weight loss programs for those who are already obese are
485 recommended, as of mid-2021, there do not appear to be specific plans for added funding. While the
486 modelling indicates that all three are a good investment, the relatively small overall impact on the
487 high prevalence of overweight and obesity in the UK suggests that much more will be required to
488 improve health and reduce the associated costs of care.

489 A broader range of interventions targeting dietary intake and obesity may be beneficial for health in
490 the UK, but it is likely that we also need to give greater consideration to the structural and systemic
491 changes that are needed in our society to address the underlying drivers of the obesity epidemic. With
492 globalisation has come enormous shifts in the way that we work, travel, produce and distribute food,
493 which have impacted on both our dietary intake and energy expenditure.[61] While the underlying
494 drivers and feedback mechanisms are sometime complex,[62] the last decade has seen big advances
495 in the way that we can collect and make use of data to better understand these forces, as well as big
496 advances in the tools available to build and run models. Since the early 2000s there has been rapid

497 growth in the development and use of models to find cost-effective interventions that directly target
498 physical activity, dietary intake and obesity.[63, 64] But models can potentially now play a much
499 broader role in simulating impacts of policies or trends that impact on the food system or active
500 environment, either directly or indirectly. In the future, integration of health models, such as
501 PRIMETIME, with models that simulate the complexities of our economies and changing climate, may
502 help us better understand and address the underlying drivers of the obesity epidemic.

503 References

- 504 1. Williams G, Fruhbeck G. Obesity: science to practice: John Wiley & Sons; 2009.
- 505 2. Caballero B. The global epidemic of obesity: an overview. *Epidemiol Rev.* 2007;29(1):1-5.
- 506 3. The Global Health Observatory: Indicators: World Health Organization; [13 May 2021]. Available
507 from: <https://www.who.int/data/gho/data/indicators>.
- 508 4. Dai H, Alsalhe TA, Chalghaf N, Riccò M, Bragazzi NL, Wu J. The global burden of disease
509 attributable to high body mass index in 195 countries and territories, 1990–2017: An analysis of the
510 Global Burden of Disease Study. *PLoS Med.* 2020;17(7):e1003198.
- 511 5. Health Survey for England. UK: NHS Digital.
- 512 6. Theis DR, White M. Is obesity policy in England fit for purpose? Analysis of government strategies
513 and policies, 1992–2020. *The Milbank Quarterly.* 2021;99(1):126-70.
- 514 7. Jebb S, Aveyard P, Hawkes C. The evolution of policy and actions to tackle obesity in England.
515 *Obes Rev.* 2013;14:42-59.
- 516 8. Cobiac LJ, Scarborough P. Modelling future trajectories of obesity and body mass index in
517 England. *PLoS ONE.* 2021;16(6):e0252072. doi: 10.1371/journal.pone.0252072.

- 518 9. Metcalf CJE, Edmunds W, Lessler J. Six challenges in modelling for public health policy. *Epidemics*.
519 2015;10:93-6.
- 520 10. Webber L, Mytton OT, Briggs ADM, Woodcock J, Scarborough P, McPherson K, et al. The Brighton
521 declaration: the value of non-communicable disease modelling in population health sciences. *Eur J*
522 *Epidemiol.* 2014;29(12):867-70. doi: 10.1007/s10654-014-9978-0.
- 523 11. Cobiac LJ, Scarborough P, Kaur A, Rayner M. The Eatwell guide: Modelling the health implications
524 of incorporating new sugar and fibre guidelines. *PLoS ONE*. 2016;11(12):e0167859.
- 525 12. Briggs AD, Cobiac LJ, Wolstenholme J, Scarborough P. PRIMETIME CE: a multistate life table model
526 for estimating the cost-effectiveness of interventions affecting diet and physical activity. *BMC Health*
527 *Serv Res.* 2019;19(1):485.
- 528 13. Kent S, Aveyard P, Astbury N, Mihaylova B, Jebb SA. Is Doctor Referral to a Low-Energy Total Diet
529 Replacement Program Cost-Effective for the Routine Treatment of Obesity? *Obesity*. 2019;27(3):391-
530 8.
- 531 14. Mytton OT, Boyland E, Adams J, Collins B, O'Connell M, Russell SJ, et al. The potential health
532 impact of restricting less-healthy food and beverage advertising on UK television between 05.30 and
533 21.00 hours: A modelling study. *PLoS Med.* 2020;17(10):e1003212.
- 534 15. Alonso S, Tan M, Wang C, Kent S, Cobiac L, MacGregor GA, et al. Impact of the 2003 to 2018
535 Population Salt Intake Reduction Program in England: A Modeling Study. *Hypertension*.
536 2021;77(4):1086-94.
- 537 16. Cobiac LJ, Scarborough P. Modelling the health co-benefits of sustainable diets in the UK, France,
538 Finland, Italy and Sweden. *Eur J Clin Nutr.* 2019;73(4):624-33.

- 539 17. Department of Health and Social Care. Tackling obesity: empowering adults and children to live
540 healthier lives. UK: Department of Health and Social Care, 2020.
- 541 18. Morgenstern H, Bursic ES. A method for using epidemiologic data to estimate the potential
542 impact of an intervention on the health status of a target population. *J Community Health*.
543 1982;7(4):292-309.
- 544 19. Hill AB. *The environment and disease: association or causation?* : Sage Publications; 1965.
- 545 20. Barendregt J, Oortmarssen GJ, Vos T, Murray CJL. A generic model for the assessment of disease
546 epidemiology: the computational basis of DisMod II. *Popul Health Metr*. 2003;1. doi: 10.1186/1478-
547 7954-1-4.
- 548 21. Lawes C, Vander Hoorn S, Law M, Elliott P. High blood pressure. In: Ezzati M, Lopez A, Rodgers A,
549 Murray C, editors. *Comparative Quantification of Health Risks: Global and Regional Burden of*
550 *Disease Attributable to Selected Major Risk Factors*. Geneva: World Health Organisation; 2004.
- 551 22. Renehan AG, Soerjomataram I, Tyson M, Egger M, Zwahlen M, Coebergh JW, et al. Incident
552 cancer burden attributable to excess body mass index in 30 European countries. *Int J Cancer*.
553 2010;126(3):692-702.
- 554 23. Barendregt JJ, Van Oortmarssen GJ, Van Hout BA, Van Den Bosch JM, Bonneux L. Coping with
555 multiple morbidity in a life table. *Math Popul Stud*. 1998;7(1):29-49.
- 556 24. University of California Berkeley (USA), Max Planck Institute for Demographic Research
557 (Germany). Human Mortality Database [5 May 2021]. Available from: www.mortality.org.
- 558 25. Institute for Health Metrics and Evaluation. Global Health Data Exchange: GBD Results Tool [5
559 May 2021]. Available from: <http://ghdx.healthdata.org/gbd-results-tool>.

- 560 26. Institute for Health Metrics and Evaluation. Terms and Conditions [5 May 2021]. Available from:
561 <http://www.healthdata.org/about/terms-and-conditions>.
- 562 27. Jackson C. disbayes [5 May 2021]. Available from: <https://github.com/chjackson/disbayes>.
- 563 28. Global Dietary Database: Tufts University; [13 May 2021]. Available from:
564 <https://www.globaldietarydatabase.org/>.
- 565 29. Briggs AD, Scarborough P, Wolstenholme J. Estimating comparable English healthcare costs for
566 multiple diseases and unrelated future costs for use in health and public health economic modelling.
567 PLoS ONE. 2018;13(5):e0197257.
- 568 30. Rogers N, Pell D, Mytton O, Penney T, Briggs A, Cummins S, et al. Changes in soft drinks
569 purchased by British households associated with the UK soft drinks industry levy: a controlled
570 interrupted time series analysis. BMJ Open (Under review).
- 571 31. Number of households by household size and age of household reference person (HRP), English
572 regions and UK constituent countries, 2019 UK: Office for National Statistics; 2019 [22 June 2019].
573 Available from:
574 <https://www.ons.gov.uk/peoplepopulationandcommunity/birthsdeathsandmarriages/families/adhocs/11520numberofhouseholdsbyhouseholdsizeandageofhouseholdreferencepersonhrpenglishregionandukconstituentcountries2019>.
- 575
576
- 577 32. FAO. Food energy - methods of analysis and conversion factors. Rome: Food and Agriculture
578 Organization of the United Nations, 2003.
- 579 33. Hartmann-Boyce J, Theodoulou A, Oke JL, Butler AR, Scarborough P, Bastounis A, et al.
580 Association between characteristics of behavioural weight loss programmes and weight change after
581 programme end: systematic review and meta-analysis. *bmj*. 2021;374.

- 582 34. Jebb SA, Astbury NM, Tearne S, Nickless A, Aveyard P. Doctor Referral of Overweight People to a
583 Low-Energy Treatment (DROPLET) in primary care using total diet replacement products: a protocol
584 for a randomised controlled trial. *BMJ open*. 2017;7(8).
- 585 35. Astbury NM, Aveyard P, Nickless A, Hood K, Corfield K, Lowe R, et al. Doctor Referral of
586 Overweight People to Low Energy total diet replacement Treatment (DROPLET): pragmatic
587 randomised controlled trial. *bmj*. 2018;362.
- 588 36. Hall KD, Butte NF, Swinburn BA, Chow CC. Dynamics of childhood growth and obesity:
589 development and validation of a quantitative mathematical model. *The lancet Diabetes &*
590 *endocrinology*. 2013;1(2):97-105.
- 591 37. Hall KD, Sacks G, Chandramohan D, Chow CC, Wang YC, Gortmaker SL, et al. Quantification of the
592 effect of energy imbalance on bodyweight. *Lancet*. 2011;378(9793):826-37. PubMed PMID: S0140-
593 6736(11)60812-X.
- 594 38. Office for National Statistics. 2016-based National Population Projections 2017 [1 September
595 2020]. Available from:
596 [https://www.ons.gov.uk/peoplepopulationandcommunity/populationandmigration/populationproje](https://www.ons.gov.uk/peoplepopulationandcommunity/populationandmigration/populationprojections/datasets/z3zippedpopulationprojectionsdatafilesengland)
597 [ctions/datasets/z3zippedpopulationprojectionsdatafilesengland](https://www.ons.gov.uk/peoplepopulationandcommunity/populationandmigration/populationprojections/datasets/z3zippedpopulationprojectionsdatafilesengland).
- 598 39. Global Burden of Disease Study 2015 (GBD 2015) Data Resources: Institute for Health Metrics and
599 Evaluation, University of Washington; 2016 [cited 2016 12 December 2016]. Available from:
600 <http://ghdx.healthdata.org/gbd-2015>.
- 601 40. Sullivan PW, Slejko JF, Sculpher MJ, Ghushchyan V. Catalogue of EQ-5D scores for the United
602 Kingdom. *Med Decis Making*. 2011;31(6):800-4.
- 603 41. CPI INDEX 06 : HEALTH 2015=100 United Kingdom: Office for National Statistics; [14 May 2021].
604 Available from: <https://www.ons.gov.uk/economy/inflationandpriceindices/timeseries/d7bz/mm23>.

- 605 42.Kuan V, Denaxas S, Gonzalez-Izquierdo A, Direk K, Bhatti O, Husain S, et al. A chronological map of
606 308 physical and mental health conditions from 4 million individuals in the English National Health
607 Service. *The Lancet Digital Health*. 2019;1(2):e63-e77.
- 608 43.HM Treasury. *The Green Book: Central Government Guidance on Appraisal and Evaluation*. UK:
609 HM Treasury, 2018.
- 610 44.Briggs A, Claxton K, Sculpher M. *Decision modelling for health economic evaluation*. New York:
611 Oxford University Press; 2006.
- 612 45.Glover D, Henderson J. *Quantifying health impacts of government policies* 2010 21 October 2021.
613 Available from:
614 [https://assets.publishing.service.gov.uk/government/uploads/system/uploads/attachment_data/file](https://assets.publishing.service.gov.uk/government/uploads/system/uploads/attachment_data/file/216003/dh_120108.pdf)
615 [/216003/dh_120108.pdf](https://assets.publishing.service.gov.uk/government/uploads/system/uploads/attachment_data/file/216003/dh_120108.pdf).
- 616 46.Denaxas S, Gonzalez-Izquierdo A, Direk K, Fitzpatrick NK, Fatemifar G, Banerjee A, et al. UK
617 phenomics platform for developing and validating electronic health record phenotypes: CALIBER. *J*
618 *Am Med Inform Assoc*. 2019;26(12):1545-59.
- 619 47.Herrett E, Gallagher AM, Bhaskaran K, Forbes H, Mathur R, Van Staa T, et al. Data resource
620 profile: clinical practice research datalink (CPRD). *Int J Epidemiol*. 2015;44(3):827-36.
- 621 48.Peters SA, Huxley RR, Woodward M. Diabetes as risk factor for incident coronary heart disease in
622 women compared with men: a systematic review and meta-analysis of 64 cohorts including 858,507
623 individuals and 28,203 coronary events. *Diabetologia*. 2014;57(8):1542-51.
- 624 49.Peters SA, Huxley RR, Woodward M. Diabetes as a risk factor for stroke in women compared with
625 men: a systematic review and meta-analysis of 64 cohorts, including 775 385 individuals and 12 539
626 strokes. *Lancet*. 2014;383(9933):1973-80.

- 627 50. Brown V, Ananthapavan J, Veerman L, Sacks G, Lal A, Peeters A, et al. The potential cost-
628 effectiveness and equity impacts of restricting television advertising of unhealthy food and
629 beverages to Australian children. *Nutrients*. 2018;10(5):622.
- 630 51. Cleghorn C, Jones A, Freeman L, Wilson N. Updated Cost-effectiveness Modelling of a Behavioural
631 Weight Loss Intervention Involving a Primary Care Provider. New Zealand: University of Otago, 2020.
- 632 52. Cobiac LJ, Vos T, Veerman JL. Cost-effectiveness of Lighten Up to a Healthy Lifestyle and Weight
633 Watchers. Report for Queensland Health. Centre for Burden of Disease and Cost-Effectiveness, The
634 University of Queensland, 2008.
- 635 53. Forster M, Veerman JL, Barendregt JJ, Vos T. Cost-effectiveness of diet and exercise interventions
636 to reduce overweight and obesity. *Int J Obes*. 2011.
- 637 54. Jones AC, Veerman JL, Hammond D. The health and economic impact of a tax on sugary drinks in
638 Canada. Waterloo (ON): University of Waterloo, 2017.
- 639 55. Bourke EJ, Veerman JL. The potential impact of taxing sugar drinks on health inequality in
640 Indonesia. *BMJ global health*. 2018;3(6):e000923.
- 641 56. Moran A, Zhao D, Gu D, Coxson P, Chen C-S, Cheng J, et al. The future impact of population
642 growth and aging on coronary heart disease in China: projections from the Coronary Heart Disease
643 Policy Model-China. *BMC Public Health*. 2008;8(1):1-14.
- 644 57. Weinstein MC, Coxson PG, Williams LW, Pass TM, Stason WB, Goldman L. Forecasting coronary
645 heart disease incidence, mortality, and cost: the Coronary Heart Disease Policy Model. *Am J Public*
646 *Health*. 1987;77(11):1417-26.
- 647 58. McPherson K, Marsh T, Brown M. Foresight. Tackling obesities – modelling future trends in
648 obesity and the impact on health. London: Government Office for Science, 2007.

- 649 59.HM Revenue & Customs. Soft Drinks Industry Levy: UK Government; 2016 [cited 2021 7 April
650 2021]. Available from: [https://www.gov.uk/government/publications/soft-drinks-industry-levy/soft-
drinks-industry-levy](https://www.gov.uk/government/publications/soft-drinks-industry-levy/soft-
651 drinks-industry-levy).
- 652 60.Introducing further advertising restrictions on TV and online for products high in fat, salt and
653 sugar: government response: UK Government; 24 June 2021 [30 August 2021]. Available from:
654 [https://www.gov.uk/government/consultations/further-advertising-restrictions-for-products-high-
in-fat-salt-and-sugar/outcome/introducing-further-advertising-restrictions-on-tv-and-online-for-
products-high-in-fat-salt-and-sugar-government-response](https://www.gov.uk/government/consultations/further-advertising-restrictions-for-products-high-
655 in-fat-salt-and-sugar/outcome/introducing-further-advertising-restrictions-on-tv-and-online-for-
656 products-high-in-fat-salt-and-sugar-government-response).
- 657 61.Kawachi I, Wamala SP, ProQuest E, Oxford University P. Globalization and health. Wamala S,
658 Kawachi I, Kawachi I, Wamala S, editors. New York;Oxford;: Oxford University Press; 2007.
- 659 62.Tackling Obesities: Future Choices – Project report. UK: Government Office for Science, 2007.
- 660 63.Cobiac LJ, Veerman L, Vos T. The role of cost-effectiveness analysis in developing nutrition policy.
661 Annu Rev Nutr. 2013;33:373-93.
- 662 64.Schwander B, Hiligsmann M, Nuijten M, Evers S. Systematic review and overview of health
663 economic evaluation models in obesity prevention and therapy. Expert review of
664 pharmacoeconomics & outcomes research. 2016;16(5):561-70.
- 665

Risk factor exposure

Diet

Obesity

Disease models

Disease 1

Disease 2

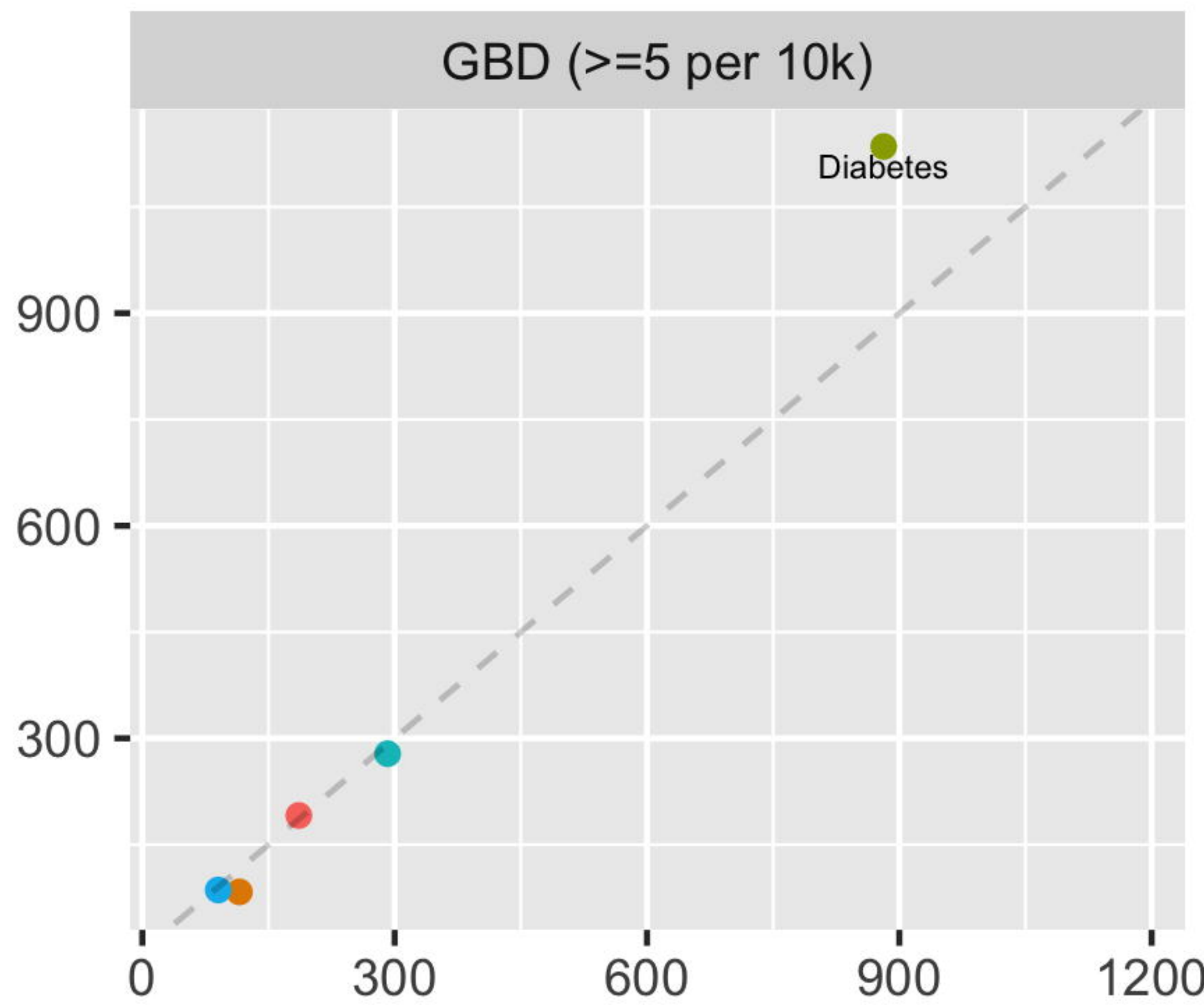
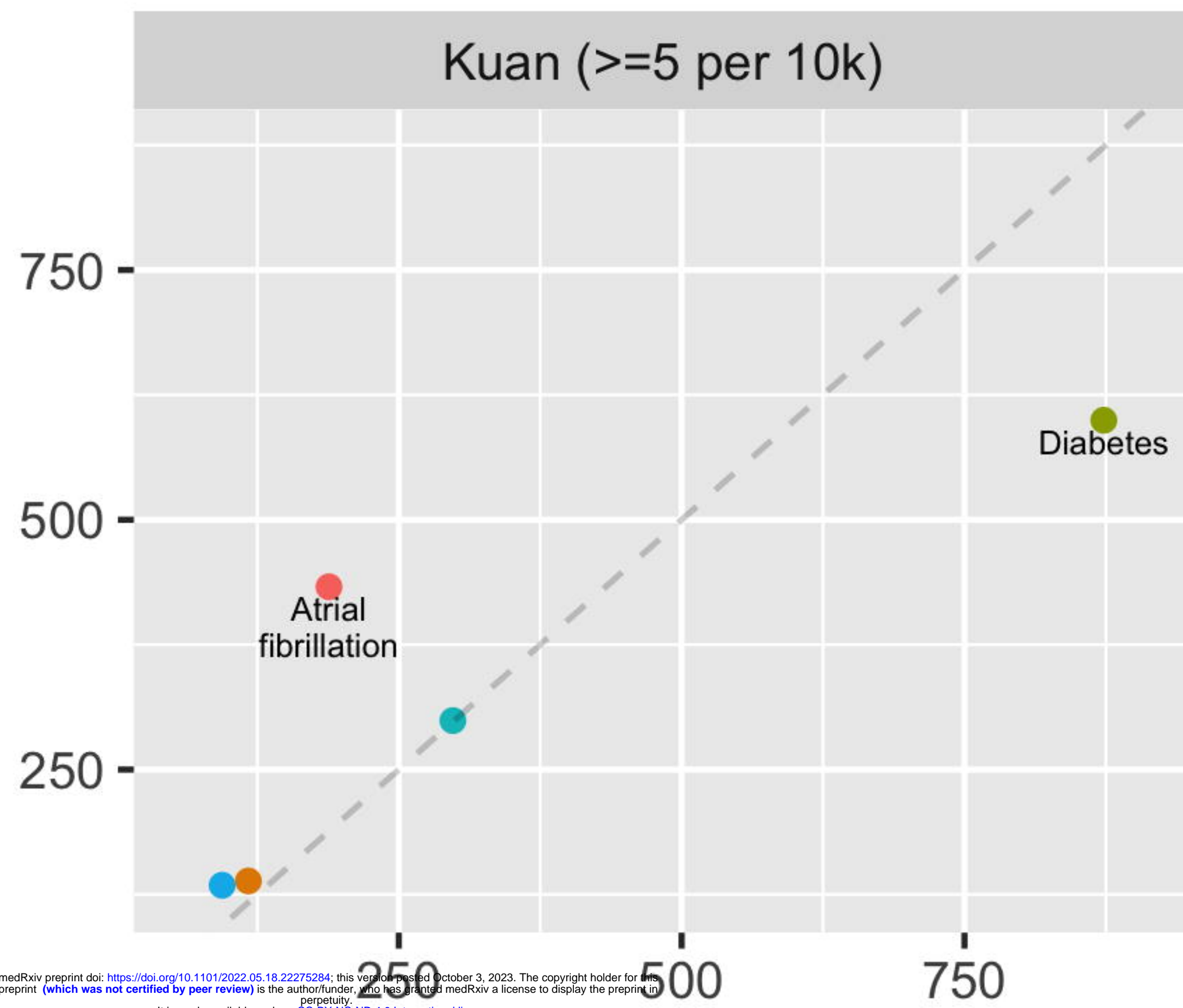
...

Disease x

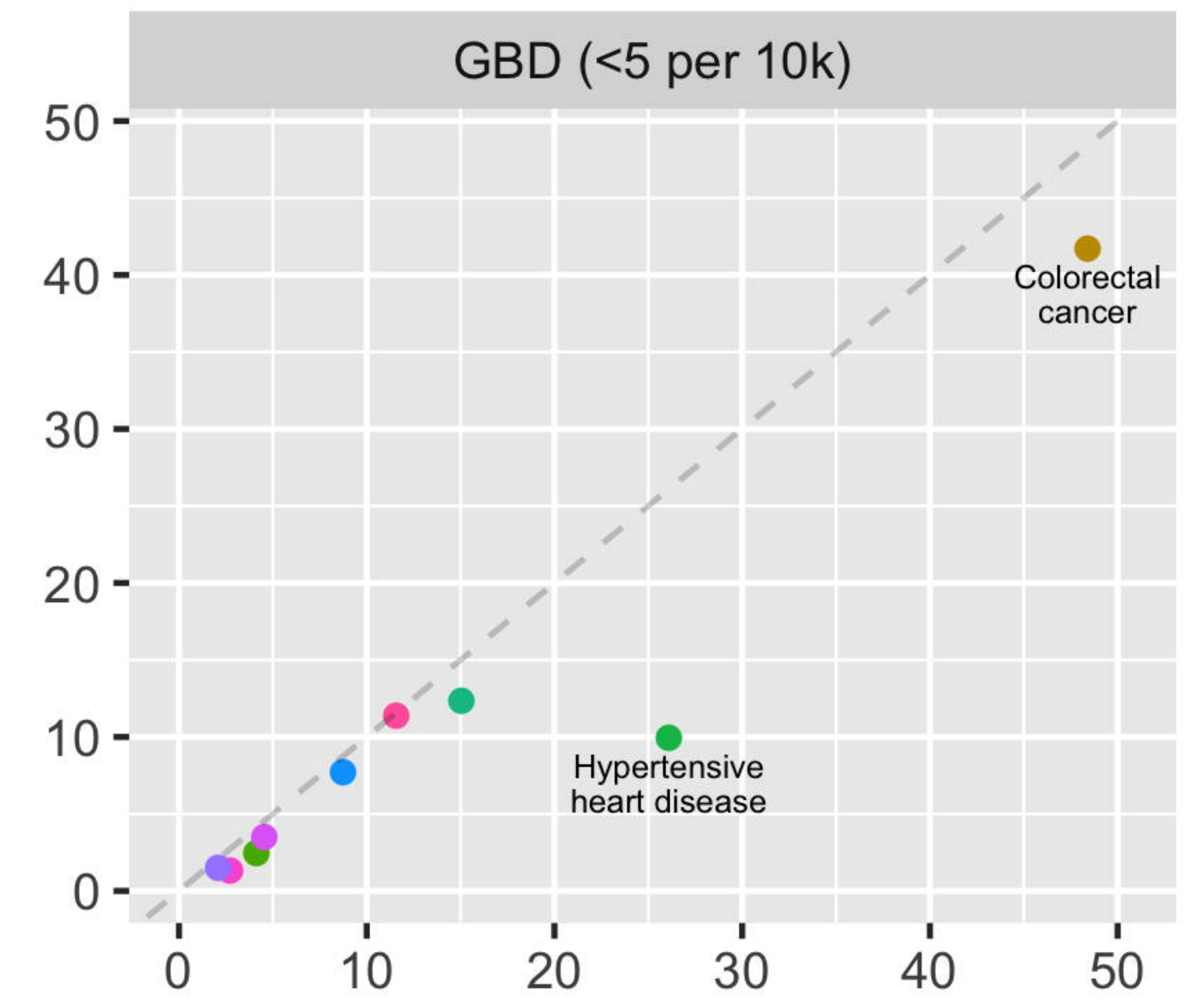
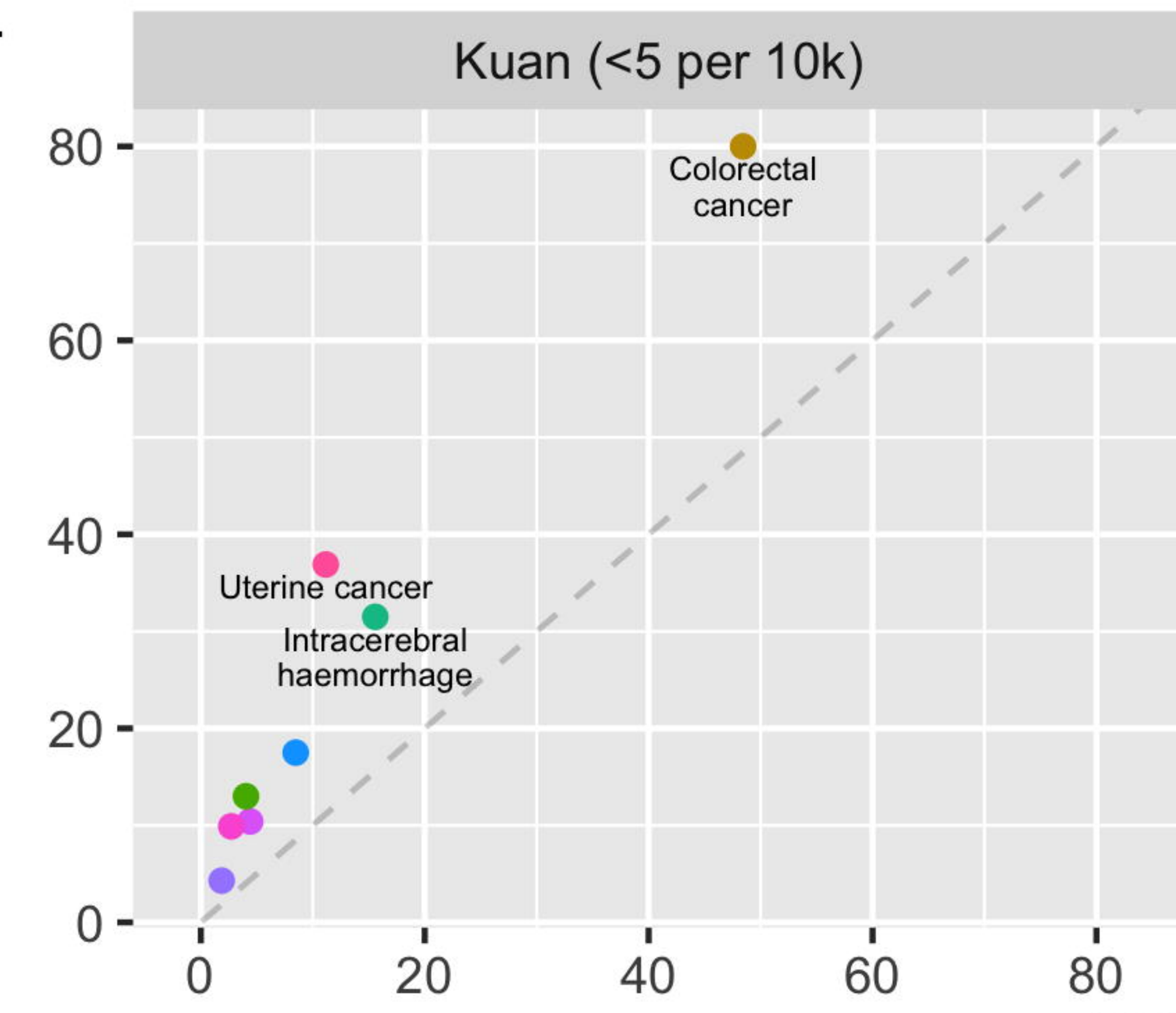
Population lifetable

Lifetable

Comparator



medRxiv preprint doi: <https://doi.org/10.1101/2022.05.18.22275284>; this version posted October 3, 2023. The copyright holder for this preprint (which was not certified by peer review) is the author/funder, who has granted medRxiv a license to display the preprint in perpetuity. It is made available under a [CC-BY-NC-ND 4.0 International license](https://creativecommons.org/licenses/by-nc-nd/4.0/).



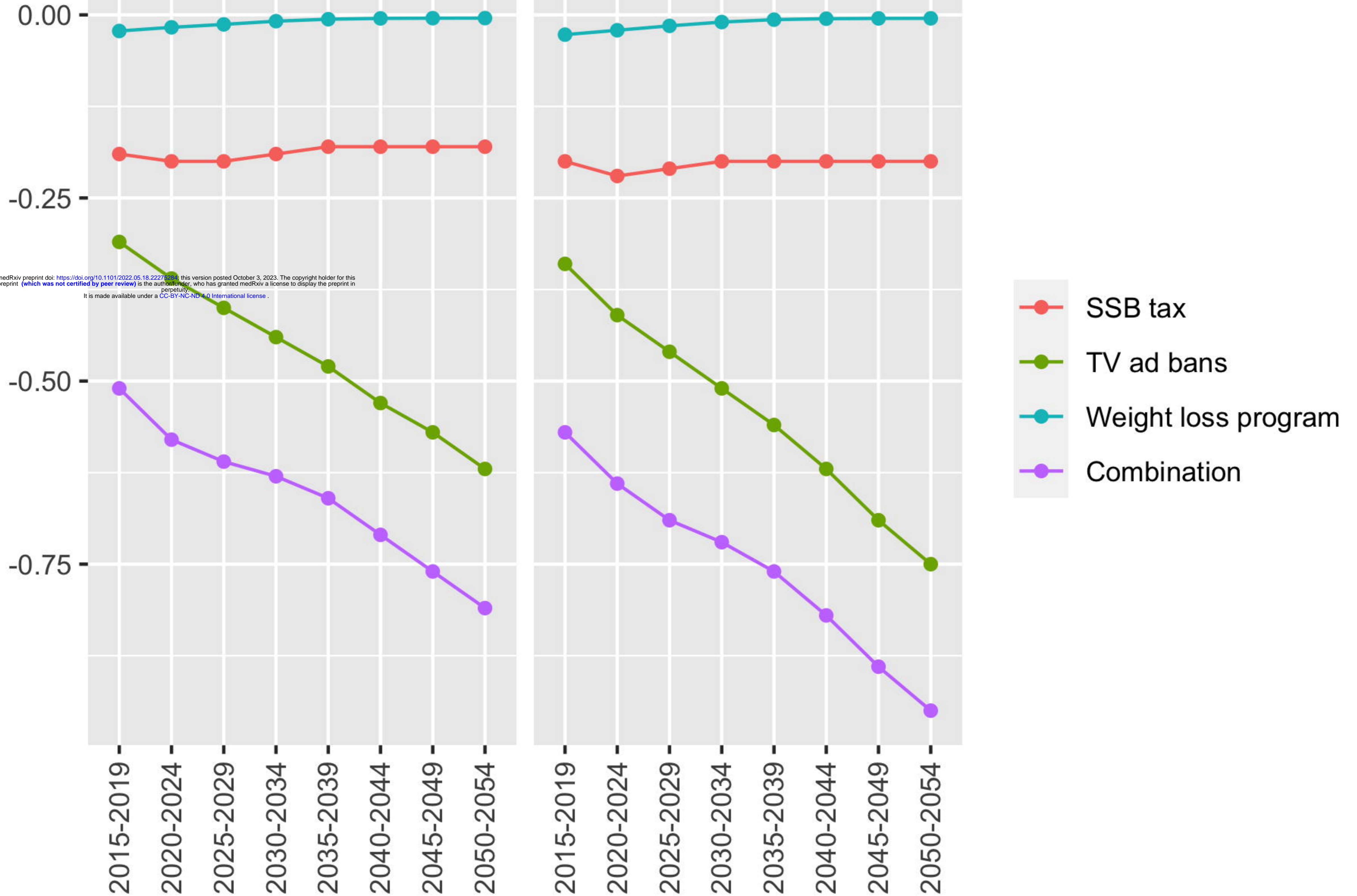
PRIMEtime

Male

Female

medRxiv preprint doi: <https://doi.org/10.1101/2022.05.18.22271574>; this version posted October 3, 2023. The copyright holder for this preprint (which was not certified by peer review) is the author/funder, who has granted medRxiv a license to display the preprint in perpetuity. It is made available under a [CC-BY-NC-ND 4.0 International license](https://creativecommons.org/licenses/by-nc-nd/4.0/).

Percent



QALYs (thousands)

Costs (£million)

NMB (£million)

Effect

medRxiv preprint doi: <https://doi.org/10.1101/2022.05.18.22275284>; this version posted October 3, 2023. The copyright holder for this preprint (which was not certified by peer review) is the author/funder, who has granted medRxiv a license to display the preprint in perpetuity. It is made available under a [CC-BY-NC-ND 4.0 International license](https://creativecommons.org/licenses/by-nc-nd/4.0/).

RR

Utilities

Costs

