

1 **Factors associated with variation in single-dose albendazole**
2 **pharmacokinetics: A systematic review and modelling analysis**
3 **Short title: Review and modelling of albendazole pharmacokinetics**

4 Charles Whittaker^{1,5,§}, Cédric B. Chesnais², Sébastien D.S. Pion², Joseph Kamgno³, Martin
5 Walker^{4,5}, Maria-Gloria Basáñez^{1,5*} & Michel Boussinesq^{2*}

6 ¹ MRC Centre for Global Infectious Disease Analysis, Department of Infectious Disease

7 Epidemiology, School of Public Health, Imperial College London, London, UK

8 ² Institut de Recherche pour le Développement (IRD), Montpellier, France

9 ³ Centre for Research on Filariasis & other Tropical Diseases, and Faculty of Medicine and

10 Biomedical Sciences, University of Yaoundé I, Yaoundé, Cameroon

11 ⁴ Department of Pathobiology and Population Sciences, Royal Veterinary College, Hatfield, UK

12 ⁵ London Centre for Neglected Tropical Disease Research, Department of Infectious Disease

13 Epidemiology, School of Public Health, Imperial College London, London, UK

14 * Joint senior authors

15 § Corresponding author: charles.whittaker16@imperial.ac.uk

16

17 **Abstract**

18 **Background**

19 Albendazole is an orally administered anti-parasitic medication with widespread usage in a
20 variety of both programmatic and clinical contexts. Previous work has shown the drug to be
21 characterised by significant inter-individual pharmacokinetic variation. This variation is
22 thought to have important consequences for treatment success, but current understanding of
23 the factors associated with this variation remains incomplete.

24 **Methodology/Principal Findings**

25 We carried out a systematic review to identify references containing temporally
26 disaggregated data on the blood concentration of albendazole and/or (its pharmacologically-
27 active metabolite) albendazole sulfoxide following a single oral dose. These data were then
28 integrated into a mathematical modelling framework to infer key pharmacokinetic parameters
29 and relate them to characteristics of the populations being treated. These characteristics
30 included age, weight, sex, dosage, infection status, and whether patients had received a fatty
31 meal prior to treatment or other drugs alongside albendazole. Our results highlight a number
32 of factors systematically associated with albendazole pharmacokinetic variation including
33 age, existing parasitic infection and receipt of a fatty meal. These factors impact different
34 aspects of the drug's pharmacokinetic profile. Whilst age is significantly associated with
35 albendazole sulfoxide half-life, receipt of a fatty meal prior to treatment was associated with
36 increased albendazole bioavailability (and by extension, peak blood concentration and total
37 drug exposure following the dose). Parasitic infection (particularly echinococcosis and
38 neurocysticercosis) was associated with altered pharmacokinetic parameters, with infected
39 populations displaying distinct characteristics to uninfected ones.

40 **Conclusions/Significance**

41 These results highlight the extensive inter-individual variation that characterises albendazole
42 pharmacokinetics and provides insight into some of the factors associated with this variation.

43 **Key-Words:** Albendazole, Albendazole sulphoxide, Single-dose, Pharmacokinetics,
44 Systematic review, Modelling, Inter-individual variation

45

46 **Author Summary**

47 Albendazole is a broad-spectrum anti-parasitic medication widely used in the treatment of a
48 variety of parasitic worm infections. Previous studies have demonstrated significant variation
49 in the pharmacokinetics of albendazole (and its pharmacologically active metabolite
50 albendazole sulfoxide), leading to substantial inter-individual variability in blood plasma
51 concentrations following a dose of the drug being given. This variation is thought to have
52 important consequences for treatment success but our understanding of the factors driving
53 this variation remain incomplete. In this study, we carried out a systematic review to identify
54 references with data on albendazole and albendazole sulfoxide concentrations in the blood
55 following a single oral dose. We then fitted a mathematical model of albendazole
56 pharmacokinetics to these data to infer key pharmacokinetic parameters and relate them to
57 characteristics of the populations being treated. We found that receipt of a fatty meal prior to
58 treatment was associated with increased albendazole bioavailability, that the half-life of
59 albendazole sulfoxide in the blood varied significantly with age, and that both echinococcosis
60 and neurocysticercosis were associated with altered pharmacokinetic profiles compared to
61 healthy individuals. Our work provides insight into some of the factors systematically
62 associated with variation in albendazole pharmacokinetics.

63

64 **Introduction**

65 Albendazole is a broad-spectrum medication used widely in the treatment of a variety of parasitic
66 worm infections. This includes usage in a clinical context, where multiple-dose regimens are used to
67 treat infections with the larval stages of *Taenia solium* ((neuro-)cysticercosis) [1] or of *Echinococcus*
68 spp. (principally cystic and alveolar echinococcosis due to, respectively, *E. granulosus* and
69 *E. multilocularis*) [2]. It has also been used extensively in neglected tropical disease (NTD)
70 programmatic contexts, for which albendazole is being/has been delivered (as a single-dose treatment)
71 to communities in mass drug administration (MDA) campaigns against soil-transmitted helminthiases
72 [3] (STHs, due to *Ascaris lumbricoides*, *Trichuris trichiura*, *Necator americanus* and/or *Ancylostoma*
73 *duodenale*), and delivered alone [4] or alongside ivermectin and/or diethylcarbamazine [5,6] against
74 lymphatic filariasis [7] (LF, due to *Wuchereria bancrofti* or *Brugia malayi*). In addition, albendazole
75 has also been offered to individuals with loiasis [8,9], frequently those whose *Loa loa* microfilarial
76 densities are high enough to preclude safe treatment with microfilaricidal anthelmintics [10,11] (such
77 as diethylcarbamazine or ivermectin [12]).

78 Whilst the therapeutic efficacy of albendazole has been established for a wide array of helminth
79 parasites, the drug's pharmacokinetics (and those of its pharmacologically-active metabolite,
80 albendazole sulfoxide) are characterised by extensive inter- and intra-individual variation. This
81 variation has been consistently observed across a wide range of studies (see [13] for a review and its
82 implications for treatment), and is typically attributed to the drug's limited solubility in the
83 gastrointestinal tract and extensive first-pass metabolism by the liver (responsible for rapid conversion
84 of albendazole to albendazole sulfoxide). This variation is thought to contribute to the failure of cure
85 in some treated patients – whilst some require only one course of treatment, others require multiple
86 rounds and, in a limited number of instances, treatment failure has been observed [13–15]. This
87 variation in outcomes observed in clinical settings has also been seen in field studies, where highly
88 variable impact of the drug on STH infections have been observed depending on the setting [16]. For
89 example, the average reduction in faecal egg reduction rates for treated hookworm infections varied
90 from 53% to 95% across different communities in Ghana [17] (though note that such observations

91 might also be driven by variation between settings in the prevalence of different STH species which
92 are thought to show variable responses to albendazole treatment [18]).

93 A number of factors are deemed to underlie this variation in pharmacokinetic dynamics. Several
94 studies have examined the influence of different drivers, including sex [19], co-administered drugs
95 [20,21], delivery of albendazole alongside a fatty meal [22,23] and infection status [24,25] on the
96 pharmacokinetic profile of albendazole and/or albendazole sulfoxide. However, these studies typically
97 only analyse a single factor, and therefore a systematic understanding of the comparative impact of
98 different factors on albendazole's pharmacokinetics remains outstanding. Given albendazole's
99 widespread usage in NTD programmatic contexts, insight into mechanisms that influence the
100 pharmacokinetic profile of albendazole could have significant public health relevance.

101 Motivated by this, we conducted a systematic review of the literature to identify references containing
102 temporally disaggregated information on albendazole and/or albendazole sulfoxide concentrations in
103 the blood following treatment with a single oral dose (the typical regimen used in NTD programmatic
104 contexts). To these data, we fitted a mathematical model of albendazole and albendazole sulfoxide's
105 dynamics in the blood following receipt of the dose that captures key phenomena associated with the
106 drug's metabolism. These include albendazole's extensive first-pass metabolism [26] and its
107 established low bioavailability [27]. We fitted this model to data collated as part of the systematic
108 review to infer key pharmacokinetic parameters, including albendazole bioavailability, albendazole
109 sulfoxide half-life, peak albendazole concentration in the blood (C_{Max}) and the total drug exposure
110 across time (commonly described as the area under the curve or AUC). We then related these
111 parameter estimates to characteristics of the patient populations being treated and the treatment
112 regimen received.

113 **Methods**

114 **Systematic review of albendazole pharmacokinetic literature**

115 Web of Science and PubMed databases were searched on 4th July 2019 with no limitations on date
116 range using the keywords "albendazole" AND (treatment* OR dose* OR pharma* OR "half-life" OR

117 “half life”) in order to identify references containing temporally disaggregated data detailing the
118 concentration of albendazole and/or albendazole sulfoxide in the blood following treatment with a
119 single dose of the drug. A total of 5690 unique records were identified through this search process,
120 with 206 records retained for full text evaluation following Title and Abstract screening (**Fig 1**).
121 Studies lacking the required information on blood concentration levels over time, that had been
122 carried out *in vitro* or in non-human subjects, or were not in English were subsequently excluded.
123 Following this, a total of 32 references were included, yielding 92 time-series describing the evolution
124 of blood concentrations of albendazole and/or albendazole sulfoxide following treatment with a single
125 dose. Fifteen time-series contained information on both albendazole and albendazole sulfoxide levels;
126 and 77 contained information on albendazole sulfoxide levels only. Eighty-four of these time-series
127 were studies in which only blood drug concentrations following a single oral dose of albendazole
128 were presented; and eight were studies in which measured blood drug concentrations were presented
129 that spanned a course of multiple doses, but that contained information on drug blood concentration
130 levels immediately following the first dose. For these eight time-series, we extracted data following
131 receipt of the first dose up until receipt of the second dose. For each time-series, we also extracted the
132 data describing evolution of albendazole/albendazole sulfoxide levels over time, as well as an array of
133 metadata. These included characteristics of the treatment regimen (dose, fasting state, co-administered
134 drugs), as well as information and metadata on the patients receiving treatment (sex, age, infection
135 status and weight). In the majority of instances, presented data were reported for a population of
136 patients rather than individuals. In these instances, population averages for factors such as age,
137 weight, etc., were extracted. A full list of these references, as well as further information about each
138 study and how the data were extracted are available in *Supplementary S1 File, S1 Text: Data*
139 *Extraction, Collation and Initial Processing*.

140 **Fig 1: PRISMA diagram illustrating the systematic review workflow.** Web of Science and
141 PubMed were searched on 4th July 2019 using the keywords albendazole AND (treatment* OR dose*
142 OR pharma* OR “half-life” OR “half life”). This produced a total of 5690 results after duplicate
143 removal, of which 206 were retained for full text screening. 175 of the retained articles were
144 subsequently excluded based on pre-defined exclusion criteria, yielding 32 studies containing
145 temporally disaggregated data on albendazole blood concentrations following treatment with a single

146 dose; these 32 references contained a total of 92 time-series measuring albendazole and/or
147 albendazole sulfoxide blood concentrations over time in different populations.

148

149 **Mathematical model construction and fitting**

150 We developed a model describing the evolution of albendazole and albendazole sulfoxide
151 concentrations in the blood following receipt of a single oral dose of the drug, based on a series of
152 linked ordinary differential equations (ODEs) of albendazole and its metabolite albendazole sulfoxide
153 (**Fig 2**). The model incorporates a number of pharmacokinetic phenomena relevant to albendazole,
154 including its well-established, limited bioavailability (thought to be a product of its poor solubility
155 along the gastrointestinal tract [27]) and the extensive first-pass metabolism of albendazole to
156 albendazole sulfoxide known to occur in the liver [26]. This model was fitted individually to each of
157 the 92 collated time-series within a Bayesian framework, utilising an adaptive Metropolis-Hastings
158 based Markov Chain Monte Carlo (MCMC) sampling scheme for parameter inference. Uninformative
159 priors were used for each of the parameters being subsequently related to the collected metadata. For
160 each dataset, a total of 25,000 iterations were run, with the first 5,000 discarded as burn in, leaving
161 20,000 samples available for parameter inference – the median value based on these samples was then
162 used as an input into the multiple linear regression (described below). Further information on the
163 exact formulation of the model and the fitting process is available in *Supplementary S1 File, S2 Text:*
164 *Model Construction, Fitting and Inference*.

165 **Fig 2: Schematic representation of the model describing albendazole and albendazole sulfoxide**
166 **dynamics and pharmacokinetics.** A compartmental model consisting of a series of linked ordinary
167 differential equations (ODEs) was developed to simulate the pharmacokinetics of albendazole and its
168 pharmacodynamically-active metabolite, albendazole sulfoxide, in the blood following a single oral
169 dose. **(A)** Schematic representation illustrating the model structure and the way in which the different
170 compartments are linked. **(B)** Overview of the ODEs governing the model, representing the amount of
171 albendazole in the gut and concentration of the drug (and its metabolite albendazole sulfoxide) in the
172 liver and systemic circulation. Note that the received dose is further scaled by a bioavailability
173 parameter not shown here (see *S1 File, S2 Text subsection: Mathematical Model of Albendazole*
174 **and Albendazole Sulfoxide Dynamics** for further details and full description of the model
175 equations).

176

177 **Regression linking pharmacokinetic properties to patient characteristics**

178 From the 92 fitted time-series, we extracted estimates of key pharmacokinetic parameters and
179 regressed them onto the collected metadata (describing aspects of the patient population and treatment
180 regimen received) to assess the influence of various factors on variation in albendazole and
181 albendazole sulfoxide's pharmacokinetics. The pharmacokinetic parameters were k_{AlbSO} (the half-life
182 of albendazole sulfoxide), the *bioavailability* of albendazole (the proportion of administered
183 albendazole absorbed from the gut into the blood), C_{Max} (the peak concentration of the drug in the
184 blood) and *AUC* ("area under the curve", reflecting the total exposure to the drug after administration
185 of the dose, calculated over a time-period of 50 hours). k_{AlbSO} and *bioavailability* are model
186 parameters directly estimated during the fitting process outlined above, and so for each time-series,
187 the median parameter estimate from each time-series was used in the regression. For C_{Max} and *AUC*,
188 in order to control for differences in dosages between studies (which would directly impact estimates
189 of these two quantities), we used the fitted model (and median parameter estimates) for each time-
190 series to simulate and generate a hypothetical pharmacokinetic curve assuming a standardised dose of
191 400 mg. We then calculated C_{Max} and *AUC* from this hypothetical pharmacokinetic curve to give
192 estimates of the two parameters standardised by the dose received. We subsequently refer to these
193 quantities as C_{Max400} and AUC_{400} .

194 **Results**

195 **Systematic review results and study characteristics**

196 A total of 32 references containing 92 time-series detailing the concentration of albendazole and/or
197 albendazole sulfoxide in the blood following treatment with a single dose of albendazole were
198 identified. Forty-four time-series were data for a single individual and 58 time-series described
199 average concentrations through time for a group of individuals (mean group size = 12.2, interquartile
200 range = 6-14), with the data comprising a total number of 629 individuals who had received a single
201 dose of albendazole. Of the 92 time-series identified, information on the sex of participants was
202 available for 67 time-series (37 from male participants, 24 including a mixture of males and females,
203 and 6 from female participants), with information on mean age and weight available for 79 and 69

204 time-series respectively. Sixteen time-series were from children under the age of 18. Information on
205 whether treatment was taken with a fatty meal was available for 75 time-series (29 received a fatty
206 meal, the remainder did not), whilst infection status was available for 91 time-series (48 were from
207 uninfected patient populations, 16 were from individuals with neurocysticercosis, 14 from individuals
208 with echinococcosis, 7 from individuals with onchocerciasis, 3 from individuals with lymphatic
209 filariasis, 2 from individuals with giardiasis and 1 from an individual with hookworm infection). The
210 median dose received was 400 mg (range 200 mg – 2205 mg). Co-administered drugs included
211 ivermectin (n=7), diethylcarbamazine (DEC, n=7), praziquantel (n=4), ritonavir (n=2),
212 dexamethasone (n=2), amoxicillin (n=1), gentamycin (n=1), metronidazole (n=1), ceftriaxone (n=1),
213 levamisole (n=1) and oxantel pamoate (n=1). **Supplementary Table S1 in Supplementary S1 File**
214 provides full details of each included study and time-series.

215 **Pharmacokinetic modelling of albendazole and albendazole sulfoxide dynamics**

216 To each of these collated time-series, we fitted a model describing the dynamics of albendazole and
217 albendazole sulfoxide concentrations in the blood following receipt of a single oral dose and before a
218 second dose in the case of treatment regimen using multiple doses (see **Fig 2** for model structure and
219 formulation). This model was fitted individually to each time-series within a Bayesian MCMC-based
220 framework (see **Supplementary Fig S1 in Supplementary S1 File** for individual model fitting results
221 for each time-series). Our results highlighted significant variation in model estimates of key
222 pharmacokinetic parameters including k_{AlbSO} (the half-life of albendazole sulfoxide), the
223 bioavailability of albendazole (i.e. proportion of administered albendazole absorbed from the gut into
224 the blood), C_{Max400} (peak modelled concentration of albendazole sulfoxide in the blood following
225 receipt of a hypothetical 400 mg dose) and AUC_{400} (total modelled exposure to albendazole sulfoxide
226 following receipt of a hypothetical 400 mg dose of albendazole). Stratifying the modelled
227 pharmacokinetic profiles by various characteristics of the patient population suggested possible
228 systematic pharmacokinetic differences associated with patient- and treatment regimen-related
229 factors, although also extensive between-study variation in dynamics (**Fig 3**).

230 **Fig 3: Albendazole sulfoxide pharmacokinetic variability, stratified by patient and dosage**
231 **features.** In all panels displayed above, each pale line represents the fitted model output for a single
232 time-series, with the darker lines representing the average of the time-series for a given category.
233 Factors explored were **(A)** Sex; **(B)** Feeding Status (according to whether groups had received the
234 single dose of albendazole alongside a fatty meal or not); **(C)** Dose (with time-series crudely
235 categorised into high/low strata based on whether the dose was higher or lower than 400 mg); **(D)**
236 Infection Status (defined as per the paper associated with each time-series as whether the patient
237 population were receiving treatment for a known infection or not); **(E)** Co-Administered Drugs (i.e.
238 whether albendazole was delivered alone or in tandem with other drugs); and **(F)** Age Group, defined
239 based on whether the average age of the patients was under 18 years old (children) or ≥ 18 years
240 (adults).

241

242 In order to explore these relationships more formally, we carried out a multiple linear regression
243 analysis to assess which of the factors in **Fig 3** were statistically associated with differences in these
244 pharmacokinetic parameters. The results of this regression are displayed in **Table 1**. Receipt of a fatty
245 meal prior to treatment increased the bioavailability of albendazole by 38% on average ($p < 0.01$) and
246 resulted in a significantly higher peak blood concentration (C_{Max400} being 353 mg/ml higher or
247 almost twice as high in individuals receiving a fatty meal on average, $p < 0.01$). Receiving a fatty meal
248 prior to treatment was also associated with a 1.53-fold higher overall AUC_{400} than in fasted
249 individuals ($p < 0.01$). Higher doses were associated with reduced albendazole bioavailability (with
250 bioavailability reducing approximately 1% for each 100 mg increase in dosage, $p = 0.03$). We did not
251 observe any significant differences in pharmacokinetic parameters that depended on sex.

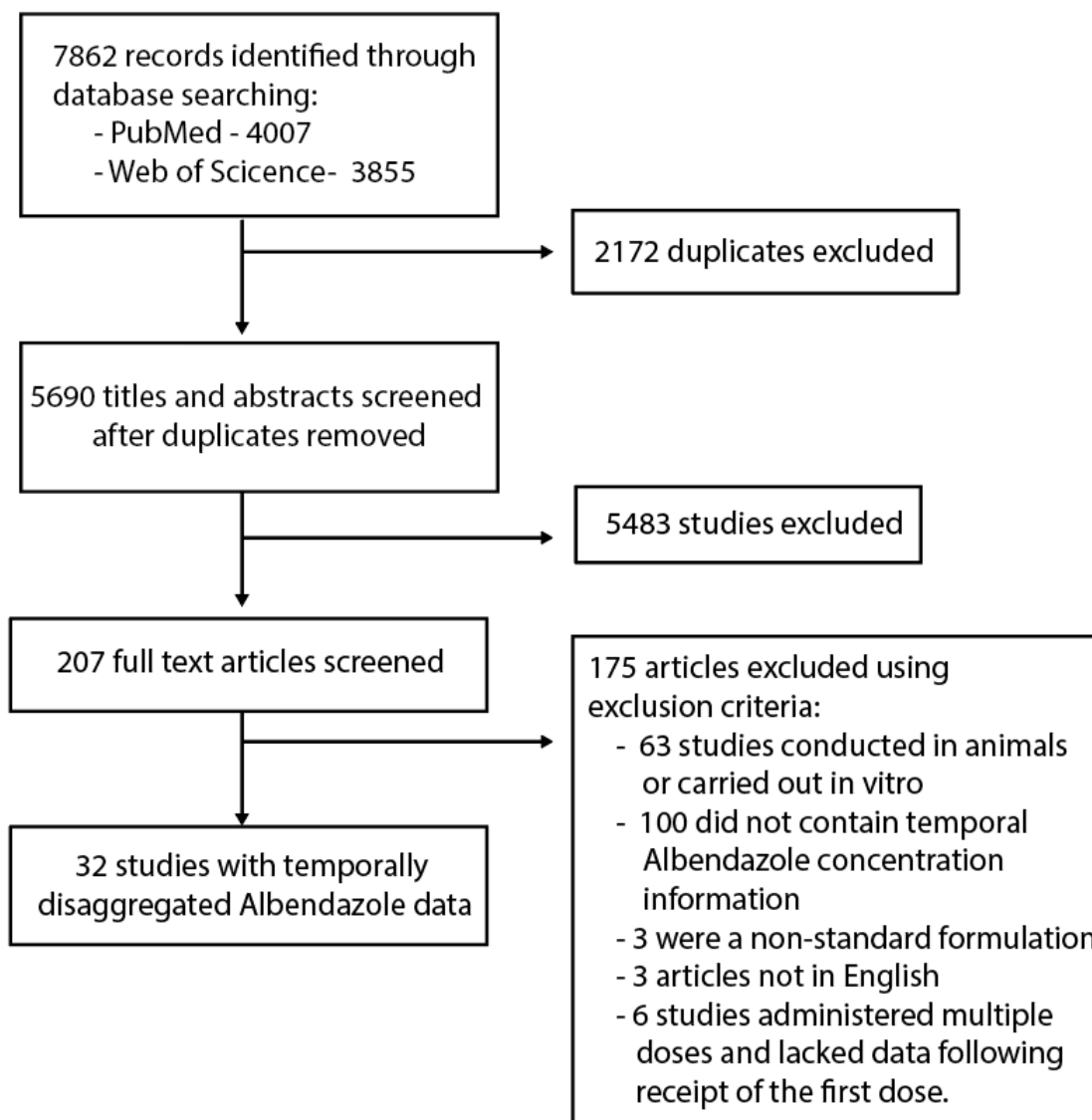
252 Parasitic infection was associated with significant differences in pharmacokinetic parameters
253 compared to uninfected individuals. Whilst we did not detect any significant differences when
254 considering infection status as a binary indicator (i.e. whether an individual had a parasitic infection
255 or not), stratifying the infected population further by specific disease revealed significant associations
256 between particular diseases. There was a significant association between neurocysticercosis and
257 albendazole sulfoxide half-life (median 12 hours compared to 10.5 hours in uninfected individuals,
258 $p = 0.05$); and significant effects of echinococcosis on bioavailability (increased by 14% in infected
259 compared to uninfected individuals, $p < 0.01$) and C_{Max400} and AUC_{400} (increased by 2.7 and 4.0 fold
260 respectively, $p < 0.01$ in both instances). We did not observe any significant association between
261 onchocerciasis and the considered pharmacokinetic parameters.

262 As a sensitivity analysis, we repeated the analyses described above controlling for the dose of
263 albendazole received per kilogram of body weight (available only for a subset of the time-series due
264 to a lack of complete information about participants' weight), rather than the raw amount (in mg, not
265 standardised by body weight) given to an individual. All significant associations described above
266 were retained when conducting this subset sensitivity analysis (see **Supplementary S2 Table** in
267 **Supplementary File S1**). Additionally, we observed a difference between age groups in the modelled
268 estimates of k_{AlbSO} , with the median half-life of albendazole sulfoxide at 12.4 hours in adults
269 compared to only 8.04 hours in children under the age of 18 years ($p < 0.01$).

270 We did not detect a significant effect of co-administered drugs on albendazole's pharmacokinetics,
271 though it is important to note that the heterogeneous array of drugs co-administered across the
272 collated dataset, and the comparative paucity of time-series featuring each of the drugs precluded a
273 stratified analysis of each drug individually (as was possible with disease status). This lack of data
274 necessitated combining them into the binary category of yes/no co-administration. The corollary of
275 this is that these analyses were not powered to reliably detect drug-drug interactions with albendazole
276 (which are well documented in the literature).

277

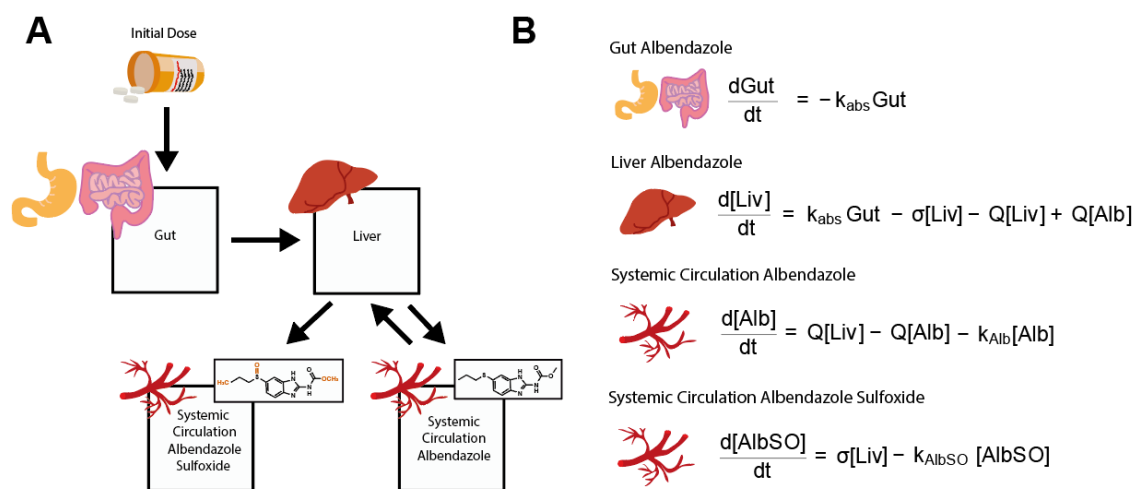
278
279
280



281
282
283
284
285
286
287
288
289
290
291

Figure 1: PRISMA diagram illustrating the systematic review workflow. Web of Science and PubMed were searched on 4th July 2019 using the keywords albendazole AND (treatment* OR dose* OR pharma* OR “half-life” OR “half life”). This produced a total of 5690 results after duplicate removal, of which 206 were retained for full text screening. 175 of the retained articles were subsequently excluded based on pre-defined exclusion criteria, yielding 32 studies containing temporally disaggregated data on albendazole blood concentrations following treatment with a single dose; these 32 references contained a total of 92 time-series measuring albendazole and/or albendazole sulfoxide blood concentrations over time in different populations.

292
293
294
295
296
297
298
299



300
301
302
303
304
305
306
307
308
309
310
311
312

Figure 2: Schematic representation of the model describing albendazole and albendazole sulfoxide dynamics and pharmacokinetics. A compartmental model consisting of a series of linked ordinary differential equations (ODEs) was developed to simulate the pharmacokinetics of albendazole and its pharmacodynamically-active metabolite, albendazole sulfoxide, in the blood following a single oral dose. **(A)** Schematic illustrating the model structure and the way in which the different compartments are linked. **(B)** Overview of the ODEs governing the model, representing the amount of albendazole in the gut and concentration of the drug (and its metabolite albendazole sulfoxide) in the liver and systemic circulation. Note that the received dose is further scaled by a bioavailability parameter not shown here – see *Supplementary Information Section “Mathematical Model of Albendazole and Albendazole Sulfoxide Dynamics”* for further details and full description of the model equations.

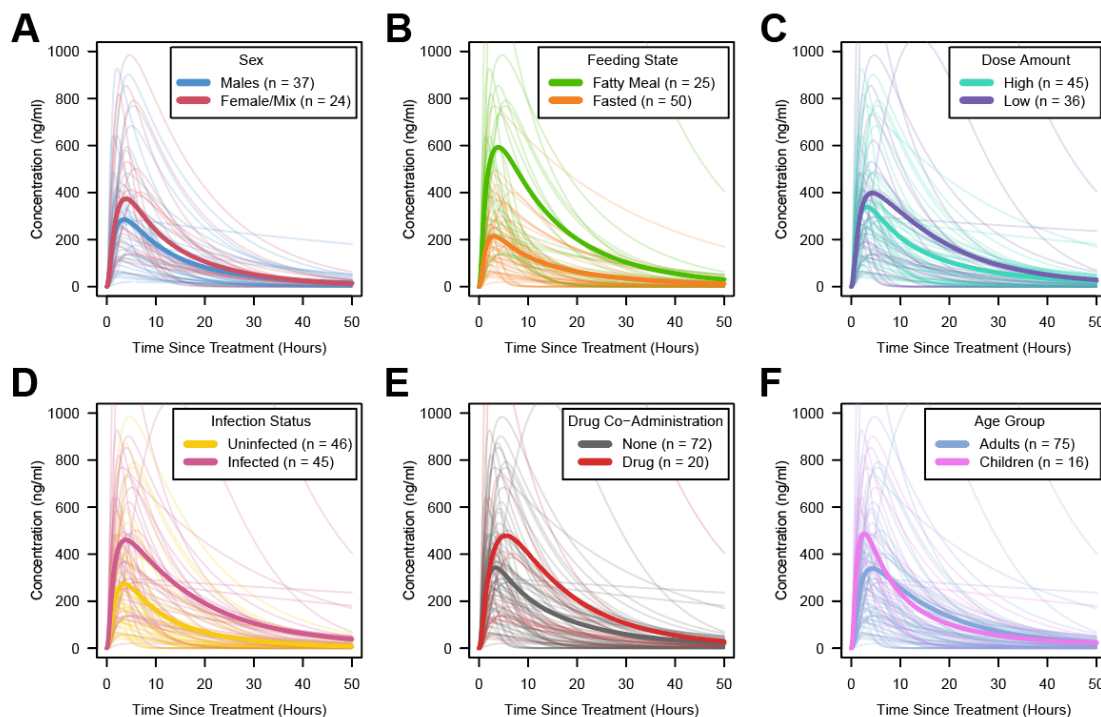
313

314

315

316

317



318

319 **Figure 3: Albendazole sulfoxide pharmacokinetic variability, stratified by patient and dosage**
320 **features.** In all panels displayed above, each pale line represents the fitted model output for a single
321 time-series, with the darker lines representing the average of the time-series for a given category.
322 Factors explored were **(A)** Sex; **(B)** Feeding Status (according to whether groups had received the
323 single dose of albendazole alongside a fatty meal or not); **(C)** Dose (with time-series crudely
324 categorised into high/low strata based on whether the dose was higher than 400 mg); **(D)** Infection
325 Status (defined as per the paper associated with each time-series as whether the patient population
326 were receiving treatment for a known infection or not); **(E)** Co-Administered Drugs (i.e. whether
327 albendazole was delivered alone or in tandem with other drugs); and **(F)** Age Group, defined based on
328 whether the average age of the patients was under 18 years old (children) or ≥ 18 years (adults).

329

330

331

332

333

334

335

336 **Table 1: Regression outputs relating pharmacokinetic properties to characteristics.** Inferred
 337 parameters from the fitted pharmacokinetic curves, specifically albendazole bioavailability,
 338 albendazole sulfoxide half-life, AUC and C_{Max} were regressed onto various patient population
 339 demographic and treatment metadata.

	Bioavailability	AlbSO half-life	AUC (for standardised 400 mg dose)	C_{Max} (for standardised 400 mg dose)
Sex (Ref = male)	p=0.25	p=0.90	p=0.44	p=0.15
Fatty meal	p=0.001 (+14%)	p=0.93	p=0.01 (+6141)	p<0.001 (+330)
Age group (Ref = adults)	p=0.67	p=0.19	p=0.12	p=0.95
Dose (mg)	p=0.03 (-1.1% per 100 mg increase)	p=0.19	p=0.30	p=0.10
Parasitic infection (Ref = none)	p=0.41	p=0.10	p=0.46	p=0.95
→ Onchocerciasis	p=0.09	p=0.48	p=0.51	p=0.08
→ Echinococcosis	p=0.04 (+14%)	p=0.15	p<0.001 (+15604)	p<0.001 (+538)
→ Neurocysticercosis	p=0.74	p=0.05 (-1.5 hours)	p=0.32	p=0.14
Co-administered drugs (Ref = none)	p=0.09	p=0.48	p=0.58	p=0.27

340

341

342

343 Discussion

344 Despite widespread usage, significant uncertainty surrounds the factors underlying variation in the
345 pharmacokinetics of albendazole. Whilst other studies have previously examined these factors
346 individually (e.g. [23,28–31] amongst others), a systematic analysis of different factors together
347 remained outstanding. Integrating the results of a systematic review of the literature with a
348 mathematical model of albendazole/albendazole sulfoxide dynamics, our work highlights the
349 extensive inter-individual pharmacokinetic variation in albendazole's dynamics, and the impact that a
350 number of different factors has in shaping the pharmacokinetic profile of the drug (and its metabolite)
351 in the blood following receipt of a single oral dose. Importantly, our results suggest that these
352 different factors influence different pharmacokinetic parameters, and hence alter different aspects of
353 the pharmacokinetic profile of the drug in the blood.

354 In-keeping with previous work [22,23,32–34], consumption of a fatty meal prior to receiving the dose
355 was associated with increased bioavailability of albendazole, increasing the amount absorbed into the
356 body (and concomitantly elevating the AUC and C_{Max} values achieved), a phenomenon thought to be
357 attributed to changes in the drug's solubility (previously shown to be the rate-limiting step in
358 albendazole's bioavailability and absorption [27]) when delivered alongside a fatty meal [34]. Whilst
359 prior results from the literature have suggested (modest) differences between men and women in
360 albendazole's pharmacokinetics (specifically with regards to the AUC and C_{Max} [19]), we did not
361 observe any statistically significant differences here. However, important caveats to our results are
362 that the lack of individual data in many cases precluded examination of men and women separately.
363 Therefore, we constructed a crude proxy for comparison (between men and groups in which the
364 population comprised mixtures of men and women), which may not have been powered to detect the
365 (minor) differences previously reported [19]. We observed a small but significant effect of the dose of
366 albendazole received on the bioavailability of the drug, with bioavailability decreasing as the dose
367 increased. This is consistent with the well-described induction by albendazole of enzymes responsible
368 for its own metabolism [35]. Together, our results also suggest that different factors impact different
369 pharmacokinetic properties of albendazole and albendazole sulfoxide. For example, whilst receipt of a

370 fatty meal was associated with increases to bioavailability, AUC and C_{Max} , age was significantly
371 associated with albendazole sulfoxide half-life (when controlling for dosage per kilogram of body
372 weight).

373 Perhaps most interestingly, our analyses suggested significant effects of parasitic infection on
374 albendazole pharmacokinetics, with the exact impact dependent on the infection being considered.
375 Previous work in sheep has highlighted that gastrointestinal nematode infection can influence the
376 kinetics of albendazole and albendazole sulfoxide, leading to increased AUC values [36]. Other work
377 has noted increased rates of transformation from albendazole to albendazole sulfoxide in infected
378 compared to uninfected sheep [37], though this has been inconsistently observed and the exact
379 influence (or lack thereof) likely depends on the particular infecting parasite [38]. Work in humans
380 has suggested that the precise impact of infection depends on the interaction between the drug
381 (particularly its absorption and elimination) and the infecting parasite's impact on the host. For
382 example, whilst recent work comparing the pharmacokinetics of albendazole in uninfected and
383 *Wuchereria bancrofti*-infected adults showed no differences [24], previous work exploring
384 albendazole kinetics in patients with echinococcosis demonstrated delayed absorption and impaired
385 elimination of the drug (with this latter effect contributing to increases in the AUC of albendazole
386 sulfoxide, particularly in patients with hepatic obstruction due to the disease) [39]. In-keeping with
387 these results, we observed a significant effect of echinococcosis on albendazole's pharmacokinetic
388 parameters, with infection associated with increases to the bioavailability, C_{Max} and AUC of the drug.
389 By contrast, we observed no significant effect of onchocerciasis on albendazole's pharmacokinetics.
390 For neurocysticercosis, we observed alterations to the apparent half-life of albendazole sulfoxide.
391 However, these results should be interpreted with caution. Sample sizes for each of the individual
392 infections were small; for example, the largest was for echinococcosis with 14 time-series drawn from
393 a total of four studies. The estimates presented here are therefore uncertain, and it is possible that
394 study-specific variation not accounted for might explain the observed results. Relatedly, whilst we
395 attempted to control for co-administered drugs, our ability to do this was limited (see below). It is,

396 therefore, possible that the results presented here might be confounded by the receipt of treatment for
397 an infection that is not described in the reference.

398 There are a number of limitations to the analyses presented here. Firstly, and perhaps most notably,
399 the available data in the literature were highly heterogeneous, involving a diversity of treatment
400 regimens (i.e. other co-administered drugs) and patients (i.e. characteristics), with data available at
401 different levels of aggregation (i.e. individual vs. average profiles). This constraint limits the
402 statistical power of our analyses to characterise the effects of different individual drugs on
403 albendazole's pharmacokinetics. Whilst our binary indicator for co-administered drugs was not found
404 to be significantly associated with any of the pharmacokinetic parameters explored here, numerous
405 interactions between albendazole and other drugs such as cimetidine [20], azithromycin [40] and
406 various anti-epileptic drugs [41] are well-documented in the literature. It is also important to note the
407 overall paucity of available data upon which the inferences presented here are based. Whilst
408 albendazole sulfoxide data were available for all 92 time-series considered here, data on albendazole's
409 pharmacokinetics was only available for 15 time-series; and in no cases was comparable information
410 relevant to the drug's metabolism (such as liver function) available.

411 In addition to these constraints posed by population-level data, the results presented here are limited
412 in that they only describe the pharmacokinetic dynamics following treatment with a single dose of
413 albendazole. This holds programmatic relevance given usage of albendazole in MDA programmes
414 targeting STH [42] and/or LF [43] amongst others but other treatment regimen exist, most notably the
415 use of albendazole in dedicated clinical settings to treat individuals for diseases such as cysticercosis
416 and echinococcosis. These regimens typically utilise multiple doses delivered over consecutive days.
417 Previous results have indicated that albendazole appears to induce its own metabolism through
418 induction of key enzymes in the liver [25], and that multiple doses given over sequential days can lead
419 to changes in pharmacokinetic properties over the course of multiple dose regimen; specifically,
420 reductions in the maximum blood concentrations of albendazole sulfoxide reached following each
421 dose [44]. However, the magnitude of this effect and the frequency of dosing required to elicit
422 pharmacologically-relevant reductions in blood concentrations remain far from clear and have, to

423 date, been addressed in only a limited number of studies. Exploration of this phenomenon and its
424 consequences for anthelmintic treatment regimens using multiple doses of the drug would require
425 both further clinical research and an extension of the mathematical model developed here, and likely
426 represents an instructive avenue of future investigation. Similarly, extensions of the model to include
427 infrequent but reported pharmacokinetic phenomena associated with albendazole treatment, such as
428 biphasic pharmacokinetic profiles (thought possibly to be a product of inter-individual variation in
429 frequency of gastric emptying affecting release of ingested albendazole into the gut, as well as other
430 related characteristics [45]), would also likely provide new insight.

431 The availability of studies explicitly exploring the pharmacokinetics of drugs used to treat NTDs is
432 limited [46]. Despite the limitations described above, our work begins to address this gap for
433 albendazole. It suggests potential useful avenues for improvements to programmatic delivery of
434 albendazole, and perhaps more importantly, highlights the existence of significant inter-individual
435 variation in albendazole pharmacokinetics. Whilst we provide insight into some of the factors
436 underlying this variation, further quantification and exploration will be essential. This is particularly
437 crucial for understanding and interpreting the results of studies exploring programmatic usage of the
438 drug to treat parasitic infections. Having an understanding of the degree of inter-individual variation
439 will be vital for establishing whether observed sub-optimal responses to the drug are due to parasitic
440 factors (e.g. possible resistance potentially developed through cumulative exposure to treatment over
441 multiple rounds [47]) or, instead, simply reflect a high degree of variation between individuals in total
442 exposure to the drug (and hence anti-parasitic effect) that follows ingestion of the same oral dose.
443 Indeed, previous work has demonstrated a high degree of community-level variation in the impacts of
444 ivermectin distribution campaigns to treat onchocerciasis in Ghana, even across communities
445 characterised by similar histories of ivermectin exposure [48], highlighting the need to understand
446 patterns of variation in drug responses (both at the individual and community level) if the underlying
447 causes are to be accurately determined. Together, these results support and underscore recent calls
448 highlighting the need for the collection, collation and analysis of individual participant data (IPD) to
449 generate robust evidence on efficacy and safety of anti-parasitic treatment regimens [49]. Given the

450 increasing frequency with which albendazole is being utilised as part of community-based MDA
451 programmes aimed at controlling a wide array of parasitic infections and NTDs, such an
452 understanding would hold important public health relevance.

453 **Data and Code Availability:** All data collated as part of this study, as well as the analytical code
454 used to generate the analyses reported in the Main Text and Supplementary File can be found at the
455 following link: https://github.com/cwhittaker1000/albendazole_pk.

456 **Acknowledgements:** We deeply thank Dr Annette C. Kuesel for her hugely insightful and helpful
457 comments on earlier versions of this manuscript, which have materially improved and contributed to
458 the work now presented here.

459 **Funding Statement:**

460 C.W. and M.G.B. acknowledge funding from the Medical Research Council (MRC) Centre for Global
461 Infectious Disease Analysis (MR/R015600/1), jointly funded by the UK MRC and the UK Foreign,
462 Commonwealth & Development Office (FCDO), under the MRC/FCDO Concordat agreement and is
463 also part of the European and Developing Countries Clinical Trials Partnership (EDCTP2)
464 programme supported by the European Union.

465 **Authors Contributions:**

466 **Charlie Whittaker:** Conceptualization, Data Curation, Formal Analysis, Investigation, Methodology,
467 Software, Visualization, Writing – Original Draft Preparation; **Cédric B. Chesnais:** Resources,
468 Writing – Review & Editing; **Sébastien D.S. Pion:** Writing – Review & Editing; **Joseph Kamgno:**
469 Writing – Review & Editing; **Martin Walker:** Resources, Writing – Review & Editing; **Maria-**
470 **Gloria Basáñez:** Conceptualization, Funding Acquisition, Project Administration, Resources,
471 Supervision, Writing – Review & Editing; **Michel Boussinesq:** Conceptualization, Project
472 Administration, Resources, Supervision, Writing – Review & Editing.

473

474 **Supplementary S1 File: Additional Methods and Results**

475 **S1 Text: Data Extraction, Collation and Initial Processing**

476 *Systematic Review References & Associated Metadata*

477 **S1 Table: Studies collated through the systematic review and their associated metadata**

478 **S2 Text: Model Construction, Fitting and Inference**

479 *Mathematical Model of Albendazole and Albendazole Sulfoxide Dynamics*

480 *Model Fitting and Inferential Framework*

481 *Pharmacokinetic Parameter Estimation and Multiple Linear Regression Modelling*

482 **S1 Figure: Results of model fitting and calibration to data collated through the systematic**
483 **review.**

484 **S2 Table: Multiple linear regression results relating pharmacokinetic properties to study**
485 **characteristics when controlling for dosage per kilogram of body weight instead of raw dosage**
486 **amount in milligrams**

487 **Supplementary References**

488

489 **References**

- 490 1. Carpio A, Kelvin EA, Bagiella E, Leslie D, Leon P, Andrews H, et al. Effects of albendazole
491 treatment on neurocysticercosis: a randomised controlled trial. *J Neurol Neurosurg Psychiatry*.
492 2008;79: 1050–1055. doi:10.1136/jnnp.2008.144899
- 493 2. Teggi A, Lastilla MG, De Rosa F. Therapy of human hydatid disease with mebendazole and
494 albendazole. *Antimicrob Agents Chemother*. 1993;37: 1679–1684. doi:10.1128/AAC.37.8.1679
- 495 3. Vlaminck J, Cools P, Albonico M, Ame S, Ayana M, Cringoli G, et al. Therapeutic efficacy of
496 albendazole against soil-transmitted helminthiasis in children measured by five diagnostic
497 methods. *PLoS Negl Trop Dis*. 2019;13: e0007471. doi:10.1371/journal.pntd.0007471
- 498 4. Pion SDS, Chesnais CB, Weil GJ, Fischer PU, Missamou F, Boussinesq M. Effect of 3 years of
499 biannual mass drug administration with albendazole on lymphatic filariasis and soil-transmitted
500 helminth infections: a community-based study in Republic of the Congo. *Lancet Infect Dis*.
501 2017;17: 763–769. doi:10.1016/S1473-3099(17)30175-5
- 502 5. Macfarlane CL, Budhathoki SS, Johnson S, Richardson M, Garner P. Albendazole alone or in
503 combination with microfilaricidal drugs for lymphatic filariasis. *Cochrane Database Syst Rev*.
504 2019;1: CD003753. doi: 10.1002/14651858.CD003753.pub4
- 505 6. Dubray CL, Sircar AD, Beau de Rochars VM, Bogus J, Direny AN, Ernest JR, et al. Safety and
506 efficacy of co-administered diethylcarbamazine, albendazole and ivermectin during mass drug
507 administration for lymphatic filariasis in Haiti: Results from a two-armed, open-label, cluster-
508 randomized, community study. *PLoS Negl Trop Dis*. 2020;14: e0008298.
509 doi:10.1371/JOURNAL.PNTD.0008298
- 510 7. Simonsen PE, Pedersen EM, Rwegoshora RT, Malecela MN, Derua YA, Magesa SM.
511 Lymphatic filariasis control in Tanzania: effect of repeated mass drug administration with
512 ivermectin and albendazole on infection and transmission. *PLoS Negl Trop Dis*. 2010;4: e696.
513 doi:10.1371/journal.pntd.0000696
- 514 8. Klion AD, Massougbdji A, Horton J, Ekoué S, Lanmasso T, Ahouissou NL, et al. Albendazole
515 in human loiasis: results of a double-blind, placebo-controlled trial. *J Infect Dis*. 1993;168: 202–
516 206. doi:10.1093/infdis/168.1.202
- 517 9. Klion AD, Horton J, Nutman TB. Albendazole therapy for loiasis refractory to
518 diethylcarbamazine treatment. *Clin Infect Dis*. 1999;29: 680–682.

- 519 10. Arrey-Agbor DB, Nana-Djeunga HC, Mogoung-Wafo AE, Mafo M, Danwe C, Kamgno J. Case
520 report: Probable case of spontaneous encephalopathy due to loiasis and dramatic reduction of
521 Loa loa microfilariaemia with prolonged repeated courses of albendazole. *Am J Trop Med Hyg.*
522 2018;99: 112–115.
- 523 11. Kamgno J, Nguipod-Djomo P, Gounoue R, Téjiokem M, Kuesel AC. Effect of two or six doses
524 800 mg of albendazole every two months on Loa loa microfilaraemia: A double blind,
525 randomized, placebo-controlled trial. *PLoS Negl Trop Dis.* 2016;10: e0004492.
- 526 12. Gardon J, Gardon-Wendel N, Demanga-Ngangue, Kamgno J, Chippaux JP, Boussinesq M.
527 Serious reactions after mass treatment of onchocerciasis with ivermectin in an area endemic for
528 Loa loa infection. *Lancet.* 1997;350: 18–22. doi:10.1016/S0140-6736(96)11094-1
- 529 13. Jung-Cook H. Pharmacokinetic variability of anthelmintics: implications for the treatment of
530 neurocysticercosis. *Expert Rev Clin Pharmacol.* 2012;5: 21–30. doi:10.1586/ECP.11.72
- 531 14. Del Brutto OH. Albendazole therapy for subarachnoid cysticerci: clinical and neuroimaging
532 analysis of 17 patients. *J Neurol Neurosurg Psychiatry.* 1997;62: 659–661.
533 doi:10.1136/jnnp.62.6.659
- 534 15. García HH, Evans CAW, Nash TE, Takayanagui OM, White AC Jr, Botero D, et al. Current
535 consensus guidelines for treatment of neurocysticercosis. *Clin Microbiol Rev.* 2002;15: 747–756.
536 doi:10.1128/CMR.15.4.747-756.2002
- 537 16. Mrus J, Baeten B, Engelen M, Silber SA. Efficacy of single-dose 500 mg mebendazole in soil-
538 transmitted helminth infections: a review. *J Helminthol.* 2018;92: 269–278.
539 doi:10.1017/S0022149X17000426
- 540 17. Humphries D, Nguyen S, Kumar S, Quagraine JE, Otchere J, Harrison LM, et al. Effectiveness
541 of albendazole for hookworm varies widely by community and correlates with nutritional
542 factors: A cross-sectional study of school-age children in Ghana. *Am J Trop Med Hyg.* 2017;96:
543 347–354. doi:10.4269/ajtmh.16-0682
- 544 18. Basáñez M-G, French MD, Walker M, Churcher TS. Paradigm lost: how parasite control may
545 alter pattern and process in human helminthiasis. *Trends Parasitol.* 2012;28: 161–171.
546 doi:10.1016/J.PT.2012.02.004
- 547 19. Mirfazaelian A, Dadashzadeh S, Rouini MR. Effect of gender in the disposition of albendazole
548 metabolites in humans. *Eur J Clin Pharmacol.* 2002;58: 403–408. doi:10.1007/s00228-002-0488-
549 8

- 550 20. Schipper HG, Nagy J, Van Boxtel CJ, Koopmans RP, Kager PA, Butter JJ. Effect of dose
551 increase or cimetidine co-administration on albendazole bioavailability. *Am J Trop Med Hyg.*
552 2000;63: 270–273. doi:10.4269/ajtmh.2000.63.270
- 553 21. Awadzi K, Edwards G, Duke BOL, Opoku NO, Attah SK, Addy ET, et al. The co-administration
554 of ivermectin and albendazole--safety, pharmacokinetics and efficacy against *Onchocerca*
555 *volvulus*. *Ann Trop Med Parasitol.* 2003;97: 165–178. doi:10.1179/000349803235001697
- 556 22. Lange H, Eggers R, Bircher J. Increased systemic availability of albendazole when taken with
557 fatty meal. *Eur J Clin Pharmacol.* 1988;34: 315–317. doi: 10.1007/BF00540964
- 558 23. Mares SS, Jung CH, López AT, González-Esquivel DF. Influence of a Mexican diet on the
559 bioavailability of albendazole. *Basic Clin Pharmacol Toxicol.* 2005;97: 122–124.
560 doi:10.1111/j.1742-7843.2005.pto_172.x
- 561 24. Edi C, Bjerum CM, Ouattara AF, Chhonker YS, Penali LK, Méité A, et al. Pharmacokinetics,
562 safety, and efficacy of a single co-administered dose of diethylcarbamazine, albendazole and
563 ivermectin in adults with and without *Wuchereria bancrofti* infection in Côte d'Ivoire. *PLoS*
564 *Negl Trop Dis.* 2019;13: e0007325. doi:10.1371/journal.pntd.0007325
- 565 25. Steiger U, Cotting J, Reichen J. Albendazole treatment of echinococcosis in humans: effects on
566 microsomal metabolism and drug tolerance. *Clin Pharmacol Ther.* 1990;47: 347–353.
567 doi:10.1038/clpt.1990.38
- 568 26. Lawrenz A, Eglit S, Kroker R. The metabolism of albendazole in the isolated perfused intestine
569 of rats. *Dtsch Tierarztl Wochenschr.* 1992;99: 416–418.
- 570 27. Jung H, Medina L, García L, Fuentes I, Moreno-Esparza R. Absorption studies of albendazole
571 and some physicochemical properties of the drug and its metabolite albendazole sulphoxide. *J*
572 *Pharm Pharmacol.* 1998;50: 43–48. doi:10.1111/j.2042-7158.1998.tb03303.x
- 573 28. Jung H, Sánchez M, González-Astiazarán A, Martínez JM, Suástegui R, González-Esquivel DF.
574 Clinical pharmacokinetics of albendazole in children with neurocysticercosis. *Am J Ther.*
575 1997;4: 23–26. doi: 10.1097/00045391-199701000-00005
- 576 29. Pengsaa K, Na-Bangchang K, Limkittikul K, Kabkaew K, Lapphra K, Sirivichayakul C, et al.
577 Pharmacokinetic investigation of albendazole and praziquantel in Thai children infected with
578 *Giardia intestinalis*. *Ann Trop Med Parasitol.* 2004;98: 349–357.
579 doi:10.1179/000349804225003398

- 580 30. Nagy J, Schipper HG, Koopmans RP, Butter JJ, Van Boxtel CJ, Kager PA. Effect of grapefruit
581 juice or cimetidine coadministration on albendazole bioavailability. *Am J Trop Med Hyg.*
582 2002;66: 260–263. doi:10.4269/ajtmh.2002.66.260
- 583 31. Mirfazaelian A, Rouini MR, Dadashzadeh S. Dose dependent pharmacokinetics of albendazole
584 in human. *Biopharm Drug Dispos.* 2002;23: 379–383. doi:10.1002/bdd.327
- 585 32. Ochoa D, Saiz-Rodríguez M, González-Rojano E, Román M, Sánchez-Rojas S, Wojnicz A, et al.
586 High-fat breakfast increases bioavailability of albendazole compared to low-fat breakfast:
587 Single-dose study in healthy subjects. *Front Pharmacol.* 2021;12: 664465.
588 doi: 10.3389/fphar.2021.664465
- 589 33. Awadzi K, Hero M, Opoku NO, Büttner DW, Coventry PA, Prime MA, et al. The chemotherapy
590 of onchocerciasis XVII. A clinical evaluation of albendazole in patients with onchocerciasis;
591 effects of food and pretreatment with ivermectin on drug response and pharmacokinetics. *Trop*
592 *Med Parasitol.* 1994;45: 203–208.
- 593 34. Schmidt LE, Dalhoff K. Food-drug interactions. *Drugs.* 2002;62: 1481–1502.
594 doi:10.2165/00003495-200262100-00005
- 595 35. Souhaili-el Amri H, Fargetton X, Benoit E, Totis M, Batt AM. Inducing effect of albendazole on
596 rat liver drug-metabolizing enzymes and metabolite pharmacokinetics. *Toxicol Appl Pharmacol.*
597 1988;92: 141–149. doi: 10.1016/0041-008x(88)90236-0
- 598 36. Alvarez LI, Sánchez SF, Lanusse CE. Modified plasma and abomasal disposition of albendazole
599 in nematode-infected sheep. *Vet Parasitol.* 1997;69: 241–253. doi:10.1016/S0304-
600 4017(96)01118-1
- 601 37. Skálová L, Krízová V, Cvilink V, Szotáková B, Storkánová L, Velík J, et al. Mouflon (*Ovis*
602 *musimon*) dicrocoeliosis: effects of parasitosis on the activities of biotransformation enzymes
603 and albendazole metabolism in liver. *Vet Parasitol.* 2007;146: 254–262.
604 doi:10.1016/j.vetpar.2007.02.026
- 605 38. McKellar QA, Jackson F, Coop RL, Baggot JD. Plasma profiles of albendazole metabolites after
606 administration of netobimin and albendazole in sheep: effects of parasitism and age. *Br Vet J.*
607 1993;149: 101–113. doi: 10.1016/S0007-1935(05)80213-1
- 608 39. Cotting J, Zeugin T, Steiger U, Reichen J. Albendazole kinetics in patients with echinococcosis:
609 delayed absorption and impaired elimination in cholestasis. *Eur J Clin Pharmacol.* 1990;38: 605–
610 608. doi: 10.1007/BF00278590

- 611 40. Amsden GW, Gregory TB, Michalak CA, Glue P, Knirsch CA. Pharmacokinetics of
612 azithromycin and the combination of ivermectin and albendazole when administered alone and
613 concurrently in healthy volunteers. *Am J Trop Med Hyg.* 2007;76: 1153–1157.
614 doi:10.4269/ajtmh.2007.76.1153
- 615 41. Perucca E. Clinically relevant drug interactions with antiepileptic drugs. *Br J Clin Pharmacol.*
616 2006;61: 246–255. doi:10.1111/j.1365-2125.2005.02529.x
- 617 42. Echazú A, Juárez M, Vargas PA, Cajal SP, Cimino RO, Heredia V, et al. Albendazole and
618 ivermectin for the control of soil-transmitted helminths in an area with high prevalence of
619 *Strongyloides stercoralis* and hookworm in northwestern Argentina: A community-based
620 pragmatic study. *PLoS Negl Trop Dis.* 2017;11: e0006003. doi:10.1371/journal.pntd.0006003
- 621 43. Weil GJ, Bogus J, Christian M, Dubray C, Djuardi Y, Fischer PU, et al. The safety of double-
622 and triple-drug community mass drug administration for lymphatic filariasis: A multicenter,
623 open-label, cluster-randomized study. *PLoS Med.* 2019;16: e1002839.
624 doi:10.1371/journal.pmed.1002839
- 625 44. Hoaksey PE, Awadzi K, Ward SA, Coventry PA, Orme ML, Edwards G. Rapid and sensitive
626 method for the determination of albendazole and albendazole sulphoxide in biological fluids. *J*
627 *chromatogr.* 1991;566: 244–249. doi:10.1016/0378-4347(91)80131-U
- 628 45. Davies NM, Takemoto JK, Brocks DR, Yáñez JA. Multiple peaking phenomena in
629 pharmacokinetic disposition. *Clin Pharmacokinet.* 2010;49: 351–377. doi:10.2165/11319320-
630 000000000-00000
- 631 46. Verrest L, Dorlo TPC. Lack of clinical pharmacokinetic studies to optimize the treatment of
632 neglected tropical diseases: A systematic review. *Clin Pharmacokinet.* 2017;56: 583–606.
633 doi:10.1007/s40262-016-0467-3
- 634 47. Walker M, Cools P, Albonico M, Ame SM, Ayana M, Dana D, et al. Individual responses to a
635 single oral dose of albendazole indicate reduced efficacy against soil-transmitted helminths in an
636 area with high drug pressure. *PLoS Negl Trop Dis.* 2021;15: e0009888.
637 doi:10.1371/JOURNAL.PNTD.0009888
- 638 48. Churcher TS, Pion SDS, Osei-Atweneboana MY, Prichard RK, Awadzi K, Boussinesq M, et al.
639 Identifying sub-optimal responses to ivermectin in the treatment of River Blindness. *Proc Natl*
640 *Acad Sci U S A.* 2009;106: 16716–16721. doi:10.1073/PNAS.0906176106

- 641 49. Walker M, Freitas LT, Halder JB, Brack M, Keiser J, King CH, et al. Improving anthelmintic
642 treatment for schistosomiasis and soil-transmitted helminthiases through sharing and reuse of
643 individual participant data. Wellcome Open Res. 2022;7: 5.
644 doi:10.12688/wellcomeopenres.17468.1