

1           **Accelerated Aging Mediates the Associations of Unhealthy Lifestyles with**  
2           **Cardiovascular Disease, Cancer, and Mortality:**  
3           **Two Large Prospective Cohort Studies**

4

5   **Authors:**

6   Xueqin Li<sup>1#</sup>, Xingqi Cao<sup>1#</sup>, Jingyun Zhang<sup>1#</sup>, Jinjing Fu<sup>1</sup>, Mayila Mohedaner<sup>1</sup>,  
7   Danzengzhuoga<sup>1</sup>, Xiaoyi Sun<sup>1</sup>, Gan Yang<sup>1</sup>, Zhenqing Yang<sup>1</sup>, Chia-Ling Kuo<sup>2</sup>, Xi Chen<sup>3</sup>,  
8   <sup>4</sup>, Alan A Cohen<sup>5</sup>, Zuyun Liu<sup>1\*</sup>

9   **Affiliations:**

10   <sup>1</sup>Department of Big Data in Health Science School of Public Health and Center for  
11   Clinical Big Data and Analytics Second Affiliated Hospital, Zhejiang University School  
12   of Medicine, Hangzhou 310058, Zhejiang, China

13   <sup>2</sup>Department of Community Medicine and Health Care, Connecticut Convergence  
14   Institute for Translation in Regenerative Engineering, Institute for Systems Genomics,  
15   University of Connecticut Health, Farmington, CT 06030, USA

16   <sup>3</sup>Department of Health Policy and Management, Yale School of Public Health, New  
17   Haven, CT 06520, USA

18   <sup>4</sup>Department of Economics, Yale University, New Haven, CT 06520, USA

19   <sup>5</sup>Department of Family Medicine, Research Centre on Aging, CHUS Research Centre,  
20   University of Sherbrooke, Sherbrooke, QC, Canada

21

22   <sup>#</sup>These authors contributed equally to this work.

23   **\*Corresponding author:**

24   Zuyun Liu, Professor, Department of Big Data in Health Science School of Public  
25   Health and Center for Clinical Big Data and Analytics Second Affiliated Hospital,  
26   Zhejiang University School of Medicine, 866 Yuhangtang Rd, Hangzhou, 310058,  
27   Zhejiang, China. Telephone: +86-0571-87077127. Email: Zuyun.liu@outlook.com or  
28   zuyunliu@zju.edu.cn

29

30 **Abstract**

31 With a well-validated aging measure – Phenotypic Age Acceleration (PhenoAgeAccel),  
32 this study examined whether and to what extent aging mediates the associations of  
33 unhealthy lifestyles with adverse health outcomes. Data were from 405,944 adults (40-  
34 69 years) from UK Biobank (UKB) and 9,972 adults (20-84 years) from US National  
35 Health and Nutrition Examination Surveys (NHANES). The mediation proportion of  
36 PhenoAgeAccel in associations of unhealthy lifestyles with incident cardiovascular  
37 disease, incident cancer, and all-cause mortality were 20.0%, 17.8%, and 26.6% (P  
38 values <0.001) in UKB, respectively. The mediation proportion of PhenoAgeAccel in  
39 associations of lifestyles with cancer mortality, and all-cause mortality were 25.7%, and  
40 35.2% (P values <0.05) in NHANES, respectively. This study demonstrated that  
41 accelerated aging partially mediated the associations of lifestyles with adverse health  
42 outcomes in UK and US populations. The findings reveal a novel pathway and the  
43 potential of geroprotective programs in mitigating health inequality in late-life beyond  
44 lifestyle interventions.

45 **Keywords:** Lifestyles; Phenotypic aging; Adverse health outcomes; Mediation analysis

46

## 47 **Introduction**

48 Unhealthy lifestyle factors, such as lack of exercise <sup>1</sup>, unhealthy diet <sup>2</sup>, and smoking <sup>3</sup>,  
49 are independently associated with multiple adverse health outcomes <sup>4-6</sup>, such as  
50 cardiovascular disease (CVD) and all-cause mortality. Furthermore, such factors are  
51 associated with each other and tend to have synergistic effects on health <sup>7,8</sup>. A few  
52 randomized controlled trials have shown that multi-domain and intensive lifestyle  
53 interventions as a whole could improve cognitive function and reduce the prevalence  
54 of frailty, a geriatric syndrome <sup>9-11</sup>. Despite the observed benefit of lifestyle  
55 interventions, the potential mechanisms explaining how healthy lifestyles contribute to  
56 the reduction of adverse health outcomes remain poorly understood.

57 Accelerated aging is the primary risk factor for chronic diseases and death <sup>12</sup>.  
58 Geroscience researchers hypothesize that therapies or preventive programs targeting  
59 aging would alleviate the incidence or severity of most chronic diseases <sup>12</sup>. Interestingly,  
60 emerging evidence suggests that unhealthy lifestyles are associated with the  
61 acceleration of aging in various populations <sup>11,13-18</sup>. For instance, smoking and higher  
62 BMI are found to be strongly associated with biological aging <sup>18</sup>. Thus, we hypothesize  
63 that aging could play a mediating role in the associations of unhealthy lifestyles with  
64 adverse health outcomes, which, however, has rarely been investigated in previous  
65 literature.

66 Based on multi-system blood biomarkers, we have previously developed a novel  
67 aging measure, Phenotypic Age Acceleration (PhenoAgeAccel) <sup>19-22</sup>. We have  
68 demonstrated that this comprehensive aging measure could predict mortality and  
69 morbidity across different subpopulations, even among those who are disease-free <sup>22</sup>.  
70 This aging measure provides a useful indicator for differentiating at-risk individuals  
71 and evaluating the efficacy of interventions, and it facilitates the investigation of  
72 mechanisms of aging <sup>20</sup>. Here, with this validated aging measure, we tested the  
73 hypothesis that lifestyle interventions impact health outcomes (CVD, cancer, and  
74 mortality) via their effects on aging rates. We used data from the UK Biobank (UKB)  
75 and the US National Health and Nutrition Examination Survey (NHANES), which  
76 comprised nationally representative and large samples of participants in the UK and the  
77 US. More specifically, this study aimed to examine: (1) the associations of unhealthy  
78 lifestyles with aging; (2) the associations of aging with adverse health outcomes; and  
79 (3) the mediating role of aging in the association of unhealthy lifestyles with adverse  
80 health outcomes.

81

## 82 **Results**

### 83 **Population characteristics**

84 **Table 1** shows sex-specific characteristics of UKB (N= 405,944) and NHANES  
85 participants (N= 9,972), respectively. In UKB, the chronological age and PhenoAge of  
86 participants were 57.0 years (SD= 8.0) and 53.2 years (SD= 10.0); In NHANES, the  
87 chronological age and PhenoAge of participants were 49.6 years (SD= 17.6) and 43.3  
88 years (SD= 19.8), respectively. In UKB, we recorded 29,726 incident CVD cases,  
89 34,413 incident cancer cases, and 27,471 deaths during a mean follow-up of 11.9 years.  
90 In NHANES, we recorded 258 CVD deaths, 325 cancer deaths, and 1,374 all-cause

91 deaths during a mean follow-up of 9.8 years. The proportion of participants with  
92 favorable, intermediate, and unfavorable lifestyles were 23.0%, 59.9%, and 17.1% in  
93 UKB, and 24.4%, 66.4%, and 9.2% in NHANES, respectively. The distributions of  
94 unhealthy lifestyle scores of UKB and NHANES were shown in **Fig. S1 and Fig. S2**.

#### 95 **Associations of unhealthy lifestyles with aging (Path a)**

96 The unhealthy lifestyles score was positively associated with PhenoAgeAccel (UKB:  
97  $\beta=0.741\pm 0.008$  SE,  $P<0.001$ ; NHANES:  $\beta=0.874\pm 0.064$  SE,  $P<0.001$ ) (**Table S1**).

#### 98 **Associations of aging with adverse health outcomes (Path b)**

99 PhenoAgeAccel was positively associated with the risk of adverse health outcomes in  
100 both UKB and NHANES, as we observed in the previous study<sup>22</sup>. For instance, for  
101 each one-year increase in PhenoAgeAccel, the risk of incident CVD, incident cancer,  
102 and all-cause mortality increased by 4% (hazard ratios [HR]:1.04, 95% confidence  
103 intervals [CIs]: 1.04, 1.05), 2% (HR: 1.02, 95%CI: 1.02, 1.02), and 7% (HR: 1.07,  
104 95%CI: 1.07, 1.07), respectively in UKB (**Table S2**).

#### 105 **Mediations analysis of aging on associations of unhealthy lifestyles with adverse 106 health outcomes (Path c)**

107 **Table 2** presents the associations of unhealthy lifestyles with adverse health outcomes  
108 and the mediation proportion of PhenoAgeAccel in adverse health outcomes attributed  
109 to unhealthy lifestyles. In UKB, unhealthy lifestyles were significantly associated with  
110 adverse health outcomes. When unfavorable lifestyles were compared with favorable  
111 lifestyles, the risks of incident CVD, incident cancer, and all-cause mortality were  
112 increased by 59% (HR: 1.59, 95%CI: 1.53, 1.65), 33% (HR: 1.33, 95%CI: 1.29, 1.38),  
113 and 84% (HR: 1.84, 95%CI: 1.77, 1.92) in model 1, respectively. After further adjusting  
114 PhenoAgeAccel in model 2, the magnitude of increased risk of incident CVD, incident  
115 cancer, and all-cause mortality was reduced. The mediation proportion of  
116 PhenoAgeAccel in associations of unhealthy lifestyles with risk of incident CVD,  
117 incident cancer, and all-cause mortality were 20.0%, 17.8%, and 26.6% (all P values <  
118 0.001), respectively.

119 In NHANES, unhealthy lifestyles were significantly associated with adverse health  
120 outcomes as well. Although the association of unhealthy lifestyles with the risk of CVD  
121 mortality was not statistically significant, effect sizes were broadly consistent with the  
122 findings from NHANES and the analyses appear to be underpowered due to a small  
123 number of cases in the favorable lifestyle group. Similarly, after further adjusting for  
124 PhenoAgeAccel in model 2, the magnitude of increased risk of CVD mortality, cancer  
125 mortality, and all-cause mortality was reduced. The mediation proportion of  
126 PhenoAgeAccel in associations of lifestyles with risk of CVD mortality, cancer  
127 mortality, and all-cause mortality were 43.9% (P values = 0.100), 25.7%, and 35.2%  
128 (all P values < 0.05), respectively.

#### 129 **Sensitivity analyses**

130 First, using another aging measure—Biological Age Acceleration (BioAgeAccel), we  
131 observed similar results, but the mediation proportion of BioAgeAccel (ranging from  
132 1.9% to 18.3% in UKB and 1.1% to 8.1% in NHANES) was smaller than that of  
133 PhenoAgeAccel (**Table S3-S7**). Second, the mediation proportion of PhenoAgeAccel  
134 in associations of lifestyles with incident CVD was slightly smaller in women than that

135 in men (P for interaction < 0.001). The above sex-specific results were not observed in  
136 NHANES (**Table S6**). Third, after excluding outcomes that occurred within the first  
137 two years of follow-up, the association between unhealthy lifestyles and adverse health  
138 outcomes was maintained and the mediation proportion of PhenoAgeAccel in  
139 associations of lifestyles with adverse health outcomes did not change substantially  
140 (**Table S7**). Fourth, the difference method showed similar results (**Table S8**).

141

## 142 **Discussion**

143 Based on the two large population-based cohort studies, this study found that  
144 accelerated aging partially mediated the associations of unhealthy lifestyles with  
145 adverse health outcomes (CVD, cancer, and mortality) in the UK and US populations.  
146 The mediation proportion ranged from 17.8 % to 26.6% in UKB and 25.7% to 35.2%  
147 in NHANES. The findings reveal a novel pathway linking unhealthy lifestyles to  
148 adverse health outcomes and the potential for lifestyle intervention.

149 To our knowledge, studies investigating the mediating role of aging in the  
150 association of lifestyles with adverse health outcomes are scarce, with one exception by  
151 our group<sup>23</sup>. In this previous study of older Chinese adults, aging is suggested to  
152 partially mediate the association of lifestyles with mortality. In the present study, we  
153 enlarged the age range by including a large sample size of participants aged 40-69 years  
154 old in UKB and 20-84 years old in NHANES. We further included incident CVD and  
155 cancer in UKB, and CVD mortality and cancer mortality in NHANES for adverse health  
156 outcomes, because CVD and cancer are the leading causes of increased disability-  
157 adjusted life-years and mortality globally<sup>24,25</sup>. We extended our previous observation  
158 to more general populations and more adverse health outcomes, enhancing the  
159 significance of the findings in disease prevention and intervention.

160 The explanation of the mediating role of aging in the associations of unhealthy  
161 lifestyles with CVD, cancer, and mortality might be related to inflammation/immunity.  
162 First, unhealthy lifestyles, such as smoking, and obesity, are likely to contribute to  
163 accelerated aging by triggering low-grade chronic inflammation<sup>26-28</sup>, which increases  
164 individuals' susceptibility to diverse adverse outcomes. Second, PhenoAgeAccel is  
165 found to be associated with increased activation of pro-inflammatory pathways (16).  
166 Additionally, as blood biomarkers involved in PhenoAge could reflect individuals'  
167 status of inflammation (i.e., C-reactive protein) and immune system (i.e., lymphocyte  
168 percent, mean (red) cell volume, red cell distribution width, and white blood cell count),  
169 PhenoAgeAccel could capture risks of multiple diseases from the preclinical  
170 perspective. Genes linked to PhenoAgeAccel are overrepresented in the immune system,  
171 carbohydrate homeostasis pathways, and cell function, suggesting that the effect of  
172 unhealthy lifestyles on accelerated aging may be through multiple pathways including  
173 inflammation/immune pathways (17). Third, inflammation and dysfunctional immune  
174 function contribute to the pathogenesis of multiple diseases, such as CVD and cancer,  
175 which eventually contribute to death<sup>29,30</sup>. Based on the evidence above, we speculate  
176 that unhealthy lifestyles lead to the pathogenesis of disease through accelerated aging  
177 (unhealthy lifestyles → accelerated aging (inflammation and immune dysfunction) →  
178 adverse health outcomes).

179 Using another aging measure—BioAgeAccel, we observed similar results though  
180 with weaker effect sizes, which enhanced our speculation that aging partially mediated  
181 the associations of unhealthy lifestyles with CVD, cancer, and mortality. Researchers  
182 revealed that genes linked to BioAgeAccel were enriched in lipid-related pathways<sup>31</sup>  
183 which were reported to be associated with the regulation of aging and longevity<sup>20</sup>.  
184 Since dysregulation in lipid metabolism is another prominent pathway in the  
185 pathogenesis of CVD and cancer<sup>32,33</sup>, there may be another pathway that unhealthy  
186 lifestyles lead to the pathogenesis of disease through aging (unhealthy lifestyles →  
187 accelerated aging (lipid metabolism) → adverse health outcomes). The mutual  
188 verification of the mediating role of aging by two aging measures further tells us that if  
189 more aging measures are available, we could capture aging more comprehensively.  
190 Many aging measures are under development, involving a single hallmark of aging (eg,  
191 DNA methylation)<sup>34</sup> or composite aging measures by integrating multi-omics data<sup>35</sup>.  
192 Hence, we have the opportunity to further understand the important role of aging, a  
193 complex process, in the pathway linking unhealthy lifestyles to adverse health  
194 outcomes. Future studies are needed to validate our findings using more aging measures.

195 The associations of unhealthy lifestyles with CVD, cancer, and mortality observed  
196 in this study highlight the potential of multi-domain lifestyle interventions (i.e., healthy  
197 diet, no smoking, no alcohol consumption, regular exercise, and healthy BMI) in  
198 disease prevention. As the implementation of multi-domain interventions in preventing  
199 cognitive decline and frailty has been suggested to be effective<sup>9-11</sup>, it is meaningful to  
200 extend such interventions to CVD, cancer, and even aging itself. Besides, from the point  
201 of view of pharmacological intervention, many anti-aging drugs have been developed  
202 such as caloric restriction mimetics (resveratrol, rapamycin, metformin), senolytics, and  
203 synthetic sirtuin activators, which are promising to alleviate or delay age-related  
204 conditions<sup>36-40</sup>. With a more comprehensive understanding of aging hallmarks, more  
205 aging interventions are expected to flourish. Likewise, advances in biomedical research  
206 may bring us the possibility of anti-aging and delaying the onset of diseases in the future.

207 We caution that it would be premature to interpret our results as showing that lifestyle  
208 interventions reduce adverse health outcomes by slowing aging. While PhenoAge and  
209 BioAge well-validated metrics related to the aging process, their precise interpretation  
210 as metrics of aging is complicated by the lack of consensus on what aging is<sup>41,42</sup>. For  
211 example, it is possible that many of the adverse health outcomes observed today are a  
212 result of the cumulative impact of industrialized lifestyles over decades, and not of the  
213 basic human biology of aging. In that case, PhenoAge and BioAge might at least  
214 partially reflect these aging-independent lifestyle impacts, and we could still see the  
215 relationships observed here. At a practical level, such nuances could be important to  
216 disentangle mechanisms and help tailor interventions to specific aspects of aging and/or  
217 health that are most important for preventing adverse outcomes.

218 The strengths of our study included the large sample sizes of middle-aged and older  
219 adults from the UK and the US and the use of two well-validated aging measures.  
220 Nevertheless, several limitations should be noted. First, the assessment of lifestyle was  
221 based on self-reported information and could be subject to bias. Second, the UKB and  
222 NHANES participants are healthier than the general population and are mostly

223 Caucasian. Hence, our findings may not be generalizable to other populations. Third,  
224 there was likely residual confounding even though we controlled for various covariates.  
225 Future studies are needed to further validate our findings in other populations and to  
226 develop appropriate lifestyle interventions and geroprotective programs.

227 This study, for the first time, demonstrated that accelerated aging partially mediated  
228 the associations of unhealthy lifestyles with CVD, cancer, and mortality in UK and US  
229 populations. The findings reveal a novel pathway and the potential of geroprotective  
230 programs in mitigating health inequality in late-life beyond lifestyle interventions.

231

## 232 **Methods**

### 233 **Study population**

234 UKB, a prospective, population-based study, recruited more than 500,000 participants  
235 aged 40-69 years from 22 assessment centers across the UK from 2006 to 2010. Details  
236 of the study design and data collection have been described previously <sup>43</sup>. UKB was  
237 approved by the North West Multi-center Research Ethics Committee <sup>44</sup>, and written  
238 informed consent was obtained from all participants <sup>45</sup>. Among 499,366 participants  
239 aged 40-69 years old, we excluded those with missing information on lifestyle factors  
240 (N= 432), clinical blood biomarkers (N= 85,193), and covariates (N= 7,797). Finally,  
241 we included 405,944 participants for all-cause mortality (Analytic sample 1). We  
242 further excluded participants with CVD at baseline (N= 27,236) and cancer at baseline  
243 (N= 33,741). We included 378,708, and 372,203 participants for the analyses of incident  
244 CVD (Analytic sample 2), and incident cancer (Analytic sample 3), respectively.

245 NHANES uses a multistage, complex probability design to recruit a representative  
246 sample of community-dwelling children and adults of the US population. Since 1999,  
247 NHANES has become a continuous biennial survey. Approximately 5,000 participants  
248 among the 7,000 randomly selected individuals were invited to complete both the  
249 questionnaire interview and comprehensive health examination. NHANES was  
250 approved by the National Center for Health Statistics Research Ethics Review Board,  
251 and written informed consent was obtained from all participants. Detailed information  
252 on the NHANES is available through the NHANES website  
253 (<https://www.cdc.gov/nchs/nhanes/index.htm>) <sup>46</sup>. Among 60,685 participants who were  
254 not pregnant and aged 20 years and older from the continuous NHANES (1999-2010)  
255 surveys, we excluded those with missing information on clinical blood biomarkers (N=  
256 49,698) and covariates (N= 1,015). Overall, we included 9,972 participants for the  
257 analysis of CVD mortality, cancer mortality, and all-cause mortality. The flow chart is  
258 shown in **Fig. 1**.

### 259 **Assessments of lifestyles**

260 Consistent with the recommendations from World Health Organization <sup>47</sup>, we  
261 constructed an unhealthy lifestyles score, including five lifestyle factors (smoking,  
262 drinking, physical inactivity, unhealthy body mass index (BMI), and unhealthy diet)  
263 assessed at baseline by a touchscreen questionnaire in UKB and NHANES. In UKB,  
264 structured questionnaires and 24-hour dietary recalls offered information on all lifestyle  
265 factors. An unhealthy level of smoking was defined as participants who reported ever  
266 smoked or current smoking or who had smoked more than 100 times in their life.

267 Drinking was defined as participants who reported alcohol consumption of more than  
268 one drink for women and two drinks for men according to the UK dietary guidelines<sup>48</sup>  
269 (one drink contains ethanol 8 g in the UK). Diet was defined based on the ideal intake  
270 of dietary components for cardiovascular health<sup>49</sup>. An unhealthy diet was defined as an  
271 intake of less than half of the following diet components and not meeting the amount  
272 of intake requirements: increased intake of vegetables, fruits, (shell) fish, whole grains,  
273 dairy products, and vegetable oils; and no intake of sugar-sweetened beverages; and  
274 reduced intake of refined grains, processed meats, and unprocessed red meats according  
275 to the previous study<sup>50</sup>. Physical inactivity was defined as less than 75 minutes of  
276 vigorous activity per week or 150 minutes of moderate activity per week (or an  
277 equivalent combination) or engaging in vigorous activity less than once a week or  
278 moderate activity less than 5 days a week<sup>51</sup>. In NHANES, smoking was defined as  
279 participants who reported ever smoking more than 100 cigarettes<sup>52</sup>. Using self-reported  
280 frequency and volume of alcohol consumption, drinking was defined as daily alcohol  
281 consumption of more than one drink for women and one drink for men, according to  
282 the US dietary guidelines<sup>53</sup> (one drink contains 14 g of ethanol in the US). According  
283 to the questionnaires, the metabolic equivalent scores were calculated. Participants  
284 were classified into thirds and they were defined as physical inactivity if their metabolic  
285 equivalent score was lower than the top third of the distribution<sup>52</sup>. Dietary quality was  
286 assessed by the Healthy Eating Index-2010 (HEI-2010), a measurement score to  
287 evaluate the degree to which diets met the 2010 Dietary Guidelines for Americans. The  
288 total score ranged from 0 to 100 and a higher score indicated a healthier diet<sup>54</sup>.  
289 According to a previous study, we defined an unhealthy diet as the HEI in the three  
290 lowest quintiles of distribution<sup>52</sup>. In both UKB and NHANES, an unhealthy BMI was  
291 defined as a BMI out of the range of 18.5-24.9 kg/m<sup>2</sup>.

292 For every single lifestyle, we assigned 1 point and 0 points for an unhealthy level  
293 and a healthy level, respectively. The unhealthy lifestyles score was the sum of the  
294 points and ranged from 0 to 5, with higher scores indicating a higher level of an  
295 unhealthy lifestyle. The unhealthy lifestyles score was subsequently categorized as  
296 favorable (score: 0 to 1), intermediate (score: 2 to 3), and unfavorable (score: 4 to 5)  
297 lifestyles.

### 298 **Aging measures**

299 PhenoAgeAccel was previously developed and validated using data from NHANES  
300<sup>19,22</sup> and has been applied to UKB participants in our recent work<sup>20</sup>. Briefly, nine  
301 biomarkers (i.e., albumin, creatinine, glucose, C-reactive protein, lymphocyte  
302 percentage, mean cell volume, red blood cell distribution width, alkaline phosphatase,  
303 white blood cell count) and chronological age collected at baseline were used to  
304 calculate PhenoAge (in years), with the equation as follows:

$$305 \quad \text{PhenoAge} = 141.50 + \frac{\ln\{-0.00553 \times \ln(1 - \text{mortality risk})\}}{0.090165}$$

306 where

$$307 \quad \text{Mortality risk} = 1 - \exp\left(\frac{-1.51714 \times \exp(xb)}{0.0076927}\right)$$

308 and



$$\begin{aligned} \text{309} \quad \text{xb} &= -19.907 - 0.0336 \times \text{albumin} + 0.0095 \times \text{creatinine} + 0.1953 \times \text{glucose} \\ \text{310} \quad &+ 0.0954 \times \ln(\text{C-reactive protein}) - 0.0120 \\ \text{311} \quad &\times \text{lymphocyte percentage} + 0.0268 \times \text{mean cell volume} \\ \text{312} \quad &+ 0.3306 \times \text{red blood cell distribution width} + 0.00188 \\ \text{313} \quad &\times \text{alkaline phosphatase} + 0.0554 \times \text{white blood cell count} \\ \text{314} \quad &+ 0.0804 \times \text{chronological age} \end{aligned}$$

315 PhenoAgeAccel was calculated as a residual from a linear regression of PhenoAge  
316 against chronological age<sup>20,22</sup>.

### 317 **Ascertainment of adverse health outcome**

318 In UKB, the outcomes – incident CVD, incident cancer, and all-cause mortality – were  
319 ascertained through linked hospital admissions data through Aug 29, 2021. We used the  
320 International Statistical Classification of Diseases and Related Health Problems 9th  
321 (ICD-9) (410, 411, 412, 413, 414, 429.79, 430, 431, 432, 433, 434, 435, 436, 437, and  
322 438) and 10th (ICD-10) (I20, I21, I22, I23, I24.1, I25, I46, I60, I61, I63, and I64) to  
323 define CVD<sup>55</sup>. Participants' time to CVD was calculated from baseline to the date of  
324 the first diagnosis of CVD, date of death, date of loss to follow-up, or Aug 29, 2021,  
325 whichever came first. Cancer and deaths were ascertained through the NHS Information  
326 Centre (England and Wales) and the NHS Central Register (Scotland). We used ICD-9  
327 (140-208, except 173) and ICD-10 (C00-C96, except C44) to define the diagnosis of  
328 cancer. Participants' time to cancer was calculated from baseline to the date of the first  
329 diagnosis of cancer, date of death, date of loss to follow-up, or 30 Nov 2020, whichever  
330 came first. Participants' time to death was calculated from baseline to the date of death,  
331 date of loss to follow up, or 8 Apr 2021, whichever came first.

332 In NHANES, CVD mortality, cancer mortality, and all-cause mortality during  
333 follow-up were based on linked data from records taken from the National Death Index  
334 through December 31, 2015, provided through the Centers for Disease Control and  
335 Prevention.

### 336 **Covariates**

337 We considered the following covariates through questionnaires, i.e., age, sex, race/  
338 ethnicity, education level, occupational status (UKB only), Townsend deprivation index  
339 (TDI) (UKB only), marital status (NHANES only), and family poverty income ratio  
340 (PIR) (NHANES only). The self-reported race/ ethnicity was categorized as White,  
341 Mixed background, Asian, Black, Chinese, and Others in UKB; Mexican American,  
342 Non-Hispanic White, Non-Hispanic Black, and others in NHANES. Education level  
343 was categorized as high (college or university degree), intermediate (A/AS levels or  
344 equivalent, O levels/GCSEs or equivalent), and low (none of the aforementioned) in  
345 UKB<sup>56</sup>; college, some college, high school (HS), and less than HS /general educational  
346 diploma (GED) in NHANES<sup>22</sup>. Occupation status was categorized as working, retired,  
347 and others. TDI was calculated by combining information on employment, social class,  
348 housing, and car availability. A lower score on TDI indicates a higher level of  
349 socioeconomic status. PIR (categorized as < 1.3, 1.30-3.50, and >3.50) was estimated  
350 using guidelines and adjustments for family size, year, and state<sup>57</sup>.

### 351 **Statistical analysis**

352 The basic characteristics of the study participants were summarized by sex using mean

353 and standard deviation (SD) for continuous variables and number (percentage) for  
354 categorical variables. Basic characteristics by sex were compared using the analysis of  
355 variance (ANOVA) or  $\chi^2$  test.

356 To evaluate the potential mediating role of PhenoAgeAccel in the association of  
357 unhealthy lifestyles with adverse health outcomes, we considered three pathways (a:  
358 unhealthy lifestyles  $\rightarrow$  aging; b: aging  $\rightarrow$  adverse health outcomes; c: unhealthy  
359 lifestyles  $\rightarrow$  adverse health outcomes. **Fig. 2**). **For path a**, general linear regression  
360 models were used to investigate the associations of unhealthy lifestyle scores with  
361 PhenoAgeAccel. The coefficient ( $\beta$ ) and standard error (SE) were documented in model  
362 1. According to previous studies<sup>22,52</sup>, model 1 included chronological age, gender,  
363 education level, race, occupational status (UKB only), TDI (UKB only), marital status  
364 (NHANES only), and PIR (NHANES only). **For path b**, Cox proportional hazards  
365 regression models were performed to investigate the associations of PhenoAgeAccel  
366 with adverse health outcomes. The HR and 95% CI were documented in model 1. **For**  
367 **path c**, Cox proportional hazards regression models were used to estimate the HR and  
368 95% CIs of adverse health outcomes associated with unhealthy lifestyles and aging in  
369 model 1 and model 2 (additionally including PhenoAgeAccel based on model 1). To  
370 determine whether PhenoAgeAccel mediated the associations of unhealthy lifestyles  
371 with adverse health outcomes, the formal mediation analyses were performed to  
372 estimate the mediation proportions and 95% CIs in model 1<sup>58</sup>.

373 We performed several sensitivity analyses to test the robustness of our results. First,  
374 we repeated all the analyses using another aging measure—BioAgeAccel in model 1  
375 and model 3 (additionally included BioAgeAccel based on model 1). Details on  
376 BioAgeAccel were shown in **supplemental methods**. Second, given the sex difference  
377 in aging and health, we further conducted a stratified analysis by sex to investigate the  
378 associations of unhealthy lifestyles with adverse health outcomes and the mediation  
379 proportion of aging in adverse health outcomes attributed to unhealthy lifestyles. Third,  
380 to reduce the potential reverse causation, we repeated the main analyses after excluding  
381 outcomes that occurred within the first two years of follow-up. Forth, we repeated the  
382 main analyses using the difference method<sup>59</sup> to evaluate the mediating role of  
383 PhenoAgeAccel.

384 All analyses were performed using SAS version 9.4 (SAS Institute, Cary, NC), and  
385 R version 3.6.3 (2020-02-29). We considered a two-sided P value  $<0.05$  to be  
386 statistically significant.

### 387 **Data availability**

388 Data and materials are available via UK Biobank at <http://www.ukbiobank.ac.uk/>. Data  
389 from the US National Health and Nutrition Examination Survey (NHANES) are  
390 available at the NHANES website: <https://www.cdc.gov/nchs/nhanes/index.htm>.

### 391 **Code availability**

392 The source code for this study can be obtained upon request to the corresponding  
393 author (Prof. Z.L., [Zuyun.liu@outlook.com](mailto:Zuyun.liu@outlook.com))

394

395 **Reference:**

- 396 1 Kraus, W. E. *et al.* Physical Activity, All-Cause and Cardiovascular Mortality,  
397 and Cardiovascular Disease. *Med Sci Sports Exerc* **51**, 1270-1281,  
398 doi:10.1249/mss.0000000000001939 (2019).
- 399 2 Chareonrungrueangchai, K., Wongkawinwoot, K., Anothaisintawee, T. &  
400 Reutrakul, S. Dietary Factors and Risks of Cardiovascular Diseases: An  
401 Umbrella Review. *Nutrients* **12**, doi:10.3390/nu12041088 (2020).
- 402 3 Thurber, K. A. *et al.* Tobacco smoking and mortality among Aboriginal and  
403 Torres Strait Islander adults in Australia. *Int J Epidemiol* **50**, 942-954,  
404 doi:10.1093/ije/dyaa274 (2021).
- 405 4 Livingstone, K. M., Abbott, G., Ward, J. & Bowe, S. J. Unhealthy Lifestyle,  
406 Genetics and Risk of Cardiovascular Disease and Mortality in 76,958  
407 Individuals from the UK Biobank Cohort Study. *Nutrients* **13**,  
408 doi:10.3390/nu13124283 (2021).
- 409 5 Shan, Z. *et al.* Rotating night shift work and adherence to unhealthy lifestyle in  
410 predicting risk of type 2 diabetes: results from two large US cohorts of female  
411 nurses. *Bmj* **363**, k4641, doi:10.1136/bmj.k4641 (2018).
- 412 6 Martinez, J. E. *et al.* Unhealthy Lifestyle and Gut Dysbiosis: A Better  
413 Understanding of the Effects of Poor Diet and Nicotine on the Intestinal  
414 Microbiome. *Front Endocrinol (Lausanne)* **12**, 667066,  
415 doi:10.3389/fendo.2021.667066 (2021).
- 416 7 Zhang, Y. B. *et al.* Combined lifestyle factors, all-cause mortality and  
417 cardiovascular disease: a systematic review and meta-analysis of prospective  
418 cohort studies. *J Epidemiol Community Health* **75**, 92-99, doi:10.1136/jech-  
419 2020-214050 (2021).
- 420 8 Zhang, Y. B. *et al.* Combined lifestyle factors, incident cancer, and cancer  
421 mortality: a systematic review and meta-analysis of prospective cohort studies.  
422 *Br J Cancer* **122**, 1085-1093, doi:10.1038/s41416-020-0741-x (2020).
- 423 9 Ngandu, T. *et al.* A 2 year multidomain intervention of diet, exercise, cognitive  
424 training, and vascular risk monitoring versus control to prevent cognitive  
425 decline in at-risk elderly people (FINGER): a randomised controlled trial.  
426 *Lancet* **385**, 2255-2263, doi:10.1016/s0140-6736(15)60461-5 (2015).
- 427 10 Chew, K. A. *et al.* SINGapore GERiatric intervention study to reduce physical  
428 frailty and cognitive decline (SINGER)-pilot: A feasibility study. *Alzheimers*  
429 *Dement (N Y)* **7**, e12141, doi:10.1002/trc2.12141 (2021).
- 430 11 Hazuda, H. P. *et al.* Association of Intensive Lifestyle and Metformin  
431 Interventions With Frailty in the Diabetes Prevention Program Outcomes Study.  
432 *J Gerontol A Biol Sci Med Sci* **76**, 929-936, doi:10.1093/gerona/glaa295 (2021).
- 433 12 Sierra, F. & Kohanski, R. Geroscience and the trans-NIH Geroscience Interest  
434 Group, GSIG. *Geroscience* **39**, 1-5, doi:10.1007/s11357-016-9954-6 (2017).
- 435 13 Ryan, J., Wrigglesworth, J., Loong, J., Fransquet, P. D. & Woods, R. L. A  
436 Systematic Review and Meta-analysis of Environmental, Lifestyle, and Health  
437 Factors Associated With DNA Methylation Age. *J Gerontol A Biol Sci Med Sci*  
438 **75**, 481-494, doi:10.1093/gerona/glz099 (2020).

- 439 14 Robinson, O. *et al.* Determinants of accelerated metabolomic and epigenetic  
440 aging in a UK cohort. *Aging Cell* **19**, e13149, doi:10.1111/ace1.13149 (2020).
- 441 15 Zhao, W. *et al.* Education and Lifestyle Factors Are Associated with DNA  
442 Methylation Clocks in Older African Americans. *Int J Environ Res Public*  
443 *Health* **16**, doi:10.3390/ijerph16173141 (2019).
- 444 16 McCartney, D. L. *et al.* Epigenetic prediction of complex traits and death.  
445 *Genome Biol* **19**, 136, doi:10.1186/s13059-018-1514-1 (2018).
- 446 17 Quach, A. *et al.* Epigenetic clock analysis of diet, exercise, education, and  
447 lifestyle factors. *Aging (Albany NY)* **9**, 419-446, doi:10.18632/aging.101168  
448 (2017).
- 449 18 Fiorito, G. *et al.* Socioeconomic position, lifestyle habits and biomarkers of  
450 epigenetic aging: a multi-cohort analysis. *Aging (Albany NY)* **11**, 2045-2070,  
451 doi:10.18632/aging.101900 (2019).
- 452 19 Levine, M. E. *et al.* An epigenetic biomarker of aging for lifespan and  
453 healthspan. *Aging (Albany NY)* **10**, 573-591, doi:10.18632/aging.101414 (2018).
- 454 20 Kuo, C. L., Pilling, L. C., Liu, Z., Atkins, J. L. & Levine, M. E. Genetic  
455 associations for two biological age measures point to distinct aging phenotypes.  
456 *Aging Cell* **20**, e13376, doi:10.1111/ace1.13376 (2021).
- 457 21 Levine, M. E. Modeling the rate of senescence: can estimated biological age  
458 predict mortality more accurately than chronological age? *J Gerontol A Biol Sci*  
459 *Med Sci* **68**, 667-674, doi:10.1093/gerona/gls233 (2013).
- 460 22 Liu, Z. *et al.* A new aging measure captures morbidity and mortality risk across  
461 diverse subpopulations from NHANES IV: A cohort study. *PLoS Med* **15**,  
462 e1002718, doi:10.1371/journal.pmed.1002718 (2018).
- 463 23 Jin, S. *et al.* Association of lifestyle with mortality and the mediating role of  
464 aging among older adults in China. *Arch Gerontol Geriatr* **98**, 104559,  
465 doi:10.1016/j.archger.2021.104559 (2022).
- 466 24 Joseph, P. *et al.* Reducing the Global Burden of Cardiovascular Disease, Part 1:  
467 The Epidemiology and Risk Factors. *Circ Res* **121**, 677-694,  
468 doi:10.1161/circresaha.117.308903 (2017).
- 469 25 Leong, D. P. *et al.* Reducing the Global Burden of Cardiovascular Disease, Part  
470 2: Prevention and Treatment of Cardiovascular Disease. *Circ Res* **121**, 695-710,  
471 doi:10.1161/circresaha.117.311849 (2017).
- 472 26 Saltiel, A. R. & Olefsky, J. M. Inflammatory mechanisms linking obesity and  
473 metabolic disease. *J Clin Invest* **127**, 1-4, doi:10.1172/jci92035 (2017).
- 474 27 Strzelak, A., Ratajczak, A., Adamiec, A. & Feleszko, W. Tobacco Smoke  
475 Induces and Alters Immune Responses in the Lung Triggering Inflammation,  
476 Allergy, Asthma and Other Lung Diseases: A Mechanistic Review. *Int J Environ*  
477 *Res Public Health* **15**, doi:10.3390/ijerph15051033 (2018).
- 478 28 Deeks, S. G. HIV infection, inflammation, immunosenescence, and aging. *Annu*  
479 *Rev Med* **62**, 141-155, doi:10.1146/annurev-med-042909-093756 (2011).
- 480 29 Frostegård, J. Immunity, atherosclerosis and cardiovascular disease. *BMC Med*  
481 **11**, 117, doi:10.1186/1741-7015-11-117 (2013).
- 482 30 Greten, F. R. & Grivennikov, S. I. Inflammation and Cancer: Triggers,

- 483 Mechanisms, and Consequences. *Immunity* **51**, 27-41,  
484 doi:10.1016/j.immuni.2019.06.025 (2019).
- 485 31 Mutlu, A. S., Duffy, J. & Wang, M. C. Lipid metabolism and lipid signals in  
486 aging and longevity. *Dev Cell* **56**, 1394-1407, doi:10.1016/j.devcel.2021.03.034  
487 (2021).
- 488 32 Deprince, A., Haas, J. T. & Staels, B. Dysregulated lipid metabolism links  
489 NAFLD to cardiovascular disease. *Mol Metab* **42**, 101092,  
490 doi:10.1016/j.molmet.2020.101092 (2020).
- 491 33 Bian, X. *et al.* Lipid metabolism and cancer. *J Exp Med* **218**,  
492 doi:10.1084/jem.20201606 (2021).
- 493 34 Porter, H. L. *et al.* Many chronological aging clocks can be found throughout  
494 the epigenome: Implications for quantifying biological aging. *Aging Cell* **20**,  
495 e13492, doi:10.1111/accel.13492 (2021).
- 496 35 Nie, C. *et al.* Distinct biological ages of organs and systems identified from a  
497 multi-omics study. *Cell Rep* **38**, 110459, doi:10.1016/j.celrep.2022.110459  
498 (2022).
- 499 36 Kirkland, J. L. & Tchkonina, T. Senolytic drugs: from discovery to translation. *J*  
500 *Intern Med* **288**, 518-536, doi:10.1111/joim.13141 (2020).
- 501 37 Statzer, C. *et al.* Youthful and age-related matreotypes predict drugs promoting  
502 longevity. *Aging Cell* **20**, e13441, doi:10.1111/accel.13441 (2021).
- 503 38 Palliyaguru, D. L., Moats, J. M., Di Germanio, C., Bernier, M. & de Cabo, R.  
504 Frailty index as a biomarker of lifespan and healthspan: Focus on  
505 pharmacological interventions. *Mech Ageing Dev* **180**, 42-48,  
506 doi:10.1016/j.mad.2019.03.005 (2019).
- 507 39 Zajda, A., Huttunen, K. M., Sikora, J., Podsiedlik, M. & Markowicz-Piasecka,  
508 M. Is metformin a geroprotector? A peek into the current clinical and  
509 experimental data. *Mech Ageing Dev* **191**, 111350,  
510 doi:10.1016/j.mad.2020.111350 (2020).
- 511 40 Le Pelletier, L. *et al.* Metformin alleviates stress-induced cellular senescence of  
512 aging human adipose stromal cells and the ensuing adipocyte dysfunction. *Elife*  
513 **10**, doi:10.7554/eLife.62635 (2021).
- 514 41 Cohen, A. A. *et al.* Lack of consensus on an aging biology paradigm? A global  
515 survey reveals an agreement to disagree, and the need for an interdisciplinary  
516 framework. *Mech Ageing Dev* **191**, 111316, doi:10.1016/j.mad.2020.111316  
517 (2020).
- 518 42 Cohen, A. A., Legault, V. & Fülöp, T. What if there's no such thing as "aging"?  
519 *Mech Ageing Dev* **192**, 111344, doi:10.1016/j.mad.2020.111344 (2020).
- 520 43 Sudlow, C. *et al.* UK biobank: an open access resource for identifying the causes  
521 of a wide range of complex diseases of middle and old age. *PLoS Med* **12**,  
522 e1001779, doi:10.1371/journal.pmed.1001779 (2015).
- 523 44 Haan, M. N., Zeki Al-Hazzouri, A. & Aiello, A. E. Life-span socioeconomic  
524 trajectory, nativity, and cognitive aging in Mexican Americans: the Sacramento  
525 Area Latino Study on Aging. *J Gerontol B Psychol Sci Soc Sci* **66 Suppl 1**, i102-  
526 110, doi:10.1093/geronb/gbq071 (2011).

- 527 45 Li, Y., Xue, Q. L., Odden, M. C., Chen, X. & Wu, C. Linking early life risk  
528 factors to frailty in old age: evidence from the China Health and Retirement  
529 Longitudinal Study. *Age Ageing* **49**, 208-217, doi:10.1093/ageing/afz160 (2020).  
530 46 Statistics., N. C. f. H. National Health and Nutrition Examination Survey.  
531 Atlanta: Centers for Disease Control and Prevention. (2018 [cited 2018 Nov  
532 29]).
- 533 47 Yang, W. S. *et al.* Albumin dialysis in critically ill patients: use versus omission  
534 of intradialytic heparin. *Artificial organs* **32**, 411-416, doi:10.1111/j.1525-  
535 1594.2008.00560.x (2008).
- 536 48 Bik, W. *et al.* The relationship between adiponectin levels and metabolic status  
537 in centenarian, early elderly, young and obese women. *Neuro endocrinology*  
538 *letters* **27**, 493-500 (2006).
- 539 49 Mozaffarian, D. Dietary and Policy Priorities for Cardiovascular Disease,  
540 Diabetes, and Obesity: A Comprehensive Review. *Circulation* **133**, 187-225,  
541 doi:10.1161/circulationaha.115.018585 (2016).
- 542 50 Said, M. A., Verweij, N. & van der Harst, P. Associations of Combined Genetic  
543 and Lifestyle Risks With Incident Cardiovascular Disease and Diabetes in the  
544 UK Biobank Study. *JAMA Cardiol* **3**, 693-702,  
545 doi:10.1001/jamacardio.2018.1717 (2018).
- 546 51 Lloyd-Jones, D. M. *et al.* Defining and setting national goals for cardiovascular  
547 health promotion and disease reduction: the American Heart Association's  
548 strategic Impact Goal through 2020 and beyond. *Circulation* **121**, 586-613,  
549 doi:10.1161/circulationaha.109.192703 (2010).
- 550 52 Zhang, Y. B. *et al.* Associations of healthy lifestyle and socioeconomic status  
551 with mortality and incident cardiovascular disease: two prospective cohort  
552 studies. *Bmj* **373**, n604, doi:10.1136/bmj.n604 (2021).
- 553 53 Phillips, J. A. Dietary Guidelines for Americans, 2020-2025. *Workplace Health*  
554 *Saf* **69**, 395, doi:10.1177/21650799211026980 (2021).
- 555 54 Kinderknecht, K., Harris, C. & Jones-Smith, J. Association of the Healthy,  
556 Hunger-Free Kids Act With Dietary Quality Among Children in the US National  
557 School Lunch Program. *Jama* **324**, 359-368, doi:10.1001/jama.2020.9517  
558 (2020).
- 559 55 Wan, E. Y. F. *et al.* Blood Pressure and Risk of Cardiovascular Disease in UK  
560 Biobank: A Mendelian Randomization Study. *Hypertension* **77**, 367-375,  
561 doi:10.1161/HYPERTENSIONAHA.120.16138 (2021).
- 562 56 Chadeau-Hyam, M. *et al.* Education, biological ageing, all-cause and cause-  
563 specific mortality and morbidity: UK biobank cohort study. *EClinicalMedicine*  
564 **29-30**, 100658, doi:10.1016/j.eclinm.2020.100658 (2020).
- 565 57 Lehmler, H. J., Simonsen, D., Liu, B. & Bao, W. Environmental exposure to  
566 pyrethroid pesticides in a nationally representative sample of U.S. adults and  
567 children: The National Health and Nutrition Examination Survey 2007-2012.  
568 *Environ Pollut* **267**, 115489, doi:10.1016/j.envpol.2020.115489 (2020).
- 569 58 Tingley, D., Yamamoto, T., Hirose, K., Keele, L. & Imai, K. mediation: R  
570 Package for Causal Mediation Analysis. *J Stat Softw* **59** (2014).

571 59 Nevo, D., Liao, X. & Spiegelman, D. Estimation and Inference for the  
572 Mediation Proportion. *Int J Biostat* **13**, doi:10.1515/ijb-2017-0006 (2017).  
573

574 **Acknowledgments:** This research has been conducted using the UK Biobank resource  
575 under application number 61856. We wish to acknowledge all participants of the UK  
576 Biobank and US National Health and Nutrition Examination Survey (NHANES). This  
577 research was supported by a grant from the National Natural Science Foundation of  
578 China (82171584), the Fundamental Research Funds for the Central Universities, Key  
579 Laboratory of Intelligent Preventive Medicine of Zhejiang Province (2020E10004), and  
580 Zhejiang University Global Partnership Fund (188170-11103). This work was also  
581 supported by the Career Development Award (K01AG053408) from the National  
582 Institute on Aging; Claude D. Pepper Older Americans Independence Center at Yale  
583 School of Medicine, funded by the National Institute on Aging (P30AG021342). The  
584 funders had no role in the study design; data collection, analysis, or interpretation; in  
585 the writing of the report; or in the decision to submit the article for publication.

#### 586 **Author contributions**

587 Z.L. contributed to the concept and design of the research. X.L. contributed to data  
588 analyses. X.L., X.C., J.Z., J.F., M.M., D., X.S., G.Y., Z.Y., C.L.K., X.Cheng., A.A.C.,  
589 and Z.L. contributed to interpretation of data. X.L., X.C., and J.Z. contributed to the  
590 drafting of the manuscript. X.C., J.Z., J.F., M.M., D., X.S., G.Y., Z.Y., C.L.K., X.Cheng.,  
591 A.A.C., and Z.L. contributed to critical revision of the manuscript. All authors read and  
592 approved the final version of the manuscript.

#### 593 **Competing Interest Statement**

594 The authors declare no competing interests.

595



596 **Table 1. Baseline characteristics of participants from UK Biobank (UKB) and US National Health and Nutrition Examination Survey**  
 597 **(NHANES).**

<b>Characteristics</b>	<b>Total</b>	<b>Women</b>	<b>Men</b>	<b>P value</b>
<b>UKB</b>				
	(N= 405,944)	(N= 218,528)	(N= 187,416)	
Chronological age in years, Mean±SD	57.0±8.0	56.8±7.9	57.1±8.1	<0.001
Race/ethnicity, n (%)				<0.001
White	385,421 (94.9)	207,622 (95.0)	177,799 (94.9)	
Mixed	2,364 (0.6)	1,463 (0.7)	901 (0.5)	
South Asian	7,367 (1.8)	3,290 (1.5)	4,077 (2.2)	
Black	6,087 (1.5)	3,441 (1.6)	2,646 (1.4)	
Chinese	1,197 (0.3)	750 (0.3)	447 (0.2)	
Others	3,508 (0.9)	1,962 (0.9)	1,546 (0.8)	
TDI, Mean± SD	-1.3±3.1	-1.4±3.0	-1.3±3.1	0.01
Education level, n (%)				<0.001
High	140,280 (34.6)	71,734 (32.8)	68,546 (36.6)	
Intermediate	132,828 (32.7)	78,021 (35.7)	54,807 (29.2)	
Low	132,836 (32.7)	68,773 (31.5)	64,063 (34.2)	
Occupation status, n (%)				<0.001
Working	235,655 (58.1)	120,882 (55.3)	114,773 (61.2)	
Retired	134,133 (33.0)	76,294 (34.9)	57,839 (30.9)	
Other	36,156 (8.9)	21,352 (9.8)	14,804 (7.9)	
Smoking, yes, n (%)	179,506 (44.9)	83,547 (38.9)	95,959 (51.8)	<0.001
Drinking, yes, n (%)	147,559 (42.6)	80,280 (44.9)	67,279 (40.1)	<0.001
Physical inactivity, yes, n (%)	106,264 (26.7)	60,562 (28.3)	45,702 (24.8)	<0.001

Unhealthy diet, yes, n (%)	255,648 (63.0)	128,229 (58.7)	127,419 (68.0)	<0.001
Unhealthy BMI, yes, n (%)	276,778 (68.4)	134,697 (61.8)	142,081 (76.1)	<0.001
Unhealthy lifestyles <sup>a</sup>				<0.001
Favorable	93,491 (23.0)	59,754 (27.3)	33,737 (18.0)	
Intermediate	243,161 (59.9)	128,617 (58.9)	114,544 (61.1)	
Unfavorable	692,92 (17.1)	30,157 (13.8)	39,135 (20.9)	
PhenoAge, Mean±SD	53.3±10.0	52.2±9.5	54.4±10.5	<0.001

### NHANES

	(N=9,972)	(N=5,099)	(N=4,873)	P Value
Chronological age in years, Mean±SD	49.6±17.6	49.5±17.7	49.7±17.5	0.567
Race/ethnicity, n (%)				0.165
Non-Hispanic white	5,162 (51.8)	2,664 (52.2)	2,498 (51.3)	
Non-Hispanic black	1,800 (18.1)	895 (17.6)	905 (18.6)	
Mexican-American	2,021 (20.3)	1,057 (20.7)	964 (19.8)	
Other	989 (9.9)	483 (9.5)	506 (10.4)	
PIR, n (%)				<0.001
≤ 1.30	2,801 (28.1)	1,318 (25.8)	1,483 (30.4)	
1.31~3.50	3,884 (38.9)	1,999 (39.2)	1,885 (38.7)	
≥ 3.51	3,287 (33.0)	1,782 (34.9)	1,505 (30.9)	
Education level, n (%)				<0.001
Less than HS	2,841 (28.5)	1,521 (29.8)	1,320 (27.1)	
HS/GED	2,380 (23.9)	1,216 (23.8)	1,164 (23.9)	
Some college	2,751 (27.6)	1,285 (25.2)	1,466 (30.1)	
College	2,000 (20.1)	1,077 (21.1)	923 (18.9)	

Marital status, n (%)				<0.001
Married or living with partner	6,333 (63.5)	3,539 (69.4)	2,794 (57.3)	
Other	3,639 (36.5)	1,560 (30.6)	2,079 (42.7)	
Smoking, yes, n (%)	4,829 (48.5)	2,903 (57.0)	1,926 (39.5)	<0.001
Drinking, yes, n (%)	711 (7.4)	436 (8.8)	275 (6.0)	<0.001
Physical inactivity, n (%)	3,410 (52.3)	1,631 (46.8)	1,779 (58.7)	<0.001
Unhealthy diet, yes, n (%)	5,883 (60.1)	3,224 (64.4)	2,659 (55.7)	<0.001
Unhealthy BMI, yes, n (%)	6,774 (71.2)	3,533 (72.8)	3,241 (69.5)	<0.001
Unhealthy lifestyles				<0.001
Favorable	2,436 (24.4)	987 (19.4)	1,449 (29.7)	
Intermediate	6,619 (66.4)	3,557 (69.8)	3,062 (62.8)	
Unfavorable	917 (9.2)	555 (10.9)	362 (7.4)	
PhenoAge, Mean±SD	43.6±19.8	44.3±20.3	42.9±19.2	0.005

598 Abbreviations: SD, standard deviation; TDI, Townsend deprivation index; BMI, body mass index; PIR, poverty income ratio; HS/GED, less than  
599 high school (HS) /general educational development (GED); PhenoAge, Phenotypic Age.

600 <sup>a</sup>Favorable (unhealthy lifestyle score ranged from 0 to 1), intermediate (unhealthy lifestyle score ranged from 2 to 3), and Unfavorable (unhealthy  
601 lifestyle score ranged from 4 to 5) lifestyles.

602

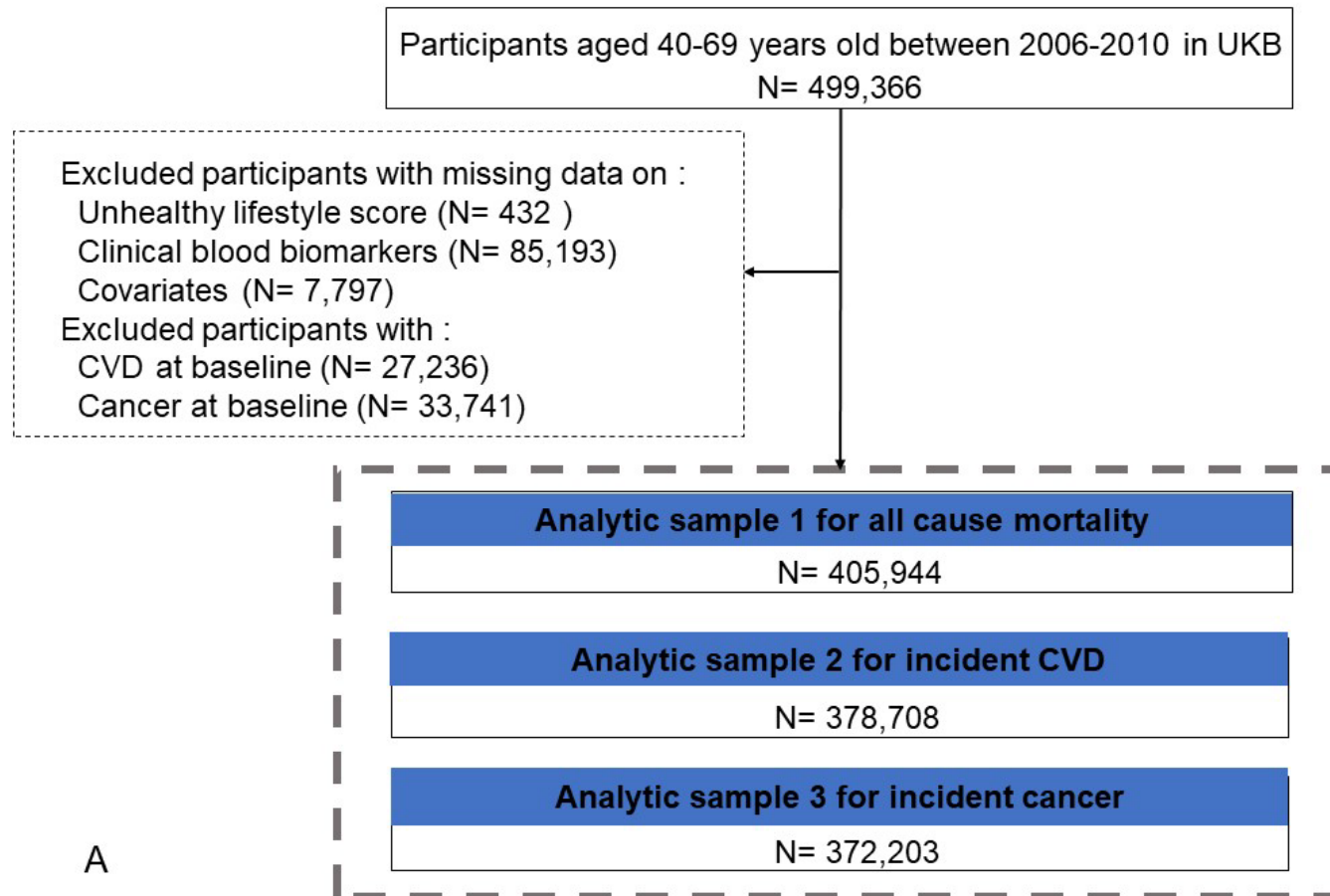
603 **Table 2. Associations of unhealthy lifestyles with adverse health outcomes and mediation proportion of aging (measured by PhenoAgeAccel)**  
 604 **in adverse health outcomes attributed to different lifestyles.**

Unhealthy lifestyle	No. of events/No. participants	Model 1 <sup>a</sup>		Model 2 <sup>b</sup>		Mediation proportion of PhenoAgeAccel (%) (95% CI) <sup>a</sup>	P value
		HR (95% CI)	P for trend	HR (95% CI)	P for trend		
<b>UKB</b>							
Incident CVD							
29,726/378,708							
Favorable <sup>c</sup>	4,967/89,538	ref	<0.001	ref	<0.001	0.200 (0.182, 0.220)	<0.001
Intermediate	18,234/226,657	1.33 (1.29, 1.38)		1.27 (1.23, 1.31)			
Unfavorable	6,525/62,513	1.59 (1.53, 1.65)		1.45 (1.39, 1.51)			
Incident cancer							
34,413/372,203							
Favorable	6,695/ 85,776	ref	<0.001	ref	<0.001	0.178 (0.155, 0.200)	<0.001

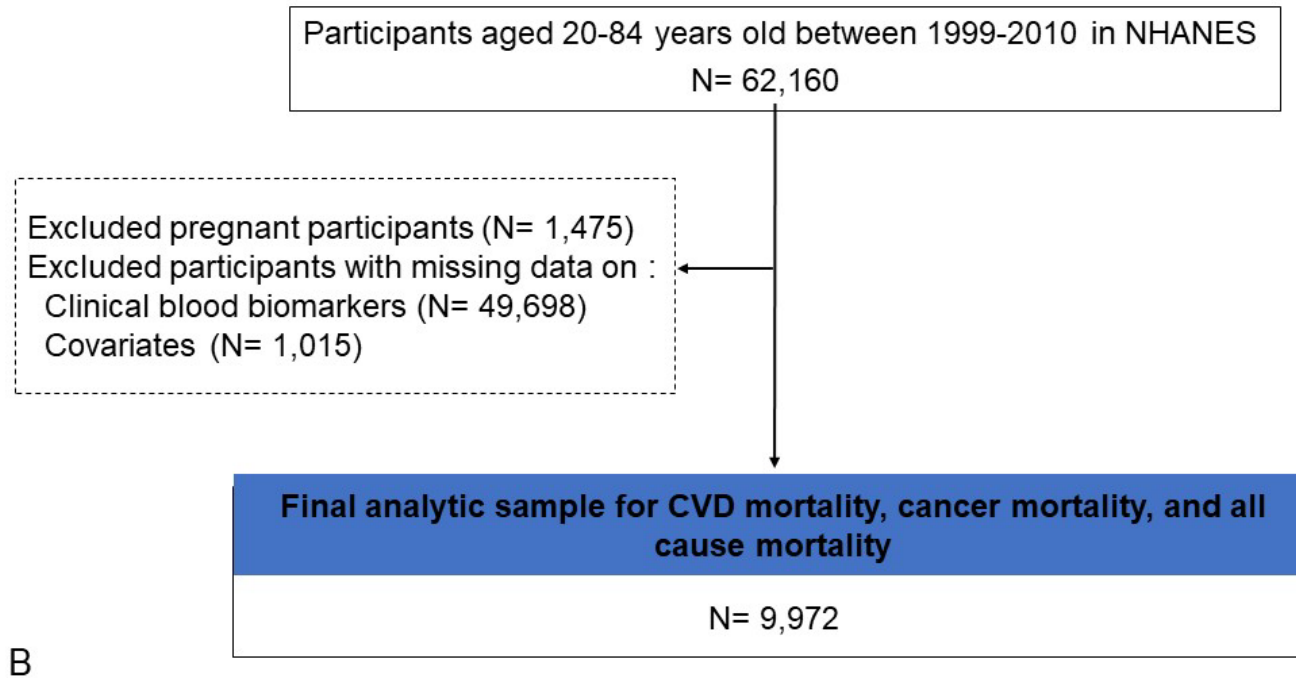
Intermediate	20,700/223,155	1.15 (1.12, 1.18)		1.12 (1.09, 1.15)			
Unfavorable	7,018/63,272	1.33 (1.29, 1.38)		1.27 (1.22, 1.31)			
	All-cause mortality						
	27,471/405,944						
Favorable	4,146/93,491	ref	<0.001	ref	<0.001	0.266 (0.250, 0.290)	<0.001
Intermediate	16,174/243,161	1.34 (1.29, 1.39)		1.22 (1.18, 1.26)			
Unfavorable	7,151/69,292	1.84 (1.77, 1.92)		1.55 (1.49, 1.61)			
<hr/>							
<b>NHANES</b>							
CVD mortality							
258/9,972							
Favorable	54/2,436	ref	0.175	ref	0.373	0.439 (-1.85, 4.45)	0.100
Intermediate	181/6,619	1.23 (0.90, 1.67)		1.14 (0.83, 1.55)			
Unfavorable	23/917	1.37 (0.82, 2.28)		1.23 (0.74, 2.05)			

Cancer mortality							
325/9,972							
Favorable	69/2,436	ref	0.036	ref	0.101	0.257 (0.135, 1.010)	0.004
Intermediate	223/6,619	1.22 (0.92, 1.61)		1.15 (0.87, 1.52)			
Unfavorable	33/917	1.60 (1.04, 2.47)		1.47 (0.95, 2.27)			
All-cause mortality							
1,374/9,972							
Favorable	317/2,436	ref	<0.001	ref	0.023	0.352 (0.245, 0.610)	<0.001
Intermediate	921/6,619	1.11 (0.98, 1.27)		1.04 (0.92, 1.18)			
Unfavorable	136/917	1.48 (1.20, 1.82)		1.34 (1.09, 1.65)			

605 Abbreviations: PhenoAgeAccel, Phenotypic Age Acceleration; HR, hazard ratios; CI, confidence intervals; CVD, cardiovascular disease;  
606 <sup>a</sup>Model 1 included age; sex; education level; self-reported race/ethnicity; occupational status (UKB only); Townsend deprivation index (TDI)  
607 (UKB only); marital status (NHANES only); poverty income ratio (PIR) (NHANES only);  
608 <sup>b</sup>Model 2 additional included PhenoAgeAccel based on model 1.  
609 <sup>c</sup>Favorable (unhealthy lifestyle score ranged from 0 to 1), intermediate (unhealthy lifestyle score ranged from 2 to 3), and Unfavorable  
610 (unhealthy lifestyle score ranged from 4 to 5) lifestyles.



A

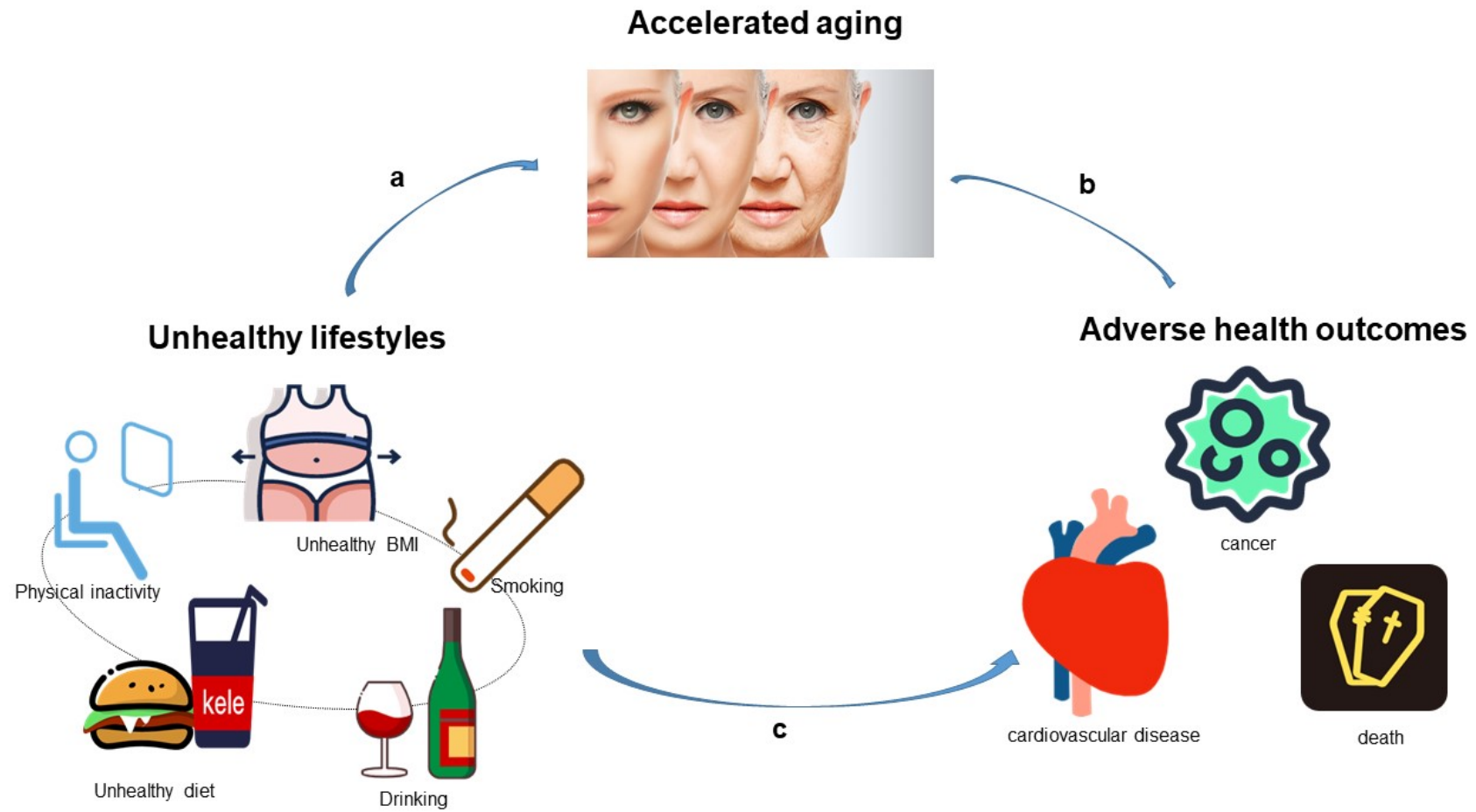


**Fig. 1. Flow chart of two studies (A for UK Biobank and B for NHANES).**

Abbreviations: UK Biobank: UKB; US National Health and Nutrition Examination Survey: NHANES; CVD, cardiovascular diseases.

612  
613  
614  
615





616

617 **Fig. 2 The mediating role of aging in the association of unhealthy lifestyles and adverse health outcomes**