

1 **Reduced exercise capacity, chronotropic incompetence, and early systemic inflammation in**  
2 **cardiopulmonary phenotype Long COVID**

3 **Durstenfeld et al. CPET Findings >1 year after COVID-19**

4 **Matthew S. Durstenfeld**<sup>1,2</sup>, Michael J. Peluso<sup>1,3</sup>, Punita Kaveti<sup>1,4</sup>, Christopher Hill<sup>5</sup>, Danny Li<sup>2</sup>,  
5 Erica Sander<sup>4</sup>, Shreya Swaminathan<sup>2</sup>, Victor M. Arechiga<sup>2</sup>, Scott Lu<sup>3</sup>, Sarah A Goldberg<sup>6</sup>,  
6 Rebecca Hoh<sup>2</sup>, Ahmed Chenna,<sup>7</sup> Brandon C. Yee,<sup>7</sup> John W. Winslow,<sup>7</sup> Christos J. Petropoulos,<sup>7</sup>  
7 J. Daniel Kelly<sup>6,8,9</sup>, David V. Glidden<sup>6</sup>, Timothy J. Henrich<sup>10</sup>, Jeffrey N. Martin<sup>6</sup>, Yoo Jin Lee<sup>11</sup>,  
8 Mandar A. Aras<sup>1,4</sup>, Carlin S. Long<sup>1,4</sup>, Donald J. Grandis<sup>1,4</sup>, Steven G. Deeks<sup>1,3</sup>, Priscilla Y.  
9 Hsue<sup>1,2</sup>

10 1 Department of Medicine, University of California, San Francisco, CA, USA

11 2 Division of Cardiology, Zuckerberg San Francisco General, San Francisco, CA, USA

12 3 Division of HIV, Infectious Diseases, and Global Medicine, Zuckerberg San Francisco General  
13 Hospital, University of California, San Francisco, USA

14 4 Division of Cardiology, UCSF Health

15 5 School of Medicine, University of California, San Francisco, USA

16 6 Department of Epidemiology and Biostatistics, University of California, San Francisco, USA

17 7 LabCorp-Monogram Biosciences Inc, South San Francisco, CA USA

18 8 Institute of Global Health Sciences, University of California, San Francisco, USA

19 9 F.I. Proctor Foundation, University of California, San Francisco, USA

20 10 Division of Experimental Medicine, University of California, San Francisco, USA

21 11 Cardiac and Pulmonary Imaging, Department of Radiology, University of California, San  
22 Francisco

23 Presented in part as a late breaking oral presentation at Conference on Retroviruses and  
24 Opportunistic Infections, 2/2022, as an oral presentation at the Heart Rhythm Society in 5/2022,  
25 and in full at the American Heart Association Scientific Sessions 11/2022.

26 Keywords: post-acute sequelae of COVID-19 (PASC); Long COVID; chronotropic  
27 incompetence; cardiopulmonary exercise testing (CPET); inflammation

28 Word Count: 3736

29 **Corresponding author:**

30 Matthew S. Durstenfeld, MD MAS

31 Division of Cardiology, UCSF at Zuckerberg San Francisco General Hospital

32 1001 Potrero Avenue, 5G8

33 San Francisco, CA 94110, USA

34 Tel: +1 628 206 5562; Fax: +1 628 206 5447

35 e-mail: [matthew.durstenfeld@ucsf.edu](mailto:matthew.durstenfeld@ucsf.edu)

36 twitter: @durstenfeld

37 **Key Points:** Long COVID symptoms were associated with reduced exercise capacity on  
38 cardiopulmonary exercise testing more than 1 year after SARS-CoV-2 infection. The most  
39 common abnormal finding was chronotropic incompetence. Reduced exercise capacity was  
40 associated with early elevations in inflammatory markers.

1 **Abstract**

2 **BACKGROUND** Mechanisms underlying persistent cardiopulmonary symptoms following  
3 SARS-CoV-2 infection (post-acute sequelae of COVID-19 “PASC” or “Long COVID”) remain  
4 unclear. This study sought to elucidate mechanisms of cardiopulmonary symptoms and reduced  
5 exercise capacity using advanced cardiac testing.

6 **METHODS** We performed cardiopulmonary exercise testing (CPET), cardiac magnetic  
7 resonance imaging (CMR) and ambulatory rhythm monitoring among adults > 1 year after  
8 confirmed SARS-CoV-2 infection in Long-Term Impact of Infection with Novel Coronavirus  
9 cohort (LIINC; substudy of NCT04362150). Adults who completed a research echocardiogram  
10 (at a median 6 months after SARS-CoV-2 infection) without evidence of heart failure or  
11 pulmonary hypertension were asked to complete additional cardiopulmonary testing  
12 approximately 1 year later. Although participants were recruited as a prospective cohort, to  
13 account for selection bias, the primary analyses were as a case-control study comparing those  
14 with and without persistent cardiopulmonary symptoms. We also correlated findings with  
15 previously measured biomarkers. We used logistic regression and linear regression models to  
16 adjust for potential confounders including age, sex, body mass index, time since SARS-CoV-2  
17 infection, and hospitalization for acute SARS-CoV-2 infection, with sensitivity analyses  
18 adjusting for medical history.

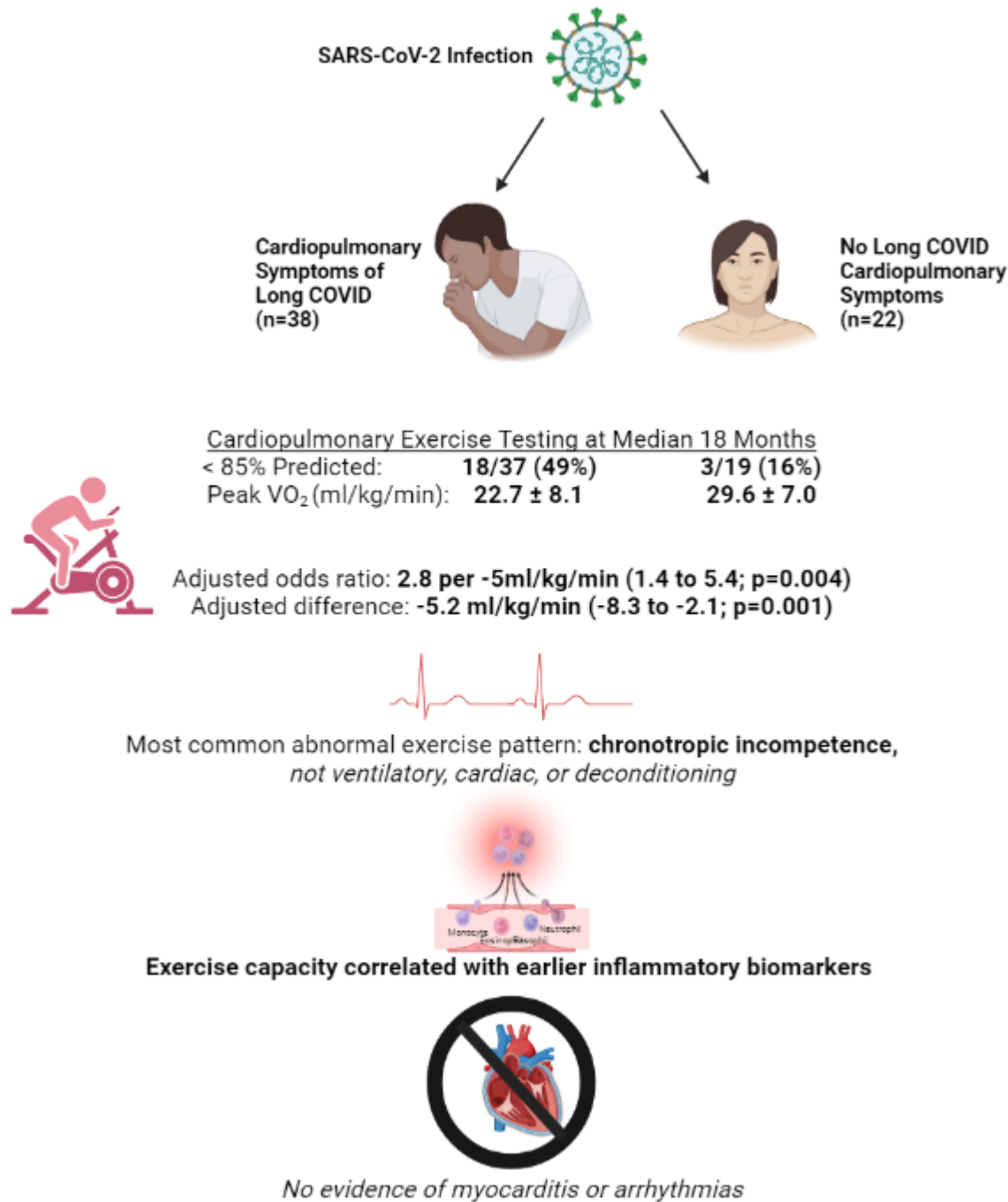
19 **RESULTS** Sixty participants (unselected for symptoms, median age 53, 42% female, 87% non-  
20 hospitalized) were studied at median 17.6 months following SARS-CoV-2 infection. On  
21 maximal CPET, 18/37 (49%) with symptoms had reduced exercise capacity (peak  $VO_2 < 85\%$   
22 predicted) compared to 3/19 (16%) without symptoms ( $p=0.02$ ). The adjusted peak  $VO_2$  was 5.2  
23 ml/kg/min (95%CI 2.1-8.3;  $p=0.001$ ) or 16.9% lower actual compared to predicted (95%CI 4.3-  
24 29.6;  $p=0.02$ ) among those with symptoms compared to those without symptoms. Chronotropic  
25 incompetence was present among 12/21 (57%) with reduced  $VO_2$  including 11/37 (30%) with  
26 symptoms and 1/19 (5%) without ( $p=0.04$ ). Inflammatory markers (hsCRP, IL-6, TNF- $\alpha$ ) and  
27 SARS-CoV-2 antibody levels measured early in PASC were negatively correlated with peak  
28  $VO_2$  more than 1 year later. Late-gadolinium enhancement on CMR and arrhythmias on  
29 ambulatory monitoring were not present.

30 **CONCLUSIONS** We found evidence of objectively reduced exercise capacity among those  
31 with cardiopulmonary symptoms more than 1 year following COVID-19, which was associated  
32 with elevated inflammatory markers early in PASC. Chronotropic incompetence may explain  
33 exercise intolerance among some with cardiopulmonary phenotype Long COVID.

34

35

## 1 Graphical Abstract



2

3

1 **Abbreviations list:** PASC=post-acute sequelae of COVID-19; hsCRP=high sensitivity c-  
2 reactive protein; LIINC=Long-term Impact of Infection with Novel Coronavirus; LV=left  
3 ventricle; RV=right ventricle; CPET=cardiopulmonary exercise testing; CMR=cardiac magnetic  
4 resonance imaging; AHRR=adjusted heart rate reserve; POTS=postural orthostatic tachycardia  
5 syndrome;

6

## 1 **Background**

2 Following acute SARS-CoV-2 infection, some individuals experience persistent symptoms of  
3 “Long COVID” (LC), a type of post-acute sequelae of COVID-19 (PASC) [1]. By 3-6 months  
4 after SARS-CoV-2 infection, cardiac function is generally normal on echocardiogram [2-4],  
5 suggesting that other techniques are needed to identify physiologic correlates of symptoms.  
6 Cardiac magnetic resonance imaging (CMR) has revealed changes in parametric mapping and  
7 late gadolinium enhancement (LGE) suggestive of cardiac inflammation without consistent  
8 associations with symptoms or differences from controls [5-9]. Cardiopulmonary exercise testing  
9 (CPET) has demonstrated reduced exercise capacity 3-6 months after SARS-CoV-2 infection  
10 without consistent patterns of limitations [10], and with limited data beyond 1 year after  
11 infection.

12 We designed the Long-Term Impact of Infection with Novel Coronavirus (LIINC) study (NCT  
13 04362150) to evaluate physical and mental health following SARS-COV-2 infection by  
14 including individuals representing the spectrum of acute illness and post-acute-recovery [11].  
15 The purpose of this substudy was to elucidate mechanisms underlying cardiopulmonary  
16 symptoms >1 year following SARS-CoV-2 infection by comparing symptomatic and recovered  
17 individuals using CMR, CPET, and ambulatory rhythm monitoring, and correlating findings with  
18 blood-based markers.

## 19 **Methods**

20 As previously reported, LIINC is a San Francisco-based post-COVID cohort [11]. After our  
21 initial echocardiogram-based study did not reveal cardiac mechanisms of symptoms [2], we  
22 amended our protocol to conduct a second visit about 1 year later among participants who

1 completed an echocardiogram visit and were willing to undergo additional cardiopulmonary  
2 testing. In this subset, we performed cross-sectional cardiopulmonary testing including CPET,  
3 CMR, and ambulatory rhythm monitoring and correlated with already measured biomarkers from  
4 prior cohort visits (including at the time of the echocardiogram for troponin, NT-pro-BNP, and  
5 hsCRP).

## 6 *Participants*

7 We invited LIINC participants with PCR-confirmed SARS-CoV-2 infection who completed an  
8 echocardiogram study visit to participate in additional cardiopulmonary testing irrespective of  
9 symptom status. Those with pregnancy (due to expected changes during pregnancy), cardiac  
10 disease (congenital heart disease, heart failure, myocardial infarction, coronary revascularization  
11 with percutaneous coronary intervention or coronary artery bypass graft surgery, or other heart  
12 surgery), pulmonary disease requiring home oxygen or lung surgery, and musculoskeletal or  
13 neurologic conditions that precluded participation in cycle ergometry were excluded.  
14 Additionally, those with non-MRI compatible implants or claustrophobia were excluded from  
15 CMR; those with eGFR  $<30$  ml/min/1.73m<sup>2</sup> were excluded from gadolinium.

## 16 *Symptoms*

17 Participants completed a structured interview about medical history, characteristics of acute  
18 infection, cardiopulmonary diagnoses, and symptoms within the previous two weeks. We defined  
19 cardiopulmonary symptoms as chest pain, dyspnea, or palpitations and symptoms as  
20 cardiopulmonary symptoms or fatigue in the 2 weeks preceding the study visit. Consistent with  
21 the WHO definition, all classified as symptomatic were  $>3$  months after SARS-CoV-2 infection  
22 with new symptoms without alternative cardiopulmonary explanations [12].

1 *Blood-Based Markers*

2 Participants had venous blood collected and processed for serum and plasma on the day of the  
3 echocardiogram. Samples were batch processed for measurement of high-sensitivity troponin I,  
4 N-terminal prohormone b-type natriuretic protein. A subset had antibodies and additional  
5 markers measured at two earlier time points (<90 days and 90-150 days after infection) including  
6 IL-6, IL-10, glial fibrillary acidic protein (GFAP), neurofilament light chain (NfL), monocyte  
7 chemoattractant protein-1 (MCP-1), interferon gamma (IFN - $\gamma$ ), and tumor necrosis factor  
8 (TNF), and SARS-CoV-2 receptor-binding domain (RBD) immunoglobulin G (IgG). These  
9 samples were assayed by Monogram Biosciences using the Quanterix Simoa® platform blinded  
10 with respect to patient and clinical information, and assay performance was consistent with  
11 manufacturers' specifications [13].

12 *Cardiac Magnetic Resonance Imaging*

13 Multiparametric, sequence-standardized, blinded (technician and reader) cardiac magnetic  
14 resonance imaging (CMR) was performed with a 3T system (Premier, General Electric),  
15 including assessment of LV and RV size and function, parametric mapping, and late gadolinium  
16 enhancement. Measurements were performed by a single reader at a dedicated workstation using  
17 Medis (Leiden, Netherlands) and AI-assisted Arterys (San Francisco, CA) under supervision of a  
18 senior cardiac imager, both blinded to clinical variables, and in accordance with Society for  
19 Cardiovascular Magnetic Resonance recommendations. The full protocol is described in  
20 Supplemental Methods.

21 *Cardiopulmonary Exercise Testing*

1 Noninvasive CPETs were performed by an exercise physiologist and cardiology nurse  
2 practitioner blinded to participant data according to standard protocol using a metabolic cart  
3 (Medical Graphics Corporation Ultima CardiO<sub>2</sub>) and cycle ergometer (Lode Corival CPET) with  
4 continuous 12 lead ECG monitoring (GE CASE) and noninvasive blood pressure and pulse  
5 oximetry measurement. After rest ECG, BP and spirometry measurements were taken,  
6 participants exercised to symptom limited maximal exertional with work increased in 1-minute  
7 steps targeting a 10-minute test. We determined the work increase per 1 minute step based on the  
8 expected peak VO<sub>2</sub> from the maximum voluntary ventilation for a goal 10 minute test, rounded  
9 to 5 Watts/min increments based on reported exercise (range 10-30 Watts/min) in accordance  
10 with guidelines [14]. The full protocol is described in Supplemental Methods.

11 We evaluated measured peak VO<sub>2</sub> (in ml/kg/min), estimated percent predicted peak VO<sub>2</sub> using  
12 the Wasserman equations [15], and classified peak VO<sub>2</sub> <85% predicted as reduced. We defined  
13 chronotropic incompetence as peak VO<sub>2</sub> <85% predicted, adjusted heart rate reserve (AHRR)  
14 <80%  $[(HR_{\text{peak}}-HR_{\text{rest}})/(220-\text{age}-HR_{\text{rest}})]$ , and no alternative explanation for exercise limitation  
15 [16]. CPETs were interpreted independently by two cardiologists with discrepancies resolved  
16 through consensus.

### 17 *Ambulatory Rhythm Monitoring*

18 An ambulatory rhythm monitor (Carnation Ambulatory Monitor, BardyDx) was placed on  
19 participants' chests. They were instructed wear it for 2 weeks, press the button for symptoms,  
20 and record a symptom diary. Monitors were processed according to BardyDx standard  
21 procedures, and reports were overread by a cardiologist.

### 22 *Statistical Analysis*



1 To compare participants with and without symptoms, we used logistic regression to estimate  
2 adjusted odds ratios of parameters with symptoms and linear regression to estimate adjusted  
3 mean differences. Adjusted models included age, sex, time since SARS-CoV-2 infection,  
4 hospitalization, and body mass index. Non-normally distributed variables were log-transformed  
5 and findings are reported per doubling or 10-fold change. For biomarker data we report  
6 unadjusted Pearson's rho correlation coefficients and adjusted linear regression models. For  
7 longitudinal data we used mixed effects models with random intercept per patient. We conducted  
8 sensitivity analyses considering other symptom definitions and additionally adjusting for  
9 potentially relevant medical history (hypertension, diabetes, asthma/COPD, and HIV) and  
10 echocardiographic (LV ejection fraction and LV diastolic function) and spirometry parameters  
11 (forced vital capacity, forced expiratory volume in 1 second, and maximal voluntary ventilation.  
12 REDCap was used for data entry. Statistical analyses were performed using STATA version  
13 17.1. P values <0.05 were considered statistically significant and were not adjusted for multiple  
14 testing. The first author (MSD) had full access to the data and takes responsibility for the  
15 integrity of the data and analysis. The study was approved by the UCSF Institutional Review  
16 Board (IRB 20-33000). All participants provided written informed consent prior to participation.

17

## 18 **Results**

### 19 *Participant Characteristics*

20 60 participants were included. Median age was 53 (IQR 41-59.5), 25 (42%) were female, and 8  
21 (13%) were hospitalized during acute infection (Table 1). Median infection was in June 2020  
22 (IQR March 2020-November 2020), so most participants were infected with the ancestral strain.

1 Four participants were vaccinated pre-infection (“breakthrough” infections), and 57 (95%)  
2 received at least one SARS-CoV-2 vaccine prior to advanced testing.

### 3 *Symptoms Persist at 18 Months*

4 At visit 1 (median 6 months after infection; echocardiogram visit), 40/60 (67%) reported  
5 symptoms and 32/60 (53%) reported cardiopulmonary symptoms. At visit 2 (median 17.6  
6 months; advanced cardiopulmonary testing visit), 38/60 (63%) reported symptoms and 31/60  
7 (52%) reported cardiopulmonary symptoms. Trajectories of individual symptoms were similar  
8 (Supplemental Table 1). Self-reported reduced exercise capacity was highly associated with  
9 symptoms: 29/33 (88%) reporting reduced exercise capacity also reported other symptoms  
10 versus 9/27 (33%) reporting preserved or improved exercise capacity (OR 14.5, 95%CI 3.9-54.1;  
11  $p<0.001$ ).

### 12 *CPETs were Maximal Tests*

13 Out of 60 participants who attended a CPET visit, 59 completed CPET at a median 17.6 months  
14 after infection (IQR 15.8-19.4); one participant was too hypertensive to undergo CPET. Out of  
15 59 CPETs performed, one was excluded due to  $\beta$ -blocker use, two were excluded for  
16 submaximal tests with respiratory exchange ratio (RER)  $<1.05$ , leaving 56 CPETs for analysis.  
17 Three were stopped for hypertensive response (after reaching  $>100\%$  predicted peak  $VO_2$ ); all  
18 others were symptom-limited maximal tests. No included participants were taking chronotropic  
19 medications or antianginals including  $\beta$ -blockers, non-dihydropyridine calcium channel blockers,  
20 ivabradine, or long-acting nitrates at the time of CPET.

### 21 *Exercise Capacity Lower than Predicted and Objectively Reduced Among those with Symptoms*

1 Peak  $\text{VO}_2$  was  $<85\%$  predicted among 18/37 (49%) with symptoms compared to 3/19 (16%)  
2 without symptoms ( $p=0.02$ ). A 5 ml/kg/min decrease in peak  $\text{VO}_2$  was associated with 2.75  
3 times higher odds of symptoms (95%CI 1.39-5.44;  $p=0.004$ ). Those with symptoms completed  
4 less work despite higher perceived effort and similar respiratory exchange ratio (Table 2).  
5 Despite reduced exercise capacity among those with symptoms, most CPET parameters were not  
6 associated with symptoms (Table 2 and Supplemental Table 2 for additional parameters  
7 including rest spirometry & echocardiographic parameters).  
8 As shown in Figure 1 and Table 2, peak  $\text{VO}_2$  was  $22.7\pm 8.1$  and  $29.6\pm 7.0$  ml/kg/min among those  
9 with and without symptoms, respectively, a difference of 6.9 ml/kg/min (95%CI 2.5-11.3;  
10  $p=0.003$ ) and 92% versus 107% percent predicted (difference 15% predicted, 95%CI;  $p=0.02$ ).  
11 The adjusted difference in peak  $\text{VO}_2$  was 5.2 ml/kg/min (95%CI 2.1-8.3;  $p=0.001$ ), 0.4 L/min  
12 (95%CI 0.09 to 0.73;  $p=0.02$ ), and 16.9% lower predicted (95%CI 4.3-29.6;  $p=0.02$ ). Results  
13 were unchanged in sensitivity analysis adding diabetes and hypertension; the adjusted difference  
14 in peak  $\text{VO}_2$  was 4.5 ml/kg/min (95%CI 1.40-7.50;  $p=0.005$ ). Similarly, results were unchanged  
15 in sensitivity analyses accounting for diabetes, hypertension, asthma/COPD, and HIV, resting  
16 spirometry values, and echocardiographic parameters (adjusted difference 3.9 ml/kg/min, 95%CI  
17 0.6-7.3;  $p=0.02$ ), but did vary based on symptom classification used (Supplemental Table 3).

### 18 *Classification of Reduced Exercise Capacity by Pattern of CPET Findings*

19 Among 56 maximal CPETs, 21 (37%) had peak  $\text{VO}_2 < 85\%$  predicted; no participants had  
20 ventilatory limitation, 3 had cardiac limitation, and one had a hypertensive response. Four had  
21 findings most consistent with deconditioning/obesity, and one participant's peak  $\text{VO}_2$  was 84%  
22 predicted with no other abnormalities (possibly deconditioning). Twelve (21% overall, 57% of  
23 those with reduced exercise capacity) had chronotropic incompetence. Among those with

1 symptoms, 11/37 (30%) had chronotropic incompetence compared to 1/19 (5%) without  
2 symptoms ( $p=0.04$ ).  
3 Compared to those with peak  $VO_2 \geq 85\%$  without an impaired chronotropic response, those with  
4 chronotropic incompetence had 49 bpm lower peak heart rate (119 bpm vs 170; 95%CI 40-60;  
5  $p<0.0001$ ; Figure 2). They completed 100 Watts less work (196 vs 96, 95%CI 49-152;  $p=0.0005$ )  
6 and had 12.2 ml/kg/min lower peak  $VO_2$  (95%CI 6.5-17.9;  $p=0.0001$ ). Those with chronotropic  
7 incompetence also had reduced HR recovery at 1 minute (7.9 bpm lower, 95%CI 1.3-14.6;  
8  $p=0.02$ ). In absolute terms, those with chronotropic incompetence generated a mean peak oxygen  
9 consumption of 1.59 L/min compared to 2.35 L/min among those with normal exercise capacity  
10 (difference 0.76 L/min, 95%CI 0.23 to 1.28;  $p=0.007$ ); a linear regression model with only rest  
11 and peak heart rate explains 54% of the difference in relative oxygen consumption (ml/kg/min)  
12 and 34% of the difference in absolute oxygen consumption (L/min).

### 13 *Normal Cardiac Structure and Function on CMR*

14 Forty-three participants completed CMR, including two without gadolinium (one  $eGFR<30$  and  
15 one due to inability to place an IV). CMR demonstrated normal LV and RV volumes and  
16 ejection fraction, and only RV volumes were associated with symptoms with smaller RV size  
17 associated with higher odds of symptoms (Table 3). No participants had LGE suggestive of  
18 myocardial scar, and native T1 and T2 parametric mapping values and ECV were not associated  
19 with symptoms. Some participants (10/43, 23%) had trace or small pericardial effusions with no  
20 difference by symptoms ( $p=0.59$ ).

### 21 *Palpitations are Not Explained by Arrhythmias on Ambulatory Rhythm Monitoring*

1 Of those included, 38 participants wore and returned an ambulatory rhythm monitor. Lower  
2 maximum heart rate, age-predicted maximum heart rate, and adjusted heart rate reserve were all  
3 associated with symptoms consistent with our CPET findings (Table 4). One symptomatic  
4 individual had a single episode of non-sustained ventricular tachycardia without recorded  
5 symptoms or button push; no other clinically significant arrhythmias including atrial fibrillation  
6 or atrial flutter were present in either group (Supplemental Table 4). The burden of sinus  
7 tachycardia and supraventricular tachycardias was not significantly increased among those with  
8 symptoms. Premature ventricular contractions were associated with symptoms, and we could not  
9 exclude an association between premature atrial contractions and symptoms (Table 4).  
10 Symptomatic individuals pressed the button 3.2 times more often (95%CI 2.1-4.7;  $p<0.001$ ).  
11 Button pushes were mostly during sinus rhythm, sinus tachycardia, or supraventricular ectopy  
12 (Supplemental Figure). Results were similar considering only those with palpitations.

### 13 *Ambulatory Rhythm Monitoring Correlates of Chronotropic Incompetence on CPET*

14 CPET peak HR correlated with maximum sinus HR during ambulatory monitoring (Pearson's  
15  $r=0.71$ ;  $p<0.001$ ), with ambulatory peak HR 29 bpm lower among those with chronotropic  
16 incompetence (95%CI 13-45;  $p<0.001$ ). Chronotropic incompetence was associated with 12.6  
17 bpm higher minimum HR (95%CI 3-22;  $p=0.01$ ) and 59ms lower HR variability by standard  
18 deviation n-to-n (95%CI 24-95;  $p=0.002$ ; Supplemental Table 4). PR intervals were not  
19 significantly longer among those with chronotropic incompetence (171ms vs 168ms;  $p=0.72$ ).  
20 One symptomatic individual had 2<sup>nd</sup> degree Mobitz type 1 (normal finding), and no participants  
21 had 2<sup>nd</sup> degree Mobitz type 2 or 3<sup>rd</sup> degree heart block.

### 22 *Markers of Inflammation Early in PASC are Associated with Exercise Capacity and Pericardial* 23 *Effusions More than 1 Year Later*

1 Markers of inflammation in the blood (hsCRP, IL-6, TNF) and SARS-CoV-2 RBD IgG level,  
2 but not hs-troponin or NT-pro-BNP measured at 3-9 months after infection are negatively  
3 correlated with peak  $\text{VO}_2$  more than one year after infection (Figure 3). After adjustment, peak  
4  $\text{VO}_2$  was 6.2 ml/kg/min lower per doubling of TNF (95%CI 0.6-11.8;  $p=0.03$ ) and 1.8 ml/kg/min  
5 lower per doubling of hsCRP (95%CI 0.8-2.9;  $p=0.001$ ).

6 Longitudinal serum biomarkers of inflammation, neurologic injury, and SARS-CoV-2 RBD IgG  
7 were measured at <90 days from SARS-CoV-2 acute infection (median 52 days) and between  
8 90-150 days (median 124 days) in 36 participants who underwent CPET (Figure 4), all prior to  
9 vaccination. SARS-CoV-2 IgG (2.99-fold higher mean ratio, 95%CI 1.41-6.33;  $p=0.004$ ) and  
10 TNF (1.34-fold higher mean ratio, 95%CI 1.11-1.61;  $p=0.002$ ) were higher at <90 days among  
11 those with reduced exercise capacity. At 90-150 days, only SARS-CoV-2 IgG (2.12-fold higher  
12 mean ratio, 95%CI 1.02-4.43;  $p=0.04$ ) remained statistically significant, although after  
13 adjustment it was no longer statistically significant (1.1 ml/kg/min per doubling, 95%CI -0.3 to  
14 2.4;  $p=0.11$ ). We could not exclude an effect of IL-6 (1.34-fold higher mean ratio, 95%CI 0.92-  
15 1.96;  $p=0.11$ ; adjusted 2.1 ml/kg/min per doubling, 95%CI -0.5-4.6;  $p=0.11$ ). Except for IL-6, all  
16 other biomarkers decreased over time regardless of eventual exercise capacity.

## 17 **Discussion**

18 We demonstrate that clinically meaningful reductions in objective exercise capacity are  
19 associated with LC symptoms more than 1 year after SARS-CoV-2 infection. Our findings  
20 suggest that chronotropic incompetence contributes to exercise limitations in LC. We found  
21 elevated inflammatory markers and SARS-CoV-2 antibody levels early in PASC are associated  
22 with reduced exercise capacity more than a year later. We did not find evidence of myocarditis,  
23 cardiac dysfunction, or clinically significant arrhythmias. Finally, our study validates that CPET

1 allows objective measurement of patient-reported exercise intolerance and therefore may be  
2 useful for interventional trials of therapeutics for LC.

### 3 *Connections between Inflammation, Reduced Exercise Capacity, and Autonomic Responses*

4 Our study extends prior findings that inflammatory markers including hsCRP, IL-6, and TNF are  
5 negatively correlated with peak VO<sub>2</sub> early after COVID-19 hospitalization [17] to >1 year after  
6 infection and those not hospitalized. This correlation may reflect a common cause for  
7 inflammation and exercise limitations in PASC (i.e., viral persistence [18], immune activation  
8 [19]), or these markers could be on the causal path from infection to symptoms and reduced  
9 exercise capacity. Endothelial and coronary microvascular dysfunction occur in PASC [20-23]  
10 and are associated with chronotropic incompetence and inflammation [24, 25]. Inflammation  
11 may alter autonomic function which could explain reduced exercise capacity and chronotropic  
12 incompetence.

13 Data from animal models support the hypothesis that chronotropy may be related to  
14 inflammatory signals and endothelial functions. Apart from COVID-19, IL-6 impairs  
15 chronotropic responses to autonomic signaling in mice [26] and may regulate energy allocation  
16 during exercise [27]. In addition, IL-6 and TNF impair endothelial function in animal models via  
17 increasing oxidative stress and suppressing endothelial nitric oxide synthase pathways [28].

18 Ideally, clinical trials should evaluate whether anti-inflammatory strategies improve chronotropy  
19 and endothelial function, as both impact exercise capacity and risk of cardiovascular disease.

### 20 *Autonomic Function, Sinus Node Function, and Inflammation in PASC*

21 Altered autonomic function is a possible unifying explanation for our and others' CPET findings  
22 in PASC including altered peripheral oxygen extraction [29], preload failure [30-32], and

1 disordered breathing [30]. Orthostatic intolerance, an autonomic symptom, occurs in PASC [33],  
2 and skin biopsies suggest small fiber neuropathy in LC-associated postural-orthostatic  
3 tachycardia syndrome [34, 35]. Effects on brainstem regulatory regions or the amygdala [36]  
4 could also modify autonomic responses to exercise.

5 An alternative hypothesis is that SARS-CoV-2 could alter sinus node function. Autopsy studied  
6 have not specifically examined sinus node tissue for evidence of persistent viral infection of the  
7 sinus node [37], but hamster models suggest that SARS-CoV-2 can infect hamster sinoatrial  
8 node cells and *in vitro* sinoatrial-like pacemaker cells resulting in altered calcium handling,  
9 activated inflammatory pathways, and induced ferroptosis [38]. Sinus node remodeling may  
10 reduce sinus node reserve in heart failure [39]. Although we did not find evidence of cardiac  
11 fibrosis or sinus node dysfunction, we cannot fully exclude that sinus node dysfunction may  
12 contribute to CI. A combination of autopsy studies that specifically examine sinoatrial tissue and  
13 clinical studies may be necessary to identify the relevant mechanisms.

14 Inflammation modifies autonomic and chronotropic responses. Young adults recovering from  
15 SARS-CoV-2 have elevated sympathetic activation at rest [40]. Chronic inflammation in other  
16 settings is associated with parasympathetic and sympathetic imbalance, chronotropic  
17 incompetence and reduced exercise capacity [24, 41]. Thus, chronic inflammation could blunt  
18 chronotropy in PASC even without autonomic nervous system or sinus node damage.

#### 19 *Other Studies of PASC using CPET*

20 Our study is consistent with others that have reported lower peak  $\text{VO}_2$  among those with PASC  
21 compared to recovered individuals mostly at 3-6 months after severe COVID-19, which we  
22 summarized in a systematic review and meta-analysis [10]. Our findings build upon earlier



1 studies by (1) demonstrating reduced peak  $\text{VO}_2$  and chronotropic incompetence much later after  
2 infection (2) including evaluation of cardiac inflammation, structural heart disease and  
3 arrhythmias, (3) adjusting for confounders, (4) including recovered persons as comparators, and  
4 (5) demonstrating associations with longitudinal biomarkers.

5 Differences in classification of exercise limitations across CPET studies of PASC may arise from  
6 selection bias, confounding, different CPET protocols, and different interpretation algorithms.  
7 Deconditioning, which contributes to reduced exercise capacity after any illness, may be  
8 misidentified from noninvasive CPET, and has been commonly reported 3-6 months after  
9 hospitalization [10]. Although reductions in physical activity after COVID-19 [42] suggest  
10 deconditioning contributes, our findings argue against deconditioning as the only explanation for  
11 most individuals as deconditioning more commonly demonstrates an accelerated rather than a  
12 blunted heart rate response.

13 Five other studies have also found that chronotropic incompetence contributes to exercise  
14 limitations in PASC [32, 42-45]. Chronotropic incompetence may be underestimated in some  
15 studies as sensitivity and specificity vary with exercise modality and protocol and including sub-  
16 maximal tests or patients on beta-blockers reduces specificity. Diagnosing chronotropic  
17 incompetence may have prognostic implications: it is associated with incident cardiovascular  
18 disease, sudden death, and all-cause mortality among men without coronary artery disease [46-  
19 48].

20 Impaired peripheral oxygen extraction, best assessed with invasive CPET, may also contribute to  
21 exercise limitations in PASC [29], perhaps via changes in autonomic regulation of  
22 microcirculatory function [49] or altered metabolism [50]. We did not find differences in  
23  $\text{VO}_2/\text{work}$  slope, a noninvasive correlate of measured oxygen extraction. Although not observed

1 among our participants, dysfunctional (rapid, erratic) breathing and exercise hyperventilation  
2 may contribute to dyspnea in PASC [30, 51, 52].

3

#### 4 *CMR and Ambulatory Rhythm Monitoring Findings*

5 CMR findings suggestive of myocarditis without cardiac dysfunction may be present in the early  
6 post-acute period [5, 8, 53]. Consistent with studies at later time points [6, 7], we did not find  
7 evidence of abnormal function or LGE, suggesting that myocarditis is unlikely to explain  
8 symptoms in most with PASC.

9 Our findings are consistent with two studies that did not find arrhythmias in early PASC [54, 55].  
10 In contrast to a study in early PASC [56], inappropriate sinus tachycardia was present only in  
11 one individual (without symptoms). Therefore, arrhythmias and inappropriate sinus tachycardia  
12 are unlikely to explain symptoms among most individuals with PASC.

#### 13 *Implications for Therapy*

14 Investigation into mechanisms of PASC may benefit from proof-of-concept approaches to  
15 identify potential therapies. Although vaccination reduces the risk of PASC [57, 58] and the  
16 newer circulating variants may be associated with lower risk of Long COVID [59], there is no  
17 data regarding whether anti-viral, anti-inflammatory, or anti-coagulant strategies improve  
18 exercise capacity in PASC. In chronotropic incompetence separate from COVID-19, chronic  
19 supervised exercise is the only intervention demonstrated to improve exercise capacity and  
20 surrogates of autonomic function [60-62]. Exercise is an effective treatment for postural  
21 orthostatic tachycardia syndrome, which may also be related to post-viral alterations in  
22 autonomic responses to stress and occurs in PASC [63, 64]. Reports of post-exertional malaise or

1 symptom exacerbation (PEM/PESE) in PASC overlapping with ME/CFS [65-67] mean exercise-  
2 based interventions should be considered with caution. A study of a six-week structured pacing  
3 intervention improved physical activity levels and reduced PESE [68], and another study found  
4 that supervised exercise may be helpful rather than harmful in PASC [69].

### 5 *Limitations*

6 The main limitations of this observational study arise from the small sample size, non-  
7 probabilistic sampling, and cross-sectional cardiac measures. Secondly, the difference in peak  
8  $VO_2$  was sensitive to the case definition, but our definition is consistent with current consensus  
9 definitions [12]. Volunteer bias may result in overestimated prevalence and magnitude of  
10 reduced exercise capacity but should not affect classification of limitations. We did not include  
11 an uninfected comparator group and nearly all individuals were unvaccinated at the time of  
12 initial SARS-CoV-2 infection. Although we excluded those with cardiac disease, adjusted for  
13 measured confounders, and conducted sensitivity analyses adjusting for additional confounders,  
14 unmeasured residual confounders including pre-COVID fitness remain. Adjustment (in BMI, for  
15 example) may not have fully accounted for confounding. Misclassification of exercise limitations  
16 could occur since we did not perform invasive CPET, stress echocardiography, stress CMR, or  
17 stress ventriculography. Lastly, we lacked contemporaneous biomarker data with CPETs to  
18 ascertain whether a transient inflammatory process or ongoing inflammation is more likely.

### 19 *Conclusions*

20 In conclusion, more than 1 year after pre-vaccine index SARS-CoV-2 infection, reduced exercise  
21 capacity on CPET is associated with LC symptoms, chronotropic incompetence, and higher  
22 inflammatory markers and antibody levels in the early post-acute period, but not evidence of

- 1 myocarditis or arrhythmias. Further investigation into mechanisms of cardiopulmonary PASC
- 2 should include evaluation of inflammatory pathways, chronotropic function, and the autonomic
- 3 nervous system to identify therapeutic targets.
- 4

1 **Acknowledgements:** We would like to thank the research participants and the members of the  
2 LIINC study team. We would like to thank Dr. Kara Lynch and Dr. Alan Wu for their assistance  
3 with measuring cardiac biomarkers and hsCRP. We would also like to acknowledge support  
4 from Jeremy Lambert from Quanterix (Billerica, MA) and Patrick Kaiser from BardyDx, a  
5 division of Hillrom (Bellevue, Washington). We acknowledge the contributions of the UCSF  
6 Clinical and Translational Science Unit.

7 This study was funded by philanthropic gifts from Charles W. Swanson and the Ed and Pearl  
8 Fein Foundation, research grants from the NIH/NLBI including L30 HL159695 and K12  
9 HL143961, and internal funds from the Division of Cardiology at Zuckerberg San Francisco  
10 General. This work was assisted in part by a CFAR-ARI Boost Award from the UCSF AIDS  
11 Research Institute. MSD is supported by K12HL143961. MJP is supported by K23AI157875.  
12 JDK is supported by NIH/NIAID K23AI135037. TJH is supported by NIH/NIAID  
13 3R01A1141003-03S1. PYH is supported by NIH/NAID 2K24AI112393-06. This publication  
14 was supported by the National Center for Advancing Translational Sciences, National Institutes  
15 of Health, through UCSF-CTSI Grant Number UL1TR001872. Its contents are solely the  
16 responsibility of the authors and do not necessarily represent the official views of the NIH. The  
17 funders had no role in study design, data collection and analysis, decision to publish, or  
18 preparation of the manuscript.

19 **Author Contributions:**

20 MSD designed the study, obtained IRB approval, acquired data, analyzed data, interpreted the  
21 findings, and wrote the first draft of the manuscript. MJP assisted in study design, participant  
22 recruitment, data interpretation, and critical revision of the manuscript. PK and YJL conducted  
23 CMR measurements, drafted the MRI methods, and contributed to interpretation of the MRI

1 findings. CH led the ambulatory rhythm monitoring measurements and participated in  
2 interpretation of the findings. DL and ES participated in the cardiopulmonary exercise testing  
3 measurements, drafting of the CPET methods, CPET interpretation, and provided input on the  
4 manuscript. SS and VMA participated in measurements, data management, and revisions of the  
5 manuscript. DVG participated in statistical design, analysis and visualization. SL, SAG, and RH  
6 participated in participant recruitment, measurement, and data management. AC, BCY, JWW,  
7 and CJP participated in biomarker measurement and provided input on drafts of the manuscript.  
8 JDK, TJH, and JNM participated in the study design, interpretation of results, and revision of the  
9 manuscript. CSL and DJG provided funding and participated in designing the study, interpreting  
10 results, and revising the manuscript. SGD and PYH provided funding, oversight, and mentorship  
11 for the first two authors and participated in study design, interpretation of results, and critical  
12 manuscript revision.

13 **Competing Interests statement:** AC, BCY, JWW, and CJP are employees of Monogram  
14 Biosciences, Inc., a division of LabCorp. PYH has received modest honoraria from Gilead and  
15 Merck and research grant from Novartis unrelated to the submitted work. All other authors report  
16 no other competing interests.

17

1 **Tables:**

2 **Table 1: Baseline Characteristics (n=60)**

		Symptoms (n=38)	No Symptoms (n=22)
Months since Infection, median (IQR)		17.7 (15.9, 19.4)	17.5 (15.8, 18.6)
Age (years), median (IQR)		50.5 (40, 57)	54.5 (42, 61)
Sex	Male	19 (50%)	16 (73%)
	Female	19 (50%)	6 (27%)
Race/ Ethnicity	Hispanic/Latino	10 (24%)	5 (22%)
	White	26 (63%)	15 (65%)
	Black/African American	2 (5%)	1 (4%)
	Asian	2 (9%)	3 (7%)
BMI (kg/m <sup>2</sup> ), mean±SD		30.2±7.5	28.1±5.0
Change in BMI from visit 1 to visit 2, mean±SD		1.18±1.4	1.32±2.1
BMI Category	24.9 or less	10 (26%)	7 (32%)
	25 to 29.9	11 (29%)	10 (45%)
	30 to 34.5	9 (24%)	4 (18%)
	35 or greater	8 (21%)	1 (5%)
Medical History	Hypertension	9 (24%)	5 (24%)
	Diabetes	6 (16%)	1 (5%)
	Asthma/COPD	10 (27%)	2 (10%)
	HIV	10 (26%)	6 (27%)
	Autoimmune Disease	3 (8%)	1 (5%)
	Cancer	1 (3%)	1 (5%)
	Kidney Disease	1 (3%)	0 (0%)
	Former or Current Tobacco use	13 (34%)	3 (14%)
Hospitalized (including ICU)		6 (16%)	2 (9%)
ICU		2 (33% hospitalized)	0

3 **Table 1 Legend:** Demographic information, past medical history, and severity of acute COVID-19 by  
4 hospitalization/ICU status of the participants who underwent advanced cardiopulmonary testing. Abbreviations:  
5 BMI=body mass index, ICU=intensive care unit, IQR=Interquartile Range

6

1 **Table 2: Selected Cardiopulmonary Exercise Testing Parameters by Symptom Status (n=56)**

	Measure	Symptoms (n=37)	No Symptoms (n=19)	Adjusted OR (95%CI; p value)	Adjusted Difference (95%CI; p value)
<b>Exercise Capacity</b>	Peak VO <sub>2</sub> , ml/kg/min	22.7 ± 8.1	29.6 ± 7.0	2.75 per -5 ml/kg/min (1.39-5.44; p=0.004)	-5.2 (-8.3to -2.1; p=0.001)
	Peak VO <sub>2</sub> , % predicted	92.0 ± 22.0	107.3 ± 22.0	1.22 per -5% (1.04-1.43; p=0.01)	-17 (-30 to -4.3; p=0.01)
	Peak VO <sub>2</sub> , L/min	1.9 ± 0.6	2.4 ± 0.7	1.18 per -0.1/min (1.03-1.37; p=0.02)	-0.41 (-0.73 to -0.09; p=0.01)
	Proportion <85% predicted	18 (49%)	3 (16%)	7.97 (1.56 to 40.8; p=0.01)	--
<b>Ventilatory</b>	Peak Respiratory Rate	37.5 ± 8.7	40.8 ± 9.7	0.95 (0.88-1.02; p=0.17)	-3.8 (-10.0 to 2.4; p=0.23)
	Breathing Reserve (MVV-V <sub>E</sub> max)	44.5 (38.3, 59.0)	32.8 (24.0, 44.8)	1.04 (1.00-1.07; p=0.05)	14.8 (0.7 to 29; p=0.04)
	Vent. Efficiency (V <sub>E</sub> /VCO <sub>2</sub> slope) <sup>a</sup>	27.5 ± 3.7	25.8 ± 3.7	1.18 (0.98-1.44; p=0.09)	2.0 (-0.4 to 4.4; p=0.10)
<b>Peripheral</b>	VO <sub>2</sub> to Work slope	9.9±3.0	10.9±3.5	0.94 (0.76-1.17; p=0.60)	-0.5 (-2.6 to 1.5; p=0.60)
<b>Cardiac</b>	VO <sub>2</sub> pulse, ml/beat	13.1 ± 3.3	15.4 ± 4.5	0.85 (0.69-1.03; p=0.11)	-1.6 (-3.8 to 0.5; p=0.13)
	SBP peak, mm Hg	173.9 ± 31.7	189.2 ± 23.3	0.86 per 5 mm Hg (0.73-1.03; p=0.10)	-13.2 (-31.3 to 4.8; p=0.15)
<b>Heart Rate</b>	Rest, bpm	78.3 ± 14.5	75.2 ± 10.4	1.01 (0.96-1.06; p=0.75)	0.9 (-6.9 to 8.7; p=0.83)
	Peak, bpm	147.2 ± 25.7	154.1 ± 21.7	0.97 (0.94-1.01; p = 0.10)	-9.3 (-21 to 2; p=0.11)
	Peak, % Age Predicted	86.2 ± 11.9	94.1 ± 9.3	0.92 (0.85-0.99; p=0.02)	-8.5 (-15.2 to -1.8; p=0.02)
	Adjusted HR Reserve Achieved, %	73.6 ± 22.0	84.9 ± 21.2	0.97 (0.94-1.00; p=0.05)	-12.1 (-24.6 to 0.5; p=0.06)
	HR Recovery at 1 min, bpm	14.4 ± 7.4	14.0 ± 10.0	1.04 (0.95-1.14; p=0.39)	2.0 (-2.9 to 6.9; p=0.42)
<b>Exertion</b>	Work (Watts)	140.8 ± 60.6	196.2 ± 68.2	1.20 per -10 Watts (1.04 to 1.40; p=0.01)	-49.6 (-86.2 to -13.0; p=0.009)
	Perceived Exertion, Borg Scale 6-20 <sup>b</sup>	16.2 ± 1.8	14.9 ± 2.2	1.64 (1.05-2.57; p=0.03)	1.3 (0.1 to 2.6; p=0.03)
	Peak Respiratory Exchange Ratio (VCO <sub>2</sub> /VO <sub>2</sub> )	1.18 (1.12, 1.23)	1.20 (1.12, 1.30)	1.01 per -0.1 (0.48-2.12; p=0.98)	0.03 (-0.09 to 0.02; p=0.23)



1 **Table 2 Legend:** We present both the odds ratios for the association between CPET parameters and symptoms  
2 estimated using logistic regression with adjustment for age, sex, time since COVID, hospitalization for acute  
3 COVID, BMI category and the estimated adjusted mean differences between those with and without symptoms  
4 using linear regression adjusting for the same covariates. Sensitivity analysis incorporating history of hypertension,  
5 diabetes, and lung disease had no substantive changes in effect sizes or confidence intervals. <sup>a</sup>VE/VCO<sub>2</sub> slope could  
6 not be determined for one participant without symptoms. <sup>b</sup>Borg scale of perceived exertion was assessed every 2  
7 minutes; these represent the last measurement prior to test stopping. **Bold text represents p<0.05.** Abbreviations:  
8 AT=Anaerobic threshold; bpm=beats per minute; FVC=Forced Vital Capacity; HR=heart rate; DBP=diastolic blood  
9 pressure; MVV=maximal voluntary ventilation; SBP=systolic blood pressure; V<sub>D</sub>/V<sub>T</sub>=Dead space ratio; V<sub>E</sub> = minute  
10 ventilation; VCO<sub>2</sub>=carbon dioxide production; pVO<sub>2</sub>=peak oxygen consumption (VO<sub>2</sub>); Vent=Ventilatory.

11

1 **Table 3. Cardiac Magnetic Resonance Imaging Parameters (n=41) by Symptom Status**

Meaning	Parameter	Symptoms (n=25)	No Symptoms (n=18)	Adjusted OR (95%CI; p value)
<b>Months since SARS-CoV-2 Infection, mean±SD</b>		15.9±3.8	15.9±3.9	--
<b>Hematocrit, mean±SD</b>		43.0 ± 3.5	44.5 ± 4.1	0.86 (0.67 to 1.09; p=0.21)
<b>Body Surface Area, m<sup>2</sup></b>		1.95 ± 0.22	1.90 ± 0.16	1.26 per 0.1 m <sup>2</sup> (0.74-2.17; p=0.38)
<b>Left Ventricular Size and Function</b>	LVEDi, ml/m <sup>2</sup>	63.6 ± 13.9	69.3 ± 12.3	0.97 (0.91-1.03; p=0.27)
	LVESi, ml/m <sup>2</sup>	24.4 ± 6.9	25.3 ± 7.0	1.00 (0.89-1.12; p=0.97)
	LVEF, %	61.8 ± 5.9	63.3 ± 5.8	0.93 (0.82-1.05; p=0.26)
	LV Mass Index, gm/m <sup>2</sup>	47.6 ± 7.9	51.6 ± 7.6	0.98 (0.90 to 1.06; p=0.60)
	Stroke Volume, ml <sup>a</sup>	77.2 ± 18.1	84.2 ± 18.1	0.97 (0.93-1.01; p=0.20)
<b>Right Ventricular Size and Function</b>	<b>RVEDi, ml/m<sup>2</sup></b>	<b>65.3 ± 13.5</b>	<b>75.6 ± 12.4</b>	<b>0.92 (0.86 to 0.99; p=0.02)</b>
	<b>RVESi, ml/m<sup>2</sup></b>	<b>27.1 ± 6.4</b>	<b>31.3 ± 7.6</b>	<b>0.86 (0.75=0.99; p=0.04)</b>
	RVEF, %	58.9 ± 5.0	58.4 ± 5.0	0.75 (0.86 to 1.14; p=0.93)
<b>Markers of Cardiac Inflammation</b>	T1 Native Mapping, ms	1202 (1141, 1253)	1219 (1153, 1248)	1.00 (0.99-1.00; p=0.51)
	Post-Contrast T1 Mapping Time, ms	603 (507, 634)	624 (577, 655)	1.00 (0.99 to 1.01; p=0.64)
	Extracellular Volume, %	26.7 ± 6.3	24.2 ± 5.3	1.08 (0.92-1.26; p=0.35)
	T2 Native Mapping, ms	46.5 (44.4, 51.0)	48.0 (44.0, 51.4)	0.97 (0.83-1.13; p=0.70)
<b>Cardiac Fibrosis</b>	LGE	0	0	--
<b>Possible Pericardial Inflammation</b>	Pericardial Effusion	6 (24%)	5 (22%)	0.47 (0.08-2.71; p=0.41)

2 **Table 3 Legend:** CMR parameters by cardiopulmonary symptoms given as mean±SD or median (intraquartile  
3 range) for non-normally distributed variables. Logistic regression was used to estimated odds of having symptoms  
4 for a given change in each parameter adjusted for age, sex, BMI category, hospitalization, and time since infection.  
5 Only RV end diastolic and end systolic volume indices were associated with symptoms with larger RV size  
6 associated with lower odds of symptoms. **Bold text represents p<0.05.** Abbreviations: LVEDi=Left ventricular end  
7 diastolic volume indexed to body surface area; LVESi=Left ventricular end diastolic volume indexed to body  
8 surface area; LVEF=left ventricular ejection fraction; RVEDi=Right ventricular end diastolic volume indexed to  
9 body surface area; RVESi=Right ventricular end diastolic volume indexed to body surface area; RVEF=Right  
10 ventricular Ejection Fraction. LGE=Late Gadolinium Enhancement. <sup>a</sup>LV stroke volumes are reported but there is a  
11 high correlation between LV and RV stroke volumes (Pearson's r=0.96).

12

1 **Table 4: Ambulatory Rhythm Monitoring Findings by Symptoms (n=38)**

Parameter	Symptoms (n=24)	No Symptoms (n=14)	Adjusted OR for symptoms (95%CI; p value)	Adjusted OR for palpitations (95%CI; p value)
Monitoring Time, days	4 (3, 13)	8 (3, 13)	--	
Average Heart Rate, bpm	77.5 ± 11.4	74.4 ± 4.5	1.04 (0.96 to 1.14; p=0.34)	1.11 (0.98-1.28; p=0.11)
Minimum HR, bpm	50.2 ± 12.5	44.9 ± 2.8	1.13 (0.96-1.33; p=0.13)	<b>1.38 (1.04-1.82; p=0.02)</b>
Maximum HR, bpm	142.2 ± 19.0	157.4 ± 21.4	<b>1.77 per -10 (1.03 to 3.03; p=0.04)</b>	<b>2.60 (1.07-6.34; p=0.04)</b>
Maximum HR, % predicted	85.1 ± 9.1	94.9 ± 11.3	<b>3.39 per -10 (1.09 to 10.6; p=0.04)</b>	<b>9.15 (1.14-72.9; p=0.04)</b>
Adjusted HRR achieved, %	70.7 ± 19.7	89.9 ± 20.1	<b>1.77 per -10 (1.09 to 2.89; p=0.02)</b>	<b>4.20 (1.34-13.2; p=0.01)</b>
Heart Rate Variability, SDNN	143.5 (113.3, 185.5)	155.7 (137.0, 177.0)	1.00 per -10 (0.87 to 1.16; p=0.97)	<b>1.91 (1.08-3.60; p=0.03)</b>
PAC, % burden	0.02 (0.01, 0.10)	0.01 (0.01, 0.04)	1.36 per 10-fold increase (0.58 to 3.20; p=0.48)	1.05 (0.36-3.05; p=0.93)
PVC, % burden	0.01 (0.01, 0.15)	0.01 (0, 0.01)	<b>2.74 per 10-fold increase (1.14 to 6.53; p=0.02)</b>	2.20 (0.92-5.31; p=0.08)
Sinus tachycardia, % burden	7 (3, 13)	4 (3, 6)	1.15 (0.97 to 1.37; p=0.12)	1.20 (1.00-1.43; p=0.05)
Episodes of SVT* per week	1.2 (0, 3.5)	0 (0, 3)	1.08 (0.91 to 1.28; p=0.39)	1.15 (0.91-1.46; p=0.25)
Episodes of Nonsustained VT	0	1	--	
Button Pushes	2.5 (0.5,7)	1 (0, 2)	1.33 (1.00-1.76; p=0.05)	1.13 (0.93-1.36; p=0.22)

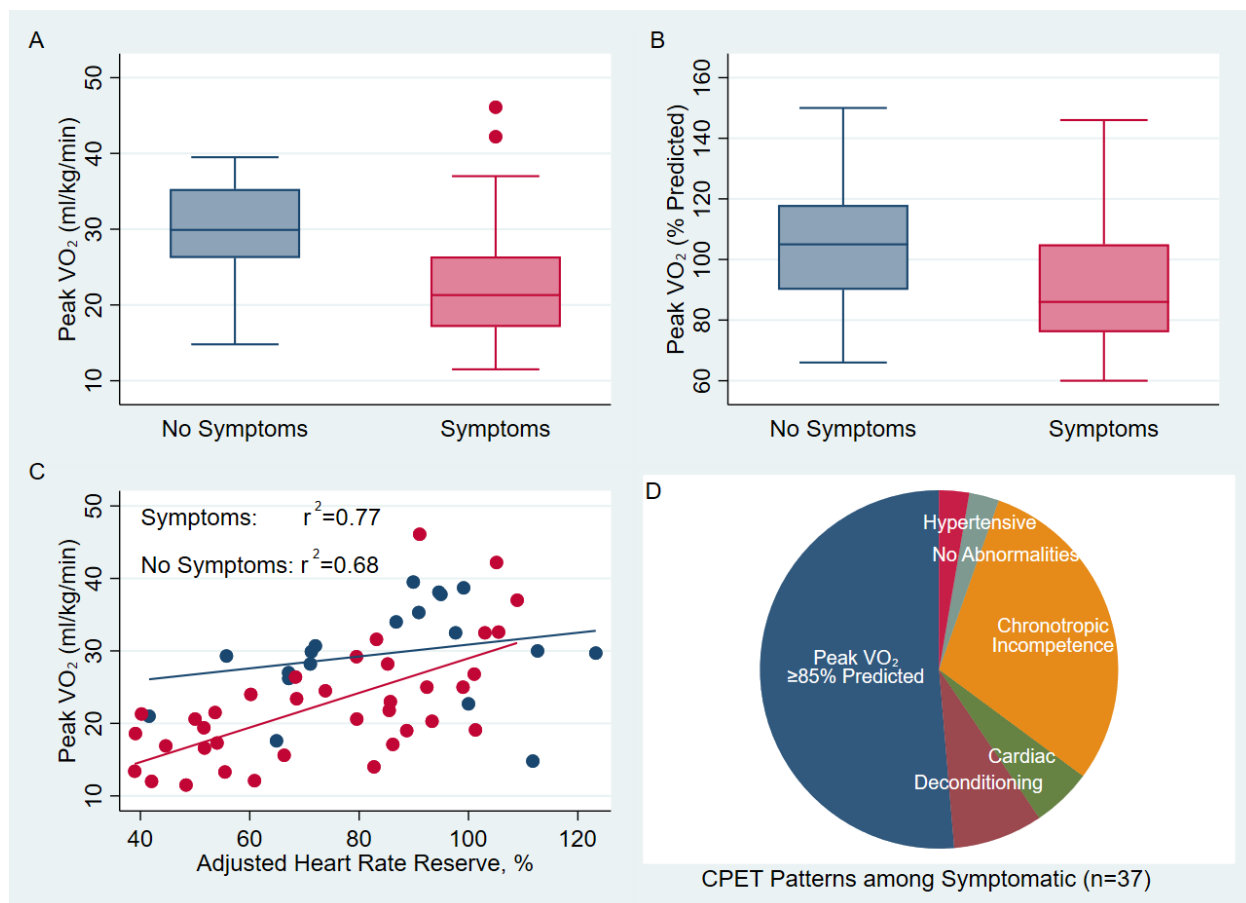
2 **Table 4 Legend.** Values are reported as mean±SD or median (interquartile range) for non-normally distributed  
3 variables assessed by histogram. Those with self-reported symptoms pressed the symptom button on the monitor  
4 more 3.2 times more often (95%CI 2.1-4.7; p<0.001). **Bolded results are p<0.05.**

5

6

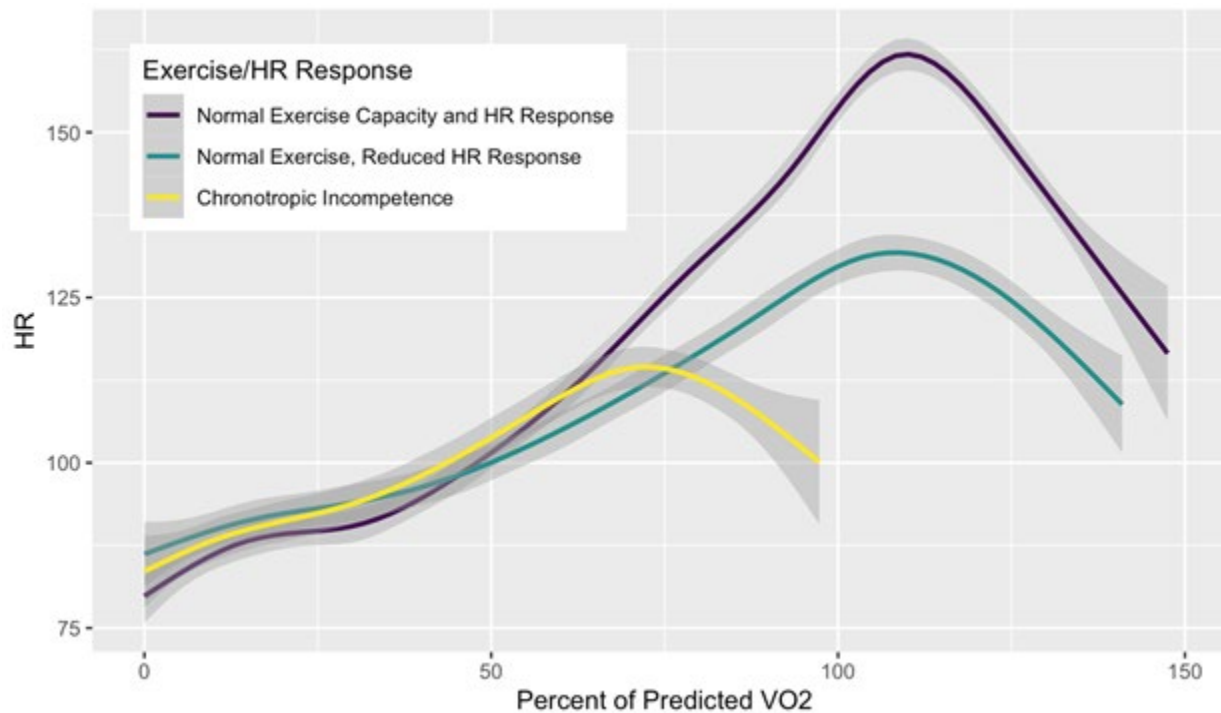
1 **Figures:**

2 **Figure 1. Exercise Capacity by Symptoms and HR Response to Exercise (n=56)**



3  
4 **Figure 1 Legend:** Box and whisker plots of peak VO<sub>2</sub> (ml/kg/min in Panel A and percent  
5 predicted in Panel B) among those without (blue) and with symptoms (pink) 17.6 months after  
6 SARS-CoV-2 infection (top). In Panel C peak VO<sub>2</sub> in ml/kg/min is plotted by adjusted heart rate  
7 reserve (AHRR) to demonstrate the cluster of symptomatic individuals with low peak VO<sub>2</sub> and  
8 chronotropic incompetence in the bottom left. Panel D demonstrates CPET patterns among those  
9 with Long COVID symptoms: half achieved greater than 85% predicted peak VO<sub>2</sub>, and  
10 chronotropic incompetence was the most common pattern among those with reduced exercise  
11 capacity.

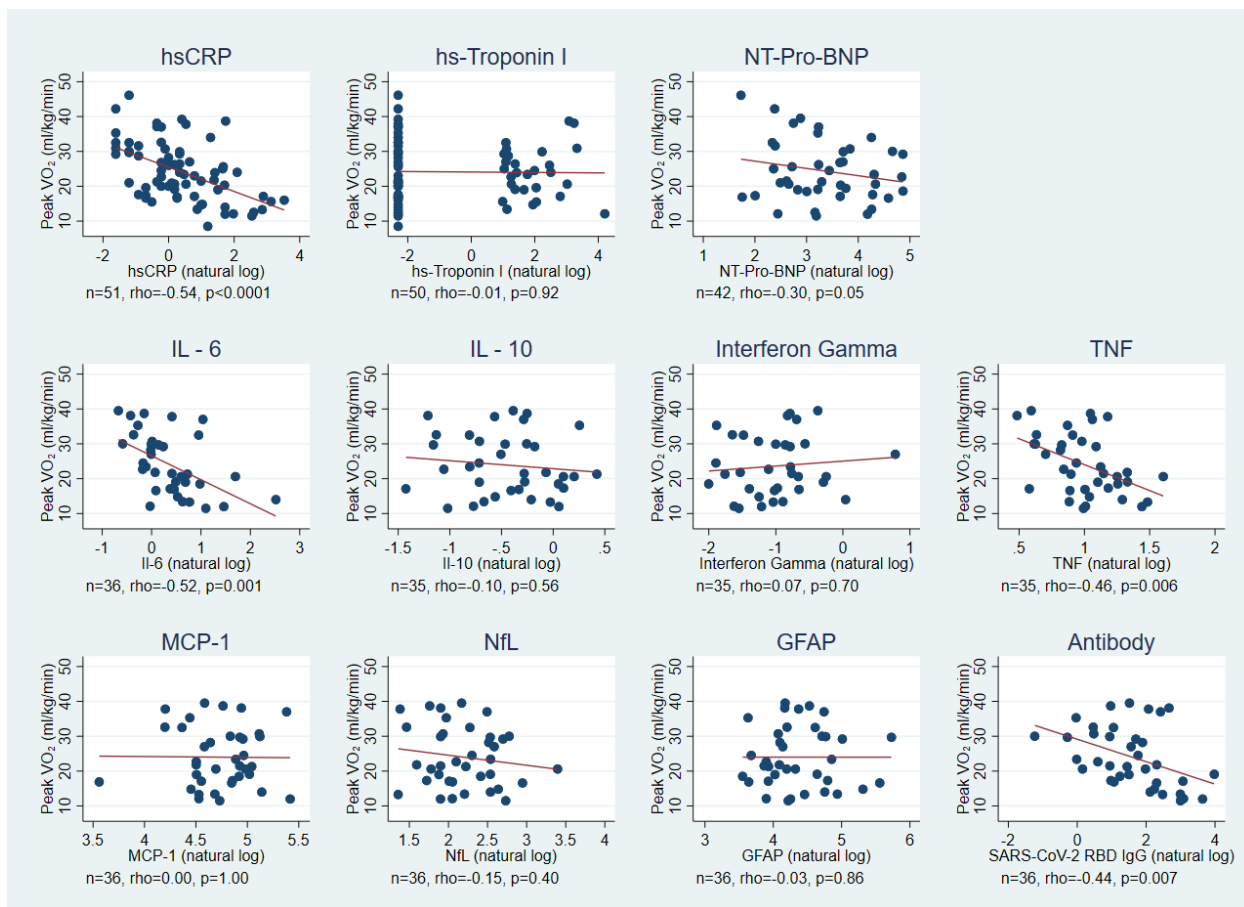
1 **Figure 2. Heart Rate during Exercise by Chronotropic Response to Exercise**



2  
3 **Figure 2 Legend:** Mean heart rate is plotted as a function of exercise time normalized to percent  
4 of predicted peak VO<sub>2</sub>: in purple are those with normal exercise capacity (peak VO<sub>2</sub> >85%  
5 predicted and normal heart rate response (n=16), in teal are those with normal exercise capacity  
6 (peak VO<sub>2</sub>>85%; n=8) and blunted heart rate response (AHRR<80%; n=8), and in yellow are  
7 those with chronotropic incompetence (n=9), as described in Supplemental Table 4.

8

1 **Figure 3. Correlations between Peak VO<sub>2</sub> and Previously Measured Biomarkers**



2

3 **Figure 3 Legend.** Scatterplots and linear trend lines of peak VO<sub>2</sub> (measured at ~18 months) by

4 natural log of previously measured biomarker levels with unadjusted Pearson's rho correlations

5 and p-values listed (top row, median 6 months after SARS-CoV-2 infection; bottom two rows

6 median 3.5 months after SARS-CoV-2 infection). Prior hsCRP, IL-6, TNF and SARS-CoV-2

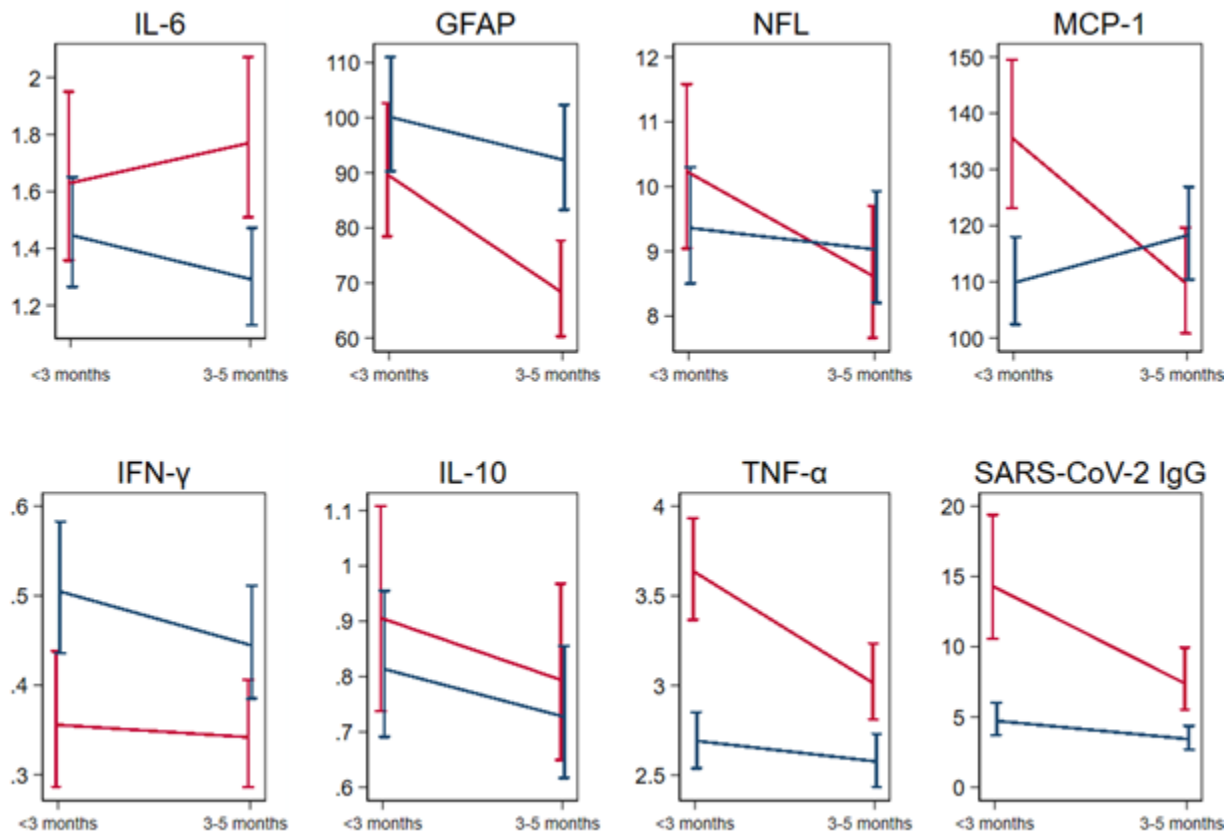
7 receptor binding domain antibody levels were correlated with subsequent peak VO<sub>2</sub>. All

8 antibody levels were measured prior to vaccination.

9

10

1 **Figure 4. Change in Biomarkers Early Post-Infection by Eventual Exercise Capacity at 18**  
2 **months (n=35)**



3  
4 **Figure 4 Legend:** Mean ± standard error of the mean for serum biomarkers over time among  
5 those with reduced exercise capacity (red) and preserved exercise capacity (blue) measured at  
6 <90 days from SARS-CoV-2 acute infection (median 52 days from symptom onset) and between  
7 90-150 days (median 124 days from symptom onset) in 35 participants who underwent CPET.  
8 Inflammatory markers decreased over time, except for IL-6 among those with reduced exercise  
9 capacity. MCP-1, TNF, and IgG were higher early among those with reduced exercise capacity.  
10 TNF and IgG remained higher and GFAP became lower among those with reduced exercise  
11 capacity at the second time point.

## 1 **References**

- 2 1. Ballering AV, van Zon SKR, Olde Hartman TC, Rosmalen JGM. Persistence of somatic symptoms  
3 after COVID-19 in the Netherlands: an observational cohort study. *Lancet*. 2022;400(10350):452-61.  
4 Epub 2022/08/08. doi: 10.1016/s0140-6736(22)01214-4. PubMed PMID: 35934007; PubMed Central  
5 PMCID: PMC9352274.
- 6 2. Durstenfeld MS, Peluso MJ, Kelly JD, Win S, Swaminathan S, Li D, et al. Role of antibodies,  
7 inflammatory markers, and echocardiographic findings in postacute cardiopulmonary symptoms after  
8 SARS-CoV-2 infection. *JCI Insight*. 2022;7(10). Epub 2022/04/08. doi: 10.1172/jci.insight.157053.  
9 PubMed PMID: 35389890; PubMed Central PMCID: PMC9220849.
- 10 3. Fayol A, Livrozet M, Boutouyrie P, Khettab H, Betton M, Tea V, et al. Cardiac performance in  
11 patients hospitalized with COVID-19: a 6 month follow-up study. *ESC Heart Fail*. 2021;8(3):2232-9. Epub  
12 2021/03/28. doi: 10.1002/ehf2.13315. PubMed PMID: 33773099; PubMed Central PMCID:  
13 PMC938120370.
- 14 4. Tangen J, Aukrust P, Barratt-Due A, Skulstad H, Edvardsen T. Reduced Cardiac Function by  
15 Echocardiography in a Minority of COVID-19 Patients >3 Months after Hospitalization. *Journal of the*  
16 *American Society of Echocardiography*. 2022;35(2):243-4. doi: 10.1016/j.echo.2021.10.014.
- 17 5. Puntmann VO, Carerj ML, Wieters I, Fahim M, Arendt C, Hoffmann J, et al. Outcomes of  
18 Cardiovascular Magnetic Resonance Imaging in Patients Recently Recovered From Coronavirus Disease  
19 2019 (COVID-19). *JAMA Cardiology*. 2020. doi: 10.1001/jamacardio.2020.3557.
- 20 6. Joy G, Artico J, Kurdi H, Seraphim A, Lau C, Thornton GD, et al. Prospective Case-Control Study of  
21 Cardiovascular Abnormalities 6 Months Following Mild COVID-19 in Healthcare Workers. *JACC:*  
22 *Cardiovascular Imaging*. 2021;14(11):2155-66. doi: 10.1016/j.jcmg.2021.04.011.
- 23 7. Cassar MP, Tunnicliffe EM, Petousi N, Lewandowski AJ, Xie C, Mahmud M, et al. Symptom  
24 Persistence Despite Improvement in Cardiopulmonary Health - Insights from longitudinal CMR, CPET and  
25 lung function testing post-COVID-19. *EClinicalMedicine*. 2021;41:101159. Epub 2021/10/26. doi:  
26 10.1016/j.eclinm.2021.101159. PubMed PMID: 34693230; PubMed Central PMCID: PMC938527025.
- 27 8. Kotecha T, Knight DS, Razvi Y, Kumar K, Vimalasvaran K, Thornton G, et al. Patterns of  
28 myocardial injury in recovered troponin-positive COVID-19 patients assessed by cardiovascular magnetic  
29 resonance. *Eur Heart J*. 2021;42(19):1866-78. Epub 2021/02/18. doi: 10.1093/eurheartj/ehab075.  
30 PubMed PMID: 33596594; PubMed Central PMCID: PMC9387928984.
- 31 9. Puntmann VO, Martin S, Shchendrygina A, Hoffmann J, Ka MM, Giokoglu E, et al. Long-term  
32 cardiac pathology in individuals with mild initial COVID-19 illness. *Nat Med*. 2022;28(10):2117-23. Epub  
33 2022/09/06. doi: 10.1038/s41591-022-02000-0. PubMed PMID: 36064600; PubMed Central PMCID:  
34 PMC9556300.
- 35 10. Durstenfeld MS, Sun K, Tahir P, Peluso MJ, Deeks SG, Aras MA, et al. Use of Cardiopulmonary  
36 Exercise Testing to Evaluate Long COVID-19 Symptoms in Adults: A Systematic Review and Meta-  
37 analysis. *JAMA Netw Open*. 2022;5(10):e2236057. Epub 2022/10/13. doi:  
38 10.1001/jamanetworkopen.2022.36057. PubMed PMID: 36223120.
- 39 11. Peluso MJ, Kelly JD, Lu S, Goldberg SA, Davidson MC, Mathur S, et al. Persistence, Magnitude,  
40 and Patterns of Postacute Symptoms and Quality of Life Following Onset of SARS-CoV-2 Infection:  
41 Cohort Description and Approaches for Measurement. *Open Forum Infectious Diseases*. 2021;9(2). doi:  
42 10.1093/ofid/ofab640.
- 43 12. Soriano JM, J; Diaz, JV; Murthy, S;; Relan, P. A clinical case definition of post COVID-19 condition  
44 by a Delphi consensus. In: Organization WH, editor. 2021.1 ed: ; 2021.
- 45 13. Peluso MJ, Lu S, Tang AF, Durstenfeld MS, Ho HE, Goldberg SA, et al. Markers of Immune  
46 Activation and Inflammation in Individuals With Postacute Sequelae of Severe Acute Respiratory



- 1 Syndrome Coronavirus 2 Infection. *J Infect Dis.* 2021;224(11):1839-48. Epub 2021/10/23. doi:  
2 10.1093/infdis/jiab490. PubMed PMID: 34677601; PubMed Central PMCID: PMC8643408.
- 3 14. Balady GJ, Arena R, Sietsema K, Myers J, Coke L, Fletcher GF, et al. Clinician's Guide to  
4 cardiopulmonary exercise testing in adults: a scientific statement from the American Heart Association.  
5 *Circulation.* 2010;122(2):191-225. Epub 2010/06/30. doi: 10.1161/CIR.0b013e3181e52e69. PubMed  
6 PMID: 20585013.
- 7 15. Wasserman K HJ, Sue DY, Stringer W, Whipp BJ. Principles of Exercise Testing and Interpretation.  
8 4th ed. Philadelphia: Lippincott Williams and Wilkins; 2005.
- 9 16. Brubaker PH, Kitzman DW. Chronotropic incompetence: causes, consequences, and  
10 management. *Circulation.* 2011;123(9):1010-20. Epub 2011/03/09. doi:  
11 10.1161/CIRCULATIONAHA.110.940577. PubMed PMID: 21382903; PubMed Central PMCID:  
12 PMC3065291.
- 13 17. Ribeiro Baptista B, d'Humieres T, Schlemmer F, Bendib I, Justeau G, Al-Assaad L, et al.  
14 Identification of factors impairing exercise capacity after severe COVID-19 pulmonary infection: a 3-  
15 month follow-up of prospective COVulnerability cohort. *Respir Res.* 2022;23(1):68. Epub 2022/03/24.  
16 doi: 10.1186/s12931-022-01977-z. PubMed PMID: 35317815; PubMed Central PMCID:  
17 PMC8938727.
- 18 18. Swank Z, Senussi Y, Manickas-Hill Z, Yu XG, Li JZ, Alter G, et al. Persistent circulating SARS-CoV-2  
19 spike is associated with post-acute COVID-19 sequelae. *Clin Infect Dis.* 2022. Epub 2022/09/03. doi:  
20 10.1093/cid/ciac722. PubMed PMID: 36052466.
- 21 19. Littlefield KM, Watson RO, Schneider JM, Neff CP, Yamada E, Zhang M, et al. SARS-CoV-2-specific  
22 T cells associate with inflammation and reduced lung function in pulmonary post-acute sequelae of  
23 SARS-CoV-2. *PLoS Pathog.* 2022;18(5):e1010359. Epub 2022/05/27. doi: 10.1371/journal.ppat.1010359.  
24 PubMed PMID: 35617421.
- 25 20. Paneroni M, Pasini E, Vitacca M, Scavini S, Comini L, Pedrinolla A, et al. Altered Vascular  
26 Endothelium-Dependent Responsiveness in Frail Elderly Patients Recovering from COVID-19 Pneumonia:  
27 Preliminary Evidence. *J Clin Med.* 2021;10(12). Epub 2021/07/03. doi: 10.3390/jcm10122558. PubMed  
28 PMID: 34207876; PubMed Central PMCID: PMC8228458.
- 29 21. Mejia-Renteria H, Travieso A, Sagir A, Martínez-Gómez E, Carrascosa-Granada A, Toya T, et al.  
30 In-vivo evidence of systemic endothelial vascular dysfunction in COVID-19. *International Journal of*  
31 *Cardiology.* 2021;345:153-5. doi: <https://doi.org/10.1016/j.ijcard.2021.10.140>.
- 32 22. Drakos S, Chantzantonis G, Bietenbeck M, Evers G, Schulze AB, Mohr M, et al. A cardiovascular  
33 magnetic resonance imaging-based pilot study to assess coronary microvascular disease in COVID-19  
34 patients. *Sci Rep.* 2021;11(1):15667. Epub 2021/08/04. doi: 10.1038/s41598-021-95277-z. PubMed  
35 PMID: 34341436; PubMed Central PMCID: PMC8329060.
- 36 23. Ahmed AI, Saad JM, Han YS, Malahfji M, Nabi F, Mahmarian JJ, et al. Coronary Microvascular  
37 Health in Patients with Prior Covid-19 Infection: Implications for Long-Covid Syndrome. *Journal of the*  
38 *American College of Cardiology.* 2022;79(9):1822-. doi: doi:10.1016/j.jcmg.2022.07.006. PubMed PMID:  
39 WOS:000781026602023.
- 40 24. Huang PH, Leu HB, Chen JW, Wu TC, Lu TM, Ding YA, et al. Comparison of endothelial vasodilator  
41 function, inflammatory markers, and N-terminal pro-brain natriuretic peptide in patients with or without  
42 chronotropic incompetence to exercise test. *Heart.* 2006;92(5):609-14. Epub 2005/09/15. doi:  
43 10.1136/hrt.2005.064147. PubMed PMID: 16159987; PubMed Central PMCID: PMC81860951.
- 44 25. Bechgaard DF, Hove JD, Suhrs HE, Bové KB, Shahriari P, Gustafsson I, et al. Women with  
45 coronary microvascular dysfunction and no obstructive coronary artery disease have reduced exercise  
46 capacity. *International Journal of Cardiology.* 2019;293:1-9. doi:  
47 <https://doi.org/10.1016/j.ijcard.2019.07.048>.

- 1 26. Hajiasgharzadeh K, Mirnajafi-Zadeh J, Mani AR. Interleukin-6 impairs chronotropic  
2 responsiveness to cholinergic stimulation and decreases heart rate variability in mice. *Eur J Pharmacol.*  
3 2011;673(1-3):70-7. Epub 2011/11/03. doi: 10.1016/j.ejphar.2011.10.013. PubMed PMID: 22044916.
- 4 27. Kistner TM, Pedersen BK, Lieberman DE. Interleukin 6 as an energy allocator in muscle tissue.  
5 *Nat Metab.* 2022;4(2):170-9. Epub 2022/02/26. doi: 10.1038/s42255-022-00538-4. PubMed PMID:  
6 35210610.
- 7 28. Lee J, Lee S, Zhang H, Hill MA, Zhang C, Park Y. Interaction of IL-6 and TNF- $\alpha$  contributes to  
8 endothelial dysfunction in type 2 diabetic mouse hearts. *PLoS One.* 2017;12(11):e0187189. Epub  
9 2017/11/03. doi: 10.1371/journal.pone.0187189. PubMed PMID: 29095915; PubMed Central PMCID:  
10 PMCPMC5667841.
- 11 29. Singh I, Joseph P, Heerdt PM, Cullinan M, Lutchmansingh DD, Gulati M, et al. Persistent  
12 Exertional Intolerance After COVID-19: Insights From Invasive Cardiopulmonary Exercise Testing. *Chest.*  
13 2022;161(1):54-63. Epub 2021/08/15. doi: 10.1016/j.chest.2021.08.010. PubMed PMID: 34389297;  
14 PubMed Central PMCID: PMCPMC8354807.
- 15 30. Mancini DM, Brunjes DL, Lala A, Trivieri MG, Contreras JP, Natelson BH. Use of Cardiopulmonary  
16 Stress Testing for Patients With Unexplained Dyspnea Post-Coronavirus Disease. *JACC Heart Fail.*  
17 2021;9(12):927-37. Epub 2021/12/04. doi: 10.1016/j.jchf.2021.10.002. PubMed PMID: 34857177;  
18 PubMed Central PMCID: PMCPMC8629098.
- 19 31. Brown JT, Saigal A, Karia N, Patel RK, Razvi Y, Constantinou N, et al. Ongoing Exercise Intolerance  
20 Following COVID-19: A Magnetic Resonance-Augmented Cardiopulmonary Exercise Test Study. *J Am*  
21 *Heart Assoc.* 2022;11(9):e024207. Epub 2022/04/27. doi: 10.1161/JAHA.121.024207. PubMed PMID:  
22 35470679.
- 23 32. Szekely Y, Lichter Y, Sadon S, Lupu L, Taieb P, Banai A, et al. Cardiorespiratory Abnormalities in  
24 Patients Recovering from Coronavirus Disease 2019. *J Am Soc Echocardiogr.* 2021;34(12):1273-84.e9.  
25 Epub 2021/09/12. doi: 10.1016/j.echo.2021.08.022. PubMed PMID: 34508837; PubMed Central PMCID:  
26 PMCPMC8425293.
- 27 33. Jamal SM, Landers DB, Hollenberg SM, Turi ZG, Glotzer TV, Tancredi J, et al. Prospective  
28 Evaluation of Autonomic Dysfunction in Post-Acute Sequela of COVID-19. *Journal of the American*  
29 *College of Cardiology.* 2022;79(23):2325-30. doi: doi:10.1016/j.jacc.2022.03.357.
- 30 34. Novak P, Mukerji SS, Alabsi HS, Systrom D, Marciano SP, Felsenstein D, et al. Multisystem  
31 Involvement in Post-Acute Sequelae of Coronavirus Disease 19. *Ann Neurol.* 2022;91(3):367-79. Epub  
32 2021/12/26. doi: 10.1002/ana.26286. PubMed PMID: 34952975.
- 33 35. Oaklander AL, Mills AJ, Kelley M, Toran LS, Smith B, Dalakas MC, et al. Peripheral Neuropathy  
34 Evaluations of Patients With Prolonged Long COVID. *Neurol Neuroimmunol Neuroinflamm.* 2022;9(3).  
35 Epub 2022/03/03. doi: 10.1212/nxi.0000000000001146. PubMed PMID: 35232750; PubMed Central  
36 PMCID: PMCPMC8889896.
- 37 36. Douaud G, Lee S, Alfaro-Almagro F, Arthofer C, Wang C, McCarthy P, et al. SARS-CoV-2 is  
38 associated with changes in brain structure in UK Biobank. *Nature.* 2022;604(7907):697-707. Epub  
39 2022/03/08. doi: 10.1038/s41586-022-04569-5. PubMed PMID: 35255491; PubMed Central PMCID:  
40 PMCPMC9046077.
- 41 37. Stein SR, Ramelli SC, Grazioli A, Chung JY, Singh M, Yinda CK, et al. SARS-CoV-2 infection and  
42 persistence in the human body and brain at autopsy. *Nature.* 2022;612(7941):758-63. Epub 2022/12/15.  
43 doi: 10.1038/s41586-022-05542-y. PubMed PMID: 36517603; PubMed Central PMCID:  
44 PMCPMC9749650.
- 45 38. Han Y, Zhu J, Yang L, Nilsson-Payant BE, Hurtado R, Lacko LA, et al. SARS-CoV-2 Infection Induces  
46 Ferroptosis of Sinoatrial Node Pacemaker Cells. *Circ Res.* 2022;130(7):963-77. Epub 2022/03/09. doi:  
47 10.1161/CIRCRESAHA.121.320518. PubMed PMID: 35255712; PubMed Central PMCID:  
48 PMCPMC8963443.

- 1 39. Sanders P, Kistler PM, Morton JB, Spence SJ, Kalman JM. Remodeling of sinus node function in  
2 patients with congestive heart failure: reduction in sinus node reserve. *Circulation*. 2004;110(8):897-  
3 903. Epub 2004/08/11. doi: 10.1161/01.CIR.0000139336.69955.AB. PubMed PMID: 15302799.
- 4 40. Stute NL, Stickford JL, Province VM, Augenreich MA, Ratchford SM, Stickford ASL. COVID-19 is  
5 getting on our nerves: sympathetic neural activity and haemodynamics in young adults recovering from  
6 SARS-CoV-2. *J Physiol*. 2021;599(18):4269-85. Epub 2021/06/27. doi: 10.1113/JP281888. PubMed PMID:  
7 34174086; PubMed Central PMCID: PMCPCMC8447023.
- 8 41. Franssen WMA, Keytsman C, Marinus N, Verboven K, Eijnde BO, van Ryckeghem L, et al.  
9 Chronotropic incompetence is more frequent in obese adolescents and relates to systemic inflammation  
10 and exercise intolerance. *J Sport Health Sci*. 2021. Epub 2021/02/03. doi: 10.1016/j.jshs.2021.01.010.  
11 PubMed PMID: 33529767.
- 12 42. Margalit I, Yelin D, Sagi M, Rahat MM, Sheena L, Mizrahi N, et al. Risk factors and  
13 multidimensional assessment of long COVID fatigue: a nested case-control study. *Clin Infect Dis*. 2022.  
14 Epub 2022/04/12. doi: 10.1093/cid/ciac283. PubMed PMID: 35403679.
- 15 43. Jimeno-Almazán A, Pallarés JG, Buendía-Romero Á, Martínez-Cava A, Courel-Ibáñez J.  
16 Chronotropic Incompetence in Non-Hospitalized Patients with Post-COVID-19 Syndrome. *Journal of*  
17 *Clinical Medicine*. 2021;10(22):5434. PubMed PMID: doi:10.3390/jcm10225434.
- 18 44. Abdallah SJ, Voduc N, Corrales-Medina VF, McGuinty M, Pratt A, Chopra A, et al. Symptoms,  
19 Pulmonary Function, and Functional Capacity Four Months after COVID-19. *Ann Am Thorac Soc*.  
20 2021;18(11):1912-7. Epub 2021/04/20. doi: 10.1513/AnnalsATS.202012-1489RL. PubMed PMID:  
21 33872135; PubMed Central PMCID: PMCPCMC8641826.
- 22 45. Ladlow P, O'Sullivan O, Houston A, Barker-Davies R, May S, Mills D, et al. Dysautonomia  
23 following COVID-19 is not associated with subjective limitations or symptoms but is associated with  
24 objective functional limitations. *Heart Rhythm*. 2022;19(4):613-20. doi:  
25 <https://doi.org/10.1016/j.hrthm.2021.12.005>.
- 26 46. Jouven X, Empana JP, Schwartz PJ, Desnos M, Courbon D, Ducimetiere P. Heart-rate profile  
27 during exercise as a predictor of sudden death. *N Engl J Med*. 2005;352(19):1951-8. Epub 2005/05/13.  
28 doi: 10.1056/NEJMoa043012. PubMed PMID: 15888695.
- 29 47. Savonen KP, Lakka TA, Laukkanen JA, Halonen PM, Rauramaa TH, Salonen JT, et al. Heart rate  
30 response during exercise test and cardiovascular mortality in middle-aged men. *European Heart Journal*.  
31 2006;27(5):582-8. doi: 10.1093/eurheartj/ehi708.
- 32 48. Lauer MS, Francis GS, Okin PM, Pashkow FJ, Snader CE, Marwick TH. Impaired Chronotropic  
33 Response to Exercise Stress Testing as a Predictor of Mortality. *JAMA*. 1999;281(6):524-9. doi:  
34 10.1001/jama.281.6.524.
- 35 49. Joseph P, Arevalo C, Oliveira RKF, Faria-Urbina M, Felsenstein D, Oaklander AL, et al. Insights  
36 From Invasive Cardiopulmonary Exercise Testing of Patients With Myalgic Encephalomyelitis/Chronic  
37 Fatigue Syndrome. *Chest*. 2021;160(2):642-51. Epub 2021/02/13. doi: 10.1016/j.chest.2021.01.082.  
38 PubMed PMID: 33577778; PubMed Central PMCID: PMCPCMC8727854.
- 39 50. de Boer E, Petrache I, Goldstein NM, Olin JT, Keith RC, Modena B, et al. Decreased Fatty Acid  
40 Oxidation and Altered Lactate Production during Exercise in Patients with Post-acute COVID-19  
41 Syndrome. *Am J Respir Crit Care Med*. 2022;205(1):126-9. Epub 2021/10/20. doi: 10.1164/rccm.202108-  
42 1903LE. PubMed PMID: 34665688; PubMed Central PMCID: PMCPCMC8865580.
- 43 51. Fresard I, Genecand L, Altarelli M, Gex G, Vremaroiu P, Vremaroiu-Coman A, et al. Dysfunctional  
44 breathing diagnosed by cardiopulmonary exercise testing in 'long COVID' patients with persistent  
45 dyspnoea. *BMJ Open Respir Res*. 2022;9(1):e001126. Epub 2022/04/01. doi: 10.1136/bmjresp-2021-  
46 001126. PubMed PMID: 35354589; PubMed Central PMCID: PMCPCMC8968537.
- 47 52. Motiejunaite J, Balagny P, Arnoult F, Mangin L, Bancal C, Vidal-Petiot E, et al. Hyperventilation as  
48 one of the mechanisms of persistent dyspnoea in SARS-CoV-2 survivors. *Eur Respir J*.

- 1 2021;58(2):2101578. Epub 2021/08/14. doi: 10.1183/13993003.01578-2021. PubMed PMID: 34385265;  
2 PubMed Central PMCID: PMC8361302 support from Servier, outside the submitted work. A. Cohen-  
3 Solal has received grants or honoraria from Novartis, Servier, Daiichi Sankyo, Vifor, Menarini and  
4 Cardiorentis, outside of the submitted work. J. Frija-Masson reports non-financial support from Vitalaire,  
5 Boehringer Ingelheim, Oxyvie and LVL Medical, outside the submitted work. All other authors declare  
6 that the research was conducted in the absence of any commercial or financial relationships that could  
7 be construed as a potential conflict of interest.
- 8 53. Morrow AJ, Sykes R, McIntosh A, Kamdar A, Bagot C, Bayes HK, et al. A multisystem, cardio-renal  
9 investigation of post-COVID-19 illness. *Nat Med*. 2022. Epub 2022/05/24. doi: 10.1038/s41591-022-  
10 01837-9. PubMed PMID: 35606551.
- 11 54. Ingul CB, Grimsmo J, Mecinaj A, Trebinjac D, Berger Nossen M, Andrup S, et al. Cardiac  
12 Dysfunction and Arrhythmias 3 Months After Hospitalization for COVID-19. *J Am Heart Assoc*.  
13 2022;11(3):e023473. Epub 2022/01/21. doi: 10.1161/JAHA.121.023473. PubMed PMID: 35048715.
- 14 55. Dewland TA, Whitman IR, Win S, Sanchez JM, Olgin JE, Pletcher MJ, et al. Prospective arrhythmia  
15 surveillance after a COVID-19 diagnosis. *Open Heart*. 2022;9(1). Epub 2022/01/22. doi:  
16 10.1136/openhrt-2021-001758. PubMed PMID: 35058344; PubMed Central PMCID: PMC8783964.
- 17 56. Aranyó J, Bazan V, Lladós G, Dominguez MJ, Bisbal F, Massanella M, et al. Inappropriate sinus  
18 tachycardia in post-COVID-19 syndrome. *Scientific Reports*. 2022;12(1):298. doi: 10.1038/s41598-021-  
19 03831-6.
- 20 57. Al-Aly Z, Bowe B, Xie Y. Long COVID after breakthrough SARS-CoV-2 infection. *Nature Medicine*.  
21 2022. doi: 10.1038/s41591-022-01840-0.
- 22 58. Hastie CE, Lowe DJ, McAuley A, Winter AJ, Mills NL, Black C, et al. Outcomes among confirmed  
23 cases and a matched comparison group in the Long-COVID in Scotland study. *Nat Commun*.  
24 2022;13(1):5663. Epub 2022/10/13. doi: 10.1038/s41467-022-33415-5. PubMed PMID: 36224173;  
25 PubMed Central PMCID: PMC9556711.
- 26 59. Durstenfeld MS, Peluso MJ, Peyser ND, Lin F, Knight SJ, Djibo A, et al. Factors Associated With  
27 Long COVID Symptoms in an Online Cohort Study. *Open Forum Infect Dis*. 2023;10(2):ofad047. Epub  
28 2023/02/28. doi: 10.1093/ofid/ofad047. PubMed PMID: 36846611; PubMed Central PMCID:  
29 PMC9945931.
- 30 60. Keteyian SJ, Brawner CA, Schairer JR, Levine TB, Levine AB, Rogers FJ, et al. Effects of exercise  
31 training on chronotropic incompetence in patients with heart failure. *Am Heart J*. 1999;138(2 Pt 1):233-  
32 40. Epub 1999/07/30. doi: 10.1016/s0002-8703(99)70106-7. PubMed PMID: 10426833.
- 33 61. Kiilavuori K, Toivonen L, Näveri H, Leinonen H. Reversal of autonomic derangements by physical  
34 training in chronic heart failure assessed by heart rate variability. *Eur Heart J*. 1995;16(4):490-5. Epub  
35 1995/04/01. doi: 10.1093/oxfordjournals.eurheartj.a060941. PubMed PMID: 7671894.
- 36 62. Myers J, Hadley D, Oswald U, Bruner K, Kottman W, Hsu L, et al. Effects of exercise training on  
37 heart rate recovery in patients with chronic heart failure. *Am Heart J*. 2007;153(6):1056-63. Epub  
38 2007/06/02. doi: 10.1016/j.ahj.2007.02.038. PubMed PMID: 17540210.
- 39 63. Fu Q, Levine BD. Exercise and non-pharmacological treatment of POTS. *Auton Neurosci*.  
40 2018;215:20-7. Epub 2018/07/14. doi: 10.1016/j.autneu.2018.07.001. PubMed PMID: 30001836;  
41 PubMed Central PMCID: PMC6289756.
- 42 64. George SA, Bivens TB, Howden EJ, Saleem Y, Galbreath MM, Hendrickson D, et al. The  
43 international POTS registry: Evaluating the efficacy of an exercise training intervention in a community  
44 setting. *Heart Rhythm*. 2016;13(4):943-50. Epub 2015/12/23. doi: 10.1016/j.hrthm.2015.12.012.  
45 PubMed PMID: 26690066.
- 46 65. Bonilla H, Quach TC, Tiwari A, Bonilla AE, Miglis M, Yang PC, et al. Myalgic  
47 Encephalomyelitis/Chronic Fatigue Syndrome is common in post-acute sequelae of SARS-CoV-2 infection  
48 (PASC): Results from a post-COVID-19 multidisciplinary clinic. *Front Neurol*. 2023;14:1090747. Epub

- 1 2023/03/14. doi: 10.3389/fneur.2023.1090747. PubMed PMID: 36908615; PubMed Central PMCID:  
2 PMCPMC9998690.
- 3 66. Jason LA, Dorri JA. ME/CFS and Post-Exertional Malaise among Patients with Long COVID. *Neurol*  
4 *Int.* 2022;15(1):1-11. Epub 2023/01/18. doi: 10.3390/neurolint15010001. PubMed PMID: 36648965;  
5 PubMed Central PMCID: PMCPMC9844405.
- 6 67. Vernon SD, Hartle M, Sullivan K, Bell J, Abbaszadeh S, Unutmaz D, et al. Post-exertional malaise  
7 among people with long COVID compared to myalgic encephalomyelitis/chronic fatigue syndrome  
8 (ME/CFS). *Work.* 2023. Epub 2023/03/14. doi: 10.3233/wor-220581. PubMed PMID: 36911963.
- 9 68. Parker M, Sawant HB, Flannery T, Tarrant R, Shardha J, Bannister R, et al. Effect of using a  
10 structured pacing protocol on post-exertional symptom exacerbation and health status in a longitudinal  
11 cohort with the post-COVID-19 syndrome. *J Med Virol.* 2023;95(1):e28373. Epub 2022/12/04. doi:  
12 10.1002/jmv.28373. PubMed PMID: 36461167; PubMed Central PMCID: PMCPMC9878088.
- 13 69. Jimeno-Almazán A, Buendía-Romero Á, Martínez-Cava A, Franco-López F, Sánchez-Alcaraz BJ,  
14 Courel-Ibáñez J, et al. Effects of a concurrent training, respiratory muscle exercise, and self-management  
15 recommendations on recovery from post-COVID-19 conditions: the RECOVE trial. *Journal of Applied*  
16 *Physiology.* 2023;134(1):95-104. doi: 10.1152/jappphysiol.00489.2022. PubMed PMID: 36476156.
- 17