

1 **Inflammation during early post-acute COVID-19 is associated with reduced exercise**
2 **capacity and Long COVID symptoms after 1 year**

3 **Durstenfeld et al. CPET, CMR, & Rhythm Findings after COVID-19**

4 **Matthew S. Durstenfeld**^{1,2}, Michael J. Peluso^{1,3}, Punita Kaveti^{1,4}, Christopher Hill⁵, Danny Li²,
5 Erica Sander⁴, Shreya Swaminathan², Victor M. Arechiga², Kaiwen Sun¹, Yifei Ma², Victor
6 Zepeda², Scott Lu³, Sarah A Goldberg⁶, Rebecca Hoh², Ahmed Chenna,⁷ Brandon C. Yee,⁷ John
7 W. Winslow,⁷ Christos J. Petropoulos,⁷ Sithu Win^{1,2}, J. Daniel Kelly^{6,8,9}, David V. Glidden⁶,
8 Timothy J. Henrich¹⁰, Jeffrey N. Martin⁶, Yoo Jin Lee¹¹, Mandar A. Aras^{1,4}, Carlin S. Long^{1,4},
9 Donald J. Grandis^{1,4}, Steven G. Deeks^{1,3}, Priscilla Y. Hsue^{1,2}

10 1 Department of Medicine, University of California, San Francisco, CA, USA

11 2 Division of Cardiology, Zuckerberg San Francisco General, San Francisco, CA, USA

12 3 Division of HIV, Infectious Diseases, and Global Medicine, Zuckerberg San Francisco General
13 Hospital, University of California, San Francisco, USA

14 4 Division of Cardiology, UCSF Health

15 5 School of Medicine, University of California, San Francisco, USA

16 6 Department of Epidemiology and Biostatistics, University of California, San Francisco, USA

17 7 LabCorp-Monogram Biosciences Inc, South San Francisco, CA USA

18 8 Institute of Global Health Sciences, University of California, San Francisco, USA

19 9 F.I. Proctor Foundation, University of California, San Francisco, USA

20 10 Division of Experimental Medicine, University of California, San Francisco, USA

21 11 Cardiac and Pulmonary Imaging, Department of Radiology, University of California, San
22 Francisco

23 Presented in part as a late breaking oral presentation at the Conference on Retroviruses and
24 Opportunistic Infections, February 15, 2022, and as an oral presentation at the Heart Rhythm
25 Society 2022 on May 1, 2022.

26 **Address for Correspondence & Reprints:**

27 Matthew S. Durstenfeld, MD

28 Division of Cardiology, UCSF at Zuckerberg San Francisco General Hospital

29 1001 Potrero Avenue, 5G8

30 San Francisco, CA 94110, USA

31 Tel: +1 628 206 5562; Fax: +1 628 206 5447

32 e-mail: matthew.durstenfeld@ucsf.edu twitter: @durstenfeld

33 Word Count: 5109

1 **Abstract**

2 **BACKGROUND** Mechanisms underlying persistent cardiopulmonary symptoms following
3 SARS-CoV-2 infection (post-acute sequelae of COVID-19 “PASC” or “Long COVID”) remain
4 unclear. The purpose of this study was to elucidate the pathophysiology of cardiopulmonary
5 PASC using multimodality cardiovascular imaging including cardiopulmonary exercise testing
6 (CPET), cardiac magnetic resonance imaging (CMR) and ambulatory rhythm monitoring.

7 **METHODS** We performed CMR, CPET, and ambulatory rhythm monitoring among adults > 1
8 year after PCR-confirmed SARS-CoV-2 infection in the UCSF Long-Term Impact of Infection
9 with Novel Coronavirus cohort (LIINC; NCT04362150) and correlated findings with previously
10 measured biomarkers. We used logistic regression to estimate associations with PASC symptoms
11 (dyspnea, chest pain, palpitations, and fatigue) adjusted for confounders and linear regression to
12 estimate differences between those with and without symptoms adjusted for confounders.

13 **RESULTS** Out of 120 participants in the cohort, 46 participants (unselected for symptom status)
14 had at least one advanced cardiac test performed at median 17 months following initial SARS-
15 CoV-2 infection. Median age was 52 (IQR 42-61), 18 (39%) were female, and 6 (13%) were
16 hospitalized for severe acute infection. On CMR (n=39), higher extracellular volume was
17 associated with symptoms, but no evidence of late-gadolinium enhancement or differences in T1
18 or T2 mapping were demonstrated. We did not find arrhythmias on ambulatory monitoring. In
19 contrast, on CPET (n=39), 13/23 (57%) with cardiopulmonary symptoms or fatigue had reduced
20 exercise capacity (peak $VO_2 < 85\%$ predicted) compared to 2/16 (13%) without symptoms
21 ($p=0.008$). The adjusted difference in peak VO_2 was 5.9 ml/kg/min lower (-9.6 to -2.3; $p=0.002$)
22 or -21% predicted (-35 to -7; $p=0.006$) among those with symptoms. Chronotropic incompetence
23 was the primary abnormality among 9/15 (60%) with reduced peak VO_2 . Adjusted heart rate

1 reserve <80% was associated with reduced exercise capacity (OR 15.6, 95%CI 1.30-187;
2 p=0.03). Inflammatory markers (hsCRP, IL-6, TNF- α) and SARS-CoV-2 antibody levels
3 measured early in PASC were negatively correlated with peak VO₂ more than 1 year later.

4 **CONCLUSIONS** Cardiopulmonary symptoms and elevated inflammatory markers present early
5 in PASC are associated with objectively reduced exercise capacity measured on
6 cardiopulmonary exercise testing more than 1 year following COVID-19. Chronotropic
7 incompetence may explain reduced exercise capacity among some individuals with PASC.

8

9 **Key Words**

10 SARS-CoV-2; COVID-19; post-acute sequelae of COVID-19 (PASC); Long COVID;
11 chronotropic incompetence; cardiopulmonary exercise testing (CPET); cardiac magnetic
12 resonance imaging (CMR); ambulatory rhythm monitoring; inflammation

13 **Abbreviations list:** PASC (post-acute sequelae of COVID-19); hsCRP=high sensitivity c-
14 reactive protein; LIINC=Long-term Impact of Infection with Novel Coronavirus; LV=left
15 ventricle; RV=right ventricle; cardiopulmonary exercise testing (CPET); cardiac magnetic
16 resonance imaging (CMR); adjusted heart rate reserve (AHRR); ECG=electrocardiogram;
17 premature atrial contraction (PAC); premature ventricular contraction (PVC); supraventricular
18 tachycardia (SVT) POTS=postural orthostatic tachycardia syndrome;

19

20

1 **Clinical Perspective**

2 What is New?

- 3 • Elevated inflammatory markers in early post-acute COVID-19 are associated with
4 reduced exercise capacity more than 1 year later.
- 5 • Impaired chronotropic response to exercise is associated with reduced exercise capacity
6 and cardiopulmonary symptoms more than 1 year after SARS-CoV-2 infection.
- 7 • Findings on ambulatory rhythm monitoring point to perturbed autonomic function, while
8 cardiac MRI findings argue against myocardial dysfunction and myocarditis.

9

10 Clinical Implications:

- 11 • Cardiopulmonary testing to identify etiologies of persistent symptoms in post-acute
12 sequelae of COVID-19 or “Long COVID” should be performed in a manner that allows
13 for assessment of heart rate response to exercise.
- 14 • Therapeutic trials of anti-inflammatory and exercise strategies in PASC are urgently
15 needed and should include assessment of symptoms and objective testing with
16 cardiopulmonary exercise testing.

17

18

1 **Introduction**

2 Following acute SARS-CoV-2 infection, at least 3% and possibly >30% of individuals
3 experience persistent symptoms called “Long COVID,” a type of post-acute sequelae of COVID-
4 19 (PASC) lasting for at least months following SARS-CoV-2 infection.¹⁻⁵ Understanding PASC
5 represents a major public health issue given that more than half the US population has been
6 infected.⁶

7 Characterizing phenotypes of cardiopulmonary PASC with multi-modality cardiac testing may
8 yield insights into mechanisms which remain incompletely understood but may include
9 inflammation, aberrant immune activation, and endothelial dysfunction.^{7, 8} We previously
10 demonstrated that inflammatory markers and possibly pericardial effusions were associated with
11 symptoms 6 months after SARS-CoV-2 infection.⁹ We and others have demonstrated normal
12 cardiac function on echocardiography 3-6 months after COVID-19, suggesting that other
13 techniques are needed to identify physiologic correlates of symptoms.⁹⁻¹⁴ Evaluation with cardiac
14 magnetic resonance imaging (CMR) has confirmed normal cardiac function and revealed
15 changes in parametric mapping and late gadolinium enhancement without consistent associations
16 with symptoms or differences from controls.¹⁵⁻¹⁹ Studies using cardiopulmonary exercise testing
17 (CPET) have demonstrated reduced exercise capacity at 3-6 months after SARS-CoV-2 infection
18 without consistent patterns of exercise limitation.¹⁹⁻²⁴ Finally, whether arrhythmias explain
19 palpitations in PASC is unknown beyond 3 months.^{25, 26}

20 We designed the Long-Term Impact of Infection with Novel Coronavirus (LIINC) study (NCT
21 04362150) to evaluate physical and mental health following SARS-COV-2 infection by
22 including individuals representing the full spectrum of acute illness (asymptomatic to severe) and
23 post-acute-recovery (full recovery, symptomatic PASC).²⁷ The purpose of this sub-study was to

1 elucidate mechanisms underlying cardiopulmonary symptoms present more than 1 year
2 following SARS-CoV-2 infection by comparing symptomatic and recovered individuals using
3 blood-based markers, echocardiography, CMR, CPET, and ambulatory rhythm monitoring.

4 **Methods**

5 As previously reported, the LIINC study is a San Francisco-based post-COVID cohort that
6 includes longitudinal symptom assessment.²⁷ In a subset, we measured biomarkers and
7 performed echocardiograms.⁹ Here we report findings from the subset who have undergone
8 additional cross-sectional cardiopulmonary testing including CPET, CMR, and ambulatory
9 rhythm monitoring.

10 *Participants*

11 LIINC participants with a history of nucleic-acid confirmed SARS-CoV-2 infection who had
12 completed an echocardiogram study visit were offered participation in additional
13 cardiopulmonary testing in order of date of infection (earliest first) irrespective of symptom
14 status. Participants were excluded if they were pregnant or had a history of significant
15 cardiopulmonary disease including congenital heart disease, heart failure, myocardial infarction,
16 or heart surgery. Additionally, those with non-MRI compatible implants or claustrophobia were
17 excluded from CMR; those with estimated GFR $<30\text{ml}/\text{min}/1.73\text{m}^2$ were excluded from
18 receiving gadolinium contrast. We excluded those unable to exercise on cycle ergometer from
19 CPET.

20 *Symptoms*

21 Individuals were queried regarding 32 PASC symptoms and using the Patient Health
22 Questionnaire Somatic Symptom Scale.²⁷ At enrollment, participants completed a structured

1 interview about medical history, characteristics of acute infection, cardiopulmonary diagnoses,
2 and symptoms within the previous two weeks. We defined a composite symptom variable for
3 cardiopulmonary PASC including chest pain, dyspnea, or palpitations (“cardiopulmonary
4 symptoms”) in the preceding 2 weeks prior to the study visit and a general PASC composite that
5 included cardiopulmonary symptoms and fatigue (“symptoms”).⁹ Consistent with the WHO
6 definition, all participants had new symptoms without alternative cardiopulmonary explanations
7 and were more than 3 months after SARS-CoV-2 infection.²⁸

8 *Echocardiography*

9 A cardiac sonographer blinded to patient data performed echocardiograms with a GE VIVID E90
10 machine at the first study visit using a standardized protocol. Post-processing and measurements
11 were performed by a single echocardiographer using GE EchoPAC software according to ASE
12 guidelines,²⁹ as we have previously described.⁹

13 *Blood-Based Measures*

14 Participants had venous blood collected and processed for serum and plasma on the day of the
15 echocardiogram. Samples were batch processed for measurement of high sensitivity troponin I
16 (hs-troponin; ADVIA Centaur® High-Sensitivity Troponin I (TNIH) assay), high sensitivity c-
17 reactive protein (hsCRP; ADVIA® Chemistry CardioPhase™ High Sensitivity C-Reactive
18 Protein assay), and N-terminal prohormone b-type natriuretic protein (NT-pro-BNP; Roche
19 Cobas 6000 Elecsys® proBNP II assay). Most participants had antibodies and additional markers
20 collected at two time points (<90 days and 90-150 days) after symptom onset analyzed by
21 Monogram Biosciences (South San Francisco, CA) using the Quanterix Simoa® platform with
22 Simoa® Assay Kits from Quanterix Corporation (Billerica, MA).³⁰ These included interleukin 6
23 (IL-6), interleukin 10 (IL-10), glial fibrillary acidic protein (GFAP), neurofilament light chain

1 (NfL), monocyte chemoattractant protein-1 (MCP-1), interferon gamma (IFN γ), and tumor
2 necrosis factor alpha (TNF- α), and SARS-CoV-2 receptor-binding domain (RBD)
3 immunoglobulin G (IgG). Samples were assayed blinded with respect to patient and clinical
4 information, and assay performance was consistent with the manufacturers' specifications.
5 Additionally, blood was drawn immediately prior to CMR for measurement of hematocrit for
6 calculation of extracellular volume.

7 *Cardiac Magnetic Resonance Imaging*

8 Multiparametric, sequence-standardized, blinded (technician and reader) cardiac magnetic
9 resonance imaging (CMR) was performed with a 3 Tesla system (Premier, General Electric). The
10 protocol consisted of acquisition of the following sequences after multiplane localizers prior to
11 gadolinium injection: fast imaging employing steady state acquisition (FIESTA) cine in the axial
12 short axis planes, pre-contrast T1 mapping sequences using the MOLLI 5-(3)-3 technique, as
13 well as pre-contrast T2 mapping at the basal, mid, and apical short axis planes and T2 fat-
14 saturated weighted black blood spin-echo images in the short axis plane. 8-10 minutes after
15 intravenous gadolinium injection, phase sensitive inversion recovery (PSIR) late gadolinium
16 enhancement imaging in short axis full stack, 4 chamber full stack, three slices of 2 chamber
17 images, and post-contrast T1 mapping sequences were obtained. Inversion times were
18 individualized to null the myocardium. Measurements were performed by a single reader at a
19 dedicated workstation using Medis (Leiden, Netherlands) and AI-assisted Arterys (San
20 Francisco, CA) under supervision of a senior cardiac imager, both blinded to all clinical
21 variables, and in accordance with Society for Cardiovascular Magnetic Resonance task force
22 recommendations. Arterys software was used for T1 and T2 mapping and ECV calculation using
23 pre- and post-contrast MOLLI sequences.

1 *Cardiopulmonary Exercise Testing*

2 CPETs were performed by an experienced exercise physiologist and noninvasive cardiology
3 nurse practitioner blinded to participant data according to standard protocol using a metabolic
4 cart (Medical Graphics Corporation Ultima CardiO₂) and supine cycle ergometer (Lode Corival
5 CPET) with continuous 12 lead ECG monitoring (GE CASE) and noninvasive blood pressure
6 and pulse oximetry measurement. First, baseline ECG, blood pressure, and rest spirometry
7 including maximum voluntary ventilation (MVV) were measured. We determined the work
8 increase per 1 minute step based on the expected peak VO₂ from the MVV for a goal 10 minute
9 test, rounded to 5 Watts/min increments based on reported exercise (range 10-30W/min) in
10 accordance with guidelines.³¹ Participants underwent a 2-minute rest phase, 2-minute no
11 resistance warm up, and then 1-minute steps. Breath-by-breath oxygen consumption (VO₂) and
12 carbon dioxide production (VCO₂) were measured continuously. Participants were blinded to
13 time, wattage, and peak VO₂ during the test and encouraged to maintain a cadence of ~60 cycles
14 per minute and exercise to their maximum ability, with the test stopped prematurely for severe
15 hypertension, relative hypotension, moderate to severe angina, ventricular tachycardia or
16 couplets, or ischemic changes. Reason for stopping and exertional symptoms were recorded.
17 Exercise effort was assessed by Borg Scale and respiratory exchange ratio (RER). Anaerobic
18 threshold was determined manually by the exercise physiologist using the slope method. CPETs
19 were interpreted separately by two independent readers and differences in interpretation were
20 discussed and resolved through consensus.

21 We evaluated measured peak VO₂ (in ml/kg/min) and used the Wasserman equations to estimate
22 the percent predicted VO₂ for each participant.³²⁻³⁴ We classified exercise capacity <85%
23 predicted as reduced. We considered ventilatory limitation if rest spirometry was abnormal, tidal

1 volume did not double over baseline reaching at least 50% of FVC, breathing reserve was <30%,
2 dead space ratio (V_D/V_T) was >0.2, or desaturation occurred. We classified participants as having
3 a cardiac limitation if there were ischemic ECG changes, the oxygen pulse was reduced and
4 plateaued early, AT occurred at less than 40% of predicted maximal VO_2 , and if ventilatory
5 efficiency slope (VE/VCO_2) was <32. We defined an abnormal chronotropic response as <80%
6 of the adjusted heart rate reserve (AHRR) calculated as $(HR_{peak}-HR_{rest})/(220-age-HR_{rest})$.³⁵ We
7 considered exercise limitation to be likely due to deconditioning, obesity or impaired gas
8 exchange if exercise capacity was reduced without cardiac or ventilatory limitation.

9 *Ambulatory Rhythm Monitoring*

10 After CMR, an ambulatory rhythm monitor (Carnation Ambulatory Monitor, BardyDx) was
11 placed on the chest. Participants were instructed wear it for up to 2 weeks, press the button for
12 cardiopulmonary symptoms, and record symptoms in a diary. Monitors were processed
13 according to BardyDx standard procedures and reports were overread by a cardiologist.

14 *Statistical Design*

15 Adjusted models included potential confounders age, sex, time since SARS-CoV-2 infection,
16 hospitalization for acute SARS-CoV-2 infection, and body mass index. We used logistic
17 regression to estimate associations of parameters with symptoms and linear regression to
18 estimate adjusted mean differences between those parameters among participants with and
19 without symptoms. For count outcomes (button pushes on rhythm monitoring), we used Poisson
20 regression. Non-normally distributed variables (hsCRP, T1 mapping times, premature atrial
21 contraction burden, for example) were log-transformed and findings are reported per doubling or
22 per 10-fold change depending on the range of values. For biomarker data we report unadjusted

1 Pearson's rho correlation coefficients, adjusted linear regression models, and for longitudinal
2 biomarker data we used mixed effects models with a random intercept per patient. We conducted
3 sensitivity analyses considering other definitions of symptoms and additionally adjusting for
4 potentially relevant past medical history and baseline echocardiographic and spirometry
5 parameters.

6 The study was approved by the UCSF Institutional Review Board (IRB 20-33000) and all
7 participants provided written informed consent. REDCap was used for data entry. Statistical
8 analyses were performed using STATA version 17.1.

9 **RESULTS**

10 *Participant Characteristics*

11 Among 120 participants who completed Visit 1, 46 participants had at least one advanced test
12 performed. The median age was 52 (IQR 42-61), 18 (39%) were female, and 6 (13%) were
13 hospitalized (Table 1). Two notable differences between the subset who underwent advanced
14 testing were earlier date of infection ($p < 0.001$) and a lower proportion with HIV ($p = 0.06$). As
15 most individuals were infected between March and September 2020, no participants had been
16 vaccinated at the time of initial infection, but all had received at least one SARS-CoV-2 vaccine
17 prior to advanced testing.

18 *Symptoms Persist at 18 Months*

19 At visit 1 (median 6 months after SARS-CoV-2 infection), 73/120 (61%) reported PASC
20 symptoms and 56/120 (47%) reported cardiopulmonary symptoms (chest pain, dyspnea, or
21 palpitations). At visit 2 (median 17.0 months), 25/47 (53%) reported PASC symptoms and 19/47
22 (40%) reported cardiopulmonary symptoms. Among the 25 individuals with symptoms at visit 2,

1 20 had reported symptoms at visit 1, and 5 developed new symptoms between visits. Nine people
2 reported resolution of symptoms by visit 2. Individual symptom patterns were similar
3 (Supplemental Table 1). Reporting reduced exercise capacity was associated with reporting other
4 cardiopulmonary symptoms (OR 8.04, 95%CI 1.94-33.3; $p=0.004$); 78% versus 32% with
5 preserved or improved exercise capacity had cardiopulmonary symptoms ($p=0.003$).

6 *CPETs were Maximal Tests*

7 Out of 40 participants who attended a CPET visit, 39 completed CPET at a median 17.5 months
8 (IQR 15.5-18.4) after SARS-CoV-2 infection (one excluded due to hypertensive urgency). Two
9 CPETs (one with and one without symptoms) were stopped early for hypertensive response after
10 predicted heart rate and exercise capacity were reached but before symptomatic limitation. All
11 other tests were completed to symptom-limited maximal exertion. All tests had a respiratory
12 exchange ratio (RER) >1.05 with no difference in RER achieved by symptom status. No
13 participants were taking beta blockers, non-dihydropyridine calcium channel blockers, or
14 ivabradine at the time of CPET.

15 *Reduced Exercise Capacity on CPET*

16 Overall, 15/39 (38%) participants had reduced exercise capacity (peak $\text{VO}_2 < 85\%$ predicted).
17 Among those with PASC symptoms, 13/23 (57%) had reduced exercise capacity compared to
18 2/16 (13%) without symptoms ($p=0.008$ by Fisher's exact test). The odds of reduced exercise
19 capacity were 3.0 times higher for cardiopulmonary symptoms (95%CI 0.8-11.4; $p=0.11$) and 9.1
20 times higher for PASC symptoms (95%CI 1.7 to 49.6; $p=0.01$). Objectively reduced exercise
21 capacity on CPET was associated with 25 times higher odds of PASC symptoms compared to
22 preserved exercise capacity (95%CI 2.1 to 303; $p=0.01$).

1 As shown in Figure 1, peak VO_2 was 21.2 ± 8.2 ml/kg/min among those with symptoms and
2 28.8 ± 7.7 among those without symptoms, a difference of -7.6 (95%CI -12.9 to -2.3 ; $p=0.006$) or
3 89% versus 111% percent predicted (-22.1% predicted, 95%CI -36.5 to -7.7 ; $p=0.003$). The
4 adjusted difference in peak VO_2 was -5.9 ml/kg/min (95%CI -9.6 to -2.3 ; $p=0.002$) or -21%
5 predicted (95%CI -35 to -7 ; $p=0.006$). Results were unchanged in sensitivity analyses accounting
6 for history of asthma/COPD and hypertension, resting spirometry (FVC, FEV_1 , MVV), and
7 baseline echocardiogram (LVEF, LV diastolic function, LV strain, RV strain, and TAPSE) with
8 point estimates ranging from -4.4 to -7.9 ml/kg/min and no confidence intervals crossing 0. The
9 difference in peak VO_2 was smaller among those reporting only cardiopulmonary symptoms: 2.7
10 ml/kg/min lower (95%CI -6.9 to 1.5 ; $p=0.20$; Supplemental Table 2).

11 As shown in Table 2, the work completed was lower and perceived effort was higher among
12 those with symptoms, even though the respiratory exchange ratio (an objective measure of
13 reaching a maximal test) was similar. There were no significant differences on rest
14 echocardiography (Supplemental Table 3) or spirometry (Supplemental Table 4), and most
15 CPET parameters were not significantly associated with symptoms (Table 2). Reaching
16 anaerobic threshold at a lower VO_2 , but not as a percent of predicted peak VO_2 , was associated
17 with symptoms.

18 *Classification of Reduced Exercise Capacity by Pattern of CPET Findings*

19 A higher dead space ratio at peak exertion was associated with symptoms, but no participants
20 had a ventilatory limitation. One participant had a cardiac limitation (reduced oxygen pulse
21 pressure and ischemic ECG changes), and one had a hypertensive response. One participant's
22 peak VO_2 was slightly below 85% predicted with no other abnormalities (which could be
23 deconditioning), and three participants had findings most consistent with deconditioning/obesity.

1 Among participants with reduced exercise capacity (<85% predicted), 9/15 (60%) had
2 chronotropic incompetence with an adjusted heart rate reserve (AHRR) <80% and peak heart
3 rate <85% age predicted maximum. One participant's CPET pattern was most consistent with
4 obesity/deconditioning, but AHRR=80%; we did not classify that participant as having
5 chronotropic incompetence.

6 *Chronotropic Incompetence on CPET*

7 Nineteen participants had AHRR<80%, which was associated with reduced exercise capacity
8 (OR 15.6, 95%CI 1.30-187; p=0.03) and 4.9 ml/kg/min lower peak VO₂ (95%CI CI -9.3 to -0.5;
9 p=0.03). Those with chronotropic incompetence had much lower peak heart rate (117±10 bpm)
10 compared to those with normal peak VO₂ and HR (168±13), an adjusted difference of 48 bpm
11 (95%CI 39 to 56; p<0.001; Supplemental Figure 1). Chronotropic incompetence was associated
12 with 6.4 ml/kg/min lower peak VO₂ (95%CI -11.3 to -1.6; p=0.01), a large and clinically
13 meaningful difference. Compared to individuals with normal peak VO₂ and HR, chronotropic
14 incompetence was associated with reduced heart rate recovery at 1 minute after cessation of
15 exercise (adjusted difference -8.7, 95%CI -15.6 to -1.7; p=0.02). Although achieving adequate
16 heart rate can be a measure of maximal effort, the respiratory exchange ratio was not lower
17 (difference 0.04, 95%CI -0.02 to 12; p=0.19) and the Borg effort was the same (difference -0.2,
18 95%CI -1.8 to 1.5; p=0.85) among those with chronotropic incompetence.

19 *Normal Cardiac Structure and Function on CMR*

20 One participant was not administered gadolinium due to eGFR<30, and 3 participants could not
21 complete CMR due to claustrophobia. CMR demonstrated normal LV and RV volumes and
22 ejection fraction in all participants (n=39, Table 4). Higher extracellular volume was associated

1 with symptoms, but no participants had late gadolinium enhancement suggestive of myocardial
2 scar, and other markers suggestive of cardiac inflammation including native T1 and T2
3 parametric mapping values were not associated with symptoms. A high proportion of
4 participants (11/39, 28%) had trace or small pericardial effusions with no difference by symptom
5 status. Smaller RV end diastolic volume index and smaller stroke volume were associated with
6 cardiopulmonary symptoms (Supplemental Table 6). Those with chronotropic incompetence had
7 lower stroke volume at rest (-19ml, 95%CI -34 to -3; p=0.02) and higher extracellular volume
8 (6.2%, 95%CI 0.7 to 11.7; p=0.03).

9 *No Arrhythmias on Ambulatory Rhythm Monitoring*

10 There were no clinically significant arrhythmias including atrial fibrillation or atrial flutter on
11 ambulatory rhythm monitoring (Supplemental Table 7). There were no statistically significant
12 differences in premature atrial contractions (PAC), premature ventricular contractions (PVC),
13 sinus tachycardia, or supraventricular tachycardias (SVT) by symptom status. Most participants
14 had no PVCs, so we could not exclude meaningful increases in PVC burden given wide
15 confidence intervals. Symptomatic individuals pressed the button 3.3 times more often (95%CI
16 2.3-4.8; p<0.001). Most button pushes were during sinus rhythm, sinus tachycardia, or
17 supraventricular ectopy (Supplemental Figure 2), except in one participant with PASC in whom
18 button pushes correlated with brief episodes of SVT. Results were similar in sensitivity analyses
19 adjusting for echocardiographic parameters including LVEF, LV strain, and LA volume index.

20 *Ambulatory Rhythm Monitoring Correlates of Chronotropic Incompetence on CPET*

21 Peak heart rate during CPET correlated with maximum sinus heart rate during ambulatory
22 rhythm monitoring (Pearson's $r=0.73$; p<0.001), with an adjusted difference between those with

1 and without chronotropic incompetence of 24 bpm (95%CI 6-41; p=0.01). On ambulatory
2 rhythm monitoring, those with chronotropic incompetence during CPET had a higher average
3 heart rate, higher minimum heart rate, lower maximum heart rate, and lower heart rate variability
4 (Supplemental Table 8). PR intervals were not significantly longer among those with
5 chronotropic incompetence (174ms vs 162ms, +12ms, 95%CI -4 to +27; p=0.13), and no
6 individuals had 2nd or 3rd degree heart block.

7 *Markers of Inflammation, Not Cardiac Biomarkers, Early in PASC Trajectory are Associated*
8 *with Reduced Exercise Capacity and Pericardial Effusions More than 1 Year Later*

9 As shown in Figure 2, markers of inflammation in the blood (hsCRP, IL-6, TNF- α) and SARS-
10 CoV-2 RBD IgG level measured at 3-9 months after infection are highly negatively correlated
11 with peak VO₂ more than one year after infection. Cardiac biomarkers, hs-troponin I and NT-
12 pro-BNP, were not associated with peak VO₂. After adjustment, peak VO₂ was 1.8 ml/kg/min
13 lower per doubling of hsCRP (95%CI -3.3 to -0.2; p=0.03) and 6.4 ml/kg/min lower per doubling
14 of TNF- α (95%CI -12.3 to -0.4; 95%CI p=0.04) with similar but non-statistically significant
15 differences for IL-6 (-2.2, 95%CI -4.7 to 0.4; p=0.10) and SARS-CoV-2 IgG (-1.1, 95%CI -2.4
16 to 0.3; p=0.12).

17 The odds of pericardial effusion on CMR were 1.8 times higher per doubling of hsCRP (95%CI
18 1.09-2.92; p=0.02). Adjusted results for associations between pericardial effusions and IL-6,
19 TNF- α and SARS-CoV-2 RBD IgG at the later time point were not statistically significant,
20 although the confidence intervals do not exclude an effect. There were no significant associations
21 between ECV and inflammatory biomarkers.

1 Longitudinal serum biomarkers of inflammation, neurologic injury, and SARS-CoV-2 RBD IgG
2 were measured at <90 days from SARS-CoV-2 acute infection (median 52 days from symptom
3 onset) and between 90-150 days (median 124 days from symptom onset) in 34 participants who
4 underwent CPET (Figure 3). Among those with reduced compared to preserved exercise
5 capacity, SARS-CoV-2 IgG (3.00-fold higher mean ratio, 95%CI 1.31-6.88; p=0.009) and TNF-
6 α (1.42-fold higher mean ratio, 95%CI 1.16-1.73; p=0.001) were significantly higher at the early
7 time point (<90 days) with similar patterns in MCP-1 (1.26-fold higher mean ratio, 95%CI 0.99-
8 1.60; p=0.06) and IL-10 (1.23-fold higher mean ratio, 95%CI 0.92-1.65; p=0.17) that were not
9 statistically significant. At the second time point (90-150 days), IL-6 (1.39-fold higher mean
10 ratio, 95%CI 0.93-2.07; p=0.11), (1.19-fold higher mean ratio, 95%CI 0.99-1.43; p=0.06) and
11 SARS-CoV-2 IgG (2.03-fold higher mean ratio, 95%CI 0.90-4.55; p=0.09) were elevated
12 although confidence intervals cross 1 when exercise capacity is dichotomized. All biomarkers
13 decreased over time regardless of eventual exercise capacity, except for IL-6, which increased
14 among those with reduced exercise capacity. Among the neurologic markers, GFAP was lower at
15 the second time point (0.72-fold higher mean ratio, 95%CI 0.51-1.00; p=0.049) and NfL was not
16 different by group at either time point.

17 **Discussion**

18 We demonstrate that clinically significant reductions in objective exercise capacity are
19 associated with PASC symptoms more than 1 year after acute SARS-CoV-2 infection. We found
20 elevated inflammatory markers and SARS-CoV-2 antibody levels early in PASC are associated
21 with reduced exercise capacity more than 1 year after infection. Our findings suggest that
22 chronotropic incompetence is a likely mechanism of reduced exercise capacity for some
23 individuals with PASC. Other than pericardial effusions and increased extracellular volume, we

1 did not find evidence of myocarditis or cardiac dysfunction on echocardiography or cardiac MRI,
2 nor evidence of arrhythmias on ambulatory rhythm monitoring. Our study validates that CPET
3 allows objective measurement of what many people subjectively experience after SARS-CoV-2
4 infection and therefore may be a useful tool to identify the underlying pathophysiology of PASC.

5 *Connections between Inflammation, Reduced Exercise Capacity, and Autonomic Responses*

6 One other group previously demonstrated that hsCRP, IL-6, and TNF- α are associated with
7 reduced peak VO₂ three months after COVID-19 hospitalization.³⁶ Our findings suggest that
8 higher levels of SARS-CoV-2 antibodies and inflammation during the early post-acute period are
9 associated with lower peak VO₂ more than a year later. Elevated inflammatory markers,
10 especially hsCRP, IL-6, and TNF- α could be due to higher severity of acute illness,³⁷ persistent
11 immune activation,³⁸ and/or ongoing antigen stimulation from viral persistence.³⁹⁻⁴³

12 The correlation between these markers and peak VO₂ could arise from a common cause of
13 PASC, or these markers could be on the causal path from SARS-CoV-2 infection to symptoms
14 and reduced exercise capacity in Long COVID (Figure 4). Multiple studies have demonstrated
15 that IL-6 may be elevated in PASC.^{30,38,44,45} Intriguingly, in our study only IL-6 did not decrease
16 among individuals who eventually had reduced exercise capacity. Apart from COVID-19, IL-6
17 impairs chronotropic responses to autonomic signaling in mice⁴⁶ and may regulate energy
18 allocation during exercise.⁴⁷ IL-6 and TNF- α also impair endothelial function in animal models
19 via increasing oxidative stress and suppressing endothelial nitric oxide synthase pathways.⁴⁸
20 Endothelial and coronary microvascular dysfunction are associated with chronotropic
21 incompetence in the general population⁴⁹⁻⁵¹ and have been demonstrated in early PASC.⁵²⁻⁵⁴
22 Endothelial dysfunction may be associated with reduced VO₂ in PASC;⁵⁵ this could be due to
23 endothelial injury from direct viral infection, or due to effects of persistent inflammation and

1 immune activation.⁵⁶ Elevated inflammation resulting in changes in autonomic function in PASC
2 could explain reduced exercise capacity, chronotropic incompetence, blunted heart rate recovery,
3 reduced heart rate variability and CPET findings others have noted in PASC including altered
4 peripheral oxygen extraction,⁵⁷ preload failure⁵⁸ or inadequate stroke volume augmentation,^{23, 24}
5 and disordered breathing.⁵⁸⁻⁶⁰

6 *Autonomic Function, Sinus Node Function, and Inflammation in PASC*

7 Altered autonomic function is the most likely unifying explanation for the constellation of
8 findings we observed. SARS-CoV-2 may lead to damage of the peripheral autonomic nerve
9 fibers as sequelae of direct viral infection, secondary inflammation of the nerves, autoimmune
10 neuropathy, or alterations in central nervous system regulation. Skin biopsies suggest small fiber
11 neuropathy among those with COVID-19 associated postural-orthostatic tachycardia syndrome
12 (POTS) and abnormal autonomic testing.^{61, 62} Similar to preload failure pathophysiology in
13 POTS, autonomic reflexes govern regulation of preload during exercise.⁶³ Autonomic
14 dysfunction could also occur via infection of autonomic regulatory regions in the brainstem,⁶⁴ or
15 through changes in the amygdala evident on longitudinal pre- and post-infection brain MRIs.⁶⁵
16 We have previously demonstrated abnormal markers of neurologic injury in PASC in serum⁴⁴
17 and cerebrospinal fluid.⁶⁶

18 Alternatively, sinus node remodeling has been hypothesized to reduce sinus node reserve in heart
19 failure,⁶⁷ and SARS-CoV-2 may directly affect sinus node function. SARS-CoV-2 can infect
20 sinoatrial node cells in hamsters and *in vitro* sinoatrial-like pacemaker cells resulting in sinoatrial
21 node-dysfunction including changes in calcium handling, activated inflammatory pathways, and
22 induced ferroptosis.⁶⁸ Although we did not find evidence of fibrosis on CMR or evidence of

1 sinus node dysfunction on ambulatory rhythm monitoring or during CPET (i.e. sinus pauses,
2 Wenckebach, blocked PACs), sinus node dysfunction could explain chronotropic incompetence.
3 Inflammation also modifies autonomic and chronotropic responses. Young adults recovering
4 from SARS-CoV-2 have elevated sympathetic activation at rest compared to healthy controls.⁶⁹
5 Chronic inflammation in other conditions including obesity and heart failure is associated with
6 imbalance between parasympathetic and sympathetic activation manifest in changes in heart rate
7 variability, reduced exercise capacity and chronotropic incompetence.^{49, 70-72} In heart failure,
8 chronotropic incompetence during exercise is negatively correlated with copeptin (C-terminal
9 portion of arginine) and norepinephrine levels.⁷³ FDG-PET studies suggest vascular
10 inflammation⁷⁴ and cardiac inflammation⁷⁵ may be present in early PASC, consistent with
11 findings of elevated inflammatory markers. Systemic inflammation in the setting of stress (as
12 evidenced in the association between amygdalar activity and bone-marrow/arterial
13 inflammation)⁷⁶ has been implicated in the pathophysiology of health disparities^{77, 78} and post-
14 traumatic stress disorder.⁷⁹ Thus, inflammatory responses to direct viral infection, chronic
15 immune activation, localized cardiovascular inflammation, or from the distressing nature of
16 persistent symptoms could alter exertional heart rate augmentation in PASC even without
17 damage to the autonomic nervous system or the sinus node.

18 *Other Studies of PASC using CPET*

19 Our study is consistent with six studies that have reported lower peak VO₂ among those with
20 PASC compared to recovered individuals at 3-6 months after COVID-19.¹⁹⁻²⁴ Our findings build
21 upon earlier studies by (1) demonstrating reduced peak VO₂ and chronotropic incompetence
22 much later after infection than other published studies, (2) also including evaluation of cardiac
23 inflammation, structural heart disease and cardiovascular arrhythmias, (3) adjusting for likely

1 confounders in our models, (4) including recovered persons as comparators, and (5) and
2 demonstrating associations with higher inflammatory markers early in PASC.

3 These studies, together with studies that included SARS-CoV-2 uninfected controls and case-
4 studies without controls, have not reached consistent conclusions regarding patterns of reduced
5 exercise capacity. Inconsistency in categorizing exercise-limitation patterns may arise because of
6 selection bias and confounding, the presence of multiple contributing mechanisms, and use of
7 different interpretation algorithms, CPET protocols and adjunctive testing. Deconditioning is
8 commonly reported, perhaps because most studies predominantly included hospitalized
9 individuals and even non-hospitalized individuals experience deconditioning after illness.^{22, 80-84}

10 Although we observed findings consistent with deconditioning or obesity in a few individuals
11 (earlier anaerobic threshold, accelerated heart rate response), our findings argue against
12 deconditioning as the primary explanation. Identifying deconditioning as a cause is challenging
13 because it is also an effect of reduced habitual exercise among symptomatic individuals.

14 Four other studies have also found that chronotropic incompetence contributes to exercise
15 limitations in PASC.^{23, 85-87} Similarly, “dysautonomia” defined by heart rate parameters was
16 associated with lower peak VO_2 in PASC.⁸⁷ Chronotropic incompetence is not a universal
17 finding in PASC; some exercise protocols make ascertainment of chronotropic incompetence
18 difficult, sensitivity and specificity vary with exercise modality, and including sub-maximal tests
19 or patients on beta-blockers reduces specificity. Nonetheless, recognition of chronotropic
20 incompetence provides insight into the pathophysiology of PASC. Diagnosis of chronotropic
21 incompetence may have prognostic implications: chronotropic incompetence is associated with
22 incident cardiovascular disease, sudden death, and all-cause mortality among men without
23 known coronary artery disease.⁸⁸⁻⁹⁰

1 Impaired peripheral oxygen extraction (assessed using invasive CPET) may also contribute to
2 exercise limitations in PASC,⁵⁷ perhaps via changes in autonomic regulation of microcirculatory
3 function.⁹¹ We did not find differences in VO_2/work slope, a noninvasive correlate of measured
4 oxygen extraction. Although more common in PASC than in recovered individuals, ventilatory
5 limitation is uncommon²¹ and only one study has reported ventilatory inefficiency or
6 ventilation/perfusion mismatch from pulmonary vasculopathy.²⁰ Although not observed among
7 any of our participants, dysfunctional (rapid, erratic) breathing or exercise hyperventilation may
8 contribute to dyspnea in PASC as a manifestation of autonomic dysfunction.⁵⁸⁻⁶⁰

9 *CMR and Ambulatory Rhythm Monitoring Findings*

10 Multiple studies have found CMR findings suggestive of myocarditis without cardiac
11 dysfunction in the early post-acute period.^{15, 92, 93} Consistent with other studies at later time
12 points,^{16, 19} our study reassuringly did not find evidence of abnormal cardiac function or late
13 gadolinium enhancement suggestive of scar. We found higher ECV among those with
14 symptoms, but not significant differences in native parametric mapping times nor associations
15 with inflammatory markers early in PASC, and the clinical meaning of this isolated finding is
16 uncertain.

17 Our findings are consistent with two studies that did not find significant arrhythmias in early
18 PASC and had inconsistent results regarding PVCs.^{25, 26} A high prevalence of inappropriate sinus
19 tachycardia has been reported in early PASC;⁹⁴ we only identified one individual (without
20 cardiopulmonary symptoms) with resting heart rate >100 bpm and average sinus rate >90 bpm
21 on ambulatory monitoring. Therefore, arrhythmias or inappropriate sinus tachycardia are
22 unlikely to explain symptoms among most individuals with PASC.

1 *Implications for Therapy*

2 Investigation into mechanisms of PASC may benefit from proof-of-concept approaches to
3 identify potential targets for intervention. Given associations with elevated inflammatory
4 markers, targeting inflammatory pathways is worthy of investigation, although whether such
5 interventions can improve exercise capacity, restore autonomic nervous system function, or
6 improve symptoms remains unknown and needs to be tested rigorously. In those with
7 chronotropic incompetence separate from COVID-19 without cardiac implantable devices,
8 exercise is the only intervention demonstrated to improve chronotropic incompetence and
9 improve peak VO_2 .⁹⁵ In heart failure, exercise also improves surrogates of autonomic function
10 including heart rate recovery and heart rate variability.^{96, 97} Exercise is an effective treatment for
11 POTS, which may also be related to autonomic responses to stress and has been observed in
12 PASC.^{98, 99}

13 *Limitations*

14 The main limitations of this observational study arise from the non-probabilistic sampling
15 strategy, which is prone to selection bias, and the cross-sectional nature of cardiac measures. The
16 first challenge is the classification of PASC—the statistical significance and magnitude of the
17 difference in peak VO_2 was sensitive to how we defined PASC, but our definition is consistent
18 with current consensus definitions.²⁸ Although participants were not selected based on
19 symptoms, volunteer bias may overestimate the prevalence of reduced exercise capacity and
20 possibly the magnitude of the difference, but should not affect classification of limitation
21 patterns or identification of chronotropic incompetence. We did not include an uninfected
22 comparator group, which could have strengthened our ability to make inferences regardless of
23 symptom definition. As others using CPET have noted, selecting an appropriate control group

1 can be challenging. We do not have pre-infection exercise tests and prior fitness is associated
2 with post-infection peak VO_2 ; if fitness is associated with risk of PASC, it would be an
3 unmeasured confounder. Although we adjusted for important measured confounders and
4 conducted sensitivity analyses adjusting for potential confounders, there are likely residual
5 confounders (including unmeasured ones like pre-COVID fitness). In terms of measurement, we
6 did not perform invasive CPET, stress echocardiography, stress CMR, or stress
7 ventriculography. Lastly, we did not have contemporaneous biomarker data with CPETs to
8 ascertain whether a hit-and-run transient inflammatory process or ongoing inflammation is more
9 likely.

10 *Conclusions*

11 In conclusion, we found that reduced exercise capacity on CPET is associated with symptoms of
12 PASC at 18 months following SARS-CoV-2 infection. Reduced exercise capacity in PASC is
13 associated with chronotropic incompetence and higher levels of inflammatory markers and
14 antibody levels in the early post-acute period. While a significant proportion had pericardial
15 effusions (also associated with hsCRP) and increased extracellular volume fraction was
16 associated with symptoms, we did not find strong evidence of prior or ongoing myocarditis.
17 Further investigation into mechanisms of cardiopulmonary PASC should include evaluation of
18 inflammatory pathways, chronotropic function, and the autonomic nervous system to identify
19 potential therapeutic targets.

20

1 **Acknowledgements:** We would like to thank the research participants and the members of the
2 LIINC study team. We would like to thank Dr. Kara Lynch and Dr. Alan Wu for their assistance
3 with measuring cardiac biomarkers and hsCRP. We would also like to acknowledge support
4 from Jeremy Lambert from Quanterix (Billerica, MA) and Patrick Kaiser from BardyDx, a
5 division of Hillrom (Bellevue, Washington). We acknowledge the contributions of the UCSF
6 Clinical and Translational Science Unit.

7
8 **Funding:** This study was funded by philanthropic gifts from Charles W. Swanson and the Ed
9 and Pearl Fein Foundation, research grants from the NIH/NLBI including L30 HL159695 and
10 K12 HL143961, and internal funds from the Division of Cardiology at Zuckerberg San Francisco
11 General. This work was assisted in part by a CFAR-ARI Boost Award from the UCSF AIDS
12 Research Institute. MSD is supported by K12HL143961. MJP is supported by K23AI157875.
13 JDK is supported by NIH/NIAID K23AI135037. TJH is supported by NIH/NIAID
14 3R01A1141003-03S1. PYH is supported by NIH/NAID 2K24AI112393-06. This publication
15 was supported by the National Center for Advancing Translational Sciences, National Institutes
16 of Health, through UCSF-CTSI Grant Number UL1TR001872. Its contents are solely the
17 responsibility of the authors and do not necessarily represent the official views of the NIH.

18
19 **Disclosures:** AC, BCY, JWW, and CJP are employees of Monogram Biosciences, Inc., a
20 division of LabCorp. PYH has received modest honoraria from Gilead and Merck and research
21 grant from Novartis unrelated to the submitted work. All other authors report no disclosures or
22 conflicts.

1 **References**

- 2 1. Groff D, Sun A, Ssentongo AE, Ba DM, Parsons N, Poudel GR, Lekoubou A, Oh JS,
3 Ericson JE, Ssentongo P and Chinchilli VM. Short-term and Long-term Rates of Postacute
4 Sequelae of SARS-CoV-2 Infection: A Systematic Review. *JAMA Netw Open*.
5 2021;4:e2128568.
- 6 2. Hirschtick JL, Titus AR, Slocum E, Power LE, Hirschtick RE, Elliott MR, McKane P and
7 Fleischer NL. Population-Based Estimates of Post-acute Sequelae of Severe Acute Respiratory
8 Syndrome Coronavirus 2 (SARS-CoV-2) Infection (PASC) Prevalence and Characteristics. *Clin*
9 *Infect Dis*. 2021;73:2055-2064.
- 10 3. Taquet M, Dercon Q, Luciano S, Geddes JR, Husain M and Harrison PJ. Incidence, co-
11 occurrence, and evolution of long-COVID features: A 6-month retrospective cohort study of
12 273,618 survivors of COVID-19. *PLoS Med*. 2021;18:e1003773.
- 13 4. Piotr DA and Gaughan PC. Technical article: Updated estimates of the prevalence of
14 post-acute symptoms among people with coronavirus (COVID-19) in the UK: 26 April 2020 to 1
15 August 2021. 2021.
- 16 5. Yomogida K, Zhu S, Rubino F, Figueroa W, Balanji N and Holman E. Post-Acute
17 Sequelae of SARS-CoV-2 Infection Among Adults Aged ≥ 18 Years - Long Beach, California,
18 April 1-December 10, 2020. *MMWR Morb Mortal Wkly Rep*. 2021;70:1274-1277.
- 19 6. Clarke KEN, Jones JM, Deng Y, Nycz E, Lee A, Iachan R, Gundlapalli AV, Hall AJ and
20 MacNeil A. Seroprevalence of Infection-Induced SARS-CoV-2 Antibodies - United States,
21 September 2021-February 2022. *MMWR Morb Mortal Wkly Rep*. 2022;71:606-608.
- 22 7. Amenta EM, Spallone A, Rodriguez-Barradas MC, El Sahly HM, Atmar RL and
23 Kulkarni PA. Postacute COVID-19: An Overview and Approach to Classification. *Open Forum*
24 *Infect Dis*. 2020;7:ofaa509.
- 25 8. Peluso MJ and Deeks SG. Early clues regarding the pathogenesis of long-COVID. *Trends*
26 *Immunol*. 2022;43:268-270.
- 27 9. Durstenfeld MS, Peluso MJ, Kelly JD, Win S, Swaminathan S, Li D, Arechiga VM,
28 Zepeda VA, Sun K, Shao SJ, Hill C, Arreguin MI, Lu S, Hoh R, Tai VW, Chenna A, Yee BC,
29 Winslow JW, Petropoulos CJ, Kornak J, Henrich TJ, Martin JN, Deeks SG and Hsue PY. Role of
30 antibodies, inflammatory markers, and echocardiographic findings in post-acute
31 cardiopulmonary symptoms after SARS-CoV-2 infection. *JCI Insight*. 2022.
- 32 10. Fayol A, Livrozet M, Boutouyrie P, Khettab H, Betton M, Tea V, Blanchard A, Bruno
33 RM, Hulot JS and French Ccsg. Cardiac performance in patients hospitalized with COVID-19: a
34 6 month follow-up study. *ESC Heart Fail*. 2021;8:2232-2239.
- 35 11. Tangen J, Aukrust P, Barratt-Due A, Skulstad H and Edvardsen T. Reduced Cardiac
36 Function by Echocardiography in a Minority of COVID-19 Patients 3 Months after
37 Hospitalization. *Journal of the American Society of Echocardiography*. 2022;35:243-244.
- 38 12. Catena C, Colussi G, Bulfone L, Da Porto A, Tascini C and Sechi LA. Echocardiographic
39 Comparison of COVID-19 Patients with or without Prior Biochemical Evidence of Cardiac
40 Injury after Recovery. *J Am Soc Echocardiogr*. 2021;34:193-195.
- 41 13. Wu X, Deng KQ, Li C, Yang Z, Hu H, Cai H, Zhang C, He T, Zheng F, Wang H, Zhang
42 XA, Caillon A, Yuan Y, Wang X, Xu H and Lu Z. Cardiac Involvement in Recovered Patients
43 From COVID-19: A Preliminary 6-Month Follow-Up Study. *Front Cardiovasc Med*.
44 2021;8:654405.

- 1 14. Sechi LA, Colussi G, Bulfone L, Brosolo G, Da Porto A, Peghin M, Patruno V, Tascini C
2 and Catena C. Short-term cardiac outcome in survivors of COVID-19: a systematic study after
3 hospital discharge. *Clin Res Cardiol.* 2021;110:1063-1072.
- 4 15. Puntmann VO, Carerj ML, Wieters I, Fahim M, Arendt C, Hoffmann J, Shchendrygina
5 A, Escher F, Vasa-Nicotera M, Zeiher AM, Vehreschild M and Nagel E. Outcomes of
6 Cardiovascular Magnetic Resonance Imaging in Patients Recently Recovered From Coronavirus
7 Disease 2019 (COVID-19). *JAMA Cardiology.* 2020.
- 8 16. Joy G, Artico J, Kurdi H, Seraphim A, Lau C, Thornton GD, Oliveira MF, Adam RD,
9 Aziminia N, Menacho K, Chacko L, Brown JT, Patel RK, Shiwani H, Bhuva A, Augusto JB,
10 Andiapen M, McKnight A, Noursadeghi M, Pierce I, Evain T, Captur G, Davies RH, Greenwood
11 JP, Fontana M, Kellman P, Schelbert EB, Treibel TA, Manisty C and Moon JC. Prospective
12 Case-Control Study of Cardiovascular Abnormalities 6 Months Following Mild COVID-19 in
13 Healthcare Workers. *JACC: Cardiovascular Imaging.* 2021;14:2155-2166.
- 14 17. Kotecha T, Knight DS, Razvi Y, Kumar K, Vimallesvaran K, Thornton G, Patel R,
15 Chacko L, Brown JT, Coyle C, Leith D, Shetye A, Ariff B, Bell R, Captur G, Coleman M,
16 Goldring J, Gopalan D, Heightman M, Hillman T, Howard L, Jacobs M, Jeetley PS,
17 Kanagaratnam P, Kon OM, Lamb LE, Manisty CH, Mathurdas P, Mayet J, Negus R, Patel N,
18 Pierce I, Russell G, Wolff A, Xue H, Kellman P, Moon JC, Treibel TA, Cole GD and Fontana
19 M. Patterns of myocardial injury in recovered troponin-positive COVID-19 patients assessed by
20 cardiovascular magnetic resonance. *Eur Heart J.* 2021.
- 21 18. Roca-Fernandez A, Wamil M, Telford A, Carapella V, Borlotti A, Monteiro D,
22 Thomaidis-Brears H, Kelly MD, Dennis A, Banerjee R, Robson M, Brady M, Lip G, Bull S,
23 Heightman MJ, Ntusi N and Banerjee A. Cardiac impairment in Long Covid 1-year post-SARS-
24 CoV-2 infection. *Preprint medRxiv 2022.* 2022.
- 25 19. Cassar MP, Tunnicliffe EM, Petousi N, Lewandowski AJ, Xie C, Mahmood M, Samat
26 AHA, Evans RA, Brightling CE, Ho LP, Piechnik SK, Talbot NP, Holdsworth D, Ferreira VM,
27 Neubauer S and Raman B. Symptom Persistence Despite Improvement in Cardiopulmonary
28 Health - Insights from longitudinal CMR, CPET and lung function testing post-COVID-19.
29 *EClinicalMedicine.* 2021;41:101159.
- 30 20. Aparisi A, Ybarra-Falcon C, Garcia-Gomez M, Tobar J, Iglesias-Echeverria C, Jaurrieta-
31 Largo S, Ladron R, Uribarri A, Catala P, Hinojosa W, Marcos-Mangas M, Fernandez-Prieto L,
32 Sedano-Gutierrez R, Cusacovich I, Andaluz-Ojeda D, de Vega-Sanchez B, Recio-Platero A,
33 Sanz-Patino E, Calvo D, Baladron C, Carrasco-Moraleja M, Disdier-Vicente C, Amat-Santos IJ
34 and San Roman JA. Exercise Ventilatory Inefficiency in Post-COVID-19 Syndrome: Insights
35 from a Prospective Evaluation. *J Clin Med.* 2021;10.
- 36 21. Barbagelata L, Masson W, Iglesias D, Lillo E, Migone JF, Orazi ML and Maritano
37 Furcada J. Cardiopulmonary Exercise Testing in Patients with Post-COVID-19 Syndrome. *Med*
38 *Clin (Barc).* 2021.
- 39 22. Skjorten I, Ankerstjerne OAW, Trebinjac D, Bronstad E, Rasch-Halvorsen O, Einvik G,
40 Lerum TV, Stavem K, Edvardsen A and Ingul CB. Cardiopulmonary exercise capacity and
41 limitations 3 months after COVID-19 hospitalisation. *Eur Respir J.* 2021;58.
- 42 23. Szekely Y, Lichter Y, Sadon S, Lupu L, Taieb P, Banai A, Sapir O, Granot Y, Hochstadt
43 A, Friedman S, Laufer-Perl M, Banai S and Topilsky Y. Cardiorespiratory Abnormalities in
44 Patients Recovering from Coronavirus Disease 2019. *J Am Soc Echocardiogr.* 2021;34:1273-
45 1284.e9.

- 1 24. Brown JT, Saigal A, Karia N, Patel RK, Razvi Y, Constantinou N, Steeden JA, Mandal
2 S, Kotecha T, Fontana M, Goldring J, Muthurangu V and Knight DS. Ongoing Exercise
3 Intolerance Following COVID-19: A Magnetic Resonance-Augmented Cardiopulmonary
4 Exercise Test Study. *J Am Heart Assoc.* 2022;11:e024207.
- 5 25. Ingul CB, Grimsmo J, Mecinaj A, Trebinjac D, Berger Nossen M, Andrup S, Grenne B,
6 Dalen H, Einvik G, Stavem K, Follestad T, Josefsen T, Omland T and Jensen T. Cardiac
7 Dysfunction and Arrhythmias 3 Months After Hospitalization for COVID-19. *J Am Heart Assoc.*
8 2022;11:e023473.
- 9 26. Dewland TA, Whitman IR, Win S, Sanchez JM, Olgin JE, Pletcher MJ, Santhosh L,
10 Kumar U, Joyce S, Yang V, Hwang J, Ogomori K, Peyser N, Horner C, Wen D, Butcher X and
11 Marcus GM. Prospective arrhythmia surveillance after a COVID-19 diagnosis. *Open Heart.*
12 2022;9.
- 13 27. Peluso MJ, Kelly JD, Lu S, Goldberg SA, Davidson MC, Mathur S, Durstenfeld MS,
14 Spinelli MA, Hoh R, Tai V, Fehrman EA, Torres L, Hernandez Y, Williams MC, Arreguin MI,
15 Ngo LH, Deswal M, Munter SE, Martinez EO, Anglin KA, Romero MD, Tavs J, Rugart PR,
16 Chen JY, Sans HM, Murray VW, Ellis PK, Donohue KC, Massachi JA, Weiss JO, Mehdi I,
17 Pineda-Ramirez J, Tang AF, Wenger MA, Assenzio MT, Yuan Y, Krone MR, Rutishauser RL,
18 Rodriguez-Barraquer I, Greenhouse B, Saucedo JA, Gandhi M, Scheffler AW, Hsue PY, Henrich
19 TJ, Deeks SG and Martin JN. Persistence, Magnitude, and Patterns of Postacute Symptoms and
20 Quality of Life Following Onset of SARS-CoV-2 Infection: Cohort Description and Approaches
21 for Measurement. *Open Forum Infectious Diseases.* 2021;9.
- 22 28. Soriano JM, J; Diaz, JV; Murthy, S; Relan, P. A clinical case definition of post COVID-
23 19 condition by a Delphi consensus. 2021.
- 24 29. Nagueh SF, Smiseth OA, Appleton CP, Byrd BF, 3rd, Dokainish H, Edvardsen T,
25 Flachskampf FA, Gillebert TC, Klein AL, Lancellotti P, Marino P, Oh JK, Popescu BA and
26 Waggoner AD. Recommendations for the Evaluation of Left Ventricular Diastolic Function by
27 Echocardiography: An Update from the American Society of Echocardiography and the
28 European Association of Cardiovascular Imaging. *J Am Soc Echocardiogr.* 2016;29:277-314.
- 29 30. Peluso MJ, Lu S, Tang AF, Durstenfeld MS, Ho HE, Goldberg SA, Forman CA, Munter
30 SE, Hoh R, Tai V, Chenna A, Yee BC, Winslow JW, Petropoulos CJ, Greenhouse B, Hunt PW,
31 Hsue PY, Martin JN, Daniel Kelly J, Glidden DV, Deeks SG and Henrich TJ. Markers of
32 Immune Activation and Inflammation in Individuals With Postacute Sequelae of Severe Acute
33 Respiratory Syndrome Coronavirus 2 Infection. *J Infect Dis.* 2021;224:1839-1848.
- 34 31. Balady GJ, Arena R, Sietsema K, Myers J, Coke L, Fletcher GF, Forman D, Franklin B,
35 Guazzi M, Gulati M, Keteyian SJ, Lavie CJ, Macko R, Mancini D, Milani RV, American Heart
36 Association Exercise CR, Prevention Committee of the Council on Clinical C, Council on E,
37 Prevention, Council on Peripheral Vascular D, Interdisciplinary Council on Quality of C and
38 Outcomes R. Clinician's Guide to cardiopulmonary exercise testing in adults: a scientific
39 statement from the American Heart Association. *Circulation.* 2010;122:191-225.
- 40 32. Hansen JE, Sue DY and Wasserman K. Predicted values for clinical exercise testing. *Am*
41 *Rev Respir Dis.* 1984;129:S49-55.
- 42 33. Wasserman K HJ, Sue DY, Stringer W, Whipp BJ. *Principles of Exercise Testing and*
43 *Interpretation.* 4th ed. Philadelphia: Lippincott Williams and Wilkins; 2005.
- 44 34. Arena R, Myers J, Abella J, Pinkstaff S, Brubaker P, Moore B, Kitzman D, Peberdy MA,
45 Bensimhon D, Chase P, Forman D, West E and Guazzi M. Determining the preferred percent-

- 1 predicted equation for peak oxygen consumption in patients with heart failure. *Circ Heart Fail.*
2 2009;2:113-20.
- 3 35. Brubaker PH and Kitzman DW. Chronotropic Incompetence. *Circulation.*
4 2011;123:1010-1020.
- 5 36. Ribeiro Baptista B, d'Humieres T, Schlemmer F, Bendib I, Justeau G, Al-Assaad L,
6 Hachem M, Codiart R, Bardel B, Abou Chakra L, Belmondo T, Audureau E, Hue S, Mekontso-
7 Dessap A, Derumeaux G and Boyer L. Identification of factors impairing exercise capacity after
8 severe COVID-19 pulmonary infection: a 3-month follow-up of prospective COVulnerability
9 cohort. *Respir Res.* 2022;23:68.
- 10 37. Peluso MJ, Deitchman AN, Torres L, Iyer NS, Munter SE, Nixon CC, Donatelli J, Thanh
11 C, Takahashi S, Hakim J, Turcios K, Janson O, Hoh R, Tai V, Hernandez Y, Fehrman EA,
12 Spinelli MA, Gandhi M, Trinh L, Wrin T, Petropoulos CJ, Aweeka FT, Rodriguez-Barraquer I,
13 Kelly JD, Martin JN, Deeks SG, Greenhouse B, Rutishauser RL and Henrich TJ. Long-term
14 SARS-CoV-2-specific immune and inflammatory responses in individuals recovering from
15 COVID-19 with and without post-acute symptoms. *Cell Rep.* 2021;36:109518.
- 16 38. Littlefield KM, Watson RO, Schneider JM, Neff CP, Yamada E, Zhang M, Campbell TB,
17 Falta MT, Jolley SE, Fontenot AP and Palmer BE. SARS-CoV-2-specific T cells associate with
18 inflammation and reduced lung function in pulmonary post-acute sequelae of SARS-CoV-2.
19 *PLoS Pathog.* 2022;18:e1010359.
- 20 39. Gaebler C, Wang Z, Lorenzi JCC, Muecksch F, Finkin S, Tokuyama M, Cho A, Jankovic
21 M, Schaefer-Babajew D, Oliveira TY, Cipolla M, Viant C, Barnes CO, Bram Y, Breton G,
22 Hagglof T, Mendoza P, Hurley A, Turroja M, Gordon K, Millard KG, Ramos V, Schmidt F,
23 Weisblum Y, Jha D, Tankelevich M, Martinez-Delgado G, Yee J, Patel R, Dizon J, Unson-
24 O'Brien C, Shimeliovich I, Robbiani DF, Zhao Z, Gazumyan A, Schwartz RE, Hatziioannou T,
25 Bjorkman PJ, Mehandru S, Bieniasz PD, Caskey M and Nussenzweig MC. Evolution of
26 antibody immunity to SARS-CoV-2. *Nature.* 2021;591:639-644.
- 27 40. Peluso MJ, Deeks SG, Mustapic M, Kapogiannis D, Henrich TJ, Lu S, Goldberg SA,
28 Hoh R, Chen JY, Martinez EO, Kelly JD, Martin JN and Goetzl EJ. SARS-CoV-2 and
29 Mitochondrial Proteins in Neural-Derived Exosomes of COVID-19. *Ann Neurol.* 2022;91:772-
30 781.
- 31 41. Natarajan A, Zlitni S, Brooks EF, Vance SE, Dahlen A, Hedlin H, Park RM, Han A,
32 Schmidtke DT, Verma R, Jacobson KB, Parsonnet J, Bonilla HF, Singh U, Pinsky BA, Andrews
33 JR, Jagannathan P and Bhatt AS. Gastrointestinal symptoms and fecal shedding of SARS-CoV-2
34 RNA suggest prolonged gastrointestinal infection. *Med (N Y).* 2022.
- 35 42. Chertow D, Stein S, Ramelli S, Grazioli A, Chung J-Y, Singh M, Yinda CK, Winkler C,
36 Dickey J, Ylaya K, Ko SH, Platt A, Burbelo P, Quezado M, Pittaluga S, Purcell M, Munster V,
37 Belinky F, Ramos-Benitez M, Boritz E, Herr D, Rabin J, Saharia K, Madathil R, Tabatabai A,
38 Soherwardi S, McCurdy M, Peterson K, Cohen J, de Wit E, Vannella K, Hewitt S and Kleiner D.
39 SARS-CoV-2 infection and persistence throughout the human body and brain. *Preprint at*
40 <https://doi.org/10.21203/rs.3.rs-1139035/v1> (Posted December 20, 2021). 2021.
- 41 43. Zollner A, Koch R, Jukic A, Pfister A, Meyer M, Rössler A, Kimpel J, Adolph TE and
42 Tilg H. Post-acute COVID-19 is characterized by gut viral antigen persistence in inflammatory
43 bowel diseases. *Gastroenterology.* 2022.
- 44 44. Peluso MJ, Sans HM, Forman CA, Nylander AN, Ho H-e, Lu S, Goldberg SA, Hoh R,
45 Tai V, Munter SE, Chenna A, Yee BC, Winslow JW, Petropoulos CJ, Martin JN, Kelly JD,
46 Durstenfeld MS, Hsue PY, Hunt PW, Greene M, Chow FC, Hellmuth J, Henrich TJ, Glidden DV

- 1 and Deeks SG. Plasma markers of neurologic injury and systemic inflammation in individuals
2 with self-reported neurologic post-acute sequelae of SARS-CoV-2 infection (PASC). *medRxiv*.
3 2021;2021.11.02.21265778.
- 4 45. Phetsouphanh C, Darley DR, Wilson DB, Howe A, Munier CML, Patel SK, Juno JA,
5 Burrell LM, Kent SJ, Dore GJ, Kelleher AD and Matthews GV. Immunological dysfunction
6 persists for 8 months following initial mild-to-moderate SARS-CoV-2 infection. *Nat Immunol*.
7 2022;23:210-216.
- 8 46. Hajiasgharzadeh K, Mirnajafi-Zadeh J and Mani AR. Interleukin-6 impairs chronotropic
9 responsiveness to cholinergic stimulation and decreases heart rate variability in mice. *Eur J*
10 *Pharmacol*. 2011;673:70-7.
- 11 47. Kistner TM, Pedersen BK and Lieberman DE. Interleukin 6 as an energy allocator in
12 muscle tissue. *Nat Metab*. 2022;4:170-179.
- 13 48. Lee J, Lee S, Zhang H, Hill MA, Zhang C and Park Y. Interaction of IL-6 and TNF- α
14 contributes to endothelial dysfunction in type 2 diabetic mouse hearts. *PLoS One*.
15 2017;12:e0187189.
- 16 49. Huang PH, Leu HB, Chen JW, Wu TC, Lu TM, Ding YA and Lin SJ. Comparison of
17 endothelial vasodilator function, inflammatory markers, and N-terminal pro-brain natriuretic
18 peptide in patients with or without chronotropic incompetence to exercise test. *Heart*.
19 2006;92:609-14.
- 20 50. Bechsgaard DF, Hove JD, Suhars HE, Bové KB, Shahriari P, Gustafsson I and Prescott E.
21 Women with coronary microvascular dysfunction and no obstructive coronary artery disease
22 have reduced exercise capacity. *International Journal of Cardiology*. 2019;293:1-9.
- 23 51. Kim B-J, Jo E-A, Im S-I, Kim H-S, Heo JH and Cho K-I. Heart rate recovery and blood
24 pressure response during exercise testing in patients with microvascular angina. *Clinical*
25 *Hypertension*. 2019;25:4.
- 26 52. Paneroni M, Pasini E, Vitacca M, Scalvini S, Comini L, Pedrinolla A and Venturelli M.
27 Altered Vascular Endothelium-Dependent Responsiveness in Frail Elderly Patients Recovering
28 from COVID-19 Pneumonia: Preliminary Evidence. *J Clin Med*. 2021;10.
- 29 53. Mejia-Renteria H, Travieso A, Sagir A, Martínez-Gómez E, Carrascosa-Granada A, Toya
30 T, Núñez-Gil IJ, Estrada V, Lerman A and Escaned J. In-vivo evidence of systemic endothelial
31 vascular dysfunction in COVID-19. *International Journal of Cardiology*. 2021;345:153-155.
- 32 54. Drakos S, Chatzantonis G, Bietenbeck M, Evers G, Schulze AB, Mohr M, Fonfara H,
33 Meier C and Yilmaz A. A cardiovascular magnetic resonance imaging-based pilot study to assess
34 coronary microvascular disease in COVID-19 patients. *Sci Rep*. 2021;11:15667.
- 35 55. Ambrosino P, Parrella P, Formisano R, Perrotta G, D'Anna SE, Mosella M, Papa A and
36 Maniscalco M. Cardiopulmonary Exercise Performance and Endothelial Function in
37 Convalescent COVID-19 Patients. *J Clin Med*. 2022;11.
- 38 56. Fodor A, Tiperciuc B, Login C, Orasan OH, Lazar AL, Buchman C, Hanghicele P, Sitar-
39 Taut A, Suharoschi R, Vulturar R and Cozma A. Endothelial Dysfunction, Inflammation, and
40 Oxidative Stress in COVID-19-Mechanisms and Therapeutic Targets. *Oxid Med Cell Longev*.
41 2021;2021:8671713.
- 42 57. Singh I, Joseph P, Heerdt PM, Cullinan M, Lutchmansingh DD, Gulati M, Possick JD,
43 Systrom DM and Waxman AB. Persistent Exertional Intolerance After COVID-19: Insights
44 From Invasive Cardiopulmonary Exercise Testing. *Chest*. 2022;161:54-63.

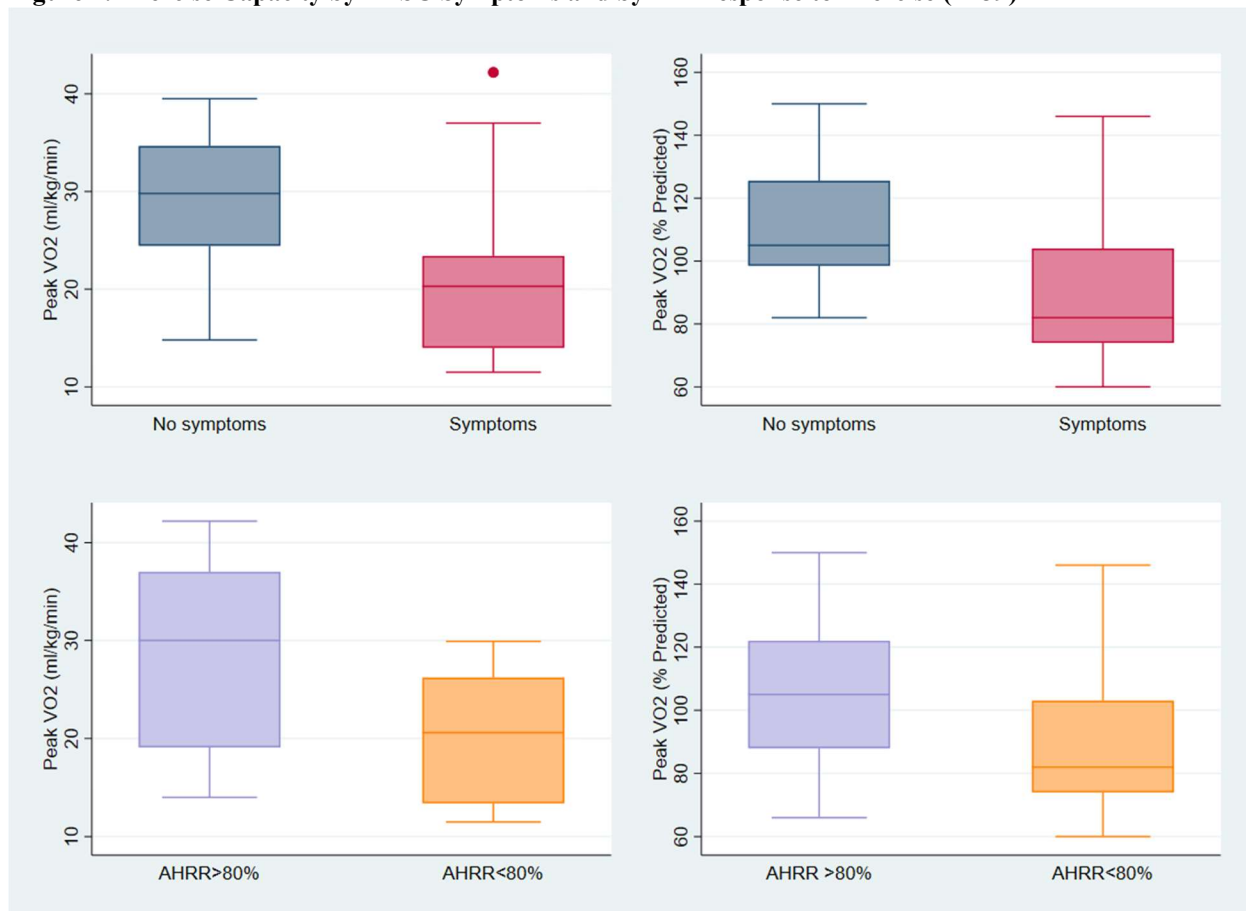
- 1 58. Mancini DM, Brunjes DL, Lala A, Trivieri MG, Contreras JP and Natelson BH. Use of
2 Cardiopulmonary Stress Testing for Patients With Unexplained Dyspnea Post-Coronavirus
3 Disease. *JACC Heart Fail.* 2021;9:927-937.
- 4 59. Fresard I, Genecand L, Altarelli M, Gex G, Vremaroiu P, Vremaroiu-Coman A, Lawi D
5 and Bridevaux PO. Dysfunctional breathing diagnosed by cardiopulmonary exercise testing in
6 'long COVID' patients with persistent dyspnoea. *BMJ Open Respir Res.* 2022;9:e001126.
- 7 60. Motiejunaite J, Balagny P, Arnoult F, Mangin L, Bancal C, Vidal-Petiot E, Flamant M,
8 Jondeau G, Cohen-Solal A, d'Ortho MP and Frija-Masson J. Hyperventilation as one of the
9 mechanisms of persistent dyspnoea in SARS-CoV-2 survivors. *Eur Respir J.* 2021;58:2101578.
- 10 61. Novak P, Mukerji SS, Alabsi HS, Systrom D, Marciano SP, Felsenstein D, Mullally WJ
11 and Pilgrim DM. Multisystem Involvement in Post-Acute Sequelae of Coronavirus Disease 19.
12 *Ann Neurol.* 2022;91:367-379.
- 13 62. Oaklander AL, Mills AJ, Kelley M, Toran LS, Smith B, Dalakas MC and Nath A.
14 Peripheral Neuropathy Evaluations of Patients With Prolonged Long COVID. *Neurol*
15 *Neuroimmunol Neuroinflamm.* 2022;9.
- 16 63. Fudim M, Sobotka PA and Dunlap ME. Extracardiac Abnormalities of Preload Reserve:
17 Mechanisms Underlying Exercise Limitation in Heart Failure with Preserved Ejection Fraction,
18 Autonomic Dysfunction, and Liver Disease. *Circ Heart Fail.* 2021;14:e007308.
- 19 64. Li Y-C, Zhang Y and Tan B-H. What can cerebrospinal fluid testing and brain autopsies
20 tell us about viral neuroinvasion of SARS-CoV-2. *Journal of Medical Virology.* 2021;93:4247-
21 4257.
- 22 65. Douaud G, Lee S, Alfaro-Almagro F, Arthofer C, Wang C, McCarthy P, Lange F,
23 Andersson JLR, Griffanti L, Duff E, Jbabdi S, Taschler B, Keating P, Winkler AM, Collins R,
24 Matthews PM, Allen N, Miller KL, Nichols TE and Smith SM. SARS-CoV-2 is associated with
25 changes in brain structure in UK Biobank. *Nature.* 2022;604:697-707.
- 26 66. Apple AC, Oddi A, Peluso MJ, Asken BM, Henrich TJ, Kelly JD, Pleasure SJ, Deeks
27 SG, Allen IE, Martin JN, Ndhlovu LC, Miller BL, Stephens ML and Hellmuth J. Risk factors
28 and abnormal cerebrospinal fluid associate with cognitive symptoms after mild COVID-19. *Ann*
29 *Clin Transl Neurol.* 2022;9:221-226.
- 30 67. Sanders P, Kistler PM, Morton JB, Spence SJ and Kalman JM. Remodeling of sinus node
31 function in patients with congestive heart failure: reduction in sinus node reserve. *Circulation.*
32 2004;110:897-903.
- 33 68. Han Y, Zhu J, Yang L, Nilsson-Payant BE, Hurtado R, Lacko LA, Sun X, Gade AR,
34 Higgins CA, Sisso WJ, Dong X, Wang M, Chen Z, Ho DD, Pitt GS, Schwartz RE, tenOever BR,
35 Evans T and Chen S. SARS-CoV-2 Infection Induces Ferroptosis of Sinoatrial Node Pacemaker
36 Cells. *Circ Res.* 2022;130:963-977.
- 37 69. Stute NL, Stickford JL, Province VM, Augenreich MA, Ratchford SM and Stickford
38 ASL. COVID-19 is getting on our nerves: sympathetic neural activity and haemodynamics in
39 young adults recovering from SARS-CoV-2. *J Physiol.* 2021;599:4269-4285.
- 40 70. Halaris A. Inflammation-Associated Co-morbidity Between Depression and
41 Cardiovascular Disease. *Curr Top Behav Neurosci.* 2017;31:45-70.
- 42 71. Williams DP, Koenig J, Carnevali L, Sgoifo A, Jarczok MN, Sternberg EM and Thayer
43 JF. Heart rate variability and inflammation: A meta-analysis of human studies. *Brain Behav*
44 *Immun.* 2019;80:219-226.
- 45 72. Franssen WMA, Keytsman C, Marinus N, Verboven K, Eijnde BO, van Ryckeghem L,
46 Dendale P, Zeevaert R, Massa G and Hansen D. Chronotropic incompetence is more frequent in

- 1 obese adolescents and relates to systemic inflammation and exercise intolerance. *J Sport Health*
2 *Sci.* 2021.
- 3 73. Benes J, Kotrc M, Borlaug BA, Lefflerova K, Jarolim P, Bendlova B, Jabor A, Kautzner
4 J and Melenovsky V. Resting heart rate and heart rate reserve in advanced heart failure have
5 distinct pathophysiologic correlates and prognostic impact: a prospective pilot study. *JACC*
6 *Heart Fail.* 2013;1:259-66.
- 7 74. Sollini M, Ciccarelli M, Cecconi M, Aghemo A, Morelli P, Gelardi F and Chiti A.
8 Vasculitis changes in COVID-19 survivors with persistent symptoms: an [18F]FDG-PET/CT
9 study. *European Journal of Nuclear Medicine and Molecular Imaging.* 2021;48:1460-1466.
- 10 75. Saricam E, Dursun AD, Turkmen Sariyildiz G, Can N, Bozkurt E, Gonullu U, Basay N,
11 Turkmen M, Denli A and Unlu M. Laboratory and Imaging Evaluation of Cardiac Involvement
12 in Patients with Post-Acute COVID-19. *Int J Gen Med.* 2021;14:4977-4985.
- 13 76. Tawakol A, Ishai A, Takx RA, Figueroa AL, Ali A, Kaiser Y, Truong QA, Solomon CJ,
14 Calcagno C, Mani V, Tang CY, Mulder WJ, Murrrough JW, Hoffmann U, Nahrendorf M, Shin
15 LM, Fayad ZA and Pitman RK. Relation between resting amygdalar activity and cardiovascular
16 events: a longitudinal and cohort study. *Lancet.* 2017;389:834-845.
- 17 77. Tawakol A, Osborne MT, Wang Y, Hammel B, Tung B, Patrich T, Oberfeld B, Ishai A,
18 Shin LM, Nahrendorf M, Warner ET, Wasfy J, Fayad ZA, Koenen K, Ridker PM, Pitman RK
19 and Armstrong KA. Stress-Associated Neurobiological Pathway Linking Socioeconomic
20 Disparities to Cardiovascular Disease. *J Am Coll Cardiol.* 2019;73:3243-3255.
- 21 78. Tell D, Burr RL, Mathews HL and Janusek LW. Heart Rate Variability and Inflammatory
22 Stress Response in Young African American Men: Implications for Cardiovascular Risk. *Front*
23 *Cardiovasc Med.* 2021;8:745864.
- 24 79. Fonkoue IT, Marvar PJ, Norrholm S, Li Y, Kankam ML, Jones TN, Vemulapalli M,
25 Rothbaum B, Bremner JD, Le NA and Park J. Symptom severity impacts sympathetic
26 dysregulation and inflammation in post-traumatic stress disorder (PTSD). *Brain Behav Immun.*
27 2020;83:260-269.
- 28 80. Clavario P, De Marzo V, Lotti R, Barbara C, Porcile A, Russo C, Beccaria F, Bonavia M,
29 Bottaro LC, Caltabellotta M, Chioni F, Santangelo M, Hautala AJ, Griffo R, Parati G, Corra U
30 and Porto I. Cardiopulmonary exercise testing in COVID-19 patients at 3 months follow-up. *Int J*
31 *Cardiol.* 2021;340:113-118.
- 32 81. Rinaldo RF, Mondoni M, Parazzini EM, Pitari F, Brambilla E, Luraschi S, Balbi M,
33 Sferrazza Papa GF, Sotgiu G, Guazzi M, Di Marco F and Centanni S. Deconditioning as main
34 mechanism of impaired exercise response in COVID-19 survivors. *Eur Respir J.*
35 2021;58:2100870.
- 36 82. Borrego Rodriguez J, Berenguel Senen A, De Cabo Porras C, Gallango Brejano M,
37 Gigante Miravalles E, Morante Perea C, Serrano Blanco A, Gadella Fernandez A, Martinez
38 Camara A, Sanchez-Aguilera Sanchez-Paulete P, Lazaro Salvador M, Flores Hernan M, Lozano
39 Lazaro MG, Arias Palomares MA and Rodriguez Padial L. Cardiopulmonary exercise test in
40 patients with persistent dyspnea after COVID-19 disease. *European Heart Journal.* 2021;42.
- 41 83. Jahn K, Sava M, Sommer G, Schumann DM, Bassetti S, Siegemund M, Battagay M,
42 Stolz D, Tamm M, Khanna N and Hostettler KE. Exercise capacity impairment after COVID-19
43 pneumonia is mainly caused by deconditioning. *The European respiratory journal.*
44 2021;59:2101136.
- 45 84. Schaeffer MR, Cowan J, Milne KM, Puyat JH, Voduc N, Corrales-Medina V, Lavoie KL,
46 Mulloy A, Chirinos JA, Abdallah SJ and Guenette JA. Cardiorespiratory physiology, exertional

- 1 symptoms, and psychological burden in post-COVID-19 fatigue. *Respir Physiol Neurobiol.*
2 2022;302:103898.
- 3 85. Abdallah SJ, Voduc N, Corrales-Medina VF, McGuinty M, Pratt A, Chopra A, Law A,
4 Garuba HA, Thavorn K, Reid RER, Lavoie KL, Crawley A, Chirinos JA and Cowan J.
5 Symptoms, Pulmonary Function, and Functional Capacity Four Months after COVID-19. *Ann*
6 *Am Thorac Soc.* 2021;18:1912-1917.
- 7 86. Jimeno-Almazán A, Pallarés JG, Buendía-Romero Á, Martínez-Cava A and Courel-
8 Ibáñez J. Chronotropic Incompetence in Non-Hospitalized Patients with Post-COVID-19
9 Syndrome. *Journal of Clinical Medicine.* 2021;10:5434.
- 10 87. Ladlow P, O’Sullivan O, Houston A, Barker-Davies R, May S, Mills D, Dewson D,
11 Chamley R, Naylor J, Mulae J, Bennett AN, Nicol ED and Holdsworth DA. Dysautonomia
12 following COVID-19 is not associated with subjective limitations or symptoms but is associated
13 with objective functional limitations. *Heart Rhythm.* 2022;19:613-620.
- 14 88. Jouven X, Empana JP, Schwartz PJ, Desnos M, Courbon D and Ducimetiere P. Heart-rate
15 profile during exercise as a predictor of sudden death. *N Engl J Med.* 2005;352:1951-8.
- 16 89. Savonen KP, Lakka TA, Laukkanen JA, Halonen PM, Rauramaa TH, Salonen JT and
17 Rauramaa R. Heart rate response during exercise test and cardiovascular mortality in middle-
18 aged men. *European Heart Journal.* 2006;27:582-588.
- 19 90. Lauer MS, Francis GS, Okin PM, Pashkow FJ, Snader CE and Marwick TH. Impaired
20 Chronotropic Response to Exercise Stress Testing as a Predictor of Mortality. *JAMA.*
21 1999;281:524-529.
- 22 91. Joseph P, Arevalo C, Oliveira RKF, Faria-Urbina M, Felsenstein D, Oaklander AL and
23 Systrom DM. Insights From Invasive Cardiopulmonary Exercise Testing of Patients With
24 Myalgic Encephalomyelitis/Chronic Fatigue Syndrome. *Chest.* 2021;160:642-651.
- 25 92. Kotecha T, Knight DS, Razvi Y, Kumar K, Vimalasvaran K, Thornton G, Patel R,
26 Chacko L, Brown JT, Coyle C, Leith D, Shetye A, Ariff B, Bell R, Captur G, Coleman M,
27 Goldring J, Gopalan D, Heightman M, Hillman T, Howard L, Jacobs M, Jeetley PS,
28 Kanagaratnam P, Kon OM, Lamb LE, Manisty CH, Mathurdas P, Mayet J, Negus R, Patel N,
29 Pierce I, Russell G, Wolff A, Xue H, Kellman P, Moon JC, Treibel TA, Cole GD and Fontana
30 M. Patterns of myocardial injury in recovered troponin-positive COVID-19 patients assessed by
31 cardiovascular magnetic resonance. *Eur Heart J.* 2021;42:1866-1878.
- 32 93. Morrow AJ, Sykes R, McIntosh A, Kamdar A, Bagot C, Bayes HK, Blyth KG, Briscoe
33 M, Bulluck H, Carrick D, Church C, Corcoran D, Findlay I, Gibson VB, Gillespie L, Grieve D,
34 Hall Barrientos P, Ho A, Lang NN, Lennie V, Lowe DJ, Macfarlane PW, Mark PB, Mayne KJ,
35 McConnachie A, McGeoch R, McGinley C, McKee C, Nordin S, Payne A, Rankin AJ,
36 Robertson KE, Roditi G, Ryan N, Sattar N, Allwood-Spiers S, Stobo D, Touyz RM, Veldtman
37 G, Watkins S, Weeden S, Weir RA, Welsh P, Wereski R, Consortium C-, Mangion K and Berry
38 C. A multisystem, cardio-renal investigation of post-COVID-19 illness. *Nat Med.* 2022.
- 39 94. Aranyó J, Bazan V, Lladós G, Dominguez MJ, Bisbal F, Massanella M, Sarrias A,
40 Adeliño R, Riverola A, Paredes R, Clotet B, Bayés-Genís A, Mateu L and Villuendas R.
41 Inappropriate sinus tachycardia in post-COVID-19 syndrome. *Scientific Reports.* 2022;12:298.
- 42 95. Keteyian SJ, Brawner CA, Schairer JR, Levine TB, Levine AB, Rogers FJ and Goldstein
43 S. Effects of exercise training on chronotropic incompetence in patients with heart failure. *Am*
44 *Heart J.* 1999;138:233-40.

- 1 96. Kiilavuori K, Toivonen L, Näveri H and Leinonen H. Reversal of autonomic
2 derangements by physical training in chronic heart failure assessed by heart rate variability. *Eur*
3 *Heart J.* 1995;16:490-5.
- 4 97. Myers J, Hadley D, Oswald U, Bruner K, Kottman W, Hsu L and Dubach P. Effects of
5 exercise training on heart rate recovery in patients with chronic heart failure. *Am Heart J.*
6 2007;153:1056-63.
- 7 98. Fu Q and Levine BD. Exercise and non-pharmacological treatment of POTS. *Auton*
8 *Neurosci.* 2018;215:20-27.
- 9 99. George SA, Bivens TB, Howden EJ, Saleem Y, Galbreath MM, Hendrickson D, Fu Q
10 and Levine BD. The international POTS registry: Evaluating the efficacy of an exercise training
11 intervention in a community setting. *Heart Rhythm.* 2016;13:943-50.
- 12

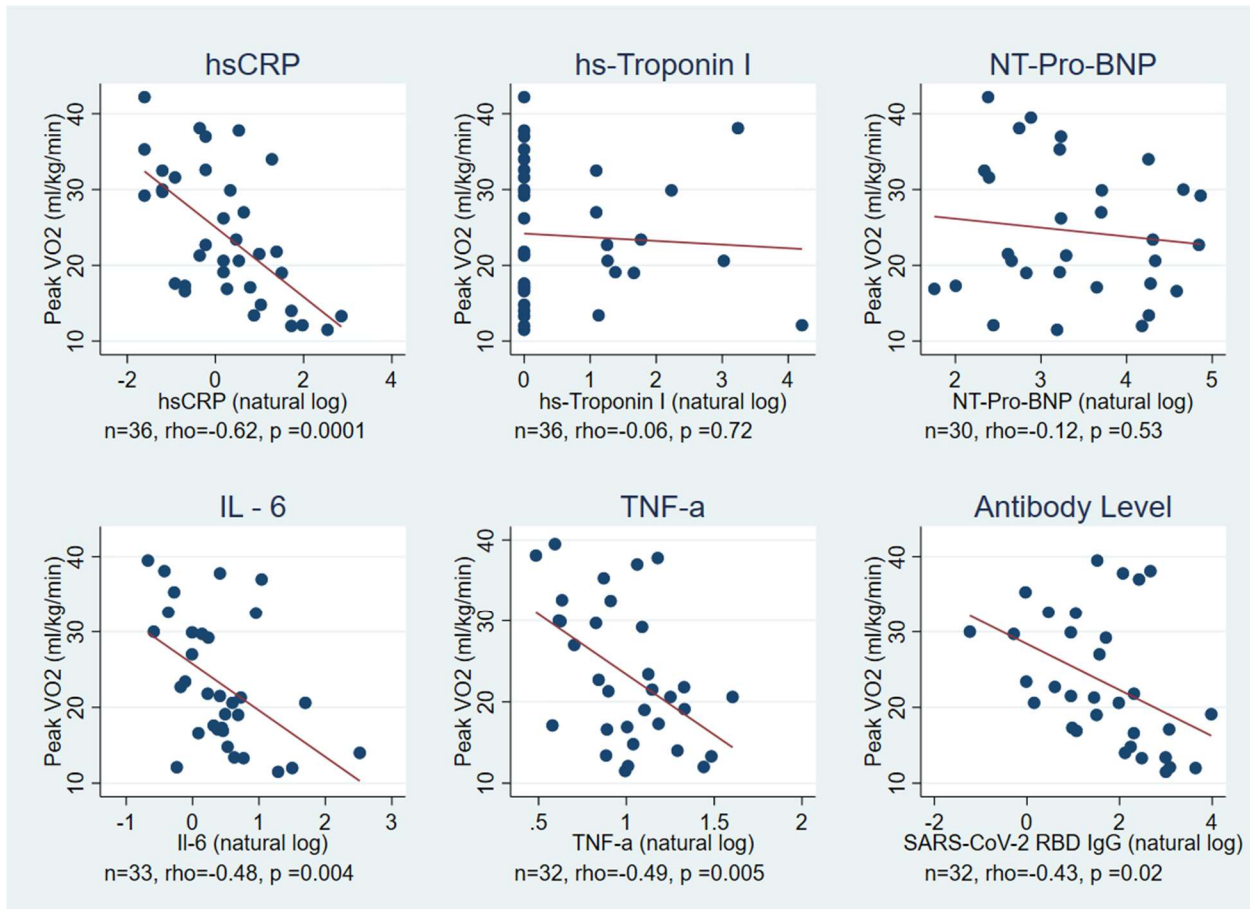
1 **Figure 1. Exercise Capacity by PASC Symptoms and by HR Response to Exercise (n=39)**



2
 3 **Figure 1 Legend:** On the top row are box and whisker plots of peak oxygen consumption (VO₂ in ml/kg/min on the
 4 left and percent of predicted on the right) among those without (blue) and with chest pain, dyspnea, palpitations, or
 5 fatigue (pink). Peak VO₂<85% was associated with PASC symptoms (OR 25.0, 95%CI 2.1 to 303; p=0.01). Mean
 6 peak VO₂ was 21.2±8.2 ml/kg/min among those with symptoms compared to 28.8±7.7 ml/kg/min among those
 7 without symptoms, a difference of -7.6 ml/kg/min (95%CI -12.9 to -2.3; p=0.006) or 89% vs 111% percent
 8 predicted (difference -22.1, 95%CI -36.5 to -7.7; p=0.003). After adjustment for age, sex, hospitalization for acute
 9 COVID-19, BMI category, and months since SARS-CoV-2 infection, peak VO₂ was 5.9 ml/kg/min lower among
 10 those with versus without symptoms (95%CI -9.6 to -2.3; p=0.002) or -21% (95%CI -35 to -7; p=0.006). On the
 11 bottom row are peak VO₂ (ml/kg/min on the left and percent predicted on the right) by reaching an AHRR >80%
 12 (normal chronotropic response to exercise) or <80% (blunted chronotropic response to exercise). Not reaching
 13 adjusted heart rate reserve >80% during CPET was associated with 15.6x higher odds of having reduced exercise
 14 capacity <85% predicted (95%CI 1.30-187; p=0.03).

15

1 **Figure 2. Correlations between Peak VO₂ and Previously Measured Biomarkers**

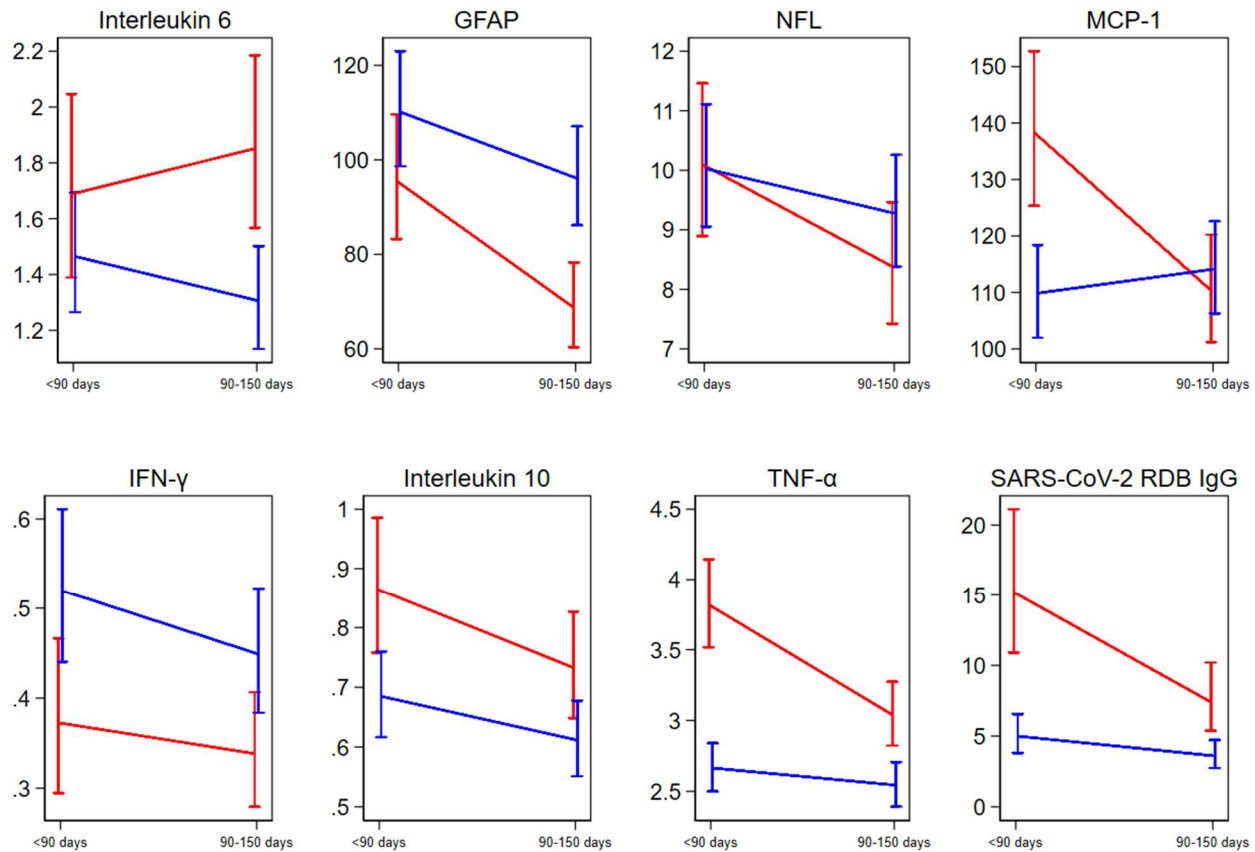


2

3 **Figure 2 Legend.** Scatterplots and linear trend lines of peak VO₂ by natural log of biomarkers including hsCRP
4 (n=36, median 6 months after infection), hs-Troponin I (n=36, median 6 months after infection), NT-Pro-BNP
5 (n=30, median 6 months after infection), IL-6 (n=33, median 3.5 months after infection), TNF- α (n=33, median 3.5
6 months after infection), and SARS-CoV-2 Receptor Binding Domain IgG Antibody Level (n=32, median 3.5
7 months after infection) with unadjusted Pearson's rho correlations and p-values listed. On unadjusted analysis,
8 hsCRP, IL-6, TNF- α and SARS-CoV-2 antibody levels were highly correlated with peak VO₂, but not hs-Troponin I
9 or NT-pro-BNP. After adjustment for age, sex, BMI, and time of testing, per doubling of biomarker level: peak VO₂
10 was -2.1 ml/kg/min for hsCRP (95%CI -3.4 to -0.8; p=0.003), -6.4ml/kg/min for TNF-alpha (95%CI -12.3 to -0.4;
11 p=0.04), -2.2 ml/kg/min for IL-6 (95%CI -4.7 to 0.4; p=0.10), and -1.1 ml/kg/min for antibody levels (95%CI -2.5 to
12 0.3; p=0.13).

13

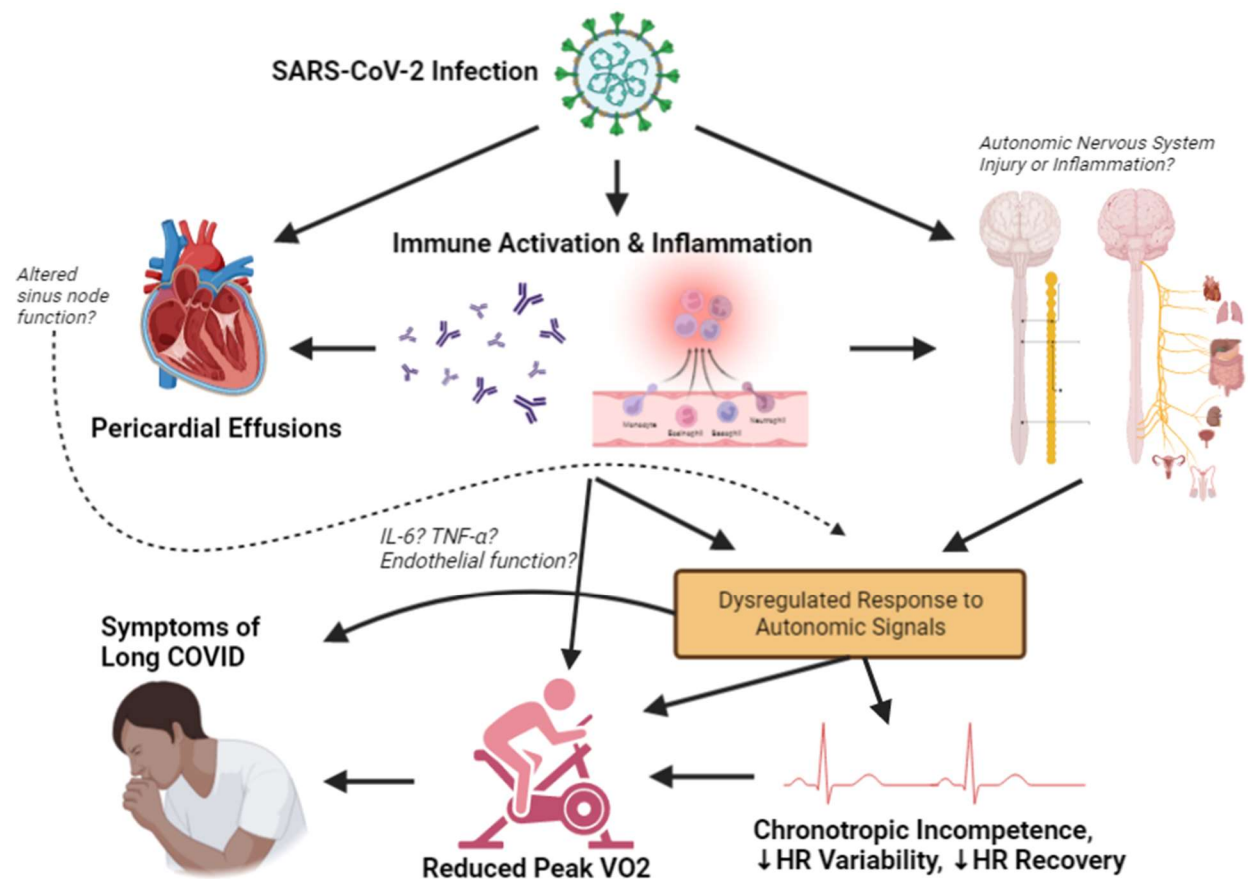
1 **Figure 3. Change in Biomarkers During the Early Post-Infection Period among those with Reduced**
2 **versus Preserved Exercise Capacity at ~17 months After Infection (n=32)**



3
4 **Figure 3 Legend:** Mean \pm standard error for serum biomarkers measured at <90 days from SARS-CoV-2 acute
5 infection (median 52 days from symptom onset) and between 90-150 days (median 124 days from symptom onset)
6 in 32 participants who underwent CPET. Biomarkers include interleukin 6 (IL-6), glial fibrillary acidic protein
7 (GFAP), neurofilament light chain (NFL), monocyte chemoattractant protein-1, interferon gamma [IFN- γ],
8 Interleukin 10 (IL-10), tumor necrosis factor alpha [TNF- α], and SARS-CoV-2 receptor-binding domain (RBD)
9 immunoglobulin G (IgG). Markers of inflammation decreased over time in both groups, except for IL-6, which
10 increased among those with reduced exercise capacity. MCP-1, TNF- α , and IgG were higher at the early time point
11 among those with reduced exercise capacity. TNF- α and IgG remained significantly elevated, and GFAP became
12 significantly lower at the second time point among those with reduced exercise capacity.

13

1 **Figure 4. Proposed Mechanisms of Reduced Exercise Capacity and Cardiopulmonary Symptoms in Post-**
2 **Acute COVID-19**



3
4 **Figure 4 Legend:** Figure made with biorender.com. We found that higher inflammatory markers (hsCRP, MCP-1,
5 TNF- α) and SARS-CoV-2 receptor binding domain IgG antibody levels measured within the first six months after
6 infection are associated with reduced exercise capacity measured on cardiopulmonary exercise testing more than 1
7 year after infection. We propose that persistent immune activation and systemic inflammation may cause a
8 dysregulated response to autonomic signaling that many manifest as chronotropic incompetence and cause reduced
9 exercise capacity and symptoms of Long COVID.

1 **Table 1: Baseline Characteristics for Participants with Advanced Cardiac Testing (n=46)**

		Symptoms (n=25)	No Symptoms (n=21)
Months since Infection, median (IQR)		17.3 (15.9, 17.6)	17.1 (14.4, 19.4)
Age (years), median (IQR)		50 (41, 57)	54 (42, 63)
Sex	Male	14 (54%)	16 (70%)
	Female	12 (46%)	7 (30%)
Race/ Ethnicity	Hispanic/Latino	7 (28%)	4 (22%)
	White	14 (56%)	12 (67%)
	Black/African American	2 (8%)	0 (0%)
	Asian	2 (8%)	2 (11%)
School completed	High School or less	6 (24%)	2 (12%)
	Some college/Associates degree	1 (4%)	1 (6%)
	4-year college	11 (44%)	7 (39%)
	Graduate school	7 (28%)	8 (44%)
Household income	<\$50,000	10 (40%)	3 (14%)
	\$50,001-\$100,000	3 (12%)	1 (5%)
	\$100,001-200,000	4 (16%)	5 (23%)
	>\$200,001	6 (24%)	9 (41%)
	Prefer not to answer	2 (8%)	4 (18%)
Body Mass Index (kg/m ²), mean±SD		31.6±7.7	27.5±4.3
BMI Category	24.9 or less	4 (17%)	4 (25%)
	25 to 29.9	8 (35%)	9 (56%)
	30 to 34.5	4 (17%)	3 (19%)
	35 or greater	7 (30%)	0 (0%)
Medical History	Hypertension	8 (32%)	4 (18%)
	Diabetes	6 (24%)	0 (0%)
	Asthma/COPD	8 (32%)	2 (9%)
	HIV	7 (27%)	5 (22%)
	Autoimmune Disease	2 (8%)	1 (5%)
	Cancer	1 (4%)	1 (6%)
	Kidney Disease	1 (4%)	0 (0%)
	Former or Current Tobacco use	12 (48%)	3 (14%)
Hospitalized		5 (19%)	3 (13%)
ICU		2 (40% of those hospitalized)	1 (33% hospitalized)

2 **Table 1 Legend:** Demographic information, past medical history, and severity of acute COVID-19 by
3 hospitalization/ICU status of the participants who underwent advanced cardiopulmonary testing. Abbreviations:
4 BMI=body mass index, ICU=intensive care unit

1 **Table 2: Cardiopulmonary Exercise Testing Parameters by Symptom Status (n=39)**

	Measure	Symptoms (n=23)	No Symptoms (n=16)	Adjusted OR (95%CI; p value)	Adjusted Difference (95%CI; p value)
Exertion	Work (Watts)	137±53	185±75	1.23 per -10 Watts (1.04 to 1.46; p=0.02)	-45 (-80 to -9; p=0.02)
	Perceived Exertion, Borg Scale 6-20	16.2±1.8	14.4±1.8	3.24 (1.32 to 7.96; p=0.01)	2.01 (0.80 to 3.21; p=0.002)
	Respiratory Exchange Ratio (RER, VCO_2/VO_2)	1.19 (1.13, 1.28)	1.20 (1.12, 1.29)	1.00 per -0.1 (0.47-2.12; p=0.99)	0.00 (-0.07 to 0.07; p=1.00)
Exercise Capacity	pVO ₂ , ml/kg/min	21.2±8.2	28.8±7.7	1.32 per -1 ml/kg/min (1.10 to 1.58; p=0.003)	-5.9 (-9.6 to -2.3; p=0.002)
	pVO ₂ , % predicted	89±23	111±20	1.77 per 10% decrease (1.15-2.72; p=0.009)	-20 (-35 to -6.6; p=0.006)
	pVO ₂ <85% predicted	13 (87%)	2 (13%)	25 (2.06 to 303; p=0.01)	--
	VO ₂ AT (ml/kg/min)	11.1±3.1	13.9±3.3	2.02 per -1 ml/kg/min (1.19 to 3.43; p=0.009)	-2.5 (-4.1 to -1.0; p=0.002)
	VO ₂ AT % Predicted pVO ₂	54.7±10.1	50.1±9.0	0.79 per 5% decrease (0.50-1.24; p=0.30)	1.40 (-5.2 to 8.0; p=0.67)
	Weber Class A (pVO ₂ >20) B (pVO ₂ 16-20) C (pVO ₂ 10-16)	12 (52%) 5 (22%) 6 (26%)	13 (81%) 2 (13%) 1 (6%)	p=0.09 Ref 6.26 (0.52-75) 35 (0.78-1563)	--
Ventilatory	Rest Respiratory Rate	16.8±4.7	15.6±6.1	1.08 (0.93-1.25; p=0.33)	1.5 (-2.7 to 5.6; p=0.47)
	Peak Respiratory Rate	37.2±7.6	40.5±10.2	0.94 (0.86-1.03; p=0.22)	-5.4 (-11.7 to 0.9; p=0.09)
	Tidal Volume at Peak (% FVC)	52.5±9.0	56.5±12.8	0.97 (0.90-1.04; p=0.40)	-1.1 (-9.3 to 7.1; p=0.78)
	Dead Space Ratio at Peak (V_D/V_T)	0.18±0.04	0.17±0.03	1.50 per 10% increase (1.03-2.18; p=0.03)	0.02 (-0.004 to 0.04; p=0.13)
	Breathing Reserve (MVV- V_{Emax})	43 [38,54]	35 [24,49]	1.05 (1.00-1.11; p=0.07)	11.4 (-1.0 to 23.7; p=0.07)
	Vent. Efficiency (V_E/VCO_2 slope) ^a	27.4±3.9	26.4±3.9	1.13 (0.93-1.37; p=0.23)	1.6 (-1.4 to 4.6; p=0.29)
	Vent. Class ^a I II	17 (74%) 6 (26%)	10 (67%) 5 (33%)	ref 0.96 (0.17-5.45; p=0.96)	--
Peripheral	VO ₂ to Work slope	10.7±3.7	9.9±3.4	0.97 (0.78 to 1.19; p=0.76)	-0.3 (-3.0 to 2.4; p=0.83)
Cardiac	VO ₂ pulse, ml/beat	12.9±2.5	14.8±5.0	1.26 per -1 ml/beat (0.99 to 1.61; p=0.07)	-2.5 (-4.8 to -0.07; p=0.04)

	SBP peak, mm Hg	169±34	186±25	0.88 per 5 mm Hg (0.73-1.04; p=0.91)	-8.7 (-31 to 13; p=0.42)
	DBP peak, mm Hg	87±13	83±12	1.03 (0.97-1.09; p=0.41)	6.1 (-3 to 15; p=0.17)
Heart Rate	Rest, bpm	80±16	75±11	1.02 (0.96-1.08; p=0.59)	-1.1 (-10.7 to 8.5; p=0.82)
	Peak, bpm	145±25	154±22	0.96 (0.92-1.01; p = 0.09)	-8.5 (-22 to 5; p=0.22)
	Peak, % Age Predicted	86±12%	93±11%	0.94 (0.88-1.01; p=0.08)	-5.7 (-14 to 2.8; p=0.18)
	Adjusted HR Reserve Achieved, %	72±23%	86±21%	0.97 (0.93-1.00; p=0.07)	-9.7 (-25 to 5.7; p=0.21)
	HR Recovery 1 min, bpm	14±7	12±10	1.09 (0.97-1.20; p=0.12)	4.7 (-0.9 to 10.3; p=0.10)

1 **Table 2 Legend:** We present both the odds ratios for the association between CPET parameters and symptoms
2 estimated using logistic regression with adjustment for age, sex, time since COVID, hospitalization for acute
3 COVID, BMI category and the estimated adjusted mean differences between those with and without symptoms
4 using linear regression adjusting for the same covariates. Sensitivity analysis incorporating history of hypertension,
5 diabetes, and lung disease had no substantive changes in effect sizes or confidence intervals. Sensitivity analyses
6 using only cardiopulmonary symptoms are shown in Supplemental Table 6: notably there is an earlier anaerobic
7 threshold among those with only cardiopulmonary symptoms. ^aVE/VCO₂ slope could not be determined for one
8 participant without symptoms. Abbreviations: AT=Anaerobic threshold; bpm=beats per minute; FVC=Forced Vital
9 Capacity; HR=heart rate; DBP=diastolic blood pressure; MVV=maximal voluntary ventilation; SBP=systolic blood
10 pressure; V_D/V_T=Dead space ratio; V_E = minute ventilation; VCO₂=carbon dioxide production; pVO₂=peak oxygen
11 consumption (VO₂); Vent=Ventilatory.

12

1 **Table 3. Cardiac Magnetic Resonance Imaging Parameters (n=39) by Symptom Status**

Meaning	Parameter	Symptoms (n=18)	No Symptoms (n=20)	Adjusted OR (95%CI; p value)	Adjusted Difference (95%CI; p value)
Months since SARS-CoV-2 Infection		15.5±3.2	16.2±3.9	--	--
Left Ventricular Size and Function	LVEDi, ml/m ²	67 [45, 77]	70 [58, 77]	1.07 per -5ml (0.80-1.44; p=0.65)	-1.8 (-11.1 to 7.6; p=0.70)
	LVESi, ml/m ²	24 [17, 32]	24 [21, 31]	0.91 per 5ml decrease (0.50-1.64; p=0.96)	0.7 (-4.0 to 5.3; p=0.77)
	LVEF, % LVEF <50%	62±6 0	63±6 0	1.39 per -5% (0.69-2.79; p=0.36)	-1.7 (-5.8 to 2.5; p=0.42)
	LV Mass Index, gm/m ²	46.1±7.9	48.5±7.6	1.12 per -5 gm/m ² (0.64 to 1.95; p=0.69)	-0.9 (-5.7 to 3.9; p=0.71)
	Stroke Volume, ml ^a	77.2±18.2	79.0±18.3	1.07 per -5 ml (0.85-1.34; p=0.56)	-5.6 (-10.9 to -0.2; p=0.04)
Right Ventricular Size and Function	RVEDi, ml/m ²	65 [54, 78]	71 [62, 85]	1.28 per -5ml (0.93 to 1.78; p=0.13)	-5.1 (-8.9 to -1.4; p=0.009)
	RVESi, ml/m ²	27 [23, 33]	31 [24, 36]	2.24 per -5ml (0.93 to 5.26; p=0.07)	-3.1 (-6.7 to 0.5; p=0.09)
	RVEF, % RVEF<50%	58±4 0	59±5 0	1.01 per -5% (0.393-2.58; p=0.98)	0.0 (-3.1 to 3.; p=0.99)
Markers of Cardiac Inflammation	T1 Native Mapping, ms	1201 [1152, 1255]	1216 [1155, 1258]	0.99 (0.94-1.00; p=0.25)	0.99x (0.96 to 1.01; p=0.30) ^b
	T2 Native Mapping, ms	47.1±5.6	47.8±4	0.95 (0.79-1.14; p=0.60)	-0.9 (-4.7 to 3.0; p=0.64)
	Extracellular Volume, %	28.0±6.3	23.9±4.3	1.58 (1.02-2.47; p=0.04)	4.0 (0.14 to 7.85; p=0.04)
Cardiac Fibrosis	Late Gadolinium Enhancement	0	0	--	--
Possible Pericardial Inflammation	Pericardial Effusion	6 (33%)	5 (25%)	0.70 (0.11-4.64; p=0.71)	--

2 **Table 3 Legend:** CMR parameters by cardiopulmonary symptoms given as mean±SD or median [intraquartile
3 range] for non-normally distributed variables. Logistic regression was used to estimated odds of having symptoms
4 for a given change in each parameter adjusted for age, sex, BMI category, hospitalization, and time since infection
5 and linear regression was used to estimate mean differences between those with and without symptoms adjusted for
6 the same likely confounders. Abbreviations: LVEDi=Left ventricular end diastolic volume indexed to body surface
7 area; LVESi=Left ventricular end diastolic volume indexed to body surface area; LVEF=left ventricular ejection
8 fraction; RVEDi=Right ventricular end diastolic volume indexed to body surface area; RVESi=Right ventricular end
9 diastolic volume indexed to body surface area; RVEF=Right ventricular Ejection Fraction. ^aLV stroke volumes are
10 reported but there is a high correlation between LV and RV stroke volumes (Pearson's r=0.96). T1 mapping time
11 was log transformed and then the difference was exponentiated.

12

1 **Supplemental Table 1: Symptom pattern by individual symptoms**

	Never had	Resolved between 1 st & second visit	Developed symptoms after first visit	Persistent Symptoms
Any symptom (including fatigue)	13	9	4	19
Chest pain, dyspnea, or palpitations	18	8	5	14
Chest pain	31	2	4	4
Dyspnea	22	6	3	10
Palpitations	24	4	4	7
Fatigue	18	2	8	13

2 **Supplemental Table 1 Legend:** Trajectory of Symptoms by specific symptoms and whether they were never
3 reported, reported at first visit and resolved prior to second visit, developed after the first visit, or were persistent.

4

1 **Supplemental Table 2. Differences in Peak VO₂ by Different Means of Classifying Symptoms**

		Symptom Present	Symptom Absent	Unadjusted Difference	Adjusted Difference
Dyspnea, Chest Pain, Palpitations, or Fatigue at Visit 2 (n=23)	VO ₂ (ml/kg/min)	21.2±8.2	28.8±7.7	-7.6 (-12.9 to -2.3; p=0.006)	-5.9 (-9.6 to -2.3; p=0.002)
	VO ₂ , % predicted	89.3±23%	111±20	-22 (-37 to -8; p=0.003)	-21 (-35 to -7; p=0.006)
Dyspnea, Chest Pain, or Palpitations at Visit 2 (n=17)	VO ₂ (ml/kg/min)	22.1±9.3	26.0±8.2	-3.9 (-1.7 to 9.6; p=0.17)	-2.7 (-6.9 to 1.5; p=0.20)
	VO ₂ , % predicted	92±26	103±23	-11 (-5 to 26; p=0.18)	-11 (27 to 5; p=0.17)
Self-Reported Reduced Exercise Capacity at Visit 2 (n=20)	VO ₂ (ml/kg/min)	23.6±9.1	24.6±8.6	-0.9 (-6.8 to 4.9; p=0.75)	-2.9 (-6.9 to 1.2; p=0.16)
	VO ₂ , % predicted	94±23	105±25	-11 (-27 to 4; p=0.15)	-13 (-28 to 2; p=0.09)
Persistent (n=12) vs Never Symptoms	VO ₂ (ml/kg/min)	20.1±8.6	27.3±8.8	-7.2 (-14.6 to 0.2; p=0.06)	-5.6 (-11 to 0.1; p=0.05)
	VO ₂ , % predicted	109±23	93±29	-17% (-39 to 5; p=0.12)	-17 (-40 to 6; p=0.14)
Symptoms at Visit 1, median 6 months (n= 20)	VO ₂ (ml/kg/min)	21.8±8.2	27.3±8.7	-5.5 (-11.0 to -0.03, p=0.048)	-3.0 (-7.2 to 1.0; p=0.13)
	VO ₂ , % predicted	93±25	103±23	-12 (-27 to +4; p=0.14)	-8.2 (-24 to 8; p=0.30)

2

3 **Supplemental Table 2 Legend:** Sensitivity analysis of peak VO₂ (ml/kg/min and % predicted) using different
 4 definitions of PASC. N listed for the number with that symptom finding.

5

1 **Supplemental Table 3. Echocardiographic Parameters at a Median 6 months after Infection by Presence of**
 2 **Cardiopulmonary Symptoms**

	Symptoms (n=56)	No Symptoms (n=64)	OR (95%CI; p value)
Left Ventricular Ejection Fraction	64+-6%	64+-7%	1.12 per 5% decrease (0.81 to 1.55; p=0.49)
LV Diastolic Dysfunction	5 (9%)	4 (7%)	1.34 (0.27-6.55; p=0.72)
LV Strain	-19.6+-2.4%	-19.6+-2.7%	1.05 (0.89 to 1.24; p=0.59)
RV Dilated	2 (4%)	2 (3%)	1.96 (0.25 to 15.5; p=0.52)
RV Function Reduced	0	2 (3%)	0.48 (0.02 to 10.7; p=0.64)
RV Strain	-24.0+-4.6%	-24.0+-4.5%	1.00 (0.89-1.11; p=0.95)
Pulmonary Artery Pressure PASP>35 mm Hg (PHTN)	23.4+-4.7 0	22.6+-4.2 0	1.39 per 5 mm Hg increase (0.80 to 2.43; p=0.25)
Pericardial Effusions	4 (9%)	0	13.2 (0.7 to 260; p=0.09)

3 **Supplemental Table 3 Legend:** Echocardiographic parameters by cardiopulmonary symptom status at echo visit
 4 (median 6 months). Odds ratios are adjusted for age, sex, time since SARS-CoV-2 infection, hospitalization for
 5 COVID-19; no change in sensitivity analysis additionally adjusting for medical history.

6

1 **Supplemental Table 4: Rest Spirometry by Presence of Cardiopulmonary Symptoms**

	Symptoms (n=23)	No Symptoms (n=15)	OR (95%CI; p value)
Forced Vital Capacity, % Pred	94±18%	103±13	0.97 (0.91-1.02; p=0.20)
Forced Expiratory Volume in 1 second, % Pred	100±19	105±13	1.00 (0.95-1.04; p=0.88)
FEV ₁ /FVC, % Pred	106±9	101±5	1.17 (1.01-1.34; p=0.03)
Slow Vital Capacity, % Pred	98±17	107±15	0.95 (0.93-1.03; p=0.32)
Inspiratory Capacity, % Pred	98±17	107±15	1.00 (0.96-1.04; p=0.94)
Expiratory Reserve Volume, % Pred	50±32	67±31	0.99 (0.96-1.01; p=0.31)
Maximum Voluntary Ventilation, % Pred	105±21	109±13	0.99 (0.94-1.03; p=0.58)

2 **Supplemental Table 4 Legend:** Rest spirometry parameters by symptom status at CPET. Odds ratios are adjusted
3 for age, sex, time since SARS-CoV-2 infection, hospitalization for COVID-19, and Asthma/COPD; no change in
4 sensitivity analysis additionally adjusting for additional medical history.

5

1 **Supplemental Table 5: Cardiopulmonary Exercise Testing Parameters by Symptom Status (n=39)**

	Measure	Symptoms (n=17)	No Symptoms (n=22)	Adjusted OR (95%CI; p value)	Adjusted Difference (95%CI; p value)
Exertion	Work (Watts)	144±60	167±71	1.24 per 10 watt decrease (0.98-1.56; p=0.07)	-15 (-57 to 26; p=0.46)
	Perceived Exertion, Borg Scale 6-20	15.9±1.7	15.1±2.1	1.58 (0.91-2.73; p=0.10)	1.03 (-0.3 to 2.4; p=0.14)
	Respiratory Exchange Ratio (VCO ₂ /VO ₂)	1.2 (1.1, 1.3)	1.2 (1.1, 1.3)	0.78 per 0.1 decrease (0.34-1.78; p=0.56)	0.02 (-0.06 to 0.09; p=0.62)
Exercise Capacity	Peak VO ₂ , ml/kg/min	22.1±9.3	26.0±8.2	0.89 (0.76-1.05; p=0.17)	-2.7 (-6.8 to 1.5; p=0.20)
	VO ₂ , % predicted	92±26	103±23	0.97 (0.93-1.01; p=0.14)	-10.9 (-26.7 to 4.9; p=0.17)
	Peak VO ₂ <85% predicted	9 (53%)	7 (32%)	6.36 (0.86-41.1; p=0.07)	21 (-10 to 52; p=0.18)
	VO ₂ AT (ml/kg/min)	10.8 (8.9, 12.6)	11.8 (10.2, 15.2)	0.85 (0.65-1.10; p=0.21)	-1.3 (-3.6 to 1.1; p=0.29)
	VO ₂ AT % Pred. Peak	47.8±8.2	53.0±12.8	2.13 (1.08-4.20; p=0.03)	-7.7 (-14.8 to -0.6; p=0.04)
Cardiac	VO ₂ pulse, ml/beat	12.7±2.6	14.4±4.4	0.89 (0.68-1.16; p=0.38)	-1.1 (-3.7 to 1.4; p=0.37)

2 **Supplemental Table 6 Legend:** In sensitivity analysis including only those with cardiopulmonary symptoms, the
3 main difference in findings is that an early anaerobic threshold as percent of predicted VO₂ was associated with
4 cardiopulmonary symptoms. The difference in peak VO₂ was no longer statistically significant.

5

1 **Supplemental Table 6: Cardiac MRI Findings and Association with Cardiopulmonary Symptoms (n=39)**

Meaning	Parameter	Symptoms (n=15)	No Symptoms (n=24)	Adjusted OR (95%CI; p value)	Adjusted Difference (95%CI; p value)
Months since SARS-CoV-2 Infection		14.9±3.3	16.0±3.7	0.92 (0.72 to 1.18; p=0.51)	-0.8 (-3.8 to 2.2; p=0.58)
Left Ventricular Size and Function	LVEDi, ml/m ²	67 [45, 77]	70 [58, 77]	1.39 per 5ml decrease (0.93-2.06; p=0.11)	-7.4 (-17 to 2.5; p=0.14)
	LVESi, ml/m ²	25 [17, 32]	25 [21, 31]	1.18 per 5ml decrease (0.62-2.24; p=0.62)	-1.2 (-6 to 4; p=0.63)
	LVEF, %	59.5 [57.0, 62.0]	63.0 [58.0, 68.0]	1.52 per 5% decrease (0.73-3.19; p=0.27)	-2.1 (-6.7 to 2.6; p=0.37)
	LVEF <50%	0	0		
	LV Mass Index, gm/m ²	46.5±7.9	49.25±7.4	1.26 per 5gm/m ² decrease (0.67 to 2.39; p=0.47)	-1.8 (-7.0 to 3.4; p=0.49)
	Stroke Volume, ml*	73.0±18.4	82.3±18.8	1.45 per 5 ml decrease (1.02-2.05; p=0.04)	-16 (-29 to -3; p=0.02)
Right Ventricular Size and Function	RVEDi, ml/m ²	64 [48, 79]	72 [64, 81]	1.69 per 5ml decrease (1.08 to 2.68; p=0.02)	-10.8 (-19.7 to -2.0; p=0.02)
	RVESi, ml/m ²	27 [22, 33]	30 [24, 35]	3.57 per 5ml decrease (1.09 to 11.8; p=0.04)	-4.4 (-8.2 to -0.6; p=0.03)
	RVEF, % RVEF<50%	58±4% 0	60±5% 0	1.50 per 5% decrease (0.53-4.24; p=0.44)	-1.1 (-4.5 to 2.3; p=0.52)
Markers of Cardiac Inflammation	T1 Native Mapping, ms	1201 [1163, 1253]	1216 [1155, 1258]	1.00 (0.99-1.01; p=0.40)	0.98x (0.92 to 1.05; p=0.51)
	T2 Native Mapping, ms	47.1±5.6	47.8±4	0.99 (0.83-1.19; p=0.95)	-0.2 (-4.4 to 4.0; p=0.93)
	Extracellular Volume, %	28.4±6.6	24.1±4.1	1.49 (0.97-2.29; p=0.07)	4.4 (0.51 to 8.30; p=0.03)
Cardiac Fibrosis	Late Gadolinium Enhancement	0	0	--	--
Possible Pericardial Inflammation	Pericardial Effusion	5 (25%)	6 (33%)	1.26 (0.16-10.0; p=0.83)	--

2 **Supplemental Table 7 Legend:** Smaller RV volumes and stroke volume were associated with cardiopulmonary
3 symptoms, which can be seen in deconditioning. However, LV Mass index was not significantly lower among those
4 with cardiopulmonary symptoms, and there was no difference incorporating hypertension in the models.
5 Extracellular volume was slightly higher among those with symptoms, similar to when patients with only fatigue
6 were included as symptomatic.

7

8

1 **Supplemental Table 7: Ambulatory Rhythm Monitoring Findings by Symptoms (n=38)**

Parameter	Symptoms (n=20)	No Symptoms (n=18)	Adjusted OR (95%CI; p value)	Adjusted difference (95%CI CI; p value)
Monitoring Time, days	6 (3, 11)	4 (3, 12)	--	--
Average Heart Rate, bpm	78±12	75±7	1.01 (0.92 to 1.10; p=0.90)	0.3 (-7 to 8; p=0.94)
Minimum HR, bpm	51±13	46±5	1.06 (0.94-1.19; p=0.33)	3.1 (-4.4 to 10.5; p=0.41)
Maximum HR, bpm	141±19	153±22	1.49 per 10 decrease (0.81 to 2.73; p=0.20)	-5.5 (-15.0 to 3.9; p=0.24)
Maximum HR, % predicted	85±9	92±12	1.84 per 10 decrease (0.70 to 4.84; p=0.21)	-3.3 (-9.3 to 2.6; p=0.26)
Adjusted HRR achieved, %	71±19	86±22	1.42 per 10 decrease (0.86 to 2.35; p=0.17)	-7.2 (-18.8 to 4.4; p=0.21)
Heart Rate Variability, SDNN	132 (111, 186)	147 (136, 168)	0.99 per 10 decrease (0.85 to 1.15; p=0.88)	2.5 (-36 to 41; p=0.89)
PAC, % burden	0.015 (0.01, 0.09)	0.01 (0.01, 0.04)	3.38 per 10-fold increase (0.36 to 31.6; p=0.29)	1.5x (0.56 to 4.5; p=0.36)
PVC, % burden	0.01 (0.01, 0.1)	0.01 (0, 0.01)	1.78 per 10-fold increase (0.86 to 3.66; p=0.12)	6.0x (0.51 to 72; p=0.15)
Sinus tachycardia, % burden	7 (2, 13)	4 (3, 6)	1.0 (0.95 to 1.09; p=0.62)	1.9 (-7.5 to 11.4; p=0.68)
Episodes of SVT* per week	0 (0, 4)	1 (0, 3)	0.98 (0.86 to 1.11; p =0.73)	-0.6 (-5.0 to 3.7; p=0.76)
Episodes of Nonsustained VT	0	1	--	--
Button Pushes	2.5 (1,6)	1 (0, 3)	2.0 if ≥1 (0.29 to 14; p=0.48) 4.9 if ≥2 (0.85 to 28; p=0.08) 7.9 if ≥3 (1.05 to 59; p=0.04)	3.3x (2.3-4.8; p<0.001)

2 **Table 4 Legend.** Values are reported as mean±SD or median (interquartile range) for non-normally distributed
3 variables assessed by histogram. The only statistically significant difference between those with and without
4 symptoms was the number of button pushes, which was 2.4 time more among those with symptoms (95CI% 1.7-3.4;
5 p<0.001), and lower maximum sinus heart rate consistent with chronotropic incompetence among those with
6 symptoms. One participant had SVT that correlated with palpitations by patient diary, but no episodes were
7 sustained longer than 30 second. Results were similar in sensitivity analysis when only cardiopulmonary symptoms
8 (n=14) palpitations (n=10) were considered (not shown).

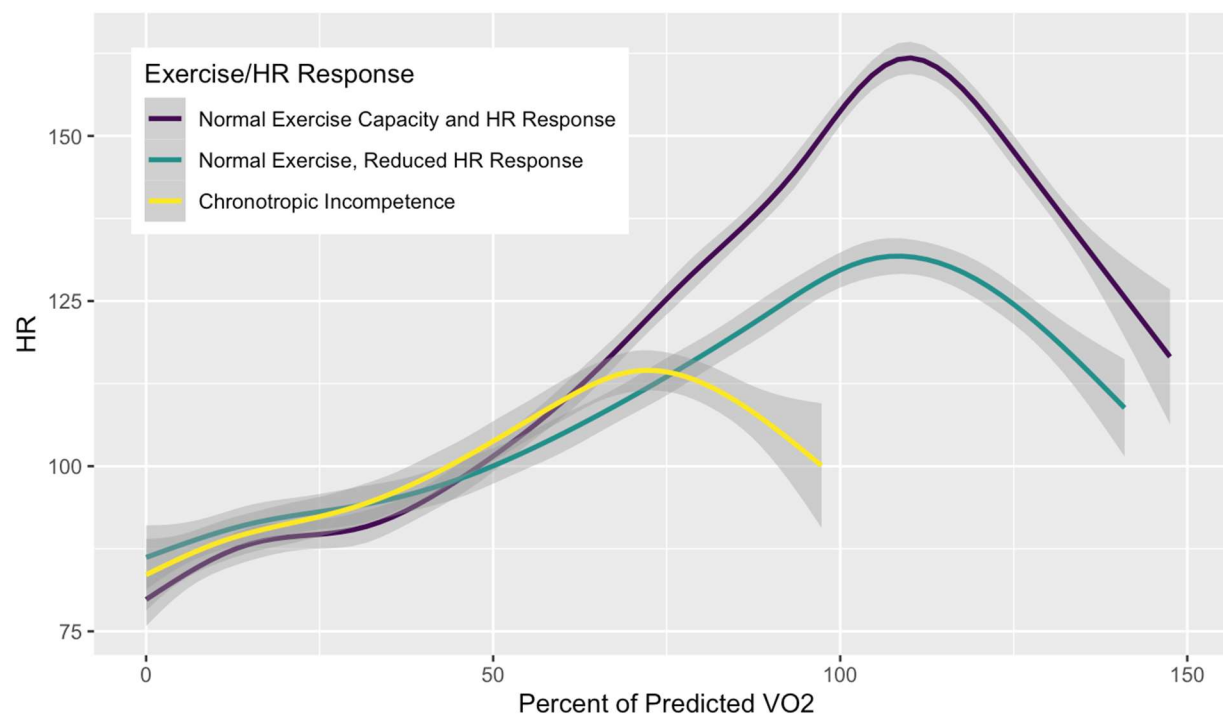
1 **Supplemental Table 8: Heart Rate Parameters by Chronotropy and Exercise Capacity**

Measure		Value, mean±SD	Unadjusted Difference (95%CI; p-value)	Adjusted Difference (95%CI; p value)
CPET Peak HR During Exercise, bpm	CI	117±10	-52 (-62 to -41; p<0.0001)	-48 (-56 to -39; p<0.001)
	Reduced HR	136±6	-32 (-42 to -22; p<0.0001)	-29 (-37 to -22; p<0.001)
	Normal	168±13		
CPET Peak HR, %Age Predicted Max	CI	72±5	-28% (-33 to -23; p<0.0001)	-30 (-36 to -25; p<0.001)
	Reduced HR	84±4	-16% (-21 to -11; p<0.0001)	-17 (-23 to -12; p<0.001)
	Normal	100±6		
CPET AHRR, %	CI	47±6	-53 (-61 to -45; p<0.0001)	-54 (-63 to -44; p<0.001)
	Reduced HR	66±8	-34 (-43 to -25; p<0.0001)	-35 (-43 to -26; p<0.001)
	Normal	100±11		
CPET HR Recovery at 1 minute, bpm	CI	9.1±6.1	-7.3 (-13.7 to -0.9; p=0.03)	-8.7 (-15.6 to -1.7; p=0.02)
	Reduced HR	8.1±7.5	-8.3 (-15.4 to -1.3; p=0.02)	-6.2 (-13.8 to 1.5; p=0.11)
	Normal	16.4±8		
Ambulatory Max sinus HR, bpm	CI	127±20	-32 (-49 to -15; p=0.001)	-24 (-41 to -6; p=0.01)
	Reduced HR	144±19	-14 (-32 to 3; p=0.11)	-7 (-23 to 9; p=0.39)
	Normal	159±18		
Ambulatory max HR, % Age Predicted Max	CI	81±12	-14 (-22 to -6; p=0.003)	-11 (-23 to 0.2; p=0.05)
	Reduced HR	89±15	-6 (-16 to 5; p=0.26)	-2.2 (-13 to 9; p=0.68)
	Normal	95±7		
Ambulatory AHRR, %	CI	60±24	-31 (-48 to -14; p=0.001)	-23 (-44 to -2; p=0.03)
	Reduced HR	79±27	-12 (-31 to 7; p=0.20)	-3 (-23 to 17; p=0.76)
	Normal	91±13		
Ambulatory Minimum HR, bpm	CI	58±17	14 (4 to 24; p=0.007)	8.4 (-2.1 to 19.0; p=0.11)
	Reduced HR	46±5	2 (-3 to 6; p=0.39)	0.1(-9.7 to 9.8; p = 0.99)
	Normal	44±5		
Ambulatory Average HR, bpm	CI	80±13	7.5 (-0.8 to 15.9; p=0.07)	2.3 (-7.5 to 12.2; p=0.63)
	Reduced HR	77.9±11	5.5 (-1.9 to 12.9; p=0.14)	4.0 (-5.1 to 13.1; p=0.37)
	Normal	72±5		
Ambulatory HR Variability SDNN	CI	107±40	-61 (-99 to -22; p=0.004)	-49 (-95 to -4; p=0.03)
	Reduced HR	143±52	-24 (-61 to 13; p=0.18)	-29 (-71 to 13; p=0.16)
	Normal	168±43		

2 **Supplemental Table 8 Legend. Table 5 Legend:** The first row of each measure is the mean±SD for those with
3 chronotropic incompetence (“CI”, VO₂ <85%, AHRR<80%, and no alternative findings, n=9); the second row is the
4 mean±SD for those with a reduced chronotropic response (VO₂ ≥85% and AHRR<80%, n=8) and the third row is
5 those with peak VO₂ ≥85% and AHRR≥80% (n=16). Adjusted differences are compared to those with normal
6 exercise capacity and heart rate response during exercise, and those with alternative explanations for reduced
7 exercise capacity were excluded. Results were similar whether considering absolute heart rate, percent of age
8 predicted, or adjusted heart rate reserve for both CPET and ambulatory measurements so only Abbreviations:
9 HR=heart rate, bpm=beats per minute, CI=chronotropic incompetence, AHRR=adjusted heart rate reserve,
10 SDNN=standard deviation n-to-n.

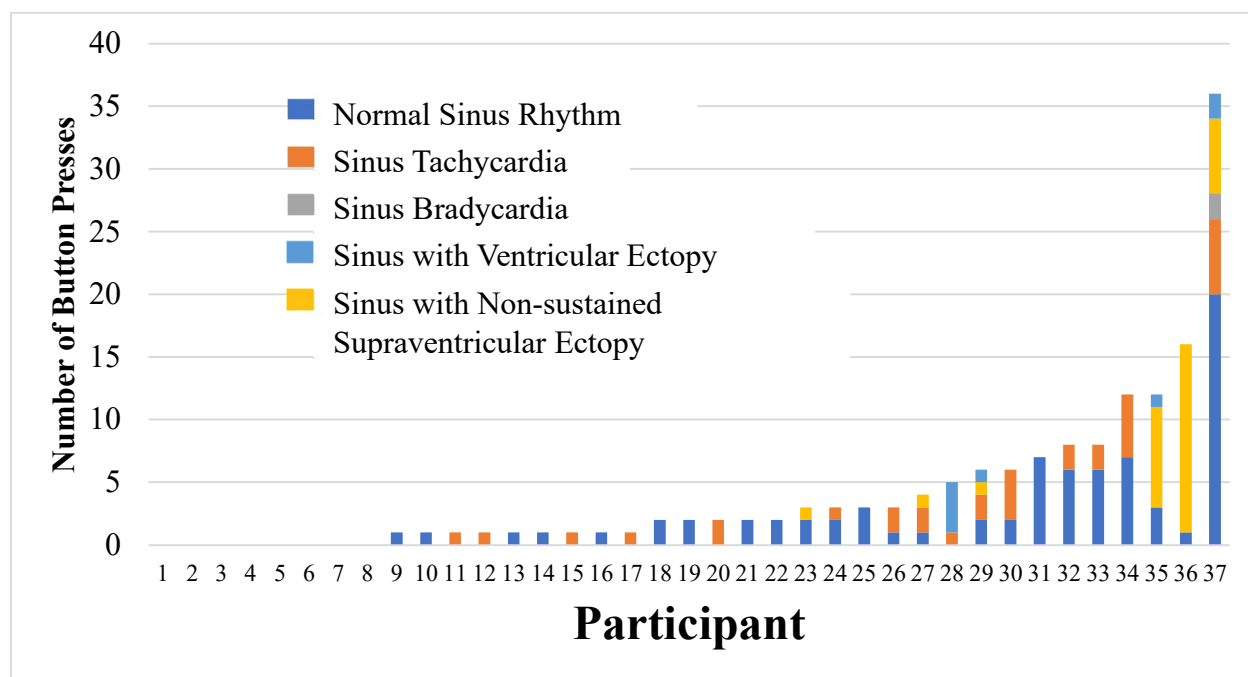
11

1 **Supplemental Figure 1. Heart Rate during Exercise by Chronotropic Response to Exercise**



2
3 **Supplemental Figure 1 Legend:** Mean heart rate is plotted as a function of exercise time normalized to percent of
4 predicted peak VO₂: in purple are those with normal exercise capacity (peak VO₂ >85% predicted and normal heart
5 rate response (n=16), in teal are those with normal exercise capacity (peak VO₂>85%; n=8) and blunted heart
6 rate response (AHRR<80%; n=8), and in yellow are those with chronotropic incompetence (n=9), as described in
7 Supplemental Table 8.

1 **Supplemental Figure 2. Cardiac Rhythms During Button Pushes (n=37)**



2

3 **Supplemental Figure 1 Legend:** Individual participant analysis of number of button pushes and

4 associated rhythm with each participant on the x axis and the number of times that individual pushed the

5 symptom button on the y axis with each identified rhythm coded by color. Most button pushes were

6 associated with sinus rhythm or sinus tachycardia, with supraventricular ectopy (premature atrial

7 contractions) present among a few individuals especially the 3 with the most button pushes.