

1 **Article title:**

2 A Randomized Phase 2/3 Study of Ensitrelvir, a Novel Oral SARS-CoV-2 3C-like Protease
3 Inhibitor, in Japanese Patients With Mild-to-Moderate COVID-19 or Asymptomatic SARS-CoV-
4 2 Infection: Results of the Phase 2a Part

5
6 **Authors:**

7 Hiroshi Mukae^a, Hiroshi Yotsuyanagi^b, Norio Ohmagari^c, Yohei Doi^{d,e}, Takumi Imamura^f,
8 Takuhiro Sonoyama^f, Takahiro Fukuhara^f, Genki Ichihashi^f, Takao Sanaki^g, Keiko Baba^g,
9 Yosuke Takeda^f, Yuko Tsuge^f, Takeki Uehara^{f,*}

10

11 **Affiliations:**

12 ^aDepartment of Respiratory Medicine, Nagasaki University Graduate School of Biomedical
13 Sciences, Nagasaki, Japan

14 ^bThe Institute of Medical Science, The University of Tokyo, Tokyo, Japan

15 ^cDisease Control and Prevention Center, National Center for Global Health and Medicine,
16 Tokyo, Japan

17 ^dDivision of Infectious Diseases, University of Pittsburgh School of Medicine, Pittsburgh,
18 Pennsylvania, USA

19 ^eDepartments of Microbiology and Infectious Diseases, Fujita Health University School of
20 Medicine, Toyoake, Japan

21 ^fDrug Development and Regulatory Science Division, Shionogi & Co., Ltd., Osaka, Japan

22 ^gPharmaceutical Research Division, Shionogi & Co., Ltd., Osaka, Japan

23

24 ***Corresponding author:**

25 Takeki Uehara

26 Drug Development and Regulatory Science Division, Shionogi & Co., Ltd.

27 Address: 8F, Nissay Yodoyabashi East, 3-3-13 Imabashi, Chuo-ku, Osaka 541-0042, Japan

28 Email: takeki.uehara@shionogi.co.jp

29 Telephone: +81-6-6209-6907

30

31 **ABSTRACT**

32 For the treatment of coronavirus disease 2019 (COVID-19), antiviral agents that can achieve
33 rapid severe acute respiratory syndrome coronavirus 2 (SARS-CoV-2) reduction are warranted.
34 This double-blind, phase 2a part of a phase 2/3 study assessed the efficacy and safety of
35 ensitrelvir, a novel oral SARS-CoV-2 3C-like protease inhibitor, in Japanese patients with mild-
36 to-moderate COVID-19 or asymptomatic SARS-CoV-2 infection. Sixty-nine patients enrolled
37 from 56 sites were randomized (1:1:1) to orally receive 5-day ensitrelvir fumaric acid (375 mg
38 on day 1 followed by 125 mg daily or 750 mg on day 1 followed by 250 mg daily) or placebo
39 and followed up until day 28. The primary outcome was change from baseline in SARS-CoV-2
40 viral titer. A total of 16, 14, and 17 patients in the ensitrelvir 125 mg, ensitrelvir 250 mg, and
41 placebo groups, respectively, were included in the intention-to-treat population (mean age: 38.8,
42 40.4, and 38.0 years, respectively). On day 4, the change from baseline in SARS-CoV-2 viral
43 titer (\log_{10} 50% tissue culture infectious dose/mL) in patients with positive viral titer and viral
44 RNA at baseline was greater with ensitrelvir 125 mg (mean [standard deviation], -2.42 [1.42]; P
45 = 0.0712) and 250 mg (-2.81 [1.21]; P = 0.0083) versus placebo (-1.54 [0.74]), and ensitrelvir
46 treatment reduced SARS-CoV-2 RNA by -1.4 to -1.5 \log_{10} copies/mL versus placebo. All
47 adverse events were mild to moderate. Ensitrelvir treatment demonstrated rapid SARS-CoV-2
48 clearance and was well tolerated in patients with mild-to-moderate COVID-19 or asymptomatic
49 SARS-CoV-2 infection (Japan Registry of Clinical Trials identifier: jRCT2031210350).

50

51 **KEYWORDS:** COVID-19, ensitrelvir, Japanese, proof-of-concept study, S-217622, SARS-
52 CoV-2 3C-like protease inhibitor, viral titer

53 **INTRODUCTION**

54 The coronavirus disease 2019 (COVID-19) outbreak, caused by infection with severe acute
55 respiratory syndrome coronavirus 2 (SARS-CoV-2), has quickly spread worldwide and poses a
56 significant public health burden. As of April 11, 2022, nearly 500 million confirmed cases of
57 COVID-19 and more than 6 million deaths associated with COVID-19 have been reported to the
58 World Health Organization (<https://covid19.who.int/>). Although at least one-third of
59 SARS-CoV-2 infections are asymptomatic (1), the risk of severe COVID-19 is high in
60 approximately one-fifth of infected individuals, particularly in those with underlying health
61 conditions (2). Shedding of infectious SARS-CoV-2 may persist for approximately 10 days in
62 asymptomatic individuals or patients with mild-to-moderate COVID-19 and up to 4 weeks in
63 those with severe disease after symptom onset (3-5). A high viral titer or long persistence of
64 infectious SARS-CoV-2 affects not only the disease severity of infected patients but may also
65 facilitate its spread to their close contacts. Moreover, although vaccination is the cornerstone for
66 controlling COVID-19, it is occasionally associated with post-vaccination breakthrough
67 infections (6). Therefore, from a public health point of view, rapid SARS-CoV-2 reduction in
68 infected patients, in addition to vaccination, is essential for disease control.

69 Several novel treatment options have demonstrated efficacy in reducing the risk of
70 hospitalization, death, or disease progression in patients with COVID-19 at risk of severe
71 disease. These include molnupiravir, a small-molecule ribonucleoside prodrug of
72 *N*-hydroxycytidine (7); nirmatrelvir, a SARS-CoV-2 3C-like (3CL) protease inhibitor, in
73 combination with ritonavir as a pharmacokinetic booster (8); the SARS-CoV-2 neutralizing
74 monoclonal antibody sotrovimab (9); and the neutralizing antibody cocktail
75 casirivimab/imdevimab (10). In addition, remdesivir has demonstrated efficacy in patients

76 hospitalized with COVID-19, with an acceptable safety profile (11). Additional oral antiviral
77 agents that can achieve rapid SARS-CoV-2 reduction as home-based treatment are required for
78 patients with mild-to-moderate COVID-19 or asymptomatic SARS-CoV-2 infection.

79 Ensitrelvir fumaric acid (S-217622; hereafter, ensitrelvir) is a novel oral SARS-CoV-2
80 3CL protease inhibitor that was discovered through joint research by Hokkaido University and
81 Shionogi & Co., Ltd. (12) and is currently developed by Shionogi & Co., Ltd. for the treatment
82 of COVID-19. As the SARS-CoV-2 3CL protease is essential for processing viral complex
83 proteins needed for viral replication (13), its inhibition by ensitrelvir is expected to prevent viral
84 replication. Indeed, ensitrelvir has shown antiviral efficacy in both *in vitro* and *in vivo* animal
85 studies (12, 14). Moreover, its safety, tolerability, and pharmacokinetic profile as single and
86 multiple oral doses have been assessed in a phase 1 study (R. Shimizu, et al., unpublished data).
87 Currently, a multicenter, randomized, double-blind, placebo-controlled, phase 2/3 study is
88 underway to assess the efficacy, safety, and pharmacokinetics of 5-day oral administration of
89 ensitrelvir (Japan Registry of Clinical Trials identifier: jRCT2031210350). Herein, we report the
90 results of the phase 2a part of this phase 2/3 study that assessed the antiviral efficacy and safety
91 of ensitrelvir in patients with mild-to-moderate COVID-19 or asymptomatic SARS-CoV-2
92 infection.

93

94 **RESULTS**

95 **Patient disposition.**

96 This phase 2a part was conducted from September 28, 2021, to January 1, 2022, at 56 sites
97 across Japan (Table S1). Of the 70 patients who provided informed consent and were screened, 1
98 was excluded prior to randomization due to protocol deviation. Among the 69 patients

99 randomized (ensitrelvir 125 mg, 22; ensitrelvir 250 mg, 23; and placebo, 24), 1 patient in the
100 ensitrelvir 125 mg group did not receive the study drug and was excluded from the safety
101 analysis set. After receiving the allocated intervention, 3 patients in the placebo group
102 discontinued treatment because of consent withdrawal (2 patients) or disease progression (1
103 patient). None of the female patients discontinued treatment because of pregnancy. Twenty-two
104 patients who tested negative with reverse transcription-polymerase chain reaction (RT-PCR) at
105 baseline (ensitrelvir 125 mg, 6; ensitrelvir 250 mg, 9; and placebo, 7) were excluded, resulting in
106 47 patients (ensitrelvir 125 mg, 16; ensitrelvir 250 mg, 14; and placebo, 17) in the intention-to-
107 treat (ITT) population. Following the exclusion of patients without detectable baseline viral titer,
108 43 patients (ensitrelvir 125 mg, 15; ensitrelvir 250 mg, 14; and placebo, 14) were included in the
109 modified ITT (mITT) population (Fig. 1). All analyses were performed in originally assigned
110 groups.

111 **Demographics and clinical characteristics.**

112 No notable difference was observed in the baseline demographics and clinical characteristics
113 across treatment groups (Table 1). The mean (standard deviation [SD]) age among the
114 47 patients included in the ITT population was 38.8 (12.5), 40.4 (10.7), and 38.0 (14.2) years in
115 the ensitrelvir 125 mg, ensitrelvir 250 mg, and placebo groups, respectively. None of the enrolled
116 patients were aged > 65 years, and those aged < 20 years were enrolled in the placebo group
117 only. Of the 47 patients, 29 (ensitrelvir 125 mg, 8 [50.0%]; ensitrelvir 250 mg, 8 [57.1%]; and
118 placebo, 13 [76.5%]) were men. A majority of the ITT population (40 patients) had mild-to-
119 moderate COVID-19, and 7 (ensitrelvir 125 mg, 2 [12.5%]; ensitrelvir 250 mg, 2 [14.3%]; and
120 placebo, 3 [17.6%]) were asymptomatic. Among the 47 patients, 42 and 5 were infected with the
121 Delta and Omicron variants, respectively. A majority of the patients in the ITT population had

122 been vaccinated (ensitrelvir 125 mg, 14 [87.5%]; ensitrelvir 250 mg, 12 [85.7%]; and placebo,
123 12 [70.6%]). All vaccinated patients had received 2 doses of mRNA SARS-CoV-2 vaccines,
124 except for 1 patient in the ensitrelvir 125 mg group who received only 1 dose. All patients in the
125 ITT population completed the 5-day treatment, except for 1 patient each in the ensitrelvir 125 mg
126 group (did not receive the study drug) and placebo group (discontinued the treatment after day
127 2).

128 **SARS-CoV-2 viral titer and viral RNA level.**

129 Generally, the SARS-CoV-2 viral titer, measured as \log_{10} 50% tissue culture infectious dose
130 (TCID₅₀)/mL, decreased with time for up to day 4 (3 days after treatment initiation) and
131 remained stable until day 21 in all treatment groups. The SARS-CoV-2 viral titer was
132 significantly lower in the ensitrelvir 125 mg (mean [SD], 0.94 [0.29]; $P = 0.0333$) and 250 mg
133 (0.85 [0.19]; $P = 0.0059$) groups versus the placebo group (1.74 [1.17]) on day 4 (Fig. 2A). The
134 change from baseline in SARS-CoV-2 viral titer on day 4 was greater in the ensitrelvir 125 mg
135 (mean [SD], -2.42 [1.42]; difference from placebo, -0.88; $P = 0.0712$) and 250 mg (-2.81 [1.21];
136 difference from placebo, -1.27; $P = 0.0083$) groups versus the placebo group (-1.54 [0.74]) (Fig.
137 2B).

138 The SARS-CoV-2 viral RNA level, measured using RT-PCR (\log_{10} copies/mL), was
139 significantly lower in the ensitrelvir 250 mg group versus the placebo group on day 4 (mean
140 [SD], 4.005 [0.765] versus 5.067 [1.117]; $P = 0.0084$) (Fig. 2C). The change from baseline in
141 viral RNA level (\log_{10} copies/mL) on day 4 was significantly greater in the ensitrelvir 125 mg
142 (mean [SD], -2.677 [1.063]; difference from placebo, -1.408; $P = 0.0029$) and 250 mg (-2.761
143 [1.291]; difference from placebo, -1.492; $P = 0.0039$) groups versus the placebo group (-1.269
144 [1.228]). A similar trend of greater change in viral RNA level versus the placebo group was

145 observed on day 6 in the ensitrelvir 125 mg ($P = 0.0108$) and 250 mg ($P = 0.0041$) groups and
146 day 9 in the ensitrelvir 125 mg group ($P = 0.0323$) (Fig. 2D).

147 **Proportion of patients with positive SARS-CoV-2 viral titer.**

148 The proportion of patients with positive SARS-CoV-2 viral titer decreased with time from
149 baseline to day 21 in all treatment groups. On day 4, the proportion of patients with positive viral
150 titer was significantly lower in the ensitrelvir 125 mg (26.7%, $P = 0.0205$) and 250 mg (14.3%, P
151 $= 0.0033$) groups versus the placebo group (71.4%), with a reduction of approximately 60% and
152 80%, respectively. Similarly, the proportion of patients with positive viral titer was significantly
153 lower in the ensitrelvir 125 mg group versus the placebo group (0% versus 30.8%, $P = 0.0276$)
154 on day 6 (Fig. S1).

155 **Time to viral clearance.**

156 The median time to viral clearance (first negative SARS-CoV-2 viral titer) was significantly
157 shorter in the ensitrelvir 125 mg (61.3 hours; difference from placebo, -49.8 hours; $P = 0.0159$)
158 and 250 mg (62.7 hours; difference from placebo, -48.4 hours; $P = 0.0205$) groups versus the
159 placebo group (111.1 hours). Viral clearance was achieved in all patients in the ensitrelvir 125
160 mg and 250 mg groups in less than 120 hours (Fig. 3).

161 **COVID-19 symptoms.**

162 The mean total score of the predefined 12 symptoms in patients with mild-to-moderate COVID-
163 19 showed a decreasing trend with time after treatment initiation in all groups (Fig. 4A).
164 Generally, the mean change from baseline in the total score of the 12 COVID-19 symptoms was
165 numerically greater in the ensitrelvir 125 mg and 250 mg groups versus the placebo group (Fig.
166 4B). A decreasing trend from baseline to 120 hours after dose in the 14 COVID-19 symptom
167 scores was observed. In particular, the scores for respiratory symptoms (stuffy or runny nose,

168 sore throat, and cough) and feverish symptoms showed a decreasing trend in patients treated with
169 ensitrelvir (Fig. S2).

170 **Effects in preventing COVID-19 exacerbations (*post hoc* analysis).**

171 After treatment initiation, 2 of 14 patients in the placebo group recorded ≥ 3 on the 8-point
172 ordinal scale of patients' condition (exacerbation), both of whom were unvaccinated. None of the
173 patients in the ensitrelvir 125 mg (unvaccinated, 2; vaccinated, 11) and 250 mg (unvaccinated, 2;
174 vaccinated, 10) groups recorded ≥ 3 on the 8-point ordinal scale (Table S2).

175 **Safety.**

176 Treatment-emergent adverse events (TEAEs) were reported in 11 (52.4%), 16 (69.6%), and 9
177 (37.5%) patients in the ensitrelvir 125 mg, ensitrelvir 250 mg, and placebo groups, respectively,
178 all of which were mild to moderate in severity. The most common TEAE observed across groups
179 was a decrease in high density lipoprotein (HDL; 3 [14.3%], 12 [52.2%], and 2 [8.3%] patients
180 in the ensitrelvir 125 mg, ensitrelvir 250 mg, and placebo groups, respectively) (Table 2).

181 Transient decrease and increase in HDL and blood triglyceride levels, respectively, were
182 observed in the ensitrelvir groups following treatment initiation but were resolved without
183 additional treatment (Fig. S3). Additionally, an increase in total bilirubin and iron levels was
184 observed in patients receiving ensitrelvir (Fig. S4). Total bilirubin increase observed in 2 patients
185 in the ensitrelvir 250 mg group (Table 2) and iron increase observed in 1 patient in the ensitrelvir
186 250 mg group were reported as TEAEs. These changes were asymptomatic and transient, and
187 resolved without additional treatment. No obvious changes compared with placebo were
188 observed in haptoglobin, reticulocytes, and low-density lipoprotein in the ensitrelvir groups, and
189 no laboratory or clinical signs of hemolysis were observed. No serious TEAEs, deaths, or TEAEs
190 leading to treatment discontinuation were reported (Table 2).

191 Treatment-related AEs were reported in 5 (23.8%) and 10 (43.5%) patients in the
192 ensitrelvir 125 mg and 250 mg groups, respectively. A decrease in HDL and increase in blood
193 triglycerides were observed to be the most common ($\geq 5\%$ in either group) treatment-related AEs
194 (Table 2). All treatment-related AEs resolved without sequelae, except for mild
195 hyperbilirubinemia (total bilirubin level just above the normal range) that lasted until the last
196 visit (day 28) in 1 patient in the 250 mg group.

197

198 **DISCUSSION**

199 This is the first clinical study to assess the antiviral efficacy and safety of a novel oral
200 SARS-CoV-2 3CL protease inhibitor, ensitrelvir, in patients with mild-to-moderate COVID-19
201 or asymptomatic SARS-CoV-2 infection. This study used infectious viral titer as the primary
202 endpoint to assess the antiviral efficacy of anti-SARS-CoV-2 agents. A majority of the enrolled
203 patients had been vaccinated, which reflects the real-world scenario. Our results demonstrated
204 promising antiviral efficacy of 5-day oral administration of ensitrelvir in rapid viral titer and viral
205 RNA reduction in this patient population. Patients with mild-to-moderate COVID-19 who were
206 treated with ensitrelvir showed a trend of symptom relief. Treatment with ensitrelvir was
207 generally well tolerated.

208 As patients with COVID-19 may shed infectious viruses for up to 4 weeks depending on
209 the disease severity (3-5), rapid viral clearance is crucial for disease treatment. In the current
210 phase 2a part, reduction in viral titer and viral RNA was observed after ensitrelvir treatment; this
211 efficacy is comparable with or greater than the findings from clinical trials for other anti-SARS-
212 CoV-2 infection agents (7, 8, 15). Moreover, viral RNA reduction with ensitrelvir was
213 substantial, with a difference from placebo on day 4 reported at -1.4 to -1.5 \log_{10} copies/mL. The

214 difference from placebo in viral RNA reduction reported in previous randomized clinical trials
215 on day 5 was $-0.547 \log_{10}$ copies/mL (least-squares mean) for molnupiravir 800 mg (15) and -
216 $0.868 \log_{10}$ copies/mL (adjusted mean) for nirmatrelvir plus ritonavir (8). In addition, previous
217 randomized clinical trials of anti-SARS-CoV-2 agents were conducted in unvaccinated patients
218 (7, 8, 15), whereas most patients in our study had been vaccinated. These results indicate the
219 efficacy of ensitrelvir in the rapid clearance of SARS-CoV-2. From the efficacy of ensitrelvir in
220 rapid viral titer and viral RNA reduction, favorable clinical outcomes, such as earlier symptom
221 relief or prevention of severe COVID-19, are expected.

222 Transient decrease in HDL and increase in triglycerides was observed as TEAEs in the
223 current phase 2a part, which was consistent with the findings derived from the previous phase 1
224 study of ensitrelvir (R. Shimizu, et al., unpublished data). In addition, transient and
225 asymptomatic increase in total bilirubin and iron levels, which was not associated with signs of
226 hepatic or hematologic abnormalities, was observed following ensitrelvir treatment. However,
227 the exact mechanism of these laboratory value changes is yet to be elucidated and further
228 investigation is warranted.

229 This study has some limitations. First, the small sample size and high vaccination rate
230 limit concrete conclusions to be drawn from analyses of the clinical outcomes, such as COVID-
231 19 symptoms including respiratory symptoms and disease exacerbation. Second, most of the
232 enrolled patients were infected with the SARS-CoV-2 Delta variant. Our *in vitro* study results
233 suggested that ensitrelvir has antiviral activity against the Omicron variant, which is the most
234 predominant SARS-CoV-2 variant at the time of publication (12). Thus, the clinical efficacy of
235 ensitrelvir against the Omicron variant or future variants of concern needs to be assessed in the
236 subsequent part of this study. In addition, statistical analyses in subgroups, such as minor

237 patients and asymptomatic patients, were not feasible owing to the limited number of patients.
238 Further assessment of the safety and clinical efficacy of ensitrelvir in subsequent clinical studies
239 is warranted.

240 In conclusion, treatment with 5-day oral administration of ensitrelvir demonstrated a
241 rapid clearance of SARS-CoV-2 and was well tolerated in patients with mild-to-moderate
242 COVID-19 or asymptomatic SARS-CoV-2 infection. The results support further clinical
243 development of ensitrelvir through large-scale clinical studies for the treatment of mild-to-
244 moderate COVID-19 or asymptomatic SARS-CoV-2 infection.

245

246 **MATERIALS AND METHODS**

247 **Study design.**

248 Patients with mild-to-moderate COVID-19 or asymptomatic SARS-CoV-2 infection were
249 randomized (1:1:1) to receive ensitrelvir fumaric acid tablet 125 mg, 250 mg, or matching
250 placebo. Patients allocated to the ensitrelvir groups received a loading dose of ensitrelvir on day
251 1 (375 mg for the 125 mg group and 750 mg for the 250 mg group), followed by the maintenance
252 dose (125 mg for the 125 mg group and 250 mg for the 250 mg group) on days 2 through 5
253 without dose modification.

254 This study was conducted in accordance with the principles of the Declaration of
255 Helsinki, Good Clinical Practice guidelines, and other applicable laws and regulations. The study
256 was reviewed and approved by the institutional review boards of all participating institutions
257 listed in Table S1. All patients or their legally acceptable representatives provided written
258 informed consent.

259 **Patients.**

260 Patients (aged 12 to <70 years; body weight \geq 40 kg for those aged <20 years to avoid increased
261 drug exposure) who tested positive for SARS-CoV-2 within 120 hours prior to randomization
262 were eligible for study enrollment. Results of SARS-CoV-2 antigen tests or nucleic acid
263 detection testing, including RT-PCR, were used to determine positive SARS-CoV-2 infection.
264 Patients with mild-to-moderate COVID-19 should have had at least 1 moderate or severe
265 symptom among the 12 COVID-19 symptoms (stuffy or runny nose, sore throat, shortness of
266 breath, cough, low energy or tiredness, muscle or body aches, headache, chills or shivering,
267 feeling hot or feverish, nausea, vomiting, or diarrhea; Table S3), based on the United States Food
268 and Drug Administration guidance for assessing COVID-19-related symptoms
269 ([https://www.fda.gov/regulatory-information/search-fda-guidance-documents/assessing-covid-](https://www.fda.gov/regulatory-information/search-fda-guidance-documents/assessing-covid-19-related-symptoms-outpatient-adult-and-adolescent-subjects-clinical-trials-drugs)
270 [19-related-symptoms-outpatient-adult-and-adolescent-subjects-clinical-trials-drugs](https://www.fda.gov/regulatory-information/search-fda-guidance-documents/assessing-covid-19-related-symptoms-outpatient-adult-and-adolescent-subjects-clinical-trials-drugs)), or
271 worsening of at least 1 moderate or severe COVID-19 symptom. Patients without the 12
272 COVID-19 symptoms listed above, anosmia, or dysgeusia within 2 weeks prior to randomization
273 were classified as those with asymptomatic SARS-CoV-2 infection.

274 Key exclusion criteria were an awake oxygen saturation of \leq 93% (room air); need for
275 oxygen administration; worsening of COVID-19 within 48 hours from randomization strongly
276 suspected by the investigator; suspected active and systemic infections requiring treatment
277 (except for COVID-19); current or chronic history of moderate or severe liver disease, known
278 hepatic or biliary abnormalities (except for Gilbert syndrome or asymptomatic gallstones), or
279 kidney disease; recent blood donation (\geq 400 mL within 12 weeks or \geq 200 mL within 4 weeks
280 prior to enrollment); use of drugs for COVID-19 within 7 days; and use of strong CYP3A

281 inhibitors or inducers or St John's wort products within 14 days prior to randomization.

282 Pregnant, possibly pregnant, or breastfeeding women were also excluded.

283 **Randomization and blinding.**

284 Randomization of patients was performed using an interactive response technology system. For

285 patients with mild-to-moderate COVID-19, the time from the onset of COVID-19 to

286 randomization (<72 hours/≥72 hours) and the presence or absence of COVID-19 vaccination

287 were used as stratification factors. For those with asymptomatic SARS-CoV-2 infection, the

288 presence or absence of COVID-19 vaccination was used as a stratification factor.

289 All patients and study staff were blinded to treatment until the completion of the 28-day

290 follow-up period and database lock, except for designated persons at the sponsor and contract

291 research organization in charge of statistical analyses. Measurements of SARS-CoV-2 viral titer

292 and viral RNA level prior to database lock were allowed in an anonymized manner to avoid

293 unexpected unblinding. Emergency unblinding per the investigator's request was allowed only in

294 the event of AEs to determine an appropriate therapy for the patient.

295 **Treatment.**

296 Patients received allocated study drugs orally (ensitrelvir fumaric acid 125 mg, 250 mg, or

297 placebo tablets), which were indistinguishable in appearance, labeling, and packaging.

298 Use of drugs for the treatment of COVID-19; antiviral, antibacterial, or antifungal drugs

299 (except for external use); antipyretic analgesics other than acetaminophen; antitussives and

300 expectorants; combination cold remedy; and CYP3A substrates was prohibited from study

301 initiation to day 28 or study discontinuation. Strong CYP3A inhibitors or inducers, strong P-

302 glycoprotein or breast cancer resistance protein inhibitors, and other transporter substrates were

303 prohibited from study initiation to 10 days after the last administration of the study drug or study

304 discontinuation. Treatment was discontinued in the event of exacerbation of COVID-19, serious
305 or intolerable AEs, pregnancy, or liver function abnormalities.

306 **Outcomes and assessments.**

307 The primary outcome was a change from baseline (day 1, before drug administration) in SARS-
308 CoV-2 viral titer on days 2, 4, 6, 9, 14, and 21 (or study discontinuation). Secondary outcomes
309 included SARS-CoV-2 viral RNA level, proportion of patients with a positive viral titer, and
310 time to viral clearance (first negative SARS-CoV-2 viral titer). SARS-CoV-2 viral titer
311 measurement and RT-PCR using nasopharyngeal swabs were performed at Shionogi
312 TechnoAdvance Research (Osaka, Japan) and LSI Medience (Tokyo, Japan), respectively.

313 Clinical outcomes included the total score of the 12 COVID-19 symptoms, proportion
314 of patients with anosmia, and those with dysgeusia following treatment in patients with mild-to-
315 moderate COVID-19. Patients assessed their COVID-19 symptoms on a questionnaire (Table
316 S3) and recorded the scores in a diary twice daily (morning and evening) until day 9 and once
317 daily (evening) from days 10 to 21. Additionally, disease exacerbations were assessed as a *post*
318 *hoc* analysis in patients with mild-to-moderate COVID-19. Patients' conditions (exacerbation)
319 were assessed by the investigator using an 8-point ordinal scale (0 = Asymptomatic to 7 = Death,
320 ≥ 3 corresponds to hospitalization or worse symptoms; Table S4) on day 1 (before drug
321 administration) and days 2, 4, 6, 9, 14, 21, and 28 (or study discontinuation).

322 Safety was assessed through TEAEs coded using Medical Dictionary for Regulatory
323 Activities version 24.0. Laboratory tests, vital sign measurements, and electrocardiography were
324 additionally performed. All safety data were evaluated by an independent data and safety
325 monitoring board. Pregnancy tests were performed on day 1 (before drug administration), day
326 28, and at the investigator's discretion for women of childbearing potential.

327

328 **Statistical analyses.**

329 To compare change from baseline in SARS-CoV-2 viral titer between each treatment group and
330 the placebo group, 11 patients per group with COVID-19 were required to provide 82.3% power,
331 assuming a difference of 2.5 log, a common SD of 2.2 log, and a 2-sided significance level of
332 10%. Based on the phase 2a study of molnupiravir, which reported an infectious SARS-CoV-2
333 rate of 44% at baseline (15), it was assumed that 50% of patients enrolled in this phase 2a part
334 would have positive RT-PCR results and detectable viral titer at baseline. Thus, the sample size
335 was set to 23 patients per group (69 in total).

336 All randomized patients who tested positive with RT-PCR at baseline were included in
337 the ITT population. All randomized patients who tested positive with RT-PCR and had
338 detectable SARS-CoV-2 viral titer at baseline were included in the mITT population. All
339 randomized patients who received at least 1 dose of the study drug were included in the safety
340 analysis set.

341 A positive SARS-CoV-2 viral titer was defined as $\geq 0.8 \log_{10}$ TCID₅₀/mL. SARS-CoV-2
342 viral titer and SARS-CoV-2 viral RNA level were compared between each of the ensitrelvir
343 groups and placebo using the van Elteren test. Median time to viral clearance was compared
344 between each of the ensitrelvir groups and placebo using a stratified log-rank test. The
345 proportion of patients with positive SARS-CoV-2 viral titer was compared between each of the
346 ensitrelvir groups and placebo using the Mantel-Haenszel test. All statistical tests were
347 performed with stratification by study cohort (mild to moderate or asymptomatic) and at a 2-
348 sided significance level of 0.05.

349 No prespecified statistical hypothesis was set because this phase 2a part was conducted
350 in an exploratory manner. No imputation was performed for missing data, and multiplicity was
351 not considered. All analyses were performed using SAS version 9.4 (SAS Institute, Inc., Cary,
352 NC, USA).

353 **Data availability.**

354 Shionogi & Co., Ltd. is committed to disclosing the synopses and results of its clinical trials and
355 sharing clinical trial data with researchers on reasonable request. For further details, please refer
356 to the websites of Shionogi & Co., Ltd.

357 ([https://www.shionogi.com/shionogi/global/en/company/policies/shionogi-group-clinical-trial-](https://www.shionogi.com/shionogi/global/en/company/policies/shionogi-group-clinical-trial-data-transparency-policy.html)
358 [data-transparency-policy.html](https://www.shionogi.com/shionogi/global/en/company/policies/shionogi-group-clinical-trial-data-transparency-policy.html)) and Vivli (<https://vivli.org/>).

359

360 **ACKNOWLEDGMENTS**

361 The authors and research team thank all patients involved in this study and Masahiro Kinoshita
362 and Satoshi Kojima (Shionogi & Co., Ltd.) for their support for manuscript development.

363 Support for study monitoring and data management was provided by EPS Corporation and
364 funded by Shionogi & Co., Ltd. Medical writing and editorial assistance was provided by Mami
365 Hirano, MS, of Cactus Life Sciences (part of Cactus Communications) and funded by Shionogi
366 & Co., Ltd. All authors retained full ownership of the manuscript content and approved the final
367 draft for submission.

368 This study was sponsored by Shionogi & Co., Ltd. and financially supported by the
369 Japan Agency for Medical Research and Development. Employees of Shionogi & Co., Ltd.
370 participated in and approved the design and conduct of the study, wrote the protocol, and were

371 involved in the collection, management, analysis, and interpretation of data. Institutional authors
372 reviewed and approved the protocol and collected and interpreted the data.

373 H. Mukae has received funding relevant to the submitted work from Shionogi and grants
374 from Taisho Pharma; lecture fees from Pfizer, MSD, Shionogi, and Taisho Pharma; and advisory
375 fees from Pfizer, MSD, and Shionogi outside the submitted work. H. Yotsuyanagi has received
376 consulting fees from Shionogi, lecture fees from Shionogi and ViiV Healthcare, and travel
377 support from Shionogi outside the submitted work. He serves as an advisory board member of
378 Shionogi and President of the Japanese Society of Infectious Diseases. Y. Doi has received
379 grants from Shionogi and Entasis; consulting fees from Shionogi, Meiji Seika Pharma, Gilead
380 Sciences, GSK, MSD, Chugai, and bioMerieux; and lecture fees from MSD, AstraZeneca,
381 Shionogi, and Teijin Healthcare outside the submitted work and serves as an advisory board
382 member of FujiFilm. T. Imamura, T. Sonoyama, T. Fukuhara, G. Ichihashi, T. Sanaki, K. Baba,
383 Y. Takeda, Y. Tsuge, and T. Uehara are full-time employees of Shionogi & Co., Ltd. and may
384 have stocks or stock options. N. Ohmagari declares no conflict of interest.

385 **Author contributions:** H. Mukae: Conceptualization, Data curation, Supervision, Writing –
386 review & editing. H. Yotsuyanagi: Conceptualization, Data curation, Writing – review & editing.
387 N. Ohmagari: Conceptualization, Data curation, Writing – review & editing. Y. Doi:
388 Conceptualization, Data curation, Writing – review & editing. T. Imamura: Conceptualization,
389 Formal analysis, Supervision, Visualization, Writing – review & editing. T. Sonoyama:
390 Conceptualization, Supervision, Writing – review & editing. T. Fukuhara: Conceptualization,
391 Data curation, Project administration, Writing – review & editing. G. Ichihashi:
392 Conceptualization, Data curation, Project administration, Writing – review & editing. T. Sanaki:
393 Conceptualization, Data curation, Formal analysis, Methodology, Writing – review & editing. K.

394 Baba: Conceptualization, Data curation, Formal analysis, Methodology, Writing – review &
395 editing. Y. Takeda: Conceptualization, Data curation, Project administration, Writing – review &
396 editing. Y. Tsuge: Conceptualization, Project administration, Supervision, Writing – review &
397 editing. T. Uehara: Conceptualization, Project administration, Supervision, Writing – review &
398 editing.
399

400 **REFERENCES**

- 401 1. Oran DP, Topol EJ. 2021. The proportion of SARS-CoV-2 infections that are
402 asymptomatic: a systematic review. *Ann Intern Med* 174:655–662.
- 403 2. Clark A, Jit M, Warren-Gash C, Guthrie B, Wang HHX, Mercer SW, Sanderson C,
404 McKee M, Troeger C, Ong KL, Checchi F, Perel P, Joseph S, Gibbs HP, Banerjee A,
405 Eggo RM. 2020. Global, regional, and national estimates of the population at increased
406 risk of severe COVID-19 due to underlying health conditions in 2020: a modelling
407 study. *Lancet Glob Health* 8:e1003–e1017.
- 408 3. Singanayagam A, Patel M, Charlett A, Lopez Bernal J, Saliba V, Ellis J, Ladhani S,
409 Zambon M, Gopal R. 2020. Duration of infectiousness and correlation with RT-PCR
410 cycle threshold values in cases of COVID-19, England, January to May 2020. *Euro*
411 *Surveill* 25:2001483.
- 412 4. Folgueira MD, Luczkowiak J, Lasala F, Pérez-Rivilla A, Delgado R. 2021. Prolonged
413 SARS-CoV-2 cell culture replication in respiratory samples from patients with severe
414 COVID-19. *Clin Microbiol Infect* 27:886–891.
- 415 5. van Kampen JJA, van de Vijver DAMC, Fraaij PLA, Haagmans BL, Lamers MM,
416 Okba N, van den Akker JPC, Endeman H, Gommers DAMPJ, Cornelissen JJ, Hoek
417 RAS, van der Eerden MM, Hesselink DA, Metselaar HJ, Verbon A, de Steenwinkel
418 JEM, Aron GI, van Gorp ECM, van Boheemen S, Voermans JC, Boucher CAB,
419 Molenkamp R, Koopmans MPG, Geurtsvankessel C, van der Eijk AA. 2021. Duration
420 and key determinants of infectious virus shedding in hospitalized patients with
421 coronavirus disease-2019 (COVID-19). *Nat Commun* 12:267.

- 422 6. Brown CM, Vostok J, Johnson H, Burns M, Gharpure R, Sami S, Sabo RT, Hall N,
423 Foreman A, Schubert PL, Gallagher GR, Fink T, Madoff LC, Gabriel SB, MacInnis B,
424 Park DJ, Siddle KJ, Harik V, Arvidson D, Brock-Fisher T, Dunn M, Kearns A, Laney
425 AS. 2021. Outbreak of SARS-CoV-2 infections, including COVID-19 vaccine
426 breakthrough infections, associated with large public gatherings - Barnstable County,
427 Massachusetts, July 2021. *MMWR Morb Mortal Wkly Rep* 70:1059–1062.
- 428 7. Jayk Bernal A, Gomes da Silva MM, Musungaie DB, Kovalchuk E, Gonzalez A, Delos
429 Reyes V, Martín-Quirós A, Caraco Y, Williams-Diaz A, Brown ML, Du J, Pedley A,
430 Assaid C, Strizki J, Grobler JA, Shamsuddin HH, Tipping R, Wan H, Paschke A,
431 Butterson JR, Johnson MG, De Anda C. 2022. Molnupiravir for oral treatment of
432 COVID-19 in nonhospitalized patients. *N Engl J Med* 386:509–520.
- 433 8. Hammond J, Leister-Tebbe H, Gardner A, Abreu P, Bao W, Wisemandle W, Baniecki
434 M, Hendrick VM, Damle B, Simón-Campos A, Pypstra R, Rusnak JM. 2022. Oral
435 nirmatrelvir for high-risk, nonhospitalized adults with COVID-19. *N Engl J Med*
436 386:1397–1408.
- 437 9. Gupta A, Gonzalez-Rojas Y, Juarez E, Crespo Casal M, Moya J, Falci DR, Sarkis E,
438 Solis J, Zheng H, Scott N, Cathcart AL, Hebner CM, Sager J, Mogalian E, Tipple C,
439 Peppercorn A, Alexander E, Pang PS, Free A, Brinson C, Aldinger M, Shapiro AE.
440 2021. Early treatment for COVID-19 with SARS-CoV-2 neutralizing antibody
441 sotrovimab. *N Engl J Med* 385:1941–1950.
- 442 10. Weinreich DM, Sivapalasingam S, Norton T, Ali S, Gao H, Bhore R, Xiao J, Hooper
443 AT, Hamilton JD, Musser BJ, Rofail D, Hussein M, Im J, Atmodjo DY, Perry C, Pan C,
444 Mahmood A, Hosain R, Davis JD, Turner KC, Baum A, Kyratsous CA, Kim Y, Cook

- 445 A, Kampman W, Roque-Guerrero L, Acloque G, Aazami H, Cannon K, Simón-Campos
446 JA, Bocchini JA, Kowal B, DiCioccio AT, Soo Y, Geba GP, Stahl N, Lipsich L,
447 Braunstein N, Herman G, Yancopoulos GD. 2021. REGEN-COV antibody combination
448 and outcomes in outpatients with COVID-19. *N Engl J Med* 385:e81.
- 449 11. Beigel JH, Tomashek KM, Dodd LE, Mehta AK, Zingman BS, Kalil AC, Hohmann E,
450 Chu HY, Luetkemeyer A, Kline S, Lopez de Castilla D, Finberg RW, Dierberg K,
451 Tapson V, Hsieh L, Patterson TF, Paredes R, Sweeney DA, Short WR, Touloumi G,
452 Lye DC, Ohmagari N, Oh MD, Ruiz-Palacios GM, Benfield T, Fätkenheuer G,
453 Kortepeter MG, Atmar RL, Creech CB, Lundgren J, Babiker AG, Pett S, Neaton JD,
454 Burgess TH, Bonnett T, Green M, Makowski M, Osinusi A, Nayak S, Lane HC. 2020.
455 Remdesivir for the treatment of COVID-19 - Final report. *N Engl J Med* 383:1813–
456 1826.
- 457 12. Unoh Y, Uehara S, Nakahara K, Nobori H, Yamatsu Y, Yamamoto S, Maruyama Y,
458 Taoda Y, Kasamatsu K, Suto T, Kouki K, Nakahashi A, Kawashima S, Sanaki T, Toba
459 S, Uemura K, Mizutare T, Ando S, Sasaki M, Orba Y, Sawa H, Sato A, Sato T, Kato T,
460 Tachibana Y. 2022. Discovery of S-217622, a non-covalent oral SARS-CoV-2 3CL
461 protease inhibitor clinical candidate for treating COVID-19. *J Med Chem*
462 <https://doi.org/10.1021/acs.jmedchem.2c00117>.
- 463 13. He J, Hu L, Huang X, Wang C, Zhang Z, Wang Y, Zhang D, Ye W. 2020. Potential of
464 coronavirus 3C-like protease inhibitors for the development of new anti-SARS-CoV-2
465 drugs: insights from structures of protease and inhibitors. *Int J Antimicrob Agents*
466 56:106055.

- 467 14. McKimm-Breschkin JL, Hay AJ, Cao B, Cox RJ, Dunning J, Moen AC, Olson D,
468 Pizzorno A, Hayden FG. 2022. COVID-19, influenza and RSV: surveillance-informed
469 prevention and treatment - meeting report from an isirv-WHO virtual conference.
470 *Antiviral Res* 197:105227.
- 471 15. Fischer WA, 2nd, Eron JJ, Jr., Holman W, Cohen MS, Fang L, Szewczyk LJ, Sheahan
472 TP, Baric R, Mollan KR, Wolfe CR, Duke ER, Azizad MM, Borroto-Esoda K, Wohl
473 DA, Coombs RW, James Loftis A, Alabanza P, Lipansky F, Painter WP. 2022. A phase
474 2a clinical trial of molnupiravir in patients with COVID-19 shows accelerated SARS-
475 CoV-2 RNA clearance and elimination of infectious virus. *Sci Transl Med* 14:eabl7430.
476

FIGURE LEGENDS

FIG 1 Patient disposition

Patients may be excluded from the analysis populations due to more than one reason.

ITT, intention-to-treat; mITT, modified ITT; RT-PCR, reverse transcription-polymerase chain reaction.

FIG 2 SARS-CoV-2 viral titer as (A) absolute values and (B) change from baseline (mITT population), and SARS-CoV-2 viral RNA level as (C) absolute values and (D) change from baseline (ITT population)

Data are presented as mean \pm SD. * $P < 0.05$ versus placebo. The gray, dotted, horizontal lines in panels (A) and (C) indicate the lower limit of detection of viral titer ($0.8 \log_{10}$ TCID₅₀/mL) and lower limit of quantification of viral RNA ($3.40 \log_{10}$ copies/mL), respectively.

ITT, intention-to-treat; mITT, modified ITT; SARS-CoV-2, severe acute respiratory syndrome coronavirus 2; SD, standard deviation; TCID₅₀, 50% tissue culture infectious dose.

FIG 3 Time to viral clearance (first negative SARS-CoV-2 viral titer; mITT population)

One patient in the ensitrelvir 250 mg group was excluded from this analysis due to the use of prohibited concomitant drugs on day 1.

CI, confidence interval; mITT, modified intention-to-treat; SARS-CoV-2, severe acute respiratory syndrome coronavirus 2.

FIG 4 Total score of 12 COVID-19 symptoms in patients with mild-to-moderate COVID-19 as (A) mean absolute value and (B) mean change from baseline (ITT population)

COVID-19, coronavirus disease 2019; ITT, intention-to-treat.

1 **TABLES**2 **TABLE 1** Baseline demographics and clinical characteristics (ITT population)

| Variables | Ensitrelvir 125 mg (N=16) | Ensitrelvir 250 mg (N=14) | Placebo (N=17) |
|---|--------------------------------------|--------------------------------------|---------------------------|
| Male sex, n (%) | 8 (50.0) | 8 (57.1) | 13 (76.5) |
| Age, years, mean (SD) | 38.8 (12.5) | 40.4 (10.7) | 38.0 (14.2) |
| Patient conditions, n (%) ^a | | | |
| Hospitalized | 6 (37.5) | 5 (35.7) | 5 (29.4) |
| Outpatient | 1 (6.3) | 2 (14.3) | 0 |
| Recuperation at hotel | 9 (56.3) | 7 (50.0) | 12 (70.6) |
| COVID-19 severity, n (%) | | | |
| Mild to moderate | 14 (87.5) | 12 (85.7) | 14 (82.4) |
| Asymptomatic | 2 (12.5) | 2 (14.3) | 3 (17.6) |
| SARS-CoV-2 variant, n (%) | | | |
| Delta | 13 (81.3) | 13 (92.9) | 16 (94.1) |
| Omicron | 3 (18.8) | 1 (7.1) | 1 (5.9) |
| Time from onset to randomization, n (%) | | | |

| | | | |
|---|-----------|-----------|-----------|
| ≥ 24 to < 48 hours | 1 (6.3) | 0 | 2 (11.8) |
| ≥ 48 to < 72 hours | 4 (25.0) | 5 (35.7) | 3 (17.6) |
| ≥ 72 to < 96 hours | 4 (25.0) | 4 (28.6) | 3 (17.6) |
| ≥ 96 to ≤ 120 hours | 5 (31.3) | 3 (21.4) | 6 (35.3) |
| COVID-19 vaccination history, n (%) | 14 (87.5) | 12 (85.7) | 12 (70.6) |
| Patients with COVID-19 symptoms, n (%) ^b | | | |
| Respiratory symptoms | | | |
| Stuffy or runny nose | 6 (46.2) | 4 (33.3) | 4 (28.6) |
| Sore throat | 7 (53.8) | 2 (16.7) | 3 (21.4) |
| Shortness of breath (difficulty breathing) | 1 (7.7) | 0 | 0 |
| Cough | 7 (53.8) | 7 (58.3) | 6 (42.9) |
| Systemic symptoms | | | |
| Low energy or tiredness | 6 (46.2) | 3 (25.0) | 4 (28.6) |
| Muscle or body aches | 2 (15.4) | 2 (16.7) | 2 (14.3) |
| Headache | 3 (23.1) | 2 (16.7) | 3 (21.4) |
| Chills or shivering | 4 (30.8) | 2 (16.7) | 2 (14.3) |
| Feeling hot or feverish | 5 (38.5) | 5 (41.7) | 3 (21.4) |

| | | | |
|---|------------|-----------|-----------|
| Digestive symptoms | | | |
| Nausea | 0 | 0 | 0 |
| Vomiting | 0 | 0 | 0 |
| Diarrhea | 2 (15.4) | 1 (8.3) | 1 (7.1) |
| Sensation disturbance | | | |
| Anosmia | 6 (46.2) | 5 (41.7) | 7 (50.0) |
| Dysgeusia | 7 (53.8) | 3 (25.0) | 5 (35.7) |
| Total score of 12 COVID-19 symptoms, mean (SD) ^b | 10.2 (5.7) | 8.8 (4.3) | 7.3 (3.6) |

3 ^aAt the time of this research, hospitalization was recommended for all patients with COVID-19 in Japan irrespective of disease severity or
4 presence of risk factors. Patients were thus eligible for enrollment in all treatment settings (inpatient, outpatient, recuperation at home, or
5 recuperation at designated hotels).

6 ^bIn mild-to-moderate patients in the mITT population (n=13, n=12, and n=14 for the ensitrelvir 125 mg, ensitrelvir 250 mg, and placebo groups,
7 respectively).

8 COVID-19, coronavirus disease 2019; ITT, intention-to-treat; mITT, modified ITT; SD, standard deviation.

9 **TABLE 2** Summary of TEAEs (safety analysis set)

| Patients with events, n (%) | Ensitrelvir 125 mg (N=21) | Ensitrelvir 250 mg (N=23) | Placebo (N=24) |
|---|--------------------------------------|--------------------------------------|---------------------------|
| Patients with any TEAE | 11 (52.4) | 16 (69.6) | 9 (37.5) |
| Patients with any serious TEAE or death | 0 (0.0) | 0 (0.0) | 0 (0.0) |
| Patients with TEAEs leading to treatment discontinuation | 0 (0.0) | 0 (0.0) | 0 (0.0) |
| TEAEs occurring in $\geq 5\%$ of patients in either group | | | |
| Nasopharyngitis | 2 (9.5) | 0 (0.0) | 0 (0.0) |
| Headache | 1 (4.8) | 3 (13.0) | 0 (0.0) |
| Rhinalgia | 2 (9.5) | 0 (0.0) | 0 (0.0) |
| High density lipoprotein decreased | 3 (14.3) | 12 (52.2) | 2 (8.3) |
| Blood triglycerides increased | 0 (0.0) | 3 (13.0) | 0 (0.0) |
| Aspartate aminotransferase increased | 1 (4.8) | 1 (4.3) | 2 (8.3) |
| Blood bilirubin increased | 0 (0.0) | 2 (8.7) | 0 (0.0) |
| Alanine aminotransferase increased | 1 (4.8) | 0 (0.0) | 2 (8.3) |
| Patients with any treatment-related AE | 5 (23.8) | 10 (43.5) | 0 (0.0) |
| Treatment-related AEs occurring in $\geq 5\%$ of patients in either group | | | |

| | | | |
|------------------------------------|----------|----------|---------|
| High density lipoprotein decreased | 3 (14.3) | 8 (34.8) | 0 (0.0) |
| Blood triglycerides increased | 0 (0.0) | 2 (8.7) | 0 (0.0) |

10 AE, adverse event; TEAE, treatment-emergent AE

Screened (n=70)

Screen failure (n=1)
• Protocol deviation (n=1)

Randomized (n=69)

Ensitrelvir 125 mg group (n=22)
Received the allocated intervention (safety analysis set) (n=21)
Did not receive the allocated intervention (n=1)
• Patient withdrawal (n=1)

Ensitrelvir 250 mg group (n=23)
Received the allocated intervention (safety analysis set) (n=23)
Did not receive the allocated intervention (n=0)

Placebo group (n=24)
Received the allocated intervention (safety analysis set) (n=24)
Did not receive the allocated intervention (n=0)

Lost to follow-up (n=0)
Discontinued (n=0)

Completed (n=21)

Lost to follow-up (n=0)
Discontinued (n=0)

Completed (n=23)

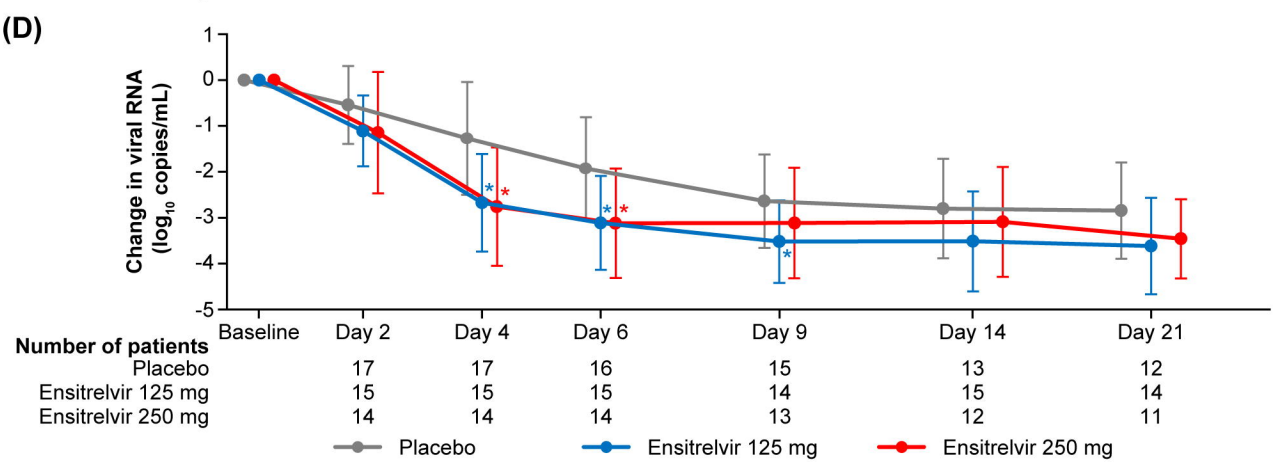
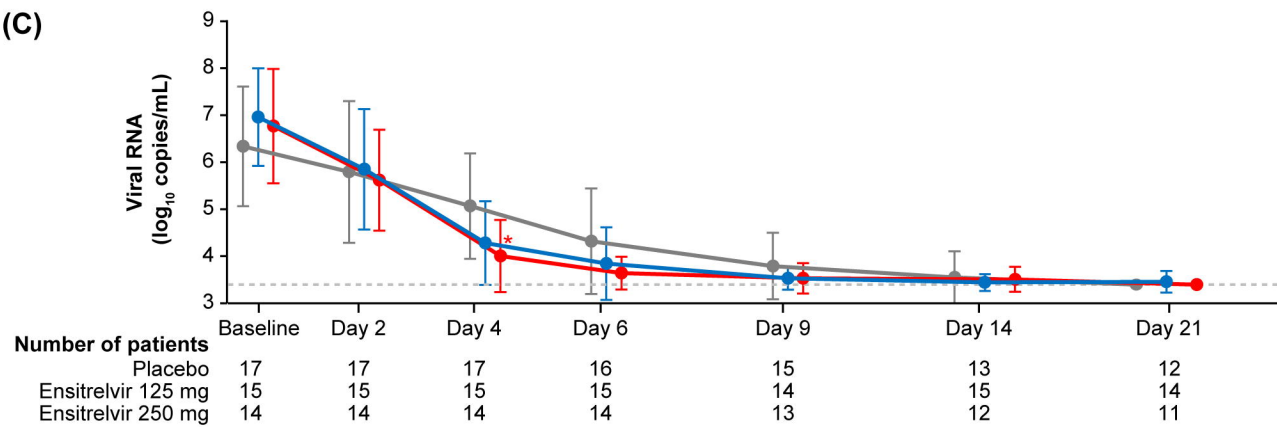
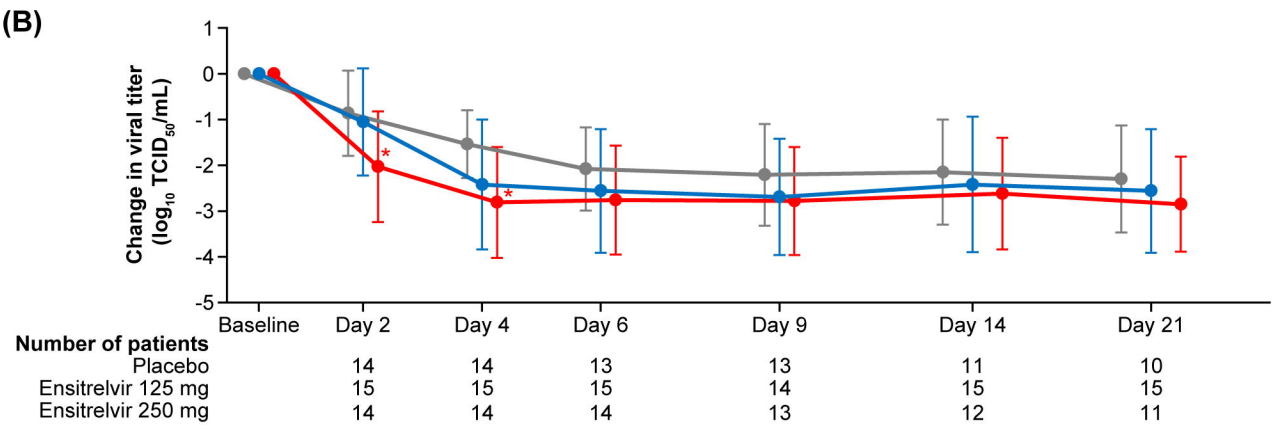
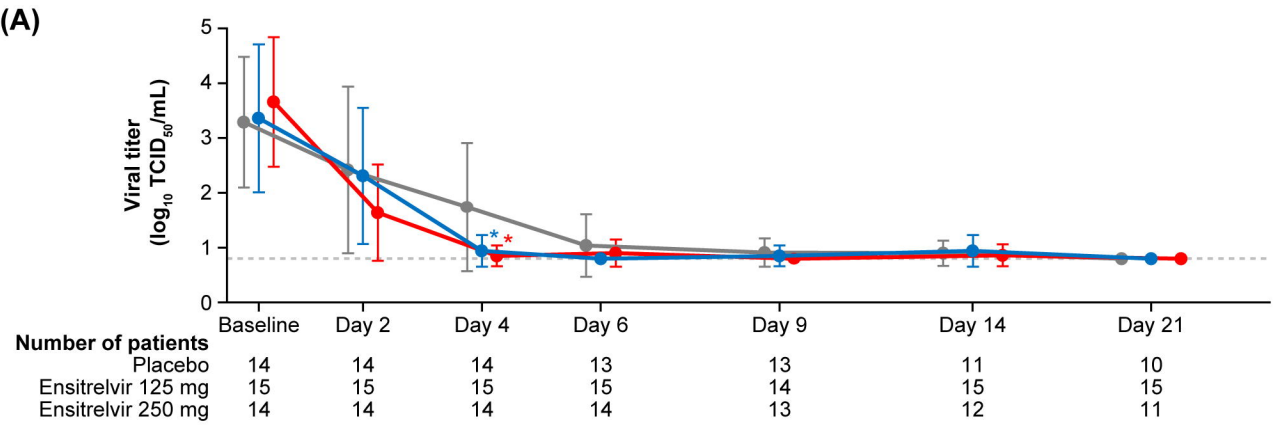
Lost to follow-up (n=0)
Discontinued (n=3)
• Patient withdrawal (n=2)
• Disease progression (n=1)

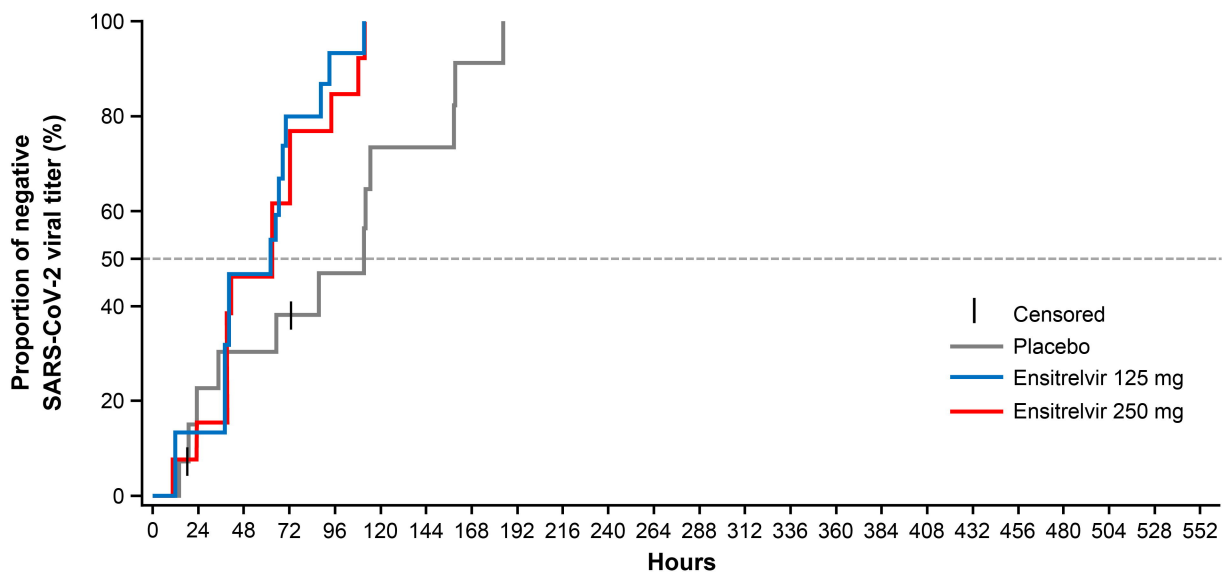
Completed (n=21)

Efficacy analysis
ITT population (n=16)
Excluded due to negative RT-PCR at baseline (n=6)
mITT population (n=15)
Excluded due to negative RT-PCR at baseline (n=6)
Excluded due to negative baseline viral titer (n=5)

Efficacy analysis
ITT population (n=14)
Excluded due to negative RT-PCR at baseline (n=9)
mITT population (n=14)
Excluded due to negative RT-PCR at baseline (n=9)
Excluded due to negative baseline viral titer (n=6)

Efficacy analysis
ITT population (n=17)
Excluded due to negative RT-PCR at baseline (n=7)
mITT population (n=14)
Excluded due to negative RT-PCR at baseline (n=7)
Excluded due to negative baseline viral titer (n=8)

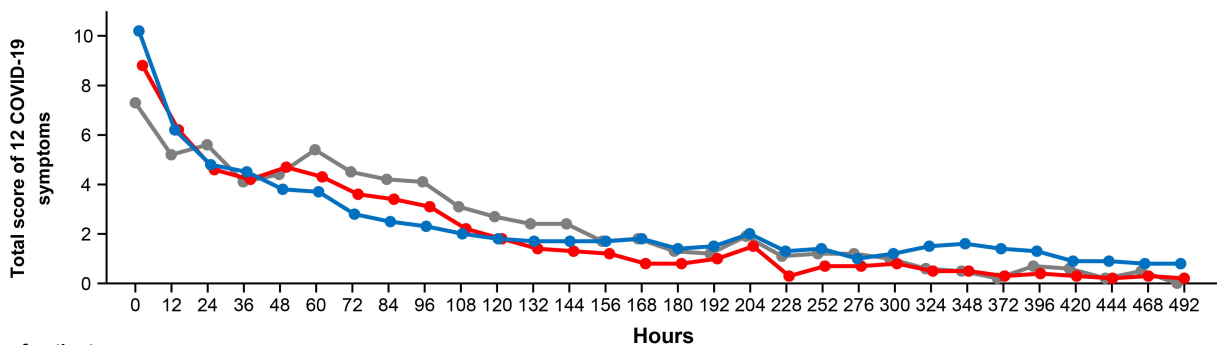




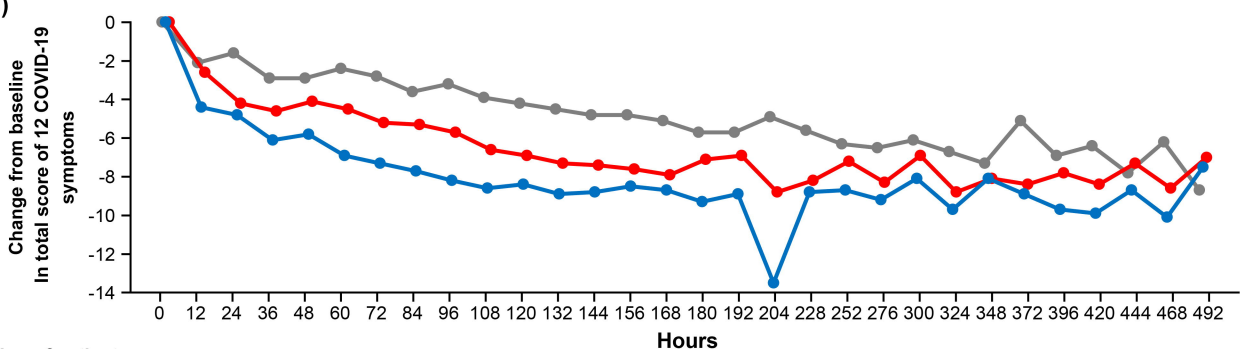
Number at risk

| | Placebo | 14 | 10 | 9 | 8 | 6 | 3 | 3 | 1 | 0 | 0 | 0 | 0 | 0 | 0 | 0 | 0 | 0 | 0 | 0 | 0 | 0 | 0 |
|--------------------|---------|----|----|---|---|---|---|---|---|---|---|---|---|---|---|---|---|---|---|---|---|---|---|
| Placebo | 14 | 10 | 9 | 8 | 6 | 3 | 3 | 1 | 0 | 0 | 0 | 0 | 0 | 0 | 0 | 0 | 0 | 0 | 0 | 0 | 0 | 0 | 0 |
| Ensitrelvir 125 mg | 15 | 13 | 8 | 3 | 1 | 0 | 0 | 0 | 0 | 0 | 0 | 0 | 0 | 0 | 0 | 0 | 0 | 0 | 0 | 0 | 0 | 0 | 0 |
| Ensitrelvir 250 mg | 13 | 11 | 7 | 5 | 2 | 0 | 0 | 0 | 0 | 0 | 0 | 0 | 0 | 0 | 0 | 0 | 0 | 0 | 0 | 0 | 0 | 0 | 0 |

| | Time to viral clearance (hours), median [95% CI] | Difference from placebo (hours), median [95% CI] | P Value |
|-----------------------------|---|---|---------|
| Placebo (n=14) | 111.1 [23.2, 158.5] | - | - |
| Ensitrelvir 125 mg (n = 15) | 61.3 [38.0, 68.4] | -49.8 [-96.7, 30.9] | 0.0159 |
| Ensitrelvir 250 mg (n = 13) | 62.7 [39.2, 72.3] | -48.4 [-95.9, 28.5] | 0.0205 |

(A)**Number of patients**

| | | | | | | | | | | | | | | | | | | | | | | | | | | | | | | | |
|--------------------|----|----|----|----|----|----|----|----|----|----|----|----|----|----|----|----|----|----|----|----|----|----|----|----|----|----|----|----|----|----|---|
| Placebo | 14 | 14 | 14 | 11 | 14 | 13 | 13 | 13 | 13 | 14 | 11 | 13 | 13 | 12 | 12 | 13 | 11 | 13 | 8 | 9 | 10 | 11 | 10 | 11 | 10 | 9 | 11 | 10 | 9 | 11 | 6 |
| Ensitrelvir 125 mg | 13 | 12 | 12 | 12 | 12 | 12 | 13 | 13 | 12 | 12 | 13 | 12 | 12 | 13 | 12 | 11 | 12 | 2 | 13 | 9 | 13 | 12 | 11 | 11 | 12 | 10 | 11 | 11 | 11 | 4 | |
| Ensitrelvir 250 mg | 12 | 12 | 12 | 12 | 12 | 11 | 12 | 12 | 12 | 12 | 12 | 12 | 12 | 12 | 11 | 11 | 6 | 11 | 11 | 11 | 10 | 11 | 11 | 12 | 10 | 12 | 10 | 12 | 10 | 9 | 5 |

(B)**Number of patients**

| | | | | | | | | | | | | | | | | | | | | | | | | | | | | | | |
|--------------------|----|----|----|----|----|----|----|----|----|----|----|----|----|----|----|----|----|----|----|----|----|----|----|----|----|----|----|----|----|---|
| Placebo | 14 | 14 | 11 | 14 | 13 | 13 | 13 | 13 | 14 | 11 | 13 | 13 | 12 | 12 | 13 | 11 | 13 | 8 | 9 | 10 | 11 | 10 | 11 | 10 | 9 | 11 | 10 | 9 | 11 | 6 |
| Ensitrelvir 125 mg | 12 | 12 | 12 | 12 | 12 | 13 | 13 | 12 | 12 | 13 | 12 | 12 | 13 | 12 | 11 | 12 | 2 | 13 | 9 | 13 | 12 | 11 | 11 | 12 | 10 | 11 | 11 | 11 | 4 | |
| Ensitrelvir 250 mg | 12 | 12 | 12 | 12 | 11 | 12 | 12 | 12 | 12 | 12 | 12 | 12 | 12 | 12 | 11 | 11 | 6 | 11 | 11 | 11 | 10 | 11 | 11 | 12 | 10 | 12 | 10 | 9 | 5 | |

● Placebo

● Ensitrelvir 125 mg

● Ensitrelvir 250 mg