

1 **Metabolomic Risk Predictors of Diabetic Foot Complications: a longitudinal**
2 **observational study in Type 1 Diabetes**

3
4 Jonas A. Andersen^{1†}, Tommi Suviola^{1†}, Kajetan Trošt¹, María José Romero-Lado¹, Simone
5 Theilade^{1,2,3}, Ismo Mattila¹, Marie Frimodt-Møller¹, Anne Rasmussen¹, Peter Rossing^{1,3}, Cristina
6 Legido-Quigley¹, Tarunveer S. Ahluwalia^{1,4,5*}

7 **Affiliations:**

8 ¹Steno Diabetes Center Copenhagen, Herlev, Denmark

9 ²Department of Medicine, Herlev-Gentofte Hospital, Copenhagen, Denmark

10 ³Department of Clinical Medicine, University of Copenhagen, Copenhagen, Denmark

11 ⁴The Bioinformatics Center, Department of Biology, University of Copenhagen, Copenhagen,
12 Denmark

13 ⁵Department of Science and Environment, Roskilde University, Roskilde, Denmark

14 [†] These authors contributed equally to this work

15

16 ***Corresponding author:**

17 Tarunveer Singh Ahluwalia, PhD.

18 Senior Researcher & Associate Professor

19 Steno Diabetes Center Copenhagen

20 Borgmester Ib Juuls Vej 83

21 DK-2730 Herlev

22 Phone: +45 20558294

23 Email: tarun.veer.singh.ahluwalia@regionh.dk

24

25

26

27

28

29

30

31

32

33

34

35

36

37

38

39

40 **Word count:** Main text: 2878 Abstract: 248

41 **Number of tables and figures:** One table & three figures

42 **Abstract:**

43 Diabetic foot complications (DFCs) comprising diabetic foot ulcer (DFU), charcot's
44 neuroarthropathy and amputations are a collective term used for the ailments of the foot that
45 individuals with diabetes incur. Despite implementation of national and international guidelines,
46 DFCs are still a growing challenge to the individual and society. Novel markers for the treatment
47 and prevention of DFCs are thus needed. The aim of this study was to investigate circulating
48 metabolites associated with the prevalence and incidence of DFCs in persons with type 1 diabetes
49 (T1D). A panel of non-targeted serum metabolites (n=75) were analyzed using mass spectrometry
50 in 637 individuals with T1D with a median follow up time of 10 years. Cross sectional associations
51 between metabolites and DFCs were analysed by linear regression models at baseline, Cox
52 proportional hazards model at follow-up and adjusted for relevant confounders (age, sex, HbA_{1c},
53 systolic blood pressure, bmi, smoking, statin use, total cholesterol, plasma triglycerides, and renal
54 function). The median (interquartile range) age was 55 (47, 64) years, diabetes duration of 35 (25,
55 44) years and HbA_{1c} levels 64 (8%) (56, 72(7.3%, 8.7%)) mmol/mol. In the adjusted model, four
56 amino acids (Proline, Threonine, Valine, and Leucine) were associated with a decreased incidence
57 of Charcot's arthropathy at baseline ($p<0.05$). In addition, circulating ribonic acid levels were
58 associated with an increased risk of DFUs during follow-up (HR 1.38(1.06-1.8); $p<0.05$) which
59 were validated in an independent cross-sectional T1D cohort ($p<0.05$). This study identifies novel
60 circulating metabolites, as potential biomarkers for risk stratification of diabetic foot complications.

61

62

63

64

65

66 *Keywords:* Metabolomics, diabetic foot complications, diabetic foot ulcer, amputation, Charcot

67 **Introduction**

68 The complications that afflict the feet of individuals with diabetes are often referred to under the
69 common term diabetic foot complications. Generally, the term covers four ailments that afflict the
70 diabetic foot; diabetic foot ulcers (DFU), infections of the diabetic foot, amputations incurred by
71 individuals with diabetes and Charcot's arthropathy. The ailments encompassed in the term are
72 closely linked to each other; and with a lifetime risk of 19-34% the DFU is the most common
73 diabetic foot complication incurred by individuals with diabetes(1). The DFU is often the triggering
74 event for infections and amputations of the diabetic foot(1) and has been associated to risk of
75 Charcot's arthropathy(2). Apart from the connection between the individual ailments of the diabetic
76 foot, the diabetic foot borrows from both the macro and microvascular complications of diabetes
77 with connections to neuropathy, peripheral arterial disease and retinopathy among others(3). To put
78 the challenge in perspective an individual with diabetes is subjected to amputation of the lower limb
79 or part of a lower limb every 30 sec. on a global scale(4). In addition to the burden incurred by the
80 individual, the diabetic foot complication poses a significant economic challenge to all societies in
81 the world. The cost of treating the diabetic foot complication is substantial, with a 5.4 times higher
82 cost of treating an individual with a diabetic foot complication compared to an individual with
83 diabetes without a foot complication(5). On a larger scale 1% of the total health-care budget in
84 England was spend on treating the diabetic foot(6). These challenges have led to several national
85 and international strategies with the intend of reducing the incidence of diabetic foot
86 complications(7). This has, however, not lead to a significant reduction in the incidence or cost of
87 diabetic foot complications in general. In addition, the projected increase in size and lifespan of the
88 global diabetic population, new treatment strategies are needed to incur reductions in or even
89 prevention of prevention of diabetic foot complications(3).

90 One of the emerging frontiers in prevention and treatment of the diabetic foot complication is
91 metabolomics. Metabolomics has shown promise in identifying pathways and biomarkers
92 associated with risk of developing diabetes(8; 9). Furthermore, specific metabolites have been
93 associated with increased risk of developing complications associated with diabetes(10). Despite the
94 increased focus on the relationship between metabolomics and diabetic complications, studies on
95 this topic are still lacking.

96 Thus, the aim of the current study was to investigate the association between a non-targeted panel
97 of circulating serum metabolites and three severe forms of diabetic foot complications (DFU,
98 amputations and Charcot's arthropathy (from here on referred to as diabetic foot complications or
99 DFCs)) among adult persons with type 1 diabetes (T1D).

100 **Research Design and Methods**

101 637 individuals with T1D and a wide range of albuminuria were recruited from the outpatient clinic
102 at Steno Diabetes Center Copenhagen (SDCC).

103 This is a longitudinal observational cohort recruited between 2009 and 2011. Details of this cohort
104 have been previously described (11).

105 Another cross-sectional observational cohort with 161 T1D individuals being followed at SDCC
106 and recruited during 2016-2017, also described in detail previously (12), was used as the validation
107 cohort.

108 All participants were subdivided into different albuminuria stages, normoalbuminuria (<3.39
109 mg/mmol corresponding to <30 mg/24 h or mg/g), moderately increased albuminuria (3.39–33.79
110 mg/mmol corresponding to 30–299 mg/24 h or mg/g), and severely increased albuminuria (\geq 33.90
111 mg/mmol corresponding to \geq 300 mg/24 h or mg/g). Participants with end stage kidney disease
112 defined as receiving dialysis, kidney transplantation, estimated glomerular filtration rate (eGFR)<
113 15ml/min/1.73m² at baseline were excluded.

114 In the current study plasma metabolomics data along with information on (with or without) all foot
115 complications (diabetic foot ulcer (DFU), amputation, and Charcot's arthropathy) was available for
116 637 individuals in the primary study whereas 126 individuals with T1D and peripheral neuropathy
117 had information available only on DFUs (validation cohort).

118 The study was conducted according to the Helsinki Declaration on ethical principles for medical
119 research. The study was approved by the Danish Ethical Committee for the Capital Region of
120 Denmark (Hillerød, Denmark), Danish Patient Safety Authorities and Danish Data Protection
121 Agency. All participants provided informed written consent.

122 **Baseline Characteristics and Diagnosis Codes**

123 All information on clinical characteristics and diabetic foot complications was extracted from the
124 patient's electronic health records. Three diabetic foot complications including DFUs, amputations,
125 and Charcot's arthropathy were investigated in the current study. All information on diabetic foot
126 complications were attained in accordance with the international classification of diseases, tenth
127 revision(13). A DFU was defined as a lesion of the skin on the foot of the person with type 1
128 diabetes (14). All information on procedures (amputations) were attained in accordance with
129 Danish version of the Nordic Classification of Surgical Procedures(15). Date of diabetic foot
130 complications diagnosis was cross referenced with date of participant blood sampling for
131 metabolomic and biochemical analysis (or baseline). The diagnosis was then registered as "at
132 baseline" if date of diagnosis was made prior to or at baseline and as during follow-up if date of
133 diagnosis was after baseline. eGFR was calculated using the CKD-EPI 2012 equation (16).

134 Participant baseline characteristics (Table 1) refer to the time point where blood collections were
135 made for metabolomics analyses. Longitudinal data was acquired until 31st Dec 2020. Data
136 regarding potential changes in medication during follow-up were not available.

137 **Serum Metabolomics Analyses**

138 The method used has previously been described in detail by Tofte et. al(17). In brief, the
139 metabolomic measurements were performed using serum stored at -80° C. Leco Pegasus four-
140 dimensional gas chromatography with time off flight mass spectrometry (4D GC×GC TOFMS)
141 instrument (Leco Corp. MI, USA) was used for metabolomics measurements. Using ChromaTOF
142 raw data were assessed using peak-picking and resulting data were processed (alignment and
143 normalization) with Guinea(18) and postprocessed in R-software. Inclusion of metabolites in the
144 following analysis was based on certainty of the identification and level of technical precision. No
145 restrictions for prior hypothesis or known pathways were implemented. A total of 75 metabolites
146 (ESM Table 1, Supplementary table 4.1.1.3) were measured and included in analyses. These
147 included amino acids, free fatty acids and compounds from the polyol and energy metabolite
148 pathways.

149 Metabolites with missing or undetectable values less than or equal to 20%, underwent imputation
150 using the k-nearest neighbor algorithm and were log₂-transformed as previously described (17; 19).

151 **Statistical analysis**

152 All statistical analysis and subsequent data visualization were carried out using the R-software.
153 Continuous variables are given as median (interquartile range Q1-Q3 or IQR). Skewed variables,
154 including all metabolites were log transformed before association testing. Categorical variables are
155 given as total number followed by %. Clinical characteristics at baseline between two groups with
156 and without diabetes foot complications were compared using Welch two sample t-test, Fisher's
157 exact test or Chi-squared test for continuous or categorical variables, respectively. Circulating
158 metabolites and specific diabetic foot complication outcome were evaluated as follows: Cross
159 sectional associations between each metabolite and diabetic foot complication outcome at baseline
160 were assessed using multivariate linear regression models adjusted for relevant clinical variables.

161 The following models were used: *Crude model*: unadjusted, *M1 model* adjusted for age, gender,
162 body mass index, systolic blood pressure, cholesterol, HbA_{1c}, smoking, statin use, and triglycerides,
163 also referred to as adjusted model. *M2 model* was M1 with additional adjustment for renal function
164 markers (eGFR and/or UACR) also referred to as “fully adjusted” model. Multiple testing
165 correction for p values were performed using the Benjamini-Hochberg method (p_{adjusted}) throughout
166 the analyses.

167 Cox proportional hazards model was used to assess longitudinal follow-up end points. The hazard
168 ratios (HR) are reported per doubling of specified metabolites level. Significant or top performing
169 metabolites with $P_{\text{adjusted}} < 0.05$ in the adjusted (M1) longitudinal cox proportional hazards model
170 were included in survival analysis with the fully adjusted cox proportional hazards (M2) model for
171 end points. The R-package “survminer” was used for constructing a) Kaplan-Meier plots for end
172 points during longitudinal follow-up with stratification on median levels of the top-performing
173 metabolite at baseline, and b) forest plot of the hazard ratios of the top-performing metabolite and
174 clinical covariates. Integration of the results from all the crude models was visualized with the R-
175 package “circlize”. Significance was defined as $p < 0.05$ (before multiple testing) and $p_{\text{adjusted}} < 0.05$
176 (after multiple testing) unless other is noted. Significance for validation cohort was defined as
177 $p < 0.05$.

178 **Results**

179 **Clinical characteristics of study population**

180 The primary study included 637 participants (54.6% males) with T1D, a median (IQR) age of 55
181 (47-64) years, diabetes duration of 35 (25-44) years (Table 1). In the following the participants are
182 divided in two groups; first group without any diabetic foot complication at baseline ($n=577$) and
183 the second group with at least one foot complication at baseline ($n=60$).

184 Age, diabetes duration, and urinary albumin creatinine ratio (UACR) were significantly higher in
185 T1D with foot complications compared to the T1D without foot complications group. The estimated
186 glomerular filtration rate (eGFR) was significantly lower in the two groups with foot complications
187 compared to the group without foot complications (Table 1).

188 All T1D individuals from baseline that did not incur a diabetic foot complication during a median
189 follow up time of 10 years formed the no-foot complications group ($n=488$) whereas those who
190 developed at least one foot complication during a median follow up ($n=89$) formed the foot
191 complications group, for longitudinal analysis (Extra supplementary material, ESM Table 2). A
192 total of 68 diagnoses of diabetic foot complications were registered at baseline (Table 1), while 149
193 new diagnoses were made during follow-up (ESM Table 2).

194 **Cross-sectional analysis**

195 All 75 circulating metabolites were included in a linear regression analysis at baseline
196 (Supplementary file Table 4.1.1.3).

197 In the crude model, 20 metabolites were associated with Charcot's arthropathy at baseline before
198 multiple testing correction ($p<0.05$) but only 9 remained significant after correction ($p_{\text{adjusted}}<0.05$;
199 Figure 1, Supplementary Figure 4.1.1.1 and Table 4.1.1.2). In the M1 four amino acids (Proline,
200 Threonine, Valine, and Leucine) were negatively while six other metabolites were positively
201 associated with Charcot's arthropathy at baseline ($p_{\text{adjusted}}<0.05$; Figure 1, Supplementary Figure
202 4.1.2.1, and Table 4.1.2.2). In the M2 model, only proline remained associated ($p_{\text{adjusted}}<0.05$) with
203 decreased incidence of Charcot's arthropathy (Figure 1, Supplementary figure 4.1.4.1 and Table
204 4.1.4.2).

205 Seventeen metabolites showed an association with amputations at baseline before multiple testing
206 ($p<0.05$, Supplementary Table 5.1.1.2) in the crude model, while six remained significant after
207 correction ($p_{\text{adjusted}}<0.05$). Of the six metabolites, five were positively associated (Ribonic acid,

208 Myo Inositol, 4-Hydroxybenzeneacetic acid, Ribitol, and Succinic acid) while amino acid
209 Threonine was negatively correlated with amputations (Supplementary Figure 5.1.1.1). In the M1
210 model three metabolites showed a significant association with amputations at baseline before but
211 none after the multiple testing correction (Supplementary Figure 5.1.2.1 and Table 5.1.2.2). None of
212 the metabolites were associated with the incidence of DFUs at baseline after correcting for multiple
213 testing in the crude or adjusted models ($p_{\text{adjusted}} > 0.05$; Supplementary Tables 6.1.1.3, 6.1.2.3, and
214 6.1.3.3).

215 **Longitudinal analysis**

216 All plasma metabolites used for cross-sectional analysis were examined for longitudinal analyses.
217 Albeit 17 circulating metabolites associated with the risk of incurring Charcot's arthropathy during
218 follow-up in the crude model, only four metabolites (Ribonic acid, Ribitol, Creatinine, Myo
219 Inositol) remained significant (Supplementary Figure 4.2.1.1 and Table 4.2.1.2) after multiple
220 testing correction. In the M1 model out of 16 metabolites associated to risk of incurring Charcot's
221 arthropathy during follow up ($p < 0.05$, Supplementary Table 4.2.2.2), none retained after multiple
222 testing correction. Similarly, no metabolites remained significant in M3.

223 None of the tested metabolites were associated with risk of incurring an amputation during follow-
224 up in crude or adjusted models ($p_{\text{adjusted}} > 0.05$; supplementary Tables 5.2.1.2, 5.2.2.2, and 5.2.3.2).

225 In the crude model 11 metabolites were significantly associated ($p_{\text{adjusted}} < 0.05$) to the risk of
226 incurring a DFU during follow-up (Supplementary Figure 6.2.1.1 and Table 6.2.1.2). In the M1
227 model two metabolites (Ribonic acid and Tyrosine) remained significantly associated with risk of
228 incurring DFU during follow-up (Supplementary Figure 6.2.2.1 and Table 6.2.2.2). Ribonic acid
229 retained a significant association with risk of incurring a DFU during follow-up with a hazard ratio
230 of 1.39 (1.08-1.8 ($p = 0.012$)) (Supplementary Section 6.2.3.3 and Figure 6.2.3.3.1)) after adjustment
231 for renal function.

232 A survival analysis of DFU-free days stratified on median plasma levels of Ribonic acid in the
233 study population showed a significantly higher number of DFU-free days in the group with the
234 lowest levels of Ribonic acid in serum at baseline ($p<0.0001$) (Figure 2).

235 Overall associations of significant metabolites and diabetic foot complication outcomes from the
236 crude model have been depicted in Figure 3 chord diagram.

237 **Validation**

238 We replicated Ribonic acid association with DFU in the cross-sectional validation study with 126
239 T1D individuals: 27 with DFU and 99 without any DFU (ESM Table 3).

240 Higher circulating Ribonic acid levels were significantly associated with DFU risk in the crude
241 (Beta: 0.57; $p = 0.013$), M1 (Beta: 0.57; $p=0.019$) and M2 (Beta: 0.53; $p=0.024$) models,
242 respectively (ESM Table 4; ESM figure 1).

243 **Discussion**

244 This is one of the first prospective studies to examine a possible correlation between circulating
245 plasma metabolites and diabetic foot complications. Several metabolites with association to
246 incidence and risk of incurring diabetic foot complications are identified in the current study.
247 Perhaps the most interesting being Ribonic acid also known as Ribonate, a derivate of the sugar
248 Ribose and part of the pentose pathway. A significant association between risk of incurring a DFU
249 and plasma levels of Ribonic acid. Prior studies have associated Ribonic acid with the incidence and
250 future risk of retinopathy and nephropathy in the same cohort examined here(17; 19). This may hint
251 at general correlation between complications associated with diabetes and plasma levels of Ribonic
252 acid in this one cohort. While this may still be true, a study by Chen et al. identified an association
253 between plasma levels of Ribonic acid and retinopathy when comparing a population with diabetes
254 and retinopathy to a population with diabetes without retinopathy(20). Similarly, Hu et al. found
255 that all-cause mortality was linked to plasma levels of Ribonic acid in a population with chronic

256 kidney disease(21). A possible role for Ribonic acid and/or the pentose pathway, as a marker of
257 diabetes, is further supported by animal models that have shown that Ribonic acid levels in urine
258 and plasma are elevated when diabetes is induced(22; 23). Although the proposed role of the
259 pentose pathway and Ribonic acid is still unclear, it is a candidate for future research both when
260 looking for potential biomarker and metabolomic pathways to target, in treatment and prevention of
261 diabetic foot complications.

262

263 In addition to the connection between Ribonic acid and development of DFUs, an inverse
264 association between plasma levels of four amino acids (Threonine, Leucine, Valine, and Proline)
265 and incidence Charcot's arthropathy at baseline was found. Like Ribonic acid the role of circulating
266 amino acids in diabetes complications is unclear. There have been studies showing a vital role for
267 amino acids in human metabolic pathways including gluconeogenesis(24-26) and the secretion of
268 insulin and glucagon(27). In regard to diabetic complications and circulating amino acids the
269 published data is sparse for foot related complications albeit associations to microvascular
270 complications (nephropathy and autonomic neuropathy) have been shown (10; 28-30). A recent
271 study by Hung et al. found an association between DFU healing and plasma levels of four amino
272 acids. These amino acids included Threonine and Leucine, which were also found in our study(31).
273 An association between amino acids and healing of pressure, trauma and burn ulcers have been
274 proposed in other studies(32; 33). Prospective randomized studies have even hinted at beneficial
275 effects on pressure-ulcer healing of nutritional supplements including specific amino acids(34).
276 However, the beneficial effects are still uncertain due to the limited available data(35). Similar
277 results have been seen when adding nutritional supplements to treatment of individuals with
278 diabetes; smaller retrospective and prospective studies have shown promise(36; 37), but the
279 combined data is insufficient to conclude if there is a beneficial effect(38). While the role of diet in

280 diabetic foot complications is still unclear, the role of diet in diabetes in general is not up for
281 debate(39). We need further studies on the association between diabetic foot complications and
282 amino acids to identify the most potent biomarkers and targets for treatment and prevention of
283 diabetic foot complications.

284 Study limitations included missing information on medication. Consequently, information on
285 dosage and changes in dosage during the study is unavailable. In addition, information on some of
286 the known clinical risk factors (toe blood pressure and foot deformities) in development of diabetic
287 foot complications were unavailable at the time of data analysis. Finally, information on diet, which
288 may affect the composition of the individual participants metabolome, was unavailable. On the
289 other hand, the strengths of this study are, the large size of the cohort with T1D, long follow-up,
290 high throughput metabolomic measurements using mass spectrometry and high qualitative
291 bioinformatic data analyses methods.

292

293 A recent editorial from our institute highlights the importance of including longitudinal follow-up,
294 as presented in this study, in metabolomic and similar studies on diabetes and its complications(40).
295 This study adds to the growing evidence base for specific metabolites associated to complications of
296 diabetes, specifically DFU and Charcot's arthropathy. The identified circulating metabolites have
297 already been described in the literature, suggesting associations with diabetes and microvascular
298 complications. Plasma metabolomics in diabetic foot complications is an intriguing prospect, as risk
299 profiling promises the opportunity to prevent rather than treat these debilitating ailments. In
300 addition, metabolomics can help uncover molecular pathways of foot complication development,
301 that are also potential targets for developing novel therapeutics.

302

303

304 **Acknowledgments**

305 We thank the participants of this study. Jonas A. Andersen, and Tarunveer S. Ahluwalia are the
306 guarantors of this study.

307 **Funding**

308 TSA was supported by funding from the Novo Nordisk Foundation NNF18OC0052457 and Steno
309 Diabetes Center Copenhagen.

310

311 **Author Contributions**

312 Conceptualization: JAA, PR, TSA

313 Methodology: TS, KT, IM, CLQ, TSA

314 Investigation: JAA, TS, MJR-L, TSA

315 Visualization: TS

316 Funding acquisition: ST, PR, CLQ, TSA

317 Project administration: ST, AR, MFM, PR, TSA

318 Supervision: TSA

319 Writing – original draft: JAA, TS, TSA

320 Writing – review & editing: JAA, TS, ST, AR, MFM, PR, CLQ, TSA

321 All authors read and approved the final version of the manuscript.

322

323

324

325 **Competing interests**

326 None of the authors have any competing interest connected to this study.

327 *Outside of this study:* PR has received consultancy and/or speaking fees (to SDCC) from AbbVie,

328 Astellas, AstraZeneca, Bayer, Boehringer Ingelheim, Gilead, Eli Lilly, MSD, Novo Nordisk and

329 Sanofi Aventis, and research grants from Novo Nordisk and Astra Zeneca.

330 MFM has received speaking fees from Boehringer Ingelheim, Novartis, Baxter and Sanofi

331 **Data availability**

332 The data sets used in this study are available from the corresponding author after acquiring required
333 permissions from the relevant regulatory authorities.

334

335 **References**

- 336 1. Armstrong DG, Swerdlow MA, Armstrong AA, Conte MS, Padula WV, Bus SA. Five year mortality and
337 direct costs of care for people with diabetic foot complications are comparable to cancer. *J Foot Ankle Res*
338 2020;13:16
- 339 2. Fauzi AA, Chung TY, Latif LA. Risk factors of diabetic foot Charcot arthropathy: a case-control study at a
340 Malaysian tertiary care centre. *Singapore Med J* 2016;57:198-203
- 341 3. Edmonds M, Manu C, Vas P. The current burden of diabetic foot disease. *J Clin Orthop Trauma*
342 2021;17:88-93
- 343 4. IDF Diabetes Atlas [article online], 2021. Available from <https://diabetesatlas.org/>. Accessed 22/11-2021
344 2021
- 345 5. Williams R, Karuranga S, Malanda B, Saeedi P, Basit A, Besancon S, Bommer C, Esteghamati A, Ogurtsova
346 K, Zhang P, Colagiuri S. Global and regional estimates and projections of diabetes-related health
347 expenditure: Results from the International Diabetes Federation Diabetes Atlas, 9th edition. *Diabetes Res*
348 *Clin Pract* 2020;162:108072
- 349 6. Kerr M, Barron E, Chadwick P, Evans T, Kong WM, Rayman G, Sutton-Smith M, Todd G, Young B, Jeffcoate
350 WJ. The cost of diabetic foot ulcers and amputations to the National Health Service in England. *Diabet Med*
351 2019;36:995-1002
- 352 7. Parker CN, Van Netten JJ, Parker TJ, Jia L, Corcoran H, Garrett M, Kwok CF, Nather A, Que MT, Srisawasdi
353 G, Wraight P, Lazzarini PA. Differences between national and international guidelines for the management
354 of diabetic foot disease. *Diabetes Metab Res Rev* 2019;35:e3101
- 355 8. Long J, Yang Z, Wang L, Han Y, Peng C, Yan C, Yan D. Metabolite biomarkers of type 2 diabetes mellitus
356 and pre-diabetes: a systematic review and meta-analysis. *BMC Endocr Disord* 2020;20:174
- 357 9. Arneith B, Arneith R, Shams M. Metabolomics of Type 1 and Type 2 Diabetes. *Int J Mol Sci* 2019;20
- 358 10. Jin Q, Ma RCW. Metabolomics in Diabetes and Diabetic Complications: Insights from Epidemiological
359 Studies. *Cells* 2021;10
- 360 11. Tofte N, Suvitaival T, Ahonen L, Winther SA, Theilade S, Fridmodt-Moller M, Ahluwalia TS, Rossing P.
361 Lipidomic analysis reveals sphingomyelin and phosphatidylcholine species associated with renal
362 impairment and all-cause mortality in type 1 diabetes. *Sci Rep* 2019;9:16398
- 363 12. Clos-Garcia M, Ahluwalia TS, Winther SA, Henriksen P, Ali M, Fan Y, Stankevic E, Lyu L, Vogt JK, Hansen
364 T, Legido-Quigley C, Rossing P, Pedersen O. Multiomics signatures of type 1 diabetes with and without
365 albuminuria. *Front Endocrinol (Lausanne)* 2022;13:1015557
- 366 13. ICD-10 Version:2010 [article online], 2010. Available from <https://icd.who.int/browse10/2010/en>.
367 Accessed 09/02-2022 2022
- 368 14. DNBo. H. Diabetic Foot Ulcers - a health technology assessment. Copenhagen: Danish National Board of
369 Health, 2011 2011;
- 370 15. Sundhedsvæsenets Klassifikations System (SKS) [article online], 2021. Available from
371 <https://sundhedsdatastyrelsen.dk/da/rammer-og-retningslinjer/om-klassifikationer/sks-klassifikationer>.
372 Accessed 09/02-2022 2022

- 373 16. Inker LA, Schmid CH, Tighiouart H, Eckfeldt JH, Feldman HI, Greene T, Kusek JW, Manzi J, Van Lente F,
374 Zhang YL, Coresh J, Levey AS, Investigators C-E. Estimating glomerular filtration rate from serum creatinine
375 and cystatin C. *N Engl J Med* 2012;367:20-29
- 376 17. Tofte N, Suvitaival T, Trost K, Mattila IM, Theilade S, Winther SA, Ahluwalia TS, Fridodt-Møller M,
377 Legido-Quigley C, Rossing P. Metabolomic Assessment Reveals Alteration in Polyols and Branched Chain
378 Amino Acids Associated With Present and Future Renal Impairment in a Discovery Cohort of 637 Persons
379 With Type 1 Diabetes. *Front Endocrinol (Lausanne)* 2019;10:818
- 380 18. Castillo S, Mattila I, Miettinen J, Orešič M, Hyötyläinen T. Data analysis tool for comprehensive two-
381 dimensional gas chromatography/time-of-flight mass spectrometry. *Anal Chem* 2011;83:3058-3067
- 382 19. Curovic VR, Suvitaival T, Mattila I, Ahonen L, Trost K, Theilade S, Hansen TW, Legido-Quigley C, Rossing
383 P. Circulating Metabolites and Lipids Are Associated to Diabetic Retinopathy in Individuals With Type 1
384 Diabetes. *Diabetes* 2020;69:2217-2226
- 385 20. Chen L, Cheng CY, Choi H, Ikram MK, Sabanayagam C, Tan GS, Tian D, Zhang L, Venkatesan G, Tai ES,
386 Wang JJ, Mitchell P, Cheung CM, Beuerman RW, Zhou L, Chan EC, Wong TY. Plasma Metabonomic Profiling
387 of Diabetic Retinopathy. *Diabetes* 2016;65:1099-1108
- 388 21. Hu JR, Coresh J, Inker LA, Levey AS, Zheng Z, Rebholz CM, Tin A, Appel LJ, Chen J, Sarnak MJ, Grams ME.
389 Serum metabolites are associated with all-cause mortality in chronic kidney disease. *Kidney Int*
390 2018;94:381-389
- 391 22. Jing L, Chengji W. GC/MS-based metabolomics strategy to analyze the effect of exercise intervention in
392 diabetic rats. *Endocr Connect* 2019;8:654-660
- 393 23. Steer KA, Sochor M, McLean P. Renal hypertrophy in experimental diabetes. Changes in pentose
394 phosphate pathway activity. *Diabetes* 1985;34:485-490
- 395 24. Schutz Y. Protein turnover, ureagenesis and gluconeogenesis. *Int J Vitam Nutr Res* 2011;81:101-107
- 396 25. Basu R, Chandramouli V, Dicke B, Landau B, Rizza R. Obesity and type 2 diabetes impair insulin-induced
397 suppression of glycogenolysis as well as gluconeogenesis. *Diabetes* 2005;54:1942-1948
- 398 26. Chung ST, Hsia DS, Chacko SK, Rodriguez LM, Haymond MW. Increased gluconeogenesis in youth with
399 newly diagnosed type 2 diabetes. *Diabetologia* 2015;58:596-603
- 400 27. Gannon MC, Nuttall FQ. Amino acid ingestion and glucose metabolism--a review. *IUBMB Life*
401 2010;62:660-668
- 402 28. Mathew AV, Jaiswal M, Ang L, Michailidis G, Pennathur S, Pop-Busui R. Impaired Amino Acid and TCA
403 Metabolism and Cardiovascular Autonomic Neuropathy Progression in Type 1 Diabetes. *Diabetes*
404 2019;68:2035-2044
- 405 29. Hansen CS, Suvitaival T, Theilade S, Mattila I, Lajer M, Trost K, Ahonen L, Hansen TW, Legido-Quigley C,
406 Rossing P, Ahluwalia TS. Cardiovascular Autonomic Neuropathy in Type 1 Diabetes Is Associated With
407 Disturbances in TCA, Lipid, and Glucose Metabolism. *Front Endocrinol (Lausanne)* 2022;13:831793
- 408 30. Tofte N, Vogelzangs N, Mook-Kanamori D, Brahimaj A, Nano J, Ahmadizar F, van Dijk KW, Fridodt-
409 Moller M, Arts I, Beulens JWJ, Rutters F, van der Heijden AA, Kavousi M, Stehouwer CDA, Nijpels G, van
410 Greevenbroek MMJ, van der Kallen CJH, Rossing P, Ahluwalia TS, t Hart LM. Plasma Metabolomics Identifies
411 Markers of Impaired Renal Function: A Meta-analysis of 3089 Persons with Type 2 Diabetes. *J Clin*
412 *Endocrinol Metab* 2020;105
- 413 31. Hung SY, Tsai JS, Yeh JT, Chen KH, Lin CN, Yang HM, Lin CW, Chen HY, Huang CH, Huang YY. Amino acids
414 and wound healing in people with limb-threatening diabetic foot ulcers. *J Diabetes Complications*
415 2019;33:107403
- 416 32. Wong A, Chew A, Wang CM, Ong L, Zhang SH, Young S. The use of a specialised amino acid mixture for
417 pressure ulcers: a placebo-controlled trial. *J Wound Care* 2014;23:259-260, 262-254, 266-259
- 418 33. Stechmiller JK. Understanding the role of nutrition and wound healing. *Nutr Clin Pract* 2010;25:61-68
- 419 34. Cereda E, Neyens JCL, Caccialanza R, Rondanelli M, Schols J. Efficacy of a Disease-Specific Nutritional
420 Support for Pressure Ulcer Healing: A Systematic Review and Meta-Analysis. *J Nutr Health Aging*
421 2017;21:655-661

- 422 35. Langer G, Fink A. Nutritional interventions for preventing and treating pressure ulcers. Cochrane
423 Database Syst Rev 2014;Cd003216
- 424 36. Armstrong DG, Hanft JR, Driver VR, Smith AP, Lazaro-Martinez JL, Reyzelman AM, Furst GJ, Vayser DJ,
425 Cervantes HL, Snyder RJ, Moore MF, May PE, Nelson JL, Baggs GE, Voss AC. Effect of oral nutritional
426 supplementation on wound healing in diabetic foot ulcers: a prospective randomized controlled trial.
427 Diabet Med 2014;31:1069-1077
- 428 37. Sipahi S, Gungor O, Gunduz M, Cilci M, Demirci MC, Tamer A. The effect of oral supplementation with a
429 combination of beta-hydroxy-beta-methylbutyrate, arginine and glutamine on wound healing: a
430 retrospective analysis of diabetic haemodialysis patients. BMC Nephrol 2013;14:8
- 431 38. Moore ZE, Corcoran MA, Patton D. Nutritional interventions for treating foot ulcers in people with
432 diabetes. Cochrane Database Syst Rev 2020;7:CD011378
- 433 39. Diabetes Prevention [article online], 2022. Available from
434 <https://www.idf.org/aboutdiabetes/prevention.html>. Accessed 09/02-2022 2022
- 435 40. Ahluwalia TS, Kilpelainen TO, Singh S, Rossing P. Editorial: Novel Biomarkers for Type 2 Diabetes. Front
436 Endocrinol (Lausanne) 2019;10:649
- 437
- 438
- 439
- 440
- 441
- 442
- 443
- 444
- 445
- 446
- 447
- 448
- 449
- 450
- 451
- 452
- 453
- 454

455

456

457 **Tables and figures**

458 **Table 1.** Clinical characteristics of the study participants at baseline

	All study participants	T1D participants without foot complications	T1D with at least one foot complication	p-value*
<i>n</i> (%)	637 (100)	577 (90.6)	60 (9.4)	-
Men, <i>n</i> (%)	348 (54.6)	314 (54.4)	34 (56.6)	0.8
Age, years	55 (47, 64)	55 (47, 63)	60 (52, 68)	<0.001
Diabetes duration (years)	35 (25, 44)	34 (23, 43)	44 (36, 52)	<0.001
Smokers, <i>n</i> (%)	133 (20.8)	123 (21.3)	10 (16.6)	0.4
BMI, kg/m ²	24.8 (22.5, 27.5)	24.8 (22.5, 27.2)	25.3 (22.7, 29.1)	0.6
Systolic blood pressure, mmHg	130 (119, 142)	129 (118, 142)	131 (120, 148)	0.4
HbA _{1c} , mmol/mol	64 (56, 72)	64 (55, 72)	66 (58, 72)	0.2
eGFR, ml/min/1.73 m ²	85 (64, 102)	86 (68, 104)	59 (43, 88)	<0.001
UACR, mg/g	13 (6, 42)	12 (6, 39)	41 (20, 206)	<0.001
LDL, mmol/l	2.4 (2.0, 2.9)	2.4 (2.0, 2.9)	2.1 (1.7, 2.6)	0.089
Triglycerides, mmol/l	1.0 (0.7, 1.3)	1.0 (0.7, 1.4)	0.9 (0.8, 1.2)	0.8
DFC, <i>n</i>	68	-	68	-
DFU, <i>n</i> (%)	19 (3)	-	19 (31.6)	-
Amputations, <i>n</i> (%)	23 (3.6)	-	23 (38.3)	-
Charcot's arthropathy, <i>n</i> (%)	26 (4.1)	-	26 (43.3)	-

459 Values are Median (IQR).

460 *T1D*: Type 1 Diabetes; *BMI*: Body mass index; *HbA_{1c}*: Glycosylated hemoglobin A1c; *eGFR*: Estimated glomerular filtration rate; *LDL*: Low density lipoproteins; *UACR*: urinary albumin excretion rate; *DFC*: Diabetic foot complication comprising diagnosis of diabetic foot ulcer (DFU), amputations, or Charcot's arthropathy.

461
462
463
464 *P value <0.05 were considered significant and are depicted in bold. P values were calculated using Welch Two Sample t-test; Fisher's exact test; or Pearson's Chi-squared test.

466

467

468

469

470

471

472

473 **Figure Legends**

474 **Figure 1.** Cross-sectional analysis - *Charcot's Arthropathy*

475 Cross-sectional analysis of association between baseline metabolites level and Charcot's arthropathy at
476 baseline. Divided in crude (with correction for multiple testing), adjusted (further adjusted for age, gender,
477 body mass index, systolic blood pressure, cholesterol, glycosylated hemoglobin A1c, smoking, statin and
478 triglycerides) and fully-adjusted (further adjusted for estimated glomerular filtration rate (eGFR) and
479 urinary-albumin creatinine ratio), with 95% confidence intervals. Significance was defined as $p < 0.05$. In this
480 figure an significant p -value not adjusted for multiple testing is marked in yellow (p). A p -value that is
481 significant after adjustment for multiple testing is marked in red (q). Finally, a p -value that is not-significant
482 before multiple testing is marked in black.

483

484 **Figure 2.** Survival analysis – *diabetic foot ulcer-free days*

485 Kaplan-Meier analysis of ulcer-free days stratified on median of plasma levels of Ribonic acid at baseline.

486

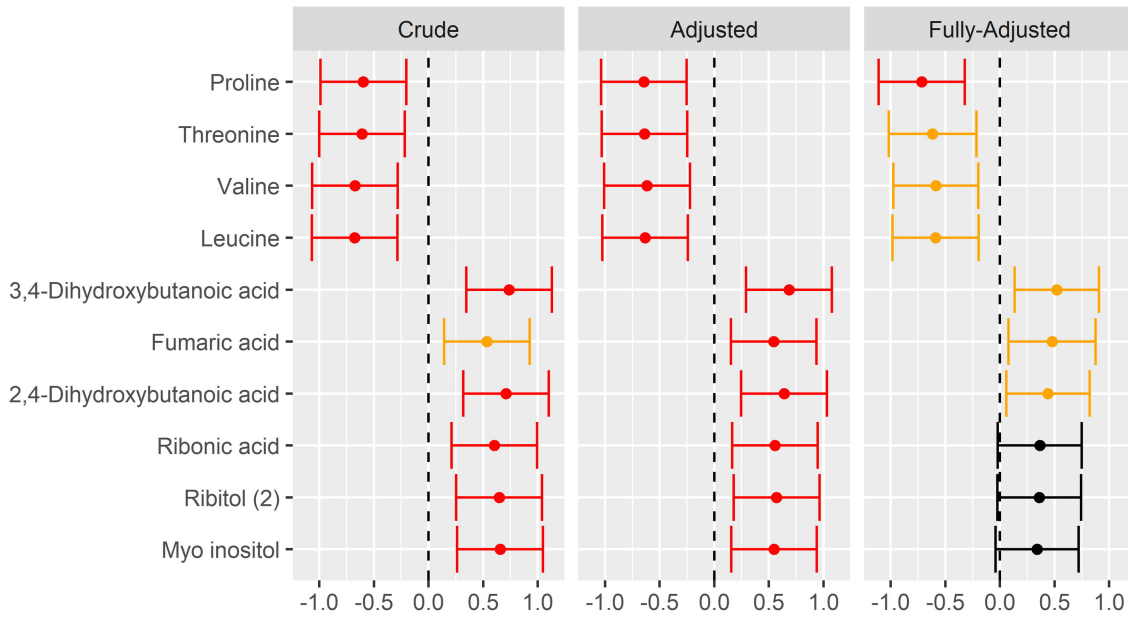
487 **Figure 3.** Overview of serum metabolite associations with diabetic foot complications (incident and 488 prevalent; crude model).

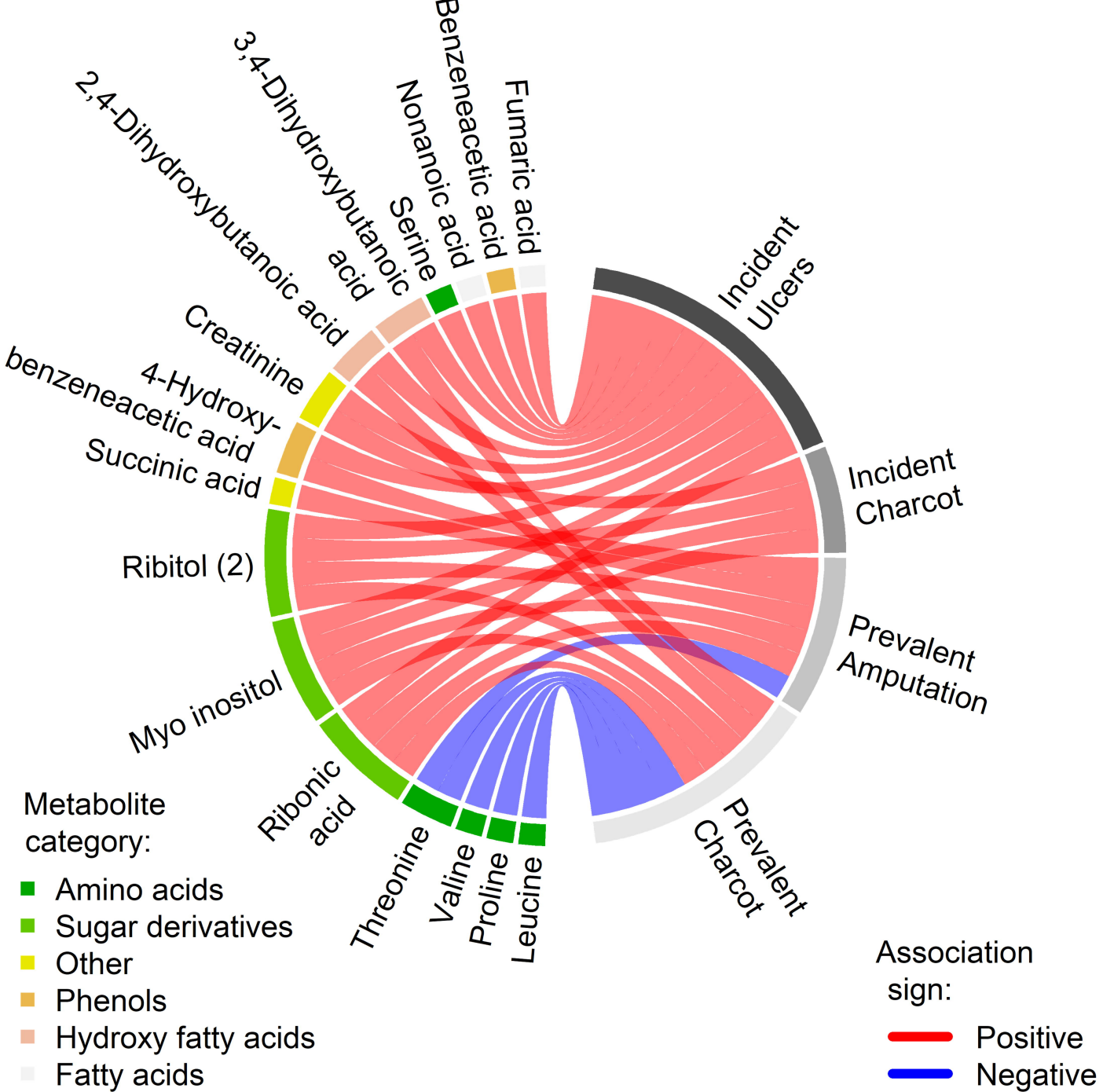
489

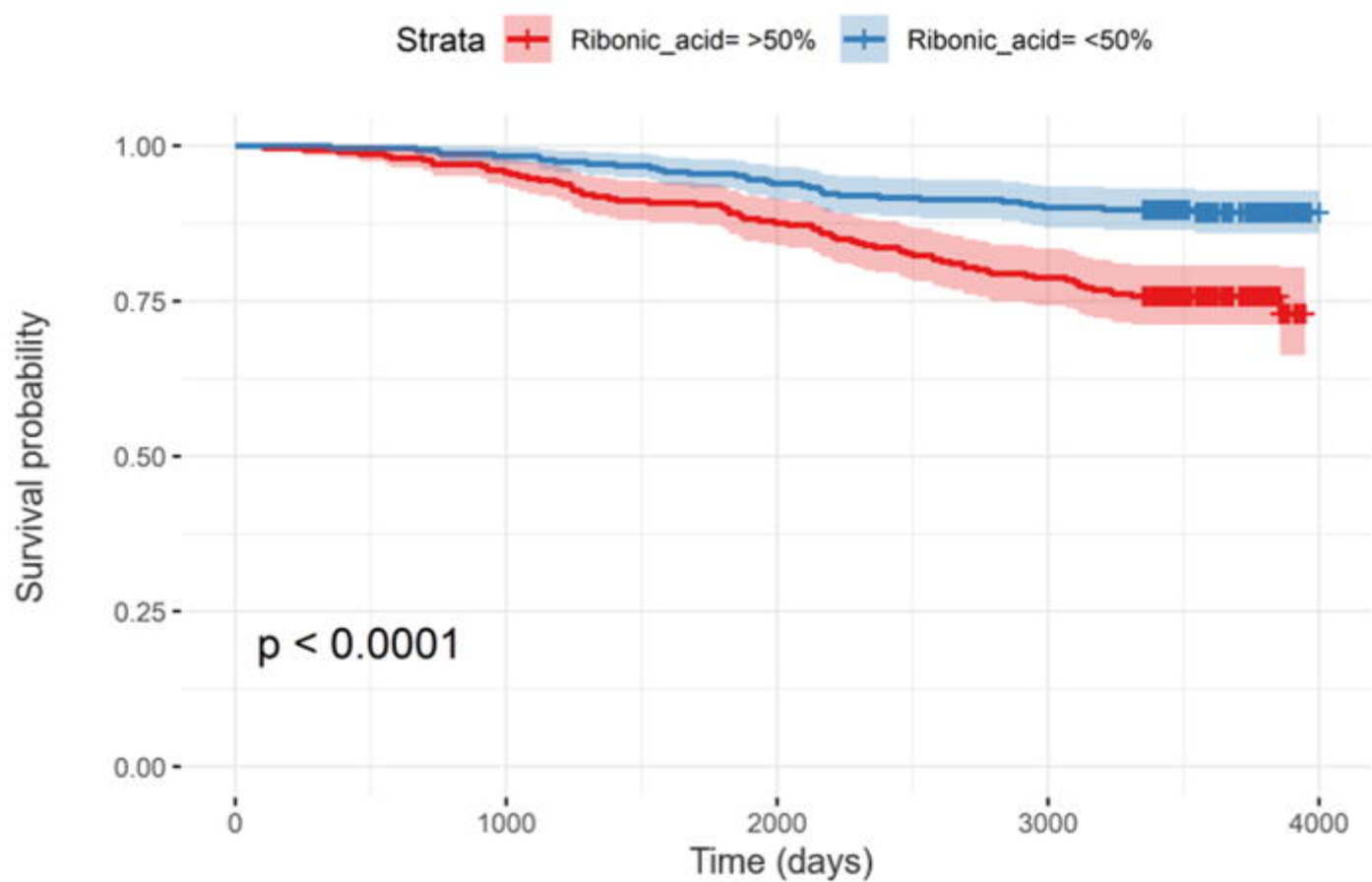
490 Chord diagram of crude associations between the metabolome (left) and foot complications (right) at
491 baseline (prevalent cases) and during the follow-up (incident cases). A curve between a metabolite and a
492 complication depicts a significant crude association (red: positive; blue: negative) after correction for
493 multiple testing. The category of each metabolite is indicated by the color aside the metabolite name. Amino
494 acids Leucine, Proline, Threonine and Valine are negatively associated with prevalent Charcot's arthropathy
495 (blue curves), whereas most of the other associations are positive (red curves).

496

Significance ● $q < 0.05$ ● $p < 0.05$ ● Not significant







Number at risk

	0	1000	2000	3000	4000
Ribonic_acid= >50%	306	293	268	241	0
Ribonic_acid= <50%	312	307	293	281	1

Cumulative number of events

Ribonic_acid= >50%	0	13	38	65	75
Ribonic_acid= <50%	0	5	19	31	33