

1 **“Puberty age gap”**: New method of assessing pubertal timing and its association with  
2 **mental health problems**

3 Niousha Dehestani<sup>1,2\*</sup>, Nandita Vijayakumar<sup>1</sup>, Gareth Ball<sup>3,4</sup>, Sina Mansour L.<sup>2,5</sup>, Sarah Whittle<sup>2,6</sup> &  
4 Timothy J. Silk<sup>1,3,6\*</sup>

5

6 <sup>1</sup>School of Psychology, Deakin University, 221 Burwood Highway, Burwood, VIC 3125, Australia.

7 <sup>2</sup>Melbourne Neuropsychiatry Centre, Department of Psychiatry, The University of Melbourne and  
8 Melbourne Health, Victoria, Australia

9 <sup>3</sup>Developmental Imaging, Murdoch Children’s Research Institute, Parkville 3052, Australia.

10 <sup>4</sup>Department of Paediatrics, The University of Melbourne, Melbourne 3053, Australia.

11 <sup>5</sup>Department of Biomedical Engineering, The University of Melbourne, Victoria, Australia

12 <sup>6</sup>These authors jointly supervised this work: Sarah Whittle and Timothy J. Silk

13

14 **Correspondence**

15 Niousha Dehestani, School of Psychology, Deakin University, 221 Burwood Highway,  
16 Burwood, VIC 3125, Australia, [ndehestanikolag@deakin.edu.au](mailto:ndehestanikolag@deakin.edu.au), +61422937273 or Tim Silk,  
17 School of Psychology, Deakin University, 221 Burwood Highway, Burwood, VIC 3125,  
18 Australia, [tim.silk@deakin.edu.au](mailto:tim.silk@deakin.edu.au), +61408533160.

19

“Puberty Age gap”: A new method of pubertal timing

20 **Abstract**

21

22 Puberty is linked to mental health problems during adolescence, and in particular, the timing  
23 of puberty is thought to be an important risk factor. This study developed a new measure of  
24 pubertal timing using multiple pubertal features and nonlinear associations with age and  
25 investigated its association with mental health problems. Using the Adolescent Brain  
26 Cognitive Development (ABCD) cohort, we implemented three models of pubertal timing by  
27 predicting chronological age from i) observed physical development, ii) hormones  
28 (testosterone and dehydroepiandrosterone [DHEA]), and iii) a combination of the two, using  
29 a supervised machine learning method (n ~9,900). Accuracy of the new models, and their  
30 associations with mental health problems were evaluated. The new pubertal timing measure  
31 performed better in capturing age variance compared to a commonly used method, and the  
32 physical measure accounted for more variance in mental health, such that earlier pubertal  
33 timing was associated with higher symptoms. This study demonstrates the utility for a new  
34 model of pubertal timing and suggests that physical maturation may play a predominant role  
35 in predicting mental health problems in early adolescence.

36

“Puberty Age gap”: A new method of pubertal timing

## 37 **Introduction**

38

39 Adolescence is the period between childhood and adulthood when individuals acquire the  
40 emotional and cognitive skills necessary to gain independence from their parents(1,2).

41 Individuals also progress through puberty, the process of attaining reproductive maturity,  
42 during this period. This includes hormonal and physical changes such as body hair growth  
43 and gonadal maturation (along with the development of breasts and onset of menstruation in  
44 females)(3,4). The progression through puberty has been associated with an increase in  
45 susceptibility to a range of internalizing and externalizing mental health problems(5,6), which  
46 may reflect the effects of hormones on the central nervous system and/or psychosocial  
47 mechanisms related to physical differences from peers(7). Therefore, investigation of  
48 individual differences in pubertal processes that consider both hormonal and physical  
49 changes may lead to a better understanding of adolescent mental health problems.

50

51 While all typically developing individuals progress through the same stages of puberty (based  
52 on observable physical changes), the onset and speed of progression can differ across  
53 individuals. As such, at any given period during adolescence, there is marked variability in  
54 pubertal stage, termed “pubertal timing” (8,9). Importantly, it is pubertal timing – not  
55 pubertal stage – that is often linked to the emergence and severity of mental health problems  
56 (10), though there are inconsistencies in the literature. A number of studies have found that in  
57 females, earlier pubertal timing is associated with internalizing problems (11,12), including  
58 depression(13,14), anxiety(15), eating disorders (16), and externalizing behaviors. On the  
59 other hand, a number of other studies report null findings regarding internalizing  
60 symptoms(14,15). Similarly in males, both early and late timing has been related to  
61 internalizing (11 VS 16) and externalizing problems (17 VS 18), while others have failed to

“Puberty Age gap”: A new method of pubertal timing

62 identify any associations (9, 15). Small sample sizes and methodological differences between  
63 studies may partially explain the inconsistent findings, with variation in the measures used to  
64 calculate pubertal timing likely important. Indeed, a meta-analysis of 101 studies found that  
65 the method of measuring puberty had a moderating role in the relationship between pubertal  
66 timing and mental health problems (4).

67

68 Different statistical approaches exist to measure the relative pubertal timing of  
69 individuals compared to same-aged peers. A common approach is to regress age from  
70 pubertal status (e.g., based on Pubertal Developmental Scale [PDS] scores) in a sample, with  
71 residuals reflecting earlier or later maturity relative to the group average (21). However, such  
72 approaches only capture individual differences in observable physical development and do  
73 not inform us about underlying biological mechanisms that are more reflected in hormone  
74 levels (22). Hormone levels provide valuable information regarding the endocrine processes  
75 of puberty (23,24). Previous studies have also demonstrated associations between changes in  
76 hormone levels and adolescent mental health problems. For example, increasing levels of  
77 dehydroepiandrosterone (DHEA) have been linked to internalizing symptoms (25), while  
78 testosterone has been associated with externalizing and disruptive behaviors (26). To the best  
79 of our knowledge, only one study has calculated pubertal timing with hormone data to predict  
80 internalizing behaviors in a sample of 174 females (27). Although this study did not find any  
81 significant associations, it is important to investigate this in a larger sample, of both females  
82 and males, and to assess associations across different dimensions of mental health problems.  
83 Additionally, no previous studies have combined both hormonal and physical measurements  
84 when calculating pubertal timing, which may be more sensitive to multiple underlying  
85 mechanisms that contribute to mental health problems. Thus, further investigation is needed

“Puberty Age gap”: A new method of pubertal timing

86 to develop pubertal timing methods that amalgamate different aspects of puberty in a single  
87 model.

88

89 In this study, we propose a multivariate method to calculate pubertal timing that  
90 draws upon the “brain age” approach (28,29), where an association between multiple  
91 neuroimaging variables and chronological age is learned with supervised machine learning  
92 methods. Subtracting chronological age from brain age yields a “brain age gap” that reflects  
93 brain maturation relative to the group average (26,28). The major benefits of this model  
94 include being able to combine multiple features and reducing complex multivariate  
95 information to a single parameter. We propose to use a similar model to calculate estimates of  
96 pubertal timing by combining multiple puberty-related features. In contrast, alternative  
97 strategies either focus on single measures and only capture specific aspects or mechanisms of  
98 puberty or calculate the mean of multiple measures but may obscure the relative importance  
99 of each item. The second benefit of this method is that it can model nonlinear relationships  
100 between multiple measures of puberty and age, which is important given that nonlinear  
101 associations between specific features of puberty and chronological age have been observed  
102 in previous studies (30,31).

103

104 In the current study, we aimed to create a normative model of pubertal timing that combines  
105 multiple measures of puberty capturing hormone levels and physical changes. By using a  
106 strict cross-validation approach, we ensure that model performance is robust. We compared  
107 model performance to a common linear model of pubertal timing (i.e., regressing age from  
108 total PDS score). We also compared the combined normative model against two unimodal  
109 models employing a similar supervised machine learning approach, one that uses hormonal  
110 measures alone and another that uses physical measures only. Finally, we examined the

“Puberty Age gap”: A new method of pubertal timing

111 association between each pubertal timing model and multiple dimensions of mental health  
112 problems. We hypothesized that the combined normative model of pubertal timing, which  
113 uses both hormonal and physical measures, would provide a more accurate prediction of age  
114 and better prediction of mental health problems compared to either of the unimodal  
115 (hormonal or physical) normative models or the (traditional) linear model of puberty. We  
116 additionally hypothesized that early pubertal timing would be associated with increased  
117 mental health problems in females and males. Based on a recent meta-analysis, we  
118 hypothesized significant effects of similar magnitude for internalizing and externalizing  
119 problems, while no significant effects were expected for attention problems (4). Prior  
120 findings of sex differences are mixed, and as such we did not propose specific hypotheses  
121 here.

122

## 123 **Materials and Methods**

124

125 To promote reproducible open research practices, all analyses conducted as part of this article  
126 are made publicly available in a git repository (“<https://github.com/Niousha-Dehestani/Puberty-age>”). In addition, more detail about participants, measurements and  
127 analysis is provided in the supplementary materials.  
128

129

### 130 **Participants**

131

132 Participants were drawn from the ongoing, longitudinal, Adolescent Brain Cognitive  
133 Development (ABCD) Study (<https://abcdstudy.org/>). Data was collected from ~11,500  
134 children at baseline (47% females, age 9-10 years old) from 21 sites across the United States,

“Puberty Age gap”: A new method of pubertal timing

135 with annual data collection thereafter (see Supplementary Table 1 for demographic  
136 information). Data from baseline and 3 annual follow-up waves were used in the current  
137 analyses. We excluded participants who had a mismatch between their biological sex  
138 (collected per visit with the salivary sample) and their self-reported gender as well as those  
139 with missing values in biological sex (See Supplementary Information (SI) Appendix S1 for  
140 details of data cleaning procedures). The exact sample sizes utilized in each analysis are  
141 reported in detail below.

142

### 143 **Measures**

144

145 ***Pubertal Development Scale.*** The Pubertal Development Scale (PDS) measures observable  
146 physical signs of puberty. It includes items on height, body hair, and skin change in both  
147 sexes, as well as the onset of menarche and breast development for girls, and facial hair and  
148 voice changes for boys. Items are rated on a Likert scale from one to four points (“had not  
149 begun” to “already complete”). Onset of menarche was a binary variable (yes/no response)  
150 that was converted to one for “no” and four for “yes”. The PDS can either be collected via  
151 self- or parent-report. However, each of these measures have their own limitations. The  
152 parent-report has good correspondence to clinician ratings, though this correspondence is  
153 lower in males (32). Conversely, the self-report is less accurate for individuals who are in the  
154 lower or upper pubertal stages as they tend to report toward the mid stages. Therefore, some  
155 studies have recommended using the parent-report PDS, especially in late childhood or early  
156 adolescence (33), and accordingly, the current study utilized this version. In this study we  
157 used individual PDS items rather than the average PDS score typically used in prior  
158 literature. This allowed us to capture the unique relationship between each item and our

“Puberty Age gap”: A new method of pubertal timing

159 outcomes of interest, consistent with previous literature that has found that separate PDS  
160 items exhibit differential relationships with, e.g., brain structure (34).

161

162 **Hormones.** DHEA and testosterone (TST) levels were measured via salivary hormone  
163 samples assayed by Salimetrics. Although estradiol was also measured, it was not used in the  
164 current analyses due to it only being available for females and having excessive missingness  
165 (n = 780). The hormone data was cleaned based on the protocol that published recently(35),  
166 which involved removing the confounding effects of collection time, duration of collection,  
167 wake-up time on collection day, having exercised before collection, and caffeine intake (with  
168 a linear mixed effect model, see SI for more details). Further information on the reliability  
169 and overall quality of the hormone data can be found in protocol (32).

170

171

172 **Body Mass Index (BMI).** BMI was calculated as the average of two weight and height  
173 measurements per visit, assessed by the researcher. Next, BMI standard deviation scores  
174 (BMI z-scores) were calculated relative to age and sex, with reference to the CDC 2000  
175 Growth Charts (36).

176

177 **Sociodemographic Variables.** Five categories of race/ethnicity were coded: White, Black,  
178 Hispanic, Asian, and Other/Multi-race. Additionally, household income and education were  
179 obtained as measures of family socioeconomic status (SES) that were collected in a parent  
180 report.

181

182 **Mental health problems.** The Child Behavior Checklist (CBCL) (age 6 to 18 form; (37)) was  
183 used to measure parent-reported mental health problems. CBCL includes 8 syndrome scales;



“Puberty Age gap”: A new method of pubertal timing

184 namely, Anxious/Depressed, Withdrawn/Depressed, Somatic Complaints, Social Problems,  
185 Thought Problems, Attention Problems, Aggressive Behavior, and Rule-breaking Behavior as  
186 well as three broad summary scales of externalizing, internalizing, and total problems.

187

## 188 **Statistical Analysis**

189

190 ***Calculating pubertal timing.*** Inheriting fundamental concepts from the literature on “brain  
191 age” (26), “puberty age” was computed using supervised machine learning. The model was  
192 trained to learn the relationship between physical and hormonal measurements of puberty  
193 (specifically, each PDS item, DHEA levels and TST levels) and chronological age, separately  
194 in males and females. Thereafter, the model was used to predict chronological age from  
195 pubertal measurements in an independent test sample. The effect of age was subsequently  
196 regressed from these predictions to adjust the bias created by regression toward the mean  
197 (RTM) (For more details see SI, Appendix S3, Figure S2 and Figure S3, and (38)). The bias-  
198 adjusted prediction of an individual’s chronological age from pubertal measurements is  
199 termed “puberty age”. Further, the residuals of the prediction model (after subtracting  
200 chronological age from puberty age) are referred to as the “puberty age gap”, which we use  
201 as a dimensional measure indicative of relative pubertal timing. A positive puberty age gap is  
202 interpreted as a sign of earlier pubertal development compared to the normative age and sex-  
203 matched group, while a negative gap reflects relatively delayed pubertal development (see,  
204 Appendix 1, Figure S1).

205 We implemented a Generalized Additive Model (GAM) for the prediction of age  
206 (response variable) from pubertal measurements, which utilized TST, DHEA, and each of the  
207 PDS items as multivariate predictor variables. To remove the potential impacts of familial  
208 relations and repeat assessments of each individual, the sample was stratified to randomly

“Puberty Age gap”: A new method of pubertal timing

209 keep a single observation for each family (i.e., across waves and siblings). For details on data  
210 processing, such as the procedure for dealing with missing values, see SI Appendix S1 and  
211 Table S1. Additionally, to ensure the model was trained on a typically developing sample;  
212 using the CBCL DSM-oriented scales (consistent with DSM diagnostic categories), we  
213 excluded individuals above the threshold (symptom’s score >60) for affective, anxiety,  
214 somatic, opposition defiant and conduct problems, as well as ADHD. The remaining  
215 participants who had symptom scores <60 were included in the training of models of puberty  
216 age (N = 4,949 (2,439 females)). However, a representation of the whole sample was used for  
217 testing (N = 9,919 (4,725 females)).

218

219 As GAM fits smooth nonlinear curves in the form of spline functions, it is expected  
220 to outperform commonly utilized linear methods of pubertal timing measurement, given the  
221 nonlinear relations previously reported(30). Model training was performed within a nested  
222 10-fold cross-validation design (for each fold in the outer loop, 90% of samples were used for  
223 model training and 10% for testing). Inner loop hyperparameter tuning was performed by a  
224 grid search for optimal regularization penalty on each term (i.e, using GAM) to minimize the  
225 estimated prediction error in the training sample (generalized cross-validation (GCV) score).  
226 To understand the contribution of different indices to the measurement of pubertal timing, we  
227 implemented three alternative models to estimate “puberty age”. The first approach only used  
228 hormones (DHEA and TST) as features to predict chronological age, the second only used  
229 PDS items, and the third combined hormone and PDS items. The predictions of age were  
230 named *hormonal* puberty age, *physical* puberty age, and *combined* puberty age, respectively.  
231 In all three models, the residuals of age prediction indexed “puberty age gap”, which reflects  
232 pubertal timing. We also used the partial dependence function in GAM models that can

“Puberty Age gap”: A new method of pubertal timing

233 reflect the importance of each feature in the combined puberty age model (for more detail,  
234 see SI, Appendix S4 and Figure S4).

235

236 ***Comparison of “puberty age” models.*** We compared the performance of the three alternate  
237 puberty age models using Pearson's correlation between predicted and chronological age and  
238 median absolute error (MAE) averaged over the 10 cross-validation folds. Additionally, we  
239 used a non-parametric paired t-test (Wilcoxon signed-rank test) to statistically compare the  
240 model performance of different models based on the absolute error of predictions.

241

242 ***“Physical puberty age” compared to a traditional pubertal timing model.*** The current study  
243 also compared the out-of-sample performance and accuracy of the physical puberty age  
244 model with the most common traditional pubertal timing model: linearly regressing age from  
245 average PDS score. In order to draw a comparison between the new model and the traditional  
246 approach, the performance of the physical puberty age model was contrasted with the  
247 traditional approach. The physical model was selected (rather than the hormonal or combined  
248 model) to ensure a fair comparison of two approaches that measure pubertal timing from the  
249 same input features (i.e., PDS). In order to conduct this comparison, a linear regression model  
250 was used to regress chronological age from the total PDS score (train) and used the fitted  
251 model coefficients in unseen data to measure timing (test). Similar to the puberty age model  
252 design, a 10-fold cross-validation design was used to measure traditional pubertal timing for  
253 the whole sample. This linear model provided an implementation of the traditional model in  
254 an out-of-sample prediction paradigm. Model performance was assessed based on the out-of-  
255 sample prediction accuracies (quantified by the absolute error of predictions). Similarly, we  
256 used the “Wilcoxon signed-rank test” to investigate the statistical differences in model  
257 performance.

“Puberty Age gap”: A new method of pubertal timing

258

259 **“Puberty age gap” associations with mental health problems.** We used linear mixed-effect  
260 models (LMM) to investigate associations between each alternate “puberty age gap” measure  
261 and different dimensions of mental health problems, in males and females separately. The  
262 following formula was tested for each syndrome dimension (i.e., Anxious/Depressed,  
263 Withdrawn/Depressed, Somatic Complaints, Social Problems, Thought Problems, Attention  
264 Problems, Aggressive Behavior, and Rule-breaking Behavior), as well as three broad scales  
265 including total problems, externalizing, and internalizing problems. Sample size for this  
266 analysis was  $N = 9,919$  (4,725 (females)) after removing the missing value in CBCL items.

267

268 Mental health problems  $\sim$  *puberty age gap* + *age* + (*1/site*).

269

270 Age was included as a confound (fixed effect) and data collection sites were modelled as  
271 random effects. We corrected for multiple tests controlling for False Discovery Rate (FDR) at  
272 5% and reported the FDR corrected p-values in the results. The different “pubertal age”  
273 LMMs were compared based on the Akaike Information Criterion (AIC) and a cut-off of 2  
274 was used to indicate evidence for a better model, i.e., the model with an AIC that is at least 2  
275 units smaller is considered a comparatively better model. Furthermore, to investigate whether  
276 associations between pubertal timing and mental health problems differed by age, we  
277 investigated the interaction effect of age and puberty age gap in predicting mental health  
278 problems using the following LMM:

279

280 Mental health problems  $\sim$  *puberty age gap* + *age* + *puberty age gap: age* + (*1/site*)

281

“Puberty Age gap”: A new method of pubertal timing

282 Finally, given the known association of pubertal timing with BMI, SES, and race/ethnicity  
283 (Mendle et al., 2019), supplementary analyses repeated primary models while accounting for  
284 these variables as covariates (see SI, Appendix S5 and Table S2, for details of these  
285 analyses). This approach avoided potential complexity in our primary analyses due to the  
286 collinearity of confounding variables with our main variables of interest.

287

288

## 289 **Results**

290

291 ***Accuracy of puberty age models.*** All three models were able to provide significant and  
292 accurate out-of-sample predictions of age (Table 1, Figure 1). The performance of the  
293 hormonal model was better than the physical model in males, while on the contrary, physical  
294 puberty age was found to be a better predictor of age than hormonal puberty age in females.  
295 Across both sexes, combined puberty age explained the largest degree of variation in  
296 chronological age. Non-parametric statistical comparisons showed that the MAE between all  
297 models was significantly different ( $p < 0.001$ ). See the correlation between these three models  
298 in SI (See Appendix S2 and Figure S1).

299

Approximate position of Table 1

Approximate position of Figure 1

300

301

302 **“Puberty age model” vs. Traditional model.** Comparing the out-of-sample prediction  
303 performance of the physical puberty age gap with the traditional model of pubertal timing  
304 showed that the physical puberty age model was significantly better at modelling the

“Puberty Age gap”: A new method of pubertal timing

305 relationship between puberty development and age in previously unseen data (See Table 2).

306 Non-parametric statistical comparisons showed that the MAE between models were

307 significantly different ( $p < 0.001$ )

308

Approximate position of Table 2

309

310

311 ***Pubertal timing measures predicting mental health problems.*** We investigated the

312 association between each puberty age gap measure (hormonal, physical, and combined) and

313 different dimensions of mental health problems (see Table 3, Figure 2). Hormonal puberty

314 age gap was not significantly associated with any mental health problems in either males or

315 females. Physical puberty age gap, however, was significantly positively associated with all

316 dimensions of mental health problems in males and all dimensions except Anxiety-

317 Depression in females. While similar associations were present for the combined puberty age

318 gap, AIC differences indicated a better model fit for the physical puberty age gap in all cases.

319 Finally, there were no significant interactions between age and any puberty age gap measure

320 in predicting mental health problems in either females or males, suggesting that associations

321 were stable across the age range.

322

Approximate position of Table 3

Approximate position of Figure 2

323

## 324 **Discussion**

325 In this study, we utilized biological and physical pubertal features and used

326 supervised machine learning to model pubertal timing and its association with mental health

“Puberty Age gap”: A new method of pubertal timing

327 problems. Overall, a combined puberty age model predicted age more accurately than the  
328 unimodal (i.e., physical, or hormonal features alone). In males, the performance of the  
329 hormonal model was better than the physical model, which was not the case for females. This  
330 may be due to the fact that the two hormones tested (DHEA and testosterone) are more  
331 predominant in males, whilst female-dominant hormones (such as estradiol) were not  
332 considered. We showed that our novel pubertal timing model (based on physical pubertal  
333 features) had better accuracy than a conventional linear regression-based measurement in  
334 both sexes. Findings also highlight that our new method of assessing pubertal timing was  
335 significantly associated with most dimensions of mental health problems in males and  
336 females. Generally, we found that early pubertal maturation (based on physical and combined  
337 physical and hormonal features) was consistently predictive of various dimensions of mental  
338 health problems and could hence be an indicative risk factor for general mental health  
339 problems.

340 Findings indicated that our novel normative puberty age models were able to provide  
341 significantly accurate out-of-sample predictions of age. This nonlinear modelling approach  
342 was found to be more accurate at predicting age than traditional measures of pubertal timing  
343 that rely on linear modelling of the relationship between (average) pubertal stage and age.  
344 These results highlight the presence of nonlinear relationships between age and pubertal  
345 development, consistent with previous literature reporting benefits of other nonlinear  
346 methods for calculating pubertal timing(21,31). Additionally, our examination of the  
347 collinearity between each of the PDS items showed that, although the items are significantly  
348 correlated, the correlations between them are less than 0.35 (for more details, see  
349 supplementary section 2). This suggests that each PDS item carried a significant amount of  
350 independent information. Our method thus used this independent information in a  
351 multivariate design instead of simplifying this information by averaging items to create a

“Puberty Age gap”: A new method of pubertal timing

352 single PDS score. Furthermore, our out-of-sample prediction provides an evaluation of the  
353 generalizability and replicability of study findings (39). We presented how a model that was  
354 trained on 90% of the sample could provide accurate out-of-sample predictions in the  
355 remaining 10% of the sample. This provides the opportunity for future research to measure  
356 pubertal timing in studies with smaller sample sizes, by taking advantage of this pre-trained  
357 normative model. This could potentially alleviate some study biases inherent to small sample  
358 sizes.

359         Beyond its benefits for predicting age, our novel method of assessing pubertal timing  
360 was also significantly related to mental health problems in adolescents. Across most models  
361 of puberty age, we found that relatively early pubertal timing (i.e., positive puberty age gap)  
362 was associated with an increase in most dimensions of mental health problems. This is  
363 consistent with the maturation disparity hypothesis, whereby a mismatch between physical  
364 development and progression of emotional and cognitive development is purported to  
365 increase in those with early pubertal timing, which accounts for difficulties navigating the  
366 complexities and challenges of this period and may thus result in greater risk for mental  
367 health problems (7, 4). In particular, findings showed that physical puberty age gap out-  
368 performed combined and hormonal puberty age gap measures in the prediction of mental  
369 health problems in both females and males. Thus, although the prediction accuracy of the  
370 combined puberty age model was significantly better than physical puberty age, it was not  
371 better at explaining mental health problems. Moreover, we did not find any significant  
372 associations between hormonal puberty age gap and mental health problems in males or  
373 females. These findings are partially consistent with (40), who reported that pubertal timing  
374 measured from hormonal information (testosterone and DHEA) did not predict internalizing  
375 symptoms. Consistent with prior studies, these findings may suggest that psychosocial  
376 mechanisms have a larger role (in contrast to biological mechanisms indexed by hormones)



“Puberty Age gap”: A new method of pubertal timing

377 in predicting mental health problems in early adolescence (14). Likewise, prior work has  
378 suggested that earlier physical development impacts social functions such as difficulty  
379 maintaining friendship with peers who mature later, and a tendency to associate with older  
380 adolescents that engage in more externalizing behaviors (12).

381 While this study has strengths in its large sample size, use of hormonal assays and  
382 physical measurement of puberty, as well as implementation of a novel, generalizable method  
383 for assessing pubertal timing, there are limitations that should be addressed in future work.  
384 First, the age range of the sample used was rather limited and a wider age range could have  
385 captured more variance in pubertal maturation and improved the out-of-sample model  
386 prediction of age. Future studies that implement our model in a wider age range  
387 encompassing the start to completion of puberty would be able to better capture the complete  
388 nonlinear relationship between age and pubertal development. Relatedly, while we did not  
389 observe any interactive effects of age with pubertal timing in predicting mental health  
390 problems symptoms in early adolescents, it is possible that such effects may be detectable  
391 across a larger age range. Further, different measures of puberty age gap may also  
392 differentially predict mental health problems in earlier versus later adolescence. Second, this  
393 study focused on a limited number of pubertal hormones, and the omission of other hormonal  
394 features may have impacted the predictive power of hormonal puberty age gap – particularly  
395 in females. Additionally, variations in the time for collecting hormones across the day could  
396 have also had an impact on the inferior performance of the hormonal age gap (although these  
397 were statistically accounted for). Thus, future studies could incorporate more detailed  
398 assessments of hormones to improve model prediction. Although the current study used the  
399 parent report version of PDS due to reportedly higher reliability in this particular age range, it  
400 would be valuable for future research to replicate this analysis in a sample with a wider age  
401 range with self- or clinician-assessed pubertal development.

“Puberty Age gap”: A new method of pubertal timing

402 In conclusion, the current study proposes a smooth nonlinear puberty age model that  
403 facilitates generalizable investigations of pubertal timing in future studies. Our findings also  
404 highlight the importance of physical pubertal maturation, relative to hormonal changes, for  
405 mental health problems during early adolescence. This suggests that psychosocial  
406 mechanisms may play an important role in the relationship between early pubertal timing and  
407 mental health problems, which has implications for interventions aimed at reducing the risk  
408 of the emergence of mental health problems in adolescence.

409

#### 410 **Data Sharing:**

411

412 This study used data from Adolescent Brain Cognitive Development (ABCD) Study  
413 (<https://abcdstudy.org>), held in the NIMH Data Archive (NDA). This is a longitudinal study  
414 which collected data from ~ 11000 children in age 9-10 and follow them through 10 years. A  
415 full list of supporters is available at <https://abcdstudy.org/federal-partners.html>. A listing of  
416 participating sites and a complete listing of the study investigators can be found at  
417 <https://abcdstudy.org/scientists/workgroups/>. ABCD consortium investigators designed and  
418 implemented the study and/or provided data but did not participate in the analysis or writing  
419 of this report. This manuscript reflects the views of the authors and may not reflect the  
420 opinions or views of the NIH or ABCD consortium investigators.

421

#### 422 **Acknowledgement**

423

424 Niousha Dehestani was supported by a Deakin University Postgraduate

“Puberty Age gap”: A new method of pubertal timing

425 Research Scholarships (DUPRS). Additionally, this study was supported by the MASSIVE

426 high-performance computing facility ([www.massive.org.au](http://www.massive.org.au)).

427

428 **Conflict of Interest**

429 The authors declare that they have no financial interests or personal relationships that could

430 impact the work reported in this paper.

431

432

“Puberty Age gap”: A new method of pubertal timing

433

434 **References**

- 435 1. Blakemore S-J, Choudhury S. Development of the adolescent brain: implications for  
436 executive function and social cognition. *J Child Psychol Psychiatry* [Internet]. 2006  
437 Mar;47(3–4):296–312. Available from:  
438 <https://onlinelibrary.wiley.com/doi/10.1111/j.1469-7610.2006.01611.x>
- 439 2. Sawyer SM, Azzopardi PS, Wickremarathne D, Patton GC. The age of adolescence.  
440 *Lancet Child Adolesc Heal*. 2018;2(3):223–8.
- 441 3. Banerjee I, Clayton P. The Genetic Basis for the Timing of Human Puberty. *J*  
442 *Neuroendocrinol* [Internet]. 2007 Nov;19(11):831–8. Available from:  
443 <https://onlinelibrary.wiley.com/doi/10.1111/j.1365-2826.2007.01598.x>
- 444 4. Kohen-Raz R. PHYSIOLOGICAL MATURATION AND MENTAL GROWTH AT  
445 PRE-ADOLESCENCE AND PUBERTY. *J Child Psychol Psychiatry* [Internet]. 1974  
446 Jul;15(3):199–213. Available from:  
447 <https://onlinelibrary.wiley.com/doi/10.1111/j.1469-7610.1974.tb01245.x>
- 448 5. Ullsperger JM, Nikolas MA. A meta-analytic review of the association between  
449 pubertal timing and psychopathology in adolescence: Are there sex differences in risk?  
450 *Psychol Bull* [Internet]. 2017 Sep;143(9):903–38. Available from:  
451 <http://doi.apa.org/getdoi.cfm?doi=10.1037/bul0000106>
- 452 6. Natsuaki MN, Klimes-Dougan B, Ge X, Shirtcliff EA, Hastings PD, Zahn-Waxler C.  
453 Early pubertal maturation and internalizing problems in adolescence: Sex differences  
454 in the role of cortisol reactivity to interpersonal stress. *J Clin Child Adolesc Psychol*.  
455 2009;38(4):513–24.
- 456 7. Ge X, Natsuaki MN. In search of explanations for early pubertal timing effects on  
457 developmental psychopathology. *Curr Dir Psychol Sci*. 2009;18(6):327–31.

“Puberty Age gap”: A new method of pubertal timing

- 458 8. A W, TANNER JM. VARIATIONS IN PATTERN OF PUBERTAL CHANGES IN  
459 GIRLS. *Obstet Gynecol Surv* [Internet]. 1970 Jul;25(7):694–5. Available from:  
460 <http://journals.lww.com/00006254-197007000-00018>
- 461 9. Petersen AC, Crockett L, Richards M, Boxer A. A self-report measure of pubertal  
462 status: Reliability, validity, and initial norms. *J Youth Adolesc* [Internet]. 1988  
463 Apr;17(2):117–33. Available from: <http://link.springer.com/10.1007/BF01537962>
- 464 10. Graber JA. Pubertal timing and the development of psychopathology in adolescence  
465 and beyond. *Horm Behav* [Internet]. 2013 Jul;64(2):262–9. Available from:  
466 <http://dx.doi.org/10.1016/j.yhbeh.2013.04.003>
- 467 11. Crockett LJ, Carlo G, Wolff JM, Hope MO. The role of pubertal timing and  
468 temperamental vulnerability in adolescents’ internalizing symptoms. *Dev*  
469 *Psychopathol* [Internet]. 2013 May 30;25(2):377–89. Available from:  
470 [https://www.cambridge.org/core/product/identifier/S0954579412001125/type/journal\\_](https://www.cambridge.org/core/product/identifier/S0954579412001125/type/journal_article)  
471 [article](https://www.cambridge.org/core/product/identifier/S0954579412001125/type/journal_article)
- 472 12. Marceau K, Neiderhiser JM, Lichtenstein P, Reiss D. Genetic and Environmental  
473 Influences on the Association Between Pubertal Maturation and Internalizing  
474 Symptoms. *J Youth Adolesc*. 2012;41(9):1111–26.
- 475 13. Hamlat EJ, McCormick KC, Young JF, Hankin BL. Early pubertal timing predicts  
476 onset and recurrence of depressive episodes in boys and girls. *J Child Psychol*  
477 *Psychiatry Allied Discip*. 2020;61(11):1266–74.
- 478 14. Mendle J, Ferrero J. Detrimental psychological outcomes associated with pubertal  
479 timing in adolescent boys. *Dev Rev* [Internet]. 2012;32(1):49–66. Available from:  
480 <http://dx.doi.org/10.1016/j.dr.2011.11.001>
- 481 15. Weingarden H, Renshaw KD. Early and late perceived pubertal timing as risk factors  
482 for anxiety disorders in adult women. *J Psychiatr Res* [Internet]. 2012;46(11):1524–9.

“Puberty Age gap”: A new method of pubertal timing

- 483 Available from: <http://dx.doi.org/10.1016/j.jpsychires.2012.07.015>
- 484 16. Klump KL. Puberty as a critical risk period for eating disorders: A review of human  
485 and animal studies. *Horm Behav* [Internet]. 2013;64(2):399–410. Available from:  
486 <http://dx.doi.org/10.1016/j.yhbeh.2013.02.019>
- 487 17. Winer JP, Parent J, Forehand R, Breslend NL. Interactive Effects of Psychosocial  
488 Stress and Early Pubertal Timing on Youth Depression and Anxiety: Contextual  
489 Amplification in Family and Peer Environments. *J Child Fam Stud* [Internet]. 2016  
490 May 7;25(5):1375–84. Available from: [http://link.springer.com/10.1007/s10826-015-](http://link.springer.com/10.1007/s10826-015-0318-0)  
491 [0318-0](http://link.springer.com/10.1007/s10826-015-0318-0)
- 492 18. R. K-H, M. M, P. R, M. R. Early puberty is associated with mental health problems in  
493 middle adolescence. *Soc Sci Med* [Internet]. 2003;57(6):1055–64. Available from:  
494 [http://www.embase.com/search/results?subaction=viewrecord&from=export&id=L368](http://www.embase.com/search/results?subaction=viewrecord&from=export&id=L36876071%5Cnhttp://dx.doi.org/10.1016/S0277-9536(02)00480-X%5Cnhttp://sfxhosted.exlibrisgroup.com/galway?sid=EMBASE&issn=02779536&id=doi:10.1016%2FS0277-9536%2802%2900480-X&atitle=E)  
495 [76071%5Cnhttp://dx.doi.org/10.1016/S0277-9536\(02\)00480-](http://www.embase.com/search/results?subaction=viewrecord&from=export&id=L36876071%5Cnhttp://dx.doi.org/10.1016/S0277-9536(02)00480-X%5Cnhttp://sfxhosted.exlibrisgroup.com/galway?sid=EMBASE&issn=02779536&id=doi:10.1016%2FS0277-9536%2802%2900480-X&atitle=E)  
496 [X%5Cnhttp://sfxhosted.exlibrisgroup.com/galway?sid=EMBASE&issn=02779536&id](http://www.embase.com/search/results?subaction=viewrecord&from=export&id=L36876071%5Cnhttp://dx.doi.org/10.1016/S0277-9536(02)00480-X%5Cnhttp://sfxhosted.exlibrisgroup.com/galway?sid=EMBASE&issn=02779536&id=doi:10.1016%2FS0277-9536%2802%2900480-X&atitle=E)  
497 [=doi:10.1016%2FS0277-9536%2802%2900480-X&atitle=E](http://www.embase.com/search/results?subaction=viewrecord&from=export&id=L36876071%5Cnhttp://dx.doi.org/10.1016/S0277-9536(02)00480-X%5Cnhttp://sfxhosted.exlibrisgroup.com/galway?sid=EMBASE&issn=02779536&id=doi:10.1016%2FS0277-9536%2802%2900480-X&atitle=E)
- 498 19. Dorn LD, Dahl RE, Williamson DE, Birmaher B, Axelson D, Perel J, et al.  
499 Developmental Markers in Adolescence: Implications for Studies of Pubertal  
500 Processes. *J Youth Adolesc*. 2003;32(5):315–24.
- 501 20. Ge X, Brody GH, Conger RD, Simons RL, Murry VMB. Contextual amplification of  
502 pubertal transition effects on deviant peer affiliation and externalizing behavior among  
503 African American children. *Dev Psychol*. 2002;38(1):42–54.
- 504 21. Mendle J, Beltz AM, Carter R, Dorn LD. Understanding Puberty and Its Measurement:  
505 Ideas for Research in a New Generation. *J Res Adolesc*. 2019;29(1):82–95.
- 506 22. Dorn LD, Biro FM. Puberty and its measurement: A decade in review. *J Res Adolesc*.  
507 2011;21(1):180–95.

“Puberty Age gap”: A new method of pubertal timing

- 508 23. Byrne ML, Whittle S, Vijayakumar N, Dennison M, Simmons JG, Allen NB. A  
509 systematic review of adrenarche as a sensitive period in neurobiological development  
510 and mental health. *Dev Cogn Neurosci* [Internet]. 2017 Jun;25:12–28. Available from:  
511 <http://dx.doi.org/10.1016/j.dcn.2016.12.004>
- 512 24. Shirtcliff EA, Zahn-Waxler C, Klimes-Dougan B, Slattery M. Salivary  
513 dehydroepiandrosterone responsiveness to social challenge in adolescents with  
514 internalizing problems. *J Child Psychol Psychiatry Allied Discip*. 2007;48(6):580–91.
- 515 25. Peixoto C, José Grande A, Gomes Carrilho C, Egidio Nardi A, Cardoso A, Barciela  
516 Veras A. Dehydroepiandrosterone for depressive symptoms: A systematic review and  
517 meta-analysis of randomized controlled trials. *J Neurosci Res*. 2020;98(12):2510–28.
- 518 26. Han G, Miller JG, Cole PM, Zahn-Waxler C, Hastings PD. Adolescents’ internalizing  
519 and externalizing problems predict their affect-specific HPA and HPG axes reactivity.  
520 *Dev Psychobiol*. 2015;57(6):769–85.
- 521 27. Barendse MEA, Cosme D, Flournoy JC, Vijayakumar N, Cheng TW, Allen NB, et al.  
522 Neural correlates of self-evaluation in relation to age and pubertal development in  
523 early adolescent girls. *Dev Cogn Neurosci* [Internet]. 2020 Aug;44:100799. Available  
524 from: <https://doi.org/10.1016/j.dcn.2020.100799>
- 525 28. Cole JH, Franke K. Predicting Age Using Neuroimaging: Innovative Brain Ageing  
526 Biomarkers. *Trends Neurosci* [Internet]. 2017 Dec;40(12):681–90. Available from:  
527 <http://dx.doi.org/10.1016/j.tins.2017.10.001>
- 528 29. Kaufmann T, van der Meer D, Doan NT, Schwarz E, Lund MJ, Agartz I, et al.  
529 Common brain disorders are associated with heritable patterns of apparent aging of the  
530 brain. *Nat Neurosci* [Internet]. 2019 Oct 24;22(10):1617–23. Available from:  
531 <http://www.nature.com/articles/s41593-019-0471-7>
- 532 30. Gracia-Tabuenca Z, Moreno MB, Barrios FA, Alcauter S. Development of the brain

“Puberty Age gap”: A new method of pubertal timing

- 533 functional connectome follows puberty-dependent nonlinear trajectories. *Neuroimage*  
534 [Internet]. 2021;229(January):117769. Available from:  
535 <https://doi.org/10.1016/j.neuroimage.2021.117769>
- 536 31. Marceau K, Ram N, Houts RM, Grimm KJ, Susman EJ. Individual differences in  
537 boys’ and girls’ timing and tempo of puberty: Modeling development with nonlinear  
538 growth models. *Dev Psychol* [Internet]. 2011 Sep;47(5):1389–409. Available from:  
539 <http://doi.apa.org/getdoi.cfm?doi=10.1037/a0023838>
- 540 32. Rasmussen AR, Wohlfahrt-Veje C, De Renzy-Martin KT, Hagen CP, Tinggaard J,  
541 Mouritsen A, et al. Validity of self-assessment of pubertal maturation. *Pediatrics*.  
542 2015;135(1):86–93.
- 543 33. Huang B, Hillman J, Biro FM, Ding L, Dorn LD, Susman EJ. Correspondence  
544 Between Gonadal Steroid Hormone Concentrations and Secondary Sexual  
545 Characteristics Assessed by Clinicians, Adolescents, and Parents. *J Res Adolesc*.  
546 2012;22(2):381–91.
- 547 34. Hu S, Pruessner JC, Coupé P, Collins DL. Volumetric analysis of medial temporal  
548 lobe structures in brain development from childhood to adolescence. *Neuroimage*  
549 [Internet]. 2013;74:276–87. Available from:  
550 <http://dx.doi.org/10.1016/j.neuroimage.2013.02.032>
- 551 35. Herting MM, Uban KA, Gonzalez MR, Baker FC, Kan EC, Thompson WK, et al.  
552 Correspondence Between Perceived Pubertal Development and Hormone Levels in 9-  
553 10 Year-Olds From the Adolescent Brain Cognitive Development Study. *Front*  
554 *Endocrinol (Lausanne)* [Internet]. 2021 Feb 18;11(April 2020):1–22. Available from:  
555 <https://www.frontiersin.org/articles/10.3389/fendo.2020.549928/full>
- 556 36. Gray JC, Schvey NA, Tanofsky-Kraff M. Demographic, psychological, behavioral,  
557 and cognitive correlates of BMI in youth: Findings from the Adolescent Brain



“Puberty Age gap”: A new method of pubertal timing

- 558 Cognitive Development (ABCD) study. *Psychol Med.* 2020;50(9):1539–47.
- 559 37. Achenbach TM, Ruffle TM. The child behavior checklist and related forms for  
560 assessing behavioral/emotional problems and competencies. *Pediatr Rev.*  
561 2000;21(8):265–71.
- 562 38. Liang H, Zhang F, Niu X. Investigating systematic bias in brain age estimation with  
563 application to post-traumatic stress disorders. *Hum Brain Mapp.* 2019;40(11):3143–52.
- 564 39. Rosenberg MD, Casey BJ, Holmes AJ. Prediction complements explanation in  
565 understanding the developing brain. *Nat Commun [Internet].* 2018;9(1):1–13.  
566 Available from: <http://dx.doi.org/10.1038/s41467-018-02887-9>
- 567 40. Barendse MEA, Byrne ML, Flournoy JC, Mcneilly EA, Williamson VG, Barrett MY,  
568 et al. Journal of Abnormal Psychology Internalizing Psychopathology in Early  
569 Adolescent Girls Multimethod Assessment of Pubertal Timing and Associations With  
570 Internalizing Psychopathology in Early Adolescent Girls. 2021;  
571  
572  
573

“Puberty Age gap”: A new method of pubertal timing

574 **Tables and Figures:**

575

576 **Table 1.** Comparison of the out-of-sample prediction performance of alternative puberty age gap

577 models

|                                  | Female |           | Male |           |
|----------------------------------|--------|-----------|------|-----------|
|                                  | r      | mae       | r    | mae       |
| Combined puberty age             | 0.58   | 0.65 year | 0.54 | 0.67 year |
| Hormonal puberty age             | 0.37   | 0.76 year | 0.45 | 0.72 year |
| Physical development puberty age | 0.55   | 0.67 year | 0.43 | 0.72 year |

578 r = correlation, mae = mean absolute error

579

“Puberty Age gap”: A new method of pubertal timing

580

581

582 **Figure 1.** Performance of puberty age gap models. For all three models (combined, physical

583 development and hormonal), the prediction of the age of each individual is plotted against

584 chronological age (in years). Red dots indicate individuals with a positive puberty age gap (early

585 timing) and blue dots indicate individuals with a negative puberty age gap (late timing).

586

“Puberty Age gap”: A new method of pubertal timing

587

588 **Table 2.** Comparison of the out-of-sample prediction performance of the traditional pubertal timing

589 model and the physical development puberty age model

|  | Female   |            | Male     |            |
|--|----------|------------|----------|------------|
|  | <i>r</i> | <i>mae</i> | <i>r</i> | <i>mae</i> |
| Traditional pubertal timing            | 0.49     | 0.71       | 0.32     | 0.78       |
| Physical development Puberty age Model | 0.55     | 0.68       | 0.43     | 0.72       |

590 *r* = correlation, *mae* = mean absolute error

591

“Puberty Age gap”: A new method of pubertal timing

592

593 **Table 3.** Associations between puberty age gap and mental health problems measured by linear

594 mixed effect regression

595

“Puberty Age gap”: A new method of pubertal timing

|                      | Female         |                 |          |          |          |          | Male           |                 |          |          |          |          |
|----------------------|----------------|-----------------|----------|----------|----------|----------|----------------|-----------------|----------|----------|----------|----------|
|                      | Physical       |                 | Combined |          | Hormonal |          | Physical       |                 | Combined |          | Hormonal |          |
|                      | t              | aic             | t        | aic      | t        | aic      | t              | aic             | t        | aic      | t        | aic      |
| Total                | <b>7.16***</b> | <b>31382.19</b> | 5.06***  | 31407.62 | -1.61    | 31430.59 | <b>6.19***</b> | <b>34308.27</b> | 6.03***  | 34330.51 | -0.44    | 34346.23 |
| Internalising        | <b>5.81***</b> | <b>31145.29</b> | 3.93**   | 31163.47 | -1.52    | 31176.60 | <b>6.33***</b> | <b>33654.96</b> | 5.29***  | 33677.32 | -0.41    | 33694.64 |
| Externalising        | <b>6.80***</b> | <b>30528.71</b> | 5.04***  | 30549.40 | -1.150   | 30573.33 | <b>6.54***</b> | <b>33492.17</b> | 6.07***  | 33515.11 | 0.23     | 33534.59 |
| Anxiety_Depression   | <b>1.82</b>    | <b>26535.61</b> | 1.03     | 26537.87 | -1.20    | 26537.47 | <b>5.27***</b> | <b>29000.46</b> | 4.78**   | 29019.26 | -1.20    | 29026.61 |
| Withdrawn_depression | <b>6.89***</b> | <b>25451.83</b> | 5.67***  | 25467.03 | 0.84     | 25498.29 | <b>5.07***</b> | <b>29052.81</b> | 3.98**   | 29063.78 | 0.89     | 29077.61 |
| Somatic_Complaints   | <b>4.73**</b>  | <b>26644.49</b> | 2.68*    | 26659.56 | -2.38    | 26661.07 | <b>6.35***</b> | <b>28592.79</b> | 5.17**   | 28619.53 | -0.90    | 28632.09 |
| Attention_problems   | <b>3.73**</b>  | <b>26187.00</b> | 3.26*    | 26190.28 | 0.05     | 26200.82 | <b>2.86*</b>   | <b>29291.46</b> | 1.89*    | 29296.84 | -0.39    | 29299.45 |
| Rule_breaking        | <b>5.38**</b>  | <b>24226.11</b> | 3.93*    | 24239.47 | -0.72    | 24254.27 | <b>6.29***</b> | <b>26982.27</b> | 5.31**   | 27005.78 | -0.08    | 27021.57 |
| Aggressive_Behaviour | <b>4.82**</b>  | <b>24915.41</b> | 3.64*    | 24925.27 | -0.51    | 24938.20 | <b>5.78***</b> | <b>28625.15</b> | 4.46**   | 28646.70 | -0.28    | 28658.31 |
| Thought_Problems     | <b>3.10*</b>   | <b>25920.98</b> | 2.25*    | 25925.51 | -1.36    | 25928.69 | <b>5.02***</b> | <b>29131.42</b> | 3.61**   | 29147.13 | -0.49    | 29156.23 |
| Social_Problems      | <b>4.96**</b>  | <b>23988.88</b> | 3.67*    | 24000.00 | -1.24    | 24011.85 | <b>5.50***</b> | <b>26908.05</b> | 3.88**   | 26923.08 | 0.51     | 26937.86 |

“Puberty Age gap”: A new method of pubertal timing

596 Note: Statistical significance is indicated by asterisks (\*:  $p < 0.05$ ; \*\*:  $p < 0.01$ ; \*\*\*:  $p < 0.001$ ; FDR corrected). The bold numbers reflect better model  
597 performance.  
598

“Puberty Age gap”: A new method of pubertal timing

599

600 **Figure 2.** Bar plot showing the T-statistic from the prediction of each dimension of mental health

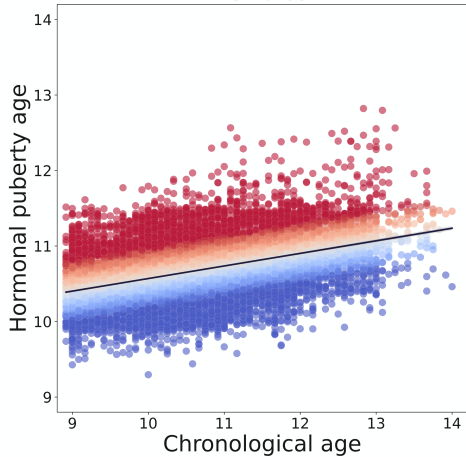
601 problems from different puberty age models. Hormonal puberty age gap is not significantly associated

602 with any dimension of mental health problems.

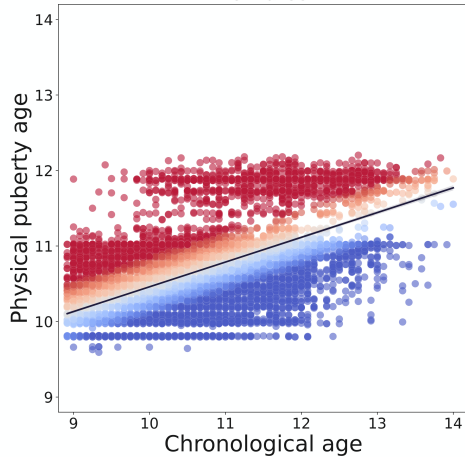
603



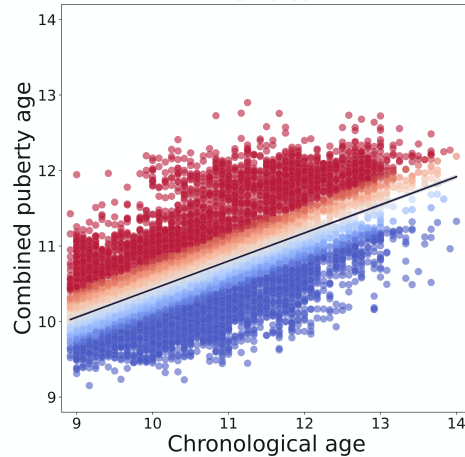
Females



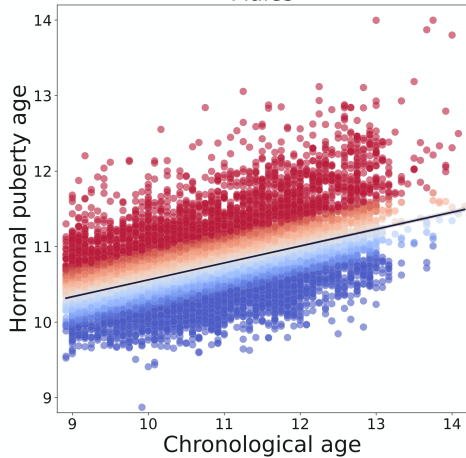
Females



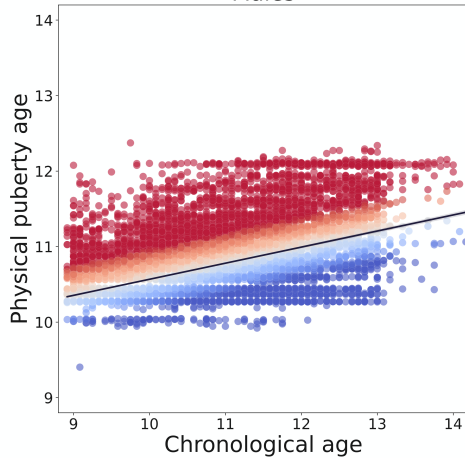
Females



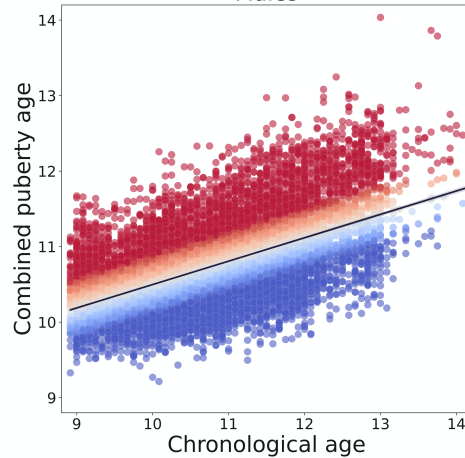
Males

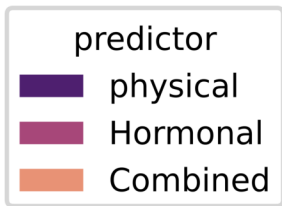


Males

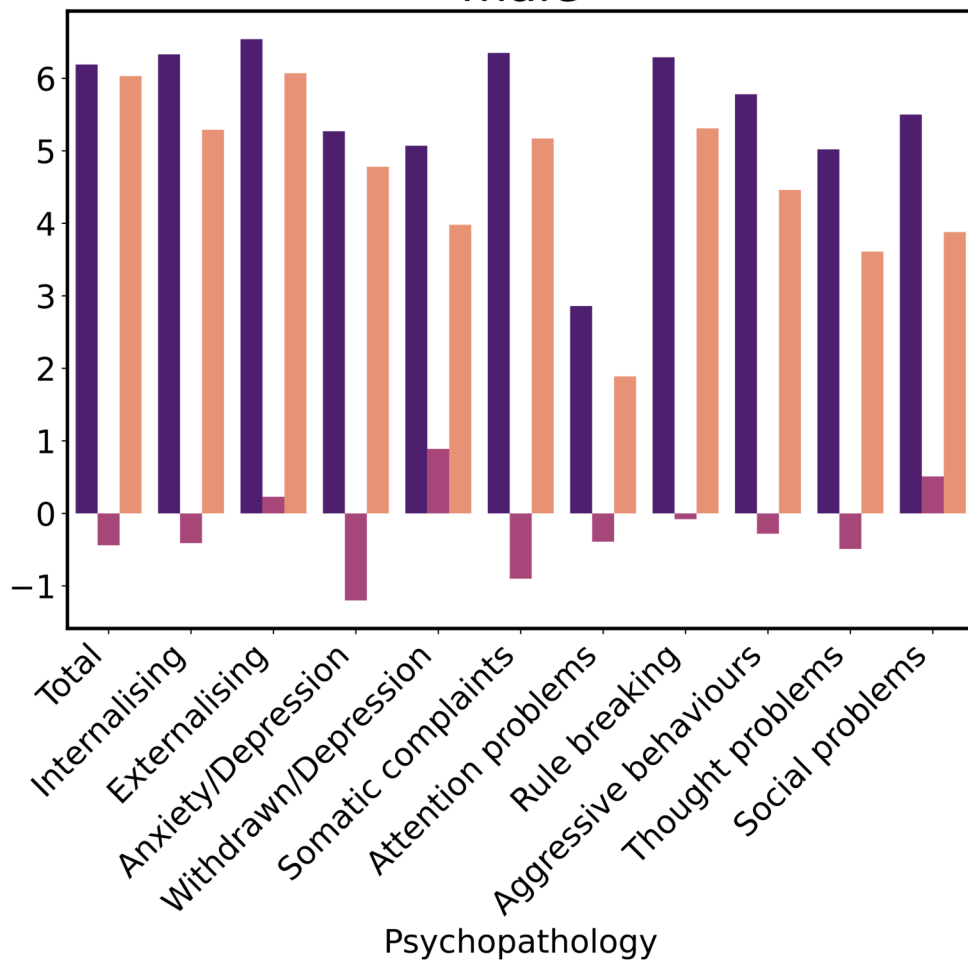


Males





male



female

