

1 **Title**

2 Risk factors for pneumococcal carriage in adults living with HIV on antiretroviral therapy in the
3 infant pneumococcal vaccine era in Malawi.

4

5 **Authors**

6 Deus Thindwa^{1,2*}, Thandie S Mwalukomo³, Jacqueline Msefula², Kondwani C Jambo^{2,4}, Comfort
7 Brown², Arox Kamng'ona³, Charles Mwansambo⁵, John Ojal^{1,6}, Stefan Flasche¹, Neil French⁷, Robert
8 S Heyderman⁸, Todd D Swarthout^{2,8}.

9

10 ¹ Centre for the Mathematical Modelling of Infectious Diseases, Department of Infectious Disease
11 Epidemiology, London School of Hygiene and Tropical Medicine, London, UK.

12 ² Malawi-Liverpool-Wellcome Programme, Blantyre, Malawi.

13 ³ School of Life Sciences and Allied Health Professions, Department of Biomedical Sciences,
14 Kamuzu University of Health Sciences, Blantyre, Malawi.

15 ⁴ Department of Clinical Sciences, Liverpool School of Tropical Medicine, Liverpool, UK.

16 ⁵ Ministry of Health of Malawi, Lilongwe, Malawi

17 ⁶ KEMRI-Wellcome Research Programme, Geographic Medicine Centre, Kilifi, Kenya.

18 ⁷ Institute of Infection, Veterinary and Ecological Science, Department of Clinical Infection,
19 Microbiology, and Immunology, University of Liverpool, Liverpool, UK.

20 ⁸ NIHR Mucosal Pathogens Research Unit, Research Department of Infection, Division of Infection
21 and Immunity, University College London, London, United Kingdom

22

23 Corresponding author

24 *Email: deus.thindwa@lshtm.ac.uk

25 Phone: +265997788370

26

27 **Abstract**

28 **Objective**

29 Adults living with HIV (ALWHIV) on antiretroviral therapy (ART) are at high risk of pneumococcal
30 carriage and disease. To help evaluate carriage risk in African ALWHIV in the infant pneumococcal
31 conjugate vaccination era, we assessed association between carriage and potential risk factors.

32
33 **Methods**

34 Nasopharyngeal swabs were collected from adults aged 18-40 years attending an ART clinic during
35 rolling, cross-sectional surveys in Blantyre, Malawi between 2015-2019. We fitted generalised
36 additive models to estimate the risk of sex, social economic status (SES), living with a child <5y, and
37 ART duration on carriage.

38
39 **Results**

40 Of 2,067 adults, median age was 33y (range 28-37), 1,427 (69.0%) were females, 1,087 (61.4%) were
41 in low-middle socio-economic-status (SES), 910 (44.0%) were living with a child <5y, and median
42 ART duration was 3.0 years (range 0.004-17). We estimated 38.2% and 60.6% reductions in overall
43 and vaccine-serotype carriage prevalence. Overall carriage was associated with low SES, living with a
44 child <5y and shorter duration on ART. By contrast, vaccine-type carriage was associated with living
45 without a child <5y and male sex.

46
47 **Conclusion**

48 Despite temporal reductions in overall and vaccine-serotype carriage, there is evidence of incomplete
49 VT indirect protection. A targeted-vaccination campaign should be considered for ALWHIV, along
50 with other public health measures to further reduce vaccine-serotype carriage and therefore disease.

51
52 **Key words:** Pneumococcal carriage, pneumococcal conjugate vaccine, human immunodeficiency
53 virus, herd immunity, antiretroviral, risk factors, Malawi

54 **Introduction**

55 *Streptococcus pneumoniae* (the pneumococcus) is a common coloniser of the human nasopharynx,
56 particularly in young children and populations with human immunodeficiency virus (HIV) ¹.
57 Pneumococcal colonisation is a necessary prerequisite for transmission and the development of
58 disease, including otitis media, sinusitis, pneumonia, meningitis, and bacteraemia ². The
59 pneumococcus is associated with a large burden of disease in adults living with HIV (ALWHIV)
60 compared to adults without HIV ³⁻⁵. Adult HIV prevalence remains high (>10%) in many sub-Saharan
61 African countries, with Malawi reporting a national prevalence of 10.6% ⁶⁻⁸. The use of antiretroviral
62 therapy (ART) has substantially increased survival and reduced the incidence of invasive
63 pneumococcal disease (IPD) ⁹. However, despite more than 85% of ALWHIV in Malawi receiving
64 ART ¹⁰⁻¹², ALWHIV remain at greater risk of IPD than adults without HIV ³.

65
66 Pneumococcal conjugate vaccines (PCVs) are widely used in infant schedules in low- and middle-
67 income countries (LMICs), generally targeting the most commonly invasive serotypes in this age
68 group ¹. To date, in contrast to high-income settings, immunisation of vulnerable adults with
69 pneumococcal vaccines has not been adopted in most LMICs ¹³. In November 2011, Malawi
70 introduced the 13-valent PCV (PCV13) into the national Expanded Program on Immunisation (EPI)
71 using a three-primary-dose schedule without booster (3+0; one dose at 6, 10 and 14 weeks of age).
72 Despite nearly 10 years of >80% PCV13 three-dose coverage among age-eligible children, there is
73 evidence of a sub-optimal reduction in both vaccine-serotype (VT) carriage prevalence and VT-IPD
74 incidence in children and ALWHIV in Malawi ¹⁴⁻¹⁶. Similar evidence of residual VT carriage
75 prevalence is also reported in the Gambia and Mozambique after 5 and 2 years of implementation,
76 respectively, ¹⁷ despite both countries also reporting >80% PCV three-dose coverage under a 3+0
77 vaccine schedule ^{18,19}. There is increasing evidence that the indirect protection (i.e. herd immunity)
78 offered by an infant PCV against VT carriage, especially in ALWHIV, is sub-optimal ^{14,18}.

79

80 The most effective strategy to reduce residual VT-IPD burden in ALWHIV depends on the factors
81 shaping VT carriage and disease risk. Before introducing infant PCV in Malawi and South Africa, risk
82 factors for IPD in ALWHIV included younger age, female sex, cotrimoxazole resistance, underlying
83 medical conditions and living in a densely populated area^{3,4}. On the other hand, risk factors for
84 carriage of any pneumococcal serotype included exposure to infants exposed to HIV^{20,21}, low socio-
85 economic status (SES), high density living in housing with inadequate ventilation and with intense
86 social contacts²²⁻²⁵. Moreover, among Malawian ALWHIV, the overall (VT and non-VT [NVT])
87 carriage prevalence was found to be higher in those on ART than not on ART^{26,27}.

88

89 In the PCV era, however, there are important information gaps in our understanding of the relative
90 importance of of key factors for pneumococcal carriage and disease among ALWHIV. These include
91 duration on ART, PCV vaccination status among children in the household, and SES. Following our
92 recent data from Blantyre, Malawi showing high residual VT carriage and its determinants in PCV13-
93 vaccinated and unvaccinated children and in ALWHIV^{15,16}, we extend the analysis to identify age-
94 and time-dependent risk factors for pneumococcal carriage in ALWHIV on ART using generalised
95 additive modelling.

96

97 **Methods**

98 **Study design**

99 Blantyre is located in the southern region of Malawi spanning 2,025 km², with an urban (population
100 density 3,334/km²) and rural (253/km²) population of approximately 800,000 and 451,000 people,
101 respectively.²⁸ As described elsewhere in more detail¹⁵, rolling, prospective cross-sectional
102 pneumococcal nasopharyngeal (NP) carriage surveys were conducted between 29 June 2015 and 9
103 August 2019 in Blantyre to investigate the change over time of pneumococcal colonisation in
104 ALWHIV on ART. The majority (98.6%) of sampled individuals were on a first line ART regimen
105 containing either i) Zidovudine, Lamivudine and Efavirenz, ii) Tenofovir, Lamivudine and Efavirenz
106 or iii) Tenofovir, Lamivudine and Nevirapine²⁹. Eight pneumococcal carriage surveys (each

107 approximately 6 months in duration) were conducted from 3.6 to 7.9 years after infant PCV13
108 introduction into the EPI schedule. ALWHIV aged 18-40 years were recruited from the Queen
109 Elizabeth Central Hospital (QECH) ART clinic in Blantyre using a systematic sampling approach.
110 Exclusion from the study included being currently on treatment for tuberculosis, hospitalisation within
111 two weeks of recruitment and previously enrolled in the survey.

112

113 **Nasopharyngeal sample collection and processing**

114 An NP swab sample was collected from each participant and processed at the Malawi-Liverpool-
115 Wellcome Programme laboratory, co-located to QECH, to ascertain the presence of pneumococci.
116 Samples were collected and processed according to World Health Organisation guidelines³⁰.
117 Serotyping was done using latex agglutination, based on picking a single colony, to identify serotypes
118 targeted by PCV13 (1, 3, 4, 5, 6A, 6B, 7F, 9V, 14, 18C, 19A, 19F, 23F). Non-typeable and NVT
119 isolates were both classified as NVT. Pneumococcal carriage dynamics were further evaluated using
120 DNA microarray techniques, a technique which, in the case of co-carriage of multiple pneumococcal
121 serotypes, differentiates all individual serotypes and reports relative abundance of each serotype in
122 carriage^{31,32}. Microarray was implemented only in surveys 1 through 4 and with samples having
123 latex-confirmed pneumococcal carriage. Further details of sample processing has been reported earlier
124 ^{15,32}.

125

126 **Data collection and analysis**

127 Participant data collected at recruitment included age, sex, cohabitation with a child <5y (Yes/No),
128 social economic status (SES), duration of ART use, CD4+ T-cell count, current ART regimen and
129 cotrimoxazole use. A multiple imputation random forest-based method, using MissForest R package
130 ³⁴, was conducted to impute 1 (0.0005%), 297 (14.4%), and 537 (26.0%) missing data points on
131 cohabitation with a child <5y, SES, and duration of ART use, respectively. Though reported in the
132 descriptive analysis, CD4+ cell count was excluded from model-based analyses because 46.0% of its
133 data points were missing, a proportion above the acceptable standard threshold for imputation³⁴.

134 Duration on ART was not used as a continuous variable because of data sparsity in age- or time-
135 stratified analyses but was categorised as short (<3 years) or long (≥ 3 years) duration based on (1) a
136 previous study in rural Malawi which showed strong evidence of high pneumococcal carriage during
137 the first 2 years of ART use ²⁶, and (2) the median value of ART duration in this study.

138

139 Individual fitted carriage prevalence estimates were categorised into 18-24y, 25-29y, 30-34y, and 35-
140 40y age groups reflecting their distinct IPD incidence ³. Time was stratified into year of survey
141 initiation (2015, 2016, 2017, 2018 and 2019). In Malawi, pneumococcal carriage prevalence is usually
142 higher in the cold (May-August) and hot (September-November) seasons as compared to the rainy
143 season (December-April) ²⁶. Thus, seasonality in carriage was captured using an indicator variable
144 with values ranging from January to December based on the month of NP sample collection.

145

146 **Generalised additive modelling framework**

147 We used a generalised additive modelling (GAM) framework to fit to age- and time-specific
148 trajectories of pneumococcal carriage, and allow flexibility in capturing nonlinear carriage dynamics.
149 In brief, we used penalised B splines (P-splines) for the age and time spline smoothers to avoid knot
150 selections which usually introduce under- and over-fitting biases when trading-off model fit to the
151 data and the smoothness of the curve ³⁵. A penalized log-likelihood maximization was used to fit a
152 non-parametric binomial model with complementary log-log link function defined by log-hazard of
153 carriage as a function of the risk factors and a spline in age and time. No time-series autocorrelation
154 structure was included in the model fits because ALWHIV were independently sampled without
155 replacement and with no evidence to suggest strong autocorrelation across time. Thus, the rolling,
156 prospective cross-sectional carriage samples and model residuals were assumed to be serially
157 independent.

158

159 **Age- and time-dependent carriage prevalence estimation**

160 We modelled age- and time-dependent carriage trajectories separately for overall (VT+NVT) and VT
161 carriage as outcome variables for a set of potential risk factors. Due to reported poor immunogenicity
162 and effectiveness of PCV13 against serotype 3^{36,37}, we also modelled VT carriage without serotype 3
163 (VT-st3) to explore changes in carriage prevalence. A model with age and time smoothers and
164 potential risk factors including sex, seasonality, duration on ART, cohabitation with a child <5 years
165 old, and SES were fitted to the carriage data to estimate the overall or VT carriage prevalence and risk
166 factor-specific effects on carriage prevalence dynamics.

167

168 A ‘gam’ function in the ‘mgcv’ R package facilitated model fitting³⁸, based on a model formulated as
169 $g(P(Y_i = 1|a_i, t_i)) = g(\pi(a_i, t_i)) = \eta(a_i, t_i)$, where Y_i is a binomial outcome on whether an
170 individual i is carrying pneumococcus (1) or not (0); g is the complementary log-log link function;
171 $\pi(a_i, t_i)$ is the carriage prevalence estimate for individuals of age (a_i) at time (t_i); $\eta(a_i, t_i)$ is a
172 nonparametric linear predictor as function of individual age and time, and a set of risk factors. The
173 linear predictor on a predictor scale is further expanded using the equation
174 $\eta(a_i, t_i) = \beta_0 + \sum_k \beta_k G_k + te(a_i) + te(t_i)$, where β_0 is a model intercept, G_k refers to individual risk
175 factor category, β_k is the risk factor coefficient, $te(a_i)$ and $te(t_i)$ denote tensor product P-spline of
176 predictor age (a_i) and time (t_i).

177

178 The relative difference in carriage prevalence was computed by subtracting the GAM carriage
179 prevalence estimate for each age or time category from the reference category and then dividing the
180 difference by the reference category and then multiplying by 100%. The 95% confidence interval
181 (95%CI) of the relative difference was estimated using

182 $(\rho + 1) * [1 \pm 1.96 * \sqrt{\delta_1^2 + \delta_2^2 - (1.96^2) * \delta_1^2 * \delta_2^2 / (1 - 1.96 * \delta_1^2)}] - 1$, where ρ is the relative
183 difference, δ_1 and δ_2 are the coefficient variations of the reference and comparator categories,
184 respectively, and coefficient variation being standard deviation divided by the observed mean³⁹.

185 GAMs with and without interactions between age group or time and each independent risk factor on

186 the overall and VT carriage prevalence were fitted and compared using Akaike information criterion
187 (AIC), and results of these tests are numerically presented in S1 Table. Given the model
188 complexities, sensitivity analyses assessed factors that may affect carriage estimates which included
189 the impact on carriage of individual age group or survey, serotyping method, carriage autocorrection,
190 model formulation and spline type. Detailed sensitivity methods and results are presented in
191 Supplementary Material (S1 Text and S2 Text). Analyses were conducted in R v4.1.1⁴⁰, with
192 statistical significance set at $p < 0.05$, and the code is publicly shared via GitHub⁴¹.

193

194 **Ethical approval**

195 Ethical approval for this study was granted by the College of Medicine Research Ethics Committee,
196 Kamuzu University of Health Sciences (P.02/15/1677), the Liverpool School of Tropical Medicine
197 Research Ethics Committee (14.056) and the London School of hygiene and Tropical Medicine
198 (26839). Individual written informed consent, including consent for publication, was obtained from
199 each participant prior to study recruitment.

200

201 **Results**

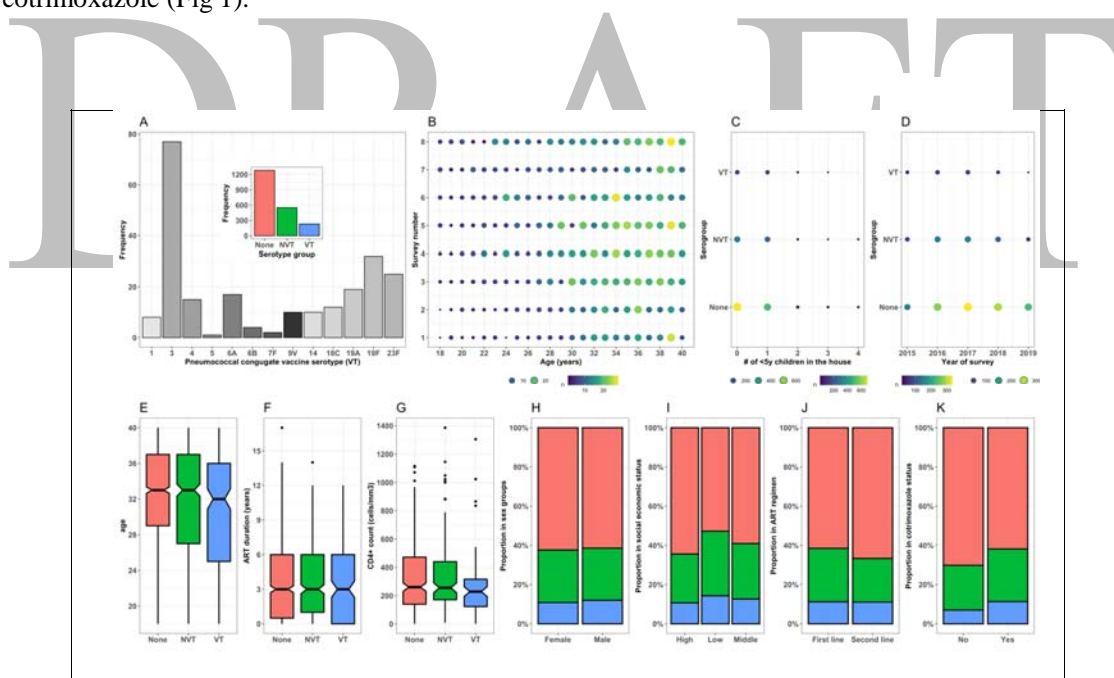
202 **Descriptive analysis**

203 A total of 2,067 ALWHIV aged 18-40y were enrolled in the study between 29 June 2015 and 9
204 August 2019. Among adults with non-missing data, 1,427 (69.0%, n=2,067) were females, 413
205 (23.3%, n=1,770) and 674 (38.1%, n=1,770) were from low and middle SES households, respectively,
206 1,156 (56.0%, n=2,066) were not living with a child <5y, 1,772 (98.5%, n=1,799) were on one of
207 Malawi's first-line ART regimens, and 2,010 (97.2%, n=2,067) were using prophylactic
208 cotrimoxazole at recruitment. The median age was 33y (IQR: 28-37, n=2,067), median CD4+ count
209 was 252 cells/mm³ (IQR: 138-443, n=1,117), and median duration on ART at the time of study
210 recruitment was 3.0 years, (range: 0-17, n=1,530) (Fig. 1).

211

212 Using survey-aggregated data, serotype 3 comprised 77 (33.2%, n=232) of all VT serotypes
213 identified. Survey-aggregated data showed that carriage prevalence was 552 (26.7%, n=2,067) for
214 overall (VT+NVT) and 232 (11.2%, n=2,067) for VT. It also showed that overall and VT carriage
215 prevalence was 537 (37.7%, n=1,427) and 155 (10.9%, n=1,427) among females, 247 (38.6%, n=640)
216 and 77 (12.0%, = 640) among males, 195 (47.2%, n=413) and 59 (14.3%, n=413) in low SES, 276
217 (40.9%, n=674) and 85 (12.6%, n=674) in middle SES and 243 (35.6%, n=683), 73 (10.7%, =683) in
218 high SES households, 361 (39.7%, n=910) and 111 (12.2%, n=910) in adults living with a child <5y,
219 423 (36.6%, n=1,156) and 121 (10.5%, n=1,156) in adults living without a child <5y, 682 (38.5%,
220 n=1,778) and 199 (11.2%, n=1,778) in adults on a first-line ART regimen, 9 (33.3%, n=27) and 3
221 (11.1%, n=27) in adults on second-line ART regimen, 767 (38.1%, n=2,010) and 228 (11.3%,
222 n=2,010) in adults taking cotrimoxazole, 17 (29.8%, n=57) and 4 (7.0%, n=57) in adults not taking
223 cotrimoxazole (Fig 1).

224



225

226 Figure 1. Demographics and clinical characteristics of participants using aggregated data across eight
227 surveys. (A) Frequency of each VT in carriage; insert shows frequency of VT, NVT and no carriage.
228 (B) Number of adults in each annual age per survey with circle size proportional to total sample size.
229 The number of adults with VT, NVT, and no carriage living with (C) varying number of children <5
230 years or (D) across survey years. Notched box plots by serotype group representing participant

231 distribution by (E) age, (F) duration on ART and (G) CD4+ count. Proportion of serotype group by
 232 (H) sex, (I) social economic status, (J) ART regimen and (K) Cotrimoxazole use.

233

234 **Age- and time-dependent carriage prevalence estimates**

235 Our GAM predicted a significant reduction in overall and VT carriage prevalence with increasing age
 236 and time. Among older age categories, overall carriage prevalence was lower than the reference
 237 younger adults aged 18-24y, with greatest reduction in adults aged 30-34y (-22.8%, 95%CI -34.1, -
 238 10.4). Likewise, VT carriage prevalence was lower in older than younger adults, with highest
 239 reduction in adults aged 30-34y (-45.1%, 95%CI -61.8, -25.6). Across time, we estimated lower
 240 overall (-38.2%, 95%CI -51.7, -23.6) and VT (-60.6%, 95%CI -79.1, -39.2) carriage prevalence in
 241 2019 compared to 2015. In a sub-analysis, serotype 3 made up 22.6-34.7% (across age groups) and
 242 18.9-38.2% (across time) of VT carriage prevalence (Table 1; Fig. 2).

243

Table 1. Age- and time-dependent overall and VT carriage prevalence, and relative difference in fitted carriage prevalence among ALWHIV on ART, 2015-2019 in Blantyre, Malawi.

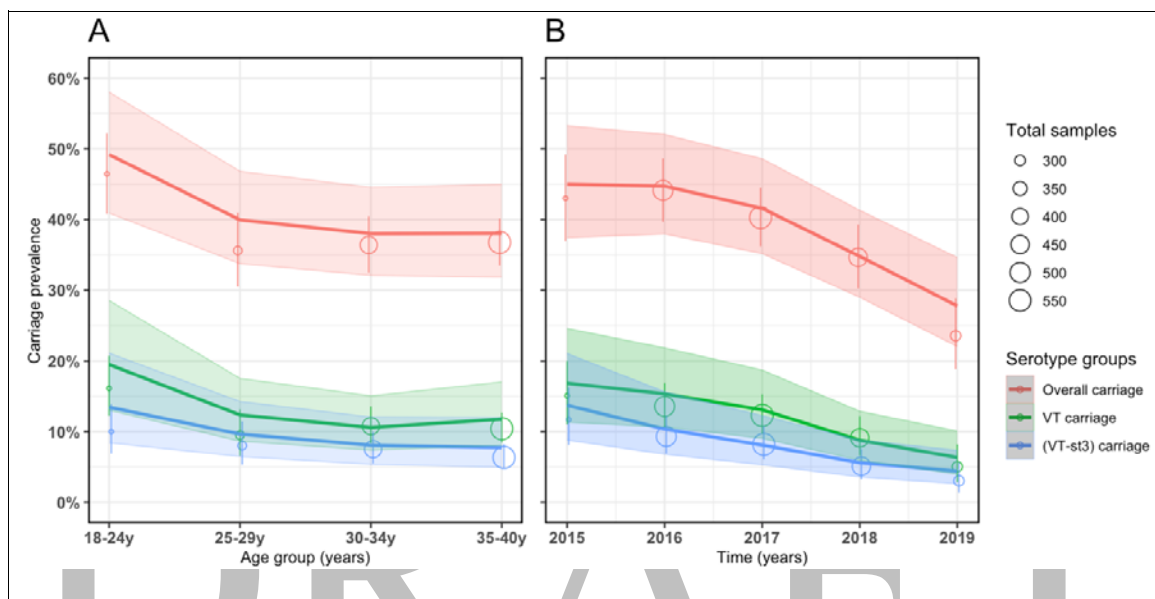
	Observed overall carriage n/N (%)	Modelled [‡] overall carriage prevalence (95%CI)	Relative difference [†] in overall carriage (95%CI)	Observed VT carriage n/N (%)	Modelled [‡] VT carriage prevalence (95%CI)	Relative difference [†] in VT carriage (95%CI)
Age (years)						
18-24	144/310 (46.5)	49.2 (40.9, 58.0)	Reference	50/310 (16.1)	19.5 (13.0, 28.6)	Reference
25-29	120/337 (35.6)	40.0 (33.8, 46.8)	-18.7 (-32.3, -4.1)	32/337 (9.5)	12.4 (8.7, 17.6)	-36.4 (-58.0, -11.4)
30-34	213/585 (36.4)	38.0 (32.1, 44.5)	-22.8 (-34.1, -10.4)	63/585 (10.8)	10.7 (7.4, 15.1)	-45.1 (-61.8, -25.6)
35-40	307/835 (36.8)	38.0 (31.8, 45.0)	-22.8 (-33.3, -11.2)	87/835 (10.4)	11.8 (8.1, 17.1)	-39.4 (-55.9, -19.9)
Year						
2015	114/265 (43.0)	45.0 (37.4, 53.3)	Reference	40/265 (15.1)	17.0 (11.4, 24.8)	Reference
2016	218/494 (44.1)	44.7 (38.0, 52.0)	-0.7 (-16.3, 16.8)	67/494 (13.6)	15.3 (10.6, 21.8)	-10.0 (-37.7, 24.4)
2017	226/561 (40.3)	41.6 (35.2, 48.6)	-7.6 (-22.1, 8.7)	69/561 (12.3)	13.1 (9.1, 18.8)	-22.9 (-46.9, 6.8)
2018	156/450 (34.7)	34.8 (29.0, 41.3)	-22.7 (-36.2, -7.7)	41/450 (9.1)	8.8 (5.9, 12.9)	-48.2 (-67.3, -25.3)
2019	70/297 (23.6)	27.8 (22.0, 34.6)	-38.2 (-51.7, -23.6)	15/297 (5.1)	6.7 (4.2, 10.6)	-60.6 (-79.1, -39.2)

‡ Carriage prevalence was modelled by fitting a GAM to individual carriage trajectories adjusting for risk factors as described in Methods

† Relative difference was computed by subtracting a GAM carriage prevalence estimate from the reference category and then dividing the difference by the reference category and then multiplying by 100%.

VT - PCV13 vaccine serotype.
ALWHIV - adults living with human immunodeficiency virus.
ART – Antiretroviral therapy
95%CI - 95% confidence interval.
Values in bold are statistically significant ($p < 0.05$).

244



245

246 Figure 2. Observed and fitted pneumococcal carriage prevalence curves using data from rolling,
247 prospective cross-sectional surveys in Blantyre, Malawi 2015-19. Number of carriage samples per age
248 group between 18 to 40 years (y) and survey time from 2015 to 2019 represented by open circles
249 radius proportion to total sample size with corresponding confidence intervals (vertical lines). P-spline
250 GAM fitted lines and confidence intervals (ribbons) for the (A) age- and (B) time-dependent carriage
251 prevalence stratified by overall carriage, vaccine serotypes (VT) carriage and VT carriage without
252 serotype 3 (VT-st3).

253

254 **Factors associated with overall carriage prevalence**

255 Overall carriage prevalence was only independently associated with SES, with adults in low SES
256 having 22% higher overall carriage than those in high SES (21.9, 95%CI 1.6, 43.7). In a sub-analysis
257 with age and time-stratification, our model predicted that being a younger (18-24y) adult in low SES

258 or living with a child aged <5y was significantly associated with higher overall carriage prevalence.
259 Significant associations with low SES and shorter ART duration were also seen with overall carriage .
260 Overall carriage prevalence in younger adults was significantly higher by 42% for those in low vs
261 high SES (41.8, 95%CI 12.5, 74.0) and 27% for those living with vs those living without a child <5y
262 (27.2, 95%CI 0.4, 57.4). Temporally, overall carriage prevalence was persistently higher by 50% in
263 2018 (49.5, 95%CI 13.4, 89.8) and 84% in 2019 (83.6, 95%CI 20.5, 167.4) in adults in the low vs
264 high SES, and higher by 35% in 2015 (35.4, 95%CI 0.9, 77.2) and 131% in 2019 (130.8, 95%CI 43.2,
265 255.4) in adults with shorter vs longer duration on ART (Table 2, Fig. 3, S1 Table).

266

267 **Factors associated with VT carriage prevalence**

268 Sex, SES, ART duration and living with a child <5y were not significantly associated with VT
269 carriage prevalence. However, with age- and time-stratification, our model of VT carriage outcome
270 predicted that being a younger (18-24y) or older (35-40y) adult living without a child <5y or being
271 older male significantly increased VT carriage prevalence. Temporally, living without a child <5y
272 remained a significant predictor of higher carriage prevalence in 2019. Living without vs with a child
273 <5y significantly increased VT carriage prevalence by 67% in younger adults 67.1 (95%CI 10.7,
274 140.5) and 41.0% in older adults (95%CI 1.5, 88.6). VT carriage prevalence was significantly higher
275 in older males than females (50.0, 95%CI 7.2, 100.7; Table 2, Fig. 3, S1 Table).

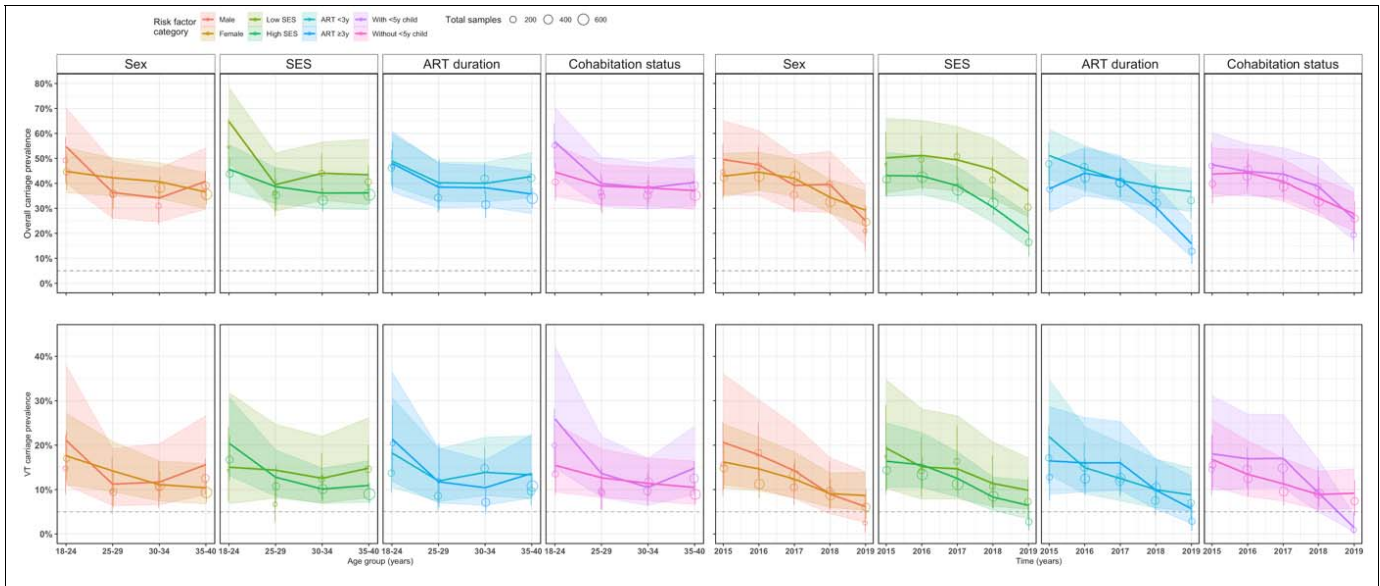
276

Table 2. Risk factors for age- and time-dependent overall and VT with serotype 3 carriage prevalence, and the relative differences in the fitted carriage prevalence between the reference group and comparative groups among ALWHIV on ART, 2015-2019 in Blantyre, Malawi.

Risk factors	Overall % relative difference [†] (95% CI)	% Relative difference [†] in age-dependent carriage prevalence (95% CI)				% Relative difference [†] in time-dependent carriage prevalence (95% CI)				
		18-24y	25-29y	30-34y	35-40y	2015	2016	2017	2018	2019
Overall carriage										
Female vs male	-4.8 (-20.9, 13.5)	-18.1 (-35.7, 1.7)	16.3 (-15.9, 57.2)	19.0 (-8.5, 52.9)	-10.3 (-25.5, 6.8)	-13.5 (-35.5, 12.7)	-6.1 (-23.9, 14.2)	7.1 (-14.5, 32.5)	-12.9 (-33.8, 12.2)	16.8 (-27.4, 79.8)
Low vs High SES	21.9 (1.6, 43.7)	41.8 (12.5, 74.0)	2.1 (-26.0, 32.9)	22.2 (-2.8, 49.2)	19.9 (-1.8, 42.9)	16.5 (-16.2, 52.2)	19.3 (-5.4, 45.8)	26.7 (-0.1, 55.2)	49.5 (13.4, 89.8)	83.6 (20.5, 167.1)
ART <3y vs ART ≥3y	11.5 (-6.7, 31.5)	1.9 (-20.8, 28.4)	4.7 (-23.9, 40.6)	4.4 (-15.7, 26.8)	19.9 (-0.4, 41.8)	35.4 (0.9, 77.2)	3.9 (-15.7, 25.3)	-0.7 (-19.4, 19.9)	26.2 (-4.1, 61.4)	130.8 (43.2, 255.6)
With vs without child <5y	9.7 (-0.8, 29.1)	27.2 (0.4, 57.4)	2.6 (-22.9, 31.8)	0.3 (-19.5, 22.1)	8.9 (-9.2, 28.5)	8.7 (-18.4, 39.5)	1.1 (-17.9, 22.2)	7.4 (-12.4, 29.4)	13.8 (-14.3, 44.7)	-7.6 (-41.8, 31.5)
VT carriage										
Female vs male	-18.6 (-64.9, 53.7)	-16.6 (-51.2, 28.6)	26.8 (-42.8, 146.6)	-5.1 (-47.8, 59.1)	-33.3 (-55.6, -5.8)	-21.4 (-58.3, 31.3)	-18.0 (-48.9, 22.5)	-13.3 (-47.6, 33.1)	1.1 (-54.4, 92.7)	40.3 (-72.9, 315.5)
Low vs High SES	6.0 (-61.0, 91.2)	-26.5 (-67.6, 19.6)	12.5 (-46.6, 85.4)	23.8 (-32.4, 90.8)	35.8 (-14.5, 93.2)	17.7 (-47.0, 94.6)	-3.2 (-48.7, 47.9)	17.6 (-38.2, 80.9)	37.3 (-39.2, 133.2)	53.1 (-48.0, 229.5)
ART <3y vs ART ≥3y	0.0 (-55.1, 77.4)	-14.5 (-49.6, 32.3)	-15.3 (-63.7, 65.3)	33.7 (-19.3, 102.1)	-2.9 (-36.4, 35.0)	32.7 (-26.2, 114.5)	-6.9 (-42.9, 36.2)	-21.9 (-51.5, 13.6)	1.0 (-49.2, 67.6)	54.4 (-53.7, 255.6)
With vs without child <5y	33.1 (-40.9, 142.5)	-40.2 (-64.7, -9.9)	-6.6 (-52.3, 54.3)	8.6 (-36.6, 67.6)	-29.1 (-52.8, -0.5)	7.7 (-43.3, 73.9)	26.9 (-21.2, 89.1)	50.4 (-6.0, 125.0)	4.5 (-55.1, 78.6)	-84.8 (-108.2, -57.4)

[†] Relative difference was computed by subtracting a GAM carriage prevalence estimate of the reference category from the comparator category and then dividing the absolute difference by the reference category then multiplied by 100%.

ART: Antiretroviral therapy, ALWHIV: adults living with human immunodeficiency virus, CI: confidence intervals, y: year, SES: Social Economic Status score based a possession index which is calculated as a sum of positive responses for household ownership of each of the fifteen different functioning items such as watch, radio, bank account, iron (charcoal), sewing machine (electric), mobile phone, CD player, fan (electric), bednet, mattress, bed, bicycle, motorcycle, car, and television. Middle and high SES were combined and named as high SES.



278

279 Figure 3. P-spline generalised additive model: Observed and fitted pneumococcal carriage prevalence
280 curves for each potential risk factor category using data from rolling, prospective cross-sectional
281 surveys in Blantyre, Malawi 2015-19. Nasopharyngeal samples across age groups from 18 to 40 years
282 (y) and time represented by open circles. Circle radius is proportional to total sample size with
283 corresponding confidence intervals (vertical lines). The coloured lines show P-spline GAM fitted
284 model and confidence intervals for age- and time-dependent carriage prevalence for overall carriage
285 (plots from first row) and vaccine serotypes (VT) carriage (plots from second row) stratified by risk
286 factor categories.

287

288 Discussion

289 We used generalised additive models to estimate age- and time-dependent overall (VT+NVT) and VT
290 pneumococcal carriage prevalence and related risk factors in ALWHIV on ART. We analysed overall
291 and VT carriage separately to take into account the effect of a high uptake infant PCV13 programme
292 ⁴². Overall and VT carriage declined with increasing age group and time, with VT carriage having a
293 faster decline (faster still if serotype 3 was excluded from VT). Our models predicted higher overall
294 carriage prevalence in younger adults from low SES and living with a child <5y, as well as those with
295 shorter duration on ART. Conversely, VT carriage prevalence was predominantly high in older males,
296 and younger and older adults not living with a child <5y. These findings suggest that the decline in
297 VT carriage prevalence across time in ALWHIV on ART is in part due to VT indirect protection from
298 vaccinated younger children, although it is imperfect in males or adults not living with younger
299 children, who may potentially have different routes of pneumococcal acquisition outside the
300 household. Reduction in overall carriage suggests a combined effect of infant PCV13 vaccination and
301 widespread use of antibiotics (i.e. cotrimoxazole) among adults in this setting.

302
303 Our analysis of risk factors for persistent carriage in ALWHIV on ART in the post PCV13
304 introduction era in urban Blantyre extends our previous observations that focussed mainly on high
305 residual VT carriage and its determinants in PCV13-vaccinated and unvaccinated children ^{15,16}. We
306 now show substantially high overall and VT carriage prevalence in ALWHIV during the earlier (45%
307 and 17%) than later (28% and 7%) years post infant-PCV13 introduction. VT carriage declined faster
308 than overall carriage, suggesting cumulative vaccine-induced community-level indirect protection
309 from infant PCV vaccination ⁴³⁻⁴⁵. The temporal reduction in VT carriage prevalence was even more
310 marked when serotype 3 was excluded (and included as NVT), supporting accumulating evidence of
311 the reduced effectiveness of PCV13 against serotype 3 ^{36,37}.

312

313 Higher overall and VT carriage prevalences among younger than older adults reported in this study
314 may suggest distinct high carriage acquisition risk in younger adults, partly supported by recent
315 evidence of higher rates of skin-to-skin contacts between younger adults and with other age groups in

316 urban Blantyre⁴⁶. The shorter median duration on ART amongst the younger adults as shown in S6
317 Fig may contribute to this residual pneumococcal carriage through incomplete immune reconstitution
318 at both the systemic and mucosal level^{27,47,48}.

319

320 Low SES neighbourhoods in urban Blantyre predominantly comprise high-density informal
321 settlements, relatively larger households and low rates of formal employment²⁸. Thus, substantial
322 overall carriage prevalence in younger adults from low SES suggests that factors associated with low
323 SES such as poorly ventilated and overcrowded houses with intense social contacts are reservoirs for
324 pneumococcal carriage in the PCV13 era^{16,28,46,49}. On the contrary, non-differential VT carriage
325 prevalence by household SES underlines an important role PCV vaccination plays to outweigh
326 infection risks in poor settings. We uncover a phenomenon where adults living with children <5y,
327 mostly PCV13 recipients given the high (>90%) infant PCV13 vaccination coverage¹⁵, have
328 substantially lower VT but higher overall carriage prevalence suggesting some non-vaccine serotype
329 (NVT) replacement in adults within households, in line with evidence from rural Malawi and South
330 Africa^{50,51}.

331

332 In this setting, VT carriage prevalence was higher in older male than female adults. VT carriage
333 acquisition between mothers and their infants has been demonstrated previously in Malawi and South
334 Africa prior to infant-PCV introduction^{20,21}. Thus, our finding aligns with recent evidence in the same
335 setting showing strong intergenerational social mixing patterns between females and their potentially
336 PCV13-vaccinated younger children likely through parental or guardian roles⁴⁶. This suggests that in
337 the infant-PCV13 era, interruption of VT carriage transmission likely favors females than males.

338

339 Overall and VT carriage prevalence in ALWHIV on ART are heterogenous by age such that
340 epidemiological models for carriage that incorporate ALWHIV should stratify for age for precise
341 estimations. Our findings have policy implications in sub-Saharan African populations affected by
342 HIV as persistent VT carriage in ALWHIV may imply continued risk of VT-IPD¹⁴. The indirect
343 impact on VT carriage of alternative infant-PCV13 vaccine strategies, including 2 primary doses with

344 a booster dose or double booster doses (i.e. 2+1 or 2+1+1), currently being tested to improve the
345 control of childhood disease, should also be further evaluated in ALWHIV¹⁸. Indeed the 2+1
346 schedule, as implemented in South Africa, has generated indirect protection against IPD in
347 unvaccinated older children and ALWHIV^{44,52}. However, simply improving control of carriage in
348 young children to indirectly protect vulnerable immunocompromised adults may be insufficient,
349 particularly in the context of a high local force of infection and a rapid waning of vaccine-induced
350 immunity^{16,53}. Furthermore, we provide evidence of heterogeneity in VT carriage prevalence with
351 males or adults living without <5y child in their homes being at highest risk of VT carriage in the
352 PCV era. Together, these data add weight to our viewpoint that as with many people living in high-
353 income countries, targeted-pneumococcal vaccination should be considered in ALWHIV in LMICs.

354

355 We used a robust dataset with adequate samples to compute estimates for the overall, VT and risk
356 factor-dependent carriage prevalence. Nonetheless, there were some limitations to our work, including
357 limited data on risk factors such as viral load, use of tobacco, presence of other chronic co-
358 morbidities, adherence to ART and history of antibiotics, which may independently influence carriage
359 dynamics⁵⁴. In addition, latex agglutination method used in the main analysis for single serotype
360 detection could underestimate our current prevalence estimates as compared to a more sensitive
361 microarray method for multiple serotype detection as show in S2 Fig. Finally, the systematic
362 recruitment of ALWHIV may be prone to bias if a cyclical pattern (unnoticeable here) is present in
363 the important characteristics of the individuals as they attend the ART clinic⁵⁵.

364

365 In conclusion, despite temporal reductions in overall pneumococcal carriage, the risk of VT carriage
366 and therefore subsequent pneumococcal disease remains high in ALWHIV. Efficient infant PCV
367 schedules that enhance indirect protection together with targeted-vaccination for ALWHIV should be
368 considered, along with other public health measures to further reduce VT carriage and disease. These
369 measures should be supported by robust surveillance to assess effectiveness and identify early
370 evidence of vaccine escape.

371 **Acknowledgements**

372 We thank the individuals who participated in this study and the local authorities for their support. We
373 are grateful to the study field teams (supported by Farouck Bonomali and Roseline Nyirenda). We are
374 grateful to the hospitality of the QECH ART Clinic, led by Ken Malisita. Our thanks also extend to
375 the MLW laboratory management team (led by Brigitte Denis) and the MLW data management team
376 (led by the late Clemens Masesa whose contribution we wish to particularly acknowledge). DT, KCJ,
377 JO, SF NF, RSH, and TDS are supported by the National Institute for Health and Care Research
378 (NIHR) Global Health Research Unit on Mucosal Pathogens and RSH is a NIHR Senior Investigator.
379 The views expressed in this publication are those of the authors and not necessarily those of the NIHR
380 or the Department of Health and Social Care. The MLW Programme is supported by a Strategic
381 Award from the Wellcome, UK

382 **Author contributions**

383 Conceptualization; DT, SF, NF, TDS, RSH

384 Data curation; DT, TDS, TM

385 Formal analysis; DT, SF

386 Funding acquisition; NF, RSH, TDS

387 Investigation; DT, TM, AK, JM, CB, TDS

388 Methodology; DT, SF

389 Project administration; TM, AK, JM, CB, CM, NF, RSH, TDS

390 Resources; NF, RSH, TDS

391 Software; DT

392 Supervision; SF, NF, KCJ, TDS

393 Validation; DT, TM, KCJ, AK, JM, CB, CM, JO, SF, NF, RSH, TDS

394 Visualization; DT

395 Writing – original draft; DT

396 Writing - review & editing; DT, TM, KCJ, AK, JM, CB, CM, JO, SF, NF, RSH, TDS

397 All authors read and approved the final manuscript.

398

399 **Data availability**

400 An R script that was used to analyse the datasets is available in the GitHub repository ⁴¹.

401

402 **Competing interests**

403 The authors declare no competing interests.

404

405 **Role of the funding source**

406 A project grant jointly funded by the UK Medical Research Council (MRC) and the UK Department
407 for International Development (DFID) under the MRC/DFID Concordat agreement, also as part of the
408 EDCTP2 programme supported by the European Union (Grant MR/N023129/1); and a recruitment
409 award from the Wellcome (Grant 106846/Z/15/Z). The MLW Programme is supported by a Strategic
410 Award from the Wellcome, UK. The National Institute for Health and Care Research (NIHR) Global
411 Health Research Unit on Mucosal Pathogens is supported using UK aid from the UK Government
412 (Grant 16/136/46). SF is also supported by a Sir Henry Dale Fellowship jointly funded by the
413 Wellcome Trust and the Royal Society (Grant 208812/Z/17/Z). The views expressed in this
414 publication are those of the author(s) and not necessarily those of the NIHR or the Department of
415 Health and Social Care. The funders had no role in study design, collection, analysis, data
416 interpretation, writing of the report or in the decision to submit the paper for publication. The
417 corresponding author and senior authors had full access to the study data, and together, had final
418 responsibility for the decision to submit for publication.

419

420 **References**

- 421 1. WHO. *WHO Pneumococcus vaccines position paper*. 85–104
422 https://www.who.int/immunization/policy/position_papers/pneumococcus/en/ (2019).
- 423 2. Simell, B. *et al.* The fundamental link between pneumococcal carriage and disease. *Expert*
424 *Review of Vaccines* **11**, 841–855 (2012).
- 425 3. Bar-Zeev, N., Mtunthama, N., Gordon, S. B., Mwafulirwa, G. & French, N. Minimum Incidence
426 of Adult Invasive Pneumococcal Disease in Blantyre, Malawi an Urban African Setting: A
427 Hospital Based Prospective Cohort Study. *PLOS ONE* **10**, e0128738 (2015).
- 428 4. Meiring, S. *et al.* HIV Infection and the Epidemiology of Invasive Pneumococcal Disease (IPD)
429 in South African Adults and Older Children Prior to the Introduction of a Pneumococcal
430 Conjugate Vaccine (PCV). *PLOS ONE* **11**, e0149104 (2016).
- 431 5. Corcoran, M. *et al.* The epidemiology of invasive pneumococcal disease in older adults in the
432 post-PCV era. Has there been a herd effect? *Epidemiology & Infection* **145**, 2390–2399 (2017).
- 433 6. Dwyer-Lindgren, L. *et al.* Mapping HIV prevalence in sub-Saharan Africa between 2000 and
434 2017. *Nature* **570**, 189 (2019).
- 435 7. Frank, T. D. *et al.* Global, regional, and national incidence, prevalence, and mortality of HIV,
436 1980–2017, and forecasts to 2030, for 195 countries and territories: a systematic analysis for the
437 Global Burden of Diseases, Injuries, and Risk Factors Study 2017. *The Lancet HIV* **6**, e831–e859
438 (2019).
- 439 8. Choko, A. T. *et al.* Uptake, Accuracy, Safety, and Linkage into Care over Two Years of
440 Promoting Annual Self-Testing for HIV in Blantyre, Malawi: A Community-Based Prospective
441 Study. *PLOS Medicine* **12**, e1001873 (2015).
- 442 9. van Aalst, M. *et al.* Incidence of invasive pneumococcal disease in immunocompromised
443 patients: A systematic review and meta-analysis. *Travel Medicine and Infectious Disease* **24**, 89–
444 100 (2018).
- 445 10. Harries, A., Makombe, S., Libamba, E. & Schouten, E. Why Did the Scale-up of HIV Treatment
446 Work?: A Case Example From Malawi. *J AIDS Journal of Acquired Immune Deficiency Syndromes*
447 **57**, (2011).

- 448 11. Harries, A. D. *et al.* Act local, think global: how the Malawi experience of scaling up
449 antiretroviral treatment has informed global policy. *BMC Public Health* **16**, 938 (2016).
- 450 12. Jahn, A. *et al.* Scaling-up antiretroviral therapy in Malawi. *Bulletin of the World Health*
451 *Organization* **94**, 772–776 (2016).
- 452 13. VACFA. Immunization Schedules - Africa | Vaccines for Africa.
453 <http://www.vacfa.uct.ac.za/immunization-schedules-africa> (2018).
- 454 14. Bar-Zeev, N. *et al.* Impact and effectiveness of 13-valent pneumococcal conjugate vaccine on
455 population incidence of vaccine and non-vaccine serotype invasive pneumococcal disease in
456 Blantyre, Malawi, 2006–18: prospective observational time-series and case-control studies. *The*
457 *Lancet Global Health* **9**, e989–e998 (2021).
- 458 15. Swarthout, T. D. *et al.* High residual carriage of vaccine-serotype *Streptococcus pneumoniae* after
459 introduction of pneumococcal conjugate vaccine in Malawi. *Nature Communications* **11**, 2222
460 (2020).
- 461 16. Lourenço, J. *et al.* Determinants of high residual post-PCV13 pneumococcal vaccine-type
462 carriage in Blantyre, Malawi: a modelling study. *BMC Medicine* **17**, (2019).
- 463 17. Klugman, K. P. & Rodgers, G. L. Population versus individual protection by pneumococcal
464 conjugate vaccination. *The Lancet* **393**, 2102–2104 (2019).
- 465 18. Thindwa, D. *et al.* Vaccine strategies to reduce the burden of pneumococcal disease in HIV-
466 infected adults in Africa. *Expert Review of Vaccines* **0**, 1–8 (2020).
- 467 19. WHO | Pneumococcal conjugate 3rd dose (PCV3) immunization coverage. *WHO*
468 <http://www.who.int/gho/immunization/pneumococcal/en/> (2019).
- 469 20. Shiri, T. *et al.* Dynamics of Pneumococcal Transmission in Vaccine-Naïve Children and Their
470 HIV-infected or HIV-uninfected Mothers During the First 2 Years of Life. *Am J Epidemiol* **178**,
471 1629–1637 (2013).
- 472 21. Heinsbroek, E. *et al.* Pneumococcal Acquisition Among Infants Exposed to HIV in Rural
473 Malawi: A Longitudinal Household Study. *Am J Epidemiol* **183**, 70–78 (2016).

- 474 22. le Polain de Waroux, O. *et al.* Characteristics of human encounters and social mixing patterns
475 relevant to infectious diseases spread by close contact: a survey in Southwest Uganda. *BMC*
476 *Infectious Diseases* **18**, 172 (2018).
- 477 23. le Polain de Waroux, O. *et al.* Identifying human encounters that shape the transmission of
478 *Streptococcus pneumoniae* and other acute respiratory infections. *Epidemics* **25**, 72–79 (2018).
- 479 24. Neal, E. F. G. *et al.* Factors associated with pneumococcal carriage and density in children and
480 adults in Fiji, using four cross-sectional surveys. *PLOS ONE* **15**, e0231041 (2020).
- 481 25. Neal, E. F. G. *et al.* Associations between ethnicity, social contact, and pneumococcal carriage
482 three years post-PCV10 in Fiji. *Vaccine* **38**, 202–211 (2020).
- 483 26. Heinsbroek, E. *et al.* Persisting high prevalence of pneumococcal carriage among HIV-infected
484 adults receiving antiretroviral therapy in Malawi. *Aids* **29**, 1837–1844 (2015).
- 485 27. Glennie, S. J. *et al.* Defective Pneumococcal-Specific Th1 Responses in HIV-Infected Adults
486 Precedes a Loss of Control of Pneumococcal Colonization. *Clin Infect Dis* **56**, 291–299 (2013).
- 487 28. National Statistical Office Malawi. *Malawi Population and Housing Census 2018*. 1–311
488 [http://www.nsomalawi.mw/index.php?option=com_content&view=article&id=3](http://www.nsomalawi.mw/index.php?option=com_content&view=article&id=3D226:2018-malawi-population-and-housing-census&catid=E2%80%89%3D%E2%80%89:reports&Itemid=E2%80%89%3D%E2%80%89%896)
489 [D226:2018-malawi-population-and-housing-](http://www.nsomalawi.mw/index.php?option=com_content&view=article&id=3D226:2018-malawi-population-and-housing-census&catid=E2%80%89%3D%E2%80%89:reports&Itemid=E2%80%89%3D%E2%80%89%896)
490 [census&catid=E2%80%89%3D%E2%80%89:reports&Itemid=E2%80%89%3D%E2%80](http://www.nsomalawi.mw/index.php?option=com_content&view=article&id=3D226:2018-malawi-population-and-housing-census&catid=E2%80%89%3D%E2%80%89:reports&Itemid=E2%80%89%3D%E2%80%89%896)
491 [%896](http://www.nsomalawi.mw/index.php?option=com_content&view=article&id=3D226:2018-malawi-population-and-housing-census&catid=E2%80%89%3D%E2%80%89:reports&Itemid=E2%80%89%3D%E2%80%89%896) (2019).
- 492 29. Ministry of Health. *Malawi Guidelines for Clinical Management of HIV in Children and Adults*.
493 1–128
494 [https://differentiatedservicedelivery.org/Portals/0/adam/Content/yb4xSSLvE0SW98_z7wTm_w/](https://differentiatedservicedelivery.org/Portals/0/adam/Content/yb4xSSLvE0SW98_z7wTm_w/File/Malawi%20Clinical%20HIV%20Guidelines%202018%20(1).pdf)
495 [File/Malawi%20Clinical%20HIV%20Guidelines%202018%20\(1\).pdf](https://differentiatedservicedelivery.org/Portals/0/adam/Content/yb4xSSLvE0SW98_z7wTm_w/File/Malawi%20Clinical%20HIV%20Guidelines%202018%20(1).pdf) (2018).
- 496 30. Satzke, C. *et al.* Standard method for detecting upper respiratory carriage of *Streptococcus*
497 *pneumoniae*: Updated recommendations from the World Health Organization Pneumococcal
498 Carriage Working Group. *Vaccine* **32**, 165–179 (2013).
- 499 31. Newton, R., Hinds, J. & Wernisch, L. Empirical Bayesian models for analysing molecular
500 serotyping microarrays. *BMC Bioinformatics* **12**, 88 (2011).

- 501 32. Swarthout, T. D. *et al.* Evaluation of Pneumococcal Serotyping of Nasopharyngeal-Carriage
502 Isolates by Latex Agglutination, Whole-Genome Sequencing (PneumoCaT), and DNA
503 Microarray in a High-Pneumococcal-Carriage-Prevalence Population in Malawi. *Journal of*
504 *Clinical Microbiology* **59**, (2020).
- 505 33. Kamng'ona, A. W. *et al.* High multiple carriage and emergence of *Streptococcus pneumoniae*
506 vaccine serotype variants in Malawian children. *BMC Infectious Diseases* **15**, 234 (2015).
- 507 34. Stekhoven, D. J. & Bühlmann, P. MissForest—non-parametric missing value imputation for
508 mixed-type data. *Bioinformatics* **28**, 112–118 (2012).
- 509 35. Eilers, P. H. C. & Marx, B. D. Flexible Smoothing with B-splines and Penalties. *Statistical*
510 *Science* **11**, 89–102 (1996).
- 511 36. Linley, E., Bell, A., Gritzfeld, J. F. & Borrow, R. Should Pneumococcal Serotype 3 Be Included
512 in Serotype-Specific Immunoassays? *Vaccines* **7**, 4 (2019).
- 513 37. Usuf, E. *et al.* Persistence of Nasopharyngeal Pneumococcal Vaccine Serotypes and Increase of
514 Nonvaccine Serotypes Among Vaccinated Infants and Their Mothers 5 Years After Introduction
515 of Pneumococcal Conjugate Vaccine 13 in The Gambia. *Clin Infect Dis* **68**, 1512–1521 (2019).
- 516 38. Hens, N. *et al.* *Modeling Infectious Disease Parameters Based on Serological and Social Contact*
517 *Data: A Modern Statistical Perspective*. (Springer Science & Business Media, 2012).
- 518 39. Kohavi, R., Longbotham, R., Sommerfield, D. & Henne, R. M. Controlled experiments on the
519 web: survey and practical guide. *Data Min Knowl Disc* **18**, 140–181 (2009).
- 520 40. R Core Team (2018). R: A language and environment for statistical computing. R Foundation for
521 Statistical Computing, Vienna, Austria. <https://www.r-project.org/>.
- 522 41. Thindwa, D. R code and data for Age- and time-dependent risk factors for pneumococcal carriage
523 in HIV-positive adults on ART in the infant PCV era in Blantyre, Malawi.
524 <https://github.com/deusthindwa/Pneumo.carriage.adults.hiv.malawi> (2021).
- 525 42. Mvula, H. *et al.* Predictors of Uptake and Timeliness of Newly Introduced Pneumococcal and
526 Rotavirus Vaccines, and of Measles Vaccine in Rural Malawi: A Population Cohort Study. *PLOS*
527 *ONE* **11**, e0154997 (2016).

- 528 43. Nzenze, S. A. M. C. *et al.* Temporal Changes in Pneumococcal Colonization in a Rural African
529 Community With High HIV Prevalence Following Routine Infant Pneumococcal Immunization.
530 *Journal* **32**, 1270–1278 (2013).
- 531 44. Nzenze, S. A. *et al.* Imputing the Direct and Indirect Effectiveness of Childhood Pneumococcal
532 Conjugate Vaccine Against Invasive Pneumococcal Disease by Surveying Temporal Changes in
533 Nasopharyngeal Pneumococcal Colonization. *Am J Epidemiol* **186**, 435–444 (2017).
- 534 45. Roca, A. *et al.* Effects of Community-Wide Vaccination with PCV-7 on Pneumococcal
535 Nasopharyngeal Carriage in The Gambia: A Cluster-Randomized Trial. *PLOS Medicine* **8**,
536 e1001107 (2011).
- 537 46. Thindwa, D. *et al.* *Social mixing patterns relevant to infectious diseases spread by close contact*
538 *in urban Blantyre, Malawi.* 2021.12.16.21267959
539 <https://www.medrxiv.org/content/10.1101/2021.12.16.21267959v1> (2021)
540 doi:10.1101/2021.12.16.21267959.
- 541 47. Glennie, S. J. *et al.* Impaired CD4 T cell memory response to *Streptococcus pneumoniae* precedes
542 CD4 T cell depletion in HIV-infected Malawian adults. *PLoS ONE* **6**, e25610 (2011).
- 543 48. Zhang, L. *et al.* Humoral immune responses to *Streptococcus pneumoniae* in the setting of HIV-1
544 infection. *Vaccine* **33**, 4430–4436 (2015).
- 545 49. Dherani, M., Heinsbroek, E., Tafatatha, T., Chartier, R. & Bruce, N. Household Air Pollution and
546 Pneumococcal Carriage in 6 Months Old Children in Malawi – MSCAPE Study. *ISEE*
547 *Conference Abstracts* (2018) doi:10.1289/isee.2017.2017-558.
- 548 50. Heinsbroek, E. *et al.* Pneumococcal carriage in households in Karonga District, Malawi, before
549 and after introduction of 13-valent pneumococcal conjugate vaccination. *Vaccine* **36**, 7369–7376
550 (2018).
- 551 51. Cohen, C. *et al.* Effectiveness of the 13-valent pneumococcal conjugate vaccine against invasive
552 pneumococcal disease in South African children: a case-control study. *The Lancet Global Health*
553 **5**, e359–e369 (2017).

- 554 52. Madhi, S. A. & Nunes, M. C. The potential impact of pneumococcal conjugate vaccine in Africa:
555 Considerations and early lessons learned from the South African experience. *Human Vaccines &*
556 *Immunotherapeutics* **12**, 314–325 (2016).
- 557 53. Flasche, S., Lipsitch, M., Ojal, J. & Pinsent, A. Estimating the contribution of different age strata
558 to vaccine serotype pneumococcal transmission in the pre vaccine era: a modelling study. *BMC*
559 *Medicine* **18**, (2020).
- 560 54. Thindwa, D. *et al.* Estimating the contribution of HIV-infected adults to household pneumococcal
561 transmission in South Africa, 2016–2018: A hidden Markov modelling study. *PLOS*
562 *Computational Biology* **17**, e1009680 (2021).
- 563 55. PHAST. Methods of sampling from a population. *Health Knowledge*
564 [https://www.healthknowledge.org.uk/public-health-textbook/research-methods/1a-](https://www.healthknowledge.org.uk/public-health-textbook/research-methods/1a-epidemiology/methods-of-sampling-population)
565 [epidemiology/methods-of-sampling-population](https://www.healthknowledge.org.uk/public-health-textbook/research-methods/1a-epidemiology/methods-of-sampling-population) (2010).

566

DRAFT