

1 Environmental enteric dysfunction and small intestinal 2 histomorphology of stunted children in Bangladesh

3
4 Md. Shabab Hossain^{1*}, S. M. Khodeza Nahar Begum², M Masudur Rahman³, Mashud Parvez², Ramendra
5 Nath Mazumder¹, Shafiqul Alam Sarker¹, Md. Mehedi Hasan¹, Shah Mohammad Fahim¹, Md. Amran
6 Gazi¹, Subhasish Das¹, Mustafa Mahfuz¹, Tahmeed Ahmed^{1,4,5}

7
8 ¹Nutrition and Clinical Services Division, International Centre for Diarrheal Disease Research, Bangladesh
9 (icddr,b), Dhaka, Bangladesh

10 ²Department of Pathology, Bangladesh Specialized Hospital, Dhaka, Bangladesh

11 ³Department of Gastroenterology, Sheikh Russel National Gastroenterology Institute and Hospital, Dhaka,
12 Bangladesh

13 ⁴Department of Global Health, University of Washington, Seattle, Washington, USA

14 ⁵Department of Public Health Nutrition, James P Grant School of Public Health, BRAC University, Dhaka
15 1212, Bangladesh

16
17 ***Corresponding author:**

18 Email: dr.shabab@icddr.org

22 **Abstract**

23 There is lack of information on the histological characteristics of the intestinal mucosa in Bangladeshi
24 children, which is considered to be the traditional gold standard for diagnosis of environmental enteric
25 dysfunction (EED). The purpose of the study was to evaluate the intestinal histological characteristics of
26 stunted children aged between 12-18 months with possible EED. 110 children with chronic malnutrition
27 (52 stunted with length-for-age Z score, LAZ<-2 and 58 at risk of stunting with LAZ <-1 to -2) from the
28 Bangladesh Environmental Enteric Dysfunction (BEED) study protocol who underwent upper
29 gastrointestinal (GI) endoscopy were selected for this study. To explore the association of EED with
30 childhood stunting, upper GI endoscopy was done and the biopsy specimens were studied for
31 histopathology. Villous height and crypt depth were measured and the presence and intensity of
32 inflammatory infiltrates in the lamina propria was investigated. Bivariate analysis was performed to
33 examine the relationship between stunting and histologic morphology. More than 90% children
34 irrespective of nutritional status were diagnosed to have chronic non-specific duodenitis on
35 histopathology. Half of the children from both groups had villous atrophy as well as crypt hyperplasia
36 and lymphocytic infiltration was present in more than 90% children, irrespective of groups. However, no
37 statistically significant difference was observed when compared between the groups. The prevalence of
38 chronic non-specific duodenitis in Bangladeshi children, irrespective of nutritional status, was high. A
39 significant number of these children had abnormal findings in intestinal histomorphology.

40 **Author Summary**

41 EED or environmental enteropathy, results in poor gut health and suboptimal child growth, and is
42 considered to play a major role on childhood stunting in the tropics. Growth faltering due to decreased
43 nutrient absorption as a result of alteration of small intestinal histological structure manifested as

44 blunting or atrophy of intestinal villi, hyperplasia or elongation of crypts and infiltration of inflammatory
45 cells in the lamina propria, has been demonstrated as the basic characteristics of EED. The traditional
46 gold standard for the diagnosis of EED is intestinal biopsy and assessment of the histomorphological
47 alterations. There is lack of information on the histological characteristics of the intestinal mucosa in
48 Bangladeshi children. The purpose of the study was to evaluate the intestinal histological characteristics
49 of stunted children aged between 12-18 months with possible EED. 110 children with chronic
50 malnutrition who underwent upper gastrointestinal (GI) endoscopy were selected for this study and the
51 biopsy specimens were studied for histopathology. Villous height and crypt depth were measured and
52 the presence and intensity of inflammatory infiltrates in the lamina propria was investigated. More than
53 90% children irrespective of nutritional status were diagnosed to have chronic non-specific duodenitis.
54 Half of the children from both groups had villous atrophy as well as crypt hyperplasia and lymphocytic
55 infiltration was present in more than 90% children, irrespective of groups. However, no statistically
56 significant difference was observed when compared between the groups.

57

58 **Introduction**

59 Malnutrition accounts for almost half of all under-five child deaths ¹, especially in lesser developed
60 countries ². Chronic malnutrition is frequently manifested as linear growth failure or stunting ³, affecting
61 an estimated 150 million children below 5 years of age ⁴. About one-third of children in developing
62 countries are stunted, accounting for 14–17% of mortality in under-five children ⁵. The survivors suffer
63 from long-term sequelae including reduced neuro-developmental potential and poor cognitive function
64 ³. According to a meta-analysis, each year two-hundred million children fail to achieve their growth
65 potential as a result of stunting ⁶. Studies show that, children suffering from impaired linear growth
66 during the first thousand days of life suffer from higher risk of chronic diseases and sub-optimal

67 cognitive development causing sub-standard academic performance and financial productivity in the
68 subsequent phases of life ⁷. Although Bangladesh has made substantial progress in terms of fighting
69 malnutrition including stunting, with a reduction of stunting rates from 66% to 31% between the time
70 period of 1990 and 2018, the prevalence rates of childhood stunting are still “very high” according to the
71 criteria set by WHO ⁸.

72
73 There is high prevalence of chronic intestinal inflammation in the tropical parts of the world. The
74 structural and functional abnormality of the child gut in this part of the world is also established ⁵.
75 Certain changes in the small bowel function has been observed in the early phases of life in stunted
76 children residing in developing countries, which is indicated by a change in the mucosal architecture of
77 the intestine and chronic inflammation ⁹. These alterations appear to be caused because of prolonged
78 exposure to a contaminated environment. However, the reversal of this condition has been observed in
79 studies conducted earlier. These studies show that when a non-native person returns to their origins,
80 even following a prolonged residence in a resource-poor setting, the gut alterations reverse back to
81 normal. This led researchers to suggest the exposure to a contaminated environment to be responsible
82 for such alterations ^{9,10,11}, and the changes in mucosal architecture and intestinal inflammation is
83 assumed to be the result of a prolonged exposure to enteric pathogens through fecal contamination,
84 known as environmental enteric dysfunction (EED) ⁹.

85
86 EED, also recognized as environmental enteropathy or tropical enteropathy, results in poor gut health
87 and suboptimal child growth ¹², and is considered to play a major role on childhood stunting in the
88 tropics ³. The mechanism of EED has been described earlier in many studies ^{7,13}. Growth faltering due to
89 decreased nutrient absorption as a result of alteration of small intestinal histological structure
90 manifested as blunting or atrophy of intestinal villi, hyperplasia or elongation of crypts and infiltration of

91 inflammatory cells in the lamina propria, has been demonstrated as the basic characteristics of EED ¹⁴.
92 EED is a clinically asymptomatic condition, and is only manifested visibly as growth impairment. The
93 traditional gold standard for the diagnosis of EED is intestinal biopsy and assessment of the
94 histomorphological alterations ¹⁵. It is evident that because of the invasive nature of the procedure of
95 collecting intestinal biopsy samples, especially in young, apparently asymptomatic children, ⁷ the
96 number of studies conducted to investigate this are very limited. The small number of studies that
97 aimed to explore this have found blunting of the intestinal villi, increase in the depth of the crypts and
98 infiltration of inflammatory cells in the lamina propria of intestinal biopsy samples as the key hallmarks
99 of EED ¹⁵.
100 There is insufficient information on the intestinal histological morphology of stunted children with
101 possible EED in Bangladesh. With an aim to mitigate this knowledge gap, we sought to explore these
102 parameters in children aged between 12-18 months of age.

103

104 **Materials and methods**

105 **Study site and Data collection**

106 This study is a part of the Bangladesh Environmental Enteric Dysfunction (BEED) study which was
107 conducted among the residents of *Bauniabadh* slum in Mirpur, Dhaka. BEED study was a community-
108 based nutrition intervention study targeted at validating non-invasive biomarkers of EED with small
109 intestinal biopsy samples and to have a better understanding of the disease pathogenesis. In this study,
110 children aged between 12-18 months, who are stunted (length-for-age Z-scores (LAZ) <-2) and those
111 who are at risk of stunting (LAZ <-1 to -2) were enrolled. The participants received on site nutritional
112 intervention for 90 days consisting of one egg, 150 ml of whole milk and micronutrient sprinkles, as well
113 as, nutritional counseling daily, six days a week. The details and overall design of the BEED study have

114 already been published ¹⁶. Participants failing to respond to nutritional therapy and also negative for
115 secondary malnutrition, i.e. tuberculosis, parasitic infection were considered as probable cases of EED
116 and upper GI endoscopy was performed. For this particular study, a total of 110 children (52 stunted, 58
117 at risk of stunting) were enrolled from July 2016 to March 2019. Ethical approval was taken from
118 Institutional review committee of icddr,b. The protocol number is PR-16007. A written informed consent
119 for the intervention as well as the upper GI endoscopy and biopsy was obtained from the parents of
120 children after explaining the aims and procedures of the study.

121

122 **Duodenal biopsy**

123 Pediatric UGI endoscopy procedures were performed by expert endoscopists (MMR and MRB) at the
124 Apollo Hospitals, Dhaka and Bangladesh Specialized Hospital, Dhaka using Olympus GIF Type Q180Z
125 scope under general anesthesia. Biopsy specimens were collected from the duodenal bulb using Radial
126 Jaw™ 4 Pediatric 2.0 mm single use biopsy forceps (Boston Scientific Corporation, Marlborough, USA)
127 and were kept in 10% buffered formalin solution containing vials for the purpose of fixation. Paraffin
128 sections were prepared and stained by hematoxylin and eosin. All biopsies were examined by expert
129 pathologists (KNB and MP), who were absolutely blinded to the case histories. Estimation of the villous
130 height, crypt depth and presence and intensity of inflammatory infiltrates in lamina propria as well as
131 counting of the intraepithelial lymphocytes (IELs) was done ¹⁷.

132

133 **Definition of duodenitis and evaluation of intestinal histo-morphology**

134 The definitions and classification of duodenitis used in this study have already been published elsewhere
135 ¹⁸. Non-specific duodenitis was defined as the inflammation and morphological alterations of the
136 duodenal mucosa, not known to be associated with any other pathology ¹⁹. Specific or secondary

137 duodenitis was defined as the presence of inflammation and similar alterations of the duodenal mucosa
138 due to a disease; for instance, Crohn's disease, sarcoidosis, etc ²⁰. Whether the duodenitis was active
139 (chronic active duodenitis) or not was determined on the basis of the presence of neutrophilic
140 infiltration or polymorphonuclear invasion, characterized by epithelial degeneration and regeneration
141 with intercellular edema ²¹. Figure 1 shows the classification of duodenitis based on pathogenesis and
142 cellular activity ¹⁸.

143

144 **Figure 1.** Classification of duodenitis based on pathogenesis and cellular activity

145

146 As reported in several studies ^{5, 12, 13, 14, 22, 23}, morphometry of intestinal histology consisted of certain
147 estimations related to remodeling of the crypts and villi with inflammatory infiltrations in the lamina
148 propria. The schemes used to assess the morphological alterations in this study were also based on
149 these parameters, which has already been published elsewhere ¹⁸. Shortening of the villous height was
150 indicated by flattening of the mucosal surface secondary to the atrophy of the villi and was referred to
151 as villous atrophy or blunting. Crypt changes consisted of elongation of the crypts or hyperplastic crypts
152 ²⁴. Complete flattening of the villi with a V:C ratio varying from 0:1 to 1:1 was defined as total villous
153 atrophy, while partial blunting of the villi and a mild reduction of the villous height than normal,
154 respectively, were referred to as subtotal and mild villous atrophy ²⁴.

155

156 The lamina propria usually consists of plasma cells and lymphocytes, even in absence of active
157 inflammation ²⁴. Slides having an obvious presence of excess inflammatory cellular infiltrates than
158 normal as estimated by expert eye were considered. The presence and intensity of inflammatory cellular

159 infiltrates was further divided into marked cellular infiltration, moderate cellular infiltration and mild
160 cellular infiltration through microscopic exploration¹⁸. An intense and diffuse inflammatory infiltration
161 that was clearly distinguishable on naked eye was referred to as marked cellular infiltration while
162 moderate cellular infiltration was defined as the presence of a lymphoid aggregation or follicle. A higher
163 number of infiltrates than normal was defined as mild cellular infiltration. Figure 2 shows the schematic
164 representation used for the assessment of the morphological changes described above¹⁸.

165

166 **Figure 2.** Schematic presentation for assessment of the histological alterations of intestinal mucosa

167

168 Increased numbers of IELs in an otherwise normal duodenal biopsy sample usually indicates certain
169 immunological conditions; such as, lymphocytic/collagenous colitis, bacterial overgrowth and gluten
170 sensitive enteropathy. Above 30 IELs/100 enterocytes was considered as intraepithelial lymphocytosis.
171 IELs were estimated by counting the number of lymphocytes per 20 enterocytes present on a random
172 villous tip, following the summation of the numbers of these lymphocytes from such 5 random villi²⁴. 20
173 enterocytes multiplied by 5 villi resulted in the number of lymphocytes per 100 enterocytes. Subjective
174 morphologic analysis of the mucosal surface architecture was done using LEICA DM 1000 LED
175 microscope.

176

177 **Statistical analyses**

178 Mean values, standard deviation (SD) and 95% confidence intervals (CI) of means were used to describe
179 the distribution and prevalence and bivariate analysis was performed to explore the relation between
180 malnutrition and the histological features. Pearson's chi-square test or Fisher's exact test, whichever
181 applicable, was used to compare the distribution of duodenitis and the histological features between

182 the stunted and at risk of stunting children. Statistical significance was defined as a p-value of less than
183 0.05. Statistical analyses were performed using SPSS version 20.0 (IBM).

184

185 **Results**

186 110 children (52 stunted, 58 at risk of stunting) with mean age of 18±2 months underwent upper GI
187 endoscopy. Among them, 64 (58.2%) children were female. Representative histological images of
188 normal villous architecture, mild villous atrophy, subtotal villous atrophy and total villous atrophy with
189 crypt hyperplasia obtained using hematoxylin and eosin (H&E) stain are shown in Fig. 3 a, b, c and d
190 respectively.

191

192 **Figure 3.** Representative histological images of villous height obtained using hematoxylin and eosin
193 (H&E) stain

194

195 On histopathology, most of the children from both stunted and at risk of stunting groups suffered from
196 chronic non-specific duodenitis. The proportion of chronic duodenitis and chronic active duodenitis in
197 both groups were similar and no statistically significant difference existed between the groups. A small
198 number of children belonging to both stunted and at risk of stunting cohorts were found to have
199 abnormal intra-epithelial lymphocyte count in the biopsy samples. Presence of duodenitis did not differ
200 significantly between the two groups of children. Table 1 shows the distribution of duodenitis in
201 children.

202

203 **Table 1.** Types of duodenitis in children

204

Duodenitis	Child Cohort		
	Stunted (†n= 52)	At risk (†n= 58)	†P-value
Based on known pathology			
Normal	3 (6%)	3 (5%)	1.00
Specific	0 (0%)	0 (0%)	-
Non-specific	49 (94%)	55 (95%)	0.62
Based on tissue morphology			
Normal	3 (6%)	3 (5%)	1.00
Chronic	27(52%)	26 (45%)	0.46
Chronic active	22 (42%)	29 (50%)	0.42
Intraepithelial lymphocytosis (†IEL>30)	2 (4%)	3 (5%)	1.00

205

206 † n, Number of respondents; P-value, Significance level; IEL, Intraepithelial lymphocytosis

207

208 Morphology analysis shows, half of the children from both stunted and at risk of stunting groups had
 209 villous atrophy as well as crypt hyperplasia. Lymphocytic infiltration was present in more than 90%
 210 children, irrespective of groups. However, no statistically significant difference was observed between
 211 the groups. Figure 4 shows the morphologic distribution of histopathology findings.

212

213 **Figure 4.** Histomorphological features of upper GI mucosa in children with stunting

214

215 Discussion

216 This study showed a high prevalence of non-specific duodenitis on histopathology in children
217 irrespective of their nutritional status. The finding is novel as after a thorough literature search, it was
218 observed that there is paucity of data on the prevalence of duodenitis in this entire geographic region.
219 Numerous studies were conducted to investigate pathologies of the stomach and esophagus²⁵, but only
220 a few explored duodenal pathologies, especially in children²⁵. A similar study on malnourished adults
221 has revealed very high prevalence of non-specific duodenitis based on histopathological evidence¹⁸. A
222 study aimed to explore *H. pylori* associated dyspepsia in children residing in urban slums has also shown
223 a high prevalence of asymptomatic duodenitis²⁶. Studies based on esophagogastroduodenoscopy (EGD)
224 procedures on US and Turkish children showed the prevalence of duodenitis to be 12.7% and 30.3%,
225 respectively^{25,27}. However, in contrast to stunted or at risk of stunting children in the present study, the
226 children in those studies were relatively older, well-nourished and underwent EGD for diagnostic
227 purpose. The commonest etiology responsible for duodenitis in studies conducted in Western countries
228 was found to be celiac disease (CD), which accounted for 32% of the total cases²⁸. No children in the
229 present study were found positive for celiac disease on serology²⁹ and the IEL count was also
230 insignificant, which is an important histopathologic marker of CD³⁰. As the unique feature for all the
231 children was only being stunted or at risk of stunting and they also did not have any pathology
232 diagnosed by endoscopy, the high prevalence of duodenitis among these children was possibly related
233 to EED and not due to celiac disease or any other GI disease¹⁶. This also partly explains the high
234 prevalence of the non-specific form of chronic duodenitis in the studied children, as the etiology could
235 not be directly linked to any disease process. As the children underwent endoscopy to address the
236 association of EED with stunting and not because of any known gastro-intestinal pathology, diagnosis of
237 duodenitis with a specific etiology or specific duodenitis, would also be highly unlikely.

238

239 Approximately half of the children from both stunted and at risk of stunting cohorts had abnormal
240 villous height as well as crypt depth. And lymphocytic infiltration was found to be present in majority of
241 the participants, irrespective of groups. These findings are novel because this study is the first of its kind
242 to explore the gut histomorphology in stunted children of this age group in Bangladesh. There are
243 ethical challenges to obtain biopsy tissue from the intestine of young children without an evident clinical
244 condition⁹. As a result, a thorough literature search yielded very limited studies that have been
245 conducted on asymptomatic children suffering solely from chronic malnutrition. A study done on 38
246 Gambian children suffering from protein energy malnutrition (PEM) had also shown that most of the
247 children had villous atrophy or crypt elongation³¹. Further studies aimed at obtaining serial biopsy
248 samples at different ages and biopsy sites would be of great scientific value⁹. No statistical significance
249 was observed in terms of both duodenitis and intestinal histological morphology when both the groups
250 were compared. As already mentioned, collection of small intestinal biopsy samples is an invasive
251 procedure and hence is ethically and technically infeasible, particularly in young children without an
252 evident clinical condition⁷. As a result, biopsy samples from absolutely 'healthy' children could not be
253 obtained. The comparison group here was at risk of stunting, and not a proper 'healthy' cohort, which
254 could have yielded a better result.

255
256 From the morphological analysis it is evident that, nearly half of the children from both the groups had
257 significant alterations in the intestinal histomorphology. As no other pathology which could have made a
258 direct impact on these mucosal changes could be identified in these clinically asymptomatic children,
259 EED may be a factor related with these findings. The children were provided with an intensive
260 nutritional intervention prior to endoscopy as well as screened negative for other possible causes of
261 malnutrition, yet, the children were stunted. Considering both the unexplained stunting and intestinal

262 histomorphologic changes in the same children, EED might be the linking bridge and might also be a
263 possible explanation. Thus, further studies associating EED markers with gut histomorphology in stunted
264 children are warranted.

265

266 **Limitations**

267 This study was conducted as a sub-study of the Bangladesh Environmental Enteric Dysfunction (BEED)
268 study where the studied population of the parent study were only stunted (length-for-age Z-scores (LAZ)
269 <-2) and at risk of stunting (LAZ <-1 to -2) children and therefore, by definition were not absolutely
270 healthy. As collection of small intestinal biopsy samples in young children without an evident clinical
271 condition is ethically infeasible, biopsy samples from absolutely 'healthy' children could not be obtained.
272 Therefore, the comparison group was at risk of stunting, and not a proper 'healthy' cohort, which could
273 have yielded a better result. Whether any association between EED markers with gut histomorphology
274 exists or not was also not investigated, which also remained a limitation.

275

276 **Conclusion**

277 Based on histopathology of the intestinal biopsy samples, chronic non-specific duodenitis was found to
278 be very high in Bangladeshi children, irrespective of nutritional status. A significant number of these
279 children had abnormal morphological findings in intestinal histopathology. As no other pathology could
280 be identified in these children, EED may be a possible factor related to these findings, warranting further
281 studies to establish this as a fact.

282

283 **Acknowledgements**

284 This work was supported, in whole or in part, by the Bill & Melinda Gates Foundation [OPP1136751] and
285 was funded by the Bill and Melinda Gates Foundation (BMGF) under its Global Health Program and the
286 project investment ID is OPP1136751 ([https://www.gatesfoundation.org/How-We-Work/Quick-](https://www.gatesfoundation.org/How-We-Work/Quick-Links/Grants-Database/Grants/2015/11/OPP1136751)
287 [Links/Grants-Database/Grants/2015/11/OPP1136751](https://www.gatesfoundation.org/How-We-Work/Quick-Links/Grants-Database/Grants/2015/11/OPP1136751)). Under the grant conditions of the Foundation, a
288 Creative Commons Attribution 4.0 Generic License has already been assigned to the Author Accepted
289 Manuscript version that might arise from this submission. icddr,b acknowledges with gratitude the
290 commitment of BMGF to its research efforts. We express our sincere gratitude to our pediatric
291 endoscopist, unfortunately who is no longer with us, late Prof. Dr. Md Muzibur Rahman Bhuiyan, former
292 Senior Consultant, Department of Gastroenterology, Apollo Hospitals, Dhaka, Bangladesh. We express
293 our sincere thanks to our colleagues at icddr,b and the study participants. icddr,b acknowledges with
294 gratitude the commitment of the University of Virginia, Washington University in St. Louis, Dhaka
295 Medical College and Hospital, Bangabandhu Sheikh Mujib Medical University, Dhaka Shishu Hospital,
296 Bangladesh Specialised Hospital and Apollo Hospital, Dhaka to its research efforts. icddr,b is also grateful
297 to the Governments of Bangladesh, Canada, Sweden and the UK for providing core/unrestricted
298 support.

299

300 **Financial Support**

301 This work was supported by the Bill & Melinda Gates Foundation [OPP1136751] and was funded by the
302 Bill and Melinda Gates Foundation (BMGF) under its Global Health Program and the project investment
303 ID is OPP1136751 ([https://www.gatesfoundation.org/How-We-Work/Quick-Links/Grants-](https://www.gatesfoundation.org/How-We-Work/Quick-Links/Grants-Database/Grants/2015/11/OPP1136751)
304 [Database/Grants/2015/11/OPP1136751](https://www.gatesfoundation.org/How-We-Work/Quick-Links/Grants-Database/Grants/2015/11/OPP1136751)).

305

306 **Competing Interests**

307 The authors declared no conflict of interest.

308

309 **Trial registration number**

310 ClinicalTrials.gov ID: NCT02812615

311 (<https://clinicaltrials.gov/ct2/results?cond=NCT02812615&term=&cntry=&state=&city=&dist=>)

312 Date of first registration: 24/06/2016

313

314 **References**

- 315 1. Black RE, Victora CG, Walker SP, Bhutta ZA, Christian P, De Onis M, Ezzati M, Grantham-
316 McGregor S, Katz J, Martorell R, 2013. Maternal and child undernutrition and overweight in low-
317 income and middle-income countries. *The lancet* 382: 427-451.
- 318 2. Kane AV, Dinh DM, Ward HD, 2014. Childhood malnutrition and the intestinal microbiome.
319 *Pediatric research* 77: 256.
- 320 3. Farràs M, Chandwe K, Mayneris-Perxachs J, Amadi B, Louis-Auguste J, Besa E, Zyambo K,
321 Guerrant R, Kelly P, Swann JR, 2018. Characterizing the metabolic phenotype of intestinal villus
322 blunting in Zambian children with severe acute malnutrition and persistent diarrhea. *PloS one*
323 13: e0192092.
- 324 4. Fanzo J, Hawkes C, Udomkesmalee E, Afshin A, Allemandi L, Assery O, Baker P, Battersby J,
325 Bhutta Z, Chen K, 2018. 2018 Global Nutrition Report: Shining a light to spur action on nutrition.
- 326 5. Amadi B, Besa E, Zyambo K, Kaonga P, Louis-Auguste J, Chandwe K, Tarr PI, Denno DM, Nataro
327 JP, Faubion W, 2017. Impaired barrier function and autoantibody generation in malnutrition
328 enteropathy in Zambia. *EBioMedicine* 22: 191-199.
- 329 6. Grantham-McGregor S, Cheung YB, Cueto S, Glewwe P, Richter L, Strupp B, Group ICDS, 2007.
330 Developmental potential in the first 5 years for children in developing countries. *The lancet* 369:
331 60-70.
- 332 7. Harper KM, Mutasa M, Prendergast AJ, Humphrey J, Manges AR, 2018. Environmental enteric
333 dysfunction pathways and child stunting: A systematic review. *PLoS neglected tropical diseases*
334 12: e0006205.
- 335 8. NIPORT M, 2014. Bangladesh Demographic and Health Survey BDHS 2014: Key Indicators.
336 Dhaka, Bangladesh and Calverton, Maryland, USA: National Institute of Population Research and
337 Training (NIPORT), Mitra and Associates, and ICF International.
- 338 9. Keusch GT, Rosenberg IH, Denno DM, Duggan C, Guerrant RL, Lavery JV, Tarr PI, Ward HD, Black
339 RE, Nataro JP, 2013. Implications of acquired environmental enteric dysfunction for growth and

- 340 stunting in infants and children living in low-and middle-income countries. Food and nutrition
341 bulletin 34: 357-364.
- 342 10. Lindenbaum J, Gerson CD, Kent TH, 1971. Recovery of small-intestinal structure and function
343 after residence in the tropics: I. Studies in Peace Corps Volunteers. *Annals of Internal Medicine*
344 74: 218-222.
- 345 11. Gerson CD, Kent TH, Saha JR, Siddiqi N, Lindenbaum J, 1971. Recovery of Small-Intestinal
346 Structure and Function After Residence in the Tropics: II. Studies in Indians and Pakistanis Living
347 in New York City. *Annals of internal medicine* 75: 41-48.
- 348 12. Louis-Auguste J, Greenwald S, Simuyandi M, Soko R, Banda R, Kelly P, 2014. High dose multiple
349 micronutrient supplementation improves villous morphology in environmental enteropathy
350 without HIV enteropathy: results from a double-blind randomised placebo controlled trial in
351 Zambian adults. *BMC gastroenterology* 14: 15.
- 352 13. Kelly P, Menzies I, Crane R, Zulu I, Nickols C, Feakins R, Mwansa J, Mudenda V, Katubulushi M,
353 Greenwald S, 2004. Responses of small intestinal architecture and function over time to
354 environmental factors in a tropical population. *The American journal of tropical medicine and*
355 *hygiene* 70: 412-419.
- 356 14. Owino V, Ahmed T, Freemark M, Kelly P, Loy A, Manary M, Loechl C, 2016. Environmental
357 enteric dysfunction and growth failure/stunting in global child health. *Pediatrics* 138:
358 e20160641.
- 359 15. Rogawski ET, Guerrant RL, 2017. The burden of enteropathy and “subclinical” infections.
360 *Pediatric Clinics* 64: 815-836.
- 361 16. Mahfuz M, Das S, Mazumder RN, Rahman MM, Haque R, Bhuiyan MMR, Akhter H, Sarker MSA,
362 Mondal D, Muaz SSA, 2017. Bangladesh Environmental Enteric Dysfunction (BEED) study:
363 protocol for a community-based intervention study to validate non-invasive biomarkers of
364 environmental enteric dysfunction. *BMJ open* 7: e017768.
- 365 17. Van Der Hulst RR, Von Meyenfeldt MF, Van Kreel BK, Thunnissen FB, Brummer R-JM, Arends J-
366 W, Soeters PB, 1998. Gut permeability, intestinal morphology, and nutritional depletion.
367 *Nutrition* 14: 1-6.
- 368 18. Hossain MS, Begum SKN, Rahman MM, Mazumder RN, Parvez M, Gazi MA, Hasan MM, Fahim
369 SM, Das S, Mahfuz M, 2021. Alterations in the histological features of the intestinal mucosa in
370 malnourished adults of Bangladesh. *Scientific Reports* 11: 1-8.
- 371 19. Whitehead R, Roca M, Meikle D, Skinner J, Truelove S, 1975. The histological classification of
372 duodenitis in fiberoptic biopsy specimens. *Digestion* 13: 129-136.
- 373 20. Wang C-X, Liu L-J, Guan J, Zhao X-L, 2005. Ultrastructural changes in non-specific duodenitis.
374 *World Journal of Gastroenterology: WJG* 11: 686.
- 375 21. Caselli M, Gaudio M, Chiamenti CM, Trevisani L, Sartori S, Saragoni L, Boldrini P, Dentale A,
376 Ruina M, Alvisi V, 1998. Histologic findings and *Helicobacter pylori* in duodenal biopsies. *Journal*
377 *of clinical gastroenterology* 26: 74-80.
- 378 22. Kelly P, Davies S, Mandanda B, Veitch A, McPhail G, Zulu I, Drobniewski F, Fuchs D, Summerbell
379 C, Luo N, 1997. Enteropathy in Zambians with HIV related diarrhoea: regression modelling of
380 potential determinants of mucosal damage. *Gut* 41: 811-816.
- 381 23. Kelly P, Besa E, Zyambo K, Louis-Auguste J, Lees J, Banda T, Soko R, Banda R, Amadi B, Watson A,
382 2016. Endomicroscopic and transcriptomic analysis of impaired barrier function and
383 malabsorption in environmental enteropathy. *PLoS neglected tropical diseases* 10: e0004600.
- 384 24. Serra S, Jani PA, 2006. An approach to duodenal biopsies. *Journal of clinical pathology* 59: 1133-
385 1150.
- 386 25. Akbulut UE, Fidan S, Emeksiz HC, Ors OP, 2017. Duodenal pathologies in children: a single-center
387 experience. *J Pediatr (Rio J)*.

- 388 26. Hossain MS, Das S, Begum S, Rahman MM, Mazumder RN, Gazi MA, Fahim SM, Mahfuz M,
389 Haque R, Petri WA, 2020. Asymptomatic Duodenitis and Helicobacter pylori associated
390 Dyspepsia in 2-Year-Old Chronic Malnourished Bangladeshi Slum-Dwelling Children: A Cross-
391 Sectional Study. *Journal of Tropical Pediatrics*.
- 392 27. Alper A, Hardee S, Rojas-Velasquez D, Escalera S, Morotti RA, Pashankar DS, 2016. Prevalence,
393 clinical, endoscopic and pathological features of duodenitis in children. *Journal of pediatric*
394 *gastroenterology and nutrition* 62: 314.
- 395 28. Alper A, Hardee S, Rojas-Velasquez D, Escalera S, Morotti RA, Pashankar DS, 2016. Prevalence
396 and Clinical, Endoscopic, and Pathological Features of Duodenitis in Children. *J Pediatr*
397 *Gastroenterol Nutr* 62: 314-6.
- 398 29. Gazi MA, Das S, Mahfuz M, Hasan MM, Hossain MS, Fahim SM, Alam MA, Noor Z, Gilchrist CA,
399 Petri WA, 2019. Screening for coeliac disease in children and adults living in a slum of Dhaka,
400 Bangladesh. *BMJ open gastroenterology* 6: e000294.
- 401 30. Oberhuber G, Granditsch G, Vogelsang H, 1999. The histopathology of coeliac disease: time for a
402 standardized report scheme for pathologists. *European journal of gastroenterology &*
403 *hepatology* 11: 1185-1194.
- 404 31. Campbell DI, Murch SH, Elia M, Sullivan PB, Sanyang MS, Jobarteh B, Lunn PG, 2003. Chronic T
405 cell-mediated enteropathy in rural west African children: relationship with nutritional status and
406 small bowel function. *Pediatric research* 54: 306.

407

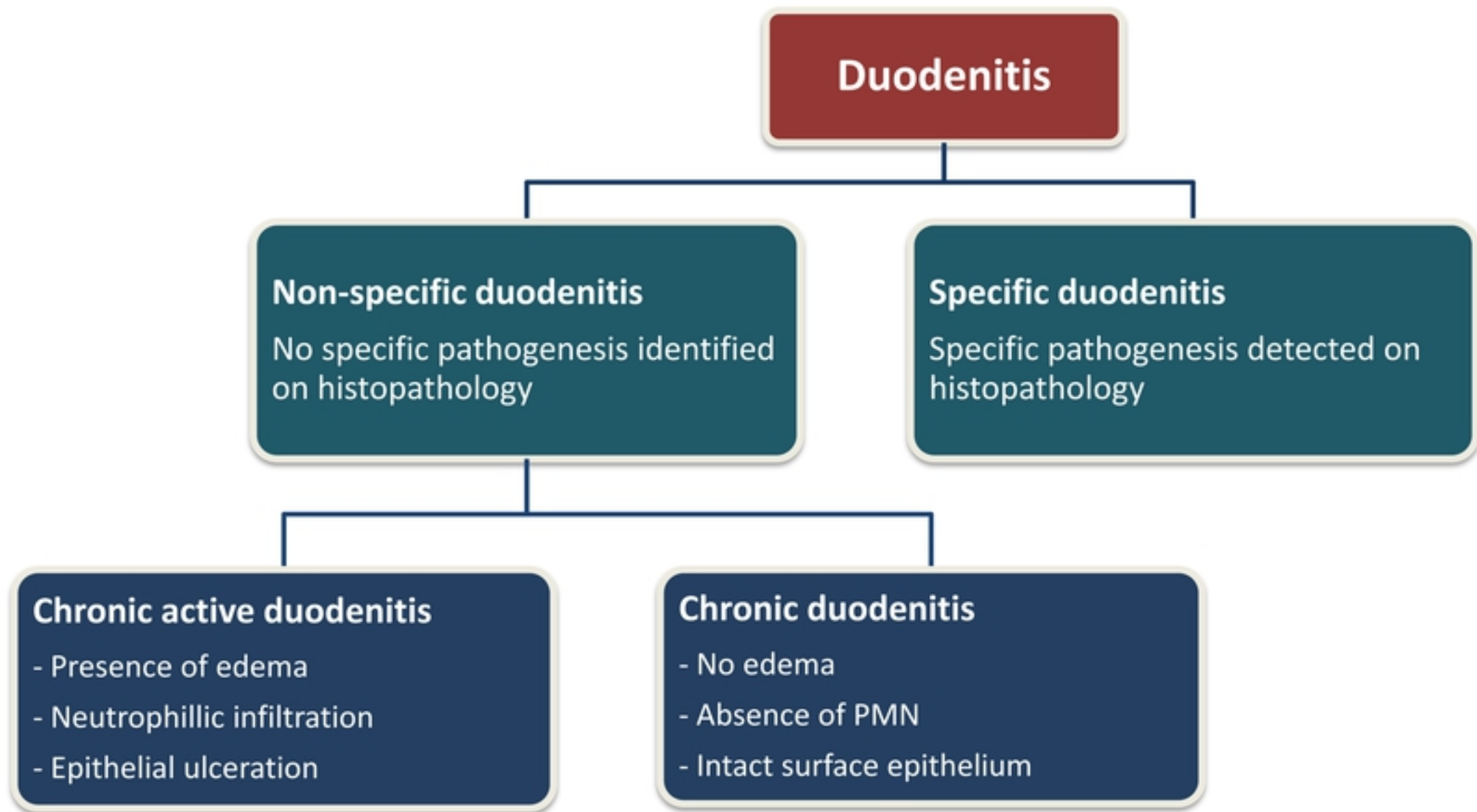
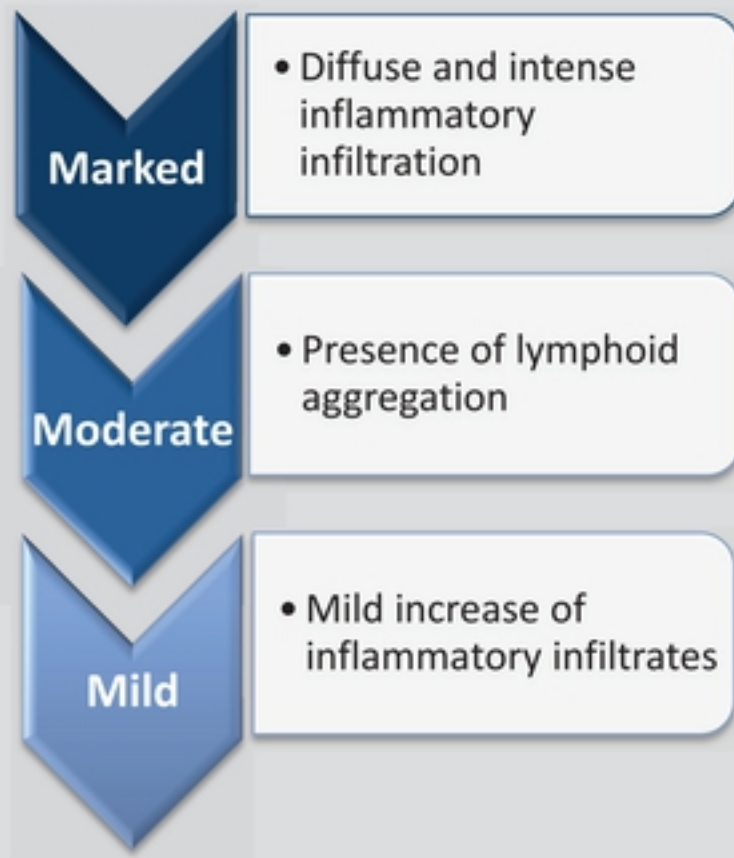
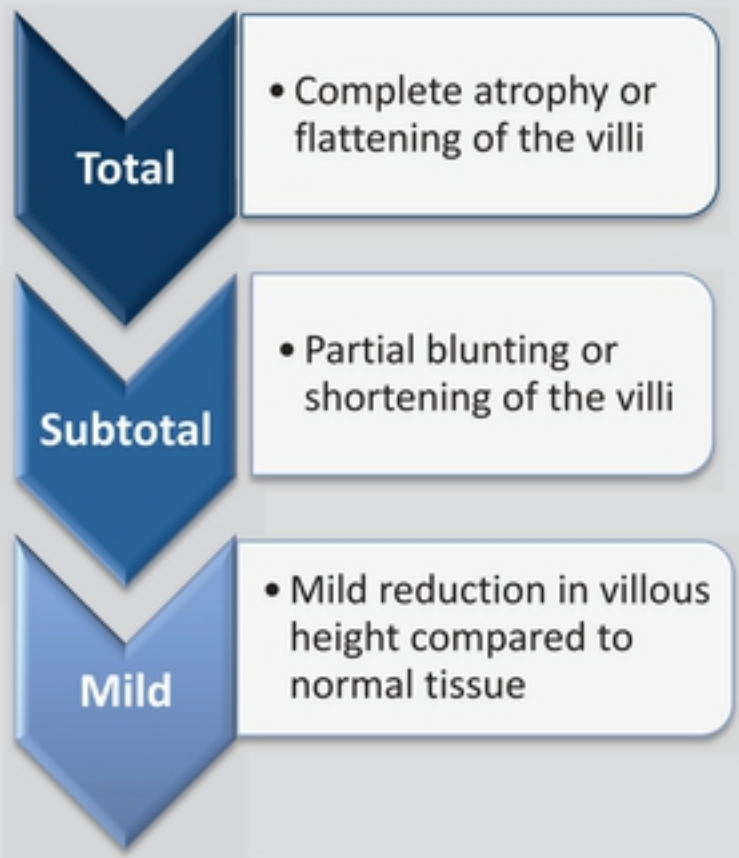


Figure 1

Inflammatory infiltrates



Villous atrophy



Crypt hyperplasia

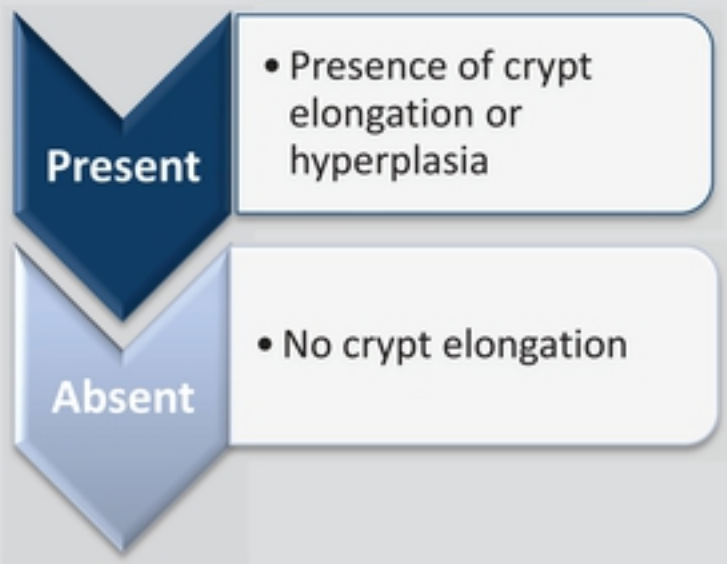


Figure 2

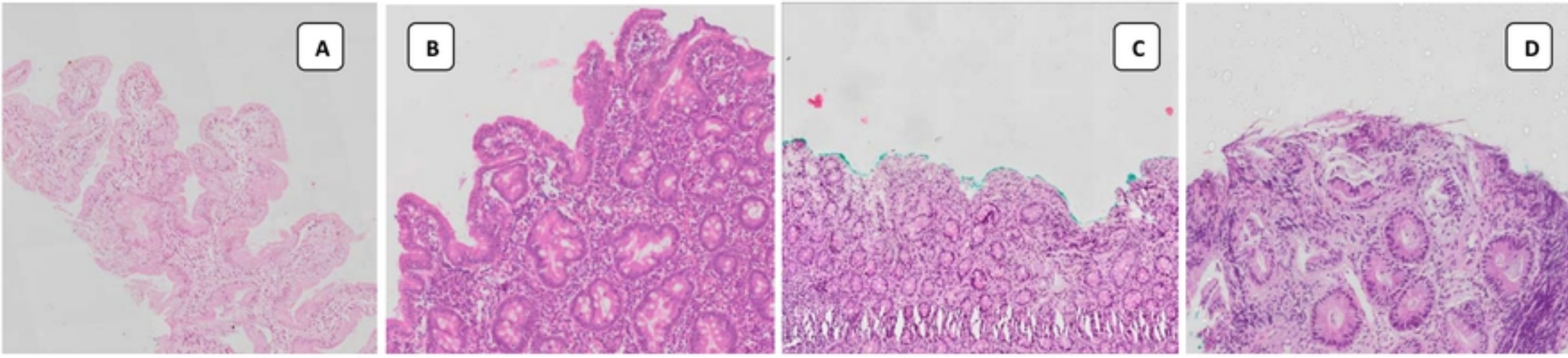


Figure 3

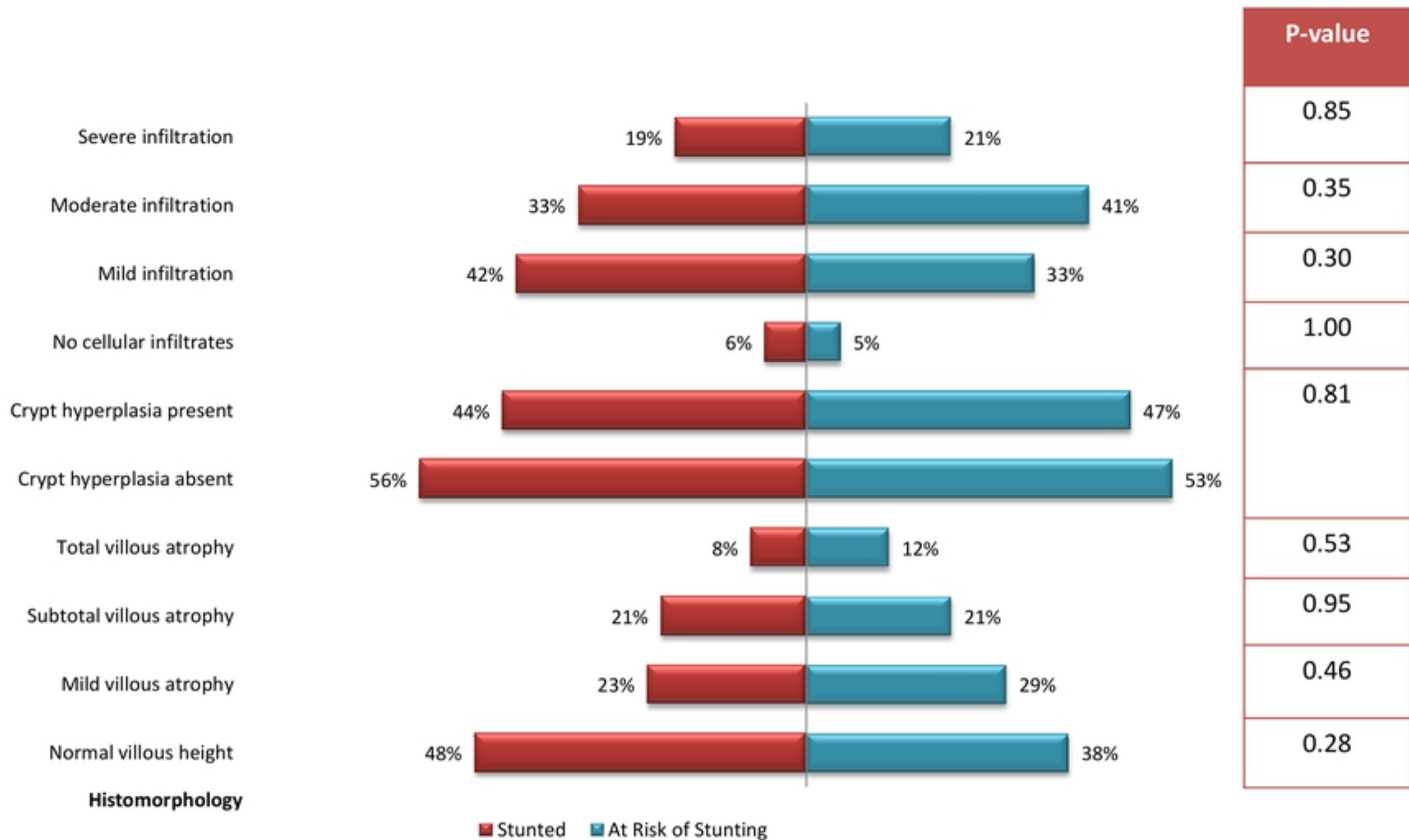


Figure 4