

1 Clinical and Virological Features of Severe Acute Respiratory Syndrome Coronavirus 2
2 (SARS-CoV-2) Variants in Vaccinated and Unvaccinated Patients in Mexico City

3

4 Alejandra Hernández-Terán¹, Pamela GarciaDiego², Marco Villanueva-Reza², Celia Boukadida³, Blanca Taboada⁴,
5 Eduardo Porras², Victor Ahumada-Topete², Kathia Tapia Diaz³, Margarita Matias-Florentino³, Marissa Pérez-García³,
6 Santiago Ávila-Rios³, Fidencio Mejía-Nepomuceno¹, Ricardo Serna-Muñoz¹, Fortunato Juárez-Hernández⁵, Maria
7 Eugenia Jiménez-Corona⁶, Eduardo Becerril-Vargas⁷, Omar Barreto⁸, Jose Arturo, Martínez-Orozco⁷, Rogelio Pérez-
8 Padilla¹, Carlos F. Arias⁴, Joel Armando Vázquez-Pérez¹.

9 [^]These authors contributed equally to this work.

10 ¹Departamento de Investigación en Tabaquismo y EPOC. Instituto Nacional de Enfermedades Respiratorias Ismael Cosío
11 Villegas, INER, Ciudad de Mexico.

12 ²Departamento de Unidad de Epidemiología Hospitalaria e Infectología. Instituto Nacional de Enfermedades Respiratorias
13 Ismael Cosío Villegas, INER, Ciudad de Mexico.

14 ³Centro de Investigación en Enfermedades Infecciosas, CIENI,
15 Instituto Nacional de Enfermedades Respiratorias Ismael Cosío Villegas, INER, Ciudad de Mexico.

16 ⁴Departamento de Genética del Desarrollo y Fisiología Molecular, Instituto de Biotecnología, Universidad Nacional
17 Autónoma de México, Ciudad de Mexico.

18 ⁵Departamento de Imagenología, Instituto Nacional de Enfermedades Respiratorias Ismael Cosío Villegas, INER, Ciudad
19 de Mexico.

20 ⁶Departamento de Epidemiología, Instituto Nacional de Cardiología Ignacio Chávez, Ciudad de Mexico.

21 ⁷Laboratorio de Microbiología, Instituto Nacional de Enfermedades Respiratorias Ismael Cosío Villegas, INER, Ciudad de
22 Mexico.

23 ⁸Coordinación de Atención Médica, Instituto Nacional de Enfermedades Respiratorias Ismael Cosío Villegas, INER,
24 Ciudad de Mexico.

25 **Corresponding author:** Carlos F Arias, Joel Armando Vazquez-Perez

26 E-mail: carlos.arias@ibt.unam.mx / joevazpe@gmail.com

27 **Running Title:** Clinical and Virological Features of Severe Acute Respiratory Syndrome Coronavirus 2
28 (SARS-CoV-2) in Mexico City

29

30

31 **ABSTRACT**

32 **Background:** Coronavirus disease 2019 (COVID-19) vaccines are very effective at protecting
33 against severe disease and death. However, the impact of the vaccine used, viral variants, and host
34 factors on disease severity in vaccinated individuals remain poorly understood. Here we compared
35 COVID-19 clinical presentations and outcomes in vaccinated and unvaccinated patients in a tertiary
36 hospital in Mexico City. Severe acute respiratory syndrome coronavirus 2 (SARS-CoV-2) variants
37 were also determined to study their potential impact on disease severity.

38 **Methods:** From March to September 2021, clinical and demographic characteristics were obtained
39 from 1,014 individuals with a documented SARS-CoV-2 infection, and viral variants were
40 identified in a subset of 386 patients. We compared three groups of patients: 1) unvaccinated, 2)
41 partially vaccinated, and 3) fully vaccinated, stratifying by age groups (<30 years, 31-60 years, and
42 > 61 years) on the clinical outcomes, and including in-hospital mortality. We fitted different
43 multivariate statistical models to evaluate the impact of vaccination status, SARS-CoV-2 lineages,
44 vaccine types, and clinical parameters.

45 **Results:** 1,014 patients were included, with 11% being outpatients and 88% hospitalized. Most
46 hospitalized patients were unvaccinated. In patients over 61 years old, mortality was significantly
47 higher in unvaccinated compared to fully vaccinated individuals. In patients aged 31 to 60 years,
48 vaccinated patients were more likely to be outpatients (46%) than unvaccinated individuals (6.1%).
49 The percentage of critical patients over 61 years was higher in unvaccinated than vaccinated
50 individuals (75% vs. 56%, $p < 0.001$). We found immune disease (OR: 3.12, 95% CI: 1.09-8.34, $p =$
51 0.02) and age above 61 years old (OR: 3.51, 95% CI: 2.3-5.2, $p = 5.9e-10$) as risk factors. While
52 fully vaccination was found as the most protective factor against in-hospital death (OR: 0.25, 95%
53 CI: 0.12-0.46, $p = 2.89e-05$).

54 **Conclusions:** This study suggests that vaccination and particularly full vaccination is essential to
55 reduce mortality in a comorbid population such as that of Mexico. When analyzing the presence of
56 comorbidities and advanced ages as risk factors, complete vaccination was the most significant
57 protective factor against death by COVID-19. We found no strong association between SARS-CoV-
58 2 lineages or vaccine type and disease severity.

59

60 **KEYWORDS:** COVID-19, vaccination, SARS-CoV-2 lineages, COVID-19 severity.

61

62

63

64 **INTRODUCTION**

65 Severe acute respiratory syndrome coronavirus 2 (SARS-CoV-2) was first detected in
66 Wuhan, China, in December 2019 [1]; since then, more than 500 million people have been
67 infected, and over six million have died worldwide [2]. SARS-CoV-2 has evolved and
68 several mutations throughout the genome have been detected worldwide [3]. Genomic
69 mutations are anticipated events during virus replication, and although most mutations are
70 expected to be neutral some can confer a fitness advantage and be fixed in the viral genome
71 [4,5]. The accumulation of mutations over time generates new SARS-CoV-2 variants [6].
72 The World Health Organization (WHO) has classified them as variants of concern (VOC),
73 variants of interest (VOI), and variants under monitoring (VUM) (WHO, tracking SARS-
74 CoV-2 variants). VOC are SARS-CoV-2 variants with increased transmissibility, virulence,
75 or decreased effectiveness of vaccines, therapeutics, diagnostics, or public health and social
76 measures [6].

77
78 As in other countries, in Mexico, several variants classified as VOC, VOI, and VUM have
79 been detected, particularly Delta, Alpha, Gamma, Mu [7], and more recently Omicron [8].
80 Moreover, B.1.1.519 was detected as the predominant lineage in Mexico during late 2020
81 and the first months of 2021 [9]. The B.1.1.519 lineage was dominant during the second
82 COVID-19 wave in Mexico and may have been associated with an increased risk of severe
83 and fatal outcomes [10].

84
85 In Mexico, vaccination against COVID-19 began in December 2020 with the health
86 personnel and people older than 60 years old, followed by people over 50. Until September
87 30, 2021, 101,190,484 doses have been applied with a variety of platforms; of which

88 43,431,200 doses were of Oxford-AstraZeneca (ChAdOx1 nCov-19 adenoviral vector),
89 33,022,275 of Pfizer BioNTech (RNA platform, mRNA-BNT162b2), 20,000,000 of
90 SinoVac (inactivated virus), 9,900,000 of Sputnik V (Gam-COVID-Vac), 8,149,930 of
91 CanSino (Convidecia or AD5-nCOV); 3,500,000 of Moderna (mRNA-1273), and
92 1,350,000 of Janssen (AD26.coV2.s). By the end of September 2021, almost 50% of the
93 population over 18 years old had received at least one dose of vaccine [11].

94

95 Importantly, COVID-19 vaccines have been shown to be effective at preventing severe
96 disease and death even in patients with comorbidities [12]. As a result, fully vaccinated
97 persons are less likely to experience severe disease or death than unvaccinated persons with
98 the same medical conditions [13]. Nonetheless, vaccines are less effective at protecting
99 from SARS-CoV-2 infections, and this partial protection seems to wane after a few months,
100 leading to infections in vaccinated individuals (breakthrough infections) [14]. Furthermore,
101 one of the most critical factors behind the changing vaccine effectiveness is the viral
102 variability and the mutations that affect the recognition of neutralizing antibodies elicited
103 by vaccination or previous infections [15,16]. These mutations are located mainly in the
104 Receptor Binding Domain (RBD) of Spike protein [17].

105

106 Understanding the impact of vaccination, viral variants, and host factors on disease severity
107 is critical to guide COVID-19 vaccination campaigns and protective measures. Here, we
108 analyzed the main risk factors for severe COVID-19, comparing the outcomes and clinical
109 presentation of vaccinated and unvaccinated patients, and analyzing the effects of both
110 SARS-CoV-2 lineages and vaccine types in a tertiary hospital in Mexico City from March
111 to September 2021.

112 MATERIAL AND METHODS

113 Study participants and clinical data

114 We analyzed 1014 patients with SARS-CoV-2 infection who received medical attention
115 from March to September 2021 at the Instituto Nacional de Enfermedades Respiratorias
116 (INER), belonging to the Ministry of Health of Mexico. INER is a reference hospital for
117 respiratory diseases that primarily provide services for uninsured individuals and was
118 designated as a hospital exclusive for COVID-19 in March 2020, offering between 150-200
119 beds for the attention of critically ill patients.

120 For all patients, demographic data, clinical symptoms, laboratory, radiology data, and
121 outcome-related information were obtained from electronic medical records. Clinical
122 management was performed according to the standards of care and attending physicians.
123 Follow-up went from the time of admission for up to 28 days. This study was reviewed and
124 approved by the Science, Biosecurity, and Bioethics Committee of the Instituto Nacional de
125 Enfermedades Respiratorias (B-10-20). In addition, the Institution requested informed
126 consent for the recovery, storage, and use of biological remnants for research purposes.

127

128 SARS-CoV-2 diagnostics

129 Oropharyngeal and/or nasopharyngeal swabs were collected, and the diagnosis was made
130 using validated RT-qPCR protocols for SARS-CoV-2 RNA detection, approved by the
131 World Health Organization (WHO).

132

133

134

135

136 **RNA extraction and sequencing**

137 *Complete genome sequencing*

138 Viral nucleic acid extraction was performed using a MagNa Pure L.C. 2-0 system (Roche,
139 Indianapolis, OH, USA) or QIAamp viral RNA Minikit (Qiagen, Hilden Germany).
140 Libraries for whole-genome sequencing of SARS-CoV-2 were generated using the protocol
141 developed by the ARTIC Network (<https://artic.network/2-protocols.html>) or a long-
142 amplicon-based method [18]. Libraries were sequenced on a MiSeq sequencing platform
143 using a 2x150-cycle or a NextSeq 500 platform using 2x150-cycle mid-output kits to obtain
144 paired-end reads (Illumina, San Diego, CA, USA). The DRAGEN COVIDSeq Test
145 Pipeline on BaseSpace Sequence Hub performed the analysis, mapping, and consensus.
146

147 *Spike partial sequencing*

148 Partial sequencing of the Spike segment was performed by Sanger sequencing in samples
149 with incomplete genome or samples with cycle threshold (Ct) values above 28. Briefly, 956
150 bp amplicons (944-1900 nucleotide sequence, 315-633 aa) were obtained using specific
151 primers for SARS-CoV-2:
152 SF3 CTTCTAACTTTAGAGTCCAACC and SR4 GCCAAGTAGGAGTAAGTTGAT.
153 The amplicons were sequenced in both directions with the same primers. Sequencing
154 reactions were performed with BigDye Terminator v3.1 (Life Technologies, Carlsbad, CA)
155 as instructed by the manufacturer. Sequences were obtained by capillary electrophoresis
156 using an ABI Prism 3500 Genetic Analyzer (Life Technologies) and were assembled using
157 MEGA 10.0 [19]. The sequences mentioned above can be found at GenBank (accession
158 numbers: ON158371-ON158443).

159

160 **Phylogenetic analysis**

161 To perform a phylogenetic analysis, we analyzed only samples with complete genomes of
162 hospitalized and ambulatory patients from our cohort (N= 311). In addition, for the
163 genomic surveillance, 219 complete Mexican genomes available in the GISAID platform,
164 including 140 sequences of INER from May 2020 to November 2020, 42 and 37 sequences
165 of different States of Mexico from March 2020 to November 2020, and March 2021 to
166 September 2021 respectively were used. Also, we included 10 USA sequences from
167 January 2020 to November 2021 and one Wuhan 2019 sequence for reference. To construct
168 the analysis, we selected only the Spike sequences of these 541 sequences. Sequence
169 alignments were created with MAFFT V7 [20] and edited with MEGA 10.0. A maximum-
170 likelihood tree was constructed for the whole Spike sequence using MEGA 10.0. The
171 General Time-Reversible (GTR) model was selected with 5-parameter gamma-distributed
172 rates and 1,000 bootstrap replicates. Edition of the trees was made using FigTree [21].

173

174 **Statistical analyses**

175 To evaluate the impact on clinical outcomes, we divided our cohort into three groups: 1)
176 unvaccinated: defined as those patients who had never received a SARS-CoV-2 vaccine; 2)
177 partially vaccinated: defined as those patients who had not yet completed the standard
178 vaccination schedule (depending on the vaccine) or had received the last dose less than 14
179 days before symptom onset; and 3) fully vaccinated: defined for those patients who had
180 already completed the vaccination schedule and with more than 14 days after the last dose.
181 As advanced age is a significant driver of severe COVID-19 [22]; we categorized patients
182 into three groups: <30 years old, 31-60 years old, and > 61 years old. In addition, the
183 severity of the disease was categorized according to the NIH COVID-19 treatment

184 guidelines [23] into four groups: 1) Mild illness: individuals who have any of the various
185 signs and symptoms of COVID-19 (e.g., fever, cough, sore throat, malaise, headache,
186 muscle pain, nausea, vomiting, diarrhea, loss of taste, and smell) but who do not have
187 shortness of breath, dyspnea, or abnormal chest imaging, 2) Moderate illness: individuals
188 who show evidence of lower respiratory disease during clinical assessment or imaging and
189 who have an oxygen saturation (SpO_2) $>94\%$ on room air at sea level, 3) Severe illness:
190 individuals who have $SpO_2 <94\%$ on room air at sea level, a ratio of arterial partial pressure
191 of oxygen to fraction of inspired oxygen (PaO_2/FiO_2) <300 mmHg, a respiratory rate >30
192 breaths/min, or lung infiltrates in $>50\%$ of the lung fields, and 4) Critical illness:
193 individuals who have respiratory failure, septic shock, or multiple organ dysfunction.

194

195 All statistical analyses were performed using R v4.0.2 in RStudio v1.3.1 [24] and the
196 packages ggplot2 (v3.3.3) [25], stats (v3.6.2) [24], survival (v3.2.13) [26], and survminer
197 (v0.4.9) [27]. We used stacked bar plots, density plots, pie charts, or heatmaps constructed
198 in the ggplot2 package to represent data proportion. For numerical data representation, we
199 used boxplots constructed in the ggplot2 package. For all cases, categorical variables were
200 statistically compared using Chi-square or Fisher's exact test and continuous variables using
201 Wilcoxon rank-sum test in R base.

202

203 To predict the clinical outcome (deceased vs. recovered) we constructed Generalized Linear
204 Models (GLM) using a Binomial family with a *logit* link in R base. We fitted one model as
205 a function of vaccination status and another model as a function of clinical parameters.
206 Both models were adjusted by comorbidities, age, and sex. Odds ratios and 95% CI for all
207 selected variables were calculated and plotted in the final model. Finally, to detect variables

208 that significantly affect survival probability, we calculated Kaplan-Meier curves coupled
209 with the Cox proportional hazard models to determine factors affecting survival, using the
210 survival package and plotted with the survminer package. We used the hospitalization
211 length in days as a time variable for all curves, the outcome (deceased or recovered)
212 standardized at 28 days as a dependent variable, and the tested variables as exposure.
213 Finally, for both the GLM and the Kaplan-Meier curves, we categorized the numerical
214 variables (e.g., age, D dimer.) into three groups according to the data distribution: 1) all
215 values under the 25th percentile, 2) values between the 25th and 75th percentiles, and 3)
216 values above the 75th percentile.

217

218

219

220

221

222

223

224

225

226

227

228

229

230

231

232 **RESULTS**

233 **Clinical and demographic characteristics of the cohort**

234 A total of 1014 patients admitted to INER from March to September 2021 positive for
235 SARS-CoV-2 infection were included. 124 (12%) were outpatients, and 890 (88%) were
236 hospitalized due to respiratory failure. 48 patients in the cohort had incomplete information;
237 thus, only 111 out of 124 outpatients and 855 out of 890 hospitalized patients had their
238 clinical and demographic data analyzed (Table 1).

239
240 For outpatients, the median age was 39.5 years (IQR: 30-52), 47.7% were female, and 64%
241 of the patients were either partially (28.8%) or fully (36%) vaccinated. The most frequently
242 administered vaccine in fully vaccinated patients was Pfizer (70%), followed by Sinovac
243 (12%) and AstraZeneca (10%). The most commonly administered vaccines in partially
244 vaccinated patients were AstraZeneca (40.6%) and Pfizer (37%). 13.5% of the patients had
245 at least one comorbidity, obesity being the most common (14.4%), particularly in
246 unvaccinated (12.8%) and partially vaccinated (21.8%). For fully vaccinated outpatients,
247 the most common comorbidity was hypertension (12.5%). Only eight patients received
248 dexamethasone (7%) as in-hospital treatment, with the highest prevalence in the
249 unvaccinated group (12.8%). Among the outpatients, unvaccinated patients reported fever
250 (48.7%, Chi-square test, $p = 0.01$) and headache (33.3%, Chi-square test, $p = 0.01$) more
251 frequently than vaccinated individuals. While partially vaccinated patients reported a higher
252 prevalence of arthralgias (31.2%, Chi-square test, $p = 0.002$). Diarrhea was less frequently
253 reported in partially vaccinated patients (3.1%, Chi-square test, $p = 0.01$). The rest of the
254 symptoms were equally reported.

255

256 For hospitalized patients, the median age was 52 (IQR: 41-64), and 37% were female. Most
257 patients were unvaccinated (66.9%), while 20.8% were partially vaccinated and 12.2%
258 were fully vaccinated. For fully vaccinated patients, the most frequently administered
259 vaccines were Sinovac (33.3%), Sputnik (20%), and Cansino (17.1%), while for partially
260 vaccinated patients, AstraZeneca (38.7%), Sputnik (28.6%), and Pfizer (19%) were the
261 most frequently administered. 34.6% had at least one comorbidity. Obesity was the most
262 frequent comorbidity in the three compared groups (unvaccinated: 44.5%, partially
263 vaccinated: 46%, and fully vaccinated: 44.7%). In general, fully vaccinated patients were
264 significantly older (median: 70, Chi-square test $p < 0.001$) and showed higher prevalence of
265 diabetes (40%, Chi-square test $p < 0.001$), hypertension (53.3%, Chi-square test $p < 0.001$),
266 and three or more comorbidities (37.1%, Chi-square test $p < 0.001$). Above 90% of
267 hospitalized patients (regardless of the vaccination status) received in-hospital treatment,
268 being dexamethasone the most administered (unvaccinated: 96.8%, partially vaccinated:
269 94.9%, and fully vaccinated: 93.3%). Fever and pharyngodinia were more frequently
270 reported by partially vaccinated patients (75.2% and 32%, respectively, Chi-square test, $p <$
271 0.05). The rest of the symptoms were equally reported.

272

273 Furthermore, we found no differences in the radiological patterns between study groups.
274 Most of the patients presented a crazy-paving pattern regardless of the vaccination status
275 (unvaccinated: 57.6%, partially vaccinated: 67.4%, fully vaccinated: 68.5%), while the least
276 showed pattern was consolidation (unvaccinated: 6.2%, partially vaccinated: 3.3%, fully
277 vaccinated: 4.8%).

278

279 **Impact of vaccination status and age on the severity and clinical parameters of**
280 **COVID-19 patients**

281 We compared the distribution of COVID-19 severity, severity indexes, O₂ requirement, and
282 laboratory parameters among patients with different vaccination status and age (Fig. 1-2).

283 Overall, due to the timing of the vaccination campaign in Mexico, most of the vaccinated
284 patients were received from June to August, while unvaccinated patients arrived at the
285 hospital in equal proportion during the sampling months (Suppl. Fig. S1).

286

287 In general, we found that a large proportion of patients were classified either as severe or
288 critical, regardless of age and vaccination status (Fig. 1A). Nonetheless, the highest
289 proportion of patients with mild disease was found in fully vaccinated patients under 30
290 years old (Suppl. Table S1, Chi-square test $p < 0.001$), while the highest proportion of
291 critical patients were unvaccinated older than 61 years old (Suppl. Table S1, Chi-square test
292 $p < 0.001$). It is essential to highlight that for older patients (>61 years) the vaccination
293 status seems to be associated with less disease severity, reducing the number of critical
294 patients (Suppl. Table S1, unvaccinated against vaccinated patients; Chi-square test $p =$
295 0.001) and slightly increasing the number of patients with mild disease in the vaccinated
296 groups (Suppl. Table S1, Chi-square test $p < 0.002$). Furthermore, we do not find statistical
297 differences in the most commonly used ICU scales (Fig. 1B) (SOFA and APACHE II).

298 Nonetheless, we detected that, although most of the patients were subjected to mechanical
299 ventilation, the highest proportion of intubated patients was in the unvaccinated group (Fig.
300 1C).

301

302 Finally, we also investigated whether patients with different vaccination status and age
303 differ in laboratory parameters (Fig. 2). The most remarkable differences were found in the
304 unvaccinated group, particularly when comparing patients <30 years with >61 years. For
305 instance, we found that, regardless of the vaccination status, patients older than 61 years
306 exhibited the highest values for blood urea nitrogen (BUN), urea, creatinine (only
307 statistically significant in unvaccinated patients), and D-dimer. In addition, patients in the
308 age groups of <30 and 31-60 showed the highest values for lymphocytes, hematocrit, and
309 albumin (only statistically significant in unvaccinated patients).

310

311 **Impact of different vaccines on the severity of the disease**

312 By September 2021, more than 100 million doses of seven different vaccines were
313 administered in the Mexican territory, with AstraZeneca (42.9%), Pfizer (32.6%), Sinovac
314 (19.7%), and Sputnik (9.7%) being the most common (Fig. 3A). This heterogeneity of
315 vaccine strategies is also found in our cohort, where 142 patients were fully vaccinated with
316 five different vaccines being Pfizer (29.5%), Sinovac (28.1%), Sputnik (16.1%),
317 AstraZeneca (13.3%), and Cansino (11.9%) the most administered (Fig. 3B). This allowed
318 us to analyze the effect of the different vaccines on the severity of the disease. To isolate
319 the age effect (Suppl. Figure S2), we kept only fully vaccinated patients above 61 years old
320 (N=88) and tested for differences in the severity of the disease, O₂ requirement, and
321 severity indexes (Fig. 3C-E). Regarding COVID-19 classification, we found that all
322 patients vaccinated with AstraZeneca (N=12) or Cansino (N=7) coursed a severe or critical
323 disease without patients in the mild disease group (Fig. 3C), although this may be due to
324 small sample sizes. Also, we found the highest proportion of patients with mild disease in
325 the Pfizer group (Fig. 3C and Suppl. Table S2) (16.6%, Chi-square test $p = 0.02$).

326 Furthermore, patients vaccinated with AstraZeneca, Sinovac, and Sputnik had mostly a
327 critical disease (66%, 51.4%, and 59%, respectively). Regarding O₂ requirement, although
328 most of the patients were subjected to mechanical ventilation, AstraZeneca was the group
329 with the highest proportion (66%). Pfizer was the group with the highest proportion of
330 patients with a nasal cannula (16.6%, Chi-square test $p = 0.01$), and the Cansino group had
331 the highest proportion of high flow nasal cannula (HFNC) (42.8%, Chi-square test $p =$
332 0.01). Finally, we found that the Sinovac group had significantly higher values for SOFA
333 (Fig.3E) compared to Pfizer (Wilcoxon rank-sum test, $p = 0.01$) and AstraZeneca
334 (Wilcoxon rank-sum test, $p = 0.02$). We did not find statistically significant differences in
335 the APACHE II severity index.

336

337 **Clinical factors affecting COVID-19 clinical outcome**

338 Of the hospitalized patients, 77.1% were discharged fully recovered, while 21.2% died due
339 to complications (Table 2), with the highest proportion of deceased patients in the
340 unvaccinated group (70.8%). Regarding severity indexes, fully vaccinated patients had the
341 highest median of APACHE II (median: 11, Wilcoxon rank-sum test, $p < 0.001$). Most of
342 the patients were subjected to supplemental oxygen, with mechanical ventilation
343 (unvaccinated: 65.5%, partially vaccinated: 58.9%, fully vaccinated: 58%), HFNC
344 (unvaccinated: 23.6%, partially vaccinated: 28.4%, fully vaccinated: 26.6%), and nasal
345 cannula (unvaccinated: 9.4%, partially vaccinated: 10.6%, fully vaccinated: 11.4%) being
346 the most common.

347

348 Moreover, we applied multivariate statistical approaches to determine the factors that could
349 explain mortality in COVID-19 patients. From the two fitted Generalized Linear Model

350 (GLM) (Fig. 4A), we found that the presence of immune disease (OR: 3.12, 95% CI: 1.09-
351 8.34, $p = 0.02$), age above 61 years old (OR: 3.51, 95% CI: 2.3-5.2, $p = 5.9e-10$), platelets
352 count under $175 \times 10^9/l$ (OR: 1.49, 95% CI: 0.98-2.2, $p = 0.05$), lactate dehydrogenase
353 (LDH) > 600 u/L (OR: 1.89, 95% CI: 1.2-2.7, $p = 0.001$), and D dimer > 1.8 ug/mL (OR:
354 1.45, 95% CI: 0.98-2.1, $p = 0.05$) were factors associated with higher probability of death.
355 While been fully vaccinated was associated with improved outcomes (OR: 0.25, 95% CI:
356 0.12-0.46, $p = 2.89e-05$). Odds ratios and estimates for all variables in the model are
357 available in Supplementary Table S4. Finally, age was also found to correlate with
358 mortality (Cox test, $p < 0.001$) in the Kaplan-Meier curves (Fig. 3C), as well as D-dimer
359 above $1.87 \mu\text{g/mL}$ independently from vaccination or comorbidities (Cox test, $p = 0.02$).

360

361 **SARS-CoV-2 lineages: phylogeny, distribution, and its impact on disease severity**

362 We identified the lineages of 386 (38%) samples by partial or complete genome sequencing
363 (Table 3). From this subset of samples, we detected VOC such as Alpha (2.3%), Gamma
364 (7.2%), Delta (68.6%), and Mu (3.6%), originally designated as VOI. We also detected
365 sequences belonging to lineage B.1.1.519 (14.7%) and other lineages (2.86%). The
366 distribution of lineages with a clear dominance of Delta, and in less proportion of B.1.1.519
367 was also observed between March and September 2021 nationwide, as well as in the State
368 of Mexico, and Mexico City (Fig.5A, statistical differences are available in Supplementary
369 Table S5).

370

371 Furthermore, we also found differences in the distribution of SARS-CoV-2 lineages
372 between outpatients and hospitalized patients (Table 3). In particular, we found the highest
373 proportion of Delta variant in outpatients (82.5%, Chi-square test, $p < 0.001$), while

374 B.1.1.519 represented the highest proportion in hospitalized patients (19%, Chi-square test,
375 $p = 0.001$). Notably, the SARS-CoV-2 variant distribution displayed temporal variations,
376 with B.1.1.519 being more prevalent in March and April 2020, and Delta becoming the
377 predominant lineage in July (Fig. 5C). Furthermore, we found a general increase in the
378 proportion of vaccinated patients during the study period (Fig. 5D). These temporal
379 variations make complex the analysis of potential associations between disease severity and
380 lineages. It is worth mentioning that the number of critical and severe patients (green and
381 purple colors) seems to decrease as the vaccination increases (Fig. 5D). Altogether, we
382 found no significant association between disease severity and lineages (Supplementary Fig.
383 S3). Nonetheless, when analyzing the symptoms associated with patients infected with
384 different lineages, we noted that diarrhea tended to be associated more frequently with
385 B.1.1.519 infections (Fig. 5B).

386

387 Finally, the phylogenetic analyses based on complete Spike sequences showed, as expected,
388 a specific clustering by lineages, with the Delta variant representing 69% of the samples
389 (Suppl. Figure S4). The sequences of patients with different vaccination statuses or severity
390 classifications did not form specific clusters; suggesting no association between SARS-
391 CoV-2 lineages and vaccination status or COVID-19 severity.

392

393

394

395

396

397

398 **DISCUSSION**

399 Vaccines have significantly improved the COVID-19 survival rate around the world, but
400 they are less effective at protecting from SARS-CoV-2 infections, leading to mostly mild
401 infections in vaccinated individuals. Understanding the impact of viral variants, and host
402 factors on disease severity is critical to guide COVID-19 vaccination campaigns and the
403 implementation of protective measures. In this retrospective study, we analyzed the severity
404 of COVID-19 infections in a group of individuals that had been vaccinated with all
405 different types of vaccines applied to the Mexican population. We compared this group
406 with unvaccinated individuals and performed additional analyses, including virological
407 features obtained from genomic surveillance.

408

409 **Impact of host factors and vaccination status on COVID-19 severity**

410 It is known that host factors such as advanced age and the presence of comorbidities
411 significantly worsen clinical outcomes for COVID-19 patients [28]. The Mexican
412 population is characterized by a high prevalence of comorbidities [29], which is reflected in
413 our cohort, with diabetes (20.5%), hypertension (25.5%), and obesity (39.4%) being the
414 most common. Moreover, it is important to consider that the vaccination campaign in
415 Mexico started at the end of 2020 and first focused on health care workers before moving
416 on to individuals over 60, 50, and 40 years old in February, May, and June, respectively. As
417 a result, in our cohort, the prevalence of comorbidities was even higher in fully vaccinated
418 patients (Table 1), with more than 90% presenting at least one comorbidity, and over 75%
419 were older than 60 years of age. Some studies have shown that the presence of
420 comorbidities and advanced ages can also affect vaccines' effectiveness [12]. Moreover, in
421 both COVID-19 [6,22,30] and Influenza disease [31], it has been shown that advanced age

422 is related to a lower immune response to vaccination. Furthermore, a recent study showed
423 that although vaccinated patients were less likely to present severe disease, vaccinated
424 patients with comorbidities and older age developed severe disease [6]. This is similar to
425 our study where we observed that fully vaccinated patients presented the highest values of
426 severity on the APACHE II scale (Table 2). Nonetheless, when compared to unvaccinated
427 individuals, the vaccinated group showed the lowest mortality rate (Table 2) and required
428 mechanical ventilation less frequently (Fig.1C). These observations confirm that although
429 the vaccine's protective effect may be reduced in individuals with risk factors, they still
430 provide protection against fatal outcomes.

431

432 Moreover, we found that a significant proportion of patients had either severe or critical
433 outcomes, regardless of age and vaccination status (Fig.1A). Although this could be a
434 consequence of studying a cohort of patients in a tertiary hospital limited to the attention of
435 critically ill individuals, it also could be the result of the presence of comorbidities and host
436 genetic factors [32,33]. However, it is essential to highlight that the highest proportion of
437 patients with mild disease was in those fully vaccinated and under 30 years of age (Suppl.
438 Table S1), this evidences the combined protective effect of younger ages and complete
439 vaccination schemes [34].

440

441 In addition, we analyzed laboratory parameters by vaccination status and age groups.
442 Regardless of the vaccination status, patients older than 61 years exhibited the highest
443 values for BUN, urea, creatinine, and D-dimer (Fig. 2). This is of special relevance since
444 such parameters are known as markers of disease severity and are commonly found
445 elevated in individuals with acute infections [35]. Moreover, urea, BUN, and creatinine are

446 also markers for renal damage and acute kidney injury (AKI), which are conditions that
447 strongly impact mortality [36]. Also, hypoalbuminemia, found in older COVID-19 patients,
448 could be a manifestation of a pro-inflammatory state [37]. Finally, high levels of D-dimer
449 have been found related to mortality in patients with infection or sepsis [38].

450

451 **Impact of different vaccines on the severity of the disease**

452 It is important to point out that this study was not designed to assess vaccine effectiveness
453 against COVID-19. However, Mexico is one of the few countries that used seven different
454 vaccines, offering a unique opportunity to compare these vaccine types and to look for
455 differences in severity and/or mortality. In this study, by analyzing solely patients above 61
456 years old we found, in general, a high proportion of critical patients but low mortality rates
457 regardless of the vaccine applied (Suppl. Table S2). Nonetheless, our findings of lower
458 SOFA index, a higher proportion of patients with mild disease, and higher usage of nasal
459 cannula in patients vaccinated with the Pfizer vaccine may suggest a lower severity of
460 disease in the group that received this vaccine. Some studies have shown that the
461 vaccination efficacy of mRNA vaccines does not decrease in individuals with comorbidities
462 [39]. Still, no causal associations can be made from this finding, and more investigations
463 are needed to confirm if there is a difference in severity associated with the vaccines and
464 what are the factors behind it.

465

466 **SARS-CoV-2 lineages and their impact on disease severity**

467 Understanding the impact of SARS-CoV-2 lineages on disease severity in both
468 unvaccinated and vaccinated individuals is of major importance, especially since such
469 variants could still emerge due to the evolution pressure driven by the population immunity

470 [5,40,41]. As part of our genomic surveillance program, we characterized the circulating
471 SARS-CoV-2 lineages at the time of the study and analyzed the disease severity and
472 clinical presentation associated with infections caused by particular lineages. Alpha and
473 B.1.1.519 were the predominant lineages from March to May 2021, with Delta becoming
474 the most prevalent by July 2021. In addition, other variants such as Gamma and Mu were
475 also detected, mainly between May and July 2021(Fig. 5- 6).

476

477 Furthermore, we detected a tendency in patients >60 years old infected with either Delta or
478 B.1.1.519 lineages to course a more severe disease (Suppl. Figure S3). Although this
479 finding was not statistically significant in our study, other studies have reported more
480 severe disease in infections associated with these lineages [10,42]. In particular, mutations
481 in the spike (S) protein of the virus which confer a higher affinity of the S1 domain to the
482 angiotensin converter enzyme 2 (ACE2) are one of the main reasons behind the higher
483 pathogenicity of the Delta variant [42].

484

485 Regarding symptomatology, there were no remarkable differences except for infections
486 with the B.1.1.519 lineage, since patients reported diarrhea more frequently (Fig.5B). This
487 contrasts with other studies where they found that fever, dyspnea, and sore throat were
488 more prevalent in patients infected with Delta [6,43]. However, a previous study found that
489 dyspnea, cyanosis, and particularly diarrhea were the most frequent symptoms in patients
490 infected with the B.1.1.519 lineage in Mexico [10].

491

492 Moreover, previous studies analyzing large datasets have found differences in disease
493 severity among patients infected with different lineages [44,45]. Nonetheless, studies with

494 small datasets have failed in detecting such differences [46,47]. Altogether, the reduced
495 sample size and the temporal variation of the lineages may be affecting our results and
496 hinder comparative analyses between lineages and vaccination status or disease severity.

497

498 **Clinical factors affecting COVID-19 clinical outcome**

499 We determined the main factors that lead to fatal outcomes in our cohort. According to the
500 fitted Generalized Linear Models (GLM) (Fig. 4), full vaccination was found to be a
501 protective factor against death by COVID-19. On the contrary, platelets $<175 \times 10^9/l$, age
502 above 61 years old, immune disease, D-dimer $> 1.8 \text{ ug/mL}$, and lactate dehydrogenase
503 (LDH) above 600 u/L were found as risk factors. Notably, thrombocytopenia and high
504 levels of LDH have been found associated with severe COVID-19 in other studies [48,49].
505 Furthermore, contrary to other studies [50] we did identify advanced age as a risk factor
506 itself in COVID-19 patients. It is known that the decline of physiologic functions and the
507 immunosenescence associated with increasing age can negatively affect the host response
508 to infectious diseases [6,22,30]. Finally, we hypothesize that complete vaccination may
509 diminish age negative effect since we found that despite that most of the fully vaccinated
510 patients were >61 years old (78%), 83.3% were discharged from the hospital.

511

512 Our study includes a considerable number of critical and severe patients enrolled, which
513 allowed us to analyze the impact of vaccination, vaccine type, SARS-CoV-2 lineages, and
514 several host factors on mortality and clinical presentation. However, the source is a single
515 referral hospital, and a pandemic wave mostly by the Delta variant, preventing an analysis
516 among vaccination status and lineages.

517

518 **CONCLUSIONS**

519 Comorbidities and advanced ages were the main risk factors, and complete vaccination
520 schemes with different vaccine types (Pfizer, AstraZeneca, Cansino, SinoVac, and Sputnik)
521 were the most significant protective factor against death by COVID-19. Moreover, we did
522 not find strong associations between a particular lineage (Alpha, Gamma, B.1.1.519, and
523 Delta) and disease severity, highlighting the predominant role of host factors such as age,
524 comorbidities, and vaccination status on COVID-19 outcome.

525 Complete vaccination schemes for the whole population, are key to reducing both
526 hospitalization and death. Nevertheless, public health policy should also focus on the
527 control of comorbidities in the long term, which will improve clinical outcomes not only
528 for COVID-19 but also for other current and emerging diseases. Genomic surveillance is
529 essential to identify circulating VOC, which can help to guide the implementation of
530 targeted epidemiological control measures and laboratory characterization for diagnostic
531 and research purposes.

532

533 **DECLARATIONS**

534 **Ethics approval and consent to participate**

535 This study was reviewed and approved by the Science, Biosecurity, and Bioethics
536 Committee of the Instituto Nacional de Enfermedades Respiratorias (protocol number B-
537 10-20). Informed consent was provided according to the Declaration of Helsinki. Written
538 informed consent was obtained from all patients and/or from their relatives or authorized
539 legal guardians.

540

541 **Consent for publication**

542 Not applicable.

543 **Availability of data and materials**

544 The genomic information generated during the current study is available in the GenBank
545 repository, accession numbers: ON158371-ON158443.

546 The clinical datasets used during the current study are available from the corresponding
547 author on reasonable request.

548 **Competing interests**

549 The authors declare that they have no competing interests.

550 **Funding**

551 This work was financially supported by Consejo Nacional de Ciencia y Tecnología:
552 CONACYT-FORDECYT 2020, Grant "Caracterización de la diversidad viral y bacteriana"
553 to JAVP and by grant 057 from the "Ministry of Education, Science, Technology and
554 Innovation (SECTEI) of Mexico City" (to CFA) and grant "Genomic surveillance for
555 SARS-CoV-2 variants in Mexico" to CFA) from the AHF Global Public Health Institute at
556 the University of Miami.

557

558 **Authors contributions**

559 Conception: PGD, VAT, SAR, RPP, CFA, and JAVP. Design of the work: AHT, PGD,
560 MVR, VAT, SAR, EBV, JAMO, RPP, CFA, and JAVP. Data acquisition: PGD, MVR, CB,
561 BT, EP, VAT, KTD, MMF, RSM, FJH, EBV, OB, JAMO, and JAVP. Laboratory work:
562 CB, KTD, MMF, MPG, MEJC, FMN, and JAVP. Data analysis: AHT, MVR, RSM, and
563 JAVP. Interpretation of data: AHT, PGD, MVR, CB, RSM, FJH, RPP, CFA, and JAVP.

564 Draft: AHT, PGD, MVR, CB, VAT, RSM, RPP, CFA, and JAVP. All authors read and
565 approved the final manuscript.

566 **Acknowledgments**

567 We thank Eduardo Márquez García from Unidad de Biología Molecular, INER for
568 technical assistance in Illumina sequencing. We also thank all physicians of the ICU for
569 assistance with patient management.

570

571

572

573

574

575

576

577

578

579

580

581

582

583

584

585

586

587 Table 1. Demographics of the cohort.

	Outpatients (N=111)				Hospitalized (N=855)			
	Unvaccinated (N=39) [35.1%]	Partially vaccinated (N=32) [28.8%]	Fully vaccinated (N= 40) [36%]	P	Unvaccinated (N=572) [66.9%]	Partially vaccinated (N=178) [20.8%]	Fully vaccinated (N=105) [12.2%]	P
Age								
<30, n (%)	13 (33.3%)	4 (12.5%)	14 (35%)	0.03	54 (9.4%)	1 (0.5%)	0	<0.001
31-60, n (%)	25 (64.1%)	22 (68.7%)	18 (45%)	0.04	382(66.7%)	132 (74.1%)	21 (20%)	<0.001
=/>60, n (%)	1 (2.50%)	6 (18.7%)	8 (20%)	0.03	135(23.6%)	45 (25.2%)	82 (78%)	<0.001
NA	0	0	0		1	0	2	
Gender								
Female, n (%)	17 (43.5%)	20 (62.5%)	16 (40%)	ns	200(34.9%)	65 (36.5%)	52 (49.5%)	0.02
NA	0	0	0		0	0	0	
Vaccine type								
Total of vaccinated patients		32 (100%)	40 (100%)			179 (100%)	104 (100%)	
Pfizer, n (%)	na	12(37%)	28 (70%)	0.01	na	34 (19%)	14 (13.3%)	ns
AztraZeneca, n (%)	na	13(40.6%)	4 (10%)	0.02	na	69 (38.7%)	15 (14.2%)	<0.001
SinoVac, n (%)	na	3 (9.3%)	5 (12%)	ns	na	18 (10.1%)	35 (33.3%)	<0.001
Sputnik, n (%)	na	2 (6.2%)	2 (5%)	ns	na	51 (28.6%)	21 (20%)	ns
Cansino, n (%)	na	0	1 (2.5%)	na	na	na	18 (17.1%)	na
J&J, n (%)	na	0	0	na	na	1 (0.56%)	0	ns
Moderna, n (%)	na	0	0	na	na	0	1 (0.95%)	ns
NA	na	2	0		na	5	1	
Comorbidities								
Diabetes, n (%)	2 (5.1%)	4 (12.5%)	1 (2.5%)	ns	115 (20.1%)	44 (24.7%)	42 (40%)	<0.001
Hypertension, n (%)	5 (12.8%)	4 (12.5%)	5 (12.5%)	ns	147 (25.6%)	45 (25.2%)	53 (53.3%)	<0.001
Obesity, n (%)	5 (12.8%)	7 (21.8%)	4 (10%)	ns	255 (44.5%)	82 (46%)	47 (44.7%)	ns
Smoking, n (%)	2(5.1%)	1 (3.1%)	2 (5%)	ns	177 (30.9%)	57 (32%)	25 (23.8%)	ns
COPD, n (%)	0	0	2 (5%)	na	2 (2%)	2 (1.1%)	4 (3.8%)	ns
Immune disease, n (%)	0	0	2 (5%)	na	12 (2%)	1 (0.5%)	3 (2.8%)	ns
NA	89	85	105		33	13	10	
Number of comorbidities								
None, n (%)	22 (56.4%)	13 (40.6%)	25 (62.1%)	0.05	97 (16.9%)	34 (19.1%)	10 (9.5%)	0.05
1, n (%)	9 (23.07%)	2 (6.2%)	4 (10%)	ns	217 (37.9%)	58 (32.5%)	21 (20%)	<0.001
2, n (%)	2 (5.1%)	1 (3.1%)	4 (10%)	ns	170 (29.7%)	55 (30.8%)	35 (33.3%)	ns
=/> 3, n (%)	1 (2.5%)	3 (9.3%)	2 (5%)	ns	87 (15.2%)	31 (17.4%)	39 (37.1%)	<0.001
NA	5	13	5		1	0	0	
In-hospital treatment								
Dexamethasone, n (%)	5 (12.8%)	2 (6.2%)	1 (2.5%)	ns	554 (96.8%)	169 (94.9%)	98 (93.3%)	ns
Remdesivir./Baricitinib, n (%)	0	0	0	na	11 (1.9%)	3 (1.6%)	3 (2.8%)	0.02
Remdesivir/Dexamethasone,n(%)	0	0	0	na	4 (0.6%)	0	1 (0.95%)	ns
Dexamethasone./Baricitinib, n (%)	0	0	0	na	1 (0.1%)	2 (1.1%)	0	ns
NA	5	13	6		0	0	2	
Previous steroid								
Dexamethasone, n (%)	0	0	0	na	202 (35.3%)	66 (37%)	40 (38%)	ns
Prednisone, n (%)	0	0	0	na	28 (4.8%)	0	5 (4.7%)	0.001
Betamethasone, n (%)	0	0	0	na	12 (2%)	7 (3.9%)	2 (1.9%)	ns
Dexamethasone./Prednisone, n (%)	0	0	0	na	6 (1.04%)	2 (1.1%)	0	ns
Dexamethasone./Betamethasone, n (%)	0	0	0	na	5 (0.87%)	4 (2.2%)	0	ns
NA	5	13	6		0	0	2	
Symptoms								
Fever, n (%)	19 (48.7%)	10 (31.2%)	12 (30%)	0.01	409 (71.5%)	134 (75.2%)	57 (54.2%)	<0.001
Cough, n (%)	19 (48.7%)	19 (59.3%)	15 (37.5%)	ns	333 (58.2%)	107 (60.1%)	68 (64.7%)	ns
Diarrhea, n (%)	4 (10.2%)	1 (3.1%)	4 (10%)	0.01	61 (10.6%)	17 (9.5%)	6 (5.7%)	ns
Myalgias, n (%)	9 (23%)	7 (21.8%)	11 (27.5%)	ns	382 (66.7%)	111 (62.3%)	65 (61.9%)	ns
Arthralgias, n (%)	10 (25.6%)	10 (31.2%)	8 (20%)	0.002	163 (28.4%)	47 (26.4%)	24 (22.8%)	ns
Nasal congestion, n (%)	0	0	2 (5%)	na	51 (8.9%)	21 (11.7%)	11 (10.4%)	ns
Pharyngodynia, n (%)	7 (17.9%)	7 (21.8%)	11 (27.5%)	ns	140 (24.4%)	57 (32%)	29 (27.6%)	0.05
Anosmia, n (%)	2 (5.1%)	3 (9.3%)	2 (5%)	ns	43 (7.5%)	14 (7.8%)	3 (2.8%)	ns
Headache, n (%)	13 (33.3%)	7 (21.8%)	13 (32.5%)	<0.001	190 (33.2)	60 (33.7%)	33 (31.4%)	ns
NA	5	20	14		0	0	18	

588

589 **COPD:** Chronic obstructive pulmonary disease

590 **NA:** Data not available

591 P values were obtained from Chi-square or Fisher exact test.

592 **ns=** non-significant, **na=** not available comparison.

593

594

595

596

597 Table 2. Outcome, severity indexes, and O₂ requirement among hospitalized patients with
 598 different vaccination status.

	Hospitalized (N=855)			P value
	Unvaccinated (N=572) [66.9%]	Partially vaccinated (N=178) [20.8%]	Fully vaccinated (N=105) [12.2%]	
Outcome				
Recovered, n (%)	433 (71.6%)	139 (78%)	88 (83.8%)	0.05
Deceased, n (%)	129 (22.5%)	37 (20.7%)	16 (15.2%)	<i>ns</i>
NA	10	2	1	
Severity indexes				
APACHE II, med(IQR)	8.5 (6-11)	9 (6.2-11)	11 (9-14)	<0.001
SOFA, med(IQR)	3 (3-4)	3 (3-4)	4 (3-4)	<i>ns</i>
GLASGOW, med(IQR)	15 (15-15)	15 (15-15)	15 (15-15)	<i>ns</i>
O₂ requirement				
Nasal cannula, n (%)	54 (9.4%)	19 (10.6%)	12 (11.4%)	<i>ns</i>
HFNC, n (%)	135 (23.6%)	50 (28%)	28 (26.6%)	<i>ns</i>
Mechanical ventilation, n (%)	375 (65.5%)	105 (58.9%)	61 (58%)	<i>ns</i>
Reservoir oxygen mask, n (%)	7 (1.2%)	3 (1.6%)	1 (0.9%)	<i>ns</i>
Non-invasive mechanical ventilation, n (%)	1 (0.1%)	1 (0.5%)	1 (0.9%)	<i>ns</i>
NA	0	0	2	

599 **NA:** Data not available

600 P values were obtained from Chi-square or Fisher exact test.

601 *ns*= non-significant, *na*= not available comparison.

602

603

604 Table 3. SARS-CoV-2 lineages between outpatients and hospitalized patients.

Lineages	Outpatients (N=123)	Hospitalized (N=263)	P value
Alpha, n (%)	2 (1.5%)	7 (2.6%)	<i>ns</i>
Gamma, n (%)	4 (3.1%)	24 (9.1%)	<i>ns</i>
Delta, n (%)	104 (82.5%)	163 (61.9%)	<0.001
Mu, n (%)	3 (2.3%)	11 (4.1%)	<i>ns</i>
B.1.1.519, n (%)	7 (5.5%)	50 (19%)	0.001
Other, n (%)	3 (2.3%)	8 (3.04%)	<i>ns</i>

605 P values were obtained from Chi-square or Fisher exact test.

606

607

608

609

610

611

612

613

614 FIGURE LEGENDS

615

616 **Figure 1. Impact of vaccination status and age in severity and clinical parameters in**
617 **COVID-19 patients** **A.** Barplot shown the proportion of COVID-19 severity classification
618 among unvaccinated, partially vaccinated, and fully vaccinated patients between age
619 groups. Statistically significant differences are available in Supplementary Table S1. **B.**
620 Boxplot of Sequential Organ Failure Assessment (SOFA) score and Acute Physiology and
621 Chronic Health Evaluation II (APACHE) among patients with different vaccination status
622 and age. **C.** Heatmap of the O₂ requirement among patients with different vaccination
623 status. HFNC: High Flow Nasal Cannula.

624

625 **Figure 2. Laboratory parameters that significantly vary among vaccination status and**
626 **age group.** We used logarithmic distribution in the lymphocytes and D dimer parameters
627 for visualization purposes. Statistically significant differences are given by Wilcoxon rank-
628 sum test. Units: Lymphocytes (10³/mm³), Blood Urea Nitrogen (BUN) (mg/dL), Glucose
629 (mg/dL), Albumin (g/dL), Hematocrit (%), Urea (mg/dL), Creatinine (mg/dL), D dimer
630 (mg/dL).

631

632 **Figure 3. Distribution of vaccine strategies and their impact on disease severity in**
633 **fully vaccinated patients.** **A.** Piechart of the proportion of the vaccines applied at the
634 national level. **B.** Piechart of the proportion of the different vaccines applied at the INER.
635 **C.** Barplot shown the proportion of COVID-19 classification in patients with different
636 vaccines. **D.** Barplot depicting the proportion of O₂ requirement in patients with different
637 vaccines. **E.** Boxplot of Sequential Organ Failure Assessment (SOFA) score and Acute

638 Physiology and Chronic Health Evaluation II (APACHE) among patients with different
639 vaccines. Statistically significant differences are available in Supplementary Table S2-3. In
640 C-E panels only patients >61 years old were included.

641

642 **Figure 4. Variables affecting outcome in COVID-19 patients. A.** Forest plot of the two
643 fitted Generalized Linear Model (GLM) representing the odds ratio and 95% IC for each
644 variable. Estimates are available in Supplementary Table S4. **B.** Kaplan-Meier curve
645 depicting the survival probability of patients with different age ranges. **C.** Kaplan-Meier
646 curve depicting the survival probability of patients with different values for D dimer. All
647 models were constructed using outcome (deceased or recovered) standardized at 28 days.
648 Units: Platelets ($\times 10^9/l$), Lactate dehydrogenase (LDH) (u/L), D dimer (ug/dL), and Blood
649 Urea Nitrogen (BUN) (mg/dL).

650

651 **Figure 5. SARS-CoV-2 lineages distribution and its impact on disease severity. A.**
652 Distribution of SARS-CoV-2 lineages at the country level (Mexico), Metropolitan area (the
653 State of Mexico and Mexico City), and our research center (INER). **B.** Heatmap of the
654 principal symptoms among patients infected with the different SARS-CoV-2 lineages. **C.**
655 Dominance of lineages in our cohort along time (months). **D.** Distribution of patients with
656 either mild, severe, or critical COVID-19 classification and percentage of fully vaccinated
657 patients in our cohort through time (months).

658

659

660

661

662 REFERENCES

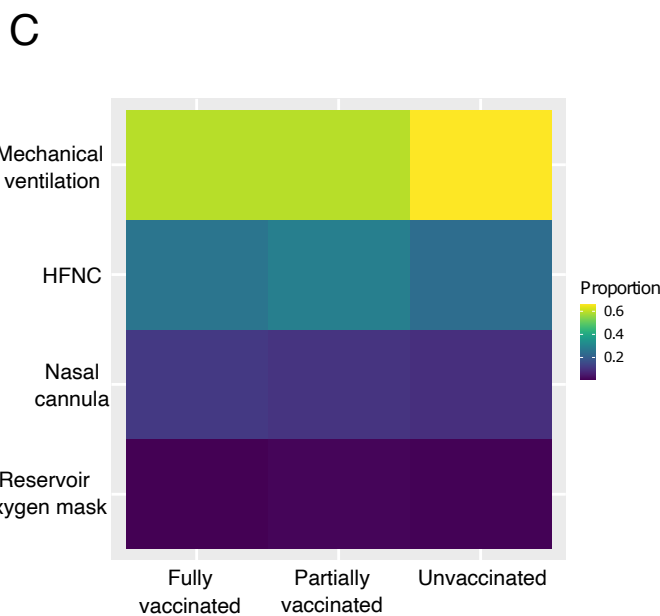
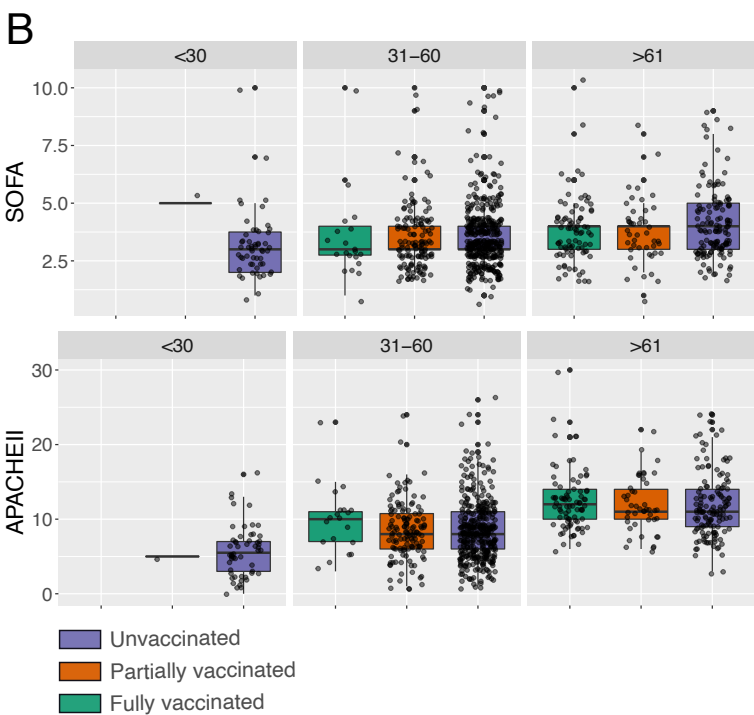
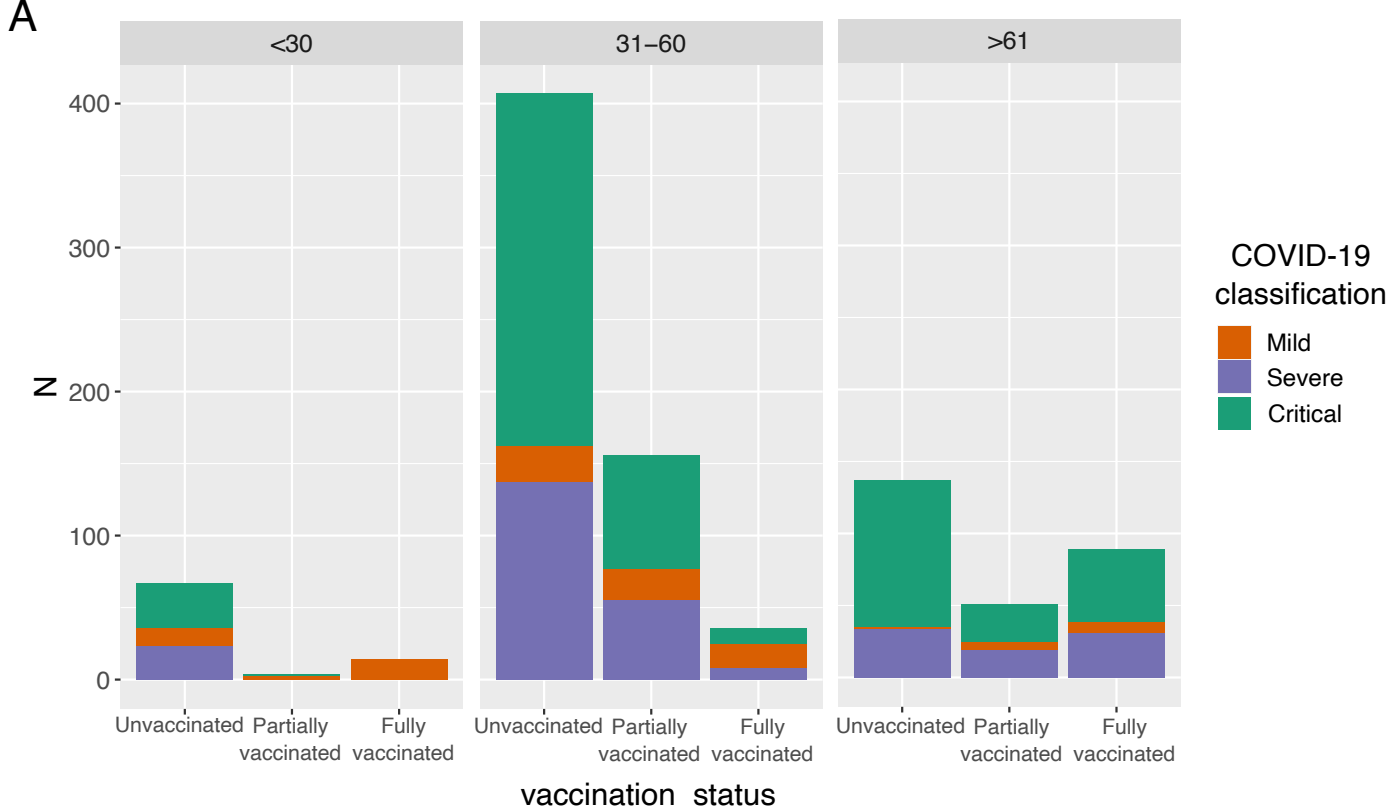
- 663 1. Zhu N, Zhang D, Wang W, Li X, Yang B, Song J, et al. A Novel Coronavirus from Patients with
664 Pneumonia in China, 2019. *N Engl J Med.* 2020;382:727–33.
- 665 2. Organization WH. WHO Coronavirus Disease (COVID-19) Dashboard. April 2022. 2022.
- 666 3. Isabel S, Graña-Miraglia L, Gutierrez JM, Bundalovic-Torma C, Groves HE, Isabel MR, et al. Evolutionary
667 and structural analyses of SARS-CoV-2 D614G spike protein mutation now documented worldwide.
668 *Sci Rep* [Internet]. Nature Publishing Group UK; 2020;10:1–9. Available from:
669 <https://doi.org/10.1038/s41598-020-70827-z>
- 670 4. Giovanetti M, Benedetti F, Campisi G, Ciccozzi A, Fabris S, Ceccarelli G, et al. Evolution patterns of
671 SARS-CoV-2: Snapshot on its genome variants. *Biochem Biophys Res Commun.* 2021;538:88–91.
- 672 5. Harvey WT, Carabelli AM, Jackson B, Gupta RK, Thomson EC, Harrison EM, et al. SARS-CoV-2
673 variants, spike mutations and immune escape. *Nat Rev Microbiol* [Internet]. Springer US;
674 2021;19:409–24. Available from: <http://dx.doi.org/10.1038/s41579-021-00573-0>
- 675 6. Ong SW, Chiew CJ, Ang LW, Mak T-M, Cui L, HS Toh MP, et al. Clinical and virological features of
676 SARS-CoV-2 variants of concern: a retrospective cohort study comparing B.1.1.7 (Alpha), B.1.315
677 (Beta), and B.1.617.2 (Delta). *Clin Infect Dis.* 2021;August:23:ciab721.
- 678 7. Taboada B, Zárate S, Iša P, Boukadida C, Vazquez-perez JA, Muñoz-medina JE, et al. Genetic analysis
679 of sars-cov-2 variants in mexico during the first year of the covid-19 pandemic. *Viruses.*
680 2021;13:1–20.
- 681 8. Cedro-tanda A, Laura G, Anda-jauregui G De, Garnica-l D, Alfaro-mora Y, Sonia S, et al. Early genomic,
682 epidemiological, and clinical description of the SARS-CoV-2 omicron variant in Mexico City.
683 *Viruses.* 2022;14:v14030545.
- 684 9. Rodríguez-Maldonado AP, Vázquez-Pérez JA, Cedro-Tanda A, Taboada B, Boukadida C, Wong-Arámbula
685 C, et al. Emergence and spread of the potential variant of interest (VOI) B.1.1.519 of SARS-CoV-2
686 predominantly present in Mexico. *Arch Virol* [Internet]. Springer Vienna; 2021;166:3173–7.
687 Available from: <https://doi.org/10.1007/s00705-021-05208-6>
- 688 10. Cedro-tanda A, Laura G, Anda-jauregui G De, Peñaloza F, Moreno B, Escobar-arrazola MA, et al. The
689 evolutionary landscape of SARS-CoV-2 variant B.1.1.519 and its clinical impact in Mexico City.

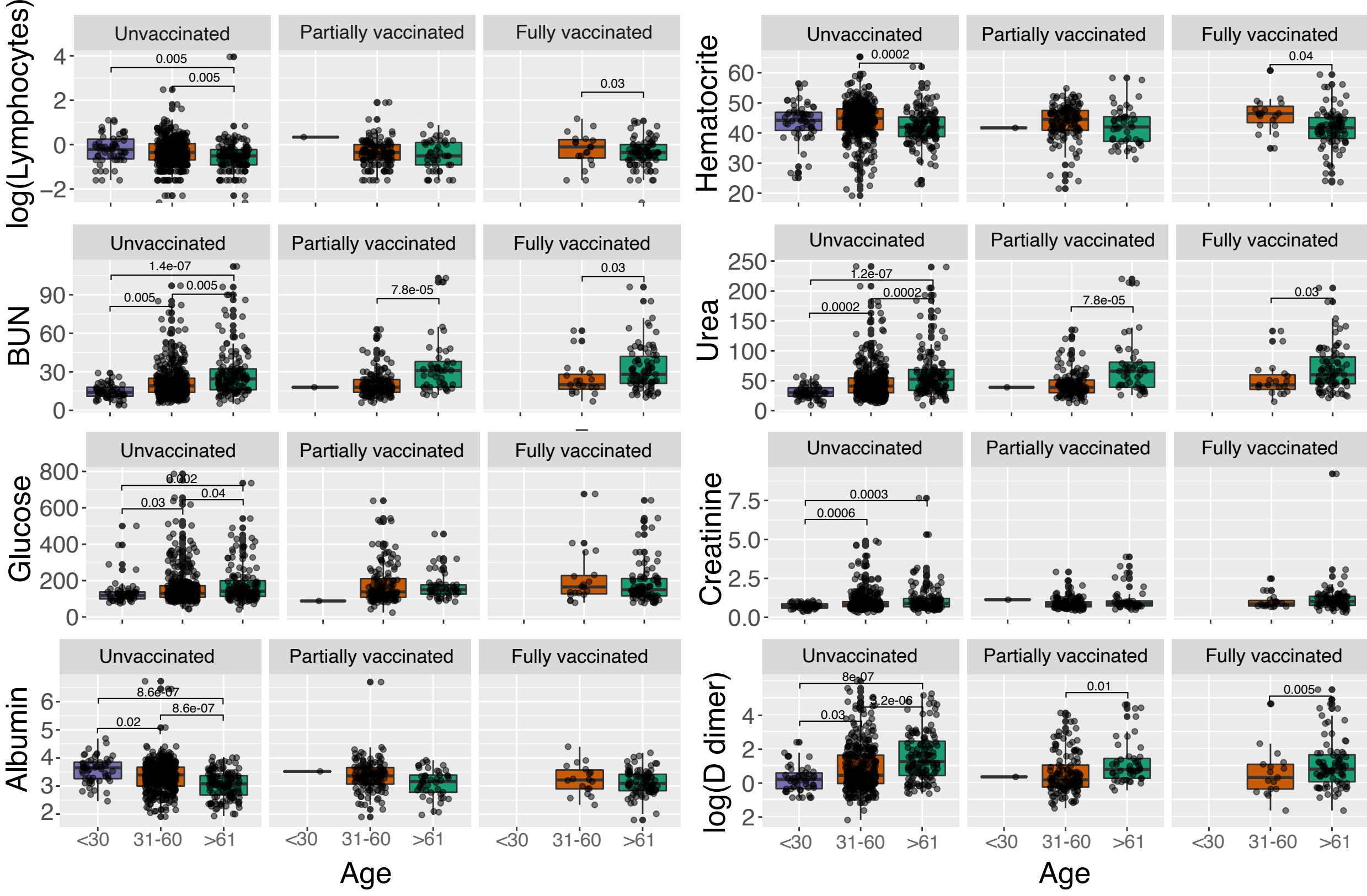
- 690 Viruses. 2021;13:v13112182.
- 691 11. Salud S de. COVID-19 MÉXICO: Comunicado técnico diario [Internet]. Secr. Salud. Mexico City; 2021.
692 Available from: <https://datos.covid-19.conacyt.mx/>
- 693 12. Butt AA, Nafady-hego H, Chemaitelly H, Abou-Samra A-B, Al Khal A, Coyle P V., et al. Outcomes
694 Among Patients with Breakthrough SARS-CoV-2 Infection After Vaccination. *Int J Infect Dis*.
695 2020;110:353–8.
- 696 13. Huang YZ, Kuan CC. Vaccination to reduce severe COVID-19 and mortality in COVID-19 patients: a
697 systematic review and meta-analysis. *Eur Rev Med Pharmacol Sci*. 2022;26:1770–6.
- 698 14. Prévost J, Finzi A. The great escape? SARS-CoV-2 variants evading neutralizing responses. *Cell Host*
699 *Microbe*. 2021;29:322–4.
- 700 15. Thakur S, Sasi S, Pillai SG, Nag A, Shukla D, Singhal R, et al. SARS-CoV-2 Mutations and Their Impact
701 on Diagnostics, Therapeutics and Vaccines. *Front Med*. 2022;9.
- 702 16. Bakhshandeh B, Jahanafrooz Z, Abbasi A, Babae M, Sadeghi M, Sadeq MM, et al. Mutations in SARS-
703 CoV-2; consequences in structure, function, and pathogenicity of the virus. *Microb Pathog*.
704 2020;154:104831.
- 705 17. Bian L, Gao F, Zhang J, He Q, Mao Q, Xu M, et al. Effects of SARS-CoV-2 variants on vaccine efficacy
706 and response strategies. *Expert Rev Vaccines* [Internet]. Taylor & Francis; 2021;20:365–73.
707 Available from: <https://doi.org/10.1080/14760584.2021.1903879>
- 708 18. Castillo AE, Parra B, Tapia P, Acevedo A, Lagos J, Andrade W, et al. Phylogenetic analysis of the first
709 four SARS-CoV-2 cases in Chile. *J Med Virol*. 2020;92:1562–6.
- 710 19. Kumar S, Stecher G, Li M, Knyaz C, Tamura K. MEGA X: Molecular evolutionary genetics analysis
711 across computing platforms. *Mol Biol Evol*. 2018;35:1547–9.
- 712 20. Katoh K, Misawa K, Kuma KI, Miyata T. MAFFT: A novel method for rapid multiple sequence
713 alignment based on fast Fourier transform. *Nucleic Acids Res*. 2002;30:3059–66.
- 714 21. Rambaut A. FigTree. 2012. p. 1–8.
- 715 22. Wang J, Tong Y, Li D, Li J, Li Y. The Impact of Age Difference on the Efficacy and Safety of COVID-19
716 Vaccines: A Systematic Review and Meta-Analysis. *Front Immunol*. 2021;12:1–8.
- 717 23. National Institutes of Health. Treatment Guidelines. Coronavirus Disease 2019 (COVID-19) [Internet].

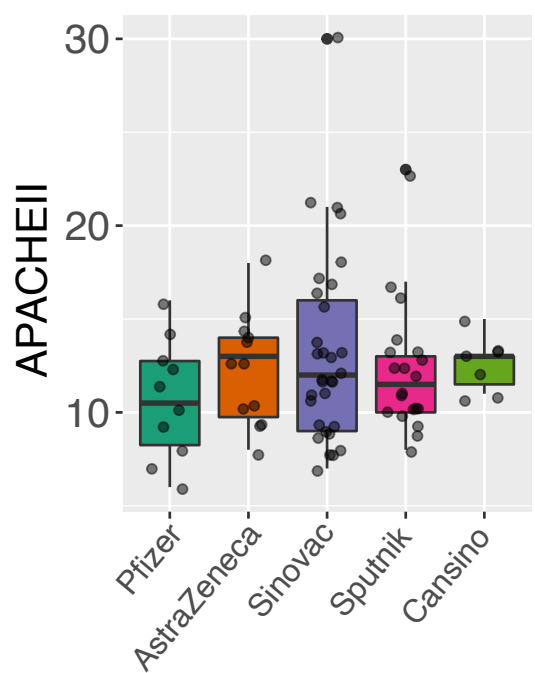
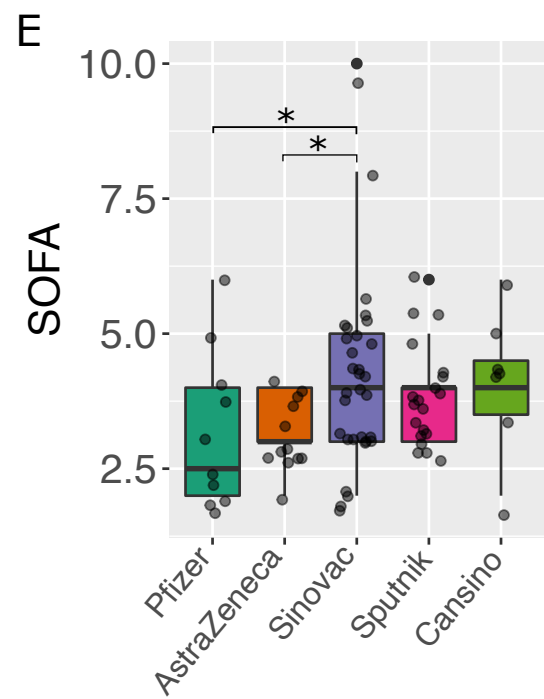
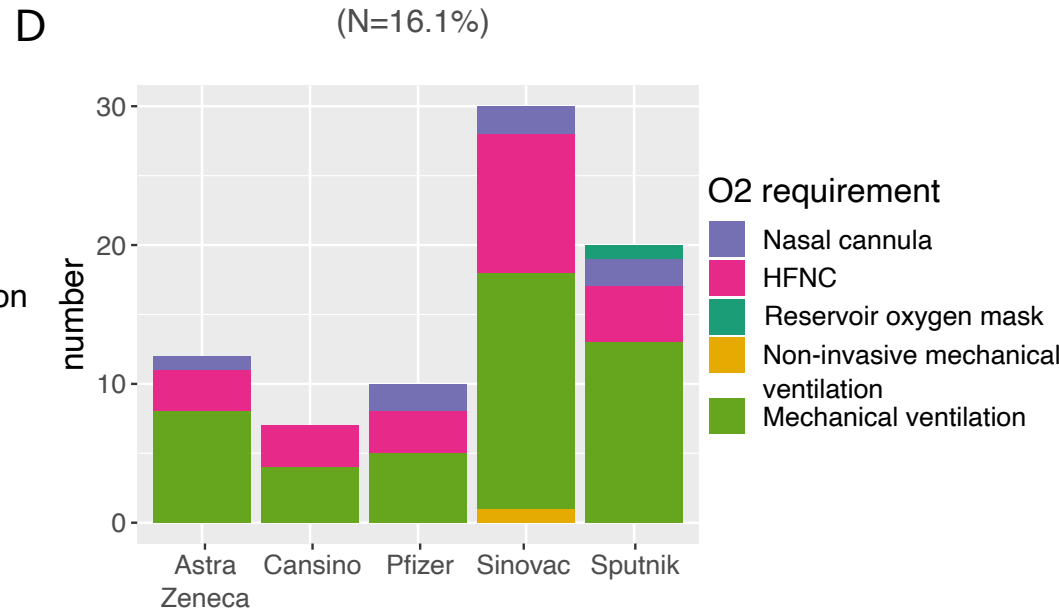
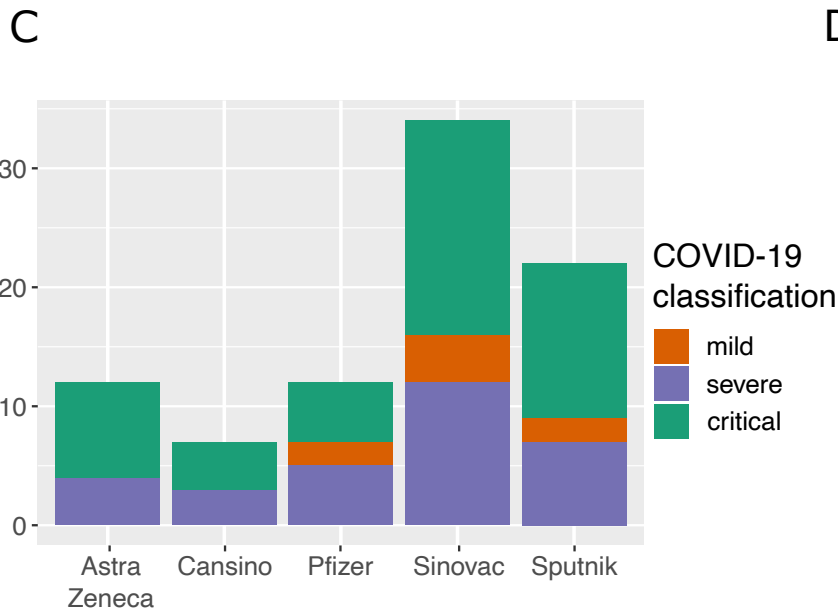
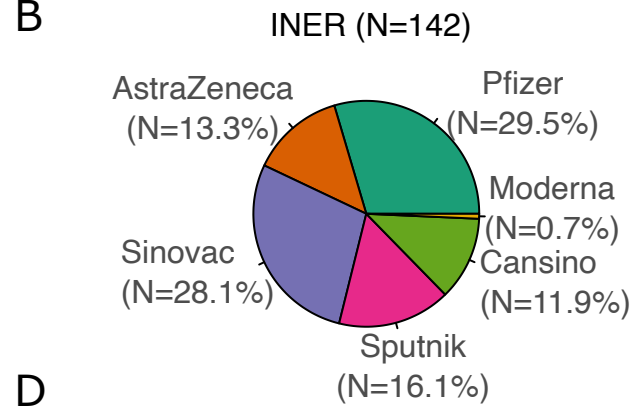
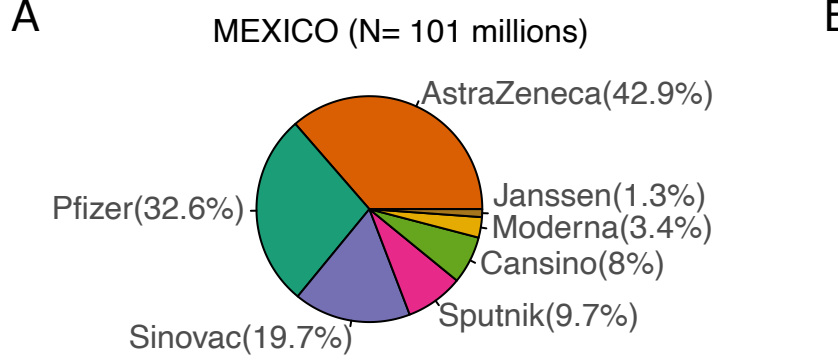
- 718 NIH. 2021. Available from:
- 719 <https://www.covid19treatmentguidelines.nih.gov/>
- 720 <https://www.covid19treatmentguidelines.nih.gov/>
- 721 24. Team RC. R: A language and environment for statistical computing. [Internet]. Viena, Austria: R
- 722 Foundation for Statistical Computing; 2020. Available from: <https://www.r-project.org/>
- 723 25. Wickham H, Chang W, Pedersen Lin T, Takahashi K, Wilke C, Woo K. ggplot2: Elegant graphics for
- 724 data analysis [Internet]. New York: Springer-Verlag; 2016. Available from: <http://ggplot2.org>
- 725 26. Therneau PM. A package for Survival Analysis in R. CRAN; 2020.
- 726 27. Kassambara A, Kosinski M, Biecek P. Survminer: drawing survival curves using ggplot2. CRAN; 2021.
- 727 28. Williamson EJ, Walker AJ, Bhaskaran K, Bacon S, Morton CE, Curtis HJ, et al. OpenSAFELY: factors
- 728 associated with COVID-19 death in 17 million patients. *Nature*. 2020;584:430–6.
- 729 29. Martos-Benítez FD, Soler-Morejón CD, García-del Barco D. Chronic comorbidities and clinical outcomes
- 730 in patients with and without COVID-19: a large population-based study using national administrative
- 731 healthcare open data of Mexico. *Intern Emerg Med* [Internet]. Springer International Publishing;
- 732 2021;16:1507–17. Available from: <https://doi.org/10.1007/s11739-020-02597-5>
- 733 30. Collier DA, Ferreira IATM, Kotagiri P, Datir RP, Lim EY, Touizer E, et al. Age-related immune response
- 734 heterogeneity to SARS-CoV-2 vaccine BNT162b2. *Nature*. 2021;596:417–22.
- 735 31. Gutiérrez-González E, Cantero-Escribano JM, Redondo-Bravo L, San Juan-Sanz I, Robustillo-Rodela A,
- 736 Cendejas-Bueno E, et al. Effect of vaccination, comorbidities and age on mortality and severe
- 737 disease associated with influenza during the season 2016–2017 in a Spanish tertiary hospital. *J Infect*
- 738 *Public Health* [Internet]. King Saud Bin Abdulaziz University for Health Sciences; 2019;12:486–91.
- 739 Available from: <https://doi.org/10.1016/j.jiph.2018.11.011>
- 740 32. Asano T, Immunol S, Asano T, Boisson B, Onodi F, Matuozzo D, et al. X-linked recessive TLR7
- 741 deficiency in ~ 1 % of men under 60 years old with life-threatening COVID-19. *Sci Immunol*.
- 742 2021;4348:1–31.
- 743 33. Zeberg H. The major genetic risk factor for severe COVID-19 is associated with protection against HIV.
- 744 *Proc Natl Acad Sci U S A*. 2022;119:17–9.
- 745 34. Kahn F, Bonander C, Moghaddassi M, Rasmussen M, Malmqvist U, Inghammar M, et al. Risk of severe

- 746 COVID-19 from the Delta and Omicron variants in relation to vaccination status, sex, age and
747 comorbidities - surveillance results from southern Sweden. medRxiv. 2022;27.
- 748 35. Markanday A. Acute phase reactants in infections: evidence-based review and a guide for clinician. Open
749 Forum Infect Dis. 2015;2.
- 750 36. Ng JH, Bijol V, Sparks MA, Sise ME, Izzedine H, Jhaveri KD. Pathophysiology and Pathology of Acute
751 Kidney Injury in Patients With COVID-19. Adv Chronic Kidney Dis [Internet]. Elsevier Inc;
752 2020;27:365–76. Available from: <https://doi.org/10.1053/j.ackd.2020.09.003>
- 753 37. Wu MA, Fossali T, Pandolfi L, Carsana L, Ottolina D, Frangipane V, et al. Hypoalbuminemia in COVID-
754 19: assessing the hypothesis for underlying pulmonary capillary leakage. J Intern Med.
755 2021;289:861–72.
- 756 38. Zhou F, Yu T, Du R, Fan G, Liu Y, Liu Z, et al. Clinical course and risk factors for mortality of adult
757 inpatients with COVID-19 in Wuhan, China: a retrospective cohort study. Lancet [Internet]. Elsevier
758 Ltd; 2020;395:1054–62. Available from: [http://dx.doi.org/10.1016/S0140-6736\(20\)30566-3](http://dx.doi.org/10.1016/S0140-6736(20)30566-3)
- 759 39. Choi WS, Cheong HJ. COVID-19 vaccination for people with comorbidities. Infect Chemother.
760 2021;53:155–8.
- 761 40. Ahmad L. Implication of SARS-CoV-2 Immune Escape Spike Variants on Secondary and Vaccine
762 Breakthrough Infections. Front Immunol. 2021;12:1–7.
- 763 41. Lou F, Li M, Pang Z, Jiang L, Guan L, Tian L, et al. Understanding the Secret of SARS-CoV-2 Variants
764 of Concern/Interest and Immune Escape. Front Immunol. 2021;12:1–19.
- 765 42. Moghaddar M, Radman R, Macreadie I. Severity, pathogenicity and transmissibility of delta and lambda
766 variants of SARS-CoV-2, toxicity of spike protein and possibilities for future prevention of COVID-
767 19. Microorganisms. 2021;9.
- 768 43. Hu Z, Huang X, Zhang J, Fu S, Ding D, Tao Z. Differences in Clinical Characteristics Between Delta
769 Variant and Wild-Type SARS-CoV-2 Infected Patients. Front Med. 2022;8:1–9.
- 770 44. Paredes MI, Lunn SM, Famulare M, Frisbie LA, Painter I, Burstein R, et al. Associations between SARS-
771 CoV-2 variants and risk of COVID-19 hospitalization among confirmed cases in Washington State: a
772 retrospective cohort study. Clin Infect Dis. 2020;12:1–18.
- 773 45. Lauring AS, Tenforde MW, Chappell JD, Gaglani M, Ginde AA, Mcneal T, et al. Clinical severity of, and

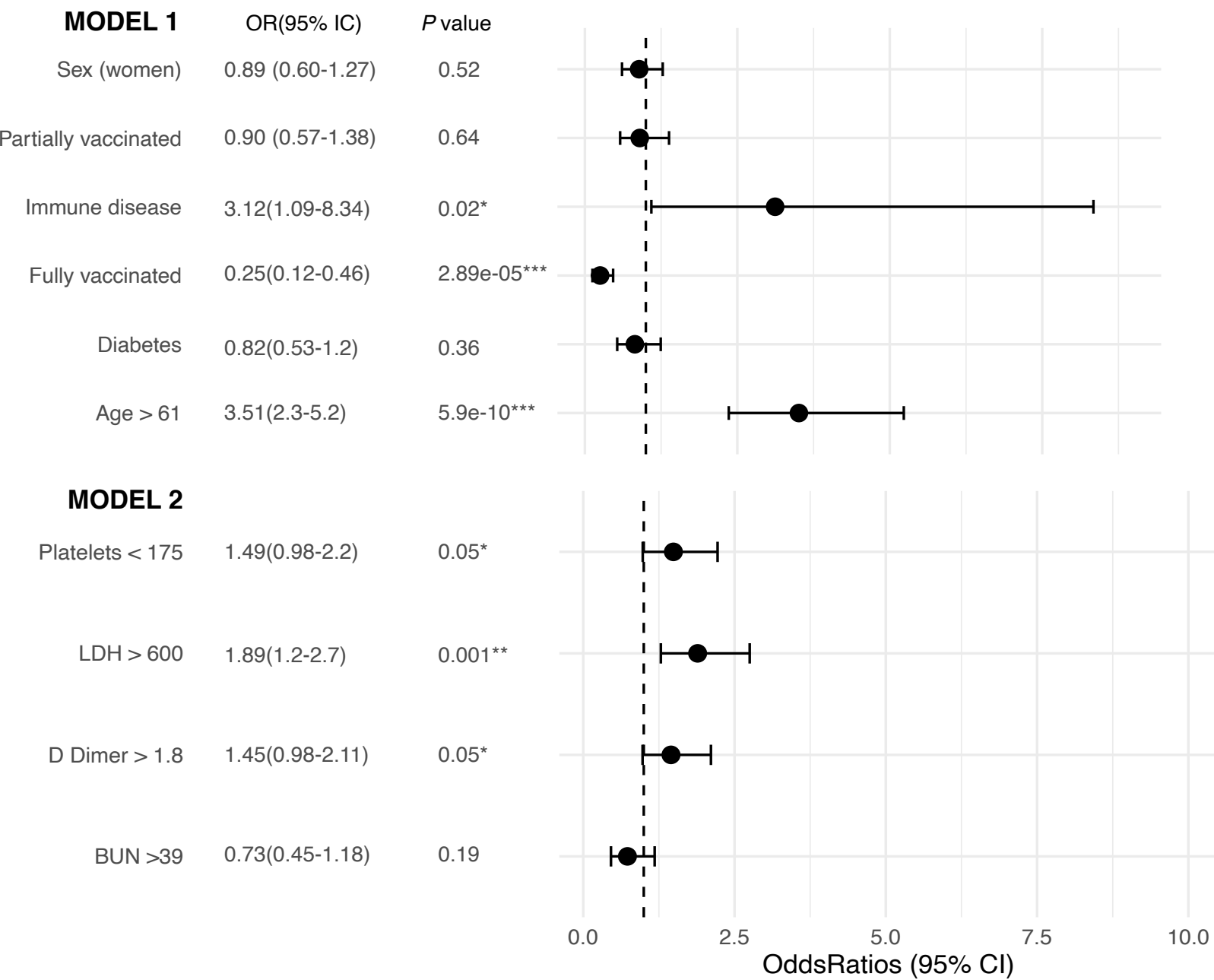
- 774 effectiveness of mRNA vaccines against, covid-19 from omicron, delta, and alpha SARS-CoV-2
775 variants in the United States: prospective observational study. *BMJ*. 2022;376.
- 776 46. Everett J, Hokama P, Roche AM, Reddy S, Hwang Y, Kessler L, et al. SARS-CoV-2 genomic variation in
777 space and time in hospitalized patients in Philadelphia. *MBio*. 2021;12:1–16.
- 778 47. Boukadida C, Taboada B, Escalera-Zamudio M, Isa P, Ramírez-González JE, Vazquez-Perez JA, et al.
779 Genomic Characterization of SARS-CoV-2 Isolated from Patients with Distinct Disease Outcomes in
780 Mexico. *Microbiol Spectr. American Society for Microbiology*; 2022;10.
- 781 48. Lippi G, Plebani M, Henry BM. Thrombocytopenia is associated with severe coronavirus disease 2019
782 (COVID-19) infections: A meta-analysis. *Clin Chim Acta [Internet]. Elsevier LTD*; 2020;506:145–8.
783 Available from: <https://doi.org/10.1016/j.cca.2020.03.022>
- 784 49. Henry BM, Aggarwal G, Wong J, Benoit S, Vikse J, Plebani M, et al. Lactate dehydrogenase levels
785 predict coronavirus disease 2019 (COVID-19) severity and mortality: A pooled analysis. *Am J*
786 *Emerg Med*. 2020;38:1722–6.
- 787 50. Stupica D, Collinet-Adler S, Kejžar N, Jagodic Z, Poljak M, Klevišar MN. The Impact of SARS-CoV-2
788 Primary Vaccination in a Cohort of Patients Hospitalized for Acute COVID-19 during Delta Variant
789 Predominance. *J Clin Med*. 2022;11.
- 790
- 791
- 792
- 793
- 794
- 795
- 796
- 797
- 798
- 799



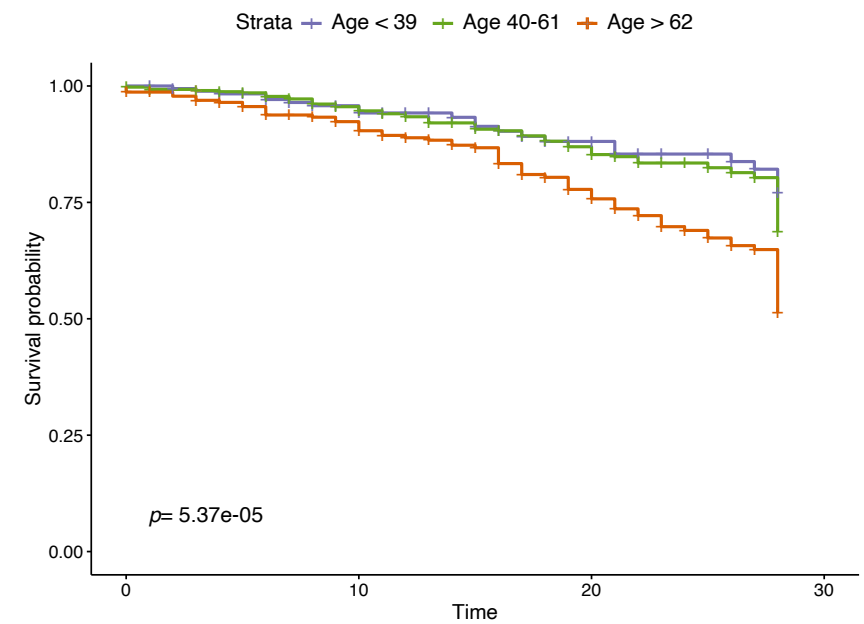




A



B



C

