

Grey matter morphometric biomarkers for classifying early schizophrenia and PD psychosis: a multicentre study

Franziska Knolle*^{1,2}, Shyam S. Arumugham ³, Roger A. Barker ⁴, Michael W.L. Chee ^{5,6}, Azucena Justicia ^{2,7}, Nitish Kamble ⁸, Jimmy Lee ^{9,10,11}, Siwei Liu ^{5,6}, Abhishek Lenka ^{8,12}, Simon J.G. Lewis ¹³, Graham K. Murray ^{2,14}, Pramod Kumar Pal ⁸, Jitender Saini ⁸, Jennifer Szeto ¹³, Ravi Yadav ³, Juan H. Zhou ^{5,6}, Kathrin Koch*¹

Affiliations:

1. Department of Diagnostic and Interventional Neuroradiology, School of Medicine, Technical University of Munich, Munich, Germany.
2. Department of Psychiatry, University of Cambridge, Cambridge UK.
3. Department of Psychiatry, National Institute of Mental Health & Neurosciences (NIMHANS), Bengaluru, India
4. Department of Clinical Neuroscience, University of Cambridge, Cambridge, UK
5. Centre for Sleep and Cognition, Yong Loo Lin School of Medicine, National University of Singapore, Singapore
6. Centre for Translational MR Research, Yong Loo Lin School of Medicine, National University of Singapore, Singapore
7. IMIM (Hospital del Mar Medical Research Institute), Centro de Investigación Biomédica en Red de Salud Mental (CIBERSAM), Barcelona, Spain
8. Department of Neurology, National Institute of Mental Health & Neurosciences (NIMHANS), Bengaluru, India
9. Research Division, Institute of Mental Health, Singapore
10. Department of Psychosis, Institute of Mental Health, Singapore
11. Neuroscience and Mental Health, Lee Kong Chian School of Medicine, Nanyang Technological University, Singapore
12. Department of Neurology, Medstar Georgetown University School of Medicine, Washington, DC, USA
13. ForeFront Parkinson's Disease Research Clinic, Brain and Mind Centre, School of Medical Sciences, University of Sydney, Camperdown, NSW, Australia
14. Cambridgeshire and Peterborough NHS Foundation Trust, Cambridge, UK.

*Corresponding authors:

Dr. Franziska Knolle

NOTE: This preprint reports new research that has not been certified by peer review and should not be used to guide clinical practice.

Department of Diagnostic and Interventional Neuroradiology, School of Medicine,
Klinikum rechts der Isar, Technical University Munich, 81675 Munich, Germany

Phone: +49 89 4041 7976

Fax: +49 89 4140 4653

Email: franziska.knolle@tum.de

ORCID: 0000-0002-9542-613X

Dr. Kathrin Koch

Department of Diagnostic and Interventional Neuroradiology, School of Medicine,
Klinikum rechts der Isar, Technical University Munich, 81675 Munich, Germany

Phone: +49 89 4041 7972

Fax: +49 89 4140 4653

Email: kathrin.koch@tum.de

ORCID: 0000-0003-4664-8016

Funding: FK received funding from the European Union's Horizon 2020 [Grant number 754462]. Subjects recruited at the National Institute of Mental Health and Neurosciences (NIMHANS), Bangalore, India were part of a project funded by the Indian Council of Medical research (ICMR). [ICMR/003/304/2013/00694]. SJGL is supported by a National Health and Medical Research Council Leadership Fellowship (1195830). The Singapore Translational and Clinical Research in Psychosis is supported by the National Research Foundation Singapore under the National Medical Research Council Translational and Clinical Research Flagship Program (NMRC/TCR/003/2008). This study is also supported by Agency for Science, Technology, and Research (A*STAR) Singapore under the Biomedical Research Council (13/1/96/19/ 687), National Medical Research Council (CBRG/0088/2015), and Duke-NUS Medical School Signature Research Program funded by Ministry of Health and Yong Loo Lin School of Medicine Research fund, National University of Singapore. SSA is supported by DBT/Wellcome Trust India Alliance Intermediate Clinical and Public Health Fellowship grant (IA/CPHI/18/1/50393).

Author contribution:

FK, KK: Conceptualization, Methodology, Formal analysis, Investigation, Writing – Original draft, Writing – Review and editing, Visualization, Project administration (FK); AL, AJ, GKM, HJZ, JL, JS, MWLC, NK, PKP, RAB, RY, SSA, SJGL, SL, JS: Data curation, Writing – Review and editing.

Acknowledgements: We thank all participants for their time and dedication.

Conflicts of interest: None of the authors reported any conflict of interest.

Data availability: All data produced in the present study are available upon reasonable request to the authors.

Abstract

Background: Psychotic symptoms occur in a majority of schizophrenia patients, and in approximately 50% of all Parkinson's disease (PD) patients. Altered grey matter (GM) structure within several brain areas and networks may contribute to their pathogenesis. Little, however, is known about transdiagnostic similarities when psychotic symptoms occur in different disorders, such as schizophrenia and PD. **Methods:** The present study investigated a large, multicenter sample containing 722 participants: 146 patients with first episode psychosis, FEP; 106 individuals at-risk mental state for developing psychosis, ARMS; 145 healthy controls matching FEP and ARMS, Con-Psy; 92 PD patients with psychotic symptoms, PDP; 145 PD patients without psychotic symptoms, PDN; 88 healthy controls matching PDN and PDP, Con-PD. We applied source-based morphometry in association with receiver operating curves (ROC) analyses to identify common GM structural covariance networks (SCN) and investigated their accuracy in identifying the different patient groups. We assessed group-specific homogeneity and variability across the different networks and potential associations with clinical symptoms. **Results:** SCN-extracted GM values differed significantly between FEP and Con-Psy, PDP and Con-PD as well as PDN and Con-PD, indicating significant overall grey matter reductions in PD and early schizophrenia. ROC analyses showed that SCN-based classification algorithms allow good classification (AUC~0.80) of FEP and Con-Psy, and fair performance (AUC~0.72) when differentiating PDP from Con-PD. Importantly, best performance was found in partly overlapping networks including the precuneus. Finally, reduced GM volume in SCN with increased variability was linked to increased psychotic symptoms in both FEP and PDP.

Conclusion: Alterations within selected SCNs seem to be related to the presence of psychotic symptoms in both early schizophrenia and PD psychosis, indicating some commonality of underlying mechanisms. Furthermore, results provide first evidence that GM volume within specific SCNs may serve as a biomarker for identifying FEP and PDP.

Introduction

Psychotic symptoms, mostly occurring in the form of hallucinations or delusions, are highly debilitating; they may be treatment-resistant and often lead to poor functional outcomes (Lieberman et al., 2019). They become manifest in different psychiatric and neurological disorders. In schizophrenia, psychotic symptoms constitute one of the core symptoms occurring in a majority of patients, mainly in the form of auditory and visual hallucinations (McCutcheon et al., 2020; Schultz et al., 2007). Likewise, about 50 % of all Parkinson's disease (PD) patients suffer from psychotic symptoms, mainly in terms of visual and minor hallucinations (Lenka et al., 2019) that become more prominent during later stages of treated illness (Ffytche et al., 2017; Pereira et al., 2017). There is a general consensus that altered structure and function of specific, often dopaminergic, brain areas play a relevant role in the pathogenesis of psychotic symptoms (Schultz et al., 2012), but little is known about the commonalities of the substrates underlying psychotic symptoms in schizophrenia and PD. Similarities in neurobiology have been suggested for example in areas of prediction error processing (Ermakova et al., 2018; Garofalo et al., 2017) and salience processing (Knolle et al., 2020, 2018), both linked to alterations in the dopaminergic systems, as well as in mechanisms underlying visual hallucinations (Davies et al., 2018; Zarkali et al., 2019). However, even less is known regarding disease-specific alterations in whole brain grey matter (GM) pattern organization. In psychosis, alterations in GM structure have been studied intensively, with mainly surface-based methods (SBM) and voxel-based morphometry (VBM) (Meda et al., 2008; Schultz et al., 2013, 2010a, 2010b).

Although meta-analyses have failed to arrive at any conclusive summary, they do suggest that alterations in several frontal and temporal regions, as well as the cingulate cortex and a number of subcortical areas, such as the hippocampus and the thalamus are among the most consistent findings (Glahn et al., 2008; Meda et al., 2008; Tanskanen et al., 2010; van Erp et al., 2016; Vos et al., 2015). These alterations seem to already be present in help-seeking patients with an increased clinical risk of developing psychosis (i.e., individuals with at-risk-

mental state for developing psychosis, ARMS) and seem to progress during the course of the illness (Fusar-Poli et al., 2011; Ho et al., 2017; Liloia et al., 2021; Merritt et al., 2021; Smieskova et al., 2010).

Substantial efforts have been made to unravel GM structural alterations related to the presence of psychotic symptoms in PD (Bejr-kasem et al., 2021; Ffytche et al., 2017; Ibarretxe-Bilbao et al., 2010; Janzen et al., 2012; Lenka et al., 2018; Pagonabarraga et al., 2014; Pereira et al., 2017; Ramírez-Ruiz et al., 2007; Shin et al., 2012; Vignando et al., 2022). A recent large-scale mega-analysis applying empirical Bayes harmonisation to identify structural alterations in PD patients with visual hallucinations compared to PD patients without visual hallucinations detected differences of cortical thickness and surface area in a wide-spread network comprising primary visual cortex and its surrounding areas, and the hippocampus (Vignando et al., 2022). The authors concluded that their findings pointed to the involvement of the attentional control networks in the pathogenesis of PD visual hallucinations, in keeping with the attentional network hypothesis as proposed by Shine et al. (2011). Findings from a comprehensive narrative review by Lenka et al. (2015) suggested GM alterations in multiple regions of the brain including, in addition to the primary visual cortex and hippocampus, frontoparietal regions, as well as the thalamus in PD patients with psychotic symptoms compared to those without. Those studies (Lenka et al., 2015; Shine et al., 2011; Vignando et al., 2022) suggest that the GM alterations might be closely associated with the pathogenesis of psychotic symptoms in PD; however, they also illustrate that the overall picture is still heterogeneous, partly due to methodological differences between studies, but most probably because PD is regarded as a multi-systemic brain disease with often diffuse alterations in multiple brain structures and function as well as treatment.

In spite of all heterogeneity, there is a great overlap between those structures reported to be altered in psychosis patients and PD patients with psychotic symptoms, indicating that these alterations might represent a common underlying substrate of psychotic symptomatology.

One of the major challenges when relating GM alterations in PD psychosis to those in schizophrenia is the difference in age of disease onset, with 60-80 years in PD (Xiromerisiou et al., 2010) and early 20s in psychosis patients (Solmi et al., 2021). Given the well-known, strong association between GM changes and age which, in turn, is closely related to illness duration especially in elderly PD patients, age differences usually make it impossible to draw a clear conclusion on psychosis-related commonalities of structural alterations in these two disorders.

Based on these considerations, in the present study we applied source-based morphometry (SBM) in association with receiver operating curves (ROC) analysis, to isolate common GM structural covariance networks (SCN) as a basis for a clinically valid classification of the different patient groups while controlling for the highly relevant influence of age. More specifically, by using this method we aimed to identify SCN-related network characteristics with a similarly good classification performance in ARMS (vs. controls) as well as first episode psychosis (FEP) patients (vs. controls) and PD patients with psychosis (vs. controls, vs. PD patients without psychosis). These network characteristics could then be assumed to be closely related to psychotic symptoms in both diseases and to be independent from age- and stage-of-disease, and overlap between regions may indicate commonality in underlying mechanisms. Of note, since SCN identified by SBM have been shown to overlap with functional brain networks subserving behavioral and cognitive functions they are gaining increasing importance as sensitive substrates for the investigation of brain network organization in neuropsychiatric diseases and are regarded as highly suitable for prediction or classification (Alexander-Bloch et al., 2013). Nonetheless, to the best of our knowledge, there are only a few single studies investigating SCN in patients with psychosis (Gupta et al., 2018; Kašpárek et al., 2010; Xu et al., 2009) and PD patients (Lee et al., 2018; Zhou et al., 2020). Only one of these employed SCN-based classification in PD patients without psychotic symptoms, and reported an overall moderate SCN-related classification accuracy (Lee et al., 2018). Thus, the present

study aimed at investigating SCN-related GM alterations in patients with first episode psychosis, ARMS as well as PD patients with and without psychotic symptoms to evaluate their suitability to identify psychosis-related characteristics taking into account age as a possible confounder. Finally, we aimed at exploring SCN-associated GM pattern organization with regard to disease-specific characteristics in whole brain GM patterns and their clinical relevance.

Methods

Participants

In this study, we used a cross-sectional dataset to investigate early schizophrenia (i.e., and) and Parkinson's disease, combining imaging data from six original projects: the Early Psychosis Human Connectome Project (EP-HCP, <https://www.humanconnectome.org/study/human-connectome-project-for-early-psychosis>), an early schizophrenia dataset collected in Cambridge, UK (Ermakova et al., 2018; Knolle et al., 2018), an at-risk for psychosis dataset collected in Singapore (Dandash et al., 2014), and three PD psychosis datasets, from Cambridge, UK (Garofalo et al., 2017; Knolle et al., 2020), Sydney, Australia (Shine et al., 2015) and Bangalore, India (Lenka et al., 2018). The final dataset included 722 participants, consisting of: individuals with an at-risk mental state for developing psychosis (ARMS), showing sub-threshold positive and negative symptoms of schizophrenia; individuals with a first episode of psychosis (FEP), consisting of first episode of schizophrenia and first episode of schizoaffective disorder; and healthy controls matching FEP and ARMS (Con-Psy), PD without psychosis (PDN), PD with psychosis (PDP), healthy controls matching PDN and PDP (CON-PD). Various clinical scores were recorded. Symptoms related to psychosis and schizophrenia were measured using the Comprehensive Assessment of At Risk Mental States (CAARMS) in ARMS (Yung et al., 2005), the Positive and Negative Syndrome Scale (PANSS) in FEP (Kay et al., 1987). In PD, the Hoehn and Yahr scale (Hoehn and Yahr, 1998) was used

to assess the disease stage, and the Unified Parkinson's Disease Rating Scale (UPDRS, (Forsaa et al., 2010)) item 2 to assess psychotic symptoms and hallucinations. In PD, both the Mini-Mental State Examination (MMSE, (Folstein et al., 1983)) and the Montreal Cognitive Assessment (MoCA, (Nasreddine et al., 2005)) were used to assess cognitive decline. MoCA scores were converted to MMSE using a validated conversion table (Yang et al., 2021). Demographic and clinical details, as well as corresponding statistics are described in Table 1. Ethical approval was obtained from local ethical committees for each original studies: The studies were approved by the Cambridgeshire 3 National Health Service research ethics committee (Garofalo et al., 2017; Knolle et al., 2020); by the ethics review board of the Singaporean National Healthcare Group (Dandash et al., 2014); by the ethical committee of the University of Sydney (Shine et al., 2015); and by the Institute Ethics Committee of NIMHANS, Bangalore (Lenka et al., 2018). Furthermore, freely available data was used from the Human Connectome Projects (<https://www.humanconnectome.org/study/human-connectome-project-for-early-psychosis>), for which ethical approval was waived by the Ethical Commission Board of the Technical University Munich. All subjects gave written informed consent in accordance with the Declaration of Helsinki.

Table 1. Group demographics and clinical scores of the final sample.											
Psychosis											
	Con-Psy				ARMS			FEP			Group comparison
	Cambri dge	HCP	Singa pore	Total	Cambri dge	Singapore	Total	Cambri dge	HCP	Total	KW- χ^2 /P- χ^2 , χ^2 (df), p-value
n	49	57 (2x*)	39 (***)	145	32	74 (****)	106	23	123	146	n/a
Age, mean/SD (range)	23.18/3.37 (18-33)	24.88-4.08 (17-36)	22.51-3.96 (14-29)	23.67/3.93 (14-36)	21.44/3.29 (18-29)	21.46/3.43 (14-29)	21.45/3.38 (14-29)	22.78/5.18 (17-32)	22.84/3.86 (17-35)	22.83-4.07 (17-35)	22.15(2), <0.001
Sex, female	23	20	16	59	13	22	35	10	48	58	1.72(2), 0.4
CAARM S	n/a				16.56/7.57 (4-29)	16.05/7.47 (3-38)	16.21/7.47 (3-38)	-	-	-	n/a
PANSS	n/a				20.13/5.46 (14-38)	-	20.13/5.46 (14-38)	25.62/7.67 (16-51)	49.91/11.04 (30-78)	46.10/13.78 (16-78)	n/a
Medicated (any current antipsychotic treatment), yes (N)					0 (1 missing)	2	2	1 (1 missing)	90 (2 missing)	91	n/a
Parkinson's Disease											

	Con-PD				PDP				PDN				
	Cambri dge	Bangalor e	Sydn ey	Total	Cambri dge	Bangalo re	Sydne y	Total	Cambri dge	Bangalore	Sydney	Total	
n	25 (***)	41	22	88	15	42	35 (**, ** *)	92	28	49 (*)	68 (2x*, ** **)	145	n/a
Age	62.2/5. 92 (46- 72)	55.42/5.2 3 (44-66)	67.73 /8.17 (52- 87)	60.42/ 8.03 (44- 87)	61.93/7. 47 (44- 73)	58.43/8. 54 (38- 69)	65.83/ 7.02 (52- 82)	61.82/ 8.45 (38- 82)	63.07/9. 58 (43- 74)	57.87/6.8 4 (42-70)	66.84/8. 66 (45- 87)	63.08/9. 14 (42- 87)	7.27(2), 0.03
Sex, female	13	10	12	35	7	8	12	27	10	3	16	29	10.74 (2), 0.005
Hoehn& Yahr mean/SD (range)	n/a				1.71/0.9 1(1-3)	2.35/0.2 5(2-3)	2.09/0. 46 (1- 3)	2.16/0. 53 (1- 3)	1.48/0.9 0(1-5)	2.32/0.30(1.5-3)	2.11/0.7 6(1-5)	2.08/0.7 2(1-5)	n/a
UPDRS, modified Psychosis Severity Scale, mean/SD (range)	n/a				1.53/0.7 8 (1-3)	2.21/1.2 2 (1-4)	1.37/0. 65 (1- 3)	1.78/1. 04 (1- 4)	n/a				n/a
MMSE, mean/SD (range)	29.5/07 9 (27- 30)	29.15/ 0.91 (27- 30)	29.74/0 .56 (28- 30)	29.37/ 0.84 (27-30)	28.00/1. 75 (24- 30)	28.32/1. 47 (26- 30)	28.74/ 1.28 (7-30)	28.37/ 1.49 (24- 30)	28.74/1.66 (25-30)	28.06/1. 30 (25- 30)	29.40/1.05 (27-30)	28.70/ 1.42 (25- 30)	19.38 (2), <0.001
Medicate d (Levodopa /	n/a				15/0	42/0	34/0	91/0	28	49	63	140	n/a

antipsychotic), yes (N)										
Exclusion criteria from original data: * Missing files; ** faulty scan; *** listed multiple times; **** excluded during segmentation; KW- χ^2 = Kruskal-Wallis rank sum test, P- χ^2 =Pearson's Chi-squared test; bold =significant										

MRI acquisition

T1-weighted structural images were acquired for all individuals, at a field strength of 3T. The different MRI sequences are detailed in Supplementary Table 1.

Image preprocessing

T1-weighted structural images were segmented into grey matter, white matter, and CSF using Statistical Parametric Mapping (SPM12, <http://www.fil.ion.ucl.ac.uk/spm/software/spm12/>), running on MATLAB version 2018b. Diffeomorphic Anatomical Registration through Exponentiated Lie Algebra toolbox (DARTEL) (Ashburner, 2007) was applied to grey matter images. This procedure created a sample-specific template representative of all 722 subjects by iterative alignment of all images. Subsequently, the template underwent non-linear registration with modulation for linear and non-linear deformations to the MNI-ICBM152 template. Each participant's grey matter map was then registered to the group template and smoothed with an 8 mm³ isotropic Gaussian kernel.

Independent component analysis

As a first step, all individually modulated and smoothed grey matter maps were concatenated to create a 4D file, which served as the basis for the independent component analysis (ICA). To ensure that only grey matter voxels were retained for the ICA, an absolute grey matter threshold of 0.1 was applied to all images. ICA was performed using the Multivariate Exploratory Linear Optimized Decomposition into Independent Components (MELODIC) method (<http://fsl.fmrib.ox.ac.uk/fsl/fslwiki/MELODIC>) as implemented in the FSL analysis package (Jenkinson et al., 2012) version 6.0. To derive data-driven population-based networks of grey matter covariance, the ICA was performed on all subjects (n=722) thus identifying common spatial components based on the covariation of grey matter patterns across all participants. In line with previous work which employed similar methods, we chose 30 components (Koch et

al., 2021; Pichet Binette et al., 2020; Zeighami et al., 2015) which allows for the investigation of a relatively detailed organization and represents one of the most frequent choices in resting state ICA analyses. To avoid spurious results, each of the 30 components or 30 morphometric networks was thresholded at $z = 3.5$ and binarized (Beckmann et al., 2009; Koch et al., 2021; Pichet Binette et al., 2020). Finally, each participant's grey matter volume was extracted from each of the 30 morphometric networks.

Statistical analyses

Grey matter volume

To investigate group differences in GM volume across brain networks, we used repeated-measures ANCOVA with grey matter volume in the 30 networks as within-subjects factor and group as between-subjects factor. Separate repeated-measures ANCOVAs with GM volume in the 30 networks as within-subjects factor and group as between-subjects factor were performed to compare Con-Psy with FEP, Con-Psy with ARMS, FEP with ARMS, Con-PD with PDN, Con-PD with PDP, and PDN with PDP. To investigate age-related changes in GM volume, an additional repeated-measures ANCOVA with grey matter volume in the 30 networks, as a within-subjects factor and group as between-subjects factor, was performed to compare young (i.e., Con-Psy) with elderly (i.e., Con-PD) controls. Given a significant positive correlation between GM volume and total intracranial volume (TIV) (Pearson's $r=0.50$, $p<0.001$), a significant negative correlation between GM volume and age (Pearson's $r=-0.72$, $p<0.001$), as well as significant GM differences between males and females ($t(720)=3.62$, $p<0.001$) and scan sites ($F(4,717)=122.92$, $p<0.001$), we entered age, TIV, gender and scan site as covariates in all repeated-measures ANCOVAs. As a prove of principle analysis, we compared young against elderly healthy controls. The young healthy controls are represented by Con-Psy and the elderly healthy controls are reflected by Con-PD. For this comparison age was removed as a covariate.

We applied binary logistic regression models to examine the classification performance of the morphometric networks for those groups showing a significant group difference in the ANCOVA. Previous studies showed that highly non-linear algorithms do not improve predictive performance when building a classifier based on image-derived brain data and for data sets in the size of the current one (Schulz et al., 2020). Therefore, a logistic regression model was used. The logistic regression models were controlled for age, gender, TIV and scan-site for all group comparisons, except for young versus elderly healthy controls (Con-Psy vs. Con-PD), which excluded age as a covariate. We then performed receiver operating characteristic (ROC) analyses, and assessed the area under the curve (AUC) to evaluate the classification performance of each network. Logistic regressions, AUC and ROC analysis were computed using the glm and roc functions of the r-packages ‘stats’ and pROC (Robin et al., 2011) respectively. We split the data in a training and in a validation-dataset using a 60:40 ratio, to account for the different group sizes and to avoid overfitting in the model evaluation. We generated the logistic regression model using the training data, and tested the model using the validation data. AUC thresholds for classification were defined as follows: excellent = 0.90–1, good = 0.80–0.89, fair = 0.70–0.79, poor = 0.60–0.69, or fail = 0.50–0.59 (Safari et al., 2016).

Whole-brain grey matter pattern

To investigate potential group differences in grey matter pattern similarity (i.e., homogeneity) for those groups showing a significant group difference in the ANCOVAs, we correlated the grey matter volume in the 30 morphometric networks of each individual to the grey matter volume in the 30 brain networks of every other subject of the respective group (Koch et al., 2021; Pichet Binette et al., 2020). Homogeneity indicates the similarity or correlation of the whole-brain network profile from one subject with the whole-brain network profile of all other subjects in the group. To investigate whether groups differed in grey matter pattern similarity,

we computed the Fligner-Killeen test of homogeneity of variances, using the `fligner.test` function of the R package ‘stats’.

Intra-network variability

Finally, for those groups showing a significant group difference in the ANCOVAs, we investigated potential differences in the intra-network variability of grey matter volume between the groups by calculating the coefficient of variation (i.e., standard deviation divided by mean of grey matter volume) in each of the 30 networks. Thus, this parameter indicates the similarity or variability of the grey matter volume of each network between subjects. We calculated the modified signed-likelihood ratio (MSLR) test using the `mslr` function of the R-package ‘cvequality’ (<https://cran.r-project.org/web/packages/cvequality/index.html>) version 0.1.3 (Marwick and Krishnamoorthy, 2019) with 100000 simulations to test for significant differences in the coefficients of variation of grey matter volume between groups.

Correlations with clinical scores

We computed Pearson correlations between grey matter volume of individual NWs (which showed significant differences in variability in group comparisons) and clinical scores, PANSS total and MMSE for FEP and PDP, respectively. We furthermore investigated associations between grey matter volume with the MDS-UPDRS Item 2 “Hallucination and Psychosis” score in PDP, which is a categorical score, using the Kruskal-Wallis test.

Results

The 30 morphometric networks are shown in Figure 1 and their anatomical description as determined by the probability maps implemented in the JuBrain Anatomy toolbox (Eickhoff et al., 2005) can be found in the Supplementary Materials. The majority of morphometric networks showed a bilateral, mainly homotopic distribution. The 30 networks described clearly

involve separate areas consisting of a large part of subcortical regions. Mean GM values extracted from each network and group are plotted in **Figure 1**.

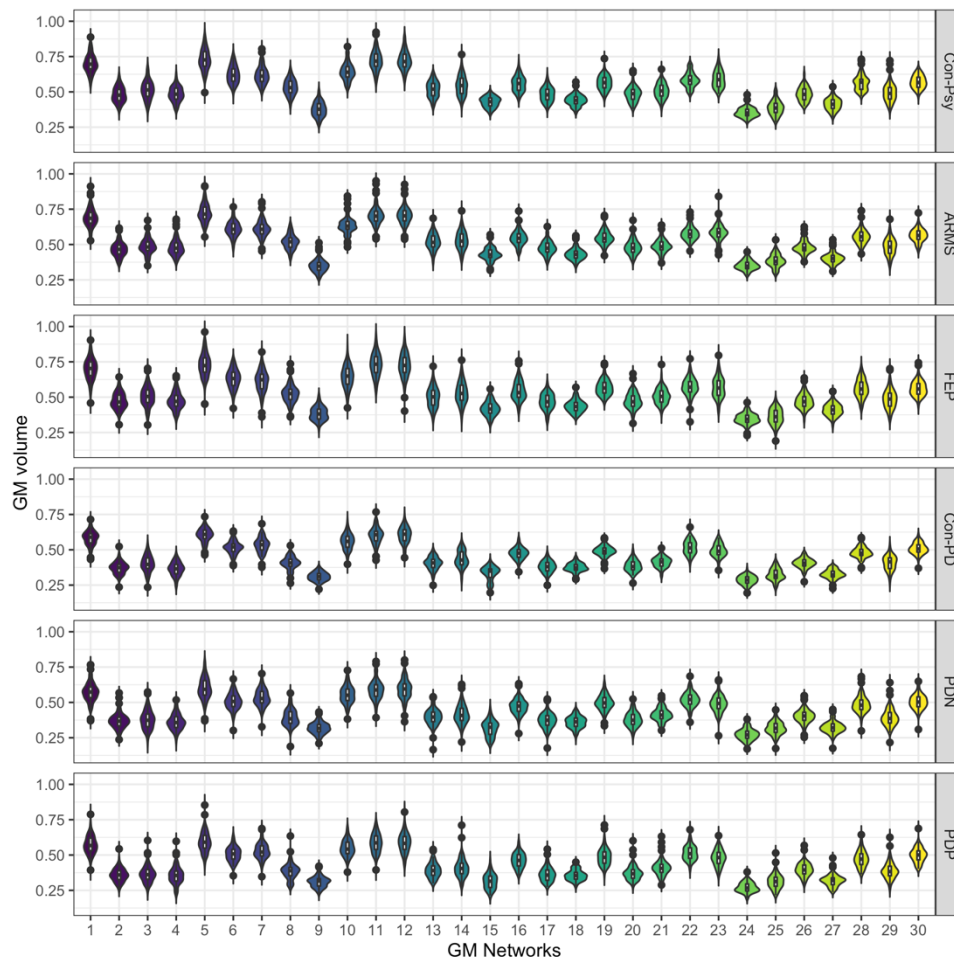


Figure 1. Mean GM values extracted from the 30 networks presented by group. Violin plots represent the median (black dot), the interquartile range (white bar in the center), the lower and upper adjacent values, and the sample distribution for each NW and group.

Grey matter volume differences between groups

Results of the repeated-measures ANCOVA, with GM volume of the 30 networks as the within-subject factor, group as the between-subject factor and age, TIV, gender and scan site as covariates, showed a significant main effect of group ($F(1, 712)=11.55, p<0.001$), significant main effect of network-related GM volume ($F(8, 5826)=33.87, p<0.001$), and significant interactions of network-related GM volume with age ($F(8, 5826)=12.79, p<0.001$), TIV ($F(8,$

5826)=36.98, $p<0.001$), gender ($F(8, 5826)=5.29$, $p<0.001$), scan site ($F(8, 5826)=8.78$, $p<0.001$) and group ($F(41, 5826)=2.23$, $p<0.001$). All between-subject effects were Greenhouse-Geisser corrected due to a significant result in the Mauchly sphericity test. The repeated-measures ANCOVA comparing FEP with Con-Psy showed a significant main effect of group ($F(1, 285)=10.79$, $p<0.001$) indicating there was a significantly smaller GM volume in patients compared to controls, a significant main effect of network-related GM volume ($F(7, 2073)=12.76$, $p<0.001$), and significant interactions of network-related GM volume with age ($F(7, 2073)=2.33$, $p<0.02$), TIV ($F(7, 2073)=8.09$, $p<0.001$), and scan site ($F(7, 2073)=6.77$, $p<0.001$). The interaction between network-related GM volume and group ($F(7, 2073)=1.52$, n.s.) as well as with gender ($F(7, 2073)=1.57$, n.s.) was not significant. Again, all between-subject effects were Greenhouse-Geisser corrected due to a significant result in the Mauchly sphericity test. The repeated-measures ANCOVA comparing Con-PD with PDN showed a significant main effect of group ($F(1, 227)=7.30$, $p<0.007$) indicating a significantly smaller GM volume in patients compared to controls, a significant main effect of network-related GM volume ($F(8, 1761)=19.32$, $p<0.001$), and significant interactions of network-related GM volume with age ($F(8, 1761)=14.89$, $p<0.001$), TIV ($F(8, 1761)=16.63$, $p<0.001$), gender ($F(8, 1761)=3.06$, $p<0.002$) and scan site ($F(8,1761)=9.91$, $p<0.001$). The interaction between network-related GM volume and group was not significant ($F(8, 1761)=1.91$, n.s.). Again, all between-subject effects were Greenhouse-Geisser corrected due to a significant result in the Mauchly sphericity test. The repeated-measures ANCOVA comparing Con-PD with PDP showed a significant main effect of group ($F(1, 174)=12.56$, $p<0.001$) with a significantly smaller GM volume in patients compared to controls, a significant main effect of network-related GM volume ($F(8, 1322)=16.78$, $p<0.001$), and significant interactions of network-related GM volume with age ($F(8, 1322)=7.85$, $p<0.001$), TIV ($F(8, 1322)=6.99$, $p<0.001$), gender ($F(8, 1322)=4.51$, $p<0.001$) and scan site ($F(8, 1322)=11.35$, $p<0.001$). The interaction between network-related GM volume and group was again not significant ($F(8, 1322)=1.85$,

n.s.). All between-subject effects were Greenhouse-Geisser corrected due to a significant result in the Mauchly sphericity test. Finally, the repeated-measures ANCOVA comparing Con-Psy with Con-PD showed a significant main effect of group ($F(1, 228)=279.8, p<0.001$) indicating there was a significantly smaller GM volume in older compared to younger subjects, a significant main effect of network-related GM volume ($F(8, 1843)=10.52, p<0.001$), and significant interactions of network-related GM volume with TIV ($F(8, 1843)=9.64, p<0.001$), gender ($F(8, 1843)=2.55, p<0.009$), scan site ($F(8, 1843)=5.67, p<0.001$) and group ($F(8, 1843)=23.54, p<0.001$) with multivariate post-hoc analyses showing significant group differences (i.e., smaller GM values in older compared to younger subjects) for all networks. Again, all between-subject effects were Greenhouse-Geisser corrected due to a significant result in the Mauchly sphericity test. The repeated-measures ANCOVA comparing FEP with Con-PD showed a significant main effect of group ($F(1, 228)=5.54, p<0.02$) indicating a significantly smaller GM volume in elderly controls compared to FEP, a significant main effect of network-related GM volume ($F(7, 1566)=13.29, p<0.001$), and significant interactions of network-related GM volume with age ($F(7, 1566)=3.86, p<0.001$), TIV ($F(7, 1566)=7.97, p<0.001$), gender ($F(7, 1566)=2.34, p<0.02$), scan site ($F(7,1566)=6.45, p<0.001$) and group ($F(7, 1566)=2.16, p<0.04$) with multivariate post-hoc analyses showing significant group differences (i.e., smaller GM values in elderly controls compared to patients) in networks 2, 8, 13, 15, 16, 17, 18, 23, 24, 26, 29, 30. Again, all between-subject effects were Greenhouse-Geisser corrected due to a significant result in the Mauchly sphericity test. All other group comparisons did not reveal any significant results.

The AUCs from the ROC analyses, representing the overall classification performance of each population-derived morphometric network to differentiate the different groups, are presented in **Figure 2** and specific diagnostics are presented in **Supplementary Table 2**. Classification performances differed depending on group comparison. The Con-Psy were differentiated from

FEP with an overall good performance in the training and in the validation (AUCs average: 0.80). The Con-PD were differentiated from PDN with a fair performance (AUCs average: 0.72) in the training set and a poor performance (AUCs average: 0.65) in the validation. Similarly, Con-PD were differentiated from PDP with a fair performance (AUCs average: 0.71) in the training, but also a fair performance (AUCs average: 0.71) in the validation. Classification of elderly (Con-PD) from young controls (Con-Psy), however, produced a mainly good to excellent performance in the training set (AUCs average: 0.94) and validation (AUCs average: 0.89; see ROC curves in Figure 2). These results indicate that morphometric networks are suitable parameters to differentiate Con-Psy from FEP, as well as younger (Con-Psy) from elderly controls (Con-PD), and to a lesser degree also for the differentiation of Con-PD from PDP. The best classifying networks for the comparison FEP vs Con-Psy and PDP vs Con-PD are presented in **Figure 3**, showing an overlap in the NW14, the precuneus.

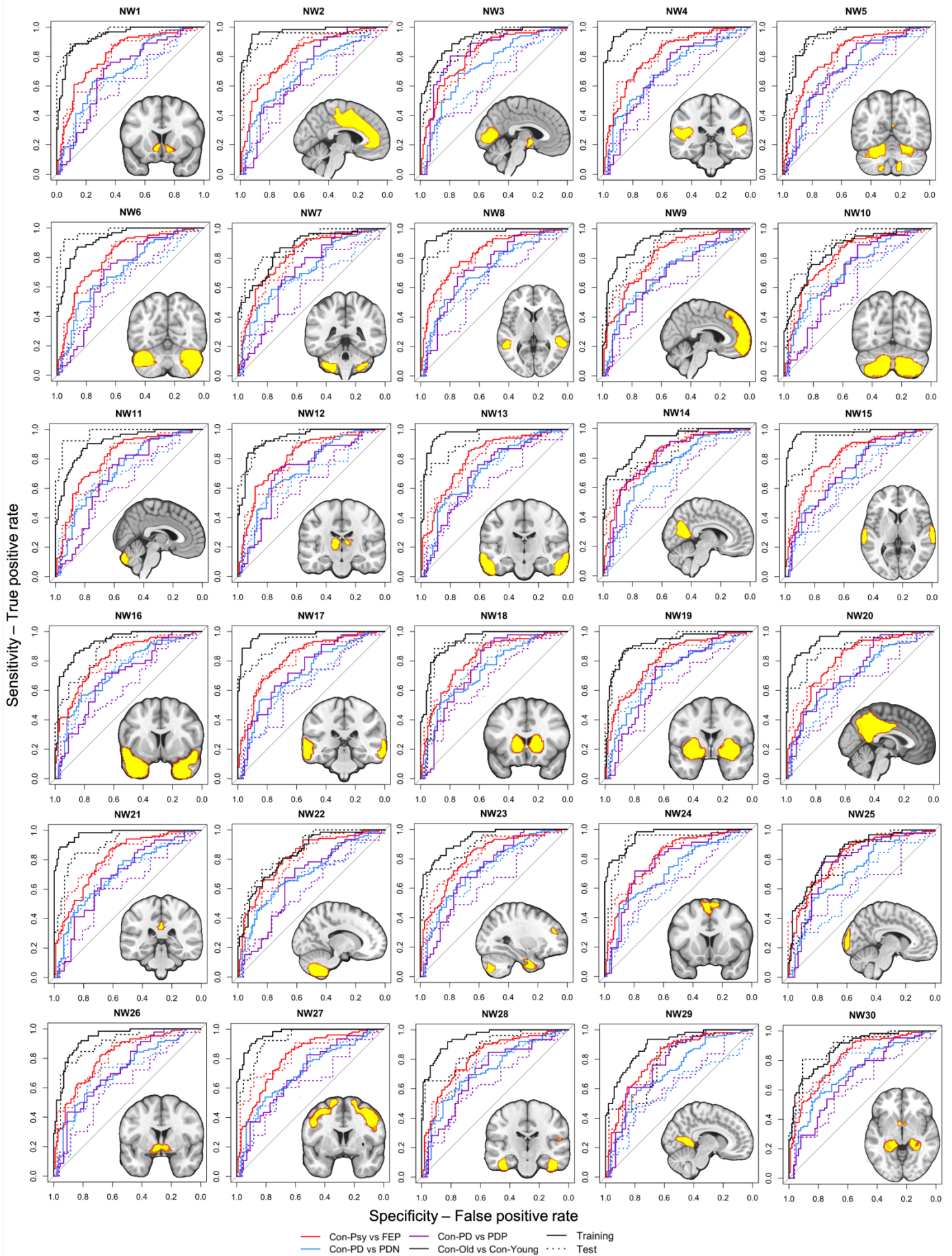


Figure 2. Classification performance of group differentiation. The 30 anatomically derived morphometric areas from the ICA networks thresholded at $z=3.5$ and overlaid on the ROC curves for each group differentiation. Model training results are presented in solid lines, model evaluation in dotted lines. Black ROC: Con-Psy vs. Con-PD, red ROC: Con-Psy vs. FEP, blue ROC: Con-PD vs PDP; purple ROC: Con-PD vs. PDN.

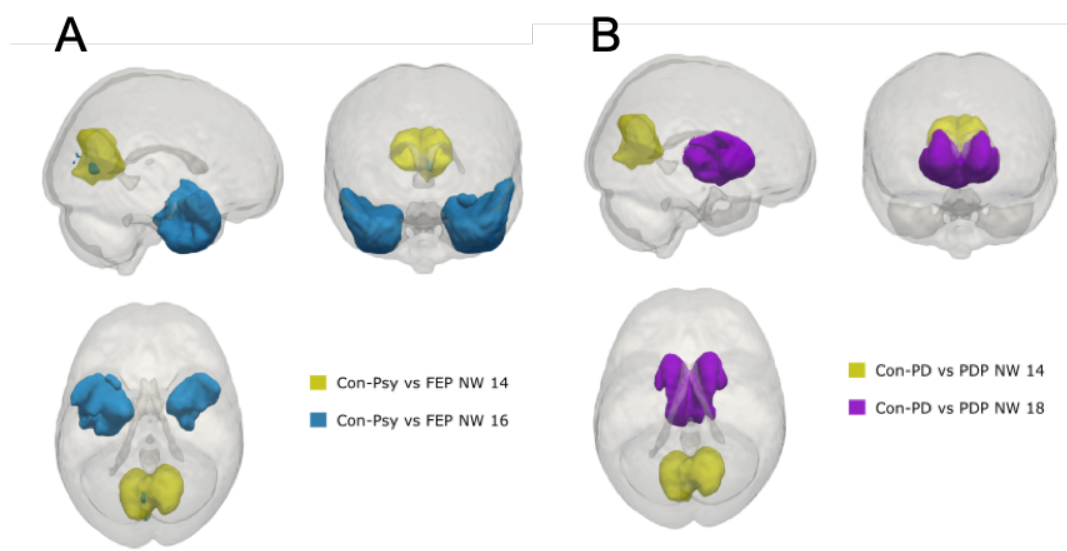


Figure 3. Best classifying networks for FEP and PDP versus controls, with overlap in the precuneus. A. NW14 and NW16 produced the best classification performance ($AUC=0.82$) to discriminate FEP from Con-Psy; these NWs consist of the precuneus, temporal pole, parahippocampal gyrus, the orbitofrontal cortex, and the lingual gyrus. B. NW 14 and 18, consisting of the precuneus and the thalamus, produced the best classification performance ($AUC>0.73$) to discriminate PDP from Con-PD.

Whole-brain grey matter pattern differences between groups

To investigate potential differences in whole-brain GM pattern between groups, we assessed GM pattern similarity (i.e., homogeneity) by correlating the GM volume in the 30 morphometric networks of each individual with the GM volume in the 30 brain networks of every other subject (**Figure 4**). These correlations indicate how similar one's whole-brain organization is with every other individual of the respective group. We compared the

homogeneity of variances between groups (Con-Psy vs. FEP ($\chi^2(59)=689.59$, $p<0.001$); Con-Psy vs. ARMS ($\chi^2(59)=440.69$ $p<0.001$); Con-PD vs. PDN ($\chi^2(59)=532.95$, $p<0.001$); Con-PD vs. PDP ($\chi^2(59)=417.01$, $p<0.001$)). All group comparisons indicated there was a lower homogeneity in the respective patient groups.

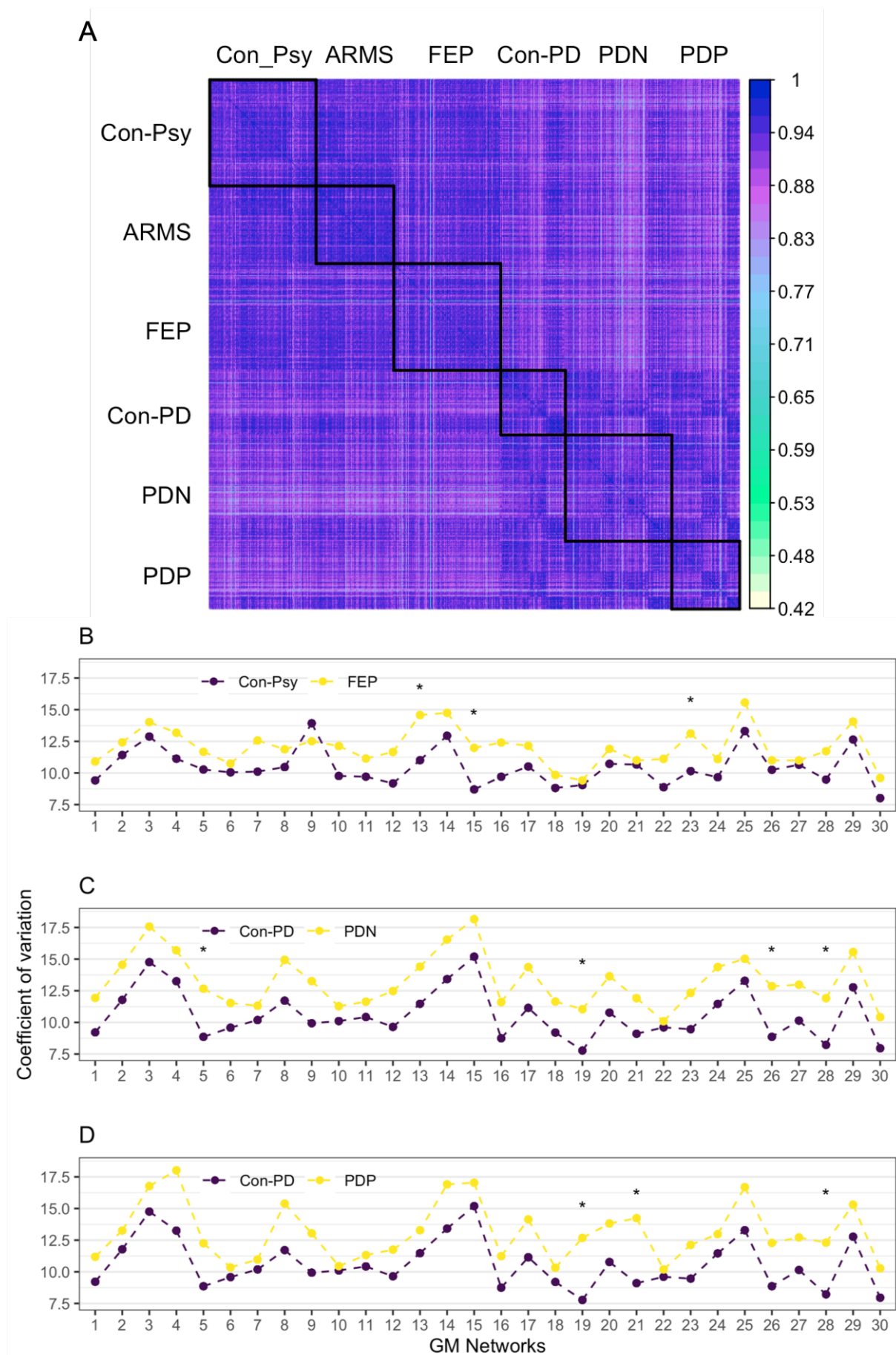


Figure 4. A. Homogeneity of GM volume per network and individual, across all groups. The

GM volume of each network for each individual is correlated with the GM volume of each NW of any other individual. Lighter colours indicate lower correlations. Black squares indicate groups. B-D. Network-specific variability as assessed by the coefficient of variation for different group comparisons: B) Con-Psy versus FEP; C) Con-PD vs. PDN; D) Con-PD vs. PDP. Group differences were investigated using the modified signed-likelihood ratio (MSLR) test; * significant at $p < 0.002$ corrected for multiple comparisons (i.e., 30 networks).

Differences in intra-network variability between groups

We assessed differences in the coefficients of variation of GM volume between groups using the MSLR test (**Figure 4**). There was a highly significant group effect between psychosis controls and FEP ($\chi^2(1)=18.57$, $p < 0.0001$), Con-PD and PDN ($\chi^2(1)=15.63$, $p < 0.0001$), as well as Con-PD and PDP ($\chi^2(1)=15.61$, $p < 0.0001$), indicating a higher variability in all patient groups across all networks. We furthermore assessed differences for each network using a Bonferroni corrected threshold for multiple comparisons ($p < 0.002$), see Supplementary Table 3 for details. In summary, for the comparison between Con-Psy and FEP, we found significant differences in NW13, NW15 and NW23; between Con-PD and PDN in NW5, NW19, NW26, and NW28; and between Con-PD and PDP in NW19, NW21, and NW 28. All differences were based on an increased coefficient of variation (i.e., variability) in patients relative to healthy controls (see **Figure 4**).

Association with clinical scores

In FEP, we found a significant correlation between the GM volume of NW23, and PANSS ($r = -0.21$, $p = 0.017$, corrected for multiple comparison), indicating reduced GM volume with higher clinical scores. Correlations between NW13, and NW15 and clinical scores did not reveal any significant effects ($p = 0.1-0.17$). Similarly, in PDP, we found a significant interaction between the GM volume of both NW21 and NW28 and psychosis severity (Hallucination and Psychosis, MDS-UPDRS, item 2; $\chi^2 = 11.26$, $p = 0.0104$, $\chi^2 = 11.31$, $p = 0.0102$, respectively and corrected

for multiple comparison), which showed reduced GM volume with increasing psychosis severity. Furthermore, in PDN, but not in PDP, we found a significant correlation between the GM volume of NW5, 19, 26, 28, and MMSE in PDN, corrected for multiple comparison ($r=0.24$, $p=0.0085$; $r=0.23$, $p=0.012$; $r=0.26$, $p=0.0053$, $r=0.3$, $p=0.00092$, respectively). The correlation implies lower GM volume with lower cognitive scores. In Con-PD, the correlation between GM volume of NW19 and 28 and MMSE produced a trend towards significance for the GM ($r=0.26$, $p=0.021$, $r=0.23$, $p=0.045$, respectively), indicating the same relationship as in PDN – greater GM volume with higher cognitive scores. Importantly, Con-PDs show a smaller range of cognitive scores, pointing towards less cognitive decline. All clinical associations are presented in **Figure 5**.

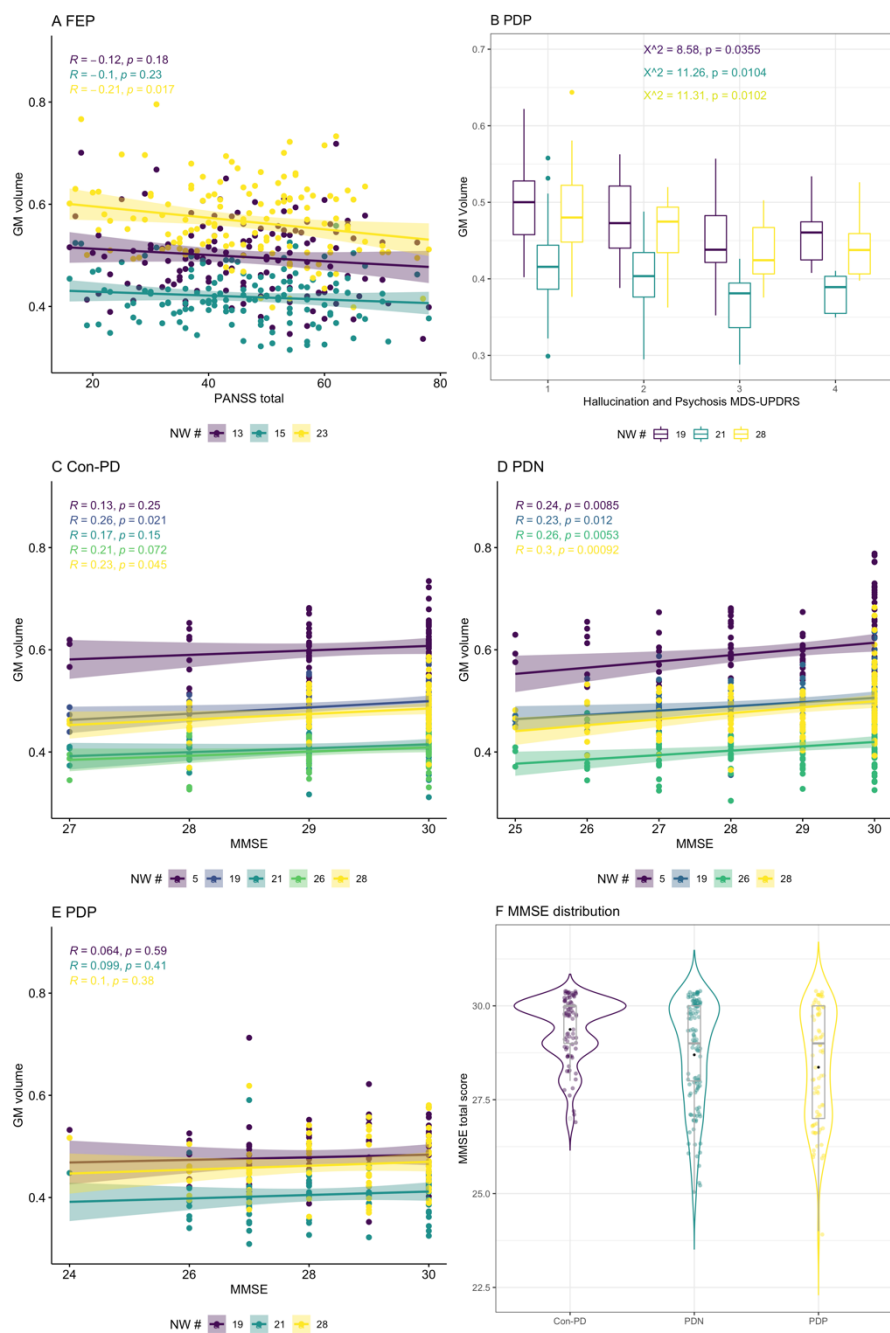


Figure 5. Correlation of clinical and cognitive scores with specific GM NWs which showed significantly different variability between controls and patients. A. shows a significant negative correlation between GM NW 23 and PANSS total, indicating lower GM volume with higher symptoms in FEP. B. reveals a significant interaction between both GM NWs, 21 and 28, and the Hallucination and Psychosis, MDS-UPDRS score, also showing reduced GM volume with higher psychotic symptoms. C/D/E show correlations of GM NWs and MMSE in Con-PD (C), PDN (D) and PDP (E). While there are significant positive correlations in PDN and Con-Psy, indicating higher GM volume with less cognitive decline; there is no such correlation in PDP (E). D. the violin plot shows the distribution of the MMSE scores across

PDP, PDN and Con-PD, the box plots show individual scores, the median as a line and the mean as a dot. All analyses are controlled for multiple comparisons.

Discussion

This study aimed at investigating transdiagnostic GM differences and similarities between early schizophrenia and Parkinson's Disease (PD) psychosis, in a unique sample that controls for age differences and disease progression, potentially shedding light on the development of psychotic symptoms in schizophrenia and PD. We present an SBM analysis, demonstrating widespread differences between patients and controls, with a general reduction of grey matter (GM) volume across the morphometric networks (NW), with a reduced inter-subject homogeneity, and increased intra-network variability in patients with both primary disorders. Importantly, we did not find any differences in GM volume, the homogeneity or variability between early schizophrenia and PD psychosis. Furthermore, data revealed that morphometric network-based classification algorithms show good performance when differentiating individuals with early schizophrenia (FEP) from healthy controls (Con-Psy), and a fair performance when differentiating individuals with PD psychosis (PDP) from healthy controls (Con-PD), with the best performance in partly overlapping clusters.

Global group differences in grey matter pattern

The ICA analysis identified 30 morphometric networks which clearly circumscribe cortical and subcortical areas using individual GM maps of all subjects. The structural covariance analysis revealed significant differences between patients and controls across both disorders - FEP vs. Con-Psy, PDN vs Con-PD, PDP vs. Con-PD; the comparison between psychosis-risk (ARMS) and Con-Psy, as well as comparisons between the patient groups (FEP vs PDP, FEP vs PDN, ARMS vs FEP, ARMS vs PDP, ARMS vs PDN, and PDP vs PDN) remained non-significant. GM alterations across the whole brain found in FEP compared to Con-Psy are in line with the literature reporting GM reductions across large areas of the brain (Ivleva et al., 2012; Lieberman

et al., 2019; Radua et al., 2012), including areas such as the anterior cingulate cortex (ACC), thalamus, insula and inferior frontal gyrus (IFG), superior temporal gyrus (STG), middle temporal gyrus (MTG), precuneus, and dorsolateral prefrontal cortex (DLPFC). They are likewise in line with previous studies using SBM in patients with psychosis (Gupta et al., 2018; Kašpárek et al., 2010; Li et al., 2019; Xu et al., 2009). These studies reported decreased grey matter volume in mainly frontal, temporal and parietal regions, although it should be noted that methodological details of the SBM approaches differed between the studies and only two of those (Kaspárek et al., 2010; Li et al., 2019) investigated patients with a first episode of psychosis. Similarly, we found global, not NW specific, reductions of GM volume across all NW in PDP and PDN compared to Con-PD. Psychosis, especially hallucinations in PD are associated with GM alterations in temporal and visual areas compared to non-psychotic PD patients (Bejr-kasem et al., 2021) and in the dorsal visual stream, the midbrain, cerebellar and limbic and paralimbic structures compared to healthy controls (Lenka et al., 2015; Pagonabarraga et al., 2014; Vignando et al., 2022). In this study, the structural covariance analysis did not reveal differences between PDN and PDP, as PD-associated changes might be prevailing. GM alterations, in PD in general, have been reported in fronto-temporo-parietal and occipital areas, as well as subcortical areas like the caudate, the putamen and limbic areas (Jia et al., 2015; Lee et al., 2013, 2018; Xuan et al., 2019; J. Zhang et al., 2015). Interestingly, there are no overall differences between FEP and PDP or PDN in the age-corrected GM NWs, potentially indicating similarities in structural changes (Farrow et al., 2005; Lin et al., 2019). In our study, we did not find GM differences between ARMS and Con-Psy, despite several studies indicating such differences, especially in the insula, prefrontal and temporal brain regions (Borgwardt et al., 2007; Meisenzahl et al., 2008; Takahashi et al., 2009; Witthaus et al., 2009). The following considerations may explain the lack of findings in our sample. First of all, GM changes especially in temporal and frontal areas have been linked to symptom severity particularly attenuated psychotic symptoms (Cropley et al., 2016), our sample of ARMS

individuals is relatively mildly affected. Secondly, our sample combines European and Asian individuals (ratio 1:2); while all studies that report grey matter differences assess European, North-American or Australian participants (Borgwardt et al., 2007; Meisenzahl et al., 2008; Takahashi et al., 2009; Witthaus et al., 2009), a recent study reported no regional grey matter differences in an Asian sample (Sakuma et al., 2018), discussing lower prevalence of illegal drug use as a potential reason (Klauser et al., 2015). While this might provide a potential explanation, the general heterogeneity of this group might be more likely. Also, in the ARMS group, we did not differentiate between those who transition, or have an increased genetic risk, and those who remit. A recent meta-analysis (Merritt et al., 2021), however, showed that grey matter differences are more pronounced not only in high-risk individuals who transition into frank psychosis but also in those with a genetic risk compared to those who remitted, for whom it may also normalise. Thirdly, a recent meta-analysis in ARMS reported both increased and decreased GM volumes in different regions compared to healthy controls (Ding et al., 2019). Given these inconsistent findings, it is possible that we did not find a significant overall (i.e., across all NW) group difference in GM volume in the current study for these reasons. As a proof of concept, we observed a strong decrease of GM volume, between young individuals and elderly individuals across all networks; as well as good to excellent classification performances (Pichet Binette et al., 2020).

ROC-Classification using grey matter networks for FEP and PDP

Can we use the GM volume NWs to identify individuals with early psychosis (i.e., FEP) or Parkinson's psychosis (i.e., PDP)? Using logistic regression analysis with receiver operator characteristics, we found that morphometric NW patterns are suitable for classification of FEP and Con-Psy with an overall good performance ($AUC > 0.8$). Networks that discriminated best (NW 3, 8, 14, 16, 21, 30) included the thalamus, putamen, insula, hippocampus, amygdala, n. accumbens, precuneus, temporal pole, parahippocampal gyrus, orbitofrontal cortex, posterior cingulate gyrus, and lingual gyrus. Those regions are highly relevant for the psychopathology

in psychosis, and structural alterations are well described in these areas (de Moura et al., 2018; Glahn et al., 2008; Meda et al., 2008; Tanskanen et al., 2010; van Erp et al., 2016; van Haren et al., 2016; Veijola et al., 2014; Vos et al., 2015; Wood et al., 2001). Also functional alterations have been detected in those areas, with regard to functional connectivity in general and in the default and salience networks specifically (Alloza et al., 2020; Avram et al., 2020; Du et al., 2018; Jukuri et al., 2013; Littow et al., 2015; Manoliu et al., 2014; Palaniyappan and Liddle, 2012), as well as cognitive, reward and salience processing (Boehme et al., 2015; Borgan et al., 2021; Ermakova et al., 2018; Haarsma et al., 2020; Katthagen et al., 2020; Kesby et al., 2021; Knolle et al., 2018).

Importantly, GM NWs also allowed fair classification performance when discriminating PDP from Con-PD ($AUC > 0.73$). Brain regions of the best classifying networks (NW 8, 14, 18, 19, 23, 24, 28) include the middle temporal gyrus, postcentral gyrus, parahippocampal gyrus, hippocampus, precuneus, thalamus, n. accumbens, putamen, insula, temporal fusiform cortex, lateral occipital cortex, cerebellum crus I, II, cerebellum VIIb, VIIIa, frontal pole, and the Heschl's gyrus. Again, these regions have been discussed reliably in the literature as core structures for functional and structural alterations in PD with psychotic symptoms (Bejr-kasem et al., 2021; Lenka et al., 2018, 2015; Pagonabarraga et al., 2014; Rollins et al., 2019; Vignando et al., 2022; Watanabe et al., 2013). There is a strong overlap in fairly well classifying regions between FEP and PDP, especially in the putamen, insula, hippocampus, parahippocampal gyrus, precuneus, and thalamus. The presence of psychotic symptoms in this group of PD patients might introduce additional differentiating structural characteristics allowing for a better classification. Still, the specificity and sensitivity is reduced compared to the classification of early psychosis, which may result from a close association between age and illness duration in this particular group (Jia et al., 2015; Lee et al., 2013). In a recent meta-analysis (He et al., 2020) investigating progressive grey matter atrophy in individuals with PD, significant grey matter reductions were detected in mainly in the caudate, putamen, n. accumbens, and

amygdala. Our work shows that these regions overlap with areas affected and used for the classification not only in PD with psychosis but also in early psychosis.

The classification of PD alone, without psychotic symptoms, was poor (max. AUC 0.68) in our sample. This is in contrast to a recent study by Lee and colleagues (Lee et al., 2018), who were able to classify between PD patients and healthy controls with an accuracy of 0.75 in the validation sample. This study, however, did not differentiate between PD patients with and without psychotic symptoms. Therefore, improved performance in Lee and colleagues (Lee et al., 2018) compared to our work, could result from the inclusion of individuals with psychotic symptoms. Taken together, our results suggest that the presence of psychotic symptoms allows for a more precise differentiation between patients and healthy control subjects in general, independent of their primary diagnosis. Despite the overlap in brain regions involved that seem to link to the presence of psychotic symptoms, it is not possible in this dataset to differentiate the contribution of specific psychotic symptoms, e.g. visual vs. auditory hallucinations. Importantly, however, functional alterations in the precuneus has been associated with visual hallucinations in PD (see reviews (Carter and ffytche, 2015; Zmigrod et al., 2016)) as well as with auditory hallucinations in schizophrenia (Mallikarjun et al., 2018; Zhuo et al., 2016), suggesting potential unifying mechanisms underlying hallucinations in both disorders. Larger studies with distinguishable subgroups of symptom expression are needed to fully understand this potential target area.

Decreased homogeneity and increased variability in patients links to symptoms

As expected, when investigating correlations of individual's GM NW volumes to every other individual's GM NW volumes, we found smaller homogeneity – or, in other terms, decreased inter-individual correlation in whole brain grey matter patterns – in all patient groups compared to healthy controls. This decreased homogeneity may be linked to clinical symptomatology. These results are in line with findings in schizophrenia (Brugger and Howes, 2017; Liu et al., 2021; Weinberg et al., 2016; T. Zhang et al., 2015) or Alzheimer's Disease using a similar

approach (Pichet Binette et al., 2020). Both, Parkinson's disease and Psychosis are neurobiologically heterogeneous disorders (Brugger and Howes, 2017; Fereshtehnejad et al., 2017; Voineskos et al., 2020), having multiple clinical subtypes, occurring with co-morbidities, and diverse representations across behavior, genetics and brain morphometry. Relating to this, we, therefore, explored interindividual GM volume variability; the variability was increased globally in FEP, PDP and PDN compared to their control groups. Additionally, we found specific NWs that showed increased variability. Within the FEP patient group GM volume was significantly more variable in NWs 13, 15 and 23 comprising the temporal lobe, amygdala, n. accumbens, large areas of the cerebellum, occipital lobe and the frontal pole. In a meta-analysis Brugger and Howes (Brugger and Howes, 2017) investigated GM variability in specific regions and found increased variability in the putamen, thalamus, temporal lobe, and third ventricle, providing some overlap, but also decreased variability in the anterior cingulate cortex. Although the increased variability may be partially caused by secondary factors like medication, illness duration or comorbidities, inherent to all case-control, the most likely cause for the increase variability is, however, the heterogeneity of the neurobiological processes underlying the illness. This heterogeneity furthermore indicates that individuals develop different psychopathological profiles. In support of the latter explanation, we found an association between GM volume in NW 23, comprising temporal lobe, cerebellar areas, frontal pole, postcentral gyrus and occipital lobe, and symptom strength as measured by PANSS, indicating that the increased variability in this region may be explained by symptom expression (Cropley et al., 2016; Job et al., 2005).

Findings in the PD group are consistent with this account. Here we found overall increased variability in PDP as well as PDN compared to Con-PD. In PDP compared to Con-PD variability was significantly greater in NW 19, 21, and 28, comprising areas such as the n. accumbens, putamen, insula, posterior cingulate gyrus, and temporal lobe, showing strong overlap with more heterogeneous areas in the FEP sample. Interestingly, GM volume in NW

21 and 28 showed an association with psychotic symptom strength measured using the MDS-UPDRS, but no correlation with cognitive decline. In contrast, PDN had increased variability in NW 5, 19, 26, and 28, including areas such as the cerebellum, n. accumbens, putamen, insula, thalamus and temporal lobe, which was, in turn, correlated with cognitive performance (i.e., MMSE score), indicating that reduced GM volume in PDN in these areas might be closely related to cognitive decline. Interestingly, in Con-PD, a trend for the same association was detected. Considering that the cognitive decline is lower in Con-PD and therefore the range decreased, the slightly lower correlation seems plausible. These findings are intriguing as they show that, while in FEP and PDP GM volume reduction in NWs with increased variability is linked to increased psychotic symptoms but not cognitive decline, in individuals not affected by psychotic symptoms, such as PDN and Con-PD, GM volume reduction in NWs with increased variability is linked to cognitive decline. Interestingly, one of the overlapping areas is the cerebellum, which has been reported in multiple studies discussing GM alterations in psychiatric and especially psychotic disorders (Moberget et al., 2018; Schwarz et al., 2019; Tanskanen et al., 2010; T. Zhang et al., 2015; Zhang et al., 2020), but which has also been linked to symptom expression and development (Moberget and Ivry, 2019). Temporal lobe alterations are a common findings in psychosis, especially in the lateral (Borgwardt et al., 2007; Colibazzi et al., 2017; Sabb et al., 2010) and medial parts (Allen et al., 2012; Lieberman et al., 2018; Schobel et al., 2013), which have been linked to the neurobiological basis of psychosis (Lodge and Grace, 2011; Modinos et al., 2015), providing some commonality with PD psychosis, as alterations in these areas may be linked to developing psychotic symptoms.

Limitations

Potential limitations need to be considered for this study. First, in a multi-cohort study, individuals from different studies are pooled together. Parameters like scan-sites, imaging protocols, selection criteria might introduce additional variance. In the ANCOVA and ROC

analysis we therefore controlled for age, gender, scan site, and TIV to allow maximal comparability. In this regard it should not go unnoticed that a correction for age always entails removing the influence of disease (duration) to a limited degree, potentially reducing differences between patient and control groups. This, however, constitutes a confound often present in PD and psychosis research which is hard to avoid. Additionally, each contributing study includes a patient and a control group both assessed under identical circumstances, and in each group consists of at least two different studies, further controlling for study intrinsic confounds. Second, there is no clinical score that has been assessed across all patient groups which is not surprising given the diversity of disease studies. We, however, made sure that each patient group, consisting of participants from multiple sites, had one identical clinical score. The main disadvantage of this shortcoming is that symptom correlation cannot be studied in detail, and, thus, potential differences between the groups - such as a higher prevalence of visual hallucinations in PD or a higher percentage of auditory hallucinations in schizophrenia - cannot be considered. Third, as we are dealing with two different psychiatric diseases, schizophrenia and PD, with different medication strategies, for which a conversion into an equivalent dose is not possible, it makes impossible to control for medication in the analysis. Therefore, the results could potentially be confounded by medication effects and/or duration of illness effects.

Conclusion

In this study, we were able to show that alterations in GM volume allow for the fair to good classification of individuals with early psychosis and Parkinson's psychosis. Furthermore, we found that there was reduced homogeneity and increased variability in patients compared to controls, potentially revealing those areas involved in the neurobiological processes underlying disease development. Importantly, we found that reduced GM volume in areas with increased variability was linked to increased psychotic symptoms in both FEP and PDP, but not to cognitive decline in PDP, indicating that these areas, mainly the cerebellum and the temporal

lobe, may contribute to the development of psychotic disorders. Generally, a SCN approach may therefore not only be a powerful tool for the identification of individuals at risk for a disorder, but also in the understanding of transdiagnostic similarities and differences contributing to the development of certain symptoms.

References

- Alexander-Bloch A, Giedd JN, Bullmore E. 2013. Imaging structural co-variance between human brain regions. *Nat Rev Neurosci* **14**:322–336.
- Allen P, Chaddock CA, Howes OD, Egerton A, Seal ML, Fusar-Poli P, Valli I, Day F, McGuire PK. 2012. Abnormal relationship between medial temporal lobe and subcortical dopamine function in people with an ultra high risk for psychosis. *Schizophr Bull* **38**:1040–1049.
- Alloza C, Blesa-Cábez M, Bastin ME, Madole JW, Buchanan CR, Janssen J, Gibson J, Deary IJ, Tucker-Drob EM, Whalley HC. 2020. Psychotic-like experiences, polygenic risk scores for schizophrenia, and structural properties of the salience, default mode, and central-executive networks in healthy participants from UK Biobank. *Transl Psychiatry* **10**:1–13.
- Ashburner J. 2007. A fast diffeomorphic image registration algorithm. *Neuroimage* **38**:95–113.
- Avram M, Brandl F, Knolle F, Cabello J, Leucht C, Scherr M, Mustafa M, Koutsouleris N, Leucht S, Ziegler S. 2020. Aberrant striatal dopamine links topographically with cortico-thalamic dysconnectivity in schizophrenia. *Brain* **143**:3495–3505.
- Beckmann M, Johansen-Berg H, Rushworth MFS. 2009. Connectivity-based parcellation of human cingulate cortex and its relation to functional specialization. *J Neurosci* **29**:1175–1190.
- Bejr-kasem H, Sampedro F, Marín-Lahoz J, Martínez-Horta S, Pagonabarraga J, Kulisevsky J. 2021. Minor hallucinations reflect early gray matter loss and predict subjective cognitive decline in Parkinson’s disease. *Eur J Neurol* **28**:438–447.
- Boehme R, Deserno L, Gleich T, Katthagen T, Pankow A, Behr J, Buchert R, Roiser JP, Heinz A, Schlagenhauf F. 2015. Aberrant Salience Is Related to Reduced Reinforcement Learning Signals and Elevated Dopamine Synthesis Capacity in Healthy Adults. *J Neurosci* **35**:10103–10111. doi:10.1523/JNEUROSCI.0805-15.2015
- Borgan F, O’Daly O, Veronese M, Reis Marques T, Laurikainen H, Hietala J, Howes O. 2021. The neural and molecular basis of working memory function in psychosis: a multimodal PET-fMRI study. *Mol Psychiatry* **26**:4464–4474.
- Borgwardt SJ, McGuire PK, Aston J, Berger G, Dazzan P, Gschwandtner U, Pflüger M, D’Souza M, Radue EW, Riecher-Rössler A. 2007. Structural brain abnormalities in individuals with an at-risk mental state who later develop psychosis. *Br J Psychiatry* **191**. doi:10.1192/bjp.191.51.s69
- Brugger SP, Howes OD. 2017. Heterogeneity and homogeneity of regional brain structure in schizophrenia: a meta-analysis. *JAMA psychiatry* **74**:1104–1111.
- Carter R, ffytche DH. 2015. On visual hallucinations and cortical networks: a trans-diagnostic review. *J Neurol*. doi:10.1007/s00415-015-7687-6
- Colibazzi T, Yang Z, Horga G, Yan C-G, Corcoran CM, Klahr K, Brucato G, Girgis RR, Abi-Dargham A, Milham MP. 2017. Aberrant temporal connectivity in persons at clinical high risk for psychosis. *Biol Psychiatry Cogn Neurosci Neuroimaging* **2**:696–705.
- Cropley VL, Lin A, Nelson B, Reniers RLEP, Yung AR, Bartholomeusz CF, Klauser P, Velakoulis D, McGorry P, Wood SJ, Pantelis C. 2016. Baseline grey matter volume of non-transitioned “ultra high risk” for psychosis individuals with and without attenuated psychotic symptoms at long-term follow-up. *Schizophr Res* **173**:152–158. doi:<https://doi.org/10.1016/j.schres.2015.05.014>
- Dandash O, Fornito A, Lee J, Keefe RSE, Chee MWL, Adcock RA, Pantelis C, Wood SJ, Harrison BJ. 2014. Altered striatal functional connectivity in subjects with an at-risk mental state for psychosis. *Schizophr Bull* **40**:904–913.
- Davies DJ, Teufel C, Fletcher PC. 2018. Anomalous perceptions and beliefs are associated

- with shifts toward different types of prior knowledge in perceptual inference. *Schizophr Bull* **44**:1245–1253.
- de Moura AM, Pinaya WHL, Gadelha A, Zugman A, Noto C, Cordeiro Q, Belangero SI, Jackowski AP, Bressan RA, Sato JR. 2018. Investigating brain structural patterns in first episode psychosis and schizophrenia using MRI and a machine learning approach. *Psychiatry Res Neuroimaging* **275**:14–20.
doi:<https://doi.org/10.1016/j.psychres.2018.03.003>
- Ding Y, Ou Y, Pan P, Shan X, Chen J, Liu F, Zhao J, Guo W. 2019. Brain structural abnormalities as potential markers for detecting individuals with ultra-high risk for psychosis: a systematic review and meta-analysis. *Schizophr Res* **209**:22–31.
- Du Y, Fryer SL, Fu Z, Lin D, Sui J, Chen J, Damaraju E, Mennigen E, Stuart B, Loewy RL, Mathalon DH, Calhoun VD. 2018. Dynamic functional connectivity impairments in early schizophrenia and clinical high-risk for psychosis. *Neuroimage* **180**:632–645.
doi:<https://doi.org/10.1016/j.neuroimage.2017.10.022>
- Eickhoff SB, Stephan KE, Mohlberg H, Grefkes C, Fink GR, Amunts K, Zilles K. 2005. A new SPM toolbox for combining probabilistic cytoarchitectonic maps and functional imaging data. *Neuroimage* **25**:1325–1335.
- Ermakova AO, Knolle F, Justicia A, Bullmore ET, Jones PB, Robbins TW, Fletcher PC, Murray GK. 2018. Abnormal reward prediction-error signalling in antipsychotic naive individuals with first-episode psychosis or clinical risk for psychosis. *Neuropsychopharmacology* **1**.
- Farrow TFD, Whitford TJ, Williams LM, Gomes L, Harris AWF. 2005. Diagnosis-Related Regional Gray Matter Loss Over Two Years in First Episode Schizophrenia and Bipolar Disorder. *Biol Psychiatry* **58**:713–723.
doi:<https://doi.org/10.1016/j.biopsych.2005.04.033>
- Fereshtehnejad S-M, Zeighami Y, Dagher A, Postuma RB. 2017. Clinical criteria for subtyping Parkinson’s disease: biomarkers and longitudinal progression. *Brain* **140**:1959–1976. doi:10.1093/brain/awx118
- Ffytche DH, Creese B, Politis M, Chaudhuri KR, Weintraub D, Ballard C, Aarsland D. 2017. The psychosis spectrum in Parkinson disease. *Nat Rev Neurol*.
doi:10.1038/nrneurol.2016.200
- Folstein MF, Robins LN, Helzer JE. 1983. The mini-mental state examination. *Arch Gen Psychiatry* **40**:812.
- Forsaa EB, Larsen JP, Wentzel-Larsen T, Goetz CG, Stebbins GT, Aarsland D, Alves G. 2010. A 12-year population-based study of psychosis in Parkinson disease. *Arch Neurol*.
doi:10.1001/archneurol.2010.166
- Fusar-Poli P, Borgwardt S, Crescini A, Deste G, Kempton MJ, Lawrie S, Mc Guire P, Sacchetti E. 2011. Neuroanatomy of vulnerability to psychosis: a voxel-based meta-analysis. *Neurosci Biobehav Rev* **35**:1175–1185.
- Garofalo S, Justicia A, Arrondo G, Ermakova AO, Ramachandra P, Tudor-Sfetea C, Robbins TW, Barker RA, Fletcher PC, Murray GK. 2017. Cortical and striatal reward processing in Parkinson’s disease psychosis. *Front Neurol*. doi:10.3389/fneur.2017.00156
- Glahn DC, Laird AR, Ellison-Wright I, Thelen SM, Robinson JL, Lancaster JL, Bullmore E, Fox PT. 2008. Meta-analysis of gray matter anomalies in schizophrenia: application of anatomic likelihood estimation and network analysis. *Biol Psychiatry* **64**:774–781.
- Gupta CN, Turner JA, Calhoun VD. 2018. Source-based morphometry: Data-driven multivariate analysis of structural brain imaging data. *Brain Morphometry*. Springer. pp. 105–120.
- Haarsma J, Fletcher PC, Griffin JD, Taverne HJ, Ziauddeen H, Spencer TJ, Miller C, Katthagen T, Goodyer I, Diederer KMJ, Murray GK. 2020. Precision weighting of cortical unsigned prediction error signals benefits learning, is mediated by dopamine, and

- is impaired in psychosis. *Mol Psychiatry*. doi:10.1038/s41380-020-0803-8
- He H, Liang L, Tang T, Luo J, Wang Y, Cui H. 2020. Progressive brain changes in Parkinson's disease: A meta-analysis of structural magnetic resonance imaging studies. *Brain Res* **1740**:146847. doi:<https://doi.org/10.1016/j.brainres.2020.146847>
- Ho NF, Holt DJ, Cheung M, Iglesias JE, Goh A, Wang M, Lim JK, de Souza J, Poh JS, See YM, Adcock AR, Wood SJ, Chee MW, Lee J, Zhou J. 2017. Progressive Decline in Hippocampal CA1 Volume in Individuals at Ultra-High-Risk for Psychosis Who Do Not Remit: Findings from the Longitudinal Youth at Risk Study. *Neuropsychopharmacol Off Publ Am Coll Neuropsychopharmacol* **42**:1361–1370. doi:10.1038/npp.2017.5
- Hoehn MM, Yahr MD. 1998. Parkinsonism: onset, progression, and mortality. *Neurology* **50**:318.
- Ibarretxe-Bilbao N, Ramirez-Ruiz B, Junque C, Marti MJ, Valldeoriola F, Bargallo N, Juanes S, Tolosa E. 2010. Differential progression of brain atrophy in Parkinson's disease with and without visual hallucinations. *J Neurol Neurosurg Psychiatry* **81**:650–657.
- Ivleva EI, Bidesi AS, Thomas BP, Meda SA, Francis A, Moates AF, Witte B, Keshavan MS, Tamminga CA. 2012. Brain gray matter phenotypes across the psychosis dimension. *Psychiatry Res Neuroimaging* **204**:13–24. doi:<https://doi.org/10.1016/j.psychres.2012.05.001>
- Janzen J, Van't Ent D, Lemstra AW, Berendse HW, Barkhof F, Foncke EMJ. 2012. The pedunclopontine nucleus is related to visual hallucinations in Parkinson's disease: preliminary results of a voxel-based morphometry study. *J Neurol* **259**:147–154.
- Jenkinson M, Beckmann CF, Behrens TEJ, Woolrich MW, Smith SM. 2012. Fsl. *Neuroimage* **62**:782–790. doi:10.1016/j.neuroimage.2011.09.015
- Jia X, Liang P, Li Y, Shi L, Wang D, Li K. 2015. Longitudinal study of gray matter changes in Parkinson disease. *Am J Neuroradiol* **36**:2219–2226.
- Job DE, Whalley HC, Johnstone EC, Lawrie SM. 2005. Grey matter changes over time in high risk subjects developing schizophrenia. *Neuroimage* **25**:1023–1030.
- Jukuri T, Kiviniemi V, Nikkinen J, Miettunen J, Mäki P, Jääskeläinen E, Mikkala S, Koivukangas J, Nordström T, Taanila A. 2013. Default mode network in young people with familial risk for psychosis—The Oulu Brain and Mind Study. *Schizophr Res* **143**:239–245.
- Kašpárek T, Mareček R, Schwarz D, Přikryl R, Vaníček J, Mikl M, Češková E. 2010. Source-based morphometry of gray matter volume in men with first-episode schizophrenia. *Hum Brain Mapp* **31**:300–310.
- Katthagen T, Kaminski J, Heinz A, Buchert R, Schlagenhauf F. 2020. Striatal Dopamine and Reward Prediction Error Signaling in Unmedicated Schizophrenia Patients. *Schizophr Bull* **46**:1535–1546.
- Kay SR, Fiszbein A, Opler LA. 1987. The positive and negative syndrome scale (PANSS) for schizophrenia. *Schizophr Bull* **13**:261–76. doi:10.1093/SCHBUL/13.2.261
- Kesby JP, Murray GK, Knolle F. 2021. Neural circuitry of salience and reward processing in psychosis. *Biol Psychiatry Glob Open Sci*.
- Klauser P, Zhou J, Lim JKW, Poh JS, Zheng H, Tng HY, Krishnan R, Lee J, Keefe RSE, Adcock RA, Wood SJ, Fornito A, Chee MWL. 2015. Lack of Evidence for Regional Brain Volume or Cortical Thickness Abnormalities in Youths at Clinical High Risk for Psychosis: Findings From the Longitudinal Youth at Risk Study. *Schizophr Bull* **41**:1285–1293. doi:10.1093/schbul/sbv012
- Knolle F, Ermakova AO, Justicia A, Fletcher PC, Bunzeck N, Düzel E, Murray GK. 2018. Brain responses to different types of salience in antipsychotic naïve first episode psychosis: An fMRI study. *Transl Psychiatry*. doi:10.1038/s41398-018-0250-3
- Knolle F, Garofalo S, Viviani R, Justicia A, Ermakova AO, Blank H, Williams GB, Arrondo

- G, Ramachandra P, Tudor-Sfetea C. 2020. Altered subcortical emotional salience processing differentiates Parkinson's patients with and without psychotic symptoms. *NeuroImage Clin* 102277.
- Koch K, Manrique DR, Rus-Oswald OG, Gürsel DA, Berberich G, Kunz M, Zimmer C. 2021. Homogeneous grey matter patterns in patients with obsessive-compulsive disorder. *NeuroImage Clin* 102727.
- Lee E-Y, Sen S, Eslinger PJ, Wagner D, Shaffer ML, Kong L, Lewis MM, Du G, Huang X. 2013. Early cortical gray matter loss and cognitive correlates in non-demented Parkinson's patients. *Parkinsonism Relat Disord* **19**:1088–1093. doi:<https://doi.org/10.1016/j.parkreldis.2013.07.018>
- Lee P-L, Chou K-H, Lu C-H, Chen H-L, Tsai N-W, Hsu A-L, Chen M-H, Lin W-C, Lin C-P. 2018. Extraction of large-scale structural covariance networks from grey matter volume for Parkinson's disease classification. *Eur Radiol* **28**:3296–3305.
- Lenka A, Ingalhalikar M, Shah A, Saini J, Arumugham SS, Hegde S, George L, Reddy V, Reddy YCJ, Yadav R. 2018. Hippocampal subfield atrophy in patients with Parkinson's disease and psychosis. *J Neural Transm* **125**:1361–1372.
- Lenka A, Jhunjhunwala KR, Saini J, Pal PK. 2015. Structural and functional neuroimaging in patients with Parkinson's disease and visual hallucinations: a critical review. *Parkinsonism Relat Disord* **21**:683–691.
- Lenka A, Pagonabarraga J, Pal PK, Bejr-Kasem H, Kulisvesky J. 2019. Minor hallucinations in Parkinson disease: A subtle symptom with major clinical implications. *Neurology* **93**:259–266. doi:10.1212/WNL.0000000000007913
- Li M, Li X, Das TK, Deng W, Li Y, Zhao L, Ma X, Wang Y, Yu H, Meng Y. 2019. Prognostic utility of multivariate morphometry in schizophrenia. *Front psychiatry* **10**:245.
- Lieberman JA, Girgis RR, Brucato G, Moore H, Provenzano F, Kegeles L, Javitt D, Kantrowitz J, Wall MM, Corcoran CM. 2018. Hippocampal dysfunction in the pathophysiology of schizophrenia: a selective review and hypothesis for early detection and intervention. *Mol Psychiatry* **23**:1764–1772.
- Lieberman JA, Small SA, Girgis RR. 2019. Early detection and preventive intervention in schizophrenia: From fantasy to reality. *Am J Psychiatry* **176**:794–810. doi:10.1176/appi.ajp.2019.19080865
- Liloia D, Brasso C, Cauda F, Mancuso L, Nani A, Manuella J, Costa T, Duca S, Rocca P. 2021. Updating and characterizing neuroanatomical markers in high-risk subjects, recently diagnosed and chronic patients with schizophrenia: A revised coordinate-based meta-analysis. *Neurosci Biobehav Rev* **123**:83–103.
- Lin Y, Li M, Zhou Y, Deng W, Ma X, Wang Q, Guo W, Li Y, Jiang L, Hu X, Zhang N, Li T. 2019. Age-Related Reduction in Cortical Thickness in First-Episode Treatment-Naïve Patients with Schizophrenia. *Neurosci Bull* **35**:688–696. doi:10.1007/s12264-019-00348-x
- Littow H, Huossa V, Karjalainen S, Jääskeläinen E, Haapea M, Miettunen J, Tervonen O, Isohanni M, Nikkinen J, Veijola J. 2015. Aberrant functional connectivity in the default mode and central executive networks in subjects with schizophrenia—a whole-brain resting-state ICA study. *Front psychiatry* **6**:26.
- Liu Z, Palaniyappan L, Wu X, Zhang K, Du J, Zhao Q, Xie C, Tang Y, Su W, Wei Y, Xue K, Han S, Tsai S-J, Lin C-P, Cheng J, Li C, Wang J, Sahakian BJ, Robbins TW, Zhang J, Feng J. 2021. Resolving heterogeneity in schizophrenia through a novel systems approach to brain structure: individualized structural covariance network analysis. *Mol Psychiatry*. doi:10.1038/s41380-021-01229-4
- Lodge DJ, Grace AA. 2011. Hippocampal dysregulation of dopamine system function and the pathophysiology of schizophrenia. *Trends Pharmacol Sci* **32**:507–513.

- Mallikarjun PK, Lalouis PA, Dunne TF, Heinze K, Reniers RLEP, Broome MR, Farmah B, Oyebo F, Wood SJ, Upthegrove R. 2018. Aberrant salience network functional connectivity in auditory verbal hallucinations: a first episode psychosis sample. *Transl Psychiatry* **8**:69. doi:10.1038/s41398-018-0118-6
- Manoliu A, Riedl V, Zherdin A, Mühlau M, Schwerthöffer D, Scherr M, Peters H, Zimmer C, Förstl H, Bäuml J. 2014. Aberrant dependence of default mode/central executive network interactions on anterior insular salience network activity in schizophrenia. *Schizophr Bull* **40**:428–437.
- Marwick B, Krishnamoorthy K. 2019. cvequality: Tests for the Equality of Coefficients of Variation from Multiple Groups. R software package version 0.1.3.
- McCutcheon RA, Reis Marques T, Howes OD. 2020. Schizophrenia—An Overview. *JAMA Psychiatry* **77**:201–210. doi:10.1001/jamapsychiatry.2019.3360
- Meda SA, Giuliani NR, Calhoun VD, Jagannathan K, Schretlen DJ, Pulver A, Cascella N, Keshavan M, Kates W, Buchanan R. 2008. A large scale (N= 400) investigation of gray matter differences in schizophrenia using optimized voxel-based morphometry. *Schizophr Res* **101**:95–105.
- Meisenzahl EM, Koutsouleris N, Gaser C, Bottlender R, Schmitt GJE, McGuire P, Decker P, Burgermeister B, Born C, Reiser M. 2008. Structural brain alterations in subjects at high-risk of psychosis: a voxel-based morphometric study. *Schizophr Res* **102**:150–162.
- Merritt K, Luque Laguna P, Irfan A, David AS. 2021. Longitudinal structural MRI findings in individuals at genetic and clinical high risk for psychosis: a systematic review. *Front psychiatry* **12**:49.
- Moberget T, Doan NT, Alnæs D, Kaufmann T, Córdova-Palomera A, Lagerberg T V, Diedrichsen J, Schwarz E, Zink M, Eisenacher S. 2018. Cerebellar volume and cerebellocerebral structural covariance in schizophrenia: a multisite mega-analysis of 983 patients and 1349 healthy controls. *Mol Psychiatry* **23**:1512–1520.
- Moberget T, Ivry RB. 2019. Prediction, psychosis, and the cerebellum. *Biol Psychiatry Cogn Neurosci Neuroimaging* **4**:820–831.
- Modinos G, Allen P, Grace AA, McGuire P. 2015. Translating the MAM model of psychosis to humans. *Trends Neurosci* **38**:129–138.
- Nasreddine ZS, Phillips NA, Bédirian V, Charbonneau S, Whitehead V, Collin I, Cummings JL, Chertkow H. 2005. The Montreal Cognitive Assessment, MoCA: a brief screening tool for mild cognitive impairment. *J Am Geriatr Soc* **53**:695–699.
- Pagonabarraga J, Soriano-Mas C, Llebaria G, López-Solà M, Pujol J, Kulisevsky J. 2014. Neural correlates of minor hallucinations in non-demented patients with Parkinson's disease. *Parkinsonism Relat Disord* **20**:290–296.
- Palaniyappan L, Liddle PF. 2012. Does the salience network play a cardinal role in psychosis? An emerging hypothesis of insular dysfunction. *J Psychiatry Neurosci*. doi:10.1503/jpn.100176
- Pereira JB, Ballard C, Chaudhuri KR, Weintraub D, Aarsland D. 2017. Risk factors for early psychosis in PD: insights from the Parkinson's Progression Markers Initiative. *J Neurol Neurosurg Psychiatry* **88**:325–331.
- Pichet Binette A, Gonneaud J, Vogel JW, La Joie R, Rosa-Neto P, Collins DL, Poirier J, Breitner JCS, Villeneuve S, Vachon-Preseau E. 2020. Morphometric network differences in ageing versus Alzheimer's disease dementia. *Brain* **143**:635–649.
- Radua J, Borgwardt S, Crescini A, Mataix-Cols D, Meyer-Lindenberg A, McGuire PK, Fusar-Poli P. 2012. Multimodal meta-analysis of structural and functional brain changes in first episode psychosis and the effects of antipsychotic medication. *Neurosci Biobehav Rev*. doi:10.1016/j.neubiorev.2012.07.012
- Ramírez-Ruiz B, Martí M, Tolosa E, Gimenez M, Bargallo N, Valldeoriola F, Junque C. 2007. Cerebral atrophy in Parkinson's disease patients with visual hallucinations. *Eur J*

- Neurol* **14**:750–756.
- Robin X, Turck N, Hainard A, Tiberti N, Lisacek F, Sanchez J-C, Müller M. 2011. pROC: an open-source package for R and S+ to analyze and compare ROC curves. *BMC Bioinformatics* **12**:77. doi:10.1186/1471-2105-12-77
- Rollins CPE, Garrison JR, Simons JS, Rowe JB, O’Callaghan C, Murray GK, Suckling J. 2019. Meta-analytic Evidence for the Plurality of Mechanisms in Transdiagnostic Structural MRI Studies of Hallucination Status. *EClinicalMedicine* **8**:57–71. doi:<https://doi.org/10.1016/j.eclinm.2019.01.012>
- Sabb FW, van Erp TGM, Hardt ME, Dapretto M, Caplan R, Cannon TD, Bearden CE. 2010. Language network dysfunction as a predictor of outcome in youth at clinical high risk for psychosis. *Schizophr Res* **116**:173–183.
- Safari S, Baratloo A, Elfil M, Negida A. 2016. Evidence based emergency medicine; part 5 receiver operating curve and area under the curve. *Emergency* **4**:111.
- Sakuma A, Obara C, Katsura M, Ito F, Ohmuro N, Iizuka K, Kikuchi T, Miyakoshi T, Matsuoka H, Matsumoto K. 2018. No regional gray matter volume reduction observed in young Japanese people at ultra-high risk for psychosis: a voxel-based morphometry study. *Asian J Psychiatr* **37**:167–171.
- Schobel SA, Chaudhury NH, Khan UA, Paniagua B, Styner MA, Asllani I, Inbar BP, Corcoran CM, Lieberman JA, Moore H. 2013. Imaging patients with psychosis and a mouse model establishes a spreading pattern of hippocampal dysfunction and implicates glutamate as a driver. *Neuron* **78**:81–93.
- Schultz CC, Fusar-Poli P, Wagner G, Koch K, Schachtzabel C, Gruber O, Sauer H, Schlösser RGM. 2012. Multimodal functional and structural imaging investigations in psychosis research. *Eur Arch Psychiatry Clin Neurosci* **262**:97–106.
- Schultz CC, Koch K, Wagner G, Roebel M, Nenadic I, Schachtzabel C, Reichenbach JR, Sauer H, Schlösser RGM. 2010a. Complex pattern of cortical thinning in schizophrenia: results from an automated surface based analysis of cortical thickness. *Psychiatry Res Neuroimaging* **182**:134–140.
- Schultz CC, Koch K, Wagner G, Roebel M, Schachtzabel C, Gaser C, Nenadic I, Reichenbach JR, Sauer H, Schlösser RGM. 2010b. Reduced cortical thickness in first episode schizophrenia. *Schizophr Res* **116**:204–209.
- Schultz CC, Wagner G, Koch K, Gaser C, Roebel M, Schachtzabel C, Nenadic I, Reichenbach JR, Sauer H, Schlösser RGM. 2013. The visual cortex in schizophrenia: alterations of gyrification rather than cortical thickness—a combined cortical shape analysis. *Brain Struct Funct* **218**:51–58.
- Schultz SH, North SW, Shields CG. 2007. Schizophrenia: a review. *Am Fam Physician* **75**:1821–1829.
- Schulz M-A, Yeo BTT, Vogelstein JT, Mourao-Miranada J, Kather JN, Kording K, Richards B, Bzdok D. 2020. Different scaling of linear models and deep learning in UKBiobank brain images versus machine-learning datasets. *Nat Commun* **11**:4238. doi:10.1038/s41467-020-18037-z
- Schwarz E, Doan NT, Pergola G, Westlye LT, Kaufmann T, Wolfers T, Brecheisen R, Quarto T, Ing AJ, Di Carlo P, Gurholt TP, Harms RL, Noirhomme Q, Moberget T, Agartz I, Andreassen OA, Bellani M, Bertolino A, Blasi G, Brambilla P, Buitelaar JK, Cervenka S, Flyckt L, Frangou S, Franke B, Hall J, Heslenfeld DJ, Kirsch P, McIntosh AM, Nöthen MM, Papassotiropoulos A, de Quervain DJ-F, Rietschel M, Schumann G, Tost H, Witt SH, Zink M, Meyer-Lindenberg A, The IMAGEMEND Consortium KSP (KaSP) C. 2019. Reproducible grey matter patterns index a multivariate, global alteration of brain structure in schizophrenia and bipolar disorder. *Transl Psychiatry* **9**:12. doi:10.1038/s41398-018-0225-4
- Shin S, Lee JE, Hong JY, Sunwoo M-K, Sohn YH, Lee PH. 2012. Neuroanatomical

- substrates of visual hallucinations in patients with non-demented Parkinson's disease. *J Neurol Neurosurg Psychiatry* **83**:1155–1161.
- Shine JM, Halliday GM, Naismith SL, Lewis SJG. 2011. Visual misperceptions and hallucinations in Parkinson's disease: dysfunction of attentional control networks? *Mov Disord*. doi:10.1002/mds.23896
- Shine JM, Keogh R, O'Callaghan C, Muller AJ, Lewis SJG, Pearson J. 2015. Imagine that: elevated sensory strength of mental imagery in individuals with Parkinson's disease and visual hallucinations. *Proc R Soc B Biol Sci* **282**:20142047.
- Smieskova R, Fusar-Poli P, Allen P, Bendfeldt K, Stieglitz RD, Drewe J, Radue EW, McGuire PK, Riecher-Rössler A, Borgwardt SJ. 2010. Neuroimaging predictors of transition to psychosis—a systematic review and meta-analysis. *Neurosci Biobehav Rev* **34**:1207–1222.
- Solmi M, Radua J, Olivola M, Croce E, Soardo L, Salazar de Pablo G, Il Shin J, Kirkbride JB, Jones P, Kim JH. 2021. Age at onset of mental disorders worldwide: large-scale meta-analysis of 192 epidemiological studies. *Mol Psychiatry* 1–15.
- Takahashi T, Wood SJ, Yung AR, Phillips LJ, Soulsby B, McGorry PD, Tanino R, Zhou S-Y, Suzuki M, Velakoulis D. 2009. Insular cortex gray matter changes in individuals at ultra-high-risk of developing psychosis. *Schizophr Res* **111**:94–102.
- Tanskanen P, Ridler K, Murray GK, Haapea M, Veijola JM, Jääskeläinen E, Miettunen J, Jones PB, Bullmore ET, Isohanni MK. 2010. Morphometric Brain Abnormalities in Schizophrenia in a Population-Based Sample: Relationship to Duration of Illness. *Schizophr Bull* **36**:766–777. doi:10.1093/schbul/sbn141
- van Erp TGM, Hibar DP, Rasmussen JM, Glahn DC, Pearlson GD, Andreassen OA, Agartz I, Westlye LT, Haukvik UK, Dale AM. 2016. Subcortical brain volume abnormalities in 2028 individuals with schizophrenia and 2540 healthy controls via the ENIGMA consortium. *Mol Psychiatry* **21**:547–553.
- van Haren NEM, Schnack HG, Koevoets MGJC, Cahn W, Pol HEH, Kahn RS. 2016. Trajectories of subcortical volume change in schizophrenia: a 5-year follow-up. *Schizophr Res* **173**:140–145.
- Veijola J, Guo JY, Moilanen JS, Jääskeläinen E, Miettunen J, Kyllönen M, Haapea M, Huhtaniska S, Alaräisänen A, Mäki P. 2014. Longitudinal changes in total brain volume in schizophrenia: relation to symptom severity, cognition and antipsychotic medication. *PLoS One* **9**:e101689.
- Vignando M, Lewis SJG, Lee PH, Chung SJ, Weil RS, Hu MT, Mackay CE, Griffanti L, Pins D, Dujardin K. 2022. Mapping brain structural differences and neuroreceptor correlates in Parkinson's disease visual hallucinations. *Nat Commun* **13**:1–16.
- Voineskos AN, Jacobs GR, Ameis SH. 2020. Neuroimaging Heterogeneity in Psychosis: Neurobiological Underpinnings and Opportunities for Prognostic and Therapeutic Innovation. *Biol Psychiatry* **88**:95–102. doi:<https://doi.org/10.1016/j.biopsych.2019.09.004>
- Vos T, Barber RM, Bell B, Bertozzi-Villa A, Biryukov S, Bolliger I, Charlson F, Davis A, Degenhardt L, Dicker D, Duan L, Erskine H, Feigin VL, Ferrari AJ, Fitzmaurice C, Fleming T, Graetz N, Guinovart C, Haagsma J, Hansen GM, Hanson SW, Heuton KR, Higashi H, Kassebaum N, Kyu H, Laurie E, Liang X, Lofgren K, Lozano R, MacIntyre MF, Moradi-Lakeh M, Naghavi M, Nguyen G, Odell S, Ortblad K, Roberts DA, Roth GA, Sandar L, Serina PT, Stanaway JD, Steiner C, Thomas B, Vollset SE, Whiteford H, Wolock TM, Ye P, Zhou M, Ávila MA, Aasvang GM, Abbafati C, Ozgoren AA, Abd-Allah F, Aziz MIA, Abera SF, Aboyans V, Abraham JP, Abraham B, Abubakar I, Abu-Raddad LJ, Abu-Rmeileh NME, Aburto TC, Achoki T, Ackerman IN, Adelekan A, Ademi Z, Adou AK, Adsuar JC, Arnlov J, Agardh EE, Al Khabouri MJ, Alam SS, Alasfoor D, Albittar MI, Alegretti MA, Aleman A V., Alemu ZA, Alfonso-Cristancho R,

Alhabib S, Ali R, Alla F, Allebeck P, Allen PJ, AlMazroa MA, Alsharif U, Alvarez E, Alvis-Guzman N, Ameli O, Amini H, Ammar W, Anderson BO, Anderson HR, Antonio CAT, Anwari P, Apfel H, Arsenijevic VSA, Artaman A, Asghar RJ, Assadi R, Atkins LS, Atkinson C, Badawi A, Bahit MC, Bakfalouni T, Balakrishnan K, Balalla S, Banerjee A, Barker-Collo SL, Barquera S, Barregard L, Barrero LH, Basu S, Basu A, Baxter A, Beardsley J, Bedi N, Beghi E, Bekele T, Bell ML, Benjet C, Bennett DA, Bensenor IM, Benzian H, Bernabe E, Beyene TJ, Bhala N, Bhalla A, Bhutta Z, Bienhoff K, Bikbov B, Abdulhak A Bin, Blore JD, Blyth FM, Bohensky MA, Basara BB, Borges G, Bornstein NM, Bose D, Boufous S, Bourne RR, Boyers LN, Brainin M, Brauer M, Brayne CEG, Brazinova A, Breitborde NJK, Brenner H, Briggs ADM, Brooks PM, Brown J, Brugha TS, Buchbinder R, Buckle GC, Bukhman G, Bulloch AG, Burch M, Burnett R, Cardenas R, Cabral NL, Campos-Nonato IR, Campuzano JC, Carapetis JR, Carpenter DO, Caso V, Castaneda-Orjuela CA, Catala-Lopez F, Chadha VK, Chang JC, Chen H, Chen W, Chiang PP, Chimed-Ochir O, Chowdhury R, Christensen H, Christophi CA, Chugh SS, Cirillo M, Coggeshall M, Cohen A, Colistro V, Colquhoun SM, Contreras AG, Cooper LT, Cooper C, Cooperrider K, Coresh J, Cortinovia M, Criqui MH, Crump JA, Cuevas-Nasu L, Dandona R, Dandona L, Dansereau E, Dantes HG, Dargan PI, Davey G, Davitoiu D V., Dayama A, De La Cruz-Gongora V, De La Vega SF, De Leo D, Del Pozo-Cruz B, Dellavalle RP, Deribe K, Derrett S, Des Jarlais DC, Dessalegn M, DeVeber GA, Dharmaratne SD, Diaz-Torne C, Ding EL, Dokova K, Dorsey ER, Driscoll TR, Duber H, Durrani AM, Edmond KM, Ellenbogen RG, Endres M, Ermakov SP, Eshrati B, Esteghamati A, Estep K, Fahimi S, Farzadfar F, Fay DFJ, Felson DT, Fereshtehnejad SM, Fernandes JG, Ferri CP, Flaxman A, Foigt N, Foreman KJ, Fowkes FGR, Franklin RC, Furst T, Futran ND, Gabbe BJ, Gankpe FG, Garcia-Guerra FA, Geleijnse JM, Gessner BD, Gibney KB, Gillum RF, Ginawi IA, Giroud M, Giussani G, Goenka S, Goginashvili K, Gona P, De Cosio TG, Gosselin RA, Gotay CC, Goto A, Gouda HN, Guerrant RL, Gughani HC, Gunnell D, Gupta Rajeev, Gupta Rahul, Gutierrez RA, Hafezi-Nejad N, Hagan H, Halasa Y, Hamadeh RR, Hamavid H, Hammami M, Hankey GJ, Hao Y, Harb HL, Haro JM, Havmoeller R, Hay RJ, Hay S, Hedayati MT, Pi IBH, Heydarpour P, Hijar M, Hoek HW, Hoffman HJ, Hornberger JC, Hosgood HD, Hossain M, Hotez PJ, Hoy DG, Hsairi M, Hu H, Hu G, Huang JJ, Huang C, Huiart L, Husseini A, Iannarone M, Iburg KM, Innos K, Inoue M, Jacobsen KH, Jassal SK, Jeemon P, Jensen PN, Jha V, Jiang G, Jiang Y, Jonas JB, Joseph J, Juel K, Kan H, Karch A, Karimkhani C, Karthikeyan G, Katz R, Kaul A, Kawakami N, Kazi DS, Kemp AH, Kengne AP, Khader YS, Khalifa SEAH, Khan EA, Khan G, Khang YH, Khonelidze I, Kielling C, Kim D, Kim S, Kimokoti RW, Kinfu Y, Kinge JM, Kissela BM, Kivipelto M, Knibbs L, Knudsen AK, Kokubo Y, Kosen S, Kramer A, Kravchenko M, Krishnamurthi R V., Krishnaswami S, Defo BK, Bicer BK, Kuipers EJ, Kulkarni VS, Kumar K, Kumar GA, Kwan GF, Lai T, Laloo R, Lam H, Lan Q, Lansingh VC, Larson H, Larsson A, Lawrynowicz AEB, Leasher JL, Lee JT, Leigh J, Leung R, Levi M, Li B, Li Yichong, Li Yongmei, Liang J, Lim S, Lin HH, Lind M, Lindsay MP, Lipshultz SE, Liu S, Lloyd BK, Ohno SL, Logroscino G, Looker KJ, Lopez AD, Lopez-Olmedo N, Lortet-Tieulent J, Lotufo PA, Low N, Lucas RM, Lunevicius R, Lyons RA, Ma J, Ma S, MacKay MT, Majdan M, Malekzadeh R, Mapoma CC, Marcenes W, March LM, Margono C, Marks GB, Marzan MB, Masci JR, Mason-Jones AJ, Matzopoulos RG, Mayosi BM, Mazorodze TT, McGill NW, McGrath JJ, McKee M, McLain A, McMahon BJ, Meaney PA, Mehndiratta MM, Mejia-Rodriguez F, Mekonnen W, Melaku YA, Meltzer M, Memish ZA, Mensah G, Meretoja A, Mhimbira FA, Micha R, Miller TR, Mills EJ, Mitchell PB, Mock CN, Moffitt TE, Ibrahim NM, Mohammad KA, Mokdad AH, Mola GL, Monasta L, Montico M, Montine TJ, Moore AR, Moran AE, Morawska L, Mori R, Moschandreas J, Moturi WN, Moyer M, Mozaffarian D, Mueller UO,

- Mukaigawara M, Murdoch ME, Murray J, Murthy KS, Naghavi P, Nahas Z, Naheed A, Naidoo KS, Naldi L, Nand D, Nangia V, Narayan KMV, Nash D, Nejjari C, Neupane SP, Newman LM, Newton CR, Ng M, Ngalesoni FN, Nhung NT, Nisar MI, Nolte S, Norheim OF, Norman RE, Norrving B, Nyakarahuka L, Oh IH, Ohkubo T, Omer SB, Opio JN, Ortiz A, Pandian JD, Panelo CIA, Papachristou C, Park EK, Parry CD, Caicedo AJP, Patten SB, Paul VK, Pavlin BI, Pearce N, Pedraza LS, Pellegrini CA, Pereira DM, Perez-Ruiz FP, Perico N, Pervaiz A, Pesudovs K, Peterson CB, Petzold M, Phillips MR, Phillips D, Phillips B, Piel FB, Plass D, Poenaru D, Polanczyk G V., Polinder S, Pope CA, Popova S, Poulton RG, Pourmalek F, Prabhakaran D, Prasad NM, Qato D, Quistberg DA, Rafay A, Rahimi K, Rahimi-Movaghar V, Rahman SU, Raju M, Rakovac I, Rana SM, Razavi H, Refaat A, Rehm J, Remuzzi G, Resnikoff S, Ribeiro AL, Riccio PM, Richardson L, Richardus JH, Riederer AM, Robinson M, Roca A, Rodriguez A, Rojas-Rueda D, Ronfani L, Rothenbacher D, Roy N, Ruhago GM, Sabin N, Sacco RL, Ksoreide K, Saha S, Sahathevan R, Sahraian MA, Sampson U, Sanabria JR, Sanchez-Riera L, Santos IS, Satpathy M, Saunders JE, Sawhney M, Saylan MI, Scarborough P, Schoettler B, Schneider IJC, Schwebel DC, Scott JG, Seedat S, Sepanlou SG, Serdar B, Servan-Mori EE, Shackelford K, Shaheen A, Shahraz S, Levy TS, Shangguan S, She J, Sheikhabaei S, Shepard DS, Shi P, Shibuya K, Shinohara Y, Shiri R, Shishani K, Shiue I, Shrimme MG, Sigfusdottir ID, Silberberg DH, Simard EP, Sindi S, Singh JA, Singh L, Skirbekk V, Sliwa K, Soljak M, Soneji S, Soshnikov SS, Speyer P, Sposato LA, Sreeramareddy CT, Stoeckl H, Stathopoulou VK, Steckling N, Stein MB, Stein DJ, Steiner TJ, Stewart A, Stork E, Stovner LJ, Stroumpoulis K, Sturua L, Sunguya BF, Swaroop M, Sykes BL, Tabb KM, Takahashi K, Tan F, Tandon N, Tanne D, Tanner M, Tavakkoli M, Taylor HR, Te Ao BJ, Temesgen AM, Have M Ten, Tenkorang EY, Terkawi AS, Theadom AM, Thomas E, Thorne-Lyman AL, Thrift AG, Tleyjeh IM, Tonelli M, Topouzis F, Towbin JA, Toyoshima H, Traebert J, Tran BX, Trasande L, Trillini M, Truelsen T, Trujillo U, Tsilimbaris M, Tuzcu EM, Ukwaja KN, Undurraga EA, Uzun SB, Van Brakel WH, Van De Vijver S, Dingenen R Van, Van Gool CH, Varakin YY, Vasankari TJ, Vavilala MS, Veerman LJ, Velasquez-Melendez G, Venketasubramanian N, Vijayakumar L, Villalpando S, Violante FS, Vlassov V V., Waller S, Wallin MT, Wan X, Wang L, Wang J, Wang Y, Warouw TS, Weichenthal S, Weiderpass E, Weintraub RG, Werdecker A, Wessells KR, Westerman R, Wilkinson JD, Williams HC, Williams TN, Woldeyohannes SM, Wolfe CDA, Wong JQ, Wong H, Woolf AD, Wright JL, Wurtz B, Xu G, Yang G, Yano Y, Yenesew MA, Yentur GK, Yip P, Yonemoto N, Yoon SJ, Younis M, Yu C, Kim KY, Zaki MES, Zhang Y, Zhao Z, Zhao Y, Zhu J, Zonies D, Zunt JR, Salomon JA, Murray CJL. 2015. Global, regional, and national incidence, prevalence, and years lived with disability for 301 acute and chronic diseases and injuries in 188 countries, 1990-2013: A systematic analysis for the Global Burden of Disease Study 2013. *Lancet* **386**:743–800. doi:10.1016/S0140-6736(15)60692-4
- Watanabe H, Senda J, Kato S, Ito M, Atsuta N, Hara K, Tsuboi T, Katsuno M, Nakamura T, Hirayama M. 2013. Cortical and subcortical brain atrophy in Parkinson's disease with visual hallucination. *Mov Disord* **28**:1732–1736.
- Weinberg D, Lenroot R, Jacomb I, Allen K, Bruggemann J, Wells R, Balzan R, Liu D, Galletly C, Catts S V. 2016. Cognitive subtypes of schizophrenia characterized by differential brain volumetric reductions and cognitive decline. *JAMA psychiatry* **73**:1251–1259.
- Witthaus H, Kaufmann C, Bohner G, Özgürdal S, Gudlowski Y, Gallinat J, Ruhrmann S, Brüne M, Heinz A, Klingebiel R. 2009. Gray matter abnormalities in subjects at ultra-high risk for schizophrenia and first-episode schizophrenic patients compared to healthy controls. *Psychiatry Res Neuroimaging* **173**:163–169.

- Wood SJ, Velakoulis D, Smith DJ, Bond D, Stuart GW, McGorry PD, Brewer WJ, Bridle N, Eritaia J, Desmond P. 2001. A longitudinal study of hippocampal volume in first episode psychosis and chronic schizophrenia. *Schizophr Res* **52**:37–46.
- Xiromerisiou G, Dardiotis E, Tsimourtou V, Kountra PM, Paterakis KN, Kapsalaki EZ, Fountas KN, Hadjigeorgiou GM. 2010. Genetic basis of Parkinson disease. *Neurosurg Focus* **28**:E7.
- Xu L, Groth KM, Pearlson G, Schretlen DJ, Calhoun VD. 2009. Source-based morphometry: The use of independent component analysis to identify gray matter differences with application to schizophrenia. *Hum Brain Mapp* **30**:711–724.
- Xuan M, Guan X, Huang P, Shen Z, Gu Q, Yu X, Xu X, Luo W, Zhang M. 2019. Different patterns of gray matter density in early- and middle-late-onset Parkinson's disease: a voxel-based morphometry study. *Brain Imaging Behav* **13**:172–179. doi:10.1007/s11682-017-9745-4
- Yang H, Yim D, Park MH. 2021. Converting from the Montreal Cognitive Assessment to the Mini-Mental State Examination-2. *PLoS One* **16**:e0254055.
- Yung AR, Yuen HP, McGorry PD, Phillips LJ, Kelly D, Dell'Olio M, Francey SM, Cosgrave EM, Killackey E, Stanford C, Godfrey K, Buckby J. 2005. Mapping the onset of psychosis: The Comprehensive Assessment of At-Risk Mental States. *Aust N Z J Psychiatry* **39**:964–971. doi:10.1111/j.1440-1614.2005.01714.x
- Zarkali A, Adams RA, Psarras S, Leyland L-A, Rees G, Weil RS. 2019. Increased weighting on prior knowledge in Lewy body-associated visual hallucinations. *Brain Commun* **1**:fcz007. doi:10.1093/braincomms/fcz007
- Zeighami Y, Ulla M, Iturria-Medina Y, Dadar M, Zhang Y, Larcher KM-H, Fonov V, Evans AC, Collins DL, Dagher A. 2015. Network structure of brain atrophy in de novo Parkinson's disease. *Elife* **4**:e08440.
- Zhang J, Zhang Y-T, Hu W-D, Li L, Liu G-Y, Bai Y-P. 2015. Gray matter atrophy in patients with Parkinson's disease and those with mild cognitive impairment: a voxel-based morphometry study. *Int J Clin Exp Med* **8**:15383.
- Zhang T, Koutsouleris N, Meisenzahl E, Davatzikos C. 2015. Heterogeneity of structural brain changes in subtypes of schizophrenia revealed using magnetic resonance imaging pattern analysis. *Schizophr Bull* **41**:74–84.
- Zhang W, Sweeney JA, Yao L, Li S, Zeng J, Xu M, Tallman MJ, Gong Q, DelBello MP, Lui S, Nery FG. 2020. Brain structural correlates of familial risk for mental illness: a meta-analysis of voxel-based morphometry studies in relatives of patients with psychotic or mood disorders. *Neuropsychopharmacology* **45**:1369–1379. doi:10.1038/s41386-020-0687-y
- Zhou C, Gao T, Guo T, Wu J, Guan X, Zhou W, Huang P, Xuan M, Gu Q, Xu X. 2020. Structural covariance network disruption and functional compensation in Parkinson's disease. *Front Aging Neurosci* **12**:199.
- Zhuo C-J, Zhu J-J, Wang C-L, Wang L-N, Li J, Qin W. 2016. Increased local spontaneous neural activity in the left precuneus specific to auditory verbal hallucinations of schizophrenia. *Chin Med J (Engl)* **129**:809–813.
- Zmigrod L, Garrison JR, Carr J, Simons JS. 2016. The neural mechanisms of hallucinations: A quantitative meta-analysis of neuroimaging studies. *Neurosci Biobehav Rev* **69**:113–123. doi:<https://doi.org/10.1016/j.neubiorev.2016.05.037>